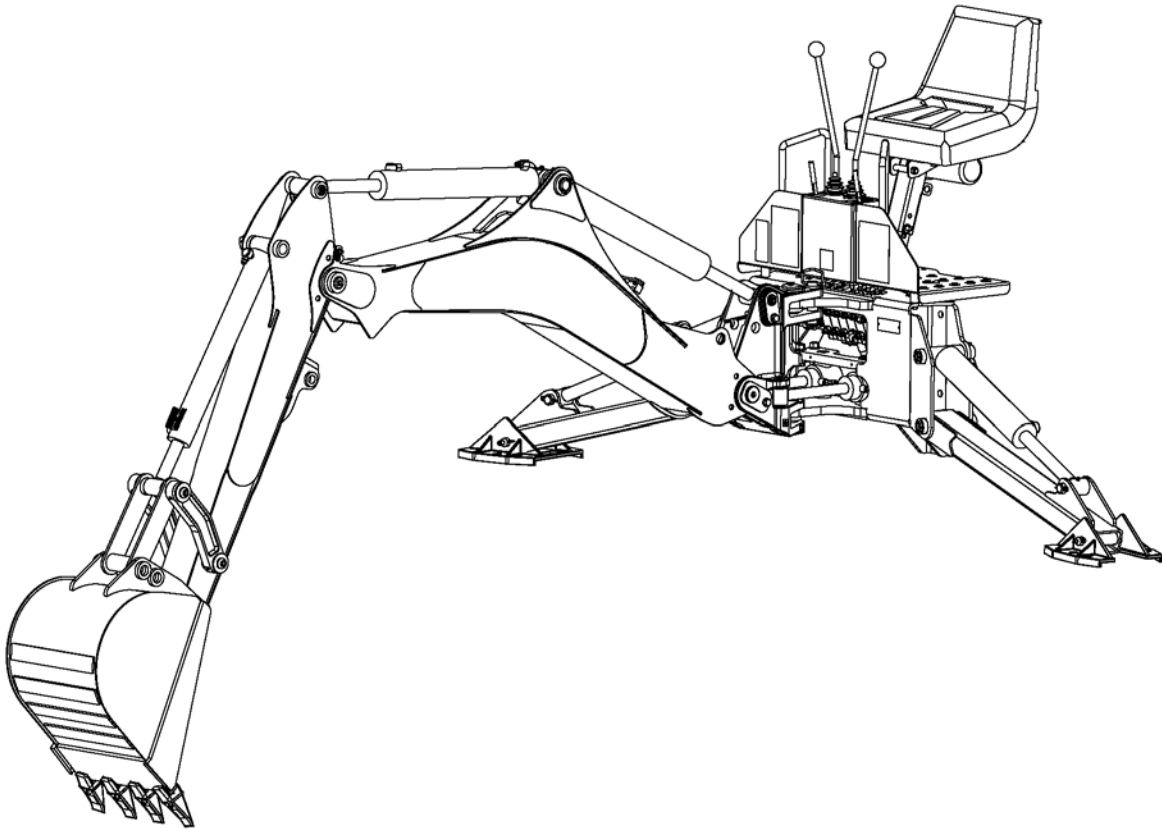


YANMAR

Mfg by Woods Equipment Co.

BACKHOE

B90



MAN1158

(Rev. 11/10/2015)

OPERATOR'S MANUAL

TO THE DEALER:

Assembly and proper installation of this product is the responsibility of the Yanmar® dealer. Read manual instructions and safety rules. Make sure all items on the Dealer's Pre-Delivery and Delivery Check Lists in the Operator's Manual are completed before releasing equipment to the owner.

The dealer must complete the online Product Registration form which certifies that all Dealer Check List items have been completed. Dealers can register all Yanmar® product through Yanmar® dealer.

Failure to register the product does not diminish customer's warranty rights.

TO THE OWNER:

Read this manual before operating your Yanmar® equipment. The information presented will prepare you to do a better and safer job. Keep this manual handy for ready reference. Require all operators to read this manual carefully and become acquainted with all adjustment and operating procedures before attempting to operate. Replacement manuals can be obtained from your dealer. To locate your nearest dealer, check the Dealer Locator at www.YanmarTractor.com, or in the United States and Canada call 1-855-416-7091.

The equipment you have purchased has been carefully engineered and manufactured to provide dependable and satisfactory use. Like all mechanical products, it will require cleaning and upkeep. Lubricate the unit as specified. Observe all safety information in this manual and safety decals on the equipment.

For service, your authorized Yanmar® dealer has trained mechanics, genuine Yanmar® service parts, and the necessary tools and equipment to handle all your needs.

Use only genuine Yanmar® service parts. Substitute parts will void the warranty and may not meet standards required for safe and satisfactory operation. Record the model number and serial number of your equipment in the spaces provided:

Model: _____ **Date of Purchase:** _____

Serial Number: (see Safety Decal section for location) _____

Provide this information to your dealer to obtain correct repair parts.

Throughout this manual, the term **NOTICE** is used to indicate that failure to observe can cause damage to equipment. The terms **CAUTION**, **WARNING**, and **DANGER** are used in conjunction with the Safety-Alert Symbol (a triangle with an exclamation mark) to indicate the degree of hazard for items of personal safety.



This is the safety alert symbol. It is used to alert you to potential physical injury hazards. Obey all safety messages that follow this symbol to avoid possible injury or death.



Indicates a hazardous situation that, if not avoided, will result in death or serious injury.



Indicates a hazardous situation that, if not avoided, could result in death or serious injury.



Indicates a hazardous situation that, if not avoided, could result in minor or moderate injury.

**IMPORTANT
or NOTICE**

Is used to address practices not related to physical injury.


NOTE

Indicates helpful information.

2 Introduction


TABLE OF CONTENTS

INTRODUCTION	3
SPECIFICATIONS	4
GENERAL INFORMATION	6
SAFETY RULES	7
SAFETY DECALS	10
OPERATION	12
OWNER SERVICE	19
TROUBLESHOOTING	21
DEALER SERVICE	23
ASSEMBLY	27
DEALER CHECK LIST	31
INDEX TO PARTS LISTS	33
BOLT TORQUE CHART	47
BOLT SIZE CHART & ABBREVIATIONS	48
INDEX	53
REPLACEMENT PARTS WARRANTY	INSIDE BACK COVER
PRODUCT WARRANTY	BACK COVER



¡LEA EL INSTRUCTIVO!

Si no lee Ingles, pida ayuda a alguien que si lo lea para que le traduzca las medidas de seguridad.



This Operator's Manual should be regarded as part of the machine. Suppliers of both new and second-hand machines must make sure that this manual is provided with the machine.

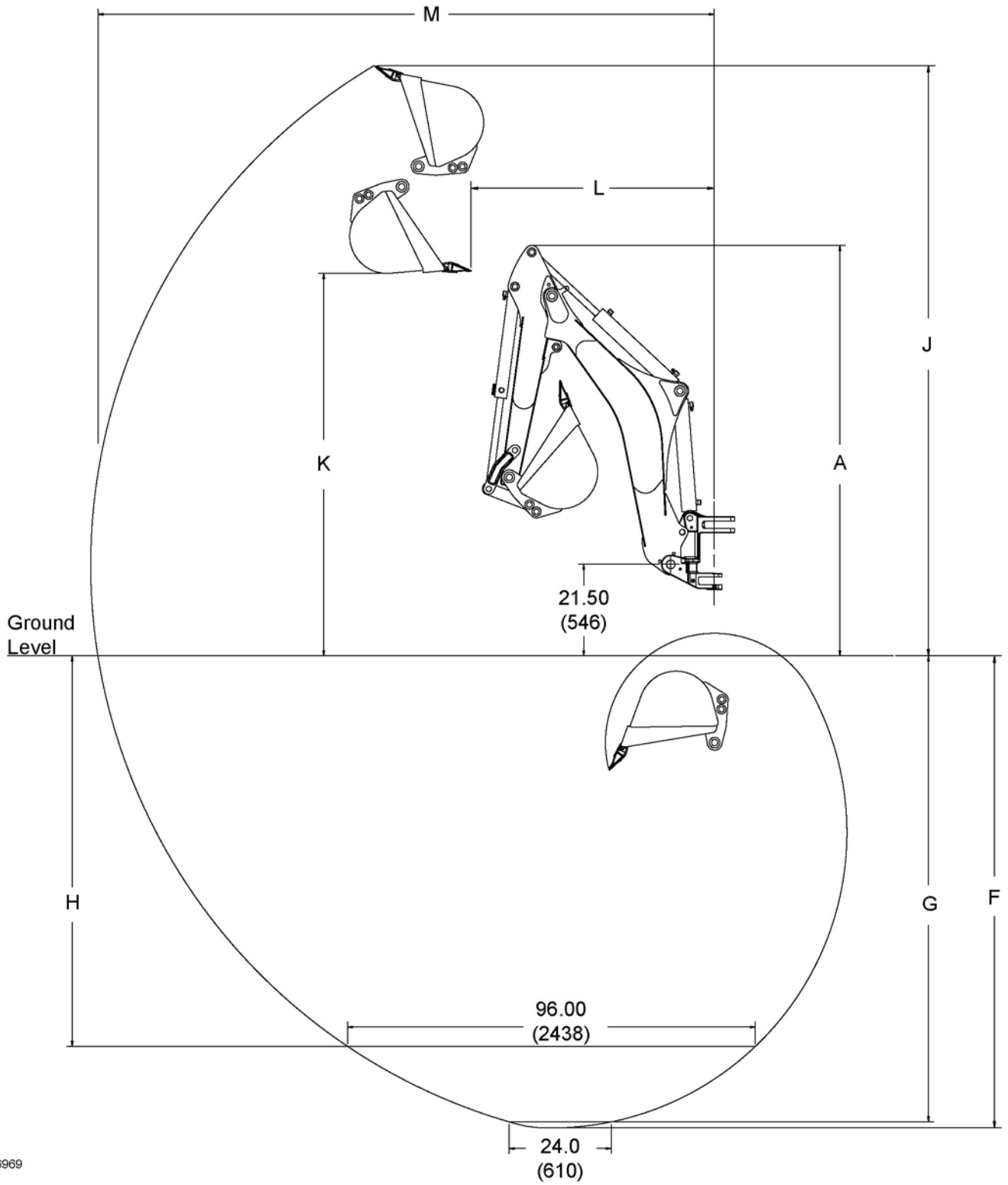
B90 SPECIFICATIONS

Description	Illustration	English	Metric
Transport Height*	A	97"	2464 mm
Stabilizer Spread (Transport)*		66"	1676 mm
Angle of Departure		15°	15°
Digging Depth, Maximum*	F	110"	2794 mm
Digging Depth, 2 ft. Flat Bottom*	G	109"	2769 mm
Digging Depth, 8 ft. Flat Bottom*	H	91"	2311 mm
Overall Operating Height*	J	139"	3531 mm
Loading Height*	K	89"	2261 mm
Loading Reach*	L	57"	1448 mm
Reach from Swing Pivot*	M	145"	3683 mm
Bucket Rotation*		180°	180°
Swing Arc*		180°	180°
Stabilizer Spread (Operating)*		100"	2540 mm
Leveling Angle*		10°	10°
Operating Pressure*		2500 psi	17.2 Mpa
Operating Flow		9 - 12 gpm	34 - 45 lpm
Bucket Digging Force*		5070 lbs	22552 N
Dipper Digging Force*		2900 lbs	12900 N

Bucket Capacity (Heaped)		cu.-ft.	cu.-meter
12" (305 mm)		1.64	0.046
16" (406 mm)		2.37	0.067
18" (457 mm)		2.58	0.073
24" (610 mm)		3.72	0.105
36" (914 mm)		3.93	0.111

* Per Definitions in SAE J49 Standard

B90 SPECIFICATIONS



CD6969

GENERAL INFORMATION

WARNING

■ Some illustrations in this manual show the backhoe with safety shields removed to provide a better view. The backhoe should never be operated with any safety shielding removed.

The purpose of this manual is to assist in setting up, operating and maintaining your backhoe. Read it carefully. It furnishes information and instructions that will help you achieve years of dependable performance.

These instructions have been compiled from extensive field experience and engineering data. Some information may be general in nature due to unknown and varying conditions. However, through experience and these instructions, you should be able to develop procedures suitable to your particular situation.

The illustrations and data used in this manual were current at the time of printing, but due to possible in-line production changes, your machine may vary slightly in detail. We reserve the right to redesign and change the machines as may be necessary without notification.

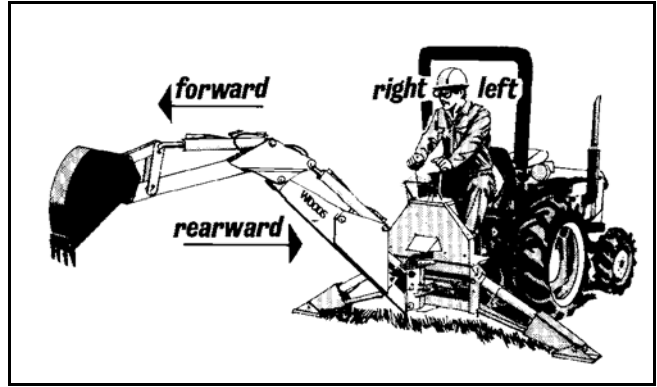


Figure 1. Backhoe Directions

Throughout this manual, references are made to right, left, forward and rearward directions. These are determined from the backhoe operator seat position facing the backhoe as shown in Figure 1.

Terms for backhoe components have some variations throughout the industry. We use SAE designations as shown in Figure 2.

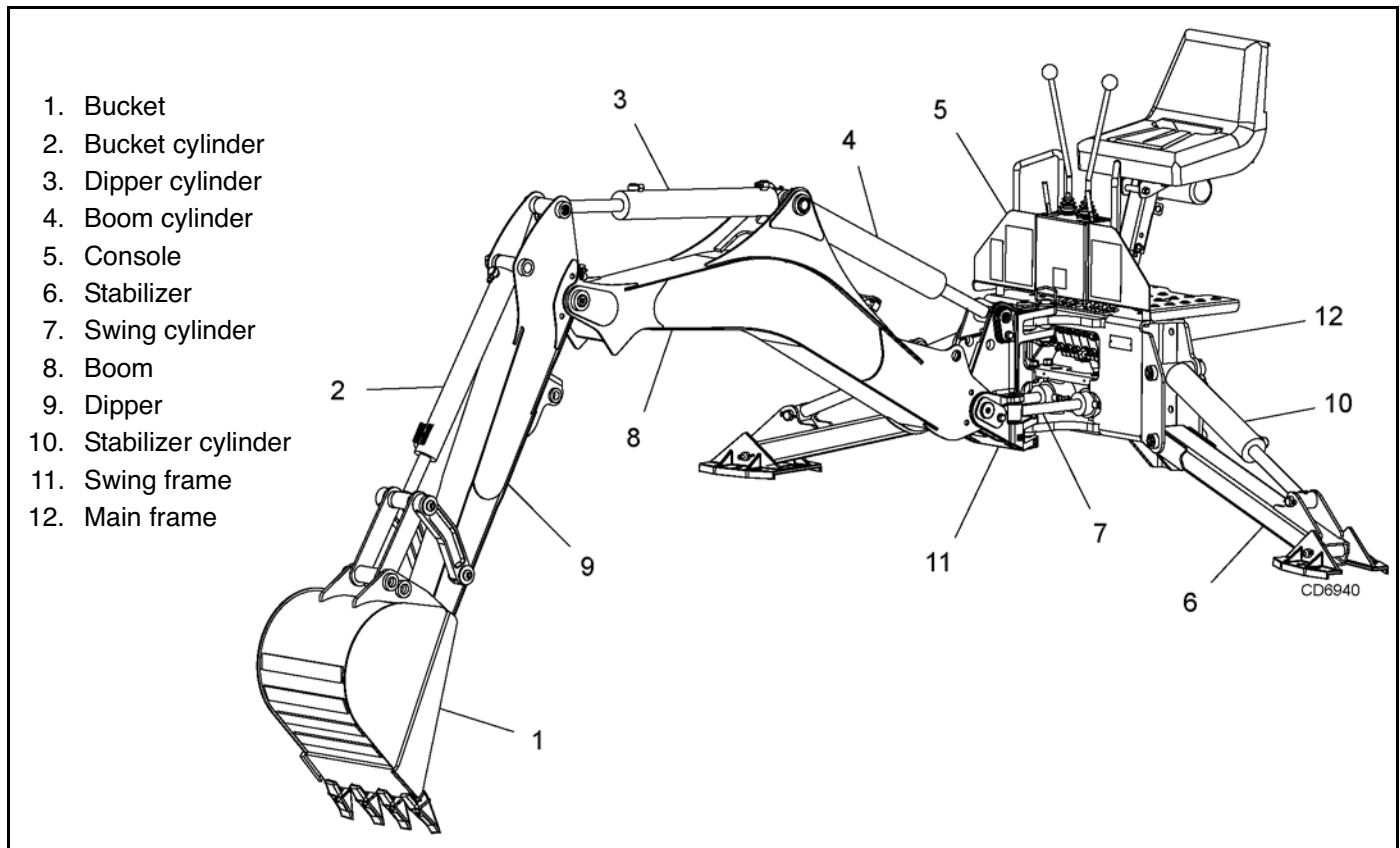


Figure 2. Backhoe Components

SAFETY RULES



ATTENTION! BECOME ALERT! YOUR SAFETY IS INVOLVED!



Safety is a primary concern in the design and manufacture of our products. Unfortunately, our efforts to provide safe equipment can be wiped out by an operator's single careless act.

In addition to the design and configuration of equipment, hazard control and accident prevention are dependent upon the awareness, concern, judgement, and proper training of personnel involved in the operation, transport, maintenance, and storage of equipment.

It has been said, "The best safety device is an informed, careful operator." We ask you to be that kind of operator.

INSTALLATION

- Hydraulics must be connected as instructed in this manual. Do not substitute parts, modify, or connect in any other way.
- After connecting hoses, check that all control lever positions function as instructed in the Operator's Manual. Do not put into service until control lever and equipment movements are correct.

TRAINING

- Safety instructions are important! Read all attachment and power unit manuals; follow all safety rules and safety decal information. (Replacement manuals and safety decals are available from your dealer. To locate your nearest dealer, check the Dealer Locator at www.YanmarTractor.com, or in the United States and Canada call 1-855-416-7091.) Failure to follow instructions or safety rules can result in serious injury or death.
- If you do not understand any part of this manual and need assistance, see your dealer.
- Know your controls and how to stop engine and attachment quickly in an emergency.
- Operators must be instructed in and be capable of the safe operation of the equipment, its attachments, and all controls. Do not allow anyone to operate this equipment without proper instructions.
- Keep hands and body away from pressurized lines. Use paper or cardboard, not hands or other body parts to check for leaks. Wear safety goggles. Hydraulic fluid under pressure can easily penetrate skin and will cause serious injury or death.
- Make sure that all operating and service personnel know that if hydraulic fluid penetrates skin, it

must be surgically removed as soon as possible by a doctor familiar with this form of injury or gangrene, serious injury, or death will result. **CONTACT A PHYSICIAN IMMEDIATELY IF FLUID ENTERS SKIN OR EYES. DO NOT DELAY.**

- Never allow children or untrained persons to operate equipment.

PREPARATION

- Check that all hardware is properly installed. Always tighten to torque chart specifications unless instructed otherwise in this manual.
- Air in hydraulic systems can cause erratic operation and allows loads or equipment components to drop unexpectedly. When connecting equipment or hoses or performing any hydraulic maintenance, purge any air in hydraulic system by operating all hydraulic functions several times. Do this before putting into service or allowing anyone to approach the equipment.
- After connecting hoses, check that all control lever positions function as instructed in the Operator's Manual. Do not put into service until control lever and equipment movements are correct.
- Protective hose sleeves must cover all hydraulic hoses within 20 inches of the operator and be secured onto metal hose fittings. Replace hoses or sleeves if damaged or if protective sleeve cannot be properly positioned or secured.
- Make sure all hydraulic hoses, fittings, and valves are in good condition and not leaking before starting power unit or using equipment. Check and route hoses carefully to prevent damage. Hoses must not be twisted, bent sharply, kinked, frayed, pinched, or come into contact with any moving parts. Operate moveable components through full operational range to check clearances. Replace any damaged hoses immediately.
- Always wear relatively tight and belted clothing to avoid getting caught in moving parts. Wear sturdy, rough-soled work shoes and protective equipment for eyes, hair, hands, hearing, and head; and respirator or filter mask where appropriate.
- Make sure spring-activated locking pin or collar slides freely and is seated firmly in tractor PTO spline groove.
- Make sure attachment is properly secured, adjusted, and in good operating condition.

(Safety Rules continued on next page)

SAFETY RULES



ATTENTION! BECOME ALERT! YOUR SAFETY IS INVOLVED!



(Safety Rules continued from previous page)

- Connect PTO driveline directly to power unit PTO shaft. Never use adapter sleeves or adapter shafts. Adapters can cause driveline failures due to incorrect spline or incorrect operating length and can result in personal injury or death.
- Power unit must be equipped with ROPS or ROPS cab and seat belt. Keep seat belt securely fastened. Falling off power unit can result in death from being run over or crushed. Keep foldable ROPS system in “locked up” position at all times.
- Only mount this backhoe on Category 1 or 2 tractors under 70 hp with 1400 lb. lift capacity at 24” behind 3-point lift arm hitch balls.
- Never put backhoe into service unless backhoe manufacturer's 3-point hitch Saf-T-Lok[®] limiter or sub-frame has been installed and adjusted.
- To avoid possible hitch failure, read and follow the Saf-T-Lok Limiter Installation Instructions in the Assembly section before mounting backhoe to tractor 3-point hitch.
- Remove seat and upper support assembly before installing or removing backhoe from tractor. Failure to comply may result in equipment failure and/or personal injury.
- Do not operate backhoe unless there is adequate operator clearance as shown on safety decal. (Refer to Danger decal in Safety Decal section.)
- Always use the special heavy-duty top link (provided with backhoe) and the OEM high-strength top link pin (provided with tractor) to mount the top link to tractor. Use 3/4" x 3-1/2" grade 5 bolt(s) to mount top link to backhoe.
- Be sure that backhoe is properly mounted, adjusted, and in good operating condition.
- Place and keep 3-point lift quadrant lever in lowered position at all times.
- If tractor is equipped with draft sensing control, set control to “HEAVY” (minimum sensitivity) position.
- Make sure all safety decals are installed. Replace if damaged. (See Safety Decals section for location.)
- Make sure shields and guards are properly installed and in good condition. Replace if damaged.
- A minimum 20% of tractor and equipment weight must be on tractor front wheels with back-

hoe in transport position. Without this weight, tractor could tip over, causing personal injury or death. The weight may be attained with a loader, front wheel weights, ballast in tires, or front tractor weights. When attaining the minimum 20% weight on the front wheels, you must not exceed the Roll Over Protection Structure (ROPS) weight certification. Weigh the tractor and equipment. Do not estimate.

- Do not install backhoe and required counterweights on tractor if the total tractor and equipment weight then exceeds the ROPS weight certification of the tractor. To reduce overall weight of unit, remove liquid from rear tires and remove mid-mount mower, if equipped.
- Clean all dirt, trash, and grease from operator's platform and steps.

OPERATION

- Do not allow bystanders in the area when operating, attaching, removing, assembling, or servicing equipment.
- Before operating, make sure stabilizer pads are lowered firmly to the ground. Stabilizer arms provide support for the backhoe and support for the backhoe mounting brackets.
- Consult local utilities before working. Know location of all underground cables, pipelines, overhead wires, and other hazards in working area and avoid contact.
- Keep bystanders away from operator, stabilizer, and maximum bucket swing areas.
- Do not operate or transport equipment while under the influence of alcohol or drugs.
- Operate only in daylight or good artificial light.
- Always comply with all state and local lighting and marking requirements.
- Do not allow riders. Do not lift or carry anybody on the power unit or attachments.
- Power unit must be equipped with ROPS or ROPS cab and seat belt. Keep seat belt securely fastened. Falling off power unit can result in death from being run over or crushed. Keep foldable ROPS system in “locked up” position at all times.
- When operating controls, always sit in backhoe seat.

(Safety Rules continued on next page)

SAFETY RULES



ATTENTION! BECOME ALERT! YOUR SAFETY IS INVOLVED!



(Safety Rules continued from previous page)

■ The only time the backhoe may be operated from a position other than the operator seat is during backhoe attachment and removal. Operator must:

- Read Mounting Kit Manual instructions on attaching and removing backhoe and use extreme care.
- Always stand between rear tire and backhoe stabilizer arms or along side of tractor to avoid being trapped should the boom swing control be accidentally activated.

■ Operate tractor PTO at 540 RPM. Do not exceed.

■ Always dump spoil at least two feet away from opening.

■ Use extreme care when working close to fences, ditches, other obstructions, or on hillsides.

■ Be careful when swinging loaded bucket on a hillside. Always dump spoil on uphill side of backhoe to minimize the possibility of upset.

■ Never leave equipment unattended with engine running or with bucket in raised position. Always engage swing and boom transport locks, relieve system pressure by operating controls, and remove ignition key before leaving equipment.

■ Do not use backhoe for craning; it is primarily designed for digging. Mechanical failures such as hose rupture will cause a load to drop suddenly.

TRANSPORTATION

■ Always engage swing and boom transport locks and attach Slow Moving Vehicle (SMV) sign before transporting backhoe.

■ Power unit must be equipped with ROPS or ROPS cab and seat belt. Keep seat belt securely fastened. Falling off power unit can result in death from being run over or crushed. Keep foldable ROPS system in “locked up” position at all times.

■ Never exceed 20 mph (32.2 km/h) during transport.

■ Always comply with all state and local lighting and marking requirements.

■ Never allow riders on power unit or attachment.

■ Do not operate PTO during transport.

■ Do not drive tractor with material in backhoe bucket.

■ Do not operate or transport on steep slopes.

■ Do not operate or transport equipment while under the influence of alcohol or drugs.

MAINTENANCE

■ Do not modify or alter or permit anyone else to modify or alter the equipment or any of its components in any way.

■ Do not allow bystanders in the area when operating, attaching, removing, assembling, or servicing equipment.

■ Your dealer can supply original equipment hydraulic accessories and repair parts. Substitute parts may not meet original equipment specifications and may be dangerous.

■ Adjustment of system relief pressure must be done by a qualified, experienced dealership. Incorrect adjustment can result in system failures and serious personal injury.

■ Always wear relatively tight and belted clothing to avoid getting caught in moving parts. Wear sturdy, rough-soled work shoes and protective equipment for eyes, hair, hands, hearing, and head; and respirator or filter mask where appropriate.

■ Dealer service personnel must perform work that requires engine operation during service.

■ Before working on backhoe, extend boom and dipperstick and place bucket on ground. Make sure that all system pressure has been relieved by operating controls before performing maintenance or service or before disconnecting any hydraulic lines.

■ Keep all persons away from operator control area while performing adjustments, service, or maintenance.

■ Tighten all bolts, nuts, and screws to torque chart specifications. Check that all cotter pins are installed securely to ensure equipment is in a safe condition before putting unit into service.

■ Make sure all safety decals are installed. Replace if damaged. (See Safety Decals section for location.)

■ Make sure shields and guards are properly installed and in good condition. Replace if damaged.

STORAGE

■ Block equipment securely for storage.

■ Keep children and bystanders away from storage area.

■ Refer to Removing and Storing Backhoe in Operation section of backhoe manual.

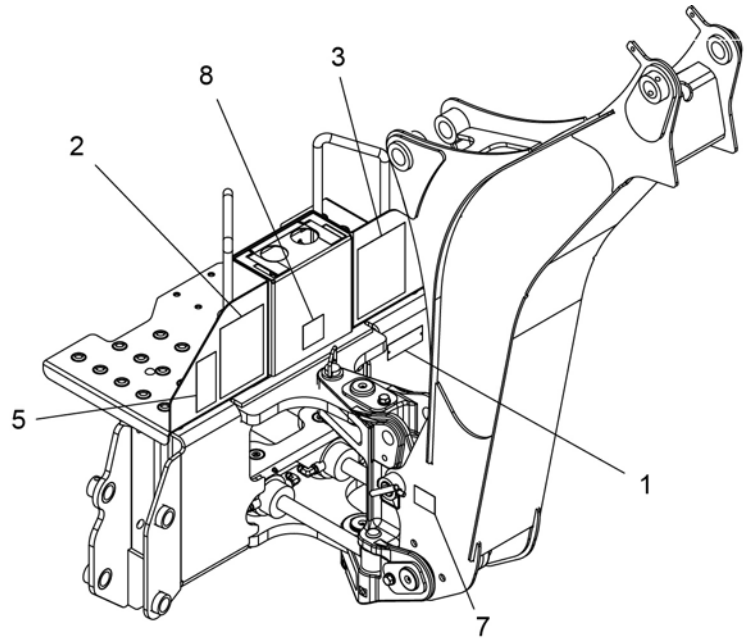
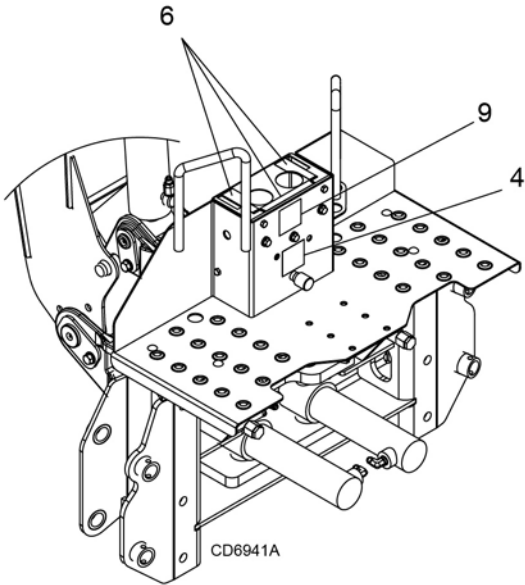
SAFETY & INSTRUCTIONAL DECALS



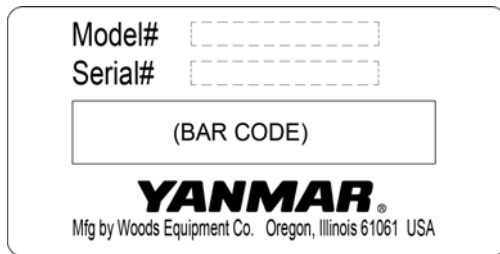
ATTENTION! BECOME ALERT! YOUR SAFETY IS INVOLVED!



Replace Immediately If Damaged!



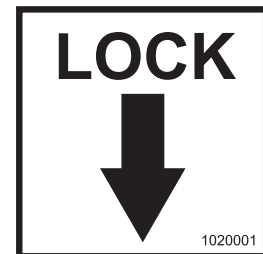
1 - SERIAL NUMBER PLATE



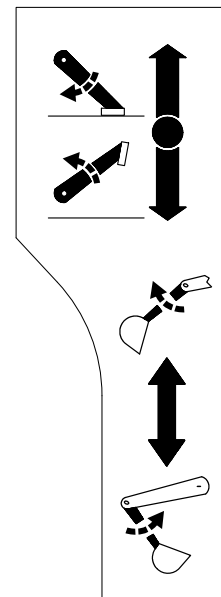
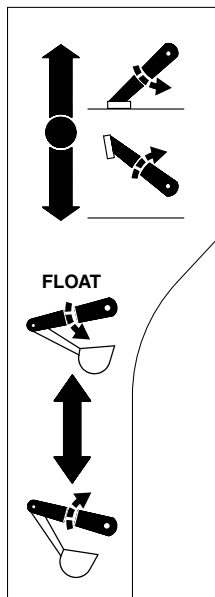
7 - PN 1020002



8 - PN 1020001



6 - PN 1012612



SAFETY & INSTRUCTIONAL DECALS



ATTENTION! BECOME ALERT! YOUR SAFETY IS INVOLVED!



Replace Immediately If Damaged!

2 - PN 1020003

DANGER

CRUSHING HAZARD

- Never operate without **3-point hitch Saf-T-Lok® kit** or **sub-frame** installed as instructed in Operator's Manual.
- Operator's area (shaded area of 40" radius) must be free from all obstructions.
- Use heavy-duty top link provided in **3-point hitch Saf-T-Lok kit** or **sub-frame kit**.
- Use tractor manufacturer's high-strength top link pin of at least 3/4" diameter. See manual details.

Failure to follow the above instructions may result in serious injury or death from backhoe being thrust upward, forward, or rearward by digging forces.

BH90-X
1020003

BE CAREFUL!

Use a clean, damp cloth to clean safety decals.

Avoid spraying too close to decals when using a pressure washer; high-pressure water can enter through very small scratches or under edges of decals causing them to peel or come off.

Replacement safety decals can be ordered free from your Yanmar dealer. To locate your nearest dealer, check the Dealer Locator at www.YanmarTractor.com, or in the United States and Canada call 1-855-416-7091.

3 - PN 1020004

WARNING

TO AVOID SERIOUS INJURY OR DEATH,

- Before operating, read and follow all safety precautions in Operator's Manual (available from your dealer).
- Make sure all safety decals are installed and readable.
- Make sure all shields are properly installed.
- Never allow riders.
- Remove seat and upper support assembly before installing or removing backhoe.
- Only mount on Category 1 or 2 tractors under 70 hp with 1400 lb lift capacity at 24" behind hitch balls.
- Maximum allowable hydraulic flow is 10 gpm at 2500 psi.
- Do not use "3-point quick attaching coupler".
- Lock out the draft sensing or set control to "Heavy".
- Do not modify or substitute any mounting or backhoe parts.
- A minimum 25% of tractor and equipment weight must be on tractor front wheels with backhoe in transport position.
- Consult local utilities before digging to avoid contacting underground hazards.
- When operating, always sit in backhoe seat; keep bystanders away from maximum swing area.
- Operate PTO at 540 rpm.
- Backhoe digging forces can lift and turn tractor over. Make sure stabilizer pads are on firm ground and avoid soft or deep banks.
- Before transporting, attach SMV sign and engage transport locks.
- Before leaving unattended, raise boom and install transport locks, disengage PTO, relieve pressure on dipperstick and bucket, shut engine off, and remove key.

BH90-X
1020004

4 - PN 1011994

SWING SPEED

1011994

9 - PN 1032572

1032572

5 - PN 1008365

WARNING

HIGH-PRESSURE HYDRAULIC OIL LEAKS CAN PENETRATE SKIN AND RESULT IN SEVERE INJURY, GANGRENE OR DEATH.

- Check for leaks with cardboard; never use hand.
- Before you loosen fittings: lower load, release pressure, and be sure oil is cool.
- See a doctor at once if oil enters skin.

1008365

OPERATION

The operator is responsible for the safe operation of the backhoe. The operator must be properly trained. Operators should be familiar with the backhoe, the tractor, and all safety practices before starting operation. Read the safety rules and safety decals on pages 7 to 11.

DANGER

- Never put backhoe into service unless backhoe manufacturer's 3-point hitch Saf-T-Lok® limiter or sub-frame has been installed and adjusted.
- Do not operate backhoe unless there is adequate operator clearance as shown on safety decal. (Refer to Danger decal in Safety Decal section.)

WARNING

- Make sure all hydraulic hoses, fittings, and valves are in good condition and not leaking before starting power unit or using equipment. Check and route hoses carefully to prevent damage. Hoses must not be twisted, bent sharply, kinked, frayed, pinched, or come into contact with any moving parts. Operate moveable components through full operational range to check clearances. Replace any damaged hoses immediately.
- Make sure that all operating and service personnel know that if hydraulic fluid penetrates skin, it must be surgically removed as soon as possible by a doctor familiar with this form of injury or gangrene, serious injury, or death will result. CONTACT A PHYSICIAN IMMEDIATELY IF FLUID ENTERS SKIN OR EYES. DO NOT DELAY.
- Keep hands and body away from pressurized lines. Use paper or cardboard, not hands or other body parts to check for leaks. Wear safety goggles. Hydraulic fluid under pressure can easily penetrate skin and will cause serious injury or death.
- Consult local utilities before working. Know location of all underground cables, pipelines, overhead wires, and other hazards in working area and avoid contact.

- A minimum 20% of tractor and equipment weight must be on tractor front wheels with backhoe in transport position. Without this weight, tractor could tip over, causing personal injury or death. The weight may be attained with a loader, front wheel weights, ballast in tires, or front tractor weights. When attaining the minimum 20% weight

on the front wheels, you must not exceed the Roll Over Protection Structure (ROPS) weight certification. Weigh the tractor and equipment. Do not estimate.

START AND STOP OPERATION

WARNING

- Operate tractor PTO at 540 RPM. Do not exceed.
- An optional tractor-driven PTO pump supplies hydraulic pressure for backhoe operation. Instructions for engaging and disengaging the PTO are in your tractor manual. Learn how to disengage PTO quickly should an emergency occur.

Never exceed 540 rpm. Operating the pump in excess of 540 rpm will cause overheating and equipment damage.

GENERAL OPERATION

WARNING

- Place and keep 3-point lift quadrant lever in lowered position at all times.
- If tractor is equipped with draft sensing control, set control to “HEAVY” (minimum sensitivity) position.
- Do not use backhoe for craning; it is primarily designed for digging. Mechanical failures such as hose rupture will cause a load to drop suddenly.
- Never allow children or untrained persons to operate equipment.
- Do not drive tractor with material in backhoe bucket.

CAUTION

- When operating controls, always sit in backhoe seat.

Mechanical failures such as a hose rupture will cause a load to drop. Lifting a heavy load with the dipper, then operating the boom, could cause boom to drop. In either case, if anyone is in the operating area (maximum reach of bucket) as shown in Figure 3, serious injury or death could occur.

Do not dig with backhoe unless stabilizers are down and on a firm surface. Stay clear of steep areas or excavation banks that are soft or could give way.

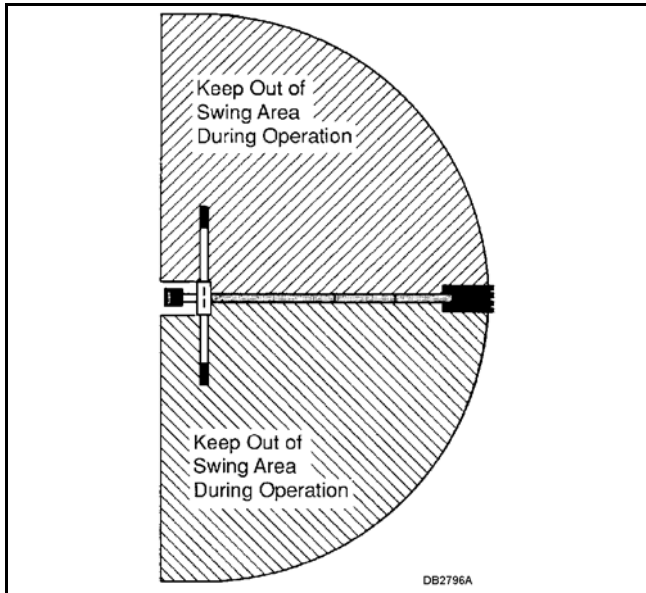


Figure 3. Backhoe Swing Area.

POSITION THE MACHINE

Before operating in an unfamiliar area, walk around the full length of the proposed site and check for hidden holes, drop-offs or obstacles that could cause an accident.

Lower stabilizers until they carry the weight of the backhoe. If tractor is equipped with a front loader, place the bucket flat on the ground. Lower loader lift arms until weight is removed from front tractor tires.

Level the machine using stabilizers and front loader before starting to dig.

Stability is very important when operating backhoe in the extreme swing positions as this causes weight transfer.

CONTROL HANDLE OPERATION

Assume your position in the operator's seat.

When engaging optional PTO-mounted pump, engine rpm should always be low. Once engaged, engine rpm may be increased to desirable operation speed (not to exceed 540 rpm).

When becoming familiar with backhoe controls, start with a lower rpm.

Before operating, perform a functional test by placing control handles in their various positions and making certain correct operation occurs, matching decals on operator's console. Pay specific attention to float position of boom. Do not operate backhoe if functions differ from decal; serious injury or death could occur.

It is not difficult to become a successful operator. Control lever operating decals (shown in Figure 4) are next to the operating control levers. Study these decals; they will assist you in becoming familiar with the controls.

Pushing handle 1 forward will lower left stabilizer; pulling back raises it.

Pushing handle 2 forward will lower right stabilizer; pulling back raises it.

Pulling left control back (toward A) raises boom; pushing it forward (toward C) lowers it. Full forward (toward C) is the float position.

Moving left handle left (toward B) swings boom left; moving it right (toward D) swings boom right.

Pulling right control back (toward E) moves dipper down and toward operator; pushing it forward (toward G) moves it up and away from operator.

Moving right handle left (toward F) curls bucket toward operator; moving it right (toward H) extends bucket out away from operator.

Operate the control levers, swinging the boom several times to practice control. Do not operate the swing more than 45 degrees each way the first few times. Gradually increase arc.

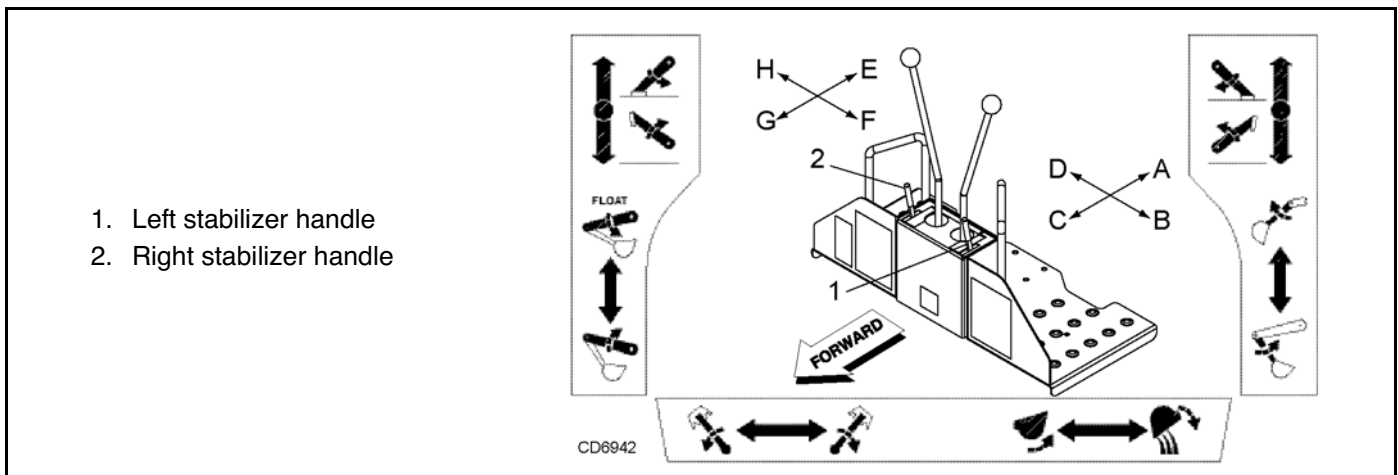


Figure 4. Operator's Controls (Typical View)

After becoming familiar with the backhoe operation, practice coordinated use of the controls in a safe open area at reduced engine speed. Gradually increase engine speed as the technique is mastered.

Operate backhoe gently and smoothly. Avoid swinging boom into mainframe. Sudden stopping or jerking could result in serious damage to tractor and backhoe.

Strive to develop a smooth digging cycle. Avoid abrupt or jerky movements. This is accomplished by operating two or more controls at the same time and not allowing the cylinders to reach the limit of travel.

Should you become confused during operation, simply let go of the controls. The valve control handles will automatically return to neutral.

SWING SPEED CONTROL

The swing speed control valve is located on the back side of the console. This controls the speed of the swing cylinders and allows for easier operation in tight areas. Turn knob to the right to decrease swing speed and to the left to increase swing speed.

EXCAVATION

Starting Excavation

⚠ WARNING

■ Consult local utilities before working. Know location of all underground cables, pipelines, overhead wires, and other hazards in working area and avoid contact.

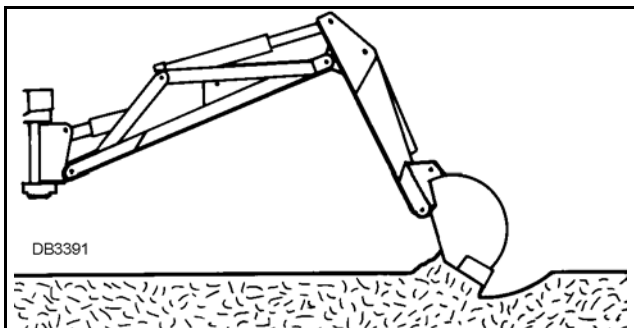


Figure 5. Starting Position

To start the excavation, position backhoe as shown in Figure 5 for maximum breakout force.

Actuate the dipper cylinder to start digging. Approximately halfway through digging cycle, start bucket curl while continuing crowding dipper in. Should bucket stall, raise boom slightly.

Do not use down pressure on the boom when starting to dig, as this will lift the machine and move it out of alignment with the work.

Filling Bucket

Control bucket attitude throughout digging cycle to keep teeth parallel to bottom of excavation. This will provide best penetration angle and minimize dragging and scraping bucket through the ground.

Penetration depth is determined by soil condition and type.

Only use dipper and bucket during the digging cycle. As the dipper moves the bucket through the soil, curl bucket to maintain proper bucket position.

At the end of the pass, or when bucket is full, curl bucket completely, lift bucket from excavation and swing boom to dump site.

To obtain a cleaner trench and avoid material buildup directly in front of backhoe, extend dipper and curl bucket completely while starting to lift it out of the excavation. This will allow excess material to fall back into the excavation.

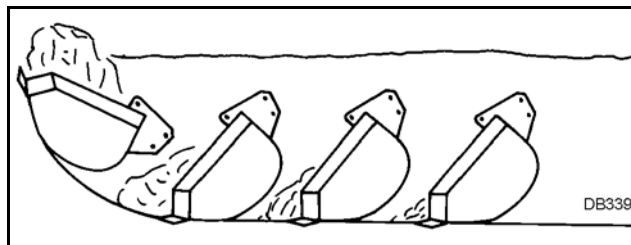


Figure 6. Fill Bucket

Dump and Return Cycle

Keep the swing-dump-return cycle as brief as possible. Keep dipper moving outward and start boom swing as soon as the bucket clears the excavation. Continue extending dipper and, as you approach the spoil pile, start to dump bucket.

When bucket is empty, dipper and bucket are in position to resume digging upon return to the excavation.

Trenching

Refer to Figure 7.

Trenching is the most basic backhoe digging operation. Other operations are variations of this basic function.

To maintain a level trench bottom, set bucket at proper approach angle and while crowding dipper-stick in, continually move bucket curl lever to maintain correct cutting angle. At the same time, place boom control in the full forward (float) position and keep the bucket in the same plane.

When handle is placed in the float position, pressure on both sides of boom cylinder is released.

Digging near center of swing so material may be dumped on either side will produce good results. Never dig near stabilizers.

Continue the trench by moving machine along trench centerline away from existing excavation. Move machine approximately one-half the effective backhoe reach. Moving too far will require excessive down pressure for digging and hand clean-up of trench bottom.

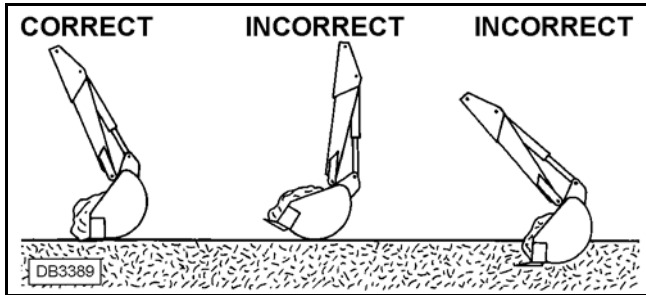


Figure 7. Trenching

Side Slope Trenching



■ Be careful when swinging loaded bucket on hillside. Always dump spoil on uphill side of backhoe to minimize rollover possibility.

When operating on a side slope, the backhoe must be positioned using one of these two methods as shown in Figure 8 or Figure 9.

When operating on a side slope, always place the trench spoil on the uphill side.

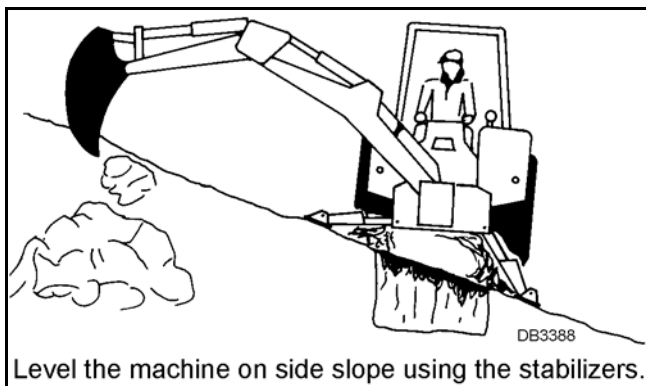


Figure 8. Level with Stabilizers

When leveling with a cut-out, cut a level pad for the uphill side of the machine and use the spoils to build a pad on the downhill side as shown in Figure 9.

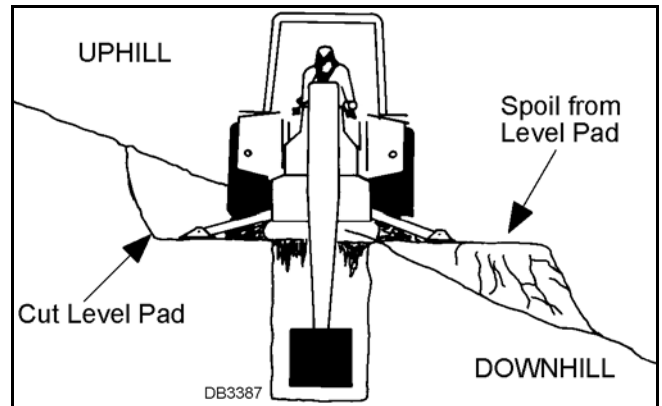


Figure 9. Level with Cut-Out

TRANSPORTING



■ Always engage swing and boom transport locks and attach Slow Moving Vehicle (SMV) sign before transporting backhoe.

■ Power unit must be equipped with ROPS or ROPS cab and seat belt. Keep seat belt securely fastened. Falling off power unit can result in death from being run over or crushed. Keep foldable ROPS system in “locked up” position at all times.

■ Never leave equipment unattended with engine running or with bucket in raised position. Always engage swing and boom transport locks, relieve system pressure by operating controls, and remove ignition key before leaving equipment.

Transport and Swing Lock Installation

NOTICE

■ Before operating backhoe, disengage transport lock pin and swing lock pin. Place pins in storage position and secure with lock pins provided.

Install Transport Lock Pins

1. Retract boom and dipper to the transport position (boom fully raised, dipper back, and bucket fully curled).
2. Center boom from side to side and install swing lock pin through swing frame and main frame. Secure with klik pin. See Figure 10.
3. Install transport lock pin through boom and swing frame and secure with lock pin.

Pin Storage

4. Store swing lock pin and transport pin in the holes provided on the back side of the seat console

during operation. Secure into position with klik and lock pins.

5. Always raise stabilizers before transporting backhoe.

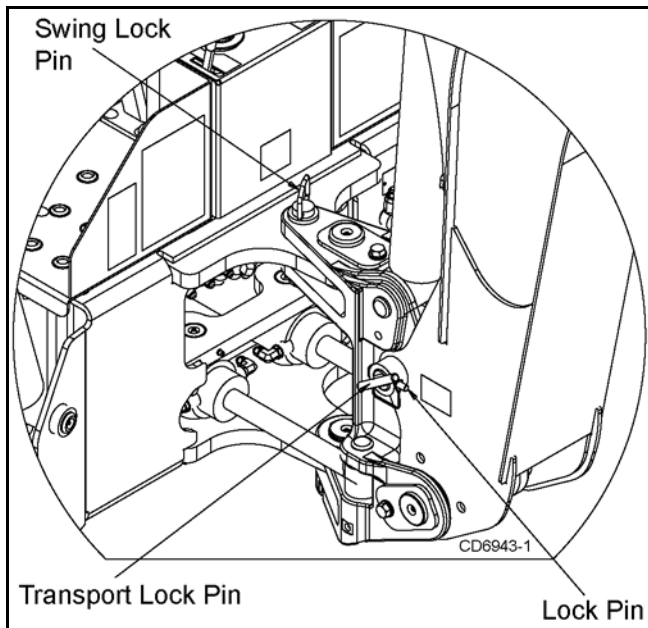


Figure 10. Transport and Swing Lock Pins Installed

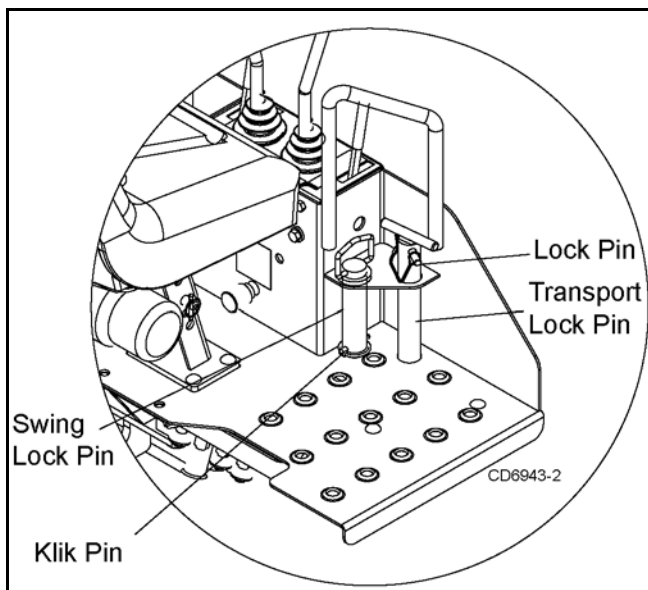


Figure 11. Pin Storage Position

BACKHOE REMOVAL AND STORAGE

! DANGER

■ The only time the backhoe may be operated from a position other than the operator seat is during backhoe attachment and removal. Operator must:

- Read Mounting Kit Manual instructions on attaching and removing backhoe and use

extreme care.

- Always stand between rear tire and backhoe stabilizer arms or along side of tractor to avoid being trapped should the boom swing control be accidentally activated.

! WARNING

■ Keep all persons away from operator control area while performing adjustments, service, or maintenance.

■ Remove seat and upper support assembly before installing or removing backhoe from power unit. Failure to comply may result in equipment failure and/or personal injury.

4-Point Sub-Frame Mount Removal

NOTE: See the sub-frame mounting kit manual that fits your tractor for specific instructions.

Position tractor on a hard level surface, remove swing lock pin and transport bar, and center the backhoe boom.

Lower stabilizers and take weight of backhoe off of rear tractor tires.

Lower boom and dipper to form 90-degree angle and rest bucket on the ground.

Remove the seat assembly.

Remove klik pins from bolt and nut assemblies.

Use 1-1/2 inch open end wrench supplied with the mounting kit to remove hex nuts. Return wrench to storage position.

Use the boom to relieve excess pressure on 1-inch bolts and remove bolts.

Tilt backhoe main frame to separate slots on the backhoe brackets from the tractor brackets.

Raise stabilizers (to lower backhoe) until backhoe brackets slide out of hooks on the sub-frame. Lower backhoe approximately 1-1/2 inch.

Move tractor forward to clear backhoe brackets.

Place 6 inch blocks under backhoe mainframe and raise stabilizers to lower backhoe to the storage position on blocks. Boom and dipper should be at 90-degree angle.

Disconnect hydraulic system.

Disconnect Tractor Hydraulics

For Tractors with Open-Center Valves

NOTE: See the sub-frame mounting kit manual that fits your tractor for specific instructions.

Stop tractor and remove key.

Disconnect pressure and return hoses. Connect tractor pressure and return hoses together to complete open-center circuit.

NOTE: Circuit must be complete to prevent damage to tractor hydraulic system.

Connect backhoe pressure and return hoses together for storage.

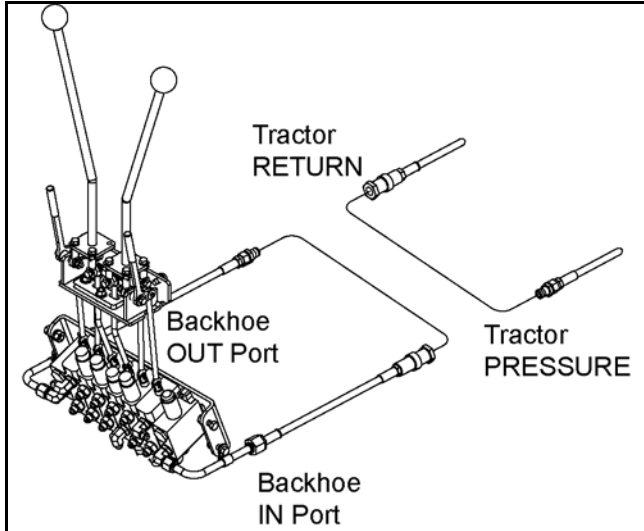


Figure 12. Tractors with Open-Center Valves

THUMB OPERATION

The optional thumb is used for grabbing objects and securing them between the thumb and the bucket.

Become familiar with the geometry and extra weight the thumb adds to the backhoe before operating. Large heavy objects such as rocks and logs can increase momentum when pivoting backhoe to the side. **DO NOT** make sudden stops and starts. Be extremely careful lifting and moving long items such as poles or tree limbs which may extend beyond the normal backhoe operating area.

Improper usage can also damage the thumb or backhoe.

- Do not use the thumb to rake material.
- Do not use the thumb to push or pull material.
- Do not use the side of the thumb to move material.
- Do not use as a lifting device with chain or rope.
- Do not use as a pry bar to dislodge objects.

Place thumb in operating position by selecting an appropriate pin location on the telescoping tube. Rotate the bucket to hold material against the thumb.

When normal backhoe operation is required, place thumb in storage position. Remove pin, rotate thumb up against dipper, and insert pin to lock thumb into position.

HYDRAULIC THUMB OPERATION

To activate the thumb use the foot pedal on the left side of the operator's platform:

- To open thumb, press the left side of the pedal.
- To close thumb, press the right side of the pedal.

Open or close the thumb and curl the bucket to grab and secure objects.

Become familiar with these functions for smooth and easy operation.

When normal backhoe operation is required, retract thumb up against dipper as shown in Figure 14.



Figure 13. Thumb Operations



Figure 14. Thumb Storage Position

PRE-OPERATION CHECK LIST

(OWNER'S RESPONSIBILITY)

The operator should perform the following check list before operating backhoe.

- ___ Check that backhoe is properly and securely attached to tractor.
- ___ Make sure all hydraulic connections are tight and all hydraulic lines and hoses are in good condition before engaging tractor PTO.
- ___ Check that there are no leaks in the hydraulic system. Before operating, all hydraulic hoses must be routed properly and not be twisted, bent sharply, kinked, pulled tight or frayed.
- ___ During inspection, check that all nuts and bolts are secure and clevis pins are properly cotter pinned.
- ___ Make sure only original equipment high-strength top link pin, provided with tractor, is used to attach top link to tractor.
- ___ Use two 3/4" x 3-1/2" grade 5 bolts to mount top link to backhoe.
- ___ Make sure tractor lower lift arm stabilizers (blocks or chains) are positioned to prevent lift arms and backhoe from swaying.
- ___ Place all backhoe controls in neutral position before starting tractor engine.
- ___ Check hydraulic reservoir level.



OWNER SERVICE

The information in this section is written for operators who possess basic mechanical skills. If you need help, your service center has trained service technicians available. For your protection, read and follow the safety information in this manual.

⚠ WARNING

■ **Keep hands and body away from pressurized lines. Use paper or cardboard, not hands or other body parts to check for leaks. Wear safety goggles. Hydraulic fluid under pressure can easily penetrate skin and will cause serious injury or death.**

■ **Make sure that all operating and service personnel know that if hydraulic fluid penetrates skin, it must be surgically removed as soon as possible by a doctor familiar with this form of injury or gangrene, serious injury, or death will result. CONTACT A PHYSICIAN IMMEDIATELY IF FLUID ENTERS SKIN OR EYES. DO NOT DELAY.**

■ **Before working on backhoe, extend boom and dipperstick and place bucket on ground. Make sure that all system pressure has been relieved by operating controls before maintenance, service, or disconnecting any hydraulic lines.**

⚠ CAUTION

■ **Always wear relatively tight and belted clothing to avoid getting caught in moving parts. Wear sturdy, rough-soled work shoes and protective equipment for eyes, hair, hands, hearing, and head; and respirator or filter mask where appropriate.**

HYDRAULIC HOSES AND FITTINGS

NOTICE

■ **Fittings with O-rings and flange do not require additional sealant; replace damaged O-rings.**

Hydraulic hoses are severely worked on a backhoe. Examine them daily and replace if necessary. Hose routing is very important. Make certain hoses can move freely, without kinking, and cannot be damaged or cut by backhoe action.

When tightening hoses and fittings, always use two wrenches: one to hold hose and one to tighten fitting. This will prevent hose from twisting and kinking.

Always back lock nut off and screw fitting all the way in for fittings that use O-rings for sealing. Then hold in position and tighten lock nut.

RELIEF VALVE

This valve is pre-set at the factory to prevent system pressure from exceeding 2500 psi. Do not attempt to reset the valve for open-center hydraulic systems. If valve is malfunctioning, replace it with an authorized factory replacement part or have service done by a qualified service center.

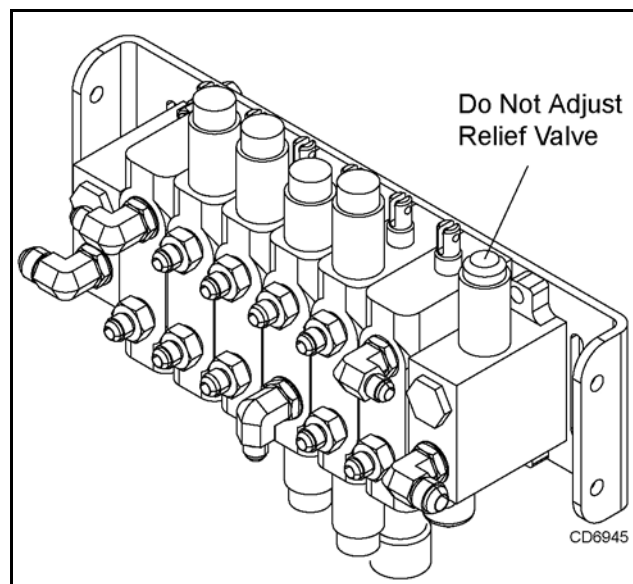


Figure 15. Relief Valve

LUBRICATION

! WARNING

■ **Keep all persons away from operator control area while performing adjustments, service, or maintenance.**

Do not let excess grease collect on or around parts, particularly when operating in sandy areas.

Figure 16 shows lubrication points for the backhoe.

It is recommended that all fittings be lubricated daily or every eight hours of operation. In very wet or dry conditions, lubricate every four hours of operation.

Use an SAE multi-purpose type grease for all locations shown unless otherwise specified. Be sure to clean fitting thoroughly before using grease gun. One good pump of most guns is sufficient.

Position backhoe for easy lubrication by placing boom and dipper at 90° to each other with bucket cutting edge vertical and teeth resting on ground. Lower stabilizers to lubricate cylinders.

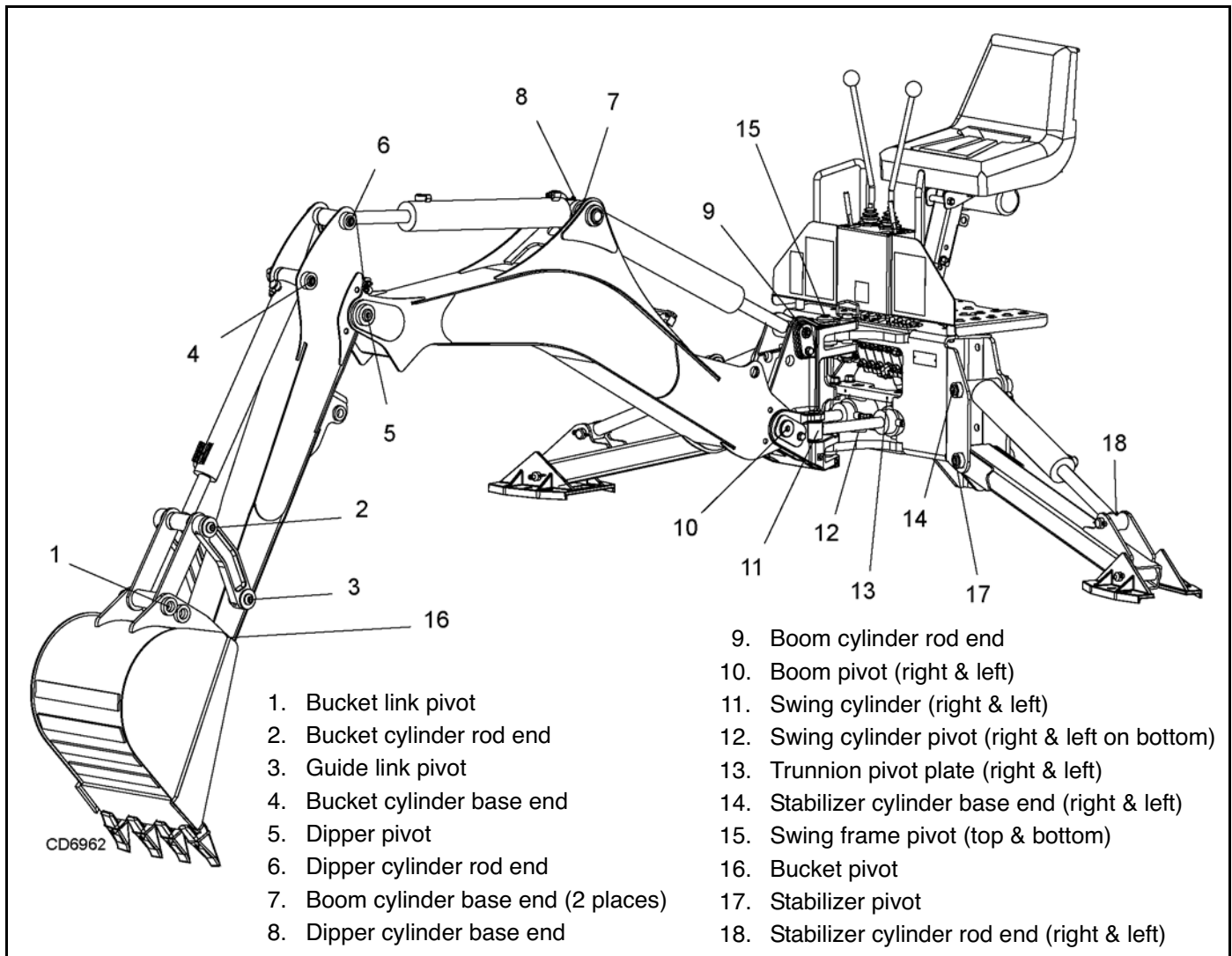


Figure 16. Lubrication Points

CLEANING

After Each Use

- Remove large debris such as clumps of dirt, grass, crop residue, etc. from machine.
- Inspect machine and replace worn or damaged parts.
- Replace any safety decals that are missing or not readable.

Periodically or Before Extended Storage

- Clean large debris such as clumps of dirt, grass, crop residue, etc. from machine.
- Remove the remainder using a low-pressure water spray.

1. Be careful when spraying near scratched or torn safety decals or near edges of decals as water spray can peel decal off surface.
 2. Be careful when spraying near chipped or scratched paint as water spray can lift paint.
 3. If a pressure washer is used, follow the advice of the pressure washer manufacturer.
- Inspect machine and replace worn or damaged parts.
 - Sand down scratches and the edges of areas of missing paint and coat with Yanmar spray paint of matching color (purchase from your Yanmar dealer).
 - Replace any safety decals that are missing or not readable (supplied free by your Yanmar dealer). See Safety Decals section for location drawing.



TROUBLESHOOTING

PROBLEM	POSSIBLE CAUSE	SOLUTION
Noisy pump caused by cavitation	Oil too heavy Oil filter plugged Suction line plugged or too small Suction line kinked	Change to proper viscosity. Replace filter. Clean line and check for size. Replace line.
Oil heating	Oil supply low Contaminated oil Setting of relief valve too high or too low Pump operating too fast	Fill reservoir. Drain reservoir, change filter, and refill with clean oil. Set to correct pressure. Do not exceed 540 rpm PTO speed.
Shaft seal leakage	Worn shaft seal	Replace shaft seal.
Foaming oil	Low oil level Air leaking into suction line Wrong kind of oil Moisture in oil	Fill reservoir. Tighten fittings. Drain and refill reservoir with non-foaming oil. Keep oil temperature below 180° and continue to operate as oil dries out, or replace oil and purge system if foaming is excessive.
Boom drops as dipper or bucket cylinder lever is activated while boom control is in raised position	Load check valve leaking	Clean or replace check valve assembly.
Jerky operation	Hydraulic hoses plumbed incorrectly	Check hydraulic plumbing schematic and correct hose routing as required.

DEALER SERVICE

The information in this section is written for service center service personnel. The repair described here requires special skills and tools. If your shop is not properly equipped or your mechanics are not properly trained in this type of repair, it may be more time and cost effective to replace complete assemblies.

WARNING

■ **Keep hands and body away from pressurized lines. Use paper or cardboard, not hands or other body parts to check for leaks. Wear safety goggles. Hydraulic fluid under pressure can easily penetrate skin and will cause serious injury or death.**

■ **Make sure that all operating and service personnel know that if hydraulic fluid penetrates skin, it must be surgically removed as soon as possible by a doctor familiar with this form of injury or gangrene, serious injury, or death will result. CONTACT A PHYSICIAN IMMEDIATELY IF FLUID ENTERS SKIN OR EYES. DO NOT DELAY.**

■ **Before working on backhoe, extend boom and dipperstick and place bucket on ground. Make sure that all system pressure has been relieved by operating controls before maintenance, service, or disconnecting any hydraulic lines.**

HYDRAULIC CYLINDER REPAIR

Check stamping on barrel before ordering repair parts. See Parts page 42 and page 43 for correct numbers.

General Hydraulic Repair Information

A clean working area is essential for any hydraulic repair.

All parts must be carefully cleaned before reassembly. We recommend that when repairing hydraulic components, you always replace existing seals with new ones. Clean all components in solvent and blow dry with low pressure air.

Bucket, Swing & Stabilizer Cylinders

Refer to Figure 17 and Figure 18.

Disassembly

On spanner nut style cylinders, unscrew spanner nut (4) using a spanner wrench, or carefully use a punch and hammer.

Tap rod guide (5) into barrel (8) about 1/2". Remove round retaining ring (3B). Pull on rod (1) to remove parts from barrel.

Clamp cross pin end of rod assembly (1) in a vise with protective jaws. Remove lock nut (7) from rod assembly. Remove piston (6) and rod guide (5) from rod.

Remove and discard all seals, wear rings and O-rings. Clean all components in solvent and blow dry with low pressure air.

Inspect inside diameter of barrel (8). Replace cylinder if damaged.

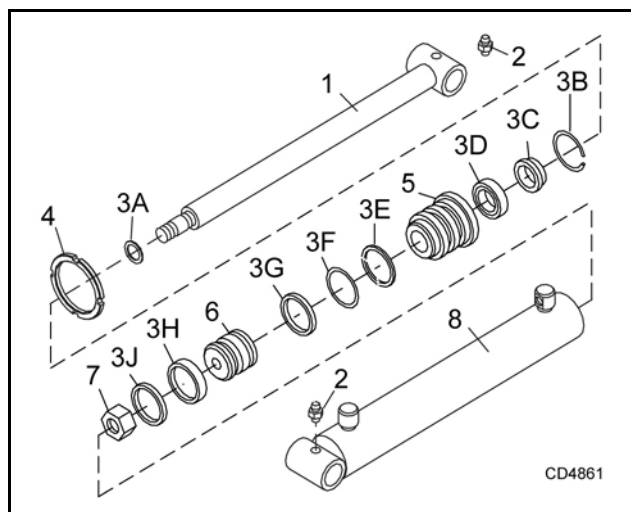


Figure 17. Spanner Nut Cylinder Assembly

Assembly

Lubricate O-rings and seals with clean hydraulic fluid. Install back-up washer (3E) on rod guide (5), then install O-ring (3F) in exterior O-ring groove of rod guide. Install rod seal (3D) into inner groove of rod guide with open portion of V-groove toward piston.

Place rod wiper (3C) in outer rod guide groove. Slide rod guide assembly (5) onto rod (1). Place wear ring (3H) in narrow groove of piston (except on swing cylinder). Place piston seal (3G) in wide piston groove. Place piston ring (3J) in narrow groove on piston (on swing cylinder only).

Lightly coat rod threads with hydraulic oil and slide O-ring (3A) over threads and into groove. Install piston (6) onto rod (1) with wear ring on side away from rod guide. Install lock nut (7) and torque to 175 lbs-ft for swing cylinder. For bucket and stabilizer cylinders, torque to 275 lbs-ft.

Compress wear ring and piston seal and carefully insert piston and rod assembly into barrel. Use care to prevent damage while installing.

Carefully push or tap rod guide (5) into barrel (8) just past groove inside barrel. Insert retaining ring (3B) into groove and pull rod (1) to seat rod guide (5) against ring. Screw spanner nut (4) into rod guide (5) using a spanner wrench, or carefully use a punch and hammer.

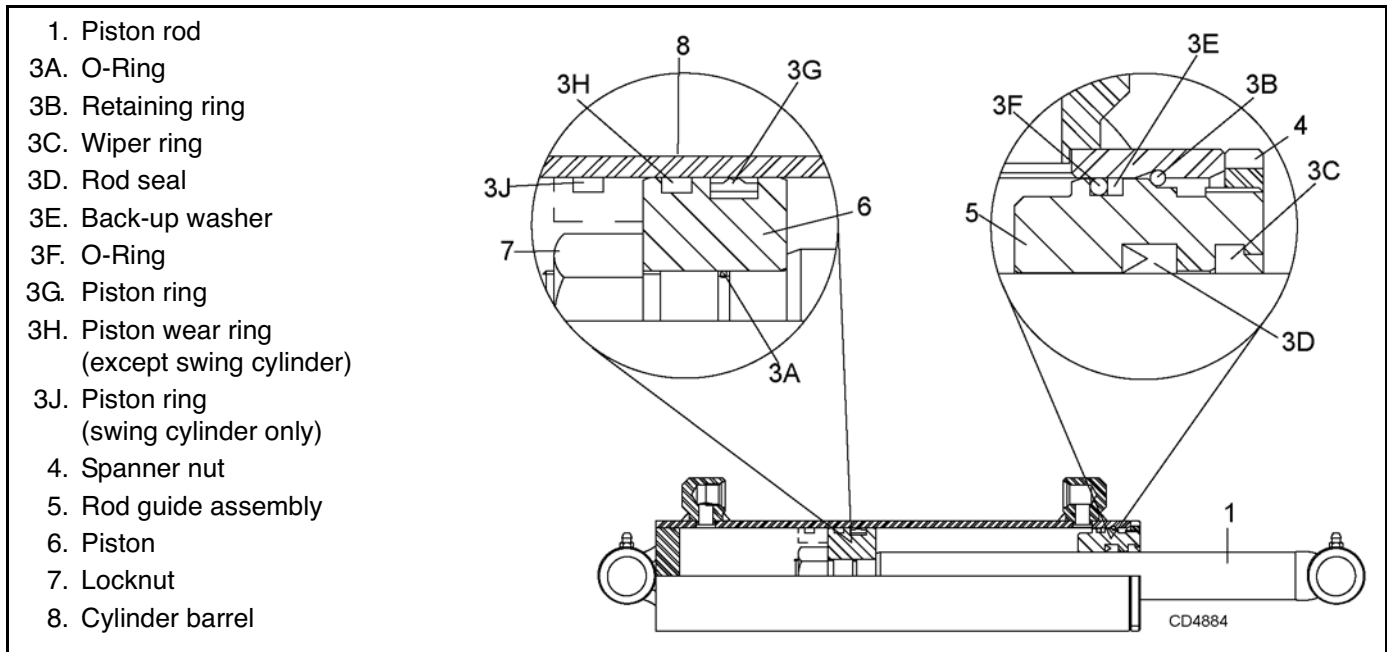


Figure 18. Spanner Nut Cylinder Assembly

Boom and Dipperstick Cylinder

Disassembly (Figure 19)

On threaded guide type cylinders, Figure 16, remove set screw (4), unscrew guide (5) using a spanner wrench, or carefully use a punch and hammer. Pull on rod (1) to remove parts from barrel.

Clamp cross pin end of rod assembly (1) in a vise with protective jaws. Remove locknut (7) from rod assembly. Remove piston (6) and rod guide (5) from rod.

Remove and discard all seals, wear rings and O-rings. Clean all components in solvent and blow dry with low pressure air.

Inspect inside diameter of barrel (8). Replace cylinder if damaged.

Assembly (Figure 19)

Lubricate O-rings and seals with clean hydraulic fluid. Install back-up washer (3D) on rod guide (5), then

install O-ring (3E) in exterior O-ring groove of rod guide. Install rod seal (3C) into inner groove of rod guide with open portion of V-groove toward piston.

Place rod wiper (3B) in outer rod guide groove. Slide rod guide assembly (5) onto rod (1). Place wear ring (3G) in narrow groove of piston. Place piston seal (3F) in wide piston groove.

Lightly coat rod threads with hydraulic oil and slide O-ring (3A) over threads and into groove. Install piston (6) onto rod (1) with ear ring on side away from rod guide. Install locknut (7) and torque to 175 lbs-ft.

Compress wear ring and piston seal and carefully insert piston and rod assembly into barrel. Use care to prevent damage while installing.

Carefully screw rod guide (5) into barrel (8) using a spanner wrench, or carefully use a punch and hammer. Screw set screw (4) into rod guide (5).

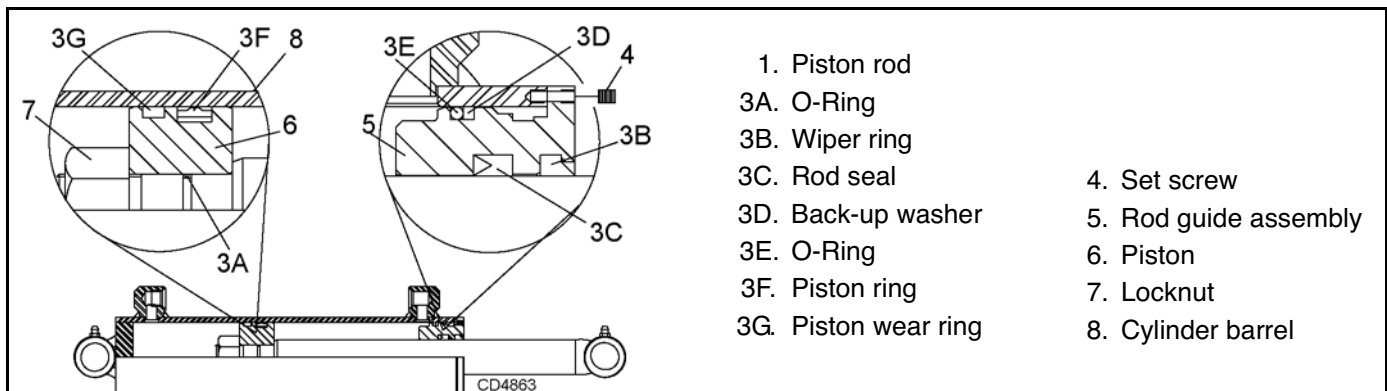


Figure 19. Threaded Guide Cylinder Assembly

HYDRAULIC VALVE REPAIR

Valve repair should be accomplished in a clean work place. Individual components for many of the assemblies are not available as repair parts. This will simplify repair and allow you to replace complete assemblies.

Pressure Settings on Port Relief Valves

Pressure settings on port relief valves are pre-set at the factory. Although they are adjustable, they must not be reset in the field using backhoe hydraulic system. The backhoe or tractor pump will separate or crack if system pressure exceeds the maximum.

Relief valve adjustment requires a test bench and accurate gauges.

Adjusting System Relief Valve Pressure

WARNING

■ Adjustment of system relief pressure must be done by a qualified, experienced dealership. Incorrect adjustment can result in system failures and serious personal injury.

NOTE: When using tractor hydraulic system to power backhoe, determine tractor hydraulic system pressure before changing the pressure setting on the valve. Many tractors will not create 2000 psi. If your tractor does not create 2000 psi, changing the relief valve setting will not improve the backhoe performance.

Place a pressure gauge in the valve inlet line at the valve. When installing pressure gauge, be sure to use steel fittings that will withstand working pressure up to 5000 psi.

Loosen nut. Using an allen wrench, rotate screw clockwise to increase pressure and counter-clockwise to decrease pressure.

Start tractor and engage PTO (for pump kits) set throttle at PTO speed. Set system relief valve pressure at 2500 psi. When pressure is adjusted, shut tractor PTO and tractor off. Tighten nut on system relief valve.

Replacing Port Relief Valves

Port Relief Valve	Pressure Setting
A	2650 psi
*B	2650 psi
C	3500 psi
* Equipped with anti-cavitation check valve	

It is not necessary to remove valve from frame to replace port relief valve cartridges. Remove console

cover and replace desired cartridge. Be sure replacement cartridges are set to the correct pressure. Valves are similar and can be easily mixed up.

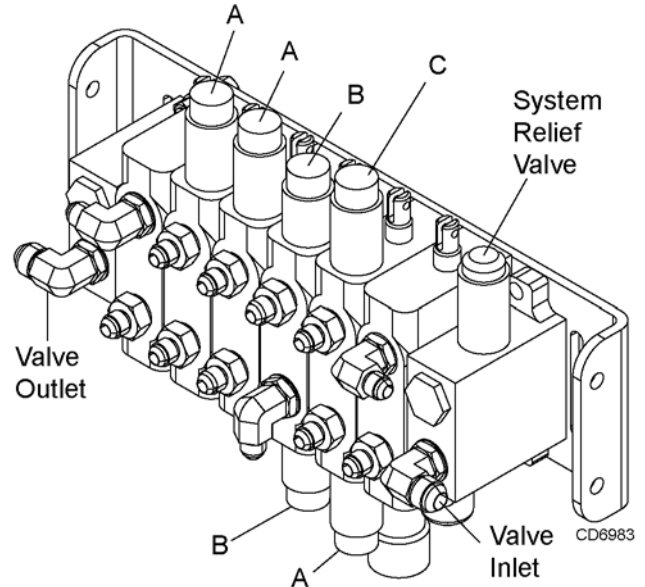


Figure 20. Relief Valve Location

Segment Replacement

Relieve system pressure, disconnect hoses, disconnect control handle linkage, and remove valve from backhoe console. Label hoses for reassembly.

Place valve on a clean, flat work surface.

Remove hex nuts and end cap from one end of valve.

Slide valve sections off until defective section is reached. Keep sections in same order as they were removed.

Replace defective sections and remaining sections in reverse order. Make sure O-ring, poppet, and spring are between each section. Note the orientation of poppet and spring (Figure 21). They must be placed in the load check cavity between valve sections as shown.

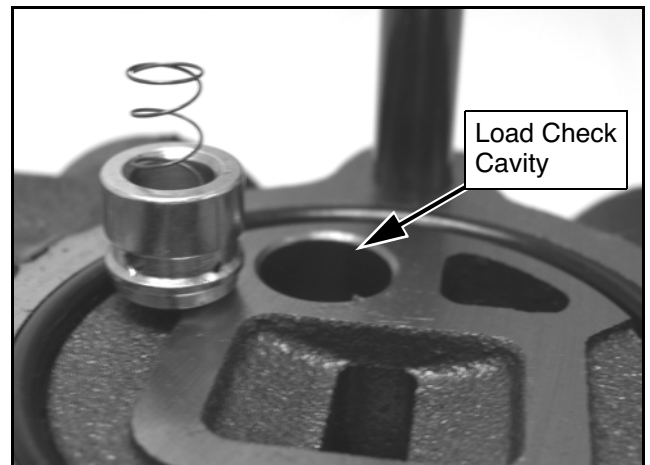


Figure 21. Poppet and Spring Placement

Place end cap on last spool section and hand tighten tie rod nuts.

Position valve assembly on a flat surface with the end cap mounting pads facing down. For proper alignment of end caps to valve sections, apply downward pressure on the end caps. Snug tie rods to approximately 10 lbs-ft.

Use care when torquing nuts on tie rods. This must be done in steps - that is to say, gradually increasing the tightening torque up to 14 lbs-ft for 1/2" nuts and 33 lbs-ft for the 9/16" nut. Torque in an alternating sequence. Non-uniform or excessive tightening can cause binding of spools. Failure to attain the proper torque can result in leaks. Always use a torque wrench.

Install valve assembly to backhoe console using hardware previously removed. Reconnect control valve linkage and hoses.

CONTROL VALVE LINKAGE ADJUSTMENT

Remove control valve cover.

Loosen the three bolts securing valve linkage mounting bracket to the back of backhoe console and two bolts on the guide plate.

Position valve linkage mounting bracket up and down or side to side as needed to position control handle as shown in Figure 22. Make sure excess free play is taken out of the valve linkage. Once control handles are positioned correctly, tighten the three bolts on the back of

the console. Tighten the two bolts on the guide plate to eliminate handle rotation.

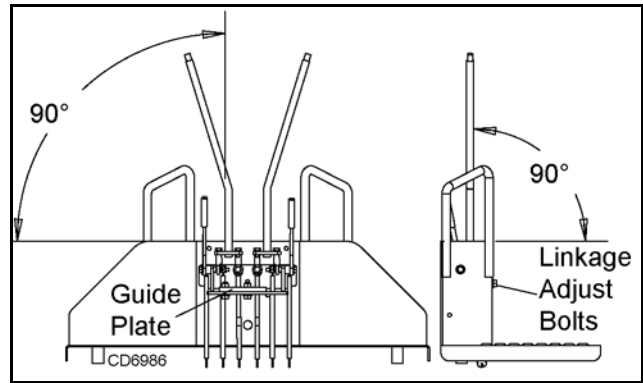


Figure 22. Control Handle Position

When completing a maintenance function on the valve, perform a functional test by placing control handles in their various positions and make certain the correct operation occurs corresponding to the decals on the operator's console. Pay specific attention to the float position of the boom. Do not operate backhoe if functions differ from the decal.

If the functions differ from the decal, check to make sure control linkage is correctly installed and check plumbing schematics to make sure hoses are correctly connected



ASSEMBLY

GENERAL ASSEMBLY INSTRUCTIONS

Backhoe assembly is the responsibility of the Cabela's service center. The backhoe should be delivered to the owner completely assembled, lubricated and adjusted for normal operating conditions.

Set backhoe up as received from the factory with these instructions and illustrations.

When mounting this backhoe on a tractor using a sub-frame mount, special assembly instructions (which are contained in another manual furnished with the sub-frame) apply to some of the assembly procedures.

The backhoe is shipped partially assembled. Assembly will be easier if components are aligned and loosely assembled before tightening hardware.

NOTE: References to right, left, forward and rearward directions are determined from the backhoe operator seat position facing the backhoe.

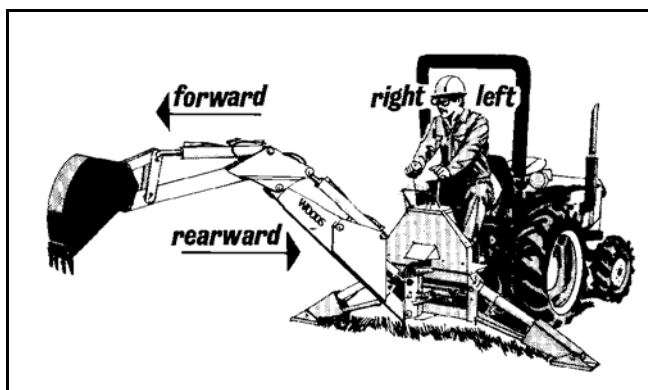


Figure 18. Backhoe Directions

! WARNING

■ Keep all persons away from operator control area while performing adjustments, service, or maintenance.

■ Only mount this backhoe on Category 1 or 2 tractors under 70 hp with 1400 lb. lift capacity at 24" behind 3-point lift arm hitch balls.

■ Keep hands and body away from pressurized lines. Use paper or cardboard, not hands or other body parts to check for leaks. Wear safety goggles. Hydraulic fluid under pressure can easily penetrate skin and will cause serious injury or death.

! WARNING

■ Make sure that all operating and service personnel know that if hydraulic fluid penetrates skin, it must be surgically removed as soon as possible by a doctor familiar with this form of injury or gangrene, serious injury, or death will result. **CONTACT A PHYSICIAN IMMEDIATELY IF FLUID ENTERS SKIN OR EYES. DO NOT DELAY.**

! CAUTION

■ Always wear relatively tight and belted clothing to avoid getting caught in moving parts. Wear sturdy, rough-soled work shoes and protective equipment for eyes, hair, hands, hearing, and head; and respirator or filter mask where appropriate.

Stabilizer Installation

Remove stabilizer arms from pallet.

Remove pivot pins (4) from their shipping position. Attach stabilizer arm (3) to main frame (1) with pivot pin (4) and secure with cap screw (5) and lock nut (6).

Attach stabilizer cylinder (3) to stabilizer arm with pivot pin (7) and secure with two cotter pins (8).

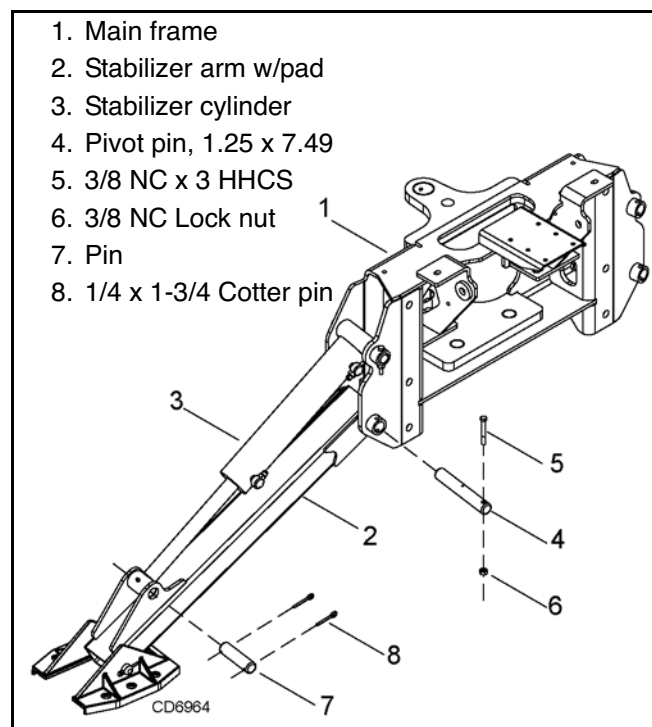


Figure 19. Stabilizer Arm Assembly - Left Side

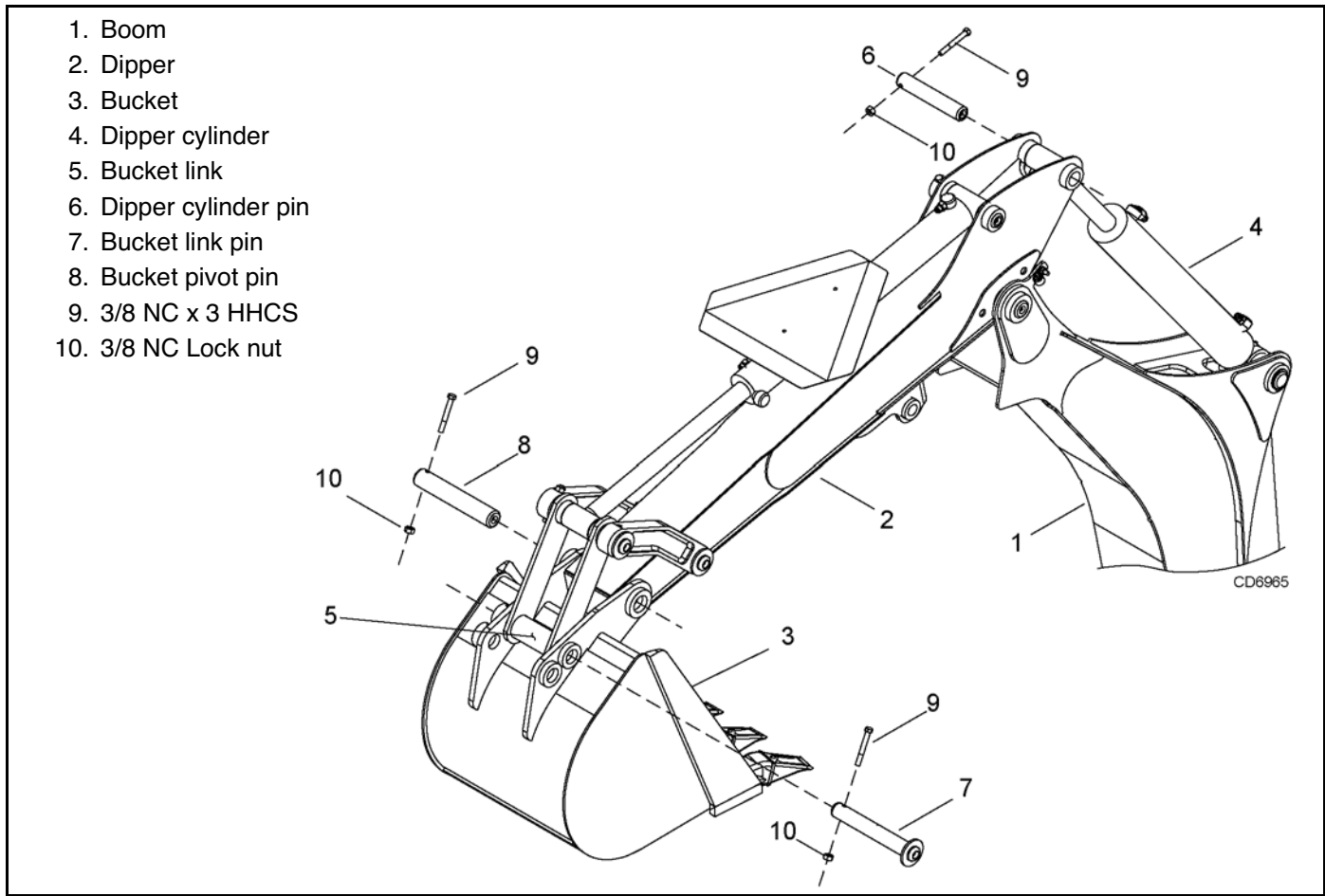


Figure 20. Dipper and Bucket Installation

Dipper Cylinder Installation

Remove pivot pin (6) from end of dipper (2). Attach dipper cylinder (4) to dipper (2) with pivot pin and secure with bolt (3) and lock nut (10). Make sure hydraulic hoses are not twisted after boom and dipper are assembled.

Bucket Installation

12", 16", 18", 24" and 36" buckets are available with this backhoe. Remove pivot pins (7 & 8) from end of bucket link (5) and dipper (2). Attach bucket (3) to the end of the dipper with pivot pins (8). Attach bucket link (5) to the bucket using pivot pin (7). Secure both pins using bolts (9) and lock nuts (10).

HYDRAULIC INSTALLATION

⚠ WARNING

■ **Keep hands and body away from pressurized lines. Use paper or cardboard, not hands or other body parts to check for leaks. Wear safety goggles.**

Hydraulic fluid under pressure can easily penetrate skin and will cause serious injury or death.

⚠ WARNING

■ **Make sure that all operating and service personnel know that if hydraulic fluid penetrates skin, it must be surgically removed as soon as possible by a doctor familiar with this form of injury or gangrene, serious injury, or death will result. CONTACT A PHYSICIAN IMMEDIATELY IF FLUID ENTERS SKIN OR EYES. DO NOT DELAY.**

■ **Make sure shields and guards are properly installed and in good condition. Replace if damaged.**

Power to the backhoe can be supplied directly from the tractor hydraulic system. **A hydraulic requirement of 9-12 gallons per minute and 2500 PSI is necessary to operate the backhoe efficiently. 1/2" diameter hoses (SAE 100 R1 with 3000 PSI working pressure) should be used to connect the hydraulic source to the backhoe valve.** These hoses must be long enough to allow ease of removal or attachment of backhoe. Hoses must include external shielding to prevent oil from spraying on operator if hose fails.

Open-Center Valve

NOTICE

- Damage to valve will result if oil is routed backwards through the valve.
- Valve damage will occur if back pressure exceeds 450 psi.
- Do not route return oil through tractor remote valve. Use a low pressure port, such as a motor return port.

NOTE: See the sub-frame mounting kit manual for specific tractor and hydraulic hose kit instructions.

Locate the IN and OUT ports on the control valve under the operator's platform. Connect hoses to these ports. Attach male and female couplers compatible to the tractor on opposite end of the hoses.

NOTE: The backhoe will not function if oil is routed backwards through the valve. Connect the tractor PRESSURE hose to the backhoe valve IN port and the RETURN hose to the backhoe valve OUT port. Tighten all fittings securely. Start engine and run at low rpm. Activate hydraulic circuit and check for leaks.

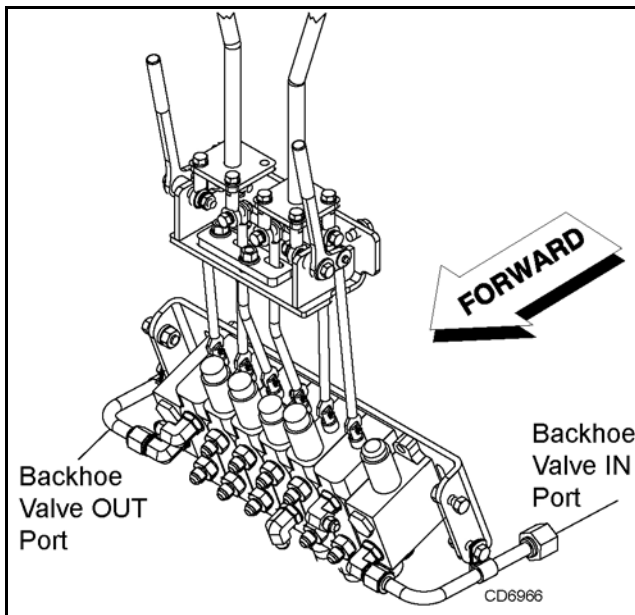


Figure 21. Backhoe Valve Ports

BACKHOE TO TRACTOR ATTACHMENT

Remove backhoe from pallet and position on level surface. Back tractor as near as possible and center on backhoe.

Remove seat and upper support before attaching backhoe to tractor.

SEAT INSTALLATION AND ADJUSTMENT

The seat may be adjusted fore, aft, up and down for operator comfort. It is necessary to use the two adjustments together. Moving the seat down also moves it forward, moving it up also moves it rearward. The fore and aft adjustment may be used with the up and down adjustment to obtain desired position. Never operate the backhoe unless manufacturer's 3-point hitch Saf-T-Lok Limiter or sub-frame has been installed, adjusted and operator's area (shown in decal 1020003, on page 11) is free from obstructions.

OPTIONAL EQUIPMENT

1006610KT Stabilizer Street Pad Installation

1. Attach two rubber stabilizer pads (7) to the bottom stabilizer pad (2) using three lock nuts (6).
2. Repeat step for opposite side stabilizer.

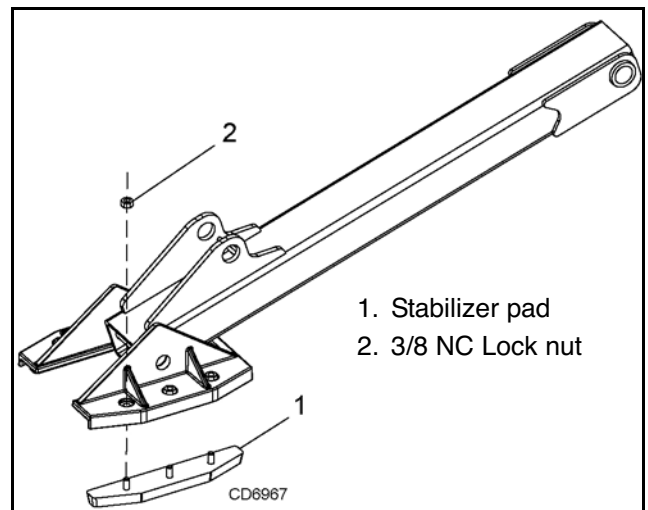


Figure 22. Stabilizer Pad Installation

1020000YMR Mechanical Thumb (Optional)

1. Disconnect lock-up bar, lower boom and place bucket on the ground.
 2. Remove hardware and pivot pin that attaches bucket to the end of the dipper.
 3. Place thumb (1) over bucket lugs and align holes.
- NOTE:** Grease pivot bushings (11) on the thumb before installing clevis pin.
4. Insert clevis pin (5) to secure thumb and bucket to the dipper. Secure clevis pin using retaining bolt previously removed.
 5. Attach inner tube (3) to the thumb (1) and secure using pin (9), cap screw (9), and lock nut (10). Do not tighten; cap screw should slide freely in the pin and bushing. See Figure 23.
 6. Attach outer tube (2) to pivot lugs on dipper and secure using pin (6), cap screw (9), and lock nut (10).
 7. Place thumb in the storage position (rotate up against dipper), insert hitch pin (4), and secure with klik pin (8).

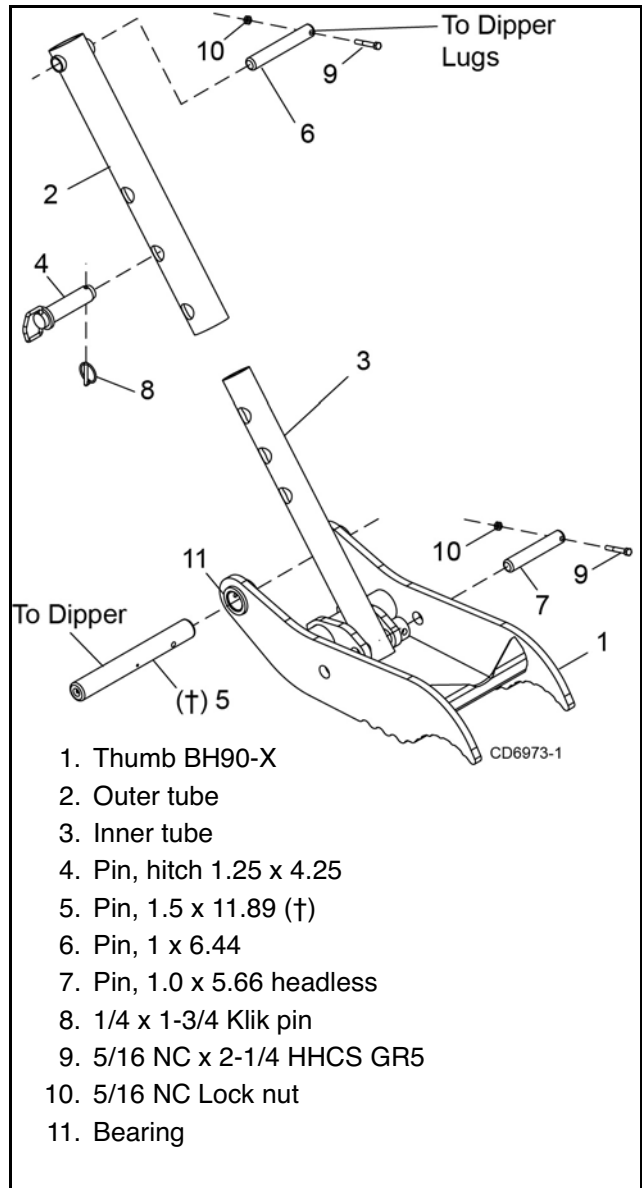


Figure 23. Mechanical Thumb Assembly



Figure 24. Mechanical Thumb Installed

DEALER CHECK LISTS

PRE-DELIVERY CHECK LIST

(DEALER'S RESPONSIBILITY)

Inspect the backhoe (and sub-frame when applicable) thoroughly after assembly to be certain it is set up properly before delivering it to the customer. The check lists are a reminder of points to inspect. Check off each item as it is found satisfactory or after proper adjustments are made.

- ___ Check all bolts to be sure they are tight.
- ___ Check that all lubrication points have been lubricated.
- ___ Check that all cotter pins and safety pins are properly installed.
- ___ Properly attach backhoe (and sub-frame when applicable) to tractor and make all necessary adjustments.
- ___ Check that optional hydraulic reservoir has been serviced and that hydraulic system and all functions have been operated through full cylinder stroke to purge air from system.
- ___ Make sure all hydraulic fittings are tight and hoses are properly routed and not twisted, bent sharply, kinked or pulled tight.
- ___ After pressurizing and operating all backhoe functions, stop tractor and make sure there are no leaks in the hydraulic system. Follow all safety rules when checking for leaks.

DELIVERY CHECK LIST

(DEALER'S RESPONSIBILITY)

- ___ Present Operator's Manual (and sub-frame manual when applicable) and request that customer and all operators read it before operating equipment.
- ___ Point out all safety features of the equipment. Explain the importance and meaning of all safety decals and emphasize the potential hazards when not followed.
- ___ Show customer how to make adjustments.
- ___ Explain importance of lubrication and show lubrication points to customer.
- ___ Show customer the safe and proper procedures to be used when mounting, dismounting and storing backhoe (and sub-frame when applicable).
- ___ If backhoe is mounted to tractor 3-point hitch, explain the importance of the Saf-T-Lok limiter. Point out (as shown in Operator's Manual) the correct attachment and adjustment of the limiter.
- ___ Point out the correct mounting of the hydraulic pump and routing of the hoses. Explain that during operation, mounting, dismounting and storage, care must be taken to prevent hose damage from pulling, twisting and kinking.
- ___ Show customer the safe and proper procedures to be used when mounting, dismounting and storing backhoe (and sub-frame when applicable).



NOTES

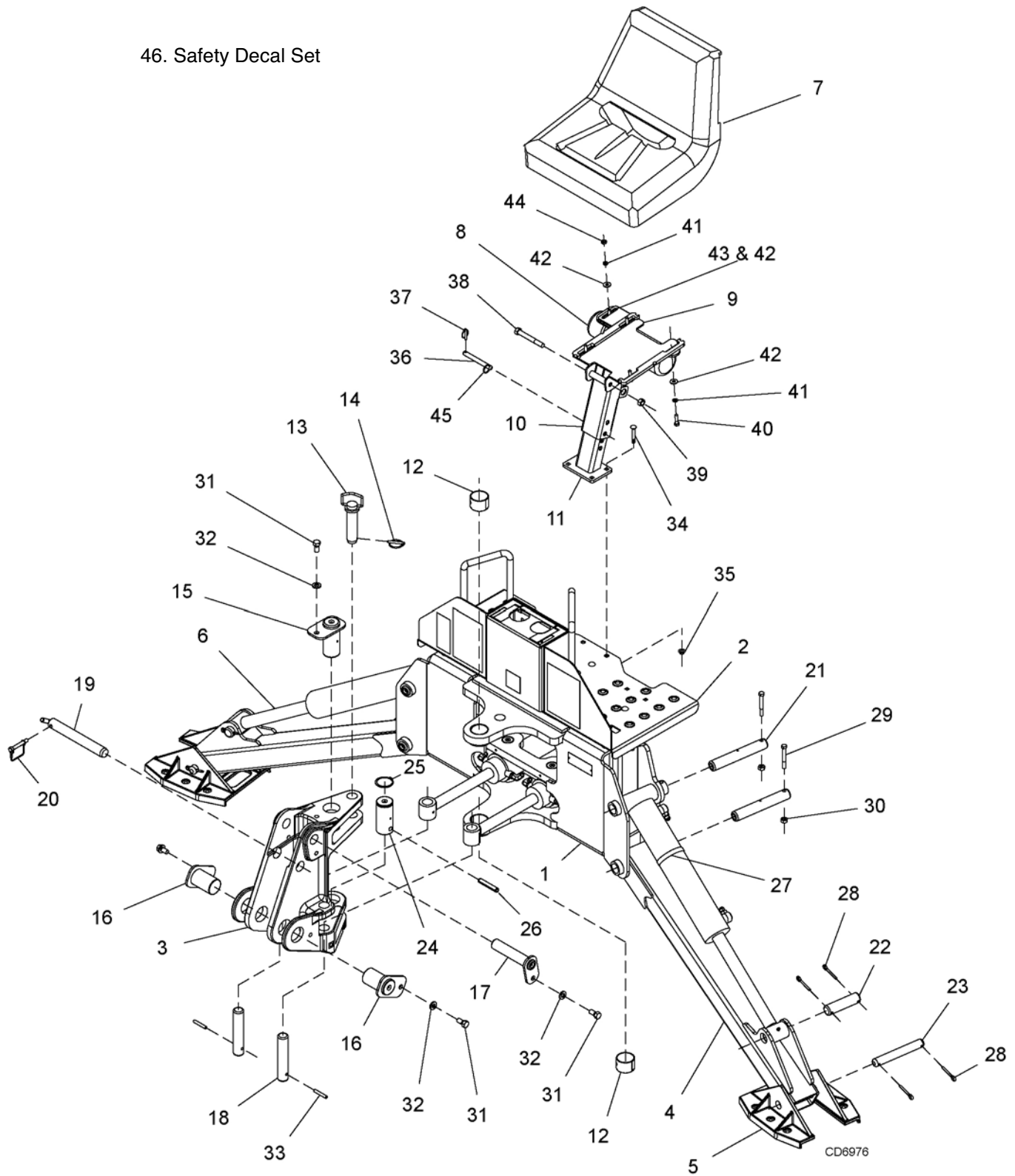
Mfg by Woods Equipment Co.

B90

MAIN FRAME ASSEMBLY	34 - 37
BOOM ASSEMBLY	38
DIPPER/BUCKET ASSEMBLY	39
CONTROL VALVE LINKAGE ASSEMBLY	40
CONTROL VALVE ASSEMBLY	41
BUCKET CYLINDER	42
BOOM & DIPPER CYLINDER	42
STABILIZER CYLINDER	43
SWING CYLINDER	43
HOSES & FITTINGS	44
THUMB ASSEMBLY (OPTIONAL)	45
STABILIZER STREET PAD KIT (OPTIONAL)	45
AUXILIARY HYDRAULIC KIT FOR HYDRAULIC THUMB (OPTIONAL) PEDAL & LINKAGE ASSEMBLY	46 - 47
AUXILIARY HYDRAULIC KIT FOR HYDRAULIC THUMB (OPTIONAL) HYDRAULIC CONNECTION	48
B90 HYDRAULIC THUMB	49
AUXILIARY VALVE	50
MOUNTING PARTS FOR TRACTOR MODELS YT347 & YT359	50

MAIN FRAME ASSEMBLY

46. Safety Decal Set



34 Parts

MAN1158 (8/28/2015)

MAIN FRAME ASSEMBLY PARTS LIST

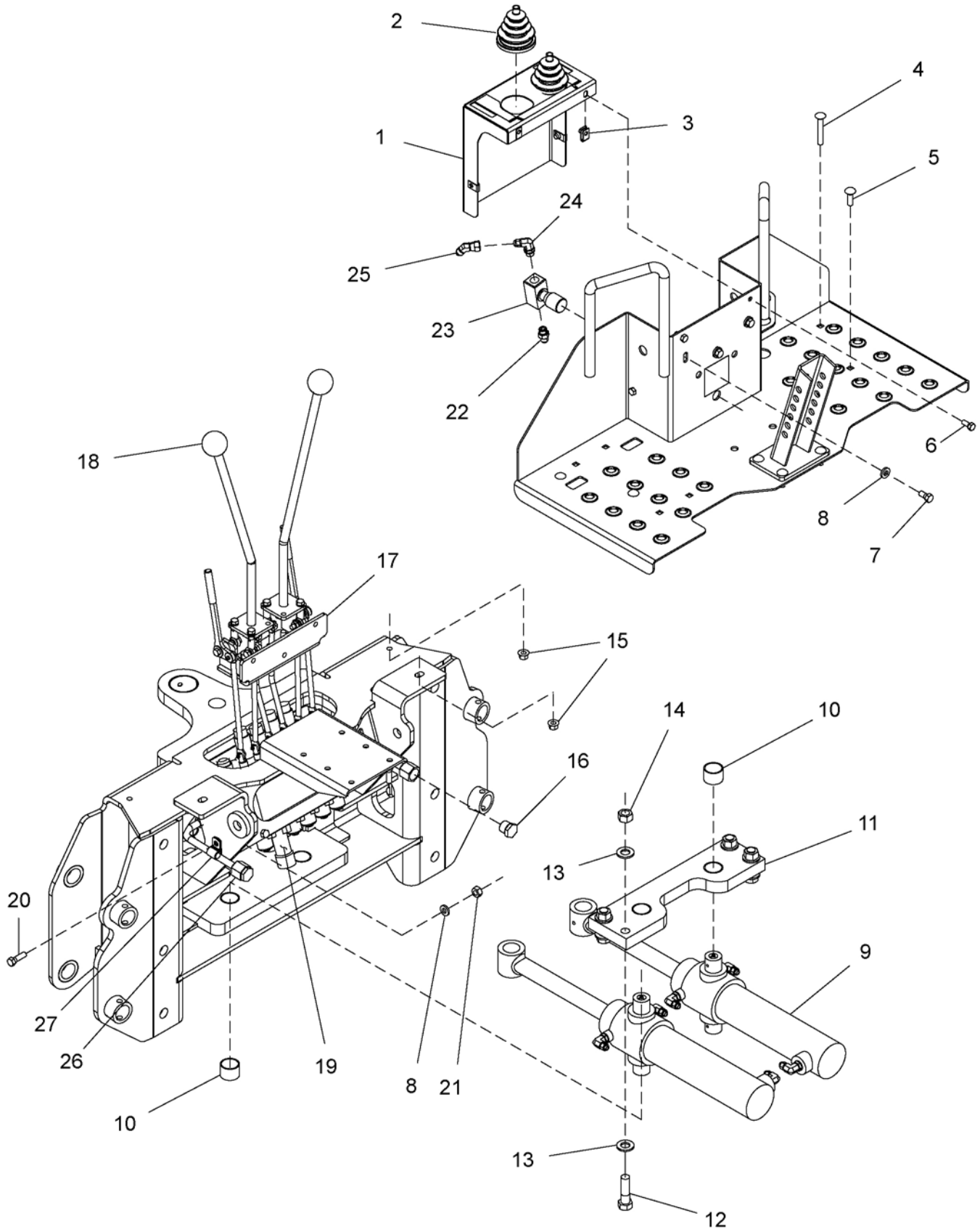
REF	PART	QTY	DESCRIPTION	REF	PART	QTY	DESCRIPTION
1	1017825	1	Main frame	25	443029	1	Snap ring
2	1022051	1	Console w/decals	26	21142	1	Pin, 1/2 x 3 slotted spring
3	1017891	1	Swing frame	27	8641	2	14-1/2 Binding strap
4	1017801	2	Stabilizer	28	923 *	8	1/4 x 1-3/4 Cotter pin
5	1017808	2	Stabilizer pad	29	7747 *	4	3/8 NC x 3 HHCS GR5
6	1017728	2	Hydraulic cylinder 3.0 x 1.5 x 14	30	6698 *	4	3/8 NC Lock nut
7	1012560	1	High back seat	31	25475 †*	4	1/2 NC x 1 HHCS full thread GR5
8	1003828	1	Manual tube	32	1012568	4	1/2 Nord lock washer
9	1012563	1	Seat bracket	33	7251	2	5/16 x 2 Spring pin
10	1012554	1	Seat mount	34	20973 *	4	3/8 NC x 1-1/4 Carriage bolt GR5
11	1008475	1	Lower seat support	35	14350 *	4	3/8 NC Flange lock nut
12	1017922	2	Bushing, 2.0 x 2.19 x 1.5	36	13817	1	Pin, .50 x 3.78
13	1012609	1	Pin, hitch 1.25 x 4.25	37	22411	1	Klik pin, 3/16 x 1
14	62043	1	Klik pin, 1/4 x 1-3/4	38	10380 *	1	1/2 NC x 4 HHCS GR5
15	1017853	1	Pin, 2.0 x 4.0	39	765 *	1	1/2 NC Lock nut
16	1017816	2	Pin, 2.0 x 3.05	40	24408 *	4	5/16 NC x 1-1/2 HHCS GR5
17	1017854	1	Pin assembly	41	2472 *	5	5/16 Lock washer
18	1017822	2	Pin	42	4378 *	6	5/16 Flat washer
19	1012608	1	Pin, 1.18 x 9.0	43	14562 *	1	5/16 NC x 1 HHCS GR5
20	33000	1	Pin, lynch 3/8 x 2-1/4	44	6778 *	1	5/16 NC Lock nut
21	1017974	4	Pin, 1.25 x 7.49	45	62992	1	.11 x 1.1 OD Split ring
22	1017742	2	Pin	46	1022052	1	Safety decal set
23	37431	2	Pin, 1.0 x 6.1				
24	1012601	1	Pin, 2.0 x 3.38				

† Apply permanent type thread locking compound such as Loctite® 2760.

HHCS Hex Head Cap Screw

* Standard hardware, obtain locally

MAIN FRAME ASSEMBLY



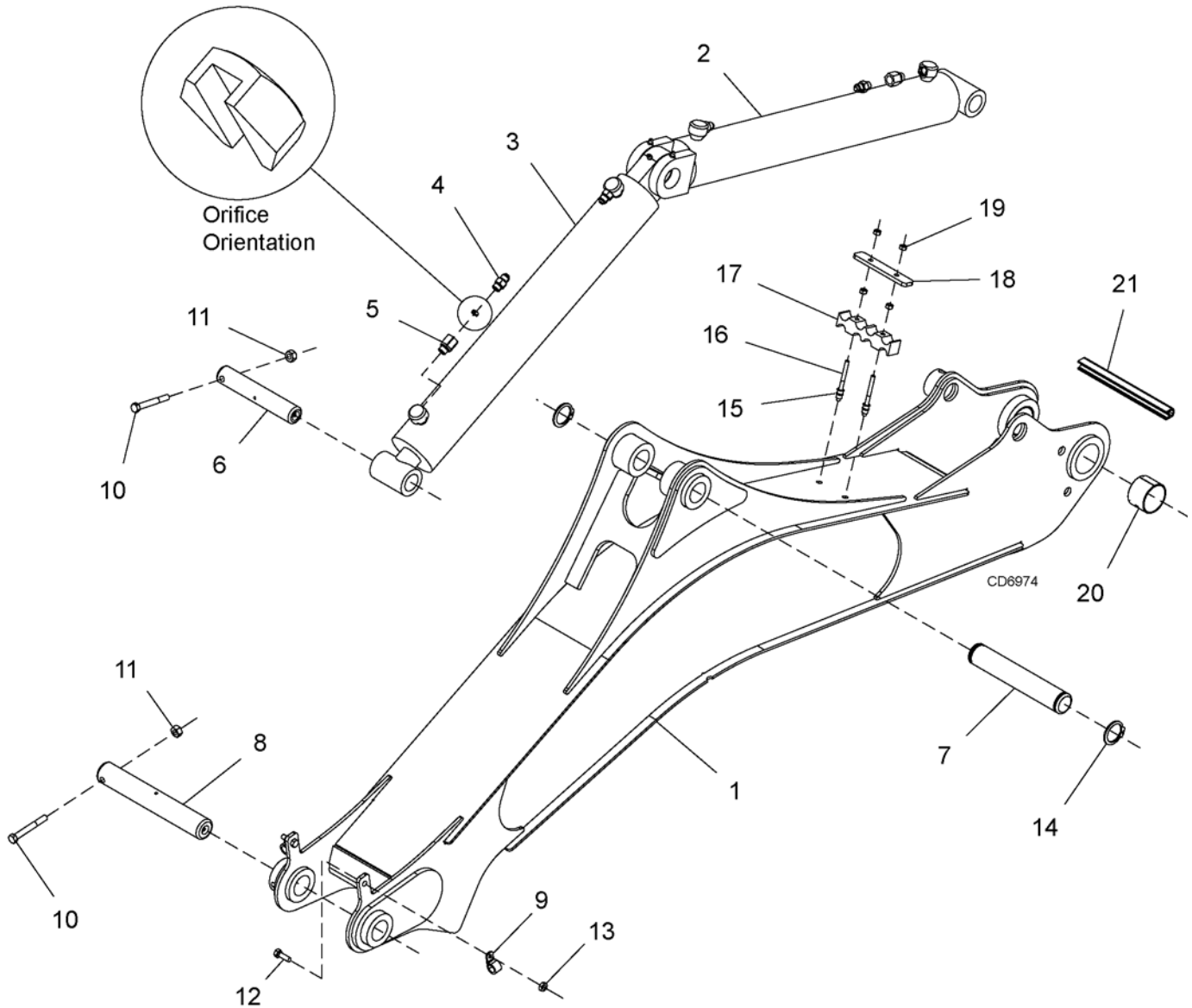
36 Parts

MAN1158 (8/28/2015)

MAIN FRAME ASSEMBLY PARTS LIST

REF	PART	QTY	DESCRIPTION	REF	PART	QTY	DESCRIPTION
1	1022050	1	Cover-console with decals	16	1005736	2	Plug, 7/8-14 O-ring hex head
2	37765	2	Boot, rubber control	17	-----	1	Control valve assembly, see page 41
3	74047	4	Spring nut 5/16-18 u-tapered	18	37672	2	Knob 1.88 dia x 1/2 NC
4	35735 *	2	3/8 NC x 2-1/2 Carriage bolt	19	-----	1	Valve assembly w/fittings, see page 44
5	20973 *	2	3/8 NC x 1-1/4 Carriage bolt GR5	20	12169 *	4	3/8 NC x 1-1/4 HHCS GR5
6	78205 *	4	5/16 NC x 3/4 HHCS GR5	21	6698 *	4	3/8 NC Lock nut
7	1270 *	3	3/8 NF x 3/4 HHCS	22	62367	1	Adapter, 9/16 JICM x 9/16 ORBM
8	44546	7	3/8 Hardened flat washer	23	1012510	1	Valve flow control
9	1017818	2	Hydraulic cylinder 2.50 x 1.25 x 11.00	24	63558	1	Elbow, 9/16 JICM x 9/16 ORBM 90°
10	37429	4	Bushing 1.25 x 1.41 x 1.00	25	62866	1	Elbow, 9/16 JICM x 9/16 JICF 45°
11	1017847	1	Trunnion mount	26	1012614	2	Feedline - BH90-X
12	12274 *	4	5/8 NC x 2-1/4 HHCS	27	35249	2	Clip, fuel line
13	57817	8	5/8 Hardened flat washer				
14	230 *	4	5/8 NC Hex nut		HHCS		Hex Head Cap Screw
15	14350 *	4	3/8 NC Flange lock nut		*		Standard hardware, obtain locally

BOOM ASSEMBLY



REF	PART	QTY	DESCRIPTION	REF	PART	QTY	DESCRIPTION
1	1017900	1	Boom B90	12	14562 *	2	5/16 NC x 1 HHCS GR5
2	1017725	1	Cylinder 3.00 x 1.50 x 21.50	13	6778 *	2	5/16 NC Lock nut
3	1017726	1	Cylinder 3.00 x 1.50 x 19.63	14	62718	2	Ring, snap .109 x 1.5 OD
4	62367	2	Adapter, 9/16 JICM x 9/16 ORBM	15	-----	2	1/4-20 UNC Blind hole nut
5	1020005	2	Restrictor, .125 9/16 ORB	16	1011842	2	1/4-20 UNC x 3.00 Stud
6	1020013	1	Pin - 1.25 x 7.08	17	1011843	1	Clamp, 8" hose
7	1017747	1	Pin - 1.5 x 8.62	18	1011844	1	Clamp bar .25 x 5.00
8	1017748	1	Pin - 1.5 x 9.78	19	5288 *	4	1/4 NC Hex nut
9	74058	2	Clamp, .625 dia steel cushion	20	1017922	2	Bushing, 2.00 x 2.19 x 1.50
10	7747 *	2	3/8 NC x 3 HHCS GR5	21	1012624	1	Trim strip, .38 x 6.8
11	6698 *	2	3/8 NC Lock nut				

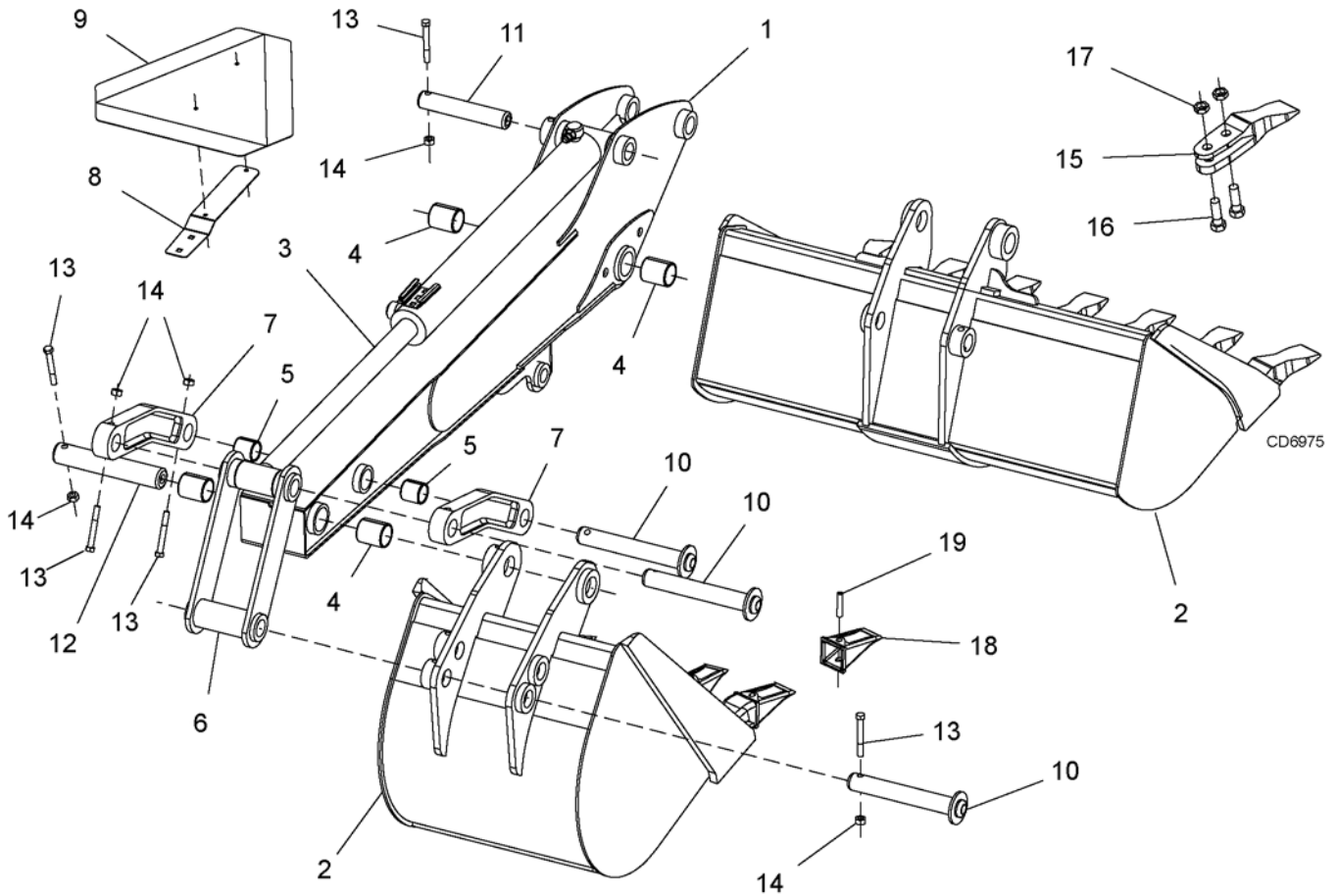
* Standard hardware, obtain locally

38 Parts

(Rev. 11/10/2015)

MAN1158 (8/28/2015)

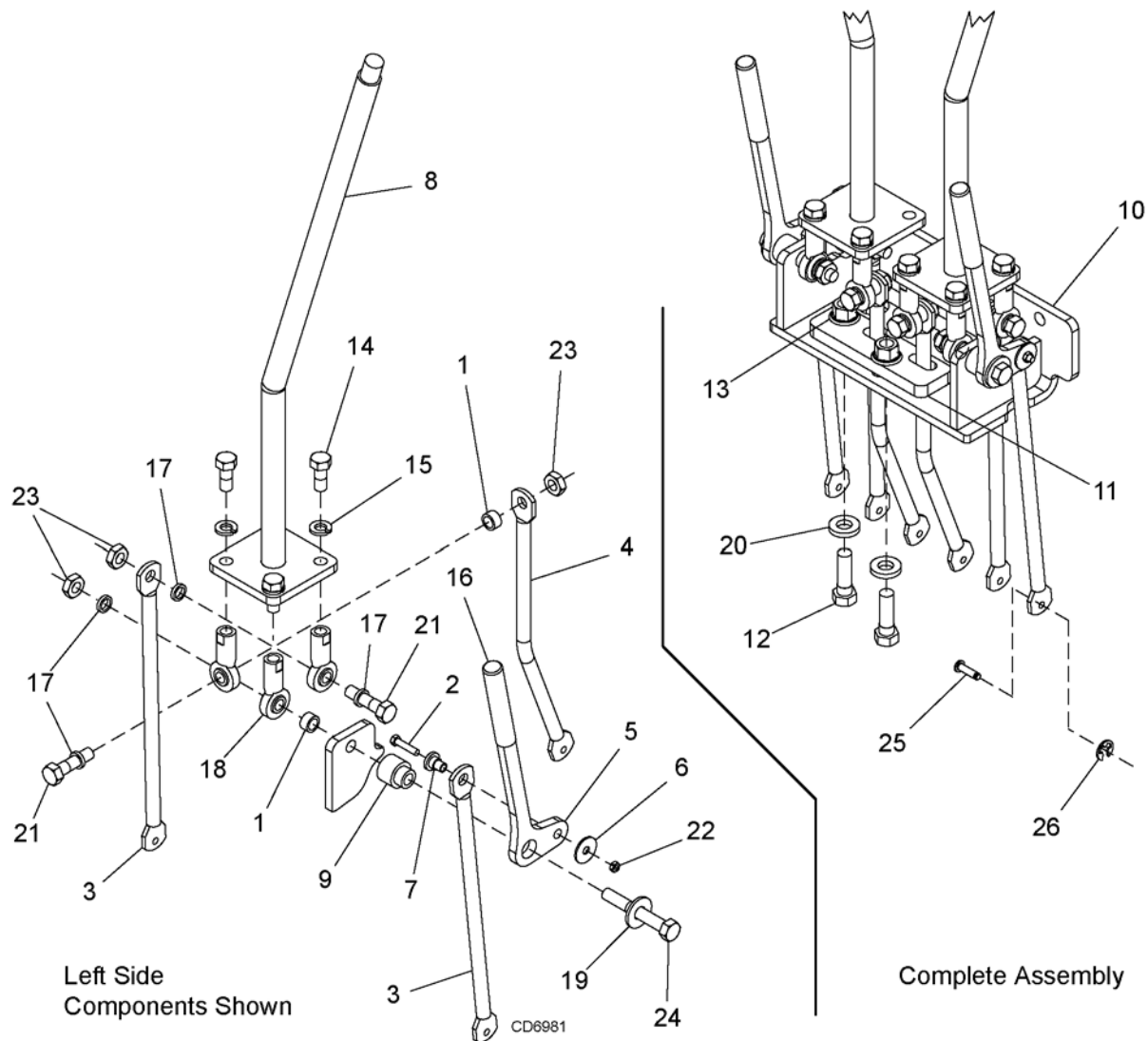
DIPPER/BUCKET ASSEMBLY



REF	PART	QTY	DESCRIPTION	REF	PART	QTY	DESCRIPTION
1	1017950	1	Dipper B90	8	1004251	1	SMV bracket
2	1020212YMR	1	Bucket 12 - or -	9	24611	1	Sign SMV
	1020216YMR	1	Bucket 16 - or -	10	37839	3	Pin, clevis 1.25 x 7.68
	1020218YMR	1	Bucket 18 - or -	11	1020013	1	Pin, 1.25 x 7.08
	1020224YMR	1	Bucket 24 - or -	12	1020014	1	Pin, 1.50 x 8.61
	1020236YMR	1	Bucket 36 w/teeth	13	7747 *	5	3/8 NC x 3 HHCS GR5
	1020236DYMR	1	Bucket 36 (ditching bucket, no teeth)	14	6698 *	5	3/8 NC Lock nut
3	1017727	1	Cylinder 2.50 x 1.50 x 20.00	15	1013499	AR	Tooth
4	37851	4	Bushing 1-1/2 ID x 1-3/4 OD x 2	16	902 *	2	5/8 NC x 2 HHCS GR5
5	34014	2	Bushing 1-1/4 x 1-1/2 x 1-1/2	17	6239 *	2	5/8 NC Lock nut
6	37830	1	Bucket link	18	HEX156	AR	Tooth, standard
7	37835	2	Guide link	19	HEP156	AR	Pin (HA201, HA203)

AR as required
 HHCS Hex Head Cap Screw
 * Standard hardware, obtain locally

CONTROL VALVE LINKAGE ASSEMBLY

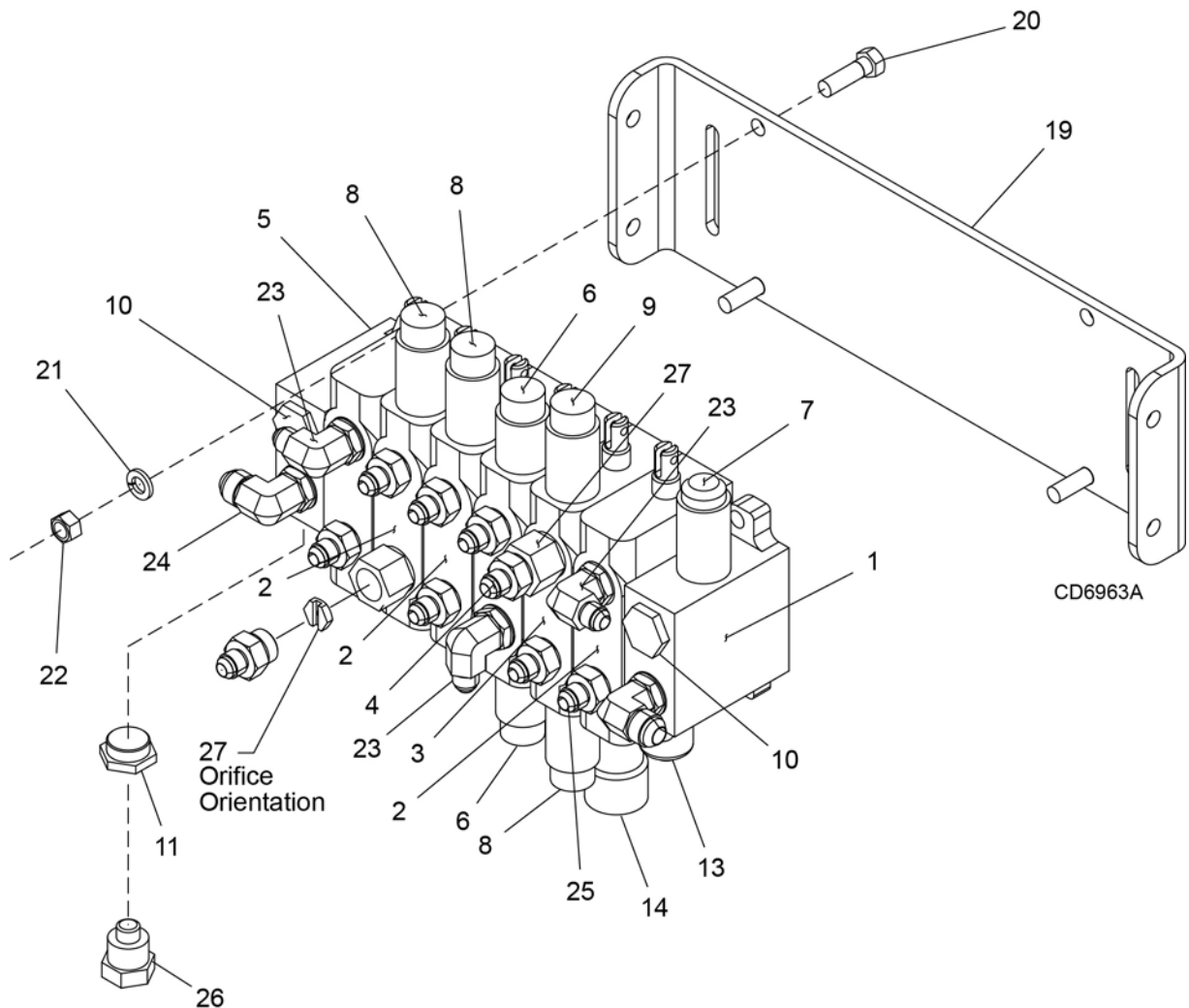


REF	PART	QTY	DESCRIPTION	REF	PART	QTY	DESCRIPTION
1	1017767	4	Sleeve, .328 x .463 x .250	15	2472 *	6	5/16 Lock washer
2	1017779 *	2	#8-32 x 3/4 HHCS	16	31416	2	Rubber handle
3	1017988	4	Control link	17	37577	8	Washer, .328 x .463 x .093
4	1017990	2	Control handle	18	37613	6	Rod end, 5/16 NF female
5	1017991	2	Stabilizer handle	19	4378 *	2	5/16 Flat washer
6	----- *	2	Washer, #8 flat	20	44546	2	3/8 Hardened flat washer
7	1020021	2	Sleeve, pivot stabilizer	21	6250 *	4	5/16 NC x 1-1/4 HHCS GR5
8	1020023	2	Handle	22	62529 *	2	#8 NC Lock nut
9	1020024	2	Sleeve, pivot joystick	23	6778 *	6	5/16 NC Lock nut
10	1020040	1	Valve control bracket	24	7164 *	2	5/16 NC x 2-1/4 HHCS GR5
11	1020046	1	Guide, valve linkage	25	1006133	6	Pin, grooved clevis .19
12	12169 *	2	3/8 NC x 1-1/4 HHCS GR5	26	34303	6	Ring ret .025 x .156 ext
13	14350 *	2	3/8 NC Flange lock nut		HHCS		Hex Head Cap Screw
14	24405 *	6	5/16 NF x 3/4 HHCS GR5		*		Standard hardware, obtain locally

40 Parts

MAN1158 (8/28/2015)

CONTROL VALVE ASSEMBLY

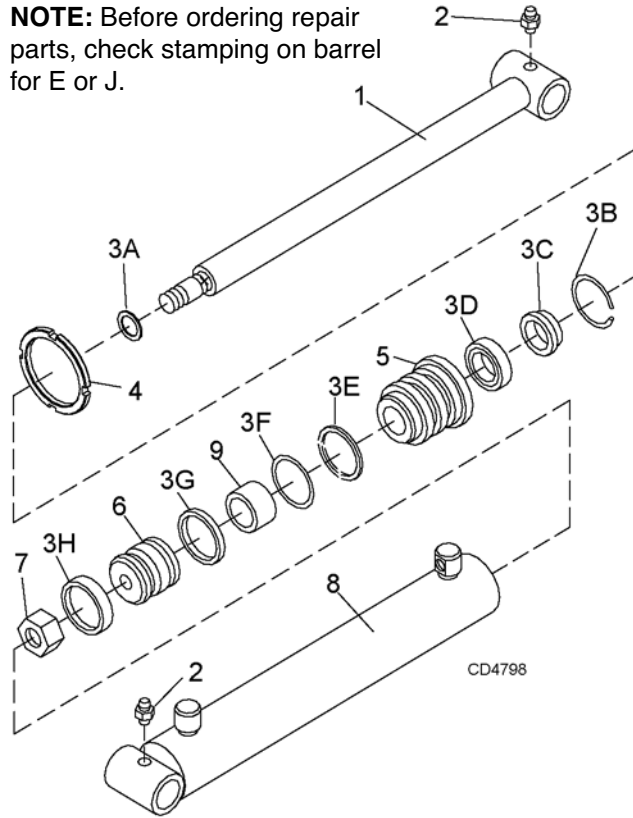


REF	PART	QTY	DESCRIPTION	REF	PART	QTY	DESCRIPTION
1	1020055	1	Inlet section assembly	17	1020082	1	Seal kit - section (NS)
2	1020059	4	Spool section assembly	18	1017880	1	Valve-6 spool section 2500 psi (no fittings)
3	1020056	1	Spool section assembly	19	1017881	1	Bracket, valve
4	1020057	1	Spool section assembly	20	12169 *	3	3/8 NC x 1-1/4 HHCS GR5
5	1020058	1	Outlet section assembly	21	838 *	3	3/8 Lock washer
6	1020077	2	Relief valve assembly PO 2650 psi	22	835 *	3	3/8 NC Hex nut
7	1020078	1	Relief valve assembly PO 2500 psi	23	313038	3	Elbow, 9/16 JICM x 3/4 ORBM 90°
8	1020076	3	Relief valve assembly DA 2650 psi	24	316004	2	Elbow, 3/4 JICM x 3/4 ORBM 90°
9	1020060	1	Relief valve DA 3500 psi	25	69	9	Adapter, 9/16 JICM x 3/4 ORBM
10	43683	2	Plug assembly - SAE (-8)	26	X102202	1	PBY Plug (if required)
11	16715-1	1	Plug assembly - SAE (-10)	27	1042058	2	Restrictor, .125 3/4 ORB
12	1020079	1	Tie rod kit, 6 section (NS)				
13	16712-1	5	Standard positioner kit				
14	1020080	1	Repair kit, spool end float		HHCS		Hex Head Cap Screw
15	1020083	6	Load check poppet w/spring (NS)		NS		not shown
16	1020081	6	Seal kit - spool (NS)		*		Standard hardware, obtain locally

HYDRAULIC CYLINDER ASSEMBLIES

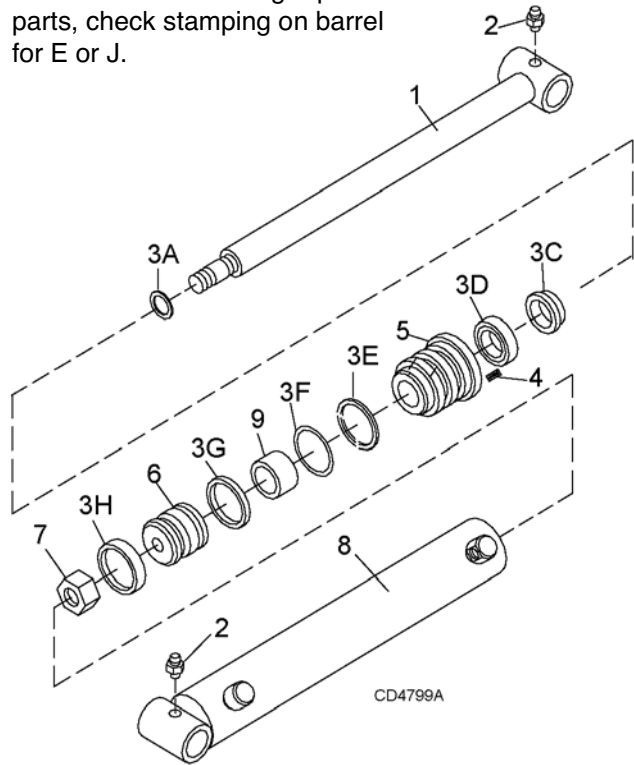
Bucket Cylinder

NOTE: Before ordering repair parts, check stamping on barrel for E or J.



Boom & Dipper Cylinder

NOTE: Before ordering repair parts, check stamping on barrel for E or J.



REF	PART "E"	PART "J"	QTY	DESCRIPTION
A	1017727	1017727	1	Complete cylinder assembly
1	1020067	N/S	1	Piston rod
2	N/S	N/S	2	Grease fitting
3	1020026	1029011	1	Seal Kit (includes 3A - 3H)
3A	----	----	1	O-Ring
3B	----	----	1	Internal retaining ring
3C	----	----	1	Wiper ring
3D	----	----	1	Seal
3E	----	----	1	Backup ring
3F	----	----	1	O-Ring
3G	----	----	1	Piston seal
3H	----	----	1	Wear ring
4	----	----	1	Spanner nut
5	----	----	1	Guide
6	----	----	1	Piston
7	----	----	1	Lock nut
8	----	----	1	Cylinder body
9	----	----	1	Tube
		N/S		Not serviceable

REF	PART "E"	PART "J"	QTY	DESCRIPTION
A	1017725	1017725	1	Complete cylinder asy - Boom
B	1017726	1017726	1	Complete cylinder asy - Dipper
1	1020061	N/S	1	Piston rod - Boom
1	1020064	N/S	1	Piston rod - Dipper
2	N/S	N/S	2	Grease fitting
3	1020025	1030038	1	Seal kit (includes 3A-3H)
3A	----	----	1	O-Ring
3C	----	----	1	Wiper ring
3D	----	----	1	Seal
3E	----	----	1	Backup ring
3F	----	----	1	O-Ring
3G	----	----	1	Piston seal
3H	----	----	1	Wear ring
4	----	----	1	Socket set screw
5	----	----	1	Guide
6	----	----	1	Piston
7	----	----	1	Lock nut
8	----	----	1	Cylinder body
9	----	----	1	Tube
		N/S		Not serviceable

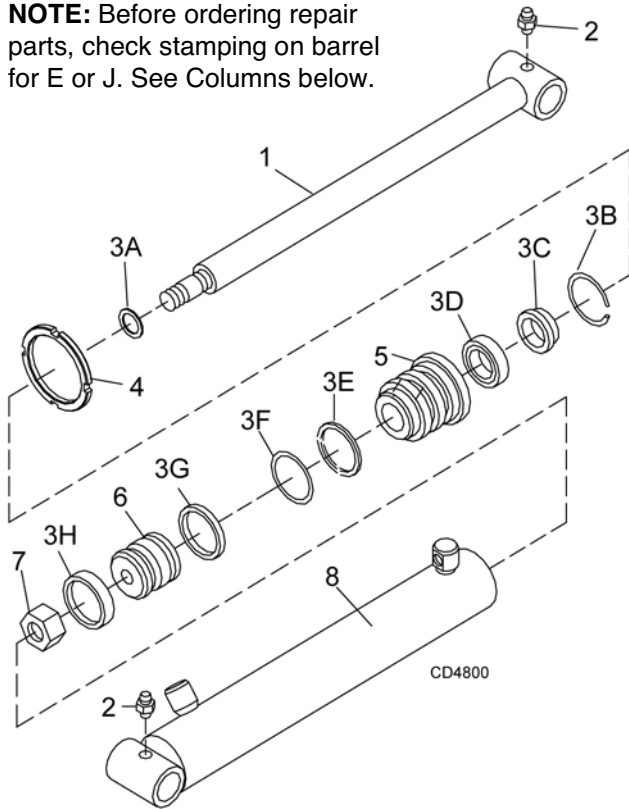
42 Parts

MAN1158 (8/28/2015)

HYDRAULIC CYLINDER ASSEMBLIES

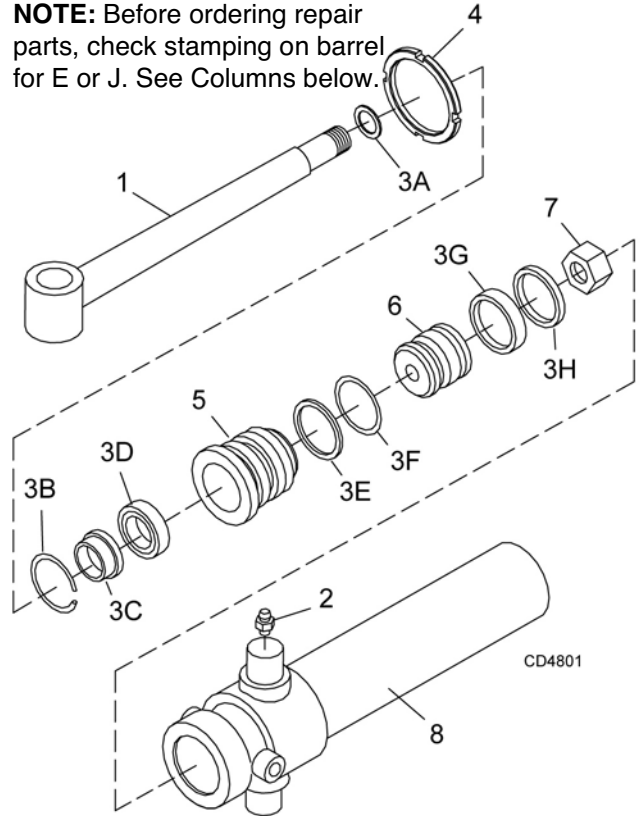
Stabilizer Cylinder

NOTE: Before ordering repair parts, check stamping on barrel for E or J. See Columns below.



Swing Cylinder

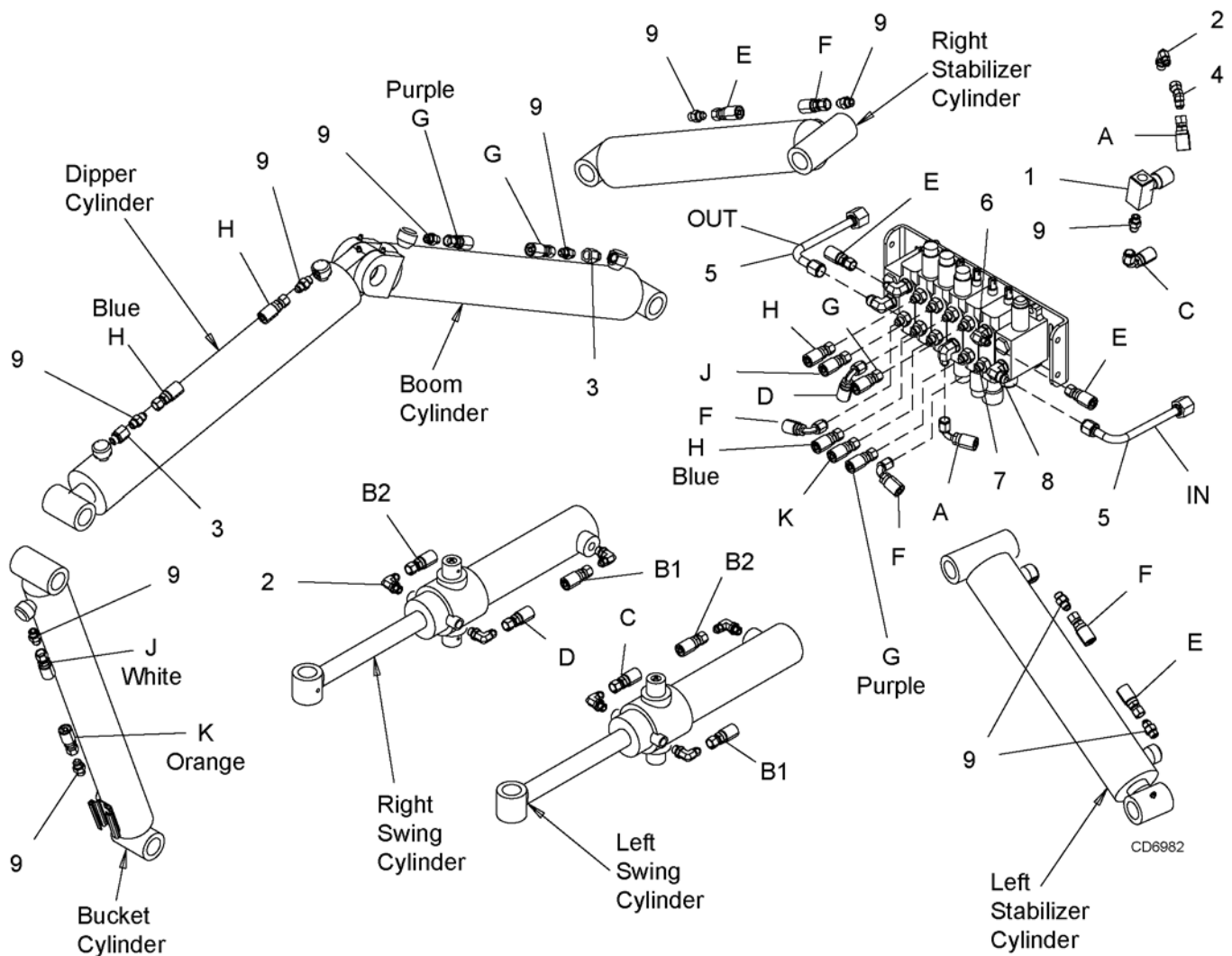
NOTE: Before ordering repair parts, check stamping on barrel for E or J. See Columns below.



REF	PART "E"	PART "J"	QTY	DESCRIPTION
A	1017728	1017728	1	Complete cylinder assembly
1	----	----	1	Piston rod
2	N/S	N/S	2	Grease fitting
3	1020027	1030039	1	Seal kit (Includes 3A-3H)
3A	----	----	1	O-Ring
3B	----	----	1	Internal retaining ring
3C	----	----	1	Wiper ring
3D	----	----	1	Seal
3E	----	----	1	Backup ring
3F	----	----	1	O-Ring
3G	----	----	1	Piston seal
3H	----	----	1	Wear ring
4	----	----	1	Spanner nut
5	----	----	1	Guide
6	----	----	1	Piston
7	----	----	1	Lock nut
8	----	----	1	Cylinder body
			N/S	Not serviceable

REF	PART "E"	PART "J"	QTY	DESCRIPTION
A	1017818	1017818	1	Complete cylinder assembly
1	1020073	1020073	1	Piston rod
2	----	----	1	Grease fitting
3	1020028	1029013	1	Seal kit (Includes 3A - 3H)
3A	----	----	1	O-Ring
3B	----	----	1	Internal retaining ring
3C	----	----	1	Wiper ring
3D	----	----	1	Seal
3E	----	----	1	Backup ring
3F	----	----	1	O-Ring
3G	----	----	1	Piston seal
3H	----	----	1	Piston ring
4	----	----	1	Spanner nut
5	----	----	1	Guide
6	----	----	1	Piston
7	----	----	1	Lock nut
8	----	----	1	Cylinder body
			N/S	Not serviceable

HOSES & FITTINGS



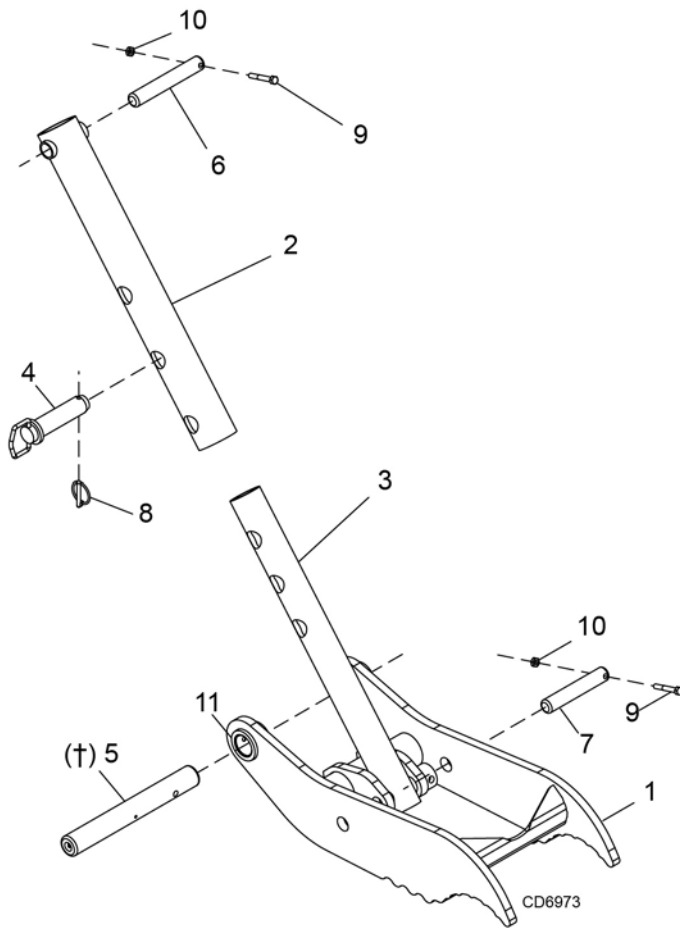
HOSE

REF	PART	QTY	DESCRIPTION	REF	PART	QTY	DESCRIPTION
1	1012510	1	Valve flow control	A	1008340	1	Hose, 1/4 21" 9/16 JICF 9/16 JICF
2	63558	7	Elbow, 9/16 ORBM x 9/16 JICM	B	1014237	2	Hose, 1/4 22" 9/16 JICF 9/16 JICF
3	1020005	2	Restrictor, .125 9/16 ORB	C	37959	1	Hose, 1/4 27" 9/16 JICF 9/16 JICF
4	62866	1	Elbow, 9/16 JICM x 9/16 JICF 45°	D	1020054	1	Hose, 1/4 30" 9/16 JICF 9/16 JICF
5	1012614	2	Feedline - BH90-X	E	1014240	2	Hose, 1/4 42" 9/16 JICF 9/16 JICF
6	313038	3	Elbow, 9/16 JICM x 3/4 ORBM 90°	F	1014241	2	Hose, 1/4 42" 9/16 JICF 9/16 JICF
7	69	9	Adapter, 9/16 JICM x 3/4 ORBM	G	1014242	2	Hose, 3/8 65" 9/16 JICF 9/16 JICF
8	316004	2	Elbow, 3/4 JICM x 3/4 ORBM 90°	H	1014244	2	Hose, 3/8 80" 9/16 JICF 9/16 JICF
9	62367	11	Adapter, 9/16 JICM x 9/16 ORBM	J	1020052	1	Hose, 3/8 127" 9/16 JICF 9/16 JICF
				K	1020053	1	Hose, 3/8 141" 9/16 JICF 9/16 JICF

44 Parts

MAN1158 (8/28/2015)

1020000YMR THUMB ASSEMBLY (OPTIONAL)

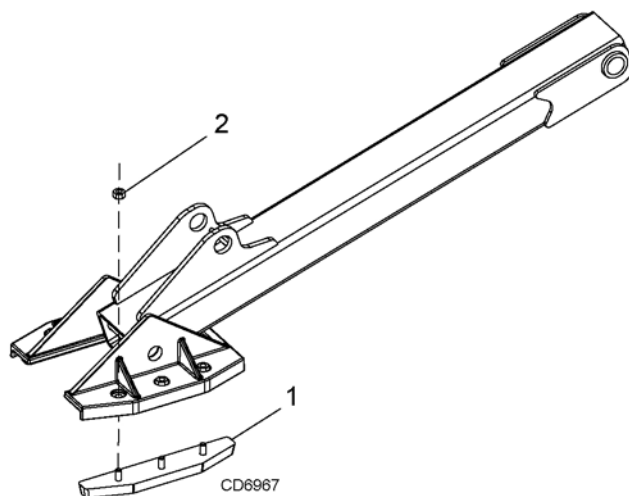


REF	PART	QTY	DESCRIPTION
1	1020030	1	Thumb, BH90-X
2	1009689	1	Outer tube
3	1009690	1	Inner tube
4	1012609	1	Pin, hitch 1.25 x 4.25
5	1020029 †	1	Pin, 1.5 x 8.61
6	55238	1	Pin, 1. x 6.44
7	55242	1	Pin, 1.0 x 5.66 headless
8	62043	1	1/4 x 1-3/4 Kilk pin
9	7164 *	2	5/16 NC x 2-1/4 HHCS GR5
10	6778 *	2	5/16 NC Lock nut
11	1012615	2	Bearing, 1.50 x 1.67 x 1.50

† (use existing hardware)

* Standard hardware, obtain locally

STABILIZER STREET PAD KIT (OPTIONAL)

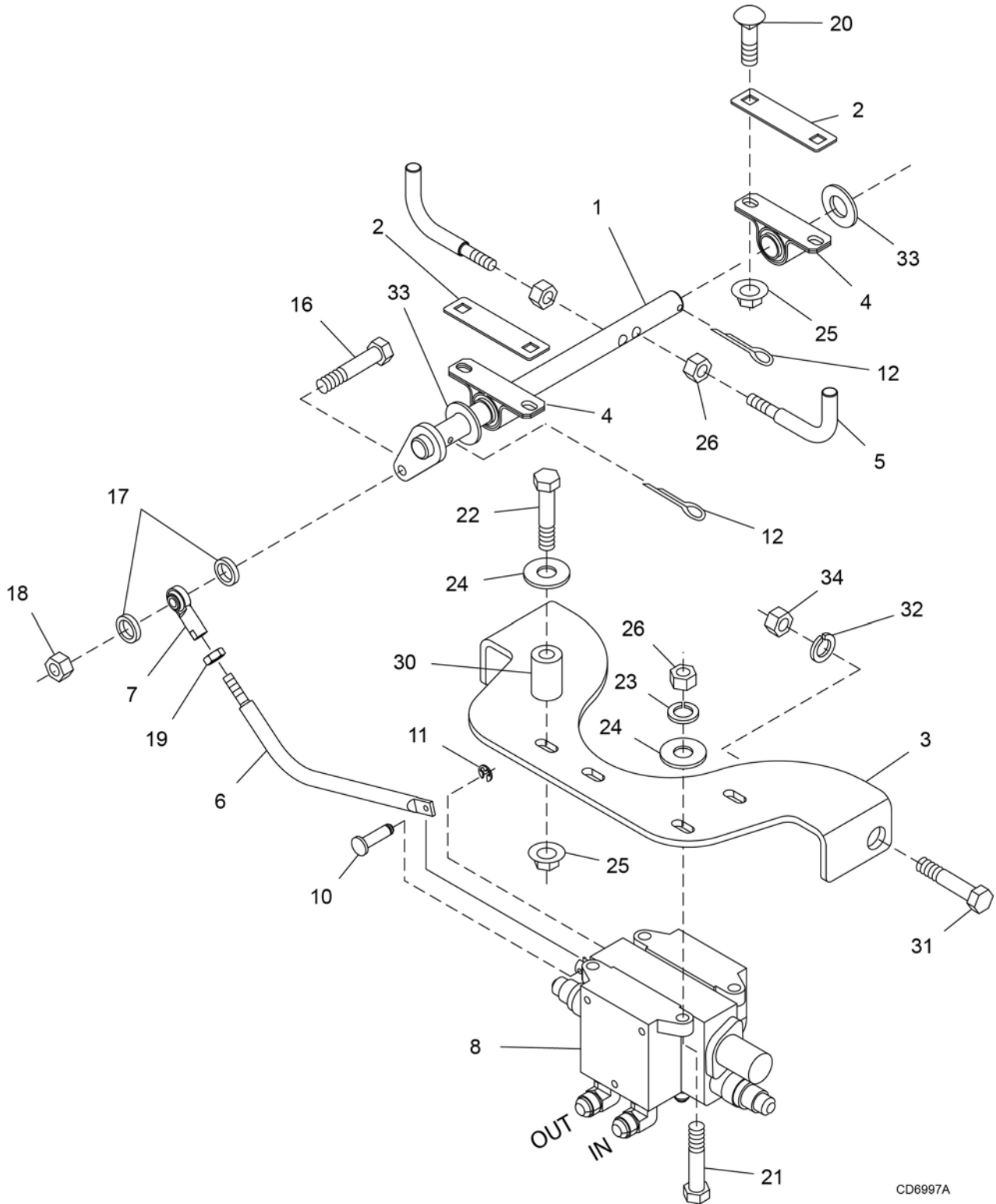


REF	PART	QTY	DESCRIPTION
A	1006610KT	1	Street pad kit (includes item 1 & 2)
1	1006610	4	Rubber stabilizer pad
2	6698 *	12	3/8 NC Lock nut

* Standard hardware, obtain locally

AUXILIARY HYDRAULIC KIT FOR HYDRAULIC THUMB (OPTIONAL)

PEDAL & LINKAGE ASSEMBLY



CD6997A

AUXILIARY HYDRAULIC KIT FOR HYDRAULIC THUMB (OPTIONAL)

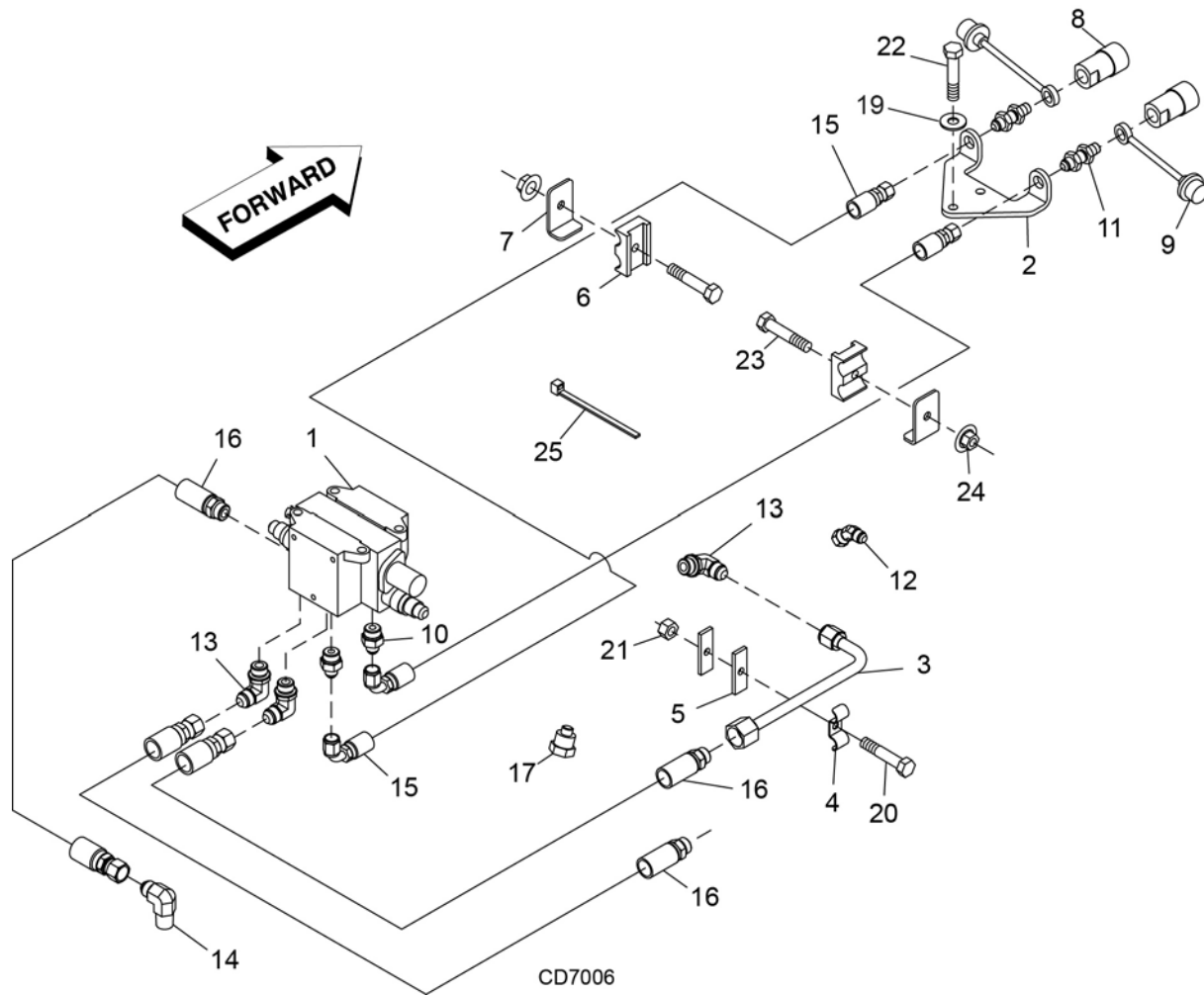
PEDAL & LINKAGE ASSEMBLY PARTS LIST

REF	PART	QTY	DESCRIPTION	REF	PART	QTY	DESCRIPTION
1	1020094	1	Control shaft	19	33654 *	1	5/16 NF Jam nut
2	1020203	2	Spacer, .075 x 1.0 x 4.0	20	6697 *	4	3/8 NC x 1 Carriage bolt GR5
3	1020093	1	Valve bracket	21	976 *	3	3/8 NC x 1-1/2 HHCS GR5
4	1020084	2	Bearing, .75 x 1.25 mounted	22	7747 *	1	3/8 NC x 3 HHCS GR5
5	1020088	2	Foot pedal, bent bar	23	838 *	3	3/8 Lock washer
6	1020090	1	Control valve linkage rod	24	44546	4	3/8 Hardened flat washer
7	37613	1	Ball joint, female 5/16 NF female	25	14350 *	5	3/8 NC Flange lock nut
8	-----	1	Valve assembly, see page 50	26	835 *	5	3/8 NC Hex nut
10	1006133	1	Pin, clevis grooved .19	30	1023302	1	Sleeve, .50 x 1.0 x 1.5
11	34303	1	Retaining ring, .025 x .156 external	31	300517 *	2	3/4 NC x 1-3/4 HHCS GR5
12	1256 *	2	3/16 x 1 Cotter pin	32	2522 *	2	3/4 Lock washer
16	6250 *	1	5/16 NC x 1-1/4 HHCS GR5	33	22240	2	Washer, 3/4 ID x 1-3/16 OD x 10 ga
17	37577	2	Washer, .328 x .463 x .093	34	1450 *	2	3/4 NC Hex nut
18	6778 *	1	5/16 NC Lock nut				

HHCS Hex Head Cap Screw

* Standard hardware, obtain locally

AUXILIARY HYDRAULIC KIT FOR HYDRAULIC THUMB (OPTIONAL) HYDRAULIC CONNECTION

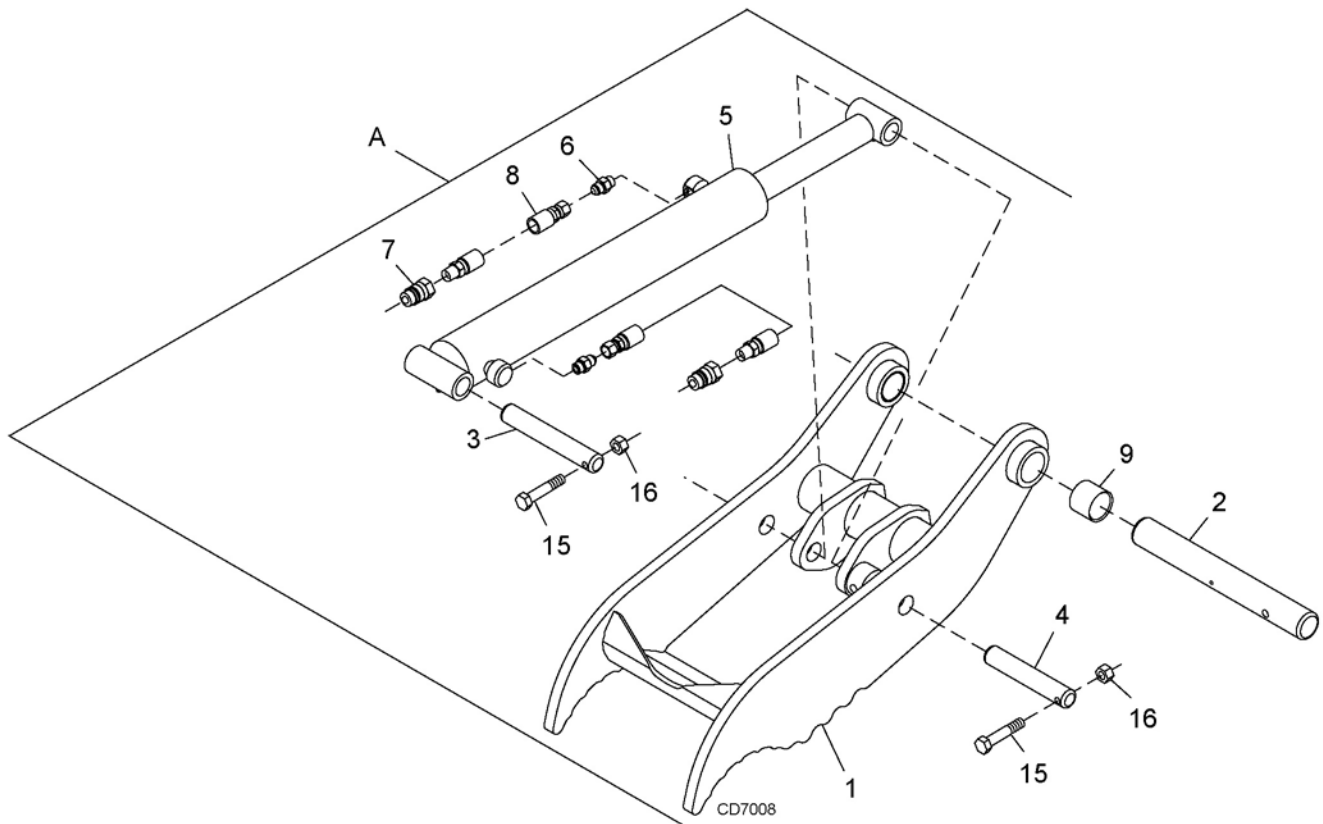


REF	PART	QTY	DESCRIPTION	REF	PART	QTY	DESCRIPTION
1	1020036	1	Valve, 1 spool see page 50	14	1020204	1	Elbow, 1/2 NPTM x 3/4 JICM (for use on pump kit only)
2	1020092	1	Coupler bracket	15	1020206	2	Hose, 148" x 9/16 JICF x 9/16 JICF
3	1012614	1	Feedline, BH90-X	16	1020208	3	Hose, 35" x 3/4 JICF x 7/8 ORBM
4	258	1	Feedline clamp 1/2	17	X102202	1	MRV Shut off plug (for backhoe valve)
5	1004843	2	Hydraulic line lug	19	32806	2	Washer, .25 x .875 x .19
6	1020047	2	Hose clamp, 2 hose	20	24408 *	1	5/16 NC x 1-1/2 HHCS GR5
7	1020091	2	Clamp angle	21	6778 *	2	5/16 NC Lock nut
8	64299	2	Quick coupler, female	22	19446 *	2	Screw, self tap 3/8 x 1-1/4 -or-
9	1020232	2	Dust plug, 3/8 ISO	22	10378 *	2	1/4 NC x 1 HHCS GR5
10	69	2	Adapter, 9/16 JICM x 3/4 ORBM	23	920 *	2	3/8 NC x 1-3/4 HHCS GR5
11	1009495	2	Adapter, bulkhead 3/8 NPTM x 9/16 JICM	24	14350 *	7	3/8 NC Flange lock nut
12	62866	1	Elbow, 9/16 JICF x 9/16 JICM 45° (for stabilizer cylinder hose)	25	8641 *	3	14-1/2 Binding strap, (plastic tie)
13	316004	3	Elbow, 3/4 JICM x 3/4 ORBM				HHCS Hex Head Cap Screw
							* Standard hardware, obtain locally

48 Parts

MAN1158 (8/28/2015)

B90 HYDRAULIC THUMB



REF	PART	QTY	DESCRIPTION	REF	PART	QTY	DESCRIPTION
1	1020030	1	B90 Thumb	7	64300	2	Quick coupler, male 3/8
2	1020029 †	1	Pin, 1.5 x 11.89	8	1020207	2	Hose, 24" x 3/8 NPTM x 9/16 JICF
3	55238	1	Pin, 1.0 x 6.44	9	1012615	2	Bearing, 1.5 x 1.67 x 1.5
4	55242	1	Pin, 1.0 x 5.66	15	7164 *	2	5/16 NC x 2-1/4 HHCS GR5
5	1009680	1	Hydraulic cylinder, 2.5 x 1.5 x 16.75	16	6778 *	2	5/16 NC Lock nut
6	62367	2	Adapter, 9/16 JICM x 9/16 ORBM	NS	1020026	1	Seal kit for cylinder (Similar to bucket cylinder.)

† Retain with existing hardware

NS Not Shown

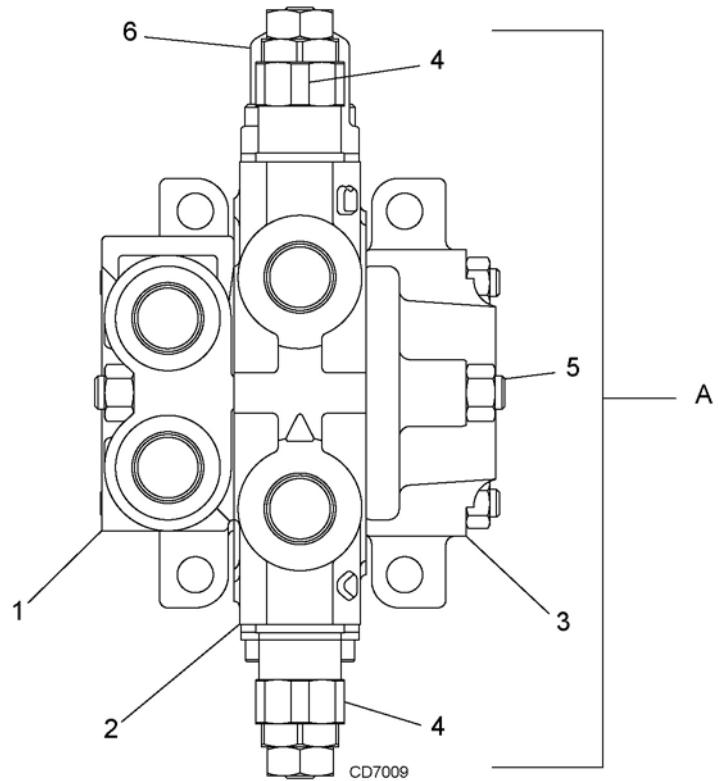
HHCS Hex Head Cap Screw

* Standard hardware, obtain locally

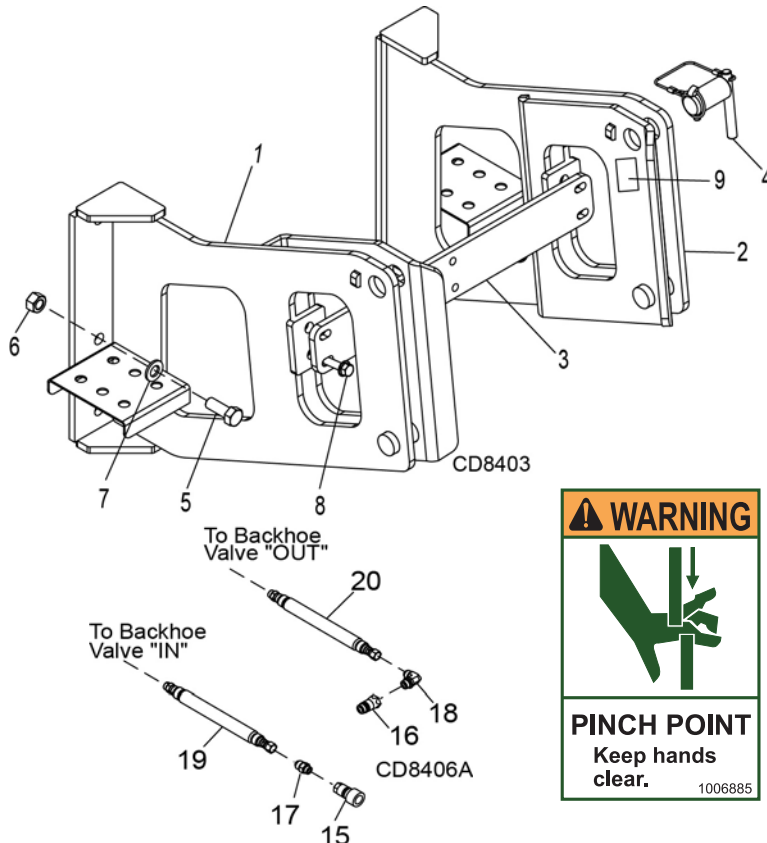
AUXILIARY VALVE

REF	PART	QTY	DESCRIPTION
A	1020036		Valve, 1 spool
1	1020099	1	Inlet section assembly
2	1020057	1	Spool section assembly
3	1020098	1	Outlet section assembly
4	1020077	2	Relief valve assembly 2650 psi
5	46766	1	Tie rod kit, 1 section
6	16712-1	1	Standard position kit
NS	1020083	1	Load check w/spring
NS	46765	1	Seal kit, 1 spool valve

NS Not Shown



MOUNTING PARTS FOR TRACTOR MODELS - YT347 & YT359



REF	PART	QTY	DESCRIPTION
1	1041202	1	Right mount
2	1041203	1	Left mount
3	1041209	1	Cross brace
4	1041210	2	1.50 x 2.39 Pin
5	735 *	6	3/4 NC x 2 HHCS GR5
6	1450 *	6	3/4 NC Hex nut
7	57798 *	6	3/4 Hardened flat washer
8	1028902	4	1/2 NC x 1-3/4 Hex flanged screw GR8
9	1006885	2	Decal, warning pinch point
15	64333	1	1/2 Female quick coupler
16	64332	1	1/2 Male quick coupler
17	37962	1	Adapter, 7/8 JICM x 3/4 ORBM
18	316004	1	Elbow, 3/4 JICM 3/4 ORBM
19	56864	1	Hose, 40" x 7/8 JICF x 7/8 ORBM
20	1041211	1	Hose, 72" x 3/4 JICF x 7/8 ORBM

HHCS Hex Head Cap Screw

* Standard hardware, obtain locally

50 Parts

(Rev. 11/10/2015)

MAN1158 (8/28/2015)

BOLT TORQUE CHART

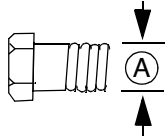
Always tighten hardware to these values unless a different torque value or tightening procedure is listed for a specific application.

Fasteners must always be replaced with the same grade as specified in the manual parts list.

Always use the proper tool for tightening hardware: SAE for SAE hardware and Metric for metric hardware.

Make sure fastener threads are clean and you start thread engagement properly.

All torque values are given to specifications used on hardware defined by SAE J1701 MAR 99 & J1701M JUL 96.



SAE SERIES TORQUE CHART



SAE Grade 2
(No Dashes)

SAE Bolt Head Identification

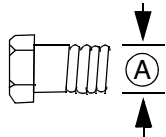


SAE Grade 5
(3 Radial Dashes)



SAE Grade 8
(6 Radial Dashes)

Ⓐ Diameter (Inches)	Wrench Size	MARKING ON HEAD					
		SAE 2		SAE 5		SAE 8	
		lbs-ft	N-m	lbs-ft	N-m	lbs-ft	N-m
1/4"	7/16"	6	8	10	13	14	18
5/16"	1/2"	12	17	19	26	27	37
3/8"	9/16"	23	31	35	47	49	67
7/16"	5/8"	36	48	55	75	78	106
1/2"	3/4"	55	75	85	115	120	163
9/16"	13/16"	78	106	121	164	171	232
5/8"	15/16"	110	149	170	230	240	325
3/4"	1-1/8"	192	261	297	403	420	569
7/8"	1-5/16"	306	416	474	642	669	907
1"	1-1/2"	467	634	722	979	1020	1383



METRIC SERIES TORQUE CHART



Metric
Grade 8.8

Metric Bolt Head Identification



Metric
Grade 10.9

Ⓐ Diameter & Thread Pitch (Millimeters)	Wrench Size	Coarse Thread				Fine Thread				Ⓐ Diameter & Thread Pitch (Millimeters)
		Marking on Head								
		Metric 8.8		Metric 10.9		Metric 8.8		Metric 10.9		
		N-m	lbs-ft	N-m	lbs-ft	N-m	lbs-ft	N-m	lbs-ft	
6 x 1.0	10 mm	8	6	11	8	8	6	11	8	6 x 1.0
8 x 1.25	13 mm	20	15	27	20	21	16	29	22	8 x 1.0
10 x 1.5	16 mm	39	29	54	40	41	30	57	42	10 x 1.25
12 x 1.75	18 mm	68	50	94	70	75	55	103	76	12 x 1.25
14 x 2.0	21 mm	109	80	151	111	118	87	163	120	14 x 1.5
16 x 2.0	24 mm	169	125	234	173	181	133	250	184	16 x 1.5
18 x 2.5	27 mm	234	172	323	239	263	194	363	268	18 x 1.5
20 x 2.5	30 mm	330	244	457	337	367	270	507	374	20 x 1.5
22 x 2.5	34 mm	451	332	623	460	495	365	684	505	22 x 1.5
24 x 3.0	36 mm	571	421	790	583	623	459	861	635	24 x 2.0
30 x 3.0	46 mm	1175	867	1626	1199	1258	928	1740	1283	30 x 2.0

Typical Washer Installations

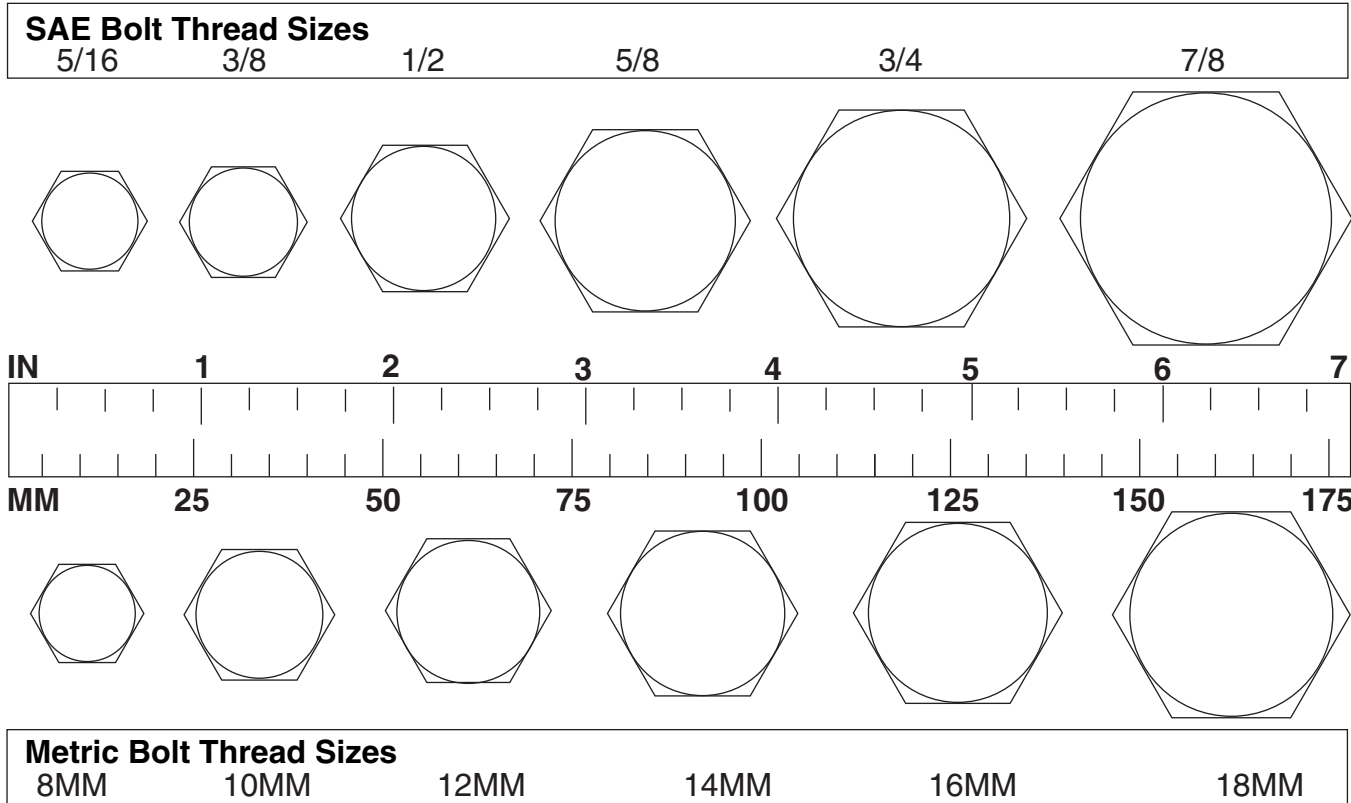
Lock Washer Flat Washer

Bolt

8/9/00

BOLT SIZE CHART

NOTE: Chart shows bolt thread sizes and corresponding head (wrench) sizes for standard SAE and metric bolts.



ABBREVIATIONS

AG Agriculture
 ASABE American Society of Agricultural & Biological Engineers (formerly ASAE)
 ASAE..... American Society of Agricultural Engineers
 ATF.....Automatic Transmission Fluid
 BSPP..... British Standard Pipe Parallel
 BSPTM..... British Standard Pipe Tapered Male
 CV Constant Velocity
 CCW..... Counter-Clockwise
 CW Clockwise
 F Female
 FT..... Full Thread
 GA Gauge
 GR (5, etc.)..... Grade (5, etc.)
 HHCS Hex Head Cap Screw
 HT Heat-Treated
 JIC..... Joint Industry Council 37° Degree Flare
 LH..... Left Hand
 LT Left
 m Meter
 mm Millimeter
 M Male

MPa Mega Pascal
 N Newton
 NC..... National Coarse
 NF National Fine
 NPSM National Pipe Straight Mechanical
 NPT.....National Pipe Tapered
 NPT SWF..... National Pipe Tapered Swivel Female
 ORBM O-Ring Boss - Male
 P Pitch
 PBY.....Power-Beyond
 psi Pounds per Square Inch
 PTO.....Power Take Off
 QD Quick Disconnect
 RH..... Right Hand
 ROPS..... Roll-Over Protective Structure
 RPM.....Revolutions Per Minute
 RT Right
 SAE..... Society of Automotive Engineers
 UNC Unified Coarse
 UNF Unified Fine
 UNS Unified Special

INDEX

A

ASSEMBLY

- Backhoe to Tractor Attachment 29
- General Assembly Instructions 27
 - Bucket Installation 28
 - Dipper Cylinder Installation 28
 - Seat Installation and Adjustment 29
 - Stabilizer Installation 27
- Hydraulic Installation 28
 - Open-Center Valve 29
- Optional Equipment
 - Mechanical Thumb 30
 - Stabilizer Street Pad Installation 29

D

DEALER CHECK LISTS

- Delivery Check List (Dealer's Responsibility) 31
- Pre-Delivery Check List (Dealer's Responsibility) 31

DEALER SERVICE

- Control Valve Linkage Adjustment 26
- Hydraulic Cylinder Repair
 - Boom and Dipperstick Cylinder (Threaded Gland Cylinders)
 - Assembly 24
 - Disassembly 24
 - Bucket, Swing, & Stabilizer Cylinders (Spanner Nut Cylinders)
 - Assembly 23
 - Disassembly 23
- General Hydraulic Repair Information 23
- Hydraulic Valve Repair
 - Adjust System Relief Valve Pressure 25
 - Pressure Settings on Port Relief Valves 25
 - Replacing Port Relief Valves 25
 - Segment Replacement 25

G

GENERAL

- Abbreviations 52
- Bolt Size Chart 52
- Bolt Torque Chart 51
- General Information 6
- Introduction 2
- Obtaining Replacement Manuals 2
- Product Registration 2
- Specifications 4
- Table of Contents 3
- Warranty
 - Product 54

- Replacement Parts 55

O

OPERATION

- Backhoe Removal and Storage
 - 4-Point Sub-Frame Mount Removal 16
 - Disconnect Tractor Hydraulics 16
- Control Handle Operation 13
- Excavation
 - Dump and Return Cycle 14
 - Filling Bucket 14
 - Side Slope Trenching 15
 - Starting Excavation 14
 - Trenching 14
- General Operation 12
- Position the Machine 13
- Pre-Operation Check List (Owner's Responsibility) 18
- Start and Stop Operation 12
- Swing Speed Control 14
- Thumb Operation 17
- Transporting
 - Transport and Swing Lock Installation 15

OWNER SERVICE

- Cleaning
 - After Each Use 21
 - Periodically or Before Extended Storage 21
- Hydraulic Hoses and Fittings 19
- Lubrication 20
- Relief Valve 19

P

PARTS

- Index to Parts Lists 33

S

SAFETY

- Delivery Check List (Dealer's Responsibility) 31
- Pre-Delivery Check List (Dealer's Responsibility) 31
- Pre-Operation Check List (Owner's Responsibility) 18
- Safety & Instructional Decals 10
- Safety Rules 7
- Safety Symbols Explained 2

T

TROUBLESHOOTING

- Troubleshooting 22



WARRANTY

All Models

Please Enter Information Below and Save for Future Reference.

Date Purchased: _____ From (Dealer): _____

Model Number: _____ Serial Number: _____

Yanmar warrants this product to be free from defect in material and workmanship. Except as otherwise set forth below, the duration of this Warranty shall be for TWELVE (12) MONTHS COMMENCING ON THE DATE OF DELIVERY OF THE PRODUCT TO THE ORIGINAL PURCHASER.

The warranty periods for specific parts or conditions are listed below:

Part or Condition Warranted	Model Number	Duration (from date of delivery to the original purchaser)
	All units invoiced after 4/30/2012	
Gearbox components	YRC180	6 years
	YPH25, YPH35, YPH65, YRC42, YRC144, YRC480, YRC600, YRC720, YRC840, YRT600C, YRT680C, YRT740C, YRT600CR, YRT680CR, YRT740CR, YFM144, YFM180, YFM204, YFM600, YFM720, YFM840	
	YFM54, YFM60, YFM72, YFM150, YRT44S, YRT52S, YRT60S, YRT44SR, YRT52SR, YRT60SR, YRC42, YRC48, YRC60, YRC72	3 years (1 year if used in rental or commercial applications)

Under no circumstances will this Warranty apply in the event that the product, in the good faith opinion of YANMAR, has been subjected to improper operation, improper maintenance, misuse, or an accident. This Warranty does not apply in the event that the product has been materially modified or repaired by someone other than YANMAR, a YANMAR authorized dealer or distributor, and/or a YANMAR authorized service center. This Warranty does not cover normal wear or tear, or normal maintenance items. This Warranty also does not cover repairs made with parts other than those obtainable through YANMAR.

This Warranty is extended solely to the original purchaser of the product. Should the original purchaser sell or otherwise transfer this product to a third party, this Warranty does not transfer to the third party purchaser in any way. There are no third party beneficiaries of this Warranty.

YANMAR makes no warranty, express or implied, with respect to engines, batteries, tires or other parts or accessories not manufactured by YANMAR. Warranties for these items, if any, are provided separately by their respective manufacturers.

YANMAR'S obligation under this Warranty is limited to, at YANMAR'S option, the repair or replacement, free of charge, of the product if YANMAR, in its sole discretion, deems it to be defective or in noncompliance with this Warranty. **The product must be returned to YANMAR with proof of purchase within thirty (30) days after such defect or noncompliance is discovered or should have been discovered, routed through the dealer and distributor from whom the purchase was made, transportation charges prepaid.** YANMAR shall complete such repair or replacement within a reasonable time after YANMAR receives the product. **THERE ARE NO OTHER REMEDIES UNDER THIS WARRANTY. THE REMEDY OF REPAIR OR REPLACEMENT IS THE SOLE AND EXCLUSIVE REMEDY UNDER THIS WARRANTY.**

THERE ARE NO WARRANTIES WHICH EXTEND BEYOND THE DESCRIPTION ON THE FACE OF THIS WARRANTY. YANMAR MAKES NO OTHER WARRANTY, EXPRESS OR IMPLIED, AND YANMAR SPECIFICALLY DISCLAIMS ANY IMPLIED WARRANTY OF MERCHANTABILITY AND/OR ANY IMPLIED WARRANTY OF FITNESS FOR A PARTICULAR PURPOSE.

YANMAR shall not be liable for any incidental or consequential losses, damages or expenses, arising directly or indirectly from the product, whether such claim is based upon breach of contract, breach of warranty, negligence, strict liability in tort or any other legal theory. Without limiting the generality of the foregoing, Yanmar specifically disclaims any damages relating to (i) lost profits, business, revenues or goodwill; (ii) loss of crops; (iii) loss because of delay in harvesting; (iv) any expense or loss incurred for labor, supplies, substitute machinery or rental; or (v) any other type of damage to property or economic loss.

This Warranty is subject to any existing conditions of supply which may directly affect YANMAR'S ability to obtain materials or manufacture replacement parts.

No agent, representative, dealer, distributor, serviceperson, salesperson, or employee of any company, including without limitation, YANMAR, its authorized dealers, distributors, and service centers, is authorized to alter, modify, or enlarge this Warranty. Answers to any questions regarding warranty service and locations may be obtained by contacting:

YANMAR

Mfg by Woods Equipment Co.

Yanmar America Corporation

101 International Parkway
Adairsville, Georgia 30103

855-416-7091 tel
YanmarTractor.com



WARRANTY

(Replacement Parts For All Models)

Yanmar warrants this product to be free from defect in material and workmanship for a period of ninety (90) days from the date of delivery of the product to the original purchaser with the exception of V-belts, which will be free of defect in material and workmanship for a period of 12 months.

Under no circumstances will this Warranty apply in the event that the product, in the good faith opinion of YANMAR, has been subjected to improper operation, improper maintenance, misuse, or an accident. This Warranty does not cover normal wear or tear, or normal maintenance items.

This Warranty is extended solely to the original purchaser of the product. Should the original purchaser sell or otherwise transfer this product to a third party, this Warranty does not transfer to the third party purchaser in any way. There are no third party beneficiaries of this Warranty.

YANMAR'S obligation under this Warranty is limited to, at YANMAR'S option, the repair or replacement, free of charge, of the product if YANMAR, in its sole discretion, deems it to be defective or in noncompliance with this Warranty. **The product must be returned to YANMAR with proof of purchase within thirty (30) days after such defect or noncompliance is discovered or should have been discovered, routed through the dealer and distributor from whom the purchase was made, transportation charges prepaid.** YANMAR shall complete such repair or replacement within a reasonable time after YANMAR receives the product. THERE ARE NO OTHER REMEDIES UNDER THIS WARRANTY. THE REMEDY OF REPAIR OR REPLACEMENT IS THE SOLE AND EXCLUSIVE REMEDY UNDER THIS WARRANTY.

THERE ARE NO WARRANTIES WHICH EXTEND BEYOND THE DESCRIPTION ON THE FACE OF THIS WARRANTY. YANMAR MAKES NO OTHER WARRANTY, EXPRESS OR IMPLIED, AND YANMAR SPECIFICALLY DISCLAIMS ANY IMPLIED WARRANTY OF MERCHANTABILITY AND/OR ANY IMPLIED WARRANTY OF FITNESS FOR A PARTICULAR PURPOSE.

YANMAR shall not be liable for any incidental or consequential losses, damages or expenses, arising directly or indirectly from the product, whether such claim is based upon breach of contract, breach of warranty, negligence, strict liability in tort or any other legal theory. Without limiting the generality of the foregoing, Yanmar specifically disclaims any damages relating to (i) lost profits, business, revenues or goodwill; (ii) loss of crops; (iii) loss because of delay in harvesting; (iv) any expense or loss incurred for labor, supplies, substitute machinery or rental; or (v) any other type of damage to property or economic loss.

This Warranty is subject to any existing conditions of supply which may directly affect YANMAR'S ability to obtain materials or manufacture replacement parts.

No agent, representative, dealer, distributor, service person, salesperson, or employee of any company, including without limitation, YANMAR, its authorized dealers, distributors, and service centers, is authorized to alter, modify, or enlarge this Warranty.

Answers to any questions regarding warranty service and locations may be obtained by contacting:

Yanmar America Corporation

101 International Parkway
Adairsville, Georgia 30103

855-416-7091 tel
YanmarTractor.com

YANMAR

Mfg by Woods Equipment Co.

PART NO.
MAN1158

YANMAR

Mfg by Woods Equipment Co.