

0CNP6-M00050EN

Contents

OCNP6-M00050

Fig. No. Fig. Name

3TNM74F-NCUK

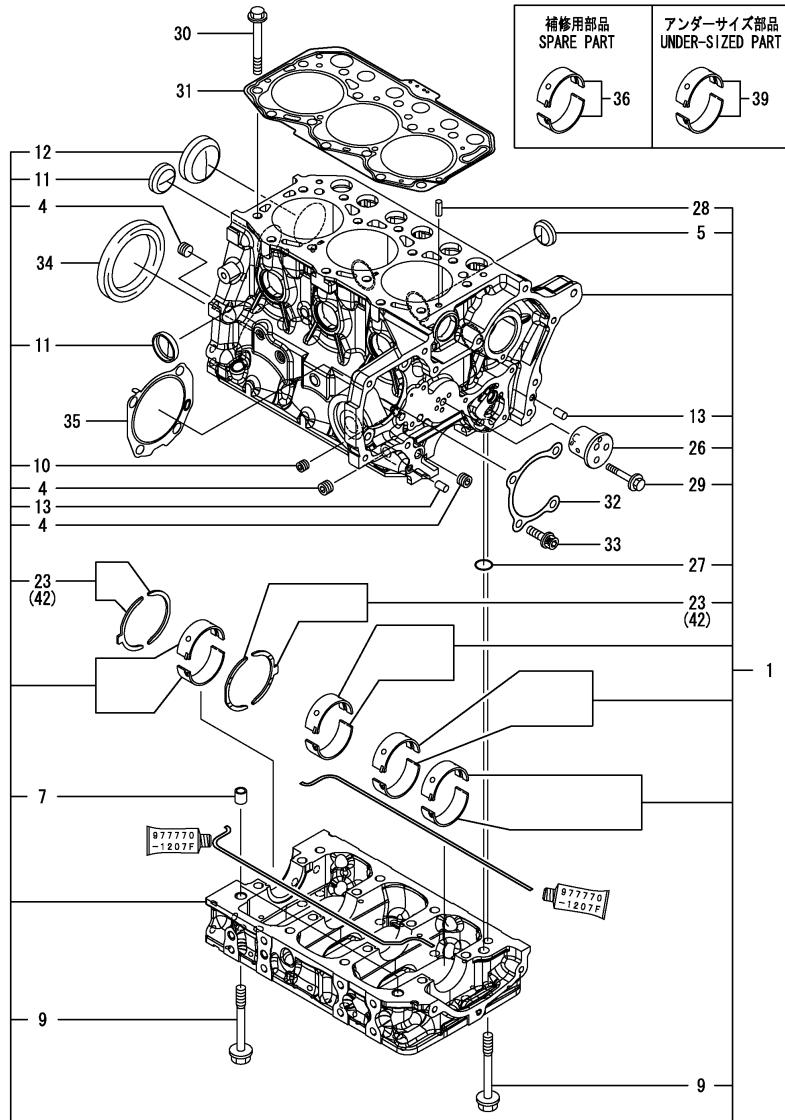
1. CYLINDER BLOCK
2. GEAR HOUSING
3. MOUNTING FLANGE & OIL SUMP
4. CYLINDER HEAD & BONNET
5. EXHAUST MANIFOLD & SILENCER
6. CAMSHAFT & DRIVING GEAR
7. CRANKSHAFT & PISTON
8. LUB. OIL SYSTEM
9. COOLING WATER SYSTEM
10. FUEL INJECTION PUMP
11. GOVERNOR
12. FUEL INJECTION VALVE
13. STARTING MOTOR
14. GENERATOR

Fig. No. Fig. Name

Fig.1. CYLINDER BLOCK

(A)=3TNM74F-NCUK
(B)=
(C)=

(D)=
(E)=
(F)=



No.	Lev.	Parts No.	Description	Q'ty						I	R
				(A)	(B)	(C)	(D)	(E)	(F)		
1	1	119D00-01560	BLOCK ASSY, CYLINDER	1							
4	2	124060-01050	PLUG, PT1/8	3							
5	2	119125-01970	PLUG, 25	3							
7	2	119125-01960	PIPE, KNOCK	2							
9	2	119125-02061	BOLT, METAL CAP	16							
10	2	23876-005000	PLUG, R005	1							
11	2	27241-300000	PLUG 30	4							
12	2	27241-450000	PLUG, 45	1							
13	2	119620-01620	PIN, M6X10	2							
23	2	119125-02930	BEARING, THRUST	2							
26	2	119125-25050	SHAFT, IDLE GEAR	1							
27	2	129900-32040	O-RING, P14	1							
28	2	22351-060012	PIN, SPRING 6.0X12	2							
29	2	26106-060402	BOLT, M6X 40 PLATED	3							
30	1	119810-01200	BOLT, HEAD	14							
31	1	119C10-01330	GASKET, HEAD	1							
32	1	119125-01790	GASKET	1							
33	1	119125-01800	FLANGE BOLT, M8X1.25	4							
34	1	119734-02220	SEAL, OIL	1							
35	1	119125-51800	GASKET	1							
36	1	119125-02900	BEARING, MAIN	4							1
39	1	119125-02910	BEARING, 0.25 US	4							2
42	1	119125-02940	BEARING, THRUST 0.25	2							3

Remarks

Note: "Effective Machine No." of the Engine Section is indicated on the Model Label which is shown in Fig.4.

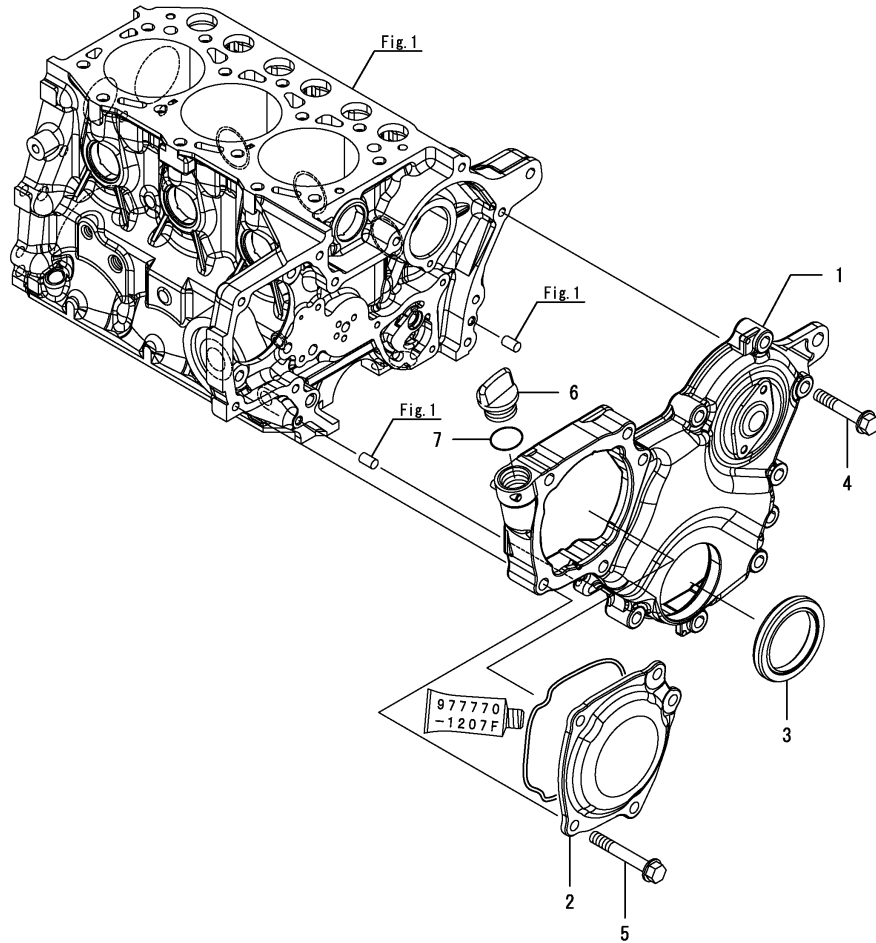
- (1) Spare part.
- (2) Under-sized(U.S.=0.25)part.
- (3) Over-sized(O.S.=0.25)part.

Fig.2. GEAR HOUSING

(A)=3TNM74F-NCUK
(B)=
(C)=

(D)=
(E)=
(F)=

No.	Lev.	Parts No.	Description	Qty						I	R
				(A)	(B)	(C)	(D)	(E)	(F)		
1	1	119025-01500	CASE, GEAR	1							
2	1	119125-01750	COVER	1							
3	1	119717-01800	SEAL, OIL	1							
4	1	26106-080352	BOLT, M8X 35 PLATED	8							
5	1	26106-080452	BOLT, M8X 45 PLATED	5							
6	1	106760-01770	CAP	1							
7	1	24311-000180	O-RING, 1AP18.0	1							



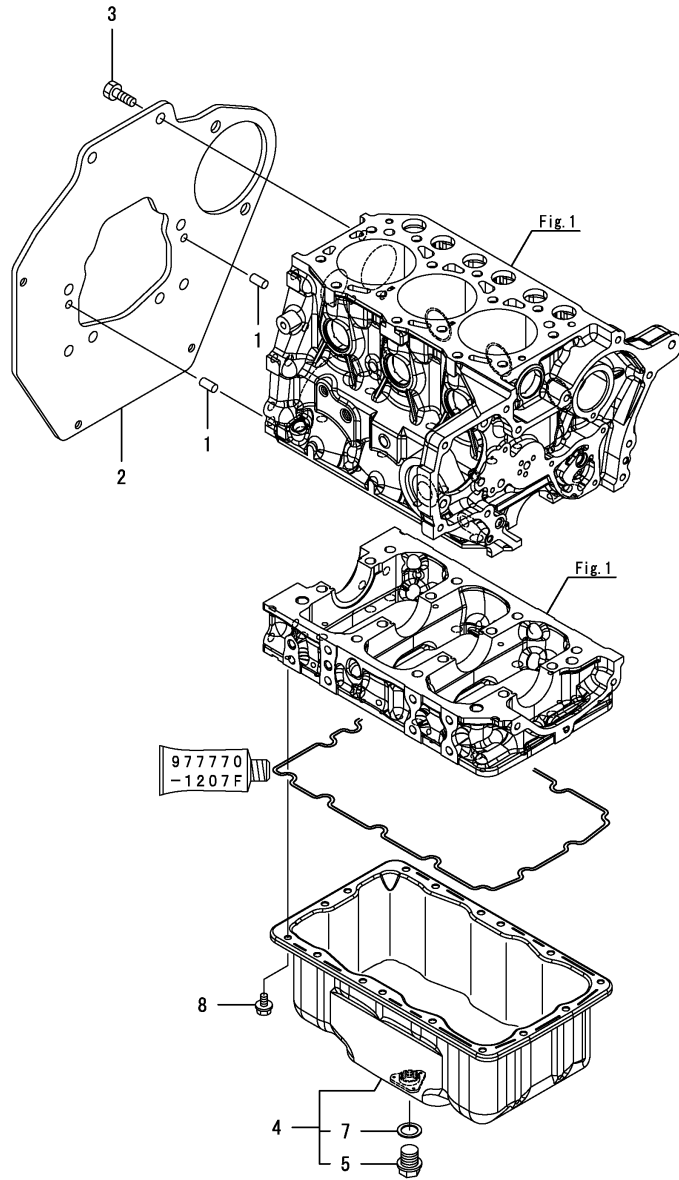
Remarks

Note: "Effective Machine No." of the Engine Section is indicated on the Model Label which is shown in Fig.4.

Fig.3. MOUNTING FLANGE & OIL SUMP

(A)=3TNM74F-NCUK
(B)=
(C)=

(D)=
(E)=
(F)=



No.	Lev.	Parts No.	Description	Q'ty						I	R
				(A)	(B)	(C)	(D)	(E)	(F)		
1	1	129100-01580	PIN, 8X16	2							
2	1	119034-01600	FLANGE, MOUNTING	1							
3	1	26206-100202	BOLT, M10X 20 PLATED	8							
4	1	119034-01770	SUMP ASSY, LUB.OIL	1							
5	2	105425-01690	PLUG, 16	1							
7	2	22190-160002	WASHER, SEAL 16	1							
8	1	119125-01780	BOLT, M6X10	16							

Remarks

Note: "Effective Machine No." of the Engine Section is indicated on the Model Label which is shown in Fig.4.

N:Old $\xleftrightarrow{\text{Yes}}$ New, Q:Old $\xleftrightarrow{\text{No}}$ New, R:Old $\xleftrightarrow{\text{Yes}}$ New, S:Old $\xleftrightarrow{\text{No}}$ New, W:Add, Z:Discontinued, F:Interchangeable by set, K:Q'ty Change

Fig.4. CYLINDER HEAD & BONNET

(A)=3TNM74F-NCUK

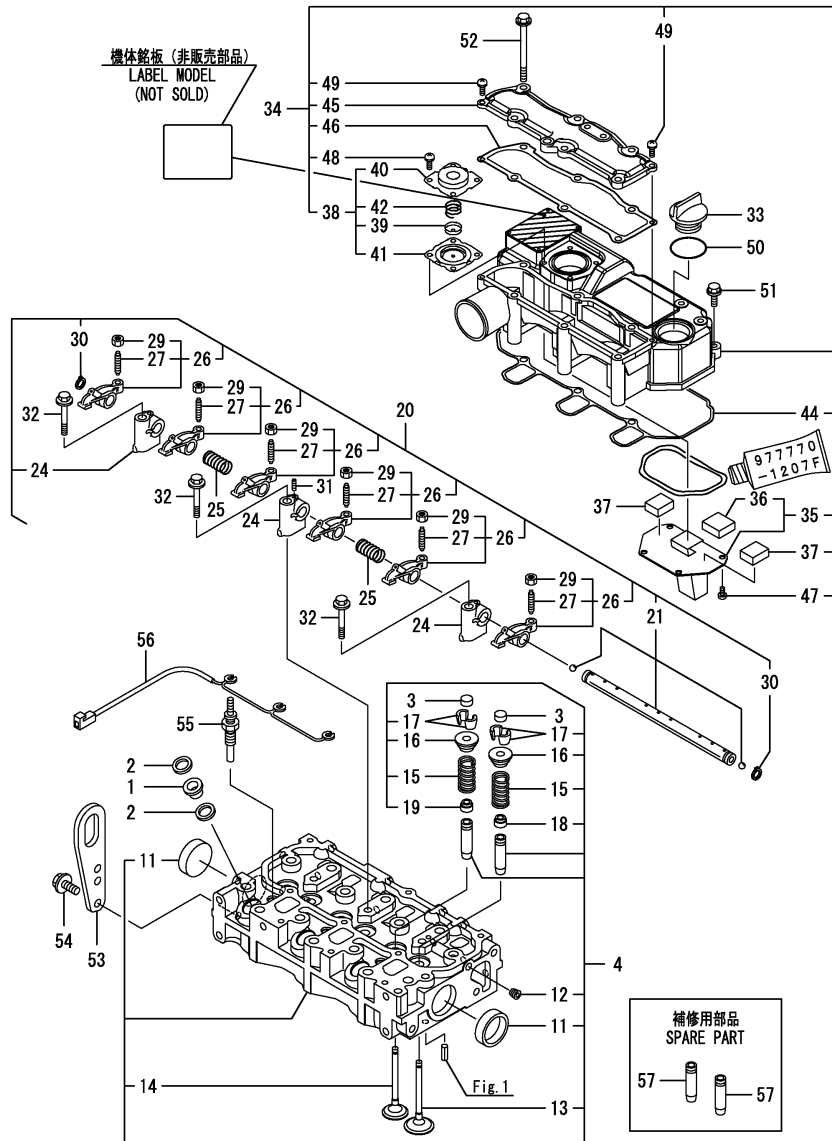
(B)=

(C)=

(D)=

(E)=

(F)=



No.	Lev.	Parts No.	Description	Q'ty						I	R
				(A)	(B)	(C)	(D)	(E)	(F)		
1	1	129901-11450	PROTECTOR, NOZZLE	3							
2	1	119600-11460	GASKET, NOZZLE	6							
3	1	105010-11490	CAP, VALVE	6							
4	1	119D00-11740	HEAD ASSY, CYLINDER	1							
11	2	119285-11990	PLUG, 35	2							
12	2	23876-005000	PLUG, R005	1							
13	2	119C10-11100	VALVE, SUCTION	3							
14	2	119C10-11110	VALVE, EXHAUST	3							
15	2	119717-11131	SPRING, VALVE	6							
16	2	129508-11180	RETAINER, SPRING	6							
17	2	119717-11190	COTTER	12							
18	2	119717-11340	SEAL, VALVE STEM	3							
19	2	119717-11350	SEAL, VALVE STEM	3							
20	1	119515-11200	SUPPORT ASSY, ARM	1							
21	2	119515-11240	SHAFT ASSY, ROCKER	1							
24	2	119717-11260	SUPPORT, ROCKER ARM	3							
25	2	119515-11280	SPRING	2							
26	2	119717-11650	ARM, ROCKER	6							
27	3	129150-11230	SCREW, VALVE ADJUST	6							
29	3	129150-11750	NUT, M8	6							
30	2	22242-000120	RING, 12	2							
31	2	26979-050162	SCREW, M5X16	1							
32	1	26106-080402	BOLT, M8X 40 PLATED	3							
33	1	124160-01751	COVER, FILLER	1							
34	1	119515-11380	BONNET ASSY, HEAD	1							
35	2	119717-03031	PLATE	1							
36	3	119717-03070	BAFFLE, BREATHER	1							
37	2	119717-03070	BAFFLE, BREATHER	2							
38	2	119802-03100	DIAPHRAGM ASSY	1							
39	3	119802-03110	PLATE	1							
40	3	119802-03121	COVER, DIAPHRAGM	1							
41	3	119802-03131	DIAPHRAGM	1							
42	3	119802-03141	SPRING, DIAPHRAGM	1							
44	2	119515-11310	GASKET, BONNET	1							
45	2	119515-11320	COVER, BONNET	1							
46	2	119515-11330	GASKET	1							
47	2	22857-500100	SCREW, 5X10	4							
48	2	22857-500100	SCREW, 5X10	4							
49	2	22857-500160	SCREW, 5X16	2							
50	1	24311-000320	O-RING, 1AP32.0	1							
51	1	26106-060202	BOLT, M6X 20 PLATED	3							
52	1	26106-060752	BOLT, M6X 75 PLATED	6							
53	1	119226-07900	LIFTER	1							
54	1	26106-080162	BOLT, M8X 16 PLATED	2							
55	1	119717-77801	PLUG, GLOW	3							
56	1	119717-77820	CONNECTOR, GLOW PLUG	1							
57	1	119515-11800	GUIDE, VALVE	6							

Remarks

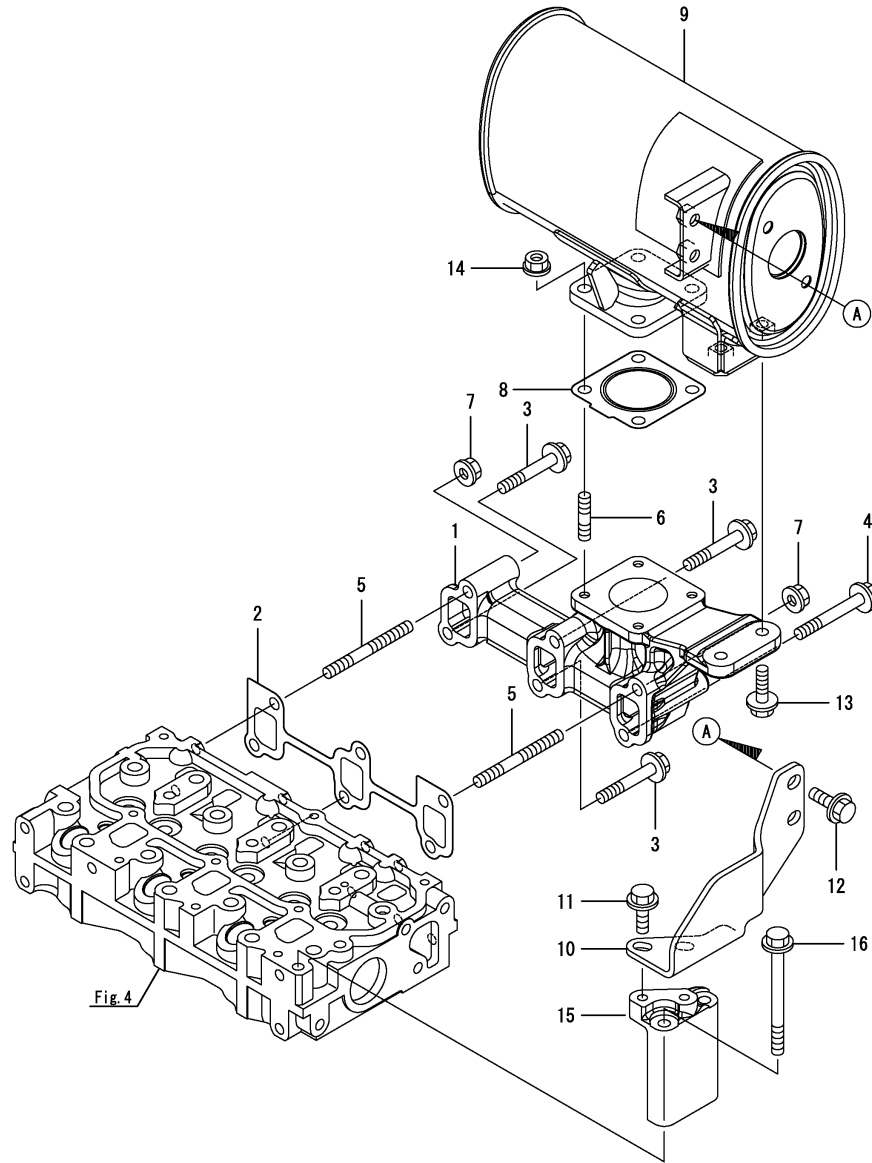
Note: "Effective Machine No." of the Engine Section is indicated on the Model Label which is shown in Fig.4.

(1) Spare part.

Fig.5. EXHAUST MANIFOLD & SILENCER

(A)=3TNM74F-NCUK
(B)=
(C)=

(D)=
(E)=
(F)=



No.	Lev.	Parts No.	Description	Q'ty						I	R
				(A)	(B)	(C)	(D)	(E)	(F)		
1	1	119D21-13100	MANIFOLD, EXHAUST	1							
2	1	119717-13110	GASKET	1							
3	1	119802-13620	BOLT, M8X50	3							
4	1	119802-13640	BOLT, M8X60 10.9T	1							
5	1	119802-13740	STUD, M8X60	2							
6	1	119131-18320	STUD, M8X22	4							
7	1	26306-080002	NUT, M8	2							
8	1	119515-13200	GASKET, SILENCER	1							
9	1	119E21-13510	SILENCER	1							
10	1	119D21-13610	STAY, SILENCER	1							
11	1	26106-080202	BOLT, M8X 20 PLATED	2							
12	1	26106-080202	BOLT, M8X 20 PLATED	2							
13	1	26106-080252	BOLT, M8X 25 PLATED	2							
14	1	26306-080002	NUT, M8	4							
15	1	119D21-13690	MOUNT, SILENCER STAY	1							
16	1	26106-080902	BOLT, M8X 90 PLATED	2							

Remarks

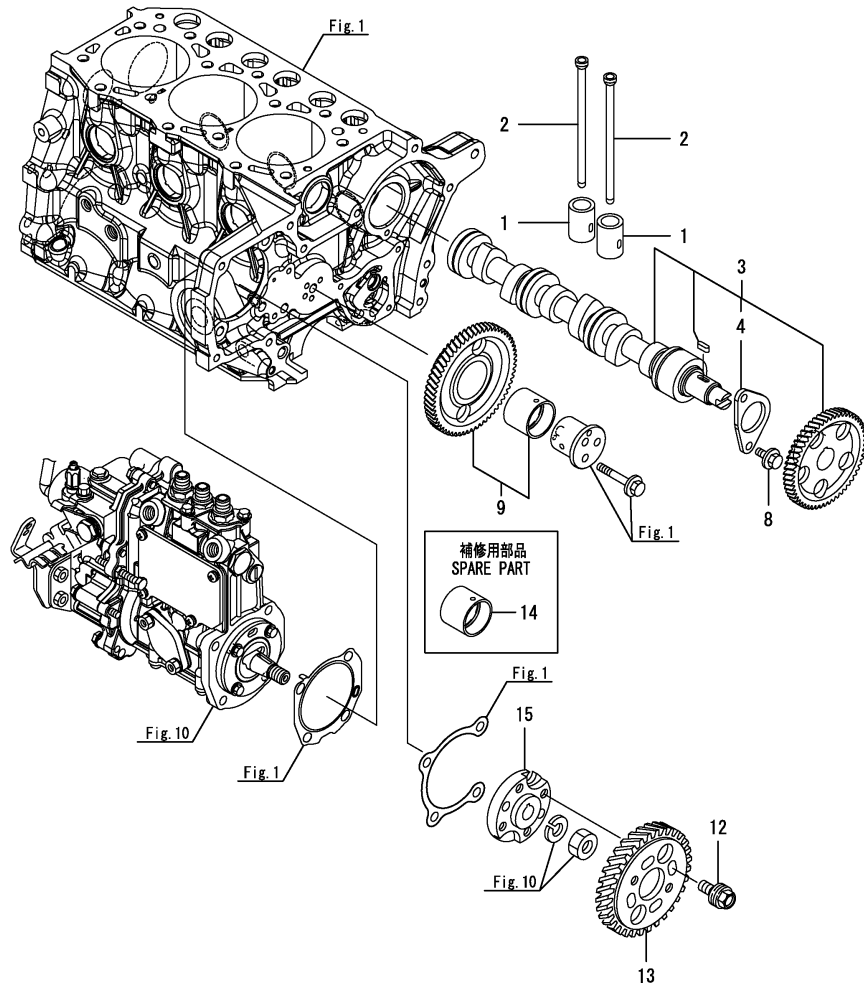
Note: "Effective Machine No." of the Engine Section is indicated on the Model Label which is shown in Fig.4.

N:Old $\xrightarrow{\text{Yes}}$ New, Q:Old $\xrightarrow{\text{No}}$ New, R:Old $\xrightarrow{\text{Yes}}$ New, S:Old $\xrightarrow{\text{No}}$ New, W:Add, Z:Discontinued, F:Interchangeable by set, K:Q'ty Change

Fig.6. CAMSHAFT & DRIVING GEAR

(A)=3TNM74F-NCUK
(B)=
(C)=

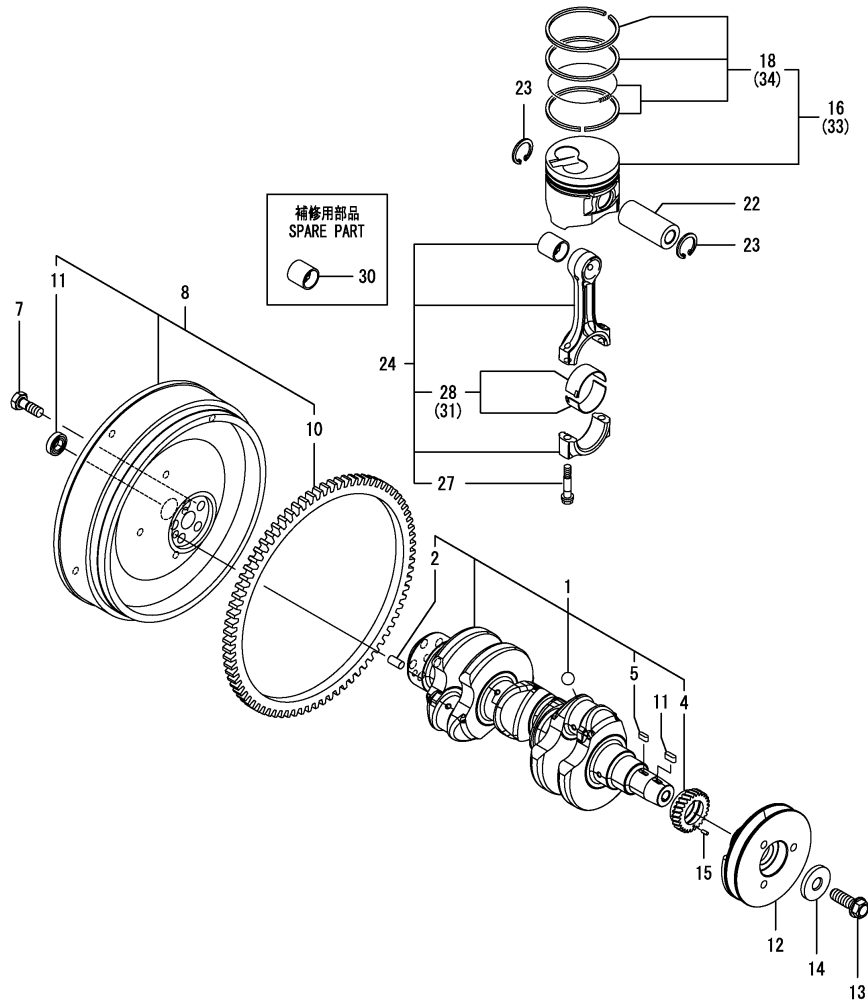
(D)=
(E)=
(F)=



No.	Lev.	Parts No.	Description	Q'ty						I	R
				(A)	(B)	(C)	(D)	(E)	(F)		
1	1	119620-14200	TAPPET	6							
2	1	119515-14400	ROD, PUSH	6							
3	1	119025-14580	CAMSHAFT ASSY	1							
4	2	119620-02450	BEARING, THRUST	1							
8	1	26106-060122	BOLT, M6X 12 PLATED	2							
9	1	119025-25100	GEAR ASSY, IDLE	1							
12	1	129150-25301	BOLT	4							
13	1	119125-25930	GEAR, PUMP	1							
14	1	119125-25910	BUSH, IDLE GEAR	1							1
15	1	119717-51150	FLANGE	1							

Remarks
Note: "Effective Machine No." of the Engine Section is indicated on the Model Label which is shown in Fig.4.
(1)Spare part.

Fig.7. CRANKSHAFT & PISTON



(A)=3TNM74F-NCUK
(B)=
(C)=

(D)=
(E)=
(F)=

No.	Lev.	Parts No.	Description	Q'ty						I	R
				(A)	(B)	(C)	(D)	(E)	(F)		
1	1	119D00-21700	CRANKSHAFT ASSY	1							
2	2	129100-01580	PIN, 8X16	1							
4	2	119125-21200	GEAR, CRANKSHAFT	1							
5	2	22512-040120	KEY, 4X 12	1							
7	1	105225-21501	BOLT, FLYWHEEL	5							
8	1	119034-21590	FLYWHEEL ASSY	1							
10	2	124060-21600	GEAR, RING	1							
11	2	119626-21700	BEARING, 6901	1							
12	1	119D21-21650	V-PULLEY, CRANKSHAFT	1							
13	1	119621-21681	BOLT, FLANGE 12X1.25	1							
14	1	119620-21941	WASHER	1							
15	1	22351-030010	PIN, SPRING 3.0X10	1							
16	1	119D00-22080	PISTON ASSY	3							
18	2	119C10-22500	RING ASSY	3							
22	1	119717-22300	PIN, PISTON	3							
23	1	22252-000220	RING, 22	6							
24	1	119515-23000	ROD ASSY, CONNECTING	3							
27	2	119717-23200	BOLT, CONNECTING ROD	6							
28	2	119515-23601	BEARING, CRANK PIN	3							
30	1	119717-23910	BEARING, PISTON PIN	3							1
31	1	119515-23611	METAL ASSY, 0.25	3							2
33	1	119D00-22900	PISTON ASSY, 0.25 OS	3							3
34	2	119C10-22550	RING ASSY ,0.25	3							3

Remarks

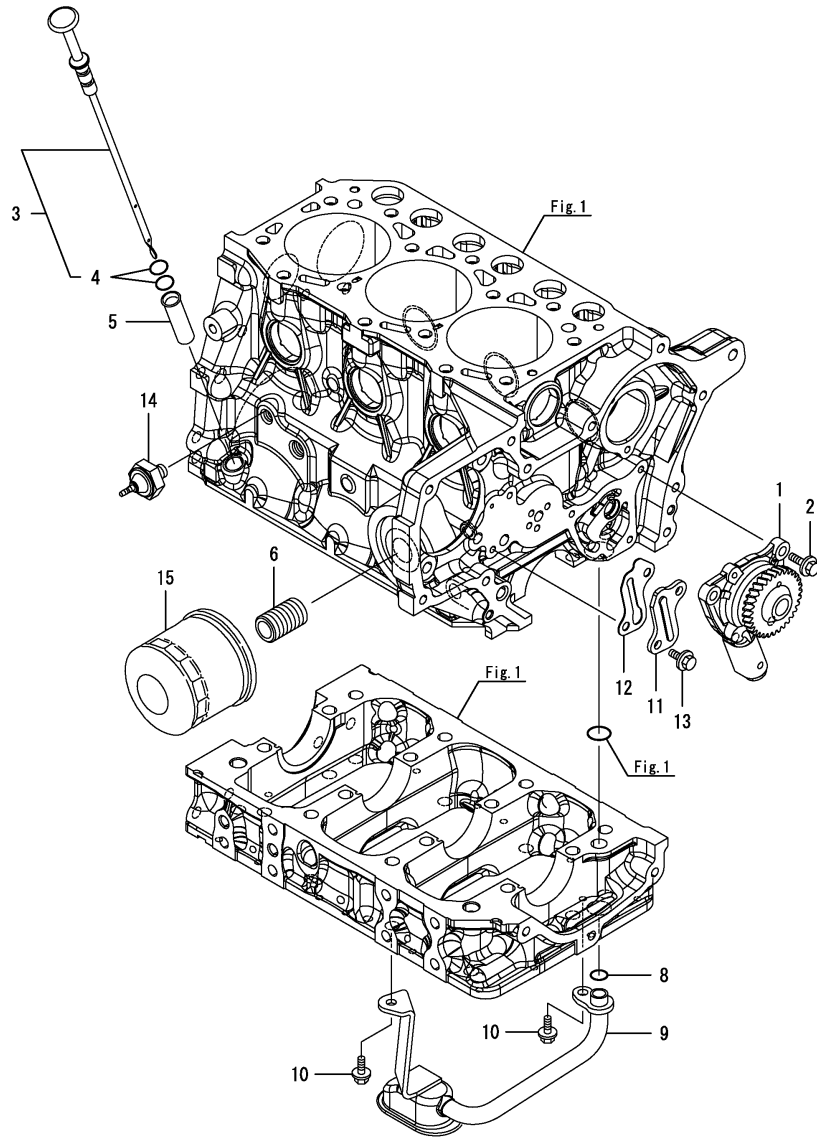
Note: "Effective Machine No." of the Engine Section is indicated on the Model Label which is shown in Fig.4.

- (1) Spare part.
- (2) Under-sized(U.S.=0.25)part.
- (3) Over-sized(O.S.=0.25)part.

Fig.8. LUB. OIL SYSTEM

(A)=3TNM74F-NCUK
(B)=
(C)=

(D)=
(E)=
(F)=



No.	Lev.	Parts No.	Description	Q'ty						I	R
				(A)	(B)	(C)	(D)	(E)	(F)		
1	1	119125-32000	PUMP ASSY, OIL	1							
2	1	26106-060142	BOLT, M6X 14 PLATED	3							
3	1	119025-34800	DIPSTICK, OIL	1							
4	2	119125-34900	O-RING	2							
5	1	119125-34810	GUIDE, DIPSTICK	1							
6	1	119717-35140	BOLT	1							
8	1	119209-35030	O-RING, P11	1							
9	1	119025-35080	PIPE ASSY, OIL INLET	1							
10	1	26106-060102	BOLT, M6X 10 PLATED	2							
11	1	119125-39200	COVER	1							
12	1	119125-39220	GASKET	1							
13	1	26106-060122	BOLT, M6X 12 PLATED	2							
14	1	114250-39450	SWITCH, 0.5KG	1							
15	1	119305-35170	FILTER ASSY, D68XL65	1							1

Remarks

Note: "Effective Machine No." of the Engine Section is indicated on the Model Label which is shown in Fig.4.

(1) Spare part.

Fig.9. COOLING WATER SYSTEM

(A)=3TNM74F-NCUK

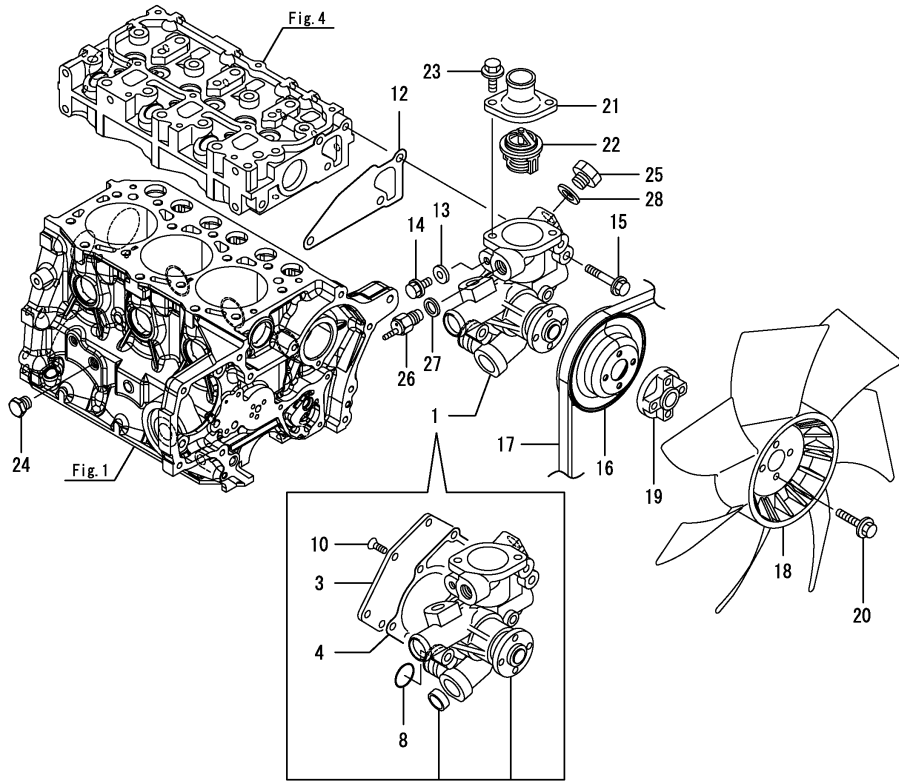
(B)=

(C)=

(D)=

(E)=

(F)=



No.	Lev.	Parts No.	Description	Q'ty						I	R
				(A)	(B)	(C)	(D)	(E)	(F)		
1	1	119025-42000	PUMP ASSY, WATER	1							
3	2	119025-42020	COVER	1							
4	2	119025-42030	GASKET, WATER PUMP	1							
8	2	119685-42281	O-RING	1							
10	2	26577-060122	SCREW, M6X12	5							
12	1	119515-42020	GASKET, WATER PUMP	1							
13	1	23414-080000	GASKET, 8X1.0	1							
14	1	26106-080122	BOLT, M8X 12 PLATED	1							
15	1	26106-080452	BOLT, M8X 45 PLATED	3							
16	1	119515-42350	V-PULLEY, D=110	1							
17	1	25152-003500	V-BELT, A35	1							
18	1	119717-44740	FAN, COOLING D335X7	1							
19	1	121267-44760	SPACER	1							
20	1	26106-060302	BOLT, M6X 30 PLATED	4							
21	1	129350-49530	COVER, THERMOSTAT	1							
22	1	119734-49801	THERMOSTAT, 71	1							
23	1	26106-080202	BOLT, M8X 20 PLATED	2							
24	1	171056-49120	PLUG, DRAIN	1							
25	1	121450-42450	PLUG, M16	1							
26	1	121250-44901	SWITCH, 110	1							
27	1	124465-44950	GASKET, 16	1							
28	1	124465-44950	GASKET, 16	1							

Remarks

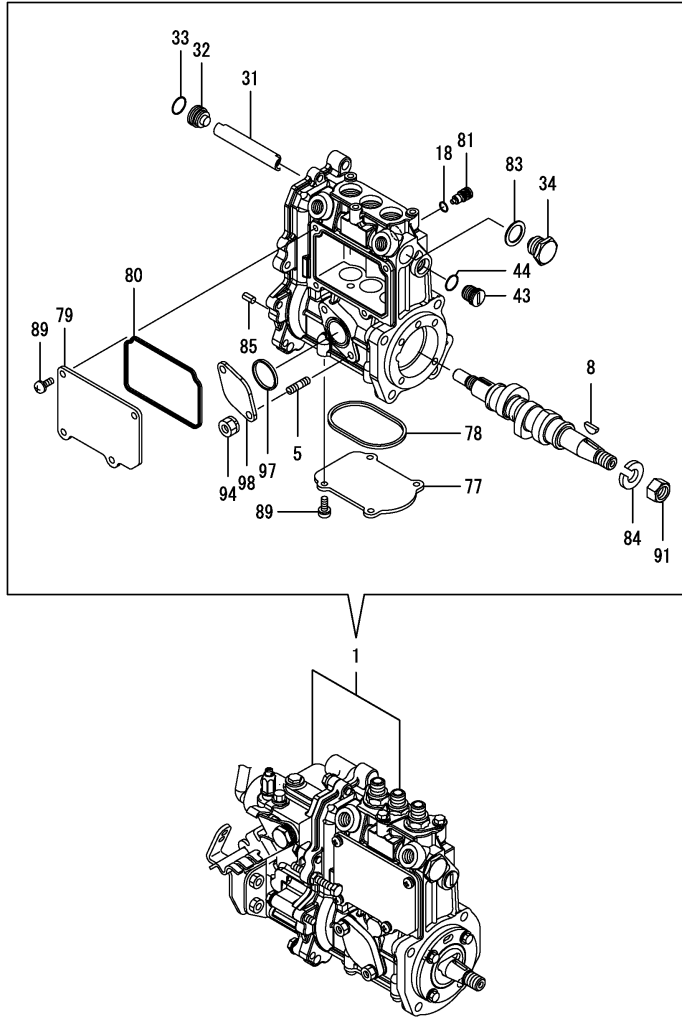
Note: "Effective Machine No." of the Engine Section is indicated on the Model Label which is shown in Fig.4.

N:Old $\xrightarrow{\text{Yes}}$ New, Q:Old $\xrightarrow{\text{No}}$ New, R:Old $\xrightarrow{\text{Yes}}$ New, S:Old $\xrightarrow{\text{No}}$ New, W:Add, Z:Discontinued, F:Interchangeable by set, K:Q'ty Change

Fig.10. FUEL INJECTION PUMP

(A)=3TNM74F-NCUK
(B)=
(C)=

(D)=
(E)=
(F)=



No.	Lev.	Parts No.	Description	Q'ty						I	R
				(A)	(B)	(C)	(D)	(E)	(F)		
1	1	719D21-51320	FIE ASSY	1							1
5	2	129155-51020	STUD	2							
8	2	122710-51090	KEY	1							
18	2	129155-51280	O-RING, S6	1							
31	2	129155-51400	DEFLECTOR	1							
32	2	158600-51410	PLUG, DEFLECTOR	1							
33	2	119717-51420	O-RING	1							
34	2	158600-51420	PLUG, DEFLECTOR	1							
43	2	158600-51570	PLUG	1							
44	2	129155-51580	O-RING	1							
77	2	119125-51700	COVER	1							
78	2	119717-51711	GASKET	1							
79	2	119717-51750	COVER	1							
80	2	119717-51761	GASKET	1							
81	2	158600-51790	STOOPER, RACK	1							
83	2	22190-160002	WASHER, SEAL 16	1							
84	2	22217-120000	WASHER, SPRING 12	1							
85	2	22351-050010	PIN, SPRING 5.0X10	2							
89	2	26022-050122	SCREW, M5X12	8							
91	2	26716-120002	NUT, M12	1							
94	2	119717-51860	NUT, M6	2							
97	2	129155-52051	GASKET	1							
98	2	129100-52200	COVER	1							

Remarks

Note: "Effective Machine No." of the Engine Section is indicated on the Model Label which is shown in Fig.4.
(1)Governor(Fig.11)is incorporated in this Fuel Injection Pump (Ref.1).

Fig.11. GOVERNOR

(A)=3TNM74F-NCUK

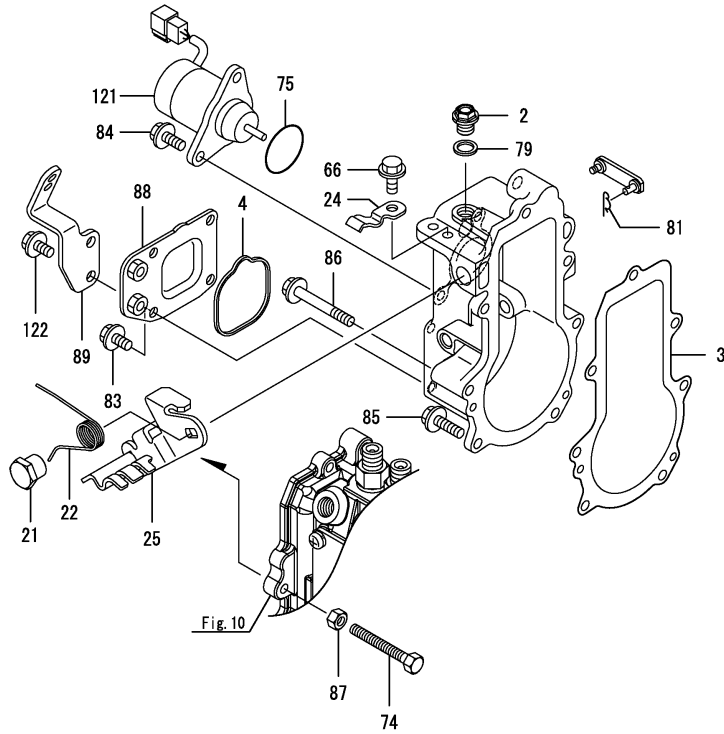
(B)=

(C)=

(D)=

(E)=

(F)=



No.	Lev.	Parts No.	Description	Q'ty						I	R
				(A)	(B)	(C)	(D)	(E)	(F)		
2	2	119717-51930	PLUG,M10	1							
3	2	119717-61050	GASKET	1							
4	2	119717-61070	GASKET	1							
21	2	129255-61410	NUT, LOCK	1							
22	2	119534-61420	SPRING	1							
24	2	119534-61430	RETAINER	1							
25	2	119527-61440	LEVER ASSY,REGULATOR	1							
66	2	26106-060102	BOLT, M6X 10 PLATED	1							
74	2	129155-61460	BOLT, IDLE	1							
75	2	158552-61900	O-RING	1							
79	2	22190-100002	WASHER, SEAL 10	1							
81	2	22372-040000	PIN, SNAP 4	1							
83	2	26106-060102	BOLT, M6X 10 PLATED	4							
84	2	26106-060142	BOLT, M6X 14 PLATED	2							
85	2	26106-060202	BOLT, M6X 20 PLATED	4							
86	2	26106-060452	BOLT, M6X 45 PLATED	3							
87	2	26756-060002	NUT, LOCK M6	1							
88	2	119761-61060	COVER, GOVERNOR CASE	1							
89	2	119734-61080	SUPPORT, WIRE	1							
121	2	119233-77932	SOLENOID, STOP	1							
122	2	26106-060102	BOLT, M6X 10 PLATED	2							

Remarks

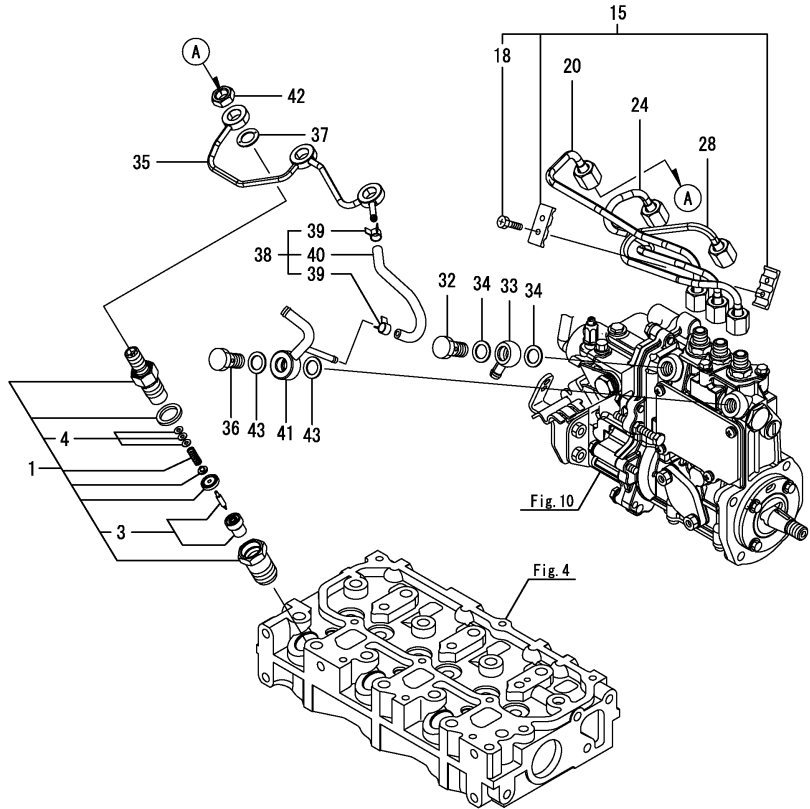
Note: "Effective Machine No." of the Engine Section is indicated on the Model Label which is shown in Fig.4.

*This figure(Governor)is incorporated in the Fuel Injection Pump (Fig.10).

Fig.12. FUEL INJECTION VALVE

(A)=3TNM74F-NCUK
(B)=
(C)=

(D)=
(E)=
(F)=



No.	Lev.	Parts No.	Description	Q'ty						I	R
				(A)	(B)	(C)	(D)	(E)	(F)		
1	1	119C10-53000	NOZZLE ASSY, F.I.	3							
3	2	119C10-53010	NOZZLE ASSY	3							
4	2	129901-53800	SHIM SET, ADJUSTING	3							1
15	1	129150-59120	RETAINER, PIPE	1							
18	2	129150-59131	BOLT, M4X14	2							
20	1	119D00-59810	PIPE ASSY,INJ,NO1	1							
24	1	119D00-59820	PIPE ASSY,INJ,NO2	1							
28	1	119D00-59830	PIPE ASSY,INJ,NO3	1							
32	1	103854-39140	BOLT, PIPE JOINT	1							
33	1	101304-59020	JOINT, PIPE 12	1							
34	1	22190-120002	WASHER, SEAL 12	2							
35	1	119D00-59540	PIPE ASSY, FO RETURN	1							
36	1	119125-59560	BOLT, PIPE JOINT	1							
37	1	129901-59560	GASKET	3							
38	1	119027-59570	PIPE ASSY, RETURN	1							
39	2	124066-59100	CLIP, HOSE 8	2							
40	2	121250-59550	PIPE, FUEL D8X120	1							
41	1	119515-59581	JOINT, OVER FLOW	1							
42	1	119620-59700	NUT, NOZZLE	3							
43	1	22190-120002	WASHER, SEAL 12	2							

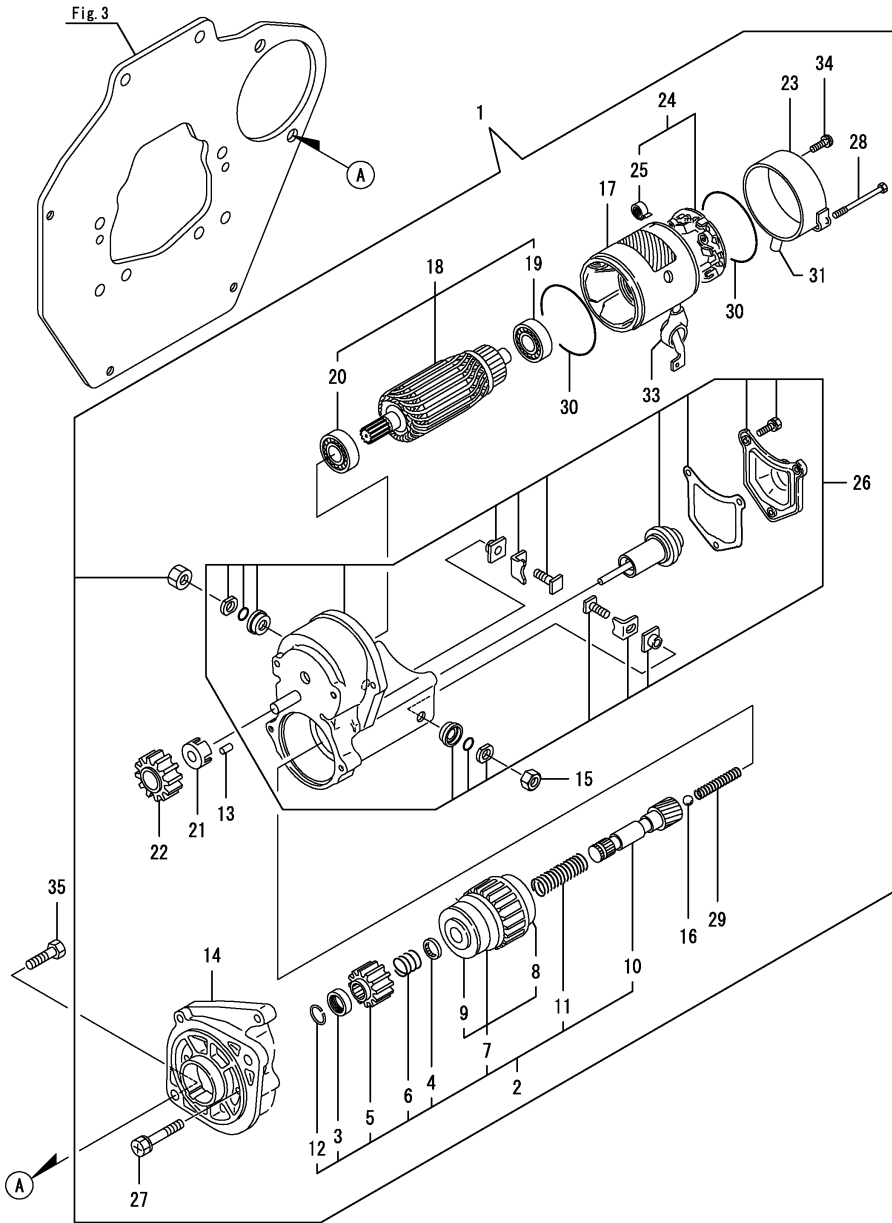
Remarks

(1) Spare parts.

Note: "Effective Machine No." of the Engine Section is indicated on the Model Label which is shown in Fig.4.

N:Old $\xrightarrow{\text{Yes}}$ New, Q:Old $\xrightarrow{\text{No}}$ New, R:Old $\xrightarrow{\text{Yes}}$ New, S:Old $\xrightarrow{\text{No}}$ New, W:Add, Z:Discontinued, F:Interchangeable by set, K:Q'ty Change

Fig.13. STARTING MOTOR



(A)=3TNM74F-NCUK
(B)=
(C)=

(D)=
(E)=
(F)=

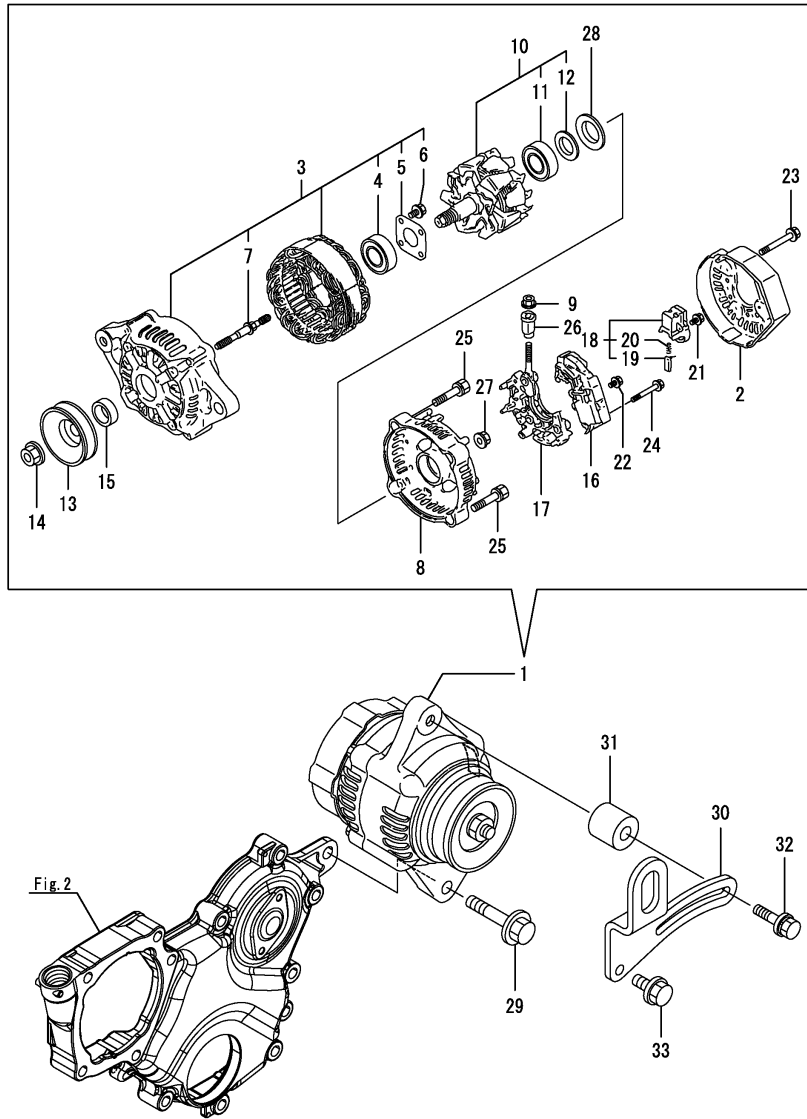
No.	Lev.	Parts No.	Description	Q'ty						I	R
				(A)	(B)	(C)	(D)	(E)	(F)		
1	1	119626-77020	STARTER, RA1.2	1							
2	2	X0283006990	CLUTCH SUB-ASSY	1							
3	3	X0280210230	NUT	1							
4	3	X0283270140	RETAINER	1							
5	3	X0283711660	PINION	1							
6	3	X9491703371	SPRING, COIL	1							
7	3	129129-77390	CLUTCH ASSY	1							
8	4	129129-77440	BEARING, BALL	1							
9	4	129129-77450	BEARING, BALL	1							
10	3	129129-77400	SHAFT	1							
11	3	129129-77410	SPRING, COIL	1							
12	3	129129-77430	RING	1							
13	2	X0283060061	ROLLER	5							
14	2	X4284000870	HOUSING	1							
15	2	X9490561370	NUT	1							
16	2	X9491200240	BALL	1							
17	2	129129-77210	YOKE ASSY	1							
18	2	129129-77220	ARMATURE ASSY	1							
19	3	129129-77230	BEARING, BALL	1							
20	3	129129-77240	BEARING, BALL	1							
21	2	129129-77260	RETAINER	1							
22	2	129129-77270	PINION	1							
23	2	129129-77290	FRAME	1							
24	2	129129-77300	HOLDER ASSY	1							
25	3	X9491730461	SPRING	4							
26	2	129407-77310	SWITCH ASSY	1							
27	2	129129-77320	BOLT	2							
28	2	129129-77330	BOLT	2							
29	2	129129-77340	SPRING	1							
30	2	129129-77350	O-RING	2							
31	2	129129-77362	COVER	1							
33	2	129129-77380	CAP	1							
34	2	129129-77460	SCREW	2							
35	1	26156-120402	BOLT, M12X 40 PLATED	2							

Remarks

Note: "Effective Machine No." of the Engine Section is indicated on the Model Label which is shown in Fig.4.

N:Old $\xrightarrow{\text{Yes}}$ New, Q:Old $\xrightarrow{\text{No}}$ New, R:Old $\xrightarrow{\text{Yes}}$ New, S:Old $\xrightarrow{\text{No}}$ New, W:Add, Z:Discontinued, F:Interchangeable by set, K:Q'ty Change

Fig.14. GENERATOR



(A)=3TNM74F-NCUK
(B)=
(C)=

(D)=
(E)=
(F)=

No.	Lev.	Parts No.	Description	Q'ty						I	R
				(A)	(B)	(C)	(D)	(E)	(F)		
1	1	119751-77200	GENERATOR, 12V-40AP	1							
2	2	X0215512440	COVER	1							
3	2	X1214001430	FRAME ASSY, DRIVE	1							
4	3	119620-79200	BEARING, BALL	1							
5	3	119620-79210	PLATE, RETAINER	1							
6	3	119620-79220	SCREW	4							
7	3	119620-79230	STUD	2							
8	2	X1215011050	FRAME ASSY	1							
9	2	X9490561001	NUT	1							
10	2	119620-77380	ROTOR ASSY	1							
11	3	119620-79240	BEARING, BALL	1							
12	3	119620-79250	COVER	1							
13	2	119620-77461	PULLEY	1							
14	2	119620-77471	NUT	1							
15	2	119620-77490	COLLAR	1							
16	2	129423-77710	REGULATOR ASSY	1							
17	2	119620-79260	HOLDER	1							
18	2	129052-79270	HOLDER, BRUSH	1							
19	3	119620-77480	BRUSH ASSY	2							
20	3	119620-79280	SPRING	2							
21	2	119620-79290	SCREW	6							
22	2	119620-79300	SCREW	1							
23	2	119620-79310	BOLT	3							
24	2	119620-79320	SCREW	2							
25	2	119620-79330	BOLT	2							
26	2	119620-79340	BUSH, INSULATION	1							
27	2	119620-79350	NUT	2							
28	2	119620-79360	WASHER, THRUST	1							
29	1	26106-100452	BOLT, M10X 45 PLATED	1							
30	1	119D21-77330	ADJUSTER, BELT	1							
31	1	124732-77340	SPACER	1							
32	1	129972-77341	BOLT, ADJUSTER L=50	1							
33	1	26106-080202	BOLT, M8X 20 PLATED	1							

Remarks

Note: "Effective Machine No." of the Engine Section is indicated on the Model Label which is shown in Fig.4.

N:Old $\begin{matrix} \leftarrow \text{Yes} \\ \text{No} \end{matrix}$ New, Q:Old $\begin{matrix} \leftarrow \text{No} \\ \text{Yes} \end{matrix}$ New, R:Old $\begin{matrix} \leftarrow \text{Yes} \\ \text{Yes} \end{matrix}$ New, S:Old $\begin{matrix} \leftarrow \text{No} \\ \text{No} \end{matrix}$ New, W:Add, Z:Discontinued, F:Interchangeable by set, K:Q'ty Change

Parts No. Index

Parts No.	Fig. No.	Ref. No.
101304-59020	12	33
103854-39140	12	32
105010-11490	4	3
105225-21501	7	7
105425-01690	3	5
106760-01770	2	6
114250-39450	8	14
119025-01500	2	1
119025-14580	6	3
119025-25100	6	9
119025-34800	8	3
119025-35080	8	9
119025-42000	9	1
119025-42020	9	3
119025-42030	9	4
119027-59570	12	38
119034-01600	3	2
119034-01770	3	4
119034-21590	7	8
119125-01750	2	2
119125-01780	3	8
119125-01790	1	32
119125-01800	1	33
119125-01960	1	7
119125-01970	1	5
119125-02061	1	9
119125-02900	1	36
119125-02910	1	39
119125-02930	1	23
119125-02940	1	42
119125-21200	7	4
119125-25050	1	26
119125-25910	6	14
119125-25930	6	13
119125-32000	8	1
119125-34810	8	5
119125-34900	8	4
119125-39200	8	11
119125-39220	8	12
119125-51700	10	77
119125-51800	1	35
119125-59560	12	36
119131-18320	5	6
119209-35030	8	8
119226-07900	4	53
119233-77932	11	121
119285-11990	4	11
119305-35170	8	15
119515-11200	4	20
119515-11240	4	21

Parts No.	Fig. No.	Ref. No.
119515-11280	4	25
119515-11310	4	44
119515-11320	4	45
119515-11330	4	46
119515-11380	4	34
119515-11800	4	57
119515-13200	5	8
119515-14400	6	2
119515-23000	7	24
119515-23601	7	28
119515-23611	7	31
119515-42020	9	12
119515-42350	9	16
119515-59581	12	41
119527-61440	11	25
119534-61420	11	22
119534-61430	11	24
119600-11460	4	2
119620-01620	1	13
119620-02450	6	4
119620-14200	6	1
119620-21941	7	14
119620-59700	12	42
119620-77380	14	10
119620-77461	14	13
119620-77471	14	14
119620-77480	14	19
119620-77490	14	15
119620-79200	14	4
119620-79210	14	5
119620-79220	14	6
119620-79230	14	7
119620-79240	14	11
119620-79250	14	12
119620-79260	14	17
119620-79280	14	20
119620-79290	14	21
119620-79300	14	22
119620-79310	14	23
119620-79320	14	24
119620-79330	14	25
119620-79340	14	26
119620-79350	14	27
119620-79360	14	28
119621-21681	7	13
119626-21700	7	11
119626-77020	13	1
119685-42281	9	8
119717-01800	2	3
119717-03031	4	35

Parts No.	Fig. No.	Ref. No.
119717-03070	4	36
		37
119717-11131	4	15
119717-11190	4	17
119717-11260	4	24
119717-11340	4	18
119717-11350	4	19
119717-11650	4	26
119717-13110	5	2
119717-22300	7	22
119717-23200	7	27
119717-23910	7	30
119717-35140	8	6
119717-44740	9	18
119717-51150	6	15
119717-51420	10	33
119717-51711	10	78
119717-51750	10	79
119717-51761	10	80
119717-51860	10	94
119717-51930	11	2
119717-61050	11	3
119717-61070	11	4
119717-77801	4	55
119717-77820	4	56
119734-02220	1	34
119734-49801	9	22
119734-61080	11	89
119751-77200	14	1
119761-61060	11	88
119802-03100	4	38
119802-03110	4	39
119802-03121	4	40
119802-03131	4	41
119802-03141	4	42
119802-13620	5	3
119802-13640	5	4
119802-13740	5	5
119810-01200	1	30
119C10-01330	1	31
119C10-11100	4	13
119C10-11110	4	14
119C10-22500	7	18
119C10-22550	7	34
119C10-53000	12	1
119C10-53010	12	3
119D00-01560	1	1
119D00-11740	4	4
119D00-21700	7	1
119D00-22080	7	16

Parts No.	Fig. No.	Ref. No.
119D00-22900	7	33
119D00-59540	12	35
119D00-59810	12	20
119D00-59820	12	24
119D00-59830	12	28
119D21-13100	5	1
119D21-13610	5	10
119D21-13690	5	15
119D21-21650	7	12
119D21-77330	14	30
119E21-13510	5	9
121250-44901	9	26
121250-59550	12	40
121267-44760	9	19
121450-42450	9	25
122710-51090	10	8
124060-01050	1	4
124060-21600	7	10
124066-59100	12	39
124160-01751	4	33
124465-44950	9	27
		28
124732-77340	14	31
129052-79270	14	18
129100-01580	3	1
	7	2
129100-52200	10	98
129129-77210	13	17
129129-77220	13	18
129129-77230	13	19
129129-77240	13	20
129129-77260	13	21
129129-77270	13	22
129129-77290	13	23
129129-77300	13	24
129129-77320	13	27
129129-77330	13	28
129129-77340	13	29
129129-77350	13	30
129129-77362	13	31
129129-77380	13	33
129129-77390	13	7
129129-77400	13	10
129129-77410	13	11
129129-77430	13	12
129129-77440	13	8
129129-77450	13	9
129129-77460	13	34
129150-11230	4	27
129150-11750	4	29

Parts No. Index

Parts No.	Fig. No.	Ref. No.
129150-25301	6	12
129150-59120	12	15
129150-59131	12	18
129155-51020	10	5
129155-51280	10	18
129155-51400	10	31
129155-51580	10	44
129155-52051	10	97
129155-61460	11	74
129255-61410	11	21
129350-49530	9	21
129407-77310	13	26
129423-77710	14	16
129508-11180	4	16
129900-32040	1	27
129901-11450	4	1
129901-53800	12	4
129901-59560	12	37
129972-77341	14	32
158552-61900	11	75
158600-51410	10	32
158600-51420	10	34
158600-51570	10	43
158600-51790	10	81
171056-49120	9	24
22190-100002	11	79
22190-120002	12	34
		43
22190-160002	3	7
	10	83
22217-120000	10	84
22242-000120	4	30
22252-000220	7	23
22351-030010	7	15
22351-050010	10	85
22351-060012	1	28
22372-040000	11	81
22512-040120	7	5
22857-500100	4	47
		48
22857-500160	4	49
23414-080000	9	13
23876-005000	1	10
	4	12
24311-000180	2	7
24311-000320	4	50
25152-003500	9	17
26022-050122	10	89
26106-060102	8	10
	11	66

Parts No.	Fig. No.	Ref. No.
26106-060102	11	83
		122
26106-060122	6	8
	8	13
26106-060142	8	2
	11	84
26106-060202	4	51
	11	85
26106-060302	9	20
26106-060402	1	29
26106-060452	11	86
26106-060752	4	52
26106-080122	9	14
26106-080162	4	54
26106-080202	5	11
		12
	9	23
	14	33
26106-080252	5	13
26106-080352	2	4
26106-080402	4	32
26106-080452	2	5
	9	15
26106-080902	5	16
26106-100452	14	29
26156-120402	13	35
26206-100202	3	3
26306-080002	5	7
		14
26577-060122	9	10
26716-120002	10	91
26756-060002	11	87
26979-050162	4	31
27241-300000	1	11
27241-450000	1	12
719D21-51320	10	1
X0215512440	14	2
X0280210230	13	3
X0283006990	13	2
X0283060061	13	13
X0283270140	13	4
X0283711660	13	5
X1214001430	14	3
X1215011050	14	8
X4284000870	13	14
X9490561001	14	9
X9490561370	13	15
X9491200240	13	16
X9491703371	13	6
X9491730461	13	25

Parts No.	Fig. No.	Ref. No.
-----------	----------	----------

Parts No.	Fig. No.	Ref. No.
-----------	----------	----------