

0CV10-M51201EN

PREFACE

- 1.This Parts Catalog carries all parts incorporated in YANMAR Model 4TNE98-NSR, engine manufactured since April, 2005.
- 2.Each illustration corresponds to the parts list on the following page.
- 3.When ordering parts,clearly write down the engine model and serial number,as well as the name and number of each part in your order sheet. This will help insure reliable delivery of the parts you have ordered.

Directions for the Parts Catalog.

1. This Parts Catalog shows both standard and optional parts.
2. Parts may change without prior notice.
3. The following is an example of the Parts Catalog format.

REF.	LEV.	PARTS NO.	DESCRIPTION	Q'TY						I	R
				(A)	(B)	(C)	(D)	(E)	(F)		
1	1	729595-51390	FUEL INJECTION PUMP	1	1	1	1	1			1
1-1	1	729595-51391	FUEL INJECTION PUMP	1	1	1	1	1		N	1
		(A=E00185) (B=E00200)									
3	2	26022-060162	SCREW M 6X 16	9	9	9	9	9			
3-1	2	26022-060162	SCREW M 6X 16	4	4	4	4	4		K	
		(A=E00156) (B=E00156) (C=E00156) (D=E00156) (E=E00156)									
4	2	129470-51040	CAMSHAFT	1	1	1	1	1			
5	2	122710-51050	BEARING, ROLLER	2	2	2	2	2			
6	2	129470-51060	RETAINER	1	1	1	1	1			

Remarks
(1) BOOST COMPEMSATOR TYPE. OPTIONAL PART, TO E00155,(4JH-DT, 4JH-DTZ

① Ref. No.

The Ref. No. listed may not be in accordance with the illustration Ref. No.

(Ex.) Illustration No.

List Ref No.

1

1

(Before change)

1-1

(After change)

For interchangeable symbols N, R and K, illustrations for new parts may be abbreviated.

② Lev. (Level)

Level indication

The numbers below indicate the level of relativity towards the main part.

1 ----- Main parts (Assembly parts)

2 ----- Sub component included in " 1 ".

3 ----- Sub component included in " 2 ".

Note) Parts that are not for sale are partially illustrated but not listed.

③ Interchangeability Symbol

When a part change takes place, one of the following interchangeability symbols is indicated beside the part.

Symbol	Interchangeability	Contents note
N	Old $\begin{matrix} \leftarrow \text{Yes} \\ \text{No} \rightarrow \end{matrix}$ New	New Part is interchangeable for Old Part but Old Part is not interchangeable for New Part.
Q	Old $\begin{matrix} \leftarrow \text{No} \\ \text{Yes} \rightarrow \end{matrix}$ New	New Part is not interchangeable for Old Part but Old Part is interchangeable for New Part.
R	Old $\begin{matrix} \leftarrow \text{Yes} \\ \text{Yes} \rightarrow \end{matrix}$ New	New/ Old Parts are both interchangeable.
S	Old $\begin{matrix} \leftarrow \text{No} \\ \text{No} \rightarrow \end{matrix}$ New	New/ Old Parts are both not interchangeable.
W		Part newly added.
Z		Part discontinued.
F		Not interchangeable by a single part but interchangeable together with related parts.
K		Changes only for used parts quantities.

④ Effective Machine No.

When a part changes, the effective Machine No. will be indicated in the (A)-(F) column.

Product Symbol	Product No.	Product Symbol	Product No.
C	Clutch No. Compressor No.	F	Machine No. (Agricultural Equip.)
D	Drive No.	M	Machine No.
E	Engine No.		

Note 1) A date may follow the symbol. (Ex.) 1996.01

Note 2) "XXXXX" and "ZZZZZ" are for parts that could not be predicted or for engine models that could not be identified.

Note 3) (A=E00185) is the E (Engine Serial Number) for the column (A) model (in this case 4JH-DT) after the parts design change.

⑤ Remarks

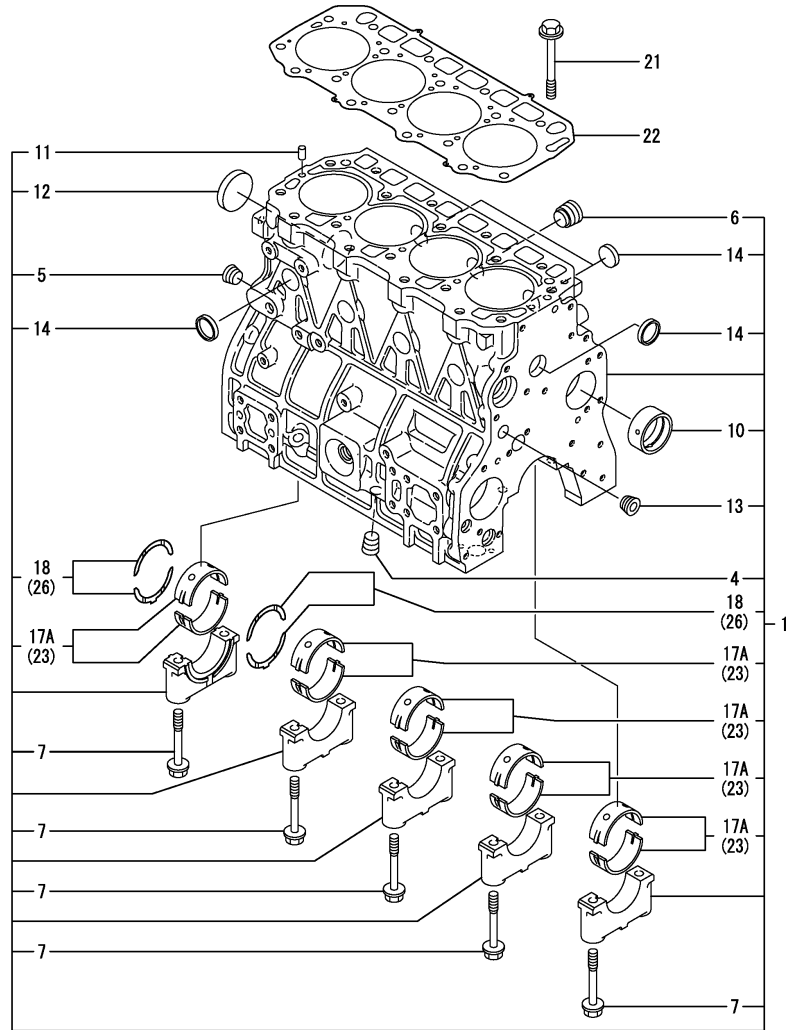
Figures or alphabets (symbols) are entered in the remarks column.

The comments (remarks) on parts that are indicated at the bottom of the illustration are the same symbols as those stated above.

Contents

Fig. No.	Fig. Name	Fig. No.	Fig. Name
ENGINE SECTION 4TNE98-NSR			
1.	CYLINDER BLOCK		
2.	GEAR HOUSING		
3.	FLYWHEEL HOUSING & OIL SUMP		
4.	CYLINDER HEAD & BONNET		
5.	SUCTION MANIFOLD & AIR CLEANER		
6.	EXHAUST MANIFOLD & SILENCER		
7.	CAMSHAFT & DRIVING GEAR		
8.	CRANKSHAFT & PISTON		
9.	LUB.OIL SYSTEM		
10.	COOLING WATER SYSTEM		
11.	FUEL INJECTION PUMP		
12.	GOVERNOR		
13.	FEED PUMP		
14.	FUEL INJECTION VALVE		
15.	FUEL LINE		
16.	ENGINE STOP DEVICE		
17.	STARTING MOTOR		
18.	GENERATOR		
19.	GASKET SET		

Fig.1. CYLINDER BLOCK



(A)=4TNE98-NSR

(B)=

(C)=

(D)=

(E)=

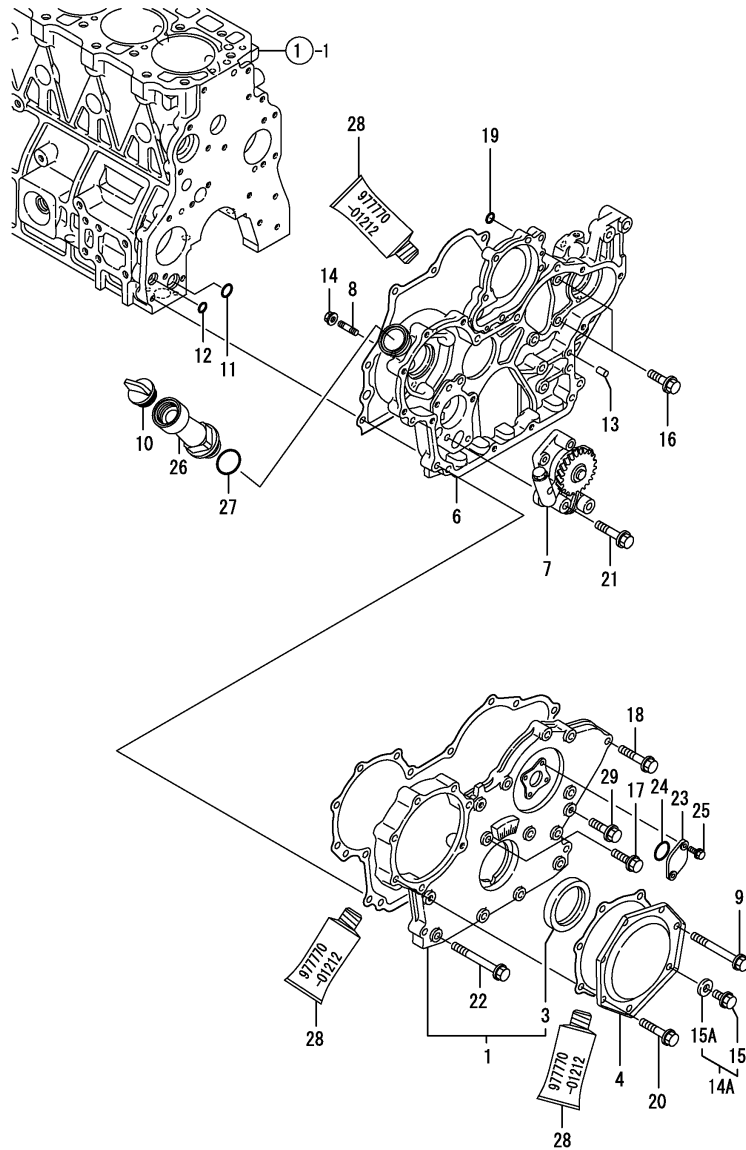
(F)=

No.	Lev.	Parts No.	Description	Q'ty						I	R
				(A)	(B)	(C)	(D)	(E)	(F)		
1	1	729902-01560	BLOCK ASSY, CYLINDER	1							
4	2	23871-030000	PLUG, R03	1							
4-1	2	23876-030000	PLUG, R03	1							N
(A=EXXX)											
5	2	23871-030000	PLUG, R03	1							
5-1	2	23876-030000	PLUG, R03	1							N
(A=EXXX)											
6	2	171051-01921	PLUG, NPTF1	1							
7	2	129900-02020	BOLT, METAL CAP	10							
10	2	129900-02410	BUSH, CAMSHAFT	1							
11	2	22351-060012	PIN, SPRING 6.0X12	2							
12	2	27231-550000	PLUG 55	1							
12-1	2	129900-01250	PLUG, 55	1							N
(A=E07387)											
13	2	23871-030000	PLUG, R03	1							
13-1	2	23876-030000	PLUG, R03	1							N
(A=EXXX)											
14	2	27241-300000	PLUG 30	8							
17A	2	729900-02800	BEARING, MAIN	5							W 3
(A=EXXX)											
18	2	129900-02930	BEARING, THRUST	2							
21	1	129900-01200	BOLT, HEAD	18							
22	1	129902-01330	GASKET, HEAD	1							
22-1	1	129902-01331	GASKET, HEAD	1							N
(A=E07387)											
23	1	129900-02340	BEARING, 0.25 US	5							1
26	1	129900-02940	BEARING, THRUST 0.25	2							2

Remarks

- (1) UNDER-SIZED(U.S=0.25)PART.
- (2) OVER-SIZED(O.S=0.25)PART.
- (3) REPAIR PART.

Fig.2. GEAR HOUSING



(A)=4TNE98-NSR

(B)=

(C)=

(D)=

(E)=

(F)=

No.	Lev.	Parts No.	Description	Q'ty						I	R
				(A)	(B)	(C)	(D)	(E)	(F)		
1	1	729900-01570	COVER ASSY,GEAR CASE	1							
3	2	129900-01780	SEAL, OIL	1							
4	1	129900-01740	COVER	1							
4-1	1	129957-01740	COVER	1							N
		(A=E15623)									
6	1	129900-01400	CASE, GEAR	1							
7	1	129900-32000	PUMP ASSY, OIL	1							
7-1	1	129900-32001	PUMP ASSY, OIL	1							R
		(A=E25686)									
8	1	26216-100302	STUD, M10X 30	4							
9	1	26106-080702	BOLT, M8X 70 PLATED	1							
9-1	1	26106-080752	BOLT, M8X 75 PLATED	1							N
		(A=EXXX)									
10	1	124160-01751	COVER, FILLER	1							
11	1	129900-32030	O-RING, P20	1							
12	1	129900-32040	O-RING, P14	1							
13	1	22312-080160	PIN, PARALLEL M8X16	4							
13-1	1	129100-01580	PIN, M8X16	4							R
		(A=E18920)									
14	1	26366-100002	NUT, M10	4							
14-1	1	26306-100002	NUT, M10	4							N
		(A=EXXX)									
14A	1	124550-01590	BOLT, M8X16	1							W
		(A=E15623)									
15	2	26106-080162	BOLT, M8X 16 PLATED	1							
15A	2	22190-080002	WASHER, SEAL 6	1							W
		(A=E15623)									
16	1	26106-080202	BOLT, M8X 20 PLATED	3							
17	1	26106-080302	BOLT, M8X 30 PLATED	1							
18	1	26106-080402	BOLT, M8X 40 PLATED	5							
19	1	24311-000070	O-RING, 1AP7.0	1							
20	1	26106-080402	BOLT, M8X 40 PLATED	5							
20-1	1	26106-080452	BOLT, M8X 45 PLATED	5							N
		(A=E15623)									
21	1	26106-080452	BOLT, M8X 45 PLATED	3							
22	1	26106-080702	BOLT, M8X 70 PLATED	6							
22-1	1	129001-91810	BOLT, M8X70	6							R
		(A=E03293)									
23	1	121023-01550	COVER	1							
24	1	24341-000240	O-RING, 1AS24.0	1							
25	1	26106-060162	BOLT, M6X 16 PLATED	2							
26	1	121027-11742	PIPE	1							
26-1	1	121027-11743	PIPE	1							R
		(A=E04462)									
27	1	24321-000350	O-RING, 1AG35.0	1							
27-1	1	24311-000320	O-RING, 1AP32.0	1							R
		(A=E25842)									
28	1	977770-01212	GASKET, LIQUID	1							1
29	1	26106-080202	BOLT, M8X 20 PLATED	1							W
		(A=E15623)									

Remarks

(1) OPTIONAL PART.

N:Old $\xrightarrow{\text{Yes}}$ New, Q:Old $\xrightarrow{\text{No}}$ New, R:Old $\xrightarrow{\text{Yes}}$ New, S:Old $\xrightarrow{\text{No}}$ New, W:Add, Z:Discontinued, F:Interchangeable by set, K:Q'ty Change

Fig.3. FLYWHEEL HOUSING & OIL SUMP

(A)=4TNE98-NSR

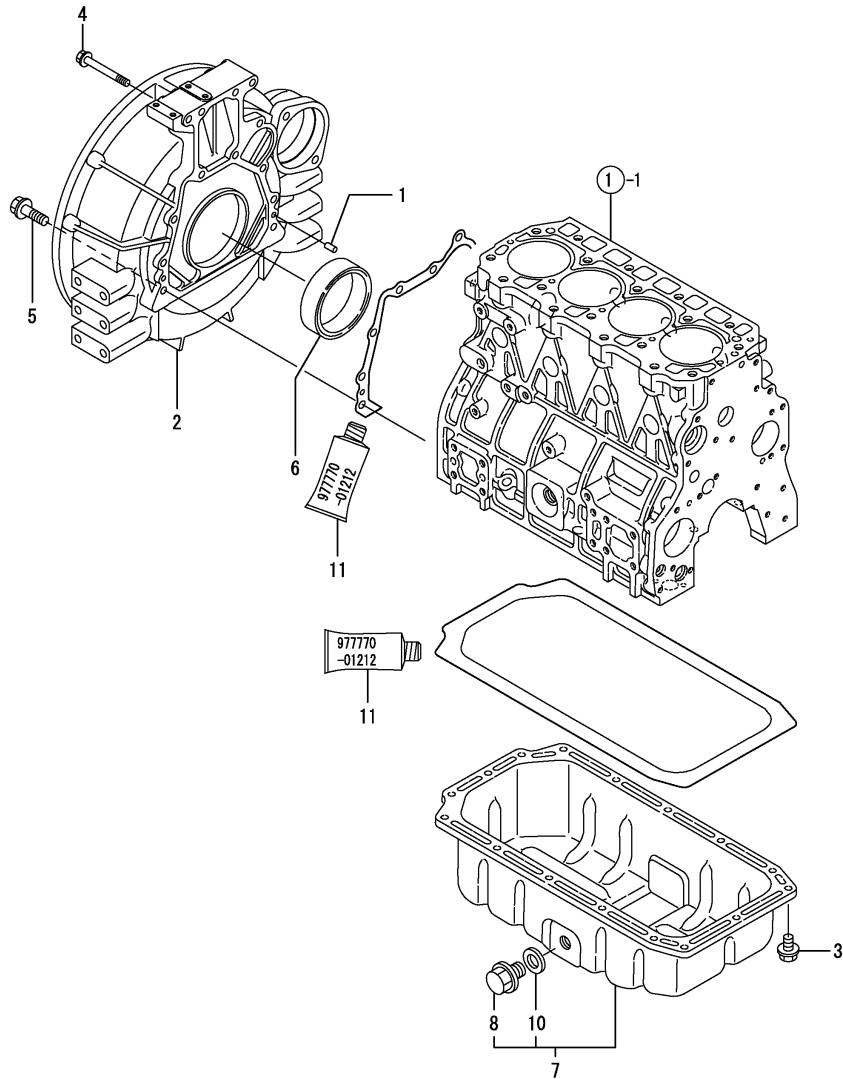
(B)=

(C)=

(D)=

(E)=

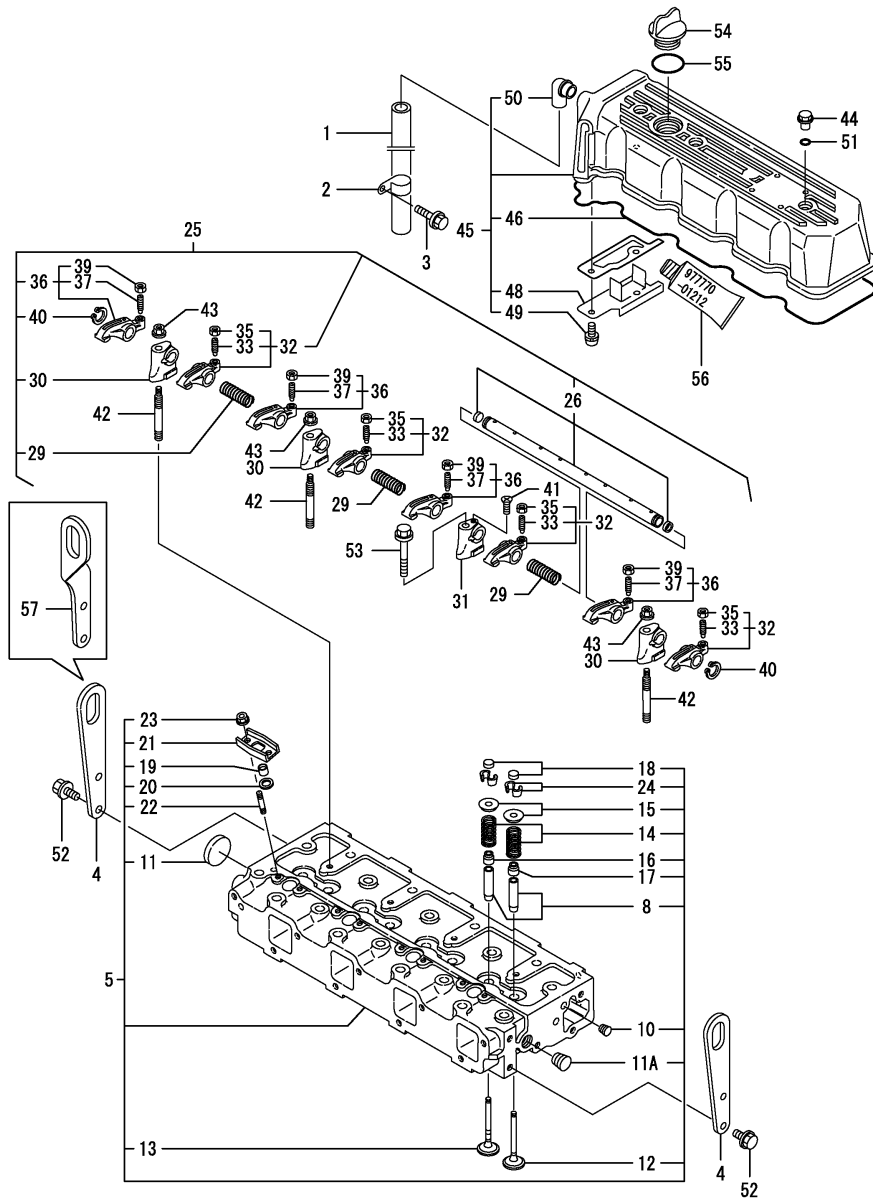
(F)=



No.	Lev.	Parts No.	Description	Q'ty						I	R
				(A)	(B)	(C)	(D)	(E)	(F)		
1	1	129100-01580	PIN, M8X16	2							
2	1	129981-01600	HOUSING, FLYWHEEL	1							
3	1	26106-080122	BOLT, M8X 12 PLATED	21							
3-1	1	26106-080122	BOLT, M8X 12 PLATED	16							K
		(A=FROM 1ST)									
4	1	26206-100702	BOLT, M10X 70 PLATED	4							
5	1	26206-100352	BOLT, M10X 35 PLATED	9							
6	1	124411-01780	SEAL, HTC95X115X12	1							
7	1	129902-01710	SUMP ASSY, OIL	1							
8	2	119640-01640	PLUG, DRAIN M22	1							
10	2	22190-220002	WASHER, SEAL 22	1							
11	1	977770-01212	GASKET, LIQUID	1							1

Remarks
(1) OPTIONAL PART.

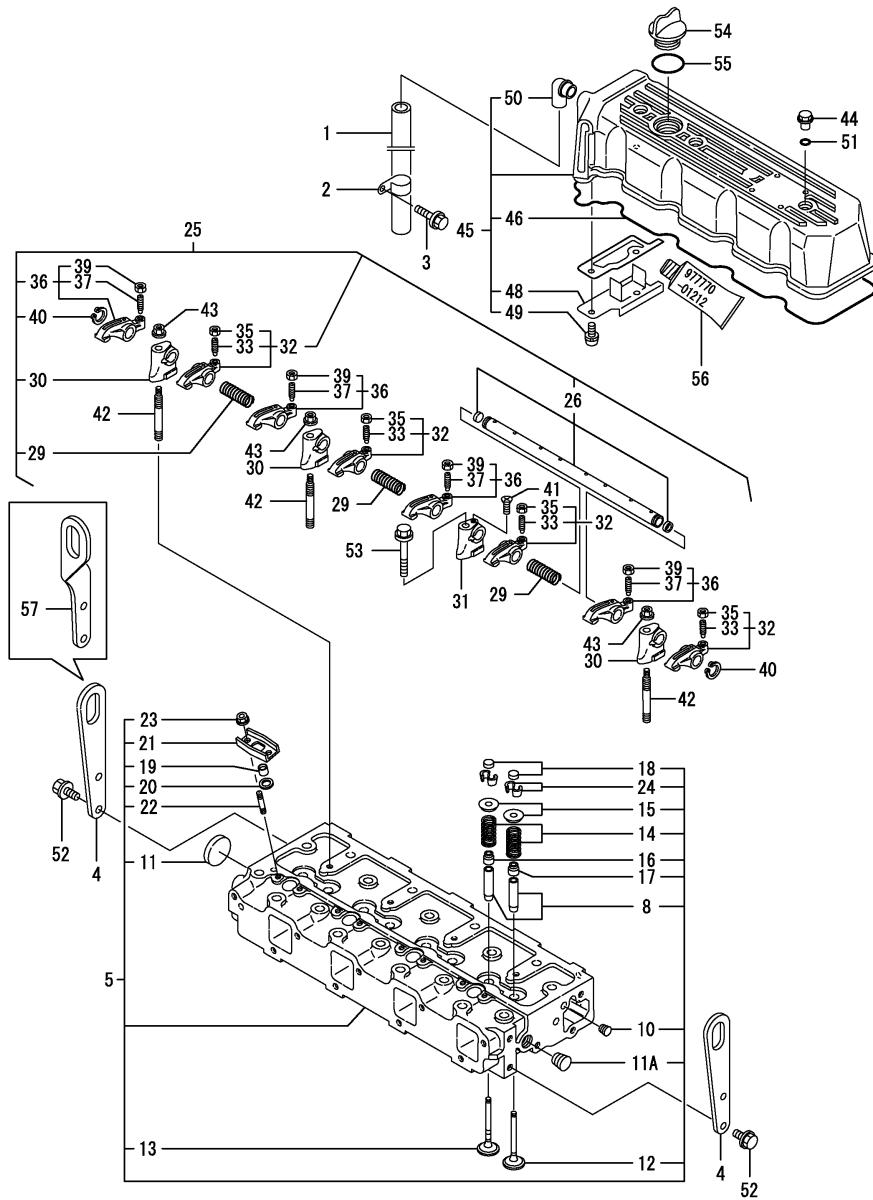
Fig.4. CYLINDER HEAD & BONNET



No.	Lev.	Parts No.	Description	Q'ty						I	R
				(A)	(B)	(C)	(D)	(E)	(F)		
1	1	119006-03090	HOSE, BREATHER	1							
1-1	1	23065-160800	PIPE, 16X 800	1							R
(A=E17524)											
2	1	129150-03100	RETAINER, PIPE	1							
3	1	26106-080122	BOLT, M8X 12 PLATED	1							
4	1	129900-07900	LIFTER	2							
4-1	1	129900-07900	LIFTER	1							K
(A=E17524)											
5	1	729900-11100	HEAD ASSY, CYLINDER	1							
8	2	129150-11810	GUIDE, VALVE	8							1
10	2	23871-005000	PLUG, R005	1							
11	2	27241-400000	PLUG, 40	1							
11A	2	23876-030000	PLUG, R03	1							W
(A=E09361)											
12	2	129900-11100	VALVE, INTAKE	4							
13	2	129900-11110	VALVE, EXHAUST	4							
14	2	129900-11120	SPRING, VALVE	8							
15	2	129795-11180	RETAINER, SPRING	8							
16	2	121400-11340	SEAL, VALVE STEM	4							
17	2	124460-11340	SEAL, VALVE STEM	4							
18	2	129150-11370	CAP, VALVE	8							
19	2	119625-11870	PROTECTOR, NOZZLE	4							
20	2	119625-11880	SEAT, NOZZLE	4							
21	2	119625-11900	RETAINER, NOZZLE	4							
22	2	26216-060202	STUD, M6X 20	8							
23	2	26366-060002	NUT, M6	8							
24	2	27310-080001	COTTER, 8	8							
25	1	129900-11200	SUPPORT ASSY, ARM	1							
26	2	129900-11240	SHAFT ASSY, ROCKER	1							
29	2	129900-11280	SPRING	3							
30	2	129900-11510	SUPPORT, ROCKER ARM	3							
31	2	129900-11520	SUPPORT, ROCKER ARM	1							
32	2	129900-11650	ARM, ROCKER	4							
33	3	129150-11230	SCREW, VALVE ADJUST	4							
35	3	129150-11750	NUT, M8	4							
36	2	129900-11660	ARM, ROCKER	4							
37	3	129150-11230	SCREW, VALVE ADJUST	4							
39	3	129150-11750	NUT, M8	4							
40	2	22242-000180	RING, 18	2							
41	2	26577-040122	SCREW, M4X12	1							
41-1	2	26577-040162	SCREW, M4X16	1							R
(A=E02956)											
42	1	129900-11530	STUD	3							
43	1	26366-100002	NUT, M10	3							
43-1	1	26306-100002	NUT, M10	3							N
(A=E15623)											
44	1	124160-11360	KNOB	3							
45	1	129900-11350	BONNET ASSY, HEAD	1							
45-1	1	129953-11350	BONNET ASSY, HEAD	1							N
(A=E15623)											
46	2	129900-11310	GASKET, BONNET	1							

Remarks
 (1) REPAIR PART.
 (2) OPTIONAL PART.

Fig.4. CYLINDER HEAD & BONNET



(A)=4TNE98-NSR

(B)=

(C)=

(D)=

(E)=

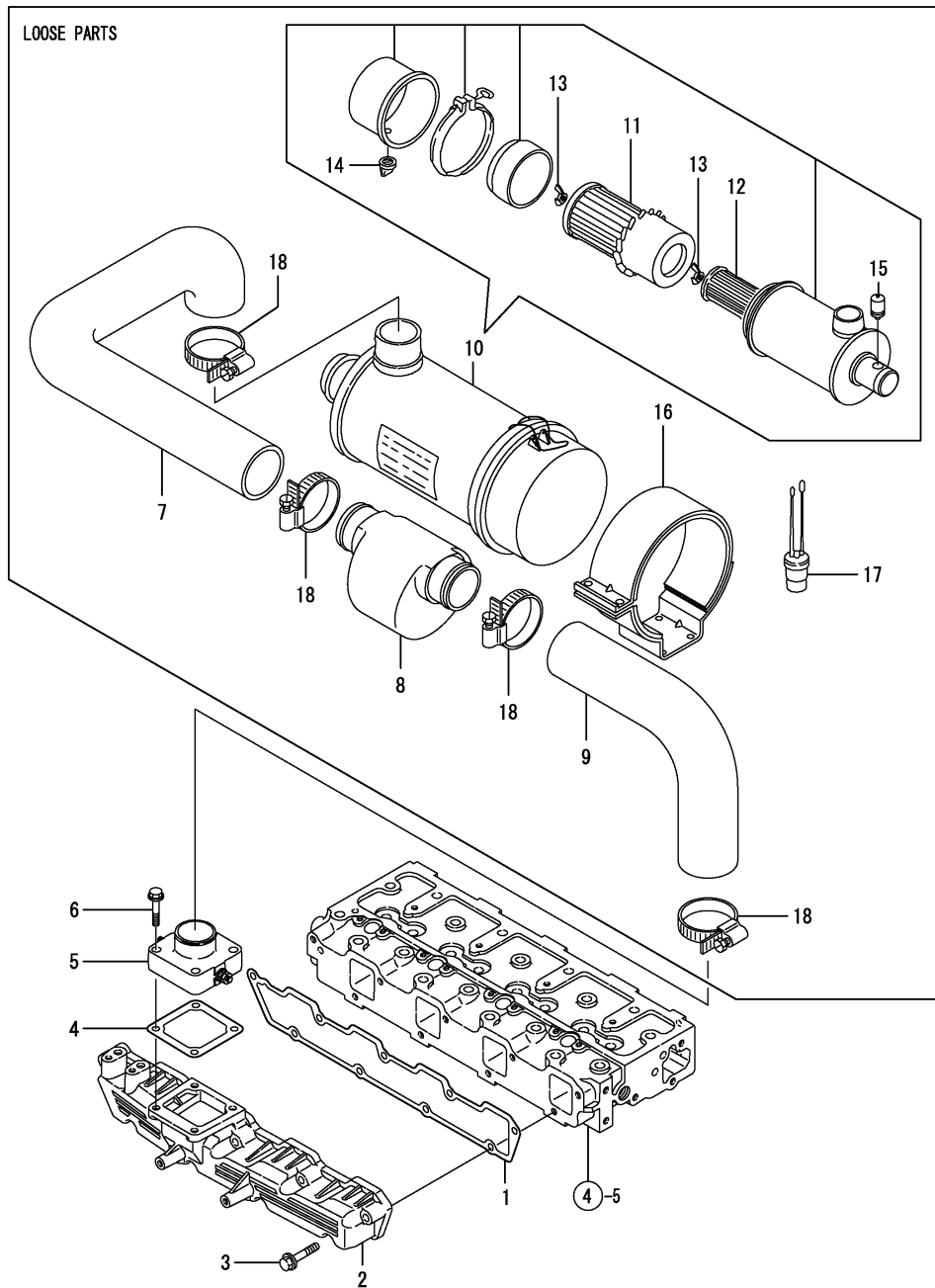
(F)=

No.	Lev.	Parts No.	Description	Q'ty						I	R
				(A)	(B)	(C)	(D)	(E)	(F)		
48	2	129900-11600	PLATE, BAFFLE	1							
49	2	22857-500100	SCREW, 5X10	2							
50	2	119100-11330	ELBOW	1							
51	1	24311-000120	O-RING, 1AP12.0	3							
52	1	26106-080162	BOLT, M8X 16 PLATED	4							
53	1	26106-100652	BOLT, M10X 65 PLATED	1							
54	1	124160-01751	COVER, FILLER	1							
55	1	24311-000320	O-RING, 1AP32.0	1							
56	1	977770-01212	GASKET, LIQUID	1							2
57	1	129910-07900	LIFTER	1							W
(A=E17524)											

Remarks

- (1) REPAIR PART.
- (2) OPTIONAL PART.

Fig.5. SUCTION MANIFOLD & AIR CLEANER



(A)=4TNE98-NSR

(B)=

(C)=

(D)=

(E)=

(F)=

No.	Lev.	Parts No.	Description	Q'ty						I	R
				(A)	(B)	(C)	(D)	(E)	(F)		
1	1	129900-12050	GASKET, MANIFOLD	1							
2	1	129900-12100	MANIFOLD, AIR INTAKE	1							
3	1	26106-080452	BOLT, M8X 45 PLATED	9							
4	1	121850-77021	GASKET	1							
5	1	129915-77050	HEATER	1							
6	1	26106-080352	BOLT, M8X 35 PLATED	4							
7	1	119032-12020	PIPE, AIR INTAKE	1							
8	1	119005-12060	SILENCER ASSY	1							
8-1	1	119005-12060	SILENCER ASSY	2							K
(A=E02836)											
9	1	129983-12070	PIPE, AIR INTAKE	1							
10	1	171064-12509	CLEANER ASSY, AIR	1							
11	2	171064-12540	ELEMENT	1							
12	2	171064-12550	ELEMENT	1							
13	2	121420-12561	NUT, WING	2							
14	2	121422-12580	VALVE, UNLOADER	1							
15	2	126650-12680	INDICATOR	1							
16	1	121872-12700	SUPPORT	1							
17	1	171061-12800	INDICATOR	1							
18	1	23000-070000	CLAMP, 70	6							

Fig.6. EXHAUST MANIFOLD & SILENCER

(A)=4TNE98-NSR

(B)=

(C)=

(D)=

(E)=

(F)=

No.	Lev.	Parts No.	Description	Qty						I	R
				(A)	(B)	(C)	(D)	(E)	(F)		
1	1	129900-13200	MANIFOLD, EXHAUST	1							
2	1	129900-13251	GASKET	1							
3	1	26106-080802	BOLT, M8X 80 PLATED	6							
3-1	1	123900-13630 (A=E19184)	BOLT, M8X80	6							R
4	1	26216-080222	STUD, M8X 22	4							
4-1	1	119131-18320 (A=E02956)	STUD, M8X22	4							N
5	1	129400-13201	GASKET, SILENCER	2							
6	1	26216-080802	STUD, M8X 80	2							
6-1	1	123900-13610 (A=E19184)	STUD, M8X80	2							R
7	1	26366-080002	NUT, M8	2							
7-1	1	26306-080002 (A=EXXX)	NUT, M8	2							N
8	1	129953-13650	STAY, SILENCER	1							
8-1	1	129983-13690 (A=E15623)	STAY, SILENCER	1							N
8-2	1	129983-13691 (A=E17524)	STAY, SILENCER	1							S
9	1	129983-13500	SILENCER	1							
9-1	1	129983-13501 (A=E15623)	SILENCER	1							N
9-2	1	129983-13510 (A=E17524)	SILENCER	1							S
10	1	129983-13560	STAY, SILENCER	1							
10-1	1	129916-13650 (A=E17524)	STAY, SILENCER	1							S
11	1	26106-080162	BOLT, M8X 16 PLATED	2							
12	1	26106-080122	BOLT, M8X 12 PLATED	2							
13	1	194990-22050	NUT, M8	4							
13-1	1	26306-080002 (A=E25842)	NUT, M8	4							N
14	1	26106-080202 (A=E17524)	BOLT, M8X 20 PLATED	2							W

LOOSE PARTS

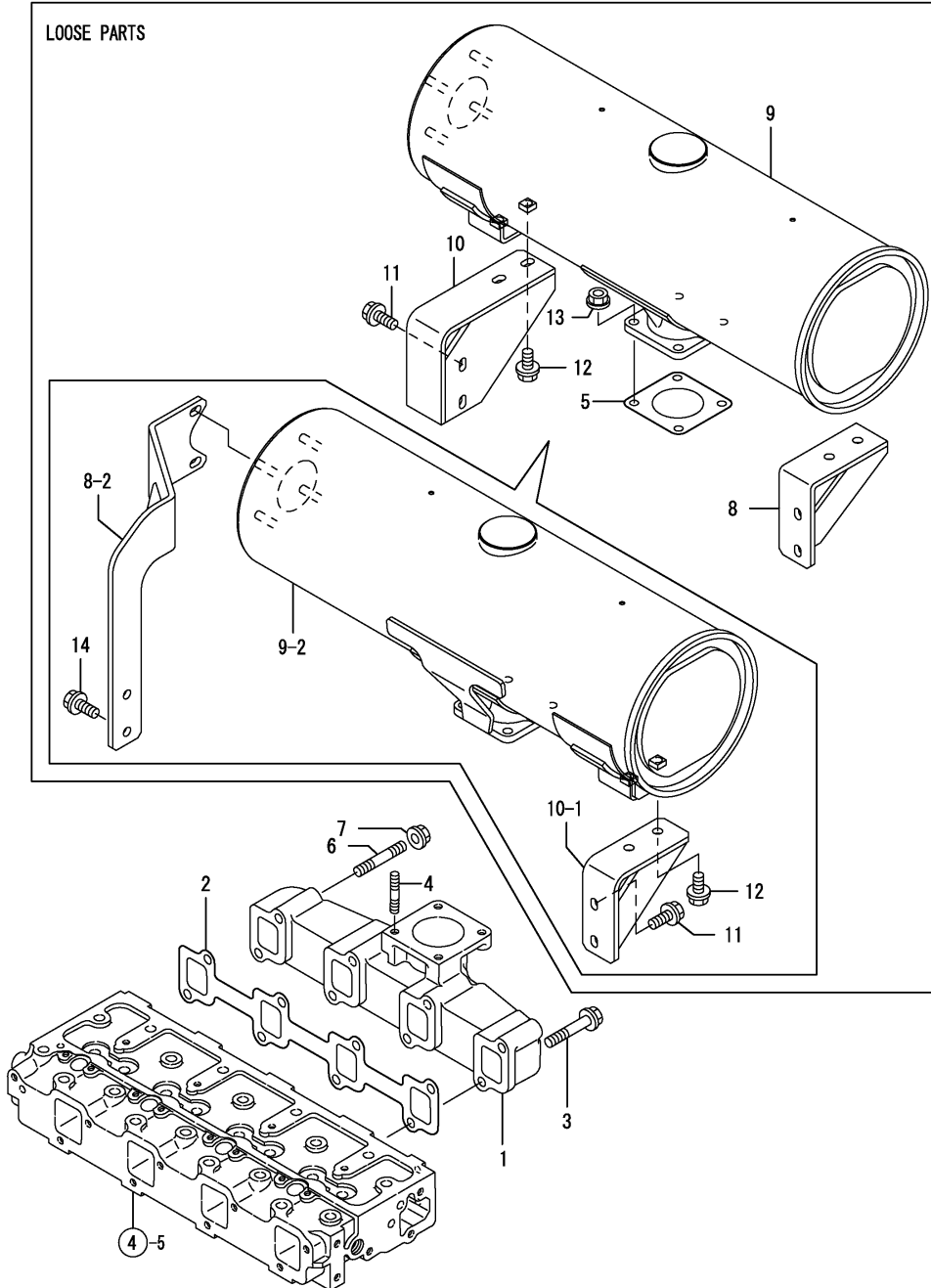
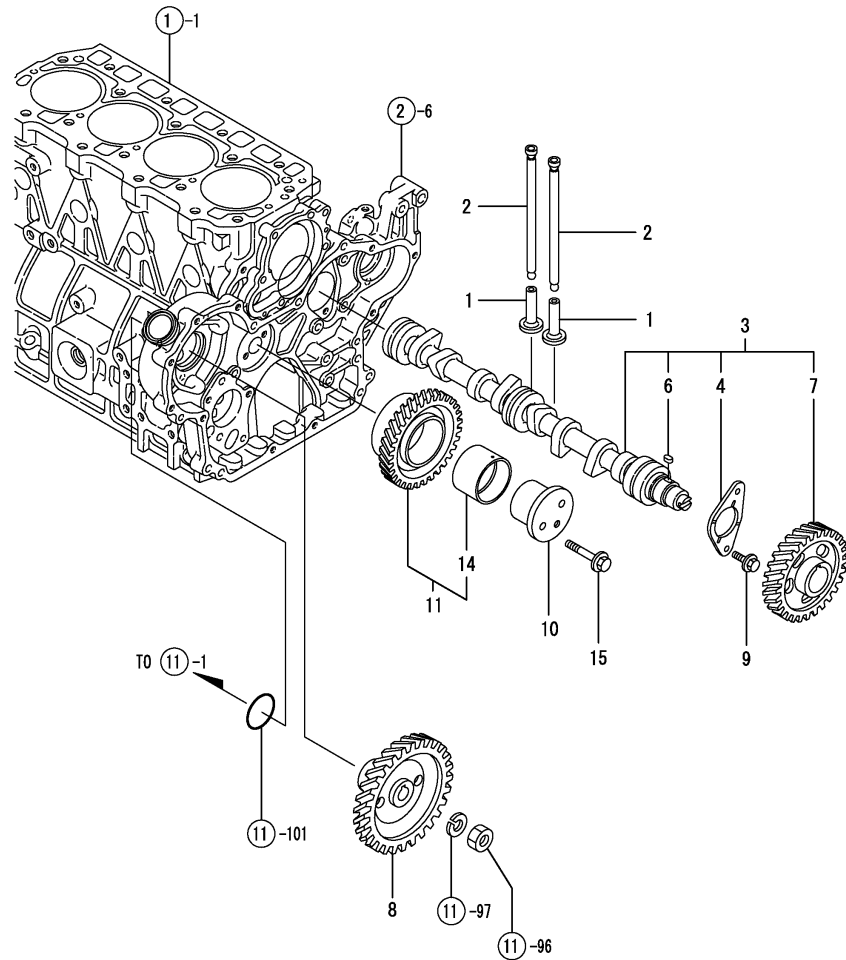


Fig.7. CAMSHAFT & DRIVING GEAR



(A)=4TNE98-NSR
(B)=
(C)=

(D)=
(E)=
(F)=

No.	Lev.	Parts No.	Description	Q'ty						I	R
				(A)	(B)	(C)	(D)	(E)	(F)		
1	1	129150-14200	TAPPET	8							
2	1	129900-14400	ROD, PUSH	8							
3	1	129900-14580	CAMSHAFT ASSY	1							
4	2	129150-02450	BEARING, THRUST	1							
6	2	22512-070140	KEY, 7X 14	1							
7	2	129900-14100	GEAR, CAMSHAFT	1							
8	1	129900-25900	GEAR, PUMP	1							
9	1	26106-080162	BOLT, M8X 16 PLATED	2							
10	1	129900-25060	SHAFT, IDLE	1							
11	1	129900-25100	GEAR ASSY, IDLE	1							
14	2	129150-25920	BUSH, IDLE GEAR	1							1
15	1	26106-080552	BOLT, M8X 55 PLATED	2							

Remarks
(1) REPAIR PART.

Fig.8. CRANKSHAFT & PISTON

(A)=4TNE98-NSR

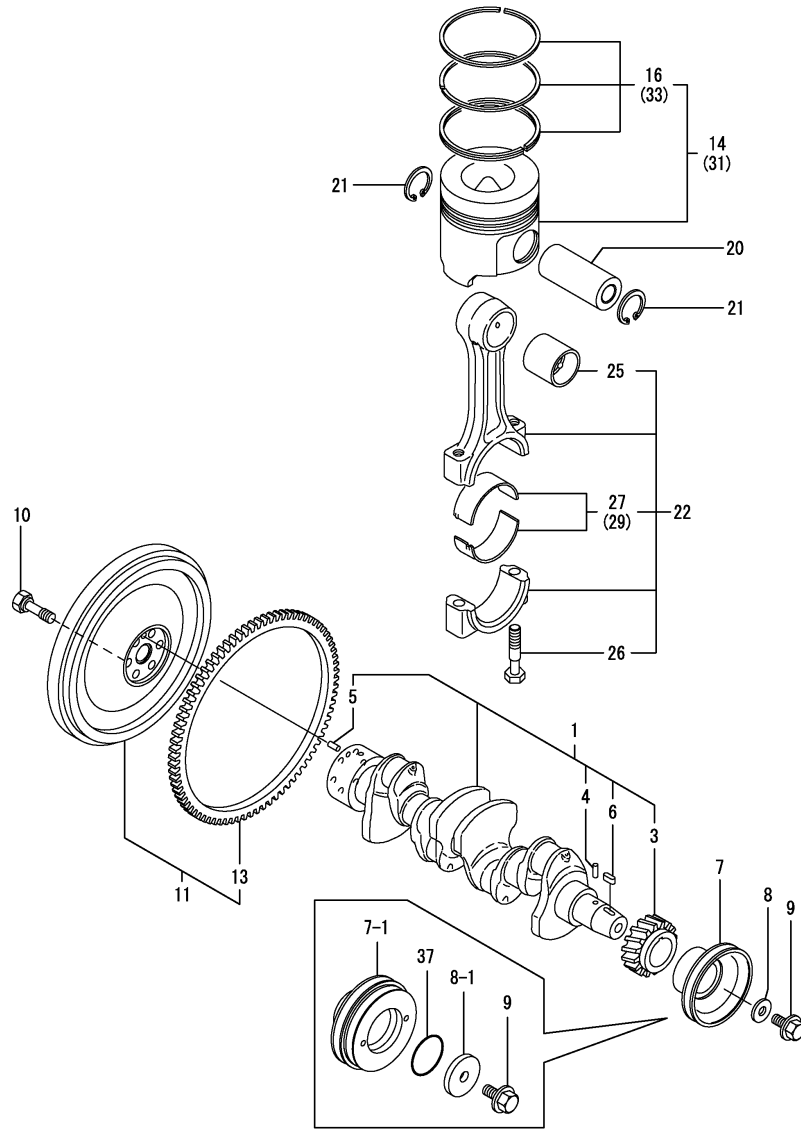
(B)=

(C)=

(D)=

(E)=

(F)=

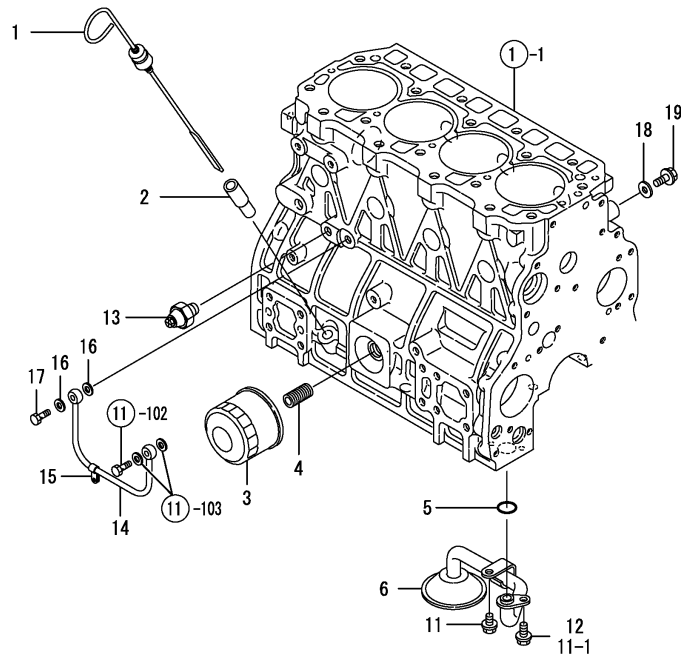


No.	Lev.	Parts No.	Description	Q'ty						I	R
				(A)	(B)	(C)	(D)	(E)	(F)		
1	1	129902-21000	CRANKSHAFT ASSY	1							
3	2	129900-21200	GEAR, CRANKSHAFT	1							
4	2	121850-21290	PIN	1							
5	2	121850-21920	PIN, M10X22	1							
6	2	22512-070140	KEY, 7X 14	1							
7	1	129900-21660	V-PULLEY, 130	1							
7-1	1	129957-21650	V-PULLEY	1							N
(A=E15623)											
8	1	129900-21640	WASHER	1							
8-1	1	129960-21640	WASHER	1							N
(A=E15623)											
9	1	121850-21680	BOLT	1							
10	1	121850-21130	BOLT, FLYWHEEL	6							
11	1	129953-21581	FLYWHEEL ASSY	1							
13	2	129900-21600	GEAR, RING	1							
14	1	129902-22080	PISTON ASSY, DI	4							
16	2	129903-22050	RING SET, PISTON	4							
20	1	120130-22301	PIN, PISTON	4							
21	1	22252-000300	RING, 30	8							
22	1	129900-23000	ROD ASSY, CONNECTING	4							
22-1	1	129900-23001	ROD ASSY, CONNECTING	4							N
(A=E25842)											
25	2	129900-23910	BEARING, PISTON PIN	4							1
25-1	2	129900-23911	BEARING, PISTON PIN	4							N 1
(A=E25842)											
26	2	129900-23200	BOLT, CONNECTING ROD	8							
27	2	129900-23600	BEARING, CRANK PIN	4							
29	1	129900-23610	BEARING, 0.25 US	4							2
31	1	129902-22900	PISTON ASSY, 0.25 OS	4							3
33	2	129903-22950	RING SET, 0.25 OS	4							3
37	1	24341-000530	O-RING, 1AS53.0	1							W
(A=E15623)											

Remarks

- (1) REPAIR PART.
- (2) UNDER-SIZE(U.S=0.25)PART.
- (3) OVER-SIZE(O.S=0.25)PART.

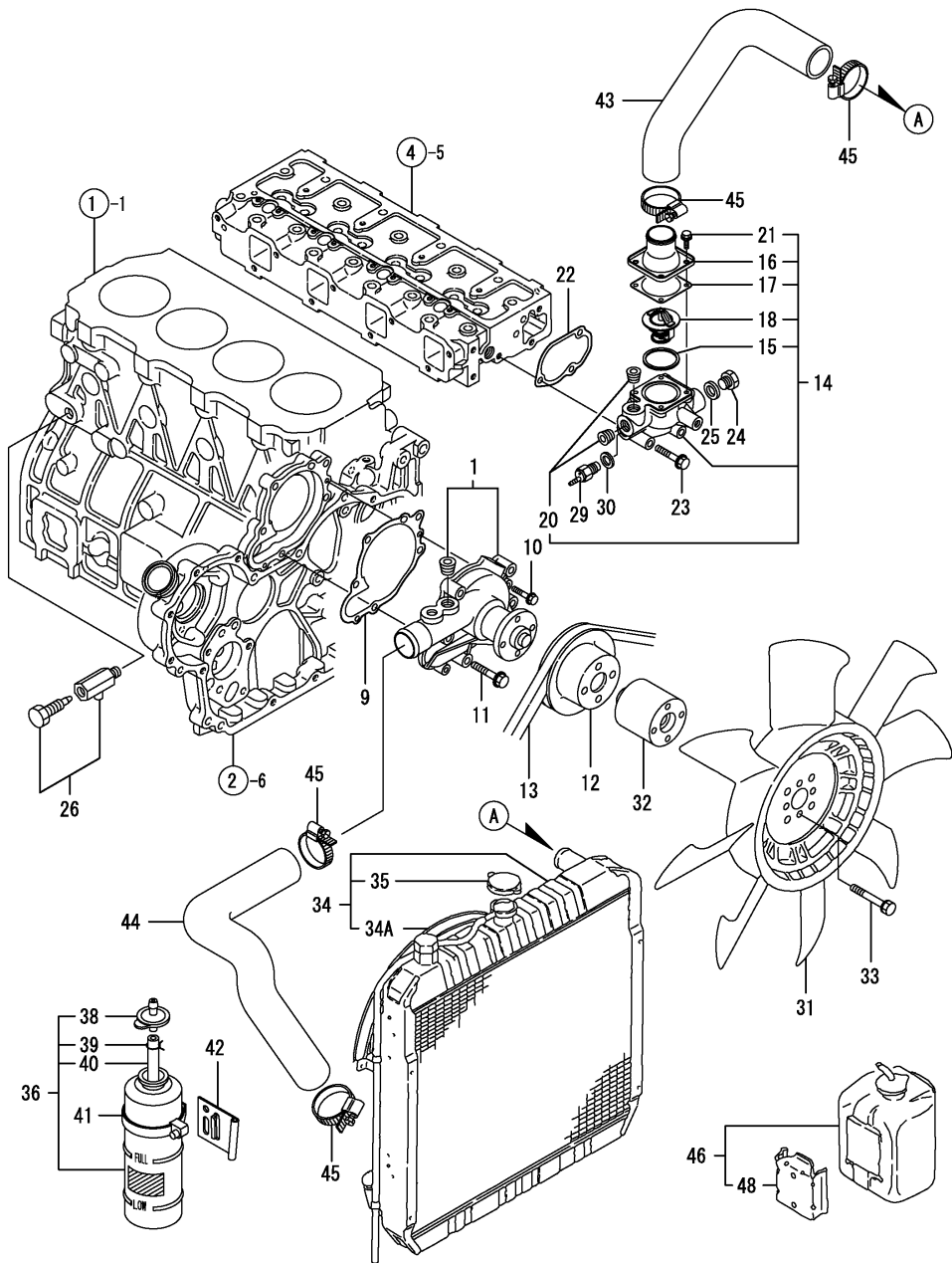
Fig.9. LUB.OIL SYSTEM



No.	Lev.	Parts No.	Description	Q'ty						I	R
				(A)	(B)	(C)	(D)	(E)	(F)		
1	1	129900-34800	DIPSTICK, OIL	1							
2	1	121520-34810	GUIDE, DIPSTICK	1							
3	1	129150-35153	FILTER 80X80L	1							1
4	1	119000-35140	BOLT, FILTER	1							
5	1	129900-32030	O-RING, P20	1							
6	1	129900-35000	PIPE ASSY, OIL INLET	1							
11	1	26106-080122	BOLT, M8X 12 PLATED	1							
11-1	1	26106-080122	BOLT, M8X 12 PLATED	2							K
(A=FROM 1ST)											
12	1	26106-080162	BOLT, M8X 16 PLATED	1							Z
(A=FROM 1ST)											
13	1	121252-39450	SWITCH, 0.5KG	1							
14	1	129900-39350	PIPE, OIL	1							
14-1	1	129900-39351	PIPE ASSY, OIL	1							N
(A=E17744)											
15	1	23297-060081	CLAMP, A6X 8	1							
16	1	23414-080000	GASKET, 8X1.0	2							
17	1	23857-030000	BOLT, JOINT 3	1							
18	1	22190-080002	WASHER, SEAL 6	1							
19	1	26106-080122	BOLT, M8X 12 PLATED	1							

Remarks
(1) REPAIR PART.

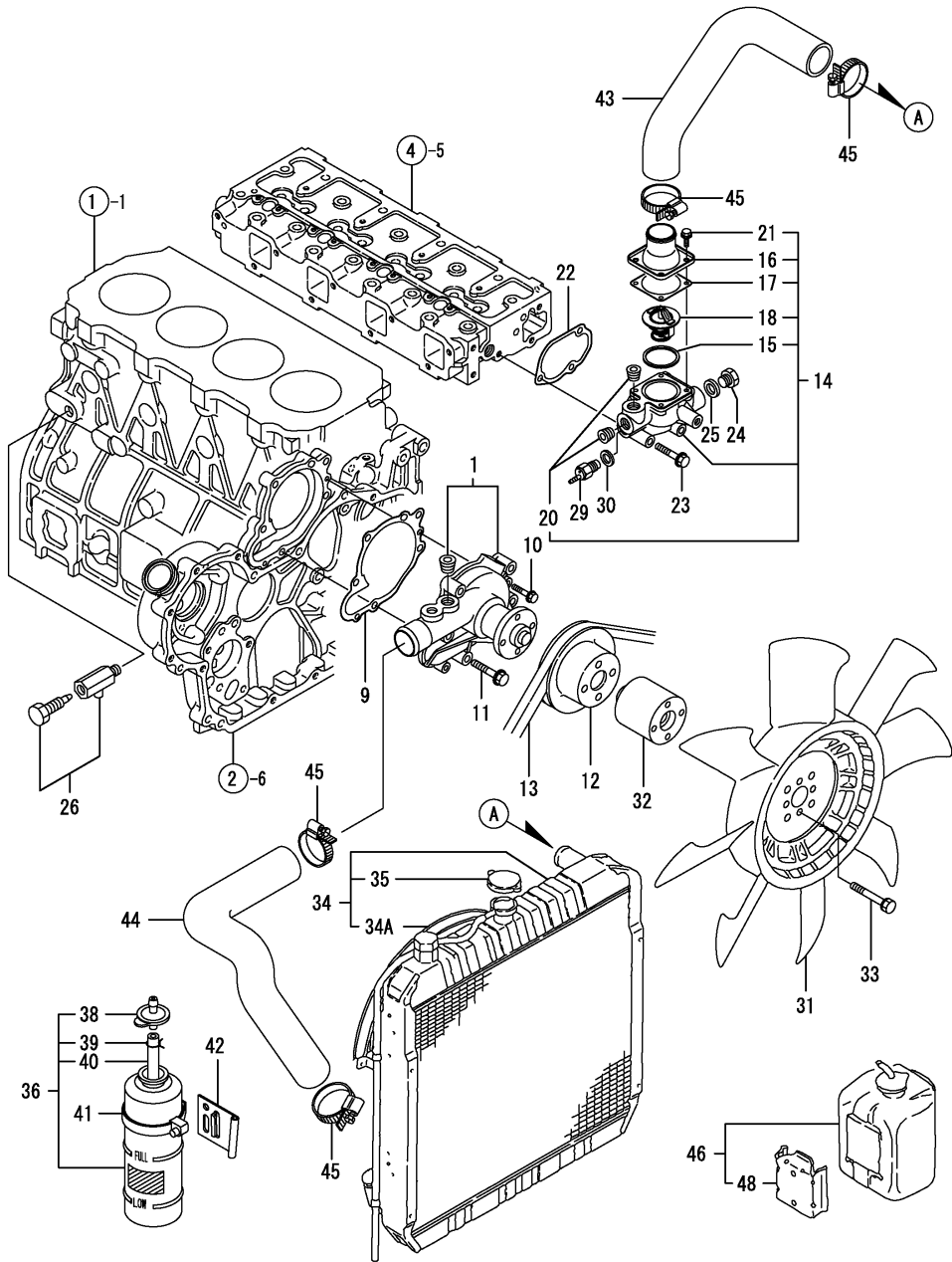
Fig.10. COOLING WATER SYSTEM



No.	Lev.	Parts No.	Description	Q'ty						I	R
				(A)	(B)	(C)	(D)	(E)	(F)		
1	1	129900-42001	PUMP ASSY, WATER	1							
1-1	1	129900-42002	PUMP ASSY, WATER	1							N
(A=E25842)											
9	1	129900-42020	GASKET, WATER PUMP	1							
10	1	26106-060302	BOLT, M6X 30 PLATED	2							
11	1	26106-080552	BOLT, M8X 55 PLATED	5							
12	1	129900-42461	V-PULLEY	1							
13	1	171087-42280	V-BELT, A44	1							
13-1	1	25152-004400	V-BELT, A44	1							N
(A=E16287)											
14	1	129900-49860	CASE ASSY,THERMOSTAT	1							
14-1	1	129900-49861	CASE ASSY,THERMOSTAT	1							N
(A=E16287)											
15	2	121850-49550	GASKET, THERMOSTAT	1							
16	2	121850-49530	COVER, THERMOSTAT	1							
16-1	2	129916-49530	COVER, THERMOSTAT	1							N
(A=E16287)											
17	2	121850-49540	GASKET, THERMOSTAT	1							
18	2	121850-49810	THERMOSTAT, 71	1							
20	2	23871-030000	PLUG, R03	2							
20-1	2	23875-030000	PLUG, R03	2							N
(A=E16287)											
21	2	26106-060142	BOLT, M6X 14 PLATED	4							
21-1	2	26106-060202	BOLT, M6X 20 PLATED	4							N
(A=E16287)											
22	1	129900-49870	GASKET	1							
23	1	26106-080602	BOLT, M8X 60 PLATED	3							
24	1	121450-42450	PLUG, M16	1							
25	1	124465-44950	GASKET, 16	1							
26	1	119620-49290	COCK ASSY, 1/4	1							
29	1	121250-44901	SWITCH, 110	1							
30	1	124465-44950	GASKET, 16	1							
31	1	119130-44740	FAN, COOLING D=410	1							
32	1	119141-44760	SPACER, FAN	1							
33	1	26013-080552	BOLT, M8X 55	4							
34	1	171093-44500	RADIATOR	1							
34A	2	X2421397350	PROTECTOR, FAN	1							
35	2	119259-44570	CAP, RADIATOR	1							
36	1	124450-44510	TANK ASSY, SUB	1							Z
(A=E02836)											
38	2	124450-44530	CAP	1							Z
(A=E02836)											
39	2	124450-44560	RETAINER	1							Z
(A=E02836)											
40	2	23061-070230	PIPE, 7X 230	1							Z
(A=E02836)											
41	1	124450-44550	BAND	1							Z
(A=E02836)											
42	1	121256-44600	BRACKET, SUB TANK	1							Z
(A=E02836)											
43	1	129951-49010	PIPE, WATER	1							

N:Old $\xrightarrow{\text{Yes}}$ New, Q:Old $\xrightarrow{\text{No}}$ New, R:Old $\xrightarrow{\text{Yes}}$ New, S:Old $\xrightarrow{\text{No}}$ New, W:Add, Z:Discontinued, F:Interchangeable by set, K:Q'ty Change
 ++ CONTINUE ++
 Copyright (C) YANMAR CO., LTD. All Rights Reserved.

Fig.10. COOLING WATER SYSTEM



(A)=4TNE98-NSR
(B)=
(C)=

(D)=
(E)=
(F)=

No.	Lev.	Parts No.	Description	Q'ty						I	R
				(A)	(B)	(C)	(D)	(E)	(F)		
44	1	129911-49020	PIPE, WATER	1							
45	1	23000-054000	CLAMP, 54	4							
46	1	720445-44200	TANK ASSY, SUB	1							W
(A=E02836)											
48	2	120445-44540	SUPPORT	1							W
(A=E02836)											

Fig.11. FUEL INJECTION PUMP

(A)=4TNE98-NSR

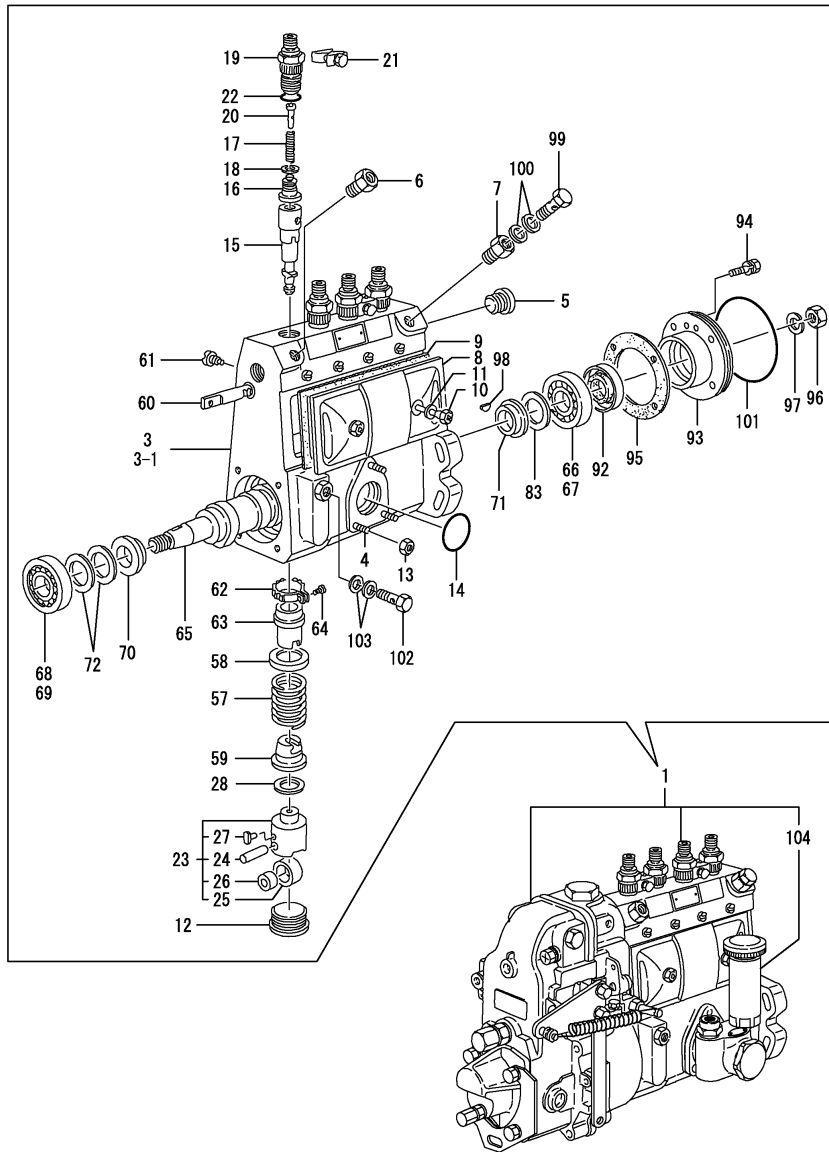
(B)=

(C)=

(D)=

(E)=

(F)=



No.	Lev.	Parts No.	Description	Q'ty						I	R
				(A)	(B)	(C)	(D)	(E)	(F)		
1	1	129955-51010	PUMP ASSY, INJECTION	1							1
1-1	1	129955-51011	PUMP ASSY, INJECTION	1							N 1
(A=E18920)											
3	2	X1310641621	FLANGED HOUSING	1							
3-1	2	X1310642220	FLANGED HOUSING	1							S
(A=E18920)											
4	2	X0290406020	STUD		3						
5	2	X1340260000	PLUG		1						
6	2	X1310022000	CAP		1						
7	2	X1310022000	CAP		1						
8	2	X1310286220	COVER		1						
9	2	X1310111900	GASKET		1						
10	2	X1310171000	SCREW		2						
11	2	X0293406020	GASKET		2						
12	2	X1310341401	PLUG		4						
13	2	X1392060400	NUT		3						
14	2	X0296331010	O-RING		1						
15	2	X1311523420	PLUNGER		4						
16	2	X1311607920	DELIVERY VALVE		4						
17	2	X1311123500	SPRING		4						
18	2	X1311151600	GASKET		4						
19	2	X1311167600	HOLDER		4						
20	2	X1311172300	STOPPER		4						
21	2	X1311220520	PLATE		2						
22	2	X0296320030	O-RING, 21X17X2		4						
23	2	X1312000220	TAPPET		4						
24	3	X1312030200	PIN		4						
25	3	X1312041000	ROLLER		4						
26	3	X1312050500	BUSH		4						
27	3	X1312060200	GUIDE		4						
28	2	X0299981020	SHIM		1						W
(A=E18920)											
57	2	X1312152500	SPRING		4						
58	2	X1312160100	SEAT, SPRING		4						
59	2	X1312170200	SEAT, SPRING		4						
60	2	X1312540600	RACK, CONTROL		1						
61	2	X1312260300	SCREW		1						
62	2	X1312400100	PINION		4						
63	2	X1312410100	SLEEVE, CONTROL		4						
64	2	X1312420100	SCREW		4						
65	2	X1313612700	CAMSHAFT		1						
66	2	X0166402030	BEARING		1						
67	2	X0282020020	BEARING		1						
68	2	X0166302030	BEARING		1						
69	2	X0282017020	BEARING		1						
70	2	X1313020300	RING		1						
71	2	X1313021000	RING		1						
72	2	X0299981700	SHIM		1						W
(A=E18920)											
83	2	X0299982020	SHIM		1						W
(A=E18920)											

Remarks

(1) GOVERNOR (FIG. NO. 12) & FEED PUMP (FIG. NO. 13) IS INCORPORATED IN THIS FUEL INJECTION PUMP (REF. NO. 1, 1-1).

Fig.11. FUEL INJECTION PUMP

(A)=4TNE98-NSR

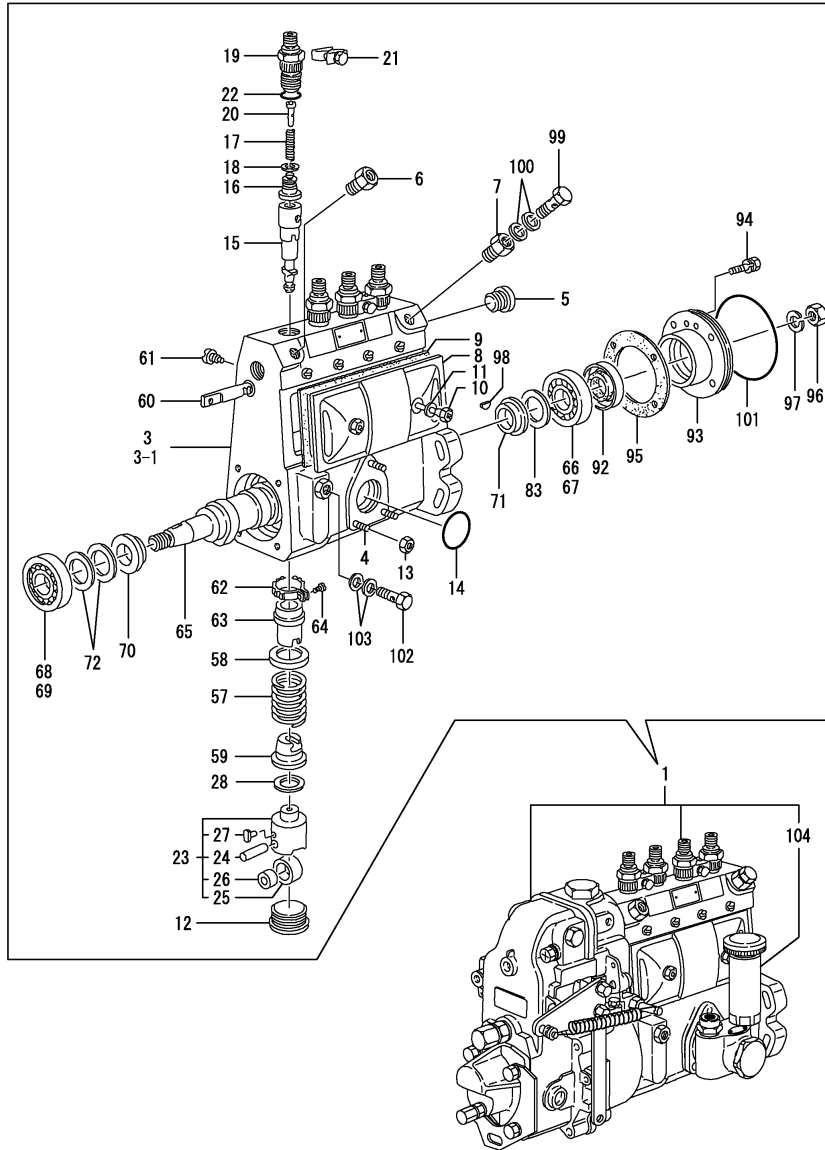
(B)=

(C)=

(D)=

(E)=

(F)=



No.	Lev.	Parts No.	Description	Q'ty						I	R
				(A)	(B)	(C)	(D)	(E)	(F)		
92	2	X0296220190	SEAL, D30/20 T=6	1							
93	2	X1313301800	COVER	1							
94	2	X0200062040	BOLT	4							
95	2	X1313211900	GASKET	1							
96	2	X0131214140	NUT	1							
97	2	X0293214010	SPRING WASHER	1							
98	2	X0294704030	WOODRUFF KEY	1							
99	2	X0297314680	EYE BOLT	1							
100	2	X0265141840	GASKET	2							
101	2	X0296375020	O-RING	1							
102	2	X0297310120	EYE BOLT	1							
103	2	X0265101340	GASKET	2							
104	2	129900-52010	PUMP ASSY, FUEL FEED	1							

Remarks

(1) GOVERNOR(FIG.NO.12) & FEED PUMP (FIG.NO.13) IS INCORPORATED IN THIS FUEL INJECTION PUMP (REF.NO.1,1-1).

Fig.12. GOVERNOR

(A)=4TNE98-NSR

(B)=

(C)=

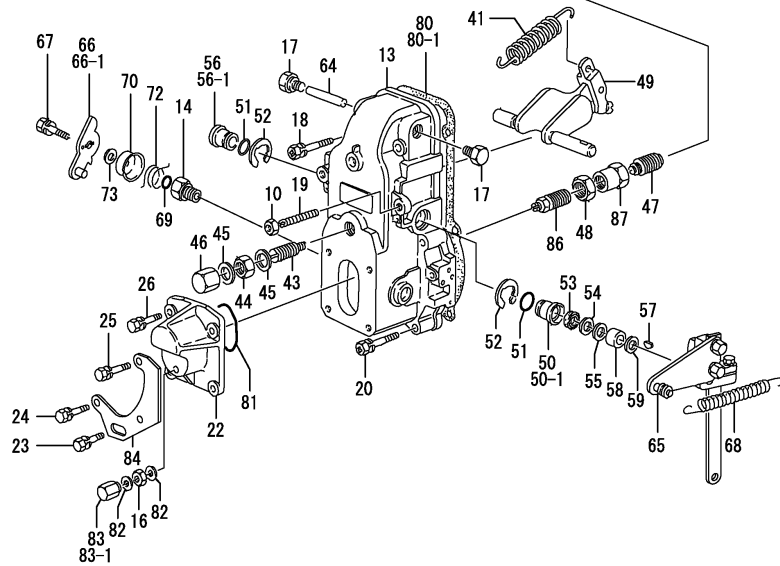
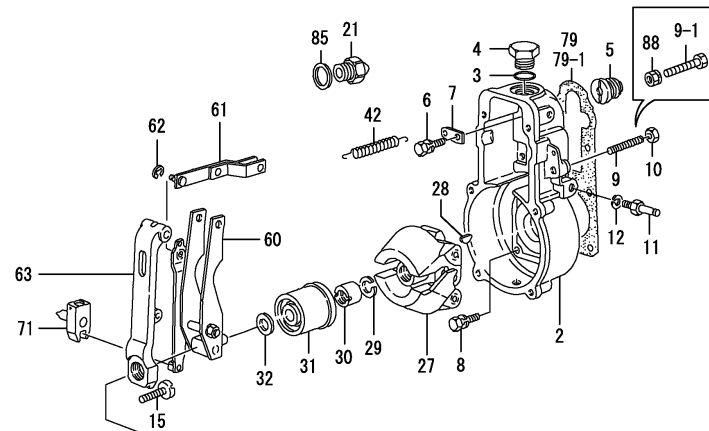
(D)=

(E)=

(F)=

Qty

I R



No.	Lev.	Parts No.	Description	(A)	(B)	(C)	(D)	(E)	(F)	I	R
2	2	X1540006400	FLANGED HOUSING	1							
3	2	X0296325070	O-RING	1							
4	2	X1540072900	PLUG	1							
5	2	X1540070200	ADAPTOR	1							
6	2	X0200181840	BOLT	1							
7	2	X1543501900	PLATE	1							
8	2	X0290106810	BOLT	6							
9	2	X1540100100	SCREW	1							
9-1	2	X1540130600	BOLT	1							S
(A=E18920)											
10	2	X1540110100	NUT	2							
10-1	2	X1540110100	NUT	1							K
(A=E18920)											
11	2	X1540132320	BOLT	1							
12	2	X0141108440	SPRING WASHER	1							
13	2	X1545001020	COVER	1							
14	2	X1543210400	BUSH	1							
15	2	X1540313000	SCREW	1							
16	2	X1392060600	NUT	1							
17	2	X1540360300	PLUG	2							
18	2	X0201065040	BOLT	2							
19	2	X1540100200	SCREW	1							
20	2	X0201063840	BOLT	4							
21	2	X1530205220	LIMITER	1							
22	2	X1540635100	COVER	1							
23	2	X0290206260	BOLT	1							
24	2	X0290206260	BOLT	1							
25	2	X0200062040	BOLT	1							
26	2	X0200061640	BOLT	1							
27	2	X1541010020	FLYWAIGHT ASSY.	1							
28	2	X0258031610	WOODRUFF KEY	1							
29	2	X0293212020	SPRING WASHER	1							
30	2	X0292312030	NUT	1							
31	2	X1541230120	SLEEVE	1							
32	2	X0299981000	SHIM	1							W
(A=EXXX)											
41	2	X1541502900	SPRING	1							
42	2	X1541540701	SPRING	1							
43	2	X1541580920	CAPSULE, SPRING	1							
44	2	X1540111700	NUT	1							
45	2	X0265121540	GASKET	2							
46	2	X1541591200	NUT, CAP	1							
47	2	X1541856120	SPRING	1							
48	2	X0292016080	NUT	1							
49	2	X1542006920	LEVER	1							
50	2	X1542043000	BUSH	1							
50-1	2	X1542044300	BUSH	1							S
(A=E18920)											
51	2	X0296318020	O-RING	2							
52	2	X0160101640	RING, SNAP	2							
53	2	X1396110000	SEAL, OIL	1							

Remarks

* THIS FIGURE(GOVERNOR ASSY)IS INCORPORATED IN THE FUEL INJECTION PUMP ASSY(FIG.11).

Fig.12. GOVERNOR

(A)=4TNE98-NSR

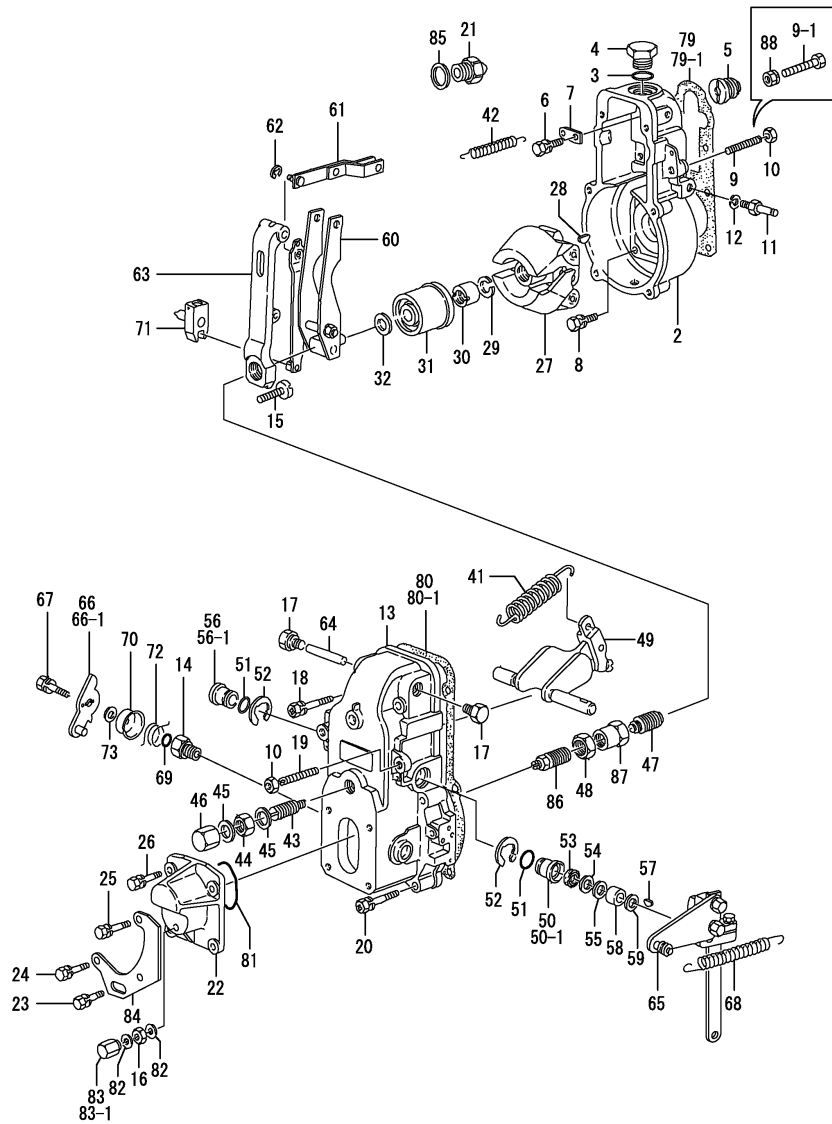
(B)=

(C)=

(D)=

(E)=

(F)=

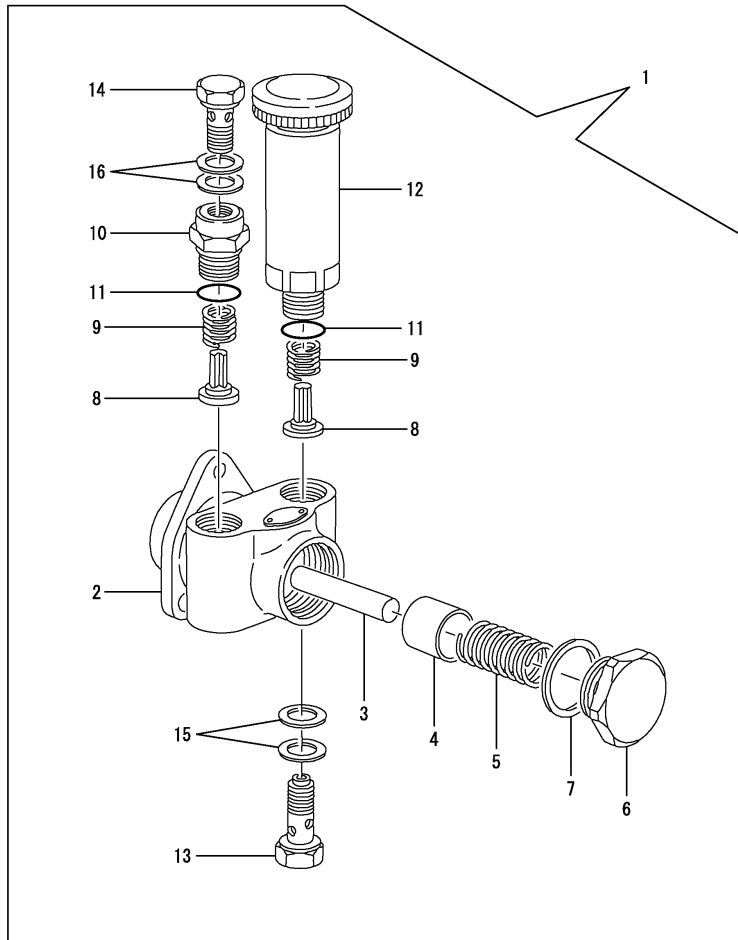


No.	Lev.	Parts No.	Description	Q'ty						I	R
				(A)	(B)	(C)	(D)	(E)	(F)		
54	2	X1394110000	SHIM	1							
55	2	X0293111070	SHIM	1							
56	2	X1542043100	BUSH	1							
56-1	2	X1542044400	BUSH	1							S
(A=E18920)											
57	2	X0258031310	WOODRUFF KEY	1							
58	2	X1542062800	COLLAR	1							
59	2	X1542060200	WASHER	1							
60	2	X1542163820	LEVER ASSY, GUIDE	1							
61	2	X1542303920	LINK	1							
62	2	X0160100540	RING, SNAP	1							
63	2	X1542364100	LEVER, TENSION	1							
64	2	X1542370100	PIN	1							
65	2	X1543956420	LEVER	1							
66	2	X1543829320	LEVER	1							
66-1	2	X1543834920	LEVER	1							S
(A=E18920)											
67	2	X0200061640	BOLT	1							
68	2	X1543142600	SPRING	1							
69	2	X0296310030	O-RING	1							
70	2	X1543220100	CAP	1							
71	2	X1543265020	LEVER ASSY	1							
72	2	X1543277400	SPRING	1							
73	2	X0299981040	SHIM	1							W
(A=E18920)											
79	2	X1543507700	GASKET	1							
79-1	2	X1543900000	GASKET	1							S
(A=E18920)											
80	2	X1543507800	GASKET	1							
80-1	2	X1543900300	GASKET	1							S
(A=E18920)											
81	2	X0296352020	O-RING	1							
82	2	X0265061040	GASKET	2							
83	2	X1540351600	CAP NUT	1							
83-1	2	X1540352500	NUT, CAP	1							S
(A=E18920)											
84	2	X1543587200	BRACKET	1							
85	2	X0265182240	GASKET	1							
86	2	X1541883320	SPRING	1							
87	2	X0292016010	NUT	1							
88	2	X1540112300	NUT	1							W
(A=E18920)											

Remarks

* THIS FIGURE(GOVERNOR ASSY)IS INCORPORATED IN THE FUEL INJECTION PUMP ASSY(FIG.11).

Fig.13. FEED PUMP



(A)=4TNE98-NSR
(B)=
(C)=

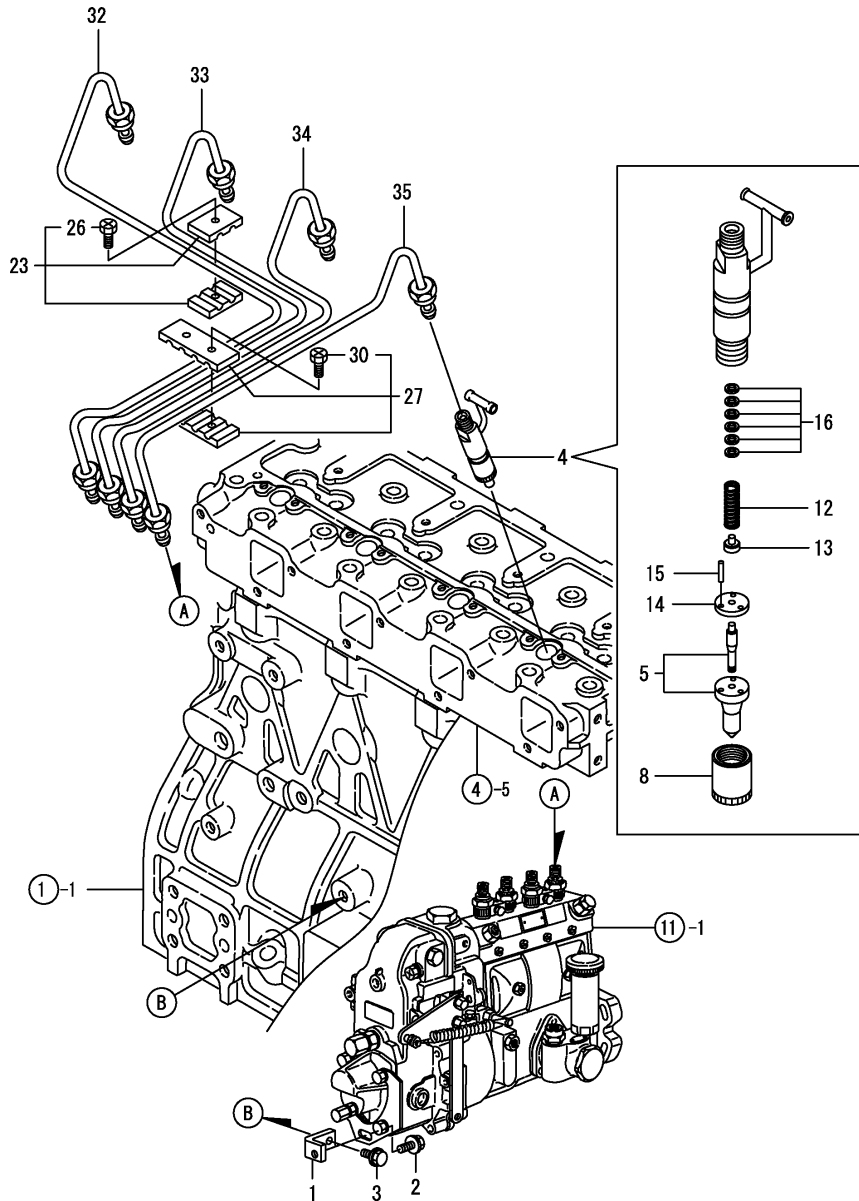
(D)=
(E)=
(F)=

No.	Lev.	Parts No.	Description	Q'ty						I	R
				(A)	(B)	(C)	(D)	(E)	(F)		
1	2	129900-52010	PUMP ASSY, FUEL FEED	1							
2	3	X1520620020	HOUSING	1							
3	3	X1520300200	ROD, PUSH	1							
4	3	X1521002301	PISTON	1							
5	3	X1521020400	SPRING	1							
6	3	X1521051500	PLUG	1							
7	3	X1395260000	GASKET	1							
8	3	X1521150500	VALVE	2							
9	3	X1521160200	SPRING	2							
10	3	X1521180900	ADAPTER	1							
11	3	X0296316060	O-RING	2							
12	3	X1522006720	PRIMING PUMP	1							
13	3	X1523005920	BOLT	1							
14	3	X0297314680	EYE BOLT	1							
15	3	X0265141840	GASKET	2							
16	3	X0265141840	GASKET	2							

Remarks

* THIS FIGURE(FEED PUMP ASSY)IS
INCORPORATED IN THE FUEL INJECTION
PUMP ASSY(FIG.11).

Fig.14. FUEL INJECTION VALVE



(A)=4TNE98-NSR

(B)=

(C)=

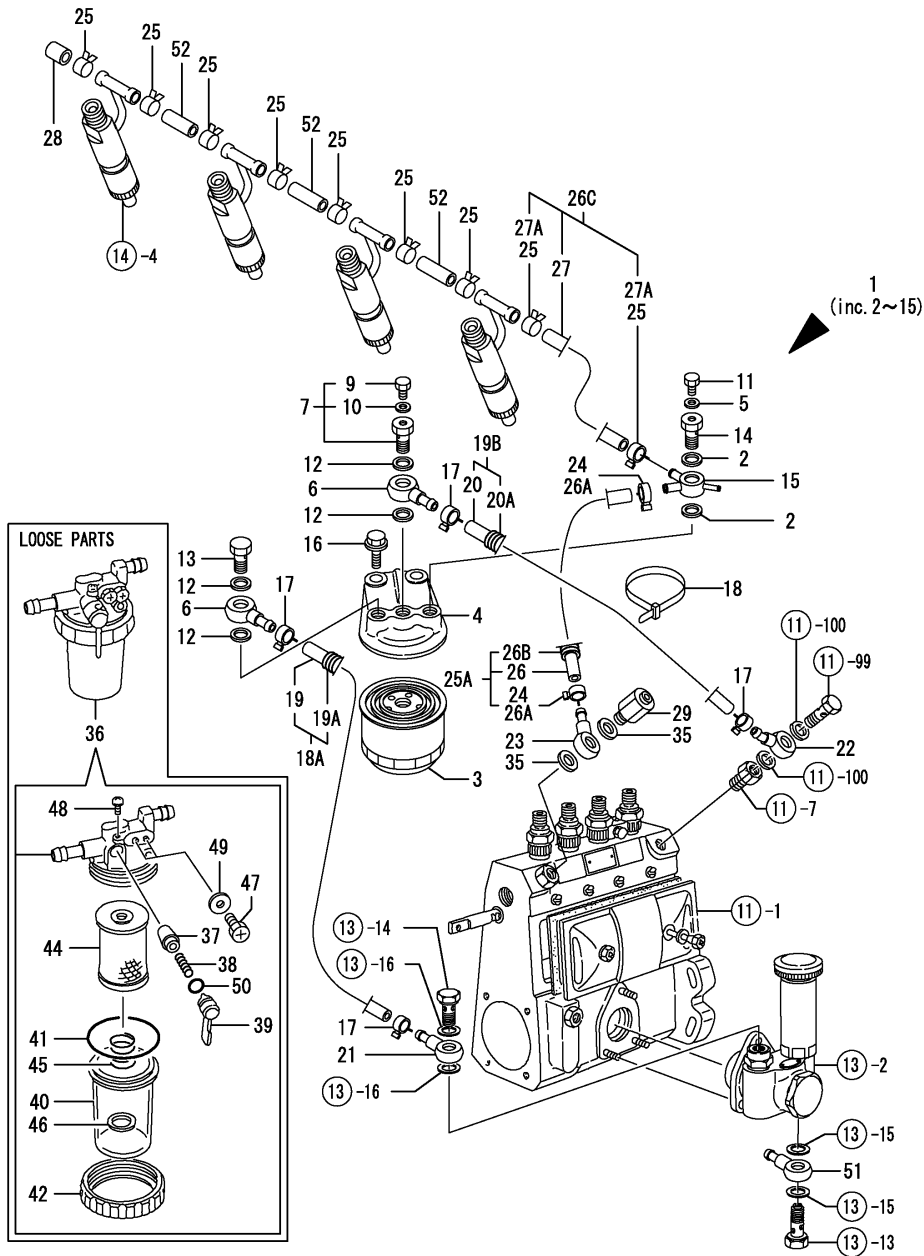
(D)=

(E)=

(F)=

No.	Lev.	Parts No.	Description	Q'ty						I	R
				(A)	(B)	(C)	(D)	(E)	(F)		
1	1	129900-01950	RETAINER	1							
2	1	26106-100142	BOLT, M10X 14 PLATED	1							
3	1	26106-080202	BOLT, M8X 20 PLATED	1							
4	1	729902-53100	VALVE ASSY,INJECTION	4							
5	2	129902-53000	VALVE ASSY,INJECTION	4							
8	2	114250-53080	NUT, NOZZLE D16.95	4							
12	2	114250-53120	SPRING, NOZZLE	4							
13	2	114250-53130	SEAT, SPRING	4							
14	2	114250-53140	PLATE	4							
15	2	114250-53210	PIN	8							
16	2	114250-53400	SHIM SET	4							
23	1	119305-59120	RETAINER, PIPE	2							
26	2	129150-59131	BOLT, M4X14	2							
27	1	129550-59120	RETAINER, PIPE	1							
30	2	129150-59131	BOLT, M4X14	2							
32	1	129902-59810	PIPE ASSY, INJECTION	1							
32-1	1	129910-59810	PIPE ASSY, INJECTION	1							R
(A=E07996)											
33	1	129902-59820	PIPE ASSY, INJECTION	1							
33-1	1	129910-59820	PIPE ASSY, INJECTION	1							R
(A=E07996)											
34	1	129902-59830	PIPE ASSY, INJECTION	1							
34-1	1	129910-59830	PIPE ASSY, INJECTION	1							R
(A=E07996)											
35	1	129902-59840	PIPE ASSY, INJECTION	1							
35-1	1	129910-59840	PIPE ASSY, INJECTION	1							R
(A=E07996)											

Fig.15. FUEL LINE



(A)=4TNE98-NSR

(B)=

(C)=

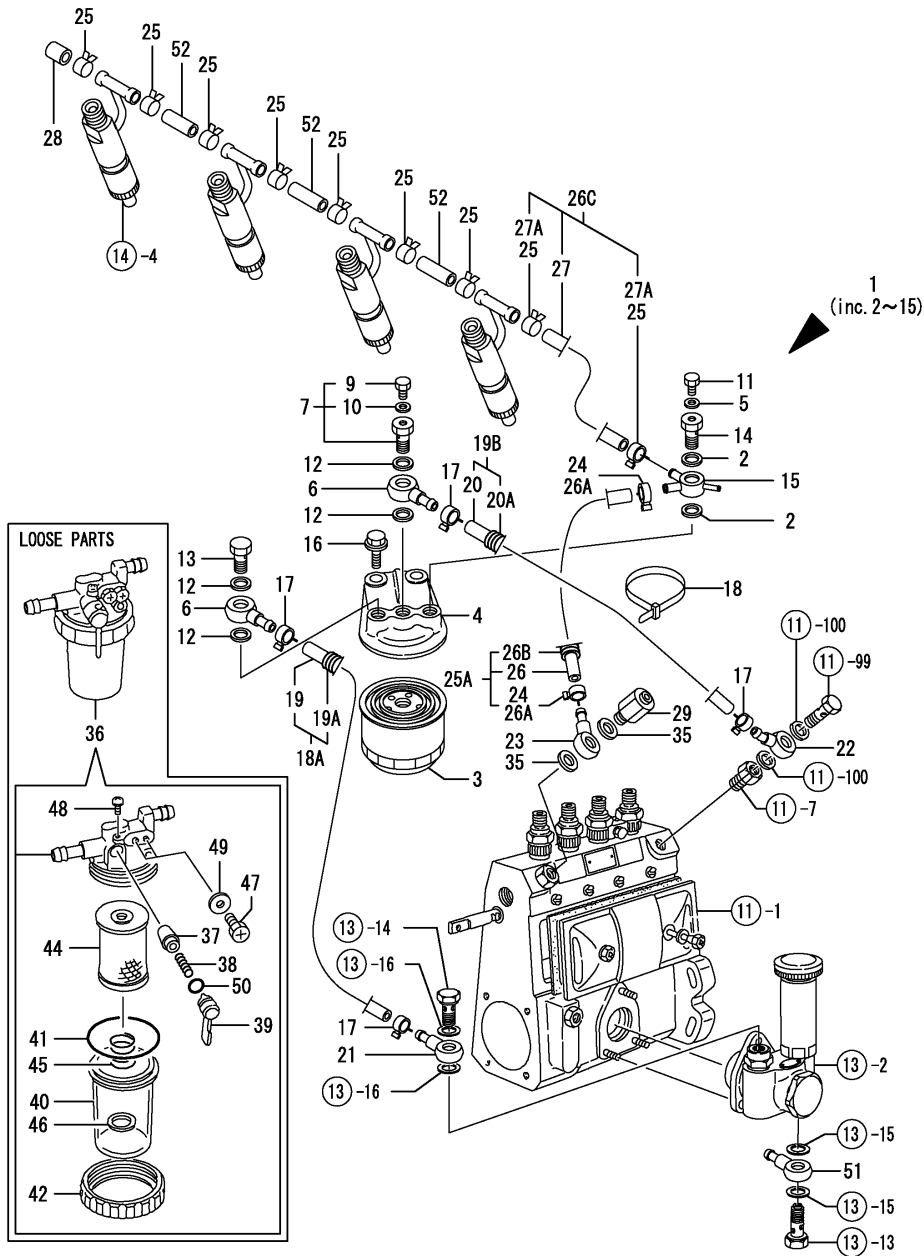
(D)=

(E)=

(F)=

No.	Lev.	Parts No.	Description	Q'ty						I	R
				(A)	(B)	(C)	(D)	(E)	(F)		
1	1	129982-55600 (A=E10624)	FILTER ASSY, FUEL	1							W
2	2	22190-140002	WASHER, SEAL 14	2							
3	2	119000-55600	FILTER, FUEL	1							
3-1	2	119000-55601 (A=E24949)	FILTER, FUEL	1							R
4	2	129470-55610	BODY, STRAINER	1							
5	2	23414-080000	GASKET, 8X1.0	1							
5-1	2	22190-080002 (A=E06434)	WASHER, SEAL 6	1							N
6	2	101304-59020	JOINT, PIPE 12	2							
6-1	2	129916-59020 (A=E22170)	JOINT, PIPE 12	2							R
7	2	103854-59191	BOLT ASSY, JOINT M12	1							
9	3	124060-59380	PLUG, 6	1							
10	3	22190-060002	WASHER, SEAL 6	1							
11	2	26106-080102	BOLT, M8X 10 PLATED	1							
12	2	22190-120002	WASHER, SEAL 12	4							
13	2	23857-060000	BOLT, JOINT 6	1							
14	2	129495-59300	BOLT, PIPE JOINT	1							
15	2	129980-59530	JOINT	1							
16	1	26106-100252	BOLT, M10X 25 PLATED	2							
17	1	124766-59050	CLIP, HOSE 12	4							
18	1	121855-59111	CLAMP, PIPE 610	2							
18-1	1	121750-59890 (A=E03778)	BAND, 140	1							N
18A	1	129957-59040 (A=E06170)	PIPE, FUEL	1							W
19	2	129335-59090	PIPE, FUEL D13X500	1							
19A	2	119560-59110 (A=E06170)	TUBE, CORRUGATED	1							W
19B	1	129957-59040 (A=E06170)	PIPE, FUEL	1							W
20	2	129335-59090	PIPE, FUEL D13X500	1							
20A	2	119560-59110 (A=E06170)	TUBE, CORRUGATED	1							W
21	1	119006-59910	JOINT, PIPE	1							
21-1	1	121250-49110 (A=E04906)	JOINT, PIPE	1							N
22	1	121855-59880	JOINT, PIPE	1							
22-1	1	129916-59870 (A=E22170)	JOINT, PIPE	1							R
23	1	121855-59880	JOINT, PIPE	1							
24	1	124766-59050 (A=E02836)	CLIP, HOSE 12	2							Z
25	1	124066-59100	CLIP, HOSE 8	9							
25-1	1	124066-59100 (A=E06718)	CLIP, HOSE 8	7							K
25A	1	129950-59311 (A=E02836)	PIPE, FUEL	1							W
26	2	105025-59560	PIPE, FUEL	1							

Fig.15. FUEL LINE



(A)=4TNE98-NSR

(B)=

(C)=

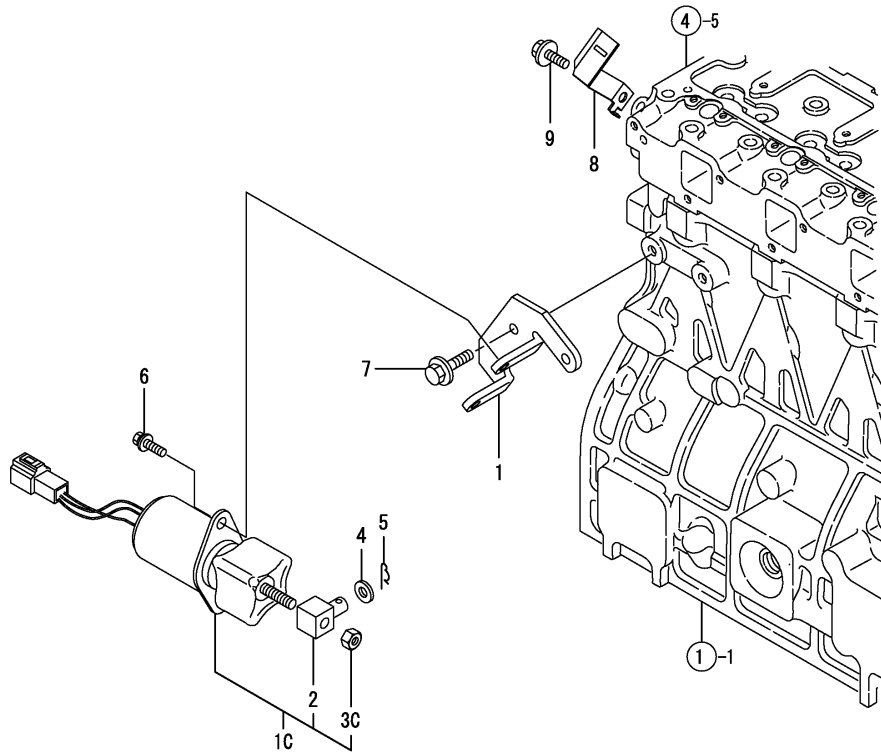
(D)=

(E)=

(F)=

No.	Lev.	Parts No.	Description	Qty						I	R	
				(A)	(B)	(C)	(D)	(E)	(F)			
26-1	2	105025-59580 (A=E02836)	PIPE, FUEL	1							N	
26A	2	124766-59050 (A=E02836)	CLIP, HOSE 12	2							W	
26B	2	129961-59110 (A=E02836)	TUBE, CORRUGATED	1							W	
26C	1	129915-59500 (A=E06718)	PIPE ASSY, RETURN	1							W	
27	2	105225-59120	PIPE, FUEL RETURN	1								
27-1	2	129915-59120 (A=E03293)	PIPE, FUEL RETURN	1							N	
27A	2	124066-59100 (A=E06718)	CLIP, HOSE 8	2							W	
28	1	129150-59580	CAP	1								
29	1	128300-59910	VALVE ASSY, OVERFLOW	1								
35	1	22190-140002	WASHER, SEAL 14	2								
36	1	121850-55800	SEPARATOR ASSY, WATER	1								
37	2	104200-55321	VALVE, TAPER	1								
38	2	104200-55330	SPRING, VALVE	1								
39	2	104200-55341	HANDLE	1								
40	2	121254-55510	COVER	1								
41	2	102103-55520	O-RING	1								
42	2	110250-55610	RING, RETAINING	1								
44	2	121850-55710	SCREEN	1								
45	2	121257-55720	SPRING	1								
46	2	121257-55731	FLOAT	1								
47	2	101720-55750	PLUG, 6	2								
48	2	104200-55750	SCREW, M4	1								
49	2	23418-060000	GASKET, 6X1.0	2								
50	2	24311-240100	O-RING, 1AP10A	1								
51	1	121855-59880	JOINT, PIPE	1								
51-1	1	129916-59870 (A=E22170)	JOINT, PIPE	1								R
52	1	121250-59550	PIPE, FUEL D8X120	3								

Fig.16. ENGINE STOP DEVICE

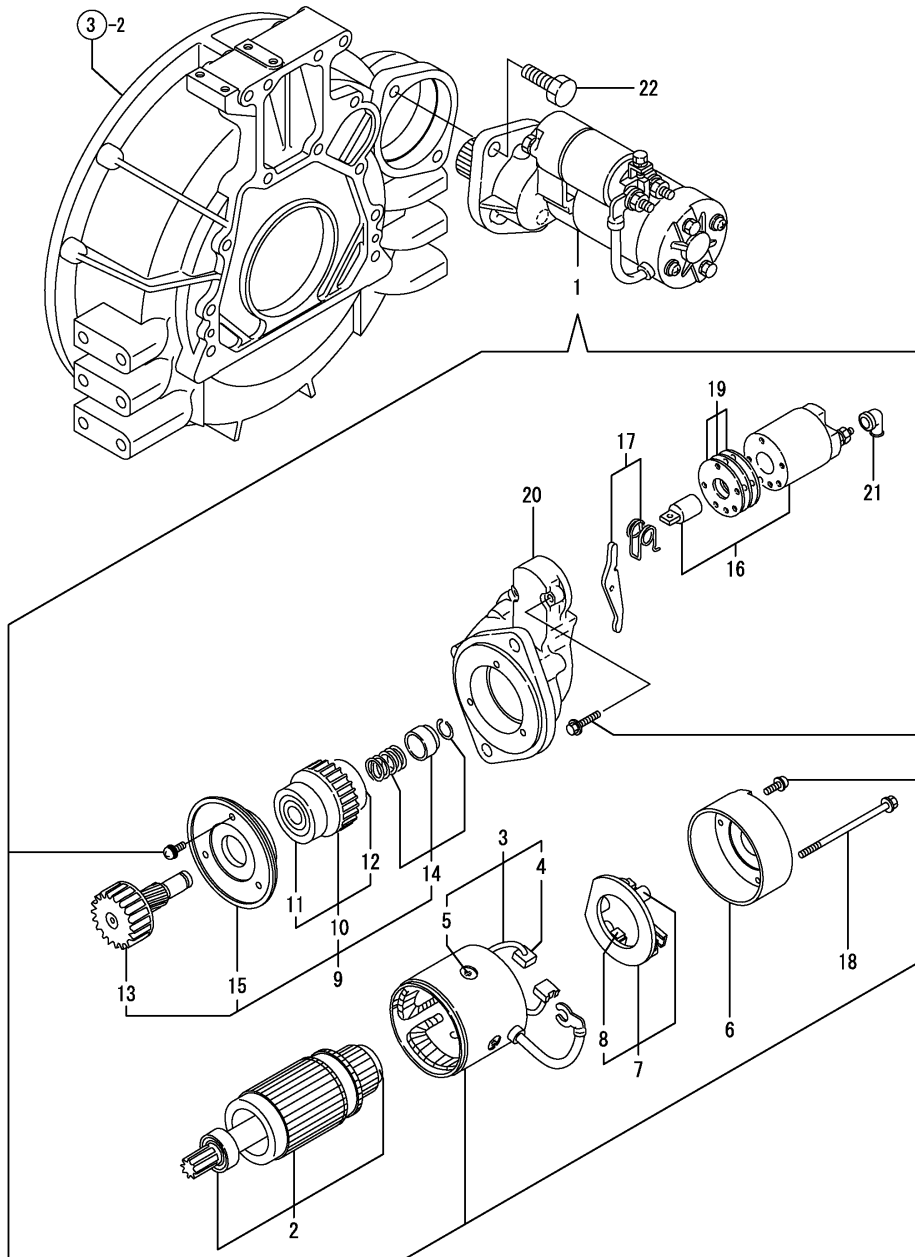


(A)=4TNE98-NSR
(B)=
(C)=

(D)=
(E)=
(F)=

No.	Lev.	Parts No.	Description	Q'ty						I	R
				(A)	(B)	(C)	(D)	(E)	(F)		
1	1	129915-66810	BRACKET, SOLENOID	1							
1-1	1	129953-66828	BRACKET, SOLENOID	1							N
(A=E18433)											
1C	1	129953-77810	SOLENOID ASSY	1							W
(A=E02677)											
1C-1	1	129953-77811	SOLENOID ASSY	1							N
(A=E04045)											
2	2	119620-66820	JOINT	1							
3C	2	26716-060002	NUT, M6	1							W
(A=E02677)											
4	1	22117-060000	WASHER, 6	1							
5	1	22360-060000	PIN, SNAP 6	1							
6	1	26106-060102	BOLT, M6X 10 PLATED	2							
6-1	1	26106-060142	BOLT, M6X 14 PLATED	2							N
(A=E18433)											
7	1	26106-080162	BOLT, M8X 16 PLATED	2							
8	1	129136-66852	SUPPORT	1							
9	1	26106-080122	BOLT, M8X 12 PLATED	1							

Fig.17. STARTING MOTOR



(A)=4TNE98-NSR

(B)=

(C)=

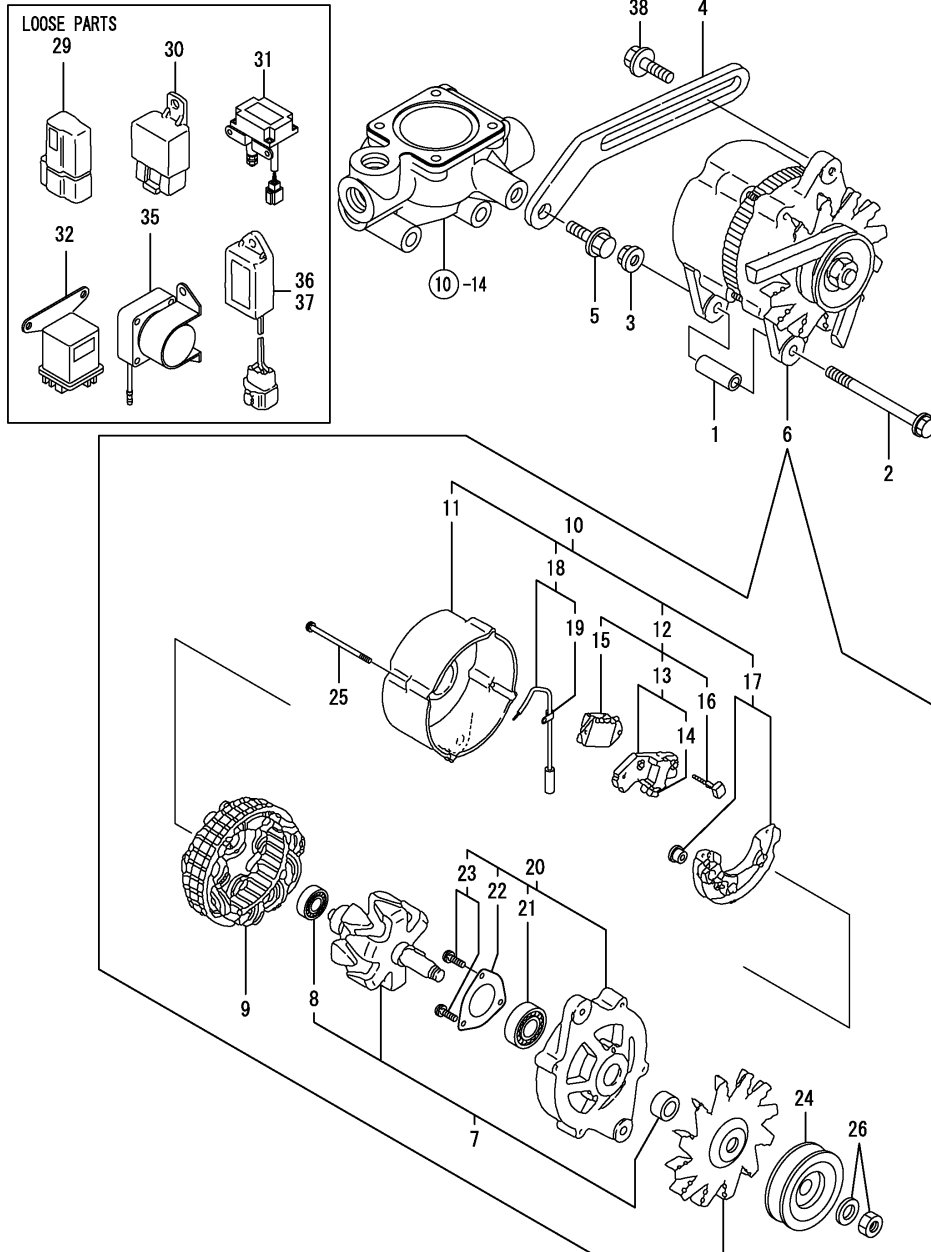
(D)=

(E)=

(F)=

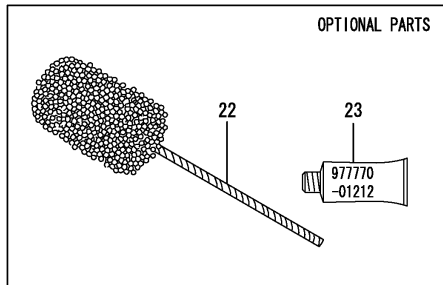
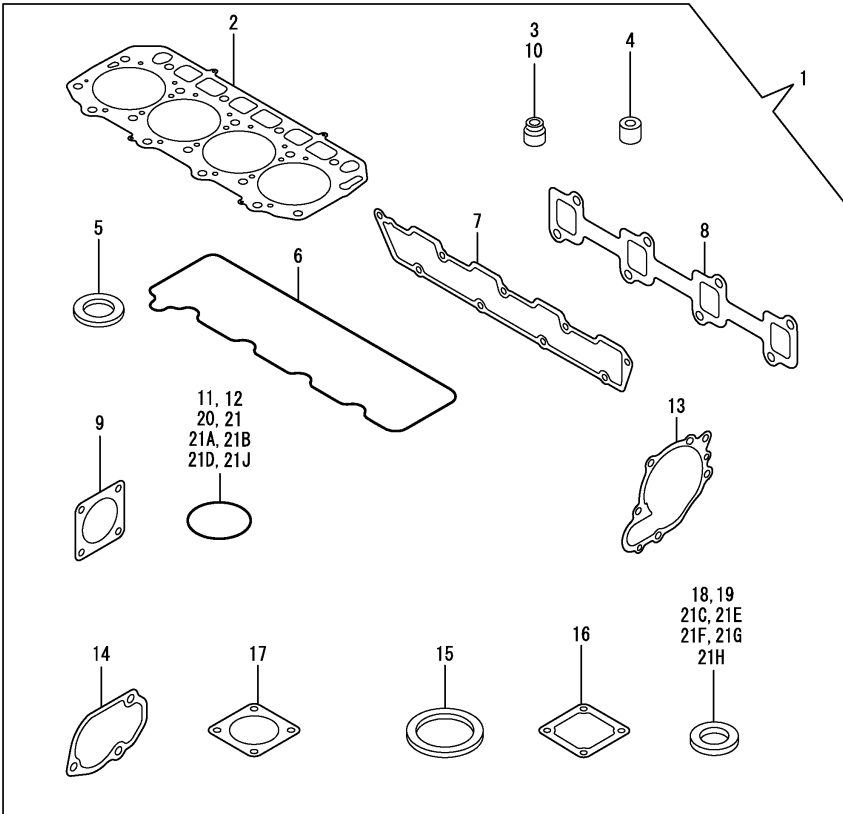
No.	Lev.	Parts No.	Description	Q'ty						I	R
				(A)	(B)	(C)	(D)	(E)	(F)		
1	1	129900-77010	STARTER(2.3KW	1							
2	2	129900-77400	ARMATURE ASSY	1							
3	2	129900-77440	COIL ASSY, FIELD	1							
4	3	129900-77450	BRUSH (+)	2							
5	3	171008-77450	SCREW	4							
6	2	129900-77460	COVER, REAR	1							
7	2	129900-77480	HOLDER ASSY, BRASH	1							
8	3	129900-77500	BRASH (-)	2							
9	2	129900-77510	PINION ASSY	1							
10	3	129900-77520	CLUTCH ASSY	1							
11	4	171008-77730	BALL BEARING (3)	1							
12	4	171008-77740	BALL BEARING (4)	1							
13	3	129900-77540	SHAFT, PINION	1							
14	3	129900-77550	STOPPER SET	1							
15	3	129900-77610	RETAINER, BEARING	1							
16	2	129900-77590	SWITCH ASSY,MAGNETIC	1							
16-1	2	129900-77591	SWITCH ASSY,MAGNETIC	1							N
(A=E05987)											
17	2	129900-77620	SHIFT LEVER SET	1							
18	2	129900-77640	BOLT, THROUGHT	2							
19	2	129900-77650	COVER ASSY, DUST	1							
20	2	129900-77710	HOUSING, GEARS	1							
21	2	171008-77750	COVER, M TERMINAL	1							
22	1	26116-120302	BOLT, M12X 30 PLATED	2							

Fig.18. GENERATOR



No.	Lev.	Parts No.	Description	Q'ty						I	R
				(A)	(B)	(C)	(D)	(E)	(F)		
1	1	129470-77340	PIECE, DISTANCE	1							
2	1	26116-101202	BOLT, M10X120 PLATED	1							
3	1	26366-100002	NUT, M10	1							
3-1	1	26306-100002	NUT, M10	1							N
		(A=E03177)									
4	1	119084-77330	ADJUSTER	1							
5	1	26014-080252	BOLT, M8X 25	2							
5-1	1	26014-080252	BOLT, M8X 25	1							K
		(A=E03177)									
6	1	129900-77210	ALTERNATOR	1							
7	2	129900-77300	ROTOR ASSY	1							
8	3	119129-77320	BALL BEARING	1							
9	2	129900-77310	STATOR ASSY	1							
10	2	129900-77320	COVER ASSY	1							
11	3	119129-77341	COVER, REAR	1							
12	3	129900-77350	BRUSH REGURATOR ASSY	1							
13	4	129900-77360	BRUSH ASSY	1							
14	4	129900-77370	BRUSH ASSY	2							
15	4	124080-77390	REGULATOR ASSY	1							
16	4	124080-77520	BOLT M5	2							
17	3	129900-77410	DIODE ASSY	1							
18	3	119129-77250	WIRE, LEAD	1							
19	4	119129-77260	CLAMP	1							
20	2	119129-77840	COVER ASSY, FRONT	1							
21	3	119129-77850	BALL BEARING	1							
22	3	119129-77870	RETAINER, BEARING	1							
23	3	26116-050122	BOLT, M5X 12 PLATED	3							
24	2	129535-77880	PULLEY	1							
25	2	119129-77890	BOLT, THROUGH	4							
26	2	119129-77900	NUT ASSY, PULLEY	1							
29	1	119643-66900	DIODE	2							Z
		(A=E02836)									
30	1	119247-77100	RELAY, SAFETY	1							Z
		(A=E02836)									
31	1	129136-77200	RELAY, SAFETY	1							
32	1	119650-77910	RELAY ASSY, GLOW	1							
35	1	129100-77910	RELAY, MAGNETIC	1							
36	1	119632-77920	TIMER	1							
36-1	1	129211-77920	TIMER	1							N
		(A=E11205)									
37	1	128300-77920	TIMER	1							
38	1	119810-77340	BOLT, ADJUSTER	1							W
		(A=E03177)									

Fig.19. GASKET SET



No.	Lev.	Parts No.	Description	Q'ty						I	R
				(A)	(B)	(C)	(D)	(E)	(F)		
1	1	729902-92600	GASKET SET	1							1
1-1	1	729902-92601	GASKET SET	1							N 1
(A=E06434)											
2	2	129902-01330	GASKET, HEAD	1							
3	2	124460-11340	SEAL, VALVE STEM	4							
4	2	119625-11870	PROTECTOR, NOZZLE	4							
5	2	119625-11880	SEAT, NOZZLE	4							
6	2	129900-11310	GASKET, BONNET	1							
7	2	129900-12050	GASKET, MANIFOLD	1							
8	2	129900-13251	GASKET	1							
9	2	129400-13201	GASKET, SILENCER	2							
10	2	121400-11340	SEAL, VALVE STEM	4							
11	2	129900-32030	O-RING, P20	2							
12	2	129900-32040	O-RING, P14	1							
13	2	129900-42020	GASKET, WATER PUMP	1							
14	2	129900-49870	GASKET	1							
15	2	121850-49550	GASKET, THERMOSTAT	1							
16	2	121850-77021	GASKET	1							
17	2	121850-49540	GASKET, THERMOSTAT	1							
18	2	23414-080000	GASKET, 8X1.0	3							
18-1	2	23414-080000	GASKET, 8X1.0	2							K
(A=E06434)											
19	2	124465-44950	GASKET, 16	2							
20	2	24311-000070	O-RING, 1AP7.0	1							
21	2	24311-000120	O-RING, 1AP12.0	3							
21A	2	24341-000240	O-RING, 1AS24.0	1							W
(A=FROM 1ST)											
21B	2	24321-000350	O-RING, 1AG35.0	1							W
(A=FROM 1ST)											
21B-1	2	24321-000350	O-RING, 1AG35.0	1							Z
(A=E25842)											
21C	2	22190-220002	WASHER, SEAL 22	1							W
(A=FROM 1ST)											
21D	2	24311-000320	O-RING, 1AP32.0	1							W
(A=FROM 1ST)											
21D-1	2	24311-000320	O-RING, 1AP32.0	2							K
(A=E25842)											
21E	2	22190-080002	WASHER, SEAL 6	1							W
(A=FROM 1ST)											
21E-1	2	22190-080002	WASHER, SEAL 6	2							K
(A=E06434)											
21F	2	22190-060002	WASHER, SEAL 6	1							W
(A=FROM 1ST)											
21G	2	22190-120002	WASHER, SEAL 12	4							W
(A=FROM 1ST)											
21H	2	22190-140002	WASHER, SEAL 14	4							W
(A=FROM 1ST)											
21J	2	24341-000530	O-RING, 1AS53.0	1							W
(A=E15623)											
22	1	129400-92450	HONE	1							1
23	1	977770-01212	GASKET, LIQUID	1							1

Remarks
(1) OPTIONAL PART.

Parts No. Index

Parts No.	Fig. No.	Ref. No.
101304-59020	15	6
101720-55750	15	47
102103-55520	15	41
103854-59191	15	7
104200-55321	15	37
104200-55330	15	38
104200-55341	15	39
104200-55750	15	48
105025-59560	15	26
105025-59580	15	26 -1
105225-59120	15	27
110250-55610	15	42
114250-53080	14	8
114250-53120	14	12
114250-53130	14	13
114250-53140	14	14
114250-53210	14	15
114250-53400	14	16
119000-35140	9	4
119000-55600	15	3
119000-55601	15	3 -1
119005-12060	5	8
		8 -1
119006-03090	4	1
119006-59910	15	21
119032-12020	5	7
119084-77330	18	4
119100-11330	4	50
119129-77250	18	18
119129-77260	18	19
119129-77320	18	8
119129-77341	18	11
119129-77840	18	20
119129-77850	18	21
119129-77870	18	22
119129-77890	18	25
119129-77900	18	26
119130-44740	10	31
119131-18320	6	4 -1
119141-44760	10	32
119247-77100	18	30
119259-44570	10	35
119305-59120	14	23
119560-59110	15	19 A
		20 A
119620-49290	10	26
119620-66820	16	2
119625-11870	4	19
	19	4
119625-11880	4	20

Parts No.	Fig. No.	Ref. No.
119625-11880	19	5
119625-11900	4	21
119632-77920	18	36
119640-01640	3	8
119643-66900	18	29
119650-77910	18	32
119810-77340	18	38
120130-22301	8	20
120445-44540	10	48
121023-01550	2	23
121027-11742	2	26
121027-11743	2	26 -1
121250-44901	10	29
121250-49110	15	21 -1
121250-59550	15	52
121252-39450	9	13
121254-55510	15	40
121256-44600	10	42
121257-55720	15	45
121257-55731	15	46
121400-11340	4	16
	19	10
121420-12561	5	13
121422-12580	5	14
121450-42450	10	24
121520-34810	9	2
121750-59890	15	18 -1
121850-21130	8	10
121850-21290	8	4
121850-21680	8	9
121850-21920	8	5
121850-49530	10	16
121850-49540	10	17
	19	17
121850-49550	10	15
	19	15
121850-49810	10	18
121850-55710	15	44
121850-55800	15	36
121850-77021	5	4
	19	16
121855-59111	15	18
121855-59880	15	22
		23
		51
121872-12700	5	16
123900-13610	6	6 -1
123900-13630	6	3 -1
124060-59380	15	9
124066-59100	15	25

Parts No.	Fig. No.	Ref. No.
124066-59100	15	25 -1
		27 A
124080-77390	18	15
124080-77520	18	16
124160-01751	2	10
	4	54
124160-11360	4	44
124411-01780	3	6
124450-44510	10	36
124450-44530	10	38
124450-44550	10	41
124450-44560	10	39
124460-11340	4	17
	19	3
124465-44950	10	25
		30
	19	19
124550-01590	2	14 A
124766-59050	15	17
		24
		26 A
126650-12680	5	15
128300-59910	15	29
128300-77920	18	37
129001-91810	2	22 -1
129100-01580	2	13 -1
	3	1
129100-77910	18	35
129136-66852	16	8
129136-77200	18	31
129150-02450	7	4
129150-03100	4	2
129150-11230	4	33
		37
129150-11370	4	18
129150-11750	4	35
		39
129150-11810	4	8
129150-14200	7	1
129150-25920	7	14
129150-35153	9	3
129150-59131	14	26
		30
129150-59580	15	28
129211-77920	18	36 -1
129335-59090	15	19
		20
129400-13201	6	5
	19	9
129400-92450	19	22

Parts No.	Fig. No.	Ref. No.
129470-55610	15	4
129470-77340	18	1
129495-59300	15	14
129535-77880	18	24
129550-59120	14	27
129795-11180	4	15
129900-01200	1	21
129900-01250	1	12 -1
129900-01400	2	6
129900-01740	2	4
129900-01780	2	3
129900-01950	14	1
129900-02020	1	7
129900-02340	1	23
129900-02410	1	10
129900-02930	1	18
129900-02940	1	26
129900-07900	4	4
		4 -1
129900-11100	4	12
129900-11110	4	13
129900-11120	4	14
129900-11200	4	25
129900-11240	4	26
129900-11280	4	29
129900-11310	4	46
	19	6
129900-11350	4	45
129900-11510	4	30
129900-11520	4	31
129900-11530	4	42
129900-11600	4	48
129900-11650	4	32
129900-11660	4	36
129900-12050	5	1
	19	7
129900-12100	5	2
129900-13200	6	1
129900-13251	6	2
	19	8
129900-14100	7	7
129900-14400	7	2
129900-14580	7	3
129900-21200	8	3
129900-21600	8	13
129900-21640	8	8
129900-21660	8	7
129900-23000	8	22
129900-23001	8	22 -1
129900-23200	8	26

Parts No. Index

Parts No.	Fig. No.	Ref. No.
129900-23600	8	27
129900-23610	8	29
129900-23910	8	25
129900-23911	8	25 -1
129900-25060	7	10
129900-25100	7	11
129900-25900	7	8
129900-32000	2	7
129900-32001	2	7 -1
129900-32030	2	11
	9	5
	19	11
129900-32040	2	12
	19	12
129900-34800	9	1
129900-35000	9	6
129900-39350	9	14
129900-39351	9	14 -1
129900-42001	10	1
129900-42002	10	1 -1
129900-42020	10	9
	19	13
129900-42461	10	12
129900-49860	10	14
129900-49861	10	14 -1
129900-49870	10	22
	19	14
129900-52010	11	104
	13	1
129900-77010	17	1
129900-77210	18	6
129900-77300	18	7
129900-77310	18	9
129900-77320	18	10
129900-77350	18	12
129900-77360	18	13
129900-77370	18	14
129900-77400	17	2
129900-77410	18	17
129900-77440	17	3
129900-77450	17	4
129900-77460	17	6
129900-77480	17	7
129900-77500	17	8
129900-77510	17	9
129900-77520	17	10
129900-77540	17	13
129900-77550	17	14
129900-77590	17	16
129900-77591	17	16 -1

Parts No.	Fig. No.	Ref. No.
129900-77610	17	15
129900-77620	17	17
129900-77640	17	18
129900-77650	17	19
129900-77710	17	20
129902-01330	1	22
	19	2
129902-01331	1	22 -1
129902-01710	3	7
129902-21000	8	1
129902-22080	8	14
129902-22900	8	31
129902-53000	14	5
129902-59810	14	32
129902-59820	14	33
129902-59830	14	34
129902-59840	14	35
129903-22050	8	16
129903-22950	8	33
129910-07900	4	57
129910-59810	14	32 -1
129910-59820	14	33 -1
129910-59830	14	34 -1
129910-59840	14	35 -1
129911-49020	10	44
129915-59120	15	27 -1
129915-59500	15	26 C
129915-66810	16	1
129915-77050	5	5
129916-13650	6	10 -1
129916-49530	10	16 -1
129916-59020	15	6 -1
129916-59870	15	22 -1
		51 -1
129950-59311	15	25 A
129951-49010	10	43
129953-11350	4	45 -1
129953-13650	6	8
129953-21581	8	11
129953-66828	16	1 -1
129953-77810	16	1 C
129953-77811	16	1 C-1
129955-51010	11	1
129955-51011	11	1 -1
129957-01740	2	4 -1
129957-21650	8	7 -1
129957-59040	15	18 A
		19 B
129960-21640	8	8 -1
129961-59110	15	26 B

Parts No.	Fig. No.	Ref. No.
129980-59530	15	15
129981-01600	3	2
129982-55600	15	1
129983-12070	5	9
129983-13500	6	9
129983-13501	6	9 -1
129983-13510	6	9 -2
129983-13560	6	10
129983-13690	6	8 -1
129983-13691	6	8 -2
171008-77450	17	5
171008-77730	17	11
171008-77740	17	12
171008-77750	17	21
171051-01921	1	6
171061-12800	5	17
171064-12509	5	10
171064-12540	5	11
171064-12550	5	12
171087-42280	10	13
171093-44500	10	34
194990-22050	6	13
22117-060000	16	4
22190-060002	15	10
	19	21 F
22190-080002	2	15 A
	9	18
	15	5 -1
	19	21 E
		21 E-1
22190-120002	15	12
	19	21 G
22190-140002	15	2
		35
	19	21 H
22190-220002	3	10
	19	21 C
22242-000180	4	40
22252-000300	8	21
22312-080160	2	13
22351-060012	1	11
22360-060000	16	5
22512-070140	7	6
	8	6
22857-500100	4	49
23000-054000	10	45
23000-070000	5	18
23061-070230	10	40
23065-160800	4	1 -1
23297-060081	9	15

Parts No.	Fig. No.	Ref. No.
23414-080000	9	16
	15	5
	19	18
		18 -1
23418-060000	15	49
23857-030000	9	17
23857-060000	15	13
23871-005000	4	10
23871-030000	1	4
		5
		13
	10	20
23875-030000	10	20 -1
23876-030000	1	4 -1
		5 -1
		13 -1
	4	11 A
24311-000070	2	19
	19	20
24311-000120	4	51
	19	21
24311-000320	2	27 -1
	4	55
	19	21 D
		21 D-1
24311-240100	15	50
24321-000350	2	27
	19	21 B
		21 B-1
24341-000240	2	24
	19	21 A
24341-000530	8	37
	19	21 J
25152-004400	10	13 -1
26013-080552	10	33
26014-080252	18	5
		5 -1
26106-060102	16	6
26106-060142	10	21
	16	6 -1
26106-060162	2	25
26106-060202	10	21 -1
26106-060302	10	10
26106-080102	15	11
26106-080122	3	3
		3 -1
	4	3
	6	12
	9	11
		11 -1

Parts No. Index

Parts No.	Fig. No.	Ref. No.
26106-080122	9	19
	16	9
26106-080162	2	15
	4	52
	6	11
	7	9
	9	12
	16	7
26106-080202	2	16
		29
	6	14
	14	3
26106-080302	2	17
26106-080352	5	6
26106-080402	2	18
		20
26106-080452	2	20 -1
		21
	5	3
26106-080552	7	15
	10	11
26106-080602	10	23
26106-080702	2	9
		22
26106-080752	2	9 -1
26106-080802	6	3
26106-100142	14	2
26106-100252	15	16
26106-100652	4	53
26116-050122	18	23
26116-101202	18	2
26116-120302	17	22
26206-100352	3	5
26206-100702	3	4
26216-060202	4	22
26216-080222	6	4
26216-080802	6	6
26216-100302	2	8
26306-080002	6	7 -1
		13 -1
26306-100002	2	14 -1
	4	43 -1
	18	3 -1
26366-060002	4	23
26366-080002	6	7
26366-100002	2	14
	4	43
	18	3
26577-040122	4	41
26577-040162	4	41 -1

Parts No.	Fig. No.	Ref. No.
26716-060002	16	3 C
27231-550000	1	12
27241-300000	1	14
27241-400000	4	11
27310-080001	4	24
720445-44200	10	46
729900-01570	2	1
729900-02800	1	17 A
729900-11100	4	5
729902-01560	1	1
729902-53100	14	4
729902-92600	19	1
729902-92601	19	1 -1
977770-01212	2	28
	3	11
	4	56
	19	23
X0131214140	11	96
X0141108440	12	12
X0160100540	12	62
X0160101640	12	52
X0166302030	11	68
X0166402030	11	66
X0200061640	12	26
		67
X0200062040	11	94
	12	25
X0200181840	12	6
X0201063840	12	20
X0201065040	12	18
X0258031310	12	57
X0258031610	12	28
X0265061040	12	82
X0265101340	11	103
X0265121540	12	45
X0265141840	11	100
	13	15
		16
X0265182240	12	85
X0282017020	11	69
X0282020020	11	67
X0290106810	12	8
X0290206260	12	23
		24
X0290406020	11	4
X0292016010	12	87
X0292016080	12	48
X0292312030	12	30
X0293111070	12	55
X0293212020	12	29

Parts No.	Fig. No.	Ref. No.
X0293214010	11	97
X0293406020	11	11
X0294704030	11	98
X0296220190	11	92
X0296310030	12	69
X0296316060	13	11
X0296318020	12	51
X0296320030	11	22
X0296325070	12	3
X0296331010	11	14
X0296352020	12	81
X0296375020	11	101
X0297310120	11	102
X0297314680	11	99
	13	14
X0299981000	12	32
X0299981020	11	28
X0299981040	12	73
X0299981700	11	72
X0299982020	11	83
X1310022000	11	6
		7
X1310111900	11	9
X1310171000	11	10
X1310286220	11	8
X1310341401	11	12
X1310641621	11	3
X1310642220	11	3 -1
X1311123500	11	17
X1311151600	11	18
X1311167600	11	19
X1311172300	11	20
X1311220520	11	21
X1311523420	11	15
X1311607920	11	16
X1312000220	11	23
X1312030200	11	24
X1312041000	11	25
X1312050500	11	26
X1312060200	11	27
X1312152500	11	57
X1312160100	11	58
X1312170200	11	59
X1312260300	11	61
X1312400100	11	62
X1312410100	11	63
X1312420100	11	64
X1312540600	11	60
X1313020300	11	70
X1313021000	11	71

Parts No.	Fig. No.	Ref. No.
X1313211900	11	95
X1313301800	11	93
X1313612700	11	65
X1340260000	11	5
X1392060400	11	13
X1392060600	12	16
X1394110000	12	54
X1395260000	13	7
X1396110000	12	53
X1520300200	13	3
X1520620020	13	2
X1521002301	13	4
X1521020400	13	5
X1521051500	13	6
X1521150500	13	8
X1521160200	13	9
X1521180900	13	10
X1522006720	13	12
X1523005920	13	13
X1530205220	12	21
X1540006400	12	2
X1540070200	12	5
X1540072900	12	4
X1540100100	12	9
X1540100200	12	19
X1540110100	12	10
		10 -1
X1540111700	12	44
X1540112300	12	88
X1540130600	12	9 -1
X1540132320	12	11
X1540313000	12	15
X1540351600	12	83
X1540352500	12	83 -1
X1540360300	12	17
X1540635100	12	22
X1541010020	12	27
X1541230120	12	31
X1541502900	12	41
X1541540701	12	42
X1541580920	12	43
X1541591200	12	46
X1541856120	12	47
X1541883320	12	86
X1542006920	12	49
X1542043000	12	50
X1542043100	12	56
X1542044300	12	50 -1
X1542044400	12	56 -1
X1542060200	12	59

Parts No. Index

Parts No.	Fig. No.	Ref. No.
X1542062800	12	58
X1542163820	12	60
X1542303920	12	61
X1542364100	12	63
X1542370100	12	64
X1543142600	12	68
X1543210400	12	14
X1543220100	12	70
X1543265020	12	71
X1543277400	12	72
X1543501900	12	7
X1543507700	12	79
X1543507800	12	80
X1543587200	12	84
X1543829320	12	66
X1543834920	12	66 -1
X1543900000	12	79 -1
X1543900300	12	80 -1
X1543956420	12	65
X1545001020	12	13
X2421397350	10	34 A

Parts No.	Fig. No.	Ref. No.
-----------	----------	----------

Parts No.	Fig. No.	Ref. No.
-----------	----------	----------

Parts No.	Fig. No.	Ref. No.
-----------	----------	----------