

0CV10-M31703EN

P R E F A C E

1. This Parts Catalog carries all parts incorporated in YANMAR Model 4TN82E-RK engine manufactured since May, 1987.

2. Each illustration corresponds to the parts list on the following page.

3. When ordering parts, clearly write down the engine model and serial number, as well as the name and number of each part in your order sheet. This will help insure reliable delivery of the parts you have ordered.

4. Pub. No. 000Y00R3170 First Published : May, 1987.
 Pub. No. 000Y00R3171 First Revised : February, 1990.
 Pub. No. 000Y00V3172 Second Revised : November, 1991.
 Pub. No. 000Y00V3173 Third Revised : November, 1992.

Directions for the Parts Catalog.

1. This Parts Catalog shows both standard and optional parts.
2. Parts may change without prior notice.
3. The following is an example of the Parts Catalog format.

REF.	LEV.	PARTS NO.	DESCRIPTION	Q'TY						I	R
				(A)	(B)	(C)	(D)	(E)	(F)		
1	1	729595-51390	FUEL INJECTION PUMP	1	1	1	1	1			1
1-1	1	729595-51391	FUEL INJECTION PUMP	1	1	1	1	1		N	1
		(A=E00185) (B=E00200)									
3	2	26022-060162	SCREW M 6X 16	9	9	9	9	9			
3-1	2	26022-060162	SCREW M 6X 16	4	4	4	4	4		K	
		(A=E00156) (B=E00156) (C=E00156) (D=E00156) (E=E00156)									
4	2	129470-51040	CAMSHAFT	1	1	1	1	1			
5	2	122710-51050	BEARING, ROLLER	2	2	2	2	2			
6	2	129470-51060	RETAINER	1	1	1	1	1			

Remarks
(1) BOOST COMPEMSATOR TYPE. OPTIONAL PART, TO E00155,(4JH-DT, 4JH-DTZ

① Ref. No.

The Ref. No. listed may not be in accordance with the illustration Ref. No.

(Ex.) Illustration No.

List Ref No.

1

1

(Before change)

1-1

(After change)

For interchangeable symbols N, R and K, illustrations for new parts may be abbreviated.

② Lev. (Level)

Level indication

The numbers below indicate the level of relativity towards the main part.

1 ----- Main parts (Assembly parts)

2 ----- Sub component included in " 1 ".

3 ----- Sub component included in " 2 ".

Note) Parts that are not for sale are partially illustrated but not listed.

③ Interchangeability Symbol

When a part change takes place, one of the following interchangeability symbols is indicated beside the part.

Symbol	Interchangeability	Contents note
N	Old $\begin{matrix} \leftarrow \text{Yes} \\ \text{No} \rightarrow \end{matrix}$ New	New Part is interchangeable for Old Part but Old Part is not interchangeable for New Part.
Q	Old $\begin{matrix} \leftarrow \text{No} \\ \text{Yes} \rightarrow \end{matrix}$ New	New Part is not interchangeable for Old Part but Old Part is interchangeable for New Part.
R	Old $\begin{matrix} \leftarrow \text{Yes} \\ \text{Yes} \rightarrow \end{matrix}$ New	New/ Old Parts are both interchangeable.
S	Old $\begin{matrix} \leftarrow \text{No} \\ \text{No} \rightarrow \end{matrix}$ New	New/ Old Parts are both not interchangeable.
W		Part newly added.
Z		Part discontinued.
F		Not interchangeable by a single part but interchangeable together with related parts.
K		Changes only for used parts quantities.

④ Effective Machine No.

When a part changes, the effective Machine No. will be indicated in the (A)-(F) column.

Product Symbol	Product No.	Product Symbol	Product No.
C	Clutch No. Compressor No.	F	Machine No. (Agricultural Equip.)
D	Drive No.	M	Machine No.
E	Engine No.		

Note 1) A date may follow the symbol. (Ex.) 1996.01

Note 2) "XXXXX" and "ZZZZZ" are for parts that could not be predicted or for engine models that could not be identified.

Note 3) (A=E00185) is the E (Engine Serial Number) for the column (A) model (in this case 4JH-DT) after the parts design change.

⑤ Remarks

Figures or alphabets (symbols) are entered in the remarks column.

The comments (remarks) on parts that are indicated at the bottom of the illustration are the same symbols as those stated above.

Contents

Fig. No. Fig. Name

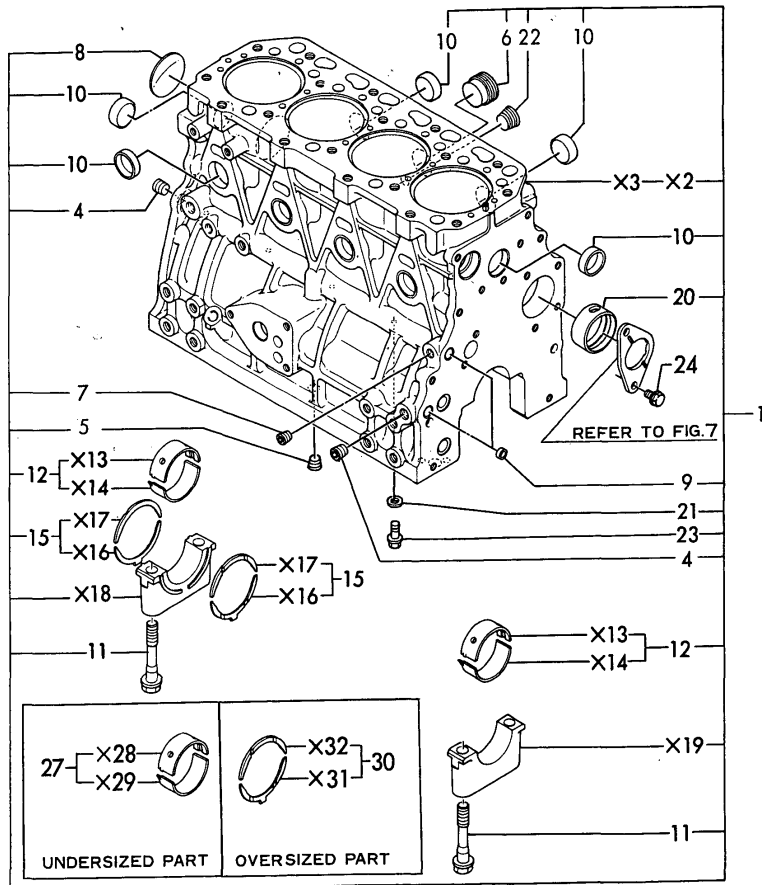
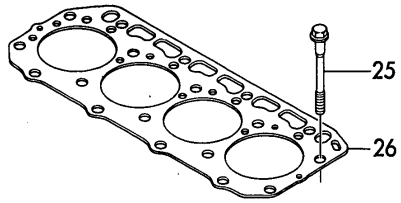
4TN82E-RK (KOHLER)

1. CYLINDER BLOCK
2. GEAR HOUSING
3. FLYWHEEL HOUSING & OIL SUMP
4. CYLINDER HEAD
5. BONNET
6. SUCTION & EXHAUST MANIFOLD
7. CAMSHAFT & DRIVING GEAR
8. CRANKSHAFT & PISTON
9. LUBRICATING OIL SYSTEM
10. COOLING WATER SYSTEM
11. FUEL INJECTION PUMP
12. FUEL INJECTION VALVE
13. FUEL LINE
14. GOVERNOR
15. STARTING MOTOR
16. TENSION PULLEY
17. GASKET SET & TOOL (OPTIONAL)

Fig. No. Fig. Name

Fig.1. CYLINDER BLOCK

Fig. 1 CYLINDER BLOCK



(A)=4TN82E-RK

(B)=

(C)=

(D)=

(E)=

(F)=

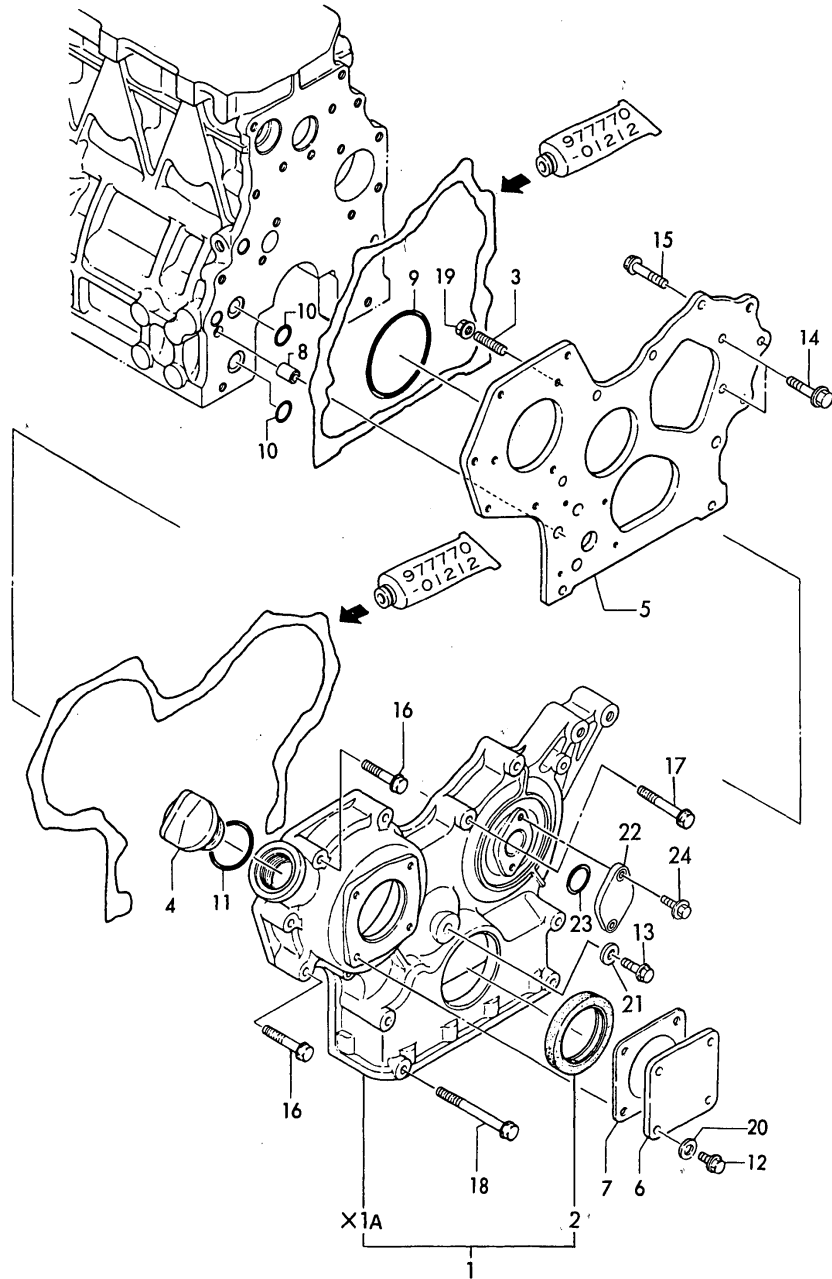
No.	Lev.	Parts No.	Description	Q'ty						I	R
				(A)	(B)	(C)	(D)	(E)	(F)		
1	1	729402-01560	BLOCK ASSY, CYLINDER	1							
4	3	124160-01910	PLUG, PT1/4	2							
5	3	124160-01910	PLUG, PT1/4	1							
6	3	171051-01921	PLUG, NPTF1	1							
7	3	23871-010000	PLUG, R01	1							
8	3	27231-500000	PLUG 50	1							
9	3	27241-120000	PLUG, 12	2							
10	3	27241-300000	PLUG 30	8							
11	2	129150-02020	BOLT, METAL CAP	10							
12	2	129150-02800	BEARING, MAIN	5							
15	2	129150-02930	BEARING, THRUST	2							
20	2	129795-02411	BUSH, CAMSHAFT	1							
21	2	23414-080000	GASKET, 8X1.0	4							
22	2	23871-030000	PLUG, R03	1							
23	2	26106-080122	BOLT, M8X 12 PLATED	4							
24	1	26106-080162	BOLT, M8X 16 PLATED	2							
25	1	129150-01200	BOLT, HEAD	18							
26	1	129402-01321	GASKET, HEAD	1							
27	1	129150-02870	BEARING, 0.25 US	5							1
30	1	129150-02940	BEARING, THRUST 0.25	2							2

Remarks

- (1) UNDERSIZED(U.S=0.25) PART.
- (2) OVERSIZED(O.S=0.25) PART.

Fig.2. GEAR HOUSING

Fig.2 GEAR HOUSING



No.	Lev.	Parts No.	Description	Q'ty						I	R
				(A)	(B)	(C)	(D)	(E)	(F)		
1	1	129400-01590	CASE ASSY, GEAR	1							W
		(A=E/# 07750)									
1-1	1	719810-01500	CASE ASSY, GEAR	1							R
		(A=E/# 07750)									
2	2	129795-01800	SEAL, OIL	1							
3	1	121450-01560	STUD, M8X22	3							
4	1	124160-01751	COVER, FILLER	1							
5	1	129400-01520	FLANGE, GEAR CASE	1							
6	1	124240-01871	COVER	1							
7	1	124240-01882	GASKET	1							
7-1	1	124240-01883	GASKET	1							N
		(A=E/# 07750)									
8	1	129795-01950	PIPE, KNOCK L=18	2							
9	1	121850-51960	O-RING	1							
10	1	24311-000160	O-RING, 1AP16.0	2							
11	1	24311-000320	O-RING, 1AP32.0	1							
12	1	26106-080122	BOLT, M8X 12 PLATED	4							
13	1	26106-080162	BOLT, M8X 16 PLATED	1							
14	1	26106-080162	BOLT, M8X 16 PLATED	3							
15	1	26106-080202	BOLT, M8X 20 PLATED	2							
16	1	26106-080452	BOLT, M8X 45 PLATED	6							
17	1	26106-080552	BOLT, M8X 55 PLATED	3							
18	1	26106-080852	BOLT, M8X 85 PLATED	4							
19	1	26366-080002	NUT, M8	3							
20	1	43400-500410	SEAL WASHER 8S	4							
21	1	43400-500410	SEAL WASHER 8S	1							
22	1	121023-01550	COVER	1							
23	1	24311-000260	O-RING, 1AP26.0	1							
23-1	1	24341-000240	O-RING, 1AS24.0	1							R
		(A=E/# 04643)									
24	1	26106-060122	BOLT, M6X 12 PLATED	2							

Fig.3. FLYWHEEL HOUSING & OIL SUMP

(A)=4TN82E-RK

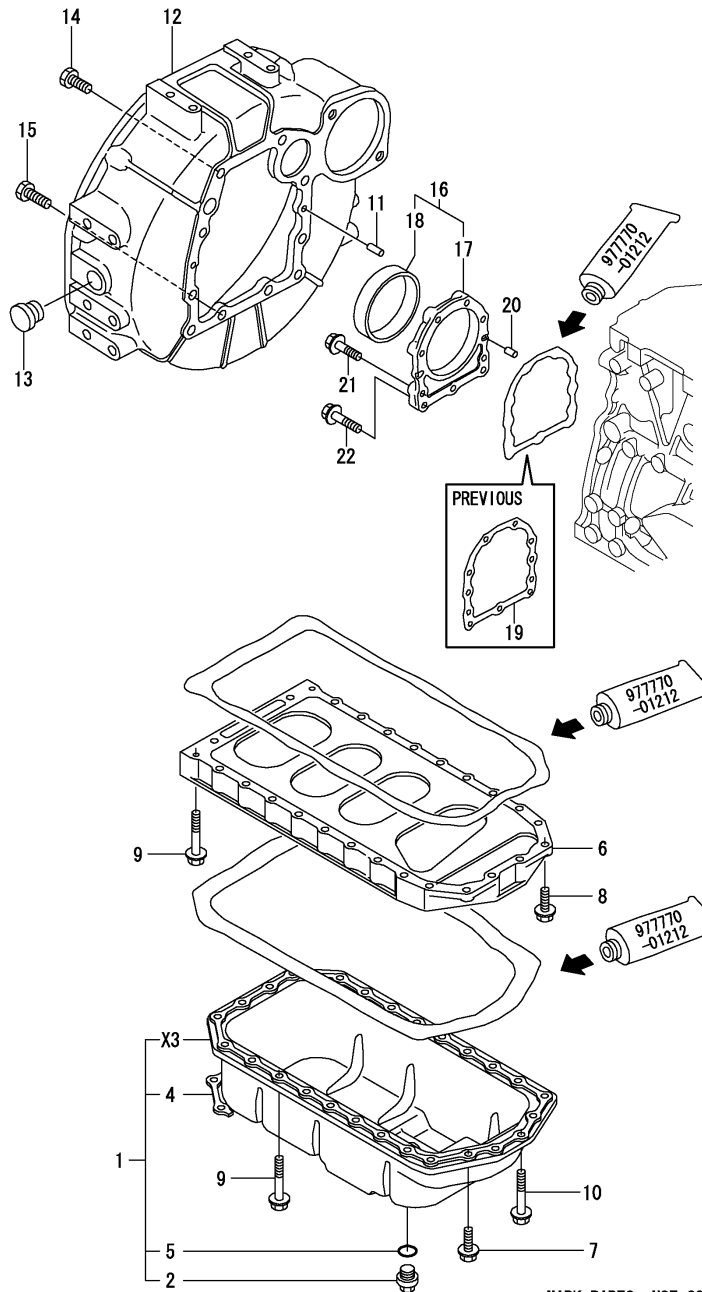
(B)=

(C)=

(D)=

(E)=

(F)=

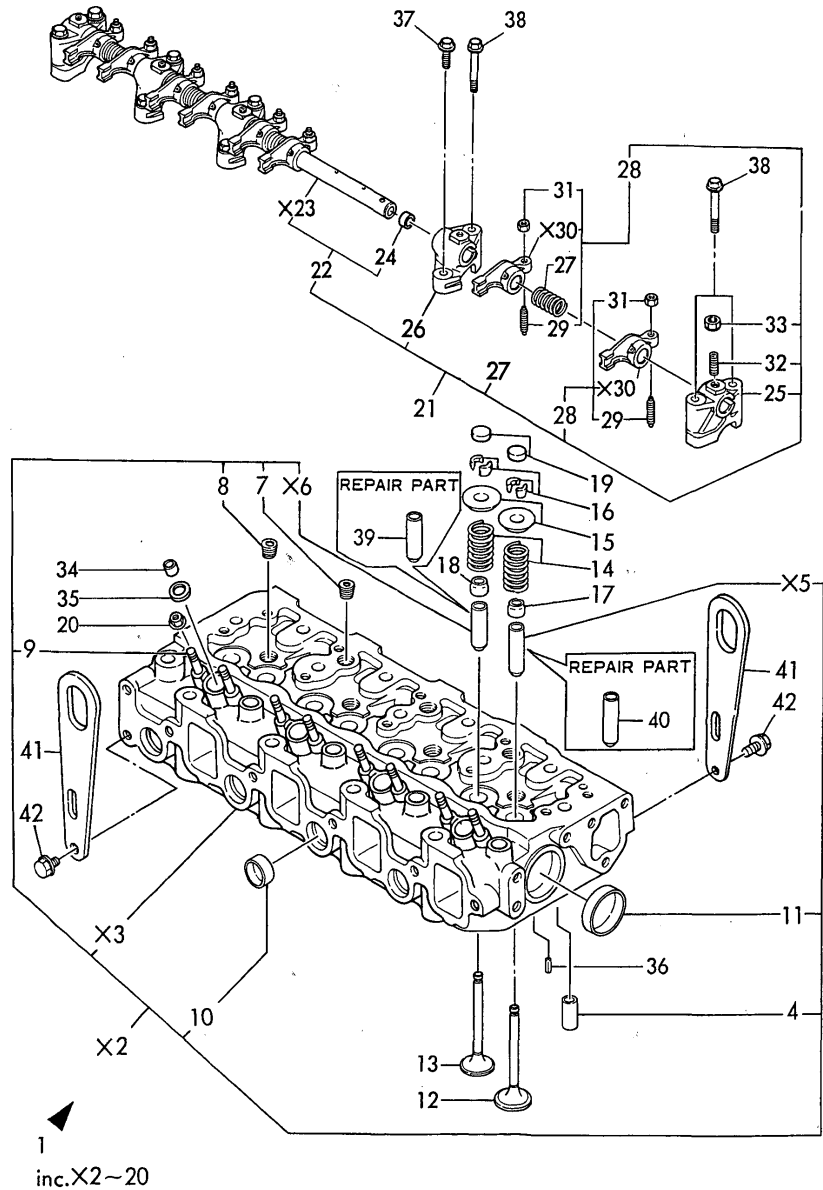


× MARK PARTS: NOT SOLD SEPARATELY.

No.	Lev.	Parts No.	Description	Q'ty						I	R
				(A)	(B)	(C)	(D)	(E)	(F)		
1	1	729488-01540	SUMP ASSY, OIL	1							
1-1	1	729402-01540	SUMP ASSY, OIL	1							R
(A=E/# 09918)											
2	2	171301-01640	PLUG, 22	1							
4	2	129100-01790	RETAINER	2							
5	2	24341-000240	O-RING, 1AS24.0	1							
6	1	129400-01730	SPACER, OIL SUMP	1							
7	1	26106-080162	BOLT, M8X 16 PLATED	4							
8	1	26106-080252	BOLT, M8X 25 PLATED	2							
9	1	26106-080452	BOLT, M8X 45 PLATED	20							
10	1	26106-080502	BOLT, M8X 50 PLATED	4							
11	1	129100-01580	PIN, M8X16	2							
12	1	171420-01600	HOUSING, FLYWHEEL	1							
13	1	119620-01750	CAP	1							
14	1	26206-100252	BOLT, M10X 25 PLATED	6							
15	1	26206-100302	BOLT, M10X 30 PLATED	4							
16	1	129100-01640	CASE ASSY, OIL SEAL	1							W
(A=E/# 07750)											
17	2	129150-01650	CASE, OIL SEAL	1							
18	2	129795-01780	SEAL, OIL	1							
19	1	129150-01660	GASKET	1							Z
(A=E/# 03926)											
20	1	129100-01580	PIN, M8X16	2							
21	1	26106-080302	BOLT, M8X 30 PLATED	6							
22	1	26106-080352	BOLT, M8X 35 PLATED	3							

Fig.4. CYLINDER HEAD

Fig. 4 CYLINDER HEAD



(A)=4TN82E-RK

(B)=

(C)=

(D)=

(E)=

(F)=

No.	Lev.	Parts No.	Description	Qty						I	R
				(A)	(B)	(C)	(D)	(E)	(F)		
1	1	729402-11701	HEAD ASSY, CYLINDER	1							
4	3	129150-11050	PIECE	4							
7	3	121850-11860	PLUG, PT1/4	3							
8	3	23871-030000	PLUG, R03	4							
9	3	26216-060202	STUD, M6X 20	8							
10	3	27241-220000	PLUG, 22	4							
11	3	27241-400000	PLUG, 40	2							
12	2	129100-11100	VALVE, INTAKE	4							
13	2	129100-11110	VALVE, EXHAUST	4							
14	2	129795-11120	SPRING, VALVE	8							
15	2	129795-11180	RETAINER, SPRING	8							
16	2	103338-11190	COTTER	8							
16-1	2	27310-080001	COTTER, 8	8							N
(A=EXXXXX)											
17	2	124460-11340	SEAL, VALVE STEM	4							
18	2	121400-11340	SEAL, VALVE STEM	4							
19	2	129150-11370	CAP, VALVE	8							
20	2	26366-060002	NUT, M6	8							
21	1	129555-11241	SHAFT ASSY, ROCKER	1							
21-1	1	129500-11240	SHAFT ASSY, ROCKER	1							R
(A=E/# 08664)											
22	2	129550-11290	SHAFT, ROCKER ARM	1							
24	3	27241-100000	PLUG, 10	2							
25	2	129155-11260	SUPPORT, ROCKER ARM	2							
26	2	129155-11270	SUPPORT, ROCKER ARM	3							
27	2	129150-11280	SPRING	4							
28	2	729150-11650	ARM ASSY, ROCKER	8							
28-1	2	729402-11650	ARM ASSY, ROCKER	8							R
(A=E/# 07750)											
28-2	2	129100-11650	ARM, ROCKER	8							R
(A=E/# 08664)											
29	3	129150-11230	SCREW, VALVE ADJUST	8							
31	3	129150-11750	NUT, M8	8							
32	2	26226-080182	STUD, M8X 18	3							
33	2	26756-080002	NUT, LOCK M8	3							
34	1	119625-11870	PROTECTOR, NOZZLE	4							
35	1	119625-11880	SEAT, NOZZLE	4							
36	1	22351-060012	PIN, SPRING 6.0X12	2							
37	1	26106-080252	BOLT, M8X 25 PLATED	3							
38	1	26106-080502	BOLT, M8X 50 PLATED	7							
39	1	129150-11810	GUIDE, VALVE	4							1
40	1	120130-11860	GUIDE, VALVE	4							1
41	1	124736-07900	LIFTER	2							
42	1	26106-080142	BOLT, M8X 14 PLATED	4							

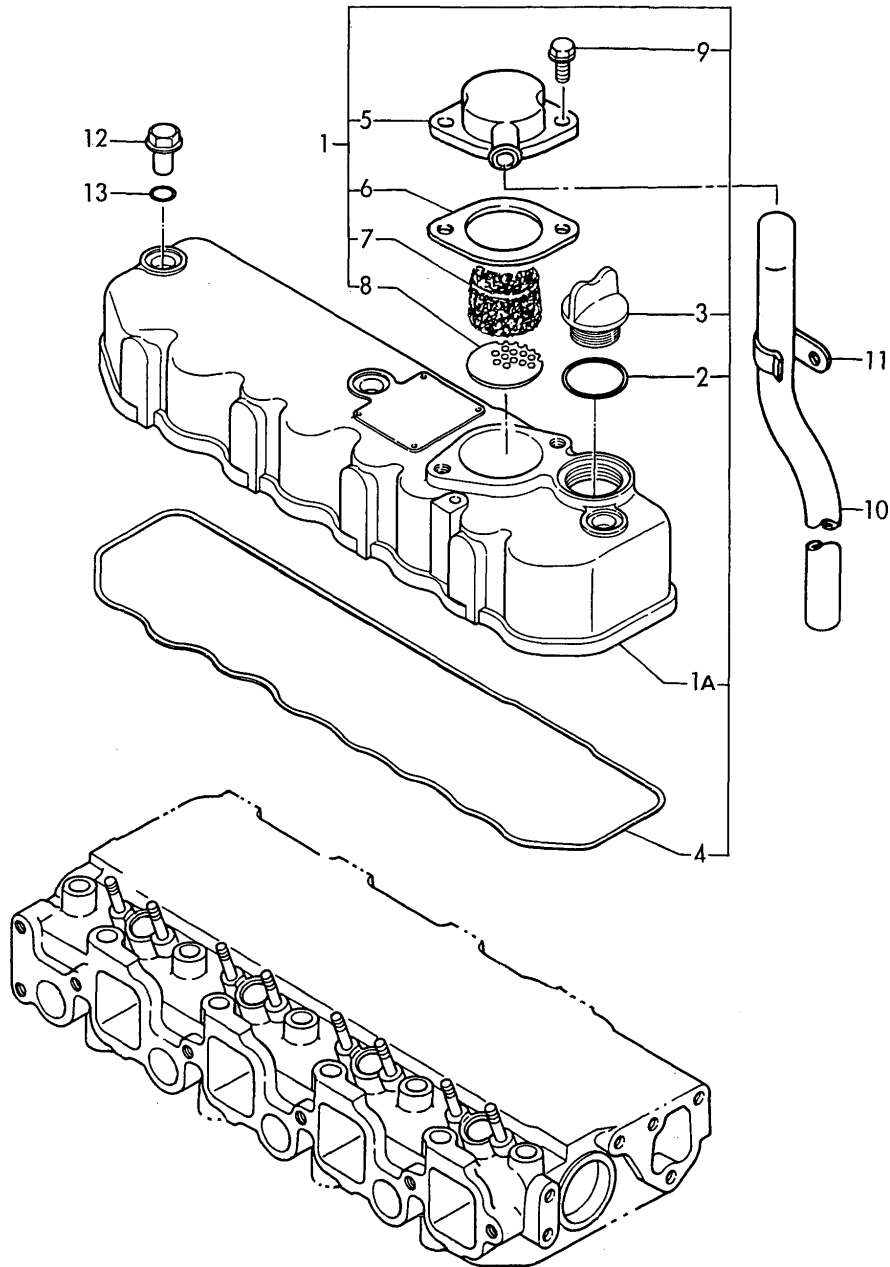
Remarks

(1) ONLY FOR REPAIR.

N:Old $\xrightarrow{\text{Yes}}$ New, Q:Old $\xrightarrow{\text{No}}$ New, R:Old $\xrightarrow{\text{Yes}}$ New, S:Old $\xrightarrow{\text{No}}$ New, W:Add, Z:Discontinued, F:Interchangeable by set, K:Qty Change

Fig.5. BONNET

Fig.5 BONNET



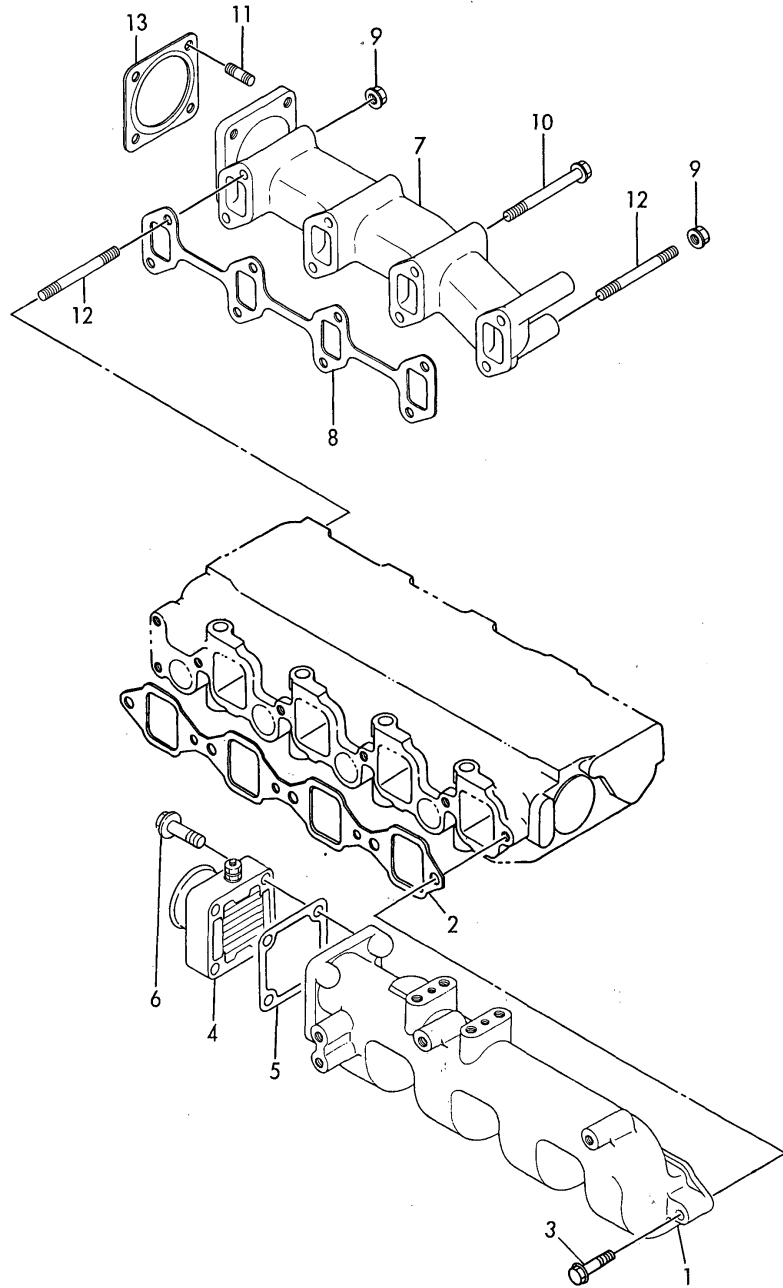
(A)=4TN82E-RK
(B)=
(C)=

(D)=
(E)=
(F)=

No.	Lev.	Parts No.	Description	Q'ty						I	R
				(A)	(B)	(C)	(D)	(E)	(F)		
1	1	171463-11350 (A=E/# 07750)	BONNET ASSY, HEAD	1							W
1A	2	129400-11300	BONNET	1							
2	2	121420-01760	O-RING	1							
2-1	2	24311-000320 (A=E/# 03238)	O-RING, 1AP32.0	1							N
3	2	124160-01751	COVER, FILLER	1							
4	2	129550-11310	GASKET, BONNET	1							
5	2	171463-03010	COVER, BREATHER	1							
6	2	171463-03020	GASKET	1							
7	2	129150-03070	BAFFLE, BREATHER	1							
8	2	129150-03080	PLATE, BAFFLE	1							
9	2	26106-080202	BOLT, M8X 20 PLATED	2							
10	1	129150-03090	HOSE, ID16X2T	1							
11	1	129150-03100	RETAINER, PIPE	1							
12	1	124160-11360	KNOB	3							
13	1	24311-000120	O-RING, 1AP12.0	3							

Fig.6. SUCTION & EXHAUST MANIFOLD

Fig.6 SUC. EXH. MANIFOLD



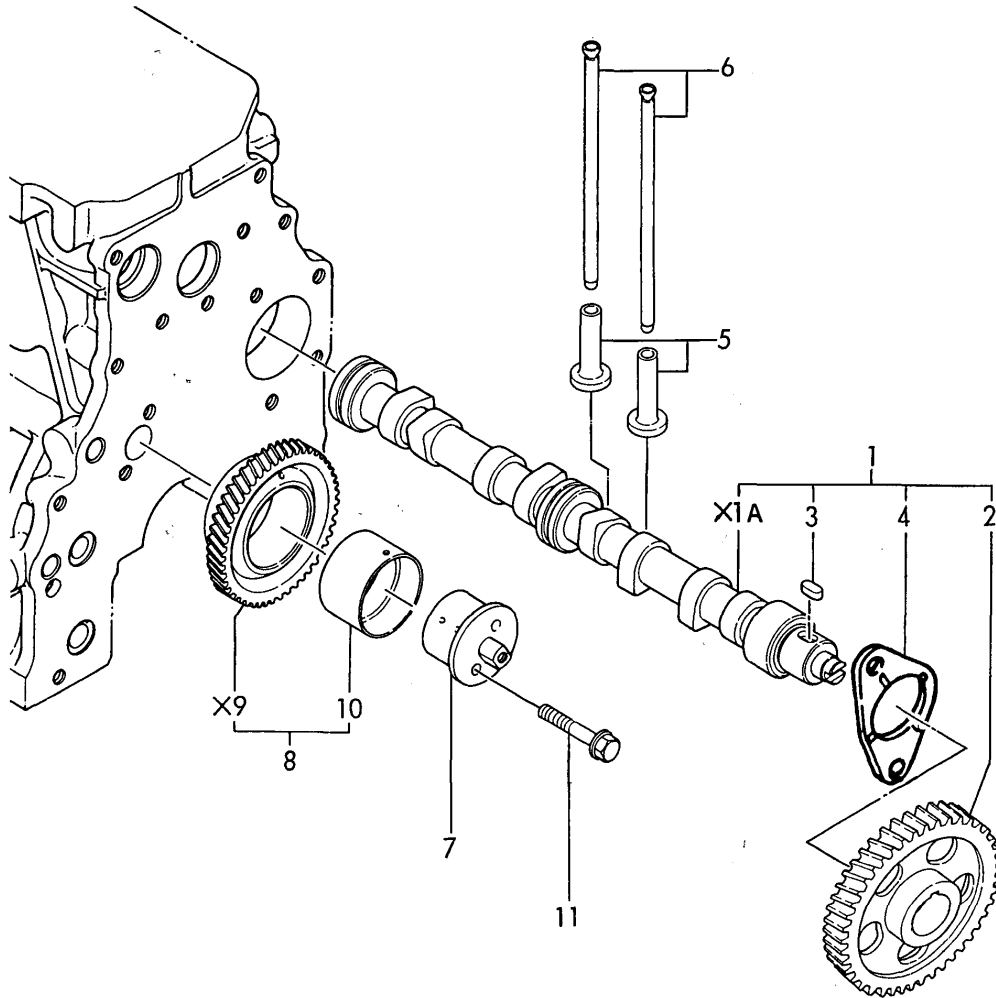
(A)=4TN82E-RK
(B)=
(C)=

(D)=
(E)=
(F)=

No.	Lev.	Parts No.	Description	Q'ty						I	R
				(A)	(B)	(C)	(D)	(E)	(F)		
1	1	129488-12100	MANIFOLD, AIR INTAKE	1							
2	1	129550-12110	GASKET, MANIFOLD	1							
2-1	1	129550-12111	GASKET, MANIFOLD	1							N
(A=E/# 07750)											
3	1	26106-080352	BOLT, M8X 35 PLATED	5							
4	1	129120-77501	HEATER	1							
5	1	129150-77510	GASKET	1							
5-1	1	129150-77511	GASKET	1							N
(A=E/# 07750)											
6	1	26106-080352	BOLT, M8X 35 PLATED	4							
7	1	129402-13100	MANIFOLD, EXHAUST	1							
8	1	129550-13110	GASKET	1							
9	1	194990-22050	NUT, M8	2							
10	1	26106-080802	BOLT, M8X 80 PLATED	6							
11	1	26216-080222	STUD, M8X 22	4							
12	1	26216-080802	STUD, M8X 80	2							
13	1	129400-13200	GASKET, SILENCER	1							
13-1	1	129400-13201	GASKET, SILENCER	1							N
(A=E/# 07750)											

Fig.7. CAMSHAFT & DRIVING GEAR

Fig. 7 CAMSHAFT & DRIVING GEAR



(A)=4TN82E-RK

(B)=

(C)=

(D)=

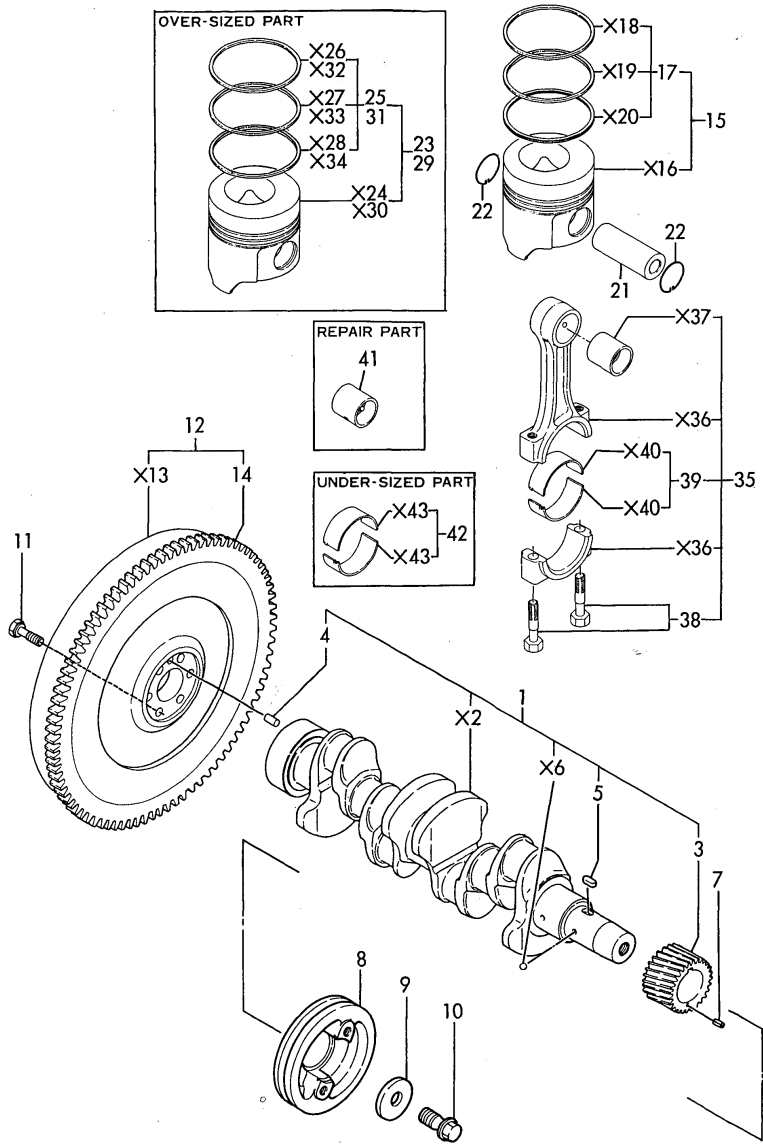
(E)=

(F)=

No.	Lev.	Parts No.	Description	Q'ty						I	R
				(A)	(B)	(C)	(D)	(E)	(F)		
1	1	729402-14580	CAMSHAFT ASSY	1							W
		(A=FROM 1ST)									
2	2	129150-14101	GEAR, CAMSHAFT	1							
3	2	22512-070140	KEY, 7X 14	1							
4	2	129150-02450	BEARING, THRUST	1							
5	1	129150-14200	TAPPET	8							
6	1	129150-14400	ROD, PUSH L=178	8							
7	1	129100-25061	SHAFT, IDLE	1							
8	1	129150-25101	GEAR ASSY, IDLE	1							
11	1	26106-080452	BOLT, M8X 45 PLATED	2							

Fig.8. CRANKSHAFT & PISTON

Fig. 8 CRANKSHAFT & PISTON



(A)=4TN82E-RK
(B)=
(C)=

(D)=
(E)=
(F)=

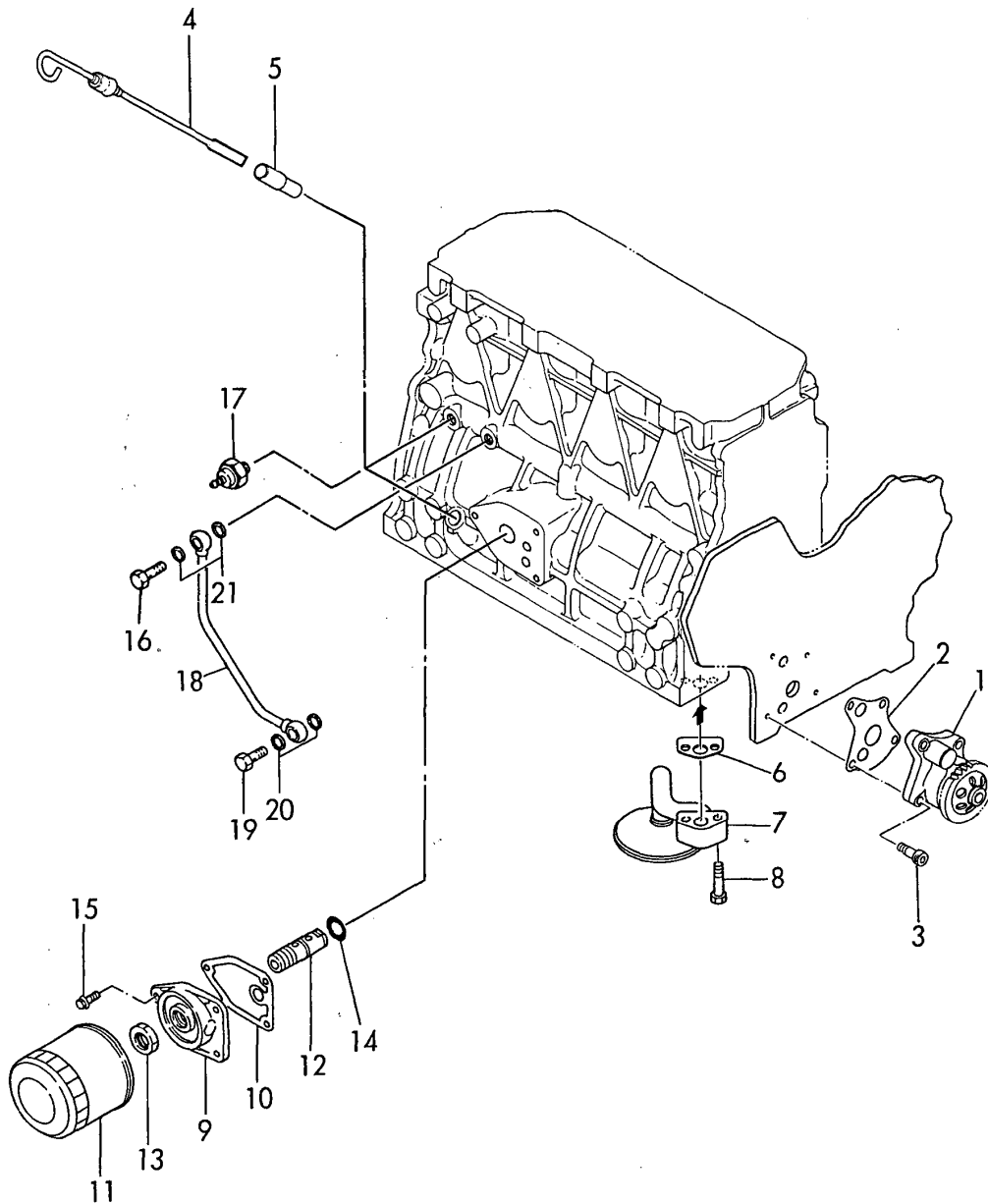
No.	Lev.	Parts No.	Description	Q'ty						I	R
				(A)	(B)	(C)	(D)	(E)	(F)		
1	1	729400-21700	CRANKSHAFT ASSY	1							
3	2	129150-21200	GEAR, CRANKSHAFT	1							
4	2	129100-01580	PIN, M8X16	1							
4-1	2	22312-080160 (A=E/# 01625)	PIN, PARALLEL M8X16	1							R
5	2	22512-070140	KEY, 7X 14	1							
7	1	22351-040010	PIN, SPRING 4.0X10	1							
8	1	129550-21650	V-PULLEY	1							
9	1	129795-21661	WASHER	1							
10	1	121850-21680	BOLT	1							
11	1	121111-21501	BOLT, FLYWHEEL	6							
12	1	171420-21590	FLYWHEEL ASSY	1							
12-1	1	171487-21590 (A=E/# 01625)	FLYWHEEL ASSY	1							N
14	2	124550-21600	GEAR, RING	1							
15	1	129402-22080	PISTON ASSY	4							
17	2	729151-22500	RING SET, PISTON	4							
17-1	2	729402-22500	RING SET, PISTON	4							R
(A=FROM 1ST)											
21	1	129150-22300	PIN, PISTON D26 L66	4							
22	1	121100-22400	CIRCLIP	8							
23	1	729402-22900	PISTON ASSY, 0.25 OS	4							1
25	2	729156-22950	RING SET, 0.25 OS	4							1
29	1	129402-22920	PISTON ASSY, 0.50 OS	4							2
31	2	129402-22970	RING SET, 0.50 OS	4							2
35	1	729150-23700	ROD ASSY, CONNECTING	4							
35-1	1	729402-23100	ROD ASSY, CONNECTING	4							R
(A=E/# 07750)											
38	2	121550-23200	BOLT, CONNECTING ROD	8							
39	2	129150-23600	BEARING, CRANK PIN	4							
41	1	129100-23910	BEARING, PISTON PIN	4							3
42	1	129150-23610	BEARING, 0.25 US	4							4

Remarks

- 1) OVERSIZED(O.S=0.25) PART.
- 2) OVERSIZED(O.S=0.5) PART.
- 3) ONLY FOR REPAIR.
- 4)UNDERSIZED(U.S=0.25) PART.

Fig.9. LUBRICATING OIL SYSTEM

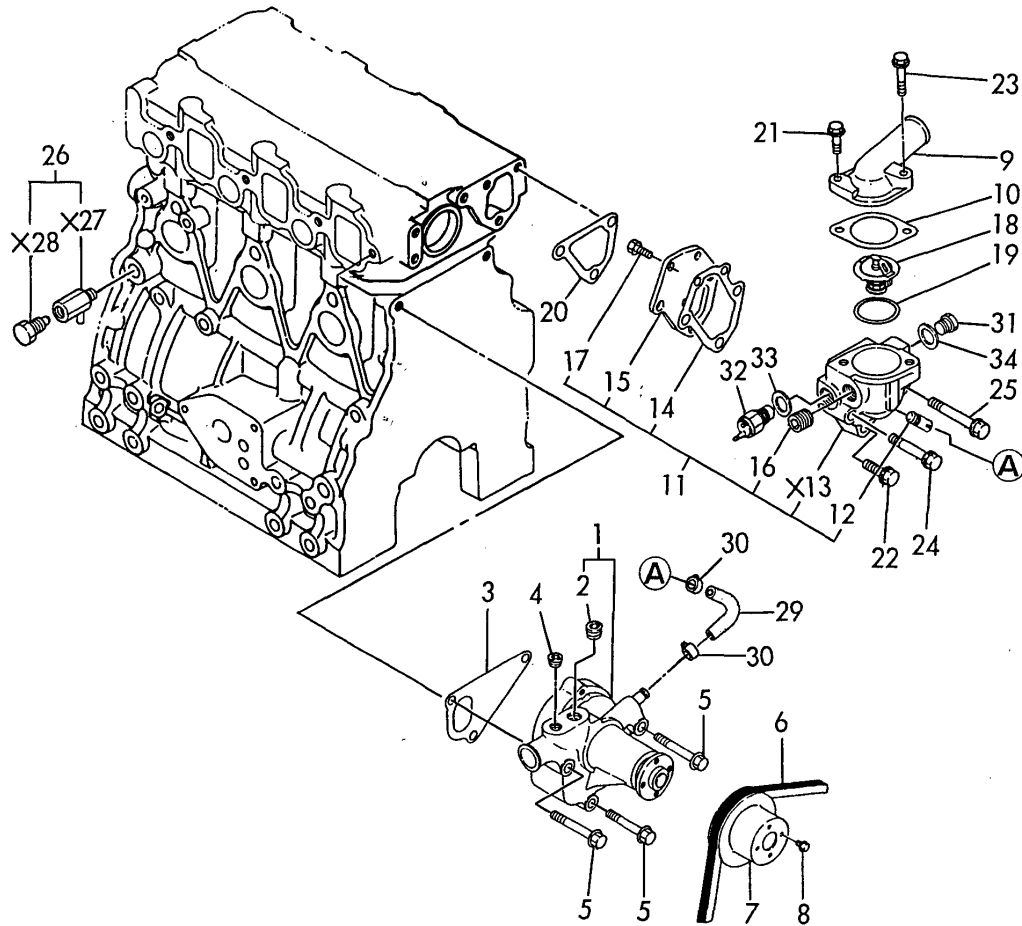
Fig. 9 LUB. OIL SYSTEM



No.	Lev.	Parts No.	Description	Q'ty						I	R
				(A)	(B)	(C)	(D)	(E)	(F)		
1	1	129150-32000	PUMP ASSY, OIL	1							
2	1	129150-32020	GASKET, PUMP	1							
3	1	26450-060252	BOLT, M6X 25	4							
4	1	171420-34800	DIPSTICK, OIL	1							
5	1	121520-34810	GUIDE, DIPSTICK	1							
6	1	129150-35040	GASKET	1							
6-1	1	129150-35041	GASKET	1							N
(A=E/# 07750)											
7	1	129150-35091	PIPE ASSY, OIL INLET	1							
8	1	26116-080352	BOLT, M8X 35 PLATED	2							
8-1	1	26106-080352	BOLT, M8X 35 PLATED	2							N
(A=FROM 1ST)											
9	1	129150-35101	BRACKET, STRAINER	1							
10	1	129150-35110	GASKET	1							
10-1	1	129150-35111	GASKET	1							N
(A=E/# 07750)											
11	1	129150-35150	FILTER 90X80L	1							
11-1	1	129150-35151	FILTER, D80XL80	1							N
(A=E/# 10922)											
12	1	119865-35300	VALVE ASSY, CONTROL	1							
13	1	129150-35350	NUT	1							
14	1	24311-000160	O-RING, 1AP16.0	1							
15	1	26106-080202	BOLT, M8X 20 PLATED	3							
16	1	124160-39140	BOLT, PIPE JOINT M10	1							
17	1	124160-39450	SWITCH, 0.5KG	1							
18	1	129550-39450	PIPE ASSY, OIL	1							
19	1	124550-59820	BOLT, PIPE JOINT M8	1							
20	1	43400-500410	SEAL WASHER 8S	2							
21	1	23414-100000	GASKET, 10X1.0	2							

Fig.10. COOLING WATER SYSTEM

Fig. 10 COOLING WATER SYSTEM



(A)=4TN82E-RK

(B)=

(C)=

(D)=

(E)=

(F)=

No.	Lev.	Parts No.	Description	Q'ty						I	R
				(A)	(B)	(C)	(D)	(E)	(F)		
1	1	129100-42001	PUMP ASSY, WATER	1							
1-1	1	129100-42002	PUMP ASSY, WATER	1							N
(A=E/# 07750)											
2	2	23871-030000	PLUG, R03	1							
3	1	129100-42020	GASKET, WATER PUMP	1							
4	1	121850-11860	PLUG, PT1/4	1							
5	1	26106-080602	BOLT, M8X 60 PLATED	3							
6	1	124732-42290	V-BELT, AX37	1							
7	1	129155-42350	V-PULLEY	1							
8	1	26106-060162	BOLT, M6X 16 PLATED	4							
9	1	129470-49540	COVER, THERMOSTAT	1							
10	1	129795-49550	GASKET	1							
10-1	1	129795-49551	GASKET	1							N
(A=E/# 07750)											
11	1	129100-49800	CASE ASSY,THERMOSTAT	1							
12	2	124770-11770	JOINT, PIPE PT1/8	1							
14	2	129100-49820	GASKET	1							
15	2	129100-49830	COVER, THERMOSTAT	1							
16	2	23871-030000	PLUG, R03	1							
17	2	26116-060162	BOLT, M6X 16 PLATED	2							
18	1	129155-49800	THERMOSTAT, 71	1							
19	1	129150-49810	GASKET, THERMOSTAT	1							
19-1	1	129150-49811	GASKET, THERMOSTAT	1							N
(A=E/# 07750)											
20	1	129100-49840	GASKET	1							
21	1	26106-080222	BOLT, M8X 22 PLATED	1							
22	1	26106-080252	BOLT, M8X 25 PLATED	1							
23	1	26106-080322	BOLT, M8X 32 PLATED	1							
24	1	26106-080502	BOLT, M8X 50 PLATED	1							
25	1	26106-080602	BOLT, M8X 60 PLATED	1							
26	1	119620-49290	COCK ASSY, 1/4	1							
29	1	129100-49050	PIPE, WATER	1							
30	1	23000-016000	CLAMP, 16	2							
31	1	121450-42450	PLUG, M16	1							
32	1	121250-44901	SWITCH, 110	1							
33	1	124465-44950	GASKET, 16	1							
34	1	124465-44950	GASKET, 16	1							

Fig.11. FUEL INJECTION PUMP

(A)=4TN82E-RK

(B)=

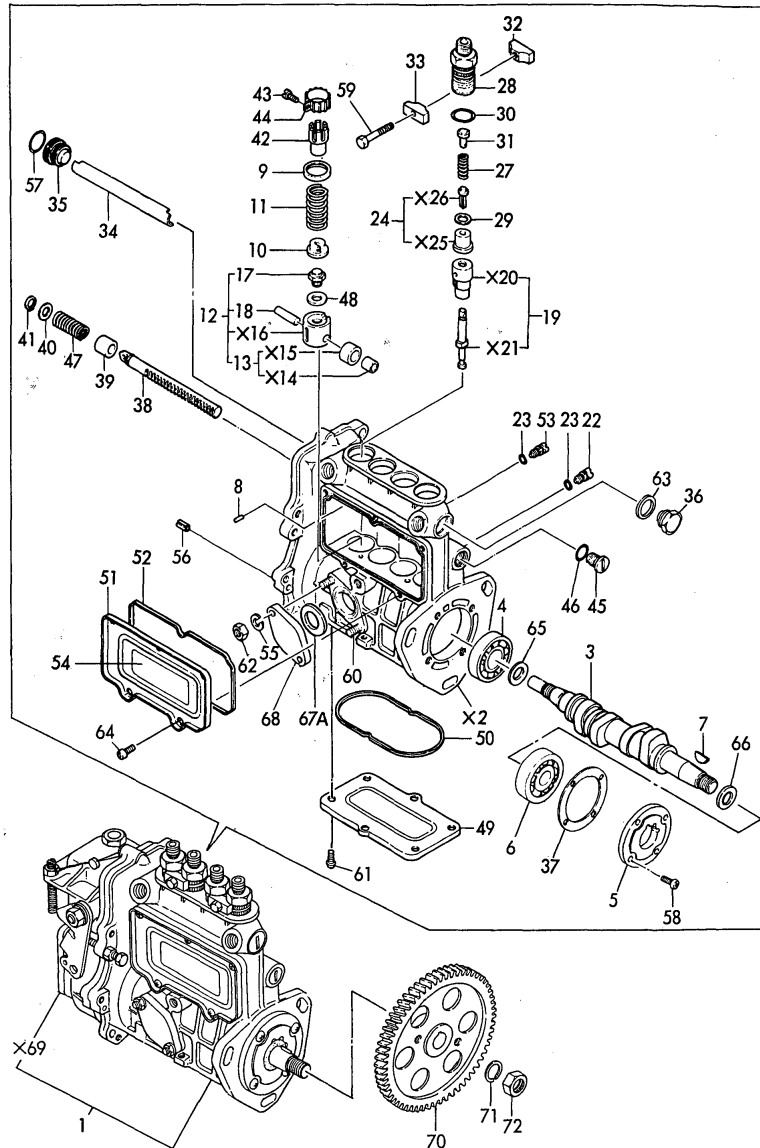
(C)=

(D)=

(E)=

(F)=

Fig. 11 FUEL INJECTION PUMP



No.	Lev.	Parts No.	Description	Q'ty						I	R
				(A)	(B)	(C)	(D)	(E)	(F)		
1	1	729489-51310	PUMP ASSY, INJECTION	1							1
3	2	129470-51040	CAMSHAFT	1							
4	2	129155-51050	BEARING, 17BM001D	1							
5	2	129155-51060	SUPPORT, CAMSHAFT	1							
6	2	24101-063034	BEARING, BALL 6303	1							
7	2	122710-51090	KEY	1							
8	2	129155-51140	PIN	4							
9	2	174307-51170	RETAINER, SPRING A	4							
10	2	129155-51180	RETAINER, SPRING	4							
11	2	124950-51190	SPRING, PLUNGER	4							
12	2	129155-51200	TAPPET ASSY	4							
13	3	711100-51540	ROLLER ASSY	4							
17	4	129155-51250	BOLT, ADJUSTING	4							
18	4	174100-54120	PIN	4							
19	2	129400-51100	PLUNGER ASSY	4							
22	2	129155-51270	STOPPER, TAPPET	4							
23	2	129155-51280	O-RING, S6	4							
24	2	128170-51300	VALVE ASSY, DELIVERY	4							
27	2	129155-51320	SPRING, DELIVERY	4							
28	2	129155-51340	RETAINER	4							
29	2	124550-51350	GASKET, DELIVERY	4							
30	2	124550-51370	O-RING	4							
31	2	129155-51370	STOPPER, VALVE	4							
32	2	129155-51380	STOPPER	2							
33	2	129155-51390	STOPPER	2							
34	2	129555-51400	DEFLECTOR	1							
35	2	129155-51410	BOLT	1							
36	2	129155-51420	PLUG, M16	1							
37	2	129155-51450	SHIM SET, ADJUSTING	1							
38	2	129555-51500	RACK, CONTROL	1							
39	2	129155-51521	BUSH, RACK	1							
40	2	129155-51530	SPACER	1							
41	2	129155-51540	CIRCLIP	1							
42	2	129155-51550	PINION, CONTROL	4							
43	2	122117-51560	SCREW	4							
44	2	174307-51560	PINION	4							
45	2	129155-51570	PLUG, M12	1							
46	2	129155-51580	O-RING	1							
47	2	129155-51591	SPRING, RACK	1							
48	2	129155-51600	SHIM SET, ADJUSTING	4							
49	2	129555-51700	COVER	1							
50	2	129555-51710	GASKET	1							
51	2	129555-51750	COVER	1							
52	2	129555-51760	GASKET	1							
53	2	129155-51790	STOOPER, RACK	1							
54	2	129156-51910	LABEL, CAUTION	1							
55	2	22217-060000	WASHER, SPRING 6	2							
56	2	22351-050010	PIN, SPRING 5.0X10	2							
57	2	24341-000160	O-RING, 1AS16.0	1							
58	2	26022-060162	SCREW, M6X16	4							
59	2	26116-050302	BOLT, M5X 30 PLATED	2							

Remarks

(1)GOVERNOR ASSY(FIG NO.14) IS INCORPORATED IN THIS FUEL INJECTION PUMP ASSY(REF NO.1).

N:Old $\frac{Yes}{No}$ New, Q:Old $\frac{No}{Yes}$ New, R:Old $\frac{Yes}{No}$ New, S:Old $\frac{No}{Yes}$ New, W:Add, Z:Discontinued, F:Interchangeable by set, K:Q'ty Change

++ CONTINUE ++

Copyright (C) YANMAR CO., LTD. All Rights Reserved.

Fig.12. FUEL INJECTION VALVE

(A)=4TN82E-RK

(B)=

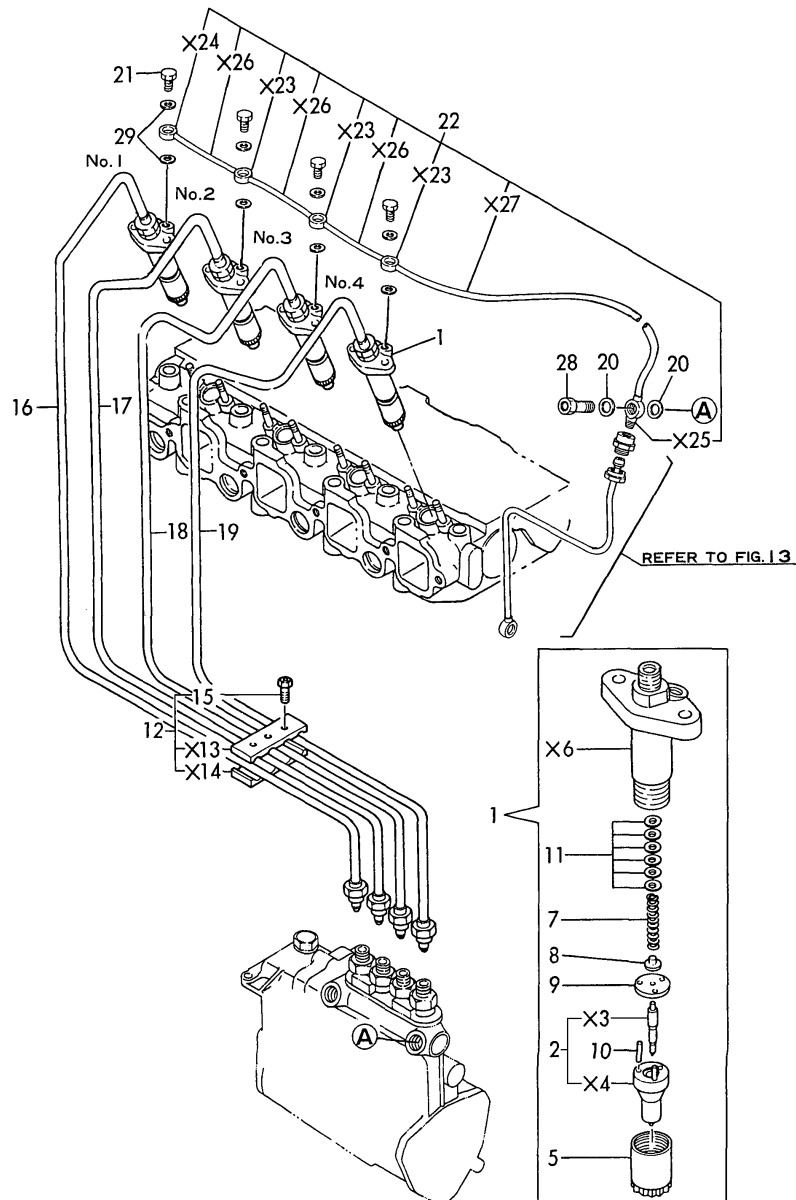
(C)=

(D)=

(E)=

(F)=

Fig. **12** FUEL INJECTION VALVE



No.	Lev.	Parts No.	Description	Q'ty						I	R
				(A)	(B)	(C)	(D)	(E)	(F)		
1	1	729491-53100	VALVE ASSY,INJECTION	4							1
2	2	119800-53000	VALVE ASSY,INJECTION	4							
5	2	114250-53080	NUT, NOZZLE D16.95	4							
7	2	114250-53120	SPRING, NOZZLE	4							
8	2	114250-53130	SEAT, SPRING	4							
9	2	114250-53140	PLATE	4							
10	2	114250-53210	PIN	8							
11	2	114250-53400	SHIM SET	4							
12	1	129550-59120	RETAINER, PIPE	1							
15	2	129150-59130	BOLT, M4X12	2							
16	1	129400-59910	PIPE ASSY, INJECTION	1							
17	1	129400-59920	PIPE ASSY, INJECTION	1							
18	1	129400-59930	PIPE ASSY, INJECTION	1							
19	1	129400-59940	PIPE ASSY, INJECTION	1							
20	1	104200-59170	GASKET, 12	2							
21	1	129491-59540	BOLT, PIPE JOINT M6	4							
22	1	129489-59550	PIPE ASSY, RETURN	1							
28	1	129100-59951	VALVE ASSY, CHECK	1							
29	1	23414-060000	GASKET, 6X1.0	8							

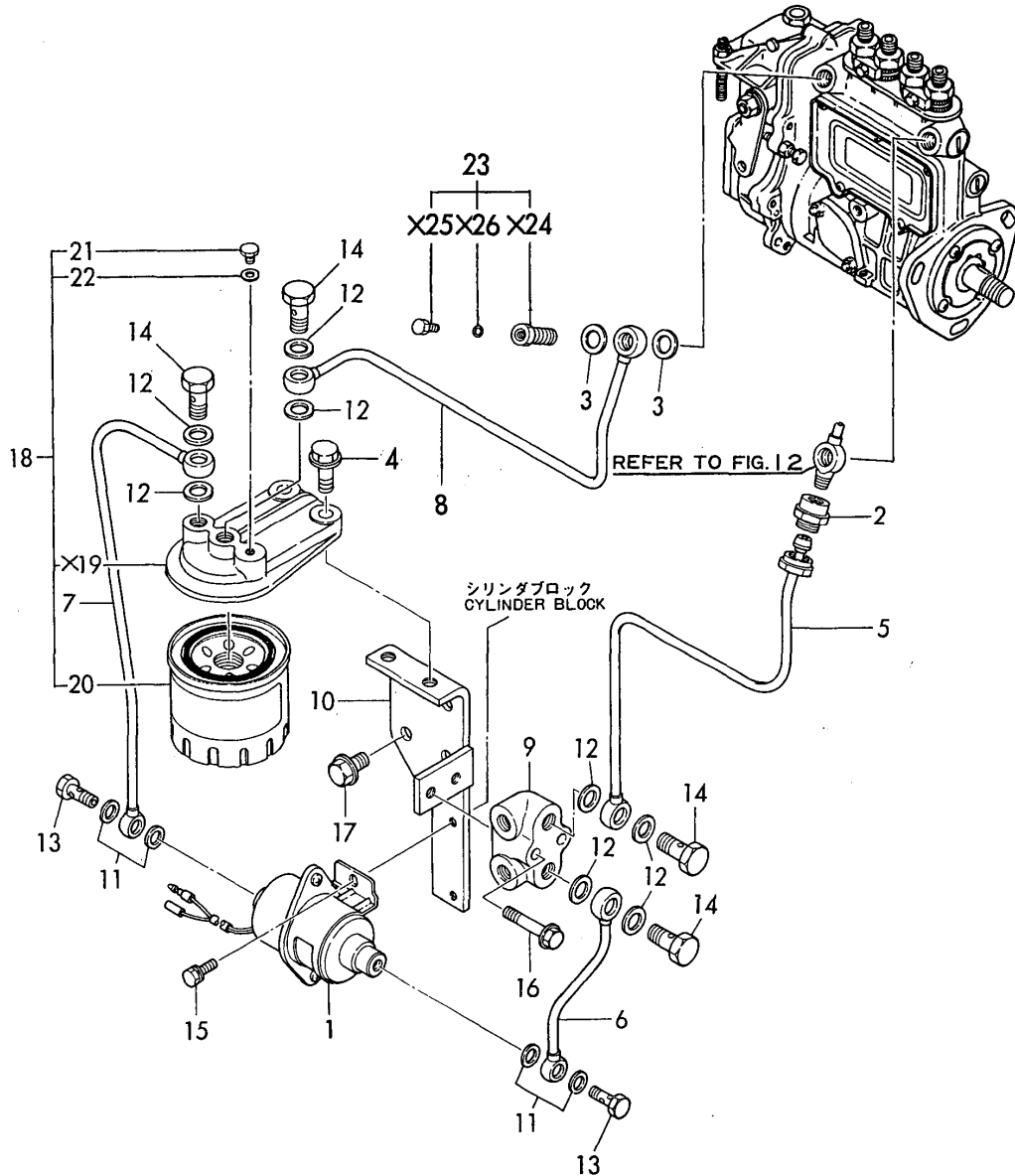
Remarks

(1) EMBOSSED MARK: YDLLA-150P204HAD

N:Old $\xrightarrow{\text{Yes}}$ New, Q:Old $\xrightarrow{\text{No}}$ New, R:Old $\xrightarrow{\text{Yes}}$ New, S:Old $\xrightarrow{\text{No}}$ New, W:Add, Z:Discontinued, F:Interchangeable by set, K:Q'ty Change

Fig.13. FUEL LINE

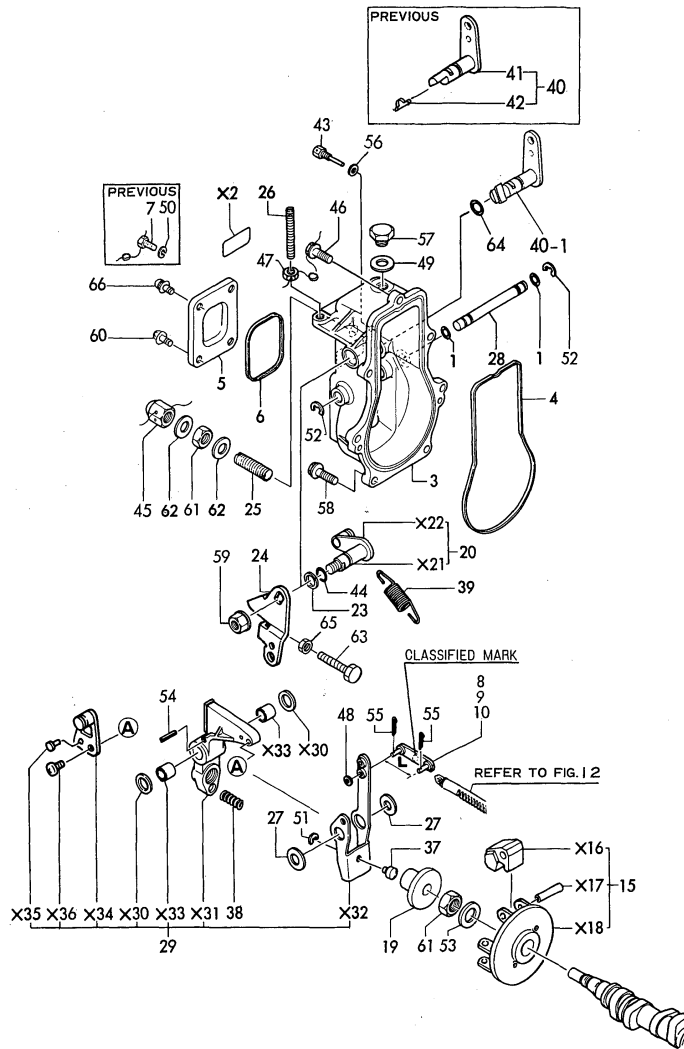
Fig. **13** FUEL LINE



No.	Lev.	Parts No.	Description	Q'ty						I	R
				(A)	(B)	(C)	(D)	(E)	(F)		
1	1	124790-52201	PUMP ASSY, FUEL FEED	1							
2	1	171463-59100	UNION	1							
3	1	104200-59170	GASKET, 12	2							
4	1	26106-100202	BOLT, M10X 20 PLATED	1							
5	1	129489-51500	PIPE ASSY, RETURN	1							
5-1	1	129489-59500	PIPE ASSY, RETURN	1							N
(A=E# 01552)											
6	1	171463-59510	PIPE ASSY, FUEL	1							
7	1	171463-59520	PIPE ASSY, FUEL	1							
8	1	129489-59530	PIPE ASSY	1							
9	1	171463-59600	BLOCK	1							
10	1	171463-59951	SUPPORT	1							
11	1	23414-080012	GASKET, 8X1.0	4							
12	1	23414-120000	GASKET, 12X1.0	8							
13	1	23857-030000	BOLT, JOINT 3	2							
14	1	23857-060000	BOLT, JOINT 6	4							
15	1	26014-060142	BOLT, M6X 14	2							
16	1	26106-080402	BOLT, M8X 40 PLATED	2							
17	1	26106-100162	BOLT, M10X 16 PLATED	3							
18	1	121850-55600	STRAINER ASSY, FUEL	1							
20	2	121850-55700	STRAINER, FUEL	1							
20-1	2	121850-55701	STRAINER, FUEL	1							R
(A=E# 10922)											
21	2	124060-59380	PLUG, 6	1							
22	2	43400-500390	SEAL WASHER 6S	1							
23	1	103854-59191	BOLT ASSY, JOINT M12	1							

Fig.14. GOVERNOR

Fig. 14 GOVERNOR



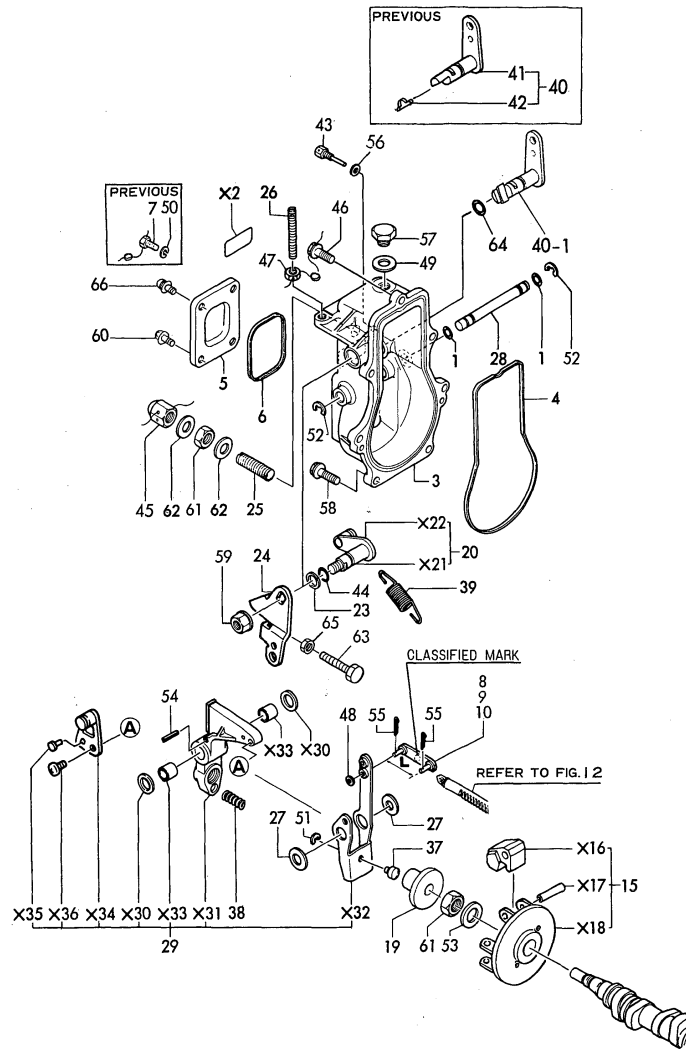
No.	Lev.	Parts No.	Description	Q'ty						I	R
				(A)	(B)	(C)	(D)	(E)	(F)		
1	1	129155-51280	O-RING, S6	2							
3	1	129155-61010	CASE, GOVERNOR	1							
3-1	1	129155-61011	CASE, GOVERNOR	1						F	1
(A=E/# 03415)											
3-2	1	129155-61012	CASE, GOVERNOR	1						F	3
(A=E/# 10922)											
4	1	129155-61050	GASKET	1							
5	1	129155-61060	COVER, GOVERNOR CASE	1							
6	1	129155-61070	GASKET	1							
7	1	129155-61090	BOLT	1							Z
(A=E/# 03415)											
8	1	129155-61120	LINK, L=30 MARK 0	1							2
9	1	129155-61130	LINK, L=31 MARK 1	1							2
10	1	129155-61140	LINK, L=30.5 MARK 05	1							2
15	1	171488-61200	WEIGHT ASSY,GOVERNOR	1							
19	1	129155-61341	SLEEVE	1							
20	1	129100-61400	SHAFT ASSY	1							
23	1	129155-61430	SPACER	1							
24	1	171488-61440	LEVER, CONTROL	1							
25	1	129155-61470	BOLT, CONTROL	1							
26	1	129155-61450	BOLT, LIMITER	1							
27	1	129155-61480	SPACER ASSY	2							
28	1	129155-61490	SHAFT	1							
29	1	129100-61500	LEVER ASSY, GOVERNOR	1							
29-1	1	129100-61501	LEVER ASSY, GOVERNOR	1						F	3
(A=E/# 10922)											
37	1	129155-61540	SHIFTER	1							
38	1	129500-61650	SPRING, FUEL CONTROL	1							
39	1	129477-61720	SPRING, GOVERNOR	1							
39-1	1	129477-61700	SPRING, GOVERNOR	1							N
(A=E/# 04350)											
39-2	1	129477-61710	SPRING, GOVERNOR	1							N
(A=E/# 09750)											
40	1	171488-61801	LEVER ASSY, STOP	1							
40-1	1	171488-61802	LEVER, STOP	1						F	1
(A=E/# 03415)											
41	2	171488-61840	LEVER, STOP	1							Z
(A=E/# 03415)											
42	2	129450-61850	COLLAR	1							Z
(A=E/# 03415)											
43	1	129155-61810	PIN	1							
44	1	129155-61830	O-RING, S10	1							
45	1	129100-61930	NUT, CAP	1							
46	1	129155-61950	BOLT	1							
47	1	124550-66370	NUT, M6	1							
48	1	22117-040000	WASHER, 4	1							
49	1	22190-100000	WASHER, SEAL 10	1							
49-1	1	43400-500430	SEAL WASHER 10S	1							R
(A=E/# 09546)											
50	1	22217-050000	WASHER, SPRING 5	1							Z
(A=E/# 03415)											

Remarks

- (1) INTERCHANGEABLE BY SIMULTANEOUS REPLACEMENT WITH NO.3-1,NO.40-1 & NO.64- 1.
- (2) SELECTIVE PART.
- (3) INTERCHANGEABLE BY SIMULTANEOUS REPLACEMENT WITH REFER NO.3-2 AND REFER NO.29-1.
- (M) MISPRINT.

Fig.14. GOVERNOR

Fig. **14** GOVERNOR



(A)=4TN82E-RK

(B)=

(C)=

(D)=

(E)=

(F)=

No.	Lev.	Parts No.	Description	Q'ty						I	R
				(A)	(B)	(C)	(D)	(E)	(F)		
51	1	22272-000040	RING, E- 4	1							
52	1	22272-000060	RING, E- 6	2							
53	1	22287-120000	WASHER, 12	1							
54	1	22351-030016	PIN, SPRING 3.0X16	1							
55	1	22360-040000	PIN, SNAP 4	2							
55-1	1	22372-040000	PIN, SNAP 4	2							N
(A=E/# 09483)											
56	1	23414-050000	GASKET, 5X1.0	1							
56-1	1	43400-500390	SEAL WASHER 6S	1							N
(A=FROM 1ST)											
57	1	23887-100002	PLUG, 10	1							
58	1	26106-060202	BOLT, M6X 20 PLATED	6							
59	1	26366-080002	NUT, M8	1							
60	1	26022-050102	SCREW, M5X10	3							
60-1	1	26022-050102	SCREW, M5X10	4							K
(A=E/# 03415)											
60-2	1	26022-050102	SCREW, M5X10	2							K
(A=E/# 10922)											
61	1	26776-120002	NUT, LOCK M12	2							
62	1	43400-500450	SEAL WASHER 12S	2							
63	1	129155-61460	BOLT, IDLE	1							
64	1	24311-000080	O-RING, 1AP8.0	1							
64-1	1	24311-240100	O-RING, 1AP10A	1							F 1
(A=E/# 03415)											
65	1	26756-060002	NUT, LOCK M6	1							W
(A=FROM 1ST)											
66	1	26023-050102	SCREW, M5X10	2							W
(A=E/# 10922)											

Remarks

(1) INTERCHANGEABLE BY SIMULTANEOUS REPLACEMENT WITH NO.3-1,NO.40-1 & NO.64- 1.

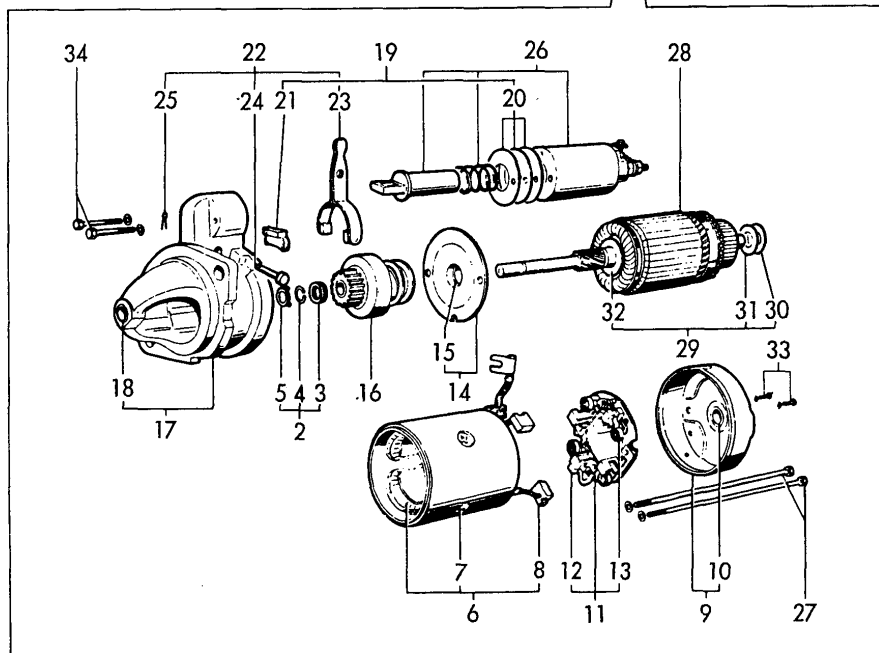
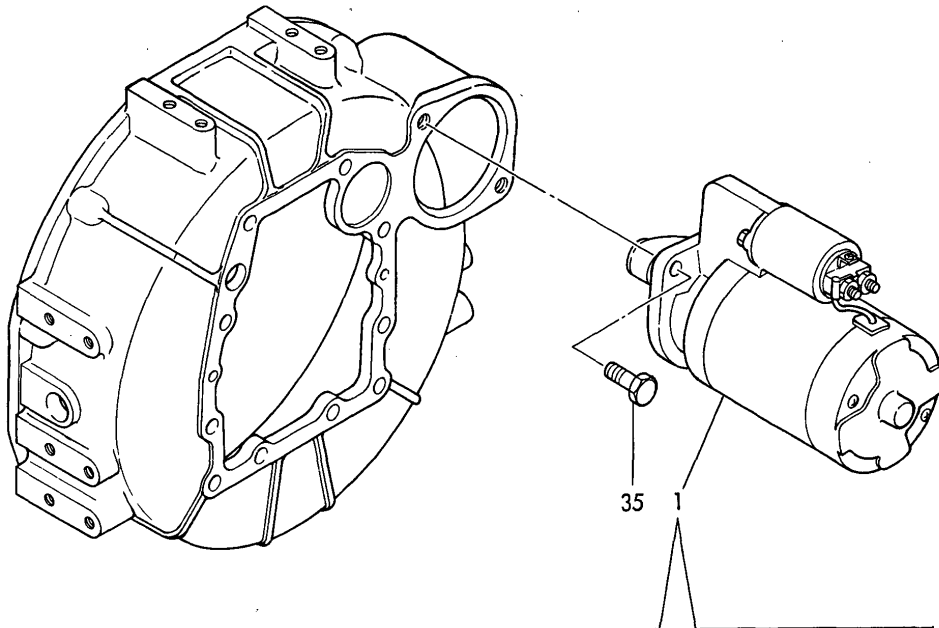
(2) SELECTIVE PART.

(3) INTERCHANGEABLE BY SIMULTANEOUS REPLACEMENT WITH REFER NO.3-2 AND REFER NO.29-1.

(M) MISPRINT.

Fig.15. STARTING MOTOR

Fig. 15 STARTING MOTOR



(A)=4TN82E-RK

(B)=

(C)=

(D)=

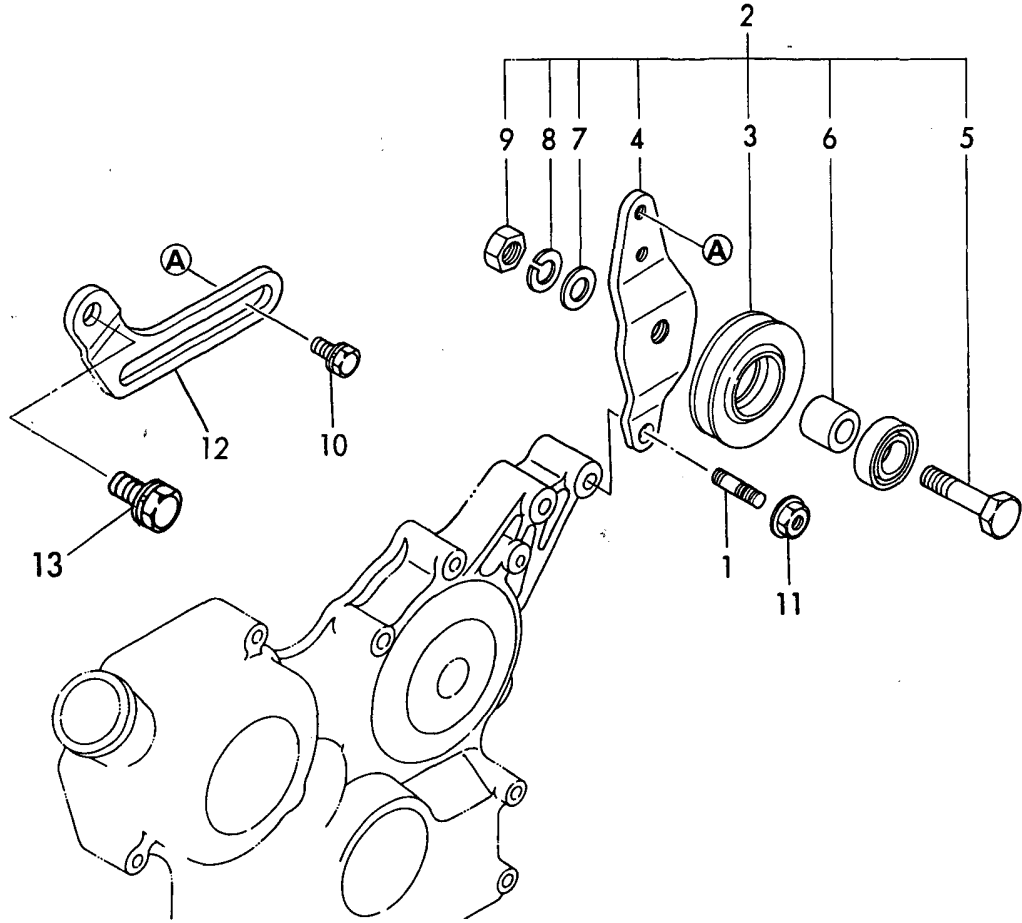
(E)=

(F)=

No.	Lev.	Parts No.	Description	Qty						I	R
				(A)	(B)	(C)	(D)	(E)	(F)		
1	1	124250-77012	STARTER, S12-77A	1							
2	2	124250-77070	STOPPER SET, PINION	1							
3	3	124250-77080	STOPPER, PINION	1							
4	3	124250-77090	WASHER, STOPPER	1							
5	3	124250-77100	CLIP, PINION STOPPER	1							
6	2	124250-77110	COIL ASSY, FIELD	1							
7	3	124250-77120	SCREW SET, PORE CORE	4							
8	3	124250-77130	BRUSH (+)	2							
9	2	124250-77140	COVER ASSY, REAR	1							
10	3	124250-77150	METAL, REAR COVER	1							
11	2	124250-77160	HOLDER ASSY, BRUSH	1							
12	3	124250-77170	BRUSH (-)	2							
13	3	124250-77180	SPRING, BRUSH	4							
14	2	124250-77190	BEARING ASSY, CENTER	1							
15	3	124250-77520	BEARING	1							
16	2	124250-77210	PINION ASSY	1							
17	2	124250-77220	CASE ASSY, GEAR	1							
18	3	124250-77230	METAL, GEAR CASE	1							
19	2	124250-77240	COVER SET, DUST	1							
20	3	124250-77250	COVER (1), DUST	1							
21	3	124250-77530	COVER (2), DUST	1							
22	2	124250-77270	LEVER SET, SHIFT	1							
23	3	124250-77280	LEVER, SHIFT	1							
24	3	124250-77290	PIN, SHIFT LEVER	1							
25	3	124250-77550	PIN	1							
26	2	124250-77310	SWITCH, MAGNETIC	1							
27	2	124250-77320	BOLT, THROUGH	2							
28	2	124250-77500	ARMATURE ASSY	1							
29	2	124250-77510	WASHER KIT	1							
30	3	124250-77040	WASHER, THRUST	2							
31	3	124250-77050	WASHER, THRUST	4							
32	3	124250-77060	WASHER, THRUST	2							
33	2	124250-77540	SCREW, M4X12	2							
33-1	2	26557-040122	SCREW, M4X12	2							N
(A=E/# 03926)											
34	2	26106-060322	BOLT, M6X 32 PLATED	2							
35	1	26116-120252	BOLT, M12X 25 PLATED	2							

Fig.16. TENSION PULLEY

Fig. **16** TENSION PULLEY



(A)=4TN82E-RK
(B)=
(C)=

(D)=
(E)=
(F)=

No.	Lev.	Parts No.	Description	Q'ty						I	R
				(A)	(B)	(C)	(D)	(E)	(F)		
1	1	121450-01570	STUD	1							
2	1	171325-44290	PULLEY ASSY, TENSION	1							
3	2	171325-44200	PULLEY, TENSION	1							
4	2	171325-44300	BRACKET, PULLEY	1							
5	2	171325-44310	BOLT	1							
6	2	171325-44320	SPACER	1							
7	2	22127-120000	WASHER, 12	1							
8	2	22217-120000	WASHER, SPRING 12	1							
9	2	26716-120002	NUT, M12	1							
10	1	26014-080252	BOLT, M8X 25	1							
11	1	26366-100002	NUT, M10	1							
12	1	129400-77330	ADJUSTER	1							
13	1	26014-080252	BOLT, M8X 25	1							W

(A=EXXX)

Fig.17. GASKET SET & TOOL (OPTIONAL)

(A)=4TN82E-RK

(B)=

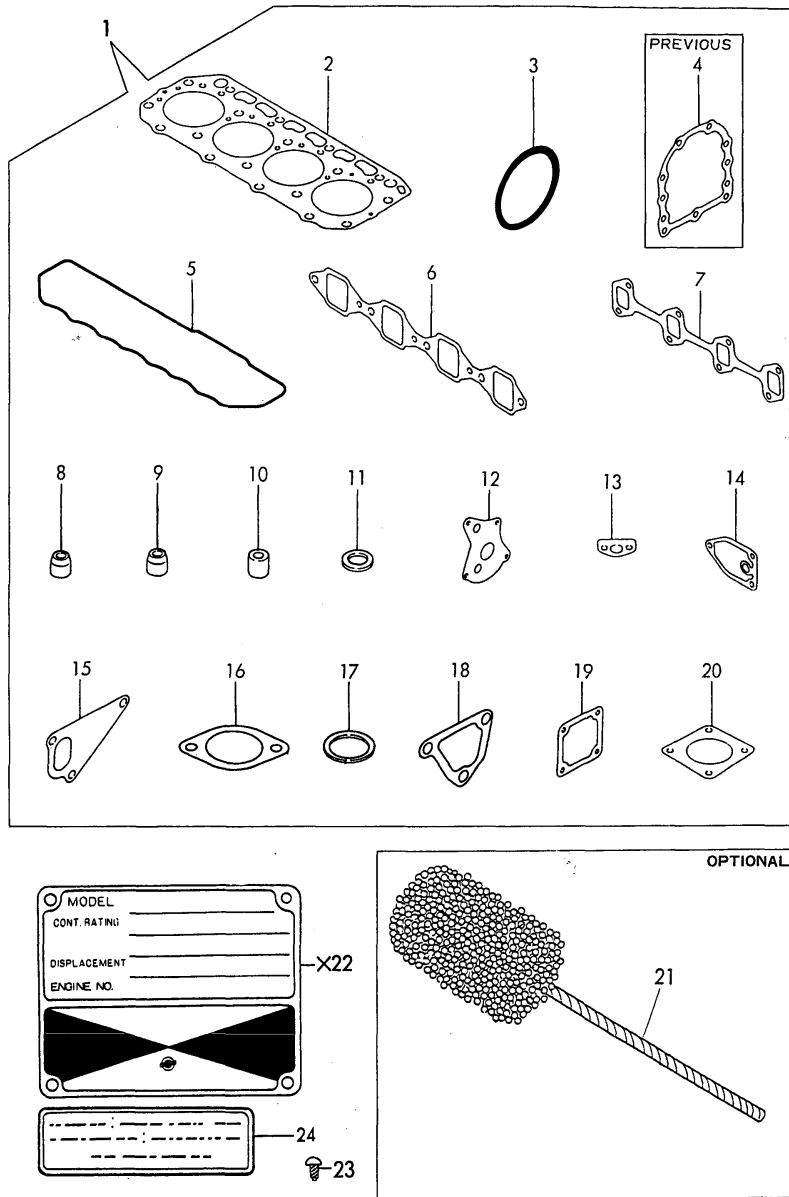
(C)=

(D)=

(E)=

(F)=

Fig. 17 GASKET SET (OPTIONAL) & TOOL



No.	Lev.	Parts No.	Description	Q'ty						I	R
				(A)	(B)	(C)	(D)	(E)	(F)		
1	1	729489-92600	GASKET SET	1							1
1-1	1	729489-92601	GASKET SET	1							N 1
(A=E/# 07750)											
2	2	129402-01321	GASKET, HEAD	1							
3	2	121850-51960	O-RING	1							
4	2	129150-01660	GASKET	1							Z
(A=E/# 03926)											
5	2	129550-11310	GASKET, BONNET	1							
6	2	129550-12110	GASKET, MANIFOLD	1							
6-1	2	129550-12111	GASKET, MANIFOLD	1							N
(A=E/# 07750)											
7	2	129550-13110	GASKET	1							
8	2	124460-11340	SEAL, VALVE STEM	4							
9	2	121400-11340	SEAL, VALVE STEM	4							
10	2	119625-11870	PROTECTOR, NOZZLE	4							
11	2	119625-11880	SEAT, NOZZLE	4							
12	2	129150-32020	GASKET, PUMP	1							
13	2	129150-35040	GASKET	1							
13-1	2	129150-35041	GASKET	1							N
(A=E/# 07750)											
14	2	129150-35110	GASKET	1							
15	2	129100-42020	GASKET, WATER PUMP	1							
16	2	129795-49550	GASKET	1							
16-1	2	129795-49551	GASKET	1							N
(A=E/# 07750)											
17	2	129150-49810	GASKET, THERMOSTAT	1							
17-1	2	129150-49811	GASKET, THERMOSTAT	1							N
(A=E/# 07750)											
18	2	129100-49840	GASKET	1							
19	2	129150-77510	GASKET	1							
19-1	2	129150-77511	GASKET	1							N
(A=E/# 07750)											
20	2	129400-13200	GASKET, SILENCER	1							
20-1	2	129400-13201	GASKET, SILENCER	1							N
(A=E/# 07750)											
21	1	129400-92420	FLEX HORN	1							1
23	1	102210-07990	RIVET	4							
24	1	129156-51910	LABEL, CAUTION	1							

Remarks
(1) OPTIONAL PART.

Parts No. Index

Parts No.	Fig. No.	Ref. No.
102210-07990	17	23
103338-11190	4	16
103854-59191	13	23
104200-59170	12	20
	13	3
114250-53080	12	5
114250-53120	12	7
114250-53130	12	8
114250-53140	12	9
114250-53210	12	10
114250-53400	12	11
119620-01750	3	13
119620-49290	10	26
119625-11870	4	34
	17	10
119625-11880	4	35
	17	11
119800-53000	12	2
119865-35300	9	12
120130-11860	4	40
121023-01550	2	22
121100-22400	8	22
121111-21501	8	11
121250-44901	10	32
121400-11340	4	18
	17	9
121420-01760	5	2
121450-01560	2	3
121450-01570	16	1
121450-42450	10	31
121520-34810	9	5
121550-23200	8	38
121850-11860	4	7
	10	4
121850-21680	8	10
121850-51960	2	9
	17	3
121850-55600	13	18
121850-55700	13	20
121850-55701	13	20 -1
122117-51560	11	43
122710-51090	11	7
124060-59380	13	21
124160-01751	2	4
	5	3
124160-01910	1	4
		5
124160-11360	5	12
124160-39140	9	16
124160-39450	9	17

Parts No.	Fig. No.	Ref. No.
124240-01871	2	6
124240-01882	2	7
124240-01883	2	7 -1
124250-77012	15	1
124250-77040	15	30
124250-77050	15	31
124250-77060	15	32
124250-77070	15	2
124250-77080	15	3
124250-77090	15	4
124250-77100	15	5
124250-77110	15	6
124250-77120	15	7
124250-77130	15	8
124250-77140	15	9
124250-77150	15	10
124250-77160	15	11
124250-77170	15	12
124250-77180	15	13
124250-77190	15	14
124250-77210	15	16
124250-77220	15	17
124250-77230	15	18
124250-77240	15	19
124250-77250	15	20
124250-77270	15	22
124250-77280	15	23
124250-77290	15	24
124250-77310	15	26
124250-77320	15	27
124250-77500	15	28
124250-77510	15	29
124250-77520	15	15
124250-77530	15	21
124250-77540	15	33
124250-77550	15	25
124460-11340	4	17
	17	8
124465-44950	10	33
		34
124550-21600	8	14
124550-51350	11	29
124550-51370	11	30
124550-59820	9	19
124550-66370	14	47
124732-42290	10	6
124736-07900	4	41
124770-11770	10	12
124790-52201	13	1
124950-51190	11	11

Parts No.	Fig. No.	Ref. No.
128170-51300	11	24
129100-01580	3	11
		20
	8	4
129100-01640	3	16
129100-01790	3	4
129100-11100	4	12
129100-11110	4	13
129100-11650	4	28 -2
129100-23910	8	41
129100-25061	7	7
129100-42001	10	1
129100-42002	10	1 -1
129100-42020	10	3
	17	15
129100-49050	10	29
129100-49800	10	11
129100-49820	10	14
129100-49830	10	15
129100-49840	10	20
	17	18
129100-52200	11	68
129100-59951	12	28
129100-61400	14	20
129100-61500	14	29
129100-61501	14	29 -1
129100-61930	14	45
129120-77501	6	4
129150-01200	1	25
129150-01650	3	17
129150-01660	3	19
	17	4
129150-02020	1	11
129150-02450	7	4
129150-02800	1	12
129150-02870	1	27
129150-02930	1	15
129150-02940	1	30
129150-03070	5	7
129150-03080	5	8
129150-03090	5	10
129150-03100	5	11
129150-11050	4	4
129150-11230	4	29
129150-11280	4	27
129150-11370	4	19
129150-11750	4	31
129150-11810	4	39
129150-14101	7	2
129150-14200	7	5

Parts No.	Fig. No.	Ref. No.
129150-14400	7	6
129150-21200	8	3
129150-22300	8	21
129150-23600	8	39
129150-23610	8	42
129150-25101	7	8
129150-25900	11	70
129150-32000	9	1
129150-32020	9	2
	17	12
129150-35040	9	6
	17	13
129150-35041	9	6 -1
	17	13 -1
129150-35091	9	7
129150-35101	9	9
129150-35110	9	10
	17	14
129150-35111	9	10 -1
129150-35150	9	11
129150-35151	9	11 -1
129150-35350	9	13
129150-49810	10	19
	17	17
129150-49811	10	19 -1
	17	17 -1
129150-59130	12	15
129150-77510	6	5
	17	19
129150-77511	6	5 -1
	17	19 -1
129155-11260	4	25
129155-11270	4	26
129155-42350	10	7
129155-49800	10	18
129155-51020	11	60 -1
129155-51050	11	4
129155-51060	11	5
129155-51140	11	8
129155-51180	11	10
129155-51200	11	12
129155-51250	11	17
129155-51270	11	22
129155-51280	11	23
	14	1
129155-51320	11	27
129155-51340	11	28
129155-51370	11	31
129155-51380	11	32
129155-51390	11	33

Parts No. Index

Parts No.	Fig. No.	Ref. No.
129155-51410	11	35
129155-51420	11	36
129155-51450	11	37
129155-51521	11	39
129155-51530	11	40
129155-51540	11	41
129155-51550	11	42
129155-51570	11	45
129155-51580	11	46
129155-51591	11	47
129155-51600	11	48
129155-51790	11	53
129155-51930	11	65
129155-51940	11	66
129155-52050	11	67
129155-61010	14	3
129155-61011	14	3 -1
129155-61012	14	3 -2
129155-61050	14	4
129155-61060	14	5
129155-61070	14	6
129155-61090	14	7
129155-61120	14	8
129155-61130	14	9
129155-61140	14	10
129155-61341	14	19
129155-61430	14	23
129155-61450	14	26
129155-61460	14	63
129155-61470	14	25
129155-61480	14	27
129155-61490	14	28
129155-61540	14	37
129155-61810	14	43
129155-61830	14	44
129155-61950	14	46
129156-51910	11	54
	17	24
129400-01520	2	5
129400-01590	2	1
129400-01730	3	6
129400-11300	5	1 A
129400-13200	6	13
	17	20
129400-13201	6	13 -1
	17	20 -1
129400-51100	11	19
129400-59910	12	16
129400-59920	12	17
129400-59930	12	18

Parts No.	Fig. No.	Ref. No.
129400-59940	12	19
129400-77330	16	12
129400-92420	17	21
129402-01321	1	26
	17	2
129402-13100	6	7
129402-22080	8	15
129402-22920	8	29
129402-22970	8	31
129450-61850	14	42
129470-49540	10	9
129470-51040	11	3
129477-61700	14	39 -1
129477-61710	14	39 -2
129477-61720	14	39
129488-12100	6	1
129489-51500	13	5
129489-59500	13	5 -1
129489-59530	13	8
129489-59550	12	22
129491-59540	12	21
129500-11240	4	21 -1
129500-61650	14	38
129550-11290	4	22
129550-11310	5	4
	17	5
129550-12110	6	2
	17	6
129550-12111	6	2 -1
	17	6 -1
129550-13110	6	8
	17	7
129550-21650	8	8
129550-39450	9	18
129550-59120	12	12
129555-11241	4	21
129555-51400	11	34
129555-51500	11	38
129555-51700	11	49
129555-51710	11	50
129555-51750	11	51
129555-51760	11	52
129795-01780	3	18
129795-01800	2	2
129795-01950	2	8
129795-02411	1	20
129795-11120	4	14
129795-11180	4	15
129795-21661	8	9
129795-49550	10	10

Parts No.	Fig. No.	Ref. No.
129795-49550	17	16
129795-49551	10	10 -1
	17	16 -1
171051-01921	1	6
171301-01640	3	2
171325-44200	16	3
171325-44290	16	2
171325-44300	16	4
171325-44310	16	5
171325-44320	16	6
171420-01600	3	12
171420-21590	8	12
171420-34800	9	4
171463-03010	5	5
171463-03020	5	6
171463-11350	5	1
171463-59100	13	2
171463-59510	13	6
171463-59520	13	7
171463-59600	13	9
171463-59951	13	10
171487-21590	8	12 -1
171488-61200	14	15
171488-61440	14	24
171488-61801	14	40
171488-61802	14	40 -1
171488-61840	14	41
174100-54120	11	18
174307-51170	11	9
174307-51560	11	44
194990-22050	6	9
22117-040000	14	48
22127-120000	16	7
22190-100000	14	49
22217-050000	14	50
22217-060000	11	55
22217-120000	11	71
	16	8
22272-000040	14	51
22272-000060	14	52
22287-120000	14	53
22312-080160	8	4 -1
22351-030016	14	54
22351-040010	8	7
22351-050010	11	56
22351-060012	4	36
22360-040000	14	55
22372-040000	14	55 -1
22512-070140	7	3
	8	5

Parts No.	Fig. No.	Ref. No.
23000-016000	10	30
23414-050000	14	56
23414-060000	12	29
23414-080000	1	21
23414-080012	13	11
23414-100000	9	21
23414-120000	13	12
23857-030000	13	13
23857-060000	13	14
23871-010000	1	7
23871-030000	1	22
	4	8
	10	2
		16
23887-100002	14	57
24101-063034	11	6
24311-000080	14	64
24311-000120	5	13
24311-000160	2	10
	9	14
24311-000260	2	23
24311-000320	2	11
	5	2 -1
24311-240100	14	64 -1
24341-000160	11	57
24341-000240	2	23 -1
	3	5
26014-060142	13	15
26014-080252	16	10
		13
26022-050102	11	61
		64
	14	60
		60 -1
		60 -2
26022-060162	11	58
26023-050102	14	66
26106-060122	2	24
26106-060162	10	8
26106-060202	14	58
26106-060322	15	34
26106-080122	1	23
	2	12
26106-080142	4	42
26106-080162	1	24
	2	13
		14
	3	7
26106-080202	2	15
	5	9

Parts No. Index

Parts No.	Fig. No.	Ref. No.
26106-080202	9	15
26106-080222	10	21
26106-080252	3	8
	4	37
	10	22
26106-080302	3	21
26106-080322	10	23
26106-080352	3	22
	6	3
		6
	9	8 -1
26106-080402	13	16
26106-080452	2	16
	3	9
	7	11
26106-080502	3	10
	4	38
	10	24
26106-080552	2	17
26106-080602	10	5
		25
26106-080802	6	10
26106-080852	2	18
26106-100162	13	17
26106-100202	13	4
26116-050302	11	59
26116-060162	10	17
26116-080352	9	8
26116-120252	15	35
26206-100252	3	14
26206-100302	3	15
26216-060142	11	60
26216-060202	4	9
26216-080222	6	11
26216-080802	6	12
26226-080182	4	32
26366-060002	4	20
26366-080002	2	19
	14	59
26366-100002	16	11
26450-060252	9	3
26557-040122	15	33 -1
26716-060002	11	62
26716-120002	11	72
	16	9
26756-060002	14	65
26756-080002	4	33
26776-120002	14	61
27231-500000	1	8
27241-100000	4	24

Parts No.	Fig. No.	Ref. No.
27241-120000	1	9
27241-220000	4	10
27241-300000	1	10
27241-400000	4	11
27310-080001	4	16 -1
43400-500390	13	22
	14	56 -1
43400-500410	2	20
		21
	9	20
43400-500430	14	49 -1
43400-500450	14	62
43400-500490	11	63
711100-51540	11	13
719810-01500	2	1 -1
729150-11650	4	28
729150-23700	8	35
729151-22500	8	17
729156-22950	8	25
729400-21700	8	1
729402-01540	3	1 -1
729402-01560	1	1
729402-11650	4	28 -1
729402-11701	4	1
729402-14580	7	1
729402-22500	8	17 -1
729402-22900	8	23
729402-23100	8	35 -1
729488-01540	3	1
729489-51310	11	1
729489-92600	17	1
729489-92601	17	1 -1
729491-53100	12	1

Parts No.	Fig. No.	Ref. No.
-----------	----------	----------

Parts No.	Fig. No.	Ref. No.
-----------	----------	----------