

0CV10-M41701EN

# P R E F A C E

1. This Parts Catalog carries all parts incorporated in YANMAR Model 4TN100E - ACG & 4TN100E - ACGD engines manufactured since March, 1996.
2. Each illustration corresponds to the parts list on the following page.
3. When ordering parts, clearly write down the engine model and serial number, as well as the name and number of each part in your order sheet. This will help insure reliable delivery of the parts you have ordered.

## Directions for the Parts Catalog.

- The parts stipulated in this Parts Catalog are not necessarily standard equipped parts.
- Parts may change without prior notice.
- The following is an example of the Parts Catalog format.

OCF10-G21601 29. FUEL INJECTION PUMP(W/BOOST)

REF.	LEV.	PARTS NO.	DESCRIPTION	Q'TY						I	R
				(A)	(B)	(C)	(D)	(E)	(F)		
1	1	729595-51390	FUEL INJECTION PUMP	1	1	1	1	1			1
1-1	1	729595-51391	FUEL INJECTION PUMP	1	1	1	1	1		N	1
		(A=E00185) (B=E00200)									
3	2	26022-060162	SCREW M 6X 16	9	9	9	9	9			
3-1	2	26022-060162	SCREW M 6X 16	4	4	4	4	4		K	
		(A=E00156) (B=E00156) (C=E00156) (D=E00156) (E=E00156)									
4	2	129470-51040	CAMSHAFT	1	1	1	1	1			
5	2	122710-51050	BEARING, ROLLER	2	2	2	2	2			
6	2	129470-51060	RETAINER	1	1	1	1	1			

Remarks

(1) BOOST COMPEMSATOR TYPE. OPTIONAL PART, TO E00155,(4JH-DT, 4JH-DTZ

### ① Ref. No.

The Ref. No. listed may not be in accordance with the illustration Ref. No.

(Ex.) Illustration No.

List Ref No.

1

1

(Before change)

1-1

(After change)

For interchangeable symbols N, R and K, illustrations for new parts may be abbreviated.

### ② Lev. (Level)

Level indication

The numbers below indicate the level of relativity towards the main part.

1 ----- Main parts (Assembly parts)

2 ----- Sub component included in " 1 ".

3 ----- Sub component included in " 2 ".

Note) Parts that are not for sale are partially illustrated but not listed.

### ③ Interchangeability Mark

When a part change takes place, one of the following interchangeability symbols is indicated beside the part.

Symbol	Interchangeability	Contents note
N	Old $\begin{matrix} \leftarrow \text{Yes} \\ \text{No} \rightarrow \end{matrix}$ New	New Part is interchangeable for Old Part but Old Part is not interchangeable for New Part.
Q	Old $\begin{matrix} \leftarrow \text{No} \\ \text{Yes} \rightarrow \end{matrix}$ New	New Part is not interchangeable for Old Part but Old Part is interchangeable for New Part.
R	Old $\begin{matrix} \leftarrow \text{Yes} \\ \text{Yes} \rightarrow \end{matrix}$ New	New/ Old Parts are both interchangeable.
S	Old $\begin{matrix} \leftarrow \text{No} \\ \text{No} \rightarrow \end{matrix}$ New	New/ Old Parts are both not interchangeable.
W		Part newly added.
Z		Part discontinued.
F		Not interchangeable by a single part but interchangeable together with related parts.
K		Changes only for used parts quantities.

### ④ Effective Machine No.

When a part changes, the effective Machine No. will be indicated in the (A)-(F) column.

Product Symbol	Product No.	Product Symbol	Product No.
C	Clutch No. Compressor No.	F	Machine No. (Agricultural Equip.)
D	Drive No.	M	Machine No.
E	Engine No.		

Note 1) A date may follow the symbol. (Ex.) 1996.01

Note 2) "XXXXX" and "ZZZZZ" are for parts that could not be predicted or for engine models that could not be identified.

Note 3) (A=E00185) is the E (Engine Serial Number) for the column (A) model (in this case 4JH-DT) after the parts design change.

### ⑤ Remarks Mark

Figures or alphabets (symbols) are entered in the remarks column.

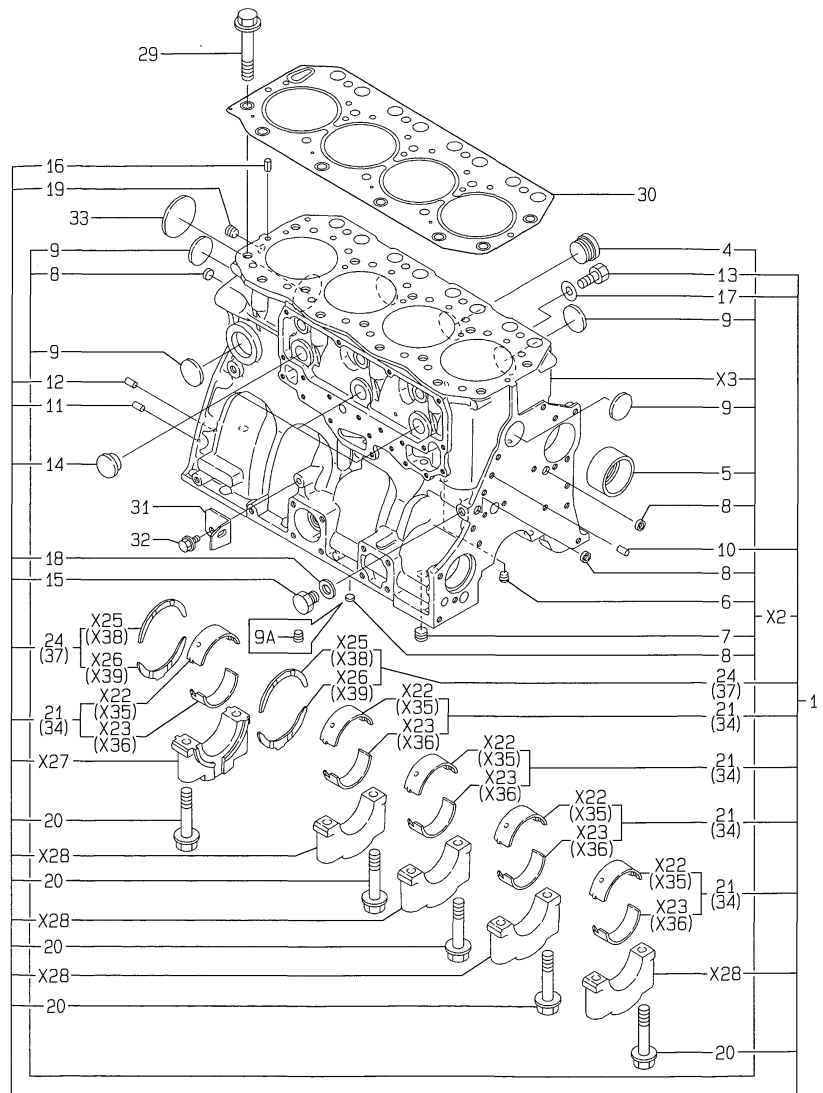
The comments (remarks) on parts that are indicated at the bottom of the illustration are the same symbols as those stated above.

# Contents

Fig. No.	Fig. Name	Fig. No.	Fig. Name
4TN100E-ACG			
1.	CYLINDER BLOCK		
2.	GEAR HOUSING		
3.	FLYWHEEL HOUSING & OIL SUMP		
4.	CYLINDER HEAD & BONNET		
5.	SUCTION MANIFOLD		
6.	EXHAUST MANIFOLD		
7.	CAMSHAFT & DRIVING GEAR		
8.	CRANKSHAFT & PISTON		
9.	LUB.OIL SYSTEM		
10.	OIL COOLER CASE		
11.	COOLING WATER PUMP		
12.	FUEL INJECTION PUMP		
13.	FUEL FEED PUMP		
14.	GOVERNOR		
15.	FUEL INJECTION VALVE		
16.	FUEL LINE		
17.	STARTING MOTOR		
18.	GENERATOR		
19.	GASKET SET(CYLINDER BLOCK)		
20.	GASKET SET(CYLINDER HEAD)		
21.	GOVERNOR		

### Fig.1. CYLINDER BLOCK

1. CYLINDER BLOCK



X-MARK PARTS: NOT SOLD SEPARATELY.

Remarks

(1) UNDER-SIZED(U.S=0.25)PART.

(2) OVER-SIZED(O.S=0.25)PART.

(G) THESE PARTS ARE SOLD BY FIG.19,

REF.NO.1.

(H) THESE PARTS ARE SOLD BY FIG.20,

REF.NO.1.

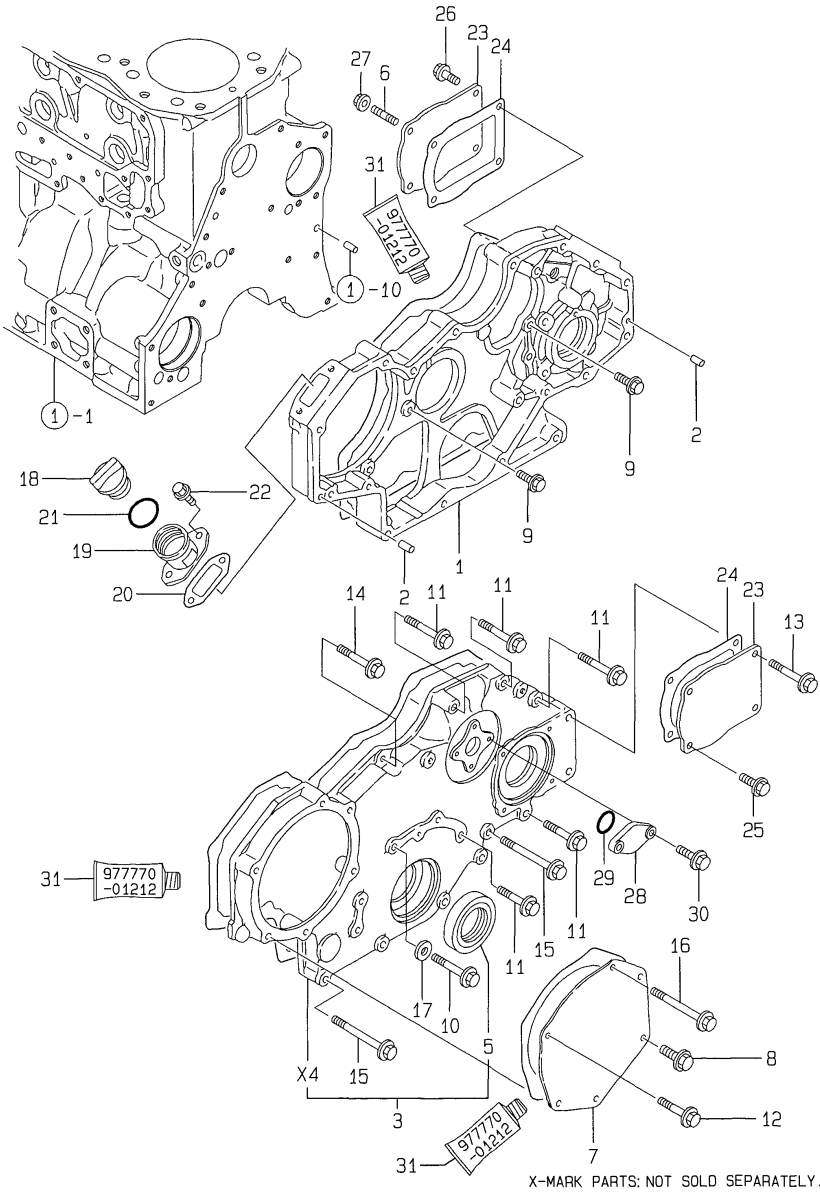
(A)=4TN100E-ACG  
(B)=4TN100E-ACGD  
(C)=

(D)=  
(E)=  
(F)=

No.	Lev.	Parts No.	Description	Q'ty						I	R
				(A)	(B)	(C)	(D)	(E)	(F)		
1	1	719141-01561	BLOCK ASSY, CYLINDER	1	1						
4	3	171051-01921	PLUG, NPTF1	1	1						
5	3	119000-02410	BUSH, CAMSHAFT	1	1						
6	3	23871-010000	PLUG, R01	1	1						
7	3	23871-030000	PLUG, R03	1	1						
8	3	27241-140000	PLUG, 14		4						
8-1	3	27241-140000	PLUG, 14	3	3						K
				(A=E07100)							
9	3	27241-400000	PLUG, 40		5						
9-1	3	119593-01870	PLUG	5	5						R
				(A=E06489)							
9A	3	119000-01880	SCREW	1	1						W
				(A=E07100)							
10	2	129100-01580	PIN, M8X16	2	2						
11	2	129100-01580	PIN, M8X16	2	2						
12	2	129100-01580	PIN, M8X16	2	2						
13	2	135400-01790	PLUG	1	1						
14	2	119000-01840	PLUG, RUBBER	3	3						
15	2	135602-34390	RETAINER	1	1						
16	2	22351-080016	PIN, SPRING 8.0X16	2	2						
17	2	23414-100000	GASKET, 10X1.0	1	1						
18	2	23414-140000	GASKET, 14X1.0	1	1						G
19	2	23871-020000	PLUG, R02	1	1						
20	2	119000-02020	BOLT, METAL CAP	10	10						
21	2	119000-02800	BEARING, MAIN	5	5						
24	2	119000-02930	BEARING, THRUST	2	2						
29	1	119000-01200	BOLT, HEAD	18	18						
30	1	119100-01340	GASKET, HEAD T=1.3	1	1						H
31	1	119100-01980	RETAINER, PUMP	1	1						
32	1	26106-080162	BOLT, M8X 16 PLATED	2	2						
33	1	27231-600000	PLUG, 60	1	1						
34	1	719000-02870	BEARING, 0.25 US	5	5						1
37	1	719000-02940	BEARING, THRUST 0.25	2	2						2

Fig.2. GEAR HOUSING

2. GEAR HOUSING



X-MARK PARTS: NOT SOLD SEPARATELY.

(A)=4TN100E-ACG  
(B)=4TN100E-ACGD  
(C)=

(D)=  
(E)=  
(F)=

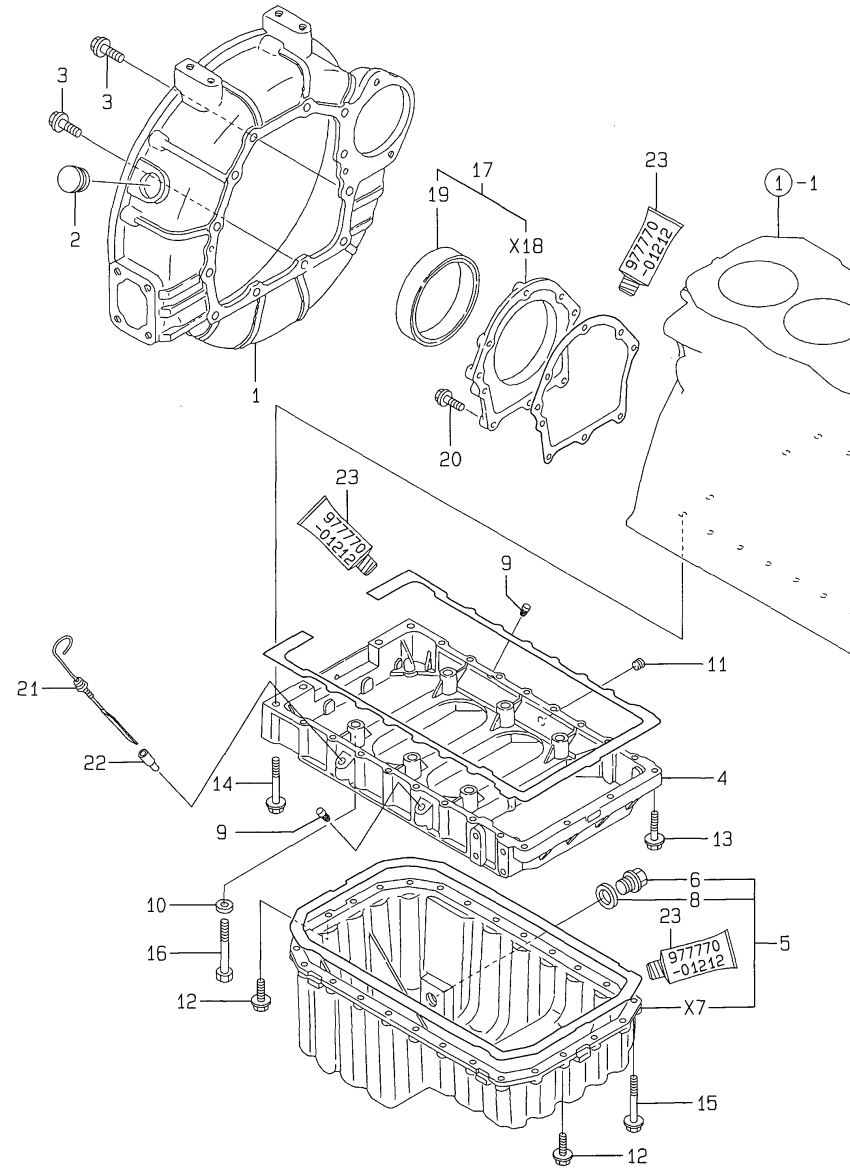
No.	Lev.	Parts No.	Description	Q'ty						I	R
				(A)	(B)	(C)	(D)	(E)	(F)		
1	1	119000-01500	CASE, GEAR	1	1						
2	1	129100-01580	PIN, M8X16	2	2						
3	1	119000-01590	COVER ASSY,GEAR CASE	1	1						
5	2	121850-01800	SEAL, OIL	1	1						G
6	1	121850-01920	STUD, 2D8X22	2	2						
7	1	119000-01930	COVER	1	1						
8	1	26106-080182	BOLT, M8X 18 PLATED	1	1						
9	1	26106-080202	BOLT, M8X 20 PLATED	5	5						
10	1	26106-080402	BOLT, M8X 40 PLATED	1	1						
11	1	26106-080452	BOLT, M8X 45 PLATED	5	5						
12	1	26106-080452	BOLT, M8X 45 PLATED	3	3						
13	1	26106-080502	BOLT, M8X 50 PLATED	2	2						
14	1	26106-080552	BOLT, M8X 55 PLATED	1	1						
15	1	26106-080752	BOLT, M8X 75 PLATED	4	4						
16	1	26106-080902	BOLT, M8X 90 PLATED	2	2						
17	1	22190-080003	WASHER, SEAL 8	1	1						G
18	1	124160-01751	COVER, FILLER	1	1						
19	1	119000-01760	FLANGE	1	1						
20	1	119000-01771	GASKET	1	1						G
21	1	24311-000320	O-RING, 1AP32.0	1	1						G
22	1	26106-080252	BOLT, M8X 25 PLATED	2	2						
23	1	124610-01851	COVER	2	2						
24	1	124610-01862	GASKET	2	2						G
25	1	26106-080202	BOLT, M8X 20 PLATED	2	2						
26	1	26106-080202	BOLT, M8X 20 PLATED	2	2						
27	1	26366-080002	NUT, M8	2	2						
28	1	121023-01550	COVER	1	1						
29	1	24341-000240	O-RING, 1AS24.0	1	1						G
30	1	26106-060122	BOLT, M6X 12 PLATED	2	2						
31	1	977770-01212	GASKET, LIQUID	1	1						W 1

(A)=EXXX

Remarks  
(G) THESE PARTS ARE SOLD BY FIG.19,  
REF.NO.1.  
(1) OPTIONAL PART.

Fig.3. FLYWHEEL HOUSING & OIL SUMP

3.FLYWHEEL HOUSING & OIL SUMP



(A)=4TN100E-ACG  
(B)=4TN100E-ACGD  
(C)=

(D)=  
(E)=  
(F)=

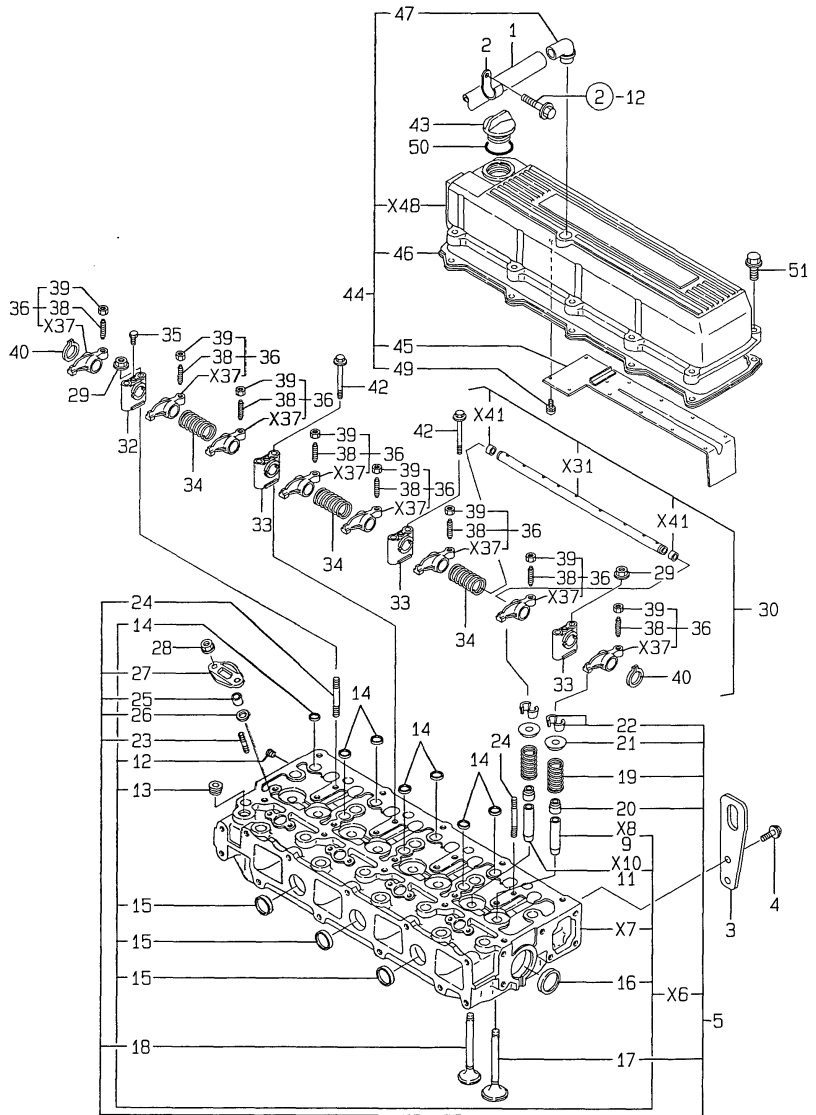
No.	Lev.	Parts No.	Description	Q'ty						I	R
				(A)	(B)	(C)	(D)	(E)	(F)		
1	1	119140-01610	HOUSING, FLYWHEEL	1	1						
2	1	129795-11750	CAP	1	1						
3	1	26106-100302	BOLT, M10X 30 PLATED	12	12						
4	1	119100-01730	SPACER	1	1						
5	1	119100-01770	SUMP ASSY, OIL	1	1						
6	2	119640-01640	PLUG, DRAIN M22	1	1						
8	2	22190-220002	WASHER, SEAL 22	1	1						G
9	1	124976-34850	CAP	2	2						
10	1	22117-120000	WASHER, 12	6	6						
11	1	23871-030000	PLUG, R03	1	1						
12	1	26106-080252	BOLT, M8X 25 PLATED	8	8						
13	1	26106-080352	BOLT, M8X 35 PLATED	4	4						
14	1	26106-080702	BOLT, M8X 70 PLATED	2	2						
15	1	26106-080802	BOLT, M8X 80 PLATED	18	18						
16	1	26116-120852	BOLT, M12X 85 PLATED	6	6						
17	1	119100-01640	CASE ASSY, OIL SEAL	1	1						
19	2	124411-01780	SEAL, HTC95X115X12	1	1						G
20	1	26106-080252	BOLT, M8X 25 PLATED	8	8						
21	1	119100-34800	DIPSTICK, OIL	1	1						
22	1	121520-34810	GUIDE, DIPSTICK	1	1						
23	1	977770-01212	GASKET, LIQUID	1	1						W 1

(A)=EXXX

Remarks  
(G) THESE PARTS ARE SOLD BY FIG.19,  
REF.NO.1.  
(1) OPTIONAL PART.

Fig.4. CYLINDER HEAD & BONNET

4. CYLINDER HEAD & BONNET



X-MARK PARTS: NOT SOLD SEPARATELY.

(A)=4TN100E-ACG  
(B)=4TN100E-ACGD  
(C)=

(D)=  
(E)=  
(F)=

No.	Lev.	Parts No.	Description	Q'ty						I	R
				(A)	(B)	(C)	(D)	(E)	(F)		
1	1	119140-03090	HOSE, ID16X2T	1	1						
2	1	129150-03100	RETAINER, PIPE	1	1						
3	1	119000-07200	LIFTER	1	1						
4	1	26106-100202	BOLT, M10X 20 PLATED	2	2						
5	1	719129-11700	HEAD ASSY, CYLINDER	1	1						
9	3	121850-11800	GUIDE, VALVE	4	4						1
11	3	119000-11810	GUIDE, VALVE	4	4						1
12	3	123385-82200	PLUG, 1/16	1	1						
13	3	23871-030000	PLUG, R03	1	1						
14	3	27241-160000	PLUG, 16	7	7						
15	3	27241-280000	PLUG, 28	3	3						
16	3	27241-400000	PLUG, 40	2	2						
17	2	121850-11100	VALVE, INTAKE	4	4						
18	2	119000-11110	VALVE, EXHAUST	4	4						
19	2	121850-11120	SPRING, VALVE	8	8						
20	2	121850-11150	SEAL, VALVE STEM	8	8						H
21	2	121850-11180	RETAINER, SPRING	8	8						
22	2	124250-11190	COTTER	8							
22-1	2	27310-090000	COTTER 9	8	8						R
(A=EXXX)											
23	2	26216-060252	STUD, M6X 25	8	8						
24	2	26216-080652	STUD, M8X 65	2	2						
25	2	119625-11871	PROTECTOR, NOZZLE	4	4						H
26	2	119625-11880	SEAT, NOZZLE	4	4						H
27	2	119625-11900	RETAINER, NOZZLE	4	4						
28	1	26366-060002	NUT, M6	8	8						
29	1	26366-080002	NUT, M8	2	2						
30	1	119100-11230	SHAFT ASSY, ROCKER	1	1						
32	2	119000-11260	SUPPORT, ROCKER ARM	1	1						
33	2	119000-11270	SUPPORT, ROCKER ARM	3	3						
34	2	119000-11280	SPRING	3	3						
35	2	119000-11290	BOLT	1	1						
36	2	719129-11660	ARM ASSY, ROCKER	8	8						
38	3	119000-11230	SCREW, VALVE ADJUST	8	8						
39	3	129150-11750	NUT, M8	8	8						
40	2	22242-000180	RING, 18	2	2						
42	1	26106-080652	BOLT, M8X 65 PLATED	6	6						
43	1	124160-01751	COVER, FILLER	1	1						
44	1	119100-11311	BONNET ASSY, HEAD	1	1						
45	2	119100-03200	COVER	1	1						
46	2	119100-11320	GASKET, BONNET	1	1						H
47	2	119100-11330	ELBOW	1	1						
49	2	26022-050122	SCREW, M5X12	11	11						
50	1	24311-000320	O-RING, 1AP32.0	1	1						G
51	1	26106-080252	BOLT, M8X 25 PLATED	10	10						

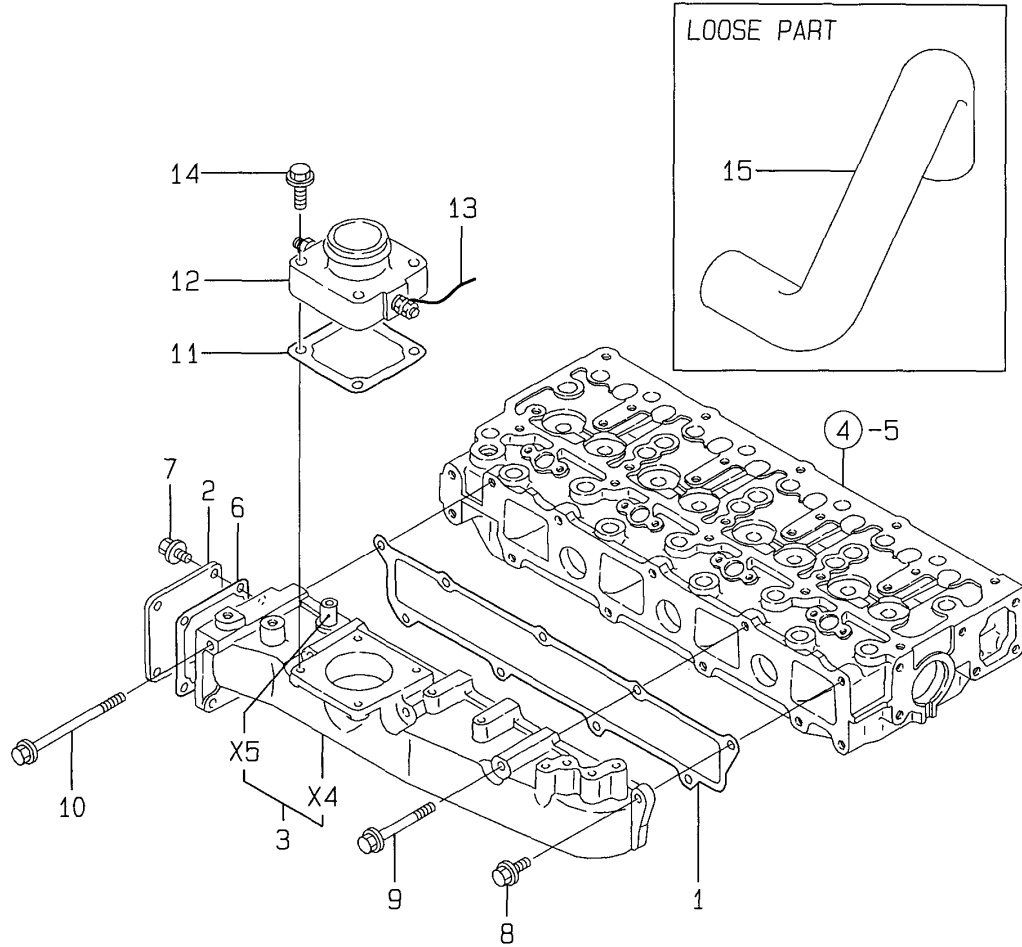
Remarks

- (1) REPAIR PART.
- (G) THESE PARTS ARE SOLD BY FIG.19, REF.NO.1.
- (H) THESE PARTS ARE SOLD BY FIG.20, REF.NO.1.



Fig.5. SUCTION MANIFOLD

5. SUCTION MANIFOLD



(A)=4TN100E-ACG  
 (B)=4TN100E-ACGD  
 (C)=

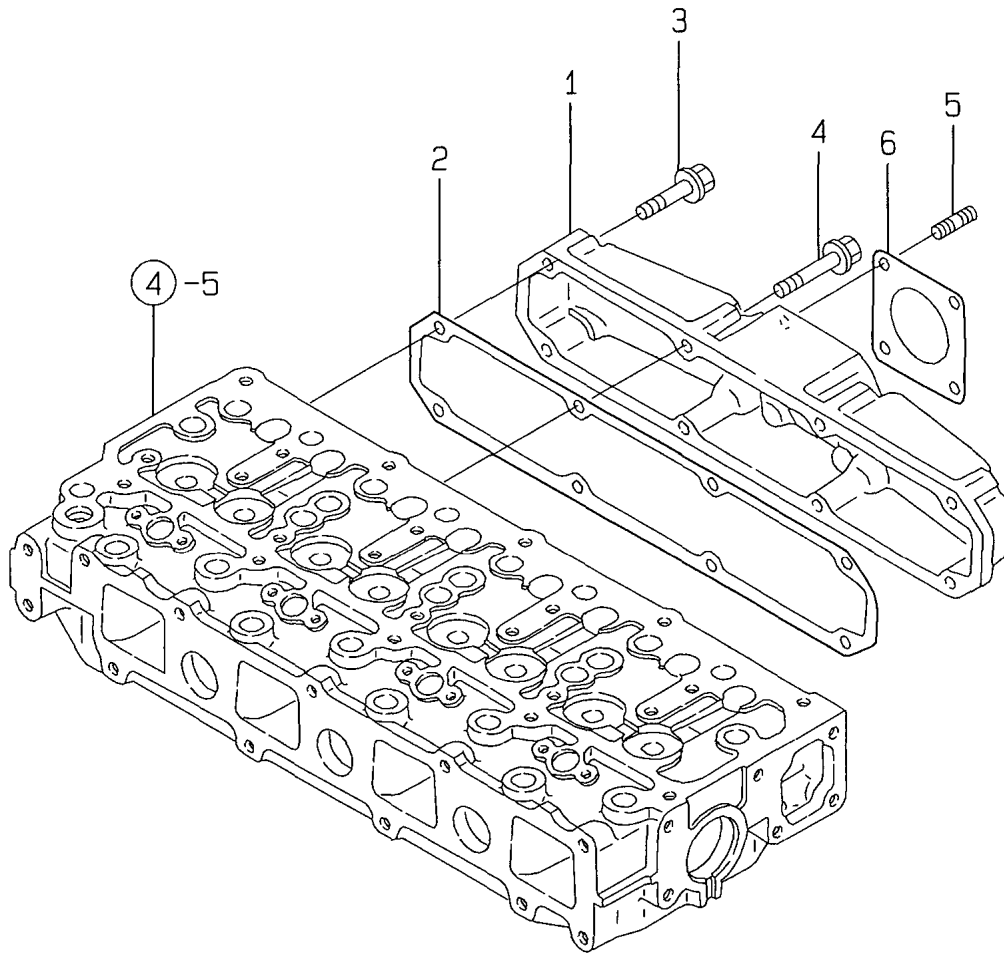
(D)=  
 (E)=  
 (F)=

No.	Lev.	Parts No.	Description	Q'ty						I	R
				(A)	(B)	(C)	(D)	(E)	(F)		
1	1	119100-12112	GASKET, MANIFOLD	1	1						H
2	1	119100-12120	COVER, MANIFOLD	1	1						
3	1	119140-12730	MANIFOLD, AIR INTAKE	1	1						
6	1	121850-77021	GASKET	1	1						H
7	1	26106-080142	BOLT, M8X 14 PLATED	4	4						
8	1	26106-080202	BOLT, M8X 20 PLATED	5	5						
9	1	26106-080702	BOLT, M8X 70 PLATED	3	3						
10	1	26106-081152	BOLT, M8X115 PLATED	1	1						
11	1	121850-77021	GASKET	1	1						
12	1	121850-77050	HEATER	1	1						
13	1	129100-77820	WIRE	1	1						
14	1	26106-080352	BOLT, M8X 35 PLATED	4	4						
15	1	119140-12040	PIPE, AIR INTAKE	1	1						

Remarks  
 (H) THESE PARTS ARE SOLD BY FIG.20,  
 REF.NO.1.

Fig.6. EXHAUST MANIFOLD

6. EXHAUST MANIFOLD



(A)=4TN100E-ACG  
(B)=4TN100E-ACGD  
(C)=

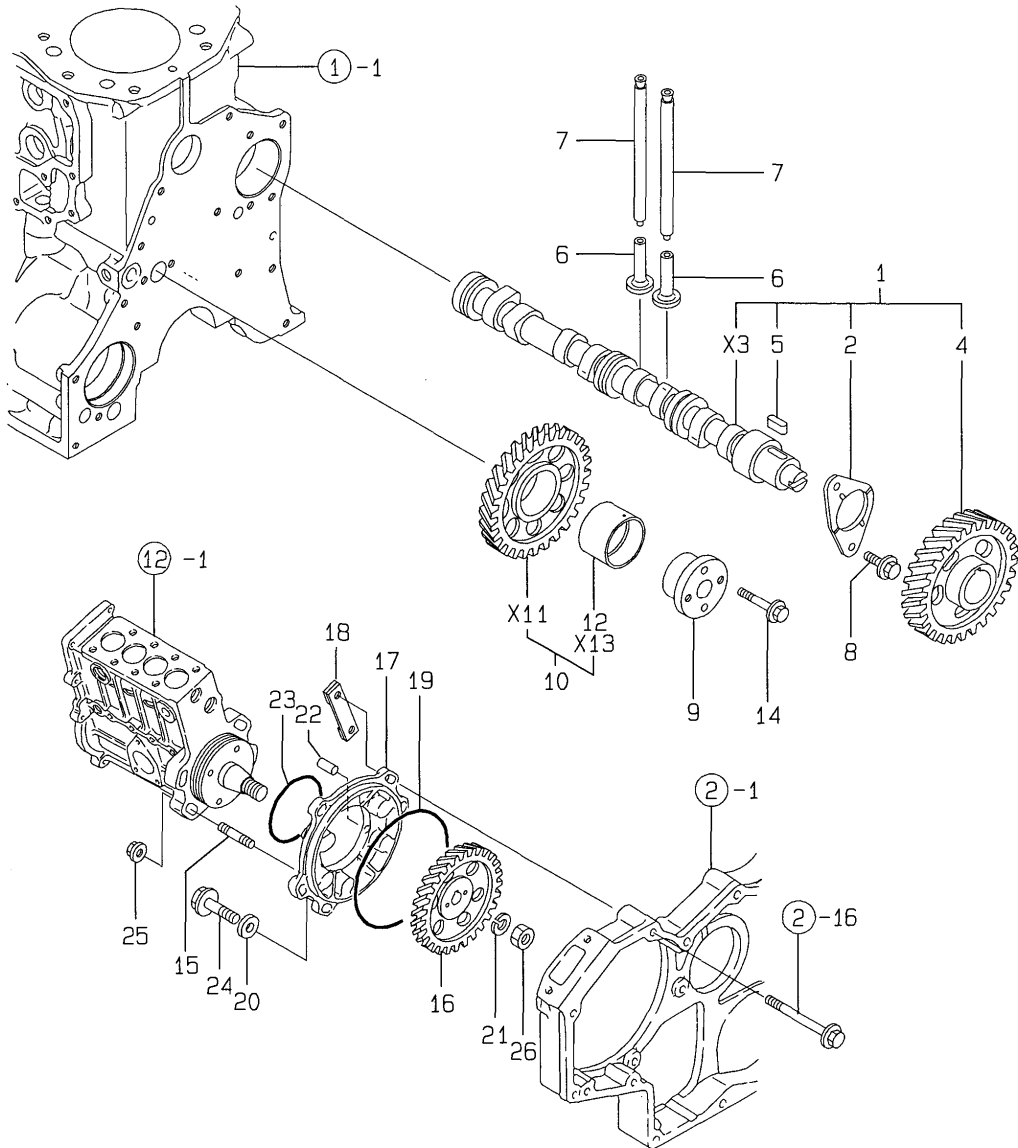
(D)=  
(E)=  
(F)=

No.	Lev.	Parts No.	Description	Q'ty						I	R
				(A)	(B)	(C)	(D)	(E)	(F)		
1	1	119100-13100	MANIFOLD, EXHAUST	1	1						
2	1	119100-13200	GASKET	1	1						H
3	1	26106-080402	BOLT, M8X 40 PLATED	4	4						
4	1	26106-080502	BOLT, M8X 50 PLATED	4	4						
5	1	26216-080222	STUD, M8X 22	4	4						
6	1	129400-13200	GASKET, SILENCER	1							H
6-1	1	129400-13201 (A=E06375)	GASKET, SILENCER	1	1						N H

Remarks  
(H) THESE PARTS ARE SOLD BY FIG.20,  
REF.NO.1.

Fig.7. CAMSHAFT & DRIVING GEAR

7. CAMSHAFT & DRIVING GEAR



(A)=4TN100E-ACG  
(B)=4TN100E-ACGD  
(C)=

(D)=  
(E)=  
(F)=

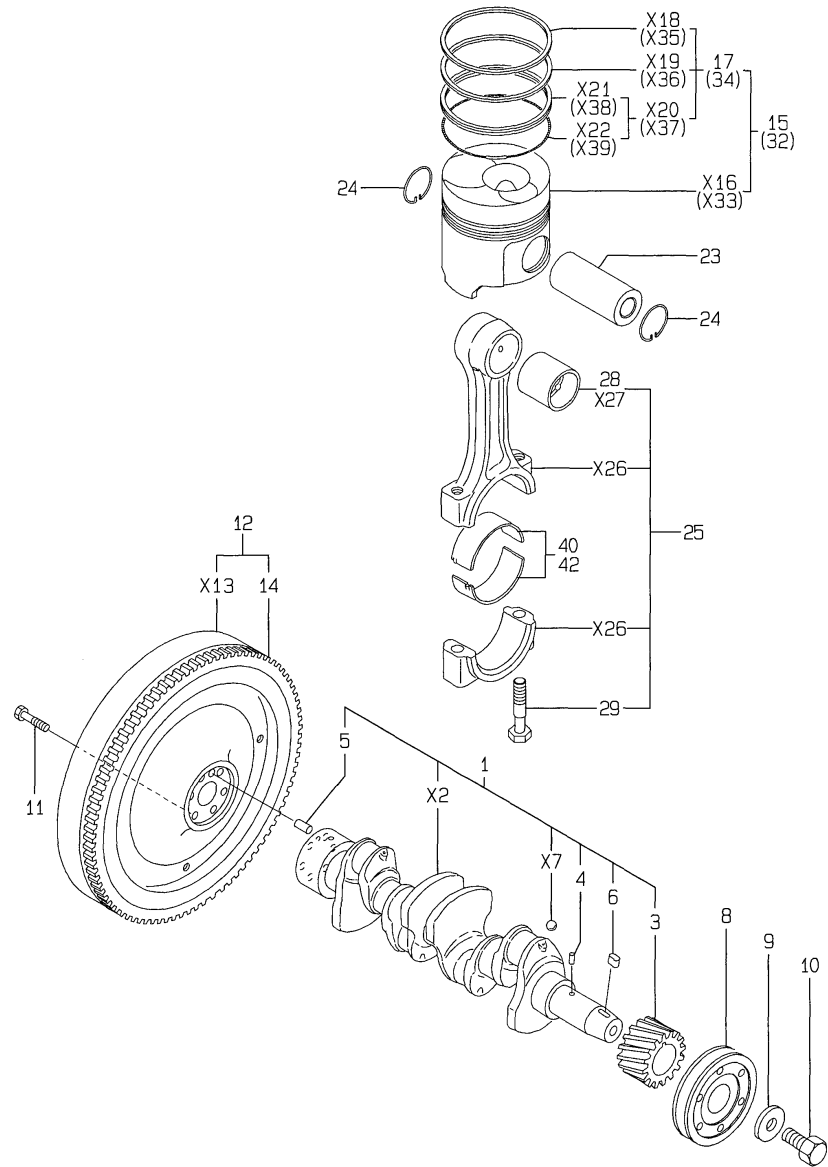
No.	Lev.	Parts No.	Description	Qty						I	R
				(A)	(B)	(C)	(D)	(E)	(F)		
1	1	119100-14000	CAMSHAFT ASSY	1	1						
2	2	119000-02450	BEARING, THRUST	1	1						
4	2	119000-14100	GEAR, CAMSHAFT Z=48	1	1						
5	2	22512-070140	KEY, 7X 14	1	1						
6	1	119000-14200	TAPPET	8	8						
7	1	129150-14400	ROD, PUSH L=178	8	8						
8	1	26106-080162	BOLT, M8X 16 PLATED	2	2						
9	1	119000-25050	SHAFT, IDLE GEAR	1	1						
10	1	119000-25100	GEAR ASSY, IDLE Z=51	1	1						
12	2	119000-25930	BUSH, IDLE GEAR	1	1						1
14	1	26013-080452	BOLT, M8X 45	2	2						
15	1	121850-01900	STUD, SB10X32	4	4						
16	1	119000-25900	GEAR, PUMP	1	1						
17	1	119000-25910	BRACKET, PUMP	1	1						
18	1	119000-25920	RETAINER	1	1						
19	1	24341-001350	O-RING, 1AS135.0	1	1						G
20	1	106100-55800	WASHER	3	3						
21	1	22217-180000	WASHER, SPRING 18	1	1						
22	1	22351-050012	PIN, SPRING 5.0X12	1	1						
23	1	124410-51960	O-RING	1	1						G
24	1	26106-080252	BOLT, M8X 25 PLATED	3	3						
25	1	26366-100002	NUT, M10	4	4						
26	1	26776-180002	NUT, LOCK M18	1	1						

Remarks

(1) REPAIR PART.  
(G) THESE PARTS ARE SOLD BY FIG.19,  
REF.NO.1.

# Fig.8. CRANKSHAFT & PISTON

## 8. CRANKSHAFT & PISTON



(A)=4TN100E-ACG  
(B)=4TN100E-ACGD  
(C)=

(D)=  
(E)=  
(F)=

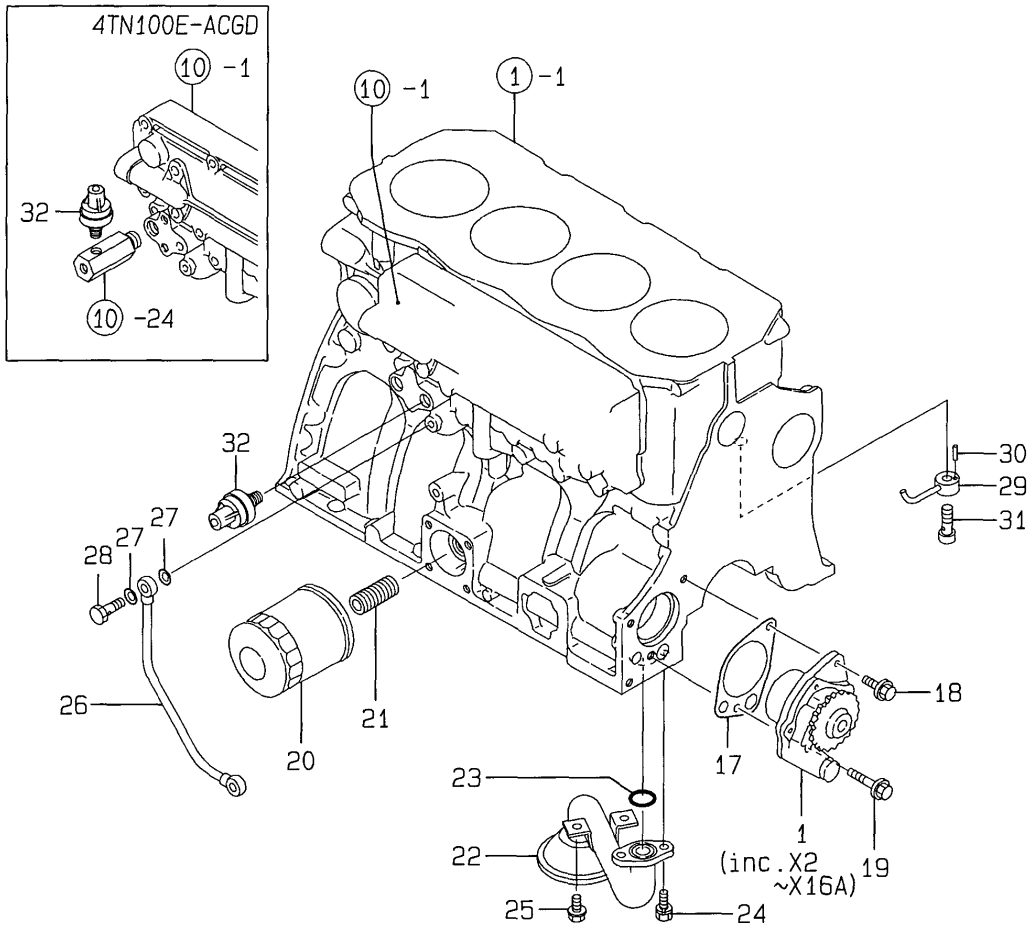
No.	Lev.	Parts No.	Description	Q'ty						I	R
				(A)	(B)	(C)	(D)	(E)	(F)		
1	1	719100-21700	CRANKSHAFT ASSY	1	1						
3	2	121850-21200	GEAR, CRANKSHAFT	1	1						
4	2	121850-21290	PIN	1	1						
5	2	121850-21920	PIN, M10X22	1	1						
6	2	22512-070140	KEY, 7X 14	1	1						
8	1	119000-21650	V-PULLEY	1	1						
9	1	121850-21660	WASHER	1	1						
10	1	121850-21680	BOLT	1	1						
11	1	121850-21130	BOLT, FLYWHEEL	6	6						
12	1	119140-21590	FLYWHEEL ASSY	1	1						
14	2	127410-21480	GEAR, RING Z=129	1	1						
15	1	119000-22000	PISTON ASSY	4	4						
17	2	719000-22500	RING SET, PISTON	4	4						
23	1	119000-22300	PIN, PISTON	4	4						
24	1	22252-000340	RING, 34	8	8						
25	1	719000-23100	ROD ASSY, CONNECTING	4	4						
28	2	119000-23910	BEARING, PISTON PIN	4	4						1
29	2	121850-23200	BOLT, CONNECTING ROD	8	8						
32	1	719000-22900	PISTON ASSY, 0.25 OS	4	4						2
34	2	719000-22950	RING SET, 0.25 OS	4	4						2
40	1	719000-23610	BEARING ASSY, 0.25	4	4						3
42	1	719000-23600	BEARING, CRANK PIN	4	4						

Remarks

- (1) REPAIR PART.
- (2) OVER-SIZED (O.S.=0.25) PART.
- (3) UNDER-SIZED (U.S.=0.25) PART.

Fig.9. LUB.OIL SYSTEM

9.LUB.OIL SYSTEM



(A)=4TN100E-ACG  
(B)=4TN100E-ACGD  
(C)=

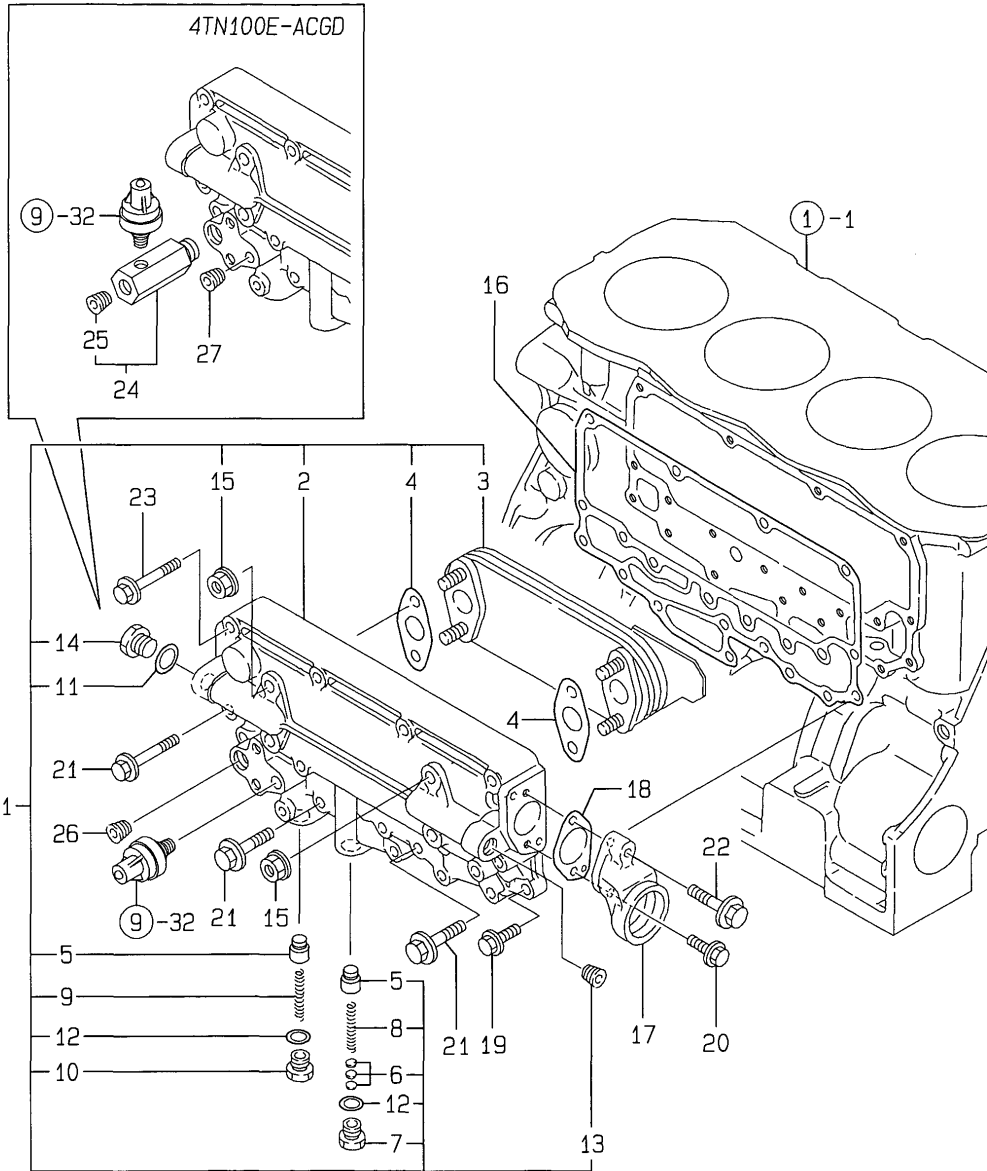
(D)=  
(E)=  
(F)=

No.	Lev.	Parts No.	Description	Q'ty						I	R
				(A)	(B)	(C)	(D)	(E)	(F)		
1	1	119000-32001	PUMP ASSY, OIL	1	1						
1-1	1	119060-32000	PUMP ASSY, OIL	1	1						N
		(A=E08065) (B=E08148)									
17	1	119000-32020	GASKET, PUMP	1	1						G
18	1	26106-080162	BOLT, M8X 16 PLATED	1	1						
19	1	26106-080502	BOLT, M8X 50 PLATED	1	1						
20	1	119005-35100	FILTER, D80X100L	1	1						
21	1	119000-35140	BOLT, FILTER	1	1						
22	1	119100-35090	PIPE ASSY, OIL INLET	1	1						
23	1	24311-000220	O-RING, 1AP22.0	1	1						G
24	1	26013-080162	BOLT, M8X 16	2	2						
25	1	26106-080162	BOLT, M8X 16 PLATED	2	2						
26	1	119100-39350	PIPE, OIL	1	1						
27	1	23414-080000	GASKET, 8X1.0	2	2						G
28	1	23857-030000	BOLT, JOINT 3	1	1						
29	1	119000-39650	NOZZLE	4	4						
30	1	22351-030010	PIN, SPRING 3.0X10	4	4						
31	1	23857-030000	BOLT, JOINT 3	4	4						
32	1	119265-39450	SWITCH	1	1						

Remarks  
(G) THESE PARTS ARE SOLD BY FIG.19,  
REF.NO.1.

Fig.10. OIL COOLER CASE

10.OIL COOLER CASE



(A)=4TN100E-ACG  
(B)=4TN100E-ACGD  
(C)=

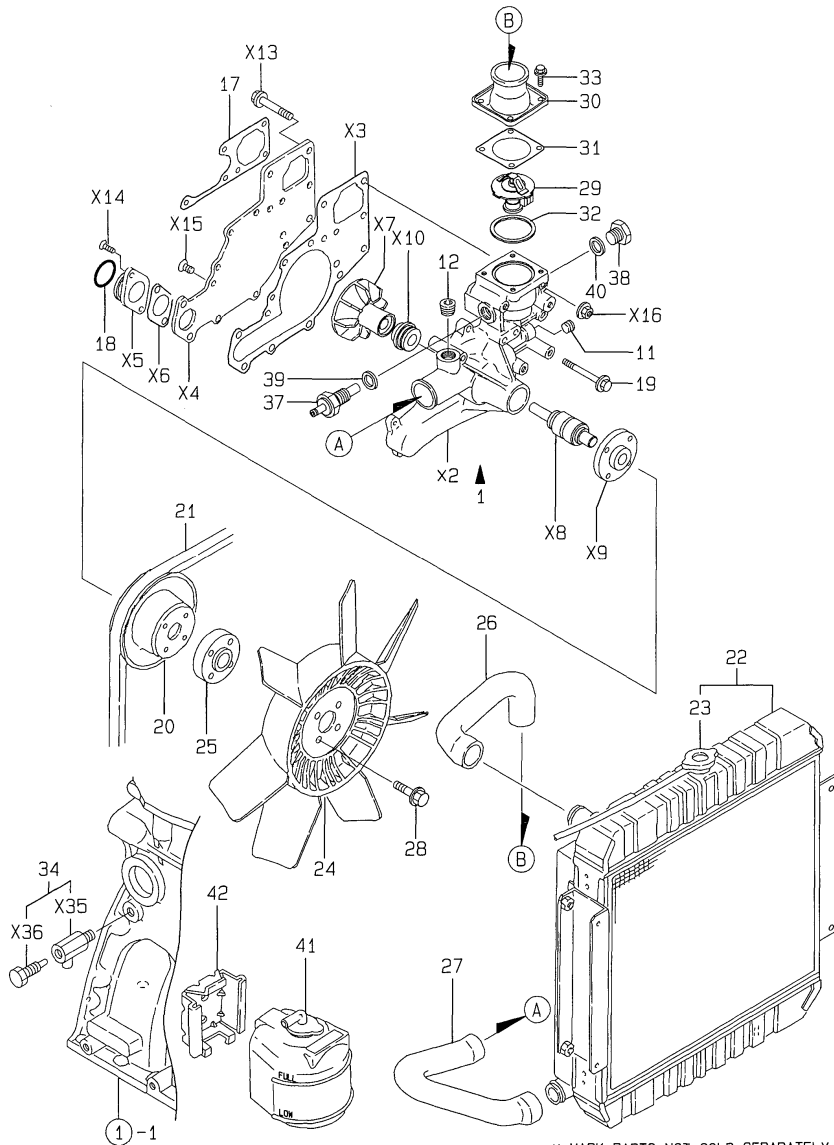
(D)=  
(E)=  
(F)=

No.	Lev.	Parts No.	Description	Q'ty						I	R
				(A)	(B)	(C)	(D)	(E)	(F)		
1	1	719000-33700	COOLER ASSY, OIL	1	1						
1-1	1	119140-92600	SET,LO COOLER CMP	1	1						N
		(A=E2009.12) (B=E2009.12)									
2	2	119000-33010	CASE, OIL COOLER	1	1						
3	2	119000-33050	COOLER, OIL	1	1						
4	2	121952-33071	GASKET, COOLER	2	2						G
5	2	119000-34030	VALVE, CONTROL	2							
5-1	2	119160-34030	VALVE, CONTROL	2	2						N
		(A=E07699)									
6	2	121850-35230	SHIM, T=1.0	5	5						
7	2	124223-35510	RETAINER, SPRING	1	1						
8	2	124411-35520	SPRING	1	1						
9	2	121952-39830	SPRING	1	1						
10	2	123672-84530	RETAINER, VALVE	1	1						
11	2	23414-160000	GASKET, 16X1.0	1	1						G
12	2	23414-180000	GASKET, 18X1.0	2	2						G
12-1	2	23414-170000	GASKET, 17X1.0	2	2						N
		(A=E2009.12) (B=E2009.12)									
13	2	23871-030000	PLUG, R03	1	1						
14	2	23887-160002	PLUG, 16	1	1						
15	2	26376-100002	NUT, M10	4	4						
16	1	119000-33022	GASKET	1	1						G
17	1	119000-33030	BEND	1	1						
18	1	119000-33041	GASKET	1	1						G
19	1	26106-080202	BOLT, M8X 20 PLATED	3	3						
20	1	26106-080202	BOLT, M8X 20 PLATED	1	1						
21	1	26106-080352	BOLT, M8X 35 PLATED	8	8						
22	1	26106-080352	BOLT, M8X 35 PLATED	1	1						
23	1	26106-080502	BOLT, M8X 50 PLATED	10	10						
24	1	119140-39400	NIPPLE ASSY		1						
25	2	119285-01730	PLUG, NPT1/8		1						
26	1	23871-030000	PLUG, R03	1							W
		(A=E2009.12) (B=E2009.12)									
27	1	23871-010000	PLUG, R01		1						

Remarks  
(G) THESE PARTS ARE SOLD BY FIG.19,  
REF.NO.1.

Fig.11. COOLING WATER PUMP

11.COOLING WATER PUMP



(A)=4TN100E-ACG  
(B)=4TN100E-ACGD  
(C)=

(D)=  
(E)=  
(F)=

No.	Lev.	Parts No.	Description	Q'ty						I	R
				(A)	(B)	(C)	(D)	(E)	(F)		
1	1	119006-42001	PUMP ASSY, WATER	1	1						
11	2	23871-020000	PLUG, R02	1	1						
12	2	23871-030000	PLUG, R03	1	1						
17	1	119000-42021	GASKET, WATER PUMP	1	1						G
18	1	24311-000360	O-RING, 1AP36.0	1	1						G
19	1	26106-080652	BOLT, M8X 65 PLATED	5	5						
20	1	119000-42250	V-PULLEY	1	1						
21	1	171087-42280	V-BELT, A44	1	1						
22	1	119083-44500	RADIATOR	1	1						
23	2	121850-44660	CAP	1	1						
24	1	121972-44740	FAN, COOLING	1	1						
25	1	119130-44760	SPACER, FAN	1	1						
26	1	119040-49010	PIPE, WATER	1	1						
27	1	119130-49020	PIPE, WATER	1	1						
28	1	26014-080352	BOLT, M8X 35	4	4						
29	1	119000-48170	THERMOSTAT, 71	1	1						
30	1	121850-49530	COVER, THERMOSTAT	1	1						
31	1	121850-49540	GASKET, THERMOSTAT	1	1						H
32	1	121850-49550	GASKET, THERMOSTAT	1	1						H
33	1	26014-060142	BOLT, M6X 14	4	4						
34	1	119620-49290	COCK ASSY, 1/4	1	1						
37	1	129110-44900	SWITCH	1	1						
38	1	23887-160002	PLUG, 16	1	1						
39	1	124465-44950	GASKET, 16	1	1						
40	1	124465-44950	GASKET, 16	2	2						G
41	1	120445-44530	TANK, SUB	1	1						
42	1	120445-44540	SUPPORT	1	1						

Remarks

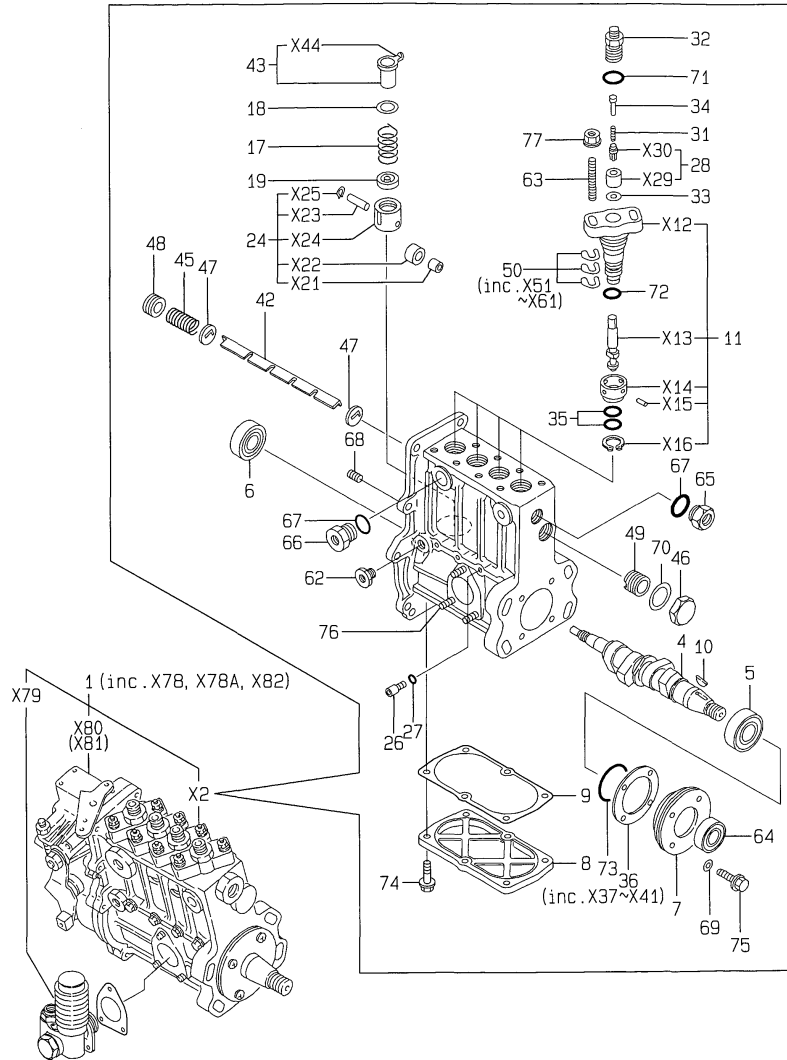
(G) THESE PARTS ARE SOLD BY FIG.19, REF.NO.1.

(H) THESE PARTS ARE SOLD BY FIG.20, REF.NO.1.

(H) THESE PARTS ARE SOLD BY FIG.20, REF.NO.1.

Fig.12. FUEL INJECTION PUMP

12.FUEL INJECTION PUMP



(A)=4TN100E-ACG  
(B)=4TN100E-ACGD  
(C)=

(D)=  
(E)=  
(F)=

No.	Lev.	Parts No.	Description	Q'ty						I	R
				(A)	(B)	(C)	(D)	(E)	(F)		
1	1	719140-51360	PUMP ASSY, INJECTION	1							1
1A	1	719140-51200	PUMP ASSY, INJECTION		1						2
4	3	119100-51030	CAMSHAFT	1							
4A	3	119140-51030	CAMSHAFT		1						
5	3	119000-51050	BEARING, HR32005XJ	1	1						
6	3	122710-51050	BEARING, HR30203J	1	1						
7	3	119000-51060	SUPPORT, BEARING A	1	1						
8	3	119100-51081	COVER	1	1						
9	3	119100-51091	GASKET	1	1						
10	3	144626-51090	KEY, 5X19	1	1						
11	3	119100-51101	PLUNGER ASSY	4							
11A	3	119000-51101	PLUNGER ASSY		4						
17	3	119000-51161	SPRING, PLUNGER	4	4						
18	3	119000-51170	SEAT, SPRING A	4	4						
19	3	119000-51181	SEAT, SPRING B	4	4						
20	3	119000-51201	TAPPET ASSY	4	4						
26	3	129155-51270	STOPPER, TAPPET	4	4						
27	3	129155-51280	O-RING, S6	4	4						
28	3	128400-51300	VALVE ASSY, DELIVERY	4	4						
31	3	119000-51330	SPRING, DELIVERY	4	4						
32	3	119000-51340	HOLDER, DELIVERY	4	4						
33	3	122710-51350	GASKET	4	4						
34	3	119000-51360	STOPPER, VALVE	4	4						
35	3	119000-51410	O-RING, S18	8	8						
36	3	119000-51450	SHIM SET, CAMSHAFT	1	1						
42	3	119100-51500	RACK, CONTROL	1	1						
43	3	119000-51510	SLEEVE, CONTROL	4	4						
45	3	119000-51530	SPRING, RACK	1							
46	3	119000-51550	COVER	1	1						
47	3	119000-51570	GUIDE, RACK	2	2						
48	3	119000-51580	SCREW	1	1						
49	3	119000-51590	SCREW	1	1						
50	3	119000-51650	SHIM SET, ADJUSTING	8	8						
62	3	121850-51700	BUSH	1	1						
63	3	119000-51800	BOLT	8	8						
64	3	119000-51900	SEAL, AC1290E0	1	1						
65	3	121952-51900	PLUG	1	1						
66	3	144626-51940	PLUG	1	1						
67	3	144626-51950	O-RING, 1016	2	2						
68	3	137600-53900	SCREW, M6X6	1	1						
69	3	22190-060000	WASHER, SEAL 6	4	4						
70	3	23414-220029	GASKET, 22X1.0	1	1						
71	3	24312-000150	O-RING, 2P15.0	4	4						
72	3	24341-000260	O-RING, 1AS26.0	4	4						
73	3	24341-000500	O-RING, 1AS50.0	1	1						
74	3	26106-060182	BOLT, M6X 18 PLATED	6	6						
75	3	26106-060202	BOLT, M6X 20 PLATED	4	4						
76	3	26216-060162	STUD, M6X 16	3	3						
77	3	26366-080002	NUT, M8	8	8						

Remarks

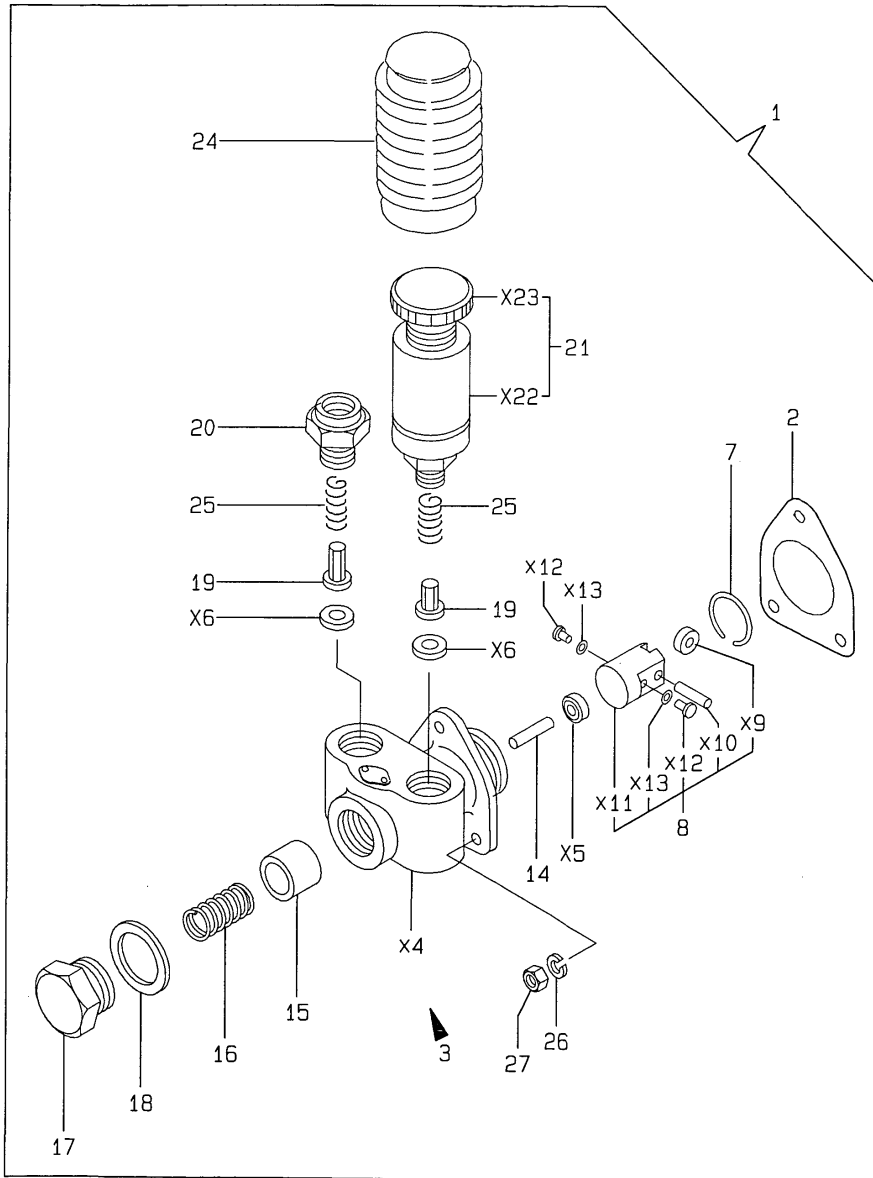
(1) FEED PUMP ASSY(FIG.NO.13)AND GOVERNOR ASSY(FIG.NO.14)IS INCORPORATED IN THIS FUEL INJECTION PUMP ASSY(REF.NO.1).

(2) FEED PUMP ASSY(FIG.NO.13)AND GOVERNOR ASSY(FIG.NO.21)IS INCORPORATED IN THIS FUEL INJECTION PUMP ASSY(REF.NO.1A).



Fig.13. FUEL FEED PUMP

13.FUEL FEED PUMP



(A)=4TN100E-ACG  
(B)=4TN100E-ACGD  
(C)=

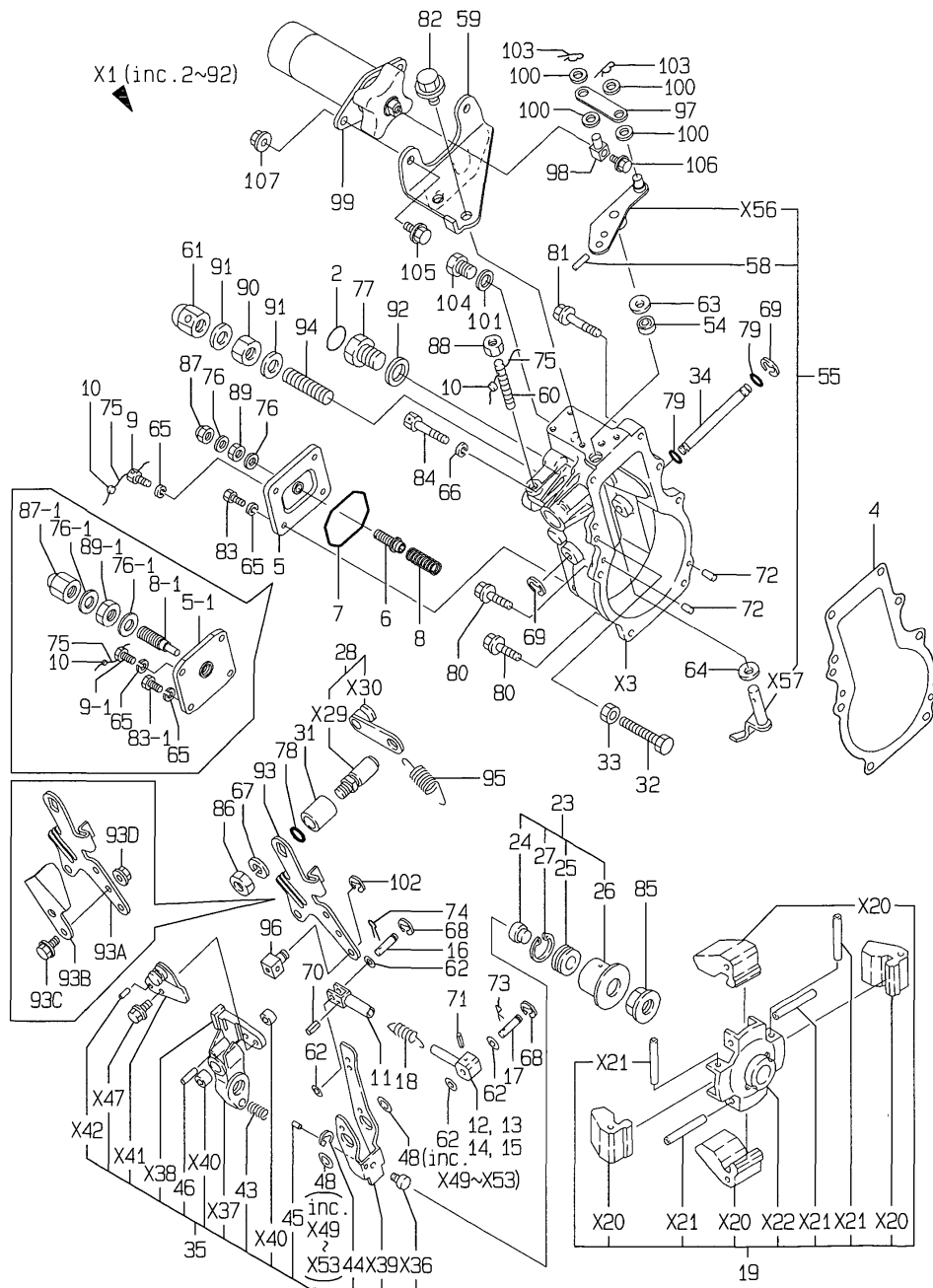
(D)=  
(E)=  
(F)=

No.	Lev.	Parts No.	Description	Q'ty						I	R
				(A)	(B)	(C)	(D)	(E)	(F)		
1	1	119000-52000	PUMP ASSY, FUEL FEED	1	1						
2	2	124410-51861	GASKET	1	1						G
3	2	121820-52020	BODY ASSY, PUMP	1	1						
7	2	121820-52070	PIN	1	1						
8	2	119000-52100	TAPPET ASSY	1	1						
14	2	121820-52160	SPINDLE, INTER	1	1						
15	2	121820-52170	PISTON	1	1						
16	2	121820-52180	SPRING, VALVE	1	1						
17	2	121820-52190	RETAINER, SPRING	1	1						
18	2	121820-52200	GASKET, 25	1	1						
19	2	121820-52210	VALVE	2	2						
20	2	121820-52230	RETAINER, SPRING	1	1						
21	2	121820-52300	PUMP, PRIMING	1	1						
24	2	121820-52400	COVER	1	1						
25	2	121820-52510	SPRING, VALVE	2	2						
26	2	22217-060000	WASHER, SPRING 6	3	3						
27	2	26716-060002	NUT, M6	3	3						

Remarks  
(G) THESE PARTS ARE SOLD BY FIG.19,  
REF.NO.1.

Fig.14. GOVERNOR

14. GOVERNOR



(A)=4TN100E-ACG  
 (B)=4TN100E-ACGD  
 (C)=

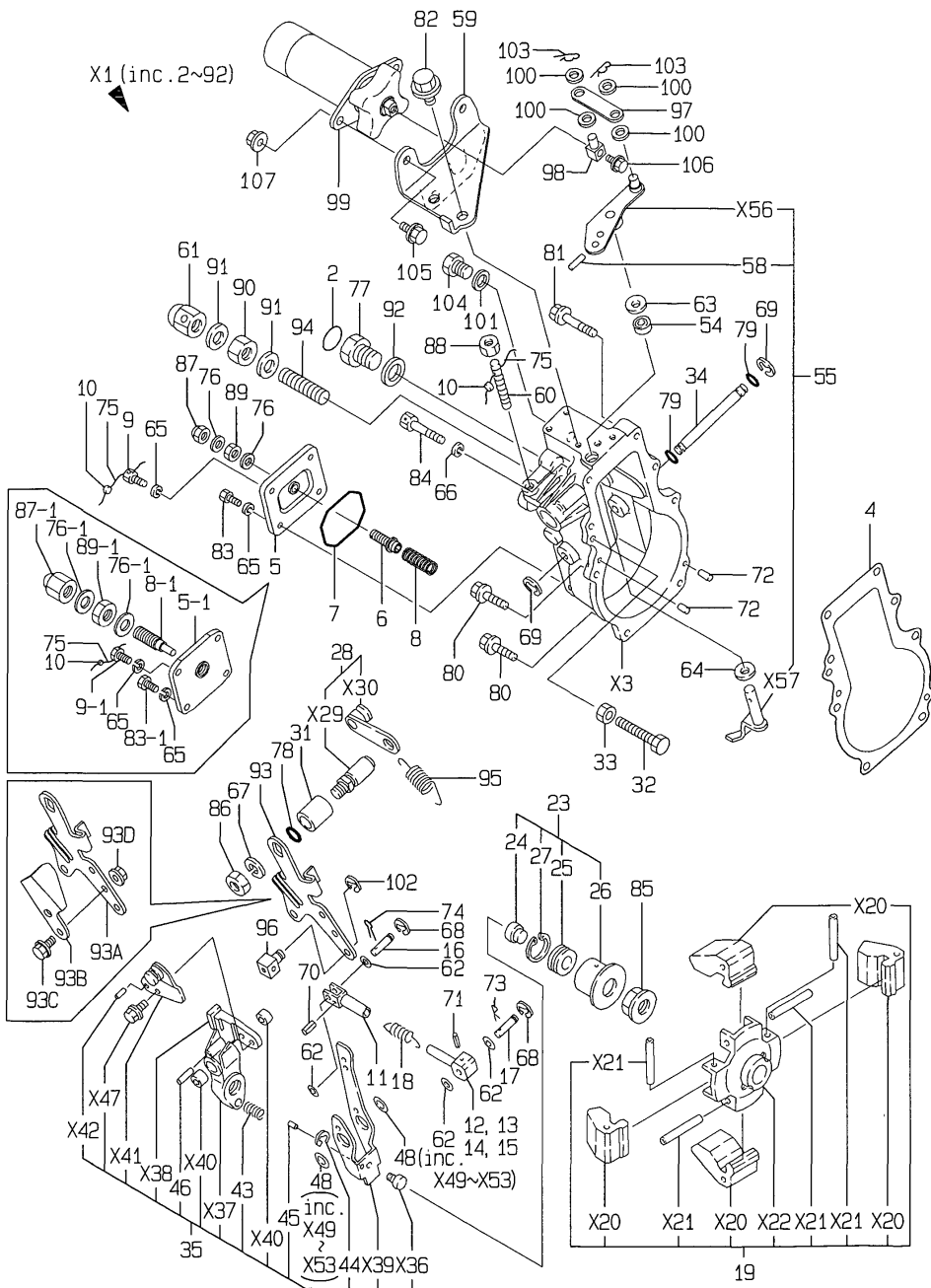
(D)=  
 (E)=  
 (F)=

No.	Lev.	Parts No.	Description	(A)	(B)	(C)	(D)	(E)	(F)	I	R
2	2	124610-51970	LABEL	1							
4	2	119000-61051	GASKET	1							
5	2	119141-61060	COVER, GOVERNOR CASE	1							
5-1	2	119141-61061 (A=E08169)	COVER	1							S
6	2	119141-61070 (A=E08169)	BOLT	1							Z
7	2	120323-61070	GASKET	1							
8	2	119141-61080	SPRING	1							
8-1	2	127695-61550 (A=E08169)	IDLE ASSY	1							S
9	2	129155-61090	BOLT	1							
9-1	2	26116-050146 (A=E08169)	BOLT, M5X 14 PLATED	1							S
10	2	135210-61090	LEAD	2							
11	2	119000-61120	LINK	1							
12	2	119000-61080	LINK	1							
13	2	119000-61140	LINK, MARK-1 L=40	1							
14	2	119000-61150	LINK, MARK-2 L=42	1							
15	2	119000-61160	LINK, MARK-3 L=44	1							
16	2	119000-61170	PIN, LINK	1							
17	2	119000-61180	PIN, LINK	1							
18	2	119000-61190	SPRING	1							
19	2	119100-61200	WEIGHT ASSY, GOVERNOR	1							
23	2	119100-61300	SLEEVE ASSY, L=35.5	1							
24	3	119000-61310	SHIFTER	1							
25	3	119000-61320	BEARING, THRUST	1							
26	3	119100-61340	SLEEVE	1							
27	3	22262-000260	RING, R-26	1							
28	2	119000-61400	SHAFT ASSY	1							
31	2	119100-61430	BUSH	1							
32	2	129155-61460	BOLT, IDLE	1							
33	2	119000-61470	NUT, M6	1							
34	2	119000-61490	SHAFT	1							
35	2	119141-61500	LEVER ASSY, GOVERNOR	1							
43	3	121850-61600	SPRING, FUEL CONTROL	1							
44	3	22272-000040	RING, E- 4	1							
45	3	22351-020004	PIN, SPRING 2.0X 4	1							
46	3	22351-020012	PIN, SPRING 2.0X12	1							
48	2	119000-61630	SHIM SET	1							
54	2	148616-61650	SEAL, VC081404	1							
55	2	119083-61800	LEVER ASSY, STOP	1							
58	3	22351-030016	PIN, SPRING 3.0X16	1							
59	2	119083-61870	BRACKET, SOLENOID	1							
60	2	121855-61910	BOLT, LIMITER	1							
61	2	129100-61930	NUT, CAP	1							
62	2	22117-050000	WASHER, 5	4							
63	2	22137-080000	WASHER, 8	1							
64	2	22137-080000	WASHER, 8	1							
65	2	22217-050000	WASHER, SPRING 5	4							
66	2	22217-060000	WASHER, SPRING 6	1							

N:Old  $\xrightarrow{\text{Yes}}$  New, Q:Old  $\xrightarrow{\text{No}}$  New, R:Old  $\xrightarrow{\text{Yes}}$  New, S:Old  $\xrightarrow{\text{No}}$  New, W:Add, Z:Discontinued, F:Interchangeable by set, K:Q'ty Change  
 ++ CONTINUE ++  
 Copyright (C) YANMAR CO., LTD. All Rights Reserved.

Fig.14. GOVERNOR

14. GOVERNOR



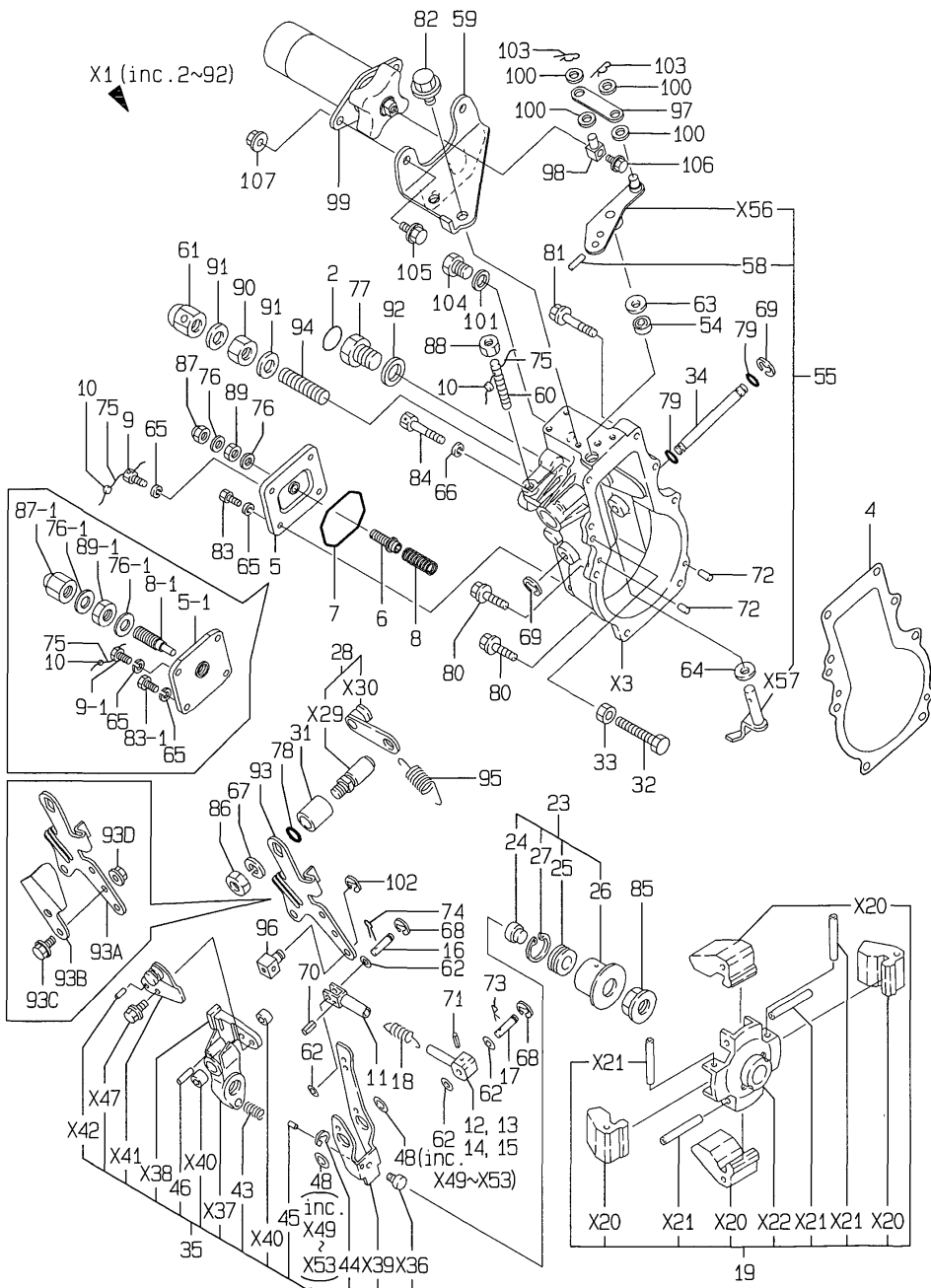
(A)=4TN100E-ACG  
(B)=4TN100E-ACGD  
(C)=

(D)=  
(E)=  
(F)=

No.	Lev.	Parts No.	Description	Qty						I	R
				(A)	(B)	(C)	(D)	(E)	(F)		
67	2	22217-100000	WASHER, SPRING 10	1							
68	2	22272-000040	RING, E- 4	2							
69	2	22272-000080	RING, E- 8	2							
70	2	22351-030016	PIN, SPRING 3.0X16	1							
71	2	22351-030025	PIN, SPRING 3.0X25	1							
72	2	22351-050020	PIN, SPRING 5.0X20	2							
73	2	22372-050000	PIN, SNAP 5	1							
74	2	22417-120120	PIN, COTTER 1.2X12	1							
75	2	22453-060000	WIRE, 0.6	2							
76	2	23414-080012	GASKET, 8X1.0	2							
76-1	2	22190-120002	WASHER, SEAL 12	2							S
(A=E08169)											
77	2	23887-160002	PLUG, 16	1							
78	2	24311-000110	O-RING, 1AP11.0	1							
79	2	24341-000080	O-RING, 1AS8.0	2							
80	2	26106-060222	BOLT, M6X 22 PLATED	6							
81	2	26106-060352	BOLT, M6X 35 PLATED	1							
82	2	26106-080122	BOLT, M8X 12 PLATED	3							
83	2	26116-050102	BOLT, M5X 10 PLATED	3							
83-1	2	26116-050142	BOLT, M5X 14 PLATED	3							S
(A=E08157)											
84	2	26116-060356	BOLT, M6X 35 PLATED	1							
85	2	26376-120002	NUT, M12	1							
86	2	26606-100002	NUT, M10	1							
87	2	26667-080002	NUT, CAP M8	1							
87-1	2	26687-120002	NUT, CAP M12	1							S
(A=E08157)											
88	2	26756-080002	NUT, LOCK M8	1							
89	2	26756-080002	NUT, LOCK M8	1							
89-1	2	26777-120002	NUT, LOCK M12	1							S
(A=E08157)											
90	2	26777-120002	NUT, LOCK M12	1							
91	2	22190-120002	WASHER, SEAL 12	2							
92	2	22190-160002	WASHER, SEAL 16	1							
93	1	119141-61440	LEVER, CONTROL	1							
93-1	1	119141-61400	LEVER ASSY, CONTROL	1							N
(A=*1996.09)											
93A	2	119100-61440	LEVER, GOVERNOR	1							W
(A=*1996.09)											
93B	2	119141-61450	PLATE	1							W
(A=*1996.09)											
93C	2	26106-060122	BOLT, M6X 12 PLATED	2							W
(A=*1996.09)											
93D	2	26366-060002	NUT, M6	2							W
(A=*1996.09)											
94	1	120323-61470	BOLT, CONTROL	1							
95	1	119100-61700	SPRING, GOVERNOR	1							
95-1	1	119032-61720	SPRING, GOVERNOR	1							N
(A=E08103)											
96	1	124066-03770	RETAINER	1							
97	1	119083-61860	LINK, SOLENOID	1							

Fig.14. GOVERNOR

14. GOVERNOR



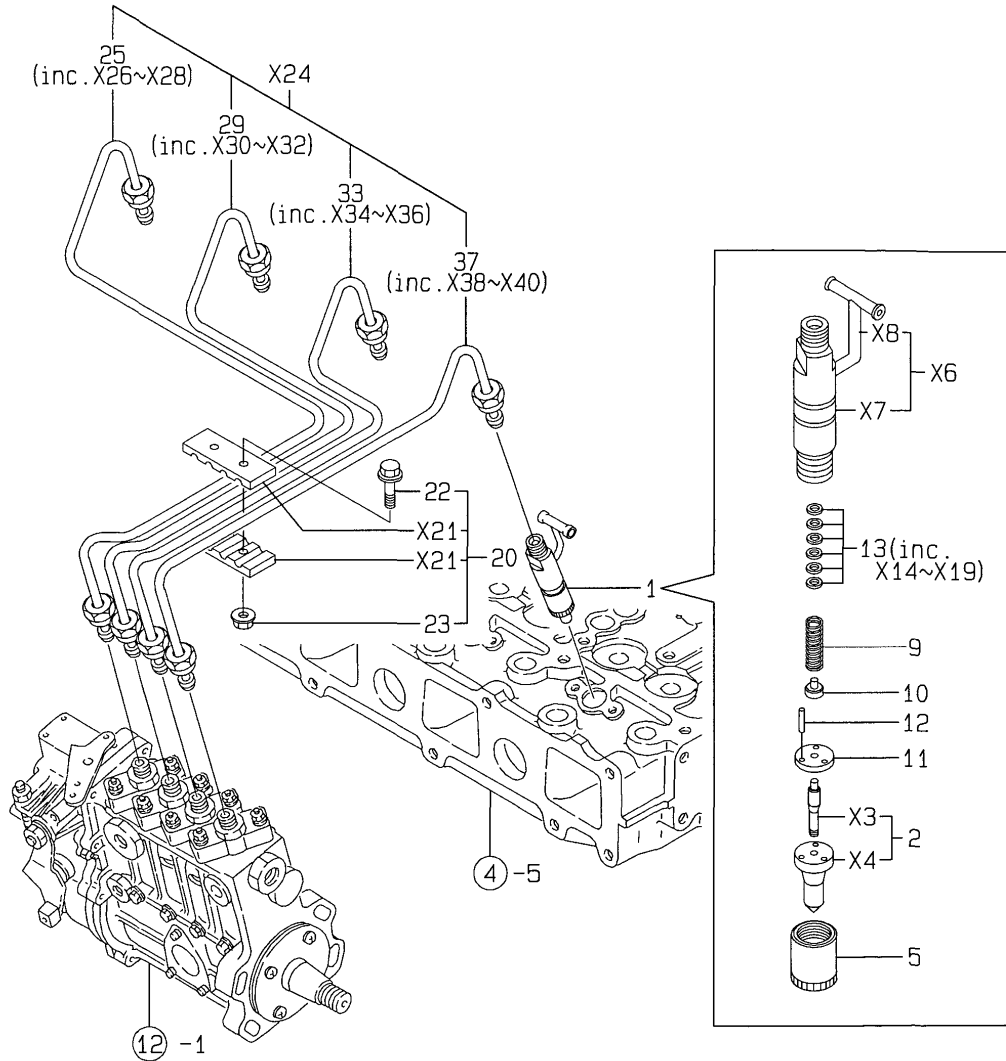
(A)=4TN100E-ACG  
 (B)=4TN100E-ACGD  
 (C)=

(D)=  
 (E)=  
 (F)=

No.	Lev.	Parts No.	Description	Q'ty						I	R
				(A)	(B)	(C)	(D)	(E)	(F)		
98	1	171078-66551	PIN	1							
99	1	129577-67320	SOLENOID	1							
100	1	22117-080000	WASHER, 8	4							
101	1	22190-080002	WASHER, SEAL 6	1							
102	1	22272-000050	RING, E- 5	1							
103	1	22372-080000	PIN, SNAP 8	2							
104	1	23887-080002	PLUG 8	1							
105	1	26106-060122	BOLT, M6X 12 PLATED	2							
106	1	26106-060202	BOLT, M6X 20 PLATED	1							
107	1	26756-060002	NUT, LOCK M6	2							

Fig.15. FUEL INJECTION VALVE

15.FUEL INJECTION VALVE



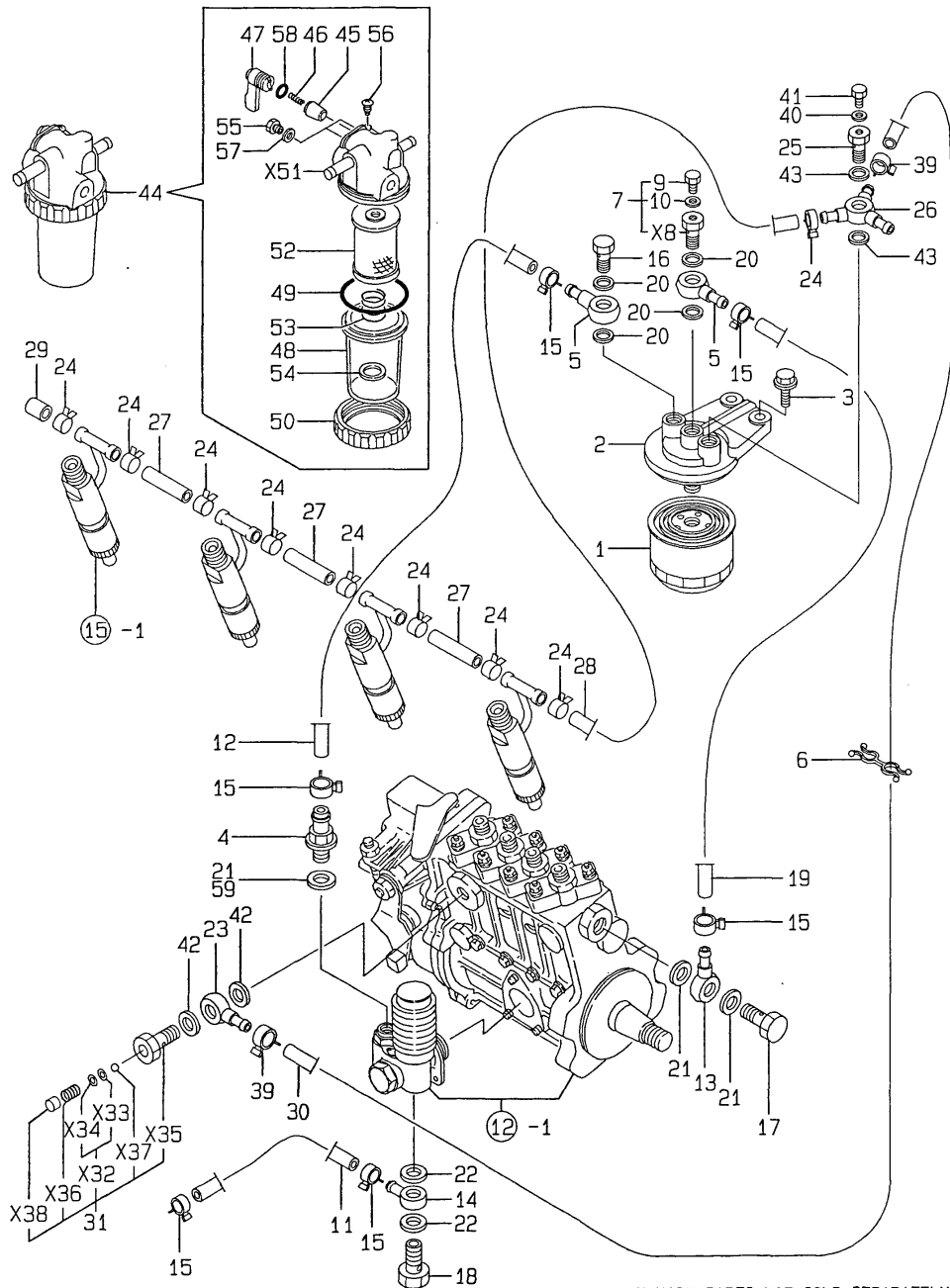
(A)=4TN100E-ACG  
(B)=4TN100E-ACGD  
(C)=

(D)=  
(E)=  
(F)=

No.	Lev.	Parts No.	Description	Q'ty						I	R
				(A)	(B)	(C)	(D)	(E)	(F)		
1	1	719129-53100	VALVE ASSY,INJECTION	4							
1-1	1	719100-53100	VALVE ASSY,INJECTION	4	4						N
(A=E06117)											
2	2	119000-53000	VALVE ASSY,INJECTION	4							
2-1	2	119100-53000	VALVE ASSY,INJECTION	4	4						N
(A=E06117)											
5	2	114250-53080	NUT, NOZZLE D16.95	4	4						
9	2	114250-53120	SPRING, NOZZLE	4	4						
10	2	114250-53130	SEAT, SPRING	4	4						
11	2	114250-53140	PLATE	4	4						
12	2	114250-53210	PIN	8	8						
13	2	114250-53400	SHIM SET	4	4						
20	1	123472-59090	RETAINER ASSY	1	1						
22	2	26106-060202	BOLT, M6X 20 PLATED	2	2						
23	2	26366-060002	NUT, M6	2	2						
25	2	119100-59810	PIPE ASSY, INJECTION	1	1						
29	2	119100-59820	PIPE ASSY, INJECTION	1	1						
33	2	119100-59830	PIPE ASSY, INJECTION	1	1						
37	2	119100-59840	PIPE ASSY, INJECTION	1	1						

Fig.16. FUEL LINE

16.FUEL LINE

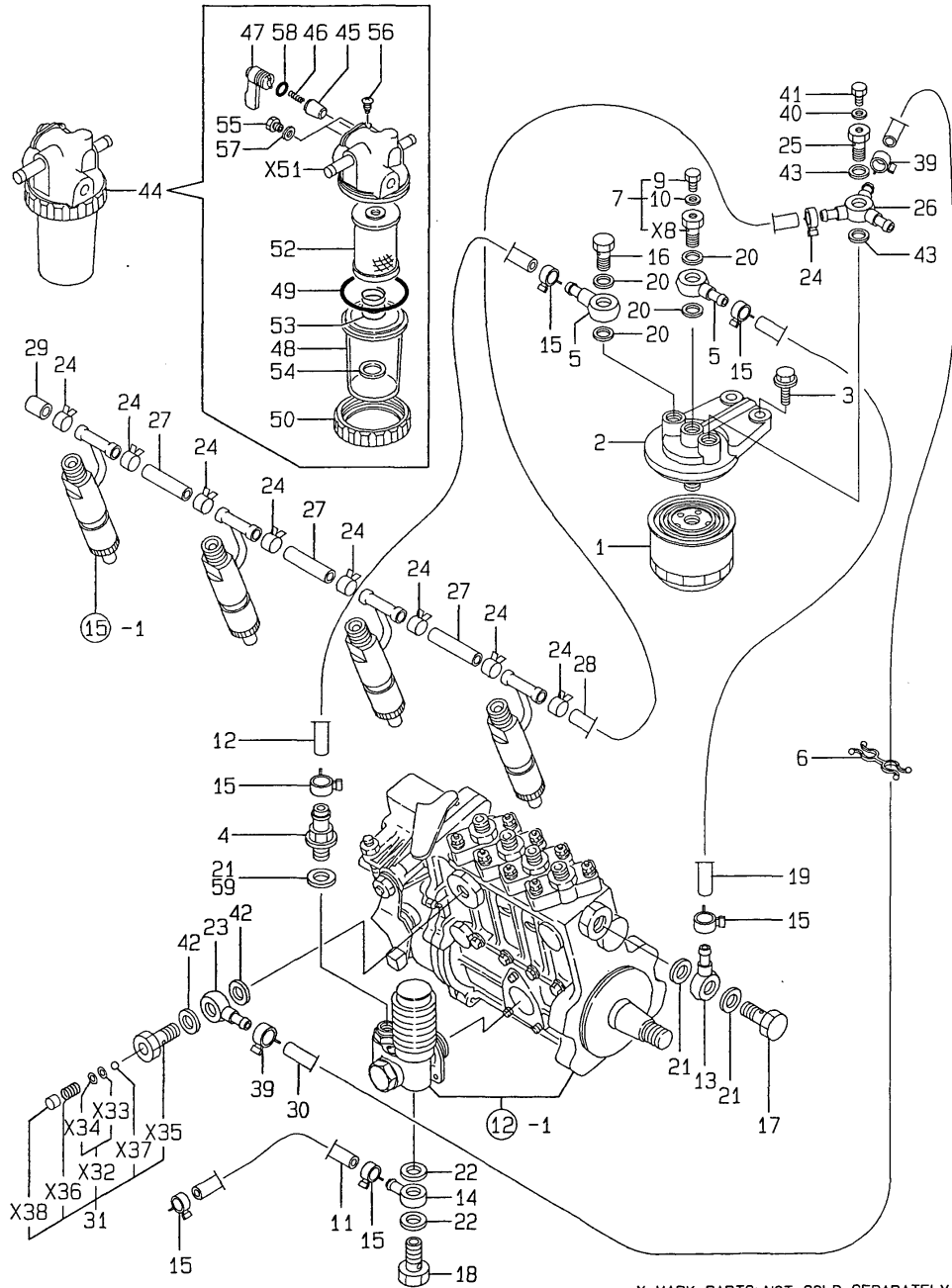


X-MARK PARTS: NOT SOLD SEPARATELY.

No.	Lev.	Parts No.	Description	Q'ty						I	R
				(A)	(B)	(C)	(D)	(E)	(F)		
1	1	119000-55600	FILTER, FUEL	1	1						
2	1	129470-55610	BODY, STRAINER	1	1						
3	1	26106-100252	BOLT, M10X 25 PLATED	2	2						
4	1	121250-49110	JOINT, PIPE	1	1						
5	1	101304-59020	JOINT, PIPE 12	2	2						
6	1	119006-59110	CLAMP	1	1						
7	1	103854-59191	BOLT ASSY, JOINT M12	1	1						
9	2	124060-59380	PLUG, 6	1	1						
10	2	22190-060002	WASHER, SEAL 6	1	1						
11	1	129129-59510	PIPE ASSY, RETURN	1	1						
12	1	105025-59530	PIPE, FUEL D13X400	1	1						
13	1	121855-59880	JOINT, PIPE	1	1						
14	1	121855-59880	JOINT, PIPE	1	1						
15	1	23000-013000	CLAMP, 13	6	6						
16	1	23857-060000	BOLT, JOINT 6	1	1						
17	1	23857-080000	BOLT, JOINT 8	1	1						
18	1	23857-080000	BOLT, JOINT 8	1	1						
19	1	23980-730240	HOSE, 7.3X 240	1	1						
20	1	22190-120002	WASHER, SEAL 12	4	4						
21	1	22190-140002	WASHER, SEAL 14	3							
21-1	1	22190-140002	WASHER, SEAL 14	2	2						K
(A=E06719)											
22	1	22190-140002	WASHER, SEAL 14	2	2						
23	1	101304-59020	JOINT, PIPE 12	1	1						
24	1	124066-59100	CLIP, HOSE 8	9	9						
25	1	129495-59300	BOLT, PIPE JOINT	1	1						
26	1	129470-59530	JOINT, PIPE	1	1						
27	1	119000-59550	PIPE, FUEL RETURN	3	3						
28	1	119000-59560	PIPE, FUEL RETURN	1	1						
29	1	129150-59580	CAP	1	1						
30	1	129255-59580	PIPE, FUEL	1	1						
31	1	129100-59951	VALVE ASSY, CHECK	1	1						
39	1	23000-013000	CLAMP, 13	2	2						
40	1	23414-080000	GASKET, 8X1.0	1	1						
41	1	26106-080102	BOLT, M8X 10 PLATED	1	1						
42	1	22190-120002	WASHER, SEAL 12	2	2						
43	1	22190-140002	WASHER, SEAL 14	2	2						
44	1	121850-55800	SEPARATOR ASSY,WATER	1	1						
45	2	104200-55321	VALVE, TAPER	1	1						
46	2	104200-55330	SPRING, VALVE	1	1						
47	2	104200-55341	HANDLE	1	1						
48	2	121254-55510	COVER	1	1						
49	2	102103-55520	O-RING	1	1						
50	2	110250-55610	RING, RETAINING	1	1						
52	2	121850-55710	SCREEN	1	1						
53	2	121257-55720	SPRING	1	1						
54	2	121257-55731	FLOAT	1	1						
55	2	101720-55750	PLUG, 6	2	2						
56	2	104200-55750	SCREW, M4	1	1						
57	2	23418-060000	GASKET, 6X1.0	2	2						
58	2	24311-240100	O-RING, 1AP10A	1	1						

Fig.16. FUEL LINE

16.FUEL LINE



X-MARK PARTS: NOT SOLD SEPARATELY.

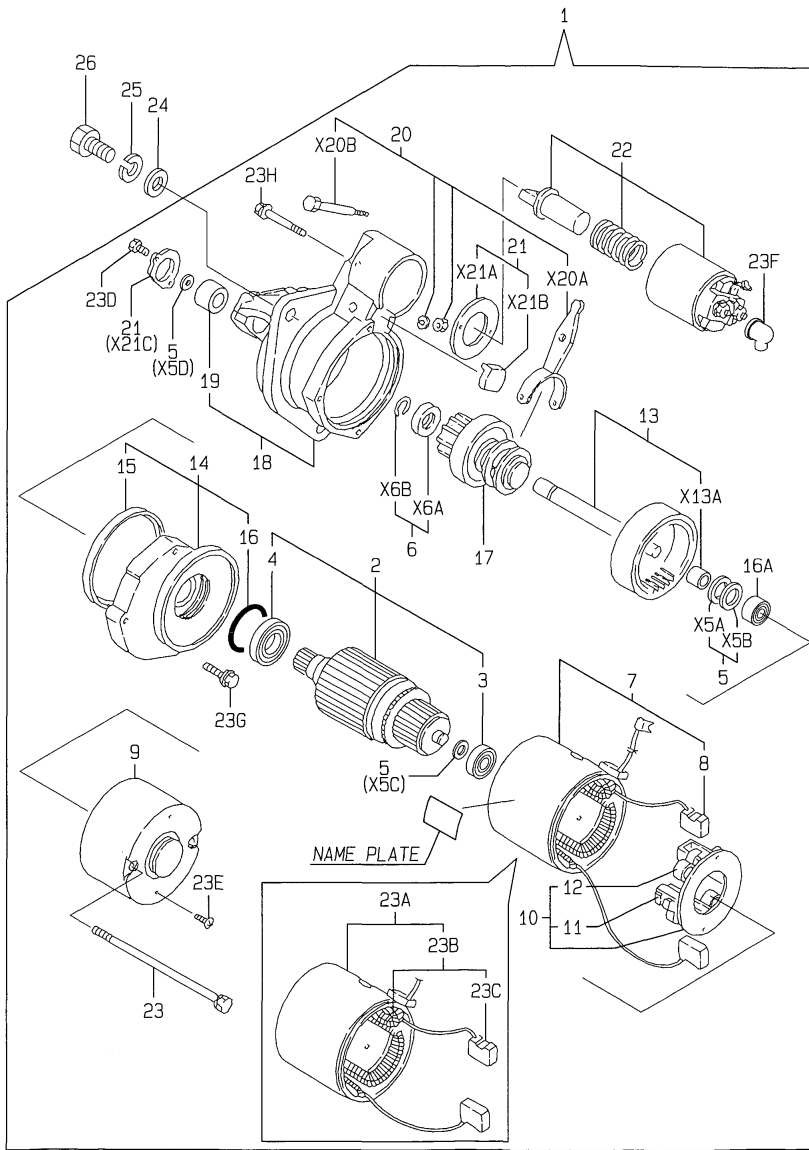
(A)=4TN100E-ACG  
(B)=4TN100E-ACGD  
(C)=

(D)=  
(E)=  
(F)=

No.	Lev.	Parts No.	Description	Qty						I	R
				(A)	(B)	(C)	(D)	(E)	(F)		
59	1	124450-01980 (A=E06719)	GASKET	1	1						W

Fig.17. STARTING MOTOR

17. STARTING MOTOR



Remarks  
 (1) CERTAIN THE NAME PLATE, THEN PLACE YOUR ORDER. (REFER TO ILLUSTRATION)  
 \* NAME PLATE <S13-68A>= 2-1, 10-1, 11-1.

No.	Lev.	Parts No.	Description	Qty						I	R
				(A)	(B)	(C)	(D)	(E)	(F)		
1	1	124610-77010	STARTER, S13-68A	1	1						
2	2	X213011001	ARMATURE ASSY	1							
2-1	2	121254-77402	ARMATURE ASSY	1	1						S 1
(A=E07699)											
3	3	X21302302	BALL BEARING	1							
3-1	3	121254-77410	BALL BEARING	1	1						N
(A=E07699)											
4	3	X21303302	BALL BEARING	1							
4-1	3	121254-77420	BALL BEARING	1	1						N
(A=E07699)											
5	2	X21302115	WASHER KIT, THRUST	1							
5-1	2	121254-77430	WASHER KIT, THRUST	1	1						N
(A=E07699)											
6	2	X21303119	STOPPER SET, PINION	1							
6-1	2	121254-77480	STOPPER KIT, PINION	2	2						N
(A=E07699)											
7	2	X21308220	COIL ASSY, FIELD	1							Z
(A=E07699)											
8	3	X21308311	BRUSH (+)	2							Z
(A=E07699)											
9	2	X225013012	COVER, REAR	1							
9-1	2	124610-77550	REAR COVER ASSY	1	1						N
(A=E07699)											
10	2	X21307305	HOLDER ASSY, BRUSH	1							
10-1	2	121254-77571	HOLDER ASSY	1	1						S 1
(A=E07699)											
11	3	X21305312	BRUSH (-)	2							
11-1	3	121254-77581	BRUSH, -	2	2						S 1
(A=E07699)											
12	3	X21305313	SPRING, BRUSH	4							
12-1	3	121254-77590	SPRING, BRUSH	4	4						N
(A=E07699)											
13	2	X22501113	SHAFT ASSY, GEAR	1							
13-1	2	121254-77640	SHAFT ASSY, GEAR	1	1						N
(A=E07699)											
14	2	X21304400	BEARING ASSY, CENTER	1							
14-1	2	121254-77600	BEARING ASSY, CENTER	1	1						N
(A=E07699)											
15	3	X21301402	SEAL, OIL	1							
15-1	3	119129-77210	SEAL, OIL	1	1						N
(A=E07699)											
16	3	X21302402	O-RING	1							Z
(A=E07699)											
16A	3	119129-77220	BEARING, NEEDLE	1	1						W
(A=E07699)											
17	2	X213035002	PINION ASSY	1							
17-1	2	121254-77661	PINION ASSY	1	1						N
(A=E07699)											
18	2	X213046003	HOUSING ASSY, GEAR	1							
18-1	2	121254-77681	CASE ASSY, GEAR	1	1						N
(A=E07699)											

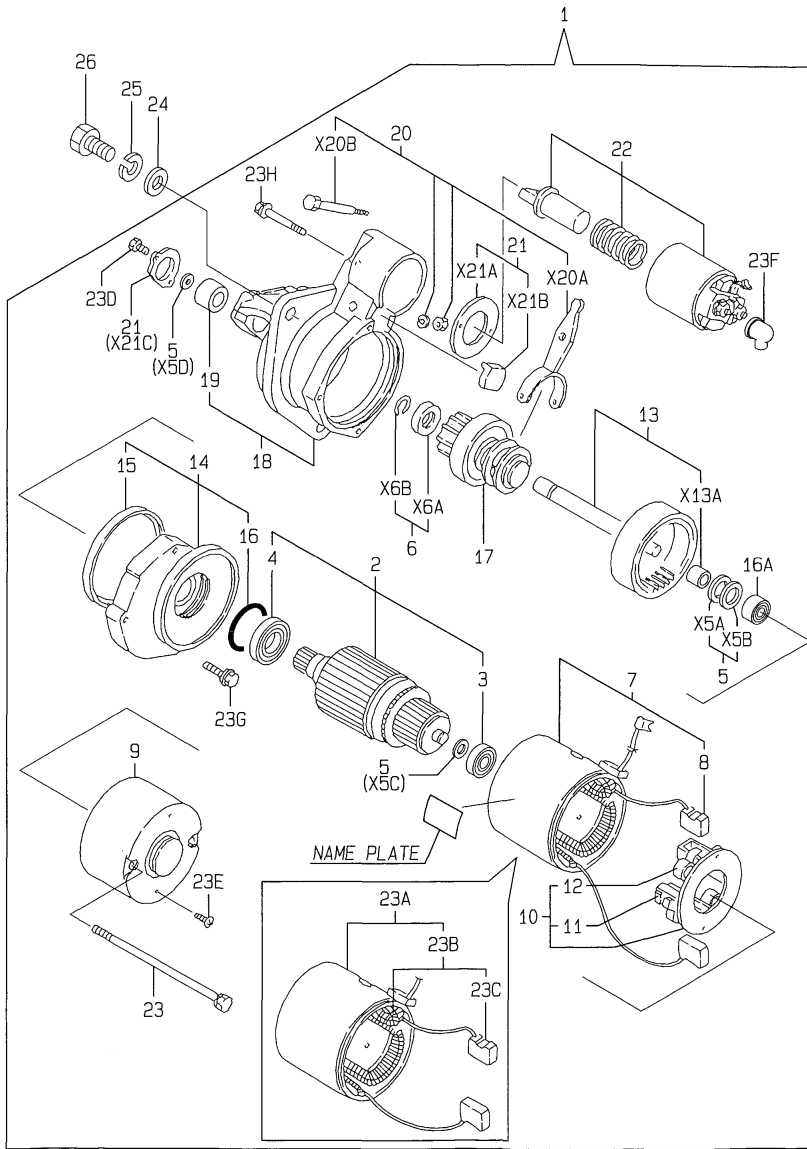


# Fig.17. STARTING MOTOR

(A)=4TN100E-ACG  
 (B)=4TN100E-ACGD  
 (C)=

(D)=  
 (E)=  
 (F)=

## 17. STARTING MOTOR



No.	Lev.	Parts No.	Description	Q'ty						I	R
				(A)	(B)	(C)	(D)	(E)	(F)		
19	3	X21302601	METAL, CASE BEARING	1							
19-1	3	121254-77690	METAL, GEAR CASE	1	1						N
(A=E07699)											
20	2	X21302605	LEVER SET	1							
20-1	2	121254-77700	LEVER SET, SHIFT	1	1						N
(A=E07699)											
21	2	X21303610	COVER SET, DUST	1							
21-1	2	121254-77730	DUST COVER SET	1	1						N
(A=E07699)											
22	2	X213017001	SWITCH ASSY, MAGNET.	1							
22-1	2	121254-77670	SWITCH, MAGNETIC	1	1						N
(A=E07699)											
23	2	X21305820	BOLT, THROUGH	2							
23-1	2	121254-77770	BOLT, THROUGH	2	2						N
(A=E07699)											
23A	2	121254-77511	COIL ASSY, FIELD	1	1						W
(A=E07699)											
23B	3	121254-77521	COIL ASSY, FIELD	1	1						W
(A=E07699)											
23C	4	121254-77541	BRUSH (+)	2	2						W
(A=E07699)											
23D	2	121254-77780	SCREW 5	2	2						W
(A=E07699)											
23E	2	121254-77790	SCREW 4	2	2						W
(A=E07699)											
23F	2	121254-77810	COVER, TERMINAL	1	1						W
(A=E07699)											
23G	2	26106-060302	BOLT, M6X 30 PLATED	3	3						W
(A=E07699)											
23H	2	26106-060452	BOLT, M6X 45 PLATED	2	2						W
(A=E07699)											
24	1	22137-120000	WASHER, 12	3	3						
25	1	22217-120000	WASHER, SPRING 12	3	3						
26	1	26116-120352	BOLT, M12X 35 PLATED	3	3						

**Remarks**

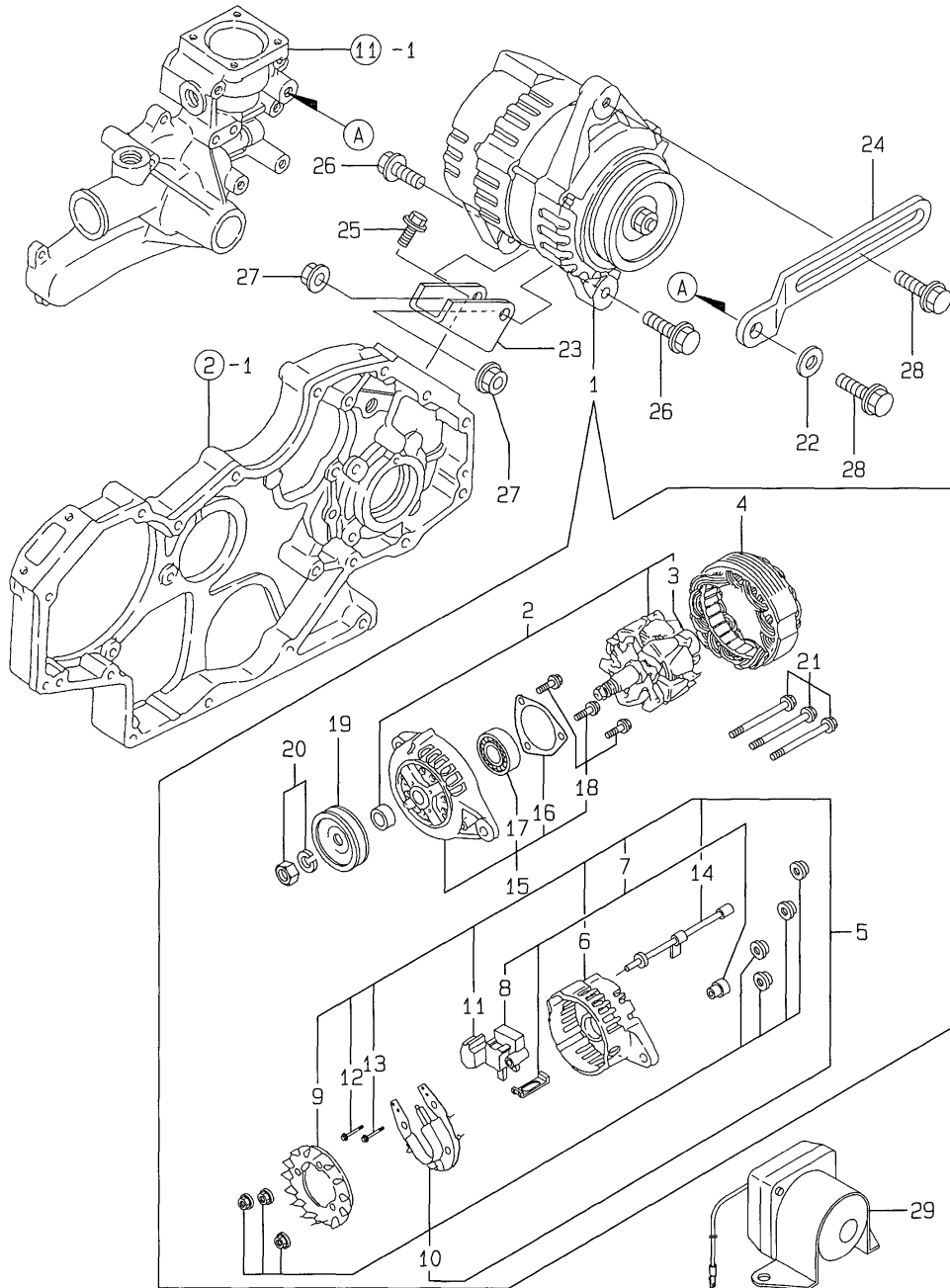
(1) CERTAIN THE NAME PLATE, THEN PLACE YOUR ORDER. (REFER TO ILLUSTRATION)

\* NAME PLATE<S13-68A>= 2-1,10-1,

11-1.

Fig.18. GENERATOR

18. GENERATOR



(A)=4TN100E-ACG  
(B)=4TN100E-ACGD  
(C)=

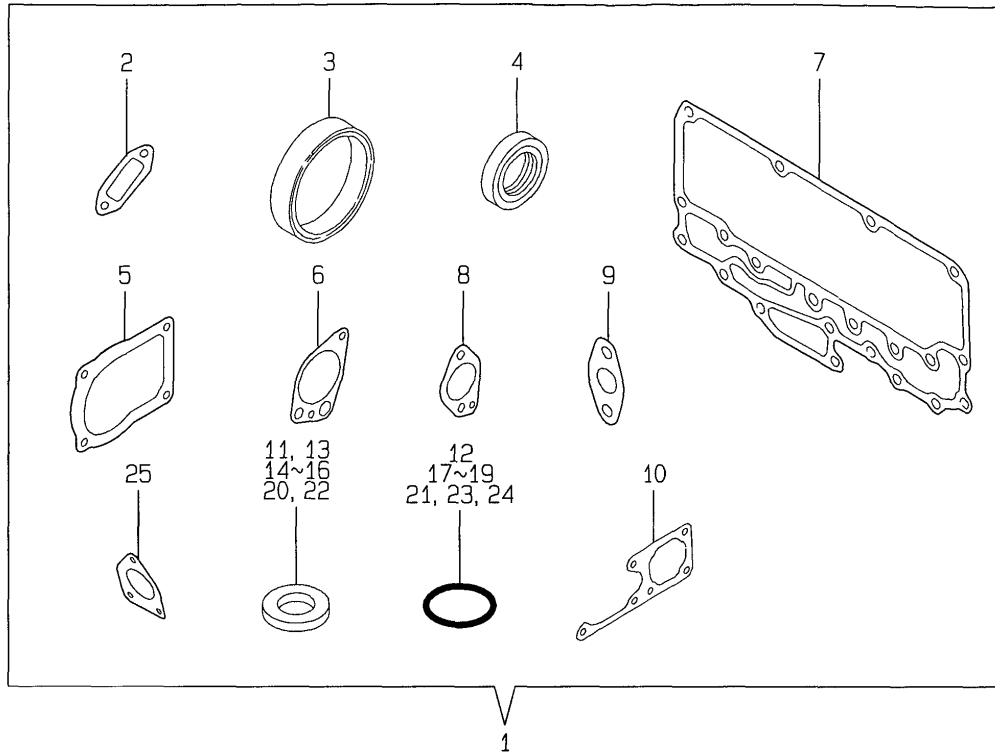
(D)=  
(E)=  
(F)=

No.	Lev.	Parts No.	Description	Q'ty						I	R
				(A)	(B)	(C)	(D)	(E)	(F)		
1	1	119836-77200	GENERATOR	1	1						
2	2	119836-77700	ROTOR ASSY	1	1						
3	3	119836-77850	BALL BEARING	1	1						
4	2	119836-77710	STATOR ASSY	1	1						
5	2	119836-77721	COVER ASSY, REAR	1	1						
6	3	119836-77730	COVER, REAR	1	1						
7	3	119836-77741	BRUSH ASSY,REGULATOR	1	1						
8	4	119836-77750	BRUSH ASSY	1	1						
9	3	119836-77760	GUIDE, FAN SIDE	1	1						
10	3	119836-77770	DIODE ASSY	1	1						
11	3	119836-77780	CONDENSER	1	1						
12	3	119836-77871	BOLT (1)	1	1						
13	3	119836-77880	BOLT (2)	1	1						
14	3	119836-77890	WIRE ASSY, LEAD	1	1						
15	2	119836-77790	COVER ASSY, FRONT	1	1						
16	3	119836-77800	RETAINER, BEARING	1	1						
17	3	119836-77840	BALL BEARING	1	1						
18	2	119836-77860	SCREW KID	1	1						
19	2	119836-77810	PULLEY	1	1						
20	2	119836-77820	NUT ASSY, PULLEY	1	1						
21	2	119836-77830	BOLT, THROUGH	1	1						
22	1	106100-55800	WASHER	1	1						
23	1	119005-77340	BRACKET, GENERATOR	1	1						
24	1	121857-77330	ADJUSTER	1	1						
25	1	26106-080202	BOLT, M8X 20 PLATED	2	2						
26	1	26106-080302	BOLT, M8X 30 PLATED	2	2						
27	1	26366-080002	NUT, M8	2	2						
28	1	26106-080202	BOLT, M8X 20 PLATED	2	2						
29	1	129100-77910	RELAY, MAGNETIC	1							
29-1	1	129100-77910	RELAY, MAGNETIC	2	2						K

(A=E07699)

Fig.19. GASKET SET(CYLINDER BLOCK)

19.GASKET SET (CYLINDER BLOCK)



(A)=4TN100E-ACG  
(B)=4TN100E-ACGD  
(C)=

(D)=  
(E)=  
(F)=

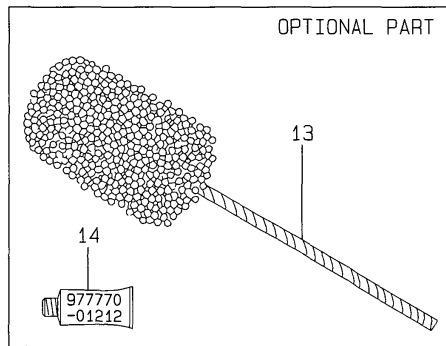
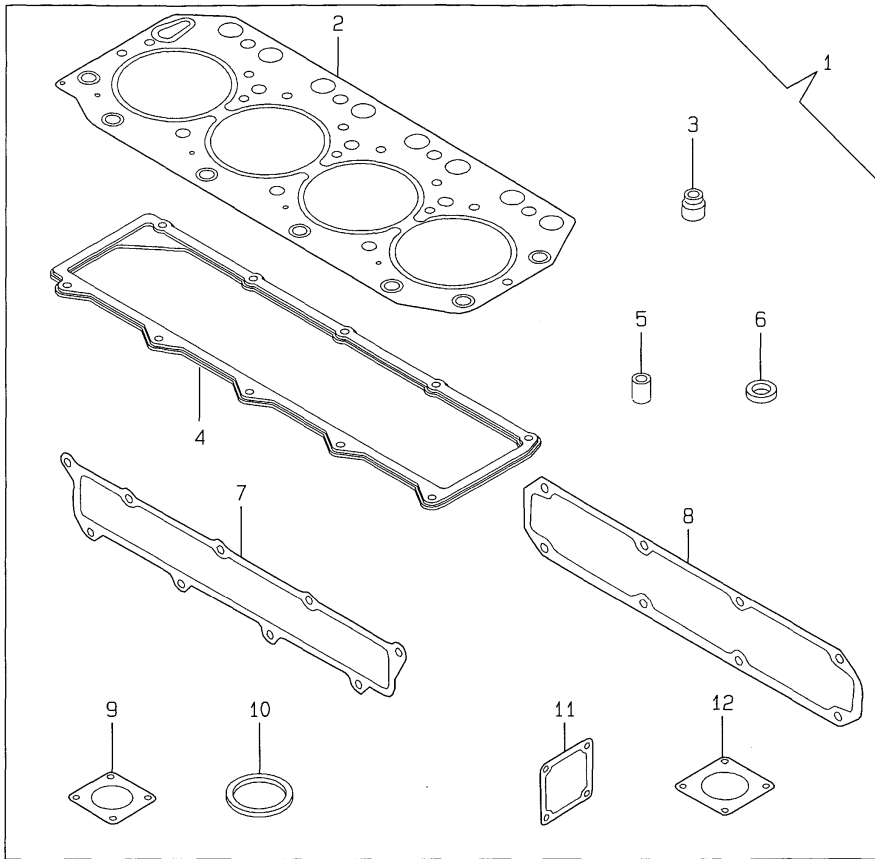
No.	Lev.	Parts No.	Description	Q'ty						I	R
				(A)	(B)	(C)	(D)	(E)	(F)		
1	1	719140-92620	GASKET SET, BLOCK	1	1						1
1-1	1	119140-92620	GASKET SET(NON-ASB.)	1	1						N 1
		(A=E2009.12) (B=E2009.12)									
2	2	119000-01771	GASKET	1	1						
3	2	124411-01780	SEAL, HTC95X115X12	1	1						
4	2	121850-01800	SEAL, OIL	1	1						
5	2	124610-01862	GASKET	2	2						
6	2	119000-32020	GASKET, PUMP	1	1						
7	2	119000-33022	GASKET	1	1						
8	2	119000-33041	GASKET	1	1						
9	2	121952-33071	GASKET, COOLER	2	2						
10	2	119000-42021	GASKET, WATER PUMP	1	1						
11	2	124465-44950	GASKET, 16	2	2						
12	2	124410-51960	O-RING	1	1						
13	2	23414-080000	GASKET, 8X1.0	2	2						
14	2	23414-140000	GASKET, 14X1.0	1	1						
15	2	23414-160000	GASKET, 16X1.0	1	1						
16	2	23414-180000	GASKET, 18X1.0	2	2						
16-1	2	23414-170000	GASKET, 17X1.0	2	2						N
		(A=E2009.12) (B=E2009.12)									
17	2	24311-000220	O-RING, 1AP22.0	1	1						
18	2	24311-000360	O-RING, 1AP36.0	1	1						
19	2	24341-000240	O-RING, 1AS24.0	1	1						
20	2	22190-220002	WASHER, SEAL 22	1	1						
21	2	24341-001350	O-RING, 1AS135.0	1	1						
22	2	22190-080003	WASHER, SEAL 8	1	1						
23	2	24311-000320	O-RING, 1AP32.0	1	1						
24	2	24311-000320	O-RING, 1AP32.0	1	1						
25	2	124410-51861	GASKET	1	1						

Remarks

(1) OPTIONAL PART.

Fig.20. GASKET SET(CYLINDER HEAD)

20.GASKET SET (CYLINDER HEAD)



(A)=4TN100E-ACG  
(B)=4TN100E-ACGD  
(C)=

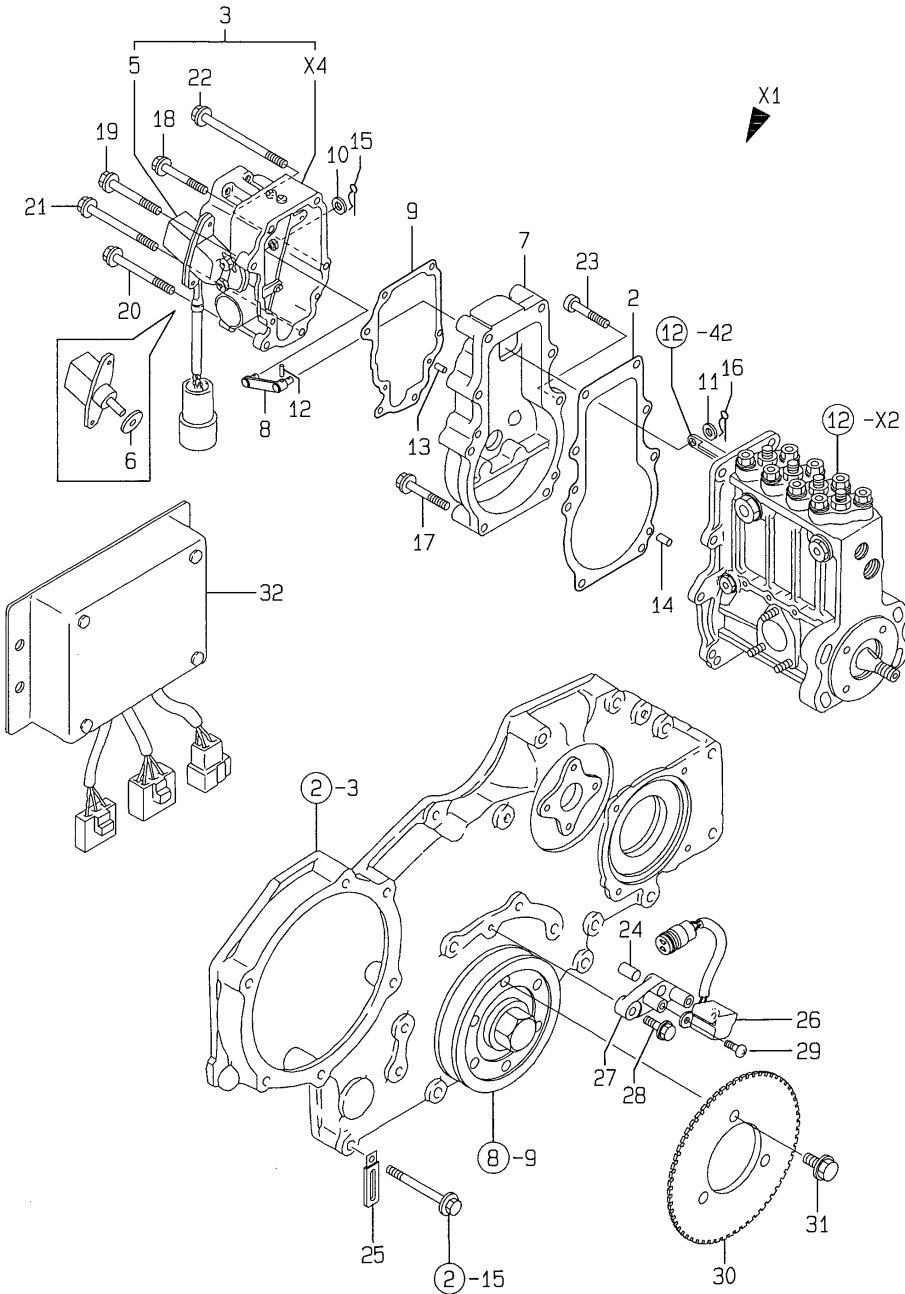
(D)=  
(E)=  
(F)=

No.	Lev.	Parts No.	Description	Q'ty						I	R
				(A)	(B)	(C)	(D)	(E)	(F)		
1	1	719140-99030	GASKET SET, HEAD	1	1						1
2	2	119100-01340	GASKET, HEAD T=1.3	1	1						
3	2	121850-11150	SEAL, VALVE STEM	8	8						
4	2	119100-11320	GASKET, BONNET	1	1						
5	2	119625-11871	PROTECTOR, NOZZLE	4	4						
6	2	119625-11880	SEAT, NOZZLE	4	4						
7	2	119100-12112	GASKET, MANIFOLD	1	1						
8	2	119100-13200	GASKET	1	1						
9	2	121850-49540	GASKET, THERMOSTAT	1	1						
10	2	121850-49550	GASKET, THERMOSTAT	1	1						
11	2	121850-77021	GASKET	1	1						
12	2	129400-13200	GASKET, SILENCER	1							
12-1	2	129400-13201	GASKET, SILENCER	1	1						N
			(A=E06375)								
13	1	129400-92450	HONE	1	1						1
14	1	977770-01212	GASKET, LIQUID	1	1						1

Remarks  
(1) OPTIONAL PART.

Fig.21. GOVERNOR

21. GOVERNOR



(A)=4TN100E-ACG  
 (B)=4TN100E-ACGD  
 (C)=

(D)=  
 (E)=  
 (F)=

No.	Lev.	Parts No.	Description	Q'ty						I	R
				(A)	(B)	(C)	(D)	(E)	(F)		
2	2	119000-61051	GASKET		1						
3	2	129611-61100	ACTUATOR		1						
5	3	119649-61091	SENSOR		1						
6	4	129611-61180	GASKET		1						
7	2	119140-61110	SPACER		1						
8	2	119140-61120	LINK		1						
9	2	119649-61151	GASKET		1						
10	2	22117-040000	WASHER, 4		1						
11	2	22117-050000	WASHER, 5		1						
12	2	22351-030025	PIN, SPRING 3.0X25		1						
13	2	22351-040010	PIN, SPRING 4.0X10		2						
14	2	22351-050020	PIN, SPRING 5.0X20		2						
15	2	22360-040000	PIN, SNAP 4		1						
16	2	22360-050000	SNAP PIN 5		1						
17	2	26106-060402	BOLT, M6X 40 PLATED		5						
18	2	26106-060452	BOLT, M6X 45 PLATED		2						
19	2	26106-060502	BOLT, M6X 50 PLATED		1						
20	2	26106-060602	BOLT, M6X 60 PLATED		1						
21	2	26106-060702	BOLT, M6X 70 PLATED		1						
22	2	26106-060852	BOLT, M6X 85 PLATED		1						
23	2	26450-060352	BOLT, M6X 35		1						
24	1	129100-01580	PIN, M8X16		1						
25	1	194180-51640	CLAMP, HARNESS		1						
26	1	119649-78500	PULSAR		1						
27	1	119140-78510	BRACKET, PULSAR		1						
28	1	26106-060222	BOLT, M6X 22 PLATED		1						
29	1	26557-040082	SCREW, M4X 8		2						
30	1	119140-78650	GEAR, PULSAR		1						
31	1	26106-100142	BOLT, M10X 14 PLATED		3						
32	1	129219-78800	CONTROLLER, MAIN		1						

## Parts No. Index

Parts No.	Fig. No.	Ref. No.
101304-59020	16	5
		23
101720-55750	16	55
102103-55520	16	49
103854-59191	16	7
104200-55321	16	45
104200-55330	16	46
104200-55341	16	47
104200-55750	16	56
105025-59530	16	12
106100-55800	7	20
	18	22
110250-55610	16	50
114250-53080	15	5
114250-53120	15	9
114250-53130	15	10
114250-53140	15	11
114250-53210	15	12
114250-53400	15	13
119000-01200	1	29
119000-01500	2	1
119000-01590	2	3
119000-01760	2	19
119000-01771	2	20
	19	2
119000-01840	1	14
119000-01880	1	9 A
119000-01930	2	7
119000-02020	1	20
119000-02410	1	5
119000-02450	7	2
119000-02800	1	21
119000-02930	1	24
119000-07200	4	3
119000-11110	4	18
119000-11230	4	38
119000-11260	4	32
119000-11270	4	33
119000-11280	4	34
119000-11290	4	35
119000-11810	4	11
119000-14100	7	4
119000-14200	7	6
119000-21650	8	8
119000-22000	8	15
119000-22300	8	23
119000-23910	8	28
119000-25050	7	9
119000-25100	7	10
119000-25900	7	16

Parts No.	Fig. No.	Ref. No.
119000-25910	7	17
119000-25920	7	18
119000-25930	7	12
119000-32001	9	1
119000-32020	9	17
	19	6
119000-33010	10	2
119000-33022	10	16
	19	7
119000-33030	10	17
119000-33041	10	18
	19	8
119000-33050	10	3
119000-34030	10	5
119000-35140	9	21
119000-39650	9	29
119000-42021	11	17
	19	10
119000-42250	11	20
119000-48170	11	29
119000-51050	12	5
119000-51060	12	7
119000-51101	12	11 A
119000-51161	12	17
119000-51170	12	18
119000-51181	12	19
119000-51201	12	20
119000-51330	12	31
119000-51340	12	32
119000-51360	12	34
119000-51410	12	35
119000-51450	12	36
119000-51510	12	43
119000-51530	12	45
119000-51550	12	46
119000-51570	12	47
119000-51580	12	48
119000-51590	12	49
119000-51650	12	50
119000-51800	12	63
119000-51900	12	64
119000-52000	13	1
119000-52100	13	8
119000-53000	15	2
119000-55600	16	1
119000-59550	16	27
119000-59560	16	28
119000-61051	14	4
	21	2
119000-61080	14	12

Parts No.	Fig. No.	Ref. No.
119000-61120	14	11
119000-61140	14	13
119000-61150	14	14
119000-61160	14	15
119000-61170	14	16
119000-61180	14	17
119000-61190	14	18
119000-61310	14	24
119000-61320	14	25
119000-61400	14	28
119000-61470	14	33
119000-61490	14	34
119000-61630	14	48
119005-35100	9	20
119005-77340	18	23
119006-42001	11	1
119006-59110	16	6
119032-61720	14	95 -1
119040-49010	11	26
119060-32000	9	1 -1
119083-44500	11	22
119083-61800	14	55
119083-61860	14	97
119083-61870	14	59
119100-01340	1	30
	20	2
119100-01640	3	17
119100-01730	3	4
119100-01770	3	5
119100-01980	1	31
119100-03200	4	45
119100-11230	4	30
119100-11311	4	44
119100-11320	4	46
	20	4
119100-11330	4	47
119100-12112	5	1
	20	7
119100-12120	5	2
119100-13100	6	1
119100-13200	6	2
	20	8
119100-14000	7	1
119100-34800	3	21
119100-35090	9	22
119100-39350	9	26
119100-51030	12	4
119100-51081	12	8
119100-51091	12	9
119100-51101	12	11

Parts No.	Fig. No.	Ref. No.
119100-51500	12	42
119100-53000	15	2 -1
119100-59810	15	25
119100-59820	15	29
119100-59830	15	33
119100-59840	15	37
119100-61200	14	19
119100-61300	14	23
119100-61340	14	26
119100-61430	14	31
119100-61440	14	93 A
119100-61700	14	95
119129-77210	17	15 -1
119129-77220	17	16 A
119130-44760	11	25
119130-49020	11	27
119140-01610	3	1
119140-03090	4	1
119140-12040	5	15
119140-12730	5	3
119140-21590	8	12
119140-39400	10	24
119140-51030	12	4 A
119140-61110	21	7
119140-61120	21	8
119140-78510	21	27
119140-78650	21	30
119140-92600	10	1 -1
119140-92620	19	1 -1
119141-61060	14	5
119141-61061	14	5 -1
119141-61070	14	6
119141-61080	14	8
119141-61400	14	93 -1
119141-61440	14	93
119141-61450	14	93 B
119141-61500	14	35
119160-34030	10	5 -1
119265-39450	9	32
119285-01730	10	25
119593-01870	1	9 -1
119620-49290	11	34
119625-11871	4	25
	20	5
119625-11880	4	26
	20	6
119625-11900	4	27
119640-01640	3	6
119649-61091	21	5
119649-61151	21	9

## Parts No. Index

Parts No.	Fig. No.	Ref. No.
119649-78500	21	26
119836-77200	18	1
119836-77700	18	2
119836-77710	18	4
119836-77721	18	5
119836-77730	18	6
119836-77741	18	7
119836-77750	18	8
119836-77760	18	9
119836-77770	18	10
119836-77780	18	11
119836-77790	18	15
119836-77800	18	16
119836-77810	18	19
119836-77820	18	20
119836-77830	18	21
119836-77840	18	17
119836-77850	18	3
119836-77860	18	18
119836-77871	18	12
119836-77880	18	13
119836-77890	18	14
120323-61070	14	7
120323-61470	14	94
120445-44530	11	41
120445-44540	11	42
121023-01550	2	28
121250-49110	16	4
121254-55510	16	48
121254-77402	17	2 -1
121254-77410	17	3 -1
121254-77420	17	4 -1
121254-77430	17	5 -1
121254-77480	17	6 -1
121254-77511	17	23 A
121254-77521	17	23 B
121254-77541	17	23 C
121254-77571	17	10 -1
121254-77581	17	11 -1
121254-77590	17	12 -1
121254-77600	17	14 -1
121254-77640	17	13 -1
121254-77661	17	17 -1
121254-77670	17	22 -1
121254-77681	17	18 -1
121254-77690	17	19 -1
121254-77700	17	20 -1
121254-77730	17	21 -1
121254-77770	17	23 -1
121254-77780	17	23 D

Parts No.	Fig. No.	Ref. No.
121254-77790	17	23 E
121254-77810	17	23 F
121257-55720	16	53
121257-55731	16	54
121520-34810	3	22
121820-52020	13	3
121820-52070	13	7
121820-52160	13	14
121820-52170	13	15
121820-52180	13	16
121820-52190	13	17
121820-52200	13	18
121820-52210	13	19
121820-52230	13	20
121820-52300	13	21
121820-52400	13	24
121820-52510	13	25
121850-01800	2	5
	19	4
121850-01900	7	15
121850-01920	2	6
121850-11100	4	17
121850-11120	4	19
121850-11150	4	20
	20	3
121850-11180	4	21
121850-11800	4	9
121850-21130	8	11
121850-21200	8	3
121850-21290	8	4
121850-21660	8	9
121850-21680	8	10
121850-21920	8	5
121850-23200	8	29
121850-35230	10	6
121850-44660	11	23
121850-49530	11	30
121850-49540	11	31
	20	9
121850-49550	11	32
	20	10
121850-51700	12	62
121850-55710	16	52
121850-55800	16	44
121850-61600	14	43
121850-77021	5	6
		11
	20	11
121850-77050	5	12
121855-59880	16	13

Parts No.	Fig. No.	Ref. No.
121855-59880	16	14
121855-61910	14	60
121857-77330	18	24
121952-33071	10	4
	19	9
121952-39830	10	9
121952-51900	12	65
121972-44740	11	24
122710-51050	12	6
122710-51350	12	33
123385-82200	4	12
123472-59090	15	20
123672-84530	10	10
124060-59380	16	9
124066-03770	14	96
124066-59100	16	24
124160-01751	2	18
	4	43
124223-35510	10	7
124250-11190	4	22
124410-51861	13	2
	19	25
124410-51960	7	23
	19	12
124411-01780	3	19
	19	3
124411-35520	10	8
124450-01980	16	59
124465-44950	11	39
		40
	19	11
124610-01851	2	23
124610-01862	2	24
	19	5
124610-51970	14	2
124610-77010	17	1
124610-77550	17	9 -1
124976-34850	3	9
127410-21480	8	14
127695-61550	14	8 -1
128400-51300	12	28
129100-01580	1	10
		11
		12
	2	2
	21	24
129100-59951	16	31
129100-61930	14	61
129100-77820	5	13
129100-77910	18	29

Parts No.	Fig. No.	Ref. No.
129100-77910	18	29 -1
129110-44900	11	37
129129-59510	16	11
129150-03100	4	2
129150-11750	4	39
129150-14400	7	7
129150-59580	16	29
129155-51270	12	26
129155-51280	12	27
129155-61090	14	9
129155-61460	14	32
129219-78800	21	32
129255-59580	16	30
129400-13200	6	6
	20	12
129400-13201	6	6 -1
	20	12 -1
129400-92450	20	13
129470-55610	16	2
129470-59530	16	26
129495-59300	16	25
129577-67320	14	99
129611-61100	21	3
129611-61180	21	6
129795-11750	3	2
135210-61090	14	10
135400-01790	1	13
135602-34390	1	15
137600-53900	12	68
144626-51090	12	10
144626-51940	12	66
144626-51950	12	67
148616-61650	14	54
171051-01921	1	4
171078-66551	14	98
171087-42280	11	21
194180-51640	21	25
22117-040000	21	10
22117-050000	14	62
	21	11
22117-080000	14	100
22117-120000	3	10
22137-080000	14	63
		64
22137-120000	17	24
22190-060000	12	69
22190-060002	16	10
22190-080002	14	101
22190-080003	2	17
	19	22

## Parts No. Index

Parts No.	Fig. No.	Ref. No.
22190-120002	14	76 -1
		91
	16	20
22190-140002	16	42
		21
		21 -1
		22
22190-160002	14	43
		92
22190-220002	3	8
	19	20
		20
22217-050000	14	65
22217-060000	13	26
	14	66
		67
22217-100000	14	67
22217-120000	17	25
22217-180000	7	21
22242-000180	4	40
22252-000340	8	24
22262-000260	14	27
22272-000040	14	44
		68
		102
22272-000050	14	102
22272-000080	14	69
22351-020004	14	45
22351-020012	14	46
22351-030010	9	30
22351-030016	14	58
	14	70
		71
22351-030025	21	12
	21	13
		22
22351-050012	7	22
22351-050020	14	72
	21	14
		16
22351-080016	1	16
22360-040000	21	15
22360-050000	21	16
22372-050000	14	73
22372-080000	14	103
22417-120120	14	74
22453-060000	14	75
22512-070140	7	5
	8	6
		15
23000-013000	16	15
	9	39
		27
23414-080000	16	40
	19	13
		76
23414-080012	14	76

Parts No.	Fig. No.	Ref. No.
23414-100000	1	17
23414-140000	1	18
23414-160000	19	14
		10
		11
23414-170000	10	11
		19
		15
23414-180000	10	12 -1
		16 -1
	19	16
		12
23414-220029	12	70
23418-060000	16	57
23857-030000	9	28
		31
		16
23857-060000	16	16
23857-080000	16	17
		18
		6
23871-010000	1	6
	10	27
		19
23871-020000	1	19
	11	11
		7
23871-030000	1	7
	3	11
		13
	4	13
		10
	10	13
		26
	11	12
		14
23887-080002	14	104
23887-160002	10	14
	11	38
		77
23980-730240	14	77
24311-000110	16	19
24311-000110	14	78
24311-000220	9	23
	19	17
		21
24311-000320	2	21
	4	50
		19
	19	23
		24
24311-000360	11	18
	19	18
		58
24311-240100	16	58
24312-000150	12	71
24341-000080	14	79
24341-000240	2	29
	19	19
		12
24341-000260	12	72
24341-000500	12	73
24341-001350	7	19
	19	21
		24
26013-080162	9	24

Parts No.	Fig. No.	Ref. No.
26013-080452	7	14
26014-060142	11	33
26014-080352	11	28
26022-050122	4	49
26106-060122	2	30
	14	93 C
		105
		74
26106-060182	12	74
26106-060202	12	75
	14	106
		22
26106-060222	14	80
	21	28
		23 G
26106-060302	17	23 G
26106-060352	14	81
26106-060402	21	17
26106-060452	17	23 H
	21	18
		19
26106-060502	21	19
26106-060602	21	20
26106-060702	21	21
26106-060852	21	22
26106-080102	16	41
26106-080122	14	82
26106-080142	5	7
26106-080162	1	32
	7	8
		18
26106-080182	9	18
	2	25
		8
26106-080202	2	9
		25
		26
	5	8
		19
	10	19
		20
	18	25
		28
26106-080252	2	22
	3	12
		20
	4	51
		24
26106-080302	7	24
26106-080302	18	26
26106-080352	3	13
	5	14
		21
	10	22
		10
26106-080402	2	10
	6	3

Parts No.	Fig. No.	Ref. No.
26106-080452	2	11
		12
		13
		4
26106-080502	2	13
	6	4
		19
		23
	10	23
		14
26106-080552	2	14
26106-080652	4	42
	11	19
		14
26106-080702	3	14
	5	9
		15
26106-080752	2	15
26106-080802	3	15
26106-080902	2	16
26106-081152	5	10
26106-100142	21	31
26106-100202	4	4
26106-100252	16	3
26106-100302	3	3
26116-050102	14	83
26116-050142	14	83 -1
26116-050146	14	9 -1
26116-060356	14	84
26116-120352	17	26
26116-120852	3	16
26216-060162	12	76
26216-060252	4	23
26216-080222	6	5
26216-080652	4	24
26366-060002	4	28
	14	93 D
		23
	15	23
		27
26366-080002	2	27
	4	29
		77
	12	77
		27
	18	27
		25
26366-100002	7	25
26376-100002	10	15
26376-120002	14	85
26450-060352	21	23
26557-040082	21	29
26606-100002	14	86
26667-080002	14	87
26687-120002	14	87 -1
26716-060002	13	27
26756-060002	14	107
26756-080002	14	88
		89
		26
26776-180002	7	26
26777-120002	14	89 -1



## Parts No. Index

Parts No.	Fig. No.	Ref. No.
26777-120002	14	90
27231-600000	1	33
27241-140000	1	8
		8 -1
27241-160000	4	14
27241-280000	4	15
27241-400000	1	9
	4	16
27310-090000	4	22 -1
719000-02870	1	34
719000-02940	1	37
719000-22500	8	17
719000-22900	8	32
719000-22950	8	34
719000-23100	8	25
719000-23600	8	42
719000-23610	8	40
719000-33700	10	1
719100-21700	8	1
719100-53100	15	1 -1
719129-11660	4	36
719129-11700	4	5
719129-53100	15	1
719140-51200	12	1 A
719140-51360	12	1
719140-92620	19	1
719140-99030	20	1
719141-01561	1	1
977770-01212	2	31
	3	23
	20	14
X213011001	17	2
X21301402	17	15
X213017001	17	22
X21302115	17	5
X21302302	17	3
X21302402	17	16
X21302601	17	19
X21302605	17	20
X21303119	17	6
X21303302	17	4
X213035002	17	17
X21303610	17	21
X21304400	17	14
X213046003	17	18
X21305312	17	11
X21305313	17	12
X21305820	17	23
X21307305	17	10
X21308220	17	7

Parts No.	Fig. No.	Ref. No.
X21308311	17	8
X22501113	17	13
X225013012	17	9

Parts No.	Fig. No.	Ref. No.
-----------	----------	----------

Parts No.	Fig. No.	Ref. No.
-----------	----------	----------