

0CW10-M00300EN

# PREFACE

- 1.This Parts Catalog carries all parts incorporated in YANMAR Model 4TNV98-Q2FY engine manufactured since August, 2004.
- 2.Each illustration corresponds to the parts list on the following page.
- 3.When ordering parts,clearly write down the engine model and serial number,as well as the name and number of each part in your order sheet. This will help insure reliable delivery of the parts you have ordered.

## Directions for the Parts Catalog.

1. This Parts Catalog shows both standard and optional parts.
2. Parts may change without prior notice.
3. The following is an example of the Parts Catalog format.

REF.	LEV.	PARTS NO.	DESCRIPTION	Q'TY						I	R
				(A)	(B)	(C)	(D)	(E)	(F)		
1	1	729595-51390	FUEL INJECTION PUMP	1	1	1	1	1			1
1-1	1	729595-51391	FUEL INJECTION PUMP	1	1	1	1	1		N	1
		(A=E00185) (B=E00200)									
3	2	26022-060162	SCREW M 6X 16	9	9	9	9	9			
3-1	2	26022-060162	SCREW M 6X 16	4	4	4	4	4		K	
		(A=E00156) (B=E00156) (C=E00156) (D=E00156) (E=E00156)									
4	2	129470-51040	CAMSHAFT	1	1	1	1	1			
5	2	122710-51050	BEARING, ROLLER	2	2	2	2	2			
6	2	129470-51060	RETAINER	1	1	1	1	1			

Remarks
(1) BOOST COMPEMSATOR TYPE. OPTIONAL PART, TO E00155,(4JH-DT, 4JH-DTZ

### ① Ref. No.

The Ref. No. listed may not be in accordance with the illustration Ref. No.

(Ex.) Illustration No.

List Ref No.

1

1

(Before change)

1-1

(After change)

For interchangeable symbols N, R and K, illustrations for new parts may be abbreviated.

### ② Lev. (Level)

Level indication

The numbers below indicate the level of relativity towards the main part.

1 ----- Main parts (Assembly parts)

2 ----- Sub component included in " 1 ".

3 ----- Sub component included in " 2 ".

Note) Parts that are not for sale are partially illustrated but not listed.

### ③ Interchangeability Symbol

When a part change takes place, one of the following interchangeability symbols is indicated beside the part.

Symbol	Interchangeability	Contents note
N	Old $\begin{matrix} \leftarrow \text{Yes} \\ \text{No} \rightarrow \end{matrix}$ New	New Part is interchangeable for Old Part but Old Part is not interchangeable for New Part.
Q	Old $\begin{matrix} \leftarrow \text{No} \\ \text{Yes} \rightarrow \end{matrix}$ New	New Part is not interchangeable for Old Part but Old Part is interchangeable for New Part.
R	Old $\begin{matrix} \leftarrow \text{Yes} \\ \text{Yes} \rightarrow \end{matrix}$ New	New/ Old Parts are both interchangeable.
S	Old $\begin{matrix} \leftarrow \text{No} \\ \text{No} \rightarrow \end{matrix}$ New	New/ Old Parts are both not interchangeable.
W		Part newly added.
Z		Part discontinued.
F		Not interchangeable by a single part but interchangeable together with related parts.
K		Changes only for used parts quantities.

### ④ Effective Machine No.

When a part changes, the effective Machine No. will be indicated in the (A)-(F) column.

Product Symbol	Product No.	Product Symbol	Product No.
C	Clutch No. Compressor No.	F	Machine No. (Agricultural Equip.)
D	Drive No.	M	Machine No.
E	Engine No.		

Note 1) A date may follow the symbol. (Ex.) 1996.01

Note 2) "XXXXX" and "ZZZZZ" are for parts that could not be predicted or for engine models that could not be identified.

Note 3) (A=E00185) is the E (Engine Serial Number) for the column (A) model (in this case 4JH-DT) after the parts design change.

### ⑤ Remarks

Figures or alphabets (symbols) are entered in the remarks column.

The comments (remarks) on parts that are indicated at the bottom of the illustration are the same symbols as those stated above.

# Contents

Fig. No.    Fig. Name

4TNV98-Q2FY

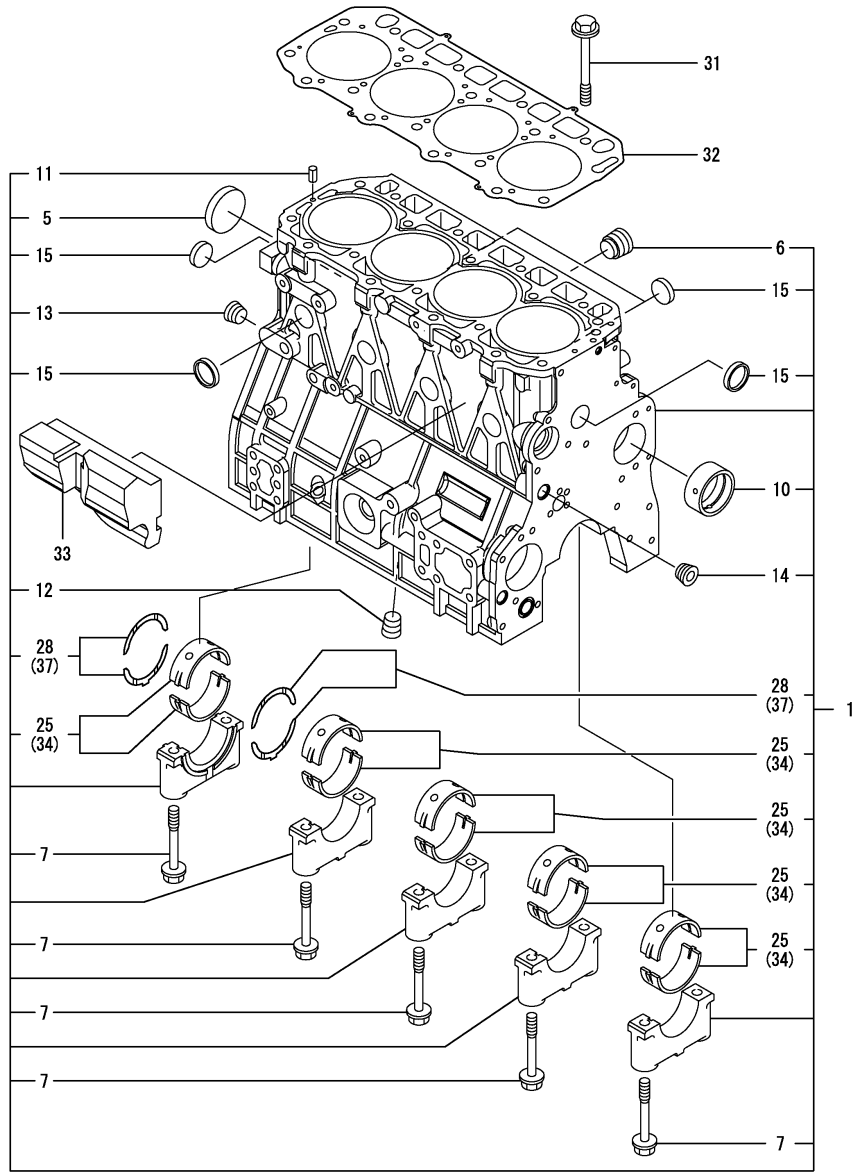
1. CYLINDER BLOCK
2. GEAR HOUSING
3. FLYWHEEL HOUSING & OIL SUMP
4. CYLINDER HEAD & BONNET
5. SUCTION MANIFOLD & AIR CLEANER
6. EXHAUST MANIFOLD & SILENCER
7. CAMSHAFT & DRIVING GEAR
8. CRANKSHAFT & PISTON
9. LUB. OIL SYSTEM
10. COOLING WATER SYSTEM
11. RADIATOR
12. FUEL INJECTION PUMP
13. FUEL INJECTION VALVE
14. FUEL LINE
15. STARTING MOTOR
16. GENERATOR
17. GASKET SET
18. SERVICE PART

Fig. No.    Fig. Name

Fig.1. CYLINDER BLOCK

(A)=4TNV98-Q2FY  
(B)=  
(C)=

(D)=  
(E)=  
(F)=



No.	Lev.	Parts No.	Description	Q'ty						I	R
				(A)	(B)	(C)	(D)	(E)	(F)		
1	1	729907-01560	BLOCK ASSY, CYLINDER	1							
5	2	129900-01250	PLUG, 55	1							
6	2	171051-01921	PLUG, NPTF1	1							
7	2	129900-02020	BOLT, METAL CAP	10							
10	2	129900-02410	BUSH, CAMSHAFT	1							
11	2	22351-060012	PIN, SPRING 6.0X12	2							
12	2	23876-030000	PLUG, R03	1							
13	2	23876-030000	PLUG, R03	1							
14	2	23876-030000	PLUG, R03	1							
15	2	27241-300000	PLUG 30	8							
25	2	729900-02800	BEARING, MAIN	5							3
28	2	129900-02930	BEARING, THRUST	2							
31	1	129900-01200	BOLT, HEAD	18							
32	1	129907-01331	GASKET, HEAD	1							
33	1	129907-01190	SPACER	1							
34	1	129900-02340	BEARING, 0.25 US	5							1
37	1	129900-02940	BEARING, THRUST 0.25	2							2

Remarks

- (1) UNDER-SIZED(U.S=0.25)PART.
- (2) OVER-SIZED(O.S=0.25)PART.
- (3) REPAIR PART.

Fig.2. GEAR HOUSING

(A)=4TNV98-Q2FY

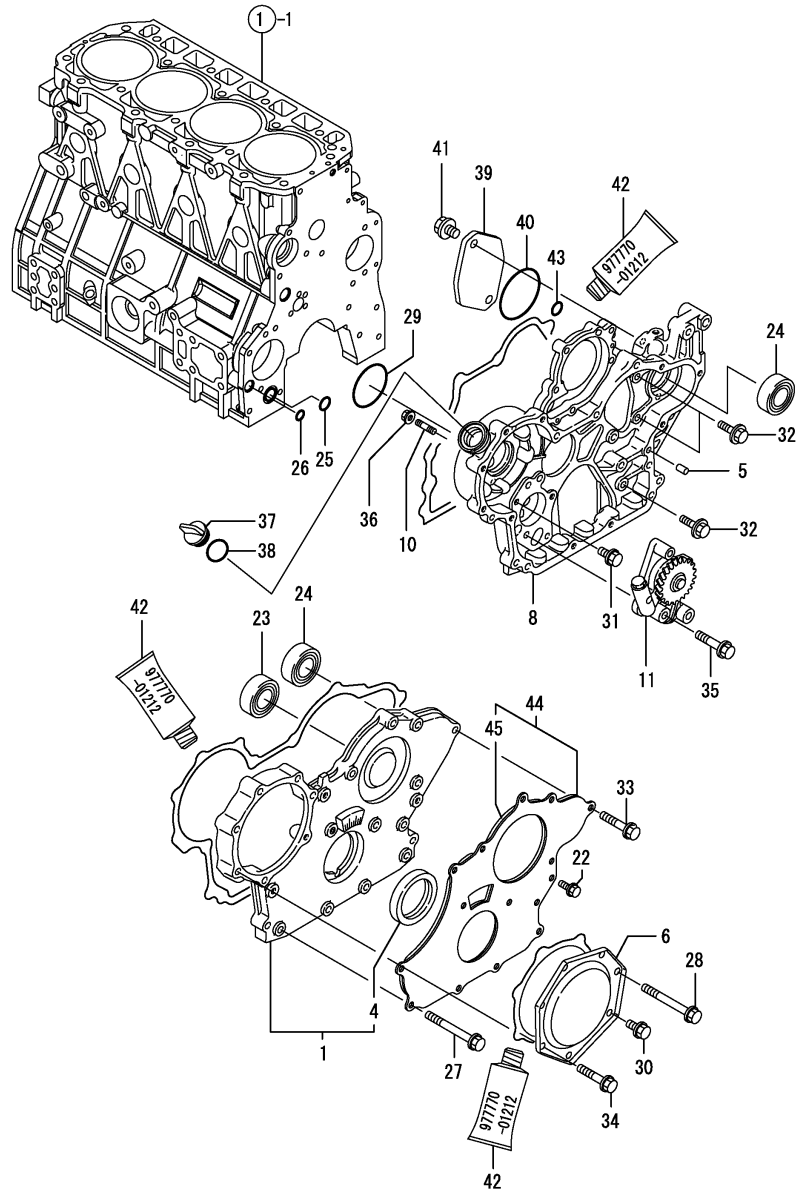
(B)=

(C)=

(D)=

(E)=

(F)=



No.	Lev.	Parts No.	Description	Q'ty						I	R
				(A)	(B)	(C)	(D)	(E)	(F)		
1	1	729907-01550	COVER ASSY,GEAR CASE	1							
4	2	129900-01780	SEAL, OIL	1							
5	1	129100-01580	PIN, M8X16	4							
6	1	129900-01740	COVER	1							
8	1	129962-01500	CASE, GEAR	1							
10	1	26216-100302	STUD, M10X 30	4							
11	1	129900-32001	PUMP ASSY, OIL	1							
22	1	26106-080162	BOLT, M8X 16 PLATED	3							
23	1	129900-14140	BEARING, BALL 6205	1							
24	1	129900-26250	BEARING, BALL 6206C3	2							
25	1	129900-32030	O-RING, P20	1							
26	1	129900-32040	O-RING, P14	1							
27	1	129001-91810	BOLT, M8X70	6							
28	1	129001-91810	BOLT, M8X70	1							
29	1	24351-030750	O-RING, 1A3075	1							
30	1	26106-080162	BOLT, M8X 16 PLATED	1							
31	1	26106-080162	BOLT, M8X 16 PLATED	1							
32	1	26106-080202	BOLT, M8X 20 PLATED	3							
33	1	26106-080402	BOLT, M8X 40 PLATED	5							
34	1	26106-080402	BOLT, M8X 40 PLATED	5							
35	1	26106-080452	BOLT, M8X 45 PLATED	3							
36	1	26306-100002	NUT, M10	4							
37	1	124160-01751	COVER, FILLER	1							
38	1	24311-000320	O-RING, 1AP32.0	1							
39	1	121023-26070	COVER	1							
40	1	24321-000850	O-RING, 1AG85.0	1							
41	1	26106-100202	BOLT, M10X 20 PLATED	2							
42	1	977770-01212	GASKET, LIQUID	1							1
43	1	24311-000070	O-RING, 1AP7.0	1							
44	1	129900-01850	COVER ASSY,GEAR CASE	1							
45	2	129900-01870	SPONGE	1							

Remarks

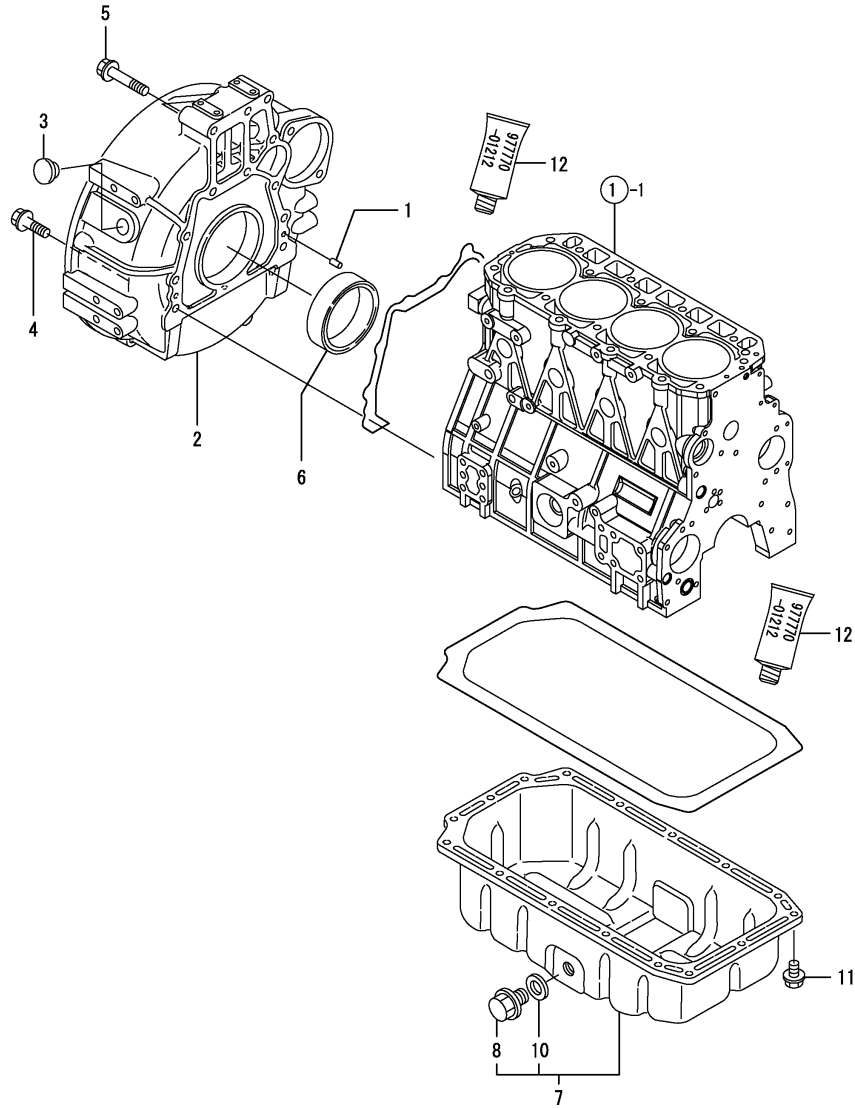
(1) OPTIONAL PART.

N:Old  $\xrightarrow{\text{Yes}}$  New, Q:Old  $\xrightarrow{\text{No}}$  New, R:Old  $\xrightarrow{\text{Yes}}$  New, S:Old  $\xrightarrow{\text{No}}$  New, W:Add, Z:Discontinued, F:Interchangeable by set, K:Q'ty Change

Fig.3. FLYWHEEL HOUSING & OIL SUMP

(A)=4TNV98-Q2FY  
(B)=  
(C)=

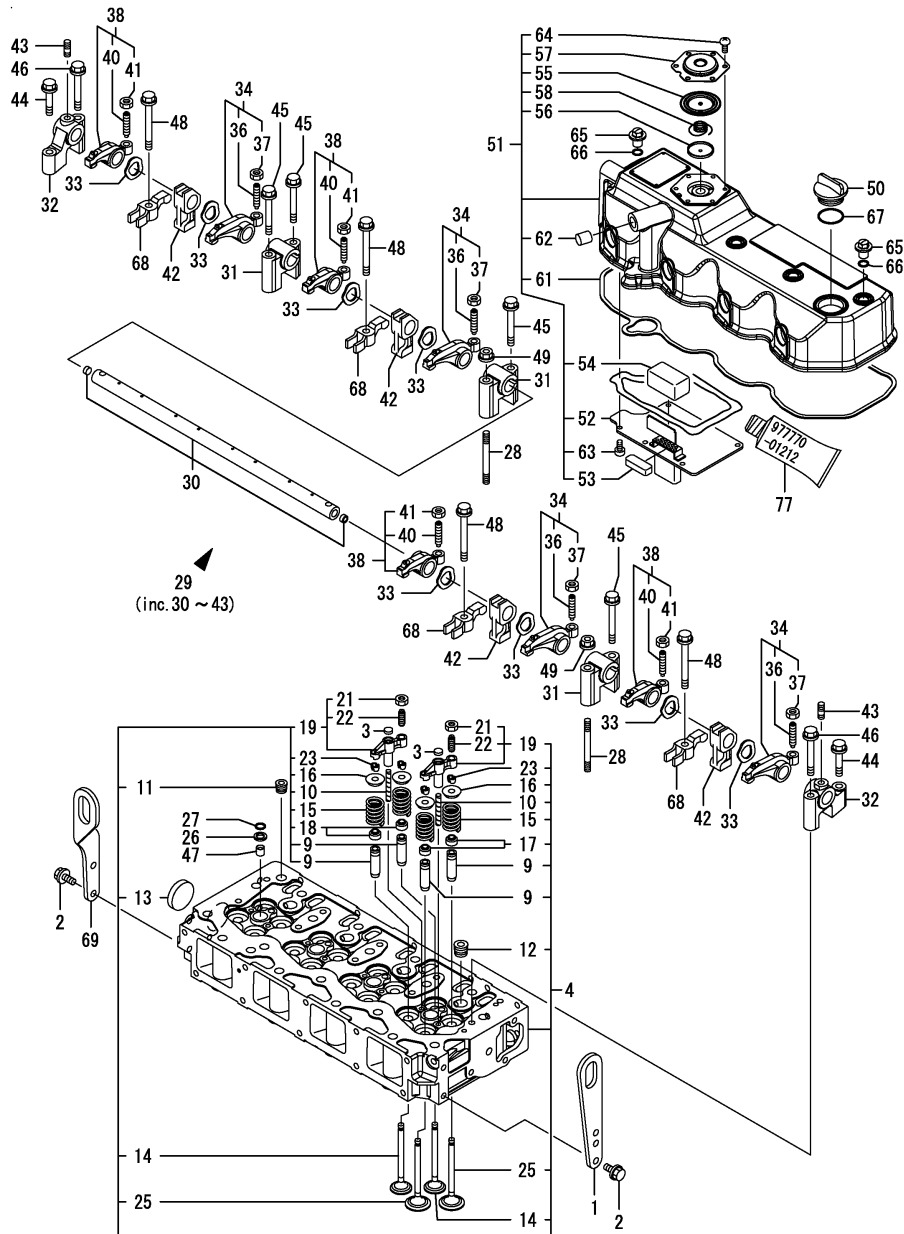
(D)=  
(E)=  
(F)=



No.	Lev.	Parts No.	Description	Q'ty						I	R
				(A)	(B)	(C)	(D)	(E)	(F)		
1	1	129100-01580	PIN, M8X16	2							
2	1	129955-01600	HOUSING, FLYWHEEL	1							
3	1	119620-01750	CAP	1							
4	1	26206-100352	BOLT, M10X 35 PLATED	9							
5	1	26206-100702	BOLT, M10X 70 PLATED	3							
6	1	124411-01780	SEAL, HTC95X115X12	1							
7	1	129902-01710	SUMP ASSY, OIL	1							
8	2	119640-01640	PLUG, DRAIN M22	1							
10	2	22190-220002	WASHER, SEAL 22	1							
11	1	26106-080122	BOLT, M8X 12 PLATED	16							
12	1	977770-01212	GASKET, LIQUID	1							1

Remarks  
(1) OPTIONAL PART.

Fig.4. CYLINDER HEAD & BONNET



(A)=4TNV98-Q2FY

(B)=

(C)=

(D)=

(E)=

(F)=

No.	Lev.	Parts No.	Description	Q'ty						I	R
				(A)	(B)	(C)	(D)	(E)	(F)		
1	1	129900-07900	LIFTER	1							
2	1	26106-080162	BOLT, M8X 16 PLATED	4							
3	1	123907-11550	SEAT, VALVE BRIDGE	8							
4	1	129907-11700	HEAD ASSY, CYLINDER	1							
9	2	129907-11800	GUIDE, VALVE	16							1
10	2	123907-11820	GUIDE	8							
11	2	23876-020000	PLUG, R02	1							
12	2	23876-030000	PLUG, R03	4							
13	2	27241-400000	PLUG, 40	1							
14	2	129907-11110	VALVE, EXHAUST	8							
15	2	129907-11120	SPRING, VALVE	16							
16	2	119620-11180	RETAINER, SPRING	16							
17	2	124160-11340	SEAL, VALVE STEM	8							
18	2	124950-11340	SEAL, VALVE STEM	8							
19	2	129907-11510	BRIDGE ASSY, VALVE	8							
21	3	129150-11750	NUT, M8	8							
22	3	123907-11830	ADJUSTER	8							
23	2	27310-070001	COTTER, 7	16							
25	2	129907-11100	VALVE, INTAKE	8							
26	1	119625-11880	SEAT, NOZZLE	4							
27	1	24311-000120	O-RING, 1AP12.0	4							
28	1	119593-11301	STUD, M8X80	2							
29	1	129907-11341	SHAFT ASSY, ROCKER	1							
30	2	129907-11250	SHAFT, ROCKER ARM	1							
31	2	129907-11260	SUPPORT, ROCKER ARM	3							
32	2	129907-11270	SUPPORT, ROCKER ARM	2							
33	2	123907-11280	WASHER	8							
34	2	129907-11650	ARM, ROCKER	4							
36	3	129150-11230	SCREW, VALVE ADJUST	4							
37	3	129150-11750	NUT, M8	4							
38	2	129907-11660	ARM, ROCKER	4							
40	3	129150-11230	SCREW, VALVE ADJUST	4							
41	3	129150-11750	NUT, M8	4							
42	2	129907-11920	RETAINER	4							
43	2	26226-080222	STUD, M8X 22	2							
44	1	26106-080402	BOLT, M8X 40 PLATED	2							
45	1	26106-080602	BOLT, M8X 60 PLATED	4							
46	1	26106-080602	BOLT, M8X 60 PLATED	2							
47	1	119802-11870	PROTECTOR, NOZZLE	4							
48	1	129907-11950	BOLT, M8X75	4							
49	1	26306-080002	NUT, M8	2							
50	1	124160-01751	COVER, FILLER	1							
51	1	129907-11320	BONNET ASSY, HEAD	1							
52	2	129907-03010	PLATE	1							
53	2	129907-03060	BAFFLE, BREATHER	1							
54	2	129907-03070	BAFFLE, BREATHER	1							
55	2	123907-03100	DIAPHRAGM	1							
56	2	123907-03110	PLATE	1							
57	2	123907-03120	PLATE, BREATHER	1							
58	2	123907-03140	SPRING, DIAPHRAGM	1							
61	2	129907-11310	GASKET, BONNET	1							

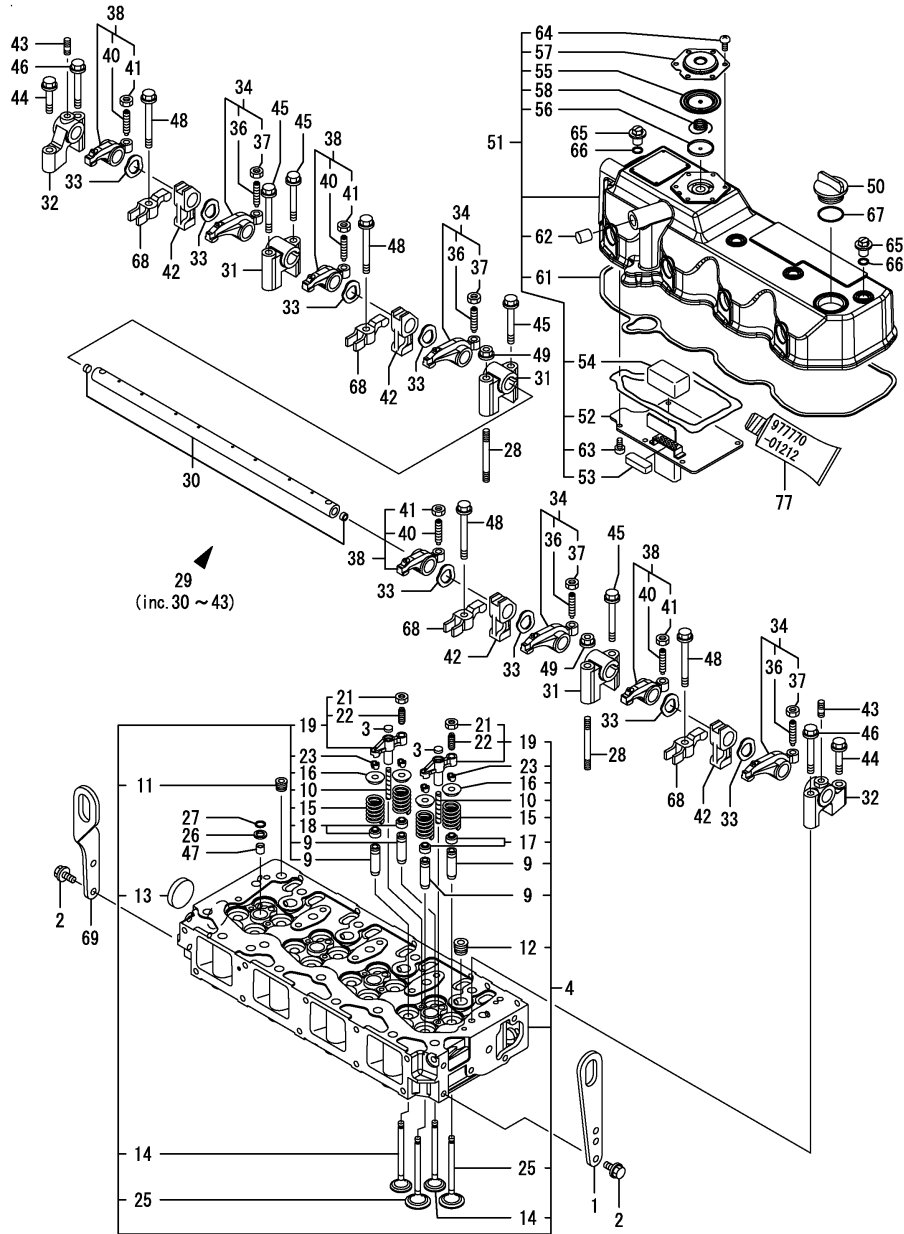
Remarks

(1) REPAIR PART.

(2) OPTIONAL PART.



Fig.4. CYLINDER HEAD & BONNET



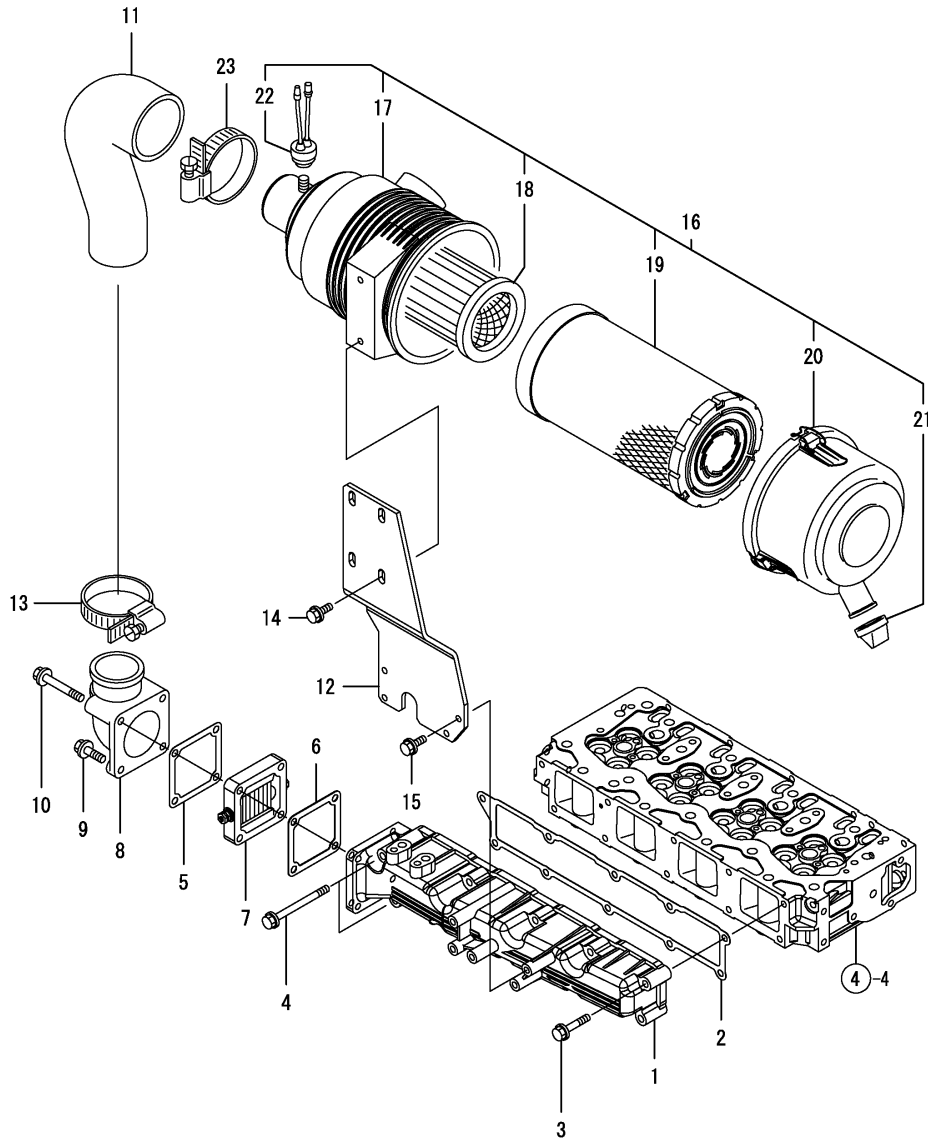
(A)=4TNV98-Q2FY  
(B)=  
(C)=

(D)=  
(E)=  
(F)=

No.	Lev.	Parts No.	Description	Q'ty						I	R
				(A)	(B)	(C)	(D)	(E)	(F)		
62	2	119640-61400	PLUG	1							
63	2	22857-500100	SCREW, 5X10	6							
64	2	22857-500100	SCREW, 5X10	6							
65	1	124160-11360	KNOB	4							
66	1	24311-000120	O-RING, 1AP12.0	4							
67	1	24311-000320	O-RING, 1AP32.0	1							
68	1	129907-11910	RETAINER, NOZZLE	4							
69	1	129910-07900	LIFTER	1							
77	1	97770-01212	GASKET, LIQUID	1							2

Remarks  
(1) REPAIR PART.  
(2) OPTIONAL PART.

Fig.5. SUCTION MANIFOLD & AIR CLEANER



(A)=4TNV98-Q2FY  
(B)=  
(C)=

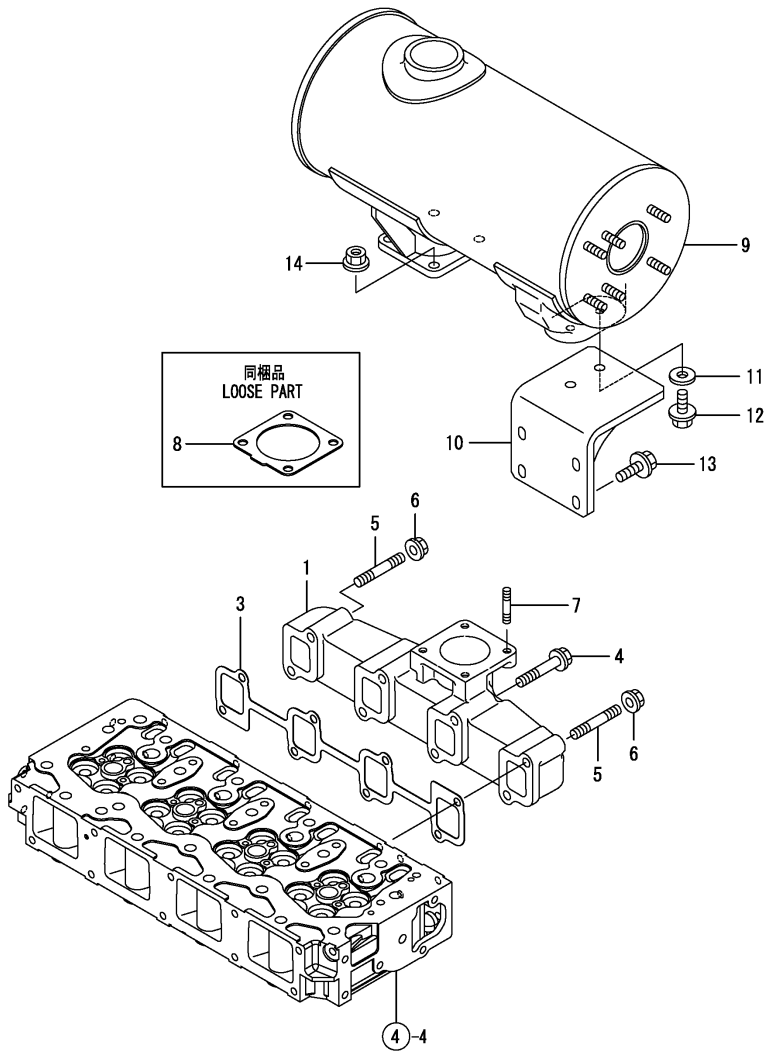
(D)=  
(E)=  
(F)=

No.	Lev.	Parts No.	Description	Q'ty						I	R
				(A)	(B)	(C)	(D)	(E)	(F)		
1	1	129944-12110	MANIFOLD, AIR INTAKE	1							
2	1	129907-12110	GASKET, MANIFOLD	1							
3	1	26106-080452	BOLT, M8X 45 PLATED	8							
4	1	26106-080802	BOLT, M8X 80 PLATED	2							
5	1	119129-77020	GASKET	1							
6	1	121850-77021	GASKET	1							
7	1	119005-77050	HEATER	1							
8	1	119129-77520	BEND	1							
9	1	26106-080402	BOLT, M8X 40 PLATED	2							
10	1	26106-080902	BOLT, M8X 90 PLATED	2							
11	1	129944-12230	PIPE, AIR INTAKE	1							
12	1	129944-12620	BRACKET, AIR CLEANER	1							
13	1	23000-080000	CLAMP, 80	1							
14	1	26106-080202	BOLT, M8X 20 PLATED	2							
15	1	26013-080222	BOLT, M8X 22	4							
16	1	129935-12500	CLEANER ASSY, AIR	1							
17	2	129935-12510	BODY	1							
18	2	119160-12570	ELEMENT	1							
19	2	129935-12520	ELEMENT	1							
20	2	119160-12530	COVER ASSY	1							
21	2	119160-12540	VALVE	1							
22	2	119140-12680	INDICATOR	1							
23	1	23000-090000	CLAMP, 90	1							

Fig.6. EXHAUST MANIFOLD & SILENCER

(A)=4TNV98-Q2FY  
(B)=  
(C)=

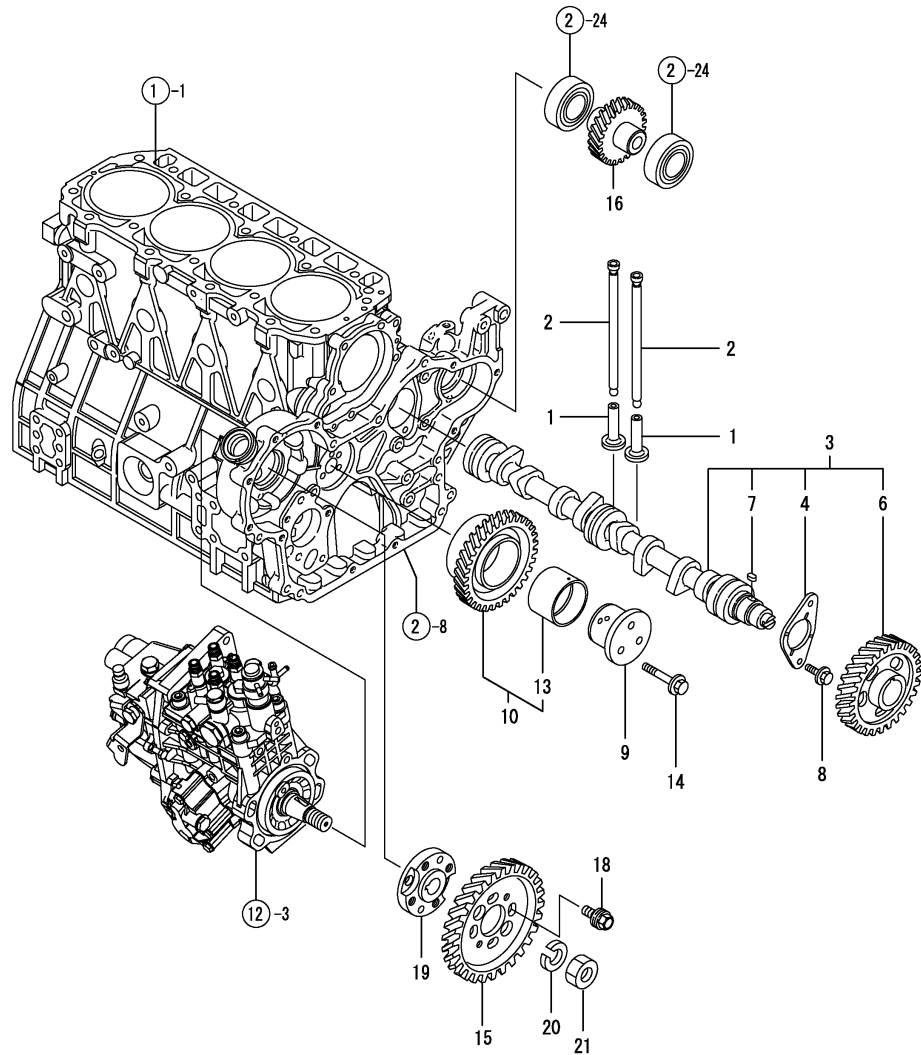
(D)=  
(E)=  
(F)=



No.	Lev.	Parts No.	Description	Q'ty						I	R
				(A)	(B)	(C)	(D)	(E)	(F)		
1	1	129900-13200	MANIFOLD, EXHAUST	1							
3	1	129900-13251	GASKET	1							
4	1	123900-13630	BOLT, M8X80	6							
5	1	123900-13610	STUD, M8X80	2							
6	1	26306-080002	NUT, M8	2							
7	1	119131-18320	STUD, M8X22	4							
8	1	129930-13200	GASKET, SILENCER	1						Z	1
(A=EZZZZZ)											
9	1	129944-13520	SILENCER	1							
10	1	129944-13660	STAY, SILENCER	1							
11	1	22157-080000	WASHER, 8	2							
12	1	26106-080162	BOLT, M8X 16 PLATED	2							
13	1	26106-080202	BOLT, M8X 20 PLATED	4							
14	1	26306-080002	NUT, M8	4							

Remarks  
(1)Refer to Fig.18.

Fig.7. CAMSHAFT & DRIVING GEAR



(A)=4TNV98-Q2FY  
(B)=  
(C)=

(D)=  
(E)=  
(F)=

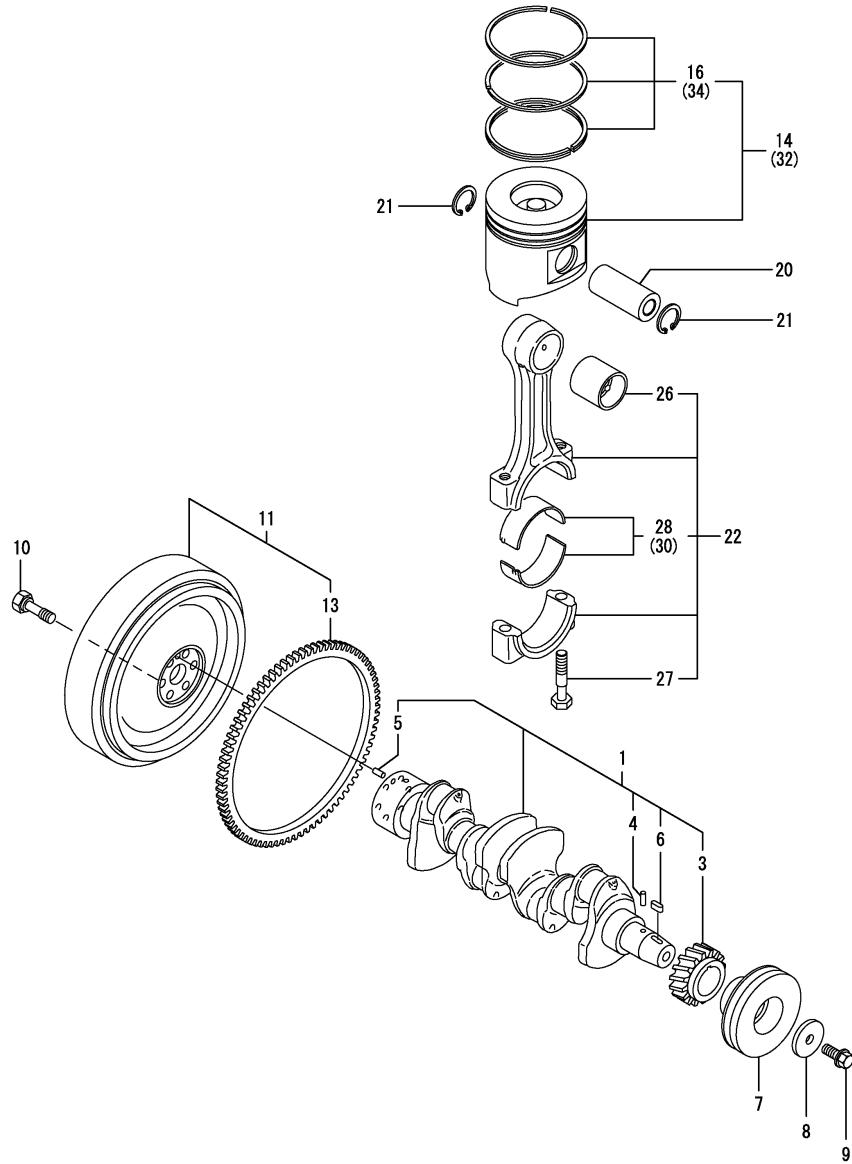
No.	Lev.	Parts No.	Description	Q'ty						I	R
				(A)	(B)	(C)	(D)	(E)	(F)		
1	1	129150-14200	TAPPET	8							
2	1	129907-14400	ROD, PUSH	8							
3	1	129907-14590	CAMSHAFT ASSY	1							
3-1	1	129908-14590 (A=EZZZZZ)	CAMSHAFT ASSY	1							N
4	2	129150-02450	BEARING, THRUST	1							
6	2	129900-14110	GEAR, CAMSHAFT	1							
7	2	22512-070140	KEY, 7X 14	1							
8	1	26106-080162	BOLT, M8X 16 PLATED	2							
9	1	123900-25060	SHAFT, IDLE GEAR	1							
10	1	129900-25110	GEAR ASSY, IDLE	1							
13	2	129150-25920	BUSH, IDLE GEAR	1							1
14	1	26106-080552	BOLT, M8X 55 PLATED	3							
15	1	123907-25909	GEAR, PUMP	1							
16	1	129900-26030	GEAR ASSY, PUMP	1							
18	1	129953-25300	BOLT	4							
19	1	158563-51150	FLANGE	1							
20	1	22217-180000	WASHER, SPRING 18	1							
21	1	26776-180002	NUT, LOCK M18	1							

Remarks  
(1) REPAIR PART.

Fig.8. CRANKSHAFT & PISTON

(A)=4TNV98-Q2FY  
(B)=  
(C)=

(D)=  
(E)=  
(F)=



No.	Lev.	Parts No.	Description	Q'ty						I	R
				(A)	(B)	(C)	(D)	(E)	(F)		
1	1	129902-21050	CRANKSHAFT ASSY	1							
3	2	129900-21220	GEAR, CRANKSHAFT	1							
4	2	121850-21290	PIN	1							
5	2	121850-21920	PIN, M10X22	1							
6	2	22512-070140	KEY, 7X 14	1							
7	1	129907-21660	V-PULLEY, 130	1							
8	1	129900-21640	WASHER	1							
9	1	121850-21680	BOLT	1							
10	1	121850-21130	BOLT, FLYWHEEL	6							
11	1	129955-21590	FLYWHEEL ASSY	1							
13	2	129900-21600	GEAR, RING	1							
14	1	129907-22090	PISTON ASSY, 18.5	4							
16	2	129907-22050	RING SET, PISTON	4							
20	1	120130-22301	PIN, PISTON	4							
21	1	22252-000300	RING, 30	8							
22	1	129900-23001	ROD ASSY, CONNECTING	4							
26	2	129900-23911	BEARING, PISTON PIN	4							1
27	2	129900-23200	BOLT, CONNECTING ROD	8							
28	2	129900-23600	BEARING, CRANK PIN	4							
30	1	129900-23610	BEARING, 0.25 US	4							2
32	1	729907-22910	PISTON ASSY, 0.25 OS	4							3
34	2	729907-22950	RING SET, 0.25 OS	4							3

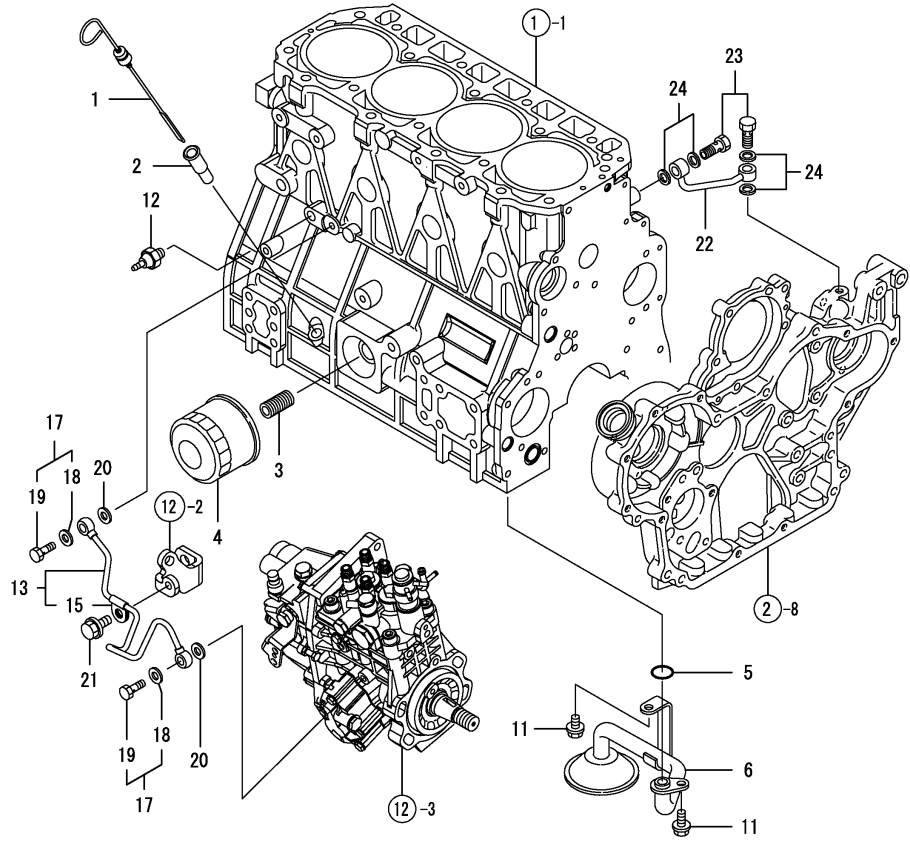
Remarks

- (1) REPAIR PART.
- (2) UNDER-SIZE(U.S=0.25)PART.
- (3) OVER-SIZE(O.S=0.25)PART.

# Fig.9. LUB. OIL SYSTEM

(A)=4TNV98-Q2FY  
(B)=  
(C)=

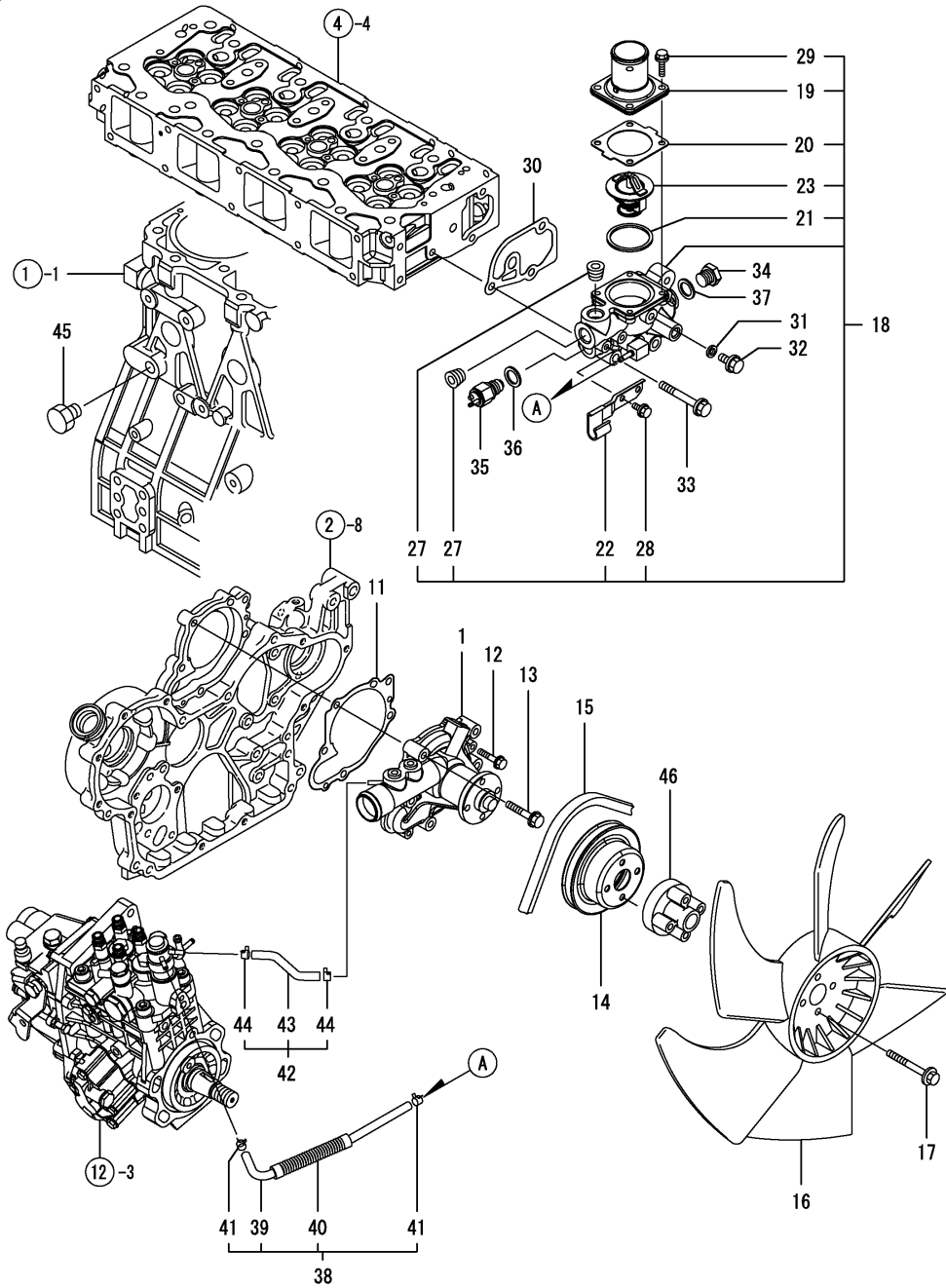
(D)=  
(E)=  
(F)=



No.	Lev.	Parts No.	Description	Q'ty						I	R
				(A)	(B)	(C)	(D)	(E)	(F)		
1	1	129900-34800	DIPSTICK, OIL	1							
2	1	121520-34810	GUIDE, DIPSTICK	1							
3	1	119000-35140	BOLT, FILTER	1							
4	1	129150-35153	FILTER	1							1
5	1	129900-32030	O-RING, P20	1							
6	1	129900-35000	PIPE ASSY, OIL INLET	1							
11	1	26106-080122	BOLT, M8X 12 PLATED	2							
12	1	114250-39450	SWITCH, 0.5KG	1							
13	1	129907-39061	PIPE ASSY, OIL	1							
15	2	123907-39500	RETAINER	1							
17	1	129005-59830	BOLT ASSY, JOINT M8	2							
18	2	22190-080002	WASHER, SEAL 6	2							
19	2	23857-030000	BOLT, JOINT 3	2							
20	1	22190-080002	WASHER, SEAL 6	2							
21	1	26106-080122	BOLT, M8X 12 PLATED	1							
22	1	129930-39050	PIPE, OIL	1							
23	1	105010-39140	BOLT, PIPE JOINT	2							
24	1	22190-080002	WASHER, SEAL 6	4							

Remarks  
(1) REPAIR PART.

Fig.10. COOLING WATER SYSTEM



(A)=4TNV98-Q2FY  
(B)=  
(C)=

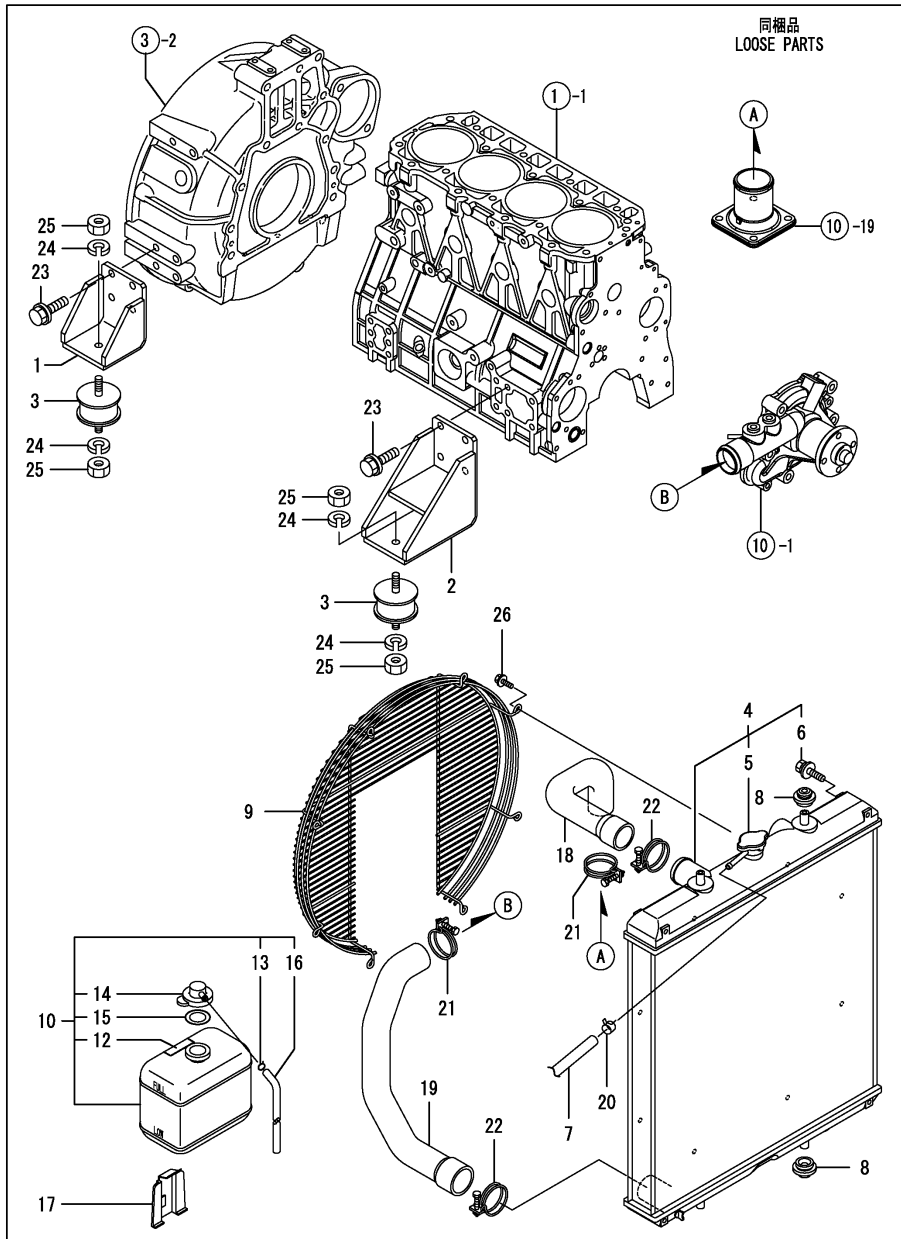
(D)=  
(E)=  
(F)=

No.	Lev.	Parts No.	Description	Q'ty						I	R
				(A)	(B)	(C)	(D)	(E)	(F)		
1	1	129907-42000	PUMP ASSY, WATER	1							
11	1	129900-42020	GASKET, WATER PUMP	1							
12	1	26106-060302	BOLT, M6X 30 PLATED	2							
13	1	26106-080552	BOLT, M8X 55 PLATED	5							
14	1	129900-42461	V-PULLEY	1							
15	1	25152-004400	V-BELT, A44	1							
16	1	129916-44740	FAN, COOLING D=430	1							
17	1	26106-080552	BOLT, M8X 55 PLATED	4							
18	1	129907-49800	CASE ASSY, THERMOSTAT	1							
19	2	129916-49530	COVER, THERMOSTAT	1							
20	2	121850-49540	GASKET, THERMOSTAT	1							
21	2	121850-49550	GASKET, THERMOSTAT	1							
22	2	129907-49730	RETAINER, PIPE	1							
23	2	121850-49810	THERMOSTAT, 71	1							
27	2	23875-030000	PLUG, R03	2							
28	2	26106-060122	BOLT, M6X 12 PLATED	1							
29	2	26106-060202	BOLT, M6X 20 PLATED	4							
30	1	129900-49870	GASKET	1							
31	1	23414-080000	GASKET, 8X1.0	1							
32	1	26106-080122	BOLT, M8X 12 PLATED	1							
33	1	26106-080602	BOLT, M8X 60 PLATED	3							
34	1	121450-42450	PLUG, M16	1							
35	1	121250-44901	SWITCH, 110	1							
36	1	124465-44950	GASKET, 16	1							
37	1	124465-44950	GASKET, 16	1							
38	1	129907-49610	HOSE ASSY, WATER	1							
39	2	129907-49710	PIPE ASSY, WATER	1							
40	2	129907-49750	TUBE, CORRUGATED	1							
41	2	124722-59050	CLIP, HOSE 9	2							
42	1	129907-49620	HOSE ASSY, WATER	1							
43	2	129907-49720	PIPE ASSY, WATER	1							
44	2	124722-59050	CLIP, HOSE 9	2							
45	1	171056-49120	PLUG, DRAIN	1							
46	1	119141-44760	SPACER, FAN	1							

Fig.11. RADIATOR

(A)=4TNV98-Q2FY  
(B)=  
(C)=

(D)=  
(E)=  
(F)=



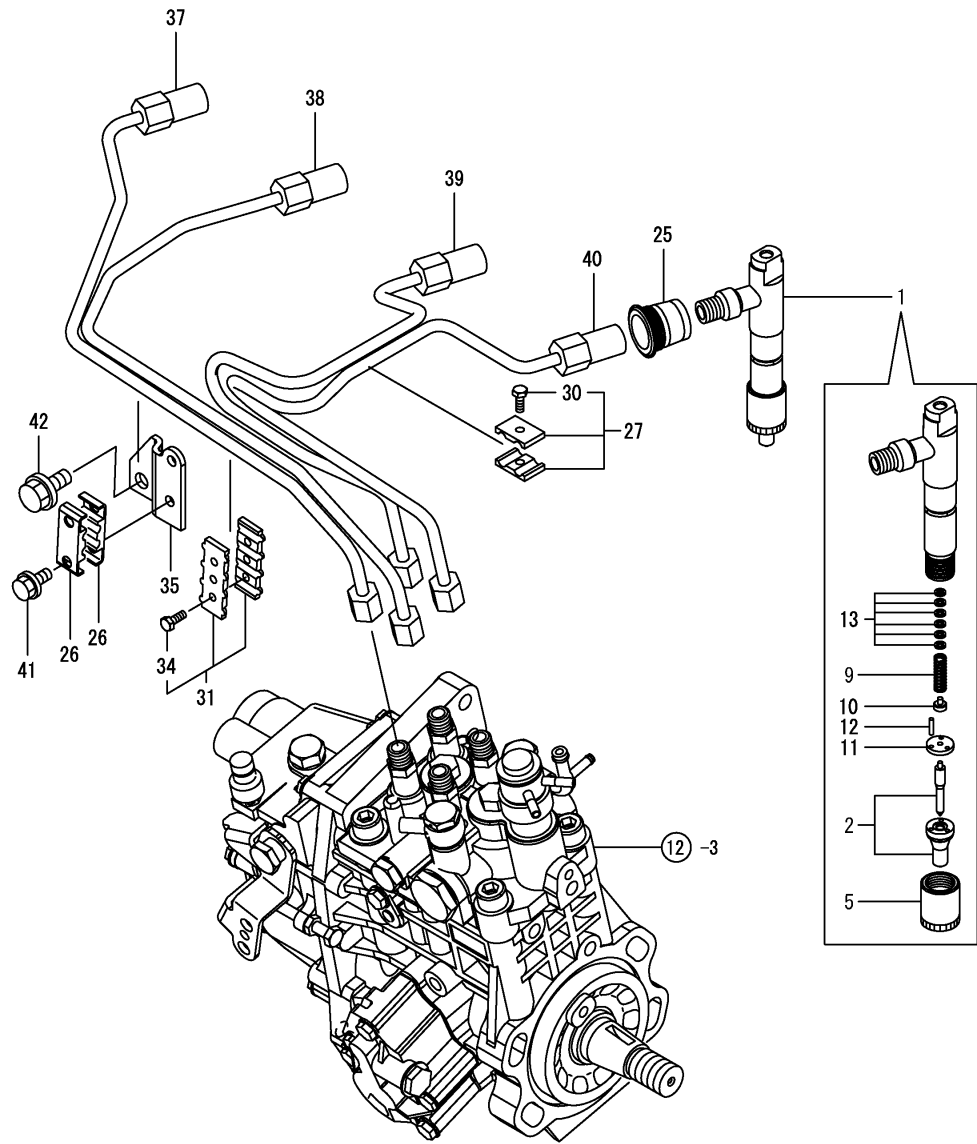
No.	Lev.	Parts No.	Description	Qty						I	R	
				(A)	(B)	(C)	(D)	(E)	(F)			
1	1	129981-08030 (A=EXXXXX)	FOOT	2							Z	1
2	1	129981-08040 (A=EXXXXX)	FOOT	2							Z	1
3	1	170905-08150 (A=EXXXXX)	ABSORBER	4							Z	1
4	1	129907-44500 (A=EXXXXX)	RADIATOR ASSY	1							Z	1
5	2	129107-44590 (A=EXXXXX)	CAP, RADIATOR	1							Z	1
6	2	26014-060122 (A=EXXXXX)	BOLT, M6X 12	4							Z	1
7	1	124790-44560 (A=EXXXXX)	PIPE, WATER L=1000	1							Z	1
8	1	119255-44660 (A=EXXXXX)	ABSORBER	4							Z	1
9	1	129907-44560 (A=EXXXXX)	GUARD	1							Z	1
10	1	121857-44800 (A=EXXXXX)	TANK ASSY, RESERVE	1							Z	1
12	2	121850-44830 (A=EXXXXX)	LABEL, RESERVE TANK	1							Z	1
13	2	121850-44880 (A=EXXXXX)	CLAMP	1							Z	1
14	2	121850-44850 (A=EXXXXX)	CAP	1							Z	1
15	2	121850-44860 (A=EXXXXX)	GASKET	1							Z	1
16	2	121850-44870 (A=EXXXXX)	HOSE	1							Z	1
17	1	120147-44810 (A=EXXXXX)	BRACKET	1							Z	1
18	1	129981-49050 (A=EXXXXX)	PIPE, WATER	1							Z	1
19	1	129981-49060 (A=EXXXXX)	PIPE, WATER	1							Z	1
20	1	23000-013000 (A=EXXXXX)	CLAMP, 13	2							Z	1
21	1	23000-048000 (A=EXXXXX)	CLAMP, 48	2							Z	1
22	1	23000-060000 (A=EXXXXX)	CLAMP, 60	2							Z	1
23	1	26106-100202 (A=EXXXXX)	BOLT, M10X 20 PLATED	16							Z	1
24	1	22217-120000 (A=EXXXXX)	WASHER, SPRING 12	8							Z	1
25	1	26366-120002 (A=EXXXXX)	NUT, M12	8							Z	1
26	1	26106-060102 (A=EXXXXX)	BOLT, M6X 10 PLATED	4							Z	1

Remarks  
(1)Refer to Fig.18.





Fig.13. FUEL INJECTION VALVE



(A)=4TNV98-Q2FY  
(B)=  
(C)=

(D)=  
(E)=  
(F)=

No.	Lev.	Parts No.	Description	Q'ty						I	R
				(A)	(B)	(C)	(D)	(E)	(F)		
1	1	729907-53100	VALVE ASSY,INJECTION	4							
2	2	129907-53000	VALVE ASSY,INJECTION	4							
5	2	114250-53080	NUT, NOZZLE D16.95	4							
9	2	114250-53120	SPRING, NOZZLE	4							
10	2	114250-53130	SEAT, SPRING	4							
11	2	114250-53140	PLATE	4							
12	2	114250-53210	PIN	8							
13	2	114250-53400	SHIM SET	4							
25	1	123907-11601	SEAL	4							
26	1	122780-59100	RETAINER	2							
27	1	119305-59120	RETAINER, PIPE	1							
30	2	129150-59131	BOLT, M4X14	1							
31	1	129550-59120	RETAINER, PIPE	1							
34	2	129150-59131	BOLT, M4X14	2							
35	1	129907-59720	SUPPORT	1							
37	1	129907-59810	PIPE ASSY, INJECTION	1							
38	1	129907-59820	PIPE ASSY, INJECTION	1							
39	1	129907-59830	PIPE ASSY, INJECTION	1							
40	1	129907-59840	PIPE ASSY, INJECTION	1							
41	1	26106-060162	BOLT, M6X 16 PLATED	2							
42	1	26106-080182	BOLT, M8X 18 PLATED	1							

Fig.14. FUEL LINE

(A)=4TNV98-Q2FY

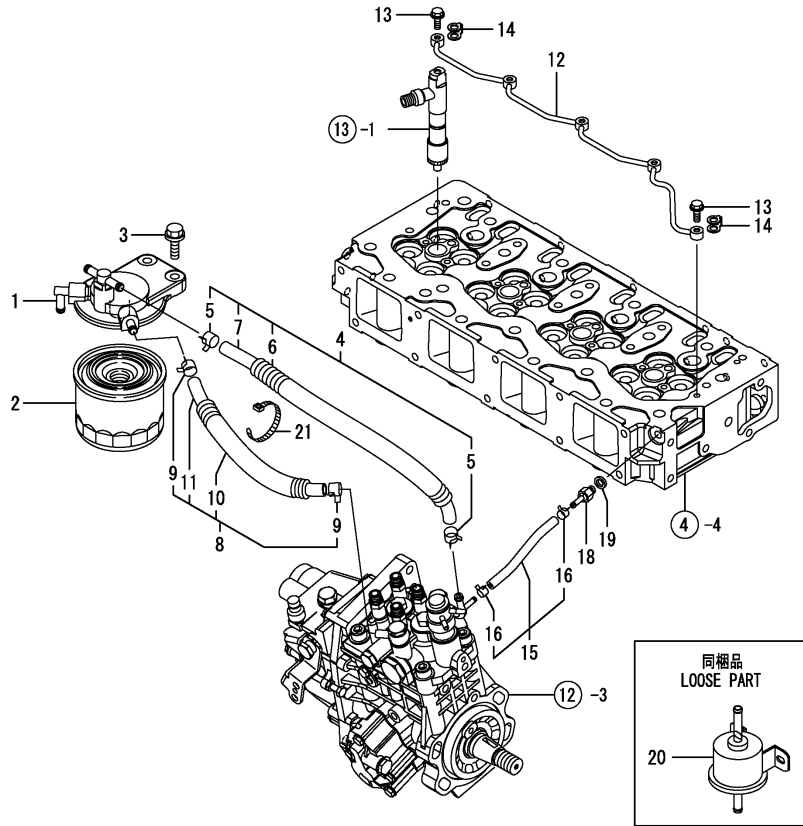
(B)=

(C)=

(D)=

(E)=

(F)=



No.	Lev.	Parts No.	Description	Q'ty						I	R
				(A)	(B)	(C)	(D)	(E)	(F)		
1	1	129004-55610	BRACKET, FILTER	1							
2	1	119802-55800	FILTER, FUEL	1							
3	1	26106-080302	BOLT, M8X 30 PLATED	2							
4	1	129457-59010	PIPE ASSY, FUEL	1							
5	2	124766-59050	CLIP, HOSE 12	2							
6	2	129957-59120	TUBE, CORRUGATED	1							
7	2	105025-59750	PIPE, FUEL	1							
8	1	129981-59010	PIPE ASSY, FUEL	1							
9	2	124766-59050	CLIP, HOSE 12	2							
10	2	129950-59221	TUBE, CORRUGATED	1							
11	2	129980-59510	PIPE, FUEL	1							
12	1	129907-59140	PIPE ASSY, RETURN	1							
13	1	123907-59540	BOLT, PIPE JOINT M6	5							
14	1	123907-59550	GASKET	5							
15	1	129486-59551	PIPE ASSY, RETURN	1							
16	2	124722-59050	CLIP, HOSE 9	2							
18	1	123907-59560	JOINT	1							
19	1	22190-080002	WASHER, SEAL 6	1							
20	1	119225-52102	PUMP ASSY, FUEL FEED	1							Z 1
		(A=EXXXXX)									
21	1	121750-59890	BAND, 140	1							

Remarks

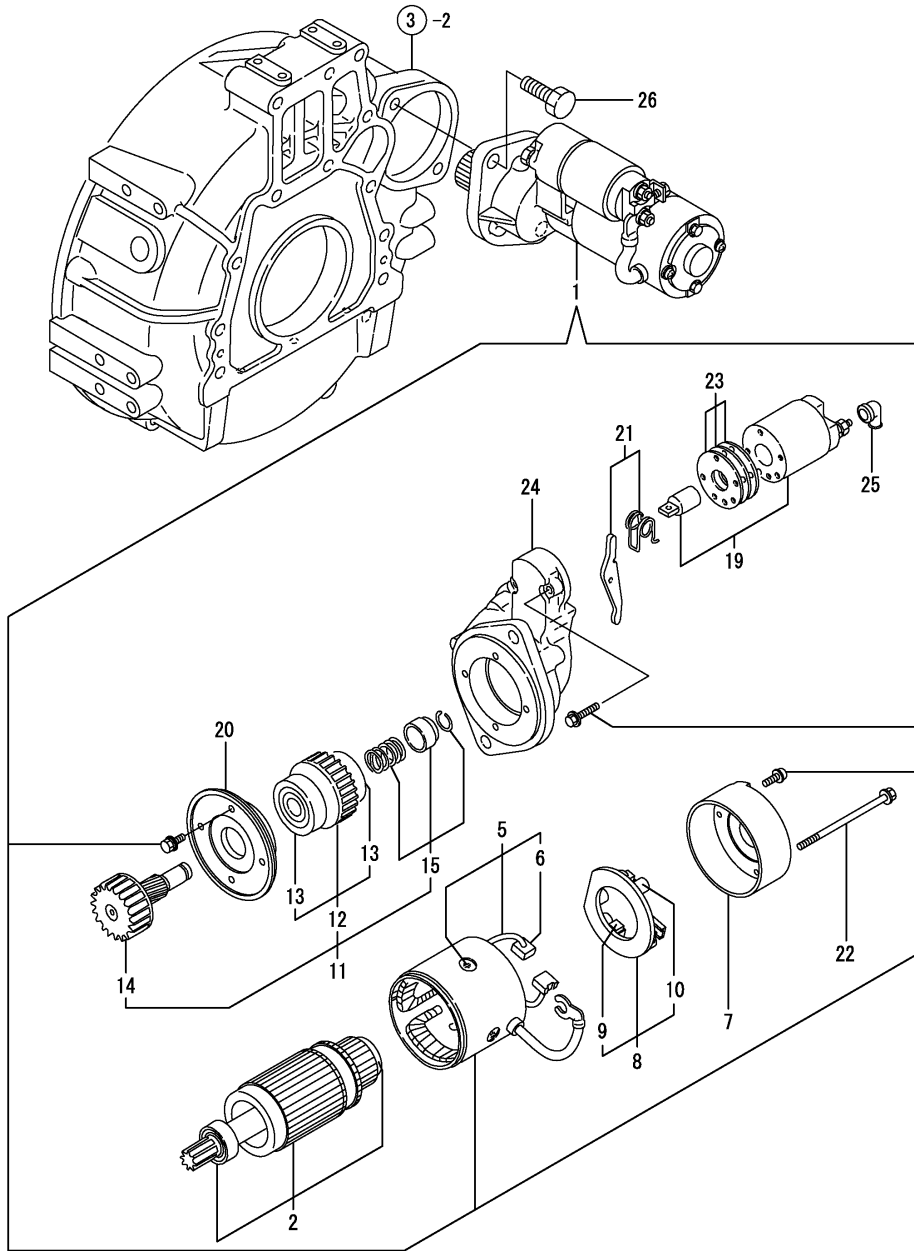
(1) Refer to Fig.18.

N:Old  $\xrightarrow{\text{Yes}}$  New, Q:Old  $\xrightarrow{\text{No}}$  New, R:Old  $\xrightarrow{\text{Yes}}$  New, S:Old  $\xrightarrow{\text{No}}$  New, W:Add, Z:Discontinued, F:Interchangeable by set, K:Q'ty Change

Fig.15. STARTING MOTOR

(A)=4TNV98-Q2FY  
(B)=  
(C)=

(D)=  
(E)=  
(F)=



No.	Lev.	Parts No.	Description	Qty						I	R
				(A)	(B)	(C)	(D)	(E)	(F)		
1	1	123900-77010	STARTER	1							
2	2	123900-77400	ARMATURE ASSY	1							
5	2	123900-77440	COIL ASSY, FIELD	1							
6	3	123900-77450	BRUSH	2							
7	2	123900-77460	COVER	1							
8	2	123900-77480	HOLDER ASSY, BRUSH	1							
9	3	123900-77450	BRUSH	2							
10	3	121254-77590	SPRING	4							
11	2	123900-77510	PINION ASSY	1							
12	3	123900-77520	CLUTCH ASSY	1							
13	4	X2240610100	BEARING, BALL	2							
14	3	123900-77540	SHAFT	1							
15	3	119131-77550	STOPPER KIT	1							
19	2	129900-77591	SWITCH ASSY	1							
20	2	123900-77610	RETAINER	1							
21	2	129900-77620	LEVER SET	1							
22	2	123900-77640	BOLT, THROUGH	2							
23	2	123900-77650	COVER ASSY, DUST	1							
24	2	123900-77710	CASE, GEAR	1							
25	2	171008-77750	COVER	1							
26	1	26116-120252	BOLT, M12X 25 PLATED	2							

Fig.16. GENERATOR

(A)=4TNV98-Q2FY

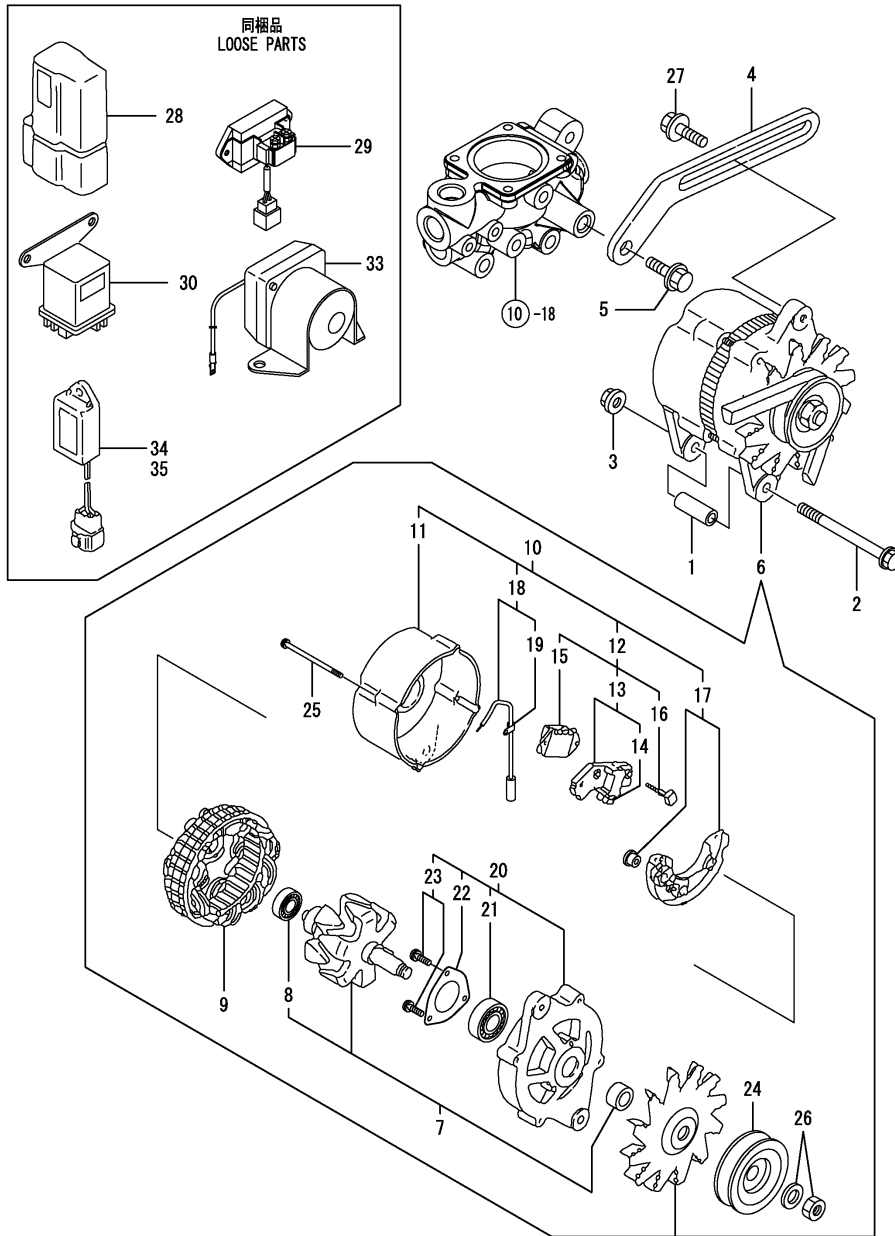
(B)=

(C)=

(D)=

(E)=

(F)=



No.	Lev.	Parts No.	Description	Qty						I	R
				(A)	(B)	(C)	(D)	(E)	(F)		
1	1	129470-77340	PIECE, DISTANCE	1							
2	1	26116-101202	BOLT, M10X120 PLATED	1							
3	1	26306-100002	NUT, M10	1							
4	1	119084-77330	ADJUSTER	1							
5	1	26014-080252	BOLT, M8X 25	1							
6	1	129900-77210	ALTERNATOR	1							
7	2	129900-77300	ROTOR ASSY	1							
8	3	119129-77320	BALL BEARING	1							
9	2	129900-77310	STATOR ASSY	1							
10	2	129900-77320	COVER ASSY	1							
11	3	119129-77341	COVER, REAR	1							
12	3	129900-77350	BRUSH REGURATOR ASSY	1							
13	4	129900-77360	BRUSH ASSY	1							
14	4	129900-77370	BRUSH ASSY	2							
15	4	124080-77390	REGULATOR ASSY	1							
16	4	124080-77520	BOLT M5	2							
17	3	129900-77410	DIODE ASSY	1							
18	3	119129-77250	WIRE, LEAD	1							
19	4	119129-77260	CLAMP	1							
20	2	119129-77840	COVER ASSY, FRONT	1							
21	3	119129-77850	BALL BEARING	1							
22	3	119129-77870	RETAINER, BEARING	1							
23	3	26116-050122	BOLT, M5X 12 PLATED	3							
24	2	129535-77880	PULLEY	1							
25	2	119129-77890	BOLT, THROUGH	4							
26	2	119129-77900	NUT ASSY, PULLEY	1							
27	1	119810-77340	BOLT, ADJUSTER	1							
28	1	119643-66900	DIODE	1						Z	1
				(A=EXXXXX)							
29	1	129136-77200	RELAY, SAFETY	1						Z	1
				(A=EXXXXX)							
30	1	119650-77910	RELAY ASSY, GLOW	1						Z	1
				(A=EXXXXX)							
33	1	129100-77910	RELAY, MAGNETIC	1						Z	1
				(A=EXXXXX)							
34	1	128300-77920	TIMER	1						Z	1
				(A=EXXXXX)							
35	1	129211-77920	TIMER	1						Z	1
				(A=EXXXXX)							

Remarks  
(1)Refer to Fig.18.

Fig.17. GASKET SET

(A)=4TNV98-Q2FY

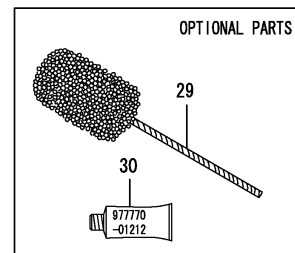
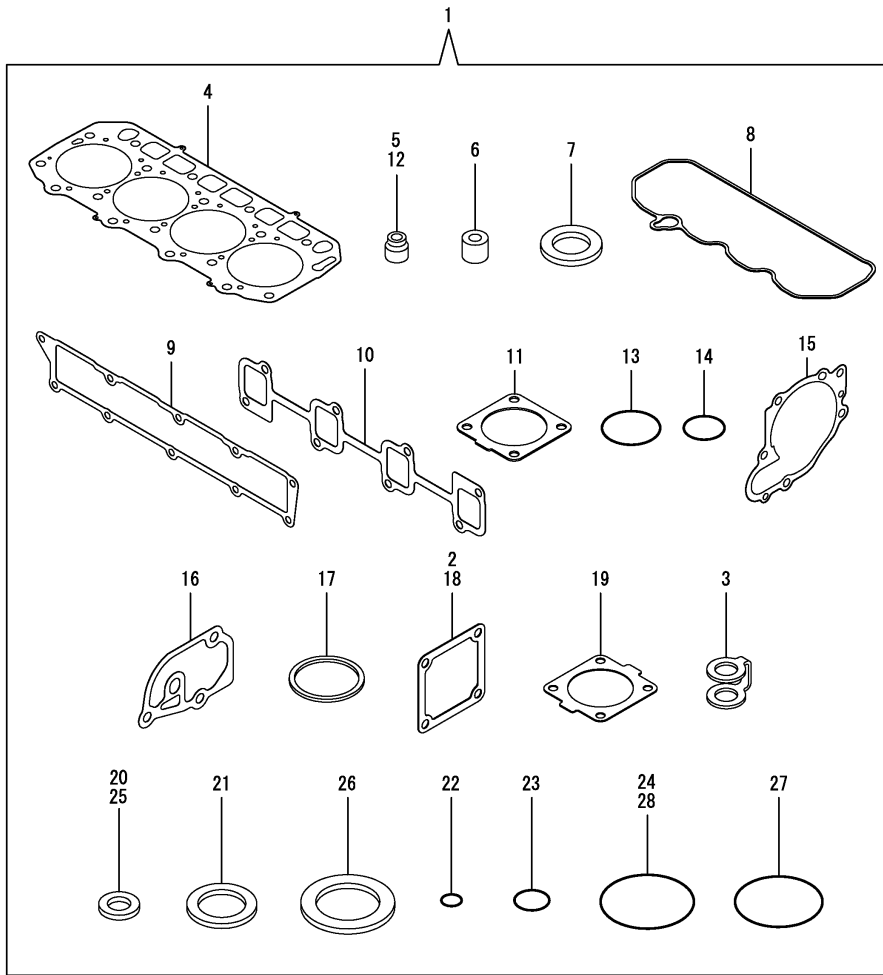
(B)=

(C)=

(D)=

(E)=

(F)=



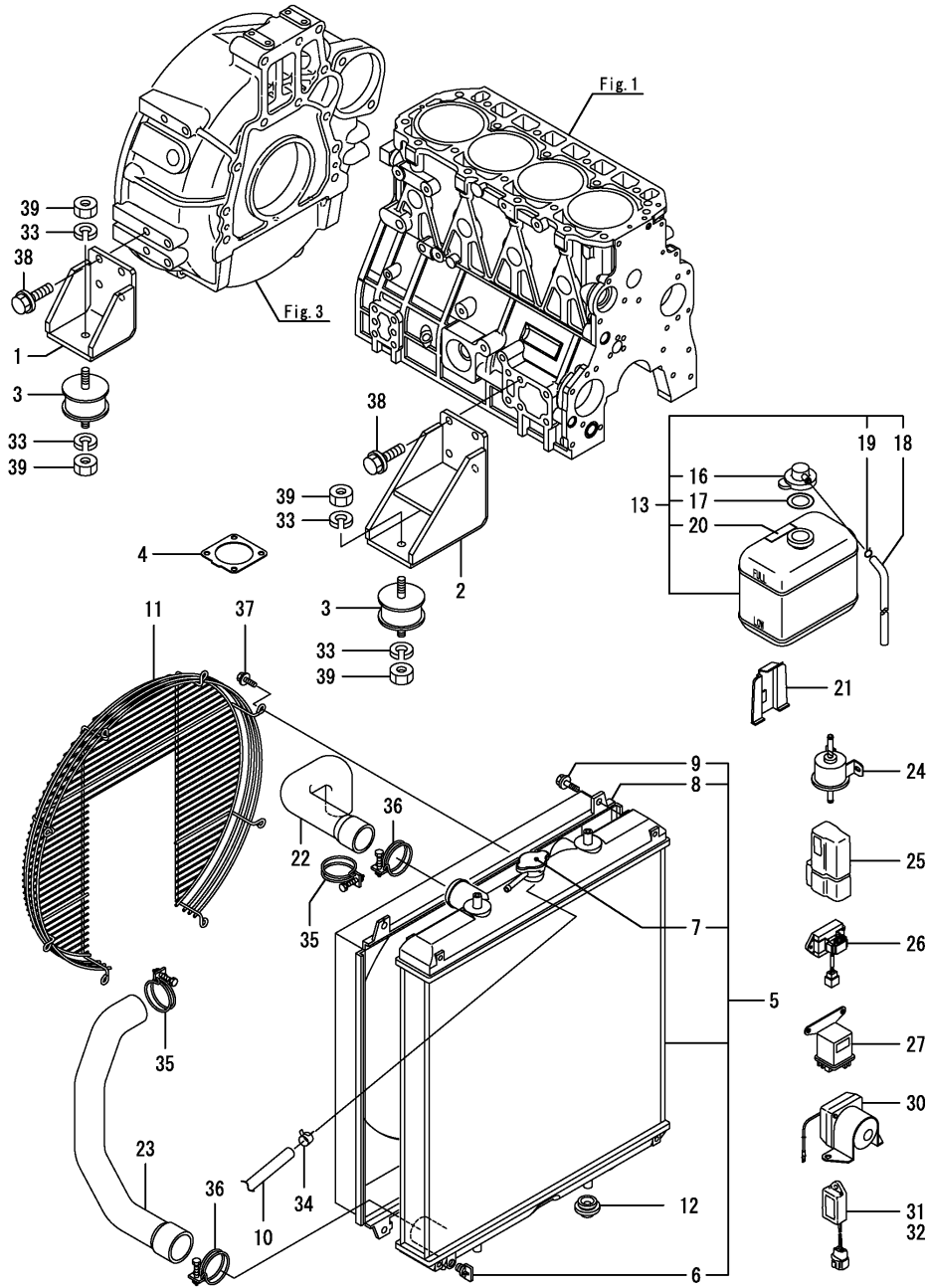
No.	Lev.	Parts No.	Description	Q'ty						I	R
				(A)	(B)	(C)	(D)	(E)	(F)		
1	1	729907-92780	GASKET SET	1							1
2	2	119129-77020	GASKET	1							
3	2	123907-59550	GASKET	5							
4	2	129907-01331	GASKET, HEAD	1							
5	2	124160-11340	SEAL, VALVE STEM	8							
6	2	119802-11870	PROTECTOR, NOZZLE	4							
7	2	119625-11880	SEAT, NOZZLE	4							
8	2	129907-11310	GASKET, BONNET	1							
9	2	129907-12110	GASKET, MANIFOLD	1							
10	2	129900-13251	GASKET	1							
11	2	129930-13200	GASKET, SILENCER	1							
12	2	124950-11340	SEAL, VALVE STEM	8							
13	2	129900-32030	O-RING, P20	2							
14	2	129900-32040	O-RING, P14	1							
15	2	129900-42020	GASKET, WATER PUMP	1							
16	2	129900-49870	GASKET	1							
17	2	121850-49550	GASKET, THERMOSTAT	1							
18	2	121850-77021	GASKET	1							
19	2	121850-49540	GASKET, THERMOSTAT	1							
20	2	23414-080000	GASKET, 8X1.0	3							
21	2	124465-44950	GASKET, 16	2							
22	2	24311-000070	O-RING, 1AP7.0	1							
23	2	24311-000120	O-RING, 1AP12.0	8							
24	2	24311-000320	O-RING, 1AP32.0	2							
25	2	22190-080002	WASHER, SEAL 6	9							
26	2	22190-220002	WASHER, SEAL 22	1							
27	2	24351-030750	O-RING, 1A3075	1							
28	2	24321-000850	O-RING, 1AG85.0	1							
29	1	129400-92450	HONE	1							1
30	1	977770-01212	GASKET, LIQUID	1							1

Remarks

(1) OPTIONAL PART.

N:Old  $\begin{matrix} \leftarrow \text{Yes} \\ \text{No} \end{matrix}$  New, Q:Old  $\begin{matrix} \leftarrow \text{No} \\ \text{Yes} \end{matrix}$  New, R:Old  $\begin{matrix} \leftarrow \text{Yes} \\ \text{No} \end{matrix}$  New, S:Old  $\begin{matrix} \leftarrow \text{No} \\ \text{Yes} \end{matrix}$  New, W:Add, Z:Discontinued, F:Interchangeable by set, K:Q'ty Change

Fig.18. SERVICE PART



(A)=4TNV98-Q2FY

(B)=

(C)=

(D)=

(E)=

(F)=

No.	Lev.	Parts No.	Description	Q'ty						I	R
				(A)	(B)	(C)	(D)	(E)	(F)		
1	1	129981-08030	FOOT	2							
2	1	129981-08040	FOOT	2							
3	1	170905-08150	ABSORBER	4							
4	1	129930-13201	GASKET, SILENCER	1							
5	1	129907-44500	RADIATOR ASSY	1							
6	2	129508-44550	COCK ASSY	1							
7	2	129107-44590	CAP, RADIATOR	1							
8	2	129907-44600	SHROUD	1							
9	2	26014-060122	BOLT, M6X 12	4							
10	1	124790-44560	PIPE, WATER L=1000	1							
11	1	129907-44560	GUARD	1							
12	1	119255-44660	ABSORBER	4							
13	1	121857-44800	TANK ASSY, RESERVE	1							
16	2	121850-44850	CAP	1							
17	2	121850-44860	GASKET	1							
18	2	121850-44870	HOSE	1							
19	2	121850-44880	CLAMP	1							
20	2	121850-44830	LABEL, RESERVE TANK	1							
21	1	120147-44810	BRACKET	1							
22	1	129981-49050	PIPE, WATER	1							
23	1	129981-49062	PIPE, WATER	1							
24	1	119225-52102	PUMP ASSY, FUEL FEED	1							
25	1	119643-66900	DIODE	1							
26	1	129136-77200	RELAY, SAFETY	1							
27	1	119650-77911	RELAY ASSY, GLOW	1							
30	1	129100-77910	RELAY, MAGNETIC	1							
31	1	128300-77920	TIMER	1							
32	1	129211-77920	TIMER	1							
33	1	22217-120000	WASHER, SPRING 12	8							
34	1	23000-013000	CLAMP, 13	2							
35	1	23010-048000	CLAMP, 48	2							
36	1	23010-060000	CLAMP, 60	2							
37	1	26106-060102	BOLT, M6X 10 PLATED	4							
38	1	26106-100202	BOLT, M10X 20 PLATED	16							
39	1	26366-120002	NUT, M12	8							

## Parts No. Index

Parts No.	Fig. No.	Ref. No.
105010-39140	9	23
105025-59750	14	7
114250-39450	9	12
114250-53080	13	5
114250-53120	13	9
114250-53130	13	10
114250-53140	13	11
114250-53210	13	12
114250-53400	13	13
119000-35140	9	3
119005-77050	5	7
119084-77330	16	4
119129-77020	5	5
	17	2
119129-77250	16	18
119129-77260	16	19
119129-77320	16	8
119129-77341	16	11
119129-77520	5	8
119129-77840	16	20
119129-77850	16	21
119129-77870	16	22
119129-77890	16	25
119129-77900	16	26
119131-18320	6	7
119131-77550	15	15
119140-12680	5	22
119141-44760	10	46
119160-12530	5	20
119160-12540	5	21
119160-12570	5	18
119225-52102	14	20
	18	24
119255-44660	11	8
	18	12
119305-59120	13	27
119593-11301	4	28
119620-01750	3	3
119620-11180	4	16
119625-11880	4	26
	17	7
119640-01640	3	8
119640-61400	4	62
119643-66900	16	28
	18	25
119650-77910	16	30
119650-77911	18	27
119802-11870	4	47
	17	6
119802-55800	14	2

Parts No.	Fig. No.	Ref. No.
119810-77340	16	27
120130-22301	8	20
120147-44810	11	17
	18	21
121023-26070	2	39
121250-44901	10	35
121254-77590	15	10
121450-42450	10	34
121520-34810	9	2
121750-59890	14	21
121850-21130	8	10
121850-21290	8	4
121850-21680	8	9
121850-21920	8	5
121850-44830	11	12
	18	20
121850-44850	11	14
	18	16
121850-44860	11	15
	18	17
121850-44870	11	16
	18	18
121850-44880	11	13
	18	19
121850-49540	10	20
	17	19
121850-49550	10	21
	17	17
121850-49810	10	23
121850-77021	5	6
	17	18
121857-44800	11	10
	18	13
122780-59100	13	26
123900-13610	6	5
123900-13630	6	4
123900-25060	7	9
123900-77010	15	1
123900-77400	15	2
123900-77440	15	5
123900-77450	15	6
	9	9
123900-77460	15	7
123900-77480	15	8
123900-77510	15	11
123900-77520	15	12
123900-77540	15	14
123900-77610	15	20
123900-77640	15	22
123900-77650	15	23

Parts No.	Fig. No.	Ref. No.
123900-77710	15	24
123907-03100	4	55
123907-03110	4	56
123907-03120	4	57
123907-03140	4	58
123907-11280	4	33
123907-11550	4	3
123907-11601	13	25
123907-11820	4	10
123907-11830	4	22
123907-25909	7	15
123907-39500	9	15
123907-59540	14	13
123907-59550	14	14
	17	3
123907-59560	14	18
124080-77390	16	15
124080-77520	16	16
124160-01751	2	37
	4	50
124160-11340	4	17
	17	5
124160-11360	4	65
124411-01780	3	6
124465-44950	10	36
	37	37
	17	21
124722-59050	10	41
	44	44
	14	16
124766-59050	14	5
	9	9
124790-44560	11	7
	18	10
124950-11340	4	18
	17	12
128300-77920	16	34
	18	31
129001-91810	2	27
	28	28
129004-55610	14	1
129005-59830	9	17
129100-01580	2	5
	3	1
129100-77910	16	33
	18	30
129107-44590	11	5
	18	7
129136-77200	16	29
	18	26

Parts No.	Fig. No.	Ref. No.
129150-02450	7	4
129150-11230	4	36
		40
129150-11750	4	21
		37
		41
129150-14200	7	1
129150-25920	7	13
129150-35153	9	4
129150-59131	13	30
		34
129211-77920	16	35
	18	32
129400-92450	17	29
129457-59010	14	4
129470-77340	16	1
129486-59551	14	15
129508-44550	18	6
129535-77880	16	24
129550-59120	13	31
129900-01200	1	31
129900-01250	1	5
129900-01740	2	6
129900-01780	2	4
129900-01850	2	44
129900-01870	2	45
129900-02020	1	7
129900-02340	1	34
129900-02410	1	10
129900-02930	1	28
129900-02940	1	37
129900-07900	4	1
129900-13200	6	1
129900-13251	6	3
	17	10
129900-14110	7	6
129900-14140	2	23
129900-21220	8	3
129900-21600	8	13
129900-21640	8	8
129900-23001	8	22
129900-23200	8	27
129900-23600	8	28
129900-23610	8	30
129900-23911	8	26
129900-25110	7	10
129900-26030	7	16
129900-26250	2	24
129900-32001	2	11
129900-32030	2	25



## Parts No. Index

Parts No.	Fig. No.	Ref. No.
129900-32030	9	5
	17	13
129900-32040	2	26
	17	14
129900-34800	9	1
129900-35000	9	6
129900-42020	10	11
	17	15
129900-42461	10	14
129900-49870	10	30
	17	16
129900-77210	16	6
129900-77300	16	7
129900-77310	16	9
129900-77320	16	10
129900-77350	16	12
129900-77360	16	13
129900-77370	16	14
129900-77410	16	17
129900-77591	15	19
129900-77620	15	21
129902-01710	3	7
129902-21050	8	1
129907-01190	1	33
129907-01331	1	32
	17	4
129907-01950	12	1
129907-01960	12	2
129907-03010	4	52
129907-03060	4	53
129907-03070	4	54
129907-11100	4	25
129907-11110	4	14
129907-11120	4	15
129907-11250	4	30
129907-11260	4	31
129907-11270	4	32
129907-11310	4	61
	17	8
129907-11320	4	51
129907-11341	4	29
129907-11510	4	19
129907-11650	4	34
129907-11660	4	38
129907-11700	4	4
129907-11800	4	9
129907-11910	4	68
129907-11920	4	42
129907-11950	4	48
129907-12110	5	2

Parts No.	Fig. No.	Ref. No.
129907-12110	17	9
129907-14400	7	2
129907-14590	7	3
129907-21660	8	7
129907-22050	8	16
129907-22090	8	14
129907-39061	9	13
129907-42000	10	1
129907-44500	11	4
	18	5
129907-44560	11	9
	18	11
129907-44600	18	8
129907-49610	10	38
129907-49620	10	42
129907-49710	10	39
129907-49720	10	43
129907-49730	10	22
129907-49750	10	40
129907-49800	10	18
129907-53000	13	2
129907-59140	14	12
129907-59720	13	35
129907-59810	13	37
129907-59820	13	38
129907-59830	13	39
129907-59840	13	40
129908-14590	7	3 -1
129910-07900	4	69
129916-44740	10	16
129916-49530	10	19
129930-13200	6	8
	17	11
129930-13201	18	4
129930-39050	9	22
129935-12500	5	16
129935-12510	5	17
129935-12520	5	19
129944-12110	5	1
129944-12230	5	11
129944-12620	5	12
129944-13520	6	9
129944-13660	6	10
129950-59221	14	10
129953-25300	7	18
129955-01600	3	2
129955-21590	8	11
129957-59120	14	6
129962-01500	2	8
129980-59510	14	11

Parts No.	Fig. No.	Ref. No.
129981-08030	11	1
	18	1
129981-08040	11	2
	18	2
129981-49050	11	18
	18	22
129981-49060	11	19
129981-49062	18	23
129981-59010	14	8
158563-51150	7	19
170905-08150	11	3
	18	3
171008-77750	15	25
171051-01921	1	6
171056-49120	10	45
22157-080000	6	11
22190-080002	9	18
		20
		24
	14	19
	17	25
22190-220002	3	10
	17	26
22217-120000	11	24
	18	33
22217-180000	7	20
22252-000300	8	21
22351-060012	1	11
22512-070140	7	7
	8	6
22857-500100	4	63
		64
23000-013000	11	20
	18	34
23000-048000	11	21
23000-060000	11	22
23000-080000	5	13
23000-090000	5	23
23010-048000	18	35
23010-060000	18	36
23414-080000	10	31
	17	20
23857-030000	9	19
23875-030000	10	27
23876-020000	4	11
23876-030000	1	12
		13
		14
	4	12
24311-000070	2	43

Parts No.	Fig. No.	Ref. No.
24311-000070	17	22
24311-000120	4	27
		66
	17	23
24311-000320	2	38
	4	67
	17	24
24321-000850	2	40
	17	28
24351-030750	2	29
	17	27
25152-004400	10	15
26013-080222	5	15
26014-060122	11	6
	18	9
26014-080252	16	5
26106-060102	11	26
	18	37
26106-060122	10	28
26106-060162	13	41
26106-060202	10	29
26106-060302	10	12
26106-080122	3	11
	9	11
	10	32
26106-080162	2	22
		30
		31
	4	2
	6	12
	7	8
	12	4
26106-080182	13	42
26106-080202	2	32
	5	14
	6	13
26106-080222	12	5
		6
26106-080302	14	3
26106-080402	2	33
		34
	4	44
	5	9
26106-080452	2	35
	5	3
26106-080552	7	14
	10	13
		17
26106-080602	4	45

## Parts No. Index

Parts No.	Fig. No.	Ref. No.
26106-080602	4	46
	10	33
26106-080802	5	4
26106-080902	5	10
26106-100202	2	41
	11	23
	12	7
	18	38
26116-050122	16	23
26116-101202	16	2
26116-120252	15	26
26206-100352	3	4
26206-100702	3	5
26216-100302	2	10
26226-080222	4	43
26306-080002	4	49
	6	6
		14
26306-100002	2	36
	16	3
26366-120002	11	25
	18	39
26776-180002	7	21
27241-300000	1	15
27241-400000	4	13
27310-070001	4	23
729900-02800	1	25
729907-01550	2	1
729907-01560	1	1
729907-22910	8	32
729907-22950	8	34
729907-53100	13	1
729907-92780	17	1
729940-51400	12	3
977770-01212	2	42
	3	12
	4	77
	17	30
X2240610100	15	13

Parts No.	Fig. No.	Ref. No.
-----------	----------	----------

Parts No.	Fig. No.	Ref. No.
-----------	----------	----------

Parts No.	Fig. No.	Ref. No.
-----------	----------	----------