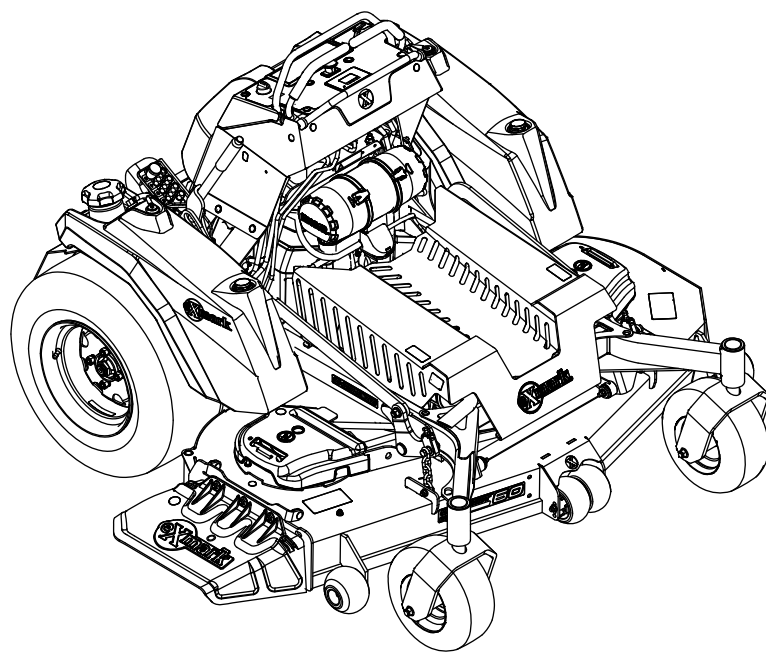




STARIS® S-SERIES

Model No. STS730GKA60400—Serial No. 404314159 and Up

Picture below may not reflect actual product.



Parts Manual

Part No. 4504-290 Rev. B

Ordering Replacement Parts

To order replacement parts, please supply the part number, the quantity, and the description of each part desired.

Understanding Reference Numbers

Each identified part in an illustration has a reference number. The reference number for a part also appears in the parts list, along with other information about the part.

This catalog uses two special reference number formats, one to indicate parts in a service assembly and another to indicate the quantity of a given part in an illustration.

Service Assembly Reference Numbers

Parts in service assemblies have reference numbers in the form a:b. The a represents the reference number of the entire service assembly and the b represents a sequential number unique to each part within the service assembly.

For example, a wheel assembly might be identified by reference number 6, the tire by 6:1, the valve by 6:2, and the wheel by 6:3. When you order the assembly identified by reference number 6, you receive all parts identified by reference numbers 6:1, 6:2, and 6:3. However, you may also order any part individually. Reference numbers of this type appear in illustration and in parts lists.

Reference Numbers Indicating Quantity

In an illustration, if a reference number indicates more than one part, the reference number has the form nX y. The n represents the quantity of the part, the X is the multiplication symbol, and the y represents the reference number.

For example, in an illustration, the reference number 2X 37 means that two of the parts identified by reference number 37 are indicated.

Touch Up Paint

Exmark black touch up spray paint – gloss black.

Exmark red touch up paint (spray paint – P/N 1-850337 - .6 oz liquid bottle – P/N 103-9140).

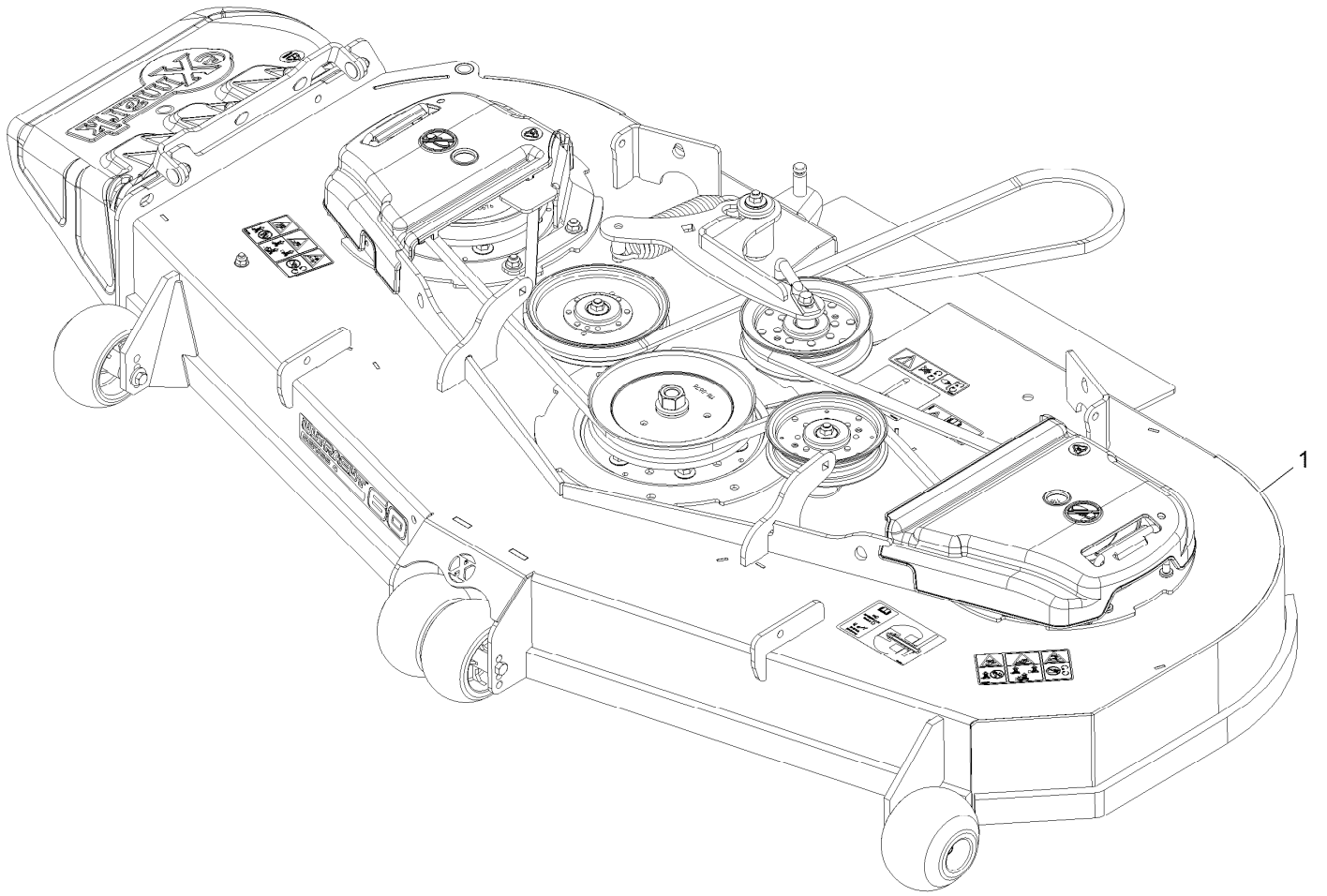


If your Exmark dealer does not have the Exmark part in stock, Exmark will get the parts to the dealer the next business day or the part will be FREE Guaranteed!! (Some restrictions apply. See your participating Exmark Dealer for details.)

Contents

Complete Deck Assembly	4
Deck Assembly	6
Deck W/Decals Assembly	8
Idler Arm Assembly	10
Main Frame Assembly	12
Controls Assembly	14
Deck Lift Assembly	16
Deck Strut Assembly	18
Height of Cut Lever Assembly	20
Platform Assembly	22
Guarding Assembly	24
Park Brake Assembly	26
Drive Wheel Assembly	28
Caster Wheel Assembly	30
Engine Assembly	32
Fuel Assembly	34
Left Fuel Line Assembly	36
Right Fuel Line Assembly	38
Fuel Line Assembly	40
Hydraulic Assembly	42
Idler Arm Assembly	44
Electrical Assembly	46
Harness Assembly	48

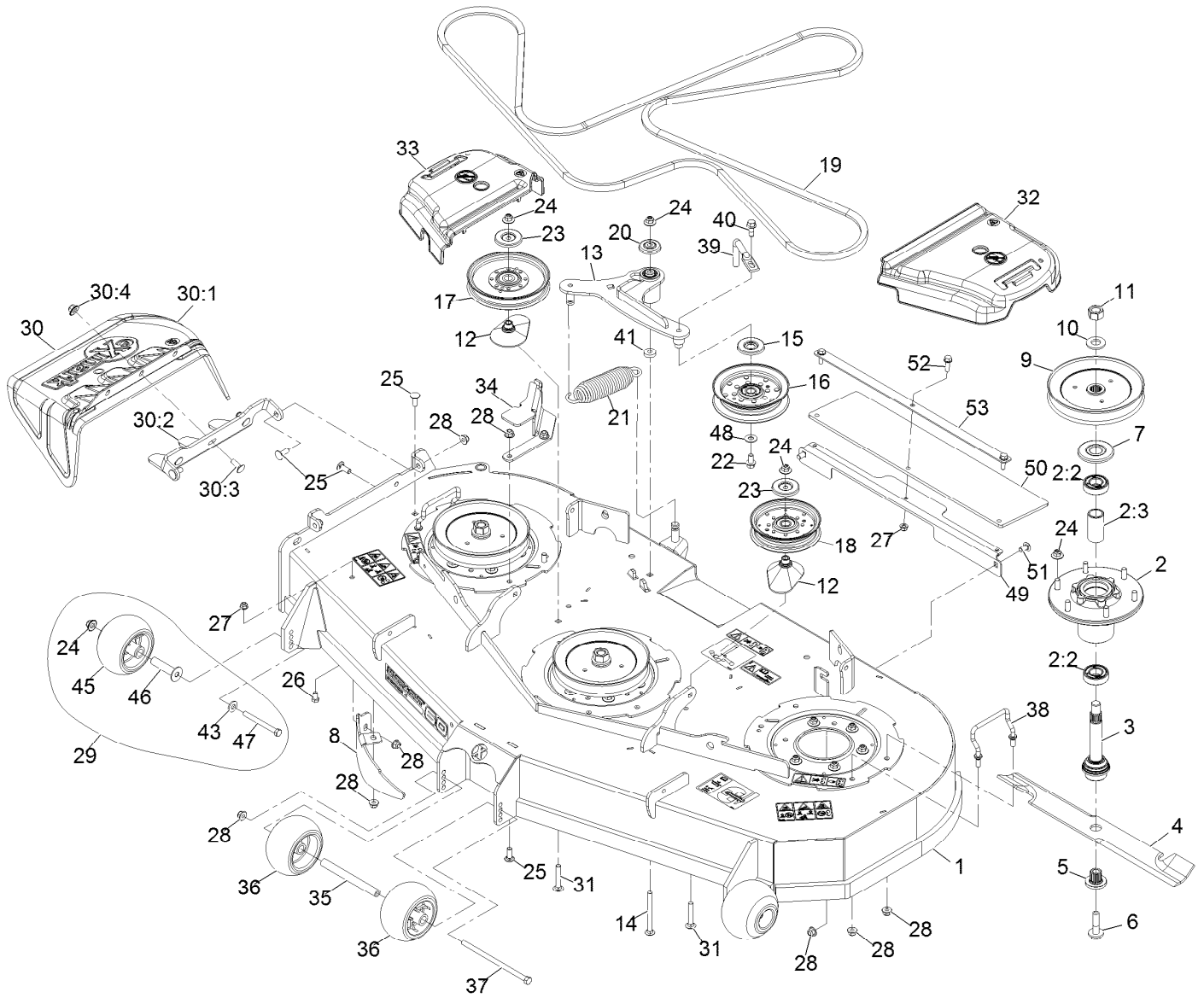
Complete Deck Assembly



Complete Deck Assembly (continued)

<i>Ref.</i>	<i>Part Number</i>	<i>Qty.</i>	<i>Description</i>
1	135-6670	1	ASM, Complete Deck, 604

Deck Assembly



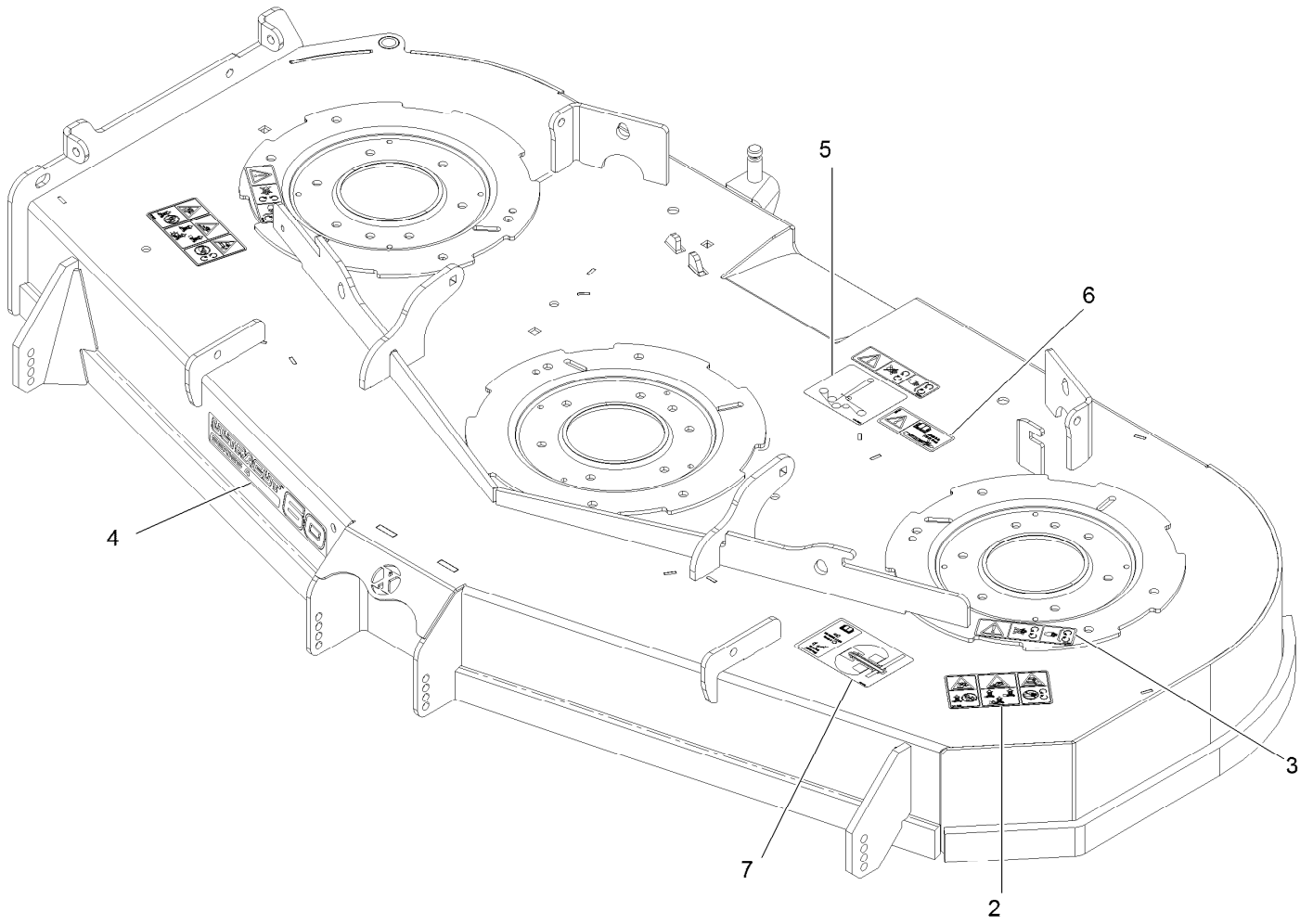
Deck Assembly (continued)

<i>Ref.</i>	<i>Part Number</i>	<i>Qty.</i>	<i>Description</i>	<i>Ref.</i>	<i>Part Number</i>	<i>Qty.</i>	<i>Description</i>
1	135-1962	1	ASM, Deck W/ Decals, 60"	25	3231-22	6	Screw-CARR
2	116-3344	3	ASM-Cutter Hsg With Bearings	26	322-2	1	Screw-HH
2:2	116-0720	2	Bearing-Ball	27	104-8300	4	Nut-HF, NI
2:3	116-3312	1	Spacer-Bearing	28	104-8301	13	Nut-HF, NI
3	116-3341	3	ASM-Spindle And Seal	29	116-9981	2	Kit, Anti-Scalp Roller
4	103-6383	3	Blade, Solid ●	30	109-7188	1	ASM,Discharge Chute
4	103-6388	3	Blade, Low Lift ●	30:1	109-2738	1	Chute, Discharge
4	103-6393	3	Blade, Mulching ■	30:2	109-8675-01	1	Bracket,Discharge Chute
4	103-6403	3	Blade, Notched	30:3	3231-22	3	Screw-CARR
4	116-5174	3	Blade-Extreme 2, 20.50" ●	30:4	109-6658	3	Nut-Flange, NI
5	103-3037	3	Bushing, Splined	31	3231-7	2	Screw-CARR
6	109-9220	3	Screw,Sems (1/2-20 X 2.19, GR5)	32	109-6936	1	Cover-Belt, LH
7	116-1286	3	Guard,Bearing Top .989	33	109-6935	1	Cover-Belt, RH
8	116-5614-01	1	Dogleg - Lz60	34	135-1953-01	1	Guard, Belt
9	116-0676	3	Sheave,Blade Drive 7.25	35	98-5967	1	Spacer-Wheel
10	103-2802	3	Washer	36	1-603299	2	Roller-Scalp, Anti
11	116-7306	3	Nut-Hex	37	108-5388	1	Screw-HH
12	109-2872	2	Spacer-Pulley	38	135-1954	2	Wireform, Belt Cover
13	135-1937	1	ASM, Deck Idler	39	135-5023	1	Guide, Belt
14	3231-37	1	Screw-CARR	40	126-1680	1	Screw-Hfh
15	126-9195	1	Shield-Guard, Dust	41	62-6660	1	Spacer
16	126-9196	1	Idler-Pulley, Flat	43	98-5975	2	Washer-Belleville
17	126-7685	1	Idler-Pulley	45	103-8415	2	Roller-Anti-Scalp
18	126-9187	1	Pulley-Idler, Flat	46	116-8131	2	Axle, Roller
19	135-4711	1	Belt, 5V	47	116-9362	2	Screw-HH
20	103-2916	1	Guard-Top	48	3256-4	1	Washer-Flat
21	116-6317	1	Spring-Extension	49	135-6287-03	1	Brkt, Heat Deflector
22	110-1718	1	Screw-HHF	50	135-6358	1	Shield, Heat
23	126-8043	2	Shield-Dust	51	3231-21	2	Screw-CARR
24	109-6658	23	Nut-Flange, NI	52	3234-29	3	Screw-HHF
				53	135-7122-03	1	Brkt-Heat Deflector, Top

● Optional Equipment

■ Requires installation of mulch kit for proper mulching. See your Exmark dealer for details.

Deck W/Decals Assembly

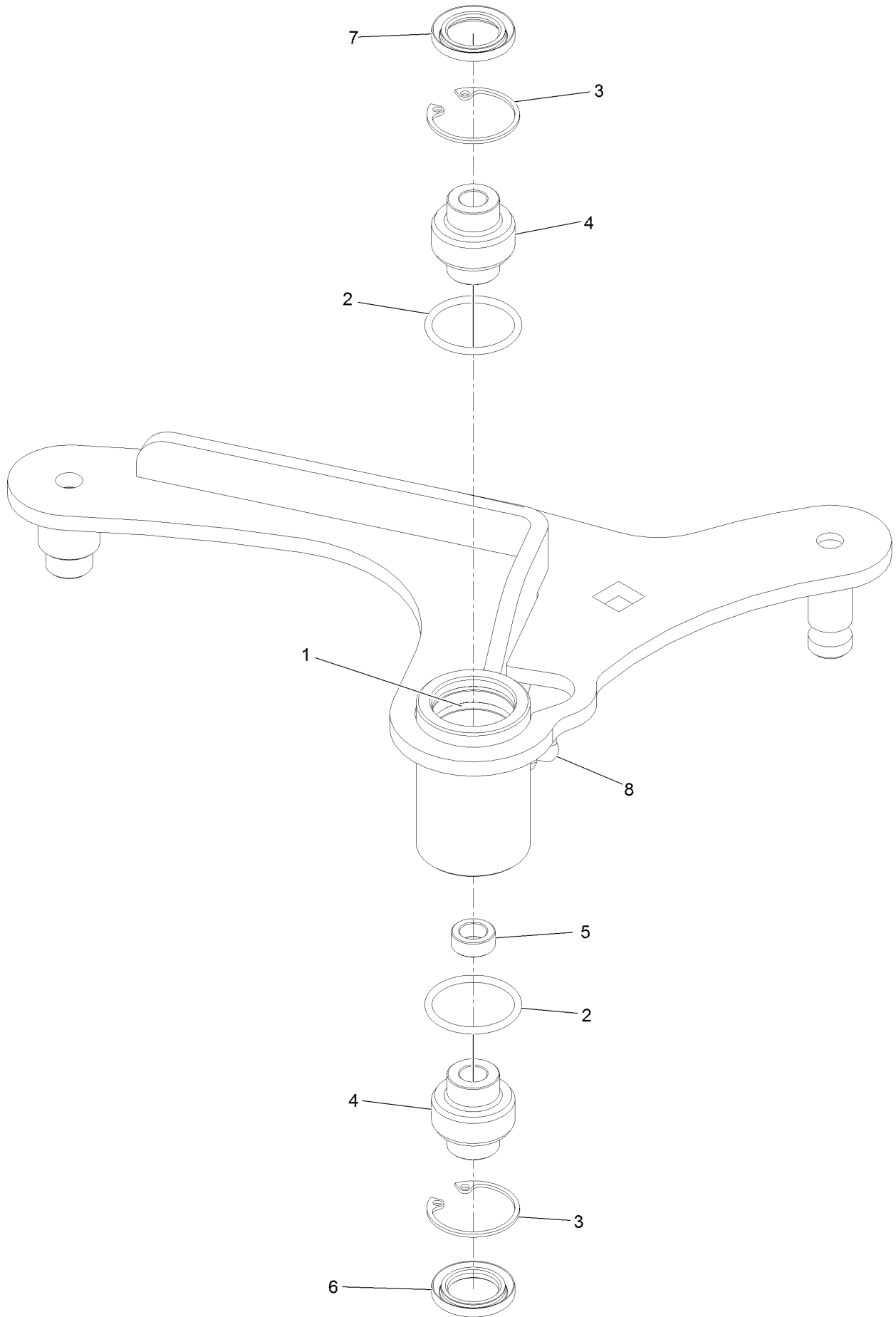


Deck W/Decals Assembly (continued)

<i>Ref.</i>	<i>Part Number</i>	<i>Qty.</i>	<i>Description</i>
2	135-5210	2	Decal-Warning Thrown Obj
3	112-9028	3	Decal-Cover, Missing
4	126-6589	1	Decal, 604

<i>Ref.</i>	<i>Part Number</i>	<i>Qty.</i>	<i>Description</i>
5	116-8727	1	Decal-Belt Routing
6	116-8283	1	Decal-Bolt Torque
7	126-0898	1	Decal-Roller Mounting

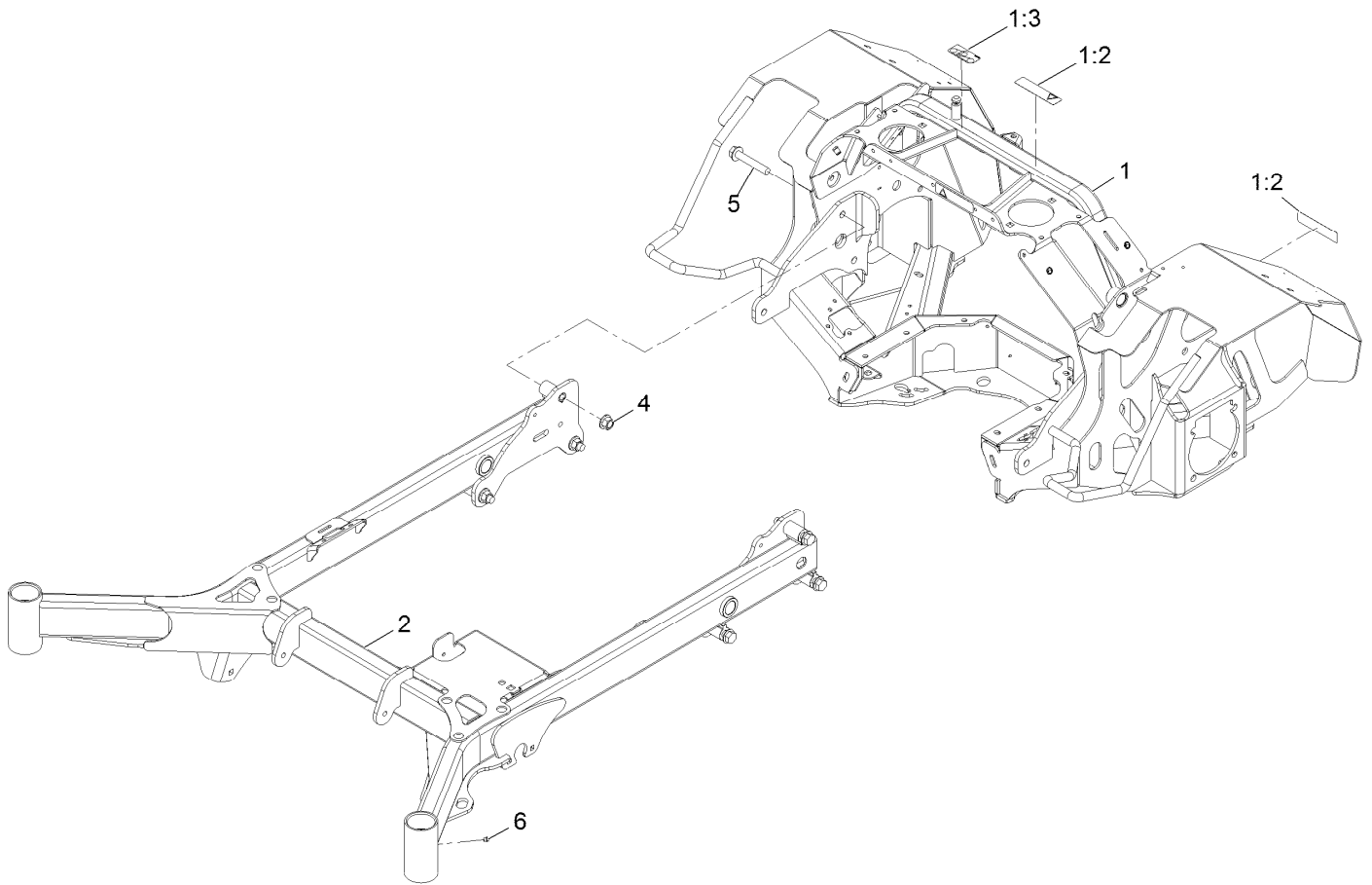
Idler Arm Assembly



Idler Arm Assembly (continued)

<i>Ref.</i>	<i>Part Number</i>	<i>Qty.</i>	<i>Description</i>	<i>Ref.</i>	<i>Part Number</i>	<i>Qty.</i>	<i>Description</i>
1	135-1936-03	1	Weld, Idler Arm	5	103-5677	1	Spacer
2	106-7159	2	O-Ring	6	103-3505	1	Seal-Lip, Double
3	32120-10	2	Ring-Retaining	7	103-3506	1	Seal-Single Lip
4	103-3504	2	Bearing-Spherical	8	302-40	1	Zerk-90° 1/4-28

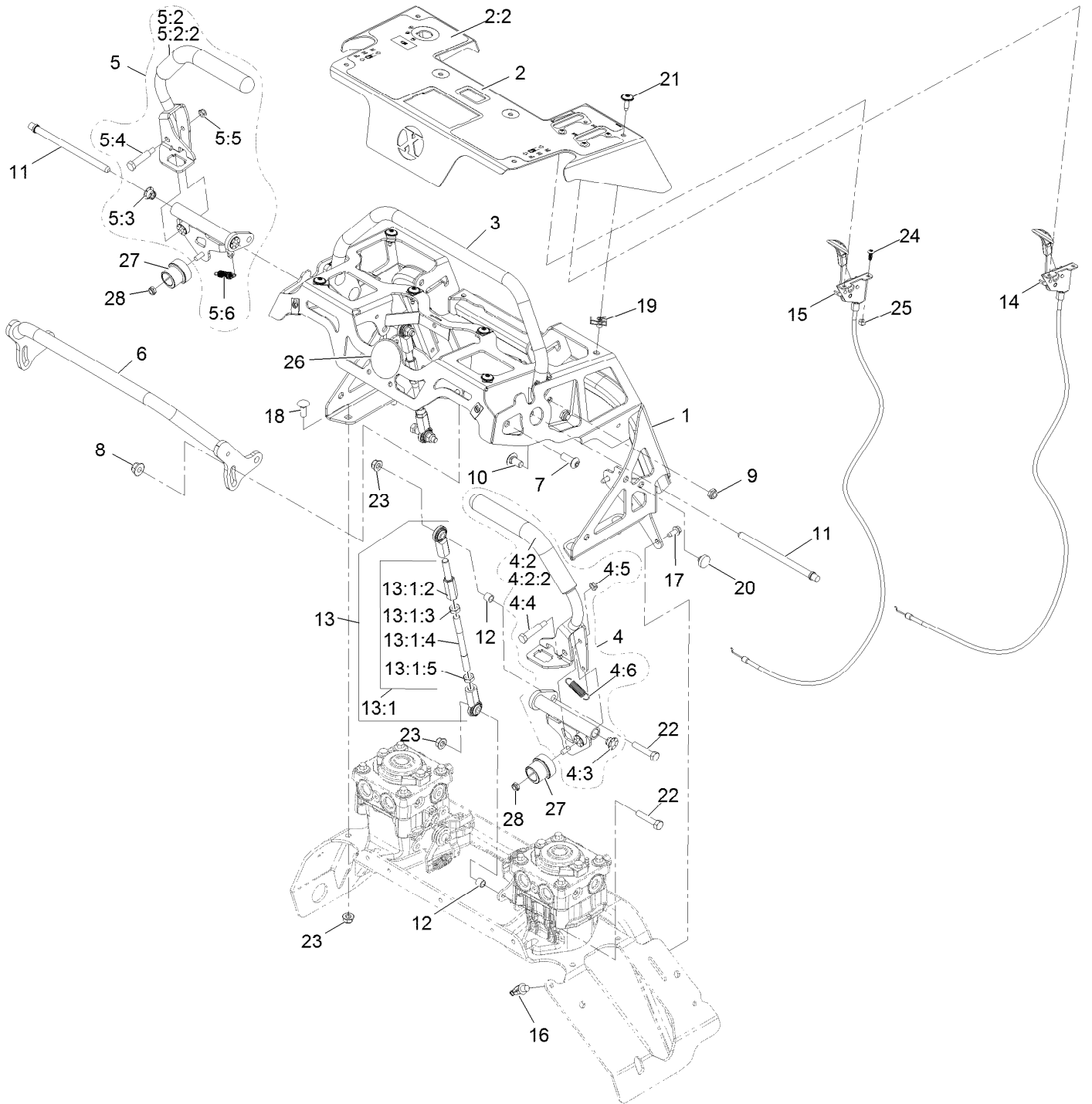
Main Frame Assembly



Main Frame Assembly (continued)

<i>Ref.</i>	<i>Part Number</i>	<i>Qty.</i>	<i>Description</i>	<i>Ref.</i>	<i>Part Number</i>	<i>Qty.</i>	<i>Description</i>
1	135-2161	1	ASM, Rear Frame W/ Decals	2	135-1943-01	1	Weld, Front Frame, 60
1:2	98-1977	3	Decal-Warning	4	99-5107	6	Nut-Lock
1:3	135-2267	1	Decal-Belt Routing HYD	5	3234-40	6	Screw-HF
				6	1-811010	2	Plug

Controls Assembly

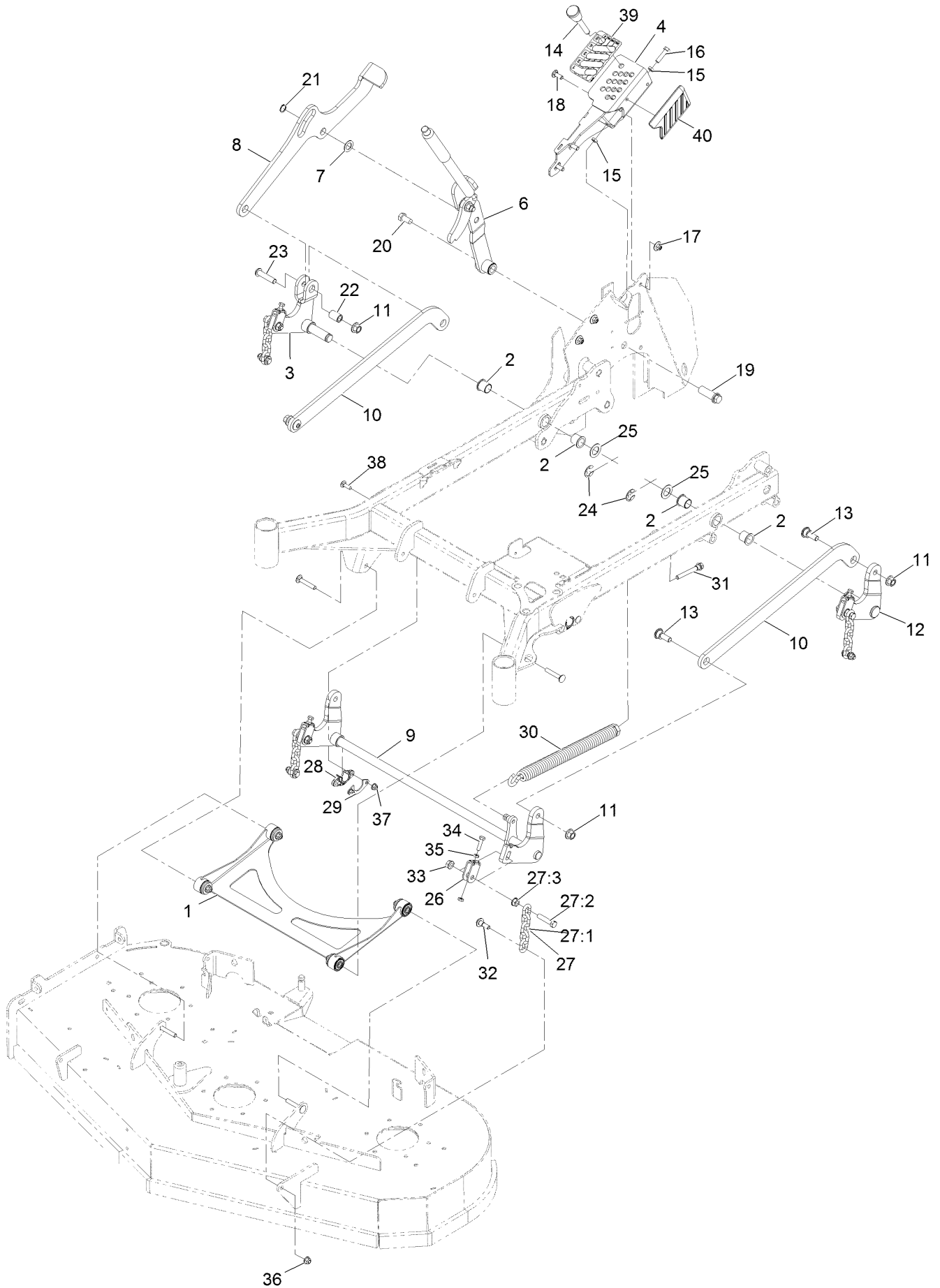


Controls Assembly (continued)

<i>Ref.</i>	<i>Part Number</i>	<i>Qty.</i>	<i>Description</i>	<i>Ref.</i>	<i>Part Number</i>	<i>Qty.</i>	<i>Description</i>
1	135-4142	1	ASM, Control Tower W/ Decal	9	3296-59	4	Nut-Nyloc 3/8-16 Thin
2	135-6766	1	ASM,Control Panel W/ Decal	10	3231-21	4	Bolt-Carriage 3/8-16 X 3/4
2:2	135-6773	1	Decal-Control Panel Non-EFI	11	135-1277	2	Pin, Pivot
3	135-3430-03	1	Weld, Rear Ref Bar	12	1-633545	4	Spacer
4	135-1304	1	ASM, Motion Control, Lt	13	135-7116	2	ASM, Linkage
4:2	135-2546	1	ASM, Lt Control Lever W/ Grip	13:1		1	ASM, Motion Control Link ●
4:2:2	135-3301	1	Grip, Drive Lever	13:1:2	116-4755	1	Rod-Adjustment
4:3	135-6412	4	Bearing, Igus	13:1:3	3220-16	1	Nut-Jam 3/8-24 LH
4:4	121-1229	1	Bolt-Shoulder	13:1:4	135-1291	1	Link, Motion Control
4:5	3296-56	1	Nut-Nyloc 1/4-20 Thin	13:1:5	3220-3	1	Nut-Jam 3/8-24
4:6	114-0249	1	Spring-Extension	14	135-2168	1	Control, Choke
5	135-1305	1	ASM, Motion Control, Rt	15	135-2169	1	Control, Throttle
5:2	135-2547	1	ASM, Rt Control Lever W/ Grip	16	32180-030	1	Clip-Tie
5:2:2	135-3301	1	Grip, Drive Lever	17	32144-10	4	Screw-HWH 1/4-20 X .62
5:3	135-6412	4	Bearing, Igus	18	3230-16	4	Bolt-Carriage 5/16-18 X 7/8
5:4	121-1229	1	Bolt-Shoulder	19	107069	8	Nut-Retainer-Panel 1/4-20
5:5	3296-56	1	Nut-Nyloc 1/4-20 Thin	20	1-513658	2	Bumper
5:6	114-0249	1	Spring-Extension	21	135-3494	6	Screw, Torx
6	135-3432-03	1	Weld, Front Ref Bar	22	322-8	4	Screw-HH
7	3274-94	2	Screw-Button Head 3/8-16 X 1	23	104-8300	8	Nut-Nyloc 5/16-18 Flg
8	104-8301	2	Nut-Nyloc 3/8-16 Flg	24	135-3176	4	Screw, BHCS
				25	3296-2	4	Nut-Nyloc #10-24
				26	135-2281	1	Decal-Cover
				27	126-1499	2	Cam
				28	3296-56	2	Nut-Nyloc 1/4-20 Thin

● Not serviced separately

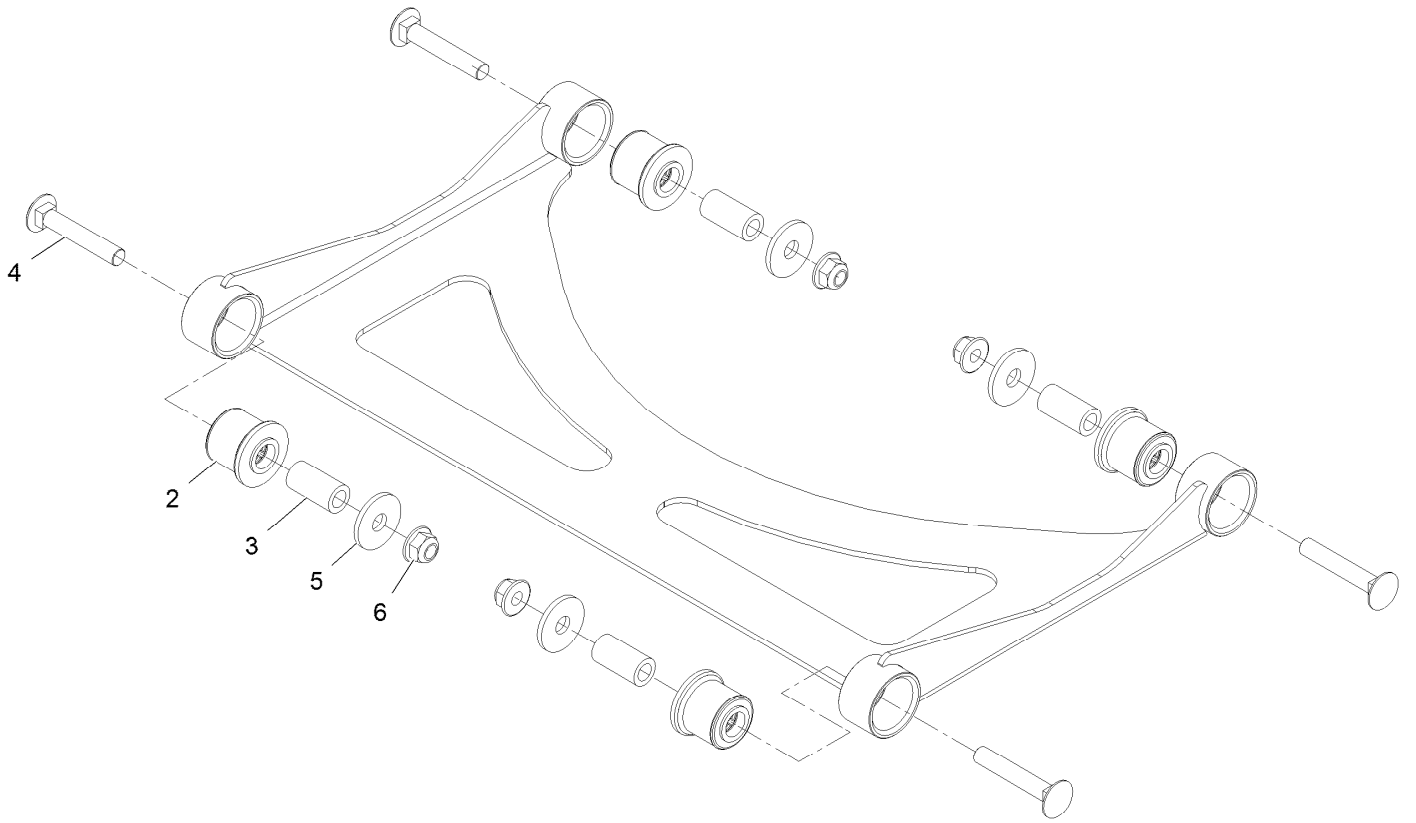
Deck Lift Assembly



Deck Lift Assembly (continued)

<i>Ref.</i>	<i>Part Number</i>	<i>Qty.</i>	<i>Description</i>	<i>Ref.</i>	<i>Part Number</i>	<i>Qty.</i>	<i>Description</i>
1	135-1667	1	ASM, Deck Strut	24	32151-103	2	E-Ring
2	135-1248	4	Bushing, Igus	25	119-2332	2	Washer-Flat
3	135-4586-03	1	Weld, Bellcrank, Rt	26	109-9066	4	Yoke-Adjust, Deck
4	135-1252-03	1	Weld, HOC Index	27	116-0756	4	Deck Lift Chain ASM
6	135-2176	1	ASM, HOC Lever	27:1	1-633447	1	Chain-Lift, Deck
7	119-7640	1	Washer-Thrust	27:2	109-9065	1	Screw-HH 7/16-14 X 2
8	135-3940-03	1	Strap, HOC Index	27:3	32128-37	1	Nut-Whizlock 7/16-14
9	135-4585-03	1	Weld, HOC Cross Shaft	28	115-5065	2	Bushing-Flange
10	135-1253-03	2	Strap, HOC Lift	29	116-2887	2	Gusset-Lift, Deck
11	99-5107	4	Nut-Lock 1/2-13	30	116-0886	1	Spring-Extension
12	135-4587-03	1	Weld, Bellcrank	31	92-7674	1	Screw-Shcs 3/8-16 X 2.212
13	135-1259	3	Bolt, Shoulder	32	109-9840	4	Screw-Hex Flange 3/8-16 X .80
14	126-5401	1	Pin-HOC	33	32128-37	4	Nut-Whizlock 7/16-14
15	3218-3	2	Nut-Jam 3/8-16	34	322-47	4	Screw-HH 5/16-18 X 1 1/4
16	323-50	1	Bolt-HH	35	3218-2	8	Nut-Jam 5/16-18
17	109-6658	3	Nut-Nyloc 3/8-16 Flg	36	104-8301	4	Nut-Nyloc 3/8-16 Flg
18	3231-22	3	Bolt-Carriage 3/8-16 X 1	37	104-8300	4	Nut-Nyloc 5/16-18 Flg
19	109-5891	1	Hub-Threaded	38	3230-2	4	Bolt-Carriage 5/16-18 X 1
20	325-4	1	Screw-HH	39	135-2280	1	Decal-Height Of Cut
21	32120-72	1	Ring-Snap	40	135-5337	1	Pad, Knee
22	135-3944	1	Spacer, HOC				
23	135-3945	1	Screw-HSBH				

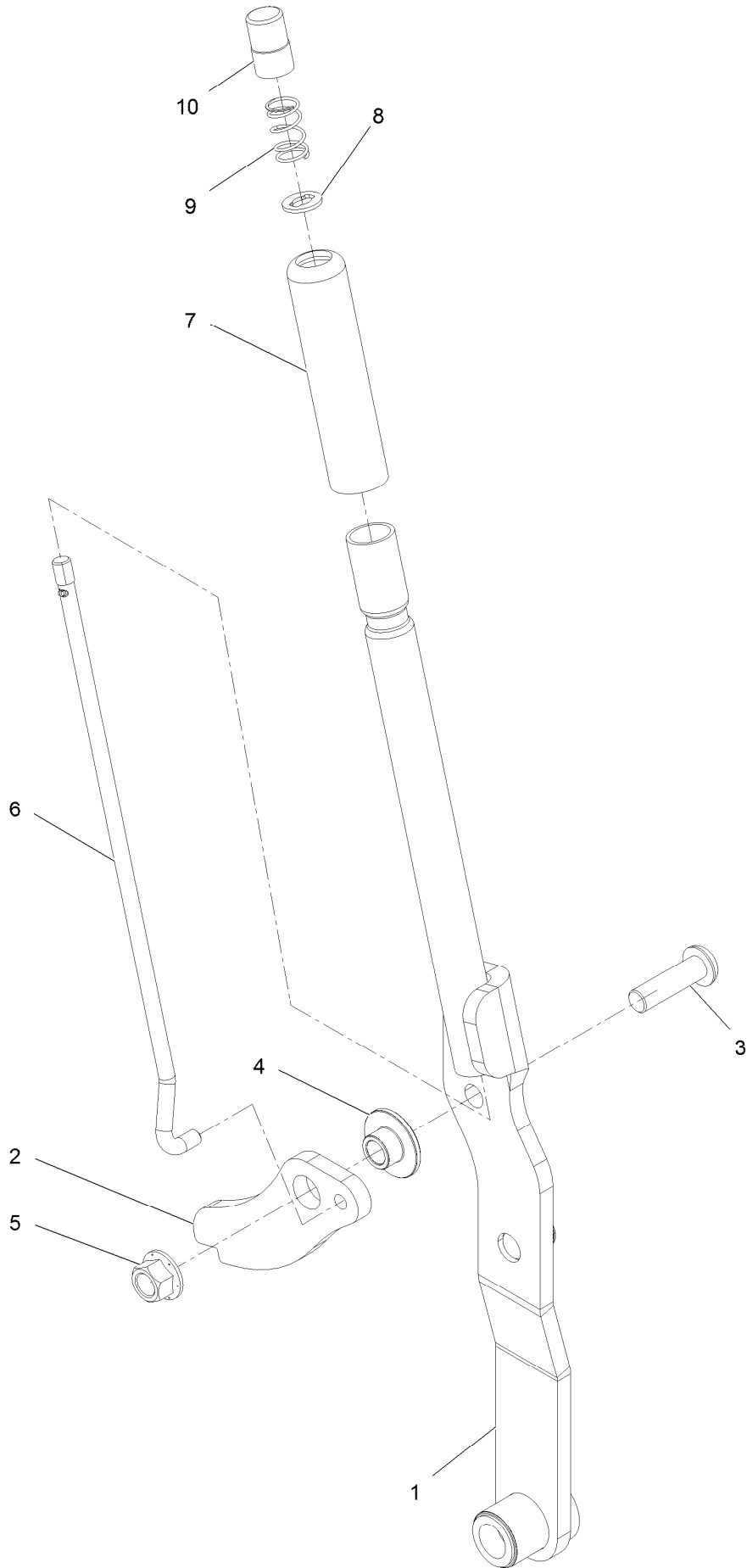
Deck Strut Assembly



Deck Strut Assembly (continued)

<i>Ref.</i>	<i>Part Number</i>	<i>Qty.</i>	<i>Description</i>	<i>Ref.</i>	<i>Part Number</i>	<i>Qty.</i>	<i>Description</i>
2	126-8360	4	Bushing-Rubber, Suspension	4	3231-7	4	Bolt-Carriage 3/8-16 X 2 1/4
3	108-6544	4	Spacer	5	2844	4	Washer
				6	104-8301	4	Nut-Nyloc 3/8-16 Flg

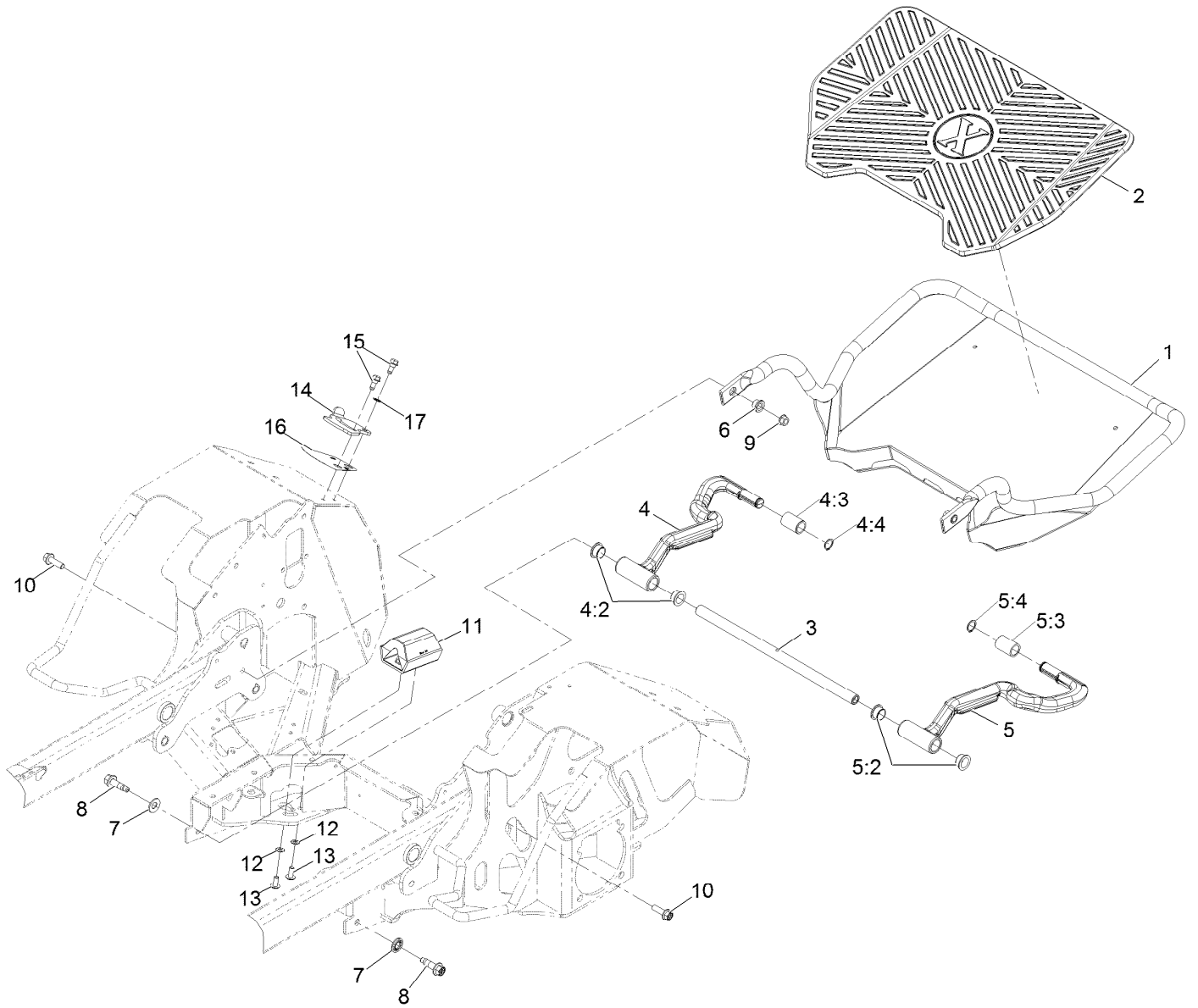
Height of Cut Lever Assembly



Height of Cut Lever Assembly (continued)

<i>Ref.</i>	<i>Part Number</i>	<i>Qty.</i>	<i>Description</i>	<i>Ref.</i>	<i>Part Number</i>	<i>Qty.</i>	<i>Description</i>
1	135-2233	1	ASM, HOC Lever W/ Bushings	6	135-1260	1	Linc, HOC
2	135-1209	1	Arm, Transport Lock	7	115-3592	1	Grip
3	108-1993	1	Screw-HSBH	8	114-1207	1	Washer-Special
4	135-3954	1	Spacer	9	114-8187	1	Spring-Compression
5	99-5107	1	Nut-Lock 1/2-13	10	115-2750	1	Knob

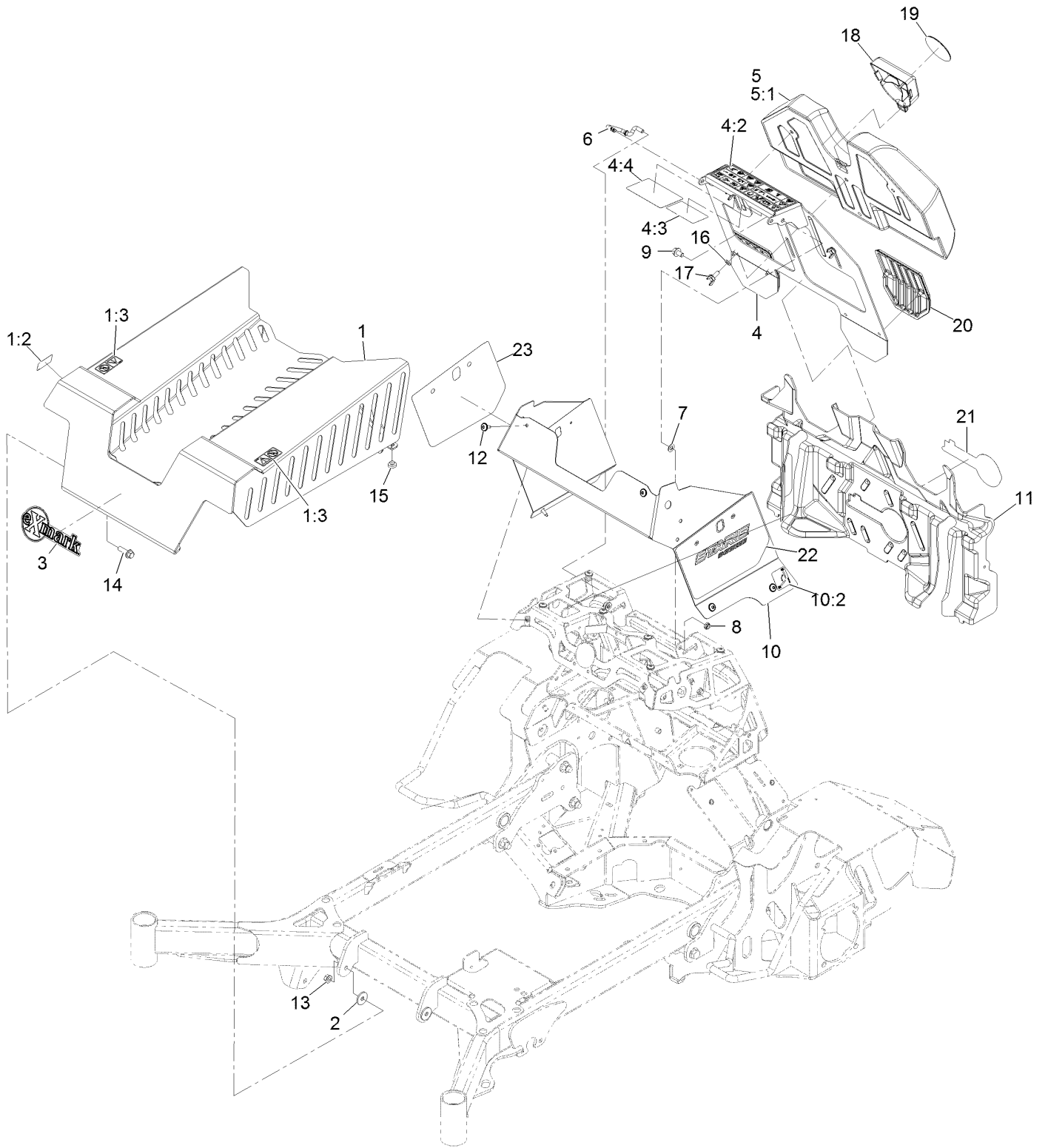
Platform Assembly



Platform Assembly (continued)

<i>Ref.</i>	<i>Part Number</i>	<i>Qty.</i>	<i>Description</i>	<i>Ref.</i>	<i>Part Number</i>	<i>Qty.</i>	<i>Description</i>
1	135-1264-03	1	Weld, Platform	8	135-7001	2	Screw-HHF
2	135-1911	1	Mat, Platform	9	32128-21	2	Nut-3/8-16 Flanged Side Lock
3	135-1336	1	Shaft, Cross	10	135-4712	2	Screw, HHF
4	135-2237	1	ASM, Rt Arm W/ Bushings	11	135-3993	2	Bumper
4:2	109-8054	2	Bushing-Flanged	12	3255-8	4	Washer-Lock 5/16 (Ext-Tooth)
4:3	135-6438	1	Bushing, Sleeve	13	126-6268	4	Screw-Truss HD 5/16-18 X 3/4 Torx Plus
4:4	32120-72	1	Ring-Snap	14	135-4601-03	1	Latch, Platform
5	135-2236	1	ASM, Lt Arm W/ Bushings	15	126-4424	2	Screw-Shoulder
5:2	109-8054	2	Bushing-Flanged	16	135-5206	1	Decal-Latch Lock
5:3	135-6438	1	Bushing, Sleeve	17	135-6584	1	Washer, Plastic
5:4	32120-72	1	Ring-Snap				
6	109-8788	2	Bushing-Flanged				
7	1-603610	2	Washer-Spring Disc 7/16				

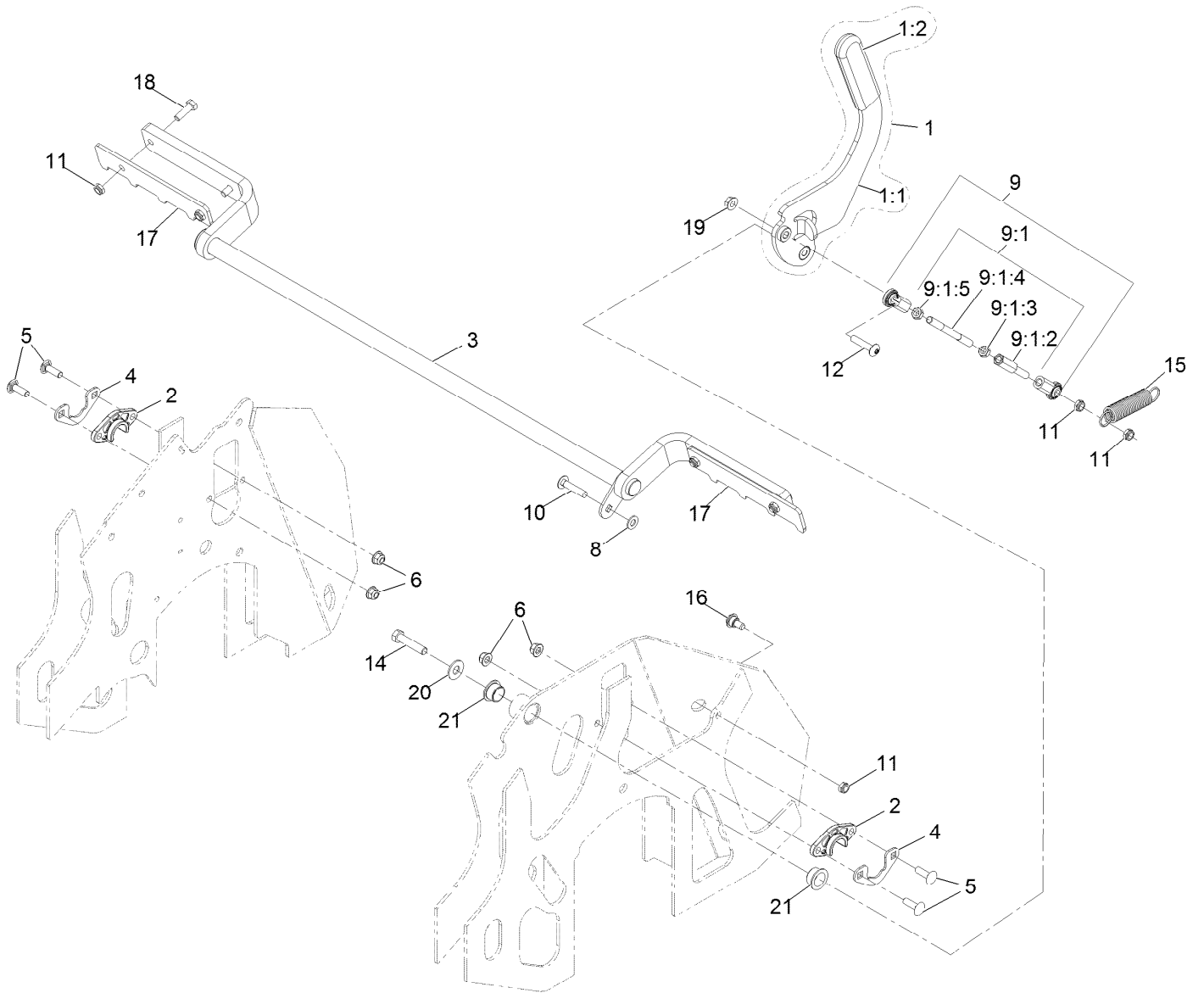
Guarding Assembly



Guarding Assembly (continued)

<i>Ref.</i>	<i>Part Number</i>	<i>Qty.</i>	<i>Description</i>	<i>Ref.</i>	<i>Part Number</i>	<i>Qty.</i>	<i>Description</i>
1	135-2163	1	ASM, Front Cover W/ Decals	10	135-2164	1	ASM, Tower Skin W/ Decals
1:2	106-5517	1	Decal-Warning	10:2	116-5988	1	Decal-Park Brake, CE
1:3	119-6807	2	Decal-Warning	11	135-1605	1	Panel, Heat Deflector
2	107675	2	Washer	12	135-3494	6	Screw, Torx
3	126-6877	1	Decal, Exmark Logo	13	32128-21	2	Nut-3/8-16 Flanged Side Lock
4	135-2162	1	ASM, Pad Backing W/ Decals	14	119-4061	2	Screw-HHF
4:2	135-2412	1	Decal-Warning	15	1-513658	2	Bumper
4:3	116-8253	1	Decal-Drive Release	16	3290-475	3	Washer-Belleville
4:4	135-2266	1	Decal-Service Aid	17	135-2180	3	Screw, Thumb
5	135-1320	1	Pad, Thigh	18	135-2596	1	Insert, Pad
5:1	135-6556	1	Cover, Pad	19	135-2714	1	Decal-X Logo Badge 3 In
6	135-1611	1	Rod, Prop	20	135-5107	2	Pad, Knee
7	131-8667	2	Washer-Thrust	21	135-7280	1	Decal-Exmark Logo
8	3296-59	2	Nut-Nyloc 3/8-16 Thin	22	135-6809	1	Decal-Staris Logo Lt
9	3234-9	2	Screw-HHF	23	135-6810	1	Decal-Staris Logo Rt

Park Brake Assembly

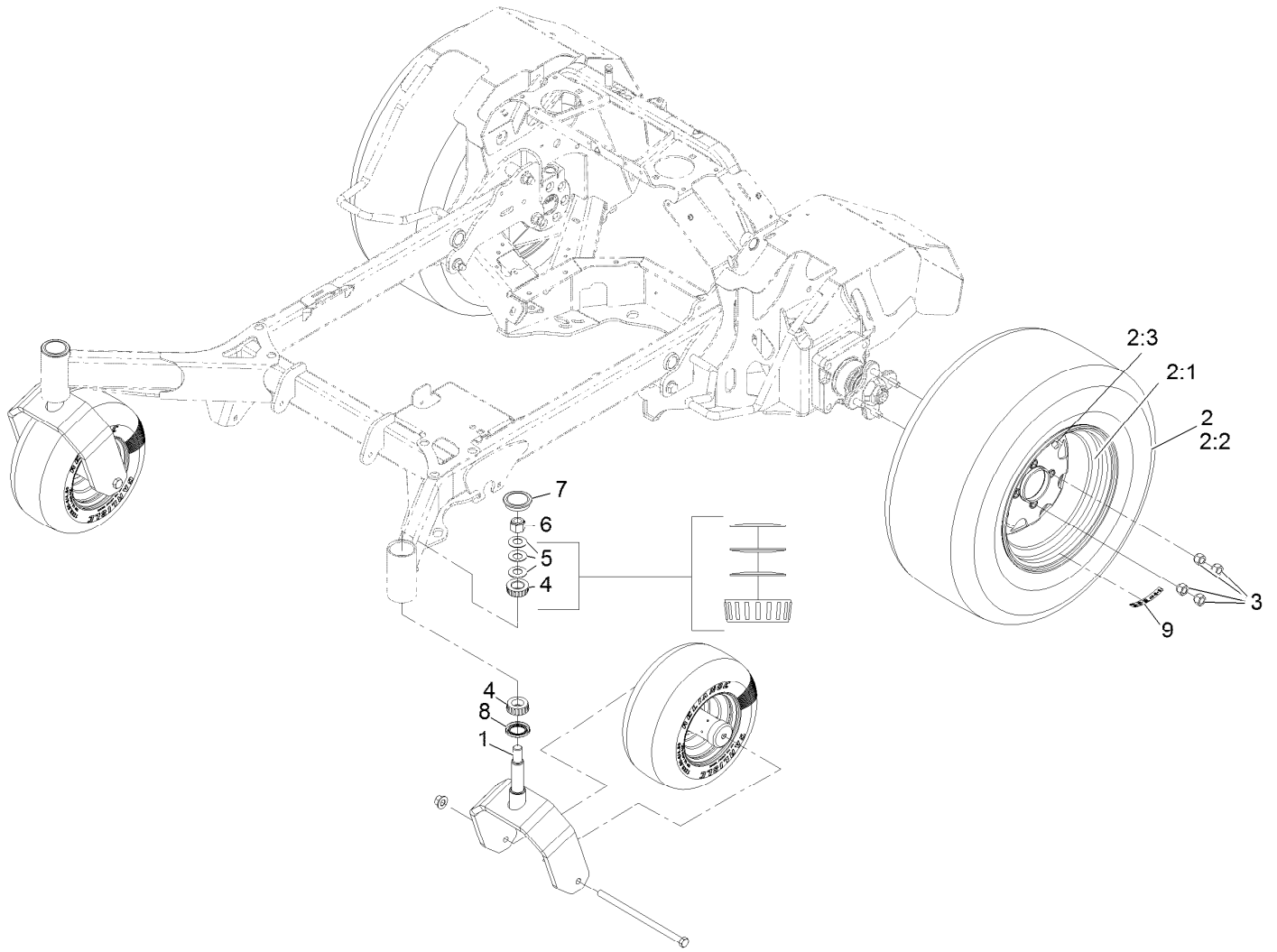


Park Brake Assembly (continued)

<i>Ref.</i>	<i>Part Number</i>	<i>Qty.</i>	<i>Description</i>	<i>Ref.</i>	<i>Part Number</i>	<i>Qty.</i>	<i>Description</i>
1	135-7092	1	ASM, Brake Lever W/ Grip	9:1:5	3220-3	1	Nut-Jam 3/8-24
1:1	135-6984-03	1	Weld, Brake Lever	10	3230-4	1	Bolt-Carriage 5/16-18 X 1 1/2
1:2	1-633268	1	Grip-Lever	11	3296-47	7	Nut-Nyloc 5/16-18 Thin
2	115-5065	2	Bushing-Flange	12	126-7439	1	Screw-Truss HD 5-16-18 X 1 1/2 Torx Plus
3	135-1189-03	1	Weld, Brake Shaft	14	323-52	1	Screw-HH 3/8-16 X 1 3/4
4	135-5132	2	Support, Bearing	15	1-323161	1	Spring
5	3230-22	4	Bolt-Carriage 5/16-18 X 1 Sp	16	120-9471	1	Screw-Shoulder Bh 5/16-18 X 1/2 Tf Torx
6	104-8300	4	Nut-Nyloc 5/16-18 Flg	17	135-6577-03	2	Plate, Snubber
8	3256-23	1	Washer-5/16 SAE	18	322-5	4	Screw-HH 5/16-18 X 1
9	135-7116	1	ASM, Linkage	19	32128-25	1	Nut-Hex 5/16-18 Side Lock
9:1		1	ASM, Motion Control Link ●	20	3256-4	1	Washer-3/8 Std
9:1:2	116-4755	1	Rod-Adjustment	21	135-7091	2	Bushing, Igus
9:1:3	3220-16	1	Nut-Jam 3/8-24 LH				
9:1:4	135-1291	1	Link, Motion Control				

● Not serviced separately

Drive Wheel Assembly

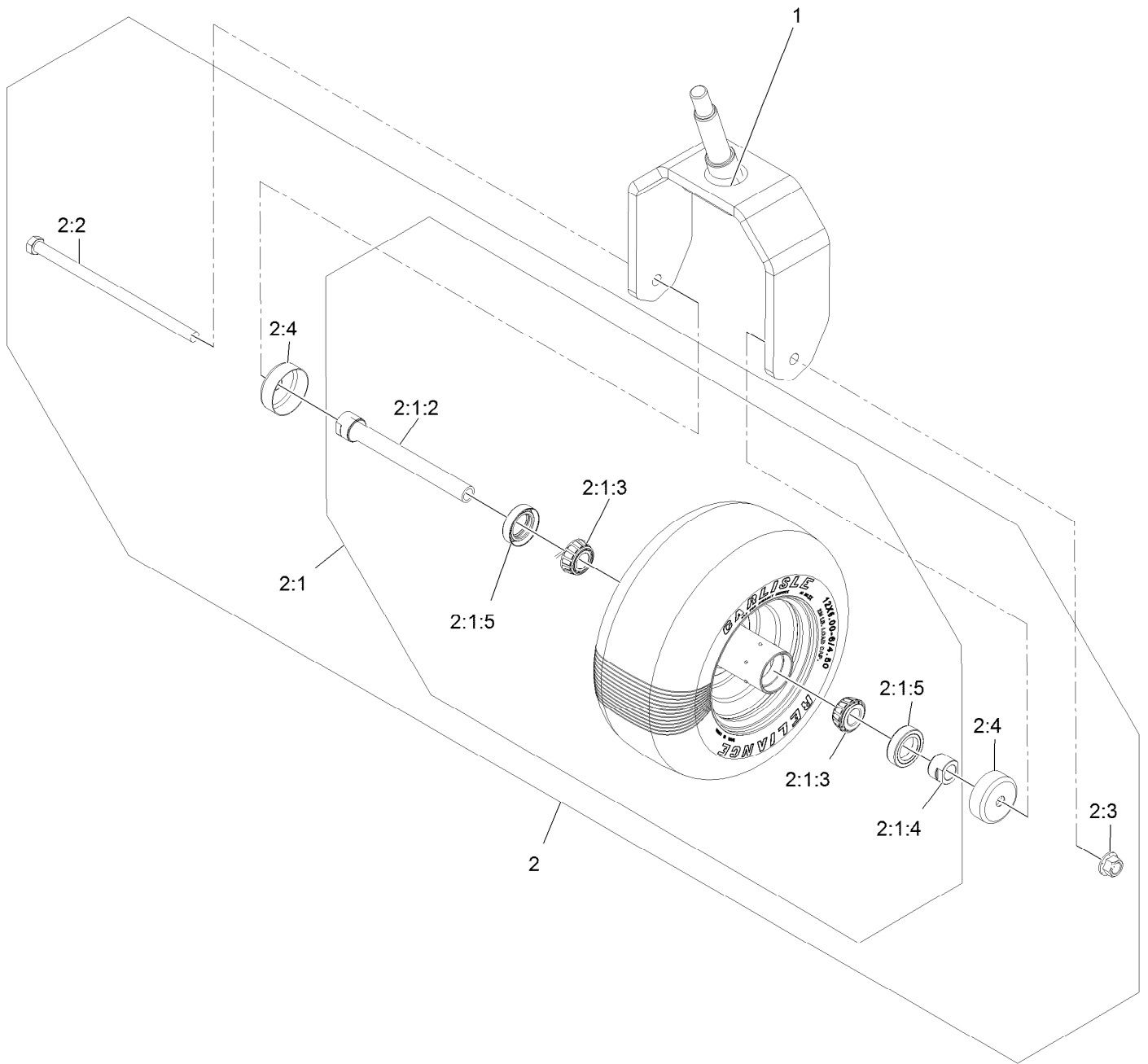


Drive Wheel Assembly (continued)

<i>Ref.</i>	<i>Part Number</i>	<i>Qty.</i>	<i>Description</i>	<i>Ref.</i>	<i>Part Number</i>	<i>Qty.</i>	<i>Description</i>
1		2	ASM, Caster, 12X6-6●	5	1-633508	6	Washer-Spring Disc
2	135-2175	2	ASM, Wheel And Tire	6	3296-51	2	Nut-Nyloc 3/4-10
2:1	135-2172	1	Rim, 12 X 8.5	7	103-4882	2	Cap-Grease
2:2	135-2173	1	Tire, 23 X 10.50-12	8	116-5647	2	Seal-Grease
2:3	232-27	1	Stem-Valve	9	126-2055	2	Decal-Torque, Wheel Hub Lug
3	242-50	8	Nut-Lug 1/2-20				
4	1-543509	4	Cone-Bearing Tapered Roller				

● Not serviced separately

Caster Wheel Assembly

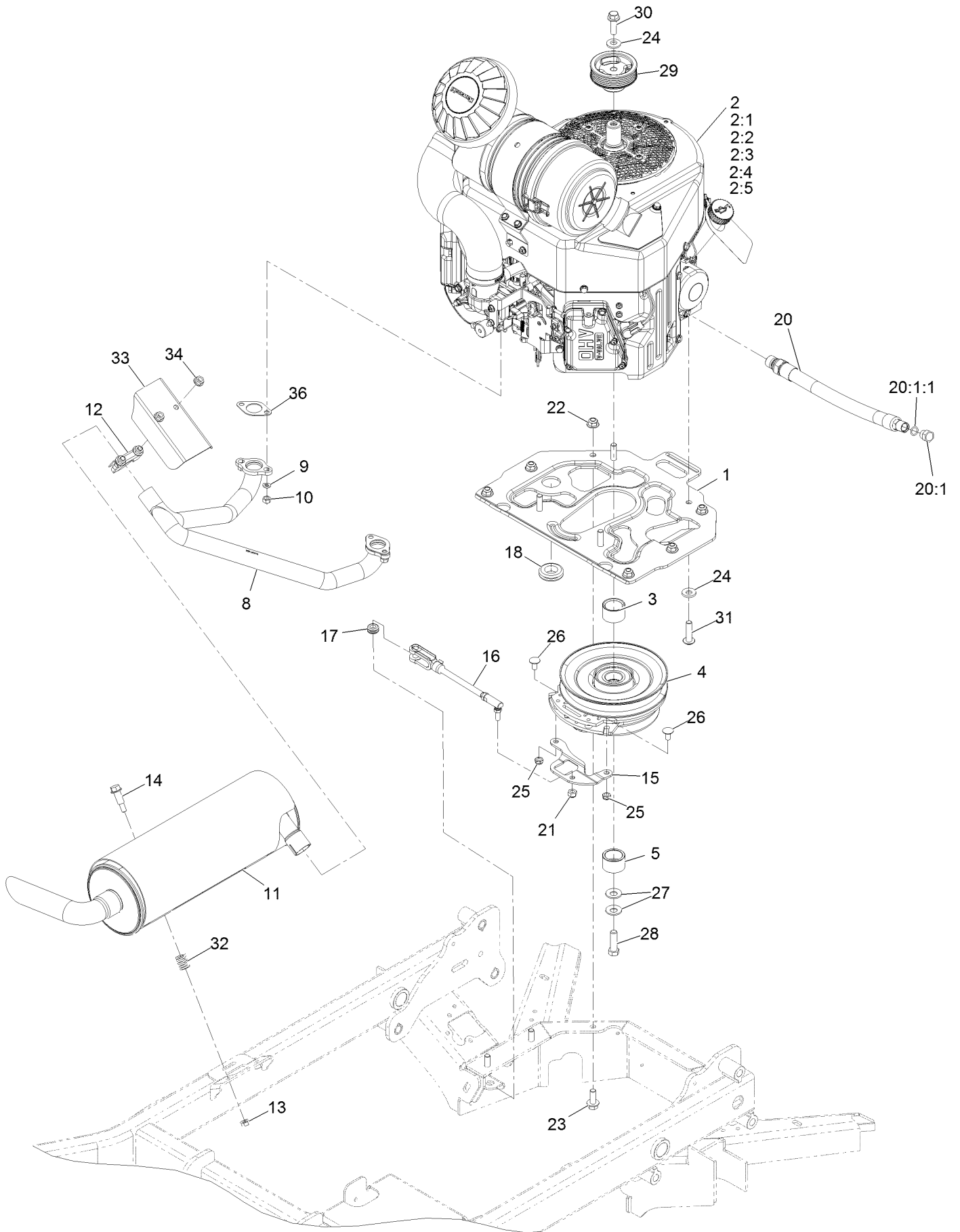


Caster Wheel Assembly (continued)

<i>Ref.</i>	<i>Part Number</i>	<i>Qty.</i>	<i>Description</i>	<i>Ref.</i>	<i>Part Number</i>	<i>Qty.</i>	<i>Description</i>
1	135-3598-01	1	Weld, Caster Fork	2:1:4	103-3051	1	Spacer-Nut
2	135-2148	1	ASM, Caster W/ Axle	2:1:5	103-0063	2	Seal-Caster
2:1		1	ASM, Caster W/ Bearings ●	2:2	325-39	1	Screw-HH
2:1:2	126-5361	1	Axle Caster ASM	2:3	99-5107	1	Nut-Lock
2:1:3	1-633585	2	Bearing-Cone, Taper	2:4	103-2768	2	Guard-Seal

● Not serviced separately

Engine Assembly



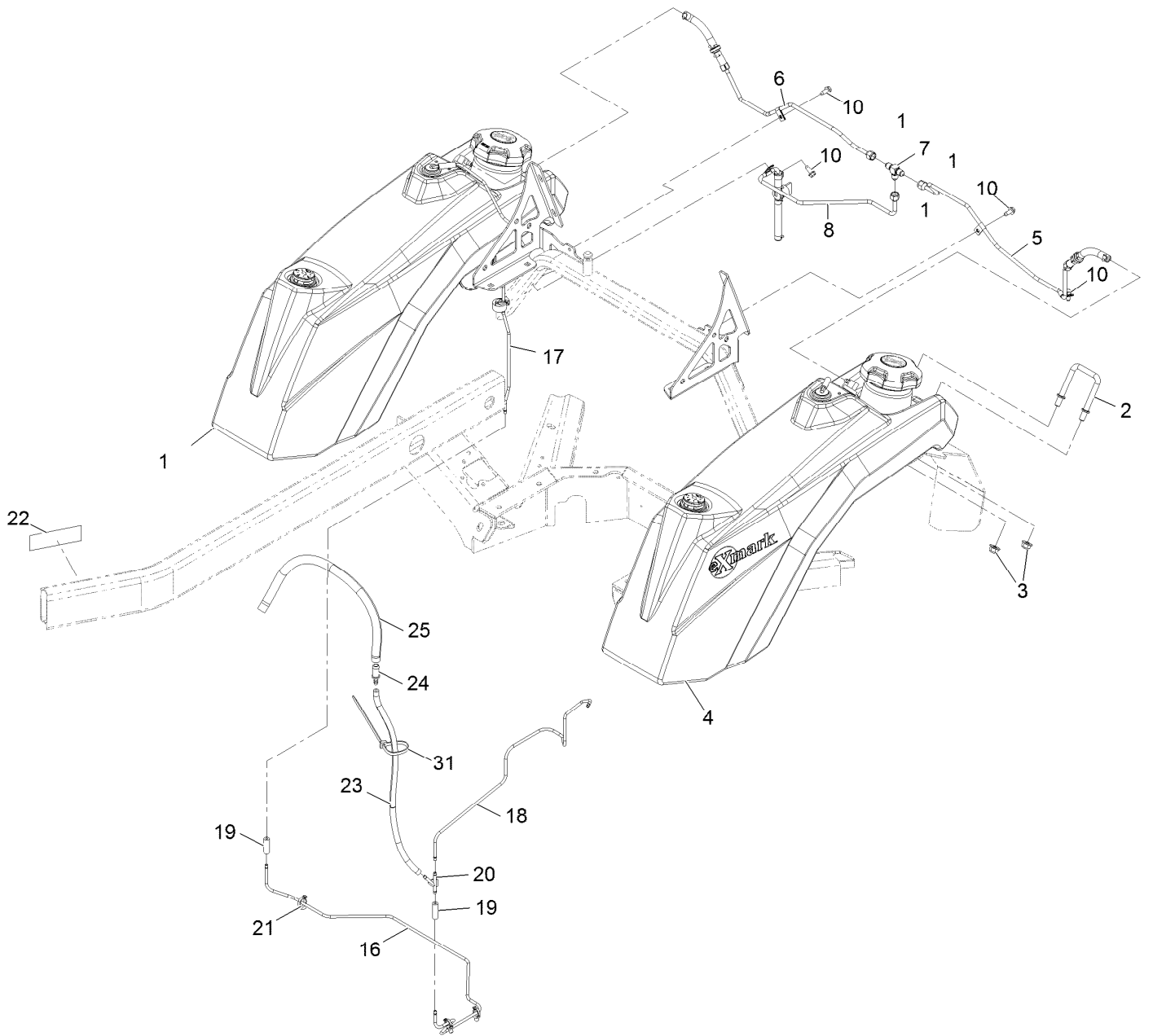
Engine Assembly (continued)

<i>Ref.</i>	<i>Part Number</i>	<i>Qty.</i>	<i>Description</i>	<i>Ref.</i>	<i>Part Number</i>	<i>Qty.</i>	<i>Description</i>
1	135-1615-03	1	Plate, Engine	16	126-0620	1	ASM, Clutch Anchor
2		1	Engine, Kawasaki Fx730 ■	17	237-136	1	Grommet
2:1		1	Kawasaki 49065-7007 Engine Oil Filter ■▲	18	1-543286	1	Grommet
2:2		1	Kawasaki 49019-0027 Fuel Filter ■▲	20	116-4924	1	Engine Oil Drain Hose ASM
2:3		1	Kawasaki 92070-7004 Plug-Spark Bpr4ES ■▲	20:1	353-508	1	Plug-HH ●
2:4		1	Kawasaki 11013-7045 Pre-Filter ■▲	20:1:1	237-42	1	O-Ring
2:5		1	Kawasaki 11013-7044 Air Filter ■▲	21	3296-4	1	Nut-Lock
3	135-1925	1	Spacer, Clutch	22	104-8301	6	Nut-HF, NI
4	135-1307	1	Clutch	23	3234-42	6	Screw-HHF
5	135-1308	1	Spacer, Clutch	24	98-5975	5	Washer-Belleville
8	135-5094	1	Header, Kawaswaki	25	3296-47	2	Nut-Lock, NI
9	114-3550	4	Washer-Lock	26	3230-18	2	Screw-CARR
10	114-3549	4	Nut	27	1-603610	2	Washer-Spring
11	135-5093	1	Muffler, 5"	28	87-2080	1	Bolt-Hex, TAP
12	104-4090	1	Clamp-Muffler	29	135-1198	1	Pulley, Crank
13	32128-25	2	Nut-HF	30	119-4061	1	Screw-HHF
14	130-2344	2	Bolt-Shoulder	31	126-0983	4	Screw-BHTF
15	135-1589	1	Strap, Clutch	32	135-6667	2	Spring, Compression
				33	135-6366	1	Shield, Heat
				34	32128-25	2	Nut-HF
				36	1-653313	2	Gasket-Exhaust

● Torque to 24-26 ft-lb
▲ Obtain parts from www.kawpowerepc.com

■ Not serviced separately

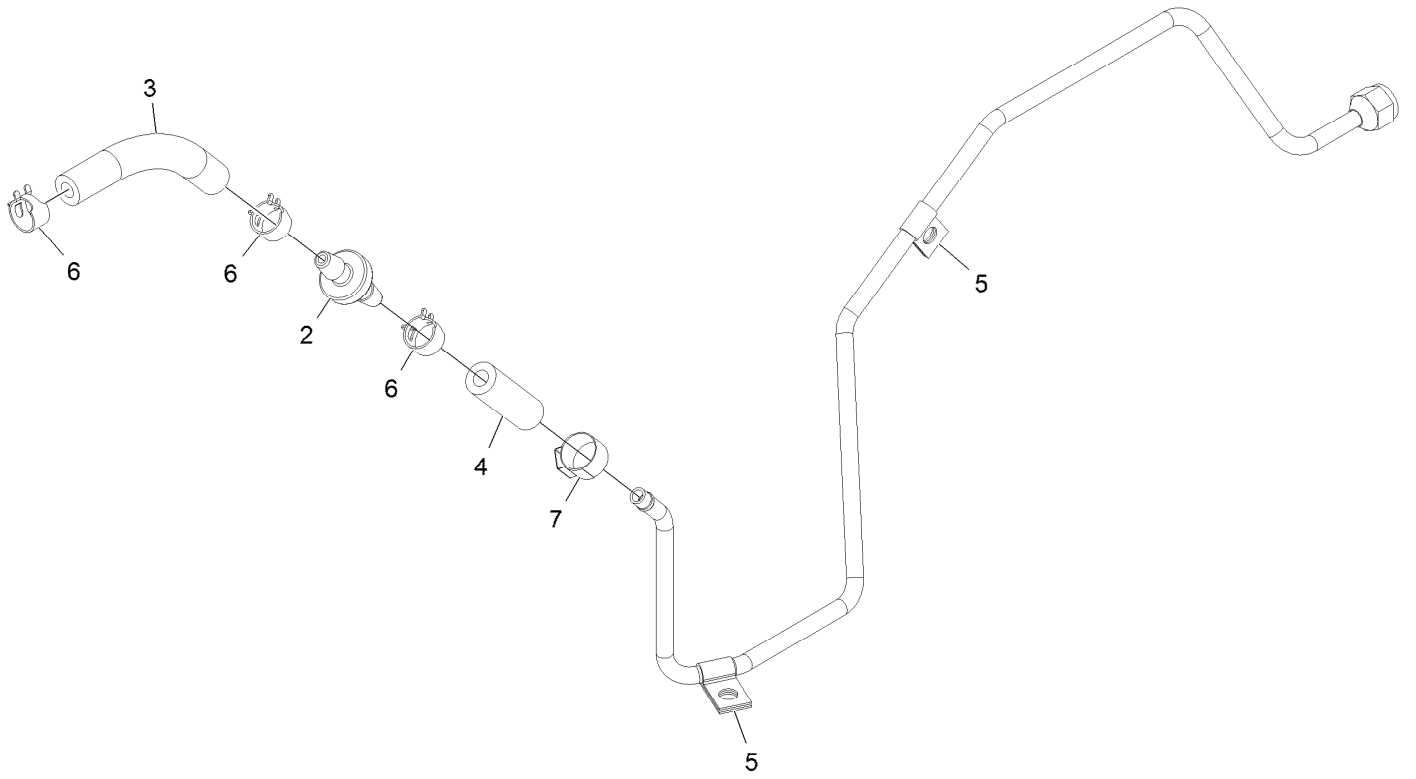
Fuel Assembly



Fuel Assembly (continued)

<i>Ref.</i>	<i>Part Number</i>	<i>Qty.</i>	<i>Description</i>	<i>Ref.</i>	<i>Part Number</i>	<i>Qty.</i>	<i>Description</i>
1	135-2227	1	ASM, Rt Fuel Tank	17	135-2221	1	Line, Vent, Right
2	135-7299	2	Clamp, Tank	18	135-7097	1	Line, Vent, Left
3	3296-59	4	Nut-Lock, NI	19	51-3216	5	Hose-Fuel
4	135-2225	1	ASM, Lt Fuel Tank	20	135-2222	1	Fitting, 3/16" Y
5	135-2197	1	ASM, Left Fuel Line	21	32180-030	4	Clip-Tie
6	135-2198	1	ASM, Right Fuel Line	22	133-8062	1	Decal-Arrestor, Spark
7	135-2203	1	Fitting, 2603-4-4-4	23	135-3950	1	Hose, Vent
8	135-2199	1	ASM, Kaw Fuel Line	24	98-2952	1	Fitting-Straight
10	32144-10	5	Screw-HWH 1/4-20 X .62	25	116-5087	1	Hose-Fuel
16	135-2219	1	Line, Vent, Main	31	1-303335	1	Tie-Cable 7 15/16 (Large)

Left Fuel Line Assembly

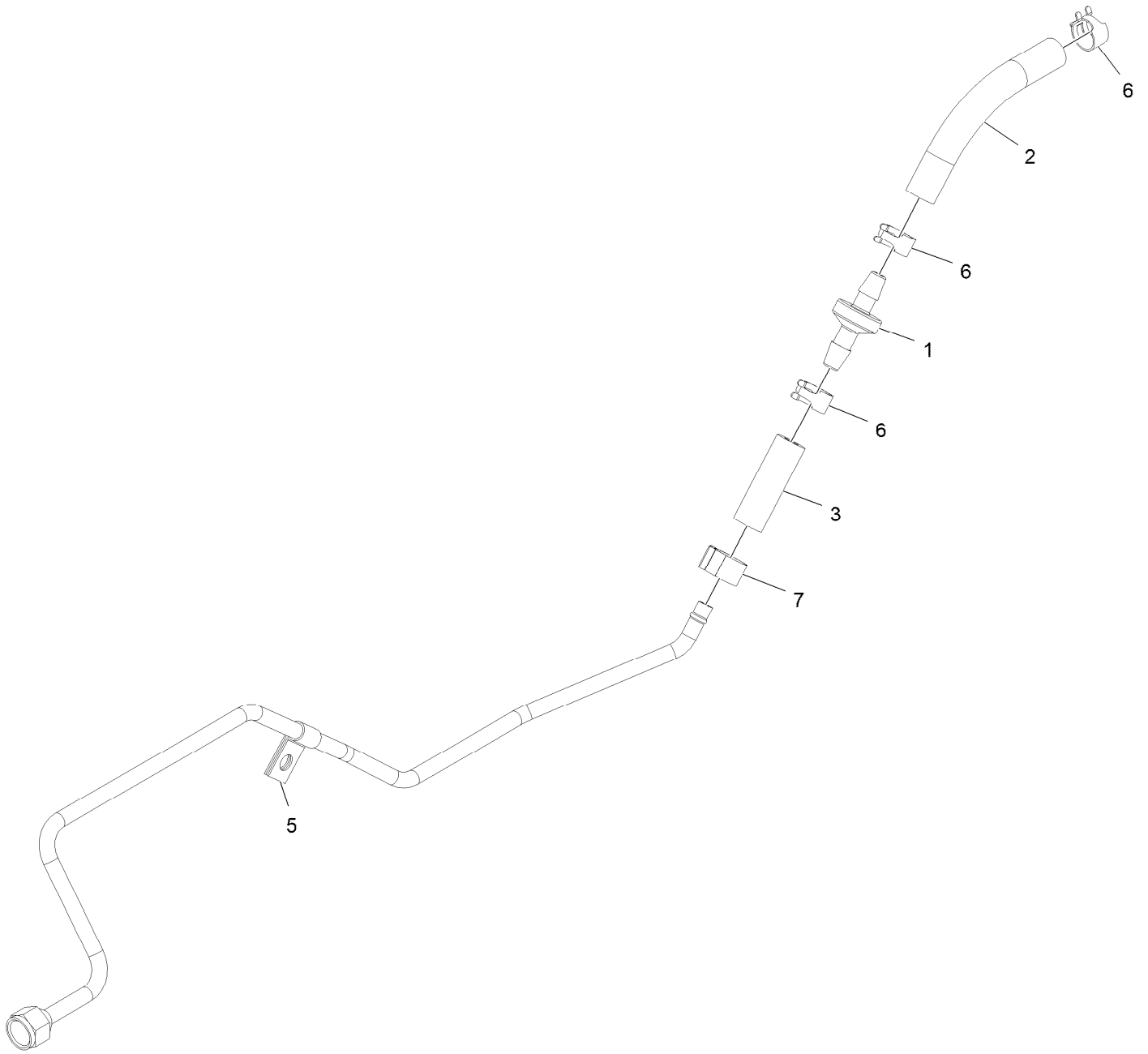


Left Fuel Line Assembly (continued)

<i>Ref.</i>	<i>Part Number</i>	<i>Qty.</i>	<i>Description</i>	<i>Ref.</i>	<i>Part Number</i>	<i>Qty.</i>	<i>Description</i>
2	99-5000	1	Valve-Check, Fuel	5	2412-72	2	Clip-Closed, Insulated
3	105-8342	1	Hose-Fuel	6	2412-98	3	Clamp-Hose
4		1	Hose-Fuel ●	7		1	Clamp-Hose, Fuel ●

● Not serviced separately

Right Fuel Line Assembly

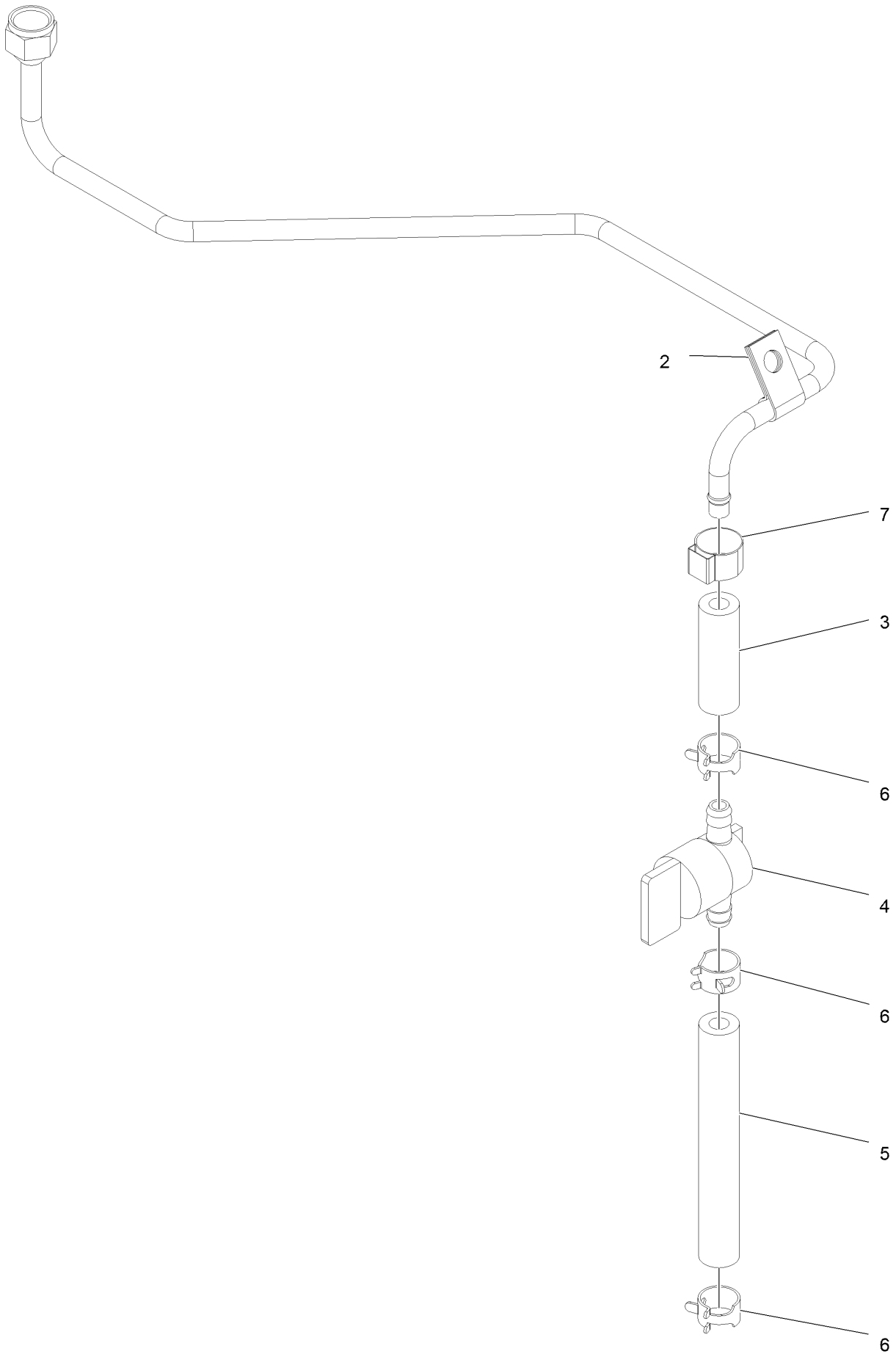


Right Fuel Line Assembly (continued)

<i>Ref.</i>	<i>Part Number</i>	<i>Qty.</i>	<i>Description</i>	<i>Ref.</i>	<i>Part Number</i>	<i>Qty.</i>	<i>Description</i>
1	99-5000	1	Valve-Check, Fuel	5	2412-72	1	Clip-Closed, Insulated
2	105-8342	1	Hose-Fuel	6	2412-98	3	Clamp-Hose
3		1	Hose-Fuel ●	7		1	Clamp-Hose, Fuel ●

● Not serviced separately

Fuel Line Assembly

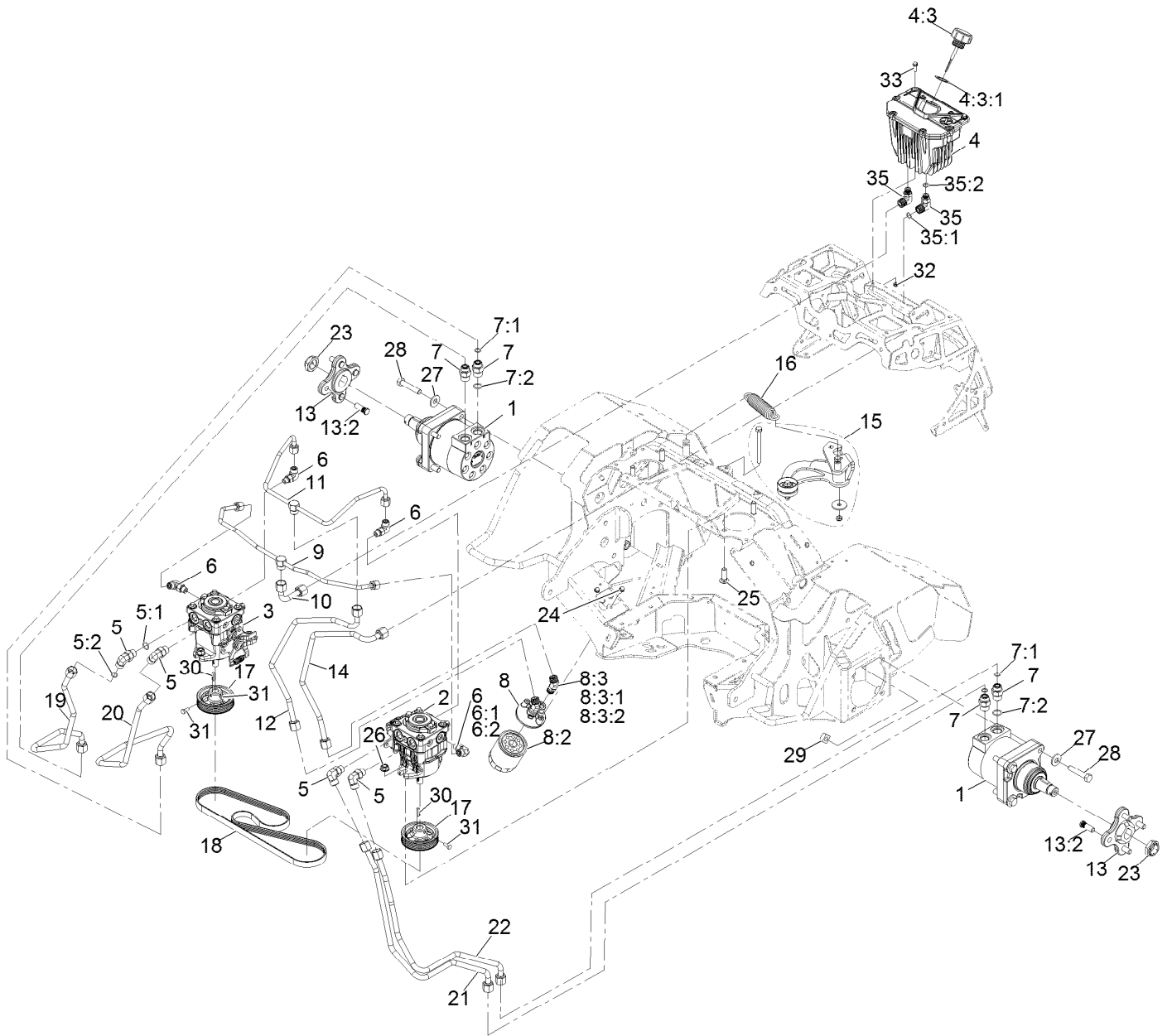


Fuel Line Assembly (continued)

<i>Ref.</i>	<i>Part Number</i>	<i>Qty.</i>	<i>Description</i>	<i>Ref.</i>	<i>Part Number</i>	<i>Qty.</i>	<i>Description</i>
2	2412-72	1	Clip-Closed, Insulated	5	109-0660	1	Hose-Fuel
3		1	Hose-Fuel ●	6	2412-98	3	Clamp-Hose
4	1-603770	1	Valve-Fuel	7		1	Clamp-Hose, Fuel ●

● Not serviced separately

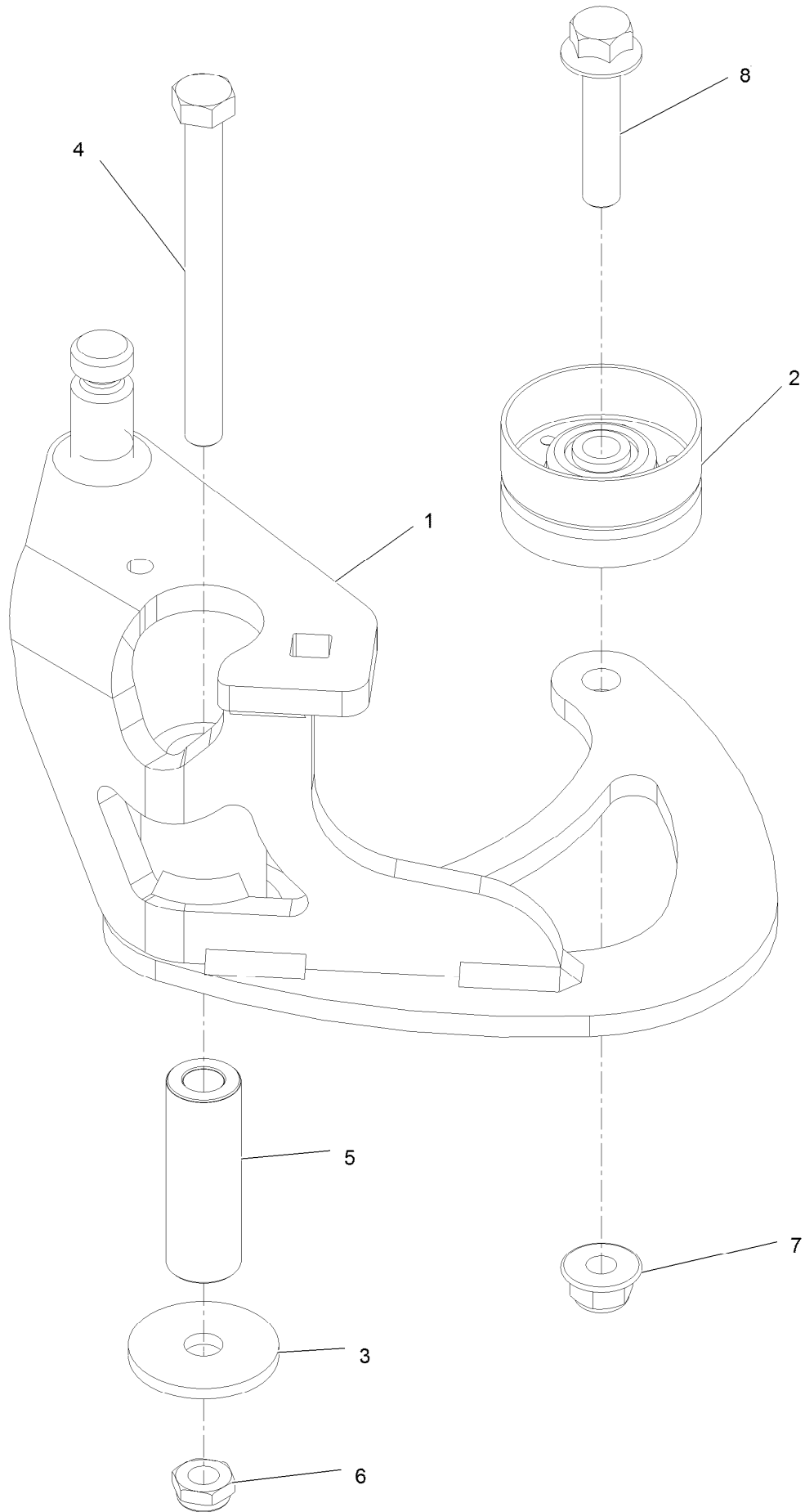
Hydraulic Assembly



Hydraulic Assembly (continued)

<i>Ref.</i>	<i>Part Number</i>	<i>Qty.</i>	<i>Description</i>	<i>Ref.</i>	<i>Part Number</i>	<i>Qty.</i>	<i>Description</i>
1	135-1162	2	Motor, T1195	13:2	116-1696	4	Stud-Wheel
2	135-1926	1	Pump, 12Cc	14	135-7052	1	Line, Hydraulic, Supply
3	135-1927	1	Pump, 12Cc	15	135-1270	1	ASM, Idler Arm
4	135-3305	1	ASM, Hydraulic Reservoir	16	135-1272	1	Spring, Extension
4:3	116-9273	1	Reservoir Cap ASM	17	135-1197	2	Pulley, Pump
4:3:1	103-1949	1	Gasket-Cap	18	135-1196	1	Belt, Pvk5
5	340-98	4	Fitting-Elbow, 90 DEG	19	135-3151	1	Line, Hydraulic, B-A
5:1	237-79	1	O-Ring	20	135-3152	1	Line, Hydraulic, A-B
5:2	237-30	1	O-Ring	21	135-3153	1	Line, Hydraulic, B-B
6	340-77	4	Fitting-Elbow, 90 DEG	22	135-3154	1	Line, Hydraulic, A-A
6:1	237-22	1	O-Ring	23	116-1399	2	Locknut
6:2	237-42	1	O-Ring	24	119-1065	2	Screw-HWH
7	340-6	4	Fitting-Straight	25	3232-3	4	Bolt-Carriage 7/16-14 X 1 1/2
7:1	237-30	1	O-Ring	26	114-8417	4	Nut-HF, NI
7:2	237-80	1	O-Ring	27	1-513435	8	Washer-Spring Disc 1/2
8	135-2179	1	ASM, Filter Head	28	325-10	8	Screw-HH 1/2-13 X 2 1/2
8:2	109-4180	1	Element, Oil Filter	29	3290-510	8	Nut-Square
8:3	340-96	2	Adapter	30	1-807272	2	Key-5Mm X 5Mm X 25Mm
8:3:1	237-30	1	O-Ring	31	110-9381	4	Screw-HH
8:3:2	237-42	1	O-Ring	32	3296-56	2	Nut-Nyloc 1/4-20 Thin
9	135-7056	1	Line, Hydraulic, Case Tee	33	32105-15	2	Screw-Machine 1/4-20 X 3/4
10	135-7054	1	Line, Hydraulic, Case	35	340-99	2	Fitting-HYD, 90 DEG
11	135-7055	1	Line, Hydraulic, Charge Tee	35:1	237-30	1	O-Ring
12	135-7053	1	Line, Hydraulic, Charge	35:2	237-42	1	O-Ring
13	135-2214	2	ASM, Hub W/ Studs				

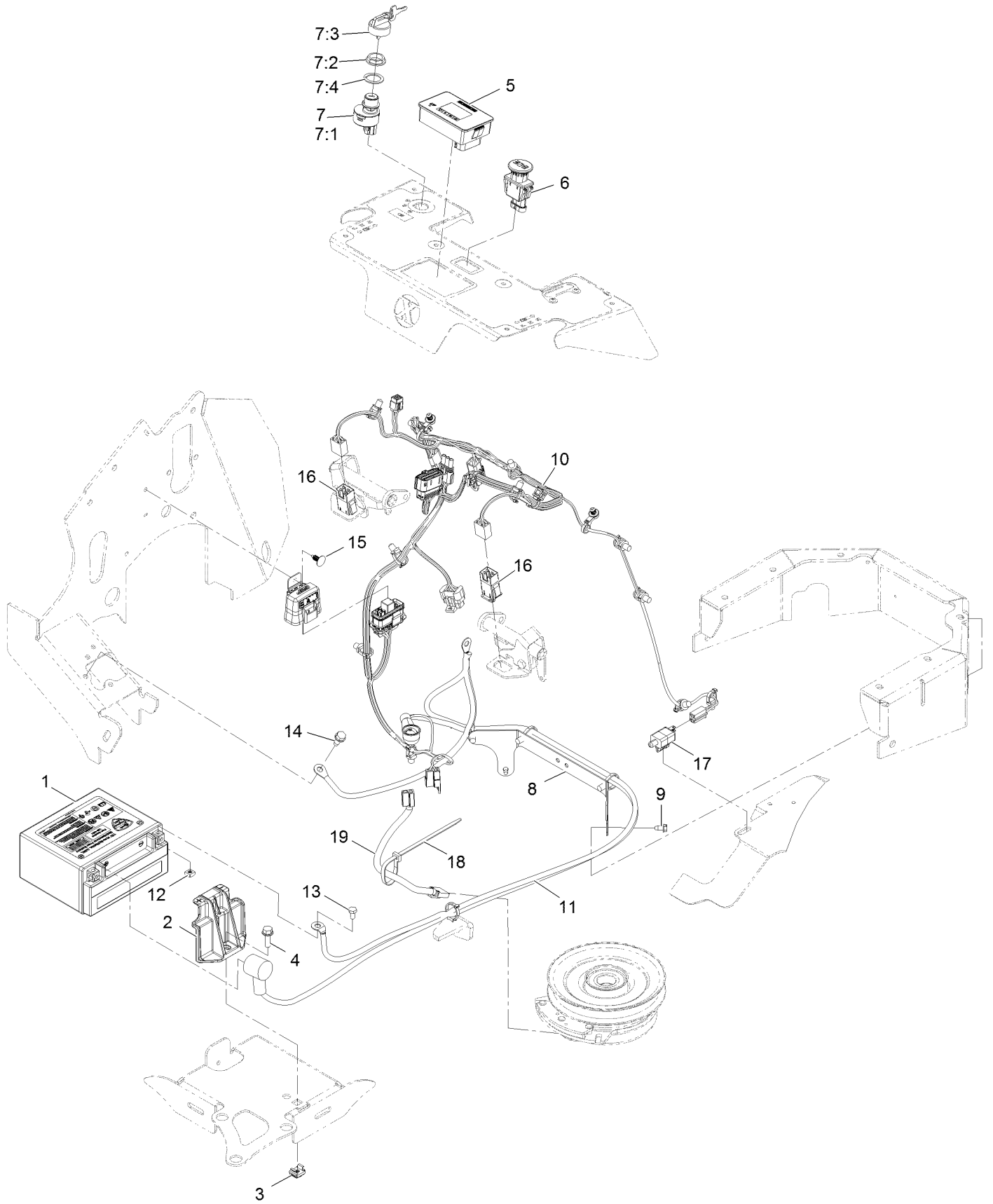
Idler Arm Assembly



Idler Arm Assembly (continued)

<i>Ref.</i>	<i>Part Number</i>	<i>Qty.</i>	<i>Description</i>	<i>Ref.</i>	<i>Part Number</i>	<i>Qty.</i>	<i>Description</i>
1	135-2238	1	ASM, Idler Arm W/ Bushings	5	135-1273	1	Tube, Idler Pivot
2	135-1199	1	Idler, Flat	6	3296-59	1	Nut-Nyloc 3/8-16 Thin
3	1-213069	1	Washer	7	104-8301	2	Nut-Nyloc 3/8-16 Flg
4	323-16	1	Screw-HH 3/8-16 X 4	8	3234-19	1	Screw-HHF 3/8-16 X 1 3/4

Electrical Assembly



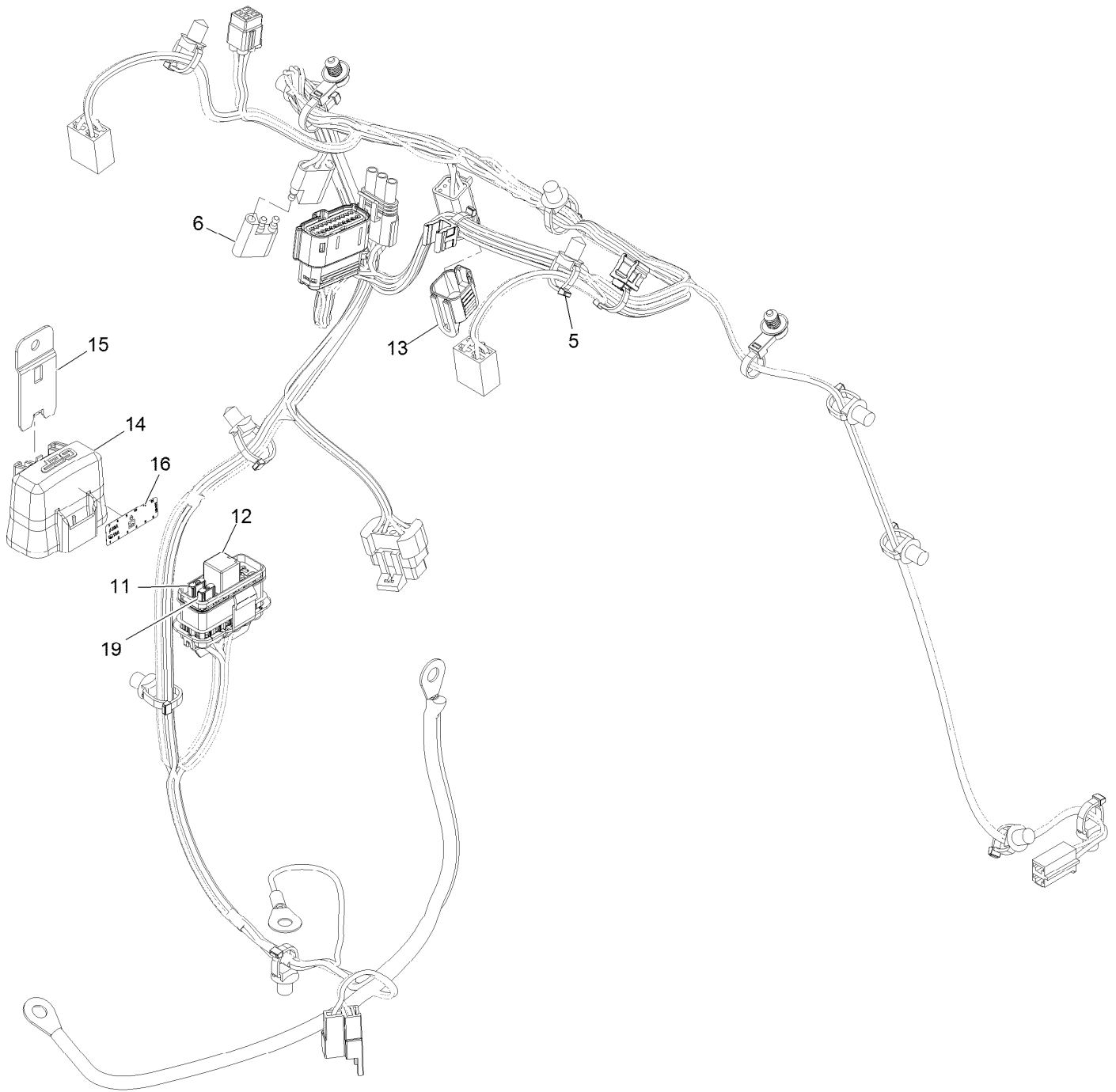
Electrical Assembly (continued)

<i>Ref.</i>	<i>Part Number</i>	<i>Qty.</i>	<i>Description</i>	<i>Ref.</i>	<i>Part Number</i>	<i>Qty.</i>	<i>Description</i>
1	135-4421	1	Battery, Agm	10	135-2021	1	Harness-Wiring ■
2	135-4422	1	Hold Down, Battery	11	135-2126	1	Harness-Battery
3	135-4473	1	Nut, Snap	12	HDW13708	2	Square Nut 1/4-20,ATV CB
4	3234-29	1	Screw-HH Flg 5/16-18 X 1	13	321-2	2	Screw-HH 1/4-20 X 1/2
5	135-2471	1	Meter-Hour	14	32144-11	1	Screw-HWH 5/16-18 X 3/4 Tf
6	126-6187	1	Switch-PTO, Sealed	15	117-2382	1	Plug-Plastic
7	126-6285	1	Ignition Switch ASM	16	104-3338	2	Switch-Delta
7:1		1	Switch-Ignition ●	17	110-6765	1	Switch
7:2	108-8660	1	Nut-Mounting	18	1-303335	1	Tie-Cable 7 15/16 (Large)
7:3	106-5270	1	Ignition Key Set	19	126-0624	1	Harness-Clutch Pigtail
7:4	108-8659	1	Washer-Backup				
8	135-1924-03	1	Support, Battery Cable				
9	32104-17	2	Screw-HWH 1/4-20 X 1/2 Tap				

● Not serviced separately

■ Use dielectric grease on all unsealed connectors and terminals only. Do not apply in sealed connectors.

Harness Assembly



Harness Assembly (continued)

<i>Ref.</i>	<i>Part Number</i>	<i>Qty.</i>	<i>Description</i>	<i>Ref.</i>	<i>Part Number</i>	<i>Qty.</i>	<i>Description</i>
5	32180-030	12	Clip-Tie	14	32180-176	1	Cover-Block, Fuse
6	32180-197	1	Cap-Plug	15	32180-177	1	Clip-Mounting
11	121-8868	1	Fuse-Mini Blade, 20 Amp	16	126-7875	1	Decal-Fuse
12	126-3991	1	Relay-Micro	19	121-8867	1	Fuse-Mini Blade, 15 Amp
13	32180-156	1	Cap-Plug, 6 Way				

Notes:



MAXIMIZE THE PERFORMANCE OF YOUR EXMARK MACHINE.



EXMARK® PREMIUM ENGINE OIL

Exmark now offers a family of engine oil viscosities to perform well in any environment. Each viscosity has the same synthetic formulation to give you what you need in punishing conditions. We designed each grade to the highest quality, making it ideal even for diesel applications. Coupled with Exmark Premium Fuel Treatment, we have the performance products to make your machine hum.

EXMARK PREMIUM ENGINE OIL SAE 30/10W-30

- Meets zero shear requirements of a straight grade SAE 30 as well as the cold temp properties of a 10W-30.
- Most versatile oil in the industry.
- Superior corrosion protection over conventional oil - even in corrosive, humid environments.

EXMARK PREMIUM ENGINE OIL SAE 20W-50

- Perfect for your big block engine, or any application in severe service.
- Same full synthetic formulation as all other Exmark Premium viscosities.
- Also effective for use in severe service small block engines.

EXMARK PREMIUM ENGINE OIL SAE 10W-50

- Full synthetic formulation gives you peak performance. Don't settle for less.
- Wide span multi-grade combines easy starting in cold weather with maximum protection in high temperature operation.
- Reduce friction & wear over standard mineral formulations.

EXMARK PREMIUM ENGINE OIL SAE 0W-40

- The perfect choice for when the weather turns cold or unpredictable, and your Exmark UTV has to perform.
- Commercial quality for severe service.
- Advanced additive package helps prevent corrosion from long-term storage.

EXMARK PREMIUM ENGINE OIL UTV FORMULATION

- 4-cycle high-temp formulation.
- Heavier viscosity, full synthetic, perfect for your UTV.

EXMARK PREMIUM UTV EXTREME CONDITIONS GEAR OIL

- SAE 80W-90, designed to keep your UTV performing at its peak.
- Shear stable, hypoid gear lube.
- Includes a premium additive system to combat wear, oxidation, rust & corrosion.

Available from your local Exmark dealer. Find your closest dealer at exmark.com

EXMARK ACCESSORIES AND OPTIONS*

MID-MOUNT RIDING ACCESSORIES AND OPTIONS

CUSTOM RIDE SEAT SUSPENSION SYSTEM	OPERATOR CONTROLLED DISCHARGE
FULL SUSPENSION SEAT	SUN SHADE
DECK LIFT ASSIST KIT	TRASH CONTAINER
HITCH KIT	TURF STRIPER
LIGHT KIT	ULTRA VAC COLLECTION SYSTEM
12V POWER PORT	ULTRA VAC QUICK DISPOSAL SYSTEM
MICRO-MULCH SYSTEM	

OUT-FRONT RIDING ACCESSORIES AND OPTIONS

CUSTOM RIDE SEAT SUSPENSION SYSTEM	SNOW BLADE
DUAL-TAIL WHEEL	SNOWBLOWER
FLOOR PAN EXTENDER	SUN SHADE
HITCH KIT	TRASH CONTAINER
LIGHT KIT	ULTRA VAC COLLECTION SYSTEM
MICRO-MULCH SYSTEM	ULTRA VAC QUICK DISPOSAL SYSTEM
ROLL OVER PROTECTION SYSTEM (ROPS)	WEATHER CAB

WALK-BEHIND ACCESSORIES AND OPTIONS

GRASS CATCHER	TURF STRIPER
MICRO-MULCH SYSTEM	STANDON

*Some accessories and options not available for some models.

Place Model No. and Serial No.
Label Here (Included in the Literature
Pack) or Fill in Below

Model No. _____

Serial No. _____

Date Purchased _____

Engine Model No. and Spec. No. _____

Engine Serial No. (E/No) _____

© 2019 Exmark Mfg. Co., Inc.
2101 Ashland Ave
Beatrice, NE 68310
All Rights Reserved

Part No. 4504-290 Rev. B
(402) 223-6375
Fax (402) 223-5489
Printed in the USA.

