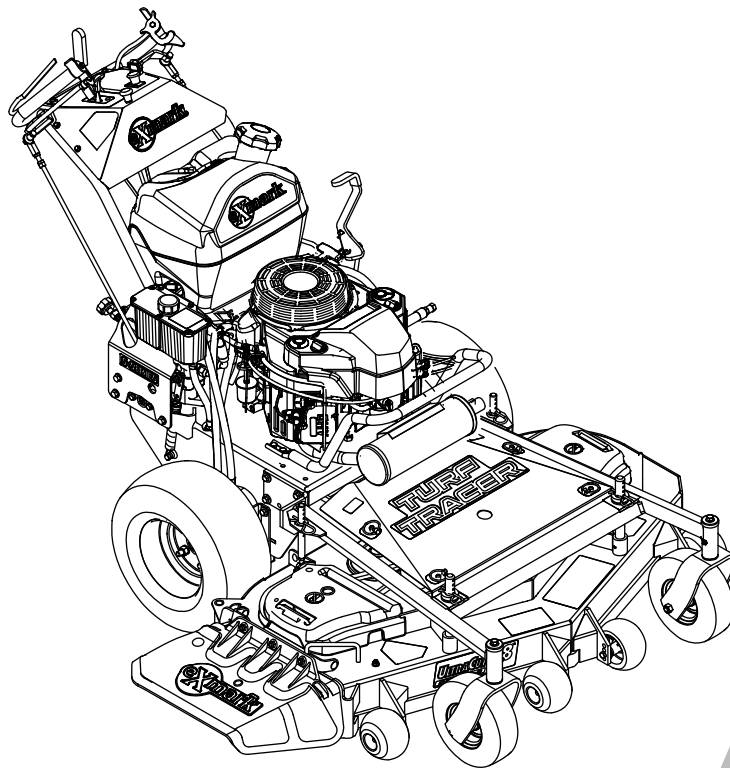




TURF TRACER® X-SERIES

Model No. TTX691CKA60400—Serial No. 404314159 and Up

Picture below may not reflect actual product.



Parts Manual

Part No. 4503-991 Rev. A

Ordering Replacement Parts

To order replacement parts, please supply the part number, the quantity, and the description of each part desired.

Understanding Reference Numbers

Each identified part in an illustration has a reference number. The reference number for a part also appears in the parts list, along with other information about the part.

This catalog uses two special reference number formats, one to indicate parts in a service assembly and another to indicate the quantity of a given part in an illustration.

Service Assembly Reference Numbers

Parts in service assemblies have reference numbers in the form a:b. The a represents the reference number of the entire service assembly and the b represents a sequential number unique to each part within the service assembly.

For example, a wheel assembly might be identified by reference number 6, the tire by 6:1, the valve by 6:2, and the wheel by 6:3. When you order the assembly identified by reference number 6, you receive all parts identified by reference numbers 6:1, 6:2, and 6:3. However, you may also order any part individually. Reference numbers of this type appear in illustration and in parts lists.

Reference Numbers Indicating Quantity

In an illustration, if a reference number indicates more than one part, the reference number has the form nX y. The n represents the quantity of the part, the X is the multiplication symbol, and the y represents the reference number.

For example, in an illustration, the reference number 2X 37 means that two of the parts identified by reference number 37 are indicated.

Touch Up Paint

Exmark black touch up spray paint – gloss black.

Exmark red touch up paint (spray paint – P/N 1-850337 - .6 oz liquid bottle – P/N 103-9140).

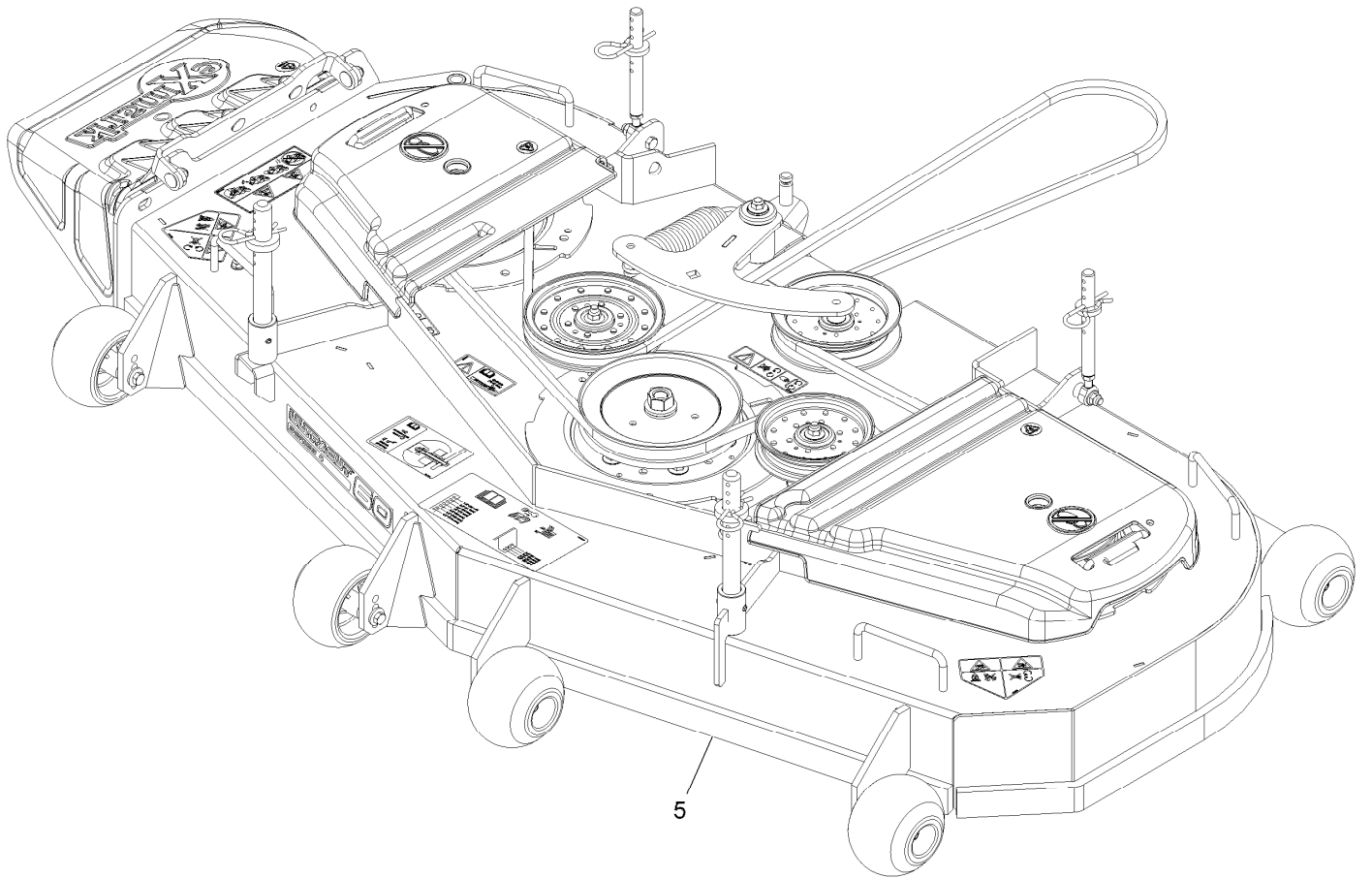


If your Exmark dealer does not have the Exmark part in stock, Exmark will get the parts to the dealer the next business day or the part will be FREE Guaranteed!! (Some restrictions apply. See your participating Exmark Dealer for details.)

Contents

| | |
|---------------------------------------|----|
| Complete Deck Assembly..... | 4 |
| Deck Assembly..... | 6 |
| Deck W/Decals Assembly..... | 8 |
| Deck Idler Assembly No. 126-2314..... | 10 |
| Main Frame Assembly..... | 12 |
| Front Frame Assembly..... | 14 |
| Engine Deck Assembly..... | 16 |
| Engine Assembly..... | 18 |
| Handle Assembly..... | 20 |
| Controls Assembly..... | 22 |
| Hydro Assembly..... | 24 |
| Electrical Assembly..... | 26 |
| Fuel Tank Assembly..... | 28 |

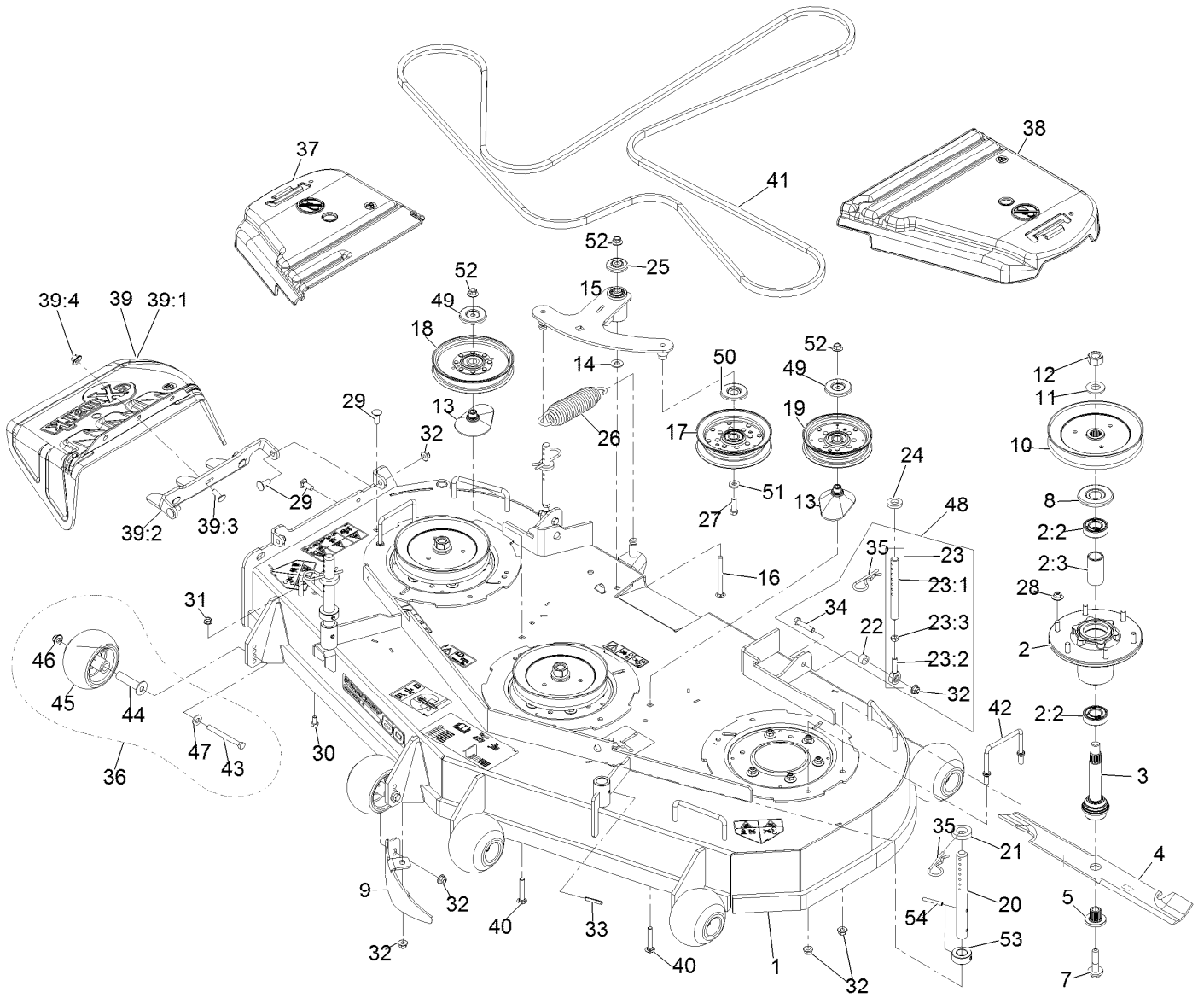
Complete Deck Assembly



Complete Deck Assembly (continued)

| <i>Ref.</i> | <i>Part Number</i> | <i>Qty.</i> | <i>Description</i> |
|-------------|--------------------|-------------|------------------------|
| 5 | 126-2537 | 1 | ASM, Complete Deck, 60 |

Deck Assembly



Deck Assembly (continued)

| Ref. | Part Number | Qty. | Description | Ref. | Part Number | Qty. | Description |
|------|-------------|------|-------------------------------------|------|-------------|------|-------------------------|
| 1 | 126-2570 | 1 | ASM, Deck W/ Decals, 60" | 25 | 103-2916 | 1 | Guard-Top |
| 2 | 116-3344 | 3 | ASM-Cutter Hsg With Bearings | 26 | 116-6317 | 1 | Spring-Extension |
| 2:2 | 116-0720 | 2 | Bearing-Ball | 27 | 323-7 | 1 | Screw-HH |
| 2:3 | 116-3312 | 1 | Spacer-Bearing | 28 | 109-6658 | 18 | Nut-Flange, NI |
| 3 | 116-3341 | 3 | ASM-Spindle And Seal □ | 29 | 3231-22 | 4 | Screw-CARR |
| 4 | 116-5174 | 3 | Blade-Extreme 2, 20.50" ● | 30 | 322-2 | 1 | Screw-HH |
| 4 | 103-6403 | 3 | Blade, Notched | 31 | 104-8300 | 1 | Nut-HF, NI |
| 4 | 103-6393 | 3 | Blade, Mulching ◆ | 32 | 104-8301 | 10 | Nut-HF, NI |
| 4 | 103-6388 | 3 | Blade, Low Lift ● | 33 | 1-806332 | 2 | Roll Pin, 1/4 X 1-1/2 |
| 4 | 103-6383 | 3 | Blade, Solid ● | 34 | 323-9 | 2 | Screw-HH |
| 5 | 103-3037 | 3 | Bushing, Splined | 35 | 1-806009 | 4 | Hairpin, .177 |
| 7 | 109-9220 | 3 | Screw,Sems (1/2-20 X 2.19, GR5) ■ ○ | 36 | 116-9981 | 6 | Kit, Anti-Scalp Roller |
| 8 | 116-1286 | 3 | Guard,Bearing Top .989 | 37 | 116-0094 | 1 | Cover-Belt, RH |
| 9 | 116-5614-01 | 1 | Dogleg - Lz60 | 38 | 109-6938 | 1 | Cover-Belt, LH |
| 10 | 116-0676 | 3 | Sheave,Blade Drive 7.25 | 39 | 109-7188 | 1 | ASM,Discharge Chute |
| 11 | 103-2802 | 3 | Washer | 39:1 | 109-2738 | 1 | Chute, Discharge |
| 12 | 116-7306 | 3 | Nut-Hex ▲ | 39:2 | 109-8675-01 | 1 | Bracket,Discharge Chute |
| 13 | 109-2872 | 2 | Spacer-Pulley | 39:3 | 3231-22 | 3 | Screw-CARR |
| 14 | 3256-4 | 1 | Washer-Flat | 39:4 | 109-6658 | 3 | Nut-Flange, NI |
| 15 | 126-2314 | 1 | ASM, Deck Idler | 40 | 3231-40 | 2 | Bolt-CARR, Short Neck |
| 16 | 3231-24 | 1 | Screw-CARR | 41 | 126-2539 | 1 | Belt, Deck Drive |
| 17 | 126-9196 | 1 | Idler-Pulley, Flat | 42 | 109-6982 | 2 | Wireform-Cover |
| 18 | 126-7685 | 1 | Idler-Pulley | 43 | 116-9362 | 6 | Screw-HH |
| 19 | 126-9187 | 1 | Pulley-Idler, Flat | 44 | 116-8131 | 6 | Axle, Roller |
| 20 | 135-4829 | 2 | Rod, Deck Support | 45 | 103-8415 | 6 | Roller-Anti-Scalp |
| 21 | 1-413425 | 2 | Spacer-Deck Support | 46 | 109-6658 | 6 | Nut-Flange, NI |
| 22 | 1-603050 | 2 | Spacer | 47 | 98-5975 | 6 | Washer-Belleville |
| 23 | 1-414521 | 2 | Link Assy | 48 | 1-411532 | 2 | Kit, Support Link W/Pin |
| 23:1 | 1-413525 | 1 | Link, Rear Deck Support | 49 | 126-8043 | 2 | Shield-Dust |
| 23:2 | 1-613204 | 1 | Balljoint | 50 | 126-9195 | 1 | Shield-Guard, Dust |
| 23:3 | 3220-3 | 1 | Nut-HJ | 51 | 43-0940 | 1 | Spacer |
| 24 | 1-323539 | 2 | Spacer | 52 | 32128-19 | 3 | Nut-HF |
| | | | | 53 | 135-4828 | 2 | Collar, Deck Height Pin |
| | | | | 54 | 32121-32 | 2 | Pin-Roll |

● Optional Equipment

▲ Torque to 130-160 ft-lb

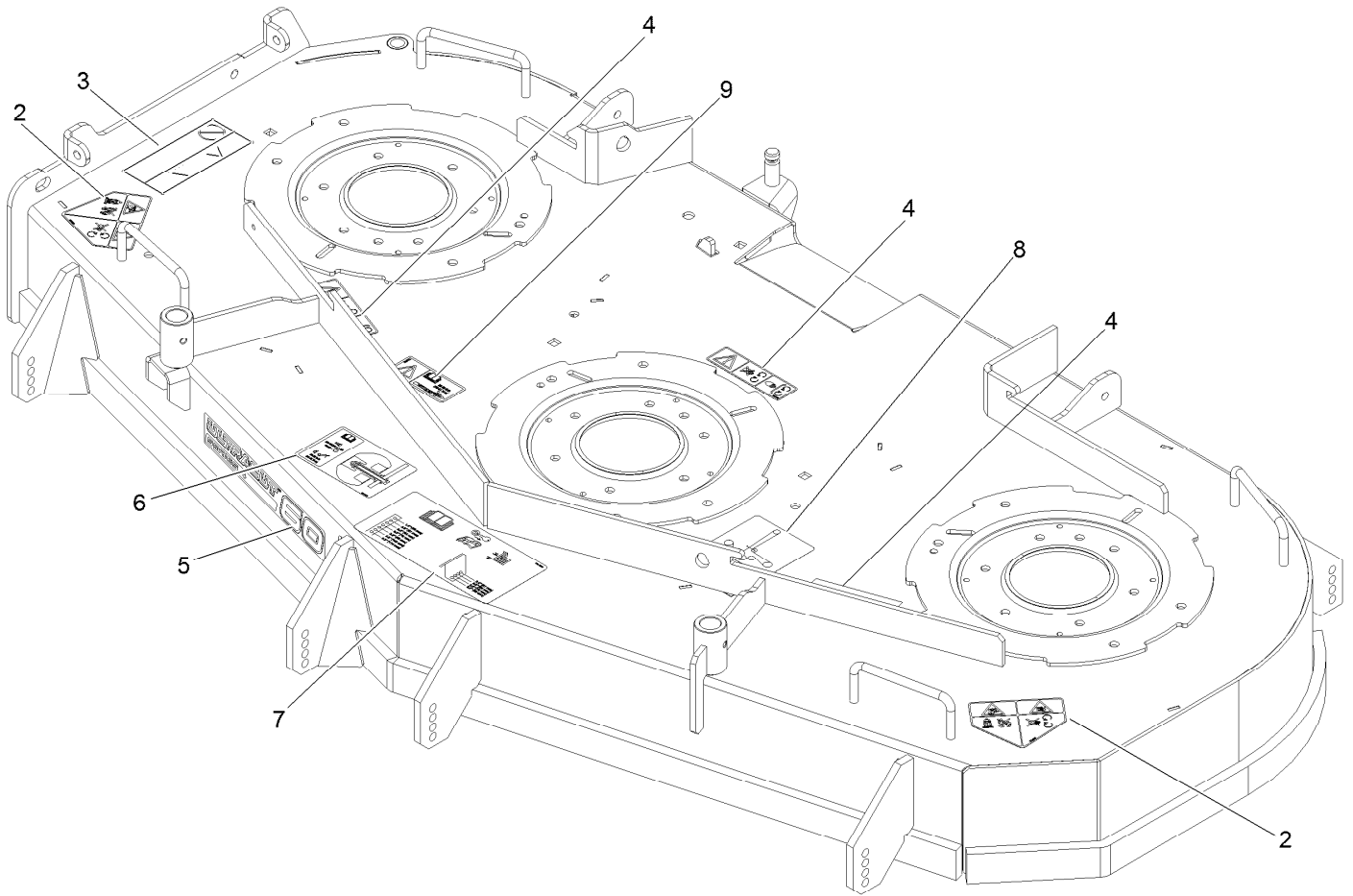
◆ Requires installation of mulch kit for proper mulching. See your Exmark dealer for details.

□ Apply Mobil HTS grease (P/N 103-5217 1.5 oz packet) (or a food-grade anti-seize). See operator s manual for locations.

○ Apply lubricant to threads as needed to prevent seizing. Copper based anti-seize preferable. Grease is an acceptable substitute.

■ Torque to 50-60 ft-lb

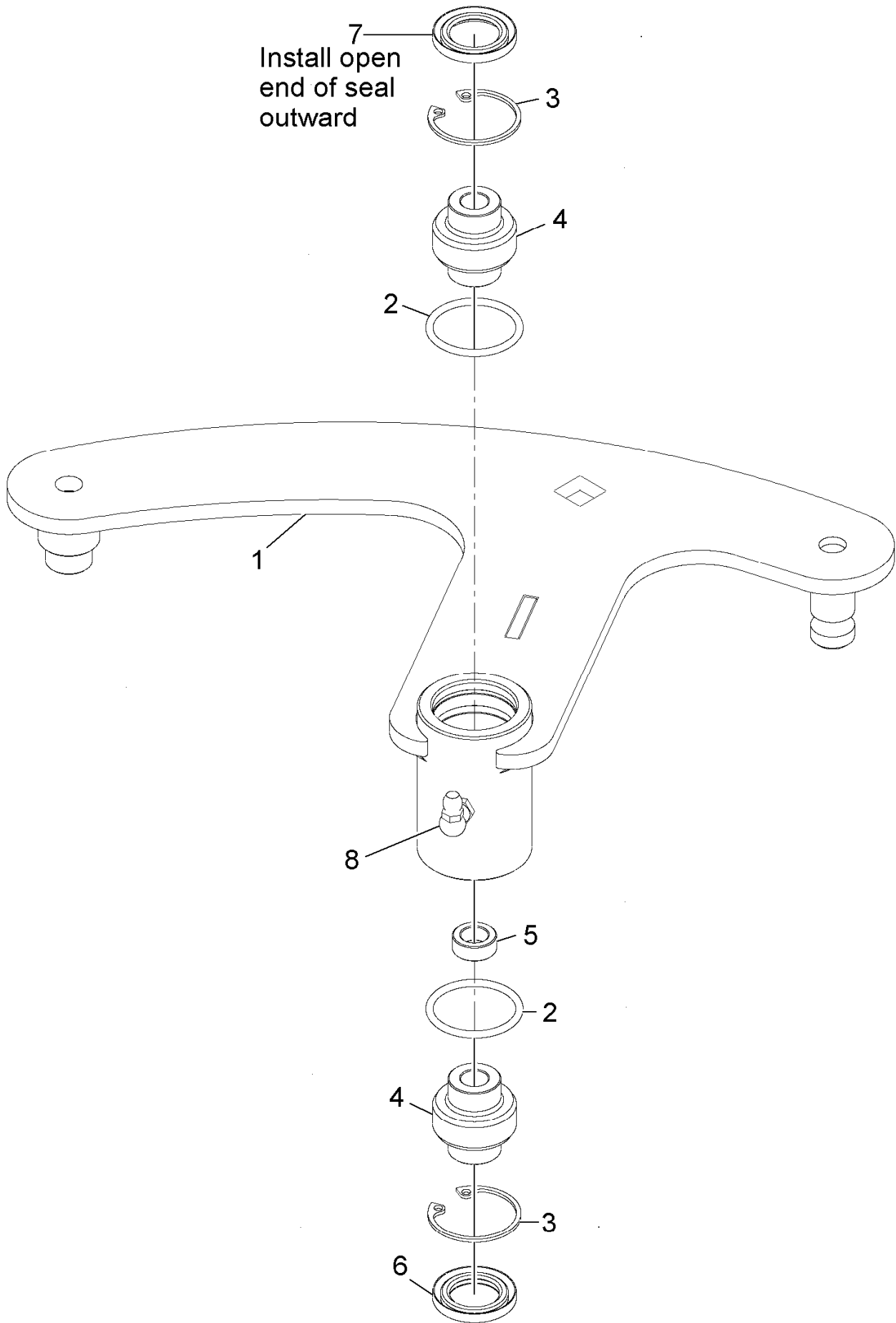
Deck W/Decals Assembly



Deck W/Decals Assembly (continued)

| <i>Ref.</i> | <i>Part Number</i> | <i>Qty.</i> | <i>Description</i> | <i>Ref.</i> | <i>Part Number</i> | <i>Qty.</i> | <i>Description</i> |
|-------------|--------------------|-------------|--------------------------|-------------|--------------------|-------------|-----------------------|
| 2 | 112-8760 | 2 | Decal-Danger | 6 | 126-0898 | 1 | Decal-Roller Mounting |
| 3 | 135-5210 | 1 | Decal-Warning Thrown Obj | 7 | 116-8278 | 1 | Decal-Anti-Scalp |
| 4 | 112-9028 | 3 | Decal-Cover, Missing | 8 | 116-8727 | 1 | Decal-Belt Routing |
| 5 | 126-6589 | 1 | Decal, 604 | 9 | 116-8283 | 1 | Decal-Bolt Torque |

Deck Idler Assembly No. 126-2314

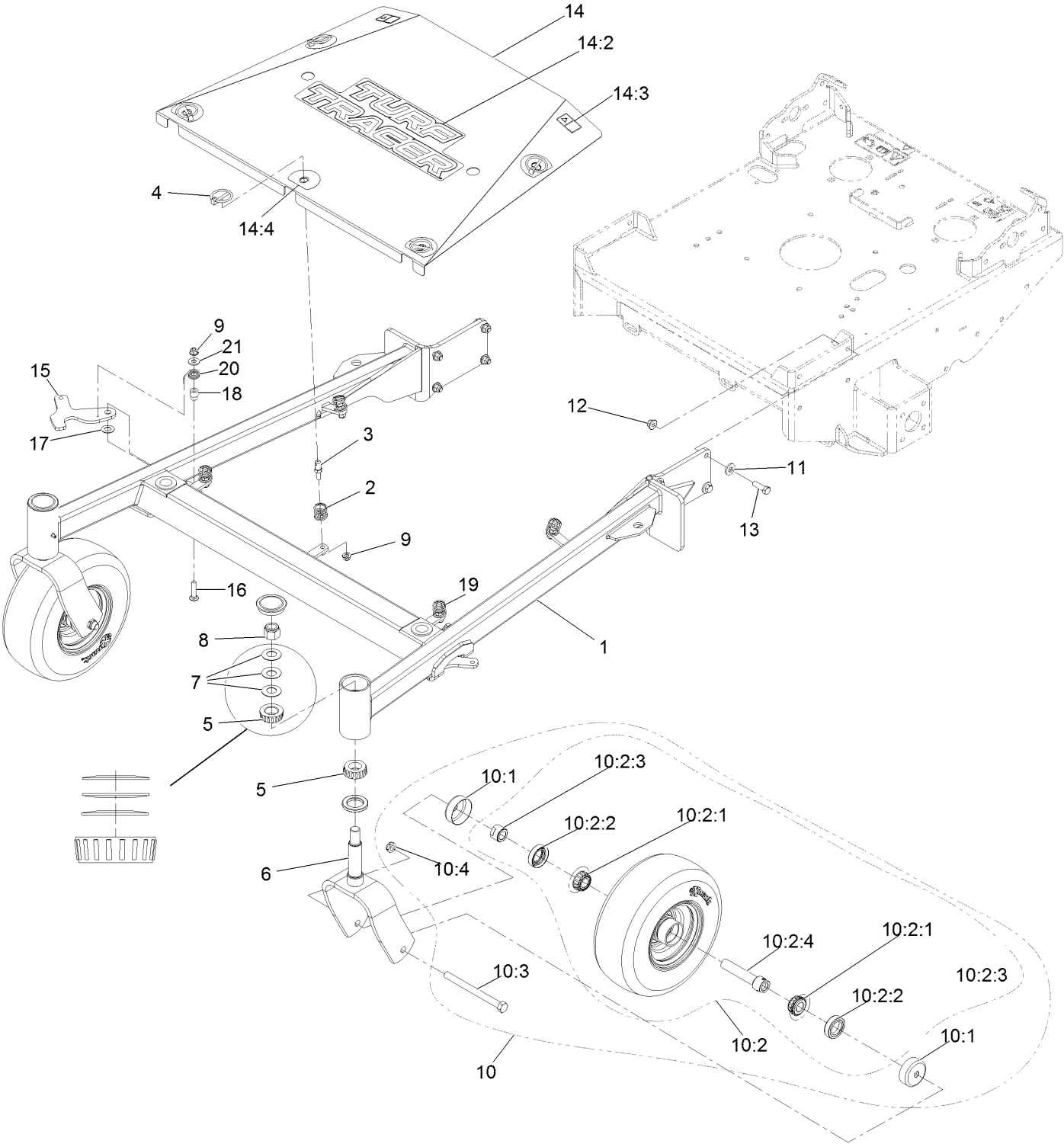


Deck Idler Assembly No. 126-2314 (continued)

| <i>Ref.</i> | <i>Part Number</i> | <i>Qty.</i> | <i>Description</i> | <i>Ref.</i> | <i>Part Number</i> | <i>Qty.</i> | <i>Description</i> |
|-------------|--------------------|-------------|--------------------|-------------|--------------------|-------------|------------------------|
| 1 | | 1 | Weld, Idler Arm ● | 5 | 103-5677 | 1 | Spacer |
| 2 | 106-7159 | 2 | O-Ring | 6 | 103-3505 | 1 | Seal-Lip, Double |
| 3 | 32120-10 | 2 | Ring-Snap | 7 | 103-3506 | 1 | Seal-Lip, Single |
| 4 | 103-3504 | 2 | Bearing-Spherical | 8 | 302-40 | 1 | Fitting-Grease, 90 DEG |

● Not serviced separately

Main Frame Assembly

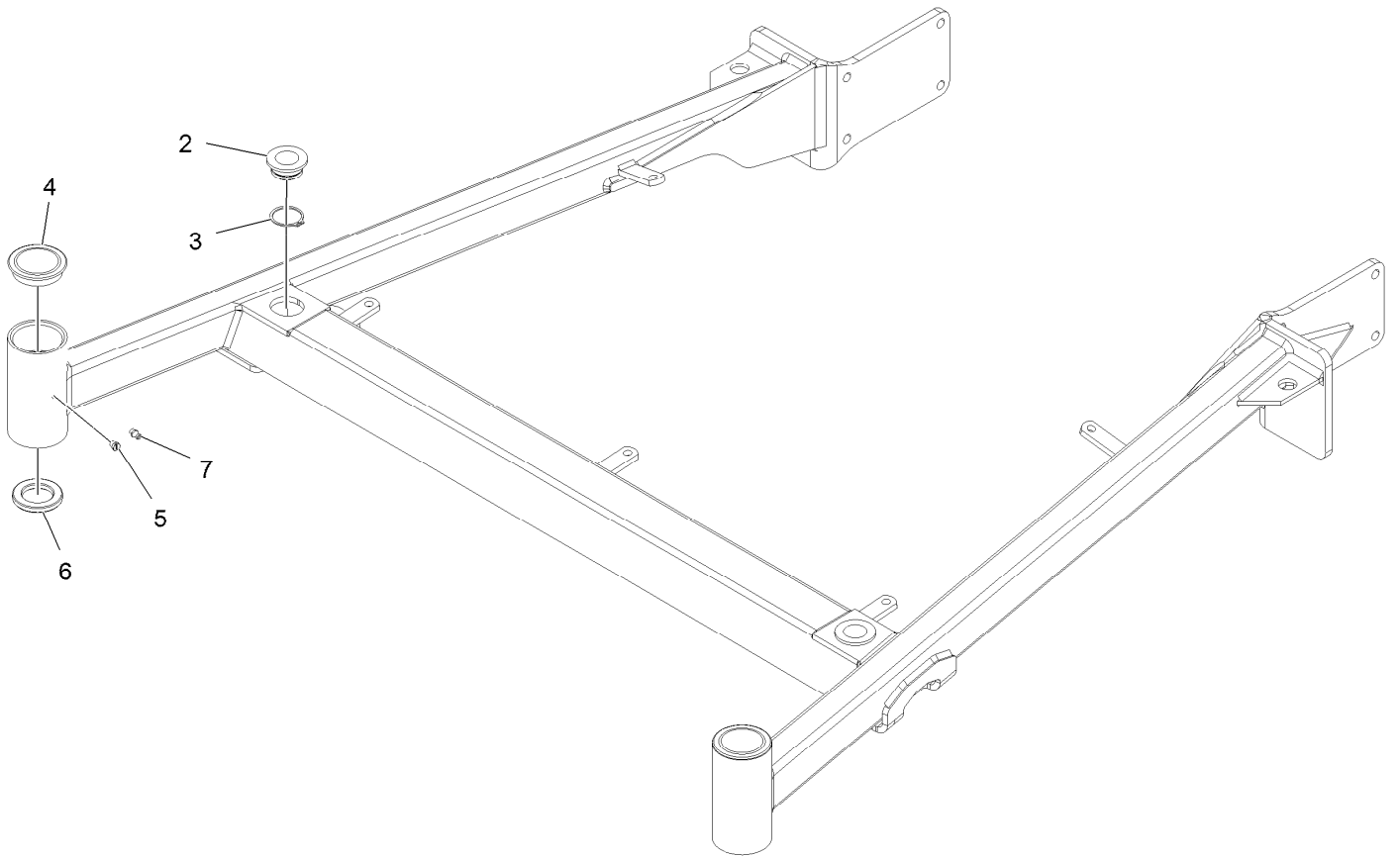


Main Frame Assembly (continued)

| <i>Ref.</i> | <i>Part Number</i> | <i>Qty.</i> | <i>Description</i> | <i>Ref.</i> | <i>Part Number</i> | <i>Qty.</i> | <i>Description</i> |
|-------------|--------------------|-------------|-------------------------------------|-------------|--------------------|-------------|-------------------------------------|
| 1 | 126-2541 | 1 | ASM, Front Frame W/ Bearings, 60 | 10:2:4 | 126-5359 | 1 | Caster Axle ASM |
| 2 | 126-1503 | 5 | Spring | 10:3 | 325-20 | 1 | Screw-HH 1/2-13 X 6 |
| 3 | 126-1504 | 5 | Pin-Spring | 10:4 | 3296-45 | 1 | Nut-Nyloc 1/2-13 Thin |
| 4 | 92-1298 | 5 | Pin-Lynch | 11 | 98-5975 | 8 | Washer-Spring Disc 3/8 |
| 5 | 1-543509 | 4 | Cone-Bearing Tapered Roller | 12 | 104-8301 | 8 | Nut-Nyloc 3/8-16 Flg |
| 6 | 103-1891-01 | 2 | Wld, Caster Fork | 13 | 323-7 | 8 | Screw-HH 3/8-16 X 1 1/4 |
| 7 | 1-633508 | 6 | Washer-Spring Disc | 14 | 126-2545 | 1 | ASM, Center Shield W/ Decals, 60 |
| 8 | 3296-51 | 2 | Nut-Nyloc 3/4-10 | 14:2 | 126-6892 | 1 | Decal-Turf Tracer |
| 9 | 104-8300 | 7 | Nut-Nyloc 5/16-18 Flg | 14:3 | 106-5517 | 2 | Decal-Warning |
| 10 | 109-3524 | 2 | Asm, Wheel And Bearings | 14:4 | 126-1692 | 5 | Decal-Scratch Cover |
| 10:1 | 103-2768 | 2 | Guard-Seal | 15 | 135-4827-01 | 2 | Latch, Deck Height |
| 10:2 | | 1 | Wheel And Bearing ASM ● | 16 | 3230-4 | 2 | Bolt-CARR |
| 10:2:1 | 1-633585 | 2 | Bearing-Cone Tapered Roller | 17 | 110-4068 | 2 | Washer-Plastic |
| 10:2:2 | 103-0063 | 2 | Seal-Double Lip | 18 | 108-9087 | 2 | Collar-Basket |
| 10:2:3 | 103-3051 | 1 | Spacer-Nut | 19 | 75-3960 | 1 | Spring-Torsion, LH (Yellow) |
| | | | | 20 | 75-3970 | 1 | Spring-Torsion, RH |
| | | | | 21 | 3256-3 | 2 | Washer-Flat |

● Not serviced separately

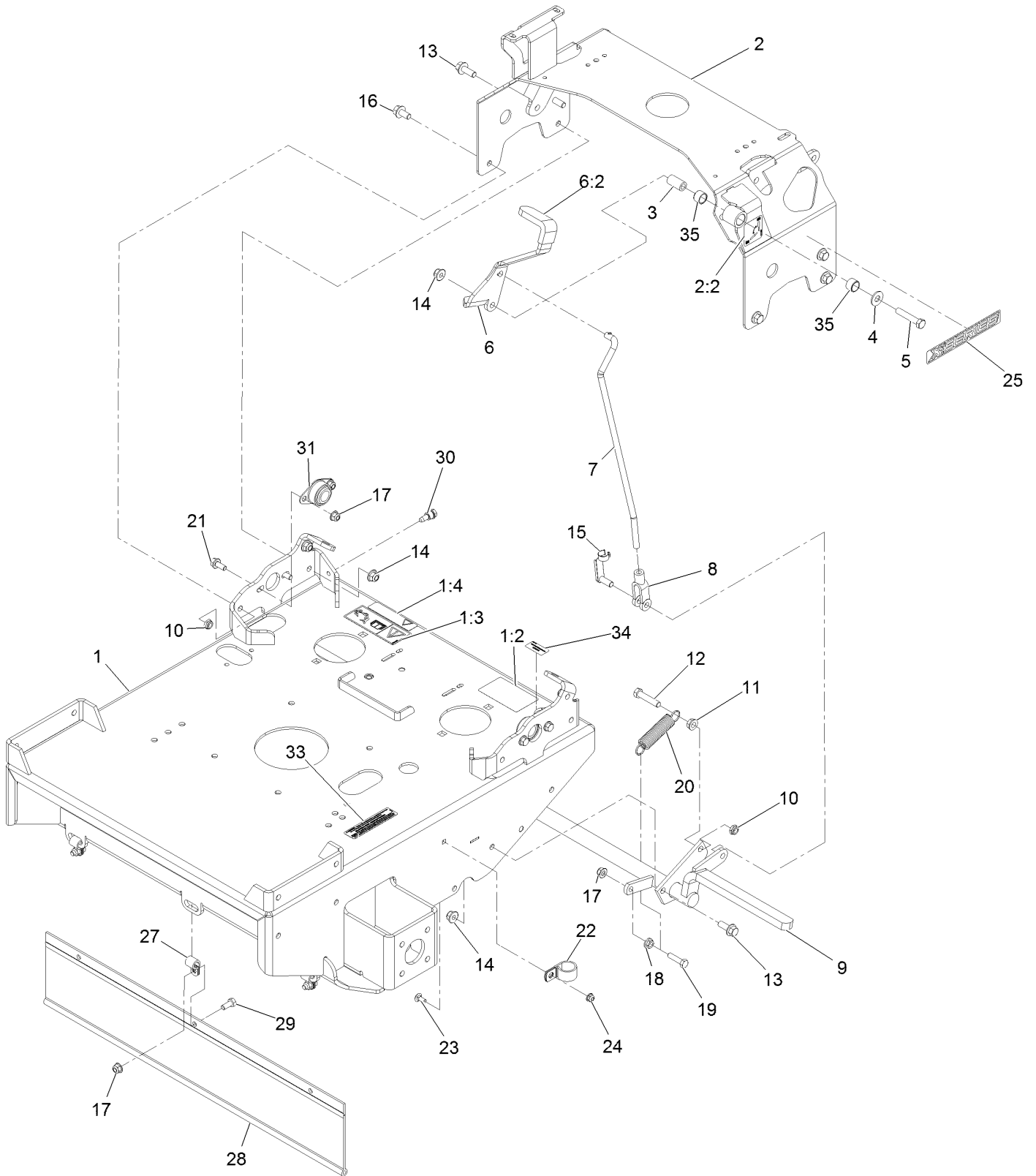
Front Frame Assembly



Front Frame Assembly (continued)

| <i>Ref.</i> | <i>Part Number</i> | <i>Qty.</i> | <i>Description</i> | <i>Ref.</i> | <i>Part Number</i> | <i>Qty.</i> | <i>Description</i> |
|-------------|--------------------|-------------|--------------------|-------------|--------------------|-------------|--------------------|
| 2 | 1-513336 | 2 | Bushing-Deck | 5 | 1-811010 | 2 | Plug |
| 3 | 32120-33 | 2 | Ring-Retaining | 6 | 1-543511 | 2 | Seal-Grease |
| 4 | 103-4882 | 2 | Cap-Grease | 7 | 302-19 | 1 | Zerk-1/4-28 Str |

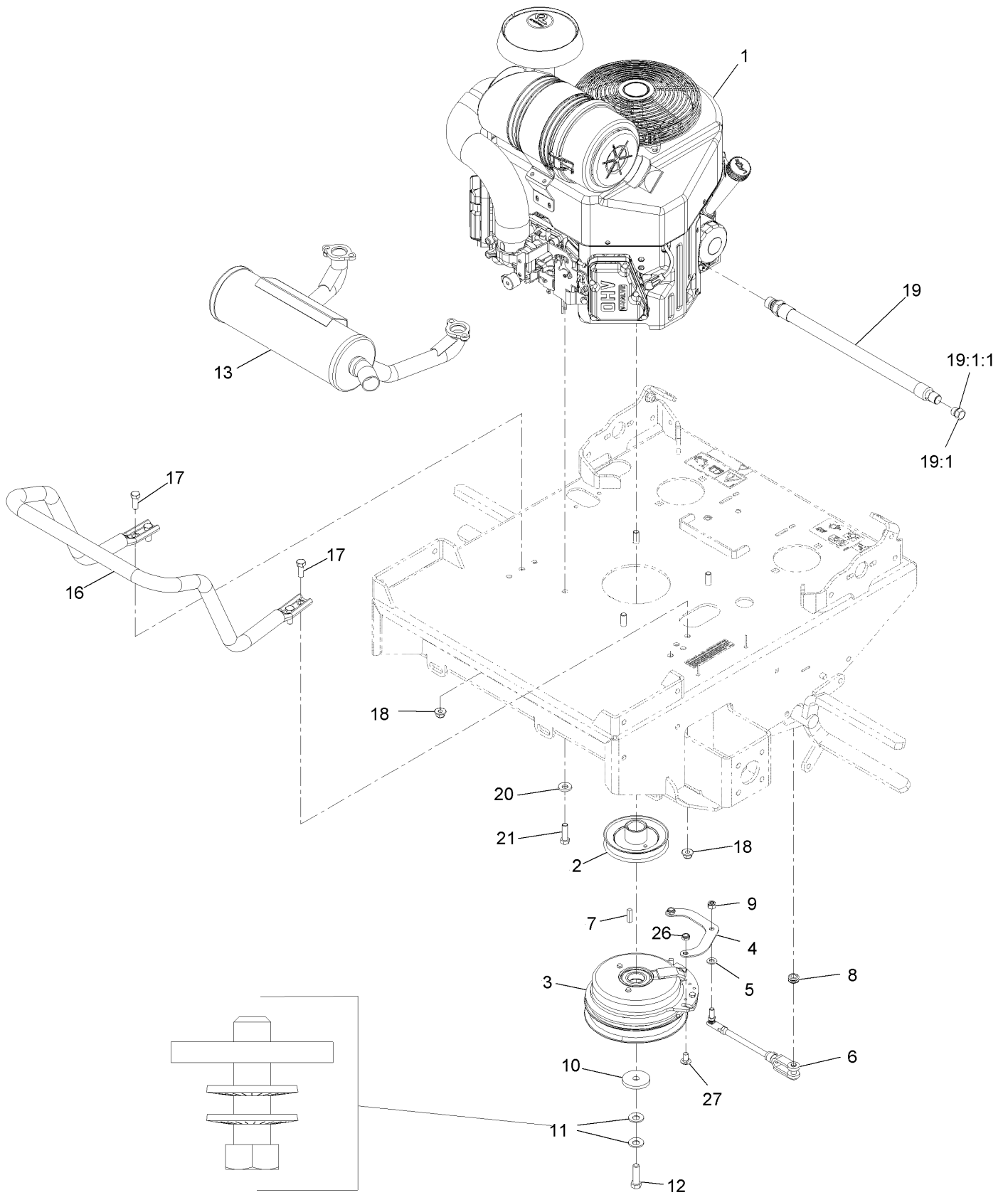
Engine Deck Assembly



Engine Deck Assembly (continued)

| <i>Ref.</i> | <i>Part Number</i> | <i>Qty.</i> | <i>Description</i> | <i>Ref.</i> | <i>Part Number</i> | <i>Qty.</i> | <i>Description</i> |
|-------------|--------------------|-------------|-------------------------------|-------------|--------------------|-------------|----------------------------|
| 1 | 126-2521 | 1 | ASM, Engine Deck W/ Decals | 15 | 103-2399 | 1 | Pin-Clevis Spring 3/8 |
| 1:2 | 98-1977 | 1 | Decal-Warning | 16 | 3234-12 | 2 | Screw-HH Flg 3/8-16 X 3/4 |
| 1:3 | 126-1400 | 1 | Decal-Warning, Sulky | 17 | 104-8300 | 8 | Nut-Nyloc 5/16-18 Flg |
| 1:4 | 116-8253 | 1 | Decal-Drive Release | 18 | 32128-20 | 1 | Nut-Whizlock 5/16-18 |
| 2 | 126-2181 | 1 | ASM, Tank Support W/ Decal | 19 | 322-6 | 1 | Screw-HH 5/16-18 X 1 1/4 |
| 2:2 | 116-5988 | 1 | Decal-Park Brake, CE | 20 | 1-323161 | 1 | Spring |
| 3 | 1-413344 | 1 | Bushing-Pivot | 21 | 3234-47 | 4 | Screw-HH Flg 5/16-18 X 3/4 |
| 4 | 3256-4 | 1 | Washer-3/8 Std | 22 | 1-643312 | 1 | Clip-Loom |
| 5 | 323-10 | 1 | Screw-HH 3/8-16 X 2 | 23 | 3229-11 | 1 | Bolt-Carriage 1/4-20 X 5/8 |
| 6 | 126-2180 | 1 | ASM, Brake Lever W/ Grip | 24 | 104-7201 | 1 | Nut-Nyloc 1/4-20 Flg |
| 6:2 | 1-303020 | 1 | Grip-Lever | 25 | 126-6573 | 2 | Decal-X-Series |
| 7 | 116-9960 | 1 | Linkage-Brake | 27 | 1-413510 | 3 | Clip-Loom |
| 8 | 1-633131 | 1 | Yoke-Linkage, Brake | 28 | 103-2224 | 1 | Shield, Drag |
| 9 | 116-9159 | 1 | Wld,Brake Ttx | 29 | 322-3 | 3 | Screw-HH 5/16-18 X 3/4 |
| 10 | 3296-59 | 3 | Nut-Nyloc 3/8-16 Thin | 30 | 115-1958 | 1 | Bolt-Shoulder |
| 11 | 3290-357 | 1 | Nut-Whizlock 3/8-16 | 31 | 1-633102 | 2 | Bearing-Flanged |
| 12 | 323-9 | 1 | Screw-HH 3/8-16 X 1 3/4 | 33 | 133-8062 | 1 | Decal-Arrestor, Spark |
| 13 | 3234-42 | 7 | Screw HHF 3/8-16 X 1 | 34 | 126-4345 | 1 | Decal-Patent |
| 14 | 104-8301 | 8 | Nut-Nyloc 3/8-16 Flg | 35 | 1-413347 | 2 | Sleeve-Bushing |

Engine Assembly



Engine Assembly (continued)

| <i>Ref.</i> | <i>Part Number</i> | <i>Qty.</i> | <i>Description</i> | <i>Ref.</i> | <i>Part Number</i> | <i>Qty.</i> | <i>Description</i> |
|-------------|--------------------|-------------|-----------------------------|-------------|--------------------|-------------|---------------------------------|
| 1 | | 1 | Engine, Kaw Fx691 ▲◆ | 13 | 116-3736 | 1 | Muffler,Horizontal |
| 2 | 126-2605 | 1 | Sheave W/ Hub | 16 | 116-6278-03 | 1 | Guard-Muffler |
| 3 | 126-2601 | 1 | Clutch, 200 Ft/Lbs, 1.13 | 17 | 323-6 | 4 | Screw-HH 3/8-16 X 1 |
| 4 | 126-2602 | 1 | Strap, Clutch | 18 | 104-8301 | 4 | Nut-Nyloc 3/8-16 Flg |
| 5 | 3256-23 | 1 | Washer-5/16 SAE | 19 | 116-5052 | 1 | Asm-Oil Drain Hose W/Plug □● |
| 6 | 126-0620 | 1 | ASM, Clutch Anchor | 19:1 | 353-508 | 1 | Plug-W/O-Ring ■ |
| 7 | 1-807259 | 1 | Key-Machine 1/4 X 1/4 X 1 ▶ | 19:1:1 | 237-42 | 1 | O-Ring |
| 8 | 237-136 | 1 | Grommet | 20 | 98-5975 | 4 | Washer-Spring Disc 3/8 |
| 9 | 3296-4 | 1 | Nut-Lock 5/16-24 | 21 | 323-7 | 4 | Screw-HH 3/8-16 X 1 1/4 |
| 10 | 109-6919 | 1 | Washer-Clutch | 26 | 3296-47 | 2 | Nut-Nyloc 5/16-18 Thin |
| 11 | 1-603610 | 2 | Washer-Spring Disc 7/16 | 27 | 3230-18 | 2 | Bolt-Carriage 5/16-18 X 5/8 |
| 12 | 87-2080 | 1 | Bolt-Hex, TAP ○ | | | | |

● Torque to 23-29 ft-lb

▲ Not serviced separately

□ Use a Teflon Pipe Sealant or equivalent on threads.

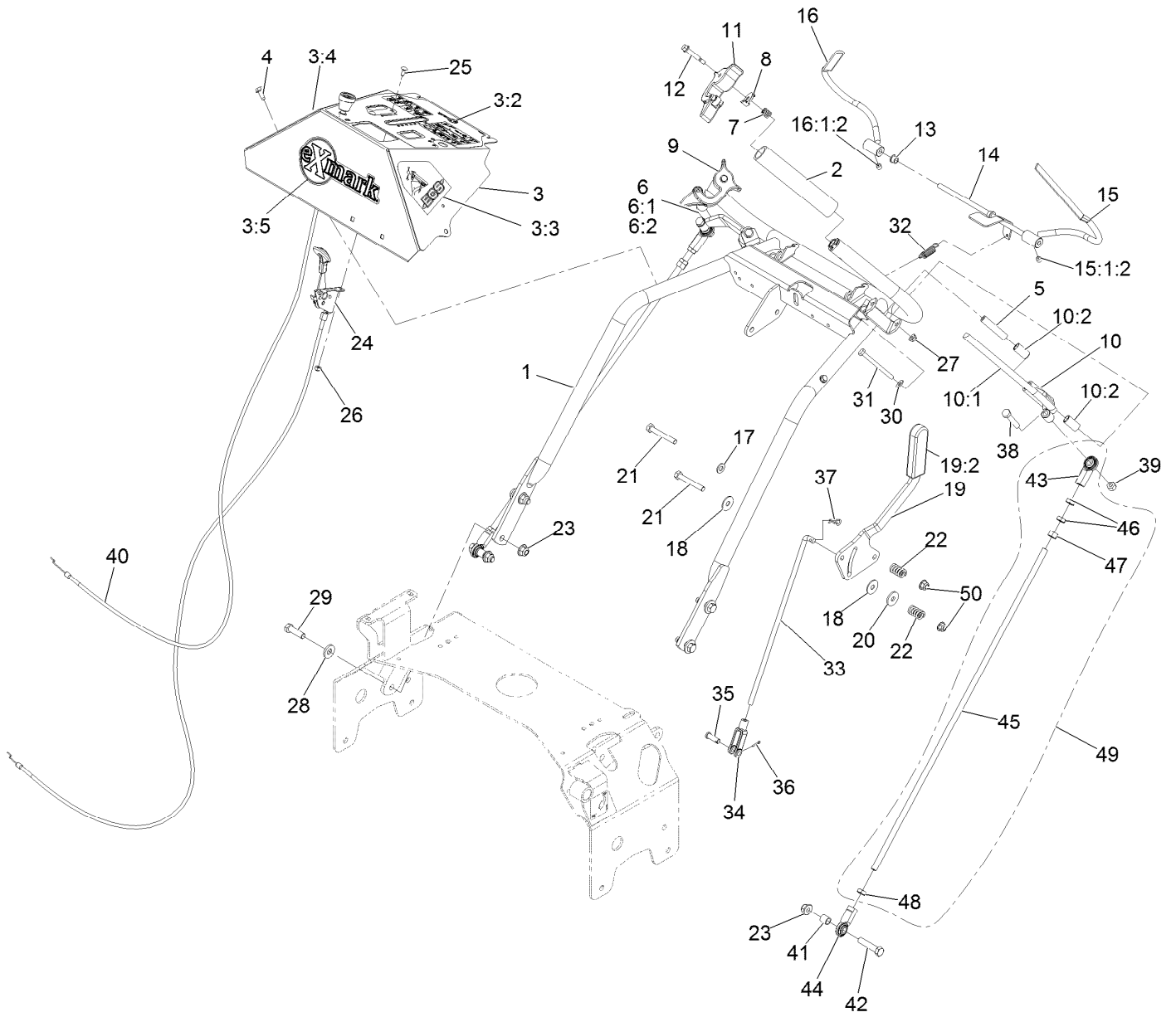
○ Use Pro-Lock, Nut Type (P/N 1-840022, .5ml tube) on threads.

▶ Apply anti-seize compound to engine crankshaft, pulley hub I.D., clutch bore I.D. and square key.

■ Torque to 20-24 ft-lb

◆ Obtain parts from www.kawpowerepc.com

Handle Assembly



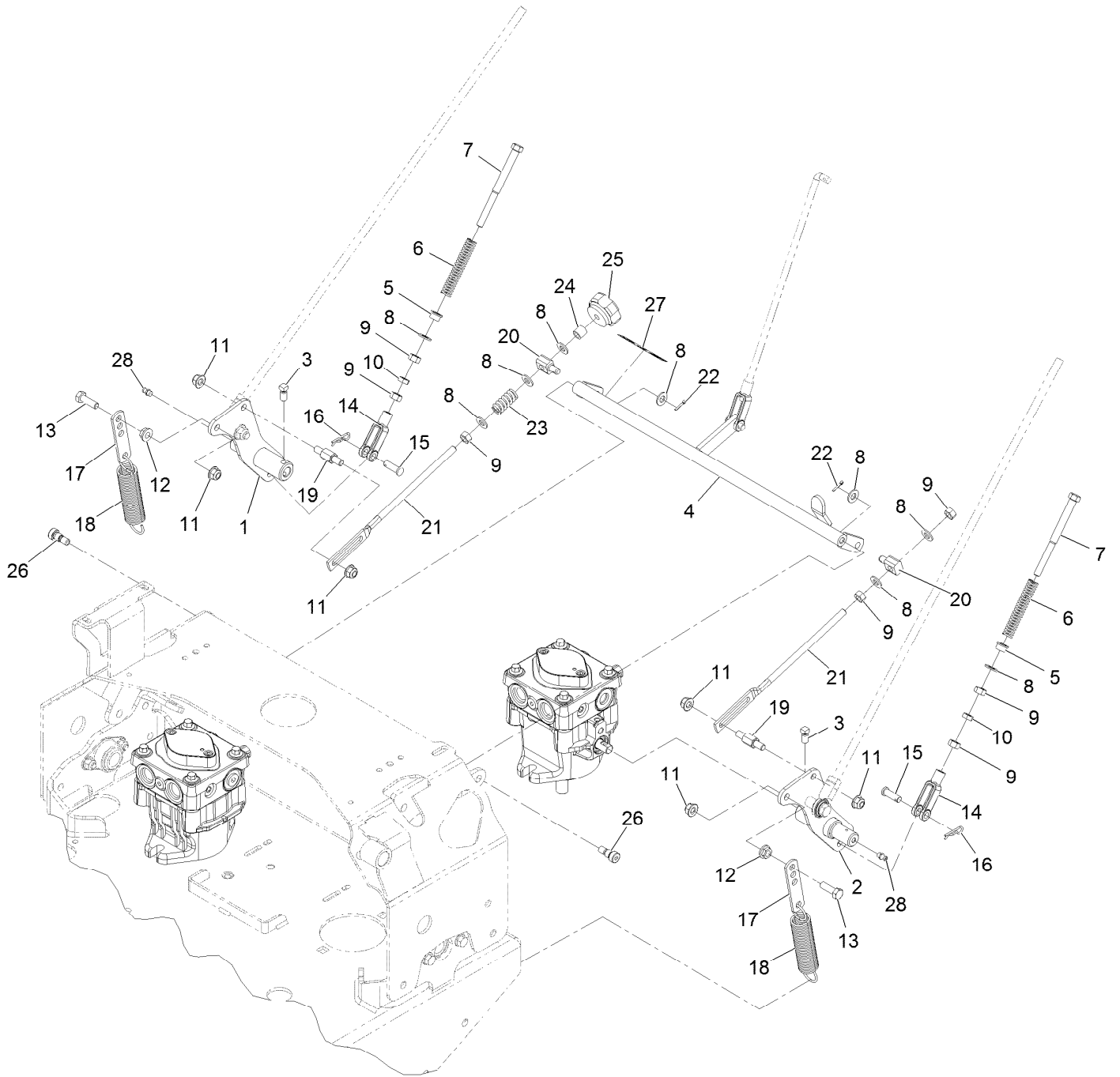
Handle Assembly (continued)

| <i>Ref.</i> | <i>Part Number</i> | <i>Qty.</i> | <i>Description</i> | <i>Ref.</i> | <i>Part Number</i> | <i>Qty.</i> | <i>Description</i> |
|-------------|--------------------|-------------|---------------------------|-------------|--------------------|-------------|----------------------------|
| 1 | 126-2642-03 | 1 | Weld, Handle | 21 | 322-11 | 2 | Screw-HH 5/16-18 X 2 1/4 |
| 2 | 103-0815 | 2 | Grip-Bar, Handle | 22 | 1-323245 | 2 | Spring-Compression |
| 3 | 126-3541 | 1 | ASM, Console W/ Decals | 23 | 104-8301 | 6 | Nut-Nyloc 3/8-16 Flg |
| 3:2 | 135-2863 | 1 | Decal-Console | 24 | 109-3958 | 1 | Control-Throttle |
| 3:3 | 103-2242 | 1 | Decal, Ecs Instruction LH | 25 | 1-807513 | 2 | Bolt-Carriage #10-24 X 1/2 |
| 3:4 | 103-2243 | 1 | Decal, Ecs Instruction RH | 26 | 3296-2 | 2 | Nut-Nyloc #10-24 |
| 3:5 | 126-6877 | 1 | Decal, Exmark Logo | 27 | 104-7201 | 2 | Nut-Nyloc 1/4-20 Flg |
| 4 | 32144-10 | 2 | Screw-HWH 1/4-20 X .62 | 28 | 98-5975 | 4 | Washer-Spring Disc 3/8 |
| 5 | 103-0027 | 2 | Bushing-Lever, Drive | 29 | 323-7 | 4 | Screw-HH 3/8-16 X 1 1/4 |
| 6 | 103-2513 | 1 | Asm, Drive Lever RH | 30 | 3256-22 | 2 | Washer-1/4 SAE |
| 6:1 | 116-4082 | 1 | Wld,RH Drive Lever | 31 | 321-14 | 2 | Screw-HH 1/4-20 X 2 3/4 |
| 6:2 | 126-9366 | 2 | Bushing, Sleeve | 32 | 1-303363 | 1 | Spring-Extension |
| 7 | 1-633349 | 2 | Spring-Compression | 33 | 1-413225 | 1 | Rod, Speed Control |
| 8 | 126-2921 | 2 | Latch, Ecs | 34 | 1-303105 | 1 | Yoke-Adjustable |
| 9 | 103-1371 | 1 | Thumb Latch Asm RH | 35 | 1-808280 | 1 | Pin-Clevis 5/16 X 1 49/64 |
| 10 | 103-2514 | 1 | Asm, Drive Lever LH | 36 | 3272-5 | 1 | Pin-Cotter 3/32 X 1/2 |
| 10:1 | 116-4081 | 1 | Wld,LH Drive Lever | 37 | 1-806003 | 1 | Hairpin-Cotter |
| 10:2 | 126-9366 | 2 | Bushing, Sleeve | 38 | 322-9 | 2 | Screw-HH 5/16-18 X 1 3/4 |
| 11 | 103-1372 | 1 | Thumb Latch Asm LH | 39 | 3296-29 | 2 | Nut-Nyloc 5/16-18 |
| 12 | 126-2931 | 2 | Screw-Shoulder | 40 | 126-2107 | 1 | Cable, Choke |
| 13 | 1-303365 | 2 | Bushing-Nylon | 41 | 103-1166 | 2 | Spacer-Tube, Pump Link |
| 14 | 103-0769-03 | 1 | Rod Weldment, OPC | 42 | 323-9 | 2 | Screw-HH 3/8-16 X 1 3/4 |
| 15 | 116-4079 | 1 | Wld,LH OPC Lever ■ | 43 | 103-2463 | 4 | Balljoint |
| 15:1:2 | 1-803322 | 1 | Setscrew-5/16-24 X 5/16 ● | 44 | 103-1167 | 2 | Joint-Ball End |
| 16 | 116-4080 | 1 | Wld,RH OPC Lever ■ | 45 | 103-1148 | 2 | Rod,Drive Lever |
| 16:1:2 | 1-803322 | 1 | Setscrew-5/16-24 X 5/16 ● | 46 | 3220-3 | 4 | Nut-Jam 3/8-24 |
| 17 | 3256-23 | 1 | Washer-5/16 SAE | 47 | 3219-3 | 2 | Nut-Hex 3/8-24 |
| 18 | 1-323244 | 2 | Washer-Friction | 48 | 3220-16 | 2 | Nut-Jam 3/8-24 LH |
| 19 | 126-0148 | 1 | Lever, Shift W/Grip | 49 | 116-3414 | 2 | Drive Link ASM |
| 19:2 | 103-5994 | 1 | Grip-Handle, Steering | 50 | 104-8300 | 2 | Nut-Nyloc 5/16-18 Flg |
| 20 | 1-603716 | 1 | Washer-Friction Disc | | | | |

● Use Pro-Lock, Nut Type (P/N 1-840022, .5ml tube) on threads.

■ Use Pro-Lock retaining type, Part no. 1-840023 (.5cc tube) on inside of bore of OPC hub.

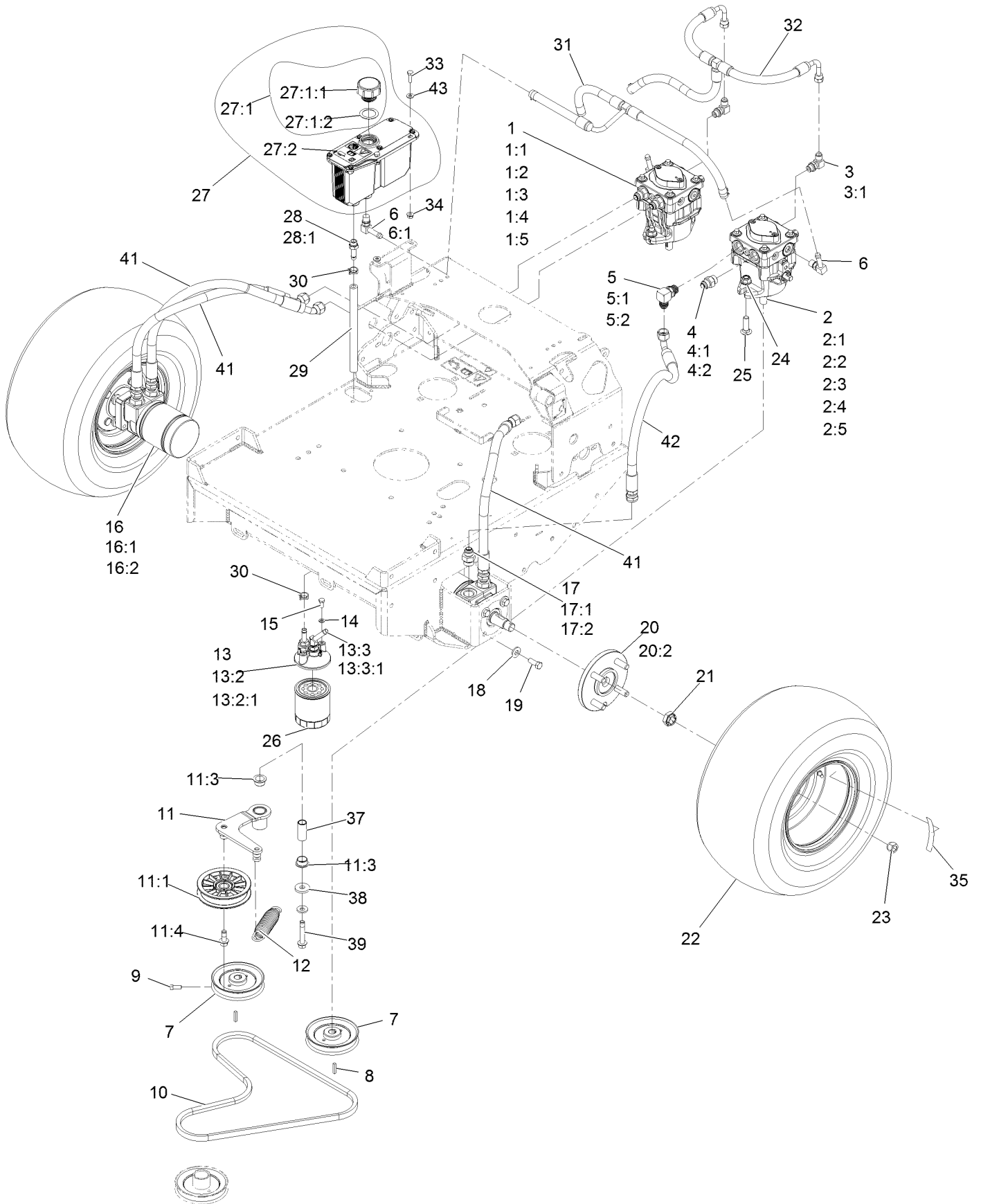
Controls Assembly



Controls Assembly (continued)

| <i>Ref.</i> | <i>Part Number</i> | <i>Qty.</i> | <i>Description</i> | <i>Ref.</i> | <i>Part Number</i> | <i>Qty.</i> | <i>Description</i> |
|-------------|--------------------|-------------|--------------------------|-------------|--------------------|-------------|---------------------------|
| 1 | 116-9975 | 1 | Weld, Motion Control, Rt | 15 | 1-808280 | 2 | Pin-Clevis 5/16 X 1 49/64 |
| 2 | 116-9974 | 1 | Weld, Motion Control, Lt | 16 | 1-806003 | 2 | Hairpin-Cotter |
| 3 | 1-803022 | 2 | Setscrew-5/16-18 X 5/8 | 17 | 1-613089 | 2 | Tab-Spring, Extension |
| 4 | 126-2982-01 | 1 | Weld, Speed Control | 18 | 1-603693 | 2 | Spring |
| 5 | 1-603735 | 2 | Bushing-Flanged | 19 | 126-0610 | 2 | Pin, Motion Control |
| 6 | 103-0265 | 2 | Spring, Neutral Return | 20 | 126-8571 | 2 | Swivel-Adjustable, Short |
| 7 | 1-603737 | 2 | Bolt-Neutral Return | 21 | 1-413350 | 2 | Link-Control, Speed |
| 8 | 3256-23 | 9 | Washer-5/16 SAE | 22 | 3272-5 | 2 | Pin-Cotter 3/32 X 1/2 |
| 9 | 3219-2 | 7 | Nut-Hex 5/16-24 | 23 | 1-323245 | 1 | Spring-Compression |
| 10 | 3220-2 | 2 | Nut-Jam 5/16-24 | 24 | 1-603903 | 1 | Spacer |
| 11 | 104-8300 | 6 | Nut-Nyloc 5/16-18 Flg | 25 | 103-3060 | 1 | Knob-Tracking |
| 12 | 32128-20 | 2 | Nut-Whizlock 5/16-18 | 26 | 1-809056 | 2 | Screw-Sh 5/16-18 X 1 3/8 |
| 13 | 322-5 | 2 | Screw-HH 5/16-18 X 1 | 27 | 116-7918 | 1 | Decal-Tracking Adjustment |
| 14 | 1-303105 | 2 | Yoke-Adjustable | 28 | 302-19 | 2 | Zerk-1/4-28 Str |

Hydro Assembly



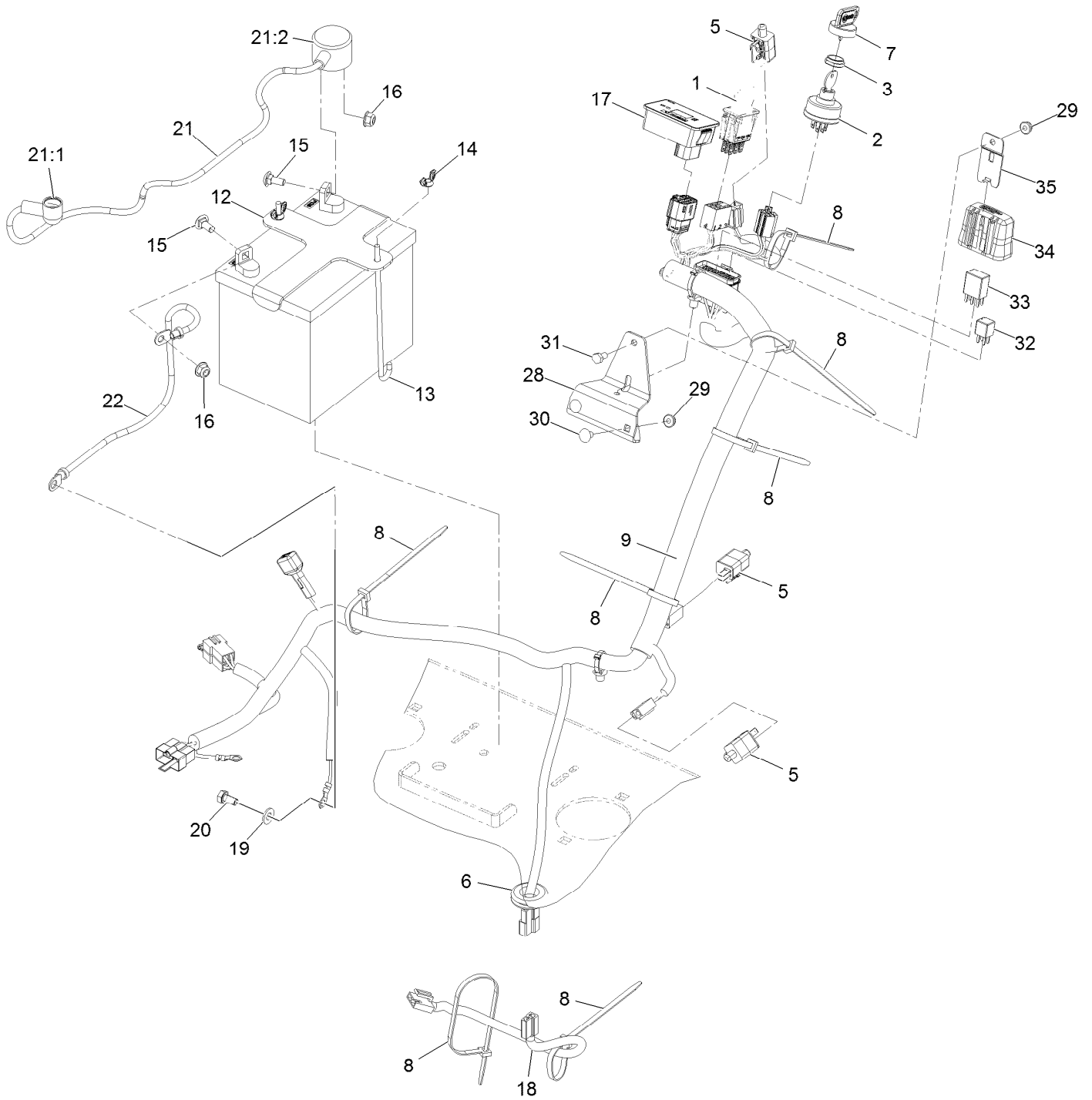
Hydro Assembly (continued)

| <i>Ref.</i> | <i>Part Number</i> | <i>Qty.</i> | <i>Description</i> | <i>Ref.</i> | <i>Part Number</i> | <i>Qty.</i> | <i>Description</i> |
|-------------|--------------------|-------------|---------------------------------|-------------|--------------------|-------------|----------------------------------|
| 1 | 116-2495 | 1 | Pump-HYD Pe RH TTH | 16 | 1-603718 | 2 | HYD Motor ASM |
| 1:1 | 103-2664 | 1 | Input Shaft Kit | 16:1 | 1-000119 | 1 | Seal Kit |
| 1:2 | 94-6922 | 1 | Bearing-Thrust | 16:2 | 1-000138 | 1 | Bearing And Seal Kit |
| 1:3 | 103-2666 | 1 | Cylinder Block Kit | 17 | 1-603991 | 4 | Adapter-Straight |
| 1:4 | 105-6184 | 1 | Seal Overhaul Kit | 17:1 | 237-80 | 1 | O-Ring |
| 1:5 | 126-2479 | 1 | Kit, 10Cc Pump Kit | 17:2 | 1-603992 | 1 | O-Ring-37 Flare #8 |
| 2 | 116-2494 | 1 | Pump-HYD Pe LH TTH | 18 | 98-5975 | 9 | Washer-Spring Disc 3/8 |
| 2:1 | 103-2664 | 1 | Input Shaft Kit | 19 | 323-6 | 8 | Screw-HH 3/8-16 X 1 |
| 2:2 | 94-6922 | 1 | Bearing-Thrust | 20 | 112-9049 | 2 | Wheel Hub ASM |
| 2:3 | 103-2666 | 1 | Cylinder Block Kit | 20:2 | 1-633926 | 4 | Stud-Wheel |
| 2:4 | 105-6184 | 1 | Seal Overhaul Kit | 21 | 116-2839 | 2 | Nut-Lock |
| 2:5 | 126-2479 | 1 | Kit, 10Cc Pump Kit | 22 | 103-1715 | 2 | Tire And Wheel Assy |
| 3 | 103-1802 | 2 | Fitting-Elbow, 90 DEG | 23 | 242-50 | 8 | Nut-Lug 1/2-20 |
| 3:1 | 237-42 | 1 | O-Ring | 24 | 114-8417 | 4 | Nut-HF, NI |
| 4 | 1-603990 | 3 | Adapter-Straight | 25 | 3232-3 | 4 | Bolt-Carriage 7/16-14 X 1 1/2 |
| 4:1 | 1-603920 | 1 | O-Ring-SAE #8 | 26 | 109-4180 | 1 | Element, Oil Filter |
| 4:2 | 1-603992 | 1 | O-Ring-37 Flare #8 | 27 | 126-1248 | 1 | ASM, HYD Reservoir ■ |
| 5 | 103-2153 | 1 | Elbow-90° | 27:1 | | 1 | Reservoir-HYD ● |
| 5:1 | 1-603920 | 1 | O-Ring-SAE #8 | 27:1:1 | 103-1948 | 1 | Cap-Reservoir, HYD |
| 5:2 | 1-603992 | 1 | O-Ring-37 Flare #8 | 27:1:2 | 103-1949 | 1 | Gasket-Cap |
| 6 | 100-4887 | 3 | Fitting-Elbow, 90 | 27:2 | 115-4212 | 1 | Decal-Warning |
| 6:1 | 237-42 | 1 | O-Ring | 28 | 103-1912 | 1 | Adapter-Straight |
| 7 | 1-413010 | 2 | Sheave ASM | 28:1 | 237-42 | 1 | O-Ring |
| 8 | 1-807272 | 2 | Key-5Mm X 5Mm X 25Mm | 29 | 103-2959 | 1 | Hose-Charge |
| 9 | 120-6474 | 4 | Screw-Set, SQH 5/16-18 X 3/4 | 30 | 103-1988 | 6 | Clamp-Hose 11/16 |
| 10 | 103-4761 | 1 | Belt | 31 | 126-2550 | 1 | Hose, Case |
| 11 | 126-2531 | 1 | ASM, Pump Idler | 32 | 126-2555 | 1 | Hose, Charge |
| 11:1 | 109-4077 | 1 | Pulley-Idler, Flat | 33 | 321-5 | 2 | Screw-HH 1/4-20 X 7/8 |
| 11:3 | 109-8054 | 2 | Bushing-Flanged | 34 | 32128-32 | 2 | Nut-Hex 1/4-20 Side Lock |
| 11:4 | 126-1680 | 1 | Screw-Hfh | 35 | 126-2056 | 2 | Decal-Torque Wheel Lug-Hub |
| 12 | 116-6316 | 1 | Spring-Extension | 37 | 126-2954 | 1 | Pivot, Idler |
| 13 | 126-0621 | 1 | ASM, Filter Head | 38 | 1-373034 | 1 | Washer |
| 13:2 | 103-1912 | 1 | Adapter-Straight | 39 | 126-2956 | 1 | Screw-HHF W/ Patch |
| 13:2:1 | 237-42 | 1 | O-Ring | 41 | 116-8646 | 3 | Hose,Hydraulic W/Cover |
| 13:3 | 103-1807 | 1 | Fitting-Barbed, 45 DEG | 42 | 119-7827 | 1 | HYD Hose ASM |
| 13:3:1 | 237-42 | 1 | O-Ring | 43 | 3256-22 | 2 | Washer-1/4 SAE |
| 14 | 1-805004 | 2 | Washer-Lock 1/4 Heavy | | | | |
| 15 | 321-3 | 2 | Screw-HH 1/4-20 X 5/8 | | | | |

● Not serviced separately

■ Use Exmark Premium Hydro Oil P/N 109-9828 (32oz)

Electrical Assembly



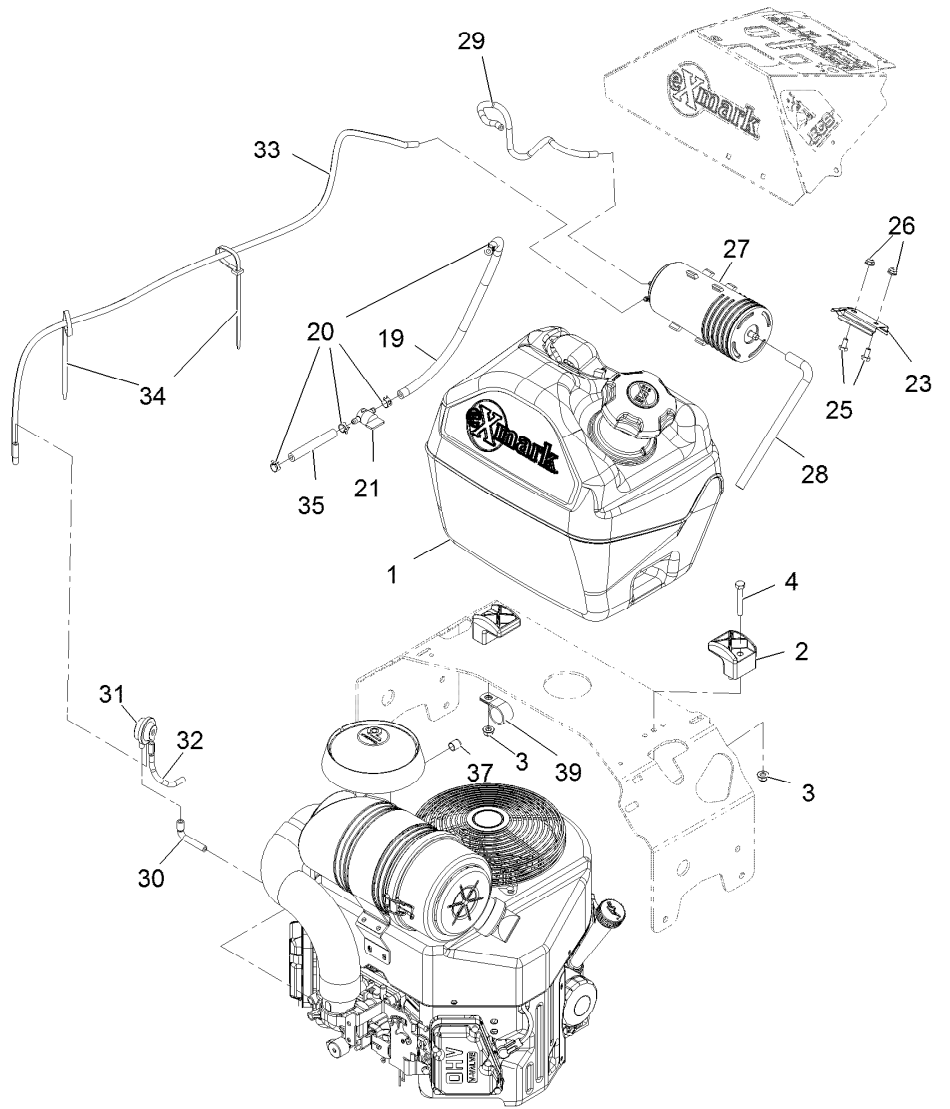
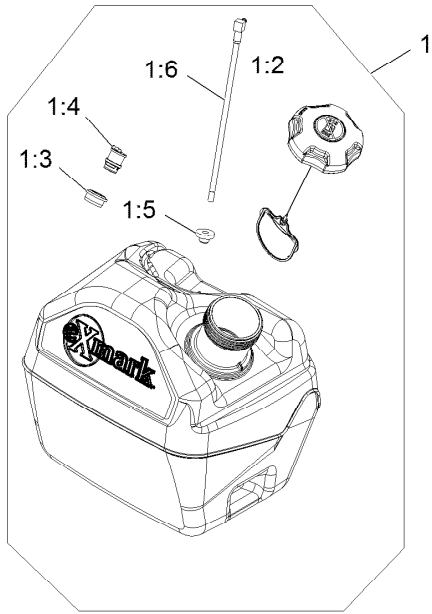
Electrical Assembly (continued)

| <i>Ref.</i> | <i>Part Number</i> | <i>Qty.</i> | <i>Description</i> | <i>Ref.</i> | <i>Part Number</i> | <i>Qty.</i> | <i>Description</i> |
|-------------|--------------------|-------------|-----------------------------|-------------|--------------------|-------------|----------------------------|
| 1 | 103-5221 | 1 | Switch-PTO | 19 | 33094-00 | 1 | Washer |
| 2 | 135-2253 | 1 | Switch, Key Start | 20 | 33114-016 | 1 | Screw-HH M8-1.25 X 16Mm |
| 3 | 103-0498 | 1 | Nut-Ignition | 21 | 109-7621 | 1 | Positive Battery Cable ASM |
| 5 | 110-6765 | 3 | Switch | 21:1 | 1-543393 | 1 | Insulator-Solenoid |
| 6 | 1-543286 | 1 | Grommet | 21:2 | 109-2407 | 1 | Insulator-Battery |
| 7 | 103-2106 | 1 | Key-Exmark Logo | 22 | 1-413540 | 1 | Cable-Battery, Negative ● |
| 8 | 1-303335 | 7 | Tie-Cable 7 15/16 (Large) | 28 | 135-2564-03 | 1 | Bracket, Mounting Pdm |
| 9 | 135-1870 | 1 | Harness-Wiring ■ | 29 | 104-7201 | 3 | Nut-Nyloc 1/4-20 Flg |
| 12 | 135-2056 | 1 | Bracket, Battery Hold Down | 30 | 3229-10 | 2 | Bolt-Carriage 1/4-20 X 1/2 |
| 13 | 1-633651 | 2 | Bolt-Holddown | 31 | 321-2 | 1 | Screw-HH 1/4-20 X 1/2 |
| 14 | 1-543792 | 2 | Wingnut-Nyloc 1/4-20 | 32 | 126-3991 | 1 | Relay-Micro |
| 15 | 3230-1 | 2 | Bolt-Carriage 5/16-18 X 3/4 | 33 | 126-6157 | 1 | Relay-Micro 280, Spdt |
| 16 | 104-8300 | 2 | Nut-Nyloc 5/16-18 Flg | 34 | 32180-176 | 1 | Cover-Block, Fuse |
| 17 | 135-1877 | 1 | Module-Hour Meter | 35 | 32180-177 | 1 | Clip-Mounting |
| 18 | 126-0624 | 1 | Harness-Clutch Pigtail | | | | |

● Not illustrated

■ Use dielectric grease on all unsealed connectors and terminals only. Do not apply in sealed connectors.

Fuel Tank Assembly



Fuel Tank Assembly (continued)

| <i>Ref.</i> | <i>Part Number</i> | <i>Qty.</i> | <i>Description</i> | <i>Ref.</i> | <i>Part Number</i> | <i>Qty.</i> | <i>Description</i> |
|-------------|--------------------|-------------|-------------------------------------|-------------|--------------------|-------------|---------------------------|
| 1 | 135-2855 | 1 | ASM, Fuel Tank 5 Gal | 25 | 321-2 | 2 | Screw-HH 1/4-20 X 1/2 |
| 1:2 | 137-4119 | 1 | Cap-Fuel, Ratcheting | 26 | 104-7201 | 2 | Nut-Nyloc 1/4-20 Flg |
| 1:3 | 114-0284 | 1 | Grommet | 27 | 117-1221 | 1 | Canister-Carbon, 800Cc |
| 1:4 | 119-3547 | 1 | Valve-Vent, Fuel | 28 | 115-0962 | 1 | Hose-Vent, Canister |
| 1:5 | 46-6560 | 1 | Bushing | 29 | 116-4801 | 1 | Hose-Emissions |
| 1:6 | 109-9364 | 1 | Fitting-Fuel (W/Line And Screen) | 30 | 116-2233 | 1 | Hose-Vent, Formed |
| 2 | 107-4543 | 2 | Clamp | 31 | 116-2232 | 1 | Valve-Control, Vacuum |
| 3 | 104-8300 | 2 | Nut-Nyloc 5/16-18 Flg | 32 | 116-2394 | 1 | Hose-Vent, Formed |
| 4 | 322-10 | 2 | Screw-HH 5/16-18 X 2 | 33 | 116-3116 | 1 | Hose-Vent, Formed |
| 19 | 114-4428 | 1 | Hose-Fuel | 34 | 1-303335 | 2 | Tie-Cable 7 15/16 (Large) |
| 20 | 2412-98 | 4 | Clamp-Hose | 35 | 105-8342 | 1 | Hose-Fuel |
| 21 | 1-603770 | 1 | Valve-Fuel | 37 | 116-4464 | 1 | Plug-Port |
| 23 | 114-0292 | 1 | Bracket-Canister, Carbon | 39 | 1-643312 | 1 | Clip-Loom |

Notes:



MAXIMIZE THE PERFORMANCE OF YOUR EXMARK MACHINE.



EXMARK® PREMIUM ENGINE OIL

Exmark now offers a family of engine oil viscosities to perform well in any environment. Each viscosity has the same synthetic formulation to give you what you need in punishing conditions. We designed each grade to the highest quality, making it ideal even for diesel applications. Coupled with Exmark Premium Fuel Treatment, we have the performance products to make your machine hum.

EXMARK PREMIUM ENGINE OIL SAE 30/10W-30

- Meets zero shear requirements of a straight grade SAE 30 as well as the cold temp properties of a 10W-30.
- Most versatile oil in the industry.
- Superior corrosion protection over conventional oil - even in corrosive, humid environments.

EXMARK PREMIUM ENGINE OIL SAE 20W-50

- Perfect for your big block engine, or any application in severe service.
- Same full synthetic formulation as all other Exmark Premium viscosities.
- Also effective for use in severe service small block engines.

EXMARK PREMIUM ENGINE OIL SAE 10W-50

- Full synthetic formulation gives you peak performance. Don't settle for less.
- Wide span multi-grade combines easy starting in cold weather with maximum protection in high temperature operation.
- Reduce friction & wear over standard mineral formulations.

EXMARK PREMIUM ENGINE OIL SAE 0W-40

- The perfect choice for when the weather turns cold or unpredictable, and your Exmark UTV has to perform.
- Commercial quality for severe service.
- Advanced additive package helps prevent corrosion from long-term storage.

EXMARK PREMIUM ENGINE OIL UTV FORMULATION

- 4-cycle high-temp formulation.
- Heavier viscosity, full synthetic, perfect for your UTV.

EXMARK PREMIUM UTV EXTREME CONDITIONS GEAR OIL

- SAE 80W-90, designed to keep your UTV performing at its peak.
- Shear stable, hypoid gear lube.
- Includes a premium additive system to combat wear, oxidation, rust & corrosion.

Available from your local Exmark dealer. Find your closest dealer at exmark.com

EXMARK ACCESSORIES AND OPTIONS*

MID-MOUNT RIDING ACCESSORIES AND OPTIONS

| | |
|------------------------------------|---------------------------------|
| CUSTOM RIDE SEAT SUSPENSION SYSTEM | OPERATOR CONTROLLED DISCHARGE |
| FULL SUSPENSION SEAT | SUN SHADE |
| DECK LIFT ASSIST KIT | TRASH CONTAINER |
| HITCH KIT | TURF STRIPER |
| LIGHT KIT | ULTRA VAC COLLECTION SYSTEM |
| 12V POWER PORT | ULTRA VAC QUICK DISPOSAL SYSTEM |
| MICRO-MULCH SYSTEM | |

OUT-FRONT RIDING ACCESSORIES AND OPTIONS

| | |
|------------------------------------|---------------------------------|
| CUSTOM RIDE SEAT SUSPENSION SYSTEM | SNOW BLADE |
| DUAL-TAIL WHEEL | SNOWBLOWER |
| FLOOR PAN EXTENDER | SUN SHADE |
| HITCH KIT | TRASH CONTAINER |
| LIGHT KIT | ULTRA VAC COLLECTION SYSTEM |
| MICRO-MULCH SYSTEM | ULTRA VAC QUICK DISPOSAL SYSTEM |
| ROLL OVER PROTECTION SYSTEM (ROPS) | WEATHER CAB |

WALK-BEHIND ACCESSORIES AND OPTIONS

| | |
|--------------------|--------------|
| GRASS CATCHER | TURF STRIPER |
| MICRO-MULCH SYSTEM | STANDON |

*Some accessories and options not available for some models.

Place Model No. and Serial No.
Label Here (Included in the Literature
Pack) or Fill in Below

Model No. _____

Serial No. _____

Date Purchased _____

Engine Model No. and Spec. No. _____

Engine Serial No. (E/No) _____

© 2018 Exmark Mfg. Co., Inc.
2101 Ashland Ave
Beatrice, NE 68310
All Rights Reserved

Part No. 4503-991 Rev. A
(402) 223-6375
Fax (402) 223-5489
Printed in the USA.

