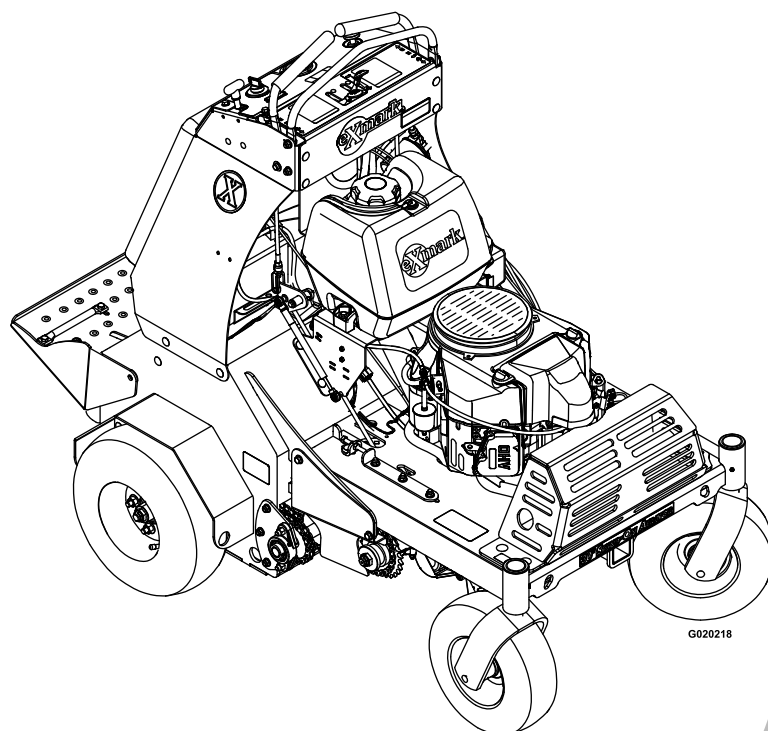




STAND-ON AERATOR

Model No. ARX481CKA30000—Serial No. 31500000 and Up

Picture below may not reflect actual product.



G020218

Parts Manual

Part No. 4502-179 Rev. A

Ordering Replacement Parts

To order replacement parts, please supply the part number, the quantity, and the description of each part desired.

Understanding Reference Numbers

Each identified part in an illustration has a reference number. The reference number for a part also appears in the parts list, along with other information about the part.

This catalog uses two special reference number formats, one to indicate parts in a service assembly and another to indicate the quantity of a given part in an illustration.

Service Assembly Reference Numbers

Parts in service assemblies have reference numbers in the form a:b. The a represents the reference number of the entire service assembly and the b represents a sequential number unique to each part within the service assembly.

For example, a wheel assembly might be identified by reference number 6, the tire by 6:1, the valve by 6:2, and the wheel by 6:3. When you order the assembly identified by reference number 6, you receive all parts identified by reference numbers 6:1, 6:2, and 6:3. However, you may also order any part individually. Reference numbers of this type appear in illustration and in parts lists.

Reference Numbers Indicating Quantity

In an illustration, if a reference number indicates more than one part, the reference number has the form nX y. The n represents the quantity of the part, the X is the multiplication symbol, and the y represents the reference number.

For example, in an illustration, the reference number 2X 37 means that two of the parts identified by reference number 37 are indicated.

List of Abbreviations

AR: as required	HLH: hex lag head	PTH: phillips truss head
ASM: assembly	HOC: height-of-cut	PTO: power-take-off
BBC: blade brake control	HP: high pressure	RH: right hand
BHTF: button head thread forming	HSBH: hex socket button head	ROPS: roll-over protection system
CARR: carriage	HSFH: hex socket flat head	RRB: rear roller brush
CCW: counter clockwise	HSH: hex socket head	SFH: slotted fillister head
CW: clockwise	HWH: hex washer head	SHH: slotted hex head
DEG: degrees	HWHTF: hex washer head thread forming	SHWH: slotted hex washer head
DPA: Dual Point Adjustment	HYD: hydraulic	SPH: slotted pan head
ECM: electronic control module	LH: left hand	SQH: square head
EXT: external	LP: low pressure	SRH: slotted round head
FH: flat head	LPG: Liquefied Petroleum Gas	STD: standard
GA: gauge	NI: nylon insert	TAP: self tapping
HD: heavy-duty	NPTF: national pipe thread fine	TTH: torx truss head
HF: hex flange	PFH: phillips flat head	
HH: hex head	PPH: phillips pan head	
HHF: hex head flange	PPHTF: phillips pan head thread forming	
HHFTF: hex head flange thread forming	PRH: phillips round head	
HJ: hex jam		

Touch Up Paint

Exmark black touch up spray paint – gloss black.

Exmark red touch up paint (spray paint – P/N 1-850337 - .6 oz liquid bottle – P/N 103-9140).

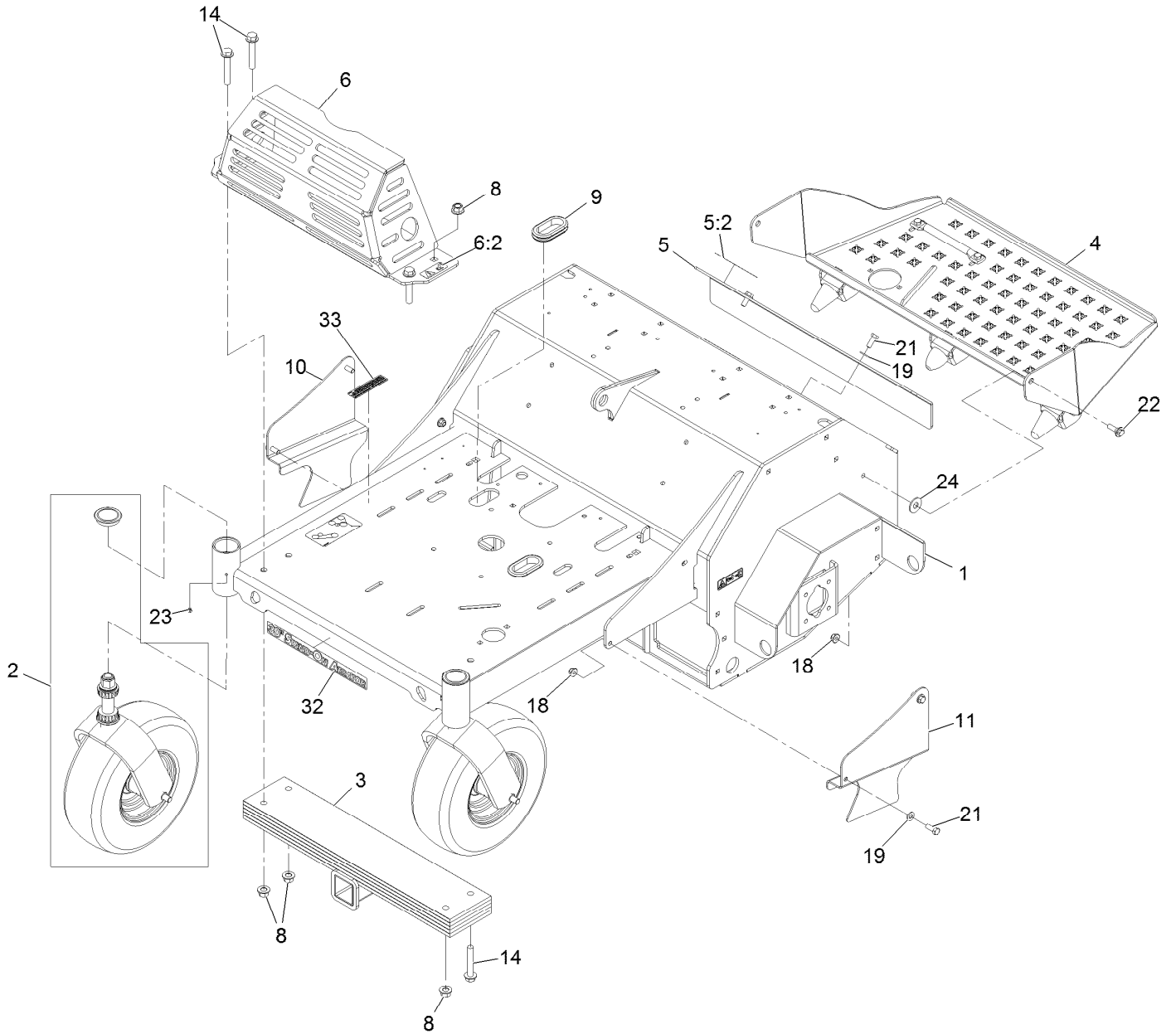


If your Exmark dealer does not have the Exmark part in stock, Exmark will get the parts to the dealer the next business day or the part will be FREE Guaranteed!! (Some restrictions apply. See your participating Exmark Dealer for details.)

Contents

Main Frame Assembly	4
Main Frame Decal Assembly No. 116-8138	6
Caster Wheel and Fork Assembly	8
Platform and Rocker Assembly	10
Tower Assembly	12
Ground Drive Assembly	14
Idler Arm Assembly No. 116-9307	16
Axle and Bearing Assembly No. 116-9545	18
RH Tine Wheel Assembly No. 116-6738	20
LH Tine Wheel Assembly No. 116-6739	22
Fuel Assembly	24
Motion Control Assembly	26
Electrical Assembly	28
Auxiliary Hydraulic Assembly	30
Manifold W/Check and Relief Asm No. 116-9549	32
Engine Assembly	34
Tine Assembly	36

Main Frame Assembly

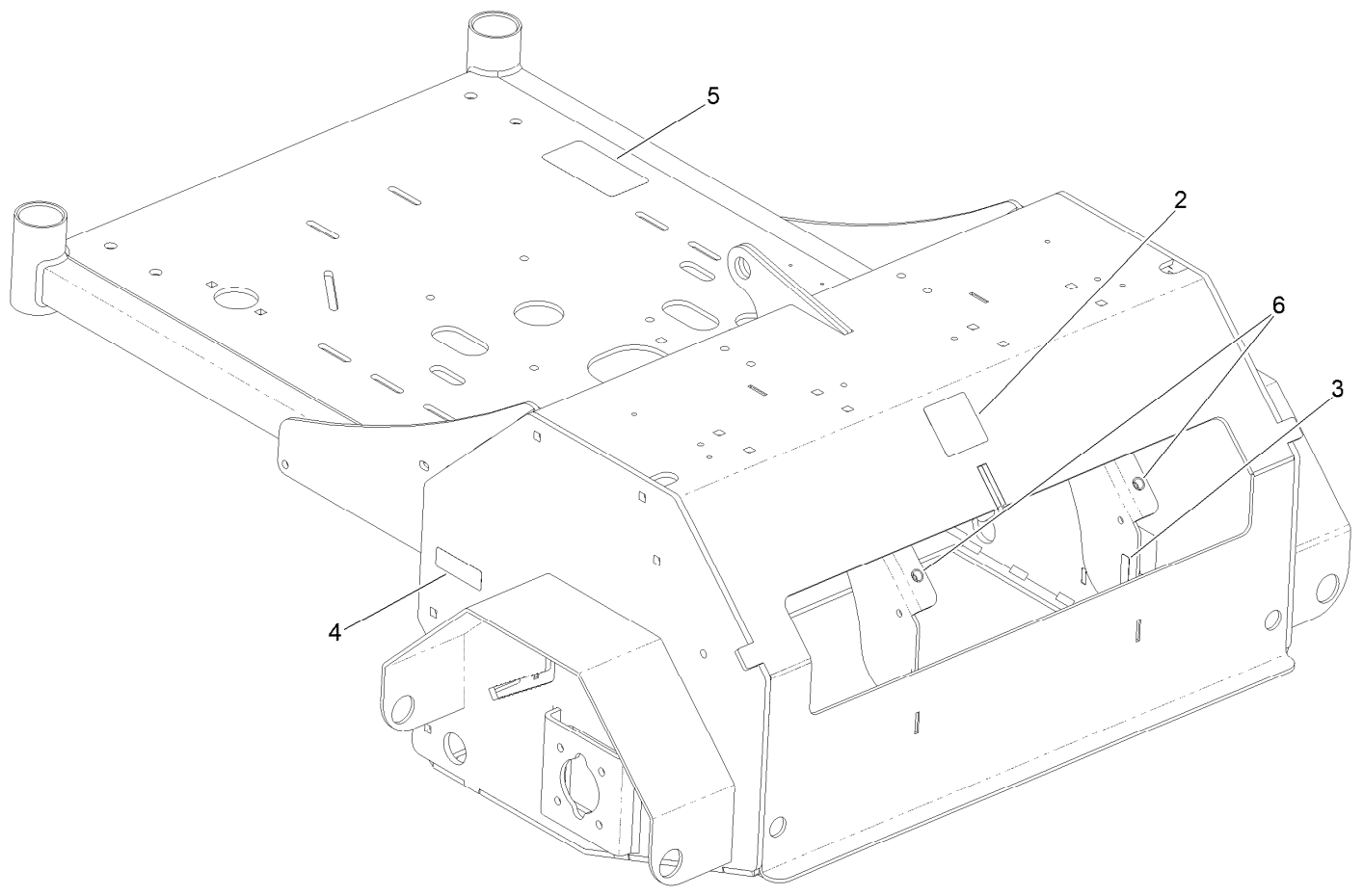


Main Frame Assembly (continued)

<i>Ref.</i>	<i>Part Number</i>	<i>Qty.</i>	<i>Description</i>	<i>Ref.</i>	<i>Part Number</i>	<i>Qty.</i>	<i>Description</i>
1	116-8138	1	Main Frame ASM	10	116-6612-01	1	Guard-Chain, RH
2		2	Front Caster ASM W/Fork ●	11	116-6611-01	1	Guard-Chain, LH
3	116-6536-01	1	Weight	14	3234-40	4	Screw-HF
4	116-9134	1	Platform ASM W/Decal & Rocker	18	104-8301	6	Nut-Nyloc 3/8-16 Flg
5	116-7300	1	Access Cover ASM	19	3256-24	6	Washer-3/8 Sae
5:2	121-6163	1	Decal-Tine Ground Operation (Ce)	21	323-6	6	Screw-HH 3/8-16 X 1
6	116-8258	1	Muffler Guard ASM	22	614672	2	Screw-Shoulder 3/8-16 X 1.295
6:2	115-2047	2	Decal-Surface, Hot	23	1-811010	2	Plug
8	99-5107	4	Nut-Lock 1/2-13	24	3256-6	2	Washer
9	126-0015	2	Grommet	32	116-6952	1	Decal-Stand-On Aerator 30
				33	117-2718	1	Decal-Arrester, Spark

● Not serviced separately

Main Frame Decal Assembly No. 116-8138

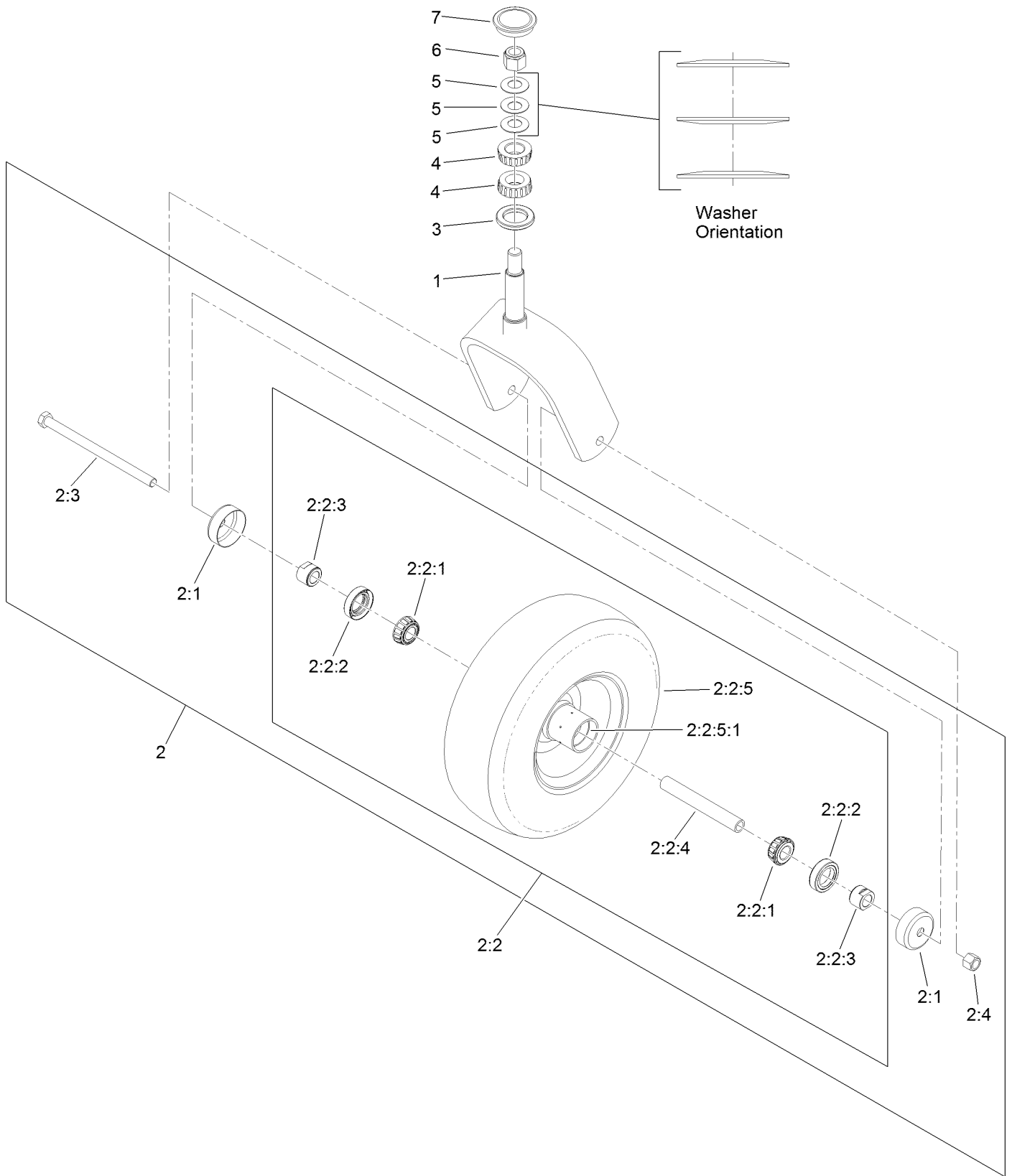


Main Frame Decal Assembly No. 116-8138 (continued)

<i>Ref.</i>	<i>Part Number</i>	<i>Qty.</i>	<i>Description</i>
2	121-6150	1	Decal-Warning
3	120-9570	1	Decal-Warning
4	121-6161	2	Decal-Danger

<i>Ref.</i>	<i>Part Number</i>	<i>Qty.</i>	<i>Description</i>
5	116-9391	1	Decal-Belt Routing
6	32148-10	2	Insert-Nut

Caster Wheel and Fork Assembly



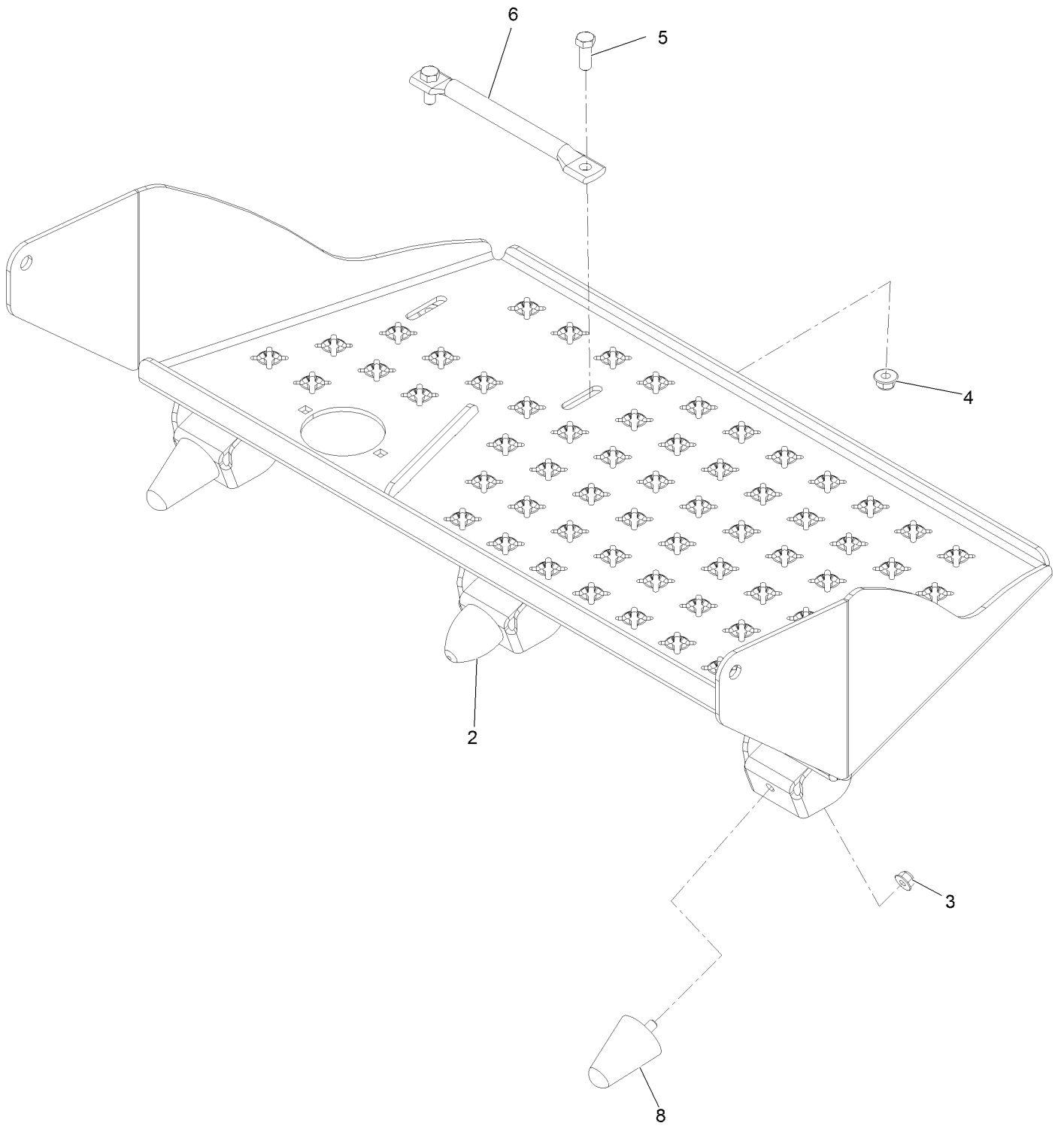
Caster Wheel and Fork Assembly (continued)

<i>Ref.</i>	<i>Part Number</i>	<i>Qty.</i>	<i>Description</i>	<i>Ref.</i>	<i>Part Number</i>	<i>Qty.</i>	<i>Description</i>
1	116-6704-01	1	Caster	2:2:5:1	1-633584	1	Bearing-Cup
2	109-9126	1	Wheel & Tire ASM	2:3	325-42	1	Screw-HH
2:1	103-2768	2	Guard-Seal	2:4	3296-23	1	Nut-Lock, NI
2:2		1	Wheel And Tire ASM ●	3	116-5647	1	Seal-Grease
2:2:1	1-633585	2	Bearing-Cone, Taper	4	1-543509	2	Bearing-Roller, Tapered
2:2:2	103-0063	2	Seal-Caster	5	1-633508	3	Washer-Bellville
2:2:3	103-3051	2	Spacer-Nut ■	6	3296-51	1	Nut-Lock, NI
2:2:4	103-3155	1	Axle-Caster	7	103-4882	1	Cap-Grease
2:2:5		1	Wheel And Tire ASM ●				

● Not serviced separately

■ Use Pro-Lock, Nut Type (P/N 1-840022, .5ml tube) on threads.

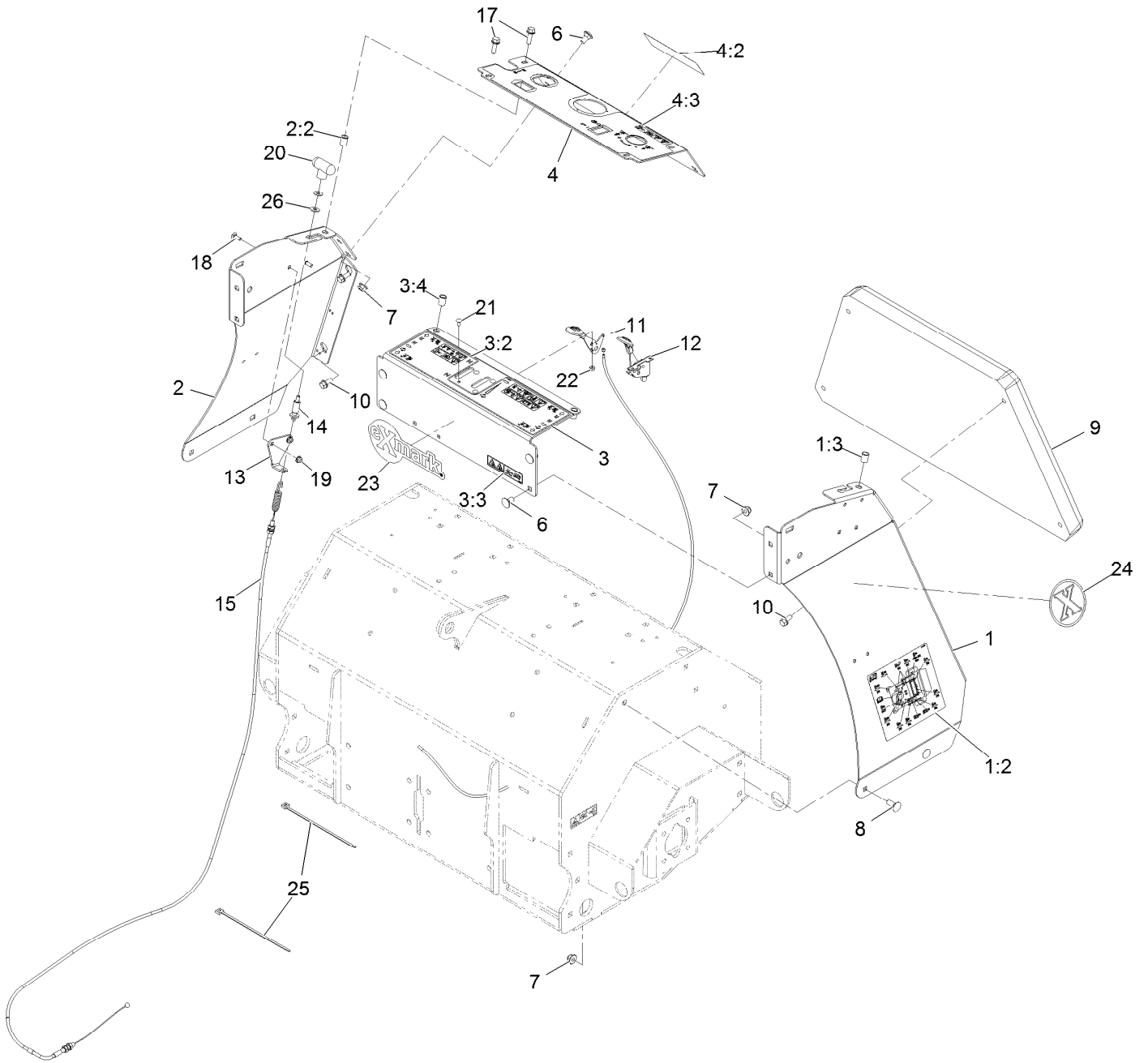
Platform and Rocker Assembly



Platform and Rocker Assembly (continued)

<i>Ref.</i>	<i>Part Number</i>	<i>Qty.</i>	<i>Description</i>	<i>Ref.</i>	<i>Part Number</i>	<i>Qty.</i>	<i>Description</i>
2	114-1926	1	Bumper-Rubber	5	323-6	2	Screw-HH 3/8-16 X 1
3	104-8300	3	Nut-Nyloc 5/16-18 Flg	6	116-8950-03	1	Rocker-Foot Pedal
4	104-8301	2	Nut-Nyloc 3/8-16 Flg	8	114-1925	2	Bumper-Rubber

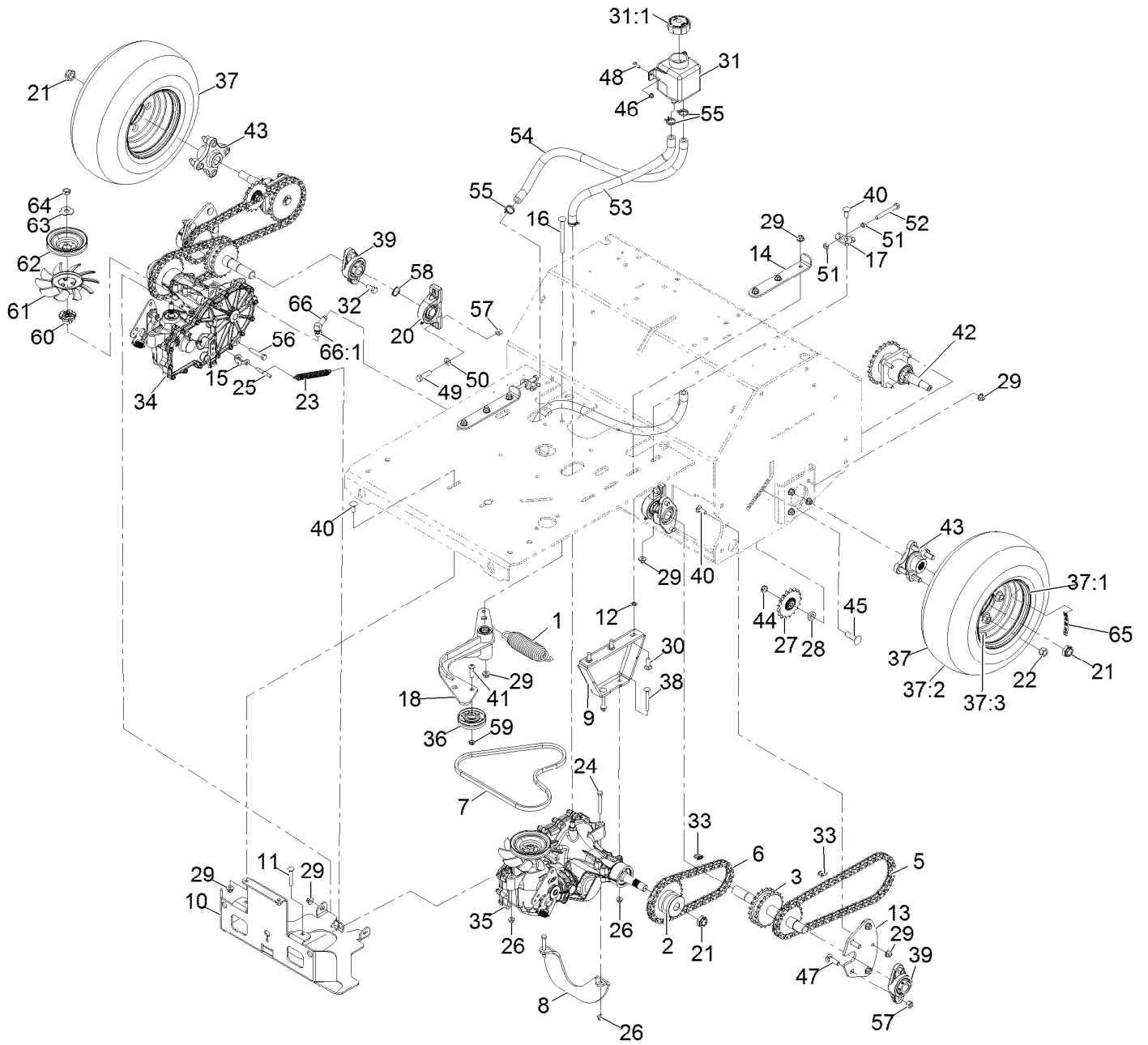
Tower Assembly



Tower Assembly (continued)

<i>Ref.</i>	<i>Part Number</i>	<i>Qty.</i>	<i>Description</i>	<i>Ref.</i>	<i>Part Number</i>	<i>Qty.</i>	<i>Description</i>
1	116-9386	1	Panel-Side,LH W/Decals-Black	9	116-6765	1	Cushion, Grey
1:2	116-9392	1	Decal-Service Aid Ce	10	3234-5	4	Screw-HH Flg 5/16-18 X 3/4
1:3	32148-7	1	Nut-Insert	11	109-9147	1	Control-Choke
2	116-7658	1	ASM-Panel,Side RH (Black)	12	109-3958	1	Control-Throttle
2:2	32148-7	1	Nut-Insert	13	116-6630	1	Bracket-Cable, Brake
3	126-4525	1	ASM-Plate W/Decal	14	116-7504	1	Link-Cable, Brake
3:2	121-6164	1	Decal-Warning, Control Panel	15	116-7503	1	Cable-Brake
3:3	121-6162	1	Decal-Warning, Tines	17	3234-29	4	Screw-HH Flg 5/16-18 X 1
3:4	32148-7	2	Nut-Insert	18	3229-1	2	Bolt-Carriage 1/4-20 X 3/4
4	126-4524	1	ASM-Panel W/Decals	19	104-7201	2	Nut-Nyloc 1/4-20 Flg
4:2	121-6166	1	Decal-Danger	20	116-7607	1	Knob-Tee
4:3	126-4528	1	Decal-Danger, Control Panel	21	1-807513	4	Bolt-Carriage #10-24 X 1/2
6	3231-1	6	Bolt-Carriage 3/8-16 X 3/4	22	3296-2	4	Nut-Nyloc #10-24
7	104-8301	10	Nut-Nyloc 3/8-16 Flg	23	103-2882	1	Decal, Exmark Logo
8	3231-2	4	Bolt-Carriage 3/8-16 X 1	24	116-7034	2	Decal-Exmark X-Logo 3.85
				25	1-303335	2	Tie-Cable 7 15/16 (Large)
				26	3256-2	2	Washer-1/4 Std

Ground Drive Assembly



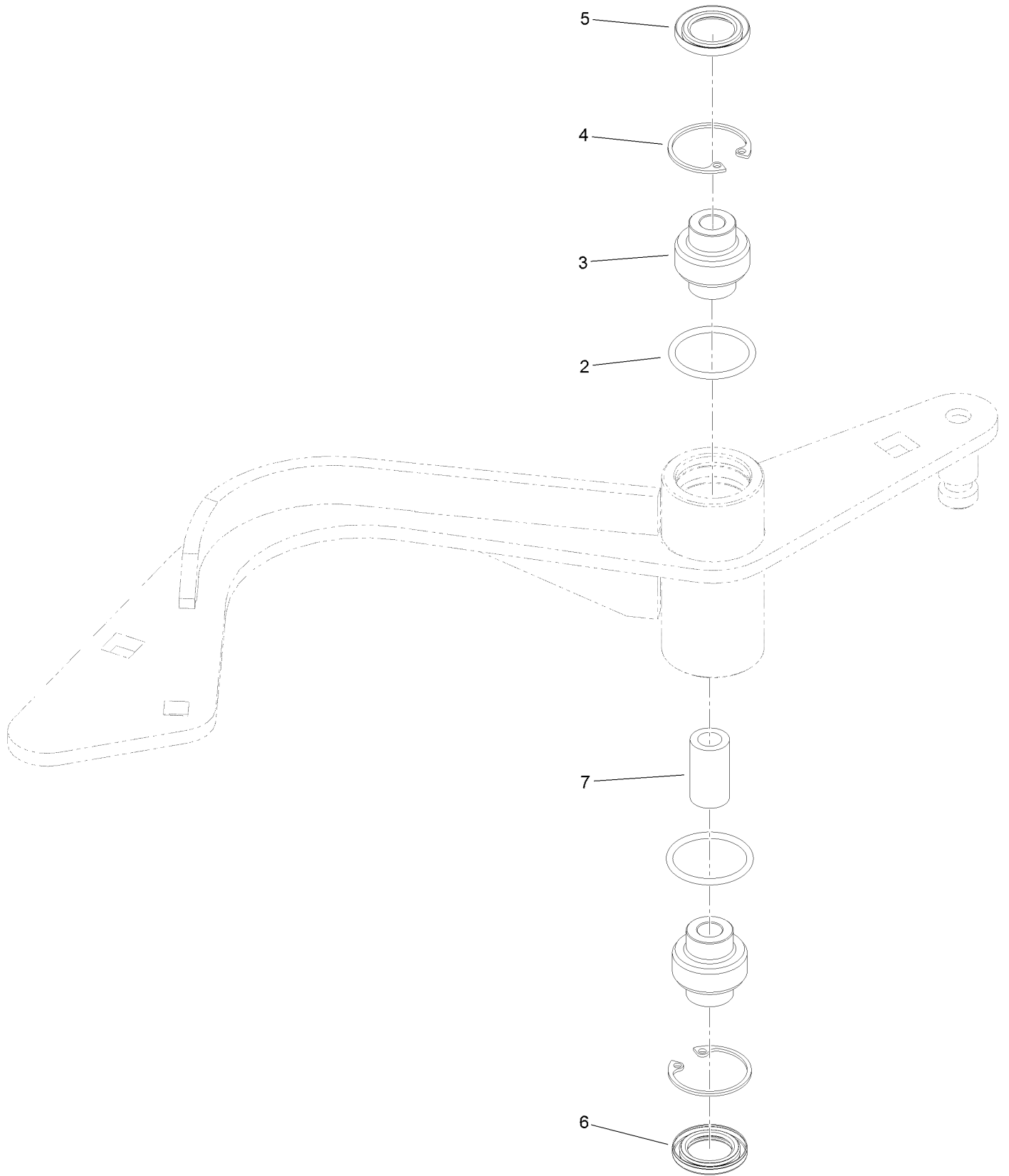
Ground Drive Assembly (continued)

<i>Ref.</i>	<i>Part Number</i>	<i>Qty.</i>	<i>Description</i>	<i>Ref.</i>	<i>Part Number</i>	<i>Qty.</i>	<i>Description</i>
1	116-6317	1	Spring-Extension	37:1	116-6977	1	Rim (8 X 5.375)
2	116-9305	2	Hub-Drive, Chain	37:2	116-6978	1	Tire (16 X 6.50-8, 4 Ply)
3	116-9684	2	Jackshaft	37:3	232-27	1	Stem-Valve
5	116-6895	2	Chain-Roller, #50, 65 Links	38	3230-9	4	Bolt-Carriage 5/16-18 X 2 3/4
6	116-6896	2	Chain-Roller #50, 47 Pitches	39	116-6777	4	Bearing-Flange, 2 Bolt
7	116-8874	1	Belt-4L Section	40	3231-2	10	Bolt-Carriage 3/8-16 X 1
8	116-9127-03	1	Angle Brace	41	116-9927	1	Screw-HSBH
9	116-9710-03	2	Mount-Transmission	42	116-9545	2	Axle And Bearing ASM
10	116-9711-03	1	Guard-Transmission	43	116-3872	2	Hub-Offset
11	3230-7	2	Bolt-Carriage 5/16-18 X 2 1/4	44	3296-45	2	Nut-Nyloc 1/2-13 Thin
12	107-3154	6	Nut-Push 3/8-16	45	3233-14	2	Screw-CARR
13	116-6596-01	2	Plate-Jackshaft	46	104-7201	2	Nut-Nyloc 1/4-20 Flg
14	116-6619	2	Plate-Adjustment, Transmission	47	3232-3	4	Bolt-Carriage 7/16-14 X 1 1/2
15	116-7597	1	Yoke-Park Brake	48	3229-1	2	Bolt-Carriage 1/4-20 X 3/4
16	9000779	1	Bolt 3/8-16 X 4 1/2	49	324-6	4	Screw-HH 7/16-14 X 1 1/2
17	116-6723	2	Bracket-Hydro, Adjust	50	3256-25	4	Washer-7/16 Sae
18	116-9307	1	Idler Arm ASM	51	3217-7	4	Nut-Hex 3/8-16
20	116-6756	2	Bearing-Pillow Block	52	99-8664	2	Bolt-HH 3/8-16 X 3 Tap
21	116-2839	4	Nut-Lock	53	116-6775	1	Hose-Hydraulic
22	242-50	8	Nut-Lug 1/2-20	54	116-6776	1	Hose-Hydraulic
23	76-4660	1	Spring-Door	55	109-3322	4	Clamp-Hose
24	322-12	2	Screw-HH 5/16-18 X 2 1/2	56	323-10	2	Screw-HH 3/8-16 X 2
25	116-7596	1	Pin-Brake, Park	57	3296-48	8	Nut-Nyloc 7/16-14
26	104-8300	8	Nut-Nyloc 5/16-18 Flg	58	32151-29	2	Ring-Retaining
27	116-6719	2	Sprocket-Idler, 17T	59	3296-59	1	Nut-Nyloc 3/8-16 Thin
28	104-8417	2	Washer	60	116-9705	2	Hub-Pulley
29	104-8301	27	Nut-Nyloc 3/8-16 Flg	61	116-9706	2	Fan
30	3231-25	6	Bolt-Carriage 3/8-16 X 1 1/4	62	116-9707	2	Pulley
31	109-2250	1	Vent-Tank, Hydro	63	116-9708	2	Washer-Slotted
31:1	109-3320	1	Cap-Reservoir, HYD	64	116-9714	2	Nut-Jam, Hex 1/2-20 W/Patch ■
32	116-7109	4	Screw-HH	65	126-2054	2	Decal-Torque Wheel Lug-Hub
33	116-6897	4	Link-Connecting, #50	66	109-6449	1	Fitting-Elbow, 90
34	116-9712	1	RH Transaxle ASM (No Fan)	66:1	237-42	1	O-Ring
35	116-9713	1	LH Transaxle ASM (No Fan)	99	109-9828	1	Bottle-Oil, 32Oz Hydraulic ●
36	116-9715	1	Pulley-Idler				
37	116-6932	2	Tire ASM (16 X 6.50-8)				

● Not illustrated

■ Use Pro-Lock, Nut Type (P/N 1-840022, .5ml tube) on threads.

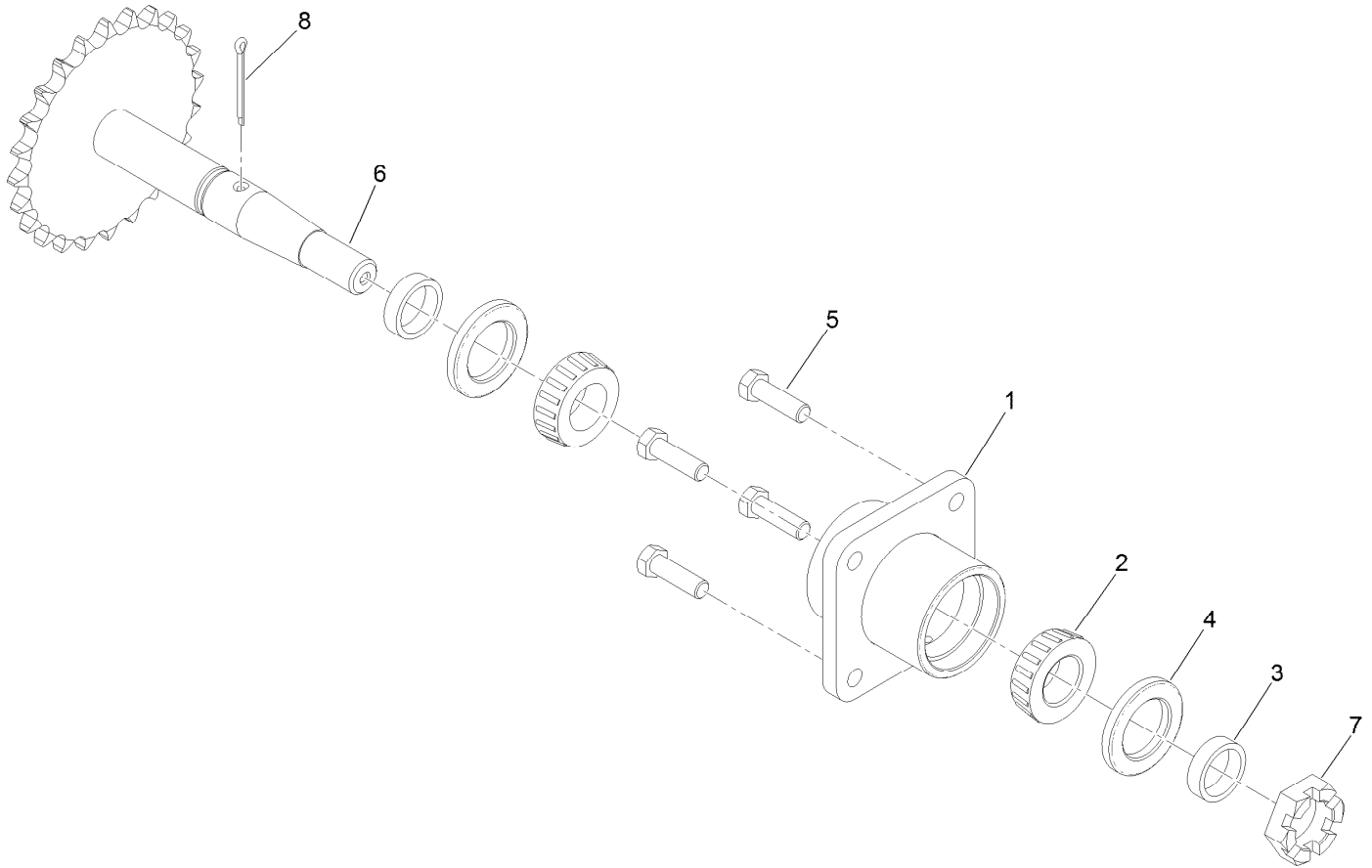
Idler Arm Assembly No. 116-9307



Idler Arm Assembly No. 116-9307 (continued)

<i>Ref.</i>	<i>Part Number</i>	<i>Qty.</i>	<i>Description</i>	<i>Ref.</i>	<i>Part Number</i>	<i>Qty.</i>	<i>Description</i>
2	106-7159	2	O-Ring	5	103-3506	1	Seal-Lip, Single
3	103-3504	2	Bearing-Spherical	6	103-3505	1	Seal-Double Lip
4	32120-10	2	Ring-Snap	7	1-603401	1	Spacer-Fender

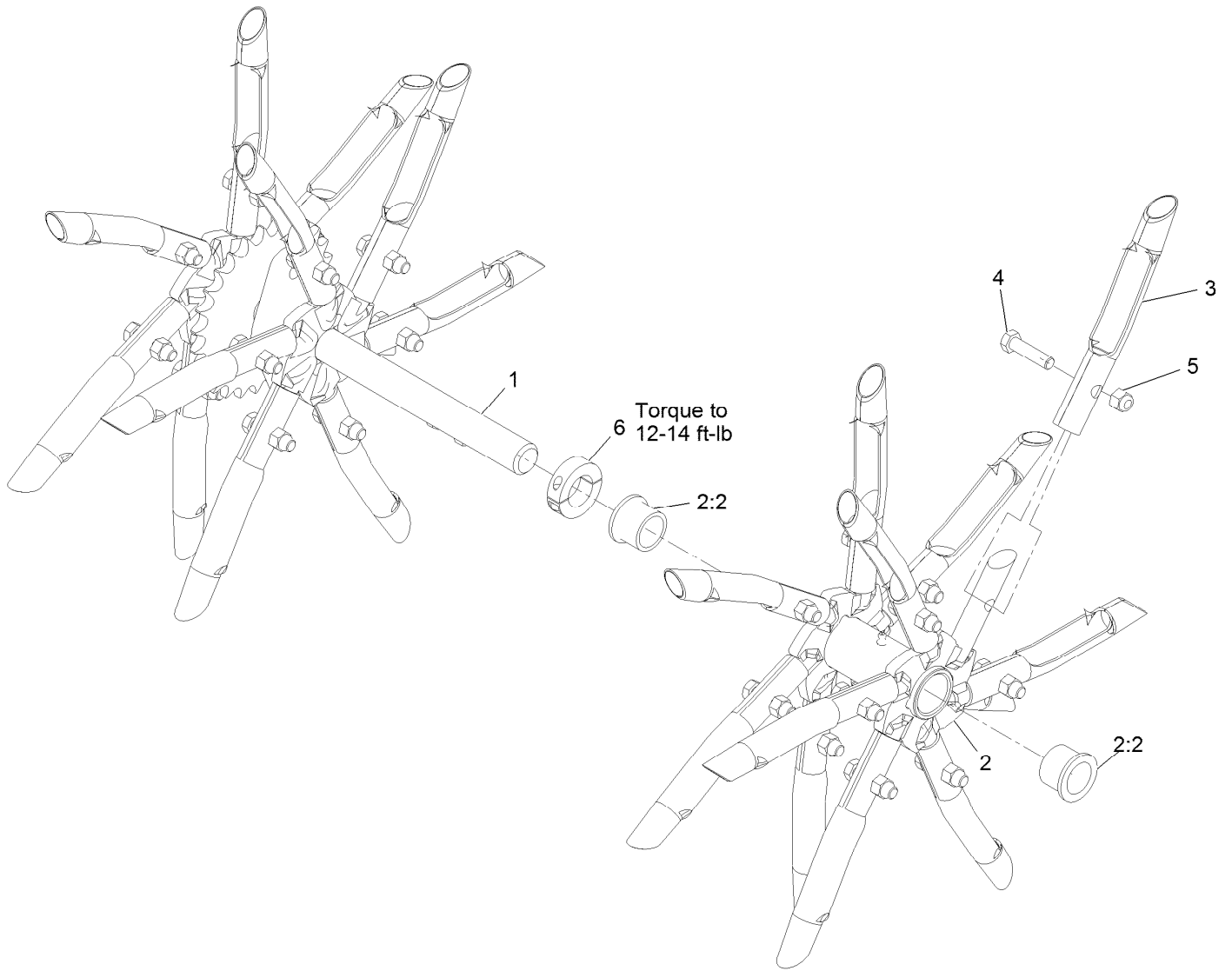
Axle and Bearing Assembly No. 116-9545



Axle and Bearing Assembly No. 116-9545 (continued)

<i>Ref.</i>	<i>Part Number</i>	<i>Qty.</i>	<i>Description</i>	<i>Ref.</i>	<i>Part Number</i>	<i>Qty.</i>	<i>Description</i>
1	116-6746-01	1	Mount-Bearing, Wheel	5	323-7	4	Screw-HH
2	1-543509	2	Bearing-Roller, Tapered	6	126-0459	1	Axle
3	116-6758	2	Spacer	7	99-3139	1	Nut
4	1-543511	2	Seal-Grease	8	1-806800	1	Pin-Cotter

RH Tine Wheel Assembly No. 116-6738

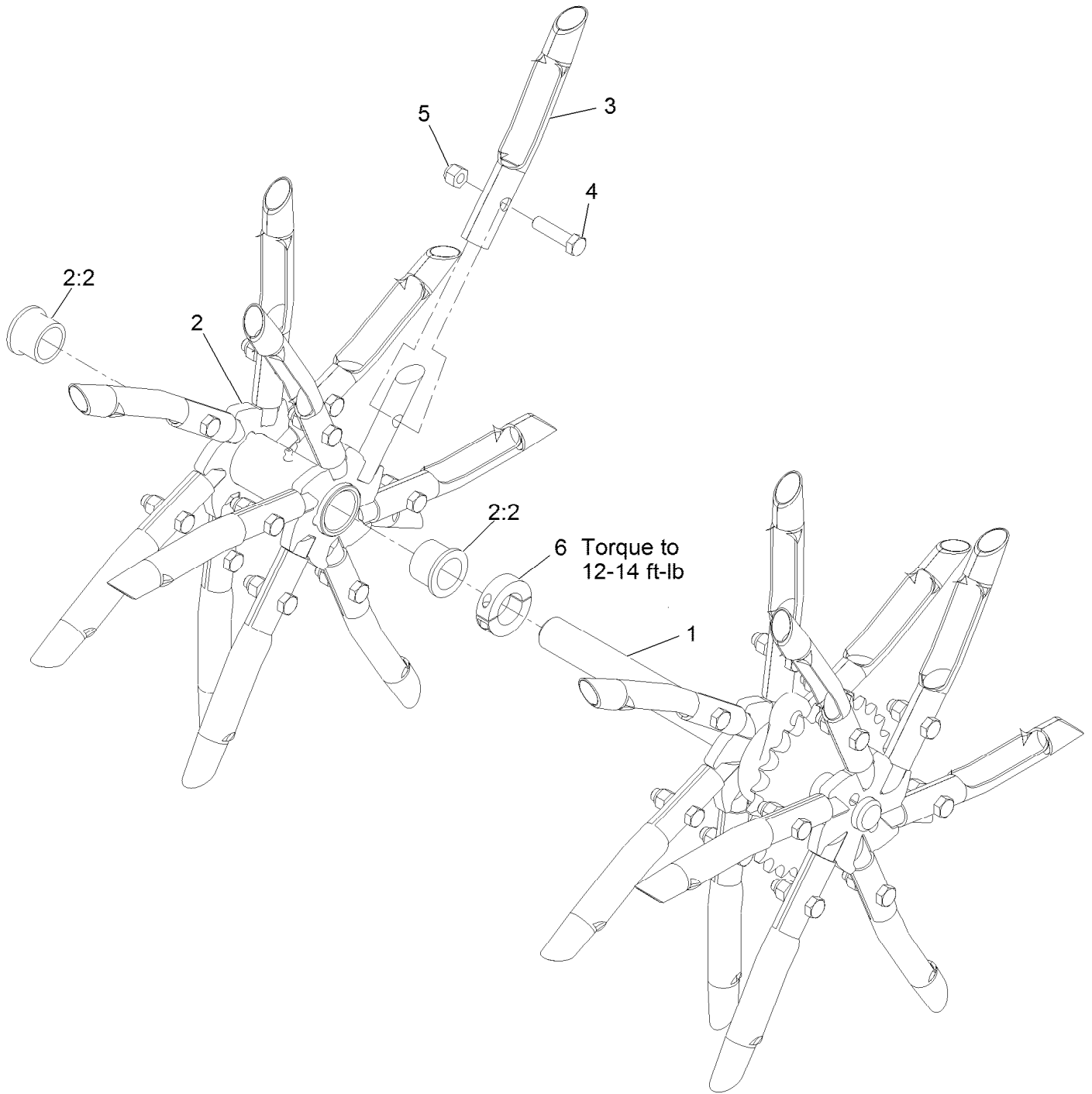


RH Tine Wheel Assembly No. 116-6738 (continued)

<i>Ref.</i>	<i>Part Number</i>	<i>Qty.</i>	<i>Description</i>	<i>Ref.</i>	<i>Part Number</i>	<i>Qty.</i>	<i>Description</i>
1	116-6727	1	Shaft-Tine, RH	4	323-8	24	Screw-HH 3/8-16 X 1 1/2
2	116-6731	1	Float Tine Shaft ASM	5	3296-39	24	Nut-Nyloc 3/8-16
2:2	94-8949	2	Bushing-Flange	6	116-7271	1	Collar-Locking ●
3	126-2143	24	Tine-Coring (3/4)				

● Use Loctite® 243 on threads.

LH Tine Wheel Assembly No. 116-6739

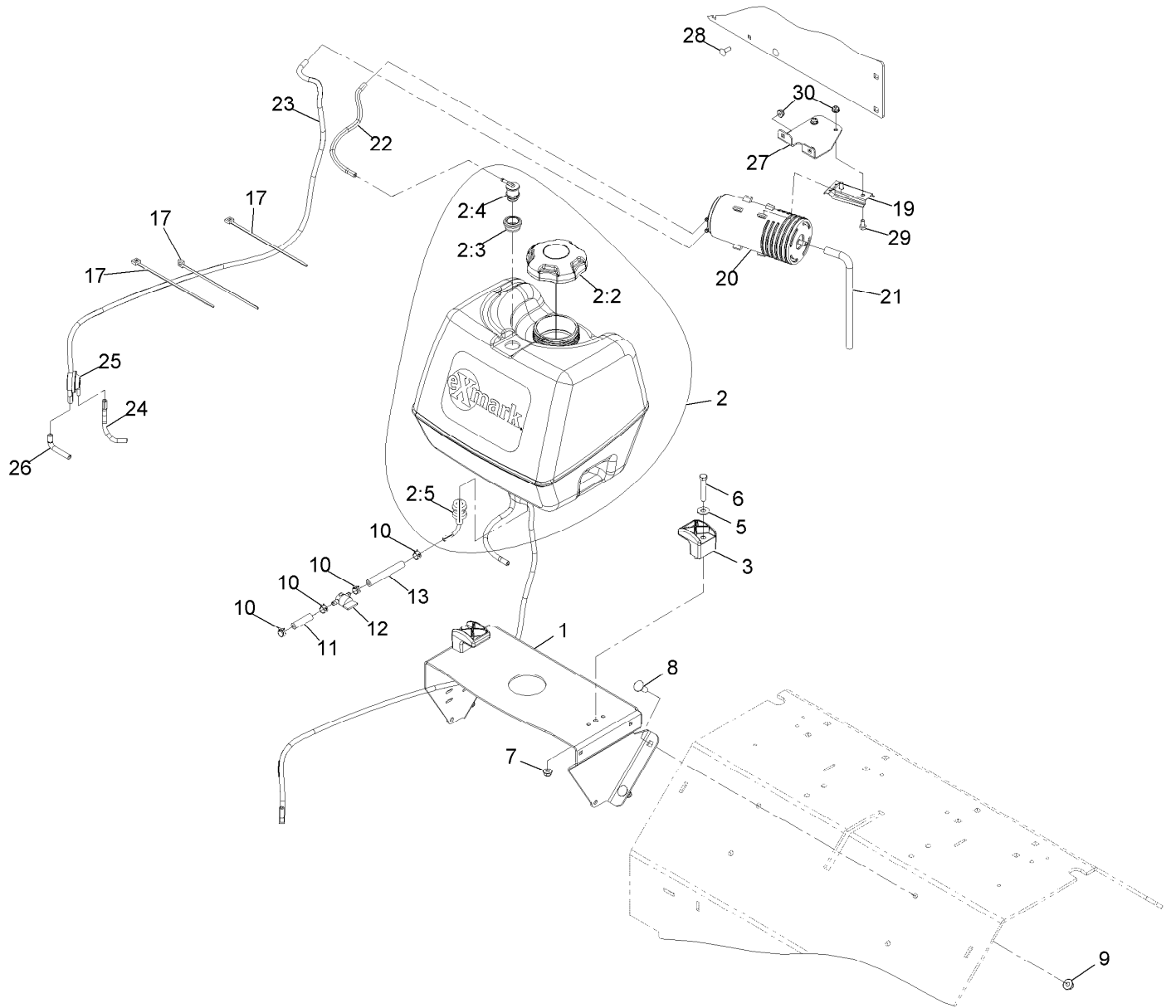


LH Tine Wheel Assembly No. 116-6739 (continued)

<i>Ref.</i>	<i>Part Number</i>	<i>Qty.</i>	<i>Description</i>	<i>Ref.</i>	<i>Part Number</i>	<i>Qty.</i>	<i>Description</i>
1	116-6728	1	Shaft-Tine, LH	4	323-8	24	Screw-HH 3/8-16 X 1 1/2
2	116-6731	1	Float Tine Shaft ASM	5	3296-39	24	Nut-Nyloc 3/8-16
2:2	94-8949	2	Bushing-Flange	6	116-7271	1	Collar-Locking ●
3	126-2143	24	Tine-Coring (3/4)				

● Use Loctite® 243 on threads.

Fuel Assembly

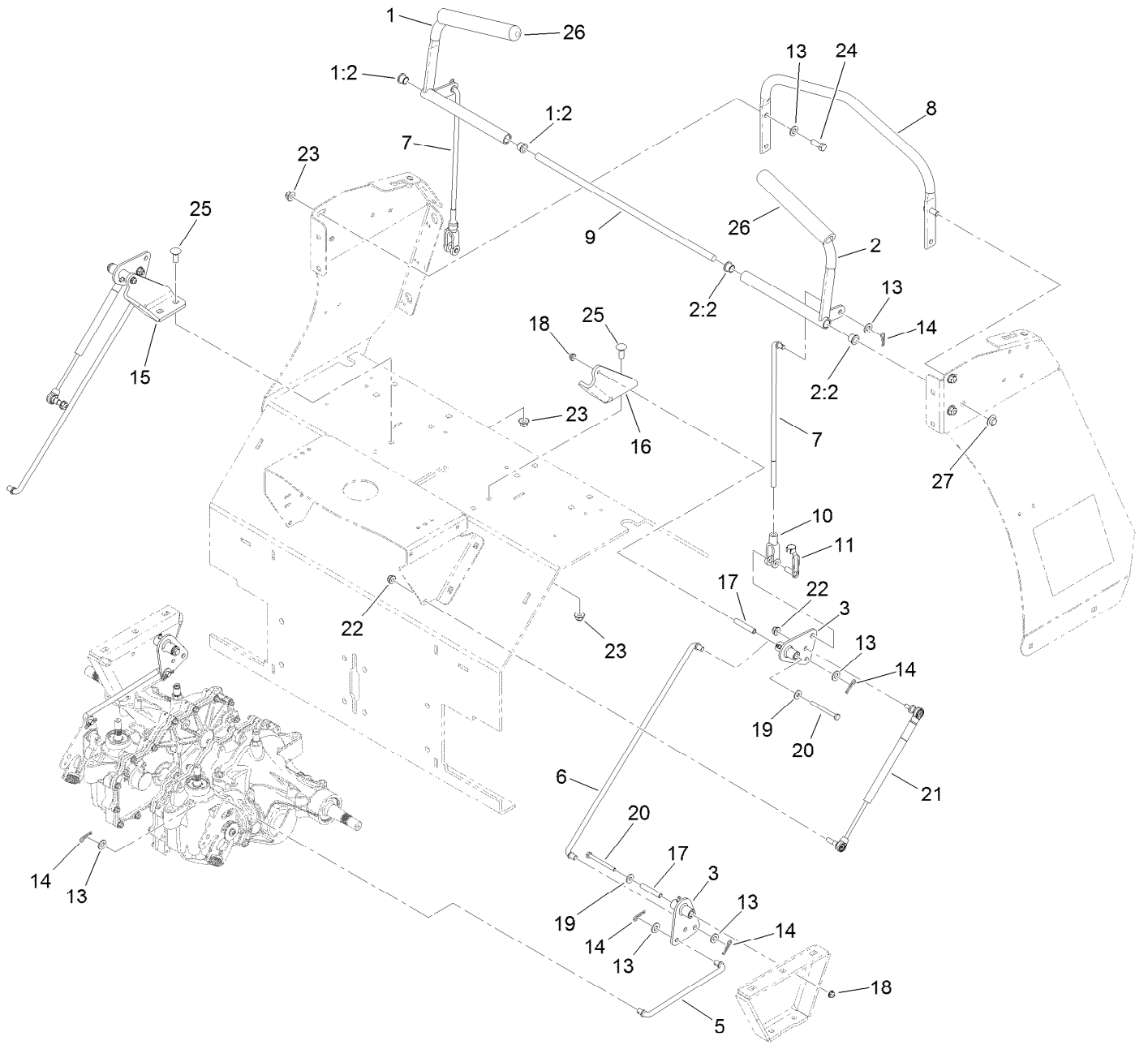


Fuel Assembly (continued)

<i>Ref.</i>	<i>Part Number</i>	<i>Qty.</i>	<i>Description</i>	<i>Ref.</i>	<i>Part Number</i>	<i>Qty.</i>	<i>Description</i>
1	116-9541-01	1	Support-Tank, Fuel	12	1-603770	1	Valve-Fuel
2	126-1525	1	ASM, Fuel Tank	13	105-8342	1	Hose-Fuel
2:2	120-5461	1	Cap-Fuel, Ratcheting	17	1-303335	3	Tie-Cable 7 15/16 (Large)
2:3	114-0284	1	Grommet	19	114-0292	1	Bracket-Canister, Carbon
2:4	119-3547	1	Valve-Vent, Fuel	20	117-1221	1	Canister-Carbon, 800Cc
2:5	103-2605	1	Fitting-Fuel Bulkhead W/Strainer ●	21	115-0962	1	Hose-Vent, Canister
3	107-4543	2	Clamp	22	126-3703	1	Hose-Emissions
5	3256-3	2	Washer-5/16 Std	23	116-3116	1	Hose-Vent, Formed
6	322-10	2	Screw-HH 5/16-18 X 2	24	116-2394	1	Hose-Vent, Formed
7	104-8300	2	Nut-Nyloc 5/16-18 Flg	25	116-2232	1	Valve-Control, Vacuum
8	3231-22	4	Bolt-Carriage 3/8-16 X 1	26	116-2233	1	Hose-Vent, Formed
9	104-8301	4	Nut-Nyloc 3/8-16 Flg	27	126-2991-03	1	Bracket-Mounting, Canister
10	2412-98	4	Clamp-Hose	28	3229-1	2	Bolt-Carriage 1/4-20 X 3/4
11	119-7856	1	Hose-Fuel	29	321-2	2	Screw-HH 1/4-20 X 1/2
				30	104-7201	4	Nut-Nyloc 1/4-20 Flg

● Use Pro-Lock, Nut Type (P/N 1-840022, .5ml tube) on threads.

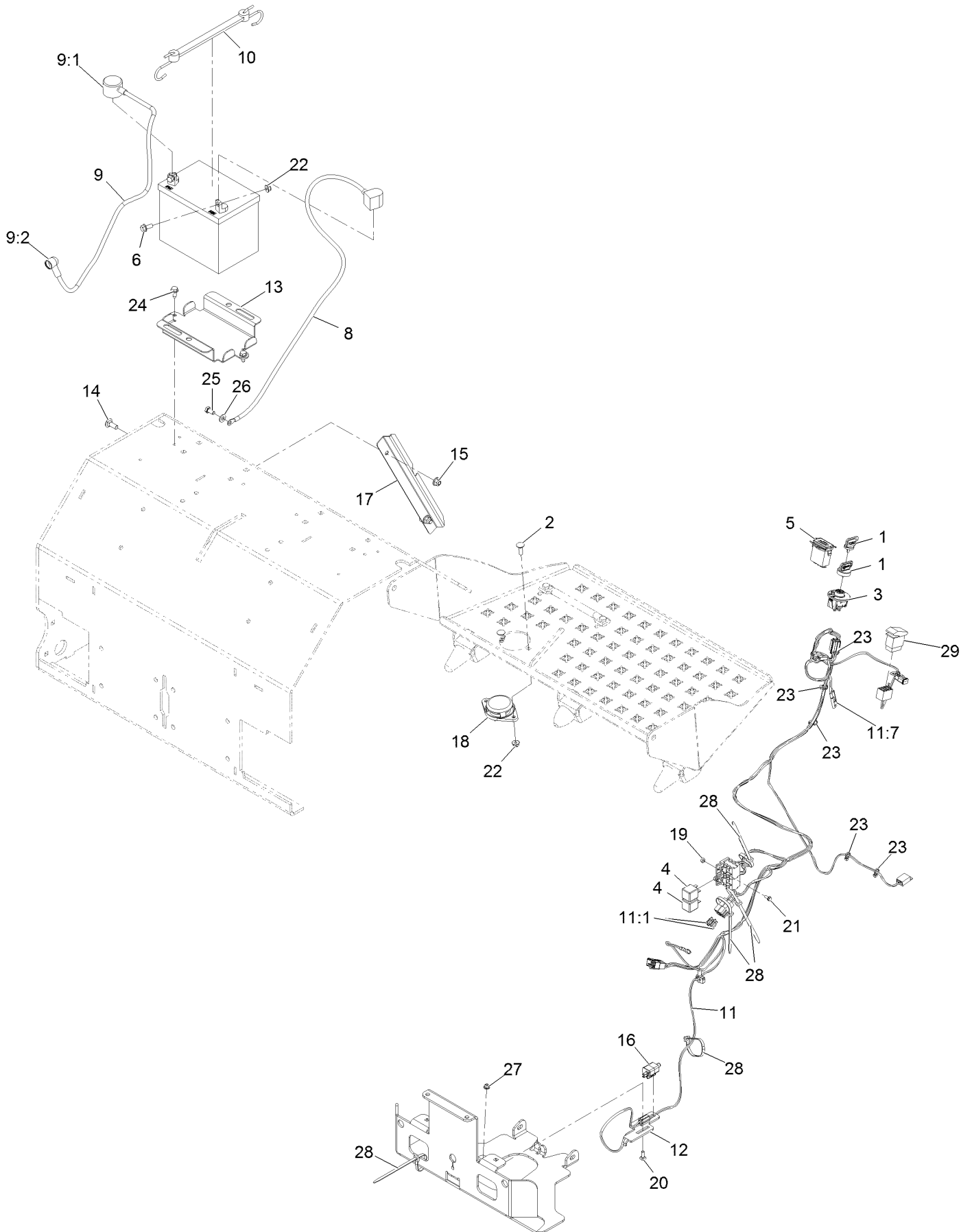
Motion Control Assembly



Motion Control Assembly (continued)

<i>Ref.</i>	<i>Part Number</i>	<i>Qty.</i>	<i>Description</i>	<i>Ref.</i>	<i>Part Number</i>	<i>Qty.</i>	<i>Description</i>
1	116-6567	1	RH Control Handle ASM	15	116-6576-03	1	Bracket-Pivot, RH
1:2	116-4279	2	Bearing-Flange	16	116-6577-03	1	Bracket-Pivot, LH
2	116-6566	1	LH Control Handle ASM	17	116-7224	4	Spacer
2:2	116-4279	2	Bearing-Flange	18	104-7201	4	Nut-Nyloc 1/4-20 Flg
3	126-0340	4	Bellcrank W/Zerk	19	3256-2	4	Washer-1/4 Std
5	116-6722	2	Link-Control, Hydro	20	321-14	4	Screw-HH 1/4-20 X 2 3/4
6	116-9298	2	Link-Control, Bell Crank	21	116-0027	2	Damper-Control, Motion
7	116-6730	2	Link-Control, Bell Crank	22	104-8300	4	Nut-Nyloc 5/16-18 Flg
8	116-6608-03	1	Bar-Reference	23	104-8301	8	Nut-Nyloc 3/8-16 Flg
9	116-6607	1	Shaft-Pivot, Control	24	323-6	4	Screw-HH 3/8-16 X 1
10	1-633131	2	Yoke-Linkage, Brake	25	3231-2	4	Bolt-Carriage 3/8-16 X 1
11	103-2399	2	Pin-Clevis Spring 3/8	26	103-8153	2	Grip-Lever, Control
13	3256-24	14	Washer-3/8 Sae	27	32112-14	2	Nut-Push
14	1-806003	10	Hairpin-Cotter				

Electrical Assembly

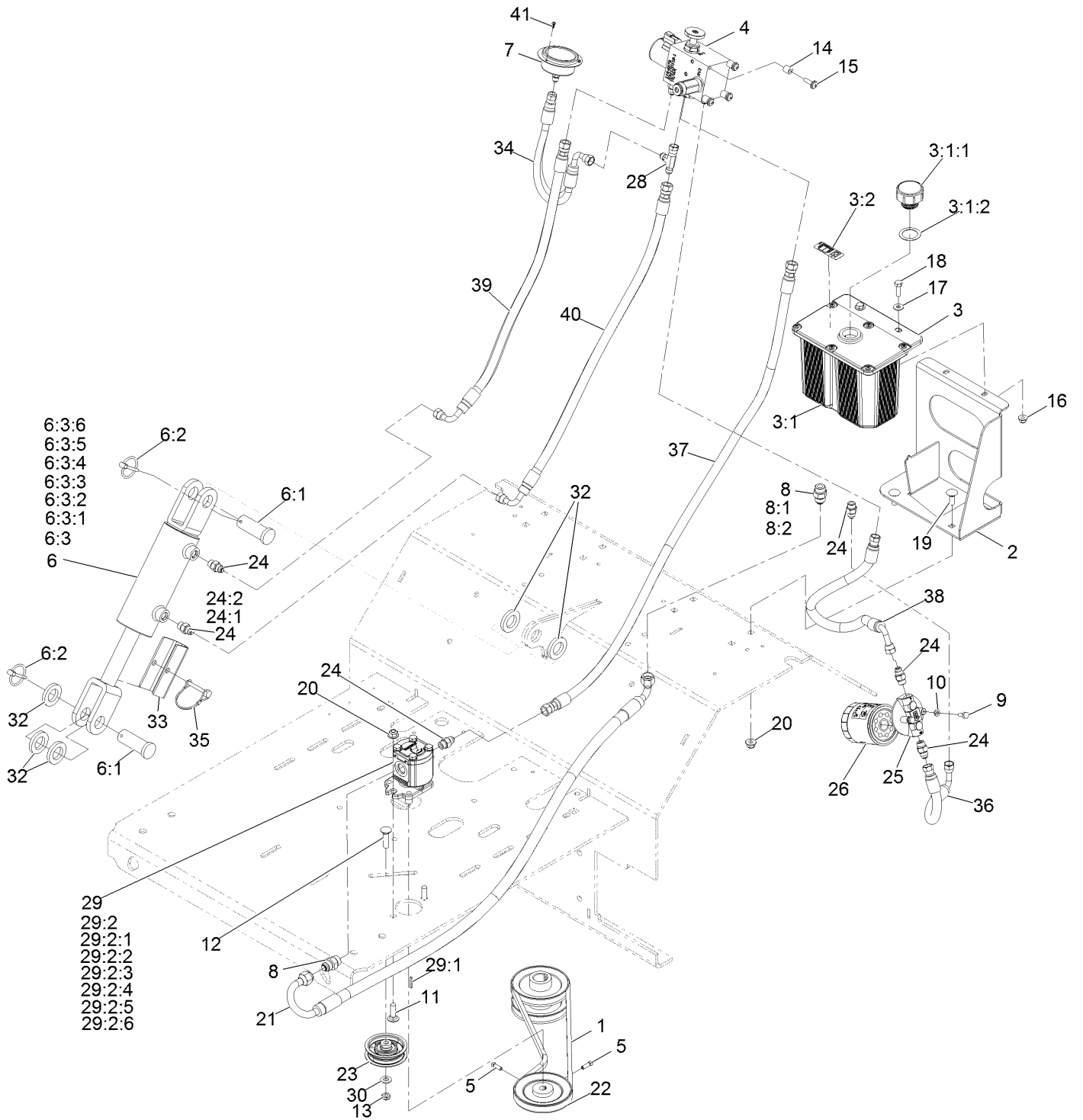


Electrical Assembly (continued)

<i>Ref.</i>	<i>Part Number</i>	<i>Qty.</i>	<i>Description</i>	<i>Ref.</i>	<i>Part Number</i>	<i>Qty.</i>	<i>Description</i>
1	1-603511	1	Key-Ignition	14	3231-2	2	Bolt-Carriage 3/8-16 X 1
1	103-2106	1	Key-Exmark Logo	15	104-8301	2	Nut-Nyloc 3/8-16 Flg
2	3230-2	2	Bolt-Carriage 5/16-18 X 1	16	110-6765	1	Switch
3	117-2221	1	Switch-Ignition	17	116-9394-03	1	Guard-Harness
4	1-643275	2	Relay-12Vdc 40 Amp	18	92-6282	1	Switch-Seat
5	1-513374	1	Meter-Engine Hours	19	3296-2	2	Nut-Nyloc #10-24
6	3234-5	2	Screw-HH Flg 5/16-18 X 3/4	20	3229-1	1	Bolt-Carriage 1/4-20 X 3/4
8	117-6422	1	Cable-Battery, Black	21	3290-321	2	Screw-HWH
9	109-7630	1	Positive Battery Cable ASM	22	104-8300	4	Nut-Nyloc 5/16-18 Flg
9:1	109-2407	1	Insulator-Battery	23	1-303287	5	Tie-Cable 5 1/2 (Small)
9:2	1-543393	1	Insulator-Solenoid	24	32144-70	2	Screw-HWH 5/16-18 X 3/4 Tf
10	104-2466	1	Holddown-Battery	25	33114-016	1	Screw-HH M8-1.25 X 16Mm
11	126-4526	1	Harness-Wire ●	26	33094-00	1	Washer
11:1	1-816001	2	Fuse-Blade Type, 20 Amp	27	104-7201	1	Nut-Nyloc 1/4-20 Flg
11:7	116-0053	1	Cap-Plug	28	1-303335	5	Tie-Cable 7 15/16 (Large)
12	116-7589	1	Mount-Switch	29	95-8999	1	Switch
13	116-9383-03	1	Bracket-Battery				

● Use dielectric grease on all unsealed connectors and terminals only. Do not apply in sealed connectors.

Auxiliary Hydraulic Assembly



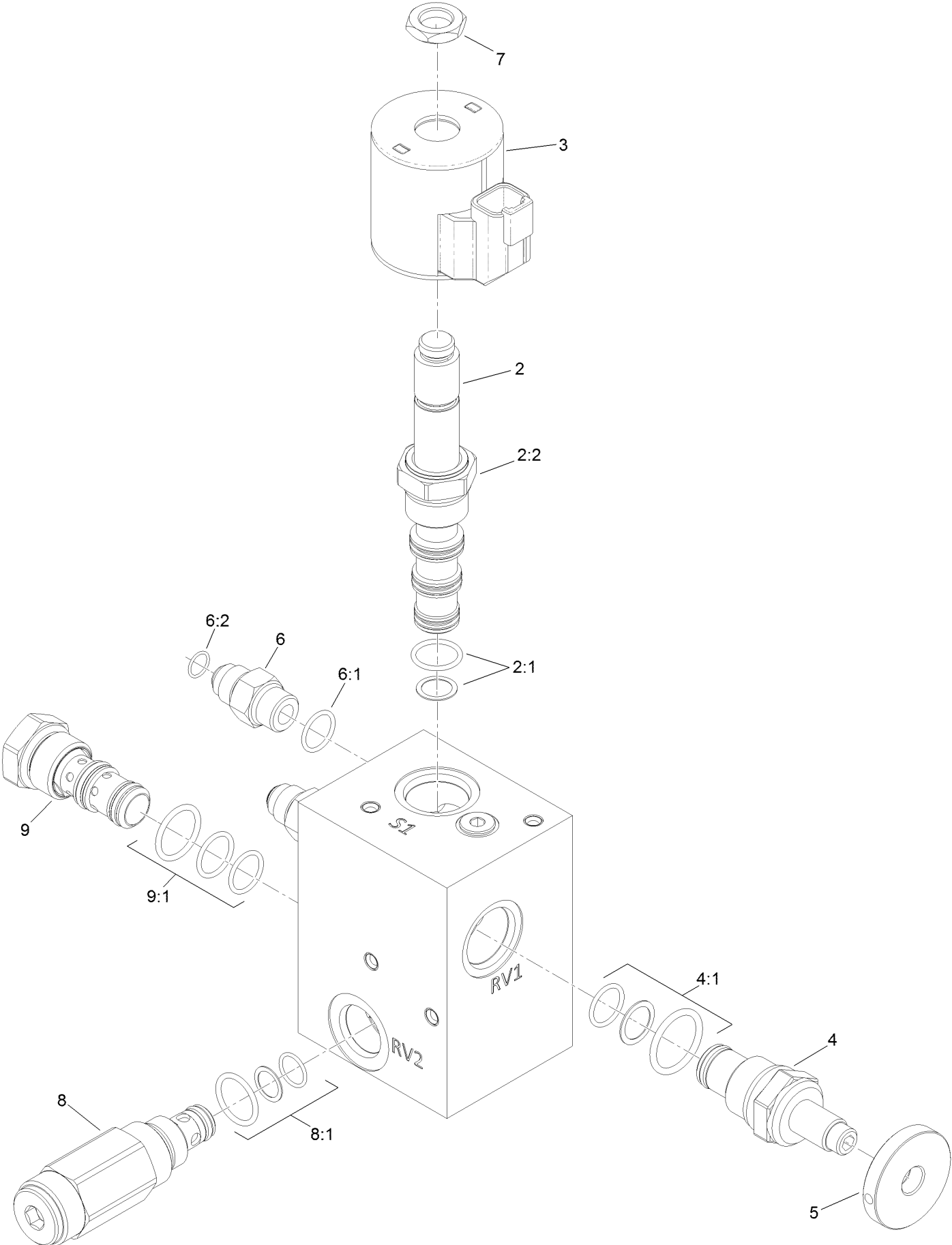
Auxiliary Hydraulic Assembly (continued)

<i>Ref.</i>	<i>Part Number</i>	<i>Qty.</i>	<i>Description</i>	<i>Ref.</i>	<i>Part Number</i>	<i>Qty.</i>	<i>Description</i>
1	116-8874	1	Belt-4L Section	18	322-5	2	Screw-HH 5/16-18 X 1
2	116-6618-03	1	Bracket-Tank, Hydraulic	19	3231-2	4	Bolt-Carriage 3/8-16 X 1
3	116-7557	1	Reservoir ASM	20	104-8301	6	Nut-Nyloc 3/8-16 Flg
3:1		1	Tank-Hydraulic ●	21	116-9309	1	Hose-Hydraulic
3:1:1	103-1948	1	Cap-Reservoir, HYD	22	116-6667	1	Pulley
3:1:2	103-1949	1	Gasket-Cap	23	116-6760	1	Pulley-Idler, Flat
3:2	93-6686	1	Decal-Oil, HYD	24	103-2156	6	Adapter-Straight
4	116-9549	1	Valve-Manifold	24:1	1-603921	1	O-Ring-Sae #6
5	3241-6	2	Screw-SQH ■	24:2	103-1020	1	O-Ring-37 Flare #6
6	116-6969	1	HYD Cylinder ASM	25	104-7836	1	Filter-Head
6:1	116-7290	2	Pin-Clevis	26	109-4180	1	Element, Oil Filter
6:2	92-1298	2	Pin-Lynch	28	353-877	1	Fitting-HYD, Tee (Swivel)
6:3	127-3234	1	Seal Kit	29	116-9129	1	Hydraulic Pump ASM
6:3:1		1	O-Ring ●	29:1	115-7855	1	Key-Square
6:3:2		1	Backup Ring ●	29:2	112-0199	1	Seal Kit
6:3:3		1	Psp Seal ●	29:2:1		1	Seal-Anti Extrusion ●
6:3:4		1	Bs Seal ●	29:2:2		1	Seal-Anti Extrusion ●
6:3:5		1	Dust Seal ●	29:2:3		1	Seal-Shaft ●
6:3:6		1	O-Ring ●	29:2:4		1	Seal-Upper ●
7	116-8178	1	Gauge-Pressure	29:2:5		1	Seal ●
8	1-603990	2	Adapter-Straight	29:2:6		2	O-Ring ●
8:1	1-603920	1	O-Ring-Sae #8	30	3256-24	1	Washer-3/8 Sae
8:2	1-603992	1	O-Ring-37 Flare #8	32	116-6781	5	Spacer
9	321-3	2	Screw-HH 1/4-20 X 5/8	33	116-7307-01	1	Stop-Cylinder
10	1-805004	2	Washer-Lock 1/4 Heavy	34	116-8180	1	Hose-Hydraulic, HP
11	3231-25	2	Bolt-Carriage 3/8-16 X 1 1/4	35	112-2583	1	Pin-Locking
12	3231-4	1	Bolt-Carriage 3/8-16 X 1 1/2	36	116-6675	1	Hose-Hydraulic, LP
13	3296-59	1	Nut-Nyloc 3/8-16 Thin	37	116-8151	1	Hose-Hydraulic
14	22-7810	4	Spacer	38	116-9308	1	Hose-Hydraulic
15	110-9361	4	Screw-PPH, Sems	39	116-6677	1	Hose-Hydraulic
16	104-8300	2	Nut-Nyloc 5/16-18 Flg	40	116-6678	1	Hose-Hydraulic, HP
17	3256-2	2	Washer-1/4 Std	41	363-8552	3	Screw-TAP

● Not serviced separately

■ Use Pro-Lock, Nut Type (P/N 1-840022, .5ml tube) on threads.

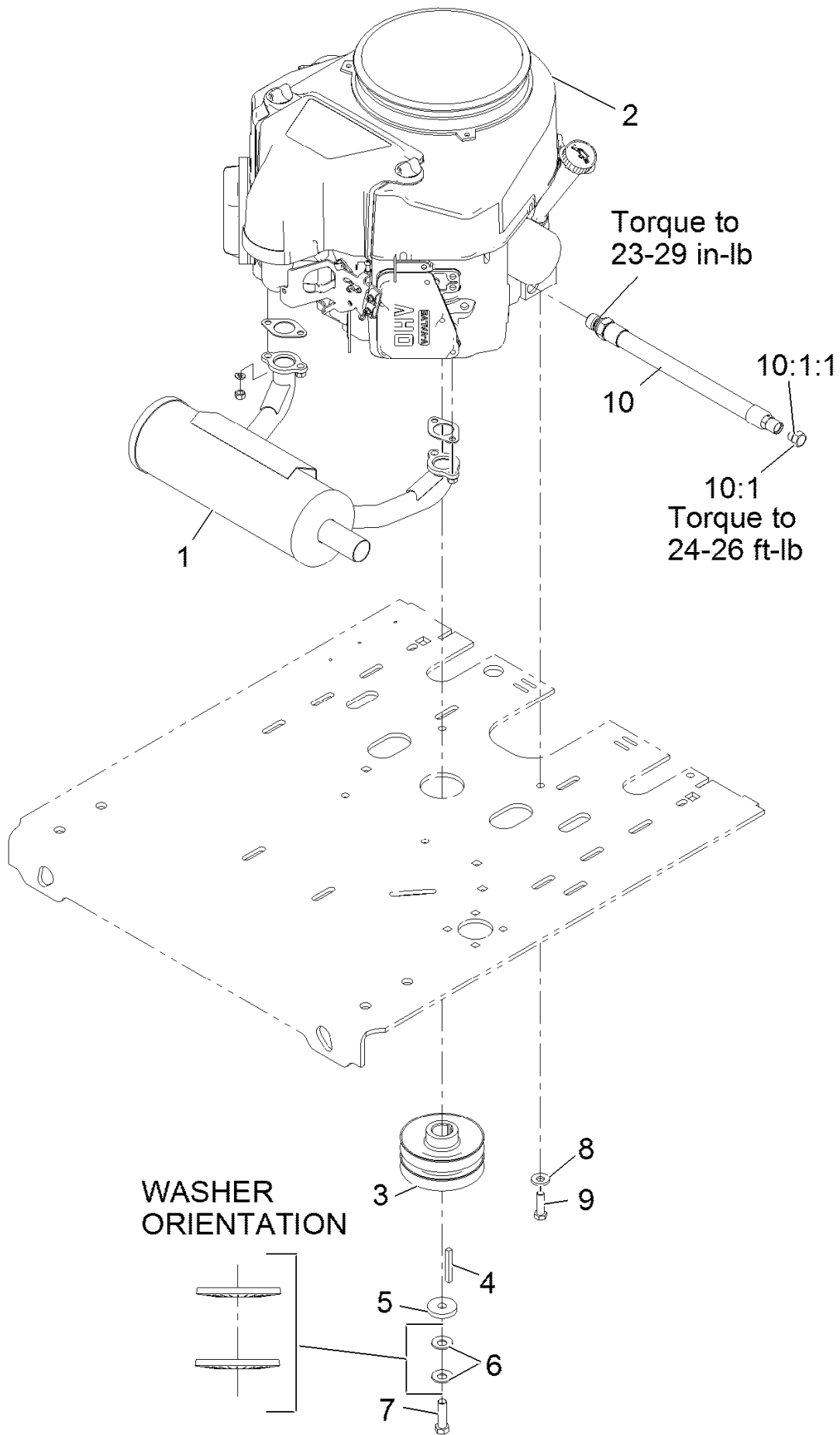
Manifold W/Check and Relief Asm No. 116-9549



Manifold W/Check and Relief Asm No. 116-9549 (continued)

<i>Ref.</i>	<i>Part Number</i>	<i>Qty.</i>	<i>Description</i>	<i>Ref.</i>	<i>Part Number</i>	<i>Qty.</i>	<i>Description</i>
2	110-8906	1	Valve-Solenoid	6:1	1-603921	1	O-Ring
2:1	110-8908	1	Spool Valve Seal Kit	6:2	103-1020	1	O-Ring
2:2	110-2634	1	Nut-Coil	7	110-2634	1	Nut-Coil
3	119-4619	1	Coil-Solenoid	8	116-9716	1	Valve-Relief
4	116-9397	1	Valve-Relief, Poppet Style	8:1	116-9717	1	Seal Kit
4:1	116-9398	1	Relief Valve Seal Kit	9	116-9718	1	Valve-Check, P O
5	116-9396	1	Knob (1.5 Dia)	9:1	116-9719	1	Seal Kit
6	103-2156	4	Fitting-Straight				

Engine Assembly



Engine Assembly (continued)

<i>Ref.</i>	<i>Part Number</i>	<i>Qty.</i>	<i>Description</i>	<i>Ref.</i>	<i>Part Number</i>	<i>Qty.</i>	<i>Description</i>
1	116-3735	1	Muffler-Horizontal	8	98-5975	4	Washer-Spring Disc 3/8
2		1	Engine-Kaw Fs481V, Es ●■	9	323-7	4	Screw-HH 3/8-16 X 1 1/4
3	116-9709	1	Pulley	10	116-4924	1	Asm-Hose Oil Drain W/Plug ▲
4	103-4177	1	Key	10:1	353-508	1	Plug-W/O-Ring
5	1-543610	1	Washer	10:1:1	237-42	1	O-Ring
6	1-603610	2	Washer-Spring Disc 7/16				
7	109-9761	1	Screw-HH 7/16-20 X 1 1/2 W/Loctite ◆				

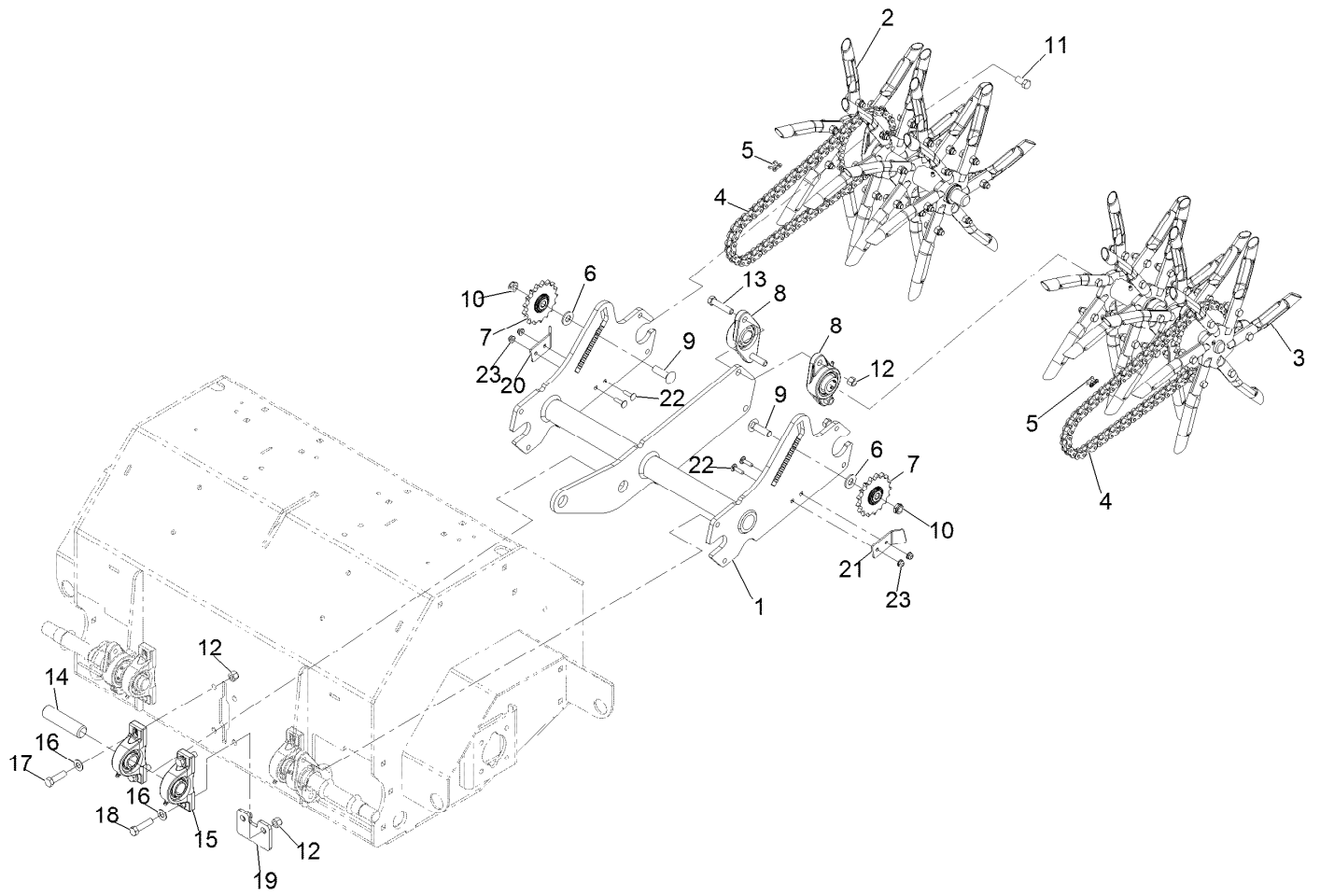
● Not serviced separately

▲ Use a Teflon Pipe Sealant or equivalent on threads.

◆ Use Pro-Lock, Nut Type (P/N 1-840022, .5ml tube) on threads.

■ Obtain parts from www.kawpowerepc.com

Tine Assembly



Tine Assembly (continued)

<i>Ref.</i>	<i>Part Number</i>	<i>Qty.</i>	<i>Description</i>	<i>Ref.</i>	<i>Part Number</i>	<i>Qty.</i>	<i>Description</i>
1	126-4817-03	1	ASM-Trail Arm [black]	13	324-8	2	Screw-HH
2	116-6738	1	RH Tine Wheel ASM	14	116-6629	1	Shaft
3	116-6739	1	LH Tine Wheel ASM	15	116-6756	2	Bearing-Pillow Block ●
4	116-6895	2	Chain-Roller, #50, 65 Links	16	3256-25	4	Washer-Flat
5	116-6897	2	Link-Connecting, #50	17	324-6	2	Screw-HH
6	87-7270	2	Washer-Thrust	18	324-7	2	Screw-HH
7	116-6719	2	Sprocket-Idler, 17T	19	116-7327-01	1	Plate-Downstop
8	116-6777	2	Bearing-Flange, 2 Bolt	20	126-4192-03	1	Guard,Chain RH
9	3233-14	2	Screw-CARR	21	126-4193-03	1	Guard,Chain LH
10	3296-45	2	Nut-Lock, NI	22	3229-30	4	Screw-CARR
11	116-7109	4	Screw-HH ●	23	104-7201	4	Nut-HF
12	3296-48	6	Nut-Lock, NI				

● Use Pro-Lock, Nut Type (P/N 1-840022, .5ml tube) on threads.

Notes:

EXMARK® MAINTENANCE

MAXIMIZE THE PERFORMANCE OF YOUR EXMARK.

4-CYCLE PREMIUM ENGINE OIL

Part No. 116-3373

Both SAE 30 and SAE 10W-30 in one bottle.

Contains increased levels of zinc and phosphorus for better lubricity.

No Viscosity Index Improvers that tend to shear down in high heat.

Synthetic formulation.

Gas & Diesel compatible.

Anti-corrosion additives.

API 'SL' and JASO rated with wet clutch compatibility for other machines.

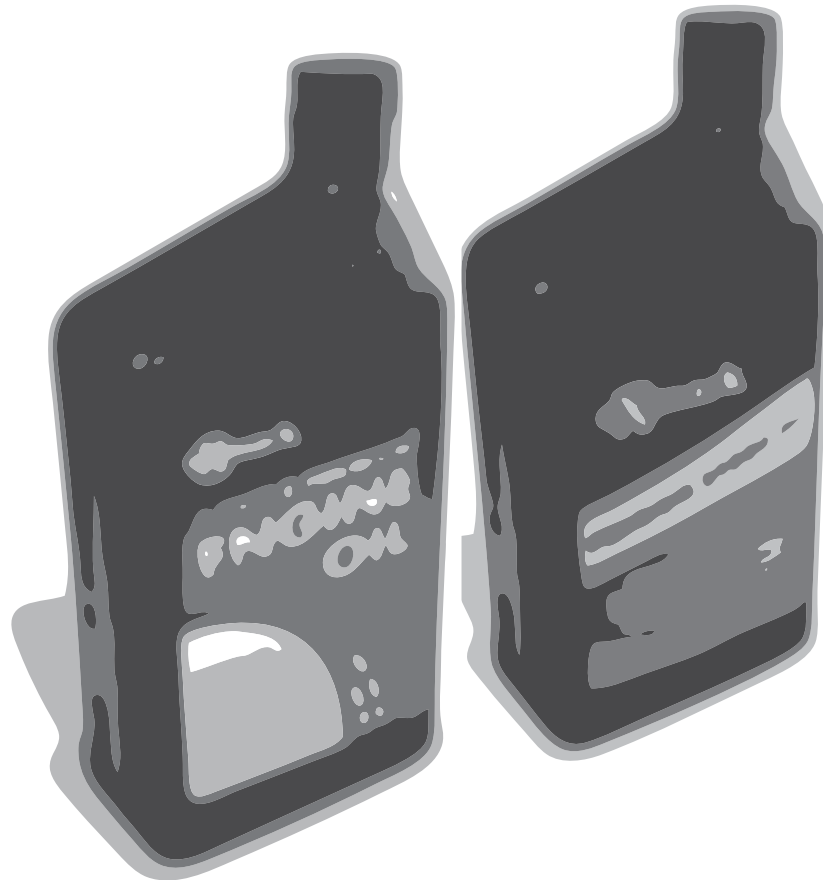
PREMIUM HYDRO OIL

Part No. 109-9828

Commercial quality for tough, high-heat conditions.

Designed specifically for zero-turn mower hydraulic systems.

Superior shear resistance under heavy loads.



Available from your local Exmark dealer. Find your closest dealer at exmark.com

EXMARK ACCESSORIES AND OPTIONS*

MID-MOUNT RIDING ACCESSORIES AND OPTIONS

CUSTOM RIDE SEAT SUSPENSION SYSTEM	OPERATOR CONTROLLED DISCHARGE
FULL SUSPENSION SEAT	SUN SHADE
DECK LIFT ASSIST KIT	TRASH CONTAINER
HITCH KIT	TURF STRIPER
LIGHT KIT	ULTRA VAC COLLECTION SYSTEM
12V POWER PORT	ULTRA VAC QUICK DISPOSAL SYSTEM
MICRO-MULCH SYSTEM	

OUT-FRONT RIDING ACCESSORIES AND OPTIONS

CUSTOM RIDE SEAT SUSPENSION SYSTEM	SNOW BLADE
DUAL-TAIL WHEEL	SNOWBLOWER
FLOOR PAN EXTENDER	SUN SHADE
HITCH KIT	TRASH CONTAINER
LIGHT KIT	ULTRA VAC COLLECTION SYSTEM
MICRO-MULCH SYSTEM	ULTRA VAC QUICK DISPOSAL SYSTEM
ROLL OVER PROTECTION SYSTEM (ROPS)	WEATHER CAB

WALK-BEHIND ACCESSORIES AND OPTIONS

GRASS CATCHER	TURF STRIPER
MICRO-MULCH SYSTEM	STANDON

*Some accessories and options not available for some models.

Place Model No. and Serial No.
Label Here (Included in the Literature
Pack) or Fill in Below

Model No. _____

Serial No. _____

Date Purchased _____

Engine Model No. and Spec. No. _____

Engine Serial No. (E/No) _____

© 2015 Exmark Mfg. Co., Inc.
Industrial Park Box 808
Beatrice, NE 68310
All Rights Reserved

Part No. 4502-179 Rev. A
(402) 223-6300
Fax (402) 223-5489
Printed in the USA.

