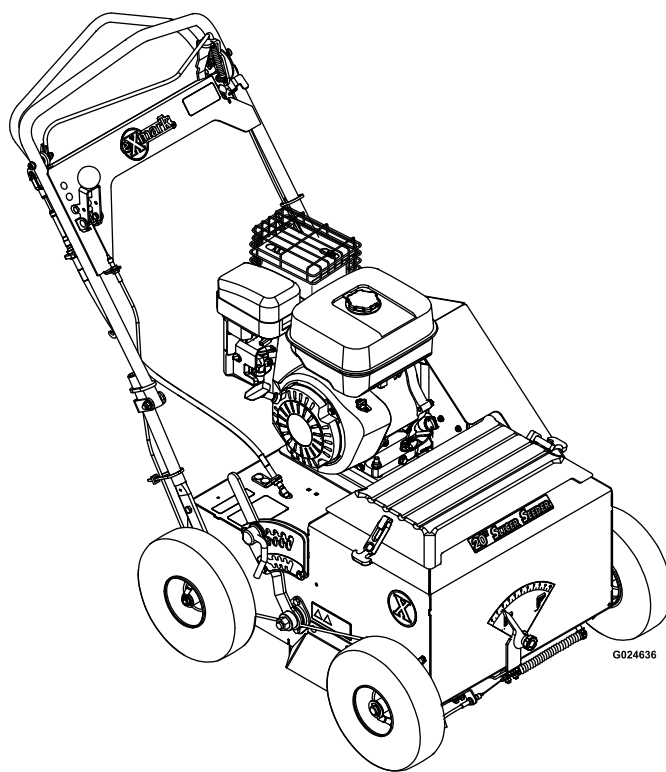




SLICER SEEDER

Model No. SDS270CSB20000—Serial No. 31500000 and Up

Picture below may not reflect actual product.



Parts Manual

Part No. 4502-169 Rev. A

Ordering Replacement Parts

To order replacement parts, please supply the part number, the quantity, and the description of each part desired.

Understanding Reference Numbers

Each identified part in an illustration has a reference number. The reference number for a part also appears in the parts list, along with other information about the part.

This catalog uses two special reference number formats, one to indicate parts in a service assembly and another to indicate the quantity of a given part in an illustration.

Service Assembly Reference Numbers

Parts in service assemblies have reference numbers in the form a:b. The a represents the reference number of the entire service assembly and the b represents a sequential number unique to each part within the service assembly.

For example, a wheel assembly might be identified by reference number 6, the tire by 6:1, the valve by 6:2, and the wheel by 6:3. When you order the assembly identified by reference number 6, you receive all parts identified by reference numbers 6:1, 6:2, and 6:3. However, you may also order any part individually. Reference numbers of this type appear in illustration and in parts lists.

Reference Numbers Indicating Quantity

In an illustration, if a reference number indicates more than one part, the reference number has the form nX y. The n represents the quantity of the part, the X is the multiplication symbol, and the y represents the reference number.

For example, in an illustration, the reference number 2X 37 means that two of the parts identified by reference number 37 are indicated.

List of Abbreviations

AR: as required	HLH: hex lag head	PTH: phillips truss head
ASM: assembly	HOC: height-of-cut	PTO: power-take-off
BBC: blade brake control	HP: high pressure	RH: right hand
BHTF: button head thread forming	HSBH: hex socket button head	ROPS: roll-over protection system
CARR: carriage	HSFH: hex socket flat head	RRB: rear roller brush
CCW: counter clockwise	HSH: hex socket head	SFH: slotted fillister head
CW: clockwise	HWH: hex washer head	SHH: slotted hex head
DEG: degrees	HWHTF: hex washer head thread forming	SHWH: slotted hex washer head
DPA: Dual Point Adjustment	HYD: hydraulic	SPH: slotted pan head
ECM: electronic control module	LH: left hand	SQH: square head
EXT: external	LP: low pressure	SRH: slotted round head
FH: flat head	LPG: Liquefied Petroleum Gas	STD: standard
GA: gauge	NI: nylon insert	TAP: self tapping
HD: heavy-duty	NPTF: national pipe thread fine	TTH: torx truss head
HF: hex flange	PFH: phillips flat head	
HH: hex head	PPH: phillips pan head	
HHF: hex head flange	PPHTF: phillips pan head thread forming	
HHFTF: hex head flange thread forming	PRH: phillips round head	
HJ: hex jam		

Touch Up Paint

Exmark black touch up spray paint – gloss black.

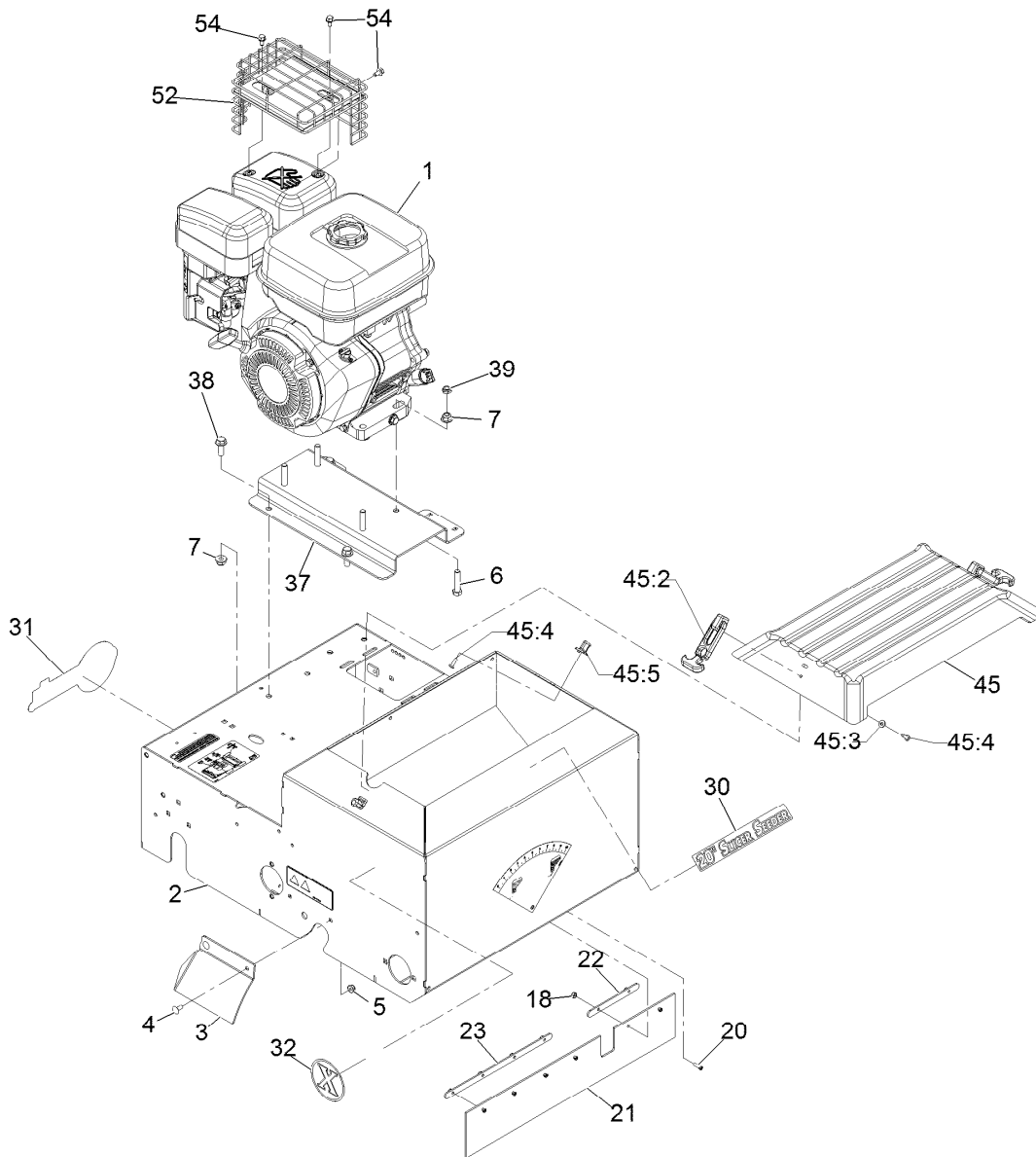
Exmark red touch up paint (spray paint – P/N 1-850337 - .6 oz liquid bottle – P/N 103-9140).



If your Exmark dealer does not have the Exmark part in stock, Exmark will get the parts to the dealer the next business day or the part will be FREE Guaranteed!! (Some restrictions apply. See your participating Exmark Dealer for details.)

Contents

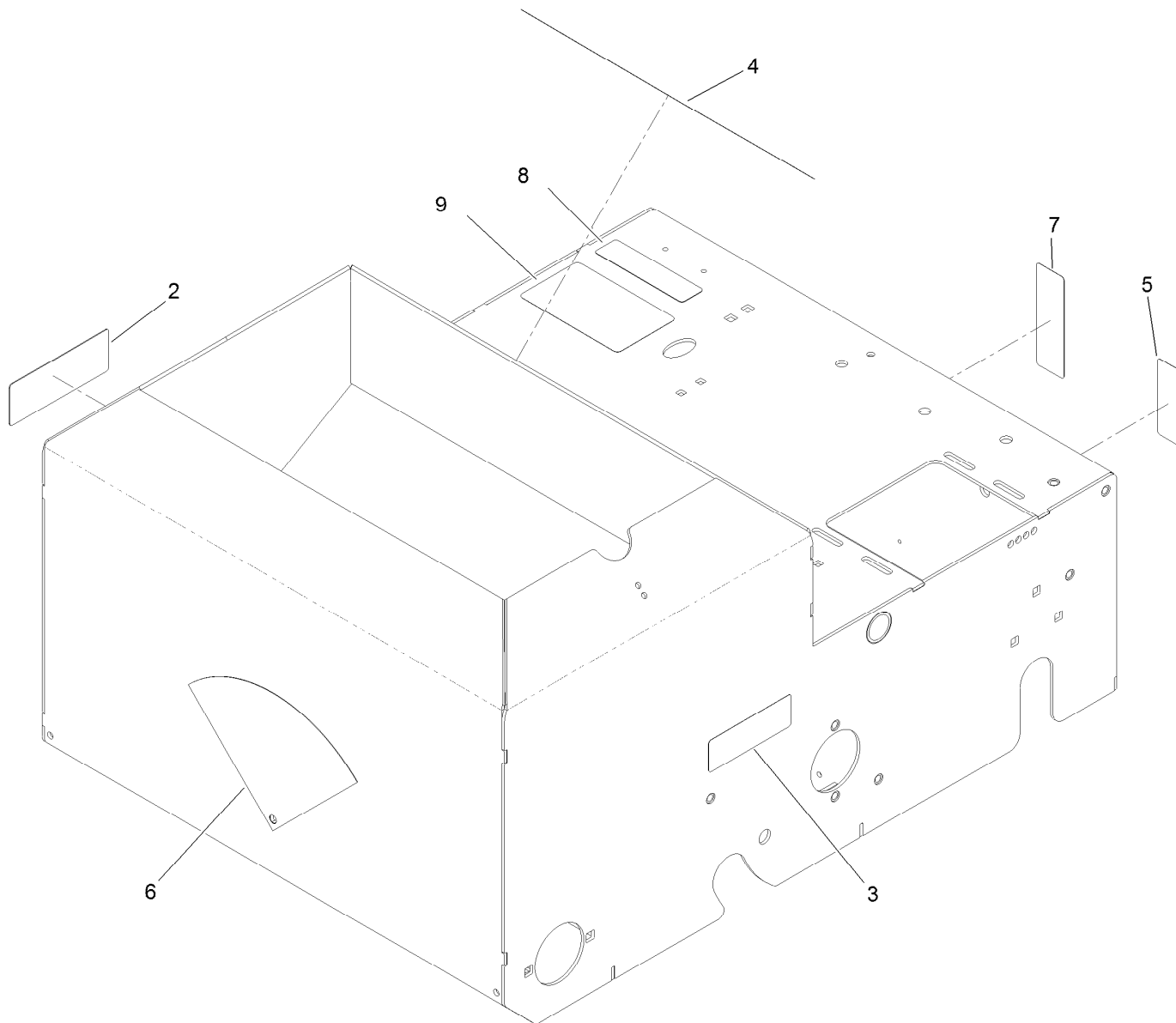
Main Frame Assembly	4
Main Frame Assembly No. 121-6196	5
Handle Assembly	6
Cutting Wheel Assembly	7
Shaft Assembly No. 126-0034	8
Seed Gate Assembly	9
Seed Gate Kit No. 126-0815	10
Belt Drive Assembly	11
Transmission Assembly	13



Main Frame Assembly

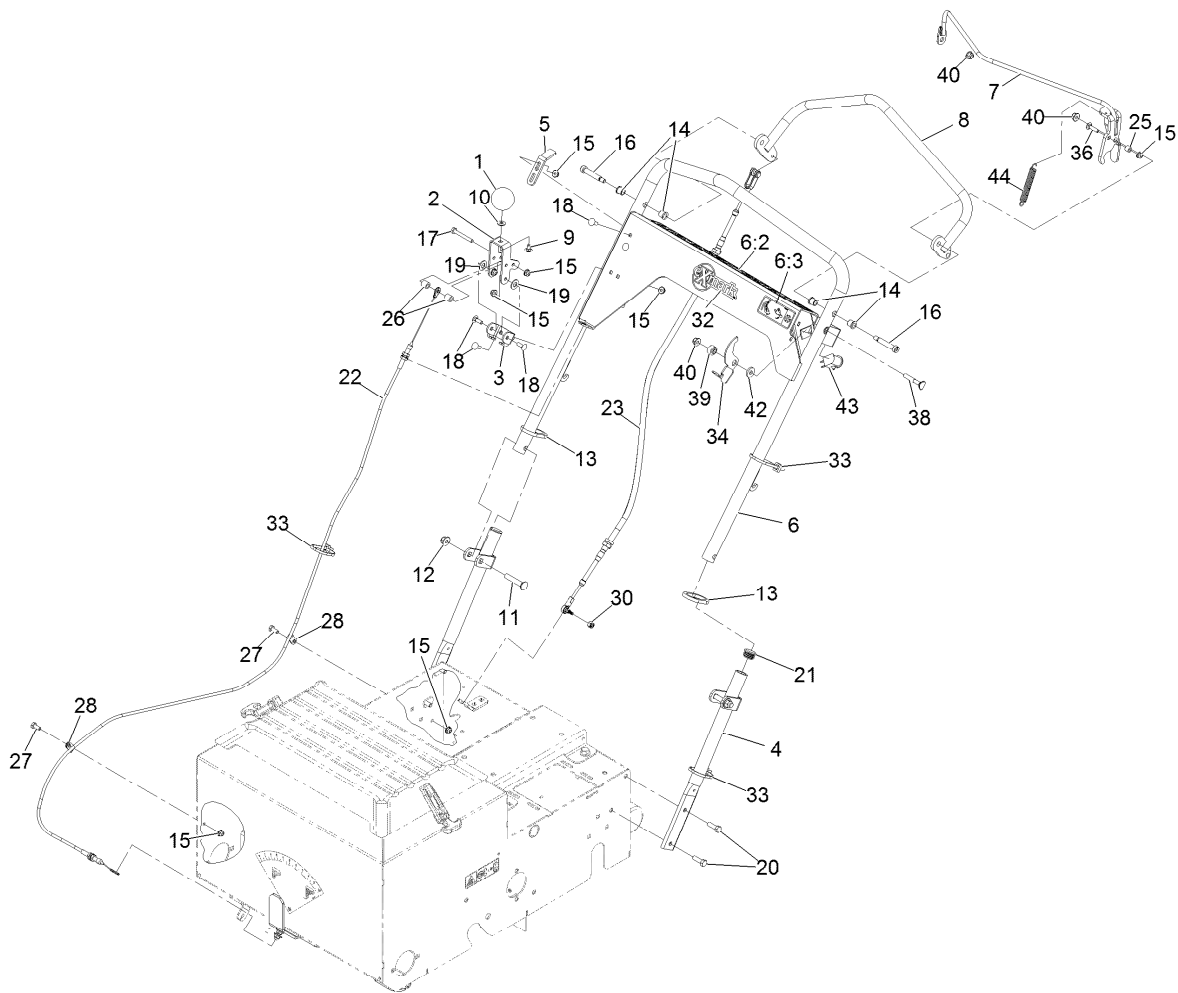
Ref.	Part Number	Qty.	Description	Ref.	Part Number	Qty.	Description
1		1	Engine-Subaru, Ex27 ●	31	103-2882	1	Decal, Exmark Logo
2	121-6196	1	Frame ASM	32	116-7035	2	Decal-Exmark X-Logo
3	121-1896-01	1	Guard-RH	37	116-9524-01	1	Plate-Engine
4	3229-11	2	Bolt-Carriage 1/4-20 X 5/8	38	3234-42	3	Screw HHF 3/8-16 X 1
5	104-7201	2	Nut-Nyloc 1/4-20 Flg	39	3296-59	1	Nut-Nyloc 3/8-16 Thin
6	323-9	4	Screw-HH 3/8-16 X 1 3/4	45	126-1665	1	Seeder Cover Kit
7	104-8301	7	Nut-Nyloc 3/8-16 Flg	45:2	103-4080	2	Latch-Rubber
18	3296-1	6	Nut-Nyloc #8-32	45:3	3256-14	4	Washer-#10 Std
20	3290-392	6	Screw-SHH #8-32 X 5/8	45:4	3290-500	6	Screw-PPH #10-24 X 5/8
21	121-1990	1	Guard-Dust	45:5	103-4081	2	Latch-Keeper
22	121-1991	1	Plate-Retainer	52	126-4255	1	Guard, Muffler
23	121-1992	1	Plate-Retainer	54	104-2628	3	Screw-HWH
30	116-7011	1	Decal-Slicer Seeder 20				

● Not serviced separately



Main Frame Assembly No. 121-6196

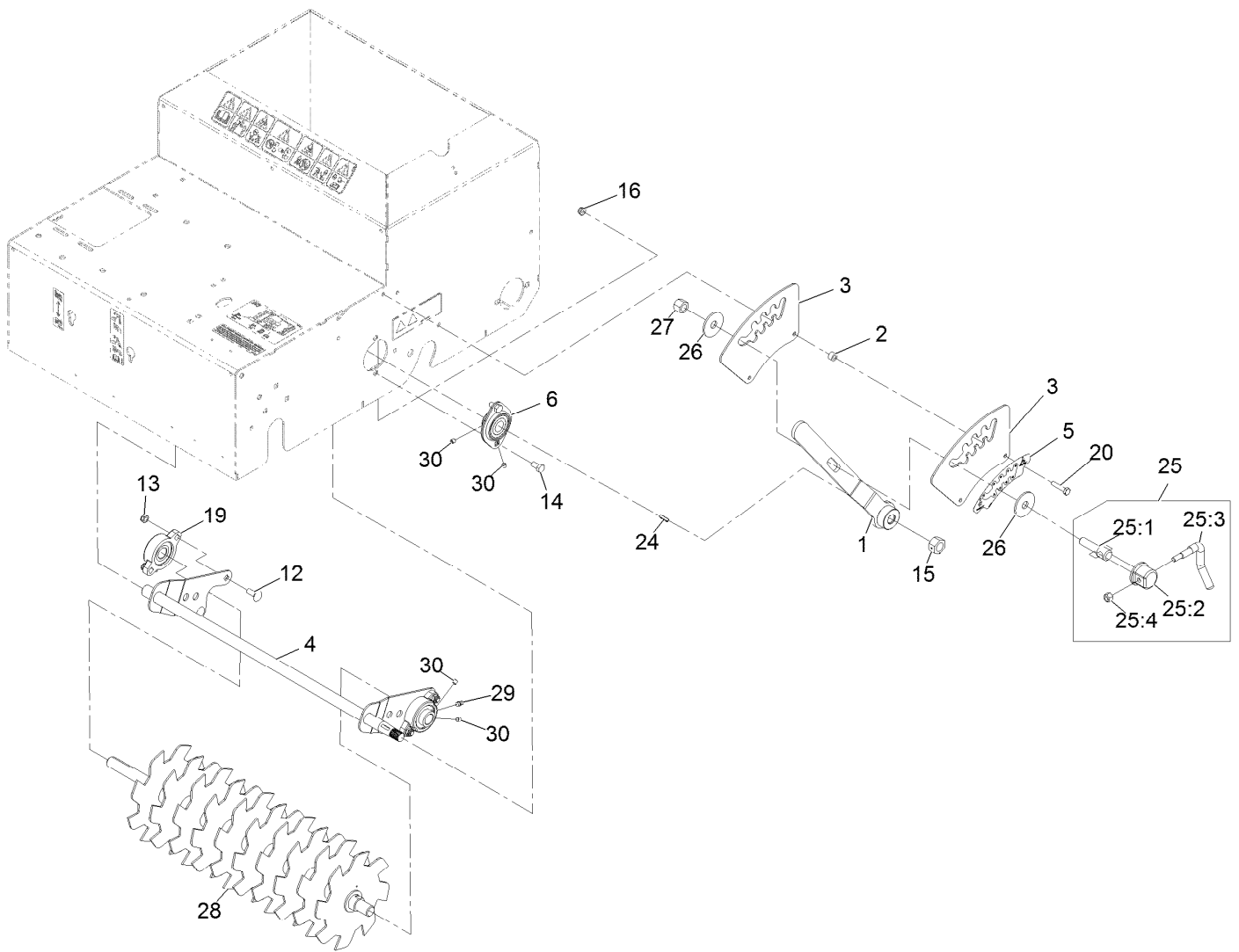
<i>Ref.</i>	<i>Part Number</i>	<i>Qty.</i>	<i>Description</i>
2	93-7321	1	Decal-Danger
3	117-4979	1	Decal-Warning, Shields
4	121-2011	1	Decal-Warning
5	115-9625	1	Decal
6	116-8535	1	Decal-Flow, Seed
7	121-6203	1	Decal-Bypass
8	117-2718	1	Decal-Arrester, Spark
9	126-0296	1	Decal-Service Aid Seeder



Handle Assembly

Ref.	Part Number	Qty.	Description	Ref.	Part Number	Qty.	Description
1	121-1877	1	Knob-Rate, Flow	19	48-9220	2	Washer
2	121-1878	1	Lever-Adjust, Flow	20	322-5	4	Screw-HH 5/16-18 X 1
3	121-1879	1	Bracket-Adjust, Flow	21	121-4870	2	Plug
4	121-1893-03	2	Handle-Lower	22	126-0042	1	Cable-Flow, Seed
5	121-1928	1	Bracket-Adjust, Drive	23	116-8252	1	Cable-Push Pull
6	116-9735	1	Handle	25	66-8010	1	Spacer-Hub, Impeller
6:2	116-8648	1	Decal-Control Panel, Seeder	26	22-7810	2	Spacer
6:3	116-8536	1	Decal-Safety Latch	27	321-3	2	Screw-HH 1/4-20 X 5/8
7	126-0509-03	1	Bail-Clutch	28	2412-149	2	Clamp-Hose
8	121-1948-03	1	Handle-Drive	30	3296-3	1	Nut-Nyloc 1/4-28
9	3229-10	1	Bolt-Carriage 1/4-20 X 1/2 ●	32	103-2883	1	Decal, Exmark Logo
10	3256-22	1	Washer-1/4 Sae	33	3290-378	3	Tie-Cable
11	3231-6	2	Bolt-Carriage 3/8-16 X 2	34	126-0205	1	Latch-Bail
12	104-8301	2	Nut-Nyloc 3/8-16 Flg	36	3229-2	1	Bolt-Carriage 1/4-20 X 1
13	121-6202	2	Ring-Handle Lock	38	112-8876	1	Bolt-Carriage 5/16-18 X 2
14	103-9928	4	Bearing	39	116-2690	1	Bushing-Stepped
15	104-7201	10	Nut-Nyloc 1/4-20 Flg	40	104-8300	3	Nut-Nyloc 5/16-18 Flg
16	126-0277	2	Screw-Shoulder	42	88-7200	1	Washer-Flat
17	321-11	1	Screw-HH 1/4-20 X 2	43	82-2190	1	Switch
18	3229-1	6	Bolt-Carriage 1/4-20 X 3/4	44	95-3805	1	Spring

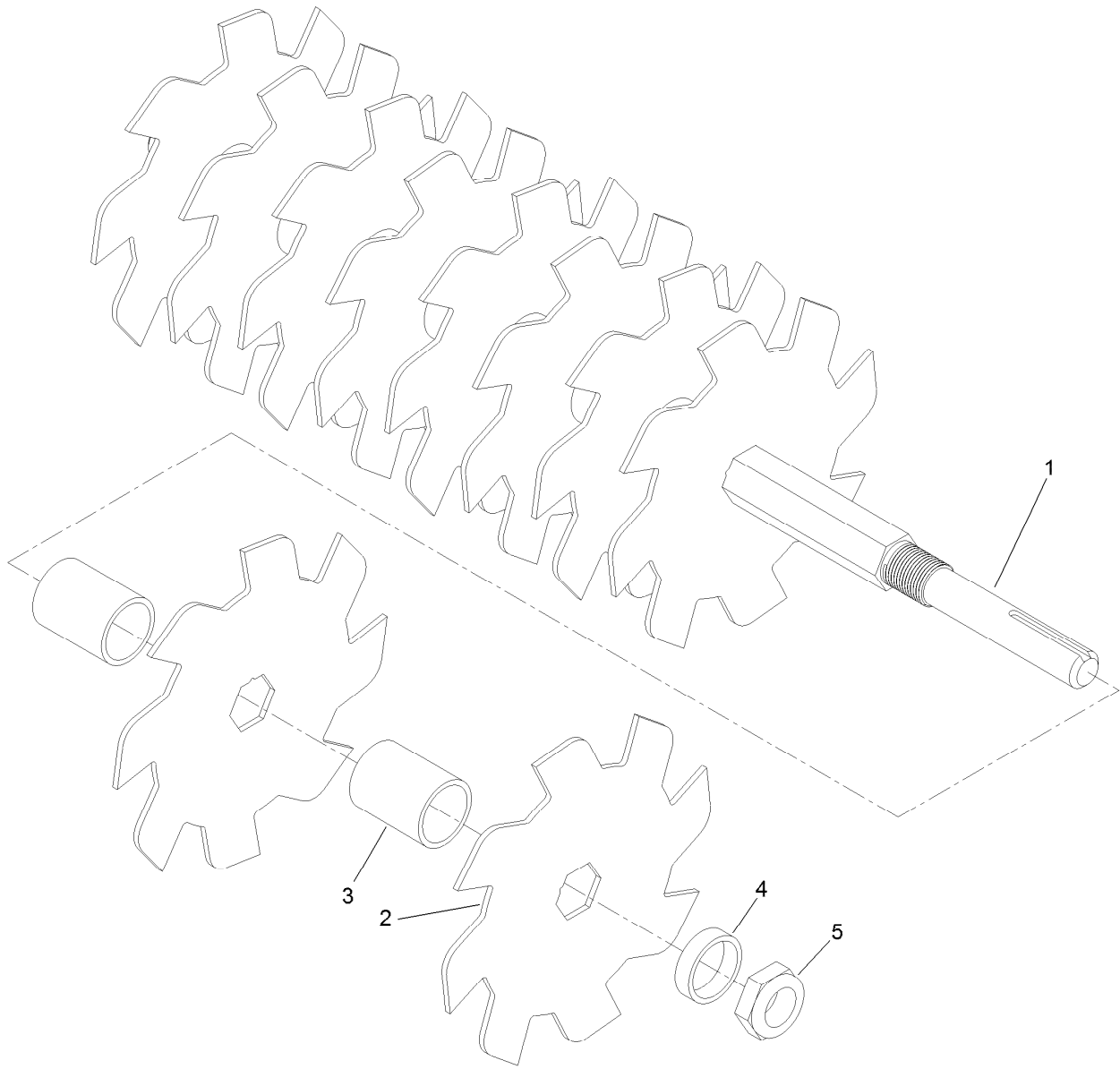
● Use Pro-Lock, Nut Type (P/N 1-840022, .5ml tube) on threads.



Cutting Wheel Assembly

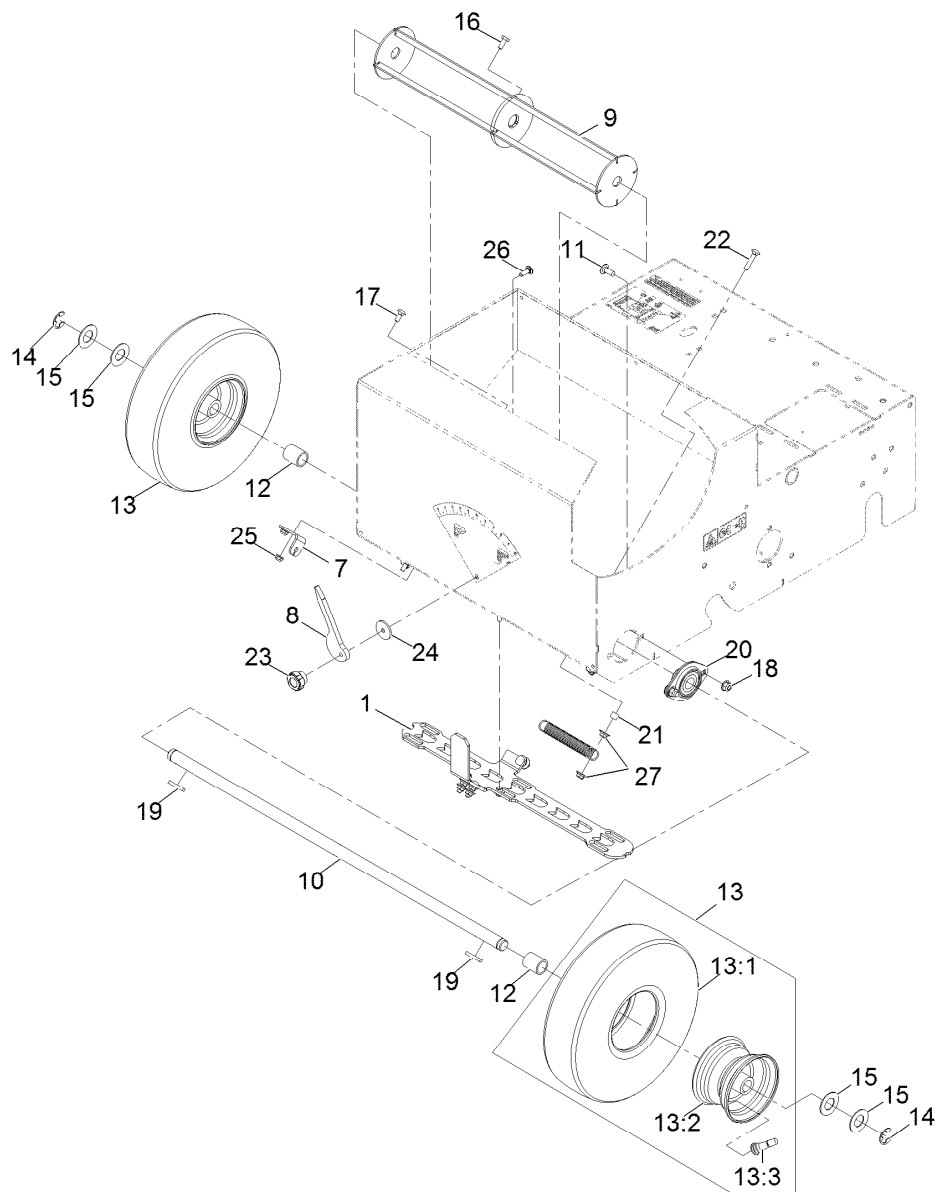
Ref.	Part Number	Qty.	Description	Ref.	Part Number	Qty.	Description
1	116-9932-03	1	Handle-Height	20	321-8	2	Screw-HH 1/4-20 X 1 1/4
2	98-4799	2	Spacer	24	3257-5	1	Key-Woodruff #9 3/4 X 3/16
3	116-9928	2	Plate-Height	25	107-1664	1	Lever ASM
4	126-0010-03	1	Pivot-Height	25:1	106-3239	1	Screw-Lock
5	126-2446	1	Decal-Cut Depth, Slicer/Seeder	25:2	107-1644	1	Cap-Lock
6	121-1961	2	Bearing	25:3	106-3241	1	Lever-Lock
12	3230-16	4	Bolt-Carriage 5/16-18 X 7/8	25:4	3296-29	1	Nut-Nyloc 5/16-18
13	3296-47	4	Nut-Nyloc 5/16-18 Thin	26	86-1990	2	Washer
14	322-2	4	Screw-HH 5/16-18 X 5/8	27	3296-23	1	Nut-Nyloc 1/2-13
15	603164	1	Nut-Blade	28	126-0034	1	Slicer Shaft ASM
16	104-7201	2	Nut-Nyloc 1/4-20 Flg	29	302-19	2	Zerk-1/4-28 Str ●
19	116-9992	2	Bearing-Flange	30	3245-35	8	Screw-Set HSH 1/4-28 X 1/4 ●

● Use Pro-Lock, Nut Type (P/N 1-840022, .5ml tube) on threads.



Shaft Assembly No. 126-0034

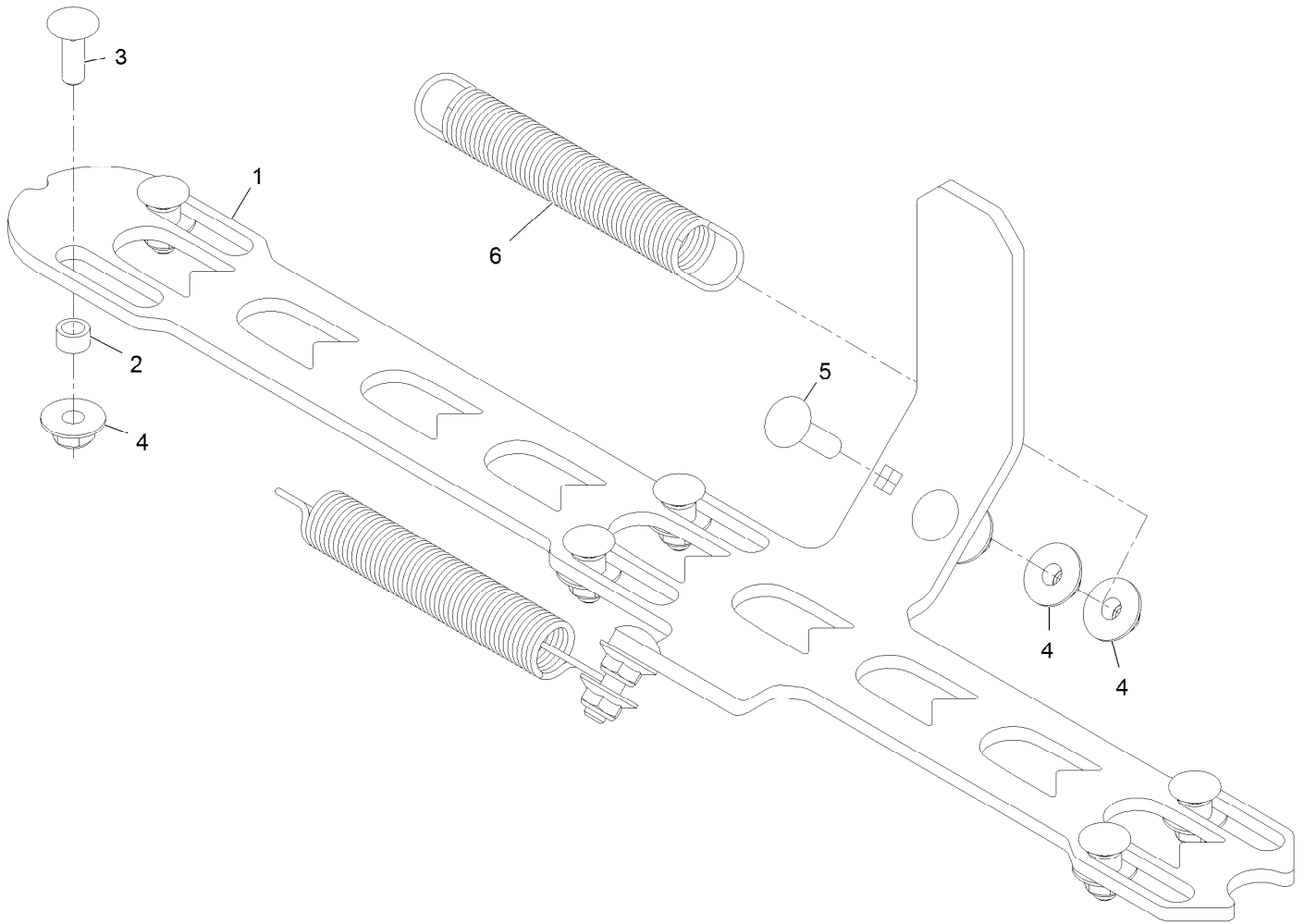
<i>Ref.</i>	<i>Part Number</i>	<i>Qty.</i>	<i>Description</i>
1	126-0009	1	Shaft-Slicer
2	121-1931	10	Blade-Cutting, Seeder
3	126-0041	9	Spacer-Blade
4	126-0033	1	Spacer
5	3296-60	1	Nut-Lock, NI



Seed Gate Assembly

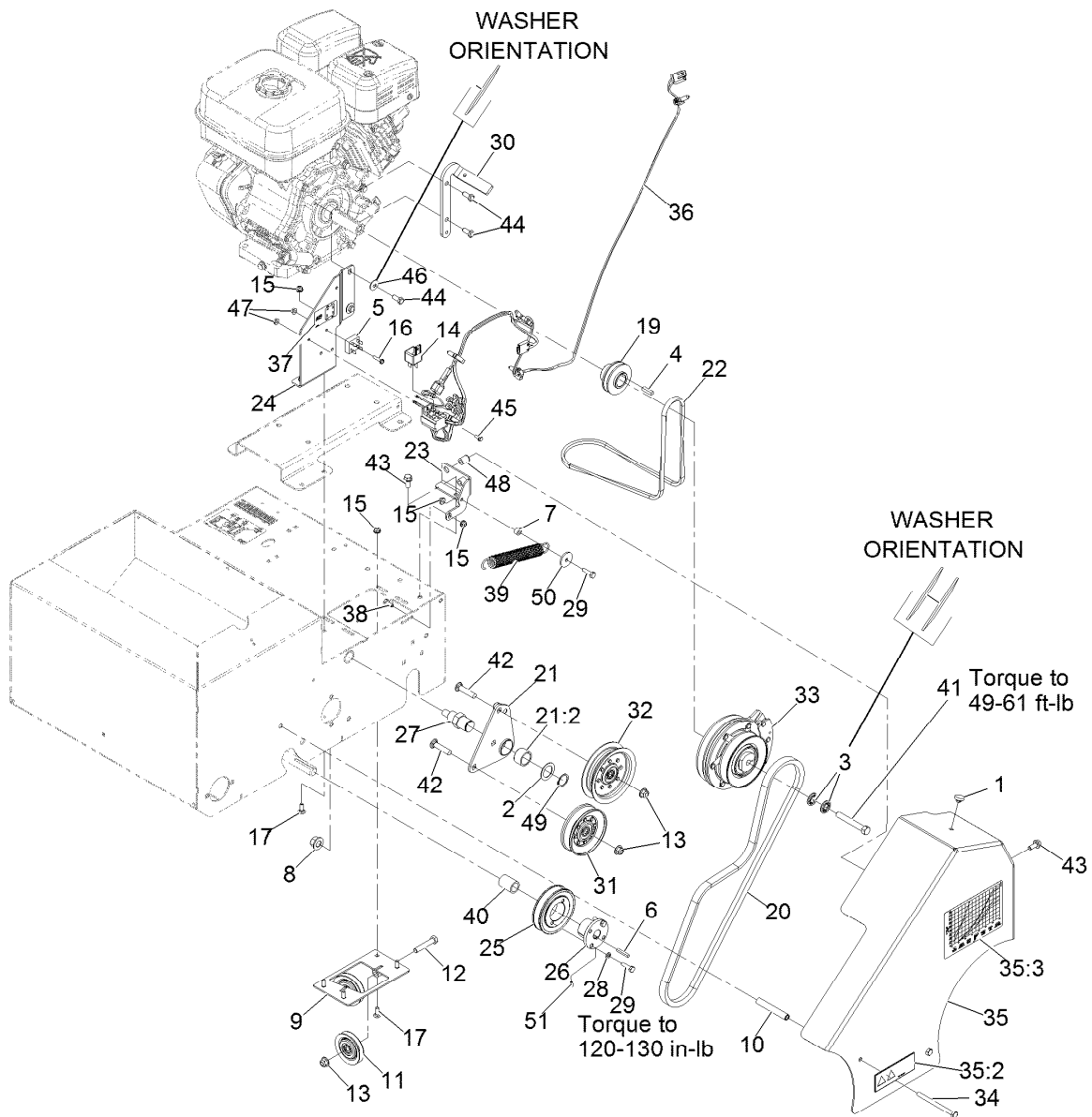
Ref.	Part Number	Qty.	Description	Ref.	Part Number	Qty.	Description
1	126-0815	1	Seed Gate Kit	16	321-3	1	Screw-HH 1/4-20 X 5/8 ●
7	121-1907	1	Bracket-Seed Flow	17	3229-11	2	Bolt-Carriage 1/4-20 X 5/8
8	121-1912	1	Gauge-Seed Flow	18	104-8300	4	Nut-Nyloc 5/16-18 Flg
9	125-3782-03	1	Mixer	19	92-0049	2	Key-Machine 3/16 X 3/16 X 1 1/4
10	121-1929	1	Axle-Front ■	20	121-1961	2	Bearing
11	3230-23	4	Bolt-Carriage 5/16-18 X 3/4 Short Neck	21	66-8010	2	Spacer-Hub, Impeller
12	105-3838	2	Spacer	22	3229-3	2	Bolt-Carriage 1/4-20 X 1 1/4
13	120-3550	2	Wheel ASM	23	233-67	1	Knob
13:1	121-6081	1	Tire	24	103995	1	Washer
13:2	121-6082	1	Wheel-Rim	25	104-7201	2	Nut-Nyloc 1/4-20 Flg
13:3	5108	1	Valve	26	1-807512	1	Bolt-Carriage 1/4-20 X 3/4 Short Neck
14	32151-48	2	E-Ring	27	114-3778	4	Nut-Lock, NI
15	3256-39	4	Washer-Flat				

- Use Pro-Lock, Nut Type (P/N 1-840022, .5ml tube) on threads.
- Apply anti-seize compound to axle ends before installing tires.



Seed Gate Kit No. 126-0815

<i>Ref.</i>	<i>Part Number</i>	<i>Qty.</i>	<i>Description</i>
1	126-0415	1	Gate-Seed
2	126-0416	6	Spacer
3	1-807512	6	Bolt-Carriage 1/4-20 X 3/4 Short Neck
4	114-3778	12	Nut-Lock, NI
5	3229-2	3	Bolt-Carriage 1/4-20 X 1
6	121-2016	2	Spring-Extension

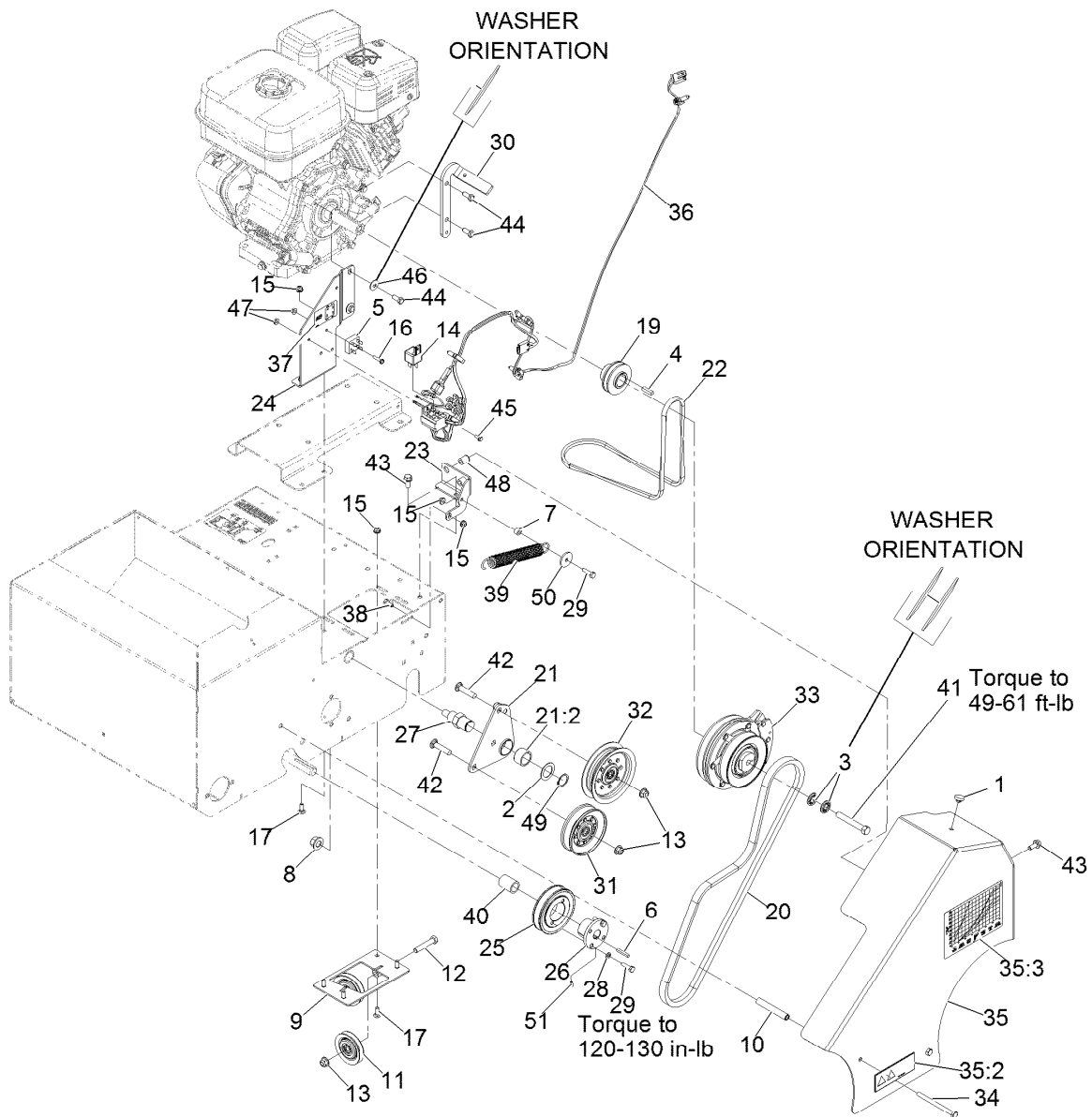


Belt Drive Assembly

Ref.	Part Number	Qty.	Description	Ref.	Part Number	Qty.	Description
1	1-513658	1	Bumper	20	116-9518	1	Belt-Seeder, Clutch
2	1-543436	1	Washer-Spacer	21	116-9519	1	Idler Arm ASM
3	1-603610	2	Washer-Spring Disc 7/16	21:2	116-9538	1	Bushing
4	1-807259	1	Key-Machine 1/4 X 1/4 X 1	22	116-9532	1	Belt-Mule Drive
5	37-7600	1	Rectifier-Bridge	23	116-9533-01	1	Bracket-Spring
6	92-0049	1	Key-Machine 3/16 X 3/16 X 1 1/4	24	116-9534-01	1	Support-Engine
7	98-4799	1	Spacer	25	121-2019	1	Sheave-Taper Lock
8	99-5107	1	Nut-Lock 1/2-13	26	121-2022	1	Bushing-Taper Lock
9	126-0418-03	1	Pulley-Tension	27	116-9539	1	Pivot-Idler
10	104-0502	2	Spacer-Kickstand, Long	28	3253-3	2	Washer-Lock 1/4
11	121-1965	2	Pulley-Idler	29	321-6	3	Screw-HH 1/4-20 X 1
12	323-10	2	Screw-HH 3/8-16 X 2	30	116-9551	1	Stop-Clutch
13	104-8301	4	Nut-Nyloc 3/8-16 Fig	31	116-9623	1	Pulley-Idler V
14	105-4145	1	Relay	32	116-9728	1	Pulley-Idler Flat (4.06-Inch)
15	104-7201	8	Nut-Nyloc 1/4-20 Fig	33	116-9852	1	Clutch-Electric
16	106-9169	1	Screw-HWH	34	322-19	2	Screw-HH 5/16-18 X 4
17	3229-1	6	Bolt-Carriage 1/4-20 X 3/4	35	116-9925	1	Belt Guard ASM
19	116-9471	1	Pulley-Mule Drive	35:2	93-7321	1	Decal-Danger
				35:3	116-8537	1	Decal-Seed Graph

● Use Pro-Lock, Nut Type (P/N 1-840022, .5ml tube) on threads.

■ Use dielectric grease on all unsealed connectors and terminals only. Do not apply in sealed connectors.

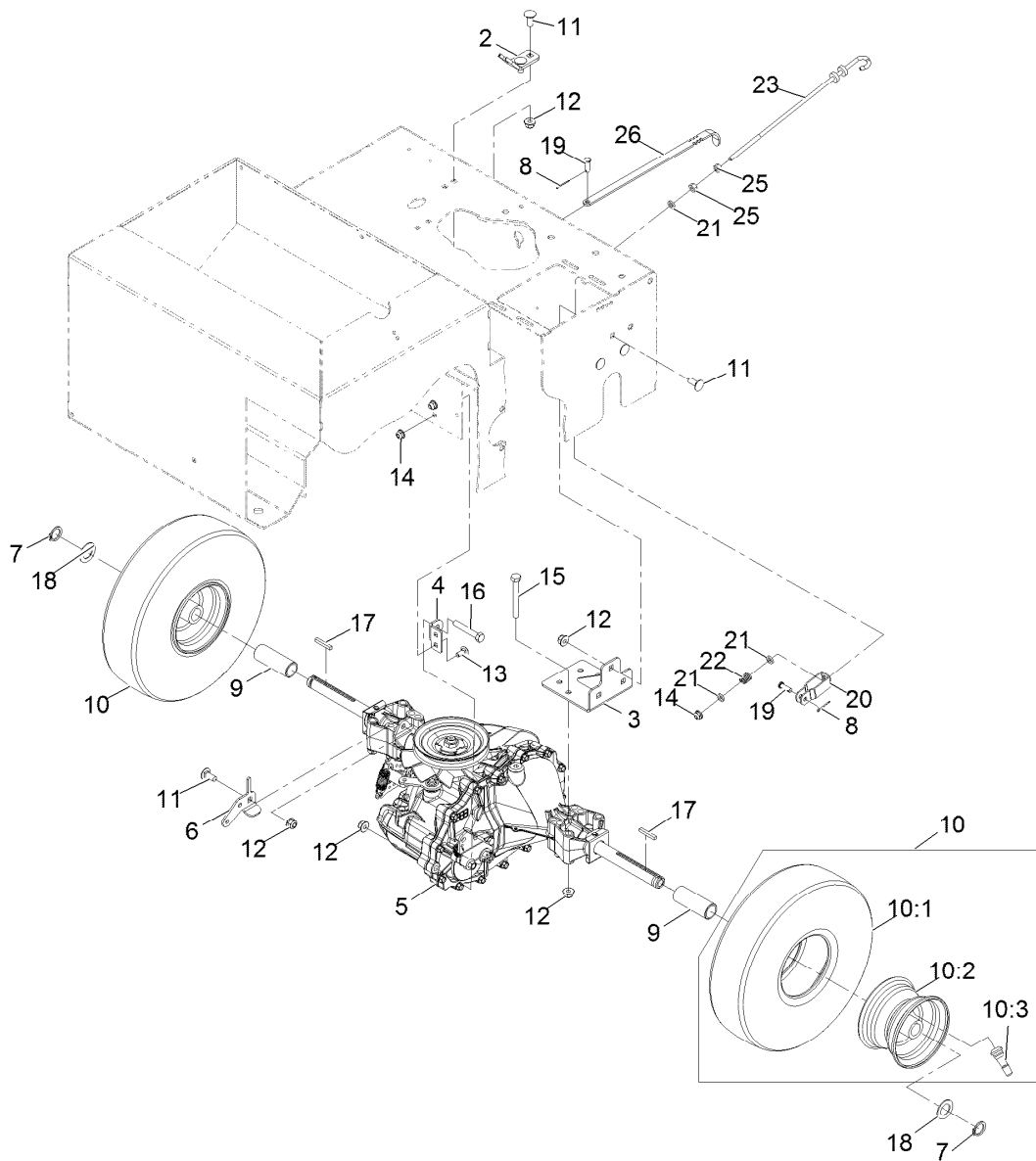


Belt Drive Assembly (continued)

Ref.	Part Number	Qty.	Description	Ref.	Part Number	Qty.	Description
36	116-9926	1	Harness-Slicer/Seeder ■	44	3235-6	4	Screw-HH 5/16-24 X 3/4
37	116-9985	1	Decal-Bridge Rectifier	45	3290-321	1	Screw-HWH
38	321-3	1	Screw-HH 1/4-20 X 5/8	46	3290-456	2	Washer-Spring Disc
39	126-0091	1	Spring-Extension	47	32128-17	2	Nut-Flange #10-24 Top Lock
40	126-0108	1	Spacer	48	32148-7	2	Nut-Insert
41	3212-12	1	Screw-HH 7/16-20 X 3 ●	49	32151-29	1	Ring-Retaining
42	3231-29	2	Bolt-Carriage 3/8-16 X 1 3/4	50	103995	1	Washer
43	3234-47	3	Screw-HH Flg 5/16-18 X 3/4	51	126-0284	1	Screw-Set, Hs

● Use Pro-Lock, Nut Type (P/N 1-840022, .5ml tube) on threads.

■ Use dielectric grease on all unsealed connectors and terminals only. Do not apply in sealed connectors.



Transmission Assembly

Ref.	Part Number	Qty.	Description	Ref.	Part Number	Qty.	Description
2	121-1897	1	Bracket-Cable	13	3229-11	2	Bolt-Carriage 1/4-20 X 5/8
3	121-1901-03	2	Bracket-Axle	14	104-7201	3	Nut-Nyloc 1/4-20 Flg
4	121-1904	1	Bracket-Transaxle, Torque	15	322-13	8	Screw-HH 5/16-18 X 2 3/4
5	121-1908	1	Transaxle ASM ●	16	322-10	1	Screw-HH 5/16-18 X 2
6	121-1909	1	Bracket-Transaxle	17	92-0049	2	Key-Machine 3/16 X 3/16 X 1 1/4
7	32120-93	2	Ring-Retaining	18	67-9410	2	Washer
8	3272-4	2	Pin-Cotter	19	1-808265	2	Pin-Clevis 1/4 X 3/4
9	121-1988	2	Spacer	20	39-3080	1	Clevis
10	120-3550	2	Wheel ASM	21	55-9620	3	Spacer
10:1	121-6081	1	Tire	22	63-4220	1	Spring-Compression
10:2	121-6082	1	Wheel-Rim	23	121-2018	1	Rod-Brake
10:3	5108	1	Valve	25	3217-5	2	Nut-Hex 1/4-20
11	3230-23	9	Bolt-Carriage 5/16-18 X 3/4 Short Neck	26	121-2039	1	Lever-Bypass
12	104-8300	18	Nut-Nyloc 5/16-18 Flg				

● Apply anti-seize compound to axle ends before installing tires.

Notes:

EXMARK® MAINTENANCE

MAXIMIZE THE PERFORMANCE OF YOUR EXMARK.

4-CYCLE PREMIUM ENGINE OIL

Part No. 116-3373

Both SAE 30 and SAE 10W-30 in one bottle.

Contains increased levels of zinc and phosphorus for better lubricity.

No Viscosity Index Improvers that tend to shear down in high heat.

Synthetic formulation.

Gas & Diesel compatible.

Anti-corrosion additives.

API 'SL' and JASO rated with wet clutch compatibility for other machines.

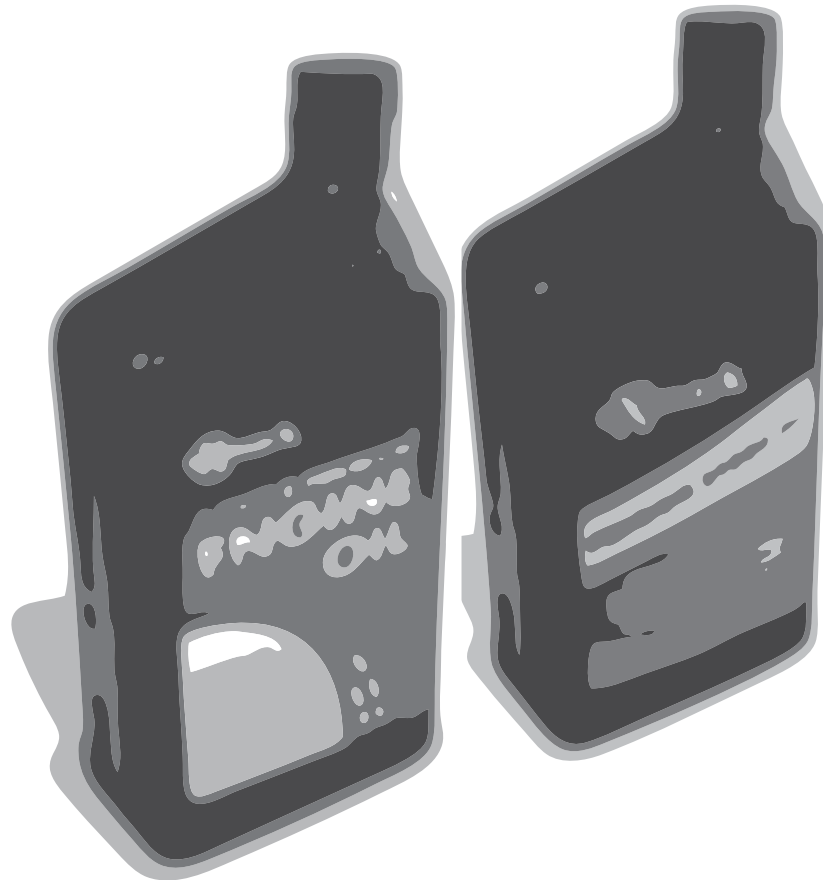
PREMIUM HYDRO OIL

Part No. 109-9828

Commercial quality for tough, high-heat conditions.

Designed specifically for zero-turn mower hydraulic systems.

Superior shear resistance under heavy loads.



Available from your local Exmark dealer. Find your closest dealer at exmark.com

EXMARK ACCESSORIES AND OPTIONS*

MID-MOUNT RIDING ACCESSORIES AND OPTIONS

CUSTOM RIDE SEAT SUSPENSION SYSTEM	OPERATOR CONTROLLED DISCHARGE
FULL SUSPENSION SEAT	SUN SHADE
DECK LIFT ASSIST KIT	TRASH CONTAINER
HITCH KIT	TURF STRIPER
LIGHT KIT	ULTRA VAC COLLECTION SYSTEM
12V POWER PORT	ULTRA VAC QUICK DISPOSAL SYSTEM
MICRO-MULCH SYSTEM	

OUT-FRONT RIDING ACCESSORIES AND OPTIONS

CUSTOM RIDE SEAT SUSPENSION SYSTEM	SNOW BLADE
DUAL-TAIL WHEEL	SNOWBLOWER
FLOOR PAN EXTENDER	SUN SHADE
HITCH KIT	TRASH CONTAINER
LIGHT KIT	ULTRA VAC COLLECTION SYSTEM
MICRO-MULCH SYSTEM	ULTRA VAC QUICK DISPOSAL SYSTEM
ROLL OVER PROTECTION SYSTEM (ROPS)	WEATHER CAB

WALK-BEHIND ACCESSORIES AND OPTIONS

GRASS CATCHER	TURF STRIPER
MICRO-MULCH SYSTEM	STANDON

*Some accessories and options not available for some models.

Place Model No. and Serial No.
Label Here (Included in the Literature
Pack) or Fill in Below

Model No. _____

Serial No. _____

Date Purchased _____

Engine Model No. and Spec. No. _____

Engine Serial No. (E/No) _____

© 2014 Exmark Mfg. Co., Inc.
Industrial Park Box 808
Beatrice, NE 68310
All Rights Reserved

Part No. 4502-169 Rev. A
(402) 223-6300
Fax (402) 223-5489
Printed in the USA.

