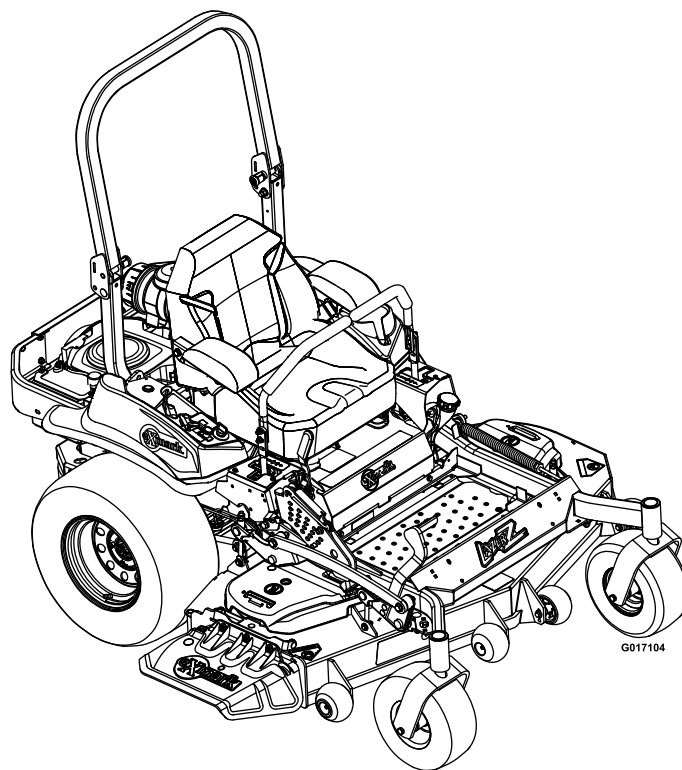




LAZER X-SERIES

Model No. LZX980EKC726T0—Serial No. 31500000 and Up

Picture below may not reflect actual product.



Parts Manual

Ordering Replacement Parts

To order replacement parts, please supply the part number, the quantity, and the description of each part desired.

Understanding Reference Numbers

Each identified part in an illustration has a reference number. The reference number for a part also appears in the parts list, along with other information about the part.

This catalog uses two special reference number formats, one to indicate parts in a service assembly and another to indicate the quantity of a given part in an illustration.

Service Assembly Reference Numbers

Parts in service assemblies have reference numbers in the form a:b. The a represents the reference number of the entire service assembly and the b represents a sequential number unique to each part within the service assembly.

For example, a wheel assembly might be identified by reference number 6, the tire by 6:1, the valve by 6:2, and the wheel by 6:3. When you order the assembly identified by reference number 6, you receive all parts identified by reference numbers 6:1, 6:2, and 6:3. However, you may also order any part individually. Reference numbers of this type appear in illustration and in parts lists.

Reference Numbers Indicating Quantity

In an illustration, if a reference number indicates more than one part, the reference number has the form nX y. The n represents the quantity of the part, the X is the multiplication symbol, and the y represents the reference number.

For example, in an illustration, the reference number 2X 37 means that two of the parts identified by reference number 37 are indicated.

List of Abbreviations

| | | |
|--|--|--|
| AR: as required | HLH: hex lag head | PTH: phillips truss head |
| ASM: assembly | HOC: height-of-cut | PTO: power-take-off |
| BBC: blade brake control | HP: high pressure | RH: right hand |
| BHTF: button head thread forming | HSBH: hex socket button head | ROPS: roll-over protection system |
| CARR: carriage | HSFH: hex socket flat head | RRB: rear roller brush |
| CCW: counter clockwise | HSH: hex socket head | SFH: slotted fillister head |
| CW: clockwise | HWH: hex washer head | SHH: slotted hex head |
| DEG: degrees | HWHTF: hex washer head thread forming | SHWH: slotted hex washer head |
| DPA: Dual Point Adjustment | HYD: hydraulic | SPH: slotted pan head |
| ECM: electronic control module | LH: left hand | SQH: square head |
| EXT: external | LP: low pressure | SRH: slotted round head |
| FH: flat head | LPG: Liquefied Petroleum Gas | STD: standard |
| GA: gauge | NI: nylon insert | TAP: self tapping |
| HD: heavy-duty | NPTF: national pipe thread fine | TTH: torx truss head |
| HF: hex flange | PFH: phillips flat head | |
| HH: hex head | PPH: phillips pan head | |
| HHF: hex head flange | PPHTF: phillips pan head thread forming | |
| HHFTF: hex head flange thread forming | PRH: phillips round head | |
| HJ: hex jam | | |

Touch Up Paint

Exmark black touch up spray paint – gloss black.

Exmark red touch up paint (spray paint – P/N 1-850337 - .6 oz liquid bottle – P/N 103-9140).

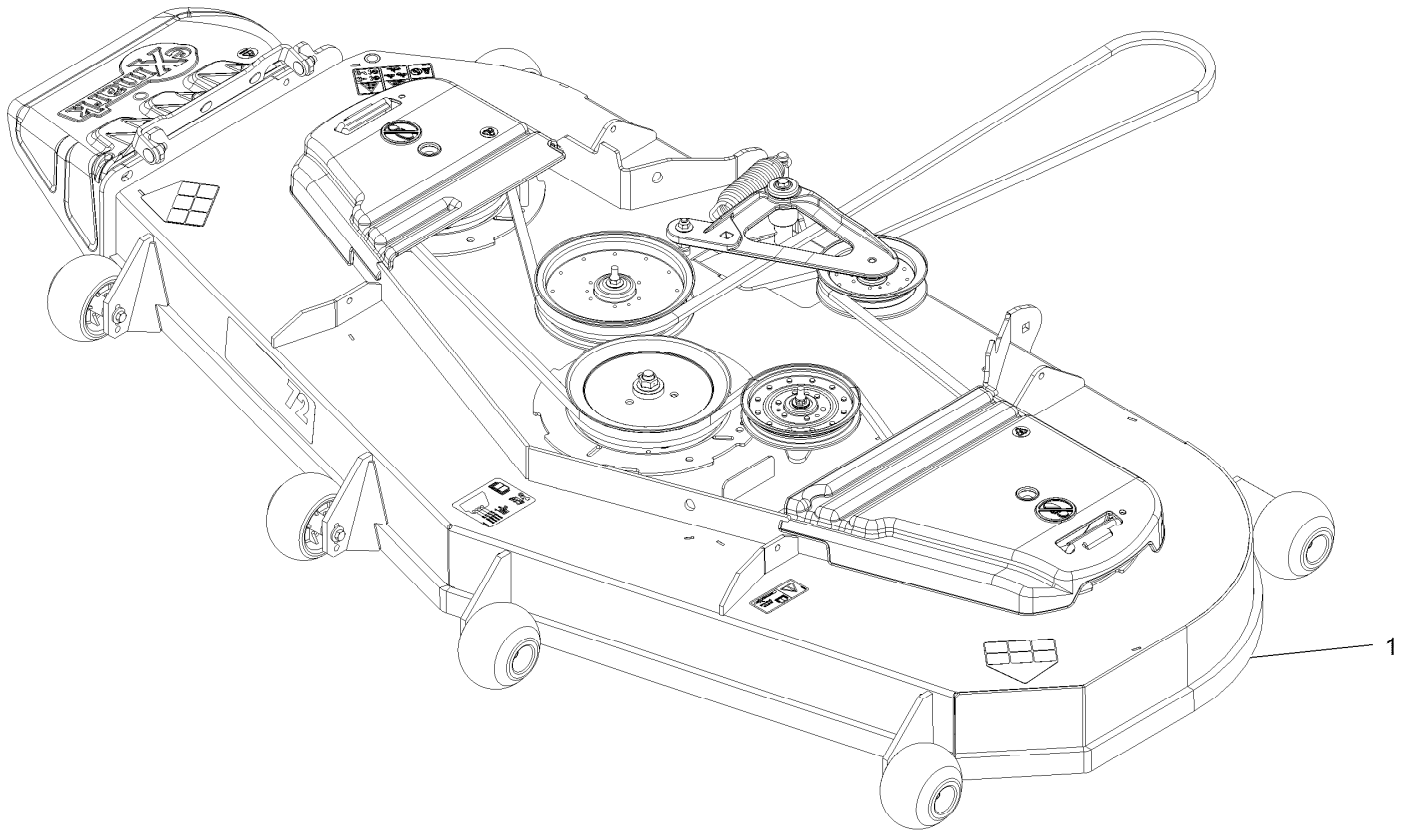


If your Exmark dealer does not have the Exmark part in stock, Exmark will get the parts to the dealer the next business day or the part will be FREE Guaranteed!! (Some restrictions apply. See your participating Exmark Dealer for details.)

Contents

| | |
|--|----|
| Complete Deck Assembly..... | 4 |
| Deck Assembly..... | 6 |
| Deck W/Decals No. 109-9133..... | 8 |
| Deck Idler Assembly No. 116-3755..... | 10 |
| Cutter Housing Assembly No. 103-9539..... | 12 |
| Main Frame Assembly..... | 14 |
| X-Series Decal..... | 16 |
| Roll-Over Protection System..... | 18 |
| Roll-Over Protection System Assembly No. 116-0230..... | 20 |
| Front Caster and Fork Assembly..... | 22 |
| Caster Wheel and Fork Assembly..... | 24 |
| Deck Lift Assembly..... | 26 |
| Height-of-Cut Assembly No. 109-7438..... | 28 |
| Park Brake Assembly..... | 30 |
| Rear Wheel Assembly..... | 32 |
| Control Assembly..... | 34 |
| Motion Control Assembly..... | 36 |
| Seat Assembly..... | 38 |
| Seat W/Tracks Assembly No. 116-8912..... | 40 |
| Fuel Assembly..... | 42 |
| Fuel Tank Assembly No. 116-3979..... | 44 |
| Engine Assembly..... | 46 |
| Hydraulic Assembly..... | 48 |
| LH Hydro Assembly No. 126-1319..... | 50 |
| RH Hydro Assembly No. 126-1320..... | 52 |
| Pump Idler Assembly No. 116-1255..... | 54 |
| Electrical Assembly..... | 56 |

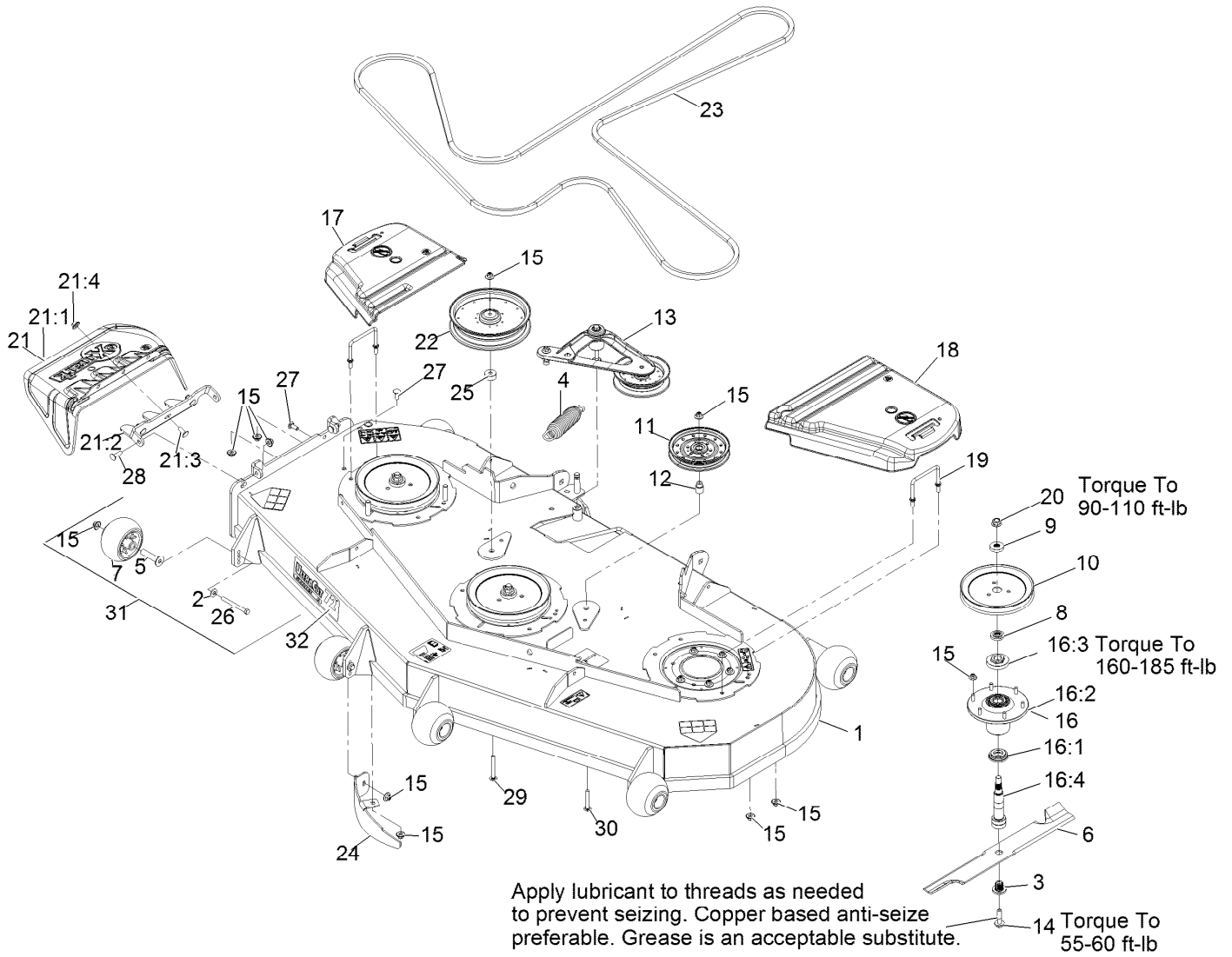
Complete Deck Assembly



Complete Deck Assembly (continued)

| <i>Ref.</i> | <i>Part Number</i> | <i>Qty.</i> | <i>Description</i> |
|-------------|--------------------|-------------|-----------------------|
| 1 | 109-9649 | 1 | Complete Deck ASM-726 |

Deck Assembly



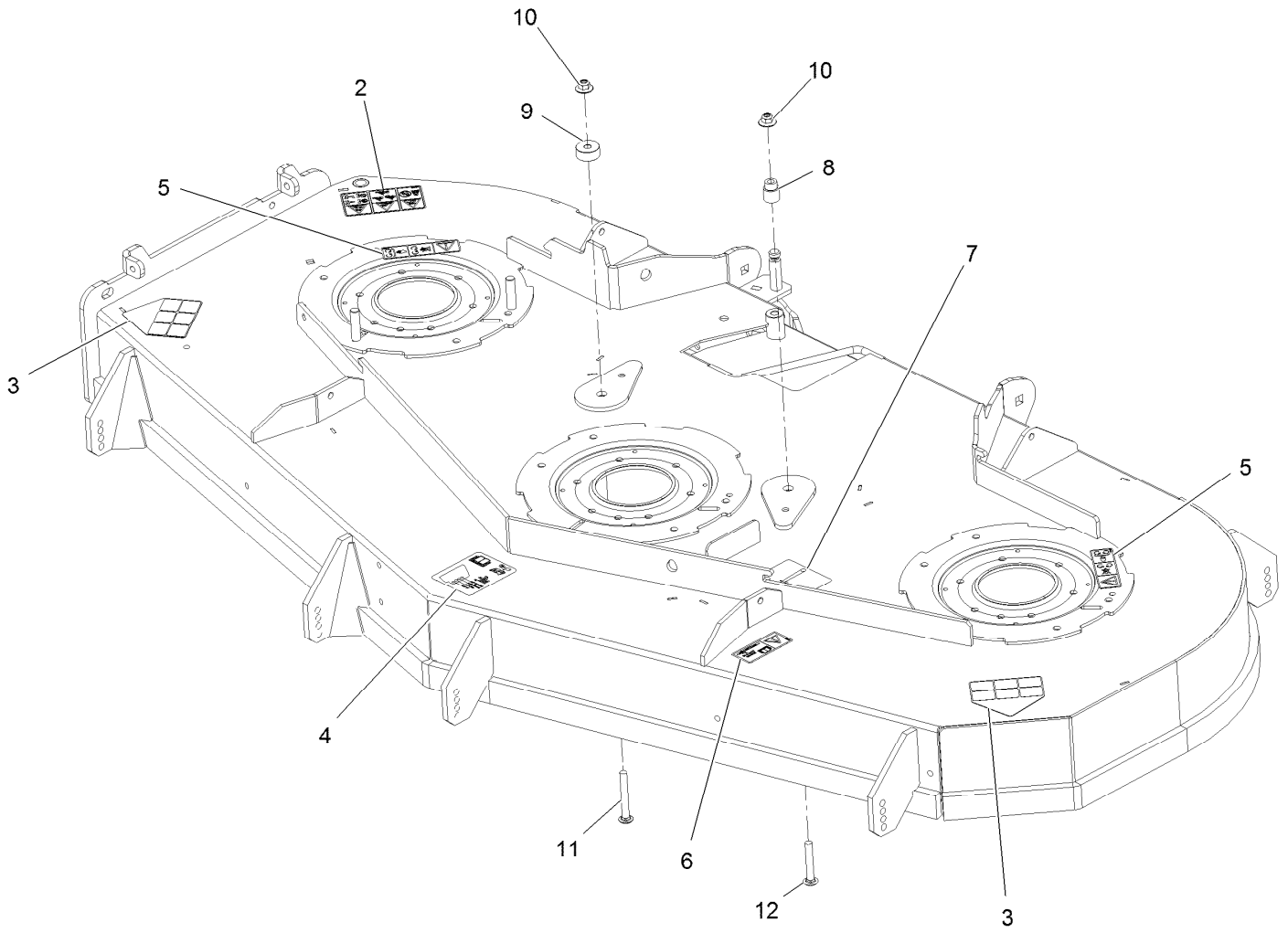
Deck Assembly (continued)

| <i>Ref.</i> | <i>Part Number</i> | <i>Qty.</i> | <i>Description</i> | <i>Ref.</i> | <i>Part Number</i> | <i>Qty.</i> | <i>Description</i> |
|-------------|--------------------|-------------|--------------------------|-------------|--------------------|-------------|---------------------------------|
| 1 | 109-9133 | 1 | Deck W/ Decals ASM-72 | 16:4 | 109-6881 | 1 | Spindle, Double Spline ■ |
| 2 | 98-5975 | 6 | Washer-Spring Disc 3/8 | 17 | 116-0094 | 1 | Cover-Belt, RH |
| 3 | 103-3037 | 3 | Bushing, Splined | 18 | 109-6938 | 1 | Cover-Belt, LH |
| 4 | 116-6317 | 1 | Spring-Extension | 19 | 109-6982 | 2 | Wireform-Cover |
| 5 | 116-8131 | 6 | Axle, Roller | 20 | 109-7033 | 3 | Nut-Flange 5/8-18 Centerlock |
| 6 | 103-6404 | 3 | Blade, Notched (72") | 21 | 109-7188 | 1 | ASM, Discharge Chute |
| 6 | 103-6394 | 3 | Blade, Mulching (72") ● | 21:1 | 109-2738 | 1 | Chute, Discharge |
| 6 | 103-6389 | 3 | Blade, Low Lift (72") | 21:2 | 109-8675-01 | 1 | Bracket, Discharge Chute |
| 6 | 103-6384 | 3 | Blade, Solid (72") | 21:3 | 3231-22 | 3 | Bolt-Carriage 3/8-16 X 1 |
| 6 | 116-5171 | 3 | Blade-Extreme 2, 24.50" | 21:4 | 109-6658 | 3 | Nut-Nyloc 3/8-16 Flg |
| 7 | 103-8415 | 6 | Roller-Anti-Scalp | 22 | 109-8590 | 1 | Pulley-Idler |
| 8 | 103-9522 | 3 | Spacer, Splined Stepped | 23 | 109-9023 | 1 | Belt, V-5V X 219.00" |
| 9 | 103-9523 | 3 | Spacer, Splined | 24 | 116-5834-01 | 1 | Baffle-Dogleg, Lz72 |
| 10 | 109-2180 | 3 | Sheave, Blade Drive 9.00 | 25 | 103-2956 | 1 | Spacer-Idler |
| 11 | 116-4667 | 1 | Idler-Pulley, Flat | 26 | 116-9362 | 6 | Screw-HH |
| 12 | 1-633456 | 1 | Bushing, Idler | 27 | 3231-22 | 2 | Bolt-Carriage 3/8-16 X 1 |
| 13 | 116-3755 | 1 | Deck Idler ASM | 28 | 3231-28 | 2 | Bolt-Carriage 3/8-16 X 1 1/4 |
| 14 | 109-9220 | 3 | Screw-Sems 1/2-20 X 2.19 | 29 | 3231-42 | 1 | Bolt-Carriage 3/8-16 X 3 |
| 15 | 109-6658 | 34 | Nut-Nyloc 3/8-16 Flg | 30 | 3231-44 | 1 | Bolt-Carriage 3/8-16 X 2 1/2 |
| 16 | 109-6917 | 3 | ASM, Spindle Housing | 31 | 116-9981 | 6 | Kit, Anti-Scalp Roller |
| 16:1 | 103-9504 | 1 | Guard, Bottom | 32 | 109-9440 | 1 | Decal, Ultracut 72 Series 6 |
| 16:2 | 103-9539 | 1 | Asm, Cutter Housing | | | | |
| 16:3 | 109-0916 | 1 | Nut, Spindle 7/8-14 | | | | |

● Requires installation of mulch kit for proper mulching. See your Exmark dealer for details.

■ Apply Mobil HTS grease (P/N 103-5217 1.5 oz packet) (or a food-grade anti-seize). See operator's manual for locations.

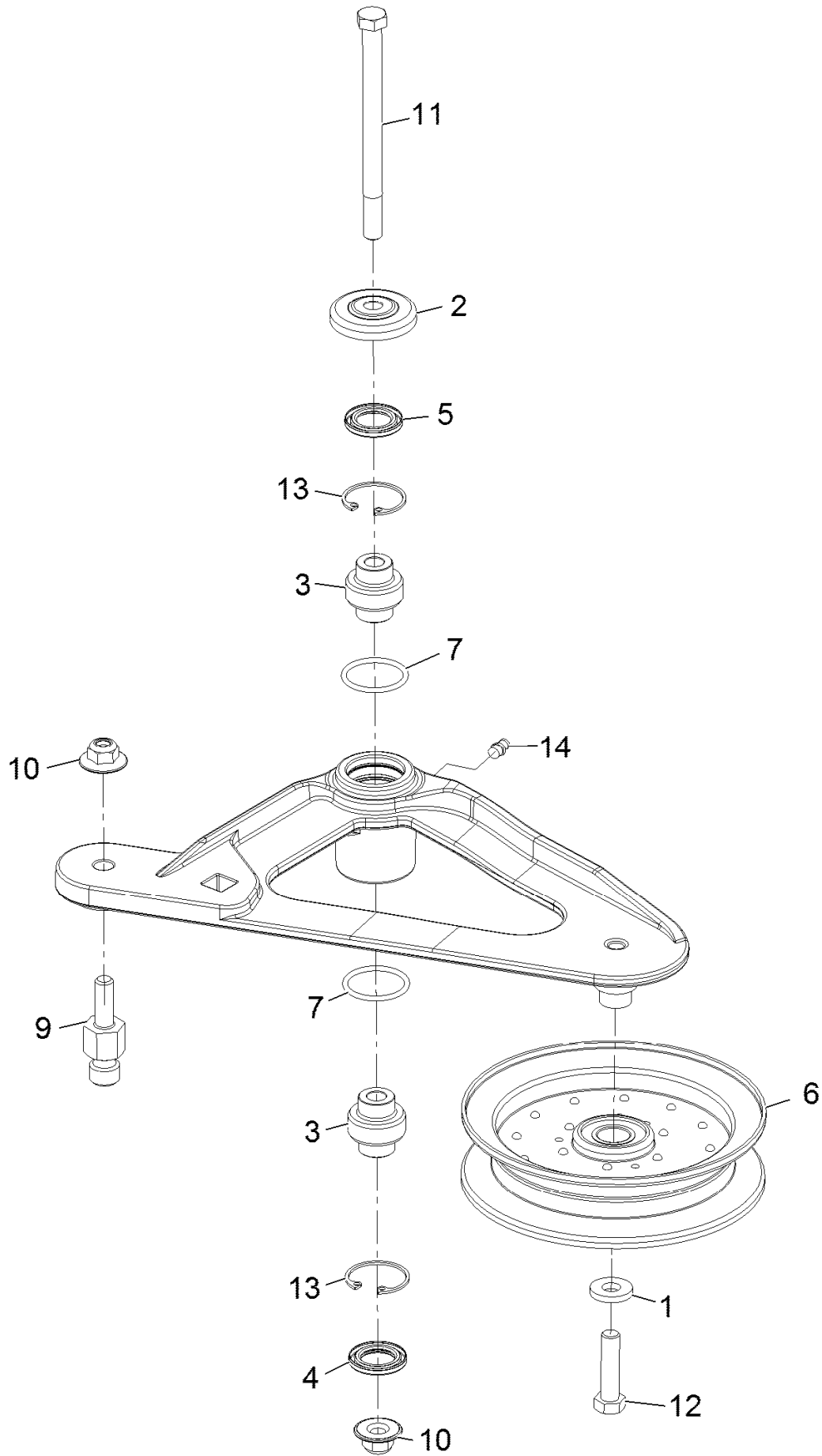
Deck W/Decals No. 109-9133



Deck W/Decals No. 109-9133 (continued)

| <i>Ref.</i> | <i>Part Number</i> | <i>Qty.</i> | <i>Description</i> | <i>Ref.</i> | <i>Part Number</i> | <i>Qty.</i> | <i>Description</i> |
|-------------|--------------------|-------------|--------------------------|-------------|--------------------|-------------|------------------------------|
| 2 | 117-3848 | 1 | Decal-Danger | 8 | 1-633456 | 1 | Bushing, Idler |
| 3 | 93-7316 | 2 | Decal-Danger | 9 | 103-2956 | 1 | Spacer-Idler |
| 4 | 109-6036 | 1 | Decal-Roller, Anti-Scalp | 10 | 109-6658 | 2 | Nut-Nyloc 3/8-16 Flg |
| 5 | 112-9028 | 2 | Decal-Cover Missing | 11 | 3231-42 | 1 | Bolt-Carriage 3/8-16 X 3 |
| 6 | 116-8283 | 1 | Decal-Bolt Torque | 12 | 3231-44 | 1 | Bolt-Carriage 3/8-16 X 2 1/2 |
| 7 | 116-8727 | 1 | Decal-Belt Routing | | | | |

Deck Idler Assembly No. 116-3755



Deck Idler Assembly No. 116-3755 (continued)

| <i>Ref.</i> | <i>Part Number</i> | <i>Qty.</i> | <i>Description</i> | <i>Ref.</i> | <i>Part Number</i> | <i>Qty.</i> | <i>Description</i> |
|-------------|--------------------|-------------|-----------------------|-------------|--------------------|-------------|---------------------------|
| 1 | 43-0940 | 1 | Spacer | 9 | 126-0423 | 1 | Pin-Spring, Anchor |
| 2 | 103-2916 | 1 | Guard-Top | 10 | 109-6658 | 2 | Nut-Nyloc 3/8-16 Flg |
| 3 | 103-3504 | 2 | Bearing-Spherical | 11 | 109-7409 | 1 | Screw-Shoulder 3/8-16 X 5 |
| 4 | 103-3505 | 1 | Seal-Double Lip | 12 | 323-8 | 1 | Screw-HH 3/8-16 X 1 1/2 |
| 5 | 103-3506 | 1 | Seal-Single Lip | 13 | 32120-10 | 2 | Ring-Retaining |
| 6 | 116-4668 | 1 | Idler-Pulley, Flanged | 14 | 302-19 | 1 | Zerk-1/4-28 Str |
| 7 | 106-7159 | 2 | O-Ring | | | | |

Cutter Housing Assembly No. 103-9539

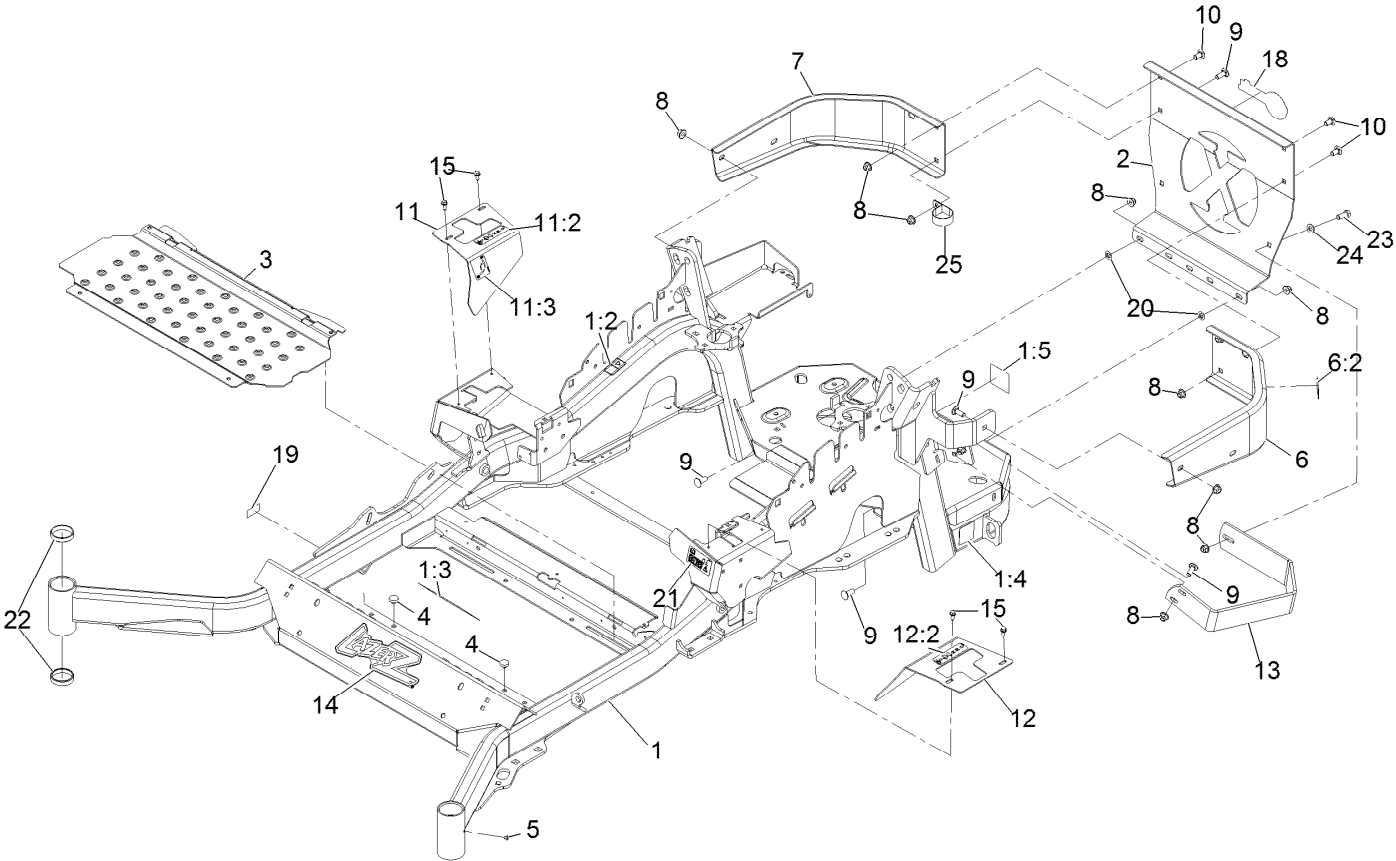


Cutter Housing Assembly No. 103-9539 (continued)

| <i>Ref.</i> | <i>Part Number</i> | <i>Qty.</i> | <i>Description</i> |
|-------------|--------------------|-------------|------------------------|
| 1 | 92-5581 | 1 | Ring-Retaining |
| 2 | 109-2064 | 1 | Asm, Bearing W/O-Rings |
| 3 | 103-5895 | 4 | O-Ring |

| <i>Ref.</i> | <i>Part Number</i> | <i>Qty.</i> | <i>Description</i> |
|-------------|--------------------|-------------|----------------------|
| 4 | 103-9506 | 1 | Spacer, Bearing |
| 5 | 109-0764 | 1 | Asm, Housing W/Studs |

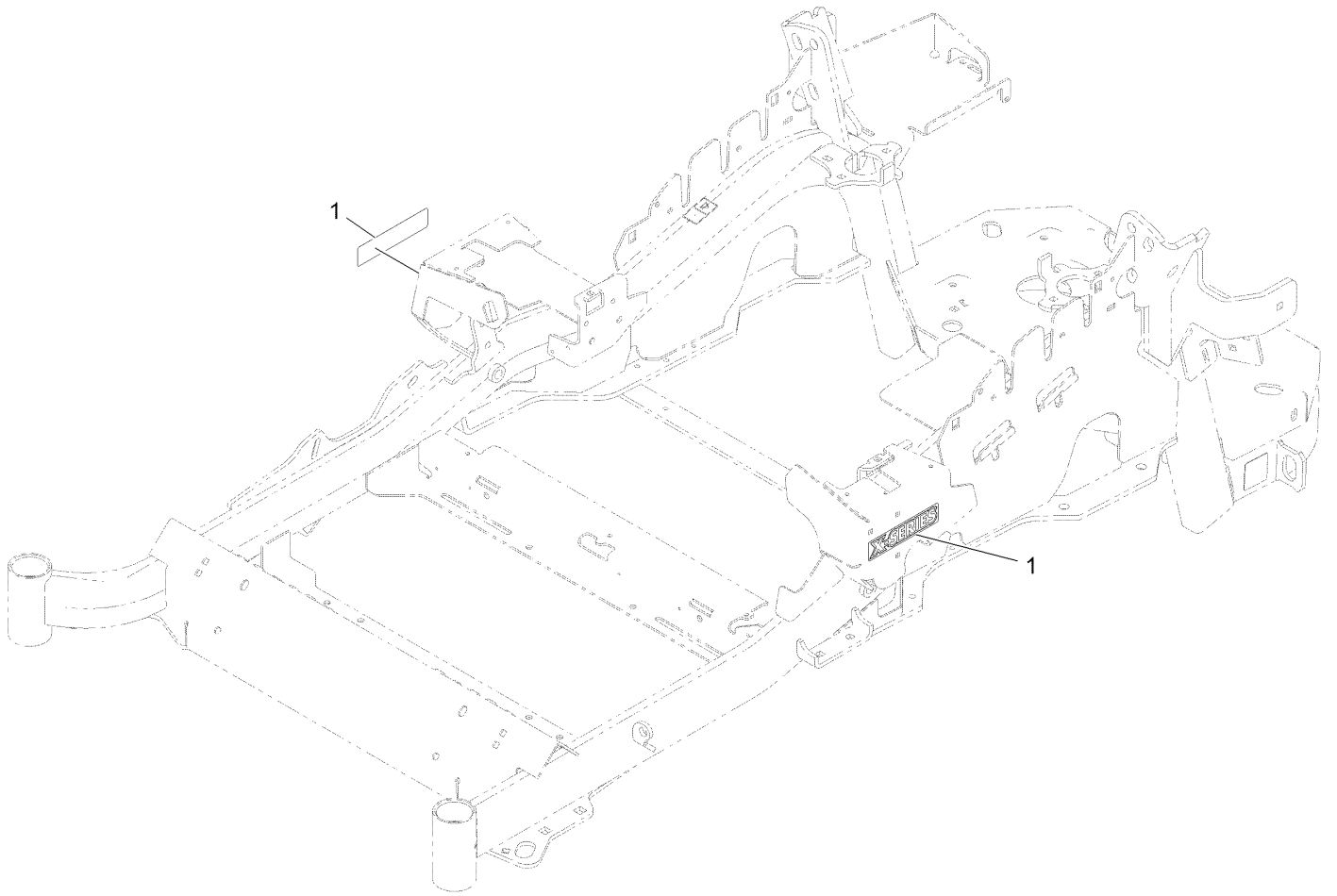
Main Frame Assembly



Main Frame Assembly (continued)

| <i>Ref.</i> | <i>Part Number</i> | <i>Qty.</i> | <i>Description</i> | <i>Ref.</i> | <i>Part Number</i> | <i>Qty.</i> | <i>Description</i> |
|-------------|--------------------|-------------|---------------------------------|-------------|--------------------|-------------|--------------------------------|
| 1 | 116-5904 | 1 | Mainframe ASM | 11:2 | 99-8936 | 1 | Decal-Control, Motion |
| 1:2 | 106-5517 | 2 | Decal-Warning, Hot Surface | 11:3 | 116-5988 | 1 | Decal-Park Brake, Ce |
| 1:3 | 127-0335 | 1 | Decal-Warning, Slope | 12 | 116-0580 | 1 | LH Motion Control Cover ASM |
| 1:4 | 106-2655 | 2 | Decal-Hazard, Pinched Finger | 12:2 | 99-8936 | 1 | Decal-Control, Motion |
| 1:5 | 116-4858 | 1 | Decal-Spark Arrester | 13 | 126-2067-03 | 1 | Guard-Muffler |
| 2 | 109-8863-03 | 1 | Plate,Rear Guard | 14 | 103-3113 | 1 | Decal, Lazer Model |
| 3 | 116-8898-01 | 1 | Floorpan | 15 | 32144-10 | 4 | Screw-HWH 1/4-20 X .62 |
| 4 | 1-513658 | 2 | Bumper | 18 | 103-2883 | 1 | Decal, Exmark Logo |
| 5 | 1-811010 | 2 | Plug | 19 | 126-4345 | 1 | Decal-Patent Ttco.Com |
| 6 | 116-0180 | 1 | LH Bumper ASM | 20 | 107-3154 | 2 | Nut-Push 3/8-16 |
| 6:2 | 106-5517 | 1 | Decal-Warning, Hot Surface | 21 | 117-3864 | 1 | Decal-Fuel Fill, Ce |
| 7 | 116-0057-03 | 1 | Bumper-RH | 22 | 1-543508 | 4 | Cup-Bearing Tapered Roller |
| 8 | 104-8301 | 11 | Nut-Nyloc 3/8-16 Flg | 23 | 323-6 | 1 | Screw-HH 3/8-16 X 1 |
| 9 | 3231-22 | 7 | Bolt-Carriage 3/8-16 X 1 | 24 | 3256-24 | 1 | Washer-3/8 Sae |
| 10 | 3231-21 | 3 | Bolt-Carriage 3/8-16 X 3/4 | 25 | 2412-147 | 1 | Clamp-R |
| 11 | 116-5899 | 1 | RH Motion Control Cover ASM | | | | |

X-Series Decal



X-Series Decal (continued)

| <i>Ref.</i> | <i>Part Number</i> | <i>Qty.</i> | <i>Description</i> |
|-------------|--------------------|-------------|--------------------|
| 1 | 116-3883 | 2 | Decal-X-Series |

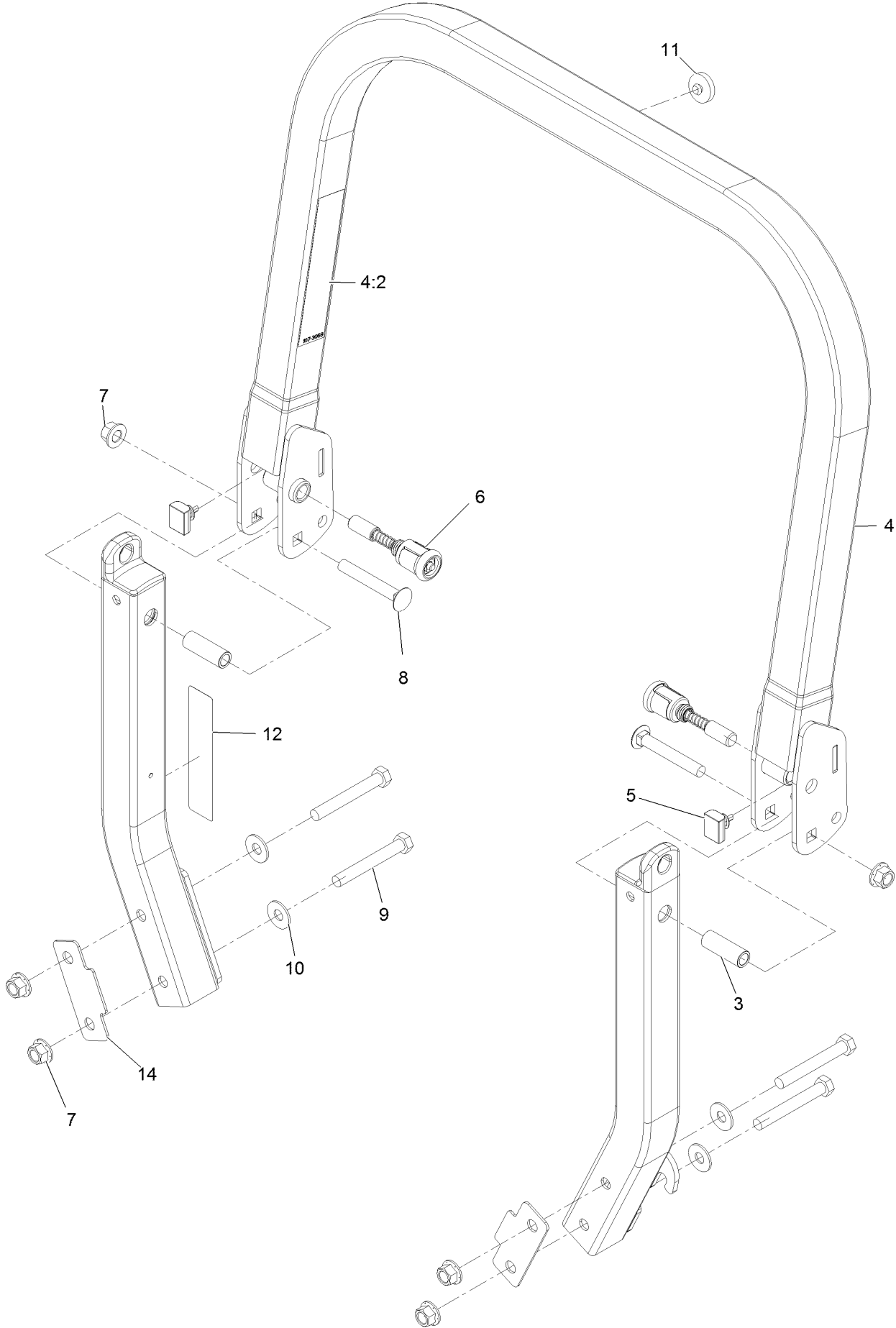
Roll-Over Protection System



Roll-Over Protection System (continued)

| <i>Ref.</i> | <i>Part Number</i> | <i>Qty.</i> | <i>Description</i> |
|-------------|--------------------|-------------|-------------------------|
| 1 | 116-0230 | 1 | ASM,ROPS Service Exmark |

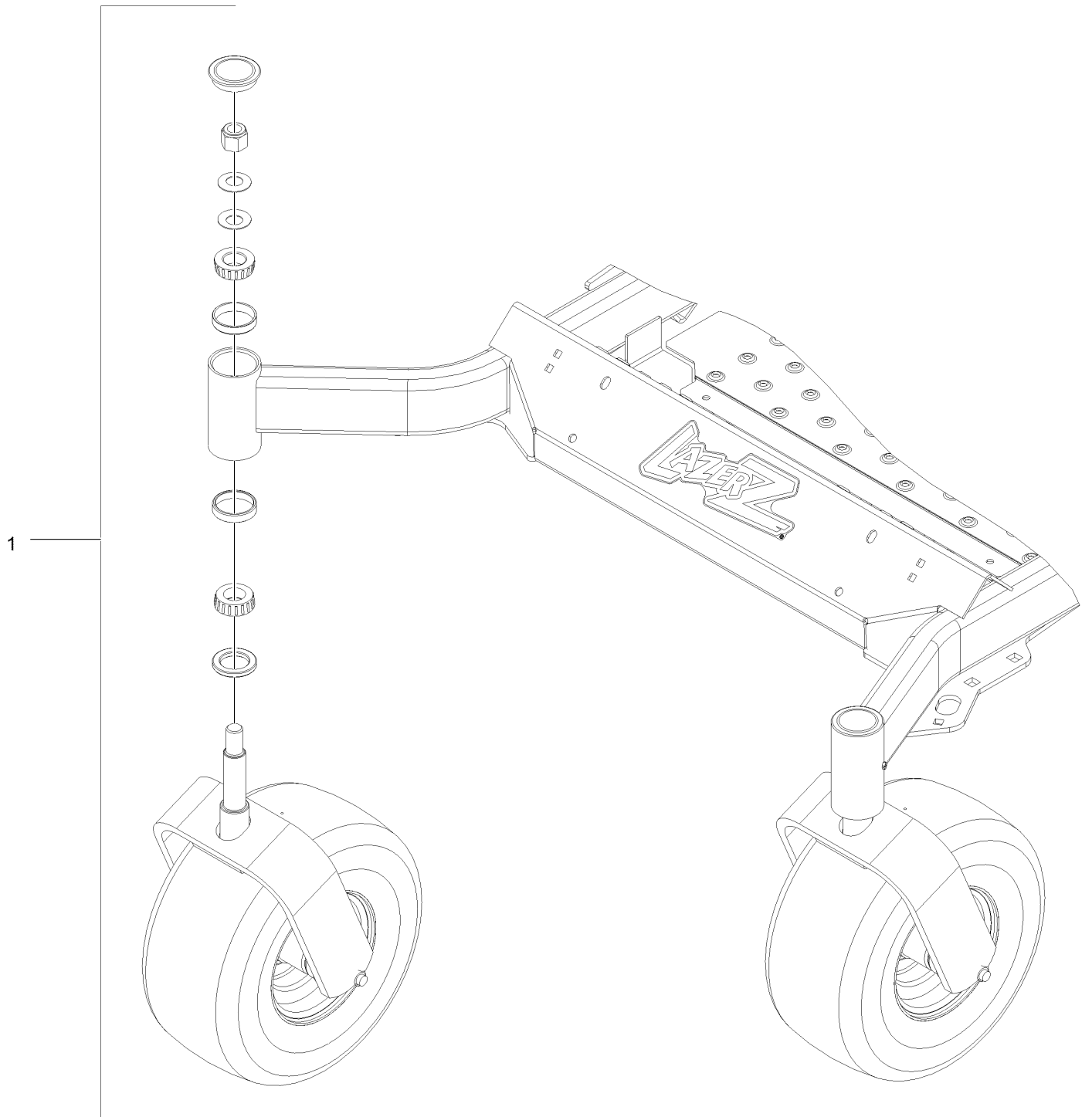
Roll-Over Protection System Assembly No. 116-0230



Roll-Over Protection System Assembly No. 116-0230 (continued)

| <i>Ref.</i> | <i>Part Number</i> | <i>Qty.</i> | <i>Description</i> | <i>Ref.</i> | <i>Part Number</i> | <i>Qty.</i> | <i>Description</i> |
|-------------|--------------------|-------------|-----------------------------|-------------|--------------------|-------------|------------------------------|
| 3 | 109-6653 | 2 | Spacer | 8 | 3233-10 | 2 | Bolt-Carriage 1/2-13 X 3 1/2 |
| 4 | 116-0019 | 1 | Upper ROPS ASM | 9 | 325-35 | 4 | Screw-HH |
| 4:2 | 107-3069 | 1 | Decal-Warning, Folding ROPS | 10 | 109-9505 | 4 | Washer, Spring Disc 1/2 |
| 5 | 109-5337 | 2 | Bumper-ROPS | 11 | 109-9233 | 1 | Bumper-Push-In, Rubber |
| 6 | 116-0104 | 2 | Pin-Spring | 12 | 117-0346 | 1 | Decal-Caution, Fuel Vent |
| 7 | 99-5107 | 6 | Nut-Lock 1/2-13 | 14 | 116-0960 | 2 | Spacer |

Front Caster and Fork Assembly

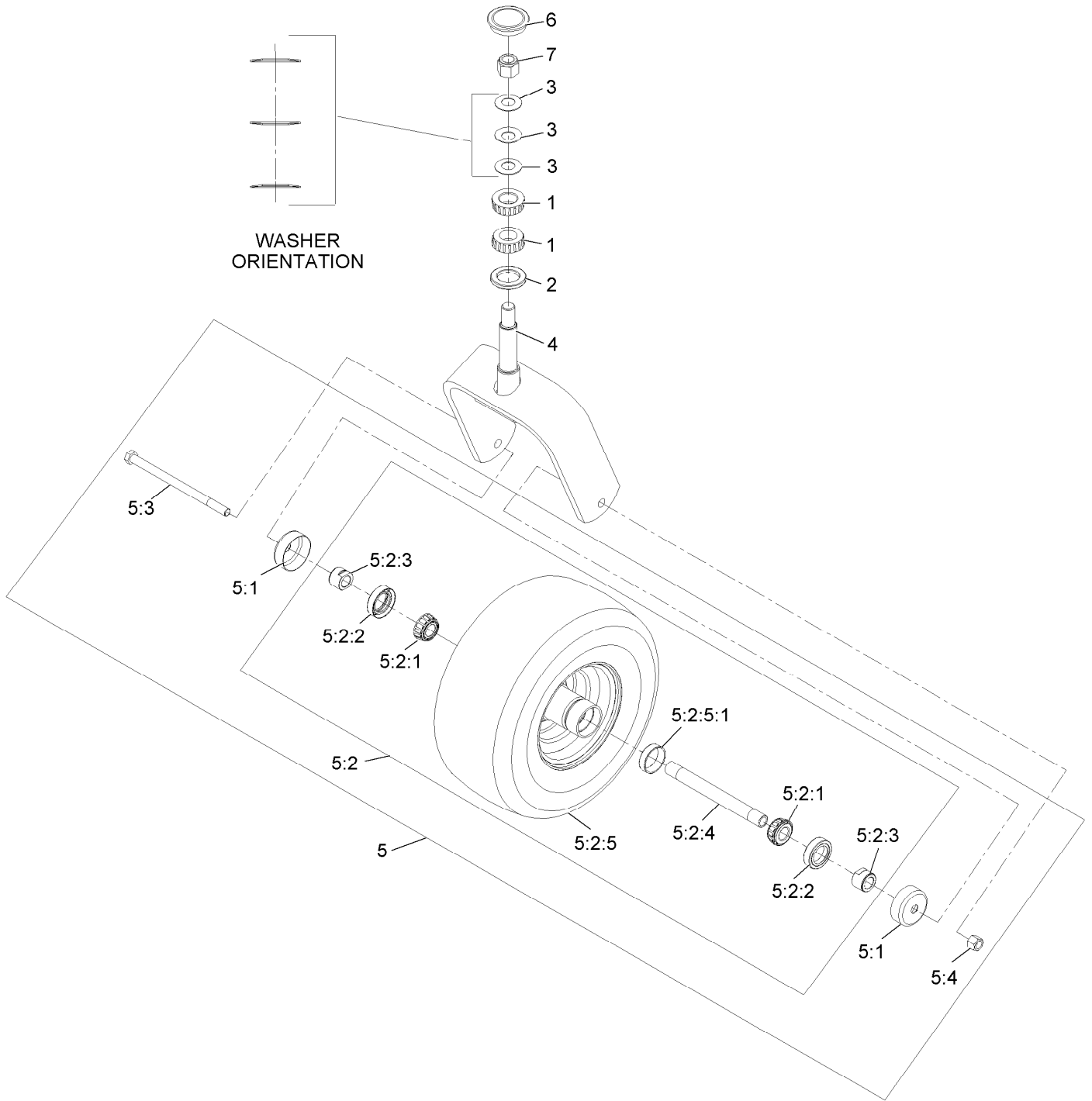


Front Caster and Fork Assembly (continued)

| <i>Ref.</i> | <i>Part Number</i> | <i>Qty.</i> | <i>Description</i> |
|-------------|--------------------|-------------|--------------------|
| 1 | | 2 | Caster Wheel ASM ● |

● Not serviced separately

Caster Wheel and Fork Assembly



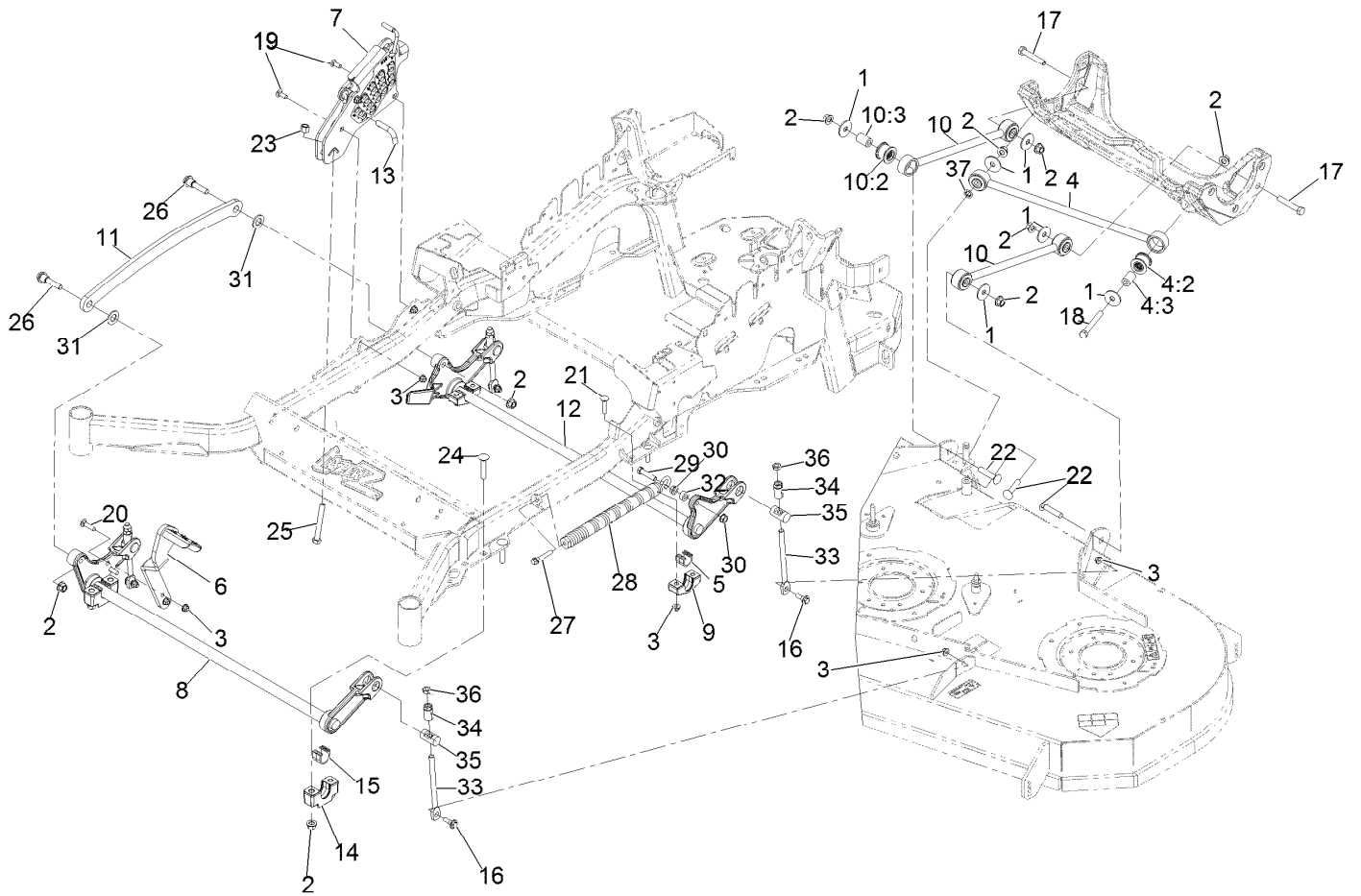
Caster Wheel and Fork Assembly (continued)

| <i>Ref.</i> | <i>Part Number</i> | <i>Qty.</i> | <i>Description</i> | <i>Ref.</i> | <i>Part Number</i> | <i>Qty.</i> | <i>Description</i> |
|-------------|--------------------|-------------|-----------------------------|-------------|--------------------|-------------|-------------------------|
| 1 | 1-543509 | 2 | Cone-Bearing Tapered Roller | 5:2:2 | 103-0063 | 2 | Seal-Double Lip |
| 2 | 116-5647 | 1 | Seal-Grease | 5:2:3 | 103-3051 | 2 | Spacer-Nut ■ |
| 3 | 1-633508 | 3 | Washer-Spring Disc | 5:2:4 | 103-5156 | 1 | Axle-Caster |
| 4 | 116-6707-01 | 1 | Caster | 5:2:5 | | 1 | Wheel And Tire ASM ● |
| 5 | 109-9127 | 1 | Wheel & Tire ASM | 5:2:5:1 | 1-633584 | 1 | Bearing-Cup |
| 5:1 | 103-2768 | 2 | Guard-Seal | 5:3 | 325-39 | 1 | Screw-HH 1/2-13 X 9 1/2 |
| 5:2 | | 1 | Wheel And Tire ASM ● | 5:4 | 3296-23 | 1 | Nut-Nyloc 1/2-13 |
| 5:2:1 | 1-633585 | 2 | Bearing-Cone Tapered Roller | 6 | 103-4882 | 1 | Cap-Grease |
| | | | | 7 | 3296-51 | 1 | Nut-Nyloc 3/4-10 |

● Not serviced separately

■ Use Pro-Lock, Nut Type (P/N 1-840022, .5ml tube) on threads.

Deck Lift Assembly



Deck Lift Assembly (continued)

| <i>Ref.</i> | <i>Part Number</i> | <i>Qty.</i> | <i>Description</i> | <i>Ref.</i> | <i>Part Number</i> | <i>Qty.</i> | <i>Description</i> |
|-------------|--------------------|-------------|---------------------------------------|-------------|--------------------|-------------|--|
| 1 | 86-1990 | 6 | Washer | 17 | 325-12 | 2 | Screw-HH 1/2-13 X 3 |
| 2 | 99-5107 | 12 | Nut-Lock 1/2-13 | 18 | 325-17 | 1 | Screw-HH 1/2-13 X 4 |
| 3 | 104-8301 | 12 | Nut-Nyloc 3/8-16 Flg | 19 | 3231-2 | 2 | Bolt-Carriage 3/8-16 X 1 |
| 4 | 109-5013 | 1 | Panhard Rod ASM | 20 | 3231-4 | 2 | Bolt-Carriage 3/8-16 X 1 1/2 |
| 4:2 | 109-5009 | 2 | Bushing-Suspension, Rubber | 21 | 3231-5 | 4 | Bolt-Carriage 3/8-16 X 1 3/4 |
| 4:3 | 109-5010 | 2 | Spacer | 22 | 3233-34 | 3 | Bolt-Carriage 1/2-13 X 2 1/2 |
| 5 | 109-7173 | 2 | Bearing-Cross Shaft, Rear | 23 | 3296-23 | 1 | Nut-Nyloc 1/2-13 |
| 6 | 116-1919-01 | 1 | Lever-Foot | 24 | 116-1700 | 4 | Bolt-Carriage 1/2-13 X 2 1/2 Spl Neck |
| 7 | 109-7438 | 1 | HOC ASM | 25 | 116-0559 | 1 | Bolt-HH 1/2-13 X 4 Tap |
| 8 | 126-2477-03 | 1 | Decklift-Front | 26 | 116-2022 | 2 | Screw-Hex Flange 1/2-13 X 1.90 |
| 9 | 116-0818-03 | 2 | Support-Cross Shaft, Rear Bearing | 27 | 92-7674 | 1 | Screw-Shcs 3/8-16 X 2.212 |
| 10 | 109-7952 | 2 | Deck Strut ASM | 28 | 116-0000 | 1 | Extension Spring ASM |
| 10:2 | 109-5009 | 2 | Bushing-Suspension, Rubber | 29 | 109-9065 | 1 | Screw-HH 7/16-14 X 2 |
| 10:3 | 109-5010 | 2 | Spacer | 30 | 32128-37 | 2 | Nut-Whizlock 7/16-14 |
| 11 | 116-0797-03 | 1 | Link-Lift, Deck | 31 | 3256-28 | 2 | Washer-3/4 Sae |
| 12 | 116-2645-03 | 1 | Lift-Deck, Rear | 32 | 116-2695 | 1 | Spacer |
| 13 | 116-5584 | 1 | Pin-HOC | 33 | 109-8007 | 4 | Link-Adjuster, Deck Lift |
| 14 | 109-9409 | 2 | Support-Cross Shaft, Front Bearing | 34 | 109-7840 | 4 | Adjuster-Lift, Deck |
| 15 | 109-9410 | 2 | Bearing-Cross Shaft, Front | 35 | 109-8353 | 4 | Trunnion |
| 16 | 109-9840 | 4 | Screw-Hex Flange 3/8-16 X .80 | 36 | 3218-5 | 4 | Nut-Jam 1/2-13 |
| | | | | 37 | 126-2916 | 1 | Nut-Push |

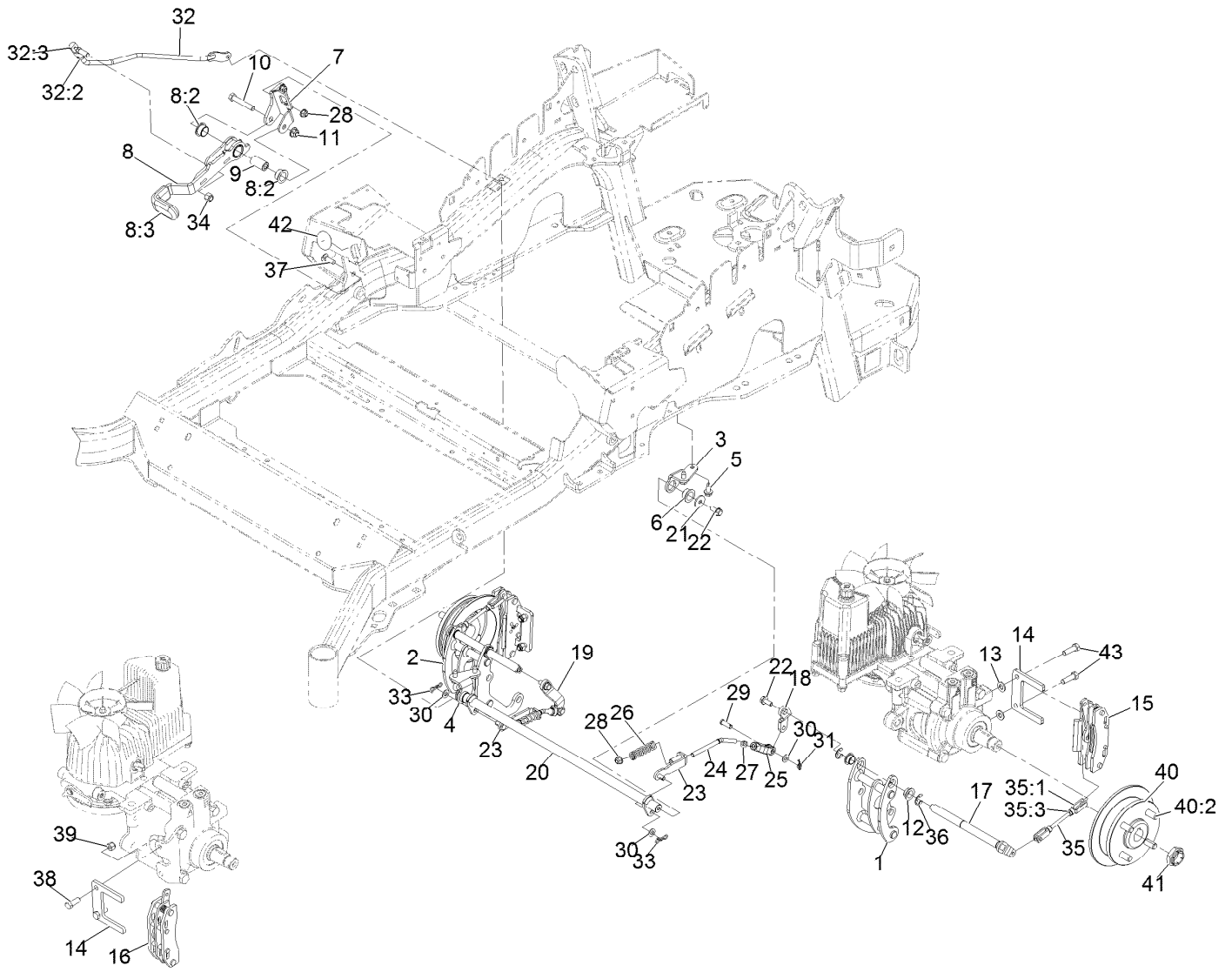
Height-of-Cut Assembly No. 109-7438



Height-of-Cut Assembly No. 109-7438 (continued)

| <i>Ref.</i> | <i>Part Number</i> | <i>Qty.</i> | <i>Description</i> | <i>Ref.</i> | <i>Part Number</i> | <i>Qty.</i> | <i>Description</i> |
|-------------|--------------------|-------------|---------------------|-------------|--------------------|-------------|---------------------|
| 1 | 62-1330 | 1 | Bolt-Shoulder | 6 | 116-0118 | 1 | Pawl-Transport, HOC |
| 2 | 109-7130 | 1 | Grommet | 7 | 109-7335 | 1 | HOC Plate ASM |
| 3 | 104-8301 | 1 | Nut-Flange, NI | 7:2 | 126-4398 | 1 | Decal-HOC |
| 4 | 109-7124 | 1 | Spring-Extension | 8 | 109-8250 | 1 | Grip-Lever |
| 5 | 109-7128 | 1 | Rod-Lock, Transport | | | | |

Park Brake Assembly

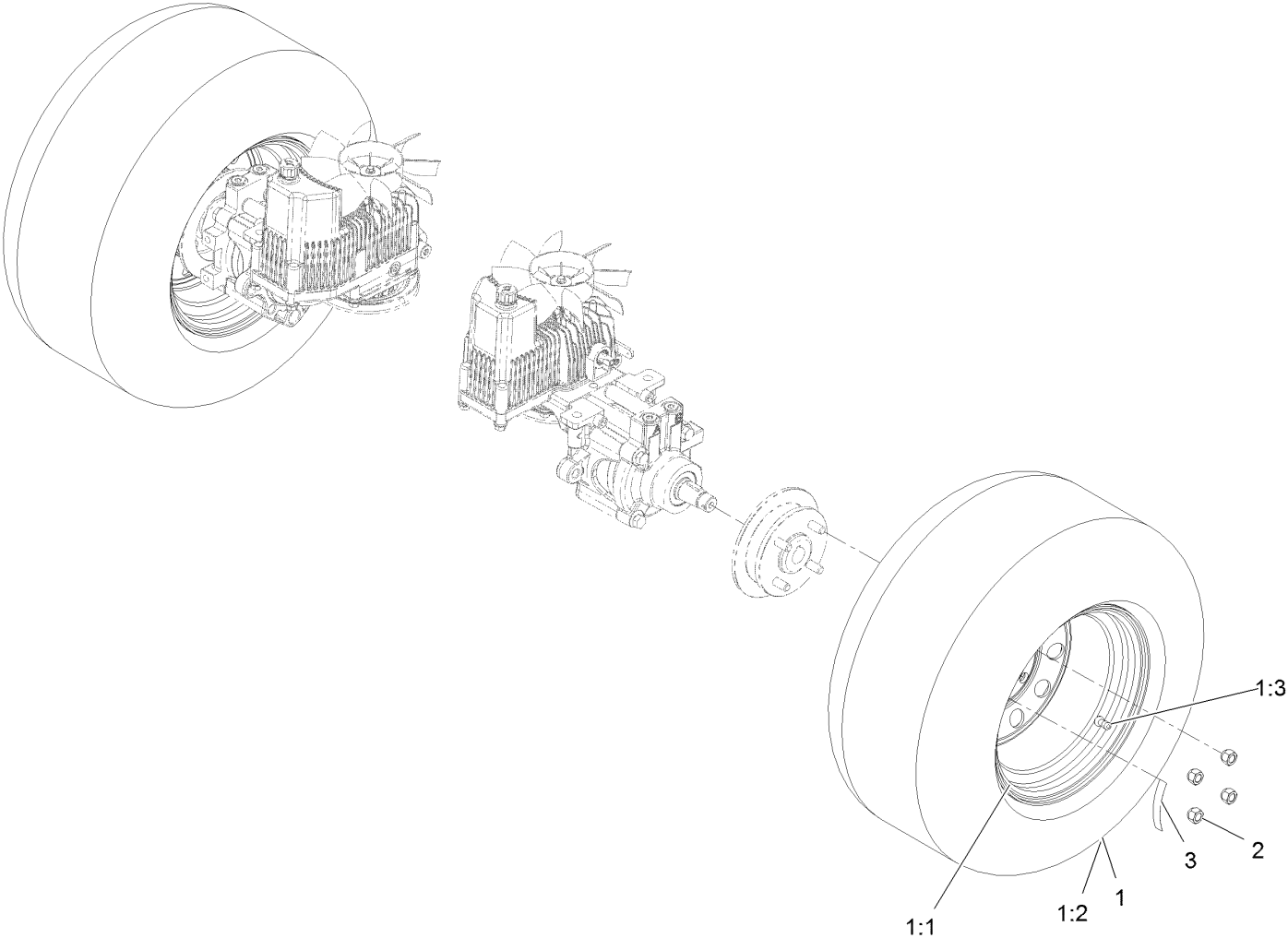


REAR VIEW OF
RIGHT HAND HYDRO

Park Brake Assembly (continued)

| <i>Ref.</i> | <i>Part Number</i> | <i>Qty.</i> | <i>Description</i> | <i>Ref.</i> | <i>Part Number</i> | <i>Qty.</i> | <i>Description</i> |
|-------------|--------------------|-------------|-------------------------------|-------------|--------------------|-------------|---------------------------|
| 1 | 116-9061 | 1 | Mount-Bellcrank, LH | 24 | 116-9086 | 2 | Linkage-Mid |
| 2 | 116-9062 | 1 | Mount-Bellcrank, RH | 25 | 126-3693 | 2 | Yoke-Offset |
| 3 | 116-9681 | 1 | Mount-Pivot, LH | 26 | 116-9085 | 2 | Spring-Compression |
| 4 | 116-9682 | 1 | Mount-Pivot, RH | 27 | 3220-2 | 2 | Nut-Jam 5/16-24 |
| 5 | 32144-70 | 4 | Screw-HWH 5/16-18 X 3/4 Tf | 28 | 104-8300 | 4 | Nut-Nyloc 5/16-18 Flg |
| 6 | 109-8054 | 2 | Bushing-Flanged | 29 | 1-808280 | 2 | Pin-Clevis 5/16 X 1 49/64 |
| 7 | 116-9096-01 | 1 | Bracket-Mount | 30 | 3256-23 | 4 | Washer-5/16 Sae |
| 8 | 126-0970 | 1 | Brake Lever ASM | 31 | 116-6639 | 2 | Pin-Cotter, Locking |
| 8:2 | 109-8054 | 2 | Bushing-Flanged | 32 | 116-9102 | 1 | Front Linkage ASM |
| 8:3 | 1-633268 | 1 | Grip-Lever | 32:2 | 94-7572 | 1 | End-Tie Rod, RH |
| 9 | 116-9117 | 1 | Handle-Pivot, Brake | 32:3 | 3220-3 | 1 | Nut-Jam 3/8-24 |
| 10 | 323-11 | 1 | Screw-HH 3/8-16 X 2 1/4 | 33 | 119-1415 | 2 | Pin-Cotter, Locking |
| 11 | 104-8301 | 1 | Nut-Nyloc 3/8-16 Flg | 34 | 3296-6 | 1 | Nut-Nyloc 3/8-24 |
| 12 | 116-9072 | 4 | Bushing | 35 | 116-9071 | 2 | Rear Linkage ASM |
| 13 | 3256-24 | 2 | Washer-3/8 Sae | 35:1 | 116-9070 | 2 | Yoke |
| 14 | 109-0958 | 2 | Plate-Mount, Brake | 35:3 | 3220-1 | 1 | Nut-Jam 1/4-28 |
| 15 | 109-2889 | 1 | Caliper-Brake | 36 | 32120-19 | 4 | E-Ring |
| 16 | 116-9103 | 1 | Caliper-Brake, RH | 37 | 3230-2 | 2 | Bolt-Carriage 5/16-18 X 1 |
| 17 | 116-9066 | 2 | Bellcrank | 38 | 323-6 | 2 | Screw-HH 3/8-16 X 1 |
| 18 | 126-3715 | 1 | Arm-Inner, LH | 39 | 3296-39 | 2 | Nut-Nyloc 3/8-16 |
| 19 | 126-3716 | 1 | Arm-Inner, RH | 40 | 116-1746 | 2 | Wheel Hub ASM |
| 20 | 116-9080 | 1 | Shaft-Cross | 40:2 | 116-1696 | 4 | Stud-Wheel |
| 21 | 115-7109 | 2 | Washer-Flat | 41 | 116-1399 | 2 | Locknut |
| 22 | 98-9940 | 4 | Screw | 42 | 126-4162 | 1 | Decal-Cover |
| 23 | 116-9609 | 2 | Bracket-L | 43 | 92-5727 | 2 | Screw-Lock, Patch |

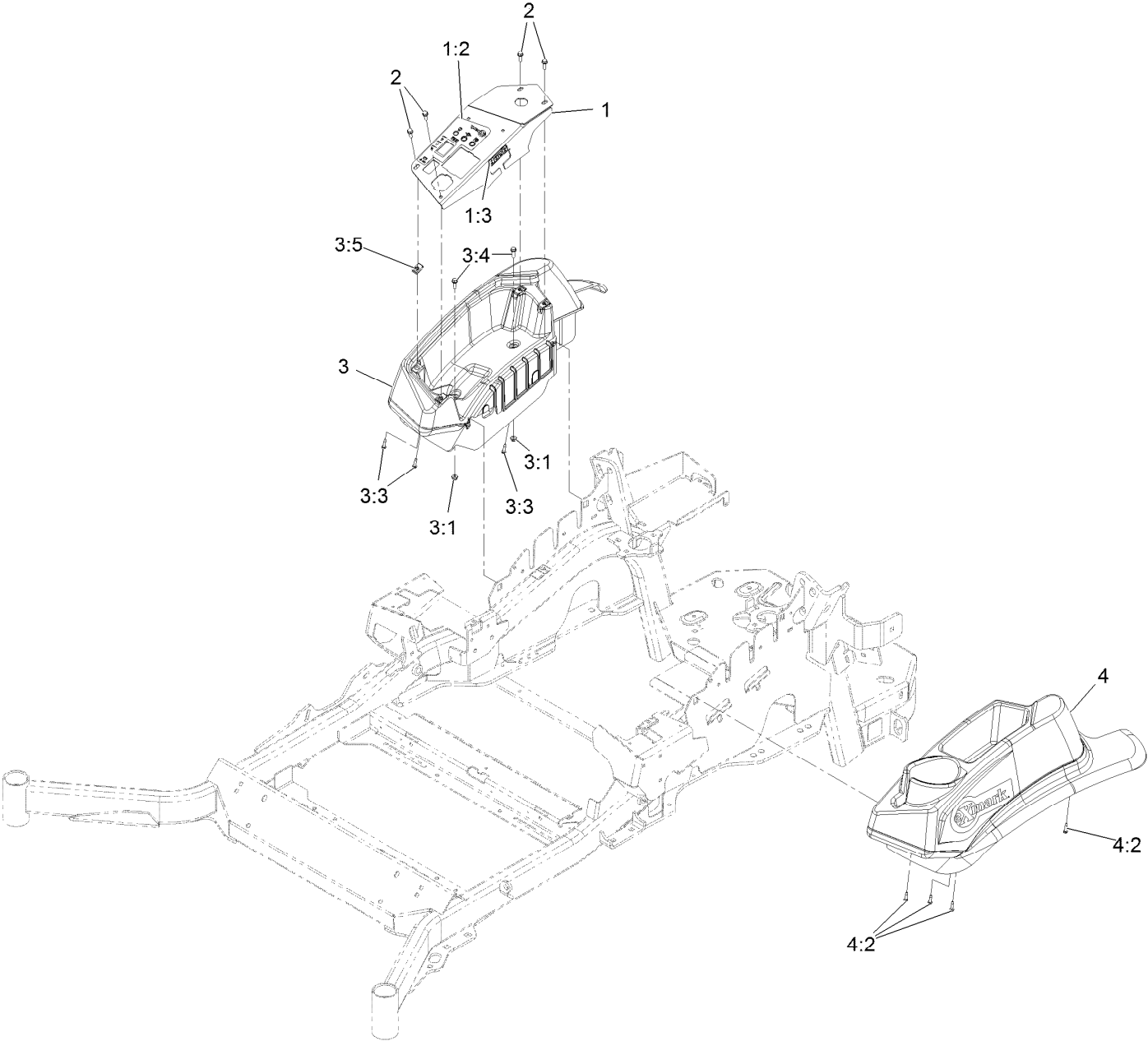
Rear Wheel Assembly



Rear Wheel Assembly (continued)

| <i>Ref.</i> | <i>Part Number</i> | <i>Qty.</i> | <i>Description</i> | <i>Ref.</i> | <i>Part Number</i> | <i>Qty.</i> | <i>Description</i> |
|-------------|--------------------|-------------|--------------------|-------------|--------------------|-------------|-------------------------------|
| 1 | 109-8972 | 2 | Wheel And Tire ASM | 2 | 242-50 | 8 | Nut-Lug 1/2-20 |
| 1:1 | 1-633993 | 1 | Tire | 3 | 126-2055 | 2 | Decal-Torque Wheel Lug-Hub |
| 1:2 | 109-3156 | 1 | Rim | | | | |
| 1:3 | 232-27 | 1 | Stem-Valve | | | | |

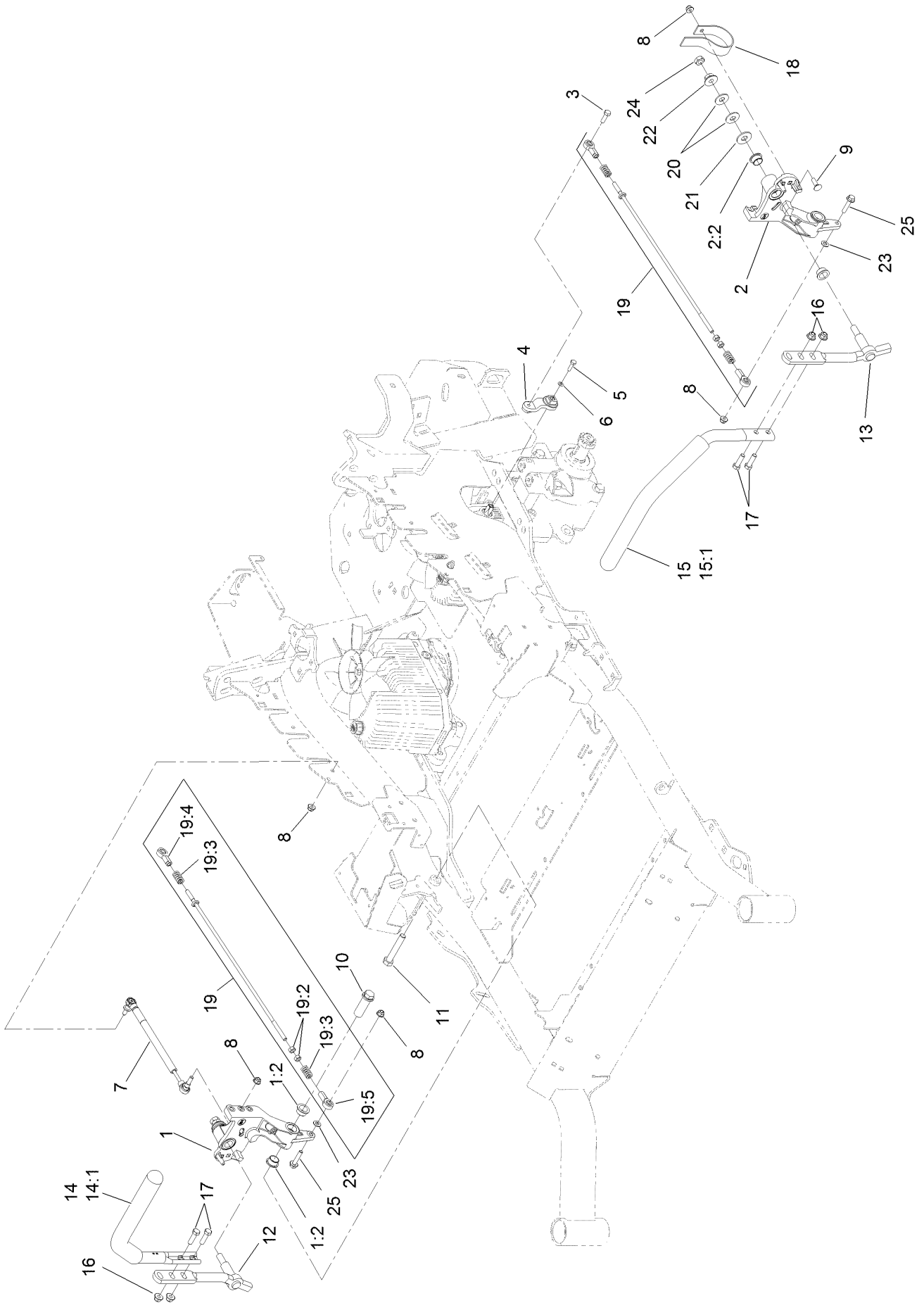
Control Assembly



Control Assembly (continued)

| <i>Ref.</i> | <i>Part Number</i> | <i>Qty.</i> | <i>Description</i> | <i>Ref.</i> | <i>Part Number</i> | <i>Qty.</i> | <i>Description</i> |
|-------------|--------------------|-------------|----------------------------|-------------|--------------------|-------------|----------------------------|
| 1 | 116-9416 | 1 | Control Panel W/Decal | 3:3 | 109-9345 | 3 | Screw-HWH #10-14 X 3/4 Tf |
| 1:2 | 126-4108 | 1 | Decal-Console Red | 3:4 | 32105-15 | 2 | Screw-Machine 1/4-20 X 3/4 |
| 1:3 | 114-4466 | 1 | Decal-Fuses | 3:5 | 107069 | 4 | Nut-Retainer-Panel 1/4-20 |
| 2 | 32105-15 | 4 | Screw-Machine 1/4-20 X 3/4 | 4 | 109-9342 | 1 | Console.LH Narrow ASM |
| 3 | 109-9341 | 1 | Console,RH Narrow ASM | 4:2 | 109-9345 | 4 | Screw-HWH #10-14 X 3/4 Tf |
| 3:1 | 104-7201 | 2 | Nut-Nyloc 1/4-20 Flg | | | | |

Motion Control Assembly

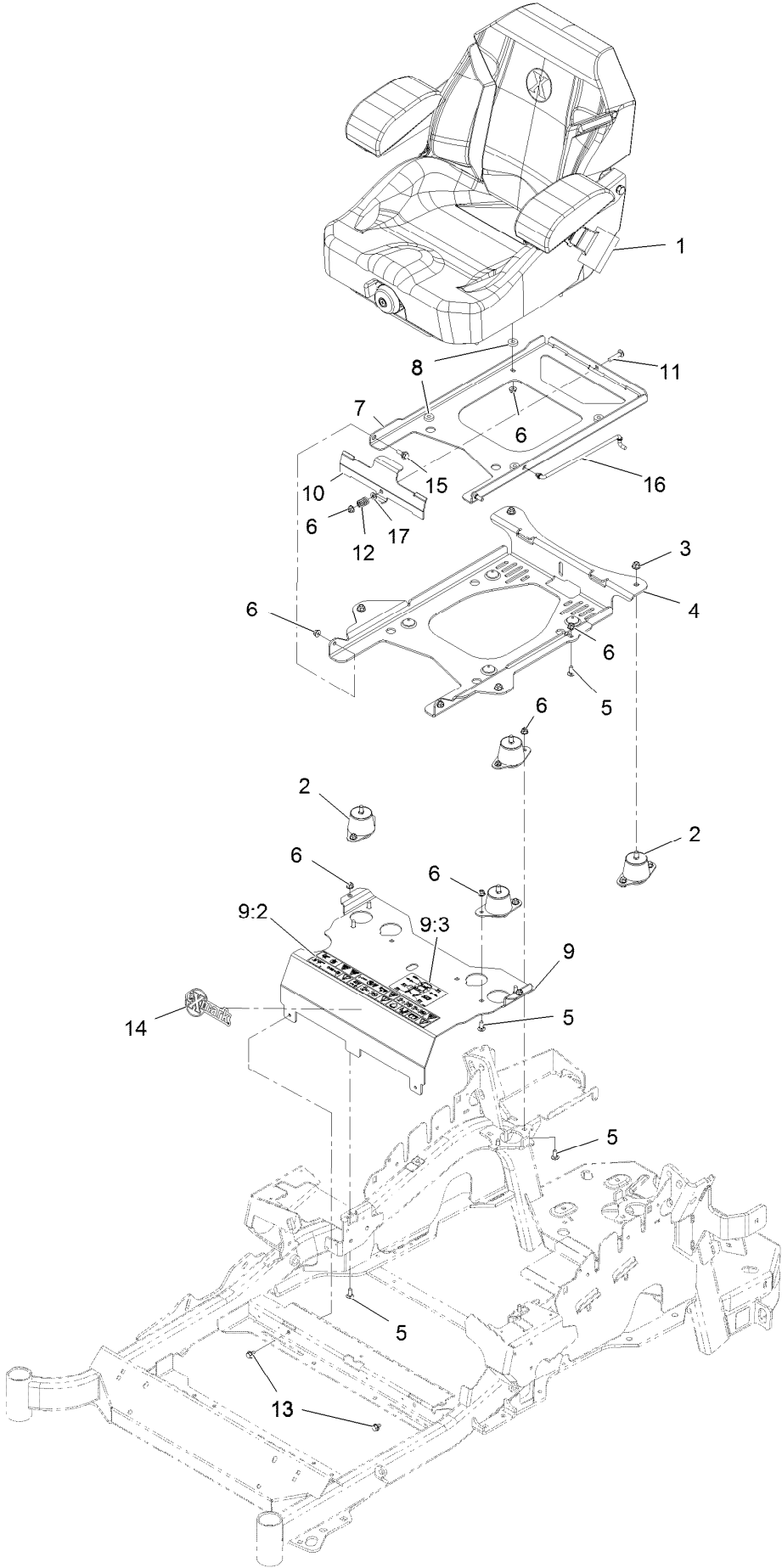


Motion Control Assembly (continued)

| <i>Ref.</i> | <i>Part Number</i> | <i>Qty.</i> | <i>Description</i> | <i>Ref.</i> | <i>Part Number</i> | <i>Qty.</i> | <i>Description</i> |
|-------------|--------------------|-------------|-----------------------------------|-------------|--------------------|-------------|------------------------|
| 1 | 116-0880 | 1 | RH Motion Control And Bushing ASM | 14 | 109-6589 | 1 | RH Steering Handle ASM |
| 1:2 | 109-8054 | 4 | Bushing-Flange | 14:1 | 109-5668 | 1 | Grip-Control, Lever |
| 2 | 116-0881 | 1 | LH Motion Control And Bushing ASM | 15 | 109-6590 | 1 | LH Steering Handle ASM |
| 2:2 | 109-8054 | 4 | Bushing-Flange | 15:1 | 109-5668 | 1 | Grip-Control, Lever |
| 3 | 116-0648 | 2 | Screw-HH, Thread Locking ● | 16 | 104-8301 | 4 | Nut-Flange, NI |
| 4 | 109-4581 | 2 | Arm-Control, Pump | 17 | 323-7 | 4 | Screw-HH |
| 5 | 9080046 | 2 | Screw-HH ● | 18 | 109-5575 | 2 | Spring-Leaf |
| 6 | 1-303435 | 2 | Washer-Spring | 19 | 109-8106 | 2 | Front Pump Linkage ASM |
| 7 | 116-0027 | 2 | Damper-Control, Motion | 19:2 | 3219-2 | 2 | Nut-Hex |
| 8 | 104-8300 | 8 | Nut-Flange, NI | 19:3 | 1-323245 | 2 | Spring-Compression |
| 9 | 3230-2 | 2 | Bolt-CARR | 19:4 | 1-633152 | 1 | Balljoint-LH |
| 10 | 109-5891 | 2 | Hub-Threaded | 19:5 | 1-543017 | 1 | Balljoint-RH |
| 11 | 325-12 | 2 | Screw-HH | 20 | 109-9505 | 4 | Washer-Spring |
| 12 | 116-0039 | 1 | Lever-Control Motion, RH | 21 | 3256-6 | 2 | Washer-Flat |
| 13 | 116-0040 | 1 | Lever-Control Motion, LH | 22 | 32128-56 | 2 | Nut-HF |
| | | | | 23 | 3256-23 | 2 | Washer-Flat |
| | | | | 24 | 3218-5 | 2 | Nut-Jam |
| | | | | 25 | 115-1794 | 2 | Screw-HHF |

● Use Pro-Lock, Nut Type (P/N 1-840022, .5ml tube) on threads.

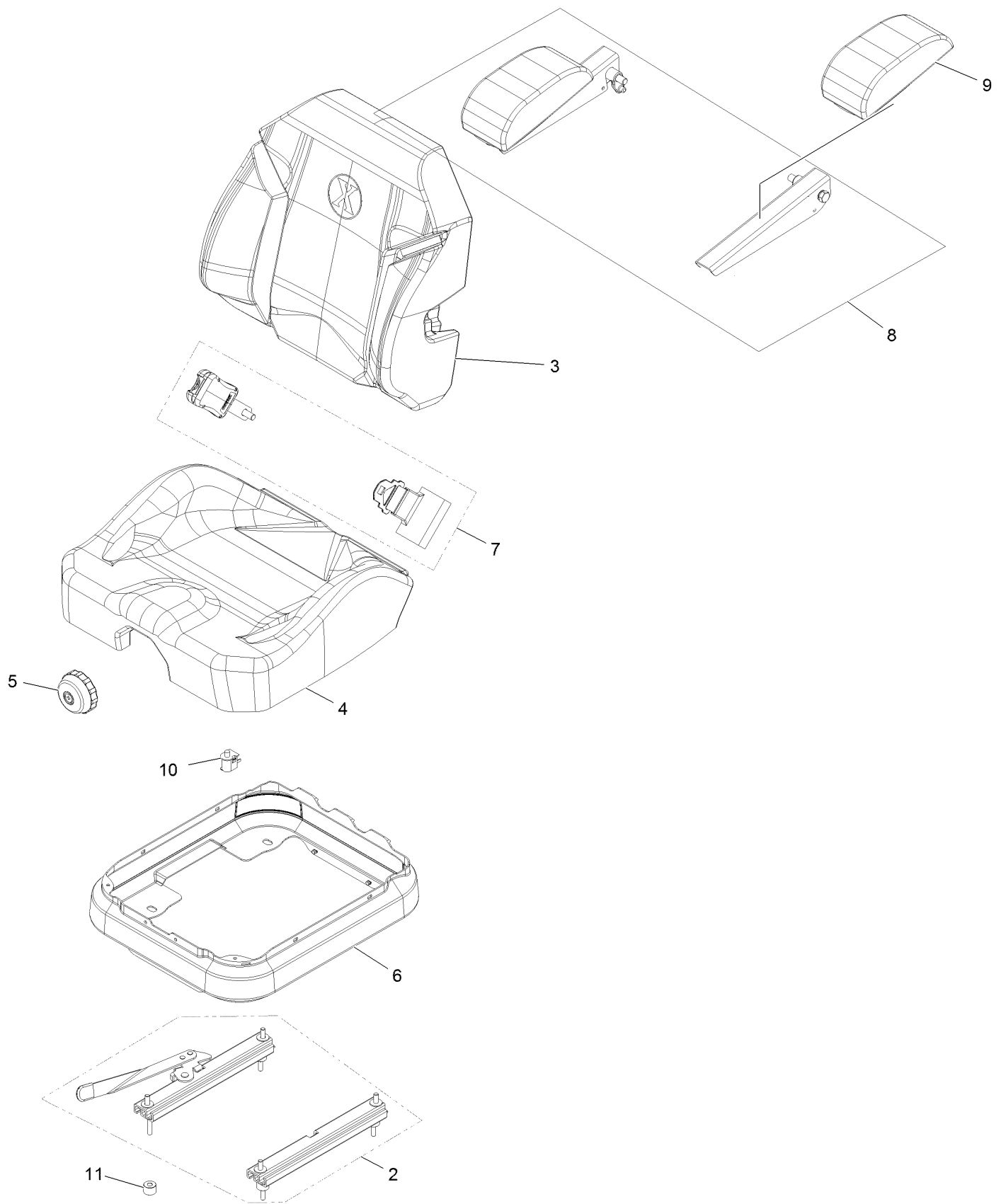
Seat Assembly



Seat Assembly (continued)

| <i>Ref.</i> | <i>Part Number</i> | <i>Qty.</i> | <i>Description</i> | <i>Ref.</i> | <i>Part Number</i> | <i>Qty.</i> | <i>Description</i> |
|-------------|--------------------|-------------|---|-------------|--------------------|-------------|----------------------------------|
| 1 | 116-8912 | 1 | Kit-Suspension Seat | 9:3 | 114-4465 | 1 | Decal-Service Aid |
| 2 | 109-9034 | 4 | Isolator-Seat | 10 | 109-9881-03 | 1 | Plate-Latch, Seat |
| 3 | 104-8301 | 4 | Nut-Nyloc 3/8-16 Flg | 11 | 3230-4 | 1 | Bolt-Carriage 5/16-18 X 1 1/2 |
| 4 | 116-3860-03 | 1 | Plate-Tilt, Seat Support | 12 | 107-3017 | 1 | Spring-Compression |
| 5 | 3230-23 | 11 | Bolt-Carriage 5/16-18 X 3/4 Short Neck | 13 | 9266934 | 2 | Screw-HWH 5/16 X 1/2 Tf |
| 6 | 104-8300 | 18 | Nut-Nyloc 5/16-18 Flg | 14 | 103-2883 | 1 | Decal, Exmark Logo |
| 7 | 116-3859-03 | 1 | Plate-Frame, Seat | 15 | 116-1297 | 2 | Screw-Shoulder |
| 8 | 26-4840 | 4 | Spacer-Pin, Mounting | 16 | 116-0070 | 1 | Rod-Prop |
| 9 | 116-2323 | 1 | Mount-Seat | 17 | 3256-23 | 1 | Washer-5/16 Sae |
| 9:2 | 116-8722 | 1 | Decal-Console | | | | |

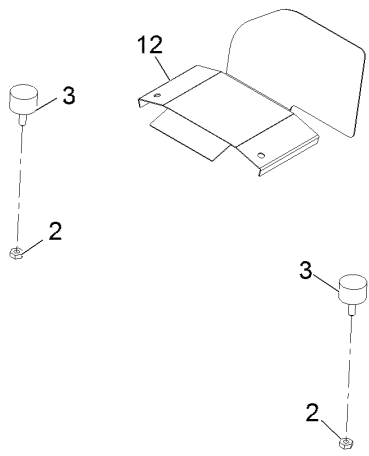
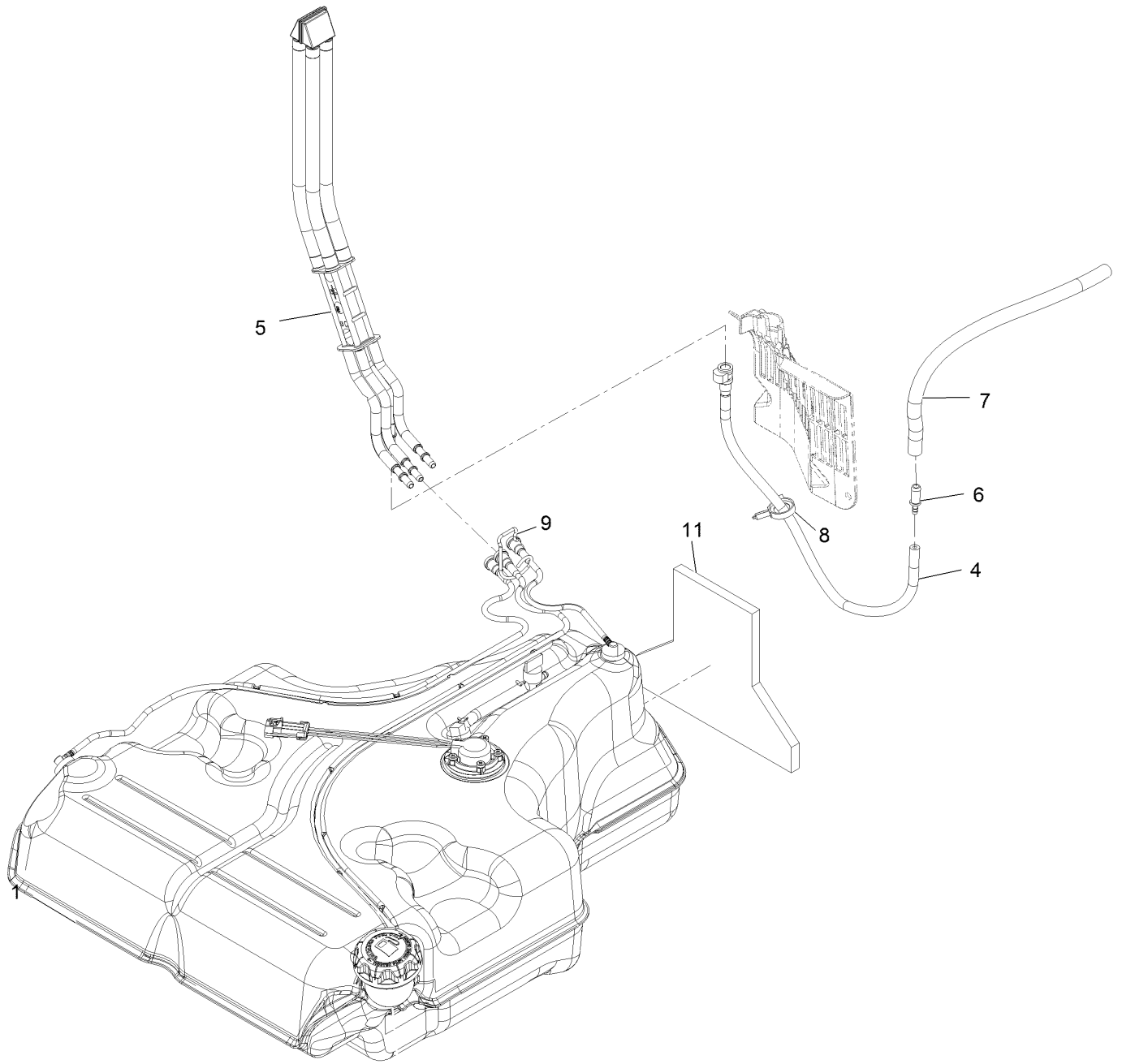
Seat W/Tracks Assembly No. 116-8912



Seat W/Tracks Assembly No. 116-8912 (continued)

| <i>Ref.</i> | <i>Part Number</i> | <i>Qty.</i> | <i>Description</i> | <i>Ref.</i> | <i>Part Number</i> | <i>Qty.</i> | <i>Description</i> |
|-------------|--------------------|-------------|------------------------------|-------------|--------------------|-------------|-----------------------|
| 2 | 116-8910 | 1 | Seat Track Set | 7 | 126-2061 | 1 | Seat Belt Service Kit |
| 3 | 116-8908 | 1 | Cover-Back 311463Vn500 | 8 | 116-8906 | 1 | Kit-Arm Rest Set |
| 4 | 116-8909 | 1 | Cover-Cushion 311464Vn500 | 9 | 116-8905 | 1 | Kit-Arm Rest Pads |
| 5 | 116-8911 | 1 | Knob-Adjuster | 10 | 82-2190 | 1 | Switch-Bail |
| 6 | 116-5659 | 1 | Cover-Suspension Bellows | 11 | 116-9329 | 4 | Spacer |

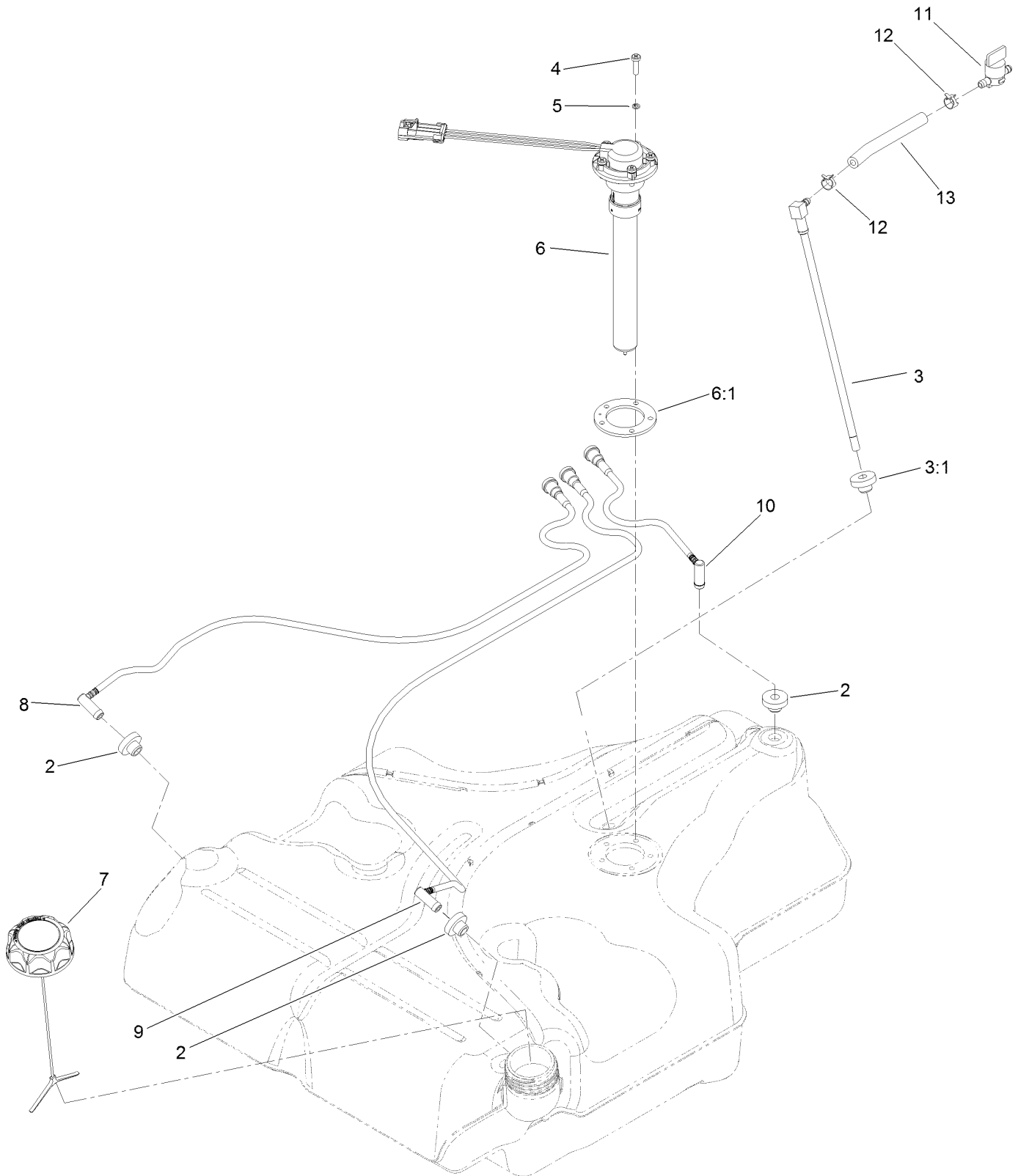
Fuel Assembly



Fuel Assembly (continued)

| <i>Ref.</i> | <i>Part Number</i> | <i>Qty.</i> | <i>Description</i> | <i>Ref.</i> | <i>Part Number</i> | <i>Qty.</i> | <i>Description</i> |
|-------------|--------------------|-------------|-------------------------|-------------|--------------------|-------------|---------------------------|
| 1 | 116-3979 | 1 | Fuel Tank ASM | 7 | 116-5087 | 1 | Hose-Fuel |
| 2 | 3218-1 | 2 | Nut-Jam | 8 | 105-1853 | 1 | Clamp-Hose |
| 3 | 116-6380 | 2 | Bumper-Rubber (W/ Stud) | 9 | 116-6005 | 1 | Retainer-Line, Vapor |
| 4 | 116-3977 | 1 | Hose ASM | 11 | 126-0224 | 1 | Insulation-Fuel Tank Foam |
| 5 | 109-9491 | 1 | Fuel Manifold Vent ASM | 12 | 126-0032-01 | 1 | Guard-Exhaust |
| 6 | 98-2952 | 1 | Fitting-Straight | | | | |

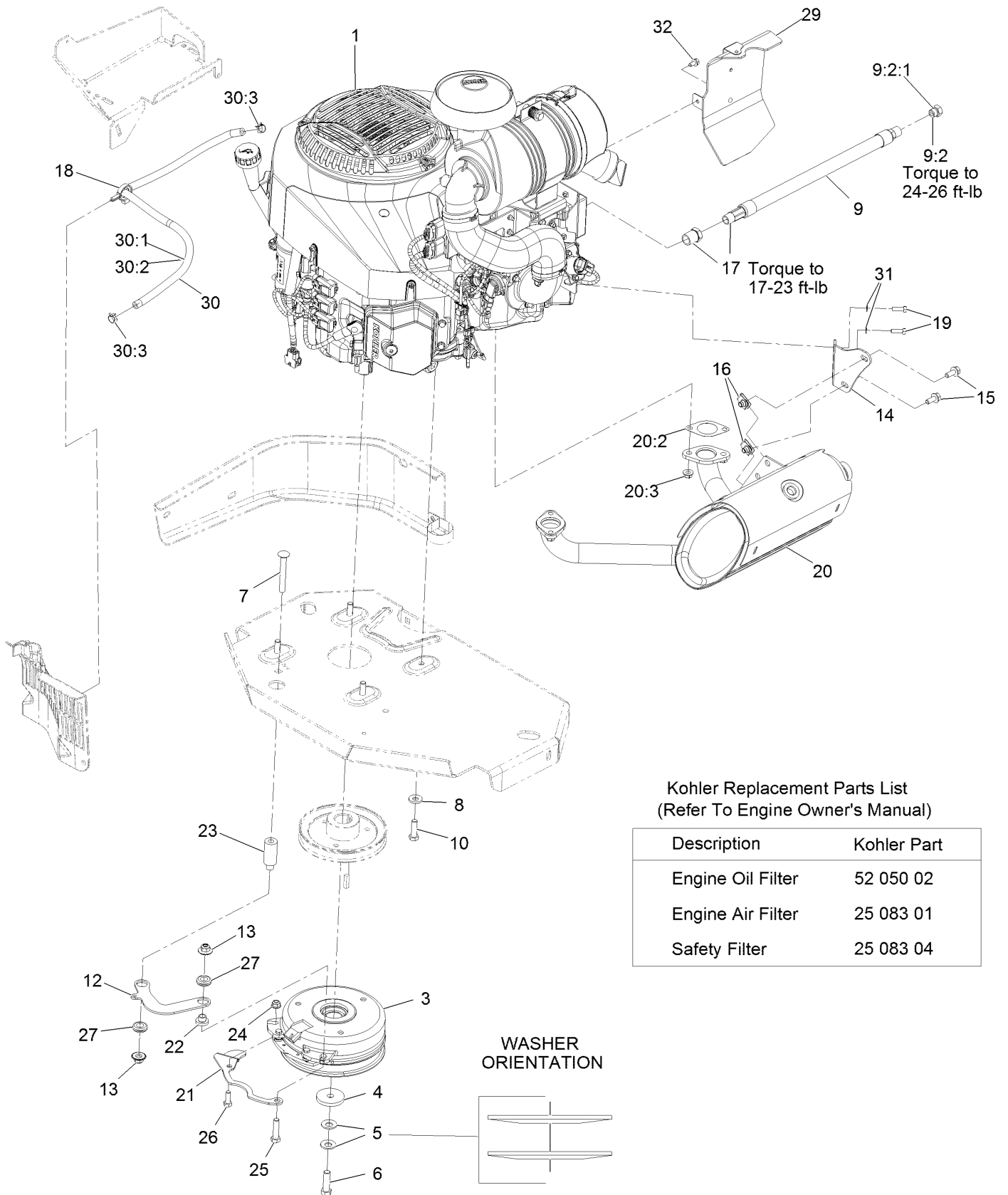
Fuel Tank Assembly No. 116-3979



Fuel Tank Assembly No. 116-3979 (continued)

| <i>Ref.</i> | <i>Part Number</i> | <i>Qty.</i> | <i>Description</i> | <i>Ref.</i> | <i>Part Number</i> | <i>Qty.</i> | <i>Description</i> |
|-------------|--------------------|-------------|------------------------------|-------------|--------------------|-------------|-----------------------------------|
| 2 | 46-6560 | 4 | Bushing | 8 | 116-2460 | 1 | RH Vent Line Kit (With Grommet) |
| 3 | 116-2459 | 1 | Fuel Line Kit (With Grommet) | 9 | 116-2461 | 1 | LH Vent Line Kit (With Grommet) |
| 3:1 | 46-6560 | 1 | Bushing | 10 | 116-2462 | 1 | Rear Vent Line Kit (With Grommet) |
| 4 | 9107944 | 5 | Screw-Pan | 11 | 1-603770 | 1 | Valve-Fuel |
| 5 | 3253-17 | 5 | Washer-Lock | 12 | 2412-98 | 2 | Clamp-Hose |
| 6 | 116-0003 | 1 | Sender-Level, Fuel | 13 | 109-0650 | 1 | Hose-Fuel |
| 6:1 | 109-9620 | 1 | Gasket-Sender, Fuel | | | | |
| 7 | 126-1789 | 1 | Cap-Fuel, Ratcheting | | | | |

Engine Assembly



Kohler Replacement Parts List
(Refer To Engine Owner's Manual)

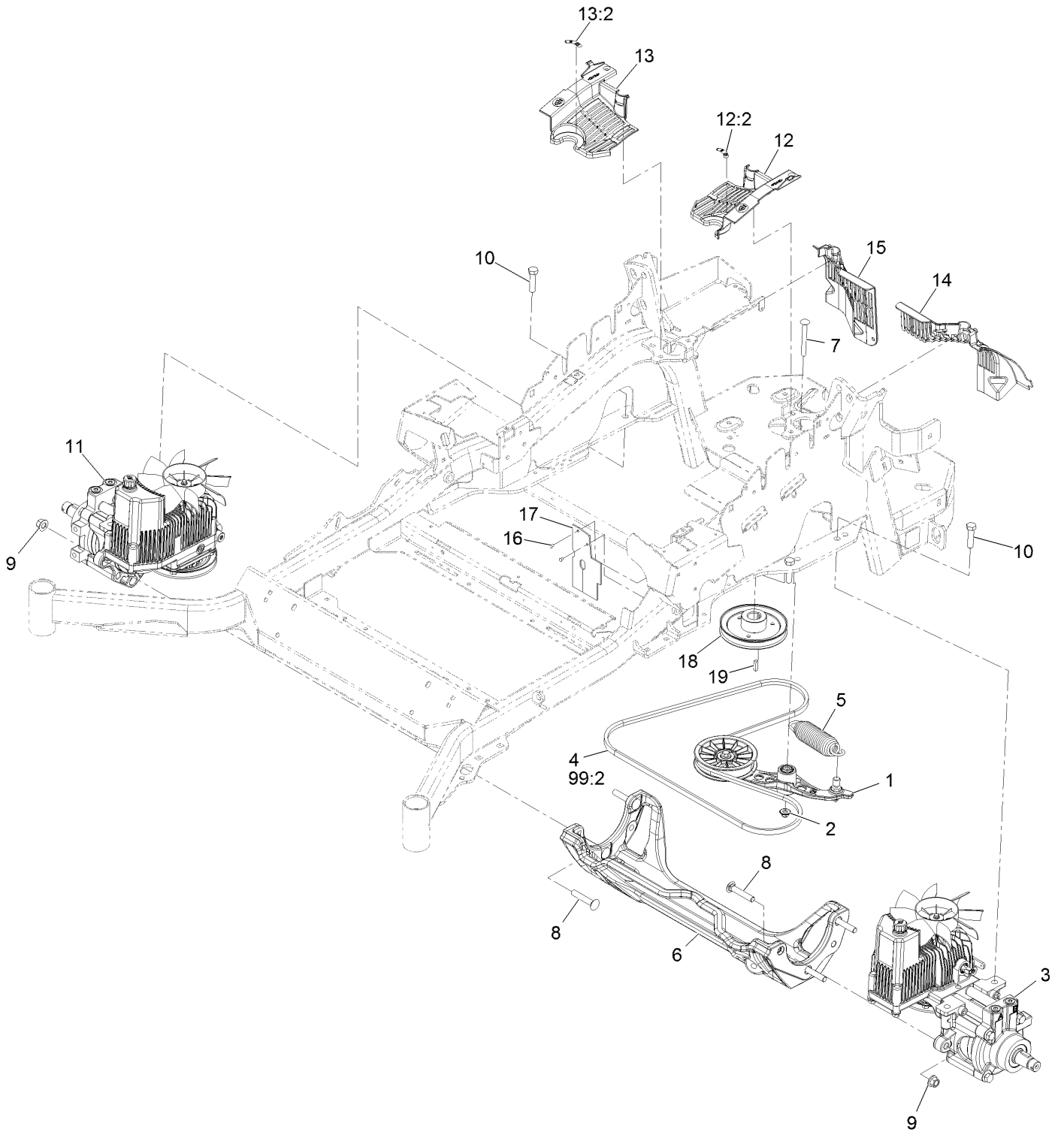
| Description | Kohler Part |
|-------------------|-------------|
| Engine Oil Filter | 52 050 02 |
| Engine Air Filter | 25 083 01 |
| Safety Filter | 25 083 04 |

Engine Assembly (continued)

| <i>Ref.</i> | <i>Part Number</i> | <i>Qty.</i> | <i>Description</i> | <i>Ref.</i> | <i>Part Number</i> | <i>Qty.</i> | <i>Description</i> |
|-------------|--------------------|-------------|---------------------------------------|-------------|--------------------|-------------|---------------------------------|
| 1 | | 1 | Engine-Koh Ecv980 Efi-Egov ● | 19 | 116-4295 | 4 | Screw-HH M6-1 X 20Mm W/Patch |
| 3 | 116-1608 | 1 | Clutch, Cms250 | 20 | 126-4645 | 1 | Muffler-940/980 Koh Efi |
| 3 | 116-1621 | 1 | Clutch Kit | 20 | 126-5423 | 1 | Kit, Muffler 940/980Kc Efi |
| 4 | 109-6919 | 1 | Washer-Clutch | 20:2 | 126-0359 | 2 | Gasket-Exhaust |
| 5 | 1-603610 | 2 | Washer-Spring Disc 7/16 | 20:3 | 116-9626 | 4 | Nut-Flange, Lock |
| 6 | 109-9761 | 1 | Screw-HH 7/16-20 X 1 1/2 W/Loctite | 21 | 116-3331-01 | 1 | Belt-Guide |
| 7 | 3231-42 | 1 | Bolt-Carriage 3/8-16 X 3 | 22 | 116-3318 | 1 | Spacer |
| 8 | 98-5975 | 4 | Washer-Spring Disc 3/8 | 23 | 116-3319 | 1 | Spacer |
| 9 | 116-5316 | 1 | Oil Drain Hose ASM | 24 | 104-8300 | 1 | Nut-Nyloc 5/16-18 Flg |
| 9:2 | 353-508 | 1 | Plug-W/O-Ring | 25 | 323-8 | 1 | Screw-HH 3/8-16 X 1 1/2 |
| 9:2:1 | 237-42 | 1 | O-Ring | 26 | 322-4 | 1 | Screw-HH 5/16-18 X 7/8 |
| 10 | 323-7 | 4 | Screw-HH 3/8-16 X 1 1/4 | 27 | 93-5108 | 2 | Grommet-Rubber |
| 12 | 116-3317-01 | 1 | Link-Anchor, Clutch | 29 | 126-5708 | 1 | Rear Baffle ASM |
| 13 | 109-6658 | 2 | Nut-Nyloc 3/8-16 Flg | 30 | 126-1414 | 1 | Fuel Line ASM |
| 14 | 116-9048 | 1 | Bracket-Muffler | 30:1 | 109-0286 | 1 | Hose-Fuel Line 35" |
| 15 | 3234-5 | 3 | Screw-HH Flg 5/16-18 X 3/4 | 30:2 | 126-1417 | 1 | Sleeve-Thermal |
| 16 | 94-2413 | 3 | U-Nut | 30:3 | 2412-98 | 2 | Clamp-Hose |
| 17 | 103-1390 | 1 | Bushing | 31 | 1-303435 | 4 | Washer-Spring Disc 1/4 |
| 18 | 105-1853 | 1 | Clamp-Hose | 32 | 104-2628 | 1 | Screw-HWH M6-1 X 12Mm Tf |

● Not serviced separately

Hydraulic Assembly

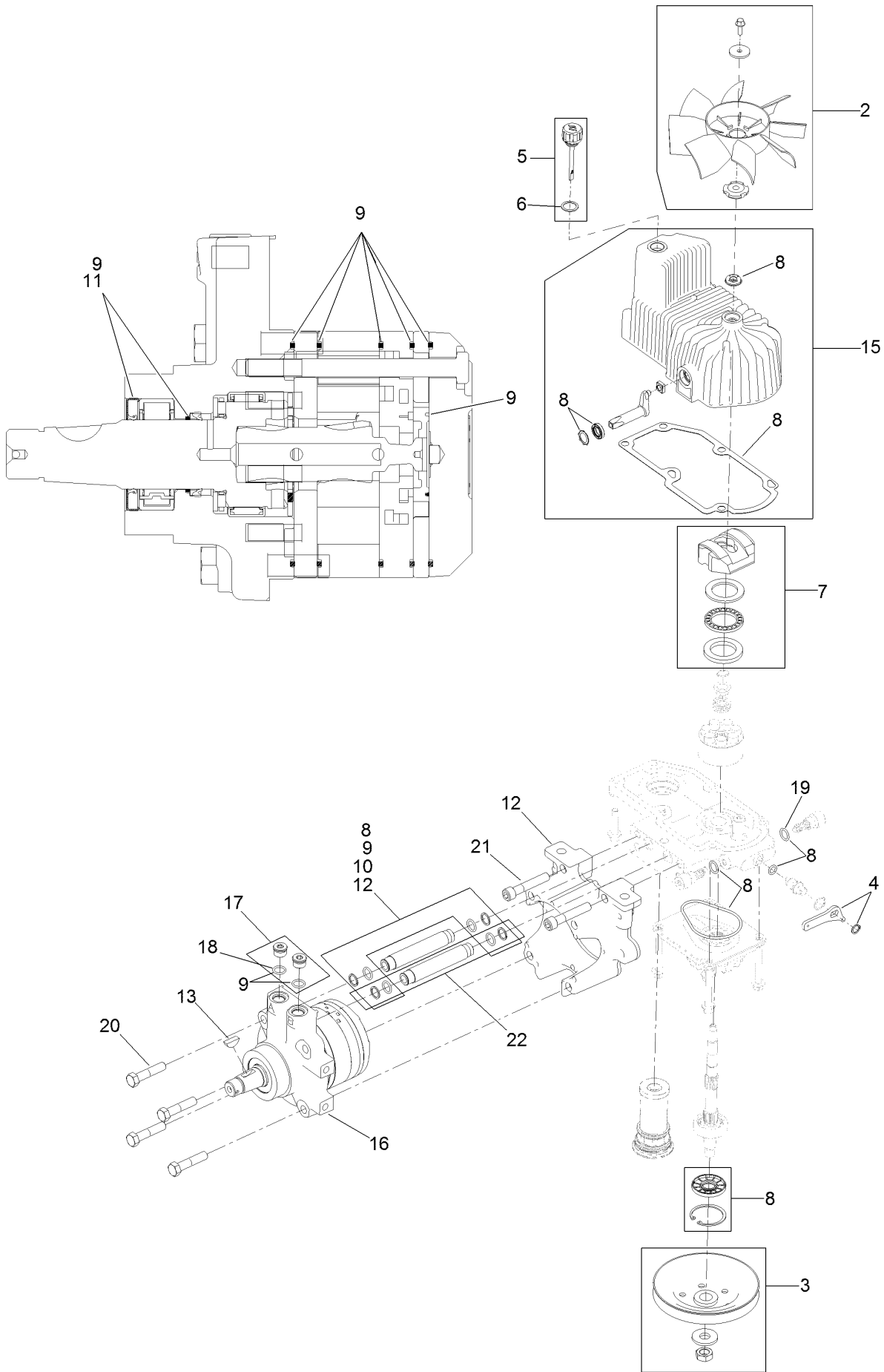


Hydraulic Assembly (continued)

| <i>Ref.</i> | <i>Part Number</i> | <i>Qty.</i> | <i>Description</i> | <i>Ref.</i> | <i>Part Number</i> | <i>Qty.</i> | <i>Description</i> |
|-------------|--------------------|-------------|--|-------------|--------------------|-------------|------------------------------------|
| 1 | 116-1255 | 1 | Pump Idler ASM | 13 | 116-0171 | 1 | RH Hydro Guard ASM |
| 2 | 109-6658 | 1 | Nut-Nyloc 3/8-16 Flg | 13:2 | 116-8726 | 1 | Decal-Oil, Hydro |
| 3 | 126-1319 | 1 | LH Hydro ASM (16Cc W/ Shock) | 14 | 109-9709 | 1 | Guard-Hydro Rear, LH Trim |
| 4 | 109-3388 | 1 | Belt | 15 | 109-9058 | 1 | Guard-Hydro, Rear (RH) |
| 5 | 116-6317 | 1 | Spring-Extension | 16 | 1-803035 | 2 | Rivet 3/16 X 1/4 |
| 6 | 116-7558 | 1 | Cradle-Hydro | 17 | 116-2362 | 1 | Deflector-Air Flow |
| 7 | 116-1502 | 1 | Bolt-Carriage Shoulder 3/8-16 X 3 1/2 | 18 | 109-9905 | 1 | Sheave |
| 8 | 126-0095 | 6 | Screw-CARR | 19 | 1-807259 | 1 | Key-Machine 1/4 X 1/4 X 1 |
| 9 | 99-5107 | 6 | Nut-Lock 1/2-13 | 99 | 109-9828 | 1 | Bottle-Oil, 32Oz Hydraulic ● |
| 10 | 325-8 | 4 | Screw-HH 1/2-13 X 1 1/4 | 99 | 116-0164 | 1 | Filter-Hydro ● |
| 11 | 126-1320 | 1 | RH Hydro ASM (16Cc W/ Shock) | 99 | 116-1218 | 1 | Bottle,Oil 1 Gallon Hydraulic ● |
| 12 | 116-0170 | 1 | LH Hydro Guard ASM | 99 | 116-3270 | 1 | Kit, Hydro Service ● |
| 12:2 | 116-8726 | 1 | Decal-Oil, Hydro | 99:1 | 109-9828 | 4 | Bottle-Oil, 32Oz Hydraulic ● |
| | | | | 99:2 | 109-3388 | 1 | Belt |
| | | | | 99:3 | 116-0164 | 2 | Filter-Hydro ● |

● Not illustrated

LH Hydro Assembly No. 126-1319



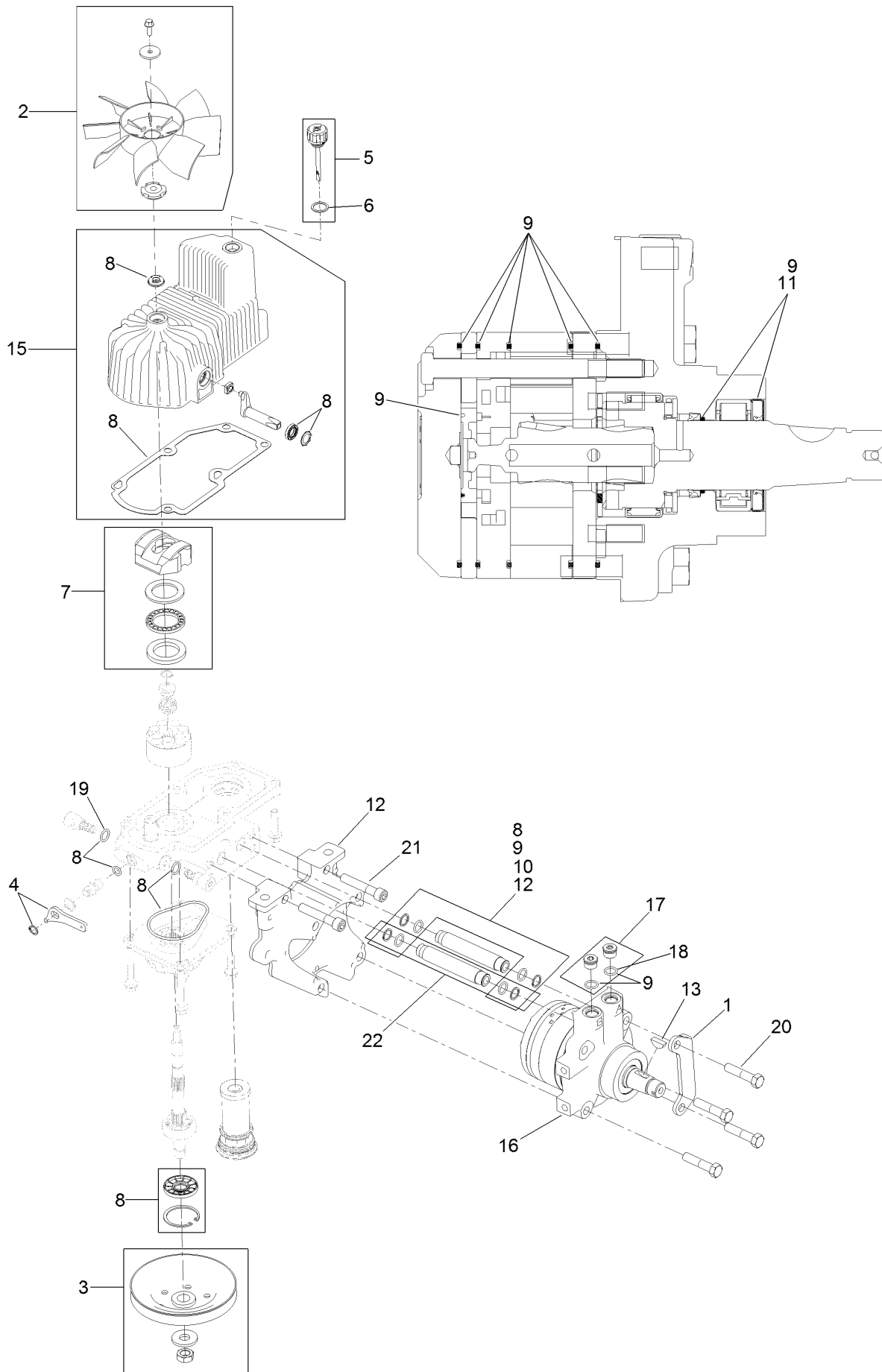
LH Hydro Assembly No. 126-1319 (continued)

| <i>Ref.</i> | <i>Part Number</i> | <i>Qty.</i> | <i>Description</i> | <i>Ref.</i> | <i>Part Number</i> | <i>Qty.</i> | <i>Description</i> |
|-------------|--------------------|-------------|--|-------------|--------------------|-------------|----------------------------|
| 1 | | 1 | Text Item-Hydro,LH 16Cc W/Shock 126-1319 ●■ | 11 | 116-1371 | 1 | Output Shaft Seal Kit |
| 2 | 116-0233 | 1 | Fan Kit | 12 | 116-5469 | 1 | Nose Cup-Uht |
| 3 | 116-0234 | 1 | Pulley Kit | 13 | 3257-42 | 1 | Key-Woodruff |
| 4 | 116-0235 | 1 | Handle-Bypass Valve, Hydro | 15 | 116-3287 | 1 | Housing-LH |
| 5 | 116-0236 | 1 | Dipstick-Hydro W/Gasket | 16 | 116-8917 | 1 | Motor-Hydraulic, LH 280Cc |
| 6 | 116-0237 | 1 | Gasket-Dipstick, Hydro | 17 | 116-7901 | 1 | Magnetic Plugs Service Kit |
| 7 | 116-1367 | 1 | Swash Block Kit | 18 | 76-1900 | 2 | O-Ring |
| 8 | 116-1368 | 1 | Pump Seal Kit | 19 | 116-8662 | 2 | O-Ring-Check Valve |
| 9 | 116-1369 | 1 | Motor Seal Kit | 20 | 116-8974 | 4 | Screw HH |
| 10 | 116-1370 | 1 | Tube Seal Kit | 21 | 116-8975 | 2 | Screw-HSH |
| | | | | 22 | 116-9922 | 2 | Hydraulic Tube Kit |
| | | | | 99 | 116-1373 | 1 | Flow Test Kit ● |

● Not illustrated

■ Not serviced separately

RH Hydro Assembly No. 126-1320



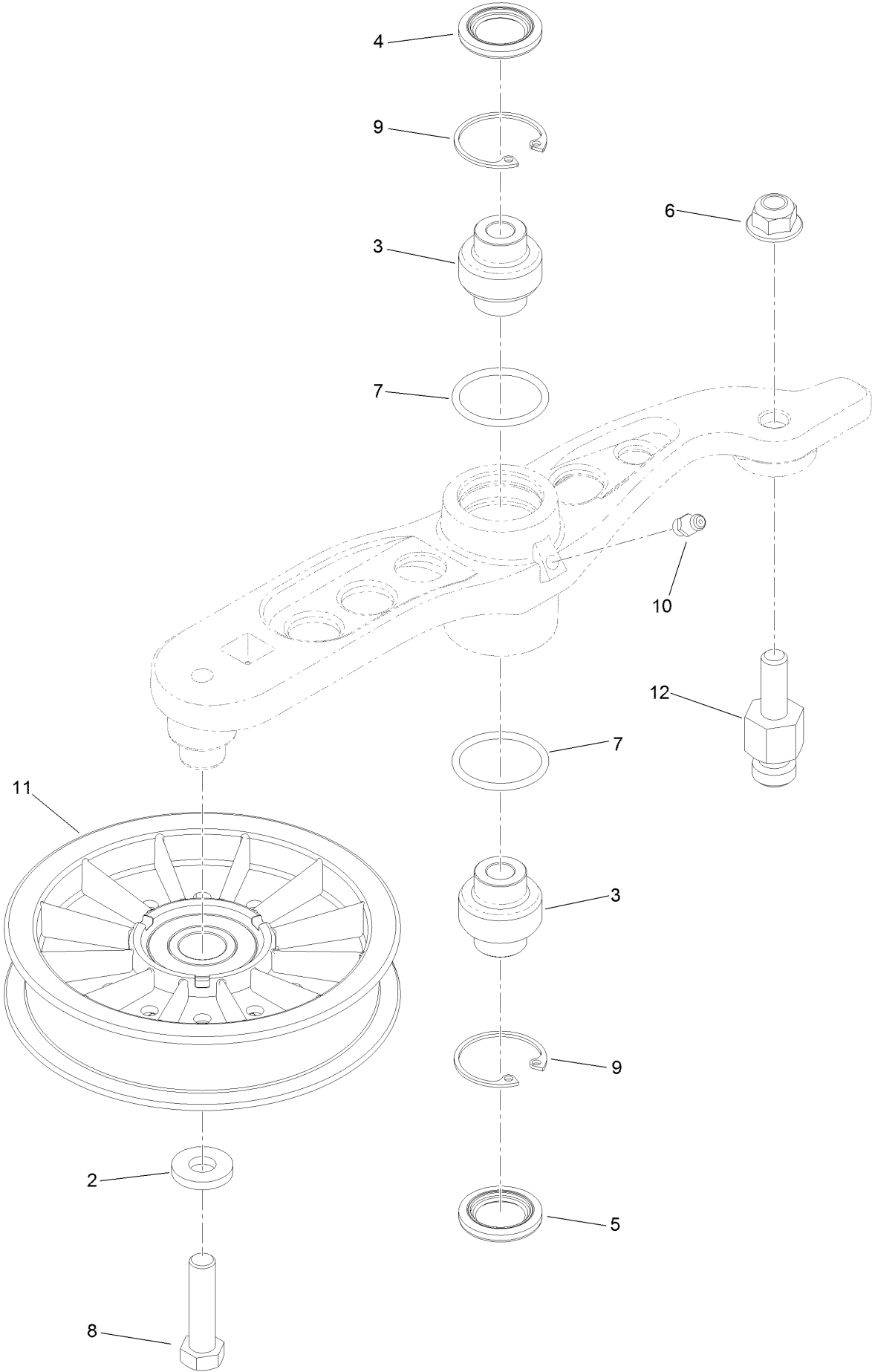
RH Hydro Assembly No. 126-1320 (continued)

| <i>Ref.</i> | <i>Part Number</i> | <i>Qty.</i> | <i>Description</i> | <i>Ref.</i> | <i>Part Number</i> | <i>Qty.</i> | <i>Description</i> |
|-------------|--------------------|-------------|-------------------------------|-------------|--------------------|-------------|--|
| 1 | 116-9063 | 1 | Mount-Shoe, Horse | 13 | 3257-42 | 1 | Key-Woodruff |
| 2 | 116-0233 | 1 | Fan Kit | 15 | 116-3288 | 1 | Housing-RH |
| 3 | 116-0234 | 1 | Pulley Kit | 16 | 116-8918 | 1 | Motor-Hydraulic, RH 280Cc |
| 4 | 116-0235 | 1 | Handle-Bypass Valve, Hydro | 17 | 116-7901 | 1 | Magnetic Plugs Service Kit |
| 5 | 116-0236 | 1 | Dipstick-Hydro W/Gasket | 18 | 76-1900 | 2 | O-Ring |
| 6 | 116-0237 | 1 | Gasket-Dipstick, Hydro | 19 | 116-8662 | 2 | O-Ring-Check Valve |
| 7 | 116-1367 | 1 | Swash Block Kit | 20 | 116-8974 | 4 | Screw HH |
| 8 | 116-1368 | 1 | Pump Seal Kit | 21 | 116-8975 | 2 | Screw-HSH |
| 9 | 116-1369 | 1 | Motor Seal Kit | 22 | 116-9922 | 2 | Hydraulic Tube Kit |
| 10 | 116-1370 | 1 | Tube Seal Kit | 98 | | 1 | Text Item-Hydro,RH 16Cc W/Shock 126-1320 ●■ |
| 11 | 116-1371 | 1 | Output Shaft Seal Kit | 99 | 116-1373 | 1 | Flow Test Kit ● |
| 12 | 116-5469 | 1 | Nose Cup-Uht | | | | |

● Not illustrated

■ Not serviced separately

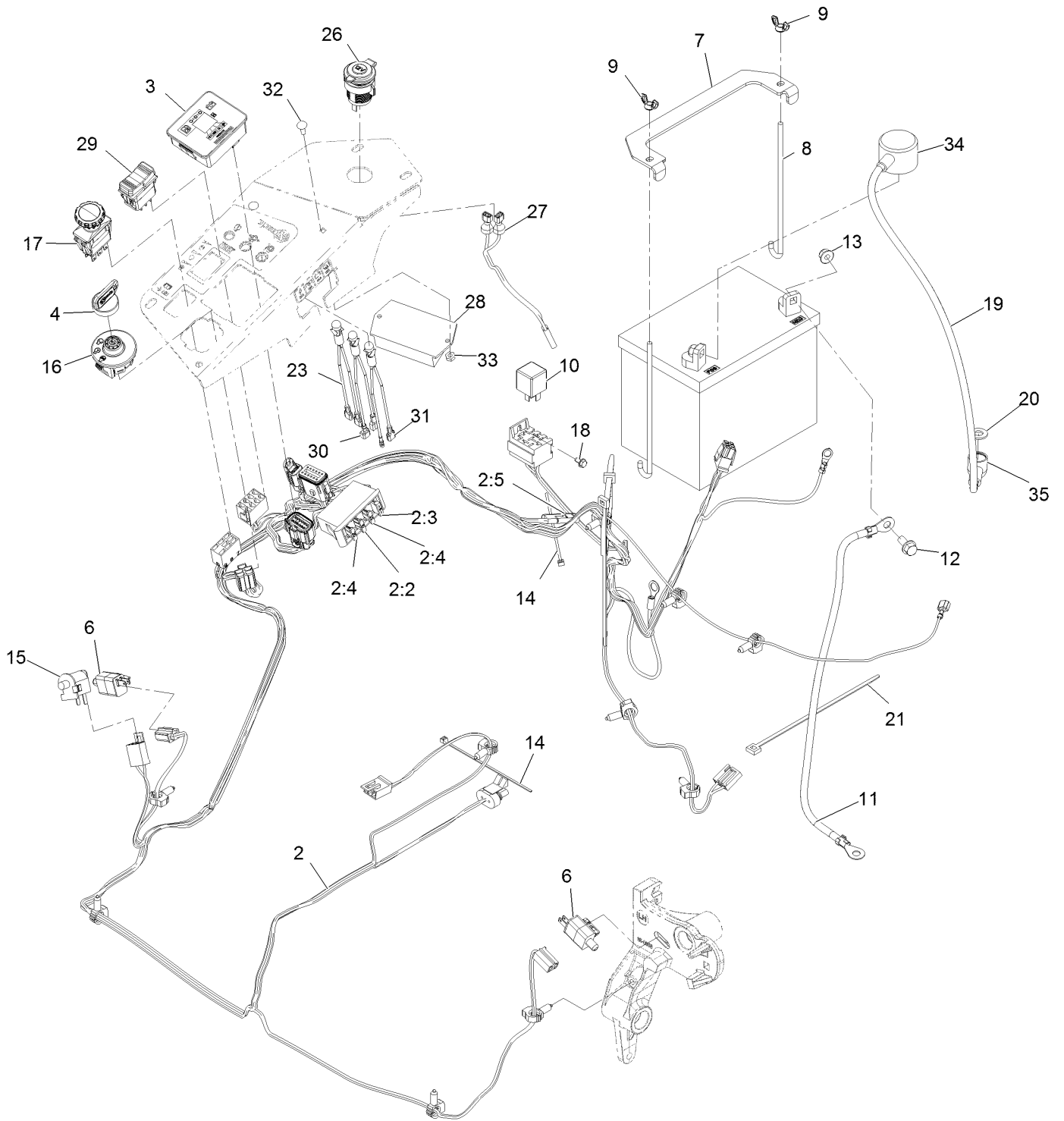
Pump Idler Assembly No. 116-1255



Pump Idler Assembly No. 116-1255 (continued)

| <i>Ref.</i> | <i>Part Number</i> | <i>Qty.</i> | <i>Description</i> | <i>Ref.</i> | <i>Part Number</i> | <i>Qty.</i> | <i>Description</i> |
|-------------|--------------------|-------------|--------------------|-------------|--------------------|-------------|--------------------|
| 2 | 43-0940 | 1 | Spacer | 8 | 323-8 | 1 | Screw-HH |
| 3 | 103-3504 | 2 | Bearing-Spherical | 9 | 32120-10 | 2 | Ring-Snap |
| 4 | 103-3505 | 1 | Seal-Double Lip | 10 | 302-19 | 1 | Fitting-Grease |
| 5 | 103-3506 | 1 | Seal-Lip, Single | 11 | 109-8076 | 1 | Pulley-Idler |
| 6 | 109-6658 | 1 | Nut-Flange, NI | 12 | 116-3467 | 1 | Pin-Spring, Anchor |
| 7 | 106-7159 | 2 | O-Ring | | | | |

Electrical Assembly



Electrical Assembly (continued)

| <i>Ref.</i> | <i>Part Number</i> | <i>Qty.</i> | <i>Description</i> | <i>Ref.</i> | <i>Part Number</i> | <i>Qty.</i> | <i>Description</i> |
|-------------|--------------------|-------------|----------------------------|-------------|--------------------|-------------|---------------------------|
| 2 | 126-1682 | 1 | Harness-Wire ● | 16 | 117-2221 | 1 | Switch-Ignition |
| 2:2 | 218-578 | 1 | Fuse-Blade, 10 Amp | 17 | 116-0124 | 1 | Switch-PTO, 10A |
| 2:3 | 109355 | 1 | Fuse-Blade, 15 Amp | 18 | 104-2065 | 1 | Screw-HWH #10-24 X 3/8 |
| 2:4 | 109102 | 2 | Fuse-Blade, 25 Amp | 19 | 115-3864 | 1 | Cable-Battery, Positive |
| 2:5 | 116-0053 | 1 | Cap-Plug | 20 | 3256-24 | 1 | Washer-3/8 Sae |
| 3 | 117-3882 | 1 | Fuel/Hour Meter ASM | 21 | 1-303335 | 1 | Tie-Cable 7 15/16 (Large) |
| 4 | 1-603511 | 1 | Key-Ignition | 23 | 1-643267 | 1 | Indicator-Red Led |
| 4 | 103-2106 | 1 | Key-Exmark Logo | 26 | 109-9376 | 1 | Receptacle-12V |
| 6 | 110-6765 | 2 | Switch | 27 | 109-9693 | 1 | Harness, Receptacle 12V |
| 7 | 116-0042-03 | 1 | Strap-Tie Down, Battery | 28 | 126-2722 | 1 | Controller-Red |
| 8 | 1-633651 | 2 | Bolt-Holddown | 29 | 116-9669 | 1 | Switch-Rocker |
| 9 | 1-543792 | 2 | Wingnut-Nyloc 1/4-20 | 30 | 116-9651 | 1 | Light-Led, Red |
| 10 | 1-643275 | 1 | Relay-12Vdc 40 Amp | 31 | 116-9652 | 1 | Light-Led, Red |
| 11 | 114-1218 | 1 | Cable-Battery, Negative | 32 | 3229-34 | 2 | Screw-CARR |
| 12 | 3234-5 | 2 | Screw-HH Flg 5/16-18 X 3/4 | 33 | 3296-2 | 2 | Nut-Nyloc #10-24 |
| 13 | 104-8300 | 2 | Nut-Nyloc 5/16-18 Flg | 34 | 109-2407 | 1 | Insulator-Battery |
| 14 | 1-303287 | 2 | Tie-Cable 5 1/2 (Small) | 35 | 1-543393 | 1 | Insulator-Solenoid |
| 15 | 82-2190 | 1 | Switch | | | | |

● Use dielectric grease on all unsealed connectors and terminals only. Do not apply in sealed connectors.

Notes:

EXMARK® MAINTENANCE

MAXIMIZE THE PERFORMANCE OF YOUR EXMARK.

4-CYCLE PREMIUM ENGINE OIL

Part No. 116-3373

Both SAE 30 and SAE 10W-30 in one bottle.

Contains increased levels of zinc and phosphorus for better lubricity.

No Viscosity Index Improvers that tend to shear down in high heat.

Synthetic formulation.

Gas & Diesel compatible.

Anti-corrosion additives.

API 'SL' and JASO rated with wet clutch compatibility for other machines.

PREMIUM HYDRO OIL

Part No. 109-9828

Commercial quality for tough, high-heat conditions.

Designed specifically for zero-turn mower hydraulic systems.

Superior shear resistance under heavy loads.



Available from your local Exmark dealer. Find your closest dealer at exmark.com

EXMARK ACCESSORIES AND OPTIONS*

MID-MOUNT RIDING ACCESSORIES AND OPTIONS

| | |
|------------------------------------|---------------------------------|
| CUSTOM RIDE SEAT SUSPENSION SYSTEM | OPERATOR CONTROLLED DISCHARGE |
| FULL SUSPENSION SEAT | SUN SHADE |
| DECK LIFT ASSIST KIT | TRASH CONTAINER |
| HITCH KIT | TURF STRIPER |
| LIGHT KIT | ULTRA VAC COLLECTION SYSTEM |
| 12V POWER PORT | ULTRA VAC QUICK DISPOSAL SYSTEM |
| MICRO-MULCH SYSTEM | |

OUT-FRONT RIDING ACCESSORIES AND OPTIONS

| | |
|------------------------------------|---------------------------------|
| CUSTOM RIDE SEAT SUSPENSION SYSTEM | SNOW BLADE |
| DUAL-TAIL WHEEL | SNOWBLOWER |
| FLOOR PAN EXTENDER | SUN SHADE |
| HITCH KIT | TRASH CONTAINER |
| LIGHT KIT | ULTRA VAC COLLECTION SYSTEM |
| MICRO-MULCH SYSTEM | ULTRA VAC QUICK DISPOSAL SYSTEM |
| ROLL OVER PROTECTION SYSTEM (ROPS) | WEATHER CAB |

WALK-BEHIND ACCESSORIES AND OPTIONS

| | |
|--------------------|--------------|
| GRASS CATCHER | TURF STRIPER |
| MICRO-MULCH SYSTEM | STANDON |

*Some accessories and options not available for some models.

Place Model No. and Serial No.
Label Here (Included in the Literature
Pack) or Fill in Below

Model No. _____

Serial No. _____

Date Purchased _____

Engine Model No. and Spec. No. _____

Engine Serial No. (E/No) _____

© 2015 Exmark Mfg. Co., Inc.
Industrial Park Box 808
Beatrice, NE 68310
All Rights Reserved

Part No. 4502-100 Rev. A
(402) 223-6300
Fax (402) 223-5489
Printed in the USA.

