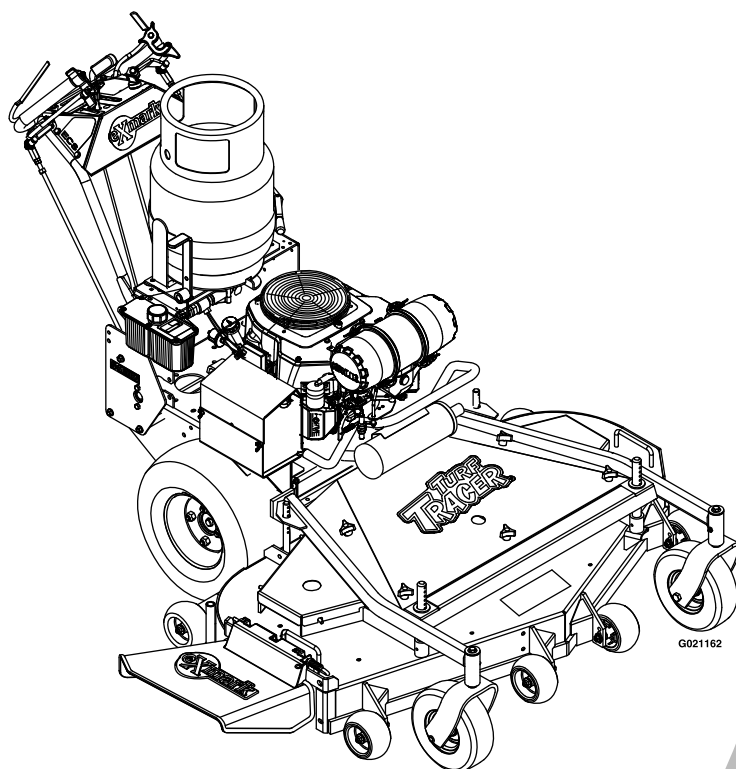




TURF TRACER S-SERIES LP

Model No. TTS680PKCE483—Serial No. 31400000 and Up

Picture below may not reflect actual product.



Parts Manual

Part No. 4501-782 Rev. A

Ordering Replacement Parts

To order replacement parts, please supply the part number, the quantity, and the description of each part desired.

Understanding Reference Numbers

Each identified part in an illustration has a reference number. The reference number for a part also appears in the parts list, along with other information about the part.

This catalog uses two special reference number formats, one to indicate parts in a service assembly and another to indicate the quantity of a given part in an illustration.

Service Assembly Reference Numbers

Parts in service assemblies have reference numbers in the form a:b. The a represents the reference number of the entire service assembly and the b represents a sequential number unique to each part within the service assembly.

For example, a wheel assembly might be identified by reference number 6, the tire by 6:1, the valve by 6:2, and the wheel by 6:3. When you order the assembly identified by reference number 6, you receive all parts identified by reference numbers 6:1, 6:2, and 6:3. However, you may also order any part individually. Reference numbers of this type appear in illustration and in parts lists.

Reference Numbers Indicating Quantity

In an illustration, if a reference number indicates more than one part, the reference number has the form nX y. The n represents the quantity of the part, the X is the multiplication symbol, and the y represents the reference number.

For example, in an illustration, the reference number 2X 37 means that two of the parts identified by reference number 37 are indicated.

List of Abbreviations

AR: as required	HJ: hex jam	PRH: phillips round head
ASM: assembly	HLH: hex lag head	PTH: phillips truss head
BBC: blade brake control	HOC: height-of-cut	PTO: power-take-off
BHTF: button head thread forming	HSBH: hex socket button head	RH: right hand
CARR: carriage	HSFH: hex socket flat head	ROPS: roll-over protection system
CCW: counter clockwise	HSH: hex socket head	RRB: rear roller brush
CW: clockwise	HWH: hex washer head	SFH: slotted fillister head
DEG: degrees	HWHTF: hex washer head thread forming	SHH: slotted hex head
DPA: Dual Point Adjustment	HYD: hydraulic	SHWH: slotted hex washer head
ECM: electronic control module	LH: left hand	SPH: slotted pan head
EXT: external	LP: Liquefied Petroleum Gas	SQH: square head
FH: flat head	LPG: Liquefied Petroleum Gas	SRH: slotted round head
GA: gauge	NI: nylon insert	STD: standard
HD: heavy-duty	NPTF: national pipe thread fine	TAP: self tapping
HF: hex flange	PFH: phillips flat head	TTH: torx truss head
HH: hex head	PPH: phillips pan head	
HHF: hex head flange	PPHTF: phillips pan head thread forming	
HHFTF: hex head flange thread forming		

Touch Up Paint

Exmark black touch up spray paint – gloss black.

Exmark red touch up paint (spray paint – P/N 1-850337 - .6 oz liquid bottle – P/N 103-9140).

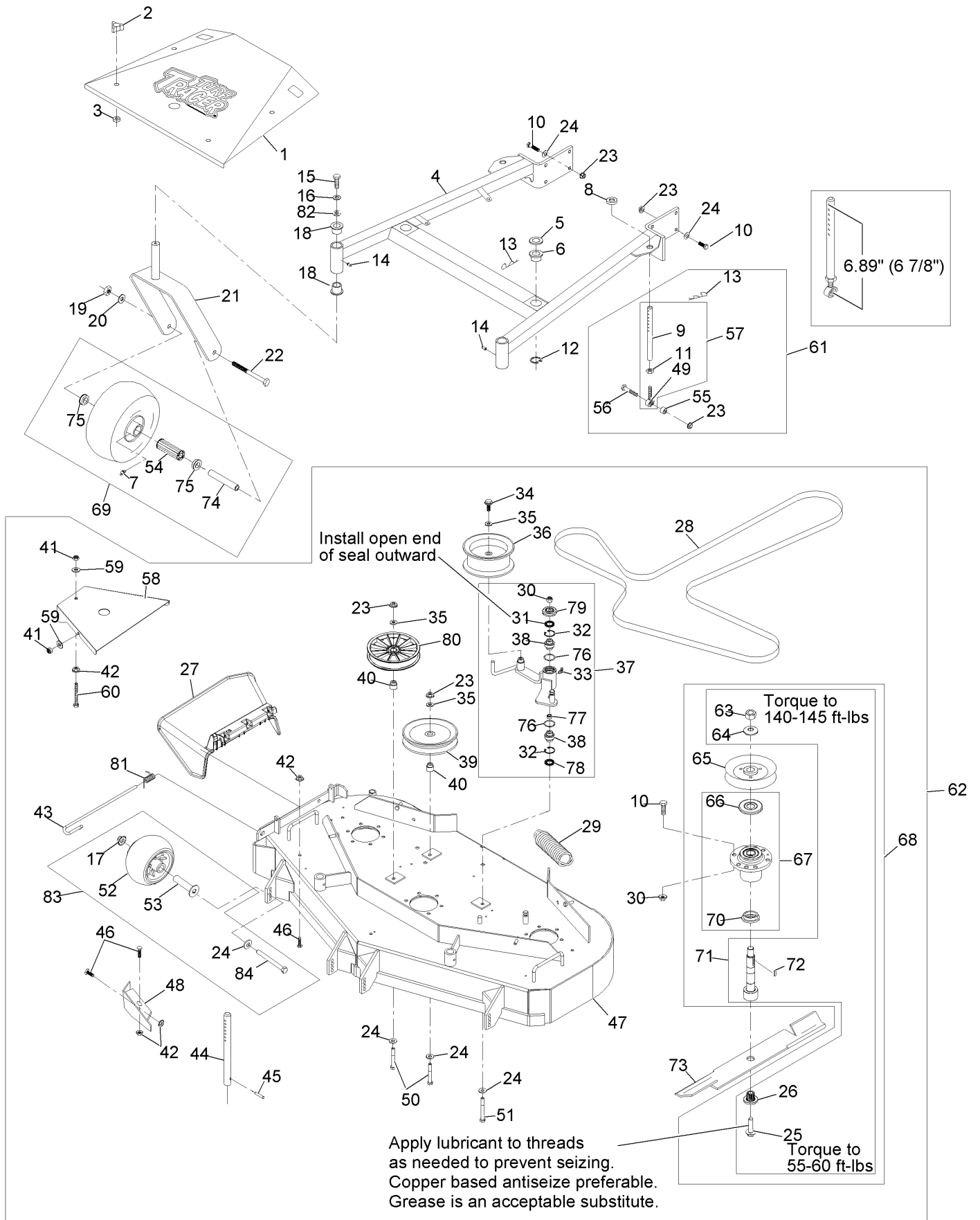


If your Exmark dealer does not have the Exmark part in stock, Exmark will get the parts to the dealer the next business day or the part will be FREE Guaranteed!! (Some restrictions apply. See your participating Exmark Dealer for details.)

Contents

Mower Deck Assembly	4
Engine Deck Assembly	6
Engine Deck Assembly (cont.)	8
ECS Upper Handles and Controls Assembly	10
Fuel Assembly	12
Electrical Assembly	13
Hydraulic Assembly	14
Decals	16

Mower Deck Assembly



Mower Deck Assembly (continued)

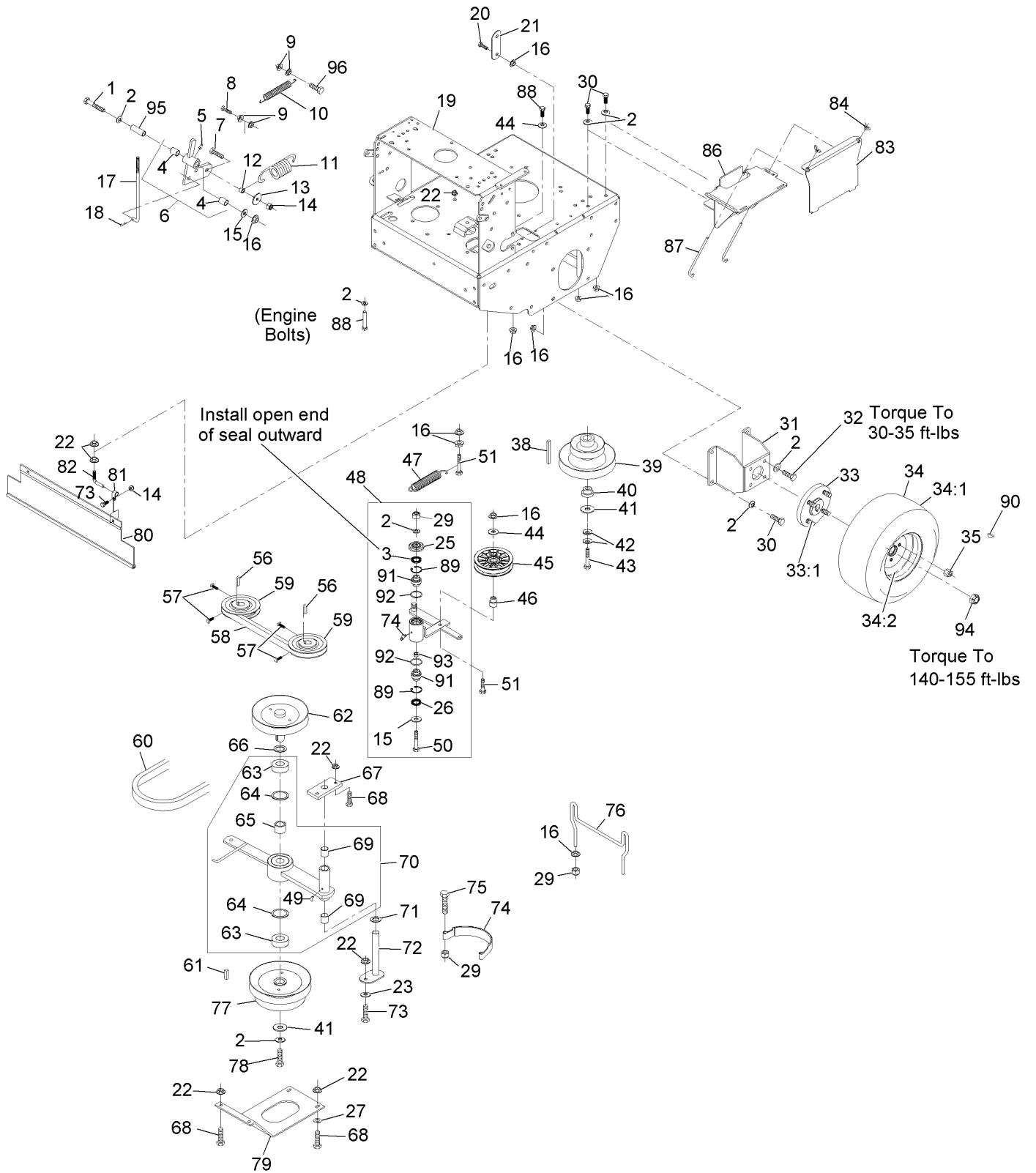
<i>Ref.</i>	<i>Part Number</i>	<i>Qty.</i>	<i>Description</i>	<i>Ref.</i>	<i>Part Number</i>	<i>Qty.</i>	<i>Description</i>
1	126-0076	1	Shield, Belt (126-0051-01) W/Decals	48	116-2297-01	1	Baffle, Discharge
2	1-323385	4	Knob-3 Prong	49	1-613204	2	Balljoint
3	1-323417	4	Washer-Belt Shield	50	323-13	2	Screw-HH 3/8-16 X 2 3/4
4	1-414310	1	Support Wld W/Bushings And Decals	51	98-5961	1	Screw-HH 3/8-16 X 4 Gr8
5	1-413425	2	Spacer	52	103-8415	4	Roller, Anti-Scalp
6	1-513336	2	Bushing-Deck	53	116-8131	4	Axle, Roller
7	302-61	2	Zerk-45° 1/4-28	54	1-513809	2	Bearing
8	1-323539	2	Spacer-Blade Drive	55	1-603050	2	Spacer
9	1-413525	2	Link, Rear Deck Support	56	323-9	2	Screw-HH 3/8-16 X 1 3/4
10	323-7	26	Screw-HH 3/8-16 X 1 1/4	57	1-414521	2	Link Assy
11	3220-3	2	Nut-Jam 3/8-24	58	103-2970-01	2	Shield, Belt
12	32120-33	2	Ring-Retaining	59	3256-3	6	Washer-5/16 Std
13	1-806009	4	Hairpin-Cotter #206	60	1-800017	2	Bolt-HH 5/16-18 X 3 1/4 Tap
14	302-52	2	Zerk-1/8-27 Str	61	1-411532	2	Kit, Support Link W/Pin
15	323-6	2	Screw-HH 3/8-16 X 1	62	103-0321	1	Assembly, Cutting Deck Complete
16	3253-5	2	Washer-Lock 3/8 Heavy	63	3217-46	3	Nut-Hex 3/4-16 Heavy
17	109-6658	4	Nut-Nyloc 3/8-16 Flg	64	103-2802	3	Washer-Spring Disc 3/4
18	1-303514	4	Bearing-Flanged	65	1-413424	3	Sheave, W/Hub 6 5/16" O.D. ▲
19	3217-9	2	Nut-Hex 1/2-13	66	103-1330	3	Guard-Bearing Top ▲
20	3253-7	2	Washer-Lock 1/2	67	103-8280	3	Asm, Cutter Housing W/Bearings
21	1-522143-01	2	Fork, Caster	68	103-9081	3	Asm, Cutter Housing Complete
22	325-20	2	Screw-HH 1/2-13 X 6	69	103-2171	2	Kit,Semi-Pneumatic Wheel Replacement
23	3290-357	9	Nut-Whizlock 3/8-16	70	103-2535	3	Spacer-Guard Bottom
24	98-5975	15	Washer-Spring Disc 3/8	71	103-9071	3	Kit, Spindle ▲
25	109-9220	3	Screw-Sems 1/2-20 X 2.19	72	1-807268	3	Key-Machine 1/4 X 3/16 X 1
26	103-3037	3	Bushing, Splined	73	103-6401	3	Blade-Notched ■
27	109-5151	1	Deflector-Discharge	73	103-6391	3	Blade, Mulching
28	1-413093	1	Belt, Deck Drive	73	103-6386	3	Blade, Low Lift
29	103-3330	1	Spring-Extension	73	103-6381	3	Blade, Solid
30	3296-39	19	Nut-Nyloc 3/8-16	73	116-5177	3	Blade-Extreme 2, 16.25"
31	103-3506	1	Seal-Single Lip	74	1-513547	2	Spacer
32	32120-10	2	Ring-Retaining	75	1-513810	4	Bushing-Flanged
33	302-40	1	Zerk-90° 1/4-28	76	106-7159	2	O-Ring
34	3234-11	1	Screw-HH Flg 3/8-16 X 1	77	103-5677	1	Spacer
35	3256-24	3	Washer-3/8 Sae	78	103-3505	1	Seal-Double Lip
36	116-4666	1	Idler-Pulley, Flat	79	103-2916	1	Guard-Top
37	103-8585	1	Kit, Idler Arm (103-7356-03) W/Brgs ●	80	109-0977	1	Pulley,Idler 5"
38	103-3504	2	Bearing-Spherical	81	116-0962	1	Spring, Torsion
39	1-613098	1	Pulley-Idler	82	1-373034	2	Washer
40	1-413113	2	Bushing-Idler	83	116-9981	1	Kit, Anti-Scalp Roller
41	3296-29	6	Nut-Nyloc 5/16-18	84	116-9362	4	Screw-HH 3/8-16 X 3 3/4 Gr 8
42	32128-20	3	Nut-Whizlock 5/16-18				
43	109-8854	1	Pin-Chute				
44	1-603001	2	Rod, Deck Support				
45	1-806332	2	Rollpin 1/4 X 1 1/2				
46	322-2	3	Screw-HH 5/16-18 X 5/8				
47	1-414384	1	Deck Weldmt W/Decals, Discharge Baffle And Support Rods				

● Assembly also includes Washer and Screw

■ Requires installation of mulch kit for proper mulching. See your Exmark dealer for details.

▲ Apply Mobil HTS grease (P/N 103-5217 1.5 oz packet) (or a food-grade anti-seize). See operator s manual for locations.

Engine Deck Assembly



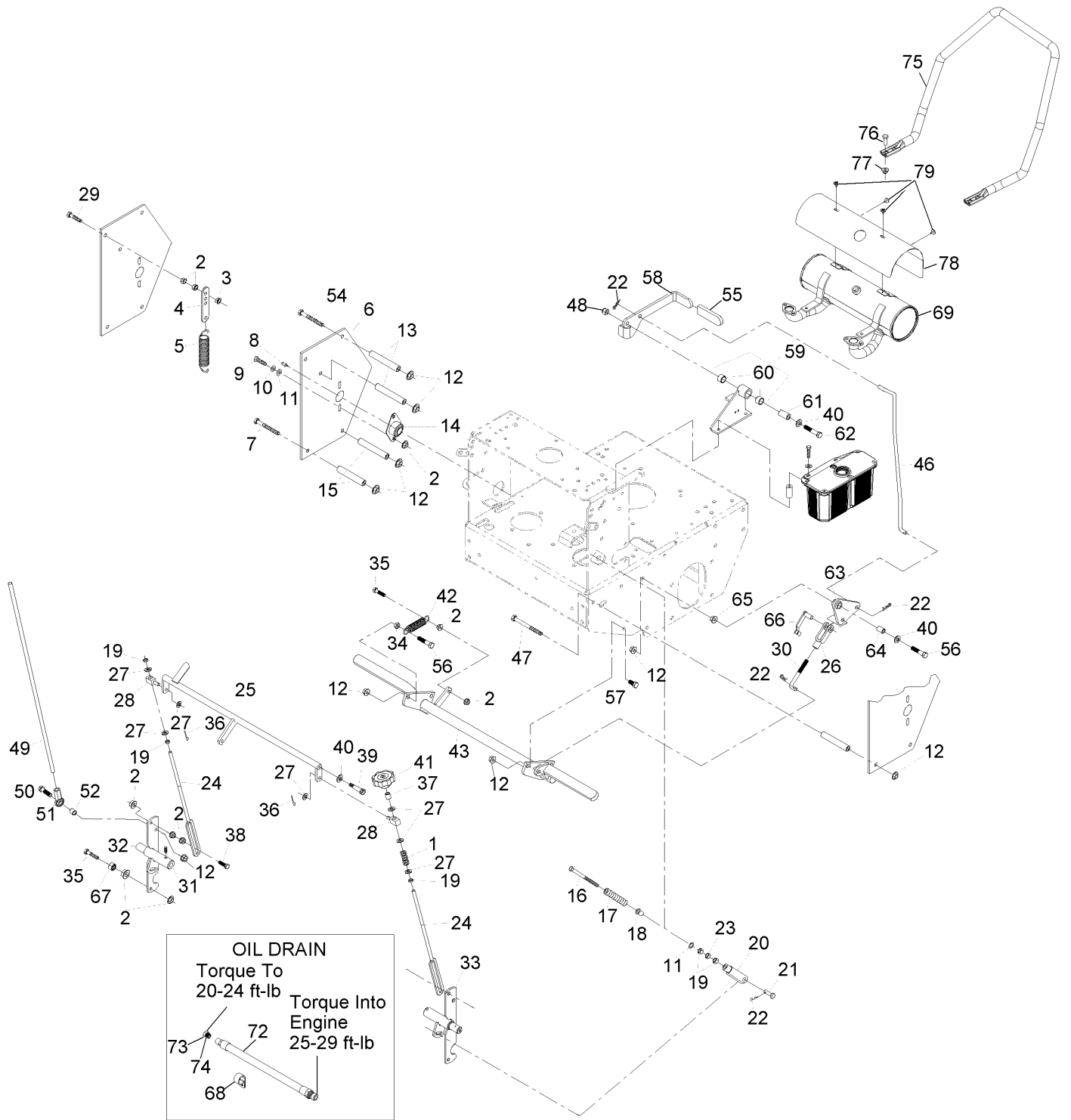
Engine Deck Assembly (continued)

<i>Ref.</i>	<i>Part Number</i>	<i>Qty.</i>	<i>Description</i>	<i>Ref.</i>	<i>Part Number</i>	<i>Qty.</i>	<i>Description</i>
1	323-11	1	Screw-HH 3/8-16 X 2 1/4	47	103-8599	1	Spring, Extension
2	98-5975	26	Washer-Spring Disc 3/8	48	109-1296	1	Kit, Idler Arm (109-1208-03) W/Brgs
3	103-3506	1	Seal-Single Lip	49	1481	2	Zerk-45° 1/4-28
4	1-513034	2	Sleeve-Bearing	50	98-5961	1	Screw-HH 3/8-16 X 4 Gr8
5	302-19	1	Zerk-1/4-28 Str	51	323-9	2	Screw-HH 3/8-16 X 1 3/4
6	1-414143	1	Link Pivot W/Bearing	56	1-807272	2	Key-5Mm X 5Mm X 25Mm
7	322-6	1	Screw-HH 5/16-18 X 1 1/4	57	120-6474	4	Screw-Set, SQH 5/16-18 X 3/4 ■
8	321-6	1	Screw-HH 1/4-20 X 1	58	109-1057	1	Belt, Pump Drive
9	32128-33	4	Nut-Whizlock 1/4-20	59	1-413010	2	Sheave ASM ●
10	1-523498	1	Spring, Motion Control	60	103-6317	1	Belt, Blade Clutch
11	103-7398	1	Spring, Belt Tension	61	1-807259	1	Key-Machine 1/4 X 1/4 X 1
12	1-543007	1	Spacer	62	103-6308	1	Sheave W/Shaft ●
13	1-213069	1	Washer	63	1-413111	2	Bearing, Clutch Shaft ●
14	3296-29	3	Nut-Nyloc 5/16-18	64	32120-8	2	Ring-Retaining
15	3256-4	2	Washer-3/8 Std	65	1-413012	1	Spacer, Bearing Clutch
16	3290-357	17	Nut-Whizlock 3/8-16	66	1-523157	1	Washer
17	1-413282	1	Linkage, Lower	67	1-413049-01	1	Plate, Clutch Pivot
18	1-806003	1	Hairpin-Cotter	68	322-5	6	Screw-HH 5/16-18 X 1
19	126-0080	1	Asm, Deck (126-0079-01) W/Decals	69	1-413207	2	Pivot, Bearing
20	323-4	2	Screw-HH 3/8-16 X 3/4	70	1-414418	1	Clutch Arm W/Bearings
21	1-633068	1	Arm-Lift, Deck	71	1-413235	1	Washer, Spacer
22	32128-20	11	Nut-Whizlock 5/16-18	72	1-412138-03	1	Pivot Pin Weldment
23	1-303334	1	Washer-Spring Disc 5/16	73	322-3	3	Screw-HH 5/16-18 X 3/4
25	103-2916	1	Guard-Top	74	1-413062	1	Band, Brake Clutch
26	103-3505	1	Seal-Double Lip	75	323-8	2	Screw-HH 3/8-16 X 1 1/2
27	3256-3	2	Washer-5/16 Std	76	103-6310	1	Wld, Belt Guide
29	3296-39	5	Nut-Nyloc 3/8-16	77	1-412028	1	Sheave W/Drum (48") ●
30	323-6	10	Screw-HH 3/8-16 X 1	78	1-800521	1	Screw-HH 3/8-24 X 1 ■
31	1-412082-01	2	Mount, Wheel Motor 48" And 52"	79	1-413009-01	1	Plate, Guard
32	323-6	8	Screw-HH 3/8-16 X 1	80	103-2056	1	Shield-Drag
33	112-9049	2	Wheel Hub ASM	81	1-413510	2	Clip-Loom
33:1	1-633926	8	Stud-Wheel	82	1-413511	2	Hanger, Drag Shield
34	1-613263	2	Wheel And Tire ASM	83	126-0069-03	1	Battery, Cover
34:1	1-613264	2	Tire-Turfmaster	84	1-543792	2	Wingnut-Nyloc 1/4-20
34:2	1-603715	2	Wheel-Rim	86	126-0068-03	1	Stand W/ Trim-Lok
35	242-50	8	Nut-Lug 1/2-20	87	1-633651	2	Bolt-Holddown
38	1-807264	1	Key-Machine 1/4 X 1/4 X 2 5/8	88	323-7	5	Screw-HH 3/8-16 X 1 1/4
39	103-6309	1	Asm, Drive Sheave ●	89	32120-10	2	Ring-Retaining
40	1-603609	1	Bushing, Clutch Keeper	90	1-807019	2	Key-Woodruff 1 X 1/4
41	1-373034	2	Washer	91	103-3504	2	Bearing-Spherical
42	1-603610	2	Washer-Spring Disc 7/16	92	106-7159	2	O-Ring
43	3212-10	1	Screw-HH 7/16-20 X 2 1/2 ■	93	103-5677	1	Spacer
44	3256-24	2	Washer-3/8 Sae	94	116-2839	2	Nut-Lock
45	109-4077	1	Pulley-Idler, Flat	95	1-603044	1	Bushing
46	1-603496	1	Bushing-Idler	96	321-8	1	Screw-HH 1/4-20 X 1 1/4

● Apply anti-seize compound in bore.

■ Use Pro-Lock, Nut Type (P/N 1-840022, .5ml tube) on threads.

Engine Deck Assembly (cont.)



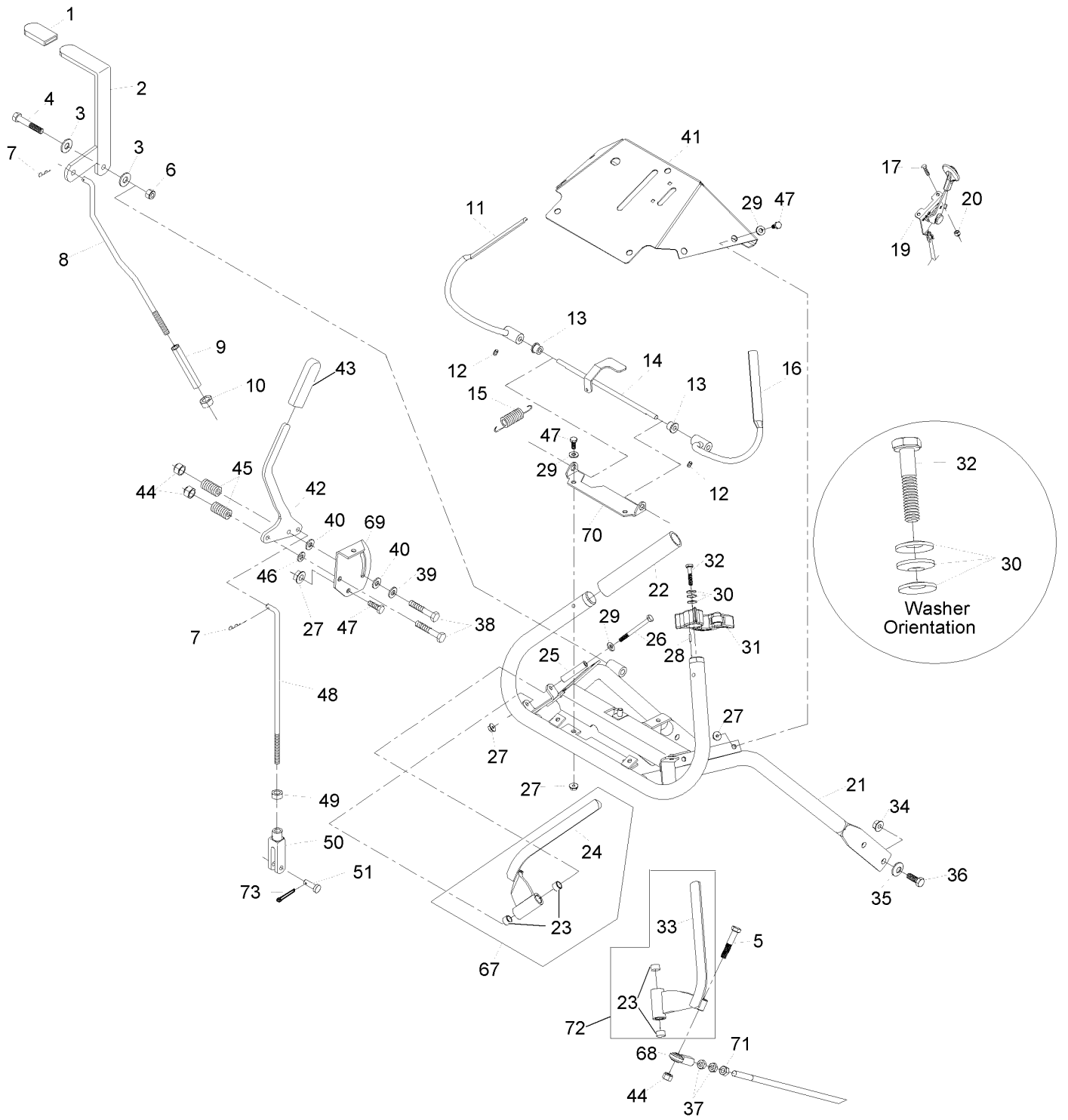
Engine Deck Assembly (cont.) (continued)

<i>Ref.</i>	<i>Part Number</i>	<i>Qty.</i>	<i>Description</i>	<i>Ref.</i>	<i>Part Number</i>	<i>Qty.</i>	<i>Description</i>
1	1-323245	1	Spring-Compression	39	1-809056	2	Screw-Sh 5/16-18 X 1 3/8 ■
2	32128-20	20	Nut-Whizlock 5/16-18	40	3256-24	4	Washer-3/8 Sae
3	3296-29	2	Nut-Nyloc 5/16-18	41	103-3060	1	Knob-Tracking
4	1-613089	2	Tab-Spring, Extension	42	1-323161	1	Spring
5	1-603693	2	Spring	43	103-2004-03	1	Brake
6	110-4897-01	2	Shield-Control	46	1-413492	1	Linkage, Upper Brake
7	323-16	6	Screw-HH 3/8-16 X 4	47	323-16	1	Screw-HH 3/8-16 X 4
8	302-19	2	Zerk-1/4-28 Str	48	3296-39	1	Nut-Nyloc 3/8-16
9	322-3	4	Screw-HH 5/16-18 X 3/4	49	103-1148	2	Rod, Drive Lever
10	1-805005	4	Washer-Lock 5/16 Heavy	50	323-8	2	Screw-HH 3/8-16 X 1 1/2
11	3256-2	6	Washer-1/4 Std	51	103-1167	2	Joint-Ball End, .38X.38Fe LH
12	3290-357	15	Nut-Whizlock 3/8-16	52	103-1166	2	Spacer-Tube, Pump Link
13	1-323195-01	4	Spacer-Shield	54	323-23	1	Screw-HH 3/8-16 X 4-1/2
14	1-633102	2	Bearing-Flanged	55	1-303020	1	Grip-Lever
15	1-323197-01	4	Spacer-Shield	56	323-9	2	Screw-HH 3/8-16 X 1 3/4
16	1-603737	2	Bolt-Neutral Return	57	323-4	3	Screw-HH 3/8-16 X 3/4
17	103-0265	2	Spring, Neutral Return	58	103-3495	1	Lever, Park Brake (116-1725-03) W/Decals
18	1-603735	2	Bushing-Flanged	59	1-414504	1	Bracket ASM
19	3219-2	7	Nut-Hex 5/16-24	60	1-413347	2	Sleeve-Bushing
20	1-303105	2	Yoke-Adjustable	61	1-413344	1	Bushing-Pivot
21	1-808280	2	Pin-Clevis 5/16 X 1 49/64	62	323-10	1	Screw-HH 3/8-16 X 2
22	1-806003	5	Hairpin-Cotter	63	1-414508	1	Bellcrank ASM
23	3220-2	2	Nut-Jam 5/16-24	64	1-303548	1	Bushing-Plastic
24	1-413350	2	Link-Control, Speed	65	32128-21	1	Nut-3/8-16 Flanged Side Lock
25	1-412203-01	1	Crank-Control, Speed	66	103-2399	1	Pin-Clevis Spring 3/8
26	1-633131	1	Yoke-Linkage, Brake	67	3218-2	2	Nut-Jam 5/16-18
27	3256-23	7	Washer-5/16 Sae	68	1-643312	1	Clip-Loom
28	1-603676	2	Swivel-Adjustable, Short	69	116-3936	1	Muffler
29	1-800016	2	Bolt-HH 5/16-18 X 1 1/4 Tap	72	116-5052	1	Asm-Oil Drain Hose W/Plug ●
30	1-413489	1	Linkage-Lower	73	353-508	1	Plug-W/O-Ring
31	1-803022	2	Setscrew-5/16-18 X 5/8 ■	74	237-42	1	O-Ring
32	103-1190-01	1	Shaft-Control, LH	75	116-8575-03	1	Guard-Air Cleaner
33	103-4796-01	1	Shaft-Control, RH	76	323-6	4	Screw-HH 3/8-16 X 1
34	3218-3	1	Nut-Jam 3/8-16	77	104-8301	4	Nut-Nyloc 3/8-16 Flg
35	116-3515	3	Screw, HH Special 5/16-18 X 1.25	78	116-8654	1	Shield-Muffler
36	3272-5	2	Pin-Cotter 3/32 X 1/2	79	116-1103	4	Screw-HH, Thread Forming
37	1-603903	1	Spacer				
38	1-403180	2	Screw-HH 5/16-18 X 1 3/8 Special				

● Use a Teflon Pipe Sealant or equivalent on threads.

■ Use Pro-Lock, Nut Type (P/N 1-840022, .5ml tube) on threads.

ECS Upper Handles and Controls Assembly

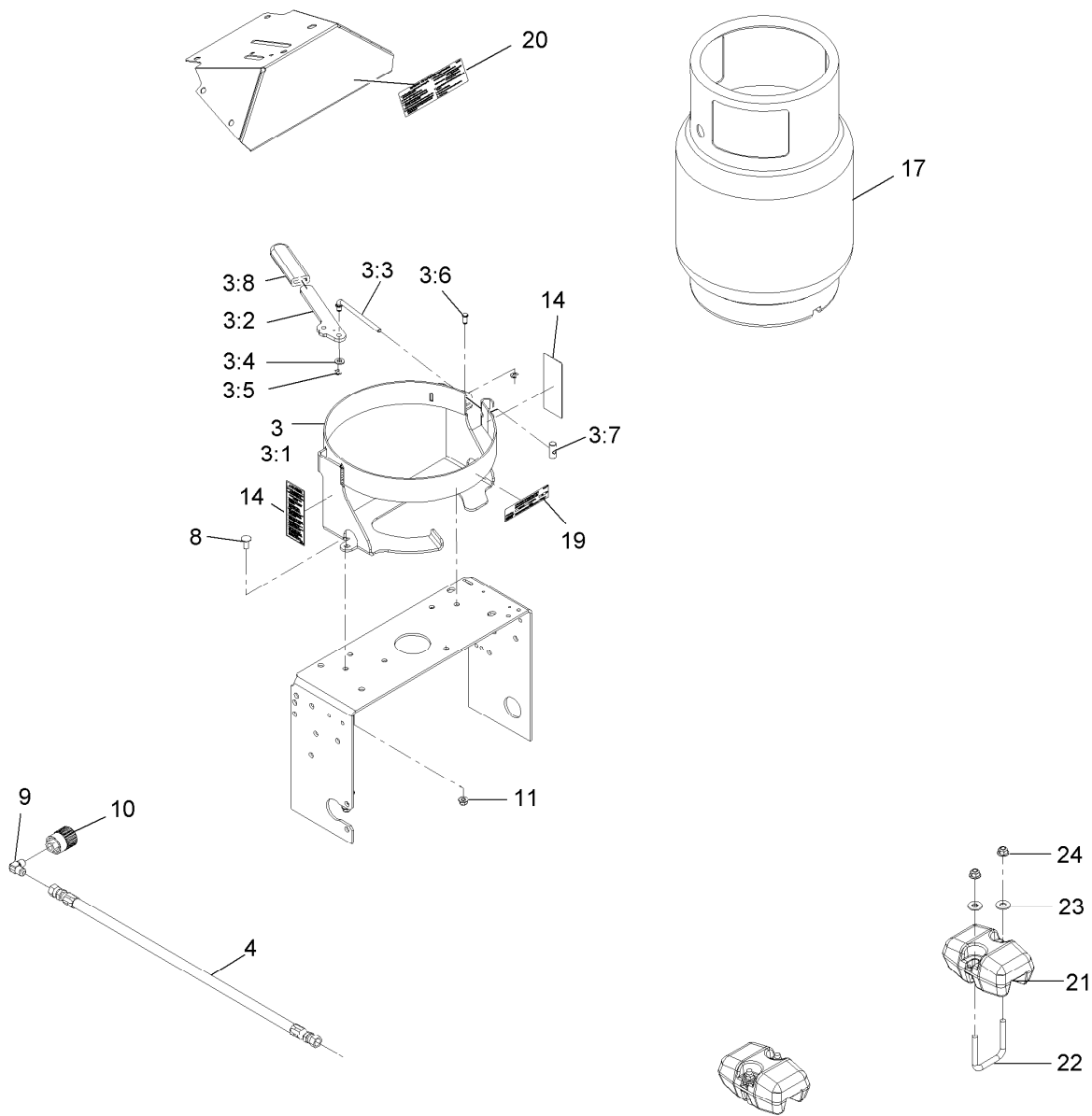


ECS Upper Handles and Controls Assembly (continued)

<i>Ref.</i>	<i>Part Number</i>	<i>Qty.</i>	<i>Description</i>	<i>Ref.</i>	<i>Part Number</i>	<i>Qty.</i>	<i>Description</i>
1	1-303020	1	Grip-Lever	31	103-1371	1	Thumb Latch Asm RH
2	116-6334	1	Asm, Lever (116-1736-03) W/Grip	31	103-1372	1	Thumb Latch Asm LH
3	3256-4	2	Washer-3/8 Std	32	103-0235	2	Screw-HH 1/4-20 X 1 1/8 W/Nylon ●
4	323-11	1	Screw-HH 3/8-16 X 2 1/4	33	116-4082-03	1	Lever, Drive RH
5	322-9	2	Screw-HH 5/16-18 X 1 3/4	34	3290-357	4	Nut-Whizlock 3/8-16
6	3296-39	1	Nut-Nyloc 3/8-16	35	98-5975	4	Washer-Spring Disc 3/8
7	1-806003	2	Hairpin-Cotter	36	323-6	4	Screw-HH 3/8-16 X 1
8	103-1149	1	Linkage, Upper	37	3220-3	4	Nut-Jam 3/8-24
9	1-413279	1	Turnbuckle, 3/8-16 Ss	38	322-10	2	Screw-HH 5/16-18 X 2
10	3217-7	1	Nut-Hex 3/8-16	39	1-603716	1	Washer-Friction Disc
11	116-4079	1	Wld, Lever, Opc (LH) ■	40	1-323244	2	Washer-Friction
12	1-803322	2	Setscrew-5/16-24 X 5/16 ●	41	126-0088	1	Asm, Console (126-0049-03)W/ Decals
13	1-303365	2	Bushing-Nylon	42	116-8632	1	Lever-Shift W/Grip
14	103-0769-03	1	Rod Weldment, Opc	43	103-5994	1	Grip, Steering Handle
15	1-303363	1	Spring-Extension	44	3296-29	4	Nut-Nyloc 5/16-18
16	116-4080	1	Wld, Opc Lever (RH) ■	45	1-323245	2	Spring-Compression
17	1-807513	2	Bolt-Carriage #10-24 X 1/2	46	3256-23	1	Washer-5/16 Sae
19	116-2426	1	Cable, Throttle	47	321-3	8	Screw-HH 1/4-20 X 5/8
20	3296-2	3	Nut-Nyloc #10-24	48	1-413225	1	Rod, Speed Control
21	103-0770-03	1	Handle Weldment (1-412449)	49	3220-2	1	Nut-Jam 5/16-24
22	103-0815	2	Grip-Bar, Handle	50	1-303105	1	Yoke-Adjustable
23	1-413152	4	Bushing-Sleeve	51	1-808280	1	Pin-Clevis 5/16 X 1 49/64
24	116-4081-03	1	Lever, Drive LH	67	103-2513	1	Asm, Drive Lever RH
25	103-0027	2	Bushing-Lever, Drive	68	103-2463	2	Balljoint
26	321-14	2	Screw-HH 1/4-20 X 2 3/4	69	103-0503	1	Bracket, Shifter Slide
27	32128-33	10	Nut-Whizlock 1/4-20	70	103-0489-03	1	Bracket, Opc Axle
28	103-0464	2	Pin-Spring 1/8 X 1/2	71	3219-3	2	Nut-Hex 3/8-24
29	3256-22	10	Washer-1/4 Sae	72	103-2514	1	Asm, Drive Lever LH
30	1-303435	6	Washer-Spring Disc 1/4	73	3272-5	1	Pin-Cotter 3/32 X 1/2

● Use Pro-Lock, Nut Type (P/N 1-840022, .5ml tube) on threads.

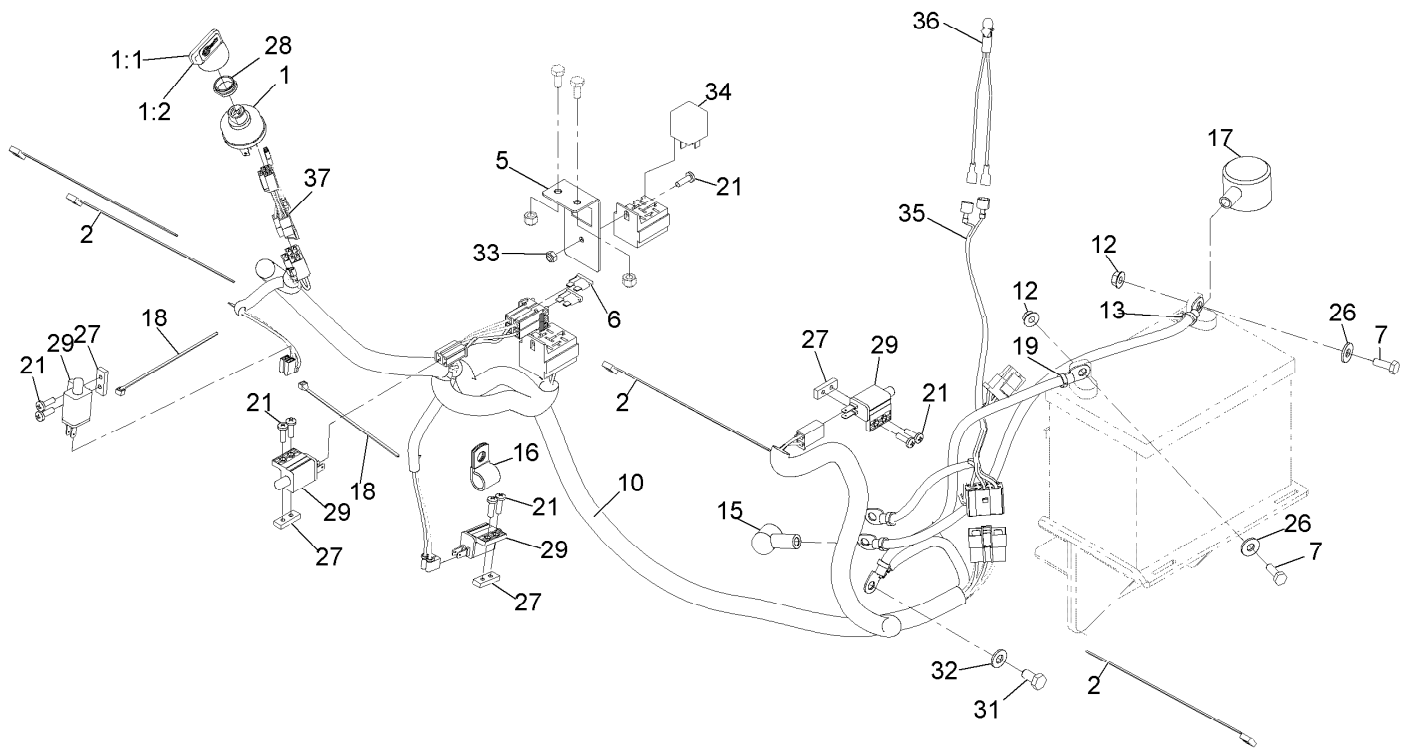
■ Use Pro-Lock retaining type, Part no. 1-840023 (.5cc tube) on inside of bore of OPC hub.



Fuel Assembly

Ref.	Part Number	Qty.	Description	Ref.	Part Number	Qty.	Description
3	126-0365	1	Bracket, LPG Tank Vertical	11	104-8300	2	Nut-Nyloc 5/16-18 Flg
3:1	126-0320-03	1	Wld-Tank Mount	14	109-9875	2	Decal-LPG Warning
3:2	126-0321	1	Arm-Lever	17	109-9675	1	Tank, LPG 20 Lb Vertical
3:3	126-0322	1	Linkage-Latch	19	109-9870	1	Decal-LPG Tank Spec
3:4	3256-23	1	Washer-5/16 Sae	20	109-9906	1	Decal-Tank Replacement
3:5	116-0332	2	E-Ring-5/16 Heavy Duty	21	103-2455-01	2	Weight, Caster Support
3:6	109-6887	1	Pin-Clevis 5/16 X 5/8	22	103-2469	2	U-Bolt
3:7	126-0323	1	Trunnion-Latch	23	3256-4	4	Washer-3/8 Std
3:8	1-633268	1	Grip-Lever	24	104-8301	4	Nut-Nyloc 3/8-16 Flg
4	126-0074	1	Asm, LPG Fuel Hose	99	116-1457	1	Washer, Rubber LPG Connector ●
8	3230-1	2	Bolt-Carriage 5/16-18 X 3/4	99	116-1456	1	O-Ring, LPG Connector ●
9	116-1116	1	Elbow-90°				
10	116-1073	1	Connector-LPG Tank, LH Thread				

● Not illustrated

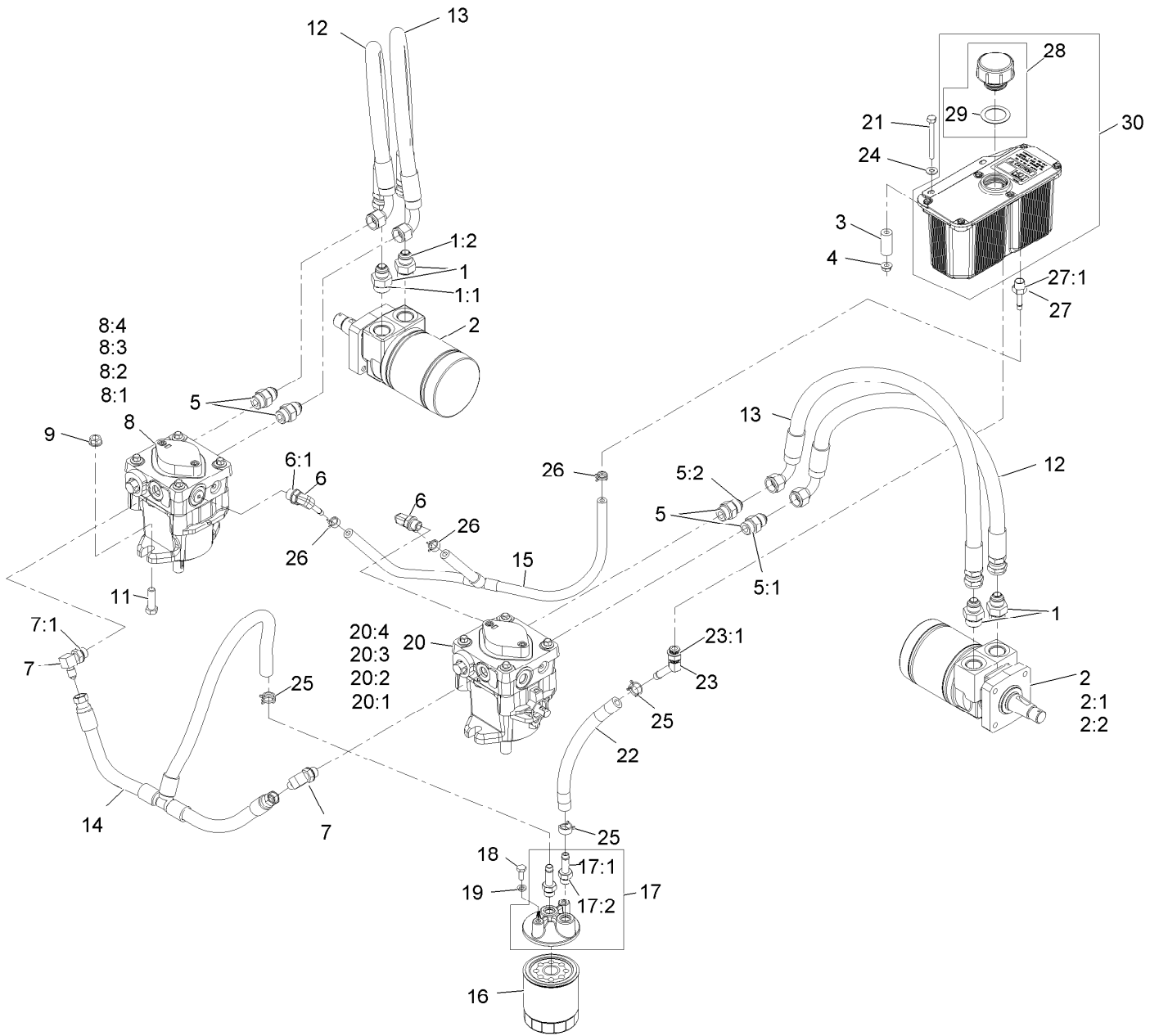


Electrical Assembly

Ref.	Part Number	Qty.	Description	Ref.	Part Number	Qty.	Description
1	103-0206	1	Switch-Ignition W/Keys	19	1-413540	1	Cable-Battery, Negative
1:1	1-603511	1	Key-Ignition	21	3290-500	9	Screw-PPH #10-24 X 5/8
1:2	103-2106	1	Key-Exmark Logo	26	3256-2	2	Washer-1/4 Std
2	1-303335	4	Tie-Cable 7 15/16 (Large)	27	1-633181	4	Plate-Tapped
5	116-2738-01	1	Bracket, Fuse	28	103-0498	1	Nut-Ignition
6	1-816001	2	Fuse-Blade Type, 20 Amp	29	1-513051	4	Switch-N.O.
7	321-4	5	Screw-HH 1/4-20 X 3/4	31	33114-016	1	Screw-HH M8-1.25 X 16Mm
10	116-8375	1	Harness, Wiring ●	32	33094-00	1	Washer
12	32128-33	2	Nut-Whizlock 1/4-20	33	3296-2	1	Nut-Nyloc #10-24
13	109-7628	1	Cable, Battery +	34	1-643275	1	Relay-12Vdc 40 Amp
15	1-543393	1	Insulator-Solenoid	35	116-9205	1	Harness-Indicator Light ●
16	1-603727	1	Clip-Loom	36	1-643267	1	Indicator-Red Led
17	109-2407	1	Insulator-Battery	37	126-0310	1	Harness-LP Pigtail ●
18	1-303287	2	Tie-Cable 5 1/2 (Small)				

● Use dielectric grease on all unsealed connectors and terminals only. Do not apply in sealed connectors.

Hydraulic Assembly



Hydraulic Assembly (continued)

<i>Ref.</i>	<i>Part Number</i>	<i>Qty.</i>	<i>Description</i>	<i>Ref.</i>	<i>Part Number</i>	<i>Qty.</i>	<i>Description</i>
1	1-603991	4	Adapter-Straight	15	116-0918	1	Case Drain Hose ASM
1:1	1-603919	1	O-Ring-Sae #10	16	109-4180	1	Element, Oil Filter
1:2	1-603992	1	O-Ring-37 Flare #8	16	1-523541	1	Element, Oil Filter (Winter) ●
2	1-603718	2	HYD Motor ASM	17	103-2889	1	Filter Head ASM
2:1	1-000138	1	Bearing And Seal Kit	17:1	103-1912	2	Adapter-Straight
2:2	1-000119	1	Seal Kit	17:2	1-603921	1	O-Ring-Sae #6
3	103-2191	2	Spacer	18	321-3	2	Screw-HH 1/4-20 X 5/8
4	32128-33	2	Nut-Whizlock 1/4-20	19	1-805004	2	Washer-Lock 1/4 Heavy
5	1-603990	4	Adapter-Straight	20	116-0943	1	RH HYD Pump ASM
5:1	1-603920	1	O-Ring-Sae #8	20:1	103-2664	1	Input Shaft Kit
5:2	1-603992	1	O-Ring-37 Flare #8	20:2	94-6922	1	Bearing-Thrust
6	103-1799	2	Elbow-90 DEG	20:3	103-2666	1	Cylinder Block Kit
6:1	1-603921	1	O-Ring-Sae #6	20:4	105-6184	1	Seal Overhaul Kit
7	103-1802	2	Fitting-HYD, 90 DEG	21	321-15	2	Screw-HH
7:1	1-603921	1	O-Ring-Sae #6	22	103-2959	1	Hose-Charge
8	116-0942	1	LH HYD Pump ASM	23	103-1807	1	Fitting-Barbed, 45 DEG
8:1	103-2664	1	Input Shaft Kit	23:1	1-603921	1	O-Ring-Sae #6
8:2	94-6922	1	Bearing-Thrust	24	3256-22	2	Washer-1/4 Sae
8:3	103-2666	1	Cylinder Block Kit	25	103-1988	3	Clamp-Hose 11/16
8:4	105-6184	1	Seal Overhaul Kit	26	103-1716	3	Clamp-Hose 17/32
9	32128-43	4	Nut-Whizlock 3/8-16	27	103-1801	1	Adapter-Straight
11	323-7	4	Screw-HH 3/8-16 X 1 1/4	27:1	1-603921	1	O-Ring-Sae #6
12	119-7827	2	HYD Hose ASM	28	103-7615	1	Asm, Cap W/Gasket
13	119-7826	2	HYD Hose ASM	29	103-1949	1	Gasket-Cap
14	116-2123	1	Charge Hose ASM	30	103-1947	1	HYD Reservoir ASM

● Use only for operation below 32°F (0°C).

Decals (continued)

<i>Ref.</i>	<i>Part Number</i>	<i>Qty.</i>	<i>Description</i>	<i>Ref.</i>	<i>Part Number</i>	<i>Qty.</i>	<i>Description</i>
1	103-2242	1	Decal, Ecs Instruction LH	17	1-553049	1	Decal, Mower Deck
2	103-2243	1	Decal, Ecs Instruction RH	19	116-4697	1	Decal-Ultracut 48 Series 3
4	109-3148	1	Decal, Bolt Torque	21	1-403143	1	Decal, Sulky Warning
5	1-303508	1	Decal-Warning, Discharge	22	117-2718	1	Decal-Arrester, Spark
6	1-413421	1	Decal, Indicator	23	103-4935	1	Decal, Drive Wheel Release
7	103-2103	1	Decal-Brake, Park	24	98-5954	3	Decal-Cover, Missing
9	116-0404	1	Decal-Hydraulic Tank	26	1-413327	1	Decal, Belt Routing (48")
10	103-3013	1	Decal, Turf Tracer	27	1-403005	2	Decal-Danger
11	103-1798	1	Decal, Throttle	28	116-3884	2	Decal-S-Series
12	103-2882	1	Decal, Exmark Logo	29	109-9906	1	Decal-Tank Replacement
13	1-303517	1	Decal,Belt Drive	30	109-9875	1	Decal-LPG Warning
14	126-0053	1	Decal, Ecs Console	31	109-9870	1	Decal-LPG Tank Spec
15	103-2076	2	Decal-Caution	32	126-0898	1	Decal-Roller Mounting
16	1-413214	1	Decal, Tracking	99	103-2461	1	Decal Kit(Standard) ●

● Not illustrated

Notes:

EXMARK® MAINTENANCE

MAXIMIZE THE PERFORMANCE OF YOUR EXMARK.

4-CYCLE PREMIUM ENGINE OIL

Part No. 116-3373

Both SAE 30 and SAE 10W-30 in one bottle.

Contains increased levels of zinc and phosphorus for better lubricity.

No Viscosity Index Improvers that tend to shear down in high heat.

Synthetic formulation.

Gas & Diesel compatible.

Anti-corrosion additives.

API 'SL' and JASO rated with wet clutch compatibility for other machines.

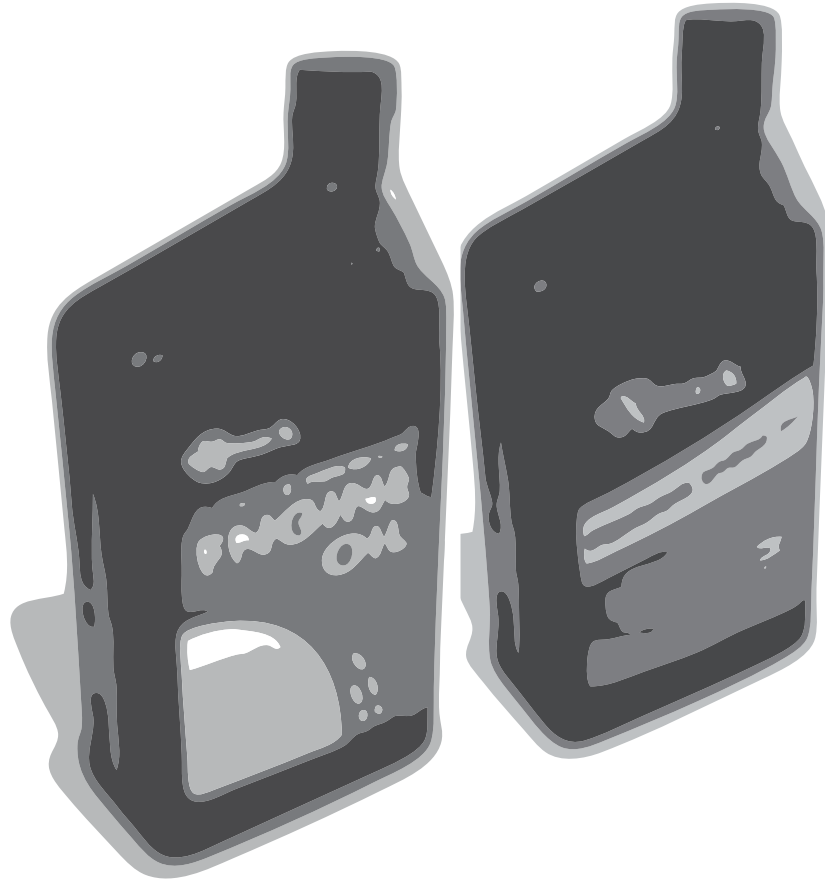
PREMIUM HYDRO OIL

Part No. 109-9828

Commercial quality for tough, high-heat conditions.

Designed specifically for zero-turn mower hydraulic systems.

Superior shear resistance under heavy loads.



Available from your local Exmark dealer. Find your closest dealer at exmark.com

EXMARK ACCESSORIES AND OPTIONS*

MID-MOUNT RIDING ACCESSORIES AND OPTIONS

CUSTOM RIDE SEAT SUSPENSION SYSTEM	OPERATOR CONTROLLED DISCHARGE
FULL SUSPENSION SEAT	SUN SHADE
DECK LIFT ASSIST KIT	TRASH CONTAINER
HITCH KIT	TURF STRIPER
LIGHT KIT	ULTRA VAC COLLECTION SYSTEM
12V POWER PORT	ULTRA VAC QUICK DISPOSAL SYSTEM
MICRO-MULCH SYSTEM	

OUT-FRONT RIDING ACCESSORIES AND OPTIONS

CUSTOM RIDE SEAT SUSPENSION SYSTEM	SNOW BLADE
DUAL-TAIL WHEEL	SNOWBLOWER
FLOOR PAN EXTENDER	SUN SHADE
HITCH KIT	TRASH CONTAINER
LIGHT KIT	ULTRA VAC COLLECTION SYSTEM
MICRO-MULCH SYSTEM	ULTRA VAC QUICK DISPOSAL SYSTEM
ROLL OVER PROTECTION SYSTEM (ROPS)	WEATHER CAB

WALK-BEHIND ACCESSORIES AND OPTIONS

GRASS CATCHER	TURF STRIPER
MICRO-MULCH SYSTEM	STANDON

*Some accessories and options not available for some models.

Place Model No. and Serial No.
Label Here (Included in the Literature
Pack) or Fill in Below

Model No. _____

Serial No. _____

Date Purchased _____

Engine Model No. and Spec. No. _____

Engine Serial No. (E/No) _____

© 2014 Exmark Mfg. Co., Inc.
Industrial Park Box 808
Beatrice, NE 68310
All Rights Reserved

Part No. 4501-782 Rev. A
(402) 223-6300
Fax (402) 223-5489
Printed in the USA.

