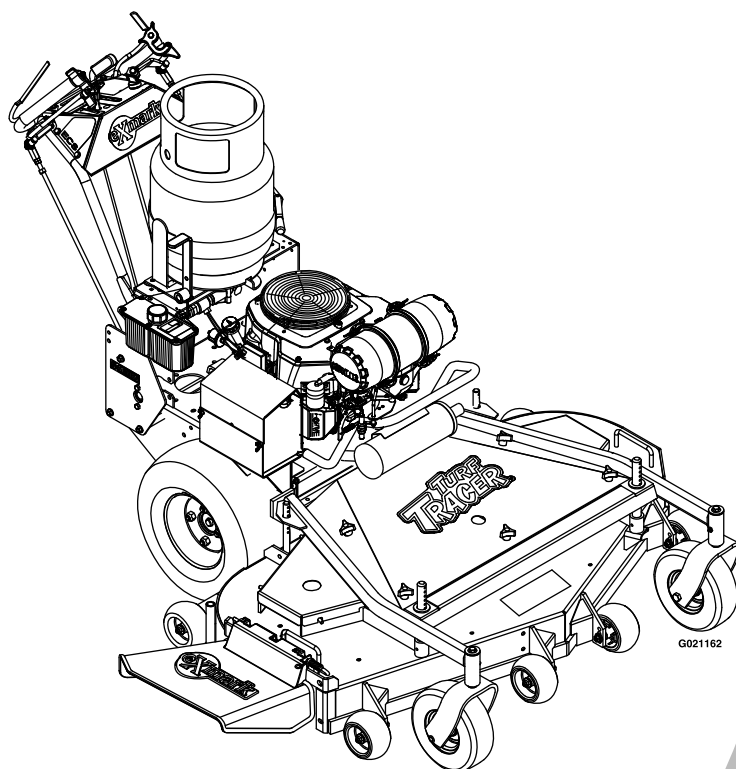




# TURF TRACER S-SERIES LP

Model No. TTS680PKCE483—Serial No. 31300000 and Up

Picture below may not reflect actual product.



# Parts Manual

Part No. 4501-605 Rev. A

# Ordering Replacement Parts

To order replacement parts, please supply the part number, the quantity, and the description of each part desired.

## Understanding Reference Numbers

Each identified part in an illustration has a reference number. The reference number for a part also appears in the parts list, along with other information about the part.

This catalog uses two special reference number formats, one to indicate parts in a service assembly and another to indicate the quantity of a given part in an illustration.

## Service Assembly Reference Numbers

Parts in service assemblies have reference numbers in the form a:b. The a represents the reference number of the entire service assembly and the b represents a sequential number unique to each part within the service assembly.

For example, a wheel assembly might be identified by reference number 6, the tire by 6:1, the valve by 6:2, and the wheel by 6:3. When you order the assembly identified by reference number 6, you receive all parts identified by reference numbers 6:1, 6:2, and 6:3. However, you may also order any part individually. Reference numbers of this type appear in illustration and in parts lists.

## Reference Numbers Indicating Quantity

In an illustration, if a reference number indicates more than one part, the reference number has the form nX y. The n represents the quantity of the part, the X is the multiplication symbol, and the y represents the reference number.

For example, in an illustration, the reference number 2X 37 means that two of the parts identified by reference number 37 are indicated.

# List of Abbreviations

<b>AR:</b> as required	<b>HJ:</b> hex jam	<b>PRH:</b> phillips round head
<b>ASM:</b> assembly	<b>HLH:</b> hex lag head	<b>PTH:</b> phillips truss head
<b>BBC:</b> blade brake control	<b>HOC:</b> height-of-cut	<b>PTO:</b> power-take-off
<b>BHTF:</b> button head thread forming	<b>HSBH:</b> hex socket button head	<b>RH:</b> right hand
<b>CARR:</b> carriage	<b>HSFH:</b> hex socket flat head	<b>ROPS:</b> roll-over protection system
<b>CCW:</b> counter clockwise	<b>HSH:</b> hex socket head	<b>RRB:</b> rear roller brush
<b>CW:</b> clockwise	<b>HWH:</b> hex washer head	<b>SFH:</b> slotted fillister head
<b>DEG:</b> degrees	<b>HWHTF:</b> hex washer head thread forming	<b>SHH:</b> slotted hex head
<b>DPA:</b> Dual Point Adjustment	<b>HYD:</b> hydraulic	<b>SHWH:</b> slotted hex washer head
<b>ECM:</b> electronic control module	<b>LH:</b> left hand	<b>SPH:</b> slotted pan head
<b>EXT:</b> external	<b>LP:</b> Liquefied Petroleum Gas	<b>SQH:</b> square head
<b>FH:</b> flat head	<b>LPG:</b> Liquefied Petroleum Gas	<b>SRH:</b> slotted round head
<b>GA:</b> gauge	<b>NI:</b> nylon insert	<b>STD:</b> standard
<b>HD:</b> heavy-duty	<b>NPTF:</b> national pipe thread fine	<b>TAP:</b> self tapping
<b>HF:</b> hex flange	<b>PFH:</b> phillips flat head	<b>TTH:</b> torx truss head
<b>HH:</b> hex head	<b>PPH:</b> phillips pan head	
<b>HHF:</b> hex head flange	<b>PPHTF:</b> phillips pan head thread forming	
<b>HHFTF:</b> hex head flange thread forming		

# Touch Up Paint

Exmark black touch up spray paint – gloss black.

Exmark red touch up paint (spray paint – P/N 1-850337 - .6 oz liquid bottle – P/N 103-9140).

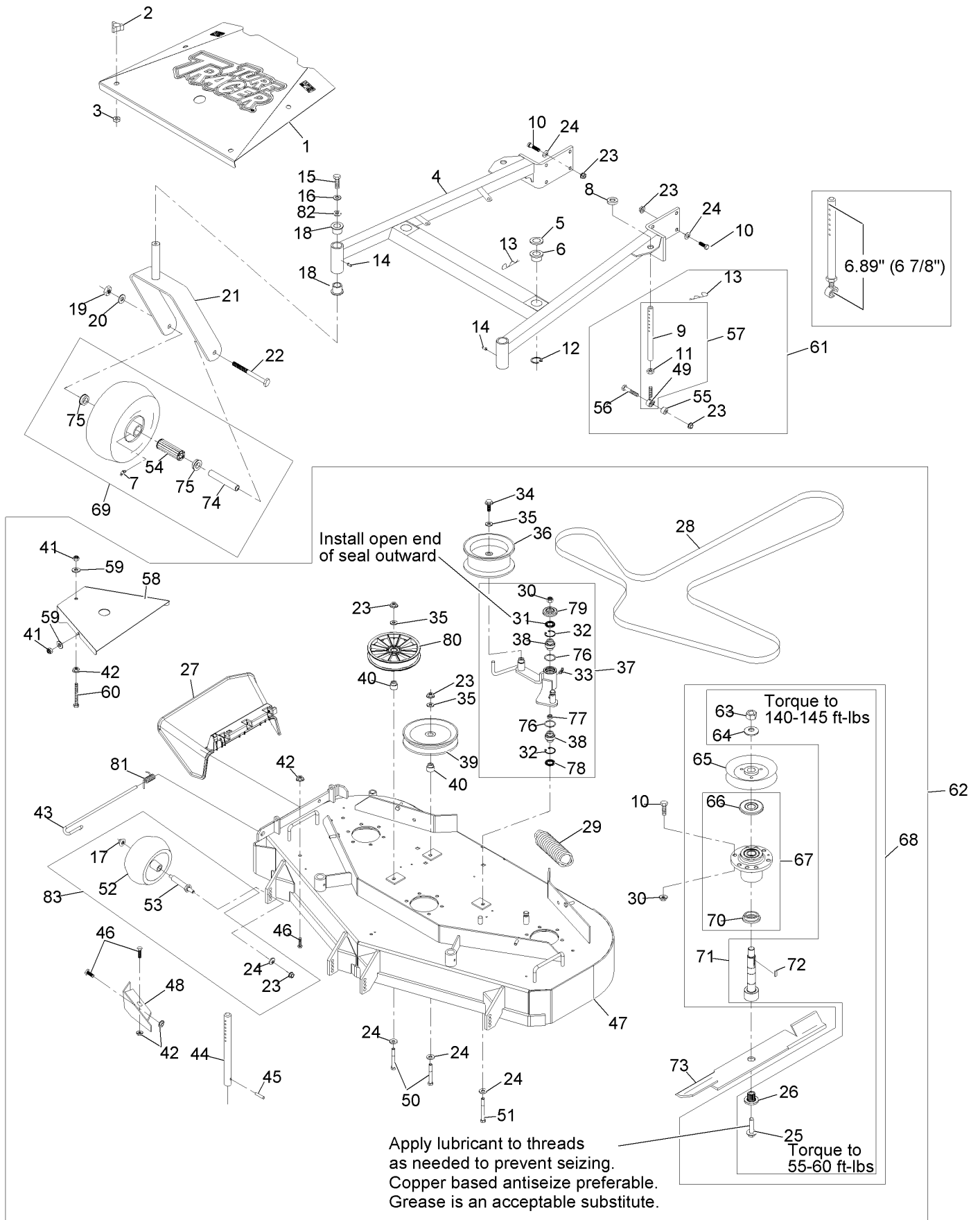


If your Exmark dealer does not have the Exmark part in stock, Exmark will get the parts to the dealer the next business day or the part will be FREE Guaranteed!! (Some restrictions apply. See your participating Exmark Dealer for details.)

## Contents

- Mower Deck Assembly ..... 4
- Engine Deck Assembly ..... 6
- Engine Deck Assembly (cont.) ..... 8
- ECS Upper Handles and Controls Assembly ..... 10
- Fuel Assembly ..... 12
- Electrical Assembly ..... 13
- Hydraulic Assembly ..... 14
- Decals ..... 16

# Mower Deck Assembly



## Mower Deck Assembly (continued)

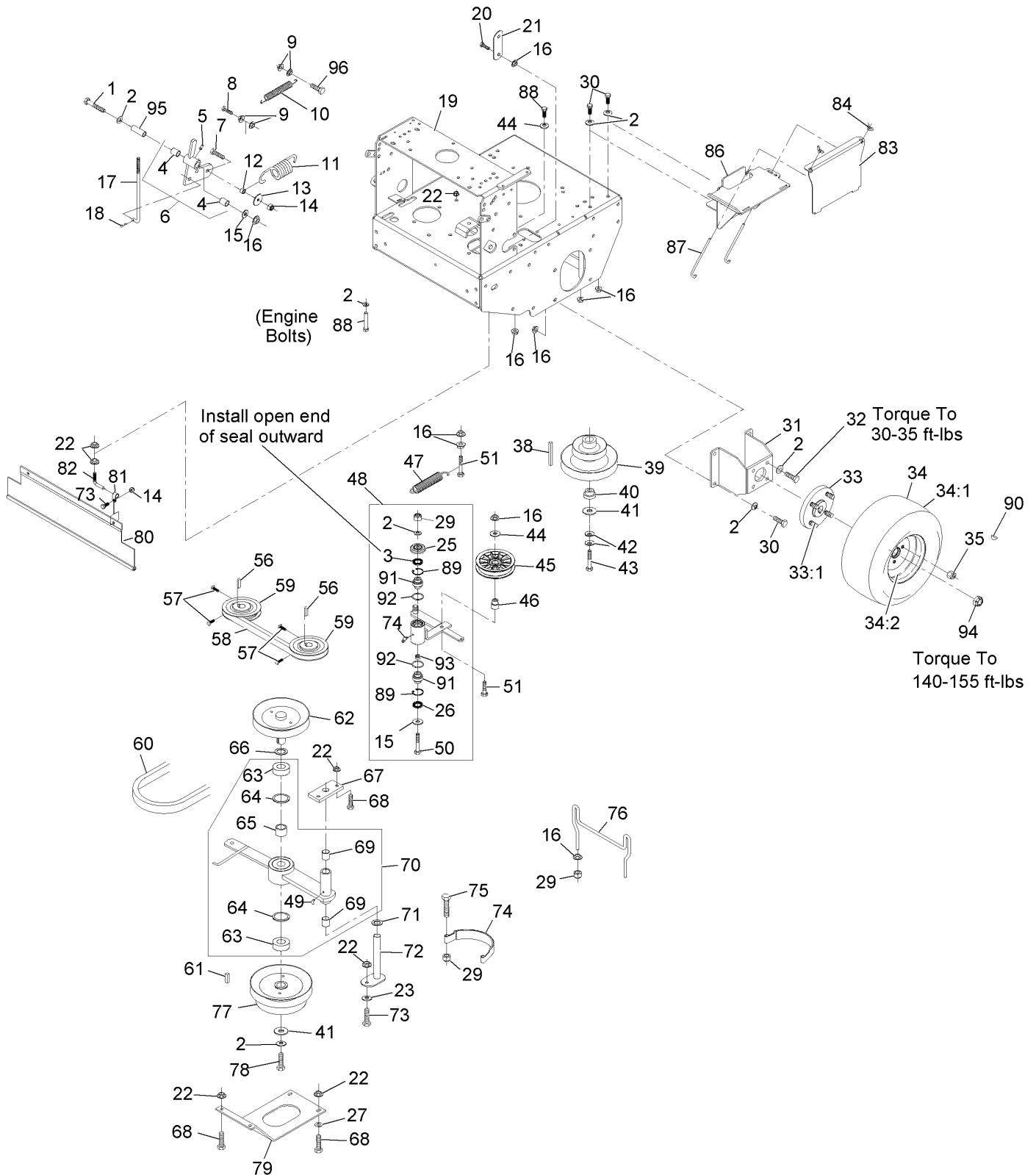
Ref.	Part Number	Qty.	Description	Ref.	Part Number	Qty.	Description
1	126-0076	1	Shield, Belt (126-0051-01) W/Decals	47	1-414384	1	Deck Weldmt W/Decals, Discharge Baffle And Support Rods
2	1-323385	4	Knob-3 Prong	48	116-2297-01	1	Baffle, Discharge
3	1-323417	4	Washer-Belt Shield	49	1-613204	2	Balljoint
4	1-414310	1	Support Wld W/Bushings And Decals	50	323-13	2	Screw-HH 3/8-16 X 2 3/4
5	1-413425	2	Spacer	51	98-5961	1	Screw-HH 3/8-16 X 4 Gr8
6	1-513336	2	Bushing-Deck	52	1-603299	4	Roller-Scalp, Anti
7	302-61	2	Zerk-45° 1/4-28	53	99-2842	4	Spacer
8	1-323539	2	Spacer-Blade Drive	54	1-513809	2	Bearing
9	1-413525	2	Link, Rear Deck Support	55	1-603050	2	Spacer
10	323-7	26	Screw-HH 3/8-16 X 1 1/4	56	323-9	2	Screw-HH 3/8-16 X 1 3/4
11	3220-3	2	Nut-Jam 3/8-24	57	1-414521	2	Link Assy
12	32120-33	2	Ring-Retaining	58	103-2970-01	2	Shield, Belt
13	1-806009	4	Hairpin-Cotter #206	59	3256-3	6	Washer-5/16 Std
14	302-52	2	Zerk-1/8-27 Str	60	1-800017	2	Bolt-HH 5/16-18 X 3 1/4 Tap
15	323-6	2	Screw-HH 3/8-16 X 1	61	1-411532	2	Kit, Support Link W/Pin
16	3253-5	2	Washer-Lock 3/8 Heavy	62	103-0321	1	Assembly, Cutting Deck Complete
17	109-6658	4	Nut-Nyloc 3/8-16 Flg	63	3217-46	3	Nut-Hex 3/4-16 Heavy
18	1-303514	4	Bearing-Flanged	64	103-2802	3	Washer-Spring Disc 3/4
19	3217-9	2	Nut-Hex 1/2-13	65	1-413424	3	Sheave, W/Hub 6 5/16" O.D. (48") ▲
20	3253-7	2	Washer-Lock 1/2	66	103-1330	3	Guard-Bearing Top ▲
21	1-522143-01	2	Fork, Caster	67	103-8280	3	Asm, Cutter Housing W/Bearings
22	325-20	2	Screw-HH 1/2-13 X 6	68	103-9081	3	Asm, Cutter Housing Complete (48")
23	3290-357	13	Nut-Whizlock 3/8-16	69	103-2171	2	Kit,Semi-Pneumatic Wheel Replacement
24	98-5975	15	Washer-Spring Disc 3/8	70	103-2535	3	Spacer-Guard Bottom
25	109-9220	3	Screw-Sems 1/2-20 X 2.19	71	103-9071	3	Kit, Spindle ▲
26	103-3037	3	Bushing, Splined	72	1-807268	3	Key-Machine 1/4 X 3/16 X 1
27	109-5151	1	Deflector-Discharge	73	103-6401	3	Blade-Notched ■
28	1-413093	1	Belt, Deck Drive (44")	73	103-6391	3	Blade, Mulching (48")
29	103-3330	1	Spring-Extension	73	103-6386	3	Blade, Low Lift (48")
30	3296-39	19	Nut-Nyloc 3/8-16	73	103-6381	3	Blade, Solid (48")
31	103-3506	1	Seal-Single Lip	73	116-5177	3	Blade-Extreme 2, 16.25"
32	32120-10	2	Ring-Retaining	74	1-513547	2	Spacer
33	302-40	1	Zerk-90° 1/4-28	75	1-513810	4	Bushing-Flanged
34	3234-11	1	Screw-HH Flg 3/8-16 X 1	76	106-7159	2	O-Ring
35	3256-24	3	Washer-3/8 Sae	77	103-5677	1	Spacer
36	116-4666	1	Idler-Pulley, Flat	78	103-3505	1	Seal-Double Lip
37	103-8585	1	Kit, Idler Arm (103-7356-03) W/Brgs ●	79	103-2916	1	Guard-Top
38	103-3504	2	Bearing-Spherical	80	109-0977	1	Pulley,Idler 5"
39	1-613098	1	Pulley-Idler	81	116-0962	1	Spring, Torsion
40	1-413113	2	Bushing-Idler	82	1-373034	2	Washer
41	3296-29	6	Nut-Nyloc 5/16-18	83	103-4051	1	Kit, Antiscalp Roller (44" And 48")
42	32128-20	3	Nut-Whizlock 5/16-18				
43	109-8854	1	Pin-Chute				
44	1-603001	2	Rod, Deck Support				
45	1-806332	2	Rollpin 1/4 X 1 1/2				
46	322-2	3	Screw-HH 5/16-18 X 5/8				

● Assembly also includes Washer and Screw

■ Requires installation of mulch kit for proper mulching. See your Exmark dealer for details.

▲ Apply Mobil HTS grease (P/N 103-5217 1.5 oz packet) (or a food-grade anti-seize). See operator s manual for locations.

# Engine Deck Assembly



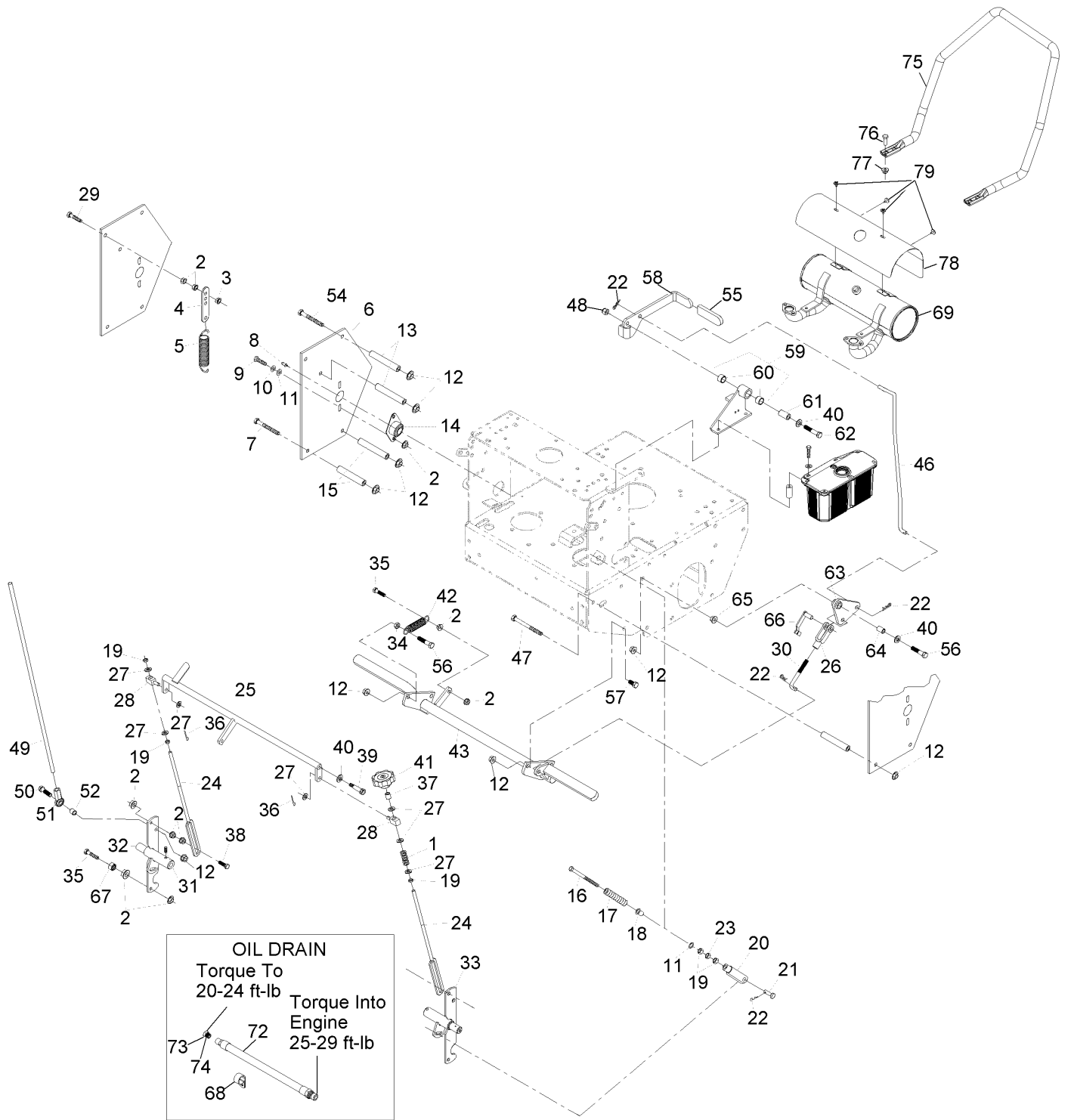
## Engine Deck Assembly (continued)

<i>Ref.</i>	<i>Part Number</i>	<i>Qty.</i>	<i>Description</i>	<i>Ref.</i>	<i>Part Number</i>	<i>Qty.</i>	<i>Description</i>
1	323-11	1	Screw-HH 3/8-16 X 2 1/4	47	103-8599	1	Spring, Extension
2	98-5975	26	Washer-Spring Disc 3/8	48	109-1296	1	Kit, Idler Arm (109-1208-03) W/Brgs
3	103-3506	1	Seal-Single Lip	49	1481	2	Zerk-45° 1/4-28
4	1-513034	2	Sleeve-Bearing	50	98-5961	1	Screw-HH 3/8-16 X 4 Gr8
5	302-19	1	Zerk-1/4-28 Str	51	323-9	2	Screw-HH 3/8-16 X 1 3/4
6	1-414143	1	Link Pivot W/Bearing	56	1-807272	2	Key-5Mm X 5Mm X 25Mm
7	322-6	1	Screw-HH 5/16-18 X 1 1/4	57	120-6474	4	Screw-Set, SQH 5/16-18 X 3/4 ■
8	321-6	1	Screw-HH 1/4-20 X 1	58	109-1057	1	Belt, Pump Drive
9	32128-33	4	Nut-Whizlock 1/4-20	59	1-413010	2	Sheave ASM ●
10	1-523498	1	Spring, Motion Control	60	103-6317	1	Belt, Blade Clutch
11	103-7398	1	Spring, Belt Tension	61	1-807259	1	Key-Machine 1/4 X 1/4 X 1
12	1-543007	1	Spacer	62	103-6308	1	Sheave W/Shaft ●
13	1-213069	1	Washer	63	1-413111	2	Bearing, Clutch Shaft ●
14	3296-29	3	Nut-Nyloc 5/16-18	64	32120-8	2	Ring-Retaining
15	3256-4	2	Washer-3/8 Std	65	1-413012	1	Spacer, Bearing Clutch
16	3290-357	17	Nut-Whizlock 3/8-16	66	1-523157	1	Washer
17	1-413282	1	Linkage, Lower	67	1-413049-01	1	Plate, Clutch Pivot
18	1-806003	1	Hairpin-Cotter	68	322-5	6	Screw-HH 5/16-18 X 1
19	126-0080	1	Asm, Deck (126-0079-01) W/Decals	69	1-413207	2	Pivot, Bearing
20	323-4	2	Screw-HH 3/8-16 X 3/4	70	1-414418	1	Clutch Arm W/Bearings
21	1-633068	1	Arm-Lift, Deck	71	1-413235	1	Washer, Spacer
22	32128-20	11	Nut-Whizlock 5/16-18	72	1-412138-03	1	Pivot Pin Weldment
23	1-303334	1	Washer-Spring Disc 5/16	73	322-3	3	Screw-HH 5/16-18 X 3/4
25	103-2916	1	Guard-Top	74	1-413062	1	Band, Brake Clutch
26	103-3505	1	Seal-Double Lip	75	323-8	2	Screw-HH 3/8-16 X 1 1/2
27	3256-3	2	Washer-5/16 Std	76	103-6310	1	Wld, Belt Guide
29	3296-39	5	Nut-Nyloc 3/8-16	77	1-412028	1	Sheave W/Drum (48") ●
30	323-6	10	Screw-HH 3/8-16 X 1	78	1-800521	1	Screw-HH 3/8-24 X 1 ■
31	1-412082-01	2	Mount, Wheel Motor 48" And 52"	79	1-413009-01	1	Plate, Guard
32	323-6	8	Screw-HH 3/8-16 X 1	80	103-2056	1	Shield-Drag
33	112-9049	2	Wheel Hub ASM	81	1-413510	2	Clip-Loom
33:1	1-633926	8	Stud-Wheel	82	1-413511	2	Hanger, Drag Shield
34	1-613263	2	Wheel And Tire ASM	83	1-543891	1	Battery Cover
34:1	1-613264	2	Tire-Turfmaster	83	126-0069-03	1	Battery, Cover
34:2	1-603715	2	Wheel-Rim	84	1-543792	2	Wingnut-Nyloc 1/4-20
35	242-50	8	Nut-Lug 1/2-20	86	126-0068-03	1	Stand
38	1-807264	1	Key-Machine 1/4 X 1/4 X 2 5/8	87	1-633651	2	Bolt-Holddown
39	103-6309	1	Asm, Drive Sheave ●	88	323-7	5	Screw-HH 3/8-16 X 1 1/4
40	1-603609	1	Bushing, Clutch Keeper	89	32120-10	2	Ring-Retaining
41	1-373034	2	Washer	90	1-807019	2	Key-Woodruff 1 X 1/4
42	1-603610	2	Washer-Spring Disc 7/16	91	103-3504	2	Bearing-Spherical
43	3212-10	1	Screw-HH 7/16-20 X 2 1/2 ■	92	106-7159	2	O-Ring
44	3256-24	2	Washer-3/8 Sae	93	103-5677	1	Spacer
45	109-4077	1	Pulley-Idler, Flat	94	116-2839	2	Nut-Lock
46	1-603496	1	Bushing-Idler	95	1-603044	1	Bushing
				96	321-8	1	Screw-HH 1/4-20 X 1 1/4

● Apply anti-seize compound in bore.

■ Use Pro-Lock, Nut Type (P/N 1-840022, .5ml tube) on threads.

# Engine Deck Assembly (cont.)





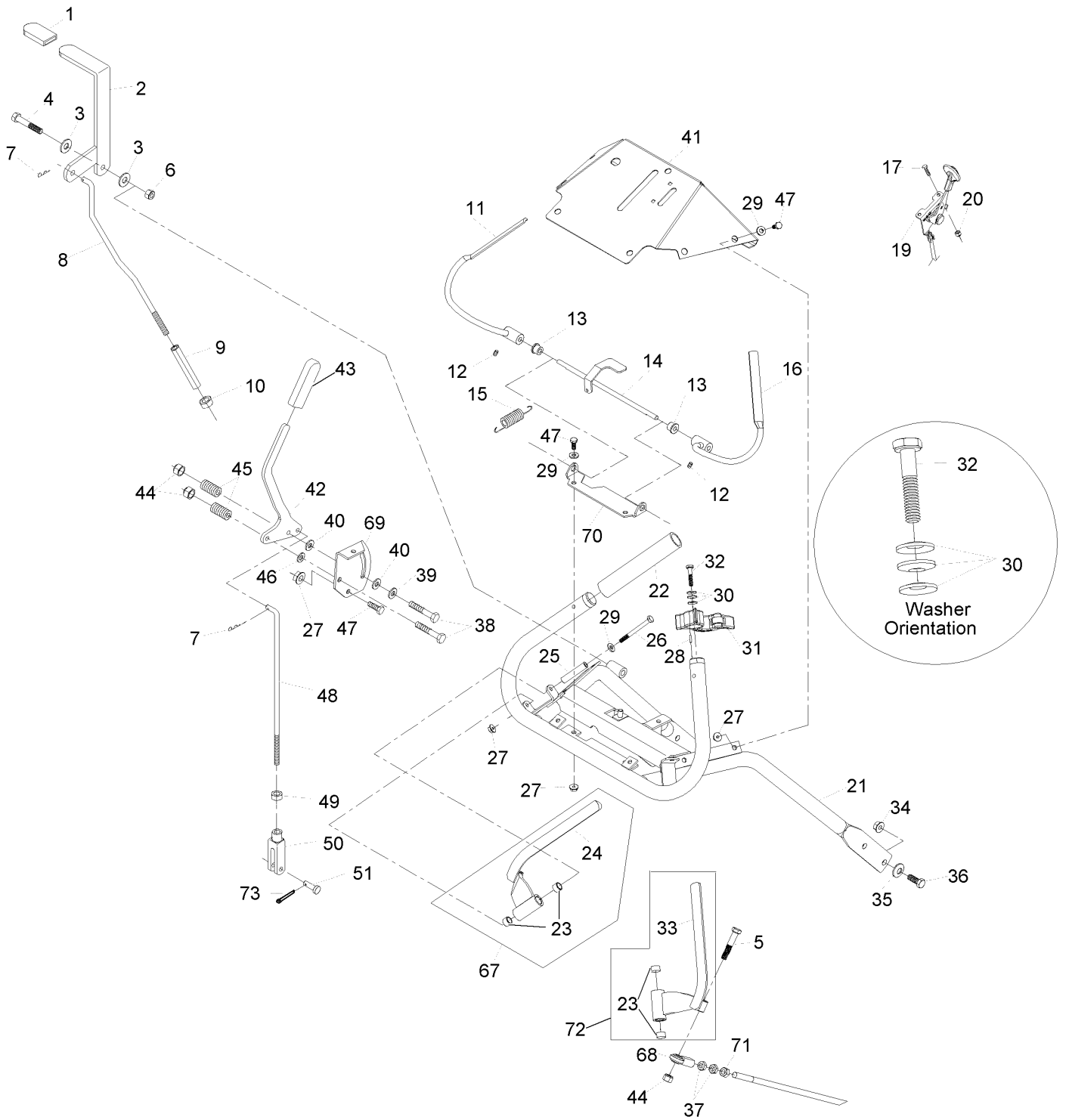
## Engine Deck Assembly (cont.) (continued)

<i>Ref.</i>	<i>Part Number</i>	<i>Qty.</i>	<i>Description</i>	<i>Ref.</i>	<i>Part Number</i>	<i>Qty.</i>	<i>Description</i>
1	1-323245	1	Spring-Compression	39	1-809056	2	Screw-Sh 5/16-18 X 1 3/8 ■
2	32128-20	20	Nut-Whizlock 5/16-18	40	3256-24	4	Washer-3/8 Sae
3	3296-29	2	Nut-Nyloc 5/16-18	41	103-3060	1	Knob-Tracking
4	1-613089	2	Tab-Spring, Extension	42	1-323161	1	Spring
5	1-603693	2	Spring	43	103-2004-03	1	Brake
6	110-4897-01	2	Shield-Control	46	1-413492	1	Linkage, Upper Brake
7	323-16	6	Screw-HH 3/8-16 X 4	47	323-16	1	Screw-HH 3/8-16 X 4
8	302-19	2	Zerk-1/4-28 Str	48	3296-39	1	Nut-Nyloc 3/8-16
9	322-3	4	Screw-HH 5/16-18 X 3/4	49	103-1148	2	Rod, Drive Lever
10	1-805005	4	Washer-Lock 5/16 Heavy	50	323-8	2	Screw-HH 3/8-16 X 1 1/2
11	3256-2	6	Washer-1/4 Std	51	103-1167	2	Joint-Ball End, .38X.38Fe LH
12	3290-357	15	Nut-Whizlock 3/8-16	52	103-1166	2	Spacer-Tube, Pump Link
13	1-323195-01	4	Spacer-Shield	54	323-23	1	Screw-HH 3/8-16 X 4-1/2
14	1-633102	2	Bearing-Flanged	55	1-303020	1	Grip-Lever
15	1-323197-01	4	Spacer-Shield	56	323-9	2	Screw-HH 3/8-16 X 1 3/4
16	1-603737	2	Bolt-Neutral Return	57	323-4	3	Screw-HH 3/8-16 X 3/4
17	103-0265	2	Spring, Neutral Return	58	103-3495	1	Lever, Park Brake (116-1725-03) W/Decals
18	1-603735	2	Bushing-Flanged	59	1-414504	1	Bracket ASM
19	3219-2	7	Nut-Hex 5/16-24	60	1-413347	2	Sleeve-Bushing
20	1-303105	2	Yoke-Adjustable	61	1-413344	1	Bushing-Pivot
21	1-808280	2	Pin-Clevis 5/16 X 1 49/64	62	323-10	1	Screw-HH 3/8-16 X 2
22	1-806003	5	Hairpin-Cotter	63	1-414508	1	Bellcrank ASM
23	3220-2	2	Nut-Jam 5/16-24	64	1-303548	1	Bushing-Plastic
24	1-413350	2	Link-Control, Speed	65	32128-21	1	Nut-3/8-16 Flanged Side Lock
25	1-412203-01	1	Crank-Control, Speed	66	103-2399	1	Pin-Clevis Spring 3/8
26	1-633131	1	Yoke-Linkage, Brake	67	3218-2	2	Nut-Jam 5/16-18
27	3256-23	7	Washer-5/16 Sae	68	1-643312	1	Clip-Loom
28	1-603676	2	Swivel-Adjustable, Short	69	116-3936	1	Muffler
29	1-800016	2	Bolt-HH 5/16-18 X 1 1/4 Tap	72	116-5052	1	Asm-Oil Drain Hose W/Plug ●
30	1-413489	1	Linkage-Lower	73	353-508	1	Plug-W/O-Ring
31	1-803022	2	Setscrew-5/16-18 X 5/8 ■	74	237-42	1	O-Ring
32	103-1190-01	1	Shaft-Control, LH	75	116-8575-03	1	Guard-Air Cleaner
33	103-4796-01	1	Shaft-Control, RH	76	323-6	4	Screw-HH 3/8-16 X 1
34	3218-3	1	Nut-Jam 3/8-16	77	104-8301	4	Nut-Nyloc 3/8-16 Flg
35	116-3515	3	Screw, HH Special 5/16-18 X 1.25	78	116-8654	1	Shield-Muffler
36	3272-5	2	Pin-Cotter 3/32 X 1/2	79	116-1103	4	Screw-HH, Thread Forming
37	1-603903	1	Spacer				
38	1-403180	2	Screw-HH 5/16-18 X 1 3/8 Special				

● Use a Teflon Pipe Sealant or equivalent on threads.

■ Use Pro-Lock, Nut Type (P/N 1-840022, .5ml tube) on threads.

# ECS Upper Handles and Controls Assembly

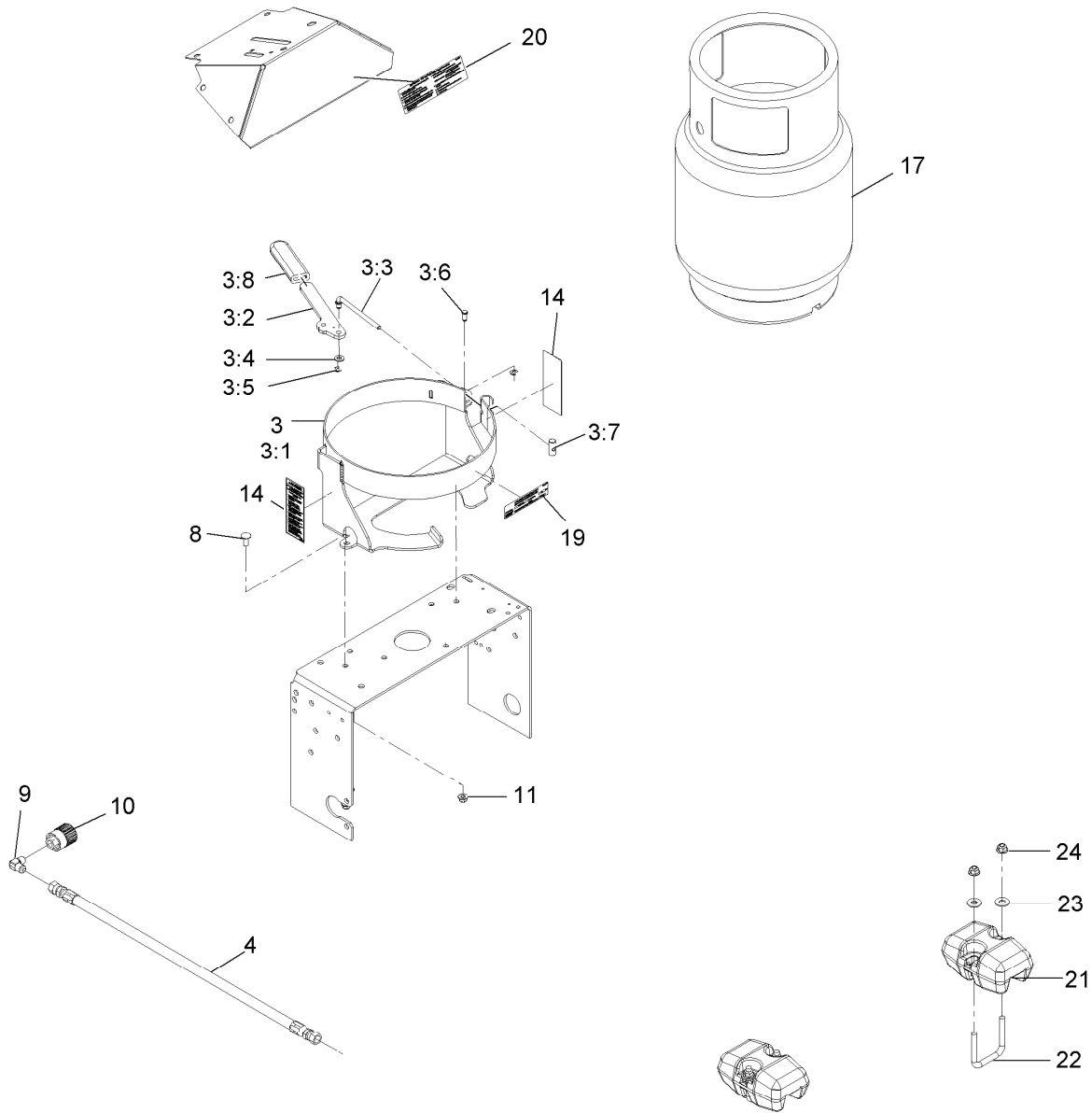


# ECS Upper Handles and Controls Assembly (continued)

<i>Ref.</i>	<i>Part Number</i>	<i>Qty.</i>	<i>Description</i>	<i>Ref.</i>	<i>Part Number</i>	<i>Qty.</i>	<i>Description</i>
1	1-303020	1	Grip-Lever	31	103-1371	1	Thumb Latch Asm RH
2	116-6334	1	Asm, Lever (116-1736-03) W/Grip	31	103-1372	1	Thumb Latch Asm LH
3	3256-4	2	Washer-3/8 Std	32	103-0235	2	Screw-HH 1/4-20 X 1 1/8 W/Nylon ●
4	323-11	1	Screw-HH 3/8-16 X 2 1/4	33	116-4082-03	1	Lever, Drive RH
5	322-9	2	Screw-HH 5/16-18 X 1 3/4	34	3290-357	4	Nut-Whizlock 3/8-16
6	3296-39	1	Nut-Nyloc 3/8-16	35	98-5975	4	Washer-Spring Disc 3/8
7	1-806003	2	Hairpin-Cotter	36	323-6	4	Screw-HH 3/8-16 X 1
8	103-1149	1	Linkage, Upper	37	3220-3	4	Nut-Jam 3/8-24
9	1-413279	1	Turnbuckle, 3/8-16 Ss	38	322-10	2	Screw-HH 5/16-18 X 2
10	3217-7	1	Nut-Hex 3/8-16	39	1-603716	1	Washer-Friction Disc
11	116-4079	1	Wld, Lever, Opc (LH) ■	40	1-323244	2	Washer-Friction
12	1-803322	2	Setscrew-5/16-24 X 5/16 ●	41	126-0088	1	Asm, Console (126-0049-03)W/ Decals
13	1-303365	2	Bushing-Nylon	42	116-8632	1	Lever-Shift W/Grip
14	103-0769-03	1	Rod Weldment, Opc	43	103-5994	1	Grip, Steering Handle
15	1-303363	1	Spring-Extension	44	3296-29	4	Nut-Nyloc 5/16-18
16	116-4080	1	Wld, Opc Lever (RH) ■	45	1-323245	2	Spring-Compression
17	1-807513	2	Bolt-Carriage #10-24 X 1/2	46	3256-23	1	Washer-5/16 Sae
19	116-2426	1	Cable, Throttle	47	321-3	8	Screw-HH 1/4-20 X 5/8
20	3296-2	3	Nut-Nyloc #10-24	48	1-413225	1	Rod, Speed Control
21	103-0770-03	1	Handle Weldment (1-412449)	49	3220-2	1	Nut-Jam 5/16-24
22	103-0815	2	Grip-Bar, Handle	50	1-303105	1	Yoke-Adjustable
23	1-413152	4	Bushing-Sleeve	51	1-808280	1	Pin-Clevis 5/16 X 1 49/64
24	116-4081-03	1	Lever, Drive LH	67	103-2513	1	Asm, Drive Lever RH
25	103-0027	2	Bushing-Lever, Drive	68	103-2463	2	Balljoint
26	321-14	2	Screw-HH 1/4-20 X 2 3/4	69	103-0503	1	Bracket, Shifter Slide
27	32128-33	10	Nut-Whizlock 1/4-20	70	103-0489-03	1	Bracket, Opc Axle
28	103-0464	2	Pin-Spring 1/8 X 1/2	71	3219-3	2	Nut-Hex 3/8-24
29	3256-22	10	Washer-1/4 Sae	72	103-2514	1	Asm, Drive Lever LH
30	1-303435	6	Washer-Spring Disc 1/4	73	3272-5	1	Pin-Cotter 3/32 X 1/2

● Use Pro-Lock, Nut Type (P/N 1-840022, .5ml tube) on threads.

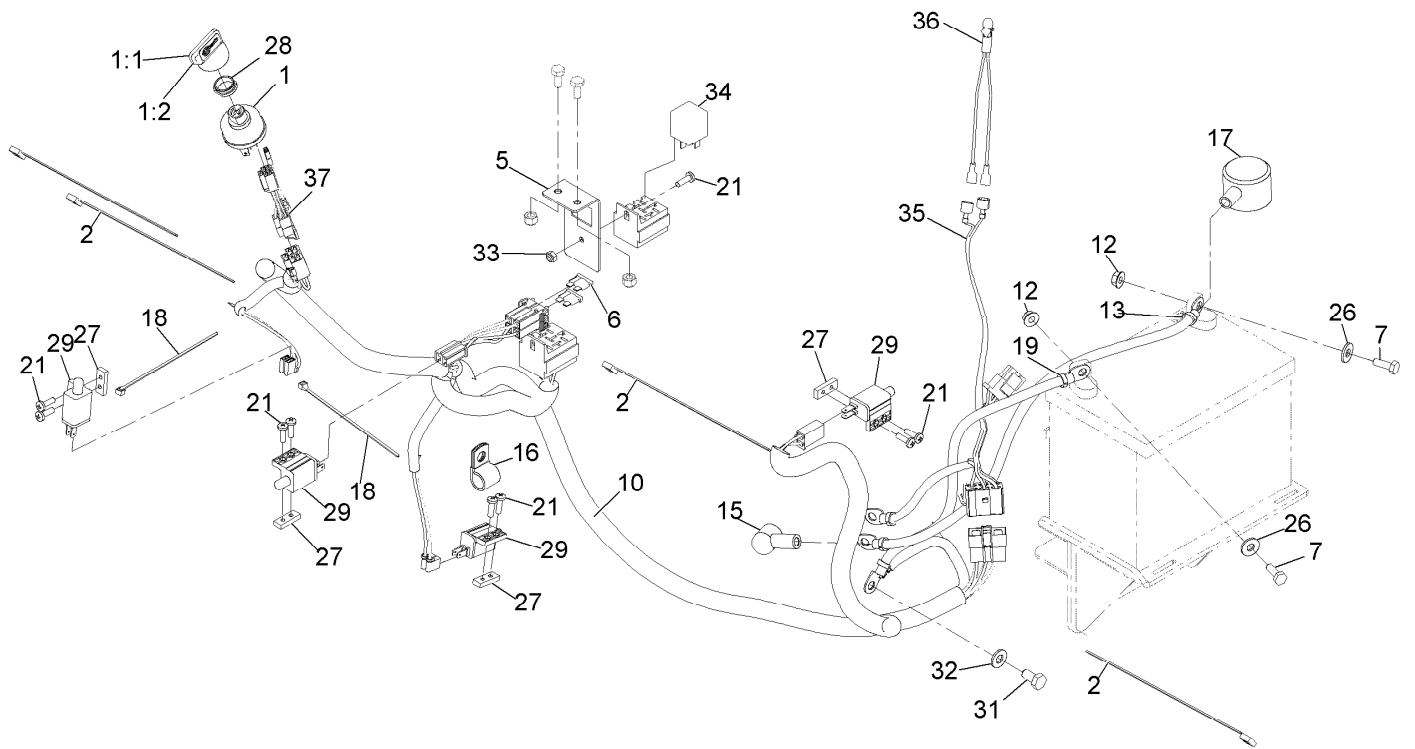
■ Use Pro-Lock retaining type, Part no. 1-840023 (.5cc tube) on inside of bore of OPC hub.



## Fuel Assembly

Ref.	Part Number	Qty.	Description	Ref.	Part Number	Qty.	Description
3	126-0365	1	Bracket, LPG Tank Vertical	11	104-8300	2	Nut-Nyloc 5/16-18 Flg
3:1	126-0320-03	1	Wld-Tank Mount	14	109-9875	2	Decal-LPG Warning
3:2	126-0321	1	Arm-Lever	17	109-9675	1	Tank, LPG 20 Lb Vertical
3:3	126-0322	1	Linkage-Latch	19	109-9870	1	Decal-LPG Tank Spec
3:4	3256-23	1	Washer-5/16 Sae	20	109-9906	1	Decal-Tank Replacement
3:5	116-0332	2	E-Ring-5/16 Heavy Duty	21	103-2455-01	2	Weight, Caster Support
3:6	109-6887	1	Pin-Clevis 5/16 X 5/8	22	103-2469	2	U-Bolt
3:7	126-0323	1	Trunnion-Latch	23	3256-4	4	Washer-3/8 Std
3:8	1-633268	1	Grip-Lever	24	104-8301	4	Nut-Nyloc 3/8-16 Flg
4	126-0074	1	Asm, LPG Fuel Hose	99	116-1457	1	Washer, Rubber LPG Connector ●
8	3230-1	2	Bolt-Carriage 5/16-18 X 3/4	99	116-1456	1	O-Ring, LPG Connector ●
9	116-1116	1	Elbow-90°				
10	116-1073	1	Connector-LPG Tank, LH Thread				

● Not illustrated

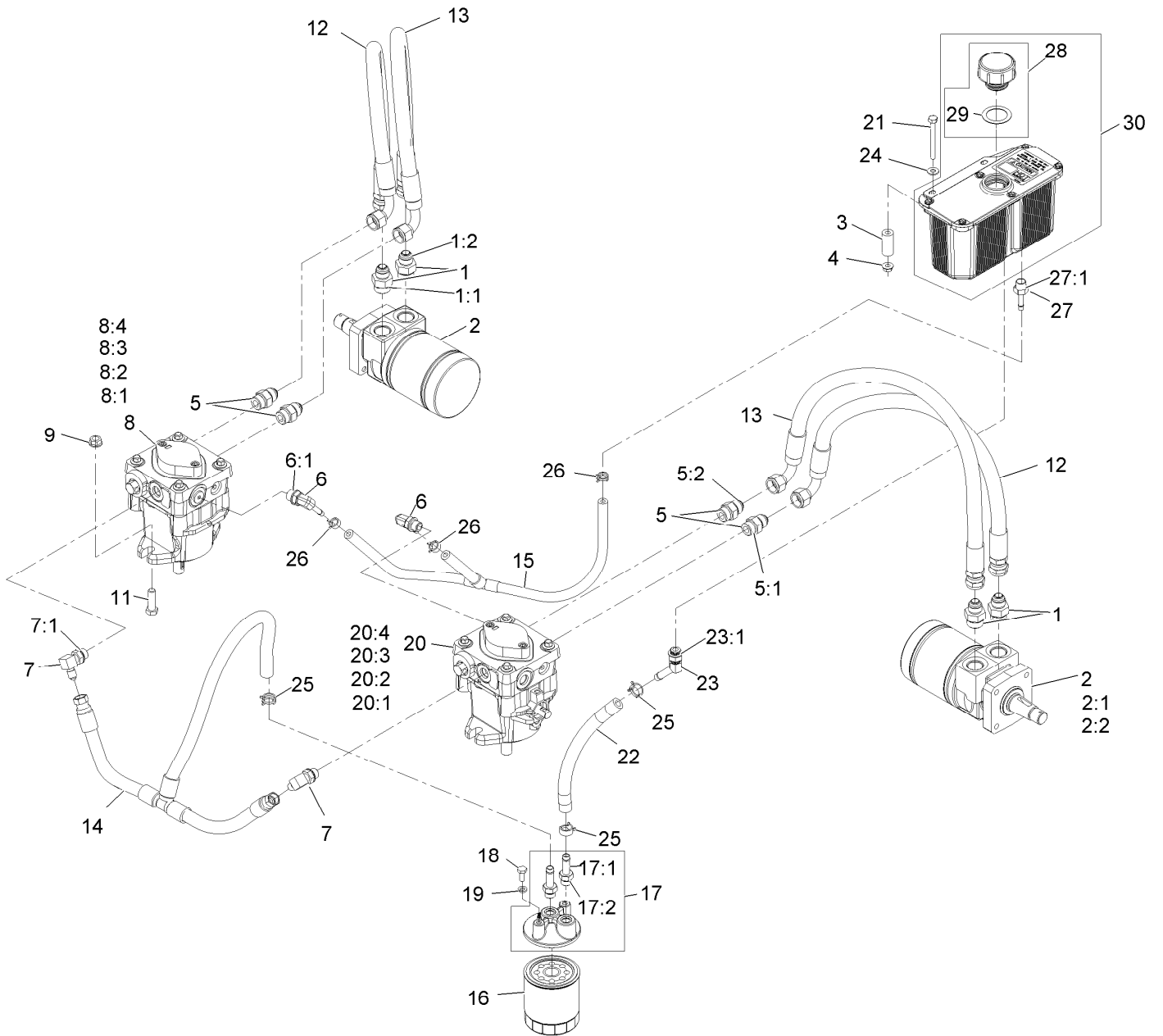


## Electrical Assembly

Ref.	Part Number	Qty.	Description	Ref.	Part Number	Qty.	Description
1	103-0206	1	Switch-Ignition W/Keys	19	1-413540	1	Cable-Battery, Negative
1:1	1-603511	1	Key-Ignition	21	3290-500	9	Screw-PPH #10-24 X 5/8
1:2	103-2106	1	Key-Exmark Logo	26	3256-2	2	Washer-1/4 Std
2	1-303335	4	Tie-Cable 7 15/16 (Large)	27	1-633181	4	Plate-Tapped
5	116-2738-01	1	Bracket, Fuse	28	103-0498	1	Nut-Ignition
6	1-816001	2	Fuse-Blade Type, 20 Amp	29	1-513051	4	Switch-N.O.
7	321-4	5	Screw-HH 1/4-20 X 3/4	31	33114-016	1	Screw-HH M8-1.25 X 16Mm
10	116-8375	1	Harness, Wiring ●	32	33094-00	1	Washer
12	32128-33	2	Nut-Whizlock 1/4-20	33	3296-2	1	Nut-Nyloc #10-24
13	109-7628	1	Cable, Battery +	34	1-643275	1	Relay-12Vdc 40 Amp
15	1-543393	1	Insulator-Solenoid	35	116-9205	1	Harness-Indicator Light ●
16	1-603727	1	Clip-Loom	36	1-643267	1	Indicator-Red Led
17	109-2407	1	Insulator-Battery	37	126-0310	1	Harness-LP Pigtail ●
18	1-303287	2	Tie-Cable 5 1/2 (Small)				

● Use dielectric grease on all unsealed connectors and terminals only. Do not apply in sealed connectors.

# Hydraulic Assembly



## Hydraulic Assembly (continued)

<i>Ref.</i>	<i>Part Number</i>	<i>Qty.</i>	<i>Description</i>	<i>Ref.</i>	<i>Part Number</i>	<i>Qty.</i>	<i>Description</i>
1	1-603991	4	Adapter-Straight	15	116-0918	1	Case Drain Hose ASM
1:1	1-603919	1	O-Ring-Sae #10	16	109-4180	1	Element, Oil Filter
1:2	1-603992	1	O-Ring-37 Flare #8	16	1-523541	1	Element, Oil Filter (Winter) ●
2	1-603718	2	HYD Motor ASM	17	103-2889	1	Filter Head ASM
2:1	1-000138	1	Bearing And Seal Kit	17:1	103-1912	2	Adapter-Straight
2:2	1-000119	1	Seal Kit	17:2	1-603921	1	O-Ring-Sae #6
3	103-2191	2	Spacer	18	321-3	2	Screw-HH 1/4-20 X 5/8
4	32128-33	2	Nut-Whizlock 1/4-20	19	1-805004	2	Washer-Lock 1/4 Heavy
5	1-603990	4	Adapter-Straight	20	116-0943	1	RH HYD Pump ASM
5:1	1-603920	1	O-Ring-Sae #8	20:1	103-2664	1	Input Shaft Kit
5:2	1-603992	1	O-Ring-37 Flare #8	20:2	94-6922	1	Bearing-Thrust
6	103-1799	2	Elbow-90 DEG	20:3	103-2666	1	Cylinder Block Kit
6:1	1-603921	1	O-Ring-Sae #6	20:4	105-6184	1	Seal Overhaul Kit
7	103-1802	2	Fitting-HYD, 90 DEG	21	321-15	2	Screw-HH
7:1	1-603921	1	O-Ring-Sae #6	22	103-2959	1	Hose-Charge
8	116-0942	1	LH HYD Pump ASM	23	103-1807	1	Fitting-Barbed, 45 DEG
8:1	103-2664	1	Input Shaft Kit	23:1	1-603921	1	O-Ring-Sae #6
8:2	94-6922	1	Bearing-Thrust	24	3256-22	2	Washer-1/4 Sae
8:3	103-2666	1	Cylinder Block Kit	25	103-1988	3	Clamp-Hose 11/16
8:4	105-6184	1	Seal Overhaul Kit	26	103-1716	3	Clamp-Hose 17/32
9	32128-43	4	Nut-Whizlock 3/8-16	27	103-1801	1	Adapter-Straight
11	323-7	4	Screw-HH 3/8-16 X 1 1/4	27:1	1-603921	1	O-Ring-Sae #6
12	119-7827	2	HYD Hose ASM	28	103-7615	1	Asm, Cap W/Gasket
13	119-7826	2	HYD Hose ASM	29	103-1949	1	Gasket-Cap
14	116-2123	1	Charge Hose ASM	30	103-1947	1	HYD Reservoir ASM

● Use only for operation below 32°F (0°C).

# Decals

**1** ECS ENHANCED CONTROL SYSTEM logo (left)

**2** ECS ENHANCED CONTROL SYSTEM logo (right)

**3** Lubricate Blade Bolt threads with copper based anti-seize or grease and torque to 55-60 lbs (7.6-81 N-m)

**4** WARNING: DO NOT OPERATE WITHOUT DISCHARGE DEFLECTOR, ENTIRE GRASS COLLECTION SYSTEM, OR MULCH KIT IN PLACE. DO NOT REMOVE GRASS CATCHER UNTIL BLADES HAVE STOPPED.

**5** TENSION INDICATOR: CHECK HOURLY FOR THE FIRST 4 HRS. CHECK DAILY THEREAFTER. ALIGN BOLT WITH TENSION INDICATOR 1/8"

**6** PARK BRAKE and RELEASE indicators

**7** ONLY USE EXMARK HYDRO OIL. FILL TO TOP OF BAFFLE. CAUTION HOT SURFACE

**8** eXmark logo

**9** WARNING: OPEN BELT DRIVE! STOP ENGINE BEFORE REACHING UNDERNEATH.

**10** TURF TRACER logo

**11** TRACKING LEVER with directional arrows

**12** WARNING: DISENGAGE BLADE CLUTCH, SHUT OFF ENGINE AND REMOVE KEY BEFORE MAKING ADJUSTMENTS, SERVICING OR CLEANING DECK. CUTTING HEIGHT ADJUSTMENT table with deck support pin options.

**13** ANTI-SCALP ROLLER ADJUSTMENT: FOR NORMAL OPERATING CONDITIONS, PLACE ROLLERS IN POSITIONS SHOWN FOR 3 1/4" (89 mm) GROUND CLEARANCE. CUTTING HEIGHT table with roller positions.

**14** ULTRACUT 48 SERIES 3 logo

**15** CAUTION HOT SURFACE

**16** TRACKING LEVER with directional arrows

**17** WARNING: Use Only Exmark Riding Attachments. Use of Other Riding Attachments May Create a Hazardous Condition Resulting in Injury.

**18** CALIFORNIA SPARK ARRESTER WARNING: Operation of this engine and deck creates the risk of fire around dry vegetation. A spark arrester may be required. The operator should consult local fire agencies for fire code regulations relating to fire prevention requirements.

**19** DRIVE WHEEL RELEASE: Use 5/8 wrench. Do not over tighten.

**20** DANGER: COVER IS MISSING. DO NOT OPERATE WITH THIS UNIT WHICH COVER IS NOT IN PLACE.

**21** STATIONARY IDLERS: 413093 48" and 413308 52". FRONT OF MOWER.

**22** DANGER: LPG FUEL IS EXTREMELY FLAMMABLE AND EXPLOSIVE. DO NOT OPERATE WITHOUT PROPERLY SECURED LPG TANK. Do NOT touch or rub the tank to remove static electricity. Check tank area and ensure fuel tank cover is properly secured. Do NOT touch or rub the tank to remove static electricity. Do NOT touch or rub the tank to remove static electricity.

**23** DANGER: LPG FUEL IS EXTREMELY FLAMMABLE AND EXPLOSIVE. DO NOT OPERATE WITHOUT PROPERLY SECURED LPG TANK. Do NOT touch or rub the tank to remove static electricity. Check tank area and ensure fuel tank cover is properly secured. Do NOT touch or rub the tank to remove static electricity. Do NOT touch or rub the tank to remove static electricity.

**24** DANGER: LPG FUEL IS EXTREMELY FLAMMABLE AND EXPLOSIVE. DO NOT OPERATE WITHOUT PROPERLY SECURED LPG TANK. Do NOT touch or rub the tank to remove static electricity. Check tank area and ensure fuel tank cover is properly secured. Do NOT touch or rub the tank to remove static electricity. Do NOT touch or rub the tank to remove static electricity.

**25** IMPORTANT: LPG Fuel Tank Replacement Procedure

**26** DANGER: LPG FUEL IS EXTREMELY FLAMMABLE AND EXPLOSIVE. DO NOT OPERATE WITHOUT PROPERLY SECURED LPG TANK. Do NOT touch or rub the tank to remove static electricity. Check tank area and ensure fuel tank cover is properly secured. Do NOT touch or rub the tank to remove static electricity. Do NOT touch or rub the tank to remove static electricity.

**27** DANGER: KEEP HANDS AND FEET AWAY

**28** S-SERIES logo

**29** IMPORTANT: LPG Fuel Tank Replacement Procedure

**30** DANGER: LPG FUEL IS EXTREMELY FLAMMABLE AND EXPLOSIVE. DO NOT OPERATE WITHOUT PROPERLY SECURED LPG TANK. Do NOT touch or rub the tank to remove static electricity. Check tank area and ensure fuel tank cover is properly secured. Do NOT touch or rub the tank to remove static electricity. Do NOT touch or rub the tank to remove static electricity.

**31** LPG TANK SPECIFICATION: USE EXMARK APPROVED TANK ONLY. SECURING: METALLIC. CAPACITY: 22 LB. DISCONNECT COUPLING: UNLOCKED/UNLEADED. WITHIN 60" VAPOR.



## Decals (continued)

<i>Ref.</i>	<i>Part Number</i>	<i>Qty.</i>	<i>Description</i>	<i>Ref.</i>	<i>Part Number</i>	<i>Qty.</i>	<i>Description</i>
1	103-2242	1	Decal, Ecs Instruction LH	17	1-553049	1	Decal, Mower Deck
2	103-2243	1	Decal, Ecs Instruction RH	19	116-4697	1	Decal-Ultracut 48 Series 3
4	109-3148	1	Decal, Bolt Torque	21	1-403143	1	Decal, Sulky Warning
5	1-303508	1	Decal-Warning, Discharge	22	117-2718	1	Decal-Arrester, Spark
6	1-413421	1	Decal, Indicator	23	103-4935	1	Decal, Drive Wheel Release
7	103-2103	1	Decal-Brake, Park	24	98-5954	3	Decal-Cover, Missing
9	116-0404	1	Decal-Hydraulic Tank	26	1-413327	1	Decal, Belt Routing (48")
10	103-3013	1	Decal, Turf Tracer	27	1-403005	2	Decal-Danger
11	103-1798	1	Decal, Throttle	28	116-3884	2	Decal-S-Series
12	103-2882	1	Decal, Exmark Logo	29	109-9906	1	Decal-Tank Replacement
13	1-303517	1	Decal,Belt Drive	30	109-9875	1	Decal-LPG Warning
14	126-0053	1	Decal, Ecs Console	31	109-9870	1	Decal-LPG Tank Spec
15	103-2076	2	Decal-Caution	99	103-2461	1	Decal Kit(Standard) ●
16	1-413214	1	Decal, Tracking				

● Not illustrated

**Notes:**

# EXMARK® MAINTENANCE

## MAXIMIZE THE PERFORMANCE OF YOUR EXMARK.

### **4-CYCLE PREMIUM ENGINE OIL**

Part No. 116-3373

Both SAE 30 and SAE 10W-30 in one bottle.

Contains increased levels of zinc and phosphorus for better lubricity.

No Viscosity Index Improvers that tend to shear down in high heat.

Synthetic formulation.

Gas & Diesel compatible.

Anti-corrosion additives.

API 'SL' and JASO rated with wet clutch compatibility for other machines.

### **PREMIUM HYDRO OIL**

Part No. 109-9828

Commercial quality for tough, high-heat conditions.

Designed specifically for zero-turn mower hydraulic systems.

Superior shear resistance under heavy loads.



Available from your local Exmark dealer. Find your closest dealer at [exmark.com](http://exmark.com)

## EXMARK ACCESSORIES AND OPTIONS\*

### MID-MOUNT RIDING ACCESSORIES AND OPTIONS

CUSTOM RIDE SEAT SUSPENSION SYSTEM	OPERATOR CONTROLLED DISCHARGE
FULL SUSPENSION SEAT	SUN SHADE
DECK LIFT ASSIST KIT	TRASH CONTAINER
HITCH KIT	TURF STRIPER
LIGHT KIT	ULTRA VAC COLLECTION SYSTEM
12V POWER PORT	ULTRA VAC QUICK DISPOSAL SYSTEM
MICRO-MULCH SYSTEM	

### OUT-FRONT RIDING ACCESSORIES AND OPTIONS

CUSTOM RIDE SEAT SUSPENSION SYSTEM	SNOW BLADE
DUAL-TAIL WHEEL	SNOWBLOWER
FLOOR PAN EXTENDER	SUN SHADE
HITCH KIT	TRASH CONTAINER
LIGHT KIT	ULTRA VAC COLLECTION SYSTEM
MICRO-MULCH SYSTEM	ULTRA VAC QUICK DISPOSAL SYSTEM
ROLL OVER PROTECTION SYSTEM (ROPS)	WEATHER CAB

### WALK-BEHIND ACCESSORIES AND OPTIONS

GRASS CATCHER	TURF STRIPER
MICRO-MULCH SYSTEM	STANDON

\*Some accessories and options not available for some models.

Place Model No. and Serial No.  
Label Here (Included in the Literature  
Pack) or Fill in Below

Model No. \_\_\_\_\_

Serial No. \_\_\_\_\_

Date Purchased \_\_\_\_\_

Engine Model No. and Spec. No. \_\_\_\_\_

Engine Serial No. (E/No) \_\_\_\_\_

© 2013 Exmark Mfg. Co., Inc.  
Industrial Park Box 808  
Beatrice, NE 68310  
All Rights Reserved

Part No. 4501-605 Rev. A  
(402) 223-6300  
Fax (402) 223-5489  
Printed in the USA.

