

OCR10-M53100EN

P R E F A C E

1. This Parts Catalog carries all parts incorporated in YANMAR Model 3TNE84MT - EG1 engine manufactured since May, 2000.
2. Each illustration corresponds to the parts list on the following page.
3. When ordering parts, clearly write down the engine model and serial number, as well as the name and number of each part in your order sheet. This will help insure reliable delivery of the parts you have ordered.

Directions for the Parts Catalog.

1. This Parts Catalog shows both standard and optional parts.
2. Parts may change without prior notice.
3. The following is an example of the Parts Catalog format.

REF.	LEV.	PARTS NO.	DESCRIPTION	Q'TY						I	R
				(A)	(B)	(C)	(D)	(E)	(F)		
1	1	729595-51390	FUEL INJECTION PUMP	1	1	1	1	1			1
1-1	1	729595-51391	FUEL INJECTION PUMP	1	1	1	1	1		N	1
		(A=E00185) (B=E00200)									
3	2	26022-060162	SCREW M 6X 16	9	9	9	9	9			
3-1	2	26022-060162	SCREW M 6X 16	4	4	4	4	4		K	
		(A=E00156) (B=E00156) (C=E00156) (D=E00156) (E=E00156)									
4	2	129470-51040	CAMSHAFT	1	1	1	1	1			
5	2	122710-51050	BEARING, ROLLER	2	2	2	2	2			
6	2	129470-51060	RETAINER	1	1	1	1	1			

Remarks
(1) BOOST COMPEMSATOR TYPE. OPTIONAL PART, TO E00155,(4JH-DT, 4JH-DTZ

① Ref. No.

The Ref. No. listed may not be in accordance with the illustration Ref. No.

(Ex.) Illustration No.

List Ref No.

1

1

(Before change)

1-1

(After change)

For interchangeable symbols N, R and K, illustrations for new parts may be abbreviated.

② Lev. (Level)

Level indication

The numbers below indicate the level of relativity towards the main part.

1 ----- Main parts (Assembly parts)

2 ----- Sub component included in " 1 ".

3 ----- Sub component included in " 2 ".

Note) Parts that are not for sale are partially illustrated but not listed.

③ Interchangeability Symbol

When a part change takes place, one of the following interchangeability symbols is indicated beside the part.

Symbol	Interchangeability	Contents note
N	Old $\begin{matrix} \leftarrow \text{Yes} \\ \text{No} \rightarrow \end{matrix}$ New	New Part is interchangeable for Old Part but Old Part is not interchangeable for New Part.
Q	Old $\begin{matrix} \leftarrow \text{No} \\ \text{Yes} \rightarrow \end{matrix}$ New	New Part is not interchangeable for Old Part but Old Part is interchangeable for New Part.
R	Old $\begin{matrix} \leftarrow \text{Yes} \\ \text{Yes} \rightarrow \end{matrix}$ New	New/ Old Parts are both interchangeable.
S	Old $\begin{matrix} \leftarrow \text{No} \\ \text{No} \rightarrow \end{matrix}$ New	New/ Old Parts are both not interchangeable.
W		Part newly added.
Z		Part discontinued.
F		Not interchangeable by a single part but interchangeable together with related parts.
K		Changes only for used parts quantities.

④ Effective Machine No.

When a part changes, the effective Machine No. will be indicated in the (A)-(F) column.

Product Symbol	Product No.	Product Symbol	Product No.
C	Clutch No. Compressor No.	F	Machine No. (Agricultural Equip.)
D	Drive No.	M	Machine No.
E	Engine No.		

Note 1) A date may follow the symbol. (Ex.) 1996.01

Note 2) "XXXXX" and "ZZZZZ" are for parts that could not be predicted or for engine models that could not be identified.

Note 3) (A=E00185) is the E (Engine Serial Number) for the column (A) model (in this case 4JH-DT) after the parts design change.

⑤ Remarks

Figures or alphabets (symbols) are entered in the remarks column.

The comments (remarks) on parts that are indicated at the bottom of the illustration are the same symbols as those stated above.

Contents

Fig. No. Fig. Name

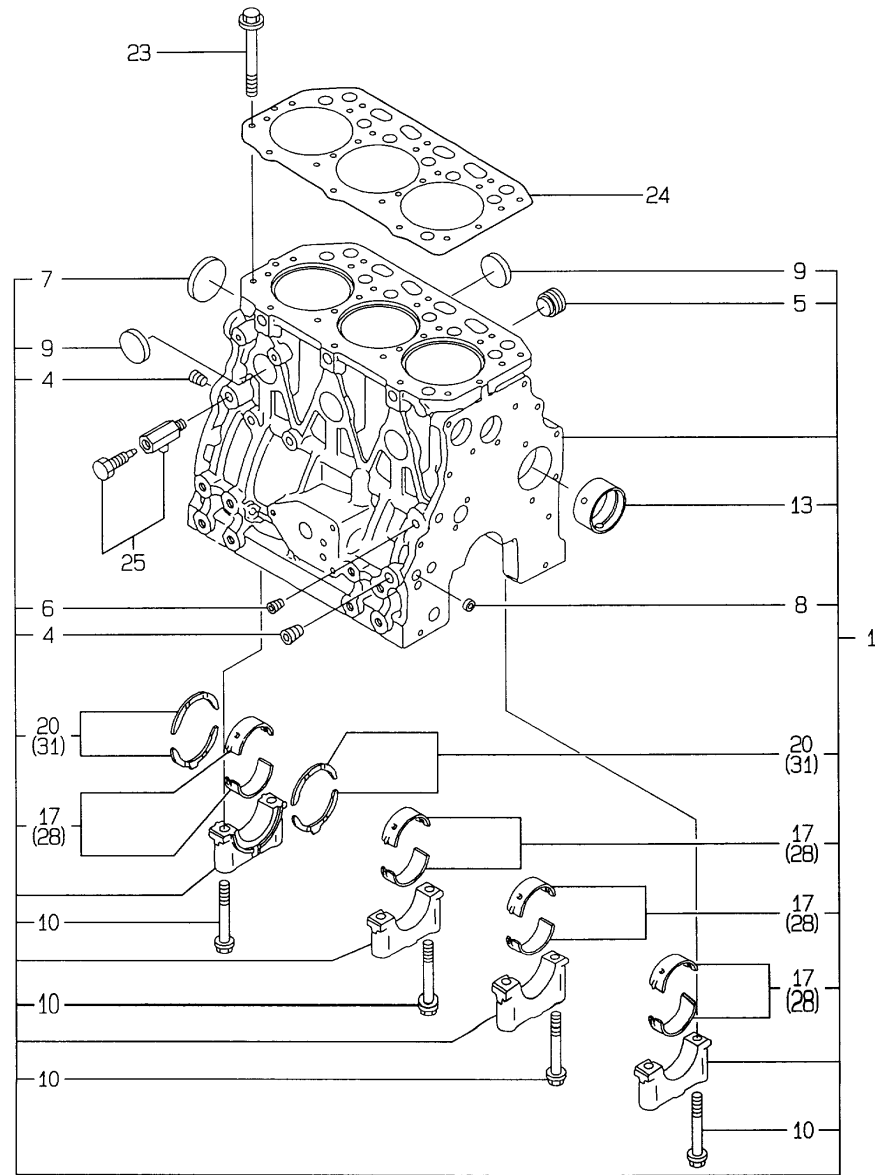
3TNE84MC-EG1

1. CYLINDER BLOCK
2. GEAR HOUSING
3. FLYWHEEL HOUSING & OIL SUMP
4. CYLINDER HEAD & BONNET
5. SUCTION MANIFOLD
6. CAMSHAFT & DRIVING GEAR
7. TURBOCHARGER
8. CRANKSHAFT & PISTON
9. LUB.OIL SYSTEM
10. LUB.OIL LINE
11. COOLING SEA WATER SYSTEM
12. COOLING FRESH WATER SYSTEM
13. COOLING FRESH WATER COOLER
14. FUEL INJECTION PUMP
15. GOVERNOR
16. FUEL INJECTION VALVE
17. FUEL LINE
18. STARTING MOTOR
19. GENERATOR
20. GASKET SET

Fig. No. Fig. Name

Fig.1. CYLINDER BLOCK

1. CYLINDER BLOCK



(A)=3TNE84MT-EG1

(B)=

(C)=

(D)=

(E)=

(F)=

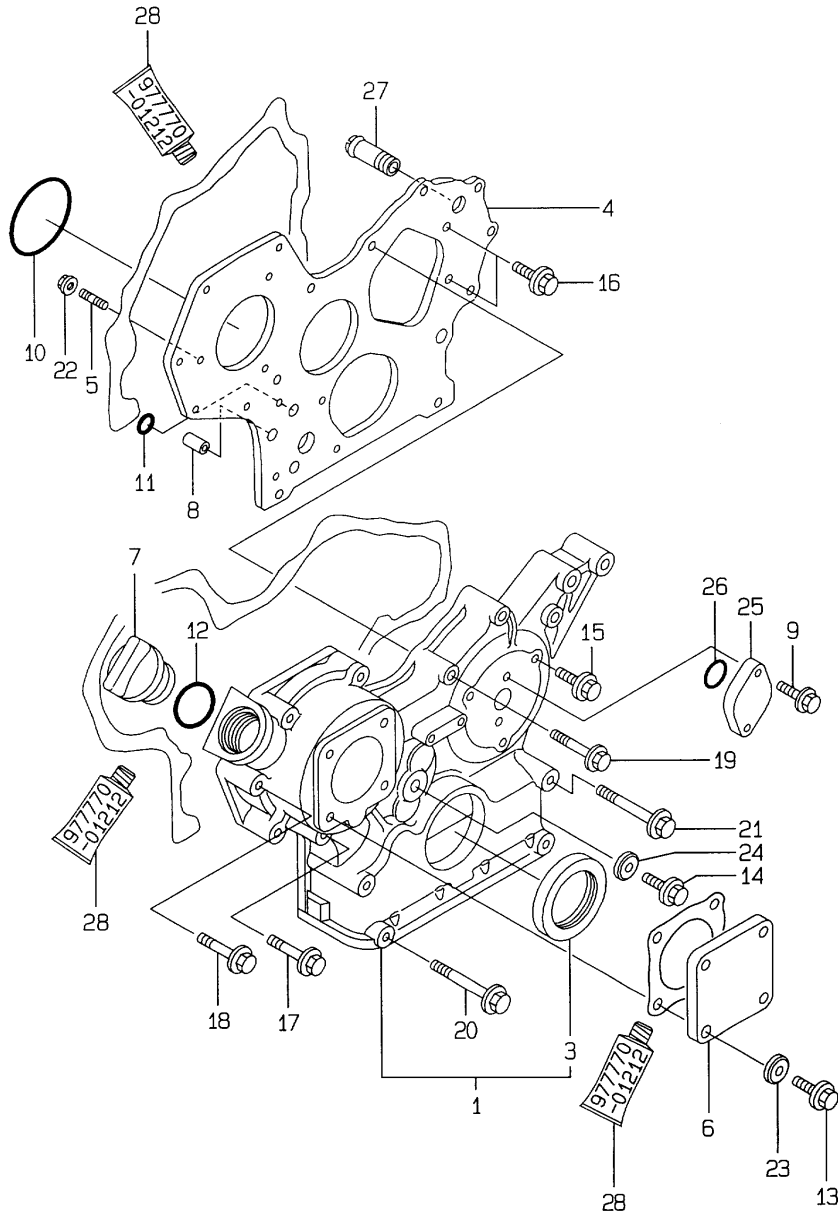
No.	Lev.	Parts No.	Description	Q'ty						I	R
				(A)	(B)	(C)	(D)	(E)	(F)		
1	1	729270-01560	BLOCK ASSY, CYLINDER	1							
4	2	124160-01910	PLUG, PT1/4	3							
5	2	171051-01921	PLUG, NPTF1	1							
6	2	23876-010000	PLUG, R01	1							
7	2	129001-01250	PLUG, 50	1							
8	2	27241-120000	PLUG, 12	2							
9	2	27241-300000	PLUG 30	6							
10	2	129150-02020	BOLT, METAL CAP	8							
13	2	129795-02411	BUSH, CAMSHAFT	1							
17	2	129001-02930	BEARING, MAIN	4							3
20	2	129150-02930	BEARING, THRUST	2							
23	1	129150-01200	BOLT, HEAD	14							
24	1	129002-01331	GASKET, HEAD	1							
25	1	119620-49290	COCK ASSY, 1/4	1							
28	1	129150-02870	BEARING, 0.25 US	4							1
31	1	129150-02940	BEARING, THRUST 0.25	1							2

Remarks

- (1) UNDER-SIZED(U.S=0.25) PART.
- (2) OVER-SIZED(O.S=0.25) PART.
- (3) REPAIR PART.

Fig.2. GEAR HOUSING

2.GEAR HOUSING



(A)=3TNE84MT-EG1

(B)=

(C)=

(D)=

(E)=

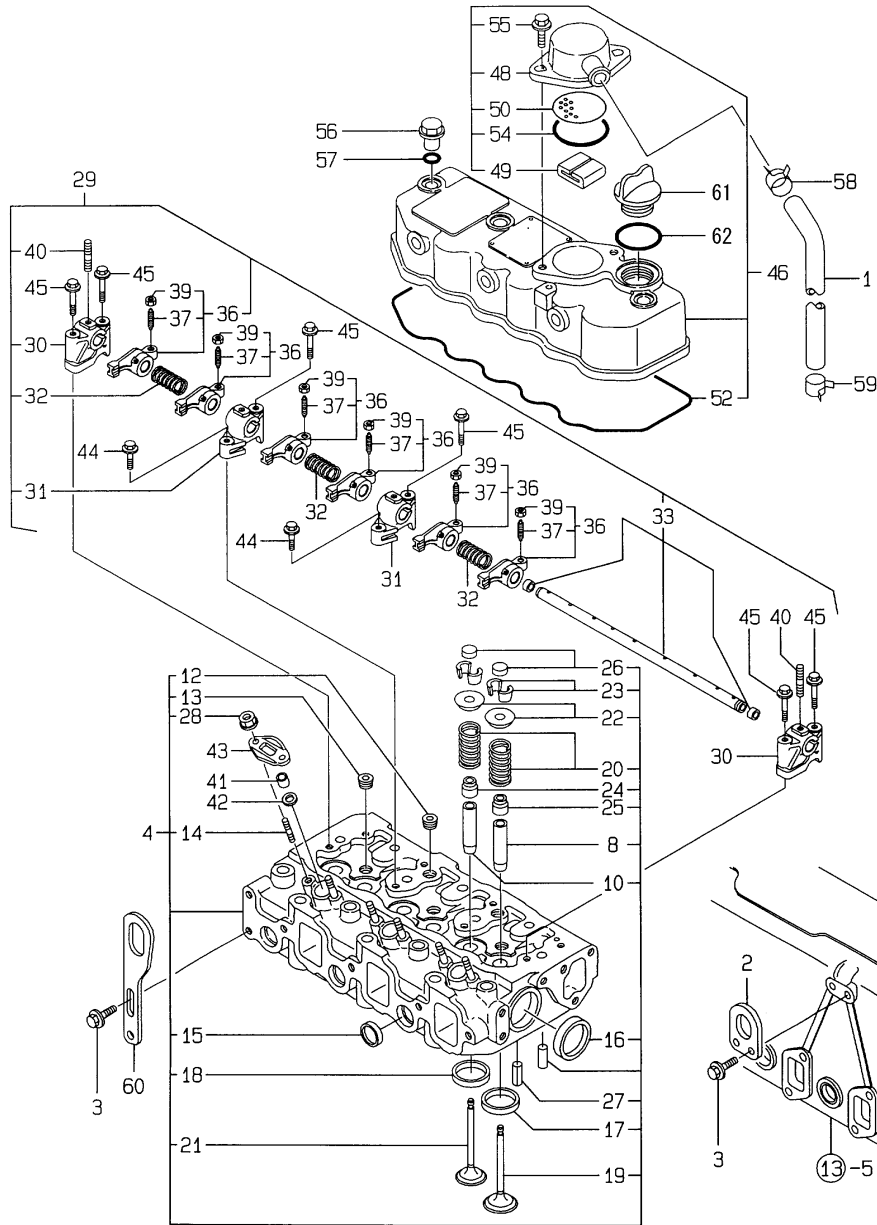
(F)=

No.	Lev.	Parts No.	Description	Q'ty						I	R
				(A)	(B)	(C)	(D)	(E)	(F)		
1	1	719810-01500	CASE ASSY, GEAR	1							
3	2	129795-01800	SEAL, OIL	1							
4	1	129103-01530	FLANGE, GEAR CASE	1							
5	1	121450-01560	STUD, M8X22	3							
6	1	124240-01871	COVER	1							
7	1	124160-01751	COVER, FILLER	1							
8	1	129795-01950	PIPE, KNOCK L=18	2							
9	1	26106-060162	BOLT, M6X 16 PLATED	2							
10	1	121850-51960	O-RING	1							
11	1	24311-000160	O-RING, 1AP16.0	2							
12	1	24311-000320	O-RING, 1AP32.0	1							
13	1	26106-080122	BOLT, M8X 12 PLATED	4							
14	1	26106-080162	BOLT, M8X 16 PLATED	1							
15	1	26106-080162	BOLT, M8X 16 PLATED	3							
16	1	26106-080202	BOLT, M8X 20 PLATED	2							
17	1	26106-080452	BOLT, M8X 45 PLATED	4							
18	1	26106-080502	BOLT, M8X 50 PLATED	2							
19	1	26106-080552	BOLT, M8X 55 PLATED	3							
20	1	26106-080852	BOLT, M8X 85 PLATED	2							
21	1	26106-080902	BOLT, M8X 90 PLATED	2							
22	1	26366-080002	NUT, M8	3							
23	1	22190-080002	WASHER, SEAL 6	4							
24	1	22190-080002	WASHER, SEAL 6	1							
25	1	121023-01550	COVER	1							
26	1	24341-000240	O-RING, 1AS24.0	1							
27	1	129122-44480	JOINT	1							
28	1	977770-01212	GASKET, LIQUID	1							1

Remarks
(1) OPTIONAL PART.

Fig.4. CYLINDER HEAD & BONNET

4. CYLINDER HEAD & BONNET

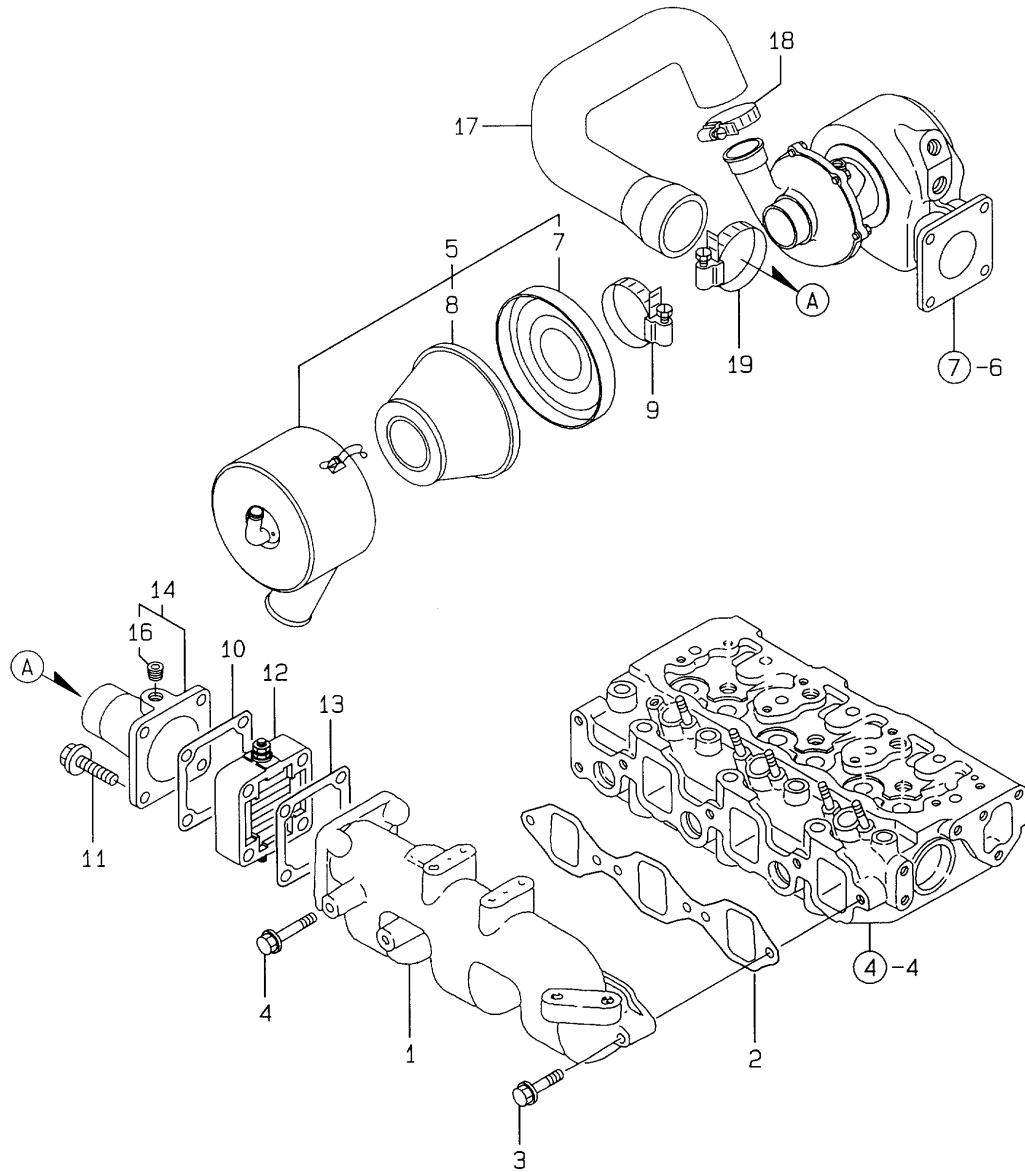


No.	Lev.	Parts No.	Description	Qty						I	R
				(A)	(B)	(C)	(D)	(E)	(F)		
1	1	129171-03090	PIPE , BREATHER	1							
2	1	129470-07230	LIFTER	1							
3	1	26106-080162	BOLT, M8X 16 PLATED	4							
4	1	729202-11710	HEAD ASSY, CYLINDER	1							
8	2	120130-11860	GUIDE, VALVE	3							1
10	2	129150-11810	GUIDE, VALVE	3							1
12	2	23876-020000	PLUG, R02	2							
13	2	23876-030000	PLUG, R03	3							
14	2	26216-060202	STUD, M6X 20	6							
15	2	27241-220000	PLUG, 22	3							
16	2	27241-400000	PLUG, 40	2							
17	2	129470-11080	SEAT, INTAKE VALVE	3							
18	2	129470-11090	SEAT, EXHAUST VALVE	3							
19	2	129100-11100	VALVE, INTAKE	3							
20	2	129795-11120	SPRING, VALVE	6							
21	2	129100-11130	VALVE, EXHAUST	3							
22	2	129795-11180	RETAINER, SPRING	6							
23	2	27310-080001	COTTER, 8	6							
24	2	121400-11340	SEAL, VALVE STEM	3							
25	2	124460-11340	SEAL, VALVE STEM	3							
26	2	129150-11370	CAP, VALVE	6							
27	2	22351-060012	PIN, SPRING 6.0X12	2							
28	2	26366-060002	NUT, M6	6							
29	1	129100-11240	SHAFT ASSY, ROCKER	1							
30	2	129155-11260	SUPPORT, ROCKER ARM	2							
31	2	129155-11270	SUPPORT, ROCKER ARM	2							
32	2	129150-11280	SPRING	3							
33	2	129150-11290	SHAFT, ROCKER ARM	1							
36	2	129100-11650	ARM, ROCKER	6							
37	3	129150-11230	SCREW, VALVE ADJUST	6							
39	3	129150-11750	NUT, M8	6							
40	2	26226-080182	STUD, M8X 18	3							
41	1	119625-11870	PROTECTOR, NOZZLE	3							
42	1	119625-11880	SEAT, NOZZLE	3							
43	1	119625-11900	RETAINER, NOZZLE	3							
44	1	26106-080252	BOLT, M8X 25 PLATED	2							
45	1	26106-080502	BOLT, M8X 50 PLATED	6							
46	1	729132-11521	BONNET ASSY, HEAD	1							
48	2	129150-03020	COVER, BREATHER	1							
49	2	129150-03070	BAFFLE, BREATHER	1							
50	2	129150-03080	PLATE, BAFFLE	1							
52	2	129150-11310	GASKET, BONNET	1							
54	2	24341-000500	O-RING, 1AS50.0	1							
55	2	26106-080162	BOLT, M8X 16 PLATED	2							
56	1	124160-11360	KNOB	3							
57	1	24311-000120	O-RING, 1AP12.0	3							
58	1	129960-03990	CLIP, HOSE 22	1							
59	1	129301-03660	CLAMP 16	1							
60	1	129900-07900	LIFTER	1							
61	1	124160-01751	COVER, FILLER	1							
62	1	24311-000320	O-RING, 1AP32.0	1							

Remarks
(1) REPAIR PART.

Fig.5. SUCTION MANIFOLD

5. SUCTION MANIFOLD



(A)=3TNE84MT-EG1

(B)=

(C)=

(D)=

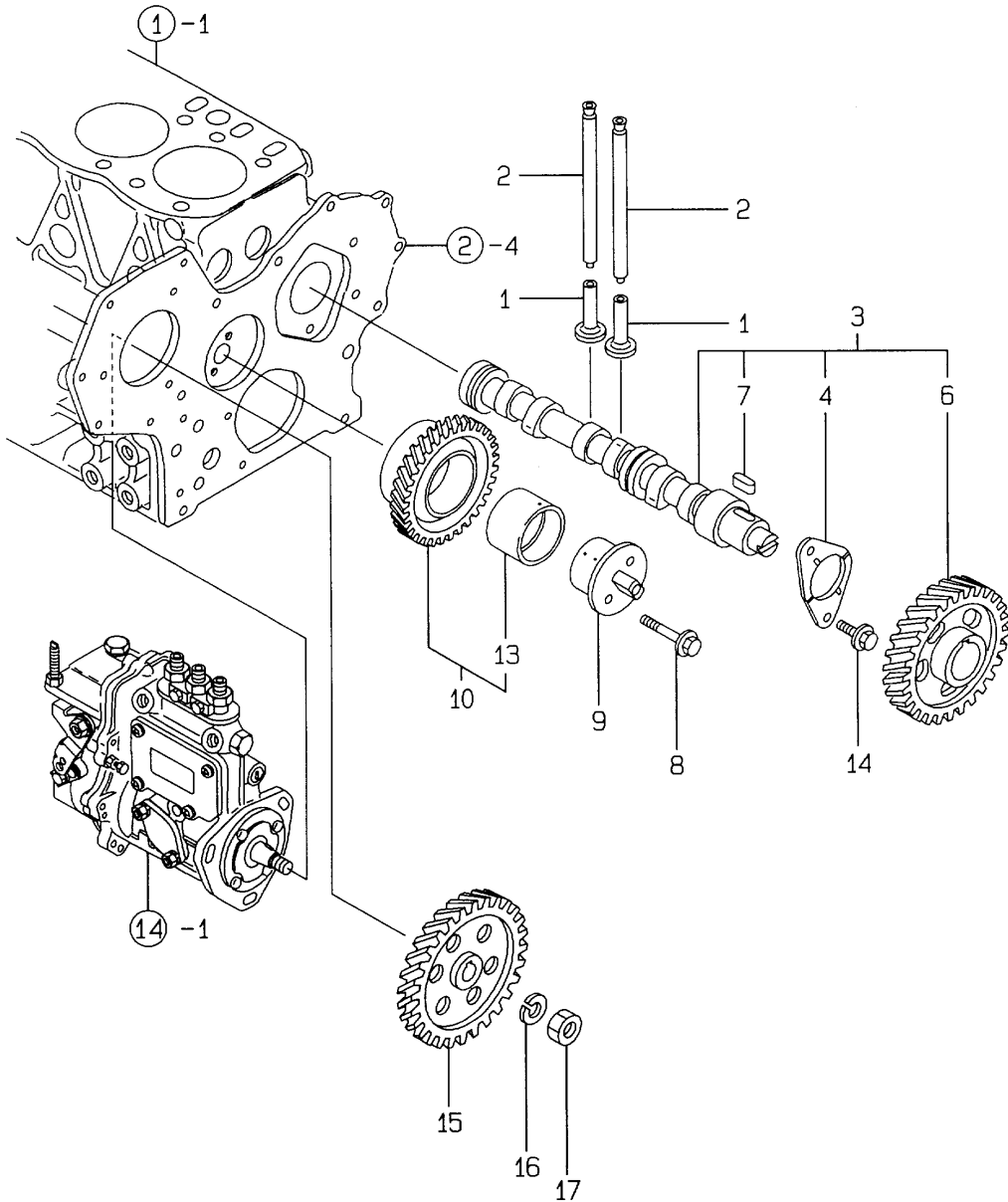
(E)=

(F)=

No.	Lev.	Parts No.	Description	Q'ty						I	R
				(A)	(B)	(C)	(D)	(E)	(F)		
1	1	129170-12100	MANIFOLD, AIR INTAKE	1							
2	1	129150-12111	GASKET, MANIFOLD	1							
3	1	26106-080252	BOLT, M8X 25 PLATED	3							
4	1	26106-080352	BOLT, M8X 35 PLATED	1							
5	1	129477-12500	SILENCER ASSY	1							
7	2	129477-12530	PLATE	1							
8	2	124770-12540	ELEMENT	1							
9	1	23000-048000	CLAMP, 48	1							
10	1	129470-77590	GASKET	1							
11	1	26106-080402	BOLT, M8X 40 PLATED	4							
12	1	129100-77500	HEATER, AIR 12V	1							
13	1	129100-77510	GASKET, AIR HEATER	1							
14	1	129470-12210	JOINT ASSY	1							
16	2	23876-010000	PLUG, R01	1							
17	1	129477-12850	HOSE, RUBBER	1							
18	1	23000-048000	CLAMP, 48	1							
19	1	23000-060000	CLAMP, 60	1							

Fig.6. CAMSHAFT & DRIVING GEAR

6.CAMSHAFT & DRIVING GEAR



(A)=3TNE84MT-EG1

(B)=

(C)=

(D)=

(E)=

(F)=

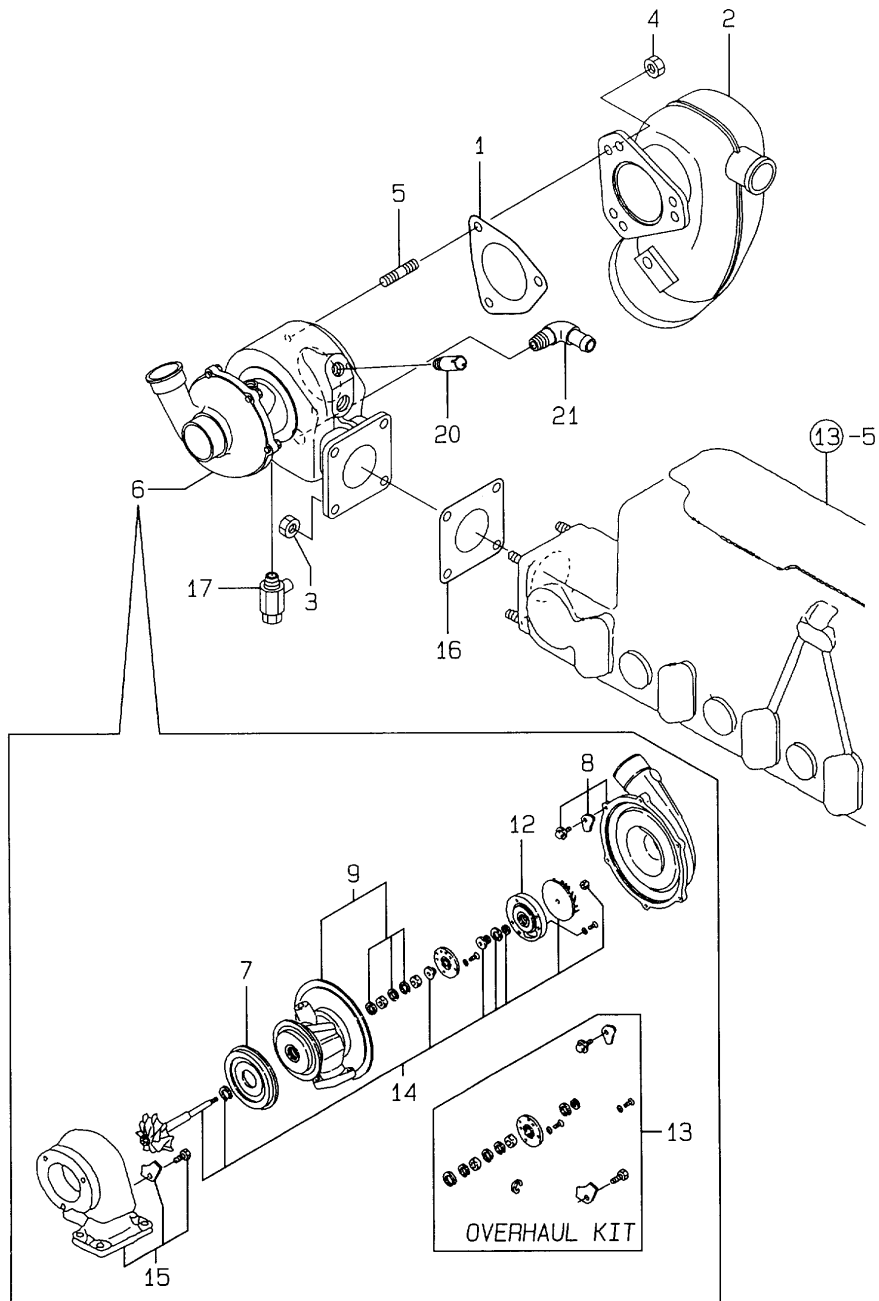
No.	Lev.	Parts No.	Description	Qty						I	R
				(A)	(B)	(C)	(D)	(E)	(F)		
1	1	129150-14200	TAPPET	6							
2	1	129150-14400	ROD, PUSH L=178	6							
3	1	129129-14580	CAMSHAFT ASSY	1							
4	2	129150-02450	BEARING, THRUST	1							
6	2	129150-14101	GEAR, CAMSHAFT	1							
7	2	22512-070140	KEY, 7X 14	1							
8	1	26106-080452	BOLT, M8X 45 PLATED	2							
9	1	129100-25061	SHAFT, IDLE	1							
10	1	129150-25101	GEAR ASSY, IDLE	1							
13	2	129150-25920	BUSH, IDLE GEAR	1							1
14	1	26106-080142	BOLT, M8X 14 PLATED	2							
15	1	129150-25900	GEAR, PUMP	1							
16	1	22217-120000	WASHER, SPRING 12	1							
17	1	26716-120002	NUT, M12	1							

Remarks

(1) REPAIR PART.

Fig.7. TURBOCHARGER

7. TURBOCHARGER



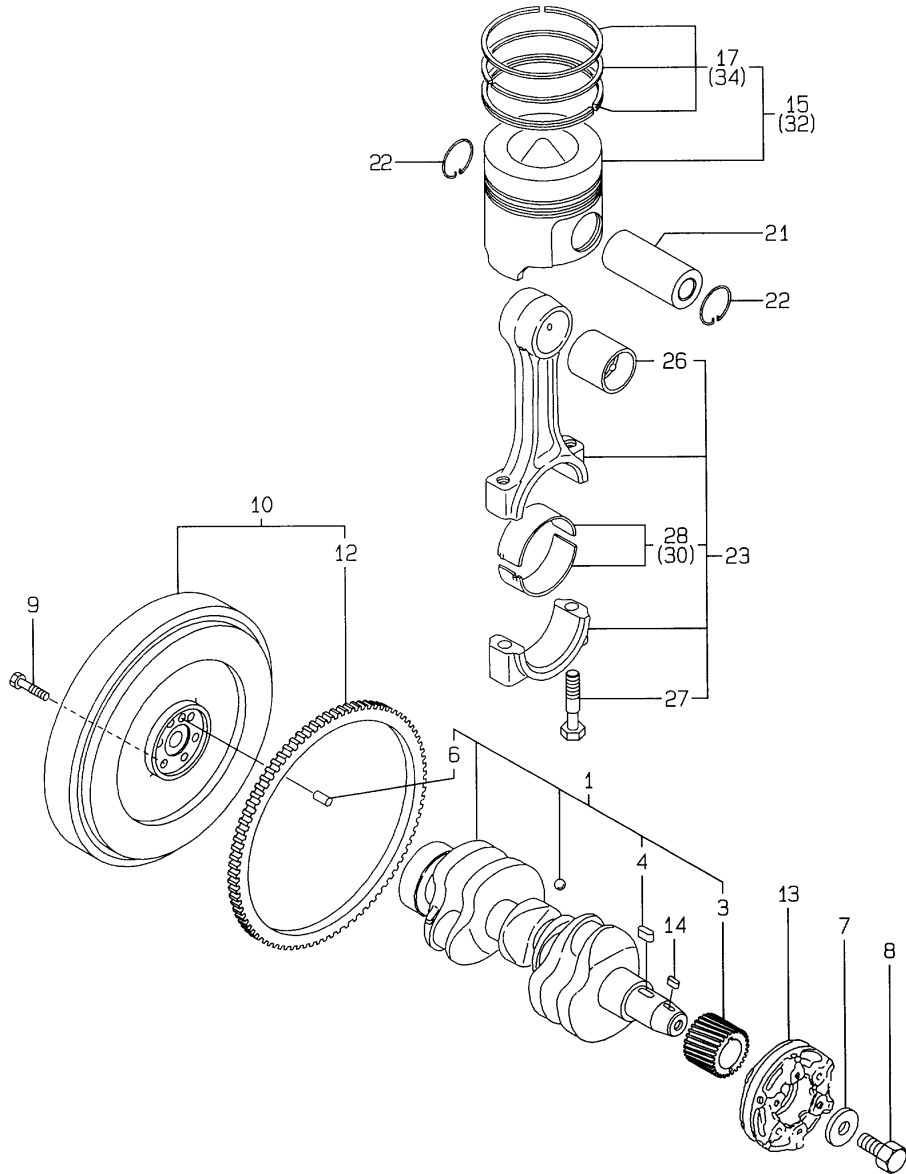
(A)=3TNE84MT-EG1
(B)=
(C)=

(D)=
(E)=
(F)=

No.	Lev.	Parts No.	Description	Q'ty						I	R
				(A)	(B)	(C)	(D)	(E)	(F)		
1	1	129472-13520	GASKET	1							
2	1	129579-13551	ELBOW	1							
3	1	26703-080002	NUT, M8	4							
4	1	26703-080002	NUT, M8	3							
5	1	128170-13600	STUD, M8X31	3							
6	1	129579-18010	TURBINE, RHB31GW	1							
7	2	129403-18720	PROTECTOR, HEAT	1							
8	2	129579-18780	HOUSING ASSY	1							
9	2	129403-18800	HOUSING ASSY, BEARING	1							
12	2	129579-18820	PLATE ASSY, SEAL	1							
13	2	129579-18830	OVERHAUL KIT	1							
14	2	129579-18850	ROTOR ASSY, TURBO	1							
15	2	129579-18860	HOUSING ASSY, TURBO	1							
16	1	129792-18091	GASKET	1							
17	1	129670-49290	COCK ASSY, R1/8	1							
20	1	104407-44480	JOINT	1							
21	1	171007-49400	JOINT	1							

Fig.8. CRANKSHAFT & PISTON

8. CRANKSHAFT & PISTON



(A)=3TNE84MT-EG1

(B)=

(C)=

(D)=

(E)=

(F)=

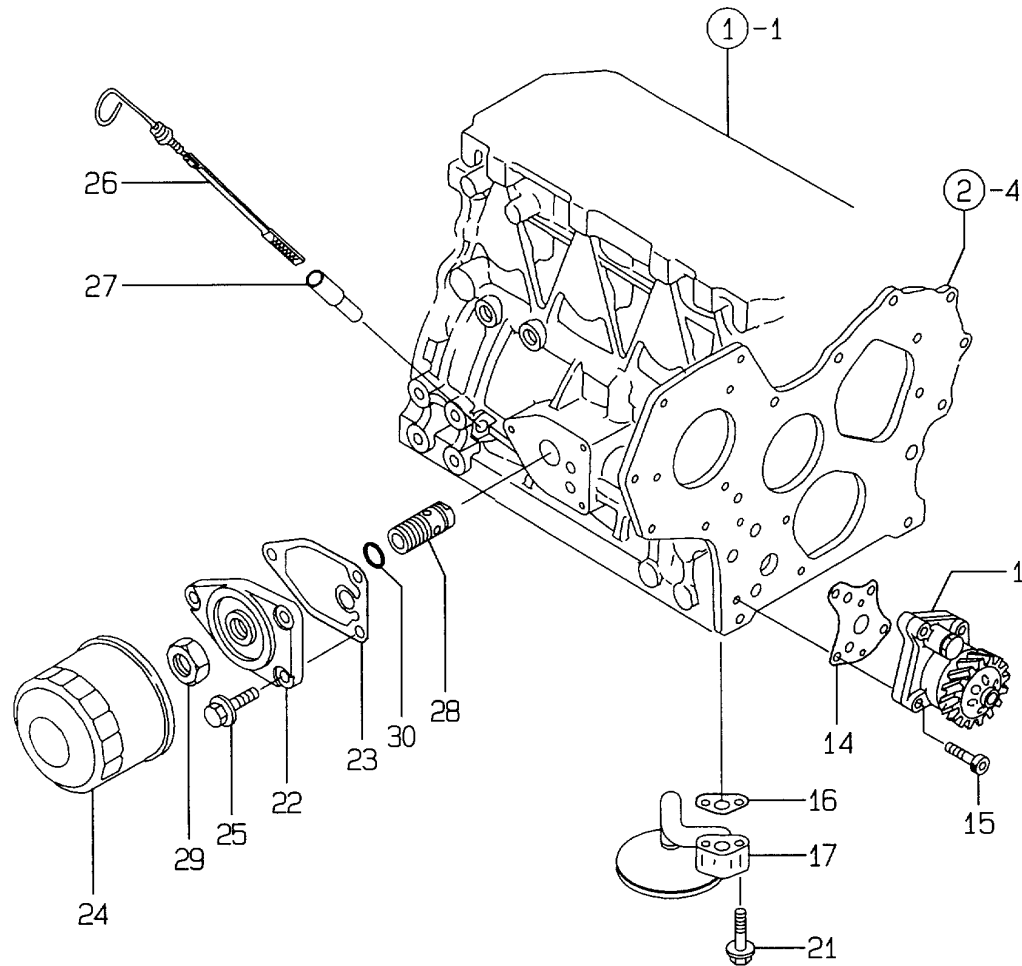
No.	Lev.	Parts No.	Description	Q'ty						I	R
				(A)	(B)	(C)	(D)	(E)	(F)		
1	1	129001-21000	CRANKSHAFT ASSY	1							
3	2	129150-21200	GEAR, CRANKSHAFT	1							
4	2	22512-070140	KEY, 7X 14	1							
6	2	129100-01580	PIN, M8X16	1							
7	1	129795-21661	WASHER	1							
8	1	121850-21680	BOLT	1							
9	1	121111-21501	BOLT, FLYWHEEL	6							
10	1	129175-21580	FLYWHEEL ASSY	1							
12	2	124550-21600	GEAR, RING	1							
13	1	129175-21650	V-PULLEY	1							
14	1	22512-070160	KEY, 7X 16	1							
15	1	129002-22090	PISTON ASSY	3							
17	2	129002-22510	RING SET, PISTON	3							
21	1	129202-22300	PIN, PISTON D26 L70	3							
22	1	22252-000260	RING, 26	6							
23	1	729402-23100	ROD ASSY, CONNECTING	3							
26	2	129100-23910	BEARING, PISTON PIN	3							3
27	2	121550-23200	BOLT, CONNECTING ROD	6							
28	2	129150-23600	BEARING, CRANK PIN	3							
30	1	129150-23610	BEARING, 0.25 US	3							1
32	1	129002-22910	PISTON ASSY, 0.25 OS	3							2
34	2	129002-22960	RING SET, 0.25 OS	3							2

Remarks

- (1) UNDER-SIZED(U.S=0.25) PART.
- (2) OVER-SIZED(O.S=0.25) PART.
- (3) REPAIR PART.

Fig.9. LUB.OIL SYSTEM

9.LUB.OIL SYSTEM



(A)=3TNE84MT-EG1

(B)=

(C)=

(D)=

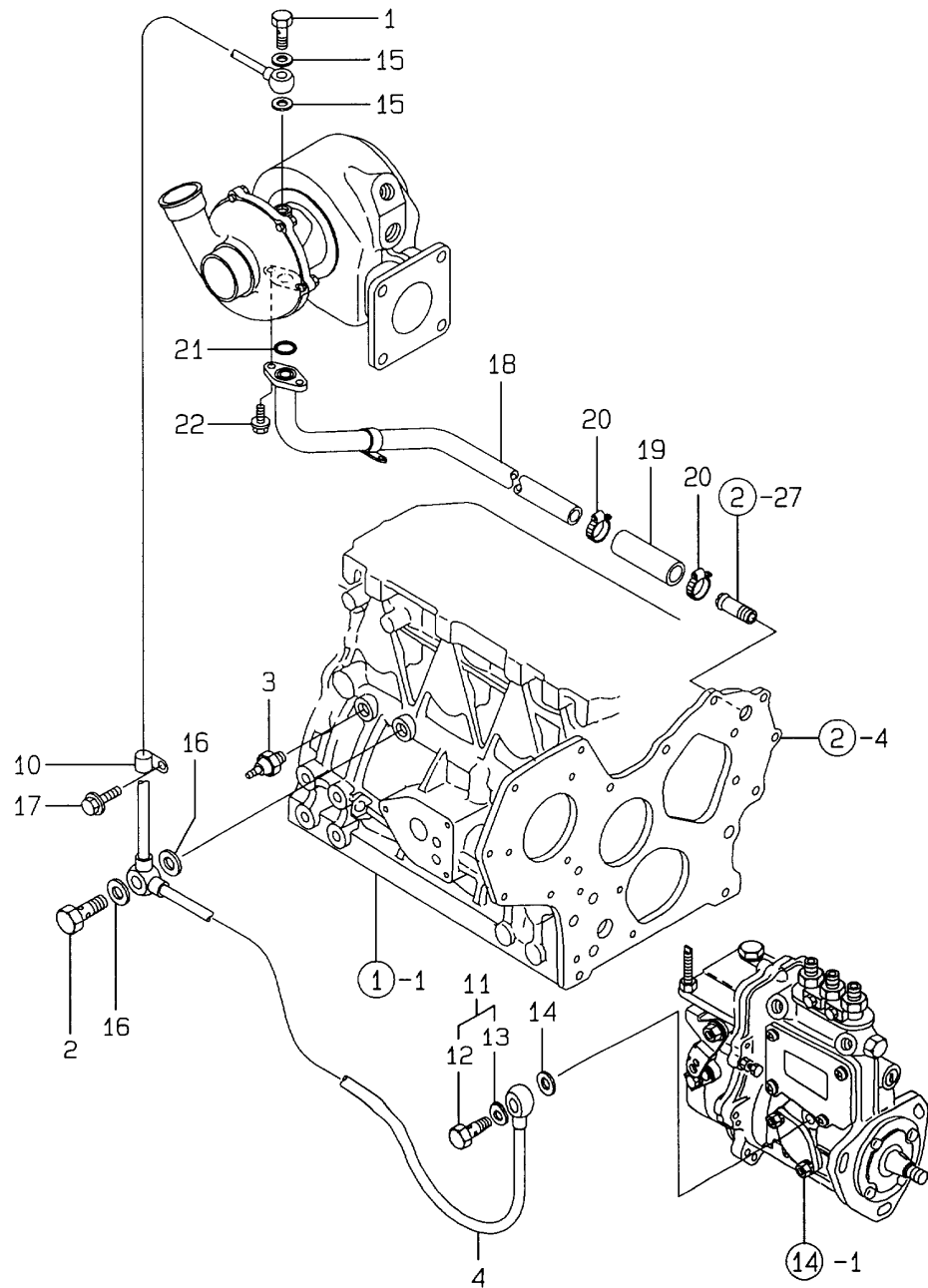
(E)=

(F)=

No.	Lev.	Parts No.	Description	Q'ty						I	R
				(A)	(B)	(C)	(D)	(E)	(F)		
1	1	129001-32001	PUMP ASSY, OIL	1							
14	1	129150-32020	GASKET, PUMP	1							
15	1	26450-060252	BOLT, M6X 25	4							
16	1	129150-35041	GASKET	1							
17	1	129150-35091	PIPE ASSY, OIL INLET	1							
21	1	26106-080352	BOLT, M8X 35 PLATED	2							
22	1	129150-35101	BRACKET, STRAINER	1							
23	1	129150-35111	GASKET	1							
24	1	129150-35151	FILTER, D80XL80	1							
25	1	26106-080202	BOLT, M8X 20 PLATED	3							
26	1	171420-34800	DIPSTICK, OIL	1							
27	1	121520-34810	GUIDE, DIPSTICK	1							
28	1	129001-35300	BOLT, FILTER	1							
29	1	129150-35350	NUT	1							
30	1	24311-000160	O-RING, 1AP16.0	1							

Fig.10. LUB.OIL LINE

10.LUB.OIL LINE



(A)=3TNE84MT-EG1

(B)=

(C)=

(D)=

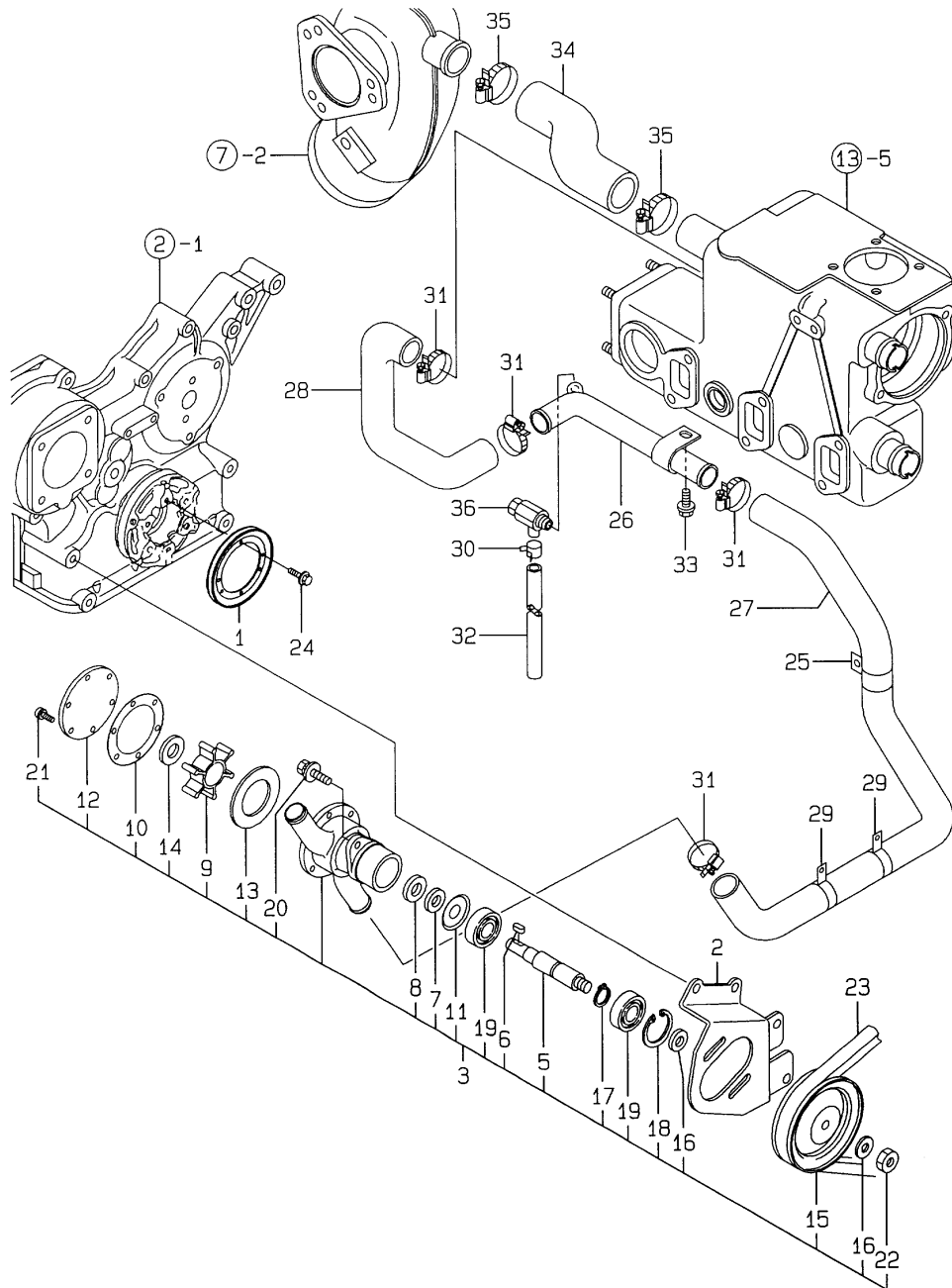
(E)=

(F)=

No.	Lev.	Parts No.	Description	Q'ty						I	R
				(A)	(B)	(C)	(D)	(E)	(F)		
1	1	105010-39140	BOLT, PIPE JOINT	1							
2	1	124160-39140	BOLT, PIPE JOINT M10	1							
3	1	114250-39450	SWITCH, 0.5KG	1							
4	1	129080-39450	PIPE ASSY, OIL	1							
10	1	124223-39900	RETAINER	1							
11	1	124550-59830	BOLT ASSY, JOINT M8	1							
12	2	124550-59820	BOLT, PIPE JOINT M8	1							
13	2	22190-080002	WASHER, SEAL 6	1							
14	1	22190-080002	WASHER, SEAL 6	1							
15	1	23414-080000	GASKET, 8X1.0	2							
16	1	22190-100002	WASHER, SEAL 10	2							
17	1	26106-080102	BOLT, M8X 10 PLATED	1							
18	1	129176-39630	PIPE, OIL	1							
19	1	129403-39610	JOINT, RUBBER	1							
20	1	23000-022000	CLAMP, 22	2							
21	1	24314-000160	O-RING, 4CP16.0	1							
22	1	26106-060162	BOLT, M6X 16 PLATED	2							

Fig.11. COOLING SEA WATER SYSTEM

11. COOLING SEA WATER SYSTEM



(A)=3TNE84MT-EG1

(B)=

(C)=

(D)=

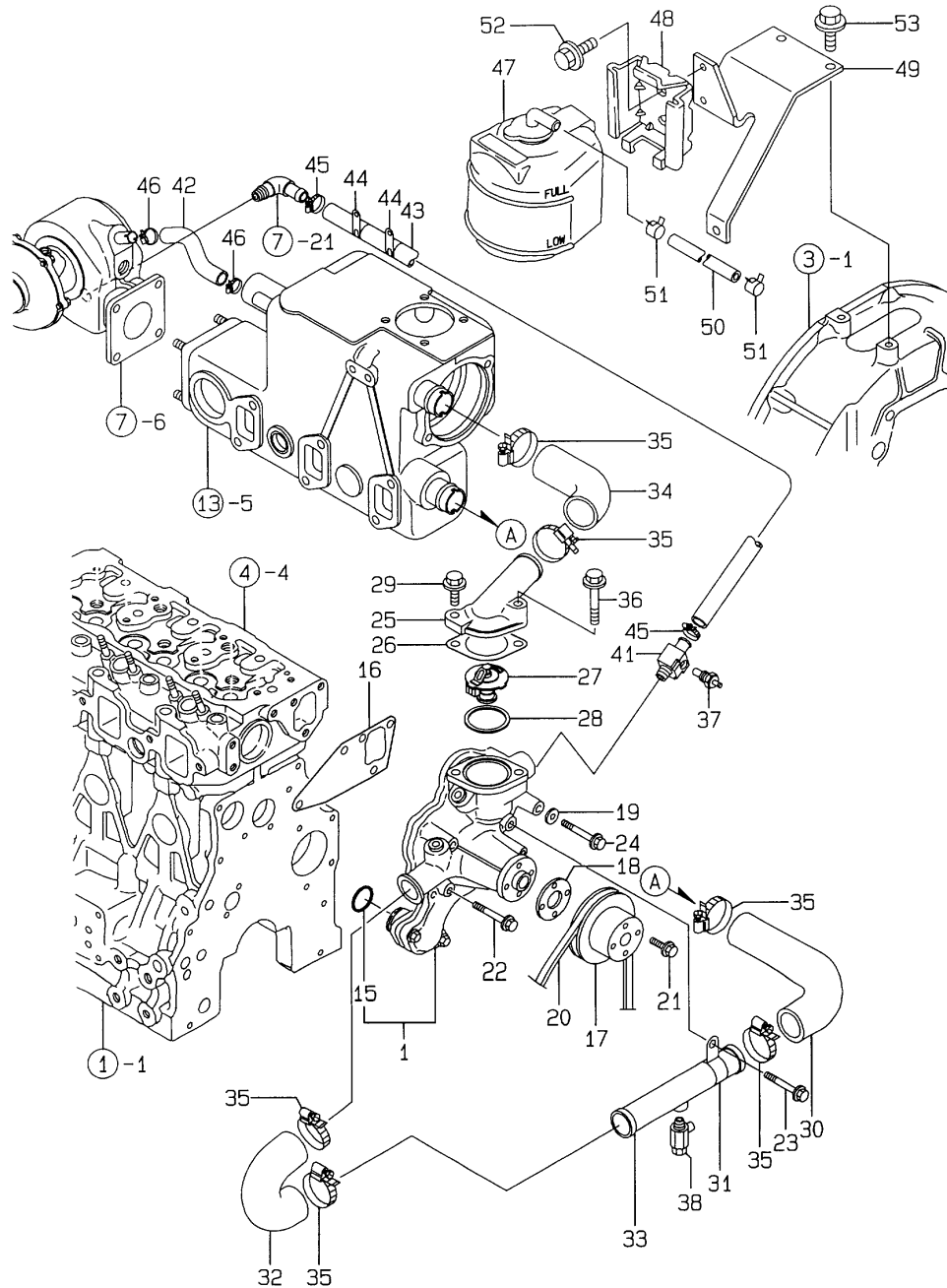
(E)=

(F)=

No.	Lev.	Parts No.	Description	Q'ty						I	R
				(A)	(B)	(C)	(D)	(E)	(F)		
1	1	104407-21600	V-PULLEY	1							
2	1	129579-42150	BRACKET, PUMP	1							
3	1	129579-42500	PUMP ASSY, WATER	1							
5	2	121575-42020	SHAFT	1							
6	2	124223-42040	KEY	1							
7	2	124223-42070	PIECE	1							
8	2	124223-42080	SEAL, TC13X28X7	1							
9	2	124223-42091	IMPELLER	1							
10	2	124223-42110	GASKET, WATER PUMP	1							
11	2	121575-42120	COVER, BEARING	1							
12	2	121575-42150	COVER	1							
13	2	129579-42160	PLATE	1							
14	2	129579-42190	COVER	1							
15	2	124070-42400	V-PULLEY	1							
16	2	124070-42420	WASHER	2							
17	2	22242-000150	RING, 15	1							
18	2	22252-000350	RING, 35	1							
19	2	24107-062024	BEARING, BALL 6202ZZ	2							
20	2	26014-080162	BOLT, M8X 16	2							
21	2	26113-040088	BOLT, M4X 8	6							
22	2	26347-080002	NUT, M8	1							
23	1	104214-42780	V-BELT, HM30	1							
24	1	26106-060082	BOLT, M6X 8 PLATED	4							
25	1	127610-03270	RETAINER	1							
26	1	129080-49010	PIPE, WATER	1							
27	1	129080-49030	PIPE, WATER	1							
28	1	129475-49020	PIPE, WATER	1							
29	1	129579-49460	RETAINER, D32	2							
30	1	124460-77680	RETAINER	1							
31	1	23000-035000	CLAMP, 35	4							
32	1	23061-070300	PIPE, 7X 300	1							
33	1	26106-080162	BOLT, M8X 16 PLATED	1							
34	1	129472-49040	PIPE, WATER	1							
35	1	23000-035000	CLAMP, 35	2							
36	1	129670-49290	COCK ASSY, R1/8	1							

Fig.12. COOLING FRESH WATER SYSTEM

12.COOLING FRESH WATER SYSTEM



(A)=3TNE84MT-EG1

(B)=

(C)=

(D)=

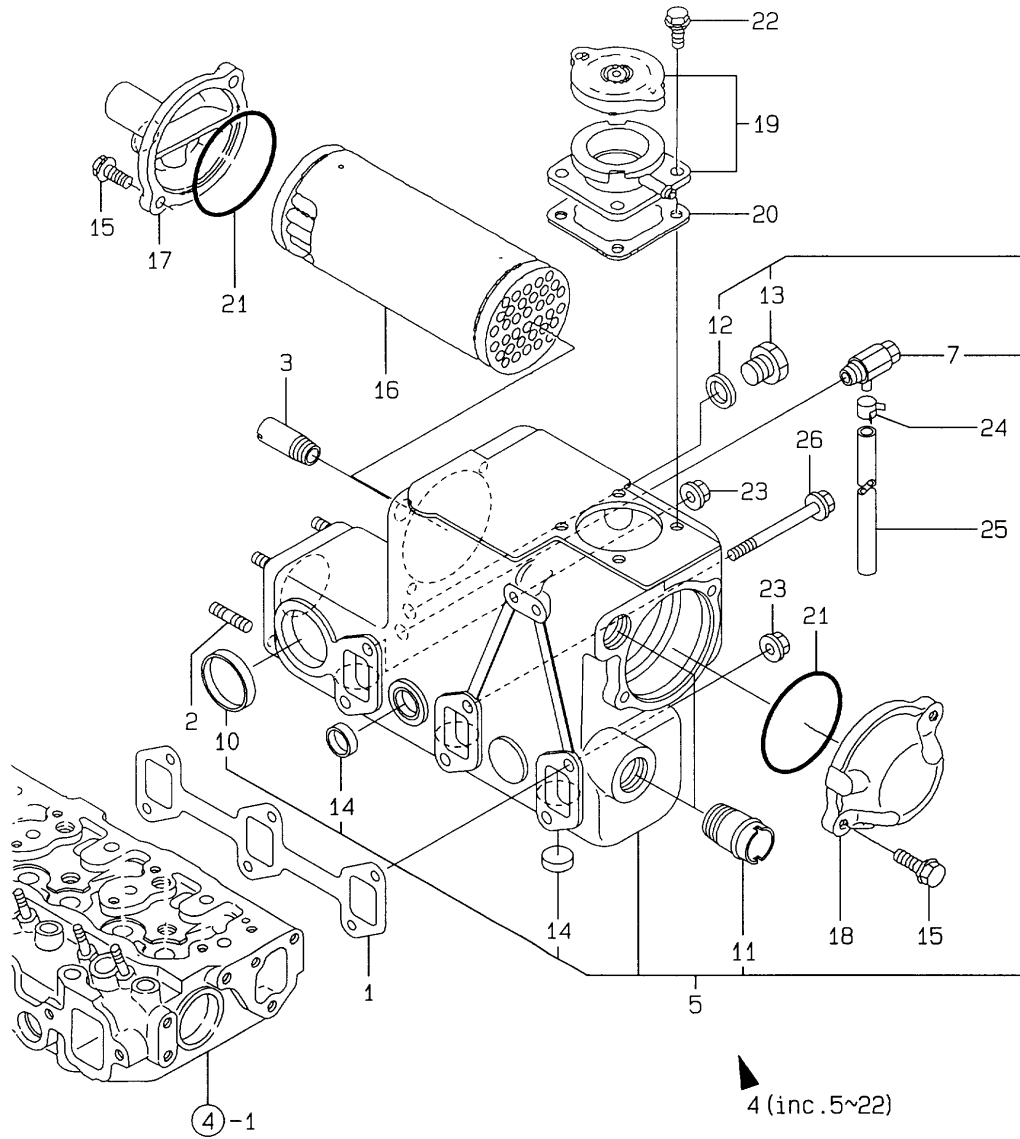
(E)=

(F)=

No.	Lev.	Parts No.	Description	Q'ty						I	R
				(A)	(B)	(C)	(D)	(E)	(F)		
1	1	129470-42001	PUMP ASSY, WATER	1							
15	2	129150-42320	O-RING	1							
16	1	129486-42050	GASKET, WATER PUMP	1							
17	1	129550-42350	V-PULLEY, D=120	1							
18	1	129156-44760	WASHER	1							
19	1	22217-080000	WASHER, SPRING 8	1							
20	1	25132-004400	V-BELT, A44	1							
21	1	26106-060102	BOLT, M6X 10 PLATED	4							
22	1	26106-080552	BOLT, M8X 55 PLATED	2							
23	1	26106-080552	BOLT, M8X 55 PLATED	1							
24	1	26106-080652	BOLT, M8X 65 PLATED	1							
25	1	129470-49540	COVER, THERMOSTAT	1							
26	1	129795-49551	GASKET	1							
27	1	129470-49801	THERMOSTAT, 76.5	1							
28	1	129470-49810	GASKET, THERMOSTAT	1							
29	1	26106-080252	BOLT, M8X 25 PLATED	1							
30	1	129470-49200	JOINT, RUBBER	1							
31	1	129470-49220	RETAINER	1							
32	1	129470-49240	JOINT, RUBBER 28	1							
33	1	129470-49250	PIPE, WATER	1							
34	1	129170-49260	JOINT	1							
35	1	23000-041000	CLAMP, 41	6							
36	1	26106-080352	BOLT, M8X 35 PLATED	1							
37	1	127610-91350	SWITCH, 95	1							
38	1	129670-49290	COCK ASSY, R1/8	1							
41	1	129473-49310	JOINT, PT3/8-8	1							
42	1	129579-49320	HOSE, RUBBER	1							
43	1	129171-49560	HOSE, WATER	1							
44	1	194440-51620	CLAMP	2							
45	1	23000-013000	CLAMP, 13	2							
46	1	23000-025000	CLAMP, 25	2							
47	1	120445-44530	TANK, SUB	1							
48	1	120445-44540	SUPPORT	1							
49	1	129209-44540	BRACKET, SUB TANK	1							
50	1	127420-44560	PIPE, OVERFLOW L=740	1							
51	1	124766-59050	CLIP, HOSE 12	2							
52	1	26106-080122	BOLT, M8X 12 PLATED	2							
53	1	26106-080182	BOLT, M8X 18 PLATED	3							

Fig.13. COOLING FRESH WATER COOLER

13.COOLING FRESH WATER COOLER



(A)=3TNE84MT-EG1

(B)=

(C)=

(D)=

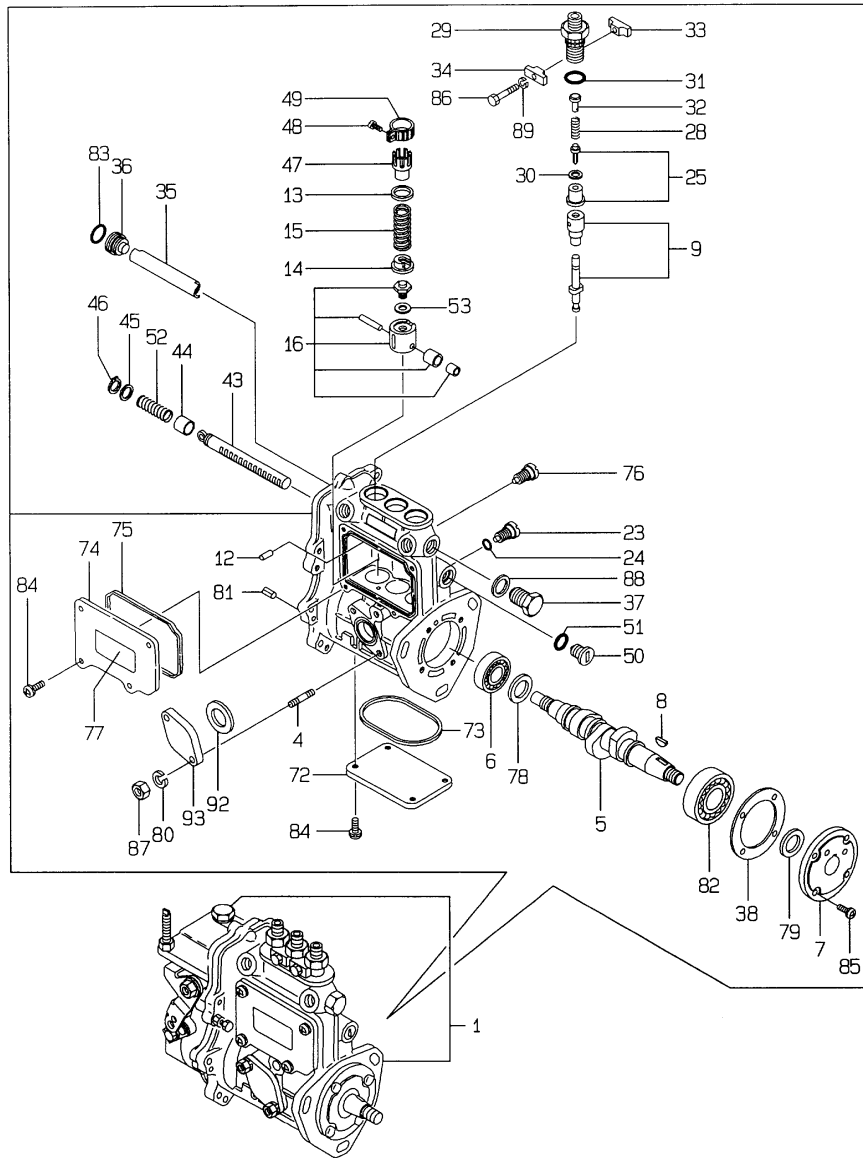
(E)=

(F)=

No.	Lev.	Parts No.	Description	Q'ty						I	R
				(A)	(B)	(C)	(D)	(E)	(F)		
1	1	129150-13110	GASKET	1							
2	1	128170-13600	STUD, M8X31	4							
3	1	104407-44480	JOINT	1							
4	1	129176-44900	COOLER ASSY, WATER	1							
5	2	129176-44000	COOLER ASSY, WATER	1							
7	3	119620-49290	COCK ASSY, 1/4	1							
10	3	27241-400000	PLUG, 40	1							
11	3	124160-49480	JOINT, PIPE	2							
12	3	23414-170000	GASKET, 17X1.0	1							
13	3	23894-030002	PLUG, G3/8	1							
14	3	27241-280000	PLUG, 28	7							
15	2	26106-080252	BOLT, M8X 25 PLATED	4							
16	2	129170-44110	CORE ASSY, COOLER	1							
17	2	129470-44440	COVER, A	1							
18	2	129470-44450	COVER, B	1							
19	2	129171-44600	FILLER ASSY	1							
20	2	120445-44640	GASKET	1							
21	2	24321-000750	O-RING, 1AG75.0	2							
22	2	26106-080162	BOLT, M8X 16 PLATED	4							
23	1	26366-080002	NUT, M8	2							
24	1	124460-77680	RETAINER	1							
25	1	23061-070300	PIPE, 7X 300	1							
26	1	26106-081002	BOLT, M8X100 PLATED	4							

Fig.14. FUEL INJECTION PUMP

14.FUEL INJECTION PUMP



(A)=3TNE84MT-EG1

(B)=

(C)=

(D)=

(E)=

(F)=

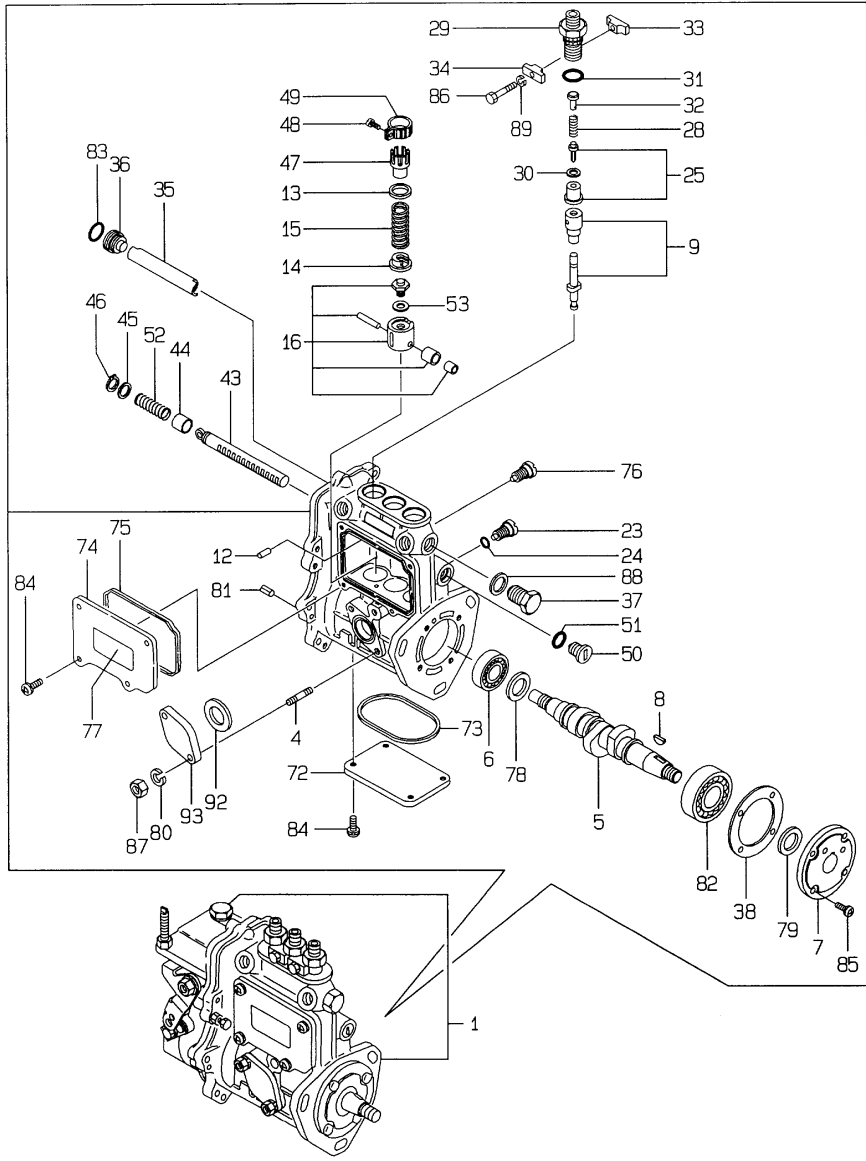
No.	Lev.	Parts No.	Description	Q'ty						I	R
				(A)	(B)	(C)	(D)	(E)	(F)		
1	1	729080-51310	PUMP ASSY, INJECTION	1							1
4	2	129155-51020	STUD	2							
5	2	119810-51040	CAMSHAFT	1							
6	2	129155-51050	BEARING, 17BM001D	1							
7	2	129155-51060	SUPPORT, CAMSHAFT	1							
8	2	122710-51090	KEY	1							
9	2	129470-51101	PLUNGER ASSY	3							
12	2	129155-51140	PIN	3							
13	2	174307-51170	RETAINER, SPRING A	3							
14	2	129155-51180	RETAINER, SPRING	3							
15	2	124950-51190	SPRING, PLUNGER	3							
16	2	129155-51200	TAPPET ASSY	3							
23	2	129155-51270	STOPPER, TAPPET	3							
24	2	129155-51280	O-RING, S6	3							
25	2	129100-51300	VALVE ASSY, DELIVERY	3							
28	2	129155-51320	SPRING, DELIVERY	3							
29	2	129155-51340	RETAINER	3							
30	2	124550-51350	GASKET, DELIVERY	3							
31	2	124550-51370	O-RING	3							
32	2	129155-51370	STOPPER, VALVE	3							
33	2	129155-51380	STOPPER	2							
34	2	129155-51390	STOPPER	2							
35	2	129155-51400	DEFLECTOR	1							
36	2	129155-51410	BOLT	1							
37	2	129155-51420	PLUG, M16	1							
38	2	129155-51450	SHIM SET, ADJUSTING	1							
43	2	129155-51500	RACK, CONTROL	1							
44	2	129155-51521	BUSH, RACK	1							
45	2	129155-51530	SPACER	1							
46	2	129155-51540	CIRCLIP	1							
47	2	129155-51550	PINION, CONTROL	3							
48	2	122117-51560	SCREW	3							
49	2	174307-51560	PINION	3							
50	2	129155-51570	PLUG, M12	1							
51	2	129155-51580	O-RING	1							
52	2	129155-51591	SPRING, RACK	1							
53	2	129155-51600	SHIM SET, ADJUSTING	3							
72	2	129155-51701	COVER	1							
73	2	129155-51711	GASKET	1							
74	2	129155-51751	COVER	1							
75	2	129155-51760	GASKET	1							
76	2	129155-51790	STOOPER, RACK	1							
77	2	129156-51910	LABEL, CAUTION	1							
78	2	129155-51930	SPACER, T=3.25	1							
79	2	129155-51940	SPACER, T=1.5	1							
80	2	22217-060000	WASHER, SPRING 6	2							
81	2	22351-050010	PIN, SPRING 5.0X10	2							
82	2	24101-063034	BEARING, BALL 6303	1							
83	2	24341-000160	O-RING, 1AS16.0	1							
84	2	26022-050122	SCREW, M5X12	8							
85	2	26022-060162	SCREW, M6X16	4							

Remarks

(1) GOVERNOR(FIG.NO.15)IS INCORPORATED IN THIS FUEL INJECTION PUMP. (REF.NO.1).

Fig.14. FUEL INJECTION PUMP

14.FUEL INJECTION PUMP



(A)=3TNE84MT-EG1
(B)=
(C)=

(D)=
(E)=
(F)=

No.	Lev.	Parts No.	Description	Q'ty						I	R
				(A)	(B)	(C)	(D)	(E)	(F)		
86	2	26116-050302	BOLT, M5X 30 PLATED	2							
87	2	26716-060002	NUT, M6	2							
88	2	22190-160002	WASHER, SEAL 16	1							
89	2	22217-050000	WASHER, SPRING 5	2							
92	2	129155-52050	GASKET	1							
93	2	129100-52200	COVER	1							

Remarks
(1) GOVERNOR(FIG.NO.15)IS INCORPORATED IN THIS FUEL INJECTION PUMP.
(REF.NO.1).

Fig.15. GOVERNOR

(A)=3TNE84MT-EG1

(B)=

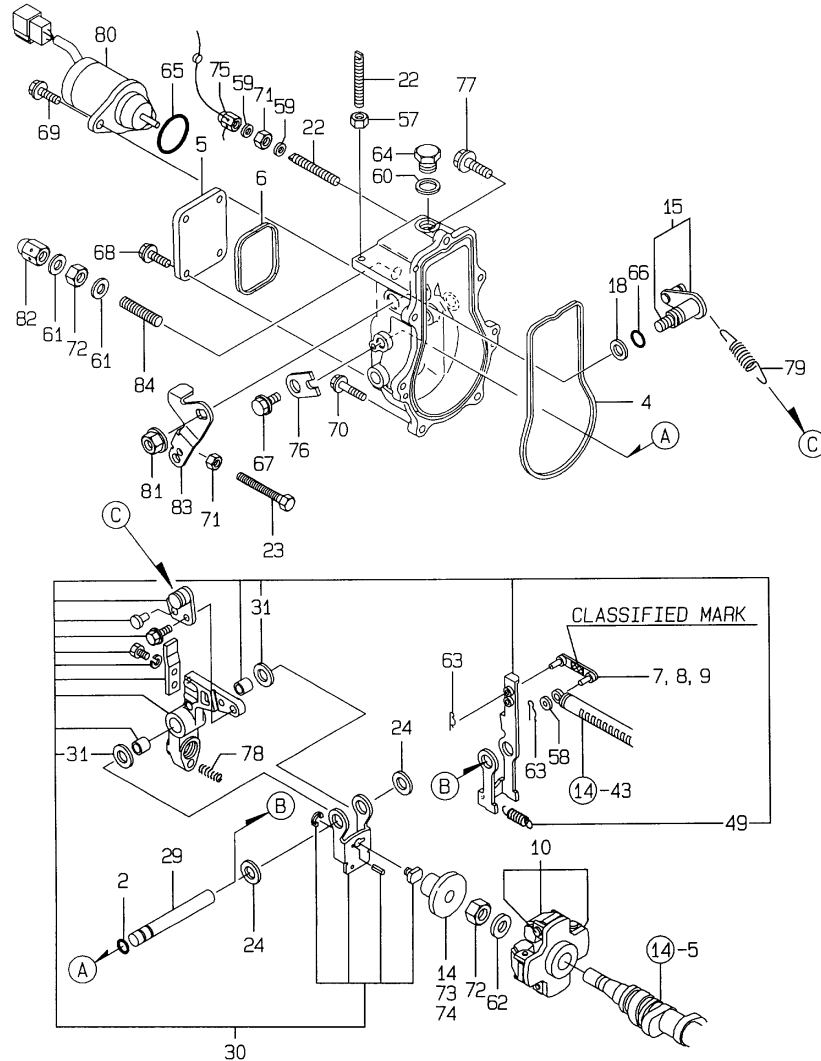
(C)=

(D)=

(E)=

(F)=

15. GOVERNOR



No.	Lev.	Parts No.	Description	Q'ty						I	R
				(A)	(B)	(C)	(D)	(E)	(F)		
2	2	129155-51280	O-RING, S6	1							
4	2	129052-61050	GASKET	1							
5	2	129052-61060	COVER, GOVERNOR CASE	1							
6	2	129052-61070	GASKET	1							
7	2	129155-61120	LINK, L=30 MARK 0	1							1
8	2	129155-61130	LINK, L=31 MARK 1	1							1
9	2	129155-61140	LINK, L=30.5 MARK 05	1							1
10	2	171488-61200	WEIGHT ASSY,GOVERNOR	1							
14	2	129155-61341	SLEEVE	1							2
15	2	129100-61400	SHAFT ASSY	1							
18	2	129155-61430	SPACER	1							
22	2	129155-61450	BOLT, LIMITER	2							
23	2	129155-61460	BOLT, IDLE	1							
24	2	129155-61480	SPACER ASSY	2							
29	2	129052-61390	SHAFT	1							
30	2	129486-61501	LEVER ASSY, GOVERNOR	1							
31	3	174307-51700	SHIM SET	2							
49	3	129486-61540	SPRING, SET	1							
57	2	124550-66370	NUT, M6	1							
58	2	22117-040000	WASHER, 4	1							
59	2	22190-060003	SEAL WASER 6	2							
60	2	22190-100002	WASHER, SEAL 10	1							
61	2	22190-120002	WASHER, SEAL 12	2							
62	2	22287-120000	WASHER, 12	1							
63	2	22372-040000	PIN, SNAP 4	2							
64	2	23887-100002	PLUG, 10	1							
65	2	24341-000280	O-RING, 1AS28.0	1							
65-1	2	158552-61900	O-RING	1							N
		(A=EXXXXX)									
66	2	129155-61830	O-RING, S10	1							
67	2	26106-060102	BOLT, M6X 10 PLATED	1							
68	2	26106-060102	BOLT, M6X 10 PLATED	4							
69	2	26106-060142	BOLT, M6X 14 PLATED	2							
70	2	26106-060202	BOLT, M6X 20 PLATED	6							
71	2	26756-060002	NUT, LOCK M6	2							
72	2	26776-120002	NUT, LOCK M12	2							
73	2	129155-61350	SLEEVE, L=24.9	1							2
74	2	129155-61360	SLEEVE, L=25.2	1							2
75	2	119600-66840	NUT, CAP	1							
76	2	119660-61901	RETAINER, SHAFT	1							
77	2	129155-61950	BOLT	1							
78	2	129500-61650	SPRING, FUEL CONTROL	1							
79	2	129477-61720	SPRING, GOVERNOR	1							
80	2	119653-77950	SOLENOID, STOP	1							
81	2	26366-080002	NUT, M8	1							
82	2	129100-61930	NUT, CAP	1							
83	2	171488-61440	LEVER, CONTROL	1							
84	2	129155-61470	BOLT, CONTROL	1							

Remarks

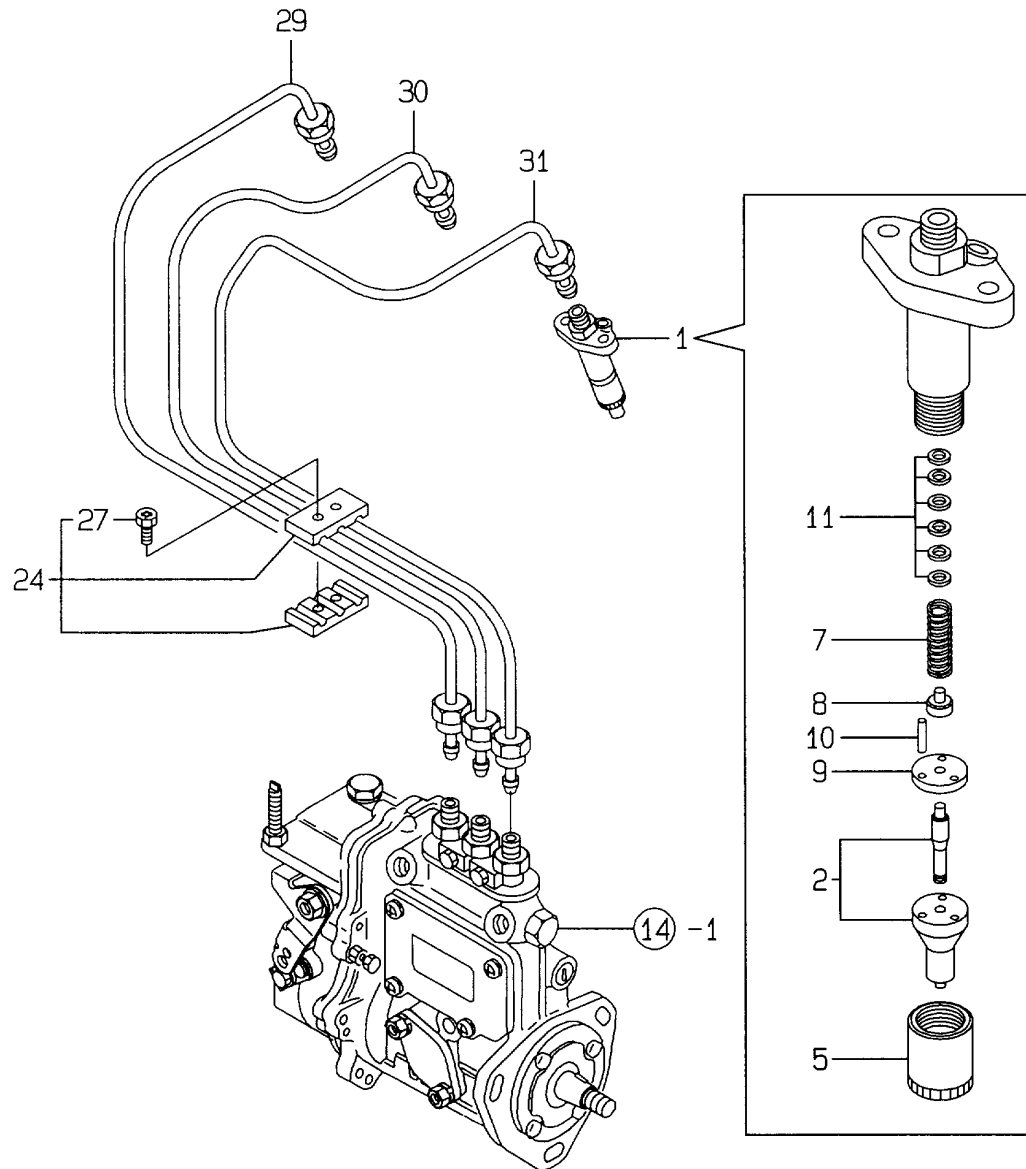
(1) SELECTIVE PARTS: CERTAIN THE CLASSIFICATION MARK, THEN PLACE YOUR ORDER.(REFER TO ILLUSTRATION).

(2) SELECTIVE PARTS.

* THIS FIGURE(GOVERNOR ASSY)IS INCORPORATED IN THE FUEL INJECTION PUMP ASSY(FIG.14).

Fig.16. FUEL INJECTION VALVE

16.FUEL INJECTION VALVE



(A)=3TNE84MT-EG1

(B)=

(C)=

(D)=

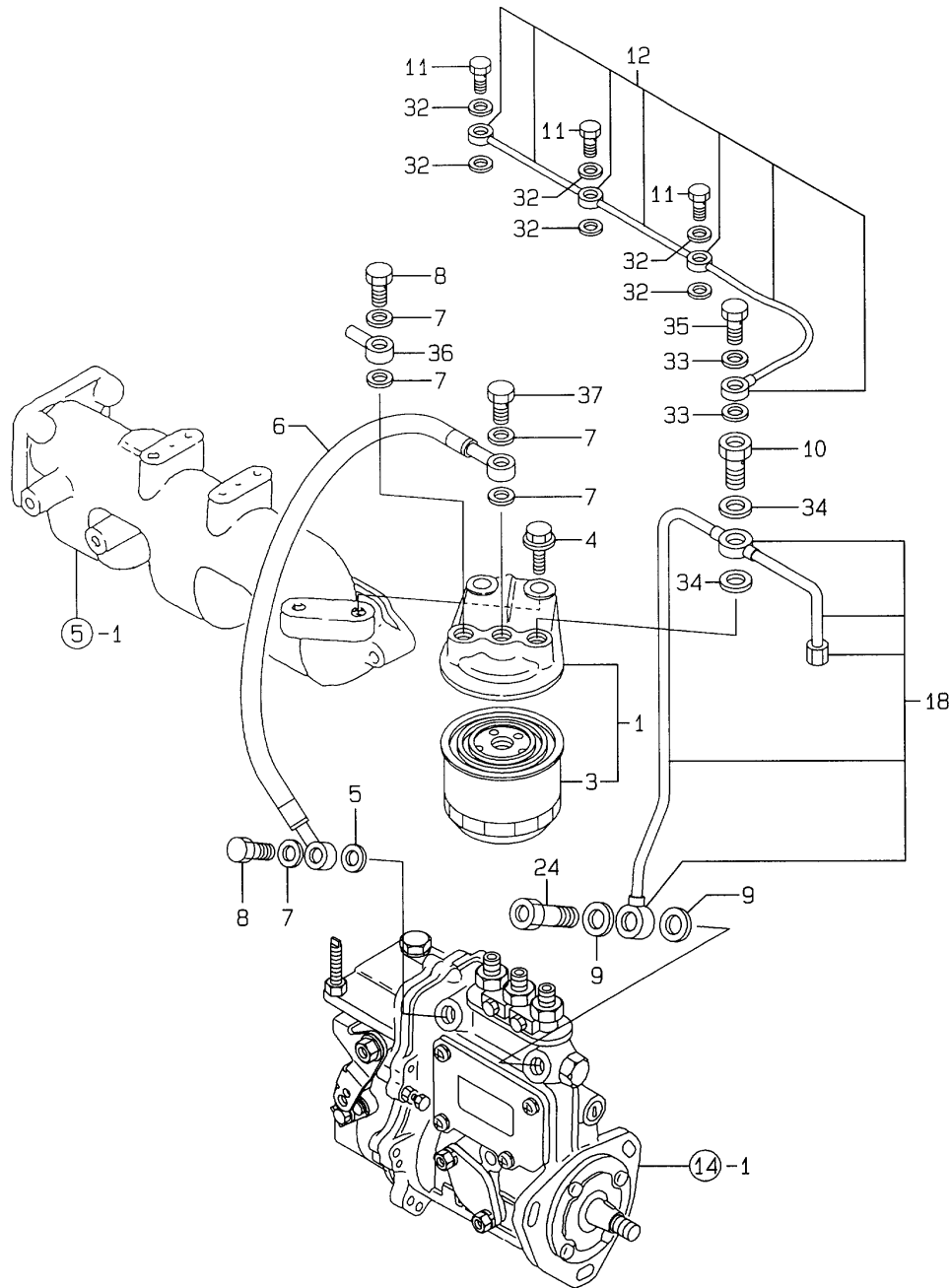
(E)=

(F)=

No.	Lev.	Parts No.	Description	Q'ty						I	R
				(A)	(B)	(C)	(D)	(E)	(F)		
1	1	729412-53300	VALVE ASSY,INJECTION	3							
2	2	129503-53000	VALVE ASSY,INJECTION	3							
5	2	114250-53080	NUT, NOZZLE D16.95	3							
7	2	114250-53120	SPRING, NOZZLE	3							
8	2	114250-53130	SEAT, SPRING	3							
9	2	114250-53140	PLATE	3							
10	2	114250-53210	PIN	6							
11	2	114250-53400	SHIM SET	3							
24	1	129150-59120	RETAINER, PIPE	1							
27	2	129150-59131	BOLT, M4X14	2							
29	1	129100-59912	PIPE ASSY, INJECTION	1							
30	1	129100-59922	PIPE ASSY, INJECTION	1							
31	1	129100-59932	PIPE ASSY, INJECTION	1							

Fig.17. FUEL LINE

17.FUEL LINE



(A)=3TNE84MT-EG1

(B)=

(C)=

(D)=

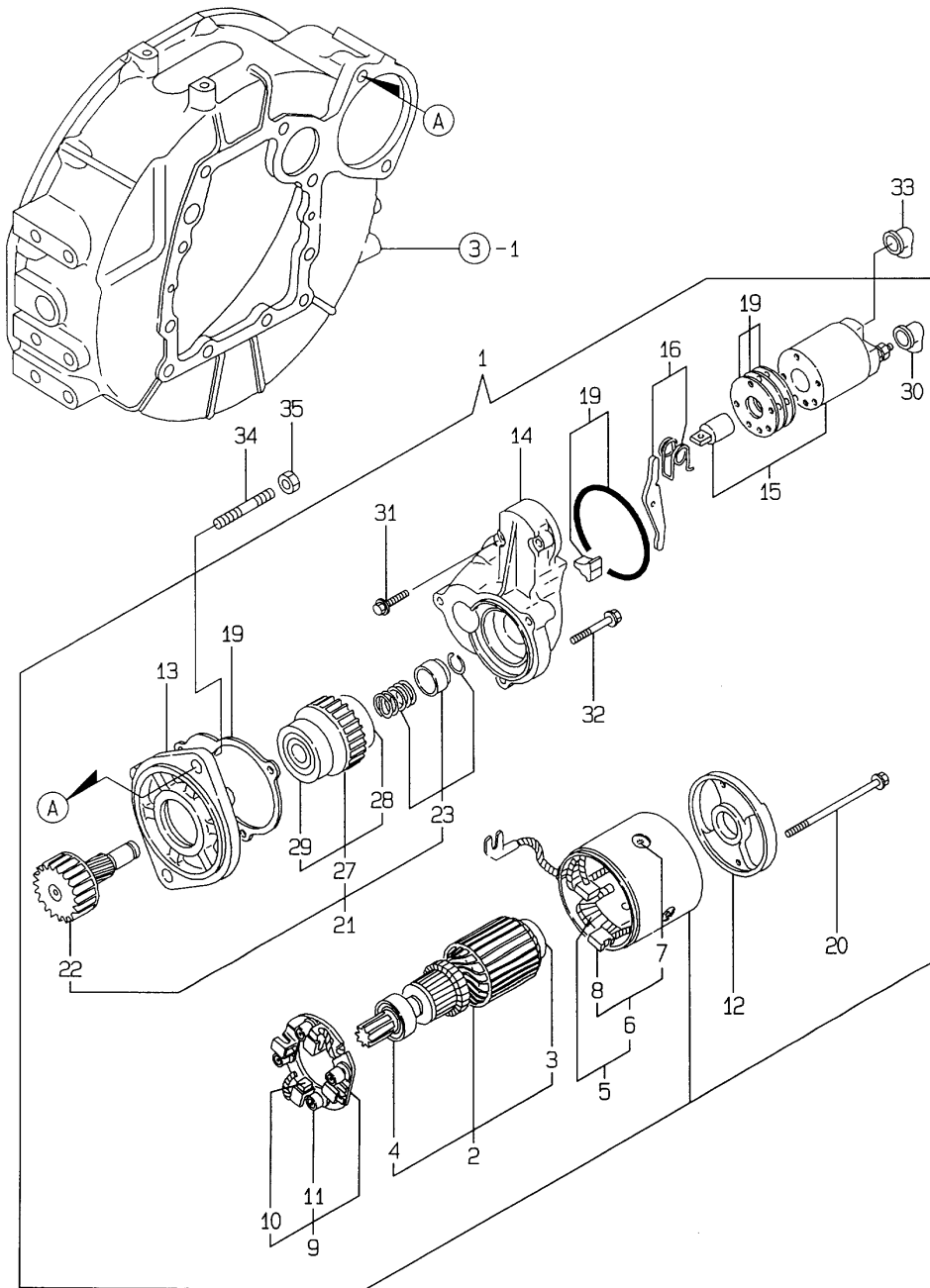
(E)=

(F)=

No.	Lev.	Parts No.	Description	Q'ty						I	R
				(A)	(B)	(C)	(D)	(E)	(F)		
1	1	129470-55601	FILTER ASSY, FUEL	1							
3	2	129470-55701	STRAINER ASSY, FUEL	1							
4	1	26106-100302	BOLT, M10X 30 PLATED				2				
5	1	22190-120002	WASHER, SEAL 12	1							
6	1	129176-59210	PIPE ASSY, FUEL	1							
7	1	22190-120002	WASHER, SEAL 12				5				
8	1	23857-060000	BOLT, JOINT 6				2				
9	1	22190-120002	WASHER, SEAL 12				2				
10	1	129495-59300	BOLT, PIPE JOINT				1				
11	1	129491-59540	BOLT, PIPE JOINT M6				3				
12	1	129176-59550	PIPE ASSY, RETURN				1				
18	1	129176-59600	PIPE ASSY, RETURN				1				
24	1	129100-59951	VALVE ASSY, CHECK				1				
32	1	22190-060002	WASHER, SEAL 6				6				
33	1	22190-080002	WASHER, SEAL 6				2				
34	1	22190-140002	WASHER, SEAL 14				2				
35	1	23857-030000	BOLT, JOINT 3				1				
36	1	101304-59020	JOINT, PIPE 12				1				
37	1	103854-39140	BOLT, PIPE JOINT				1				

Fig.18. STARTING MOTOR

18.STARTING MOTOR



(A)=3TNE84MT-EG1

(B)=

(C)=

(D)=

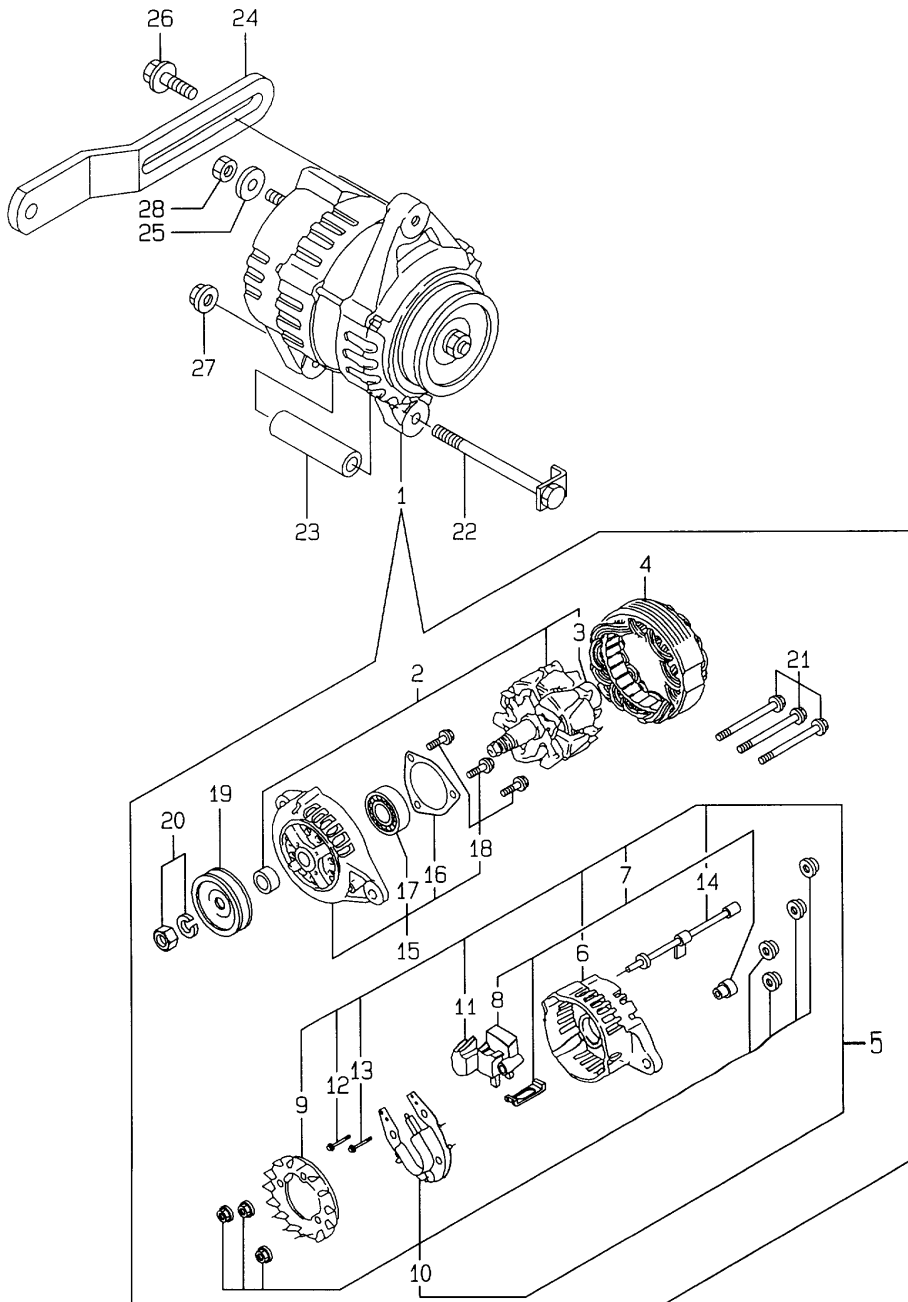
(E)=

(F)=

No.	Lev.	Parts No.	Description	Q'ty						I	R
				(A)	(B)	(C)	(D)	(E)	(F)		
1	1	171008-77010	STARTER, S114-483	1							
2	2	171008-77400	ARMATURE ASSY	1							
3	3	X2114255110	BEARING, BALL	1							
4	3	X2130350900	BALL BEARING	1							
5	2	171008-77430	YOKE ASSY	1							
6	3	171008-77440	COIL ASSY, FIELD	1							
7	4	171008-77450	SCREW	4							
8	4	171008-77460	BRUSH (+)	2							
9	2	171008-77470	HOLDER ASSY, BRUSH	1							
10	3	171008-77480	BRUSH (-)	2							
11	3	171008-77490	SPRING, BRUSH	4							
12	2	171008-77500	COVER, REAR	1							
13	2	171008-77510	HOUSING ASSY, GEAR	1							
14	2	171008-77520	HOUSING, CENTER	1							
15	2	171008-77531	MAGNETIC SWITCH ASSY	1							
16	2	171008-77540	LEVER SET, SHIFT	1							
19	2	171008-77571	DUST COVER,(NON-ASB.	1							
20	2	171008-77640	BOLT, THROUGH	2							
21	2	171008-77650	PINION ASSY	1							
22	3	171008-77660	SHAFT, PINION	1							
23	3	171008-77670	STOPPER SET, PINION	1							
27	3	X2114555500	CLUTCH ASSY	1							
28	4	X2114955020	BALL BEARING	1							
29	4	X2240410100	BEARING, BALL	1							
30	2	171008-77750	COVER, M TERMINAL	1							
31	2	26106-060322	BOLT, M6X 32 PLATED	2							
32	2	26106-060402	BOLT, M6X 40 PLATED	3							
33	1	124550-77030	COVER, TERMINAL	1							
34	1	124450-01610	STUD	2							
35	1	26716-120002	NUT, M12	2							

Fig.19. GENERATOR

19. GENERATOR



(A)=3TNE84MT-EG1

(B)=

(C)=

(D)=

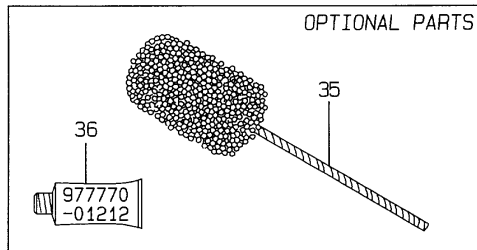
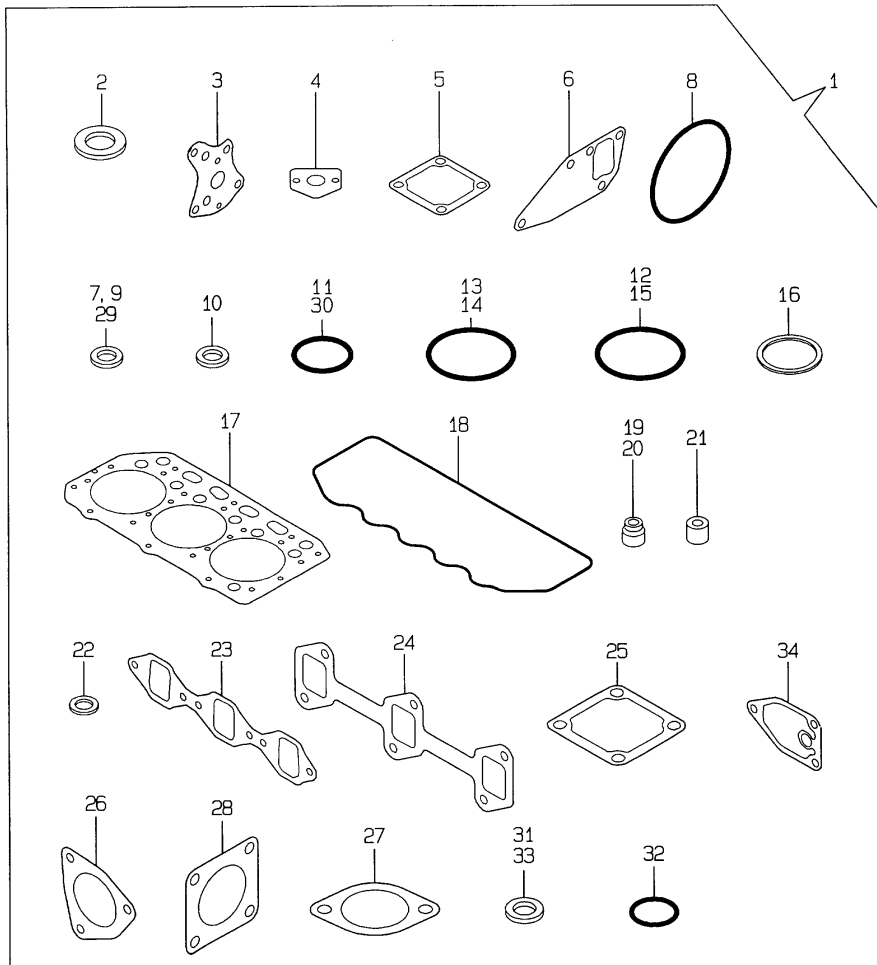
(E)=

(F)=

No.	Lev.	Parts No.	Description	Q'ty						I	R
				(A)	(B)	(C)	(D)	(E)	(F)		
1	1	119836-77200	GENERATOR	1							
2	2	119836-77700	ROTOR ASSY	1							
3	3	119836-77850	BALL BEARING	1							
4	2	119836-77710	STATOR ASSY	1							
5	2	119836-77721	COVER ASSY, REAR	1							
6	3	119836-77730	COVER, REAR	1							
7	3	119836-77741	BRUSH ASSY,REGULATOR	1							
8	4	119836-77750	BRUSH ASSY	1							
9	3	119836-77760	GUIDE, FAN SIDE	1							
10	3	119836-77770	DIODE ASSY	1							
11	3	119836-77780	CONDENSER	1							
12	3	119836-77871	BOLT (1)	1							
13	3	119836-77880	BOLT (2)	1							
14	3	119836-77890	WIRE ASSY, LEAD	1							
15	2	119836-77790	COVER ASSY, FRONT	1							
16	3	119836-77800	RETAINER, BEARING	1							
17	3	119836-77840	BALL BEARING	1							
18	3	119836-77860	SCREW KID	1							
19	2	119836-77810	PULLEY	1							
20	2	119836-77820	NUT ASSY, PULLEY	1							
21	2	119836-77830	BOLT, THROUGH	1							
22	1	129136-77251	BOLT, M8X110	1							
23	1	119820-77340	PIECE, DISTANCE	1							
24	1	129410-77330	ADJUSTER	1							
25	1	22137-080000	WASHER, 8	1							
26	1	26106-080352	BOLT, M8X 35 PLATED	1							
27	1	26366-080002	NUT, M8	1							
28	1	26716-080002	NUT, M8	1							

Fig.20. GASKET SET

20. GASKET SET



(A)=3TNE84MT-EG1

(B)=

(C)=

(D)=

(E)=

(F)=

No.	Lev.	Parts No.	Description	Q'ty						I	R
				(A)	(B)	(C)	(D)	(E)	(F)		
1	1	729218-92611	GASKET SET	1							1
2	2	129155-52050	GASKET	1							
3	2	129150-32020	GASKET, PUMP	1							
4	2	129150-35041	GASKET	1							
5	2	129100-77510	GASKET, AIR HEATER	1							
6	2	129486-42050	GASKET, WATER PUMP	1							
7	2	22190-080002	WASHER, SEAL 6					9			
8	2	121850-51960	O-RING					1			
9	2	23414-080000	GASKET, 8X1.0					2			
10	2	22190-100002	WASHER, SEAL 10					2			
11	2	24311-000160	O-RING, 1AP16.0					3			
12	2	24341-000500	O-RING, 1AS50.0					1			
13	2	24341-000240	O-RING, 1AS24.0					1			
14	2	24341-000250	O-RING, 1AS25.0					1			
15	2	24311-000320	O-RING, 1AP32.0					2			
16	2	129470-49810	GASKET, THERMOSTAT					1			
17	2	129002-01331	GASKET, HEAD					1			
18	2	129150-11310	GASKET, BONNET					1			
19	2	121400-11340	SEAL, VALVE STEM					3			
20	2	124460-11340	SEAL, VALVE STEM					3			
21	2	119625-11870	PROTECTOR, NOZZLE					3			
22	2	119625-11880	SEAT, NOZZLE					3			
23	2	129150-12111	GASKET, MANIFOLD					1			
24	2	129150-13110	GASKET					1			
25	2	129470-77590	GASKET					1			
26	2	129472-13520	GASKET					1			
27	2	129795-49551	GASKET					1			
28	2	129792-18091	GASKET					1			
29	2	22190-060002	WASHER, SEAL 6					6			
30	2	24314-000160	O-RING, 4CP16.0					1			
31	2	22190-120002	WASHER, SEAL 12					7			
32	2	24311-000120	O-RING, 1AP12.0					3			
33	2	22190-140002	WASHER, SEAL 14					2			
34	2	129150-35111	GASKET					1			
35	1	129400-92420	FLEX HORN					1			1
36	1	977770-01212	GASKET, LIQUID					1			1

Remarks

(1) OPTIONAL PART.

Parts No. Index

Parts No.	Fig. No.	Ref. No.
101304-59020	17	36
103854-39140	17	37
104214-42780	11	23
104407-21600	11	1
104407-44480	7	20
	13	3
105010-39140	10	1
114250-39450	10	3
114250-53080	16	5
114250-53120	16	7
114250-53130	16	8
114250-53140	16	9
114250-53210	16	10
114250-53400	16	11
119600-66840	15	75
119620-01750	3	20
119620-49290	1	25
	13	7
119625-11870	4	41
	20	21
119625-11880	4	42
	20	22
119625-11900	4	43
119653-77950	15	80
119660-61901	15	76
119810-51040	14	5
119820-77340	19	23
119836-77200	19	1
119836-77700	19	2
119836-77710	19	4
119836-77721	19	5
119836-77730	19	6
119836-77741	19	7
119836-77750	19	8
119836-77760	19	9
119836-77770	19	10
119836-77780	19	11
119836-77790	19	15
119836-77800	19	16
119836-77810	19	19
119836-77820	19	20
119836-77830	19	21
119836-77840	19	17
119836-77850	19	3
119836-77860	19	18
119836-77871	19	12
119836-77880	19	13
119836-77890	19	14
120130-11860	4	8
120445-44530	12	47

Parts No.	Fig. No.	Ref. No.
120445-44540	12	48
120445-44640	13	20
121023-01550	2	25
121111-21501	8	9
121400-11340	4	24
	20	19
121450-01560	2	5
121520-34810	9	27
121550-23200	8	27
121575-42020	11	5
121575-42120	11	11
121575-42150	11	12
121850-21680	8	8
121850-51960	2	10
	20	8
122117-51560	14	48
122710-51090	14	8
124070-42400	11	15
124070-42420	11	16
124160-01751	2	7
	4	61
124160-01910	1	4
124160-11360	4	56
124160-39140	10	2
124160-49480	13	11
124223-39900	10	10
124223-42040	11	6
124223-42070	11	7
124223-42080	11	8
124223-42091	11	9
124223-42110	11	10
124240-01871	2	6
124450-01610	18	34
124460-11340	4	25
	20	20
124460-77680	11	30
	13	24
124550-21600	8	12
124550-51350	14	30
124550-51370	14	31
124550-59820	10	12
124550-59830	10	11
124550-66370	15	57
124550-77030	18	33
124766-59050	12	51
124770-12540	5	8
124950-51190	14	15
127420-44560	12	50
127610-03270	11	25
127610-91350	12	37

Parts No.	Fig. No.	Ref. No.
128170-13600	7	5
	13	2
129001-01250	1	7
129001-02930	1	17
129001-21000	8	1
129001-32001	9	1
129001-35300	9	28
129002-01331	1	24
	20	17
129002-22090	8	15
129002-22510	8	17
129002-22910	8	32
129002-22960	8	34
129052-61050	15	4
129052-61060	15	5
129052-61070	15	6
129052-61390	15	29
129080-39450	10	4
129080-49010	11	26
129080-49030	11	27
129100-01580	3	2
		13
	8	6
129100-01640	3	14
129100-01730	3	5
129100-11100	4	19
129100-11130	4	21
129100-11240	4	29
129100-11650	4	36
129100-23910	8	26
129100-25061	6	9
129100-51300	14	25
129100-52200	14	93
129100-59912	16	29
129100-59922	16	30
129100-59932	16	31
129100-59951	17	24
129100-61400	15	15
129100-61930	15	82
129100-77500	5	12
129100-77510	5	13
	20	5
129103-01530	2	4
129122-44480	2	27
129129-14580	6	3
129136-77251	19	22
129150-01200	1	23
129150-02020	1	10
129150-02450	6	4
129150-02870	1	28

Parts No.	Fig. No.	Ref. No.
129150-02930	1	20
129150-02940	1	31
129150-03020	4	48
129150-03070	4	49
129150-03080	4	50
129150-11230	4	37
129150-11280	4	32
129150-11290	4	33
129150-11310	4	52
	20	18
129150-11370	4	26
129150-11750	4	39
129150-11810	4	10
129150-12111	5	2
	20	23
129150-13110	13	1
	20	24
129150-14101	6	6
129150-14200	6	1
129150-14400	6	2
129150-21200	8	3
129150-23600	8	28
129150-23610	8	30
129150-25101	6	10
129150-25900	6	15
129150-25920	6	13
129150-32020	9	14
	20	3
129150-35041	9	16
	20	4
129150-35091	9	17
129150-35101	9	22
129150-35111	9	23
	20	34
129150-35151	9	24
129150-35350	9	29
129150-42320	12	15
129150-59120	16	24
129150-59131	16	27
129155-11260	4	30
129155-11270	4	31
129155-51020	14	4
129155-51050	14	6
129155-51060	14	7
129155-51140	14	12
129155-51180	14	14
129155-51200	14	16
129155-51270	14	23
129155-51280	14	24
	15	2

Parts No. Index

Parts No.	Fig. No.	Ref. No.
129155-51320	14	28
129155-51340	14	29
129155-51370	14	32
129155-51380	14	33
129155-51390	14	34
129155-51400	14	35
129155-51410	14	36
129155-51420	14	37
129155-51450	14	38
129155-51500	14	43
129155-51521	14	44
129155-51530	14	45
129155-51540	14	46
129155-51550	14	47
129155-51570	14	50
129155-51580	14	51
129155-51591	14	52
129155-51600	14	53
129155-51701	14	72
129155-51711	14	73
129155-51751	14	74
129155-51760	14	75
129155-51790	14	76
129155-51930	14	78
129155-51940	14	79
129155-52050	14	92
	20	2
129155-61120	15	7
129155-61130	15	8
129155-61140	15	9
129155-61341	15	14
129155-61350	15	73
129155-61360	15	74
129155-61430	15	18
129155-61450	15	22
129155-61460	15	23
129155-61470	15	84
129155-61480	15	24
129155-61830	15	66
129155-61950	15	77
129156-44760	12	18
129156-51910	14	77
129170-12100	5	1
129170-44110	13	16
129170-49260	12	34
129171-03090	4	1
129171-44600	13	19
129171-49560	12	43
129175-01770	3	6
129175-21580	8	10

Parts No.	Fig. No.	Ref. No.
129175-21650	8	13
129176-39630	10	18
129176-44000	13	5
129176-44900	13	4
129176-59210	17	6
129176-59550	17	12
129176-59600	17	18
129202-22300	8	21
129209-44540	12	49
129301-03660	4	59
129400-92420	20	35
129403-18720	7	7
129403-18800	7	9
129403-39610	10	19
129410-77330	19	24
129470-07230	4	2
129470-11080	4	17
129470-11090	4	18
129470-12210	5	14
129470-42001	12	1
129470-44440	13	17
129470-44450	13	18
129470-49200	12	30
129470-49220	12	31
129470-49240	12	32
129470-49250	12	33
129470-49540	12	25
129470-49801	12	27
129470-49810	12	28
	20	16
129470-51101	14	9
129470-55601	17	1
129470-55701	17	3
129470-77590	5	10
	20	25
129472-13520	7	1
	20	26
129472-49040	11	34
129473-49310	12	41
129475-49020	11	28
129477-12500	5	5
129477-12530	5	7
129477-12850	5	17
129477-61720	15	79
129486-01670	3	17
129486-42050	12	16
	20	6
129486-61501	15	30
129486-61540	15	49
129491-59540	17	11

Parts No.	Fig. No.	Ref. No.
129495-59300	17	10
129500-61650	15	78
129503-53000	16	2
129550-42350	12	17
129579-13551	7	2
129579-18010	7	6
129579-18780	7	8
129579-18820	7	12
129579-18830	7	13
129579-18850	7	14
129579-18860	7	15
129579-42150	11	2
129579-42160	11	13
129579-42190	11	14
129579-42500	11	3
129579-49320	12	42
129579-49460	11	29
129670-49290	7	17
	11	36
	12	38
129792-18091	7	16
	20	28
129795-01780	3	16
129795-01800	2	3
129795-01950	2	8
129795-02411	1	13
129795-11120	4	20
129795-11180	4	22
129795-21661	8	7
129795-49551	12	26
	20	27
129900-07900	4	60
129960-03990	4	58
158552-61900	15	65 -1
171007-49400	7	21
171008-77010	18	1
171008-77400	18	2
171008-77430	18	5
171008-77440	18	6
171008-77450	18	7
171008-77460	18	8
171008-77470	18	9
171008-77480	18	10
171008-77490	18	11
171008-77500	18	12
171008-77510	18	13
171008-77520	18	14
171008-77531	18	15
171008-77540	18	16
171008-77571	18	19

Parts No.	Fig. No.	Ref. No.
171008-77640	18	20
171008-77650	18	21
171008-77660	18	22
171008-77670	18	23
171008-77750	18	30
171051-01921	1	5
171301-01640	3	7
171420-34800	9	26
171487-01600	3	1
171488-61200	15	10
171488-61440	15	83
174307-51170	14	13
174307-51560	14	49
174307-51700	15	31
194440-51620	12	44
22117-040000	15	58
22137-080000	19	25
22190-060002	17	32
	20	29
22190-060003	15	59
22190-080002	2	23
		24
	10	13
		14
	17	33
	20	7
22190-100002	10	16
	15	60
	20	10
22190-120002	15	61
	17	5
		7
		9
	20	31
22190-140002	17	34
	20	33
22190-160002	14	88
22217-050000	14	89
22217-060000	14	80
22217-080000	12	19
22217-120000	6	16
22242-000150	11	17
22252-000260	8	22
22252-000350	11	18
22287-120000	15	62
22351-050010	14	81
22351-060012	4	27
22372-040000	15	63
22512-070140	6	7
	8	4

Parts No. Index

Parts No.	Fig. No.	Ref. No.
22512-070160	8	14
23000-013000	12	45
23000-022000	10	20
23000-025000	12	46
23000-035000	11	31
		35
23000-041000	12	35
23000-048000	5	9
		18
23000-060000	5	19
23061-070300	11	32
	13	25
23414-080000	10	15
	20	9
23414-170000	13	12
23857-030000	17	35
23857-060000	17	8
23876-010000	1	6
	5	16
23876-020000	4	12
23876-030000	4	13
23887-100002	15	64
23894-030002	13	13
24101-063034	14	82
24107-062024	11	19
24311-000120	4	57
	20	32
24311-000160	2	11
	9	30
	20	11
24311-000320	2	12
	4	62
	20	15
24314-000160	10	21
	20	30
24321-000750	13	21
24341-000160	14	83
24341-000240	2	26
	20	13
24341-000250	3	9
	20	14
24341-000280	15	65
24341-000500	4	54
	20	12
25132-004400	12	20
26014-080162	11	20
26022-050122	14	84
26022-060162	14	85
26106-060082	11	24
26106-060102	12	21

Parts No.	Fig. No.	Ref. No.
26106-060102	15	67
		68
26106-060142	15	69
26106-060162	2	9
	10	22
26106-060202	15	70
26106-060322	18	31
26106-060402	18	32
26106-080102	10	17
26106-080122	2	13
	12	52
26106-080142	6	14
26106-080162	2	14
		15
		10
	3	10
	4	3
		55
	11	33
	13	22
26106-080182	12	53
26106-080202	2	16
	9	25
26106-080252	3	11
	4	44
	5	3
	12	29
	13	15
26106-080352	3	18
	5	4
	9	21
	12	36
	19	26
26106-080402	5	11
26106-080452	2	17
	3	12
		12 -1
	6	8
26106-080502	2	18
	3	21
	4	45
26106-080552	2	19
	12	22
		23
26106-080652	12	24
26106-080852	2	20
26106-080902	2	21
26106-081002	13	26
26106-100302	17	4
26113-040088	11	21
26116-050302	14	86

Parts No.	Fig. No.	Ref. No.
26206-100252	3	3
26206-100302	3	4
26216-060202	4	14
26226-080182	4	40
26347-080002	11	22
26366-060002	4	28
26366-080002	2	22
	13	23
	15	81
	19	27
26450-060252	9	15
26703-080002	7	3
		4
26716-060002	14	87
26716-080002	19	28
26716-120002	6	17
	18	35
26756-060002	15	71
26776-120002	15	72
27241-120000	1	8
27241-220000	4	15
27241-280000	13	14
27241-300000	1	9
27241-400000	4	16
	13	10
27310-080001	4	23
719810-01500	2	1
729080-51310	14	1
729132-11521	4	46
729202-11710	4	4
729218-92611	20	1
729270-01560	1	1
729402-23100	8	23
729412-53300	16	1
977770-01212	2	28
	3	19
	20	36
X2114255110	18	3
X2114555500	18	27
X2114955020	18	28
X2130350900	18	4
X2240410100	18	29

Parts No.	Fig. No.	Ref. No.
-----------	----------	----------