

0CV10-M45101EN

P R E F A C E

1. This Parts Catalog carries all parts incorporated in YANMAR Model 3TNE78AC-KM engine manufactured since September, 1995.
2. Each illustration corresponds to the parts list on the following page.
3. When ordering parts, clearly write down the engine model and serial number, as well as the name and number of each part in your order sheet. This will help insure reliable delivery of the parts you have ordered.

Directions for the Parts Catalog.

1. This Parts Catalog shows both standard and optional parts.
2. Parts may change without prior notice.
3. The following is an example of the Parts Catalog format.

REF.	LEV.	PARTS NO.	DESCRIPTION	Q'TY						I	R
				(A)	(B)	(C)	(D)	(E)	(F)		
1	1	729595-51390	FUEL INJECTION PUMP	1	1	1	1	1			1
1-1	1	729595-51391	FUEL INJECTION PUMP	1	1	1	1	1		N	1
		(A=E00185) (B=E00200)									
3	2	26022-060162	SCREW M 6X 16	9	9	9	9	9			
3-1	2	26022-060162	SCREW M 6X 16	4	4	4	4	4		K	
		(A=E00156) (B=E00156) (C=E00156) (D=E00156) (E=E00156)									
4	2	129470-51040	CAMSHAFT	1	1	1	1	1			
5	2	122710-51050	BEARING, ROLLER	2	2	2	2	2			
6	2	129470-51060	RETAINER	1	1	1	1	1			

Remarks
(1) BOOST COMPEMSATOR TYPE. OPTIONAL PART, TO E00155,(4JH-DT, 4JH-DTZ

① Ref. No.

The Ref. No. listed may not be in accordance with the illustration Ref. No.

(Ex.) Illustration No.

List Ref No.

1

1

(Before change)

1-1

(After change)

For interchangeable symbols N, R and K, illustrations for new parts may be abbreviated.

② Lev. (Level)

Level indication

The numbers below indicate the level of relativity towards the main part.

1 ----- Main parts (Assembly parts)

2 ----- Sub component included in " 1 ".

3 ----- Sub component included in " 2 ".

Note) Parts that are not for sale are partially illustrated but not listed.

③ Interchangeability Symbol

When a part change takes place, one of the following interchangeability symbols is indicated beside the part.

Symbol	Interchangeability	Contents note
N	Old $\begin{matrix} \leftarrow \text{Yes} \\ \text{No} \rightarrow \end{matrix}$ New	New Part is interchangeable for Old Part but Old Part is not interchangeable for New Part.
Q	Old $\begin{matrix} \leftarrow \text{No} \\ \text{Yes} \rightarrow \end{matrix}$ New	New Part is not interchangeable for Old Part but Old Part is interchangeable for New Part.
R	Old $\begin{matrix} \leftarrow \text{Yes} \\ \text{Yes} \rightarrow \end{matrix}$ New	New/ Old Parts are both interchangeable.
S	Old $\begin{matrix} \leftarrow \text{No} \\ \text{No} \rightarrow \end{matrix}$ New	New/ Old Parts are both not interchangeable.
W		Part newly added.
Z		Part discontinued.
F		Not interchangeable by a single part but interchangeable together with related parts.
K		Changes only for used parts quantities.

④ Effective Machine No.

When a part changes, the effective Machine No. will be indicated in the (A)-(F) column.

Product Symbol	Product No.	Product Symbol	Product No.
C	Clutch No. Compressor No.	F	Machine No. (Agricultural Equip.)
D	Drive No.	M	Machine No.
E	Engine No.		

Note 1) A date may follow the symbol. (Ex.) 1996.01

Note 2) "XXXXX" and "ZZZZZ" are for parts that could not be predicted or for engine models that could not be identified.

Note 3) (A=E00185) is the E (Engine Serial Number) for the column (A) model (in this case 4JH-DT) after the parts design change.

⑤ Remarks

Figures or alphabets (symbols) are entered in the remarks column.

The comments (remarks) on parts that are indicated at the bottom of the illustration are the same symbols as those stated above.

Contents

Fig. No. Fig. Name

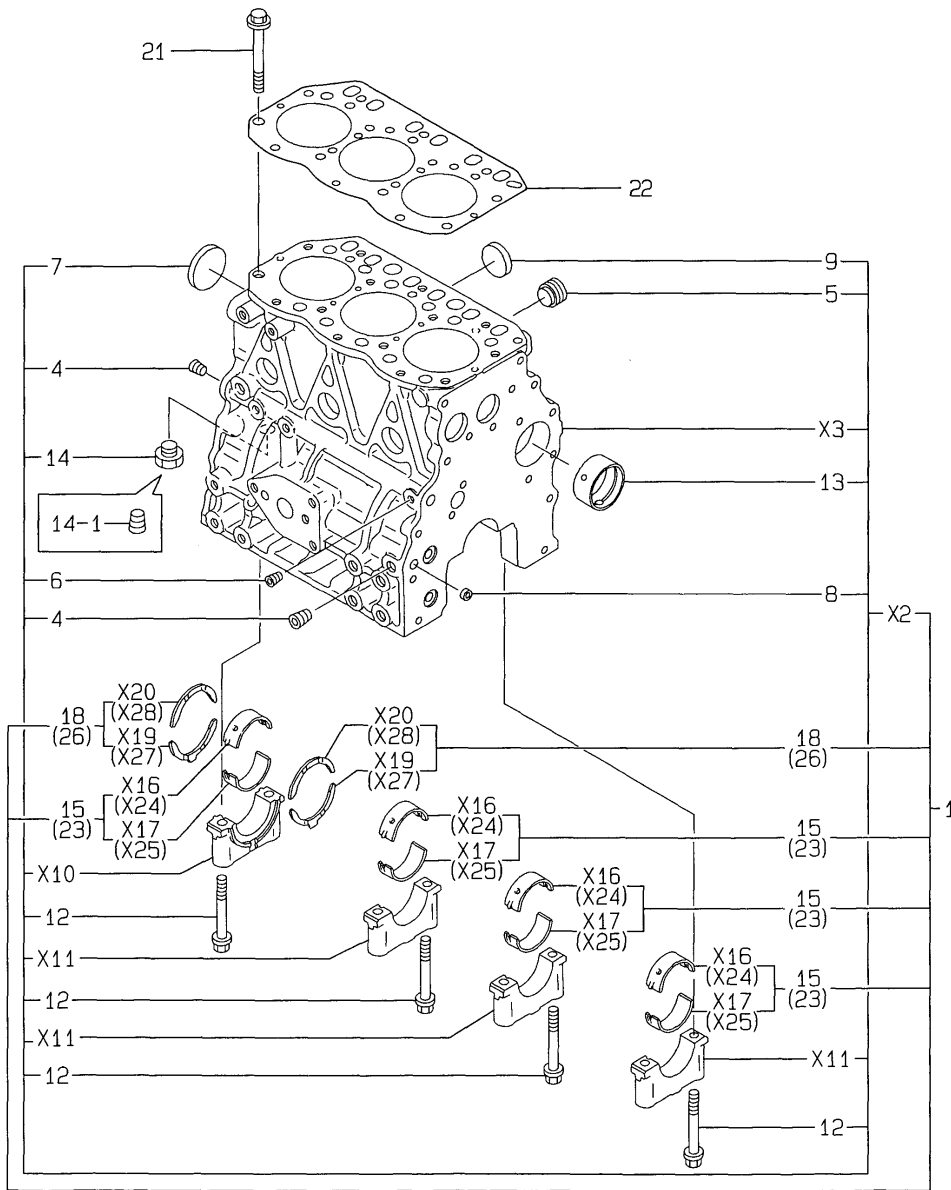
3TNE78AC-KM (KOHLER)

1. CYLINDER BLOCK
2. GEAR HOUSING
3. MOUNTING FLANGE & OIL SUMP
4. CYLINDER HEAD & BONNET
5. SUCTION MANIFOLD
6. CAMSHAFT & DRIVING GEAR
7. CRANKSHAFT & PISTON
8. LUB.OIL SYSTEM
9. COOLING WATER SYSTEM
10. FUEL INJECTION PUMP
11. GOVERNOR
12. FUEL INJECTION VALVE
13. FUEL FILTER
14. STARTING MOTOR
15. GASKET SET

Fig. No. Fig. Name

Fig.1. CYLINDER BLOCK

1. CYLINDER BLOCK



Remarks

- (1) UNDER-SIZE(U.S=0.25)PART.
- (2) OVER-SIZE(O.S=0.25)PART.

(A)=3TNE78AC-KM

(B)=

(C)=

(D)=

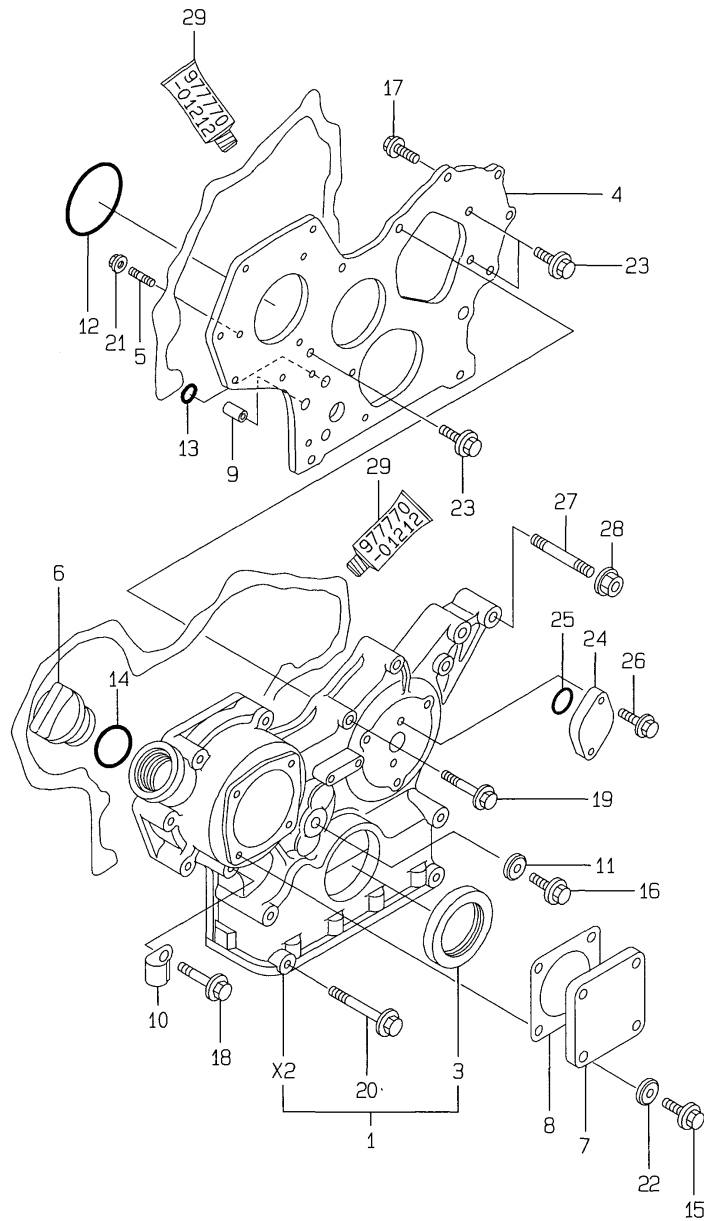
(E)=

(F)=

No.	Lev.	Parts No.	Description	Q'ty						I	R
				(A)	(B)	(C)	(D)	(E)	(F)		
1	1	719822-01560	BLOCK ASSY, CYLINDER	1							
4	3	124160-01910	PLUG, PT1/4	2							
5	3	171051-01921	PLUG, NPTF1	1							
6	3	23871-010000	PLUG, R01	1							
7	3	27231-500000	PLUG 50	1							
8	3	27241-120000	PLUG, 12	2							
9	3	27241-300000	PLUG 30	6							
12	3	119620-02020	BOLT, METAL CAP	8							
13	3	129795-02411	BUSH, CAMSHAFT	1							
14	3	23887-120002	PLUG, 12	1							
14-1	3	124160-01910	PLUG, PT1/4	1							S
(A=E01228)											
15	2	119810-02800	BEARING, MAIN	4							
18	2	119810-02930	BEARING, THRUST	1							
21	1	119810-01200	BOLT, HEAD	14							
22	1	119818-01330	GASKET, HEAD	1							
23	1	119810-02870	BEARING, 0.25 US	4							1
26	1	119810-02940	BEARING, THRUST 0.25	2							2

Fig.2. GEAR HOUSING

2. GEAR HOUSING



(A)=3TNE78AC-KM

(B)=

(C)=

(D)=

(E)=

(F)=

No.	Lev.	Parts No.	Description	Q'ty						I	R
				(A)	(B)	(C)	(D)	(E)	(F)		
1	1	719810-01500	CASE ASSY, GEAR	1							
3	2	129795-01800	SEAL, OIL	1							
4	1	129400-01520	FLANGE, GEAR CASE	1							
5	1	121450-01560	STUD, M8X22	3							
6	1	124160-01751	COVER, FILLER	1							
7	1	124240-01871	COVER	1							
8	1	124240-01883	GASKET	1							
9	1	129795-01950	PIPE, KNOCK L=18	2							
10	1	129150-03100	RETAINER, PIPE	1							
11	1	22190-080002	WASHER, SEAL 6	1							
12	1	121850-51960	O-RING	1							
13	1	24311-000160	O-RING, 1AP16.0	2							
14	1	24311-000320	O-RING, 1AP32.0	1							
15	1	26106-080122	BOLT, M8X 12 PLATED	4							
16	1	26106-080162	BOLT, M8X 16 PLATED	1							
17	1	26106-080202	BOLT, M8X 20 PLATED	2							
18	1	26106-080452	BOLT, M8X 45 PLATED	6							
19	1	26106-080552	BOLT, M8X 55 PLATED	3							
20	1	26106-080852	BOLT, M8X 85 PLATED	4							
20-1	1	129001-91840	BOLT, M8X85	4							R
(A=E01228)											
21	1	26366-080002	NUT, M8	3							
22	1	22190-080002	WASHER, SEAL 6	4							
23	1	26106-080162	BOLT, M8X 16 PLATED	3							
24	1	121023-01550	COVER	1							
25	1	24341-000240	O-RING, 1AS24.0	1							
26	1	26106-060122	BOLT, M6X 12 PLATED	2							
26-1	1	26106-060162	BOLT, M6X 16 PLATED	2							N
(A=E00338)											
27	1	121450-01570	STUD	1							
27-1	1	129795-01900	STUD	1							N
(A=E00338)											
28	1	26366-100002	NUT, M10	1							
29	1	97770-01212	GASKET, LIQUID	1							1

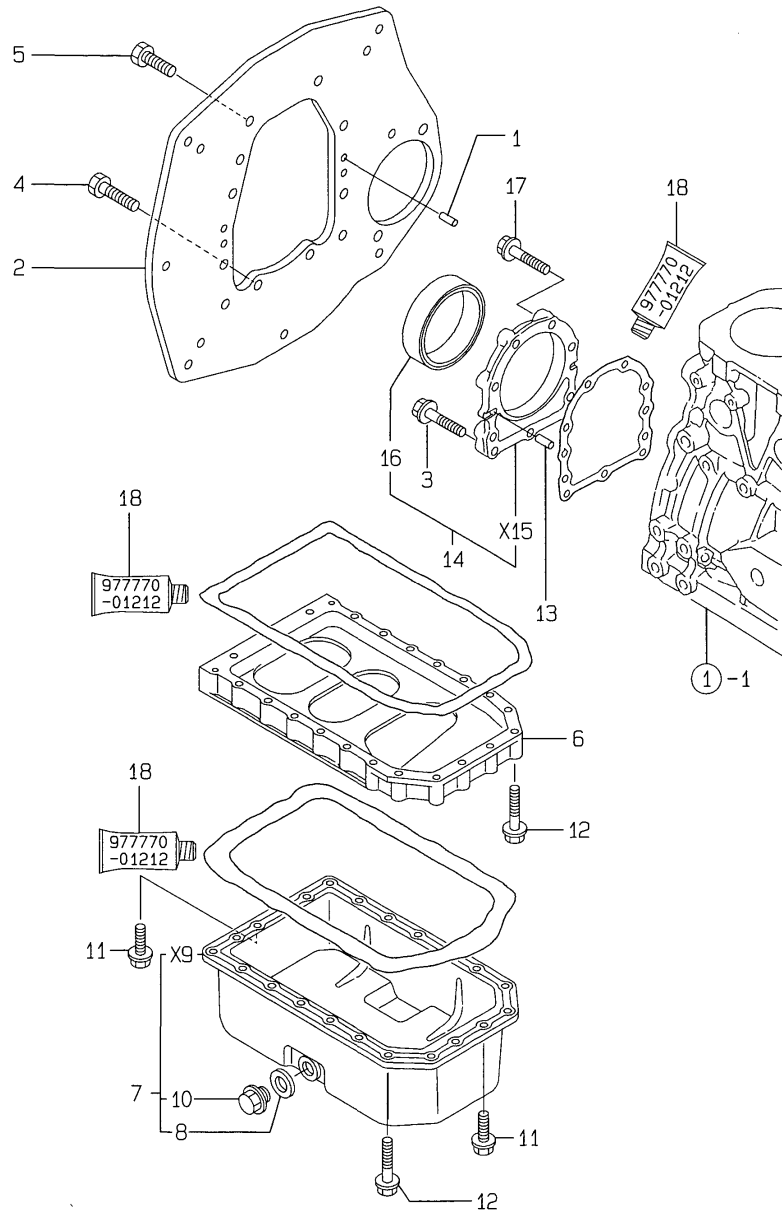
Remarks

(1) OPTIONAL PART.

N:Old $\xrightarrow{\text{Yes}}$ New, Q:Old $\xrightarrow{\text{No}}$ New, R:Old $\xrightarrow{\text{Yes}}$ New, S:Old $\xrightarrow{\text{No}}$ New, W:Add, Z:Discontinued, F:Interchangeable by set, K:Q'ty Change

Fig.3. MOUNTING FLANGE & OIL SUMP

3.MOUNTING FLANGE & OIL SUMP



(A)=3TNE78AC-KM

(B)=

(C)=

(D)=

(E)=

(F)=

No.	Lev.	Parts No.	Description	Qty						I	R
				(A)	(B)	(C)	(D)	(E)	(F)		
1	1	129100-01580	PIN, M8X16	2							
2	1	129176-01601	FLANGE, MOUNTING	1							
3	1	26106-080352	BOLT, M8X 35 PLATED	3							
4	1	26206-100252	BOLT, M10X 25 PLATED	4							
5	1	26206-100202	BOLT, M10X 20 PLATED	6							
6	1	119810-01730	SPACER, OIL SUMP	1							
7	1	119810-01770	SUMP ASSY, OIL	1							
8	2	119640-01640	PLUG, DRAIN M22	1							
10	2	22190-220002	WASHER, SEAL 22	1							
11	1	26106-080162	BOLT, M8X 16 PLATED	6							
12	1	26106-080452	BOLT, M8X 45 PLATED	22							
13	1	129100-01580	PIN, M8X16	2							
14	1	719810-01650	CASE ASSY, OIL SEAL	1							
16	2	119810-01780	SEAL, 769310	1							
17	1	26106-080302	BOLT, M8X 30 PLATED	6							
17-1	1	129486-01670 (A=E00678)	BOLT, M8X30	6							R
18	1	977770-01212	GASKET, LIQUID	1							1

Remarks

(1) OPTIONAL PART.

Fig.4. CYLINDER HEAD & BONNET

(A)=3TNE78AC-KM

(B)=

(C)=

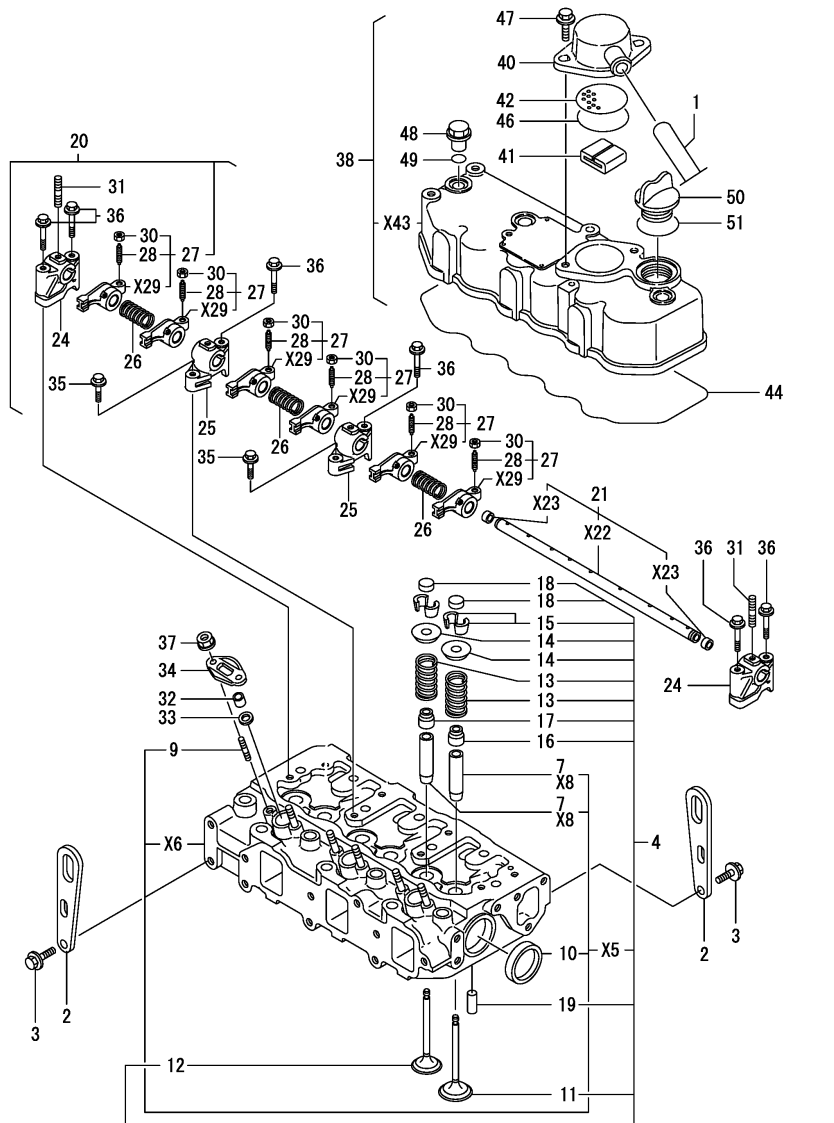
(D)=

(E)=

(F)=

Q'ty

I R



X-MARK PARTS: NOT SOLD SEPARATELY.

No.	Lev.	Parts No.	Description	(A)	(B)	(C)	(D)	(E)	(F)	I	R
1	1	129150-03090	HOSE, ID16X2T	1							
2	1	124736-07900	LIFTER	2							
3	1	26106-080142	BOLT, M8X 14 PLATED	4							
4	1	119812-11700	HEAD ASSY, CYLINDER	1							
7	3	124060-11800	GUIDE, VALVE	6							1
9	3	26216-060302	STUD, M6X 30	6							
10	3	27241-400000	PLUG, 40	2							
11	2	119810-11100	VALVE, INTAKE	3							
12	2	119810-11110	VALVE, EXHAUST	3							
13	2	119810-11120	SPRING, VALVE	6							
14	2	104211-11180	RETAINER, SPRING	6							
15	2	27310-070001	COTTER, 7	6							
16	2	124160-11340	SEAL, VALVE STEM	3							
17	2	124950-11340	SEAL, VALVE STEM	3							
18	2	104211-11370	CAP, VALVE	6							
19	1	22351-060012	PIN, SPRING 6.0X12	2							
20	1	119865-11210	SUPPORT ASSY	1							
21	2	119810-11240	SHAFT ASSY, ROCKER	1							
24	2	129155-11260	SUPPORT, ROCKER ARM	2							
25	2	129155-11270	SUPPORT, ROCKER ARM	2							
26	2	129150-11280	SPRING	3							
27	2	719810-11660	ARM ASSY, ROCKER	6							
28	3	129150-11230	SCREW, VALVE ADJUST	6							
30	3	129150-11750	NUT, M8	6							
31	2	26226-080182	STUD, M8X 18	3							
32	1	119625-11871	PROTECTOR, NOZZLE	3							
32-1	1	119625-11870	PROTECTOR, NOZZLE	3							N
(A=EXXX)											
33	1	119625-11880	SEAT, NOZZLE	3							
34	1	119625-11900	RETAINER, NOZZLE	3							Z
(A=FROM 1ST)											
35	1	26106-080252	BOLT, M8X 25 PLATED	2							
36	1	26106-080502	BOLT, M8X 50 PLATED	6							
37	1	26366-060002	NUT, M6	6							
38	1	719810-11520	BONNET ASSY, HEAD	1							
40	2	129150-03020	COVER, BREATHER	1							
41	2	129150-03070	BAFFLE, BREATHER	1							
42	2	129150-03080	PLATE, BAFFLE	1							
44	2	119865-11310	GASKET, BONNET	1							
46	2	24341-000500	O-RING, 1AS50.0	1							
47	2	26106-080162	BOLT, M8X 16 PLATED	2							
48	1	124160-11360	KNOB	3							
49	1	24311-000120	O-RING, 1AP12.0	3							
50	1	124160-01751	COVER, FILLER	1							
51	1	24311-000320	O-RING, 1AP32.0	1							

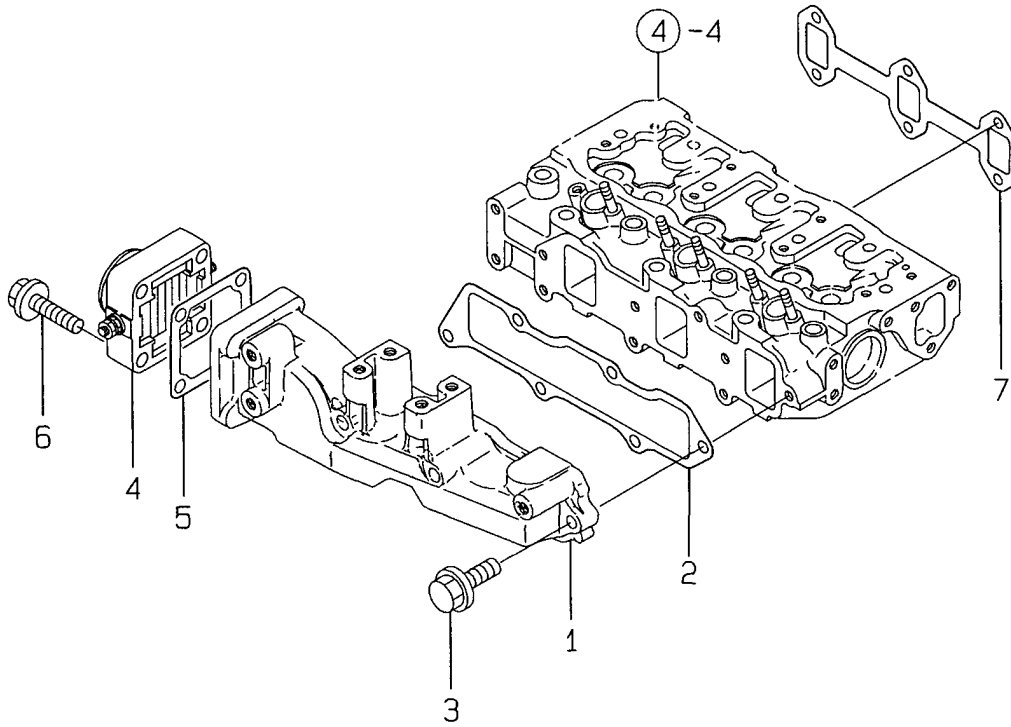
Remarks

(1) REPAIR PART.

N:Old $\begin{matrix} \leftarrow \text{Yes} \\ \text{No} \end{matrix}$ New, Q:Old $\begin{matrix} \leftarrow \text{No} \\ \text{Yes} \end{matrix}$ New, R:Old $\begin{matrix} \leftarrow \text{Yes} \\ \text{Yes} \end{matrix}$ New, S:Old $\begin{matrix} \leftarrow \text{No} \\ \text{No} \end{matrix}$ New, W:Add, Z:Discontinued, F:Interchangeable by set, K:Q'ty Change

Fig.5. SUCTION MANIFOLD

5. SUCTION MANIFOLD



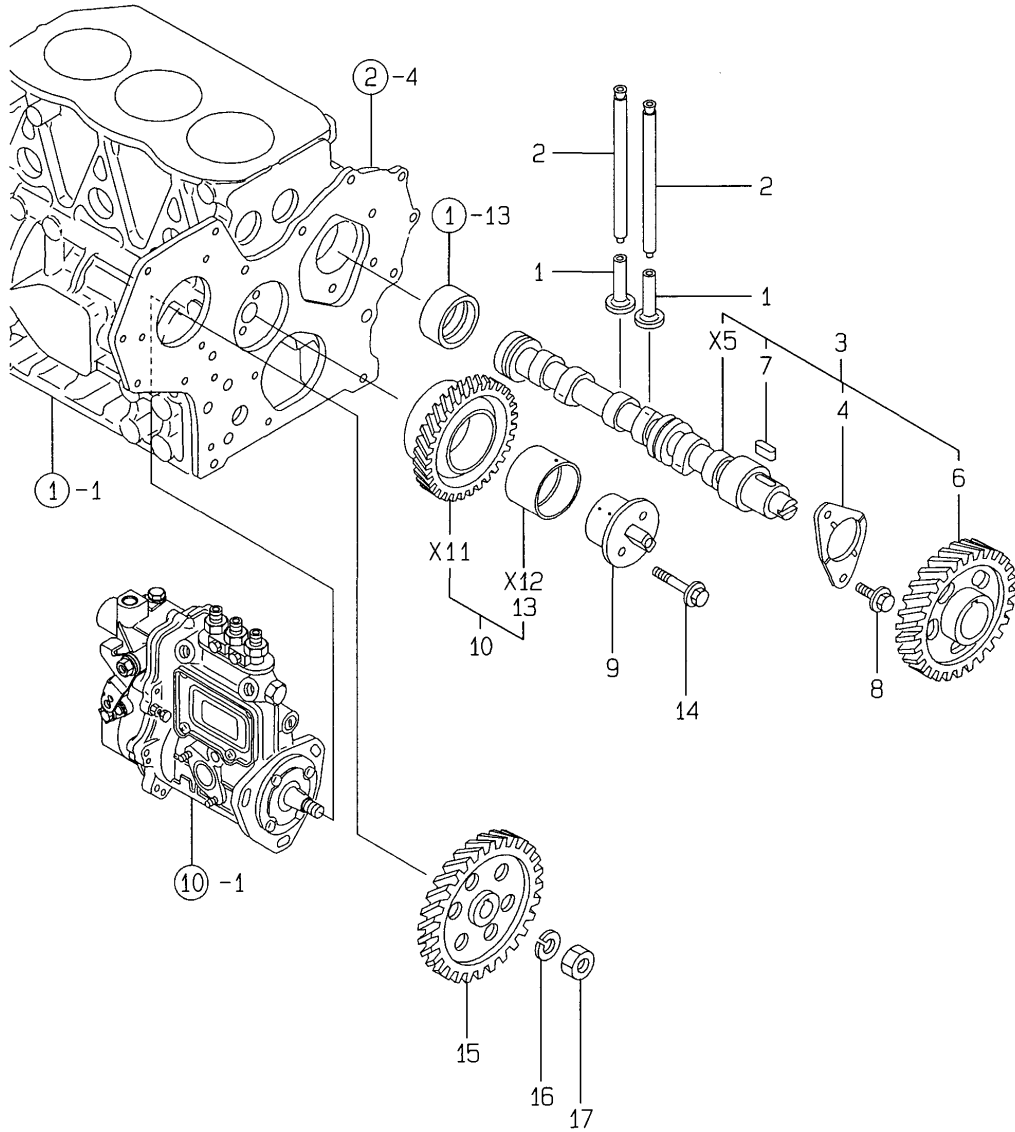
(A)=3TNE78AC-KM
(B)=
(C)=

(D)=
(E)=
(F)=

No.	Lev.	Parts No.	Description	Q'ty						I	R
				(A)	(B)	(C)	(D)	(E)	(F)		
1	1	119813-12100	MANIFOLD, AIR INTAKE	1							
2	1	119813-12110	GASKET, MANIFOLD	1							
3	1	26106-080252	BOLT, M8X 25 PLATED	6							
4	1	129120-77501	HEATER	1							
5	1	129150-77511	GASKET	1							
6	1	26106-080352	BOLT, M8X 35 PLATED	4							
7	1	119810-13110	GASKET	1							

Fig.6. CAMSHAFT & DRIVING GEAR

6.CAMSHAFT & DRIVING GEAR



(A)=3TNE78AC-KM

(B)=

(C)=

(D)=

(E)=

(F)=

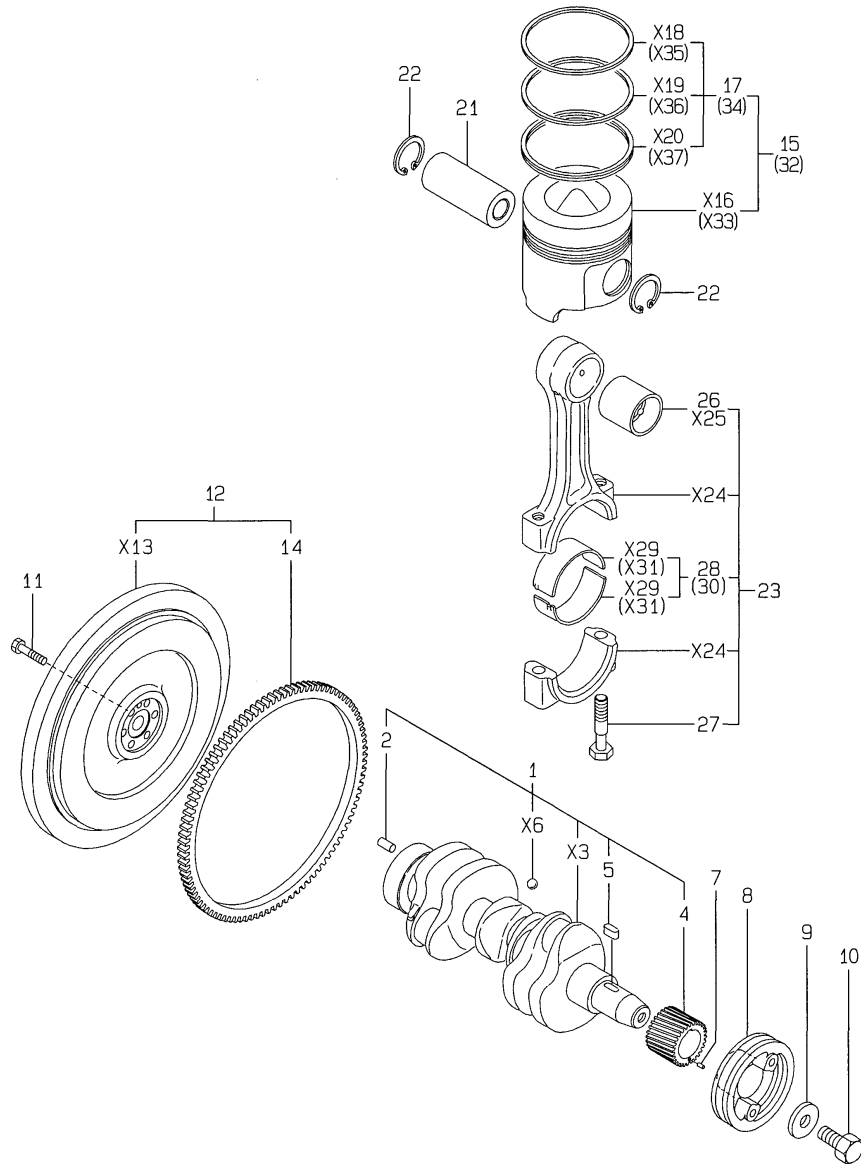
No.	Lev.	Parts No.	Description	Q'ty						I	R
				(A)	(B)	(C)	(D)	(E)	(F)		
1	1	129150-14200	TAPPET	6							
2	1	119810-14400	ROD, PUSH	6							
3	1	119810-14580	CAMSHAFT ASSY	1							
4	2	129150-02450	BEARING, THRUST	1							
6	2	129150-14101	GEAR, CAMSHAFT	1							
7	2	22512-070140	KEY, 7X 14	1							
8	1	26106-080162	BOLT, M8X 16 PLATED	2							
8-1	1	26106-080142	BOLT, M8X 14 PLATED	2							N
(A=E00600)											
9	1	129100-25061	SHAFT, IDLE	1							
10	1	129150-25101	GEAR ASSY, IDLE	1							
13	2	129150-25920	BUSH, IDLE GEAR	1							1
14	1	26106-080452	BOLT, M8X 45 PLATED	2							
15	1	129150-25900	GEAR, PUMP	1							
16	1	22217-120000	WASHER, SPRING 12	1							
17	1	26716-120002	NUT, M12	1							

Remarks

(1) REPAIR PART.

Fig.7. CRANKSHAFT & PISTON

7. CRANKSHAFT & PISTON



(A)=3TNE78AC-KM

(B)=

(C)=

(D)=

(E)=

(F)=

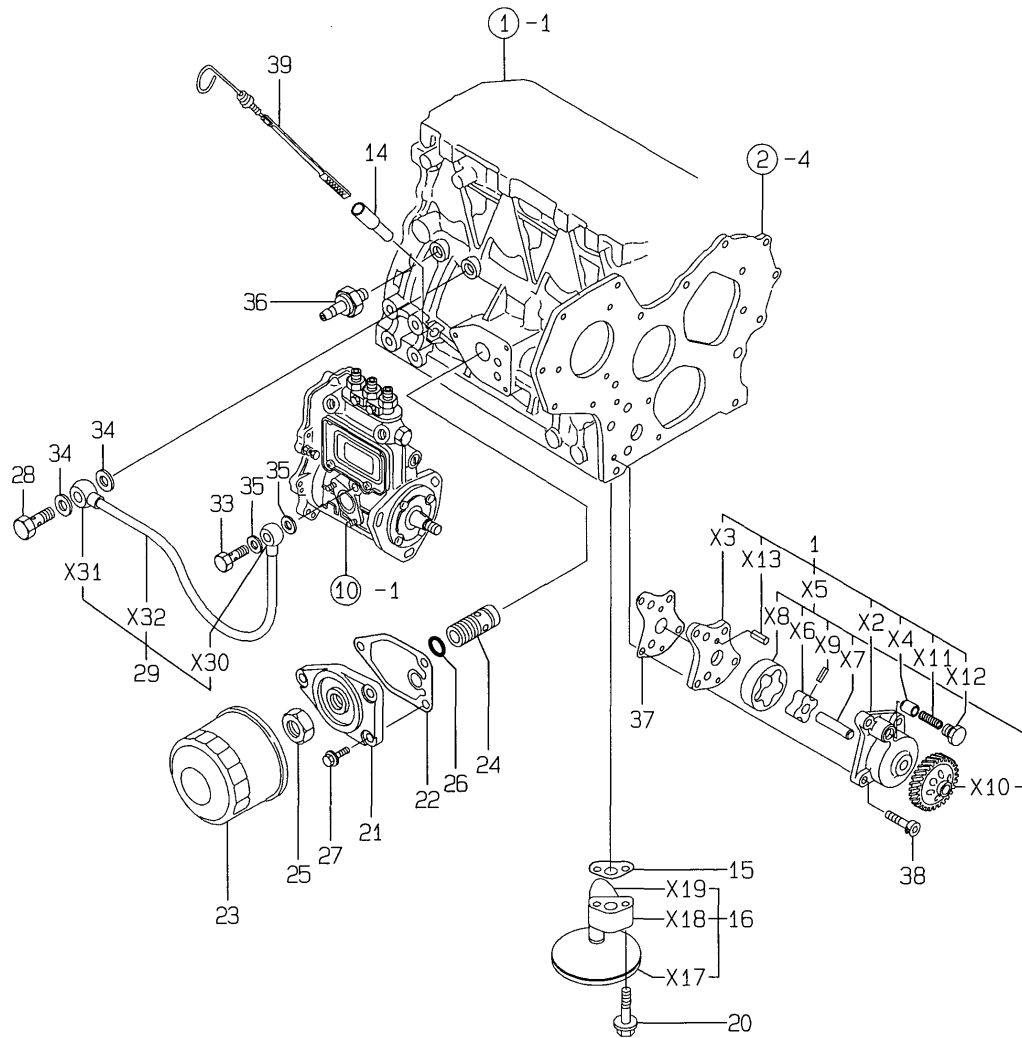
No.	Lev.	Parts No.	Description	Qty						I	R
				(A)	(B)	(C)	(D)	(E)	(F)		
1	1	119813-21000	CRANKSHAFT ASSY	1							
2	2	129100-01580	PIN, M8X16	1							
4	2	129150-21200	GEAR, CRANKSHAFT	1							
5	2	22512-070140	KEY, 7X 14	1							
7	1	22351-040010	PIN, SPRING 4.0X10	1							
8	1	129550-21650	V-PULLEY	1							
9	1	129795-21661	WASHER	1							
10	1	121850-21680	BOLT	1							
11	1	121111-21501	BOLT, FLYWHEEL	6							
12	1	119811-21570	FLYWHEEL ASSY	1							
14	2	124550-21600	GEAR, RING	1							
15	1	119818-22080	PISTON ASSY	3							
17	2	119818-22500	RING SET, PISTON	3							
21	1	119813-22300	PIN, PISTON	3							
22	1	129792-22400	CIRCLIP, 23	6							
23	1	719810-23100	ROD ASSY, CONNECTING	3							
26	2	119810-23910	BEARING, PISTON PIN	3							1
27	2	119810-23200	BOLT, CONNECTING ROD	6							
28	2	119810-23600	BEARING, CRANK PIN	3							
30	1	119810-23610	BEARING, 0.25 US	3							2
32	1	119818-22900	PISTON ASSY, 0.25 OS	3							3
34	2	119818-22950	RING SET, 0.25 OS	3							3

Remarks

- (1) REPAIR PART.
- (2) UNDER-SIZE(U.S=0.25)PART.
- (3) OVER-SIZE(O.S=0.25)PART.

Fig.8. LUB.OIL SYSTEM

8.LUB.OIL SYSTEM



(A)=3TNE78AC-KM

(B)=

(C)=

(D)=

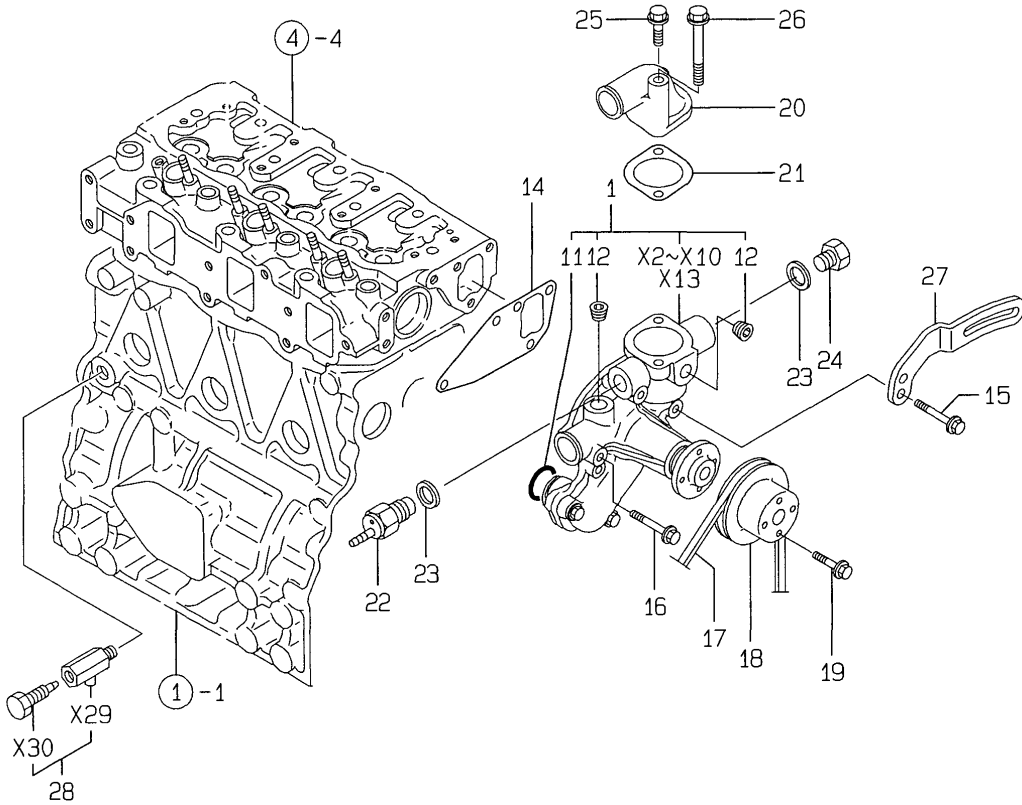
(E)=

(F)=

No.	Lev.	Parts No.	Description	Q'ty						I	R
				(A)	(B)	(C)	(D)	(E)	(F)		
1	1	129001-32001	PUMP ASSY, OIL	1							
14	1	121520-34810	GUIDE, DIPSTICK	1							
15	1	129150-35041	GASKET	1							
16	1	119810-35300	PIPE ASSY, OIL INLET	1							
20	1	26106-080352	BOLT, M8X 35 PLATED	2							
21	1	129150-35101	BRACKET, STRAINER	1							
22	1	129150-35111	GASKET	1							
23	1	129150-35151	FILTER, D80XL80	1							
24	1	129001-35300	BOLT, FILTER	1							
25	1	129150-35350	NUT	1							
26	1	24311-000160	O-RING, 1AP16.0	1							
27	1	26106-080202	BOLT, M8X 20 PLATED	3							
28	1	124160-39140	BOLT, PIPE JOINT M10	1							
29	1	119810-39200	PIPE ASSY, OIL	1							
33	1	124550-59820	BOLT, PIPE JOINT M8	1							
34	1	22190-080002	WASHER, SEAL 6	2							
35	1	23414-100000	GASKET, 10X1.0	2							
36	1	124160-39450	SWITCH, 0.5KG	1							
37	1	129150-32020	GASKET, PUMP	1							
38	1	26450-060252	BOLT, M6X 25	4							
39	1	119600-34800	DIPSTICK, OIL	1							

Fig.9. COOLING WATER SYSTEM

9. COOLING WATER SYSTEM



(A)=3TNE78AC-KM

(B)=

(C)=

(D)=

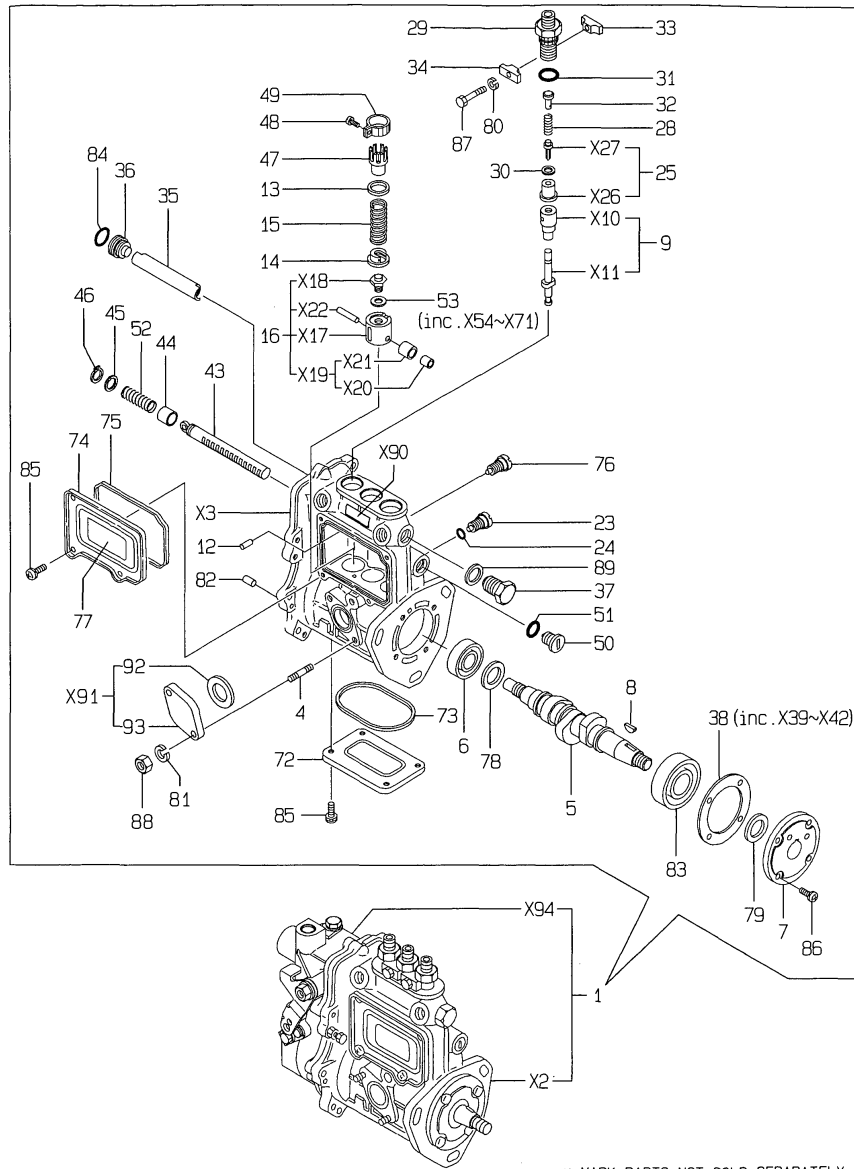
(E)=

(F)=

No.	Lev.	Parts No.	Description	Q'ty						I	R
				(A)	(B)	(C)	(D)	(E)	(F)		
1	1	119810-42001	PUMP ASSY, WATER	1							
11	2	129150-42320	O-RING	1							
12	2	23871-030000	PLUG, R03	2							
14	1	129150-42020	GASKET, WATER PUMP	1							
15	1	26106-080352	BOLT, M8X 35 PLATED	1							
16	1	26106-080552	BOLT, M8X 55 PLATED	3							
17	1	25132-003800	V-BELT, A38	1							
18	1	129155-42350	V-PULLEY	1							
19	1	26014-060142	BOLT, M6X 14	4							
20	1	119889-49530	COVER, THERMOSTAT	1							
21	1	129795-49551	GASKET	1							
22	1	46150-503100	SWITCH, 95	1							
23	1	124465-44950	GASKET, 16	2							
24	1	121450-42450	PLUG, M16	1							
25	1	26106-080252	BOLT, M8X 25 PLATED	1							
26	1	26106-080652	BOLT, M8X 65 PLATED	1							
27	1	119810-77330	ADJUSTER	1							
28	1	119620-49290	COCK ASSY, 1/4	1							

Fig.10. FUEL INJECTION PUMP

10.FUEL INJECTION PUMP



x-MARK PARTS: NOT SOLD SEPARATELY.

Remarks
 (1) GOVERNOR ASSY(FIG.11) IS
 INCORPORATED IN THIS FOP.CMP
 (REF.NO.1).

(A)=3TNE78AC-KM

(B)=

(C)=

(D)=

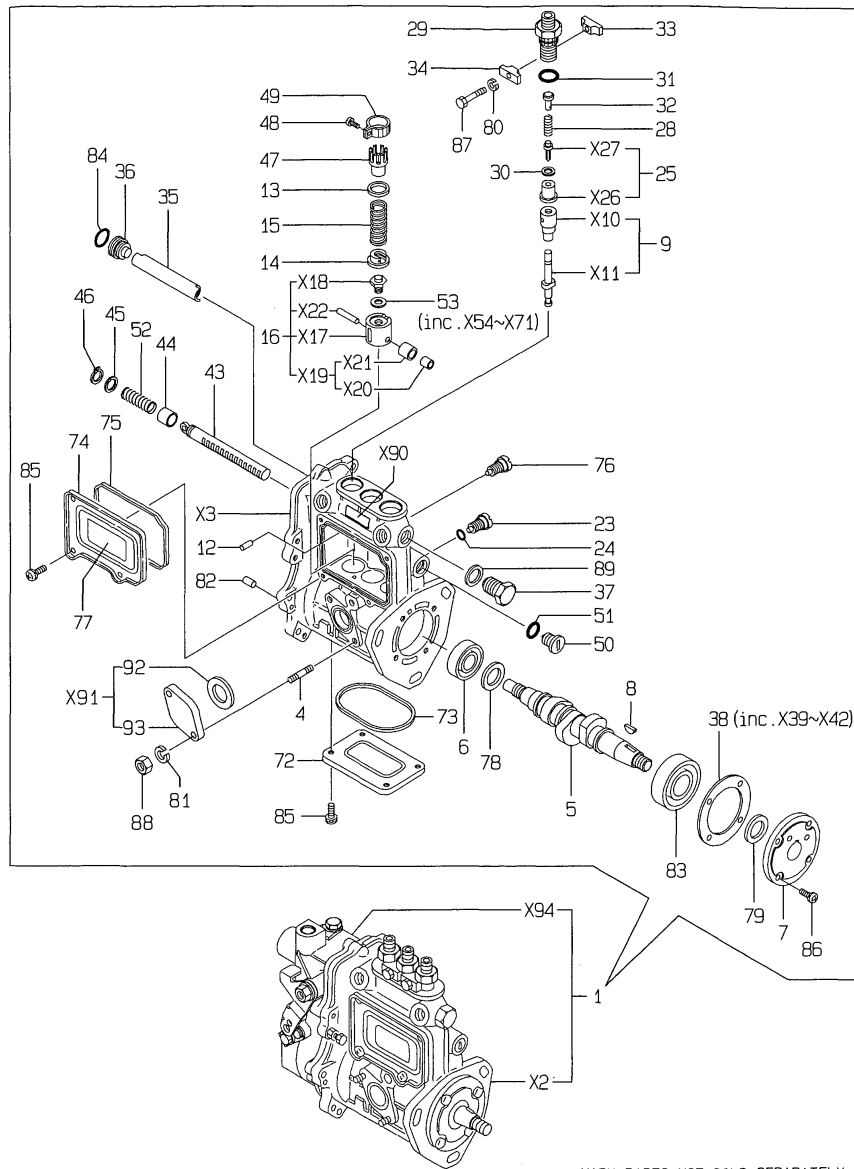
(E)=

(F)=

No.	Lev.	Parts No.	Description	Q'ty						I	R
				(A)	(B)	(C)	(D)	(E)	(F)		
1	1	719988-51300	PUMP ASSY, INJECTION	1							1
4	3	129155-51020	STUD	2							
5	3	119810-51040	CAMSHAFT	1							
6	3	129155-51050	BEARING, 17BM001D	1							
7	3	129155-51060	SUPPORT, CAMSHAFT	1							
8	3	122710-51090	KEY	1							
9	3	129108-51100	PLUNGER ASSY	3							
12	3	129155-51140	PIN	3							
13	3	174307-51170	RETAINER, SPRING A	3							
14	3	129155-51180	RETAINER, SPRING	3							
15	3	124950-51190	SPRING, PLUNGER	3							
16	3	129155-51200	TAPPET ASSY	3							
23	3	129155-51270	STOPPER, TAPPET	3							
24	3	129155-51280	O-RING, S6	3							
25	3	129100-51300	VALVE ASSY, DELIVERY	3							
28	3	129155-51320	SPRING, DELIVERY	3							
29	3	129155-51340	RETAINER	3							
30	3	124550-51350	GASKET, DELIVERY	3							
31	3	124550-51370	O-RING	3							
32	3	129155-51370	STOPPER, VALVE	3							
33	3	129155-51380	STOPPER	2							
34	3	129155-51390	STOPPER	2							
35	3	129155-51400	DEFLECTOR	1							
36	3	129155-51410	BOLT	1							
37	3	129155-51420	PLUG, M16	1							
38	3	129155-51450	SHIM SET, ADJUSTING	1							
43	3	129155-51500	RACK, CONTROL	1							
44	3	129155-51521	BUSH, RACK	1							
45	3	129155-51530	SPACER	1							
46	3	129155-51540	CIRCLIP	1							
47	3	129155-51550	PINION, CONTROL	3							
48	3	122117-51560	SCREW	3							
49	3	174307-51560	PINION	3							
50	3	129155-51570	PLUG, M12	1							
51	3	129155-51580	O-RING	1							
52	3	129155-51591	SPRING, RACK	1							
53	3	129155-51600	SHIM SET, ADJUSTING	3							
72	3	129155-51700	COVER	1							
73	3	129155-51710	GASKET	1							
74	3	129155-51750	COVER	1							
75	3	129155-51760	GASKET	1							
76	3	129155-51790	STOOPER, RACK	1							
77	3	129156-51910	LABEL, CAUTION	1							
78	3	129155-51930	SPACER, T=3.25	1							
79	3	129155-51940	SPACER, T=1.5	1							
80	3	22217-050000	WASHER, SPRING 5	2							
81	3	22217-060000	WASHER, SPRING 6	2							
82	3	22351-050010	PIN, SPRING 5.0X10	2							
83	3	24101-063034	BEARING, BALL 6303	1							
84	3	24341-000160	O-RING, 1AS16.0	1							
85	3	26022-050102	SCREW, M5X10	8							

Fig.10. FUEL INJECTION PUMP

10.FUEL INJECTION PUMP



x-MARK PARTS: NOT SOLD SEPARATELY .

(A)=3TNE78AC-KM

(B)=

(C)=

(D)=

(E)=

(F)=

No.	Lev.	Parts No.	Description	Q'ty						I	R
				(A)	(B)	(C)	(D)	(E)	(F)		
86	3	26022-060162	SCREW, M6X16	4							
87	3	26116-050302	BOLT, M5X 30 PLATED	2							
88	3	26716-060002	NUT, M6	2							
89	3	22190-160002	WASHER, SEAL 16	1							
92	3	129155-52050	GASKET	1							
93	3	129100-52200	COVER	1							

Remarks

(1) GOVERNOR ASSY(FIG.11) IS INCORPORATED IN THIS FOP.CMP (REF.NO.1).

Fig.11. GOVERNOR

(A)=3TNE78AC-KM

(B)=

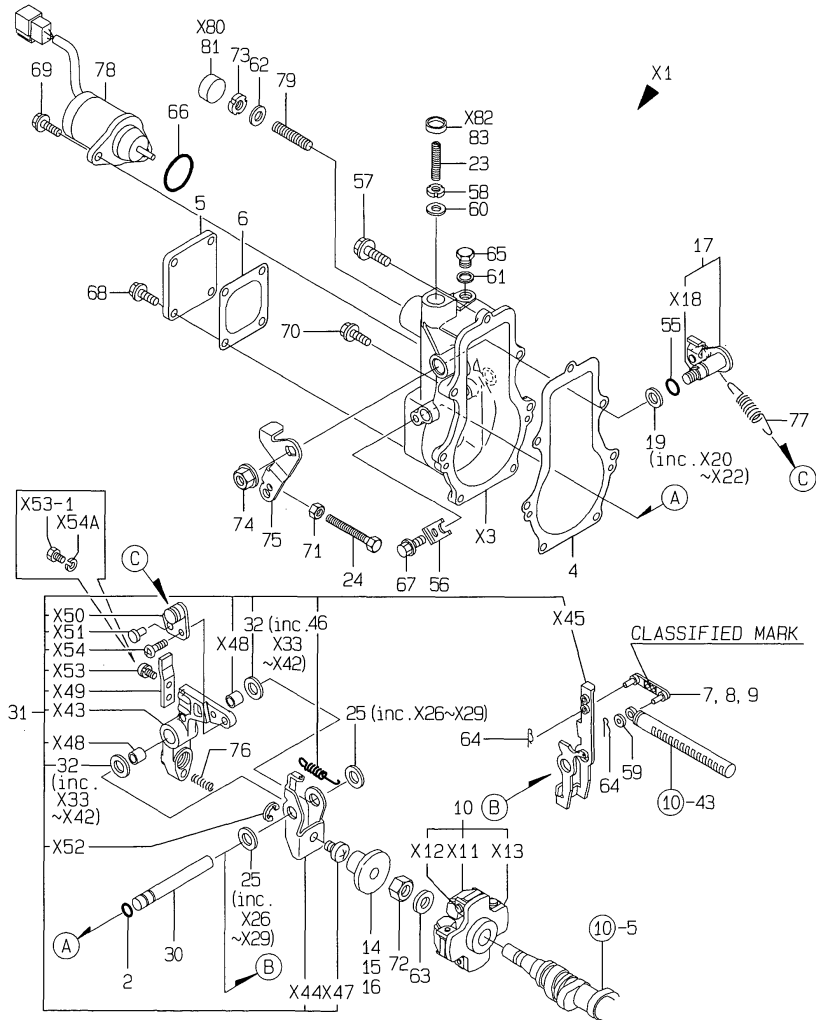
(C)=

(D)=

(E)=

(F)=

11. GOVERNOR



No.	Lev.	Parts No.	Description	Qty						I	R
				(A)	(B)	(C)	(D)	(E)	(F)		
2	3	129155-51280	O-RING, S6	1							
4	3	129116-61051	GASKET	1							
5	3	129052-61060	COVER, GOVERNOR CASE	1							
6	3	119988-61070	GASKET	1							
7	3	129155-61120	LINK, L=30 MARK 0	1							1
8	3	129155-61130	LINK, L=31 MARK 1	1							1
9	3	129155-61140	LINK, L=30.5 MARK 05	1							1
10	3	171488-61200	WEIGHT ASSY,GOVERNOR	1							
14	3	129155-61341	SLEEVE	1							2
15	3	129155-61350	SLEEVE, L=24.9	1							2
16	3	129155-61360	SLEEVE, L=25.2	1							2
17	3	119988-61400	SHAFT ASSY	1							
19	3	129155-61430	SPACER	1							
23	3	119988-61450	BOLT, LIMITER	1							
23-1	3	119988-61460	BOLT, LIMITER	1							N
(A=FROM 1ST)											
24	3	129155-61460	BOLT, IDLE	1							
25	3	129155-61480	SPACER ASSY	2							
30	3	129052-61390	SHAFT	1							
31	3	129412-61500	LEVER ASSY, GOVERNOR	1							
32	4	174307-51700	SHIM SET	2							
46	4	119843-61540	SPRING, SET	1							
55	3	129155-61830	O-RING, S10	1							
56	3	119660-61901	RETAINER, SHAFT	1							
57	3	129155-61950	BOLT	1							
58	3	119685-61950	NUT, M6	1							
59	3	22117-040000	WASHER, 4	1							
60	3	22190-060002	WASHER, SEAL 6	1							
61	3	22190-100002	WASHER, SEAL 10	1							
62	3	22190-120002	WASHER, SEAL 12	1							
63	3	22287-120000	WASHER, 12	1							
64	3	22372-040000	PIN, SNAP 4	2							
65	3	23887-100002	PLUG, 10	1							
66	3	24341-000280	O-RING, 1AS28.0	1							
66-1	2	158552-61900	O-RING	1							N
(A=EXXXXX)											
67	3	26106-060102	BOLT, M6X 10 PLATED	1							
68	3	26106-060102	BOLT, M6X 10 PLATED	4							
69	3	26106-060142	BOLT, M6X 14 PLATED	2							
70	3	26106-060202	BOLT, M6X 20 PLATED	6							
71	3	26756-060002	NUT, LOCK M6	1							
72	3	26776-120002	NUT, LOCK M12	1							
73	3	119685-61940	NUT, M12	1							
74	2	26366-080002	NUT, M8	1							
75	2	171488-61440	LEVER, CONTROL	1							
76	2	129500-61650	SPRING, FUEL CONTROL	1							
77	2	129477-61720	SPRING, GOVERNOR	1							
78	2	119653-77950	SOLENOID, STOP	1							
79	2	129155-61470	BOLT, CONTROL	1							
81	1	119621-66610	PLUG, 22	1							3
83	1	119621-66710	PLUG, 14	1							3

Remarks

(1) SELECTIVE PARTS: CERTAIN THE CLASSIFICATION MARK, THEN PLACE YOUR ORDER.(REFER TO ILLUSTRATION).

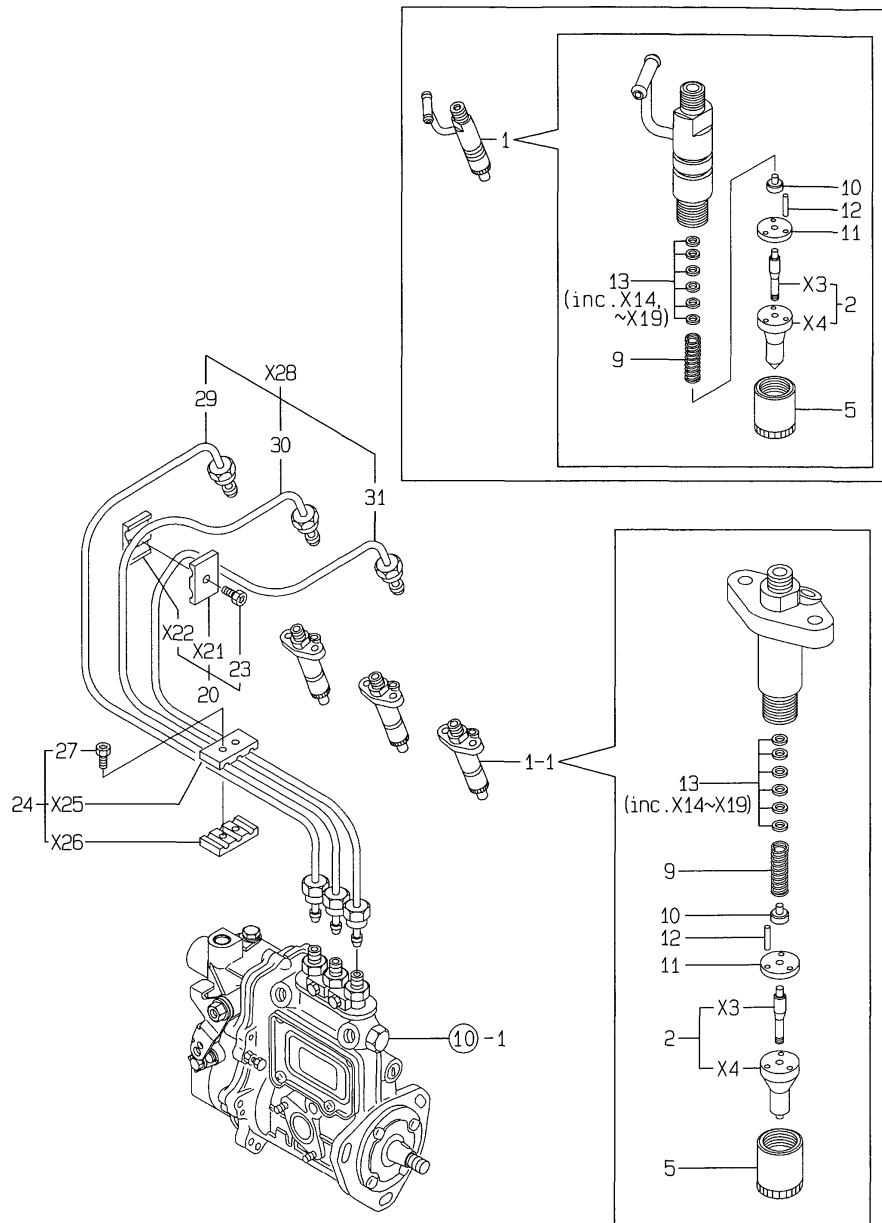
(2) SELECTIVE PARTS.

(3) REPAIR PART.

* THIS FIGURE(GOVERNOR ASSY)IS INCORPORATED IN THE FUEL INJECTION PUMP ASSY(FIG.10).

Fig.12. FUEL INJECTION VALVE

12.FUEL INJECTION VALVE



(A)=3TNE78AC-KM

(B)=

(C)=

(D)=

(E)=

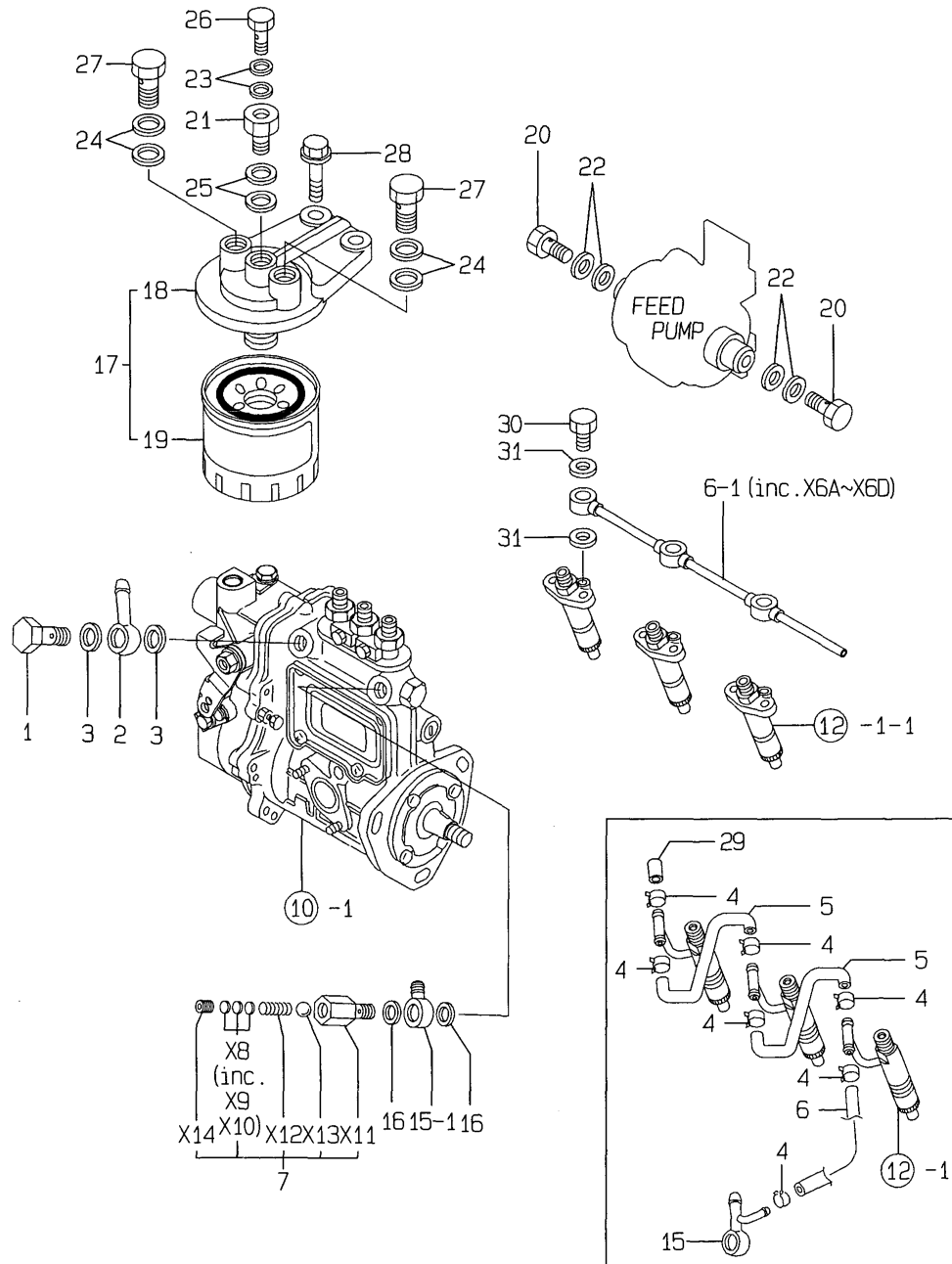
(F)=

No.	Lev.	Parts No.	Description	Qty						I	R
				(A)	(B)	(C)	(D)	(E)	(F)		
1	1	719800-53100	VALVE ASSY,INJECTION	3							
1-1	1	719989-53300	VALVE ASSY,INJECTION	3							S
(A=FROM 1ST)											
2	2	119818-53000	VALVE ASSY,INJECTION	3							
5	2	114250-53080	NUT, NOZZLE D16.95	3							
9	2	114250-53120	SPRING, NOZZLE	3							
10	2	114250-53130	SEAT, SPRING	3							
11	2	114250-53140	PLATE	3							
12	2	114250-53210	PIN	6							
13	2	114250-53400	SHIM SET	3							
20	1	119305-59120	RETAINER, PIPE	1							
23	2	129150-59131	BOLT, M4X14	1							
24	1	129150-59120	RETAINER, PIPE	1							
27	2	129150-59131	BOLT, M4X14	2							
29	2	119813-59811	PIPE ASSY, INJECTION	1							
29-1	2	119813-59812	PIPE ASSY, INJECTION	1							R
(A=EXXX)											
30	2	119813-59821	PIPE ASSY, INJECTION	1							
31	2	119813-59831	PIPE ASSY, INJECTION	1							

Remarks
(M) MISPRINT.

Fig.13. FUEL FILTER

13.FUEL FILTER



(A)=3TNE78AC-KM

(B)=

(C)=

(D)=

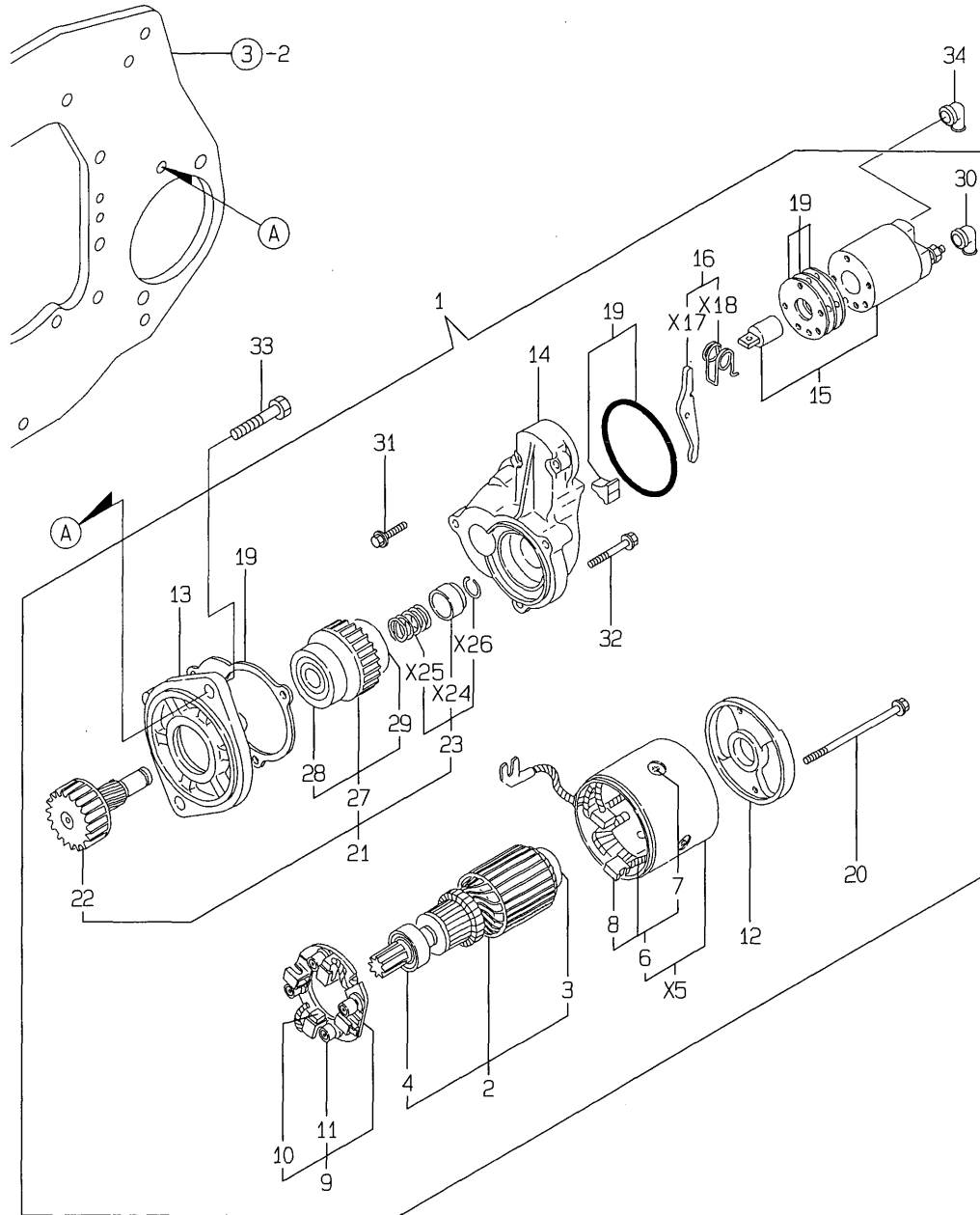
(E)=

(F)=

No.	Lev.	Parts No.	Description	Q'ty						I	R
				(A)	(B)	(C)	(D)	(E)	(F)		
1	1	103854-39140	BOLT, PIPE JOINT	1							
2	1	101304-59020	JOINT, PIPE 12	1							
3	1	104200-59170	GASKET, 12	2							
3-1	1	22190-120002 (A=E00482)	WASHER, SEAL 12	2							N
4	1	124066-59100	CLIP, HOSE 8	7							Z
5	1	121250-59550 (A=FROM 1ST)	PIPE, FUEL D8X120	2							Z
6	1	119840-59560	PIPE, FUEL RETURN	1							
6-1	1	119988-59551 (A=FROM 1ST)	PIPE ASSY, RETURN	1							S
7	1	129100-59951	VALVE ASSY, CHECK	1							
15	1	119840-59570	JOINT	1							
15-1	1	101304-59020 (A=FROM 1ST)	JOINT, PIPE 12	1							S
16	1	23414-120000	GASKET, 12X1.0	2							
17	1	129470-55601	FILTER ASSY, FUEL	1							
18	2	129470-55610	BODY, STRAINER	1							
19	2	129470-55701	STRAINER ASSY, FUEL	1							
20	1	105582-59150	BOLT, PIPE JOINT	2							
21	1	129495-59300	BOLT, PIPE JOINT	1							
22	1	23414-080012	GASKET, 8X1.0	4							
23	1	23414-080012	GASKET, 8X1.0	2							
24	1	23414-120000	GASKET, 12X1.0	4							
25	1	23414-140000	GASKET, 14X1.0	2							
26	1	23851-030000	JOINT BOLT 3	1							
27	1	23857-060000	BOLT, JOINT 6	2							
28	1	26106-100302	BOLT, M10X 30 PLATED	2							
29	1	129150-59580 (A=FROM 1ST)	CAP	1							Z
30	1	129491-59540 (A=FROM 1ST)	BOLT, PIPE JOINT M6	3							W
31	1	23414-060000 (A=FROM 1ST)	GASKET, 6X1.0	6							W

Fig.14. STARTING MOTOR

14. STARTING MOTOR



(A)=3TNE78AC-KM

(B)=

(C)=

(D)=

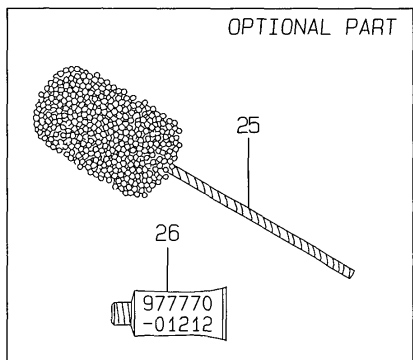
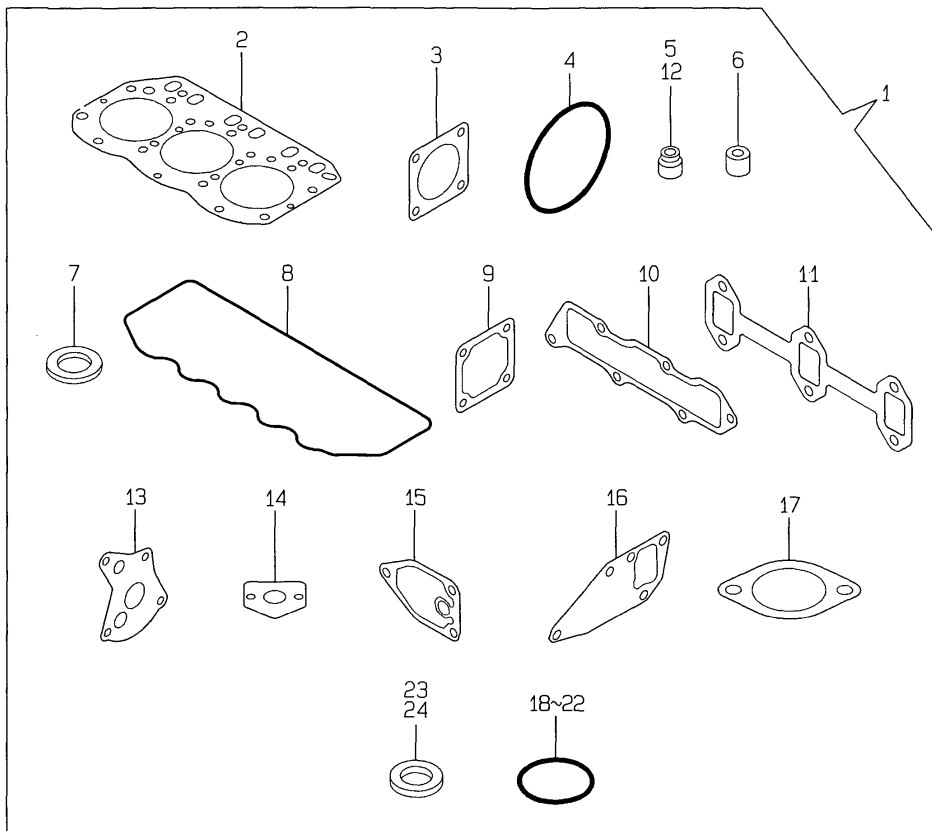
(E)=

(F)=

No.	Lev.	Parts No.	Description	Q'ty						I	R
				(A)	(B)	(C)	(D)	(E)	(F)		
1	1	171008-77010	STARTER, S114-483	1							
2	2	171008-77400	ARMATURE ASSY	1							
3	3	171008-77410	BEARING(1)	1							
3-1	3	X2130350900 (A=E00968)	BALL BEARING	1							R
4	3	171008-77420	BEARING(2)	1							
4-1	3	X2114255110 (A=E00968)	BEARING, BALL	1							R
6	3	171008-77440	COIL ASSY, FIELD	1							
7	4	171008-77450	SCREW	4							
8	4	171008-77460	BRUSH (+)	2							
9	2	171008-77470	HOLDER ASSY, BRUSH	1							
10	3	171008-77480	BRUSH (-)	2							
11	3	171008-77490	SPRING, BRUSH	4							
12	2	171008-77500	COVER, REAR	1							
13	2	171008-77510	HOUSING ASSY, GEAR	1							
14	2	171008-77520	HOUSING, CENTER	1							
15	2	171008-77530	SWITCH, MAGNETIC	1							
15-1	2	171008-77531 (A=E01890)	MAGNETIC SWITCH ASSY	1							R
16	2	171008-77540	LEVER SET, SHIFT	1							
19	2	171008-77571	DUST COVER,(NON-ASB.	1							
20	2	171008-77640	BOLT, THROUGH	2							
21	2	171008-77650	PINION ASSY	1							
22	3	171008-77660	SHAFT, PINION	1							
23	3	171008-77670	STOPPER SET, PINION	1							
27	3	171008-77720	CLUTCH ASSY	1							
27-1	3	X2114555500 (A=E00968)	CLUTCH ASSY	1							R
28	4	171008-77730	BALL BEARING (3)	1							
28-1	4	X2114955020 (A=E00968)	BALL BEARING	1							R
29	4	171008-77740	BALL BEARING (4)	1							
29-1	4	X2240410100 (A=E00968)	BEARING, BALL	1							R
30	2	171008-77750	COVER, M TERMINAL	1							
31	2	26106-060322	BOLT, M6X 32 PLATED	2							
32	2	26106-060402	BOLT, M6X 40 PLATED	3							
33	1	26116-120252	BOLT, M12X 25 PLATED	2							
34	1	124550-77030	COVER, TERMINAL	1							

Fig.15. GASKET SET

15.GASKET SET



(A)=3TNE78AC-KM

(B)=

(C)=

(D)=

(E)=

(F)=

No.	Lev.	Parts No.	Description	Q'ty						I	R
				(A)	(B)	(C)	(D)	(E)	(F)		
1	1	719818-92600	GASKET SET	1							1
2	2	119818-01330	GASKET, HEAD	1							
3	2	124240-01883	GASKET	1							
4	2	121850-51960	O-RING	1							
5	2	124160-11340	SEAL, VALVE STEM	3							
6	2	119625-11871	PROTECTOR, NOZZLE	3							
6-1	2	119625-11870	PROTECTOR, NOZZLE	3							N
		(A=EXXX)									
7	2	119625-11880	SEAT, NOZZLE	3							
8	2	119865-11310	GASKET, BONNET	1							
9	2	129150-77511	GASKET	1							
10	2	119813-12110	GASKET, MANIFOLD	1							
11	2	119810-13110	GASKET	1							
12	2	124950-11340	SEAL, VALVE STEM	3							
13	2	129150-32020	GASKET, PUMP	1							
14	2	129150-35041	GASKET	1							
15	2	129150-35111	GASKET	1							
16	2	129150-42020	GASKET, WATER PUMP	1							
17	2	129795-49551	GASKET	1							
18	2	24311-000120	O-RING, 1AP12.0	3							
19	2	24311-000160	O-RING, 1AP16.0	3							
20	2	24311-000320	O-RING, 1AP32.0	1							
21	2	24341-000500	O-RING, 1AS50.0	1							
22	2	24341-000240	O-RING, 1AS24.0	1							
23	2	23414-100000	GASKET, 10X1.0	2							
24	2	124465-44950	GASKET, 16	2							
25	1	129400-92420	FLEX HORN	1							1
26	1	977770-01212	GASKET, LIQUID	1							1

Remarks

(1) OPTIONAL PART.

Parts No. Index

Parts No.	Fig. No.	Ref. No.
101304-59020	13	2 15 -1
103854-39140	13	1
104200-59170	13	3
104211-11180	4	14
104211-11370	4	18
105582-59150	13	20
114250-53080	12	5
114250-53120	12	9
114250-53130	12	10
114250-53140	12	11
114250-53210	12	12
114250-53400	12	13
119305-59120	12	20
119600-34800	8	39
119620-02020	1	12
119620-49290	9	28
119621-66610	11	81
119621-66710	11	83
119625-11870	4	32 -1
	15	6 -1
119625-11871	4	32
	15	6
119625-11880	4	33
	15	7
119625-11900	4	34
119640-01640	3	8
119653-77950	11	78
119660-61901	11	56
119685-61940	11	73
119685-61950	11	58
119810-01200	1	21
119810-01730	3	6
119810-01770	3	7
119810-01780	3	16
119810-02800	1	15
119810-02870	1	23
119810-02930	1	18
119810-02940	1	26
119810-11100	4	11
119810-11110	4	12
119810-11120	4	13
119810-11240	4	21
119810-13110	5	7
	15	11
119810-14400	6	2
119810-14580	6	3
119810-23200	7	27
119810-23600	7	28
119810-23610	7	30

Parts No.	Fig. No.	Ref. No.
119810-23910	7	26
119810-35300	8	16
119810-39200	8	29
119810-42001	9	1
119810-51040	10	5
119810-77330	9	27
119811-21570	7	12
119812-11700	4	4
119813-12100	5	1
119813-12110	5	2
	15	10
119813-21000	7	1
119813-22300	7	21
119813-59811	12	29
119813-59812	12	29 -1
119813-59821	12	30
119813-59831	12	31
119818-01330	1	22
	15	2
119818-22080	7	15
119818-22500	7	17
119818-22900	7	32
119818-22950	7	34
119818-53000	12	2
119840-59560	13	6
119840-59570	13	15
119843-61540	11	46
119865-11210	4	20
119865-11310	4	44
	15	8
119889-49530	9	20
119988-59551	13	6 -1
119988-61070	11	6
119988-61400	11	17
119988-61450	11	23
119988-61460	11	23 -1
121023-01550	2	24
121111-21501	7	11
121250-59550	13	5
121450-01560	2	5
121450-01570	2	27
121450-42450	9	24
121520-34810	8	14
121850-21680	7	10
121850-51960	2	12
	15	4
122117-51560	10	48
122710-51090	10	8
124060-11800	4	7
124066-59100	13	4

Parts No.	Fig. No.	Ref. No.
124160-01751	2	6
	4	50
124160-01910	1	4
		14 -1
124160-11340	4	16
	15	5
124160-11360	4	48
124160-39140	8	28
124160-39450	8	36
124240-01871	2	7
124240-01883	2	8
	15	3
124465-44950	9	23
	15	24
124550-21600	7	14
124550-51350	10	30
124550-51370	10	31
124550-59820	8	33
124550-77030	14	34
124736-07900	4	2
124950-11340	4	17
	15	12
124950-51190	10	15
129001-32001	8	1
129001-35300	8	24
129001-91840	2	20 -1
129052-61060	11	5
129052-61390	11	30
129100-01580	3	1
		13
	7	2
129100-25061	6	9
129100-51300	10	25
129100-52200	10	93
129100-59951	13	7
129108-51100	10	9
129116-61051	11	4
129120-77501	5	4
129150-02450	6	4
129150-03020	4	40
129150-03070	4	41
129150-03080	4	42
129150-03090	4	1
129150-03100	2	10
129150-11230	4	28
129150-11280	4	26
129150-11750	4	30
129150-14101	6	6
129150-14200	6	1
129150-21200	7	4

Parts No.	Fig. No.	Ref. No.
129150-25101	6	10
129150-25900	6	15
129150-25920	6	13
129150-32020	8	37
	15	13
129150-35041	8	15
	15	14
129150-35101	8	21
129150-35111	8	22
	15	15
129150-35151	8	23
129150-35350	8	25
129150-42020	9	14
	15	16
129150-42320	9	11
129150-59120	12	24
129150-59131	12	23
		27
129150-59580	13	29
129150-77511	5	5
	15	9
129155-11260	4	24
129155-11270	4	25
129155-42350	9	18
129155-51020	10	4
129155-51050	10	6
129155-51060	10	7
129155-51140	10	12
129155-51180	10	14
129155-51200	10	16
129155-51270	10	23
129155-51280	10	24
	11	2
129155-51320	10	28
129155-51340	10	29
129155-51370	10	32
129155-51380	10	33
129155-51390	10	34
129155-51400	10	35
129155-51410	10	36
129155-51420	10	37
129155-51450	10	38
129155-51500	10	43
129155-51521	10	44
129155-51530	10	45
129155-51540	10	46
129155-51550	10	47
129155-51570	10	50
129155-51580	10	51
129155-51591	10	52

Parts No. Index

Parts No.	Fig. No.	Ref. No.
129155-51600	10	53
129155-51700	10	72
129155-51710	10	73
129155-51750	10	74
129155-51760	10	75
129155-51790	10	76
129155-51930	10	78
129155-51940	10	79
129155-52050	10	92
129155-61120	11	7
129155-61130	11	8
129155-61140	11	9
129155-61341	11	14
129155-61350	11	15
129155-61360	11	16
129155-61430	11	19
129155-61460	11	24
129155-61470	11	79
129155-61480	11	25
129155-61830	11	55
129155-61950	11	57
129156-51910	10	77
129176-01601	3	2
129400-01520	2	4
129400-92420	15	25
129412-61500	11	31
129470-55601	13	17
129470-55610	13	18
129470-55701	13	19
129477-61720	11	77
129486-01670	3	17 -1
129491-59540	13	30
129495-59300	13	21
129500-61650	11	76
129550-21650	7	8
129792-22400	7	22
129795-01800	2	3
129795-01900	2	27 -1
129795-01950	2	9
129795-02411	1	13
129795-21661	7	9
129795-49551	9	21
	15	17
158552-61900	11	66 -1
171008-77010	14	1
171008-77400	14	2
171008-77410	14	3
171008-77420	14	4
171008-77440	14	6
171008-77450	14	7

Parts No.	Fig. No.	Ref. No.
171008-77460	14	8
171008-77470	14	9
171008-77480	14	10
171008-77490	14	11
171008-77500	14	12
171008-77510	14	13
171008-77520	14	14
171008-77530	14	15
171008-77531	14	15 -1
171008-77540	14	16
171008-77571	14	19
171008-77640	14	20
171008-77650	14	21
171008-77660	14	22
171008-77670	14	23
171008-77720	14	27
171008-77730	14	28
171008-77740	14	29
171008-77750	14	30
171051-01921	1	5
171488-61200	11	10
171488-61440	11	75
174307-51170	10	13
174307-51560	10	49
174307-51700	11	32
22117-040000	11	59
22190-060002	11	60
22190-080002	2	11
		22
	8	34
22190-100002	11	61
22190-120002	11	62
	13	3 -1
22190-160002	10	89
22190-220002	3	10
22217-050000	10	80
22217-060000	10	81
22217-120000	6	16
22287-120000	11	63
22351-040010	7	7
22351-050010	10	82
22351-060012	4	19
22372-040000	11	64
22512-070140	6	7
	7	5
23414-060000	13	31
23414-080012	13	22
		23
23414-100000	8	35
	15	23

Parts No.	Fig. No.	Ref. No.
23414-120000	13	16
		24
23414-140000	13	25
23851-030000	13	26
23857-060000	13	27
23871-010000	1	6
23871-030000	9	12
23887-100002	11	65
23887-120002	1	14
24101-063034	10	83
24311-000120	4	49
	15	18
24311-000160	2	13
	8	26
	15	19
24311-000320	2	14
	4	51
	15	20
24341-000160	10	84
24341-000240	2	25
	15	22
24341-000280	11	66
24341-000500	4	46
	15	21
25132-003800	9	17
26014-060142	9	19
26022-050102	10	85
26022-060162	10	86
26106-060102	11	67
		68
26106-060122	2	26
26106-060142	11	69
26106-060162	2	26 -1
26106-060202	11	70
26106-060322	14	31
26106-060402	14	32
26106-080122	2	15
26106-080142	4	3
	6	8 -1
26106-080162	2	16
		23
	3	11
	4	47
	6	8
26106-080202	2	17
	8	27
26106-080252	4	35
	5	3
	9	25
26106-080302	3	17

Parts No.	Fig. No.	Ref. No.
26106-080352	3	3
	5	6
	8	20
	9	15
26106-080452	2	18
	3	12
	6	14
26106-080502	4	36
26106-080552	2	19
	9	16
26106-080652	9	26
26106-080852	2	20
26106-100302	13	28
26116-050302	10	87
26116-120252	14	33
26206-100202	3	5
26206-100252	3	4
26216-060302	4	9
26226-080182	4	31
26366-060002	4	37
26366-080002	2	21
	11	74
26366-100002	2	28
26450-060252	8	38
26716-060002	10	88
26716-120002	6	17
26756-060002	11	71
26776-120002	11	72
27231-500000	1	7
27241-120000	1	8
27241-300000	1	9
27241-400000	4	10
27310-070001	4	15
46150-503100	9	22
719800-53100	12	1
719810-01500	2	1
719810-01650	3	14
719810-11520	4	38
719810-11660	4	27
719810-23100	7	23
719818-92600	15	1
719822-01560	1	1
719988-51300	10	1
719989-53300	12	1 -1
977770-01212	2	29
	3	18
	15	26
X2114255110	14	4 -1
X2114555500	14	27 -1
X2114955020	14	28 -1

Parts No. Index

Parts No.	Fig. No.	Ref. No.
X2130350900	14	3 -1
X2240410100	14	29 -1

Parts No.	Fig. No.	Ref. No.
-----------	----------	----------

Parts No.	Fig. No.	Ref. No.
-----------	----------	----------

Parts No.	Fig. No.	Ref. No.
-----------	----------	----------