

0CV10-M15100EN

P R E F A C E

1. This Parts Catalog carries all parts incorporated in YANMAR Model 3TNE68-AC engine manufactured since April, 1993.
2. Each illustration corresponds to the parts list on the following page.
3. When ordering parts, clearly write down the engine model and serial number, as well as the name and number of each part in your order sheet. This will help insure reliable delivery of the parts you have ordered.

Directions for the Parts Catalog.

1. The parts stipulated in this Parts Catalog are not necessarily standard equipped parts.
2. Parts may change without prior notice.
3. The following is an example of the Parts Catalog format.

OCF10-G21601 29. FUEL INJECTION PUMP(W/BOOST)

REF.	LEV.	PARTS NO.	DESCRIPTION	Q'TY						I	R
				(A)	(B)	(C)	(D)	(E)	(F)		
1	1	729595-51390	FUEL INJECTION PUMP	1	1	1	1	1			1
1-1	1	729595-51391	FUEL INJECTION PUMP	1	1	1	1	1		N	1
		(A=E00185) (B=E00200)									
3	2	26022-060162	SCREW M 6X 16	9	9	9	9	9			
3-1	2	26022-060162	SCREW M 6X 16	4	4	4	4	4		K	
		(A=E00156) (B=E00156) (C=E00156) (D=E00156) (E=E00156)									
4	2	129470-51040	CAMSHAFT	1	1	1	1	1			
5	2	122710-51050	BEARING, ROLLER	2	2	2	2	2			
6	2	129470-51060	RETAINER	1	1	1	1	1			

Remarks

(1) BOOST COMPEMSATOR TYPE. OPTIONAL PART, TO E00155,(4JH-DT, 4JH-DTZ

① Ref. No.

The Ref. No. listed may not be in accordance with the illustration Ref. No.

(Ex.) Illustration No.

List Ref No.

1

1

(Before change)

1-1

(After change)

For interchangeable symbols N, R and K, illustrations for new parts may be abbreviated.

② Lev. (Level)

Level indication

The numbers below indicate the level of relativity towards the main part.

1 ----- Main parts (Assembly parts)

2 ----- Sub component included in " 1 ".

3 ----- Sub component included in " 2 ".

Note) Parts that are not for sale are partially illustrated but not listed.

③ Interchangeability Mark

When a part change takes place, one of the following interchangeability symbols is indicated beside the part.

Symbol	Interchangeability	Contents note
N	Old $\begin{matrix} \leftarrow \text{Yes} \\ \text{No} \rightarrow \end{matrix}$ New	New Part is interchangeable for Old Part but Old Part is not interchangeable for New Part.
Q	Old $\begin{matrix} \leftarrow \text{No} \\ \text{Yes} \rightarrow \end{matrix}$ New	New Part is not interchangeable for Old Part but Old Part is interchangeable for New Part.
R	Old $\begin{matrix} \leftarrow \text{Yes} \\ \text{Yes} \rightarrow \end{matrix}$ New	New/ Old Parts are both interchangeable.
S	Old $\begin{matrix} \leftarrow \text{No} \\ \text{No} \rightarrow \end{matrix}$ New	New/ Old Parts are both not interchangeable.
W		Part newly added.
Z		Part discontinued.
F		Not interchangeable by a single part but interchangeable together with related parts.
K		Changes only for used parts quantities.

④ Effective Machine No.

When a part changes, the effective Machine No. will be indicated in the (A)-(F) column.

Product Symbol	Product No.	Product Symbol	Product No.
C	Clutch No. Compressor No.	F	Machine No. (Agricultural Equip.)
D	Drive No.	M	Machine No.
E	Engine No.		

Note 1) A date may follow the symbol. (Ex.) 1996.01

Note 2) "XXXXX" and "ZZZZZ" are for parts that could not be predicted or for engine models that could not be identified.

Note 3) (A=E00185) is the E (Engine Serial Number) for the column (A) model (in this case 4JH-DT) after the parts design change.

⑤ Remarks Mark

Figures or alphabets (symbols) are entered in the remarks column.

The comments (remarks) on parts that are indicated at the bottom of the illustration are the same symbols as those stated above.

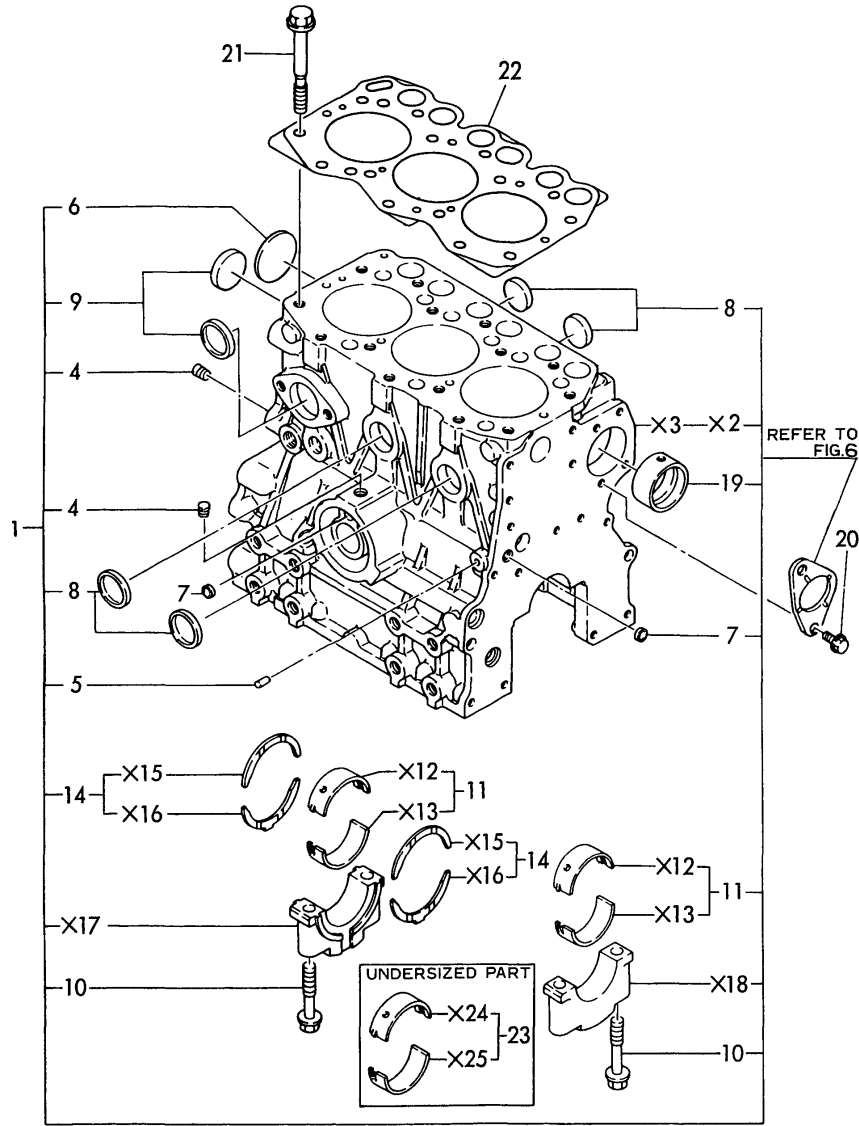
Contents

Fig. No.	Fig. Name
ENGINE SECTION (3TNE68-AC)	
1.	CYLINDER BLOCK
2.	GEAR HOUSING
3.	FLYWHEEL HOUSING & OIL SUMP
4.	CYLINDER HEAD & BONNET
5.	SUCTION & EXHAUST MANIFOLD
6.	CAMSHAFT & DRIVING GEAR
7.	CRANKSHAFT & PISTON
8.	LUB. OIL SYSTEM
9.	COOLING WATER SYSTEM
10.	FUEL INJECTION DEVICE
11.	FUEL LINE
12.	GOVERNOR
13.	STARTING MOTOR
14.	GENERATOR
15.	GASKET SET & TOOL(OPTIONAL)

Fig. No.	Fig. Name
----------	-----------

Fig.1. CYLINDER BLOCK

Fig. 1 CYLINDER BLOCK



(A)=3TNE68-AC

(B)=

(C)=

(D)=

(E)=

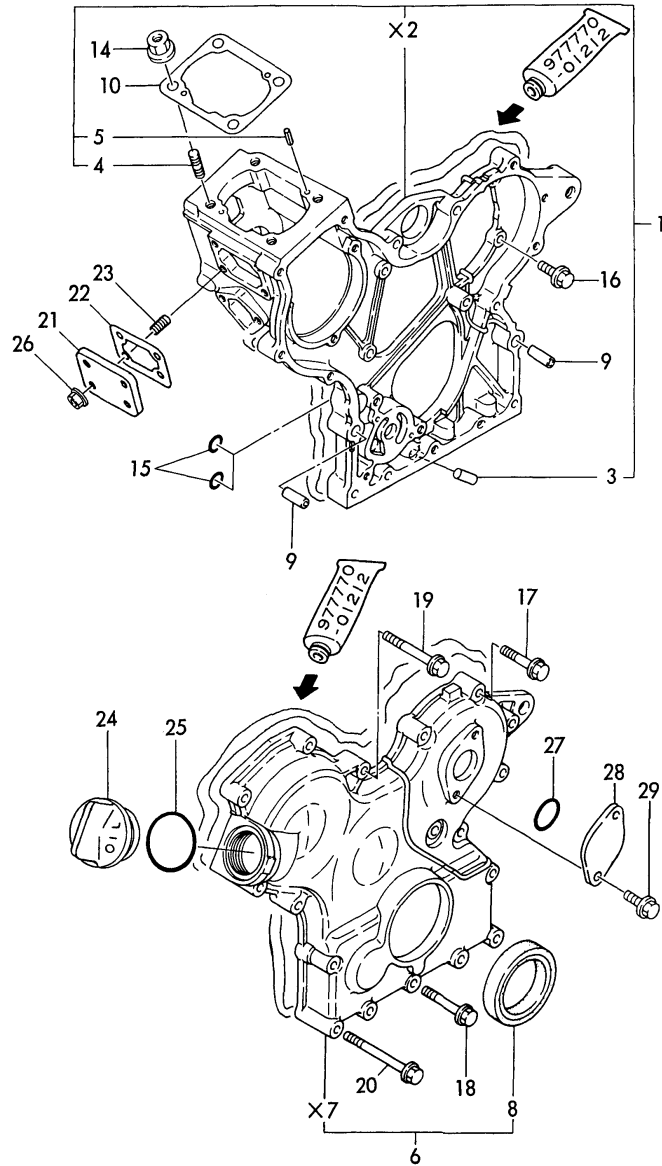
(F)=

No.	Lev.	Parts No.	Description	Q'ty						I	R	
				(A)	(B)	(C)	(D)	(E)	(F)			
1	1	719265-01560	BLOCK ASSY, CYLINDER	1								
4	2	124060-01050	PLUG, PT1/8	2								
5	2	27221-060100	PLUG, 6X10	1								
6	2	27231-400000	PLUG 40	1								
7	2	27241-100000	PLUG, 10	2								
8	2	27241-250000	PLUG, 25	4								
9	2	27241-300000	PLUG 30	2								
10	2	119260-02020	BOLT, METAL CAP	8								
11	2	719260-02800	BEARING, MAIN	4								
14	2	719260-02930	BEARING, THRUST	2								
19	2	119260-02410	BUSH, CAMSHAFT	1								
20	1	26106-060122	BOLT, M6X 12 PLATED	2								
21	1	119260-01200	BOLT, HEAD	14								
22	1	119265-01340	GASKET, HEAD	1								A
23	1	119260-02870	BEARING, 0.25 US	4								1

Remarks
 1) UNDER-SIZE (U.S=0.25) PART.
 A) THESE PART ARE ALSO SOLD BY FIG.15. REF NO.1.
 (GASKET SET.P/# 719265-92600).

Fig.2. GEAR HOUSING

Fig.2 GEAR HOUSING



(A)=3TNE68-AC

(B)=

(C)=

(D)=

(E)=

(F)=

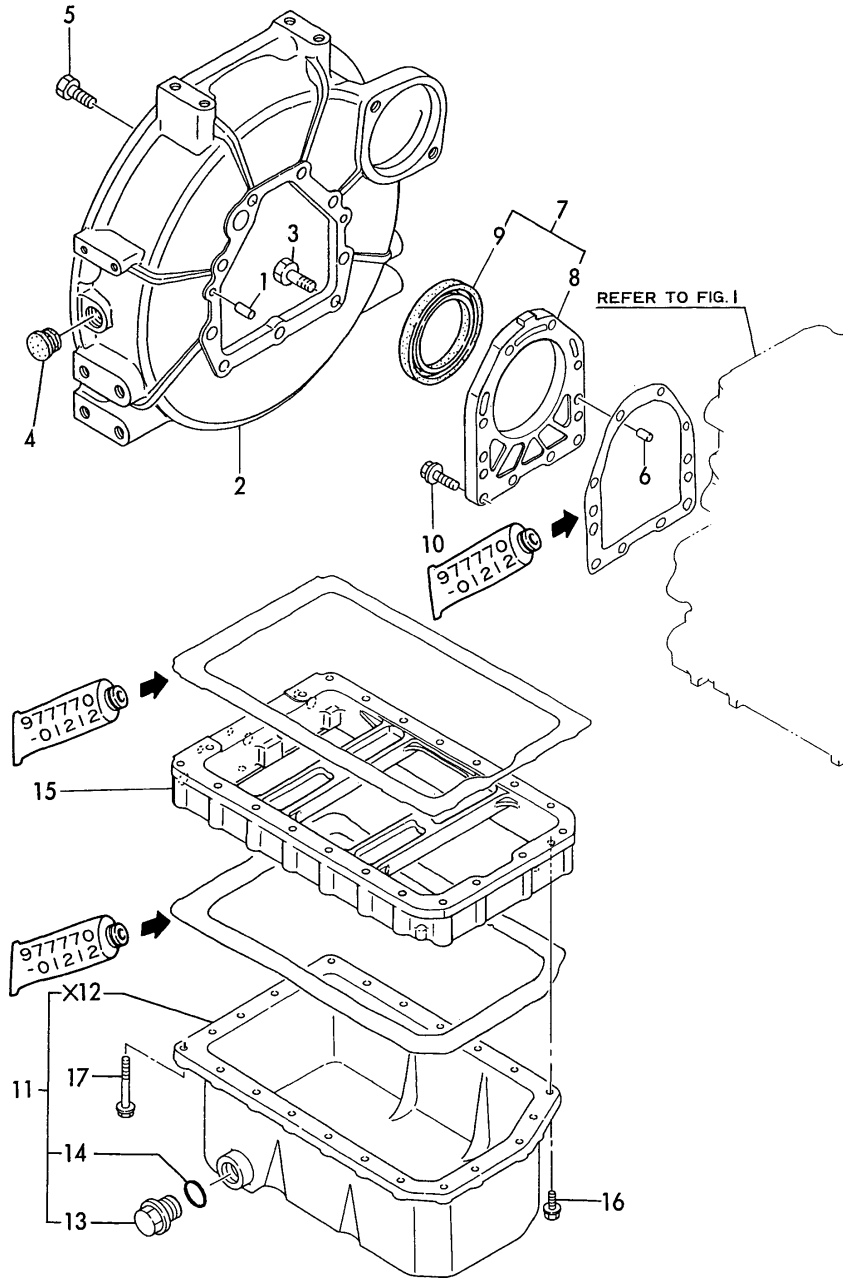
No.	Lev.	Parts No.	Description	Q'ty						I	R
				(A)	(B)	(C)	(D)	(E)	(F)		
1	1	119260-01490	CASE ASSY, GEAR	1							
3	2	119260-01510	PLUG	1							
4	2	121450-01560	STUD, M8X22	4							
5	2	22351-040010	PIN, SPRING 4.0X10	2							
6	1	119260-01590	COVER ASSY, GEAR CASE	1							
8	2	119620-01800	SEAL, OIL	1							
9	1	119660-01911	PIPE, KNOCK	4							
10	1	119620-01950	SHIM SET, ADJUSTING	1							
14	1	194990-22050	NUT, M8	4							
15	1	24311-000120	O-RING, 1AP12.0	2							A
16	1	26106-060162	BOLT, M6X 16 PLATED	5							
17	1	26106-060302	BOLT, M6X 30 PLATED	5							
18	1	26106-060402	BOLT, M6X 40 PLATED	3							
19	1	26106-060502	BOLT, M6X 50 PLATED	4							
20	1	26106-060652	BOLT, M6X 65 PLATED	6							
21	1	119660-01551	COVER	1							
22	1	119660-01562	GASKET	1							A
23	1	119660-01570	STUD, M6X12	4							
24	1	124160-01751	COVER, FILLER	1							
25	1	24311-000320	O-RING, 1AP32.0	1							A
26	1	26366-060002	NUT, M6	4							
27	1	24341-000240	O-RING, 1AS24.0	1							
28	1	121023-01550	COVER	1							
29	1	26106-060182	BOLT, M6X 18 PLATED	2							

Remarks

A) THESE PARTS ARE ALSO SOLD BY FIG.15. REF NO.1. (GASKET SET.P/#719265-92600).

Fig.3. FLYWHEEL HOUSING & OIL SUMP

Fig. 3 FLYWHEEL HOUSING & LUB. OIL SUMP



(A)=3TNE68-AC

(B)=

(C)=

(D)=

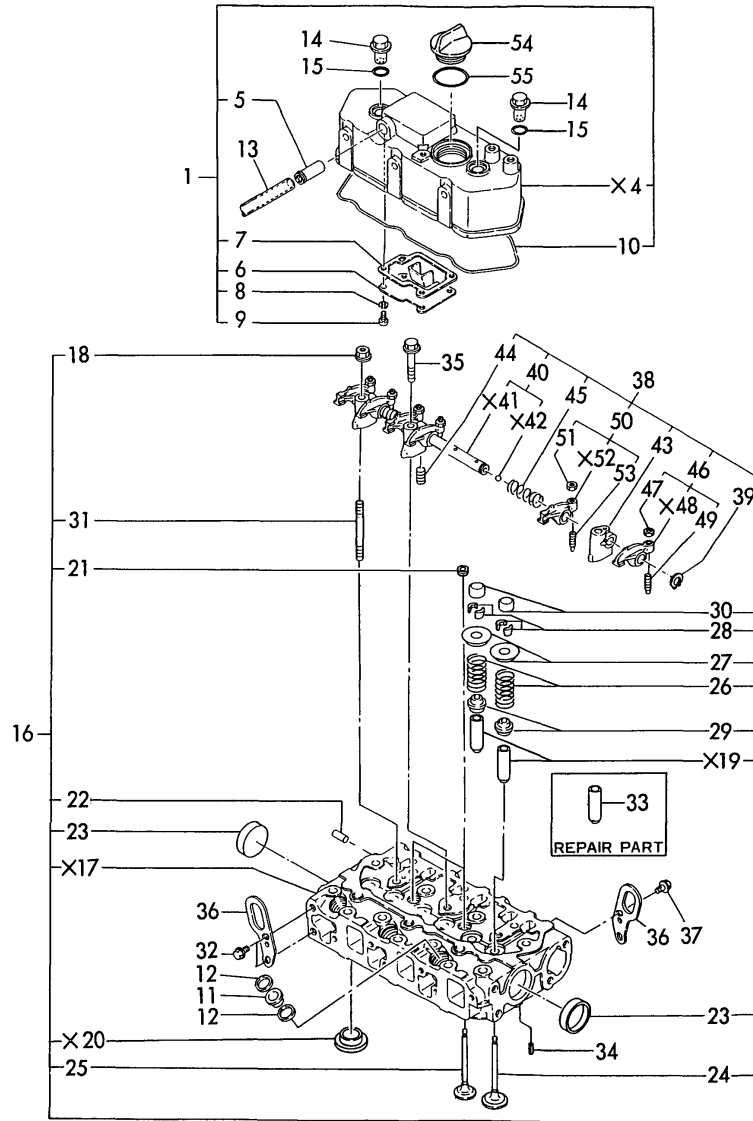
(E)=

(F)=

No.	Lev.	Parts No.	Description	Q'ty						I	R
				(A)	(B)	(C)	(D)	(E)	(F)		
1	1	129100-01580	PIN, M8X16	2							
2	1	119600-01600	HOUSING, FLYWHEEL	1							
3	1	121120-01620	BOLT, M10X28	3							
4	1	119620-01750	CAP	1							
5	1	26206-100252	BOLT, M10X 25 PLATED	6							
6	1	119620-01620	PIN, M6X10	2							
7	1	119660-01640	CASE ASSY, OIL SEAL	1							
8	2	119660-01651	CASE, OIL SEAL	1							
9	2	124085-02220	SEAL, OIL	1							
10	1	26106-060222	BOLT, M6X 22 PLATED	10							
11	1	119260-01770	SUMP ASSY, OIL	1							
13	2	121400-01640	PLUG, 16	1							
14	2	24311-000180	O-RING, 1AP18.0	1							
15	1	119454-01721	SPACER, OIL SUMP	1							
16	1	26106-060102	BOLT, M6X 10 PLATED	3							
17	1	26106-060452	BOLT, M6X 45 PLATED	20							

Fig.4. CYLINDER HEAD & BONNET

Fig.4 CYLINDER HEAD & BONNET

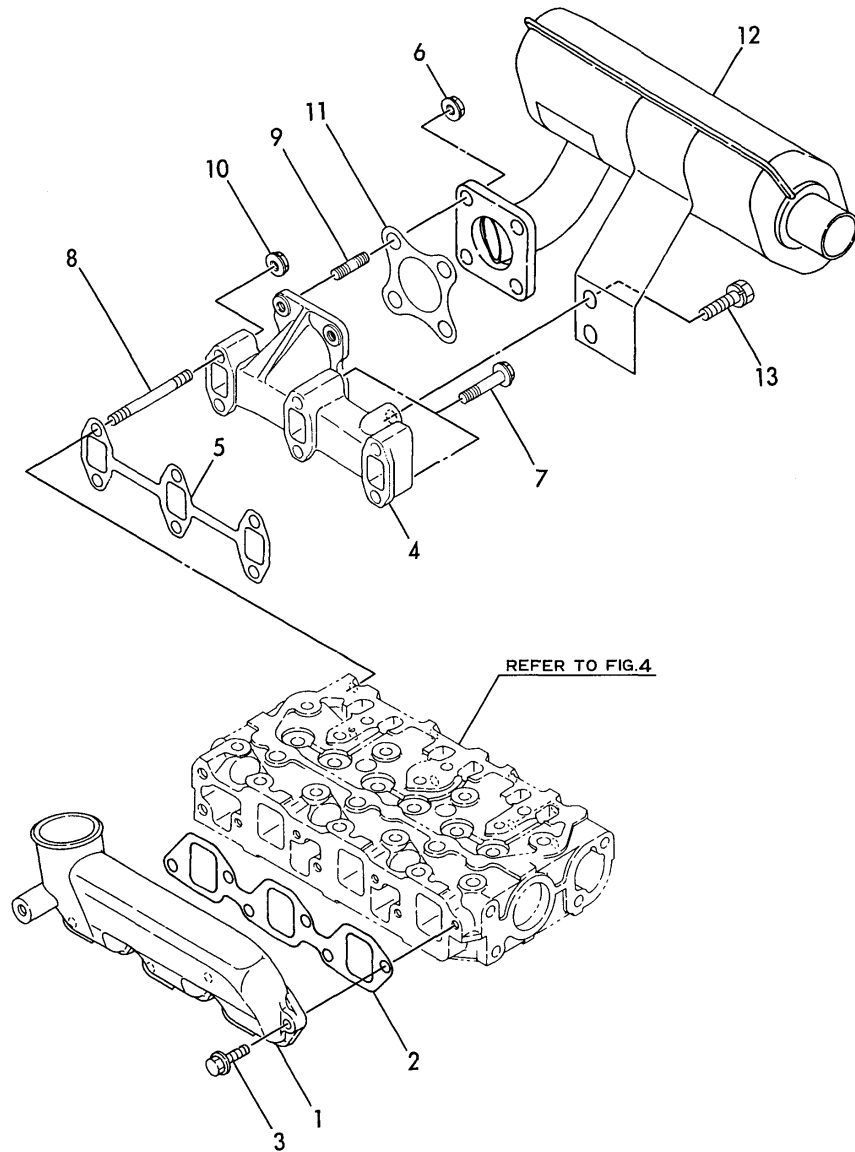


No.	Lev.	Parts No.	Description	Q'ty						I	R
				(A)	(B)	(C)	(D)	(E)	(F)		
1	1	719260-11520	BONNET ASSY, HEAD	1							
5	2	119620-11390	JOINT	1							
6	2	119260-03020	PLATE, SHELTER	1							
7	2	119260-03031	GASKET	1							A
8	2	22217-050000	WASHER, SPRING 5	4							
9	2	26557-050102	SCREW, M5X10	4							
10	2	119260-11310	GASKET, BONNET	1							A
11	1	119600-11450	PROTECTOR, NOZZLE	3							
12	1	119600-11460	GASKET, NOZZLE	6							A
13	1	23065-120500	PIPE, 12X 500	1							
14	1	124160-11360	KNOB	2							
15	1	24311-000120	O-RING, 1AP12.0	2							A
16	1	119265-11000	HEAD ASSY, CYLINDER	1							
18	2	26366-080002	NUT, M8	2							
21	2	23871-020000	PLUG, R02	2							
22	2	27221-050080	PLUG, 5X 8	1							
23	2	27241-350000	PLUG, 35	2							
24	2	119260-11100	VALVE, INTAKE	3							
25	2	119260-11110	VALVE, EXHAUST	3							
26	2	114250-11120	SPRING, VALVE	6							
27	2	114250-11180	RETAINER, SPRING	6							
28	2	114250-11190	COTTER	12							
29	2	119260-11340	SEAL, VALVE STEM	6							A
30	2	119260-11370	CAP, VALVE	6							
31	2	119620-11350	STUD	2							
32	1	26106-080142	BOLT, M8X 14 PLATED	2							
33	1	119260-11800	GUIDE, VALVE	6							1
34	1	22351-060012	PIN, SPRING 6.0X12	2							
35	1	26106-080452	BOLT, M8X 45 PLATED	1							
36	1	119260-07900	LIFTER	2							
37	1	26106-080142	BOLT, M8X 14 PLATED	1							
38	1	119260-11200	SUPPORT ASSY, ARM	1							
39	2	22242-000100	RING, 10	2							
40	2	119260-11240	SHAFT ASSY, ROCKER	1							
43	2	119260-11260	SUPPORT, ROCKER ARM	3							
44	2	119260-11270	SCREW	1							
45	2	119260-11280	SPRING	2							
46	2	719260-11650	ARM ASSY, ROCKER	3							
47	3	26756-060002	NUT, LOCK M6	3							
49	3	105010-11230	SCREW, VALVE ADJUST	3							
50	2	719260-11660	ARM ASSY, ROCKER	3							
51	3	26756-060002	NUT, LOCK M6	3							
53	3	105010-11230	SCREW, VALVE ADJUST	3							
54	1	124160-01751	COVER, FILLER	1							
55	1	24311-000320	O-RING, 1AP32.0	1							A

Remarks
 1)REPAIR PART.
 A)THESE PART ARE ALSO SOLD BY
 FIG.15.REF NO.1.
 (GASKET SET.P/#719265-92600).

Fig.5. SUCTION & EXHAUST MANIFOLD

Fig. 5 SUCTION & EXHAUST MANIFOLD



(A)=3TNE68-AC

(B)=

(C)=

(D)=

(E)=

(F)=

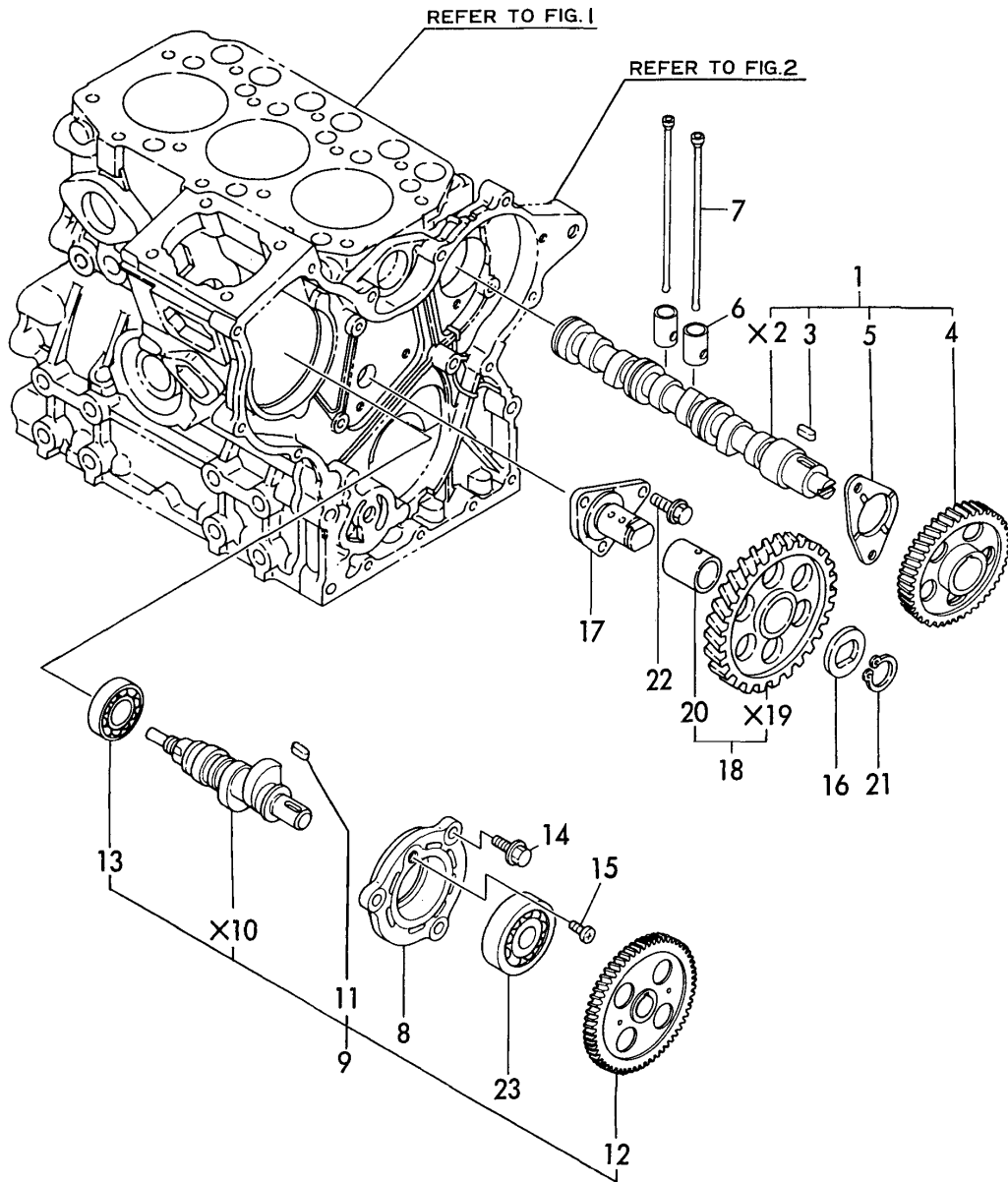
No.	Lev.	Parts No.	Description	Q'ty						I	R
				(A)	(B)	(C)	(D)	(E)	(F)		
1	1	119260-12100	MANIFOLD, AIR INTAKE	1							
2	1	119260-12111	GASKET, MANIFOLD	1							A
3	1	26106-060202	BOLT, M6X 20 PLATED	4							
4	1	119260-13100	MANIFOLD, EXHAUST	1							
5	1	119260-13110	GASKET	1							A
6	1	194990-22050	NUT, M8	4							Z
(A=E01044)											
7	1	26106-060352	BOLT, M6X 35 PLATED	4							
8	1	26216-060402	STUD, M6X 40	2							
9	1	26216-080222	STUD, M8X 22	4							
10	1	26366-060002	NUT, M6	2							
11	1	121000-13201	GASKET, SILENCER	1							A
12	1	119265-13500	SILENCER	1							Z
(A=E01044)											
13	1	26013-080142	BOLT, M8X 14	2							Z
(A=E01044)											

Remarks

A)THESE PART ARE ALSO SOLD BY FIG.15.REF NO.1. (GASKET SET.P/#719265-92600).

Fig.6. CAMSHAFT & DRIVING GEAR

Fig.6 CAMSHAFT & DRIVING GEAR



(A)=3TNE68-AC

(B)=

(C)=

(D)=

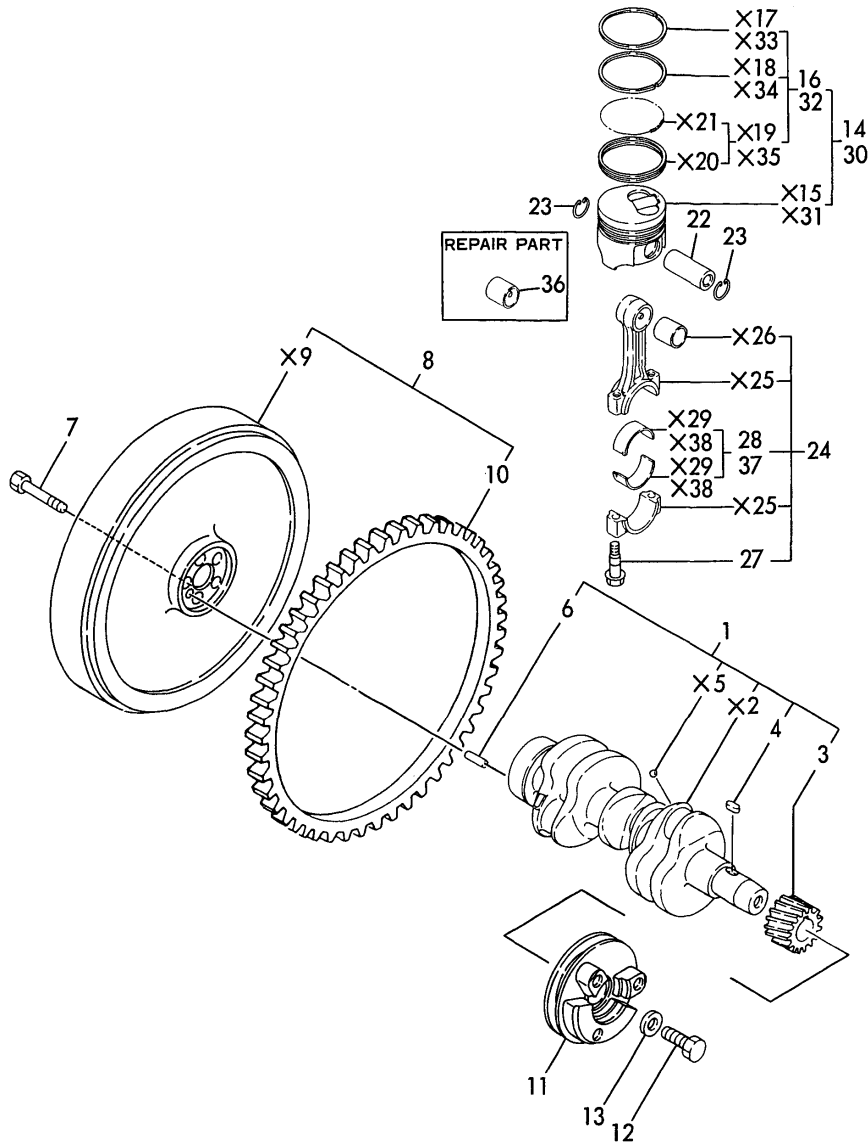
(E)=

(F)=

No.	Lev.	Parts No.	Description	Q'ty						I	R
				(A)	(B)	(C)	(D)	(E)	(F)		
1	1	119260-14580	CAMSHAFT ASSY	1							
3	2	22512-040120	KEY, 4X 12	1							
4	2	119260-14100	GEAR, CAMSHAFT	1							
5	2	119620-02450	BEARING, THRUST	1							
6	1	119260-14200	TAPPET	6							
7	1	119260-14400	ROD, PUSH	6							
8	1	119660-01821	BEARING, FUEL CAM	1							
9	1	119225-14200	CAM ASSY	1							
11	2	22512-040120	KEY, 4X 12	1							
12	2	119260-25900	GEAR, PUMP	1							
13	2	24102-063034	BEARING, BALL 6303U	1							
14	1	26106-060162	BOLT, M6X 16 PLATED	3							
15	1	26587-080102	SCREW, M8X10	1							
16	1	119660-25022	RETAINER	1							
17	1	119660-25052	SHAFT, IDLE	1							
18	1	119260-25100	GEAR ASSY, IDLE	1							
20	2	119620-25062	BUSH, IDLE GEAR	1							
21	1	22242-000200	RING, 20	1							
22	1	26106-060122	BOLT, M6X 12 PLATED	3							
23	1	24101-062034	BEARING, BALL 6203	1							

Fig.7. CRANKSHAFT & PISTON

Fig.7 CRANKSHAFT & PISTON



(A)=3TNE68-AC

(B)=

(C)=

(D)=

(E)=

(F)=

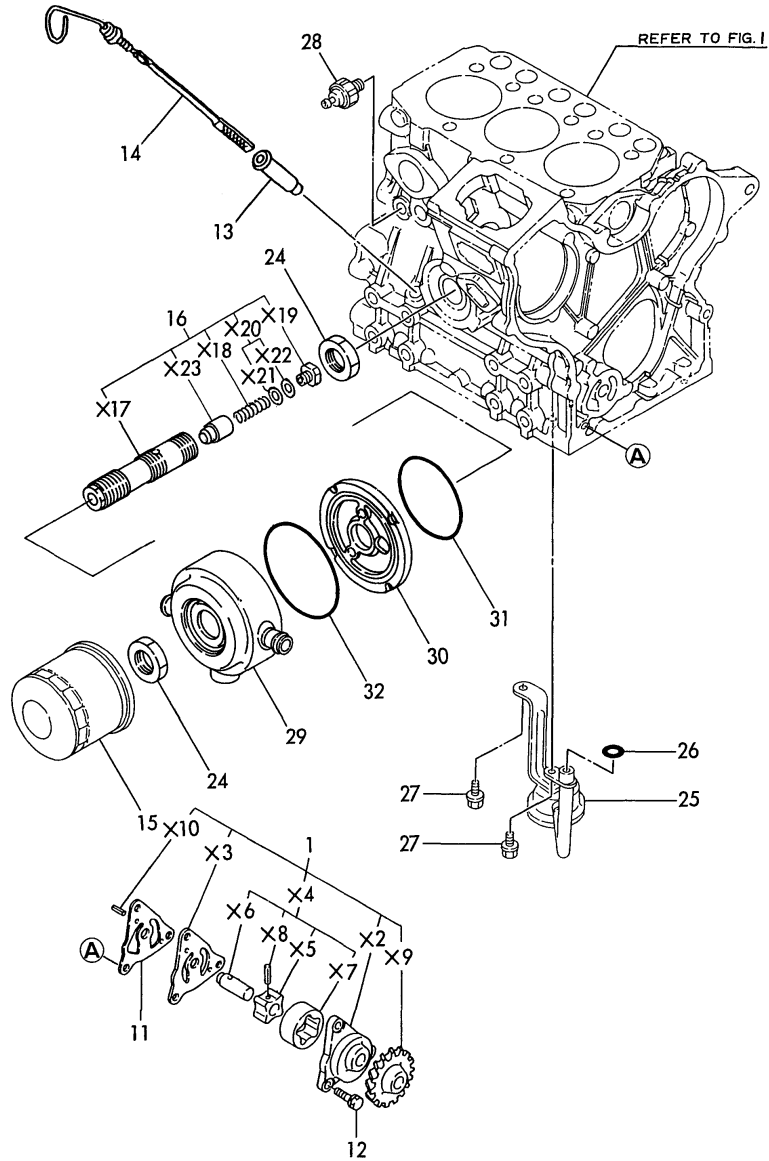
No.	Lev.	Parts No.	Description	Qty						I	R
				(A)	(B)	(C)	(D)	(E)	(F)		
1	1	119265-21700	CRANKSHAFT ASSY	1							
3	2	119260-21200	GEAR, CRANKSHAFT	1							
4	2	22512-040120	KEY, 4X 12	1							
6	2	129100-01580	PIN, M8X16	1							
7	1	121111-21501	BOLT, FLYWHEEL	5							
8	1	119265-21590	FLYWHEEL ASSY	1							
10	2	119865-21600	GEAR, RING	1							
11	1	119265-21650	V-PULLEY	1							
12	1	119621-21680	BOLT, FLANGE 12X1.25	1							
13	1	119620-21941	WASHER	1							
14	1	119265-22090	PISTON ASSY	3							
16	2	119265-22500	RING SET, PISTON	3							
22	1	119265-22300	PIN, PISTON	3							
23	1	22252-000200	RING, 20	6							
24	1	119265-23100	ROD ASSY, CONNECTING	3							
27	2	119265-23200	BOLT, CONNECTING ROD	6							
28	2	719260-23600	BEARING, CRANK PIN	3							
30	1	719265-22900	PISTON ASSY, 0.25 OS	3							1
32	2	719265-22950	RING SET, 0.25 OS	3							1
36	1	119260-23910	BEARING, PISTON PIN	3							2
37	1	719260-23610	BEARING ASSY, 0.25	3							3

Remarks

- 1)OVER-SIZE(O.S=0.25)PART.
- 2)FOR REPAIR PART.
- 3)UNDER-SIZE(U.S=0.25)PART.

Fig.8. LUB. OIL SYSTEM

Fig. 8 LUB. OIL SYSTEM



REFER TO FIG. 1

(A)=3TNE68-AC

(B)=

(C)=

(D)=

(E)=

(F)=

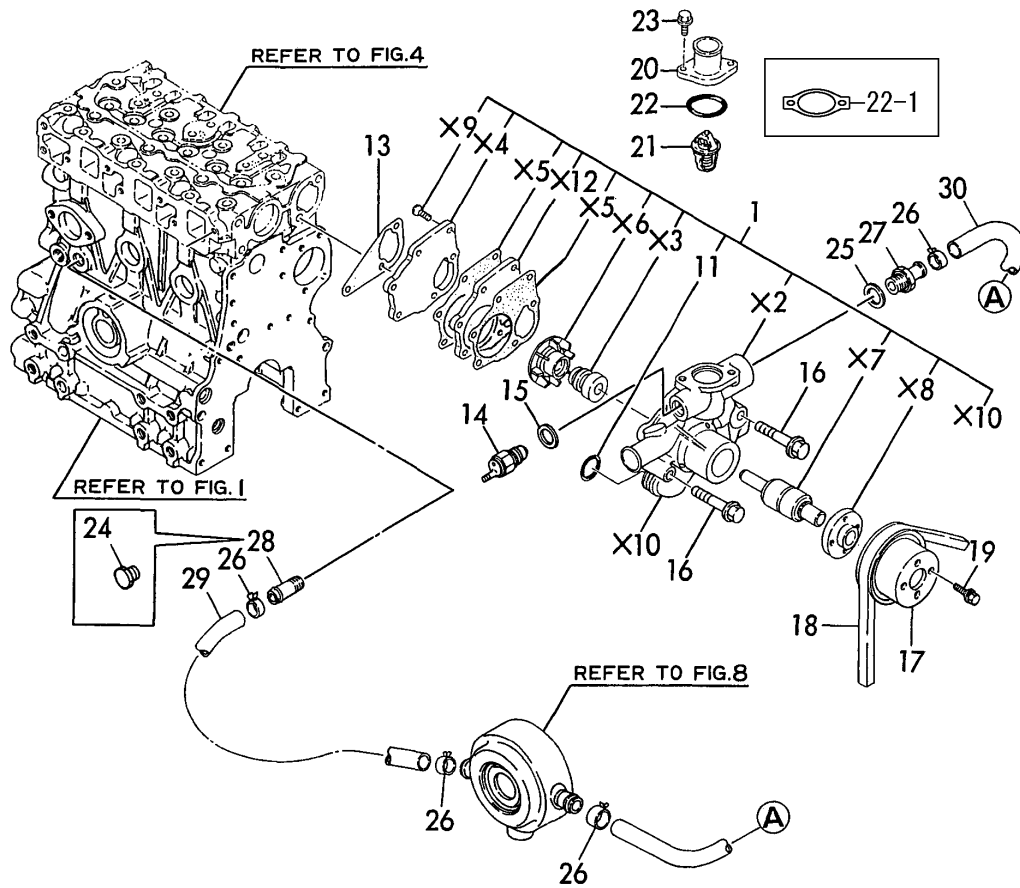
No.	Lev.	Parts No.	Description	Qty						I	R
				(A)	(B)	(C)	(D)	(E)	(F)		
1	1	119260-32000	PUMP ASSY, OIL	1							
11	1	119660-32020	GASKET, PUMP	1							A
12	1	26450-060202	BOLT, M6X 20	3							
13	1	121520-34810	GUIDE, DIPSTICK	1							
14	1	119265-34820	DIPSTICK, OIL	1							
15	1	119305-35150	FILTER, OIL	1							
16	1	119265-35300	VALVE ASSY, CONTROL	1							
24	1	129150-35350	NUT	2							
25	1	119260-35081	PIPE, OIL INLET	1							
26	1	24311-000120	O-RING, 1AP12.0	1							A
27	1	26106-060122	BOLT, M6X 12 PLATED	2							
28	1	124160-39450	SWITCH, 0.5KG	1							
28-1	1	119265-39450	SWITCH	1							S
(A=E00820)											
29	1	119642-33030	COOLER, OIL	1							
30	1	119642-33100	BRACKET, COOLER	1							
31	1	24321-000600	O-RING, 1AG60.0	1							
32	1	24321-000700	O-RING, 1AG70.0	1							

Remarks

A)THESE PART ARE ALSO SOLD BY FIG.15.REF NO.1. (GASKET SET.P/#719265-92600).

Fig.9. COOLING WATER SYSTEM

Fig.9 COOLING WATER SYSTEM



(A)=3TNE68-AC

(B)=

(C)=

(D)=

(E)=

(F)=

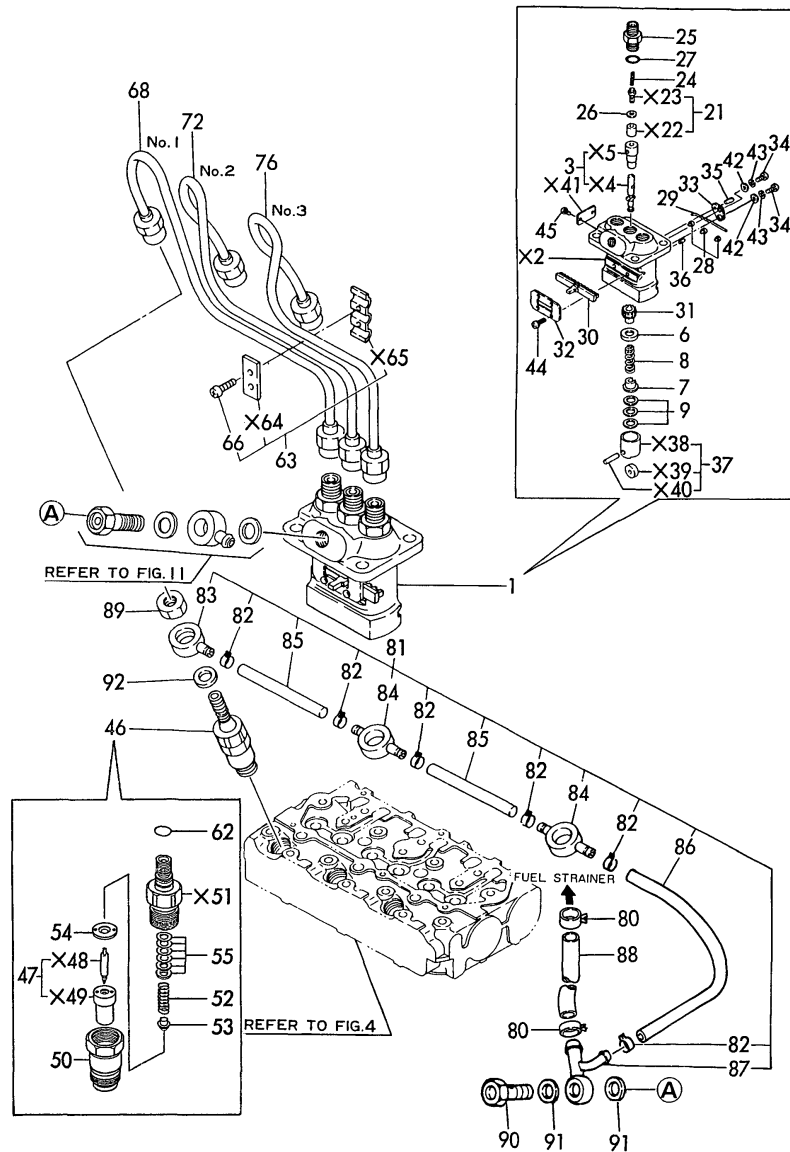
No.	Lev.	Parts No.	Description	Qty						I	R
				(A)	(B)	(C)	(D)	(E)	(F)		
1	1	119265-42000	PUMP ASSY, WATER	1							
1-1	1	119265-42001	PUMP ASSY, WATER	1							N
		(A=E01044)									
1-2	1	119265-42002	PUMP ASSY, WATER	1							N
		(A=E05157)									
11	2	24311-000210	O-RING, 1AP21.0	2							
13	1	119260-42020	GASKET, WATER PUMP	1							A
14	1	129110-44900	SWITCH	1							
15	1	124465-44950	GASKET, 16	1							A
16	1	26106-080452	BOLT, M8X 45 PLATED	3							
17	1	119620-42350	V-PULLEY	1							
17-1	1	119256-42360	V-PULLEY	1							N
		(A=E08623)									
18	1	104514-42780	V-BELT, HM33	1							
18-1	1	119256-42290	V-BELT, FM33.5	1							N
		(A=E08623)									
19	1	26014-060122	BOLT, M6X 12	4							
20	1	119260-49530	COVER, THERMOSTAT	1							
20-1	1	129350-49530	COVER, THERMOSTAT	1							S
		(A=E01504)									
21	1	119260-49800	THERMOSTAT, 71	1							
21-1	1	129350-49800	THERMOSTAT, 71	1							S
		(A=E01504)									
22	1	24321-000350	O-RING, 1AG35.0	1							A
22-1	1	129350-49541	GASKET	1							S A
		(A=E01504)									
23	1	26106-060182	BOLT, M6X 18 PLATED	2							
23-1	1	26106-080202	BOLT, M8X 20 PLATED	2							S
		(A=E01504)									
24	1	171056-49120	PLUG, DRAIN	1							
25	1	124465-44950	GASKET, 16	1							
26	1	171008-03990	CLIP, HOSE 18.5	4							
27	1	119265-44400	JOINT, PIPE	1							
27-1	1	129122-44480	JOINT	1							S
		(A=E01504)									
28	1	129122-44480	JOINT	1							
29	1	119642-49030	PIPE, WATER	1							
30	1	129403-49050	PIPE, WATER	1							
31	1	121450-42450	PLUG, M16	1							W
		(A=E01504)									

Remarks

A)THESE PART ARE ALSO SOLD BY FIG.15.REF NO.1. (GASKET SET.P/#719265-92600).

Fig.10. FUEL INJECTION DEVICE

Fig. 10 FUEL INJECTION DEVICE

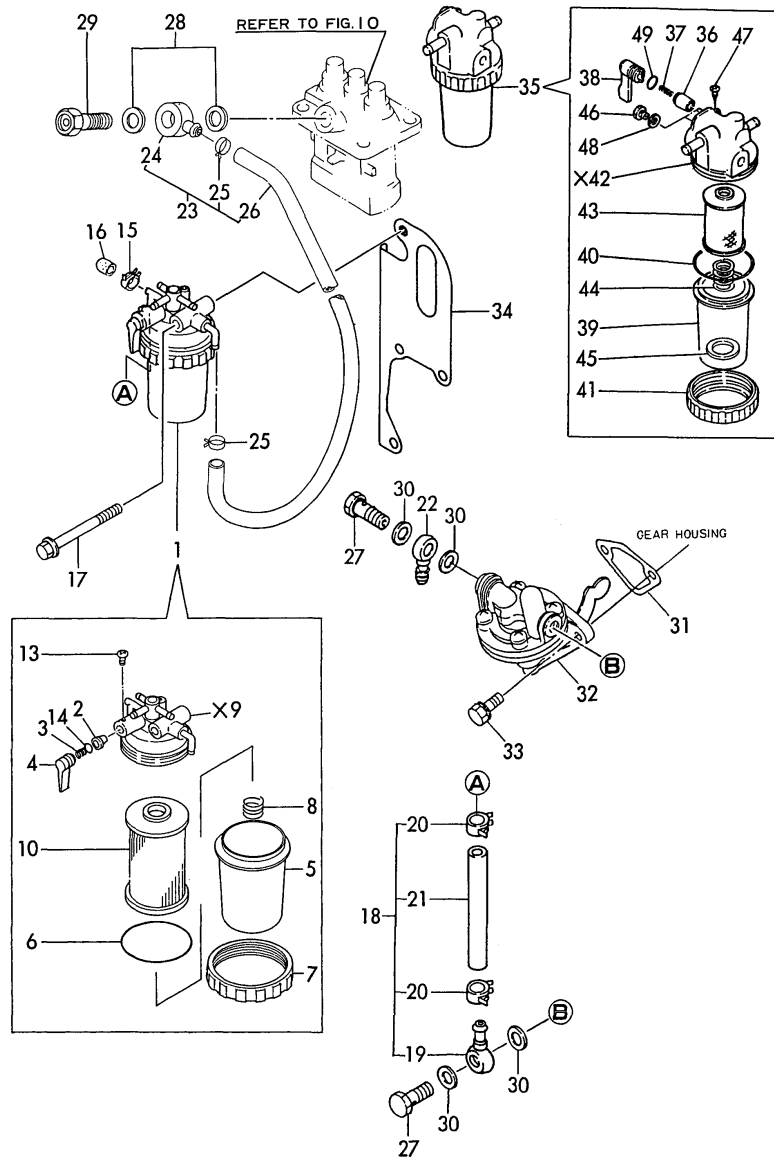


No.	Lev.	Parts No.	Description	Q'ty						I	R
				(A)	(B)	(C)	(D)	(E)	(F)		
1	1	719225-51100	PUMP ASSY, INJECTION	1							
3	2	119225-51100	PLUNGER ASSY	3							
6	2	119620-51170	RETAINER, SPRING A	3							
7	2	119620-51180	RETAINER, SPRING B	3							
8	2	119620-51190	SPRING, PLUNGER	3							
9	2	119620-51250	SHIM SET	3							
21	2	119225-51300	VALVE ASSY, DELIVERY	3							
24	2	105546-51330	SPRING, DELIVERY	3							
25	2	119620-51340	HOLDER, DELIVERY	3							
26	2	119620-51350	GASKET	3							
27	2	119620-51370	O-RING	3							
28	2	119620-51450	PIECE	3							
29	2	119620-51461	PIN	1							
30	2	119660-51500	RACK, CONTROL	1							
31	2	119620-51510	PINION	3							
32	2	119660-51530	RETAINER, RACK	1							
33	2	119620-51650	PLATE	2							
34	2	119620-51660	SCREW	2							
35	2	119620-51670	PIN	2							
36	2	119620-51680	PIN	1							
37	2	119620-51700	TAPPET ASSY	3							
42	2	22137-040000	WASHER, 4	2							
43	2	22217-040000	WASHER, SPRING 4	2							
44	2	26022-040082	SCREW, M4X 8	4							
45	2	26587-040102	SCREW, M4X10	2							
46	1	719620-53100	VALVE ASSY,INJECTION	3							
47	2	119620-53000	VALVE ASSY,INJECTION	3							
50	2	119620-53080	NUT, NOZZLE	3							
52	2	119620-53120	SPRING, NOZZLE	3							
53	2	114250-53130	SEAT, SPRING	3							
54	2	119620-53140	SPACER, VALVE STOP	3							
55	2	114250-53400	SHIM SET	3							
62	2	129155-51580	O-RING	3							
63	1	129150-59120	RETAINER, PIPE	1							
66	2	129150-59130	BOLT, M4X12	2							
68	1	119225-59810	PIPE ASSY, INJECTION	1							
72	1	119260-59820	PIPE ASSY, INJECTION	1							
76	1	119260-59830	PIPE ASSY, INJECTION	1							
80	1	124766-59050	CLIP, HOSE 12	2							
81	1	119642-59540	PIPE ASSY, RETURN	1							
82	2	124066-59100	CLIP, HOSE 8	6							
83	2	119260-59520	JOINT	1							
84	2	119260-59530	JOINT	2							
85	2	105025-59550	PIPE, FUEL RETURN	2							
86	2	119642-59550	PIPE, FUEL RETURN	1							
87	2	119642-59570	JOINT, OVER FLOW	1							
88	1	119225-59560	PIPE, FUEL	1							
89	1	119620-59700	NUT, NOZZLE	3							
90	1	124550-59820	BOLT, PIPE JOINT M8	1							
91	1	23414-080012	GASKET, 8X1.0	2							
92	1	23414-140000	GASKET, 14X1.0	3							

Remarks
 A)THESE PART ARE ALSO SOLD BY
 FIG.15.REF NO.1.
 (GASKET SET.P/# 719265-92600).

Fig.11. FUEL LINE

Fig. 11 FUEL LINE



(A)=3TNE68-AC

(B)=

(C)=

(D)=

(E)=

(F)=

No.	Lev.	Parts No.	Description	Qty						I	R
				(A)	(B)	(C)	(D)	(E)	(F)		
1	1	119632-55620	FILTER ASSY, FUEL	1							
2	2	104200-55321	VALVE, TAPER	1							
3	2	104200-55330	SPRING, VALVE	1							
4	2	119810-55340	LEVER	1							
5	2	121254-55510	COVER	1							
6	2	102103-55520	O-RING	1							
7	2	110250-55610	RING, RETAINING	1							
8	2	121250-55620	SPRING	1							
10	2	124550-55700	FILTER, FUEL L=90	1							
13	2	104200-55750	SCREW, M4	1							
14	2	24311-240100	O-RING, 1AP10A	1							A
15	1	124066-59100	CLIP, HOSE 8	1							
16	1	129150-59580	CAP	1							
17	1	26014-080702	BOLT, M8X 70	1							
18	1	119230-59020	PIPE ASSY, FUEL	1							
19	2	104264-59030	JOINT, PIPE 8	1							
20	2	124766-59050	CLIP, HOSE 12	2							
21	2	121256-59080	PIPE, FUEL	1							
22	1	104264-59030	JOINT, PIPE 8	1							
23	1	119230-59031	PIPE ASSY, FUEL	1							
24	2	101304-59020	JOINT, PIPE 12	1							
25	2	124766-59050	CLIP, HOSE 12	2							
26	2	119230-59080	PIPE, FUEL D12X185	1							
27	1	105582-59150	BOLT, PIPE JOINT	2							
28	1	104200-59170	GASKET, 12	2							A
29	1	119650-59200	BOLT, PIPE JOINT M12	1							A
30	1	23414-080012	GASKET, 8X1.0	4							A
31	1	121520-01851	GASKET	1							A
32	1	119600-52021	PUMP ASSY, FUEL FEED	1							
33	1	26014-060202	BOLT, M6X 20	2							
34	1	119265-55900	BRACKET, FILTER	1							
35	1	121850-55800	SEPARATOR ASSY,WATER	1							
36	2	104200-55321	VALVE, TAPER	1							
37	2	104200-55330	SPRING, VALVE	1							
38	2	104200-55341	HANDLE	1							
39	2	121254-55510	COVER	1							
40	2	102103-55520	O-RING	1							
41	2	110250-55610	RING, RETAINING	1							
43	2	121850-55710	SCREEN	1							
44	2	121257-55720	SPRING	1							
45	2	121257-55731	FLOAT	1							
46	2	101720-55750	PLUG, 6	2							
47	2	104200-55750	SCREW, M4	1							
48	2	23418-060000	GASKET, 6X1.0	2							
49	2	24311-240100	O-RING, 1AP10A	1							A

Remarks

(A)THESE PART ARE ALSO SOLD BY
FIG.15.REF.NO.1.
(GASKET SET.P/#719265-92600).

Fig.12. GOVERNOR

(A)=3TNE68-AC

(B)=

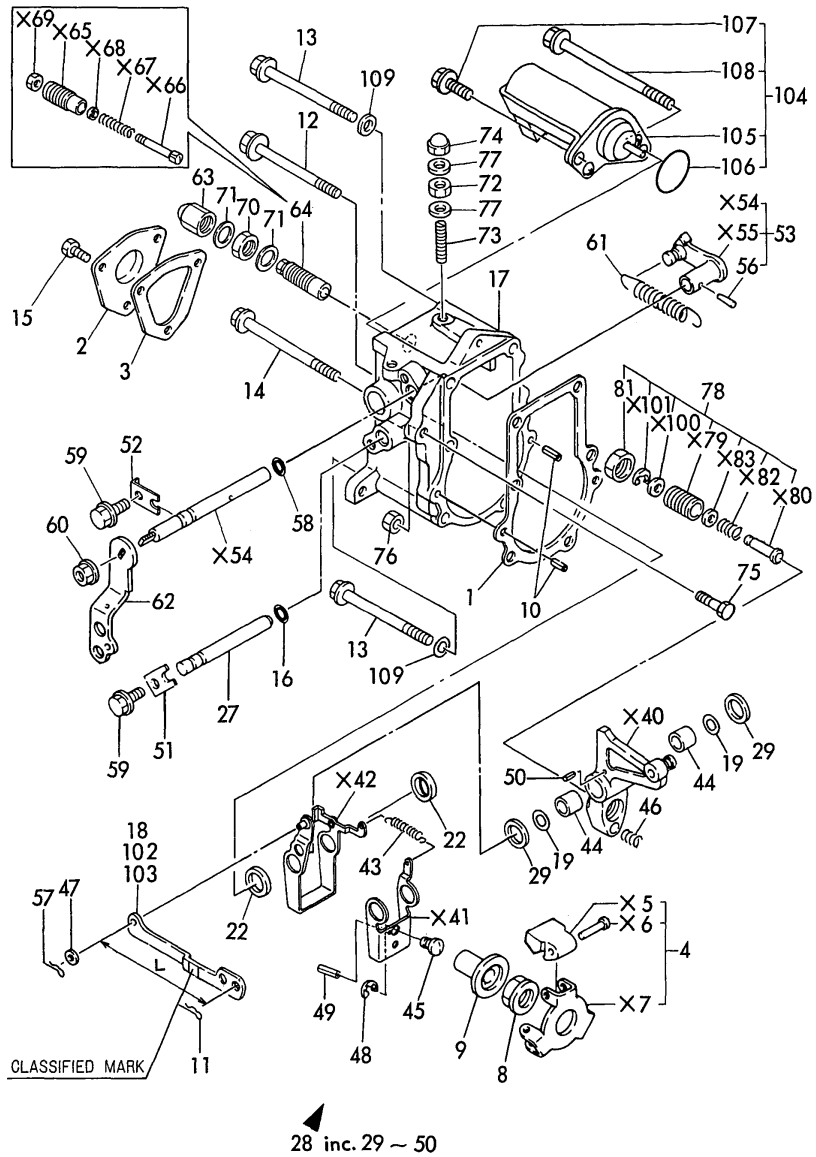
(C)=

(D)=

(E)=

(F)=

Fig. 12 GOVERNOR



No.	Lev.	Parts No.	Description	(A)	(B)	(C)	(D)	(E)	(F)	Q'ty	I	R
1	1	119660-61052	GASKET							1		
2	1	119660-61060	COVER, GOVERNOR CASE							1		
3	1	119660-61071	GASKET							1		
4	1	119600-61200	WEIGHT ASSY,GOVERNOR							1		
8	1	119660-61300	NUT							1		
9	1	119660-61341	SLEEVE							1		
10	1	22351-040010	PIN, SPRING 4.0X10							2		
11	1	22360-060000	PIN, SNAP 6							1		
12	1	26106-060702	BOLT, M6X 70 PLATED							2		
13	1	26106-060752	BOLT, M6X 75 PLATED							3		
14	1	26106-060952	BOLT, M6X 95 PLATED							1		
15	1	26116-050102	BOLT, M5X 10 PLATED							3		
16	1	129155-51280	O-RING, S6							1		
17	1	119285-61010	CASE, GOVERNOR							1		
18	1	119660-61121	LINK, NO MARK							1		1
19	1	119660-61460	SHIM SET							1		
22	1	129155-61480	SPACER ASSY							2		
27	1	119660-61491	SHAFT							1		
28	1	119288-61510	LEVER ASSY, GOVERNOR							1		
29	2	174307-51700	SHIM SET							2		
43	2	119232-61540	SPRING							1		
44	2	119843-61550	BUSH							2		
45	2	119600-61540	SHIFTER							1		
46	2	119660-61650	SPRING, STARTING							1		
47	2	22117-040000	WASHER, 4							1		
48	2	22272-000040	RING, E- 4							1		
49	2	22351-020004	PIN, SPRING 2.0X 4							1		
50	2	22351-030014	PIN, SPRING 3.0X14							1		
51	1	119600-61900	RETAINER, SHAFT							1		
52	1	119660-61901	RETAINER, SHAFT							1		
53	1	119285-66080	SHAFT ASSY							1		
56	2	22322-030160	PIN, TAPER 3X16							1		
57	1	22360-040000	PIN, SNAP 4							1		
58	1	24341-000070	O-RING, 1AS7.0							1		
59	1	26106-060102	BOLT, M6X 10 PLATED							2		
60	1	194990-22050	NUT, M8							1		
61	1	119260-66010	SPRING, REGULATOR							1		
62	1	119621-66051	LEVER, REGULATOR							1		
63	1	129100-61930	NUT, CAP							1		
64	1	119600-66530	LIMITER ASSY, FUEL							1		
70	1	124772-66750	NUT, LOCK M12							1		
71	1	43400-500450	SEAL WASHER 12S							2		
72	1	124550-66370	NUT, M6							1		
73	1	121575-66830	SCREW							1		
74	1	119600-66840	NUT, CAP							1		
75	1	26116-060302	BOLT, M6X 30 PLATED							1		
76	1	26756-060002	NUT, LOCK M6							1		
77	1	43400-500400	SEAL WASHER 6							2		
78	1	119260-66720	ANGLEICH ASSY							1		
81	2	129155-61590	NUT, LOCK							1		
102	1	119660-61140	LINK, MARK :2							1		1

Remarks

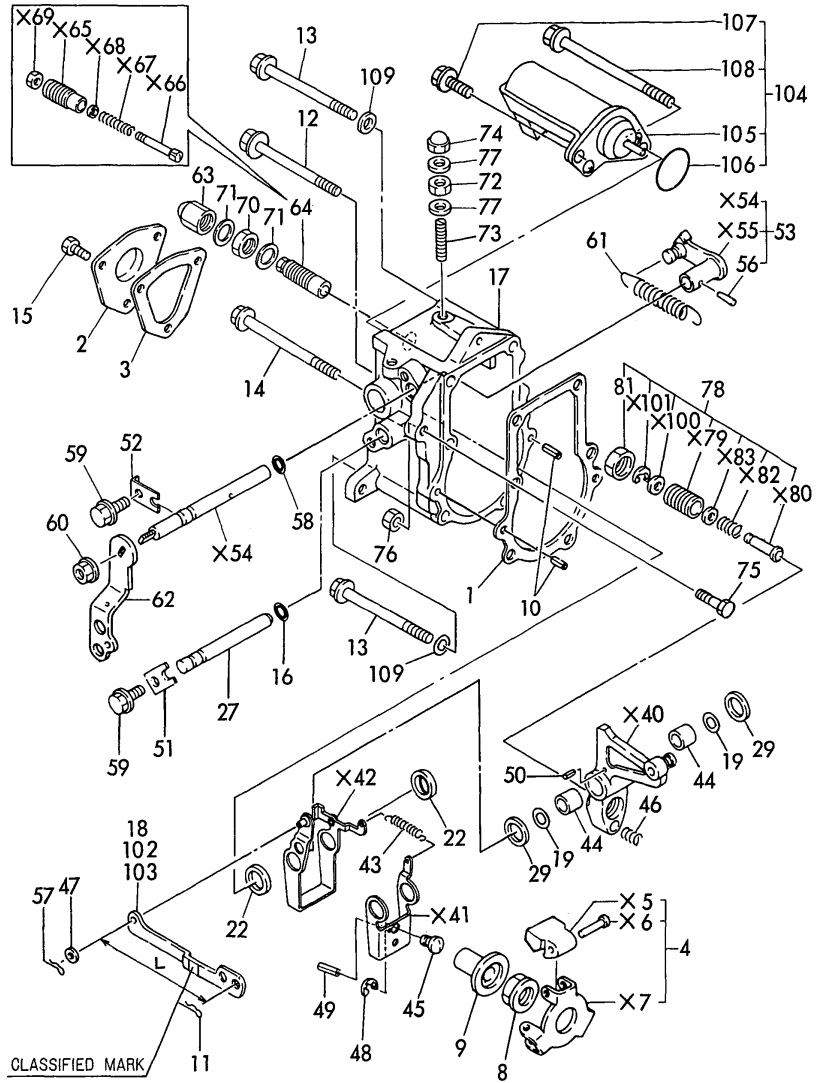
1)SELECTIVE PART. : CERTAIN THE SIZE(L) THE PLACE YOUR ORDER. (REFER TO ILLUSTRATION).

Fig.12. GOVERNOR

(A)=3TNE68-AC
(B)=
(C)=

(D)=
(E)=
(F)=

Fig. 12 GOVERNOR



28 inc. 29 ~ 50

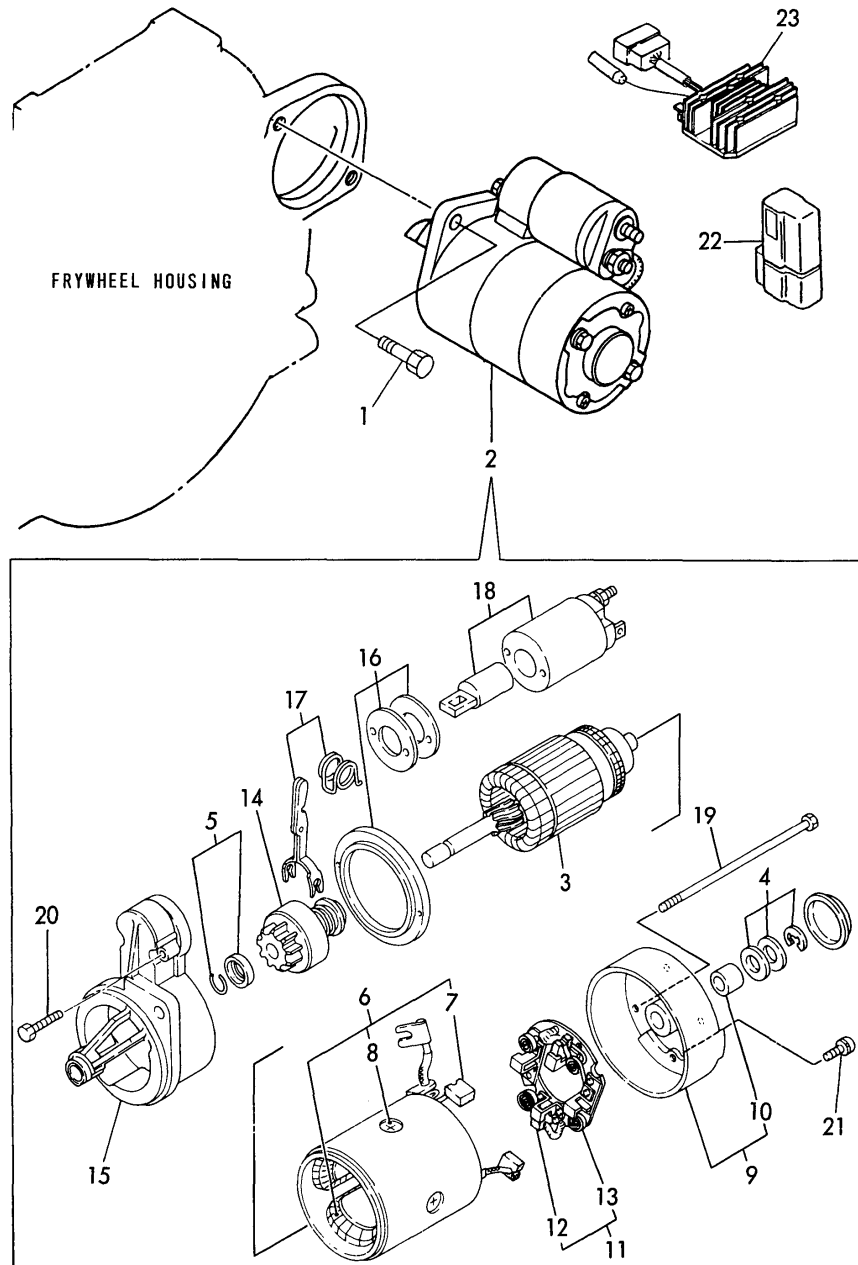
No.	Lev.	Parts No.	Description	Q'ty						I	R
				(A)	(B)	(C)	(D)	(E)	(F)		
103	1	119660-61150	LINK, MARK :3	1							1
104	1	119285-66500	STOPPER ASSY	1							
105	2	119285-77950	SOLENOID	1							
106	2	24341-000280	O-RING, 1AS28.0	1							
107	2	26106-060162	BOLT, M6X 16 PLATED	1							
108	2	26106-060952	BOLT, M6X 95 PLATED	1							
109	1	22111-060000	WASHER 6	3							

Remarks

1)SELECTIVE PART. : CERTAIN THE SIZE(L) THE PLACE YOUR ORDER. (REFER TO ILLUSTRATION).

Fig.13. STARTING MOTOR

Fig. 13 STARTING MOTOR



(A)=3TNE68-AC

(B)=

(C)=

(D)=

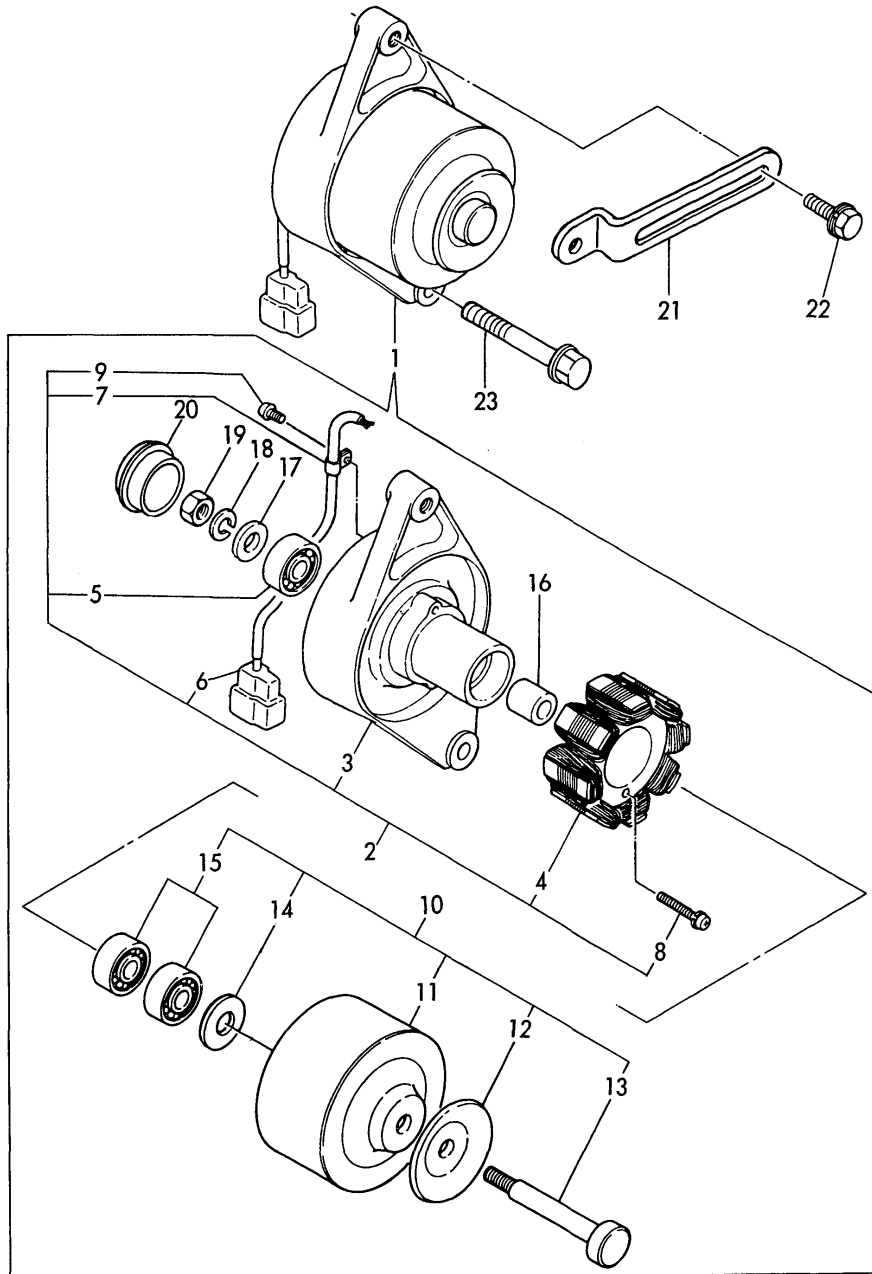
(E)=

(F)=

No.	Lev.	Parts No.	Description	Q'ty						I	R
				(A)	(B)	(C)	(D)	(E)	(F)		
1	1	26116-120252	BOLT, M12X 25 PLATED	2							
2	1	119631-77010	STARTER	1							
3	2	124190-77110	ARMATURE, (NON-ASB.)	1							
4	2	X2114811000	WASHER KIT, THRUST	1							
5	2	X2114715500	STOPPER SET, PINION	1							
6	2	X2114631090	COIL ASSY, FIELD	1							
7	3	X2114531200	BRUSH (+)	2							
8	3	X2114821500	SCREW SET	1							
9	2	X2114430010	COVER ASSY, REAR	1							
10	3	X2114535200	METAL, STARTER	1							
11	2	X2114990010	HOLDER ASSY, BRUSH	1							
12	3	X2114831300	BRUSH (-)	1							
13	3	X2114931400	SPRING, BRUSH	3							
14	2	124190-77760	PINION ASSY	1							
15	2	X2114966130	CASE ASSY, GEAR	1							
16	2	X2114780060	COVER ASSY, DUST	1							
17	2	X2114660130	LEVER KIT, SHIFT	1							
18	2	X2114275070	SWITCH, MAGNETIC	1							
19	2	X2114680050	BOLT, THROUGH	2							
20	2	X2114586700	BOLT M6X 37	2							
21	2	X2114283500	SCREW SET	1							
22	1	119643-66900	DIODE	2							
23	1	129132-77700	LIMITER, RS5136	1							

Fig.14. GENERATOR

Fig. **14** GENERATOR



(A)=3TNE68-AC

(B)=

(C)=

(D)=

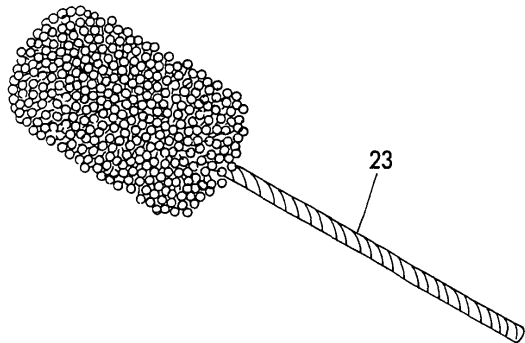
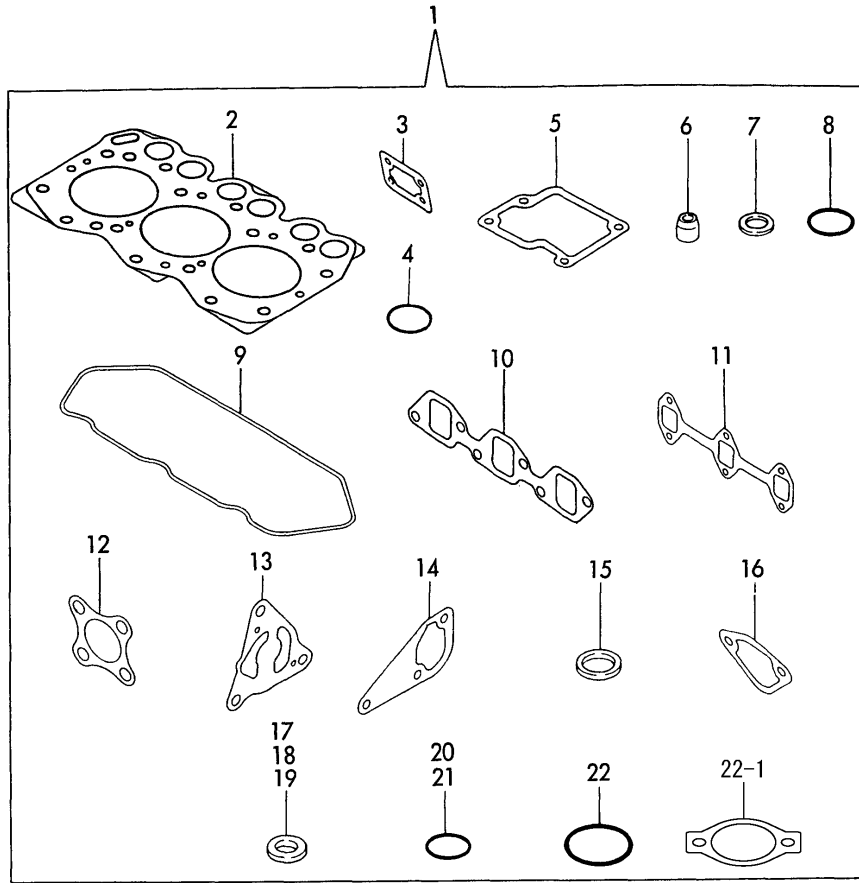
(E)=

(F)=

No.	Lev.	Parts No.	Description	Q'ty						I	R
				(A)	(B)	(C)	(D)	(E)	(F)		
1	1	171301-77201	DYNAMO ASSY, 15A	1							
2	2	XM08137	PLATE ASSY	1							
3	3	XM08138	PLATE	1							
4	3	XM08180	STATOR ASSY	1							
5	3	XM27436	BALL BEARING	1							
6	3	XM17878	COUPLER	1							
7	3	XM36410	CLAMP	1							
8	3	26022-040252	SCREW, M4X25	2							
9	3	XYSPS4008	SCREW	1							
10	2	XM82184	FLYWHEEL ASSY	1							
11	3	XM82110	FLYWHEEL	1							
12	3	XM72174	PULLEY	1							
13	3	XM72664	SHAFT	1							
14	3	XM37336	WASHER	1							
15	3	XM27436	BALL BEARING	2							
16	2	106383-44720	SPACER	1							
17	2	106383-44730	WASHER	1							
18	2	22212-100000	SPRING WASHER 10	1							
19	2	26716-100002	NUT, M10	1							
20	2	XM61014	CAP	1							
21	1	121450-77330	ADJUSTER	1							
22	1	26014-080252	BOLT, M8X 25	1							
23	1	26106-100402	BOLT, M10X 40 PLATED	1							

Fig.15. GASKET SET & TOOL(OPTIONAL)

Fig. **15** GASKET SET & TOOL (OPTIONAL)



(A)=3TNE68-AC
(B)=
(C)=

(D)=
(E)=
(F)=

No.	Lev.	Parts No.	Description	Q'ty						I	R
				(A)	(B)	(C)	(D)	(E)	(F)		
1	1	719265-92600	GASKET SET	1							
1-1	1	719265-92601	GASKET SET, BLOCK	1							S
(A=E01504)											
2	2	119265-01340	GASKET, HEAD	1							
3	2	119660-01562	GASKET	1							
4	2	24311-000320	O-RING, 1AP32.0	1							
5	2	119260-03031	GASKET	1							
6	2	119260-11340	SEAL, VALVE STEM	6							
7	2	119600-11460	GASKET, NOZZLE	6							
8	2	24311-000320	O-RING, 1AP32.0	1							
9	2	119260-11310	GASKET, BONNET	1							
10	2	119260-12111	GASKET, MANIFOLD	1							
11	2	119260-13110	GASKET	1							
12	2	121000-13201	GASKET, SILENCER	1							
13	2	119660-32020	GASKET, PUMP	1							
14	2	119260-42020	GASKET, WATER PUMP	1							
15	2	124465-44950	GASKET, 16	1							
16	2	121520-01851	GASKET	1							
17	2	104200-59170	GASKET, 12	2							
18	2	23414-080012	GASKET, 8X1.0	4							
19	2	23414-140000	GASKET, 14X1.0	3							
20	2	24311-000120	O-RING, 1AP12.0	5							
21	2	24311-240100	O-RING, 1AP10A	2							
22	2	24321-000350	O-RING, 1AG35.0	1							
22-1	2	129350-49541	GASKET	1							S
(A=E01504)											
23	1	129400-92400	FLEX HORN	1							

Parts No. Index

Parts No.	Fig. No.	Ref. No.
101304-59020	11	24
101720-55750	11	46
102103-55520	11	6
		40
104200-55321	11	2
		36
104200-55330	11	3
		37
104200-55341	11	38
104200-55750	11	13
		47
104200-59170	11	28
	15	17
104264-59030	11	19
		22
104514-42780	9	18
105010-11230	4	49
		53
105025-59550	10	85
105546-51330	10	24
105582-59150	11	27
106383-44720	14	16
106383-44730	14	17
110250-55610	11	7
		41
114250-11120	4	26
114250-11180	4	27
114250-11190	4	28
114250-53130	10	53
114250-53400	10	55
119225-14200	6	9
119225-51100	10	3
119225-51300	10	21
119225-59560	10	88
119225-59810	10	68
119230-59020	11	18
119230-59031	11	23
119230-59080	11	26
119232-61540	12	43
119256-42290	9	18 -1
119256-42360	9	17 -1
119260-01200	1	21
119260-01490	2	1
119260-01510	2	3
119260-01590	2	6
119260-01770	3	11
119260-02020	1	10
119260-02410	1	19
119260-02870	1	23
119260-03020	4	6

Parts No.	Fig. No.	Ref. No.
119260-03031	4	7
	15	5
119260-07900	4	36
119260-11100	4	24
119260-11110	4	25
119260-11200	4	38
119260-11240	4	40
119260-11260	4	43
119260-11270	4	44
119260-11280	4	45
119260-11310	4	10
	15	9
119260-11340	4	29
	15	6
119260-11370	4	30
119260-11800	4	33
119260-12100	5	1
119260-12111	5	2
	15	10
119260-13100	5	4
119260-13110	5	5
	15	11
119260-14100	6	4
119260-14200	6	6
119260-14400	6	7
119260-14580	6	1
119260-21200	7	3
119260-23910	7	36
119260-25100	6	18
119260-25900	6	12
119260-32000	8	1
119260-35081	8	25
119260-42020	9	13
	15	14
119260-49530	9	20
119260-49800	9	21
119260-59520	10	83
119260-59530	10	84
119260-59820	10	72
119260-59830	10	76
119260-66010	12	61
119260-66720	12	78
119265-01340	1	22
	15	2
119265-11000	4	16
119265-13500	5	12
119265-21590	7	8
119265-21650	7	11
119265-21700	7	1
119265-22090	7	14

Parts No.	Fig. No.	Ref. No.
119265-22300	7	22
119265-22500	7	16
119265-23100	7	24
119265-23200	7	27
119265-34820	8	14
119265-35300	8	16
119265-39450	8	28 -1
119265-42000	9	1
119265-42001	9	1 -1
119265-42002	9	1 -2
119265-44400	9	27
119265-55900	11	34
119285-61010	12	17
119285-66080	12	53
119285-66500	12	104
119285-77950	12	105
119288-61510	12	28
119305-35150	8	15
119454-01721	3	15
119600-01600	3	2
119600-11450	4	11
119600-11460	4	12
	15	7
119600-52021	11	32
119600-61200	12	4
119600-61540	12	45
119600-61900	12	51
119600-66530	12	64
119600-66840	12	74
119620-01620	3	6
119620-01750	3	4
119620-01800	2	8
119620-01950	2	10
119620-02450	6	5
119620-11350	4	31
119620-11390	4	5
119620-21941	7	13
119620-25062	6	20
119620-42350	9	17
119620-51170	10	6
119620-51180	10	7
119620-51190	10	8
119620-51250	10	9
119620-51340	10	25
119620-51350	10	26
119620-51370	10	27
119620-51450	10	28
119620-51461	10	29
119620-51510	10	31
119620-51650	10	33

Parts No.	Fig. No.	Ref. No.
119620-51660	10	34
119620-51670	10	35
119620-51680	10	36
119620-51700	10	37
119620-53000	10	47
119620-53080	10	50
119620-53120	10	52
119620-53140	10	54
119620-59700	10	89
119621-21680	7	12
119621-66051	12	62
119631-77010	13	2
119632-55620	11	1
119642-33030	8	29
119642-33100	8	30
119642-49030	9	29
119642-59540	10	81
119642-59550	10	86
119642-59570	10	87
119643-66900	13	22
119650-59200	11	29
119660-01551	2	21
119660-01562	2	22
	15	3
119660-01570	2	23
119660-01640	3	7
119660-01651	3	8
119660-01821	6	8
119660-01911	2	9
119660-25022	6	16
119660-25052	6	17
119660-32020	8	11
	15	13
119660-51500	10	30
119660-51530	10	32
119660-61052	12	1
119660-61060	12	2
119660-61071	12	3
119660-61121	12	18
119660-61140	12	102
119660-61150	12	103
119660-61300	12	8
119660-61341	12	9
119660-61460	12	19
119660-61491	12	27
119660-61650	12	46
119660-61901	12	52
119810-55340	11	4
119843-61550	12	44
119865-21600	7	10

Parts No. Index

Parts No.	Fig. No.	Ref. No.
121000-13201	5	11
	15	12
121023-01550	2	28
121111-21501	7	7
121120-01620	3	3
121250-55620	11	8
121254-55510	11	5
		39
121256-59080	11	21
121257-55720	11	44
121257-55731	11	45
121400-01640	3	13
121450-01560	2	4
121450-42450	9	31
121450-77330	14	21
121520-01851	11	31
	15	16
121520-34810	8	13
121575-66830	12	73
121850-55710	11	43
121850-55800	11	35
124060-01050	1	4
124066-59100	10	82
	11	15
124085-02220	3	9
124160-01751	2	24
	4	54
124160-11360	4	14
124160-39450	8	28
124190-77110	13	3
124190-77760	13	14
124465-44950	9	15
		25
	15	15
124550-55700	11	10
124550-59820	10	90
124550-66370	12	72
124766-59050	10	80
	11	20
		25
124772-66750	12	70
129100-01580	3	1
	7	6
129100-61930	12	63
129110-44900	9	14
129122-44480	9	27
		-1
		28
129132-77700	13	23
129150-35350	8	24
129150-59120	10	63

Parts No.	Fig. No.	Ref. No.
129150-59130	10	66
129150-59580	11	16
129155-51280	12	16
129155-51580	10	62
129155-61480	12	22
129155-61590	12	81
129350-49530	9	20
		-1
129350-49541	9	22
		-1
	15	22
		-1
129350-49800	9	21
		-1
129400-92400	15	23
129403-49050	9	30
171008-03990	9	26
171056-49120	9	24
171301-77201	14	1
174307-51700	12	29
194990-22050	2	14
	5	6
	12	60
22111-060000	12	109
22117-040000	12	47
22137-040000	10	42
22212-100000	14	18
22217-040000	10	43
22217-050000	4	8
22242-000100	4	39
22242-000200	6	21
22252-000200	7	23
22272-000040	12	48
22322-030160	12	56
22351-020004	12	49
22351-030014	12	50
22351-040010	2	5
	12	10
22351-060012	4	34
22360-040000	12	57
22360-060000	12	11
22512-040120	6	3
		11
	7	4
23065-120500	4	13
23414-080012	10	91
	11	30
	15	18
23414-140000	10	92
	15	19
23418-060000	11	48
23871-020000	4	21
24101-062034	6	23
24102-063034	6	13

Parts No.	Fig. No.	Ref. No.
24311-000120	2	15
	4	15
	8	26
	15	20
24311-000180	3	14
24311-000210	9	11
24311-000320	2	25
	4	55
	15	4
		8
24311-240100	11	14
		49
	15	21
24321-000350	9	22
	15	22
24321-000600	8	31
24321-000700	8	32
24341-000070	12	58
24341-000240	2	27
24341-000280	12	106
26013-080142	5	13
26014-060122	9	19
26014-060202	11	33
26014-080252	14	22
26014-080702	11	17
26022-040082	10	44
26022-040252	14	8
26106-060102	3	16
	12	59
26106-060122	1	20
	6	22
	8	27
26106-060162	2	16
	6	14
	12	107
26106-060182	2	29
	9	23
26106-060202	5	3
26106-060222	3	10
26106-060302	2	17
26106-060352	5	7
26106-060402	2	18
26106-060452	3	17
26106-060502	2	19
26106-060652	2	20
26106-060702	12	12
26106-060752	12	13
26106-060952	12	14
		108
26106-080142	4	32

Parts No.	Fig. No.	Ref. No.
26106-080142	4	37
26106-080202	9	23
		-1
26106-080452	4	35
	9	16
26106-100402	14	23
26116-050102	12	15
26116-060302	12	75
26116-120252	13	1
26206-100252	3	5
26216-060402	5	8
26216-080222	5	9
26366-060002	2	26
	5	10
26366-080002	4	18
26450-060202	8	12
26557-050102	4	9
26587-040102	10	45
26587-080102	6	15
26716-100002	14	19
26756-060002	4	47
		51
	12	76
27221-050080	4	22
27221-060100	1	5
27231-400000	1	6
27241-100000	1	7
27241-250000	1	8
27241-300000	1	9
27241-350000	4	23
43400-500400	12	77
43400-500450	12	71
719225-51100	10	1
719260-02800	1	11
719260-02930	1	14
719260-11520	4	1
719260-11650	4	46
719260-11660	4	50
719260-23600	7	28
719260-23610	7	37
719265-01560	1	1
719265-22900	7	30
719265-22950	7	32
719265-92600	15	1
719265-92601	15	1
		-1
719620-53100	10	46
X2114275070	13	18
X2114283500	13	21
X2114430010	13	9
X2114531200	13	7
X2114535200	13	10

Parts No. Index

Parts No.	Fig. No.	Ref. No.
X2114586700	13	20
X2114631090	13	6
X2114660130	13	17
X2114680050	13	19
X2114715500	13	5
X2114780060	13	16
X2114811000	13	4
X2114821500	13	8
X2114831300	13	12
X2114931400	13	13
X2114966130	13	15
X2114990010	13	11
XM08137	14	2
XM08138	14	3
XM08180	14	4
XM17878	14	6
XM27436	14	5
		15
XM36410	14	7
XM37336	14	14
XM61014	14	20
XM72174	14	12
XM72664	14	13
XM82110	14	11
XM82184	14	10
XYSPS4008	14	9

Parts No.	Fig. No.	Ref. No.
-----------	----------	----------

Parts No.	Fig. No.	Ref. No.
-----------	----------	----------

Parts No.	Fig. No.	Ref. No.
-----------	----------	----------