

0CW10-M08400EN

PREFACE

1.This Parts Catalog carries all parts incorporated in YANMAR Model 2V750-CVER engine manufactured since December, 2005.

2.Each illustration corresponds to the parts list on the following page.

3.When ordering parts,clearly write down the engine model and serial number,as well as the name and number of each part in your order sheet. This will help insure reliable delivery of the parts you have ordered.

How to read this Parts Catalog.

1. Parts mentioned in Parts Catalog may not necessarily be standard equipping parts
2. Parts change may be made without prior notice.
3. Form of this Parts Catalog.

Y00F2161 29. FUEL INJECTION PUMP (W/BOOST)											
REF.	LEV.	PARTS No.	DESCRIPTION	QTY						I	R
				(A)	(B)	(C)	(D)	(E)	(F)		
1		729595-51390	FUEL INJECTION PUMP	1	1	1	1	1			
1-1		729595-51391	FUEL INJECTION PUMP	1	1	1	1	1			
		(A=E00185) (B=E00200)									
3		26022-060162	SCREW M 6X16	9	9	9	9	9			
I 3-1		26022-060162	SCREW M 6X16	4	4	4	4	4			K
		(A=E00156) (B=E00156) (C=E00156) (D=E00156) (E=E00156)									
4		129470-51040	CAMSHFT	9	9	9	9	9			
5		122710-51050	BEARING. ROLLER	9	9	9	9	9			
6		129470-51060	RETAINER	9	9	9	9	9			

Remarks
 (1) BOOST COMPENSATOR TYPE.
 OPTIONAL PART. TO E#00155
 (4JH-DT, 4JH-DTZ)

① Ref. No.

The Ref. No. in the list may not be in accordance with the Ref. No. on illustration.

(Ex.) illustration No, List heed No,
 1 1 (Before change) → 1-1 (After change)

When interchangeable symbol N, and k, illustrations for the new parts are sometimes omitted.

② Lev. (Level)

Indication and Meaning of Level

Level Hereunder is given the relation among the number (1,2,3) the level and the nominal parent-child relationship.

1 ---- Parent parts (Assembly parts)

2 ---- Child parts included in " 1 " (Semi-Assembly parts, component parts of Assembly parts.)

3 ---- Child parts included in " 2 ", Grand-child parts in terms of " 1 ".

(Component parts of Semi-Assembly parts.)

Note) A parts of non-sale parts are illustrated but not listed.

③ Change Mark

Change Mark " I " is given to the part for which a design change was made at this time.

The design change was not shown in the last published Parts Catalog.

④ Interchangeability Mark

In the case where a part change took place, one of the following interchangeability marks is indicated for that part

Symbol	Interchangeability	Contents note
N	Old ← → New	New Part is interchangeable for Old Part but not interchangeable conversely.
Q	Old ← → New	New Part is not interchangeable for Old Part but interchangeable conversely.
R	Old ← → New	New Part is interchangeable for Old Part and vice versa.
S	Old ← → New	New Part is not interchangeable for Old Part and vice versa.
W		Part newly added.
Z		Part discontinued.
F		Not interchangeable single part but interchangeable by set of the related parts.
K		Changed only in quantity used.

⑤ Effective Machine No.

When a part is changed, Effective Machine No. of a Model for which the part is applicable is indication

In each column of (A)-(F).

Product Symbol	Product No.	Product Symbol	Product No.
C	Clutch No, Compressor No,	M	Machine No,
D	Drive No,	T	Tractor No,
E	Engine No,	Note 1)※	Date

Note 1) Date may follow the symbol in some cases. (Ex.) ※1996.01

Note 2) As far as engine models shown by " XXX " are concerned, the modification of the parts could not be Predicted or the engine models themselves could not be identified.

Note 3) (A=E/#00185) means that the design change on the part has been effective for the model at the, column (A) (in the case, for 4JH-DT) on and from E#(Engine Serial Number) 00185

⑥ Remarks Mark

Figures or alphabets (Symbols) are entered in the remark column.

The comments (remarks) on the pertinent parts are indicated in the lower part of the list by the same symbols as those stated above.

Contents

0CW10-M08400

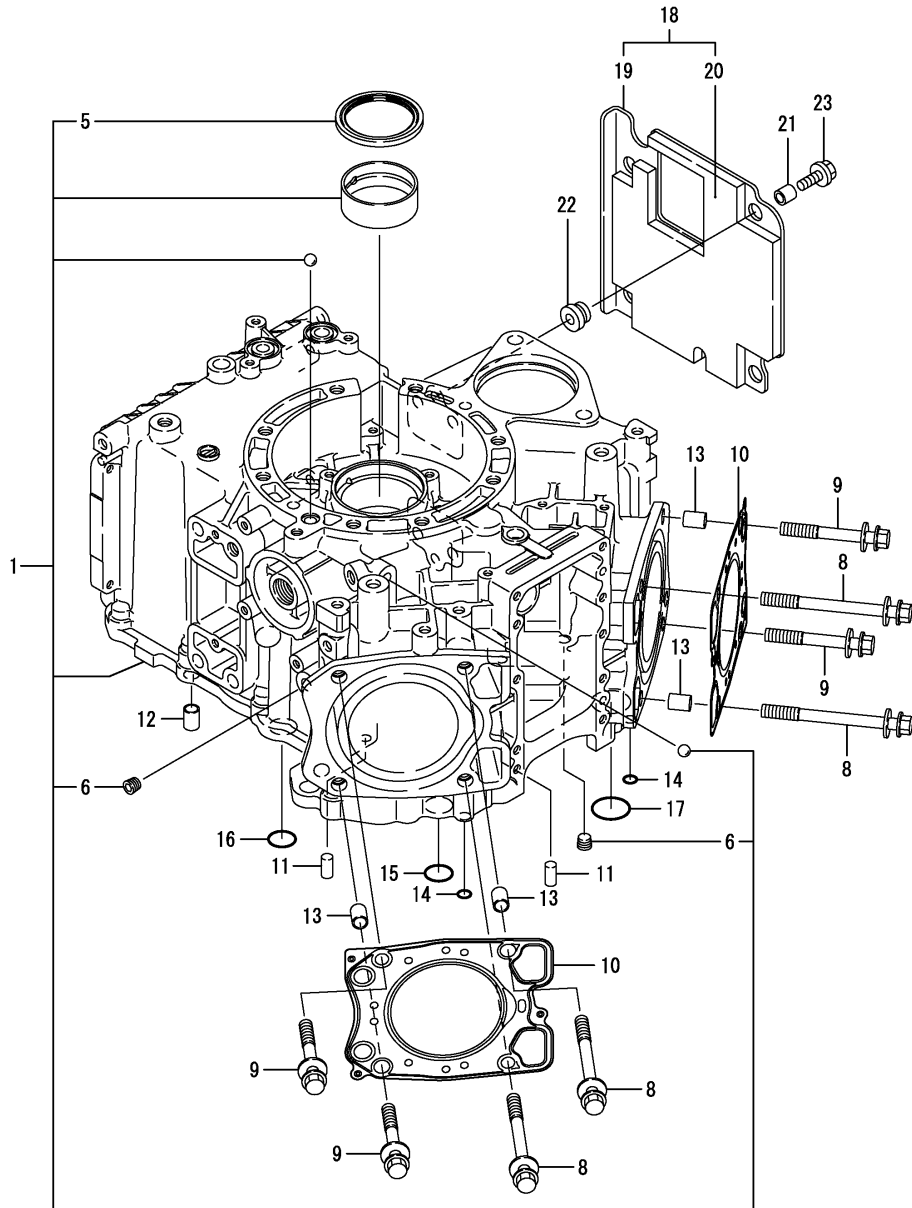
Fig. No. Fig. Name

Fig. No. Fig. Name

ENGINE 2V750-CVER

1. CYLINDER BLOCK
2. GEAR HOUSING
3. CYLINDER HEAD & BONNET
4. SUCTION MANIFOLD
5. AIR CLEANER
6. CAMSHAFT
7. CRANKSHAFT & PISTON
8. LUB.OIL SYSTEM
9. COOLING WATER SYSTEM
10. FUEL INJECTION PUMP
11. GOVERNOR
12. FUEL INJECTION VALVE
13. FUEL LINE
14. STARTING MOTOR
15. DYNAMO
16. GASKET SET

Fig.1. CYLINDER BLOCK

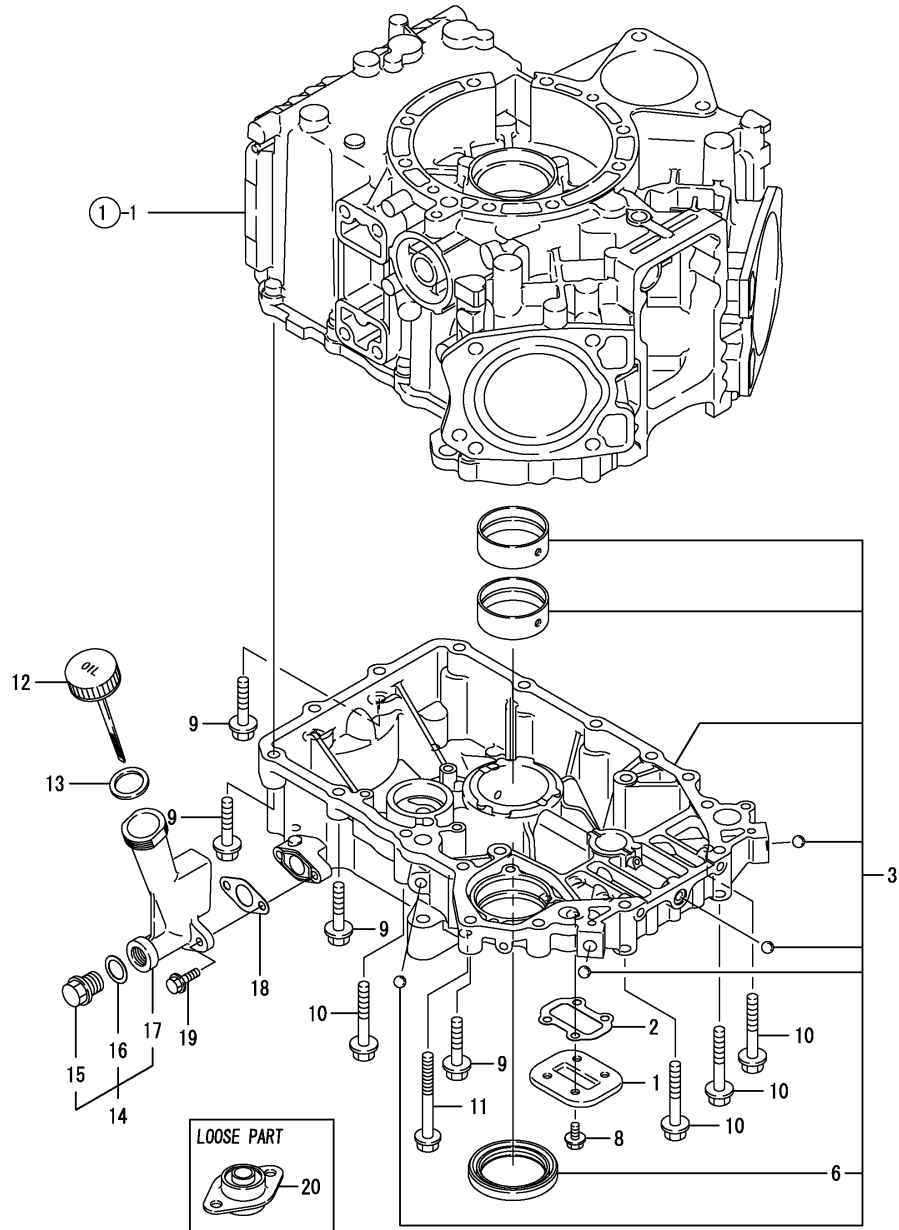


(A)=2V750-CVER
(B)=
(C)=

(D)=
(E)=
(F)=

No.	Lev.	Parts No.	Description	Q'ty						I	R
				(A)	(B)	(C)	(D)	(E)	(F)		
1	1	118410-01000	BLOCK ASSY, CYLINDER	1							
5	2	118200-02220	SEAL, OIL	1							
6	2	23875-010000	PLUG, R01	2							
8	1	118200-01200	BOLT, HEAD	4							
9	1	118200-01210	BOLT, HEAD	4							
10	1	118200-01360	GASKET, HEAD	2							
11	1	129100-01580	PIN, M8X16	2							
12	1	118200-01800	PIPE, KNOCK	2							
13	1	118200-01800	PIPE, KNOCK	4							
14	1	118200-01400	O-RING, P6.0	2							
15	1	118200-01410	O-RING, P16.0	1							
16	1	118200-01420	O-RING, P16.0	1							
17	1	118200-01430	O-RING, S24.0	1							
18	1	118401-01850	COVER, HUSH	1							
19	2	118401-01860	COVER	1							
20	2	118401-01870	INSULATOR, NOISE	1							
21	1	114350-45340	COLLAR	4							
22	1	183720-55210	GROMMET	4							
23	1	26106-060162	BOLT, M6X 16 PLATED	4							

Fig.2. GEAR HOUSING



(A)=2V750-CVER
(B)=
(C)=

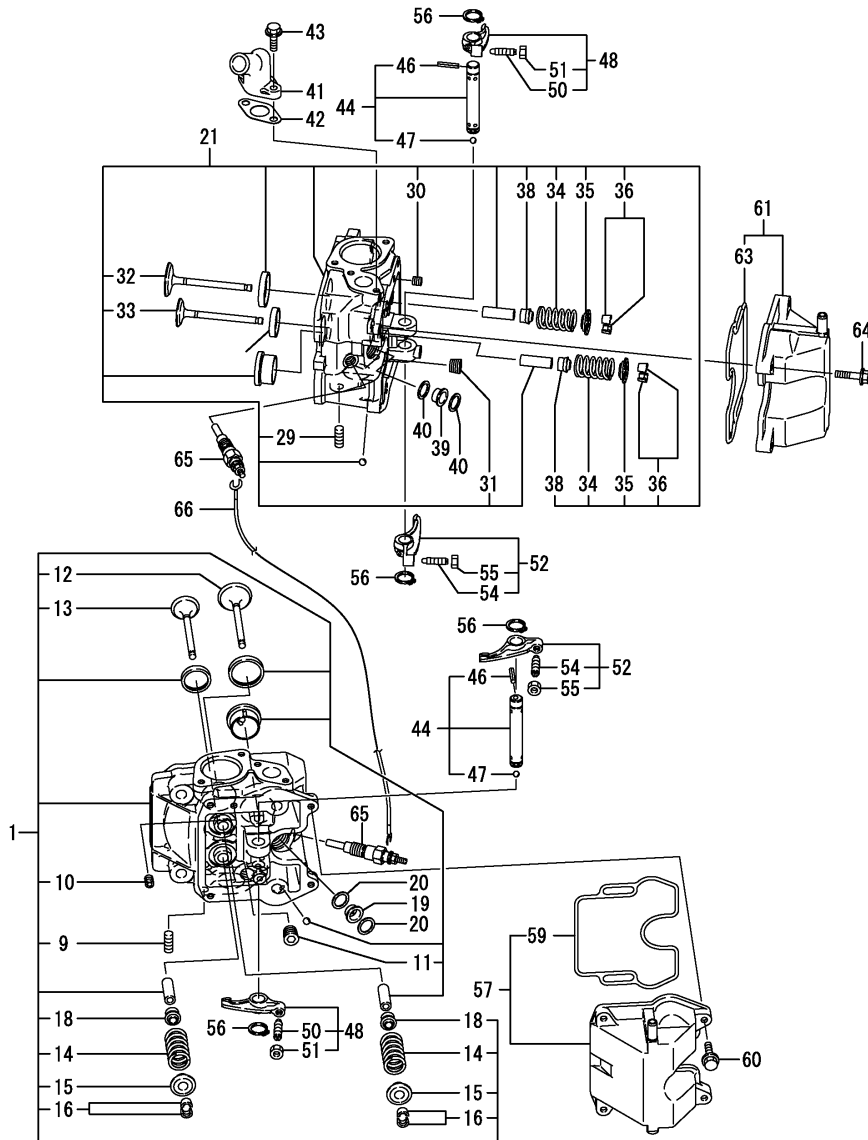
(D)=
(E)=
(F)=

No.	Lev.	Parts No.	Description	Q'ty						I	R
				(A)	(B)	(C)	(D)	(E)	(F)		
1	1	118400-01480	COVER, GEAR CASE	1							
2	1	118400-01490	GASKET	1							
3	1	118410-01820	GEARCASE ASSY	1							
6	2	118200-02230	SEAL, OIL	1							
8	1	26106-060122	BOLT, M6X 12 PLATED	4							
9	1	26106-080402	BOLT, M8X 40 PLATED	10							
10	1	26106-080552	BOLT, M8X 55 PLATED	4							
11	1	26106-080752	BOLT, M8X 75 PLATED	1							
12	1	118400-01750	CAP, FILLER	1							
13	1	118400-01760	GASKET	1							
14	1	118400-34800	GUIDE ASSY, DIPSTICK	1							
15	2	105425-01690	PLUG, 16	1							
16	2	22190-160002	WASHER, SEAL 16	1							
17	2	118400-34810	GUIDE, DIPSTICK	1							
18	1	118200-49120	GASKET	1							
19	1	26106-060202	BOLT, M6X 20 PLATED	2							

Fig.3. CYLINDER HEAD & BONNET

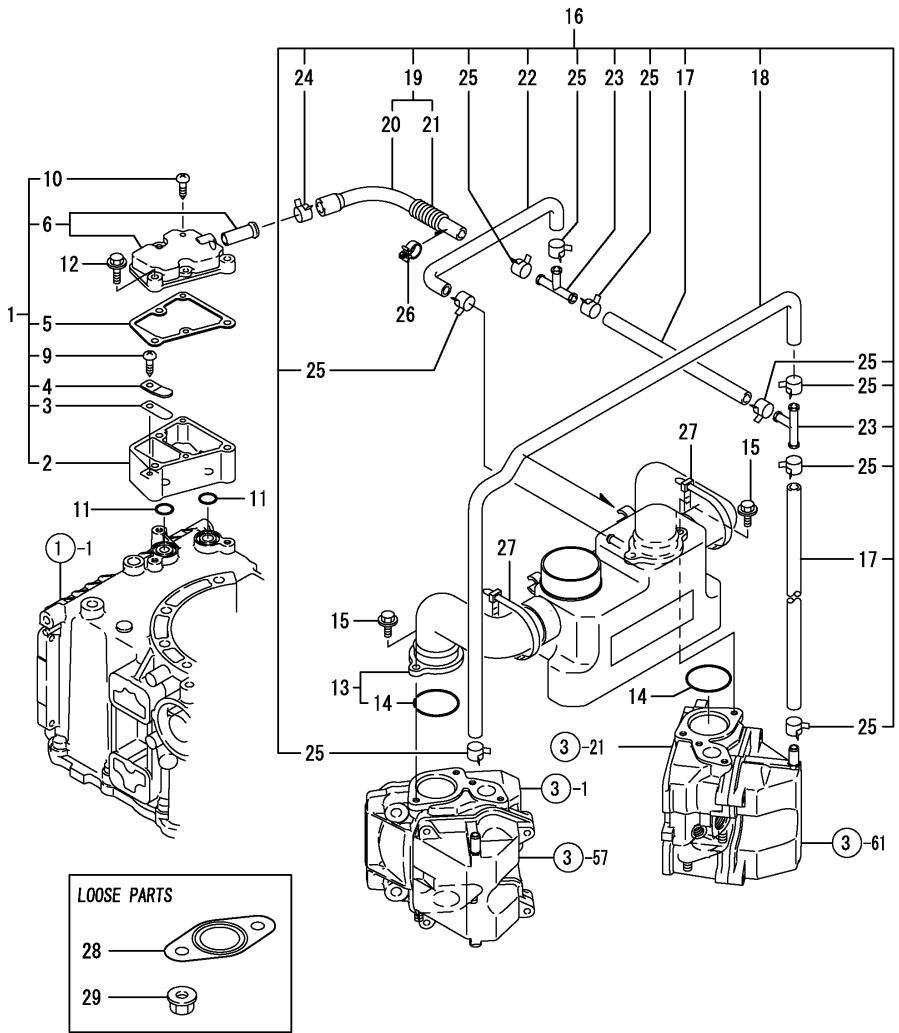
(A)=2V750-CVER
(B)=
(C)=

(D)=
(E)=
(F)=



No.	Lev.	Parts No.	Description	Q'ty						I	R
				(A)	(B)	(C)	(D)	(E)	(F)		
1	1	718410-11850	CYL.HEAD(1) ASSY	1							
9	2	26226-080222	STUD, M8X 22	2							
10	2	26979-060062	SCREW, M6X 6	1							
11	2	124160-01910	PLUG, PT1/4	1							
12	2	118200-11100	VALVE, INTAKE	1							
13	2	118200-11110	VALVE, EXHAUST	1							
14	2	118200-11120	SPRING, VALVE	2							
15	2	118200-11180	RETAINER, SPRING	2							
16	2	118200-11570	COTTER ASSY	2							
18	2	114350-11340	SEAL, VALVE STEM	2							
19	1	129901-11450	PROTECTOR, NOZZLE	1							
20	1	119600-11460	GASKET, NOZZLE	2							
21	1	718410-11860	CYL.HEAD(2) ASSY	1							
29	2	26226-080222	STUD, M8X 22	2							
30	2	26979-060062	SCREW, M6X 6	1							
31	2	124160-01910	PLUG, PT1/4	1							
32	2	118200-11100	VALVE, INTAKE	1							
33	2	118200-11110	VALVE, EXHAUST	1							
34	2	118200-11120	SPRING, VALVE	2							
35	2	118200-11180	RETAINER, SPRING	2							
36	2	118200-11570	COTTER ASSY	2							
38	2	114350-11340	SEAL, VALVE STEM	2							
39	1	129901-11450	PROTECTOR, NOZZLE	1							
40	1	119600-11460	GASKET, NOZZLE	2							
41	1	118200-49110	BEND	1							
42	1	118200-49120	GASKET	1							
43	1	26106-060202	BOLT, M6X 20 PLATED	2							
44	1	118200-11240	SHAFT ASSY, ROCKER	2							
46	2	118200-11260	PIN, 4X26	2							
47	2	24190-070001	BALL, STEEL 7/32	2							
48	1	118200-11751	ARM, ROCKER	2							
50	2	105010-11230	SCREW, VALVE ADJUST	2							
51	2	26756-060002	NUT, LOCK M6	2							
52	1	118200-11761	ARM, ROCKER	2							
54	2	105010-11230	SCREW, VALVE ADJUST	2							
55	2	26756-060002	NUT, LOCK M6	2							
56	1	22242-000120	RING, 12	4							
57	1	118400-11500	BONNET ASSY, HEAD	1							
59	2	118200-11320	GASKET, BONNET	1							
60	1	26106-060252	BOLT, M6X 25 PLATED	4							
61	1	118400-11510	BONNET ASSY, HEAD	1							
63	2	118200-11320	GASKET, BONNET	1							
64	1	26106-060252	BOLT, M6X 25 PLATED	4							
65	1	129795-77800	PLUG, GLOW	2							
66	1	118200-77820	CONNECTOR, GLOW PLUG	1							

Fig.4. SUCTION MANIFOLD



(A)=2V750-CVER
(B)=
(C)=

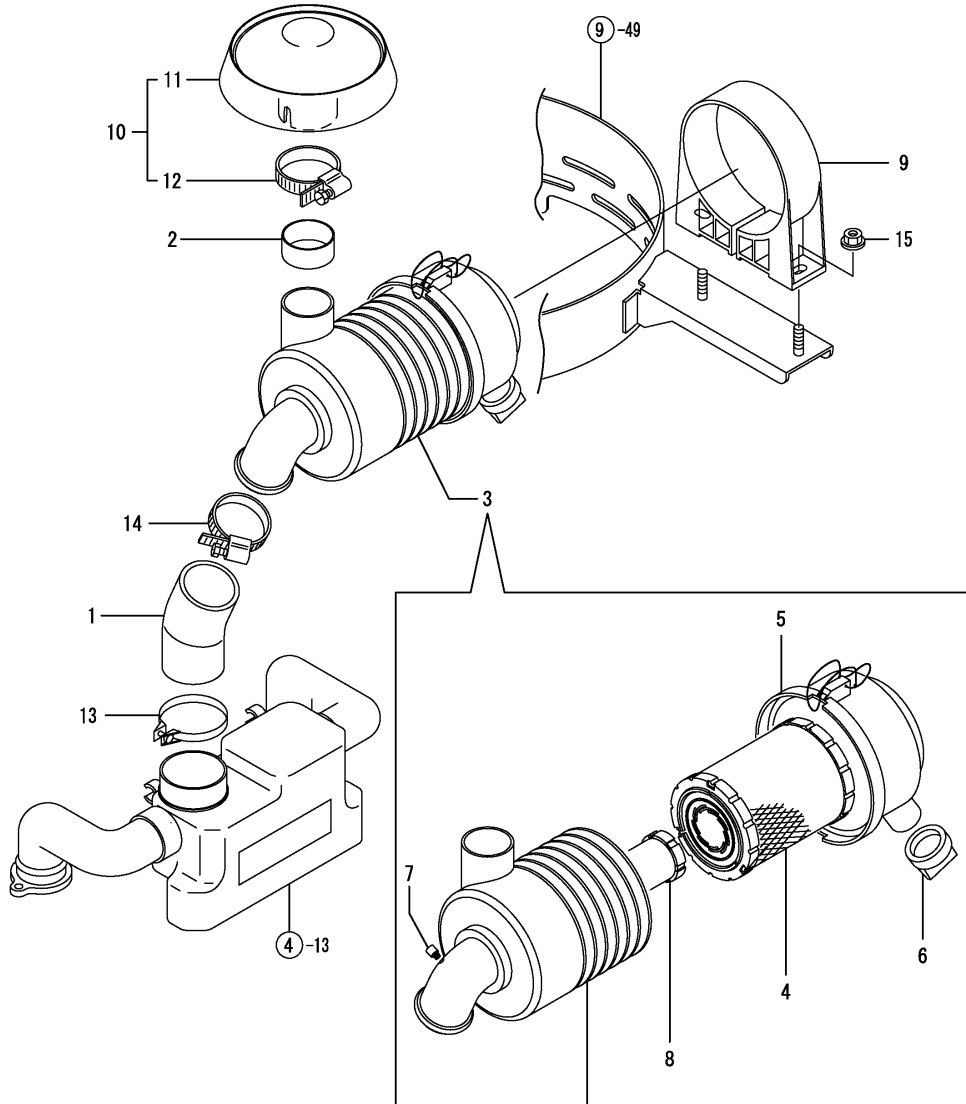
(D)=
(E)=
(F)=

No.	Lev.	Parts No.	Description	Q'ty						I	R
				(A)	(B)	(C)	(D)	(E)	(F)		
1	1	118400-03100	CASE ASSY	1							
2	2	118400-03010	CASE, BREATHER	1							
3	2	118400-03030	VALVE	1							
4	2	118400-03040	RETAINER	1							
5	2	118400-03050	GASKET	1							
6	2	118400-03110	COVER ASSY	1							
9	2	22857-500101	SCREW 5X10,TAPPING	1							
10	2	22857-500201	SCREW, 5X20	2							
11	1	24311-000160	O-RING, 1AP16.0	2							
12	1	26106-060602	BOLT, M6X 60 PLATED	3							
13	1	118400-12011	PIPE, AIR INTAKE	1							
14	2	118200-12211	GASKET	2							
15	1	26106-060162	BOLT, M6X 16 PLATED	4							
16	1	118400-03123	HOSE ASSY, BREATHER	1							
17	2	118401-03320	PIPE , BREATHER	2							
18	2	118400-03340	PIPE , BREATHER	1							
19	2	118401-03352	PIPE ASSY, BREATHER	1							
20	3	118401-03300	PIPE , BREATHER	1							
21	3	129950-59241	TUBE, CORRUGATED	1							
22	2	118401-03311	PIPE , BREATHER JA2	1							
23	2	118400-03380	JOINT, 3-WAY	2							
24	2	129301-03660	CLAMP 16	1							
25	2	124766-59050	CLIP, HOSE 12	9							
26	1	118400-59060	HOLDER	1							
27	1	29622-250001	BAND, RF250	2							
28	1	118200-13200	GASKET, SILENCER	2							
29	1	26366-080002	NUT, M8	4							

Fig.5. AIR CLEANER

(A)=2V750-CVER
(B)=
(C)=

(D)=
(E)=
(F)=



No.	Lev.	Parts No.	Description	Q'ty						I	R
				(A)	(B)	(C)	(D)	(E)	(F)		
1	1	118410-12210	PIPE, INTAKE	1							
2	1	118410-12400	SPACER, AIR CLEANER	1							
3	1	118410-12500	AIRCLEANER COMPL.	1							
4	2	119515-12520	ELEMENT	1							
5	2	118410-12540	COVER ASSY	1							
6	2	119287-12580	VALVE, UNLODER	1							
7	2	119287-12590	PLUG	1							
8	2	119233-12700	ELEMENT	1							
9	1	118410-12570	BAND, AIR CLEANER	1							
10	1	119287-12600	CAP ASSY, RAIN	1							
11	2	119287-12610	CAP, RAIN	1							
12	2	119287-12620	CLAMP	1							
13	1	118400-12610	CLIP, HOSE 58	1							
14	1	119172-48540	CLIP, HOSE 54	1							
15	1	26306-080002	NUT, M8	2							

Fig.6. CAMSHAFT

(A)=2V750-CVER
(B)=
(C)=

(D)=
(E)=
(F)=

No.	Lev.	Parts No.	Description	Q'ty						I	R
				(A)	(B)	(C)	(D)	(E)	(F)		
1	1	118400-14001	CAMSHAFT ASSY	1							
5	1	118200-14201	TAPPET	4							
6	1	118200-14261	TAPPET	2							
7	1	118200-14400	ROD, PUSH	4							
8	1	118410-14700	PLATE ASSY, ADJUST	1							

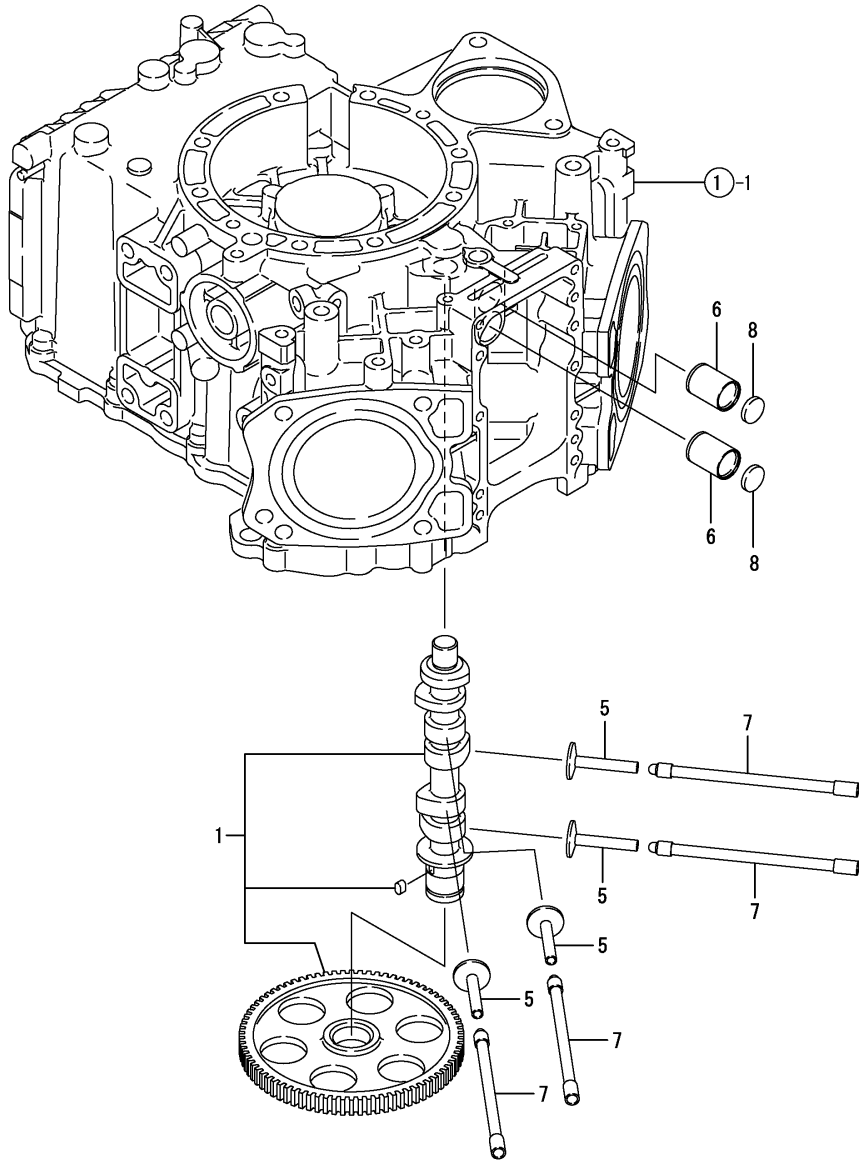
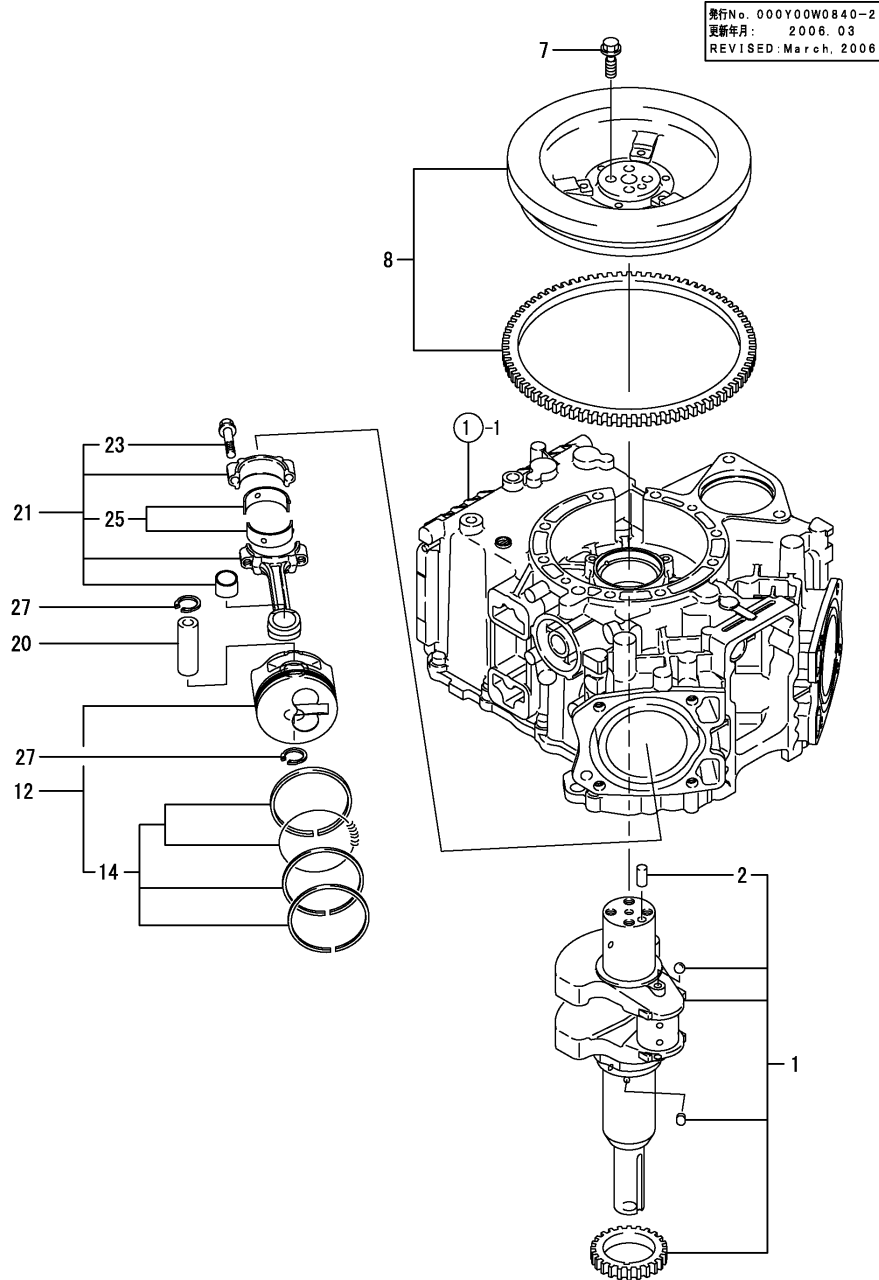


Fig.7. CRANKSHAFT & PISTON

(A)=2V750-CVER
(B)=
(C)=

(D)=
(E)=
(F)=

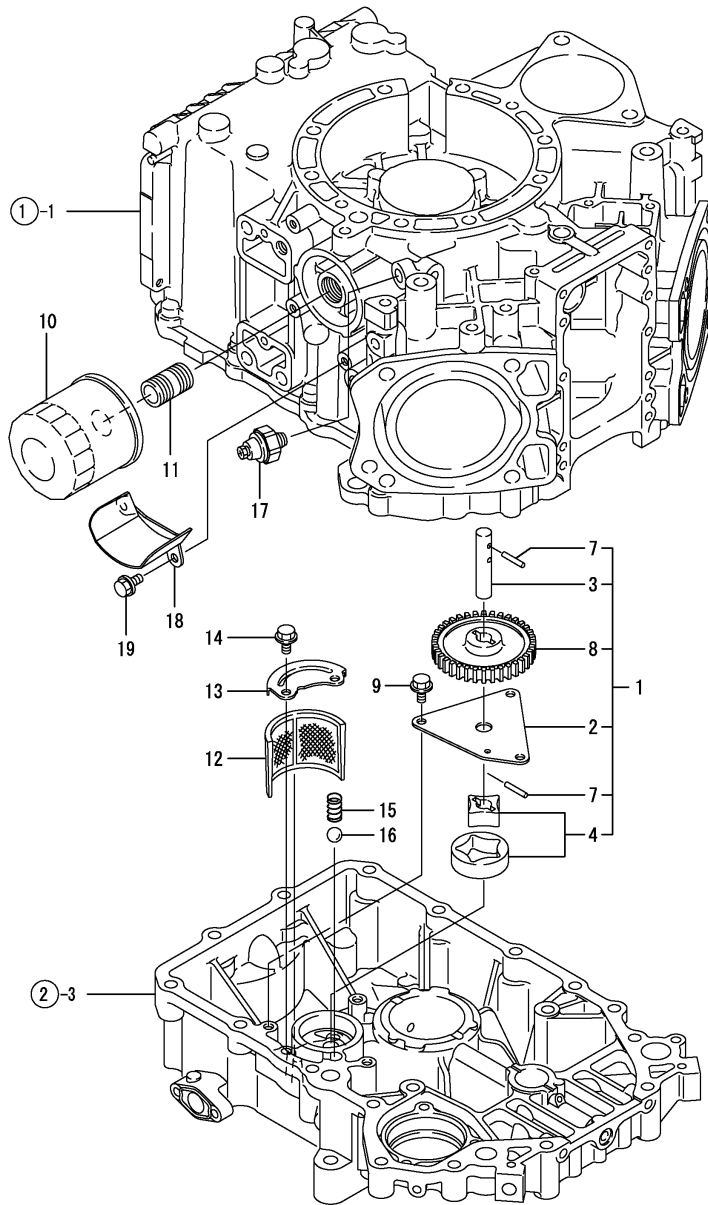


No.	Lev.	Parts No.	Description	Q'ty						I	R
				(A)	(B)	(C)	(D)	(E)	(F)		
1	1	118401-21001	CRANKSHAFT ASSY	1							
2	2	129100-01580	PIN, M8X16	1							
7	1	118200-21500	BOLT, FLYWHEEL	4							
8	1	118400-21592	FLYWHEEL ASSY	1							
12	1	118210-22030	PISTON ASSY	2							
14	2	118210-22500	RING SET, PISTON	2							
20	1	118200-22310	PIN, PISTON	2							
21	1	118200-23030	ROD ASSY, CONNECTING	2							
23	2	118200-23200	BOLT, CONNECTING ROD	4							
25	2	118200-23600	BEARING, CRANK PIN	2							
27	1	22252-000200	RING, 20	4							

Fig.8. LUB.OIL SYSTEM

(A)=2V750-CVER
(B)=
(C)=

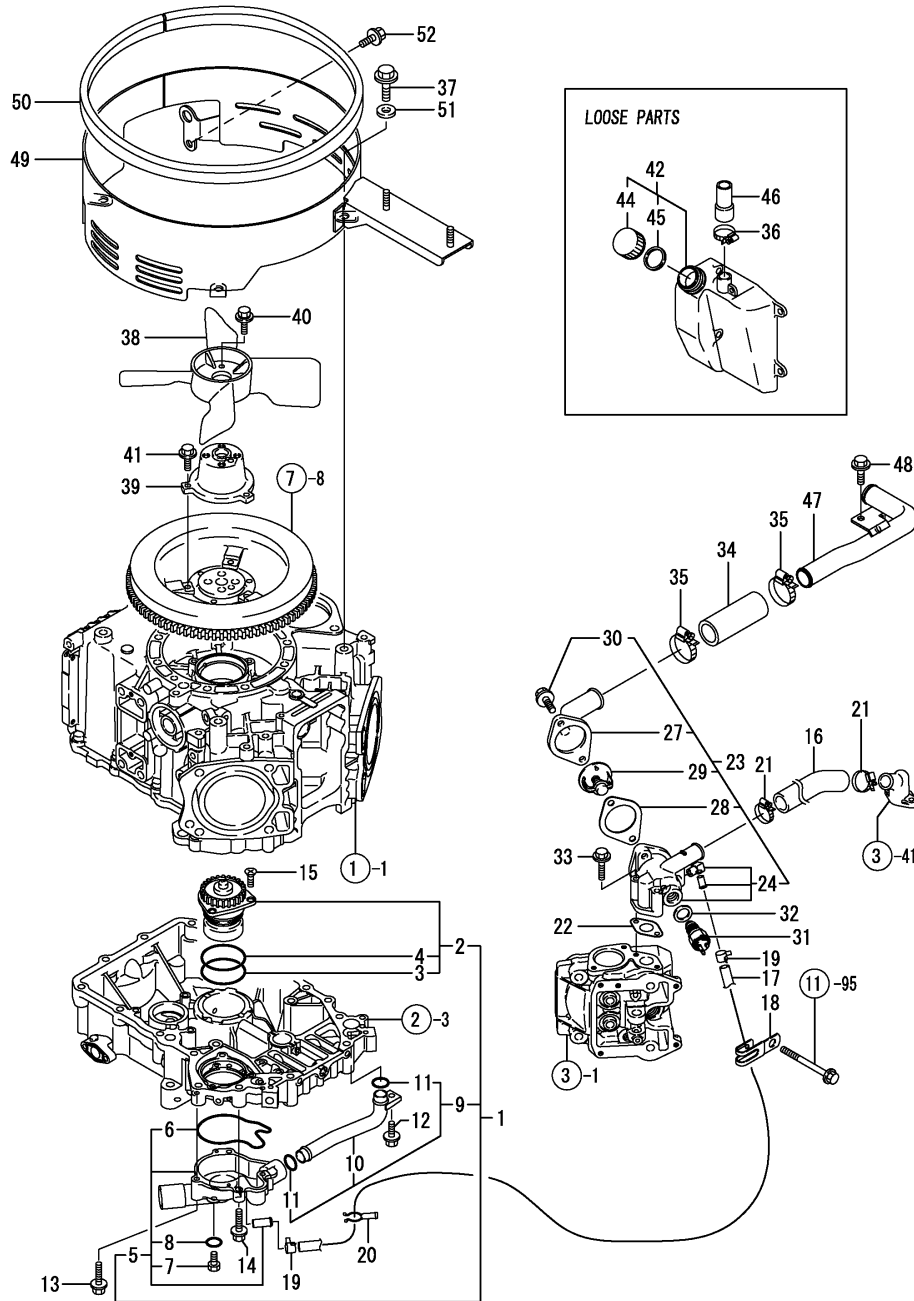
(D)=
(E)=
(F)=



No.	Lev.	Parts No.	Description	Q'ty						I	R
				(A)	(B)	(C)	(D)	(E)	(F)		
1	1	118200-32000	PUMP ASSY, OIL	1							
2	2	118200-32080	COVER	1							
3	2	118200-32110	SHAFT, INNER ROTOR	1							
4	2	118200-32150	ROTOR ASSY	1							
7	2	118200-32170	PIN	2							
8	2	118200-32200	GEAR, OIL PUMP	1							
9	1	26106-060122	BOLT, M6X 12 PLATED	3							
10	1	119305-35170	FILTER ASSY, D68XL65	1							1
11	1	118200-35300	BRACKET	1							
12	1	118400-35010	SCREEN, OIL	1							
13	1	118400-35020	PLATE	1							
14	1	26106-060122	BOLT, M6X 12 PLATED	2							
15	1	118200-34040	SPRING	1							
16	1	24190-130001	BALL, STEEL 13/32	1							
17	1	121252-39450	SWITCH, 0.5KG	1							
18	1	118401-35250	TRAY	1							
19	1	26106-060122	BOLT, M6X 12 PLATED	2							

Remarks
(1) REPAIR PART.

Fig.9. COOLING WATER SYSTEM



(A)=2V750-CVER

(B)=

(C)=

(D)=

(E)=

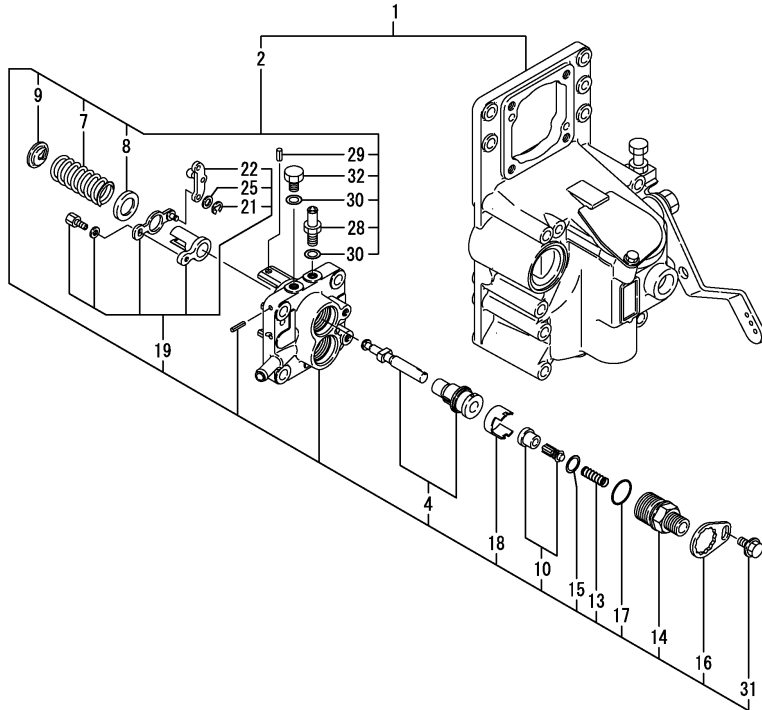
(F)=

No.	Lev.	Parts No.	Description	Qty						I	R
				(A)	(B)	(C)	(D)	(E)	(F)		
1	1	118400-42001	PUMP ASSY, WATER	1							
2	2	118400-42011	BODY, WATER PUMP	1							
3	3	24341-000500	O-RING, 1AS50.0	1							
4	3	24341-000550	O-RING, 1AS55.0	1							
5	2	118400-42020	COVER ASSY	1							
6	3	118400-42100	GASKET	1							
7	3	118400-42110	BOLT	1							
8	3	24311-000080	O-RING, 1AP8.0	1							
9	2	118400-42030	PIPE ASSY	1							
10	3	118400-42120	PIPE ASSY	1							
11	3	118400-42130	O-RING	2							
12	1	26106-060122	BOLT, M6X 12 PLATED	1							
13	1	26106-060402	BOLT, M6X 40 PLATED	3							
14	1	26106-080552	BOLT, M8X 55 PLATED	1							
15	1	26577-060162	SCREW, M6X16	3							
16	1	118200-49050	PIPE, WATER	1							
17	1	118200-49060	PIPE, WATER	1							
18	1	160260-78700	CLAMP	1							
19	1	124766-59050	CLIP, HOSE 12	2							
20	1	118400-49050	RETAINER	1							
21	1	23010-027000	CLAMP, 27	2							
22	1	118200-49120	GASKET	1							
23	1	118410-49500	CASE ASSY, THERMOSTAT	1							
24	2	118400-49511	CASE, THERMOSTAT	1							
27	2	118400-49530	COVER, THERMOSTAT	1							
28	2	129350-49541	GASKET	1							
29	2	129350-49800	THERMOSTAT, 71	1							
30	2	26106-080252	BOLT, M8X 25 PLATED	2							
31	1	121250-44901	SWITCH, 110	1							
32	1	124465-44950	GASKET, 16	1							
33	1	26106-060402	BOLT, M6X 40 PLATED	2							
34	1	118410-49020	PIPE, COOLING WATER	1							
35	1	23010-035000	CLAMP, 35	2							
36	1	129410-03990	CLAMP 24	1							
37	1	26106-100202	BOLT, M10X 20 PLATED	3							
38	1	121520-44740	FAN, COOLING D325	1							
39	1	118400-44761	SPACER, FAN	1							
40	1	118400-44750	BOLT, M6X20	4							
41	1	26106-060162	BOLT, M6X 16 PLATED	3							
42	1	118400-44512	TANK ASSY, SUB	1							
44	2	118400-44560	CAP	1							
45	2	118400-44581	GASKET, CAP	1							
46	1	118400-44590	JOINT	1							
47	1	118410-49010	CW-P(STEEL	1							
48	1	26106-080162	BOLT, M8X 16 PLATED	1							
49	1	118410-44650	FAN GUARD	1							
50	1	118410-44660	SEAL, FAN GUARD	1							
51	1	22137-100000	WASHER, 10	3							
52	1	26106-080202	BOLT, M8X 20 PLATED	1							

Fig.10. FUEL INJECTION PUMP

(A)=2V750-CVER
(B)=
(C)=

(D)=
(E)=
(F)=



No.	Lev.	Parts No.	Description	Q'ty						I	R
				(A)	(B)	(C)	(D)	(E)	(F)		
1	1	718210-51320	PUMP ASSY, INJECTION	1							1
2	2	118400-51000	PUMP ASSY, INJECTION	1							
4	3	118400-51100	PLUNGER ASSY	2							
7	3	118400-51160	SPRING, PLUNGER	2							
8	3	118400-51170	SEAT, SPRING A	2							
9	3	118400-51180	SEAT, SPRING B	2							
10	3	118400-51300	VALVE ASSY, DELIVERY	2							
13	3	105546-51330	SPRING, DELIVERY	2							
14	3	118400-51340	HOLDER, DELIVERY	2							
15	3	124550-51350	GASKET, DELIVERY	2							
16	3	118400-51370	LOCKING	2							
17	3	124550-51370	O-RING	2							
18	3	118400-51400	PROTECTOR	2							
19	3	118400-51450	LEVER ASSY, CONTROL	1							
21	4	118400-51510	CIRCLIP	2							
22	4	118400-51550	LINK	1							
25	4	105890-51650	SHIM	2							
28	3	118400-51851	JOINT	1							
29	3	22351-025006	PIN, SPRING 2.5X 6	2							
30	3	23414-060000	GASKET, 6X1.0	2							
31	3	26106-050102	BOLT, M5X 10 PLATED	2							
32	3	26117-060082	BOLT M 6X 8 PLATED	1							

Remarks

(1) GOVERNOR(FIG.NO.11,REF.NO.1-91)
IS INCORPORATED IN THIS FUEL
INJECTION PUMP.(REF.NO.1).

Fig.11. GOVERNOR

(A)=2V750-CVER

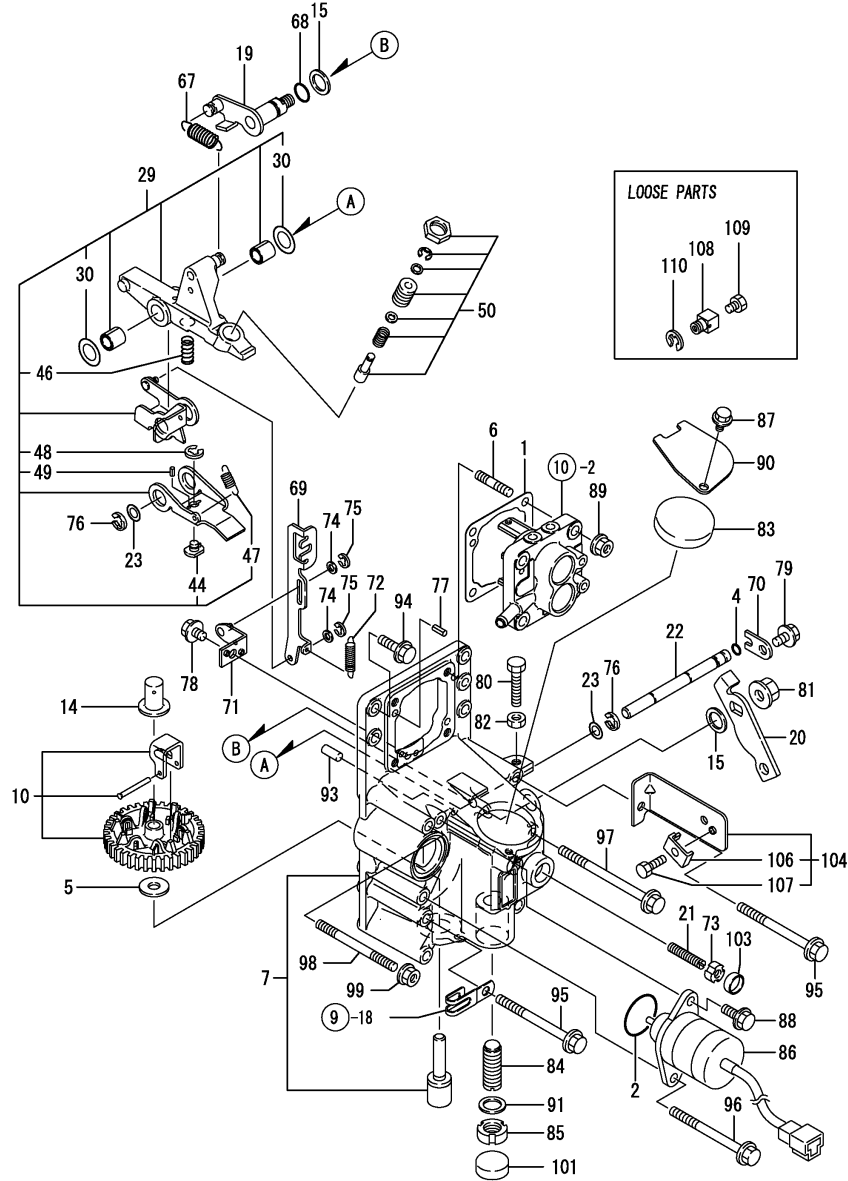
(B)=

(C)=

(D)=

(E)=

(F)=



No.	Lev.	Parts No.	Description	Qty						I	R
				(A)	(B)	(C)	(D)	(E)	(F)		
1	2	118400-51030	GASKET	1							
2	2	152673-51430	O-RING	1							
4	2	158563-51281	O-RING, 4D S6	1							
5	2	118400-61040	WASHER	1							
6	2	118400-61050	STUD, M6X20	4							
7	2	118400-61100	CASE ASSY, GOVERNOR	1							
10	2	118400-61200	WEIGHT ASSY,GOVERNOR	1							
14	2	118400-61300	SLEEVE, GOVERNOR	1							
15	2	118400-61350	SHIM SET	1							
19	2	118400-61400	SHAFT, CONTROL LEVER	1							
20	2	118404-61410	LEVER, CONTROL	1							
21	2	119988-61450	BOLT, LIMITER	1							
22	2	118400-61480	SHAFT	1							
23	2	129155-61480	SPACER ASSY	2							
29	2	118400-61500	LEVER ASSY, GOVERNOR	1							
30	3	174307-51700	SHIM SET	2							
44	3	119600-61540	SHIFTER	1							
46	3	118400-61600	SPRING, STARTING	1							
47	3	118400-61610	SPRING, SET	1							
48	3	22272-000040	RING, E- 4	1							
49	3	22351-020004	PIN, SPRING 2.0X 4	1							
50	2	118400-61650	ANGLEICH ASSY	1							
67	2	118400-61800	SPRING, GOVERNOR	1							
68	2	24341-000100	O-RING, 1AS10.0	1							
69	2	118400-61900	RACK, CONTROL	1							
70	2	119660-61901	RETAINER, SHAFT	1							
71	2	118400-61910	SUPPORT	1							
72	2	118400-61920	SPRING, RACK	1							
73	2	119685-61950	NUT, M6	1							
74	2	22117-040000	WASHER, 4	2							
75	2	22272-000030	RING, E- 3	2							
76	2	22272-000070	RING, E- 7	2							
77	2	22351-040008	PIN, SPRING 4.0X 8	2							
78	2	26106-060082	BOLT, M6X 8 PLATED	1							
79	2	26106-060102	BOLT, M6X 10 PLATED	1							
80	2	26116-060304	BOLT, M6X 30 PLATED	1							
81	2	26366-080002	NUT, M8	1							
82	2	26756-060002	NUT, LOCK M6	1							
83	2	118400-61060	COVER	1							
84	2	120323-61470	BOLT, CONTROL	1							
85	2	119685-61940	NUT, M12	1							
86	2	118400-61950	SOLENOID, STOP	1							
87	2	26106-050102	BOLT, M5X 10 PLATED	1							
88	2	26106-060162	BOLT, M6X 16 PLATED	1							
89	2	26366-060002	NUT, M6	4							
90	2	118400-61070	RETAINER	1							
91	2	22190-120002	WASHER, SEAL 12	1							
93	1	22312-060120	PIN, PARALLEL M6X12	2							
94	1	26106-060202	BOLT, M6X 20 PLATED	4							
95	1	26106-060702	BOLT, M6X 70 PLATED	4							
96	1	26106-060702	BOLT, M6X 70 PLATED	1							

Remarks

(1) REPAIR PARTS.

Fig.11. GOVERNOR

(A)=2V750-CVER

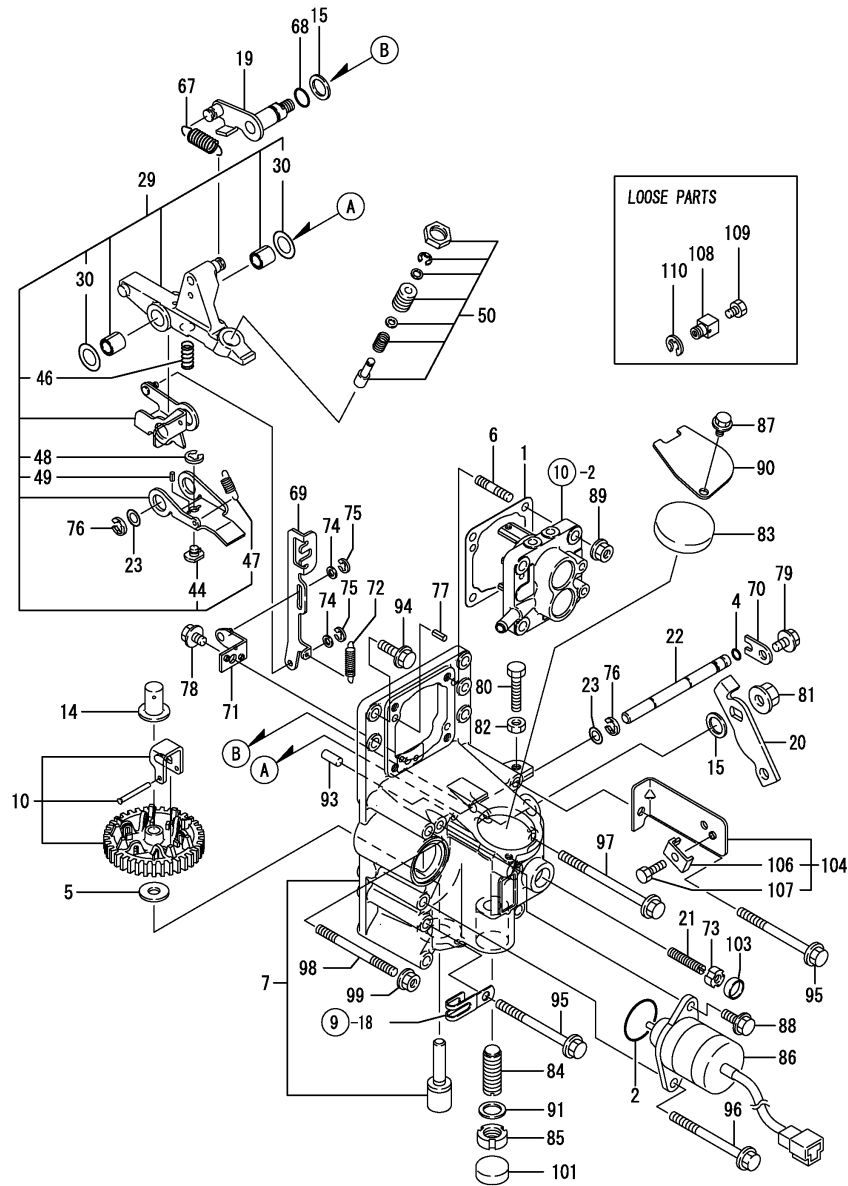
(B)=

(C)=

(D)=

(E)=

(F)=



No.	Lev.	Parts No.	Description	Q'ty						I	R
				(A)	(B)	(C)	(D)	(E)	(F)		
97	1	26106-060852	BOLT, M6X 85 PLATED	1							
98	1	26226-060702	STUD, M6X 70	2							
99	1	26366-060002	NUT, M6	2							
101	1	119621-66610	PLUG, 22	1							1
103	1	119621-66710	PLUG, 14	1							1
104	1	118400-67040	BRACKET ASSY	1							
106	2	118400-67060	CLAMP, CABLE	1							
107	2	26116-050162	BOLT, M5X 16 PLATED	1							
108	1	118400-67070	RETAINER	1							
109	1	26116-040128	BOLT, M4X 12 PLATED	1							
110	1	22272-000070	RING, E- 7	1							

Remarks

(1) REPAIR PARTS.

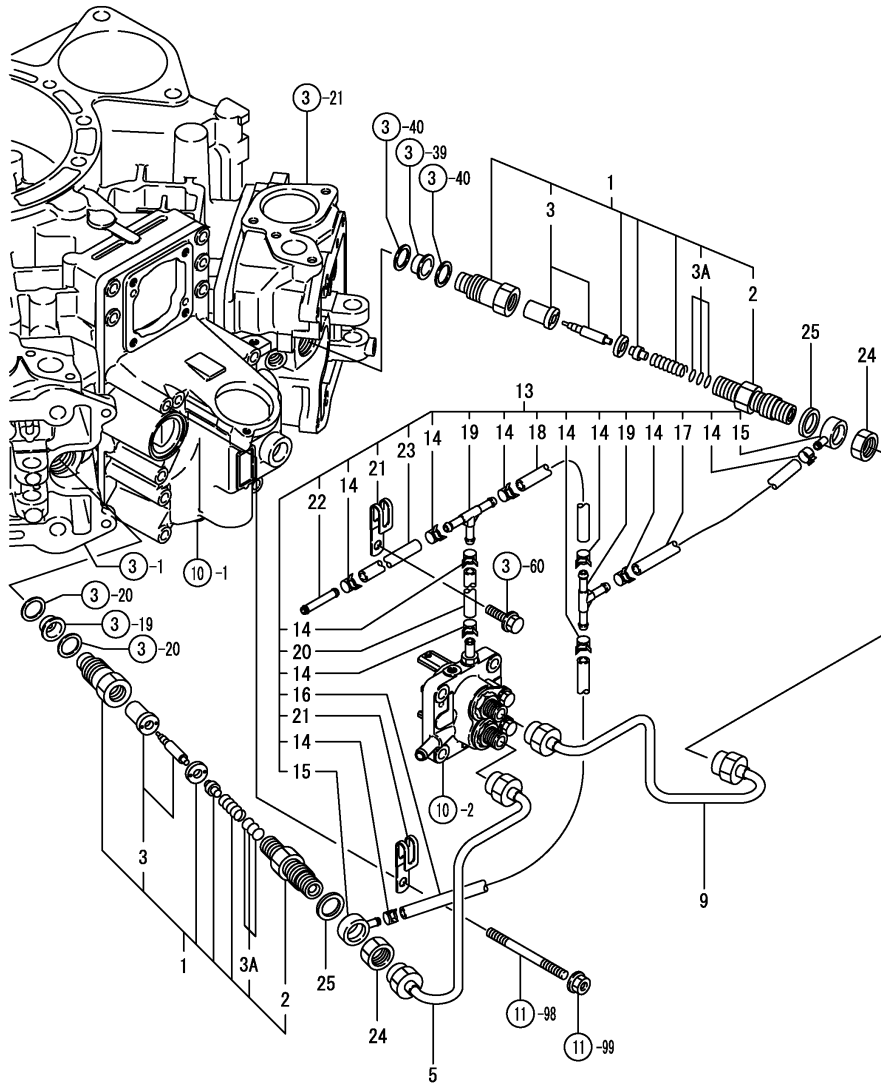
N:Old $\xrightarrow{\text{Yes}}$ New, Q:Old $\xrightarrow{\text{No}}$ New, R:Old $\xrightarrow{\text{Yes}}$ New, S:Old $\xrightarrow{\text{No}}$ New, W:Add, Z:Discontinued, F:Interchangeable by set, K:Q'ty Change

Fig.12. FUEL INJECTION VALVE

(A)=2V750-CVER
(B)=
(C)=

(D)=
(E)=
(F)=

発行No. 000Y00W0840-2
更新年月: 2006.03
REVISED: March, 2006



No.	Lev.	Parts No.	Description	Q'ty						I	R
				(A)	(B)	(C)	(D)	(E)	(F)		
1	1	119717-53001	VALVE ASSY,INJECTION	2							
2	2	118200-53010	HOLDER, NOZZLE	2							
3	2	119717-53010	VALVE ASSY,INJECTION	2							
3A	2	129901-53800	SHIM SET, ADJUSTING	2							W 1
(A=FROM 1ST)											
5	1	118200-59810	PIPE ASSY, INJECTION	1							
9	1	118200-59820	PIPE ASSY, INJECTION	1							
13	1	118400-59160	PIPE ASSY, RETURN	1							
14	2	124066-59100	CLIP, HOSE 8	10							
15	2	118200-59530	JOINT, NOZZLE	2							
16	2	119000-59560	PIPE, FUEL RETURN	1							
17	2	119000-59550	PIPE, FUEL RETURN	1							
18	2	119000-59550	PIPE, FUEL RETURN	1							
19	2	118200-59561	JOINT, 3-WAY	2							
20	2	118400-59560	PIPE, RETURN L=30	1							
21	2	160260-78700	CLAMP	3							
22	2	118200-59580	JOINT, 2-WAY	1							
23	2	124066-59580	PIPE ASSY, RETURN	1							
24	1	119620-59700	NUT, NOZZLE	2							
25	1	129901-59560	GASKET	2							

Remarks
(1) REPAIR PART.

Fig.13. FUEL LINE

(A)=2V750-CVER
(B)=
(C)=

(D)=
(E)=
(F)=

No.	Lev.	Parts No.	Description	Q'ty						I	R
				(A)	(B)	(C)	(D)	(E)	(F)		
1	1	118200-55510	FILTER, FUEL	1							
2	1	160260-78700	CLAMP	1							
3	1	118400-59040	PIPE ASSY, FUEL	1							
4	2	124766-59050	CLIP, HOSE 12	2							
5	2	118400-59110	PROTECTOR, PIPE 15	1							

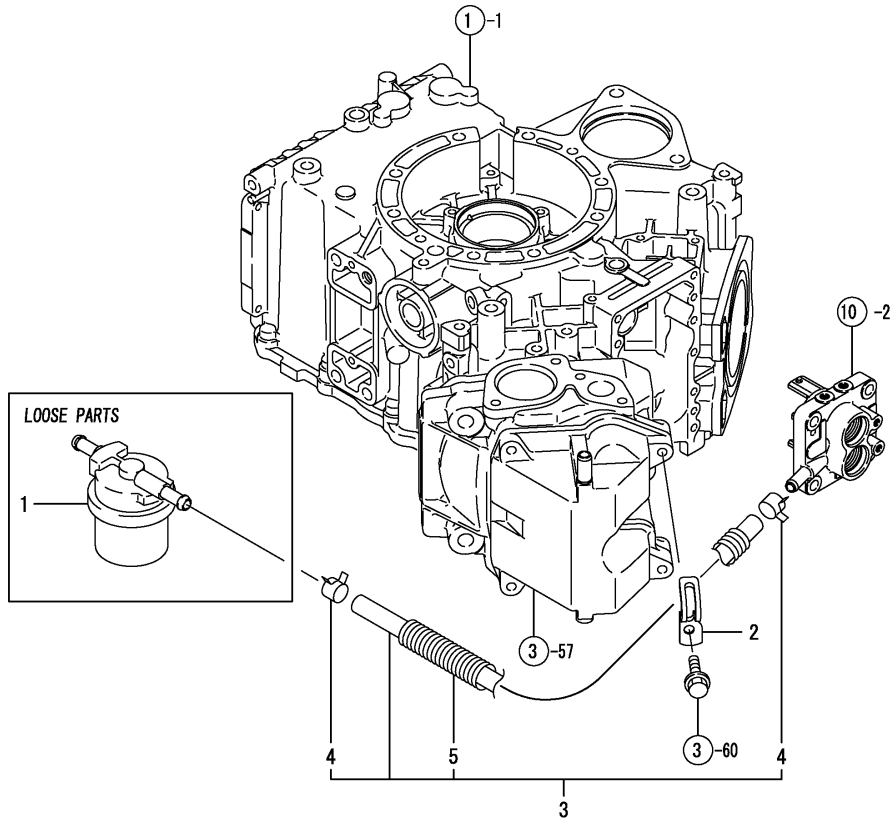
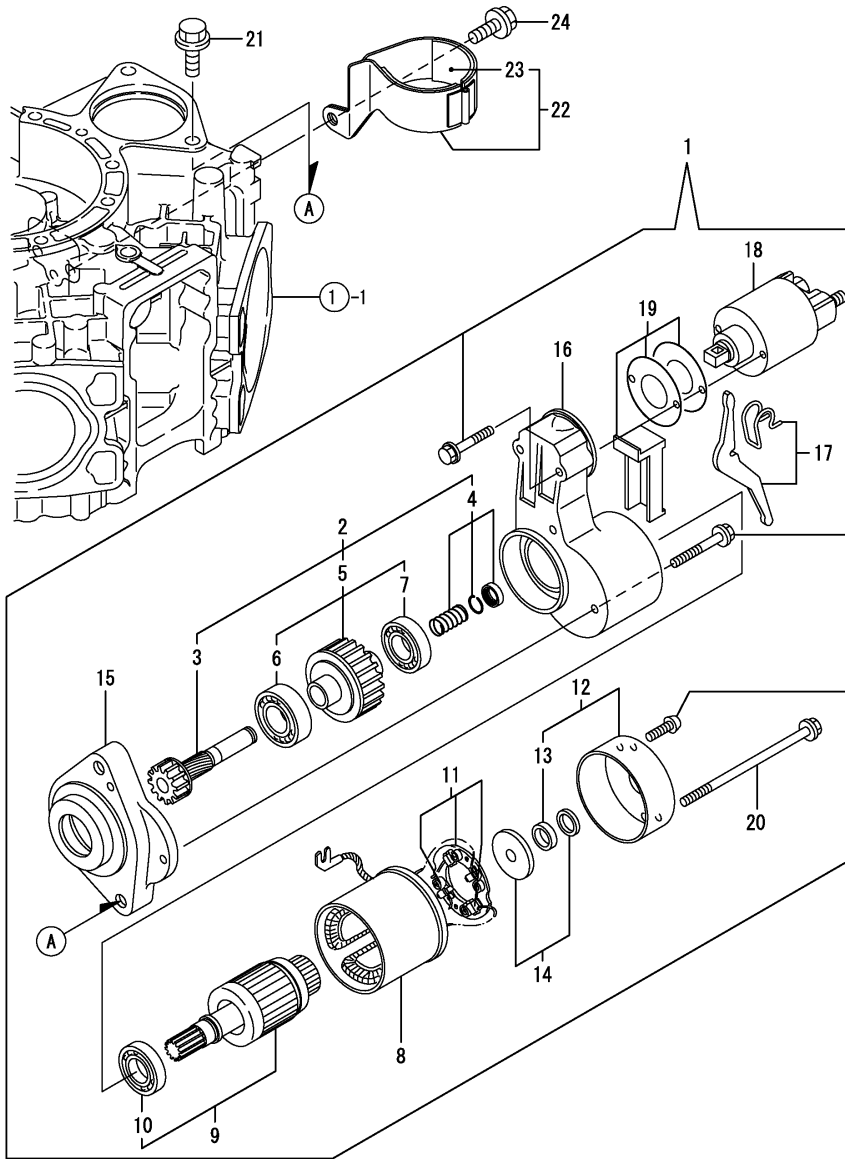


Fig.14. STARTING MOTOR

(A)=2V750-CVER
(B)=
(C)=

(D)=
(E)=
(F)=

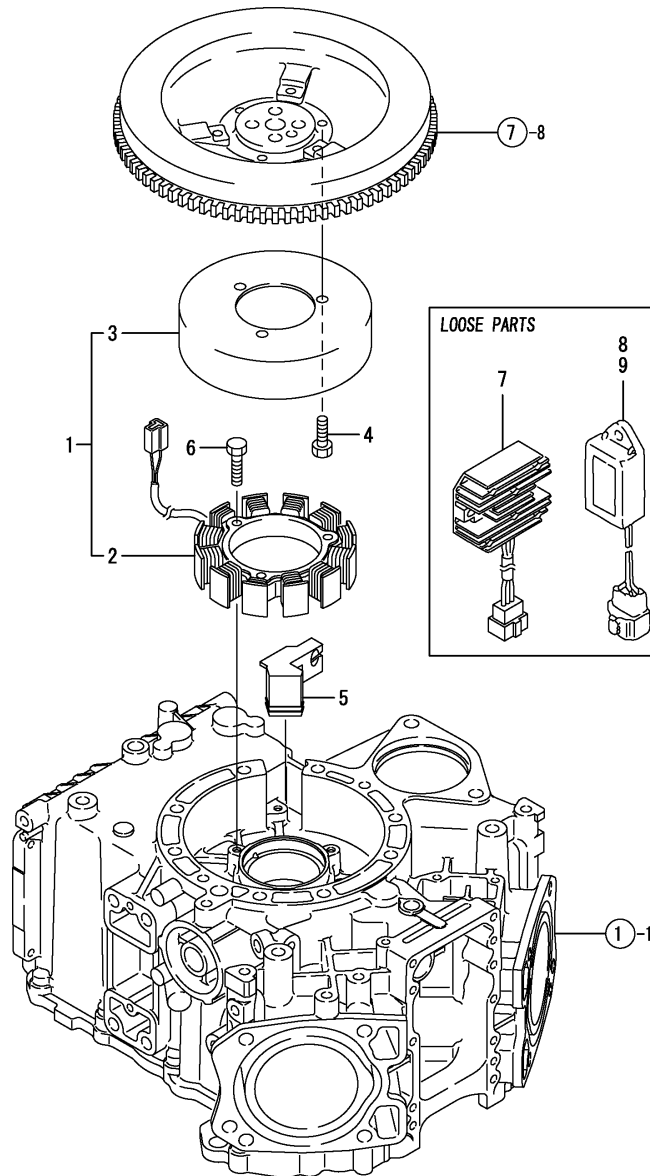


No.	Lev.	Parts No.	Description	Q'ty						I	R
				(A)	(B)	(C)	(D)	(E)	(F)		
1	1	118400-77020	STARTER ASSY, TR1.4	1							
2	2	X2130650060	CLUTCH ASSY	1							
3	3	X2114555100	SHAFT, PINION	1							
4	3	X2114890060	STOPPER SET, PINION	1							
5	3	X2130750060	CLUTCH ASSY	1							
6	4	X2114555020	BALL BEARING	1							
7	4	X2114950020	BEARING	1							
8	2	129608-77110	YOKE ASSY	1							
9	2	118400-77250	ARMATURE ASSY	1							
10	3	118400-77260	BEARING,ARMATURE	1							
11	2	118400-77270	BRUSH HOLDER ASSY	1							
12	2	118400-77280	REAR COVER ASSY	1							
13	3	129698-77170	BEARING	1							
14	2	118400-77290	THRUST WASHERKIT	1							
15	2	118400-77300	GEAR CASE	1							
16	2	118400-77310	CENTER HAUSING	1							
17	2	118400-77320	SHIFT LEVER SET	1							
18	2	118400-77330	MAGNETIC SWITCH ASSY	1							
19	2	118400-77340	DUST COVER KIT	1							
20	2	124195-77770	THROUGH BOLT	2							
21	1	26106-100302	BOLT, M10X 30 PLATED	2							
22	1	118400-77050	BRACKET ASSY	1							
23	2	118400-77060	SEAT, RUBBER	2							
24	1	26106-100202	BOLT, M10X 20 PLATED	1							

Fig.15. DYNAMO

(A)=2V750-CVER
(B)=
(C)=

(D)=
(E)=
(F)=

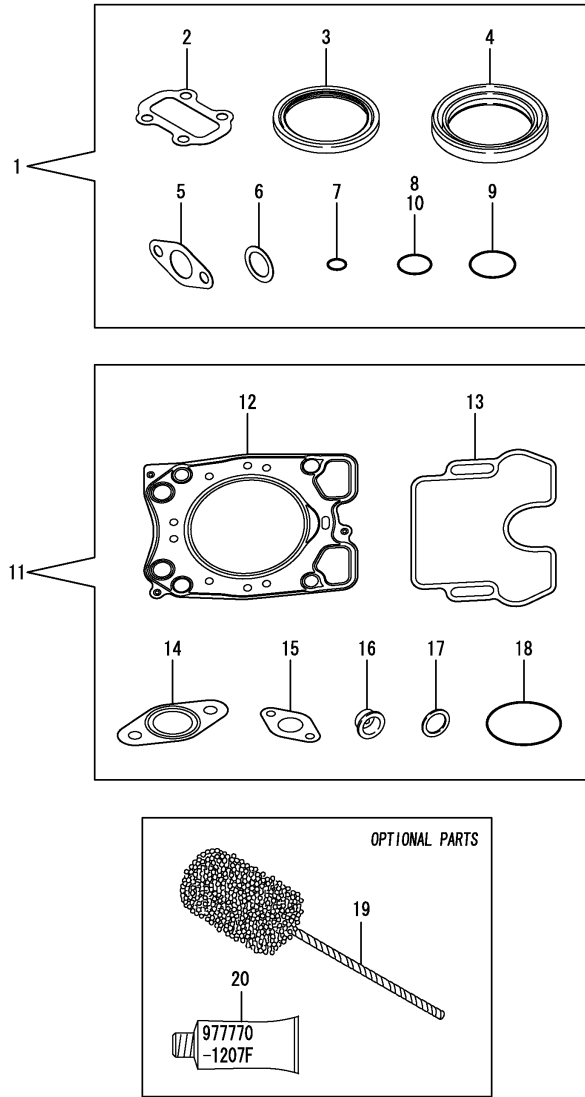


No.	Lev.	Parts No.	Description	Q'ty						I	R
				(A)	(B)	(C)	(D)	(E)	(F)		
1	1	118200-78201	DYNAMO ASSY	1							
2	2	118200-78751	STATOR ASSY	1							
3	2	118200-78760	WHEEL, DYNAMO	1							
4	1	118200-78300	BOLT, M6X12	3							
5	1	118400-78700	CLAMP	1							
6	1	26116-060252	BOLT, M6X 25 PLATED	3							
7	1	119225-77720	LIMITER, CURRENT 20A	1							
8	1	129211-77920	TIMER	1							
9	1	128300-77920	TIMER	1							

Fig.16. GASKET SET

(A)=2V750-CVER
(B)=
(C)=

(D)=
(E)=
(F)=



No.	Lev.	Parts No.	Description	Qty						I	R
				(A)	(B)	(C)	(D)	(E)	(F)		
1	1	118400-99011	GASKET SET, BLOCK	1							1
2	2	118400-01490	GASKET	1							
3	2	118200-02220	SEAL, OIL	1							
4	2	118200-02230	SEAL, OIL	1							
5	2	118200-49120	GASKET	1							
6	2	22190-160002	WASHER, SEAL 16	1							
7	2	118200-01400	O-RING, P6.0	2							
8	2	118200-01410	O-RING, P16.0	1							
9	2	118200-01430	O-RING, S24.0	1							
10	2	118200-01420	O-RING, P16.0	1							
11	1	718200-92600	GASKET SET, HEAD	2							1
12	2	118200-01360	GASKET, HEAD	2							
13	2	118200-11320	GASKET, BONNET	2							
14	2	118200-13200	GASKET, SILENCER	2							
15	2	118200-49120	GASKET	2							
16	2	129901-11450	PROTECTOR, NOZZLE	2							
17	2	119600-11460	GASKET, NOZZLE	4							
18	2	118200-12211	GASKET	2							
19	1	129400-92420	FLEX HORN	1							1
20	1	977770-1207F	GASKET.LIQUID	1							1

Remarks
(1) OPTIONAL PARTS.

Parts No. Index

Parts No.	Fig. No.	Ref. No.
105010-11230	3	50
		54
105425-01690	2	15
105546-51330	10	13
105890-51650	10	25
114350-11340	3	18
		38
114350-45340	1	21
118200-01200	1	8
118200-01210	1	9
118200-01360	1	10
	16	12
118200-01400	1	14
	16	7
118200-01410	1	15
	16	8
118200-01420	1	16
	16	10
118200-01430	1	17
	16	9
118200-01800	1	12
		13
118200-02220	1	5
	16	3
118200-02230	2	6
	16	4
118200-11100	3	12
		32
118200-11110	3	13
		33
118200-11120	3	14
		34
118200-11180	3	15
		35
118200-11240	3	44
118200-11260	3	46
118200-11320	3	59
		63
	16	13
118200-11570	3	16
		36
118200-11751	3	48
118200-11761	3	52
118200-12211	4	14
	16	18
118200-13200	4	28
	16	14
118200-14201	6	5
118200-14261	6	6
118200-14400	6	7

Parts No.	Fig. No.	Ref. No.
118200-21500	7	7
118200-22310	7	20
118200-23030	7	21
118200-23200	7	23
118200-23600	7	25
118200-32000	8	1
118200-32080	8	2
118200-32110	8	3
118200-32150	8	4
118200-32170	8	7
118200-32200	8	8
118200-34040	8	15
118200-35300	8	11
118200-49050	9	16
118200-49060	9	17
118200-49110	3	41
118200-49120	2	18
	3	42
	9	22
	16	5
		15
118200-53010	12	2
118200-55510	13	1
118200-59530	12	15
118200-59561	12	19
118200-59580	12	22
118200-59810	12	5
118200-59820	12	9
118200-77820	3	66
118200-78201	15	1
118200-78300	15	4
118200-78751	15	2
118200-78760	15	3
118210-22030	7	12
118210-22500	7	14
118400-01480	2	1
118400-01490	2	2
	16	2
118400-01750	2	12
118400-01760	2	13
118400-03010	4	2
118400-03030	4	3
118400-03040	4	4
118400-03050	4	5
118400-03100	4	1
118400-03110	4	6
118400-03123	4	16
118400-03340	4	18
118400-03380	4	23
118400-11500	3	57

Parts No.	Fig. No.	Ref. No.
118400-11510	3	61
118400-12011	4	13
118400-12610	5	13
118400-14001	6	1
118400-21592	7	8
118400-34800	2	14
118400-34810	2	17
118400-35010	8	12
118400-35020	8	13
118400-42001	9	1
118400-42011	9	2
118400-42020	9	5
118400-42030	9	9
118400-42100	9	6
118400-42110	9	7
118400-42120	9	10
118400-42130	9	11
118400-44512	9	42
118400-44560	9	44
118400-44581	9	45
118400-44590	9	46
118400-44750	9	40
118400-44761	9	39
118400-49050	9	20
118400-49511	9	24
118400-49530	9	27
118400-51000	10	2
118400-51030	11	1
118400-51100	10	4
118400-51160	10	7
118400-51170	10	8
118400-51180	10	9
118400-51300	10	10
118400-51340	10	14
118400-51370	10	16
118400-51400	10	18
118400-51450	10	19
118400-51510	10	21
118400-51550	10	22
118400-51851	10	28
118400-59040	13	3
118400-59060	4	26
118400-59110	13	5
118400-59160	12	13
118400-59560	12	20
118400-61040	11	5
118400-61050	11	6
118400-61060	11	83
118400-61070	11	90
118400-61100	11	7

Parts No.	Fig. No.	Ref. No.
118400-61200	11	10
118400-61300	11	14
118400-61350	11	15
118400-61400	11	19
118400-61480	11	22
118400-61500	11	29
118400-61600	11	46
118400-61610	11	47
118400-61650	11	50
118400-61800	11	67
118400-61900	11	69
118400-61910	11	71
118400-61920	11	72
118400-61950	11	86
118400-67040	11	104
118400-67060	11	106
118400-67070	11	108
118400-77020	14	1
118400-77050	14	22
118400-77060	14	23
118400-77250	14	9
118400-77260	14	10
118400-77270	14	11
118400-77280	14	12
118400-77290	14	14
118400-77300	14	15
118400-77310	14	16
118400-77320	14	17
118400-77330	14	18
118400-77340	14	19
118400-78700	15	5
118400-99011	16	1
118401-01850	1	18
118401-01860	1	19
118401-01870	1	20
118401-03300	4	20
118401-03311	4	22
118401-03320	4	17
118401-03352	4	19
118401-21001	7	1
118401-35250	8	18
118404-61410	11	20
118410-01000	1	1
118410-01820	2	3
118410-12210	5	1
118410-12400	5	2
118410-12500	5	3
118410-12540	5	5
118410-12570	5	9
118410-14700	6	8

Parts No. Index

Parts No.	Fig. No.	Ref. No.
118410-44650	9	49
118410-44660	9	50
118410-49010	9	47
118410-49020	9	34
118410-49500	9	23
119000-59550	12	17
		18
119000-59560	12	16
119172-48540	5	14
119225-77720	15	7
119233-12700	5	8
119287-12580	5	6
119287-12590	5	7
119287-12600	5	10
119287-12610	5	11
119287-12620	5	12
119305-35170	8	10
119515-12520	5	4
119600-11460	3	20
		40
	16	17
119600-61540	11	44
119620-59700	12	24
119621-66610	11	101
119621-66710	11	103
119660-61901	11	70
119685-61940	11	85
119685-61950	11	73
119717-53001	12	1
119717-53010	12	3
119988-61450	11	21
120323-61470	11	84
121250-44901	9	31
121252-39450	8	17
121520-44740	9	38
124066-59100	12	14
124066-59580	12	23
124160-01910	3	11
		31
124195-77770	14	20
124465-44950	9	32
124550-51350	10	15
124550-51370	10	17
124766-59050	4	25
	9	19
	13	4
128300-77920	15	9
129100-01580	1	11
	7	2
129155-61480	11	23

Parts No.	Fig. No.	Ref. No.
129211-77920	15	8
129301-03660	4	24
129350-49541	9	28
129350-49800	9	29
129400-92420	16	19
129410-03990	9	36
129608-77110	14	8
129698-77170	14	13
129795-77800	3	65
129901-11450	3	19
		39
	16	16
129901-53800	12	3 A
129901-59560	12	25
129950-59241	4	21
152673-51430	11	2
158563-51281	11	4
160260-78700	9	18
	12	21
	13	2
174307-51700	11	30
183720-55210	1	22
22117-040000	11	74
22137-100000	9	51
22190-120002	11	91
22190-160002	2	16
	16	6
22242-000120	3	56
22252-000200	7	27
22272-000030	11	75
22272-000040	11	48
22272-000070	11	76
		110
22312-060120	11	93
22351-020004	11	49
22351-025006	10	29
22351-040008	11	77
22857-500101	4	9
22857-500201	4	10
23010-027000	9	21
23010-035000	9	35
23414-060000	10	30
23875-010000	1	6
24190-070001	3	47
24190-130001	8	16
24311-000080	9	8
24311-000160	4	11
24341-000100	11	68
24341-000500	9	3
24341-000550	9	4

Parts No.	Fig. No.	Ref. No.
26106-050102	10	31
	11	87
26106-060082	11	78
26106-060102	11	79
26106-060122	2	8
	8	9
		14
		19
	9	12
26106-060162	1	23
	4	15
	9	41
	11	88
26106-060202	2	19
	3	43
	11	94
26106-060252	3	60
		64
26106-060402	9	13
		33
26106-060602	4	12
26106-060702	11	95
		96
26106-060852	11	97
26106-080162	9	48
26106-080202	9	52
26106-080252	9	30
26106-080402	2	9
26106-080552	2	10
	9	14
26106-080752	2	11
26106-100202	9	37
	14	24
26106-100302	14	21
26116-040128	11	109
26116-050162	11	107
26116-060252	15	6
26116-060304	11	80
26117-060082	10	32
26226-060702	11	98
26226-080222	3	9
		29
26306-080002	5	15
26366-060002	11	89
		99
26366-080002	4	29
	11	81
26577-060162	9	15
26756-060002	3	51
		55

Parts No.	Fig. No.	Ref. No.
26756-060002	11	82
26979-060062	3	10
		30
29622-250001	4	27
718200-92600	16	11
718210-51320	10	1
718410-11850	3	1
718410-11860	3	21
977770-1207F	16	20
X2114555020	14	6
X2114555100	14	3
X2114890060	14	4
X2114950020	14	7
X2130650060	14	2
X2130750060	14	5