

0CNP6-M02790EN

# Contents

0CNP6-M02790

Fig. No. Fig. Name

Fig. No. Fig. Name

## MOWER DECK

1. LABEL
2. LABEL(SAFETY)
3. DECK
4. GAUGE
5. DOCUMENT

## LINK

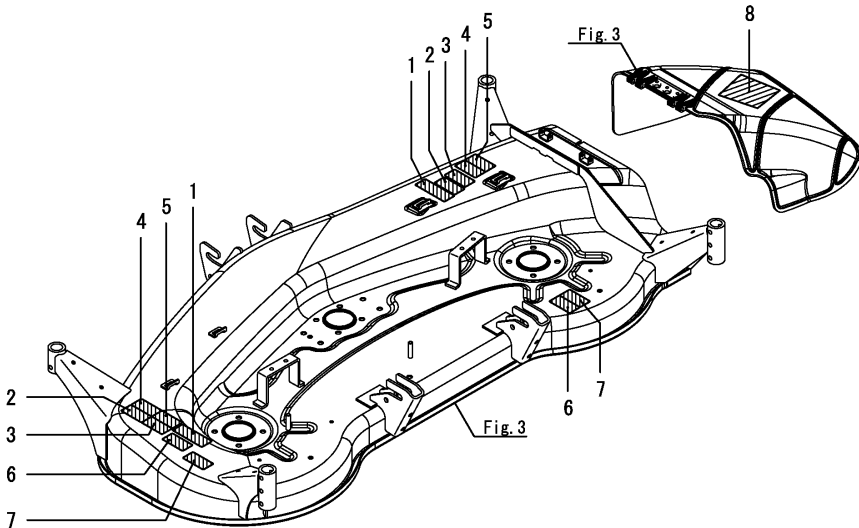
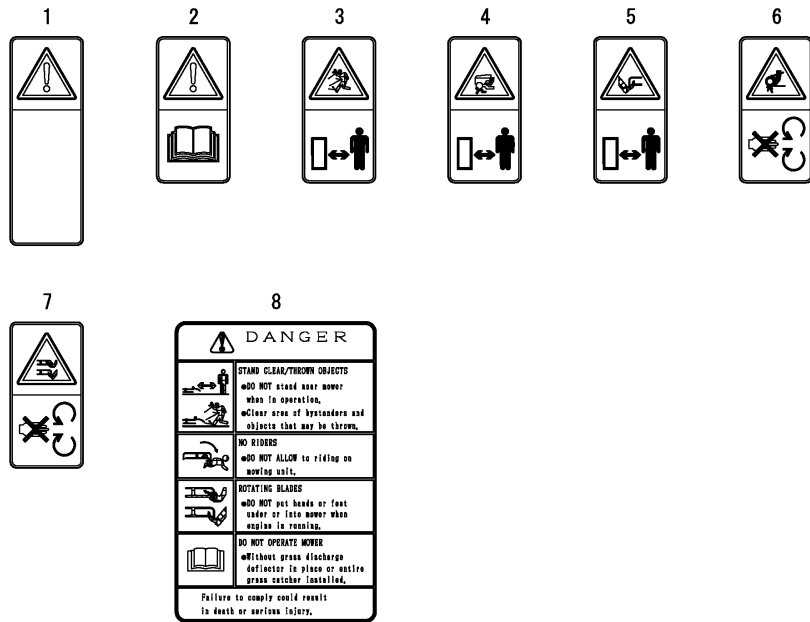
6. DRIVE SHAFT(SA221)
7. DRIVE SHAFT(SA424)
8. FRONT LINK(SA221)
9. FRONT LINK(SA424)
10. LIFT SHAFT



Fig.2. LABEL(SAFETY)

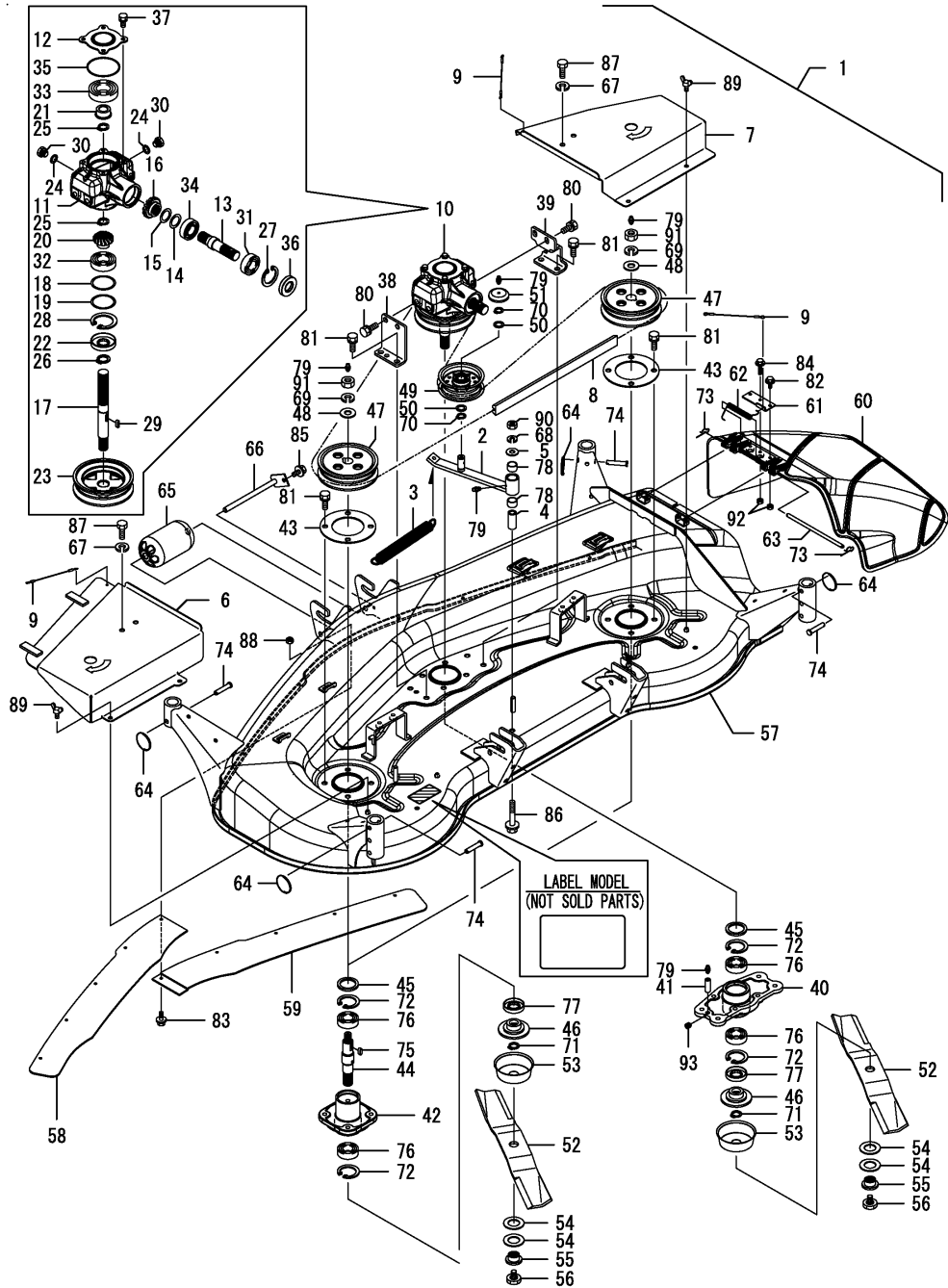
(A)=M60SA,EU  
(B)=MLSA22  
(C)=MLSA32

(D)=  
(E)=  
(F)=



No.	Lev.	Parts No.	Description	Q'ty						I	R
				(A)	(B)	(C)	(D)	(E)	(F)		
1	1	1TW110-10310	LABEL,ISO MULTI LANG	2							
2	1	1TW110-10320	LABEL,ISO READ	2							
3	1	1TW110-10330	LABEL,ISO THROWN OBJ	2							
4	1	1TW110-10350	LABEL,ISO DISMEMBER	2							
5	1	1TW110-10360	LABEL,ISO SEVERE TOE	2							
6	1	1TW110-10370	LABEL,ISO ENTANGLE	2							
7	1	1TW110-10380	LABEL,ISO SEVERING	2							
8	1	1TW110-10130	LABEL, DANGER	1							

Fig.3. DECK

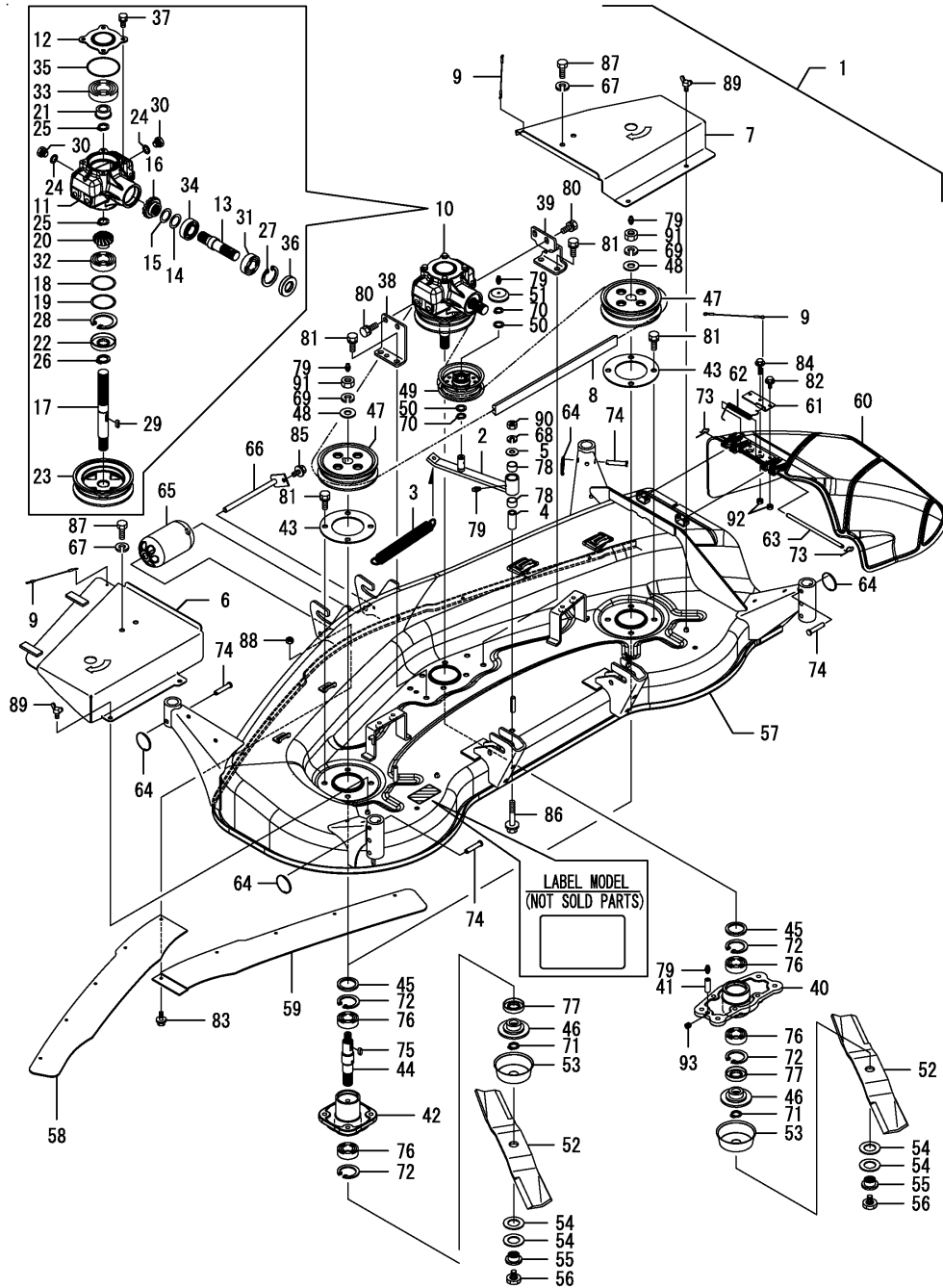


(A)=M60SA,EU  
(B)=MLSA22  
(C)=MLSA32

(D)=  
(E)=  
(F)=

No.	Lev.	Parts No.	Description	Q'ty						I	R
				(A)	(B)	(C)	(D)	(E)	(F)		
1	1	1TW110-15030	MOWER KIT,MID 60 EU	1							
2	2	1TW110-11210	ARM, TENSION	1							
3	2	1TW110-11250	SPRING, TENSION	1							
4	2	1TW110-11270	COLLAR, TENSION	1							
5	2	1TW110-11280	WASHER, TENSION	1							
6	2	1TW110-11530	M ASSY, COVER LH	1							
7	2	1TW110-11540	M ASSY, COVER RH	1							
8	2	1TW110-11810	BELT, V 118 MULTI	1							
9	2	1TW110-11910	STRAP,COVER	3							
10	2	1TW110-12100	GEARBOX ASSY	1							
11	3	1TW110-12110	CASE, GEAR	1							
12	3	1TW110-12120	PLATE, CASE COVER	1							
13	3	1TW110-12210	SHAFT, INPUT	1							
14	3	1TW110-12230	SHIM, 0.2	1							
15	3	1TW110-12240	SHIM, 0.3	1							
16	3	1TW110-12250	GEAR, SPIRAL BEVEL21	1							
17	3	1TW110-12310	SHAFT, CENTER	1							
18	3	1TW110-12330	SHIM, 0.2	1							
19	3	1TW110-12340	SHIM, 0.3	1							
20	3	1TW110-12350	GEAR, SPIRAL BEVEL16	1							
21	3	1TW110-12370	COLLAR, BEARING	1							
22	3	1TW110-12710	SEAL, TC256210	1							
23	3	1TW110-13110	PULLEY, DRIVE	1							
24	3	22190-120002	WASHER, SEAL 12	2							
25	3	22242-000210	RING, 21	2							
26	3	22242-000250	RING, 25	1							
27	3	22252-000520	RING, 52	1							
28	3	22252-000620	RING, 62	1							
29	3	22512-070200	KEY, 7X 20	1							
30	3	23887-120002	PLUG, 12	2							
31	3	24101-062054	BEARING, BALL 6205	1							
32	3	24101-062064	BEARING, BALL 6206	1							
33	3	24101-062074	BEARING, BALL 6207	1							
34	3	24148-002054	BEARING, NJ205	1							
35	3	24341-000800	O-RING, 1AS80.0	1							
36	3	24421-255210	SEAL, OIL TC255210	1							
37	3	26013-080162	BOLT, M8X 16	4							
38	2	1TW110-12150	BRACKET, LH GEARBOX	1							
39	2	1TW110-12160	BRACKET, RH GEARBOX	1							
40	2	1TW110-12610	HOLDER, CENTER	1							
41	2	1TW110-12620	PIPE, EXTENSION	1							
42	2	1TW110-12650	HOLDER, SIDE	2							
43	2	1TW110-12660	PLATE, SIDE HOLDER	2							
44	2	1TW110-12670	SHAFT, SIDE	2							
45	2	1TW110-12680	SEAL, DUST	3							
46	2	1TW110-12690	BOSS, CUTTER	3							
47	2	1TW110-13310	PULLEY, SIDE	2							
48	2	1TW110-13320	WASHER, PULLEY	2							
49	2	1TW110-13710	PULLEY, TENSION	1							
50	2	1TW110-13730	WASHER, TENSION PIVOT	2							
51	2	1TW110-13750	COVER, TENSION	1							

Fig.3. DECK



(A)=M60SA,EU  
(B)=MLSA22  
(C)=MLSA32

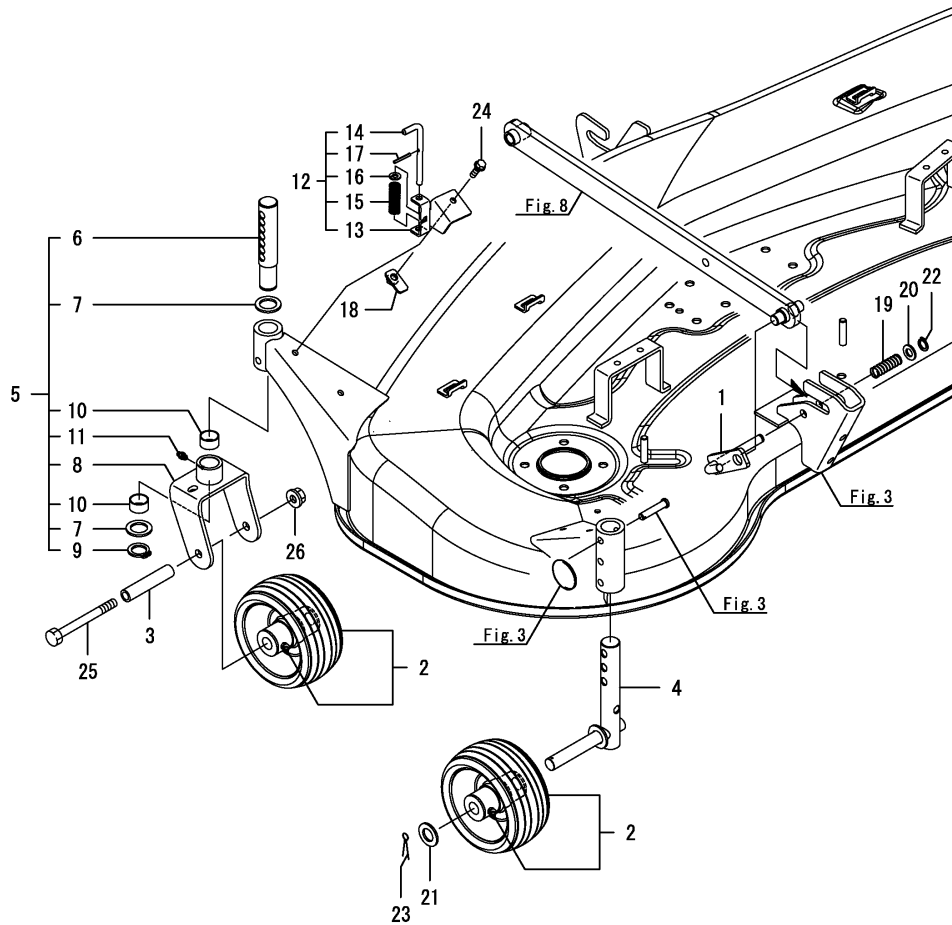
(D)=  
(E)=  
(F)=

No.	Lev.	Parts No.	Description	Q'ty						I	R
				(A)	(B)	(C)	(D)	(E)	(F)		
52	2	1TW110-14510	BLADE	3							
53	2	1TW110-14520	COVER, DUST	3							
54	2	1TW110-14530	SPRING, BLADE HOLD	6							
55	2	1TW110-14540	BOSS, BLADE	3							
56	2	1TW110-14550	BOLT, BLADE HOLD	3							
57	2	1TW110-15080	M ASSY, DECK EU	1							
58	2	1TW110-15850	GUARD, LH FRONT	1							
59	2	1TW110-15860	GUARD, RH FRONT	1							
60	2	1TW110-15900	M ASSY, DISCHARGE	1							
61	2	1TW110-15930	PLATE, DISCHARGE	1							
62	2	1TW110-15950	SPRING, TORQUE	1							
63	2	1TW110-15960	PIN, HINGE COVER	1							
64	2	1TW110-16250	RING, WHEEL SHAF	4							
65	2	1TW110-16610	ROLLER, FRONT	1							
66	2	1TW110-16650	PIN ASSY, ROLLER	1							
67	2	22217-080000	WASHER, SPRING 8	4							
68	2	22217-120000	WASHER, SPRING 12	1							
69	2	22217-160000	WASHER, SPRING 16	2							
70	2	22242-000170	RING, 17	2							
71	2	22242-000220	RING, 22	3							
72	2	22252-000520	RING, 52	6							
73	2	22372-080000	PIN, SNAP 8	2							
74	2	22487-100450	PIN 10X 45	4							
75	2	22512-070180	KEY, 7X 18	2							
76	2	24101-062054	BEARING, BALL 6205	6							
77	2	24421-255210	SEAL, OIL TC255210	3							
78	2	24550-020150	BUSH, 20X15	2							
79	2	24761-010000	NIPPLE, GREASE M6F	5							
80	2	26013-120202	BOLT, M12X 20	4							
81	2	26013-120252	BOLT, M12X 25	12							
82	2	26106-060122	BOLT, M6X 12 PLATED	2							
83	2	26106-060142	BOLT, M6X 14 PLATED	9							
84	2	26106-060252	BOLT, M6X 25 PLATED	1							
85	2	26106-080122	BOLT, M8X 12 PLATED	1							
86	2	26106-120702	BOLT, M12X 70 PLATED	1							
87	2	26116-080162	BOLT, M8X 16 PLATED	4							
88	2	26347-060002	NUT, M6	9							
89	2	26646-060122	WING BOLT M 6X12	4							
90	2	26716-120002	NUT, M12	1							
91	2	26716-160002	NUT, M16	2							
92	2	26856-060002	NUT, M6	3							
93	2	26973-060062	SCREW, M6X 6	1							

Fig.4. GAUGE

(A)=M60SA,EU  
(B)=MLSA22  
(C)=MLSA32

(D)=  
(E)=  
(F)=



No.	Lev.	Parts No.	Description	Q'ty						I	R
				(A)	(B)	(C)	(D)	(E)	(F)		
1	1	1TW110-15710	STOPPER ASSY, LEVER	2							
2	1	1TW110-16210	WHEEL ASSY, GAUGE	4							
3	1	1TW110-16220	COLLAR, WHEEL	2							
4	1	1TW110-16410	SHAFT ASSY, WHEEL	2							
5	1	1TW110-16500	SHAFT UNIT, FRONT	2							
6	2	1TW110-16310	SHAFT, GAUGE FRONT	2							
7	2	1TW110-16330	WASHER, FLAT	4							
8	2	1TW110-16510	BRACKET ASSY	2							
9	2	22242-000250	RING, 25	2							
10	2	24550-025150	BUSH, 25X15	4							
11	2	24761-010000	NIPPLE, GREASE M6F	2							
12	1	1TW110-16540	BRACKET UNIT, LOCK	2							
13	2	1TW110-16550	BRACKET ASSY, LOCK	2							
14	2	1TW110-16580	PIN, WHEEL LOCK	2							
15	2	1TW110-17480	SPRING, LOCK	2							
16	2	22137-080000	WASHER, 8	2							
17	2	22351-035032	PIN, SPRING 3.5X32	2							
18	1	1TW110-16710	PLATE ASSY, NUT	2							
19	1	1TW110-17480	SPRING, LOCK	2							
20	1	22137-120000	WASHER, 12	2							
21	1	22137-200000	WASHER, 20	2							
22	1	22242-000120	RING, 12	2							
23	1	22417-320320	PIN, COTTER 3.2X32	2							
24	1	26106-080252	BOLT, M8X 25 PLATED	2							
25	1	26116-121202	BOLT, M12X120 PLATED	2							
26	1	26366-120002	NUT, M12	2							



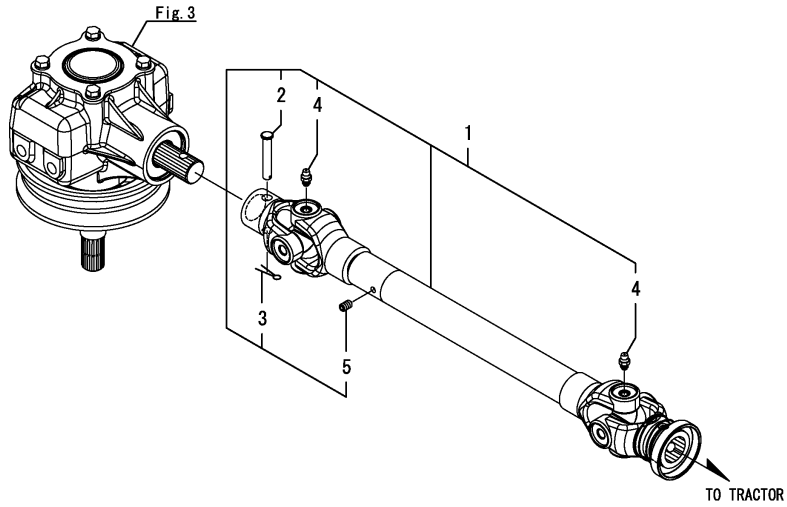


Fig.6. DRIVE SHAFT(SA221)

(A)=M60SA,EU  
(B)=MLSA22  
(C)=MLSA32

(D)=  
(E)=  
(F)=

No.	Lev.	Parts No.	Description	Q'ty						I	R
				(A)	(B)	(C)	(D)	(E)	(F)		
1	1	1TW110-11600	SHAFT ASSY, DRIVE		1						
2	2	1TW110-11750	PIN, 8X50		1						
3	2	22417-200250	PIN, COTTER 2.0X25		1						
4	2	24761-010000	NIPPLE, GREASE M6F		2						
5	2	26979-060102	SCREW, M6X10		1						



Remarks

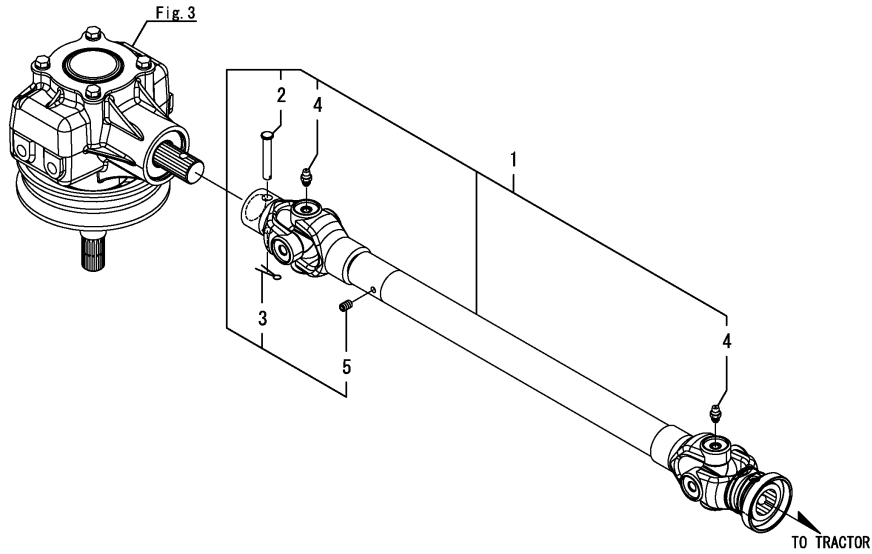
Note : "Effective Machine No." of the Link Section is indicated on the Model Label which is shown in Fig.8.

Fig.7. DRIVE SHAFT(SA424)

(A)=M60SA,EU  
 (B)=MLSA22  
 (C)=MLSA32

(D)=  
 (E)=  
 (F)=

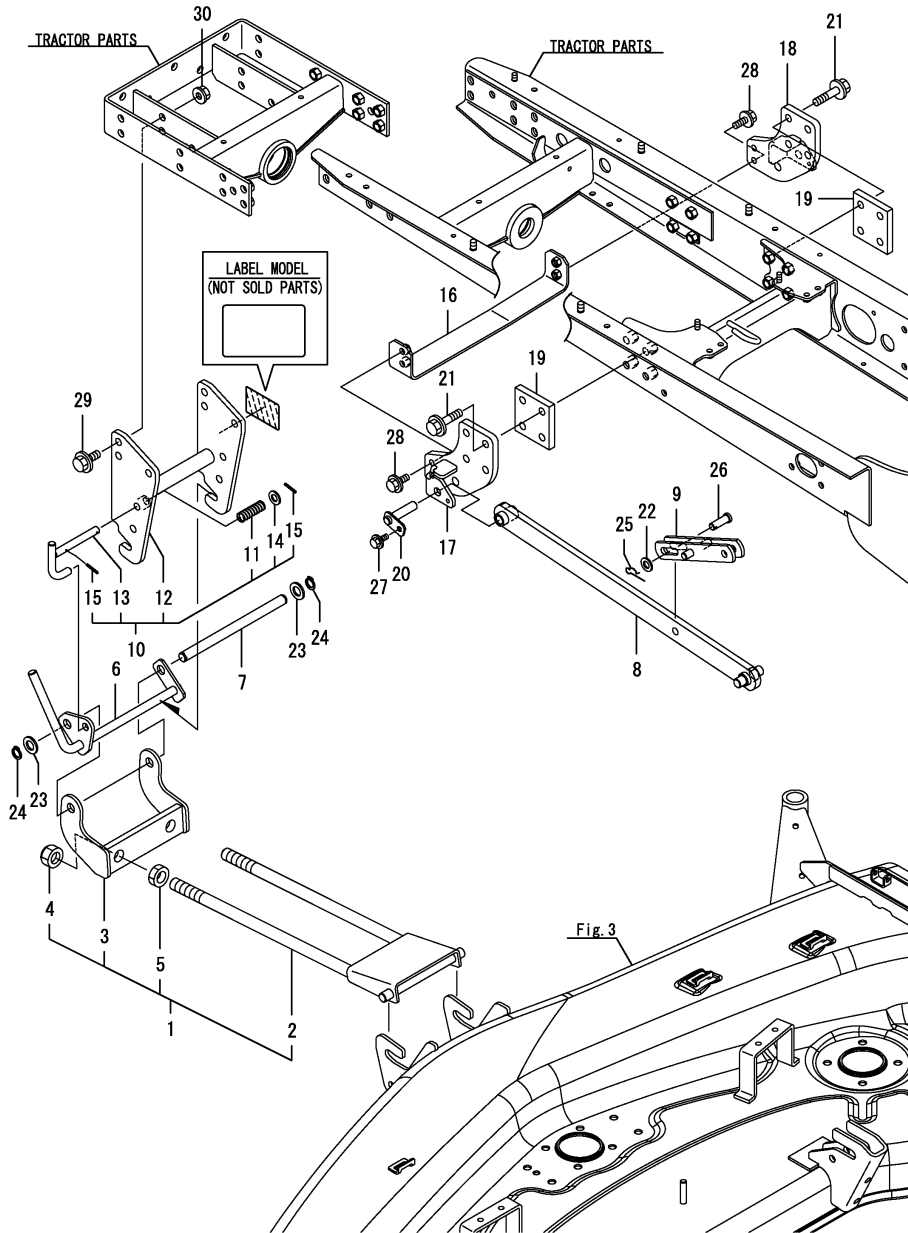
No.	Lev.	Parts No.	Description	Q'ty						I	R
				(A)	(B)	(C)	(D)	(E)	(F)		
1	1	1TW111-11600	SHAFT ASSY, DRIVE			1					
2	2	1TW110-11750	PIN, 8X50			1					
3	2	22417-200250	PIN, COTTER 2.0X25			1					
4	2	24761-010000	NIPPLE, GREASE M6F			2					
5	2	26979-060102	SCREW, M6X10			1					



Remarks

Note : "Effective Machine No." of the Link Section is indicated on the Model Label which is shown in Fig.9.

Fig.8. FRONT LINK(SA221)



(A)=M60SA,EU  
(B)=MLSA22  
(C)=MLSA32

(D)=  
(E)=  
(F)=

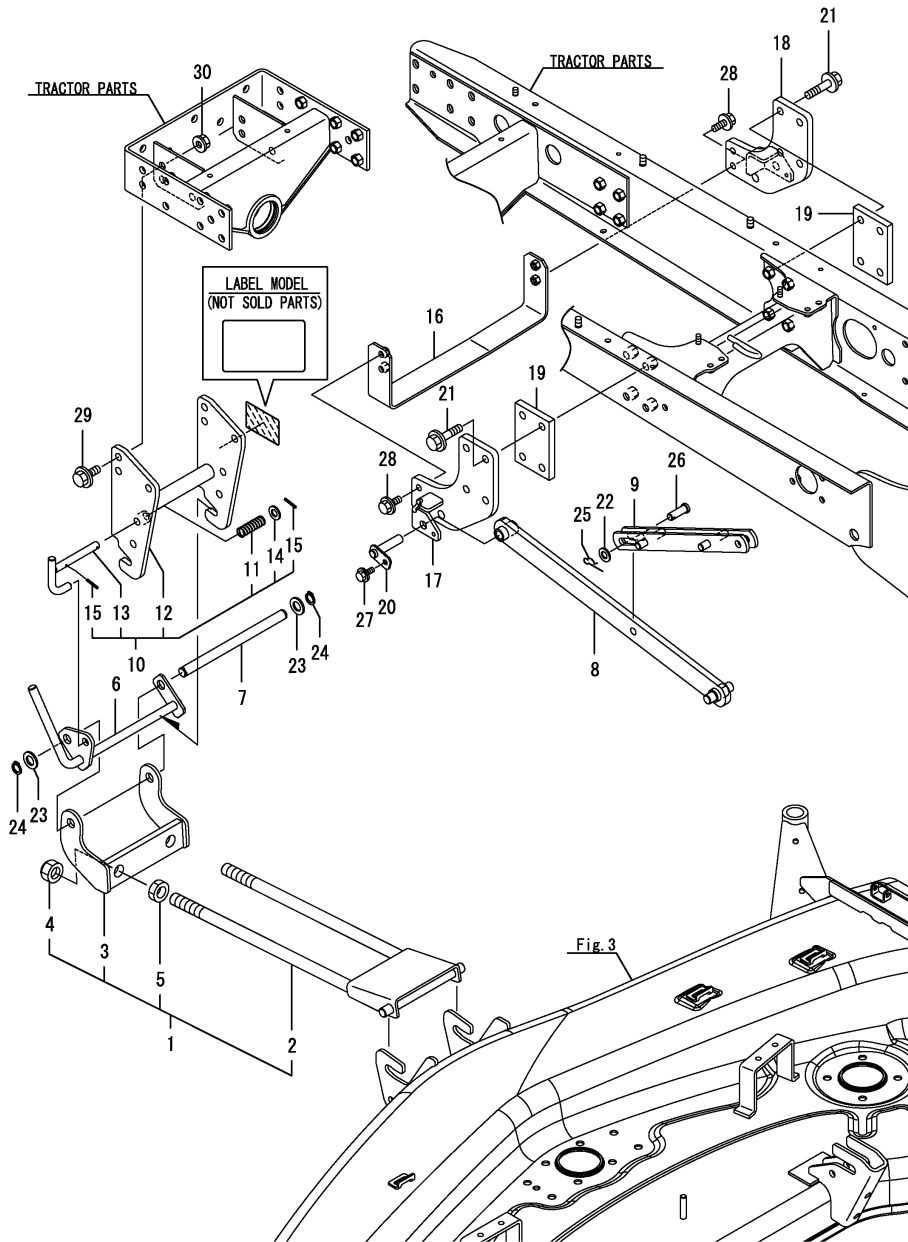
No.	Lev.	Parts No.	Description	Q'ty						I	R
				(A)	(B)	(C)	(D)	(E)	(F)		
1	1	1TW110-17100	LINK UNIT, FRONT		1						
2	2	1TW110-17110	LINK ASSY, FRONT		1						
3	2	1TW110-17170	FULCRUM ASSY, FRONT		1						
4	2	26347-200002	NUT, M20		2						
5	2	26756-200002	NUT, LOCK M20		2						
6	1	1TW110-17210	LINK ASSY, FULCRUM		1						
7	1	1TW110-17250	PIN, FULCRUM		1						
8	1	1TW110-17310	ARM ASSY, LIFT		2						
9	1	1TW110-17350	LINK ASSY, LIFT		2						
10	1	1TW110-17500	HITCH UNIT, FRONT		1						
11	2	1TW110-17480	SPRING, LOCK		1						
12	2	1TW110-17510	HITCH ASSY, FRONT		1						
13	2	1TW110-17560	PIN ASSY, HOLD		1						
14	2	22137-120000	WASHER, 12		1						
15	2	22351-030025	PIN, SPRING 3.0X25		2						
16	1	1TW110-17610	BRACKET ASSY, STOP		1						
17	1	1TW110-17710	BRACKET ASSY, LH ARM		1						
18	1	1TW110-17720	BRACKET ASSY, RH ARM		1						
19	1	1TW110-17790	PLATE, SPACER		2						
20	1	1TW110-17910	PIN ASSY, BRACKET		2						
21	1	1TW110-17990	BOLT, M12X50		8						
22	1	22137-120000	WASHER, 12		2						
23	1	22137-160000	WASHER, 16		2						
24	1	22242-000160	RING, 16		2						
25	1	22372-120000	PIN, SNAP 12		2						
26	1	22487-120300	PIN, H12X 30		2						
27	1	26106-080122	BOLT, M8X 12 PLATED		2						
28	1	26106-100252	BOLT, M10X 25 PLATED		4						
29	1	26106-120302	BOLT, M12X 30 PLATED		6						
30	1	26366-120002	NUT, M12		6						

Remarks

Note : "Effective Machine No." of the Link Section is indicated on the Model Label which is shown in Fig.8.

N:Old  $\xrightarrow{\text{Yes}}$  New, Q:Old  $\xrightarrow{\text{No}}$  New, R:Old  $\xrightarrow{\text{Yes}}$  New, S:Old  $\xrightarrow{\text{No}}$  New, W:Add, Z:Discontinued, F:Interchangeable by set, K:Q'ty Change

Fig.9. FRONT LINK(SA424)



(A)=M60SA,EU  
(B)=MLSA22  
(C)=MLSA32

(D)=  
(E)=  
(F)=

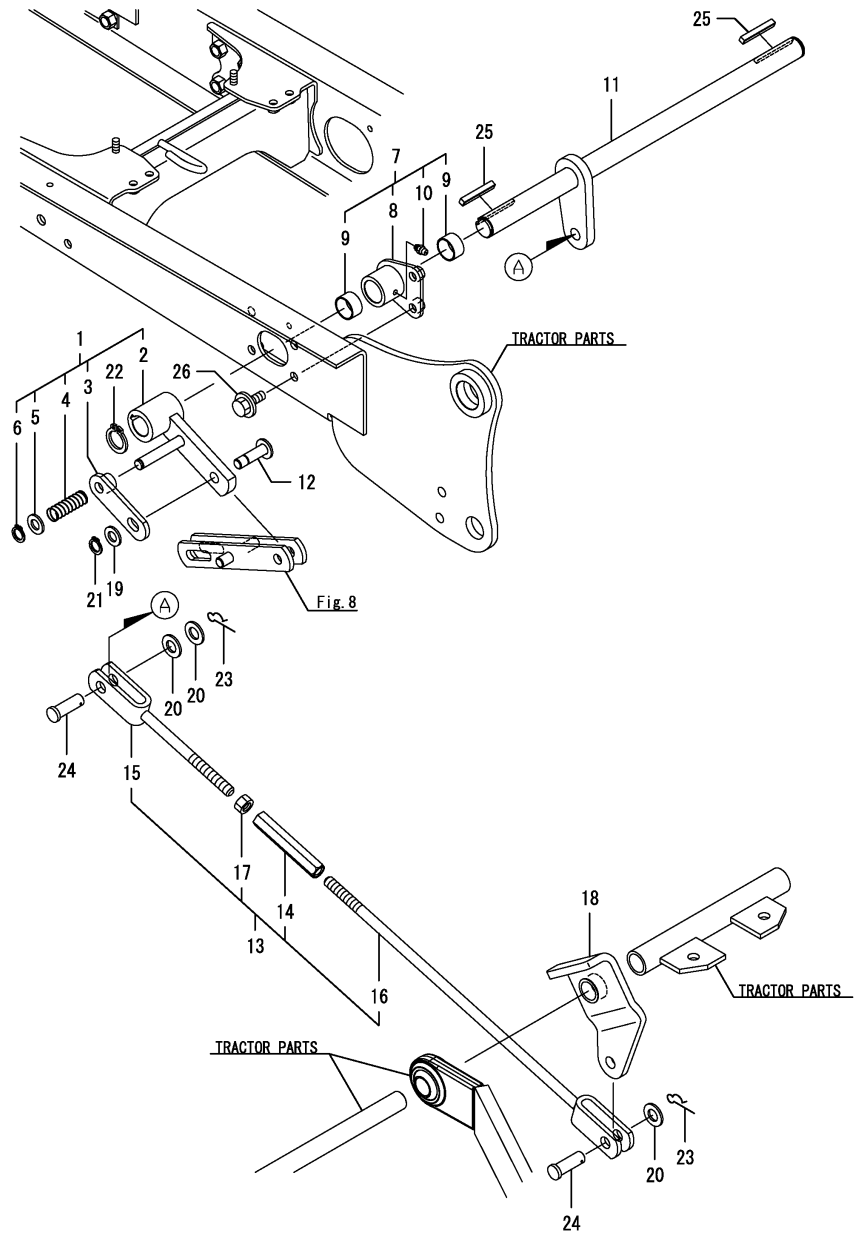
No.	Lev.	Parts No.	Description	Qty						I	R
				(A)	(B)	(C)	(D)	(E)	(F)		
1	1	1TW110-17100	LINK UNIT, FRONT			1					
2	2	1TW110-17110	LINK ASSY, FRONT			1					
3	2	1TW110-17170	FULCRUM ASSY, FRONT			1					
4	2	26347-200002	NUT, M20			2					
5	2	26756-200002	NUT, LOCK M20			2					
6	1	1TW110-17210	LINK ASSY, FULCRUM			1					
7	1	1TW110-17250	PIN, FULCRUM			1					
8	1	1TW111-17310	ARM ASSY, LIFT			2					
9	1	1TW111-17350	LINK ASSY, LIFT			2					
10	1	1TW110-17500	HITCH UNIT, FRONT			1					
11	2	1TW110-17480	SPRING, LOCK			1					
12	2	1TW110-17510	HITCH ASSY, FRONT			1					
13	2	1TW110-17560	PIN ASSY, HOLD			1					
14	2	22137-120000	WASHER, 12			1					
15	2	22351-030025	PIN, SPRING 3.0X25			2					
16	1	1TW111-17610	BRACKET ASSY, STOP			1					
17	1	1TW111-17710	BRACKET ASSY, LH ARM			1					
18	1	1TW111-17720	BRACKET ASSY, RH ARM			1					
19	1	1TW111-17790	PLATE, SPACER			2					
20	1	1TW110-17910	PIN ASSY, BRACKET			2					
21	1	1TW110-17990	BOLT, M12X50			8					
22	1	22137-120000	WASHER, 12			2					
23	1	22137-160000	WASHER, 16			2					
24	1	22242-000160	RING, 16			2					
25	1	22372-120000	PIN, SNAP 12			2					
26	1	22487-120300	PIN, H12X 30			2					
27	1	26106-080122	BOLT, M8X 12 PLATED			2					
28	1	26106-100252	BOLT, M10X 25 PLATED			4					
29	1	26106-120302	BOLT, M12X 30 PLATED			6					
30	1	26366-120002	NUT, M12			6					

Remarks

Note : "Effective Machine No." of the Link Section is indicated on the Model Label which is shown in Fig.9.

N:Old  $\xrightarrow{\text{Yes}}$  New, Q:Old  $\xrightarrow{\text{No}}$  New, R:Old  $\xrightarrow{\text{Yes}}$  New, S:Old  $\xrightarrow{\text{No}}$  New, W:Add, Z:Discontinued, F:Interchangeable by set, K:Qty Change

Fig.10. LIFT SHAFT



(A)=M60SA,EU  
(B)=MLSA22  
(C)=MLSA32

(D)=  
(E)=  
(F)=

No.	Lev.	Parts No.	Description	Qty						I	R
				(A)	(B)	(C)	(D)	(E)	(F)		
1	1	1TW110-17400	ARM UNIT, SHAFT		2	2					
2	2	1TW110-17410	ARM ASSY, SHAFT		2	2					
3	2	1TW110-17450	PLATE ASSY, LOCK		2	2					
4	2	1TW110-17480	SPRING, LOCK		2	2					
5	2	22137-120000	WASHER, 12		2	2					
6	2	22242-000120	RING, 12		2	2					
7	1	1TW110-17800	SUPPORT UNIT, SHAFT		2	2					
8	2	1TW110-17810	SUPPORT ASSY, SHAFT		2	2					
9	2	24550-025150	BUSH, 25X15		4	4					
10	2	24761-010000	NIPPLE, GREASE M6F		2	2					
11	1	1TW110-17850	SHAFT ASSY, LIFT		1	1					
12	1	1TW110-17950	PIN ASSY, LIFT		2	2					
13	1	1TW110-18511	ROD UNIT, REAR		1	1					
14	2	1TW110-18521	TURNBUCKLE		1	1					
15	2	1TW110-18531	ROD ASSY, A		1	1					
16	2	1TW110-18571	ROD ASSY, B		1	1					
17	2	26716-120002	NUT, M12		1	1					
18	1	1TW110-18710	BRACKET ASSY, LINK		1	1					
19	1	22137-120000	WASHER, 12		2	2					
20	1	22137-140000	WASHER, 14		3	3					
21	1	22242-000120	RING, 12		2	2					
22	1	22242-000250	RING, 25		2	2					
23	1	22372-140000	PIN, SNAP 14		2	2					
24	1	22487-140350	PIN, H14X 35		2	2					
25	1	22550-070500	KEY 7X50		2	2					
26	1	26106-100252	BOLT, M10X 25 PLATED		4	4					

Remarks  
Note : "Effective Machine No." of the Link Section is indicated on the Model Label which is shown in Fig.8 & 9.

## Parts No. Index

Parts No.	Fig. No.	Ref. No.
0A059-EN0070	5	1
1TN322-01530	1	1
1TW110-10130	2	8
1TW110-10160	1	2
1TW110-10310	2	1
1TW110-10320	2	2
1TW110-10330	2	3
1TW110-10340	1	3
1TW110-10350	2	4
1TW110-10360	2	5
1TW110-10370	2	6
1TW110-10380	2	7
1TW110-11210	3	2
1TW110-11250	3	3
1TW110-11270	3	4
1TW110-11280	3	5
1TW110-11530	3	6
1TW110-11540	3	7
1TW110-11600	6	1
1TW110-11750	6	2
	7	2
1TW110-11810	3	8
1TW110-11910	3	9
1TW110-12100	3	10
1TW110-12110	3	11
1TW110-12120	3	12
1TW110-12150	3	38
1TW110-12160	3	39
1TW110-12210	3	13
1TW110-12230	3	14
1TW110-12240	3	15
1TW110-12250	3	16
1TW110-12310	3	17
1TW110-12330	3	18
1TW110-12340	3	19
1TW110-12350	3	20
1TW110-12370	3	21
1TW110-12610	3	40
1TW110-12620	3	41
1TW110-12650	3	42
1TW110-12660	3	43
1TW110-12670	3	44
1TW110-12680	3	45
1TW110-12690	3	46
1TW110-12710	3	22
1TW110-13110	3	23
1TW110-13310	3	47
1TW110-13320	3	48
1TW110-13710	3	49
1TW110-13730	3	50

Parts No.	Fig. No.	Ref. No.
1TW110-13750	3	51
1TW110-14510	3	52
1TW110-14520	3	53
1TW110-14530	3	54
1TW110-14540	3	55
1TW110-14550	3	56
1TW110-15030	3	1
1TW110-15080	3	57
1TW110-15710	4	1
1TW110-15850	3	58
1TW110-15860	3	59
1TW110-15900	3	60
1TW110-15930	3	61
1TW110-15950	3	62
1TW110-15960	3	63
1TW110-16210	4	2
1TW110-16220	4	3
1TW110-16250	3	64
1TW110-16310	4	6
1TW110-16330	4	7
1TW110-16410	4	4
1TW110-16500	4	5
1TW110-16510	4	8
1TW110-16540	4	12
1TW110-16550	4	13
1TW110-16580	4	14
1TW110-16610	3	65
1TW110-16650	3	66
1TW110-16710	4	18
1TW110-17100	8	1
	9	1
1TW110-17110	8	2
	9	2
1TW110-17170	8	3
	9	3
1TW110-17210	8	6
	9	6
1TW110-17250	8	7
	9	7
1TW110-17310	8	8
1TW110-17350	8	9
1TW110-17400	10	1
1TW110-17410	10	2
1TW110-17450	10	3
1TW110-17480	4	15
	19	19
	8	11
	9	11
	10	4
1TW110-17500	8	10

Parts No.	Fig. No.	Ref. No.
1TW110-17500	9	10
1TW110-17510	8	12
	9	12
1TW110-17560	8	13
	9	13
1TW110-17610	8	16
1TW110-17710	8	17
1TW110-17720	8	18
1TW110-17790	8	19
1TW110-17800	10	7
1TW110-17810	10	8
1TW110-17850	10	11
1TW110-17910	8	20
	9	20
1TW110-17950	10	12
1TW110-17990	8	21
	9	21
1TW110-18511	10	13
1TW110-18521	10	14
1TW110-18531	10	15
1TW110-18571	10	16
1TW110-18710	10	18
1TW111-11600	7	1
1TW111-17310	9	8
1TW111-17350	9	9
1TW111-17610	9	16
1TW111-17710	9	17
1TW111-17720	9	18
1TW111-17790	9	19
22137-080000	4	16
22137-120000	4	20
	8	14
	9	14
	10	5
	19	19
22137-140000	10	20
22137-160000	8	23
	9	23
22137-200000	4	21
22190-120002	3	24
22217-080000	3	67
22217-120000	3	68
22217-160000	3	69
22242-000120	4	22
	10	6
	21	21
22242-000160	8	24
	9	24

Parts No.	Fig. No.	Ref. No.
22242-000170	3	70
22242-000210	3	25
22242-000220	3	71
22242-000250	3	26
	4	9
	10	22
22252-000520	3	27
	72	72
22252-000620	3	28
22351-030025	8	15
	9	15
22351-035032	4	17
22372-080000	3	73
22372-120000	8	25
	9	25
22372-140000	10	23
22417-200250	6	3
	7	3
22417-320320	4	23
22487-100450	3	74
22487-120300	8	26
	9	26
22487-140350	10	24
22512-070180	3	75
22512-070200	3	29
22550-070500	10	25
23887-120002	3	30
24101-062054	3	31
	76	76
24101-062064	3	32
24101-062074	3	33
24148-002054	3	34
24341-000800	3	35
24421-255210	3	36
	77	77
24550-020150	3	78
24550-025150	4	10
	10	9
24761-010000	3	79
	4	11
	6	4
	7	4
	10	10
26013-080162	3	37
26013-120202	3	80
26013-120252	3	81
26106-060122	3	82
26106-060142	3	83
26106-060252	3	84
26106-080122	3	85

# Parts No. Index

Parts No.	Fig. No.	Ref. No.
26106-080122	8	27
	9	27
26106-080252	4	24
26106-100252	8	28
	9	28
	10	26
26106-120302	8	29
	9	29
26106-120702	3	86
26116-080162	3	87
26116-121202	4	25
26347-060002	3	88
26347-200002	8	4
	9	4
26366-120002	4	26
	8	30
	9	30
26646-060122	3	89
26716-120002	3	90
	10	17
26716-160002	3	91
26756-200002	8	5
	9	5
26856-060002	3	92
26973-060062	3	93
26979-060102	6	5
	7	5

Parts No.	Fig. No.	Ref. No.
-----------	----------	----------

Parts No.	Fig. No.	Ref. No.
-----------	----------	----------

Parts No.	Fig. No.	Ref. No.
-----------	----------	----------