

0CNP6-M02410EN

Contents

0CNP6-M02410

Fig. No. Fig. Name

Fig. No. Fig. Name

MOWER DECK

1. LABEL
2. LABEL(SAFETY)
3. GEAR BOX
4. SPINDLE
5. PULLEY(TENSION)
6. BLADE
7. DECK
8. COVER
9. CHUTE
10. GAUGE
11. DOCUMENT

LINK

12. DRIVE SHAFT
13. FRONT LINK
14. LIFT SHAFT

Fig.1. LABEL

(A)=M60FSA
(B)=MLFSA32
(C)=

(D)=
(E)=
(F)=

No.	Lev.	Parts No.	Description	Q'ty						I	R
				(A)	(B)	(C)	(D)	(E)	(F)		
1	1	1A8330-65560	LABEL, MARK YANMAR	1							

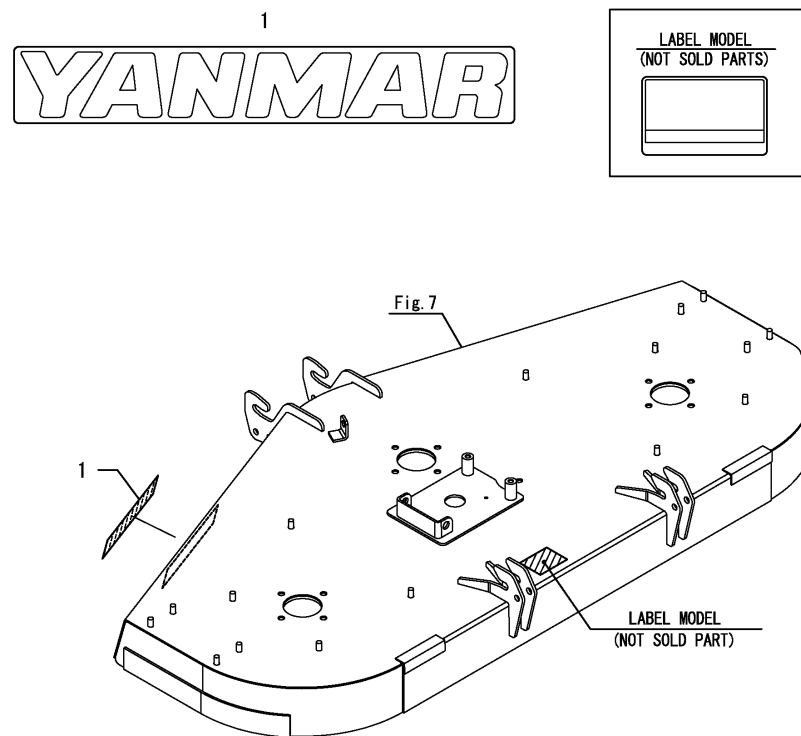


Fig.2. LABEL(SAFETY)

(A)=M60FSA
(B)=MLFSA32
(C)=

(D)=
(E)=
(F)=

No.	Lev.	Parts No.	Description	Q'ty						I	R
				(A)	(B)	(C)	(D)	(E)	(F)		
1	1	1TW113-01210	LABEL,THROWN OBJ	2							
2	1	1TW113-01220	LABEL,ENTANGLEMENT	1							
3	1	1TW113-01230	LABEL,SEVERING	1							
4	1	1TW113-01240	LABEL,CAUTION	1							
5	1	1TW113-01250	LABEL, CAUTION	1							

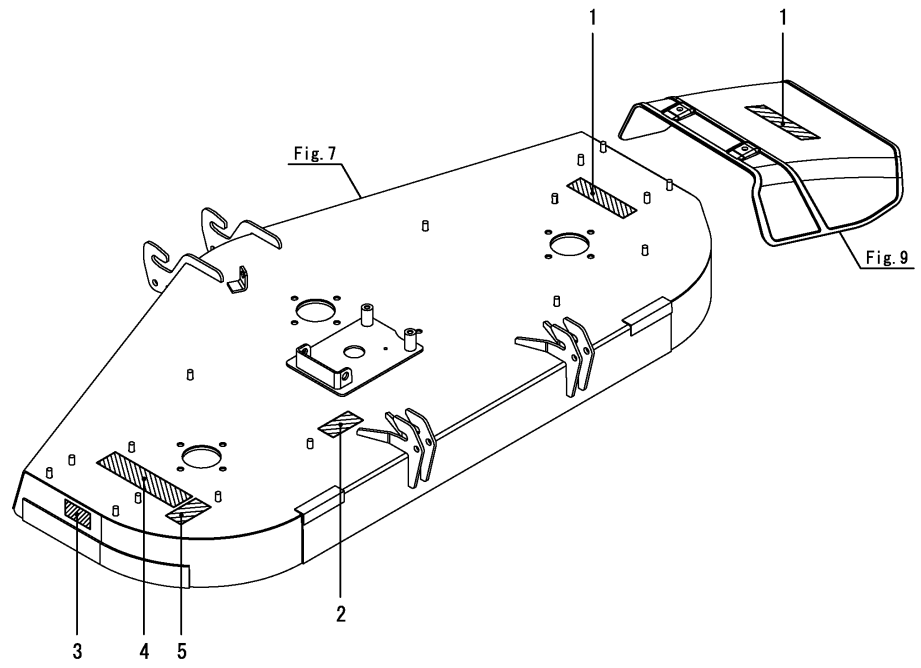
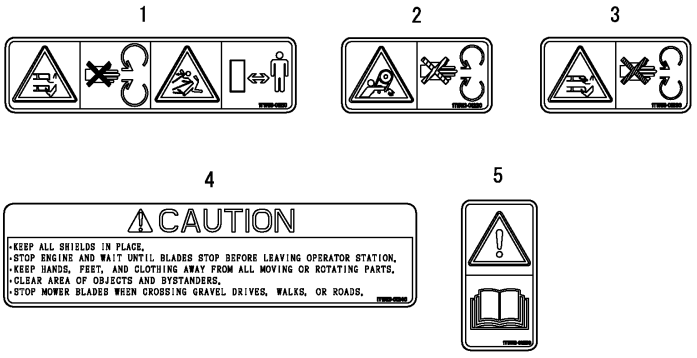


Fig.3. GEAR BOX

(A)=M60FSA
(B)=MLFSA32
(C)=

(D)=
(E)=
(F)=

No.	Lev.	Parts No.	Description	Q'ty						I	R
				(A)	(B)	(C)	(D)	(E)	(F)		
1	1	1TW113-21100	GEARBOX ASSY	1							
2	1	1TW113-21410	BRACKET ASSY, GB	1							
3	1	1TW113-21610	PIN, FULCRUM	1							
4	1	1TW113-31110	PULLEY ASSY, DRIVE	1							
5	1	1TW113-31150	BOLT, M12X25 LH	1							
6	1	22157-120000	WASHER, 12	1							
7	1	22242-000160	RING, 16	2							
8	1	26106-100252	BOLT, M10X 25 PLATED	6							

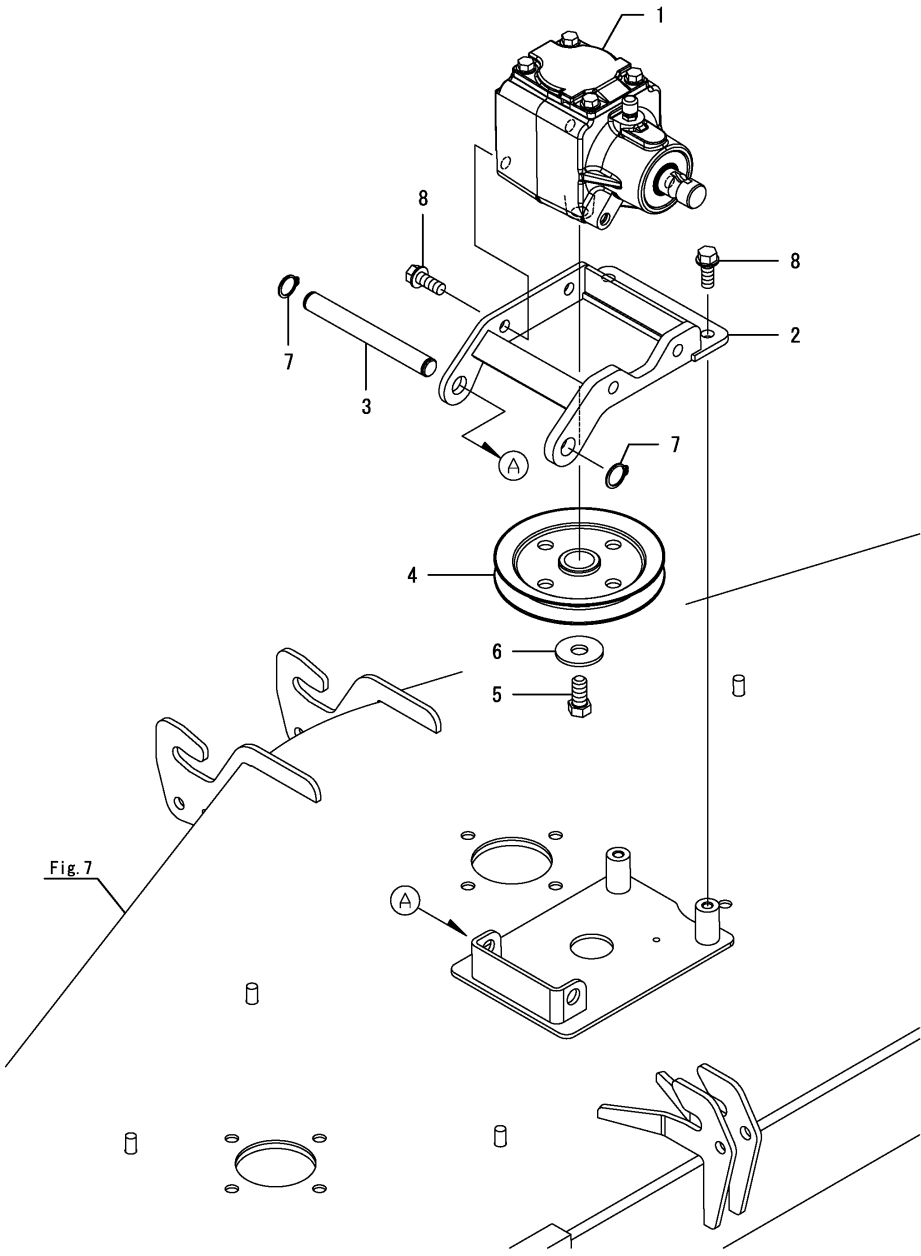
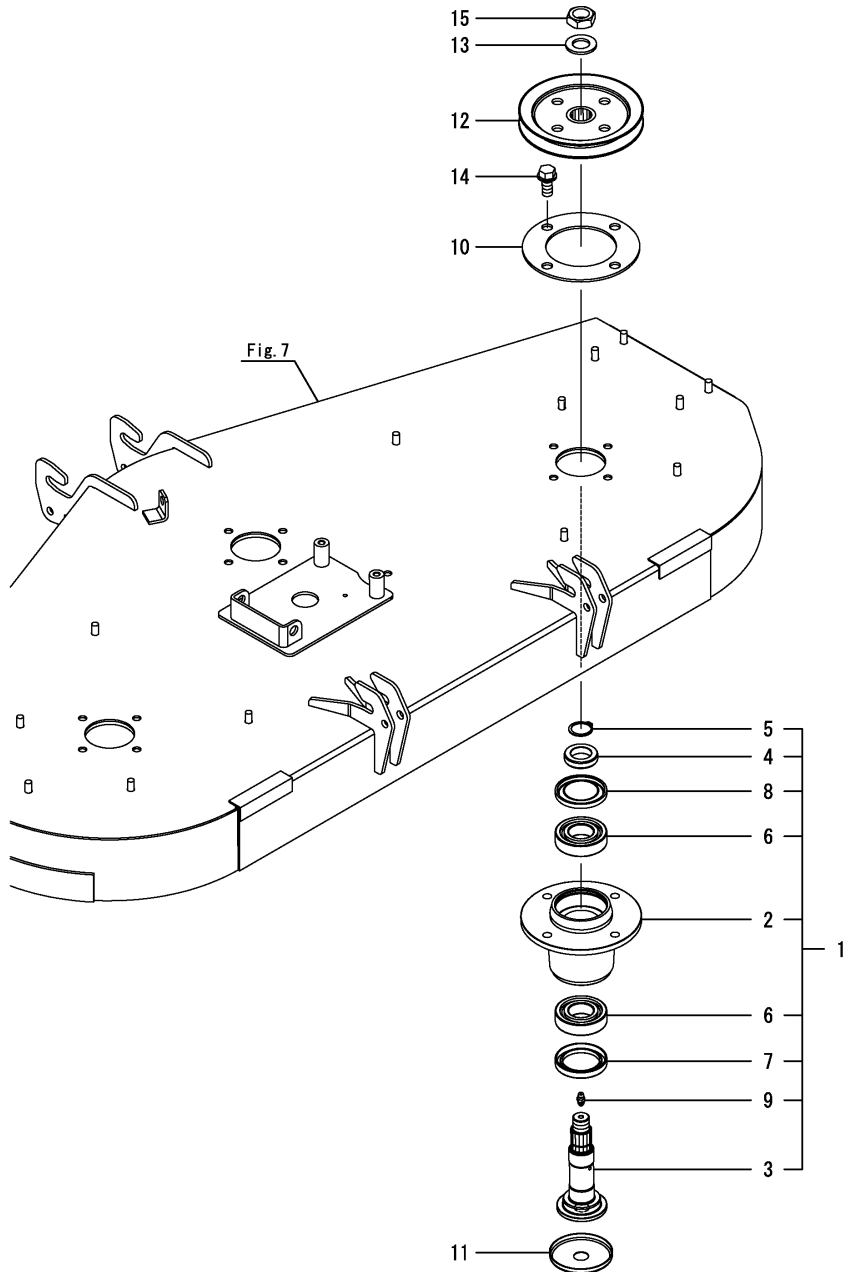


Fig.4. SPINDLE

(A)=M60FSA
(B)=MLFSA32
(C)=

(D)=
(E)=
(F)=

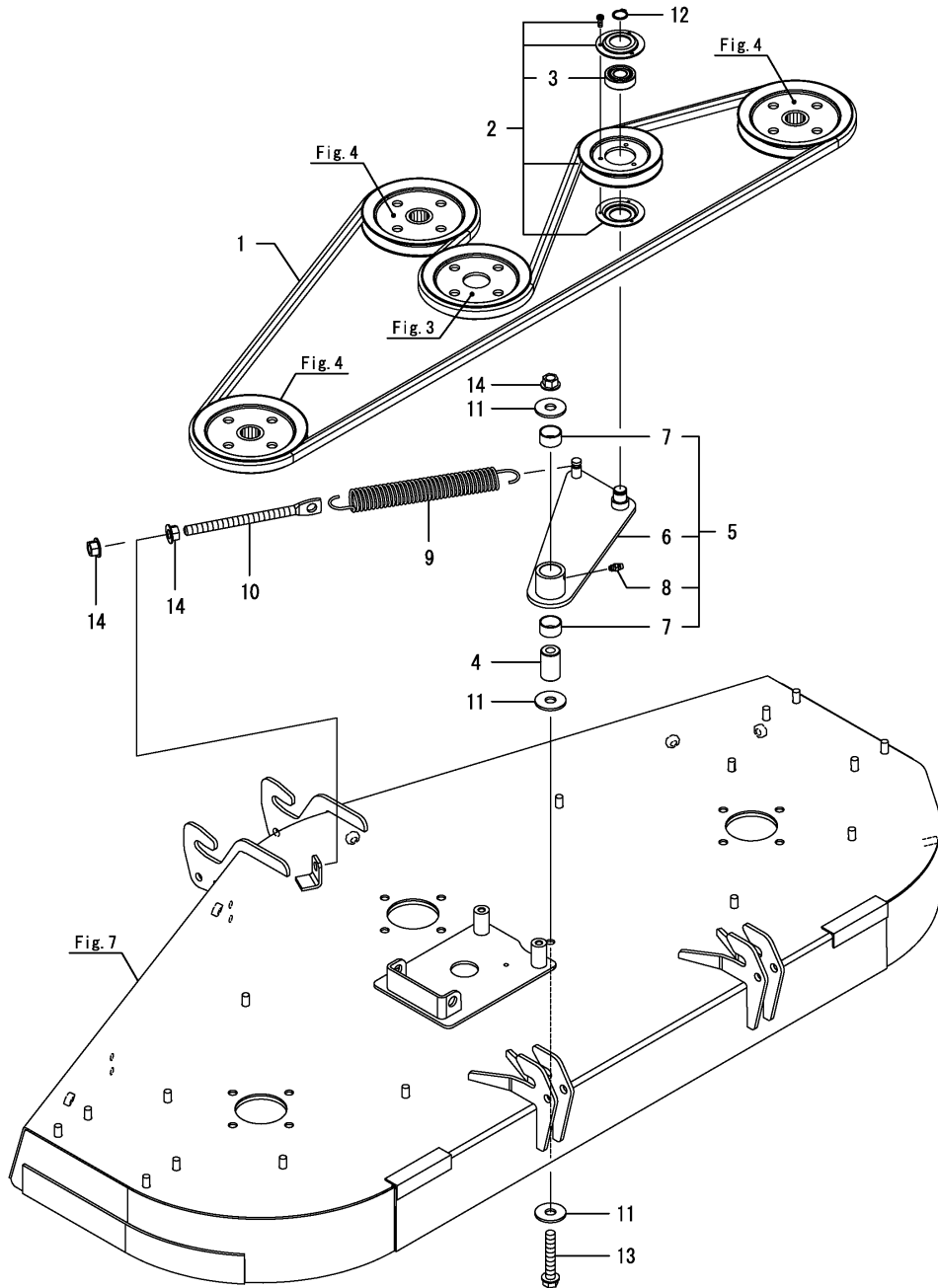


No.	Lev.	Parts No.	Description	Q'ty						I	R
				(A)	(B)	(C)	(D)	(E)	(F)		
1	1	1TW113-26100	SPINDLE ASSY	3							
2	2	1TW113-26110	CASE, SPINDLE	3							
3	2	1TW113-26130	SHAFT, SPINDLE	3							
4	2	1TW113-26150	LINER, SEAL	3							
5	2	22242-000250	RING, 25	3							
6	2	24101-062064	BEARING, BALL 6206	6							
7	2	24421-456209	SEAL, OIL TC456209	3							
8	2	24430-406206	SEAL, VC406206	3							
9	2	24761-010000	NIPPLE, GREASE M6F	3							
10	1	1TW113-26120	PLATE, SPINDLE	3							
11	1	1TW113-26170	COVER, SPINDLE	3							
12	1	1TW113-33110	PULLEY ASSY, DRIVEN	3							
13	1	22137-200000	WASHER, 20	3							
14	1	26106-120252	BOLT, M12X 25 PLATED	12							
15	1	26776-200002	NUT, LOCK M20	3							

Fig.5. PULLEY(TENSION)

(A)=M60FSA
(B)=MLFSA32
(C)=

(D)=
(E)=
(F)=



No.	Lev.	Parts No.	Description	Q'ty						I	R
				(A)	(B)	(C)	(D)	(E)	(F)		
1	1	1TW113-18111	BELT, BB 122	1							
2	1	1TW113-37110	PULLEY ASSY, TENSION	1							
3	2	24101-062034	BEARING, BALL 6203	1							
4	1	1TW113-37150	COLLAR, TENSION	1							
5	1	1TW113-37200	ARM UNIT, TENSION	1							
6	2	1TW113-37210	ARM ASSY, TENSION	1							
7	2	24550-025150	BUSH, 25X15	2							
8	2	24761-010000	NIPPLE, GREASE M6F	1							
9	1	1TW113-37310	SPRING, TENSION	1							
10	1	1TW113-37321	ADJUSTER, TENS. SPRING	1							
11	1	22157-120000	WASHER, 12	3							
12	1	22242-000170	RING, 17	1							
13	1	26106-120702	BOLT, M12X 70 PLATED	1							
14	1	26366-120002	NUT, M12	3							

Fig.6. BLADE

(A)=M60FSA
 (B)=MLFSA32
 (C)=

(D)=
 (E)=
 (F)=

No.	Lev.	Parts No.	Description	Q'ty						I	R
				(A)	(B)	(C)	(D)	(E)	(F)		
1	1	1TW113-45110	BLADE,MOWER 20.5	3							
2	1	1TW113-45120	WASHER, SPRING	3							
3	1	1TW113-45130	BOLT, REAMER M14X40	3							
4	1	22217-180000	WASHER, SPRING 18	3							

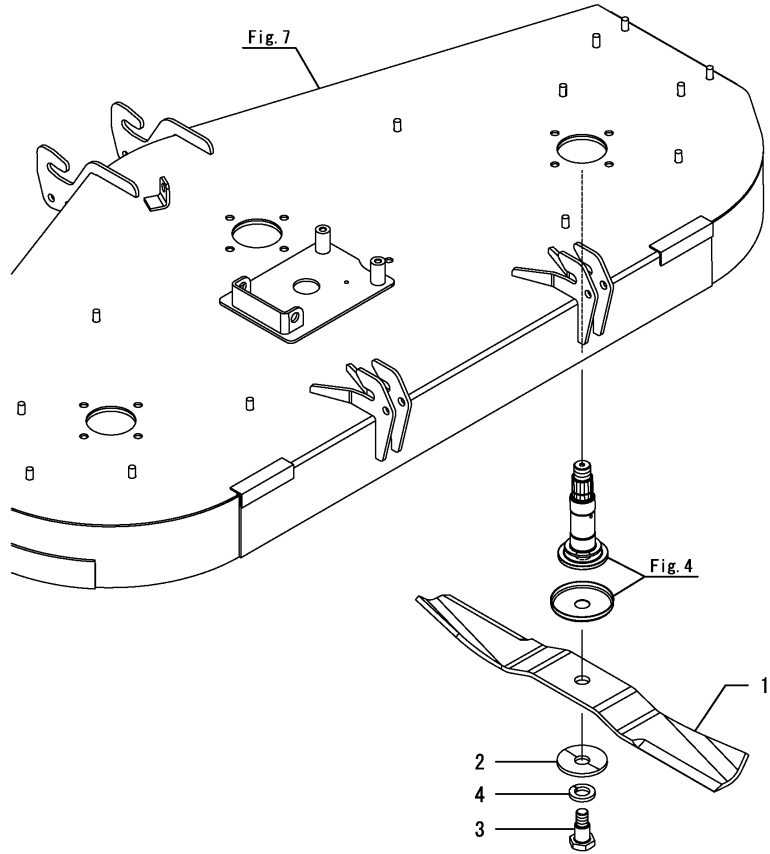
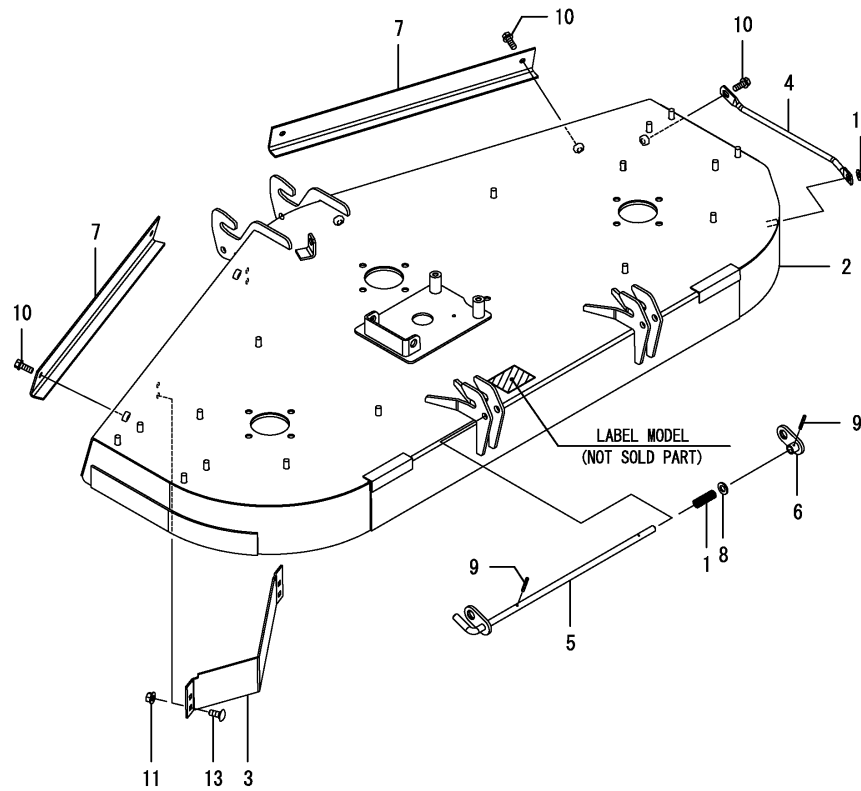


Fig.7. DECK

(A)=M60FSA
(B)=MLFSA32
(C)=

(D)=
(E)=
(F)=



No.	Lev.	Parts No.	Description	Q'ty						I	R
				(A)	(B)	(C)	(D)	(E)	(F)		
1	1	1TW110-17480	SPRING, LOCK	1							
2	1	1TW113-51100	DECK ASSY, PL	1							
3	1	1TW113-51310	PLATE, GUIDE	1							
4	1	1TW113-51370	ROD, GUARD	1							
5	1	1TW113-52310	LEVER ASSY, LOCK	1							
6	1	1TW113-52350	PLATE ASSY, LOCK	1							
7	1	1TW113-58210	GUARD, FRONT	2							
8	1	22137-120000	WASHER, 12	1							
9	1	22351-030025	PIN, SPRING 3.0X25	2							
10	1	26106-100252	BOLT, M10X 25 PLATED	5							
11	1	26366-080002	NUT, M8	4							
12	1	26366-100002	NUT, M10	1							
13	1	26487-080203	BOLT, M8X20	4							

Fig.8. COVER

(A)=M60FSA
(B)=MLFSA32
(C)=

(D)=
(E)=
(F)=

No.	Lev.	Parts No.	Description	Q'ty						I	R
				(A)	(B)	(C)	(D)	(E)	(F)		
1	1	194990-22140	NUT, M8	6							
2	1	1TW113-58110	COVER, L	1							
3	1	1TW113-58120	COVER, R	1							
4	1	1TW113-58130	GUIDE, COVER	2							
5	1	194448-61620	GROMMET, 20.5	2							
6	1	26106-080162	BOLT, M8X 16 PLATED	6							
7	1	26366-100002	NUT, M10	8							

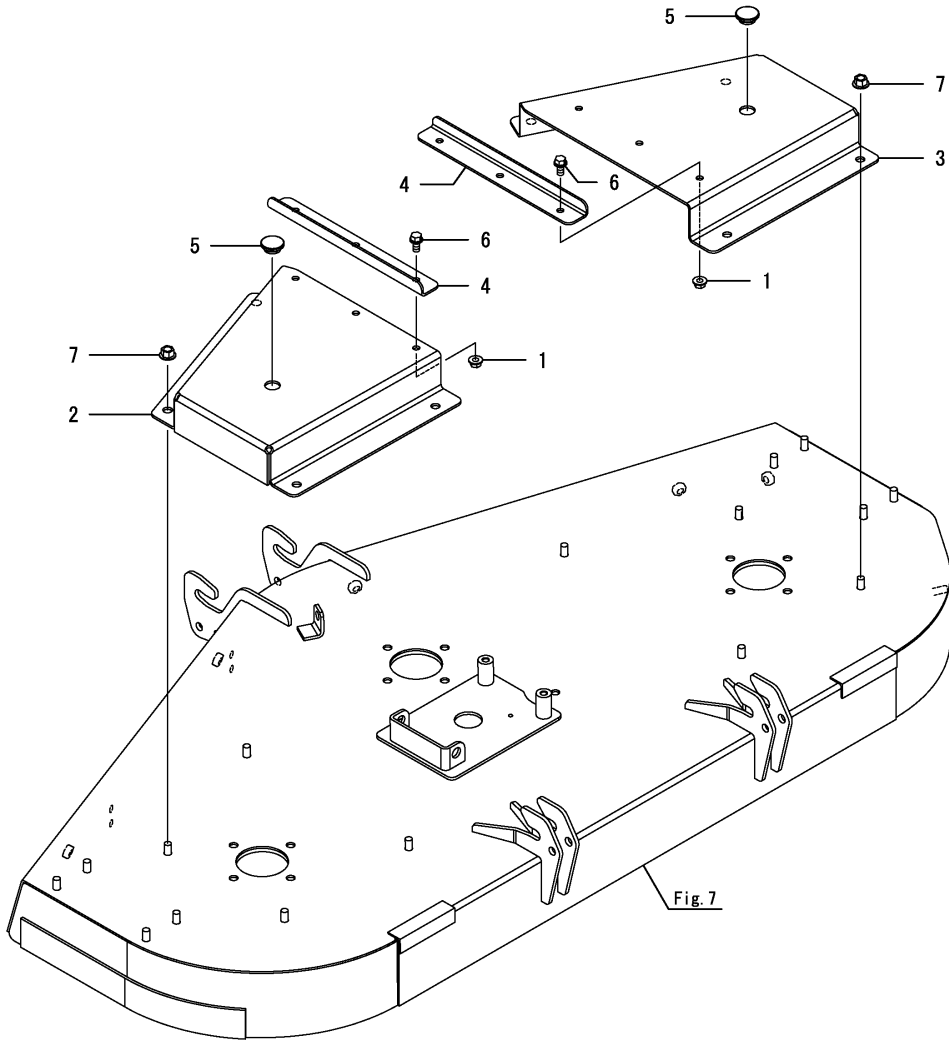


Fig.9. CHUTE

(A)=M60FSA
(B)=MLFSA32
(C)=

(D)=
(E)=
(F)=

No.	Lev.	Parts No.	Description	Q'ty						I	R
				(A)	(B)	(C)	(D)	(E)	(F)		
1	1	1TW113-59130	STAY, CHUTE	2							
2	1	1TW113-59140	PIN, CHUTE	1							
3	1	1TW113-59150	SPRING, CHUTE HINGE	1							
4	1	1TW113-59300	CHUTE ASSY, PL	2							
5	1	22137-100000	WASHER, 10	2							
6	1	22137-120000	WASHER, 12	2							
7	1	22157-100000	WASHER, 10	2							
8	1	22242-000120	RING, 12	2							
9	1	26106-100252	BOLT, M10X 25 PLATED	2							
10	1	26347-100002	NUT, M10	1							

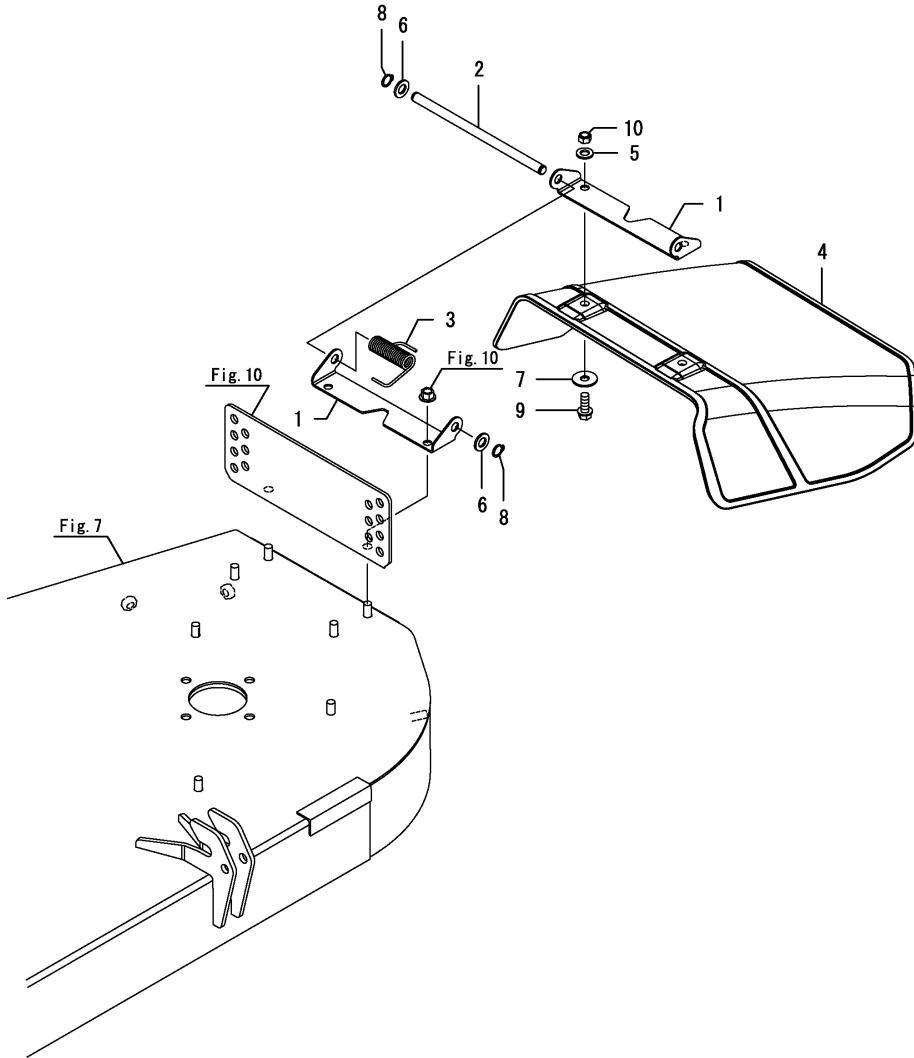
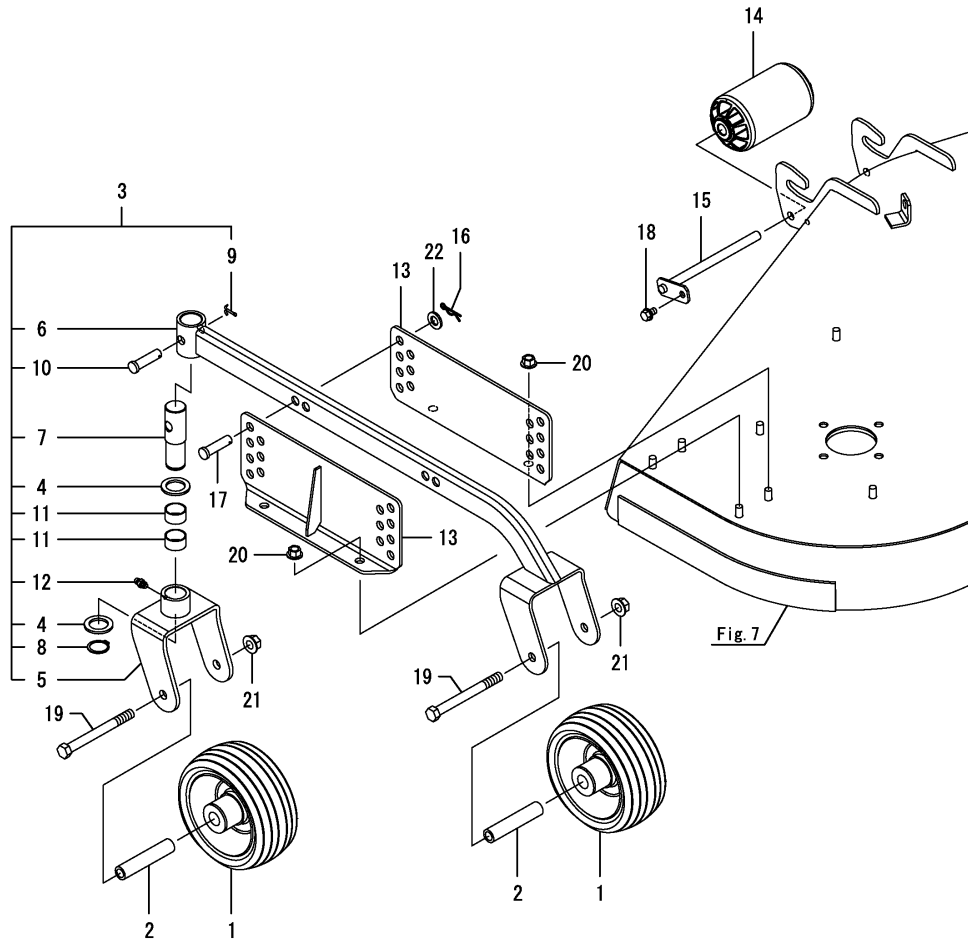


Fig.10. GAUGE



(A)=M60FSA
(B)=MLFSA32
(C)=

(D)=
(E)=
(F)=

No.	Lev.	Parts No.	Description	Q'ty						I	R
				(A)	(B)	(C)	(D)	(E)	(F)		
1	1	1TW110-16210	WHEEL ASSY, GAUGE	4							
2	1	1TW110-16220	COLLAR, WHEEL	4							
3	1	1TW113-63100	BRACKET UNIT,GAUGE	2							
4	2	1TW110-16330	WASHER, FLAT	4							
5	2	1TW110-16350	BRACKET ASSY, WHEEL	2							
6	2	1TW113-63110	BRACKET ASSY,GAUGE	2							
7	2	1TW113-63210	SHAFT, GAUGE	2							
8	2	22242-000250	RING, 25	2							
9	2	22417-250250	PIN, COTTER 2.5X25	2							
10	2	22487-120400	PIN, H12X40	2							
11	2	24550-025150	BUSH, 25X15	4							
12	2	24761-010000	NIPPLE, GREASE M6F	2							
13	1	1TW113-63310	STAY ASSY,GAUGE	4							
14	1	1TW113-66110	ROLLER, FRONT	1							
15	1	1TW113-66150	PIN ASSY, ROLLER	1							
16	1	22372-120000	PIN, SNAP 12	4							
17	1	22487-120400	PIN, H12X40	4							
18	1	26106-080122	BOLT, M8X 12 PLATED	1							
19	1	26116-121202	BOLT, M12X120 PLATED	4							
20	1	26366-100002	NUT, M10	8							
21	1	26366-120002	NUT, M12	4							
22	1	22137-120000	WASHER, 12	4							

Fig.11. DOCUMENT

(A)=M60FSA
(B)=MLFSA32
(C)=

(D)=
(E)=
(F)=

No.	Lev.	Parts No.	Description	Q'ty						I	R
				(A)	(B)	(C)	(D)	(E)	(F)		
1	1	0A059-EN0060	OPERATION MANUAL	1							

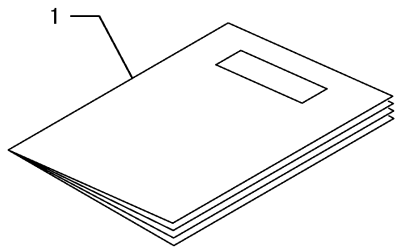
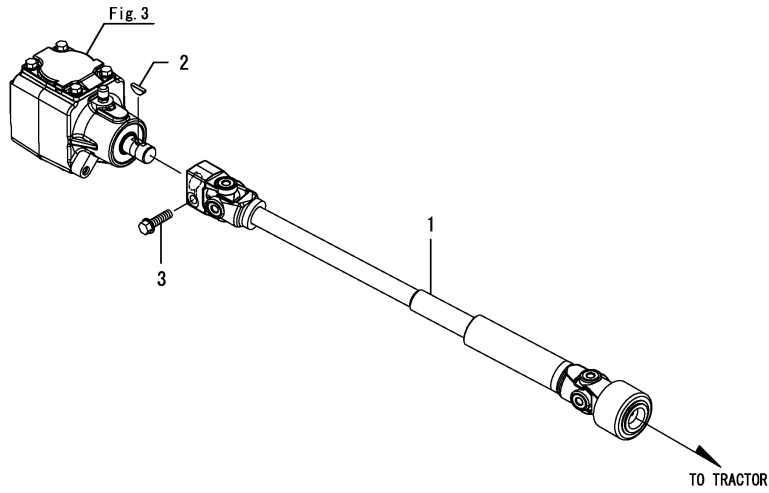


Fig.12. DRIVE SHAFT

(A)=M60FSA
(B)=MLFSA32
(C)=

(D)=
(E)=
(F)=

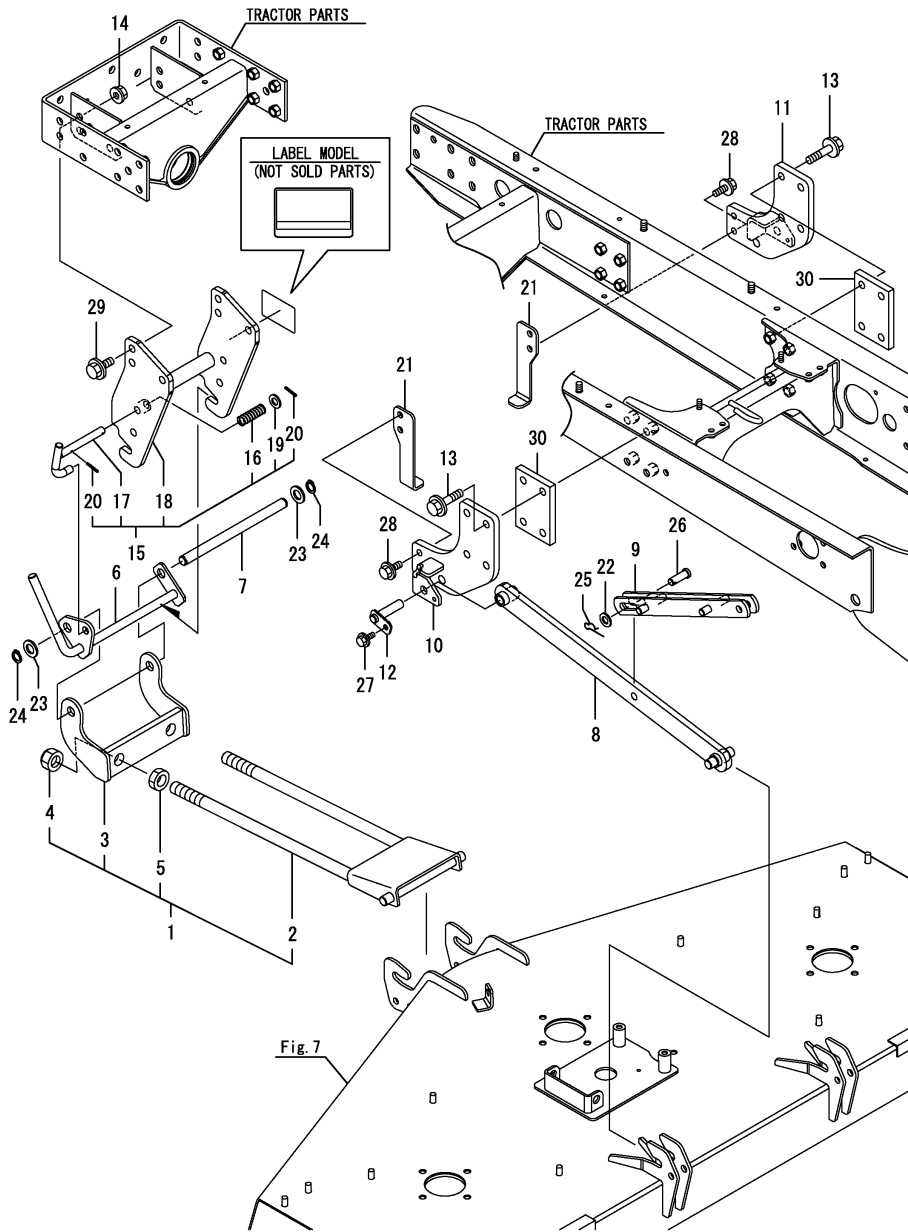
No.	Lev.	Parts No.	Description	Q'ty						I	R	
				(A)	(B)	(C)	(D)	(E)	(F)			
1	1	1TW113-16100	SHAFT ASSY, DRIVE		1							
2	1	1TW113-16310	KEY,WOODRUFF 5X22		1							
3	1	26106-100352	BOLT, M10X 35 PLATED		1							



Remarks

Note : "Effective Machine No." of the Link Section is indicated on the Model Label which is shown in Fig.13.

Fig.13. FRONT LINK



(A)=M60FSA
(B)=MLFSA32
(C)=

(D)=
(E)=
(F)=

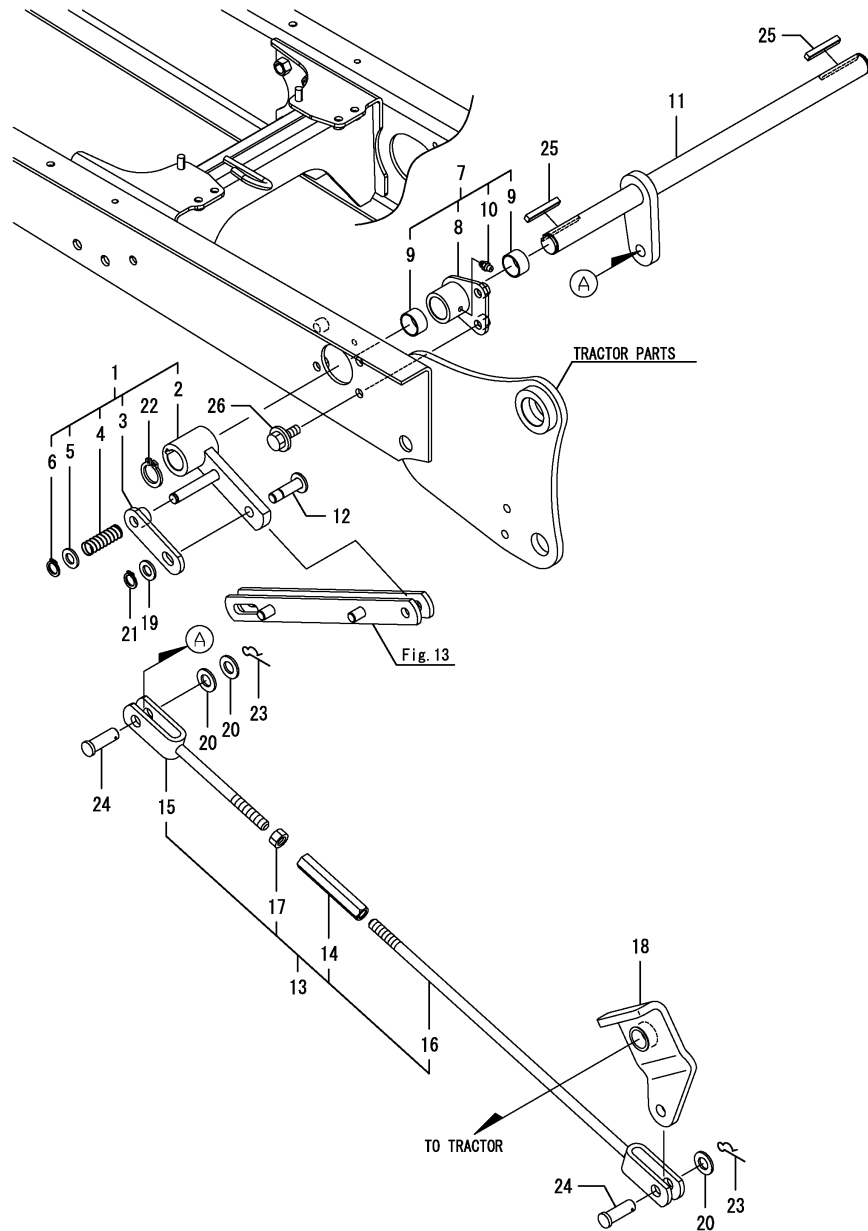
No.	Lev.	Parts No.	Description	Q'ty						I	R
				(A)	(B)	(C)	(D)	(E)	(F)		
1	1	1TW110-17100	LINK UNIT, FRONT		1						
2	2	1TW110-17110	LINK ASSY, FRONT		1						
3	2	1TW110-17170	FULCRUM ASSY, FRONT		1						
4	2	26347-200002	NUT, M20		2						
5	2	26756-200002	NUT, LOCK M20		2						
6	1	1TW110-17210	LINK ASSY, FULCRUM		1						
7	1	1TW110-17250	PIN, FULCRUM		1						
8	1	1TW111-17310	ARM ASSY, LIFT		2						
9	1	1TW111-17350	LINK ASSY, LIFT		2						
10	1	1TW111-17710	BRACKET ASSY, LH ARM		1						
11	1	1TW111-17720	BRACKET ASSY, RH ARM		1						
12	1	1TW110-17910	PIN ASSY, BRACKET		2						
13	1	1TW110-17990	BOLT, M12X50		8						
14	1	194990-22160	NUT, M12		6						
15	1	1TW113-71500	BRACKET UNIT, FRONT		1						
16	2	1TW110-17480	SPRING, LOCK		1						
17	2	1TW110-17560	PIN ASSY, HOLD		1						
18	2	1TW113-71510	BRACKET ASSY, FRONT		1						
19	2	22137-120000	WASHER, 12		1						
20	2	22351-030025	PIN, SPRING 3.0X25		2						
21	1	1TW113-71610	BRACKET ASSY, STOP		2						
22	1	22137-120000	WASHER, 12		2						
23	1	22137-160000	WASHER, 16		2						
24	1	22242-000160	RING, 16		2						
25	1	22372-120000	PIN, SNAP 12		2						
26	1	22487-120300	PIN, H12X 30		2						
27	1	26106-080122	BOLT, M8X 12 PLATED		2						
28	1	26106-100252	BOLT, M10X 25 PLATED		4						
29	1	26106-120302	BOLT, M12X 30 PLATED		6						
30	1	1TW111-17790	PLATE, SPACER		2						

Remarks

Note : "Effective Machine No." of the Link Section is indicated on the Model Label which is shown in Fig.13.

N:Old $\xrightarrow{\text{Yes}}$ New, Q:Old $\xrightarrow{\text{No}}$ New, R:Old $\xrightarrow{\text{Yes}}$ New, S:Old $\xrightarrow{\text{No}}$ New, W:Add, Z:Discontinued, F:Interchangeable by set, K:Q'ty Change

Fig.14. LIFT SHAFT



(A)=M60FSA
(B)=MLFSA32
(C)=

(D)=
(E)=
(F)=

No.	Lev.	Parts No.	Description	Q'ty						I	R
				(A)	(B)	(C)	(D)	(E)	(F)		
1	1	1TW110-17400	ARM UNIT, SHAFT		2						
2	2	1TW110-17410	ARM ASSY, SHAFT		2						
3	2	1TW110-17450	PLATE ASSY, LOCK		2						
4	2	1TW110-17480	SPRING, LOCK		2						
5	2	22137-120000	WASHER, 12		2						
6	2	22242-000120	RING, 12		2						
7	1	1TW110-17800	SUPPORT UNIT, SHAFT		2						
8	2	1TW110-17810	SUPPORT ASSY, SHAFT		2						
9	2	24550-025150	BUSH, 25X15		4						
10	2	24761-010000	NIPPLE, GREASE M6F		2						
11	1	1TW110-17850	SHAFT ASSY, LIFT		1						
12	1	1TW110-17950	PIN ASSY, LIFT		2						
13	1	1TW110-18511	ROD UNIT, REAR		1						
14	2	1TW110-18521	TURNBUCKLE		1						
15	2	1TW110-18531	ROD ASSY, A		1						
16	2	1TW110-18571	ROD ASSY, B		1						
17	2	26716-120002	NUT, M12		1						
18	1	1TW110-18710	BRACKET ASSY, LINK		1						
19	1	22137-120000	WASHER, 12		2						
20	1	22137-140000	WASHER, 14		3						
21	1	22242-000120	RING, 12		2						
22	1	22242-000250	RING, 25		2						
23	1	22372-140000	PIN, SNAP 14		2						
24	1	22487-140350	PIN, H14X 35		2						
25	1	22550-070500	KEY 7X50		2						
26	1	26106-100252	BOLT, M10X 25 PLATED		4						

Remarks

Note : "Effective Machine No." of the Link Section is indicated on the Model Label which is shown in Fig.13.

N:Old $\xrightarrow{\text{Yes}}$ New, Q:Old $\xrightarrow{\text{No}}$ New, R:Old $\xrightarrow{\text{Yes}}$ New, S:Old $\xrightarrow{\text{No}}$ New, W:Add, Z:Discontinued, F:Interchangeable by set, K:Q'ty Change

Parts No. Index

Parts No.	Fig. No.	Ref. No.
0A059-EN0060	11	1
194448-61620	8	5
194990-22140	8	1
194990-22160	13	14
1A8330-65560	1	1
1TW110-16210	10	1
1TW110-16220	10	2
1TW110-16330	10	4
1TW110-16350	10	5
1TW110-17100	13	1
1TW110-17110	13	2
1TW110-17170	13	3
1TW110-17210	13	6
1TW110-17250	13	7
1TW110-17400	14	1
1TW110-17410	14	2
1TW110-17450	14	3
1TW110-17480	7	1
	13	16
	14	4
1TW110-17560	13	17
1TW110-17800	14	7
1TW110-17810	14	8
1TW110-17850	14	11
1TW110-17910	13	12
1TW110-17950	14	12
1TW110-17990	13	13
1TW110-18511	14	13
1TW110-18521	14	14
1TW110-18531	14	15
1TW110-18571	14	16
1TW110-18710	14	18
1TW111-17310	13	8
1TW111-17350	13	9
1TW111-17710	13	10
1TW111-17720	13	11
1TW111-17790	13	30
1TW113-01210	2	1
1TW113-01220	2	2
1TW113-01230	2	3
1TW113-01240	2	4
1TW113-01250	2	5
1TW113-16100	12	1
1TW113-16310	12	2
1TW113-18111	5	1
1TW113-21100	3	1
1TW113-21410	3	2
1TW113-21610	3	3
1TW113-26100	4	1
1TW113-26110	4	2

Parts No.	Fig. No.	Ref. No.
1TW113-26120	4	10
1TW113-26130	4	3
1TW113-26150	4	4
1TW113-26170	4	11
1TW113-31110	3	4
1TW113-31150	3	5
1TW113-32110	4	12
1TW113-37110	5	2
1TW113-37150	5	4
1TW113-37200	5	5
1TW113-37210	5	6
1TW113-37310	5	9
1TW113-37321	5	10
1TW113-45110	6	1
1TW113-45120	6	2
1TW113-45130	6	3
1TW113-51100	7	2
1TW113-51310	7	3
1TW113-51370	7	4
1TW113-52310	7	5
1TW113-52350	7	6
1TW113-58110	8	2
1TW113-58120	8	3
1TW113-58130	8	4
1TW113-58210	7	7
1TW113-59130	9	1
1TW113-59140	9	2
1TW113-59150	9	3
1TW113-59300	9	4
1TW113-63100	10	3
1TW113-63110	10	6
1TW113-63210	10	7
1TW113-63310	10	13
1TW113-66110	10	14
1TW113-66150	10	15
1TW113-71500	13	15
1TW113-71510	13	18
1TW113-71610	13	21
22137-100000	9	5
22137-120000	7	8
	9	6
	10	22
	13	19
		22
	14	5
		19
22137-140000	14	20
22137-160000	13	23
22137-200000	4	13
22157-100000	9	7

Parts No.	Fig. No.	Ref. No.
22157-120000	3	6
	5	11
22217-180000	6	4
22242-000120	9	8
	14	6
		21
22242-000160	3	7
	13	24
22242-000170	5	12
22242-000250	4	5
	10	8
	14	22
22351-030025	7	9
	13	20
22372-120000	10	16
	13	25
22372-140000	14	23
22417-250250	10	9
22487-120300	13	26
22487-120400	10	10
		17
22487-140350	14	24
22550-070500	14	25
24101-062034	5	3
24101-062064	4	6
24421-456209	4	7
24430-406206	4	8
24550-025150	5	7
	10	11
	14	9
24761-010000	4	9
	5	8
	10	12
	14	10
26106-080122	10	18
	13	27
26106-080162	8	6
26106-100252	3	8
	7	10
	9	9
	13	28
	14	26
26106-100352	12	3
26106-120252	4	14
26106-120302	13	29
26106-120702	5	13
26116-121202	10	19
26347-100002	9	10
26347-200002	13	4
26366-080002	7	11

Parts No.	Fig. No.	Ref. No.
26366-100002	7	12
	8	7
	10	20
26366-120002	5	14
	10	21
26487-080203	7	13
26716-120002	14	17
26756-200002	13	5
26776-200002	4	15