

0CNP6-M02400EN

Contents

0CNP6-M02400

Fig. No. Fig. Name

MOWER DECK

1. LABEL
2. LABEL(SAFETY)
3. GEAR BOX
4. SPINDLE
5. PULLEY(TENSION)
6. BLADE
7. DECK
8. COVER
9. CHUTE
10. GAUGE
11. DOCUMENT

LINK

12. DRIVE SHAFT
13. FRONT LINK
14. LIFT SHAFT

Fig. No. Fig. Name

Fig.1. LABEL

(A)=M60FYT2
(B)=MLFYT2
(C)=

(D)=
(E)=
(F)=

No.	Lev.	Parts No.	Description	Q'ty						I	R	
				(A)	(B)	(C)	(D)	(E)	(F)			
1	1	1A8330-65560	LABEL, MARK YANMAR	1								

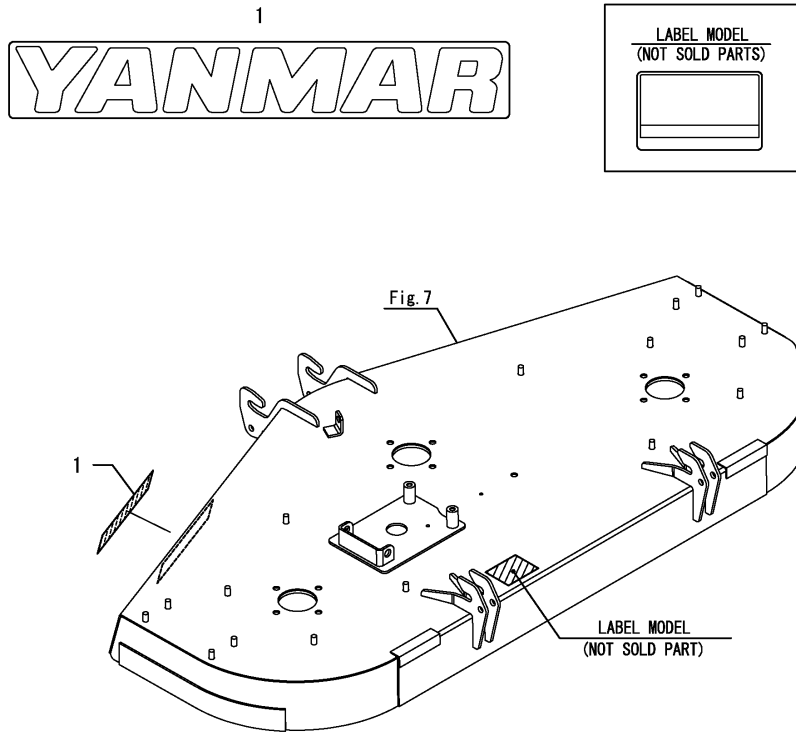


Fig.2. LABEL(SAFETY)

(A)=M60FYT2
(B)=MLFYT2
(C)=

(D)=
(E)=
(F)=

No.	Lev.	Parts No.	Description	Q'ty						I	R
				(A)	(B)	(C)	(D)	(E)	(F)		
1	1	1TW113-01210	LABEL,THROWN OBJ	2							
2	1	1TW113-01220	LABEL,ENTANGLEMENT	1							
3	1	1TW113-01230	LABEL,SEVERING	1							
4	1	1TW113-01240	LABEL,CAUTION	1							
5	1	1TW113-01250	LABEL, CAUTION	1							

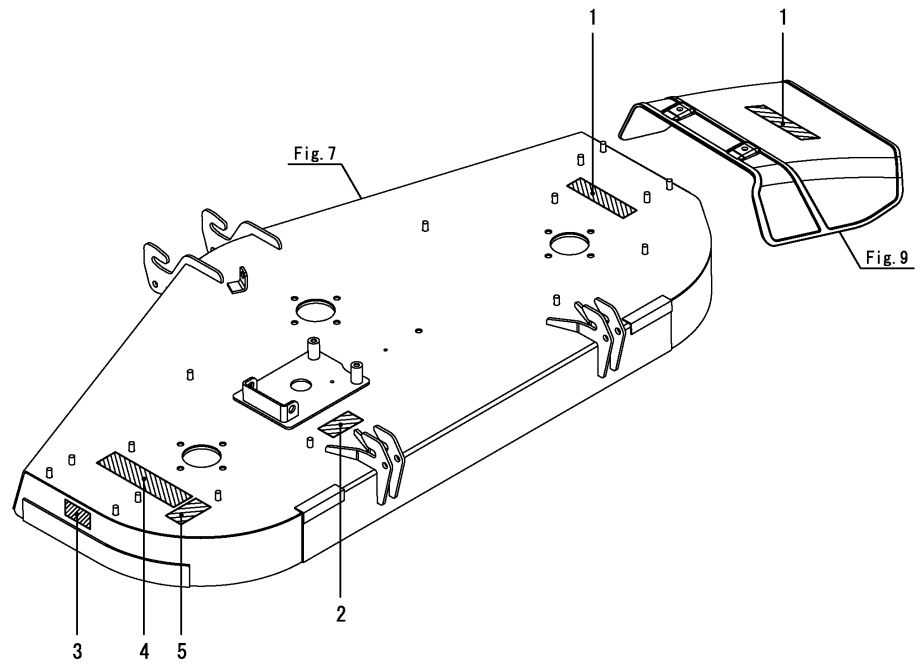
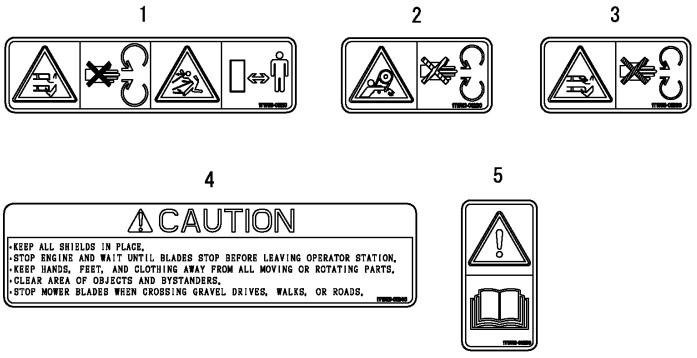


Fig.3. GEAR BOX

(A)=M60FYT2
(B)=MLFYT2
(C)=

(D)=
(E)=
(F)=

No.	Lev.	Parts No.	Description	Q'ty						I	R
				(A)	(B)	(C)	(D)	(E)	(F)		
1	1	1TW113-21100	GEARBOX ASSY	1							
2	1	1TW113-21410	BRACKET ASSY, GB	1							
3	1	1TW113-21610	PIN, FULCRUM	1							
4	1	1TW113-31110	PULLEY ASSY, DRIVE	1							
5	1	1TW113-31150	BOLT, M12X25 LH	1							
6	1	22157-120000	WASHER, 12	1							
7	1	22242-000160	RING, 16	2							
8	1	26106-100252	BOLT, M10X 25 PLATED	6							

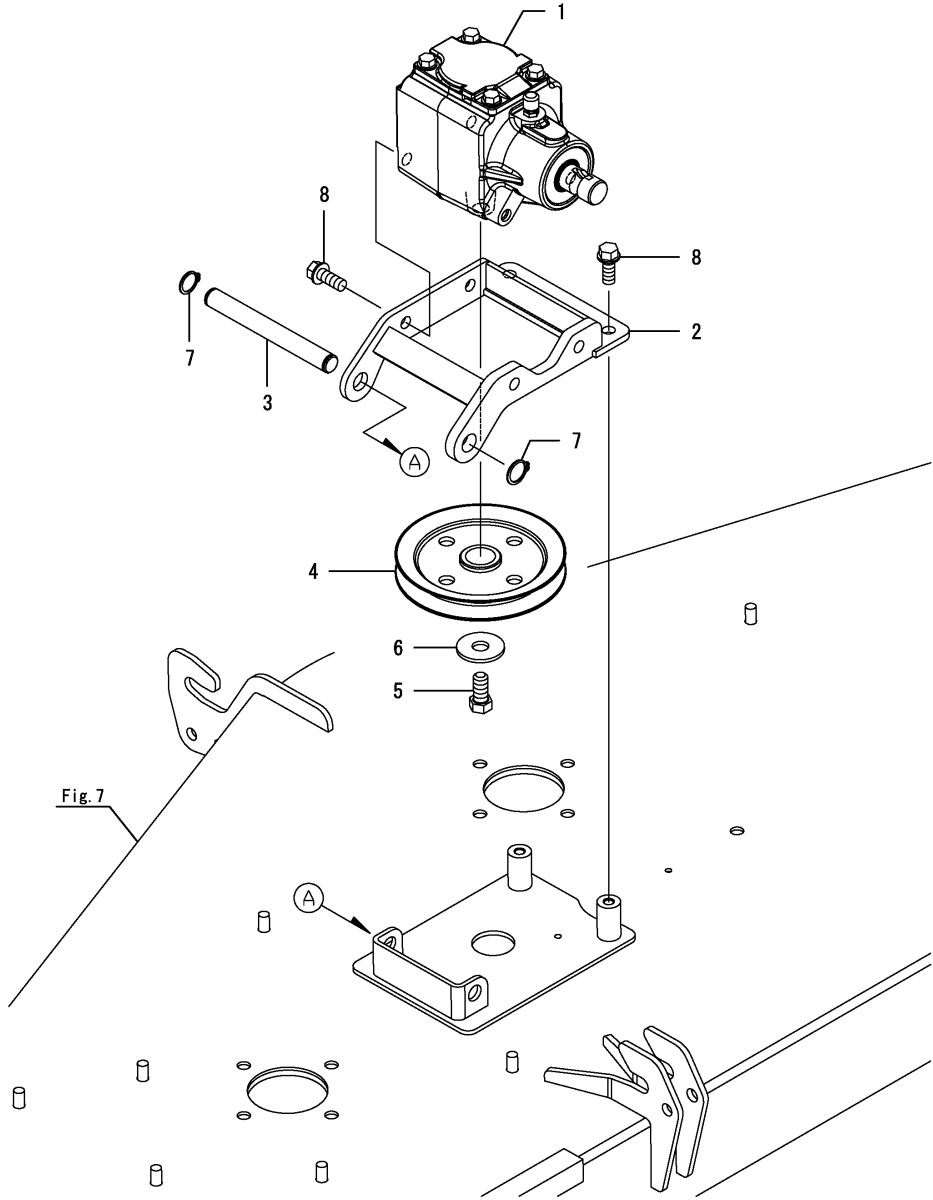
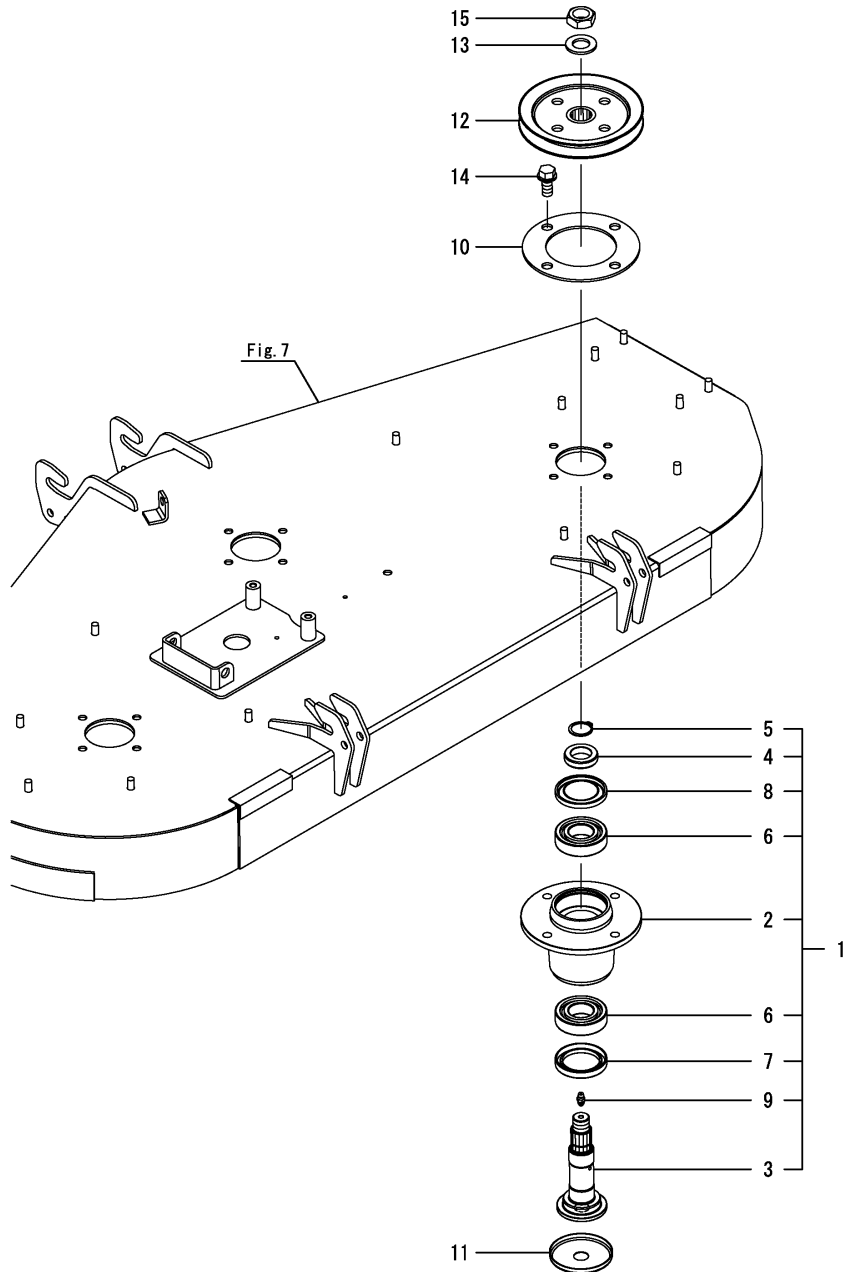


Fig.4. SPINDLE

(A)=M60FYT2
(B)=MLFYT2
(C)=

(D)=
(E)=
(F)=

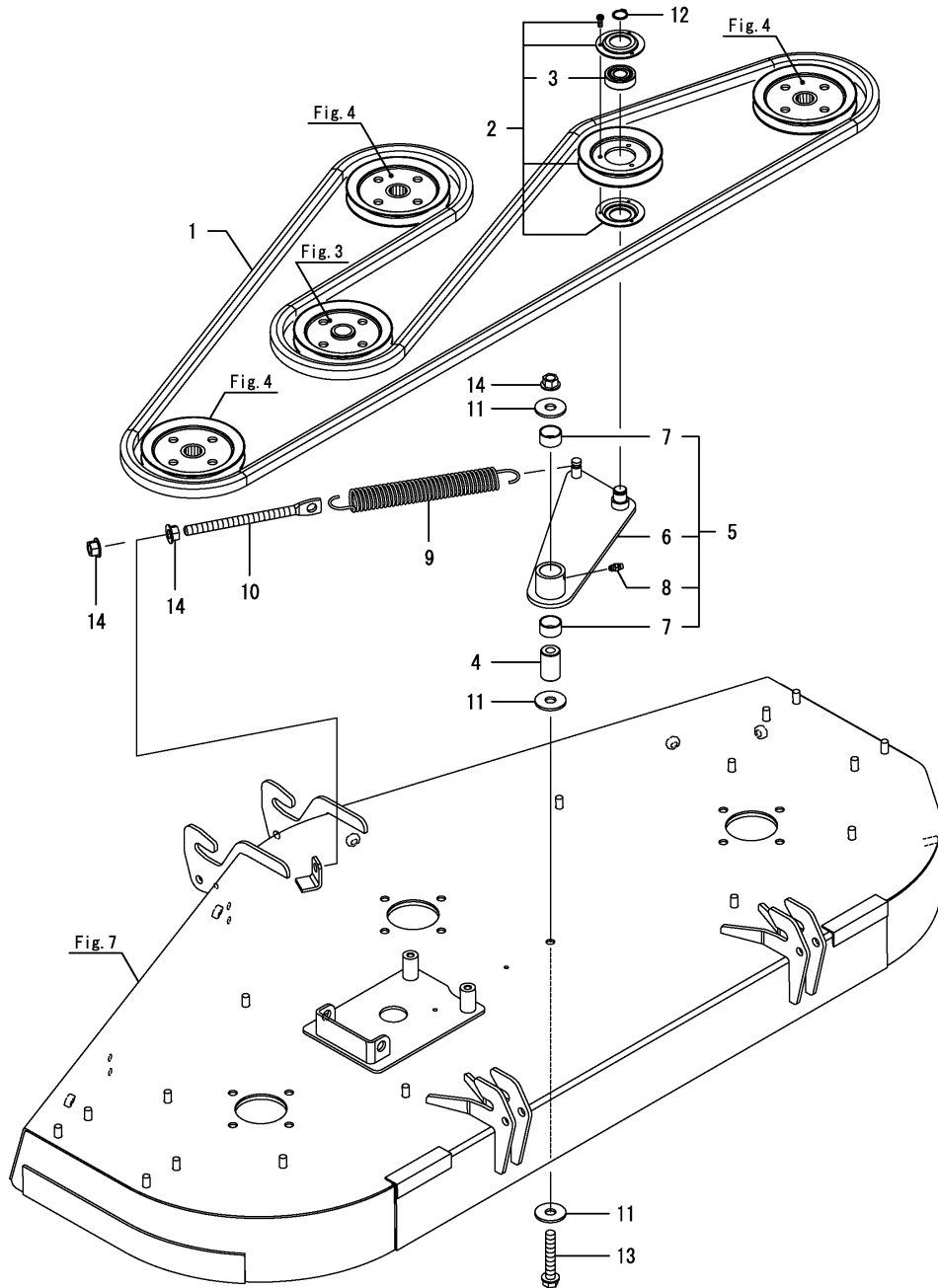


No.	Lev.	Parts No.	Description	Q'ty						I	R
				(A)	(B)	(C)	(D)	(E)	(F)		
1	1	1TW113-26100	SPINDLE ASSY	3							
2	2	1TW113-26110	CASE, SPINDLE	3							
3	2	1TW113-26130	SHAFT, SPINDLE	3							
4	2	1TW113-26150	LINER, SEAL	3							
5	2	22242-000250	RING, 25	3							
6	2	24101-062064	BEARING, BALL 6206	6							
7	2	24421-456209	SEAL, OIL TC456209	3							
8	2	24430-406206	SEAL, VC406206	3							
9	2	24761-010000	NIPPLE, GREASE M6F	3							
10	1	1TW113-26120	PLATE, SPINDLE	3							
11	1	1TW113-26170	COVER, SPINDLE	3							
12	1	1TW113-33110	PULLEY ASSY, DRIVEN	3							
13	1	22137-200000	WASHER, 20	3							
14	1	26106-120252	BOLT, M12X 25 PLATED	12							
15	1	26776-200002	NUT, LOCK M20	3							

Fig.5. PULLEY(TENSION)

(A)=M60FYT2
(B)=MLFYT2
(C)=

(D)=
(E)=
(F)=



No.	Lev.	Parts No.	Description	Qty						I	R
				(A)	(B)	(C)	(D)	(E)	(F)		
1	1	1TW114-18111	BELT, BB 130	1							
2	1	1TW113-37110	PULLEY ASSY, TENSION	1							
3	2	24101-062034	BEARING, BALL 6203	1							
4	1	1TW113-37150	COLLAR, TENSION	1							
5	1	1TW113-37200	ARM UNIT, TENSION	1							
6	2	1TW113-37210	ARM ASSY, TENSION	1							
7	2	24550-025150	BUSH, 25X15	2							
8	2	24761-010000	NIPPLE, GREASE M6F	1							
9	1	1TW113-37310	SPRING, TENSION	1							
10	1	1TW113-37321	ADJUSTER, TENS. SPRING	1							
11	1	22157-120000	WASHER, 12	3							
12	1	22242-000170	RING, 17	1							
13	1	26106-120702	BOLT, M12X 70 PLATED	1							
14	1	26366-120002	NUT, M12	3							

Fig.6. BLADE

(A)=M60FYT2
 (B)=MLFYT2
 (C)=

(D)=
 (E)=
 (F)=

No.	Lev.	Parts No.	Description	Q'ty						I	R
				(A)	(B)	(C)	(D)	(E)	(F)		
1	1	1TW113-45110	BLADE,MOWER 20.5	3							
2	1	1TW113-45120	WASHER, SPRING	3							
3	1	1TW113-45130	BOLT, REAMER M14X40	3							
4	1	22217-180000	WASHER, SPRING 18	3							

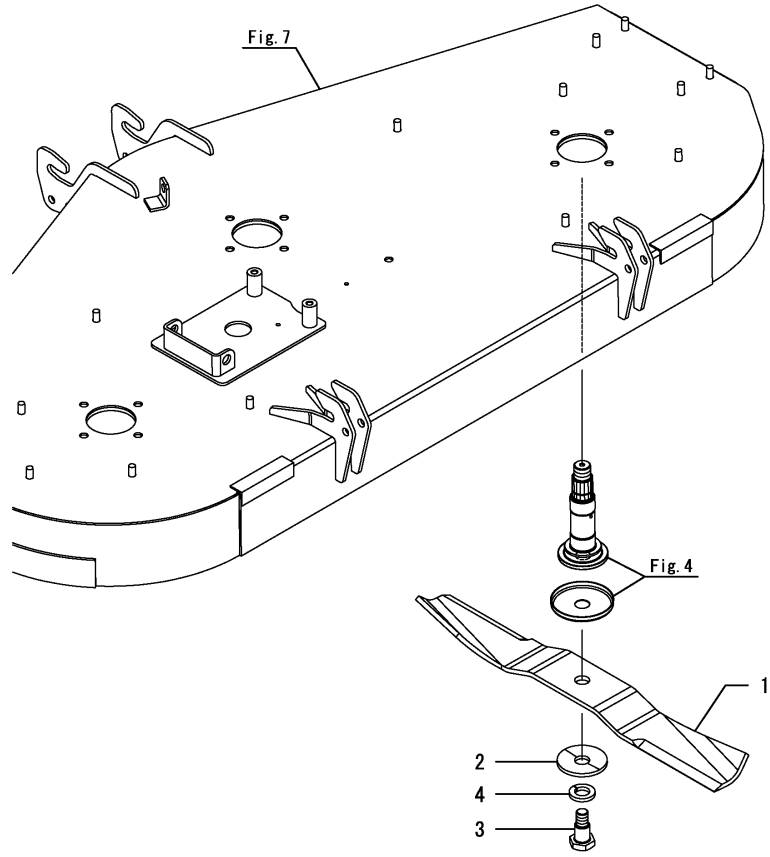
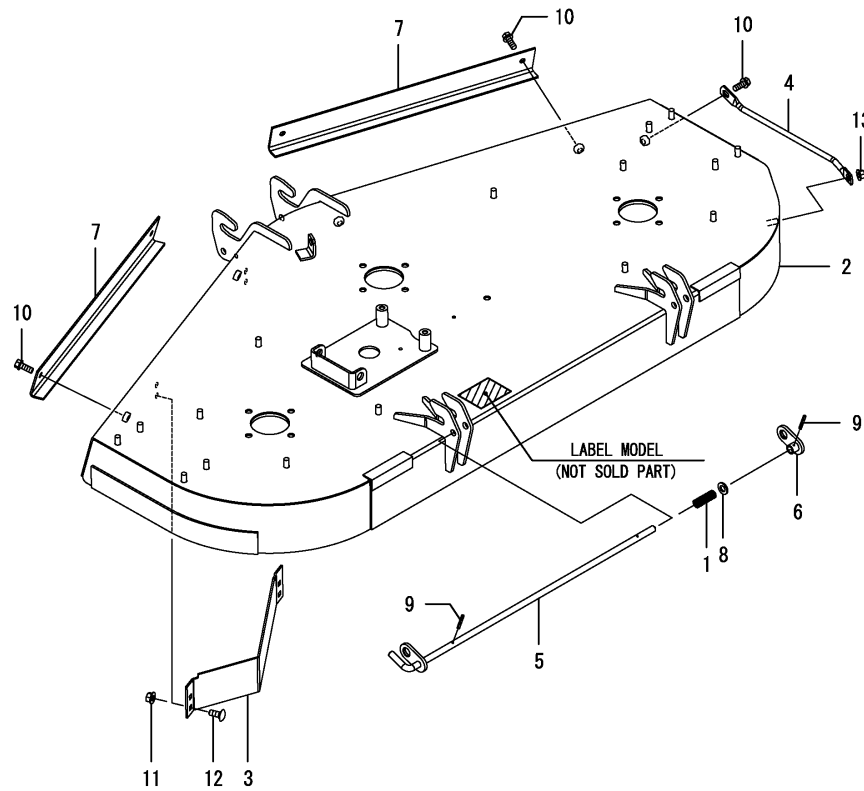


Fig.7. DECK

(A)=M60FYT2
(B)=MLFYT2
(C)=

(D)=
(E)=
(F)=



No.	Lev.	Parts No.	Description	Q'ty						I	R
				(A)	(B)	(C)	(D)	(E)	(F)		
1	1	1TW110-17480	SPRING, LOCK	1							
2	1	1TW114-51100	DECK ASSY, PL	1							
3	1	1TW113-51310	PLATE, GUIDE	1							
4	1	1TW113-51370	ROD, GUARD	1							
5	1	1TW114-52310	LEVER ASSY, LOCK	1							
6	1	1TW113-52350	PLATE ASSY, LOCK	1							
7	1	1TW113-58210	GUARD, FRONT	2							
8	1	22137-120000	WASHER, 12	1							
9	1	22351-030025	PIN, SPRING 3.0X25	2							
10	1	26106-100252	BOLT, M10X 25 PLATED	5							
11	1	26366-080002	NUT, M8	4							
12	1	26487-080203	BOLT, M8X20	4							
13	1	26366-100002	NUT, M10	1							

Fig.8. COVER

(A)=M60FYT2
(B)=MLFYT2
(C)=

(D)=
(E)=
(F)=

No.	Lev.	Parts No.	Description	Q'ty						I	R
				(A)	(B)	(C)	(D)	(E)	(F)		
1	1	194990-22140	NUT, M8	6							
2	1	1TW113-58110	COVER, L	1							
3	1	1TW113-58120	COVER, R	1							
4	1	1TW113-58130	GUIDE, COVER	2							
5	1	194448-61620	GROMMET, 20.5	2							
6	1	26106-080162	BOLT, M8X 16 PLATED	6							
7	1	26366-100002	NUT, M10	8							

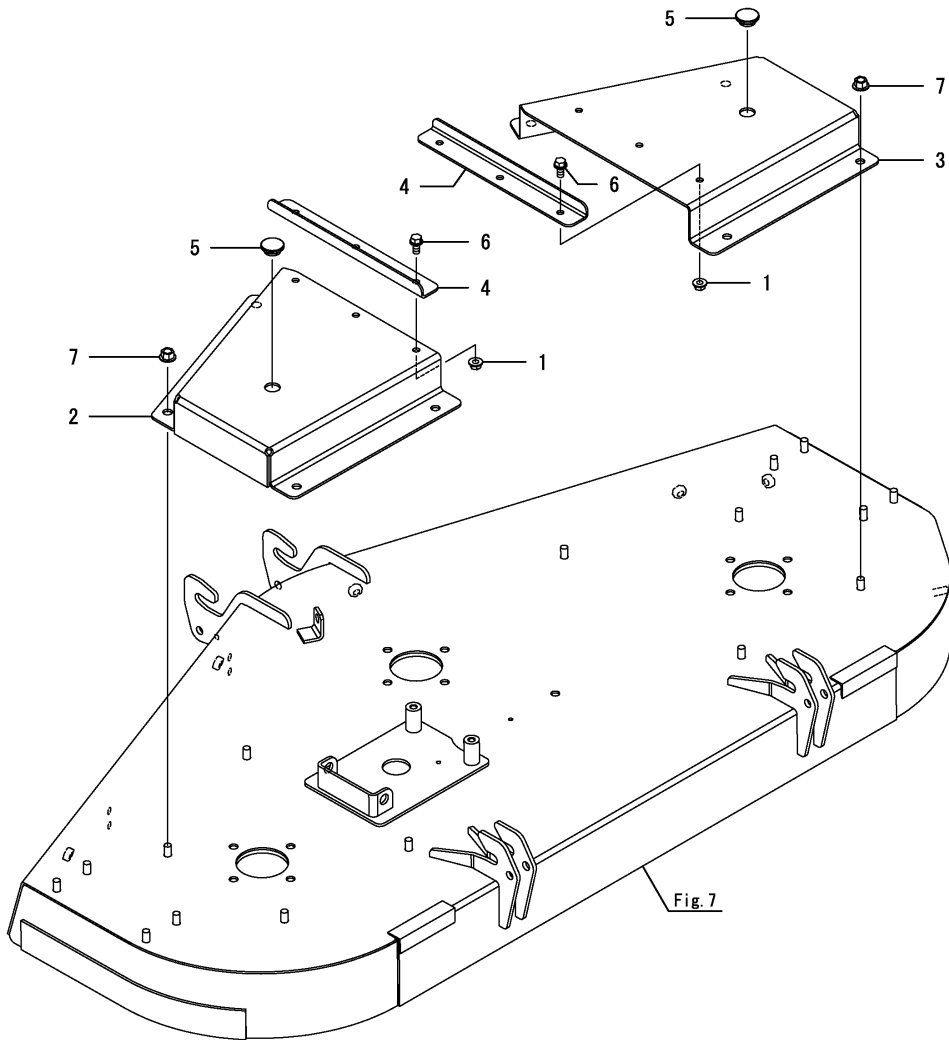


Fig.9. CHUTE

(A)=M60FYT2
(B)=MLFYT2
(C)=

(D)=
(E)=
(F)=

No.	Lev.	Parts No.	Description	Q'ty						I	R
				(A)	(B)	(C)	(D)	(E)	(F)		
1	1	1TW113-59130	STAY, CHUTE	2							
2	1	1TW113-59140	PIN, CHUTE	1							
3	1	1TW113-59150	SPRING, CHUTE HINGE	1							
4	1	1TW113-59300	CHUTE ASSY, PL	2							
5	1	22137-100000	WASHER, 10	2							
6	1	22137-120000	WASHER, 12	2							
7	1	22157-100000	WASHER, 10	2							
8	1	22242-000120	RING, 12	2							
9	1	26106-100252	BOLT, M10X 25 PLATED	2							
10	1	26347-100002	NUT, M10	2							

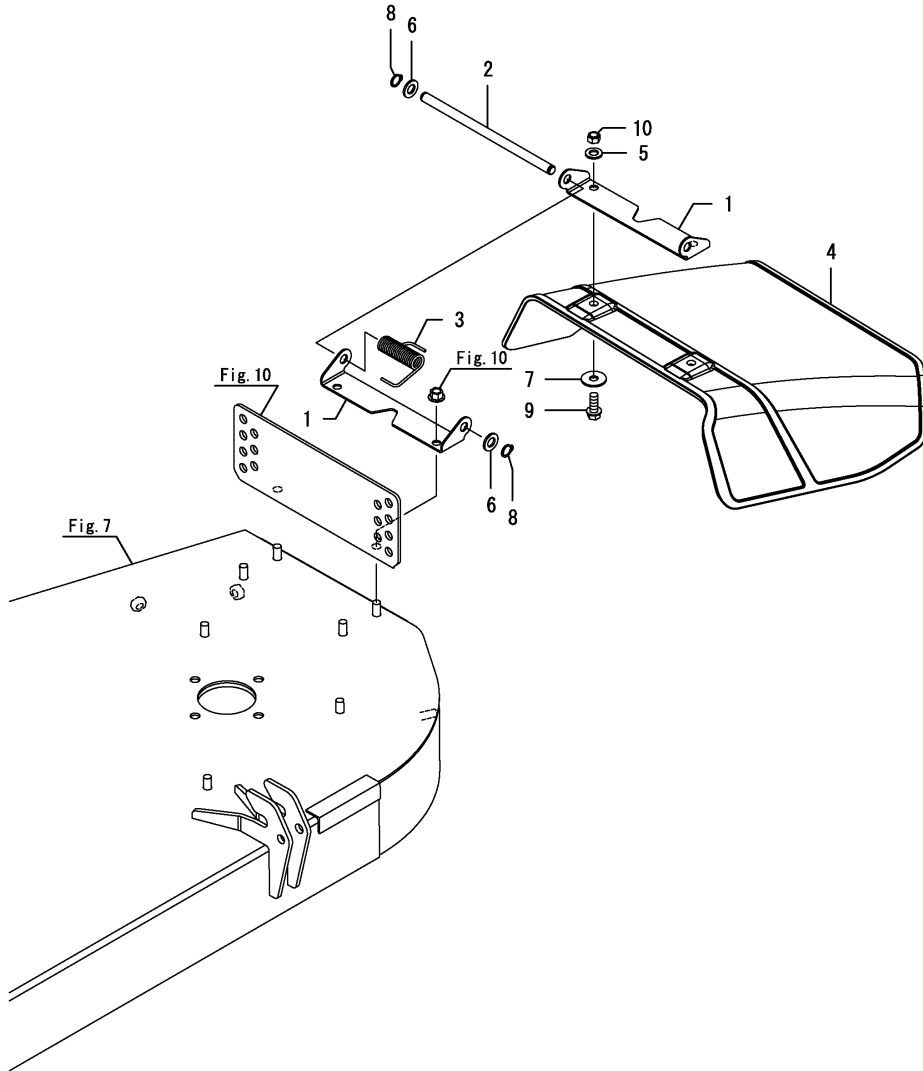
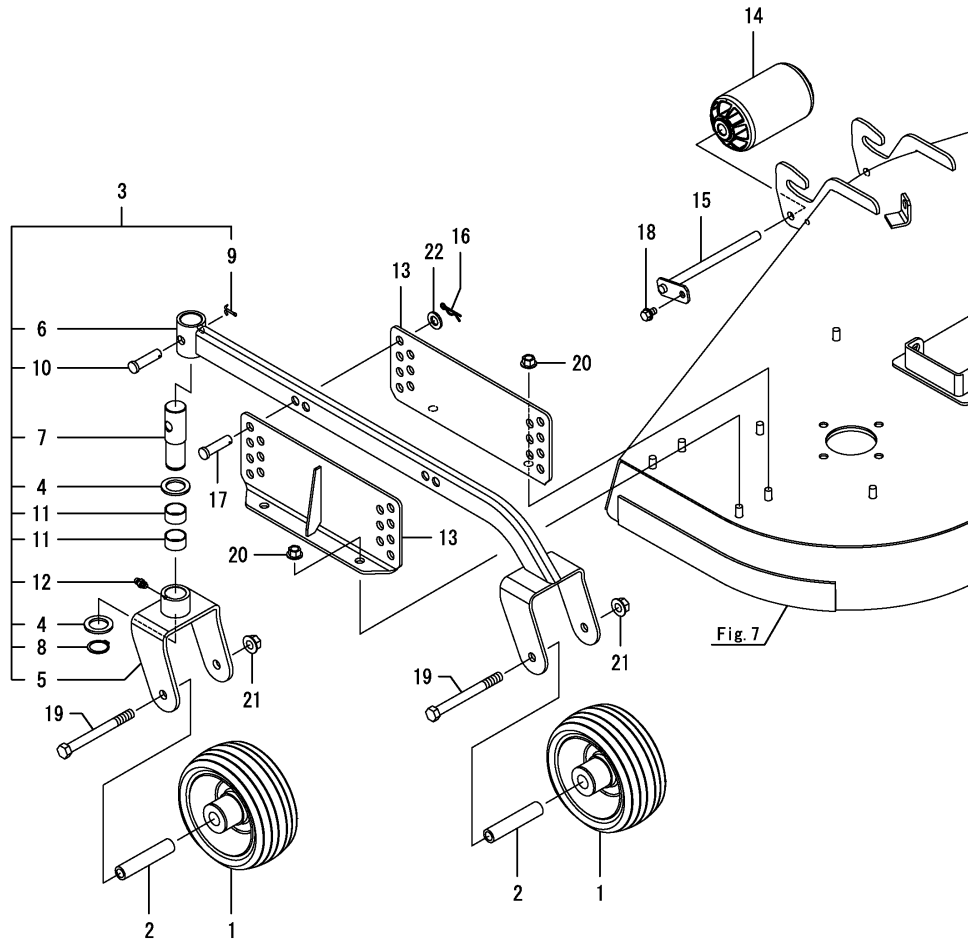


Fig.10. GAUGE



(A)=M60FYT2
(B)=MLFYT2
(C)=

(D)=
(E)=
(F)=

No.	Lev.	Parts No.	Description	Q'ty						I	R
				(A)	(B)	(C)	(D)	(E)	(F)		
1	1	1TW110-16210	WHEEL ASSY, GAUGE	4							
2	1	1TW110-16220	COLLAR, WHEEL	4							
3	1	1TW113-63100	BRACKET UNIT, GAUGE	2							
4	2	1TW110-16330	WASHER, FLAT	4							
5	2	1TW110-16350	BRACKET ASSY, WHEEL	2							
6	2	1TW113-63110	BRACKET ASSY, GAUGE	2							
7	2	1TW113-63210	SHAFT, GAUGE	2							
8	2	22242-000250	RING, 25	2							
9	2	22417-250250	PIN, COTTER 2.5X25	2							
10	2	22487-120400	PIN, H12X40	2							
11	2	24550-025150	BUSH, 25X15	4							
12	2	24761-010000	NIPPLE, GREASE M6F	2							
13	1	1TW113-63310	STAY ASSY, GAUGE	4							
14	1	1TW113-66110	ROLLER, FRONT	1							
15	1	1TW113-66150	PIN ASSY, ROLLER	1							
16	1	22372-120000	PIN, SNAP 12	4							
17	1	22487-120400	PIN, H12X40	4							
18	1	26106-080122	BOLT, M8X 12 PLATED	1							
19	1	26116-121202	BOLT, M12X120 PLATED	4							
20	1	26366-100002	NUT, M10	8							
21	1	26366-120002	NUT, M12	4							
22	1	22137-120000	WASHER, 12	4							

Fig.11. DOCUMENT

(A)=M60FYT2
(B)=MLFYT2
(C)=

(D)=
(E)=
(F)=

No.	Lev.	Parts No.	Description	Q'ty						I	R
				(A)	(B)	(C)	(D)	(E)	(F)		
1	1	0A059-EN0060	OPERATION MANUAL	1							

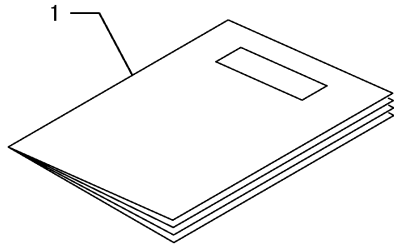
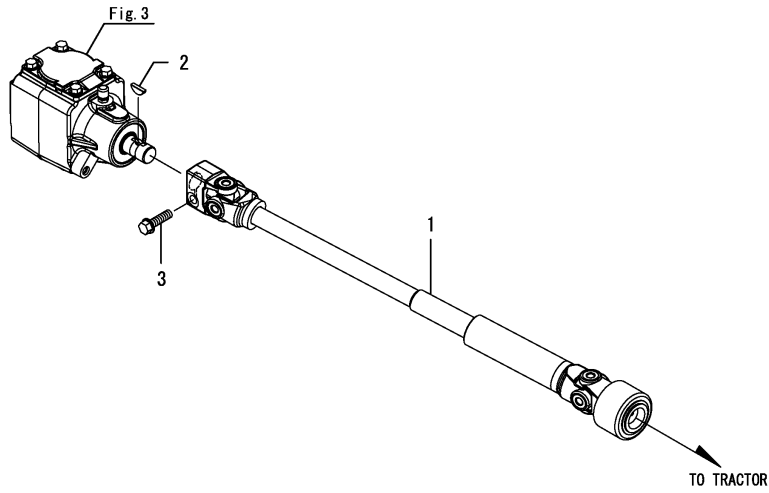


Fig.12. DRIVE SHAFT

(A)=M60FYT2
(B)=MLFYT2
(C)=

(D)=
(E)=
(F)=

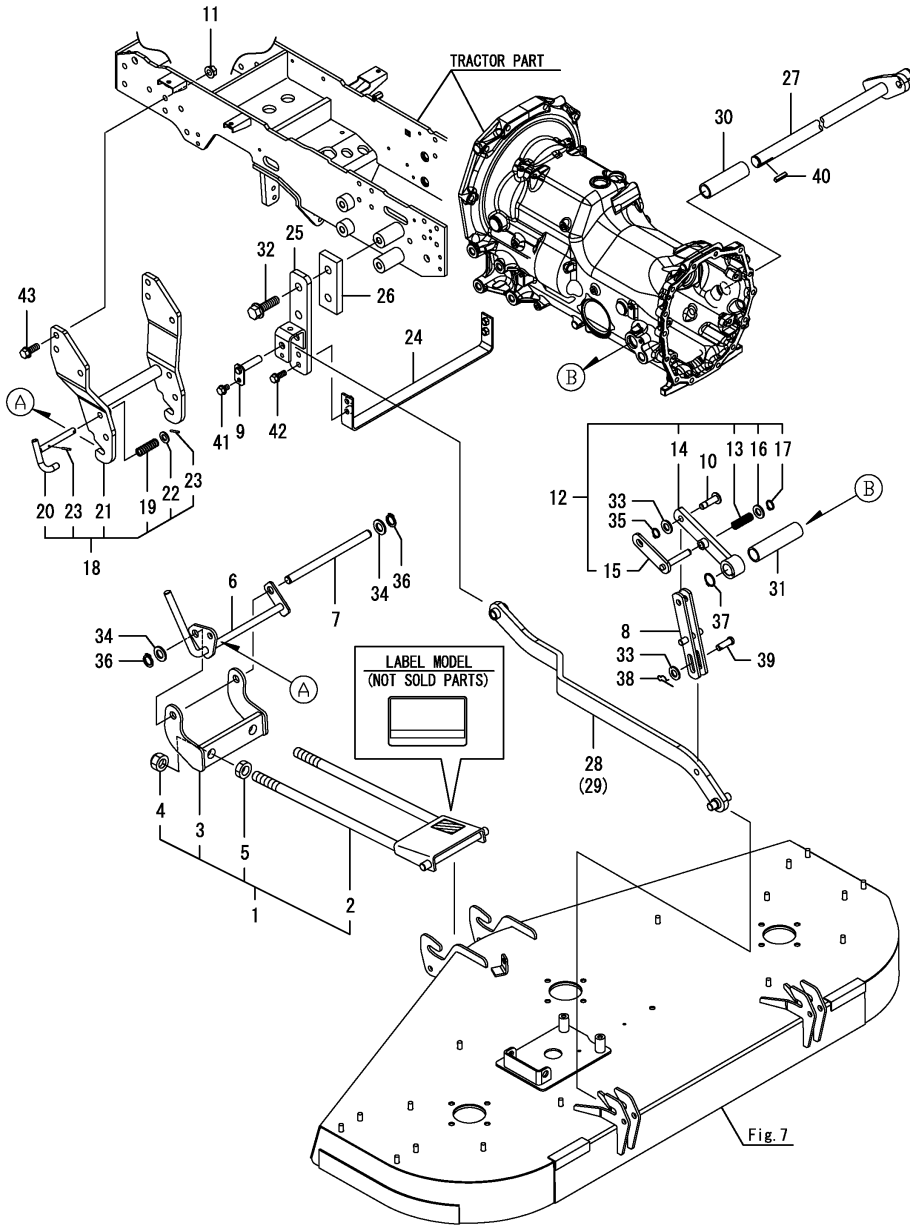
No.	Lev.	Parts No.	Description	Q'ty						I	R	
				(A)	(B)	(C)	(D)	(E)	(F)			
1	1	1TW113-16100	SHAFT ASSY, DRIVE		1							
2	1	1TW113-16310	KEY,WOODRUFF 5X22		1							
3	1	26106-100352	BOLT, M10X 35 PLATED		1							



Remarks

Note : "Effective Machine No." of the Link Section is indicated on the Model Label which is shown in Fig.13.

Fig.13. FRONT LINK



(A)=M60FYT2
(B)=MLFYT2
(C)=

(D)=
(E)=
(F)=

No.	Lev.	Parts No.	Description	Q'ty						I	R
				(A)	(B)	(C)	(D)	(E)	(F)		
1	1	1TW110-17100	LINK UNIT, FRONT		1						
2	2	1TW110-17110	LINK ASSY, FRONT		1						
3	2	1TW110-17170	FULCRUM ASSY, FRONT		1						
4	2	26347-200002	NUT, M20		2						
5	2	26756-200002	NUT, LOCK M20		2						
6	1	1TW110-17210	LINK ASSY, FULCRUM		1						
7	1	1TW110-17250	PIN, FULCRUM		1						
8	1	1TW110-17350	LINK ASSY, LIFT		2						
9	1	1TW110-17910	PIN ASSY, BRACKET		2						
10	1	1TW110-17950	PIN ASSY, LIFT		2						
11	1	194990-22160	NUT, M12		6						
12	1	1TW114-71400	ARM UNIT, SHAFT		2						
13	2	1TW110-17480	SPRING, LOCK		2						
14	2	1TW114-71410	ARM ASSY, SHAFT		2						
15	2	1TW114-71450	PLATE ASSY, LOCK		2						
16	2	22137-120000	WASHER, 12		2						
17	2	22242-000120	RING, 12		2						
18	1	1TW114-71500	BRACKET UNIT, FRONT		1						
19	2	1TW110-17480	SPRING, LOCK		1						
20	2	1TW110-17560	PIN ASSY, HOLD		1						
21	2	1TW114-71510	BRACKET ASSY, FRONT		1						
22	2	22137-120000	WASHER, 12		1						
23	2	22351-030025	PIN, SPRING 3.0X25		2						
24	1	1TW114-71610	BRACKET ASSY, STOP		1						
25	1	1TW114-71710	BRACKET ASSY, ARM		2						
26	1	1TW114-71750	PLATE, SPACER		2						
27	1	1TW114-71850	SHAFT ASSY, LIFT		1						
28	1	1TW114-72110	ARM ASSY, LIFT LH		1						
29	1	1TW114-72120	ARM ASSY, LIFT RH		1						
30	1	1TW114-72160	COLLAR, LIFT RH		1						
31	1	1TW114-72170	COLLAR, LIFT LH		1						
32	1	198220-75810	BOLT, M16X55		4						
33	1	22137-120000	WASHER, 12		4						
34	1	22137-160000	WASHER, 16		2						
35	1	22242-000120	RING, 12		2						
36	1	22242-000160	RING, 16		2						
37	1	22242-000250	RING, 25		3						
38	1	22372-120000	PIN, SNAP 12		2						
39	1	22487-120300	PIN, H12X 30		2						
40	1	22550-070300	KEY 7X30		2						
41	1	26106-080122	BOLT, M8X 12 PLATED		2						
42	1	26106-100252	BOLT, M10X 25 PLATED		4						
43	1	26106-120352	BOLT, M12X 35 PLATED		6						

Remarks

Note : "Effective Machine No." of the Link Section is indicated on the Model Label which is shown in Fig.13.

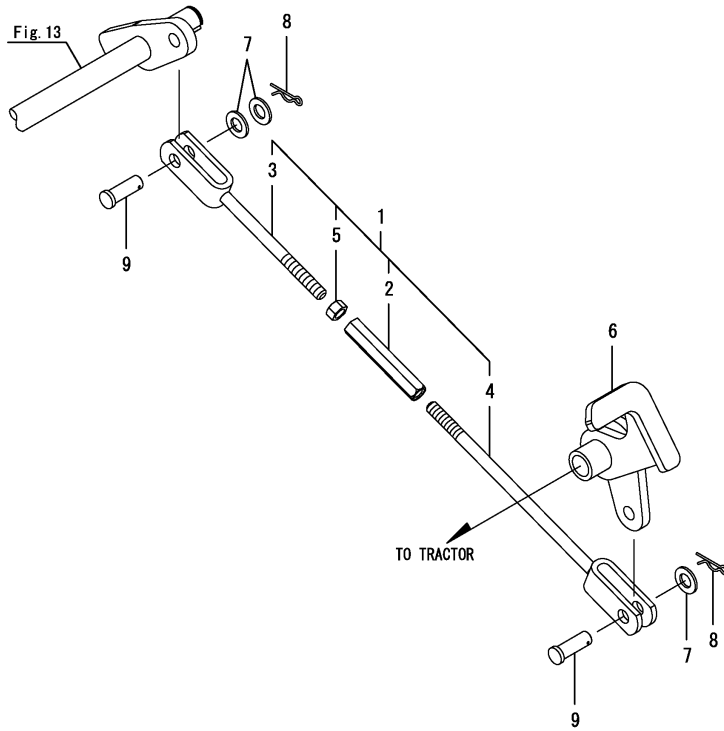
N:Old $\begin{matrix} \text{Yes} \\ \text{No} \end{matrix}$ New, Q:Old $\begin{matrix} \text{No} \\ \text{Yes} \end{matrix}$ New, R:Old $\begin{matrix} \text{Yes} \\ \text{Yes} \end{matrix}$ New, S:Old $\begin{matrix} \text{No} \\ \text{No} \end{matrix}$ New, W:Add, Z:Discontinued, F:Interchangeable by set, K:Q'ty Change

Fig.14. LIFT SHAFT

(A)=M60FYT2
(B)=MLFYT2
(C)=

(D)=
(E)=
(F)=

No.	Lev.	Parts No.	Description	Qty						I	R	
				(A)	(B)	(C)	(D)	(E)	(F)			
1	1	1TW114-73110	ROD UNIT, REAR		1							
2	2	1TW110-18521	TURNBUCKLE		1							
3	2	1TW110-18531	ROD ASSY, A		1							
4	2	1TW114-73170	ROD ASSY, B		1							
5	2	26716-120002	NUT, M12		1							
6	1	1TW114-73210	BRACKET ASSY,3P LINK		1							
7	1	22137-140000	WASHER, 14		3							
8	1	22372-140000	PIN, SNAP 14		2							
9	1	22487-140350	PIN, H14X 35		2							



Remarks

Note : "Effective Machine No." of the Link Section is indicated on the Model Label which is shown in Fig.13.

Parts No. Index

Parts No.	Fig. No.	Ref. No.
0A059-EN0060	11	1
194448-61620	8	5
194990-22140	8	1
194990-22160	13	11
198220-75810	13	32
1A8330-65560	1	1
1TW110-16210	10	1
1TW110-16220	10	2
1TW110-16330	10	4
1TW110-16350	10	5
1TW110-17100	13	1
1TW110-17110	13	2
1TW110-17170	13	3
1TW110-17210	13	6
1TW110-17250	13	7
1TW110-17350	13	8
1TW110-17480	7	1
	13	13
		19
1TW110-17560	13	20
1TW110-17910	13	9
1TW110-17950	13	10
1TW110-18521	14	2
1TW110-18531	14	3
1TW113-01210	2	1
1TW113-01220	2	2
1TW113-01230	2	3
1TW113-01240	2	4
1TW113-01250	2	5
1TW113-16100	12	1
1TW113-16310	12	2
1TW113-21100	3	1
1TW113-21410	3	2
1TW113-21610	3	3
1TW113-26100	4	1
1TW113-26110	4	2
1TW113-26120	4	10
1TW113-26130	4	3
1TW113-26150	4	4
1TW113-26170	4	11
1TW113-31110	3	4
1TW113-31150	3	5
1TW113-33110	4	12
1TW113-37110	5	2
1TW113-37150	5	4
1TW113-37200	5	5
1TW113-37210	5	6
1TW113-37310	5	9
1TW113-37321	5	10
1TW113-45110	6	1

Parts No.	Fig. No.	Ref. No.
1TW113-45120	6	2
1TW113-45130	6	3
1TW113-51310	7	3
1TW113-51370	7	4
1TW113-52350	7	6
1TW113-58110	8	2
1TW113-58120	8	3
1TW113-58130	8	4
1TW113-58210	7	7
1TW113-59130	9	1
1TW113-59140	9	2
1TW113-59150	9	3
1TW113-59300	9	4
1TW113-63100	10	3
1TW113-63110	10	6
1TW113-63210	10	7
1TW113-63310	10	13
1TW113-66110	10	14
1TW113-66150	10	15
1TW114-18111	5	1
1TW114-51100	7	2
1TW114-52310	7	5
1TW114-71400	13	12
1TW114-71410	13	14
1TW114-71450	13	15
1TW114-71500	13	18
1TW114-71510	13	21
1TW114-71610	13	24
1TW114-71710	13	25
1TW114-71750	13	26
1TW114-71850	13	27
1TW114-72110	13	28
1TW114-72120	13	29
1TW114-72160	13	30
1TW114-72170	13	31
1TW114-73110	14	1
1TW114-73170	14	4
1TW114-73210	14	6
22137-100000	9	5
22137-120000	7	8
	9	6
	10	22
	13	16
		22
		33
22137-140000	14	7
22137-160000	13	34
22137-200000	4	13
22157-100000	9	7
22157-120000	3	6

Parts No.	Fig. No.	Ref. No.
22157-120000	5	11
22217-180000	6	4
22242-000120	9	8
	13	17
		35
22242-000160	3	7
	13	36
22242-000170	5	12
22242-000250	4	5
	10	8
	13	37
22351-030025	7	9
	13	23
22372-120000	10	16
	13	38
22372-140000	14	8
22417-250250	10	9
22487-120300	13	39
22487-120400	10	10
		17
22487-140350	14	9
22550-070300	13	40
24101-062034	5	3
24101-062064	4	6
24421-456209	4	7
24430-406206	4	8
24550-025150	5	7
	10	11
24761-010000	4	9
	5	8
	10	12
26106-080122	10	18
	13	41
26106-080162	8	6
26106-100252	3	8
	7	10
	9	9
	13	42
26106-100352	12	3
26106-120252	4	14
26106-120352	13	43
26106-120702	5	13
26116-121202	10	19
26347-100002	9	10
26347-200002	13	4
26366-080002	7	11
26366-100002	7	13
	8	7
	10	20
26366-120002	5	14

Parts No.	Fig. No.	Ref. No.
26366-120002	10	21
26487-080203	7	12
26716-120002	14	5
26756-200002	13	5
26776-200002	4	15