

0CNP6-M00200EN

Contents

Fig. No. Fig. Name

MOWER DECK

1. LABEL(SAFETY)
2. LABEL
5. DECK
6. GAUGE
10. DOCUMENT

LINK

3. DRIVE SHAFT(SA221)
4. DRIVE SHAFT(SA324 & SA424)
7. FRONT LINK (SA221)
8. FRONT LINK (SA324 & SA424)
9. LIFT SHAFT

Fig. No. Fig. Name

Fig.2. LABEL

(A)=M60SA
(B)=MLSA22
(C)=MLSA32

(D)=
(E)=
(F)=

No.	Lev.	Parts No.	Description	Q'ty						I	R
				(A)	(B)	(C)	(D)	(E)	(F)		
1	1	1TN322-01530	LABEL, YANMAR	1							
2	1	1TW110-10160	LABEL, M60	1							

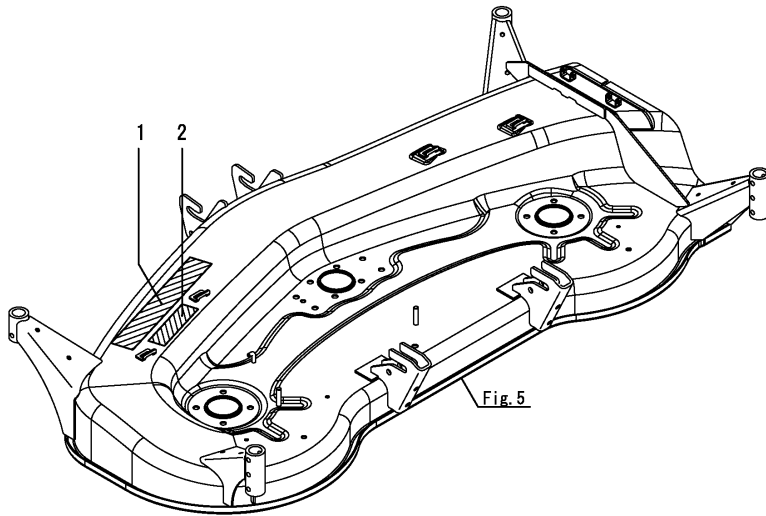
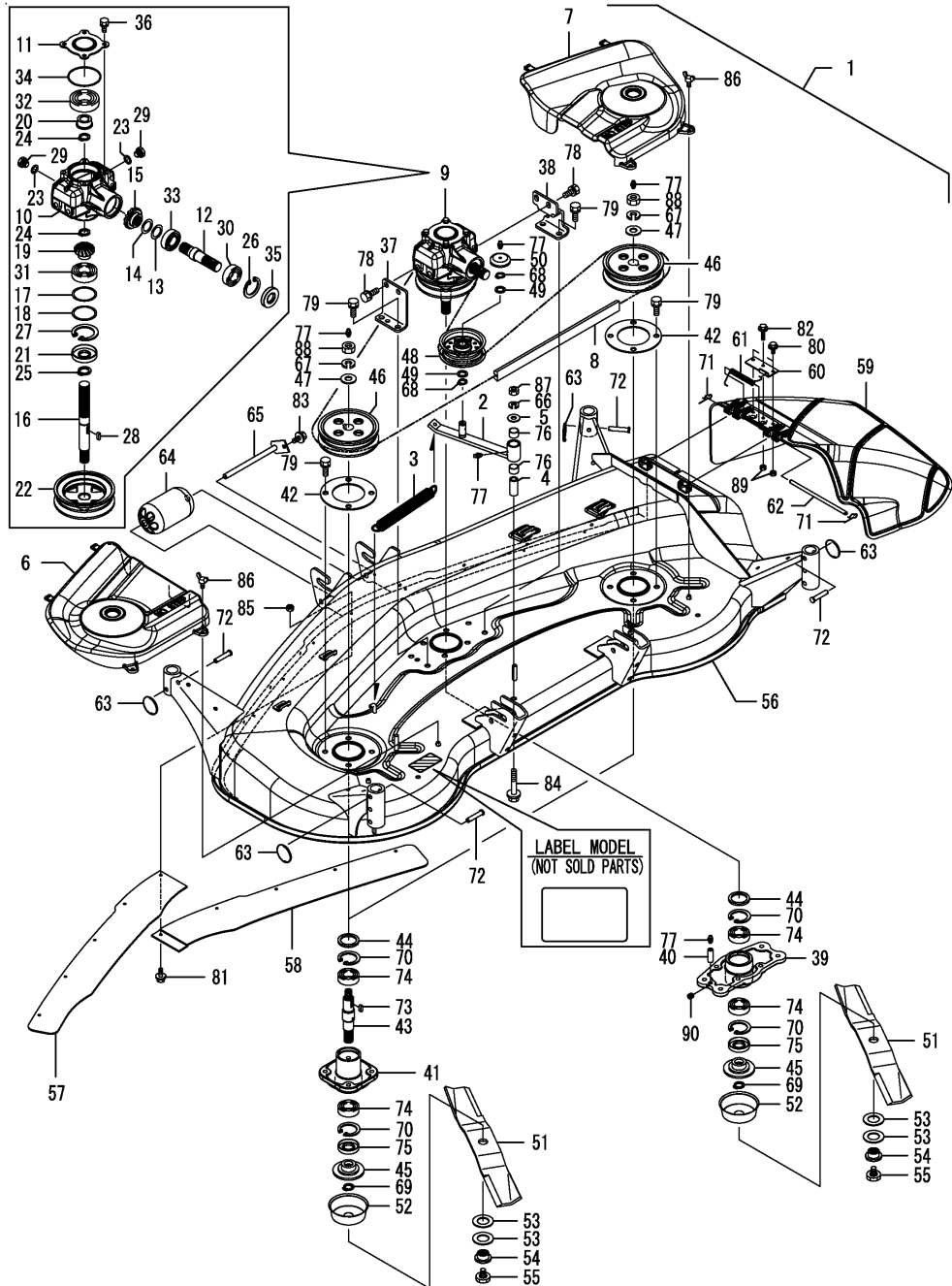


Fig.5. DECK

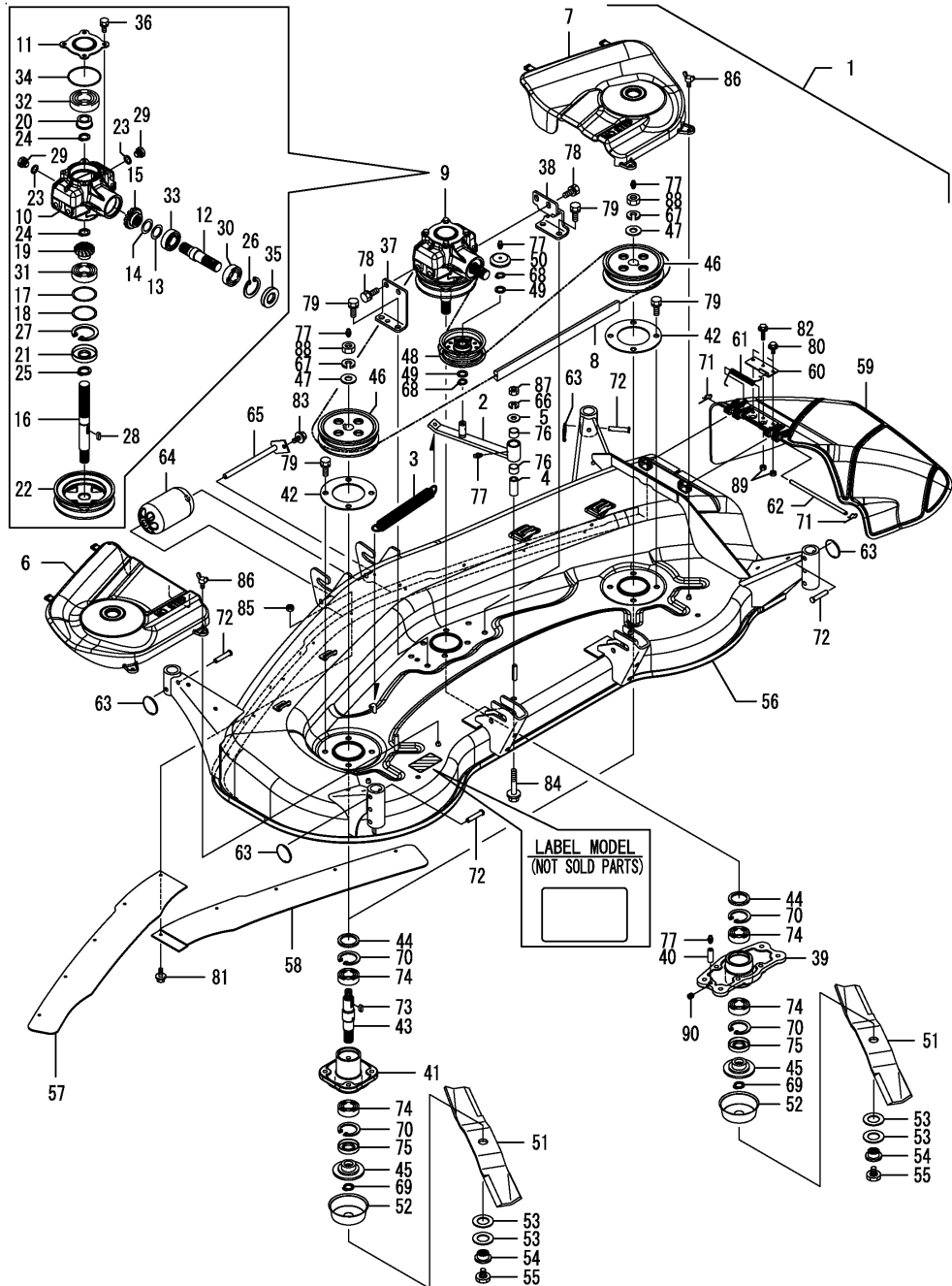


(A)=M60SA
(B)=MLSA22
(C)=MLSA32

(D)=
(E)=
(F)=

No.	Lev.	Parts No.	Description	Q'ty						I	R
				(A)	(B)	(C)	(D)	(E)	(F)		
1	1	1TW110-15000	MOWER KIT, MID 60	1							
2	2	1TW110-11210	ARM, TENSION	1							
3	2	1TW110-11250	SPRING, TENSION	1							
4	2	1TW110-11270	COLLAR, TENSION	1							
5	2	1TW110-11280	WASHER, TENSION	1							
6	2	1TW110-11510	COVER, BELT LH	1							
7	2	1TW110-11520	COVER, BELT RH	1							
8	2	1TW110-11810	BELT, V 118 MULTI	1							
9	2	1TW110-12100	GEARBOX ASSY	1							
10	3	1TW110-12110	CASE, GEAR	1							
11	3	1TW110-12120	PLATE, CASE COVER	1							
12	3	1TW110-12210	SHAFT, INPUT	1							
13	3	1TW110-12230	SHIM, 0.2	1							
14	3	1TW110-12240	SHIM, 0.3	1							
15	3	1TW110-12250	GEAR, SPIRAL BEVEL21	1							
16	3	1TW110-12310	SHAFT, CENTER	1							
17	3	1TW110-12330	SHIM, 0.2	1							
18	3	1TW110-12340	SHIM, 0.3	1							
19	3	1TW110-12350	GEAR, SPIRAL BEVEL16	1							
20	3	1TW110-12370	COLLAR, BEARING	1							
21	3	1TW110-12710	SEAL, TC256210	1							
22	3	1TW110-13110	PULLEY, DRIVE	1							
23	3	22190-120002	WASHER, SEAL 12	2							
24	3	22242-000210	RING, 21	2							
25	3	22242-000250	RING, 25	1							
26	3	22252-000520	RING, 52	1							
27	3	22252-000620	RING, 62	1							
28	3	22512-070200	KEY, 7X 20	1							
29	3	23887-120002	PLUG, 12	2							
30	3	24101-062054	BEARING, BALL 6205	1							
31	3	24101-062064	BEARING, BALL 6206	1							
32	3	24101-062074	BEARING, BALL 6207	1							
33	3	24148-002054	BEARING, NJ205	1							
34	3	24341-000800	O-RING, 1AS80.0	1							
35	3	24421-255210	SEAL, OIL TC255210	1							
36	3	26013-080162	BOLT, M8X 16	4							
37	2	1TW110-12150	BRACKET, LH GEARBOX	1							
38	2	1TW110-12160	BRACKET, RH GEARBOX	1							
39	2	1TW110-12610	HOLDER, CENTER	1							
40	2	1TW110-12620	PIPE, EXTENSION	1							
41	2	1TW110-12650	HOLDER, SIDE	2							
42	2	1TW110-12660	PLATE, SIDE HOLDER	2							
43	2	1TW110-12670	SHAFT, SIDE	2							
44	2	1TW110-12680	SEAL, DUST	3							
45	2	1TW110-12690	BOSS, CUTTER	3							
46	2	1TW110-13310	PULLEY, SIDE	2							
47	2	1TW110-13320	WASHER, PULLEY	2							
48	2	1TW110-13710	PULLEY, TENSION	1							
49	2	1TW110-13730	WASHER, TENSION PIVOT	2							
50	2	1TW110-13750	COVER, TENSION	1							
51	2	1TW110-14510	BLADE	3							

Fig.5. DECK



(A)=M60SA
(B)=MLSA22
(C)=MLSA32

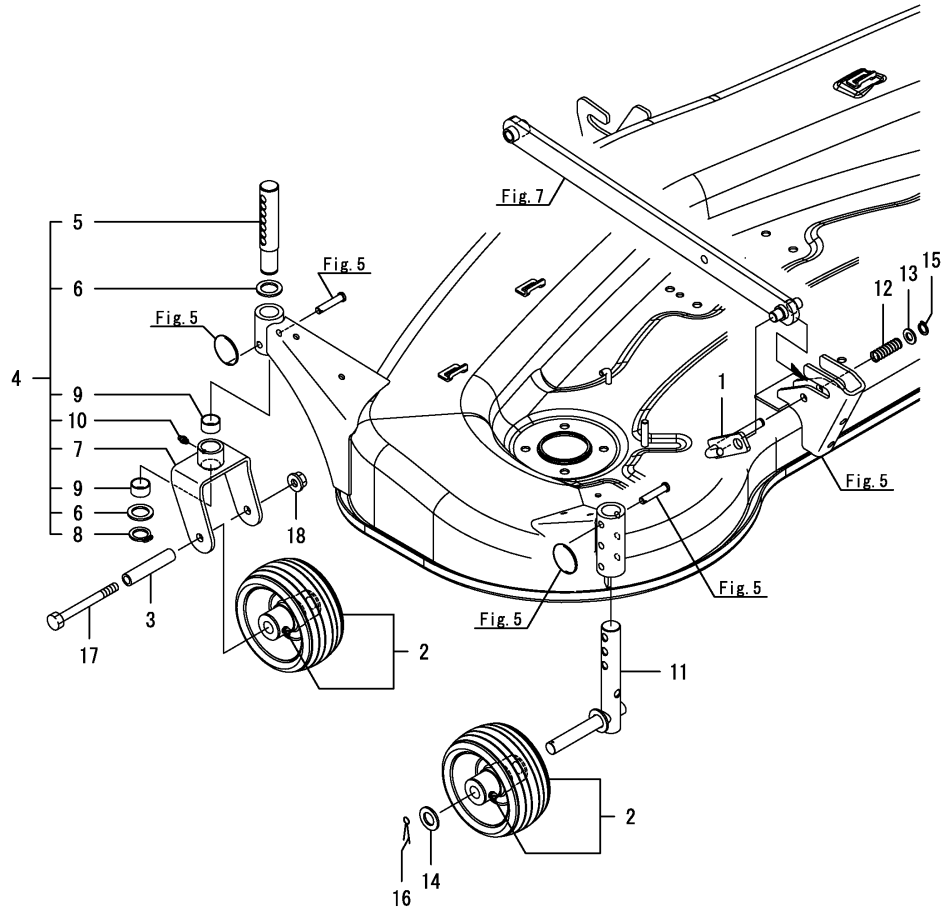
(D)=
(E)=
(F)=

No.	Lev.	Parts No.	Description	Qty						I	R
				(A)	(B)	(C)	(D)	(E)	(F)		
52	2	1TW110-14520	COVER, DUST	3							
53	2	1TW110-14530	SPRING, BLADE HOLD	6							
54	2	1TW110-14540	BOSS, BLADE	3							
55	2	1TW110-14550	BOLT, BLADE HOLD	3							
56	2	1TW110-15090	M ASSY, DECK	1							
57	2	1TW110-15850	GUARD, LH FRONT	1							
58	2	1TW110-15860	GUARD, RH FRONT	1							
59	2	1TW110-15900	M ASSY, DISCHARGE	1							
60	2	1TW110-15930	PLATE, DISCHARGE	1							
61	2	1TW110-15950	SPRING, TORQUE	1							
62	2	1TW110-15960	PIN, HINGE COVER	1							
63	2	1TW110-16250	RING, WHEEL SHAF	4							
64	2	1TW110-16610	ROLLER, FRONT	1							
65	2	1TW110-16650	PIN ASSY, ROLLER	1							
66	2	22217-120000	WASHER, SPRING 12	1							
67	2	22217-160000	WASHER, SPRING 16	2							
68	2	22242-000170	RING, 17	2							
69	2	22242-000220	RING, 22	3							
70	2	22252-000520	RING, 52	6							
71	2	22372-080000	PIN, SNAP 8	2							
72	2	22487-100450	PIN 10X 45	4							
73	2	22512-070180	KEY, 7X 18	2							
74	2	24101-062054	BEARING, BALL 6205	6							
75	2	24421-255210	SEAL, OIL TC255210	3							
76	2	24550-020150	BUSH, 20X15	2							
77	2	24761-010000	NIPPLE, GREASE M6F	5							
78	2	26013-120202	BOLT, M12X 20	4							
79	2	26013-120252	BOLT, M12X 25	12							
80	2	26106-060122	BOLT, M6X 12 PLATED	2							
81	2	26106-060142	BOLT, M6X 14 PLATED	9							
82	2	26106-060252	BOLT, M6X 25 PLATED	1							
83	2	26106-080122	BOLT, M8X 12 PLATED	1							
84	2	26106-120702	BOLT, M12X 70 PLATED	1							
85	2	26347-060002	NUT, M6	9							
86	2	26646-060122	WING BOLT M 6X12	4							
87	2	26716-120002	NUT, M12	1							
88	2	26716-160002	NUT, M16	2							
89	2	26856-060002	NUT, M6	3							
90	2	26973-060062	SCREW, M6X 6	1							

Fig.6. GAUGE

(A)=M60SA
(B)=MLSA22
(C)=MLSA32

(D)=
(E)=
(F)=



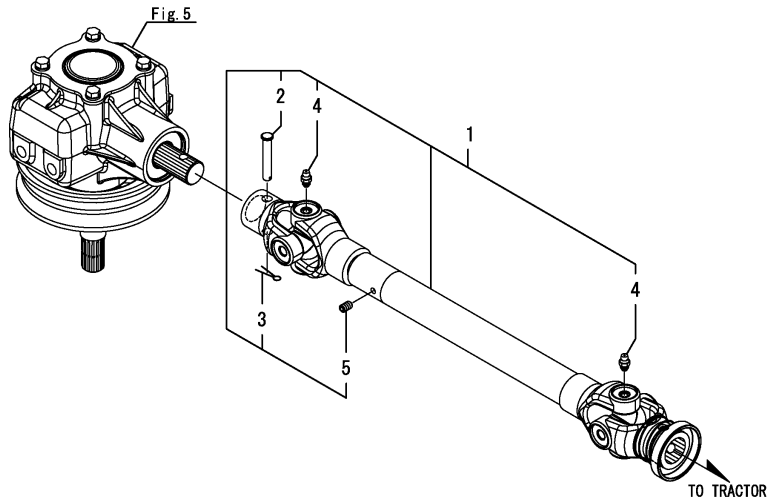
No.	Lev.	Parts No.	Description	Q'ty						I	R
				(A)	(B)	(C)	(D)	(E)	(F)		
1	1	1TW110-15710	STOPPER ASSY, LEVER	2							
2	1	1TW110-16210	WHEEL ASSY, GAUGE	4							
3	1	1TW110-16220	COLLAR, WHEEL	2							
4	1	1TW110-16300	SHAFT UNIT, FRONT	2							
5	2	1TW110-16310	SHAFT, GAUGE FRONT	2							
6	2	1TW110-16330	WASHER, FLAT	4							
7	2	1TW110-16350	BRACKET ASSY, WHEEL	2							
8	2	22242-000250	RING, 25	2							
9	2	24550-025150	BUSH, 25X15	4							
10	2	24761-010000	NIPPLE, GREASE M6F	2							
11	1	1TW110-16410	SHAFT ASSY, WHEEL	2							
12	1	1TW110-17480	SPRING, LOCK	2							
13	1	22137-120000	WASHER, 12	2							
14	1	22137-200000	WASHER, 20	2							
15	1	22242-000120	RING, 12	2							
16	1	22417-320320	PIN, COTTER 3.2X32	2							
17	1	26116-121202	BOLT, M12X120 PLATED	2							
18	1	26366-120002	NUT, M12	2							

Fig.3. DRIVE SHAFT(SA221)

(A)=M60SA
(B)=MLSA22
(C)=MLSA32

(D)=
(E)=
(F)=

No.	Lev.	Parts No.	Description	Qty						I	R	
				(A)	(B)	(C)	(D)	(E)	(F)			
1	1	1TW110-11600	SHAFT ASSY, DRIVE		1							
2	2	1TW110-11750	PIN, 8X50		1							
3	2	22417-200250	PIN, COTTER 2.0X25		1							
4	2	24761-010000	NIPPLE, GREASE M6F		2							
5	2	26979-060102	SCREW, M6X10		1							



Remarks

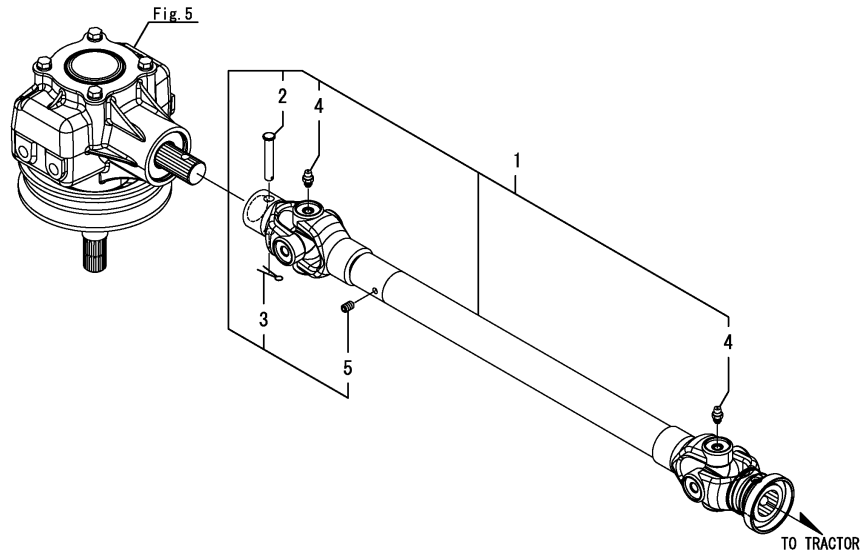
Note : "Effective Machine No." of the Link Section is indicated on the Model Label which is shown in Fig.7.

Fig.4. DRIVE SHAFT(SA324 & SA424)

(A)=M60SA
(B)=MLSA22
(C)=MLSA32

(D)=
(E)=
(F)=

No.	Lev.	Parts No.	Description	Q'ty						I	R
				(A)	(B)	(C)	(D)	(E)	(F)		
1	1	1TW111-11600	SHAFT ASSY, DRIVE			1					
2	2	1TW110-11750	PIN, 8X50			1					
3	2	22417-200250	PIN, COTTER 2.0X25			1					
4	2	24761-010000	NIPPLE, GREASE M6F			2					
5	2	26979-060102	SCREW, M6X10			1					



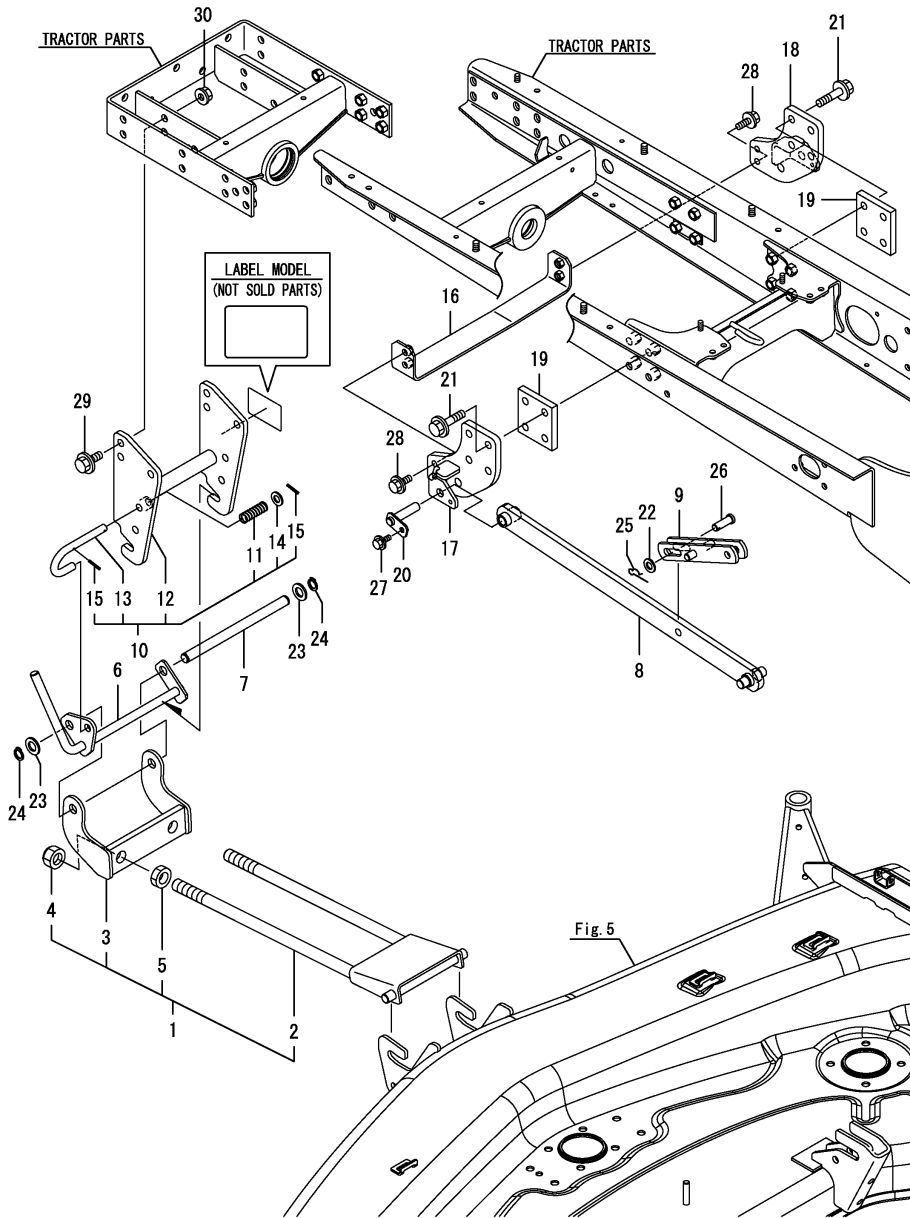
Remarks

Note : "Effective Machine No." of the Link Section is indicated on the Model Label which is shown in Fig.8.

Fig.7. FRONT LINK (SA221)

(A)=M60SA
(B)=MLSA22
(C)=MLSA32

(D)=
(E)=
(F)=



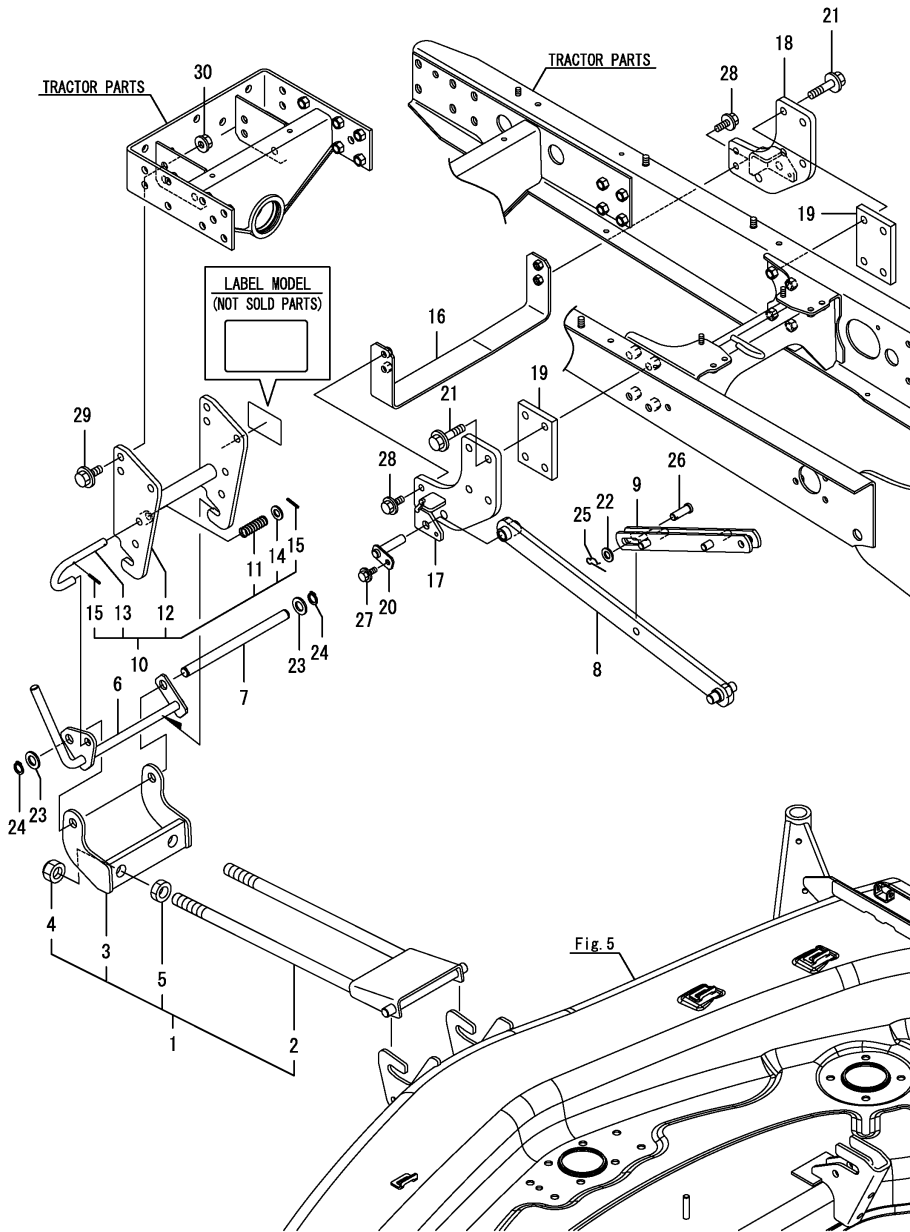
No.	Lev.	Parts No.	Description	Qty						I	R
				(A)	(B)	(C)	(D)	(E)	(F)		
1	1	1TW110-17100	LINK UNIT, FRONT		1						
2	2	1TW110-17110	LINK ASSY, FRONT		1						
3	2	1TW110-17170	FULCRUM ASSY, FRONT		1						
4	2	26347-200002	NUT, M20		2						
5	2	26756-200002	NUT, LOCK M20		2						
6	1	1TW110-17210	LINK ASSY, FULCRUM		1						
7	1	1TW110-17250	PIN, FULCRUM		1						
8	1	1TW110-17310	ARM ASSY, LIFT		2						
9	1	1TW110-17350	LINK ASSY, LIFT		2						
10	1	1TW110-17500	HITCH UNIT, FRONT		1						
11	2	1TW110-17480	SPRING, LOCK		1						
12	2	1TW110-17510	HITCH ASSY, FRONT		1						
13	2	1TW110-17550	PIN, LOCK		1						
14	2	22137-120000	WASHER, 12		1						
15	2	22351-030025	PIN, SPRING 3.0X25		2						
16	1	1TW110-17610	BRACKET ASSY, STOP		1						
17	1	1TW110-17710	BRACKET ASSY, LH ARM		1						
18	1	1TW110-17720	BRACKET ASSY, RH ARM		1						
19	1	1TW110-17790	PLATE, SPACER		2						
20	1	1TW110-17910	PIN ASSY, BRACKET		2						
21	1	1TW110-17990	BOLT, M12X50		8						
22	1	22137-120000	WASHER, 12		2						
23	1	22137-160000	WASHER, 16		2						
24	1	22242-000160	RING, 16		2						
25	1	22372-120000	PIN, SNAP 12		2						
26	1	22487-120300	PIN, H12X 30		2						
27	1	26106-080122	BOLT, M8X 12 PLATED		2						
28	1	26106-100252	BOLT, M10X 25 PLATED		4						
29	1	26106-120302	BOLT, M12X 30 PLATED		6						
30	1	26366-120002	NUT, M12		6						

Remarks

Note : "Effective Machine No." of the Link Section is indicated on the Model Label which is shown in Fig.7.

N:Old $\xrightarrow{\text{Yes}}$ New, Q:Old $\xrightarrow{\text{No}}$ New, R:Old $\xrightarrow{\text{Yes}}$ New, S:Old $\xrightarrow{\text{No}}$ New, W:Add, Z:Discontinued, F:Interchangeable by set, K:Qty Change

Fig.8. FRONT LINK (SA324 & SA424)



(A)=M60SA
(B)=MLSA22
(C)=MLSA32

(D)=
(E)=
(F)=

No.	Lev.	Parts No.	Description	Qty						I	R
				(A)	(B)	(C)	(D)	(E)	(F)		
1	1	1TW110-17100	LINK UNIT, FRONT			1					
2	2	1TW110-17110	LINK ASSY, FRONT			1					
3	2	1TW110-17170	FULCRUM ASSY, FRONT			1					
4	2	26347-200002	NUT, M20			2					
5	2	26756-200002	NUT, LOCK M20			2					
6	1	1TW110-17210	LINK ASSY, FULCRUM			1					
7	1	1TW110-17250	PIN, FULCRUM			1					
8	1	1TW111-17310	ARM ASSY, LIFT			2					
9	1	1TW111-17350	LINK ASSY, LIFT			2					
10	1	1TW110-17500	HITCH UNIT, FRONT			1					
11	2	1TW110-17480	SPRING, LOCK			1					
12	2	1TW110-17510	HITCH ASSY, FRONT			1					
13	2	1TW110-17550	PIN, LOCK			1					
14	2	22137-120000	WASHER, 12			1					
15	2	22351-030025	PIN, SPRING 3.0X25			2					
16	1	1TW111-17610	BRACKET ASSY, STOP			1					
17	1	1TW111-17710	BRACKET ASSY, LH ARM			1					
18	1	1TW111-17720	BRACKET ASSY, RH ARM			1					
19	1	1TW111-17790	PLATE, SPACER			2					
20	1	1TW110-17910	PIN ASSY, BRACKET			2					
21	1	1TW110-17990	BOLT, M12X50			8					
22	1	22137-120000	WASHER, 12			2					
23	1	22137-160000	WASHER, 16			2					
24	1	22242-000160	RING, 16			2					
25	1	22372-120000	PIN, SNAP 12			2					
26	1	22487-120300	PIN, H12X 30			2					
27	1	26106-080122	BOLT, M8X 12 PLATED			2					
28	1	26106-100252	BOLT, M10X 25 PLATED			4					
29	1	26106-120302	BOLT, M12X 30 PLATED			6					
30	1	26366-120002	NUT, M12			6					

Remarks

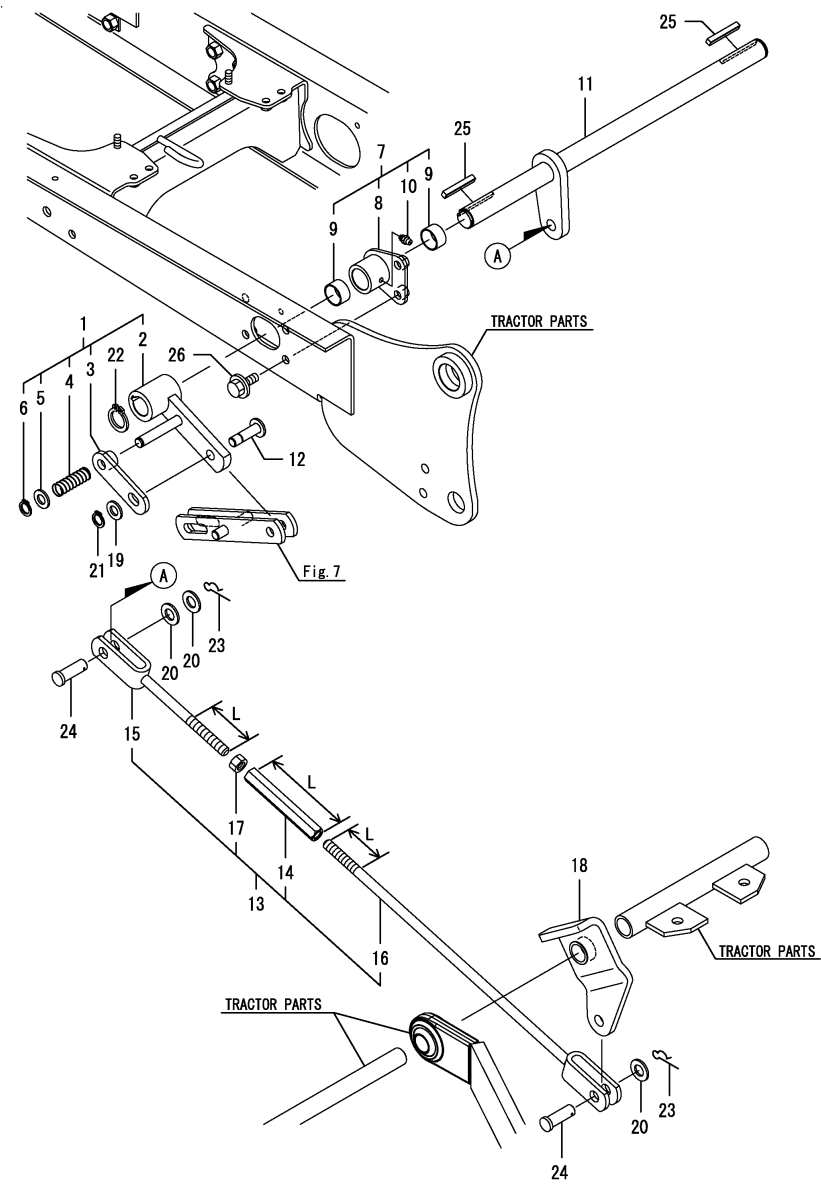
Note : "Effective Machine No." of the Link Section is indicated on the Model Label which is shown in Fig.8.

N:Old $\xrightarrow{\text{Yes}}$ New, Q:Old $\xrightarrow{\text{No}}$ New, R:Old $\xrightarrow{\text{Yes}}$ New, S:Old $\xrightarrow{\text{No}}$ New, W:Add, Z:Discontinued, F:Interchangeable by set, K:Qty Change

Fig.9. LIFT SHAFT

(A)=M60SA
(B)=MLSA22
(C)=MLSA32

(D)=
(E)=
(F)=



No.	Lev.	Parts No.	Description	Qty						I	R
				(A)	(B)	(C)	(D)	(E)	(F)		
1	1	1TW110-17400	ARM UNIT, SHAFT		2	2					
2	2	1TW110-17410	ARM ASSY, SHAFT		2	2					
3	2	1TW110-17450	PLATE ASSY, LOCK		2	2					
4	2	1TW110-17480	SPRING, LOCK		2	2					
5	2	22137-120000	WASHER, 12		2	2					
6	2	22242-000120	RING, 12		2	2					
7	1	1TW110-17800	SUPPORT UNIT, SHAFT		2	2					
8	2	1TW110-17810	SUPPORT ASSY, SHAFT		2	2					
9	2	24550-025150	BUSH, 25X15		4	4					
10	2	24761-010000	NIPPLE, GREASE M6F		2	2					
11	1	1TW110-17850	SHAFT ASSY, LIFT		1	1					
12	1	1TW110-17950	PIN ASSY, LIFT		2	2					
13	1	1TW110-18510	ROD UNIT, REAR		1	1					
13-1	1	1TW110-18511	ROD UNIT, REAR		1	1					R
		(B=*2014.04)	(C=*2014.04)								
14	2	1TW110-18520	TURNBUCKLE		1	1					
14-1	2	1TW110-18521	TURNBUCKLE		1	1					S 1
		(B=*2014.04)	(C=*2014.04)								
15	2	1TW110-18530	ROD ASSY, A		1	1					
15-1	2	1TW110-18531	ROD ASSY, A		1	1					S 2
		(B=*2014.04)	(C=*2014.04)								
16	2	1TW110-18570	ROD ASSY, B		1	1					
16-1	2	1TW110-18571	ROD ASSY, B		1	1					S 3
		(B=*2014.04)	(C=*2014.04)								
17	2	26716-120002	NUT, M12		1	1					
18	1	1TW110-18710	BRACKET ASSY, LINK		1	1					
19	1	22137-120000	WASHER, 12		2	2					
20	1	22137-140000	WASHER, 14		3	3					
21	1	22242-000120	RING, 12		2	2					
22	1	22242-000250	RING, 25		2	2					
23	1	22372-140000	PIN, SNAP 14		2	2					
24	1	22487-140350	PIN, H14X 35		2	2					
25	1	22550-070500	KEY 7X50		2	2					
26	1	26106-100252	BOLT, M10X 25 PLATED		4	4					

Remarks
 Note : "Effective Machine No." of the Link Section is indicated on the Model Label which is shown in Fig.7 & 8.
 (1)L=No.14 : 120mm, No.14-1 : 100mm.
 (2)L=No.15 : 65mm, No.15-1 : 55mm.
 (3)L=No.16 : 55mm, No.16-1 : 45mm.

Parts No. Index

Parts No.	Fig. No.	Ref. No.
0A059-U00200	10	1
1TN322-01530	2	1
1TW110-10110	1	1
1TW110-10120	1	2
1TW110-10130	1	3
1TW110-10140	1	4
1TW110-10160	2	2
1TW110-11210	5	2
1TW110-11250	5	3
1TW110-11270	5	4
1TW110-11280	5	5
1TW110-11510	5	6
1TW110-11520	5	7
1TW110-11600	3	1
1TW110-11750	3	2
	4	2
1TW110-11810	5	8
1TW110-12100	5	9
1TW110-12110	5	10
1TW110-12120	5	11
1TW110-12150	5	37
1TW110-12160	5	38
1TW110-12210	5	12
1TW110-12230	5	13
1TW110-12240	5	14
1TW110-12250	5	15
1TW110-12310	5	16
1TW110-12330	5	17
1TW110-12340	5	18
1TW110-12350	5	19
1TW110-12370	5	20
1TW110-12610	5	39
1TW110-12620	5	40
1TW110-12650	5	41
1TW110-12660	5	42
1TW110-12670	5	43
1TW110-12680	5	44
1TW110-12690	5	45
1TW110-12710	5	21
1TW110-13110	5	22
1TW110-13310	5	46
1TW110-13320	5	47
1TW110-13710	5	48
1TW110-13730	5	49
1TW110-13750	5	50
1TW110-14510	5	51
1TW110-14520	5	52
1TW110-14530	5	53
1TW110-14540	5	54
1TW110-14550	5	55

Parts No.	Fig. No.	Ref. No.
1TW110-15000	5	1
1TW110-15090	5	56
1TW110-15710	6	1
1TW110-15850	5	57
1TW110-15860	5	58
1TW110-15900	5	59
1TW110-15930	5	60
1TW110-15950	5	61
1TW110-15960	5	62
1TW110-16210	6	2
1TW110-16220	6	3
1TW110-16250	5	63
1TW110-16300	6	4
1TW110-16310	6	5
1TW110-16330	6	6
1TW110-16350	6	7
1TW110-16410	6	11
1TW110-16610	5	64
1TW110-16650	5	65
1TW110-17100	7	1
	8	1
1TW110-17110	7	2
	8	2
1TW110-17170	7	3
	8	3
1TW110-17210	7	6
	8	6
1TW110-17250	7	7
	8	7
1TW110-17310	7	8
1TW110-17350	7	9
1TW110-17400	9	1
1TW110-17410	9	2
1TW110-17450	9	3
1TW110-17480	6	12
	7	11
	8	11
	9	4
1TW110-17500	7	10
	8	10
1TW110-17510	7	12
	8	12
1TW110-17550	7	13
	8	13
1TW110-17610	7	16
1TW110-17710	7	17
1TW110-17720	7	18
1TW110-17790	7	19
1TW110-17800	9	7
1TW110-17810	9	8

Parts No.	Fig. No.	Ref. No.
1TW110-17850	9	11
1TW110-17910	7	20
	8	20
1TW110-17950	9	12
1TW110-17990	7	21
	8	21
1TW110-18510	9	13
1TW110-18511	9	13 -1
1TW110-18520	9	14
1TW110-18521	9	14 -1
1TW110-18530	9	15
1TW110-18531	9	15 -1
1TW110-18570	9	16
1TW110-18571	9	16 -1
1TW110-18710	9	18
1TW111-11600	4	1
1TW111-17310	8	8
1TW111-17350	8	9
1TW111-17610	8	16
1TW111-17710	8	17
1TW111-17720	8	18
1TW111-17790	8	19
22137-120000	6	13
	7	14
		22
	8	14
		22
	9	5
		19
22137-140000	9	20
22137-160000	7	23
	8	23
22137-200000	6	14
22190-120002	5	23
22217-120000	5	66
22217-160000	5	67
22242-000120	6	15
	9	6
		21
22242-000160	7	24
	8	24
22242-000170	5	68
22242-000210	5	24
22242-000220	5	69
22242-000250	5	25
	6	8
	9	22
22252-000520	5	26
		70
22252-000620	5	27

Parts No.	Fig. No.	Ref. No.
22351-030025	7	15
	8	15
22372-080000	5	71
22372-120000	7	25
	8	25
22372-140000	9	23
22417-200250	3	3
	4	3
22417-320320	6	16
22487-100450	5	72
22487-120300	7	26
	8	26
22487-140350	9	24
22512-070180	5	73
22512-070200	5	28
22550-070500	9	25
23887-120002	5	29
24101-062054	5	30
		74
24101-062064	5	31
24101-062074	5	32
24148-002054	5	33
24341-000800	5	34
24421-255210	5	35
		75
24550-020150	5	76
24550-025150	6	9
	9	9
24761-010000	3	4
	4	4
	5	77
	6	10
	9	10
26013-080162	5	36
26013-120202	5	78
26013-120252	5	79
26106-060122	5	80
26106-060142	5	81
26106-060252	5	82
26106-080122	5	83
	7	27
	8	27
26106-100252	7	28
	8	28
	9	26
26106-120302	7	29
	8	29
26106-120702	5	84
26116-121202	6	17
26347-060002	5	85

Parts No. Index

Parts No.	Fig. No.	Ref. No.
26347-200002	7	4
	8	4
26366-120002	6	18
	7	30
	8	30
26646-060122	5	86
26716-120002	5	87
	9	17
26716-160002	5	88
26756-200002	7	5
	8	5
26856-060002	5	89
26973-060062	5	90
26979-060102	3	5
	4	5

Parts No.	Fig. No.	Ref. No.
-----------	----------	----------

Parts No.	Fig. No.	Ref. No.
-----------	----------	----------

Parts No.	Fig. No.	Ref. No.
-----------	----------	----------