

0CNP5-M54200EN

## Directions for the Parts Catalog.

1. This Parts Catalog shows both standard and optional parts.
2. Parts may change without prior notice.
3. The following is an example of the Parts Catalog format.

REF.	LEV.	PARTS NO.	DESCRIPTION	Q'TY						I	R
				(A)	(B)	(C)	(D)	(E)	(F)		
1	1	729595-51390	FUEL INJECTION PUMP	1	1	1	1	1			1
1-1	1	729595-51391	FUEL INJECTION PUMP	1	1	1	1	1		N	1
		(A=E00185) (B=E00200)									
3	2	26022-060162	SCREW M 6X 16	9	9	9	9	9			
3-1	2	26022-060162	SCREW M 6X 16	4	4	4	4	4		K	
		(A=E00156) (B=E00156) (C=E00156) (D=E00156) (E=E00156)									
4	2	129470-51040	CAMSHAFT	1	1	1	1	1			
5	2	122710-51050	BEARING, ROLLER	2	2	2	2	2			
6	2	129470-51060	RETAINER	1	1	1	1	1			

Remarks
(1) BOOST COMPEMSATOR TYPE. OPTIONAL PART, TO E00155,(4JH-DT, 4JH-DTZ

### ① Ref. No.

The Ref. No. listed may not be in accordance with the illustration Ref. No.

(Ex.) Illustration No.

List Ref No.

1

1

(Before change)

1-1

(After change)

For interchangeable symbols N, R and K, illustrations for new parts may be abbreviated.

### ② Lev. (Level)

Level indication

The numbers below indicate the level of relativity towards the main part.

1 ----- Main parts (Assembly parts)

2 ----- Sub component included in " 1 ".

3 ----- Sub component included in " 2 ".

Note) Parts that are not for sale are partially illustrated but not listed.

### ③ Interchangeability Symbol

When a part change takes place, one of the following interchangeability symbols is indicated beside the part.

Symbol	Interchangeability	Contents note
N	Old $\begin{matrix} \leftarrow \text{Yes} \\ \text{No} \rightarrow \end{matrix}$ New	New Part is interchangeable for Old Part but Old Part is not interchangeable for New Part.
Q	Old $\begin{matrix} \leftarrow \text{No} \\ \text{Yes} \rightarrow \end{matrix}$ New	New Part is not interchangeable for Old Part but Old Part is interchangeable for New Part.
R	Old $\begin{matrix} \leftarrow \text{Yes} \\ \text{Yes} \rightarrow \end{matrix}$ New	New/ Old Parts are both interchangeable.
S	Old $\begin{matrix} \leftarrow \text{No} \\ \text{No} \rightarrow \end{matrix}$ New	New/ Old Parts are both not interchangeable.
W		Part newly added.
Z		Part discontinued.
F		Not interchangeable by a single part but interchangeable together with related parts.
K		Changes only for used parts quantities.

### ④ Effective Machine No.

When a part changes, the effective Machine No. will be indicated in the (A)-(F) column.

Product Symbol	Product No.	Product Symbol	Product No.
C	Clutch No. Compressor No.	F	Machine No. (Agricultural Equip.)
D	Drive No.	M	Machine No.
E	Engine No.		

Note 1) A date may follow the symbol. (Ex.) 1996.01

Note 2) "XXXXX" and "ZZZZZ" are for parts that could not be predicted or for engine models that could not be identified.

Note 3) (A=E00185) is the E (Engine Serial Number) for the column (A) model (in this case 4JH-DT) after the parts design change.

### ⑤ Remarks

Figures or alphabets (symbols) are entered in the remarks column.

The comments (remarks) on parts that are indicated at the bottom of the illustration are the same symbols as those stated above.

## Instructions pour le catalogue de pièces.

1. Le catalogue contient des pièces standards et optionnelles.

2. Les pièces peuvent changer sans préavis.

3. Voici un exemple de format du catalogue de pièces.

REF.	LEV.	PARTS NO.	DESCRIPTION	Q'TY						I	R
				(A)	(B)	(C)	(D)	(E)	(F)		
1	1	729595-51390	FUEL INJECTION PUMP	1	1	1	1	1			1
1-1	1	729595-51391	FUEL INJECTION PUMP	1	1	1	1	1		N	1
		(A=E00185) (B=E00200)									
3	2	26022-060162	SCREW M 6X 16	9	9	9	9	9			
3-1	2	26022-060162	SCREW M 6X 16	4	4	4	4	4		K	
		(A=E00156) (B=E00156) (C=E00156) (D=E00156) (E=E00156)									
4	2	129470-51040	CAMSHAFT	1	1	1	1	1			
5	2	122710-51050	BEARING, ROLLER	2	2	2	2	2			
6	2	129470-51060	RETAINER	1	1	1	1	1			

Remarks
(1) BOOST COMPEMSATOR TYPE. OPTIONAL PART, TO E00155,(4JH-DT, 4JH-DTZ

### ① Réf.

Il se peut que la référence de la liste ne concorde pas avec la référence de l'illustration.

(Ex.) Réf. de l'illustration      Réf. de la liste  
1                                      1 (Avant le changement) → 1-1 (Après le changement)

Pour les symboles d'interchangeabilité N, R et K, les illustrations pour les nouvelles pièces peuvent être abrégées.

### ② Niv. (Niveau)

Indication du niveau

Les numéros ci-dessous indiquent le niveau par rapport à la pièce principale.

1 ----- Pièces principales (pièces d'assemblage)

2 ----- Sous-élément inclus dans « 1 ».

3 ----- Sous-élément inclus dans « 2 ».

Remarque : les pièces qui ne sont pas en vente sont partiellement illustrées, mais ne figurent pas dans la liste.

### ③ Symbole d'interchangeabilité

En cas de changement de pièce, l'un des symboles d'interchangeabilité suivants est indiqué à côté de la pièce.

Symbole	Interchangeabilité	Remarque sur le contenu
N	Ancienne $\xleftarrow{\text{Oui}} \xrightarrow{\text{Non}}$ Nouvelle	La nouvelle pièce peut être substituée à l'ancienne, mais l'ancienne pièce ne peut pas être substituée à la nouvelle.
Q	Ancienne $\xleftarrow{\text{Non}} \xrightarrow{\text{Oui}}$ Nouvelle	La nouvelle pièce ne peut pas être substituée à l'ancienne, mais l'ancienne pièce peut être substituée à la nouvelle.
R	Ancienne $\xleftarrow{\text{Oui}} \xrightarrow{\text{Oui}}$ Nouvelle	La nouvelle pièce et l'ancienne sont interchangeables.
S	Ancienne $\xleftarrow{\text{Non}} \xrightarrow{\text{Non}}$ Nouvelle	La nouvelle pièce et l'ancienne ne sont pas interchangeables.
W		Pièce nouvellement ajoutée.
Z		Pièce supprimée.
F		Non interchangeable avec une pièce unique, mais interchangeable avec des pièces connexes.
K		Changements uniquement aux quantités de pièces usagées.

### ④ N° de machine applicable

En cas de changement de pièce, le n° de machine applicable est indiqué dans la colonne (A)-(F).

Symbole de produit	N° de produit	Symbole de produit	N° de produit
C	N° d'embrayage, n° de compresseur	F	N° de machine (agroéquipement)
D	N° d'entraînement	M	N° de machine
E	N° de moteur		

Remarque 1 : une date peut suivre le symbole. (Ex.) 1996.01

Remarque 2 : « XXXXX » et « ZZZZZ » désignent des pièces impossibles à prédire ou des modèles de moteur non identifiables.

Remarque 3 : (A=E00185) est le E (numéro de série du moteur) pour le modèle de la colonne (A) (ici : 4JH-DT) après le changement à la conception des pièces.

### ⑤ Identification des remarques

Des chiffres ou des lettres (symboles) sont entrés dans la colonne des remarques.

Les commentaires (remarques) sur les pièces dans le bas de l'illustration sont les mêmes symboles que ceux mentionnés ci-dessus.

# Contents

OCNP5-M54200

Fig. No. Fig. Name

3TNV88-BNRG3H

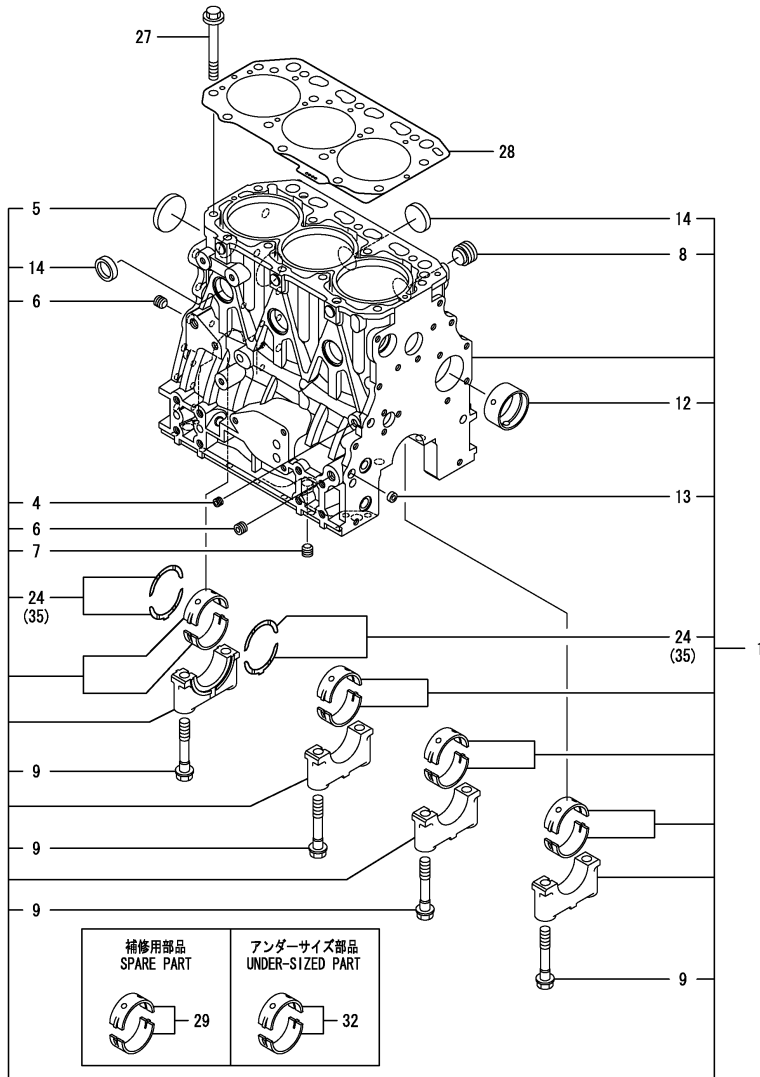
1. CYLINDER BLOCK
2. GEAR HOUSING
3. MOUNTING FLANGE & OIL SUMP
4. CYLINDER HEAD & BONNET
5. SUCTION MANIFOLD & AIR CLEANER
6. EXHAUST MANIFOLD & SILENCER
7. CAMSHAFT & DRIVING GEAR
8. CRANKSHAFT & PISTON
9. LUB. OIL SYSTEM
10. COOLING WATER SYSTEM
11. FUEL INJECTION PUMP
12. GOVERNOR
13. FUEL INJECTION VALVE
14. STARTING MOTOR
15. GENERATOR

Fig. No. Fig. Name

Fig.1. CYLINDER BLOCK

(A)=3TNV88-BNRG3H  
(B)=  
(C)=

(D)=  
(E)=  
(F)=



No.	Lev.	Parts No.	Description	Q'ty						I	R
				(A)	(B)	(C)	(D)	(E)	(F)		
1	1	729005-01560	BLOCK ASSY, CYLINDER	1							
4	2	124060-01050	PLUG, PT1/8	1							
5	2	129001-01250	PLUG, 50	1							
6	2	124160-01910	PLUG, PT1/4	2							
7	2	124160-01910	PLUG, PT1/4	1							
8	2	171051-01921	PLUG, NPTF1	1							
9	2	129150-02020	BOLT, METAL CAP	8							
12	2	129795-02412	BUSH, CAMSHAFT	1							
13	2	27241-120000	PLUG, 12	2							
14	2	27241-300000	PLUG 30	6							
24	2	129150-02931	BEARING, THRUST	2							
27	1	129150-01200	BOLT, HEAD	14							
28	1	129001-01340	GASKET, HEAD	1							
29	1	129001-02931	BEARING, MAIN	4							1
32	1	129150-02871	BEARING, 0.25 US	4							2
35	1	129150-02941	BEARING, THRUST 0.25	1							3

Remarks  
Note: "Effective Machine No." of the Engine Section is indicated on the Model Label which is shown in Fig.4.

- (1) Spare part.
- (2) Under-sized(U.S.=0.25)part.
- (3) Over-sized(O.S.=0.25)part.

Fig.2. GEAR HOUSING

(A)=3TNV88-BNRG3H

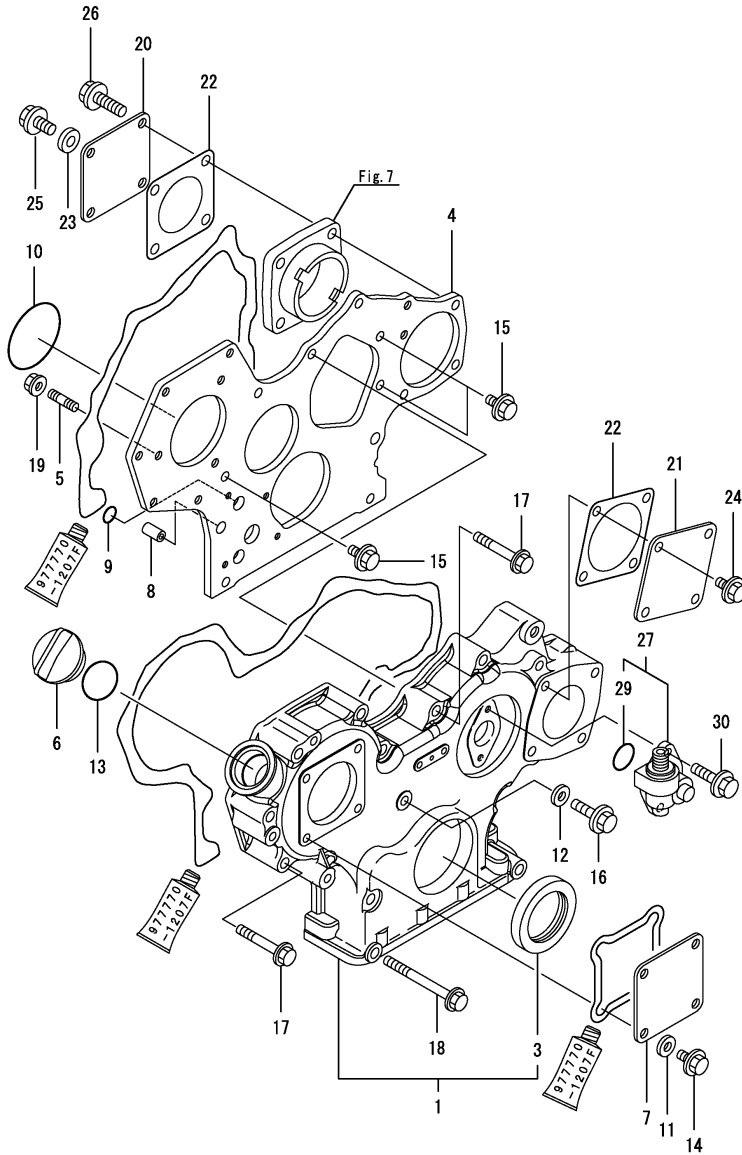
(B)=

(C)=

(D)=

(E)=

(F)=

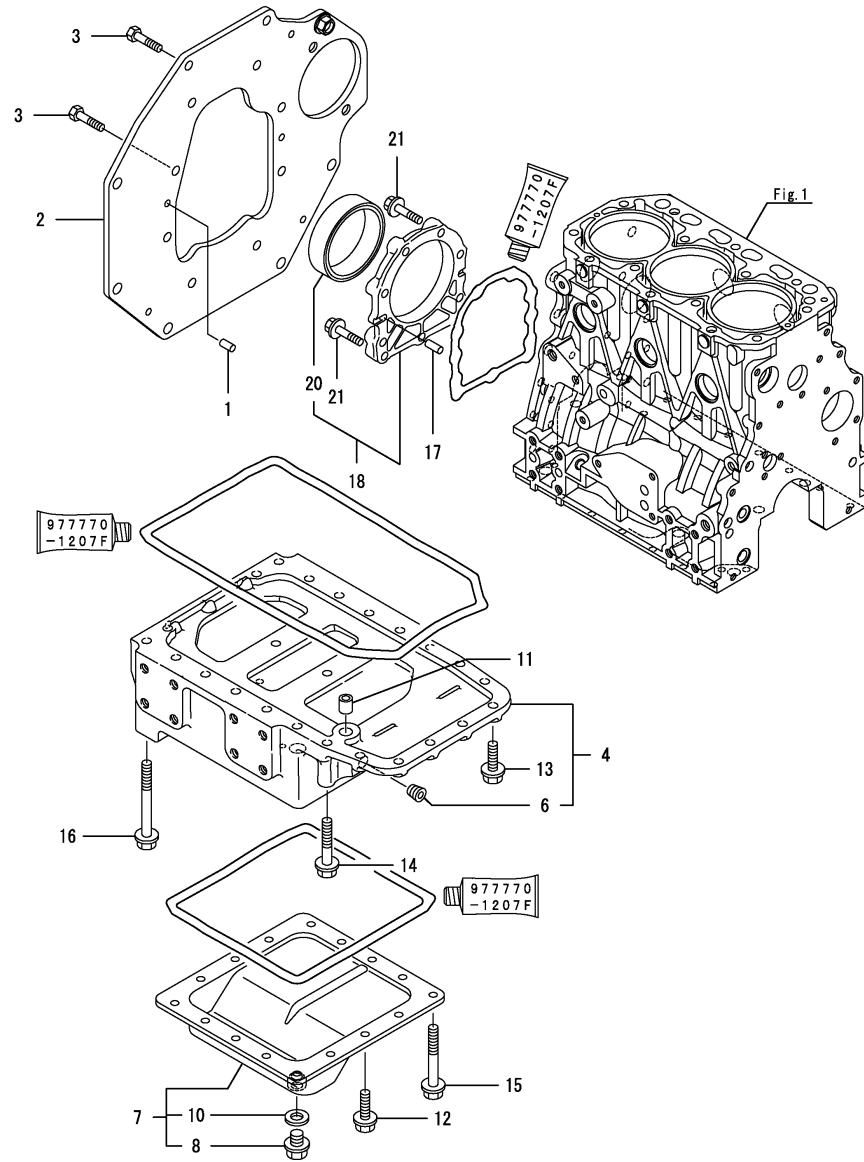


No.	Lev.	Parts No.	Description	Q'ty						I	R
				(A)	(B)	(C)	(D)	(E)	(F)		
1	1	729008-01500	CASE ASSY, GEAR	1							
3	2	119934-01800	SEAL, OIL	1							
4	1	129008-01520	FLANGE, GEAR CASE	1							
5	1	119802-01561	STUD, M8X25	3							
6	1	124160-01751	COVER, FILLER	1							
7	1	124240-01871	COVER	1							
8	1	129795-01950	PIPE, KNOCK L=18	2							
9	1	119609-32040	O-RING, P16	2							
10	1	121850-51960	O-RING	1							
11	1	22190-080002	WASHER, SEAL 6	4							
12	1	22190-080002	WASHER, SEAL 6	1							
13	1	24311-000320	O-RING, 1AP32.0	1							
14	1	26106-080162	BOLT, M8X 16 PLATED	4							
15	1	26106-080162	BOLT, M8X 16 PLATED	3							
16	1	26106-080302	BOLT, M8X 30 PLATED	1							
17	1	26106-080552	BOLT, M8X 55 PLATED	10							
18	1	26106-080852	BOLT, M8X 85 PLATED	3							
19	1	26306-080002	NUT, M8	3							
20	1	124240-01871	COVER	1							
21	1	124240-01871	COVER	1							
22	1	124240-01883	GASKET	2							
23	1	22190-080002	WASHER, SEAL 6	1							
24	1	26106-080162	BOLT, M8X 16 PLATED	4							
25	1	26106-080202	BOLT, M8X 20 PLATED	1							
26	1	26106-080302	BOLT, M8X 30 PLATED	3							
27	1	129150-91400	GEAR	1							
29	2	24341-000240	O-RING, 1AS24.0	1							
30	1	26106-060162	BOLT, M6X 16 PLATED	2							

Remarks

Note: "Effective Machine No." of the Engine Section is indicated on the Model Label which is shown in Fig.4.

Fig.3. MOUNTING FLANGE & OIL SUMP



(A)=3TNV88-BNRG3H

(B)=

(C)=

(D)=

(E)=

(F)=

No.	Lev.	Parts No.	Description	Q'ty						I	R
				(A)	(B)	(C)	(D)	(E)	(F)		
1	1	129100-01580	PIN, M8X16	2							
2	1	129232-01600	FLANGE, MOUNTING	1							
3	1	26206-100202	BOLT, M10X 20 PLATED	8							
4	1	129052-01692	SUMP ASSY, OIL	1							
6	2	124160-01910	PLUG, PT1/4	1							
7	1	129232-01710	SUMP ASSY, OIL	1							
8	2	129054-01640	PLUG, DRAIN 12	1							
10	2	22190-120002	WASHER, SEAL 12	1							
11	1	129555-01750	PIPE, KNOCK 14X18	1							
12	1	26106-080122	BOLT, M8X 12 PLATED	6							
13	1	26106-080252	BOLT, M8X 25 PLATED	6							
14	1	26106-080502	BOLT, M8X 50 PLATED	2							
15	1	26106-081002	BOLT, M8X100 PLATED	10							
16	1	26106-081202	BOLT, M8X120 PLATED	4							
17	1	129100-01580	PIN, M8X16	2							
18	1	729402-01650	CASE ASSY, OIL SEAL	1							
20	2	129120-01780	SEAL, OIL	1							
21	1	129486-01670	BOLT, M8X30	9							

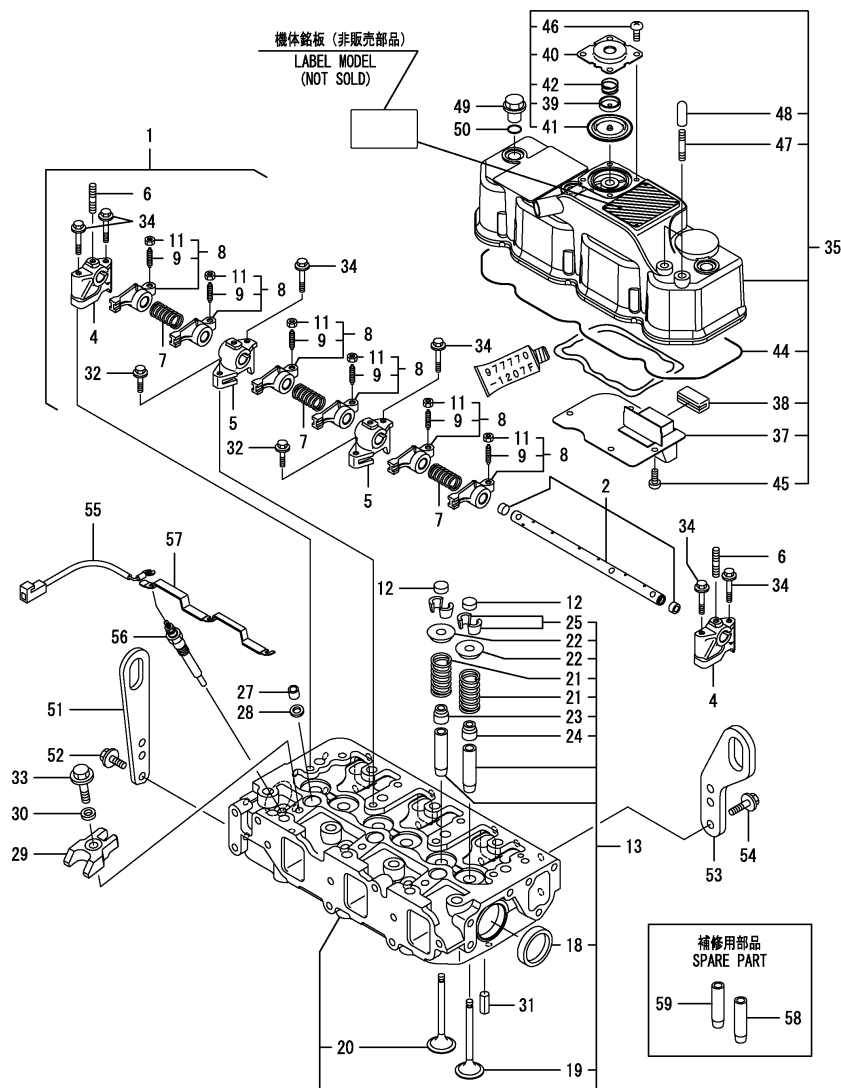
Remarks

Note: "Effective Machine No." of the Engine Section is indicated on the Model Label which is shown in Fig.4.

Fig.4. CYLINDER HEAD & BONNET

(A)=3TNV88-BNRG3H  
(B)=  
(C)=

(D)=  
(E)=  
(F)=



No.	Lev.	Parts No.	Description	Q'ty						I	R
				(A)	(B)	(C)	(D)	(E)	(F)		
1	1	129004-11241	SHAFT ASSY, ROCKER	1							
2	2	129004-11251	SHAFT, ROCKER ARM	1							
4	2	119802-11260	SUPPORT, ROCKER ARM	2							
5	2	119802-11270	SUPPORT, ROCKER ARM	2							
6	2	119802-11280	STUD	3							
7	2	129150-11280	SPRING	3							
8	2	129004-11650	ARM, ROCKER	6							
9	3	129150-11230	SCREW, VALVE ADJUST	6							
11	3	129150-11750	NUT, M8	6							
12	1	129150-11370	CAP, VALVE	6							
13	1	129008-11700	HEAD ASSY, CYLINDER	1							
18	2	27241-400000	PLUG, 40	2							
19	2	129005-11100	VALVE, INTAKE	3							
20	2	129100-11112	VALVE, EXHAUST	3							
21	2	129795-11120	SPRING, VALVE	6							
22	2	129795-11180	RETAINER, SPRING	6							
23	2	121400-11340	SEAL, VALVE STEM	3							
24	2	124460-11340	SEAL, VALVE STEM	3							
25	2	27310-080001	COTTER, 8	6							
27	1	119802-11870	PROTECTOR, NOZZLE	3							
28	1	119625-11880	SEAT, NOZZLE	3							
29	1	129004-11900	RETAINER, NOZZLE	3							
30	1	120270-54410	WASHER, INJECTOR	3							
31	1	22351-060012	PIN, SPRING 6.0X12	2							
32	1	26106-080252	BOLT, M8X 25 PLATED	2							
33	1	26106-080352	BOLT, M8X 35 PLATED	3							
34	1	26106-080502	BOLT, M8X 50 PLATED	6							
35	1	129268-11350	BONNET ASSY, HEAD	1							
37	2	129004-03010	PLATE	1							
38	2	129150-03070	BAFFLE, BREATHER	1							
39	2	119802-03110	PLATE	1							
40	2	119802-03121	COVER, DIAPHRAGM	1							
41	2	119802-03130	DIAPHRAGM	1							
42	2	119802-03141	SPRING, DIAPHRAGM	1							
44	2	129004-11310	GASKET, BONNET	1							
45	2	22857-500100	SCREW, 5X10	4							
46	2	22857-500100	SCREW, 5X10	4							
47	2	129555-44750	STUD, M8X30	2							
48	2	49933-000138	CAP	2							
49	1	124160-11360	KNOB	3							
50	1	24311-000120	O-RING, 1AP12.0	3							
51	1	129900-07900	LIFTER	1							
52	1	26106-080162	BOLT, M8X 16 PLATED	2							
53	1	129486-07910	LIFTER	1							
53-1	1	119980-07900	LIFTER	1							R
(A=EZZZZZ)											
54	1	26106-080142	BOLT, M8X 14 PLATED	2							
55	1	119803-77830	HARNESS, WIRE	1							
56	1	129008-77800	PLUG, GLOW	3							
57	1	129008-77820	CONNECTOR, GLOW PLUG	1							
58	1	120130-11860	GUIDE, VALVE	3							1

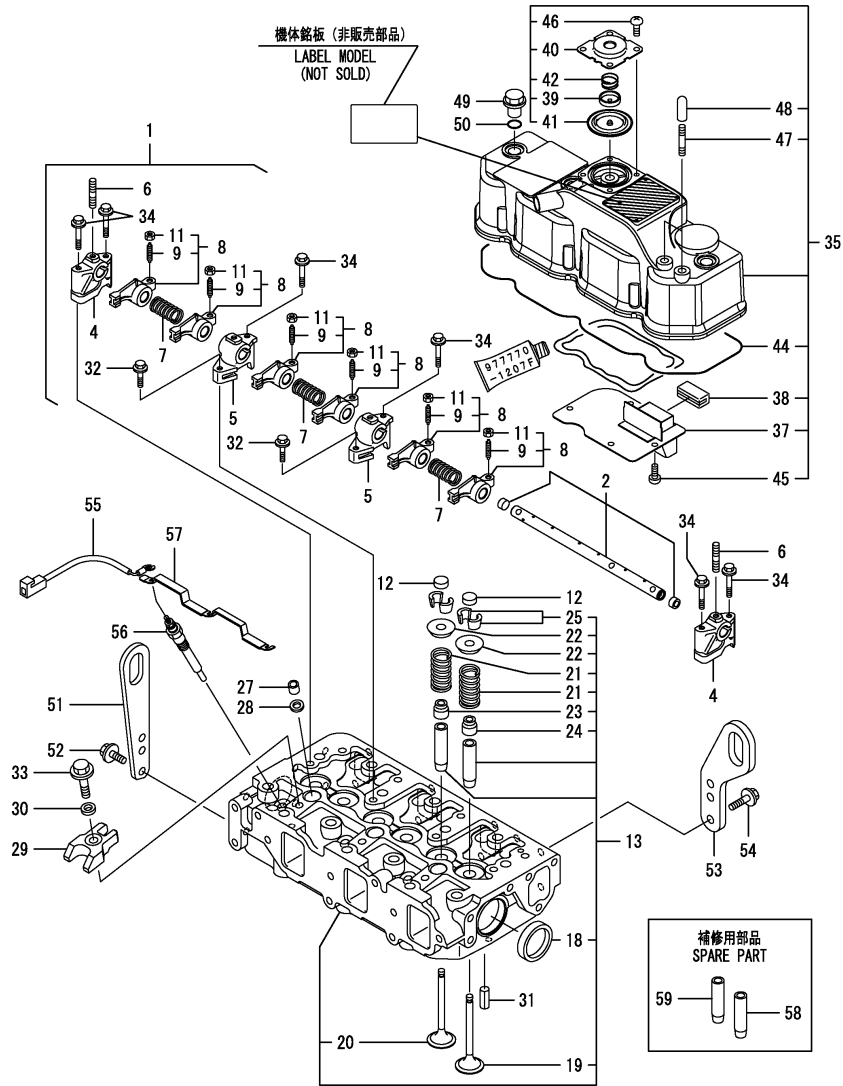
Remarks  
Note: "Effective Machine No." of the Engine Section is indicated on the Model Label which is shown in Fig.4.  
(1)Spare part.



Fig.4. CYLINDER HEAD & BONNET

(A)=3TNV88-BNRG3H  
(B)=  
(C)=

(D)=  
(E)=  
(F)=



No.	Lev.	Parts No.	Description	Q'ty						I	R
				(A)	(B)	(C)	(D)	(E)	(F)		
59	1	129150-11810	GUIDE, VALVE	3							1

Remarks  
Note: "Effective Machine No." of the Engine Section is indicated on the Model Label which is shown in Fig.4.  
(1) Spare part.

Fig.5. SUCTION MANIFOLD & AIR CLEANER

(A)=3TNV88-BNRG3H

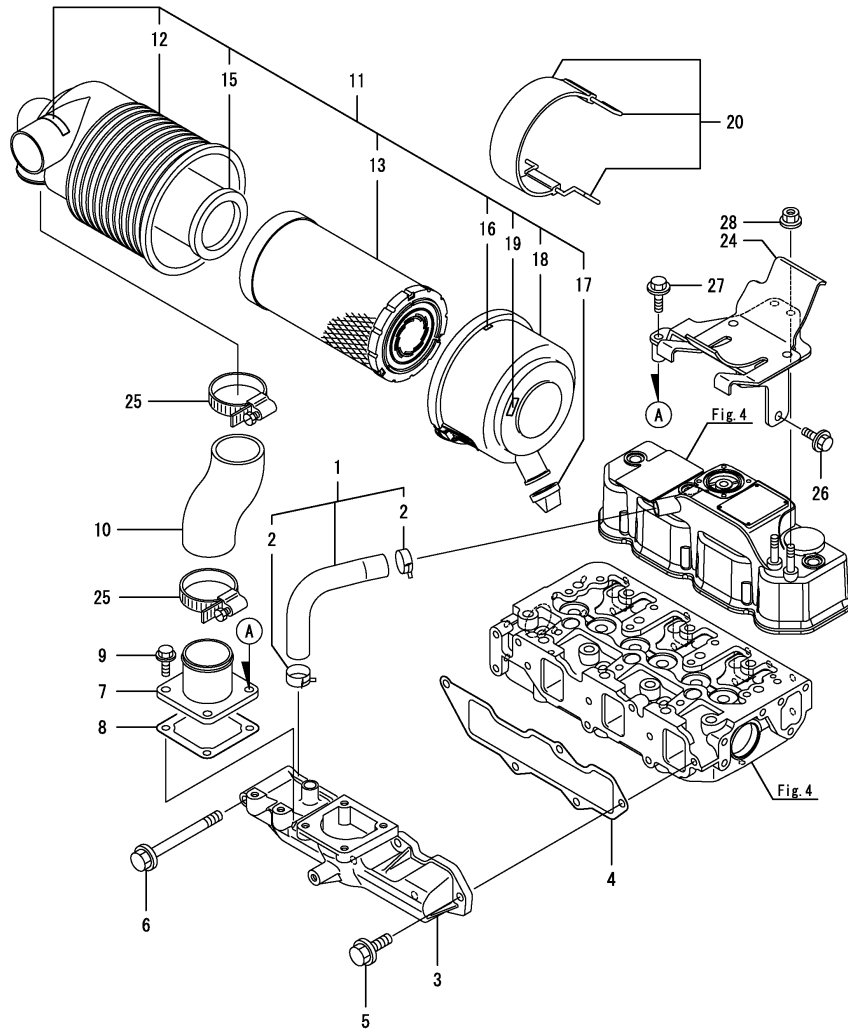
(B)=

(C)=

(D)=

(E)=

(F)=



No.	Lev.	Parts No.	Description	Q'ty						I	R
				(A)	(B)	(C)	(D)	(E)	(F)		
1	1	129005-03080	PIPE , BREATHER	1							
2	2	129410-03990	CLAMP 22	2							
3	1	129005-12101	MANIFOLD, AIR INTAKE	1							
4	1	129001-12110	GASKET, MANIFOLD	1							
5	1	26106-080202	BOLT, M8X 20 PLATED	4							
6	1	26106-080802	BOLT, M8X 80 PLATED	1							
7	1	129486-12581	JOINT, MANIFOLD	1							
8	1	129150-77511	GASKET	1							
9	1	26106-080202	BOLT, M8X 20 PLATED	4							
10	1	119934-12200	PIPE, AIR INTAKE	1							
11	1	119934-12501	CLEANER ASSY, AIR	1							
13	2	119808-12520	ELEMENT	1							
15	2	129051-12530	ELEMENT	1							
16	2	129418-12530	LABEL, MARK	2							
17	2	119808-12540	VALVE, UNLOADER	1							
18	2	119866-12541	COVER ASSY	1							
19	2	129612-12650	LABEL, MARKING	1							
20	1	119865-12600	BAND ASSY, CLEANER	1							
24	1	129232-12601	SUPPORT, AIR CLEANER	1							
25	1	23000-060000	CLAMP, 60	2							
26	1	26106-080122	BOLT, M8X 12 PLATED	1							
27	1	26106-080502	BOLT, M8X 50 PLATED	1							
28	1	26306-080002	NUT, M8	2							

Remarks

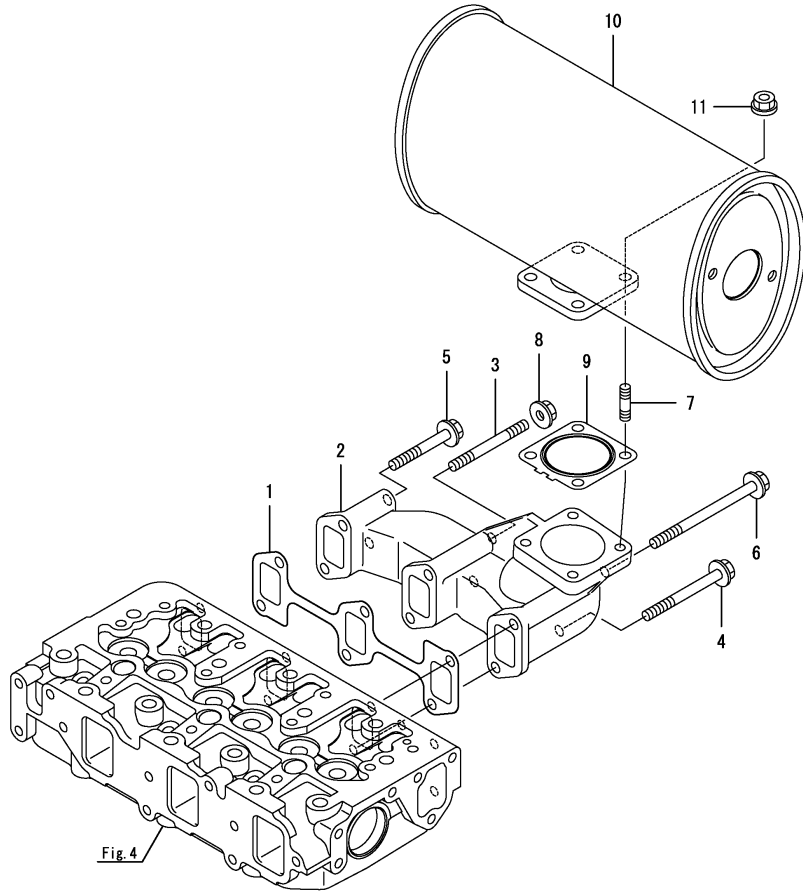
Note: "Effective Machine No." of the Engine Section is indicated on the Model Label which is shown in Fig.4.

Fig.6. EXHAUST MANIFOLD & SILENCER

(A)=3TNV88-BNRG3H  
(B)=  
(C)=

(D)=  
(E)=  
(F)=

No.	Lev.	Parts No.	Description	Q'ty						I	R
				(A)	(B)	(C)	(D)	(E)	(F)		
1	1	129150-13110	GASKET	1							
2	1	129232-13110	MANIFOLD, EXHAUST	1							
3	1	123900-13610	STUD, M8X80	2							
4	1	123900-13630	BOLT, M8X80	1							
5	1	119802-13640	BOLT, M8X60 10.9T	2							
6	1	123900-13650	BOLT, M8X110	1							
7	1	119131-18320	STUD, M8X22	4							
8	1	26306-080002	NUT, M8	2							
9	1	129004-13200	GASKET, SILENCER	1							
10	1	129055-13521	SILENCER	1							
11	1	26306-080002	NUT, M8	4							



Remarks  
Note: "Effective Machine No." of the Engine Section is indicated on the Model Label which is shown in Fig.4.

Fig.7. CAMSHAFT & DRIVING GEAR

(A)=3TNV88-BNRG3H

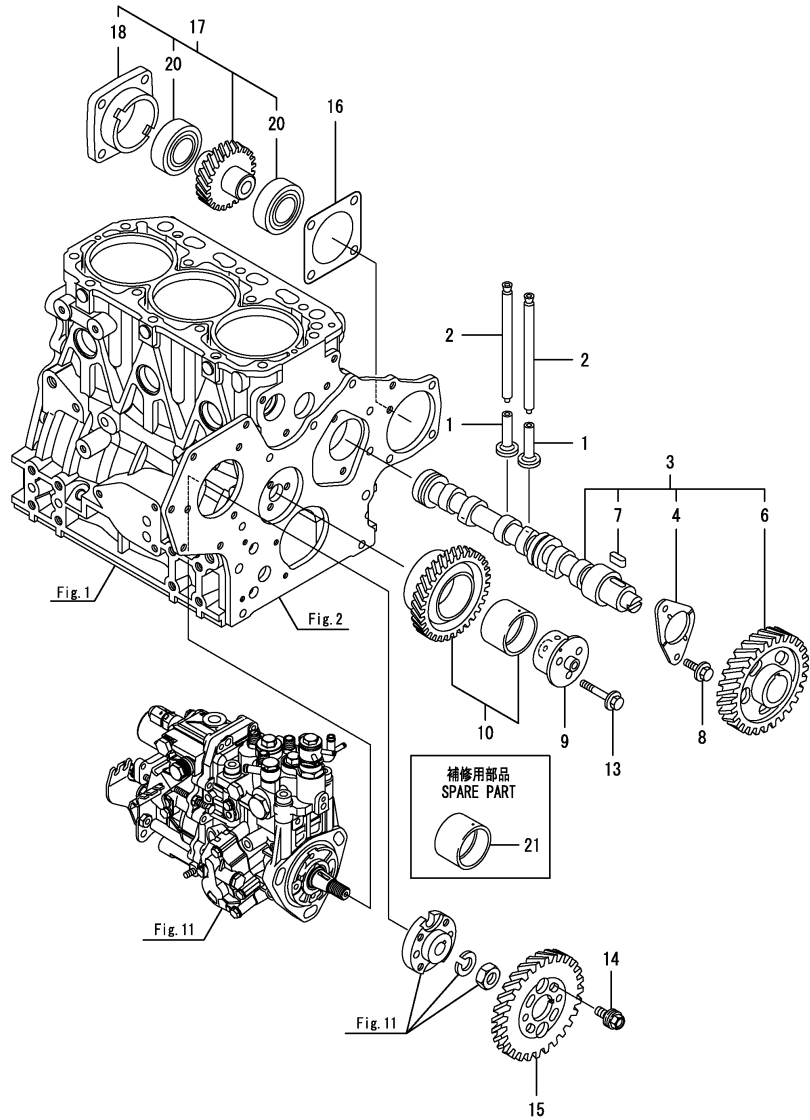
(B)=

(C)=

(D)=

(E)=

(F)=



No.	Lev.	Parts No.	Description	Q'ty						I	R
				(A)	(B)	(C)	(D)	(E)	(F)		
1	1	129150-14200	TAPPET	6							
2	1	129150-14400	ROD, PUSH L=178	6							
3	1	129129-14580	CAMSHAFT ASSY	1							
4	2	129150-02450	BEARING, THRUST	1							
6	2	129150-14101	GEAR, CAMSHAFT	1							
7	2	22512-070140	KEY, 7X 14	1							
8	1	26106-080142	BOLT, M8X 14 PLATED	2							
9	1	119803-25050	SHAFT, IDLE	1							
10	1	119802-25101	GEAR ASSY, IDLE	1							
13	1	26106-080402	BOLT, M8X 40 PLATED	3							
14	1	129150-25301	BOLT	4							
15	1	119802-25901	GEAR, PUMP	1							
16	1	129150-01881	GASKET	1							
17	1	129150-26000	DRIVE ASSY, PUMP	1							
18	2	129150-26050	BRACKET, PUMP	1							
20	2	24105-060064	BEARING, BALL 6006Z	2							
21	1	119802-25071	BUSH, IDLE GEAR	1							1

Remarks

Note: "Effective Machine No." of the Engine Section is indicated on the Model Label which is shown in Fig.4.

(1) Spare part.

Fig.8. CRANKSHAFT & PISTON

(A)=3TNV88-BNRG3H

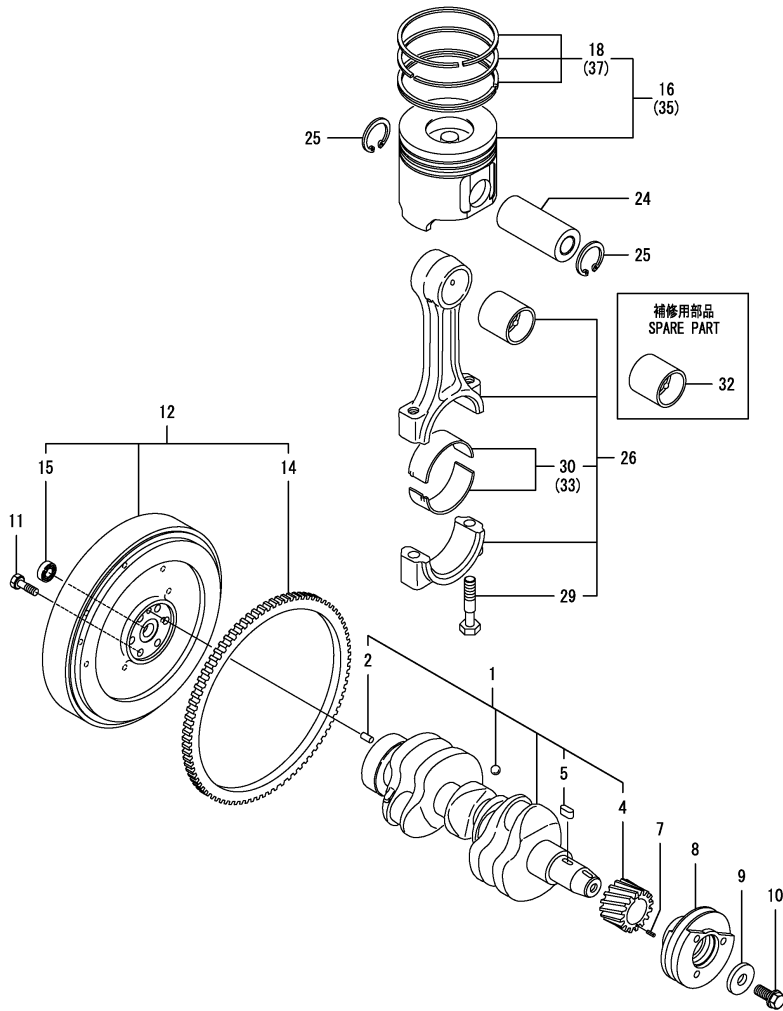
(B)=

(C)=

(D)=

(E)=

(F)=



No.	Lev.	Parts No.	Description	Q'ty						I	R
				(A)	(B)	(C)	(D)	(E)	(F)		
1	1	129008-21000	CRANKSHAFT ASSY	1							
2	2	129100-01580	PIN, M8X16	1							
4	2	119803-21200	GEAR, CRANKSHAFT	1							
5	2	22512-070140	KEY, 7X 14	1							
7	1	22351-030010	PIN, SPRING 3.0X10	1							
8	1	129004-21650	V-PULLEY, 110	1							
9	1	129795-21661	WASHER	1							
10	1	121850-21680	BOLT	1							
11	1	121111-21501	BOLT, FLYWHEEL	6							
12	1	129232-21590	FLYWHEEL ASSY	1							
14	2	119865-21600	GEAR, RING	1							
15	2	119626-21700	BEARING, 6901	1							
16	1	129005-22080	PISTON ASSY	3							
18	2	129005-22500	RING SET, PISTON	3							
24	1	129202-22300	PIN, PISTON D26 L70	3							
25	1	22252-000260	RING, 26	6							
26	1	729402-23100	ROD ASSY, CONNECTING	3							
29	2	121550-23200	BOLT, CONNECTING ROD	6							
30	2	129150-23601	BEARING, CRANK PIN	3							
32	1	129100-23910	BEARING, PISTON PIN	3							1
33	1	129150-23611	BEARING, 0.25 US	3							2
35	1	129005-22900	PISTON ASSY, 0.25 OS	3							3
37	2	129005-22950	RING SET, 0.25 OS	3							3

Remarks

Note: "Effective Machine No." of the Engine Section is indicated on the Model Label which is shown in Fig.4.

- (1) Spare part.
- (2) Under-sized (U.S.=0.25) part.
- (3) Over-sized (O.S.=0.25) part.

Fig.9. LUB. OIL SYSTEM

(A)=3TNV88-BNRG3H

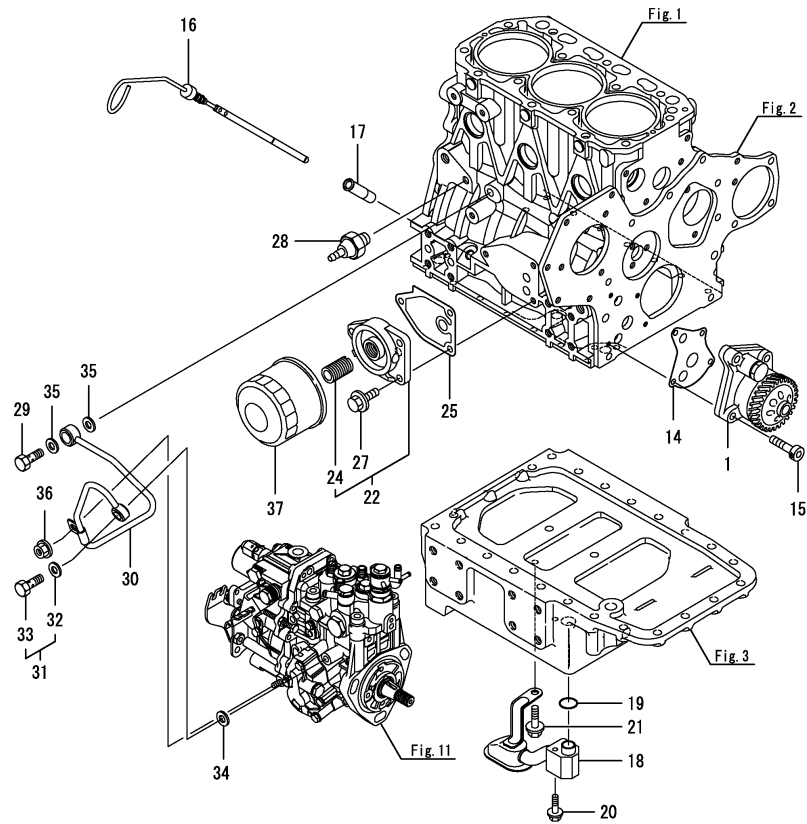
(B)=

(C)=

(D)=

(E)=

(F)=



No.	Lev.	Parts No.	Description	Q'ty						I	R
				(A)	(B)	(C)	(D)	(E)	(F)		
1	1	129001-32001	PUMP ASSY, OIL	1							
14	1	129150-32020	GASKET, PUMP	1							
15	1	26450-060252	BOLT, M6X 25	4							
16	1	129232-34800	DIPSTICK, OIL	1							
17	1	121520-34810	GUIDE, DIPSTICK	1							
18	1	129232-35090	PIPE ASSY, OIL INLET	1							
19	1	24311-000160	O-RING, 1AP16.0	1							
20	1	26106-060402	BOLT, M6X 40 PLATED	1							
21	1	26106-080122	BOLT, M8X 12 PLATED	1							
22	1	119802-35100	BRACKET ASSY, FILTER	1							
24	2	129100-35140	STUD	1							
25	1	129150-35111	GASKET	1							
27	1	26106-080202	BOLT, M8X 20 PLATED	3							
28	1	114250-39450	SWITCH, 0.5KG	1							
29	1	124160-39140	BOLT, PIPE JOINT M10	1							
30	1	119802-39450	PIPE ASSY, OIL	1							
31	1	129005-59830	BOLT ASSY, JOINT M8	1							
32	2	22190-080002	WASHER, SEAL 6	1							
33	2	23857-030000	BOLT, JOINT 3	1							
34	1	22190-080002	WASHER, SEAL 6	1							
35	1	22190-100002	WASHER, SEAL 10	2							
36	1	26366-060002	NUT, M6	1							
37	1	129150-35170	FILTER, LO	1							1

Remarks

Note: "Effective Machine No." of the Engine Section is indicated on the Model Label which is shown in Fig.4.

(1) Spare part.

Fig.10. COOLING WATER SYSTEM

(A)=3TNV88-BNRG3H

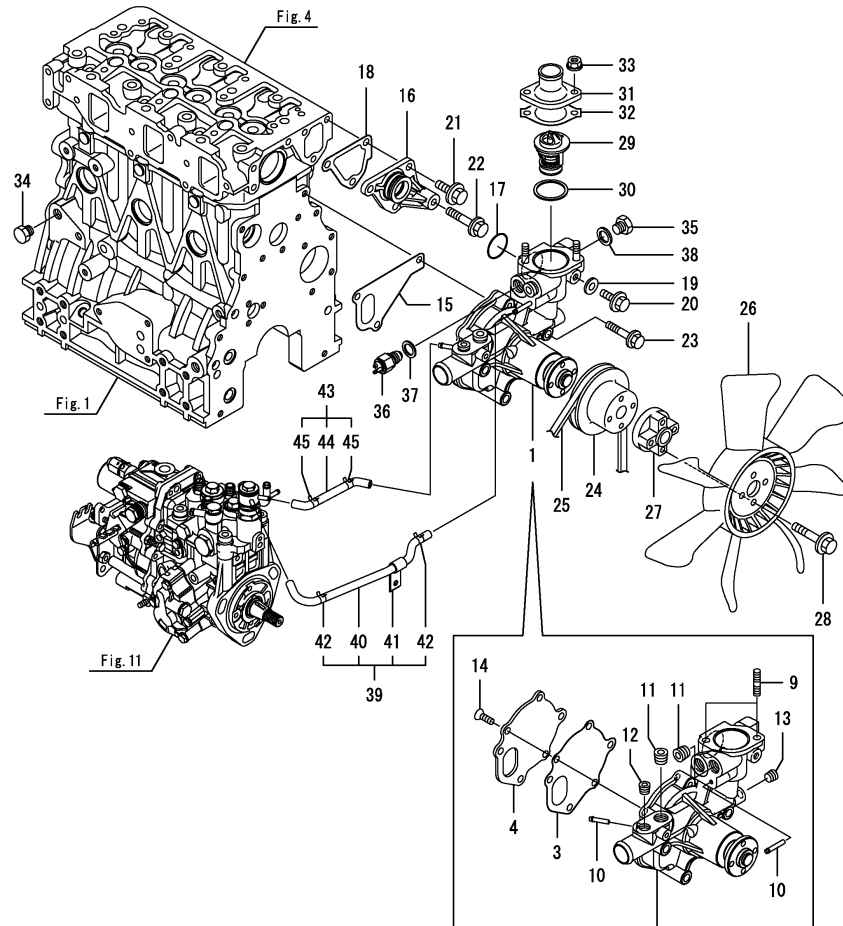
(B)=

(C)=

(D)=

(E)=

(F)=



No.	Lev.	Parts No.	Description	Q'ty						I	R
				(A)	(B)	(C)	(D)	(E)	(F)		
1	1	129232-42000	PUMP ASSY, WATER	1							
3	2	129100-42051	GASKET, WATER PUMP	1							
4	2	129100-42121	PLATE	1							
9	2	129555-44750	STUD, M8X30	2							
10	2	119802-49113	JOINT, PIPE	2							
11	2	129916-49740	PLUG, R03	2							
12	2	23875-020000	PLUG, R02	1							
13	2	23876-010000	PLUG, R01	1							
14	2	26577-060162	SCREW, M6X16	3							
15	1	129486-42021	GASKET, WATER PUMP	1							
16	1	129004-42040	JOINT	1							
17	1	129486-42140	O-RING, G30	1							
18	1	124395-49840	GASKET	1							
19	1	23414-080000	GASKET, 8X1.0	1							
20	1	26106-080122	BOLT, M8X 12 PLATED	1							
21	1	26106-080162	BOLT, M8X 16 PLATED	3							
22	1	26106-080452	BOLT, M8X 45 PLATED	1							
23	1	26106-080602	BOLT, M8X 60 PLATED	3							
24	1	129120-42351	V-PULLEY, CW PUMP	1							
25	1	25152-003700	V-BELT, A37	1							
26	1	129655-44740	FAN, COOLING D380	1							
27	1	121267-44760	SPACER	1							
28	1	26106-060302	BOLT, M6X 30 PLATED	4							
29	1	129155-49801	THERMOSTAT, 71	1							
30	1	129150-49811	GASKET, THERMOSTAT	1							
31	1	129350-49530	COVER, THERMOSTAT	1							
32	1	129795-49551	GASKET	1							
33	1	26306-080002	NUT, M8	2							
34	1	171056-49120	PLUG, DRAIN	1							
35	1	121450-42450	PLUG, M16	1							
36	1	121250-44901	SWITCH, 110	1							
37	1	124465-44950	GASKET, 16	1							
38	1	124465-44950	GASKET, 16	1							
39	1	129004-49610	PIPE ASSY, WATER	1							
40	2	129004-49711	PIPE ASSY, WATER	1							
41	2	119802-49730	RETAINER, PIPE	1							
42	2	124722-59050	CLIP, HOSE 9	2							
43	1	129004-49620	PIPE ASSY, WATER	1							
44	2	129004-49721	PIPE ASSY, WATER	1							
45	2	124722-59050	CLIP, HOSE 9	2							

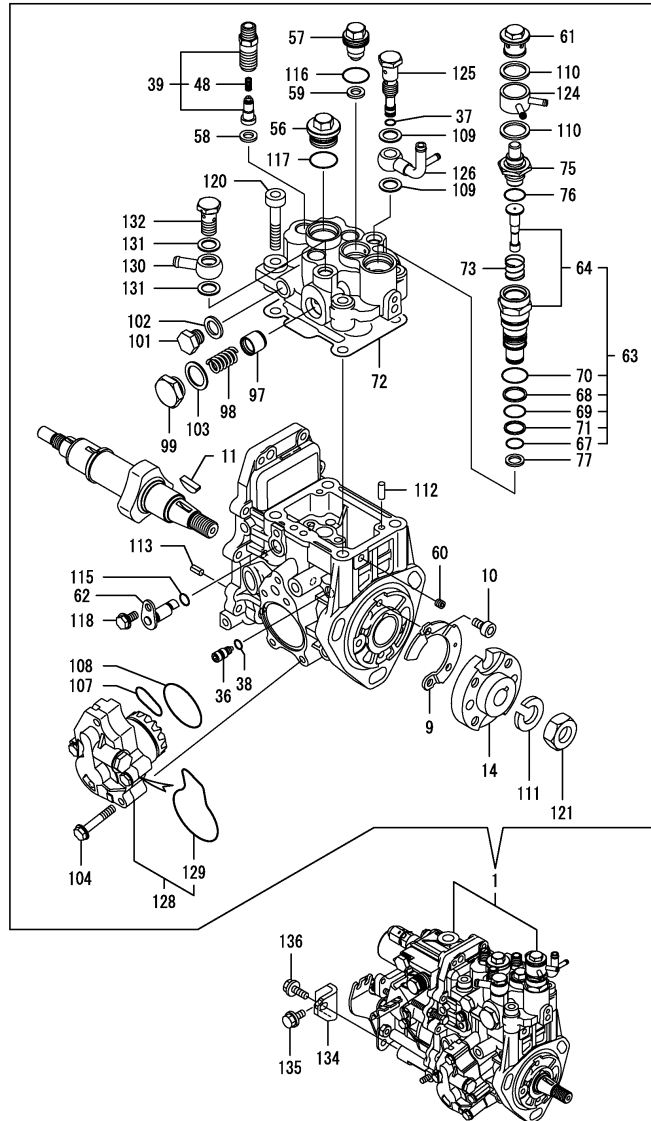
Remarks

Note: "Effective Machine No." of the Engine Section is indicated on the Model Label which is shown in Fig.4.

Fig.11. FUEL INJECTION PUMP

(A)=3TNV88-BNRG3H  
(B)=  
(C)=

(D)=  
(E)=  
(F)=



No.	Lev.	Parts No.	Description	Q'ty						I	R
				(A)	(B)	(C)	(D)	(E)	(F)		
1	1	729232-51380	PUMP ASSY, INJECTION	1							1
9	2	129008-51900	COVER, GEAR CASE	1							
10	2	129008-51920	BOLT, M6X10	2							
11	2	119802-51090	KEY, 4X16	1							
14	2	158552-51151	FLANGE	1							
36	2	158600-51270	STOPPER, TAPPET	1							
37	2	158563-51281	O-RING, 4D S6	1							
38	2	158563-51281	O-RING, 4D S6	1							
39	2	129008-51390	VALVE ASSY, DELIVERY	3							
48	3	158563-51330	SPRING, DELIVERY	3							
56	2	158601-51550	PLUG	1							
57	2	119802-51560	PLUG, BARREL	1							
58	2	158552-51571	GASKET	3							
59	2	158552-51571	GASKET	1							
60	2	158557-51570	PLUG	1							
61	2	158601-51570	PLUG	1							
62	2	158552-51580	LIFTER	1							
63	2	119802-51590	TIMER SET	1							
64	3	119802-51600	TIMER ASSY	1							
67	3	158553-51670	O-RING, 1011	1							
68	3	119802-51680	RING, BACK UP	1							
69	3	119802-51690	O-RING	1							
70	3	24356-190200	O-RING, 4D19020	1							
71	3	24372-000150	RING, BACK UP T2P15	1							
72	2	158552-51600	GASKET	1							
73	2	158553-51630	SPRING, TIMER	1							
75	2	158553-51650	ELEMENT	1							
76	2	158553-51660	O-RING, P14	1							
77	2	158553-51680	GASKET	1							
97	2	158601-51770	PISTON	1							
98	2	158552-51781	SPRING	1							
99	2	158601-51790	PLUG	1							
101	2	158553-51930	PLUG, M12	1							
102	2	22190-120002	WASHER, SEAL 12	1							
103	2	22190-180002	WASHER, SEAL 18	1							
104	2	158553-51770	BOLT	4							
107	2	158552-52311	O-RING	1							
108	2	158552-52400	O-RING, 4E S42	1							
109	2	22190-120002	WASHER, SEAL 12	2							
110	2	22190-180002	WASHER, SEAL 18	2							
111	2	22217-140000	WASHER, SPRING 14	1							
112	2	22312-050140	PIN, PARALLEL M5X14	2							
113	2	22351-050010	PIN, SPRING 5.0X10	2							
115	2	24311-000070	O-RING, 1AP7.0	1							
116	2	24356-190180	O-RING, 4D19018	1							
117	2	24356-190200	O-RING, 4D19020	1							
118	2	26106-060102	BOLT, M6X 10 PLATED	1							
120	2	26450-080452	BOLT, M8X 45	4							
121	2	26776-140002	NUT, LOCK M14	1							
124	2	158553-51551	JOINT	1							
125	2	158601-51650	JOINT, OVER FLOW	1							

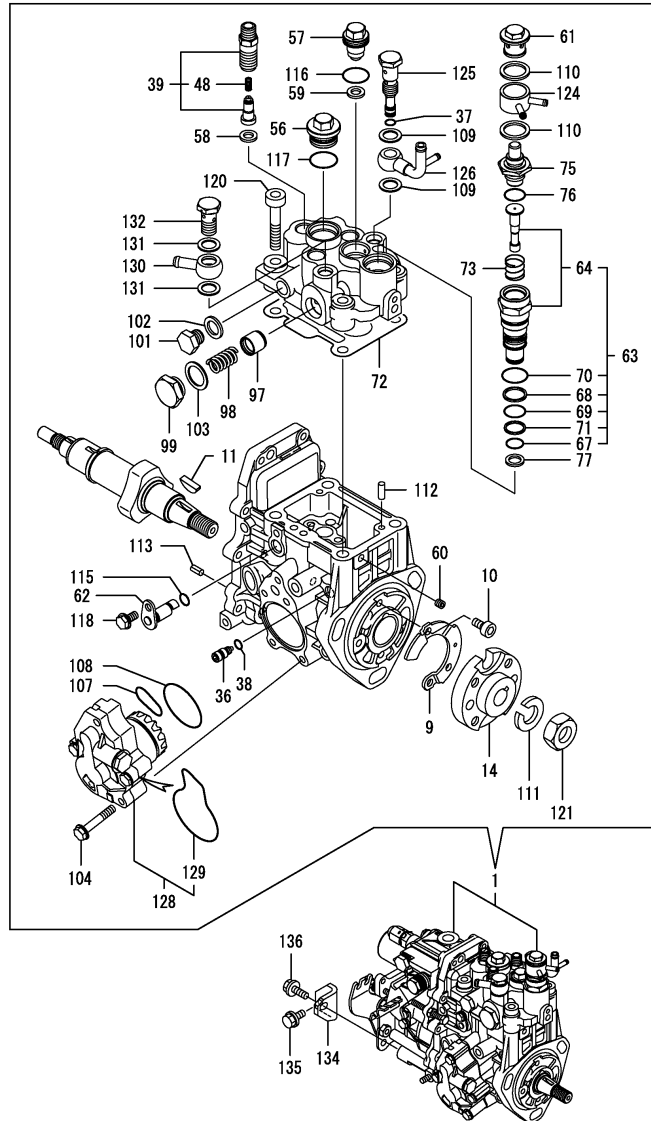
Remarks  
Note: "Effective Machine No." of the Engine Section is indicated on the Model Label which is shown in Fig.4.  
(1)Governor(Fig.12)is incorporated in this Fuel Injection Pump (Ref.1).



Fig.11. FUEL INJECTION PUMP

(A)=3TNV88-BNRG3H  
(B)=  
(C)=

(D)=  
(E)=  
(F)=



No.	Lev.	Parts No.	Description	Q'ty						I	R
				(A)	(B)	(C)	(D)	(E)	(F)		
126	2	158552-51670	JOINT, OVER FLOW	1							
128	2	158552-52100	PUMP ASSY, FUEL FEED	1							
129	3	158552-52500	O-RING	1							
130	2	129916-59020	JOINT, PIPE 12	1							
131	2	22190-120002	WASHER, SEAL 12	2							
132	2	23857-060000	BOLT, JOINT 6	1							
134	1	119802-51250	RETAINER, PUMP	1							
135	1	26106-080162	BOLT, M8X 16 PLATED	1							
136	1	26106-080202	BOLT, M8X 20 PLATED	1							

Remarks

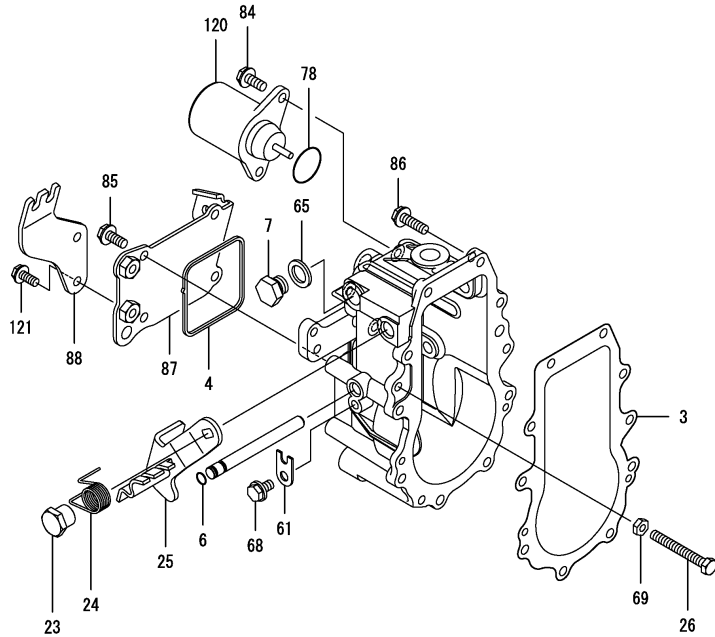
Note: "Effective Machine No." of the Engine Section is indicated on the Model Label which is shown in Fig.4.

(1) Governor(Fig.12)is incorporated in this Fuel Injection Pump (Ref.1).

Fig.12. GOVERNOR

(A)=3TNV88-BNRG3H  
(B)=  
(C)=

(D)=  
(E)=  
(F)=



No.	Lev.	Parts No.	Description	Q'ty						I	R
				(A)	(B)	(C)	(D)	(E)	(F)		
3	2	158553-61050	GASKET	1							
4	2	158553-61070	GASKET	1							
6	2	129155-51280	O-RING, S6	1							
7	2	158553-51930	PLUG, M12	1							
23	2	129255-61410	NUT, LOCK	1							
24	2	119807-61420	SPRING, RETURN	1							
25	2	119852-61440	LEVER ASSY,REGULATOR	1							
26	2	129155-61460	BOLT, IDLE	1							
61	2	119660-61901	RETAINER, SHAFT	1							
65	2	22190-120002	WASHER, SEAL 12	1							
68	2	26106-060102	BOLT, M6X 10 PLATED	1							
69	2	26756-060002	NUT, LOCK M6	1							
78	2	158552-61900	O-RING	1							
84	2	26106-060142	BOLT, M6X 14 PLATED	2							
85	2	26106-060142	BOLT, M6X 14 PLATED	4							
86	2	26106-060202	BOLT, M6X 20 PLATED	10							
87	2	158552-61061	COVER, GOVERNOR CASE	1							
88	2	119852-61080	SUPPORT, WIRE	1							
120	2	119653-77950	SOLENOID, STOP	1							
121	2	26106-060142	BOLT, M6X 14 PLATED	2							

Remarks

Note: "Effective Machine No." of the Engine Section is indicated on the Model Label which is shown in Fig.4.

\*This figure(Governor)is incorporated in the Fuel Injection Pump (Fig.11).

Fig.13. FUEL INJECTION VALVE

(A)=3TNV88-BNRG3H

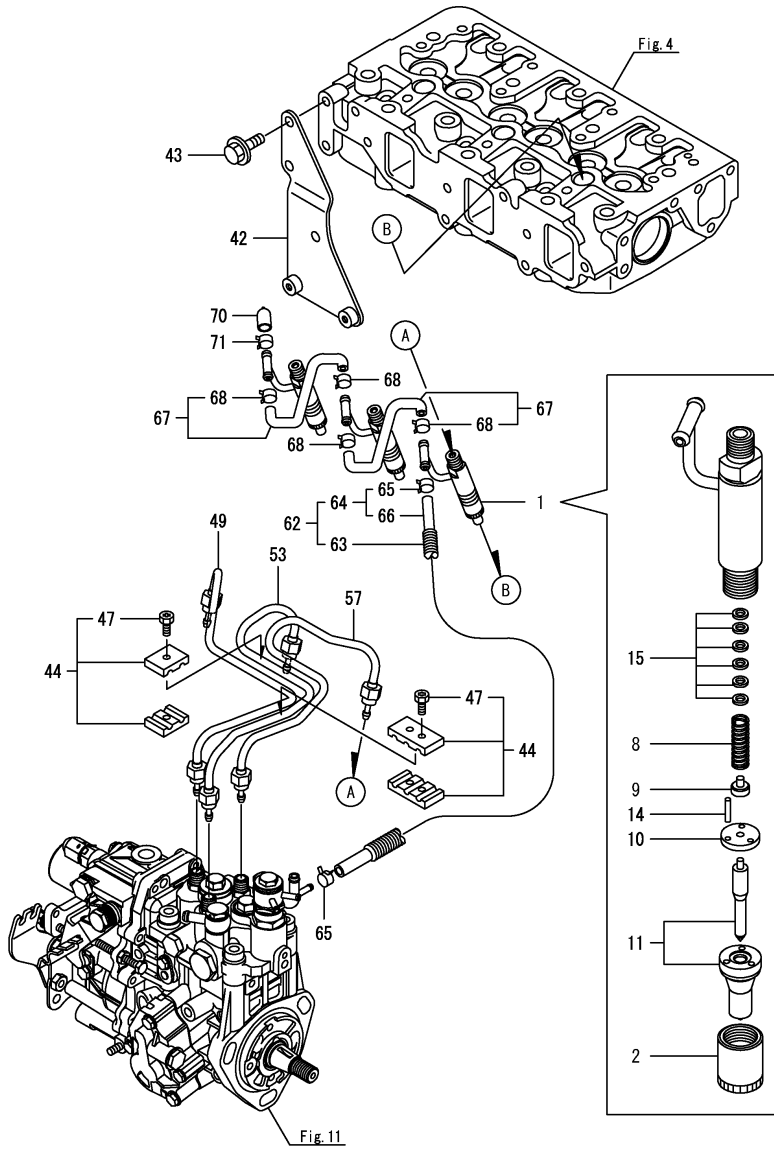
(B)=

(C)=

(D)=

(E)=

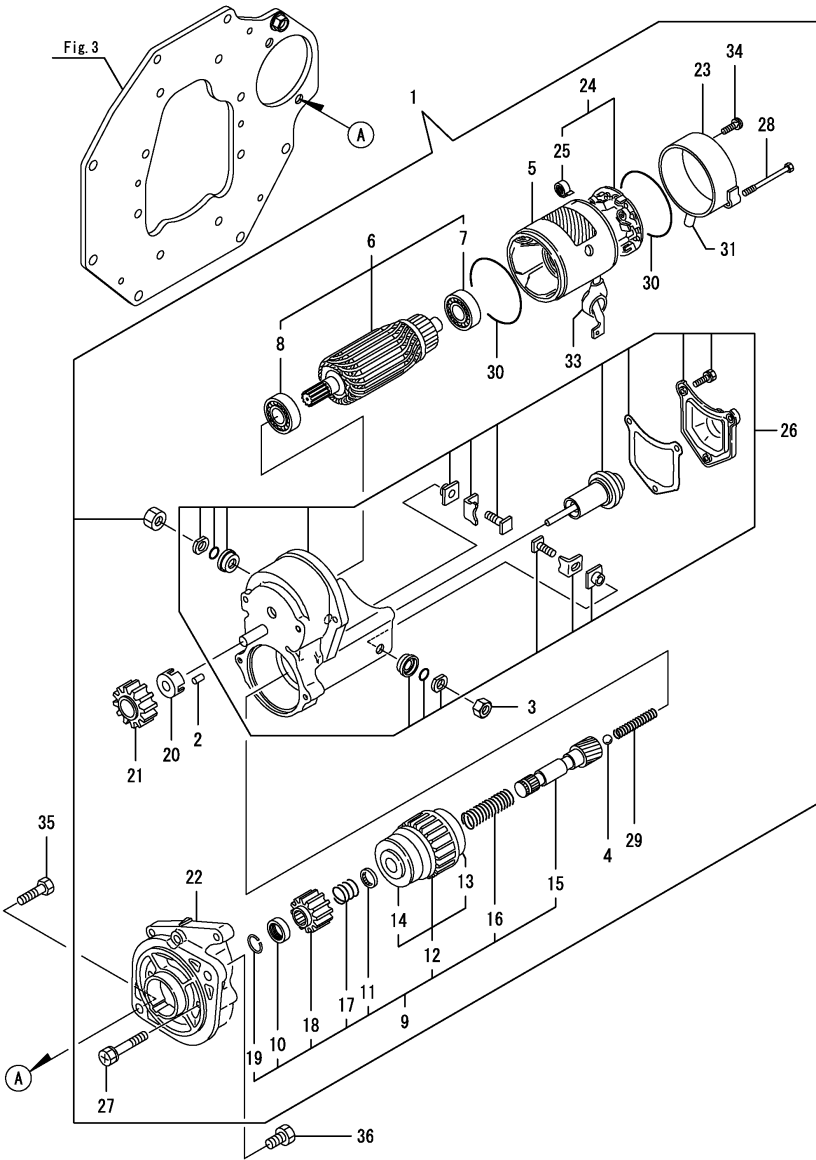
(F)=



No.	Lev.	Parts No.	Description	Q'ty						I	R
				(A)	(B)	(C)	(D)	(E)	(F)		
1	1	729008-53200	VALVE ASSY,INJECTION	3							
2	2	114250-53080	NUT, NOZZLE D16.95	3							
8	2	114250-53120	SPRING, NOZZLE	3							
9	2	114250-53130	SEAT, SPRING	3							
10	2	114250-53140	PLATE	3							
11	2	129008-53200	VALVE ASSY,INJECTION	3							
14	2	114250-53210	PIN	6							
15	2	119803-53400	SHIM SET	3							
42	1	129232-50101	STAY	1							
43	1	26106-080142	BOLT, M8X 14 PLATED	3							
44	1	129150-59120	RETAINER, PIPE	2							
47	2	129150-59131	BOLT, M4X14	4							
49	1	129004-59811	PIPE ASSY, INJECTION	1							
53	1	129004-59821	PIPE ASSY, INJECTION	1							
57	1	129004-59831	PIPE ASSY, INJECTION	1							
62	1	129263-59550	PIPE ASSY, RETURN	1							
63	2	129486-59320	TUBE, CORRUGATED	1							
64	2	119802-59550	PIPE ASSY, RETURN	1							
65	3	124722-59050	CLIP, HOSE 9	2							
66	3	119802-59560	PIPE, FUEL RETURN	1							
67	1	129486-59551	PIPE ASSY, RETURN	2							
68	2	124722-59050	CLIP, HOSE 9	4							
70	1	119593-59581	CAP	1							
71	1	124060-77680	CLIP, HOSE 10	1							

Remarks  
 Note: "Effective Machine No." of the Engine Section is indicated on the Model Label which is shown in Fig.4.

Fig.14. STARTING MOTOR



(A)=3TNV88-BNRG3H

(B)=

(C)=

(D)=

(E)=

(F)=

No.	Lev.	Parts No.	Description	Q'ty						I	R
				(A)	(B)	(C)	(D)	(E)	(F)		
1	1	129407-77010	STARTER, RA1.4	1							
2	2	X0283060061	ROLLER	5							
3	2	X9490561370	NUT	1							
4	2	X9491200240	BALL	1							
5	2	129407-77210	YOKE ASSY	1							
6	2	129407-77220	ARMATURE ASSY	1							
7	3	129129-77230	BEARING	1							
8	3	129129-77240	BEARING	1							
9	2	129407-77250	STARTER	1							
10	3	X0280210230	NUT	1							
11	3	X0283270140	RETAINER, SNAP	1							
12	3	129407-77390	CLUTCH ASSY	1							
13	4	129129-77440	BALL BEARING	1							
14	4	129129-77450	BALL BEARING	1							
15	3	129129-77400	SHAFT	1							
16	3	129129-77410	SPRING, COIL	1							
17	3	X9491703371	SPRING, COIL	1							
18	3	129129-77420	PINION, STARTER	1							
19	3	129129-77430	RING, SNAP	1							
20	2	129129-77260	RETAINER	1							
21	2	129129-77270	PINION	1							
22	2	129407-77280	HOUSING	1							
23	2	129407-77290	FRAME	1							
24	2	129407-77300	HOLDER ASSY	1							
25	3	X9491730461	SPRING	4							
26	2	129407-77310	SWITCH ASSY	1							
27	2	129129-77320	BOLT	2							
28	2	129407-77330	BOLT	2							
29	2	129129-77340	SPRING	1							
30	2	129129-77350	O-RING	2							
31	2	129129-77362	COVER	1							
33	2	129129-77380	CAP	1							
34	2	129129-77460	SCREW	2							
35	1	129155-77060	BOLT	1							
36	1	26116-120202	BOLT, M12X 20 PLATED	1							

Remarks

Note: "Effective Machine No." of the Engine Section is indicated on the Model Label which is shown in Fig.4.

Fig.15. GENERATOR

(A)=3TNV88-BNRG3H

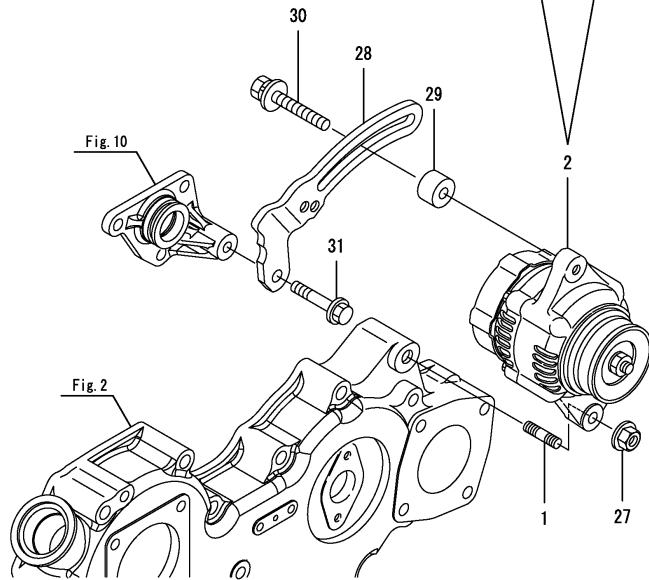
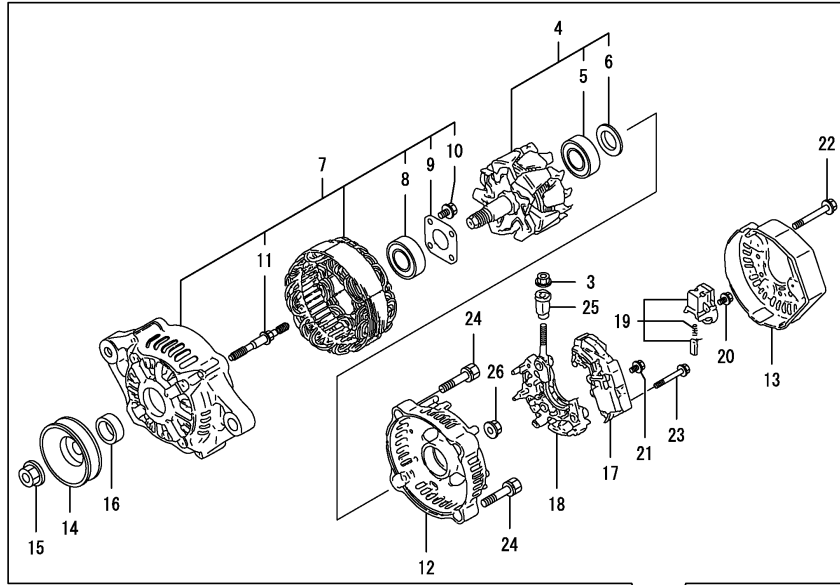
(B)=

(C)=

(D)=

(E)=

(F)=



No.	Lev.	Parts No.	Description	Q'ty						I	R
				(A)	(B)	(C)	(D)	(E)	(F)		
1	1	129795-01900	STUD	1							
2	1	129052-77201	GENERATOR, 12V-40A	1							
3	2	X9490561001	NUT	1							
4	2	119620-77380	ROTOR ASSY	1							
5	3	123501-79240	BEARING, BALL	1							
6	3	119620-79250	COVER, BEARING	1							
7	2	129052-77421	FRAME ASSY	1							
8	3	119620-79200	BALL BEARING	1							
9	3	119620-79210	PLATE, RETAINER	1							
10	3	119620-79220	SCREW	4							
11	3	119620-79230	STUD	2							
12	2	119620-77440	FLAME ASSY, REAR	1							
13	2	119620-77450	COVER, REAR END	1							
14	2	119620-77461	PULLEY	1							
15	2	119620-77471	NUT	1							
16	2	119620-77490	COLLAR	1							
17	2	119620-77710	REGULATOR ASSY	1							
18	2	119620-79260	HOLDER	1							
19	2	129052-79270	HOLDER, BRUSH	1							
20	2	119620-79290	SCREW	6							
21	2	119620-79300	SCREW	1							
22	2	119620-79310	BOLT	3							
23	2	119620-79320	SCREW	2							
24	2	119620-79330	BOLT	2							
25	2	119620-79340	BUSH, INSULATION	1							
26	2	119620-79350	NUT	2							
27	1	26306-100002	NUT, M10	1							
28	1	129064-77330	ADJUSTER	1							
29	1	129067-77340	SPACER	1							
30	1	129972-77341	BOLT, ADJUSTER L=50	1							
31	1	26106-080502	BOLT, M8X 50 PLATED	1							

Remarks

Note: "Effective Machine No." of the Engine Section is indicated on the Model Label which is shown in Fig.4.

## Parts No. Index

Parts No.	Fig. No.	Ref. No.
114250-39450	9	28
114250-53080	13	2
114250-53120	13	8
114250-53130	13	9
114250-53140	13	10
114250-53210	13	14
119131-18320	6	7
119593-59581	13	70
119609-32040	2	9
119620-77380	15	4
119620-77440	15	12
119620-77450	15	13
119620-77461	15	14
119620-77471	15	15
119620-77490	15	16
119620-77710	15	17
119620-79200	15	8
119620-79210	15	9
119620-79220	15	10
119620-79230	15	11
119620-79250	15	6
119620-79260	15	18
119620-79290	15	20
119620-79300	15	21
119620-79310	15	22
119620-79320	15	23
119620-79330	15	24
119620-79340	15	25
119620-79350	15	26
119625-11880	4	28
119626-21700	8	15
119653-77950	12	120
119660-61901	12	61
119802-01561	2	5
119802-03110	4	39
119802-03121	4	40
119802-03130	4	41
119802-03141	4	42
119802-11260	4	4
119802-11270	4	5
119802-11280	4	6
119802-11870	4	27
119802-13640	6	5
119802-25071	7	21
119802-25101	7	10
119802-25901	7	15
119802-35100	9	22
119802-39450	9	30
119802-49113	10	10
119802-49730	10	41

Parts No.	Fig. No.	Ref. No.
119802-51090	11	11
119802-51250	11	134
119802-51560	11	57
119802-51590	11	63
119802-51600	11	64
119802-51680	11	68
119802-51690	11	69
119802-59550	13	64
119802-59560	13	66
119803-21200	8	4
119803-25050	7	9
119803-53400	13	15
119803-77830	4	55
119807-61420	12	24
119808-12520	5	13
119808-12540	5	17
119852-61080	12	88
119852-61440	12	25
119865-12600	5	20
119865-21600	8	14
119866-12541	5	18
119934-01800	2	3
119934-12200	5	10
119934-12501	5	11
119980-07900	4	53 -1
120130-11860	4	58
120270-54410	4	30
121111-21501	8	11
121250-44901	10	36
121267-44760	10	27
121400-11340	4	23
121450-42450	10	35
121520-34810	9	17
121550-23200	8	29
121850-21680	8	10
121850-51960	2	10
123501-79240	15	5
123900-13610	6	3
123900-13630	6	4
123900-13650	6	6
124060-01050	1	4
124060-77680	13	71
124160-01751	2	6
124160-01910	1	6
		7
	3	6
124160-11360	4	49
124160-39140	9	29
124240-01871	2	7
		20

Parts No.	Fig. No.	Ref. No.
124240-01871	2	21
124240-01883	2	22
124395-49840	10	18
124460-11340	4	24
124465-44950	10	37
		38
124722-59050	10	42
		45
	13	65
		68
129001-01250	1	5
129001-01340	1	28
129001-02931	1	29
129001-12110	5	4
129001-32001	9	1
129004-03010	4	37
129004-11241	4	1
129004-11251	4	2
129004-11310	4	44
129004-11650	4	8
129004-11900	4	29
129004-13200	6	9
129004-21650	8	8
129004-42040	10	16
129004-49610	10	39
129004-49620	10	43
129004-49711	10	40
129004-49721	10	44
129004-59811	13	49
129004-59821	13	53
129004-59831	13	57
129005-03080	5	1
129005-11100	4	19
129005-12101	5	3
129005-22080	8	16
129005-22500	8	18
129005-22900	8	35
129005-22950	8	37
129005-59830	9	31
129008-01520	2	4
129008-11700	4	13
129008-21000	8	1
129008-51390	11	39
129008-51900	11	9
129008-51920	11	10
129008-53200	13	11
129008-77800	4	56
129008-77820	4	57
129051-12530	5	15
129052-01692	3	4

Parts No.	Fig. No.	Ref. No.
129052-77201	15	2
129052-77421	15	7
129052-79270	15	19
129054-01640	3	8
129055-13521	6	10
129064-77330	15	28
129067-77340	15	29
129100-01580	3	1
		17
	8	2
129100-11112	4	20
129100-23910	8	32
129100-35140	9	24
129100-42051	10	3
129100-42121	10	4
129120-01780	3	20
129120-42351	10	24
129129-14580	7	3
129129-77230	14	7
129129-77240	14	8
129129-77260	14	20
129129-77270	14	21
129129-77320	14	27
129129-77340	14	29
129129-77350	14	30
129129-77362	14	31
129129-77380	14	33
129129-77400	14	15
129129-77410	14	16
129129-77420	14	18
129129-77430	14	19
129129-77440	14	13
129129-77450	14	14
129129-77460	14	34
129150-01200	1	27
129150-01881	7	16
129150-02020	1	9
129150-02450	7	4
129150-02871	1	32
129150-02931	1	24
129150-02941	1	35
129150-03070	4	38
129150-11230	4	9
129150-11280	4	7
129150-11370	4	12
129150-11750	4	11
129150-11810	4	59
129150-13110	6	1
129150-14101	7	6
129150-14200	7	1

## Parts No. Index

Parts No.	Fig. No.	Ref. No.
129150-14400	7	2
129150-23601	8	30
129150-23611	8	33
129150-25301	7	14
129150-26000	7	17
129150-26050	7	18
129150-32020	9	14
129150-35111	9	25
129150-35170	9	37
129150-49811	10	30
129150-59120	13	44
129150-59131	13	47
129150-77511	5	8
129150-91400	2	27
129155-49801	10	29
129155-51280	12	6
129155-61460	12	26
129155-77060	14	35
129202-22300	8	24
129232-01600	3	2
129232-01710	3	7
129232-12601	5	24
129232-13110	6	2
129232-21590	8	12
129232-34800	9	16
129232-35090	9	18
129232-42000	10	1
129232-50101	13	42
129255-61410	12	23
129263-59550	13	62
129268-11350	4	35
129350-49530	10	31
129407-77010	14	1
129407-77210	14	5
129407-77220	14	6
129407-77250	14	9
129407-77280	14	22
129407-77290	14	23
129407-77300	14	24
129407-77310	14	26
129407-77330	14	28
129407-77390	14	12
129410-03990	5	2
129418-12530	5	16
129486-01670	3	21
129486-07910	4	53
129486-12581	5	7
129486-42021	10	15
129486-42140	10	17
129486-59320	13	63

Parts No.	Fig. No.	Ref. No.
129486-59551	13	67
129555-01750	3	11
129555-44750	4	47
	10	9
129612-12650	5	19
129655-44740	10	26
129795-01900	15	1
129795-01950	2	8
129795-02412	1	12
129795-11120	4	21
129795-11180	4	22
129795-21661	8	9
129795-49551	10	32
129900-07900	4	51
129916-49740	10	11
129916-59020	11	130
129972-77341	15	30
158552-51151	11	14
158552-51571	11	58
		59
158552-51580	11	62
158552-51600	11	72
158552-51670	11	126
158552-51781	11	98
158552-52100	11	128
158552-52311	11	107
158552-52400	11	108
158552-52500	11	129
158552-61061	12	87
158552-61900	12	78
158553-51551	11	124
158553-51630	11	73
158553-51650	11	75
158553-51660	11	76
158553-51670	11	67
158553-51680	11	77
158553-51770	11	104
158553-51930	11	101
	12	7
158553-61050	12	3
158553-61070	12	4
158557-51570	11	60
158563-51281	11	37
		38
158563-51330	11	48
158600-51270	11	36
158601-51550	11	56
158601-51570	11	61
158601-51650	11	125
158601-51770	11	97

Parts No.	Fig. No.	Ref. No.
158601-51790	11	99
171051-01921	1	8
171056-49120	10	34
22190-080002	2	11
		12
		23
	9	32
		34
22190-100002	9	35
22190-120002	3	10
	11	102
		109
		131
	12	65
22190-180002	11	103
		110
22217-140000	11	111
22252-000260	8	25
22312-050140	11	112
22351-030010	8	7
22351-050010	11	113
22351-060012	4	31
22512-070140	7	7
	8	5
22857-500100	4	45
		46
23000-060000	5	25
23414-080000	10	19
23857-030000	9	33
23857-060000	11	132
23875-020000	10	12
23876-010000	10	13
24105-060064	7	20
24311-000070	11	115
24311-000120	4	50
24311-000160	9	19
24311-000320	2	13
24341-000240	2	29
24356-190180	11	116
24356-190200	11	70
		117
24372-000150	11	71
25152-003700	10	25
26106-060102	11	118
	12	68
26106-060142	12	84
		85
		121
26106-060162	2	30
26106-060202	12	86

Parts No.	Fig. No.	Ref. No.
26106-060302	10	28
26106-060402	9	20
26106-080122	3	12
	5	26
	9	21
	10	20
26106-080142	4	54
	7	8
	13	43
26106-080162	2	14
		15
		24
	4	52
	10	21
	11	135
26106-080202	2	25
	5	5
		9
	9	27
	11	136
26106-080252	3	13
	4	32
26106-080302	2	16
		26
26106-080352	4	33
26106-080402	7	13
26106-080452	10	22
26106-080502	3	14
	4	34
	5	27
	15	31
26106-080552	2	17
26106-080602	10	23
26106-080802	5	6
26106-080852	2	18
26106-081002	3	15
26106-081202	3	16
26116-120202	14	36
26206-100202	3	3
26306-080002	2	19
	5	28
	6	8
		11
	10	33
26306-100002	15	27
26366-060002	9	36
26450-060252	9	15
26450-080452	11	120
26577-060162	10	14
26756-060002	12	69

# Parts No. Index

Parts No.	Fig. No.	Ref. No.
26776-140002	11	121
27241-120000	1	13
27241-300000	1	14
27241-400000	4	18
27310-080001	4	25
49933-000138	4	48
729005-01560	1	1
729008-01500	2	1
729008-53200	13	1
729232-51380	11	1
729402-01650	3	18
729402-23100	8	26
X0280210230	14	10
X0283060061	14	2
X0283270140	14	11
X9490561001	15	3
X9490561370	14	3
X9491200240	14	4
X9491703371	14	17
X9491730461	14	25

Parts No.	Fig. No.	Ref. No.
-----------	----------	----------

Parts No.	Fig. No.	Ref. No.
-----------	----------	----------

Parts No.	Fig. No.	Ref. No.
-----------	----------	----------