

0CNP5-M38200EN

Directions for the Parts Catalog.

1. This Parts Catalog shows both standard and optional parts.
2. Parts may change without prior notice.
3. The following is an example of the Parts Catalog format.

REF.	LEV.	PARTS NO.	DESCRIPTION	Q'TY						I	R
				(A)	(B)	(C)	(D)	(E)	(F)		
1	1	729595-51390	FUEL INJECTION PUMP	1	1	1	1	1			1
1-1	1	729595-51391	FUEL INJECTION PUMP	1	1	1	1	1		N	1
		(A=E00185) (B=E00200)									
3	2	26022-060162	SCREW M 6X 16	9	9	9	9	9			
3-1	2	26022-060162	SCREW M 6X 16	4	4	4	4	4		K	
		(A=E00156) (B=E00156) (C=E00156) (D=E00156) (E=E00156)									
4	2	129470-51040	CAMSHAFT	1	1	1	1	1			
5	2	122710-51050	BEARING, ROLLER	2	2	2	2	2			
6	2	129470-51060	RETAINER	1	1	1	1	1			

Remarks
(1) BOOST COMPEMSATOR TYPE. OPTIONAL PART, TO E00155,(4JH-DT, 4JH-DTZ

① Ref. No.

The Ref. No. listed may not be in accordance with the illustration Ref. No.

(Ex.) Illustration No.

List Ref No.

1

1

(Before change)

1-1

(After change)

For interchangeable symbols N, R and K, illustrations for new parts may be abbreviated.

② Lev. (Level)

Level indication

The numbers below indicate the level of relativity towards the main part.

1 ----- Main parts (Assembly parts)

2 ----- Sub component included in " 1 ".

3 ----- Sub component included in " 2 ".

Note) Parts that are not for sale are partially illustrated but not listed.

③ Interchangeability Symbol

When a part change takes place, one of the following interchangeability symbols is indicated beside the part.

Symbol	Interchangeability	Contents note
N	Old $\begin{matrix} \leftarrow \text{Yes} \\ \text{No} \rightarrow \end{matrix}$ New	New Part is interchangeable for Old Part but Old Part is not interchangeable for New Part.
Q	Old $\begin{matrix} \leftarrow \text{No} \\ \text{Yes} \rightarrow \end{matrix}$ New	New Part is not interchangeable for Old Part but Old Part is interchangeable for New Part.
R	Old $\begin{matrix} \leftarrow \text{Yes} \\ \text{Yes} \rightarrow \end{matrix}$ New	New/ Old Parts are both interchangeable.
S	Old $\begin{matrix} \leftarrow \text{No} \\ \text{No} \rightarrow \end{matrix}$ New	New/ Old Parts are both not interchangeable.
W		Part newly added.
Z		Part discontinued.
F		Not interchangeable by a single part but interchangeable together with related parts.
K		Changes only for used parts quantities.

④ Effective Machine No.

When a part changes, the effective Machine No. will be indicated in the (A)-(F) column.

Product Symbol	Product No.	Product Symbol	Product No.
C	Clutch No. Compressor No.	F	Machine No. (Agricultural Equip.)
D	Drive No.	M	Machine No.
E	Engine No.		

Note 1) A date may follow the symbol. (Ex.) 1996.01

Note 2) "XXXXX" and "ZZZZZ" are for parts that could not be predicted or for engine models that could not be identified.

Note 3) (A=E00185) is the E (Engine Serial Number) for the column (A) model (in this case 4JH-DT) after the parts design change.

⑤ Remarks

Figures or alphabets (symbols) are entered in the remarks column.

The comments (remarks) on parts that are indicated at the bottom of the illustration are the same symbols as those stated above.

Instructions pour le catalogue de pièces.

1. Le catalogue contient des pièces standards et optionnelles.

2. Les pièces peuvent changer sans préavis.

3. Voici un exemple de format du catalogue de pièces.

REF.	LEV.	PARTS NO.	DESCRIPTION	Q'TY						I	R
				(A)	(B)	(C)	(D)	(E)	(F)		
1	1	729595-51390	FUEL INJECTION PUMP	1	1	1	1	1			1
1-1	1	729595-51391	FUEL INJECTION PUMP	1	1	1	1	1		N	1
		(A=E00185) (B=E00200)									
3	2	26022-060162	SCREW M 6X 16	9	9	9	9	9			
3-1	2	26022-060162	SCREW M 6X 16	4	4	4	4	4		K	
		(A=E00156) (B=E00156) (C=E00156) (D=E00156) (E=E00156)									
4	2	129470-51040	CAMSHAFT	1	1	1	1	1			
5	2	122710-51050	BEARING, ROLLER	2	2	2	2	2			
6	2	129470-51060	RETAINER	1	1	1	1	1			

Remarks
(1) BOOST COMPEMSATOR TYPE. OPTIONAL PART, TO E00155,(4JH-DT, 4JH-DTZ

① Réf.

Il se peut que la référence de la liste ne concorde pas avec la référence de l'illustration.

(Ex.) Réf. de l'illustration Réf. de la liste
1 1 (Avant le changement) → 1-1 (Après le changement)

Pour les symboles d'interchangeabilité N, R et K, les illustrations pour les nouvelles pièces peuvent être abrégées.

② Niv. (Niveau)

Indication du niveau

Les numéros ci-dessous indiquent le niveau par rapport à la pièce principale.

1 ----- Pièces principales (pièces d'assemblage)

2 ----- Sous-élément inclus dans « 1 ».

3 ----- Sous-élément inclus dans « 2 ».

Remarque : les pièces qui ne sont pas en vente sont partiellement illustrées, mais ne figurent pas dans la liste.

③ Symbole d'interchangeabilité

En cas de changement de pièce, l'un des symboles d'interchangeabilité suivants est indiqué à côté de la pièce.

Symbole	Interchangeabilité	Remarque sur le contenu
N	Ancienne $\xleftarrow{\text{Oui}}$ Nouvelle $\xrightarrow{\text{Non}}$	La nouvelle pièce peut être substituée à l'ancienne, mais l'ancienne pièce ne peut pas être substituée à la nouvelle.
Q	Ancienne $\xleftarrow{\text{Non}}$ Nouvelle $\xrightarrow{\text{Oui}}$	La nouvelle pièce ne peut pas être substituée à l'ancienne, mais l'ancienne pièce peut être substituée à la nouvelle.
R	Ancienne $\xleftarrow{\text{Oui}}$ Nouvelle $\xrightarrow{\text{Oui}}$	La nouvelle pièce et l'ancienne sont interchangeables.
S	Ancienne $\xleftarrow{\text{Non}}$ Nouvelle $\xrightarrow{\text{Non}}$	La nouvelle pièce et l'ancienne ne sont pas interchangeables.
W		Pièce nouvellement ajoutée.
Z		Pièce supprimée.
F		Non interchangeable avec une pièce unique, mais interchangeable avec des pièces connexes.
K		Changements uniquement aux quantités de pièces usagées.

④ N° de machine applicable

En cas de changement de pièce, le n° de machine applicable est indiqué dans la colonne (A)-(F).

Symbole de produit	N° de produit	Symbole de produit	N° de produit
C	N° d'embrayage, n° de compresseur	F	N° de machine (agroéquipement)
D	N° d'entraînement	M	N° de machine
E	N° de moteur		

Remarque 1 : une date peut suivre le symbole. (Ex.) 1996.01

Remarque 2 : « XXXXX » et « ZZZZZ » désignent des pièces impossibles à prédire ou des modèles de moteur non identifiables.

Remarque 3 : (A=E00185) est le E (numéro de série du moteur) pour le modèle de la colonne (A) (ici : 4JH-DT) après le changement à la conception des pièces.

⑤ Identification des remarques

Des chiffres ou des lettres (symboles) sont entrés dans la colonne des remarques.

Les commentaires (remarques) sur les pièces dans le bas de l'illustration sont les mêmes symboles que ceux mentionnés ci-dessus.

Contents

OCNP5-M38200

Fig. No. Fig. Name
4TNV88-ULRG1, 4TNV88-BLRG1

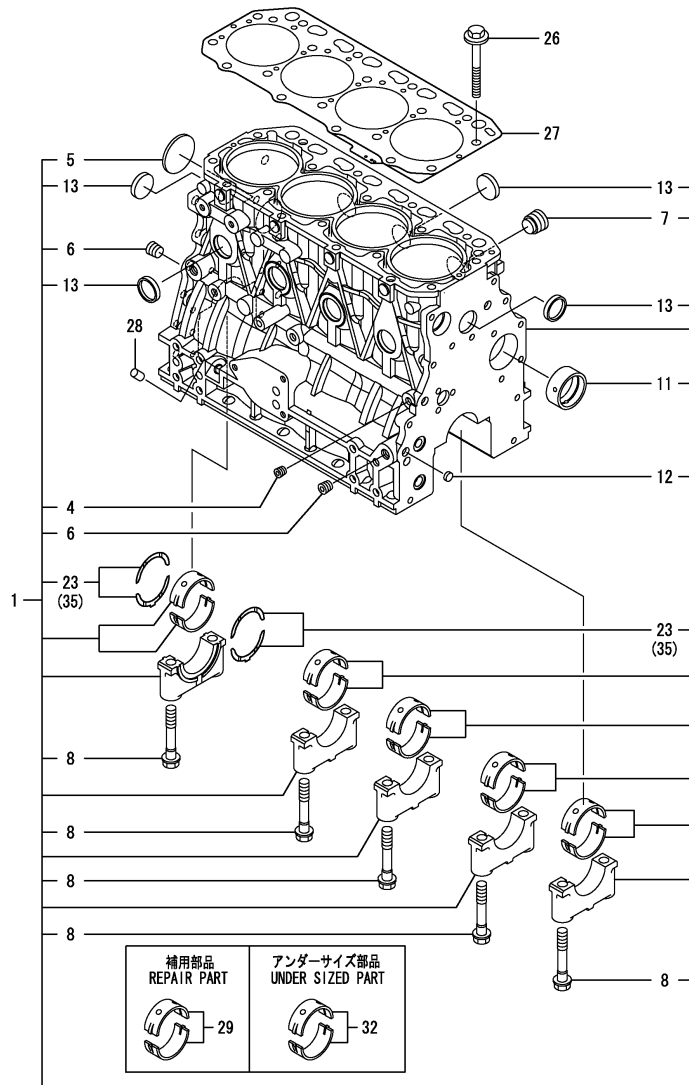
Fig. No. Fig. Name

1. CYLINDER BLOCK
2. GEAR HOUSING
3. FLYWHEEL HOUSING & OIL SUMP
4. CYLINDER HEAD & BONNET
5. SUCTION MANIFOLD
6. EXHAUST MANIFOLD & SILENCER
7. CAMSHAFT & DRIVING GEAR
8. CRANKSHAFT & PISTON
9. BALANCER
10. LUB. OIL SYSTEM
11. COOLING WATER SYSTEM
12. FUEL INJECTION PUMP
13. FUEL INJECTION PUMP
14. GOVERNOR
15. FUEL INJECTION VALVE
16. FUEL INJECTION VALVE
17. STARTING MOTOR
18. GENERATOR

Fig.1. CYLINDER BLOCK

(A)=4TNV88-ULRG1
(B)=4TNV88-BLRG1
(C)=

(D)=
(E)=
(F)=



No.	Lev.	Parts No.	Description	Q'ty						I	R
				(A)	(B)	(C)	(D)	(E)	(F)		
1	1	729659-01570	BLOCK ASSY, CYLINDER	1	1						
4	2	124060-01050	PLUG, PT1/8	1	1						
5	2	129001-01250	PLUG, 50	1	1						
6	2	124160-01910	PLUG, PT1/4	2	2						
7	2	171051-01921	PLUG, NPTF1	1	1						
8	2	129150-02020	BOLT, METAL CAP	10	10						
11	2	129795-02412	BUSH, CAMSHAFT	1	1						
12	2	27241-120000	PLUG, 12	2	2						
13	2	27241-300000	PLUG 30	8	8						
23	2	129150-02931	BEARING, THRUST	2	2						
26	1	129150-01200	BOLT, HEAD	18	18						
27	1	129407-01340	GASKET, HEAD	1	1						
28	1	119309-01810	PLUG	1	1						
29	1	129001-02931	BEARING, MAIN	5	5						1
32	1	129150-02871	BEARING, 0.25 US	5	5						2
35	1	129150-02941	BEARING, THRUST 0.25	1	1						3

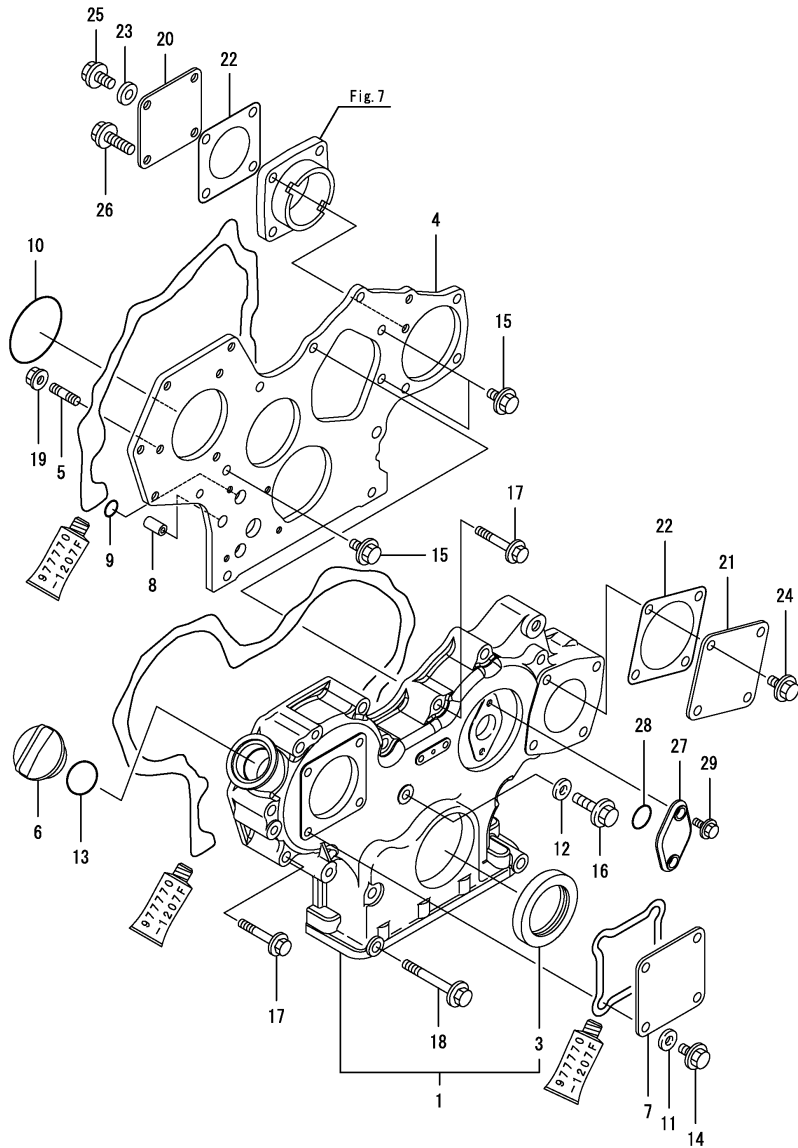
Remarks
Note: "Effective Machine No." of the Engine Section is indicated on the Model Label which is shown in Fig.4.

- (1) Repair part.
- (2) Under-sized (U.S.=0.25) part.
- (3) Over-sized (O.S.=0.25) part.

Fig.2. GEAR HOUSING

(A)=4TNV88-ULRG1
 (B)=4TNV88-BLRG1
 (C)=

(D)=
 (E)=
 (F)=



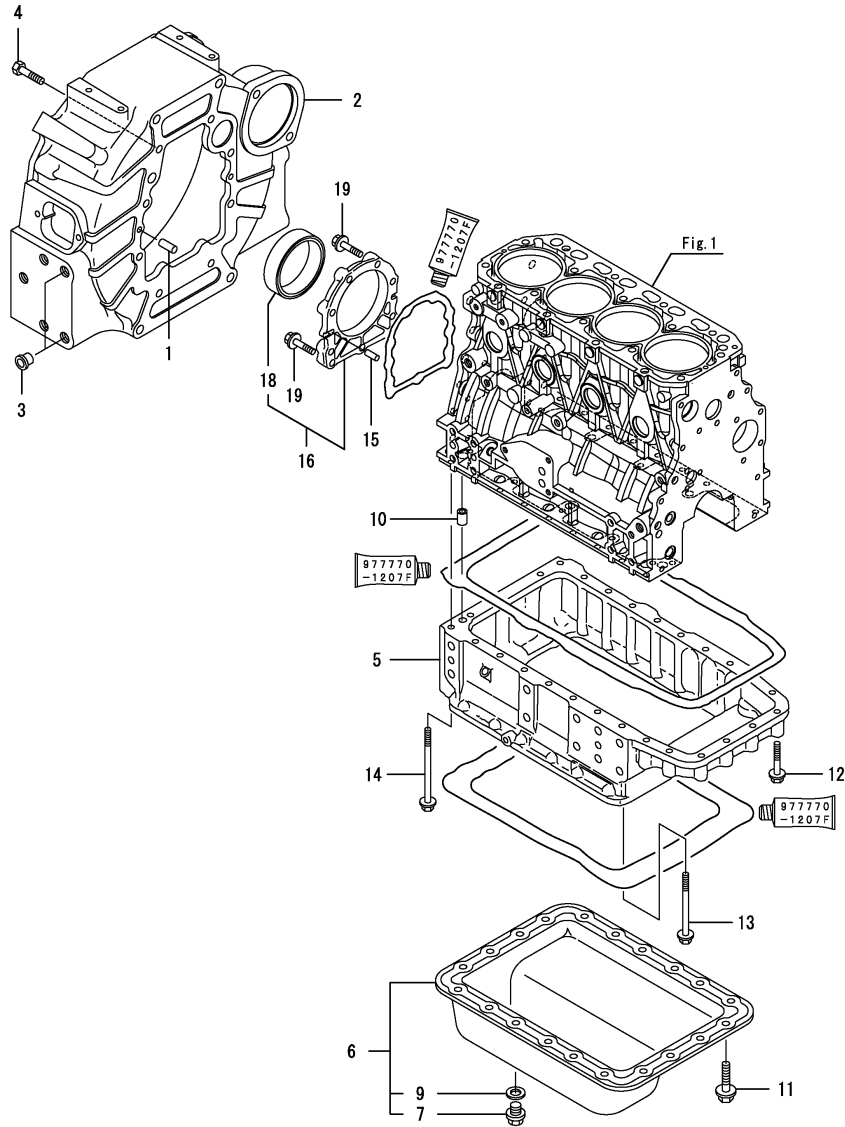
No.	Lev.	Parts No.	Description	Q'ty						I	R
				(A)	(B)	(C)	(D)	(E)	(F)		
1	1	729008-01500	CASE ASSY, GEAR	1	1						
3	2	119934-01800	SEAL, OIL	1	1						
4	1	129008-01520	FLANGE, GEAR CASE	1	1						
5	1	119802-01561	STUD, M8X25	3	3						
6	1	124160-01751	COVER, FILLER	1	1						
7	1	124240-01871	COVER	1	1						
8	1	129795-01950	PIPE, KNOCK L=18	2	2						
9	1	119609-32040	O-RING, P16	2	2						
10	1	121850-51960	O-RING	1	1						
11	1	22190-080002	WASHER, SEAL 6	4	4						
12	1	22190-080002	WASHER, SEAL 6	1	1						
13	1	24311-000320	O-RING, 1AP32.0	1	1						
14	1	26106-080162	BOLT, M8X 16 PLATED	4	4						
15	1	26106-080162	BOLT, M8X 16 PLATED	3	3						
16	1	26106-080302	BOLT, M8X 30 PLATED	1	1						
17	1	26106-080552	BOLT, M8X 55 PLATED	10	10						
18	1	26106-080852	BOLT, M8X 85 PLATED	3	3						
19	1	26306-080002	NUT, M8	3	3						
20	1	124240-01871	COVER	1	1						
21	1	124240-01871	COVER	1	1						
22	1	124240-01883	GASKET	2	2						
23	1	22190-080002	WASHER, SEAL 6	1	1						
24	1	26106-080162	BOLT, M8X 16 PLATED	4	4						
25	1	26106-080202	BOLT, M8X 20 PLATED	1	1						
26	1	26106-080302	BOLT, M8X 30 PLATED	3	3						
27	1	121023-01551	COVER	1	1						
28	1	24341-000240	O-RING, 1AS24.0	1	1						
29	1	26106-060162	BOLT, M6X 16 PLATED	2	2						

Remarks
 Note: "Effective Machine No." of the Engine Section is indicated on the Model Label which is shown in Fig.4.

Fig.3. FLYWHEEL HOUSING & OIL SUMP

(A)=4TNV88-ULRG1
 (B)=4TNV88-BLRG1
 (C)=

(D)=
 (E)=
 (F)=



No.	Lev.	Parts No.	Description	Q'ty						I	R
				(A)	(B)	(C)	(D)	(E)	(F)		
1	1	129100-01580	PIN, M8X16	2	2						
2	1	129558-01620	HOUSING, FLYWHEEL	1	1						
3	1	194450-11190	PLUG, 15.0	6	6						
4	1	26206-100252	BOLT, M10X 25 PLATED	8	8						
5	1	129550-01702	SUMP, OIL	1	1						
6	1	729429-01721	SUMP ASSY, OIL	1	1						
7	2	105425-01690	PLUG, 16	1	1						
9	2	22190-160002	WASHER, SEAL 16	1	1						
10	1	129555-01750	PIPE, KNOCK 14X18	1	1						
11	1	26106-080122	BOLT, M8X 12 PLATED	20	20						
12	1	26106-080502	BOLT, M8X 50 PLATED	8	8						
13	1	26106-081002	BOLT, M8X100 PLATED	14	14						
14	1	26106-081202	BOLT, M8X120 PLATED	4	4						
15	1	129100-01580	PIN, M8X16	2	2						
16	1	729402-01650	CASE ASSY, OIL SEAL	1	1						
18	2	129120-01780	SEAL, OIL	1	1						
19	1	129486-01670	BOLT, M8X30	9	9						

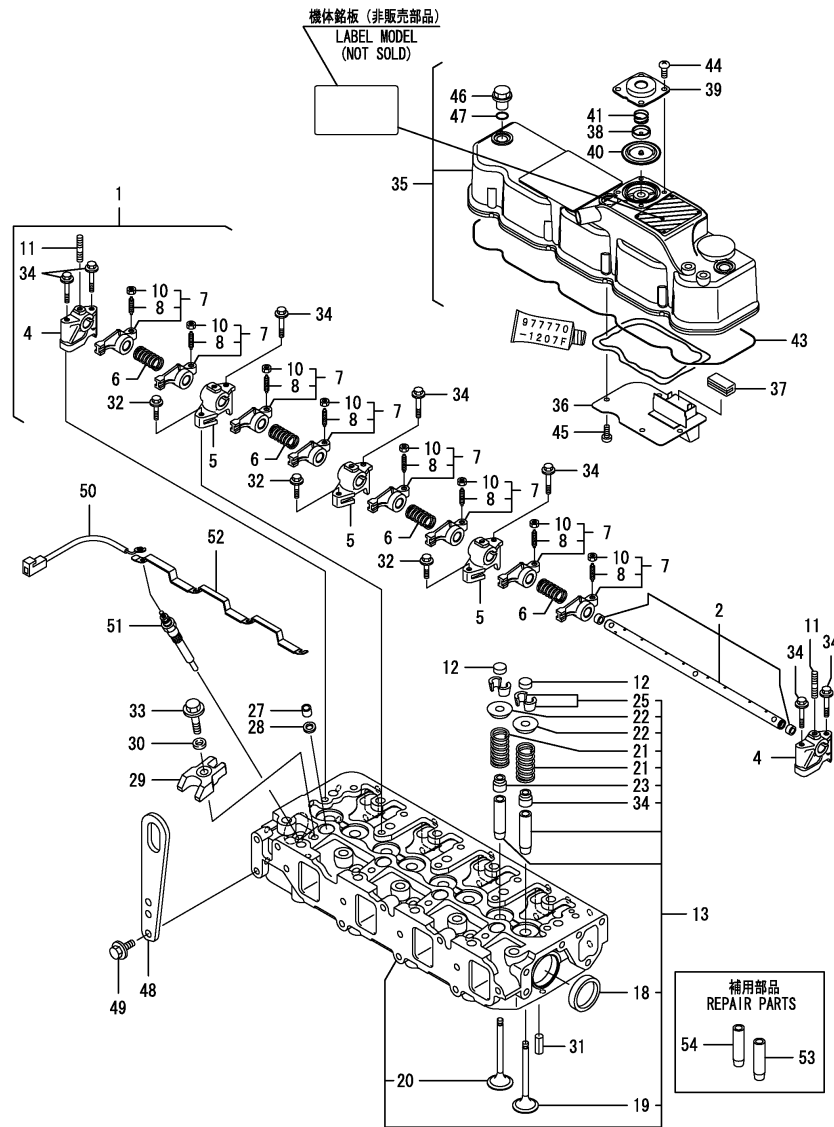
Remarks

Note: "Effective Machine No." of the Engine Section is indicated on the Model Label which is shown in Fig.4.

Fig.4. CYLINDER HEAD & BONNET

(A)=4TNV88-ULRG1
(B)=4TNV88-BLRG1
(C)=

(D)=
(E)=
(F)=



No.	Lev.	Parts No.	Description	Qty						I	R
				(A)	(B)	(C)	(D)	(E)	(F)		
1	1	129601-11241	SHAFT ASSY, ROCKER	1	1						
2	2	129601-11251	SHAFT, ROCKER ARM	1	1						
4	2	119802-11260	SUPPORT, ROCKER ARM	2	2						
5	2	119802-11270	SUPPORT, ROCKER ARM	3	3						
6	2	129150-11280	SPRING	4	4						
7	2	129004-11650	ARM, ROCKER	8	8						
8	3	129150-11230	SCREW, VALVE ADJUST	8	8						
10	3	129150-11750	NUT, M8	8	8						
11	2	26226-080182	STUD, M8X 18	3	3						
12	1	129150-11370	CAP, VALVE	8	8						
13	1	129604-11700	HEAD ASSY, CYLINDER	1	1						
18	2	27241-400000	PLUG, 40	2	2						
19	2	129005-11100	VALVE, INTAKE	4	4						
20	2	129100-11112	VALVE, EXHAUST	4	4						
21	2	129795-11120	SPRING, VALVE	8	8						
22	2	129795-11180	RETAINER, SPRING	8	8						
23	2	121400-11340	SEAL, VALVE STEM	4	4						
24	2	124460-11340	SEAL, VALVE STEM	4	4						
25	2	27310-080001	COTTER, 8	8	8						
27	1	119802-11870	PROTECTOR, NOZZLE	4	4						
28	1	119625-11880	SEAT, NOZZLE	4	4						
29	1	129004-11900	RETAINER, NOZZLE	4	4						
30	1	120270-54410	WASHER, INJECTOR	4	4						
31	1	22351-060012	PIN, SPRING 6.0X12	2	2						
32	1	26106-080252	BOLT, M8X 25 PLATED	3	3						
33	1	26106-080352	BOLT, M8X 35 PLATED	4	4						
34	1	26106-080502	BOLT, M8X 50 PLATED	7	7						
35	1	129652-11350	BONNET ASSY, HEAD	1	1						
36	2	129004-03010	PLATE	1	1						
37	2	129150-03070	BAFFLE, BREATHER	1	1						
38	2	119802-03110	PLATE	1	1						
39	2	119802-03121	COVER, DIAPHRAGM	1	1						
40	2	119802-03130	DIAPHRAGM	1	1						
41	2	119802-03141	SPRING, DIAPHRAGM	1	1						
43	2	129601-11310	GASKET, BONNET	1	1						
44	2	22857-500100	SCREW, 5X10	4	4						
45	2	22857-500100	SCREW, 5X10	4	4						
46	1	124160-11360	KNOB	3	3						
47	1	24311-000120	O-RING, 1AP12.0	3	3						
48	1	129900-07900	LIFTER	1	1						
49	1	26106-080162	BOLT, M8X 16 PLATED	2	2						
50	1	119803-77830	HARNES, WIRE	1	1						
51	1	129008-77800	PLUG, GLOW	4	4						
52	1	129604-77821	CONNECTOR, GLOW PLUG	1	1						
53	1	120130-11860	GUIDE, VALVE	4	4						1
54	1	129150-11810	GUIDE, VALVE	4	4						1

Remarks
Note: "Effective Machine No." of the Engine Section is indicated on the Model Label which is shown in Fig.4.

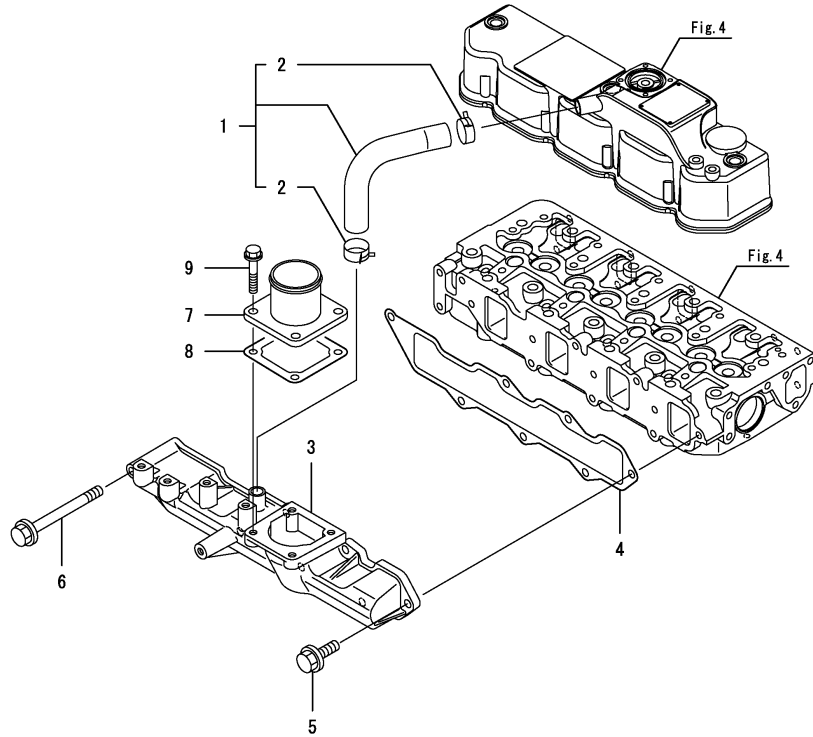
(1)Repair part.

Fig.5. SUCTION MANIFOLD

(A)=4TNV88-ULRG1
 (B)=4TNV88-BLRG1
 (C)=

(D)=
 (E)=
 (F)=

No.	Lev.	Parts No.	Description	Q'ty						I	R
				(A)	(B)	(C)	(D)	(E)	(F)		
1	1	129005-03080	PIPE , BREATHER	1	1						
2	2	129410-03990	CLAMP 22	2	2						
3	1	129602-12101	MANIFOLD, AIR INTAKE	1	1						
4	1	129407-12110	GASKET, MANIFOLD	1	1						
5	1	26106-080202	BOLT, M8X 20 PLATED	6	6						
6	1	26106-080802	BOLT, M8X 80 PLATED	1	1						
7	1	129486-12581	JOINT, MANIFOLD	1	1						
8	1	129150-77511	GASKET	1	1						
9	1	26106-080202	BOLT, M8X 20 PLATED	4	4						

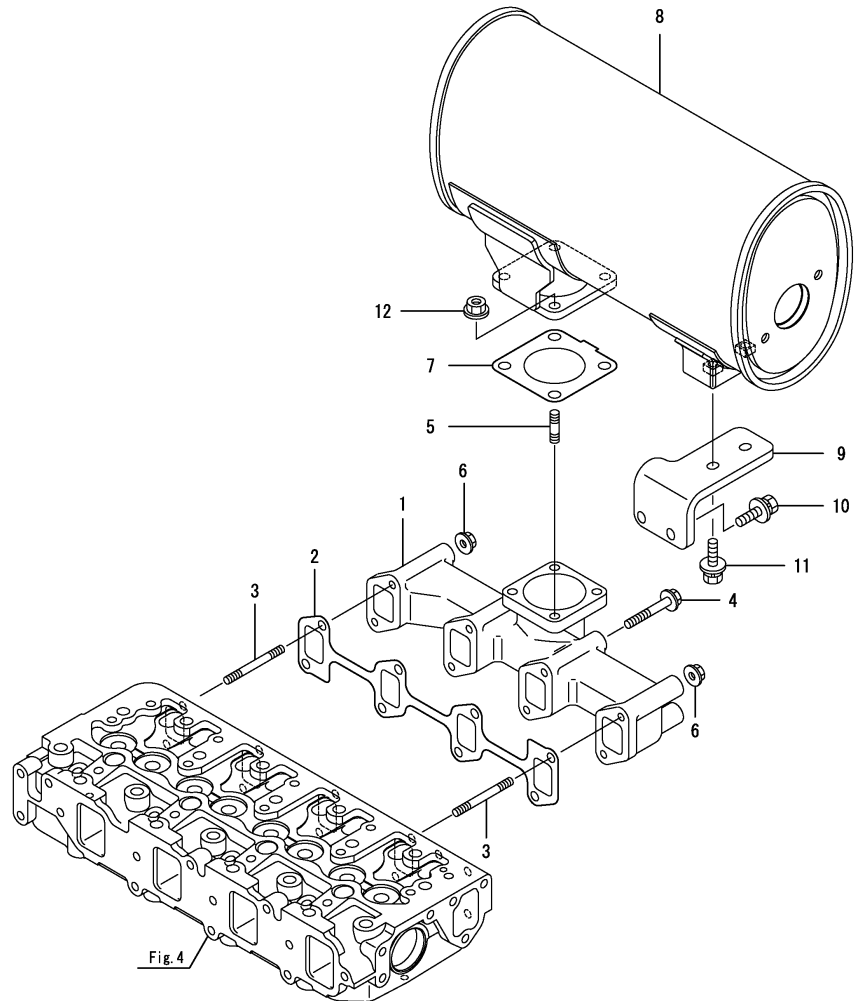


Remarks
 Note: "Effective Machine No." of the Engine Section is indicated on the Model Label which is shown in Fig.4.

Fig.6. EXHAUST MANIFOLD & SILENCER

(A)=4TNV88-ULRG1
(B)=4TNV88-BLRG1
(C)=

(D)=
(E)=
(F)=



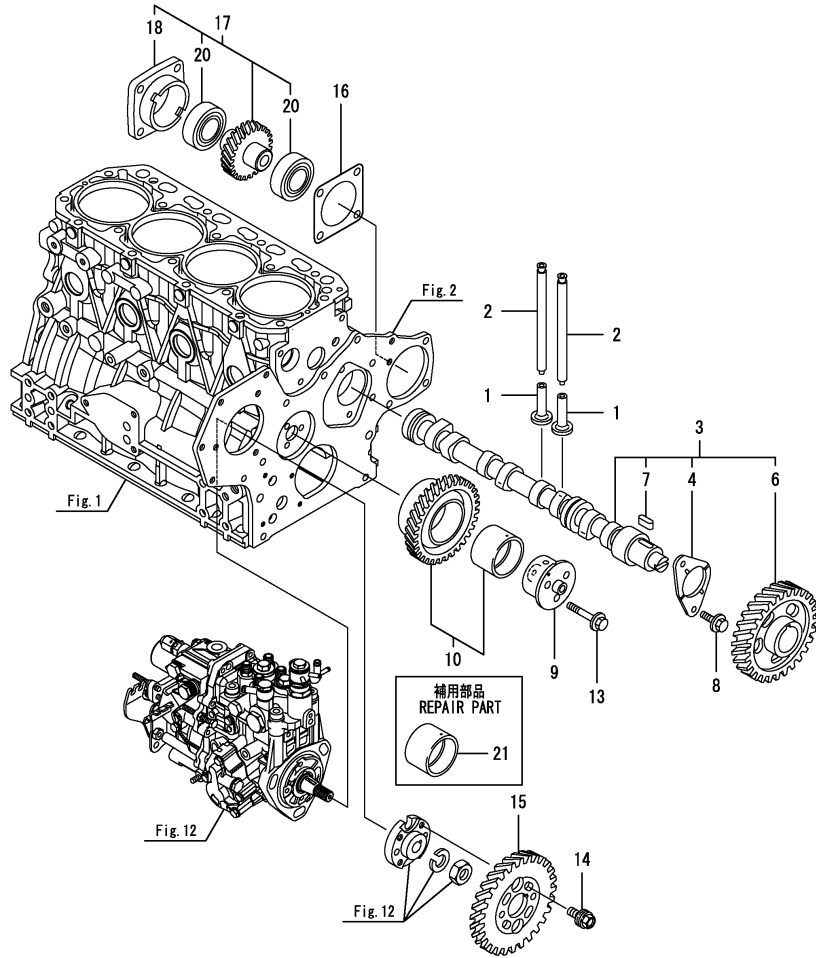
No.	Lev.	Parts No.	Description	Q'ty						I	R
				(A)	(B)	(C)	(D)	(E)	(F)		
1	1	129411-13100	MANIFOLD, EXHAUST	1	1						
2	1	129550-13110	GASKET	1	1						
3	1	129263-13220	STUD, M8X95	2	2						
4	1	123900-13630	BOLT, M8X80	6	6						
5	1	119131-18320	STUD, M8X22	4	4						
6	1	26306-080002	NUT, M8	2	2						
7	1	129930-13201	GASKET, SILENCER	1	1						
8	1	129659-13521	SILENCER	1	1						
9	1	129659-13660	STAY, SILENCER	1	1						
10	1	26014-080222	BOLT, M8X 22	2	2						
11	1	26014-080252	BOLT, M8X 25	2	2						
12	1	26306-080002	NUT, M8	4	4						

Remarks
Note: "Effective Machine No." of the Engine Section is indicated on the Model Label which is shown in Fig.4.

Fig.7. CAMSHAFT & DRIVING GEAR

(A)=4TNV88-ULRG1
(B)=4TNV88-BLRG1
(C)=

(D)=
(E)=
(F)=



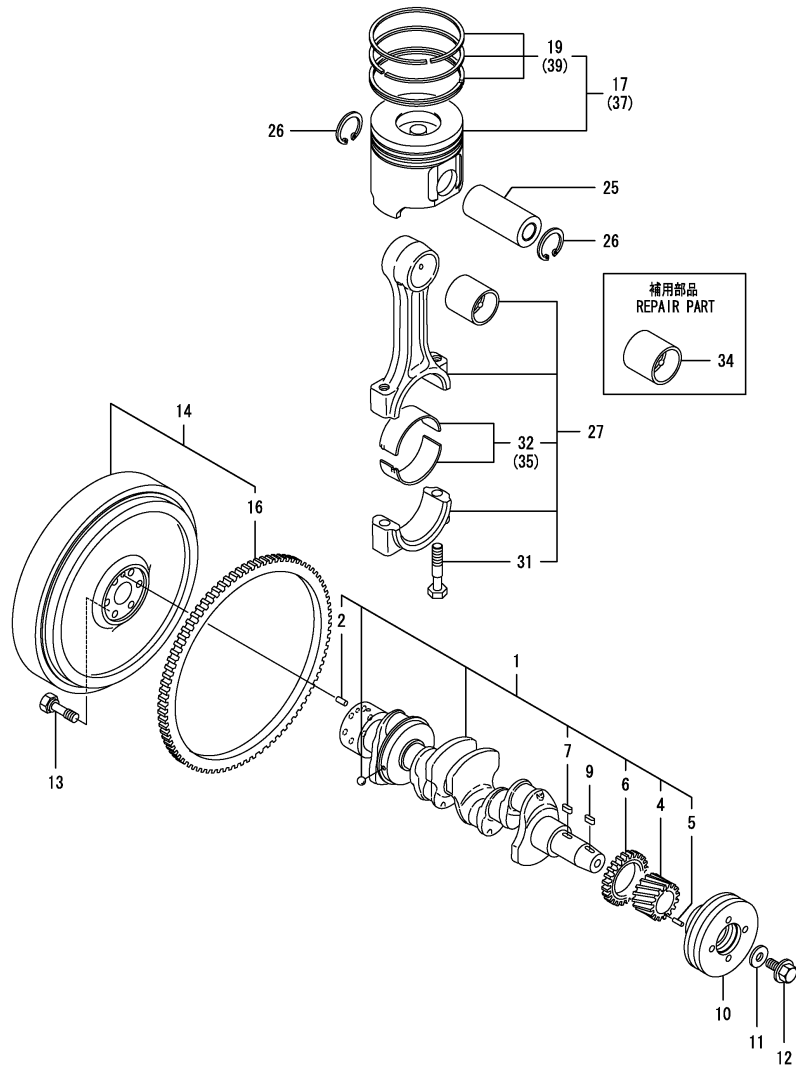
No.	Lev.	Parts No.	Description	Q'ty						I	R
				(A)	(B)	(C)	(D)	(E)	(F)		
1	1	129150-14200	TAPPET	8	8						
2	1	129150-14400	ROD, PUSH L=178	8	8						
3	1	729402-14580	CAMSHAFT ASSY	1	1						
4	2	129150-02450	BEARING, THRUST	1	1						
6	2	129150-14101	GEAR, CAMSHAFT	1	1						
7	2	22512-070140	KEY, 7X 14	1	1						
8	1	26106-080142	BOLT, M8X 14 PLATED	2	2						
9	1	119803-25050	SHAFT, IDLE	1	1						
10	1	119802-25101	GEAR ASSY, IDLE	1	1						
13	1	26106-080402	BOLT, M8X 40 PLATED	3	3						
14	1	129150-25301	BOLT	4	4						
15	1	119802-25901	GEAR, PUMP	1	1						
16	1	129150-01881	GASKET	1	1						
17	1	129150-26000	DRIVE ASSY, PUMP	1	1						
18	2	129150-26050	BRACKET, PUMP	1	1						
20	2	24105-060064	BEARING, BALL 6006Z	2	2						
21	1	119802-25071	BUSH, IDLE GEAR	1	1						1

Remarks
Note: "Effective Machine No." of the Engine Section is indicated on the Model Label which is shown in Fig.4.
(1)Repair part.

Fig.8. CRANKSHAFT & PISTON

(A)=4TNV88-ULRG1
(B)=4TNV88-BLRG1
(C)=

(D)=
(E)=
(F)=



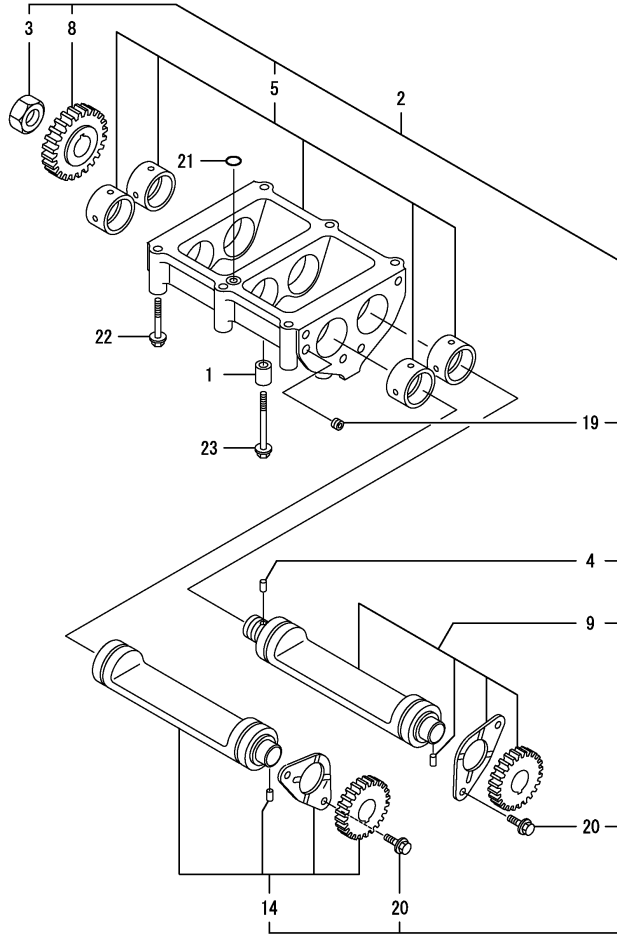
No.	Lev.	Parts No.	Description	Q'ty						I	R
				(A)	(B)	(C)	(D)	(E)	(F)		
1	1	129652-21010	CRANKSHAFT ASSY	1	1						
2	2	129100-01580	PIN, M8X16	1	1						
4	2	119803-21200	GEAR, CRANKSHAFT	1	1						
5	2	121850-21290	PIN	1	1						
6	2	129400-28121	GEAR, BALANCER	1	1						
7	2	22512-070140	KEY, 7X 14	1	1						
9	1	22512-070140	KEY, 7X 14	1	1						
10	1	119852-21650	V-PULLEY, 120	1	1						
11	1	129795-21661	WASHER	1	1						
12	1	121850-21680	BOLT	1	1						
13	1	121111-21501	BOLT, FLYWHEEL	6	6						
14	1	129635-21590	FLYWHEEL ASSY	1	1						
16	2	124550-21600	GEAR, RING	1	1						
17	1	129005-22080	PISTON ASSY	4	4						
19	2	129005-22500	RING SET, PISTON	4	4						
25	1	129202-22300	PIN, PISTON D26 L70	4	4						
26	1	22252-000260	RING, 26	8	8						
27	1	729402-23100	ROD ASSY, CONNECTING	4	4						
31	2	121550-23200	BOLT, CONNECTING ROD	8	8						
32	2	129150-23601	BEARING, CRANK PIN	4	4						
34	1	129100-23910	BEARING, PISTON PIN	4	4						1
35	1	129150-23611	BEARING, 0.25 US	4	4						2
37	1	129005-22900	PISTON ASSY, 0.25 OS	4	4						3
39	2	129005-22950	RING SET, 0.25 OS	4	4						3

Remarks
Note: "Effective Machine No." of the Engine Section is indicated on the Model Label which is shown in Fig.4.
(1)Repair part.
(2)Under-sized(U.S.=0.25)part.
(3)Over-sized(O.S.=0.25)part.

Fig.9. BALANCER

(A)=4TNV88-ULRG1
 (B)=4TNV88-BLRG1
 (C)=

(D)=
 (E)=
 (F)=



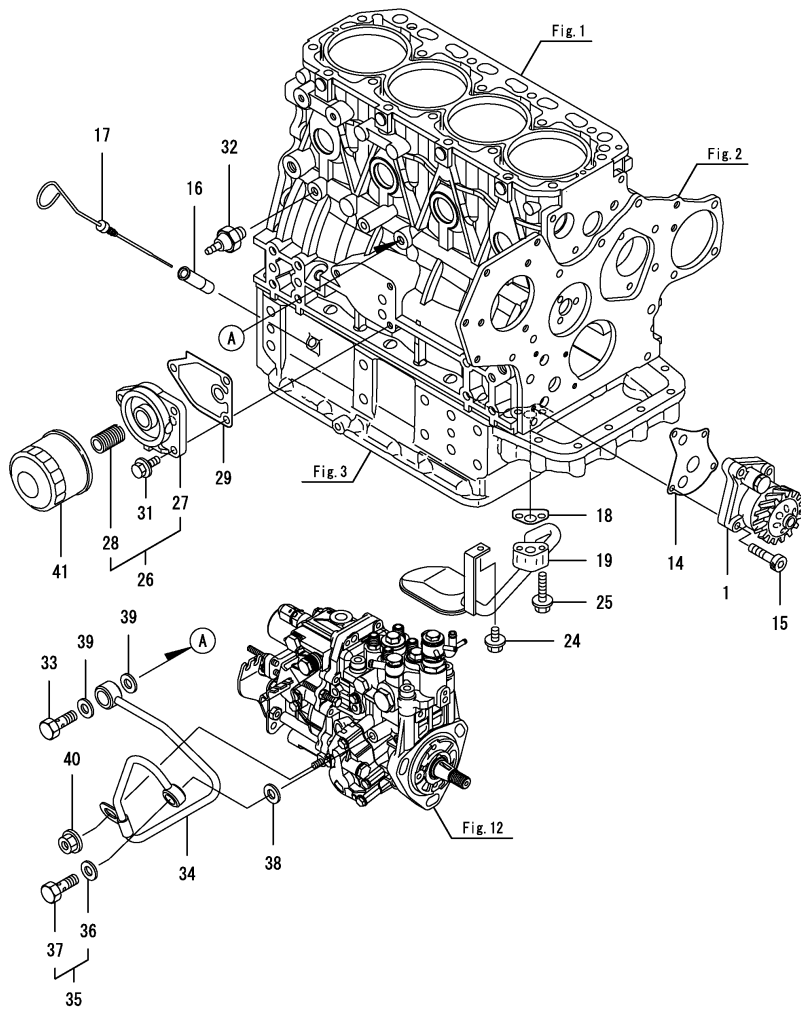
No.	Lev.	Parts No.	Description	Q'ty						I	R
				(A)	(B)	(C)	(D)	(E)	(F)		
1	1	129795-01960	PIPE, KNOCK	2	2						
2	1	129457-28000	BALANCER ASSY	1	1						
3	2	128170-14150	NUT	1	1						
4	2	121850-21290	PIN	1	1						
5	2	129457-28011	CASE ASSY, BALANCER	1	1						
8	2	129400-28150	GEAR, BALANCER	1	1						
9	2	729490-28510	SHAFT ASSY, BALANCER	1	1						
14	2	729490-28520	SHAFT ASSY, BALANCER	1	1						
19	2	23876-005000	PLUG, R005	1	1						
20	2	26106-080142	BOLT, M8X 14 PLATED	4	4						
21	1	24311-000140	O-RING, 1AP14.0	1	1						
22	1	26106-080602	BOLT, M8X 60 PLATED	4	4						
23	1	26106-080802	BOLT, M8X 80 PLATED	2	2						

Remarks
 Note: "Effective Machine No." of the Engine Section is indicated on the Model Label which is shown in Fig.4.

Fig.10. LUB. OIL SYSTEM

(A)=4TNV88-ULRG1
(B)=4TNV88-BLRG1
(C)=

(D)=
(E)=
(F)=



No.	Lev.	Parts No.	Description	Q'ty						I	R
				(A)	(B)	(C)	(D)	(E)	(F)		
1	1	129407-32000	PUMP ASSY, OIL	1	1						
14	1	129150-32020	GASKET, PUMP	1	1						
15	1	26450-060252	BOLT, M6X 25	4	4						
16	1	121520-34810	GUIDE, DIPSTICK	1	1						
17	1	129558-34820	DIPSTICK, LUB.OIL	1	1						
18	1	129150-35042	GASKET	1	1						
19	1	129550-35090	PIPE ASSY, OIL INLET	1	1						
24	1	26106-080122	BOLT, M8X 12 PLATED	1	1						
25	1	26106-080352	BOLT, M8X 35 PLATED	2	2						
26	1	119802-35100	BRACKET ASSY, FILTER	1	1						
27	2	119802-35110	BRACKET, FILTER	1	1						
28	2	129100-35140	STUD	1	1						
29	1	129150-35111	GASKET	1	1						
31	1	26106-080202	BOLT, M8X 20 PLATED	3	3						
32	1	114250-39450	SWITCH, 0.5KG	1	1						
33	1	124160-39140	BOLT, PIPE JOINT M10	1	1						
34	1	119802-39450	PIPE ASSY, OIL	1	1						
35	1	129005-59830	BOLT ASSY, JOINT M8	1	1						
36	2	22190-080002	WASHER, SEAL 6	1	1						
37	2	23857-030000	BOLT, JOINT 3	1	1						
38	1	22190-080002	WASHER, SEAL 6	1	1						
39	1	22190-100002	WASHER, SEAL 10	2	2						
40	1	26366-060002	NUT, M6	1	1						
41	1	129150-35170	FILTER, LO	1	1						1

Remarks

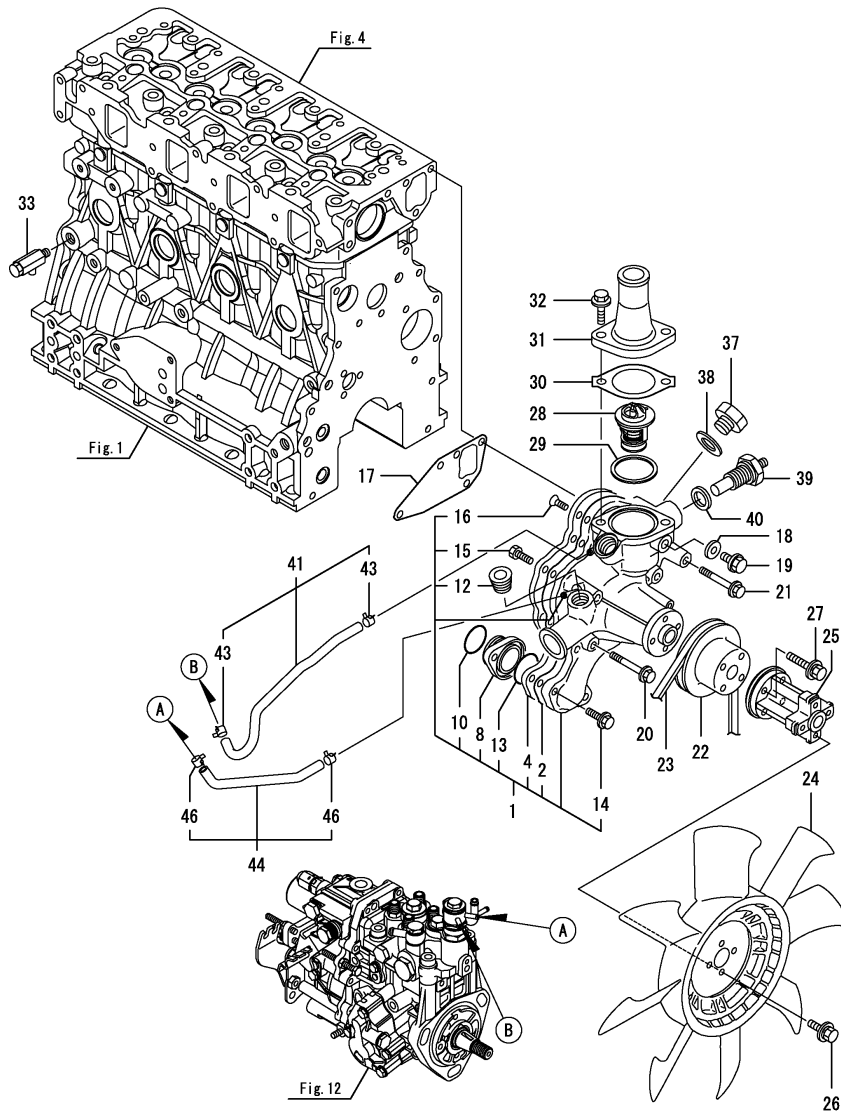
Note: "Effective Machine No." of the Engine Section is indicated on the Model Label which is shown in Fig.4.

(1)Repair part.

Fig.11. COOLING WATER SYSTEM

(A)=4TNV88-ULRG1
(B)=4TNV88-BLRG1
(C)=

(D)=
(E)=
(F)=



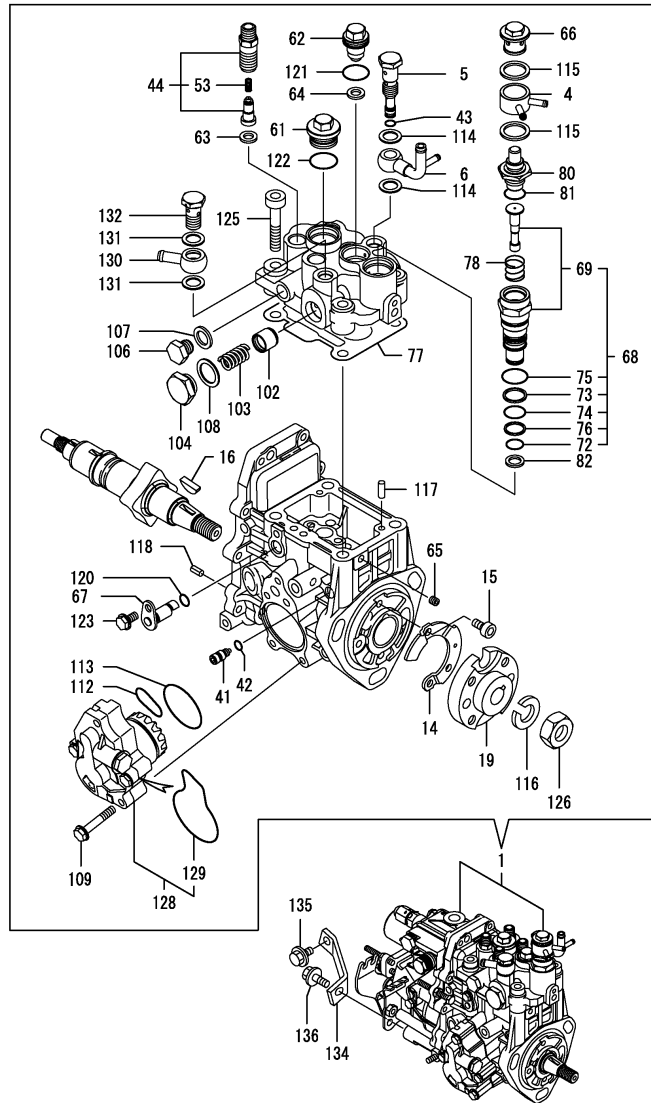
No.	Lev.	Parts No.	Description	Q'ty						I	R
				(A)	(B)	(C)	(D)	(E)	(F)		
1	1	129263-42000	PUMP ASSY, WATER	1	1						
2	2	129150-42059	GASKET	1	1						
4	2	129263-42120	PLATE	1	1						
8	2	129150-42301	FLANGE	1	1						
10	2	129054-42320	O-RING	1	1						
12	2	129916-49740	PLUG, R03	2	2						
13	2	24358-240310	O-RING, 524031	1	1						
14	2	26106-060202	BOLT, M6X 20 PLATED	2	2						
15	2	26116-060162	BOLT, M6X 16 PLATED	3	3						
16	2	26577-060152	SCREW, M6X15	3	3						
17	1	129486-42050	GASKET, WATER PUMP	1	1						
18	1	23414-080000	GASKET, 8X1.0	1	1						
19	1	26106-080122	BOLT, M8X 12 PLATED	1	1						
20	1	26106-080552	BOLT, M8X 55 PLATED	3	3						
21	1	26106-080602	BOLT, M8X 60 PLATED	1	1						
22	1	129120-42350	V-PULLEY, 130	1	1						
23	1	25152-004100	V-BELT, A41	1	1						
24	1	129436-44740	FAN, COOLING D410	1	1						
25	1	129266-44760	SPACER, FAN	1	1						
26	1	26014-060162	BOLT, M6X 16	4	4						
27	1	26014-060302	BOLT, M6X 30	4	4						
28	1	129155-49801	THERMOSTAT, 71	1	1						
29	1	129150-49811	GASKET, THERMOSTAT	1	1						
30	1	129795-49551	GASKET	1	1						
31	1	129350-49560	COVER, THERMOSTAT	1	1						
32	1	26106-080202	BOLT, M8X 20 PLATED	2	2						
33	1	119620-49290	COCK ASSY, 1/4	1	1						
37	1	121450-42450	PLUG, M16	1	1						
38	1	124465-44950	GASKET, 16	1	1						
39	1	124250-49351	SENSOR	1	1						
40	1	129150-49360	GASKET	1	1						
41	1	129263-49610	PIPE, WATER	1	1						
43	2	124722-59050	CLIP, HOSE 9	2	2						
44	1	129263-49620	PIPE, WATER	1	1						
46	2	124722-59050	CLIP, HOSE 9	2	2						

Remarks
Note: "Effective Machine No." of the Engine Section is indicated on the Model Label which is shown in Fig.4.

Fig.12. FUEL INJECTION PUMP

(A)=4TNV88-ULRG1
(B)=4TNV88-BLRG1
(C)=

(D)=
(E)=
(F)=



No.	Lev.	Parts No.	Description	Q'ty						I	R
				(A)	(B)	(C)	(D)	(E)	(F)		
1	1	729652-51560	INJECTION PUMP ASSY	1							1
4	2	158553-51551	JOINT	1							
5	2	158601-51650	JOINT, OVER FLOW	1							
6	2	158552-51670	JOINT, OVER FLOW	1							
14	2	129008-51900	COVER, GEAR CASE	1							
15	2	129008-51920	BOLT, M6X10	2							
16	2	119802-51090	KEY, 4X16	1							
19	2	158552-51151	FLANGE	1							
41	2	158600-51270	STOPPER, TAPPET	1							
42	2	158563-51281	O-RING, 4D S6	1							
43	2	158563-51281	O-RING, 4D S6	1							
44	2	129008-51390	VALVE ASSY, DELIVERY	4							
53	3	158563-51330	SPRING, DELIVERY	4							
61	2	158601-51550	PLUG	1							
62	2	119802-51560	PLUG, BARREL	1							
63	2	158552-51571	GASKET	3							
64	2	158552-51571	GASKET	1							
65	2	158557-51570	PLUG	1							
66	2	158601-51570	PLUG	1							
67	2	158552-51580	LIFTER	1							
68	2	119802-51590	TIMER SET	1							
69	3	119802-51600	TIMER ASSY	1							
72	3	158553-51670	O-RING, 1011	1							
73	3	119802-51680	RING, BACK UP	1							
74	3	119802-51690	O-RING	1							
75	3	24356-190200	O-RING, 4D19020	1							
76	3	24372-000150	RING, BACK UP T2P15	1							
77	2	158552-51600	GASKET	1							
78	2	158553-51630	SPRING, TIMER	1							
80	2	158553-51650	ELEMENT	1							
81	2	158553-51660	O-RING, P14	1							
82	2	158553-51680	GASKET	1							
102	2	158601-51770	PISTON	1							
103	2	158552-51781	SPRING	1							
104	2	158601-51790	PLUG	1							
106	2	158553-51930	PLUG, M12	1							
107	2	22190-120002	WASHER, SEAL 12	1							
108	2	22190-180002	WASHER, SEAL 18	1							
109	2	158553-51770	BOLT	4							
112	2	158552-52311	O-RING	1							
113	2	158552-52400	O-RING, 4E S42	1							
114	2	22190-120002	WASHER, SEAL 12	2							
115	2	22190-180002	WASHER, SEAL 18	2							
116	2	22217-140000	WASHER, SPRING 14	1							
117	2	22312-050140	PIN, PARALLEL M5X14	2							
118	2	22351-050010	PIN, SPRING 5.0X10	2							
120	2	24311-000070	O-RING, 1AP7.0	1							
121	2	24356-190180	O-RING, 4D19018	1							
122	2	24356-190200	O-RING, 4D19020	1							
123	2	26106-060102	BOLT, M6X 10 PLATED	1							
125	2	26450-080452	BOLT, M8X 45	4							

Remarks

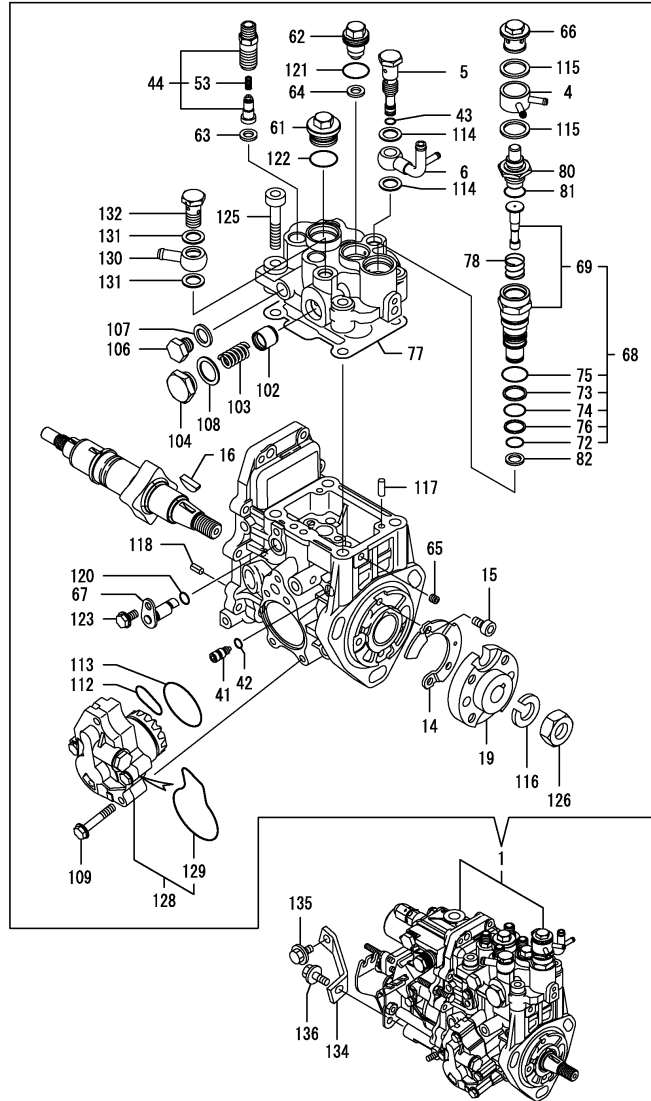
Note: "Effective Machine No." of the Engine Section is indicated on the Model Label which is shown in Fig.4.

(1)Governor(Fig.14)is incorporated in this Fuel Injection Pump (Ref.1).

Fig.12. FUEL INJECTION PUMP

(A)=4TNV88-ULRG1
 (B)=4TNV88-BLRG1
 (C)=

(D)=
 (E)=
 (F)=



No.	Lev.	Parts No.	Description	Q'ty						I	R
				(A)	(B)	(C)	(D)	(E)	(F)		
126	2	26776-140002	NUT, LOCK M14	1							
128	2	158552-52100	PUMP ASSY, FUEL FEED	1							
129	3	158552-52500	O-RING	1							
130	2	129916-59020	JOINT, PIPE 12	1							
131	2	22190-120002	WASHER, SEAL 12	2							
132	2	23857-060000	BOLT, JOINT 6	1							
134	1	129601-51250	RETAINER, PUMP	1							
135	1	26106-080162	BOLT, M8X 16 PLATED	1							
136	1	26106-080202	BOLT, M8X 20 PLATED	1							

Remarks

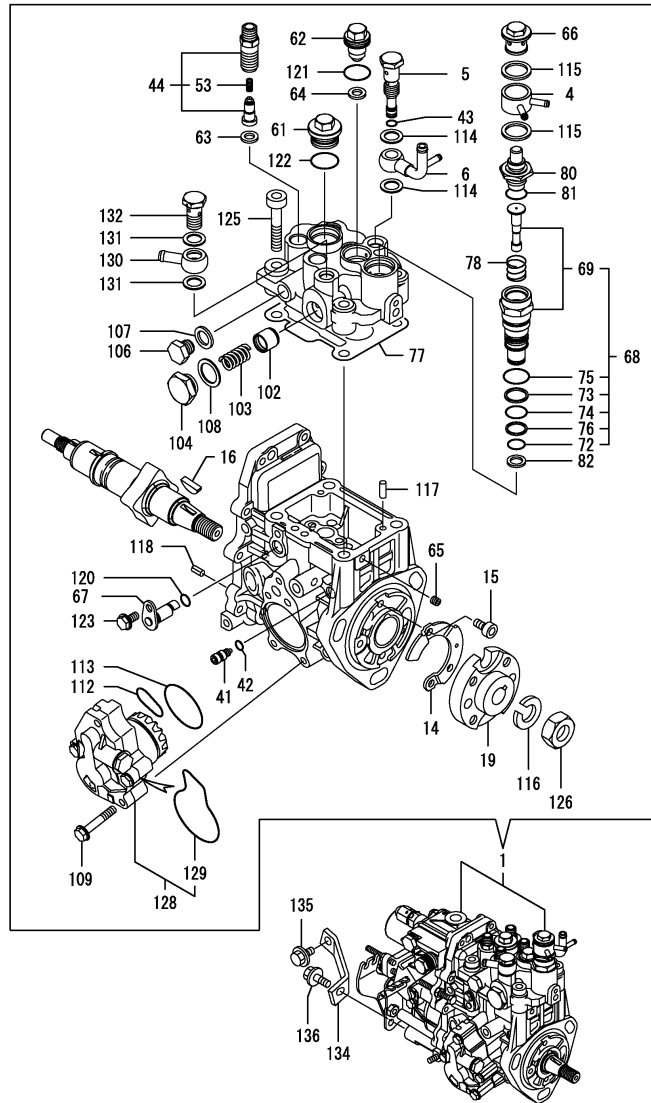
Note: "Effective Machine No." of the Engine Section is indicated on the Model Label which is shown in Fig.4.

(1) Governor(Fig.14)is incorporated in this Fuel Injection Pump (Ref.1).

Fig.13. FUEL INJECTION PUMP

(A)=4TNV88-ULRG1
(B)=4TNV88-BLRG1
(C)=

(D)=
(E)=
(F)=



No.	Lev.	Parts No.	Description	Qty						I	R
				(A)	(B)	(C)	(D)	(E)	(F)		
1	1	729652-51570	INJECTION PUMP ASSY	1							1
4	2	158553-51551	JOINT		1						
5	2	158601-51650	JOINT, OVER FLOW		1						
6	2	158552-51670	JOINT, OVER FLOW		1						
14	2	129008-51900	COVER, GEAR CASE		1						
15	2	129008-51920	BOLT, M6X10		2						
16	2	119802-51090	KEY, 4X16		1						
19	2	158552-51151	FLANGE		1						
41	2	158600-51270	STOPPER, TAPPET		1						
42	2	158563-51281	O-RING, 4D S6		1						
43	2	158563-51281	O-RING, 4D S6		1						
44	2	129008-51390	VALVE ASSY, DELIVERY		4						
53	3	158563-51330	SPRING, DELIVERY		4						
61	2	158601-51550	PLUG		1						
62	2	119802-51560	PLUG, BARREL		1						
63	2	158552-51571	GASKET		3						
64	2	158552-51571	GASKET		1						
65	2	158557-51570	PLUG		1						
66	2	158601-51570	PLUG		1						
67	2	158552-51580	LIFTER		1						
68	2	119802-51590	TIMER SET		1						
69	3	119802-51600	TIMER ASSY		1						
72	3	158553-51670	O-RING, 1011		1						
73	3	119802-51680	RING, BACK UP		1						
74	3	119802-51690	O-RING		1						
75	3	24356-190200	O-RING, 4D19020		1						
76	3	24372-000150	RING, BACK UP T2P15		1						
77	2	158552-51600	GASKET		1						
78	2	158553-51630	SPRING, TIMER		1						
80	2	158553-51650	ELEMENT		1						
81	2	158553-51660	O-RING, P14		1						
82	2	158553-51680	GASKET		1						
102	2	158601-51770	PISTON		1						
103	2	158552-51781	SPRING		1						
104	2	158601-51790	PLUG		1						
106	2	158553-51930	PLUG, M12		1						
107	2	22190-120002	WASHER, SEAL 12		1						
108	2	22190-180002	WASHER, SEAL 18		1						
109	2	158553-51770	BOLT		4						
112	2	158552-52311	O-RING		1						
113	2	158552-52400	O-RING, 4E S42		1						
114	2	22190-120002	WASHER, SEAL 12		2						
115	2	22190-180002	WASHER, SEAL 18		2						
116	2	22217-140000	WASHER, SPRING 14		1						
117	2	22312-050140	PIN, PARALLEL M5X14		2						
118	2	22351-050010	PIN, SPRING 5.0X10		2						
120	2	24311-000070	O-RING, 1AP7.0		1						
121	2	24356-190180	O-RING, 4D19018		1						
122	2	24356-190200	O-RING, 4D19020		1						
123	2	26106-060102	BOLT, M6X 10 PLATED		1						
125	2	26450-080452	BOLT, M8X 45		4						

Remarks

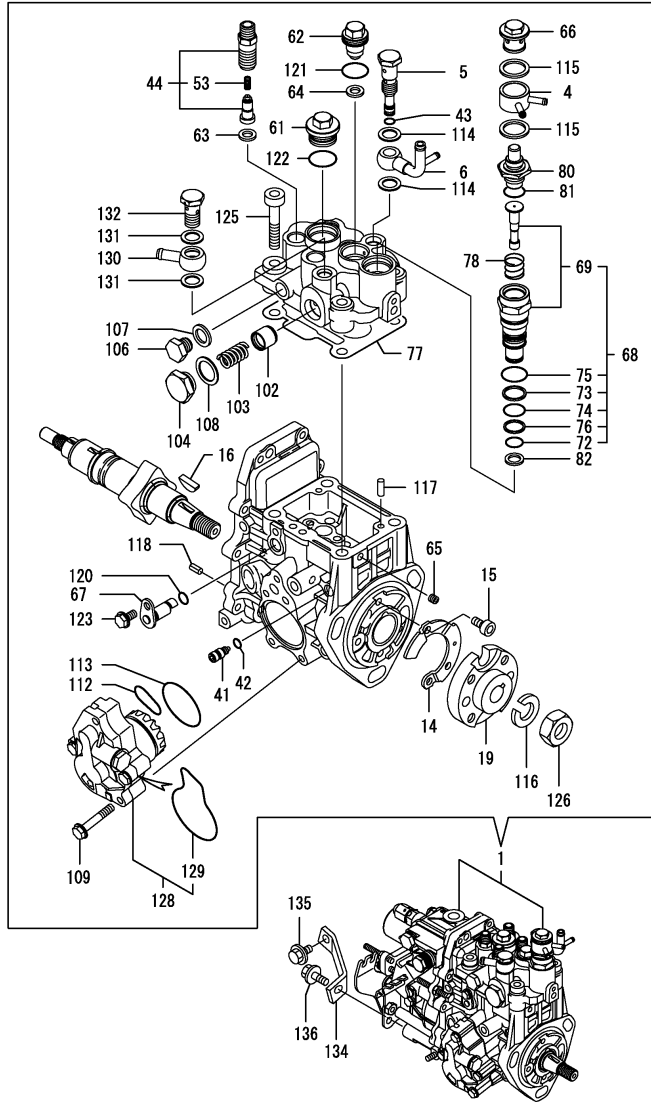
Note: "Effective Machine No." of the Engine Section is indicated on the Model Label which is shown in Fig.4.

(1)Governor(Fig.14)is incorporated in this Fuel Injection Pump (Ref.1).

Fig.13. FUEL INJECTION PUMP

(A)=4TNV88-ULRG1
 (B)=4TNV88-BLRG1
 (C)=

(D)=
 (E)=
 (F)=



No.	Lev.	Parts No.	Description	Qty						I	R
				(A)	(B)	(C)	(D)	(E)	(F)		
126	2	26776-140002	NUT, LOCK M14		1						
128	2	158552-52100	PUMP ASSY, FUEL FEED		1						
129	3	158552-52500	O-RING		1						
130	2	129916-59020	JOINT, PIPE 12		1						
131	2	22190-120002	WASHER, SEAL 12		2						
132	2	23857-060000	BOLT, JOINT 6		1						
134	1	129601-51250	RETAINER, PUMP		1						
135	1	26106-080162	BOLT, M8X 16 PLATED		1						
136	1	26106-080202	BOLT, M8X 20 PLATED		1						

Remarks

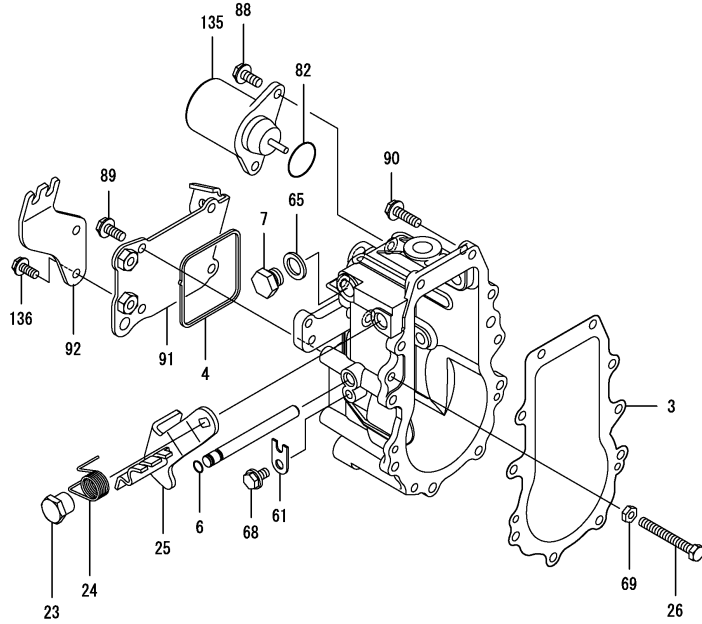
Note: "Effective Machine No." of the Engine Section is indicated on the Model Label which is shown in Fig.4.

(1) Governor(Fig.14)is incorporated in this Fuel Injection Pump (Ref.1).

Fig.14. GOVERNOR

(A)=4TNV88-ULRG1
(B)=4TNV88-BLRG1
(C)=

(D)=
(E)=
(F)=



No.	Lev.	Parts No.	Description	Q'ty						I	R
				(A)	(B)	(C)	(D)	(E)	(F)		
3	2	158553-61050	GASKET	1	1						
4	2	158553-61070	GASKET	1	1						
6	2	129155-51280	O-RING, S6	1	1						
7	2	158553-51930	PLUG, M12	1	1						
23	2	129255-61410	NUT, LOCK	1	1						
24	2	119807-61420	SPRING, RETURN	1	1						
25	2	119852-61440	LEVER ASSY,REGULATOR	1	1						
26	2	129155-61460	BOLT, IDLE	1	1						
61	2	119660-61901	RETAINER, SHAFT	1	1						
65	2	22190-120002	WASHER, SEAL 12	1	1						
68	2	26106-060102	BOLT, M6X 10 PLATED	1	1						
69	2	26756-060002	NUT, LOCK M6	1	1						
82	2	158552-61900	O-RING	1	1						
88	2	26106-060142	BOLT, M6X 14 PLATED	2	2						
89	2	26106-060142	BOLT, M6X 14 PLATED	4	4						
90	2	26106-060202	BOLT, M6X 20 PLATED	10	10						
91	2	158552-61061	COVER, GOVERNOR CASE	1	1						
92	2	119852-61080	SUPPORT, WIRE	1	1						
135	2	119653-77950	SOLENOID, STOP	1	1						
136	2	26106-060142	BOLT, M6X 14 PLATED	2	2						

Remarks

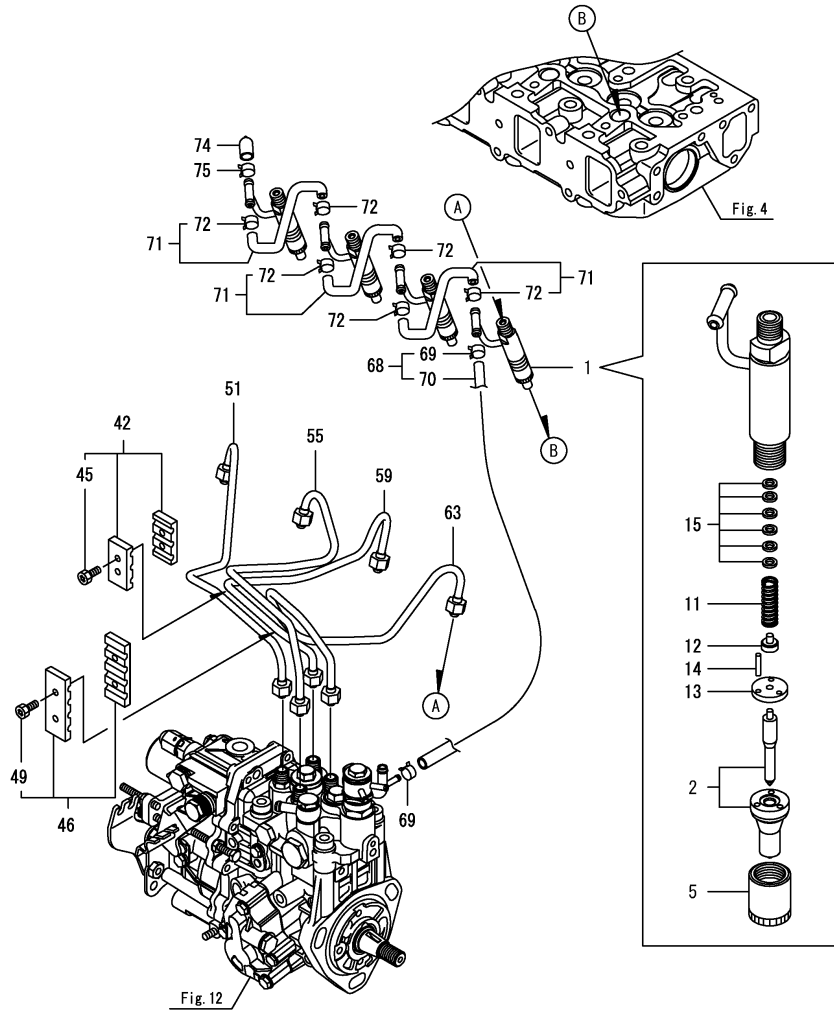
Note: "Effective Machine No." of the Engine Section is indicated on the Model Label which is shown in Fig.4.

*This figure(Governor)is incorporated in the Fuel Injection Pump (Fig.12 or 13).

Fig.15. FUEL INJECTION VALVE

(A)=4TNV88-ULRG1
(B)=4TNV88-BLRG1
(C)=

(D)=
(E)=
(F)=



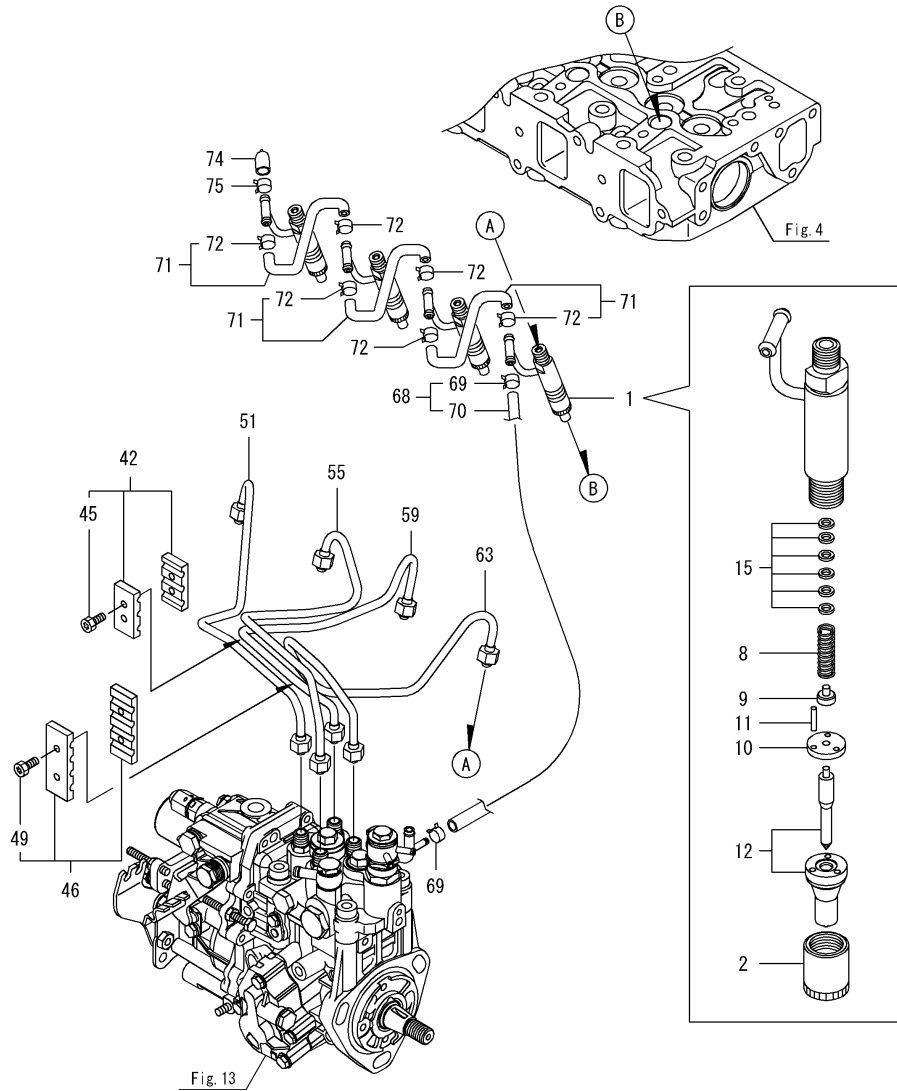
No.	Lev.	Parts No.	Description	Q'ty						I	R
				(A)	(B)	(C)	(D)	(E)	(F)		
1	1	729604-53200	VALVE ASSY,INJECTION	4							
2	2	129604-53000	VALVE ASSY,INJECTION	4							
5	2	114250-53080	NUT, NOZZLE D16.95	4							
11	2	114250-53120	SPRING, NOZZLE	4							
12	2	114250-53130	SEAT, SPRING	4							
13	2	114250-53140	PLATE	4							
14	2	114250-53210	PIN	8							
15	2	119803-53400	SHIM SET	4							
42	1	129150-59120	RETAINER, PIPE	1							
45	2	129150-59131	BOLT, M4X14	2							
46	1	129550-59120	RETAINER, PIPE	1							
49	2	129150-59131	BOLT, M4X14	2							
51	1	129601-59810	PIPE ASSY, INJECTION	1							
55	1	129601-59820	PIPE ASSY, INJECTION	1							
59	1	129601-59830	PIPE ASSY, INJECTION	1							
63	1	129601-59840	PIPE ASSY, INJECTION	1							
68	1	119802-59550	PIPE ASSY, RETURN	1							
69	2	124722-59050	CLIP, HOSE 9	2							
70	2	119802-59560	PIPE, FUEL RETURN	1							
71	1	129486-59551	PIPE ASSY, RETURN	3							
72	2	124722-59050	CLIP, HOSE 9	6							
74	1	119593-59581	CAP	1							
75	1	124060-77680	CLIP, HOSE 10	1							

Remarks
Note: "Effective Machine No." of the Engine Section is indicated on the Model Label which is shown in Fig.4.

Fig.16. FUEL INJECTION VALVE

(A)=4TNV88-ULRG1
(B)=4TNV88-BLRG1
(C)=

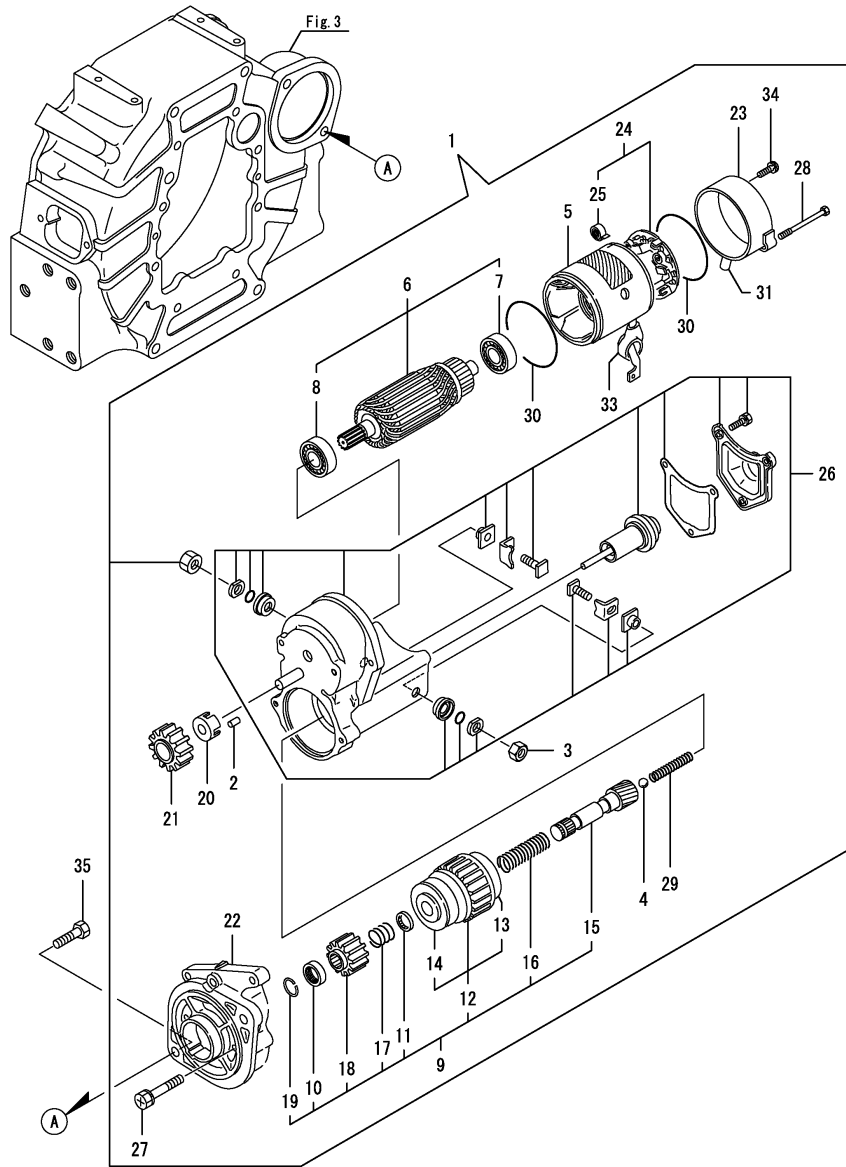
(D)=
(E)=
(F)=



No.	Lev.	Parts No.	Description	Q'ty						I	R
				(A)	(B)	(C)	(D)	(E)	(F)		
1	1	729604-53400	VALVE ASSY,INJECTION		4						
2	2	114250-53080	NUT, NOZZLE D16.95		4						
8	2	114250-53120	SPRING, NOZZLE		4						
9	2	114250-53130	SEAT, SPRING		4						
10	2	114250-53140	PLATE		4						
11	2	114250-53210	PIN		8						
12	2	129604-53300	VALVE ASSY,INJECTION		4						
15	2	119803-53400	SHIM SET		4						
42	1	129150-59120	RETAINER, PIPE		1						
45	2	129150-59131	BOLT, M4X14		2						
46	1	129550-59120	RETAINER, PIPE		1						
49	2	129150-59131	BOLT, M4X14		2						
51	1	129601-59810	PIPE ASSY, INJECTION		1						
55	1	129601-59820	PIPE ASSY, INJECTION		1						
59	1	129601-59830	PIPE ASSY, INJECTION		1						
63	1	129601-59840	PIPE ASSY, INJECTION		1						
68	1	119802-59550	PIPE ASSY, RETURN		1						
69	2	124722-59050	CLIP, HOSE 9		2						
70	2	119802-59560	PIPE, FUEL RETURN		1						
71	1	129486-59551	PIPE ASSY, RETURN		3						
72	2	124722-59050	CLIP, HOSE 9		6						
74	1	119593-59581	CAP		1						
75	1	124060-77680	CLIP, HOSE 10		1						

Remarks
Note: "Effective Machine No." of the Engine Section is indicated on the Model Label which is shown in Fig.4.

Fig.17. STARTING MOTOR



(A)=4TNV88-ULRG1
(B)=4TNV88-BLRG1
(C)=

(D)=
(E)=
(F)=

No.	Lev.	Parts No.	Description	Q'ty						I	R
				(A)	(B)	(C)	(D)	(E)	(F)		
1	1	129407-77010	STARTER, RA1.4	1	1						
2	2	X0283060061	ROLLER	5	5						
3	2	X9490561370	NUT	1	1						
4	2	X9491200240	BALL	1	1						
5	2	129407-77210	YOKE ASSY	1	1						
6	2	129407-77220	ARMATURE ASSY	1	1						
7	3	129129-77230	BEARING	1	1						
8	3	129129-77240	BEARING	1	1						
9	2	129407-77250	STARTER	1	1						
10	3	X0280210230	NUT	1	1						
11	3	X0283270140	RETAINER, SNAP	1	1						
12	3	129407-77390	CLUTCH ASSY	1	1						
13	4	129129-77440	BALL BEARING	1	1						
14	4	129129-77450	BALL BEARING	1	1						
15	3	129129-77400	SHAFT	1	1						
16	3	129129-77410	SPRING, COIL	1	1						
17	3	X9491703371	SPRING, COIL	1	1						
18	3	129129-77420	PINION, STARTER	1	1						
19	3	129129-77430	RING, SNAP	1	1						
20	2	129129-77260	RETAINER	1	1						
21	2	129129-77270	PINION	1	1						
22	2	129407-77280	HOUSING	1	1						
23	2	129407-77290	FRAME	1	1						
24	2	129407-77300	HOLDER ASSY	1	1						
25	3	X9491730461	SPRING	4	4						
26	2	129407-77310	SWITCH ASSY	1	1						
27	2	129129-77320	BOLT	2	2						
28	2	129407-77330	BOLT	2	2						
29	2	129129-77340	SPRING	1	1						
30	2	129129-77350	O-RING	2	2						
31	2	129129-77362	COVER	1	1						
33	2	129129-77380	CAP	1	1						
34	2	129129-77460	SCREW	2	2						
35	1	26116-120252	BOLT, M12X 25 PLATED	2	2						

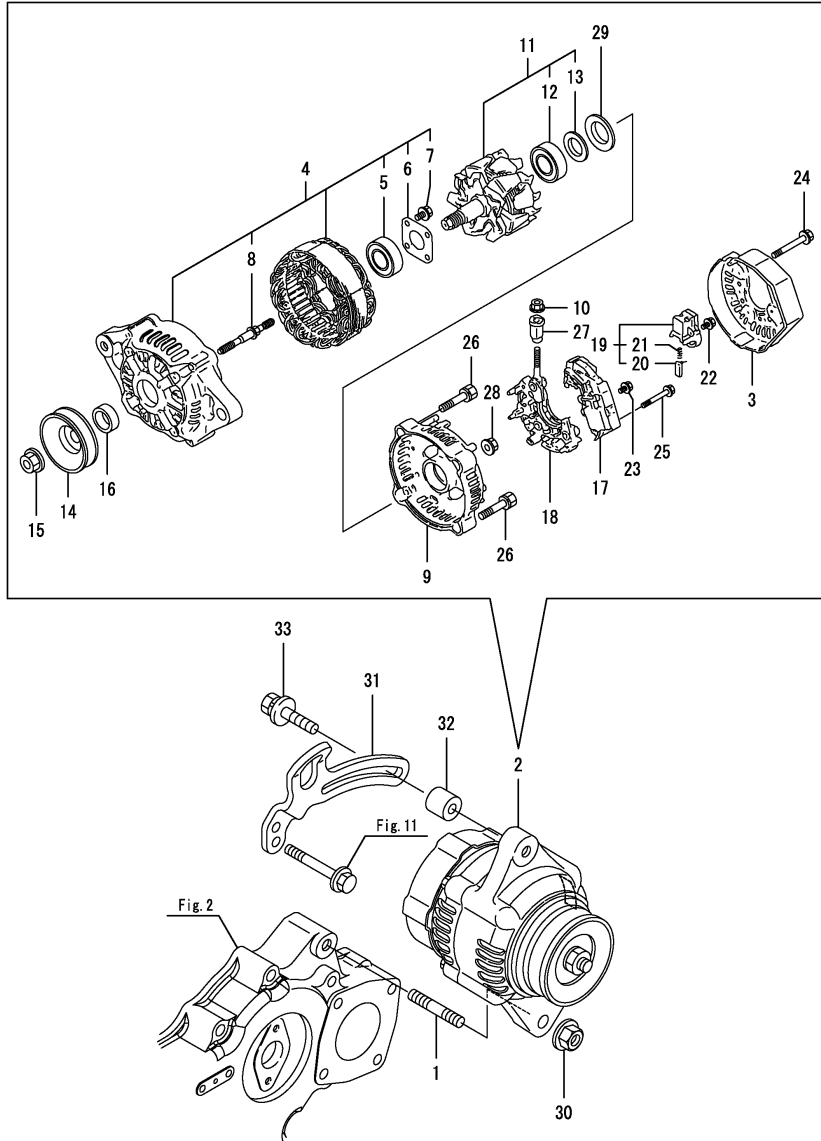
Remarks

Note: "Effective Machine No." of the Engine Section is indicated on the Model Label which is shown in Fig.4.

Fig.18. GENERATOR

(A)=4TNV88-ULRG1
(B)=4TNV88-BLRG1
(C)=

(D)=
(E)=
(F)=



No.	Lev.	Parts No.	Description	Q'ty						I	R
				(A)	(B)	(C)	(D)	(E)	(F)		
1	1	129795-01900	STUD	1	1						
2	1	119751-77200	GENERATOR, 12V-40AP	1	1						
3	2	X0215512440	COVER	1	1						
4	2	X1214001430	FRAME ASSY, DRIVE	1	1						
5	3	119620-79200	BALL BEARING	1	1						
6	3	119620-79210	PLATE, RETAINER	1	1						
7	3	119620-79220	SCREW	4	4						
8	3	119620-79230	STUD	2	2						
9	2	X1215011050	FRAME ASSY	1	1						
10	2	X9490561001	NUT	1	1						
11	2	119620-77380	ROTOR ASSY	1	1						
12	3	119620-79240	BALL BEARING	1	1						
13	3	119620-79250	COVER, BEARING	1	1						
14	2	119620-77461	PULLEY	1	1						
15	2	119620-77471	NUT	1	1						
16	2	119620-77490	COLLAR	1	1						
17	2	129423-77710	REGULATOR ASSY	1	1						
18	2	119620-79260	HOLDER	1	1						
19	2	129052-79270	HOLDER, BRUSH	1	1						
20	3	119620-77480	BRUSH ASSY	2	2						
21	3	119620-79280	SPRING	2	2						
22	2	119620-79290	SCREW	6	6						
23	2	119620-79300	SCREW	1	1						
24	2	119620-79310	BOLT	3	3						
25	2	119620-79320	SCREW	2	2						
26	2	119620-79330	BOLT	2	2						
27	2	119620-79340	BUSH, INSULATION	1	1						
28	2	119620-79350	NUT	2	2						
29	2	119620-79360	WASHER, THRUST	1	1						
30	1	26306-100002	NUT, M10	1	1						
31	1	129107-77330	ADJUSTER	1	1						
32	1	124732-77340	SPACER	1	1						
33	1	129972-77341	BOLT, ADJUSTER L=50	1	1						

Remarks
Note: "Effective Machine No." of the Engine Section is indicated on the Model Label which is shown in Fig.4.

Parts No. Index

Parts No.	Fig. No.	Ref. No.
105425-01690	3	7
114250-39450	10	32
114250-53080	15	5
	16	2
114250-53120	15	11
	16	8
114250-53130	15	12
	16	9
114250-53140	15	13
	16	10
114250-53210	15	14
	16	11
119131-18320	6	5
119309-01810	1	28
119593-59581	15	74
	16	74
119609-32040	2	9
119620-49290	11	33
119620-77380	18	11
119620-77461	18	14
119620-77471	18	15
119620-77480	18	20
119620-77490	18	16
119620-79200	18	5
119620-79210	18	6
119620-79220	18	7
119620-79230	18	8
119620-79240	18	12
119620-79250	18	13
119620-79260	18	18
119620-79280	18	21
119620-79290	18	22
119620-79300	18	23
119620-79310	18	24
119620-79320	18	25
119620-79330	18	26
119620-79340	18	27
119620-79350	18	28
119620-79360	18	29
119625-11880	4	28
119653-77950	14	135
119660-61901	14	61
119751-77200	18	2
119802-01561	2	5
119802-03110	4	38
119802-03121	4	39
119802-03130	4	40
119802-03141	4	41
119802-11260	4	4
119802-11270	4	5

Parts No.	Fig. No.	Ref. No.
119802-11870	4	27
119802-25071	7	21
119802-25101	7	10
119802-25901	7	15
119802-35100	10	26
119802-35110	10	27
119802-39450	10	34
119802-51090	12	16
	13	16
119802-51560	12	62
	13	62
119802-51590	12	68
	13	68
119802-51600	12	69
	13	69
119802-51680	12	73
	13	73
119802-51690	12	74
	13	74
119802-59550	15	68
	16	68
119802-59560	15	70
	16	70
119803-21200	8	4
119803-25050	7	9
119803-53400	15	15
	16	15
119803-77830	4	50
119807-61420	14	24
119852-21650	8	10
119852-61080	14	92
119852-61440	14	25
119934-01800	2	3
120130-11860	4	53
120270-54410	4	30
121023-01551	2	27
121111-21501	8	13
121400-11340	4	23
121450-42450	11	37
121520-34810	10	16
121550-23200	8	31
121850-21290	8	5
	9	4
121850-21680	8	12
121850-51960	2	10
123900-13630	6	4
124060-01050	1	4
124060-77680	15	75
	16	75
124160-01751	2	6

Parts No.	Fig. No.	Ref. No.
124160-01910	1	6
124160-11360	4	46
124160-39140	10	33
124240-01871	2	7
		20
		21
124240-01883	2	22
124250-49351	11	39
124460-11340	4	24
124465-44950	11	38
124550-21600	8	16
124722-59050	11	43
		46
	15	69
		72
	16	69
		72
124732-77340	18	32
128170-14150	9	3
129001-01250	1	5
129001-02931	1	29
129004-03010	4	36
129004-11650	4	7
129004-11900	4	29
129005-03080	5	1
129005-11100	4	19
129005-22080	8	17
129005-22500	8	19
129005-22900	8	37
129005-22950	8	39
129005-59830	10	35
129008-01520	2	4
129008-51390	12	44
	13	44
129008-51900	12	14
	13	14
129008-51920	12	15
	13	15
129008-77800	4	51
129052-79270	18	19
129054-42320	11	10
129100-01580	3	1
		15
	8	2
129100-11112	4	20
129100-23910	8	34
129100-35140	10	28
129107-77330	18	31
129120-01780	3	18
129120-42350	11	22

Parts No.	Fig. No.	Ref. No.
129129-77230	17	7
129129-77240	17	8
129129-77260	17	20
129129-77270	17	21
129129-77320	17	27
129129-77340	17	29
129129-77350	17	30
129129-77362	17	31
129129-77380	17	33
129129-77400	17	15
129129-77410	17	16
129129-77420	17	18
129129-77430	17	19
129129-77440	17	13
129129-77450	17	14
129129-77460	17	34
129150-01200	1	26
129150-01881	7	16
129150-02020	1	8
129150-02450	7	4
129150-02871	1	32
129150-02931	1	23
129150-02941	1	35
129150-03070	4	37
129150-11230	4	8
129150-11280	4	6
129150-11370	4	12
129150-11750	4	10
129150-11810	4	54
129150-14101	7	6
129150-14200	7	1
129150-14400	7	2
129150-23601	8	32
129150-23611	8	35
129150-25301	7	14
129150-26000	7	17
129150-26050	7	18
129150-32020	10	14
129150-35042	10	18
129150-35111	10	29
129150-35170	10	41
129150-42059	11	2
129150-42301	11	8
129150-49360	11	40
129150-49811	11	29
129150-59120	15	42
	16	42
129150-59131	15	45
		49
	16	45

Parts No. Index

Parts No.	Fig. No.	Ref. No.
129150-59131	16	49
129150-77511	5	8
129155-49801	11	28
129155-51280	14	6
129155-61460	14	26
129202-22300	8	25
129255-61410	14	23
129263-13220	6	3
129263-42000	11	1
129263-42120	11	4
129263-49610	11	41
129263-49620	11	44
129266-44760	11	25
129350-49560	11	31
129400-28121	8	6
129400-28150	9	8
129407-01340	1	27
129407-12110	5	4
129407-32000	10	1
129407-77010	17	1
129407-77210	17	5
129407-77220	17	6
129407-77250	17	9
129407-77280	17	22
129407-77290	17	23
129407-77300	17	24
129407-77310	17	26
129407-77330	17	28
129407-77390	17	12
129410-03990	5	2
129411-13100	6	1
129423-77710	18	17
129436-44740	11	24
129457-28000	9	2
129457-28011	9	5
129486-01670	3	19
129486-12581	5	7
129486-42050	11	17
129486-59551	15	71
	16	71
129550-01702	3	5
129550-13110	6	2
129550-35090	10	19
129550-59120	15	46
	16	46
129555-01750	3	10
129558-01620	3	2
129558-34820	10	17
129601-11241	4	1
129601-11251	4	2

Parts No.	Fig. No.	Ref. No.
129601-11310	4	43
129601-51250	12	134
	13	134
129601-59810	15	51
	16	51
129601-59820	15	55
	16	55
129601-59830	15	59
	16	59
129601-59840	15	63
	16	63
129602-12101	5	3
129604-11700	4	13
129604-53000	15	2
129604-53300	16	12
129604-77821	4	52
129635-21590	8	14
129652-11350	4	35
129652-21010	8	1
129659-13521	6	8
129659-13660	6	9
129795-01900	18	1
129795-01950	2	8
129795-01960	9	1
129795-02412	1	11
129795-11120	4	21
129795-11180	4	22
129795-21661	8	11
129795-49551	11	30
129900-07900	4	48
129916-49740	11	12
129916-59020	12	130
	13	130
129930-13201	6	7
129972-77341	18	33
158552-51151	12	19
	13	19
158552-51571	12	63
		64
	13	63
		64
158552-51580	12	67
	13	67
158552-51600	12	77
	13	77
158552-51670	12	6
	13	6
158552-51781	12	103
	13	103
158552-52100	12	128

Parts No.	Fig. No.	Ref. No.
158552-52100	13	128
158552-52311	12	112
	13	112
158552-52400	12	113
	13	113
158552-52500	12	129
	13	129
158552-61061	14	91
158552-61900	14	82
158553-51551	12	4
	13	4
158553-51630	12	78
	13	78
158553-51650	12	80
	13	80
158553-51660	12	81
	13	81
158553-51670	12	72
	13	72
158553-51680	12	82
	13	82
158553-51770	12	109
	13	109
158553-51930	12	106
	13	106
	14	7
158553-61050	14	3
158553-61070	14	4
158557-51570	12	65
	13	65
158563-51281	12	42
		43
	13	42
		43
158563-51330	12	53
	13	53
158600-51270	12	41
	13	41
158601-51550	12	61
	13	61
158601-51570	12	66
	13	66
158601-51650	12	5
	13	5
158601-51770	12	102
	13	102
158601-51790	12	104
	13	104
171051-01921	1	7
194450-11190	3	3

Parts No.	Fig. No.	Ref. No.
22190-080002	2	11
		12
		23
	10	36
		38
22190-100002	10	39
22190-120002	12	107
		114
		131
	13	107
		114
		131
	14	65
22190-160002	3	9
22190-180002	12	108
		115
	13	108
		115
22217-140000	12	116
	13	116
22252-000260	8	26
22312-050140	12	117
	13	117
22351-050010	12	118
	13	118
22351-060012	4	31
22512-070140	7	7
	8	7
		9
22857-500100	4	44
		45
23414-080000	11	18
23857-030000	10	37
23857-060000	12	132
	13	132
23876-005000	9	19
24105-060064	7	20
24311-000070	12	120
	13	120
24311-000120	4	47
24311-000140	9	21
24311-000320	2	13
24341-000240	2	28
24356-190180	12	121
	13	121
24356-190200	12	75
		122
	13	75
		122
24358-240310	11	13

Parts No. Index

Parts No.	Fig. No.	Ref. No.
24372-000150	12	76
	13	76
25152-004100	11	23
26014-060162	11	26
26014-060302	11	27
26014-080222	6	10
26014-080252	6	11
26106-060102	12	123
	13	123
	14	68
26106-060142	14	88
		89
		136
26106-060162	2	29
26106-060202	11	14
	14	90
26106-080122	3	11
	10	24
	11	19
26106-080142	7	8
	9	20
26106-080162	2	14
		15
		24
	4	49
	12	135
	13	135
26106-080202	2	25
	5	5
		9
	10	31
	11	32
	12	136
	13	136
26106-080252	4	32
26106-080302	2	16
		26
26106-080352	4	33
	10	25
26106-080402	7	13
26106-080502	3	12
	4	34
26106-080552	2	17
	11	20
26106-080602	9	22
	11	21
26106-080802	5	6
	9	23
26106-080852	2	18
26106-081002	3	13

Parts No.	Fig. No.	Ref. No.
26106-081202	3	14
26116-060162	11	15
26116-120252	17	35
26206-100252	3	4
26226-080182	4	11
26306-080002	2	19
	6	6
		12
26306-100002	18	30
26366-060002	10	40
26450-060252	10	15
26450-080452	12	125
	13	125
26577-060152	11	16
26756-060002	14	69
26776-140002	12	126
	13	126
27241-120000	1	12
27241-300000	1	13
27241-400000	4	18
27310-080001	4	25
729008-01500	2	1
729402-01650	3	16
729402-14580	7	3
729402-23100	8	27
729429-01721	3	6
729490-28510	9	9
729490-28520	9	14
729604-53200	15	1
729604-53400	16	1
729652-51560	12	1
729652-51570	13	1
729659-01570	1	1
X0215512440	18	3
X0280210230	17	10
X0283060061	17	2
X0283270140	17	11
X1214001430	18	4
X1215011050	18	9
X9490561001	18	10
X9490561370	17	3
X9491200240	17	4
X9491703371	17	17
X9491730461	17	25

Parts No.	Fig. No.	Ref. No.
-----------	----------	----------

Parts No.	Fig. No.	Ref. No.
-----------	----------	----------