

0CNP4-M59300EN

## Directions for the Parts Catalog.

1. The parts stipulated in this Parts Catalog are not necessarily standard equipped parts.
2. Parts may change without prior notice.
3. The following is an example of the Parts Catalog format.

OCF10-G21601		29. FUEL INJECTION PUMP(W/BOOST)									
REF.	LEV.	PARTS NO.	DESCRIPTION	(A)	(B)	(C)	(D)	(E)	(F)	I	R
1	1	729595-51390	FUEL INJECTION PUMP	1	1	1	1	1			1
1-1	1	729595-51391	FUEL INJECTION PUMP	1	1	1	1	1		N	1
		(A=E00185)	(B=E00200)								
3	2	26022-060162	SCREW M 6X 16	9	9	9	9	9			
3-1	2	26022-060162	SCREW M 6X 16	4	4	4	4	4		K	
		(A=E00156)	(B=E00156)	(C=E00156)	(D=E00156)	(E=E00156)					
4	2	129470-51040	CAMSHAFT	1	1	1	1	1			
5	2	122710-51050	BEARING, ROLLER	2	2	2	2	2			
6	2	129470-51060	RETAINER	1	1	1	1	1			

Remarks
(1) BOOST COMPEMSATOR TYPE. OPTIONAL PART, TO E00155,(4JH-DT, 4JH-DTZ

### ① Ref. No.

The Ref. No. listed may not be in accordance with the illustration Ref. No.

(Ex.) Illustration No.

List Ref No.

1 1 (Before change) → 1-1 (After change)

For interchangeable symbols N, R and K, illustrations for new parts may be abbreviated.

### ② Lev. (Level)

Level indication

The numbers below indicate the level of relativity towards the main part.

1 ----- Main parts (Assembly parts)

2 ----- Sub component included in " 1 ".

3 ----- Sub component included in " 2 ".

Note) Parts that are not for sale are partially illustrated but not listed.

### ③ Interchangeability Mark

When a part change takes place, one of the following interchangeability symbols is indicated beside the part.

Symbol	Interchangeability	Contents note
N	Old $\begin{matrix} \leftarrow \text{Yes} \\ \text{No} \rightarrow \end{matrix}$ New	New Part is interchangeable for Old Part but Old Part is not interchangeable for New Part.
Q	Old $\begin{matrix} \leftarrow \text{No} \\ \text{Yes} \rightarrow \end{matrix}$ New	New Part is not interchangeable for Old Part but Old Part is interchangeable for New Part.
R	Old $\begin{matrix} \leftarrow \text{Yes} \\ \text{Yes} \rightarrow \end{matrix}$ New	New/ Old Parts are both interchangeable.
S	Old $\begin{matrix} \leftarrow \text{No} \\ \text{No} \rightarrow \end{matrix}$ New	New/ Old Parts are both not interchangeable.
W		Part newly added.
Z		Part discontinued.
F		Not interchangeable by a single part but interchangeable together with related parts.
K		Changes only for used parts quantities.

### ④ Effective Machine No.

When a part changes, the effective Machine No. will be indicated in the (A)-(F) column.

Product Symbol	Product No.	Product Symbol	Product No.
C	Clutch No. Compressor No.	F	Machine No. (Agricultural Equip.)
D	Drive No.	M	Machine No.
E	Engine No.		

Note 1) A date may follow the symbol. (Ex.) 1996.01

Note 2) "XXXXX" and "ZZZZZ" are for parts that could not be predicted or for engine models that could not be identified.

Note 3) (A=E00185) is the E (Engine Serial Number) for the column (A) model (in this case 4JH-DT) after the parts design change.

### ⑤ Remarks Mark

Figures or alphabets (symbols) are entered in the remarks column.

The comments (remarks) on parts that are indicated at the bottom of the illustration are the same symbols as those stated above.

# Contents

OCNP4-M59300

Fig. No. Fig. Name

Fig. No. Fig. Name

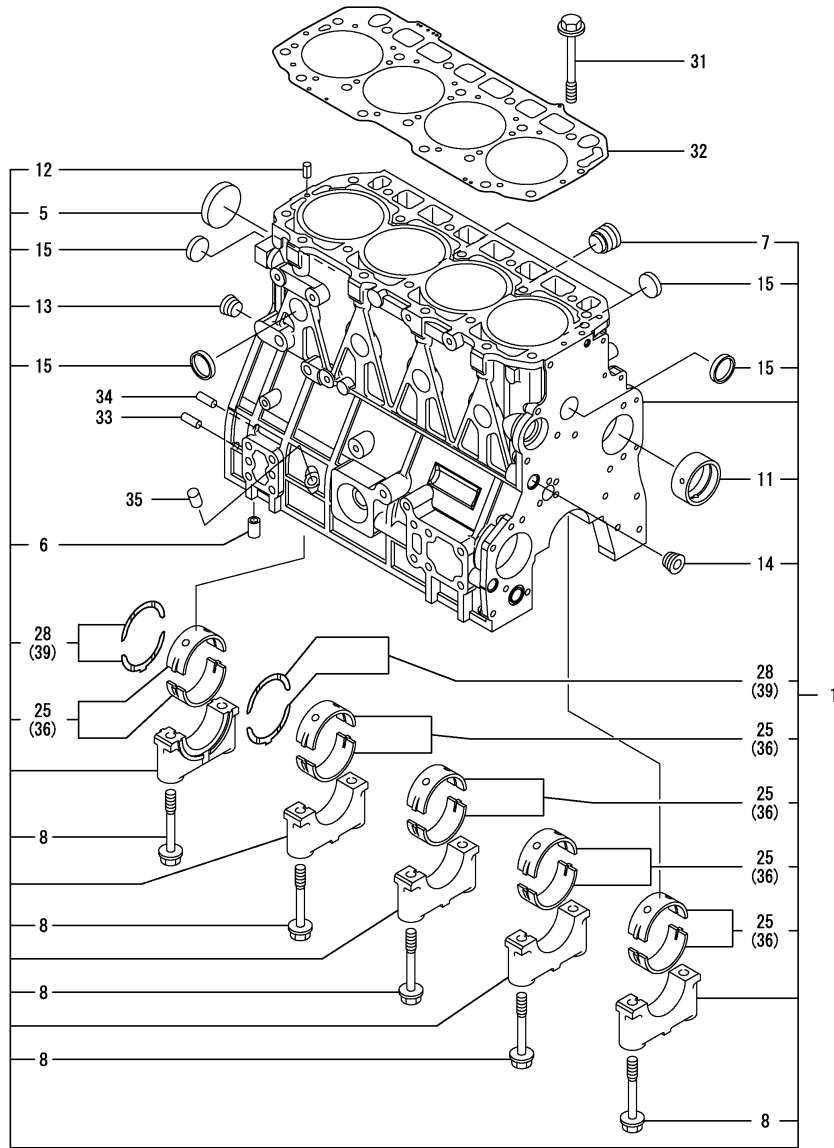
## ENGINE

1. CYLINDER BLOCK
2. GEAR HOUSING
3. MOUNTING FLANGE & OIL SUMP
4. CYLINDER HEAD & BONNET
5. SUCTION MANIFOLD
6. EXHAUST MANIFOLD & SILENCER
7. CAMSHAFT & DRIVING GEAR
8. CRANKSHAFT & PISTON
9. HYDRAULIC PUMP
10. BALANCER
11. LUB. OIL SYSTEM
12. COOLING WATER SYSTEM
13. FUEL INJECTION PUMP
14. FUEL INJECTION VALVE
15. FUEL PIPING
16. STARTING MOTOR
17. GENERATOR
18. COMPRESSOR(ATTACHMENT)

Fig.1. CYLINDER BLOCK

(A)=4TNV98-RZA1Q  
 (B)=4TNV98-RZN1Q  
 (C)=

(D)=  
 (E)=  
 (F)=



No.	Lev.	Parts No.	Description	Q'ty						I	R
				(A)	(B)	(C)	(D)	(E)	(F)		
1	1	729963-01560	BLOCK ASSY, CYLINDER	1	1						
5	2	129900-01250	PLUG, 55	1	1						
6	2	129956-01710	PIPE, KNOCK L=25	1	1						
7	2	171051-01921	PLUG, NPTF1	1	1						
8	2	129900-02020	BOLT, METAL CAP	10	10						
11	2	129900-02410	BUSH, CAMSHAFT	1	1						
12	2	22351-060012	PIN, SPRING 6.0X12	2	2						
13	2	23876-030000	PLUG, R03	1	1						
14	2	23876-030000	PLUG, R03	1	1						
15	2	27241-300000	PLUG 30	8	8						
25	2	729900-02800	BEARING, MAIN	5	5						3
28	2	129900-02930	BEARING, THRUST	2	2						
31	1	129900-01200	BOLT, HEAD	18	18						
32	1	129907-01331	GASKET, HEAD	1	1						
33	1	129100-01580	PIN, M8X16	2	2						
34	1	129100-01580	PIN, M8X16	2	2						
35	1	119309-01810	PLUG	1	1						
36	1	129900-02340	BEARING, 0.25 US	5	5						1
39	1	129900-02940	BEARING, THRUST 0.25	2	2						2

Remarks

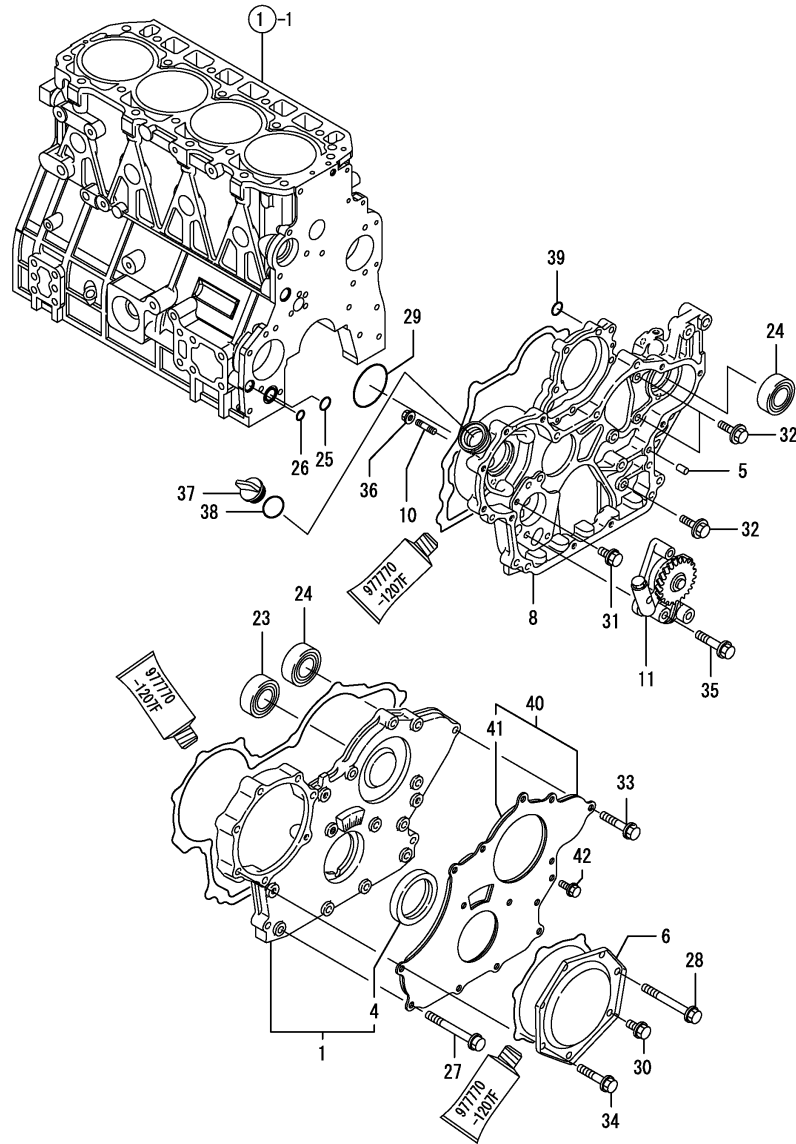
- (1) Under-sized (U.S.=0.25) parts.
- (2) Over-sized (O.S.=0.25) parts.
- (3) Repair parts.

Note : "Effective Machine No." of the Engine Section is indicated on the Model Label which is shown in Fig.4.

Fig.2. GEAR HOUSING

(A)=4TNV98-RZA1Q  
 (B)=4TNV98-RZN1Q  
 (C)=

(D)=  
 (E)=  
 (F)=



No.	Lev.	Parts No.	Description	Q'ty						I	R
				(A)	(B)	(C)	(D)	(E)	(F)		
1	1	729907-01550	COVER ASSY,GEAR CASE	1	1						
4	2	129900-01780	SEAL, OIL	1	1						
5	1	129100-01580	PIN, M8X16	4	4						
6	1	129900-01740	COVER	1	1						
8	1	129907-01500	CASE, GEAR	1	1						
10	1	26216-100302	STUD, M10X 30	4	4						
11	1	129956-32001	PUMP ASSY, OIL	1	1						
23	1	129900-14140	BEARING, BALL 6205	1	1						
24	1	129900-26250	BEARING, BALL 6206C3	2	2						
25	1	129900-32030	O-RING, P20	1	1						
26	1	129900-32040	O-RING, P14	1	1						
27	1	129001-91810	BOLT, M8X70	6	6						
28	1	129001-91810	BOLT, M8X70	1	1						
29	1	24351-030750	O-RING, 1A3075	1	1						
30	1	26106-080162	BOLT, M8X 16 PLATED	1	1						
31	1	26106-080162	BOLT, M8X 16 PLATED	1	1						
32	1	26106-080202	BOLT, M8X 20 PLATED	3	3						
33	1	26106-080402	BOLT, M8X 40 PLATED	5	5						
34	1	26106-080402	BOLT, M8X 40 PLATED	5	5						
35	1	26106-080452	BOLT, M8X 45 PLATED	3	3						
36	1	26306-100002	NUT, M10	4	4						
37	1	124160-01751	COVER, FILLER	1	1						
38	1	24311-000320	O-RING, 1AP32.0	1	1						
39	1	24311-000070	O-RING, 1AP7.0	1	1						
40	1	129900-01850	COVER ASSY,GEAR CASE	1	1						
41	2	129900-01870	SPONGE	1	1						
42	1	26106-080162	BOLT, M8X 16 PLATED	3	3						

Remarks

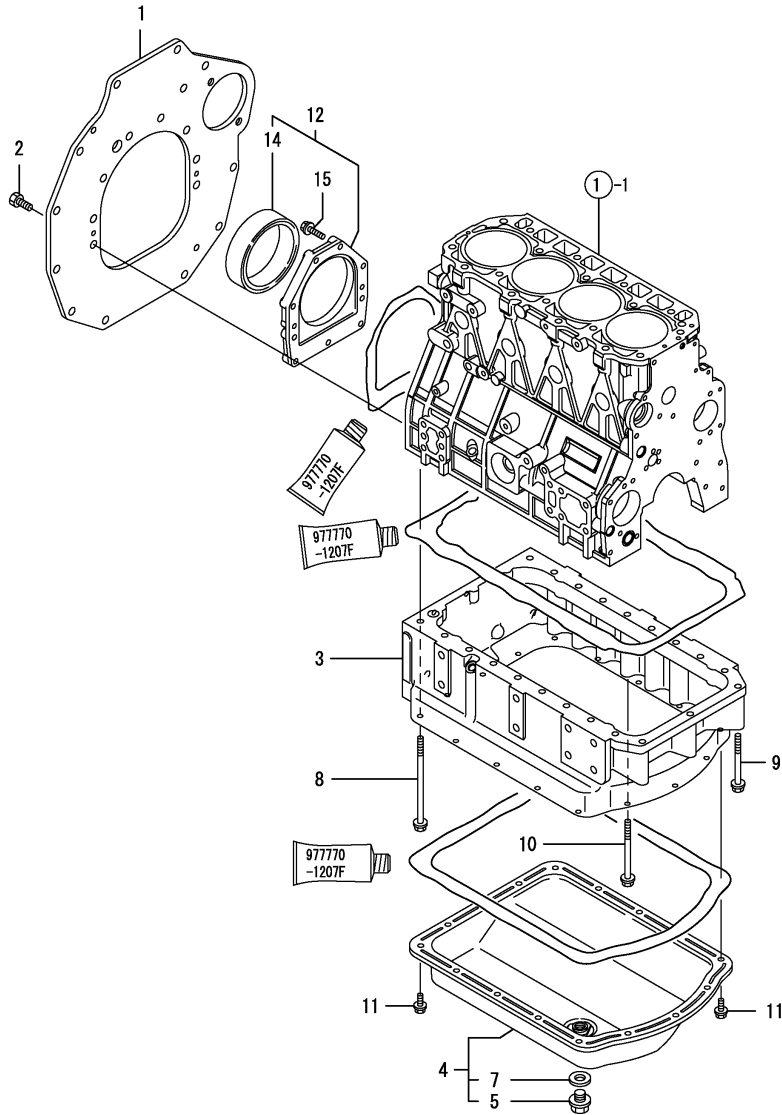
Note : "Effective Machine No." of the Engine Section is indicated on the Model Label which is shown in Fig.4.

N:Old  $\xrightarrow{\text{Yes}}$  New, Q:Old  $\xrightarrow{\text{No}}$  New, R:Old  $\xrightarrow{\text{Yes}}$  New, S:Old  $\xrightarrow{\text{No}}$  New, W:Add, Z:Discontinued, F:Interchangeable by set, K:Q'ty Change

Fig.3. MOUNTING FLANGE & OIL SUMP

(A)=4TNV98-RZA1Q  
 (B)=4TNV98-RZN1Q  
 (C)=

(D)=  
 (E)=  
 (F)=

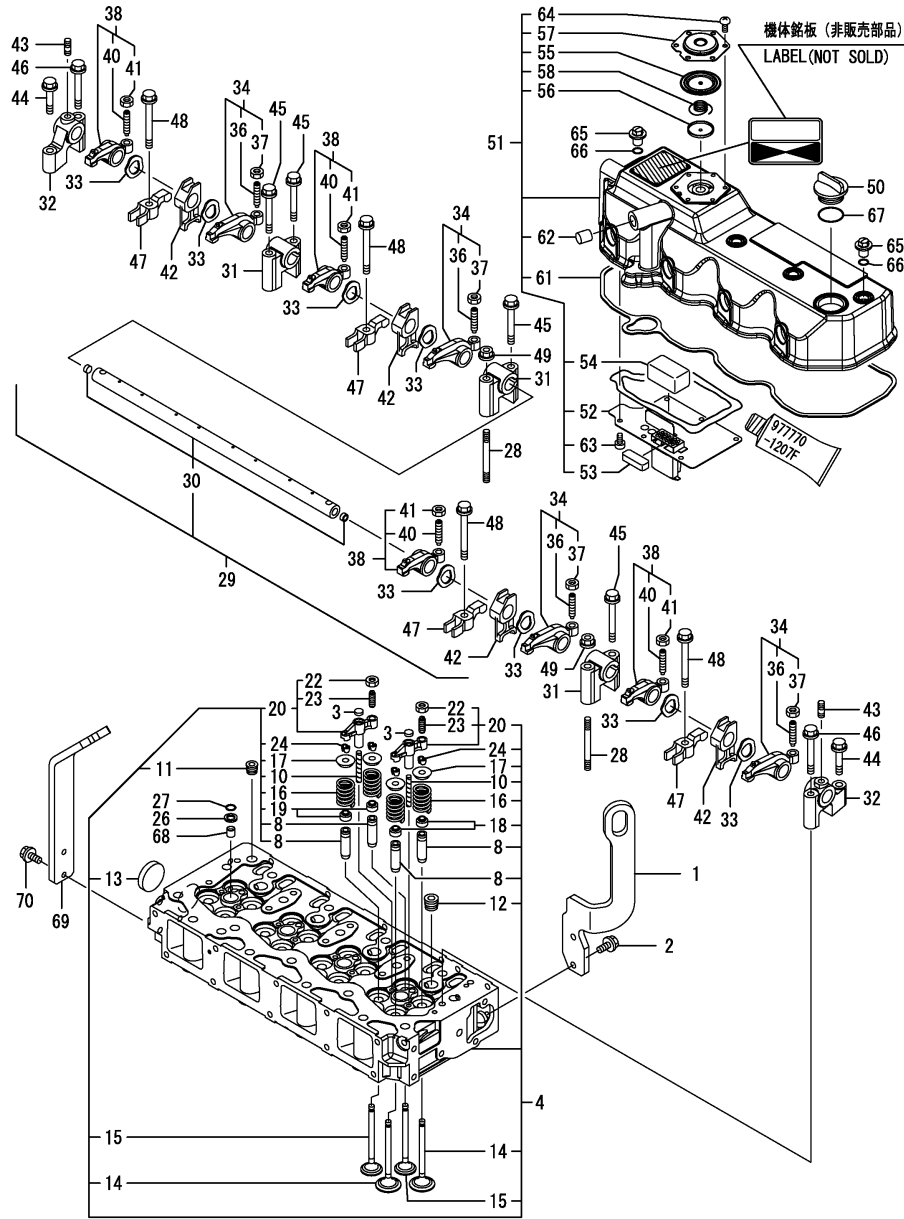


No.	Lev.	Parts No.	Description	Q'ty						I	R
				(A)	(B)	(C)	(D)	(E)	(F)		
1	1	129956-01602	FLANGE, MOUNTING	1	1						
2	1	26116-100202	BOLT, M10X 20 PLATED	9	9						
3	1	129956-01700	SUMP, OIL	1	1						
4	1	129956-01740	COVER ASSY, OIL SUMP	1	1						
5	2	105425-01690	PLUG, 16	1	1						
7	2	22190-160002	WASHER, SEAL 16	1	1						
8	1	129972-01731	BOLT, M8X150	2	2						
9	1	129001-91841	BOLT, M8X85	3	3						
10	1	129693-44310	BOLT	16	16						
11	1	26106-080122	BOLT, M8X 12 PLATED	16	16						
12	1	129956-01640	CASE ASSY, OIL SEAL	1	1						
14	2	124411-01780	SEAL, HTC95X115X12	1	1						
15	1	26106-080302	BOLT, M8X 30 PLATED	9	9						

Remarks

Note : "Effective Machine No." of the Engine Section is indicated on the Model Label which is shown in Fig.4.

Fig.4. CYLINDER HEAD & BONNET



(A)=4TNV98-RZA1Q  
(B)=4TNV98-RZN1Q  
(C)=

(D)=  
(E)=  
(F)=

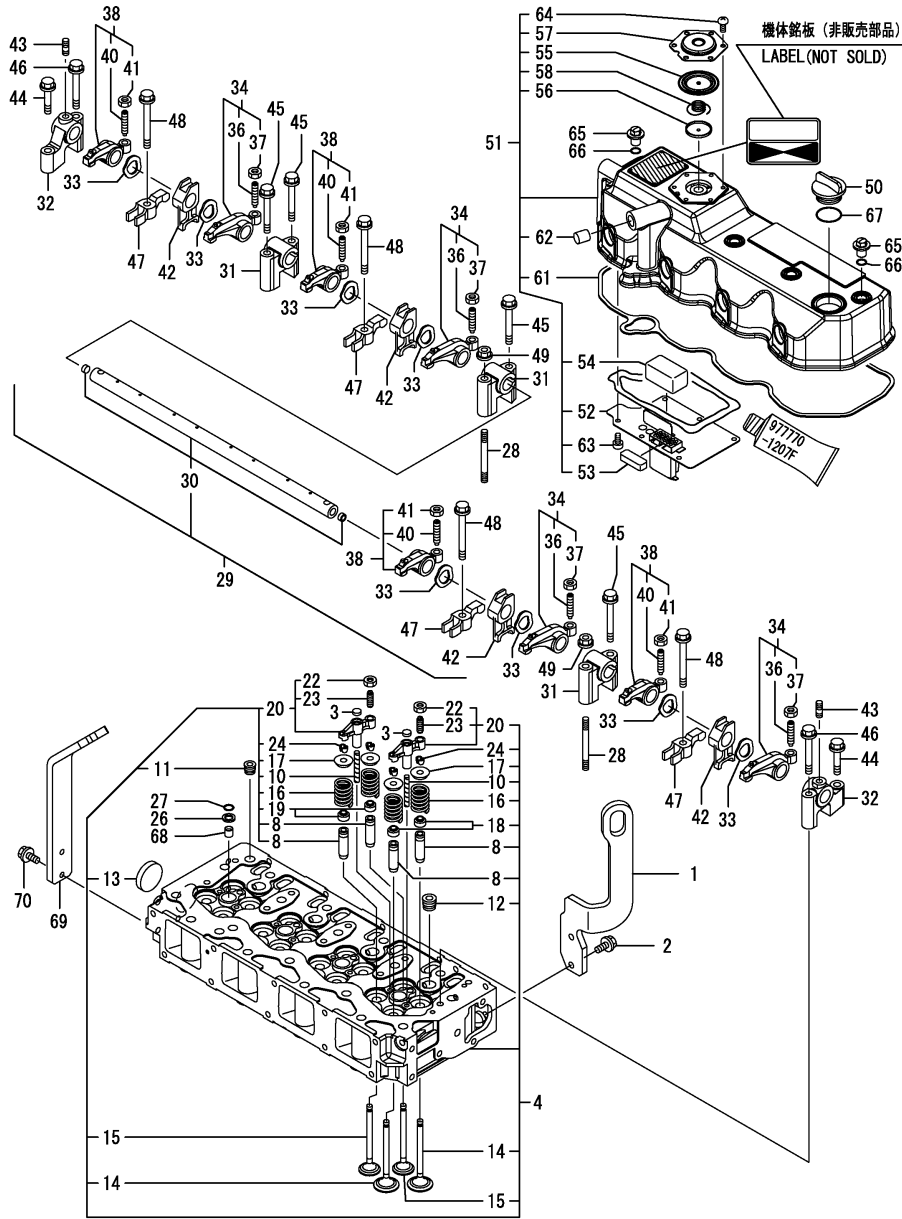
No.	Lev.	Parts No.	Description	Q'ty						I	R
				(A)	(B)	(C)	(D)	(E)	(F)		
1	1	129963-07902	LIFTER	1	1						
2	1	26106-080202	BOLT, M8X 20 PLATED	2	2						
3	1	123907-11550	SEAT, VALVE BRIDGE	8	8						
4	1	129907-11700	HEAD ASSY, CYLINDER	1	1						
8	2	129907-11800	GUIDE, VALVE	16	16						1
10	2	123907-11820	GUIDE	8	8						
11	2	23876-020000	PLUG, R02	1	1						
12	2	23876-030000	PLUG, R03	4	4						
13	2	27241-400000	PLUG, 40	1	1						
14	2	129907-11100	VALVE, INTAKE	8	8						
15	2	129907-11110	VALVE, EXHAUST	8	8						
16	2	129907-11120	SPRING, VALVE	16	16						
17	2	119620-11180	RETAINER, SPRING	16	16						
18	2	124160-11340	SEAL, VALVE STEM	8	8						
19	2	124950-11340	SEAL, VALVE STEM	8	8						
20	2	129907-11510	BRIDGE ASSY, VALVE	8	8						
22	3	129150-11750	NUT, M8	8	8						
23	3	123907-11830	ADJUSTER	8	8						
24	2	27310-070001	COTTER, 7	16	16						
26	1	119625-11880	SEAT, NOZZLE	4	4						
27	1	24311-000120	O-RING, 1AP12.0	4	4						
28	1	119593-11301	STUD, M8X80	2	2						
29	1	129907-11341	SHAFT ASSY, ROCKER	1	1						
30	2	129907-11250	SHAFT, ROCKER ARM	1	1						
31	2	129907-11260	SUPPORT, ROCKER ARM	3	3						
32	2	129907-11270	SUPPORT, ROCKER ARM	2	2						
33	2	123907-11280	WASHER	8	8						
34	2	129907-11650	ARM, ROCKER	4	4						
36	3	129150-11230	SCREW, VALVE ADJUST	4	4						
37	3	129150-11750	NUT, M8	4	4						
38	2	129907-11660	ARM, ROCKER	4	4						
40	3	129150-11230	SCREW, VALVE ADJUST	4	4						
41	3	129150-11750	NUT, M8	4	4						
42	2	129907-11920	RETAINER	4	4						
43	2	26226-080222	STUD, M8X 22	2	2						
44	1	26106-080402	BOLT, M8X 40 PLATED	2	2						
45	1	26106-080602	BOLT, M8X 60 PLATED	4	4						
46	1	26106-080602	BOLT, M8X 60 PLATED	2	2						
47	1	129907-11910	RETAINER, NOZZLE	4	4						
48	1	129907-11950	BOLT, M8X75	4	4						
49	1	26306-080002	NUT, M8	2	2						
50	1	124160-01751	COVER, FILLER	1	1						
51	1	129907-11320	BONNET ASSY, HEAD	1	1						
52	2	129907-03011	PLATE	1	1						
53	2	129907-03061	BAFFLE, BREATHER	1	1						
54	2	129907-03070	BAFFLE, BREATHER	1	1						
55	2	123907-03100	DIAPHRAGM	1	1						
56	2	123907-03110	PLATE	1	1						
57	2	123907-03120	PLATE, BREATHER	1	1						
58	2	123907-03140	SPRING, DIAPHRAGM	1	1						
61	2	129907-11310	GASKET, BONNET	1	1						

Remarks

(1)Repair parts.

Note : "Effective Machine No." of the Engine Section is indicated on the Model Label which is shown in Fig.4.

Fig.4. CYLINDER HEAD & BONNET



(A)=4TNV98-RZA1Q  
(B)=4TNV98-RZN1Q  
(C)=

(D)=  
(E)=  
(F)=

No.	Lev.	Parts No.	Description	Q'ty						I	R
				(A)	(B)	(C)	(D)	(E)	(F)		
62	2	119640-61400	PLUG	1	1						
63	2	22857-500100	SCREW, 5X10	6	6						
64	2	22857-500100	SCREW, 5X10	6	6						
65	1	124160-11360	KNOB	4	4						
66	1	24311-000120	O-RING, 1AP12.0	4	4						
67	1	24311-000320	O-RING, 1AP32.0	1	1						
68	1	119802-11870	PROTECTOR, NOZZLE	4	4						
69	1	129956-07911	LIFTER	1	1						
70	1	26106-080202	BOLT, M8X 20 PLATED	2	2						

Remarks

(1)Repair parts.

Note : "Effective Machine No." of the Engine Section is indicated on the Model Label which is shown in Fig.4.

N:Old  $\xrightarrow{\text{Yes}}$  New, Q:Old  $\xrightarrow{\text{No}}$  New, R:Old  $\xrightarrow{\text{Yes}}$  New, S:Old  $\xrightarrow{\text{No}}$  New, W:Add, Z:Discontinued, F:Interchangeable by set, K:Q'ty Change

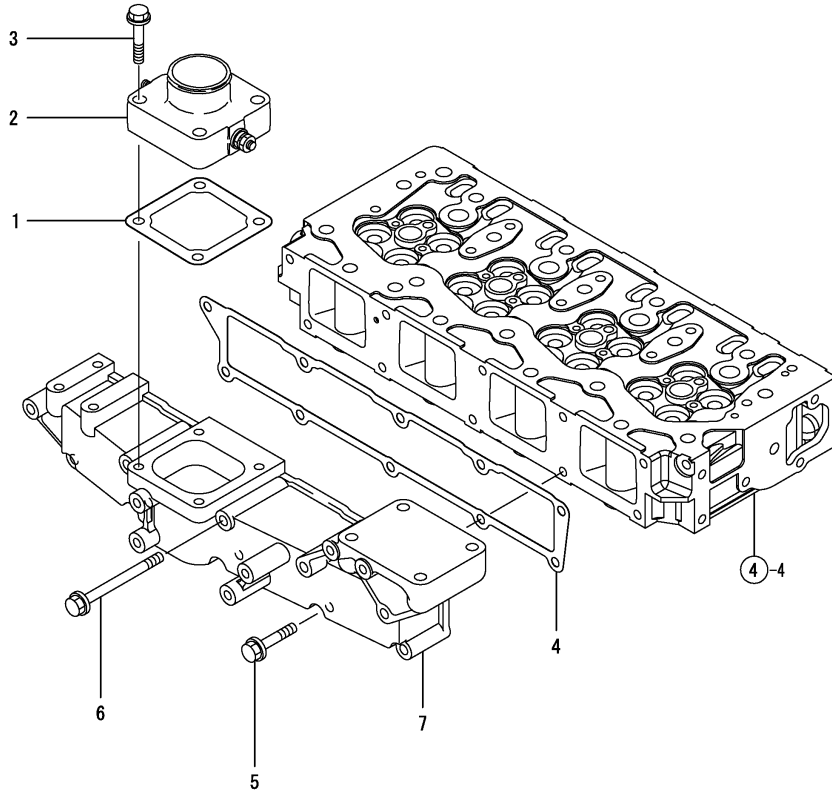


Fig.5. SUCTION MANIFOLD

(A)=4TNV98-RZA1Q  
 (B)=4TNV98-RZN1Q  
 (C)=

(D)=  
 (E)=  
 (F)=

No.	Lev.	Parts No.	Description	Q'ty						I	R
				(A)	(B)	(C)	(D)	(E)	(F)		
1	1	121850-77021	GASKET	1	1						
2	1	129915-77050	HEATER	1	1						
3	1	26106-080352	BOLT, M8X 35 PLATED	4	4						
4	1	129907-12110	GASKET, MANIFOLD	1	1						
5	1	26106-080552	BOLT, M8X 55 PLATED	5	5						
6	1	26106-080852	BOLT, M8X 85 PLATED	5	5						
7	1	129906-12100	MANIFOLD, AIR INTAKE	1	1						



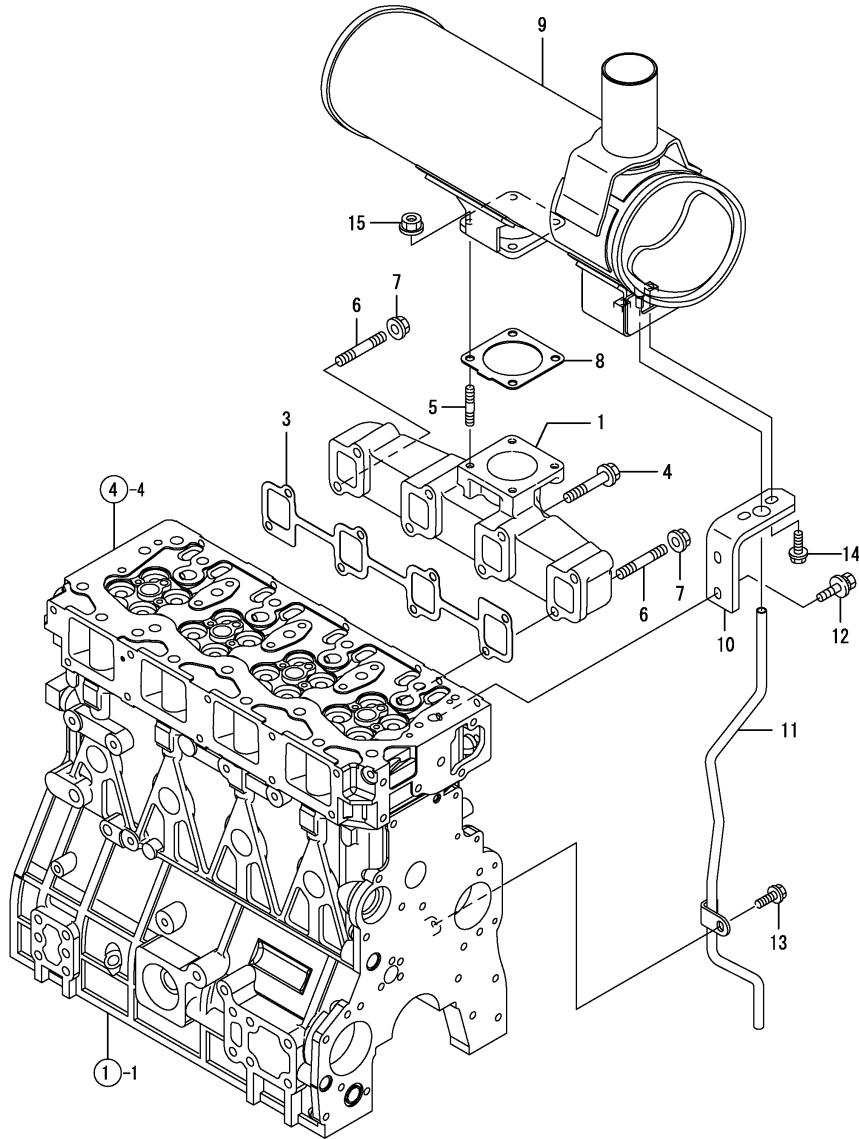
Remarks

Note : "Effective Machine No." of the Engine Section is indicated on the Model Label which is shown in Fig.4.

Fig.6. EXHAUST MANIFOLD & SILENCER

(A)=4TNV98-RZA1Q  
 (B)=4TNV98-RZN1Q  
 (C)=

(D)=  
 (E)=  
 (F)=



No.	Lev.	Parts No.	Description	Q'ty						I	R
				(A)	(B)	(C)	(D)	(E)	(F)		
1	1	129900-13200	MANIFOLD, EXHAUST	1	1						
3	1	129900-13251	GASKET	1	1						
4	1	123900-13630	BOLT, M8X80	6	6						
5	1	119131-18320	STUD, M8X22	4	4						
6	1	129263-13210	STUD, M8X90	2	2						
7	1	26306-080002	NUT, M8	2	2						
8	1	129930-13201	GASKET, SILENCER	1	1						
9	1	129963-13511	SILENCER	1	1						
10	1	129963-13650	STAY, SILENCER	1	1						
11	1	129963-13950	PIPE, WATER DRAIN	1	1						
12	1	26014-080222	BOLT, M8X 22	2	2						
13	1	26106-080122	BOLT, M8X 12 PLATED	1	1						
14	1	26106-080222	BOLT, M8X 22 PLATED	2	2						
15	1	26306-080002	NUT, M8	4	4						

Remarks

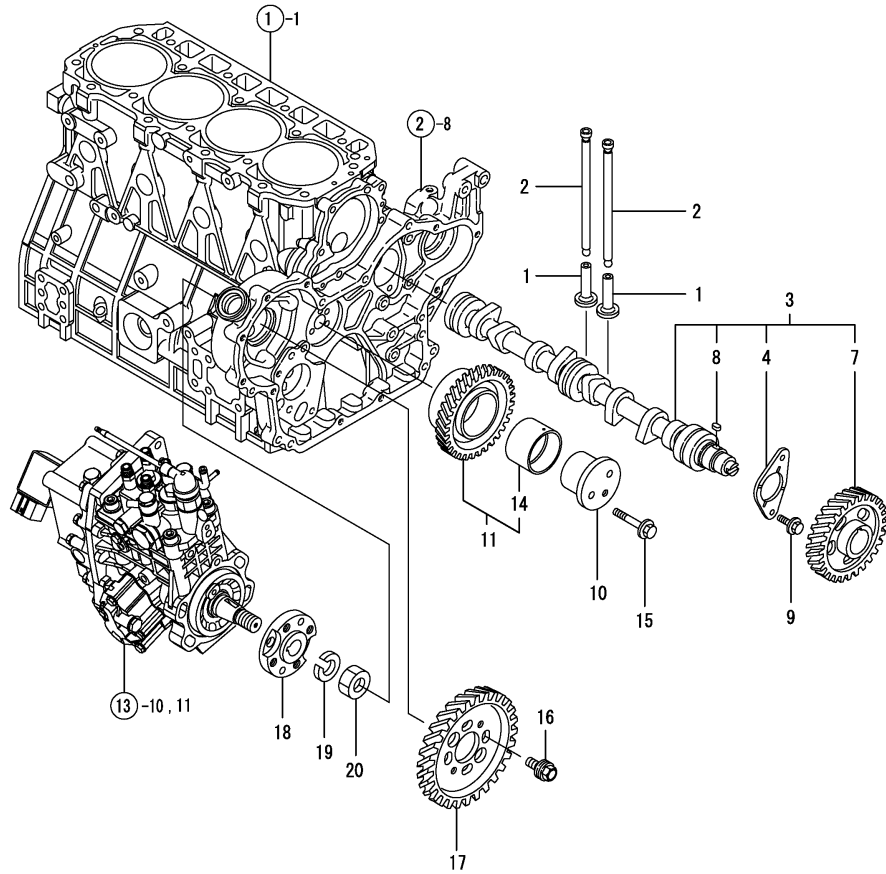
Note : "Effective Machine No." of the Engine Section is indicated on the Model Label which is shown in Fig.4.

Fig.7. CAMSHAFT & DRIVING GEAR

(A)=4TNV98-RZA1Q  
 (B)=4TNV98-RZN1Q  
 (C)=

(D)=  
 (E)=  
 (F)=

No.	Lev.	Parts No.	Description	Q'ty						I	R
				(A)	(B)	(C)	(D)	(E)	(F)		
1	1	129150-14200	TAPPET	8	8						
2	1	129907-14400	ROD, PUSH	8	8						
3	1	129907-14581	CAMSHAFT ASSY	1	1						
3-1	1	129908-14581 (A=EZZZZZ) (B=EZZZZZ)	CAMSHAFT ASSY	1	1						N
4	2	129150-02450	BEARING, THRUST	1	1						
7	2	129900-14100	GEAR, CAMSHAFT	1	1						
8	2	22512-070140	KEY, 7X 14	1	1						
9	1	26106-080162	BOLT, M8X 16 PLATED	2	2						
10	1	123900-25060	SHAFT, IDLE GEAR	1	1						
11	1	129900-25100	GEAR ASSY, IDLE	1	1						
14	2	129150-25920	BUSH, IDLE GEAR	1	1						1
15	1	26106-080552	BOLT, M8X 55 PLATED	3	3						
16	1	129953-25300	BOLT	4	4						
17	1	129907-25900	GEAR, PUMP	1	1						
18	1	158563-51150	FLANGE	1	1						
19	1	22217-180000	WASHER, SPRING 18	1	1						
20	1	26776-180002	NUT, LOCK M18	1	1						



Remarks

(1)Repair parts.

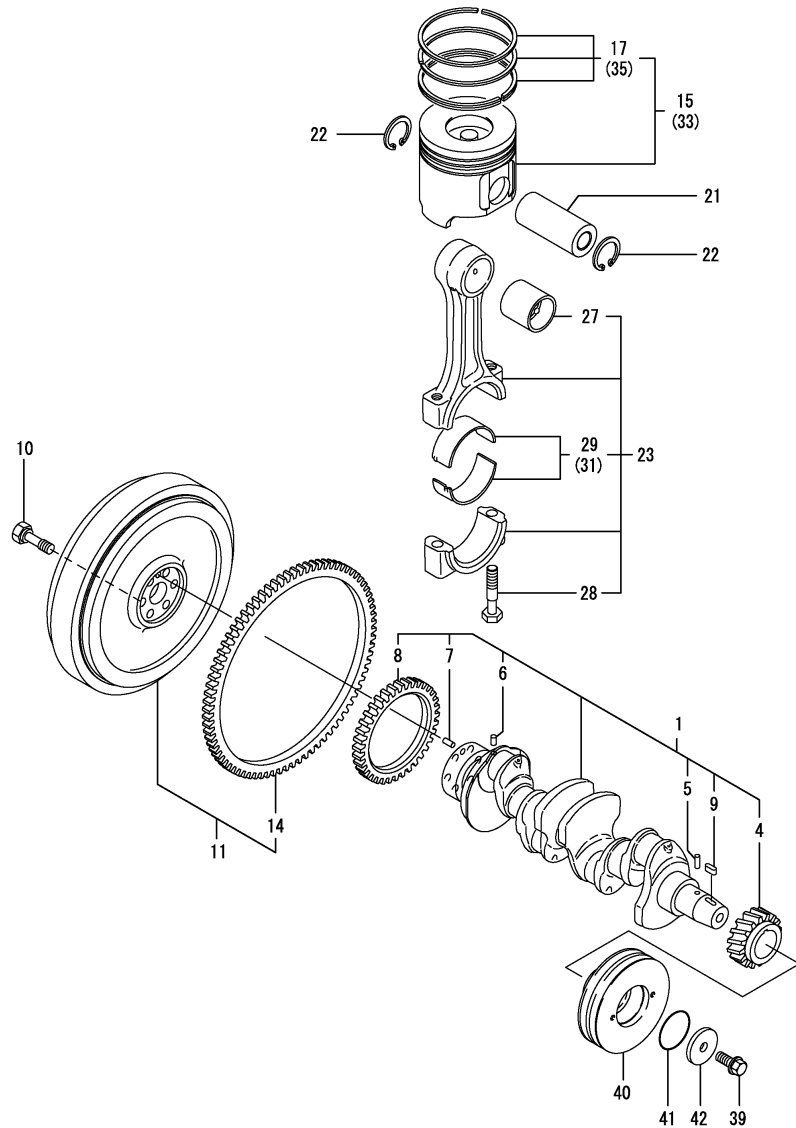
Note : "Effective Machine No." of the Engine Section is indicated on the Model Label which is shown in Fig.4.

N:Old  $\xrightarrow{\text{Yes}}$  New, Q:Old  $\xrightarrow{\text{No}}$  New, R:Old  $\xrightarrow{\text{Yes}}$  New, S:Old  $\xrightarrow{\text{No}}$  New, W:Add, Z:Discontinued, F:Interchangeable by set, K:Q'ty Change

Fig.8. CRANKSHAFT & PISTON

(A)=4TNV98-RZA1Q  
(B)=4TNV98-RZN1Q  
(C)=

(D)=  
(E)=  
(F)=



No.	Lev.	Parts No.	Description	Q'ty						I	R
				(A)	(B)	(C)	(D)	(E)	(F)		
1	1	129956-21000	CRANKSHAFT ASSY	1	1						
4	2	129900-21200	GEAR, CRANKSHAFT	1	1						
5	2	121850-21290	PIN	1	1						
6	2	121850-21290	PIN	1	1						
7	2	121850-21920	PIN, M10X22	1	1						
8	2	129956-28321	GEAR, BALANCER	1	1						
9	2	22512-070140	KEY, 7X 14	1	1						
10	1	121850-21130	BOLT, FLYWHEEL	6	6						
11	1	129956-21591	FLYWHEEL ASSY	1	1						
14	2	129900-21600	GEAR, RING	1	1						
15	1	129963-22080	PISTON ASSY, 18.5	4	4						
17	2	129907-22050	RING SET, PISTON	4	4						
21	1	120130-22301	PIN, PISTON	4	4						
22	1	22252-000300	RING, 30	8	8						
23	1	129900-23001	ROD ASSY, CONNECTING	4	4						
27	2	129900-23911	BEARING, PISTON PIN	4	4						1
28	2	129900-23200	BOLT, CONNECTING ROD	8	8						
29	2	129900-23600	BEARING, CRANK PIN	4	4						
31	1	129900-23610	BEARING, 0.25 US	4	4						2
33	1	729963-22900	PISTON ASSY, 0.25 OS	4	4						3
35	2	729907-22950	RING SET, 0.25 OS	4	4						3
39	1	129916-21610	BOLT	1	1						
40	1	129972-21660	V-PULLEY	1	1						
41	1	24341-000530	O-RING, 1AS53.0	1	1						
42	1	129960-21640	WASHER	1	1						

Remarks

- (1) Repair parts.
- (2) Under-sized (U.S.=0.25) parts.
- (3) Over-sized (O.S.=0.25) parts.

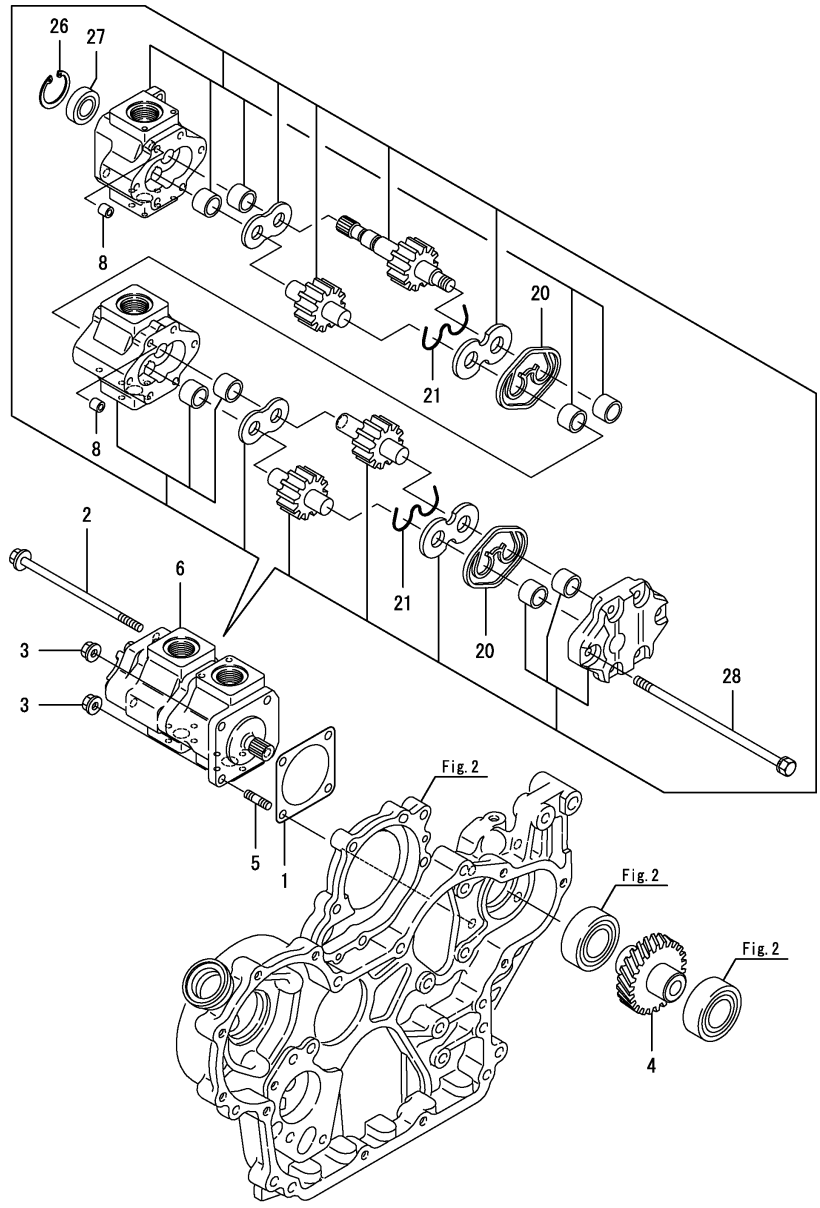
Note : "Effective Machine No." of the Engine Section is indicated on the Model Label which is shown in Fig.4.

N:Old  $\xrightarrow{\text{Yes}}$  New, Q:Old  $\xrightarrow{\text{No}}$  New, R:Old  $\xrightarrow{\text{Yes}}$  New, S:Old  $\xrightarrow{\text{No}}$  New, W:Add, Z:Discontinued, F:Interchangeable by set, K:Q'ty Change

Fig.9. HYDRAULIC PUMP

(A)=4TNV98-RZA1Q  
 (B)=4TNV98-RZN1Q  
 (C)=

(D)=  
 (E)=  
 (F)=



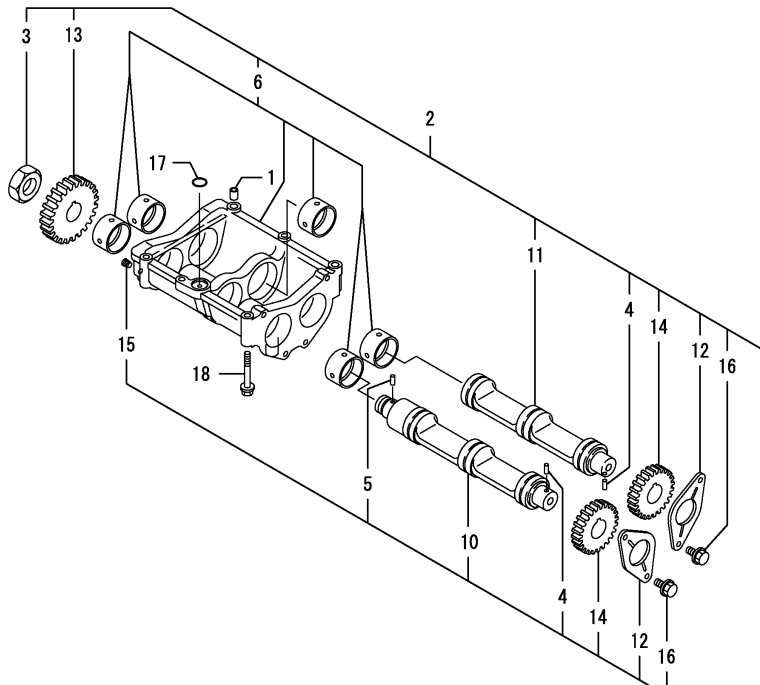
No.	Lev.	Parts No.	Description	Q'ty						I	R
				(A)	(B)	(C)	(D)	(E)	(F)		
1	1	124240-01883	GASKET	1	1						
2	1	129956-26220	BOLT, M8X170	2	2						
3	1	26306-080002	NUT, M8	2	2						
4	1	129956-26010	GEAR, PUMP	1	1						
5	1	26216-080202	STUD, M8X 20	2	2						
5-1	1	121450-01560	STUD, M8X22	2	2						N
				(A=*2009.06.)		(B=*2009.06.)					
6	1	1A7670-41110	PUMP ASSY, HYDRAULIC	1	1						
6-1	1	1A7670-41111	HO-P(PWF2-D-11X10AK)	1	1						R
				(A=E*****)		(B=E*****)					
8	2	178077-00500	PIN 11X7	8	8						
20	2	178077-15400	SEAL RING	2	2						
21	2	178077-15410	BACKUP RING	2	2						
26	2	22252-000320	RING, 32	1	1						
27	2	24421-183207	SEAL, OIL TC183207	1	1						
27-1	2	168000-01180	SEAL TCV183207	1	1						R
				(A=E*****)		(B=E*****)					
28	2	26016-081052	BOLT, M8X105	4	4						

Remarks  
 Note : "Effective Machine No." of the Engine Section is indicated on the Model Label which is shown in Fig.4.

Fig.10. BALANCER

(A)=4TNV98-RZA1Q  
 (B)=4TNV98-RZN1Q  
 (C)=

(D)=  
 (E)=  
 (F)=

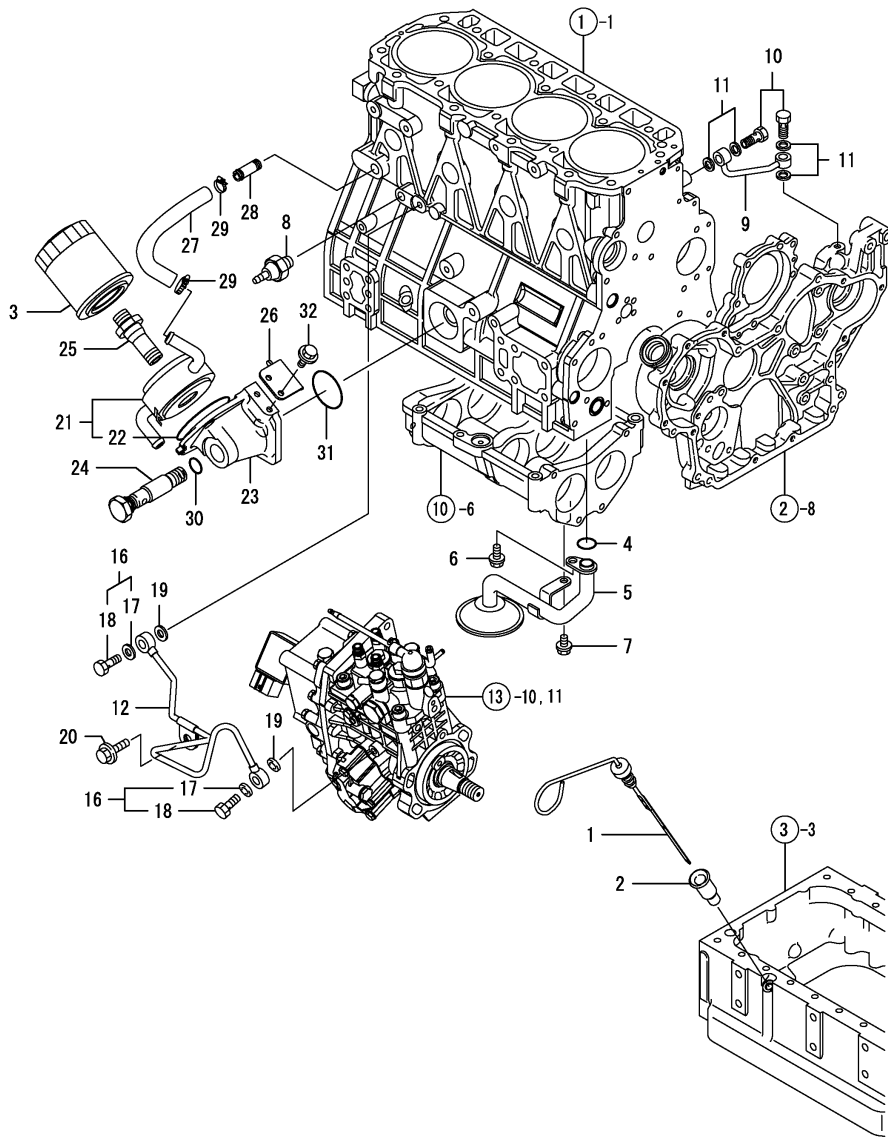


No.	Lev.	Parts No.	Description	Q'ty						I	R
				(A)	(B)	(C)	(D)	(E)	(F)		
1	1	129795-01960	PIPE, KNOCK	2	2						
2	1	129956-28009	BALANCER ASSY	1	1						
3	2	128610-14120	NUT, END	1	1						
4	2	121850-21290	PIN	2	2						
5	2	121850-21290	PIN	1	1						
6	2	129956-28019	CASE ASSY, BALANCER	1	1						
10	2	129956-28101	SHAFT, BALANCER	1	1						
11	2	129956-28111	SHAFT, BALANCER	1	1						
12	2	129956-28180	PLATE, THRUST	2	2						
13	2	129956-28332	GEAR, BALANCER	1	1						
14	2	129956-28341	GEAR, BALANCER	2	2						
15	2	23876-005000	PLUG, R005	1	1						
16	2	26106-080162	BOLT, M8X 16 PLATED	4	4						
17	1	24311-000200	O-RING, 1AP20.0	1	1						
18	1	26106-080602	BOLT, M8X 60 PLATED	6	6						

Remarks

Note : "Effective Machine No." of the Engine Section is indicated on the Model Label which is shown in Fig.4.

Fig.11. LUB. OIL SYSTEM



(A)=4TNV98-RZA1Q  
(B)=4TNV98-RZN1Q  
(C)=

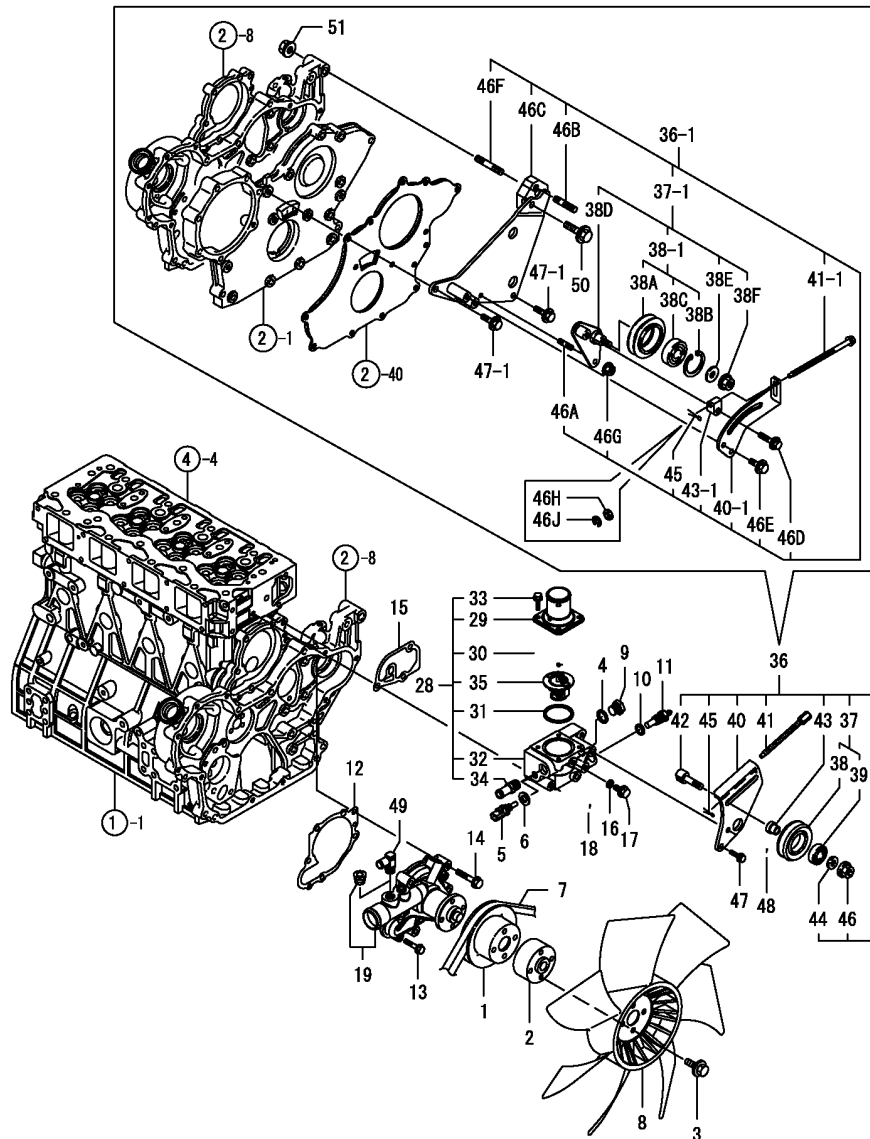
(D)=  
(E)=  
(F)=

No.	Lev.	Parts No.	Description	Q'ty						I	R
				(A)	(B)	(C)	(D)	(E)	(F)		
1	1	129972-34800	DIPSTICK, OIL	1	1						
2	1	119860-34810	GUIDE, DIPSTICK	1	1						
3	1	119005-35170	FILTER, D80X100	1	1						1
4	1	129900-32030	O-RING, P20	1	1						
5	1	129956-35000	PIPE ASSY, OIL INLET	1	1						
6	1	26106-080142	BOLT, M8X 14 PLATED	1	1						
7	1	26106-080202	BOLT, M8X 20 PLATED	1	1						
8	1	114250-39450	SWITCH, 0.5KG	1	1						
9	1	129930-39050	PIPE, OIL	1	1						
10	1	105010-39140	BOLT, PIPE JOINT	2	2						
11	1	22190-080002	WASHER, SEAL 6	4	4						
12	1	129963-39060	PIPE ASSY, OIL	1	1						
16	1	129005-59830	BOLT ASSY, JOINT M8	2	2						
17	2	22190-080002	WASHER, SEAL 6	2	2						
18	2	23857-030000	BOLT, JOINT 3	2	2						
19	1	22190-080002	WASHER, SEAL 6	2	2						
20	1	26106-080122	BOLT, M8X 12 PLATED	1	1						
21	1	129956-33011	COOLER ASSY, OIL	1	1						
22	2	129957-33050	O-RING	1	1						
23	1	129956-33101	BRACKET, COOLER	1	1						
24	1	129956-33110	BOLT	1	1						
25	1	129956-33120	BOLT, COOLER	1	1						
26	1	129972-33140	STOPPER	1	1						
27	1	129956-49172	PIPE, WATER	1	1						
28	1	129122-44480	JOINT	1	1						
29	1	23000-022000	CLAMP, 22	2	2						
30	1	24314-000200	O-RING, 4CP20.0	1	1						
31	1	24321-000600	O-RING, 1AG60.0	1	1						
32	1	26106-060142	BOLT, M6X 14 PLATED	2	2						

Remarks

(1)Repair parts.

Fig.12. COOLING WATER SYSTEM



(A)=4TNV98-RZA1Q  
(B)=4TNV98-RZN1Q  
(C)=

(D)=  
(E)=  
(F)=

No.	Lev.	Parts No.	Description	Qty						I	R
				(A)	(B)	(C)	(D)	(E)	(F)		
1	1	129900-42461	V-PULLEY	1	1						
2	1	119005-44761	SPACER, FAN	1	1						
3	1	26106-080452	BOLT, M8X 45 PLATED	4	4						
4	1	124465-44950	GASKET, 16	1	1						
5	1	119254-44910	SENSOR ASSY	1	1						
6	1	22190-120002	WASHER, SEAL 12	1	1						
7	1	129963-42290	V-BELT, A42.5	1	1						
7-1	1	129963-42270	V-BELT, A33.5	1	1						S
		(A=*2007.08) (B=*2007.08)									
8	1	129907-44740	FAN, COOLING D430X7	1	1						
9	1	121450-42450	PLUG, M16	1	1						
10	1	129150-49360	GASKET	1	1						
11	1	129242-49450	SENSOR	1	1						
12	1	129900-42020	GASKET, WATER PUMP	1	1						
13	1	26106-060302	BOLT, M6X 30 PLATED	2	2						
14	1	26106-080552	BOLT, M8X 55 PLATED	5	5						
15	1	129900-49870	GASKET	1	1						
16	1	23414-080000	GASKET, 8X1.0	1	1						
17	1	26106-080122	BOLT, M8X 12 PLATED	1	1						
18	1	26106-080652	BOLT, M8X 65 PLATED	2	2						
19	1	129900-42002	PUMP ASSY, WATER	1	1						
28	1	129963-49870	CASE ASSY, THERMOSTAT	1	1						
29	2	129916-49530	COVER, THERMOSTAT	1	1						
30	2	121850-49540	GASKET, THERMOSTAT	1	1						
31	2	121850-49550	GASKET, THERMOSTAT	1	1						
32	2	129963-49850	CASE, THERMOSTAT	1	1						
33	2	26106-060202	BOLT, M6X 20 PLATED	4	4						
34	2	129963-49300	JOINT, D14	1	1						
35	2	121850-49800	THERMOSTAT, 82	1	1						
36	1	129963-96950	TENSION ASSY, DRIVE	1	1						
36-1	1	129963-42500	TENSION ASSY, DRIVE	1	1						S
		(A=*2007.08) (B=*2007.08)									
36-2	1	129963-42501	TENSION ASSY, DRIVE	1	1						N
		(A=EZZZZZ) (B=EZZZZZ)									
36-3	1	129963-42502	TENSION ASSY, DRIVE	1	1						N
		(A=EZZZZZ) (B=EZZZZZ)									
37	2	129457-96200	PULLEY ASSY, TENSION	1	1						
37-1	2	129963-42550	ARM ASSY	1	1						S
		(A=*2007.08) (B=*2007.08)									
38	3	129457-96230	PULLEY, TENSION	1	1						
38-1	3	129963-42530	PULLEY ASSY, TENSION	1	1						S
		(A=*2007.08) (B=*2007.08)									
38A	4	129963-42540	PULLEY, TENSION	1	1						W
		(A=*2007.08) (B=*2007.08)									
38B	4	22252-000470	RING, 47	1	1						W
		(A=*2007.08) (B=*2007.08)									
38C	4	24104-063034	BEARING, BALL 6303UU	1	1						W
		(A=*2007.08) (B=*2007.08)									
38D	3	129963-42560	ARM	1	1						W
		(A=*2007.08) (B=*2007.08)									
38E	3	129636-42570	WASHER, 10	1	1						W

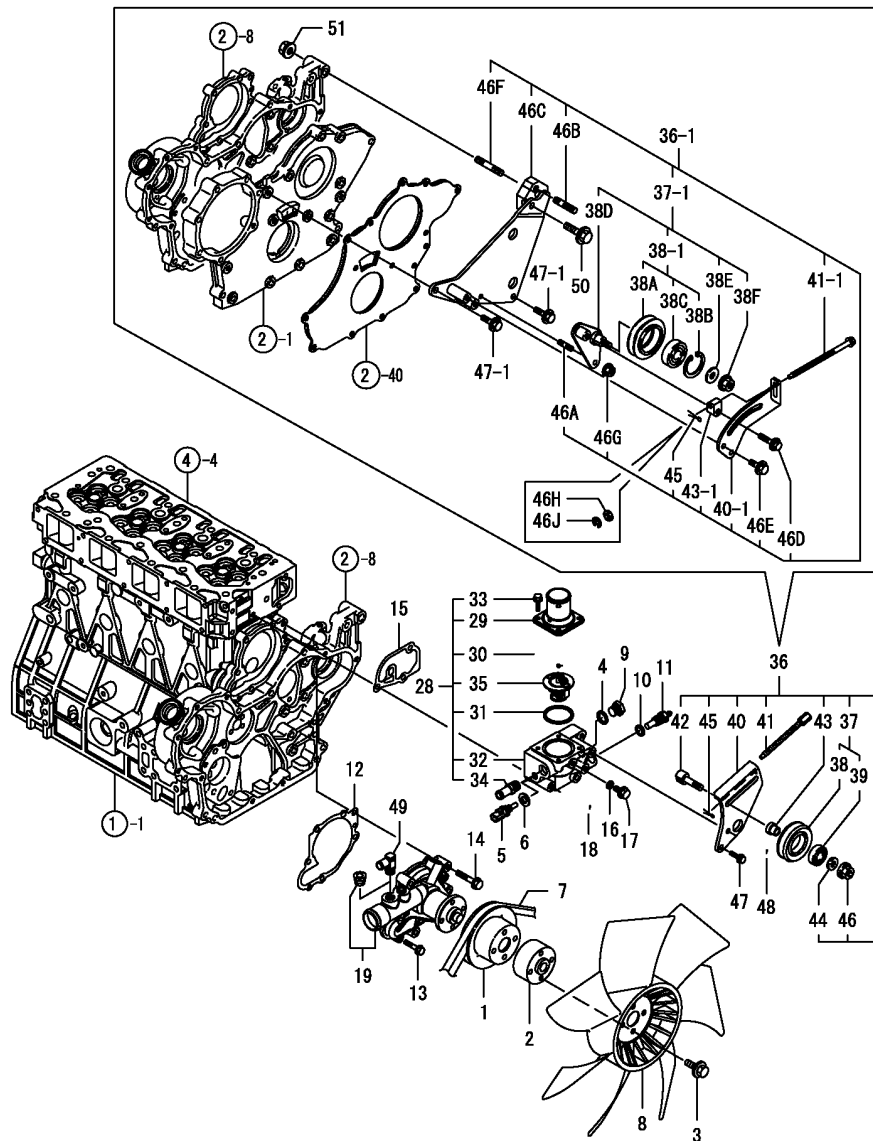
Remarks

Note : "Effective Machine No." of the Engine Section is indicated on the Model Label which is shown in Fig.4.

N:Old  $\frac{Yes}{No}$  New, Q:Old  $\frac{No}{Yes}$  New, R:Old  $\frac{Yes}{No}$  New, S:Old  $\frac{No}{Yes}$  New, W:Add, Z:Discontinued, F:Interchangeable by set, K:Q'ty Change  
 ++ CONTINUE ++  
 Copyright (C) YANMAR CO., LTD. All Rights Reserved.



Fig.12. COOLING WATER SYSTEM



(A)=4TNV98-RZA1Q  
(B)=4TNV98-RZN1Q  
(C)=

(D)=  
(E)=  
(F)=

No.	Lev.	Parts No.	Description	Q'ty						I	R
				(A)	(B)	(C)	(D)	(E)	(F)		
		(A=*2007.08) (B=*2007.08)									
38F	3	26306-100002	NUT, M10	1	1						W
		(A=*2007.08) (B=*2007.08)									
39	3	24104-062024	BEARING, BALL 6202UU	1	1						Z
		(A=*2007.08) (B=*2007.08)									
40	2	129963-96960	BRACKET	1	1						
40-1	2	129963-42570	ADJUSTER	1	1						S
		(A=*2007.08) (B=*2007.08)									
41	2	129972-96971	BOLT, ADJUSTER	1	1						
41-1	2	129963-42520	BOLT, ADJUSTER	1	1						S
		(A=*2007.08) (B=*2007.08)									
41-2	2	129963-42521	BOLT, ADJUSTER	1	1						N
		(A=EZZZZZ) (B=EZZZZZ)									
42	2	129972-96980	BOLT	1	1						Z
		(A=*2007.08) (B=*2007.08)									
43	2	129054-96990	SPACER	1	1						
43-1	2	129963-42580	BLOCK, ADJUSTER	1	1						S
		(A=*2007.08) (B=*2007.08)									
44	2	22137-100000	WASHER, 10	1	1						Z
		(A=*2007.08) (B=*2007.08)									
45	2	22411-160120	COTTER PIN 1.6X12	1	1						Z
		(A=EZZZZZ) (B=EZZZZZ)									
46	2	26306-100002	NUT, M10	1	1						Z
		(A=*2007.08) (B=*2007.08)									
46A	2	121450-01560	STUD, M8X22	1	1						W
		(A=*2007.08) (B=*2007.08)									
46B	2	129795-01900	STUD	1	1						W
		(A=*2007.08) (B=*2007.08)									
46C	2	129963-42590	BRACKET	1	1						W
		(A=*2007.08) (B=*2007.08)									
46C-1	2	129963-42591	BRACKET	1	1						N
		(A=EZZZZZ) (B=EZZZZZ)									
46D	2	119802-77340	BOLT, ADJUSTER	1	1						W
		(A=*2007.08) (B=*2007.08)									
46E	2	26106-080142	BOLT, M8X 14 PLATED	2	2						W
		(A=*2007.08) (B=*2007.08)									
46F	2	26216-100552	STUD, M10X 55	1	1						W
		(A=*2007.08) (B=*2007.08)									
46F-1	3	129963-42510	STUD, M10X55	1	1						N
		(A=*2007.08) (B=*2007.08)									
46G	2	26306-080002	NUT, M8	1	1						W
		(A=*2007.08) (B=*2007.08)									
46H	2	22117-080000	WASHER, 8	1	1						W
		(A=EZZZZZ) (B=EZZZZZ)									
46J	2	22272-000040	RING, E- 4	1	1						W
		(A=EZZZZZ) (B=EZZZZZ)									
47	1	26106-080202	BOLT, M8X 20 PLATED	1	1						
47-1	1	26106-080202	BOLT, M8X 20 PLATED	2	2						K
		(A=*2007.08) (B=*2007.08)									
48	1	26106-080902	BOLT, M8X 90 PLATED	1	1						
48-1	1	26106-080852	BOLT, M8X 85 PLATED	1	1						S

Remarks

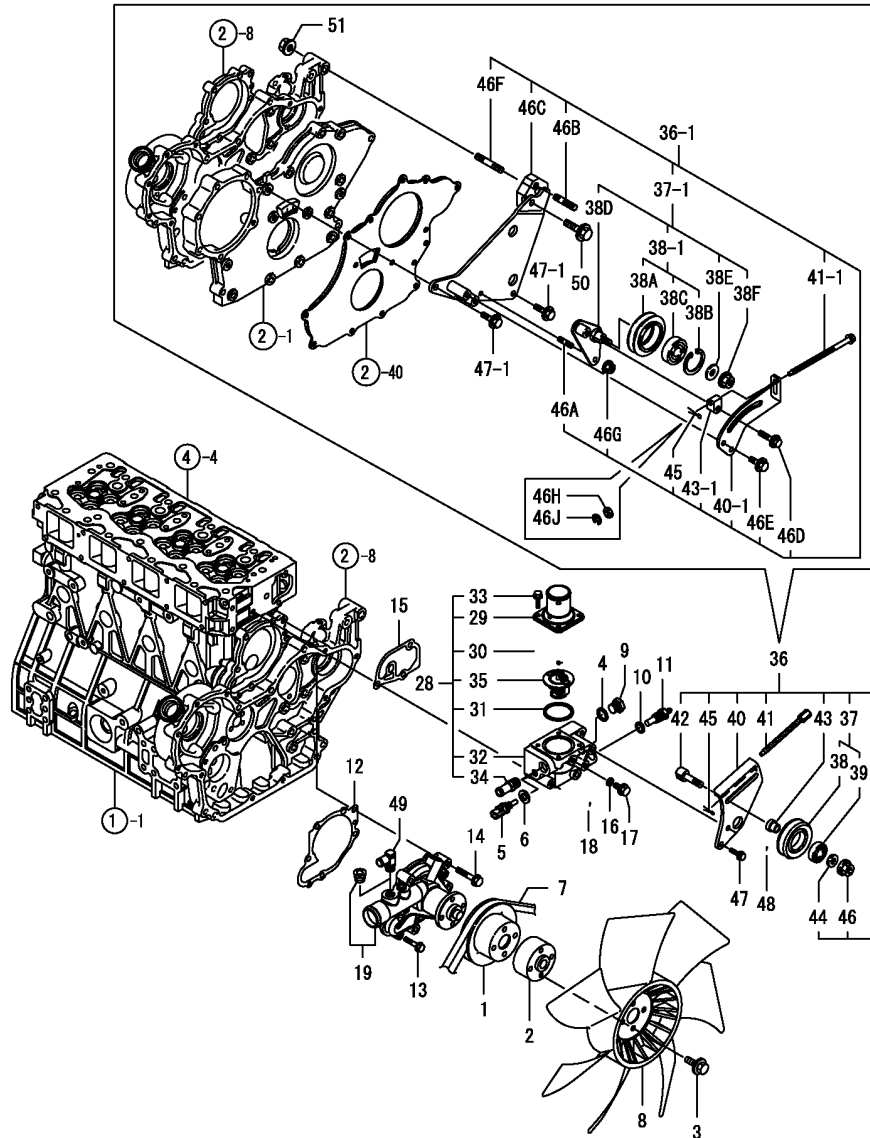
Note : "Effective Machine No." of the Engine Section is indicated on the Model Label which is shown in Fig.4.

N:Old  $\frac{Yes}{No}$  New, Q:Old  $\frac{No}{Yes}$  New, R:Old  $\frac{Yes}{No}$  New, S:Old  $\frac{No}{Yes}$  New, W:Add, Z:Discontinued, F:Interchangeable by set, K:Q'ty Change  
 ++ CONTINUE ++  
 Copyright (C) YANMAR CO., LTD. All Rights Reserved.

Fig.12. COOLING WATER SYSTEM

(A)=4TNV98-RZA1Q  
(B)=4TNV98-RZN1Q  
(C)=

(D)=  
(E)=  
(F)=



No.	Lev.	Parts No.	Description	Q'ty						I	R
				(A)	(B)	(C)	(D)	(E)	(F)		
		(A=*2007.08) (B=*2007.08)									
49	1	119852-49300	ELBOW, R3/8	1	1						
50	1	26106-100402	BOLT, M10X 40 PLATED	1	1						W
		(A=*2007.08) (B=*2007.08)									
51	1	26306-100002	NUT, M10	1	1						W
		(A=*2007.08) (B=*2007.08)									

Remarks

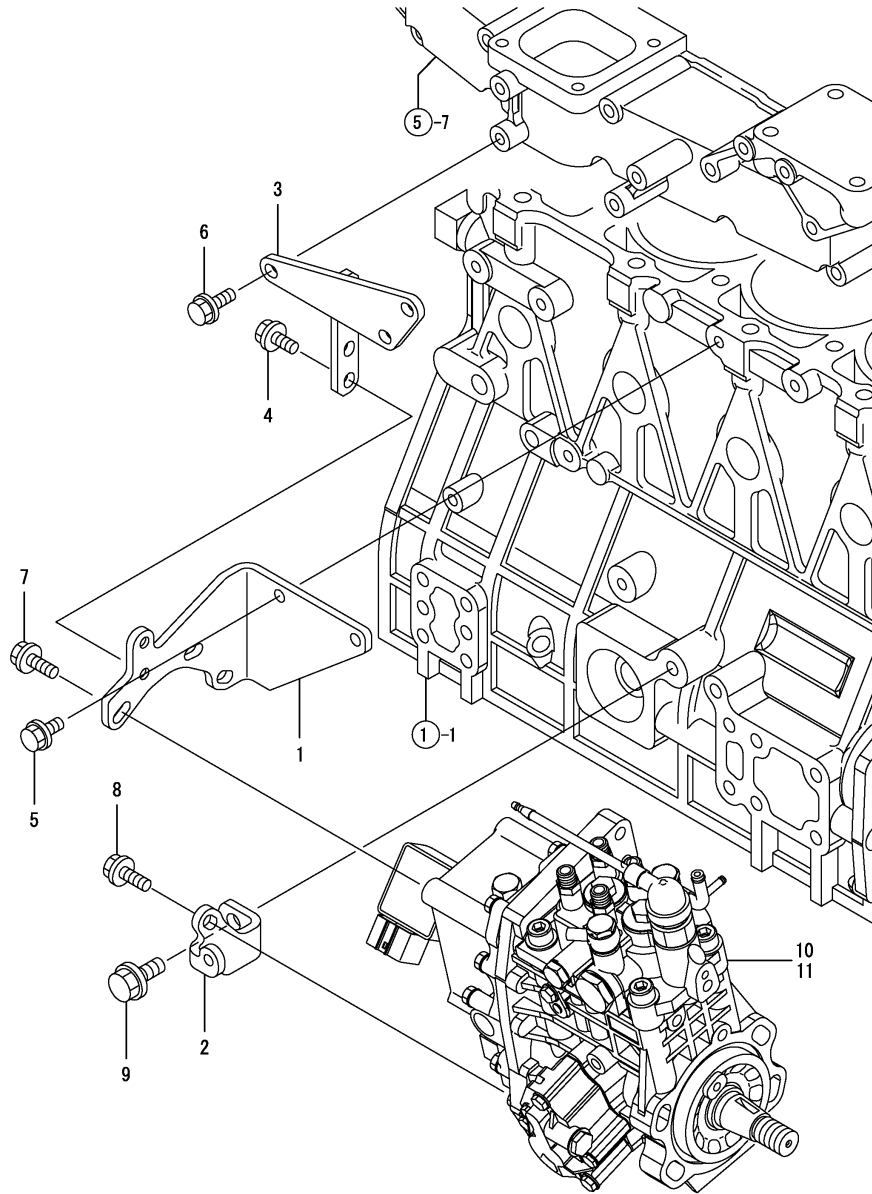
Note : "Effective Machine No." of the Engine Section is indicated on the Model Label which is shown in Fig.4.

N:Old  $\xrightarrow{\text{Yes}}$  New, Q:Old  $\xrightarrow{\text{No}}$  New, R:Old  $\xrightarrow{\text{Yes}}$  New, S:Old  $\xrightarrow{\text{No}}$  New, W:Add, Z:Discontinued, F:Interchangeable by set, K:Q'ty Change

Fig.13. FUEL INJECTION PUMP

(A)=4TNV98-RZA1Q  
 (B)=4TNV98-RZN1Q  
 (C)=

(D)=  
 (E)=  
 (F)=



No.	Lev.	Parts No.	Description	Q'ty						I	R
				(A)	(B)	(C)	(D)	(E)	(F)		
1	1	129972-01950	RETAINER	1	1						
2	1	129906-01960	RETAINER	1	1						
3	1	129972-01970	SUPPORT	1	1						
4	1	26106-080142	BOLT, M8X 14 PLATED	2	2						
5	1	26106-080162	BOLT, M8X 16 PLATED	2	2						
6	1	26106-080222	BOLT, M8X 22 PLATED	3	3						
7	1	26106-080222	BOLT, M8X 22 PLATED	2	2						
8	1	26106-080222	BOLT, M8X 22 PLATED	1	1						
9	1	26106-100202	BOLT, M10X 20 PLATED	1	1						
10	1	729963-51340	PUMP ASSY, INJECTION	1							
11	1	729963-51320	PUMP ASSY, INJECTION		1						

Remarks

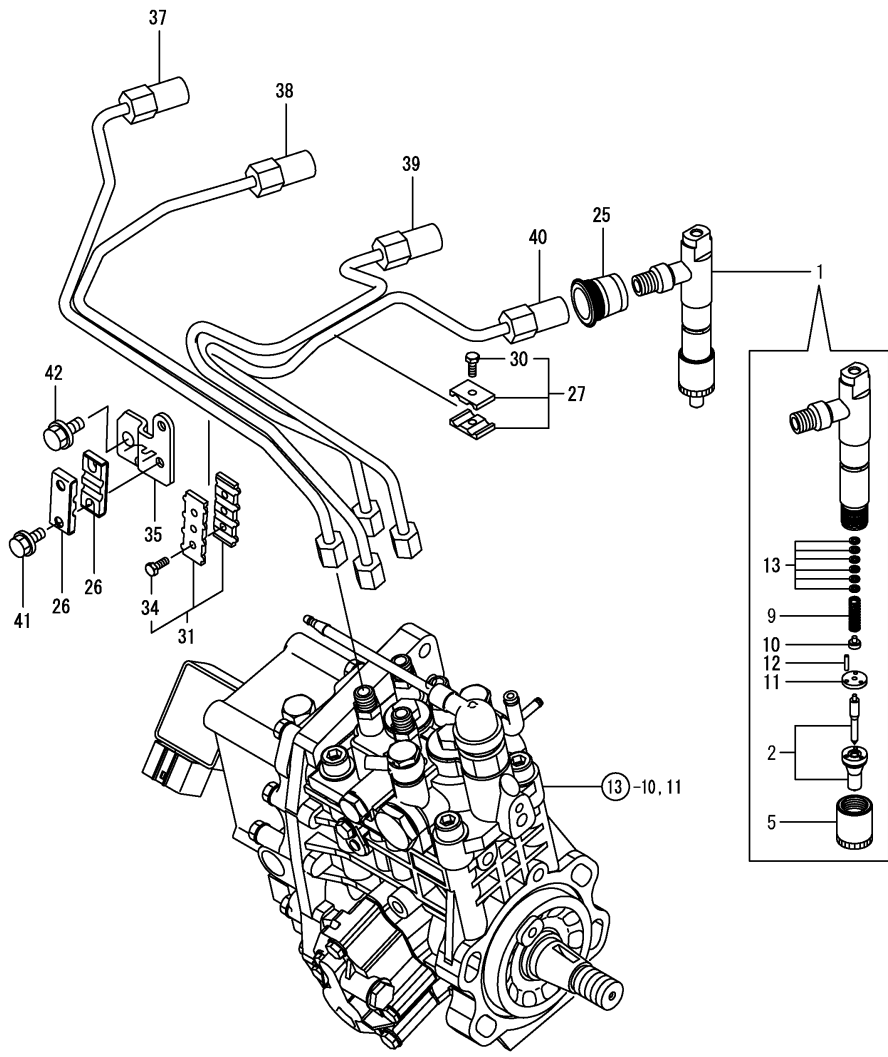
Note : "Effective Machine No." of the Engine Section is indicated on the Model Label which is shown in Fig.4.

Fig.14. FUEL INJECTION VALVE

(A)=4TNV98-RZA1Q  
 (B)=4TNV98-RZN1Q  
 (C)=

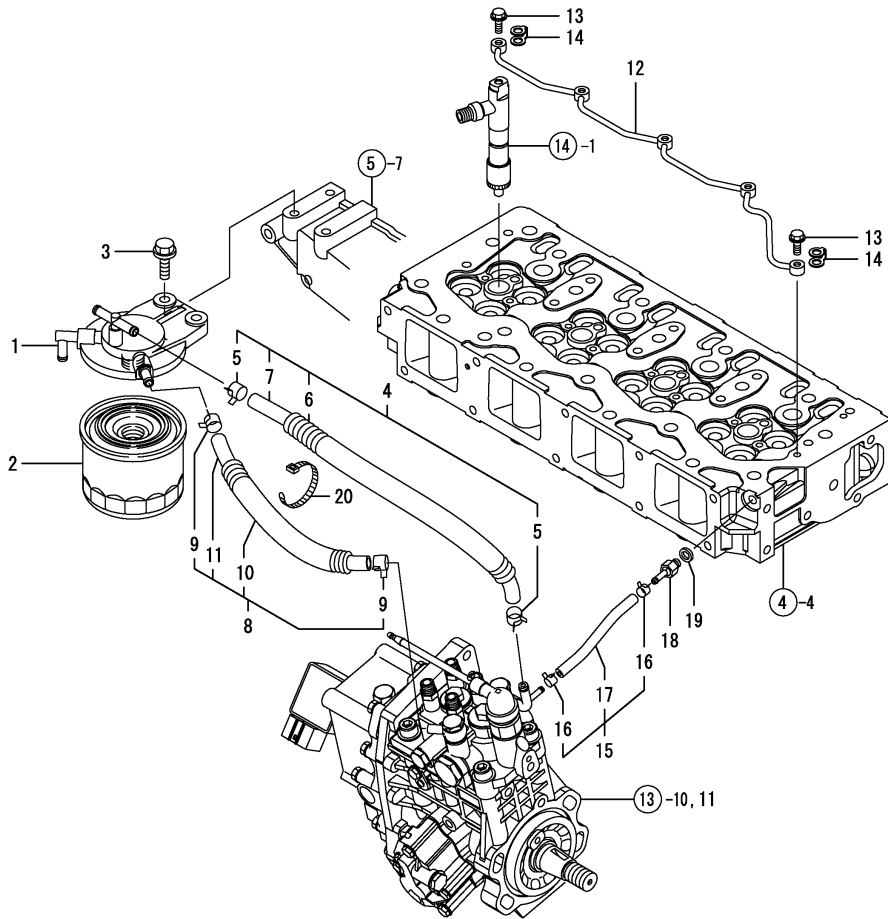
(D)=  
 (E)=  
 (F)=

No.	Lev.	Parts No.	Description	Q'ty						I	R
				(A)	(B)	(C)	(D)	(E)	(F)		
1	1	729907-53100	VALVE ASSY,INJECTION	4	4						
2	2	129907-53000	VALVE ASSY,INJECTION	4	4						
5	2	114250-53080	NUT, NOZZLE D16.95	4	4						
9	2	114250-53120	SPRING, NOZZLE	4	4						
10	2	114250-53130	SEAT, SPRING	4	4						
11	2	114250-53140	PLATE	4	4						
12	2	114250-53210	PIN	8	8						
13	2	114250-53400	SHIM SET	4	4						
25	1	123907-11601	SEAL	4	4						
26	1	122780-59100	RETAINER	2	2						
27	1	119305-59120	RETAINER, PIPE	1	1						
30	2	129150-59131	BOLT, M4X14	1	1						
31	1	129550-59120	RETAINER, PIPE	1	1						
34	2	129150-59131	BOLT, M4X14	2	2						
35	1	129972-59710	SUPPORT	1	1						
37	1	129907-59810	PIPE ASSY, INJECTION	1	1						
38	1	129907-59820	PIPE ASSY, INJECTION	1	1						
39	1	129907-59830	PIPE ASSY, INJECTION	1	1						
40	1	129907-59840	PIPE ASSY, INJECTION	1	1						
41	1	26106-060162	BOLT, M6X 16 PLATED	2	2						
42	1	26106-080182	BOLT, M8X 18 PLATED	1	1						



Remarks  
 Note : "Effective Machine No." of the Engine Section is indicated on the Model Label which is shown in Fig.4.

Fig.15. FUEL PIPING



(A)=4TNV98-RZA1Q  
(B)=4TNV98-RZN1Q  
(C)=

(D)=  
(E)=  
(F)=

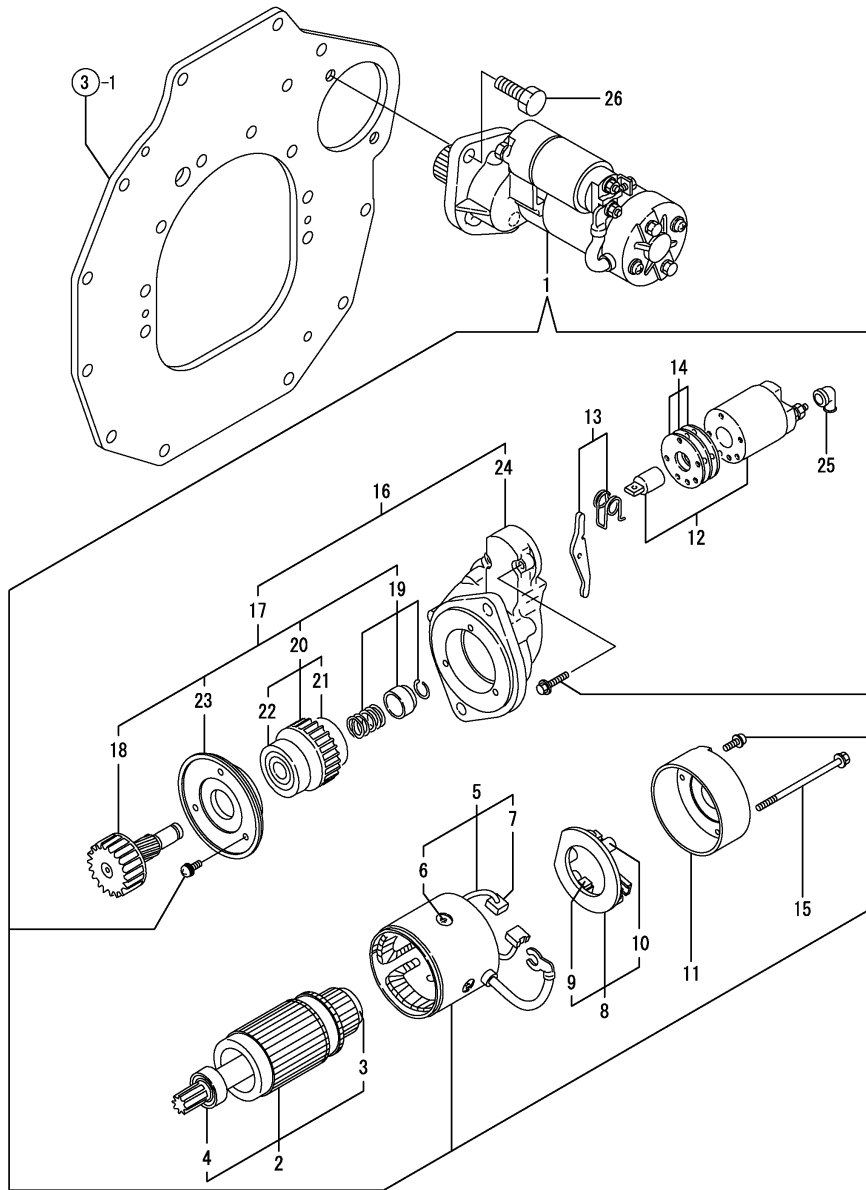
No.	Lev.	Parts No.	Description	Q'ty						I	R
				(A)	(B)	(C)	(D)	(E)	(F)		
1	1	129004-55611	BRACKET, FILTER	1	1						
2	1	119802-55800	FILTER, FUEL	1	1						
3	1	26106-080302	BOLT, M8X 30 PLATED	2	2						
4	1	129457-59010	PIPE ASSY, FUEL	1	1						
5	2	124766-59050	CLIP, HOSE 12	2	2						
6	2	129957-59120	TUBE, CORRUGATED	1	1						
7	2	105025-59750	PIPE, FUEL	1	1						
8	1	129981-59010	PIPE ASSY, FUEL	1	1						
9	2	124766-59050	CLIP, HOSE 12	2	2						
10	2	129950-59221	TUBE, CORRUGATED	1	1						
11	2	129980-59510	PIPE, FUEL	1	1						
12	1	129907-59140	PIPE ASSY, RETURN	1	1						
13	1	123907-59540	BOLT, PIPE JOINT M6	5	5						
14	1	123907-59550	GASKET	5	5						
15	1	129486-59551	PIPE ASSY, RETURN	1	1						
16	2	124722-59050	CLIP, HOSE 9	2	2						
17	2	129486-59510	PIPE, FUEL RETURN	1	1						
18	1	123907-59560	JOINT	1	1						
19	1	22190-080002	WASHER, SEAL 6	1	1						
20	1	121750-59890	BAND, 140	1	1						

Remarks

Note : "Effective Machine No." of the Engine Section is indicated on the Model Label which is shown in Fig.4.

N:Old  $\xrightarrow{\text{Yes}}$  New, Q:Old  $\xrightarrow{\text{No}}$  New, R:Old  $\xrightarrow{\text{Yes}}$  New, S:Old  $\xrightarrow{\text{No}}$  New, W:Add, Z:Discontinued, F:Interchangeable by set, K:Q'ty Change

Fig.16. STARTING MOTOR



(A)=4TNV98-RZA1Q  
 (B)=4TNV98-RZN1Q  
 (C)=

(D)=  
 (E)=  
 (F)=

No.	Lev.	Parts No.	Description	Q'ty						I	R
				(A)	(B)	(C)	(D)	(E)	(F)		
1	1	129900-77010	STARTER	1	1						
2	2	129900-77400	ARMATURE ASSY	1	1						
3	3	X2114155110	BEARING, BALL	1	1						
4	3	X2114255110	BEARING, BALL	1	1						
5	2	129900-77440	COIL ASSY, FIELD	1	1						
6	3	171008-77450	SCREW	4	4						
7	3	129900-77450	BRUSH	2	2						
8	2	129900-77480	HOLDER ASSY, BRUSH	1	1						
9	3	129900-77450	BRUSH	2	2						
10	3	X2130631300	SPRING, BRUSH	4	4						
11	2	129900-77460	COVER	1	1						
12	2	129900-77591	SWITCH ASSY	1	1						
13	2	129900-77620	LEVER SET	1	1						
14	2	129900-77650	COVER ASSY, DUST	1	1						
15	2	129900-77640	BOLT, THROUGH	2	2						
16	2	129900-77700	CASE ASSY	1	1						
17	3	129900-77510	PINION ASSY	1	1						
18	4	129900-77540	SHAFT	1	1						
19	4	129900-77550	STOPPER SET	1	1						
20	4	129900-77520	CLUTCH ASSY	1	1						
21	4	171008-77730	BEARING, BALL	1	1						
22	4	171008-77740	BEARING	1	1						
23	4	129900-77610	RETAINER	1	1						
24	3	129900-77710	CASE, GEAR	1	1						
25	2	171008-77750	COVER	1	1						
26	1	26116-120252	BOLT, M12X 25 PLATED	2	2						

Remarks

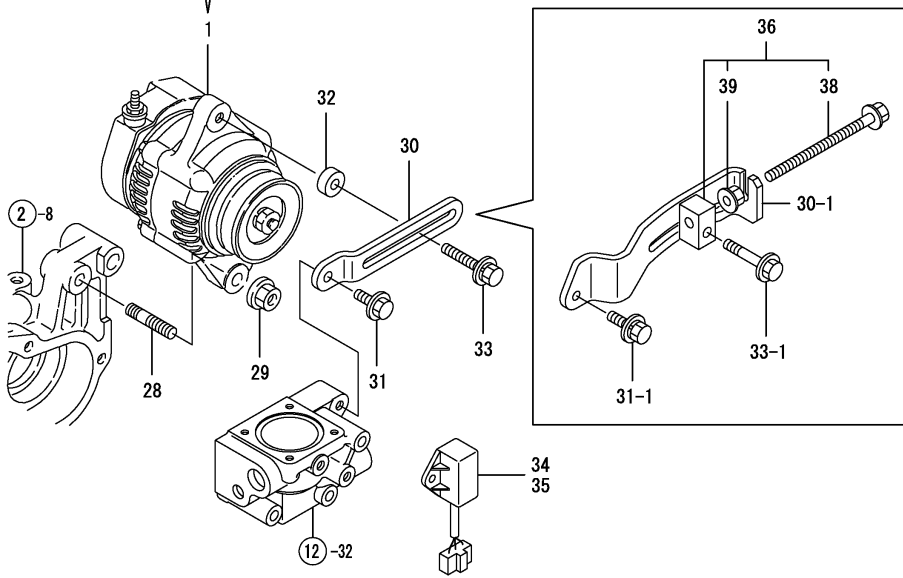
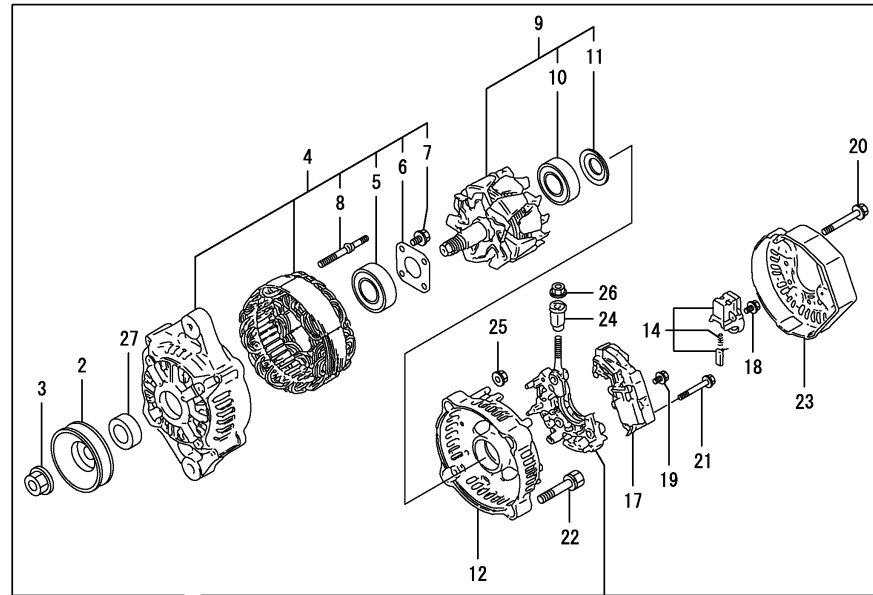
Note : "Effective Machine No." of the Engine Section is indicated on the Model Label which is shown in Fig.4.

N:Old  $\xrightarrow{\text{Yes}}$  New, Q:Old  $\xrightarrow{\text{No}}$  New, R:Old  $\xrightarrow{\text{Yes}}$  New, S:Old  $\xrightarrow{\text{No}}$  New, W:Add, Z:Discontinued, F:Interchangeable by set, K:Q'ty Change

Fig.17. GENERATOR

(A)=4TNV98-RZA1Q  
(B)=4TNV98-RZN1Q  
(C)=

(D)=  
(E)=  
(F)=



No.	Lev.	Parts No.	Description	Q'ty						I	R
				(A)	(B)	(C)	(D)	(E)	(F)		
1	1	129961-77200	GENERATOR, 12V-55A	1	1						
2	2	119620-77461	PULLEY	1	1						
3	2	119620-77471	NUT	1	1						
4	2	129961-77421	FRAME ASSY	1	1						
5	3	119620-79200	BEARING, BALL	1	1						
6	3	119620-79210	PLATE, RETAINER	1	1						
7	3	119620-79220	SCREW	4	4						
8	3	119620-79230	STUD	2	2						
9	2	129052-77380	ROTOR ASSY	1	1						
10	3	123501-79240	BEARING, BALL	1	1						
11	3	119620-79250	COVER	1	1						
12	2	128401-77440	FRAME	1	1						
14	2	129052-79270	HOLDER, BRUSH	1	1						
17	2	119620-77710	REGULATOR ASSY	1	1						
18	2	119620-79290	SCREW	6	6						
19	2	119620-79300	SCREW	1	1						
20	2	119620-79310	BOLT	3	3						
21	2	119620-79320	SCREW	2	2						
22	2	119620-79330	BOLT	2	2						
23	2	128401-77450	COVER	1	1						
24	2	119620-79340	BUSH, INSULATION	1	1						
25	2	119620-79350	NUT	2	2						
26	2	X9490561001	NUT	1	1						
27	2	119620-77490	COLLAR	1	1						
28	1	129795-01900	STUD	1	1						Z
		(A=*2007.08) (B=*2007.08)									
29	1	26306-100002	NUT, M10	1	1						
30	1	129972-77330	ADJUSTER	1	1						
30-1	1	129963-77300	ADJUSTER	1	1						S
		(A=*2007.08) (B=*2007.08)									
31	1	26106-080222	BOLT, M8X 22 PLATED	1	1						
31-1	1	26014-080252	BOLT, M8X 25	1	1						S
		(A=*2007.08) (B=*2007.08)									
32	1	119940-77270	SPACER, GENERATOR	1	1						Z
		(A=*2007.08) (B=*2007.08)									
33	1	129972-77341	BOLT, ADJUSTER L=50	1	1						
33-1	1	26106-080452	BOLT, M8X 45 PLATED	1	1						S
		(A=*2007.08) (B=*2007.08)									
34	1	185109-00030	CHANGEOVER, MODEL	1							
35	1	185109-00040	CHANGEOVER, MODEL		1						
36	1	119624-77351	BLOCK ASSY, ADJUSTER	1	1						W
		(A=*2007.08) (B=*2007.08)									
38	2	26106-081004	BOLT, M8X100 PLATED	1	1						W
		(A=*2007.08) (B=*2007.08)									
39	2	26306-080002	NUT, M8	1	1						W
		(A=*2007.08) (B=*2007.08)									

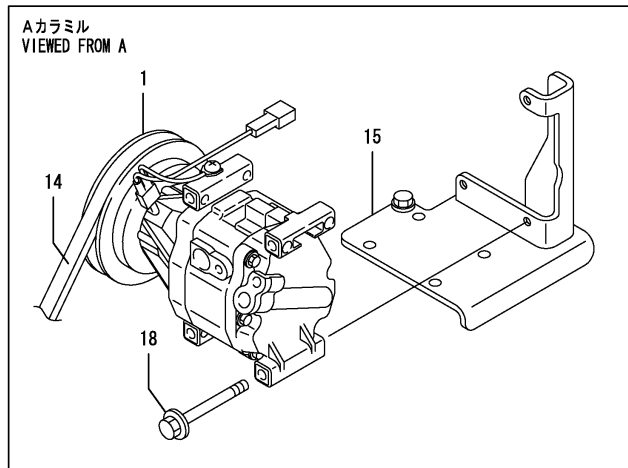
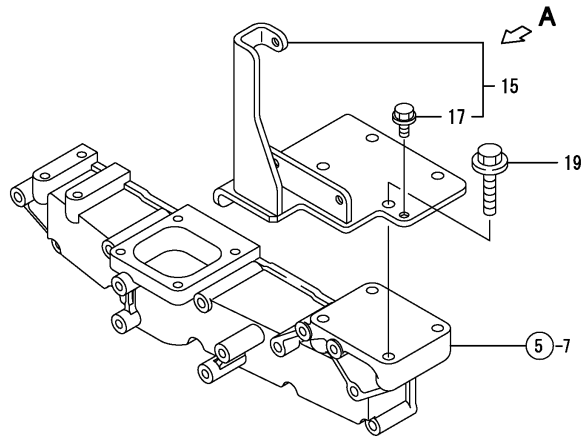
Remarks

Note : "Effective Machine No." of the Engine Section is indicated on the Model Label which is shown in Fig.4.

Fig.18. COMPRESSOR(ATTACHMENT)

(A)=4TNV98-RZA1Q  
 (B)=4TNV98-RZN1Q  
 (C)=

(D)=  
 (E)=  
 (F)=



No.	Lev.	Parts No.	Description	Q'ty						I	R
				(A)	(B)	(C)	(D)	(E)	(F)		
1	1	1A7320-87902	COMPRESSOR ASSY	1	1						
1-1	1	1A7471-87900	COMPRESSOR ASSY,	1	1						N
		(A=EXXXXX) (B=EXXXXX)									
14	1	129963-96150	V-BELT, A58.5	1	1						
14-1	1	129963-96160	V-BELT, A61.3	1	1						S
		(A=*2007.08) (B=*2007.08)									
15	1	129963-96900	STAY ASSY	1	1						
17	2	26106-080122	BOLT, M8X 12 PLATED	1	1						
18	1	26106-080702	BOLT, M8X 70 PLATED	3	3						
19	1	26106-100252	BOLT, M10X 25 PLATED	4	4						

Remarks

Note : "Effective Machine No." of the Engine Section is indicated on the Model Label which is shown in Fig.4.



## Parts No. Index

Parts No.	Fig. No.	Ref. No.
105010-39140	11	10
105025-59750	15	7
105425-01690	3	5
114250-39450	11	8
114250-53080	14	5
114250-53120	14	9
114250-53130	14	10
114250-53140	14	11
114250-53210	14	12
114250-53400	14	13
119005-35170	11	3
119005-44761	12	2
119131-18320	6	5
119254-44910	12	5
119305-59120	14	27
119309-01810	1	35
119593-11301	4	28
119620-11180	4	17
119620-77461	17	2
119620-77471	17	3
119620-77490	17	27
119620-77710	17	17
119620-79200	17	5
119620-79210	17	6
119620-79220	17	7
119620-79230	17	8
119620-79250	17	11
119620-79290	17	18
119620-79300	17	19
119620-79310	17	20
119620-79320	17	21
119620-79330	17	22
119620-79340	17	24
119620-79350	17	25
119624-77351	17	36
119625-11880	4	26
119640-61400	4	62
119802-11870	4	68
119802-55800	15	2
119802-77340	12	46 D
119852-49300	12	49
119860-34810	11	2
119940-77270	17	32
120130-22301	8	21
121450-01560	9	5 -1
	12	46 A
121450-42450	12	9
121750-59890	15	20
121850-21130	8	10
121850-21290	8	5

Parts No.	Fig. No.	Ref. No.
121850-21290	8	6
	10	4
		5
121850-21920	8	7
121850-49540	12	30
121850-49550	12	31
121850-49800	12	35
121850-77021	5	1
122780-59100	14	26
123501-79240	17	10
123900-13630	6	4
123900-25060	7	10
123907-03100	4	55
123907-03110	4	56
123907-03120	4	57
123907-03140	4	58
123907-11280	4	33
123907-11550	4	3
123907-11601	14	25
123907-11820	4	10
123907-11830	4	23
123907-59540	15	13
123907-59550	15	14
123907-59560	15	18
124160-01751	2	37
	4	50
124160-11340	4	18
124160-11360	4	65
124240-01883	9	1
124411-01780	3	14
124465-44950	12	4
124722-59050	15	16
124766-59050	15	5
		9
124950-11340	4	19
128401-77440	17	12
128401-77450	17	23
128610-14120	10	3
129001-91810	2	27
		28
129001-91841	3	9
129004-55611	15	1
129005-59830	11	16
129052-77380	17	9
129052-79270	17	14
129054-96990	12	43
129100-01580	1	33
		34
	2	5
129122-44480	11	28

Parts No.	Fig. No.	Ref. No.
129150-02450	7	4
129150-11230	4	36
		40
129150-11750	4	22
		37
		41
129150-14200	7	1
129150-25920	7	14
129150-49360	12	10
129150-59131	14	30
		34
129242-49450	12	11
129263-13210	6	6
129457-59010	15	4
129457-96200	12	37
129457-96230	12	38
129486-59510	15	17
129486-59551	15	15
129550-59120	14	31
129636-42570	12	38 E
129693-44310	3	10
129795-01900	12	46 B
	17	28
129795-01960	10	1
129900-01200	1	31
129900-01250	1	5
129900-01740	2	6
129900-01780	2	4
129900-01850	2	40
129900-01870	2	41
129900-02020	1	8
129900-02340	1	36
129900-02410	1	11
129900-02930	1	28
129900-02940	1	39
129900-13200	6	1
129900-13251	6	3
129900-14100	7	7
129900-14140	2	23
129900-21200	8	4
129900-21600	8	14
129900-23001	8	23
129900-23200	8	28
129900-23600	8	29
129900-23610	8	31
129900-23911	8	27
129900-25100	7	11
129900-26250	2	24
129900-32030	2	25
	11	4

Parts No.	Fig. No.	Ref. No.
129900-32040	2	26
129900-42002	12	19
129900-42020	12	12
129900-42461	12	1
129900-49870	12	15
129900-77010	16	1
129900-77400	16	2
129900-77440	16	5
129900-77450	16	7
		9
129900-77460	16	11
129900-77480	16	8
129900-77510	16	17
129900-77520	16	20
129900-77540	16	18
129900-77550	16	19
129900-77591	16	12
129900-77610	16	23
129900-77620	16	13
129900-77640	16	15
129900-77650	16	14
129900-77700	16	16
129900-77710	16	24
129906-01960	13	2
129906-12100	5	7
129907-01331	1	32
129907-01500	2	8
129907-03011	4	52
129907-03061	4	53
129907-03070	4	54
129907-11100	4	14
129907-11110	4	15
129907-11120	4	16
129907-11250	4	30
129907-11260	4	31
129907-11270	4	32
129907-11310	4	61
129907-11320	4	51
129907-11341	4	29
129907-11510	4	20
129907-11650	4	34
129907-11660	4	38
129907-11700	4	4
129907-11800	4	8
129907-11910	4	47
129907-11920	4	42
129907-11950	4	48
129907-12110	5	4
129907-14400	7	2
129907-14581	7	3

## Parts No. Index

Parts No.	Fig. No.	Ref. No.
129907-22050	8	17
129907-25900	7	17
129907-44740	12	8
129907-53000	14	2
129907-59140	15	12
129907-59810	14	37
129907-59820	14	38
129907-59830	14	39
129907-59840	14	40
129908-14581	7	3 -1
129915-77050	5	2
129916-21610	8	39
129916-49530	12	29
129930-13201	6	8
129930-39050	11	9
129950-59221	15	10
129953-25300	7	16
129956-01602	3	1
129956-01640	3	12
129956-01700	3	3
129956-01710	1	6
129956-01740	3	4
129956-07911	4	69
129956-21000	8	1
129956-21591	8	11
129956-26010	9	4
129956-26220	9	2
129956-28009	10	2
129956-28019	10	6
129956-28101	10	10
129956-28111	10	11
129956-28180	10	12
129956-28321	8	8
129956-28332	10	13
129956-28341	10	14
129956-32001	2	11
129956-33011	11	21
129956-33101	11	23
129956-33110	11	24
129956-33120	11	25
129956-35000	11	5
129956-49172	11	27
129957-33050	11	22
129957-59120	15	6
129960-21640	8	42
129961-77200	17	1
129961-77421	17	4
129963-07902	4	1
129963-13511	6	9
129963-13650	6	10

Parts No.	Fig. No.	Ref. No.
129963-13950	6	11
129963-22080	8	15
129963-39060	11	12
129963-42270	12	7 -1
129963-42290	12	7
129963-42500	12	36 -1
129963-42501	12	36 -2
129963-42502	12	36 -3
129963-42510	12	46 F-1
129963-42520	12	41 -1
129963-42521	12	41 -2
129963-42530	12	38 -1
129963-42540	12	38 A
129963-42550	12	37 -1
129963-42560	12	38 D
129963-42570	12	40 -1
129963-42580	12	43 -1
129963-42590	12	46 C
129963-42591	12	46 C-1
129963-49300	12	34
129963-49850	12	32
129963-49870	12	28
129963-77300	17	30 -1
129963-96150	18	14
129963-96160	18	14 -1
129963-96900	18	15
129963-96950	12	36
129963-96960	12	40
129972-01731	3	8
129972-01950	13	1
129972-01970	13	3
129972-21660	8	40
129972-33140	11	26
129972-34800	11	1
129972-59710	14	35
129972-77330	17	30
129972-77341	17	33
129972-96971	12	41
129972-96980	12	42
129980-59510	15	11
129981-59010	15	8
158563-51150	7	18
168000-01180	9	27 -1
171008-77450	16	6
171008-77730	16	21
171008-77740	16	22
171008-77750	16	25
171051-01921	1	7
178077-00500	9	8
178077-15400	9	20

Parts No.	Fig. No.	Ref. No.
178077-15410	9	21
185109-00030	17	34
185109-00040	17	35
1A7320-87902	18	1
1A7471-87900	18	1 -1
1A7670-41110	9	6
1A7670-41111	9	6 -1
22117-080000	12	46 H
22137-100000	12	44
22190-080002	11	11
		17
		19
	15	19
22190-120002	12	6
22190-160002	3	7
22217-180000	7	19
22252-000300	8	22
22252-000320	9	26
22252-000470	12	38 B
22272-000040	12	46 J
22351-060012	1	12
22411-160120	12	45
22512-070140	7	8
	8	9
22857-500100	4	63
		64
23000-022000	11	29
23414-080000	12	16
23857-030000	11	18
23876-005000	10	15
23876-020000	4	11
23876-030000	1	13
		14
	4	12
24104-062024	12	39
24104-063034	12	38 C
24311-000070	2	39
24311-000120	4	27
		66
24311-000200	10	17
24311-000320	2	38
	4	67
24314-000200	11	30
24321-000600	11	31
24341-000530	8	41
24351-030750	2	29
24421-183207	9	27
26014-080222	6	12
26014-080252	17	31 -1
26016-081052	9	28

Parts No.	Fig. No.	Ref. No.
26106-060142	11	32
26106-060162	14	41
26106-060202	12	33
26106-060302	12	13
26106-080122	3	11
	6	13
	11	20
	12	17
	18	17
26106-080142	11	6
	12	46 E
	13	4
26106-080162	2	30
		31
		42
	7	9
	10	16
	13	5
26106-080182	14	42
26106-080202	2	32
	4	2
		70
	11	7
	12	47
		47 -1
26106-080222	6	14
	13	6
		7
		8
	17	31
26106-080302	3	15
	15	3
26106-080352	5	3
26106-080402	2	33
		34
	4	44
26106-080452	2	35
	12	3
	17	33 -1
26106-080552	5	5
	7	15
	12	14
26106-080602	4	45
		46
	10	18
26106-080652	12	18
26106-080702	18	18
26106-080852	5	6
	12	48 -1
26106-080902	12	48

# Parts No. Index

Parts No.	Fig. No.	Ref. No.
26106-081004	17	38
26106-100202	13	9
26106-100252	18	19
26106-100402	12	50
26116-100202	3	2
26116-120252	16	26
26216-080202	9	5
26216-100302	2	10
26216-100552	12	46 F
26226-080222	4	43
26306-080002	4	49
	6	7
		15
	9	3
	12	46 G
	17	39
26306-100002	2	36
	12	38 F
		46
		51
	17	29
26776-180002	7	20
27241-300000	1	15
27241-400000	4	13
27310-070001	4	24
729900-02800	1	25
729907-01550	2	1
729907-22950	8	35
729907-53100	14	1
729963-01560	1	1
729963-22900	8	33
729963-51320	13	11
729963-51340	13	10
X2114155110	16	3
X2114255110	16	4
X2130631300	16	10
X9490561001	17	26

Parts No.	Fig. No.	Ref. No.
-----------	----------	----------

Parts No.	Fig. No.	Ref. No.
-----------	----------	----------

Parts No.	Fig. No.	Ref. No.
-----------	----------	----------