

0CNP4-M49900EN

Directions for the Parts Catalog.

1. This Parts Catalog shows both standard and optional parts.
2. Parts may change without prior notice.
3. The following is an example of the Parts Catalog format.

REF.	LEV.	PARTS NO.	DESCRIPTION	Q'TY						I	R
				(A)	(B)	(C)	(D)	(E)	(F)		
1	1	729595-51390	FUEL INJECTION PUMP	1	1	1	1	1			1
1-1	1	729595-51391	FUEL INJECTION PUMP	1	1	1	1	1		N	1
		(A=E00185) (B=E00200)									
3	2	26022-060162	SCREW M 6X 16	9	9	9	9	9			
3-1	2	26022-060162	SCREW M 6X 16	4	4	4	4	4		K	
		(A=E00156) (B=E00156) (C=E00156) (D=E00156) (E=E00156)									
4	2	129470-51040	CAMSHAFT	1	1	1	1	1			
5	2	122710-51050	BEARING, ROLLER	2	2	2	2	2			
6	2	129470-51060	RETAINER	1	1	1	1	1			

Remarks
(1) BOOST COMPEMSATOR TYPE. OPTIONAL PART, TO E00155,(4JH-DT, 4JH-DTZ

① Ref. No.

The Ref. No. listed may not be in accordance with the illustration Ref. No.

(Ex.) Illustration No.

List Ref No.

1

1

(Before change)

1-1

(After change)

For interchangeable symbols N, R and K, illustrations for new parts may be abbreviated.

② Lev. (Level)

Level indication

The numbers below indicate the level of relativity towards the main part.

1 ----- Main parts (Assembly parts)

2 ----- Sub component included in " 1 ".

3 ----- Sub component included in " 2 ".

Note) Parts that are not for sale are partially illustrated but not listed.

③ Interchangeability Symbol

When a part change takes place, one of the following interchangeability symbols is indicated beside the part.

Symbol	Interchangeability	Contents note
N	Old $\begin{matrix} \leftarrow \text{Yes} \\ \text{No} \rightarrow \end{matrix}$ New	New Part is interchangeable for Old Part but Old Part is not interchangeable for New Part.
Q	Old $\begin{matrix} \leftarrow \text{No} \\ \text{Yes} \rightarrow \end{matrix}$ New	New Part is not interchangeable for Old Part but Old Part is interchangeable for New Part.
R	Old $\begin{matrix} \leftarrow \text{Yes} \\ \text{Yes} \rightarrow \end{matrix}$ New	New/ Old Parts are both interchangeable.
S	Old $\begin{matrix} \leftarrow \text{No} \\ \text{No} \rightarrow \end{matrix}$ New	New/ Old Parts are both not interchangeable.
W		Part newly added.
Z		Part discontinued.
F		Not interchangeable by a single part but interchangeable together with related parts.
K		Changes only for used parts quantities.

④ Effective Machine No.

When a part changes, the effective Machine No. will be indicated in the (A)-(F) column.

Product Symbol	Product No.	Product Symbol	Product No.
C	Clutch No. Compressor No.	F	Machine No. (Agricultural Equip.)
D	Drive No.	M	Machine No.
E	Engine No.		

Note 1) A date may follow the symbol. (Ex.) 1996.01

Note 2) "XXXXX" and "ZZZZZ" are for parts that could not be predicted or for engine models that could not be identified.

Note 3) (A=E00185) is the E (Engine Serial Number) for the column (A) model (in this case 4JH-DT) after the parts design change.

⑤ Remarks

Figures or alphabets (symbols) are entered in the remarks column.

The comments (remarks) on parts that are indicated at the bottom of the illustration are the same symbols as those stated above.

Contents

OCNP4-M49900

Fig. No. Fig. Name

Fig. No. Fig. Name

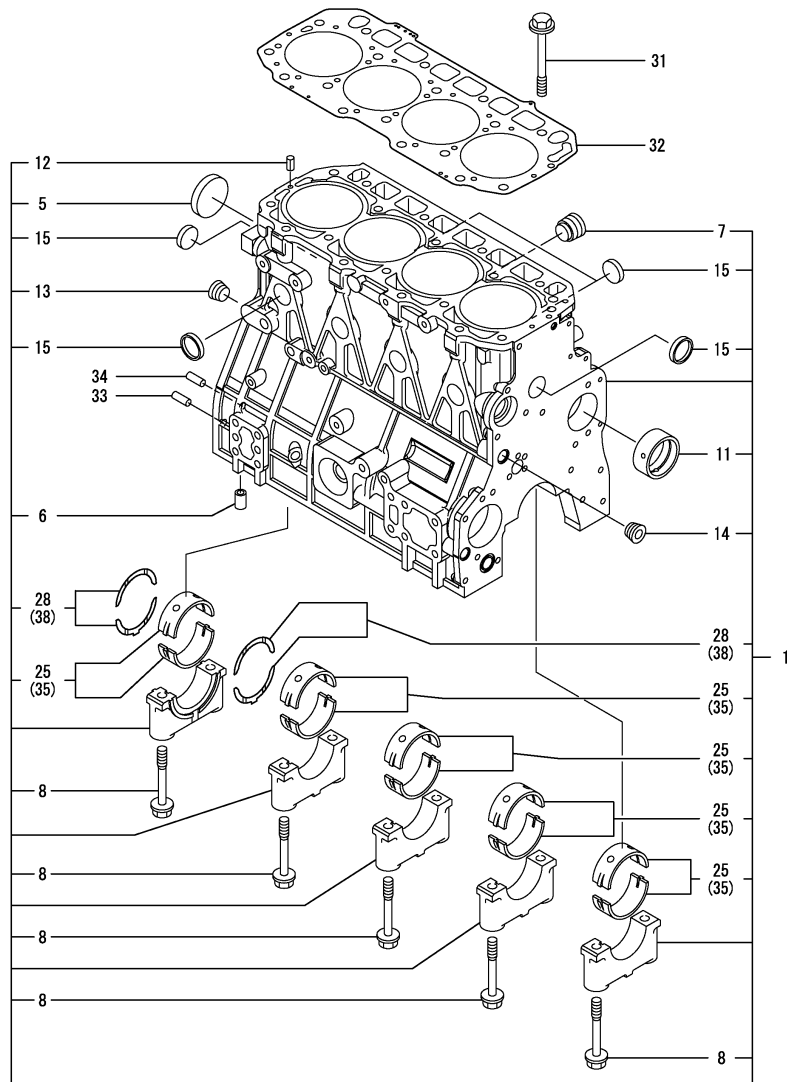
ENGINE SECTION

1. CYLINDER BLOCK
2. GEAR HOUSING
3. MOUNTING FLANGE & OIL SUMP
4. CYLINDER HEAD & BONNET
5. SUCTION MANIFOLD
6. EXHAUST MANIFOLD & SILENCER
7. TURBINE
8. CAMSHAFT & DRIVING GEAR
9. CRANKSHAFT & PISTON
10. HYDRAULIC PUMP
11. BALANCER
12. LUB. OIL SYSTEM
13. LUB. OIL LINE
14. COOLING WATER SYSTEM
15. FUEL INJECTION PUMP
16. GOVERNOR
17. FUEL INJECTION VALVE
18. FUEL LINE
19. STARTING MOTOR
20. GENERATOR

Fig.1. CYLINDER BLOCK

(A)=4TNV98T-MRF
(B)=
(C)=

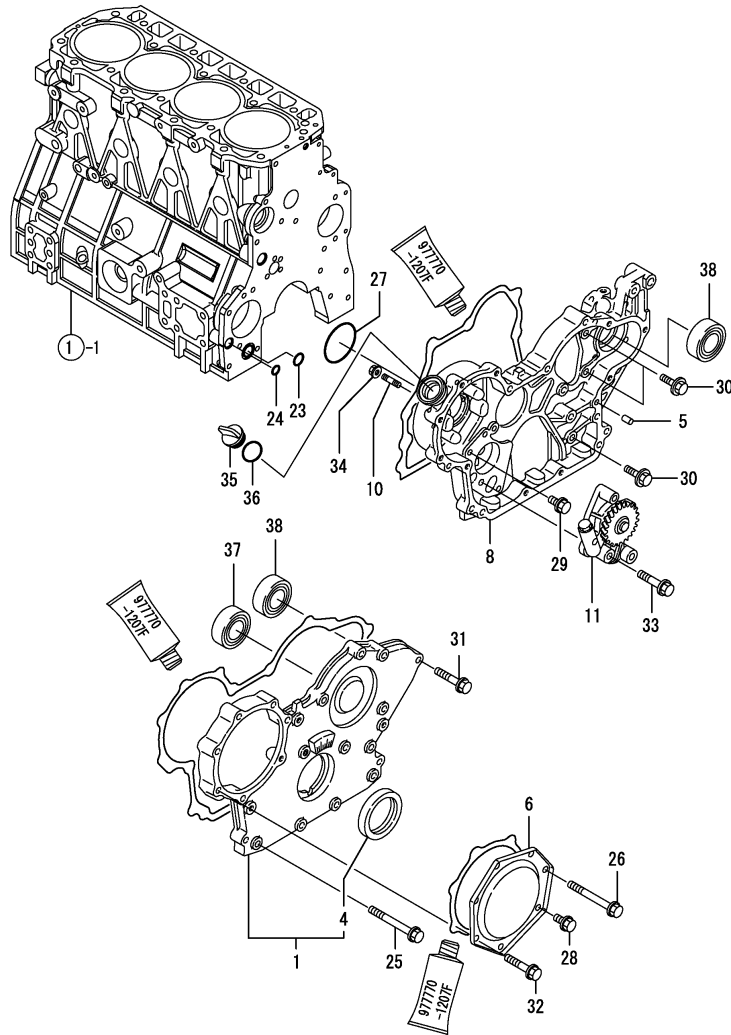
(D)=
(E)=
(F)=



No.	Lev.	Parts No.	Description	Q'ty						I	R
				(A)	(B)	(C)	(D)	(E)	(F)		
1	1	729972-01560	BLOCK ASSY, CYLINDER	1							
5	2	129900-01250	PLUG, 55	1							
6	2	129956-01710	PIPE, KNOCK L=25	1							
7	2	171051-01921	PLUG, NPTF1	1							
8	2	129900-02020	BOLT, METAL CAP	10							
11	2	129900-02410	BUSH, CAMSHAFT	1							
12	2	22351-060012	PIN, SPRING 6.0X12	2							
13	2	23876-030000	PLUG, R03	1							
14	2	23876-030000	PLUG, R03	1							
15	2	27241-300000	PLUG 30	8							
25	2	729900-02800	BEARING, MAIN	5							3
25-1	2	729900-02801	BEARING, MAIN	5							N 3
(A=EXXX)											
28	2	129900-02930	BEARING, THRUST	2							
28-1	2	129900-02931	BEARING, THRUST	2							N
(A=EXXX)											
31	1	129900-01200	BOLT, HEAD	18							
32	1	129907-01331	GASKET, HEAD	1							
33	1	129100-01580	PIN, M8X16	2							
34	1	129100-01580	PIN, M8X16	2							
35	1	129900-02340	BEARING, 0.25 US	5							1
35-1	1	129900-02341	BEARING, 0.25 US	5							N 1
(A=EXXX)											
38	1	129900-02940	BEARING, THRUST 0.25	2							2
38-1	1	129900-02941	BEARING, THRUST 0.25	2							N 2
(A=EXXX)											

Remarks
 (1) UNDER-SIZE(U.S=0.25)PART.
 (2) OVER-SIZE(O.S=0.25)PART.
 (3) REPAIR PART.
 (REMARKS)"EFFECTIVE MACHINE NO." OF
 ENGINE IS INDICATED ON THE
 ENGINE LABEL WHICH IS SHOWN
 IN FIG.4.

Fig.2. GEAR HOUSING



(A)=4TNV98T-MRF
(B)=
(C)=

(D)=
(E)=
(F)=

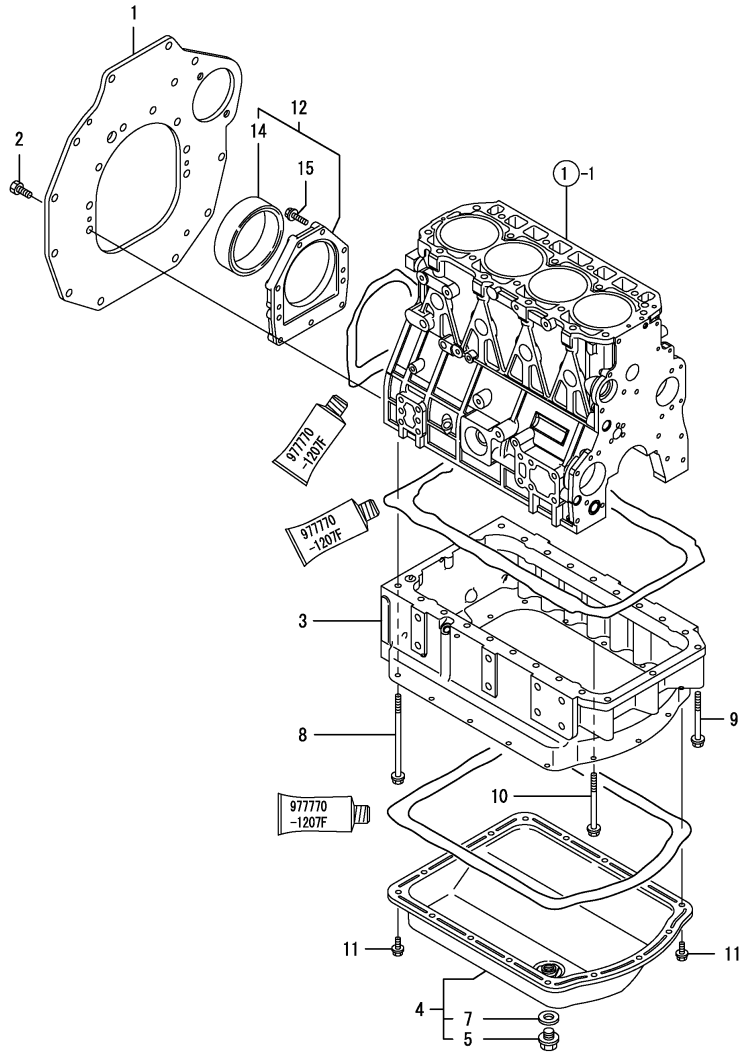
No.	Lev.	Parts No.	Description	Q'ty						I	R
				(A)	(B)	(C)	(D)	(E)	(F)		
1	1	729907-01550	COVER ASSY,GEAR CASE	1							
4	2	129900-01780	SEAL, OIL	1							
5	1	129100-01580	PIN, M8X16	4							
6	1	129900-01740	COVER	1							
8	1	129908-01520	CASE, GEAR	1							
10	1	26216-100302	STUD, M10X 30	4							
11	1	129908-32060	PUMP ASSY, OIL	1							
23	1	129900-32030	O-RING, P20	1							
24	1	129900-32040	O-RING, P14	1							
25	1	129001-91810	BOLT, M8X70	6							
26	1	129001-91810	BOLT, M8X70	1							
27	1	24351-030750	O-RING, 1A3075	1							
28	1	26106-080162	BOLT, M8X 16 PLATED	1							
29	1	26106-080162	BOLT, M8X 16 PLATED	1							
30	1	26106-080202	BOLT, M8X 20 PLATED	3							
31	1	26106-080402	BOLT, M8X 40 PLATED	5							
32	1	26106-080402	BOLT, M8X 40 PLATED	5							
33	1	26106-080452	BOLT, M8X 45 PLATED	3							
34	1	26306-100002	NUT, M10	4							
35	1	124160-01751	COVER, FILLER	1							
36	1	24311-000320	O-RING, 1AP32.0	1							
37	1	129900-14140	BEARING, BALL 6205	1							
38	1	129900-26250	BEARING, BALL 6206C3	2							

Remarks
(REMARKS)"EFFECTIVE MACHINE NO." OF
ENGINE IS INDICATED ON THE
ENGINE LABEL WHICH IS SHOWN
IN FIG.4.

Fig.3. MOUNTING FLANGE & OIL SUMP

(A)=4TNV98T-MRF
(B)=
(C)=

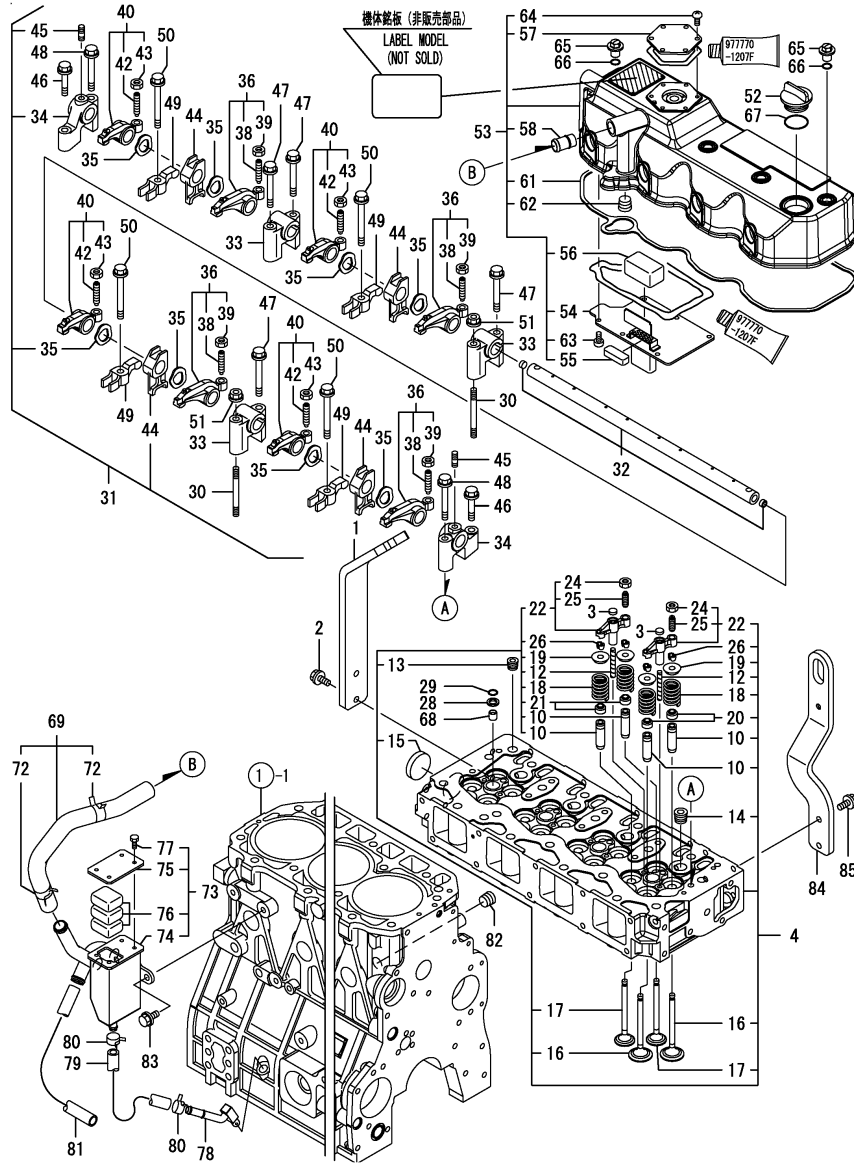
(D)=
(E)=
(F)=



No.	Lev.	Parts No.	Description	Q'ty						I	R
				(A)	(B)	(C)	(D)	(E)	(F)		
1	1	129956-01602	FLANGE, MOUNTING	1							
2	1	26116-100202	BOLT, M10X 20 PLATED	9							
3	1	129956-01700	SUMP, OIL	1							
4	1	129956-01740	COVER ASSY, OIL SUMP	1							
5	2	105425-01690	PLUG, 16	1							
7	2	22190-160002	WASHER, SEAL 16	1							
8	1	129972-01731	BOLT, M8X150	2							
9	1	129001-91841	BOLT, M8X85	3							
10	1	129693-44310	BOLT	16							
11	1	26106-080122	BOLT, M8X 12 PLATED	16							
12	1	129956-01640	CASE ASSY, OIL SEAL	1							
14	2	124411-01780	SEAL, HTC95X115X12	1							
15	1	26106-080302	BOLT, M8X 30 PLATED	9							

Remarks
(REMARKS)"EFFECTIVE MACHINE NO." OF
ENGINE IS INDICATED ON THE
ENGINE LABEL WHICH IS SHOWN
IN FIG.4.

Fig.4. CYLINDER HEAD & BONNET



(A)=4TNV98T-MRF

(B)=

(C)=

(D)=

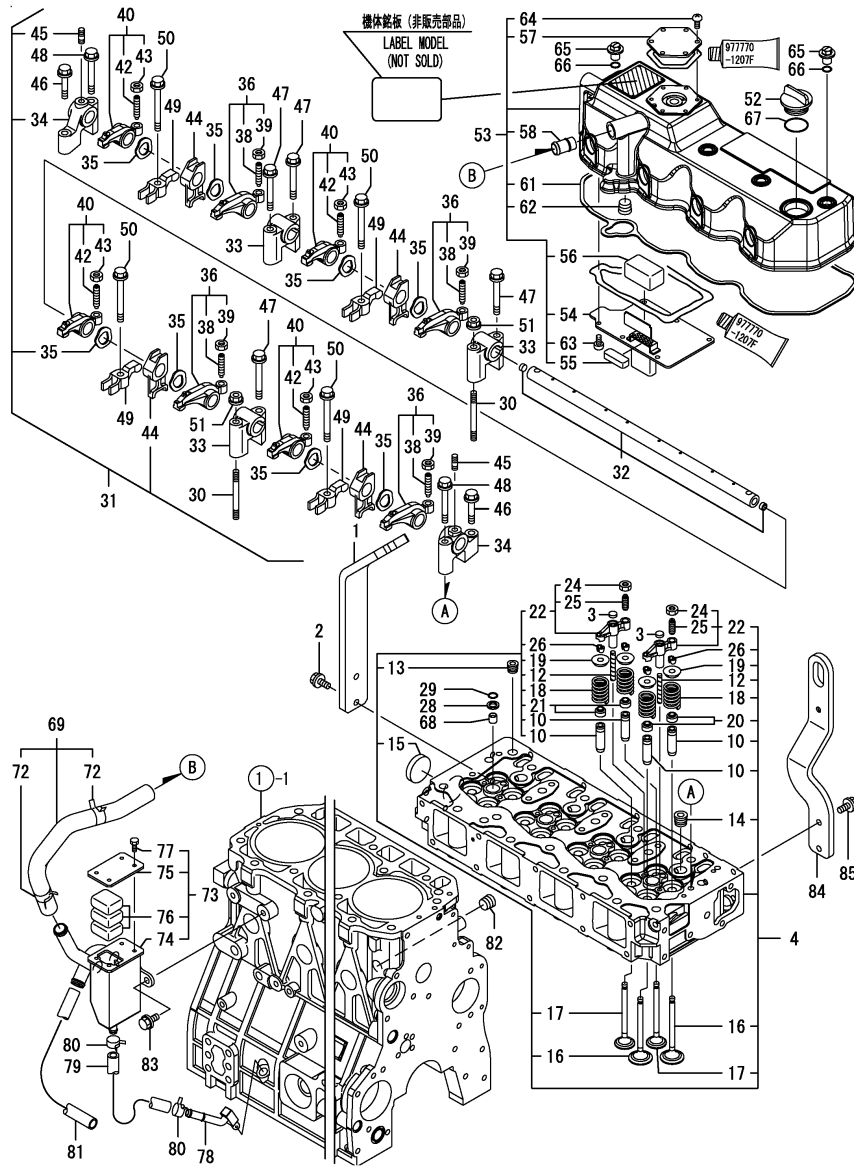
(E)=

(F)=

No.	Lev.	Parts No.	Description	Q'ty						I	R
				(A)	(B)	(C)	(D)	(E)	(F)		
1	1	129956-07911	LIFTER	1							
2	1	26106-080202	BOLT, M8X 20 PLATED	2							
3	1	123907-11550	SEAT, VALVE BRIDGE	8							
4	1	129908-11700	HEAD ASSY, CYLINDER	1							
10	2	129907-11800	GUIDE, VALVE	16							1
12	2	123907-11820	GUIDE	8							
13	2	23876-020000	PLUG, R02	1							
14	2	23876-030000	PLUG, R03	4							
15	2	27241-400000	PLUG, 40	1							
16	2	129907-11100	VALVE, INTAKE	8							
17	2	129907-11110	VALVE, EXHAUST	8							
18	2	129907-11120	SPRING, VALVE	16							
19	2	119620-11180	RETAINER, SPRING	16							
20	2	124160-11340	SEAL, VALVE STEM	8							
21	2	124950-11340	SEAL, VALVE STEM	8							
21-1	2	119803-11340	SEAL, VALVE STEM	8							N
(A=E39574)											
22	2	129907-11510	BRIDGE ASSY, VALVE	8							
24	3	129150-11750	NUT, M8	8							
25	3	123907-11830	ADJUSTER	8							
26	2	27310-070001	COTTER, 7	16							
28	1	119625-11880	SEAT, NOZZLE	4							
29	1	24311-000120	O-RING, 1AP12.0	4							
30	1	119593-11301	STUD, M8X80	2							
31	1	129907-11341	SHAFT ASSY, ROCKER	1							
32	2	129907-11250	SHAFT, ROCKER ARM	1							
33	2	129907-11260	SUPPORT, ROCKER ARM	3							
34	2	129907-11270	SUPPORT, ROCKER ARM	2							
35	2	123907-11280	WASHER	8							
36	2	129907-11650	ARM, ROCKER	4							
38	3	129150-11230	SCREW, VALVE ADJUST	4							
39	3	129150-11750	NUT, M8	4							
40	2	129907-11660	ARM, ROCKER	4							
42	3	129150-11230	SCREW, VALVE ADJUST	4							
43	3	129150-11750	NUT, M8	4							
44	2	129907-11920	RETAINER	4							
45	2	26226-080222	STUD, M8X 22	2							
46	1	26106-080402	BOLT, M8X 40 PLATED	2							
47	1	26106-080602	BOLT, M8X 60 PLATED	4							
48	1	26106-080602	BOLT, M8X 60 PLATED	2							
49	1	129907-11910	RETAINER, NOZZLE	4							
50	1	129907-11950	BOLT, M8X75	4							
51	1	26306-080002	NUT, M8	2							
52	1	124160-01751	COVER, FILLER	1							
53	1	129972-11320	BONNET ASSY, HEAD	1							
53-1	1	129972-11321	BONNET ASSY, HEAD	1							R
(A=E19185)											
54	2	129907-03011	PLATE	1							
55	2	129907-03061	BAFFLE, BREATHER	1							
56	2	129907-03070	BAFFLE, BREATHER	1							
57	2	123908-03199	PLATE, BREATHER	1							

Remarks
 (1) REPAIR PART.
 (REMARKS)"EFFECTIVE MACHINE NO." OF
 ENGINE IS INDICATED ON THE
 ENGINE LABEL WHICH IS SHOWN
 IN FIG.4.

Fig.4. CYLINDER HEAD & BONNET



(A)=4TNV98T-MRF

(B)=

(C)=

(D)=

(E)=

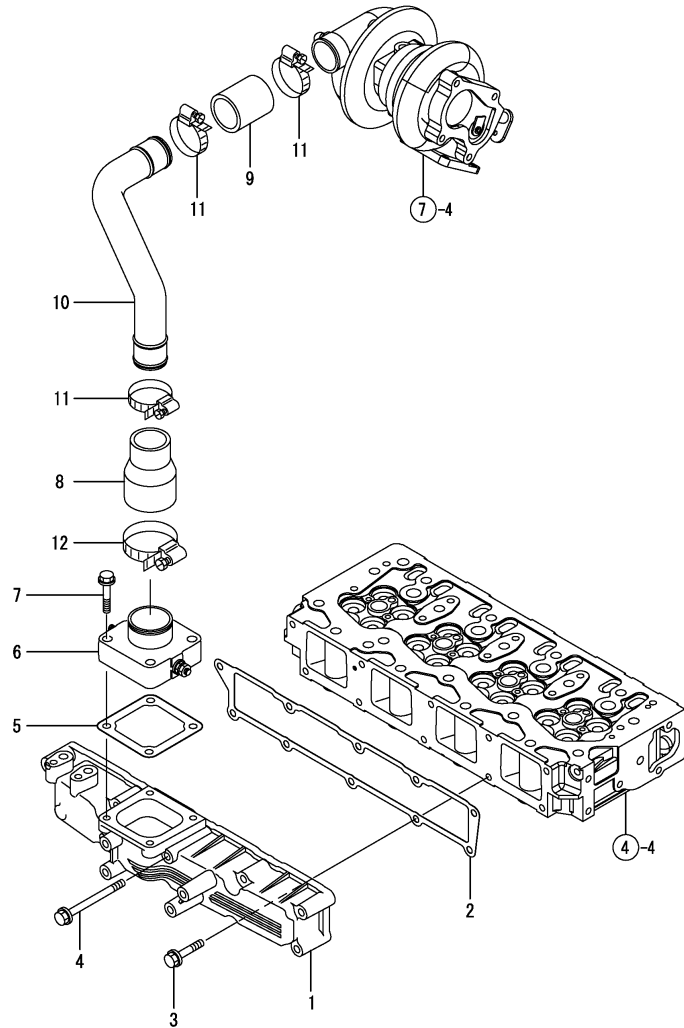
(F)=

No.	Lev.	Parts No.	Description	Q'ty						I	R
				(A)	(B)	(C)	(D)	(E)	(F)		
58	2	129001-11340	PIPE , BREATHER	1							
61	2	129907-11310	GASKET, BONNET	1							
61-1	2	129933-11310	GASKET, BONNET	1							N
(A=E19185)											
62	2	23876-030000	PLUG, R03	1							
63	2	22857-500100	SCREW, 5X10	6							
64	2	22857-500120	SCREW, 5X12	6							
65	1	124160-11360	KNOB	4							
66	1	24311-000120	O-RING, 1AP12.0	4							
67	1	24311-000320	O-RING, 1AP32.0	1							
68	1	119802-11870	PROTECTOR, NOZZLE	4							
69	1	129972-03010	HOSE ASSY, BREATHER	1							
72	2	129410-03990	CLIP	2							
73	1	129972-03200	SEPARATOR ASSY, MIST	1							
74	2	129972-03210	SEPARATOR, MIST	1							
75	2	129972-03220	COVER, SEPARATOR	1							
76	2	123901-03240	FILTER	3							
77	2	26116-050102	BOLT, M5X 10 PLATED	4							
78	1	129972-03280	JOINT, BREATHER	1							
79	1	129972-03310	HOSE	1							
80	1	23000-022000	CLAMP, 22	2							
81	1	23065-160500	PIPE, 16X 500	1							
82	1	23876-030000	PLUG, R03	1							
83	1	26106-080142	BOLT, M8X 14 PLATED	2							
84	1	129972-07920	LIFTER	1							
85	1	26106-080202	BOLT, M8X 20 PLATED	2							

Remarks

(1) REPAIR PART.
 (REMARKS)"EFFECTIVE MACHINE NO." OF
 ENGINE IS INDICATED ON THE
 ENGINE LABEL WHICH IS SHOWN
 IN FIG.4.

Fig.5. SUCTION MANIFOLD



(A)=4TNV98T-MRF
(B)=
(C)=

(D)=
(E)=
(F)=

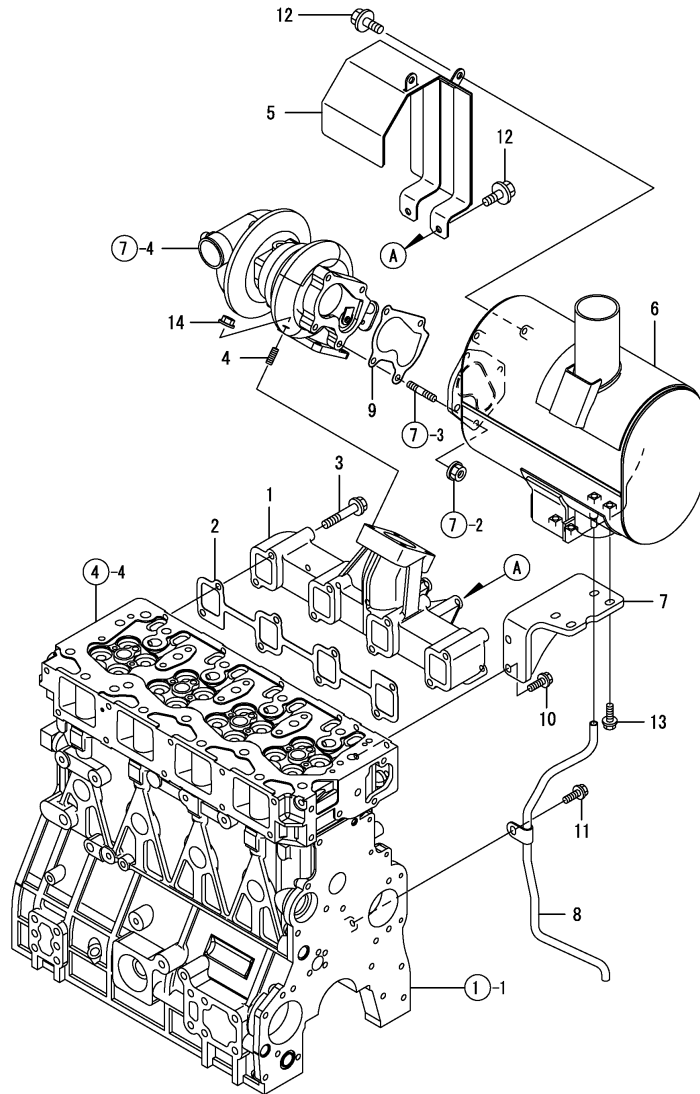
No.	Lev.	Parts No.	Description	Q'ty						I	R
				(A)	(B)	(C)	(D)	(E)	(F)		
1	1	129907-12100	MANIFOLD, AIR INTAKE	1							
2	1	129907-12110	GASKET, MANIFOLD	1							
3	1	26106-080552	BOLT, M8X 55 PLATED				9				
4	1	26106-080852	BOLT, M8X 85 PLATED	1							
5	1	121850-77021	GASKET	1							
6	1	129915-77050	HEATER	1							
7	1	26106-080352	BOLT, M8X 35 PLATED	4							
8	1	129972-18210	JOINT, RUBBER	1							
9	1	123951-18220	JOINT, RUBBER	1							
10	1	129972-18250	DUCT, AIR	1							
11	1	23000-054000	CLAMP, 54	3							
12	1	23000-070000	CLAMP, 70	1							

Remarks
(REMARKS)"EFFECTIVE MACHINE NO." OF
ENGINE IS INDICATED ON THE
ENGINE LABEL WHICH IS SHOWN
IN FIG.4.

Fig.6. EXHAUST MANIFOLD & SILENCER

(A)=4TNV98T-MRF
(B)=
(C)=

(D)=
(E)=
(F)=



No.	Lev.	Parts No.	Description	Q'ty						I	R
				(A)	(B)	(C)	(D)	(E)	(F)		
1	1	129972-13100	MANIFOLD, EXHAUST	1							
2	1	129900-13251	GASKET	1							
3	1	123900-13630	BOLT, M8X80	8							
4	1	129418-18320	STUD, M8X20	4							
5	1	129972-13420	COVER, TURBINE	1							
6	1	129972-13501	SILENCER	1							
7	1	129972-13651	STAY, SILENCER	1							
8	1	129972-13951	PIPE, WATER DRAIN	1							
9	1	123901-18080	GASKET	1							
10	1	26014-080222	BOLT, M8X 22	2							
11	1	26106-080102	BOLT, M8X 10 PLATED	1							
12	1	26106-080102	BOLT, M8X 10 PLATED	4							
13	1	26106-080252	BOLT, M8X 25 PLATED	4							
14	1	26306-080002	NUT, M8	4							

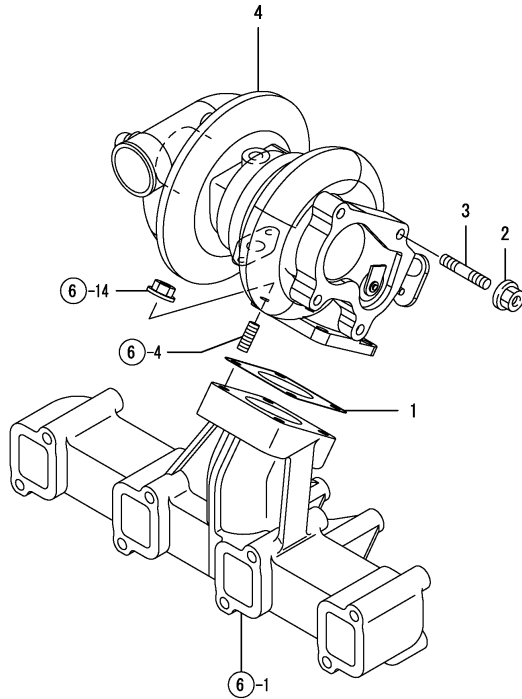
Remarks
(REMARKS)"EFFECTIVE MACHINE NO." OF
ENGINE IS INDICATED ON THE
ENGINE LABEL WHICH IS SHOWN
IN FIG.4.

Fig.7. TURBINE

(A)=4TNV98T-MRF
(B)=
(C)=

(D)=
(E)=
(F)=

No.	Lev.	Parts No.	Description	Q'ty						I	R
				(A)	(B)	(C)	(D)	(E)	(F)		
1	1	129472-18090	GASKET	1							
2	1	26306-080002	NUT, M8	4							
3	1	119131-18320	STUD, M8X22	4							
4	1	129935-18010	TURBINE, RHF5	1							



Remarks
(REMARKS)"EFFECTIVE MACHINE NO." OF
ENGINE IS INDICATED ON THE
ENGINE LABEL WHICH IS SHOWN
IN FIG.4.

Fig.8. CAMSHAFT & DRIVING GEAR

(A)=4TNV98T-MRF

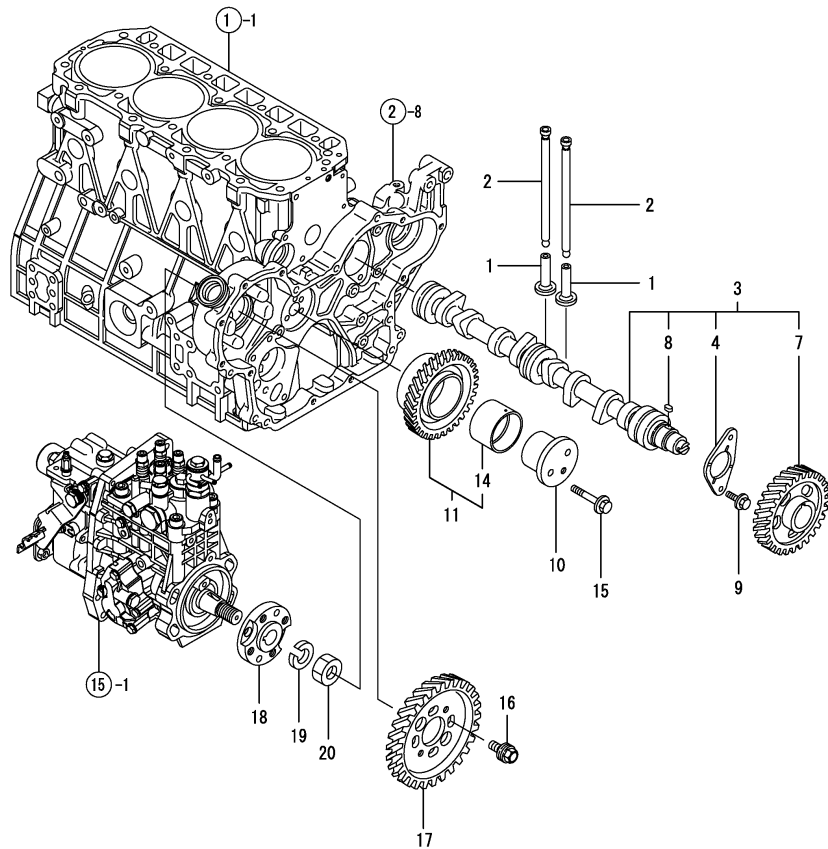
(B)=

(C)=

(D)=

(E)=

(F)=



No.	Lev.	Parts No.	Description	Q'ty						I	R
				(A)	(B)	(C)	(D)	(E)	(F)		
1	1	129150-14200	TAPPET	8							
2	1	129907-14400	ROD, PUSH	8							
3	1	129908-14581	CAMSHAFT ASSY	1							
4	2	129150-02450	BEARING, THRUST	1							
7	2	129900-14100	GEAR, CAMSHAFT	1							
8	2	22512-070140	KEY, 7X 14	1							
9	1	26106-080162	BOLT, M8X 16 PLATED	2							
10	1	123900-25060	SHAFT, IDLE GEAR	1							
11	1	129900-25100	GEAR ASSY, IDLE	1							
14	2	129150-25920	BUSH, IDLE GEAR	1							1
15	1	26106-080552	BOLT, M8X 55 PLATED	3							
16	1	129953-25300	BOLT	4							
17	1	129907-25900	GEAR, PUMP	1							
18	1	158563-51150	FLANGE	1							
19	1	22217-180000	WASHER, SPRING 18	1							
20	1	26776-180002	NUT, LOCK M18	1							

Remarks

(1) REPAIR PART.
 (REMARKS)"EFFECTIVE MACHINE NO." OF
 ENGINE IS INDICATED ON THE
 ENGINE LABEL WHICH IS SHOWN
 IN FIG.4.

Fig.9. CRANKSHAFT & PISTON

(A)=4TNV98T-MRF

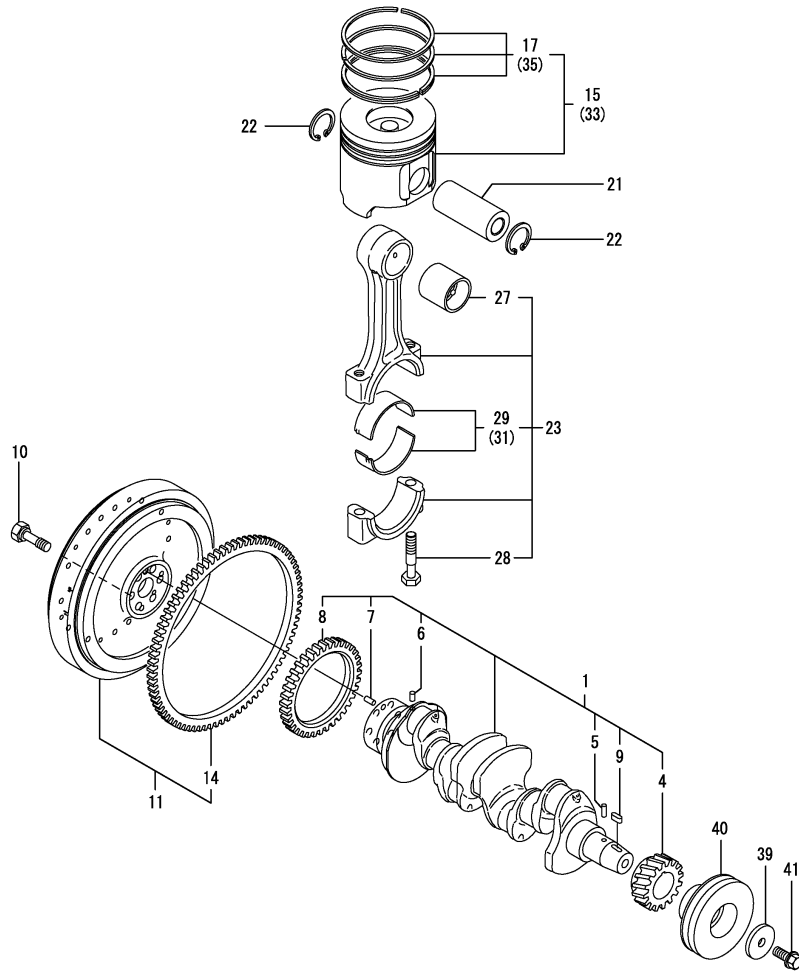
(B)=

(C)=

(D)=

(E)=

(F)=



No.	Lev.	Parts No.	Description	Q'ty						I	R
				(A)	(B)	(C)	(D)	(E)	(F)		
1	1	129956-21000	CRANKSHAFT ASSY	1							
4	2	129900-21200	GEAR, CRANKSHAFT	1							
5	2	121850-21290	PIN	1							
6	2	121850-21290	PIN	1							
7	2	121850-21920	PIN, M10X22	1							
8	2	129956-28321	GEAR, BALANCER	1							
9	2	22512-070140	KEY, 7X 14	1							
10	1	121850-21130	BOLT, FLYWHEEL	6							
11	1	129972-21570	FLYWHEEL ASSY	1							
14	2	129900-21600	GEAR, RING	1							
15	1	129908-22080	PISTON ASSY	4							
17	2	129907-22050	RING SET, PISTON	4							
21	1	120130-22301	PIN, PISTON	4							
22	1	22252-000300	RING, 30	8							
23	1	129900-23001	ROD ASSY, CONNECTING	4							
27	2	129900-23911	BEARING, PISTON PIN	4							1
28	2	129900-23200	BOLT, CONNECTING ROD	8							
29	2	129900-23600	BEARING, CRANK PIN	4							
29-1	2	129900-23601	BEARING, CRANK PIN	4							N
		(A=EXXX)									
31	1	129900-23610	BEARING, 0.25 US	4							2
31-1	1	129900-23611	BEARING, 0.25 US	4							N 2
		(A=EXXX)									
33	1	729908-22900	PISTON ASSY, 0.25 OS	4							3
35	2	729907-22950	RING SET, 0.25 OS	4							3
39	1	129900-21640	WASHER	1							
40	1	129907-21660	V-PULLEY, 130	1							
41	1	121850-21680	BOLT	1							

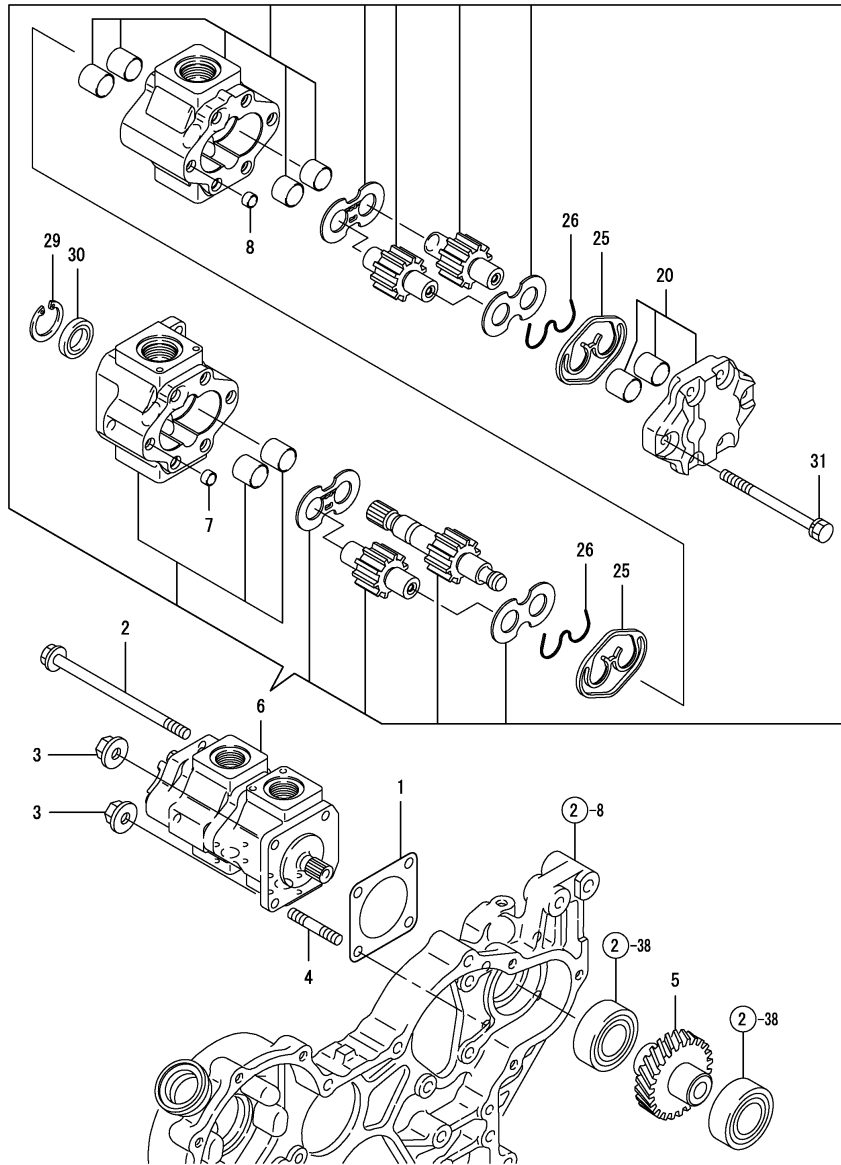
Remarks

- (1) REPAIR PART.
 - (2) UNDER-SIZE(U.S=0.25)PART.
 - (3) OVER-SIZE(O.S=0.25)PART.
- (REMARKS)"EFFECTIVE MACHINE NO." OF ENGINE IS INDICATED ON THE ENGINE LABEL WHICH IS SHOWN IN FIG.4.

Fig.10. HYDRAULIC PUMP

(A)=4TNV98T-MRF
(B)=
(C)=

(D)=
(E)=
(F)=



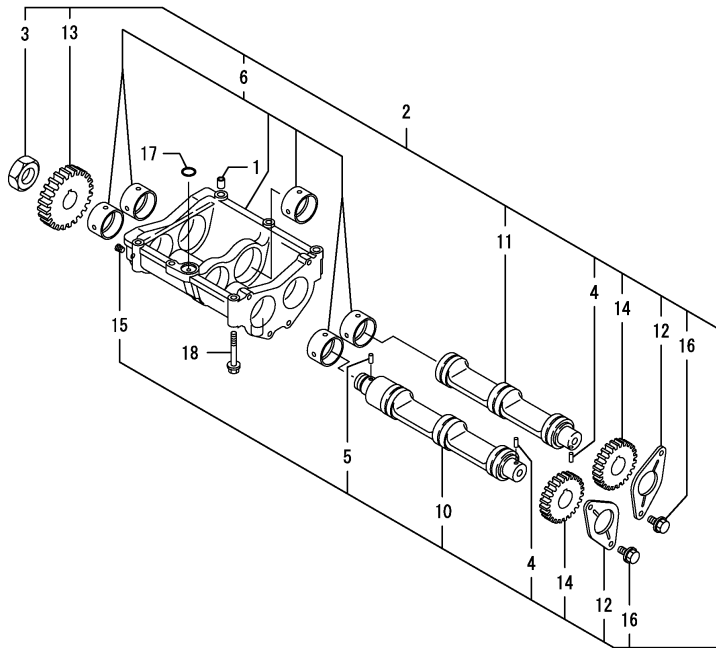
No.	Lev.	Parts No.	Description	Q'ty						I	R
				(A)	(B)	(C)	(D)	(E)	(F)		
1	1	124240-01883	GASKET	1							
2	1	129956-26220	BOLT, M8X170	2							
3	1	26306-080002	NUT, M8	2							
4	1	26216-080202	STUD, M8X 20	2							
4-1	1	121450-01560	STUD, M8X22	2							N
(A=*2009.06.)											
5	1	129956-26010	GEAR, PUMP	1							
6	1	1A7340-41110	PUMP ASSY, HYDRAULIC	1							
6-1	1	1A7340-41111	HO-P(PWF2-D-16X14AK	1							R
(A=EXXXXX)											
7	2	178077-00500	PIN 11X7	4							W
(A=EXXXXX)											
8	2	178077-00500	PIN 11X7	4							W
(A=EXXXXX)											
20	2	1680GR-02200	COVER(16X14AK CMP	1							W
(A=EXXXXX)											
20-1	2	1680GR-02200	COVER(16X14AK CMP	1							Z
(A=EXXXXX)											
25	2	178077-15400	SEAL RING	2							W
(A=EXXXXX)											
26	2	178077-15410	BACKUP RING	2							W
(A=EXXXXX)											
29	2	22252-000320	RING, 32	1							W
(A=EXXXXX)											
30	2	24421-183207	SEAL, OIL TC183207	1							W
(A=EXXXXX)											
30-1	2	168000-01180	SEAL TCV183207	1							R
(A=EXXXXX)											
31	2	26016-081052	BOLT, M8X105	4							W
(A=EXXXXX)											

Remarks
(REMARKS)"EFFECTIVE MACHINE NO." OF
ENGINE IS INDICATED ON THE
ENGINE LABEL WHICH IS SHOWN
IN FIG.4.

Fig.11. BALANCER

(A)=4TNV98T-MRF
(B)=
(C)=

(D)=
(E)=
(F)=



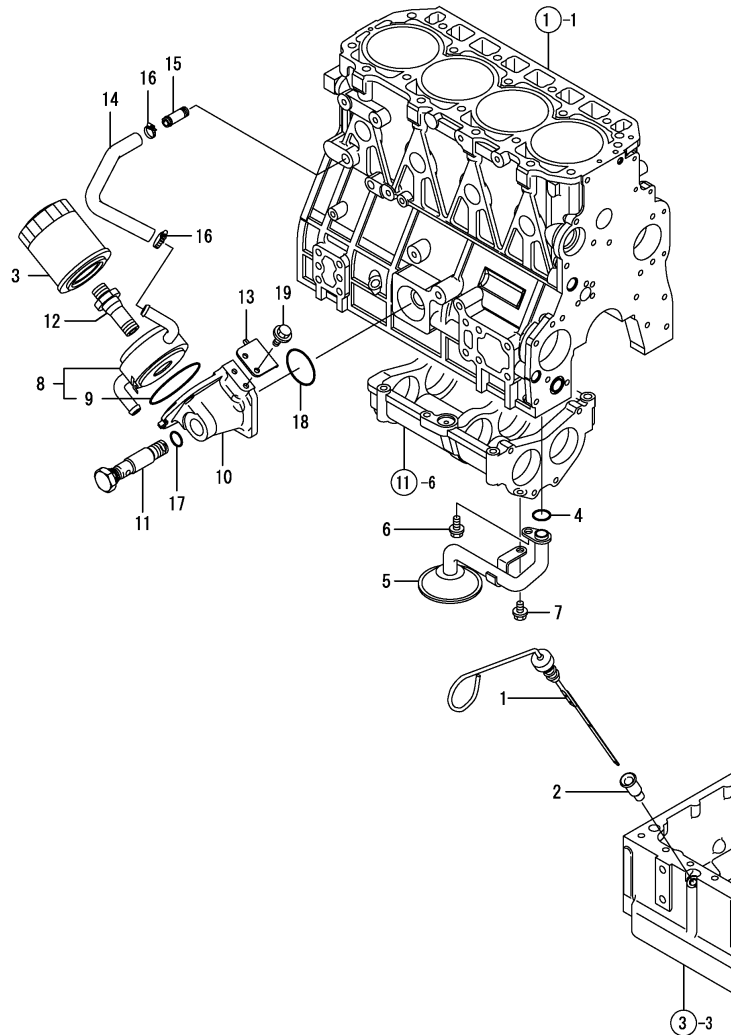
No.	Lev.	Parts No.	Description	Qty						I	R
				(A)	(B)	(C)	(D)	(E)	(F)		
1	1	129795-01960	PIPE, KNOCK	2							
2	1	129956-28009	BALANCER ASSY	1							
3	2	128610-14120	NUT, END	1							
4	2	121850-21290	PIN	2							
5	2	121850-21290	PIN	1							
6	2	129956-28019	CASE ASSY, BALANCER	1							
10	2	129956-28101	SHAFT, BALANCER	1							
11	2	129956-28111	SHAFT, BALANCER	1							
12	2	129956-28180	PLATE, THRUST	2							
13	2	129956-28332	GEAR, BALANCER	1							
14	2	129956-28341	GEAR, BALANCER	2							
15	2	23876-005000	PLUG, R005	1							
16	2	26106-080162	BOLT, M8X 16 PLATED	4							
17	1	24311-000200	O-RING, 1AP20.0	1							
18	1	26106-080602	BOLT, M8X 60 PLATED	6							

Remarks
(REMARKS)"EFFECTIVE MACHINE NO." OF
ENGINE IS INDICATED ON THE
ENGINE LABEL WHICH IS SHOWN
IN FIG.4.

Fig.12. LUB. OIL SYSTEM

(A)=4TNV98T-MRF
(B)=
(C)=

(D)=
(E)=
(F)=



No.	Lev.	Parts No.	Description	Q'ty						I	R
				(A)	(B)	(C)	(D)	(E)	(F)		
1	1	129972-34800	DIPSTICK, OIL	1							
2	1	119860-34810	GUIDE, DIPSTICK	1							
3	1	119005-35170	FILTER, D80X100	1							
4	1	129900-32030	O-RING, P20	1							
5	1	129956-35000	PIPE ASSY, OIL INLET	1							
6	1	26106-080142	BOLT, M8X 14 PLATED	1							
7	1	26106-080202	BOLT, M8X 20 PLATED	1							
8	1	129956-33050	COOLER ASSY, OIL	1							
9	2	129957-33050	O-RING	1							
10	1	129956-33101	BRACKET, COOLER	1							
11	1	129956-33110	BOLT	1							
12	1	129956-33120	BOLT, COOLER	1							
13	1	129972-33140	STOPPER	1							
14	1	129956-49172	PIPE, WATER	1							
15	1	129122-44480	JOINT	1							
16	1	23000-022000	CLAMP, 22	2							
17	1	24314-000200	O-RING, 4CP20.0	1							
18	1	24321-000600	O-RING, 1AG60.0	1							
19	1	26106-060142	BOLT, M6X 14 PLATED	2							

Remarks
(REMARKS)"EFFECTIVE MACHINE NO." OF
ENGINE IS INDICATED ON THE
ENGINE LABEL WHICH IS SHOWN
IN FIG.4.

Fig.13. LUB. OIL LINE

(A)=4TNV98T-MRF

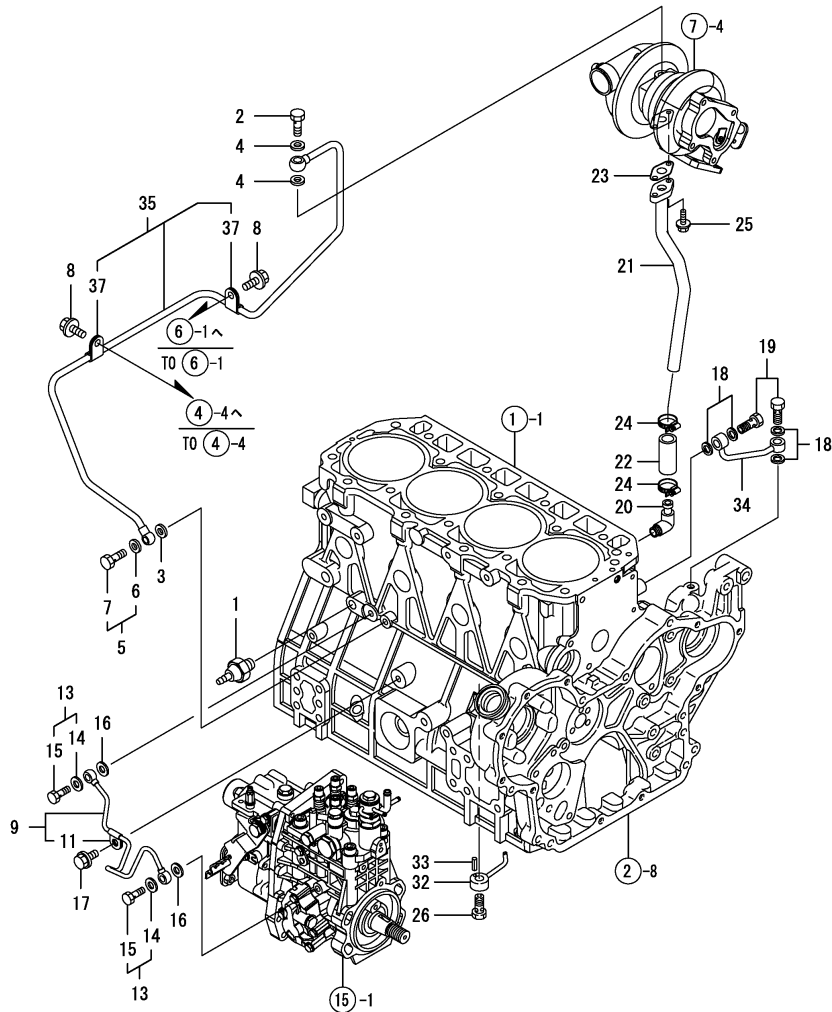
(B)=

(C)=

(D)=

(E)=

(F)=



No.	Lev.	Parts No.	Description	Qty						I	R
				(A)	(B)	(C)	(D)	(E)	(F)		
1	1	114250-39450	SWITCH, 0.5KG	1							
2	1	121252-39150	BOLT, JOINT M10X1.5	1							
3	1	22190-080002	WASHER, SEAL 6	1							
4	1	23414-100000	GASKET, 10X1.0	2							
5	1	129005-59830	BOLT ASSY, JOINT M8	1							
6	2	22190-080002	WASHER, SEAL 6	1							
7	2	23857-030000	BOLT, JOINT 3	1							
8	1	26106-080122	BOLT, M8X 12 PLATED	2							
9	1	129907-39061	PIPE ASSY, OIL	1							
11	2	123907-39500	RETAINER	1							
13	1	129005-59830	BOLT ASSY, JOINT M8	2							
14	2	22190-080002	WASHER, SEAL 6	2							
15	2	23857-030000	BOLT, JOINT 3	2							
16	1	22190-080002	WASHER, SEAL 6	2							
17	1	26106-080122	BOLT, M8X 12 PLATED	1							
18	1	22190-080002	WASHER, SEAL 6	4							
19	1	105010-39140	BOLT, PIPE JOINT	2							
20	1	124070-13300	ELBOW, PT3/8	1							
21	1	129972-39610	PIPE, OIL	1							
22	1	123957-39671	JOINT, PIPE	1							
23	1	129908-39690	GASKET	1							
24	1	23000-025000	CLAMP, 25	2							
25	1	26106-060162	BOLT, M6X 16 PLATED	2							
26	1	129908-39410	VALVE ASSY, CHECK	4							
32	1	119000-39650	NOZZLE	4							
33	1	22351-030010	PIN, SPRING 3.0X10	4							
34	1	129930-39050	PIPE, OIL	1							
35	1	129972-39450	PIPE ASSY, OIL	1							
37	2	124223-39900	RETAINER	2							

Remarks
 (REMARKS)"EFFECTIVE MACHINE NO." OF
 ENGINE IS INDICATED ON THE
 ENGINE LABEL WHICH IS SHOWN
 IN FIG.4.

Fig.14. COOLING WATER SYSTEM

(A)=4TNV98T-MRF

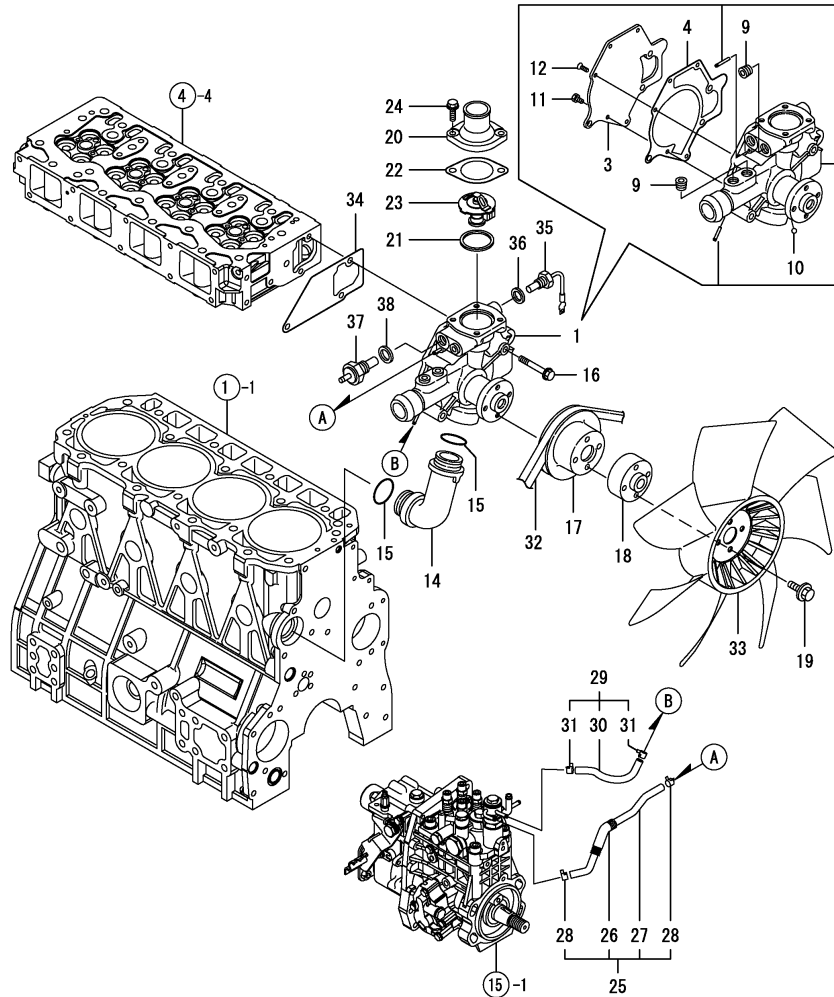
(B)=

(C)=

(D)=

(E)=

(F)=



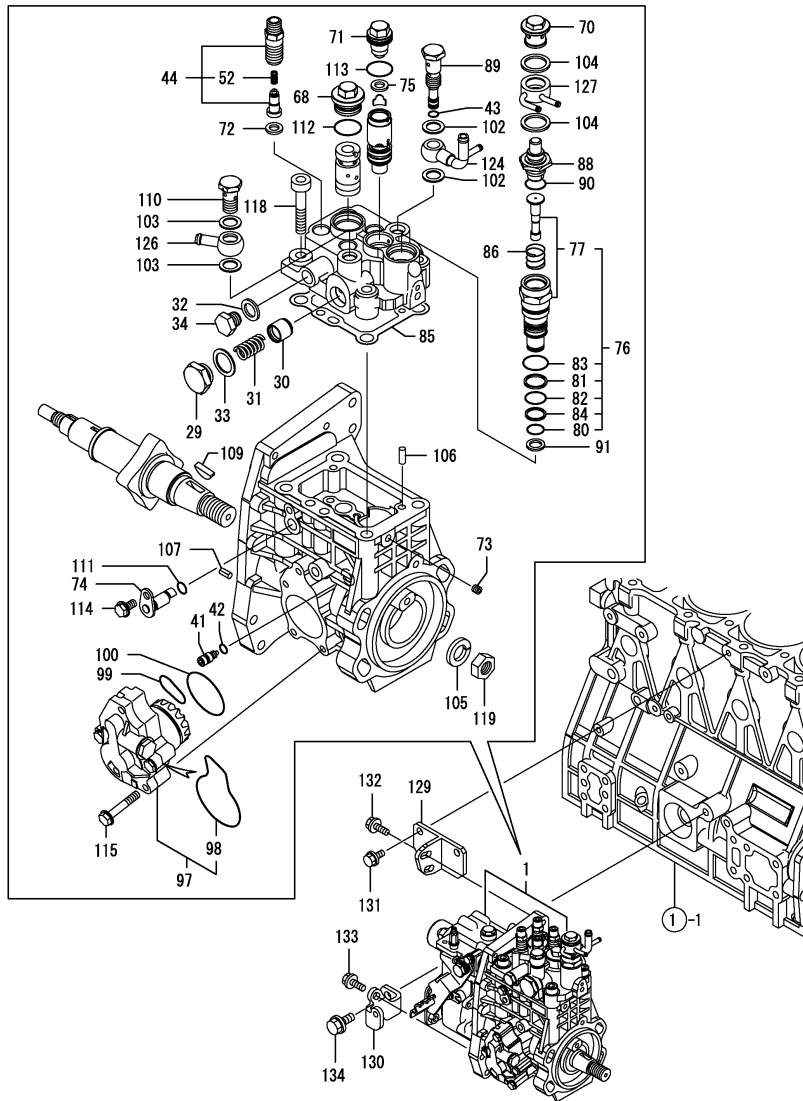
No.	Lev.	Parts No.	Description	Q'ty						I	R
				(A)	(B)	(C)	(D)	(E)	(F)		
1	1	129907-42051	PUMP ASSY, WATER	1							
3	2	129900-42161	COVER	1							
4	2	129900-42170	GASKET	1							
9	2	23875-030000	PLUG, R03	3							
10	2	24190-080001	BALL, STEEL 1/4	1							
11	2	26116-060162	BOLT, M6X 16 PLATED	2							
12	2	26577-060152	SCREW, M6X15	3							
14	1	129900-42070	PIPE, WATER	1							
15	1	129900-42140	O-RING, P36	2							
16	1	26106-080552	BOLT, M8X 55 PLATED	3							
17	1	129900-42461	V-PULLEY	1							
18	1	119005-44761	SPACER, FAN	1							
19	1	26106-080452	BOLT, M8X 45 PLATED	4							
20	1	129981-49530	COVER, THERMOSTAT	1							
20-1	1	129981-49531	COVER, THERMOSTAT	1							N
(A=E19185)											
21	1	121850-49550	GASKET, THERMOSTAT	1							
22	1	129900-49560	GASKET	1							
23	1	121850-49810	THERMOSTAT, 71	1							
24	1	26106-080252	BOLT, M8X 25 PLATED	2							
25	1	129972-49610	HOSE ASSY, WATER	1							
26	2	129972-49710	PIPE, WATER	1							
27	2	129263-49750	TUBE, CORRUGATED	1							
28	2	124722-59050	CLIP, HOSE 9	2							
29	1	129962-49620	HOSE ASSY, WATER	1							
30	2	129962-49720	PIPE ASSY, WATER	1							
31	2	124722-59050	CLIP, HOSE 9	2							
32	1	129953-42290	V-BELT, A45	1							
33	1	129907-44740	FAN, COOLING D430X7	1							
34	1	129900-42061	GASKET, WATER PUMP	1							
35	1	129107-44901	SENSOR	1							
36	1	124465-44950	GASKET, 16	1							
37	1	124250-49351	SENSOR	1							
38	1	129150-49360	GASKET	1							

Remarks
 (REMARKS)"EFFECTIVE MACHINE NO." OF
 ENGINE IS INDICATED ON THE
 ENGINE LABEL WHICH IS SHOWN
 IN FIG.4.

Fig.15. FUEL INJECTION PUMP

(A)=4TNV98T-MRF
(B)=
(C)=

(D)=
(E)=
(F)=



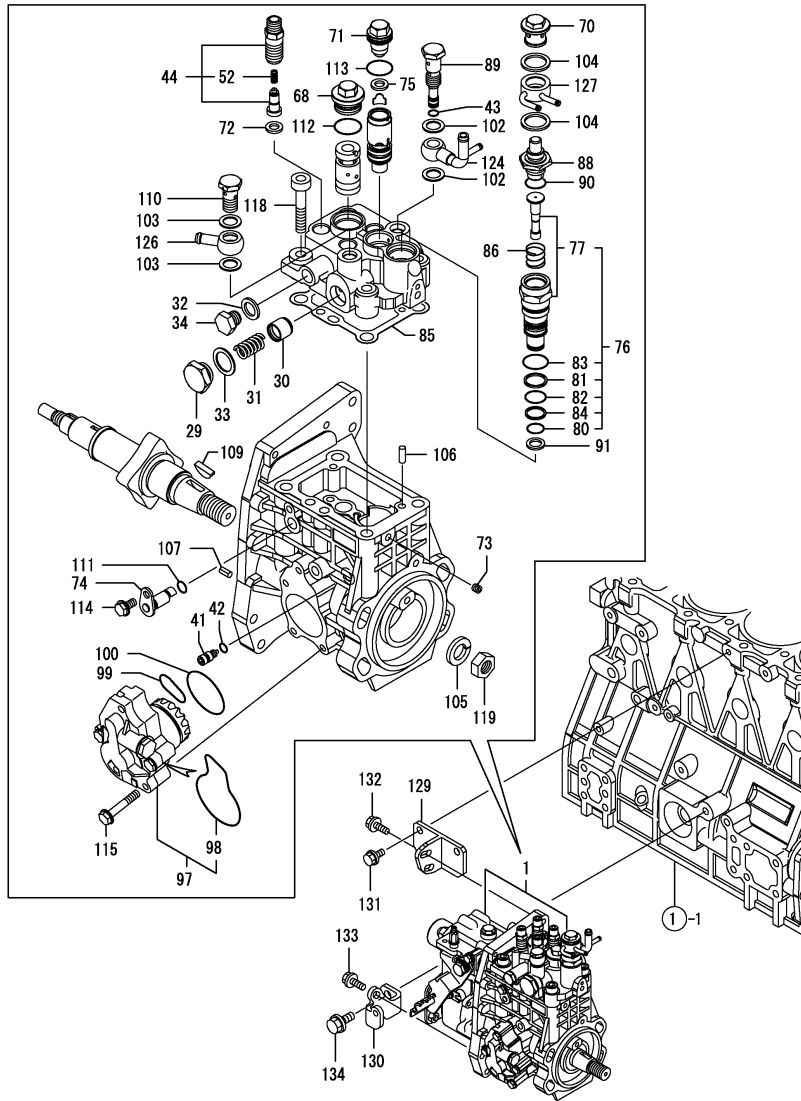
No.	Lev.	Parts No.	Description	Q'ty						I	R
				(A)	(B)	(C)	(D)	(E)	(F)		
1	1	729972-51340	PUMP ASSY, INJECTION	1							1
29	2	158601-51790	PLUG	1							
30	2	158601-51770	PISTON	1							
31	2	158552-51780	SPRING	1							
31-1	2	158552-51781	SPRING	1							R
(A=E39574)											
32	2	22190-120002	WASHER, SEAL 12	1							
33	2	22190-180002	WASHER, SEAL 18	1							
34	2	23887-120002	PLUG, 12	1							
41	2	158600-51270	STOPPER, TAPPET	1							
42	2	158563-51281	O-RING, 4D S6	1							
43	2	158563-51281	O-RING, 4D S6	1							
44	2	129509-51390	VALVE ASSY, DELIVERY	4							W
(A=*2008.02.)											
52	3	158563-51330	SPRING, DELIVERY	4							
68	2	158601-51550	PLUG	1							
70	2	158601-51570	PLUG	1							
71	2	129907-51560	PLUG, BARREL	1							
72	2	158552-51570	GASKET	4							
73	2	158557-51570	PLUG	1							
74	2	158552-51580	LIFTER	1							
75	2	129906-51580	GASKET	1							
76	2	119802-51590	TIMER SET	1							
77	3	119802-51600	TIMER ASSY	1							
80	3	158553-51670	O-RING, 1011	1							
81	3	119802-51680	RING, BACK UP	1							
82	3	119802-51690	O-RING	1							
83	3	24356-010200	O-RING, 4D1020	1							
84	3	24372-000150	RING, BACK UP T2P15	1							
85	2	158560-51600	GASKET	1							
86	2	158553-51630	SPRING, TIMER	1							
88	2	158553-51640	ELEMENT	1							
89	2	158601-51650	JOINT, OVER FLOW	1							
90	2	158553-51660	O-RING, P14	1							
91	2	158553-51680	GASKET	1							
97	2	158552-52100	PUMP ASSY, FUEL FEED	1							
98	3	158552-52500	O-RING	1							
99	2	158552-52310	O-RING	1							
100	2	158552-52400	O-RING, 4E S42	1							
102	2	22190-120002	WASHER, SEAL 12	2							
103	2	22190-120002	WASHER, SEAL 12	2							
104	2	22190-180002	WASHER, SEAL 18	2							
105	2	22217-180000	WASHER, SPRING 18	1							
106	2	22312-050140	PIN, PARALLEL M5X14	2							
107	2	22351-050010	PIN, SPRING 5.0X10	2							
109	2	144626-51090	KEY, 5X19	1							
110	2	23857-060000	BOLT, JOINT 6	1							
111	2	24311-000070	O-RING, 1AP7.0	1							
112	2	24356-010200	O-RING, 4D1020	1							
113	2	24356-020210	O-RING, 4D2021	1							
114	2	26106-060102	BOLT, M6X 10 PLATED	1							

Remarks
(1) GOVERNOR ASSY(FIG.16) IS INCORPORATED IN THIS FOP.CMP (REF.NO.1).
(REMARKS)"EFFECTIVE MACHINE NO." OF ENGINE IS INDICATED ON THE ENGINE LABEL WHICH IS SHOWN IN FIG.4.

Fig.15. FUEL INJECTION PUMP

(A)=4TNV98T-MRF
(B)=
(C)=

(D)=
(E)=
(F)=



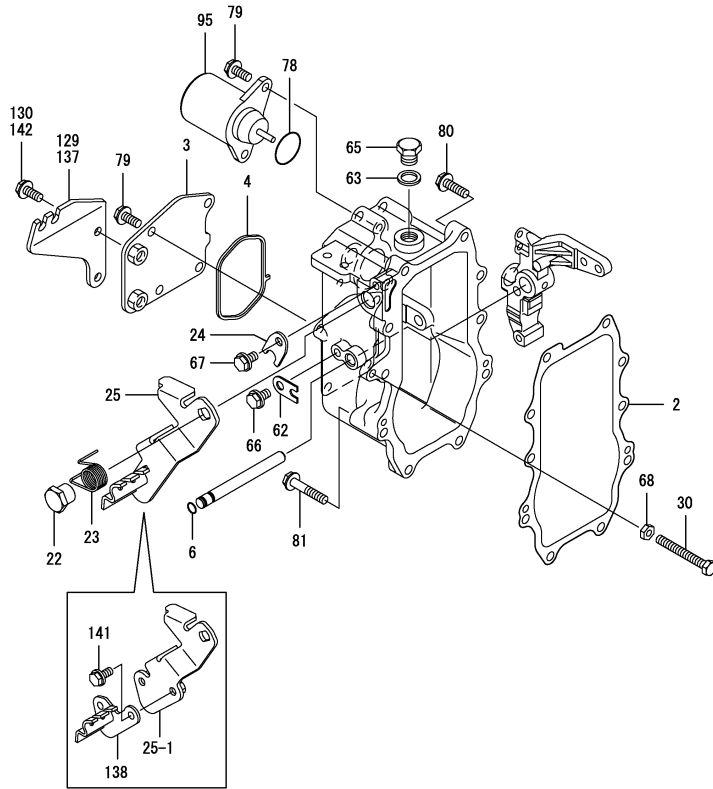
No.	Lev.	Parts No.	Description	Q'ty						I	R
				(A)	(B)	(C)	(D)	(E)	(F)		
115	2	26106-060352	BOLT, M6X 35 PLATED	4							
118	2	26450-100452	BOLT, M10X 45	4							
119	2	26776-180002	NUT, LOCK M18	1							
124	2	158552-51670	JOINT, OVER FLOW	1							
126	2	129916-59020	JOINT, PIPE 12	1							
127	2	129685-51551	JOINT	1							
129	1	129907-01950	RETAINER	1							
130	1	129907-01960	RETAINER	1							
131	1	26106-080162	BOLT, M8X 16 PLATED	2							
132	1	26106-080222	BOLT, M8X 22 PLATED	2							
133	1	26106-080222	BOLT, M8X 22 PLATED	1							
134	1	26106-100202	BOLT, M10X 20 PLATED	1							

Remarks
(1) GOVERNOR ASSY(FIG.16) IS INCORPORATED IN THIS FOP.CMP (REF.NO.1).
(REMARKS)"EFFECTIVE MACHINE NO." OF ENGINE IS INDICATED ON THE ENGINE LABEL WHICH IS SHOWN IN FIG.4.

Fig.16. GOVERNOR

(A)=4TNV98T-MRF
(B)=
(C)=

(D)=
(E)=
(F)=



No.	Lev.	Parts No.	Description	Q'ty						I	R
				(A)	(B)	(C)	(D)	(E)	(F)		
2	2	158560-61050	GASKET	1							
3	2	123945-61060	COVER, GOVERNOR CASE	1							
4	2	158560-61071	GASKET	1							
6	2	129155-51280	O-RING, S6	1							
22	2	129255-61410	NUT, LOCK	1							
23	2	119807-61420	SPRING, RETURN	1							
24	2	158560-61430	RETAINER, SHAFT	1							
25	2	129972-61440	LEVER CMP,REGULATOR	1							
25-1	2	129963-61440	LEVER, REGULATOR	1							S
(A=E18935)											
30	2	129155-61460	BOLT, IDLE	1							
62	2	119660-61901	RETAINER, SHAFT	1							
63	2	22190-160002	WASHER, SEAL 16	1							
65	2	23887-160002	PLUG, 16	1							
66	2	26106-060102	BOLT, M6X 10 PLATED	1							
67	2	26106-060102	BOLT, M6X 10 PLATED	1							
68	2	26756-060002	NUT, LOCK M6	1							
78	2	24341-000280	O-RING, 1AS28.0	1							
78-1	2	158552-61900	O-RING	1							N
(A=EXXXXX)											
79	2	26106-060142	BOLT, M6X 14 PLATED	6							
80	2	26106-060252	BOLT, M6X 25 PLATED	8							
81	2	26106-060402	BOLT, M6X 40 PLATED	2							
95	2	119233-77932	SOLENOID, STOP	1							
129	2	129972-61080	SUPPORT, ACCEL WIRE	1							Z
(A=E18935)											
130	2	26106-060142	BOLT, M6X 14 PLATED	2							Z
(A=E18935)											
137	1	129972-61080	SUPPORT, ACCEL WIRE	1							W
(A=E18935)											
138	1	129972-61490	HOOK CMP(ACCELERATOR	1							W
(A=E18935)											
141	1	26106-060122	BOLT, M6X 12 PLATED	2							W
(A=E18935)											
142	1	26106-060122	BOLT, M6X 12 PLATED	2							W
(A=E18935)											

Remarks

(1) SELECTIVE PARTS;CERTAIN THE CLASSIFICATION MARK,THEN PLACE YOUR ORDER.(REF.TO.ILLUSTRATION)
* THIS FIGURE(GOVERNOR ASSY)IS INCORPORATED IN THE FUEL INJECTION PUMP ASSY(FIG.15).
(REMARKS)"EFFECTIVE MACHINE NO." OF ENGINE IS INDICATED ON THE ENGINE LABEL WHICH IS SHOWN IN FIG.4.

Fig.17. FUEL INJECTION VALVE

(A)=4TNV98T-MRF

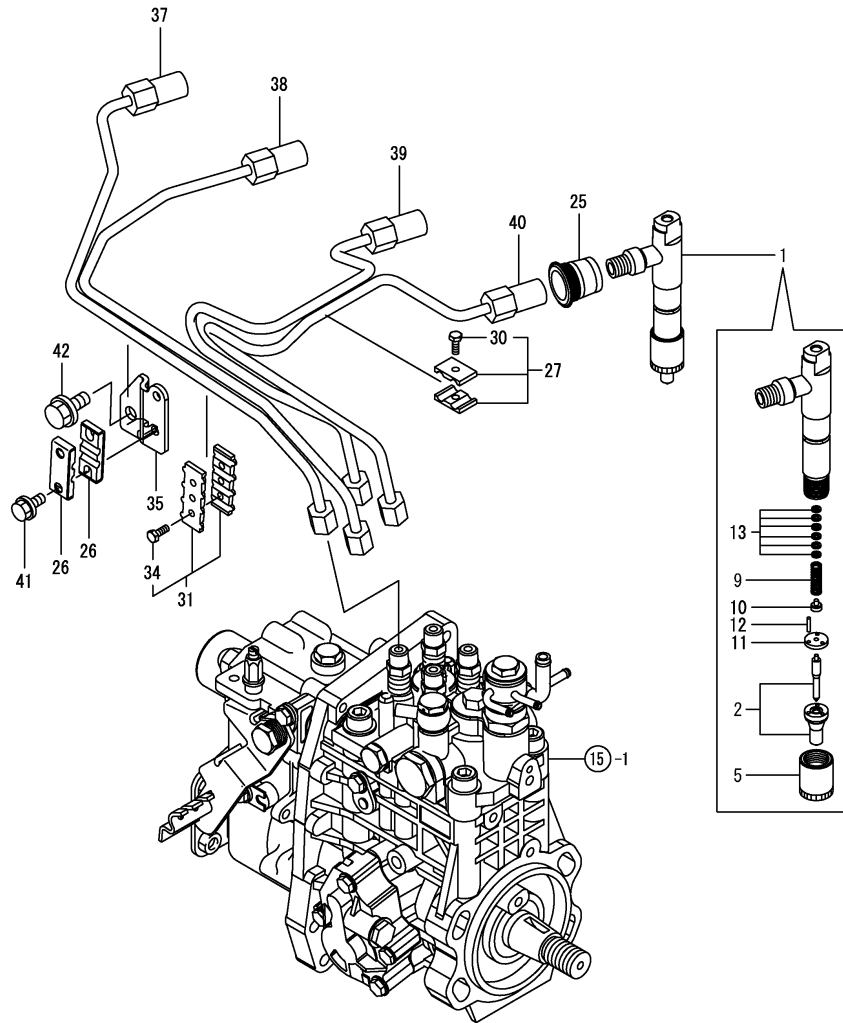
(B)=

(C)=

(D)=

(E)=

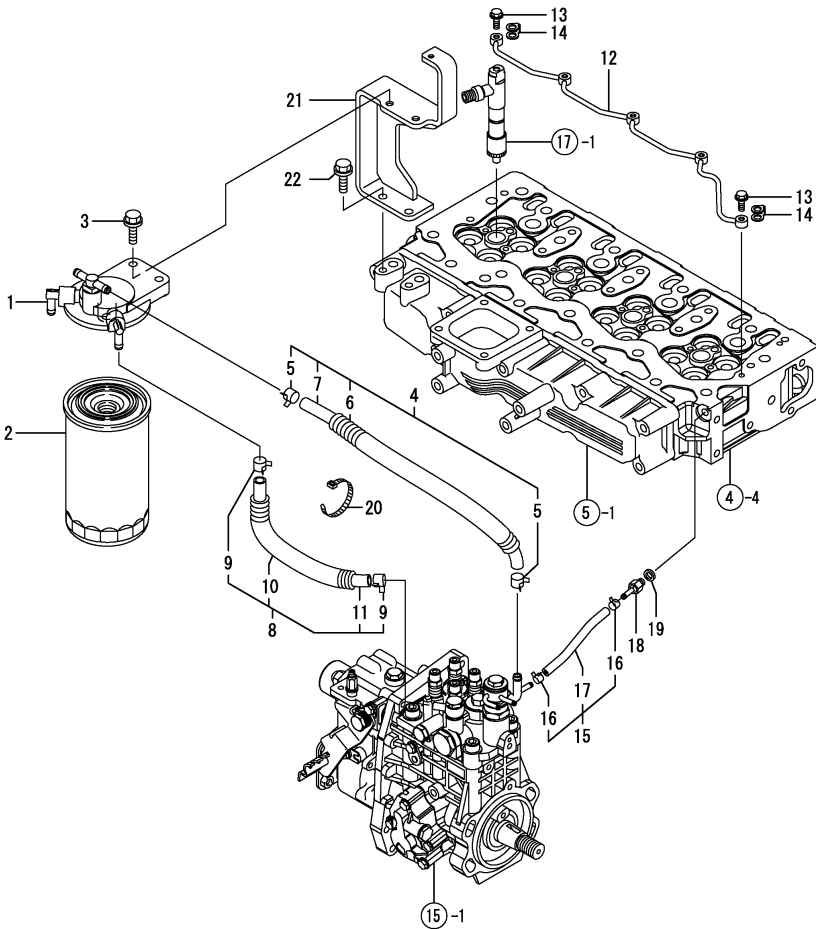
(F)=



No.	Lev.	Parts No.	Description	Q'ty						I	R
				(A)	(B)	(C)	(D)	(E)	(F)		
1	1	729908-53100	VALVE ASSY,INJECTION	4							
2	2	129908-53000	VALVE ASSY,INJECTION	4							
5	2	114250-53080	NUT, NOZZLE D16.95	4							
9	2	114250-53120	SPRING, NOZZLE	4							
10	2	114250-53130	SEAT, SPRING	4							
11	2	114250-53140	PLATE	4							
12	2	114250-53210	PIN	8							
13	2	114250-53400	SHIM SET	4							
25	1	123907-11601	SEAL	4							
26	1	122780-59100	RETAINER	2							
27	1	119305-59120	RETAINER, PIPE	1							
30	2	129150-59131	BOLT, M4X14	1							
31	1	129550-59120	RETAINER, PIPE	1							
34	2	129150-59131	BOLT, M4X14	2							
35	1	129907-59710	SUPPORT	1							
37	1	129908-59810	PIPE ASSY, INJECTION	1							
38	1	129908-59820	PIPE ASSY, INJECTION	1							
39	1	129908-59830	PIPE ASSY, INJECTION	1							
40	1	129908-59840	PIPE ASSY, INJECTION	1							
41	1	26106-060162	BOLT, M6X 16 PLATED	2							
42	1	26106-080182	BOLT, M8X 18 PLATED	1							

Remarks
 (REMARKS)"EFFECTIVE MACHINE NO." OF
 ENGINE IS INDICATED ON THE
 ENGINE LABEL WHICH IS SHOWN
 IN FIG.4.

Fig.18. FUEL LINE



(A)=4TNV98T-MRF
(B)=
(C)=

(D)=
(E)=
(F)=

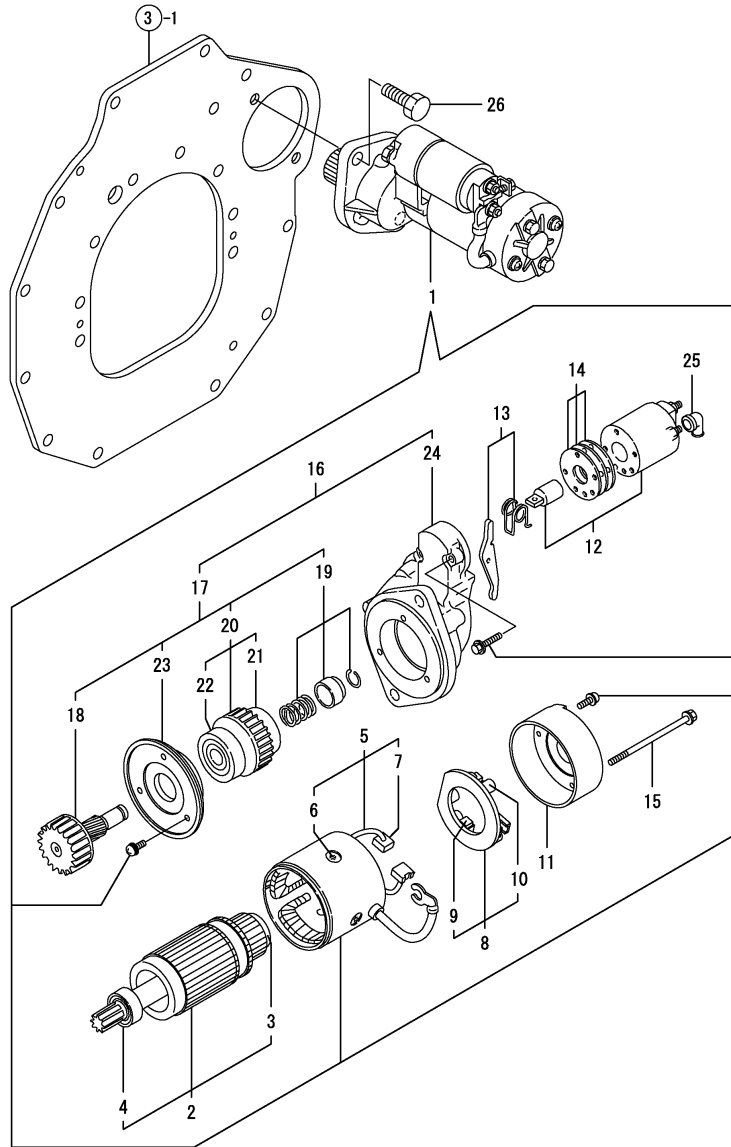
No.	Lev.	Parts No.	Description	Q'ty						I	R
				(A)	(B)	(C)	(D)	(E)	(F)		
1	1	119934-55610	BRACKET, FILTER	1							
1-1	1	119934-55611	BRACKET, FILTER	1							N
(A=E39634)											
2	1	123907-55810	FILTER, FUEL	1							
3	1	26106-080302	BOLT, M8X 30 PLATED	2							
4	1	129467-59010	PIPE ASSY, FUEL	1							
5	2	124766-59050	CLIP, HOSE 12	2							
6	2	119560-59110	TUBE, CORRUGATED	1							
7	2	129335-59090	PIPE, FUEL D13X500	1							
8	1	129972-59010	PIPE ASSY, FUEL L420	1							
9	2	124766-59050	CLIP, HOSE 12	2							
10	2	129950-59221	TUBE, CORRUGATED	1							
11	2	129972-59090	PIPE, FUEL D13X420	1							
12	1	129907-59140	PIPE ASSY, RETURN	1							
13	1	123907-59540	BOLT, PIPE JOINT M6	5							
14	1	123907-59550	GASKET	5							
15	1	129486-59551	PIPE ASSY, RETURN	1							
16	2	124722-59050	CLIP, HOSE 9	2							
17	2	129486-59510	PIPE, FUEL RETURN	1							
18	1	123907-59560	JOINT	1							
19	1	22190-080002	WASHER, SEAL 6	1							
20	1	121750-59890	BAND, 140	1							
21	1	129972-55650	STAY, FILTER	1							
22	1	26106-080202	BOLT, M8X 20 PLATED	2							

Remarks
(REMARKS)"EFFECTIVE MACHINE NO." OF
ENGINE IS INDICATED ON THE
ENGINE LABEL WHICH IS SHOWN
IN FIG.4.

Fig.19. STARTING MOTOR

(A)=4TNV98T-MRF
(B)=
(C)=

(D)=
(E)=
(F)=



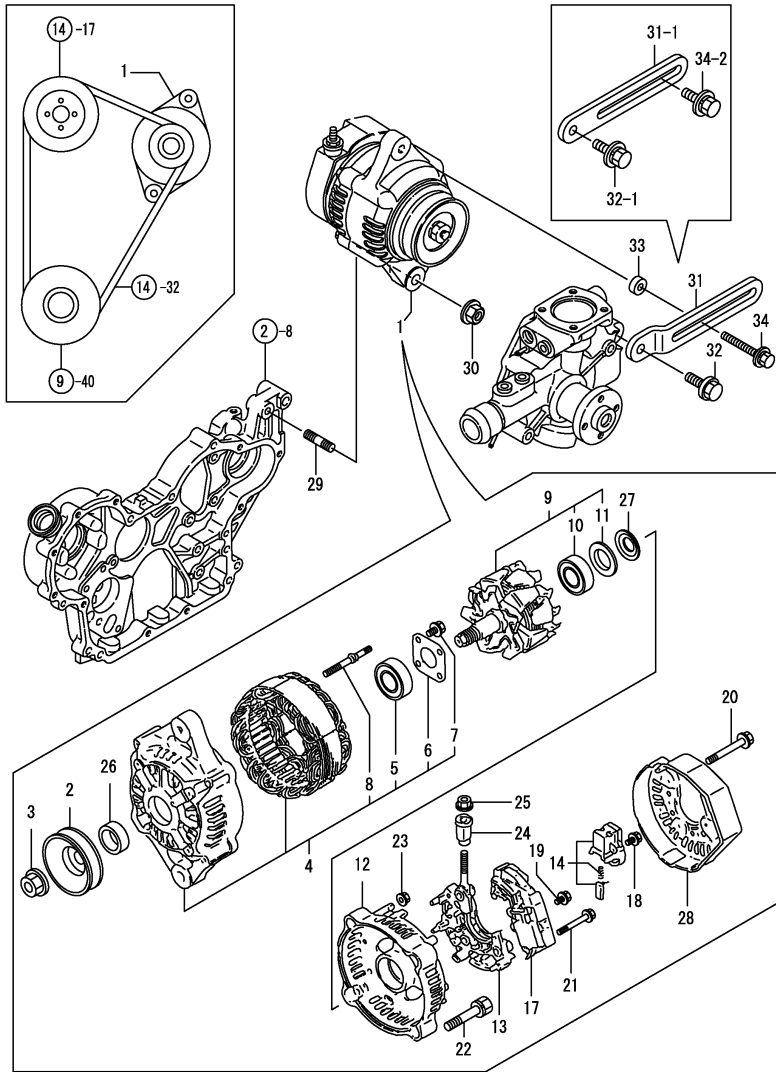
No.	Lev.	Parts No.	Description	Q'ty						I	R
				(A)	(B)	(C)	(D)	(E)	(F)		
1	1	129900-77010	STARTER	1							
2	2	129900-77400	ARMATURE ASSY	1							
3	3	X2114155110	BEARING, BALL	1							
4	3	X2114255110	BEARING, BALL	1							
5	2	129900-77440	COIL ASSY, FIELD	1							
6	3	171008-77450	SCREW	4							
7	3	129900-77450	BRUSH	2							
8	2	129900-77480	HOLDER ASSY, BRUSH	1							
9	3	129900-77450	BRUSH	2							
10	3	X2130631300	SPRING, BRUSH	4							
11	2	129900-77460	COVER	1							
12	2	129900-77591	SWITCH ASSY	1							
13	2	129900-77620	LEVER SET	1							
14	2	129900-77650	COVER ASSY, DUST	1							
15	2	129900-77640	BOLT, THROUGH	2							
16	2	129900-77700	CASE ASSY	1							
17	3	129900-77510	PINION ASSY	1							
18	4	129900-77540	SHAFT	1							
19	4	129900-77550	STOPPER SET	1							
20	4	129900-77520	CLUTCH ASSY	1							
21	4	171008-77730	BEARING, BALL	1							
22	4	171008-77740	BEARING	1							
23	4	129900-77610	RETAINER	1							
24	3	129900-77710	CASE, GEAR	1							
25	2	171008-77750	COVER	1							
26	1	26116-120252	BOLT, M12X 25 PLATED	2							

Remarks
(REMARKS)"EFFECTIVE MACHINE NO." OF
ENGINE IS INDICATED ON THE
ENGINE LABEL WHICH IS SHOWN
IN FIG.4.

Fig.20. GENERATOR

(A)=4TNV98T-MRF
(B)=
(C)=

(D)=
(E)=
(F)=



No.	Lev.	Parts No.	Description	Q'ty						I	R
				(A)	(B)	(C)	(D)	(E)	(F)		
1	1	129457-77200	GENERATOR (12V-40A	1							
2	2	119620-77461	PULLEY	1							
3	2	119620-77471	NUT	1							
4	2	119620-77421	FRAME ASSY, DRIVE	1							
5	3	119620-79200	BEARING, BALL	1							
6	3	119620-79210	PLATE, RETAINER	1							
7	3	119620-79220	SCREW	4							
8	3	119620-79230	STUD	2							
9	2	119620-77380	ROTOR ASSY	1							
10	3	123501-79240	BEARING, BALL	1							
11	3	119620-79250	COVER	1							
12	2	119620-77440	FRAME ASSY	1							
13	2	119620-79260	HOLDER	1							
14	2	129052-79270	HOLDER, BRUSH	1							
17	2	129457-77710	REGULATOR ASSY	1							
18	2	119620-79290	SCREW	6							
19	2	119620-79300	SCREW	1							
20	2	119620-79310	BOLT	3							
21	2	119620-79320	SCREW	2							
22	2	119620-79330	BOLT	2							
23	2	119620-79350	NUT	2							
24	2	119620-79340	BUSH, INSULATION	1							
25	2	129240-79310	NUT	1							
26	2	119620-77490	COLLAR	1							
27	2	119620-79360	WASHER, THRUST	1							
28	2	129240-79300	COVER	1							
29	1	129795-01900	STUD	1							
30	1	26306-100002	NUT, M10	1							
31	1	129972-77330	ADJUSTER	1							
31-1	1	129988-77330	ADJUSTER	1							S 1
(A=EXXXXX)											
32	1	26106-080222	BOLT, M8X 22 PLATED	1							
32-1	1	26014-080252	BOLT, M8X 25	1							S 1
(A=EXXXXX)											
33	1	119940-77270	SPACER, GENERATOR	1							Z
(A=EXXXXX)											
34	1	129972-77341	BOLT, ADJUSTER L=50	1							
34-1	1	119802-77340	BOLT, ADJUSTER	1							N
(A=E18935)											
34-2	1	119810-77340	BOLT, ADJUSTER	1							S 1
(A=EXXXXX)											

Remarks
(REMARKS)"EFFECTIVE MACHINE NO." OF ENGINE IS INDICATED ON THE ENGINE LABEL WHICH IS SHOWN IN FIG.4.

(1) Interchangeable by simultaneous replacement with Ref.31-1, 32-1 and 34-2.

Parts No. Index

Parts No.	Fig. No.	Ref. No.
105010-39140	13	19
105425-01690	3	5
114250-39450	13	1
114250-53080	17	5
114250-53120	17	9
114250-53130	17	10
114250-53140	17	11
114250-53210	17	12
114250-53400	17	13
119000-39650	13	32
119005-35170	12	3
119005-44761	14	18
119131-18320	7	3
119233-77932	16	95
119305-59120	17	27
119560-59110	18	6
119593-11301	4	30
119620-11180	4	19
119620-77380	20	9
119620-77421	20	4
119620-77440	20	12
119620-77461	20	2
119620-77471	20	3
119620-77490	20	26
119620-79200	20	5
119620-79210	20	6
119620-79220	20	7
119620-79230	20	8
119620-79250	20	11
119620-79260	20	13
119620-79290	20	18
119620-79300	20	19
119620-79310	20	20
119620-79320	20	21
119620-79330	20	22
119620-79340	20	24
119620-79350	20	23
119620-79360	20	27
119625-11880	4	28
119660-61901	16	62
119802-11870	4	68
119802-51590	15	76
119802-51600	15	77
119802-51680	15	81
119802-51690	15	82
119802-77340	20	34 -1
119803-11340	4	21 -1
119807-61420	16	23
119810-77340	20	34 -2
119860-34810	12	2

Parts No.	Fig. No.	Ref. No.
119934-55610	18	1
119934-55611	18	1 -1
119940-77270	20	33
120130-22301	9	21
121252-39150	13	2
121450-01560	10	4 -1
121750-59890	18	20
121850-21130	9	10
121850-21290	9	5
		6
	11	4
		5
121850-21680	9	41
121850-21920	9	7
121850-49550	14	21
121850-49810	14	23
121850-77021	5	5
122780-59100	17	26
123501-79240	20	10
123900-13630	6	3
123900-25060	8	10
123901-03240	4	76
123901-18080	6	9
123907-11280	4	35
123907-11550	4	3
123907-11601	17	25
123907-11820	4	12
123907-11830	4	25
123907-39500	13	11
123907-55810	18	2
123907-59540	18	13
123907-59550	18	14
123907-59560	18	18
123908-03199	4	57
123945-61060	16	3
123951-18220	5	9
123957-39671	13	22
124070-13300	13	20
124160-01751	2	35
	4	52
124160-11340	4	20
124160-11360	4	65
124223-39900	13	37
124240-01883	10	1
124250-49351	14	37
124411-01780	3	14
124465-44950	14	36
124722-59050	14	28
		31
	18	16

Parts No.	Fig. No.	Ref. No.
124766-59050	18	5
		9
124950-11340	4	21
128610-14120	11	3
129001-11340	4	58
129001-91810	2	25
		26
129001-91841	3	9
129005-59830	13	5
		13
129052-79270	20	14
129100-01580	1	33
		34
	2	5
129107-44901	14	35
129122-44480	12	15
129150-02450	8	4
129150-11230	4	38
		42
129150-11750	4	24
		39
		43
129150-14200	8	1
129150-25920	8	14
129150-49360	14	38
129150-59131	17	30
		34
129155-51280	16	6
129155-61460	16	30
129240-79300	20	28
129240-79310	20	25
129255-61410	16	22
129263-49750	14	27
129335-59090	18	7
129410-03990	4	72
129418-18320	6	4
129457-77200	20	1
129457-77710	20	17
129467-59010	18	4
129472-18090	7	1
129486-59510	18	17
129486-59551	18	15
129509-51390	15	44
129550-59120	17	31
129685-51551	15	127
129693-44310	3	10
129795-01900	20	29
129795-01960	11	1
129900-01200	1	31
129900-01250	1	5

Parts No.	Fig. No.	Ref. No.
129900-01740	2	6
129900-01780	2	4
129900-02020	1	8
129900-02340	1	35
129900-02341	1	35 -1
129900-02410	1	11
129900-02930	1	28
129900-02931	1	28 -1
129900-02940	1	38
129900-02941	1	38 -1
129900-13251	6	2
129900-14100	8	7
129900-14140	2	37
129900-21200	9	4
129900-21600	9	14
129900-21640	9	39
129900-23001	9	23
129900-23200	9	28
129900-23600	9	29
129900-23601	9	29 -1
129900-23610	9	31
129900-23611	9	31 -1
129900-23911	9	27
129900-25100	8	11
129900-26250	2	38
129900-32030	2	23
	12	4
129900-32040	2	24
129900-42061	14	34
129900-42070	14	14
129900-42140	14	15
129900-42161	14	3
129900-42170	14	4
129900-42461	14	17
129900-49560	14	22
129900-77010	19	1
129900-77400	19	2
129900-77440	19	5
129900-77450	19	7
		9
129900-77460	19	11
129900-77480	19	8
129900-77510	19	17
129900-77520	19	20
129900-77540	19	18
129900-77550	19	19
129900-77591	19	12
129900-77610	19	23
129900-77620	19	13
129900-77640	19	15

Parts No. Index

Parts No.	Fig. No.	Ref. No.
129900-77650	19	14
129900-77700	19	16
129900-77710	19	24
129906-51580	15	75
129907-01331	1	32
129907-01950	15	129
129907-01960	15	130
129907-03011	4	54
129907-03061	4	55
129907-03070	4	56
129907-11100	4	16
129907-11110	4	17
129907-11120	4	18
129907-11250	4	32
129907-11260	4	33
129907-11270	4	34
129907-11310	4	61
129907-11341	4	31
129907-11510	4	22
129907-11650	4	36
129907-11660	4	40
129907-11800	4	10
129907-11910	4	49
129907-11920	4	44
129907-11950	4	50
129907-12100	5	1
129907-12110	5	2
129907-14400	8	2
129907-21660	9	40
129907-22050	9	17
129907-25900	8	17
129907-39061	13	9
129907-42051	14	1
129907-44740	14	33
129907-51560	15	71
129907-59140	18	12
129907-59710	17	35
129908-01520	2	8
129908-11700	4	4
129908-14581	8	3
129908-22080	9	15
129908-32060	2	11
129908-39410	13	26
129908-39690	13	23
129908-53000	17	2
129908-59810	17	37
129908-59820	17	38
129908-59830	17	39
129908-59840	17	40
129915-77050	5	6

Parts No.	Fig. No.	Ref. No.
129916-59020	15	126
129930-39050	13	34
129933-11310	4	61 -1
129935-18010	7	4
129950-59221	18	10
129953-25300	8	16
129953-42290	14	32
129956-01602	3	1
129956-01640	3	12
129956-01700	3	3
129956-01710	1	6
129956-01740	3	4
129956-07911	4	1
129956-21000	9	1
129956-26010	10	5
129956-26220	10	2
129956-28009	11	2
129956-28019	11	6
129956-28101	11	10
129956-28111	11	11
129956-28180	11	12
129956-28321	9	8
129956-28332	11	13
129956-28341	11	14
129956-33050	12	8
129956-33101	12	10
129956-33110	12	11
129956-33120	12	12
129956-35000	12	5
129956-49172	12	14
129957-33050	12	9
129962-49620	14	29
129962-49720	14	30
129963-61440	16	25 -1
129972-01731	3	8
129972-03010	4	69
129972-03200	4	73
129972-03210	4	74
129972-03220	4	75
129972-03280	4	78
129972-03310	4	79
129972-07920	4	84
129972-11320	4	53
129972-11321	4	53 -1
129972-13100	6	1
129972-13420	6	5
129972-13501	6	6
129972-13651	6	7
129972-13951	6	8
129972-18210	5	8

Parts No.	Fig. No.	Ref. No.
129972-18250	5	10
129972-21570	9	11
129972-33140	12	13
129972-34800	12	1
129972-39450	13	35
129972-39610	13	21
129972-49610	14	25
129972-49710	14	26
129972-55650	18	21
129972-59010	18	8
129972-59090	18	11
129972-61080	16	129
		137
129972-61440	16	25
129972-61490	16	138
129972-77330	20	31
129972-77341	20	34
129981-49530	14	20
129981-49531	14	20 -1
129988-77330	20	31 -1
144626-51090	15	109
158552-51570	15	72
158552-51580	15	74
158552-51670	15	124
158552-51780	15	31
158552-51781	15	31 -1
158552-52100	15	97
158552-52310	15	99
158552-52400	15	100
158552-52500	15	98
158552-61900	16	78 -1
158553-51630	15	86
158553-51640	15	88
158553-51660	15	90
158553-51670	15	80
158553-51680	15	91
158557-51570	15	73
158560-51600	15	85
158560-61050	16	2
158560-61071	16	4
158560-61430	16	24
158563-51150	8	18
158563-51281	15	42
		43
158563-51330	15	52
158600-51270	15	41
158601-51550	15	68
158601-51570	15	70
158601-51650	15	89
158601-51770	15	30

Parts No.	Fig. No.	Ref. No.
158601-51790	15	29
168000-01180	10	30 -1
1680GR-02200	10	20
		20 -1
171008-77450	19	6
171008-77730	19	21
171008-77740	19	22
171008-77750	19	25
171051-01921	1	7
178077-00500	10	7
		8
178077-15400	10	25
178077-15410	10	26
1A7340-41110	10	6
1A7340-41111	10	6 -1
22190-080002	13	3
		6
		14
		16
		18
	18	19
22190-120002	15	32
		102
		103
22190-160002	3	7
	16	63
22190-180002	15	33
		104
22217-180000	8	19
	15	105
22252-000300	9	22
22252-000320	10	29
22312-050140	15	106
22351-030010	13	33
22351-050010	15	107
22351-060012	1	12
22512-070140	8	8
	9	9
22857-500100	4	63
22857-500120	4	64
23000-022000	4	80
	12	16
23000-025000	13	24
23000-054000	5	11
23000-070000	5	12
23065-160500	4	81
23414-100000	13	4
23857-030000	13	7
		15
23857-060000	15	110

Parts No. Index

Parts No.	Fig. No.	Ref. No.
23875-030000	14	9
23876-005000	11	15
23876-020000	4	13
23876-030000	1	13
		14
	4	14
		62
		82
23887-120002	15	34
23887-160002	16	65
24190-080001	14	10
24311-000070	15	111
24311-000120	4	29
		66
24311-000200	11	17
24311-000320	2	36
	4	67
24314-000200	12	17
24321-000600	12	18
24341-000280	16	78
24351-030750	2	27
24356-010200	15	83
		112
24356-020210	15	113
24372-000150	15	84
24421-183207	10	30
26014-080222	6	10
26014-080252	20	32 -1
26016-081052	10	31
26106-060102	15	114
	16	66
		67
26106-060122	16	141
		142
26106-060142	12	19
	16	79
		130
26106-060162	13	25
	17	41
26106-060252	16	80
26106-060352	15	115
26106-060402	16	81
26106-080102	6	11
		12
26106-080122	3	11
	13	8
		17
26106-080142	4	83
	12	6
26106-080162	2	28

Parts No.	Fig. No.	Ref. No.
26106-080162	2	29
	8	9
	11	16
	15	131
26106-080182	17	42
26106-080202	2	30
	4	2
		85
	12	7
	18	22
26106-080222	15	132
		133
	20	32
26106-080252	6	13
	14	24
26106-080302	3	15
	18	3
26106-080352	5	7
26106-080402	2	31
		32
	4	46
26106-080452	2	33
	14	19
26106-080552	5	3
	8	15
	14	16
26106-080602	4	47
		48
	11	18
26106-080852	5	4
26106-100202	15	134
26116-050102	4	77
26116-060162	14	11
26116-100202	3	2
26116-120252	19	26
26216-080202	10	4
26216-100302	2	10
26226-080222	4	45
26306-080002	4	51
	6	14
	7	2
	10	3
26306-100002	2	34
	20	30
26450-100452	15	118
26577-060152	14	12
26756-060002	16	68
26776-180002	8	20
	15	119
27241-300000	1	15

Parts No.	Fig. No.	Ref. No.
27241-400000	4	15
27310-070001	4	26
729900-02800	1	25
729900-02801	1	25 -1
729907-01550	2	1
729907-22950	9	35
729908-22900	9	33
729908-53100	17	1
729972-01560	1	1
729972-51340	15	1
X2114155110	19	3
X2114255110	19	4
X2130631300	19	10

Parts No.	Fig. No.	Ref. No.
-----------	----------	----------