

OCD10-M93800EN

# PREFACE

1. This parts catalog is the 1st edition of 4TN100TL-GLD for Ohatsu Co.,Ltd.

Pub.No. : 000Y00D9380

Published : February,2007

2. Model name

Engine model	Vehicle		Vehicle made by
	Products	Model name	
4TN100TL-GLD	4P GENERATOR	—	Ohatsu Co.,Ltd.

## Directions for the Parts Catalog.

1. This Parts Catalog shows both standard and optional parts.
2. Parts may change without prior notice.
3. The following is an example of the Parts Catalog format.

REF.	LEV.	PARTS NO.	DESCRIPTION	Q'TY						I	R
				(A)	(B)	(C)	(D)	(E)	(F)		
1	1	729595-51390	FUEL INJECTION PUMP	1	1	1	1	1			1
1-1	1	729595-51391	FUEL INJECTION PUMP	1	1	1	1	1		N	1
		(A=E00185) (B=E00200)									
3	2	26022-060162	SCREW M 6X 16	9	9	9	9	9			
3-1	2	26022-060162	SCREW M 6X 16	4	4	4	4	4		K	
		(A=E00156) (B=E00156) (C=E00156) (D=E00156) (E=E00156)									
4	2	129470-51040	CAMSHAFT	1	1	1	1	1			
5	2	122710-51050	BEARING, ROLLER	2	2	2	2	2			
6	2	129470-51060	RETAINER	1	1	1	1	1			

Remarks
(1) BOOST COMPEMSATOR TYPE. OPTIONAL PART, TO E00155,(4JH-DT, 4JH-DTZ

### ① Ref. No.

The Ref. No. listed may not be in accordance with the illustration Ref. No.

(Ex.) Illustration No.

List Ref No.

1

1

(Before change)

1-1

(After change)

For interchangeable symbols N, R and K, illustrations for new parts may be abbreviated.

### ② Lev. (Level)

Level indication

The numbers below indicate the level of relativity towards the main part.

1 ----- Main parts (Assembly parts)

2 ----- Sub component included in " 1 ".

3 ----- Sub component included in " 2 ".

Note) Parts that are not for sale are partially illustrated but not listed.

### ③ Interchangeability Symbol

When a part change takes place, one of the following interchangeability symbols is indicated beside the part.

Symbol	Interchangeability	Contents note
N	Old $\begin{matrix} \leftarrow \text{Yes} \\ \text{No} \rightarrow \end{matrix}$ New	New Part is interchangeable for Old Part but Old Part is not interchangeable for New Part.
Q	Old $\begin{matrix} \leftarrow \text{No} \\ \text{Yes} \rightarrow \end{matrix}$ New	New Part is not interchangeable for Old Part but Old Part is interchangeable for New Part.
R	Old $\begin{matrix} \leftarrow \text{Yes} \\ \text{Yes} \rightarrow \end{matrix}$ New	New/ Old Parts are both interchangeable.
S	Old $\begin{matrix} \leftarrow \text{No} \\ \text{No} \rightarrow \end{matrix}$ New	New/ Old Parts are both not interchangeable.
W		Part newly added.
Z		Part discontinued.
F		Not interchangeable by a single part but interchangeable together with related parts.
K		Changes only for used parts quantities.

### ④ Effective Machine No.

When a part changes, the effective Machine No. will be indicated in the (A)-(F) column.

Product Symbol	Product No.	Product Symbol	Product No.
C	Clutch No. Compressor No.	F	Machine No. (Agricultural Equip.)
D	Drive No.	M	Machine No.
E	Engine No.		

Note 1) A date may follow the symbol. (Ex.) 1996.01

Note 2) "XXXXX" and "ZZZZZ" are for parts that could not be predicted or for engine models that could not be identified.

Note 3) (A=E00185) is the E (Engine Serial Number) for the column (A) model (in this case 4JH-DT) after the parts design change.

### ⑤ Remarks

Figures or alphabets (symbols) are entered in the remarks column.

The comments (remarks) on parts that are indicated at the bottom of the illustration are the same symbols as those stated above.

# Contents

OCD10-M93800

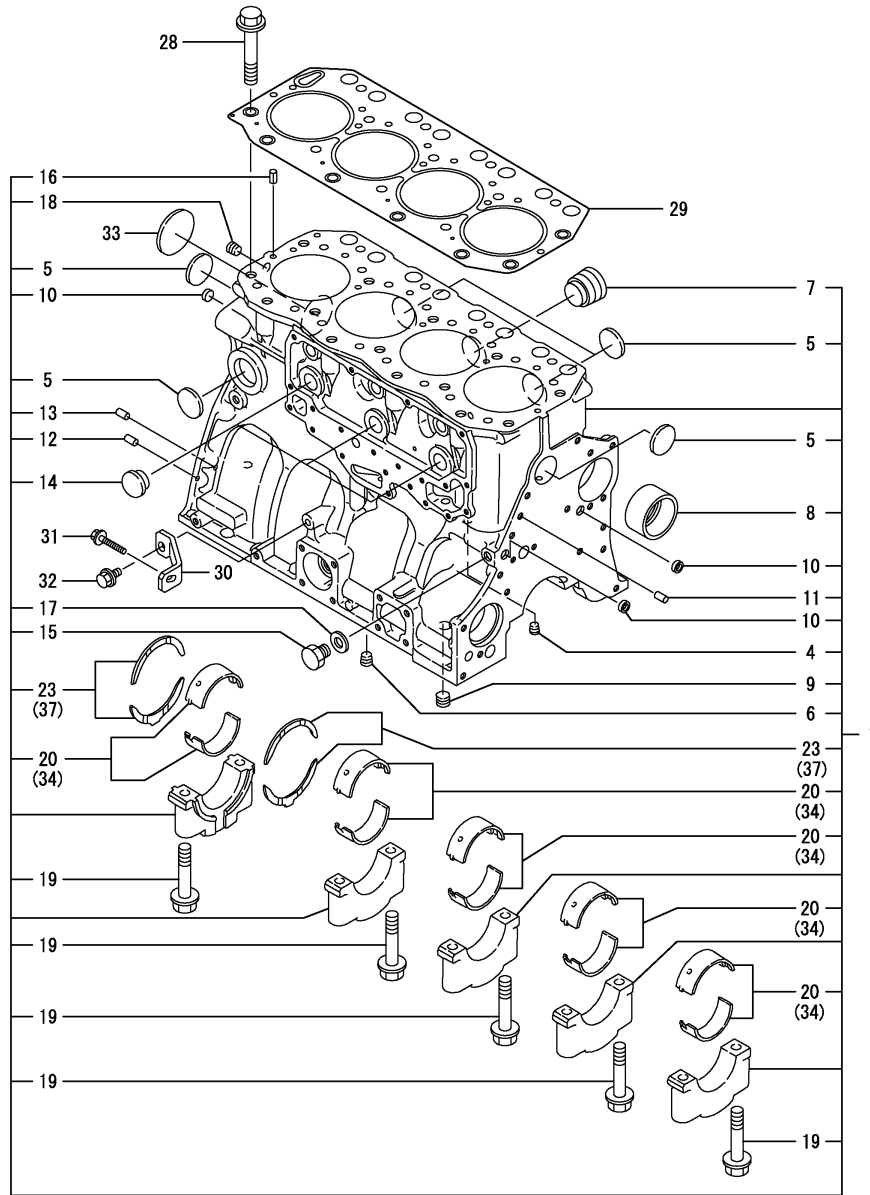
Fig. No. Fig. Name

Fig. No. Fig. Name

## 4TN100TL-GLD

1. CYLINDER BLOCK
2. GEAR HOUSING
3. FLYWHEEL HOUSING & OIL SUMP
4. CYLINDER HEAD & BONNET
5. SUCTION MANIFOLD
6. EXHAUST MANIFOLD
7. CAMSHAFT & DRIVING GEAR
8. TURBINE
9. CRANKSHAFT & PISTON
10. LUB.OIL SYSTEM
11. OIL COOLER
12. COOLING WATER SYSTEM
13. FUEL INJECTION PUMP
14. FUEL FEED PUMP
15. GOVERNOR
16. FUEL INJECTION VALVE
17. FUEL LINE
18. STARTING MOTOR
19. TENSION PULLEY
20. PULSER
21. ELECTRIC PARTS
22. GASKET SET

Fig.1. CYLINDER BLOCK



(A)=4TN100TL-GLD  
(B)=  
(C)=

(D)=  
(E)=  
(F)=

No.	Lev.	Parts No.	Description	Q'ty						I	R
				(A)	(B)	(C)	(D)	(E)	(F)		
1	1	719140-01561	BLOCK ASSY, CYLINDER	1							
4	2	124060-01050	PLUG, PT1/8	1							
5	2	119593-01870	PLUG	5							
6	2	119000-01880	SCREW	1							
7	2	171051-01921	PLUG, NPTF1	1							
8	2	119000-02410	BUSH, CAMSHAFT	1							
9	2	23876-030000	PLUG, R03	1							
10	2	27241-140000	PLUG, 14	3							
11	2	129100-01580	PIN, M8X16	2							
12	2	129100-01580	PIN, M8X16	2							
13	2	129100-01580	PIN, M8X16	2							
14	2	119000-01840	PLUG, RUBBER	3							
15	2	135602-34390	RETAINER	1							
16	2	22351-080016	PIN, SPRING 8.0X16	2							
17	2	23414-140000	GASKET, 14X1.0	1							
18	2	23876-020000	PLUG, R02	1							
19	2	119000-02020	BOLT, METAL CAP	10							
20	2	719000-02800	BEARING, MAIN	5							
23	2	719000-02930	BEARING, THRUST	2							
28	1	119000-01200	BOLT, HEAD	18							
29	1	119100-01340	GASKET, HEAD T=1.3	1							
30	1	119140-01980	RETAINER, PUMP	1							
31	1	26106-060502	BOLT, M6X 50 PLATED	1							
32	1	26106-080162	BOLT, M8X 16 PLATED	1							
33	1	27231-600000	PLUG, 60	1							
34	1	719000-02870	BEARING, 0.25 US	5							1
37	1	719000-02940	BEARING, THRUST 0.25	2							2

Remarks

- (1) UNDER-SIZED(U.S=0.25)PART.
- (2) OVER-SIZED(O.S=0.25)PART.

Fig.2. GEAR HOUSING

(A)=4TN100TL-GLD

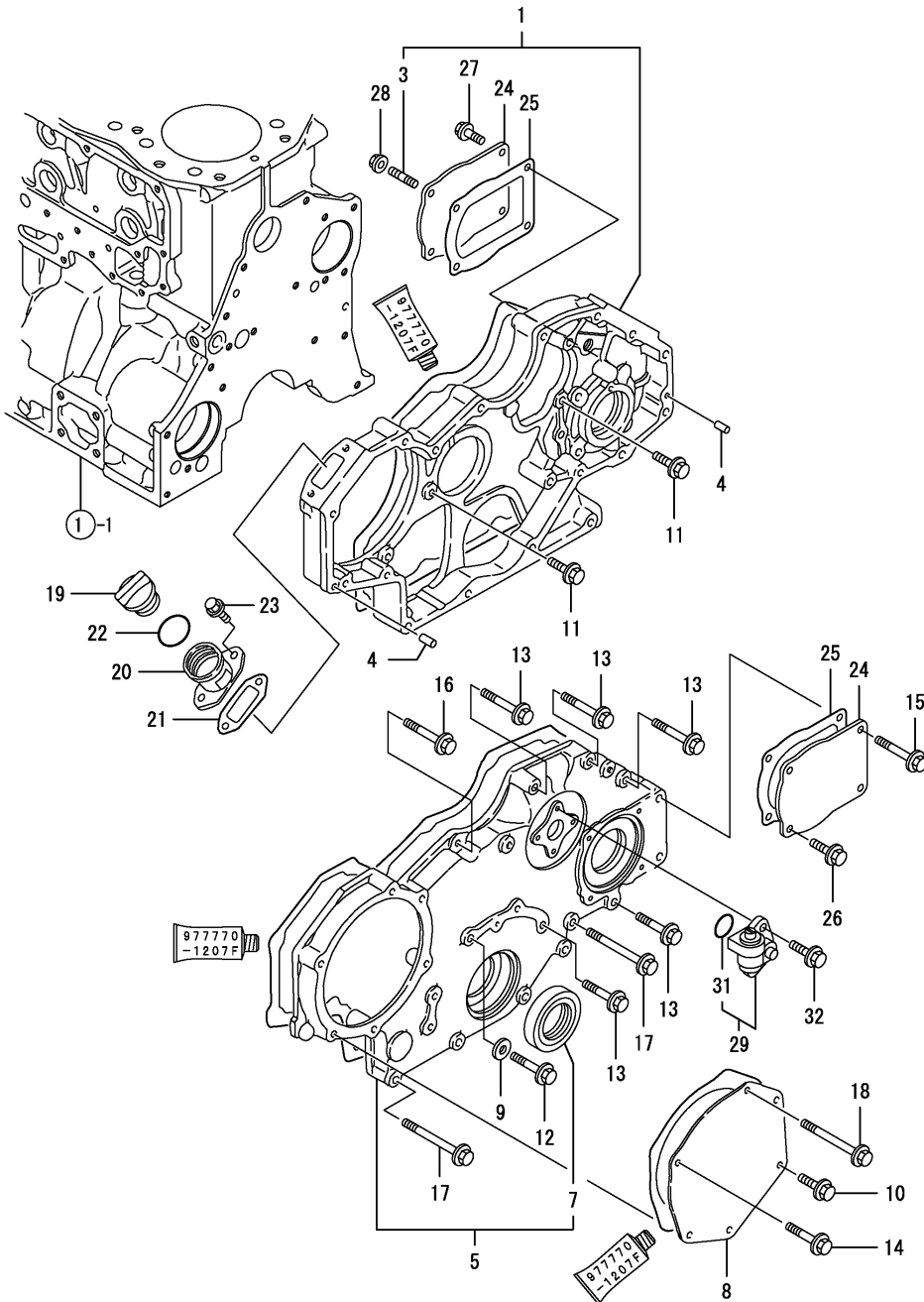
(B)=

(C)=

(D)=

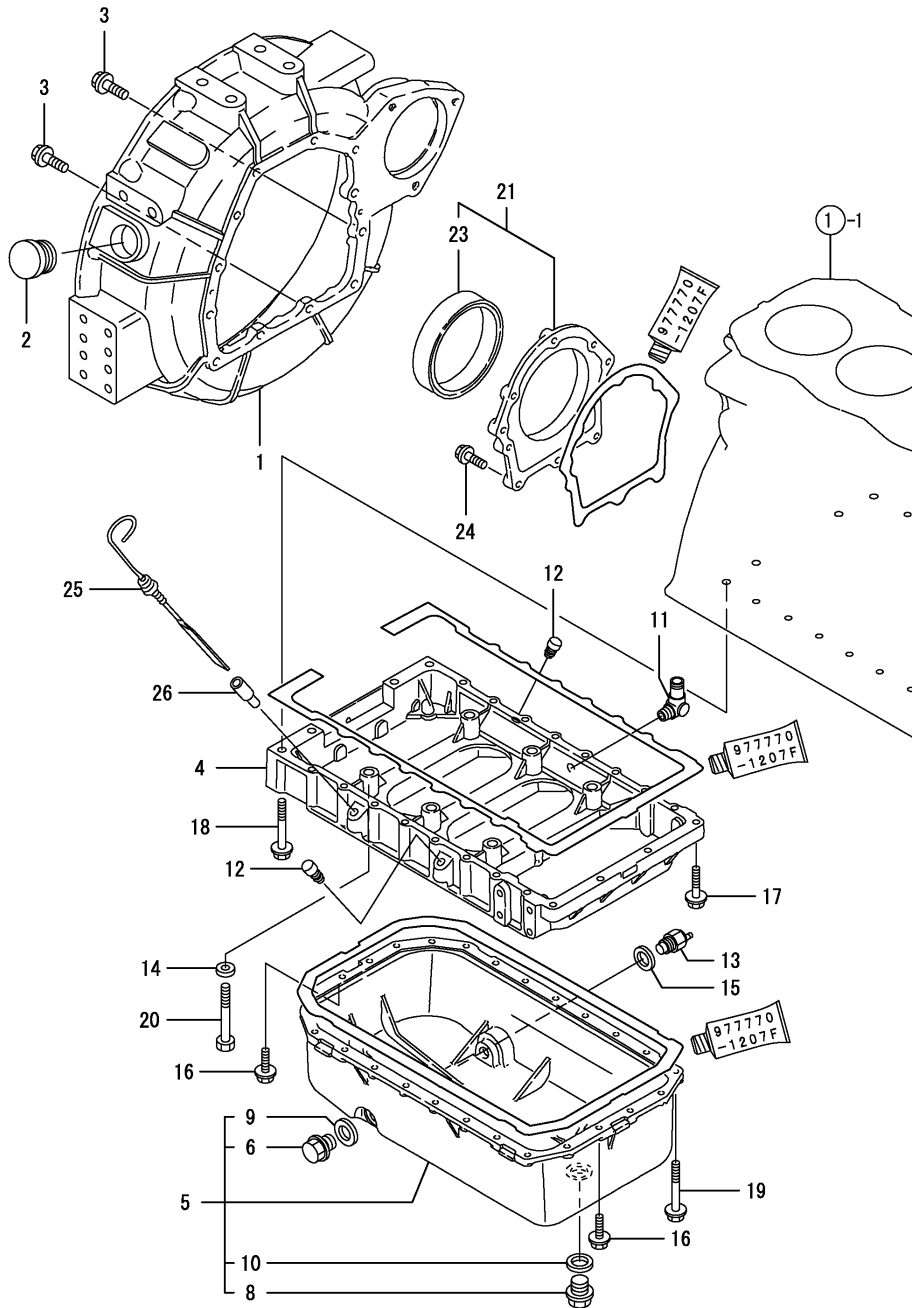
(E)=

(F)=



No.	Lev.	Parts No.	Description	Q'ty						I	R
				(A)	(B)	(C)	(D)	(E)	(F)		
1	1	719129-01500	COVER ASSY,GEAR CASE	1							
3	2	121850-01920	STUD, 2D8X22	2							
4	1	129100-01580	PIN, M8X16	2							
5	1	119000-01590	COVER ASSY,GEAR CASE	1							
7	2	121850-01800	SEAL, OIL	1							
8	1	119000-01930	COVER	1							
9	1	22190-080003	WASHER, SEAL 8	1							
10	1	26106-080182	BOLT, M8X 18 PLATED	1							
11	1	26106-080202	BOLT, M8X 20 PLATED	5							
12	1	26106-080402	BOLT, M8X 40 PLATED	1							
13	1	26106-080452	BOLT, M8X 45 PLATED	5							
14	1	26106-080452	BOLT, M8X 45 PLATED	3							
15	1	26106-080502	BOLT, M8X 50 PLATED	2							
16	1	26106-080552	BOLT, M8X 55 PLATED	1							
17	1	26106-080752	BOLT, M8X 75 PLATED	4							
18	1	26106-080902	BOLT, M8X 90 PLATED	2							
19	1	124160-01751	COVER, FILLER	1							
20	1	119000-01760	FLANGE	1							
21	1	119000-01771	GASKET	1							
22	1	24311-000320	O-RING, 1AP32.0	1							
23	1	26106-080252	BOLT, M8X 25 PLATED	2							
24	1	124610-01851	COVER	2							
25	1	124610-01862	GASKET	2							
26	1	26106-080202	BOLT, M8X 20 PLATED	2							
27	1	26106-080202	BOLT, M8X 20 PLATED	2							
28	1	26306-080002	NUT, M8	2							
29	1	129150-91400	GEAR	1							
31	2	24341-000240	O-RING, 1AS24.0	1							
32	1	26106-060162	BOLT, M6X 16 PLATED	2							

Fig.3. FLYWHEEL HOUSING & OIL SUMP



(A)=4TN100TL-GLD  
(B)=  
(C)=

(D)=  
(E)=  
(F)=

No.	Lev.	Parts No.	Description	Q'ty						I	R
				(A)	(B)	(C)	(D)	(E)	(F)		
1	1	119140-01600	HOUSING, FLYWHEEL	1							
2	1	129795-11750	CAP	1							
3	1	26106-100302	BOLT, M10X 30 PLATED	12							
4	1	119100-01730	SPACER	1							
5	1	119140-01780	SUMP ASSY, OIL	1							
6	2	119640-01640	PLUG, DRAIN M22	1							
8	2	127610-44900	PLUG, M36X1.5	1							
9	2	22190-220002	WASHER, SEAL 22	1							
10	2	22190-360002	WASHER, SEAL 36	1							
11	1	124070-13300	ELBOW, PT3/8	1							
12	1	124976-34850	CAP	2							
13	1	121470-44900	SENSOR	1							
14	1	22117-120000	WASHER, 12	6							
15	1	23414-160000	GASKET, 16X1.0	1							
16	1	26106-080252	BOLT, M8X 25 PLATED	8							
17	1	26106-080352	BOLT, M8X 35 PLATED	4							
18	1	26106-080702	BOLT, M8X 70 PLATED	2							
19	1	26106-080802	BOLT, M8X 80 PLATED	18							
20	1	26116-120852	BOLT, M12X 85 PLATED	6							
21	1	119100-01640	CASE ASSY, OIL SEAL	1							
23	2	124411-01780	SEAL, HTC95X115X12	1							
24	1	26106-080252	BOLT, M8X 25 PLATED	8							
25	1	119140-34801	DIPSTICK, OIL	1							
26	1	121520-34810	GUIDE, DIPSTICK	1							

Fig.4. CYLINDER HEAD & BONNET

(A)=4TN100TL-GLD

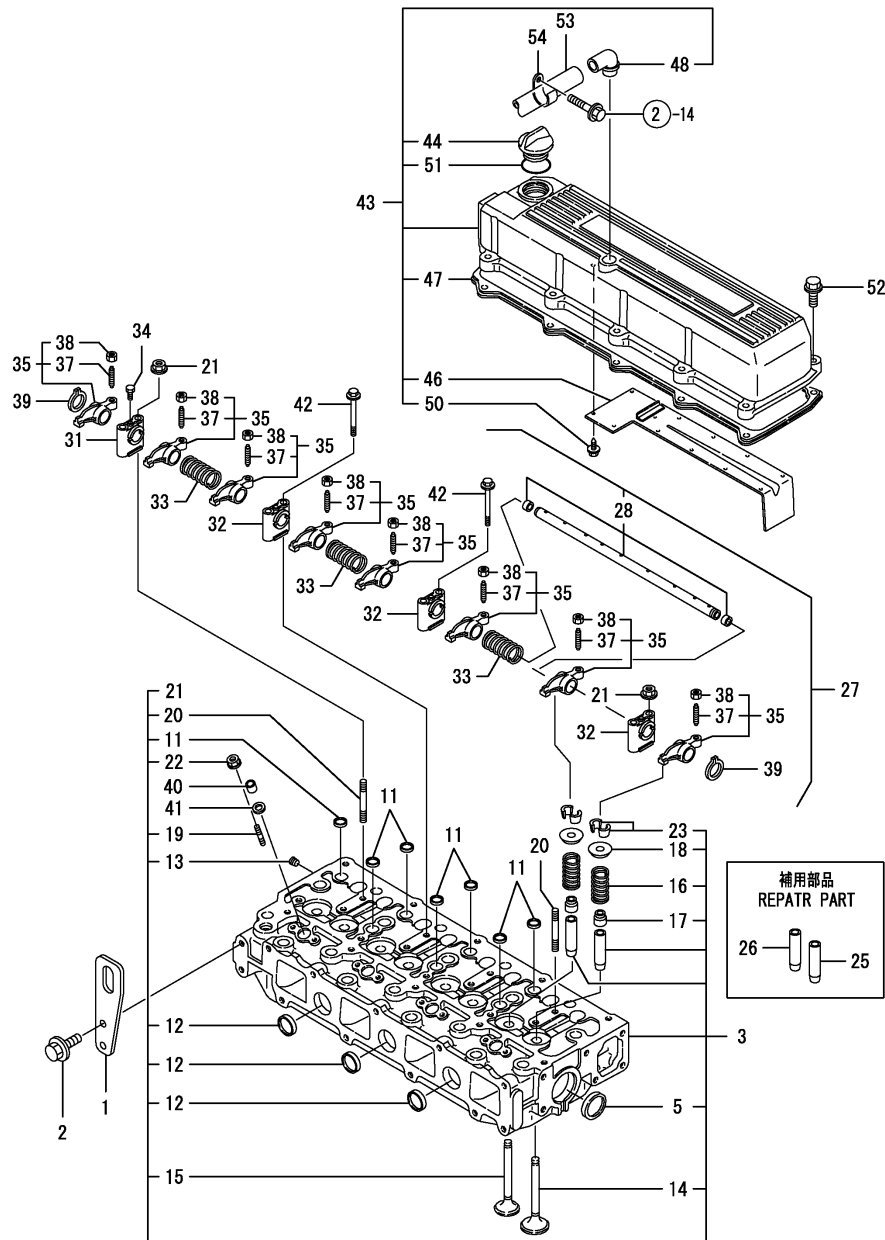
(B)=

(C)=

(D)=

(E)=

(F)=

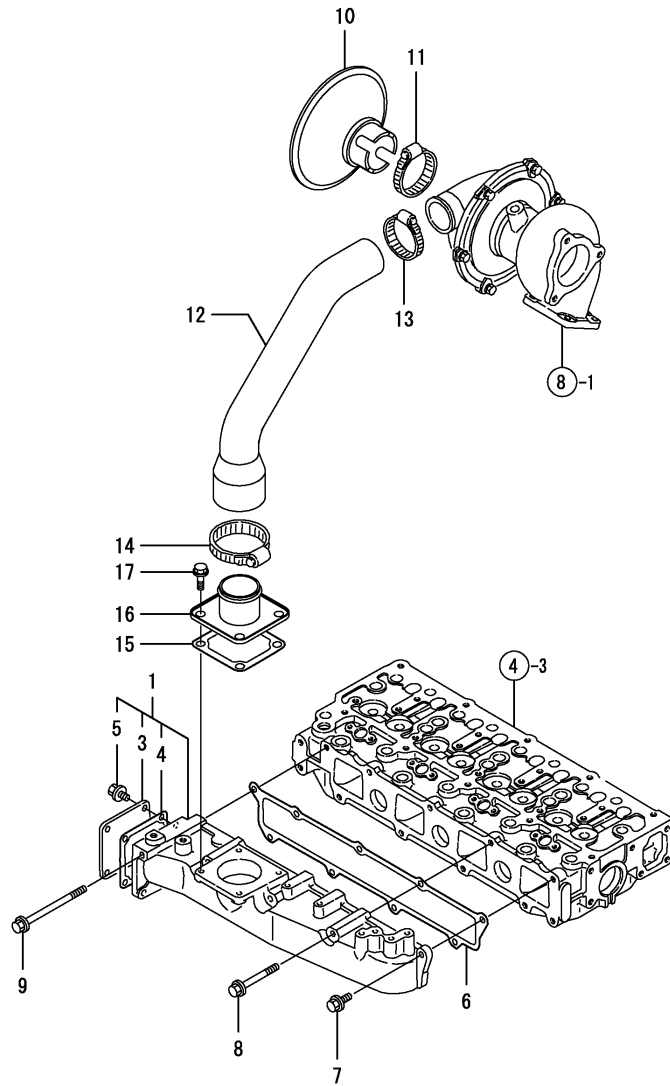


No.	Lev.	Parts No.	Description	(A)	(B)	(C)	(D)	(E)	(F)	Q'ty	I	R
1	1	119000-07200	LIFTER							2		
2	1	26106-100202	BOLT, M10X 20 PLATED							4		
3	1	719141-11711	HEAD ASSY, CYLINDER							1		
5	2	119885-01990	PLUG, 40							2		
11	2	119000-11990	PLUG, 16							7		
12	2	119100-11990	PLUG, 28							3		
13	2	23876-005000	PLUG, R005							1		
14	2	121850-11100	VALVE, INTAKE							4		
15	2	119101-11110	VALVE, EXHAUST							4		
16	2	121850-11120	SPRING, VALVE							8		
17	2	121850-11150	SEAL, VALVE STEM							8		
18	2	121850-11180	RETAINER, SPRING							8		
19	2	26216-060252	STUD, M6X 25							8		
20	2	26216-080652	STUD, M8X 65							2		
21	2	26306-080002	NUT, M8							2		
22	2	26366-060002	NUT, M6							8		
23	2	27310-090001	COTTER, 9							8		
25	1	121850-11800	GUIDE, VALVE							4		1
26	1	119000-11810	GUIDE, VALVE							4		1
27	1	119100-11230	SHAFT ASSY, ROCKER							1		
28	2	119100-11220	SHAFT ASSY, ROCKER							1		
31	2	119000-11260	SUPPORT, ROCKER ARM							1		
32	2	119000-11270	SUPPORT, ROCKER ARM							3		
33	2	119000-11280	SPRING							3		
34	2	119000-11290	BOLT							1		
35	2	719129-11660	ARM ASSY, ROCKER							8		
37	3	119000-11230	SCREW, VALVE ADJUST							8		
38	3	129150-11750	NUT, M8							8		
39	2	22242-000180	RING, 18							2		
40	1	119625-11870	PROTECTOR, NOZZLE							4		
41	1	119625-11880	SEAT, NOZZLE							4		
42	1	26106-080652	BOLT, M8X 65 PLATED							6		
43	1	119129-11520	BONNET ASSY, HEAD							1		
44	2	124160-01751	COVER, FILLER							1		
46	2	119100-03200	COVER							1		
47	2	119100-11320	GASKET, BONNET							1		
48	2	119100-11330	ELBOW							1		
50	2	26476-050102	SCREW, TAPPING M5X10							11		
51	2	24311-000320	O-RING, 1AP32.0							1		
52	1	26106-080252	BOLT, M8X 25 PLATED							10		
53	1	119006-03090	HOSE, BREATHER							1		
54	1	129150-03100	RETAINER, PIPE							1		

Remarks  
(1) REPAIR PART.



Fig.5. SUCTION MANIFOLD



(A)=4TN100TL-GLD  
(B)=  
(C)=

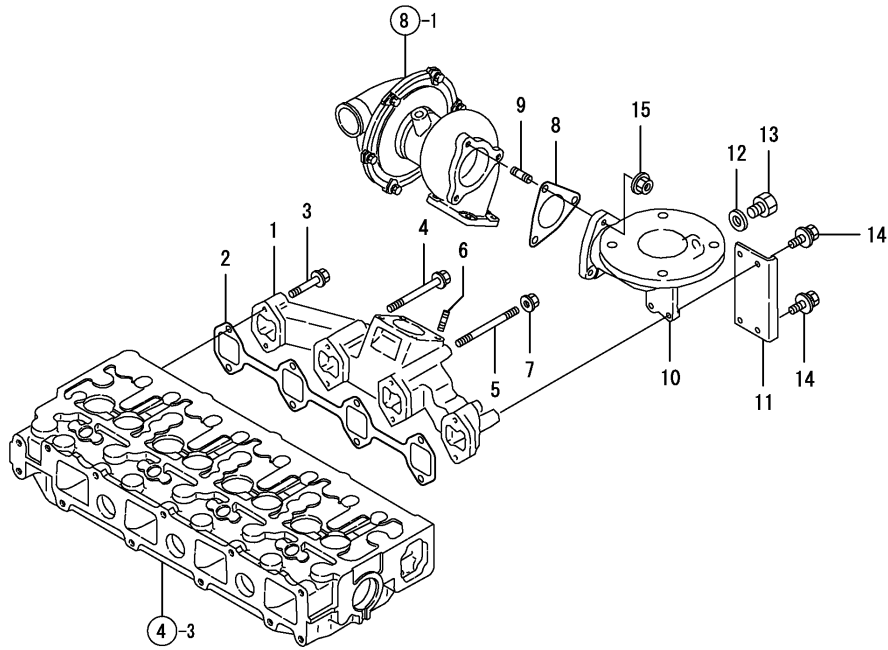
(D)=  
(E)=  
(F)=

No.	Lev.	Parts No.	Description	Q'ty						I	R
				(A)	(B)	(C)	(D)	(E)	(F)		
1	1	719129-12100	MANIFOLD ASSY,INTAKE	1							
3	2	119100-12120	COVER, MANIFOLD	1							
4	2	121850-77021	GASKET	1							
5	2	26106-080142	BOLT, M8X 14 PLATED	4							
6	1	119100-12113	GASKET, MANIFOLD	1							
7	1	26106-080202	BOLT, M8X 20 PLATED	5							
8	1	26106-080702	BOLT, M8X 70 PLATED	3							
9	1	26106-081152	BOLT, M8X115 PLATED	1							
10	1	129412-12460	COVER	1							
11	1	23000-054000	CLAMP, 54	1							
12	1	119101-12850	PIPE, AIR INTAKE	1							
13	1	23000-060000	CLAMP, 60	1							
14	1	23000-070000	CLAMP, 70	1							
15	1	121850-77021	GASKET	1							
16	1	121850-77100	CAPSULE	1							
17	1	26106-080142	BOLT, M8X 14 PLATED	4							

Fig.6. EXHAUST MANIFOLD

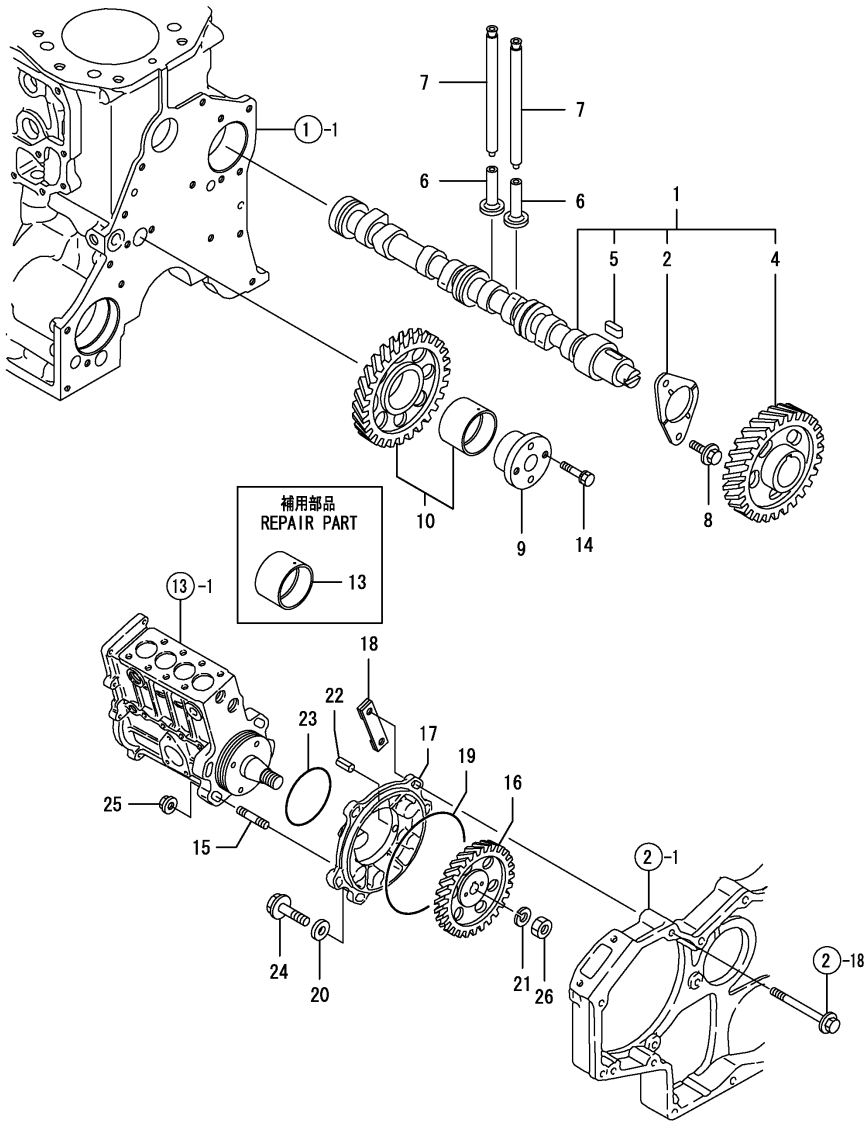
(A)=4TN100TL-GLD  
(B)=  
(C)=

(D)=  
(E)=  
(F)=



No.	Lev.	Parts No.	Description	Q'ty						I	R
				(A)	(B)	(C)	(D)	(E)	(F)		
1	1	119101-13100	MANIFOLD, EXHAUST	1							
2	1	119101-13200	GASKET	1							
3	1	119802-13600	BOLT, M8X40	4							
4	1	123900-13620	BOLT, M8X70	3							
5	1	119802-13770	STUD, M8X110	1							
6	1	129418-18320	STUD, M8X20	4							
7	1	26306-080002	NUT, M8	1							
8	1	129472-13520	GASKET	1							
9	1	119131-18320	STUD, M8X22	3							
10	1	119131-18390	BEND, EXHAUST	1							
11	1	119131-18401	STAY	1							
12	1	23414-170000	GASKET, 17X1.0	1							
13	1	23894-030002	PLUG, G3/8	1							
14	1	26014-080202	BOLT, M8X 20	4							
15	1	26306-080002	NUT, M8	3							

Fig.7. CAMSHAFT & DRIVING GEAR



(A)=4TN100TL-GLD  
(B)=  
(C)=

(D)=  
(E)=  
(F)=

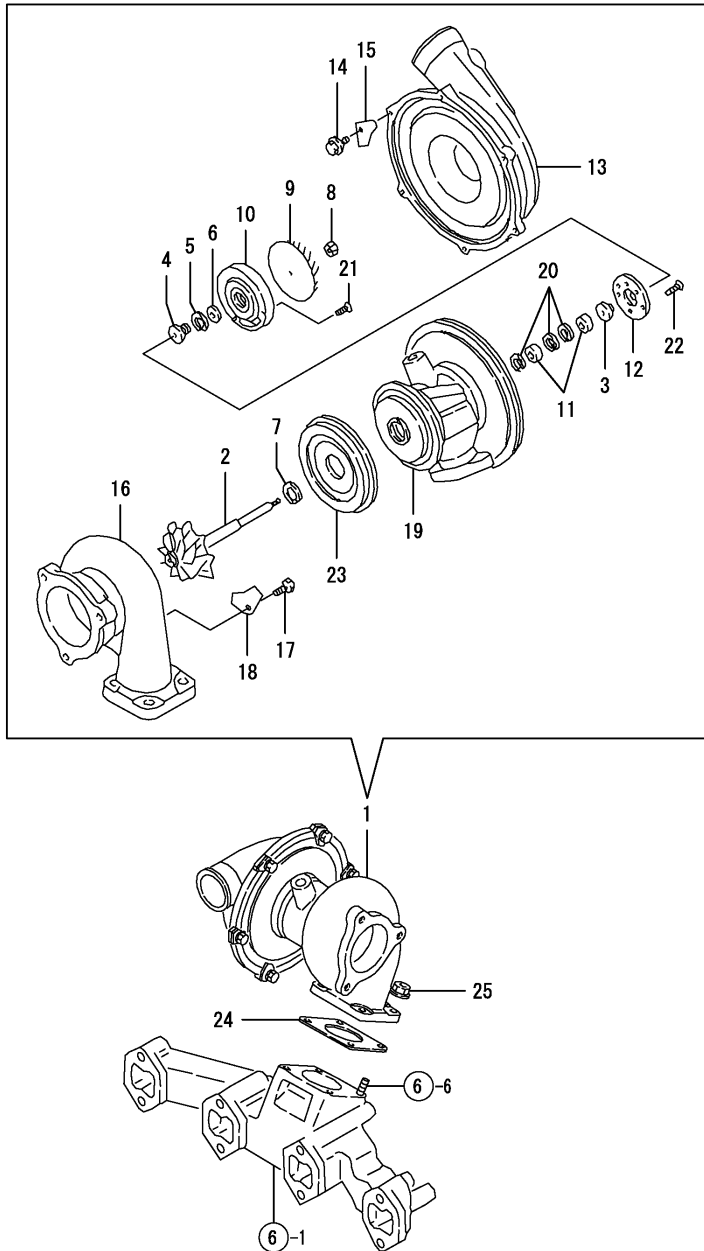
No.	Lev.	Parts No.	Description	Q'ty						I	R
				(A)	(B)	(C)	(D)	(E)	(F)		
1	1	119100-14000	CAMSHAFT ASSY	1							
2	2	119000-02450	BEARING, THRUST	1							
4	2	119000-14100	GEAR, CAMSHAFT Z=48	1							
5	2	22512-070140	KEY, 7X 14	1							
6	1	119000-14200	TAPPET	8							
7	1	129150-14400	ROD, PUSH L=178	8							
8	1	26106-080162	BOLT, M8X 16 PLATED	2							
9	1	119000-25050	SHAFT, IDLE GEAR	1							
10	1	119000-25100	GEAR ASSY, IDLE Z=51	1							
13	1	119000-25930	BUSH, IDLE GEAR	1							1
14	1	26013-080452	BOLT, M8X 45	2							
15	1	121850-01900	STUD, SB10X32	4							
16	1	119000-25900	GEAR, PUMP	1							
17	1	119000-25910	BRACKET, PUMP	1							
18	1	119000-25920	RETAINER	1							
19	1	24341-001350	O-RING, 1AS135.0	1							
20	1	106100-55800	WASHER	3							
21	1	22217-180000	WASHER, SPRING 18	1							
22	1	22351-050012	PIN, SPRING 5.0X12	1							
23	1	124410-51960	O-RING	1							
24	1	26106-080252	BOLT, M8X 25 PLATED	3							
25	1	26306-100002	NUT, M10	4							
26	1	26776-180002	NUT, LOCK M18	1							

Remarks  
(1) REPAIR PART.

Fig.8. TURBINE

(A)=4TN100TL-GLD  
(B)=  
(C)=

(D)=  
(E)=  
(F)=

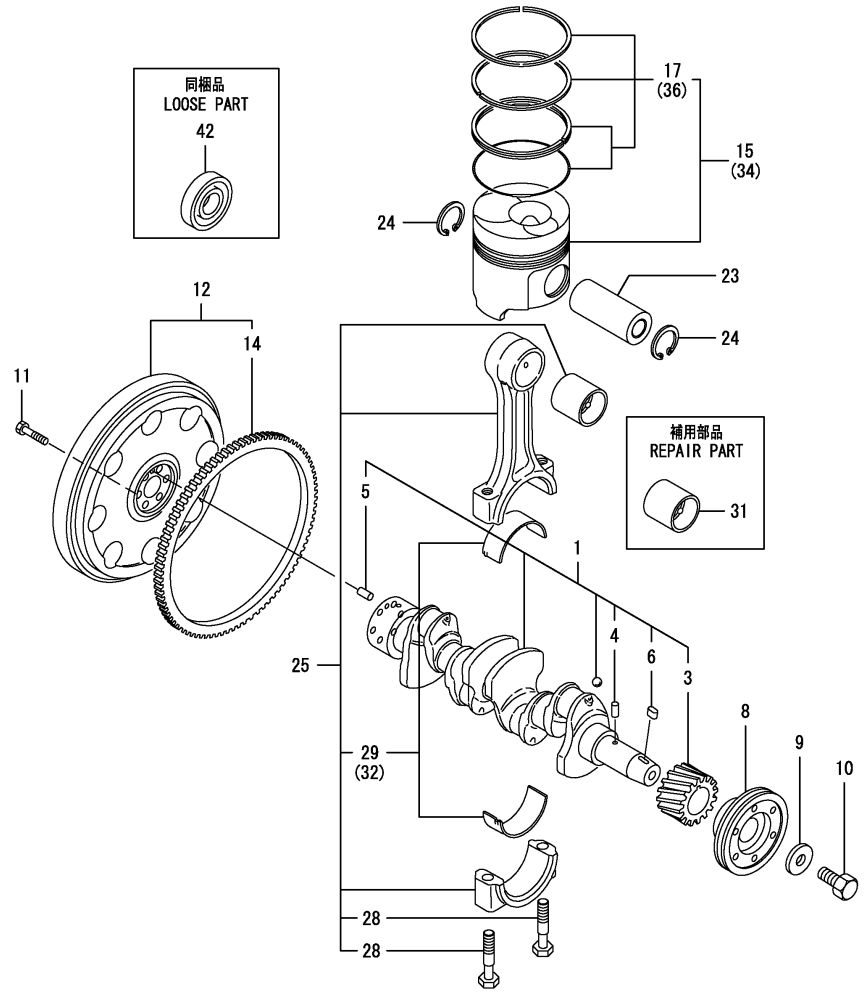


No.	Lev.	Parts No.	Description	Q'ty						I	R
				(A)	(B)	(C)	(D)	(E)	(F)		
1	1	119101-18020	TURBINE, RHB52	1							
2	2	119101-18500	SHAFT, TURBINE	1							
3	2	129404-18510	BUSHING	1							
4	2	129404-18520	OIL THROWER	1							
5	2	129404-18530	RING, SEAL	1							
6	2	129404-18540	RING, SEAL	1							
7	2	129404-18550	RING, SEAL	1							
8	2	129404-18560	NUT, D8/4.5 T5	1							
9	2	119101-18510	WHEEL, BLOWER	1							
10	2	129404-18580	PLATE	1							
11	2	129404-18590	BEARING	2							
12	2	129404-18600	BEARING, THRUST	1							
13	2	119101-18520	HOUSING ASSY	1							
14	2	129403-18620	BOLT M 5X 10.5	6							
15	2	119101-18530	PLATE	6							
16	2	119101-18540	HOUSING	1							
17	2	119101-18550	BOLT, M8	4							
18	2	119101-18560	PLATE	4							
19	2	119101-18570	HOUSING, BEARING	1							
20	2	129404-18680	CIRCLIP	3							
21	2	129406-18690	SCREW	4							
22	2	129406-18700	SCREW	3							
23	2	129404-18720	PROTECTOR, HEAT	1							
24	1	129472-18090	GASKET	1							
25	1	26306-080002	NUT, M8	4							

Fig.9. CRANKSHAFT & PISTON

(A)=4TN100TL-GLD  
(B)=  
(C)=

(D)=  
(E)=  
(F)=



No.	Lev.	Parts No.	Description	Q'ty						I	R
				(A)	(B)	(C)	(D)	(E)	(F)		
1	1	119100-21700	CRANKSHAFT ASSY	1							
3	2	121850-21200	GEAR, CRANKSHAFT	1							
4	2	121850-21290	PIN	1							
5	2	121850-21920	PIN, M10X22	1							
6	2	22512-070140	KEY, 7X 14	1							
8	1	119141-21650	V-PULLEY	1							
9	1	121850-21660	WASHER	1							
10	1	121850-21680	BOLT	1							
11	1	121850-21130	BOLT, FLYWHEEL	6							
12	1	119140-21590	FLYWHEEL ASSY	1							
14	2	127410-21480	GEAR, RING Z=129	1							
15	1	119000-22000	PISTON ASSY	4							
17	2	719000-22500	RING SET, PISTON	4							
23	1	119000-22300	PIN, PISTON	4							
24	1	22252-000340	RING, 34	8							
25	1	719000-23100	ROD ASSY, CONNECTING	4							
28	2	121850-23200	BOLT, CONNECTING ROD	8							
29	2	719000-23600	BEARING, CRANK PIN	4							
31	1	119000-23910	BEARING, PISTON PIN	4							1
32	1	719000-23610	BEARING ASSY, 0.25	4							2
34	1	719000-22900	PISTON ASSY, 0.25 OS	4							3
36	2	719000-22950	RING SET, 0.25 OS	4							3
42	1	24104-060044	BEARING, BALL 6004UU	1							

Remarks  
 (1) REPAIR PART.  
 (2) UNDER-SIZED(U.S=0.25)PART.  
 (3) OVER-SIZED(O.S=0.25)PART.

Fig.10. LUB.OIL SYSTEM

(A)=4TN100TL-GLD

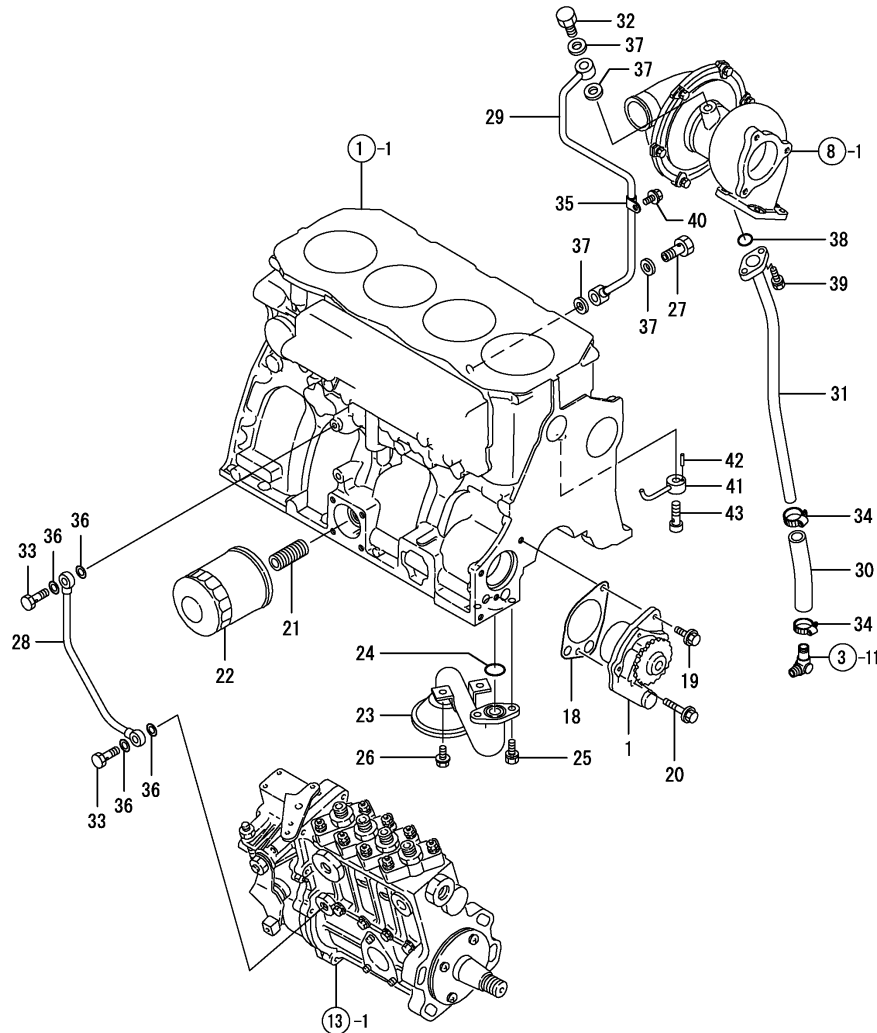
(B)=

(C)=

(D)=

(E)=

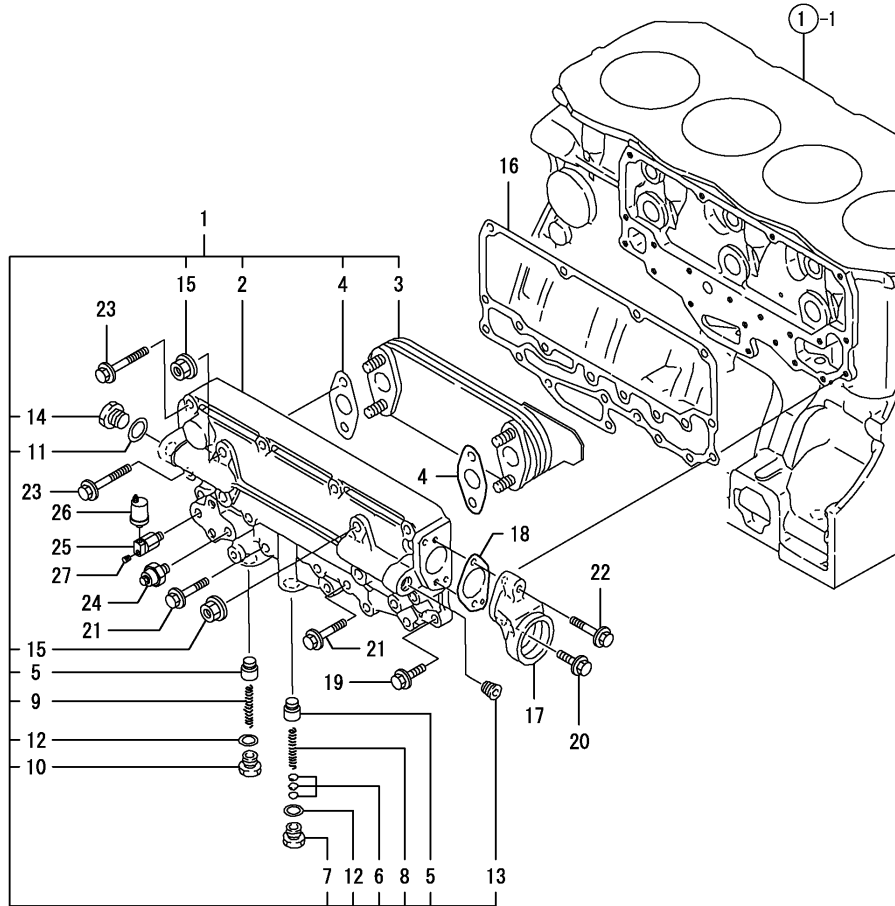
(F)=



No.	Lev.	Parts No.	Description	Q'ty						I	R
				(A)	(B)	(C)	(D)	(E)	(F)		
1	1	119060-32000	PUMP ASSY, OIL	1							
18	1	119000-32020	GASKET, PUMP	1							
19	1	26106-080162	BOLT, M8X 16 PLATED	1							
20	1	26106-080502	BOLT, M8X 50 PLATED	1							
21	1	119000-35140	BOLT, FILTER	1							
22	1	119005-35170	FILTER, D80X100	1							1
23	1	119100-35090	PIPE ASSY, OIL INLET	1							
24	1	24311-000220	O-RING, 1AP22.0	1							
25	1	26013-080162	BOLT, M8X 16	2							
26	1	26106-080162	BOLT, M8X 16 PLATED	2							
27	1	121252-39150	BOLT, JOINT M10X1.5	1							
28	1	119100-39350	PIPE, OIL	1							
29	1	119101-39600	PIPE, OIL	1							
30	1	129792-39610	JOINT, RUBBER	1							
31	1	119101-39650	PIPE, OIL	1							
32	1	124413-39710	BOLT, PIPE JOINT M10	1							
33	1	129198-59540	BOLT, PIPE JOINT M8	2							
34	1	23000-025000	CLAMP, 25	2							
35	1	23297-080081	CLAMP, A8X 8	1							
36	1	23414-080000	GASKET, 8X1.0	4							
37	1	23414-100000	GASKET, 10X1.0	4							
38	1	24314-000180	O-RING, 4CP18.0	1							
39	1	26106-060162	BOLT, M6X 16 PLATED	2							
40	1	26106-080122	BOLT, M8X 12 PLATED	1							
41	1	119000-39650	NOZZLE	4							
42	1	22351-030010	PIN, SPRING 3.0X10	4							
43	1	23857-030000	BOLT, JOINT 3	4							

Remarks  
(1) REPAIR PART.

Fig.11. OIL COOLER



(A)=4TN100TL-GLD

(B)=

(C)=

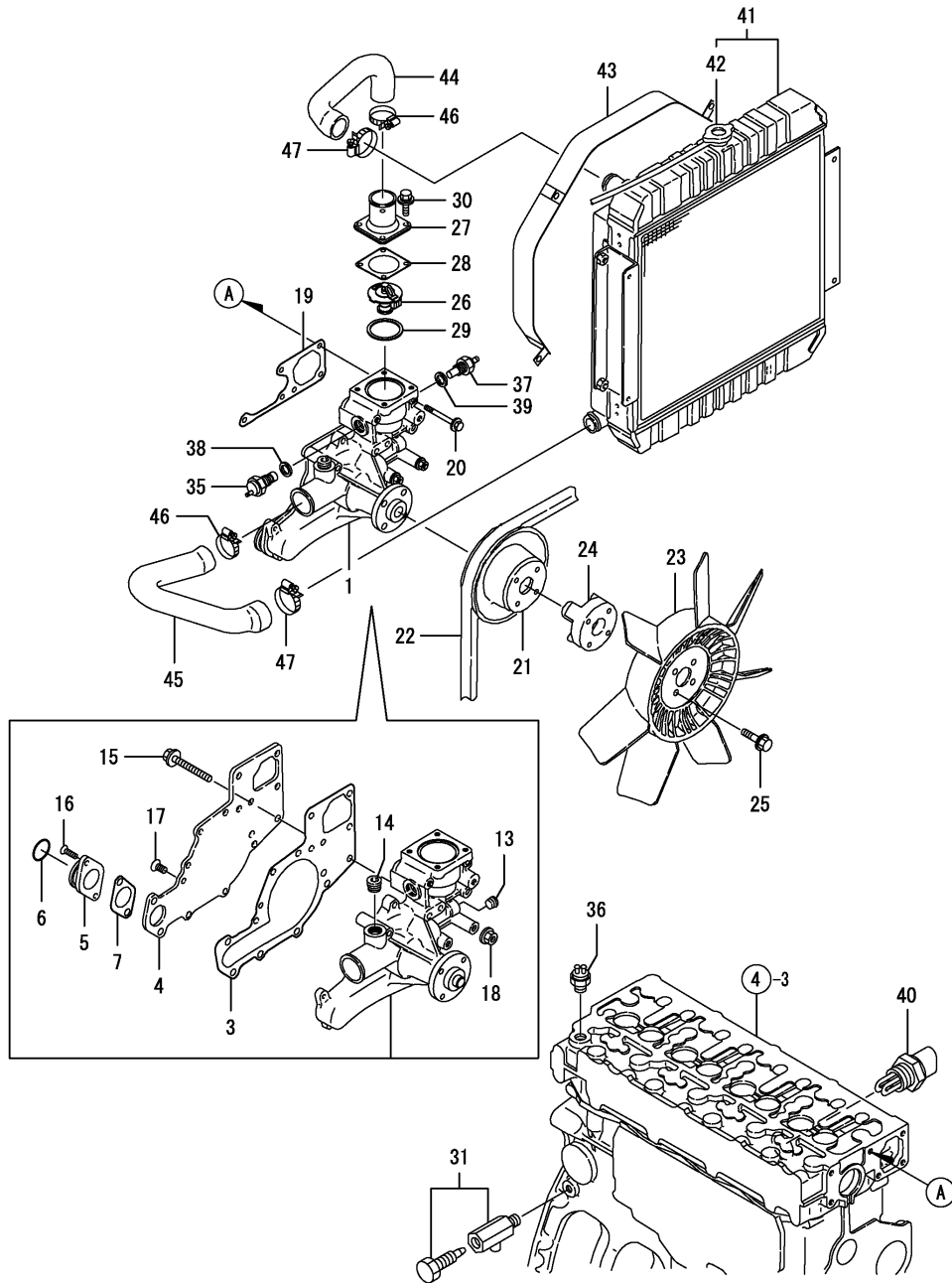
(D)=

(E)=

(F)=

No.	Lev.	Parts No.	Description	Q'ty						I	R
				(A)	(B)	(C)	(D)	(E)	(F)		
1	1	719160-33700	COOLER ASSY, OIL	1							
1-1	1	119141-92600	SET,LO COOLER CMP	1							N
(A=E2009.12)											
2	2	119000-33010	CASE, OIL COOLER	1							
3	2	119000-33050	COOLER, OIL	1							
4	2	121952-33071	GASKET, COOLER	2							
5	2	119160-34030	VALVE, CONTROL	2							
6	2	121850-35230	SHIM, T=1.0	5							
7	2	124223-35510	RETAINER, SPRING	1							
8	2	124411-35520	SPRING	1							
9	2	121952-39830	SPRING	1							
10	2	123672-84530	RETAINER, VALVE	1							
11	2	23414-160000	GASKET, 16X1.0	1							
12	2	23414-180000	GASKET, 18X1.0	2							
12-1	2	23414-170000	GASKET, 17X1.0	2							N
(A=E2009.12)											
13	2	23876-030000	PLUG, R03	1							
14	2	23887-160002	PLUG, 16	1							
15	2	26376-100002	NUT, M10	4							
16	1	119000-33022	GASKET	1							
17	1	119000-33030	BEND	1							
18	1	119000-33041	GASKET	1							
19	1	26106-080202	BOLT, M8X 20 PLATED	3							
20	1	26106-080202	BOLT, M8X 20 PLATED	1							
21	1	26106-080352	BOLT, M8X 35 PLATED	8							
22	1	26106-080352	BOLT, M8X 35 PLATED	1							
23	1	26106-080502	BOLT, M8X 50 PLATED	10							
24	1	183250-39450	SWITCH, 1.0KG	1							
25	1	119140-39610	DAMPER	1							
26	1	119773-91501	SENSOR	1							
27	1	23876-010000	PLUG, R01	1							

Fig.12. COOLING WATER SYSTEM



(A)=4TN100TL-GLD

(B)=

(C)=

(D)=

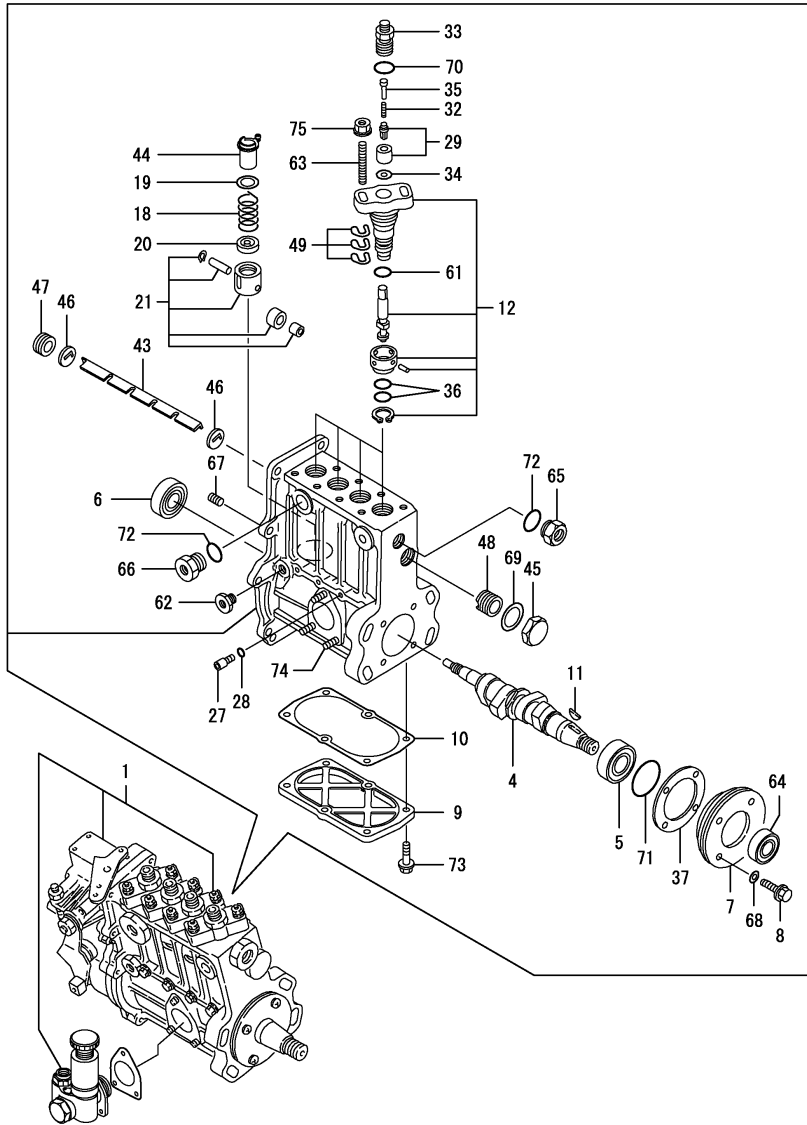
(E)=

(F)=

No.	Lev.	Parts No.	Description	Q'ty						I	R
				(A)	(B)	(C)	(D)	(E)	(F)		
1	1	119006-42003	PUMP ASSY, WATER	1							
3	2	119000-42052	GASKET	1							
4	2	119000-42122	COVER	1							
5	2	119000-42141	FLANGE	1							
6	2	129900-42140	O-RING, P36	1							
7	2	119000-42151	GASKET, WATER PUMP	1							
13	2	23876-020000	PLUG, R02	1							
14	2	23876-030000	PLUG, R03	1							
15	2	26106-080602	BOLT, M8X 60 PLATED	2							
16	2	26577-060202	SCREW, M6X20	2							
17	2	26577-080162	SCREW, M8X16	6							
18	2	26726-080002	NUT, M8	2							
19	1	119000-42021	GASKET, WATER PUMP	1							
20	1	26106-080652	BOLT, M8X 65 PLATED	5							
21	1	119000-42250	V-PULLEY	1							
22	1	25152-004400	V-BELT, A44	1							
23	1	121972-44740	FAN, COOLING	1							
24	1	119141-44760	SPACER, FAN	1							
25	1	26106-080552	BOLT, M8X 55 PLATED	4							
26	1	119000-48170	THERMOSTAT, 71	1							
27	1	129916-49530	COVER, THERMOSTAT	1							
28	1	121850-49540	GASKET, THERMOSTAT	1							
29	1	121850-49550	GASKET, THERMOSTAT	1							
30	1	26014-060202	BOLT, M6X 20	4							
31	1	119620-49290	COCK ASSY, 1/4	1							
35	1	121250-44901	SWITCH, 110	1							
36	1	171375-44900	SWITCH, 15	1							
37	1	171375-44911	SENSOR	1							
38	1	124465-44950	GASKET, 16	1							
39	1	129150-49360	GASKET	1							
40	1	46150-504500	HEATER	1							
41	1	119141-44500	RADIATOR	1							
42	2	119259-44570	CAP, RADIATOR	1							
43	1	119140-44560	PROTECTOR, FAN	1							
44	1	119140-49010	PIPE, WATER	1							
45	1	119140-49020	PIPE, WATER	1							
46	1	23000-048000	CLAMP, 48	2							
47	1	23000-054000	CLAMP, 54	2							



Fig.13. FUEL INJECTION PUMP



(A)=4TN100TL-GLD  
(B)=  
(C)=

(D)=  
(E)=  
(F)=

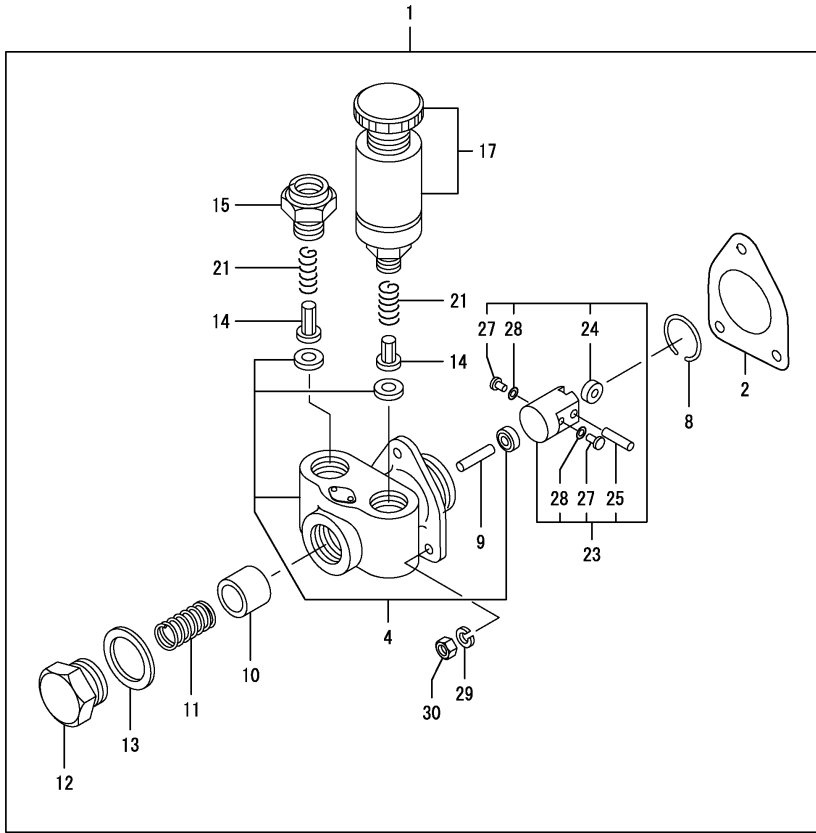
No.	Lev.	Parts No.	Description	Q'ty						I	R
				(A)	(B)	(C)	(D)	(E)	(F)		
1	1	719141-51200	PUMP ASSY, INJECTION	1							1
4	2	119140-51030	CAMSHAFT	1							
5	2	119000-51050	BEARING, HR32005XJ	1							
6	2	122710-51050	BEARING, HR30203J	1							
7	2	119000-51060	SUPPORT, BEARING A	1							
8	2	119175-51070	BOLT, M6X20	4							
9	2	119100-51081	COVER	1							
10	2	119100-51091	GASKET	1							
11	2	144626-51090	KEY, 5X19	1							
12	2	119000-51101	PLUNGER ASSY	4							
18	2	119000-51161	SPRING, PLUNGER	4							
19	2	119000-51170	SEAT, SPRING A	4							
20	2	119000-51181	SEAT, SPRING B	4							
21	2	119000-51201	TAPPET ASSY	4							
27	2	129155-51270	STOPPER, TAPPET	4							
28	2	129155-51280	O-RING, S6	4							
29	2	128400-51300	VALVE ASSY, DELIVERY	4							
32	2	119000-51330	SPRING, DELIVERY	4							
33	2	119000-51340	HOLDER, DELIVERY	4							
34	2	122710-51350	GASKET	4							
35	2	119000-51360	STOPPER, VALVE	4							
36	2	119000-51411	O-RING	8							
37	2	119000-51450	SHIM SET, CAMSHAFT	1							
43	2	119100-51500	RACK, CONTROL	1							
44	2	119000-51511	SLEEVE, CONTROL	4							
45	2	119000-51550	COVER	1							
46	2	119000-51570	GUIDE, RACK	2							
47	2	119000-51580	SCREW	1							
48	2	119000-51590	SCREW	1							
49	2	119000-51650	SHIM SET, ADJUSTING	8							
61	2	158563-51662	O-RING, 4D S26	4							
62	2	121850-51700	BUSH	1							
63	2	119000-51800	BOLT	8							
64	2	119000-51900	SEAL, AC1290E0	1							
65	2	121952-51900	PLUG	1							
66	2	144626-51940	PLUG	1							
67	2	137600-53900	SCREW, M6X6	1							
68	2	22190-060000	WASHER, SEAL 6	4							
69	2	23414-220029	GASKET, 22X1.0	1							
70	2	24316-000150	O-RING, 4DP15.0	4							
71	2	24341-000500	O-RING, 1AS50.0	1							
72	2	24356-190160	O-RING, 4D19016	3							
73	2	26106-060182	BOLT, M6X 18 PLATED	6							
74	2	26216-060162	STUD, M6X 16	3							
75	2	26366-080002	NUT, M8	8							

Remarks  
(1) FEED PUMP(FIG.NO.14) &  
GOVERNOR(FIG.NO.15) IS  
INCORPORATED IN THIS  
FUEL INJECTION PUMP.(REF.NO.1).

Fig.14. FUEL FEED PUMP

(A)=4TN100TL-GLD  
(B)=  
(C)=

(D)=  
(E)=  
(F)=



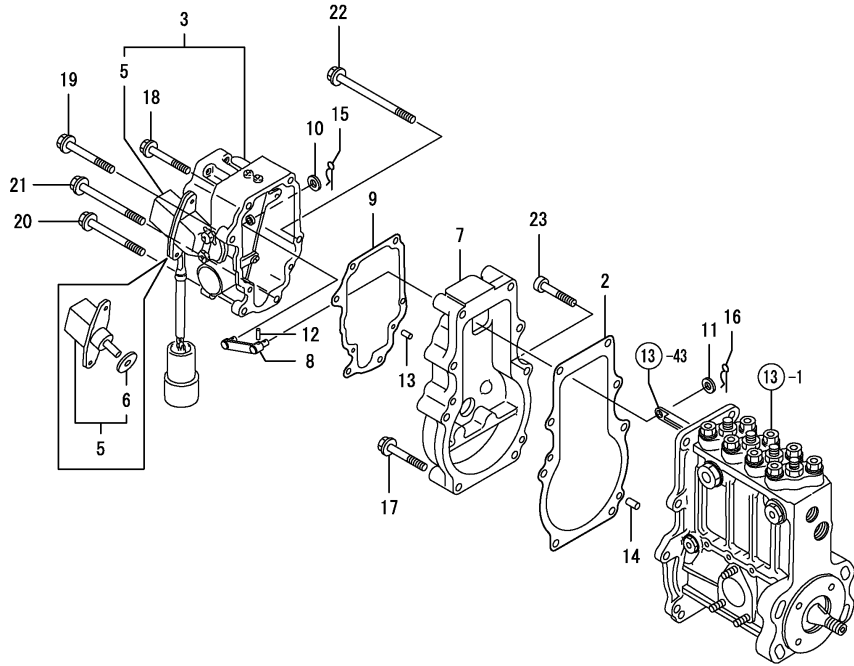
No.	Lev.	Parts No.	Description	Q'ty						I	R
				(A)	(B)	(C)	(D)	(E)	(F)		
1	2	119000-52000	PUMP ASSY, FUEL FEED	1							
2	3	124410-51861	GASKET	1							
4	3	121820-52020	BODY ASSY, PUMP	1							
8	3	121820-52070	PIN	1							
9	3	121820-52160	SPINDLE, INTER	1							
10	3	121820-52170	PISTON	1							
11	3	121820-52180	SPRING, VALVE	1							
12	3	121820-52190	RETAINER, SPRING	1							
13	3	121820-52200	GASKET, 25	1							
14	3	121820-52210	VALVE	2							
15	3	121820-52230	RETAINER, SPRING	1							
17	3	121820-52300	PUMP, PRIMING	1							
21	3	121820-52510	SPRING, VALVE	2							
23	3	119000-52100	TAPPET ASSY	1							
24	4	121820-52110	ROLLER	1							
25	4	148688-52120	PIN, ROLLER	1							
27	4	121820-52140	RETAINER	2							
28	4	119000-52150	SHIM	2							
29	3	22217-060000	WASHER, SPRING 6	3							
30	3	26716-060002	NUT, M6	3							

Remarks  
\* THIS FIGURE(FEED PUMP) IS  
INCORPORATED IN THE FUEL INJECTION  
PUMP ASSY(FIG.13).

Fig.15. GOVERNOR

(A)=4TN100TL-GLD  
(B)=  
(C)=

(D)=  
(E)=  
(F)=



No.	Lev.	Parts No.	Description	Q'ty						I	R
				(A)	(B)	(C)	(D)	(E)	(F)		
2	2	119000-61052	GASKET	1							
3	2	129611-61100	ACTUATOR	1							
5	3	119649-61091	SENSOR	1							
6	4	129611-61180	GASKET	1							
7	2	119140-61110	SPACER	1							
8	2	119140-61120	LINK	1							
9	2	119649-61151	GASKET	1							
10	2	22117-040000	WASHER, 4	1							
11	2	22117-050000	WASHER, 5	1							
12	2	22351-030025	PIN, SPRING 3.0X25	1							
13	2	22351-040010	PIN, SPRING 4.0X10	2							
14	2	22351-050020	PIN, SPRING 5.0X20	2							
15	2	22360-040000	PIN, SNAP 4	1							
16	2	22360-050000	SNAP PIN 5	1							
17	2	26106-060402	BOLT, M6X 40 PLATED	5							
18	2	26106-060452	BOLT, M6X 45 PLATED	2							
19	2	26106-060502	BOLT, M6X 50 PLATED	1							
20	2	26106-060602	BOLT, M6X 60 PLATED	1							
21	2	26106-060702	BOLT, M6X 70 PLATED	1							
22	2	26106-060852	BOLT, M6X 85 PLATED	1							
23	2	26450-060352	BOLT, M6X 35	1							

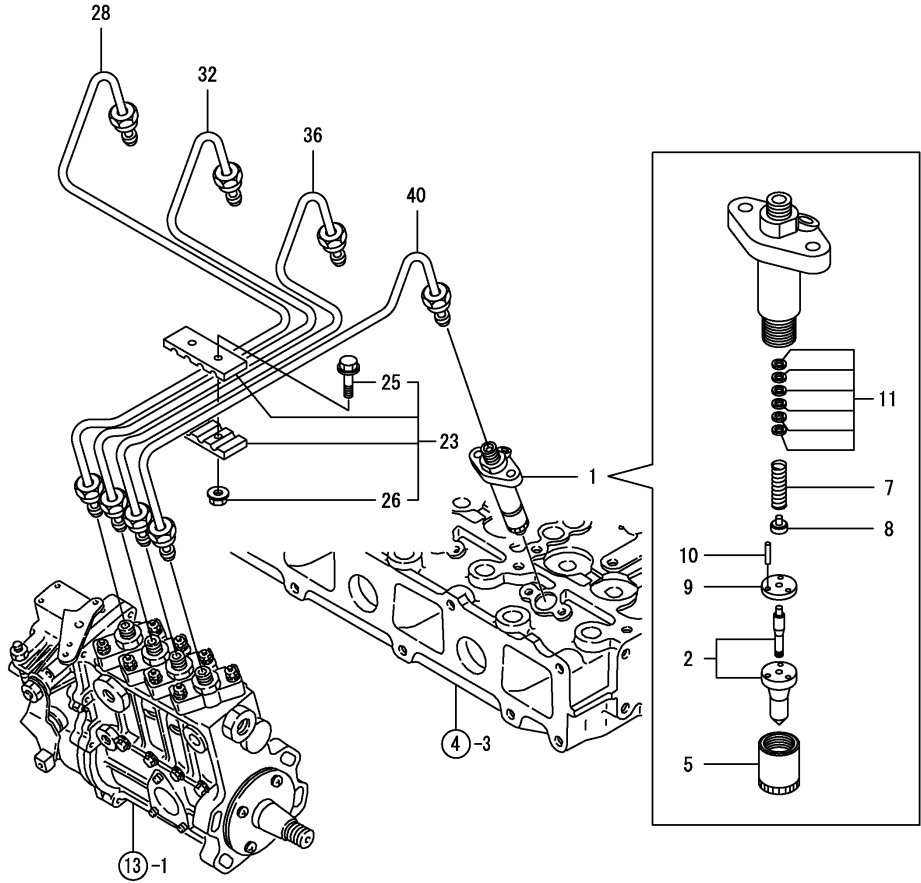
Remarks

\* THIS FIGURE(GOVERNOR ASSY) IS INCORPORATED IN THE FUEL INJECTION PUMP ASSY(FIG.13).

Fig.16. FUEL INJECTION VALVE

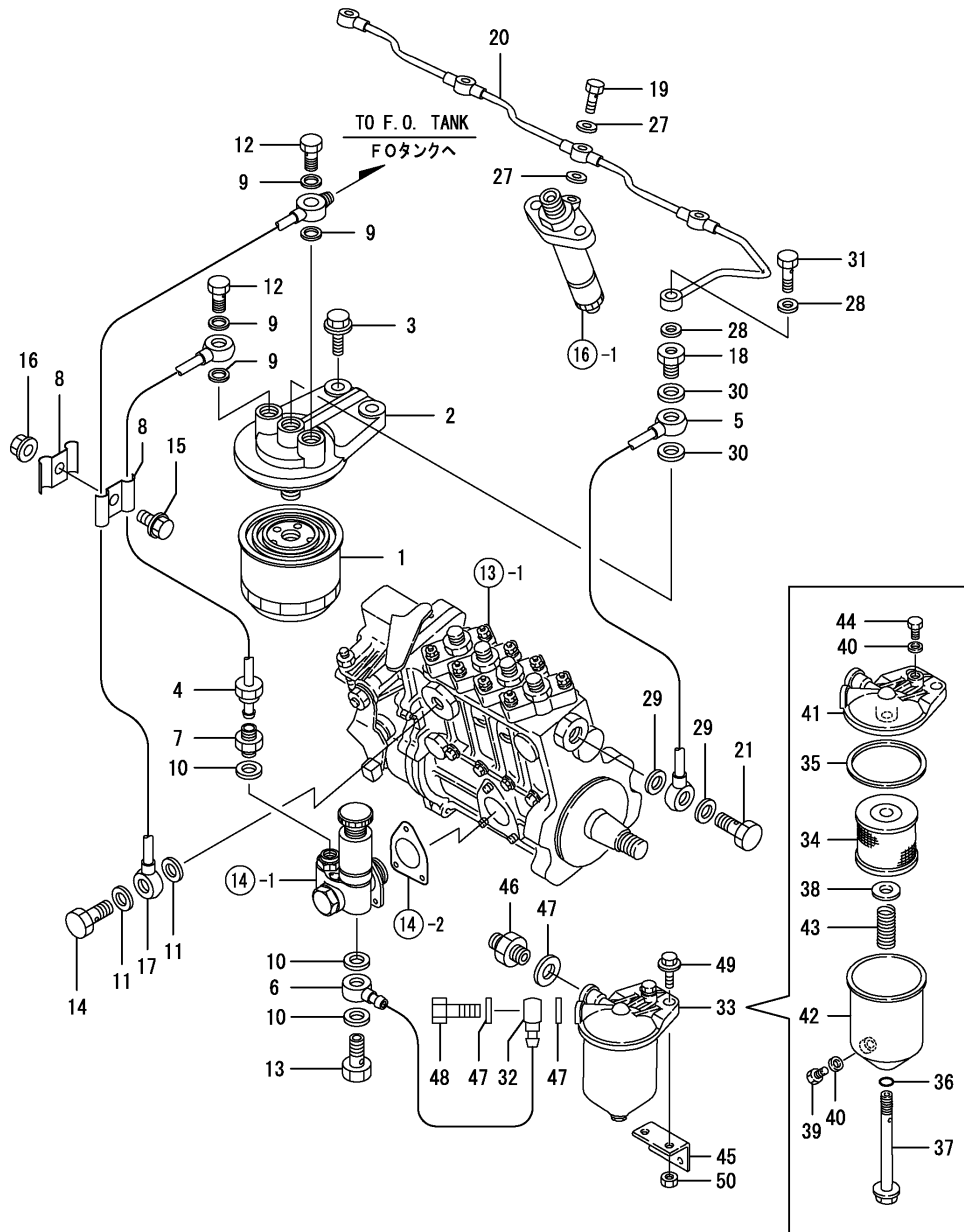
(A)=4TN100TL-GLD  
(B)=  
(C)=

(D)=  
(E)=  
(F)=



No.	Lev.	Parts No.	Description	Q'ty						I	R
				(A)	(B)	(C)	(D)	(E)	(F)		
1	1	719100-53200	VALVE ASSY,INJECTION	4							
2	2	119100-53000	VALVE ASSY,INJECTION	4							
5	2	114250-53080	NUT, NOZZLE D16.95	4							
7	2	114250-53120	SPRING, NOZZLE	4							
8	2	114250-53130	SEAT, SPRING	4							
9	2	114250-53140	PLATE	4							
10	2	114250-53210	PIN	8							
11	2	114250-53400	SHIM SET	4							
23	1	123472-59090	RETAINER ASSY	1							
25	2	26106-060202	BOLT, M6X 20 PLATED	2							
26	2	26366-060002	NUT, M6	2							
28	1	119100-59810	PIPE ASSY, INJECTION	1							
32	1	119100-59820	PIPE ASSY, INJECTION	1							
36	1	119100-59830	PIPE ASSY, INJECTION	1							
40	1	119100-59840	PIPE ASSY, INJECTION	1							

Fig.17. FUEL LINE



(A)=4TN100TL-GLD

(B)=

(C)=

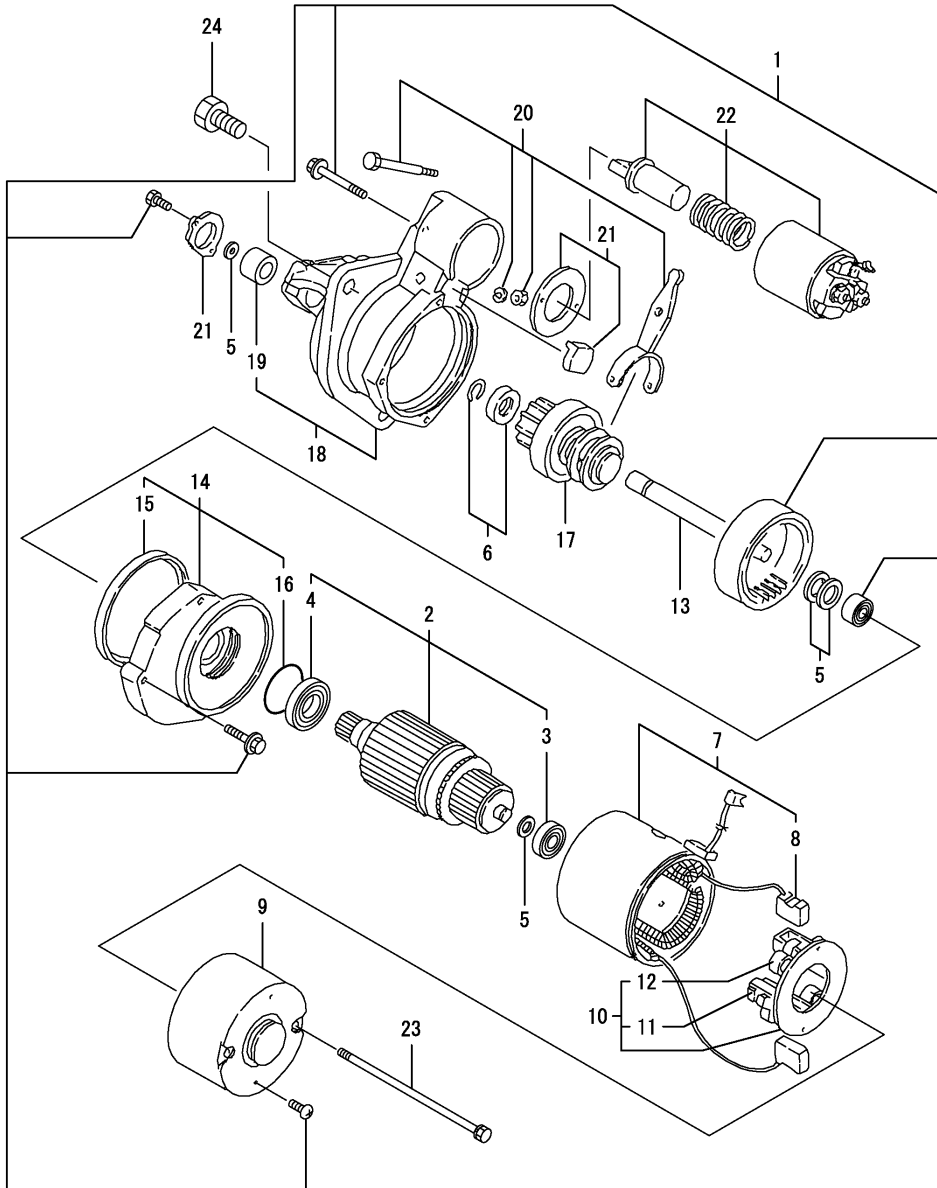
(D)=

(E)=

(F)=

No.	Lev.	Parts No.	Description	Qty						I	R
				(A)	(B)	(C)	(D)	(E)	(F)		
1	1	119000-55602	FILTER, FUEL	1							
2	1	129470-55610	BODY, STRAINER	1							
3	1	26106-100252	BOLT, M10X 25 PLATED	2							
4	1	119141-59010	PIPE, FUEL	1							
5	1	119141-59020	PIPE, FUEL	1							
6	1	171090-59130	JOINT, PIPE	1							
7	1	144628-59520	UNION, 10	1							
8	1	127450-59680	RETAINER	2							
9	1	22190-120002	WASHER, SEAL 12	4							
10	1	22190-140002	WASHER, SEAL 14	3							
10-1	1	124450-01980	GASKET	3							N
(A=E*****)											
11	1	22190-140002	WASHER, SEAL 14	2							
12	1	23857-060000	BOLT, JOINT 6	2							
13	1	23857-080000	BOLT, JOINT 8	1							
14	1	23857-080000	BOLT, JOINT 8	1							
15	1	26106-080142	BOLT, M8X 14 PLATED	1							
16	1	26306-080002	NUT, M8	1							
17	1	119141-59030	PIPE, FUEL	1							
18	1	129495-59300	BOLT, PIPE JOINT	1							
19	1	129491-59540	BOLT, PIPE JOINT M6	4							
20	1	119140-59550	PIPE, FUEL	1							
21	1	119813-59950	VALVE ASSY, CHECK	1							
27	1	22190-060002	WASHER, SEAL 6	8							
28	1	22190-080002	WASHER, SEAL 6	2							
29	1	22190-120002	WASHER, SEAL 12	2							
30	1	22190-140002	WASHER, SEAL 14	2							
31	1	23857-030000	BOLT, JOINT 3	1							
32	1	110250-39030	JOINT	1							
33	1	120324-55750	SEPARATOR ASSY	1							
34	2	120324-55760	ELEMENT	1							
35	2	X0582810173	GASKET	1							
36	2	X0580121073	O-RING, 1A P 12.0	1							
37	2	X0311121522	BOLT	1							
38	2	X0300120414	SEAT, SPRING	1							
39	2	X0313080110	BOLT	1							
40	2	X0588080273	WASHER	2							
41	2	X2740134001	COVER ASSY	1							
42	2	X2540025002	CASE ASSY	1							
43	2	X0600160122	SPRING	1							
44	2	X0314080110	PLUG	1							
45	1	123672-55811	BRACKET	1							
46	1	171090-59140	JOINT	1							
47	1	22190-140002	WASHER, SEAL 14	3							
48	1	23857-080000	BOLT, JOINT 8	1							
49	1	26106-100302	BOLT, M10X 30 PLATED	2							
50	1	26706-100002	NUT, M10	2							

Fig.18. STARTING MOTOR



(A)=4TN100TL-GLD

(B)=

(C)=

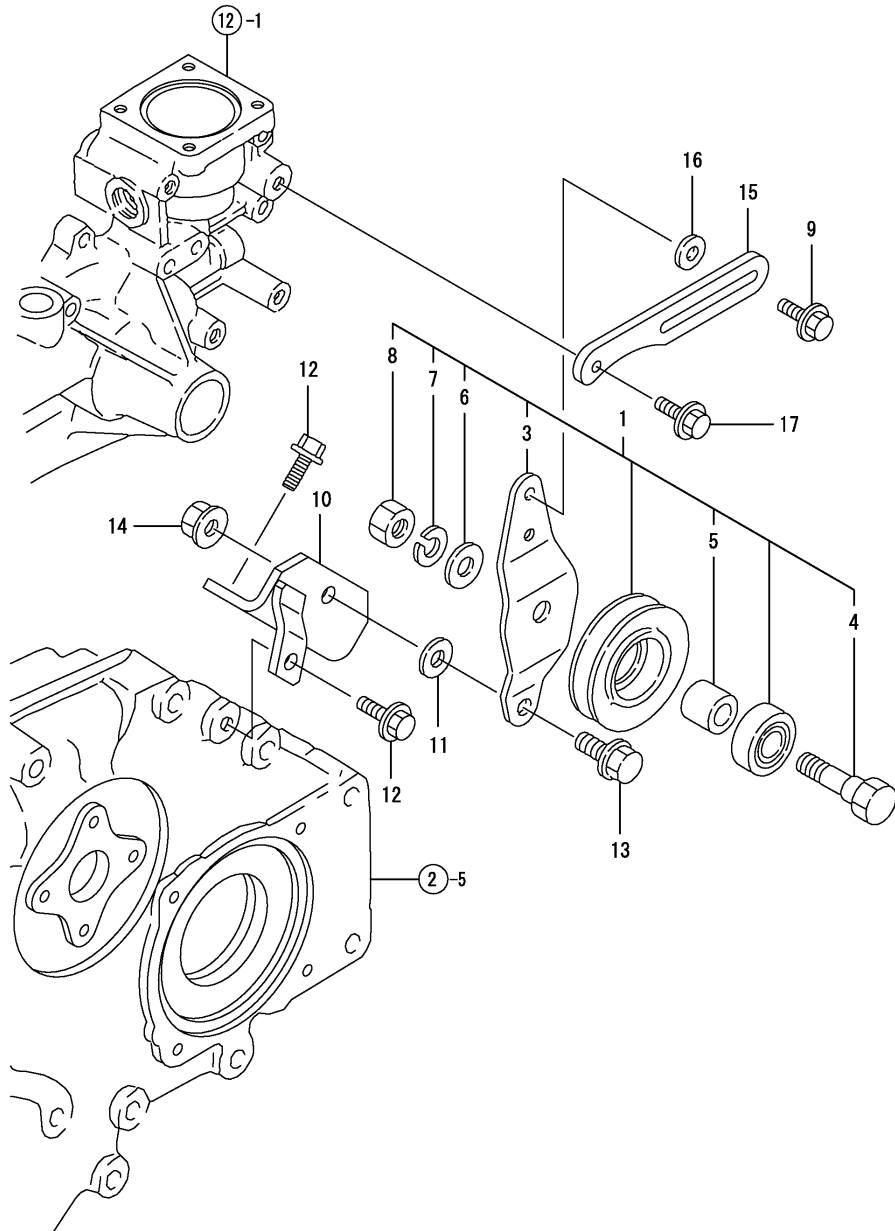
(D)=

(E)=

(F)=

No.	Lev.	Parts No.	Description	Q'ty						I	R
				(A)	(B)	(C)	(D)	(E)	(F)		
1	1	124610-77019	STARTING MOTOR	1							
2	2	X213011001	ARMATURE ASSY	1							
3	3	X21302302	BALL BEARING	1							
4	3	X21303302	BALL BEARING	1							
5	2	X21302115	WASHER KIT, THRUST	1							
6	2	X21303119	STOPPER SET, PINION	1							
7	2	X21308220	COIL ASSY, FIELD	1							
8	3	X21308311	BRUSH (+)	2							
9	2	X225013012	COVER, REAR	1							
10	2	X21307305	HOLDER ASSY, BRUSH	1							
11	3	X21305312	BRUSH (-)	2							
12	3	X21305313	SPRING, BRUSH	4							
13	2	X225011113	SHAFT ASSY, GEAR	1							
14	2	X21304400	BEARING ASSY, CENTER	1							
15	3	X21301402	SEAL, OIL	1							
16	3	X21302402	O-RING	1							
17	2	X213035002	PINION ASSY	1							
18	2	X213046003	HOUSING ASSY, GEAR	1							
19	3	X21302601	METAL, CASE BEARING	1							
20	2	X21302605	LEVER SET	1							
21	2	X21303610	COVER SET, DUST	1							
22	2	X213017001	SWITCH ASSY, MAGNET.	1							
23	2	X21305820	BOLT, THROUGH	2							
24	1	26116-120252	BOLT, M12X 25 PLATED	3							

Fig.19. TENSION PULLEY



(A)=4TN100TL-GLD  
(B)=  
(C)=

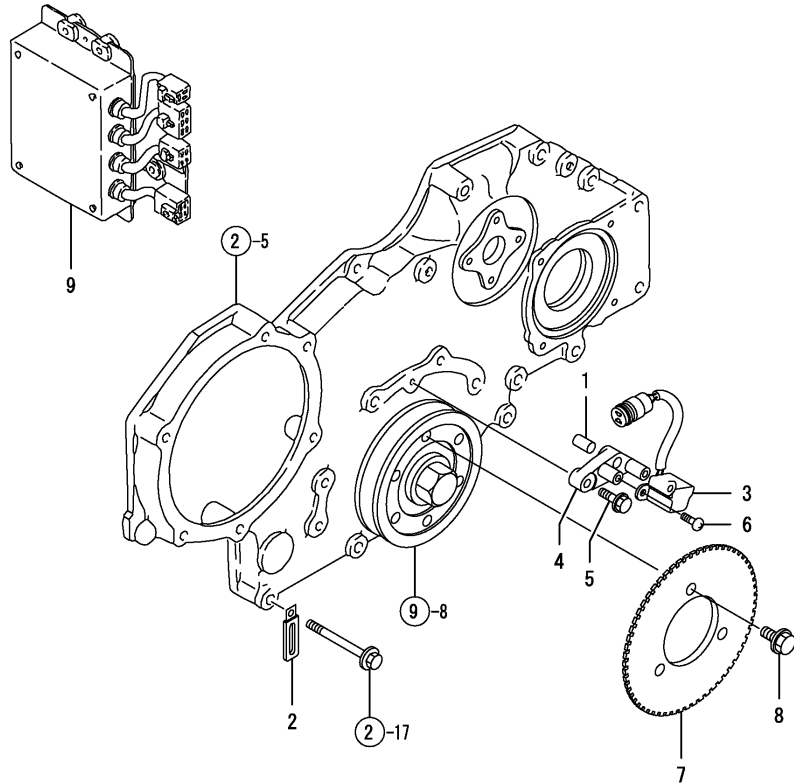
(D)=  
(E)=  
(F)=

No.	Lev.	Parts No.	Description	Q'ty						I	R
				(A)	(B)	(C)	(D)	(E)	(F)		
1	1	171325-44291	PULLEY ASSY, TENSION	1							
3	2	171325-44301	BRACKET, PULLEY	1							
4	2	171325-44310	BOLT	1							
5	2	171325-44320	SPACER	1							
6	2	22127-120000	WASHER, 12	1							
7	2	22217-120000	WASHER, SPRING 12	1							
8	2	26716-120002	NUT, M12	1							
9	1	119810-77340	BOLT, ADJUSTER	1							
10	1	119000-77350	BRACKET, GENERATOR	1							
11	1	119140-77910	WASHER	1							
12	1	26106-080202	BOLT, M8X 20 PLATED	4							
13	1	26106-100252	BOLT, M10X 25 PLATED	1							
14	1	26306-100002	NUT, M10	1							
15	1	121522-77330	ADJUSTER	1							
16	1	121236-77340	SPACER	1							
17	1	26106-080222	BOLT, M8X 22 PLATED	1							

Fig.20. PULSER

(A)=4TN100TL-GLD  
(B)=  
(C)=

(D)=  
(E)=  
(F)=



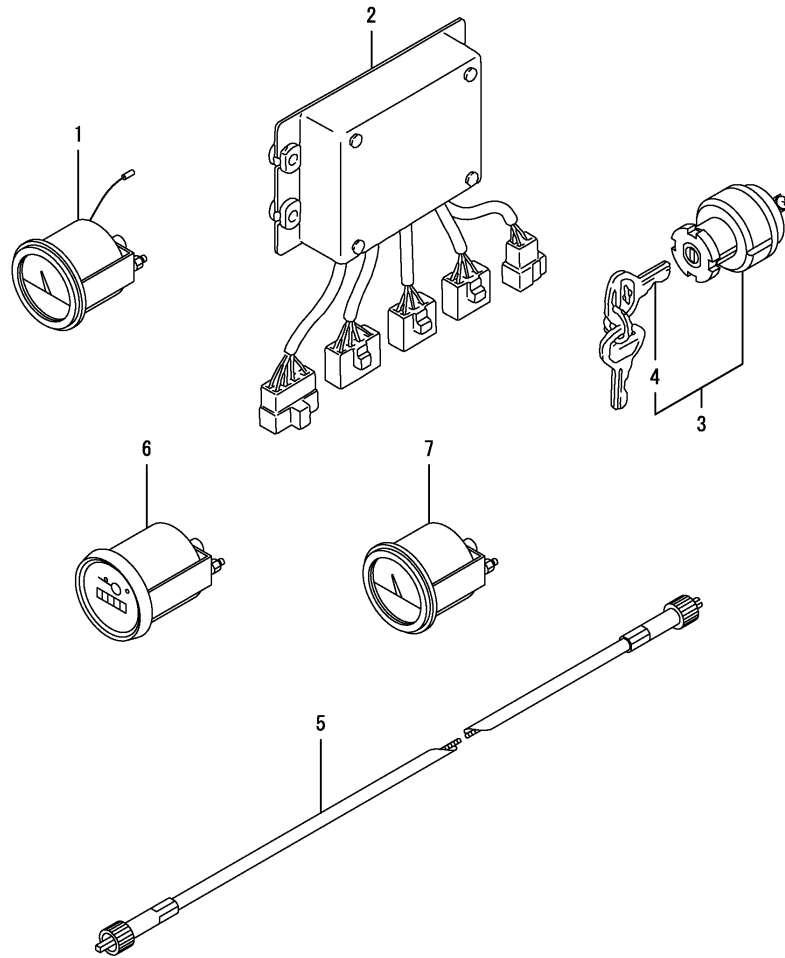
No.	Lev.	Parts No.	Description	Q'ty						I	R
				(A)	(B)	(C)	(D)	(E)	(F)		
1	1	129100-01580	PIN, M8X16	1							
2	1	194180-51640	CLAMP, HARNESS	1							
3	1	119649-78500	PULSAR	1							
4	1	119140-78510	BRACKET, PULSAR	1							
5	1	26106-060222	BOLT, M6X 22 PLATED	1							
6	1	26557-040082	SCREW, M4X 8	2							
7	1	119140-78650	GEAR, PULSAR	1							
8	1	26106-100142	BOLT, M10X 14 PLATED	3							
9	1	119140-78801	CONTROLLER, 4P	1							



Fig.21. ELECTRIC PARTS

(A)=4TN100TL-GLD  
(B)=  
(C)=

(D)=  
(E)=  
(F)=

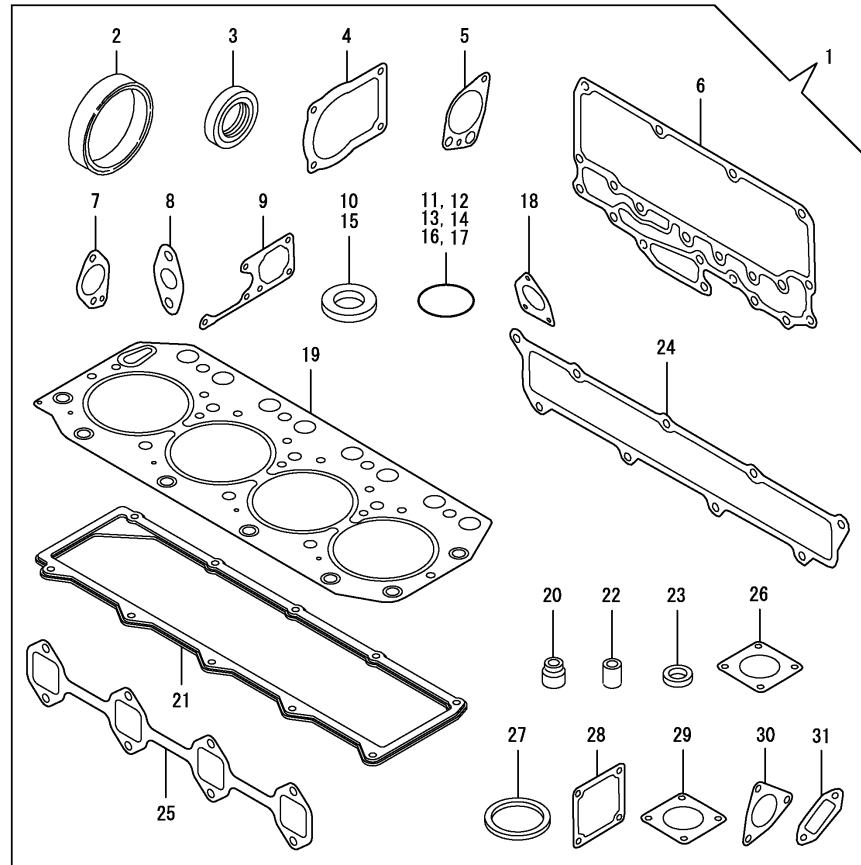


No.	Lev.	Parts No.	Description	Q'ty						I	R
				(A)	(B)	(C)	(D)	(E)	(F)		
1	1	171010-77850	THERMOSTAT	2							
2	1	119140-78810	CONTROLLER	1							
3	1	121400-91251	SWITCH, STARTER	1							
4	2	121400-91271	KEY, SWITCH	1							
5	1	42130-502220	CABLE, TACHOMETER	1							
6	1	46150-513390	TACHOMETER	1							
7	1	46150-513400	GAUGE	1							

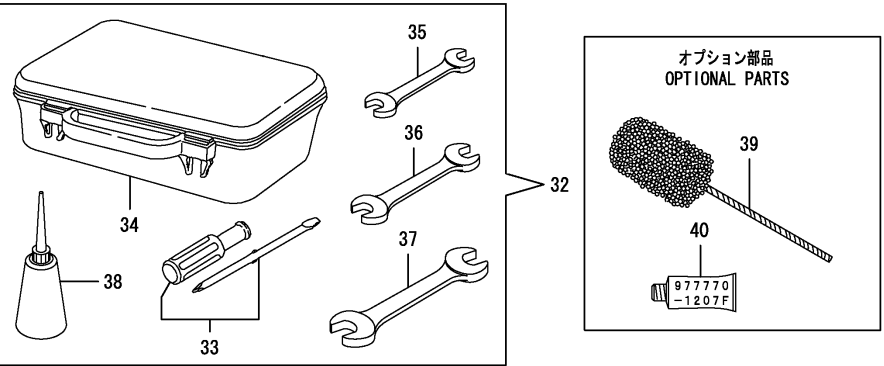
Fig.22. GASKET SET

(A)=4TN100TL-GLD  
(B)=  
(C)=

(D)=  
(E)=  
(F)=



No.	Lev.	Parts No.	Description	Q'ty						I	R
				(A)	(B)	(C)	(D)	(E)	(F)		
1	1	719100-92611	GASKET SET	1							1
2	2	124411-01780	SEAL, HTC95X115X12	1							
3	2	121850-01800	SEAL, OIL	1							
4	2	124610-01862	GASKET	2							
5	2	119000-32020	GASKET, PUMP	1							
6	2	119000-33022	GASKET	1							
7	2	119000-33041	GASKET	1							
8	2	121952-33071	GASKET, COOLER	2							
9	2	119000-42021	GASKET, WATER PUMP	1							
10	2	124465-44950	GASKET, 16	1							
11	2	124410-51960	O-RING	1							
12	2	24311-000220	O-RING, 1AP22.0	1							
13	2	129900-42140	O-RING, P36	1							
14	2	24341-000240	O-RING, 1AS24.0	1							
15	2	129150-49360	GASKET	1							
16	2	24341-001350	O-RING, 1AS135.0	1							
17	2	24311-000320	O-RING, 1AP32.0	2							
18	2	124410-51861	GASKET	1							
19	2	119100-01340	GASKET, HEAD T=1.3	1							
20	2	121850-11150	SEAL, VALVE STEM	8							
21	2	119100-11320	GASKET, BONNET	1							
22	2	119625-11870	PROTECTOR, NOZZLE	4							
23	2	119625-11880	SEAT, NOZZLE	4							
24	2	119100-12113	GASKET, MANIFOLD	1							
25	2	119101-13200	GASKET	1							
26	2	121850-49540	GASKET, THERMOSTAT	1							
27	2	121850-49550	GASKET, THERMOSTAT	1							
28	2	121850-77021	GASKET	2							
29	2	129472-18090	GASKET	1							
30	2	129472-13520	GASKET	1							
31	2	119000-01771	GASKET	1							
32	1	721400-92102	BOX ASSY, TOOL	1							
33	2	104200-92350	DRIVER, SCREW	1							
34	2	104200-92600	BOX, TOOL	1							
35	2	28110-100120	SPANNER, 10X12	1							
36	2	28110-140170	SPANNER, 14X17	1							
37	2	28110-190220	SPANNER, 19X22	1							
38	2	28210-000140	OILER	1							
39	1	129400-92450	HONE	1							1
40	1	977770-1207F	GASKET.LIQUID	1							1



Remarks  
(1) OPTIONAL PART.

## Parts No. Index

Parts No.	Fig. No.	Ref. No.
104200-92350	22	33
104200-92600	22	34
106100-55800	7	20
110250-39030	17	32
114250-53080	16	5
114250-53120	16	7
114250-53130	16	8
114250-53140	16	9
114250-53210	16	10
114250-53400	16	11
119000-01200	1	28
119000-01590	2	5
119000-01760	2	20
119000-01771	2	21
	22	31
119000-01840	1	14
119000-01880	1	6
119000-01930	2	8
119000-02020	1	19
119000-02410	1	8
119000-02450	7	2
119000-07200	4	1
119000-11230	4	37
119000-11260	4	31
119000-11270	4	32
119000-11280	4	33
119000-11290	4	34
119000-11810	4	26
119000-11990	4	11
119000-14100	7	4
119000-14200	7	6
119000-22000	9	15
119000-22300	9	23
119000-23910	9	31
119000-25050	7	9
119000-25100	7	10
119000-25900	7	16
119000-25910	7	17
119000-25920	7	18
119000-25930	7	13
119000-32020	10	18
	22	5
119000-33010	11	2
119000-33022	11	16
	22	6
119000-33030	11	17
119000-33041	11	18
	22	7
119000-33050	11	3
119000-35140	10	21

Parts No.	Fig. No.	Ref. No.
119000-39650	10	41
119000-42021	12	19
	22	9
119000-42052	12	3
119000-42122	12	4
119000-42141	12	5
119000-42151	12	7
119000-42250	12	21
119000-48170	12	26
119000-51050	13	5
119000-51060	13	7
119000-51101	13	12
119000-51161	13	18
119000-51170	13	19
119000-51181	13	20
119000-51201	13	21
119000-51330	13	32
119000-51340	13	33
119000-51360	13	35
119000-51411	13	36
119000-51450	13	37
119000-51511	13	44
119000-51550	13	45
119000-51570	13	46
119000-51580	13	47
119000-51590	13	48
119000-51650	13	49
119000-51800	13	63
119000-51900	13	64
119000-52000	14	1
119000-52100	14	23
119000-52150	14	28
119000-55602	17	1
119000-61052	15	2
119000-77350	19	10
119005-35170	10	22
119006-03090	4	53
119006-42003	12	1
119060-32000	10	1
119100-01340	1	29
	22	19
119100-01640	3	21
119100-01730	3	4
119100-03200	4	46
119100-11220	4	28
119100-11230	4	27
119100-11320	4	47
	22	21
119100-11330	4	48
119100-11990	4	12

Parts No.	Fig. No.	Ref. No.
119100-12113	5	6
	22	24
119100-12120	5	3
119100-14000	7	1
119100-21700	9	1
119100-35090	10	23
119100-39350	10	28
119100-51081	13	9
119100-51091	13	10
119100-51500	13	43
119100-53000	16	2
119100-59810	16	28
119100-59820	16	32
119100-59830	16	36
119100-59840	16	40
119101-11110	4	15
119101-12850	5	12
119101-13100	6	1
119101-13200	6	2
	22	25
119101-18020	8	1
119101-18500	8	2
119101-18510	8	9
119101-18520	8	13
119101-18530	8	15
119101-18540	8	16
119101-18550	8	17
119101-18560	8	18
119101-18570	8	19
119101-39600	10	29
119101-39650	10	31
119129-11520	4	43
119131-18320	6	9
119131-18390	6	10
119131-18401	6	11
119140-01600	3	1
119140-01780	3	5
119140-01980	1	30
119140-21590	9	12
119140-34801	3	25
119140-39610	11	25
119140-44560	12	43
119140-49010	12	44
119140-49020	12	45
119140-51030	13	4
119140-59550	17	20
119140-61110	15	7
119140-61120	15	8
119140-77910	19	11
119140-78510	20	4

Parts No.	Fig. No.	Ref. No.
119140-78650	20	7
119140-78801	20	9
119140-78810	21	2
119141-21650	9	8
119141-44500	12	41
119141-44760	12	24
119141-59010	17	4
119141-59020	17	5
119141-59030	17	17
119141-92600	11	1 -1
119160-34030	11	5
119175-51070	13	8
119259-44570	12	42
119593-01870	1	5
119620-49290	12	31
119625-11870	4	40
	22	22
119625-11880	4	41
	22	23
119640-01640	3	6
119649-61091	15	5
119649-61151	15	9
119649-78500	20	3
119773-91501	11	26
119802-13600	6	3
119802-13770	6	5
119810-77340	19	9
119813-59950	17	21
119885-01990	4	5
120324-55750	17	33
120324-55760	17	34
121236-77340	19	16
121250-44901	12	35
121252-39150	10	27
121400-91251	21	3
121400-91271	21	4
121470-44900	3	13
121520-34810	3	26
121522-77330	19	15
121820-52020	14	4
121820-52070	14	8
121820-52110	14	24
121820-52140	14	27
121820-52160	14	9
121820-52170	14	10
121820-52180	14	11
121820-52190	14	12
121820-52200	14	13
121820-52210	14	14
121820-52230	14	15

## Parts No. Index

Parts No.	Fig. No.	Ref. No.
121820-52300	14	17
121820-52510	14	21
121850-01800	2	7
	22	3
121850-01900	7	15
121850-01920	2	3
121850-11100	4	14
121850-11120	4	16
121850-11150	4	17
	22	20
121850-11180	4	18
121850-11800	4	25
121850-21130	9	11
121850-21200	9	3
121850-21290	9	4
121850-21660	9	9
121850-21680	9	10
121850-21920	9	5
121850-23200	9	28
121850-35230	11	6
121850-49540	12	28
	22	26
121850-49550	12	29
	22	27
121850-51700	13	62
121850-77021	5	4
		15
	22	28
121850-77100	5	16
121952-33071	11	4
	22	8
121952-39830	11	9
121952-51900	13	65
121972-44740	12	23
122710-51050	13	6
122710-51350	13	34
123472-59090	16	23
123672-55811	17	45
123672-84530	11	10
123900-13620	6	4
124060-01050	1	4
124070-13300	3	11
124160-01751	2	19
	4	44
124223-35510	11	7
124410-51861	14	2
	22	18
124410-51960	7	23
	22	11
124411-01780	3	23

Parts No.	Fig. No.	Ref. No.
124411-01780	22	2
124411-35520	11	8
124413-39710	10	32
124450-01980	17	10 -1
124465-44950	12	38
	22	10
124610-01851	2	24
124610-01862	2	25
	22	4
124610-77019	18	1
124976-34850	3	12
127410-21480	9	14
127450-59680	17	8
127610-44900	3	8
128400-51300	13	29
129100-01580	1	11
		12
		13
	2	4
	20	1
129150-03100	4	54
129150-11750	4	38
129150-14400	7	7
129150-49360	12	39
	22	15
129150-91400	2	29
129155-51270	13	27
129155-51280	13	28
129198-59540	10	33
129400-92450	22	39
129403-18620	8	14
129404-18510	8	3
129404-18520	8	4
129404-18530	8	5
129404-18540	8	6
129404-18550	8	7
129404-18560	8	8
129404-18580	8	10
129404-18590	8	11
129404-18600	8	12
129404-18680	8	20
129404-18720	8	23
129406-18690	8	21
129406-18700	8	22
129412-12460	5	10
129418-18320	6	6
129470-55610	17	2
129472-13520	6	8
	22	30
129472-18090	8	24

Parts No.	Fig. No.	Ref. No.
129472-18090	22	29
129491-59540	17	19
129495-59300	17	18
129611-61100	15	3
129611-61180	15	6
129792-39610	10	30
129795-11750	3	2
129900-42140	12	6
	22	13
129916-49530	12	27
135602-34390	1	15
137600-53900	13	67
144626-51090	13	11
144626-51940	13	66
144628-59520	17	7
148688-52120	14	25
158563-51662	13	61
171010-77850	21	1
171051-01921	1	7
171090-59130	17	6
171090-59140	17	46
171325-44291	19	1
171325-44301	19	3
171325-44310	19	4
171325-44320	19	5
171375-44900	12	36
171375-44911	12	37
183250-39450	11	24
194180-51640	20	2
22117-040000	15	10
22117-050000	15	11
22117-120000	3	14
22127-120000	19	6
22190-060000	13	68
22190-060002	17	27
22190-080002	17	28
22190-080003	2	9
22190-120002	17	9
		29
22190-140002	17	10
		11
		30
		47
22190-220002	3	9
22190-360002	3	10
22217-060000	14	29
22217-120000	19	7
22217-180000	7	21
22242-000180	4	39
22252-000340	9	24

Parts No.	Fig. No.	Ref. No.
22351-030010	10	42
22351-030025	15	12
22351-040010	15	13
22351-050012	7	22
22351-050020	15	14
22351-080016	1	16
22360-040000	15	15
22360-050000	15	16
22512-070140	7	5
	9	6
23000-025000	10	34
23000-048000	12	46
23000-054000	5	11
	12	47
23000-060000	5	13
23000-070000	5	14
23297-080081	10	35
23414-080000	10	36
23414-100000	10	37
23414-140000	1	17
23414-160000	3	15
	11	11
23414-170000	6	12
	11	12 -1
23414-180000	11	12
23414-220029	13	69
23857-030000	10	43
	17	31
23857-060000	17	12
23857-080000	17	13
		14
		48
23876-005000	4	13
23876-010000	11	27
23876-020000	1	18
	12	13
23876-030000	1	9
	11	13
	12	14
23887-160002	11	14
23894-030002	6	13
24104-060044	9	42
24311-000220	10	24
	22	12
24311-000320	2	22
	4	51
	22	17
24314-000180	10	38
24316-000150	13	70
24341-000240	2	31

## Parts No. Index

Parts No.	Fig. No.	Ref. No.
24341-000240	22	14
24341-000500	13	71
24341-001350	7	19
	22	16
24356-190160	13	72
25152-004400	12	22
26013-080162	10	25
26013-080452	7	14
26014-060202	12	30
26014-080202	6	14
26106-060162	2	32
	10	39
26106-060182	13	73
26106-060202	16	25
26106-060222	20	5
26106-060402	15	17
26106-060452	15	18
26106-060502	1	31
	15	19
26106-060602	15	20
26106-060702	15	21
26106-060852	15	22
26106-080122	10	40
26106-080142	5	5
	17	15
26106-080162	1	32
	7	8
	10	19
		26
26106-080182	2	10
26106-080202	2	11
		26
		27
	5	7
	11	19
		20
	19	12
26106-080222	19	17
26106-080252	2	23
	3	16
		24
	4	52
	7	24
26106-080352	3	17
	11	21
		22
26106-080402	2	12
26106-080452	2	13
		14

Parts No.	Fig. No.	Ref. No.
26106-080502	2	15
	10	20
	11	23
26106-080552	2	16
	12	25
26106-080602	12	15
26106-080652	4	42
	12	20
26106-080702	3	18
	5	8
26106-080752	2	17
26106-080802	3	19
26106-080902	2	18
26106-081152	5	9
26106-100142	20	8
26106-100202	4	2
26106-100252	17	3
	19	13
26106-100302	3	3
	17	49
26116-120252	18	24
26116-120852	3	20
26216-060162	13	74
26216-060252	4	19
26216-080652	4	20
26306-080002	2	28
	4	21
	6	7
		15
	8	25
	17	16
26306-100002	7	25
	19	14
26366-060002	4	22
	16	26
26366-080002	13	75
26376-100002	11	15
26450-060352	15	23
26476-050102	4	50
26557-040082	20	6
26577-060202	12	16
26577-080162	12	17
26706-100002	17	50
26716-060002	14	30
26716-120002	19	8
26726-080002	12	18
26776-180002	7	26
27231-600000	1	33
27241-140000	1	10
27310-090001	4	23

Parts No.	Fig. No.	Ref. No.
28110-100120	22	35
28110-140170	22	36
28110-190220	22	37
28210-000140	22	38
42130-502220	21	5
46150-504500	12	40
46150-513390	21	6
46150-513400	21	7
719000-02800	1	20
719000-02870	1	34
719000-02930	1	23
719000-02940	1	37
719000-22500	9	17
719000-22900	9	34
719000-22950	9	36
719000-23100	9	25
719000-23600	9	29
719000-23610	9	32
719100-53200	16	1
719100-92611	22	1
719129-01500	2	1
719129-11660	4	35
719129-12100	5	1
719140-01561	1	1
719141-11711	4	3
719141-51200	13	1
719160-33700	11	1
721400-92102	22	32
977770-1207F	22	40
X0300120414	17	38
X0311121522	17	37
X0313080110	17	39
X0314080110	17	44
X0580121073	17	36
X0582810173	17	35
X0588080273	17	40
X0600160122	17	43
X213011001	18	2
X21301402	18	15
X213017001	18	22
X21302115	18	5
X21302302	18	3
X21302402	18	16
X21302601	18	19
X21302605	18	20
X21303119	18	6
X21303302	18	4
X213035002	18	17
X21303610	18	21
X21304400	18	14

Parts No.	Fig. No.	Ref. No.
X213046003	18	18
X21305312	18	11
X21305313	18	12
X21305820	18	23
X21307305	18	10
X21308220	18	7
X21308311	18	8
X22501113	18	13
X225013012	18	9
X2540025002	17	42
X2740134001	17	41