

OCD10-M93700EN

PREFACE

1. This parts catalog is the 1st edition of 4TN100L-GLD for Ohatsu Co.,Ltd.

Pub.No. : 000Y00D9370

Published : February,2007

2. Model name

Engine model	Vehicle		Vehicle made by
	Products	Model name	
4TN100L-GLD	4P GENERATOR	—	Ohatsu Co.,Ltd.

Directions for the Parts Catalog.

1. This Parts Catalog shows both standard and optional parts.
2. Parts may change without prior notice.
3. The following is an example of the Parts Catalog format.

REF.	LEV.	PARTS NO.	DESCRIPTION	Q'TY						I	R
				(A)	(B)	(C)	(D)	(E)	(F)		
1	1	729595-51390	FUEL INJECTION PUMP	1	1	1	1	1			1
1-1	1	729595-51391	FUEL INJECTION PUMP	1	1	1	1	1		N	1
		(A=E00185) (B=E00200)									
3	2	26022-060162	SCREW M 6X 16	9	9	9	9	9			
3-1	2	26022-060162	SCREW M 6X 16	4	4	4	4	4		K	
		(A=E00156) (B=E00156) (C=E00156) (D=E00156) (E=E00156)									
4	2	129470-51040	CAMSHAFT	1	1	1	1	1			
5	2	122710-51050	BEARING, ROLLER	2	2	2	2	2			
6	2	129470-51060	RETAINER	1	1	1	1	1			

Remarks
(1) BOOST COMPEMSATOR TYPE. OPTIONAL PART, TO E00155,(4JH-DT, 4JH-DTZ

① Ref. No.

The Ref. No. listed may not be in accordance with the illustration Ref. No.

(Ex.) Illustration No.

List Ref No.

1

1

(Before change)

1-1

(After change)

For interchangeable symbols N, R and K, illustrations for new parts may be abbreviated.

② Lev. (Level)

Level indication

The numbers below indicate the level of relativity towards the main part.

1 ----- Main parts (Assembly parts)

2 ----- Sub component included in " 1 ".

3 ----- Sub component included in " 2 ".

Note) Parts that are not for sale are partially illustrated but not listed.

③ Interchangeability Symbol

When a part change takes place, one of the following interchangeability symbols is indicated beside the part.

Symbol	Interchangeability	Contents note
N	Old $\begin{matrix} \leftarrow \text{Yes} \\ \text{No} \rightarrow \end{matrix}$ New	New Part is interchangeable for Old Part but Old Part is not interchangeable for New Part.
Q	Old $\begin{matrix} \leftarrow \text{No} \\ \text{Yes} \rightarrow \end{matrix}$ New	New Part is not interchangeable for Old Part but Old Part is interchangeable for New Part.
R	Old $\begin{matrix} \leftarrow \text{Yes} \\ \text{Yes} \rightarrow \end{matrix}$ New	New/ Old Parts are both interchangeable.
S	Old $\begin{matrix} \leftarrow \text{No} \\ \text{No} \rightarrow \end{matrix}$ New	New/ Old Parts are both not interchangeable.
W		Part newly added.
Z		Part discontinued.
F		Not interchangeable by a single part but interchangeable together with related parts.
K		Changes only for used parts quantities.

④ Effective Machine No.

When a part changes, the effective Machine No. will be indicated in the (A)-(F) column.

Product Symbol	Product No.	Product Symbol	Product No.
C	Clutch No. Compressor No.	F	Machine No. (Agricultural Equip.)
D	Drive No.	M	Machine No.
E	Engine No.		

Note 1) A date may follow the symbol. (Ex.) 1996.01

Note 2) "XXXXX" and "ZZZZZ" are for parts that could not be predicted or for engine models that could not be identified.

Note 3) (A=E00185) is the E (Engine Serial Number) for the column (A) model (in this case 4JH-DT) after the parts design change.

⑤ Remarks

Figures or alphabets (symbols) are entered in the remarks column.

The comments (remarks) on parts that are indicated at the bottom of the illustration are the same symbols as those stated above.

Contents

OCD10-M93700

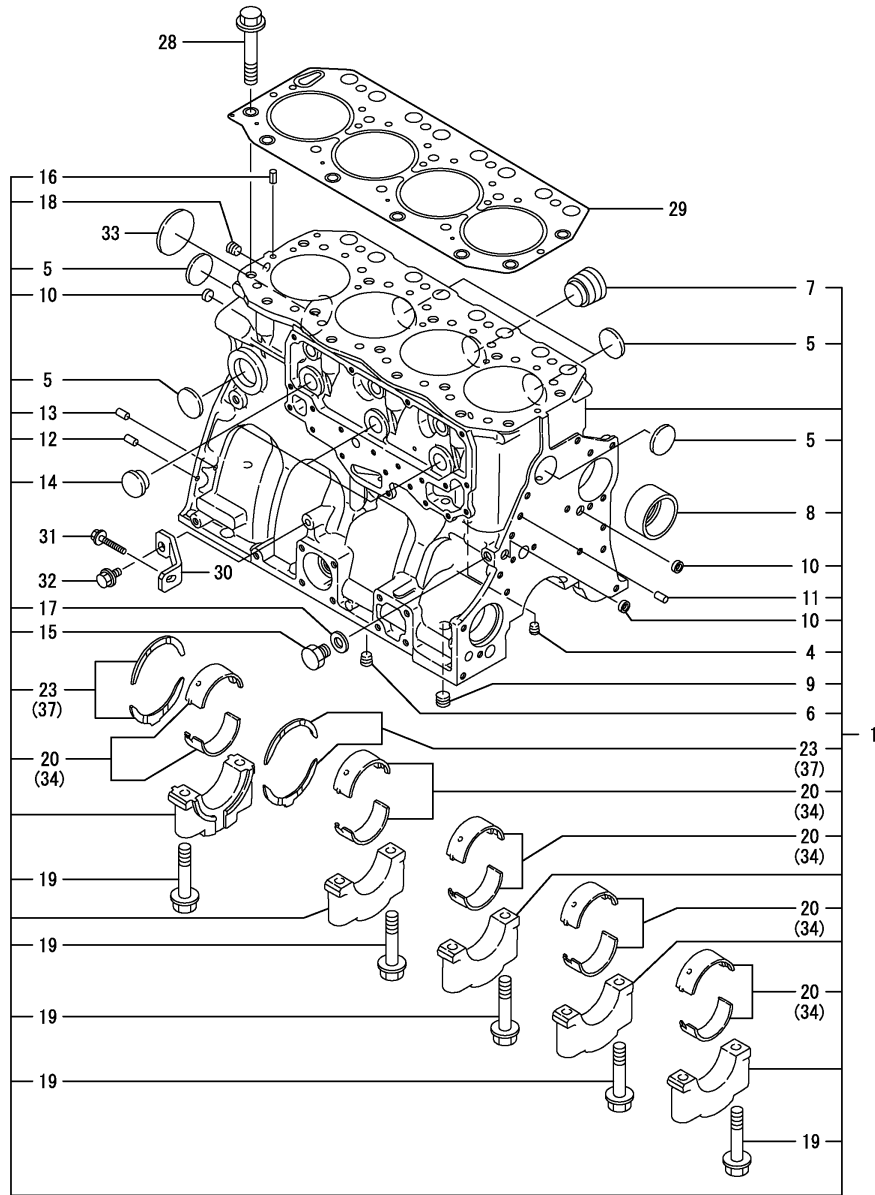
Fig. No. Fig. Name

Fig. No. Fig. Name

4TN100L-GLD

1. CYLINDER BLOCK
2. GEAR HOUSING
3. FLYWHEEL HOUSING & OIL SUMP
4. CYLINDER HEAD & BONNET
5. SUCTION MANIFOLD & AIR CLEANER
6. EXHAUST MANIFOLD
7. CAMSHAFT & DRIVING GEAR
8. CRANKSHAFT & PISTON
9. LUB. OIL SYSTEM
10. OIL COOLER
11. COOLING WATER SYSTEM
12. FUEL INJECTION PUMP
13. FUEL FEED PUMP
14. GOVERNOR
15. FUEL INJECTION VALVE
16. FUEL LINE
17. STARTING MOTOR
18. TENSION PULLEY
19. PULSER
20. ELECTRIC PARTS
21. GASKET SET
22. TOOLS (OPTIONAL PART)

Fig.1. CYLINDER BLOCK



(A)=4TN100L-GLD
(B)=
(C)=

(D)=
(E)=
(F)=

No.	Lev.	Parts No.	Description	Q'ty						I	R
				(A)	(B)	(C)	(D)	(E)	(F)		
1	1	719140-01561	BLOCK ASSY, CYLINDER	1							
4	2	124060-01050	PLUG, PT1/8	1							
5	2	119593-01870	PLUG	5							
6	2	119000-01880	SCREW	1							
7	2	171051-01921	PLUG, NPTF1	1							
8	2	119000-02410	BUSH, CAMSHAFT	1							
9	2	23876-030000	PLUG, R03	1							
10	2	27241-140000	PLUG, 14	3							
11	2	129100-01580	PIN, M8X16	2							
12	2	129100-01580	PIN, M8X16	2							
13	2	129100-01580	PIN, M8X16	2							
14	2	119000-01840	PLUG, RUBBER	3							
15	2	135602-34390	RETAINER	1							
16	2	22351-080016	PIN, SPRING 8.0X16	2							
17	2	23414-140000	GASKET, 14X1.0	1							
18	2	23876-020000	PLUG, R02	1							
19	2	119000-02020	BOLT, METAL CAP	10							
20	2	719000-02800	BEARING, MAIN	5							
23	2	719000-02930	BEARING, THRUST	2							
28	1	119000-01200	BOLT, HEAD	18							
29	1	119100-01340	GASKET, HEAD T=1.3	1							
30	1	119140-01980	RETAINER, PUMP	1							
31	1	26106-060502	BOLT, M6X 50 PLATED	1							
32	1	26106-080162	BOLT, M8X 16 PLATED	1							
33	1	27231-600000	PLUG, 60	1							
34	1	719000-02870	BEARING, 0.25 US	5							1
37	1	719000-02940	BEARING, THRUST 0.25	2							2

Remarks

- (1) UNDER-SIZED(U.S=0.25)PART.
- (2) OVER-SIZED(O.S=0.25)PART.

Fig.2. GEAR HOUSING

(A)=4TN100L-GLD

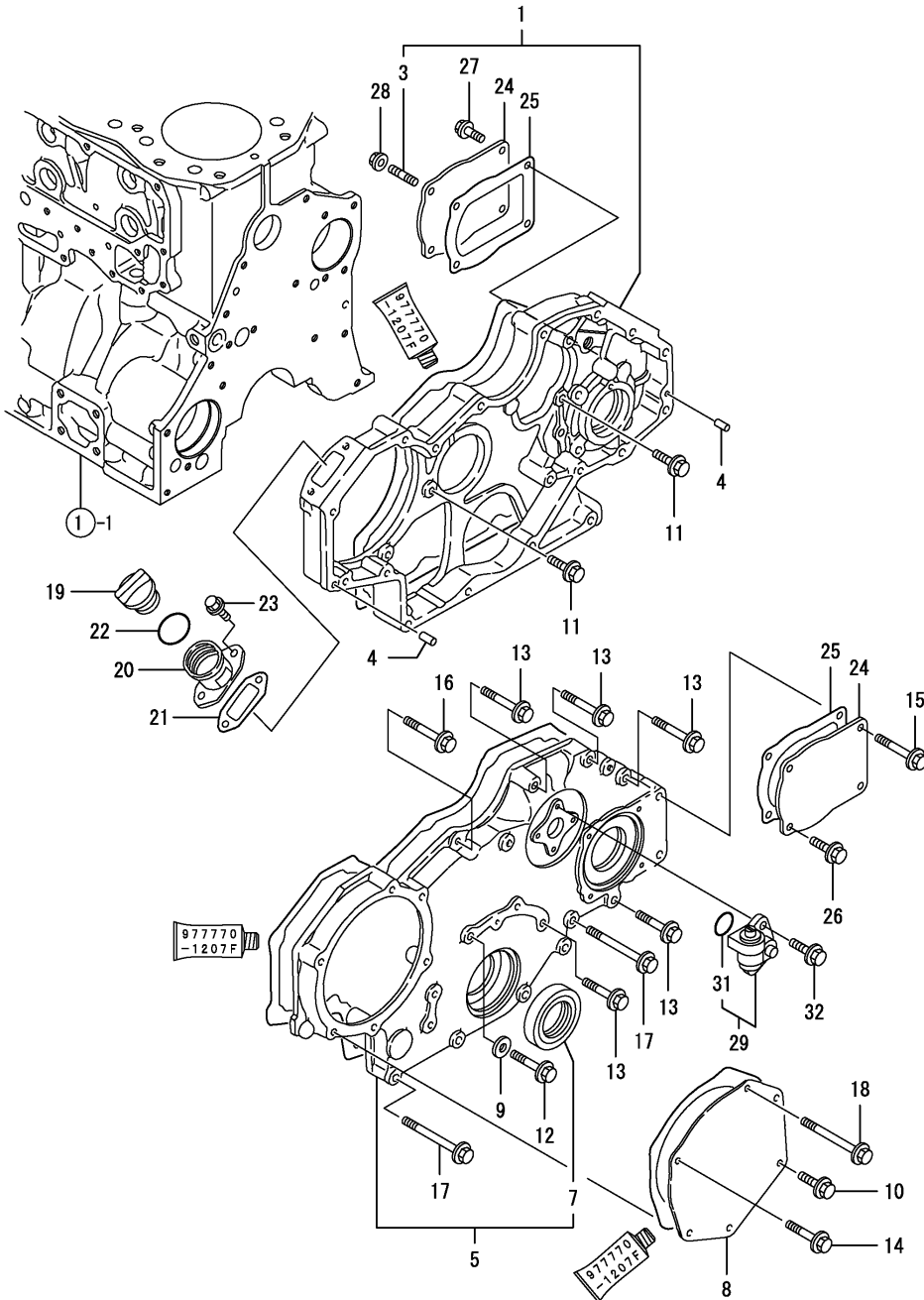
(B)=

(C)=

(D)=

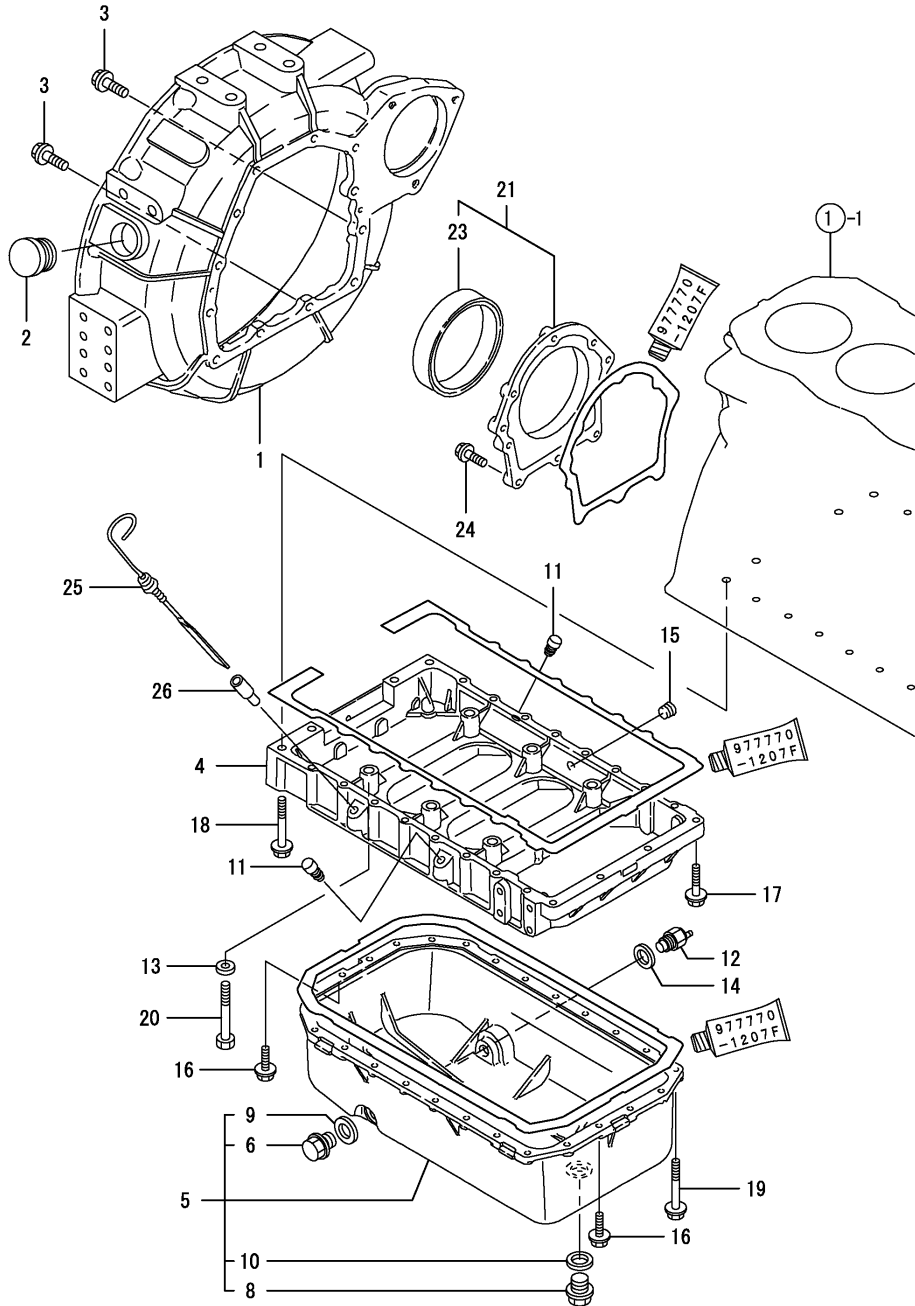
(E)=

(F)=



No.	Lev.	Parts No.	Description	Q'ty						I	R
				(A)	(B)	(C)	(D)	(E)	(F)		
1	1	719129-01500	COVER ASSY,GEAR CASE	1							
3	2	121850-01920	STUD, 2D8X22	2							
4	1	129100-01580	PIN, M8X16	2							
5	1	119000-01590	COVER ASSY,GEAR CASE	1							
7	2	121850-01800	SEAL, OIL	1							
8	1	119000-01930	COVER	1							
9	1	22190-080003	WASHER, SEAL 8	1							
10	1	26106-080182	BOLT, M8X 18 PLATED	1							
11	1	26106-080202	BOLT, M8X 20 PLATED	5							
12	1	26106-080402	BOLT, M8X 40 PLATED	1							
13	1	26106-080452	BOLT, M8X 45 PLATED	5							
14	1	26106-080452	BOLT, M8X 45 PLATED	3							
15	1	26106-080502	BOLT, M8X 50 PLATED	2							
16	1	26106-080552	BOLT, M8X 55 PLATED	1							
17	1	26106-080752	BOLT, M8X 75 PLATED	4							
18	1	26106-080902	BOLT, M8X 90 PLATED	2							
19	1	124160-01751	COVER, FILLER	1							
20	1	119000-01760	FLANGE	1							
21	1	119000-01771	GASKET	1							
22	1	24311-000320	O-RING, 1AP32.0	1							
23	1	26106-080252	BOLT, M8X 25 PLATED	2							
24	1	124610-01851	COVER	2							
25	1	124610-01862	GASKET	2							
26	1	26106-080202	BOLT, M8X 20 PLATED	2							
27	1	26106-080202	BOLT, M8X 20 PLATED	2							
28	1	26306-080002	NUT, M8	2							
29	1	129150-91400	GEAR	1							
31	2	24341-000240	O-RING, 1AS24.0	1							
32	1	26106-060162	BOLT, M6X 16 PLATED	2							

Fig.3. FLYWHEEL HOUSING & OIL SUMP



(A)=4TN100L-GLD
(B)=
(C)=

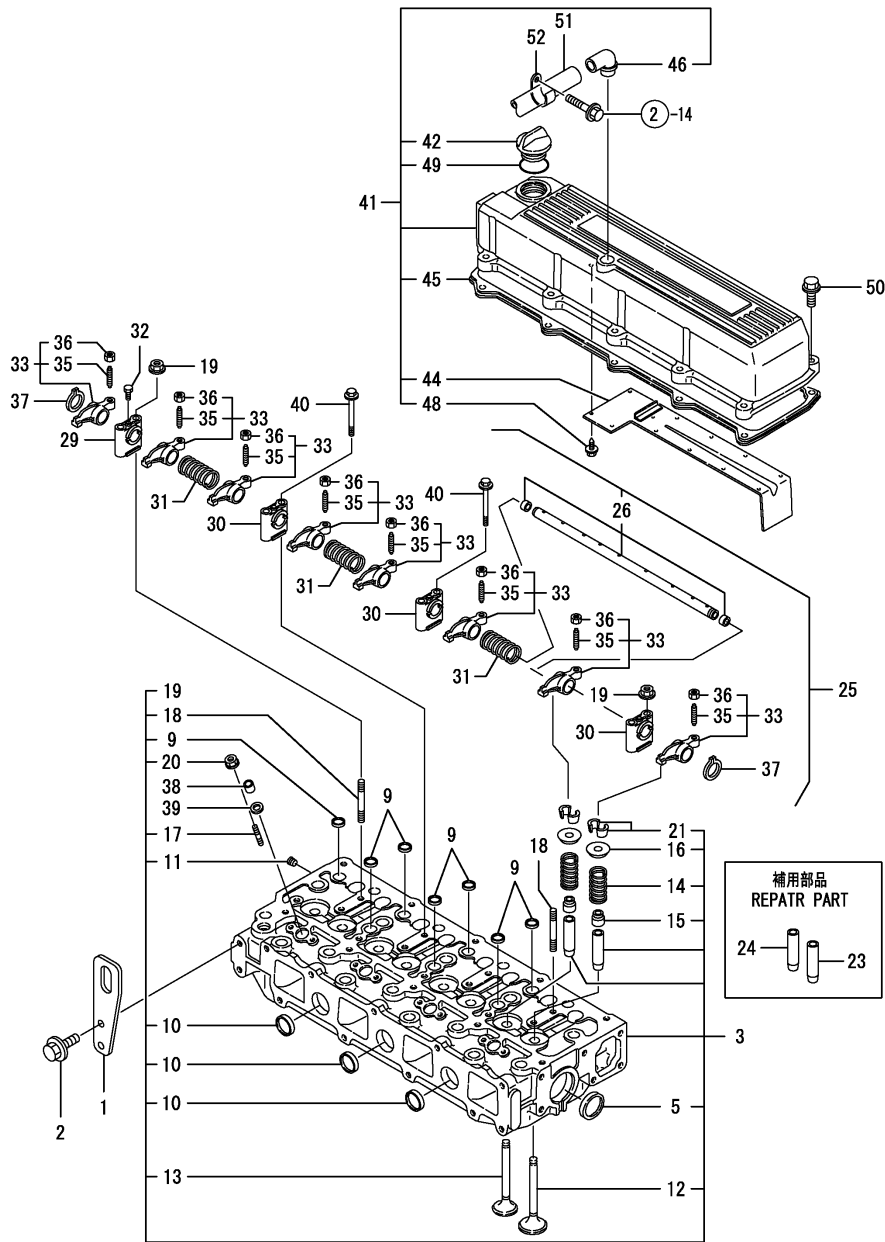
(D)=
(E)=
(F)=

No.	Lev.	Parts No.	Description	Q'ty						I	R
				(A)	(B)	(C)	(D)	(E)	(F)		
1	1	119140-01600	HOUSING, FLYWHEEL	1							
2	1	129795-11750	CAP	1							
3	1	26106-100302	BOLT, M10X 30 PLATED	12							
4	1	119100-01730	SPACER	1							
5	1	119140-01780	SUMP ASSY, OIL	1							
6	2	119640-01640	PLUG, DRAIN M22	1							
8	2	127610-44900	PLUG, M36X1.5	1							
9	2	22190-220002	WASHER, SEAL 22	1							
10	2	22190-360002	WASHER, SEAL 36	1							
11	1	124976-34850	CAP	2							
12	1	121470-44900	SENSOR	1							
13	1	22117-120000	WASHER, 12	6							
14	1	23414-160000	GASKET, 16X1.0	1							
15	1	23876-030000	PLUG, R03	1							
16	1	26106-080252	BOLT, M8X 25 PLATED	8							
17	1	26106-080352	BOLT, M8X 35 PLATED	4							
18	1	26106-080702	BOLT, M8X 70 PLATED	2							
19	1	26106-080802	BOLT, M8X 80 PLATED	18							
20	1	26116-120852	BOLT, M12X 85 PLATED	6							
21	1	119100-01640	CASE ASSY, OIL SEAL	1							
23	2	124411-01780	SEAL, HTC95X115X12	1							
24	1	26106-080252	BOLT, M8X 25 PLATED	8							
25	1	119140-34801	DIPSTICK, OIL	1							
26	1	121520-34810	GUIDE, DIPSTICK	1							

Fig.4. CYLINDER HEAD & BONNET

(A)=4TN100L-GLD
(B)=
(C)=

(D)=
(E)=
(F)=



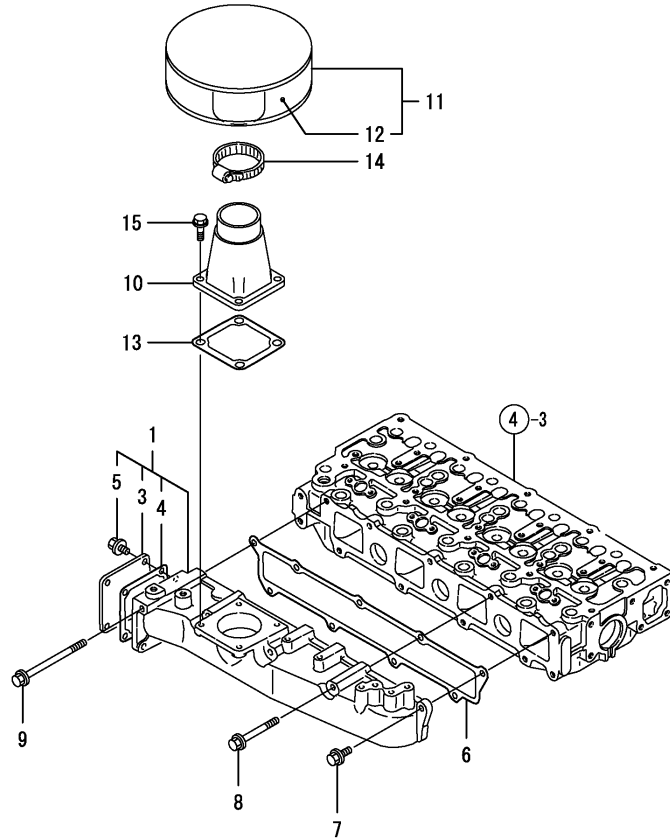
No.	Lev.	Parts No.	Description	(A)	(B)	(C)	(D)	(E)	(F)	Q'ty	I	R
1	1	119000-07200	LIFTER							2		
2	1	26106-100202	BOLT, M10X 20 PLATED							4		
3	1	719129-11701	HEAD ASSY, CYLINDER							1		
5	2	119885-01990	PLUG, 40							2		
9	2	119000-11990	PLUG, 16							7		
10	2	119100-11990	PLUG, 28							3		
11	2	23876-005000	PLUG, R005							1		
12	2	121850-11100	VALVE, INTAKE							4		
13	2	119000-11110	VALVE, EXHAUST							4		
14	2	121850-11120	SPRING, VALVE							8		
15	2	121850-11150	SEAL, VALVE STEM							8		
16	2	121850-11180	RETAINER, SPRING							8		
17	2	26216-060252	STUD, M6X 25							8		
18	2	26216-080652	STUD, M8X 65							2		
19	2	26306-080002	NUT, M8							2		
20	2	26366-060002	NUT, M6							8		
21	2	27310-090001	COTTER, 9							8		
23	1	121850-11800	GUIDE, VALVE							4		1
24	1	119000-11810	GUIDE, VALVE							4		1
25	1	119100-11230	SHAFT ASSY, ROCKER							1		
26	2	119100-11220	SHAFT ASSY, ROCKER							1		
29	2	119000-11260	SUPPORT, ROCKER ARM							1		
30	2	119000-11270	SUPPORT, ROCKER ARM							3		
31	2	119000-11280	SPRING							3		
32	2	119000-11290	BOLT							1		
33	2	719129-11660	ARM ASSY, ROCKER							8		
35	3	119000-11230	SCREW, VALVE ADJUST							8		
36	3	129150-11750	NUT, M8							8		
37	2	22242-000180	RING, 18							2		
38	1	119625-11870	PROTECTOR, NOZZLE							4		
39	1	119625-11880	SEAT, NOZZLE							4		
40	1	26106-080652	BOLT, M8X 65 PLATED							6		
41	1	119129-11520	BONNET ASSY, HEAD							1		
42	2	124160-01751	COVER, FILLER							1		
44	2	119100-03200	COVER							1		
45	2	119100-11320	GASKET, BONNET							1		
46	2	119100-11330	ELBOW							1		
48	2	26476-050102	SCREW, TAPPING M5X10							11		
49	2	24311-000320	O-RING, 1AP32.0							1		
50	1	26106-080252	BOLT, M8X 25 PLATED							10		
51	1	119006-03090	HOSE, BREATHER							1		
52	1	129150-03100	RETAINER, PIPE							1		

Remarks
(1) REPAIR PART.

Fig.5. SUCTION MANIFOLD & AIR CLEANER

(A)=4TN100L-GLD
(B)=
(C)=

(D)=
(E)=
(F)=



No.	Lev.	Parts No.	Description	Q'ty						I	R
				(A)	(B)	(C)	(D)	(E)	(F)		
1	1	719129-12100	MANIFOLD ASSY,INTAKE	1							
3	2	119100-12120	COVER, MANIFOLD	1							
4	2	121850-77021	GASKET	1							
5	2	26106-080142	BOLT, M8X 14 PLATED	4							
6	1	119100-12113	GASKET, MANIFOLD	1							
7	1	26106-080202	BOLT, M8X 20 PLATED	5							
8	1	26106-080702	BOLT, M8X 70 PLATED	3							
9	1	26106-081152	BOLT, M8X115 PLATED	1							
10	1	119140-12130	STAY, SILENCER	1							
11	1	127412-18853	SILENCER	1							
12	2	127412-18880	FILTER	1							
13	1	121850-77021	GASKET	1							
14	1	23001-060000	CLAMP, HOSE 60	1							
15	1	26106-080182	BOLT, M8X 18 PLATED	4							

Fig.6. EXHAUST MANIFOLD

(A)=4TN100L-GLD
(B)=
(C)=

(D)=
(E)=
(F)=

No.	Lev.	Parts No.	Description	Q'ty						I	R
				(A)	(B)	(C)	(D)	(E)	(F)		
1	1	119100-13100	MANIFOLD, EXHAUST	1							
2	1	119100-13200	GASKET	1							
3	1	129400-13201	GASKET, SILENCER	1							
4	1	119140-13300	BEND, EXHAUST 65A	1							
5	1	119802-13600	BOLT, M8X40	2							
6	1	119802-13610	BOLT, M8X45	2							
7	1	119802-13620	BOLT, M8X50	4							
8	1	123900-13640	BOLT, M8X95	2							
9	1	119802-13710	STUD, M8X40	2							
10	1	23414-170000	GASKET, 17X1.0	1							
11	1	23894-030002	PLUG, G3/8	1							
12	1	26306-080002	NUT, M8	2							

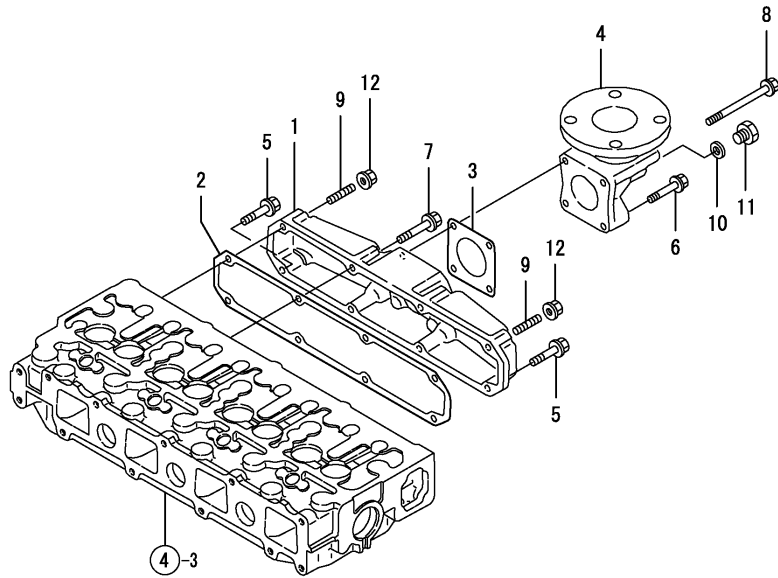
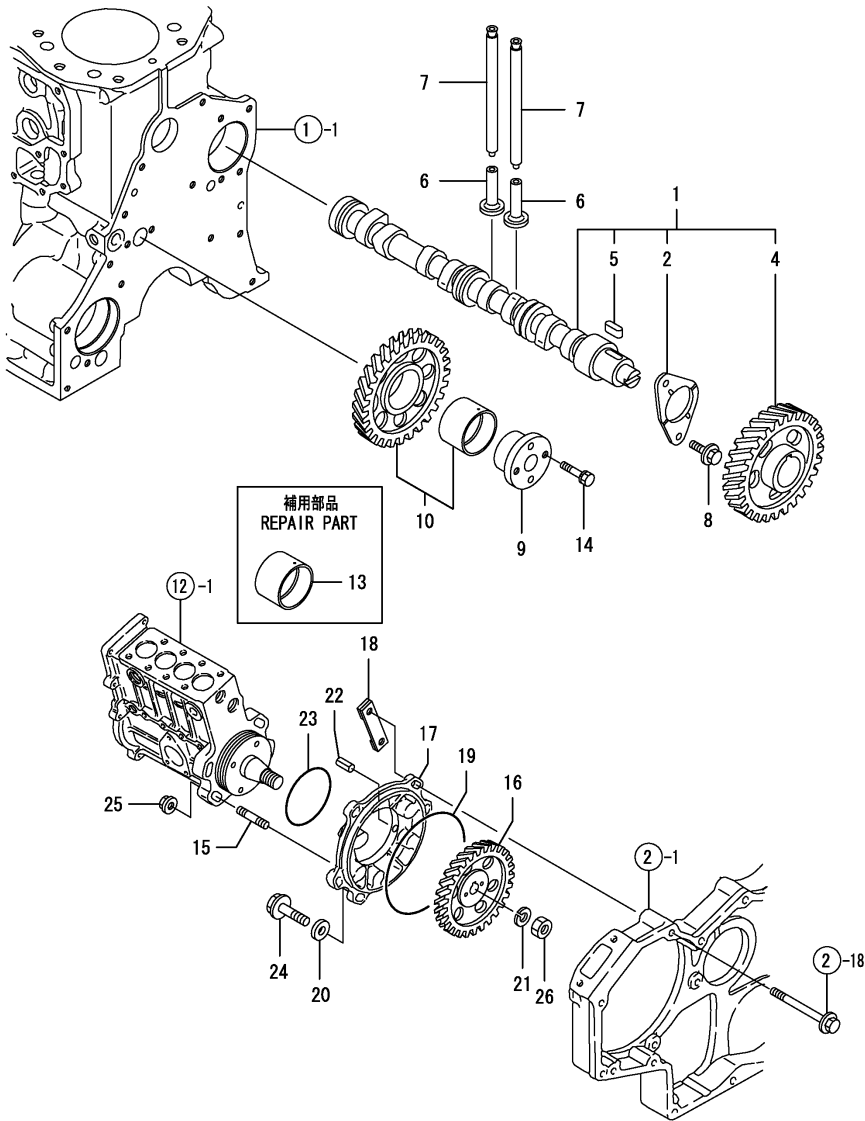


Fig.7. CAMSHAFT & DRIVING GEAR



(A)=4TN100L-GLD
(B)=
(C)=

(D)=
(E)=
(F)=

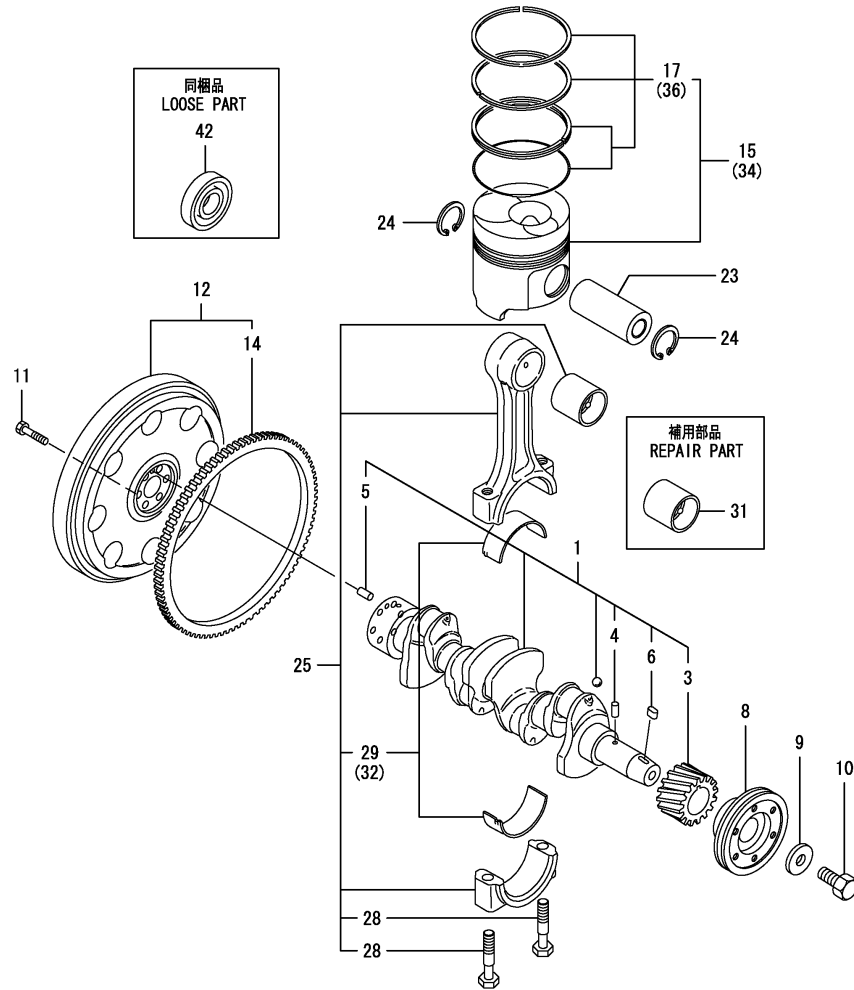
No.	Lev.	Parts No.	Description	Q'ty						I	R
				(A)	(B)	(C)	(D)	(E)	(F)		
1	1	119100-14000	CAMSHAFT ASSY	1							
2	2	119000-02450	BEARING, THRUST	1							
4	2	119000-14100	GEAR, CAMSHAFT Z=48	1							
5	2	22512-070140	KEY, 7X 14	1							
6	1	119000-14200	TAPPET	8							
7	1	129150-14400	ROD, PUSH L=178	8							
8	1	26106-080162	BOLT, M8X 16 PLATED	2							
9	1	119000-25050	SHAFT, IDLE GEAR	1							
10	1	119000-25100	GEAR ASSY, IDLE Z=51	1							
13	1	119000-25930	BUSH, IDLE GEAR	1							1
14	1	26013-080452	BOLT, M8X 45	2							
15	1	121850-01900	STUD, SB10X32	4							
16	1	119000-25900	GEAR, PUMP	1							
17	1	119000-25910	BRACKET, PUMP	1							
18	1	119000-25920	RETAINER	1							
19	1	24341-001350	O-RING, 1AS135.0	1							
20	1	106100-55800	WASHER	3							
21	1	22217-180000	WASHER, SPRING 18	1							
22	1	22351-050012	PIN, SPRING 5.0X12	1							
23	1	124410-51960	O-RING	1							
24	1	26106-080252	BOLT, M8X 25 PLATED	3							
25	1	26306-100002	NUT, M10	4							
26	1	26776-180002	NUT, LOCK M18	1							

Remarks
(1) REPAIR PART.

Fig.8. CRANKSHAFT & PISTON

(A)=4TN100L-GLD
(B)=
(C)=

(D)=
(E)=
(F)=



No.	Lev.	Parts No.	Description	Q'ty						I	R
				(A)	(B)	(C)	(D)	(E)	(F)		
1	1	119100-21700	CRANKSHAFT ASSY	1							
3	2	121850-21200	GEAR, CRANKSHAFT	1							
4	2	121850-21290	PIN	1							
5	2	121850-21920	PIN, M10X22	1							
6	2	22512-070140	KEY, 7X 14	1							
8	1	119000-21650	V-PULLEY	1							
9	1	121850-21660	WASHER	1							
10	1	121850-21680	BOLT	1							
11	1	121850-21130	BOLT, FLYWHEEL	6							
12	1	119140-21590	FLYWHEEL ASSY	1							
14	2	127410-21480	GEAR, RING Z=129	1							
15	1	119000-22000	PISTON ASSY	4							
17	2	719000-22500	RING SET, PISTON	4							
23	1	119000-22300	PIN, PISTON	4							
24	1	22252-000340	RING, 34	8							
25	1	719000-23100	ROD ASSY, CONNECTING	4							
28	2	121850-23200	BOLT, CONNECTING ROD	8							
29	2	719000-23600	BEARING, CRANK PIN	4							
31	1	119000-23910	BEARING, PISTON PIN	4							1
32	1	719000-23610	BEARING ASSY, 0.25	4							2
34	1	719000-22900	PISTON ASSY, 0.25 OS	4							3
36	2	719000-22950	RING SET, 0.25 OS	4							3
42	1	24104-060044	BEARING, BALL 6004UU	1							

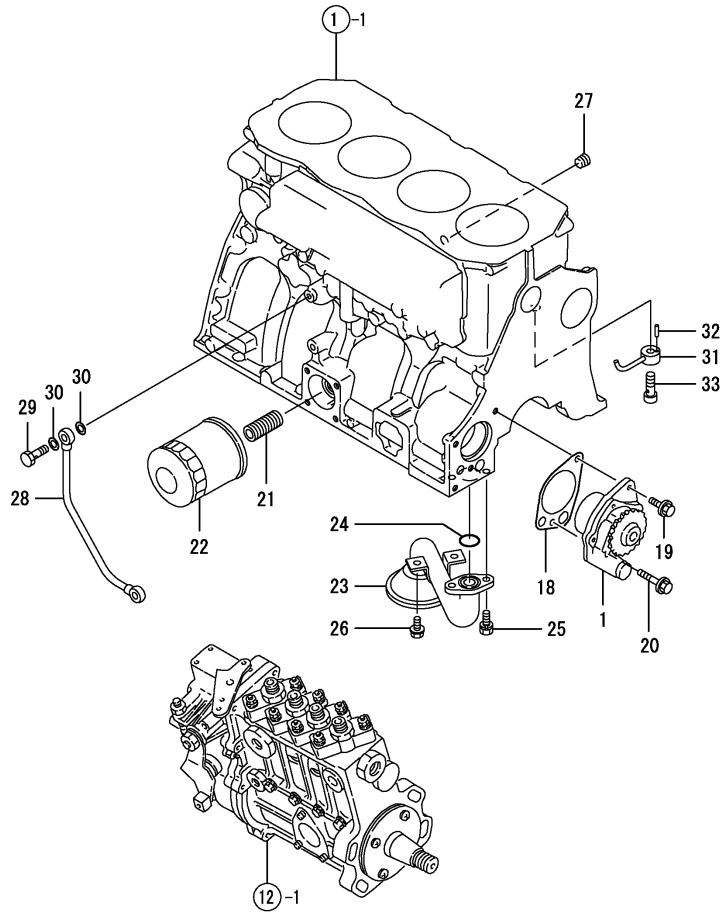
Remarks

- (1) REPAIR PART.
- (2) UNDER-SIZED(U.S=0.25)PART.
- (3) OVER-SIZED(O.S=0.25)PART.

Fig.9. LUB. OIL SYSTEM

(A)=4TN100L-GLD
(B)=
(C)=

(D)=
(E)=
(F)=



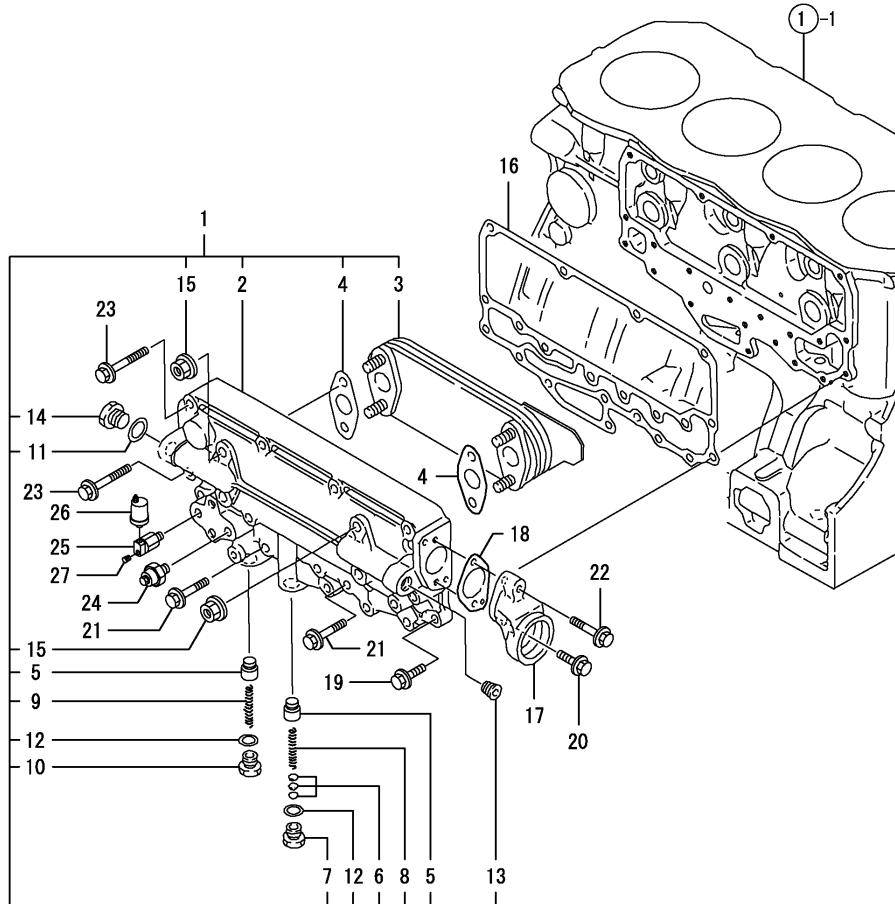
No.	Lev.	Parts No.	Description	Q'ty						I	R
				(A)	(B)	(C)	(D)	(E)	(F)		
1	1	119060-32000	PUMP ASSY, OIL	1							
18	1	119000-32020	GASKET, PUMP	1							
19	1	26106-080162	BOLT, M8X 16 PLATED	1							
20	1	26106-080502	BOLT, M8X 50 PLATED	1							
21	1	119000-35140	BOLT, FILTER	1							
22	1	119005-35170	FILTER, D80X100	1							1
23	1	119100-35090	PIPE ASSY, OIL INLET	1							
24	1	24311-000220	O-RING, 1AP22.0	1							
25	1	26013-080162	BOLT, M8X 16	2							
26	1	26106-080162	BOLT, M8X 16 PLATED	2							
27	1	135400-01790	PLUG	1							
28	1	119100-39350	PIPE, OIL	1							
29	1	129198-59540	BOLT, PIPE JOINT M8	1							
30	1	23414-080000	GASKET, 8X1.0	2							
31	1	119000-39650	NOZZLE	4							
32	1	22351-030010	PIN, SPRING 3.0X10	4							
33	1	23857-030000	BOLT, JOINT 3	4							

Remarks
(1) REPAIR PART.

Fig.10. OIL COOLER

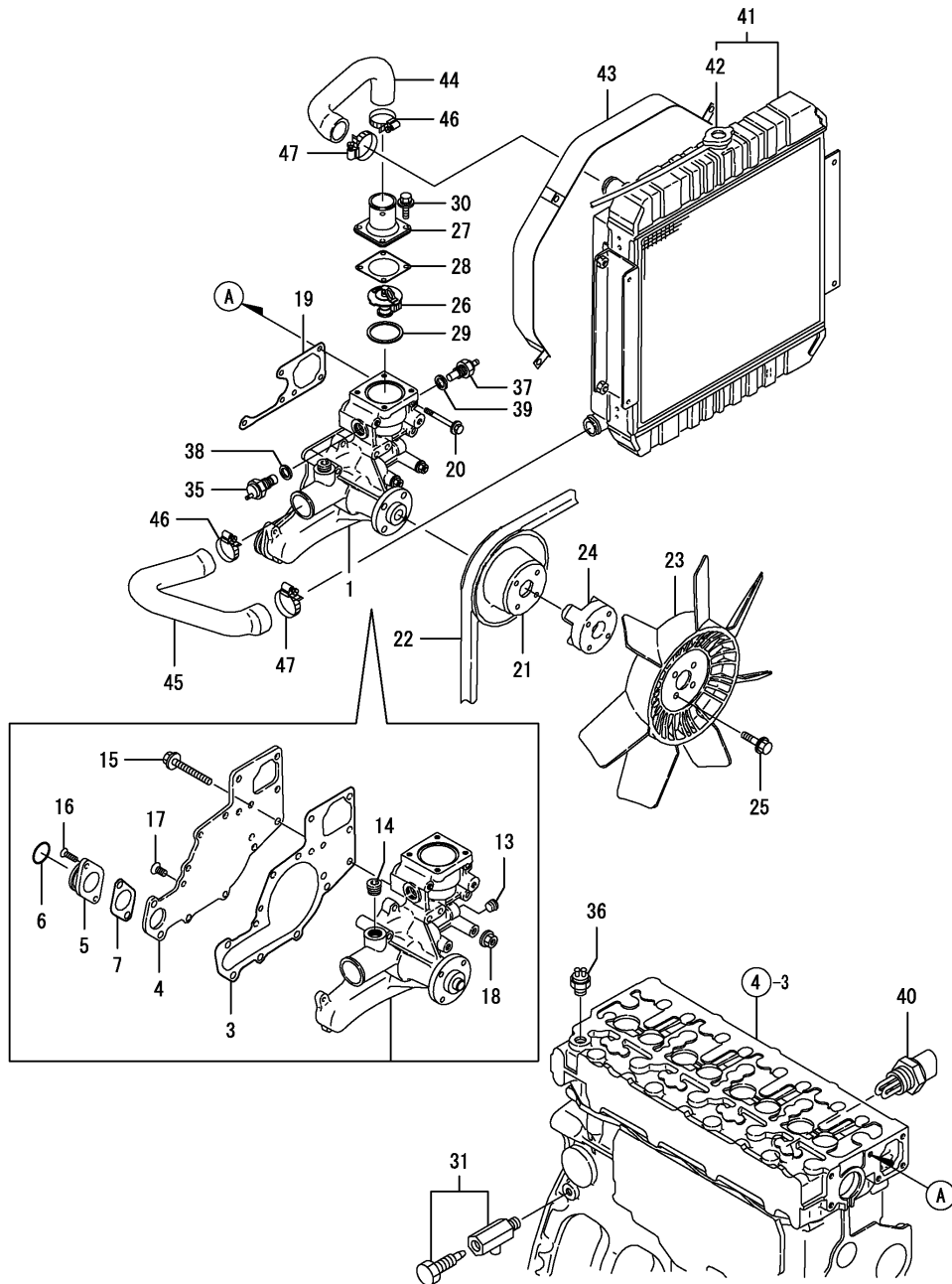
(A)=4TN100L-GLD
(B)=
(C)=

(D)=
(E)=
(F)=



No.	Lev.	Parts No.	Description	Q'ty						I	R
				(A)	(B)	(C)	(D)	(E)	(F)		
1	1	719160-33700	COOLER ASSY, OIL	1							
2	2	119000-33010	CASE, OIL COOLER	1							
3	2	119000-33050	COOLER, OIL	1							
4	2	121952-33071	GASKET, COOLER	2							
5	2	119160-34030	VALVE, CONTROL	2							
6	2	121850-35230	SHIM, T=1.0	5							
7	2	124223-35510	RETAINER, SPRING	1							
8	2	124411-35520	SPRING	1							
9	2	121952-39830	SPRING	1							
10	2	123672-84530	RETAINER, VALVE	1							
11	2	23414-160000	GASKET, 16X1.0	1							
12	2	23414-180000	GASKET, 18X1.0	2							
12-1	2	23414-170000	GASKET, 17X1.0	2							N
(A)*2009.03.)											
13	2	23876-030000	PLUG, R03	1							
14	2	23887-160002	PLUG, 16	1							
15	2	26376-100002	NUT, M10	4							
16	1	119000-33022	GASKET	1							
17	1	119000-33030	BEND	1							
18	1	119000-33041	GASKET	1							
19	1	26106-080202	BOLT, M8X 20 PLATED	3							
20	1	26106-080202	BOLT, M8X 20 PLATED	1							
21	1	26106-080352	BOLT, M8X 35 PLATED	8							
22	1	26106-080352	BOLT, M8X 35 PLATED	1							
23	1	26106-080502	BOLT, M8X 50 PLATED	10							
24	1	183250-39450	SWITCH, 1.0KG	1							
25	1	119140-39610	DAMPER	1							
26	1	119773-91501	SENSOR	1							
27	1	23876-010000	PLUG, R01	1							

Fig.11. COOLING WATER SYSTEM



(A)=4TN100L-GLD
(B)=
(C)=

(D)=
(E)=
(F)=

No.	Lev.	Parts No.	Description	Q'ty						I	R
				(A)	(B)	(C)	(D)	(E)	(F)		
1	1	119006-42003	PUMP ASSY, WATER	1							
3	2	119000-42052	GASKET	1							
4	2	119000-42122	COVER	1							
5	2	119000-42141	FLANGE	1							
6	2	129900-42140	O-RING, P36	1							
7	2	119000-42151	GASKET, WATER PUMP	1							
13	2	23876-020000	PLUG, R02	1							
14	2	23876-030000	PLUG, R03	1							
15	2	26106-080602	BOLT, M8X 60 PLATED	2							
16	2	26577-060202	SCREW, M6X20	2							
17	2	26577-080162	SCREW, M8X16	6							
18	2	26726-080002	NUT, M8	2							
19	1	119000-42021	GASKET, WATER PUMP	1							
20	1	26106-080652	BOLT, M8X 65 PLATED	5							
21	1	119000-42250	V-PULLEY	1							
22	1	25152-004400	V-BELT, A44	1							
23	1	121972-44740	FAN, COOLING	1							
24	1	119141-44760	SPACER, FAN	1							
25	1	26106-080552	BOLT, M8X 55 PLATED	4							
26	1	119000-48170	THERMOSTAT, 71	1							
27	1	129916-49530	COVER, THERMOSTAT	1							
28	1	121850-49540	GASKET, THERMOSTAT	1							
29	1	121850-49550	GASKET, THERMOSTAT	1							
30	1	26014-060202	BOLT, M6X 20	4							
31	1	119620-49290	COCK ASSY, 1/4	1							
35	1	121250-44901	SWITCH, 110	1							
36	1	171375-44900	SWITCH, 15	1							
37	1	171375-44911	SENSOR	1							
38	1	124465-44950	GASKET, 16	1							
39	1	129150-49360	GASKET	1							
40	1	46150-504500	HEATER	1							
41	1	119140-44500	RADIATOR	1							
42	2	119259-44570	CAP, RADIATOR	1							
43	1	119140-44560	PROTECTOR, FAN	1							
44	1	119140-49010	PIPE, WATER	1							
45	1	119140-49020	PIPE, WATER	1							
46	1	23000-048000	CLAMP, 48	2							
47	1	23000-054000	CLAMP, 54	2							

Fig.12. FUEL INJECTION PUMP

(A)=4TN100L-GLD

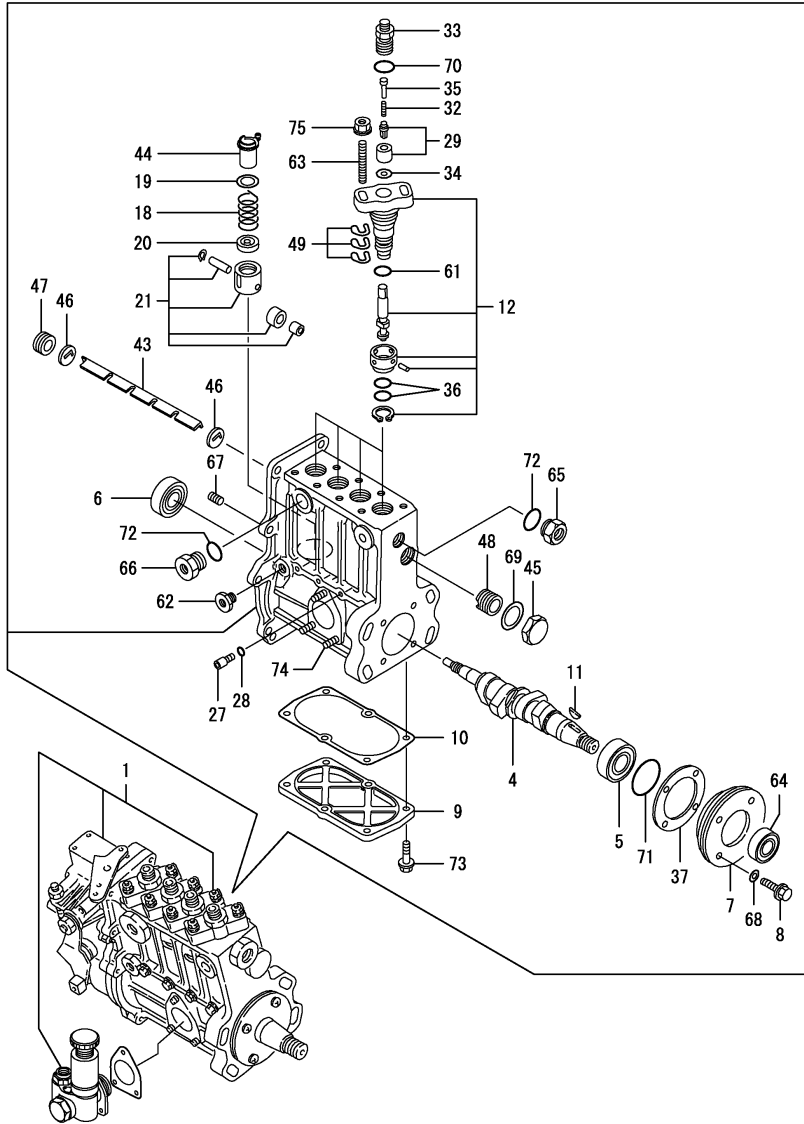
(B)=

(C)=

(D)=

(E)=

(F)=



No.	Lev.	Parts No.	Description	Q'ty						I	R
				(A)	(B)	(C)	(D)	(E)	(F)		
1	1	719140-51200	PUMP ASSY, INJECTION	1							1
4	2	119140-51030	CAMSHAFT	1							
5	2	119000-51050	BEARING, HR32005XJ	1							
6	2	122710-51050	BEARING, HR30203J	1							
7	2	119000-51060	SUPPORT, BEARING A	1							
8	2	119175-51070	BOLT, M6X20	4							
9	2	119100-51081	COVER	1							
10	2	119100-51091	GASKET	1							
11	2	144626-51090	KEY, 5X19	1							
12	2	119000-51101	PLUNGER ASSY	4							
18	2	119000-51161	SPRING, PLUNGER	4							
19	2	119000-51170	SEAT, SPRING A	4							
20	2	119000-51181	SEAT, SPRING B	4							
21	2	119000-51201	TAPPET ASSY	4							
27	2	129155-51270	STOPPER, TAPPET	4							
28	2	129155-51280	O-RING, S6	4							
29	2	128400-51300	VALVE ASSY, DELIVERY	4							
32	2	119000-51330	SPRING, DELIVERY	4							
33	2	119000-51340	HOLDER, DELIVERY	4							
34	2	122710-51350	GASKET	4							
35	2	119000-51360	STOPPER, VALVE	4							
36	2	119000-51411	O-RING	8							
37	2	119000-51450	SHIM SET, CAMSHAFT	1							
43	2	119100-51500	RACK, CONTROL	1							
44	2	119000-51511	SLEEVE, CONTROL	4							
45	2	119000-51550	COVER	1							
46	2	119000-51570	GUIDE, RACK	2							
47	2	119000-51580	SCREW	1							
48	2	119000-51590	SCREW	1							
49	2	119000-51650	SHIM SET, ADJUSTING	8							
61	2	158563-51662	O-RING, 4D S26	4							
62	2	121850-51700	BUSH	1							
63	2	119000-51800	BOLT	8							
64	2	119000-51900	SEAL, AC1290E0	1							
65	2	121952-51900	PLUG	1							
66	2	144626-51940	PLUG	1							
67	2	137600-53900	SCREW, M6X6	1							
68	2	22190-060000	WASHER, SEAL 6	4							
69	2	23414-220029	GASKET, 22X1.0	1							
70	2	24316-000150	O-RING, 4DP15.0	4							
71	2	24341-000500	O-RING, 1AS50.0	1							
72	2	24356-190160	O-RING, 4D19016	3							
73	2	26106-060182	BOLT, M6X 18 PLATED	6							
74	2	26216-060162	STUD, M6X 16	3							
75	2	26366-080002	NUT, M8	8							

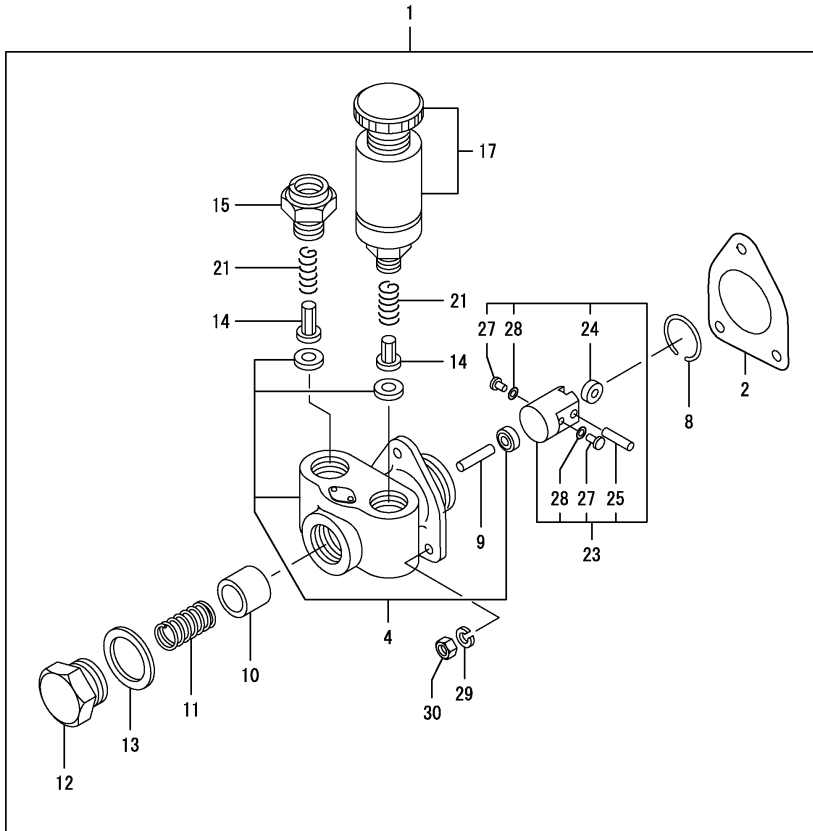
Remarks

(1) FEED PUMP(FIG.NO.13) &
GOVERNOR(FIG.NO.14) IS
INCORPORATED IN THIS
FUEL INJECTION PUMP.(REF.NO.1).

Fig.13. FUEL FEED PUMP

(A)=4TN100L-GLD
(B)=
(C)=

(D)=
(E)=
(F)=



No.	Lev.	Parts No.	Description	Q'ty						I	R
				(A)	(B)	(C)	(D)	(E)	(F)		
1	2	119000-52000	PUMP ASSY, FUEL FEED	1							
2	3	124410-51861	GASKET	1							
4	3	121820-52020	BODY ASSY, PUMP	1							
8	3	121820-52070	PIN	1							
9	3	121820-52160	SPINDLE, INTER	1							
10	3	121820-52170	PISTON	1							
11	3	121820-52180	SPRING, VALVE	1							
12	3	121820-52190	RETAINER, SPRING	1							
13	3	121820-52200	GASKET, 25	1							
14	3	121820-52210	VALVE	2							
15	3	121820-52230	RETAINER, SPRING	1							
17	3	121820-52300	PUMP, PRIMING	1							
21	3	121820-52510	SPRING, VALVE	2							
23	3	119000-52100	TAPPET ASSY	1							
24	4	121820-52110	ROLLER	1							
25	4	148688-52120	PIN, ROLLER	1							
27	4	121820-52140	RETAINER	2							
28	4	119000-52150	SHIM	2							
29	3	22217-060000	WASHER, SPRING 6	3							
30	3	26716-060002	NUT, M6	3							

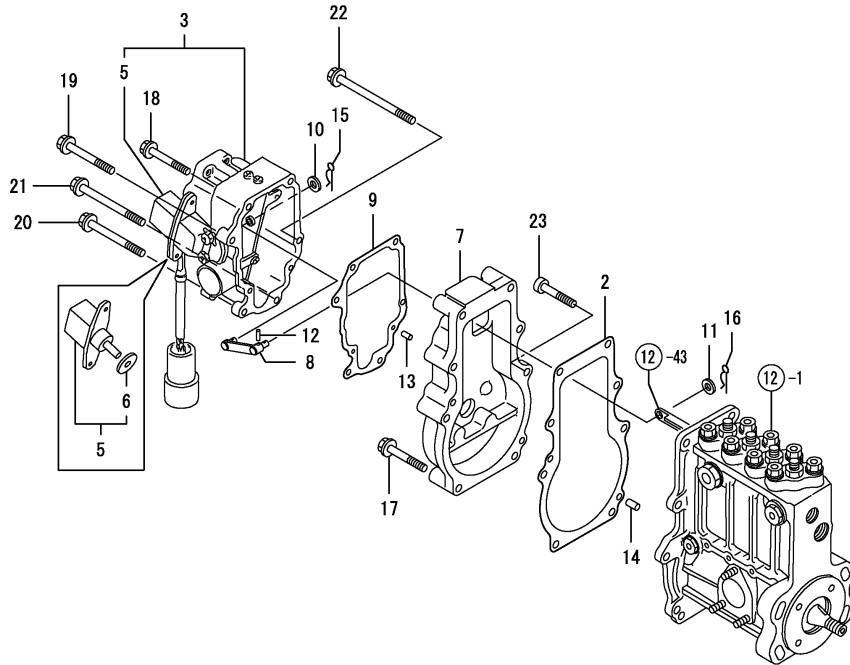
Remarks

* THIS FIGURE(FEED PUMP) IS INCORPORATED IN THE FUEL INJECTION PUMP ASSY(FIG.12).

Fig.14. GOVERNOR

(A)=4TN100L-GLD
(B)=
(C)=

(D)=
(E)=
(F)=



No.	Lev.	Parts No.	Description	Q'ty						I	R
				(A)	(B)	(C)	(D)	(E)	(F)		
2	2	119000-61052	GASKET	1							
3	2	129611-61100	ACTUATOR	1							
5	3	119649-61091	SENSOR	1							
6	4	129611-61180	GASKET	1							
7	2	119140-61110	SPACER	1							
8	2	119140-61120	LINK	1							
9	2	119649-61151	GASKET	1							
10	2	22117-040000	WASHER, 4	1							
11	2	22117-050000	WASHER, 5	1							
12	2	22351-030025	PIN, SPRING 3.0X25	1							
13	2	22351-040010	PIN, SPRING 4.0X10	2							
14	2	22351-050020	PIN, SPRING 5.0X20	2							
15	2	22360-040000	PIN, SNAP 4	1							
16	2	22360-050000	SNAP PIN 5	1							
17	2	26106-060402	BOLT, M6X 40 PLATED	5							
18	2	26106-060452	BOLT, M6X 45 PLATED	2							
19	2	26106-060502	BOLT, M6X 50 PLATED	1							
20	2	26106-060602	BOLT, M6X 60 PLATED	1							
21	2	26106-060702	BOLT, M6X 70 PLATED	1							
22	2	26106-060852	BOLT, M6X 85 PLATED	1							
23	2	26450-060352	BOLT, M6X 35	1							

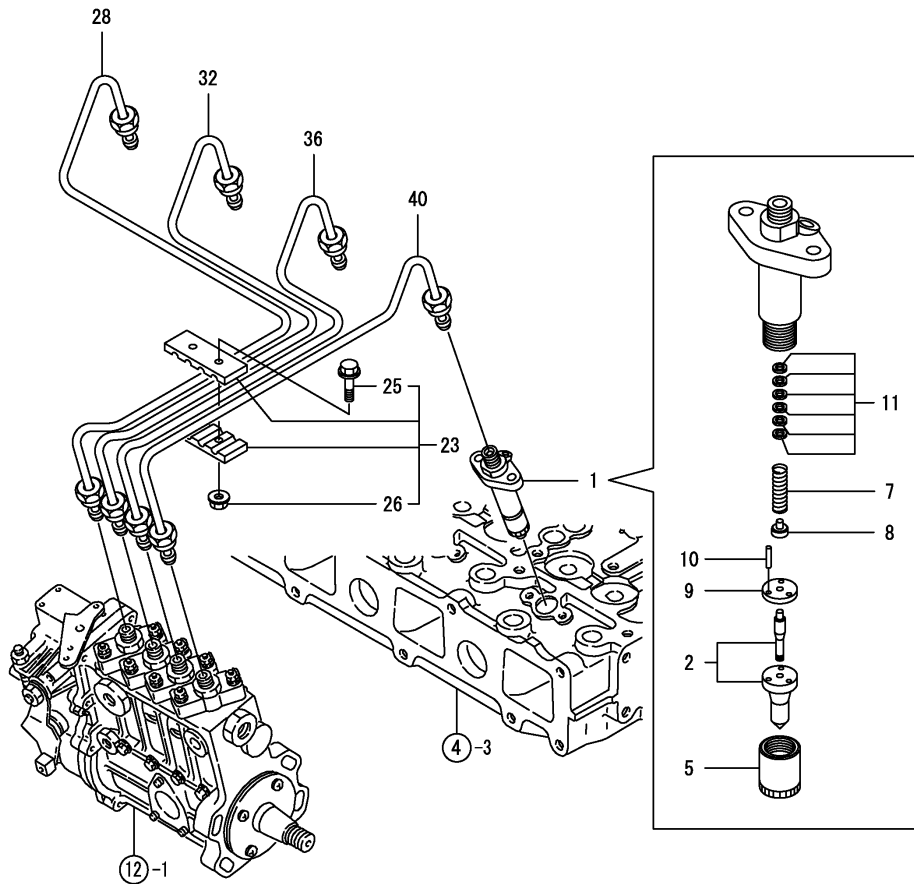
Remarks

* THIS FIGURE(GOVERNOR ASSY) IS INCORPORATED IN THE FUEL INJECTION PUMP ASSY(FIG.12).

Fig.15. FUEL INJECTION VALVE

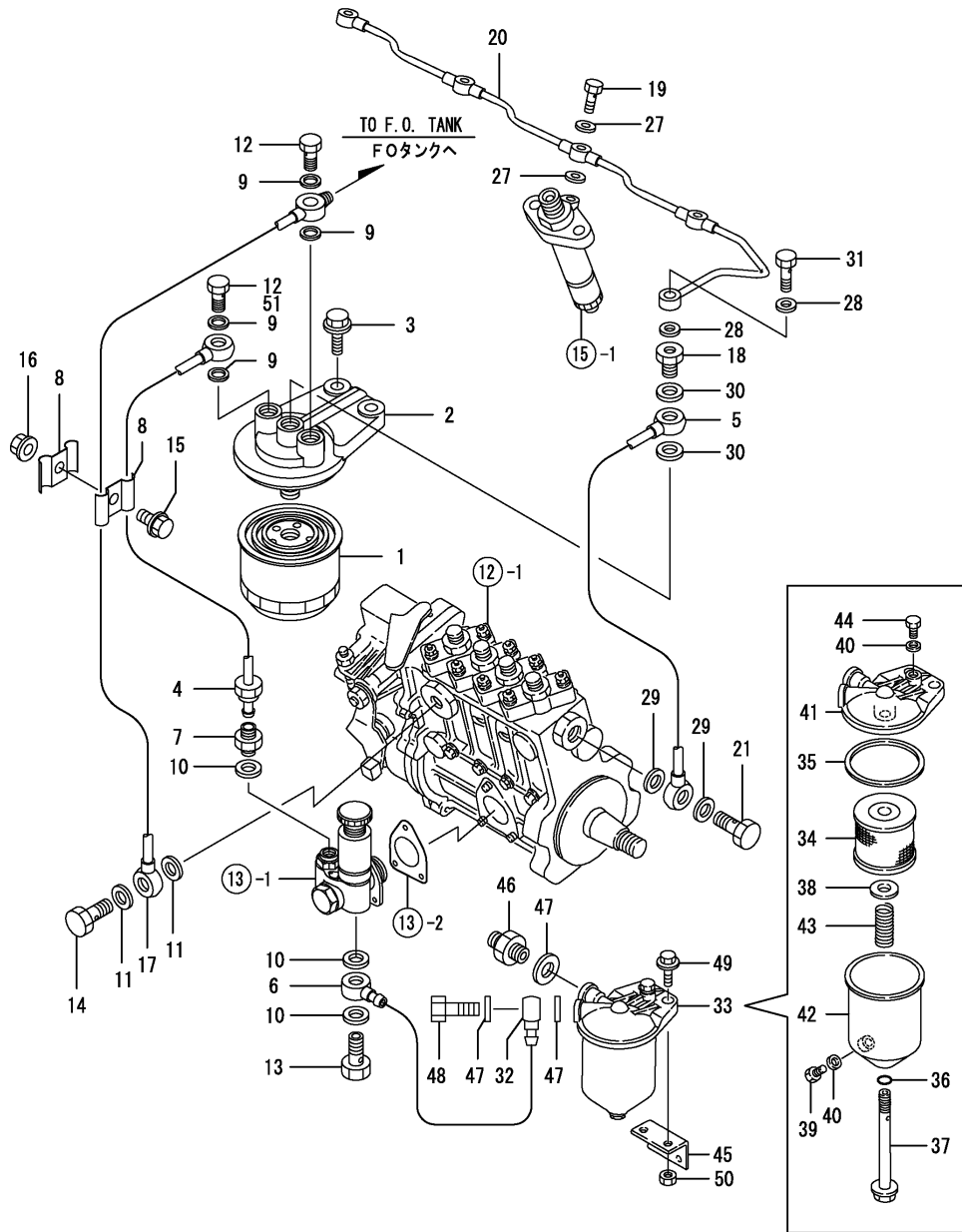
(A)=4TN100L-GLD
(B)=
(C)=

(D)=
(E)=
(F)=



No.	Lev.	Parts No.	Description	Q'ty						I	R
				(A)	(B)	(C)	(D)	(E)	(F)		
1	1	719100-53200	VALVE ASSY,INJECTION	4							
2	2	119100-53000	VALVE ASSY,INJECTION	4							
5	2	114250-53080	NUT, NOZZLE D16.95	4							
7	2	114250-53120	SPRING, NOZZLE	4							
8	2	114250-53130	SEAT, SPRING	4							
9	2	114250-53140	PLATE	4							
10	2	114250-53210	PIN	8							
11	2	114250-53400	SHIM SET	4							
23	1	123472-59090	RETAINER ASSY	1							
25	2	26106-060202	BOLT, M6X 20 PLATED	2							
26	2	26366-060002	NUT, M6	2							
28	1	119100-59810	PIPE ASSY, INJECTION	1							
32	1	119100-59820	PIPE ASSY, INJECTION	1							
36	1	119100-59830	PIPE ASSY, INJECTION	1							
40	1	119100-59840	PIPE ASSY, INJECTION	1							

Fig.16. FUEL LINE



(A)=4TN100L-GLD
(B)=
(C)=

(D)=
(E)=
(F)=

No.	Lev.	Parts No.	Description	Q'ty						I	R
				(A)	(B)	(C)	(D)	(E)	(F)		
1	1	119000-55602	FILTER, FUEL	1							
2	1	129470-55610	BODY, STRAINER	1							
3	1	26106-100252	BOLT, M10X 25 PLATED	2							
4	1	119140-59010	PIPE ASSY, FUEL	1							
5	1	119140-59020	PIPE ASSY, FUEL	1							
6	1	171090-59130	JOINT, PIPE	1							
7	1	144628-59520	UNION, 10	1							
8	1	127450-59680	RETAINER	2							
9	1	22190-120002	WASHER, SEAL 12	4							
10	1	22190-140002	WASHER, SEAL 14	3							
10-1	1	124450-01980	GASKET	3							N
(A=E*****)											
11	1	22190-140002	WASHER, SEAL 14	2							
12	1	23857-060000	BOLT, JOINT 6	2							
12-1	1	23857-060000	BOLT, JOINT 6	1							K
(A=FROM 1ST)											
13	1	23857-080000	BOLT, JOINT 8	1							
14	1	23857-080000	BOLT, JOINT 8	1							
15	1	26106-080142	BOLT, M8X 14 PLATED	1							
16	1	26306-080002	NUT, M8	1							
17	1	119140-59030	PIPE ASSY, FUEL	1							
18	1	129495-59300	BOLT, PIPE JOINT	1							
19	1	129491-59540	BOLT, PIPE JOINT M6	4							
20	1	119140-59550	PIPE, FUEL	1							
21	1	119813-59950	VALVE ASSY, CHECK	1							
27	1	22190-060002	WASHER, SEAL 6	8							
28	1	22190-080002	WASHER, SEAL 6	2							
29	1	22190-120002	WASHER, SEAL 12	2							
30	1	22190-140002	WASHER, SEAL 14	2							
31	1	23857-030000	BOLT, JOINT 3	1							
32	1	110250-39030	JOINT	1							
33	1	120324-55750	SEPARATOR ASSY	1							
34	2	120324-55760	ELEMENT	1							
35	2	X0582810173	GASKET	1							
36	2	X0580121073	O-RING, 1A P 12.0	1							
37	2	X0311121522	BOLT	1							
38	2	X0300120414	SEAT, SPRING	1							
39	2	X0313080110	BOLT	1							
40	2	X0588080273	WASHER	2							
41	2	X2740134001	COVER ASSY	1							
42	2	X2540025002	CASE ASSY	1							
43	2	X0600160122	SPRING	1							
44	2	X0314080110	PLUG	1							
45	1	123672-55811	BRACKET	1							
46	1	171090-59140	JOINT	1							
47	1	22190-140002	WASHER, SEAL 14	3							
48	1	23857-080000	BOLT, JOINT 8	1							
49	1	26106-100302	BOLT, M10X 30 PLATED	2							
50	1	26706-100002	NUT, M10	2							
51	1	103854-39140	BOLT, PIPE JOINT	1							W
(A=FROM 1ST)											

N:Old $\begin{matrix} \leftarrow \text{Yes} \\ \text{No} \end{matrix}$ New, Q:Old $\begin{matrix} \leftarrow \text{No} \\ \text{Yes} \end{matrix}$ New, R:Old $\begin{matrix} \leftarrow \text{Yes} \\ \text{Yes} \end{matrix}$ New, S:Old $\begin{matrix} \leftarrow \text{No} \\ \text{No} \end{matrix}$ New, W:Add, Z:Discontinued, F:Interchangeable by set, K:Q'ty Change
Copyright (C) YANMAR CO., LTD. All Rights Reserved.

Fig.17. STARTING MOTOR

(A)=4TN100L-GLD

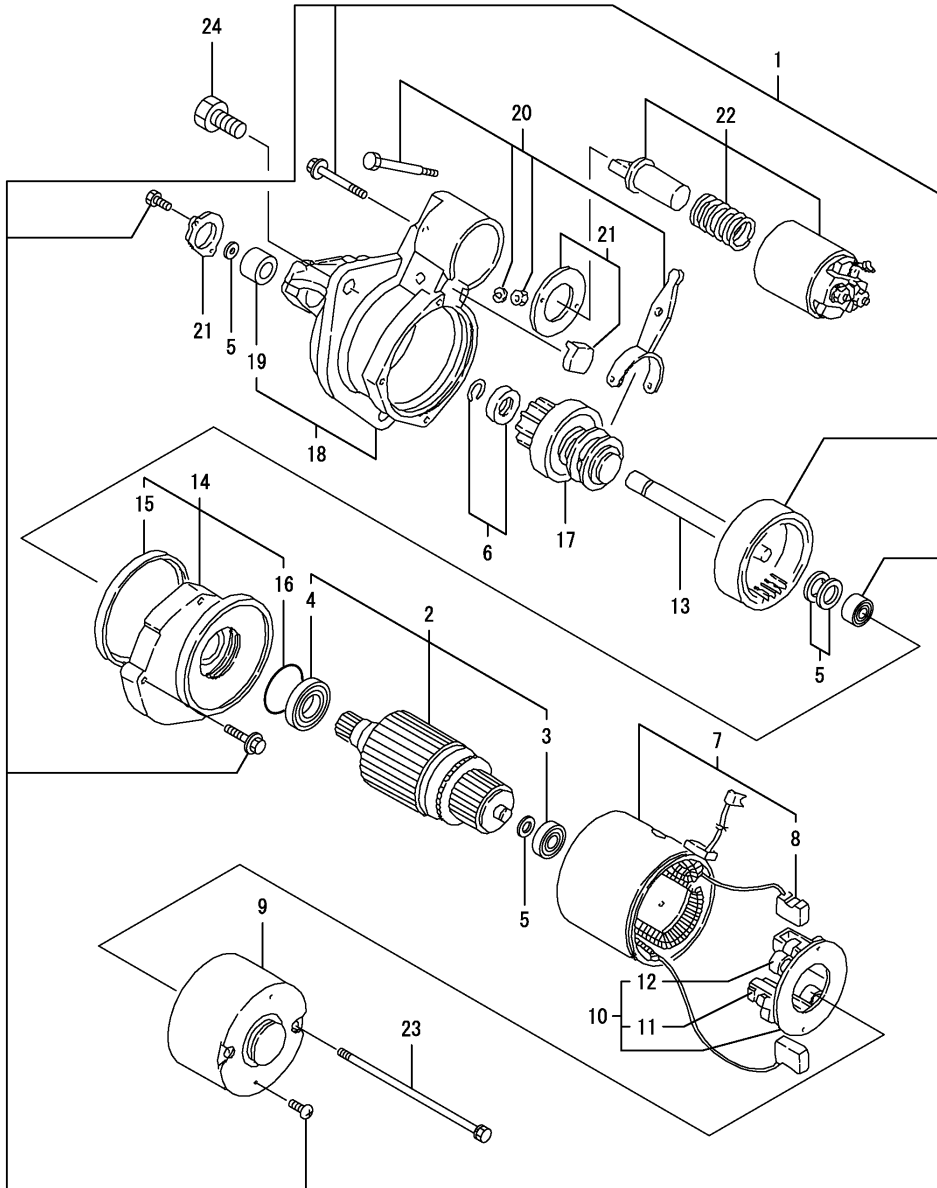
(B)=

(C)=

(D)=

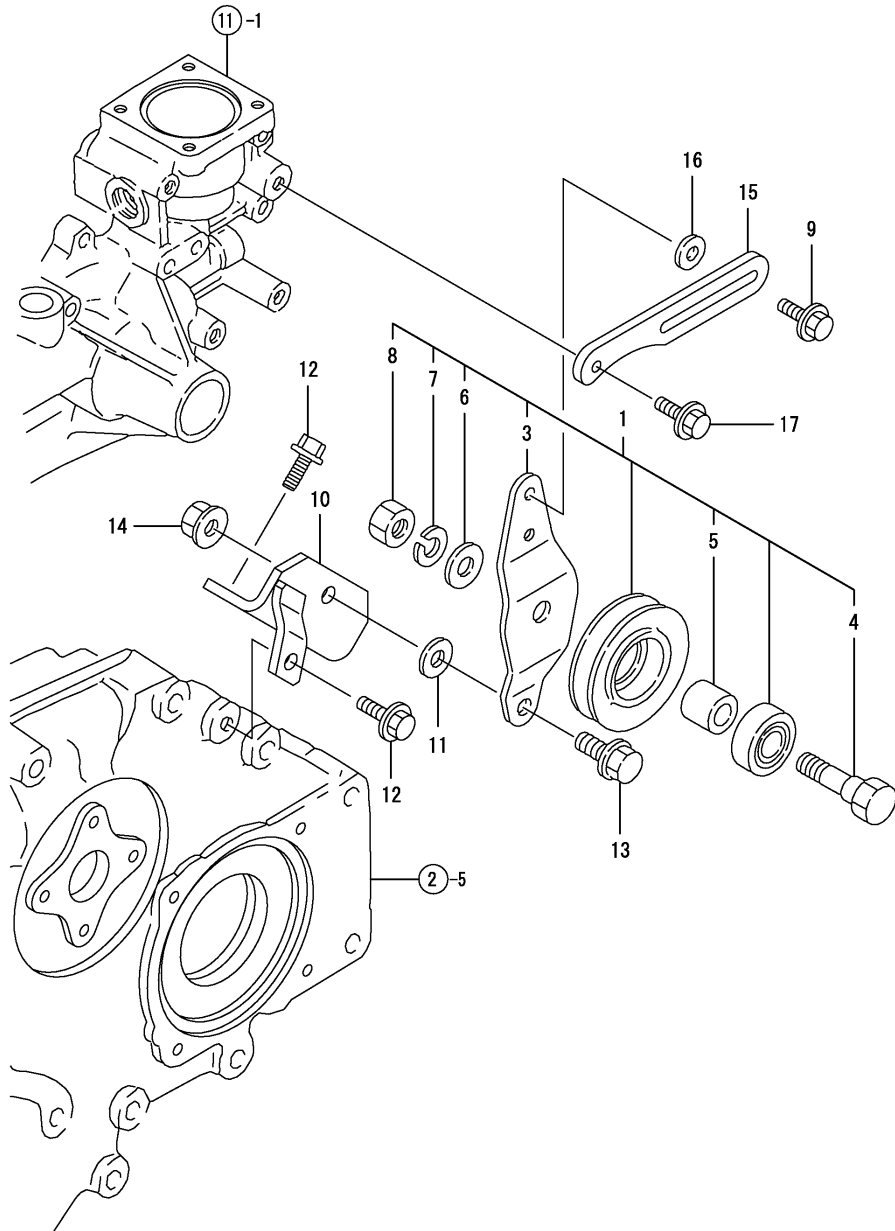
(E)=

(F)=



No.	Lev.	Parts No.	Description	Q'ty						I	R
				(A)	(B)	(C)	(D)	(E)	(F)		
1	1	124610-77019	STARTING MOTOR	1							
2	2	X213011001	ARMATURE ASSY	1							
3	3	X21302302	BALL BEARING	1							
4	3	X21303302	BALL BEARING	1							
5	2	X21302115	WASHER KIT, THRUST	1							
6	2	X21303119	STOPPER SET, PINION	1							
7	2	X21308220	COIL ASSY, FIELD	1							
8	3	X21308311	BRUSH (+)	2							
9	2	X225013012	COVER, REAR	1							
10	2	X21307305	HOLDER ASSY, BRUSH	1							
11	3	X21305312	BRUSH (-)	2							
12	3	X21305313	SPRING, BRUSH	4							
13	2	X22501113	SHAFT ASSY, GEAR	1							
14	2	X21304400	BEARING ASSY, CENTER	1							
15	3	X21301402	SEAL, OIL	1							
16	3	X21302402	O-RING	1							
17	2	X213035002	PINION ASSY	1							
18	2	X213046003	HOUSING ASSY, GEAR	1							
19	3	X21302601	METAL, CASE BEARING	1							
20	2	X21302605	LEVER SET	1							
21	2	X21303610	COVER SET, DUST	1							
22	2	X213017001	SWITCH ASSY, MAGNET.	1							
23	2	X21305820	BOLT, THROUGH	2							
24	1	26116-120252	BOLT, M12X 25 PLATED	3							

Fig.18. TENSION PULLEY



(A)=4TN100L-GLD
(B)=
(C)=

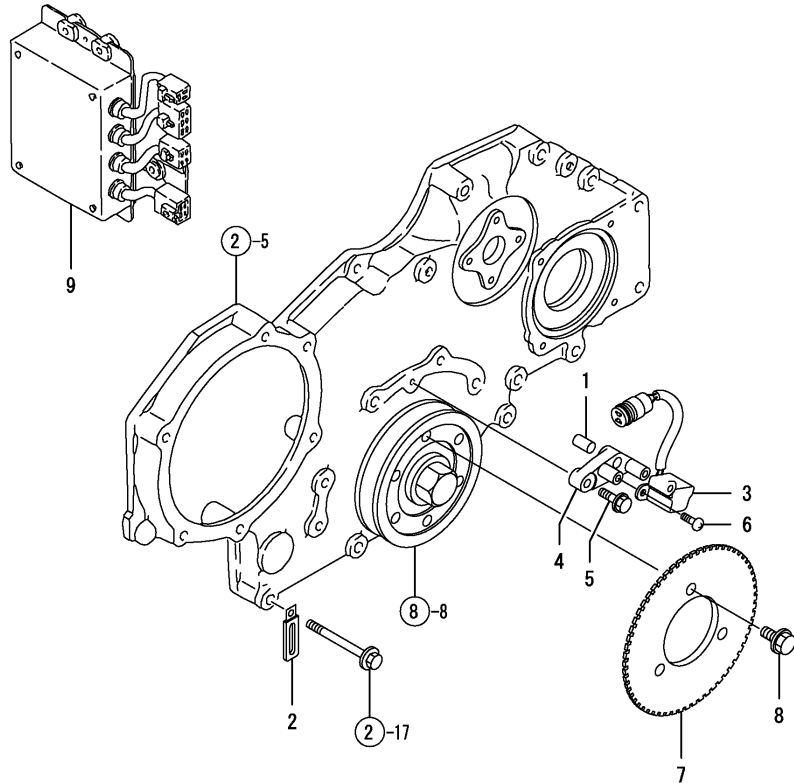
(D)=
(E)=
(F)=

No.	Lev.	Parts No.	Description	Q'ty						I	R
				(A)	(B)	(C)	(D)	(E)	(F)		
1	1	171325-44291	PULLEY ASSY, TENSION	1							
3	2	171325-44301	BRACKET, PULLEY	1							
4	2	171325-44310	BOLT	1							
5	2	171325-44320	SPACER	1							
6	2	22127-120000	WASHER, 12	1							
7	2	22217-120000	WASHER, SPRING 12	1							
8	2	26716-120002	NUT, M12	1							
9	1	119810-77340	BOLT, ADJUSTER	1							
10	1	119000-77350	BRACKET, GENERATOR	1							
11	1	119140-77910	WASHER	1							
12	1	26106-080202	BOLT, M8X 20 PLATED	4							
13	1	26106-100252	BOLT, M10X 25 PLATED	1							
14	1	26306-100002	NUT, M10	1							
15	1	121522-77330	ADJUSTER	1							
16	1	121236-77340	SPACER	1							
17	1	26106-080222	BOLT, M8X 22 PLATED	1							

Fig.19. PULSER

(A)=4TN100L-GLD
(B)=
(C)=

(D)=
(E)=
(F)=

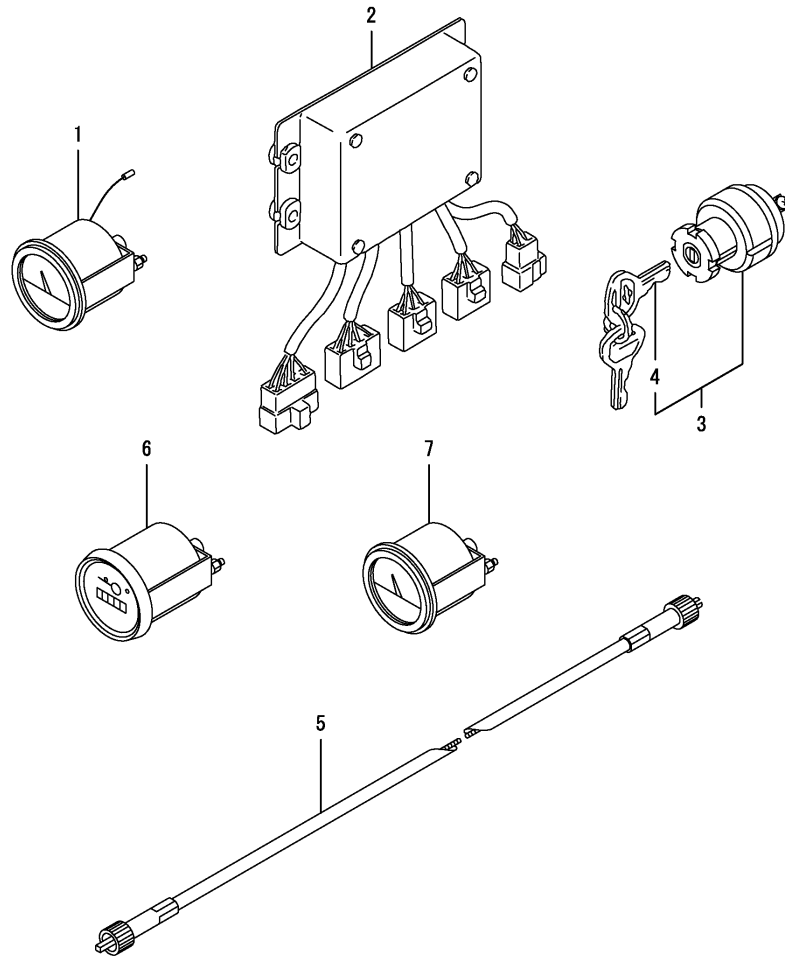


No.	Lev.	Parts No.	Description	Q'ty						I	R
				(A)	(B)	(C)	(D)	(E)	(F)		
1	1	129100-01580	PIN, M8X16	1							
2	1	194180-51640	CLAMP, HARNESS	1							
3	1	119649-78500	PULSAR	1							
4	1	119140-78510	BRACKET, PULSAR	1							
5	1	26106-060222	BOLT, M6X 22 PLATED	1							
6	1	26557-040082	SCREW, M4X 8	2							
7	1	119140-78650	GEAR, PULSAR	1							
8	1	26106-100142	BOLT, M10X 14 PLATED	3							
9	1	119140-78801	CONTROLLER, 4P	1							

Fig.20. ELECTRIC PARTS

(A)=4TN100L-GLD
(B)=
(C)=

(D)=
(E)=
(F)=

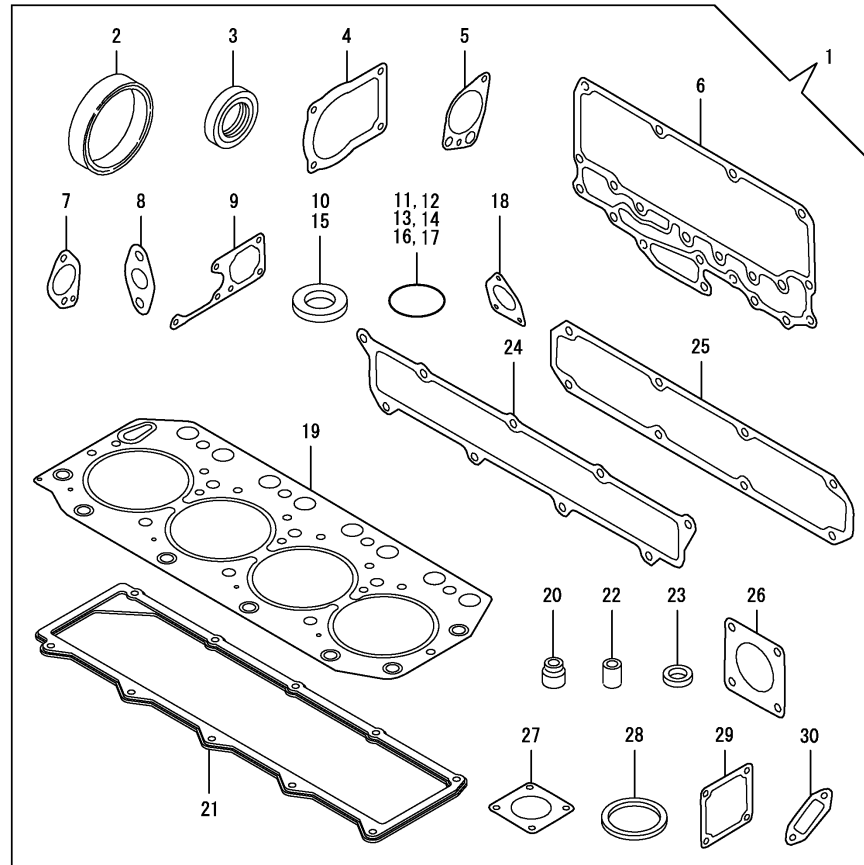


No.	Lev.	Parts No.	Description	Q'ty						I	R
				(A)	(B)	(C)	(D)	(E)	(F)		
1	1	171010-77850	THERMOSTAT	2							
2	1	119140-78810	CONTROLLER	1							
3	1	121400-91251	SWITCH, STARTER	1							
4	2	121400-91271	KEY, SWITCH	1							
5	1	42130-502220	CABLE, TACHOMETER	1							
6	1	46150-513390	TACHOMETER	1							
7	1	46150-513400	GAUGE	1							

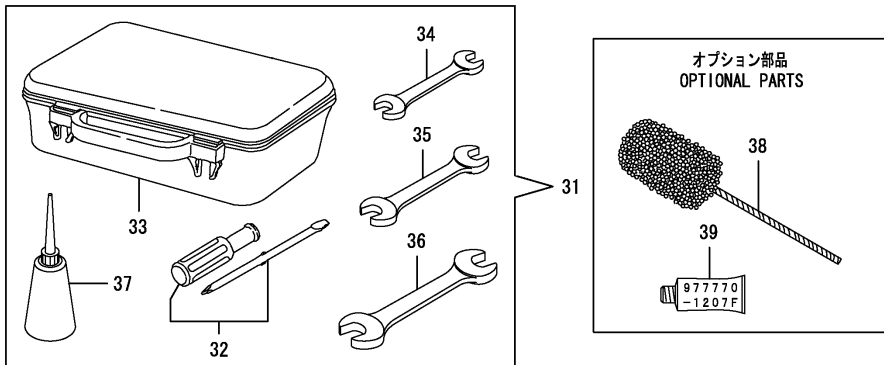
Fig.21. GASKET SET

(A)=4TN100L-GLD
(B)=
(C)=

(D)=
(E)=
(F)=



No.	Lev.	Parts No.	Description	Q'ty						I	R
				(A)	(B)	(C)	(D)	(E)	(F)		
1	1	719100-92601	GASKET SET	1							1
2	2	124411-01780	SEAL, HTC95X115X12	1							
3	2	121850-01800	SEAL, OIL	1							
4	2	124610-01862	GASKET	2							
5	2	119000-32020	GASKET, PUMP	1							
6	2	119000-33022	GASKET	1							
7	2	119000-33041	GASKET	1							
8	2	121952-33071	GASKET, COOLER	2							
9	2	119000-42021	GASKET, WATER PUMP	1							
10	2	124465-44950	GASKET, 16	1							
11	2	124410-51960	O-RING	1							
12	2	24311-000220	O-RING, 1AP22.0	1							
13	2	129900-42140	O-RING, P36	1							
14	2	24341-000240	O-RING, 1AS24.0	1							
15	2	129150-49360	GASKET	1							
16	2	24341-001350	O-RING, 1AS135.0	1							
17	2	24311-000320	O-RING, 1AP32.0	2							
18	2	124410-51861	GASKET	1							
19	2	119100-01340	GASKET, HEAD T=1.3	1							
20	2	121850-11150	SEAL, VALVE STEM	8							
21	2	119100-11320	GASKET, BONNET	1							
22	2	119625-11870	PROTECTOR, NOZZLE	4							
23	2	119625-11880	SEAT, NOZZLE	4							
24	2	119100-12113	GASKET, MANIFOLD	1							
25	2	119100-13200	GASKET	1							
26	2	129400-13201	GASKET, SILENCER	1							
27	2	121850-49540	GASKET, THERMOSTAT	1							
28	2	121850-49550	GASKET, THERMOSTAT	1							
29	2	121850-77021	GASKET	2							
30	2	119000-01771	GASKET	1							
31	1	721400-92102	BOX ASSY, TOOL	1							
32	2	104200-92350	DRIVER, SCREW	1							
33	2	104200-92600	BOX, TOOL	1							
34	2	28110-100120	SPANNER, 10X12	1							
35	2	28110-140170	SPANNER, 14X17	1							
36	2	28110-190220	SPANNER, 19X22	1							
37	2	28210-000140	OILER	1							
38	1	129400-92450	HONE	1							1
39	1	977770-1207F	GASKET.LIQUID	1							1

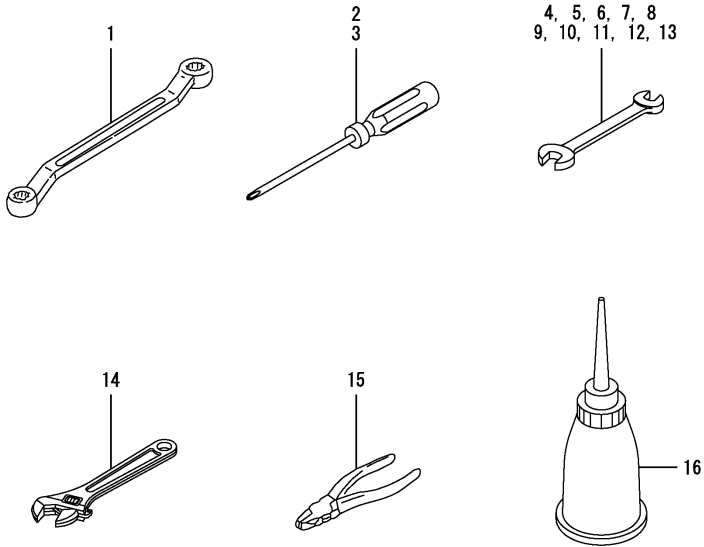


Remarks
(1) OPTIONAL PART.

Fig.22. TOOLS (OPTIONAL PART)

(A)=4TN100L-GLD
(B)=
(C)=

(D)=
(E)=
(F)=



No.	Lev.	Parts No.	Description	Q'ty						I	R
				(A)	(B)	(C)	(D)	(E)	(F)		
1	1	28160-170190	WRENCH, 17X19	1							
2	1	42112-550260	DRIVE, SCREW	1							
3	1	42112-550270	DRIVE, SCREW	1							
4	1	42900-000440	WRENCH, 6X7	1							
5	1	42900-000450	WRENCH, 8X10	1							
6	1	42900-000460	WRENCH, 10X12	1							
7	1	42900-000470	WRENCH, 11X13	1							
8	1	42900-000480	WRENCH, 12X14	1							
9	1	42900-000490	WRENCH, 14X17	1							
10	1	42900-000500	WRENCH, 17X19	1							
11	1	42900-000510	WRENCH, 19X22	1							
12	1	42900-000520	WRENCH, 22X24	1							
13	1	42900-000530	WRENCH, 24X27	1							
14	1	42900-000730	WRENCH, 150	1							
15	1	42900-000750	PINCERS	1							
16	1	42900-550570	CUP, OIL 150	1							

Remarks

* Optional part.

Parts No. Index

Parts No.	Fig. No.	Ref. No.
103854-39140	16	51
104200-92350	21	32
104200-92600	21	33
106100-55800	7	20
110250-39030	16	32
114250-53080	15	5
114250-53120	15	7
114250-53130	15	8
114250-53140	15	9
114250-53210	15	10
114250-53400	15	11
119000-01200	1	28
119000-01590	2	5
119000-01760	2	20
119000-01771	2	21
	21	30
119000-01840	1	14
119000-01880	1	6
119000-01930	2	8
119000-02020	1	19
119000-02410	1	8
119000-02450	7	2
119000-07200	4	1
119000-11110	4	13
119000-11230	4	35
119000-11260	4	29
119000-11270	4	30
119000-11280	4	31
119000-11290	4	32
119000-11810	4	24
119000-11990	4	9
119000-14100	7	4
119000-14200	7	6
119000-21650	8	8
119000-22000	8	15
119000-22300	8	23
119000-23910	8	31
119000-25050	7	9
119000-25100	7	10
119000-25900	7	16
119000-25910	7	17
119000-25920	7	18
119000-25930	7	13
119000-32020	9	18
	21	5
119000-33010	10	2
119000-33022	10	16
	21	6
119000-33030	10	17
119000-33041	10	18

Parts No.	Fig. No.	Ref. No.
119000-33041	21	7
119000-33050	10	3
119000-35140	9	21
119000-39650	9	31
119000-42021	11	19
	21	9
119000-42052	11	3
119000-42122	11	4
119000-42141	11	5
119000-42151	11	7
119000-42250	11	21
119000-48170	11	26
119000-51050	12	5
119000-51060	12	7
119000-51101	12	12
119000-51161	12	18
119000-51170	12	19
119000-51181	12	20
119000-51201	12	21
119000-51330	12	32
119000-51340	12	33
119000-51360	12	35
119000-51411	12	36
119000-51450	12	37
119000-51511	12	44
119000-51550	12	45
119000-51570	12	46
119000-51580	12	47
119000-51590	12	48
119000-51650	12	49
119000-51800	12	63
119000-51900	12	64
119000-52000	13	1
119000-52100	13	23
119000-52150	13	28
119000-55602	16	1
119000-61052	14	2
119000-77350	18	10
119005-35170	9	22
119006-03090	4	51
119006-42003	11	1
119060-32000	9	1
119100-01340	1	29
	21	19
119100-01640	3	21
119100-01730	3	4
119100-03200	4	44
119100-11220	4	26
119100-11230	4	25
119100-11320	4	45

Parts No.	Fig. No.	Ref. No.
119100-11320	21	21
119100-11330	4	46
119100-11990	4	10
119100-12113	5	6
	21	24
119100-12120	5	3
119100-13100	6	1
119100-13200	6	2
	21	25
119100-14000	7	1
119100-21700	8	1
119100-35090	9	23
119100-39350	9	28
119100-51081	12	9
119100-51091	12	10
119100-51500	12	43
119100-53000	15	2
119100-59810	15	28
119100-59820	15	32
119100-59830	15	36
119100-59840	15	40
119129-11520	4	41
119140-01600	3	1
119140-01780	3	5
119140-01980	1	30
119140-12130	5	10
119140-13300	6	4
119140-21590	8	12
119140-34801	3	25
119140-39610	10	25
119140-44500	11	41
119140-44560	11	43
119140-49010	11	44
119140-49020	11	45
119140-51030	12	4
119140-59010	16	4
119140-59020	16	5
119140-59030	16	17
119140-59550	16	20
119140-61110	14	7
119140-61120	14	8
119140-77910	18	11
119140-78510	19	4
119140-78650	19	7
119140-78801	19	9
119140-78810	20	2
119141-44760	11	24
119160-34030	10	5
119175-51070	12	8
119259-44570	11	42

Parts No.	Fig. No.	Ref. No.
119593-01870	1	5
119620-49290	11	31
119625-11870	4	38
	21	22
119625-11880	4	39
	21	23
119640-01640	3	6
119649-61091	14	5
119649-61151	14	9
119649-78500	19	3
119773-91501	10	26
119802-13600	6	5
119802-13610	6	6
119802-13620	6	7
119802-13710	6	9
119810-77340	18	9
119813-59950	16	21
119885-01990	4	5
120324-55750	16	33
120324-55760	16	34
121236-77340	18	16
121250-44901	11	35
121400-91251	20	3
121400-91271	20	4
121470-44900	3	12
121520-34810	3	26
121522-77330	18	15
121820-52020	13	4
121820-52070	13	8
121820-52110	13	24
121820-52140	13	27
121820-52160	13	9
121820-52170	13	10
121820-52180	13	11
121820-52190	13	12
121820-52200	13	13
121820-52210	13	14
121820-52230	13	15
121820-52300	13	17
121820-52510	13	21
121850-01800	2	7
	21	3
121850-01900	7	15
121850-01920	2	3
121850-11100	4	12
121850-11120	4	14
121850-11150	4	15
	21	20
121850-11180	4	16
121850-11800	4	23

Parts No. Index

Parts No.	Fig. No.	Ref. No.
121850-21130	8	11
121850-21200	8	3
121850-21290	8	4
121850-21660	8	9
121850-21680	8	10
121850-21920	8	5
121850-23200	8	28
121850-35230	10	6
121850-49540	11	28
	21	27
121850-49550	11	29
	21	28
121850-51700	12	62
121850-77021	5	4
		13
	21	29
121952-33071	10	4
	21	8
121952-39830	10	9
121952-51900	12	65
121972-44740	11	23
122710-51050	12	6
122710-51350	12	34
123472-59090	15	23
123672-55811	16	45
123672-84530	10	10
123900-13640	6	8
124060-01050	1	4
124160-01751	2	19
	4	42
124223-35510	10	7
124410-51861	13	2
	21	18
124410-51960	7	23
	21	11
124411-01780	3	23
	21	2
124411-35520	10	8
124450-01980	16	10
124465-44950	11	38
	21	10
124610-01851	2	24
124610-01862	2	25
	21	4
124610-77019	17	1
124976-34850	3	11
127410-21480	8	14
127412-18853	5	11
127412-18880	5	12
127450-59680	16	8

Parts No.	Fig. No.	Ref. No.
127610-44900	3	8
128400-51300	12	29
129100-01580	1	11
		12
		13
	2	4
	19	1
129150-03100	4	52
129150-11750	4	36
129150-14400	7	7
129150-49360	11	39
	21	15
129150-91400	2	29
129155-51270	12	27
129155-51280	12	28
129198-59540	9	29
129400-13201	6	3
	21	26
129400-92450	21	38
129470-55610	16	2
129491-59540	16	19
129495-59300	16	18
129611-61100	14	3
129611-61180	14	6
129795-11750	3	2
129900-42140	11	6
	21	13
129916-49530	11	27
135400-01790	9	27
135602-34390	1	15
137600-53900	12	67
144626-51090	12	11
144626-51940	12	66
144628-59520	16	7
148688-52120	13	25
158563-51662	12	61
171010-77850	20	1
171051-01921	1	7
171090-59130	16	6
171090-59140	16	46
171325-44291	18	1
171325-44301	18	3
171325-44310	18	4
171325-44320	18	5
171375-44900	11	36
171375-44911	11	37
183250-39450	10	24
194180-51640	19	2
22117-040000	14	10
22117-050000	14	11

Parts No.	Fig. No.	Ref. No.
22117-120000	3	13
22127-120000	18	6
22190-060000	12	68
22190-060002	16	27
22190-080002	16	28
22190-080003	2	9
22190-120002	16	9
		29
22190-140002	16	10
		11
		30
		47
22190-220002	3	9
22190-360002	3	10
22217-060000	13	29
22217-120000	18	7
22217-180000	7	21
22242-000180	4	37
22252-000340	8	24
22351-030010	9	32
22351-030025	14	12
22351-040010	14	13
22351-050012	7	22
22351-050020	14	14
22351-080016	1	16
22360-040000	14	15
22360-050000	14	16
22512-070140	7	5
	8	6
23000-048000	11	46
23000-054000	11	47
23001-060000	5	14
23414-080000	9	30
23414-140000	1	17
23414-160000	3	14
	10	11
23414-170000	6	10
	10	12
	10	12
23414-180000	10	12
23414-220029	12	69
23857-030000	9	33
	16	31
23857-060000	16	12
		12
		12
23857-080000	16	13
		14
		48
23876-005000	4	11
23876-010000	10	27
23876-020000	1	18

Parts No.	Fig. No.	Ref. No.
23876-020000	11	13
23876-030000	1	9
	3	15
	10	13
	11	14
23887-160002	10	14
23894-030002	6	11
24104-060044	8	42
24311-000220	9	24
	21	12
24311-000320	2	22
	4	49
	21	17
24316-000150	12	70
24341-000240	2	31
	21	14
24341-000500	12	71
24341-001350	7	19
	21	16
24356-190160	12	72
25152-004400	11	22
26013-080162	9	25
26013-080452	7	14
26014-060202	11	30
26106-060162	2	32
26106-060182	12	73
26106-060202	15	25
26106-060222	19	5
26106-060402	14	17
26106-060452	14	18
26106-060502	1	31
	14	19
26106-060602	14	20
26106-060702	14	21
26106-060852	14	22
26106-080142	5	5
	16	15
26106-080162	1	32
	7	8
	9	19
		26
26106-080182	2	10
	5	15
26106-080202	2	11
		26
		27
	5	7
	10	19
		20
	18	12

Parts No. Index

Parts No.	Fig. No.	Ref. No.
26106-080222	18	17
26106-080252	2	23
	3	16
		24
	4	50
	7	24
26106-080352	3	17
	10	21
		22
26106-080402	2	12
26106-080452	2	13
		14
26106-080502	2	15
	9	20
	10	23
26106-080552	2	16
	11	25
26106-080602	11	15
26106-080652	4	40
	11	20
26106-080702	3	18
	5	8
26106-080752	2	17
26106-080802	3	19
26106-080902	2	18
26106-081152	5	9
26106-100142	19	8
26106-100202	4	2
26106-100252	16	3
	18	13
26106-100302	3	3
	16	49
26116-120252	17	24
26116-120852	3	20
26216-060162	12	74
26216-060252	4	17
26216-080652	4	18
26306-080002	2	28
	4	19
	6	12
	16	16
26306-100002	7	25
	18	14
26366-060002	4	20
	15	26
26366-080002	12	75
26376-100002	10	15
26450-060352	14	23
26476-050102	4	48
26557-040082	19	6

Parts No.	Fig. No.	Ref. No.
26577-060202	11	16
26577-080162	11	17
26706-100002	16	50
26716-060002	13	30
26716-120002	18	8
26726-080002	11	18
26776-180002	7	26
27231-600000	1	33
27241-140000	1	10
27310-090001	4	21
28110-100120	21	34
28110-140170	21	35
28110-190220	21	36
28160-170190	22	1
28210-000140	21	37
42112-550260	22	2
42112-550270	22	3
42130-502220	20	5
42900-000440	22	4
42900-000450	22	5
42900-000460	22	6
42900-000470	22	7
42900-000480	22	8
42900-000490	22	9
42900-000500	22	10
42900-000510	22	11
42900-000520	22	12
42900-000530	22	13
42900-000730	22	14
42900-000750	22	15
42900-550570	22	16
46150-504500	11	40
46150-513390	20	6
46150-513400	20	7
719000-02800	1	20
719000-02870	1	34
719000-02930	1	23
719000-02940	1	37
719000-22500	8	17
719000-22900	8	34
719000-22950	8	36
719000-23100	8	25
719000-23600	8	29
719000-23610	8	32
719100-53200	15	1
719100-92601	21	1
719129-01500	2	1
719129-11660	4	33
719129-11701	4	3
719129-12100	5	1

Parts No.	Fig. No.	Ref. No.
719140-01561	1	1
719140-51200	12	1
719160-33700	10	1
721400-92102	21	31
977770-1207F	21	39
X0300120414	16	38
X0311121522	16	37
X0313080110	16	39
X0314080110	16	44
X0580121073	16	36
X0582810173	16	35
X0588080273	16	40
X0600160122	16	43
X213011001	17	2
X21301402	17	15
X213017001	17	22
X21302115	17	5
X21302302	17	3
X21302402	17	16
X21302601	17	19
X21302605	17	20
X21303119	17	6
X21303302	17	4
X213035002	17	17
X21303610	17	21
X21304400	17	14
X213046003	17	18
X21305312	17	11
X21305313	17	12
X21305820	17	23
X21307305	17	10
X21308220	17	7
X21308311	17	8
X22501113	17	13
X225013012	17	9
X2540025002	16	42
X2740134001	16	41

Parts No.	Fig. No.	Ref. No.
-----------	----------	----------