

OCD10-M85900EN

P R E F A C E

1. This parts catalog is the 1st edition of 2TNV70-PTB, 2TNV70-PTBT for Takeuchi Mfg. Co., Ltd.

Pub. No. : 0CD10-G85900

Published : June, 2005

2. Model name

Engine model	Vehicle	Vehicle made by
2TNV70-PTB 2TNV70-PTBT	EXCAVATOR	Takeuchi Mfg. Co., Ltd.

Contents

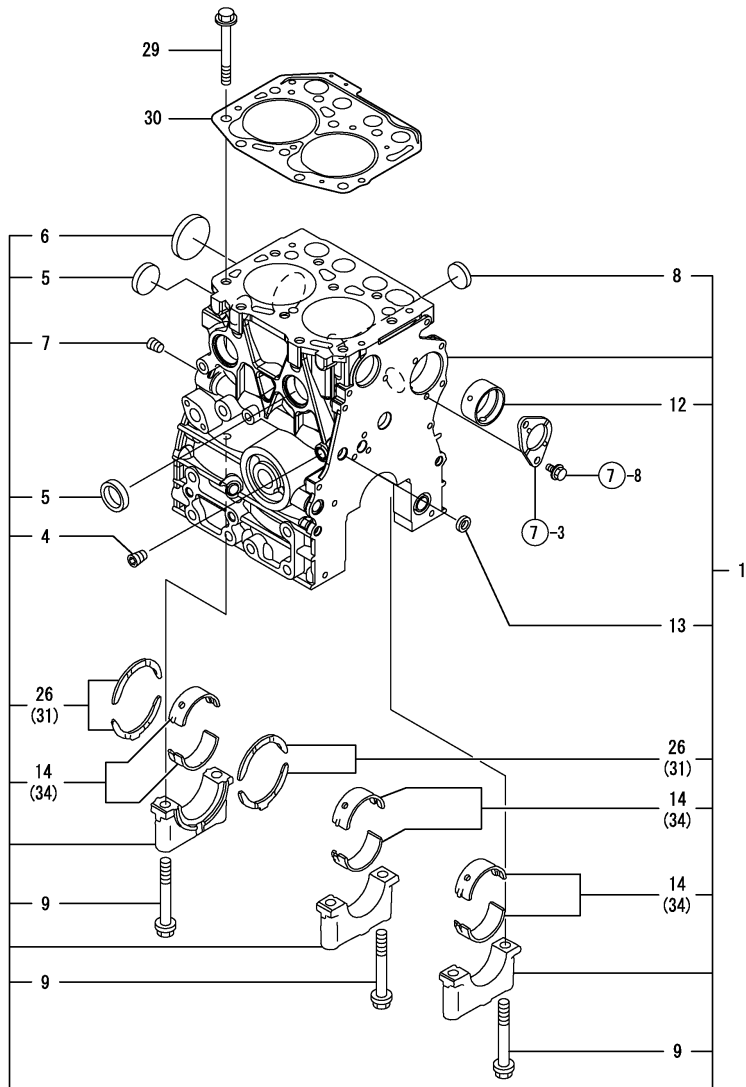
Fig. No. Fig. Name

2TNV70-PTB

1. CYLINDER BLOCK
2. GEAR HOUSING
3. FLYWHEEL HOUSING & OIL SUMP
4. CYLINDER HEAD & BONNET
5. AIR CLEANER
6. EXHAUST MANIFOLD & SILENCER
7. CAMSHAFT & DRIVING GEAR
8. CRANKSHAFT & PISTON
9. LUB.OIL SYSTEM
10. COOLING WATER SYSTEM
11. FUEL INJECTION PUMP
12. GOVERNOR
13. FUEL INJECTION VALVE
14. FUEL LINE
15. STARTING MOTOR
16. GENERATOR
17. GASKET SET

Fig. No. Fig. Name

Fig.1. CYLINDER BLOCK



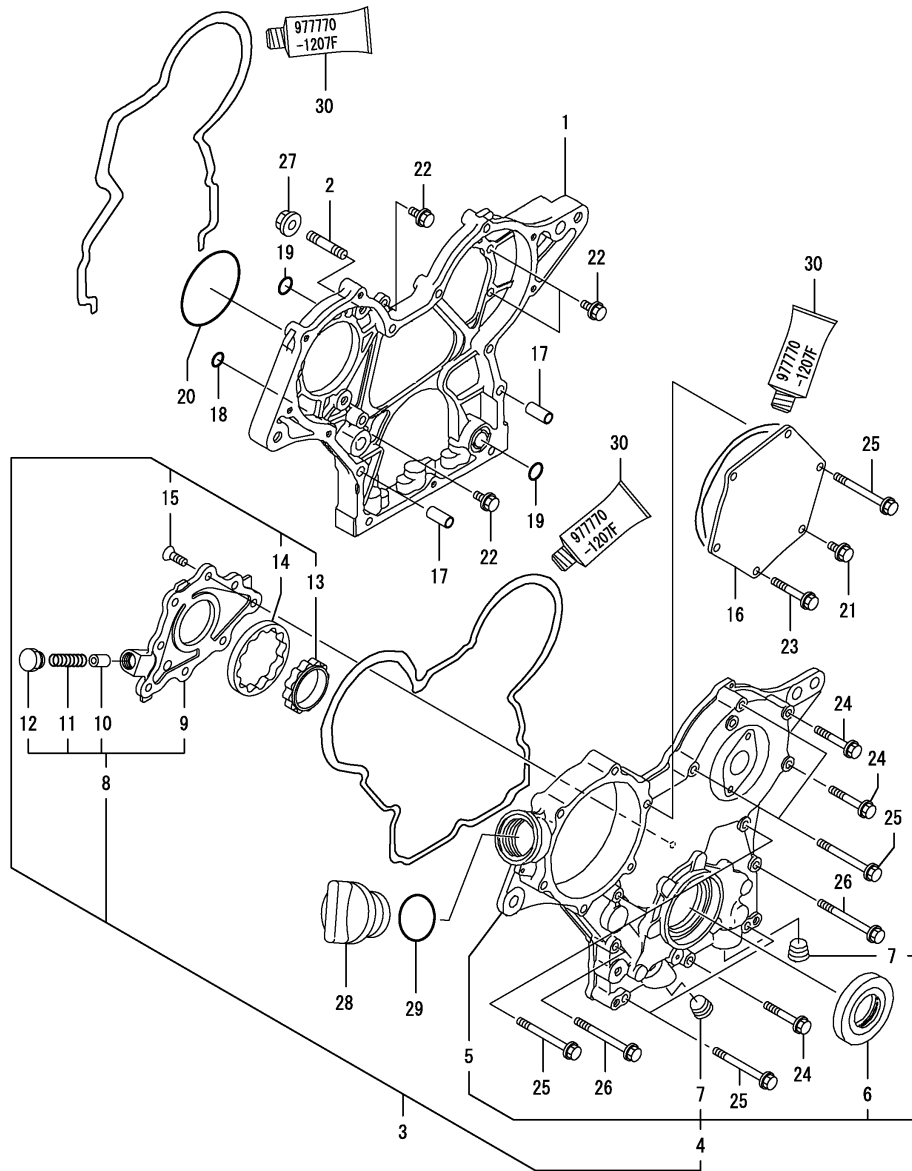
(A)=2TNV70-PTB
(B)=2TNV70-PTBT
(C)=

(D)=
(E)=
(F)=

No.	Lev.	Parts No.	Description	Q'ty						I	R
				(A)	(B)	(C)	(D)	(E)	(F)		
1	1	719415-01560	BLOCK ASSY, CYLINDER	1	1						
4	2	124060-01050	PLUG, PT1/8	1	1						
5	2	105311-01090	PLUG, 30	3	3						
6	2	119623-01250	PLUG, 45	1	1						
7	2	124160-01910	PLUG, PT1/4	1	1						
8	2	119285-01990	PLUG, 25	2	2						
9	2	119620-02020	BOLT, METAL CAP	6	6						
12	2	119717-02410	BUSH, CAMSHAFT	1	1						
13	2	27241-120000	PLUG, 12	1	1						
14	2	719717-02900	BEARING, MAIN	3	3						1
26	2	119717-02930	BEARING, THRUST	2	2						
29	1	119515-01200	BOLT, HEAD	10	10						
30	1	119415-01330	GASKET, HEAD	1	1						
31	1	119810-02940	BEARING, THRUST 0.25	2	2						2
34	1	719717-02910	BEARING, 0.25 US	3	3						3

Remarks
 (1) REPAIR PART.
 (2) OVER-SIZE(O.S=0.25)PART.
 (3) UNDER-SIZE(U.S=0.25)PART.

Fig.2. GEAR HOUSING



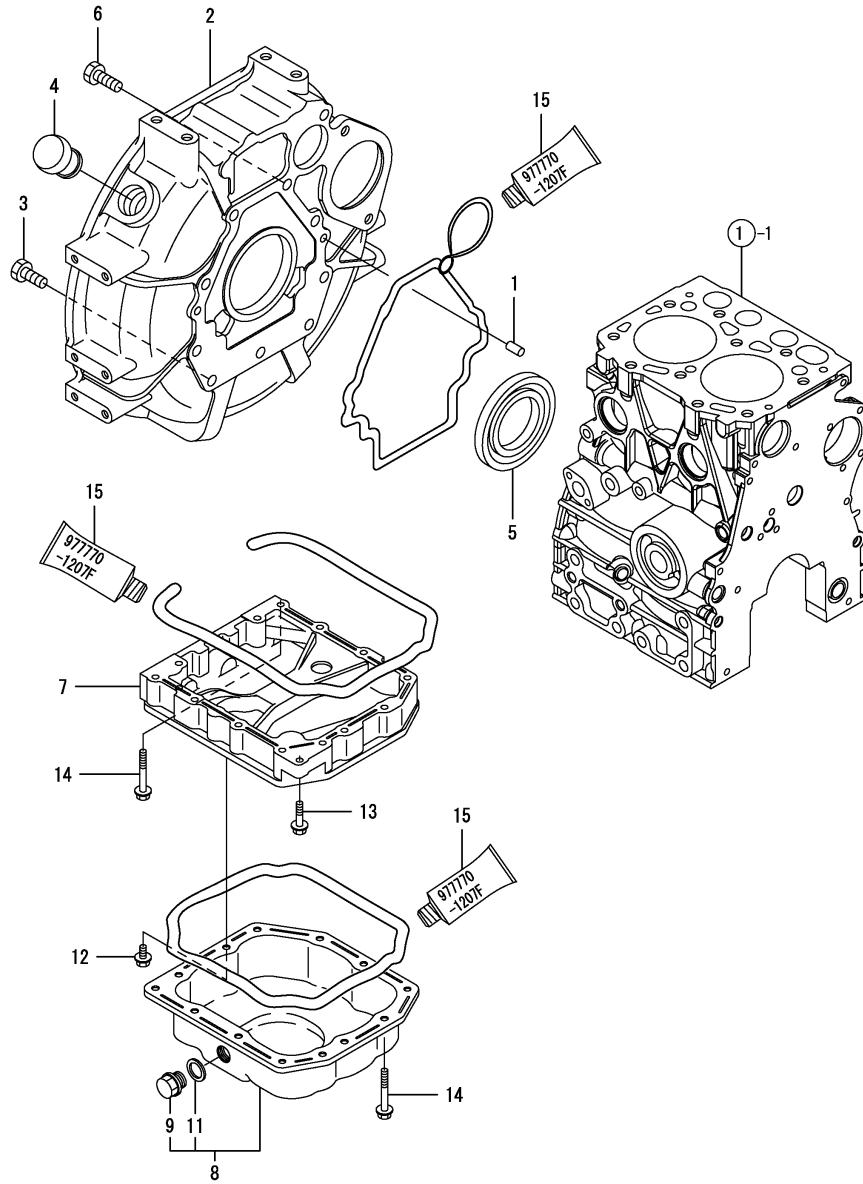
(A)=2TNV70-PTB
 (B)=2TNV70-PTBT
 (C)=

(D)=
 (E)=
 (F)=

No.	Lev.	Parts No.	Description	Q'ty						I	R
				(A)	(B)	(C)	(D)	(E)	(F)		
1	1	119717-01501	CASE, GEAR	1	1						
2	1	119717-01570	STUD	3	3						
3	1	119734-01590	COVER ASSY,GEAR CASE	1	1						
4	2	719734-01500	COVER ASSY,GEAR CASE	1	1						
5	3	119717-01521	COVER, GEAR CASE	1	1						
6	3	119717-01800	SEAL, OIL	1	1						
7	3	23876-030000	PLUG, R03	2	2						
8	2	119717-32100	COVER ASSY	1	1						
9	3	119717-32080	COVER	1	1						
10	3	129900-32130	VALVE, RELIEF	1	1						
11	3	129001-32320	SPRING	1	1						
12	3	129001-32330	PLUG	1	1						
13	2	119717-32110	ROTOR, INNER	1	1						
14	2	119717-32120	ROTOR, OUTER	1	1						
15	2	119802-32130	SCREW, M6X16	8	8						
16	1	119717-01750	COVER	1	1						
17	1	119660-01911	PIPE, KNOCK	2	2						
18	1	119624-32040	O-RING, P12.0	1	1						
19	1	119717-32050	O-RING, P17.0	3	3						
20	1	121850-51960	O-RING	1	1						
21	1	26106-060122	BOLT, M6X 12 PLATED	1	1						
22	1	26106-060162	BOLT, M6X 16 PLATED	4	4						
23	1	26106-060402	BOLT, M6X 40 PLATED	4	4						
24	1	26106-060402	BOLT, M6X 40 PLATED	3	3						
25	1	26106-060602	BOLT, M6X 60 PLATED	7	7						
26	1	26106-060652	BOLT, M6X 65 PLATED	2	2						
27	1	26306-080002	NUT, M8	3	3						
28	1	124160-01751	COVER, FILLER	1	1						
29	1	24311-000320	O-RING, 1AP32.0	1	1						
30	1	977770-1207F	GASKET.LIQUID	1	1						1

Remarks
 (1) OPTIONAL PART.

Fig.3. FLYWHEEL HOUSING & OIL SUMP



(A)=2TNV70-PTB
(B)=2TNV70-PTBT
(C)=

(D)=
(E)=
(F)=

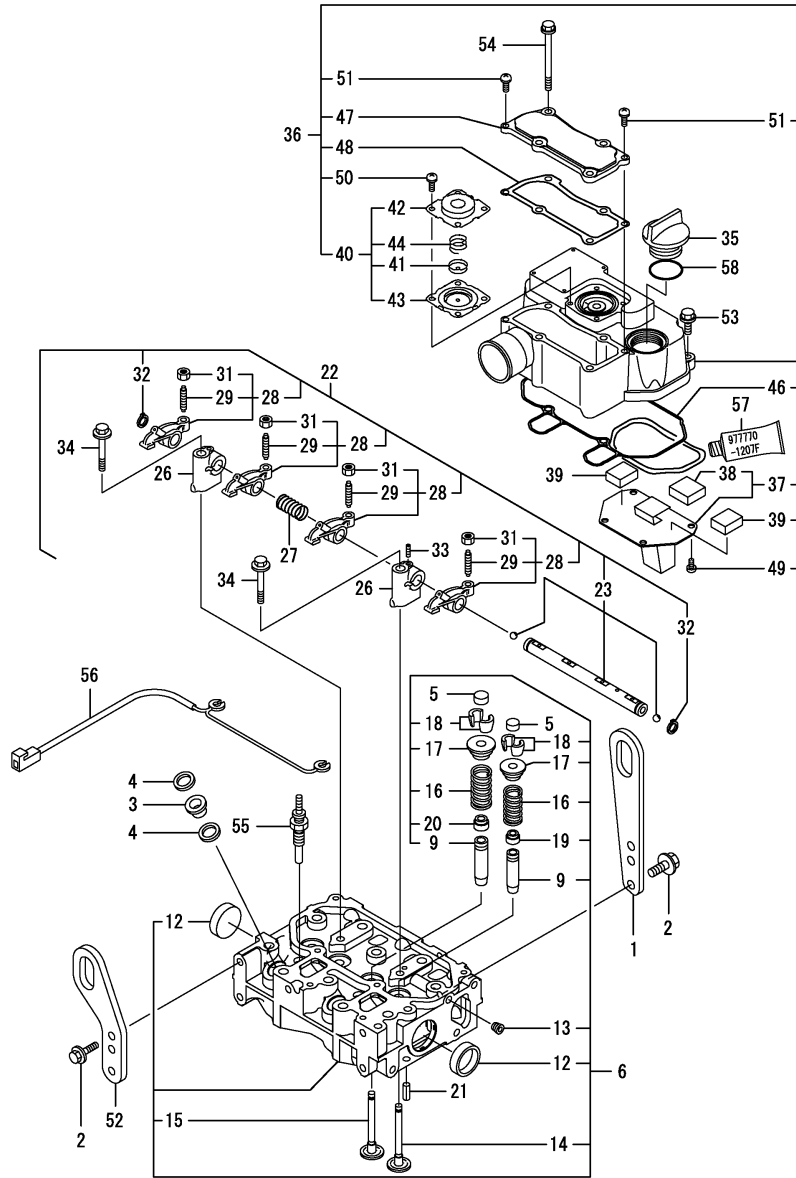
No.	Lev.	Parts No.	Description	Q'ty						I	R
				(A)	(B)	(C)	(D)	(E)	(F)		
1	1	129100-01580	PIN, M8X16	2	2						
2	1	119515-01601	HOUSING, FLYWHEEL	1	1						
3	1	121120-01620	BOLT, M10X28	3	3						
4	1	119620-01750	CAP	1	1						
5	1	124085-02220	SEAL, OIL	1	1						
6	1	26206-100252	BOLT, M10X 25 PLATED	7	7						
7	1	119415-01720	SPACER, OIL SUMP	1	1						
8	1	119415-01770	SUMP ASSY, OIL	1	1						
9	2	105425-01690	PLUG, 16	1	1						
11	2	22190-160002	WASHER, SEAL 16	1	1						
12	1	26106-060122	BOLT, M6X 12 PLATED	1	1						
13	1	26106-060252	BOLT, M6X 25 PLATED	1	1						
14	1	26106-060452	BOLT, M6X 45 PLATED	13	13						
15	1	977770-1207F	GASKET.LIQUID	1	1						1

Remarks
(1) OPTIONAL PART.

Fig.4. CYLINDER HEAD & BONNET

(A)=2TNV70-PTB
 (B)=2TNV70-PTBT
 (C)=

(D)=
 (E)=
 (F)=



No.	Lev.	Parts No.	Description	Q'ty						I	R
				(A)	(B)	(C)	(D)	(E)	(F)		
1	1	129900-07900	LIFTER	1	1						
2	1	26106-080162	BOLT, M8X 16 PLATED	4	4						
3	1	129901-11450	PROTECTOR, NOZZLE	2	2						
4	1	119600-11460	GASKET, NOZZLE	4	4						
5	1	105010-11490	CAP, VALVE	4	4						
6	1	119415-11740	HEAD ASSY, CYLINDER	1	1						
9	2	119515-11800	GUIDE, VALVE	4	4						1
12	2	119285-11990	PLUG, 35	2	2						
13	2	23876-005000	PLUG, R005	1	1						
14	2	119515-11100	VALVE, INTAKE	2	2						
15	2	119515-11110	VALVE, EXHAUST	2	2						
16	2	119717-11131	SPRING, VALVE	4	4						
17	2	129508-11180	RETAINER, SPRING	4	4						
18	2	119717-11190	COTTER	8	8						
19	2	119717-11340	SEAL, VALVE STEM	2	2						
20	2	119717-11350	SEAL, VALVE STEM	2	2						
21	1	22351-060012	PIN, SPRING 6.0X12	2	2						
22	1	119415-11200	SUPPORT ASSY, ARM	1	1						
23	2	119415-11240	SHAFT ASSY, ROCKER	1	1						
26	2	119717-11260	SUPPORT, ROCKER ARM	2	2						
27	2	119515-11280	SPRING	1	1						
28	2	119717-11650	ARM, ROCKER	4	4						
29	3	129150-11230	SCREW, VALVE ADJUST	4	4						
31	3	129150-11750	NUT, M8	4	4						
32	2	22242-000120	RING, 12	2	2						
33	2	26979-050162	SCREW, M5X16	1	1						
34	1	26106-080402	BOLT, M8X 40 PLATED	2	2						
35	1	124160-01751	COVER, FILLER	1	1						
36	1	119415-11380	BONNET ASSY, HEAD	1	1						
37	2	119717-03031	PLATE	1	1						
38	3	119717-03070	BAFFLE, BREATHER	1	1						
39	2	119717-03070	BAFFLE, BREATHER	2	2						
40	2	119802-03100	DIAPHRAGM ASSY	1	1						
41	3	119802-03110	PLATE	1	1						
42	3	119802-03121	COVER, DIAPHRAGM	1	1						
43	3	119802-03131	DIAPHRAGM	1	1						
44	3	119802-03141	SPRING, DIAPHRAGM	1	1						
46	2	119415-11310	GASKET, BONNET	1	1						
47	2	119415-11320	COVER, BONNET	1	1						
48	2	119415-11330	GASKET	1	1						
49	2	22857-500100	SCREW, 5X10	4	4						
50	2	22857-500100	SCREW, 5X10	4	4						
51	2	22857-500160	SCREW, 5X16	2	2						
52	1	129486-07901	LIFTER	1	1						
53	1	26106-060202	BOLT, M6X 20 PLATED	2	2						
54	1	26106-060752	BOLT, M6X 75 PLATED	4	4						
55	1	119717-77800	PLUG, GLOW	2	2						
56	1	119415-77820	CONNECTOR, GLOW PLUG	1	1						
57	1	977770-1207F	GASKET, LIQUID	1	1						2
58	1	24311-000320	O-RING, 1AP32.0	1	1						

Remarks
 (1) REPAIR PART.
 (2) OPTIONAL PART.

Fig.5. AIR CLEANER

(A)=2TNV70-PTB
 (B)=2TNV70-PTBT
 (C)=

(D)=
 (E)=
 (F)=

No.	Lev.	Parts No.	Description	Qty						I	R
				(A)	(B)	(C)	(D)	(E)	(F)		
1	1	119325-12560	CLEANER ASSY, AIR	1	1						
2	2	119258-12510	BODY ASSY, CLEANER	1	1						
3	2	119808-12540	VALVE, UNLOADER	1	1						
4	2	119655-12560	ELEMENT	1	1						
5	2	119686-12570	COVER ASSY	1	1						
6	1	119865-12600	BAND ASSY, CLEANER	1	1						
10	1	23000-060000	CLAMP, 60	3	3						

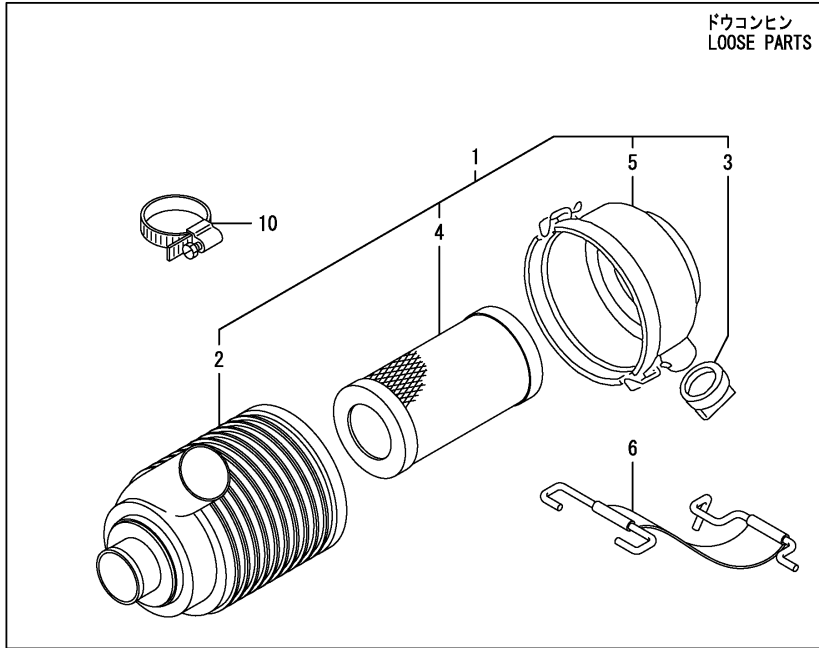


Fig.6. EXHAUST MANIFOLD & SILENCER

(A)=2TNV70-PTB
 (B)=2TNV70-PTBT
 (C)=
 (D)=
 (E)=
 (F)=

No.	Lev.	Parts No.	Description	Q'ty						I	R
				(A)	(B)	(C)	(D)	(E)	(F)		
1	1	119415-13100	MANIFOLD, EXHAUST	1	1						
2	1	119415-13110	GASKET	1	1						
3	1	119717-13600	STUD, M8X50	2	2						
4	1	119802-13620	BOLT, M8X50	2	2						
5	1	119131-18320	STUD, M8X22	4	4						
6	1	26306-080002	NUT, M8	2	2						
7	1	119515-13200	GASKET, SILENCER	1	1						
8	1	119440-13500	SILENCER	1	1						
9	1	129107-13550	GASKET	1	1						

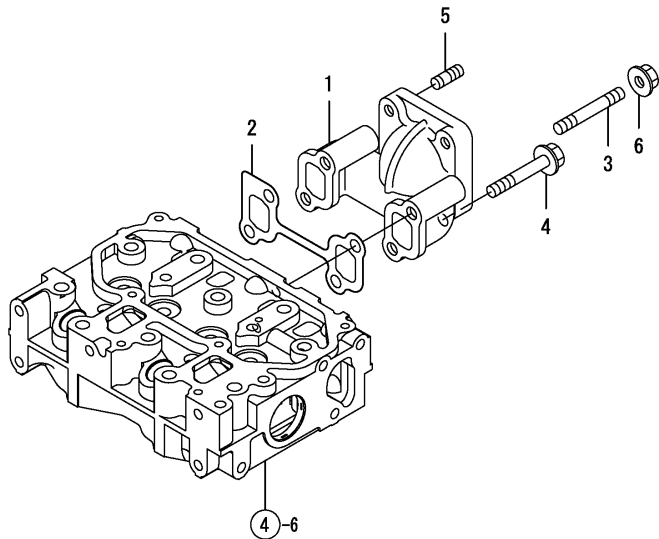
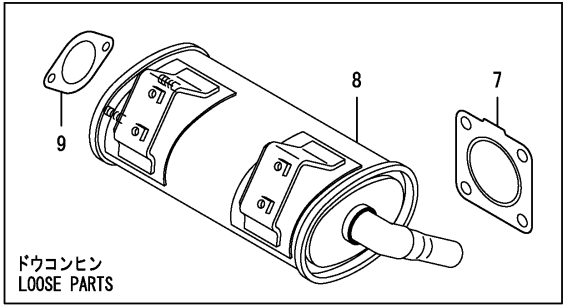
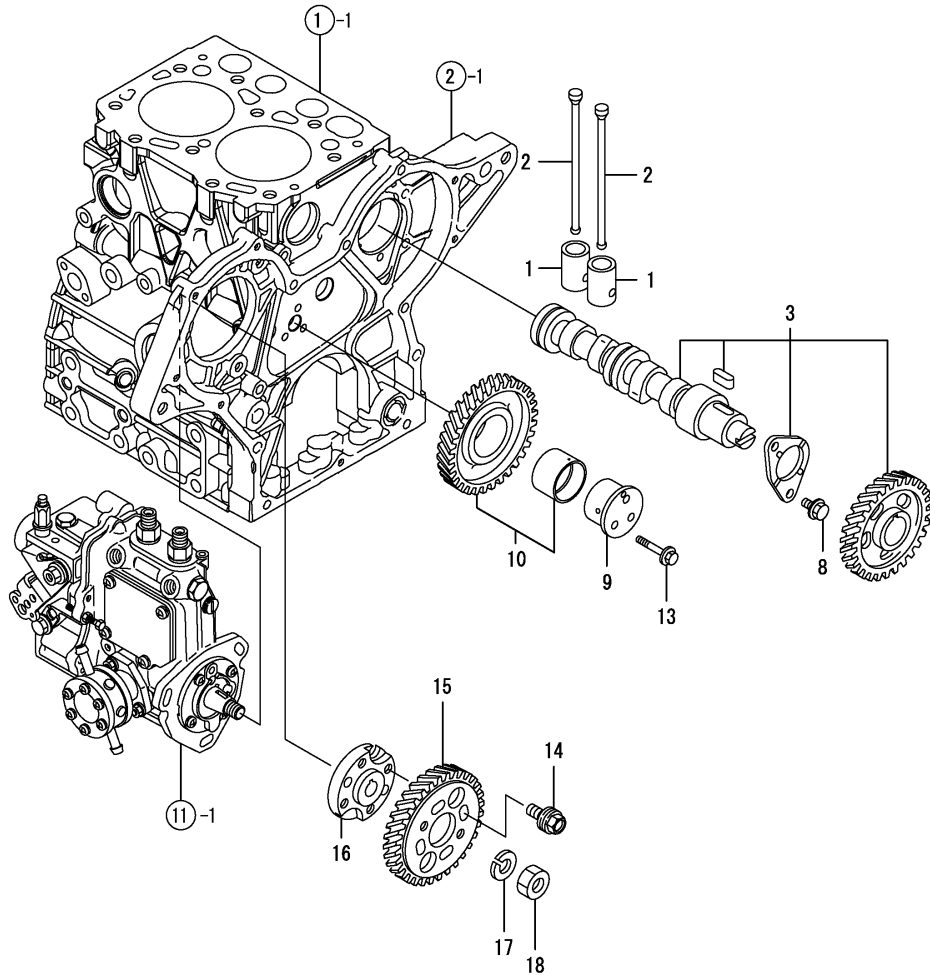


Fig.7. CAMSHAFT & DRIVING GEAR

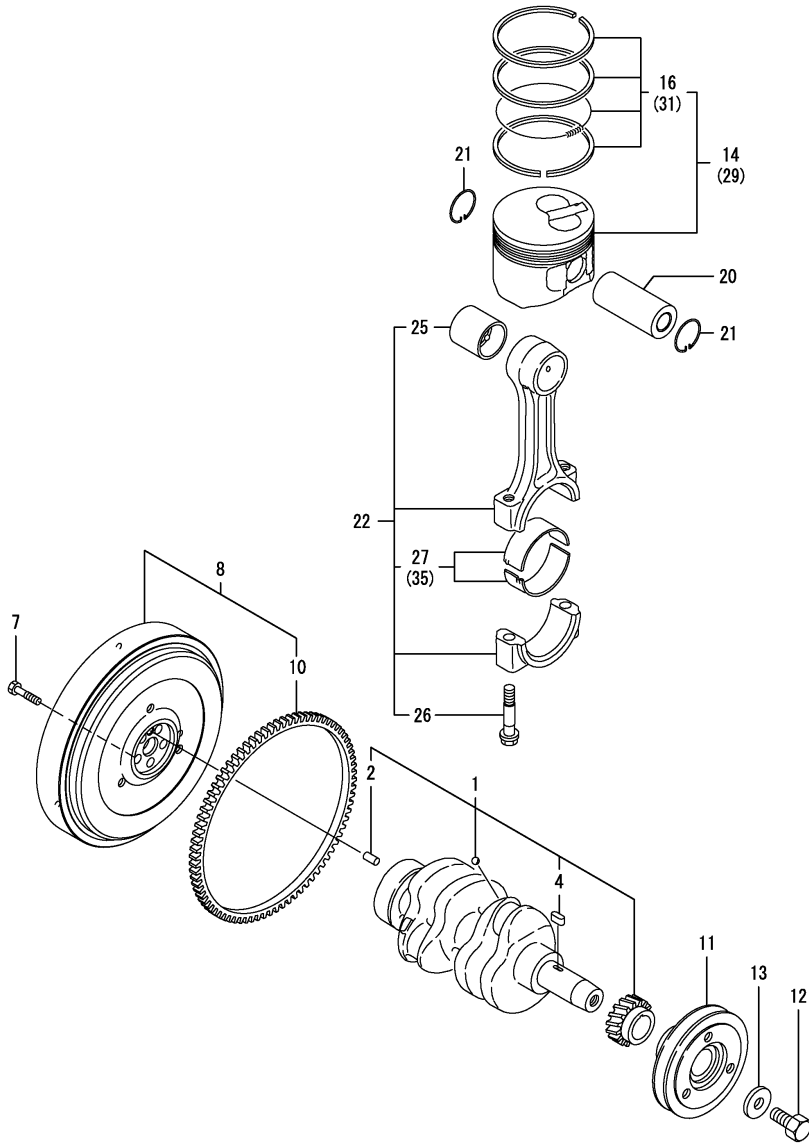


(A)=2TNV70-PTB
 (B)=2TNV70-PTBT
 (C)=

(D)=
 (E)=
 (F)=

No.	Lev.	Parts No.	Description	Q'ty						I	R
				(A)	(B)	(C)	(D)	(E)	(F)		
1	1	119620-14200	TAPPET	4	4						
2	1	119515-14400	ROD, PUSH	4	4						
3	1	119415-14580	CAMSHAFT ASSY	1	1						
8	1	26106-060122	BOLT, M6X 12 PLATED	2	2						
9	1	119717-25050	SHAFT, IDLE	1	1						
10	1	119717-25100	GEAR ASSY, IDLE	1	1						
13	1	26106-060352	BOLT, M6X 35 PLATED	3	3						
14	1	129150-25301	BOLT	4	4						
15	1	119717-25930	GEAR, PUMP	1	1						
16	1	119717-51150	FLANGE	1	1						
17	1	22217-120000	WASHER, SPRING 12	1	1						
18	1	26716-120002	NUT, M12	1	1						

Fig.8. CRANKSHAFT & PISTON



(A)=2TNV70-PTB
(B)=2TNV70-PTBT
(C)=

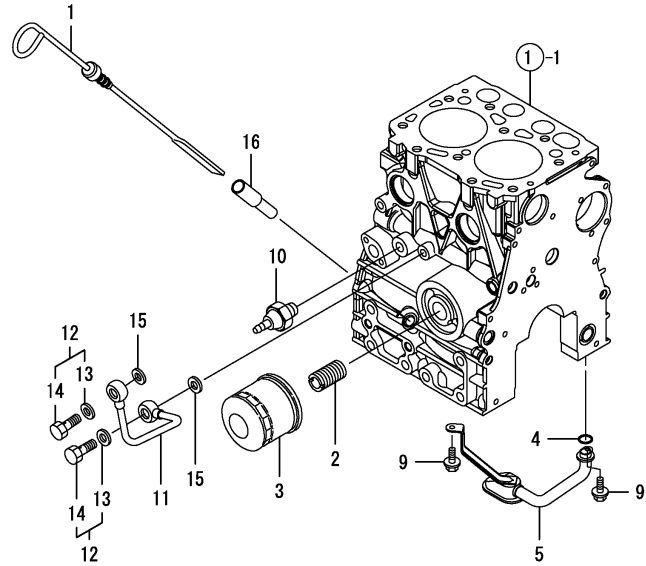
(D)=
(E)=
(F)=

No.	Lev.	Parts No.	Description	Q'ty						I	R
				(A)	(B)	(C)	(D)	(E)	(F)		
1	1	119415-21700	CRANKSHAFT ASSY	1	1						
2	2	129100-01580	PIN, M8X16	1	1						
4	2	22512-040120	KEY, 4X 12	1	1						
7	1	119620-21500	BOLT, FLYWHEEL	5	5						
8	1	119415-21590	FLYWHEEL ASSY	1	1						
10	2	124950-21600	GEAR, RING	1	1						
11	1	119717-21650	V-PULLEY	1	1						
12	1	119621-21680	BOLT, FLANGE 12X1.25	1	1						
13	1	119620-21941	WASHER	1	1						
14	1	119515-22080	PISTON ASSY	2	2						
16	2	119515-22500	RING SET, PISTON	2	2						
20	1	119515-22300	PIN, PISTON	2	2						
21	1	22252-000220	RING, 22	4	4						
22	1	119515-23000	ROD ASSY, CONNECTING	2	2						
25	2	119717-23910	BEARING, PISTON PIN	2	2						1
26	2	119717-23200	BOLT, CONNECTING ROD	4	4						
27	2	119515-23600	BEARING, CRANK PIN	2	2						
29	1	119515-22900	PISTON ASSY, 0.25 OS	2	2						3
31	2	119515-22550	RING SET, 0.25 OS	2	2						3
35	1	119515-23610	METAL ASSY, 0.25	2	2						2

Remarks
 (1) REPAIR PART.
 (2) UNDER-SIZE(U.S=0.25)PART.
 (3) OVER-SIZE(O.S=0.25)PART.

Fig.9. LUB.OIL SYSTEM

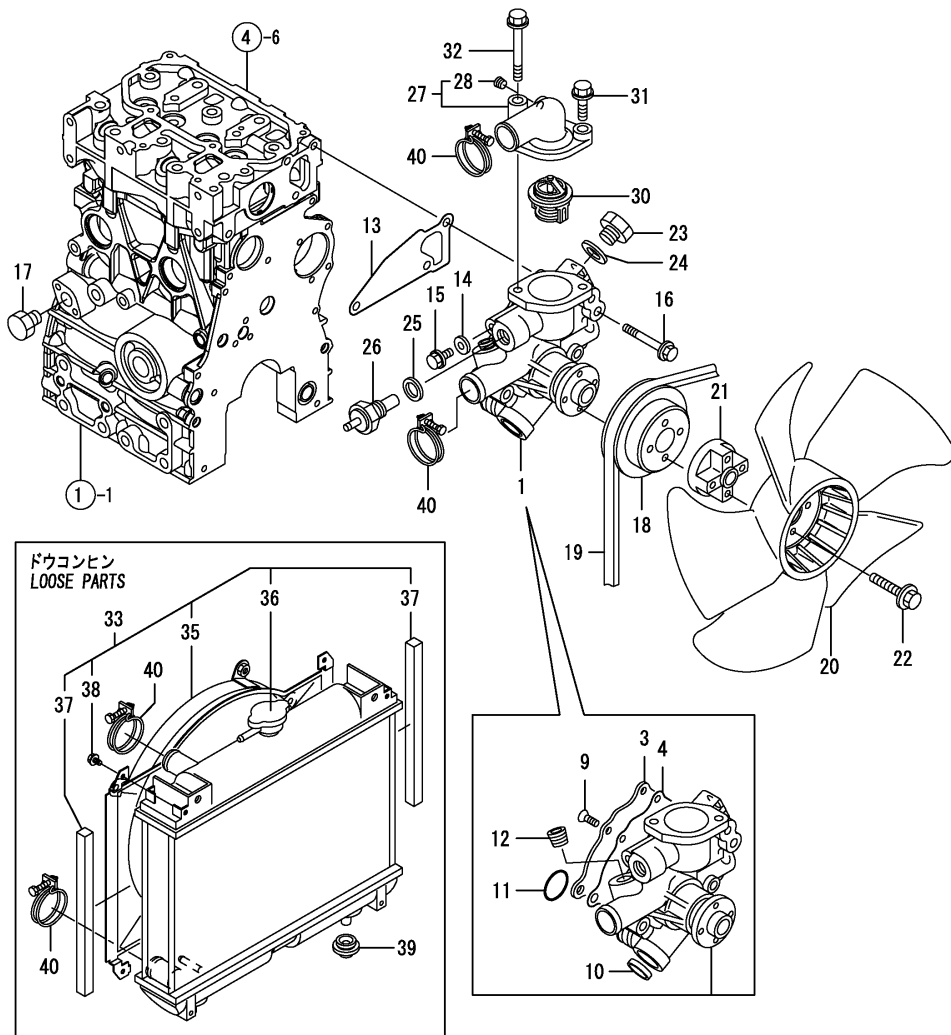
(A)=2TNV70-PTB
 (B)=2TNV70-PTBT
 (C)=
 (D)=
 (E)=
 (F)=



No.	Lev.	Parts No.	Description	Q'ty						I	R
				(A)	(B)	(C)	(D)	(E)	(F)		
1	1	119415-34801	DIPSTICK, OIL	1	1						
2	1	129100-35140	STUD	1	1						
3	1	119305-35151	FILTER ASSY, D68XL65	1	1						1
4	1	119717-32060	O-RING, P15.0	1	1						
5	1	119415-35080	PIPE ASSY, OIL INLET	1	1						
9	1	26106-060102	BOLT, M6X 10 PLATED	2	2						
10	1	114250-39450	SWITCH, 0.5KG	1	1						
11	1	119415-39210	PIPE, OIL	1	1						
12	1	129005-59830	BOLT ASSY, JOINT M8	2	2						
13	2	22190-080002	WASHER, SEAL 6	2	2						
14	2	23857-030000	BOLT, JOINT 3	2	2						
15	1	22190-080002	WASHER, SEAL 6	2	2						
16	1	121520-34810	GUIDE, DIPSTICK	1	1						

Remarks
 (1) REPAIR PART.

Fig.10. COOLING WATER SYSTEM



(A)=2TNV70-PTB
(B)=2TNV70-PTBT
(C)=

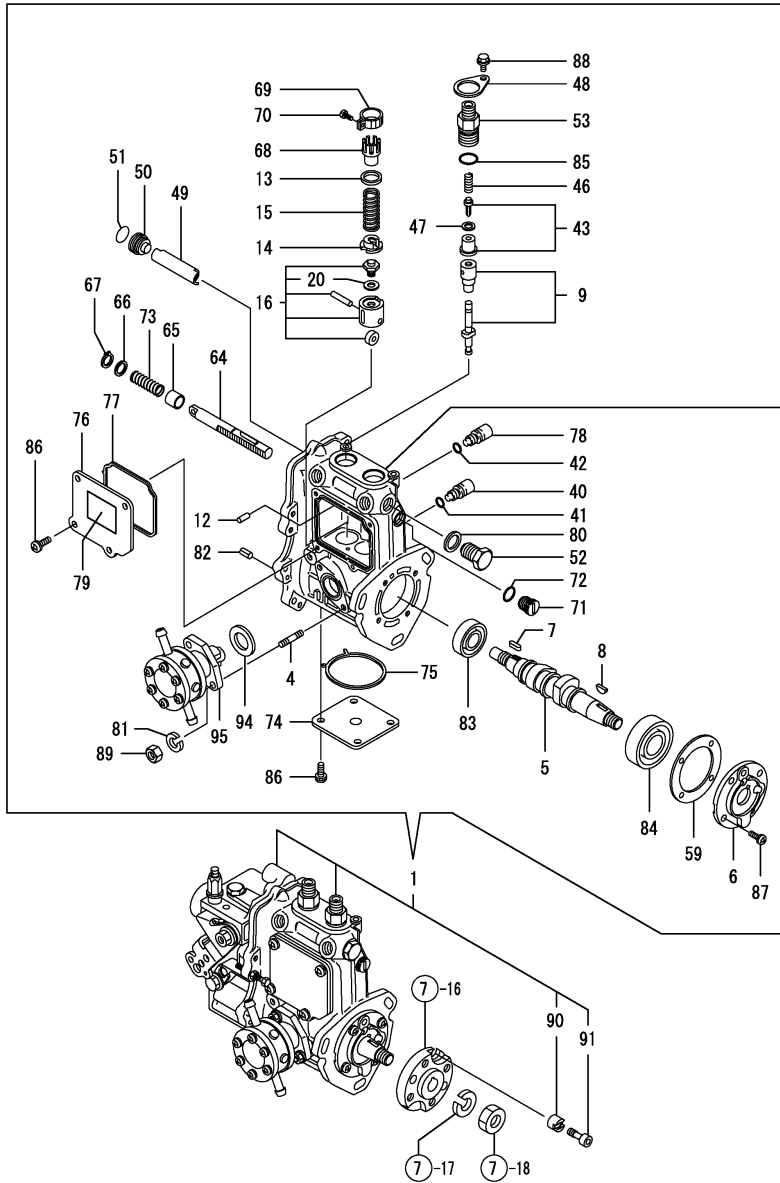
(D)=
(E)=
(F)=

No.	Lev.	Parts No.	Description	Q'ty						I	R
				(A)	(B)	(C)	(D)	(E)	(F)		
1	1	119540-42000	PUMP ASSY, WATER	1	1						
1-1	1	119C10-42000	PUMP ASSY, WATER	1	1						N
		(A=E/ C1052) (B=E/ C1052)									
3	2	119515-42041	COVER	1	1						
4	2	119717-42031	GASKET	1	1						
9	2	26577-060122	SCREW, M6X12	4	4						
10	2	27241-250000	PLUG, 25	1	1						
11	2	119717-42320	O-RING, P26	1	1						
11-1	2	119C10-42320	O-RING, 2028	1	1						S
		(A=E/ C1052) (B=E/ C1052)									
12	2	129916-49740	PLUG, R03	1	1						
13	1	119515-42020	GASKET, WATER PUMP	1	1						
14	1	23414-080000	GASKET, 8X1.0	1	1						
15	1	26106-080122	BOLT, M8X 12 PLATED	1	1						
16	1	26106-080502	BOLT, M8X 50 PLATED	3	3						
17	1	171056-49120	PLUG, DRAIN	1	1						
18	1	119717-42350	V-PULLEY, D=100	1	1						
19	1	25152-003500	V-BELT, A35	1	1						
20	1	119233-44740	FAN, D=290XUH	1	1						
21	1	121267-44760	SPACER	1	1						
22	1	26106-060302	BOLT, M6X 30 PLATED	4	4						
23	1	121450-42450	PLUG, M16	1	1						
24	1	124465-44950	GASKET, 16	1	1						
25	1	129150-49360	GASKET	1	1						
26	1	124250-49351	SENSOR	1	1						
27	1	119609-49520	COVER ASSY	1	1						
28	2	119285-01731	PLUG, NPT1/8	1	1						
30	1	119718-49800	THERMOSTAT, 82	1	1						
31	1	26106-080252	BOLT, M8X 25 PLATED	1	1						
32	1	26106-080602	BOLT, M8X 60 PLATED	1	1						
33	1	119440-44500	RADIATOR ASSY	1	1						
35	2	119325-44571	SHROUD	1	1						
36	2	129107-44590	CAP, RADIATOR	1	1						
37	2	119325-44600	NET, WIRE	2	2						
38	2	26014-060122	BOLT, M6X 12	4	4						
39	1	119255-44660	ABSORBER	2	2						
40	1	23010-038000	CLAMP, 38	4	4						

Fig.11. FUEL INJECTION PUMP

(A)=2TNV70-PTB
(B)=2TNV70-PTBT
(C)=

(D)=
(E)=
(F)=



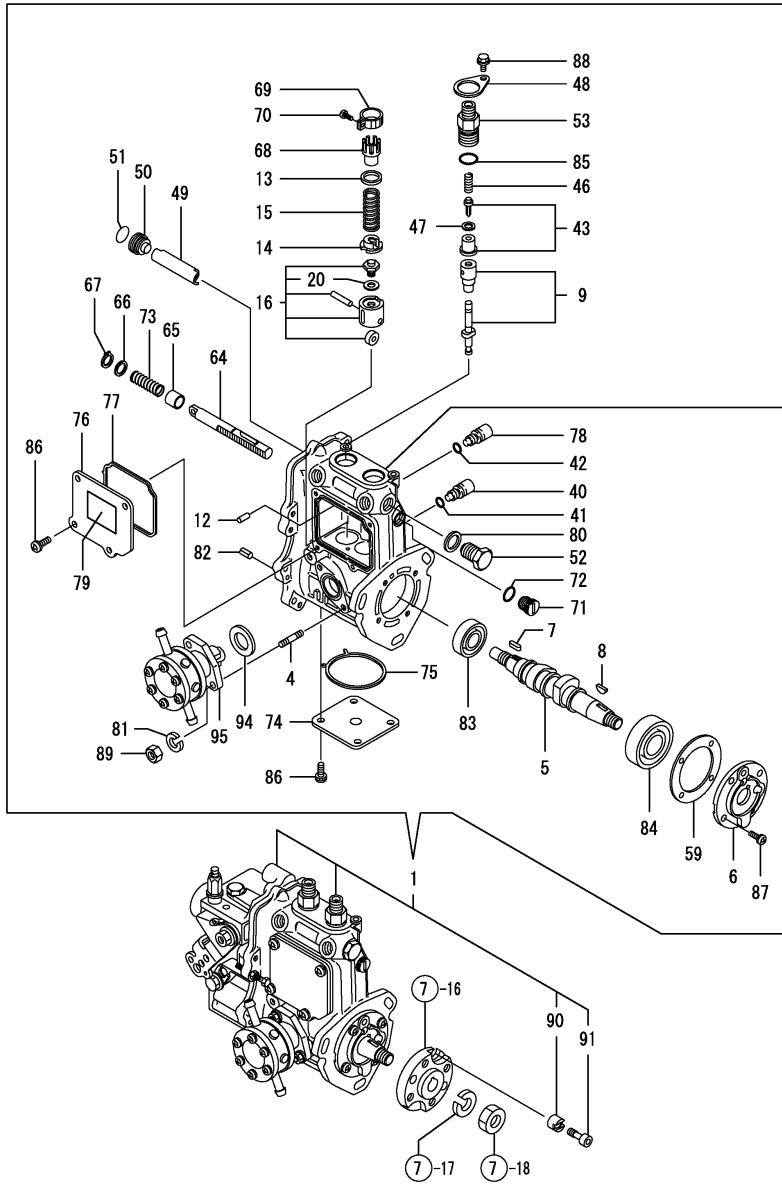
No.	Lev.	Parts No.	Description	Q'ty						I	R
				(A)	(B)	(C)	(D)	(E)	(F)		
1	1	719440-51380	PUMP ASSY, INJECTION	1	1						1
4	2	129155-51020	STUD	2	2						
5	2	119415-51030	CAMSHAFT	1	1						
6	2	119717-51060	SUPPORT, CAMSHAFT	1	1						
7	2	119717-51070	KEY	1	1						
8	2	122710-51090	KEY	1	1						
9	2	119515-51100	PLUNGER ASSY	2	2						
12	2	129155-51140	PIN	2	2						
13	2	158600-51170	RETAINER, SPRING	2	2						
14	2	119717-51180	RETAINER, SPRING	2	2						
15	2	119717-51190	SPRING, PLUNGER	2	2						
16	2	119717-51200	TAPPET ASSY	2	2						
20	3	129155-51600	SHIM SET, ADJUSTING	2	2						
40	2	158600-51270	STOPPER, TAPPET	2	2						
41	2	129155-51280	O-RING, S6	2	2						
42	2	129155-51280	O-RING, S6	1	1						
43	2	119717-51300	VALVE ASSY, DELIVERY	2	2						
46	2	119717-51330	SPRING, DELIVERY	2	2						
47	2	124550-51350	GASKET, DELIVERY	2	2						
48	2	118400-51370	LOCKING	2	2						
49	2	119415-51400	PROTECTOR	1	1						
50	2	158600-51410	PLUG, DEFLECTOR	1	1						
51	2	119717-51420	O-RING	1	1						
52	2	158600-51420	PLUG, DEFLECTOR	1	1						
53	2	158600-51441	VALVE ASSY, DELIVERY	2	2						
59	2	129155-51450	SHIM SET, ADJUSTING	1	1						
64	2	119415-51500	RACK, CONTROL	1	1						
65	2	129155-51521	BUSH, RACK	1	1						
66	2	129155-51530	SPACER	1	1						
67	2	129155-51540	CIRCLIP	1	1						
68	2	129155-51550	PINION, CONTROL	2	2						
69	2	129100-51560	PINION	2	2						
70	2	129100-51570	SCREW	2	2						
71	2	158600-51570	PLUG	1	1						
72	2	129155-51580	O-RING	1	1						
73	2	129155-51591	SPRING, RACK	1	1						
74	2	119415-51700	COVER	1	1						
75	2	119415-51710	GASKET	1	1						
76	2	119415-51750	COVER	1	1						
77	2	119415-51760	GASKET	1	1						
78	2	158600-51790	STOOPER, RACK	1	1						
79	2	129156-51910	LABEL, CAUTION	1	1						
80	2	22190-160002	WASHER, SEAL 16	1	1						
81	2	22217-060000	WASHER, SPRING 6	2	2						
82	2	22351-050010	PIN, SPRING 5.0X10	2	2						
83	2	24101-060034	BEARING, BALL 6003	1	1						
84	2	24101-063034	BEARING, BALL 6303	1	1						
85	2	24316-000150	O-RING, 4DP15.0	2	2						
86	2	26022-050122	SCREW, M5X12	8	8						
87	2	26022-060162	SCREW, M6X16	4	4						
88	2	26106-050102	BOLT, M5X 10 PLATED	2	2						

Remarks
(1) GOVERNOR ASSY(FIG.12) IS
INCORPORATED IN THIS FOP.CMP
(REF.NO.1).

Fig.11. FUEL INJECTION PUMP

(A)=2TNV70-PTB
 (B)=2TNV70-PTBT
 (C)=

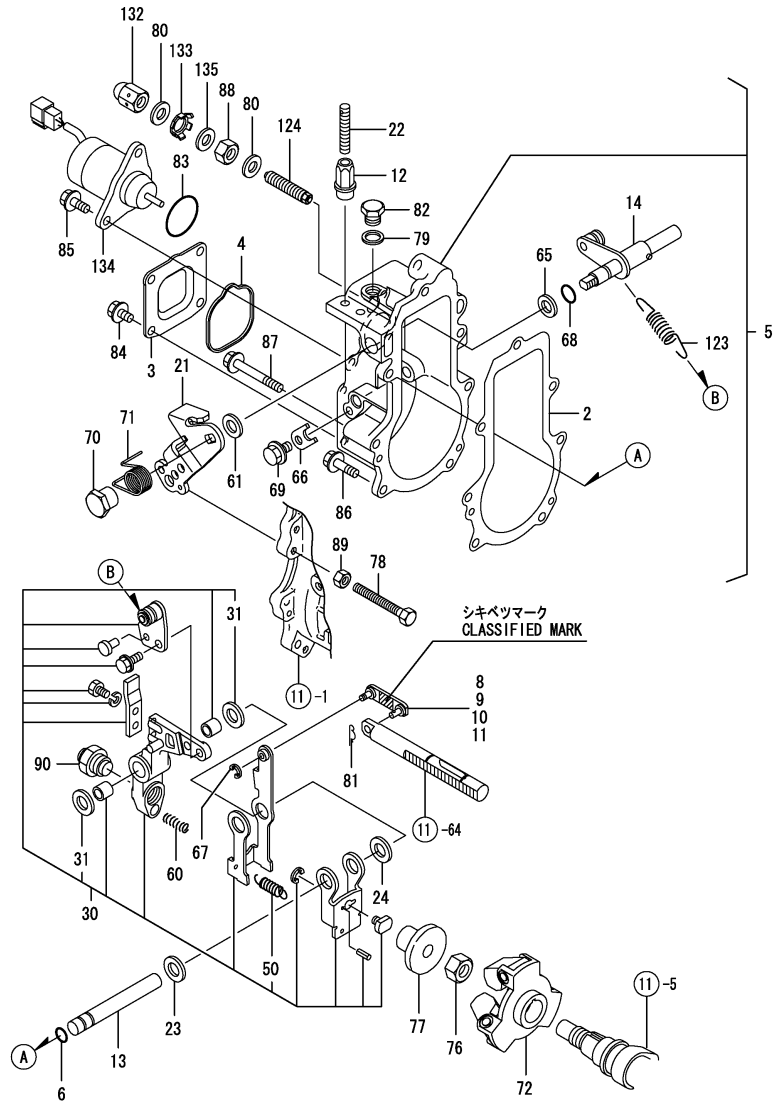
(D)=
 (E)=
 (F)=



No.	Lev.	Parts No.	Description	Q'ty						I	R
				(A)	(B)	(C)	(D)	(E)	(F)		
89	2	26716-060002	NUT, M6	2	2						
90	2	119717-51480	COLLAR	1	1						
91	2	119717-51490	BOLT	1	1						
94	2	129155-52051	GASKET	1	1						
95	2	129100-52101	PUMP ASSY, FUEL FEED	1	1						

Remarks
 (1) GOVERNOR ASSY(FIG.12) IS
 INCORPORATED IN THIS FOP.CMP
 (REF.NO.1).

Fig.12. GOVERNOR



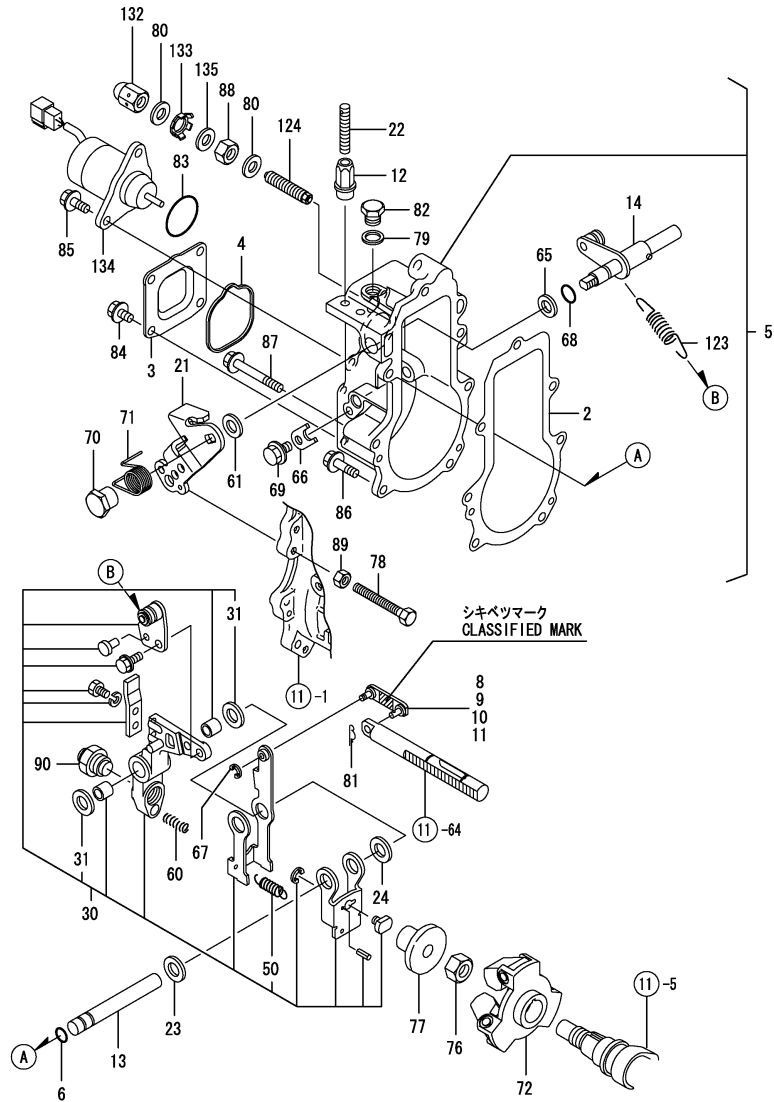
(A)=2TNV70-PTB
(B)=2TNV70-PTBT
(C)=

(D)=
(E)=
(F)=

No.	Lev.	Parts No.	Description	Q'ty						I	R
				(A)	(B)	(C)	(D)	(E)	(F)		
2	2	119717-61050	GASKET	1	1						
3	2	119717-61060	COVER, GOVERNOR CASE	1	1						
4	2	119717-61070	GASKET	1	1						
5	2	119744-61100	CASE ASSY, GOVERNOR	1	1						
6	3	129155-51280	O-RING, S6	1	1						
8	3	119717-61120	LINK, MARK :3	1	1						1
9	3	119717-61130	LINK, MARK 98	1	1						1
10	3	119717-61140	LINK, MARK 88	1	1						1
11	3	119717-61150	LINK, MARK 03	1	1						1
12	3	129209-61370	NUT, M6	1	1						
13	3	129052-61390	SHAFT	1	1						
14	3	119717-61400	SHAFT ASSY	1	1						
21	3	119515-61440	LEVER, CONTROL	1	1						
22	3	129155-61450	BOLT, LIMITER	1	1						
23	3	129156-61460	SHIM, T=0.6	1	1						
24	3	129155-61480	SPACER ASSY	1	1						
30	3	119717-61500	LEVER ASSY, GOVERNOR	1	1						
31	4	174307-51700	SHIM SET	2	2						
50	4	129486-61540	SPRING, SET	1	1						
60	3	129100-61650	SPRING, CONTROLLER	1	1						
61	3	158552-61700	SHIM SET	1	1						
65	3	158552-61710	SHIM, T=1.0	1	1						
66	3	119660-61901	RETAINER, SHAFT	1	1						
67	3	22272-000030	RING, E- 3	1	1						
68	3	24341-000070	O-RING, 1AS7.0	1	1						
69	3	26106-060102	BOLT, M6X 10 PLATED	1	1						
70	3	129255-61410	NUT, LOCK	1	1						
71	3	129255-61420	SPRING, RETURN	1	1						
72	2	119717-61200	WEIGHT ASSY,GOVERNOR	1	1						
76	2	119660-61300	NUT	1	1						
77	2	129155-61341	SLEEVE	1	1						
78	2	129155-61460	BOLT, IDLE	1	1						
79	2	22190-100002	WASHER, SEAL 10	1	1						
80	2	22190-120002	WASHER, SEAL 12	2	2						
81	2	22372-040000	PIN, SNAP 4	1	1						
82	3	23887-100002	PLUG, 10	1	1						
83	2	24341-000280	O-RING, 1AS28.0	1	1						
83-1	2	158552-61900	O-RING	1	1						N
				(A=EXXXXX)	(B=EXXXXX)						
84	2	26106-060102	BOLT, M6X 10 PLATED	4	4						
85	2	26106-060142	BOLT, M6X 14 PLATED	2	2						
86	2	26106-060202	BOLT, M6X 20 PLATED	4	4						
87	2	26106-060452	BOLT, M6X 45 PLATED	3	3						
88	2	26736-120002	NUT, M12	1	1						
89	2	26756-060002	NUT, LOCK M6	1	1						
90	2	119740-61560	ANGLEICH ASSY	1	1						
123	2	171353-61700	SPRING, GOVERNOR	1	1						
124	2	158601-61790	LIMITER ASSY, FUEL	1	1						
132	2	129209-61930	NUT, CAP	1	1						
133	2	129209-61970	PLATE	1	1						
134	2	119233-77932	SOLENOID, STOP	1	1						

Remarks
(1) SELECTIVE PARTS:CERTAIN THE CLASSIFICATION MARK, THEN PLACE YOUR ORDER. (REF.TO.ILLUSTRATION).
* THIS FIGURE(GOVERNOR ASSY)IS INCORPORATED IN THE FUEL INJECTION PUMP ASSY(FIG.11).

Fig.12. GOVERNOR



(A)=2TNV70-PTB
(B)=2TNV70-PTBT
(C)=

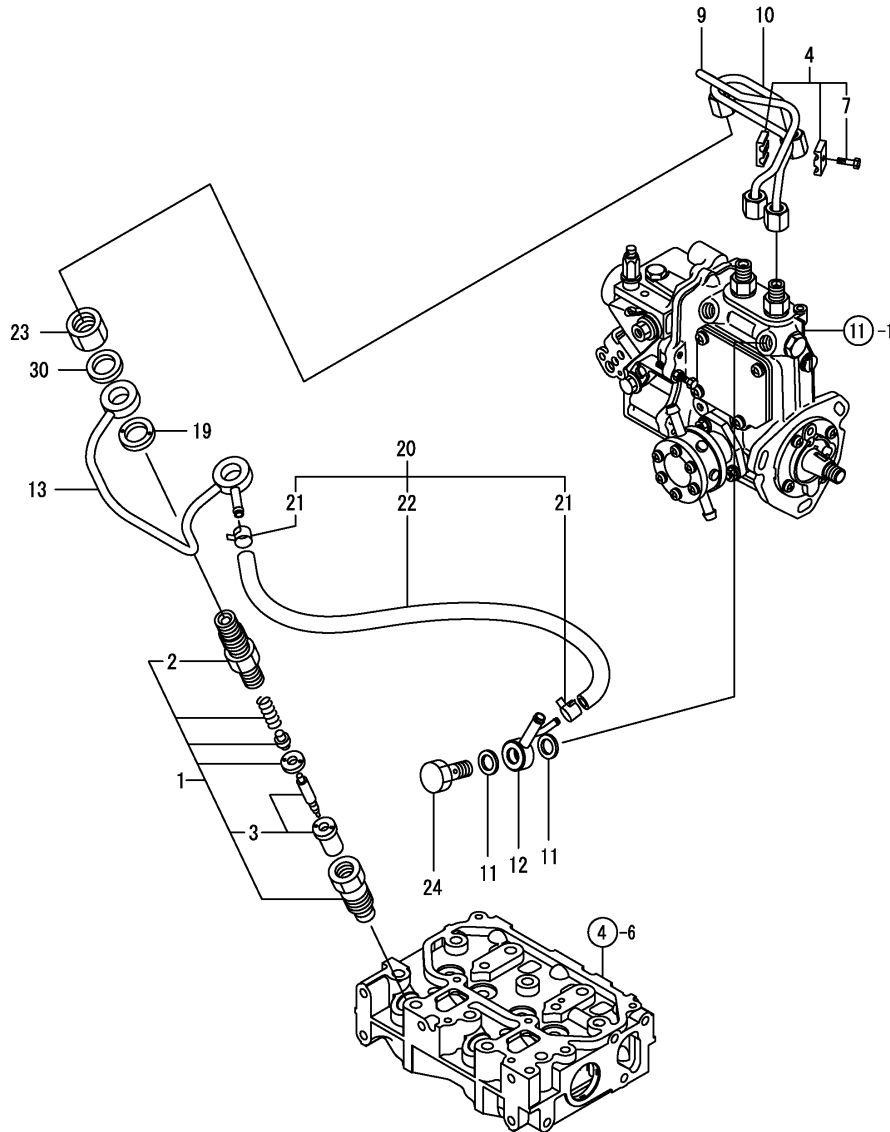
(D)=
(E)=
(F)=

No.	Lev.	Parts No.	Description	Q'ty						I	R
				(A)	(B)	(C)	(D)	(E)	(F)		
135	2	23414-120016	GASKET, 12X1.0	1	1						

Remarks

(1) SELECTIVE PARTS: CERTAIN THE CLASSIFICATION MARK, THEN PLACE YOUR ORDER. (REF. TO ILLUSTRATION).
* THIS FIGURE (GOVERNOR ASSY) IS INCORPORATED IN THE FUEL INJECTION PUMP ASSY (FIG. 11).

Fig.13. FUEL INJECTION VALVE

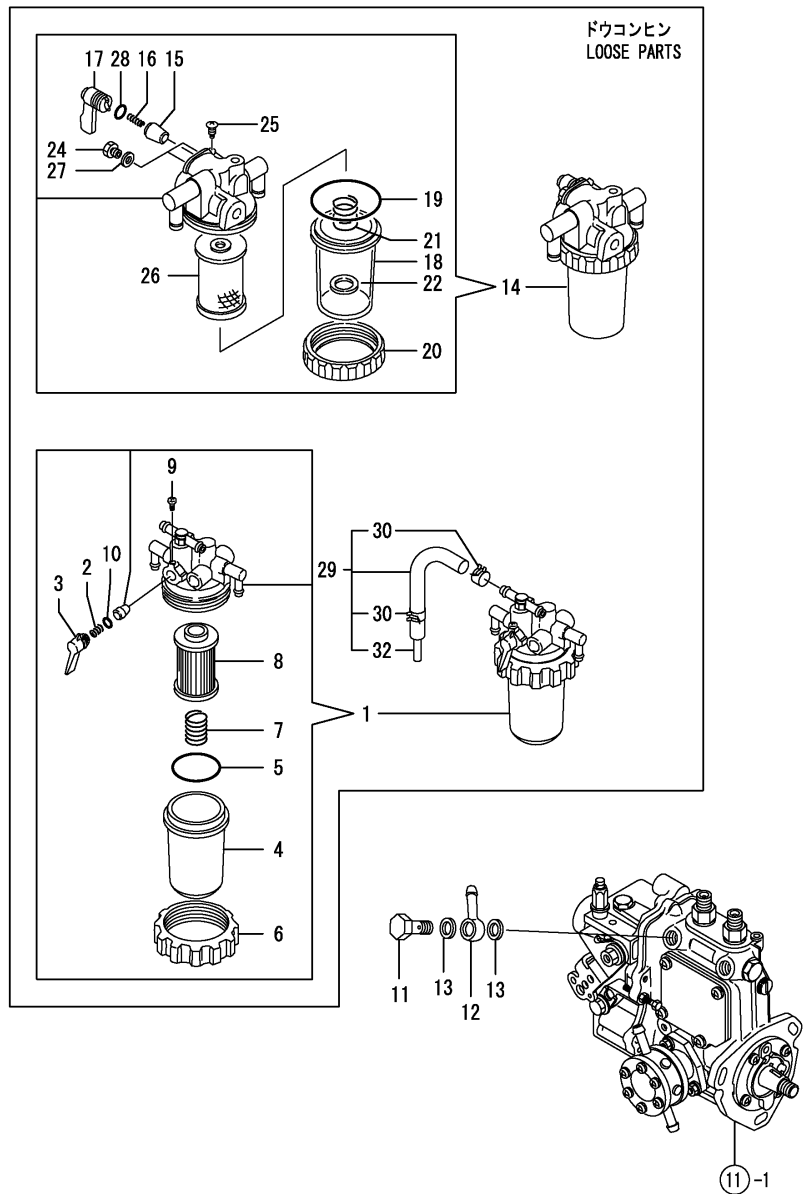


(A)=2TNV70-PTB
(B)=2TNV70-PTBT
(C)=

(D)=
(E)=
(F)=

No.	Lev.	Parts No.	Description	Q'ty						I	R
				(A)	(B)	(C)	(D)	(E)	(F)		
1	1	119515-53001	VALVE ASSY,INJECTION	2	2						
2	2	118200-53010	HOLDER, NOZZLE	2	2						
3	2	119515-53010	VALVE ASSY,INJECTION	2	2						
4	1	119305-59120	RETAINER, PIPE	1	1						
7	2	129150-59131	BOLT, M4X14	1	1						
9	1	119415-59810	PIPE ASSY, INJECTION	1	1						
10	1	119415-59820	PIPE ASSY, INJECTION	1	1						
11	1	22190-120002	WASHER, SEAL 12	2	2						
12	1	119840-59570	JOINT	1	1						
13	1	119415-59540	PIPE ASSY, RETURN	1	1						
19	1	129901-59560	GASKET	2	2						
20	1	119540-59570	PIPE ASSY, RETURN	1	1						
21	2	124066-59100	CLIP, HOSE 8	2	2						
22	2	119540-59560	PIPE ASSY, RETURN	1	1						
23	1	119620-59700	NUT, NOZZLE	2	2						
24	1	119813-59950	VALVE ASSY, CHECK	1	1						
30	1	22190-120002	WASHER, SEAL 12	2	2						

Fig.14. FUEL LINE

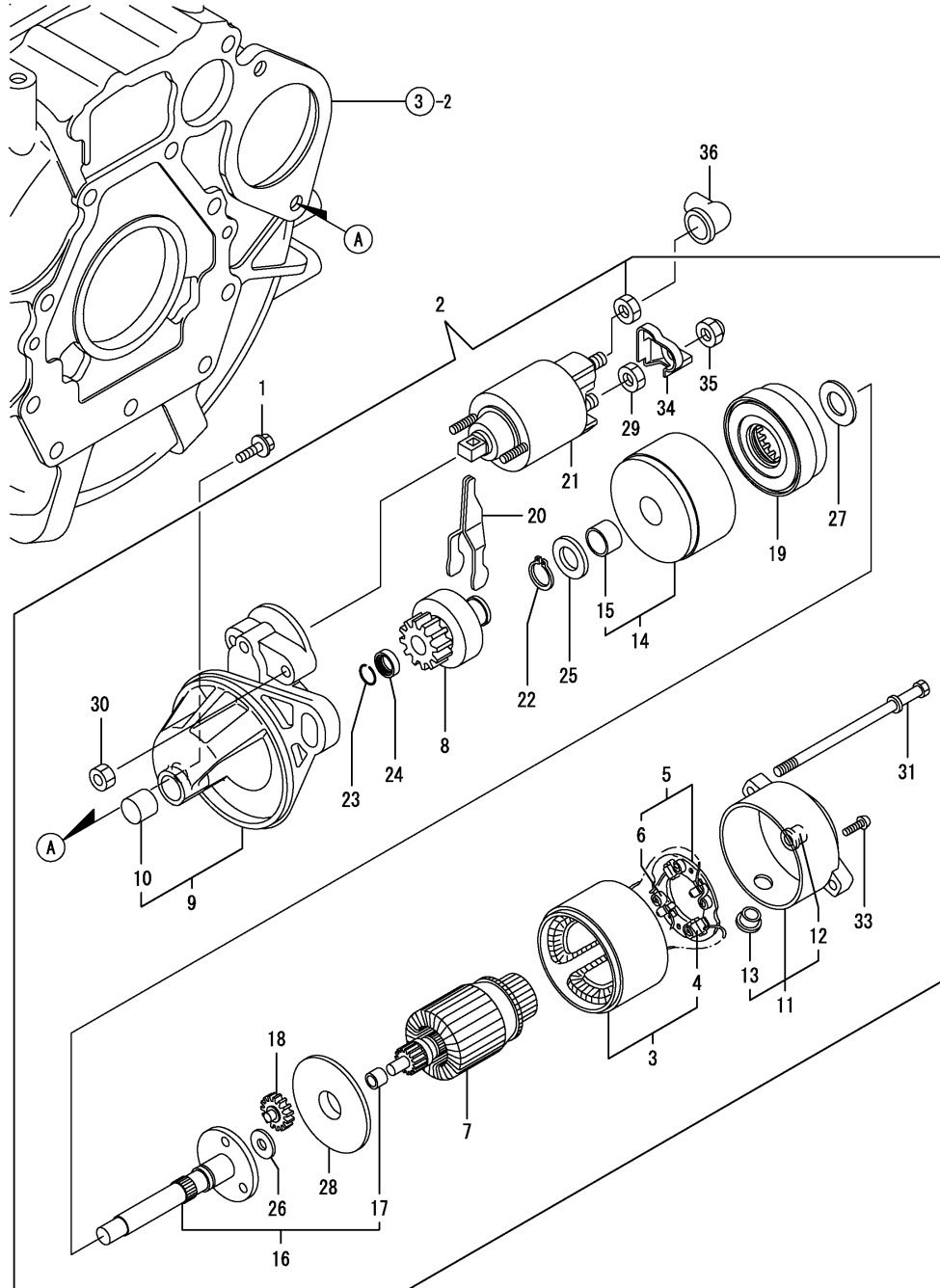


(A)=2TNV70-PTB
(B)=2TNV70-PTBT
(C)=

(D)=
(E)=
(F)=

No.	Lev.	Parts No.	Description	Q'ty						I	R
				(A)	(B)	(C)	(D)	(E)	(F)		
1	1	119833-55620	FILTER ASSY, FUEL	1	1						
2	2	104200-55330	SPRING, VALVE	1	1						
3	2	119810-55340	LEVER	1	1						
4	2	121254-55510	COVER	1	1						
5	2	102103-55520	O-RING	1	1						
6	2	110250-55610	RING, RETAINING	1	1						
7	2	121250-55620	SPRING	1	1						
8	2	119810-55650	ELEMENT	1	1						
9	2	104200-55750	SCREW, M4	1	1						
10	2	24311-240100	O-RING, 1AP10A	1	1						
11	1	103854-39140	BOLT, PIPE JOINT	1	1						
12	1	101304-59020	JOINT, PIPE 12	1	1						
13	1	22190-120002	WASHER, SEAL 12	2	2						
14	1	129335-55700	SEPARATOR ASSY,WATER	1	1						
15	2	104200-55321	VALVE, TAPER	1	1						
16	2	104200-55330	SPRING, VALVE	1	1						
17	2	104200-55341	HANDLE	1	1						
18	2	124064-55510	COVER	1	1						
19	2	102103-55520	O-RING	1	1						
20	2	110250-55610	RING, RETAINING	1	1						
21	2	121257-55720	SPRING	1	1						
22	2	121257-55731	FLOAT	1	1						
24	2	101720-55750	PLUG, 6	2	2						
25	2	104200-55750	SCREW, M4	1	1						
26	2	171081-55910	SCREEN	1	1						
27	2	23418-060000	GASKET, 6X1.0	2	2						
28	2	24311-240100	O-RING, 1AP10A	1	1						
29	1	119840-59601	BEND	1	1						
30	2	124766-59050	CLIP, HOSE 12	2	2						
32	2	119840-59621	JOINT	1	1						

Fig.15. STARTING MOTOR

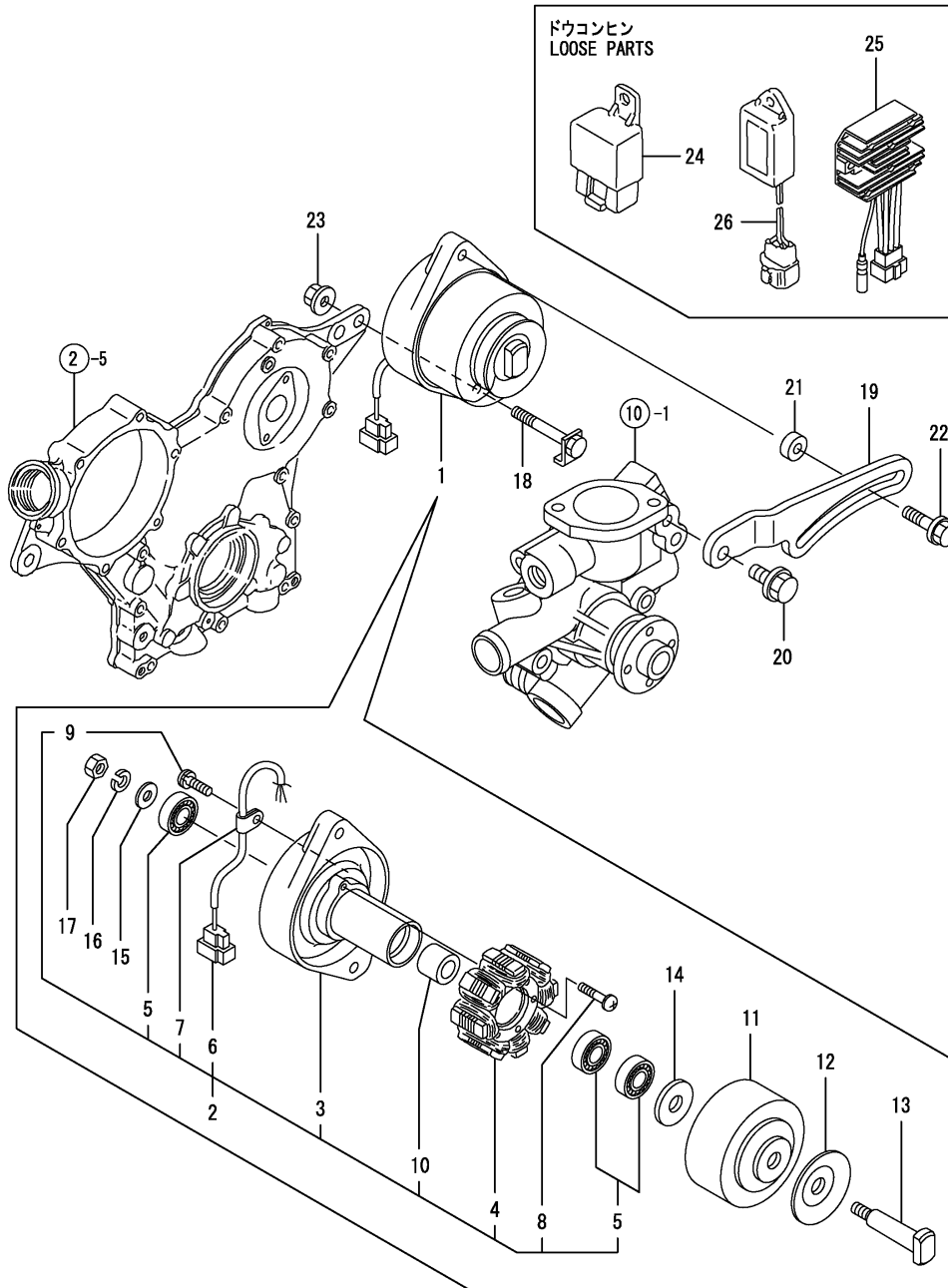


(A)=2TNV70-PTB
 (B)=2TNV70-PTBT
 (C)=

(D)=
 (E)=
 (F)=

No.	Lev.	Parts No.	Description	Q'ty						I	R
				(A)	(B)	(C)	(D)	(E)	(F)		
1	1	26106-100252	BOLT, M10X 25 PLATED	2	2						
2	1	119515-77010	STARTER	1	1						
3	2	X0281007680	YOKE ASSY	1	1						
4	3	X0280996180	STARTER KIT	2	2						
5	2	X0285105190	HOLDER ASSY	1	1						
6	3	X0285205030	SPRING	4	4						
7	2	X0282005871	ARMATURE ASSY	1	1						
8	2	X0283006960	CLUTCH ASSY	1	1						
9	2	X4284001590	HOUSING ASSY	1	1						
10	3	X9491050100	BEARING, NEEDLE	1	1						
11	2	X0285007030	FRAME ASSY	1	1						
12	3	X9491040990	BEARING	1	1						
13	3	X0280626010	COVER	1	1						
14	2	X0284105040	BEARING ASSY	1	1						
15	3	X9491034330	BEARING	1	1						
16	2	X0286105010	SHAFT ASSY	1	1						
17	3	X9491034320	BEARING	1	1						
18	2	X0286305010	GEAR	3	3						
19	2	X0286355010	GEAR	1	1						
20	2	X0287405140	LEVER	1	1						
21	2	X0534007800	SWITCH ASSY	1	1						
22	2	X9055715000	RING	1	1						
23	2	X9490721360	RING	1	1						
24	2	X0280210331	NUT	1	1						
25	2	X9490138110	WASHER	1	1						
26	2	X9490138090	WASHER	1	1						
27	2	X9490138100	WASHER	1	1						
28	2	X0284525010	PLATE	1	1						
29	2	X9490562360	NUT	1	1						
30	2	X9490560750	NUT	2	2						
31	2	X9490423520	BOLT, THROUGH	2	2						
33	2	X9490065670	SCREW, M4X6	2	2						
34	2	X0280335360	COVER, TERMINAL	1	1						
35	2	X1289510130	NUT	1	1						
36	1	124160-77020	COVER, TERMINAL	1	1						

Fig.16. GENERATOR



(A)=2TNV70-PTB
(B)=2TNV70-PTBT
(C)=

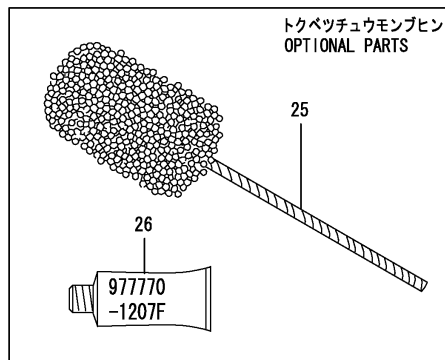
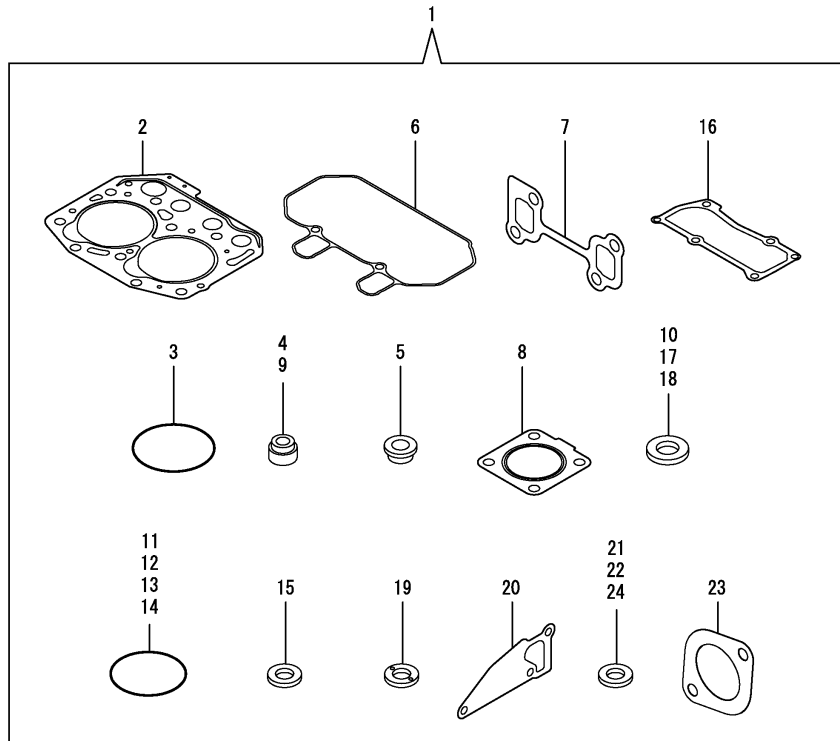
(D)=
(E)=
(F)=

No.	Lev.	Parts No.	Description	Q'ty						I	R
				(A)	(B)	(C)	(D)	(E)	(F)		
1	1	171301-77201	DYNAMO ASSY, 15A	1	1						
2	2	XM08137	PLATE ASSY	1	1						
3	3	X2A07073KA	PLATE	1	1						
4	3	X4A07023KB	STATOR ASSY	1	1						
5	3	24104-062010	BEARING, 6201UUC3	3	3						
6	3	X417878	COUPLER	1	1						
7	3	XM069000000	CLAMP	1	1						
8	3	XYSPS402400	SCREW	2	2						
9	3	XYSPS400800	SCREW	1	1						
10	3	XM329830000	COLLAR	1	1						
11	2	X3A08877KA	FLYWHEEL	1	1						
12	2	XM721740000	PULLEY	1	1						
13	2	X4A07403K01	SHAFT	1	1						
14	2	XM67935	WASHER	1	1						
15	2	XM860250000	WASHER	1	1						
16	2	XM219230000	WASHER	1	1						
17	2	XM863720000	NUT	1	1						
18	1	119740-77250	BOLT, M10X76	1	1						
19	1	119742-77300	ADJUSTER	1	1						
20	1	26106-080202	BOLT, M8X 20 PLATED	1	1						
21	1	119940-77270	SPACER, GENERATOR	1	1						
22	1	129972-77341	BOLT, ADJUSTER L=50	1	1						
23	1	26306-100002	NUT, M10	1	1						
24	1	119247-77100	RELAY, SAFETY	1	1						
25	1	119233-77710	LIMITER, CURRENT	1	1						
26	1	129211-77920	TIMER	1	1						

Fig.17. GASKET SET

(A)=2TNV70-PTB
(B)=2TNV70-PTBT
(C)=

(D)=
(E)=
(F)=



No.	Lev.	Parts No.	Description	Q'ty						I	R
				(A)	(B)	(C)	(D)	(E)	(F)		
1	1	719415-92660	GASKET SET	1	1						1
2	2	119415-01330	GASKET, HEAD	1	1						
3	2	121850-51960	O-RING	1	1						
4	2	119717-11340	SEAL, VALVE STEM	2	2						
5	2	129901-11450	PROTECTOR, NOZZLE	2	2						
6	2	119415-11310	GASKET, BONNET	1	1						
7	2	119415-13110	GASKET	1	1						
8	2	119515-13200	GASKET, SILENCER	1	1						
9	2	119717-11350	SEAL, VALVE STEM	2	2						
10	2	22190-080002	WASHER, SEAL 6	4	4						
11	2	24311-000320	O-RING, 1AP32.0	2	2						
12	2	119717-32060	O-RING, P15.0	1	1						
13	2	119624-32040	O-RING, P12.0	1	1						
14	2	119717-32050	O-RING, P17.0	3	3						
15	2	119600-11460	GASKET, NOZZLE	4	4						
16	2	119415-11330	GASKET	1	1						
17	2	22190-160002	WASHER, SEAL 16	1	1						
18	2	22190-120002	WASHER, SEAL 12	6	6						
19	2	129901-59560	GASKET	2	2						
20	2	119515-42020	GASKET, WATER PUMP	1	1						
21	2	23414-080000	GASKET, 8X1.0	1	1						
22	2	124465-44950	GASKET, 16	1	1						
23	2	129107-13550	GASKET	1	1						
24	2	129150-49360	GASKET	1	1						
25	1	129400-92410	HONE	1	1						1
26	1	977770-1207F	GASKET.LIQUID	1	1						1

Remarks
(1) OPTIONAL PART.

Parts No. Index

Parts No.	Fig. No.	Ref. No.
101304-59020	14	12
101720-55750	14	24
102103-55520	14	5
		19
103854-39140	14	11
104200-55321	14	15
104200-55330	14	2
		16
104200-55341	14	17
104200-55750	14	9
		25
105010-11490	4	5
105311-01090	1	5
105425-01690	3	9
110250-55610	14	6
		20
114250-39450	9	10
118200-53010	13	2
118400-51370	11	48
119131-18320	6	5
119233-44740	10	20
119233-77710	16	25
119233-77932	12	134
119247-77100	16	24
119255-44660	10	39
119258-12510	5	2
119285-01731	10	28
119285-01990	1	8
119285-11990	4	12
119305-35151	9	3
119305-59120	13	4
119325-12560	5	1
119325-44571	10	35
119325-44600	10	37
119415-01330	1	30
	17	2
119415-01720	3	7
119415-01770	3	8
119415-11200	4	22
119415-11240	4	23
119415-11310	4	46
	17	6
119415-11320	4	47
119415-11330	4	48
	17	16
119415-11380	4	36
119415-11740	4	6
119415-13100	6	1
119415-13110	6	2
	17	7

Parts No.	Fig. No.	Ref. No.
119415-14580	7	3
119415-21590	8	8
119415-21700	8	1
119415-34801	9	1
119415-35080	9	5
119415-39210	9	11
119415-51030	11	5
119415-51400	11	49
119415-51500	11	64
119415-51700	11	74
119415-51710	11	75
119415-51750	11	76
119415-51760	11	77
119415-59540	13	13
119415-59810	13	9
119415-59820	13	10
119415-77820	4	56
119440-13500	6	8
119440-44500	10	33
119515-01200	1	29
119515-01601	3	2
119515-11100	4	14
119515-11110	4	15
119515-11280	4	27
119515-11800	4	9
119515-13200	6	7
	17	8
119515-14400	7	2
119515-22080	8	14
119515-22300	8	20
119515-22500	8	16
119515-22550	8	31
119515-22900	8	29
119515-23000	8	22
119515-23600	8	27
119515-23610	8	35
119515-42020	10	13
	17	20
119515-42041	10	3
119515-51100	11	9
119515-53001	13	1
119515-53010	13	3
119515-61440	12	21
119515-77010	15	2
119540-42000	10	1
119540-59560	13	22
119540-59570	13	20
119600-11460	4	4
	17	15
119609-49520	10	27

Parts No.	Fig. No.	Ref. No.
119620-01750	3	4
119620-02020	1	9
119620-14200	7	1
119620-21500	8	7
119620-21941	8	13
119620-59700	13	23
119621-21680	8	12
119623-01250	1	6
119624-32040	2	18
	17	13
119655-12560	5	4
119660-01911	2	17
119660-61300	12	76
119660-61901	12	66
119686-12570	5	5
119717-01501	2	1
119717-01521	2	5
119717-01570	2	2
119717-01750	2	16
119717-01800	2	6
119717-02410	1	12
119717-02930	1	26
119717-03031	4	37
119717-03070	4	38
		39
119717-11131	4	16
119717-11190	4	18
119717-11260	4	26
119717-11340	4	19
	17	4
119717-11350	4	20
	17	9
119717-11650	4	28
119717-13600	6	3
119717-21650	8	11
119717-23200	8	26
119717-23910	8	25
119717-25050	7	9
119717-25100	7	10
119717-25930	7	15
119717-32050	2	19
	17	14
119717-32060	9	4
	17	12
119717-32080	2	9
119717-32100	2	8
119717-32110	2	13
119717-32120	2	14
119717-42031	10	4
119717-42320	10	11

Parts No.	Fig. No.	Ref. No.
119717-42350	10	18
119717-51060	11	6
119717-51070	11	7
119717-51150	7	16
119717-51180	11	14
119717-51190	11	15
119717-51200	11	16
119717-51300	11	43
119717-51330	11	46
119717-51420	11	51
119717-51480	11	90
119717-51490	11	91
119717-61050	12	2
119717-61060	12	3
119717-61070	12	4
119717-61120	12	8
119717-61130	12	9
119717-61140	12	10
119717-61150	12	11
119717-61200	12	72
119717-61400	12	14
119717-61500	12	30
119717-77800	4	55
119718-49800	10	30
119734-01590	2	3
119740-61560	12	90
119740-77250	16	18
119742-77300	16	19
119744-61100	12	5
119802-03100	4	40
119802-03110	4	41
119802-03121	4	42
119802-03131	4	43
119802-03141	4	44
119802-13620	6	4
119802-32130	2	15
119808-12540	5	3
119810-02940	1	31
119810-55340	14	3
119810-55650	14	8
119813-59950	13	24
119833-55620	14	1
119840-59570	13	12
119840-59601	14	29
119840-59621	14	32
119865-12600	5	6
119940-77270	16	21
119C10-42000	10	1 -1
119C10-42320	10	11 -1
121120-01620	3	3

Parts No. Index

Parts No.	Fig. No.	Ref. No.
121250-55620	14	7
121254-55510	14	4
121257-55720	14	21
121257-55731	14	22
121267-44760	10	21
121450-42450	10	23
121520-34810	9	16
121850-51960	2	20
	17	3
122710-51090	11	8
124060-01050	1	4
124064-55510	14	18
124066-59100	13	21
124085-02220	3	5
124160-01751	2	28
	4	35
124160-01910	1	7
124160-77020	15	36
124250-49351	10	26
124465-44950	10	24
	17	22
124550-51350	11	47
124766-59050	14	30
124950-21600	8	10
129001-32320	2	11
129001-32330	2	12
129005-59830	9	12
129052-61390	12	13
129100-01580	3	1
	8	2
129100-35140	9	2
129100-51560	11	69
129100-51570	11	70
129100-52101	11	95
129100-61650	12	60
129107-13550	6	9
	17	23
129107-44590	10	36
129150-11230	4	29
129150-11750	4	31
129150-25301	7	14
129150-49360	10	25
	17	24
129150-59131	13	7
129155-51020	11	4
129155-51140	11	12
129155-51280	11	41
		42
	12	6
129155-51450	11	59

Parts No.	Fig. No.	Ref. No.
129155-51521	11	65
129155-51530	11	66
129155-51540	11	67
129155-51550	11	68
129155-51580	11	72
129155-51591	11	73
129155-51600	11	20
129155-52051	11	94
129155-61341	12	77
129155-61450	12	22
129155-61460	12	78
129155-61480	12	24
129156-51910	11	79
129156-61460	12	23
129209-61370	12	12
129209-61930	12	132
129209-61970	12	133
129211-77920	16	26
129255-61410	12	70
129255-61420	12	71
129335-55700	14	14
129400-92410	17	25
129486-07901	4	52
129486-61540	12	50
129508-11180	4	17
129900-07900	4	1
129900-32130	2	10
129901-11450	4	3
	17	5
129901-59560	13	19
	17	19
129916-49740	10	12
129972-77341	16	22
158552-61700	12	61
158552-61710	12	65
158552-61900	12	83 -1
158600-51170	11	13
158600-51270	11	40
158600-51410	11	50
158600-51420	11	52
158600-51441	11	53
158600-51570	11	71
158600-51790	11	78
158601-61790	12	124
171056-49120	10	17
171081-55910	14	26
171301-77201	16	1
171353-61700	12	123
174307-51700	12	31
22190-080002	9	13

Parts No.	Fig. No.	Ref. No.
22190-080002	9	15
	17	10
22190-100002	12	79
22190-120002	12	80
	13	11
		30
	14	13
	17	18
22190-160002	3	11
	11	80
	17	17
22217-060000	11	81
22217-120000	7	17
22242-000120	4	32
22252-000220	8	21
22272-000030	12	67
22351-050010	11	82
22351-060012	4	21
22372-040000	12	81
22512-040120	8	4
22857-500100	4	49
		50
22857-500160	4	51
23000-060000	5	10
23010-038000	10	40
23414-080000	10	14
	17	21
23414-120016	12	135
23418-060000	14	27
23857-030000	9	14
23876-005000	4	13
23876-030000	2	7
23887-100002	12	82
24101-060034	11	83
24101-063034	11	84
24104-062010	16	5
24311-000320	2	29
	4	58
	17	11
24311-240100	14	10
		28
24316-000150	11	85
24341-000070	12	68
24341-000280	12	83
25152-003500	10	19
26014-060122	10	38
26022-050122	11	86
26022-060162	11	87
26106-050102	11	88
26106-060102	9	9

Parts No.	Fig. No.	Ref. No.
26106-060102	12	69
		84
26106-060122	2	21
	3	12
	7	8
26106-060142	12	85
26106-060162	2	22
26106-060202	4	53
	12	86
26106-060252	3	13
26106-060302	10	22
26106-060352	7	13
26106-060402	2	23
		24
26106-060452	3	14
	12	87
26106-060602	2	25
26106-060652	2	26
26106-060752	4	54
26106-080122	10	15
26106-080162	4	2
26106-080202	16	20
26106-080252	10	31
26106-080402	4	34
26106-080502	10	16
26106-080602	10	32
26106-100252	15	1
26206-100252	3	6
26306-080002	2	27
	6	6
26306-100002	16	23
26577-060122	10	9
26716-060002	11	89
26716-120002	7	18
26736-120002	12	88
26756-060002	12	89
26979-050162	4	33
27241-120000	1	13
27241-250000	10	10
719415-01560	1	1
719415-92660	17	1
719440-51380	11	1
719717-02900	1	14
719717-02910	1	34
719734-01500	2	4
977770-1207F	2	30
	3	15
	4	57
	17	26
X0280210331	15	24

Parts No. Index

Parts No.	Fig. No.	Ref. No.
X0280335360	15	34
X0280626010	15	13
X0280996180	15	4
X0281007680	15	3
X0282005871	15	7
X0283006960	15	8
X0284105040	15	14
X0284525010	15	28
X0285007030	15	11
X0285105190	15	5
X0285205030	15	6
X0286105010	15	16
X0286305010	15	18
X0286355010	15	19
X0287405140	15	20
X0534007800	15	21
X1289510130	15	35
X2A07073KA	16	3
X3A08877KA	16	11
X417878	16	6
X4284001590	15	9
X4A07023KB	16	4
X4A07403K01	16	13
X9055715000	15	22
X9490065670	15	33
X9490138090	15	26
X9490138100	15	27
X9490138110	15	25
X9490423520	15	31
X9490560750	15	30
X9490562360	15	29
X9490721360	15	23
X9491034320	15	17
X9491034330	15	15
X9491040990	15	12
X9491050100	15	10
XM069000000	16	7
XM08137	16	2
XM219230000	16	16
XM329830000	16	10
XM67935	16	14
XM721740000	16	12
XM860250000	16	15
XM863720000	16	17
XYS400800	16	9
XYS402400	16	8

Parts No.	Fig. No.	Ref. No.
-----------	----------	----------

Parts No.	Fig. No.	Ref. No.
-----------	----------	----------

Parts No.	Fig. No.	Ref. No.
-----------	----------	----------