

0CD10-M85301EN

P R E F A C E

This parts catalog is the 2nd edition of 2TNV70-PIK, 2TNV70-PIKX for IHI Construction Machinery Limited.

Published : November, 2006

Contents

OCD10-M85301

Fig. No. Fig. Name

2TNV70-PIK/PIKX

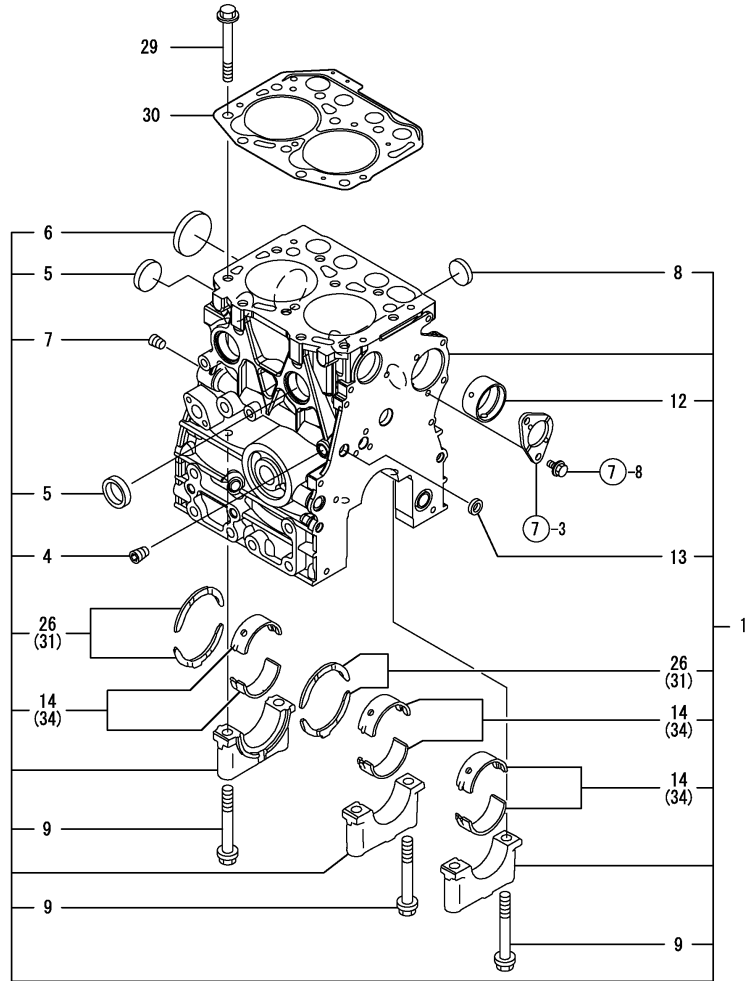
1. CYLINDER BLOCK
2. GEAR HOUSING
3. FLYWHEEL HOUSING & OIL SUMP
4. CYLINDER HEAD & BONNET
5. AIR CLEANER
6. EXHAUST MANIFOLD & SILENCER
7. CAMSHAFT & DRIVING GEAR
8. CRANKSHAFT & PISTON
9. LUB.OIL SYSTEM
10. COOLING WATER SYSTEM
11. FUEL INJECTION PUMP
12. GOVERNOR
13. FUEL INJECTION VALVE
14. FUEL LINE
15. STARTING MOTOR
16. GENERATOR
17. GASKET SET

Fig. No. Fig. Name

Fig.1. CYLINDER BLOCK

(A)=2TNV70-PIK
(B)=2TNV70-PIKX
(C)=

(D)=
(E)=
(F)=



| No. | Lev. | Parts No. | Description | Q'ty | | | | | | I | R |
|------|------|-----------------------|----------------------|------|-----|-----|-----|-----|-----|---|-----|
| | | | | (A) | (B) | (C) | (D) | (E) | (F) | | |
| 1 | 1 | 719415-01560 | BLOCK ASSY, CYLINDER | 1 | 1 | | | | | | |
| 4 | 2 | 124060-01050 | PLUG, PT1/8 | 1 | 1 | | | | | | |
| 5 | 2 | 105311-01090 | PLUG, CUP TYPE 30 | 3 | 3 | | | | | | |
| 6 | 2 | 119623-01250 | PLUG, DISH TYPE 45 | 1 | 1 | | | | | | |
| 7 | 2 | 124160-01910 | PLUG, PT1/4 | 1 | 1 | | | | | | |
| 8 | 2 | 119285-01990 | PLUG, CUP TYPE 25 | 2 | 2 | | | | | | |
| 9 | 2 | 119620-02020 | BOLT, METAL CAP | 6 | 6 | | | | | | |
| 12 | 2 | 119717-02410 | BUSH, CAMSHAFT | 1 | 1 | | | | | | |
| 12-1 | 2 | 119717-02411 | BUSH, CAMSHAFT | 1 | 1 | | | | | | N |
| | | (A=E22662) (B=E22662) | | | | | | | | | |
| 13 | 2 | 27241-120000 | PLUG, 12 | 1 | 1 | | | | | | |
| 14 | 2 | 719717-02900 | BEARING ASSY, MAIN | 3 | 3 | | | | | | 1 |
| 14-1 | 2 | 719717-02901 | BEARING ASSY, MAIN | 3 | 3 | | | | | | N 1 |
| | | (A=E22662) (B=E22662) | | | | | | | | | |
| 26 | 2 | 119717-02930 | BEARING ASSY, THRUST | 2 | 2 | | | | | | |
| 29 | 1 | 119515-01200 | BOLT, CYLINDER HEAD | 10 | 10 | | | | | | |
| 30 | 1 | 119415-01330 | GASKET, HEAD | 1 | 1 | | | | | | |
| 31 | 1 | 119810-02940 | BEARING, THRUST 0.25 | 2 | 2 | | | | | | 2 |
| 31-1 | 1 | 119810-02941 | BEARING, THRUST 0.25 | 2 | 2 | | | | | | N 2 |
| | | (A=E22662) (B=E22662) | | | | | | | | | |
| 34 | 1 | 719717-02910 | BEARING ASSY, MAIN | 3 | 3 | | | | | | 3 |
| 34-1 | 1 | 719717-02911 | BEARING ASSY, MAIN | 3 | 3 | | | | | | N 3 |
| | | (A=E22662) (B=E22662) | | | | | | | | | |

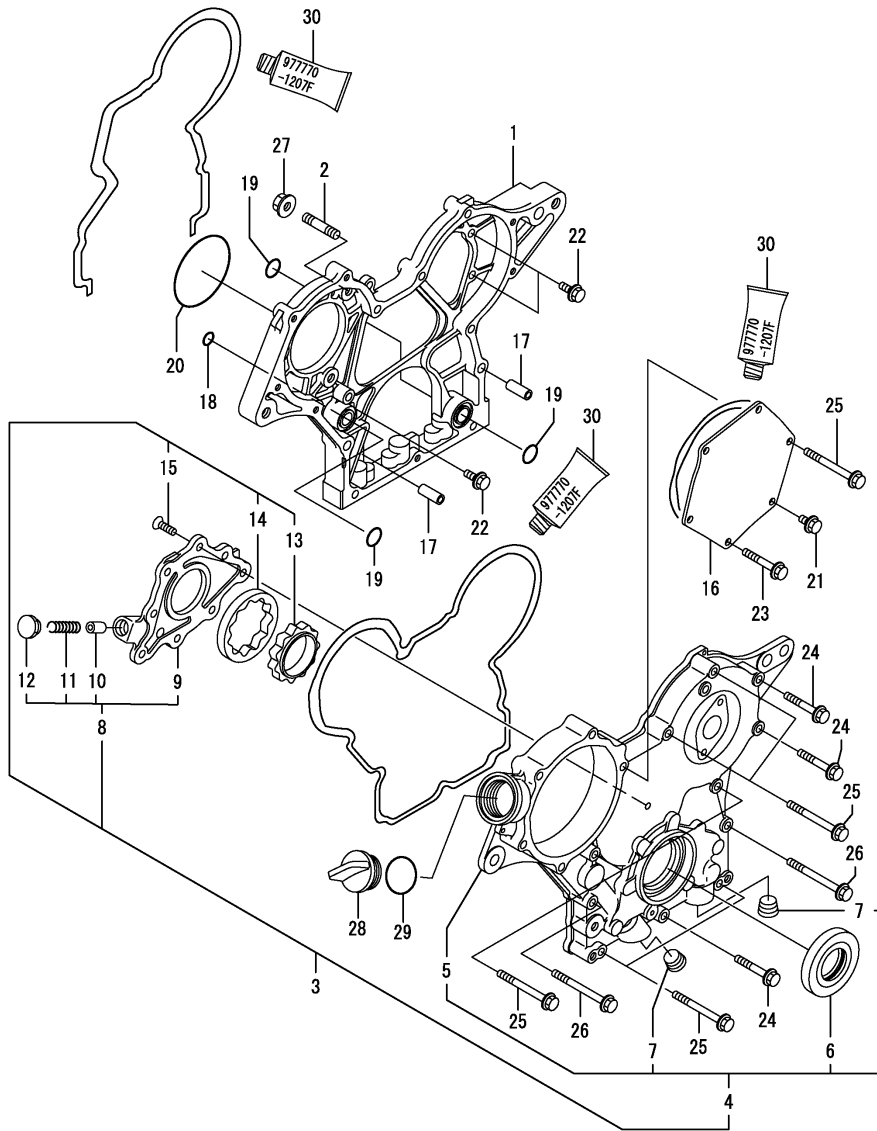
Remarks

- (1) REPAIR PART.
- (2) OVER-SIZE(O.S=0.25)PART.
- (3) UNDER-SIZE(U.S=0.25)PART.

Fig.2. GEAR HOUSING

(A)=2TNV70-PIK
(B)=2TNV70-PIKX
(C)=

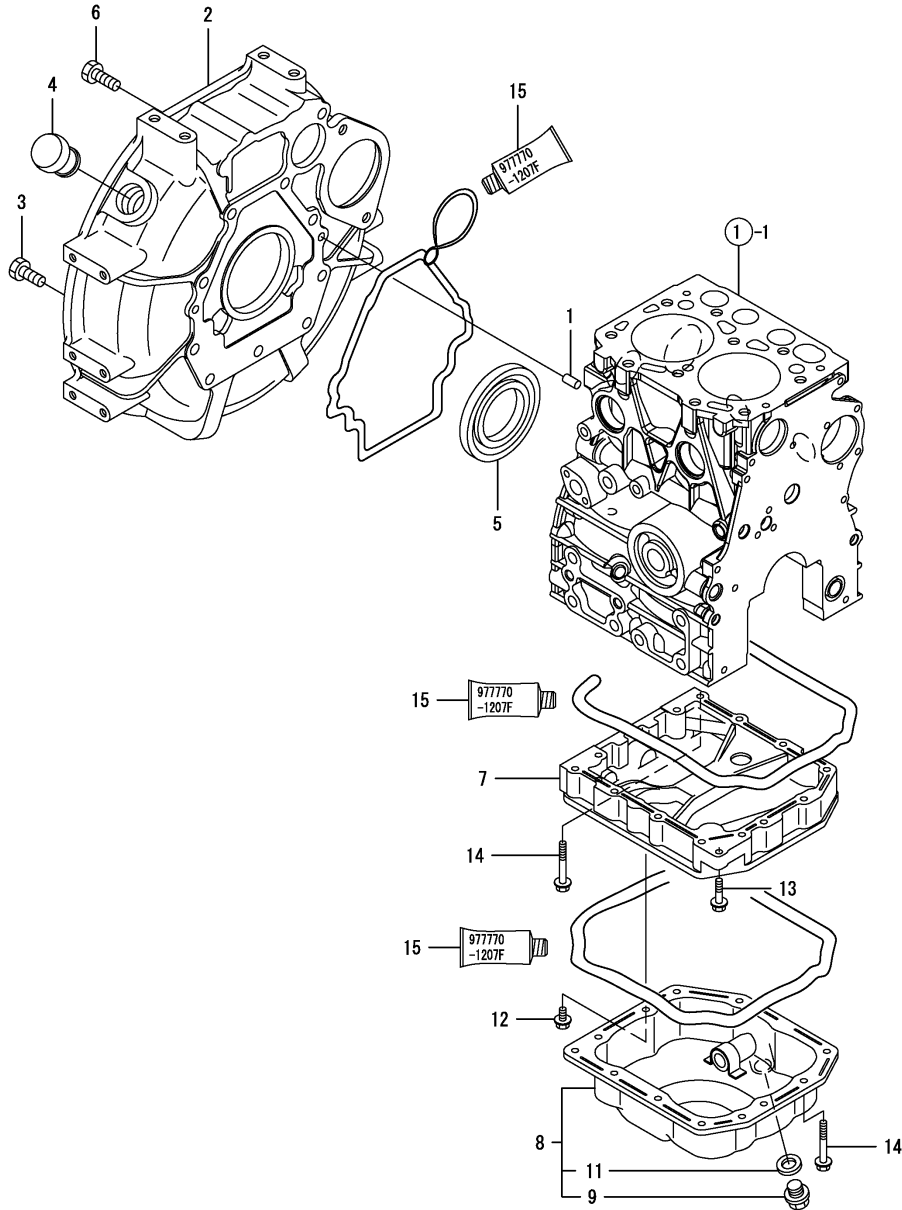
(D)=
(E)=
(F)=



| No. | Lev. | Parts No. | Description | Q'ty | | | | | | I | R |
|-----|------|--------------|----------------------|------|-----|-----|-----|-----|-----|---|---|
| | | | | (A) | (B) | (C) | (D) | (E) | (F) | | |
| 1 | 1 | 119717-01501 | CASE, GEAR | 1 | 1 | | | | | | |
| 2 | 1 | 119717-01570 | BOLT, STUD | 3 | 3 | | | | | | |
| 3 | 1 | 119717-01590 | COVER ASSY,GEAR CASE | 1 | 1 | | | | | | |
| 4 | 2 | 719717-01500 | COVER ASSY,GEAR CASE | 1 | 1 | | | | | | |
| 5 | 3 | 119717-01521 | COVER, GEAR CASE | 1 | 1 | | | | | | |
| 6 | 3 | 119620-01800 | SEAL, OIL | 1 | 1 | | | | | | |
| 7 | 3 | 23876-030000 | PLUG, R03 | 2 | 2 | | | | | | |
| 8 | 2 | 119717-32100 | COVER ASSY | 1 | 1 | | | | | | |
| 9 | 3 | 119717-32080 | COVER, PUMP | 1 | 1 | | | | | | |
| 10 | 3 | 129900-32130 | VALVE, RELIEF | 1 | 1 | | | | | | |
| 11 | 3 | 129001-32320 | SPRING | 1 | 1 | | | | | | |
| 12 | 3 | 129001-32330 | PLUG | 1 | 1 | | | | | | |
| 13 | 2 | 119717-32110 | ROTOR, INNER | 1 | 1 | | | | | | |
| 14 | 2 | 119717-32120 | ROTOR, OUTER | 1 | 1 | | | | | | |
| 15 | 2 | 119802-32130 | SCREW, M6X16 | 8 | 8 | | | | | | |
| 16 | 1 | 119717-01750 | COVER, PUMP | 1 | 1 | | | | | | |
| 17 | 1 | 119660-01911 | PIPE, DOWEL 6X17 | 4 | 4 | | | | | | |
| 18 | 1 | 119624-32040 | O-RING, P12.0 | 1 | 1 | | | | | | |
| 19 | 1 | 119717-32050 | O-RING, P17.0 | 3 | 3 | | | | | | |
| 20 | 1 | 121850-51960 | O-RING | 1 | 1 | | | | | | |
| 21 | 1 | 26106-060122 | BOLT, M6X 12 PLATED | 1 | 1 | | | | | | |
| 22 | 1 | 26106-060162 | BOLT, M6X 16 PLATED | 4 | 4 | | | | | | |
| 23 | 1 | 26106-060402 | BOLT, M6X 40 PLATED | 4 | 4 | | | | | | |
| 24 | 1 | 26106-060402 | BOLT, M6X 40 PLATED | 3 | 3 | | | | | | |
| 25 | 1 | 26106-060602 | BOLT, M6X 60 PLATED | 7 | 7 | | | | | | |
| 26 | 1 | 26106-060652 | BOLT, M6X 65 PLATED | 2 | 2 | | | | | | |
| 27 | 1 | 26306-080002 | NUT, M8 | 3 | 3 | | | | | | |
| 28 | 1 | 124160-01751 | CAP, FILLER | 1 | 1 | | | | | | |
| 29 | 1 | 24311-000320 | O-RING, 1AP32.0 | 1 | 1 | | | | | | |
| 30 | 1 | 977770-1207F | GASKET,LIQUID | 1 | 1 | | | | | | 1 |

Remarks
(1) OPTIONAL PART.

Fig.3. FLYWHEEL HOUSING & OIL SUMP



(A)=2TNV70-PIK
(B)=2TNV70-PIKX
(C)=

(D)=
(E)=
(F)=

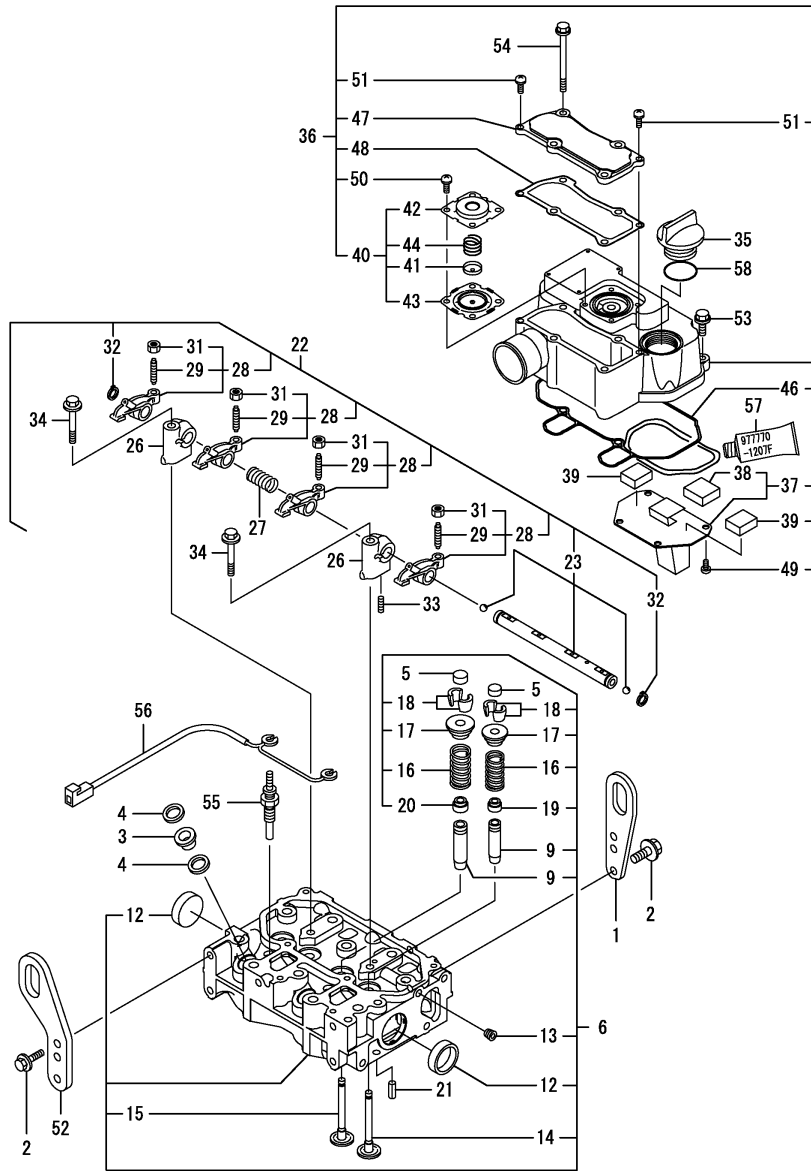
| No. | Lev. | Parts No. | Description | Q'ty | | | | | | I | R |
|-----|------|--------------|----------------------|------|-----|-----|-----|-----|-----|---|---|
| | | | | (A) | (B) | (C) | (D) | (E) | (F) | | |
| 1 | 1 | 129100-01580 | PIN, PARALLEL 8X16 | 2 | 2 | | | | | | |
| 2 | 1 | 119515-01601 | HOUSING, FLYWHEEL | 1 | 1 | | | | | | |
| 3 | 1 | 121120-01620 | BOLT, M10X28 | 3 | 3 | | | | | | |
| 4 | 1 | 119620-01750 | CAP | 1 | 1 | | | | | | |
| 5 | 1 | 124085-02220 | SEAL, OIL | 1 | 1 | | | | | | |
| 6 | 1 | 26206-100252 | BOLT, M10X 25 PLATED | 7 | 7 | | | | | | |
| 7 | 1 | 119415-01720 | SPACER, OIL-PAN | 1 | 1 | | | | | | |
| 8 | 1 | 119440-01780 | OIL PAN ASSY | 1 | 1 | | | | | | |
| 9 | 2 | 105425-01690 | PLUG, M16 | 1 | 1 | | | | | | |
| 11 | 2 | 22190-160002 | WASHER, SEAL 16 | 1 | 1 | | | | | | |
| 12 | 1 | 26106-060122 | BOLT, M6X 12 PLATED | 1 | 1 | | | | | | |
| 13 | 1 | 26106-060252 | BOLT, M6X 25 PLATED | 1 | 1 | | | | | | |
| 14 | 1 | 26106-060452 | BOLT, M6X 45 PLATED | 13 | 13 | | | | | | |
| 15 | 1 | 977770-1207F | GASKET.LIQUID | 1 | 1 | | | | | | 1 |

Remarks
(1) OPTIONAL PART.

Fig.4. CYLINDER HEAD & BONNET

(A)=2TNV70-PIK
(B)=2TNV70-PIKX
(C)=

(D)=
(E)=
(F)=



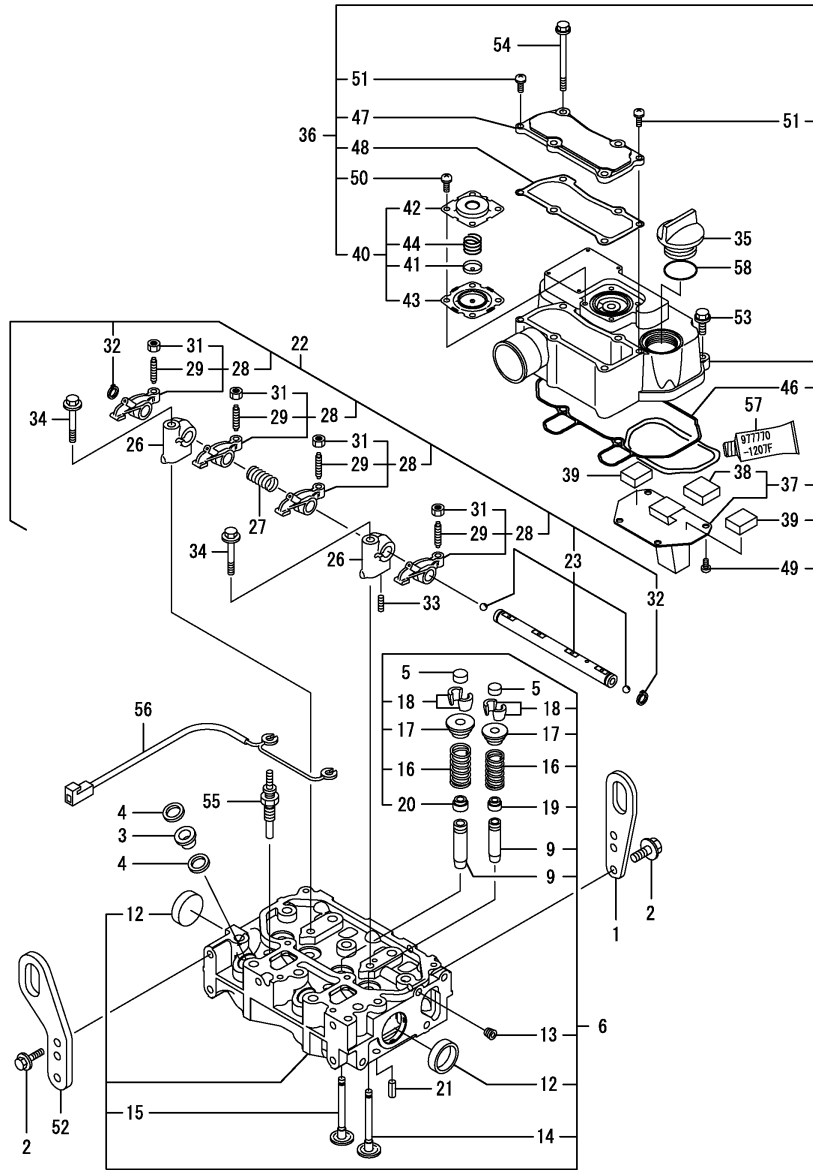
| No. | Lev. | Parts No. | Description | Q'ty | | | | | | I | R |
|------|------|-----------------------|----------------------|------|-----|-----|-----|-----|-----|---|---|
| | | | | (A) | (B) | (C) | (D) | (E) | (F) | | |
| 1 | 1 | 119226-07900 | LIFTER, ENGINE | 1 | 1 | | | | | | |
| 2 | 1 | 26106-080142 | BOLT, M8X 14 PLATED | 4 | 4 | | | | | | |
| 3 | 1 | 129901-11450 | PROTECTOR, NOZZLE | 2 | 2 | | | | | | |
| 4 | 1 | 119600-11460 | GASKET, NOZZLE | 4 | 4 | | | | | | |
| 5 | 1 | 105010-11490 | CAP, VALVE | 4 | 4 | | | | | | |
| 6 | 1 | 119415-11740 | HEAD ASSY, CYLINDER | 1 | 1 | | | | | | |
| 9 | 2 | 119515-11800 | GUIDE, VALVE | 4 | 4 | | | | | | 1 |
| 12 | 2 | 119285-11990 | PLUG, CUP TYPE 35 | 2 | 2 | | | | | | |
| 13 | 2 | 23876-005000 | PLUG, R005 | 1 | 1 | | | | | | |
| 14 | 2 | 119515-11100 | VALVE, SUCTION | 2 | 2 | | | | | | |
| 14-1 | 2 | 119515-11101 | VALVE, SUCTION | 2 | 2 | | | | | | R |
| | | (A=E27947) (B=E27947) | | | | | | | | | |
| 15 | 2 | 119515-11110 | VALVE, EXHAUST | 2 | 2 | | | | | | |
| 16 | 2 | 119717-11131 | SPRING, VALVE | 4 | 4 | | | | | | |
| 17 | 2 | 129508-11180 | RETAINER, SPRING | 4 | 4 | | | | | | |
| 18 | 2 | 119717-11190 | COTTER, VALVE | 8 | 8 | | | | | | |
| 19 | 2 | 119717-11340 | SEAL, VALVE STEM | 2 | 2 | | | | | | |
| 20 | 2 | 119717-11350 | SEAL, VALVE STEM | 2 | 2 | | | | | | |
| 21 | 1 | 22351-060012 | PIN, SPRING 6.0X12 | 2 | 2 | | | | | | |
| 22 | 1 | 119415-11200 | SUPPORT ASSY, ROCKER | 1 | 1 | | | | | | |
| 23 | 2 | 119415-11240 | SHAFT ASSY, ROCKER | 1 | 1 | | | | | | |
| 26 | 2 | 119717-11260 | SUPPORT, ROCKER ARM | 2 | 2 | | | | | | |
| 27 | 2 | 119515-11280 | SPRING, ROCKER | 1 | 1 | | | | | | |
| 28 | 2 | 119717-11650 | ARM ASSY, ROCKER | 4 | 4 | | | | | | |
| 29 | 3 | 129150-11230 | SCREW, VALVE ADJUST | 4 | 4 | | | | | | |
| 31 | 3 | 129150-11750 | NUT, M8 | 4 | 4 | | | | | | |
| 32 | 2 | 22242-000120 | RING, 12 | 2 | 2 | | | | | | |
| 33 | 2 | 26979-050162 | SCREW, M5X16 | 1 | 1 | | | | | | |
| 34 | 1 | 26106-080402 | BOLT, M8X 40 PLATED | 2 | 2 | | | | | | |
| 35 | 1 | 124160-01751 | CAP, FILLER | 1 | 1 | | | | | | |
| 36 | 1 | 119415-11380 | BONNET ASSY, HEAD | 1 | 1 | | | | | | |
| 37 | 2 | 119717-03031 | PLATE, BAFFLE | 1 | 1 | | | | | | |
| 38 | 3 | 119717-03070 | BAFFLE, BREATHER | 1 | 1 | | | | | | |
| 39 | 2 | 119717-03070 | BAFFLE, BREATHER | 2 | 2 | | | | | | |
| 40 | 2 | 119802-03100 | DIAPHRAGM ASSY | 1 | 1 | | | | | | |
| 41 | 3 | 119802-03110 | PLATE, DIAPHRAGM | 1 | 1 | | | | | | |
| 42 | 3 | 119802-03121 | COVER, DIAPHRAGM | 1 | 1 | | | | | | |
| 43 | 3 | 119802-03131 | DIAPHRAGM | 1 | 1 | | | | | | |
| 44 | 3 | 119802-03141 | SPRING, DIAPHRAGM | 1 | 1 | | | | | | |
| 46 | 2 | 119415-11310 | GASKET, BONNET | 1 | 1 | | | | | | |
| 47 | 2 | 119415-11320 | COVER, BONNET | 1 | 1 | | | | | | |
| 48 | 2 | 119415-11330 | GASKET | 1 | 1 | | | | | | |
| 49 | 2 | 22857-500100 | SCREW, 5X10 | 4 | 4 | | | | | | |
| 50 | 2 | 22857-500100 | SCREW, 5X10 | 4 | 4 | | | | | | |
| 51 | 2 | 22857-500160 | SCREW, 5X16 | 2 | 2 | | | | | | |
| 52 | 1 | 129486-07901 | LIFTER, ENGINE | 1 | 1 | | | | | | |
| 53 | 1 | 26106-060202 | BOLT, M6X 20 PLATED | 2 | 2 | | | | | | |
| 54 | 1 | 26106-060752 | BOLT, M6X 75 PLATED | 4 | 4 | | | | | | |
| 55 | 1 | 119717-77800 | PLUG, GLOW | 2 | 2 | | | | | | |
| 56 | 1 | 119415-77820 | CONNECTOR, GLOW PLUG | 1 | 1 | | | | | | |
| 57 | 1 | 977770-1207F | GASKET.LIQUID | 1 | 1 | | | | | | 2 |

Remarks
(1) REPAIR PART.
(2) OPTIONAL PART.

Fig.4. CYLINDER HEAD & BONNET

(A)=2TNV70-PIK
(B)=2TNV70-PIKX
(C)=

(D)=
(E)=
(F)=



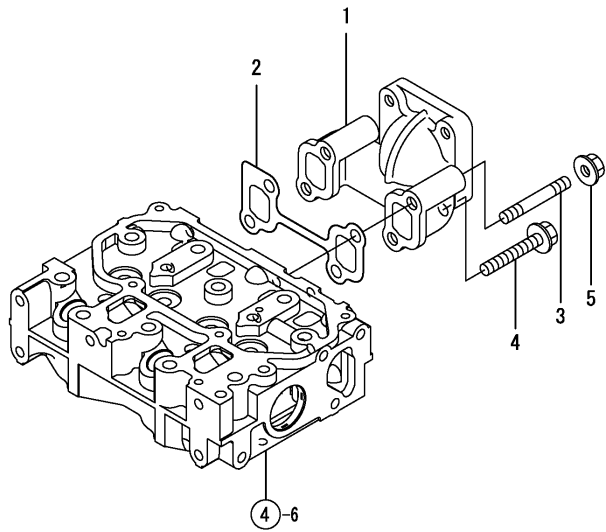
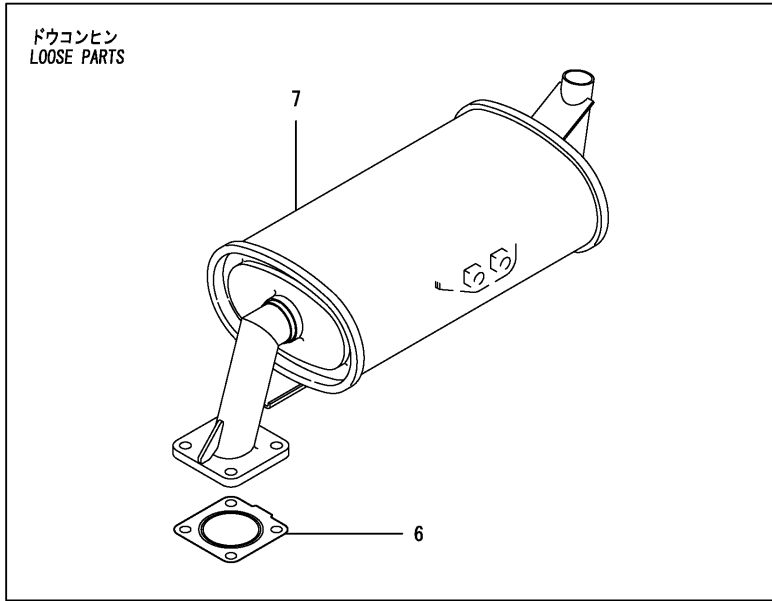
| No. | Lev. | Parts No. | Description | Q'ty | | | | | | I | R |
|-----|------|--------------|-----------------|------|-----|-----|-----|-----|-----|---|---|
| | | | | (A) | (B) | (C) | (D) | (E) | (F) | | |
| 58 | 1 | 24311-000320 | O-RING, 1AP32.0 | 1 | 1 | | | | | | |

Remarks
(1) REPAIR PART.
(2) OPTIONAL PART.

Fig.6. EXHAUST MANIFOLD & SILENCER

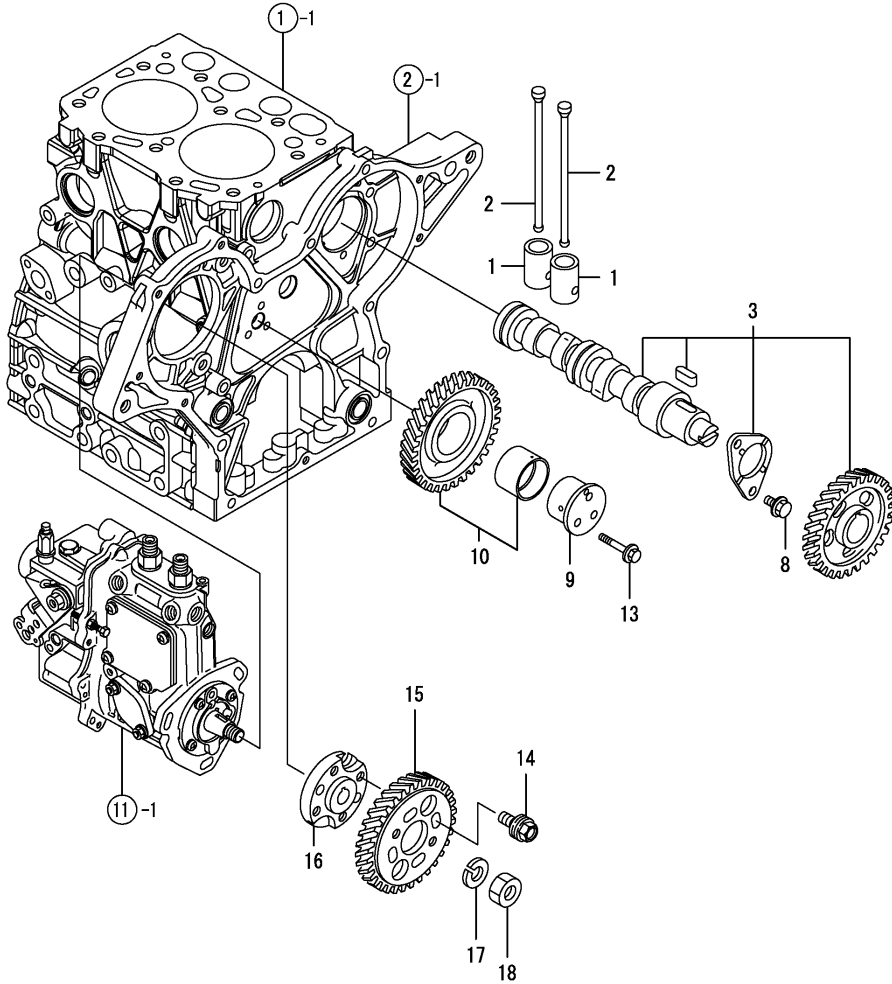
(A)=2TNV70-PIK
 (B)=2TNV70-PIKX
 (C)=

(D)=
 (E)=
 (F)=



| No. | Lev. | Parts No. | Description | Q'ty | | | | | | I | R |
|-----|------|--------------|----------------------|------|-----|-----|-----|-----|-----|---|---|
| | | | | (A) | (B) | (C) | (D) | (E) | (F) | | |
| 1 | 1 | 119415-13100 | MANIFOLD, EXHAUST | 1 | 1 | | | | | | |
| 2 | 1 | 119415-13110 | GASKET, EXH.MANIFOLD | 1 | 1 | | | | | | |
| 3 | 1 | 119717-13600 | BOLT, STUD M8X50 | 2 | 2 | | | | | | |
| 4 | 1 | 119802-13620 | BOLT, M8X50 | 2 | 2 | | | | | | |
| 5 | 1 | 26306-080002 | NUT, M8 | 2 | 2 | | | | | | |
| 6 | 1 | 119515-13200 | GASKET, SILENCER | 1 | 1 | | | | | | |
| 7 | 1 | 119415-13510 | SILENCER | 1 | 1 | | | | | | |

Fig.7. CAMSHAFT & DRIVING GEAR



(A)=2TNV70-PIK
(B)=2TNV70-PIKX
(C)=

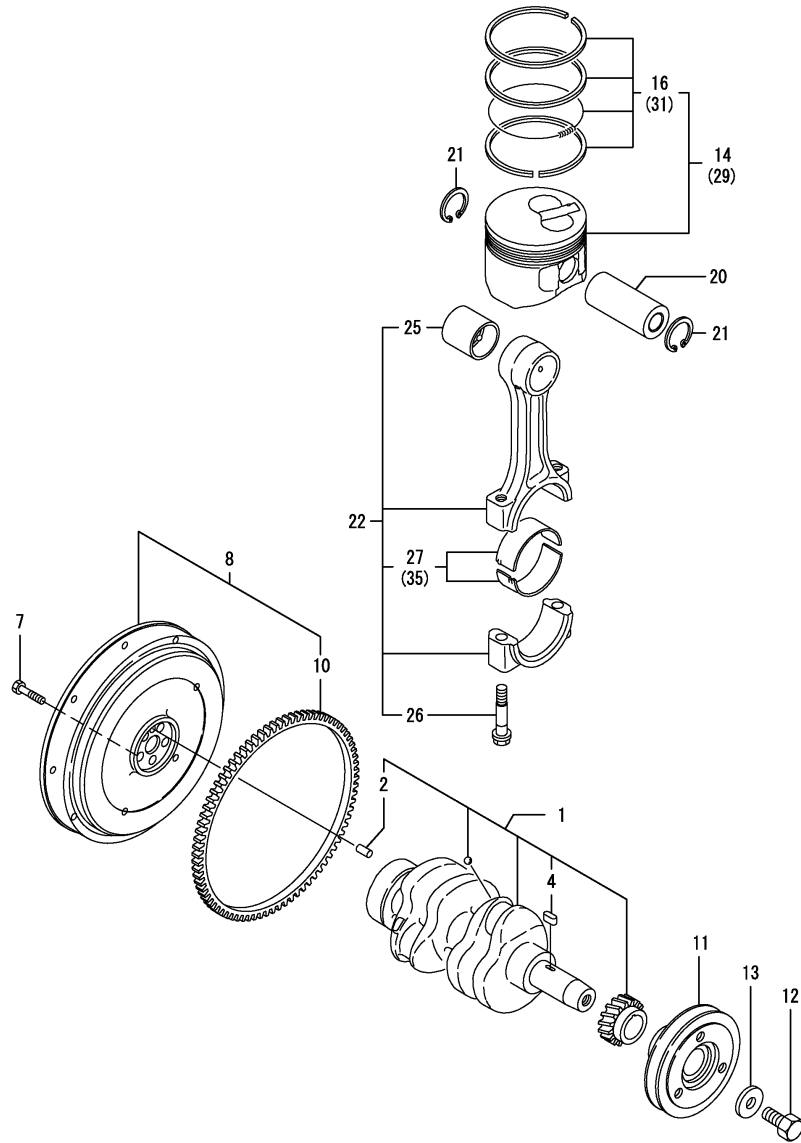
(D)=
(E)=
(F)=

| No. | Lev. | Parts No. | Description | Q'ty | | | | | | I | R |
|------|------|----------------------------|-------------------------------|------|-----|-----|-----|-----|-----|---|---|
| | | | | (A) | (B) | (C) | (D) | (E) | (F) | | |
| 1 | 1 | 119620-14200 | TAPPET | 4 | 4 | | | | | | |
| 2 | 1 | 119515-14400 | PUSH-ROD | 4 | 4 | | | | | | |
| 3 | 1 | 119415-14580 | CAMSHAFT ASSY | 1 | 1 | | | | | | |
| 3-1 | 1 | 119415-14581 (A=E20384) | CAMSHAFT ASSY (B=E20384) | 1 | 1 | | | | | | R |
| 8 | 1 | 26106-060122 | BOLT, M6X 12 PLATED | 2 | 2 | | | | | | |
| 9 | 1 | 119717-25050 | SHAFT, IDLE | 1 | 1 | | | | | | |
| 10 | 1 | 119717-25100 | GEAR ASSY, IDLE | 1 | 1 | | | | | | |
| 10-1 | 1 | 119717-25101 (A=E22662) | GEAR ASSY, IDLE (B=E22662) | 1 | 1 | | | | | | N |
| 13 | 1 | 26106-060352 | BOLT, M6X 35 PLATED | 3 | 3 | | | | | | |
| 14 | 1 | 129150-25301 | BOLT | 4 | 4 | | | | | | |
| 15 | 1 | 119717-25930 | GEAR, PUMP | 1 | 1 | | | | | | |
| 16 | 1 | 119717-51150 | FLANGE | 1 | 1 | | | | | | |
| 17 | 1 | 22217-120000 | WASHER, SPRING 12 | 1 | 1 | | | | | | |
| 18 | 1 | 26716-120002 | NUT, M12 | 1 | 1 | | | | | | |

Fig.8. CRANKSHAFT & PISTON

(A)=2TNV70-PIK
(B)=2TNV70-PIKX
(C)=

(D)=
(E)=
(F)=



| No. | Lev. | Parts No. | Description | Q'ty | | | | | | I | R |
|------|------|-----------------------|----------------------|------|-----|-----|-----|-----|-----|---|-----|
| | | | | (A) | (B) | (C) | (D) | (E) | (F) | | |
| 1 | 1 | 119415-21700 | CRANKSHAFT ASSY | 1 | 1 | | | | | | |
| 2 | 2 | 129100-01580 | PIN, PARALLEL 8X16 | 1 | 1 | | | | | | |
| 4 | 2 | 22512-040120 | KEY, 4X 12 | 1 | 1 | | | | | | |
| 7 | 1 | 119620-21500 | BOLT, FLYWHEEL | 5 | 5 | | | | | | |
| 8 | 1 | 119515-21570 | FLYWHEEL ASSY | 1 | 1 | | | | | | |
| 10 | 2 | 124950-21600 | GEAR, RING | 1 | 1 | | | | | | |
| 11 | 1 | 119717-21650 | V-PULLEY, CRANKSHAFT | 1 | 1 | | | | | | |
| 12 | 1 | 119621-21680 | BOLT, FLANGE 12X1.25 | 1 | 1 | | | | | | |
| 13 | 1 | 119620-21941 | WASHER | 1 | 1 | | | | | | |
| 14 | 1 | 119515-22080 | PISTON ASSY | 2 | 2 | | | | | | |
| 16 | 2 | 119515-22500 | RING SET, PISTON | 2 | 2 | | | | | | |
| 20 | 1 | 119515-22300 | PIN, PISTON | 2 | 2 | | | | | | |
| 21 | 1 | 22252-000220 | RING, 22 | 4 | 4 | | | | | | |
| 22 | 1 | 119515-23000 | ROD ASSY, CONNECTING | 2 | 2 | | | | | | |
| 25 | 2 | 119717-23910 | BEARING, PISTON PIN | 2 | 2 | | | | | | 1 |
| 26 | 2 | 119717-23200 | BOLT, CONNECTING ROD | 4 | 4 | | | | | | |
| 27 | 2 | 119515-23600 | BEARING, CRANK PIN | 2 | 2 | | | | | | |
| 27-1 | 2 | 119515-23601 | BEARING, CRANK PIN | 2 | 2 | | | | | | N |
| | | (A=E22662) (B=E22662) | | | | | | | | | |
| 29 | 1 | 119515-22900 | PISTON ASSY, 0.25 OS | 2 | 2 | | | | | | 3 |
| 31 | 2 | 119515-22550 | RING SET, 0.25 OS | 2 | 2 | | | | | | 3 |
| 35 | 1 | 119515-23610 | BEARING ASSY, 0.25 | 2 | 2 | | | | | | 2 |
| 35-1 | 1 | 119515-23611 | BEARING ASSY, 0.25 | 2 | 2 | | | | | | N 2 |
| | | (A=E22662) (B=E22662) | | | | | | | | | |

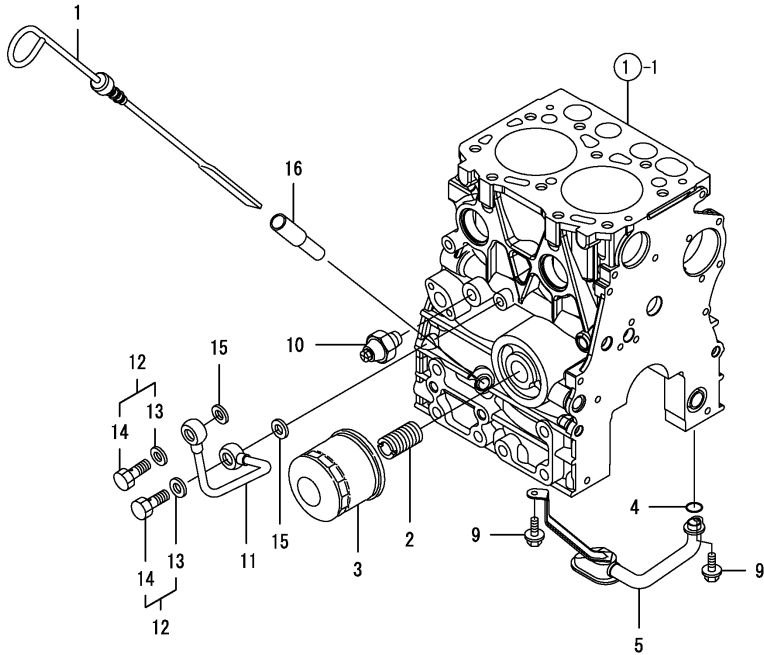
Remarks

- (1) REPAIR PART.
- (2) UNDER-SIZE(U.S=0.25)PART.
- (3) OVER-SIZE(O.S=0.25)PART.

Fig.9. LUB.OIL SYSTEM

(A)=2TNV70-PIK
(B)=2TNV70-PIKX
(C)=

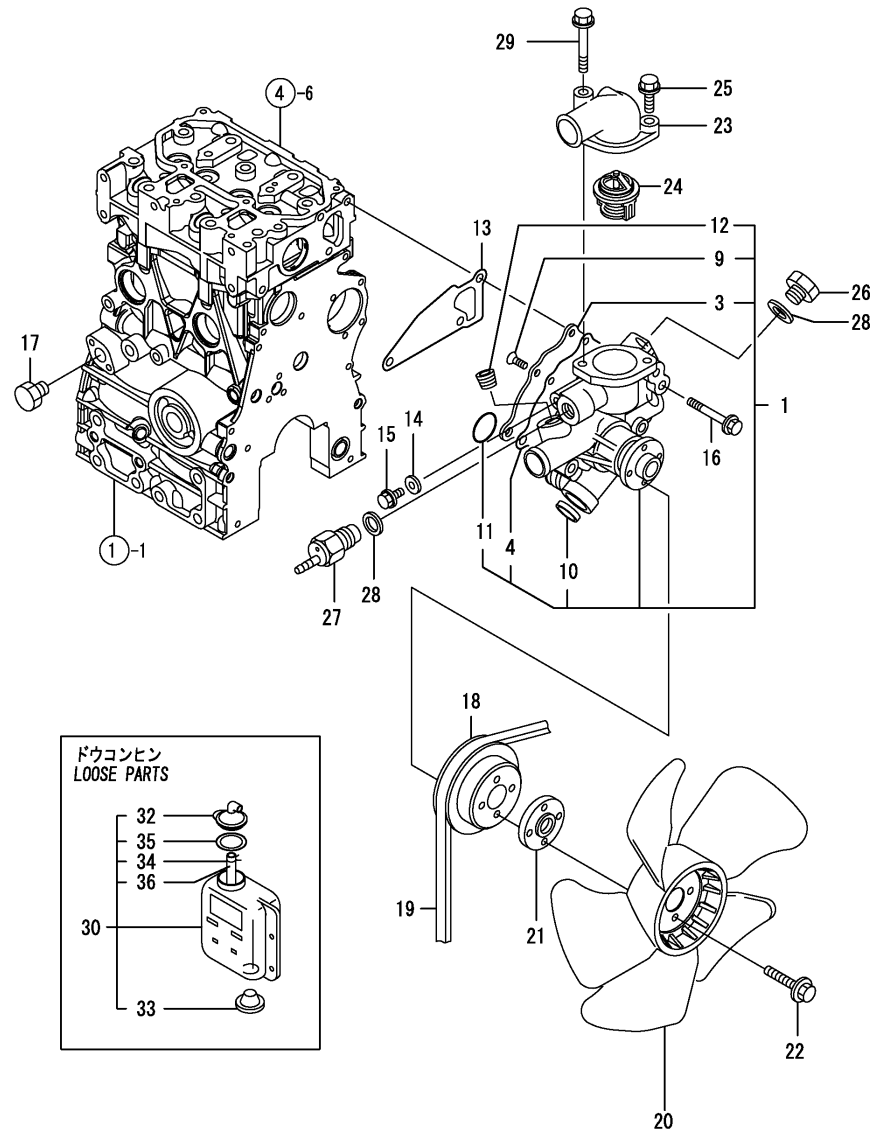
(D)=
(E)=
(F)=



| No. | Lev. | Parts No. | Description | Q'ty | | | | | | I | R |
|------|------|--------------|----------------------|------|-----|-----|-----|-----|-----|---|---|
| | | | | (A) | (B) | (C) | (D) | (E) | (F) | | |
| 1 | 1 | 119415-34801 | DIPSTICK | 1 | 1 | | | | | | |
| 2 | 1 | 129100-35140 | BOLT, STUD | 1 | 1 | | | | | | |
| 3 | 1 | 119305-35151 | FILTER ASSY, D68XL65 | 1 | 1 | | | | | | 1 |
| 4 | 1 | 119717-32060 | O-RING, P15.0 | 1 | 1 | | | | | | |
| 5 | 1 | 119415-35080 | PIPE ASSY, OIL INLET | 1 | 1 | | | | | | |
| 9 | 1 | 26106-060102 | BOLT, M6X 10 PLATED | 2 | 2 | | | | | | |
| 10 | 1 | 121252-39450 | SWITCH, HYDRAULIC | 1 | 1 | | | | | | |
| 11 | 1 | 119415-39210 | PIPE, OIL | 1 | 1 | | | | | | |
| 11-1 | 1 | 119415-39211 | PIPE, OIL | 1 | 1 | | | | | | N |
| | | (A=E15377) | (B=E15377) | | | | | | | | |
| 12 | 1 | 129005-59830 | BOLT ASSY, JOINT M8 | 2 | 2 | | | | | | |
| 13 | 2 | 22190-080002 | WASHER, SEAL 6 | 2 | 2 | | | | | | |
| 14 | 2 | 23857-030000 | BOLT, JOINT 3 | 2 | 2 | | | | | | |
| 15 | 1 | 22190-080002 | WASHER, SEAL 6 | 2 | 2 | | | | | | |
| 16 | 1 | 121520-34810 | GUIDE, DIPSTICK | 1 | 1 | | | | | | |

Remarks
(1) REPAIR PART.

Fig.10. COOLING WATER SYSTEM



(A)=2TNV70-PIK
(B)=2TNV70-PIKX
(C)=

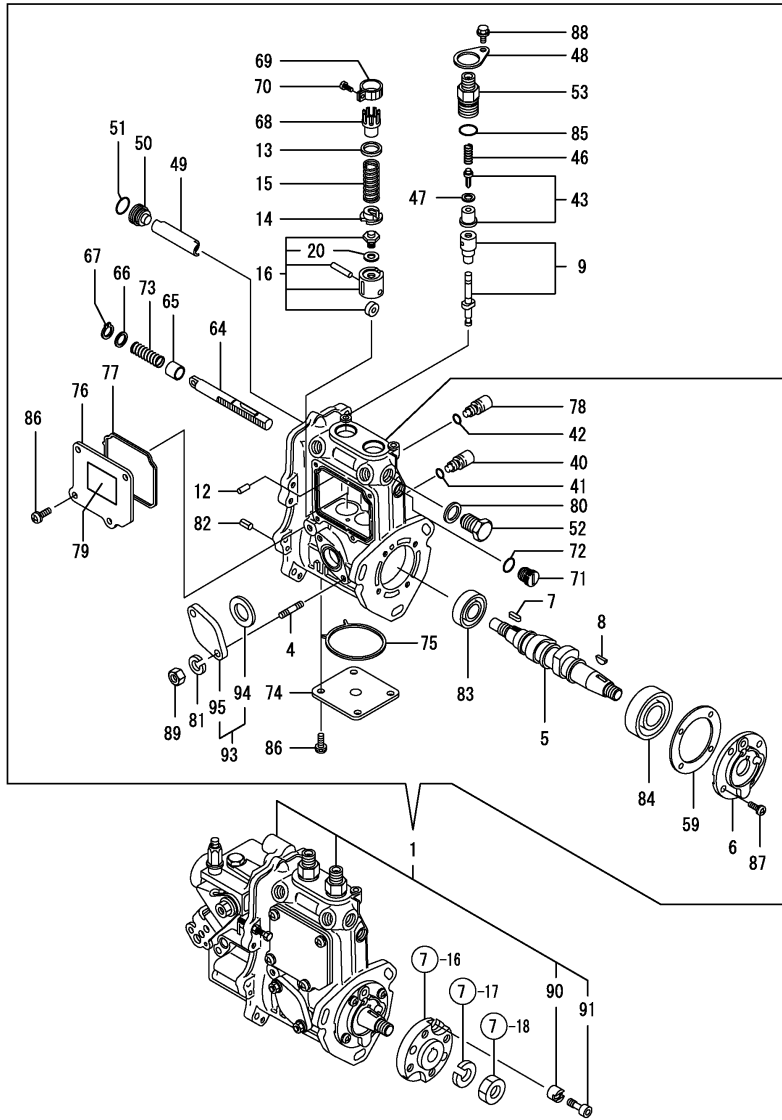
(D)=
(E)=
(F)=

| No. | Lev. | Parts No. | Description | Q'ty | | | | | | I | R |
|------|------|--------------|---------------------|------|-----|-----|-----|-----|-----|---|---|
| | | | | (A) | (B) | (C) | (D) | (E) | (F) | | |
| 1 | 1 | 119540-42000 | PUMP ASSY, WATER | 1 | 1 | | | | | | |
| 3 | 2 | 119515-42041 | COVER | 1 | 1 | | | | | | |
| 4 | 2 | 119717-42031 | GASKET | 1 | 1 | | | | | | |
| 9 | 2 | 26577-060122 | SCREW, M6X12 | 4 | 4 | | | | | | |
| 10 | 2 | 27241-250000 | PLUG, 25 | 1 | 1 | | | | | | |
| 11 | 2 | 119717-42320 | O-RING, P26 | 1 | 1 | | | | | | |
| 12 | 2 | 129916-49740 | PLUG, R3/8 | 1 | 1 | | | | | | |
| 13 | 1 | 119515-42020 | GASKET, WATER PUMP | 1 | 1 | | | | | | |
| 14 | 1 | 23414-080000 | GASKET, 8X1.0 | 1 | 1 | | | | | | |
| 15 | 1 | 26106-080122 | BOLT, M8X 12 PLATED | 1 | 1 | | | | | | |
| 16 | 1 | 26106-080502 | BOLT, M8X 50 PLATED | 3 | 3 | | | | | | |
| 17 | 1 | 171056-49120 | PLUG, DRAIN R1/4 | 1 | 1 | | | | | | |
| 18 | 1 | 119740-42350 | V-PULLEY, D=90 | 1 | 1 | | | | | | |
| 19 | 1 | 121522-42290 | V-BELT, A34.5 | 1 | 1 | | | | | | |
| 19-1 | 1 | 25152-003500 | V-BELT, A35 | 1 | 1 | | | | | | S |
| | | (A=E00321) | (B=E00321) | | | | | | | | |
| 20 | 1 | 119540-44700 | FAN, COOLING D=230 | 1 | 1 | | | | | | |
| 21 | 1 | 124574-44761 | SPACER, FAN | 1 | 1 | | | | | | |
| 22 | 1 | 26106-060202 | BOLT, M6X 20 PLATED | 4 | 4 | | | | | | |
| 23 | 1 | 124101-49531 | COVER, THERMOSTAT | 1 | 1 | | | | | | |
| 24 | 1 | 119717-49800 | THERMOSTAT, 71C | 1 | 1 | | | | | | |
| 25 | 1 | 26106-080252 | BOLT, M8X 25 PLATED | 1 | 1 | | | | | | |
| 26 | 1 | 121450-42450 | PLUG, M16 | 1 | 1 | | | | | | |
| 27 | 1 | 121250-44901 | SWITCH, THERMO 110 | 1 | 1 | | | | | | |
| 28 | 1 | 124465-44950 | GASKET, 16 | 2 | 2 | | | | | | |
| 29 | 1 | 26106-080652 | BOLT, M8X 65 PLATED | 1 | 1 | | | | | | |
| 30 | 1 | 121468-44510 | TANK ASSY, SUB | 1 | 1 | | | | | | |
| 32 | 2 | 121450-44531 | CAP | 1 | 1 | | | | | | |
| 33 | 2 | 121468-44540 | PLUG | 1 | 1 | | | | | | |
| 34 | 2 | 124450-44560 | CLAMP, HOSE | 1 | 1 | | | | | | |
| 35 | 2 | 121470-44581 | GASKET | 1 | 1 | | | | | | |
| 36 | 2 | 23065-070130 | PIPE, 7X 130 | 1 | 1 | | | | | | |

Fig.11. FUEL INJECTION PUMP

(A)=2TNV70-PIK
(B)=2TNV70-PIKX
(C)=

(D)=
(E)=
(F)=



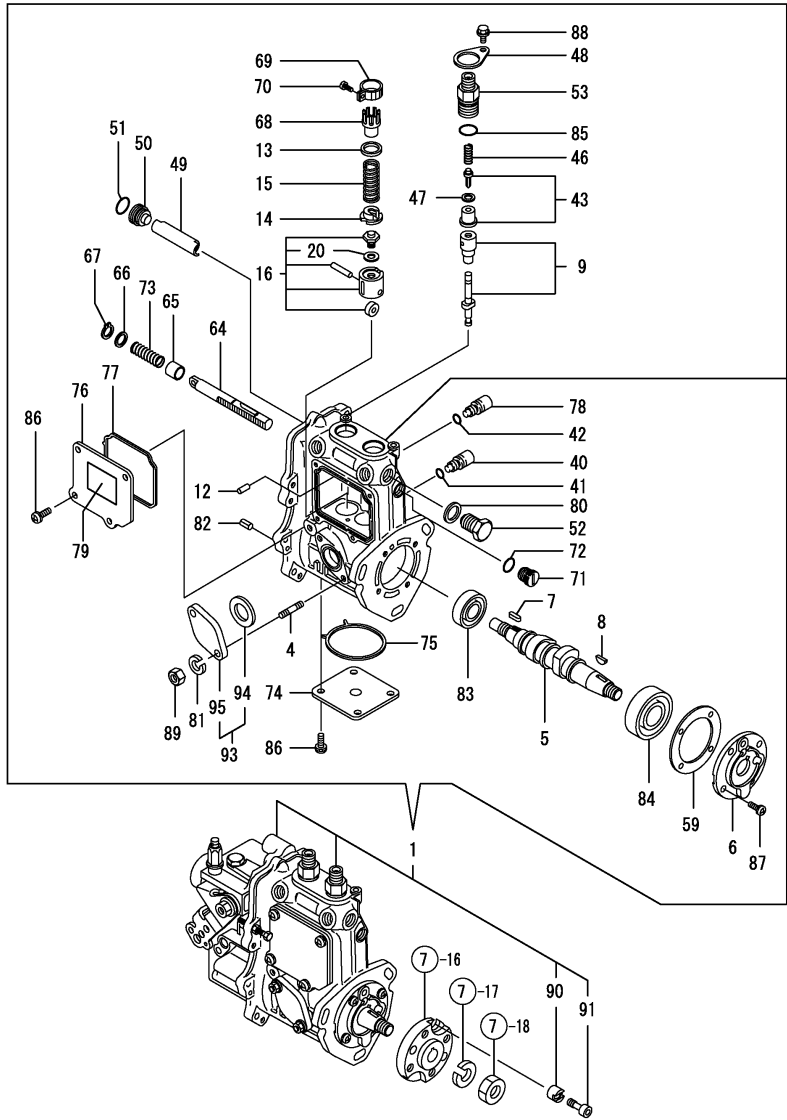
| No. | Lev. | Parts No. | Description | Q'ty | | | | | | I | R |
|------|------|-----------------------|----------------------|------|-----|-----|-----|-----|-----|---|---|
| | | | | (A) | (B) | (C) | (D) | (E) | (F) | | |
| 1 | 1 | 719440-51370 | FIE ASSY | 1 | 1 | | | | | | 1 |
| 4 | 2 | 129155-51020 | BOLT, STUD | 2 | 2 | | | | | | |
| 5 | 2 | 119415-51030 | CAMSHAFT | 1 | 1 | | | | | | |
| 6 | 2 | 119717-51060 | SUPPORT, CAMSHAFT | 1 | 1 | | | | | | |
| 7 | 2 | 119717-51070 | FEATHER KEY,PARALLEL | 1 | 1 | | | | | | |
| 8 | 2 | 122710-51090 | FEATHER KEY,WOODRUFF | 1 | 1 | | | | | | |
| 9 | 2 | 119515-51100 | PLUNGER ASSY, FUEL | 2 | 2 | | | | | | |
| 12 | 2 | 129155-51140 | PIN | 2 | 2 | | | | | | |
| 13 | 2 | 158600-51170 | RETAINER, SPRING | 2 | 2 | | | | | | |
| 14 | 2 | 119717-51180 | RETAINER, SPRING | 2 | 2 | | | | | | |
| 14-1 | 2 | 119717-51570 | RETAINER, SPRING | 2 | 2 | | | | | | R |
| | | (A=E15377) (B=E15377) | | | | | | | | | |
| 15 | 2 | 119717-51190 | SPRING, PLUNGER | 2 | 2 | | | | | | |
| 16 | 2 | 119717-51200 | TAPPET ASSY | 2 | 2 | | | | | | |
| 20 | 3 | 129155-51600 | SHIM SET, ADJUSTING | 2 | 2 | | | | | | |
| 40 | 2 | 158600-51270 | STOPPER, TAPPET | 2 | 2 | | | | | | |
| 41 | 2 | 129155-51280 | O-RING, S6 | 2 | 2 | | | | | | |
| 42 | 2 | 129155-51280 | O-RING, S6 | 1 | 1 | | | | | | |
| 43 | 2 | 119717-51300 | VALVE ASSY, DELIVERY | 2 | 2 | | | | | | |
| 46 | 2 | 119717-51330 | SPRING, DELIVERY | 2 | 2 | | | | | | |
| 47 | 2 | 124550-51350 | GASKET, DELIVERY | 2 | 2 | | | | | | |
| 48 | 2 | 118400-51370 | PLATE, LOCKING | 2 | 2 | | | | | | |
| 49 | 2 | 119415-51400 | PROTECTOR | 1 | 1 | | | | | | |
| 50 | 2 | 158600-51410 | PLUG, DEFLECTOR | 1 | 1 | | | | | | |
| 51 | 2 | 119717-51420 | O-RING | 1 | 1 | | | | | | |
| 52 | 2 | 158600-51420 | PLUG, DEFLECTOR | 1 | 1 | | | | | | |
| 53 | 2 | 158600-51441 | VALVE ASSY, DELIVERY | 2 | 2 | | | | | | |
| 53-1 | 2 | 158600-51442 | VALVE ASSY, DELIVERY | 2 | 2 | | | | | | N |
| | | (A=E09208) (B=E09208) | | | | | | | | | |
| 59 | 2 | 129155-51450 | SHIM SET, ADJUSTING | 1 | 1 | | | | | | |
| 64 | 2 | 119415-51500 | RACK, CONTROL | 1 | 1 | | | | | | |
| 65 | 2 | 129155-51521 | BUSH, RACK | 1 | 1 | | | | | | |
| 66 | 2 | 129155-51530 | SPACER | 1 | 1 | | | | | | |
| 67 | 2 | 129155-51540 | CIRCLIP | 1 | 1 | | | | | | |
| 68 | 2 | 129155-51550 | PINION, CONTROL | 2 | 2 | | | | | | |
| 69 | 2 | 129100-51560 | PINION | 2 | 2 | | | | | | |
| 70 | 2 | 129100-51570 | SCREW, PINION | 2 | 2 | | | | | | |
| 71 | 2 | 158600-51570 | PLUG, RACK | 1 | 1 | | | | | | |
| 72 | 2 | 129155-51580 | O-RING | 1 | 1 | | | | | | |
| 73 | 2 | 129155-51591 | SPRING, RACK | 1 | 1 | | | | | | |
| 74 | 2 | 119415-51700 | COVER | 1 | 1 | | | | | | |
| 75 | 2 | 119415-51710 | GASKET | 1 | 1 | | | | | | |
| 76 | 2 | 119415-51750 | COVER | 1 | 1 | | | | | | |
| 77 | 2 | 119415-51760 | GASKET | 1 | 1 | | | | | | |
| 78 | 2 | 158600-51790 | STOPPER, RACK | 1 | 1 | | | | | | |
| 79 | 2 | 129156-51910 | LABEL, CAUTION | 1 | 1 | | | | | | Z |
| | | (A=E20384) (B=E20384) | | | | | | | | | |
| 80 | 2 | 22190-160002 | WASHER, SEAL 16 | 1 | 1 | | | | | | |
| 81 | 2 | 22217-060000 | WASHER, SPRING 6 | 2 | 2 | | | | | | |
| 82 | 2 | 22351-050010 | PIN, SPRING 5.0X10 | 2 | 2 | | | | | | |
| 83 | 2 | 24101-060034 | BEARING, BALL 6003 | 1 | 1 | | | | | | |

Remarks
(1) GOVERNOR ASSY(FIG.12) IS
INCORPORATED IN THIS FOP.CMP
(REF.NO.1).

Fig.11. FUEL INJECTION PUMP

(A)=2TNV70-PIK
(B)=2TNV70-PIKX
(C)=

(D)=
(E)=
(F)=



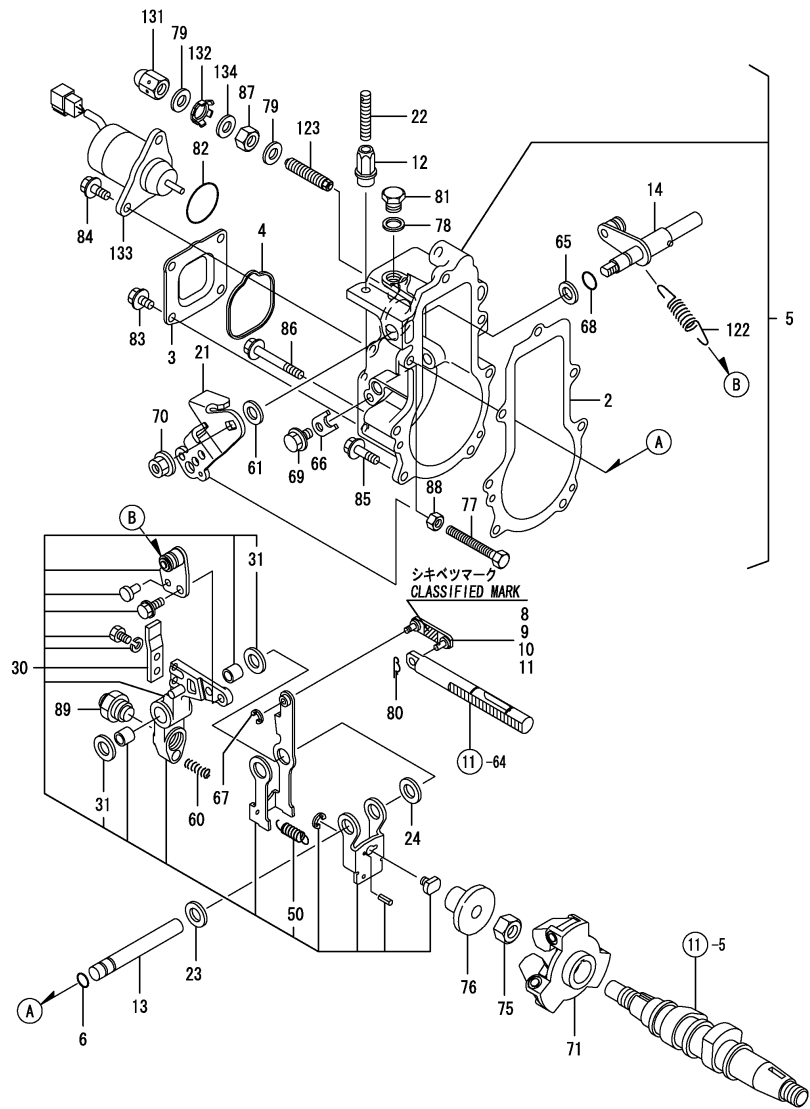
| No. | Lev. | Parts No. | Description | Q'ty | | | | | | I | R |
|-----|------|--------------|---------------------|------|-----|-----|-----|-----|-----|---|---|
| | | | | (A) | (B) | (C) | (D) | (E) | (F) | | |
| 84 | 2 | 24101-063034 | BEARING, BALL 6303 | 1 | 1 | | | | | | |
| 85 | 2 | 24316-000150 | O-RING, 4DP15.0 | 2 | 2 | | | | | | |
| 86 | 2 | 26022-050122 | SCREW, M5X12 | 8 | 8 | | | | | | |
| 87 | 2 | 26022-060162 | SCREW, M6X16 | 4 | 4 | | | | | | |
| 88 | 2 | 26106-050102 | BOLT, M5X 10 PLATED | 2 | 2 | | | | | | |
| 89 | 2 | 26716-060002 | NUT, M6 | 2 | 2 | | | | | | |
| 90 | 2 | 119717-51480 | COLLAR | 1 | 1 | | | | | | |
| 91 | 2 | 119717-51490 | BOLT | 1 | 1 | | | | | | |
| 93 | 2 | 129255-52000 | COVER ASSY | 1 | 1 | | | | | | |
| 94 | 3 | 129155-52051 | GASKET | 1 | 1 | | | | | | |
| 95 | 3 | 129100-52200 | COVER, PUMP | 1 | 1 | | | | | | |

Remarks
(1) GOVERNOR ASSY(FIG.12) IS
INCORPORATED IN THIS FOP.CMP
(REF.NO.1).

Fig.12. GOVERNOR

(A)=2TNV70-PIK
(B)=2TNV70-PIKX
(C)=

(D)=
(E)=
(F)=



| No. | Lev. | Parts No. | Description | Q'ty | | | | | | I | R |
|-----------------------|------|--------------|----------------------|------|-----|-----|-----|-----|-----|---|---|
| | | | | (A) | (B) | (C) | (D) | (E) | (F) | | |
| 2 | 2 | 119717-61050 | GASKET | 1 | 1 | | | | | | |
| 3 | 2 | 119717-61060 | COVER, GOVERNOR CASE | 1 | 1 | | | | | | |
| 4 | 2 | 119717-61070 | GASKET | 1 | 1 | | | | | | |
| 5 | 2 | 119717-61100 | CASE ASSY, GOVERNOR | 1 | 1 | | | | | | |
| 6 | 3 | 129155-51280 | O-RING, S6 | 1 | 1 | | | | | | |
| 8 | 3 | 119717-61120 | LINK, MARK :3 | 1 | 1 | | | | | | 1 |
| 9 | 3 | 119717-61130 | LINK, MARK 98 | 1 | 1 | | | | | | 1 |
| 10 | 3 | 119717-61140 | LINK, MARK 88 | 1 | 1 | | | | | | 1 |
| 11 | 3 | 119717-61150 | LINK, MARK 03 | 1 | 1 | | | | | | 1 |
| 12 | 3 | 129209-61370 | NUT, ARB M6 | 1 | 1 | | | | | | |
| 13 | 3 | 129052-61390 | SHAFT,GOVERNOR LEVER | 1 | 1 | | | | | | |
| 14 | 3 | 119717-61400 | SHAFT ASSY | 1 | 1 | | | | | | |
| 21 | 3 | 119515-61440 | LEVER, CONTROL | 1 | 1 | | | | | | |
| 22 | 3 | 129155-61450 | BOLT, LIMITING | 1 | 1 | | | | | | |
| 23 | 3 | 129156-61460 | SHIM, T=0.6 | 1 | 1 | | | | | | |
| 24 | 3 | 129155-61480 | SHIM ASSY | 1 | 1 | | | | | | |
| 30 | 3 | 119717-61500 | LEVER ASSY, GOVERNOR | 1 | 1 | | | | | | |
| 31 | 4 | 174307-51700 | SHIM SET, PLUNGER | 2 | 2 | | | | | | |
| 50 | 4 | 129486-61540 | SPRING, GOV.LEVER | 1 | 1 | | | | | | |
| 60 | 3 | 129100-61650 | SPRING, FUEL LIMITER | 1 | 1 | | | | | | |
| 61 | 3 | 158552-61700 | SHIM SET | 1 | 1 | | | | | | |
| 65 | 3 | 158552-61710 | SHIM, T=1.0 | 1 | 1 | | | | | | |
| 66 | 3 | 119660-61901 | STOPPER, SHAFT | 1 | 1 | | | | | | |
| 67 | 3 | 22272-000030 | RING, E- 3 | 1 | 1 | | | | | | |
| 68 | 3 | 24341-000070 | O-RING, 1AS7.0 | 1 | 1 | | | | | | |
| 69 | 3 | 26106-060102 | BOLT, M6X 10 PLATED | 1 | 1 | | | | | | |
| 70 | 3 | 26366-080002 | NUT, M8 | 1 | 1 | | | | | | |
| 71 | 2 | 119717-61200 | WEIGHT ASSY,GOVERNOR | 1 | 1 | | | | | | |
| 75 | 2 | 119660-61300 | NUT | 1 | 1 | | | | | | |
| 76 | 2 | 129155-61341 | SLEEVE | 1 | 1 | | | | | | |
| 77 | 2 | 129155-61460 | BOLT, LIMITING | 1 | 1 | | | | | | |
| 78 | 2 | 22190-100002 | WASHER, SEAL 10 | 1 | 1 | | | | | | |
| 79 | 2 | 22190-120002 | WASHER, SEAL 12 | 2 | 2 | | | | | | |
| 80 | 2 | 22372-040000 | PIN, SNAP 4 | 1 | 1 | | | | | | |
| 81 | 3 | 23887-100002 | PLUG, 10 | 1 | 1 | | | | | | |
| 82 | 2 | 24341-000280 | O-RING, 1AS28.0 | 1 | 1 | | | | | | |
| 82-1 | 2 | 158552-61900 | O-RING | 1 | 1 | | | | | | N |
| (A=EXXXXX) (B=EXXXXX) | | | | | | | | | | | |
| 83 | 2 | 26106-060102 | BOLT, M6X 10 PLATED | 4 | 4 | | | | | | |
| 84 | 2 | 26106-060142 | BOLT, M6X 14 PLATED | 2 | 2 | | | | | | |
| 85 | 2 | 26106-060202 | BOLT, M6X 20 PLATED | 4 | 4 | | | | | | |
| 86 | 2 | 26106-060452 | BOLT, M6X 45 PLATED | 3 | 3 | | | | | | |
| 87 | 2 | 26736-120002 | NUT, M12 | 1 | 1 | | | | | | |
| 88 | 2 | 26756-060002 | NUT, LOCK M6 | 1 | 1 | | | | | | |
| 89 | 2 | 119740-61560 | ANGLEICH ASSY | 1 | 1 | | | | | | |
| 122 | 2 | 171353-61700 | SPRING, GOVERNOR | 1 | 1 | | | | | | |
| 123 | 2 | 158601-61790 | LIMITER ASSY, FUEL | 1 | 1 | | | | | | |
| 131 | 2 | 129209-61930 | NUT, CAP | 1 | 1 | | | | | | |
| 132 | 2 | 129209-61970 | PLATE | 1 | 1 | | | | | | |
| 133 | 2 | 119233-77932 | SOLENOID, STOP | 1 | 1 | | | | | | |
| 134 | 2 | 23414-120016 | GASKET, 12X1.0 | 1 | 1 | | | | | | |

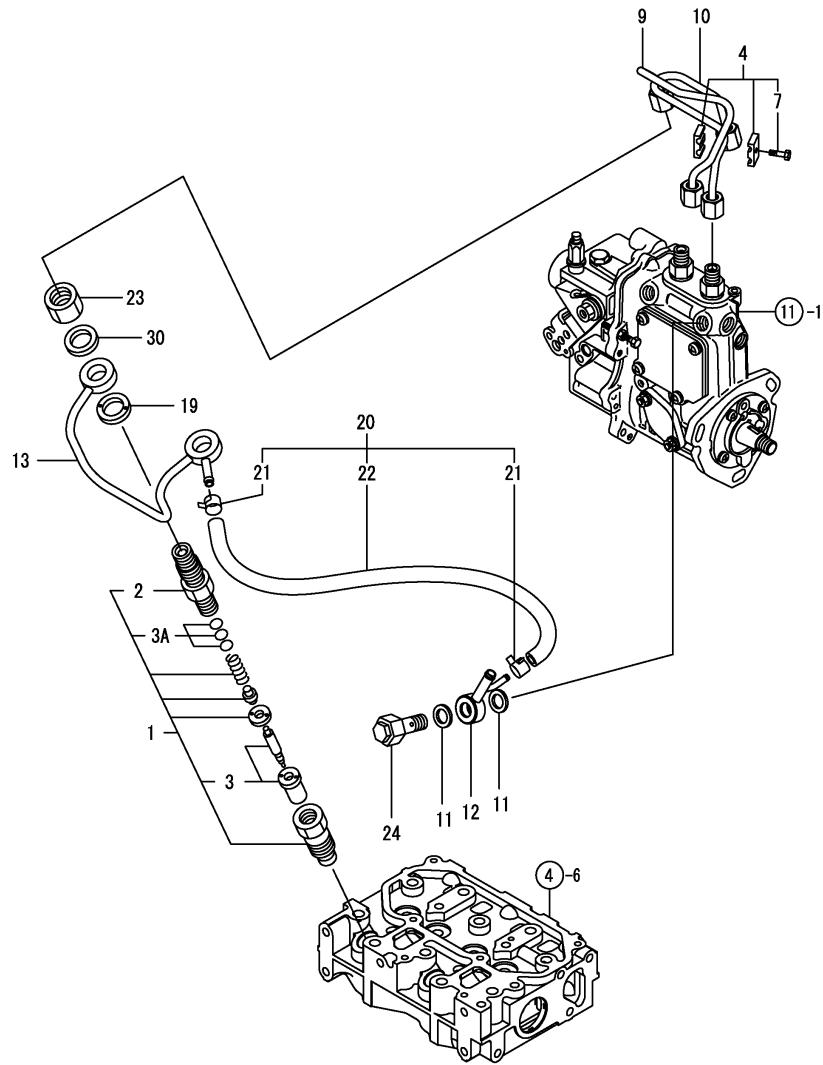
Remarks

(1) SELECTIVE PARTS;CERTAIN THE CLASSIFICATION MARK,THEN PLACE YOUR ORDER.(REF.TO.ILLUSTRATION).
* THIS FIGURE(GOVERNOR ASSY)IS INCORPORATED IN THE FUEL INJECTION PUMP ASSY(FIG.11).

Fig.13. FUEL INJECTION VALVE

(A)=2TNV70-PIK
(B)=2TNV70-PIKX
(C)=

(D)=
(E)=
(F)=



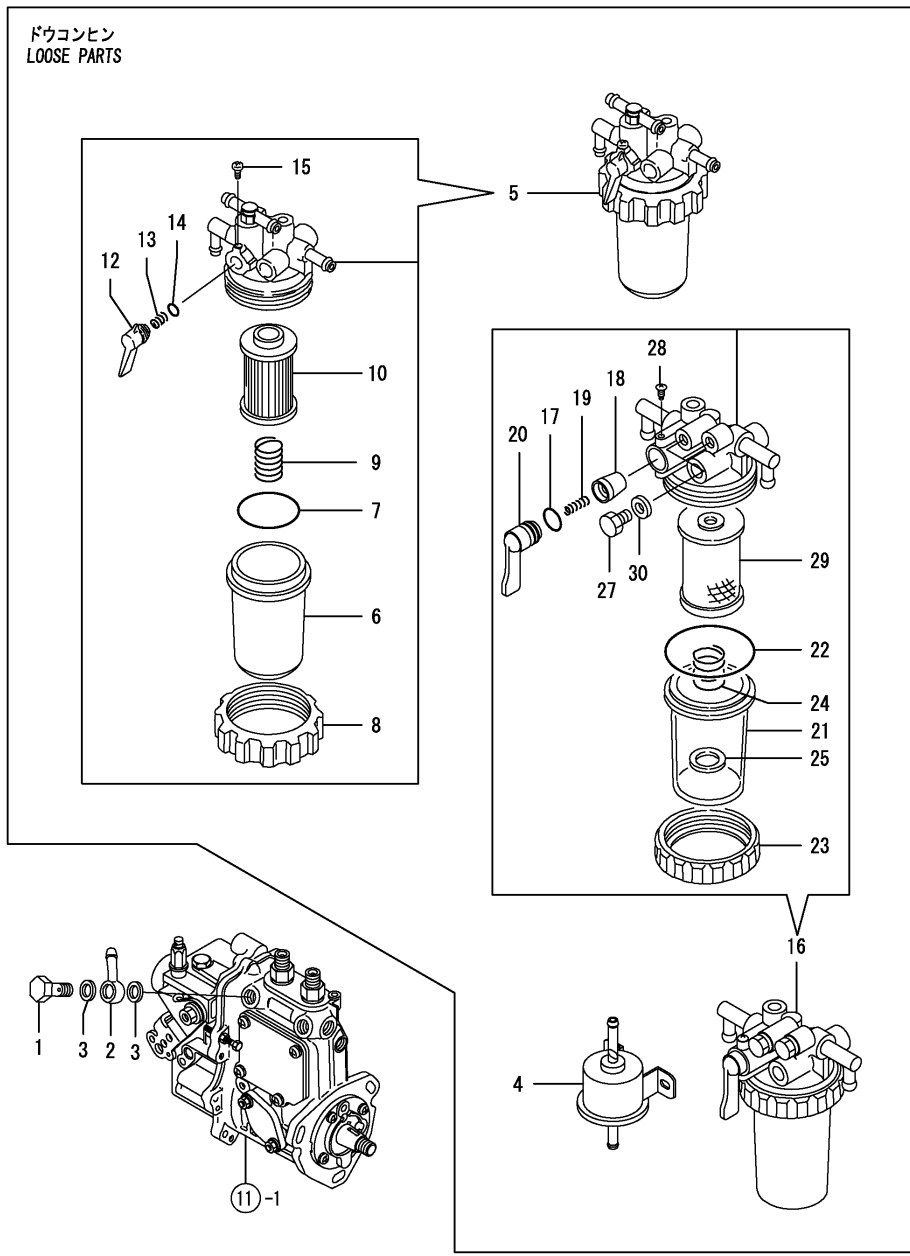
| No. | Lev. | Parts No. | Description | Q'ty | | | | | | I | R |
|-----|------|---------------------------|----------------------|------|-----|-----|-----|-----|-----|---|-----|
| | | | | (A) | (B) | (C) | (D) | (E) | (F) | | |
| 1 | 1 | 119515-53001 | VALVE ASSY,INJECTION | 2 | 2 | | | | | | |
| 2 | 2 | 118200-53010 | HOLDER, NOZZLE | 2 | 2 | | | | | | |
| 3 | 2 | 119515-53010 | NOZZLE ASSY, F.I. | 2 | 2 | | | | | | |
| 3A | 2 | 129901-53800 | SHIM SET, ADJUSTING | 2 | 2 | | | | | | W 1 |
| | | (A=FROM 1ST) (B=FROM 1ST) | | | | | | | | | |
| 4 | 1 | 119305-59120 | RETAINER, PIPE | 1 | 1 | | | | | | |
| 7 | 2 | 129150-59131 | BOLT, M4X14 | 1 | 1 | | | | | | |
| 9 | 1 | 119415-59810 | PIPE ASSY, INJECTION | 1 | 1 | | | | | | |
| 10 | 1 | 119415-59820 | PIPE ASSY, INJECTION | 1 | 1 | | | | | | |
| 11 | 1 | 22190-120002 | WASHER, SEAL 12 | 2 | 2 | | | | | | |
| 12 | 1 | 119840-59570 | JOINT | 1 | 1 | | | | | | |
| 13 | 1 | 119415-59540 | PIPE ASSY, RETURN | 1 | 1 | | | | | | |
| 19 | 1 | 129901-59560 | GASKET | 2 | 2 | | | | | | |
| 20 | 1 | 119540-59570 | HOSE ASSY, RETURN | 1 | 1 | | | | | | |
| 21 | 2 | 124066-59100 | CLAMP, HOSE 8 | 2 | 2 | | | | | | |
| 22 | 2 | 119540-59560 | HOSE ASSY, RETURN | 1 | 1 | | | | | | |
| 23 | 1 | 119620-59700 | NUT, NOZZLE | 2 | 2 | | | | | | |
| 24 | 1 | 119813-59950 | VALVE ASSY, CHECK | 1 | 1 | | | | | | |
| 30 | 1 | 22190-120002 | WASHER, SEAL 12 | 2 | 2 | | | | | | W |
| | | (A=FROM 1ST) (B=FROM 1ST) | | | | | | | | | |

Remarks
(1) REPAIR PART.

Fig.14. FUEL LINE

(A)=2TNV70-PIK
(B)=2TNV70-PIKX
(C)=

(D)=
(E)=
(F)=

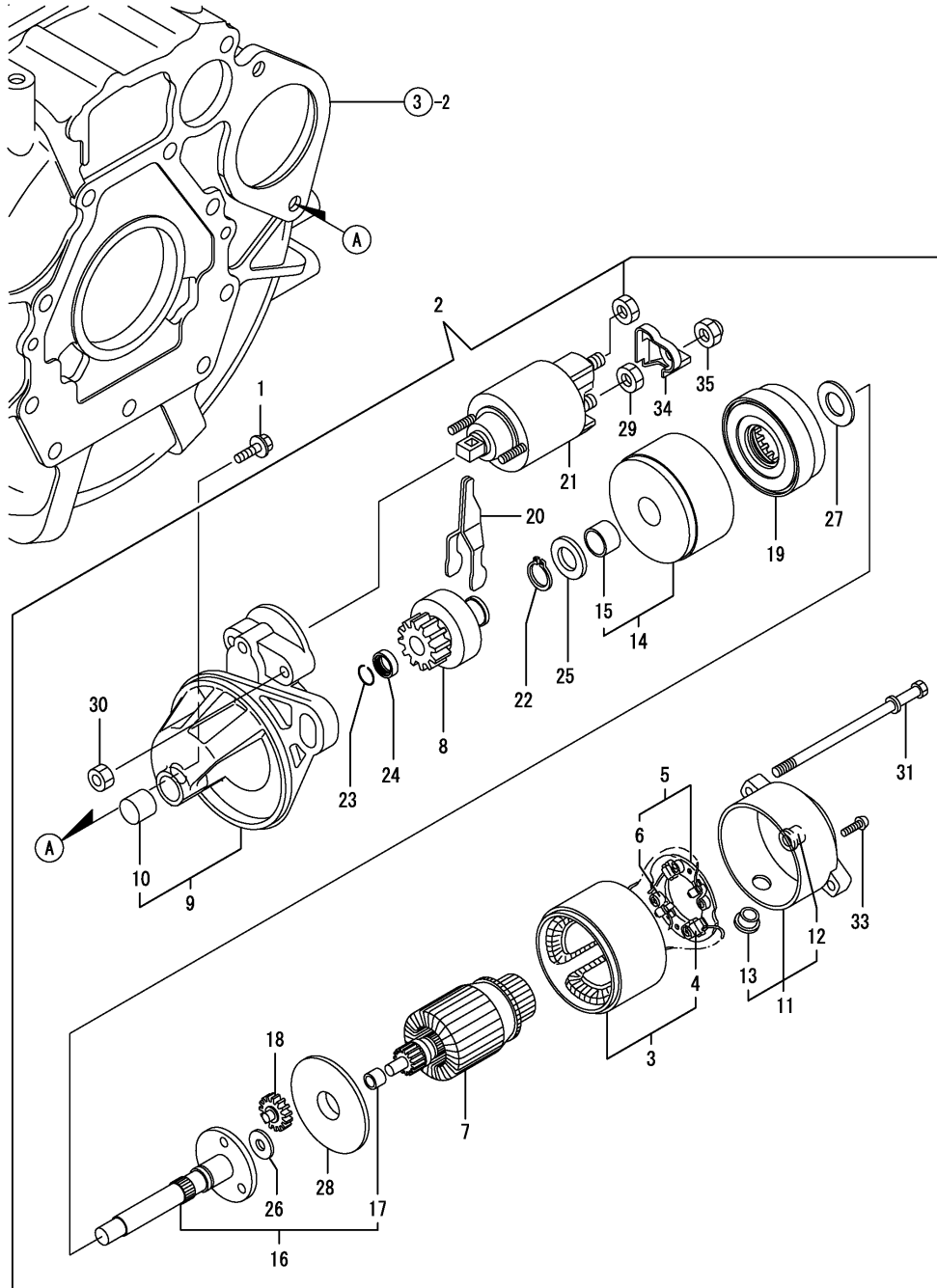


| No. | Lev. | Parts No. | Description | Q'ty | | | | | | I | R |
|-----|------|--------------|----------------------|------|-----|-----|-----|-----|-----|---|---|
| | | | | (A) | (B) | (C) | (D) | (E) | (F) | | |
| 1 | 1 | 103854-39140 | BOLT, PIPE JOINT | 1 | 1 | | | | | | |
| 2 | 1 | 101304-59020 | JOINT, PIPE 12 | 1 | 1 | | | | | | |
| 3 | 1 | 22190-120002 | WASHER, SEAL 12 | 2 | 2 | | | | | | |
| 4 | 1 | 119225-52102 | PUMP, FUEL FEED | 1 | 1 | | | | | | |
| 5 | 1 | 119740-55600 | FILTER ASSY, FUEL | 1 | 1 | | | | | | |
| 6 | 2 | 121254-55510 | CUP, FUEL STARINER | 1 | 1 | | | | | | |
| 7 | 2 | 102103-55520 | O-RING | 1 | 1 | | | | | | |
| 8 | 2 | 110250-55610 | RING, CUP RETAINING | 1 | 1 | | | | | | |
| 9 | 2 | 121250-55620 | SPRING, ELEMENT | 1 | 1 | | | | | | |
| 10 | 2 | 119810-55650 | ELEMENT | 1 | 1 | | | | | | |
| 12 | 2 | 119810-55340 | LEVER, FUEL | 1 | 1 | | | | | | |
| 13 | 2 | 104200-55330 | SPRING, FUEL VALVE | 1 | 1 | | | | | | |
| 14 | 2 | 24311-240100 | O-RING, 1AP10A | 1 | 1 | | | | | | |
| 15 | 2 | 104200-55750 | SCREW, PAN M4 | 1 | 1 | | | | | | |
| 16 | 1 | 129335-55700 | SEPARATOR ASSY,WATER | 1 | 1 | | | | | | |
| 17 | 2 | 24311-240100 | O-RING, 1AP10A | 1 | 1 | | | | | | |
| 18 | 2 | 104200-55321 | VALVE, TAPER | 1 | 1 | | | | | | |
| 19 | 2 | 104200-55330 | SPRING, FUEL VALVE | 1 | 1 | | | | | | |
| 20 | 2 | 104200-55341 | HANDLE, COCK | 1 | 1 | | | | | | |
| 21 | 2 | 124064-55510 | CUP, FUEL STARINER | 1 | 1 | | | | | | |
| 22 | 2 | 102103-55520 | O-RING | 1 | 1 | | | | | | |
| 23 | 2 | 110250-55610 | RING, CUP RETAINING | 1 | 1 | | | | | | |
| 24 | 2 | 121257-55720 | SPRING, FILTER | 1 | 1 | | | | | | |
| 25 | 2 | 121257-55731 | FLOAT | 1 | 1 | | | | | | |
| 27 | 2 | 101720-55750 | PLUG, HEXAGON M6 | 2 | 2 | | | | | | |
| 28 | 2 | 104200-55750 | SCREW, PAN M4 | 1 | 1 | | | | | | |
| 29 | 2 | 171081-55910 | FILTER, FUEL | 1 | 1 | | | | | | |
| 30 | 2 | 23418-060000 | GASKET, 6X1.0 | 2 | 2 | | | | | | |

Fig.15. STARTING MOTOR

(A)=2TNV70-PIK
(B)=2TNV70-PIKX
(C)=

(D)=
(E)=
(F)=

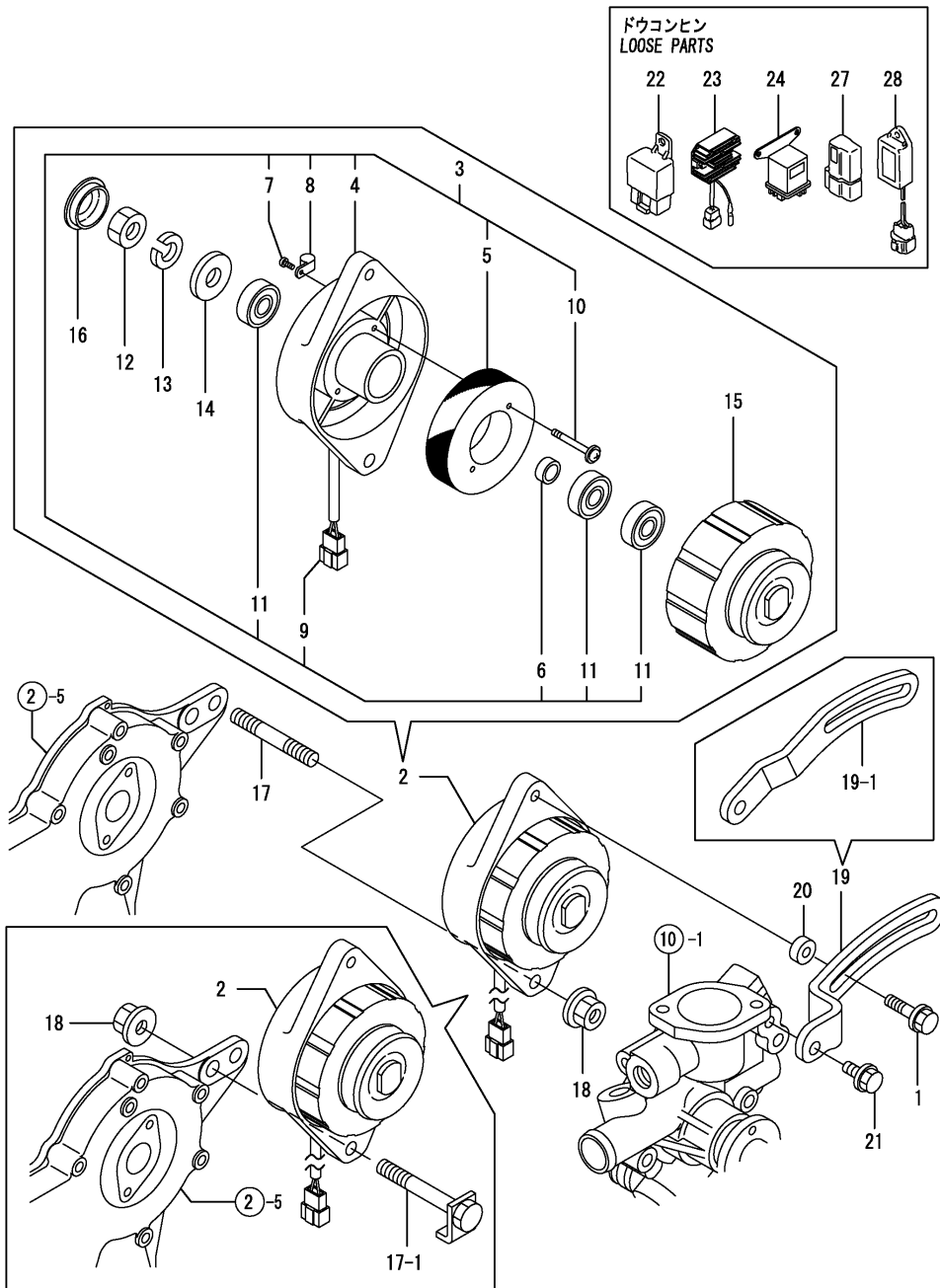


| No. | Lev. | Parts No. | Description | Q'ty | | | | | | I | R |
|-----|------|--------------|----------------------|------|-----|-----|-----|-----|-----|---|---|
| | | | | (A) | (B) | (C) | (D) | (E) | (F) | | |
| 1 | 1 | 26106-100252 | BOLT, M10X 25 PLATED | 2 | 2 | | | | | | |
| 2 | 1 | 119515-77010 | STARTER ASSY | 1 | 1 | | | | | | |
| 3 | 2 | X0281007680 | YOKE ASSY | 1 | 1 | | | | | | |
| 4 | 3 | X0280996180 | STARTER KIT | 2 | 2 | | | | | | |
| 5 | 2 | X0285105190 | HOLDER ASSY | 1 | 1 | | | | | | |
| 6 | 3 | X0285205030 | SPRING | 4 | 4 | | | | | | |
| 7 | 2 | X0282005871 | ARMATURE ASSY | 1 | 1 | | | | | | |
| 8 | 2 | X0283006960 | CLUTCH ASSY | 1 | 1 | | | | | | |
| 9 | 2 | X4284001590 | HOUSING ASSY | 1 | 1 | | | | | | |
| 10 | 3 | X9491050100 | BEARING, NEEDLE | 1 | 1 | | | | | | |
| 11 | 2 | X0285007030 | FRAME ASSY | 1 | 1 | | | | | | |
| 12 | 3 | X9491040990 | BEARING | 1 | 1 | | | | | | |
| 13 | 3 | X0280626010 | COVER | 1 | 1 | | | | | | |
| 14 | 2 | X0284105040 | BEARING ASSY | 1 | 1 | | | | | | |
| 15 | 3 | X9491034330 | BEARING | 1 | 1 | | | | | | |
| 16 | 2 | X0286105010 | SHAFT ASSY | 1 | 1 | | | | | | |
| 17 | 3 | X9491034320 | BEARING | 1 | 1 | | | | | | |
| 18 | 2 | X0286305010 | GEAR | 3 | 3 | | | | | | |
| 19 | 2 | X0286355010 | GEAR | 1 | 1 | | | | | | |
| 20 | 2 | X0287405140 | LEVER | 1 | 1 | | | | | | |
| 21 | 2 | X0534007800 | SWITCH ASSY | 1 | 1 | | | | | | |
| 22 | 2 | X9055715000 | RING | 1 | 1 | | | | | | |
| 23 | 2 | X9490721360 | RING | 1 | 1 | | | | | | |
| 24 | 2 | X0280210331 | NUT | 1 | 1 | | | | | | |
| 25 | 2 | X9490138110 | WASHER | 1 | 1 | | | | | | |
| 26 | 2 | X9490138090 | WASHER | 1 | 1 | | | | | | |
| 27 | 2 | X9490138100 | WASHER | 1 | 1 | | | | | | |
| 28 | 2 | X0284525010 | PLATE | 1 | 1 | | | | | | |
| 29 | 2 | X9490562360 | NUT | 1 | 1 | | | | | | |
| 30 | 2 | X9490560750 | NUT | 2 | 2 | | | | | | |
| 31 | 2 | X9490423520 | BOLT, THROUGH | 2 | 2 | | | | | | |
| 33 | 2 | X9490065670 | SCREW, M4X6 | 2 | 2 | | | | | | |
| 34 | 2 | X0280335360 | COVER, TERMINAL | 1 | 1 | | | | | | |
| 35 | 2 | X1289510130 | NUT | 1 | 1 | | | | | | |

Fig.16. GENERATOR

(A)=2TNV70-PIK
(B)=2TNV70-PIKX
(C)=

(D)=
(E)=
(F)=

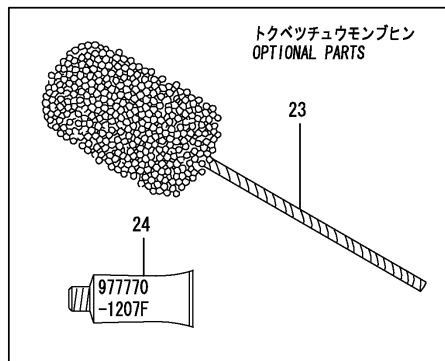
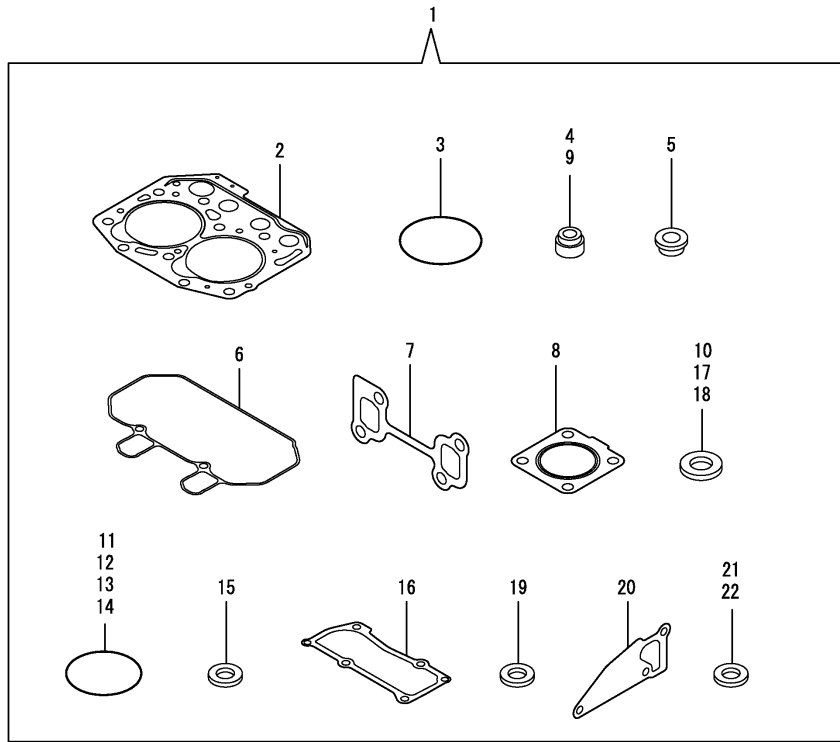


| No. | Lev. | Parts No. | Description | Q'ty | | | | | | I | R |
|-----------------------|------|--------------|---------------------|------|-----|-----|-----|-----|-----|---|---|
| | | | | (A) | (B) | (C) | (D) | (E) | (F) | | |
| 1 | 1 | 129972-77341 | BOLT, ADJUST L=50 | 1 | 1 | | | | | | |
| 2 | 1 | 119910-77200 | DYNAMO ASSY | 1 | 1 | | | | | | |
| 3 | 2 | X2A10592KA | PLATE ASSY | 1 | 1 | | | | | | |
| 4 | 3 | X2A07075KB | PLATE, COIL | 1 | 1 | | | | | | |
| 5 | 3 | X3A02982KC | STATOR ASSY | 1 | 1 | | | | | | |
| 6 | 3 | X4A10092KA | COLLAR | 1 | 1 | | | | | | |
| 7 | 3 | XYSPS400800 | SCREW | 1 | 1 | | | | | | |
| 8 | 3 | XM069000000 | CLAMP | 1 | 1 | | | | | | |
| 9 | 3 | XM771860000 | COUPLER | 1 | 1 | | | | | | |
| 10 | 3 | 119259-77250 | SCREW | 2 | 2 | | | | | | |
| 11 | 3 | 24104-062010 | BEARING, 6201UUC3 | 3 | 3 | | | | | | |
| 12 | 2 | XM863720000 | NUT | 1 | 1 | | | | | | |
| 13 | 2 | XM219230000 | WASHER, SPRING | 1 | 1 | | | | | | |
| 14 | 2 | XM860250000 | WASHER, 10 | 1 | 1 | | | | | | |
| 15 | 2 | X3A08863KA | FLYWHEEL ASSY | 1 | 1 | | | | | | |
| 16 | 2 | XM771870000 | CAP | 1 | 1 | | | | | | |
| 17 | 1 | 129795-01900 | BOLT, STUD M10X33 | 1 | 1 | | | | | | |
| 17-1 | 1 | 119740-77250 | BOLT, M10X75 | 1 | 1 | | | | | | S |
| (A=E00321) (B=E00321) | | | | | | | | | | | |
| 18 | 1 | 26306-100002 | NUT, M10 | 1 | 1 | | | | | | |
| 19 | 1 | 119734-77330 | ADJUSTER, BELT | 1 | 1 | | | | | | |
| 19-1 | 1 | 119440-77300 | ADJUSTER, BELT | 1 | 1 | | | | | | S |
| (A=E00321) (B=E00321) | | | | | | | | | | | |
| 20 | 1 | 119940-77270 | SPACER | 1 | 1 | | | | | | |
| 21 | 1 | 26106-080202 | BOLT, M8X 20 PLATED | 1 | 1 | | | | | | |
| 22 | 1 | 119247-77100 | RELAY, POWER | 2 | 2 | | | | | | |
| 23 | 1 | 119653-77710 | CURRENT LIMITER | 1 | 1 | | | | | | |
| 24 | 1 | 119650-77910 | RELAY ASSY, GLOW | 1 | 1 | | | | | | |
| 27 | 1 | 119643-66900 | DIODE | 1 | 1 | | | | | | |
| 28 | 1 | 129211-77920 | TIMER | 1 | 1 | | | | | | |

Fig.17. GASKET SET

(A)=2TNV70-PIK
(B)=2TNV70-PIKX
(C)=

(D)=
(E)=
(F)=



| No. | Lev. | Parts No. | Description | Q'ty | | | | | | I | R |
|-----|------|--------------|----------------------|------|-----|-----|-----|-----|-----|---|---|
| | | | | (A) | (B) | (C) | (D) | (E) | (F) | | |
| 1 | 1 | 719415-92640 | GASKET SET | 1 | 1 | | | | | | 1 |
| 2 | 2 | 119415-01330 | GASKET, HEAD | 1 | 1 | | | | | | |
| 3 | 2 | 121850-51960 | O-RING | 1 | 1 | | | | | | |
| 4 | 2 | 119717-11340 | SEAL, VALVE STEM | 2 | 2 | | | | | | |
| 5 | 2 | 129901-11450 | PROTECTOR, NOZZLE | 2 | 2 | | | | | | |
| 6 | 2 | 119415-11310 | GASKET, BONNET | 1 | 1 | | | | | | |
| 7 | 2 | 119415-13110 | GASKET, EXH.MANIFOLD | 1 | 1 | | | | | | |
| 8 | 2 | 119515-13200 | GASKET, SILENCER | 1 | 1 | | | | | | |
| 9 | 2 | 119717-11350 | SEAL, VALVE STEM | 2 | 2 | | | | | | |
| 10 | 2 | 22190-080002 | WASHER, SEAL 6 | 4 | 4 | | | | | | |
| 11 | 2 | 24311-000320 | O-RING, 1AP32.0 | 2 | 2 | | | | | | |
| 12 | 2 | 119717-32060 | O-RING, P15.0 | 1 | 1 | | | | | | |
| 13 | 2 | 119624-32040 | O-RING, P12.0 | 1 | 1 | | | | | | |
| 14 | 2 | 119717-32050 | O-RING, P17.0 | 3 | 3 | | | | | | |
| 15 | 2 | 119600-11460 | GASKET, NOZZLE | 4 | 4 | | | | | | |
| 16 | 2 | 119415-11330 | GASKET | 1 | 1 | | | | | | |
| 17 | 2 | 22190-160002 | WASHER, SEAL 16 | 1 | 1 | | | | | | |
| 18 | 2 | 22190-120002 | WASHER, SEAL 12 | 6 | 6 | | | | | | |
| 19 | 2 | 129901-59560 | GASKET | 2 | 2 | | | | | | |
| 20 | 2 | 119515-42020 | GASKET, WATER PUMP | 1 | 1 | | | | | | |
| 21 | 2 | 23414-080000 | GASKET, 8X1.0 | 1 | 1 | | | | | | |
| 22 | 2 | 124465-44950 | GASKET, 16 | 2 | 2 | | | | | | |
| 23 | 1 | 129400-92410 | HONE, FLEX | 1 | 1 | | | | | | 1 |
| 24 | 1 | 977770-1207F | GASKET.LIQUID | 1 | 1 | | | | | | 1 |

Remarks
(1) OPTIONAL PART.

Parts No. Index

| Parts No. | Fig. No. | Ref. No. |
|--------------|----------|----------|
| 101304-59020 | 14 | 2 |
| 101720-55750 | 14 | 27 |
| 102103-55520 | 14 | 7 |
| | | 22 |
| 103854-39140 | 14 | 1 |
| 104200-55321 | 14 | 18 |
| 104200-55330 | 14 | 13 |
| | | 19 |
| 104200-55341 | 14 | 20 |
| 104200-55750 | 14 | 15 |
| | | 28 |
| 105010-11490 | 4 | 5 |
| 105027-12580 | 5 | 6 |
| 105311-01090 | 1 | 5 |
| 105425-01690 | 3 | 9 |
| 110250-55610 | 14 | 8 |
| | | 23 |
| 118200-53010 | 13 | 2 |
| 118400-51370 | 11 | 48 |
| 119225-52102 | 14 | 4 |
| 119226-07900 | 4 | 1 |
| 119233-77932 | 12 | 133 |
| 119247-77100 | 16 | 22 |
| 119259-77250 | 16 | 10 |
| 119285-01990 | 1 | 8 |
| 119285-11990 | 4 | 12 |
| 119305-35151 | 9 | 3 |
| 119305-59120 | 13 | 4 |
| 119326-12510 | 5 | 1 |
| 119326-12520 | 5 | 2 |
| 119336-12570 | 5 | 5 |
| 119415-01330 | 1 | 30 |
| | 17 | 2 |
| 119415-01720 | 3 | 7 |
| 119415-11200 | 4 | 22 |
| 119415-11240 | 4 | 23 |
| 119415-11310 | 4 | 46 |
| | 17 | 6 |
| 119415-11320 | 4 | 47 |
| 119415-11330 | 4 | 48 |
| | 17 | 16 |
| 119415-11380 | 4 | 36 |
| 119415-11740 | 4 | 6 |
| 119415-13100 | 6 | 1 |
| 119415-13110 | 6 | 2 |
| | 17 | 7 |
| 119415-13510 | 6 | 7 |
| 119415-14580 | 7 | 3 |
| 119415-14581 | 7 | 3 -1 |
| 119415-21700 | 8 | 1 |

| Parts No. | Fig. No. | Ref. No. |
|--------------|----------|----------|
| 119415-34801 | 9 | 1 |
| 119415-35080 | 9 | 5 |
| 119415-39210 | 9 | 11 |
| 119415-39211 | 9 | 11 -1 |
| 119415-51030 | 11 | 5 |
| 119415-51400 | 11 | 49 |
| 119415-51500 | 11 | 64 |
| 119415-51700 | 11 | 74 |
| 119415-51710 | 11 | 75 |
| 119415-51750 | 11 | 76 |
| 119415-51760 | 11 | 77 |
| 119415-59540 | 13 | 13 |
| 119415-59810 | 13 | 9 |
| 119415-59820 | 13 | 10 |
| 119415-77820 | 4 | 56 |
| 119440-01780 | 3 | 8 |
| 119440-77300 | 16 | 19 -1 |
| 119515-01200 | 1 | 29 |
| 119515-01601 | 3 | 2 |
| 119515-11100 | 4 | 14 |
| 119515-11101 | 4 | 14 -1 |
| 119515-11110 | 4 | 15 |
| 119515-11280 | 4 | 27 |
| 119515-11800 | 4 | 9 |
| 119515-13200 | 6 | 6 |
| | 17 | 8 |
| 119515-14400 | 7 | 2 |
| 119515-21570 | 8 | 8 |
| 119515-22080 | 8 | 14 |
| 119515-22300 | 8 | 20 |
| 119515-22500 | 8 | 16 |
| 119515-22550 | 8 | 31 |
| 119515-22900 | 8 | 29 |
| 119515-23000 | 8 | 22 |
| 119515-23600 | 8 | 27 |
| 119515-23601 | 8 | 27 -1 |
| 119515-23610 | 8 | 35 |
| 119515-23611 | 8 | 35 -1 |
| 119515-42020 | 10 | 13 |
| | 17 | 20 |
| 119515-42041 | 10 | 3 |
| 119515-51100 | 11 | 9 |
| 119515-53001 | 13 | 1 |
| 119515-53010 | 13 | 3 |
| 119515-61440 | 12 | 21 |
| 119515-77010 | 15 | 2 |
| 119540-42000 | 10 | 1 |
| 119540-44700 | 10 | 20 |
| 119540-59560 | 13 | 22 |
| 119540-59570 | 13 | 20 |

| Parts No. | Fig. No. | Ref. No. |
|--------------|----------|----------|
| 119600-11460 | 4 | 4 |
| | 17 | 15 |
| 119620-01750 | 3 | 4 |
| 119620-01800 | 2 | 6 |
| 119620-02020 | 1 | 9 |
| 119620-14200 | 7 | 1 |
| 119620-21500 | 8 | 7 |
| 119620-21941 | 8 | 13 |
| 119620-59700 | 13 | 23 |
| 119621-21680 | 8 | 12 |
| 119623-01250 | 1 | 6 |
| 119624-32040 | 2 | 18 |
| | 17 | 13 |
| 119643-66900 | 16 | 27 |
| 119650-77910 | 16 | 24 |
| 119653-77710 | 16 | 23 |
| 119655-12560 | 5 | 4 |
| 119660-01911 | 2 | 17 |
| 119660-61300 | 12 | 75 |
| 119660-61901 | 12 | 66 |
| 119717-01501 | 2 | 1 |
| 119717-01521 | 2 | 5 |
| 119717-01570 | 2 | 2 |
| 119717-01590 | 2 | 3 |
| 119717-01750 | 2 | 16 |
| 119717-02410 | 1 | 12 |
| 119717-02411 | 1 | 12 -1 |
| 119717-02930 | 1 | 26 |
| 119717-03031 | 4 | 37 |
| 119717-03070 | 4 | 38 |
| | | 39 |
| 119717-11131 | 4 | 16 |
| 119717-11190 | 4 | 18 |
| 119717-11260 | 4 | 26 |
| 119717-11340 | 4 | 19 |
| | 17 | 4 |
| 119717-11350 | 4 | 20 |
| | 17 | 9 |
| 119717-11650 | 4 | 28 |
| 119717-13600 | 6 | 3 |
| 119717-21650 | 8 | 11 |
| 119717-23200 | 8 | 26 |
| 119717-23910 | 8 | 25 |
| 119717-25050 | 7 | 9 |
| 119717-25100 | 7 | 10 |
| 119717-25101 | 7 | 10 -1 |
| 119717-25930 | 7 | 15 |
| 119717-32050 | 2 | 19 |
| | 17 | 14 |
| 119717-32060 | 9 | 4 |

| Parts No. | Fig. No. | Ref. No. |
|--------------|----------|----------|
| 119717-32060 | 17 | 12 |
| 119717-32080 | 2 | 9 |
| 119717-32100 | 2 | 8 |
| 119717-32110 | 2 | 13 |
| 119717-32120 | 2 | 14 |
| 119717-42031 | 10 | 4 |
| 119717-42320 | 10 | 11 |
| 119717-49800 | 10 | 24 |
| 119717-51060 | 11 | 6 |
| 119717-51070 | 11 | 7 |
| 119717-51150 | 7 | 16 |
| 119717-51180 | 11 | 14 |
| 119717-51190 | 11 | 15 |
| 119717-51200 | 11 | 16 |
| 119717-51300 | 11 | 43 |
| 119717-51330 | 11 | 46 |
| 119717-51420 | 11 | 51 |
| 119717-51480 | 11 | 90 |
| 119717-51490 | 11 | 91 |
| 119717-51570 | 11 | 14 -1 |
| 119717-61050 | 12 | 2 |
| 119717-61060 | 12 | 3 |
| 119717-61070 | 12 | 4 |
| 119717-61100 | 12 | 5 |
| 119717-61120 | 12 | 8 |
| 119717-61130 | 12 | 9 |
| 119717-61140 | 12 | 10 |
| 119717-61150 | 12 | 11 |
| 119717-61200 | 12 | 71 |
| 119717-61400 | 12 | 14 |
| 119717-61500 | 12 | 30 |
| 119717-77800 | 4 | 55 |
| 119734-77330 | 16 | 19 |
| 119740-42350 | 10 | 18 |
| 119740-55600 | 14 | 5 |
| 119740-61560 | 12 | 89 |
| 119740-77250 | 16 | 17 -1 |
| 119802-03100 | 4 | 40 |
| 119802-03110 | 4 | 41 |
| 119802-03121 | 4 | 42 |
| 119802-03131 | 4 | 43 |
| 119802-03141 | 4 | 44 |
| 119802-13620 | 6 | 4 |
| 119802-32130 | 2 | 15 |
| 119808-12540 | 5 | 3 |
| 119810-02940 | 1 | 31 |
| 119810-02941 | 1 | 31 -1 |
| 119810-55340 | 14 | 12 |
| 119810-55650 | 14 | 10 |
| 119813-59950 | 13 | 24 |

Parts No. Index

| Parts No. | Fig. No. | Ref. No. |
|--------------|----------|----------|
| 119840-59570 | 13 | 12 |
| 119910-77200 | 16 | 2 |
| 119940-77270 | 16 | 20 |
| 121120-01620 | 3 | 3 |
| 121250-44901 | 10 | 27 |
| 121250-55620 | 14 | 9 |
| 121252-39450 | 9 | 10 |
| 121254-55510 | 14 | 6 |
| 121257-55720 | 14 | 24 |
| 121257-55731 | 14 | 25 |
| 121450-42450 | 10 | 26 |
| 121450-44531 | 10 | 32 |
| 121468-44510 | 10 | 30 |
| 121468-44540 | 10 | 33 |
| 121470-44581 | 10 | 35 |
| 121520-34810 | 9 | 16 |
| 121522-42290 | 10 | 19 |
| 121850-51960 | 2 | 20 |
| | 17 | 3 |
| 122710-51090 | 11 | 8 |
| 124060-01050 | 1 | 4 |
| 124064-55510 | 14 | 21 |
| 124066-59100 | 13 | 21 |
| 124085-02220 | 3 | 5 |
| 124101-49531 | 10 | 23 |
| 124160-01751 | 2 | 28 |
| | 4 | 35 |
| 124160-01910 | 1 | 7 |
| 124450-44560 | 10 | 34 |
| 124465-44950 | 10 | 28 |
| | 17 | 22 |
| 124550-51350 | 11 | 47 |
| 124574-44761 | 10 | 21 |
| 124950-21600 | 8 | 10 |
| 129001-32320 | 2 | 11 |
| 129001-32330 | 2 | 12 |
| 129005-59830 | 9 | 12 |
| 129052-61390 | 12 | 13 |
| 129100-01580 | 3 | 1 |
| | 8 | 2 |
| 129100-35140 | 9 | 2 |
| 129100-51560 | 11 | 69 |
| 129100-51570 | 11 | 70 |
| 129100-52200 | 11 | 95 |
| 129100-61650 | 12 | 60 |
| 129150-11230 | 4 | 29 |
| 129150-11750 | 4 | 31 |
| 129150-25301 | 7 | 14 |
| 129150-59131 | 13 | 7 |
| 129155-51020 | 11 | 4 |

| Parts No. | Fig. No. | Ref. No. |
|--------------|----------|----------|
| 129155-51140 | 11 | 12 |
| 129155-51280 | 11 | 41 |
| | | 42 |
| | 12 | 6 |
| 129155-51450 | 11 | 59 |
| 129155-51521 | 11 | 65 |
| 129155-51530 | 11 | 66 |
| 129155-51540 | 11 | 67 |
| 129155-51550 | 11 | 68 |
| 129155-51580 | 11 | 72 |
| 129155-51591 | 11 | 73 |
| 129155-51600 | 11 | 20 |
| 129155-52051 | 11 | 94 |
| 129155-61341 | 12 | 76 |
| 129155-61450 | 12 | 22 |
| 129155-61460 | 12 | 77 |
| 129155-61480 | 12 | 24 |
| 129156-51910 | 11 | 79 |
| 129156-61460 | 12 | 23 |
| 129209-61370 | 12 | 12 |
| 129209-61930 | 12 | 131 |
| 129209-61970 | 12 | 132 |
| 129211-77920 | 16 | 28 |
| 129255-52000 | 11 | 93 |
| 129335-55700 | 14 | 16 |
| 129400-92410 | 17 | 23 |
| 129486-07901 | 4 | 52 |
| 129486-61540 | 12 | 50 |
| 129508-11180 | 4 | 17 |
| 129795-01900 | 16 | 17 |
| 129900-32130 | 2 | 10 |
| 129901-11450 | 4 | 3 |
| | 17 | 5 |
| 129901-53800 | 13 | 3 A |
| 129901-59560 | 13 | 19 |
| | 17 | 19 |
| 129916-49740 | 10 | 12 |
| 129972-77341 | 16 | 1 |
| 158552-61700 | 12 | 61 |
| 158552-61710 | 12 | 65 |
| 158552-61900 | 12 | 82 -1 |
| 158600-51170 | 11 | 13 |
| 158600-51270 | 11 | 40 |
| 158600-51410 | 11 | 50 |
| 158600-51420 | 11 | 52 |
| 158600-51441 | 11 | 53 |
| 158600-51442 | 11 | 53 -1 |
| 158600-51570 | 11 | 71 |
| 158600-51790 | 11 | 78 |
| 158601-61790 | 12 | 123 |

| Parts No. | Fig. No. | Ref. No. |
|--------------|----------|----------|
| 171056-49120 | 10 | 17 |
| 171081-55910 | 14 | 29 |
| 171353-61700 | 12 | 122 |
| 174307-51700 | 12 | 31 |
| 22190-080002 | 9 | 13 |
| | | 15 |
| | 17 | 10 |
| 22190-100002 | 12 | 78 |
| 22190-120002 | 12 | 79 |
| | 13 | 11 |
| | | 30 |
| | 14 | 3 |
| | 17 | 18 |
| 22190-160002 | 3 | 11 |
| | 11 | 80 |
| | 17 | 17 |
| 22217-060000 | 11 | 81 |
| 22217-120000 | 7 | 17 |
| 22242-000120 | 4 | 32 |
| 22252-000220 | 8 | 21 |
| 22272-000030 | 12 | 67 |
| 22351-050010 | 11 | 82 |
| 22351-060012 | 4 | 21 |
| 22372-040000 | 12 | 80 |
| 22512-040120 | 8 | 4 |
| 22857-500100 | 4 | 49 |
| | | 50 |
| 22857-500160 | 4 | 51 |
| 23065-070130 | 10 | 36 |
| 23414-080000 | 10 | 14 |
| | 17 | 21 |
| 23414-120016 | 12 | 134 |
| 23418-060000 | 14 | 30 |
| 23857-030000 | 9 | 14 |
| 23876-005000 | 4 | 13 |
| 23876-030000 | 2 | 7 |
| 23887-100002 | 12 | 81 |
| 24101-060034 | 11 | 83 |
| 24101-063034 | 11 | 84 |
| 24104-062010 | 16 | 11 |
| 24311-000320 | 2 | 29 |
| | 4 | 58 |
| | 17 | 11 |
| 24311-240100 | 14 | 14 |
| | | 17 |
| 24316-000150 | 11 | 85 |
| 24341-000070 | 12 | 68 |
| 24341-000280 | 12 | 82 |
| 25152-003500 | 10 | 19 -1 |
| 26022-050122 | 11 | 86 |

| Parts No. | Fig. No. | Ref. No. |
|--------------|----------|----------|
| 26022-060162 | 11 | 87 |
| 26106-050102 | 11 | 88 |
| 26106-060102 | 9 | 9 |
| | 12 | 69 |
| | | 83 |
| 26106-060122 | 2 | 21 |
| | 3 | 12 |
| | 7 | 8 |
| 26106-060142 | 12 | 84 |
| 26106-060162 | 2 | 22 |
| 26106-060202 | 4 | 53 |
| | 10 | 22 |
| | 12 | 85 |
| 26106-060252 | 3 | 13 |
| 26106-060352 | 7 | 13 |
| 26106-060402 | 2 | 23 |
| | | 24 |
| 26106-060452 | 3 | 14 |
| | 12 | 86 |
| 26106-060602 | 2 | 25 |
| 26106-060652 | 2 | 26 |
| 26106-060752 | 4 | 54 |
| 26106-080122 | 10 | 15 |
| 26106-080142 | 4 | 2 |
| 26106-080202 | 16 | 21 |
| 26106-080252 | 10 | 25 |
| 26106-080402 | 4 | 34 |
| 26106-080502 | 10 | 16 |
| 26106-080652 | 10 | 29 |
| 26106-100252 | 15 | 1 |
| 26206-100252 | 3 | 6 |
| 26306-080002 | 2 | 27 |
| | 6 | 5 |
| 26306-100002 | 16 | 18 |
| 26366-080002 | 12 | 70 |
| 26577-060122 | 10 | 9 |
| 26716-060002 | 11 | 89 |
| 26716-120002 | 7 | 18 |
| 26736-120002 | 12 | 87 |
| 26756-060002 | 12 | 88 |
| 26979-050162 | 4 | 33 |
| 27241-120000 | 1 | 13 |
| 27241-250000 | 10 | 10 |
| 719415-01560 | 1 | 1 |
| 719415-92640 | 17 | 1 |
| 719440-51370 | 11 | 1 |
| 719717-01500 | 2 | 4 |
| 719717-02900 | 1 | 14 |
| 719717-02901 | 1 | 14 -1 |
| 719717-02910 | 1 | 34 |

Parts No. Index

| Parts No. | Fig. No. | Ref. No. |
|--------------|----------|----------|
| 719717-02911 | 1 | 34 -1 |
| 977770-1207F | 2 | 30 |
| | 3 | 15 |
| | 4 | 57 |
| | 17 | 24 |
| X0280210331 | 15 | 24 |
| X0280335360 | 15 | 34 |
| X0280626010 | 15 | 13 |
| X0280996180 | 15 | 4 |
| X0281007680 | 15 | 3 |
| X0282005871 | 15 | 7 |
| X0283006960 | 15 | 8 |
| X0284105040 | 15 | 14 |
| X0284525010 | 15 | 28 |
| X0285007030 | 15 | 11 |
| X0285105190 | 15 | 5 |
| X0285205030 | 15 | 6 |
| X0286105010 | 15 | 16 |
| X0286305010 | 15 | 18 |
| X0286355010 | 15 | 19 |
| X0287405140 | 15 | 20 |
| X0534007800 | 15 | 21 |
| X1289510130 | 15 | 35 |
| X2A07075KB | 16 | 4 |
| X2A10592KA | 16 | 3 |
| X3A02982KC | 16 | 5 |
| X3A08863KA | 16 | 15 |
| X4284001590 | 15 | 9 |
| X4A10092KA | 16 | 6 |
| X9055715000 | 15 | 22 |
| X9490065670 | 15 | 33 |
| X9490138090 | 15 | 26 |
| X9490138100 | 15 | 27 |
| X9490138110 | 15 | 25 |
| X9490423520 | 15 | 31 |
| X9490560750 | 15 | 30 |
| X9490562360 | 15 | 29 |
| X9490721360 | 15 | 23 |
| X9491034320 | 15 | 17 |
| X9491034330 | 15 | 15 |
| X9491040990 | 15 | 12 |
| X9491050100 | 15 | 10 |
| XM069000000 | 16 | 8 |
| XM219230000 | 16 | 13 |
| XM771860000 | 16 | 9 |
| XM771870000 | 16 | 16 |
| XM860250000 | 16 | 14 |
| XM863720000 | 16 | 12 |
| XYSPS400800 | 16 | 7 |

| Parts No. | Fig. No. | Ref. No. |
|-----------|----------|----------|
|-----------|----------|----------|

| Parts No. | Fig. No. | Ref. No. |
|-----------|----------|----------|
|-----------|----------|----------|

| Parts No. | Fig. No. | Ref. No. |
|-----------|----------|----------|
|-----------|----------|----------|