

0CD10-M83801EN

PREFACE

1. This parts catalog is the 2nd edition of 3TNV76-PIKA & 3TNV76-QIKA for IHI Construction Machinery Limited.

Pub.No. : 000Y00D8381

Published : November,2006

2.Model name

| Engine model | Vehicle | | Vehicle made by |
|--------------|-----------|------------|---------------------------------|
| | Products | Model name | |
| 3TNV76-PIKA | Excavator | 20Z3 | IHI Construction Machinery Ltd. |
| 3TNV76-QIKA | Excavator | 28N2 | |

Directions for the Parts Catalog.

1. This Parts Catalog shows both standard and optional parts.
2. Parts may change without prior notice.
3. The following is an example of the Parts Catalog format.

| REF. | LEV. | PARTS NO. | DESCRIPTION | Q'TY | | | | | | I | R |
|------|------|--|---------------------|------|-----|-----|-----|-----|-----|---|---|
| | | | | (A) | (B) | (C) | (D) | (E) | (F) | | |
| 1 | 1 | 729595-51390 | FUEL INJECTION PUMP | 1 | 1 | 1 | 1 | 1 | | | 1 |
| 1-1 | 1 | 729595-51391 | FUEL INJECTION PUMP | 1 | 1 | 1 | 1 | 1 | | N | 1 |
| | | (A=E00185) (B=E00200) | | | | | | | | | |
| 3 | 2 | 26022-060162 | SCREW M 6X 16 | 9 | 9 | 9 | 9 | 9 | | | |
| 3-1 | 2 | 26022-060162 | SCREW M 6X 16 | 4 | 4 | 4 | 4 | 4 | | K | |
| | | (A=E00156) (B=E00156) (C=E00156) (D=E00156) (E=E00156) | | | | | | | | | |
| 4 | 2 | 129470-51040 | CAMSHAFT | 1 | 1 | 1 | 1 | 1 | | | |
| 5 | 2 | 122710-51050 | BEARING, ROLLER | 2 | 2 | 2 | 2 | 2 | | | |
| 6 | 2 | 129470-51060 | RETAINER | 1 | 1 | 1 | 1 | 1 | | | |

| |
|---|
| Remarks |
| (1) BOOST COMPEMSATOR TYPE. OPTIONAL PART, TO E00155,(4JH-DT, 4JH-DTZ |

① Ref. No.

The Ref. No. listed may not be in accordance with the illustration Ref. No.

(Ex.) Illustration No.

List Ref No.

1

1

(Before change)

1-1

(After change)

For interchangeable symbols N, R and K, illustrations for new parts may be abbreviated.

② Lev. (Level)

Level indication

The numbers below indicate the level of relativity towards the main part.

1 ----- Main parts (Assembly parts)

2 ----- Sub component included in " 1 ".

3 ----- Sub component included in " 2 ".

Note) Parts that are not for sale are partially illustrated but not listed.

③ Interchangeability Symbol

When a part change takes place, one of the following interchangeability symbols is indicated beside the part.

| Symbol | Interchangeability | Contents note |
|--------|---|--|
| N | Old $\begin{matrix} \leftarrow \text{Yes} \\ \text{No} \rightarrow \end{matrix}$ New | New Part is interchangeable for Old Part but Old Part is not interchangeable for New Part. |
| Q | Old $\begin{matrix} \leftarrow \text{No} \\ \text{Yes} \rightarrow \end{matrix}$ New | New Part is not interchangeable for Old Part but Old Part is interchangeable for New Part. |
| R | Old $\begin{matrix} \leftarrow \text{Yes} \\ \text{Yes} \rightarrow \end{matrix}$ New | New/ Old Parts are both interchangeable. |
| S | Old $\begin{matrix} \leftarrow \text{No} \\ \text{No} \rightarrow \end{matrix}$ New | New/ Old Parts are both not interchangeable. |
| W | | Part newly added. |
| Z | | Part discontinued. |
| F | | Not interchangeable by a single part but interchangeable together with related parts. |
| K | | Changes only for used parts quantities. |

④ Effective Machine No.

When a part changes, the effective Machine No. will be indicated in the (A)-(F) column.

| Product Symbol | Product No. | Product Symbol | Product No. |
|----------------|---------------------------|----------------|-----------------------------------|
| C | Clutch No. Compressor No. | F | Machine No. (Agricultural Equip.) |
| D | Drive No. | M | Machine No. |
| E | Engine No. | | |

Note 1) A date may follow the symbol. (Ex.) 1996.01

Note 2) "XXXXX" and "ZZZZZ" are for parts that could not be predicted or for engine models that could not be identified.

Note 3) (A=E00185) is the E (Engine Serial Number) for the column (A) model (in this case 4JH-DT) after the parts design change.

⑤ Remarks

Figures or alphabets (symbols) are entered in the remarks column.

The comments (remarks) on parts that are indicated at the bottom of the illustration are the same symbols as those stated above.

Contents

Fig. No. Fig. Name

3TNV76-PIKA/QIKA

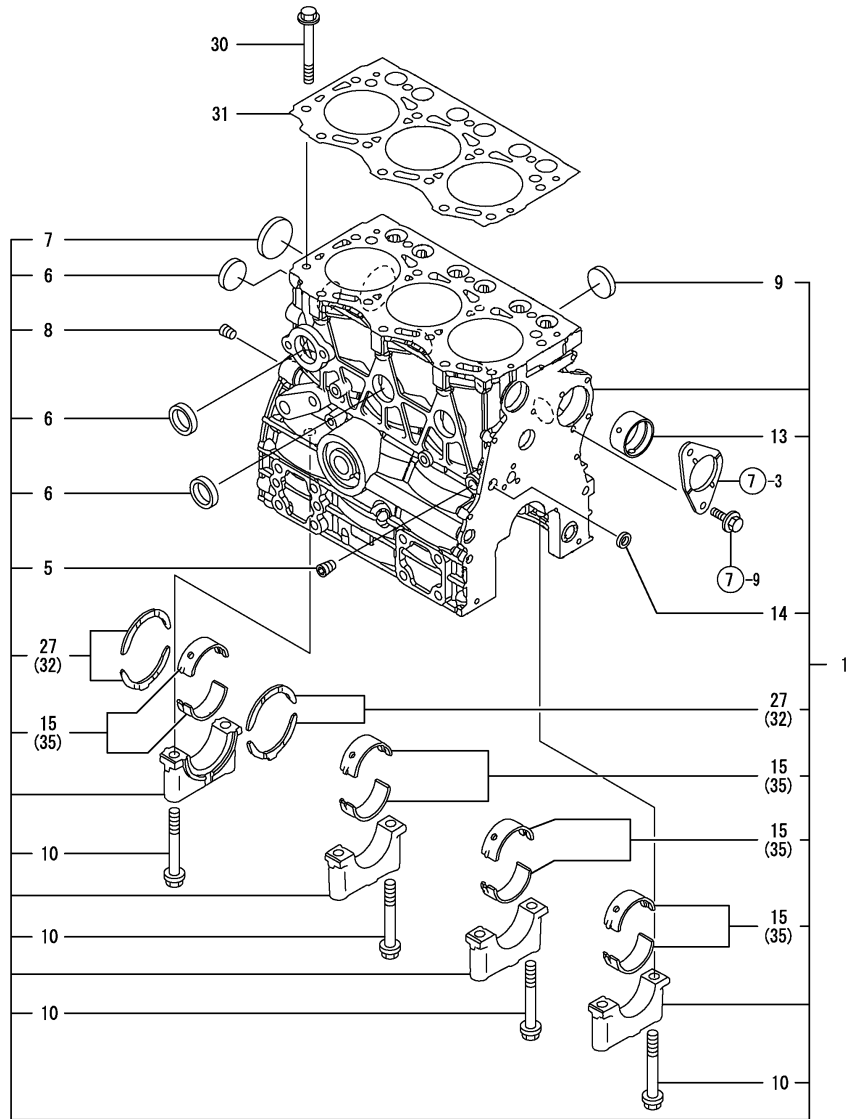
1. CYLINDER BLOCK
2. GEAR HOUSING
3. FLYWHEEL HOUSING & OIL SUMP
4. CYLINDER HEAD & BONNET
5. AIR CLEANER
6. EXHAUST MANIFOLD & SILENCER
7. CAMSHAFT & DRIVING GEAR
8. CRANKSHAFT & PISTON
9. LUB.OIL SYSTEM
10. COOLING WATER SYSTEM
11. FUEL INJECTION PUMP
12. GOVERNOR
13. FUEL INJECTION VALVE
14. FUEL LINE
18. (14A)FUEL LINE
15. STARTING MOTOR
16. GENERATOR
17. GASKET SET

Fig. No. Fig. Name

Fig.1. CYLINDER BLOCK

(A)=3TNV76-PIKA
 (B)=3TNV76-QIKA
 (C)=

(D)=
 (E)=
 (F)=

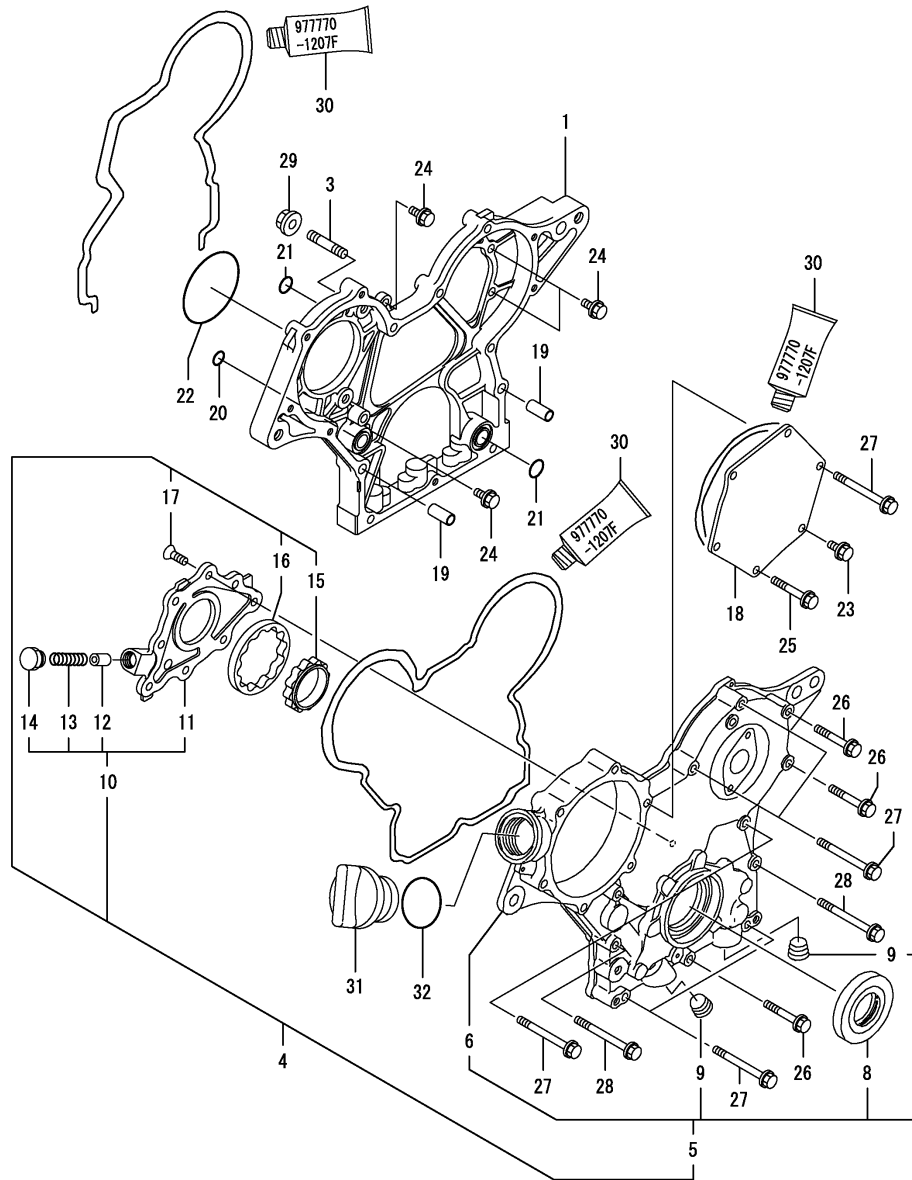


| No. | Lev. | Parts No. | Description | Q'ty | | | | | | I | R |
|------|------|-----------------------|----------------------|------|-----|-----|-----|-----|-----|---|-----|
| | | | | (A) | (B) | (C) | (D) | (E) | (F) | | |
| 1 | 1 | 719717-01560 | BLOCK ASSY, CYLINDER | 1 | 1 | | | | | | |
| 1-1 | 1 | 719717-01561 | BLOCK ASSY, CYLINDER | 1 | 1 | | | | | | N |
| | | (A=E01889) (B=E07517) | | | | | | | | | |
| 5 | 2 | 124060-01050 | PLUG, PT1/8 | 1 | 1 | | | | | | |
| 6 | 2 | 105311-01090 | PLUG, 30 | 4 | 4 | | | | | | |
| 7 | 2 | 119623-01250 | PLUG, 45 | 1 | 1 | | | | | | |
| 8 | 2 | 124160-01910 | PLUG, PT1/4 | 1 | 1 | | | | | | |
| 9 | 2 | 119285-01990 | PLUG, 25 | 3 | 3 | | | | | | |
| 10 | 2 | 119620-02020 | BOLT, METAL CAP | 8 | 8 | | | | | | |
| 13 | 2 | 119717-02410 | BUSH, CAMSHAFT | 1 | 1 | | | | | | |
| 13-1 | 2 | 119717-02411 | BUSH, CAMSHAFT | 1 | 1 | | | | | | N |
| | | (A=E25781) (B=E25306) | | | | | | | | | |
| 14 | 2 | 27241-120000 | PLUG, 12 | 1 | 1 | | | | | | |
| 15 | 2 | 719717-02900 | BEARING, MAIN | 4 | 4 | | | | | | 2 |
| 15-1 | 2 | 719717-02901 | BEARING, MAIN | 4 | 4 | | | | | | N 2 |
| | | (A=E25781) (B=E25306) | | | | | | | | | |
| 27 | 2 | 119717-02930 | BEARING, THRUST | 2 | 2 | | | | | | |
| 30 | 1 | 119810-01200 | BOLT, HEAD | 14 | 14 | | | | | | |
| 31 | 1 | 119717-01330 | GASKET, HEAD | 1 | 1 | | | | | | |
| 32 | 1 | 119810-02940 | BEARING, THRUST 0.25 | 2 | 2 | | | | | | 1 |
| 32-1 | 1 | 119810-02941 | BEARING, THRUST 0.25 | 2 | 2 | | | | | | N 1 |
| | | (A=E25781) (B=E25306) | | | | | | | | | |
| 35 | 1 | 719717-02910 | BEARING, 0.25 US | 4 | 4 | | | | | | 3 |
| 35-1 | 1 | 719717-02911 | BEARING, 0.25 US | 4 | 4 | | | | | | N 3 |
| | | (A=E25781) (B=E25306) | | | | | | | | | |

Remarks

- (1) OVER-SIZE(O.S=0.25)PART.
- (2) REPAIR PART.
- (3) UNDER-SIZE(U.S=0.25)PART.

Fig.2. GEAR HOUSING



(A)=3TNV76-PIKA
(B)=3TNV76-QIKA
(C)=

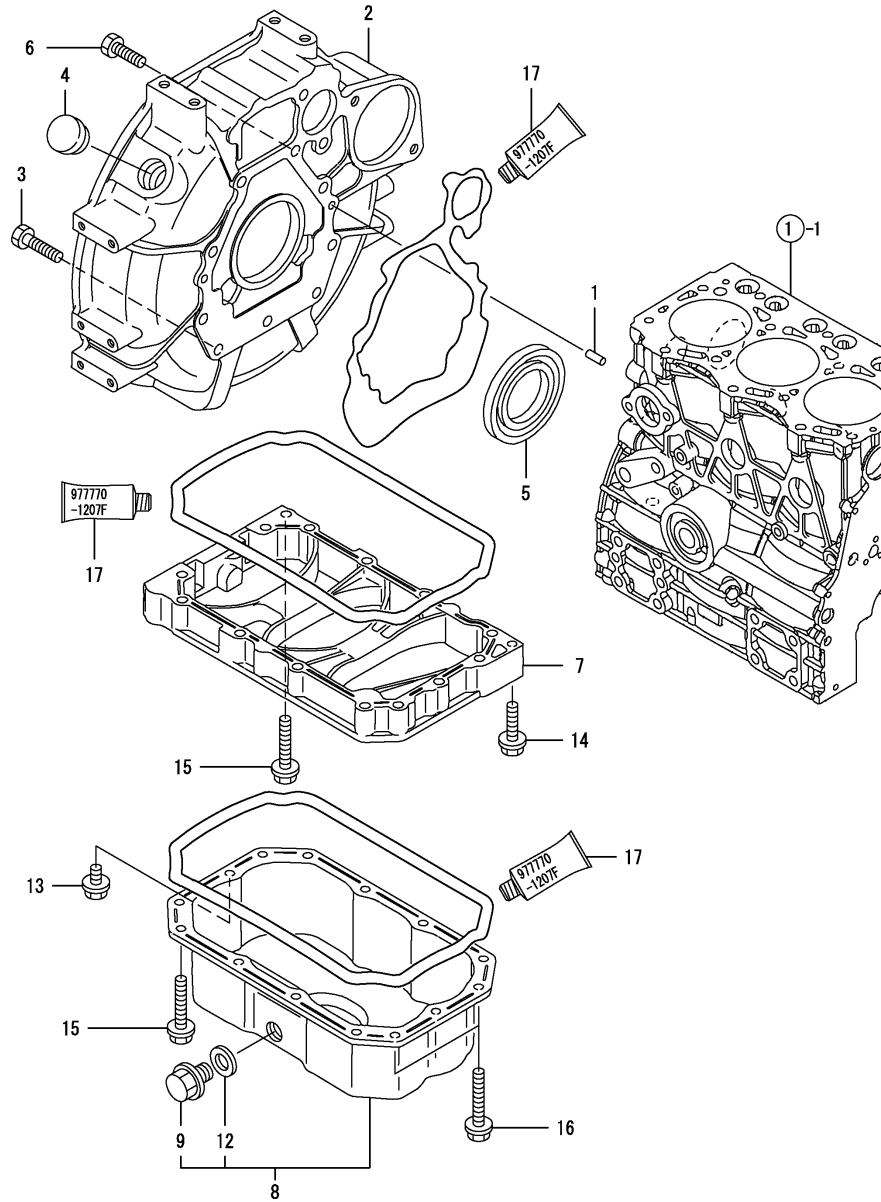
(D)=
(E)=
(F)=

| No. | Lev. | Parts No. | Description | Q'ty | | | | | | I | R |
|-----|------|--------------|----------------------|------|-----|-----|-----|-----|-----|---|---|
| | | | | (A) | (B) | (C) | (D) | (E) | (F) | | |
| 1 | 1 | 119717-01501 | CASE, GEAR | 1 | 1 | | | | | | |
| 3 | 1 | 119717-01570 | STUD | 3 | 3 | | | | | | |
| 4 | 1 | 119717-01590 | COVER ASSY,GEAR CASE | 1 | 1 | | | | | | |
| 5 | 2 | 719717-01500 | COVER ASSY,GEAR CASE | 1 | 1 | | | | | | |
| 6 | 3 | 119717-01521 | COVER, GEAR CASE | 1 | 1 | | | | | | |
| 8 | 3 | 119620-01800 | SEAL, OIL | 1 | 1 | | | | | | |
| 9 | 3 | 23876-030000 | PLUG, R03 | 2 | 2 | | | | | | |
| 10 | 2 | 119717-32100 | COVER ASSY | 1 | 1 | | | | | | |
| 11 | 3 | 119717-32080 | COVER | 1 | 1 | | | | | | |
| 12 | 3 | 129900-32130 | VALVE, RELIEF | 1 | 1 | | | | | | |
| 13 | 3 | 129001-32320 | SPRING | 1 | 1 | | | | | | |
| 14 | 3 | 129001-32330 | PLUG | 1 | 1 | | | | | | |
| 15 | 2 | 119717-32110 | ROTOR, INNER | 1 | 1 | | | | | | |
| 16 | 2 | 119717-32120 | ROTOR, OUTER | 1 | 1 | | | | | | |
| 17 | 2 | 119802-32130 | SCREW, M6X16 | 8 | 8 | | | | | | |
| 18 | 1 | 119717-01750 | COVER | 1 | 1 | | | | | | |
| 19 | 1 | 119660-01911 | PIPE, KNOCK | 4 | 4 | | | | | | |
| 20 | 1 | 119624-32040 | O-RING, P12.0 | 1 | 1 | | | | | | |
| 21 | 1 | 119717-32050 | O-RING, P17.0 | 3 | 3 | | | | | | |
| 22 | 1 | 121850-51960 | O-RING | 1 | 1 | | | | | | |
| 23 | 1 | 26106-060122 | BOLT, M6X 12 PLATED | 1 | 1 | | | | | | |
| 24 | 1 | 26106-060162 | BOLT, M6X 16 PLATED | 4 | 4 | | | | | | |
| 25 | 1 | 26106-060402 | BOLT, M6X 40 PLATED | 4 | 4 | | | | | | |
| 26 | 1 | 26106-060402 | BOLT, M6X 40 PLATED | 3 | 3 | | | | | | |
| 27 | 1 | 26106-060602 | BOLT, M6X 60 PLATED | 7 | 7 | | | | | | |
| 28 | 1 | 26106-060652 | BOLT, M6X 65 PLATED | 2 | 2 | | | | | | |
| 29 | 1 | 26306-080002 | NUT, M8 | 3 | 3 | | | | | | |
| 30 | 1 | 977770-1207F | GASKET.LIQUID | 1 | 1 | | | | | | 1 |
| 31 | 1 | 124160-01751 | COVER, FILLER | 1 | 1 | | | | | | |
| 32 | 1 | 24311-000320 | O-RING, 1AP32.0 | 1 | 1 | | | | | | |

Remarks

(1) OPTIONAL PART.

Fig.3. FLYWHEEL HOUSING & OIL SUMP



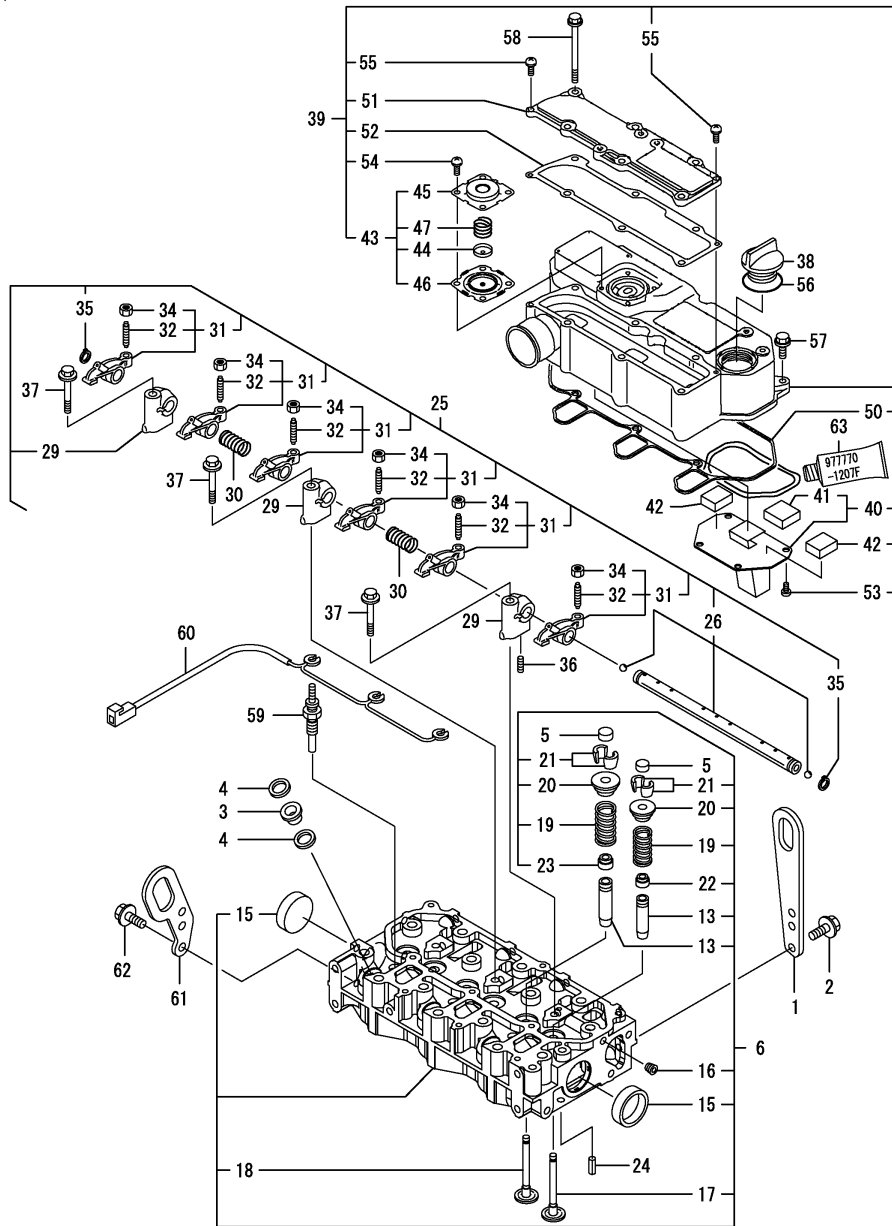
(A)=3TNV76-PIKA
(B)=3TNV76-QIKA
(C)=

(D)=
(E)=
(F)=

| No. | Lev. | Parts No. | Description | Q'ty | | | | | | I | R |
|-----|------|--------------|----------------------|------|-----|-----|-----|-----|-----|---|---|
| | | | | (A) | (B) | (C) | (D) | (E) | (F) | | |
| 1 | 1 | 129100-01580 | PIN, M8X16 | 2 | 2 | | | | | | |
| 2 | 1 | 119717-01601 | HOUSING, FLYWHEEL | 1 | 1 | | | | | | |
| 3 | 1 | 121120-01620 | BOLT, M10X28 | 3 | 3 | | | | | | |
| 4 | 1 | 119620-01750 | CAP | 1 | 1 | | | | | | |
| 5 | 1 | 124085-02220 | SEAL, OIL | 1 | 1 | | | | | | |
| 6 | 1 | 26206-100252 | BOLT, M10X 25 PLATED | 8 | 8 | | | | | | |
| 7 | 1 | 119717-01720 | SPACER, OIL SUMP | 1 | 1 | | | | | | |
| 8 | 1 | 119717-01770 | SUMP ASSY, OIL | 1 | 1 | | | | | | |
| 9 | 2 | 105425-01690 | PLUG, 16 | 1 | 1 | | | | | | |
| 12 | 2 | 22190-160002 | WASHER, SEAL 16 | 1 | 1 | | | | | | |
| 13 | 1 | 26106-080122 | BOLT, M8X 12 PLATED | 1 | 1 | | | | | | |
| 14 | 1 | 26106-080302 | BOLT, M8X 30 PLATED | 1 | 1 | | | | | | |
| 15 | 1 | 26106-080452 | BOLT, M8X 45 PLATED | 11 | 11 | | | | | | |
| 16 | 1 | 26106-080502 | BOLT, M8X 50 PLATED | 3 | 3 | | | | | | |
| 17 | 1 | 977770-1207F | GASKET.LIQUID | 1 | 1 | | | | | | 1 |

Remarks
(1) OPTIONAL PART.

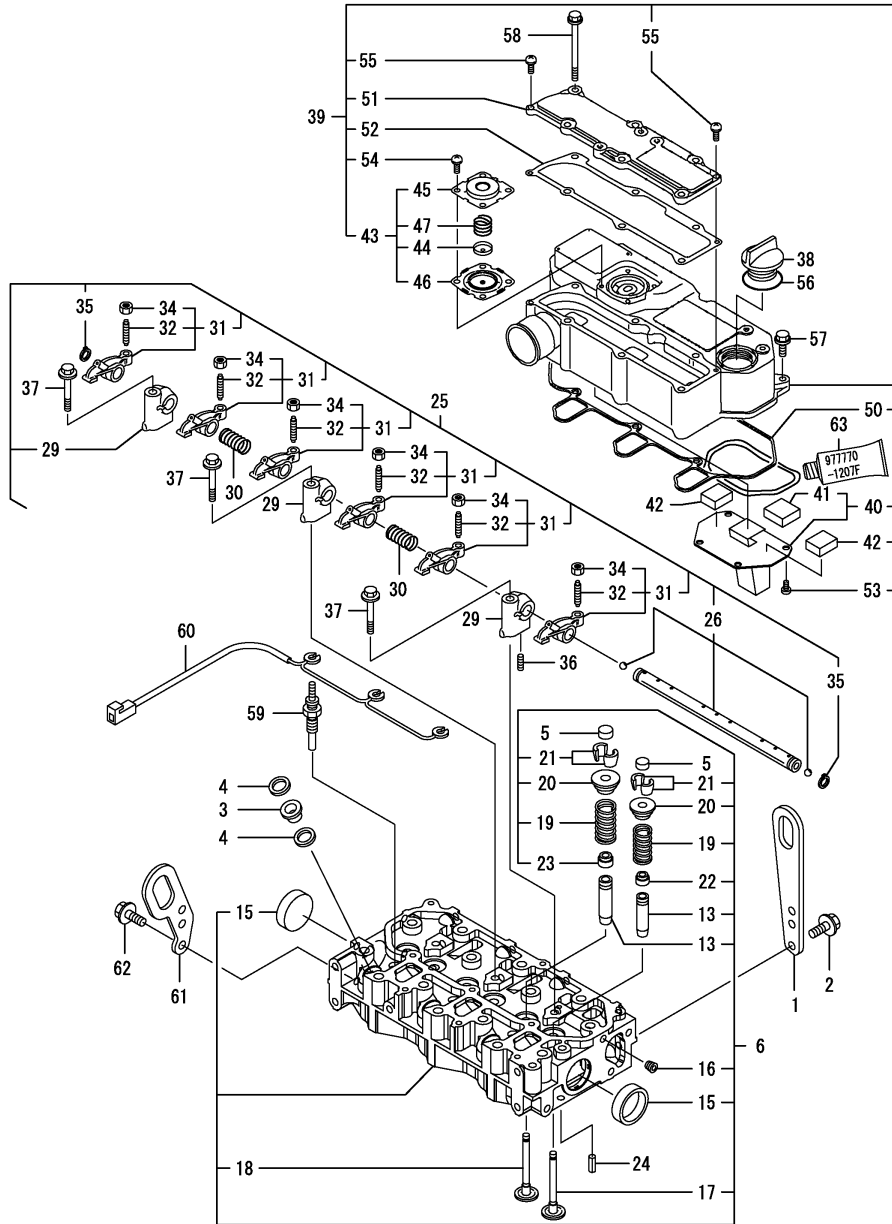
Fig.4. CYLINDER HEAD & BONNET



Remarks
 (1) REPAIR PART.
 (2) OPTIONAL PART.

| No. | Lev. | Parts No. | Description | Q'ty | | | | | | I | R |
|------|------|-----------------------|----------------------|------|-----|-----|-----|-----|-----|---|---|
| | | | | (A) | (B) | (C) | (D) | (E) | (F) | | |
| 1 | 1 | 129900-07900 | LIFTER | 1 | 1 | | | | | | |
| 2 | 1 | 26106-080162 | BOLT, M8X 16 PLATED | 2 | 2 | | | | | | |
| 3 | 1 | 129901-11450 | PROTECTOR, NOZZLE | 3 | 3 | | | | | | |
| 4 | 1 | 119600-11460 | GASKET, NOZZLE | 6 | 6 | | | | | | |
| 5 | 1 | 105010-11490 | CAP, VALVE | 6 | 6 | | | | | | |
| 6 | 1 | 119717-11740 | HEAD ASSY, CYLINDER | 1 | 1 | | | | | | |
| 13 | 2 | 119717-11800 | GUIDE, VALVE | 6 | 6 | | | | | | 1 |
| 15 | 2 | 119285-11990 | PLUG, 35 | 2 | 2 | | | | | | |
| 16 | 2 | 23876-005000 | PLUG, R005 | 1 | 1 | | | | | | |
| 17 | 2 | 119717-11100 | VALVE, INTAKE | 3 | 3 | | | | | | |
| 17-1 | 2 | 119717-11101 | VALVE, INTAKE | 3 | 3 | | | | | | R |
| | | (A=E25809) (B=E30105) | | | | | | | | | |
| 18 | 2 | 119717-11110 | VALVE, EXHAUST | 3 | 3 | | | | | | |
| 19 | 2 | 119717-11131 | SPRING, VALVE | 6 | 6 | | | | | | |
| 20 | 2 | 129508-11180 | RETAINER, SPRING | 6 | 6 | | | | | | |
| 21 | 2 | 119717-11190 | COTTER | 12 | 12 | | | | | | |
| 22 | 2 | 119717-11340 | SEAL, VALVE STEM | 3 | 3 | | | | | | |
| 23 | 2 | 119717-11350 | SEAL, VALVE STEM | 3 | 3 | | | | | | |
| 24 | 1 | 22351-060012 | PIN, SPRING 6.0X12 | 2 | 2 | | | | | | |
| 25 | 1 | 119717-11200 | SUPPORT ASSY, ARM | 1 | 1 | | | | | | |
| 26 | 2 | 119717-11240 | SHAFT ASSY, ROCKER | 1 | 1 | | | | | | |
| 29 | 2 | 119717-11260 | SUPPORT, ROCKER ARM | 3 | 3 | | | | | | |
| 30 | 2 | 119620-11280 | SPRING | 2 | 2 | | | | | | |
| 31 | 2 | 119717-11650 | ARM, ROCKER | 6 | 6 | | | | | | |
| 32 | 3 | 129150-11230 | SCREW, VALVE ADJUST | 6 | 6 | | | | | | |
| 34 | 3 | 129150-11750 | NUT, M8 | 6 | 6 | | | | | | |
| 35 | 2 | 22242-000120 | RING, 12 | 2 | 2 | | | | | | |
| 36 | 2 | 26979-050162 | SCREW, M5X16 | 1 | 1 | | | | | | |
| 37 | 1 | 26106-080402 | BOLT, M8X 40 PLATED | 3 | 3 | | | | | | |
| 38 | 1 | 124160-01751 | COVER, FILLER | 1 | 1 | | | | | | |
| 39 | 1 | 119717-11381 | BONNET ASSY, HEAD | 1 | 1 | | | | | | |
| 40 | 2 | 119717-03031 | PLATE | 1 | 1 | | | | | | |
| 41 | 3 | 119717-03070 | BAFFLE, BREATHER | 1 | 1 | | | | | | |
| 42 | 2 | 119717-03070 | BAFFLE, BREATHER | 2 | 2 | | | | | | |
| 43 | 2 | 119802-03100 | DIAPHRAGM ASSY | 1 | 1 | | | | | | |
| 44 | 3 | 119802-03110 | PLATE | 1 | 1 | | | | | | |
| 45 | 3 | 119802-03121 | COVER, DIAPHRAGM | 1 | 1 | | | | | | |
| 46 | 3 | 119802-03131 | DIAPHRAGM | 1 | 1 | | | | | | |
| 47 | 3 | 119802-03141 | SPRING, DIAPHRAGM | 1 | 1 | | | | | | |
| 50 | 2 | 119718-11310 | GASKET, BONNET | 1 | 1 | | | | | | |
| 51 | 2 | 119717-11320 | COVER, BONNET | 1 | 1 | | | | | | |
| 52 | 2 | 119717-11331 | GASKET | 1 | 1 | | | | | | |
| 53 | 2 | 22857-500100 | SCREW, 5X10 | 4 | 4 | | | | | | |
| 54 | 2 | 22857-500100 | SCREW, 5X10 | 4 | 4 | | | | | | |
| 55 | 2 | 22857-500160 | SCREW, 5X16 | 2 | 2 | | | | | | |
| 56 | 1 | 24311-000320 | O-RING, 1AP32.0 | 1 | 1 | | | | | | |
| 57 | 1 | 26106-060202 | BOLT, M6X 20 PLATED | 3 | 3 | | | | | | |
| 58 | 1 | 26106-060752 | BOLT, M6X 75 PLATED | 6 | 6 | | | | | | |
| 59 | 1 | 119717-77800 | PLUG, GLOW | 3 | 3 | | | | | | |
| 60 | 1 | 119717-77820 | CONNECTOR, GLOW PLUG | 1 | 1 | | | | | | |
| 61 | 1 | 119260-07900 | LIFTER | 1 | 1 | | | | | | |

Fig.4. CYLINDER HEAD & BONNET



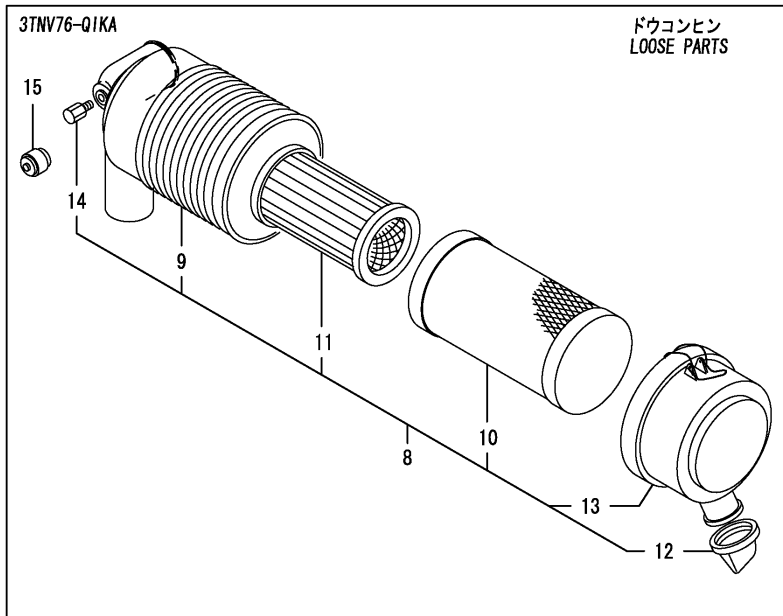
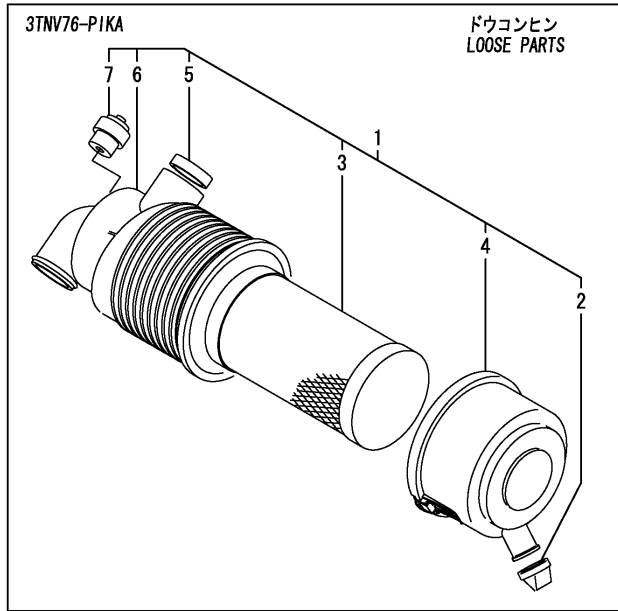
(A)=3TNV76-PIKA
 (B)=3TNV76-QIKA
 (C)=

(D)=
 (E)=
 (F)=

| No. | Lev. | Parts No. | Description | Q'ty | | | | | | I | R |
|------|------|---------------------------------------|---------------------|------|-----|-----|-----|-----|-----|---|---|
| | | | | (A) | (B) | (C) | (D) | (E) | (F) | | |
| 61-1 | 1 | 119626-07900 (A=E10899) (B=E09825) | LIFTER | 1 | 1 | | | | | | N |
| 62 | 1 | 26106-080142 | BOLT, M8X 14 PLATED | 2 | 2 | | | | | | |
| 63 | 1 | 977770-1207F | GASKET.LIQUID | 1 | 1 | | | | | | 2 |

Remarks
 (1) REPAIR PART.
 (2) OPTIONAL PART.

Fig.5. AIR CLEANER



(A)=3TNV76-PIKA
(B)=3TNV76-Q1KA
(C)=

(D)=
(E)=
(F)=

| No. | Lev. | Parts No. | Description | Qty | | | | | | I | R |
|-----|------|--------------|--------------------|-----|-----|-----|-----|-----|-----|---|---|
| | | | | (A) | (B) | (C) | (D) | (E) | (F) | | |
| 1 | 1 | 119233-12510 | CLEANER ASSY, AIR | 1 | | | | | | | |
| 2 | 2 | 119808-12540 | VALVE, UNLOADER | 1 | | | | | | | |
| 3 | 2 | 119655-12560 | ELEMENT | 1 | | | | | | | |
| 4 | 2 | 105027-12570 | COVER, AIR CREAMER | 1 | | | | | | | |
| 5 | 2 | 105027-12580 | RING | 1 | | | | | | | |
| 6 | 2 | 119233-12660 | BODY, AIR CLEANER | 1 | | | | | | | |
| 7 | 2 | 126650-12680 | INDICATOR | 1 | | | | | | | |
| 8 | 1 | 129051-12500 | CLEANER ASSY, AIR | | 1 | | | | | | |
| 9 | 2 | 129051-12510 | BODY, AIR CLEANER | | 1 | | | | | | |
| 10 | 2 | 119808-12520 | ELEMENT | | 1 | | | | | | |
| 11 | 2 | 129051-12530 | ELEMENT | | 1 | | | | | | |
| 12 | 2 | 119808-12540 | VALVE, UNLOADER | | 1 | | | | | | |
| 13 | 2 | 129051-12540 | COVER, AIR CREAMER | | 1 | | | | | | |
| 14 | 2 | 121820-12590 | NIPPLE | | 1 | | | | | | |
| 15 | 1 | 126650-12680 | INDICATOR | | 1 | | | | | | |

Fig.6. EXHAUST MANIFOLD & SILENCER

(A)=3TNV76-PIKA
 (B)=3TNV76-QIKA
 (C)=

(D)=
 (E)=
 (F)=

| No. | Lev. | Parts No. | Description | Q'ty | | | | | | I | R |
|-----|------|--------------|----------------------|------|-----|-----|-----|-----|-----|---|---|
| | | | | (A) | (B) | (C) | (D) | (E) | (F) | | |
| 1 | 1 | 119740-13100 | MANIFOLD, EXHAUST | 1 | 1 | | | | | | |
| 2 | 1 | 119717-13110 | GASKET | 1 | 1 | | | | | | |
| 3 | 1 | 119515-13200 | GASKET, SILENCER | 1 | 1 | | | | | | |
| 4 | 1 | 119717-13600 | STUD, M8X50 | 2 | 2 | | | | | | |
| 5 | 1 | 119802-13620 | BOLT, M8X50 | 2 | 2 | | | | | | |
| 6 | 1 | 119131-18320 | STUD, M8X22 | 4 | 4 | | | | | | |
| 7 | 1 | 26306-080002 | NUT, M8 | 2 | 2 | | | | | | |
| 8 | 1 | 123900-13620 | BOLT, M8X70 | 2 | 2 | | | | | | |
| 9 | 1 | 119740-13500 | SILENCER | 1 | 1 | | | | | | |
| 10 | 1 | 26106-100182 | BOLT, M10X 18 PLATED | 1 | 1 | | | | | | |
| 11 | 1 | 26306-080002 | NUT, M8 | 4 | 4 | | | | | | |

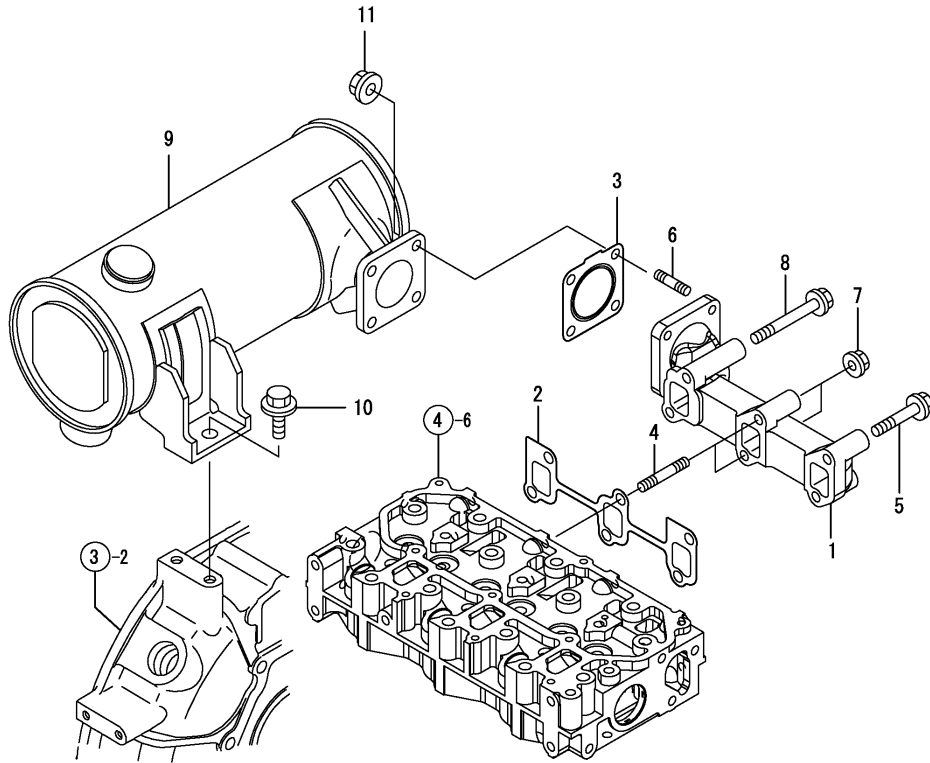
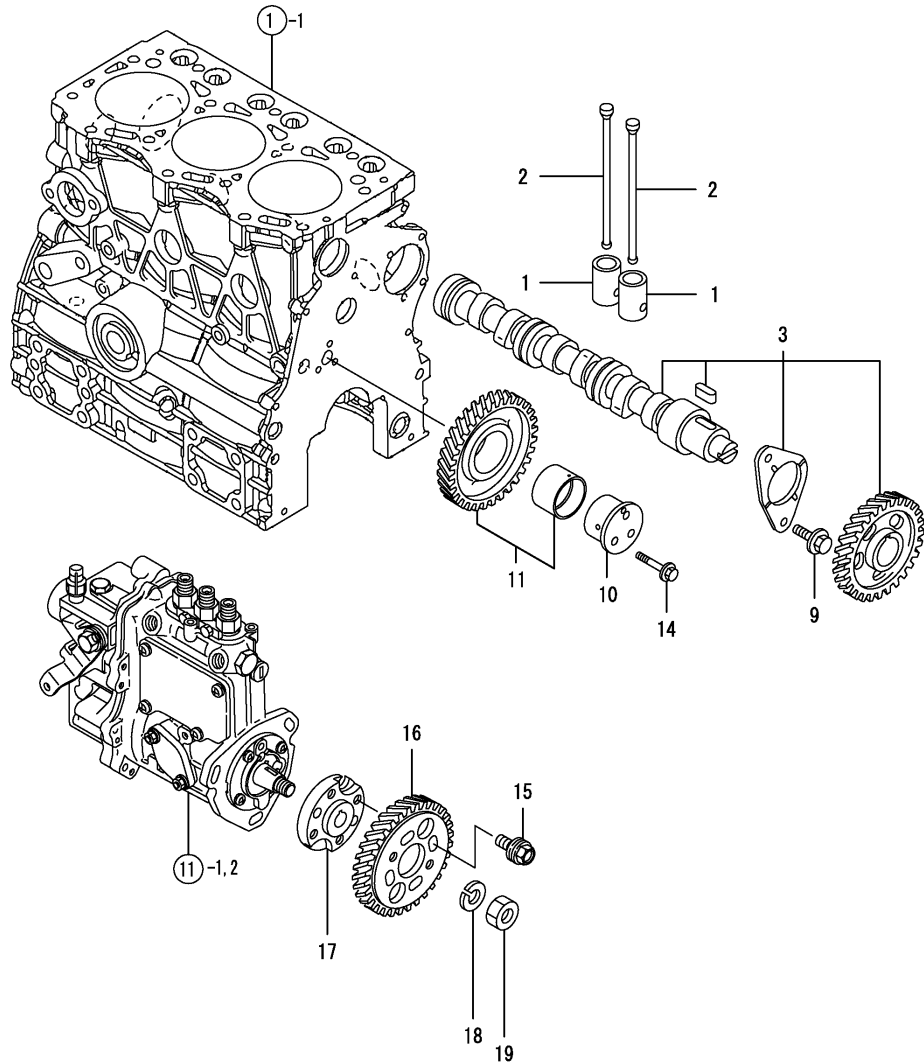


Fig.7. CAMSHAFT & DRIVING GEAR

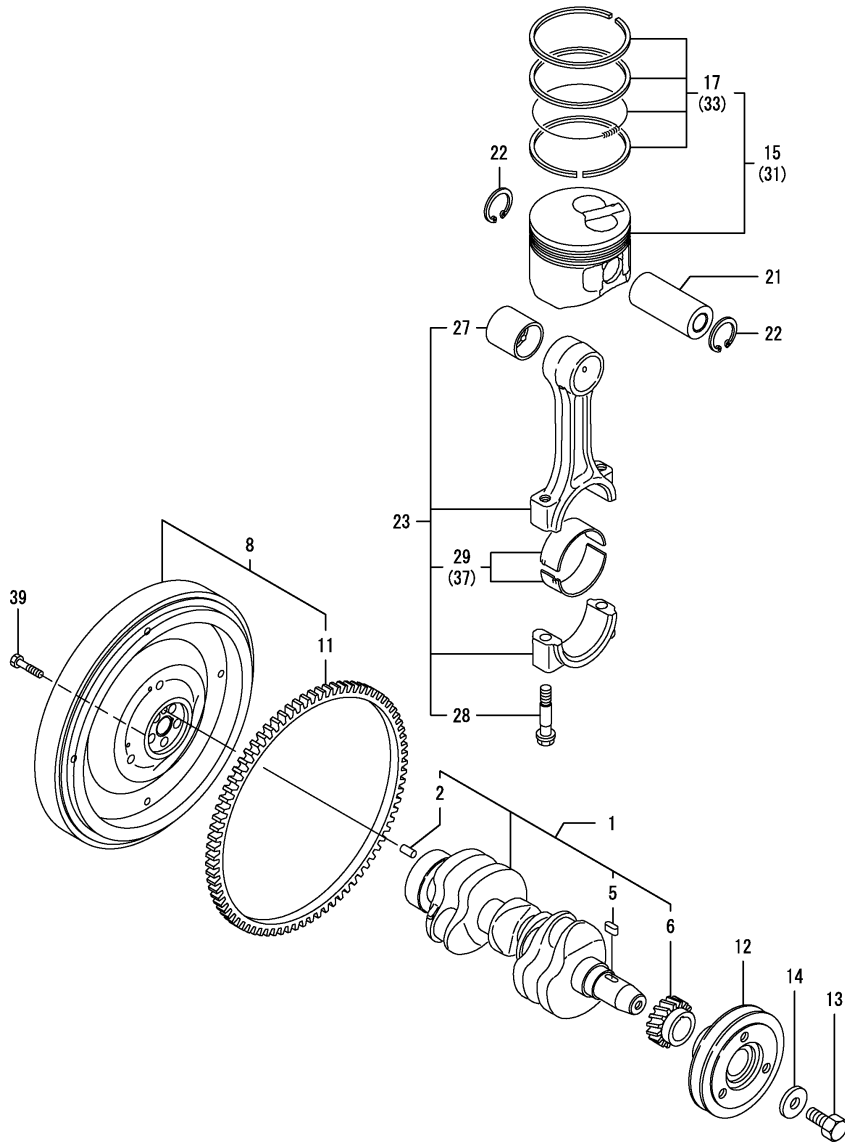


(A)=3TNV76-PIKA
 (B)=3TNV76-QIKA
 (C)=

(D)=
 (E)=
 (F)=

| No. | Lev. | Parts No. | Description | Q'ty | | | | | | I | R |
|------|------|---------------------------------------|---------------------|------|-----|-----|-----|-----|-----|---|---|
| | | | | (A) | (B) | (C) | (D) | (E) | (F) | | |
| 1 | 1 | 119620-14200 | TAPPET | 6 | 6 | | | | | | |
| 2 | 1 | 119717-14400 | ROD, PUSH | 6 | 6 | | | | | | |
| 3 | 1 | 119717-14580 | CAMSHAFT ASSY | 1 | 1 | | | | | | |
| 3-1 | 1 | 119717-14581 (A=E25781) (B=E24282) | CAMSHAFT ASSY | 1 | 1 | | | | | | R |
| 9 | 1 | 26106-060122 | BOLT, M6X 12 PLATED | 2 | 2 | | | | | | |
| 10 | 1 | 119717-25050 | SHAFT, IDLE | 1 | 1 | | | | | | |
| 11 | 1 | 119717-25100 | GEAR ASSY, IDLE | 1 | 1 | | | | | | |
| 11-1 | 1 | 119717-25101 (A=E25781) (B=E25306) | GEAR ASSY, IDLE | 1 | 1 | | | | | | N |
| 14 | 1 | 26106-060352 | BOLT, M6X 35 PLATED | 3 | 3 | | | | | | |
| 15 | 1 | 129150-25301 | BOLT | 4 | 4 | | | | | | |
| 16 | 1 | 119717-25930 | GEAR, PUMP | 1 | 1 | | | | | | |
| 17 | 1 | 119717-51150 | FLANGE | 1 | 1 | | | | | | |
| 18 | 1 | 22217-120000 | WASHER, SPRING 12 | 1 | 1 | | | | | | |
| 19 | 1 | 26716-120002 | NUT, M12 | 1 | 1 | | | | | | |

Fig.8. CRANKSHAFT & PISTON



(A)=3TNV76-PIKA
(B)=3TNV76-QIKA
(C)=

(D)=
(E)=
(F)=

| No. | Lev. | Parts No. | Description | Q'ty | | | | | | I | R |
|------|------|-----------------------|----------------------|------|-----|-----|-----|-----|-----|---|-----|
| | | | | (A) | (B) | (C) | (D) | (E) | (F) | | |
| 1 | 1 | 119717-21700 | CRANKSHAFT ASSY | 1 | 1 | | | | | | |
| 2 | 2 | 129100-01580 | PIN, M8X16 | 1 | 1 | | | | | | |
| 5 | 2 | 22512-040120 | KEY, 4X 12 | 1 | 1 | | | | | | |
| 6 | 2 | 119717-21200 | GEAR, CRANKSHAFT | 1 | 1 | | | | | | |
| 8 | 1 | 119740-21590 | FLYWHEEL ASSY | 1 | 1 | | | | | | |
| 11 | 2 | 119865-21600 | GEAR, RING | 1 | 1 | | | | | | |
| 12 | 1 | 119717-21650 | V-PULLEY | 1 | 1 | | | | | | |
| 13 | 1 | 119621-21680 | BOLT, FLANGE 12X1.25 | 1 | 1 | | | | | | |
| 14 | 1 | 119620-21941 | WASHER | 1 | 1 | | | | | | |
| 15 | 1 | 119717-22080 | PISTON ASSY | 3 | 3 | | | | | | |
| 17 | 2 | 119717-22500 | RING SET, PISTON | 3 | 3 | | | | | | |
| 21 | 1 | 119717-22300 | PIN, PISTON | 3 | 3 | | | | | | |
| 22 | 1 | 22252-000220 | RING, 22 | 6 | 6 | | | | | | |
| 23 | 1 | 119717-23000 | ROD ASSY, CONNECTING | 3 | 3 | | | | | | |
| 27 | 2 | 119717-23910 | BEARING, PISTON PIN | 3 | 3 | | | | | | 2 |
| 28 | 2 | 119717-23200 | BOLT, CONNECTING ROD | 6 | 6 | | | | | | |
| 29 | 2 | 119717-23600 | BEARING, CRANK PIN | 3 | 3 | | | | | | |
| 29-1 | 2 | 119717-23601 | BEARING, CRANK PIN | 3 | 3 | | | | | | N |
| | | (A=E25781) (B=E25306) | | | | | | | | | |
| 31 | 1 | 119717-22090 | PISTON ASSY, 0.25 OS | 3 | 3 | | | | | | 1 |
| 33 | 2 | 119717-22550 | RING SET, 0.25 OS | 3 | 3 | | | | | | 1 |
| 37 | 1 | 119717-23610 | METAL ASSY, 0.25 | 3 | 3 | | | | | | 3 |
| 37-1 | 1 | 119717-23611 | METAL ASSY, 0.25 | 3 | 3 | | | | | | N 3 |
| | | (A=E25781) (B=E25306) | | | | | | | | | |
| 39 | 1 | 119620-21500 | BOLT, FLYWHEEL | 5 | 5 | | | | | | |

Remarks

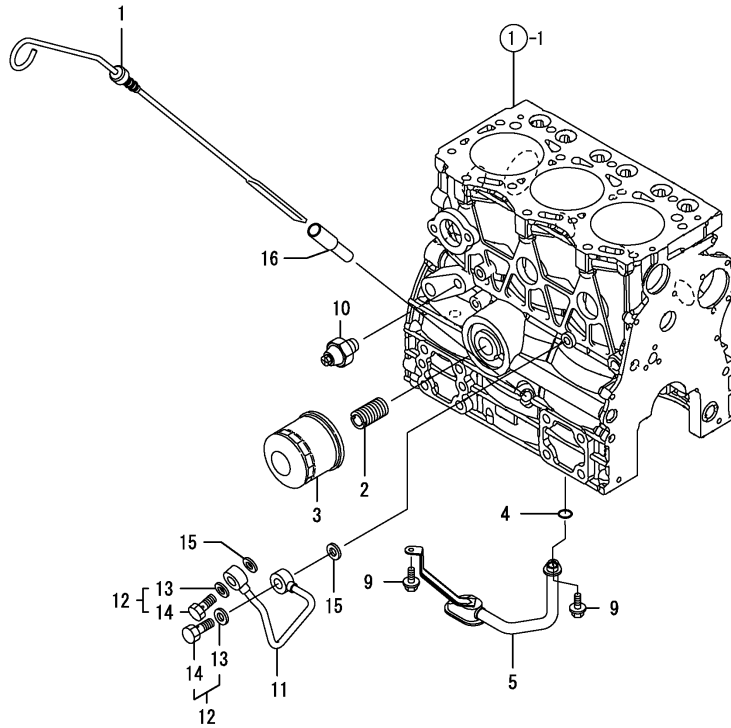
- (1) OVER-SIZE(O.S=0.25)PART.
- (2) REPAIR PART.
- (3) UNDER-SIZE(U.S=0.25)PART.

Fig.9. LUB.OIL SYSTEM

(A)=3TNV76-PIKA
 (B)=3TNV76-QIKA
 (C)=

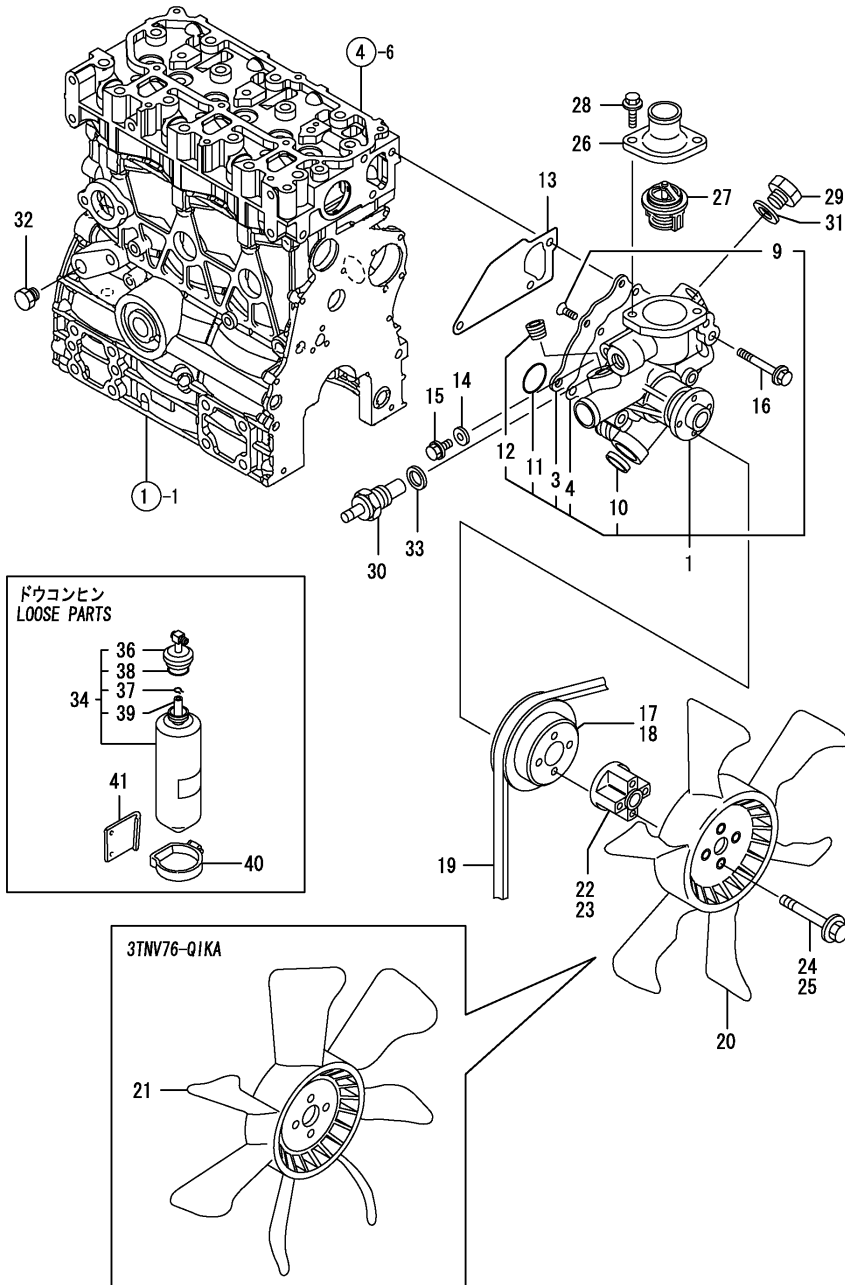
(D)=
 (E)=
 (F)=

| No. | Lev. | Parts No. | Description | Q'ty | | | | | | I | R |
|-----|------|--------------|----------------------|------|-----|-----|-----|-----|-----|---|---|
| | | | | (A) | (B) | (C) | (D) | (E) | (F) | | |
| 1 | 1 | 119740-34801 | DIPSTICK, OIL | 1 | 1 | | | | | | |
| 2 | 1 | 129100-35140 | STUD | 1 | 1 | | | | | | |
| 3 | 1 | 119305-35151 | FILTER ASSY, D68XL65 | 1 | 1 | | | | | | 1 |
| 4 | 1 | 119717-32060 | O-RING, P15.0 | 1 | 1 | | | | | | |
| 5 | 1 | 119717-35080 | PIPE ASSY, OIL INLET | 1 | 1 | | | | | | |
| 9 | 1 | 26106-060102 | BOLT, M6X 10 PLATED | 2 | 2 | | | | | | |
| 10 | 1 | 121252-39450 | SWITCH, 0.5KG | 1 | 1 | | | | | | |
| 11 | 1 | 119717-39210 | PIPE, OIL | 1 | 1 | | | | | | |
| 12 | 1 | 129005-59830 | BOLT ASSY, JOINT M8 | 2 | 2 | | | | | | |
| 13 | 2 | 22190-080002 | WASHER, SEAL 6 | 2 | 2 | | | | | | |
| 14 | 2 | 23857-030000 | BOLT, JOINT 3 | 2 | 2 | | | | | | |
| 15 | 1 | 22190-080002 | WASHER, SEAL 6 | 2 | 2 | | | | | | |
| 16 | 1 | 121520-34810 | GUIDE, DIPSTICK | 1 | 1 | | | | | | |



Remarks
 (1) REPAIR PART.

Fig.10. COOLING WATER SYSTEM



(A)=3TNV76-PIKA
(B)=3TNV76-Q1KA
(C)=

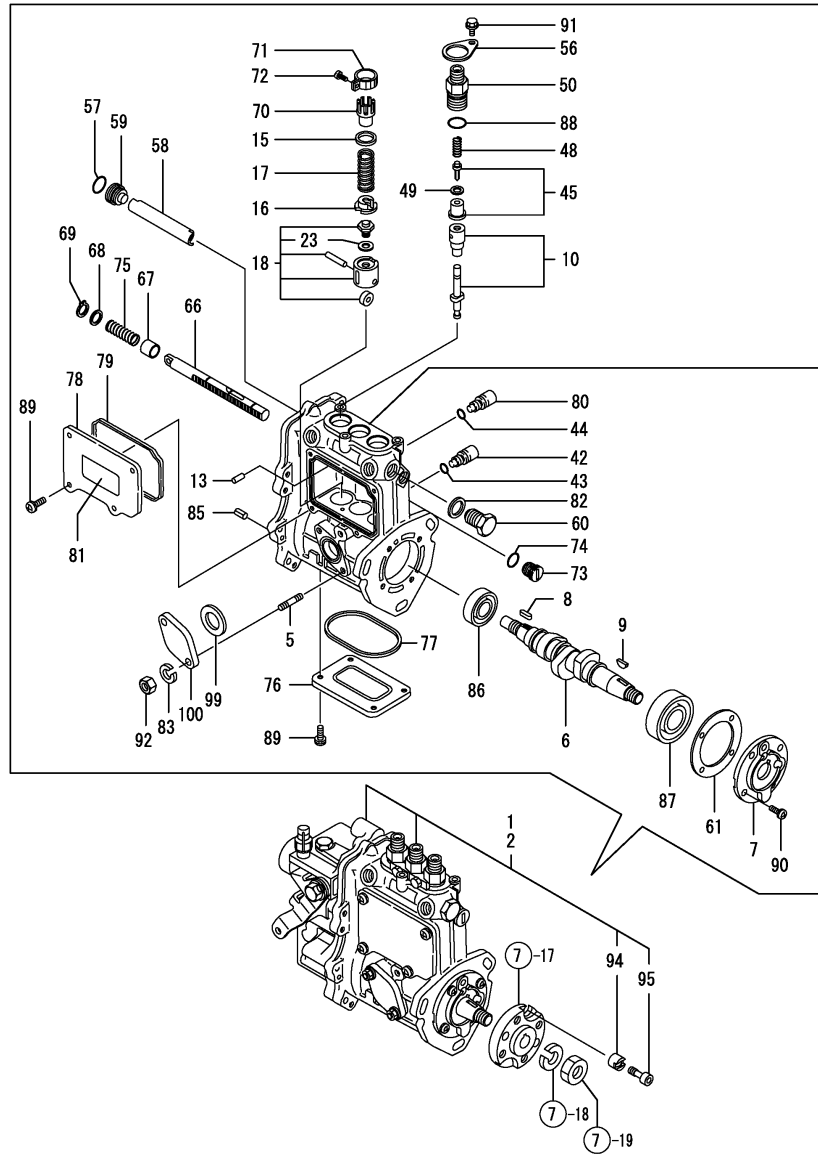
(D)=
(E)=
(F)=

| No. | Lev. | Parts No. | Description | Q'ty | | | | | | I | R |
|-----|------|--------------|----------------------|------|-----|-----|-----|-----|-----|---|---|
| | | | | (A) | (B) | (C) | (D) | (E) | (F) | | |
| 1 | 1 | 119717-42002 | PUMP ASSY, WATER | 1 | 1 | | | | | | |
| 3 | 2 | 119717-42041 | COVER | 1 | 1 | | | | | | |
| 4 | 2 | 119717-42031 | GASKET | 1 | 1 | | | | | | |
| 9 | 2 | 26577-060122 | SCREW, M6X12 | 4 | 4 | | | | | | |
| 10 | 2 | 27241-250000 | PLUG, 25 | 1 | 1 | | | | | | |
| 11 | 2 | 119717-42320 | O-RING, P26 | 1 | 1 | | | | | | |
| 12 | 2 | 129916-49740 | PLUG, R03 | 1 | 1 | | | | | | |
| 13 | 1 | 119717-42020 | GASKET, WATER PUMP | 1 | 1 | | | | | | |
| 14 | 1 | 23414-080000 | GASKET, 8X1.0 | 1 | 1 | | | | | | |
| 15 | 1 | 26106-080122 | BOLT, M8X 12 PLATED | 1 | 1 | | | | | | |
| 16 | 1 | 26106-080502 | BOLT, M8X 50 PLATED | 3 | 3 | | | | | | |
| 17 | 1 | 119717-42350 | V-PULLEY, D=100 | 1 | | | | | | | |
| 18 | 1 | 119515-42350 | V-PULLEY, D=110 | | 1 | | | | | | |
| 19 | 1 | 25132-003600 | V-BELT, A36 | 1 | 1 | | | | | | |
| 20 | 1 | 171340-44740 | FAN, COOLING D335XNF | 1 | | | | | | | |
| 21 | 1 | 121267-44741 | FAN, COOLING D=360 | | 1 | | | | | | |
| 22 | 1 | 129030-44760 | SPACER, FAN L38.5 | 1 | | | | | | | |
| 23 | 1 | 119256-44760 | SPACER, FAN | | 1 | | | | | | |
| 24 | 1 | 26106-060502 | BOLT, M6X 50 PLATED | 4 | | | | | | | |
| 25 | 1 | 26106-060552 | BOLT, M6X 55 PLATED | | 4 | | | | | | |
| 26 | 1 | 129350-49530 | COVER, THERMOSTAT | 1 | 1 | | | | | | |
| 27 | 1 | 119717-49800 | THERMOSTAT, 71 | 1 | 1 | | | | | | |
| 28 | 1 | 26106-080202 | BOLT, M8X 20 PLATED | 2 | 2 | | | | | | |
| 29 | 1 | 121450-42450 | PLUG, M16 | 1 | 1 | | | | | | |
| 30 | 1 | 171056-49351 | SENSOR | 1 | 1 | | | | | | |
| 31 | 1 | 124465-44950 | GASKET, 16 | 1 | 1 | | | | | | |
| 32 | 1 | 171056-49120 | PLUG, DRAIN | 1 | 1 | | | | | | |
| 33 | 1 | 129150-49360 | GASKET | 1 | 1 | | | | | | |
| 34 | 1 | 171064-44510 | TANK ASSY, SUB | 1 | 1 | | | | | | |
| 36 | 2 | 121450-44531 | CAP | 1 | 1 | | | | | | |
| 37 | 2 | 124450-44560 | RETAINER | 1 | 1 | | | | | | |
| 38 | 2 | 121470-44581 | GASKET | 1 | 1 | | | | | | |
| 39 | 2 | 23065-070225 | HOSE 7X 225 | 1 | 1 | | | | | | |
| 40 | 1 | 124450-44550 | BAND | 1 | 1 | | | | | | |
| 41 | 1 | 121256-44600 | BRACKET, SUB TANK | 1 | 1 | | | | | | |

Fig.11. FUEL INJECTION PUMP

(A)=3TNV76-PIKA
(B)=3TNV76-QIKA
(C)=

(D)=
(E)=
(F)=



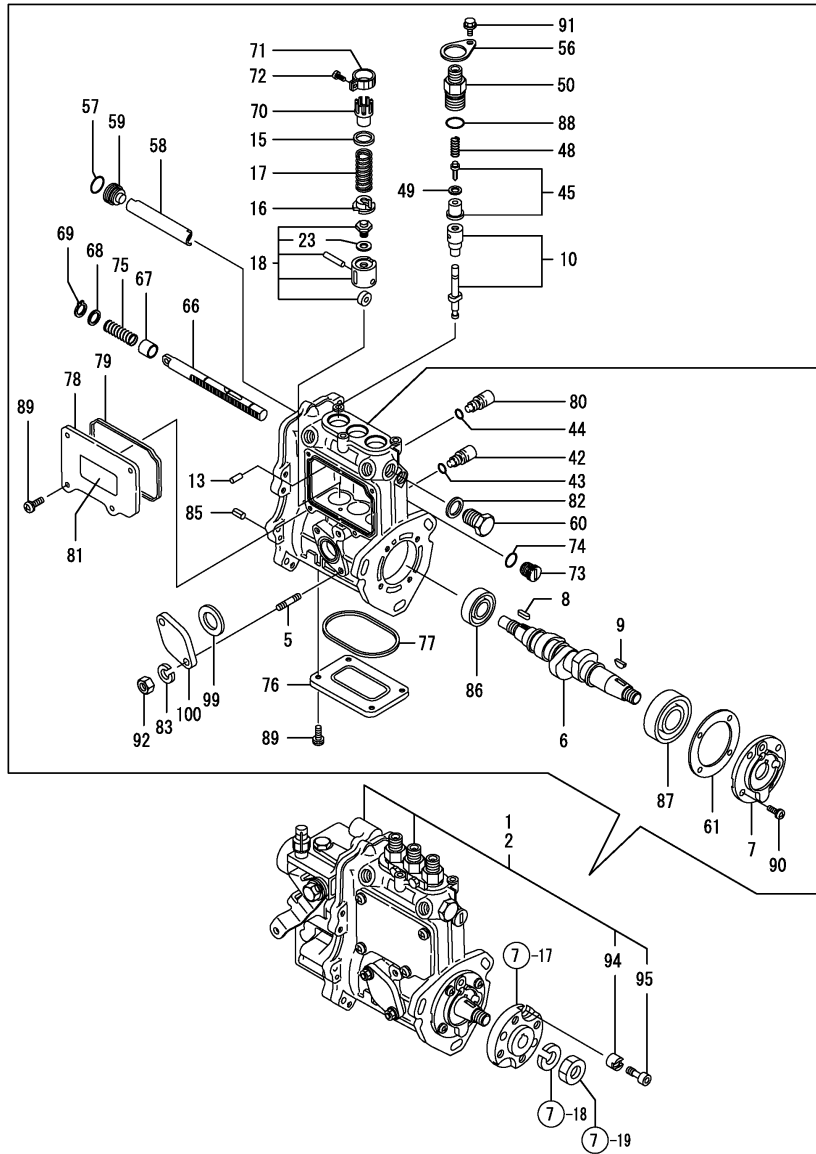
| No. | Lev. | Parts No. | Description | Q'ty | | | | | | I | R |
|------|------|-----------------------|----------------------|------|-----|-----|-----|-----|-----|---|---|
| | | | | (A) | (B) | (C) | (D) | (E) | (F) | | |
| 1 | 1 | 719740-51320 | PUMP ASSY, INJECTION | 1 | | | | | | | 1 |
| 2 | 1 | 719740-51390 | PUMP ASSY, INJECTION | | 1 | | | | | | 1 |
| 5 | 2 | 129155-51020 | STUD | 2 | 2 | | | | | | |
| 6 | 2 | 119717-51030 | CAMSHAFT | 1 | 1 | | | | | | |
| 7 | 2 | 119717-51060 | SUPPORT, CAMSHAFT | 1 | 1 | | | | | | |
| 8 | 2 | 119717-51070 | KEY | 1 | 1 | | | | | | |
| 9 | 2 | 122710-51090 | KEY | 1 | 1 | | | | | | |
| 10 | 2 | 119740-51100 | PLUNGER ASSY | 3 | 3 | | | | | | |
| 13 | 2 | 129155-51140 | PIN | 3 | 3 | | | | | | |
| 15 | 2 | 158600-51170 | RETAINER, SPRING | 3 | 3 | | | | | | |
| 15-1 | 2 | 119717-51170 | RETAINER | 3 | 3 | | | | | | N |
| | | (A=E10889) (B=E07517) | | | | | | | | | |
| 15-2 | 2 | 158600-51170 | RETAINER, SPRING | 3 | 3 | | | | | | N |
| | | (A=E10889) (B=E08844) | | | | | | | | | |
| 16 | 2 | 119717-51180 | RETAINER, SPRING | 3 | 3 | | | | | | |
| 16-1 | 3 | 119717-51570 | RETAINER, SPRING | 3 | 3 | | | | | | R |
| | | (A=E19940) (B=E19806) | | | | | | | | | |
| 17 | 2 | 119717-51190 | SPRING, PLUNGER | 3 | 3 | | | | | | |
| 18 | 2 | 119717-51200 | TAPPET ASSY | 3 | 3 | | | | | | |
| 23 | 3 | 129155-51600 | SHIM SET, ADJUSTING | 3 | 3 | | | | | | |
| 42 | 2 | 158600-51270 | STOPPER, TAPPET | 3 | 3 | | | | | | |
| 43 | 2 | 129155-51280 | O-RING, S6 | 3 | 3 | | | | | | |
| 44 | 2 | 129155-51280 | O-RING, S6 | 1 | 1 | | | | | | |
| 45 | 2 | 119717-51300 | VALVE ASSY, DELIVERY | 3 | 3 | | | | | | |
| 48 | 2 | 119717-51330 | SPRING, DELIVERY | 3 | 3 | | | | | | |
| 49 | 2 | 124550-51350 | GASKET, DELIVERY | 3 | 3 | | | | | | |
| 50 | 2 | 158600-51441 | VALVE ASSY, DELIVERY | 3 | 3 | | | | | | |
| 50-1 | 2 | 158600-51442 | VALVE ASSY, DELIVERY | 3 | 3 | | | | | | N |
| | | (A=E15903) (B=E18571) | | | | | | | | | |
| 56 | 2 | 118400-51370 | LOCKING | 3 | 3 | | | | | | |
| 57 | 2 | 119717-51420 | O-RING | 1 | 1 | | | | | | |
| 58 | 2 | 129155-51400 | DEFLECTOR | 1 | 1 | | | | | | |
| 59 | 2 | 158600-51410 | PLUG, DEFLECTOR | 1 | 1 | | | | | | |
| 60 | 2 | 158600-51420 | PLUG, DEFLECTOR | 1 | 1 | | | | | | |
| 61 | 2 | 129155-51450 | SHIM SET, ADJUSTING | 1 | 1 | | | | | | |
| 66 | 2 | 119717-51500 | RACK, CONTROL | 1 | 1 | | | | | | |
| 67 | 2 | 129155-51521 | BUSH, RACK | 1 | 1 | | | | | | |
| 68 | 2 | 129155-51530 | SPACER | 1 | 1 | | | | | | |
| 69 | 2 | 129155-51540 | CIRCLIP | 1 | 1 | | | | | | |
| 70 | 2 | 129155-51550 | PINION, CONTROL | 3 | 3 | | | | | | |
| 71 | 2 | 129100-51560 | PINION | 3 | 3 | | | | | | |
| 72 | 2 | 129100-51570 | SCREW | 3 | 3 | | | | | | |
| 73 | 2 | 158600-51570 | PLUG | 1 | 1 | | | | | | |
| 74 | 2 | 129155-51580 | O-RING | 1 | 1 | | | | | | |
| 75 | 2 | 129155-51591 | SPRING, RACK | 1 | 1 | | | | | | |
| 76 | 2 | 129155-51701 | COVER | 1 | 1 | | | | | | |
| 77 | 2 | 119717-51710 | GASKET | 1 | 1 | | | | | | |
| 77-1 | 3 | 119717-51711 | GASKET | 1 | 1 | | | | | | N |
| | | (A=E25781) (B=E24282) | | | | | | | | | |
| 78 | 2 | 119717-51750 | COVER | 1 | 1 | | | | | | |
| 79 | 2 | 119717-51760 | GASKET | 1 | 1 | | | | | | |

Remarks
(1) GOVERNOR ASSY(FIG.12) IS
INCORPORATED IN THIS FOP.CMP
(REF.NO.1,2).

Fig.11. FUEL INJECTION PUMP

(A)=3TNV76-PIKA
 (B)=3TNV76-QIKA
 (C)=

(D)=
 (E)=
 (F)=



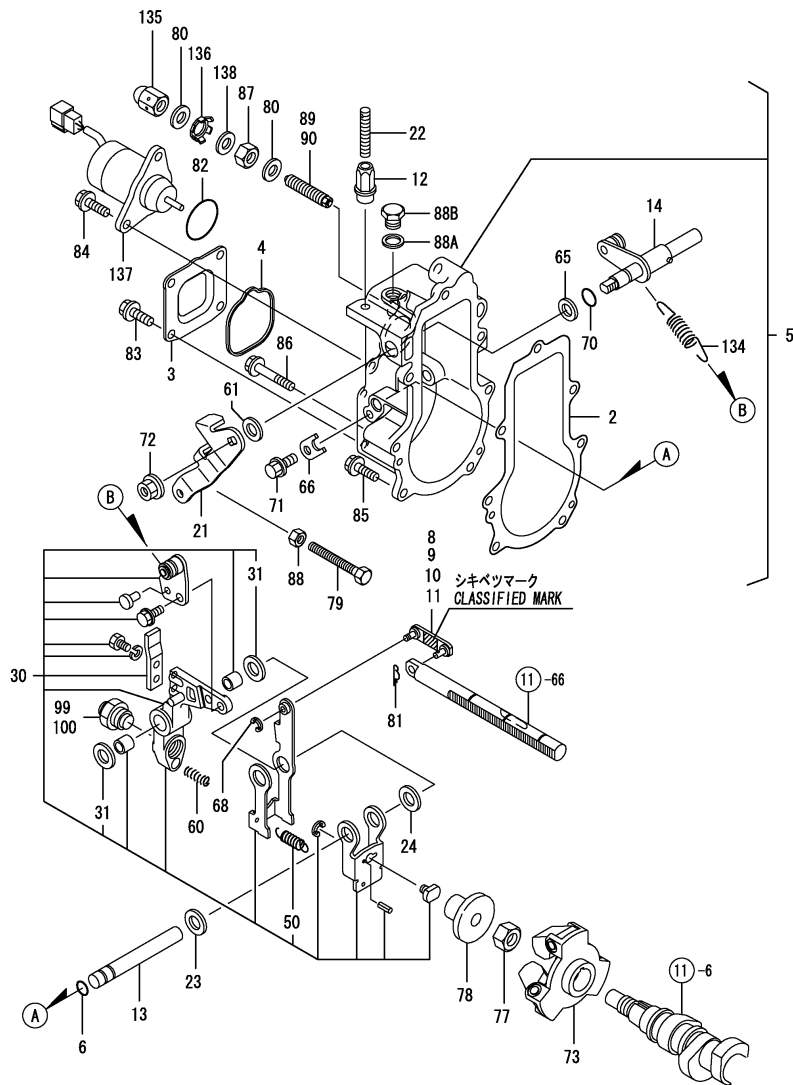
| No. | Lev. | Parts No. | Description | Q'ty | | | | | | I | R |
|------|------|---------------------------------------|---------------------|------|-----|-----|-----|-----|-----|---|---|
| | | | | (A) | (B) | (C) | (D) | (E) | (F) | | |
| 79-1 | 3 | 119717-51761 (A=E25781) (B=E24282) | GASKET | 1 | 1 | | | | | | N |
| 80 | 2 | 158600-51790 | STOOPER, RACK | 1 | 1 | | | | | | |
| 81 | 2 | 129156-51910 (A=E25781) (B=E24282) | LABEL, CAUTION | 1 | 1 | | | | | | Z |
| 82 | 2 | 22190-160002 | WASHER, SEAL 16 | 1 | 1 | | | | | | |
| 83 | 2 | 22217-060000 | WASHER, SPRING 6 | 2 | 2 | | | | | | |
| 85 | 2 | 22351-050010 | PIN, SPRING 5.0X10 | 2 | 2 | | | | | | |
| 86 | 2 | 24101-060034 | BEARING, BALL 6003 | 1 | 1 | | | | | | |
| 87 | 2 | 24101-063034 | BEARING, BALL 6303 | 1 | 1 | | | | | | |
| 88 | 2 | 24316-000150 | O-RING, 4DP15.0 | 3 | 3 | | | | | | |
| 89 | 2 | 26022-050122 | SCREW, M5X12 | 8 | 8 | | | | | | |
| 90 | 2 | 26022-060162 | SCREW, M6X16 | 4 | 4 | | | | | | |
| 91 | 2 | 26106-050102 | BOLT, M5X 10 PLATED | 3 | 3 | | | | | | |
| 92 | 2 | 26716-060002 | NUT, M6 | 2 | 2 | | | | | | |
| 94 | 2 | 119717-51480 | COLLAR | 1 | 1 | | | | | | |
| 95 | 2 | 119717-51490 | BOLT | 1 | 1 | | | | | | |
| 99 | 2 | 129155-52051 | GASKET | 1 | 1 | | | | | | |
| 100 | 2 | 129100-52200 | COVER | 1 | 1 | | | | | | |

Remarks
 (1) GOVERNOR ASSY(FIG.12) IS
 INCORPORATED IN THIS FOP.CMP
 (REF.NO.1,2).

Fig.12. GOVERNOR

(A)=3TNV76-PIKA
(B)=3TNV76-QIKA
(C)=

(D)=
(E)=
(F)=



| No. | Lev. | Parts No. | Description | Q'ty | | | | | | I | R |
|------|------|--------------|----------------------|--------------|--------------|-----|-----|-----|-----|---|---|
| | | | | (A) | (B) | (C) | (D) | (E) | (F) | | |
| 2 | 2 | 119717-61050 | GASKET | 1 | 1 | | | | | | |
| 3 | 2 | 119717-61060 | COVER, GOVERNOR CASE | 1 | 1 | | | | | | |
| 4 | 2 | 119717-61070 | GASKET | 1 | 1 | | | | | | |
| 5 | 2 | 119740-61100 | CASE ASSY, GOVERNOR | 1 | 1 | | | | | | |
| 6 | 3 | 129155-51280 | O-RING, S6 | 1 | 1 | | | | | | |
| 8 | 3 | 119717-61120 | LINK, MARK :3 | 1 | 1 | | | | | | 1 |
| 9 | 3 | 119717-61130 | LINK, MARK 98 | 1 | 1 | | | | | | 1 |
| 10 | 3 | 119717-61140 | LINK, MARK 88 | 1 | 1 | | | | | | 1 |
| 11 | 3 | 119717-61150 | LINK, MARK 03 | 1 | 1 | | | | | | 1 |
| 12 | 3 | 129209-61370 | NUT, M6 | 1 | 1 | | | | | | |
| 13 | 3 | 129052-61390 | SHAFT | 1 | 1 | | | | | | |
| 14 | 3 | 119717-61400 | SHAFT ASSY | 1 | 1 | | | | | | |
| 21 | 3 | 119740-61440 | LEVER, CONTROL | 1 | 1 | | | | | | |
| 22 | 3 | 129155-61450 | BOLT, LIMITER | 1 | 1 | | | | | | |
| 23 | 3 | 129156-61460 | SHIM, T=0.6 | 1 | 1 | | | | | | |
| 24 | 3 | 129155-61480 | SPACER ASSY | 1 | 1 | | | | | | |
| 30 | 3 | 119717-61500 | LEVER ASSY, GOVERNOR | 1 | 1 | | | | | | |
| 31 | 4 | 174307-51700 | SHIM SET | 2 | 2 | | | | | | |
| 50 | 4 | 129486-61540 | SPRING, SET | 1 | 1 | | | | | | |
| 60 | 3 | 129100-61650 | SPRING, CONTROLLER | 1 | 1 | | | | | | |
| 61 | 3 | 158552-61700 | SHIM SET | 1 | 1 | | | | | | |
| 65 | 3 | 158552-61710 | SHIM, T=1.0 | 1 | 1 | | | | | | |
| 66 | 3 | 119660-61901 | RETAINER, SHAFT | 1 | 1 | | | | | | |
| 68 | 3 | 22272-000030 | RING, E- 3 | 1 | 1 | | | | | | |
| 70 | 3 | 24341-000070 | O-RING, 1AS7.0 | 1 | 1 | | | | | | |
| 71 | 3 | 26106-060102 | BOLT, M6X 10 PLATED | 1 | 1 | | | | | | |
| 72 | 3 | 26366-080002 | NUT, M8 | 1 | 1 | | | | | | |
| 73 | 2 | 119717-61200 | WEIGHT ASSY,GOVERNOR | 1 | 1 | | | | | | |
| 77 | 2 | 119660-61300 | NUT | 1 | 1 | | | | | | |
| 78 | 2 | 129155-61341 | SLEEVE | 1 | 1 | | | | | | |
| 79 | 2 | 129155-61460 | BOLT, IDLE | 1 | 1 | | | | | | |
| 80 | 2 | 22190-120002 | WASHER, SEAL 12 | 2 | 2 | | | | | | |
| 81 | 2 | 22372-040000 | PIN, SNAP 4 | 1 | 1 | | | | | | |
| 82 | 2 | 24341-000280 | O-RING, 1AS28.0 | 1 | 1 | | | | | | |
| 82-1 | 2 | 158552-61900 | O-RING | 1 | 1 | | | | | | N |
| | | | | (A=EXXXXX) | (B=EXXXXX) | | | | | | |
| 83 | 2 | 26106-060102 | BOLT, M6X 10 PLATED | 4 | 4 | | | | | | |
| 84 | 2 | 26106-060142 | BOLT, M6X 14 PLATED | 2 | 2 | | | | | | |
| 85 | 2 | 26106-060202 | BOLT, M6X 20 PLATED | 4 | 4 | | | | | | |
| 86 | 2 | 26106-060452 | BOLT, M6X 45 PLATED | 3 | 3 | | | | | | |
| 87 | 2 | 26736-120002 | NUT, M12 | 1 | 1 | | | | | | |
| 88 | 2 | 26756-060002 | NUT, LOCK M6 | 1 | 1 | | | | | | |
| 88A | 2 | 22190-100002 | WASHER, SEAL 10 | 1 | 1 | | | | | | W |
| | | | | (A=FROM 1ST) | (B=FROM 1ST) | | | | | | |
| 88B | 2 | 23887-100002 | PLUG, 10 | 1 | 1 | | | | | | W |
| | | | | (A=FROM 1ST) | (B=FROM 1ST) | | | | | | |
| 89 | 2 | 158601-61710 | LIMITER ASSY, FUEL | 1 | | | | | | | |
| 90 | 2 | 158601-61790 | LIMITER ASSY, FUEL | | 1 | | | | | | |
| 99 | 2 | 119515-61550 | ANGLEICH ASSY | 1 | | | | | | | |
| 100 | 2 | 119740-61550 | ANGLEICH ASSY | | 1 | | | | | | |
| 134 | 2 | 171353-61700 | SPRING, GOVERNOR | 1 | 1 | | | | | | |

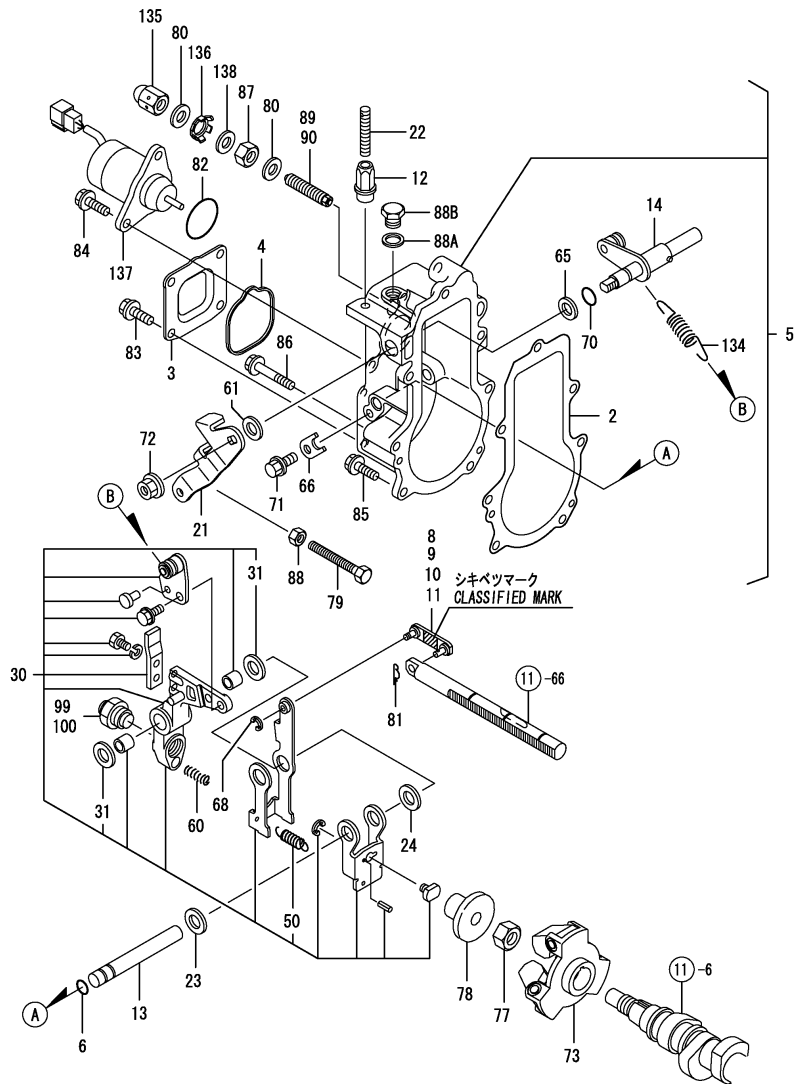
Remarks

(1) SELECTIVE PARTS: CERTAIN THE CLASSIFICATION MARK, THEN PLACE YOUR ORDER.(REF. TO ILLUSTRATION)
* THIS FIGURE(GOVERNOR ASSY)IS INCORPORATED IN THE FUEL INJECTION PUMP ASSY(FIG.11).

Fig.12. GOVERNOR

(A)=3TNV76-PIKA
 (B)=3TNV76-QIKA
 (C)=

(D)=
 (E)=
 (F)=

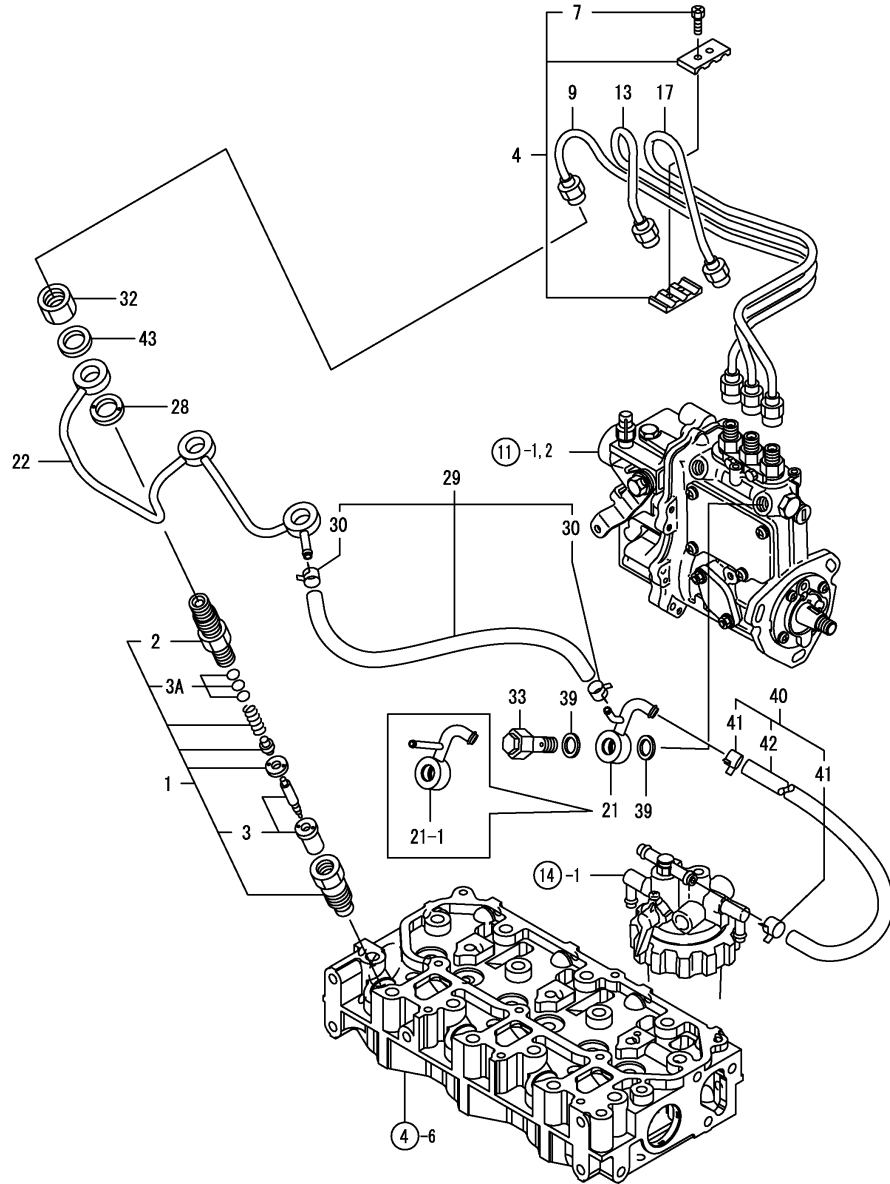


| No. | Lev. | Parts No. | Description | Q'ty | | | | | | I | R |
|-----|------|--------------|----------------|------|-----|-----|-----|-----|-----|---|---|
| | | | | (A) | (B) | (C) | (D) | (E) | (F) | | |
| 135 | 2 | 129209-61930 | NUT, CAP | 1 | 1 | | | | | | |
| 136 | 2 | 129209-61970 | PLATE | 1 | 1 | | | | | | |
| 137 | 2 | 119233-77932 | SOLENOID, STOP | 1 | 1 | | | | | | |
| 138 | 2 | 23414-120016 | GASKET, 12X1.0 | 1 | 1 | | | | | | |

Remarks

(1) SELECTIVE PARTS: CERTAIN THE CLASSIFICATION MARK, THEN PLACE YOUR ORDER.(REF. TO ILLUSTRATION)
 * THIS FIGURE(GOVERNOR ASSY)IS INCORPORATED IN THE FUEL INJECTION PUMP ASSY(FIG.11).

Fig.13. FUEL INJECTION VALVE



(A)=3TNV76-PIKA
(B)=3TNV76-QIKA
(C)=

(D)=
(E)=
(F)=

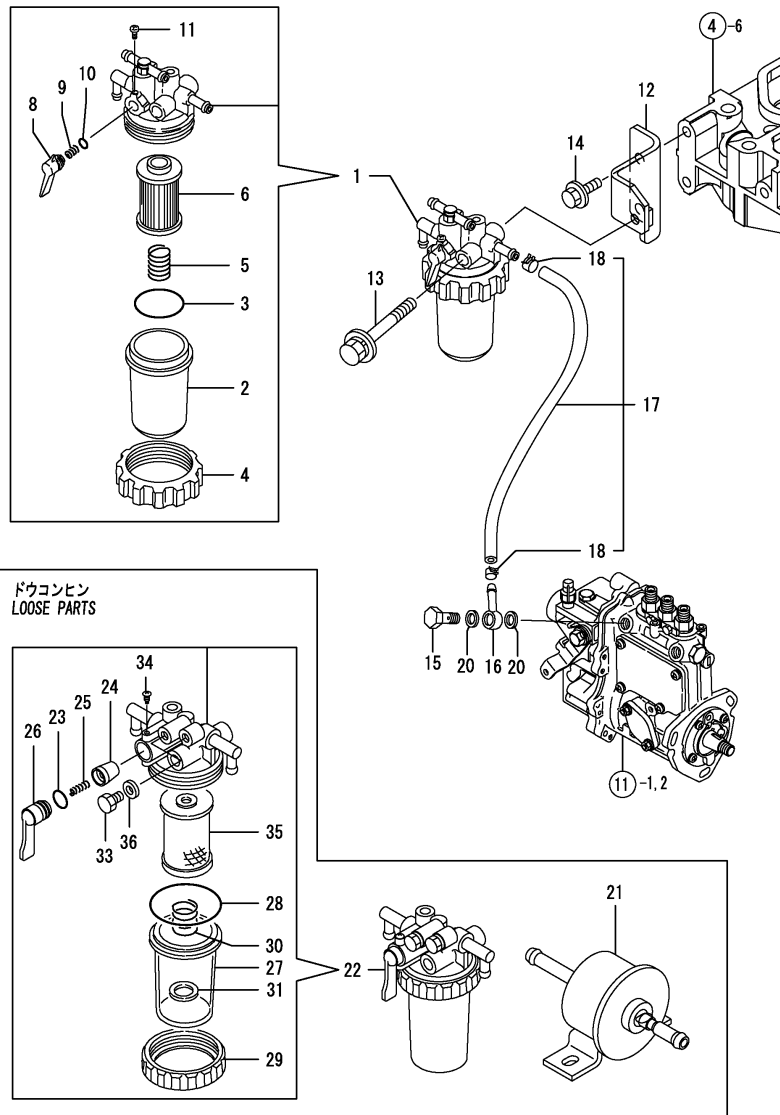
| No. | Lev. | Parts No. | Description | Q'ty | | | | | | I | R |
|------|------|---------------------------|----------------------|------|-----|-----|-----|-----|-----|---|-----|
| | | | | (A) | (B) | (C) | (D) | (E) | (F) | | |
| 1 | 1 | 119717-53001 | VALVE ASSY,INJECTION | 3 | 3 | | | | | | |
| 2 | 2 | 118200-53010 | HOLDER, NOZZLE | 3 | 3 | | | | | | |
| 3 | 2 | 119717-53010 | VALVE ASSY,INJECTION | 3 | 3 | | | | | | |
| 3A | 2 | 129901-53800 | SHIM SET, ADJUSTING | 3 | 3 | | | | | | W 1 |
| | | (A=FROM 1ST) (B=FROM 1ST) | | | | | | | | | |
| 4 | 1 | 129150-59120 | RETAINER, PIPE | 1 | 1 | | | | | | |
| 7 | 2 | 129150-59131 | BOLT, M4X14 | 2 | 2 | | | | | | |
| 9 | 1 | 119717-59810 | PIPE ASSY, INJECTION | 1 | 1 | | | | | | |
| 13 | 1 | 119717-59820 | PIPE ASSY, INJECTION | 1 | 1 | | | | | | |
| 17 | 1 | 119717-59830 | PIPE ASSY, INJECTION | 1 | 1 | | | | | | |
| 21 | 1 | 119515-59580 | JOINT, OVER FLOW | 1 | 1 | | | | | | |
| 21-1 | 1 | 119515-59581 | JOINT, OVER FLOW | 1 | 1 | | | | | | S |
| | | (A=E19940) (B=E18571) | | | | | | | | | |
| 22 | 1 | 119717-59510 | PIPE ASSY, RETURN | 1 | 1 | | | | | | |
| 28 | 1 | 129901-59560 | GASKET | 3 | 3 | | | | | | |
| 29 | 1 | 119717-59570 | PIPE ASSY, RETURN | 1 | 1 | | | | | | |
| 29-1 | 1 | 119540-59570 | PIPE ASSY, RETURN | 1 | 1 | | | | | | N |
| | | (A=E10889) (B=E08250) | | | | | | | | | |
| 30 | 2 | 124066-59100 | CLIP, HOSE 8 | 2 | 2 | | | | | | |
| 32 | 1 | 119620-59700 | NUT, NOZZLE | 3 | 3 | | | | | | |
| 33 | 1 | 119813-59950 | VALVE ASSY, CHECK | 1 | 1 | | | | | | |
| 39 | 1 | 22190-120002 | WASHER, SEAL 12 | 2 | 2 | | | | | | |
| 40 | 1 | 129210-59060 | PIPE ASSY, FUEL L240 | 1 | 1 | | | | | | |
| 41 | 2 | 124766-59050 | CLIP, HOSE 12 | 2 | 2 | | | | | | |
| 42 | 2 | 171051-59050 | PIPE, FUEL L=240 | 1 | 1 | | | | | | |
| 43 | 1 | 22190-120002 | WASHER, SEAL 12 | 3 | 3 | | | | | | W |
| | | (A=FROM 1ST) (B=FROM 1ST) | | | | | | | | | |

Remarks
(1) REPAIR PART.

Fig.14. FUEL LINE

(A)=3TNV76-PIKA
 (B)=3TNV76-QIKA
 (C)=

(D)=
 (E)=
 (F)=



| No. | Lev. | Parts No. | Description | Q'ty | | | | | | I | R |
|-----|------|--------------|----------------------|------|-----|-----|-----|-----|-----|---|---|
| | | | | (A) | (B) | (C) | (D) | (E) | (F) | | |
| 1 | 1 | 119740-55600 | FILTER ASSY, FUEL | 1 | 1 | | | | | | |
| 2 | 2 | 121254-55510 | COVER | 1 | 1 | | | | | | |
| 3 | 2 | 102103-55520 | O-RING | 1 | 1 | | | | | | |
| 4 | 2 | 110250-55610 | RING, RETAINING | 1 | 1 | | | | | | |
| 5 | 2 | 121250-55620 | SPRING | 1 | 1 | | | | | | |
| 6 | 2 | 119810-55650 | ELEMENT | 1 | 1 | | | | | | |
| 8 | 2 | 119810-55340 | LEVER | 1 | 1 | | | | | | |
| 9 | 2 | 104200-55330 | SPRING, VALVE | 1 | 1 | | | | | | |
| 10 | 2 | 24311-240100 | O-RING, 1AP10A | 1 | 1 | | | | | | |
| 11 | 2 | 104200-55750 | SCREW, M4 | 1 | 1 | | | | | | |
| 12 | 1 | 119740-55660 | BRACKET, FILTER | 1 | 1 | | | | | | |
| 13 | 1 | 26014-080702 | BOLT, M8X 70 | 1 | 1 | | | | | | |
| 14 | 1 | 26106-080142 | BOLT, M8X 14 PLATED | 2 | 2 | | | | | | |
| 15 | 1 | 103854-39140 | BOLT, PIPE JOINT | 1 | 1 | | | | | | |
| 16 | 1 | 101304-59020 | JOINT, PIPE 12 | 1 | 1 | | | | | | |
| 17 | 1 | 129210-59030 | PIPE ASSY, FUEL | 1 | 1 | | | | | | |
| 18 | 2 | 124766-59050 | CLIP, HOSE 12 | 2 | 2 | | | | | | |
| 20 | 1 | 22190-120002 | WASHER, SEAL 12 | 2 | 2 | | | | | | |
| 21 | 1 | 119225-52102 | PUMP ASSY, FUEL FEED | 1 | 1 | | | | | | |
| 22 | 1 | 129335-55700 | SEPARATOR ASSY,WATER | 1 | 1 | | | | | | |
| 23 | 2 | 24311-240100 | O-RING, 1AP10A | 1 | 1 | | | | | | |
| 24 | 2 | 104200-55321 | VALVE, TAPER | 1 | 1 | | | | | | |
| 25 | 2 | 104200-55330 | SPRING, VALVE | 1 | 1 | | | | | | |
| 26 | 2 | 104200-55341 | HANDLE | 1 | 1 | | | | | | |
| 27 | 2 | 124064-55510 | COVER | 1 | 1 | | | | | | |
| 28 | 2 | 102103-55520 | O-RING | 1 | 1 | | | | | | |
| 29 | 2 | 110250-55610 | RING, RETAINING | 1 | 1 | | | | | | |
| 30 | 2 | 121257-55720 | SPRING | 1 | 1 | | | | | | |
| 31 | 2 | 121257-55731 | FLOAT | 1 | 1 | | | | | | |
| 33 | 2 | 101720-55750 | PLUG, 6 | 2 | 2 | | | | | | |
| 34 | 2 | 104200-55750 | SCREW, M4 | 1 | 1 | | | | | | |
| 35 | 2 | 171081-55910 | SCREEN | 1 | 1 | | | | | | |
| 36 | 2 | 23418-060000 | GASKET, 6X1.0 | 2 | 2 | | | | | | |

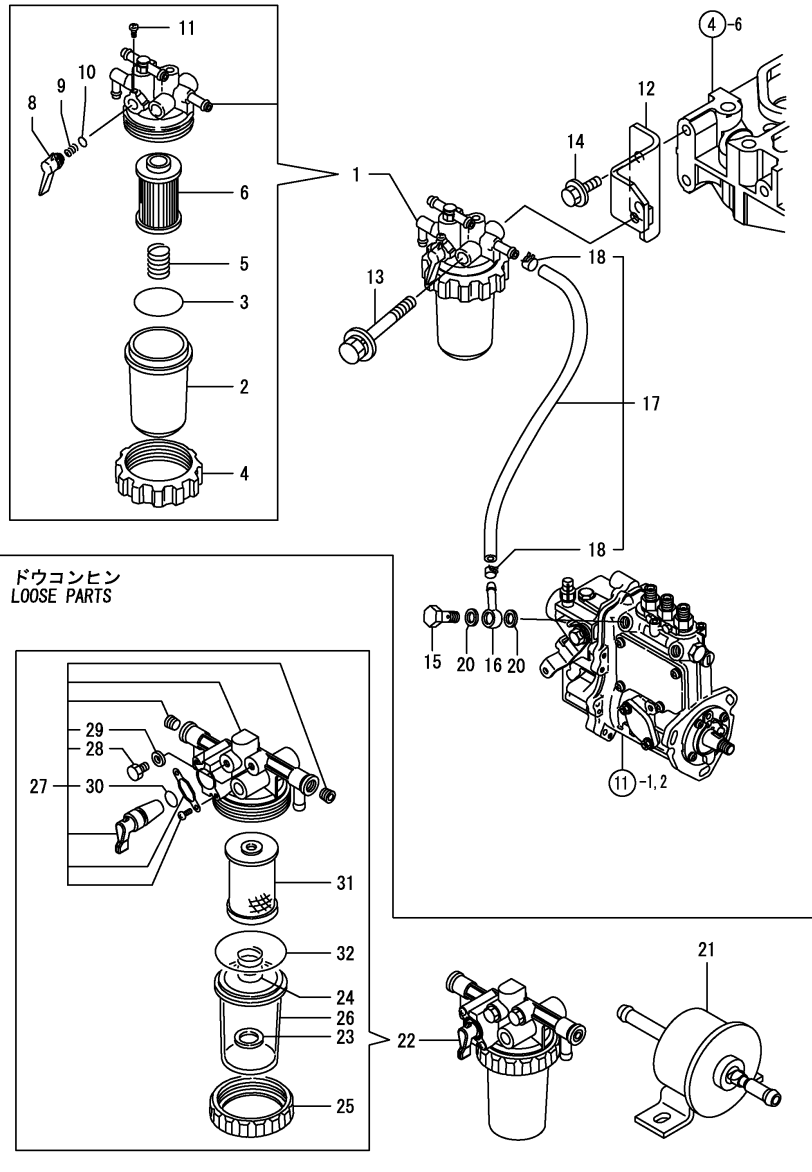
Remarks

*This item is applicable to [(A)(B)=EXXXXX-1] or previous machines. Refer to Fig.19.

Fig.18. (14A)FUEL LINE

(A)=3TNV76-PIKA
 (B)=3TNV76-QIKA
 (C)=

(D)=
 (E)=
 (F)=

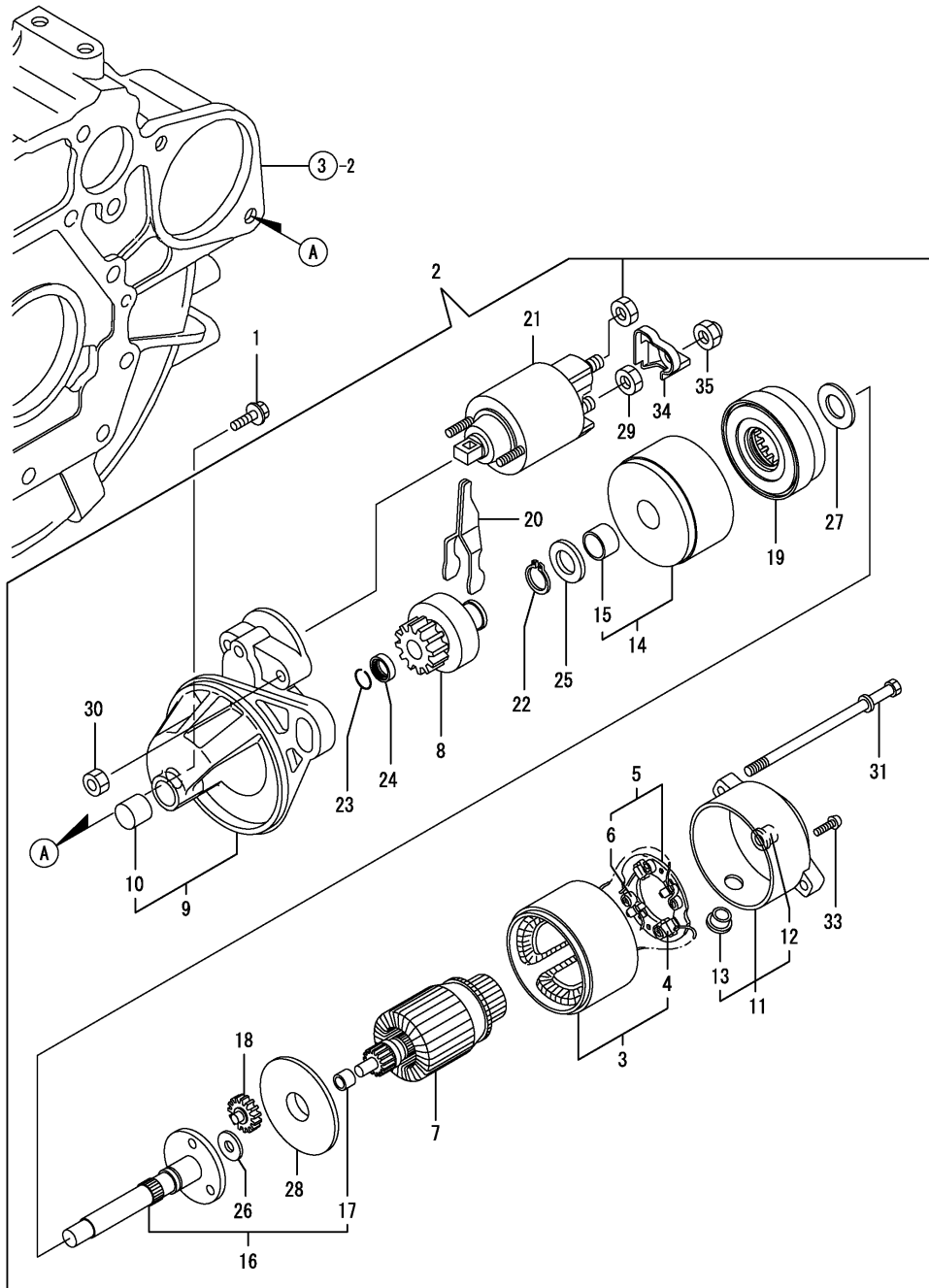


| No. | Lev. | Parts No. | Description | Q'ty | | | | | | I | R |
|-----|------|--------------|-----------------------|------|-----|-----|-----|-----|-----|---|---|
| | | | | (A) | (B) | (C) | (D) | (E) | (F) | | |
| 1 | 1 | 119740-55600 | FILTER ASSY, FUEL | 1 | 1 | | | | | | |
| 2 | 2 | 121254-55510 | COVER | 1 | 1 | | | | | | |
| 3 | 2 | 102103-55520 | O-RING | 1 | 1 | | | | | | |
| 4 | 2 | 110250-55610 | RING, RETAINING | 1 | 1 | | | | | | |
| 5 | 2 | 121250-55620 | SPRING | 1 | 1 | | | | | | |
| 6 | 2 | 119810-55650 | ELEMENT | 1 | 1 | | | | | | |
| 8 | 2 | 119810-55340 | LEVER | 1 | 1 | | | | | | |
| 9 | 2 | 104200-55330 | SPRING, VALVE | 1 | 1 | | | | | | |
| 10 | 2 | 24311-240100 | O-RING, 1AP10A | 1 | 1 | | | | | | |
| 11 | 2 | 104200-55750 | SCREW, M4 | 1 | 1 | | | | | | |
| 12 | 1 | 119740-55660 | BRACKET, FILTER | 1 | 1 | | | | | | |
| 13 | 1 | 26014-080702 | BOLT, M8X 70 | 1 | 1 | | | | | | |
| 14 | 1 | 26106-080142 | BOLT, M8X 14 PLATED | 2 | 2 | | | | | | |
| 15 | 1 | 103854-39140 | BOLT, PIPE JOINT | 1 | 1 | | | | | | |
| 16 | 1 | 101304-59020 | JOINT, PIPE 12 | 1 | 1 | | | | | | |
| 17 | 1 | 129210-59030 | PIPE ASSY, FUEL | 1 | 1 | | | | | | |
| 18 | 2 | 124766-59050 | CLIP, HOSE 12 | 2 | 2 | | | | | | |
| 20 | 1 | 22190-120002 | WASHER, SEAL 12 | 2 | 2 | | | | | | |
| 21 | 1 | 119225-52102 | PUMP ASSY, FUEL FEED | 1 | 1 | | | | | | |
| 22 | 1 | 129335-55750 | SEPARATOR ASSY, WATER | 1 | 1 | | | | | | |
| 23 | 2 | 129053-55640 | FLOAT | 1 | 1 | | | | | | |
| 24 | 2 | 129053-55650 | SPRING, SCREEN | 1 | 1 | | | | | | |
| 25 | 2 | 119833-55660 | RING, RETAINING | 1 | 1 | | | | | | |
| 26 | 2 | 129335-55740 | CUP | 1 | 1 | | | | | | |
| 27 | 2 | 129335-55770 | BODY ASSY | 1 | 1 | | | | | | |
| 28 | 3 | 129242-55750 | VALVE, AIR VENT | 2 | 2 | | | | | | |
| 29 | 3 | 129242-55760 | GASKET | 2 | 2 | | | | | | |
| 30 | 3 | 24311-000110 | O-RING, 1AP11.0 | 1 | 1 | | | | | | |
| 31 | 2 | 129335-55780 | ELEMENT ASSY | 1 | 1 | | | | | | |
| 32 | 2 | 24311-000440 | O-RING, 1AP44.0 | 1 | 1 | | | | | | |

Remarks

*This item is applicable to [(A)(B)=EXXXXX] or following machines. Refer to Fig.14.

Fig.15. STARTING MOTOR

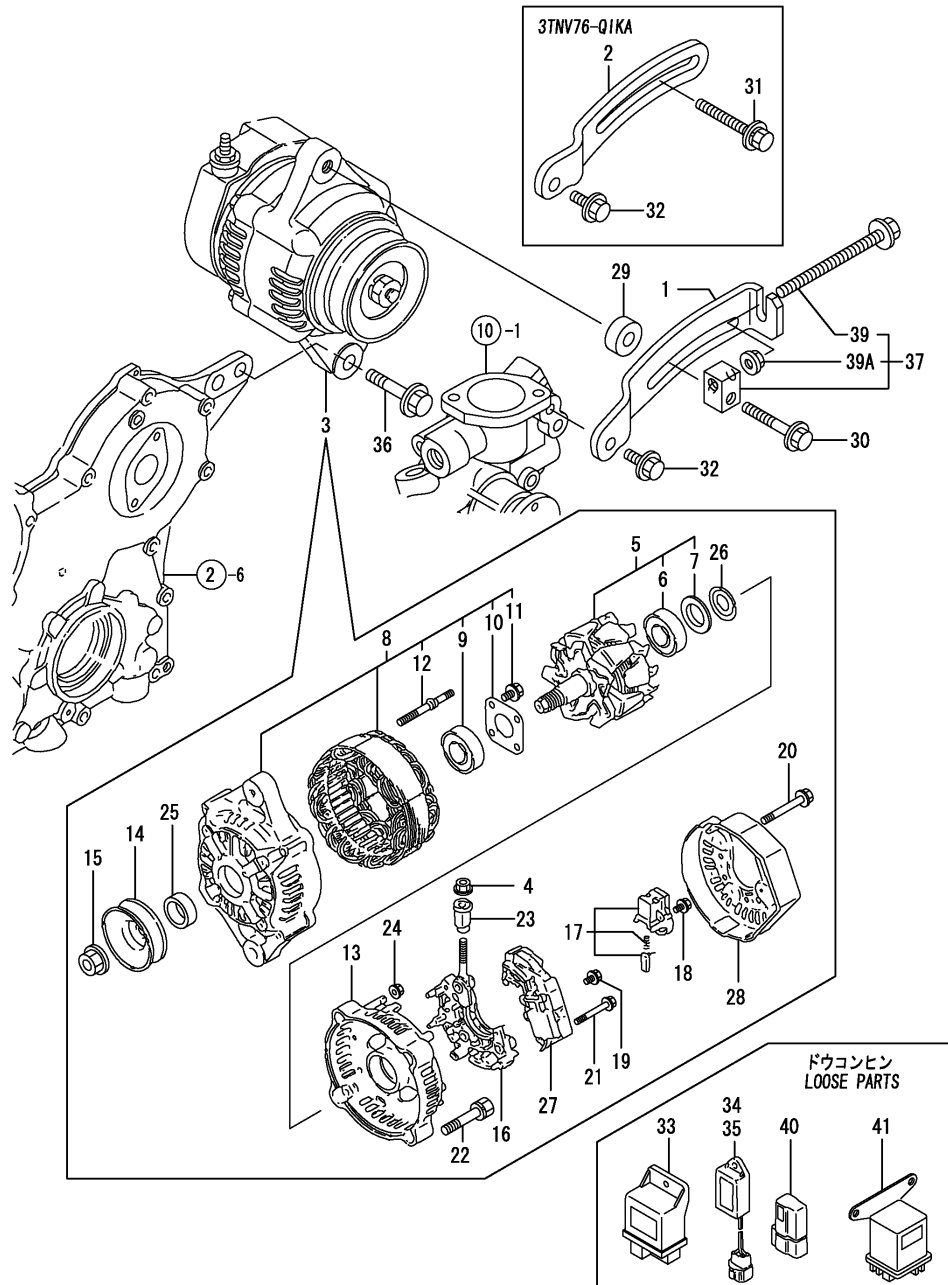


(A)=3TNV76-PIKA
 (B)=3TNV76-QIKA
 (C)=

(D)=
 (E)=
 (F)=

| No. | Lev. | Parts No. | Description | Q'ty | | | | | | I | R |
|-----|------|--------------|----------------------|------|-----|-----|-----|-----|-----|---|---|
| | | | | (A) | (B) | (C) | (D) | (E) | (F) | | |
| 1 | 1 | 26106-100252 | BOLT, M10X 25 PLATED | 2 | 2 | | | | | | |
| 2 | 1 | 119717-77010 | STARTER, P1.1 | 1 | 1 | | | | | | |
| 3 | 2 | X0281007750 | YOKE ASSY | 1 | 1 | | | | | | |
| 4 | 3 | X0280996180 | STARTER KIT | 2 | 2 | | | | | | |
| 5 | 2 | X0285105190 | HOLDER ASSY | 1 | 1 | | | | | | |
| 6 | 3 | X0285205030 | SPRING | 4 | 4 | | | | | | |
| 7 | 2 | X0282005991 | ARMATURE ASSY | 1 | 1 | | | | | | |
| 8 | 2 | X0283006960 | CLUTCH ASSY | 1 | 1 | | | | | | |
| 9 | 2 | X4284001590 | HOUSING ASSY,STARTER | 1 | 1 | | | | | | |
| 10 | 3 | X9491050100 | BEARING, NEEDLE | 1 | 1 | | | | | | |
| 11 | 2 | X0285007030 | FRAME ASSY. | 1 | 1 | | | | | | |
| 12 | 3 | X9491040990 | BEARING | 1 | 1 | | | | | | |
| 13 | 3 | X0280626010 | COVER | 1 | 1 | | | | | | |
| 14 | 2 | X0284105040 | BEARING ASSY | 1 | 1 | | | | | | |
| 15 | 3 | X9491034330 | BEARING | 1 | 1 | | | | | | |
| 16 | 2 | X0286105010 | SHAFT ASSY | 1 | 1 | | | | | | |
| 17 | 3 | X9491034320 | BEARING | 1 | 1 | | | | | | |
| 18 | 2 | X0286305010 | GEAR | 3 | 3 | | | | | | |
| 19 | 2 | X0286355010 | GEAR | 1 | 1 | | | | | | |
| 20 | 2 | X0287405140 | LEVER | 1 | 1 | | | | | | |
| 21 | 2 | X0534007800 | SWITCH ASSY | 1 | 1 | | | | | | |
| 22 | 2 | X9055715000 | RING | 1 | 1 | | | | | | |
| 23 | 2 | X9490721360 | RING | 1 | 1 | | | | | | |
| 24 | 2 | X0280210331 | NUT | 1 | 1 | | | | | | |
| 25 | 2 | X9490138110 | WASHER | 1 | 1 | | | | | | |
| 26 | 2 | X9490138090 | WASHER | 1 | 1 | | | | | | |
| 27 | 2 | X9490138100 | WASHER | 1 | 1 | | | | | | |
| 28 | 2 | X0284525010 | PLATE | 1 | 1 | | | | | | |
| 29 | 2 | X9490562360 | NUT | 1 | 1 | | | | | | |
| 30 | 2 | X9490560750 | NUT | 2 | 2 | | | | | | |
| 31 | 2 | X9490423420 | BOLT, THROUGH | 2 | 2 | | | | | | |
| 33 | 2 | X9490065670 | SCREW, M4X6 | 2 | 2 | | | | | | |
| 34 | 2 | X0280335350 | COVER, TERMINAL | 1 | 1 | | | | | | |
| 35 | 2 | X1289510130 | NUT | 1 | 1 | | | | | | |

Fig.16. GENERATOR



(A)=3TNV76-PIKA
(B)=3TNV76-Q1KA
(C)=

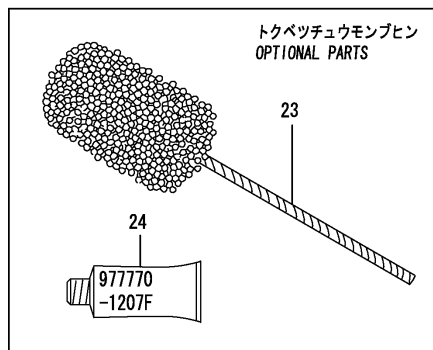
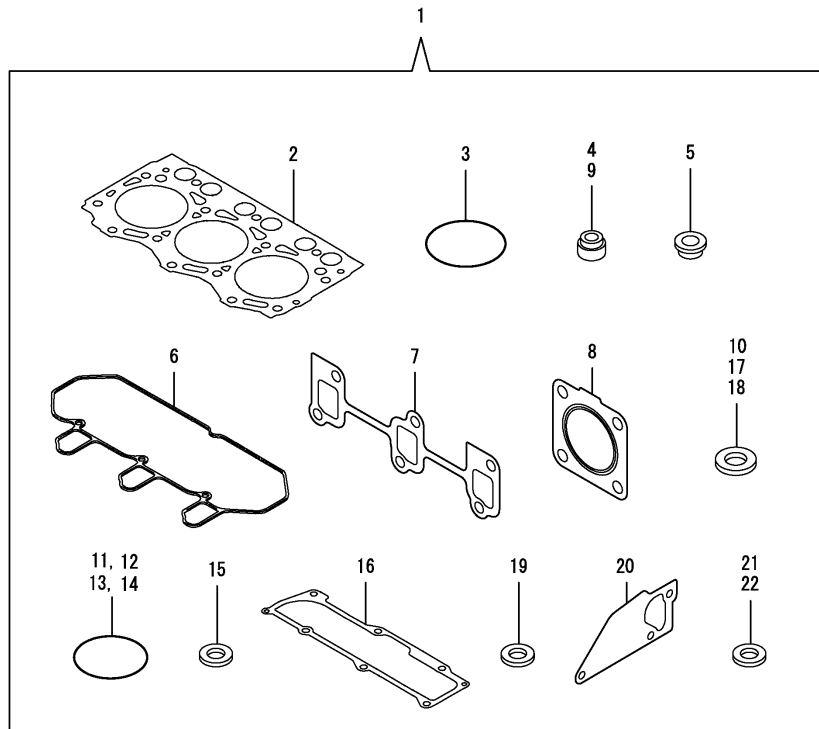
(D)=
(E)=
(F)=

| No. | Lev. | Parts No. | Description | Q'ty | | | | | | I | R |
|------|------|---------------------------|----------------------|------|-----|-----|-----|-----|-----|---|---|
| | | | | (A) | (B) | (C) | (D) | (E) | (F) | | |
| 1 | 1 | 119740-77310 | ADJUSTER | 1 | | | | | | | |
| 2 | 1 | 119717-77340 | ADJUSTER | | 1 | | | | | | |
| 3 | 1 | 129240-77200 | ALTERNATOR | 1 | 1 | | | | | | |
| 4 | 2 | 129240-79310 | NUT | 1 | 1 | | | | | | |
| 5 | 2 | 119620-77380 | ROTOR ASSY | 1 | 1 | | | | | | |
| 6 | 3 | 126501-79240 | BALL BEARING | 1 | 1 | | | | | | |
| 6-1 | 3 | 123501-79240 | BEARING, BALL | 1 | 1 | | | | | | N |
| | | (A=FROM 1ST) (B=FROM 1ST) | | | | | | | | | |
| 7 | 3 | 119620-79250 | COVER, BEARING | 1 | 1 | | | | | | |
| 8 | 2 | 119620-77421 | FRAME ASSY, DRIVE | 1 | 1 | | | | | | |
| 9 | 3 | 119620-79200 | BALL BEARING | 1 | 1 | | | | | | |
| 10 | 3 | 119620-79210 | PLATE | 1 | 1 | | | | | | |
| 11 | 3 | 119620-79220 | SCREW | 4 | 4 | | | | | | |
| 12 | 3 | 119620-79230 | BOLT, STUD | 2 | 2 | | | | | | |
| 13 | 2 | 119620-77440 | FLAME ASSY, REAR | 1 | 1 | | | | | | |
| 14 | 2 | 119620-77461 | PULLEY | 1 | 1 | | | | | | |
| 15 | 2 | 119620-77471 | NUT | 1 | 1 | | | | | | |
| 16 | 2 | 119620-79260 | HOLDER | 1 | 1 | | | | | | |
| 17 | 2 | 129052-79270 | HOLDER, BRUSH | 1 | 1 | | | | | | |
| 18 | 2 | 119620-79290 | SCREW | 6 | 6 | | | | | | |
| 19 | 2 | 119620-79300 | SCREW | 1 | 1 | | | | | | |
| 20 | 2 | 119620-79310 | BOLT | 3 | 3 | | | | | | |
| 21 | 2 | 119620-79320 | SCREW W/WASHER | 2 | 2 | | | | | | |
| 22 | 2 | 119620-79330 | BOLT | 2 | 2 | | | | | | |
| 23 | 2 | 119620-79340 | INSULATION BUSH | 1 | 1 | | | | | | |
| 24 | 2 | 119620-79350 | NUT | 2 | 2 | | | | | | |
| 25 | 2 | 119620-77490 | COLLAR | 1 | 1 | | | | | | |
| 26 | 2 | 119620-79360 | WASHER, THRUST | 1 | 1 | | | | | | |
| 27 | 2 | 129240-77710 | REGULATOR ASSY | 1 | 1 | | | | | | |
| 28 | 2 | 129240-79300 | COVER | 1 | 1 | | | | | | |
| 29 | 1 | 119940-77270 | SPACER, GENERATOR | 1 | 1 | | | | | | |
| 30 | 1 | 26106-080552 | BOLT, M8X 55 PLATED | 1 | | | | | | | |
| 31 | 1 | 119802-77340 | BOLT, ADJUSTER | | 1 | | | | | | |
| 31-1 | 1 | 129972-77341 | BOLT, ADJUSTER L=50 | | 1 | | | | | | N |
| | | (B=E07823) | | | | | | | | | |
| 32 | 1 | 26106-080202 | BOLT, M8X 20 PLATED | 1 | 1 | | | | | | |
| 33 | 1 | 119802-77200 | RELAY, SAFETY | 1 | 1 | | | | | | |
| 34 | 1 | 129211-77920 | TIMER | 1 | 1 | | | | | | |
| 35 | 1 | 129155-77925 | TIMER | 1 | 1 | | | | | | |
| 36 | 1 | 26106-100502 | BOLT, M10X 50 PLATED | 1 | 1 | | | | | | |
| 37 | 1 | 119624-77351 | BLOCK ASSY, ADJUSTER | 1 | | | | | | | |
| 39 | 2 | 26106-081004 | BOLT, M8X100 PLATED | 1 | | | | | | | |
| 39A | 2 | 26306-080002 | NUT, M8 | 1 | | | | | | | W |
| | | (A=E25781) | | | | | | | | | |
| 40 | 1 | 119643-66900 | DIODE | 1 | 1 | | | | | | |
| 41 | 1 | 119650-77910 | RELAY ASSY, GLOW | 1 | 1 | | | | | | |

Fig.17. GASKET SET

(A)=3TNV76-PIKA
 (B)=3TNV76-QIKA
 (C)=

(D)=
 (E)=
 (F)=



| No. | Lev. | Parts No. | Description | Q'ty | | | | | | I | R |
|-----|------|--------------|--------------------|------|-----|-----|-----|-----|-----|---|---|
| | | | | (A) | (B) | (C) | (D) | (E) | (F) | | |
| 1 | 1 | 719717-92620 | GASKET SET | 1 | 1 | | | | | | 1 |
| 2 | 2 | 119717-01330 | GASKET, HEAD | 1 | 1 | | | | | | |
| 3 | 2 | 121850-51960 | O-RING | 1 | 1 | | | | | | |
| 4 | 2 | 119717-11340 | SEAL, VALVE STEM | 3 | 3 | | | | | | |
| 5 | 2 | 129901-11450 | PROTECTOR, NOZZLE | 3 | 3 | | | | | | |
| 6 | 2 | 119718-11310 | GASKET, BONNET | 1 | 1 | | | | | | |
| 7 | 2 | 119717-13110 | GASKET | 1 | 1 | | | | | | |
| 8 | 2 | 119515-13200 | GASKET, SILENCER | 1 | 1 | | | | | | |
| 9 | 2 | 119717-11350 | SEAL, VALVE STEM | 3 | 3 | | | | | | |
| 10 | 2 | 22190-080002 | WASHER, SEAL 6 | 4 | 4 | | | | | | |
| 11 | 2 | 24311-000320 | O-RING, 1AP32.0 | 2 | 2 | | | | | | |
| 12 | 2 | 119717-32060 | O-RING, P15.0 | 1 | 1 | | | | | | |
| 13 | 2 | 119624-32040 | O-RING, P12.0 | 1 | 1 | | | | | | |
| 14 | 2 | 119717-32050 | O-RING, P17.0 | 3 | 3 | | | | | | |
| 15 | 2 | 119600-11460 | GASKET, NOZZLE | 6 | 6 | | | | | | |
| 16 | 2 | 119717-11331 | GASKET | 1 | 1 | | | | | | |
| 17 | 2 | 129150-49360 | GASKET | 1 | 1 | | | | | | |
| 18 | 2 | 22190-120002 | WASHER, SEAL 12 | 7 | 7 | | | | | | |
| 19 | 2 | 129901-59560 | GASKET | 3 | 3 | | | | | | |
| 20 | 2 | 119717-42020 | GASKET, WATER PUMP | 1 | 1 | | | | | | |
| 21 | 2 | 23414-080000 | GASKET, 8X1.0 | 1 | 1 | | | | | | |
| 22 | 2 | 124465-44950 | GASKET, 16 | 1 | 1 | | | | | | |
| 23 | 1 | 129400-92420 | FLEX HORN | 1 | 1 | | | | | | 1 |
| 24 | 1 | 977770-1207F | GASKET.LIQUID | 1 | 1 | | | | | | 1 |

Remarks
 (1) OPTIONAL PART.

Parts No. Index

| Parts No. | Fig. No. | Ref. No. |
|--------------|----------|----------|
| 101304-59020 | 14 | 16 |
| | 18 | 16 |
| 101720-55750 | 14 | 33 |
| 102103-55520 | 14 | 3 |
| | | 28 |
| | 18 | 3 |
| 103854-39140 | 14 | 15 |
| | 18 | 15 |
| 104200-55321 | 14 | 24 |
| 104200-55330 | 14 | 9 |
| | | 25 |
| | 18 | 9 |
| 104200-55341 | 14 | 26 |
| 104200-55750 | 14 | 11 |
| | | 34 |
| | 18 | 11 |
| 105010-11490 | 4 | 5 |
| 105027-12570 | 5 | 4 |
| 105027-12580 | 5 | 5 |
| 105311-01090 | 1 | 6 |
| 105425-01690 | 3 | 9 |
| 110250-55610 | 14 | 4 |
| | | 29 |
| | 18 | 4 |
| 118200-53010 | 13 | 2 |
| 118400-51370 | 11 | 56 |
| 119131-18320 | 6 | 6 |
| 119225-52102 | 14 | 21 |
| | 18 | 21 |
| 119233-12510 | 5 | 1 |
| 119233-12660 | 5 | 6 |
| 119233-77932 | 12 | 137 |
| 119256-44760 | 10 | 23 |
| 119260-07900 | 4 | 61 |
| 119285-01990 | 1 | 9 |
| 119285-11990 | 4 | 15 |
| 119305-35151 | 9 | 3 |
| 119515-13200 | 6 | 3 |
| | 17 | 8 |
| 119515-42350 | 10 | 18 |
| 119515-59580 | 13 | 21 |
| 119515-59581 | 13 | 21 -1 |
| 119515-61550 | 12 | 99 |
| 119540-59570 | 13 | 29 -1 |
| 119600-11460 | 4 | 4 |
| | 17 | 15 |
| 119620-01750 | 3 | 4 |
| 119620-01800 | 2 | 8 |
| 119620-02020 | 1 | 10 |
| 119620-11280 | 4 | 30 |

| Parts No. | Fig. No. | Ref. No. |
|--------------|----------|----------|
| 119620-14200 | 7 | 1 |
| 119620-21500 | 8 | 39 |
| 119620-21941 | 8 | 14 |
| 119620-59700 | 13 | 32 |
| 119620-77380 | 16 | 5 |
| 119620-77421 | 16 | 8 |
| 119620-77440 | 16 | 13 |
| 119620-77461 | 16 | 14 |
| 119620-77471 | 16 | 15 |
| 119620-77490 | 16 | 25 |
| 119620-79200 | 16 | 9 |
| 119620-79210 | 16 | 10 |
| 119620-79220 | 16 | 11 |
| 119620-79230 | 16 | 12 |
| 119620-79250 | 16 | 7 |
| 119620-79260 | 16 | 16 |
| 119620-79290 | 16 | 18 |
| 119620-79300 | 16 | 19 |
| 119620-79310 | 16 | 20 |
| 119620-79320 | 16 | 21 |
| 119620-79330 | 16 | 22 |
| 119620-79340 | 16 | 23 |
| 119620-79350 | 16 | 24 |
| 119620-79360 | 16 | 26 |
| 119621-21680 | 8 | 13 |
| 119623-01250 | 1 | 7 |
| 119624-32040 | 2 | 20 |
| | 17 | 13 |
| 119624-77351 | 16 | 37 |
| 119626-07900 | 4 | 61 -1 |
| 119643-66900 | 16 | 40 |
| 119650-77910 | 16 | 41 |
| 119655-12560 | 5 | 3 |
| 119660-01911 | 2 | 19 |
| 119660-61300 | 12 | 77 |
| 119660-61901 | 12 | 66 |
| 119717-01330 | 1 | 31 |
| | 17 | 2 |
| 119717-01501 | 2 | 1 |
| 119717-01521 | 2 | 6 |
| 119717-01570 | 2 | 3 |
| 119717-01590 | 2 | 4 |
| 119717-01601 | 3 | 2 |
| 119717-01720 | 3 | 7 |
| 119717-01750 | 2 | 18 |
| 119717-01770 | 3 | 8 |
| 119717-02410 | 1 | 13 |
| 119717-02411 | 1 | 13 -1 |
| 119717-02930 | 1 | 27 |
| 119717-03031 | 4 | 40 |

| Parts No. | Fig. No. | Ref. No. |
|--------------|----------|----------|
| 119717-03070 | 4 | 41 |
| | | 42 |
| 119717-11100 | 4 | 17 |
| 119717-11101 | 4 | 17 -1 |
| 119717-11110 | 4 | 18 |
| 119717-11131 | 4 | 19 |
| 119717-11190 | 4 | 21 |
| 119717-11200 | 4 | 25 |
| 119717-11240 | 4 | 26 |
| 119717-11260 | 4 | 29 |
| 119717-11320 | 4 | 51 |
| 119717-11331 | 4 | 52 |
| | 17 | 16 |
| 119717-11340 | 4 | 22 |
| | 17 | 4 |
| 119717-11350 | 4 | 23 |
| | 17 | 9 |
| 119717-11381 | 4 | 39 |
| 119717-11650 | 4 | 31 |
| 119717-11740 | 4 | 6 |
| 119717-11800 | 4 | 13 |
| 119717-13110 | 6 | 2 |
| | 17 | 7 |
| 119717-13600 | 6 | 4 |
| 119717-14400 | 7 | 2 |
| 119717-14580 | 7 | 3 |
| 119717-14581 | 7 | 3 -1 |
| 119717-21200 | 8 | 6 |
| 119717-21650 | 8 | 12 |
| 119717-21700 | 8 | 1 |
| 119717-22080 | 8 | 15 |
| 119717-22090 | 8 | 31 |
| 119717-22300 | 8 | 21 |
| 119717-22500 | 8 | 17 |
| 119717-22550 | 8 | 33 |
| 119717-23000 | 8 | 23 |
| 119717-23200 | 8 | 28 |
| 119717-23600 | 8 | 29 |
| 119717-23601 | 8 | 29 -1 |
| 119717-23610 | 8 | 37 |
| 119717-23611 | 8 | 37 -1 |
| 119717-23910 | 8 | 27 |
| 119717-25050 | 7 | 10 |
| 119717-25100 | 7 | 11 |
| 119717-25101 | 7 | 11 -1 |
| 119717-25930 | 7 | 16 |
| 119717-32050 | 2 | 21 |
| | 17 | 14 |
| 119717-32060 | 9 | 4 |
| | 17 | 12 |

| Parts No. | Fig. No. | Ref. No. |
|--------------|----------|----------|
| 119717-32080 | 2 | 11 |
| 119717-32100 | 2 | 10 |
| 119717-32110 | 2 | 15 |
| 119717-32120 | 2 | 16 |
| 119717-35080 | 9 | 5 |
| 119717-39210 | 9 | 11 |
| 119717-42002 | 10 | 1 |
| 119717-42020 | 10 | 13 |
| | 17 | 20 |
| 119717-42031 | 10 | 4 |
| 119717-42041 | 10 | 3 |
| 119717-42320 | 10 | 11 |
| 119717-42350 | 10 | 17 |
| 119717-49800 | 10 | 27 |
| 119717-51030 | 11 | 6 |
| 119717-51060 | 11 | 7 |
| 119717-51070 | 11 | 8 |
| 119717-51150 | 7 | 17 |
| 119717-51170 | 11 | 15 -1 |
| 119717-51180 | 11 | 16 |
| 119717-51190 | 11 | 17 |
| 119717-51200 | 11 | 18 |
| 119717-51300 | 11 | 45 |
| 119717-51330 | 11 | 48 |
| 119717-51420 | 11 | 57 |
| 119717-51480 | 11 | 94 |
| 119717-51490 | 11 | 95 |
| 119717-51500 | 11 | 66 |
| 119717-51570 | 11 | 16 -1 |
| 119717-51710 | 11 | 77 |
| 119717-51711 | 11 | 77 -1 |
| 119717-51750 | 11 | 78 |
| 119717-51760 | 11 | 79 |
| 119717-51761 | 11 | 79 -1 |
| 119717-53001 | 13 | 1 |
| 119717-53010 | 13 | 3 |
| 119717-59510 | 13 | 22 |
| 119717-59570 | 13 | 29 |
| 119717-59810 | 13 | 9 |
| 119717-59820 | 13 | 13 |
| 119717-59830 | 13 | 17 |
| 119717-61050 | 12 | 2 |
| 119717-61060 | 12 | 3 |
| 119717-61070 | 12 | 4 |
| 119717-61120 | 12 | 8 |
| 119717-61130 | 12 | 9 |
| 119717-61140 | 12 | 10 |
| 119717-61150 | 12 | 11 |
| 119717-61200 | 12 | 73 |
| 119717-61400 | 12 | 14 |

Parts No. Index

| Parts No. | Fig. No. | Ref. No. |
|--------------|----------|----------|
| 119717-61500 | 12 | 30 |
| 119717-77010 | 15 | 2 |
| 119717-77340 | 16 | 2 |
| 119717-77800 | 4 | 59 |
| 119717-77820 | 4 | 60 |
| 119718-11310 | 4 | 50 |
| | 17 | 6 |
| 119740-13100 | 6 | 1 |
| 119740-13500 | 6 | 9 |
| 119740-21590 | 8 | 8 |
| 119740-34801 | 9 | 1 |
| 119740-51100 | 11 | 10 |
| 119740-55600 | 14 | 1 |
| | 18 | 1 |
| 119740-55660 | 14 | 12 |
| | 18 | 12 |
| 119740-61100 | 12 | 5 |
| 119740-61440 | 12 | 21 |
| 119740-61550 | 12 | 100 |
| 119740-77310 | 16 | 1 |
| 119802-03100 | 4 | 43 |
| 119802-03110 | 4 | 44 |
| 119802-03121 | 4 | 45 |
| 119802-03131 | 4 | 46 |
| 119802-03141 | 4 | 47 |
| 119802-13620 | 6 | 5 |
| 119802-32130 | 2 | 17 |
| 119802-77200 | 16 | 33 |
| 119802-77340 | 16 | 31 |
| 119808-12520 | 5 | 10 |
| 119808-12540 | 5 | 2 |
| | | 12 |
| 119810-01200 | 1 | 30 |
| 119810-02940 | 1 | 32 |
| 119810-02941 | 1 | 32 -1 |
| 119810-55340 | 14 | 8 |
| | 18 | 8 |
| 119810-55650 | 14 | 6 |
| | 18 | 6 |
| 119813-59950 | 13 | 33 |
| 119833-55660 | 18 | 25 |
| 119865-21600 | 8 | 11 |
| 119940-77270 | 16 | 29 |
| 121120-01620 | 3 | 3 |
| 121250-55620 | 14 | 5 |
| | 18 | 5 |
| 121252-39450 | 9 | 10 |
| 121254-55510 | 14 | 2 |
| | 18 | 2 |
| 121256-44600 | 10 | 41 |

| Parts No. | Fig. No. | Ref. No. |
|--------------|----------|----------|
| 121257-55720 | 14 | 30 |
| 121257-55731 | 14 | 31 |
| 121267-44741 | 10 | 21 |
| 121450-42450 | 10 | 29 |
| 121450-44531 | 10 | 36 |
| 121470-44581 | 10 | 38 |
| 121520-34810 | 9 | 16 |
| 121820-12590 | 5 | 14 |
| 121850-51960 | 2 | 22 |
| | 17 | 3 |
| 122710-51090 | 11 | 9 |
| 123501-79240 | 16 | 6 -1 |
| 123900-13620 | 6 | 8 |
| 124060-01050 | 1 | 5 |
| 124064-55510 | 14 | 27 |
| 124066-59100 | 13 | 30 |
| 124085-02220 | 3 | 5 |
| 124160-01751 | 2 | 31 |
| | 4 | 38 |
| 124160-01910 | 1 | 8 |
| 124450-44550 | 10 | 40 |
| 124450-44560 | 10 | 37 |
| 124465-44950 | 10 | 31 |
| | 17 | 22 |
| 124550-51350 | 11 | 49 |
| 124766-59050 | 13 | 41 |
| | 14 | 18 |
| | 18 | 18 |
| 126501-79240 | 16 | 6 |
| 126650-12680 | 5 | 7 |
| | | 15 |
| 129001-32320 | 2 | 13 |
| 129001-32330 | 2 | 14 |
| 129005-59830 | 9 | 12 |
| 129030-44760 | 10 | 22 |
| 129051-12500 | 5 | 8 |
| 129051-12510 | 5 | 9 |
| 129051-12530 | 5 | 11 |
| 129051-12540 | 5 | 13 |
| 129052-61390 | 12 | 13 |
| 129052-79270 | 16 | 17 |
| 129053-55640 | 18 | 23 |
| 129053-55650 | 18 | 24 |
| 129100-01580 | 3 | 1 |
| | 8 | 2 |
| 129100-35140 | 9 | 2 |
| 129100-51560 | 11 | 71 |
| 129100-51570 | 11 | 72 |
| 129100-52200 | 11 | 100 |
| 129100-61650 | 12 | 60 |

| Parts No. | Fig. No. | Ref. No. |
|--------------|----------|----------|
| 129150-11230 | 4 | 32 |
| 129150-11750 | 4 | 34 |
| 129150-25301 | 7 | 15 |
| 129150-49360 | 10 | 33 |
| | 17 | 17 |
| 129150-59120 | 13 | 4 |
| 129150-59131 | 13 | 7 |
| 129155-51020 | 11 | 5 |
| 129155-51140 | 11 | 13 |
| 129155-51280 | 11 | 43 |
| | | 44 |
| | 12 | 6 |
| 129155-51400 | 11 | 58 |
| 129155-51450 | 11 | 61 |
| 129155-51521 | 11 | 67 |
| 129155-51530 | 11 | 68 |
| 129155-51540 | 11 | 69 |
| 129155-51550 | 11 | 70 |
| 129155-51580 | 11 | 74 |
| 129155-51591 | 11 | 75 |
| 129155-51600 | 11 | 23 |
| 129155-51701 | 11 | 76 |
| 129155-52051 | 11 | 99 |
| 129155-61341 | 12 | 78 |
| 129155-61450 | 12 | 22 |
| 129155-61460 | 12 | 79 |
| 129155-61480 | 12 | 24 |
| 129155-77925 | 16 | 35 |
| 129156-51910 | 11 | 81 |
| 129156-61460 | 12 | 23 |
| 129209-61370 | 12 | 12 |
| 129209-61930 | 12 | 135 |
| 129209-61970 | 12 | 136 |
| 129210-59030 | 14 | 17 |
| | 18 | 17 |
| 129210-59060 | 13 | 40 |
| 129211-77920 | 16 | 34 |
| 129240-77200 | 16 | 3 |
| 129240-77710 | 16 | 27 |
| 129240-79300 | 16 | 28 |
| 129240-79310 | 16 | 4 |
| 129242-55750 | 18 | 28 |
| 129242-55760 | 18 | 29 |
| 129335-55700 | 14 | 22 |
| 129335-55740 | 18 | 26 |
| 129335-55750 | 18 | 22 |
| 129335-55770 | 18 | 27 |
| 129335-55780 | 18 | 31 |
| 129350-49530 | 10 | 26 |
| 129400-92420 | 17 | 23 |

| Parts No. | Fig. No. | Ref. No. |
|--------------|----------|----------|
| 129486-61540 | 12 | 50 |
| 129508-11180 | 4 | 20 |
| 129900-07900 | 4 | 1 |
| 129900-32130 | 2 | 12 |
| 129901-11450 | 4 | 3 |
| | 17 | 5 |
| 129901-53800 | 13 | 3 A |
| 129901-59560 | 13 | 28 |
| | 17 | 19 |
| 129916-49740 | 10 | 12 |
| 129972-77341 | 16 | 31 -1 |
| 158552-61700 | 12 | 61 |
| 158552-61710 | 12 | 65 |
| 158552-61900 | 12 | 82 -1 |
| 158600-51170 | 11 | 15 |
| | | 15 -2 |
| 158600-51270 | 11 | 42 |
| 158600-51410 | 11 | 59 |
| 158600-51420 | 11 | 60 |
| 158600-51441 | 11 | 50 |
| 158600-51442 | 11 | 50 -1 |
| 158600-51570 | 11 | 73 |
| 158600-51790 | 11 | 80 |
| 158601-61710 | 12 | 89 |
| 158601-61790 | 12 | 90 |
| 171051-59050 | 13 | 42 |
| 171056-49120 | 10 | 32 |
| 171056-49351 | 10 | 30 |
| 171064-44510 | 10 | 34 |
| 171081-55910 | 14 | 35 |
| 171340-44740 | 10 | 20 |
| 171353-61700 | 12 | 134 |
| 174307-51700 | 12 | 31 |
| 22190-080002 | 9 | 13 |
| | | 15 |
| | 17 | 10 |
| 22190-100002 | 12 | 88 A |
| 22190-120002 | 12 | 80 |
| | 13 | 39 |
| | | 43 |
| | 14 | 20 |
| | 17 | 18 |
| | 18 | 20 |
| 22190-160002 | 3 | 12 |
| | 11 | 82 |
| 22217-060000 | 11 | 83 |
| 22217-120000 | 7 | 18 |
| 22242-000120 | 4 | 35 |
| 22252-000220 | 8 | 22 |
| 22272-000030 | 12 | 68 |

Parts No. Index

| Parts No. | Fig. No. | Ref. No. |
|--------------|----------|----------|
| 22351-050010 | 11 | 85 |
| 22351-060012 | 4 | 24 |
| 22372-040000 | 12 | 81 |
| 22512-040120 | 8 | 5 |
| 22857-500100 | 4 | 53 |
| | | 54 |
| 22857-500160 | 4 | 55 |
| 23065-070225 | 10 | 39 |
| 23414-080000 | 10 | 14 |
| | 17 | 21 |
| 23414-120016 | 12 | 138 |
| 23418-060000 | 14 | 36 |
| 23857-030000 | 9 | 14 |
| 23876-005000 | 4 | 16 |
| 23876-030000 | 2 | 9 |
| 23887-100002 | 12 | 88 B |
| 24101-060034 | 11 | 86 |
| 24101-063034 | 11 | 87 |
| 24311-000110 | 18 | 30 |
| 24311-000320 | 2 | 32 |
| | 4 | 56 |
| | 17 | 11 |
| 24311-000440 | 18 | 32 |
| 24311-240100 | 14 | 10 |
| | | 23 |
| | 18 | 10 |
| 24316-000150 | 11 | 88 |
| 24341-000070 | 12 | 70 |
| 24341-000280 | 12 | 82 |
| 25132-003600 | 10 | 19 |
| 26014-080702 | 14 | 13 |
| | 18 | 13 |
| 26022-050122 | 11 | 89 |
| 26022-060162 | 11 | 90 |
| 26106-050102 | 11 | 91 |
| 26106-060102 | 9 | 9 |
| | 12 | 71 |
| | | 83 |
| 26106-060122 | 2 | 23 |
| | 7 | 9 |
| 26106-060142 | 12 | 84 |
| 26106-060162 | 2 | 24 |
| 26106-060202 | 4 | 57 |
| | 12 | 85 |
| 26106-060352 | 7 | 14 |
| 26106-060402 | 2 | 25 |
| | | 26 |
| 26106-060452 | 12 | 86 |
| 26106-060502 | 10 | 24 |
| 26106-060552 | 10 | 25 |

| Parts No. | Fig. No. | Ref. No. |
|--------------|----------|----------|
| 26106-060602 | 2 | 27 |
| 26106-060652 | 2 | 28 |
| 26106-060752 | 4 | 58 |
| 26106-080122 | 3 | 13 |
| | 10 | 15 |
| 26106-080142 | 4 | 62 |
| | 14 | 14 |
| | 18 | 14 |
| 26106-080162 | 4 | 2 |
| 26106-080202 | 10 | 28 |
| | 16 | 32 |
| 26106-080302 | 3 | 14 |
| 26106-080402 | 4 | 37 |
| 26106-080452 | 3 | 15 |
| 26106-080502 | 3 | 16 |
| | 10 | 16 |
| 26106-080552 | 16 | 30 |
| 26106-081004 | 16 | 39 |
| 26106-100182 | 6 | 10 |
| 26106-100252 | 15 | 1 |
| 26106-100502 | 16 | 36 |
| 26206-100252 | 3 | 6 |
| 26306-080002 | 2 | 29 |
| | 6 | 7 |
| | | 11 |
| | 16 | 39 A |
| 26366-080002 | 12 | 72 |
| 26577-060122 | 10 | 9 |
| 26716-060002 | 11 | 92 |
| 26716-120002 | 7 | 19 |
| 26736-120002 | 12 | 87 |
| 26756-060002 | 12 | 88 |
| 26979-050162 | 4 | 36 |
| 27241-120000 | 1 | 14 |
| 27241-250000 | 10 | 10 |
| 719717-01500 | 2 | 5 |
| 719717-01560 | 1 | 1 |
| 719717-01561 | 1 | 1 -1 |
| 719717-02900 | 1 | 15 |
| 719717-02901 | 1 | 15 -1 |
| 719717-02910 | 1 | 35 |
| 719717-02911 | 1 | 35 -1 |
| 719717-92620 | 17 | 1 |
| 719740-51320 | 11 | 1 |
| 719740-51390 | 11 | 2 |
| 977770-1207F | 2 | 30 |
| | 3 | 17 |
| | 4 | 63 |
| | 17 | 24 |
| X0280210331 | 15 | 24 |

| Parts No. | Fig. No. | Ref. No. |
|-------------|----------|----------|
| X0280335350 | 15 | 34 |
| X0280626010 | 15 | 13 |
| X0280996180 | 15 | 4 |
| X0281007750 | 15 | 3 |
| X0282005991 | 15 | 7 |
| X0283006960 | 15 | 8 |
| X0284105040 | 15 | 14 |
| X0284525010 | 15 | 28 |
| X0285007030 | 15 | 11 |
| X0285105190 | 15 | 5 |
| X0285205030 | 15 | 6 |
| X0286105010 | 15 | 16 |
| X0286305010 | 15 | 18 |
| X0286355010 | 15 | 19 |
| X0287405140 | 15 | 20 |
| X0534007800 | 15 | 21 |
| X1289510130 | 15 | 35 |
| X4284001590 | 15 | 9 |
| X9055715000 | 15 | 22 |
| X9490065670 | 15 | 33 |
| X9490138090 | 15 | 26 |
| X9490138100 | 15 | 27 |
| X9490138110 | 15 | 25 |
| X9490423420 | 15 | 31 |
| X9490560750 | 15 | 30 |
| X9490562360 | 15 | 29 |
| X9490721360 | 15 | 23 |
| X9491034320 | 15 | 17 |
| X9491034330 | 15 | 15 |
| X9491040990 | 15 | 12 |
| X9491050100 | 15 | 10 |

| Parts No. | Fig. No. | Ref. No. |
|-----------|----------|----------|
|-----------|----------|----------|