

OCD10-M81601EN

PREFACE

1. This parts catalog is the 2nd edition of 3TNV76-SIK & 3TNV76-QIK for IHI Construction Machinery Limited.

Pub.No. : 000Y00D8161

Published : November,2006

2.Model name

Engine model	Vehicle		Vehicle made by
	Products	Model name	
3TNV76-SIK	Excavator	20NX2	IHI Construction Machinery Ltd.
3TNV76-QIK	Excavator	25NX2	

Directions for the Parts Catalog.

1. This Parts Catalog shows both standard and optional parts.
2. Parts may change without prior notice.
3. The following is an example of the Parts Catalog format.

REF.	LEV.	PARTS NO.	DESCRIPTION	Q'TY						I	R
				(A)	(B)	(C)	(D)	(E)	(F)		
1	1	729595-51390	FUEL INJECTION PUMP	1	1	1	1	1			1
1-1	1	729595-51391	FUEL INJECTION PUMP	1	1	1	1	1		N	1
		(A=E00185) (B=E00200)									
3	2	26022-060162	SCREW M 6X 16	9	9	9	9	9			
3-1	2	26022-060162	SCREW M 6X 16	4	4	4	4	4		K	
		(A=E00156) (B=E00156) (C=E00156) (D=E00156) (E=E00156)									
4	2	129470-51040	CAMSHAFT	1	1	1	1	1			
5	2	122710-51050	BEARING, ROLLER	2	2	2	2	2			
6	2	129470-51060	RETAINER	1	1	1	1	1			

Remarks
(1) BOOST COMPEMSATOR TYPE. OPTIONAL PART, TO E00155,(4JH-DT, 4JH-DTZ

① Ref. No.

The Ref. No. listed may not be in accordance with the illustration Ref. No.

(Ex.) Illustration No.

List Ref No.

1

1

(Before change)

1-1

(After change)

For interchangeable symbols N, R and K, illustrations for new parts may be abbreviated.

② Lev. (Level)

Level indication

The numbers below indicate the level of relativity towards the main part.

1 ----- Main parts (Assembly parts)

2 ----- Sub component included in " 1 ".

3 ----- Sub component included in " 2 ".

Note) Parts that are not for sale are partially illustrated but not listed.

③ Interchangeability Symbol

When a part change takes place, one of the following interchangeability symbols is indicated beside the part.

Symbol	Interchangeability	Contents note
N	Old $\begin{matrix} \leftarrow \text{Yes} \\ \text{No} \rightarrow \end{matrix}$ New	New Part is interchangeable for Old Part but Old Part is not interchangeable for New Part.
Q	Old $\begin{matrix} \leftarrow \text{No} \\ \text{Yes} \rightarrow \end{matrix}$ New	New Part is not interchangeable for Old Part but Old Part is interchangeable for New Part.
R	Old $\begin{matrix} \leftarrow \text{Yes} \\ \text{Yes} \rightarrow \end{matrix}$ New	New/ Old Parts are both interchangeable.
S	Old $\begin{matrix} \leftarrow \text{No} \\ \text{No} \rightarrow \end{matrix}$ New	New/ Old Parts are both not interchangeable.
W		Part newly added.
Z		Part discontinued.
F		Not interchangeable by a single part but interchangeable together with related parts.
K		Changes only for used parts quantities.

④ Effective Machine No.

When a part changes, the effective Machine No. will be indicated in the (A)-(F) column.

Product Symbol	Product No.	Product Symbol	Product No.
C	Clutch No. Compressor No.	F	Machine No. (Agricultural Equip.)
D	Drive No.	M	Machine No.
E	Engine No.		

Note 1) A date may follow the symbol. (Ex.) 1996.01

Note 2) " XXXXX " and " ZZZZZ " are for parts that could not be predicted or for engine models that could not be identified.

Note 3) (A=E00185) is the E (Engine Serial Number) for the column (A) model (in this case 4JH-DT) after the parts design change.

⑤ Remarks

Figures or alphabets (symbols) are entered in the remarks column.

The comments (remarks) on parts that are indicated at the bottom of the illustration are the same symbols as those stated above.

Contents

Fig. No. Fig. Name

3TNV76-SIK/QIK

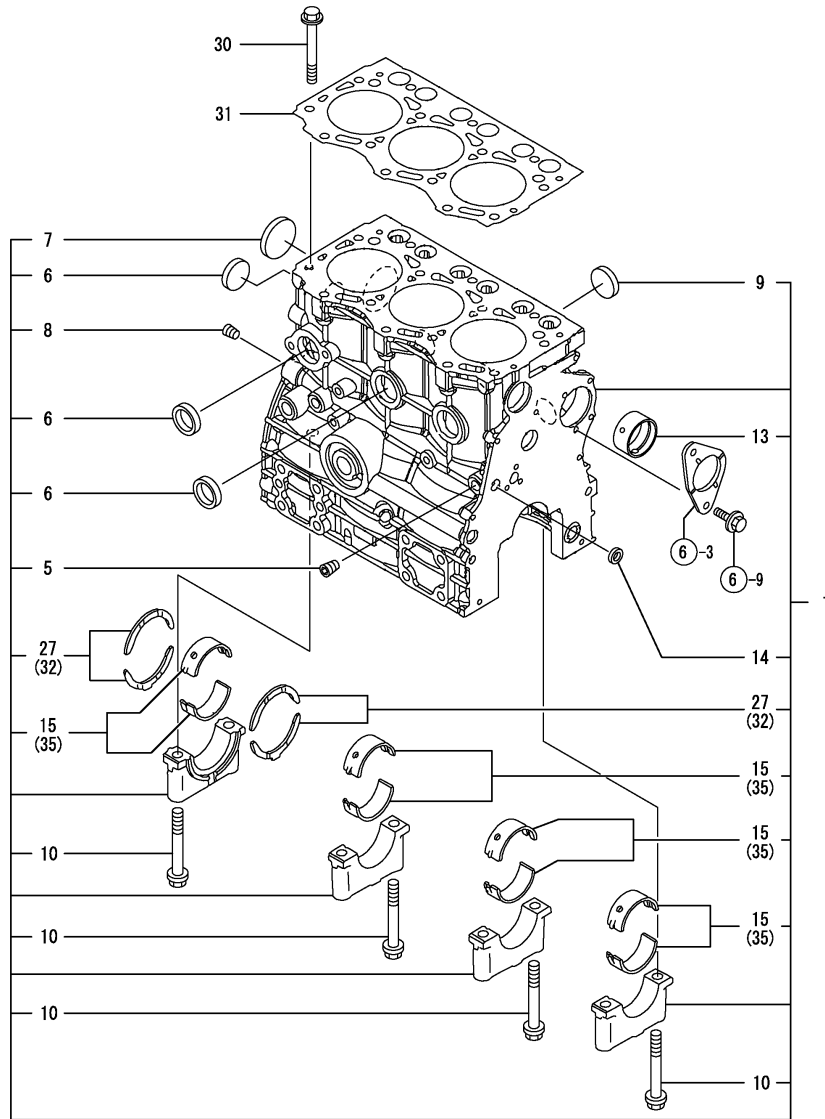
1. CYLINDER BLOCK
2. GEAR HOUSING
3. FLYWHEEL HOUSING & OIL SUMP
4. CYLINDER HEAD & BONNET
5. EXH. MANIFOLD, SILENCER & AIR CLEANER
6. CAMSHAFT & DRIVING GEAR
7. CRANKSHAFT & PISTON
8. LUB. OIL SYSTEM
9. COOLING WATER SYSTEM
10. FUEL INJECTION PUMP
11. GOVERNOR
12. FUEL INJECTION VALVE
13. FUEL LINE
17. (13A)FUEL LINE
14. STARTING MOTOR
15. GENERATOR
16. GASKET SET

Fig. No. Fig. Name

Fig.1. CYLINDER BLOCK

(A)=3TNV76-SIK
 (B)=3TNV76-QIK
 (C)=

(D)=
 (E)=
 (F)=

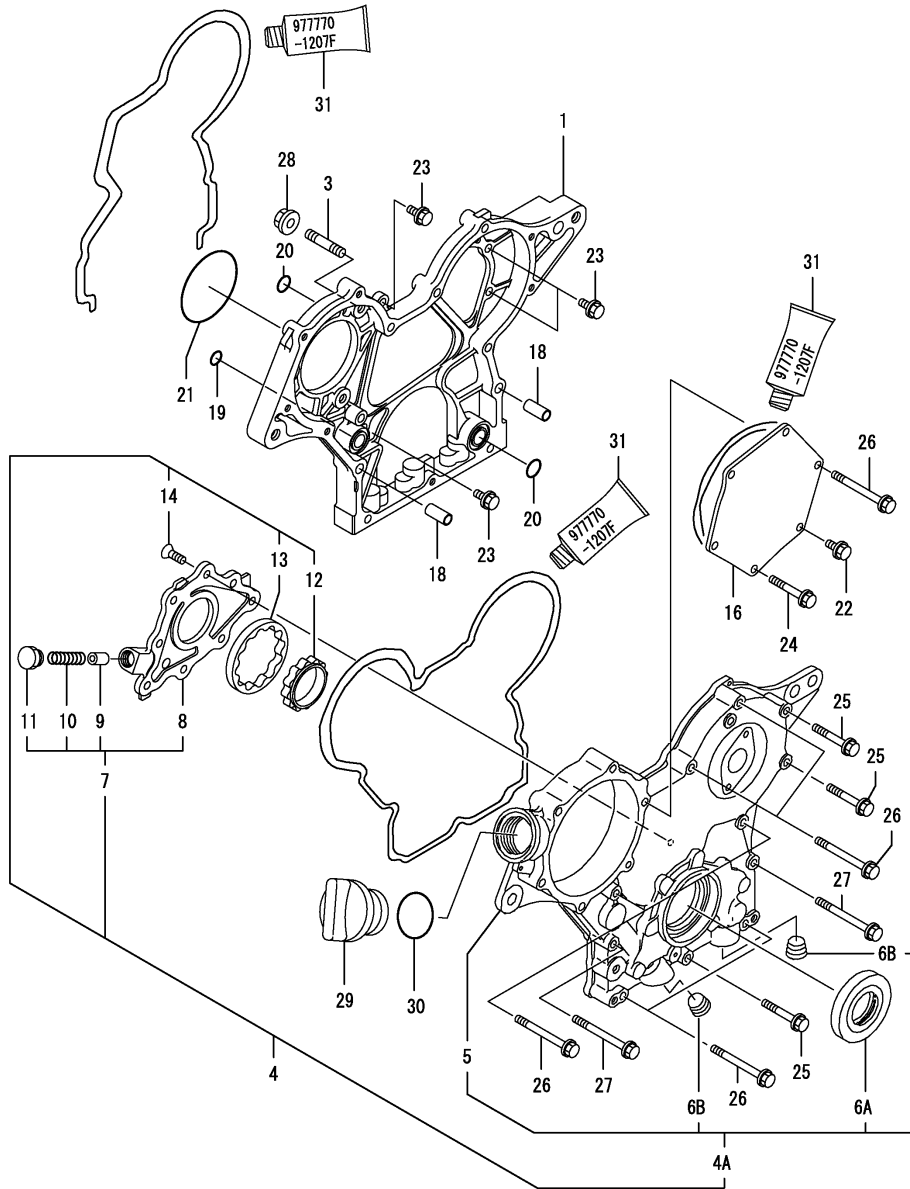


No.	Lev.	Parts No.	Description	Q'ty						I	R
				(A)	(B)	(C)	(D)	(E)	(F)		
1	1	719717-01560	BLOCK ASSY, CYLINDER	1	1						
1-1	1	719717-01561	BLOCK ASSY, CYLINDER	1	1						N
		(A=E07926) (B=E07877)									
5	2	124060-01050	PLUG, PT1/8	1	1						
6	2	105311-01090	PLUG, 30	4	4						
7	2	119623-01250	PLUG, 45	1	1						
8	2	124160-01910	PLUG, PT1/4	1	1						
9	2	119285-01990	PLUG, 25	3	3						
10	2	119620-02020	BOLT, METAL CAP	8	8						
13	2	119717-02410	BUSH, CAMSHAFT	1	1						
13-1	2	119717-02411	BUSH, CAMSHAFT	1	1						N
		(A=E25934) (B=E25358)									
14	2	27241-120000	PLUG, 12	1	1						
15	2	719717-02900	BEARING, MAIN	4	4						2
15-1	2	719717-02901	BEARING, MAIN	4	4						N 2
		(A=E25934) (B=E25358)									
27	2	119717-02930	BEARING, THRUST	2	2						
30	1	119810-01200	BOLT, HEAD	14	14						
31	1	119717-01330	GASKET, HEAD	1	1						
32	1	119810-02940	BEARING, THRUST 0.25	2	2						1
32-1	1	119810-02941	BEARING, THRUST 0.25	2	2						N 1
		(A=E25934) (B=E25358)									
35	1	719717-02910	BEARING, 0.25 US	4	4						3
35-1	1	719717-02911	BEARING, 0.25 US	4	4						N 3
		(A=E25934) (B=E25358)									

Remarks

- (1) OVER-SIZE(O.S=0.25)PART.
- (2) REPAIR PART.
- (3) UNDER-SIZE(U.S=0.25)PART.

Fig.2. GEAR HOUSING



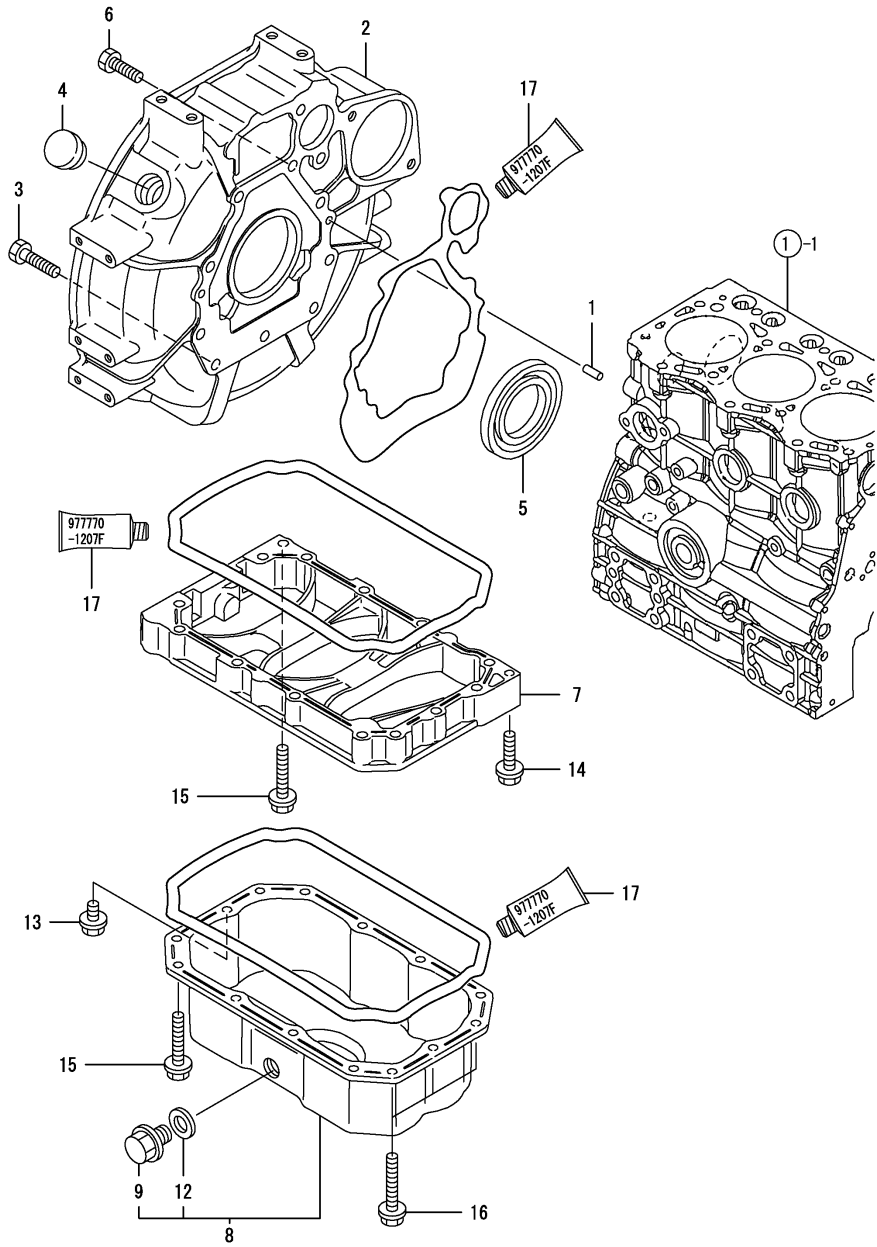
(A)=3TNV76-SIK
(B)=3TNV76-QIK
(C)=

(D)=
(E)=
(F)=

No.	Lev.	Parts No.	Description	Q'ty						I	R
				(A)	(B)	(C)	(D)	(E)	(F)		
1	1	119717-01501	CASE, GEAR	1	1						
3	1	119717-01570	STUD	3	3						
4	1	119717-01590	COVER ASSY,GEAR CASE	1	1						
4A	2	719717-01500	COVER ASSY,GEAR CASE	1	1						W
		(A=EXXXXX) (B=EXXXXX)									
5	3	119717-01521	COVER, GEAR CASE	1	1						
6A	3	119620-01800	SEAL, OIL	1	1						W
		(A=EXXXXX) (B=EXXXXX)									
6B	3	23876-030000	PLUG, R03	2	2						W
		(A=EXXXXX) (B=EXXXXX)									
7	2	119717-32100	COVER ASSY	1	1						
8	3	119717-32080	COVER	1	1						
9	3	129900-32130	VALVE, RELIEF	1	1						
10	3	129001-32320	SPRING	1	1						
11	3	129001-32330	PLUG	1	1						
12	2	119717-32110	ROTOR, INNER	1	1						
13	2	119717-32120	ROTOR, OUTER	1	1						
14	2	119802-32130	SCREW, M6X16	8	8						
16	1	119717-01750	COVER	1	1						
18	1	119660-01911	PIPE, KNOCK	4	4						
19	1	119624-32040	O-RING, P12.0	1	1						
20	1	119717-32050	O-RING, P17.0	3	3						
21	1	121850-51960	O-RING	1	1						
22	1	26106-060122	BOLT, M6X 12 PLATED	1	1						
23	1	26106-060162	BOLT, M6X 16 PLATED	4	4						
24	1	26106-060402	BOLT, M6X 40 PLATED	4	4						
25	1	26106-060402	BOLT, M6X 40 PLATED	3	3						
26	1	26106-060602	BOLT, M6X 60 PLATED	7	7						
27	1	26106-060652	BOLT, M6X 65 PLATED	2	2						
28	1	26306-080002	NUT, M8	3	3						
29	1	124160-01751	COVER, FILLER	1	1						
30	1	24311-000320	O-RING, 1AP32.0	1	1						
31	1	977770-1207F	GASKET.LIQUID	1	1						1

Remarks
(1) OPTIONAL PART.

Fig.3. FLYWHEEL HOUSING & OIL SUMP



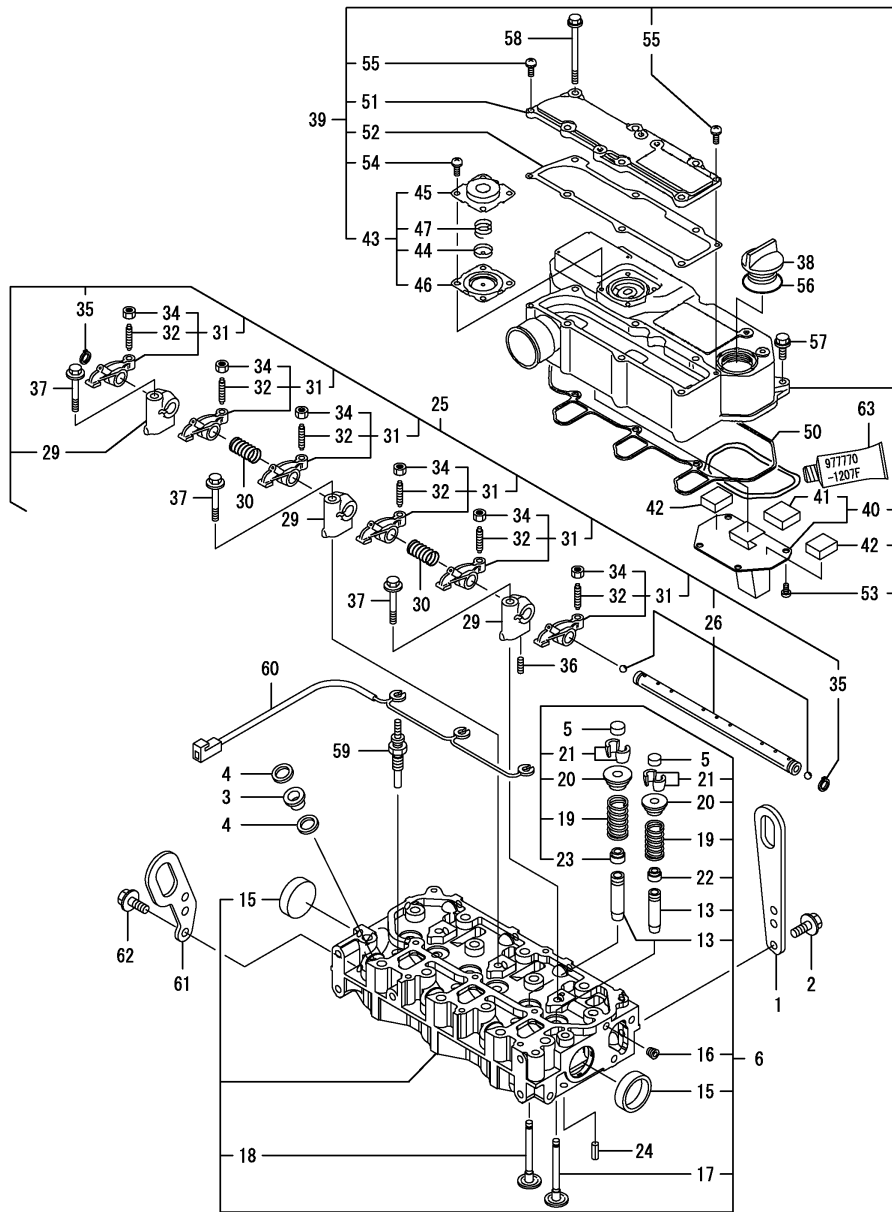
(A)=3TNV76-SIK
(B)=3TNV76-QIK
(C)=

(D)=
(E)=
(F)=

No.	Lev.	Parts No.	Description	Q'ty						I	R
				(A)	(B)	(C)	(D)	(E)	(F)		
1	1	129100-01580	PIN, M8X16	2	2						
2	1	119717-01600	HOUSING, FLYWHEEL	1	1						
2-1	1	119717-01601	HOUSING, FLYWHEEL	1	1						N
		(A=E07926) (B=E07926)									
3	1	121120-01620	BOLT, M10X28	3	3						
4	1	119620-01750	CAP	1	1						
5	1	124085-02220	SEAL, OIL	1	1						
6	1	26206-100252	BOLT, M10X 25 PLATED	7	7						
6-1	1	26206-100252	BOLT, M10X 25 PLATED	8	8						K
		(A=EXXXXX) (B=EXXXXX)									
7	1	119717-01720	SPACER, OIL SUMP	1	1						
8	1	119717-01770	SUMP ASSY, OIL	1	1						
9	2	105425-01690	PLUG, 16	1	1						
12	2	22190-160002	WASHER, SEAL 16	1	1						
13	1	26106-080122	BOLT, M8X 12 PLATED	1	1						
14	1	26106-080302	BOLT, M8X 30 PLATED	1	1						
15	1	26106-080452	BOLT, M8X 45 PLATED	11	11						
16	1	26106-080502	BOLT, M8X 50 PLATED	3	3						
17	1	977770-1207F	GASKET.LIQUID	1	1						1

Remarks
(1) OPTIONAL PART.

Fig.4. CYLINDER HEAD & BONNET



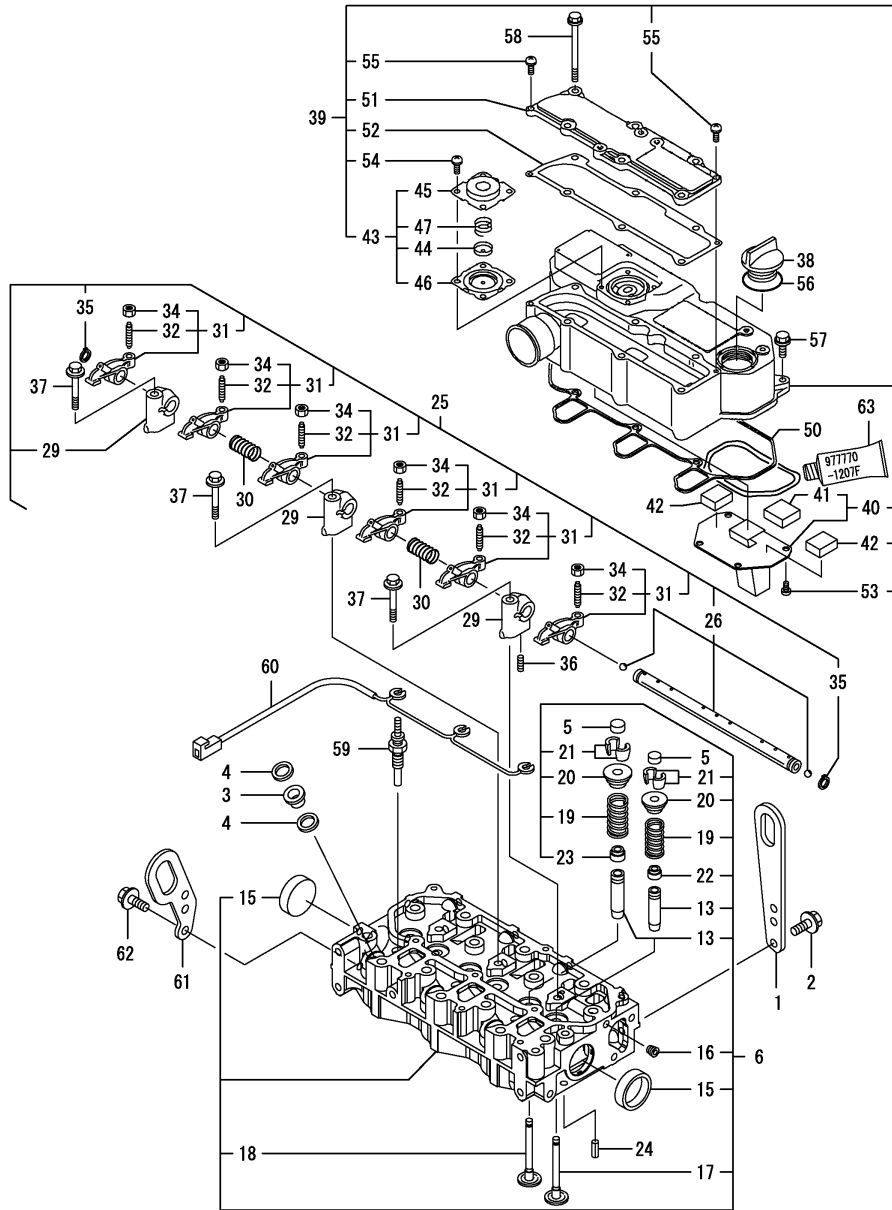
(A)=3TNV76-SIK
(B)=3TNV76-QIK
(C)=

(D)=
(E)=
(F)=

No.	Lev.	Parts No.	Description	Q'ty						I	R
				(A)	(B)	(C)	(D)	(E)	(F)		
1	1	129900-07900	LIFTER	1	1						
2	1	26106-080162	BOLT, M8X 16 PLATED	2	2						
3	1	129901-11450	PROTECTOR, NOZZLE	3	3						
4	1	119600-11460	GASKET, NOZZLE	6	6						
5	1	105010-11490	CAP, VALVE	6	6						
6	1	119717-11740	HEAD ASSY, CYLINDER	1	1						
13	2	119717-11800	GUIDE, VALVE	6	6						1
15	2	119285-11990	PLUG, 35	2	2						
16	2	23876-005000	PLUG, R005	1	1						
17	2	119717-11100	VALVE, INTAKE	3	3						
17-1	2	119717-11101	VALVE, INTAKE	3	3						R
		(A=E30230)	(B=E30550)								
18	2	119717-11110	VALVE, EXHAUST	3	3						
19	2	119717-11131	SPRING, VALVE	6	6						
20	2	129508-11180	RETAINER, SPRING	6	6						
21	2	119717-11190	COTTER	12	12						
22	2	119717-11340	SEAL, VALVE STEM	3	3						
23	2	119717-11350	SEAL, VALVE STEM	3	3						
24	1	22351-060012	PIN, SPRING 6.0X12	2	2						
25	1	119717-11200	SUPPORT ASSY, ARM	1	1						
26	2	119717-11240	SHAFT ASSY, ROCKER	1	1						
29	2	119717-11260	SUPPORT, ROCKER ARM	3	3						
30	2	119620-11280	SPRING	2	2						
31	2	119717-11650	ARM, ROCKER	6	6						
32	3	129150-11230	SCREW, VALVE ADJUST	6	6						
34	3	129150-11750	NUT, M8	6	6						
35	2	22242-000120	RING, 12	2	2						
36	2	26979-050162	SCREW, M5X16	1	1						
37	1	26106-080402	BOLT, M8X 40 PLATED	3	3						
38	1	124160-01751	COVER, FILLER	1	1						
39	1	119717-11381	BONNET ASSY, HEAD	1	1						
40	2	119717-03031	PLATE	1	1						
41	3	119717-03070	BAFFLE, BREATHER	1	1						
42	2	119717-03070	BAFFLE, BREATHER	2	2						
43	2	119802-03100	DIAPHRAGM ASSY	1	1						
44	3	119802-03110	PLATE	1	1						
45	3	119802-03121	COVER, DIAPHRAGM	1	1						
46	3	119802-03131	DIAPHRAGM	1	1						
47	3	119802-03141	SPRING, DIAPHRAGM	1	1						
50	2	119718-11310	GASKET, BONNET	1	1						
51	2	119717-11320	COVER, BONNET	1	1						
52	2	119717-11331	GASKET	1	1						
53	2	22857-500100	SCREW, 5X10	4	4						
54	2	22857-500100	SCREW, 5X10	4	4						
55	2	22857-500160	SCREW, 5X16	2	2						
56	1	24311-000320	O-RING, 1AP32.0	1	1						
57	1	26106-060202	BOLT, M6X 20 PLATED	3	3						
58	1	26106-060752	BOLT, M6X 75 PLATED	6	6						
59	1	119717-77800	PLUG, GLOW	3	3						
60	1	119717-77820	CONNECTOR, GLOW PLUG	1	1						
61	1	119260-07900	LIFTER	1	1						

Remarks
(1) REPAIR PART.
(2) OPTIONAL PART.

Fig.4. CYLINDER HEAD & BONNET



(A)=3TNV76-SIK
(B)=3TNV76-QIK
(C)=

(D)=
(E)=
(F)=

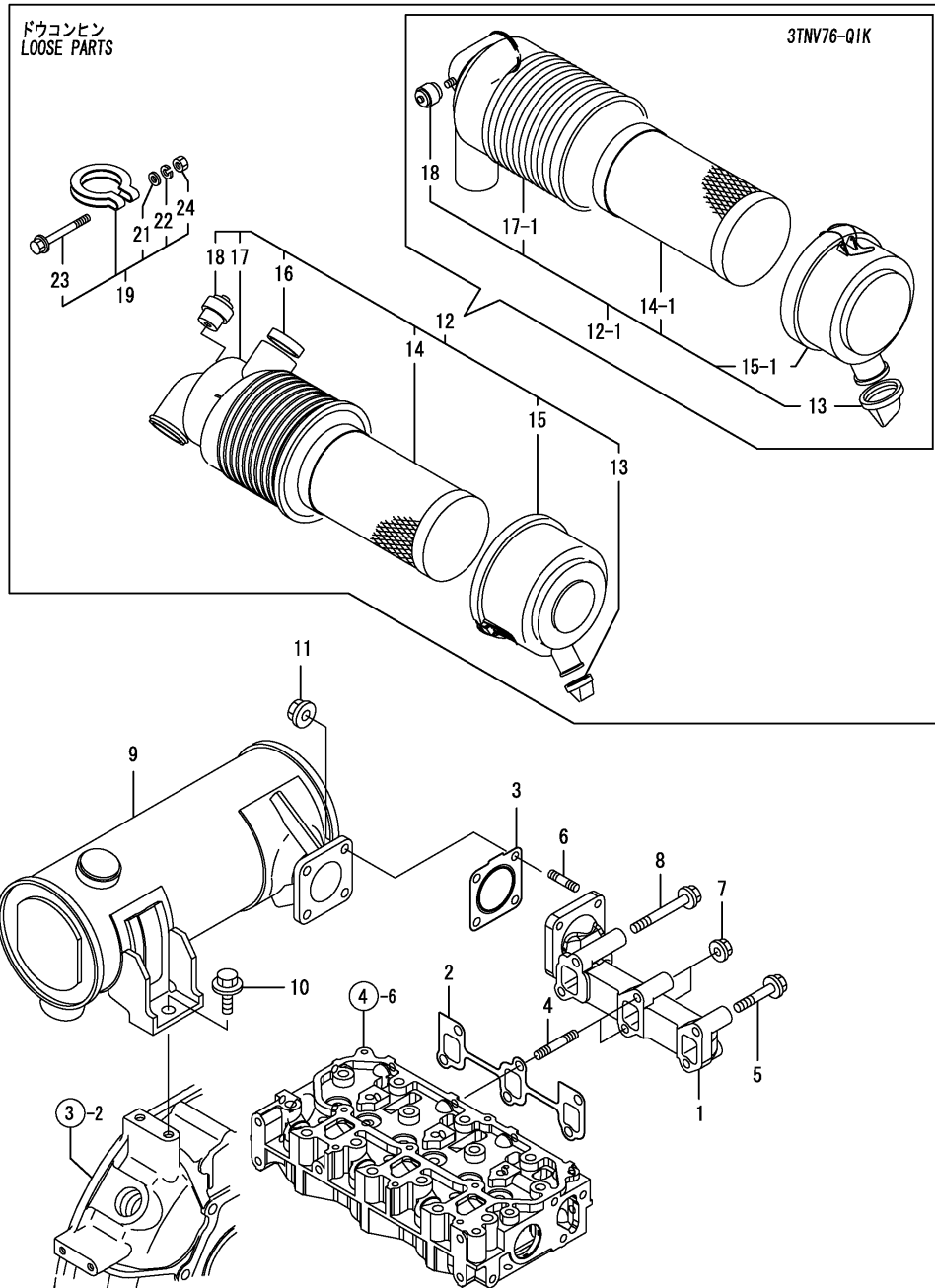
No.	Lev.	Parts No.	Description	Q'ty						I	R
				(A)	(B)	(C)	(D)	(E)	(F)		
61-1	1	119626-07900 (A=E10765)	LIFTER (B=E09822)	1	1						N
62	1	26106-080142	BOLT, M8X 14 PLATED	2	2						
63	1	977770-1207F	GASKET.LIQUID	1	1						2

Remarks
(1) REPAIR PART.
(2) OPTIONAL PART.

Fig.5. EXH. MANIFOLD, SILENCER & AIR CLEANER

(A)=3TNV76-SIK
(B)=3TNV76-QIK
(C)=

(D)=
(E)=
(F)=



No.	Lev.	Parts No.	Description	Q'ty						I	R
				(A)	(B)	(C)	(D)	(E)	(F)		
1	1	119740-13100	MANIFOLD, EXHAUST	1	1						
2	1	119717-13110	GASKET	1	1						
3	1	119515-13200	GASKET, SILENCER	1	1						
4	1	119717-13600	STUD, M8X50	2	2						
5	1	119802-13620	BOLT, M8X50	2	2						
6	1	119131-18320	STUD, M8X22	4	4						
7	1	26306-080002	NUT, M8	2	2						
8	1	123900-13620	BOLT, M8X70	2	2						
9	1	119740-13500	SILENCER	1	1						
10	1	26106-100182	BOLT, M10X 18 PLATED	1	1						
11	1	26306-080002	NUT, M8	4	4						
12	1	119233-12510	CLEANER ASSY, AIR	1	1						
12-1	1	129240-12540	CLEANER ASSY, AIR (B=FROM 1ST)		1						S
13	2	119808-12540	VALVE, UNLOADER	1	1						
14	2	119655-12560	ELEMENT	1	1						
14-1	2	119808-12520	ELEMENT (B=FROM 1ST)		1						S
15	2	105027-12570	COVER, AIR CREAMER	1	1						
15-1	2	129051-12540	COVER, AIR CREAMER (B=FROM 1ST)		1						S
16	2	105027-12580	RING (B=FROM 1ST)	1	1						Z
17	2	119233-12660	BODY, AIR CLEANER	1	1						
17-1	2	129051-12510	BODY, AIR CLEANER (B=FROM 1ST)		1						S
18	2	126650-12680	INDICATOR	1	1						
19	1	119940-13590	CLAMP ASSY (A=FROM 1ST) (B=FROM 1ST)	1	1						Z
21	2	22117-100000	WASHER, 10 (A=FROM 1ST) (B=FROM 1ST)	1	1						Z
22	2	22217-100000	WASHER, SPRING 10 (A=FROM 1ST) (B=FROM 1ST)	1	1						Z
23	2	26106-100652	BOLT, M10X 65 PLATED (A=FROM 1ST) (B=FROM 1ST)	1	1						Z
24	2	26706-100002	NUT, M10 (A=FROM 1ST) (B=FROM 1ST)	1	1						Z

Fig.6. CAMSHAFT & DRIVING GEAR

(A)=3TNV76-SIK
 (B)=3TNV76-QIK
 (C)=

(D)=
 (E)=
 (F)=

No.	Lev.	Parts No.	Description	Q'ty						I	R
				(A)	(B)	(C)	(D)	(E)	(F)		
1	1	119620-14200	TAPPET	6	6						
2	1	119717-14400	ROD, PUSH	6	6						
3	1	119717-14580	CAMSHAFT ASSY	1	1						
3-1	1	119717-14581 (A=E24497) (B=E24294)	CAMSHAFT ASSY	1	1						R
9	1	26106-060122	BOLT, M6X 12 PLATED	2	2						
10	1	119717-25050	SHAFT, IDLE	1	1						
11	1	119717-25100	GEAR ASSY, IDLE	1	1						
11-1	1	119717-25101 (A=E25934) (B=E25358)	GEAR ASSY, IDLE	1	1						N
14	1	26106-060352	BOLT, M6X 35 PLATED	3	3						
15	1	129150-25301	BOLT	4	4						
16	1	119717-25930	GEAR, PUMP	1	1						
17	1	119717-51150 (A=FROM 1ST) (B=FROM 1ST)	FLANGE	1	1						W
18	1	22217-120000 (A=FROM 1ST) (B=FROM 1ST)	WASHER, SPRING 12	1	1						W
19	1	26716-120002 (A=FROM 1ST) (B=FROM 1ST)	NUT, M12	1	1						W

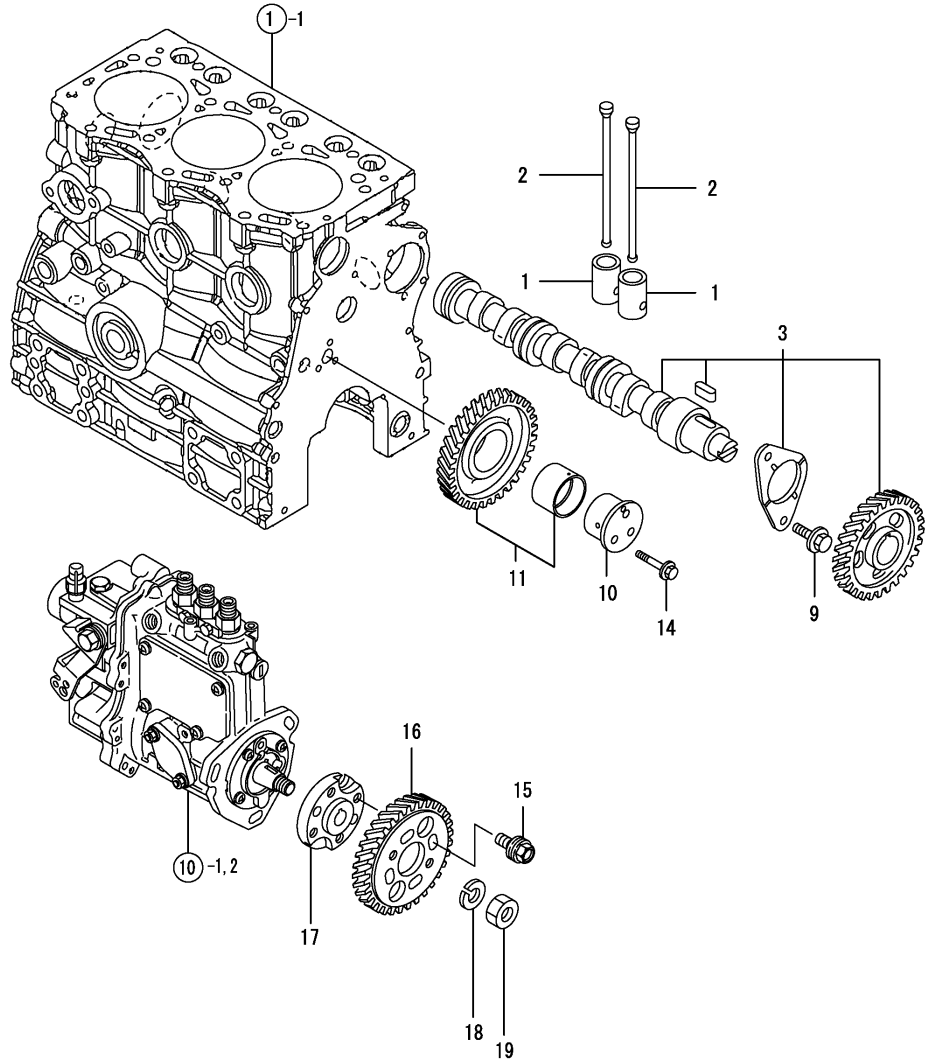
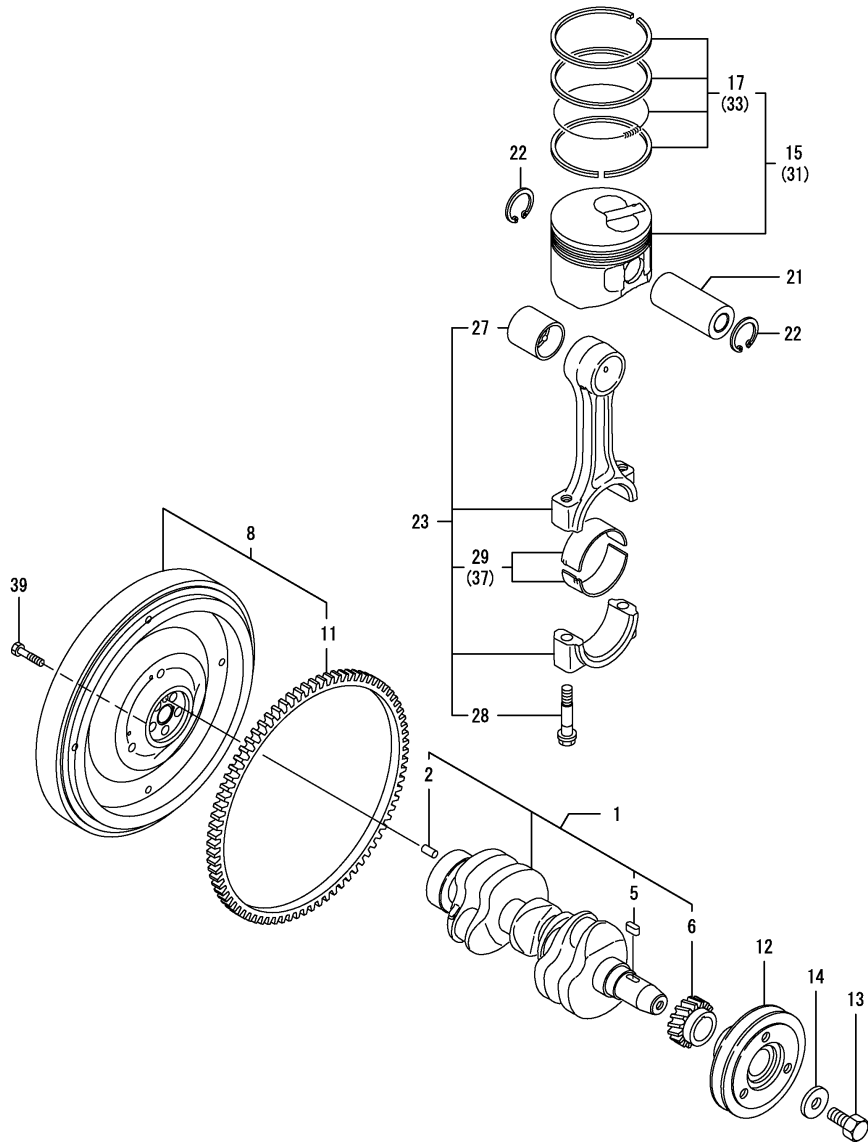


Fig.7. CRANKSHAFT & PISTON



(A)=3TNV76-SIK
(B)=3TNV76-QIK
(C)=

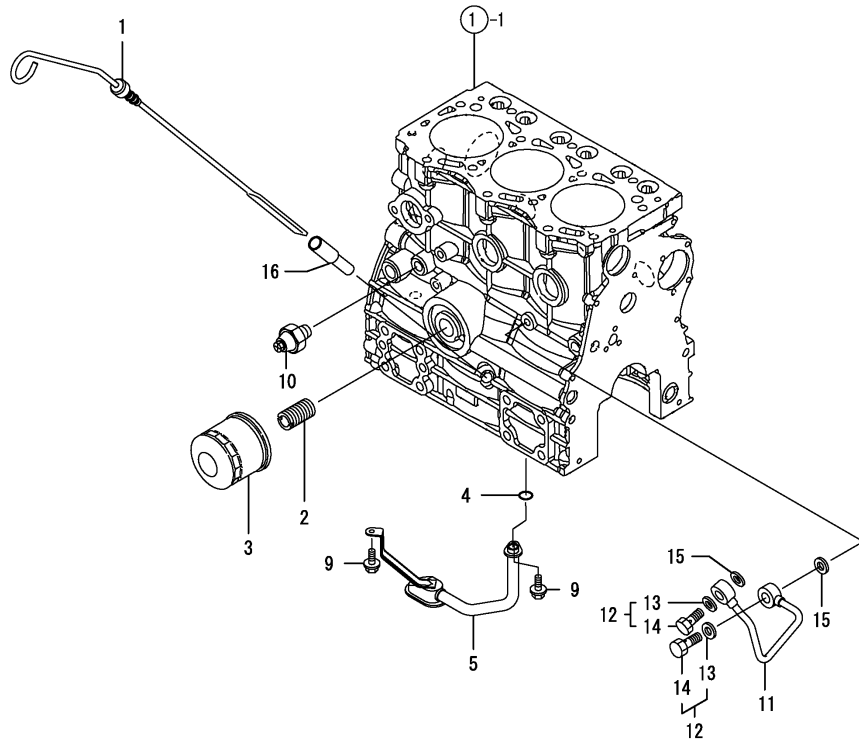
(D)=
(E)=
(F)=

No.	Lev.	Parts No.	Description	Q'ty						I	R
				(A)	(B)	(C)	(D)	(E)	(F)		
1	1	119717-21700	CRANKSHAFT ASSY	1	1						
2	2	129100-01580	PIN, M8X16	1	1						
5	2	22512-040120	KEY, 4X 12	1	1						
6	2	119717-21200	GEAR, CRANKSHAFT	1	1						
8	1	119740-21590	FLYWHEEL ASSY	1	1						
11	2	119865-21600	GEAR, RING	1	1						
12	1	119717-21650	V-PULLEY	1	1						
13	1	119621-21680	BOLT, FLANGE 12X1.25	1	1						
14	1	119620-21941	WASHER	1	1						
15	1	119717-22080	PISTON ASSY	3	3						
17	2	119717-22500	RING SET, PISTON	3	3						
21	1	119717-22300	PIN, PISTON	3	3						
22	1	22252-000220	RING, 22	6	6						
23	1	119717-23000	ROD ASSY, CONNECTING	3	3						
27	2	119717-23910	BEARING, PISTON PIN	3	3						2
28	2	119717-23200	BOLT, CONNECTING ROD	6	6						
29	2	119717-23600	BEARING, CRANK PIN	3	3						
29-1	2	119717-23601	BEARING, CRANK PIN	3	3						N
		(A=E25934)	(B=E25358)								
31	1	119717-22090	PISTON ASSY, 0.25 OS	3	3						1
33	2	119717-22550	RING SET, 0.25 OS	3	3						1
37	1	119717-23610	METAL ASSY, 0.25	3	3						3
37-1	1	119717-23611	METAL ASSY, 0.25	3	3						N 3
		(A=E25934)	(B=E25358)								
39	1	119620-21500	BOLT, FLYWHEEL	5	5						

Remarks

- (1) OVER-SIZE(O.S=0.25)PART.
- (2) REPAIR PART.
- (3) UNDER-SIZE(U.S=0.25)PART.

Fig.8. LUB. OIL SYSTEM



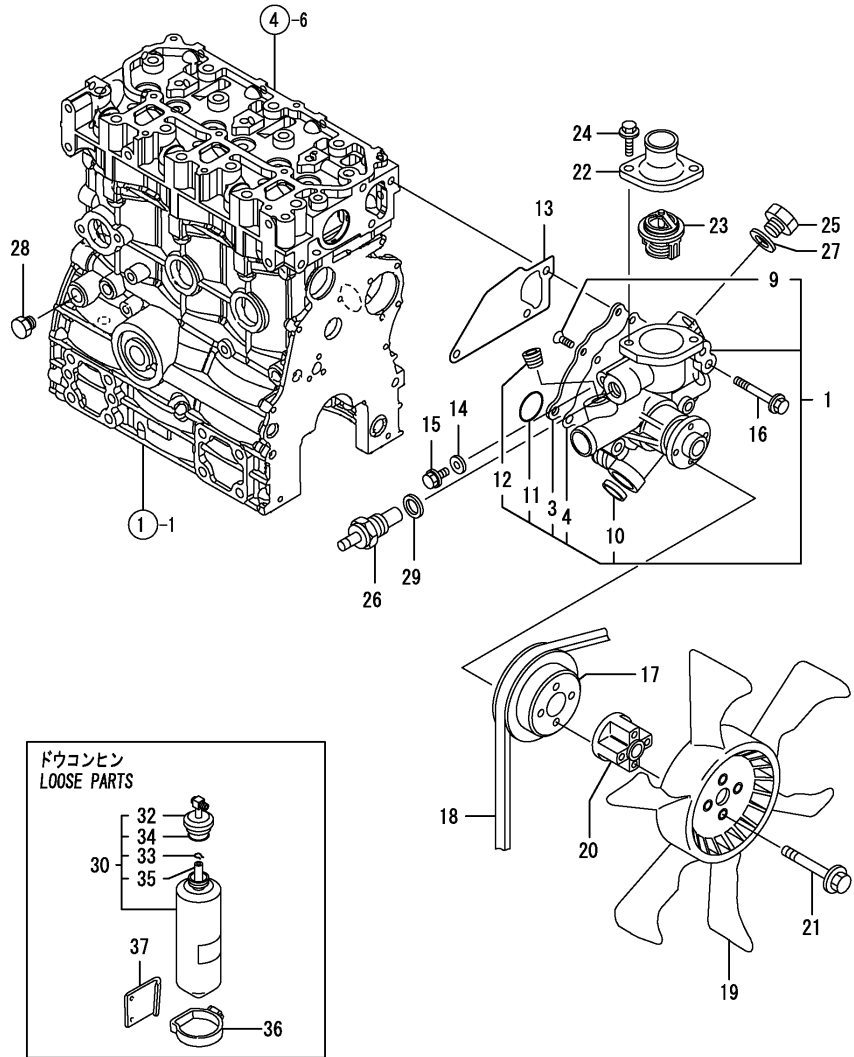
(A)=3TNV76-SIK
(B)=3TNV76-QIK
(C)=

(D)=
(E)=
(F)=

No.	Lev.	Parts No.	Description	Q'ty						I	R
				(A)	(B)	(C)	(D)	(E)	(F)		
1	1	119740-34800	DIPSTICK, OIL	1	1						
1-1	1	119740-34801	DIPSTICK, OIL	1	1						N
		(A=E07926) (B=E07877)									
2	1	129100-35140	STUD	1	1						
3	1	119305-35151	FILTER ASSY, D68XL65	1	1						1
4	1	119717-32060	O-RING, P15.0	1	1						
5	1	119717-35080	PIPE ASSY, OIL INLET	1	1						
9	1	26106-060102	BOLT, M6X 10 PLATED	2	2						
10	1	121252-39450	SWITCH, 0.5KG	1	1						
11	1	119717-39210	PIPE, OIL	1	1						
12	1	129005-59830	BOLT ASSY, JOINT M8	2	2						
13	2	22190-080002	WASHER, SEAL 6	2	2						
14	2	23857-030000	BOLT, JOINT 3	2	2						
15	1	22190-080002	WASHER, SEAL 6	2	2						
16	1	121520-34810	GUIDE, DIPSTICK	1	1						

Remarks
(1) REPAIR PART.

Fig.9. COOLING WATER SYSTEM



(A)=3TNV76-SIK
(B)=3TNV76-QIK
(C)=

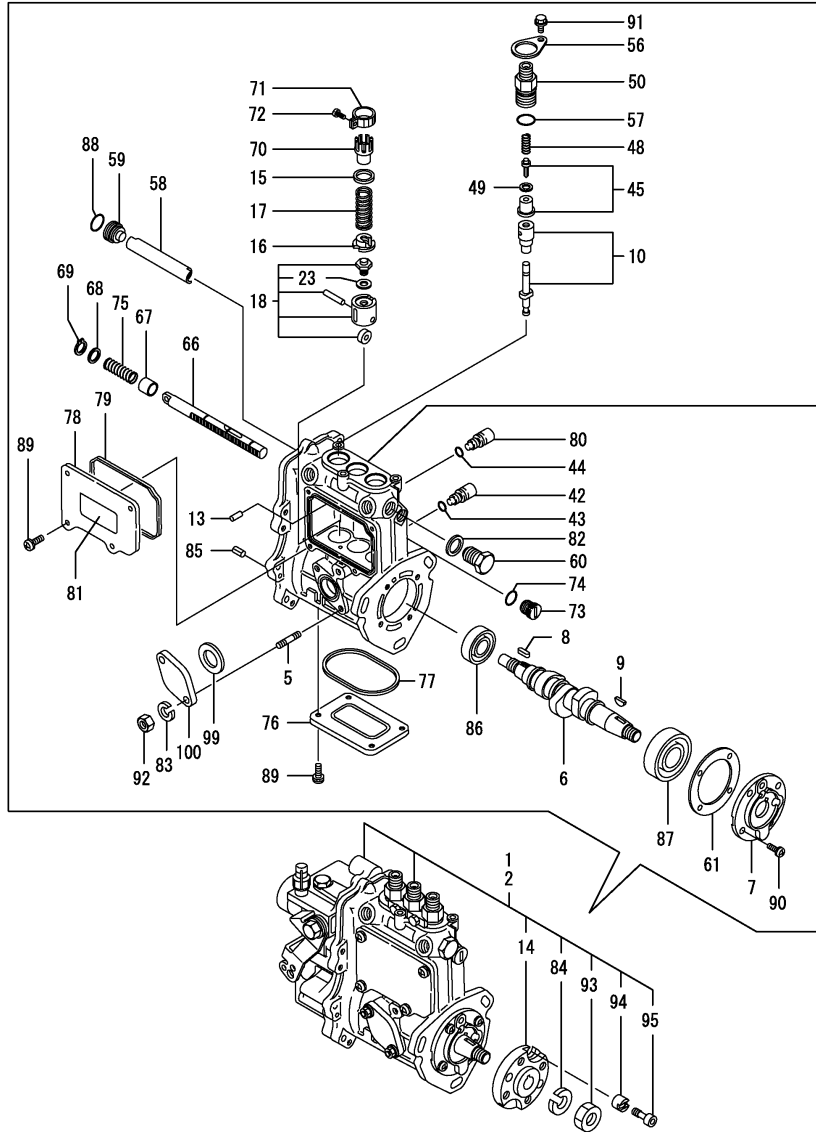
(D)=
(E)=
(F)=

No.	Lev.	Parts No.	Description	Q'ty						I	R
				(A)	(B)	(C)	(D)	(E)	(F)		
1	1	119717-42002	PUMP ASSY, WATER	1	1						
3	2	119717-42041	COVER	1	1						
4	2	119717-42031	GASKET	1	1						
9	2	26577-060122	SCREW, M6X12	4	4						
10	2	27241-250000	PLUG, 25	1	1						
11	2	119717-42320	O-RING, P26	1	1						
12	2	129916-49740	PLUG, R03	1	1						
13	1	119717-42020	GASKET, WATER PUMP	1	1						
14	1	23414-080000	GASKET, 8X1.0	1	1						
15	1	26106-080122	BOLT, M8X 12 PLATED	1	1						
16	1	26106-080502	BOLT, M8X 50 PLATED	3	3						
17	1	119740-42350	V-PULLEY, D=90	1	1						
18	1	171001-42290	V-BELT, A35.5	1	1						
19	1	171340-44740	FAN, COOLING D335XNF	1	1						
20	1	129030-44760	SPACER, FAN L38.5	1	1						
21	1	26106-060502	BOLT, M6X 50 PLATED	4	4						
22	1	129350-49530	COVER, THERMOSTAT	1	1						
23	1	119717-49800	THERMOSTAT, 71	1	1						
24	1	26106-080202	BOLT, M8X 20 PLATED	2	2						
25	1	121450-42450	PLUG, M16	1	1						
26	1	171056-49351	SENSOR	1	1						
26-1	1	119266-49350	SWITCH	1	1						N
		(A=EZZZZZ) (B=EZZZZZ)									
27	1	124465-44950	GASKET, 16	1	1						
28	1	171056-49120	PLUG, DRAIN	1	1						
29	1	129150-49360	GASKET	1	1						
30	1	171064-44510	TANK ASSY, SUB	1	1						
32	2	121450-44531	CAP	1	1						
33	2	124450-44560	RETAINER	1	1						
34	2	121470-44581	GASKET	1	1						
35	2	23065-070225	HOSE 7X 225	1	1						
36	1	124450-44550	BAND	1	1						
37	1	121256-44600	BRACKET, SUB TANK	1	1						

Fig.10. FUEL INJECTION PUMP

(A)=3TNV76-SIK
(B)=3TNV76-QIK
(C)=

(D)=
(E)=
(F)=



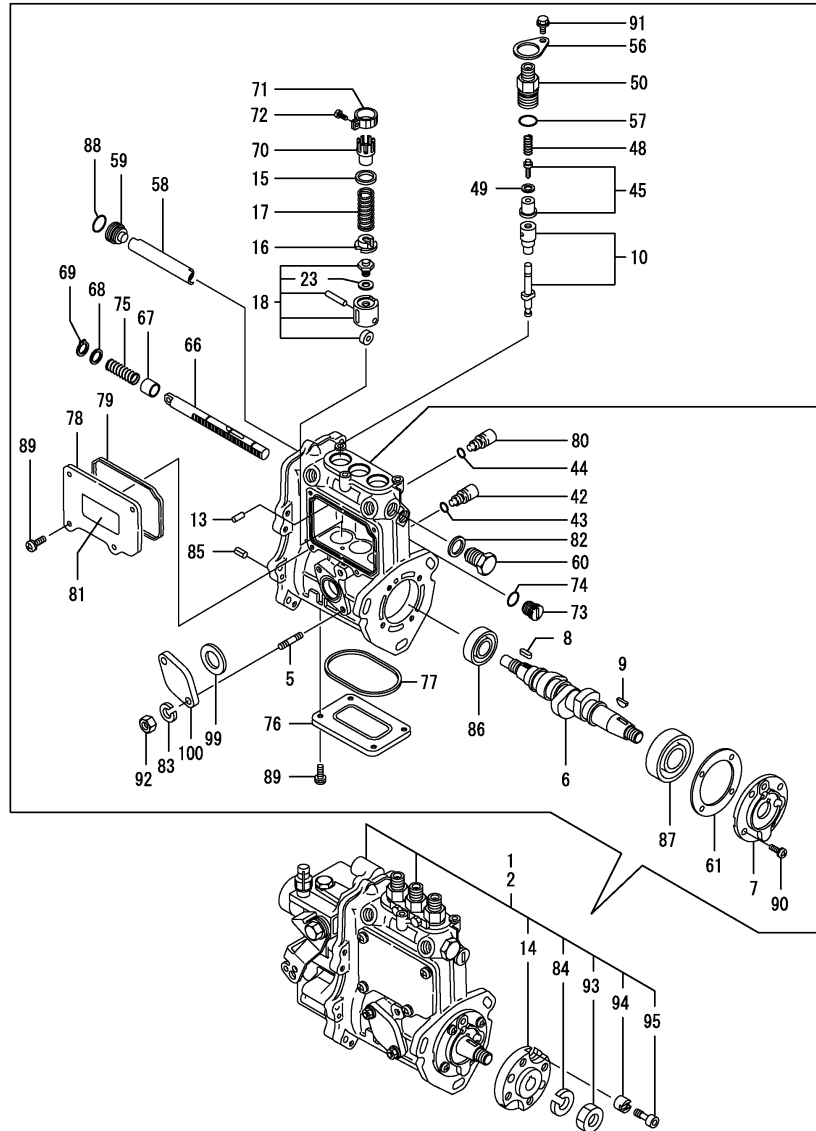
No.	Lev.	Parts No.	Description	Q'ty						I	R
				(A)	(B)	(C)	(D)	(E)	(F)		
1	1	719740-51380	PUMP ASSY, INJECTION	1							1
2	1	719740-51390	PUMP ASSY, INJECTION		1						1
5	2	129155-51020	STUD	2	2						
6	2	119717-51030	CAMSHAFT	1	1						
7	2	119717-51060	SUPPORT, CAMSHAFT	1	1						
8	2	119717-51070	KEY	1	1						
9	2	122710-51090	KEY	1	1						
10	2	119740-51100	PLUNGER ASSY	3	3						
13	2	129155-51140	PIN	3	3						
14	2	119717-51150	FLANGE	1	1						Z
		(A=FROM 1ST) (B=FROM 1ST)									
15	2	158600-51170	RETAINER, SPRING	3	3						
15-1	2	119717-51170	RETAINER	3	3						N
		(A=E07926) (B=E07877)									
15-2	2	158600-51170	RETAINER, SPRING	3	3						N
		(A=E09000) (B=E08842)									
16	2	119717-51180	RETAINER, SPRING	3	3						
16-1	2	119717-51570	RETAINER, SPRING	3	3						R
		(A=E19990) (B=E20264)									
17	2	119717-51190	SPRING, PLUNGER	3	3						
18	2	119717-51200	TAPPET ASSY	3	3						
23	3	129155-51600	SHIM SET, ADJUSTING	3	3						
42	2	158600-51270	STOPPER, TAPPET	3	3						
43	2	129155-51280	O-RING, S6	3	3						
44	2	129155-51280	O-RING, S6	1	1						
45	2	119717-51300	VALVE ASSY, DELIVERY	3	3						
48	2	119717-51330	SPRING, DELIVERY	3	3						
49	2	124550-51350	GASKET, DELIVERY	3	3						
50	2	158600-51440	VALVE ASSY, DELIVERY	3	3						
50-1	2	158600-51441	VALVE ASSY, DELIVERY	3	3						N
		(A=E07926) (B=E07877)									
50-2	2	158600-51442	VALVE ASSY, DELIVERY	3	3						N
		(A=E16256) (B=E15937)									
56	2	118400-51370	LOCKING	3	3						
57	2	119717-51420	O-RING	3	3						
58	2	129155-51400	DEFLECTOR	1	1						
59	2	158600-51410	PLUG, DEFLECTOR	1	1						
60	2	158600-51420	PLUG, DEFLECTOR	1	1						
61	2	129155-51450	SHIM SET, ADJUSTING	1	1						
66	2	119717-51500	RACK, CONTROL	1	1						
67	2	129155-51521	BUSH, RACK	1	1						
68	2	129155-51530	SPACER	1	1						
69	2	129155-51540	CIRCLIP	1	1						
70	2	129155-51550	PINION, CONTROL	3	3						
71	2	129100-51560	PINION	3	3						
72	2	129100-51570	SCREW	3	3						
73	2	158600-51570	PLUG	1	1						
74	2	129155-51580	O-RING	1	1						
75	2	129155-51591	SPRING, RACK	1	1						
76	2	129155-51701	COVER	1	1						
77	2	119717-51710	GASKET	1	1						

Remarks
(1) GOVERNOR ASSY(FIG.11) IS
INCORPORATED IN THIS FOP.CMP
(REF.NO.1,2).

Fig.10. FUEL INJECTION PUMP

(A)=3TNV76-SIK
(B)=3TNV76-QIK
(C)=

(D)=
(E)=
(F)=



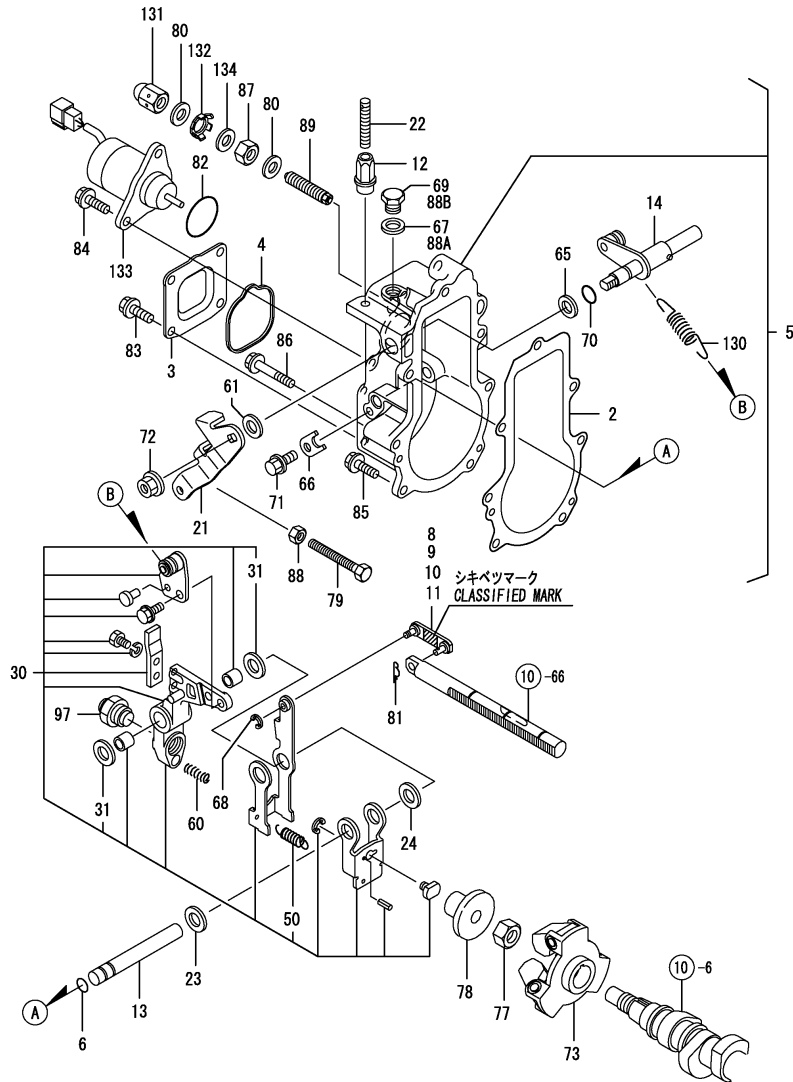
No.	Lev.	Parts No.	Description	Q'ty						I	R
				(A)	(B)	(C)	(D)	(E)	(F)		
77-1	3	119717-51711 (A=E24497) (B=E24294)	GASKET	1	1						N
78	2	119717-51750	COVER	1	1						
79	2	119717-51760	GASKET	1	1						
79-1	3	119717-51761 (A=E24497) (B=E24294)	GASKET	1	1						N
80	2	158600-51790	STOOPER, RACK	1	1						
81	2	129156-51910 (A=E24497) (B=E24294)	LABEL, CAUTION	1	1						Z
82	2	22190-160002	WASHER, SEAL 16	1	1						
83	2	22217-060000	WASHER, SPRING 6	2	2						
84	2	22217-120000	WASHER, SPRING 12	1	1						Z
		(A=FROM 1ST) (B=FROM 1ST)									
85	2	22351-050010	PIN, SPRING 5.0X10	2	2						
86	2	24101-060034	BEARING, BALL 6003	1	1						
87	2	24101-063034	BEARING, BALL 6303	1	1						
88	2	24316-000150	O-RING, 4DP15.0	3	3						
89	2	26022-050122	SCREW, M5X12	8	8						
90	2	26022-060162	SCREW, M6X16	4	4						
91	2	26106-050102	BOLT, M5X 10 PLATED	3	3						
92	2	26716-060002	NUT, M6	2	2						
93	2	26716-120002 (A=FROM 1ST) (B=FROM 1ST)	NUT, M12	1	1						Z
94	2	119717-51480	COLLAR	1	1						
95	2	119717-51490	BOLT	1	1						
99	2	129155-52051	GASKET	1	1						
100	2	129100-52200	COVER	1	1						

Remarks
(1) GOVERNOR ASSY(FIG.11) IS
INCORPORATED IN THIS FOP.CMP
(REF.NO.1,2).

Fig.11. GOVERNOR

(A)=3TNV76-SIK
(B)=3TNV76-QIK
(C)=

(D)=
(E)=
(F)=



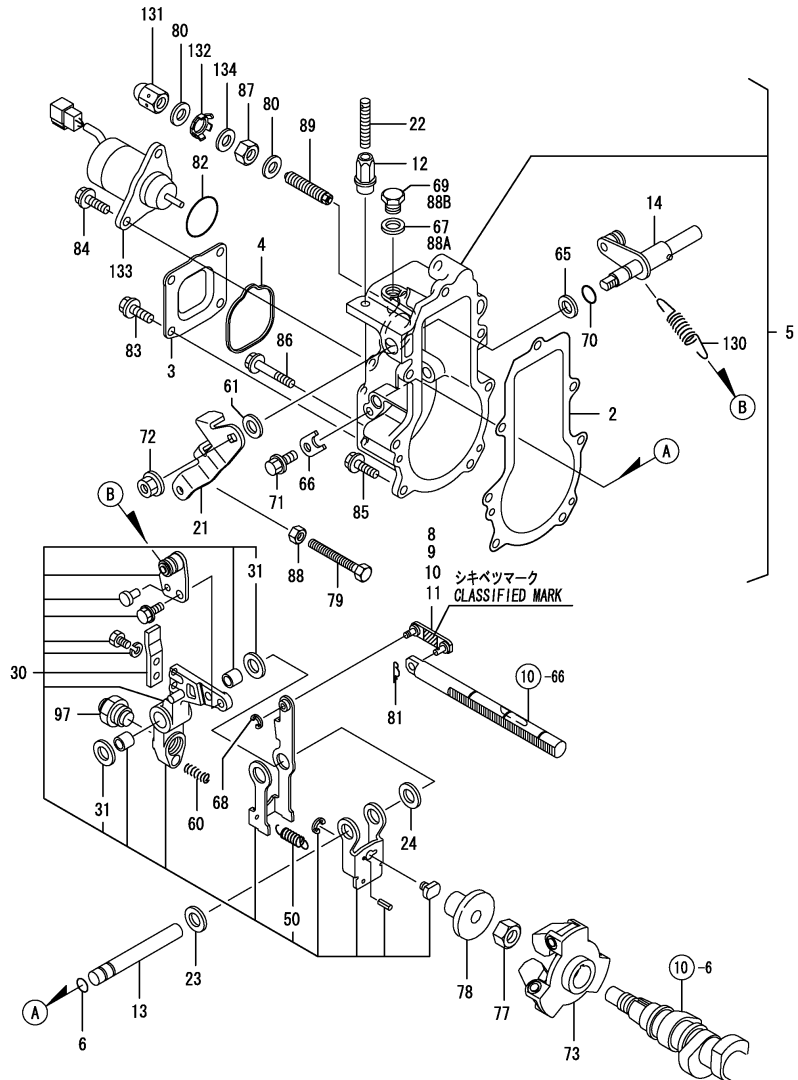
No.	Lev.	Parts No.	Description	Q'ty						I	R
				(A)	(B)	(C)	(D)	(E)	(F)		
2	2	119717-61050	GASKET	1	1						
3	2	119717-61060	COVER, GOVERNOR CASE	1	1						
4	2	119717-61070	GASKET	1	1						
5	2	119740-61100	CASE ASSY, GOVERNOR	1	1						
6	3	129155-51280	O-RING, S6	1	1						
8	3	119717-61120	LINK, MARK :3	1	1						1
9	3	119717-61130	LINK, MARK 98	1	1						1
10	3	119717-61140	LINK, MARK 88	1	1						1
11	3	119717-61150	LINK, MARK 03	1	1						1
12	3	129209-61370	NUT, M6	1	1						
13	3	129052-61390	SHAFT	1	1						
14	3	119717-61400	SHAFT ASSY	1	1						
21	3	119740-61440	LEVER, CONTROL	1	1						
22	3	129155-61450	BOLT, LIMITER	1	1						
23	3	129156-61460	SHIM, T=0.6	1	1						
24	3	129155-61480	SPACER ASSY	1	1						
30	3	119717-61500	LEVER ASSY, GOVERNOR	1	1						
31	4	174307-51700	SHIM SET	2	2						
50	4	129486-61540	SPRING, SET	1	1						
60	3	129100-61650	SPRING, CONTROLLER	1	1						
61	3	158552-61700	SHIM SET	1	1						
65	3	158552-61710	SHIM, T=1.0	1	1						
66	3	119660-61901	RETAINER, SHAFT	1	1						
67	3	22190-100002	WASHER, SEAL 10	1	1						Z
		(A=E07926) (B=E07877)									
68	3	22272-000030	RING, E- 3	1	1						
69	3	23887-100002	PLUG, 10	1	1						Z
		(A=E07926) (B=E07877)									
70	3	24341-000070	O-RING, 1AS7.0	1	1						
71	3	26106-060102	BOLT, M6X 10 PLATED	1	1						
72	3	26366-080002	NUT, M8	1	1						
73	2	119717-61200	WEIGHT ASSY,GOVERNOR	1	1						
77	2	119660-61300	NUT	1	1						
78	2	129155-61341	SLEEVE	1	1						
79	2	129155-61460	BOLT, IDLE	1	1						
80	2	22190-120002	WASHER, SEAL 12	2	2						
81	2	22372-040000	PIN, SNAP 4	1	1						
82	2	24341-000280	O-RING, 1AS28.0	1	1						
82-1	2	158552-61900	O-RING	1	1						N
		(A=EXXXXX) (B=EXXXXX)									
83	2	26106-060102	BOLT, M6X 10 PLATED	4	4						
84	2	26106-060142	BOLT, M6X 14 PLATED	2	2						
85	2	26106-060202	BOLT, M6X 20 PLATED	4	4						
86	2	26106-060452	BOLT, M6X 45 PLATED	3	3						
87	2	26736-120002	NUT, M12	1	1						
88	2	26756-060002	NUT, LOCK M6	1	1						
88A	2	22190-100002	WASHER, SEAL 10	1	1						W
		(A=E07926) (B=E07877)									
88B	2	23887-100002	PLUG, 10	1	1						W
		(A=E07926) (B=E07877)									
89	2	158601-61790	LIMITER ASSY, FUEL	1	1						

Remarks

(1) SELECTIVE PARTS: CERTAIN THE CLASSIFICATION MARK, THEN PLACE YOUR ORDER.(REF. TO ILLUSTRATION)
* THIS FIGURE(GOVERNOR ASSY)IS INCORPORATED IN THE FUEL INJECTION PUMP ASSY(FIG.10).

Fig.11. GOVERNOR

(A)=3TNV76-SIK
 (B)=3TNV76-QIK
 (C)=
 (D)=
 (E)=
 (F)=

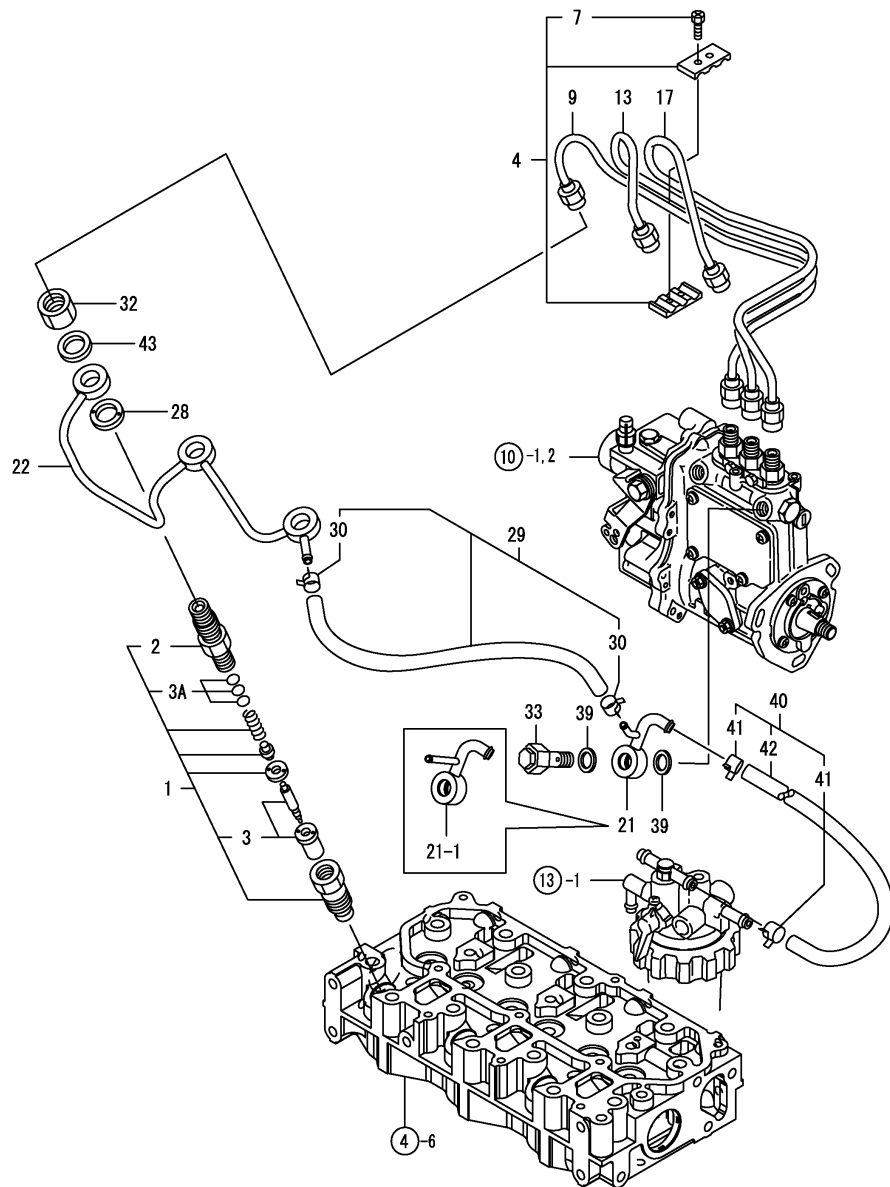


No.	Lev.	Parts No.	Description	Q'ty						I	R
				(A)	(B)	(C)	(D)	(E)	(F)		
97	2	119740-61550	ANGLEICH ASSY	1	1						
130	2	171353-61700	SPRING, GOVERNOR	1	1						
131	2	129209-61930	NUT, CAP	1	1						
132	2	129209-61970	PLATE	1	1						
133	2	119233-77932	SOLENOID, STOP	1	1						
134	2	23414-120016	GASKET, 12X1.0	1	1						

Remarks

(1) SELECTIVE PARTS: CERTAIN THE CLASSIFICATION MARK, THEN PLACE YOUR ORDER.(REF. TO ILLUSTRATION)
 * THIS FIGURE(GOVERNOR ASSY)IS INCORPORATED IN THE FUEL INJECTION PUMP ASSY(FIG.10).

Fig.12. FUEL INJECTION VALVE



(A)=3TNV76-SIK
(B)=3TNV76-QIK
(C)=

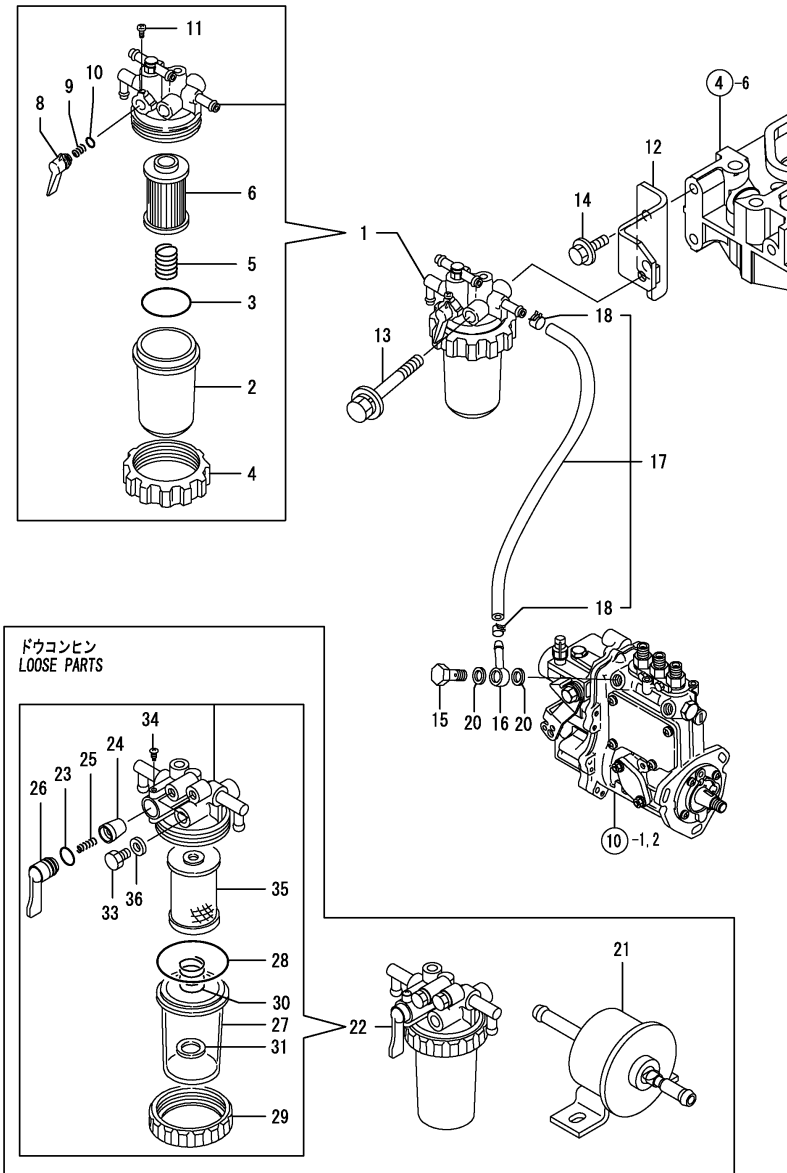
(D)=
(E)=
(F)=

No.	Lev.	Parts No.	Description	Qty						I	R
				(A)	(B)	(C)	(D)	(E)	(F)		
1	1	119717-53000	VALVE ASSY,INJECTION	3	3						
1-1	1	119717-53001	VALVE ASSY,INJECTION	3	3						R
		(A=E07926) (B=E07877)									
2	2	118200-53010	HOLDER, NOZZLE	3	3						
3	2	119717-53010	VALVE ASSY,INJECTION	3	3						
3A	2	129901-53800	SHIM SET, ADJUSTING	3	3						W 1
		(A=FROM 1ST) (B=FROM 1ST)									
4	1	129150-59120	RETAINER, PIPE	1	1						
7	2	129150-59131	BOLT, M4X14	2	2						
9	1	119717-59810	PIPE ASSY, INJECTION	1	1						
13	1	119717-59820	PIPE ASSY, INJECTION	1	1						
17	1	119717-59830	PIPE ASSY, INJECTION	1	1						
21	1	119515-59580	JOINT, OVER FLOW	1	1						
21-1	1	119515-59581	JOINT, OVER FLOW	1	1						S
		(A=E17760) (B=E17011)									
22	1	119717-59510	PIPE ASSY, RETURN	1	1						
28	1	129901-59560	GASKET	3	3						
29	1	119717-59570	PIPE ASSY, RETURN	1	1						
29-1	1	119540-59570	PIPE ASSY, RETURN	1	1						N
		(A=E08541) (B=E08304)									
30	2	124066-59100	CLIP, HOSE 8	2	2						
32	1	119620-59700	NUT, NOZZLE	3	3						
33	1	119813-59950	VALVE ASSY, CHECK	1	1						
39	1	22190-120002	WASHER, SEAL 12	2	2						
40	1	129210-59060	PIPE ASSY, FUEL L240	1	1						
41	2	124766-59050	CLIP, HOSE 12	2	2						
42	2	171051-59050	PIPE, FUEL L=240	1	1						
43	1	22190-120002	WASHER, SEAL 12	3	3						W
		(A=FROM 1ST) (B=FROM 1ST)									

Remarks

(1) REPAIR PART.

Fig.13. FUEL LINE



(A)=3TNV76-SIK
(B)=3TNV76-QIK
(C)=

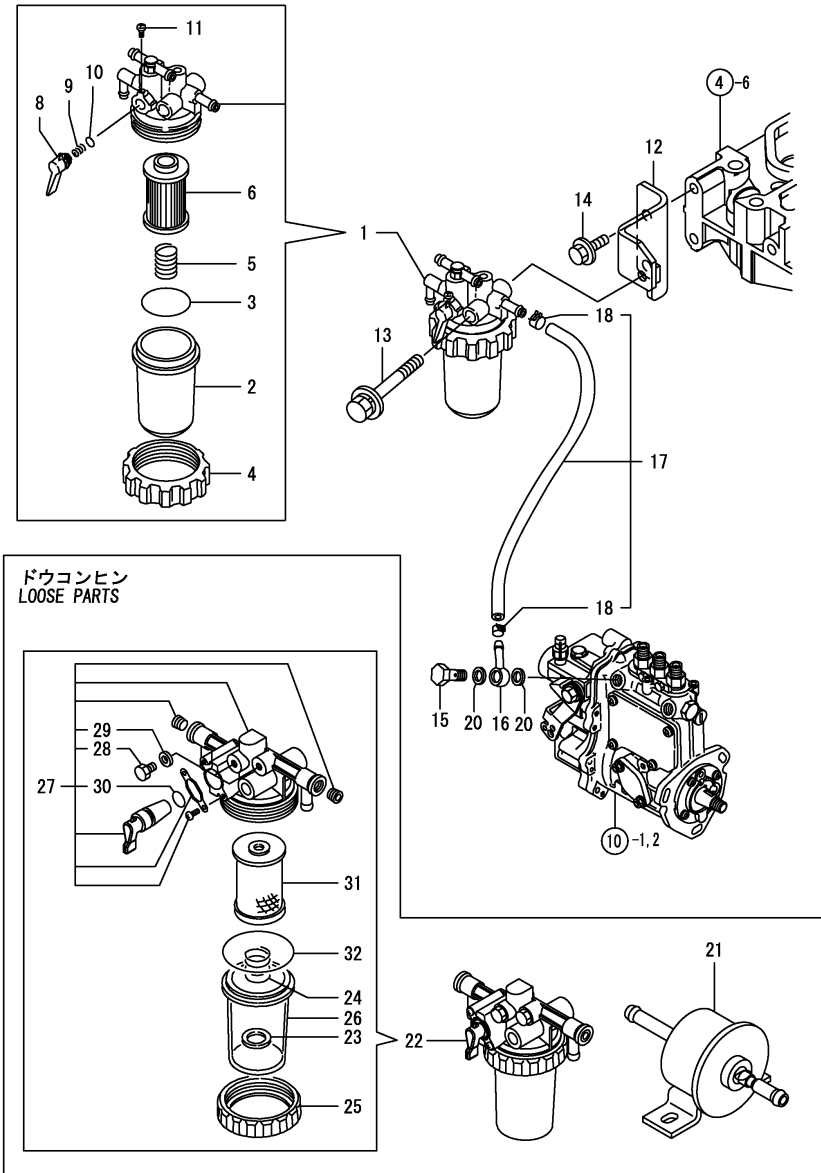
(D)=
(E)=
(F)=

No.	Lev.	Parts No.	Description	Q'ty						I	R
				(A)	(B)	(C)	(D)	(E)	(F)		
1	1	119740-55600	FILTER ASSY, FUEL	1	1						
2	2	121254-55510	COVER	1	1						
3	2	102103-55520	O-RING	1	1						
4	2	110250-55610	RING, RETAINING	1	1						
5	2	121250-55620	SPRING	1	1						
6	2	119810-55650	ELEMENT	1	1						
8	2	119810-55340	LEVER	1	1						
9	2	104200-55330	SPRING, VALVE	1	1						
10	2	24311-240100	O-RING, 1AP10A	1	1						
11	2	104200-55750	SCREW, M4	1	1						
12	1	119740-55660	BRACKET, FILTER	1	1						
13	1	26014-080702	BOLT, M8X 70	1	1						
14	1	26106-080142	BOLT, M8X 14 PLATED	2	2						
15	1	103854-39140	BOLT, PIPE JOINT	1	1						
16	1	101304-59020	JOINT, PIPE 12	1	1						
17	1	129210-59030	PIPE ASSY, FUEL	1	1						
18	2	124766-59050	CLIP, HOSE 12	2	2						
20	1	22190-120002	WASHER, SEAL 12	2	2						
21	1	119225-52102	PUMP ASSY, FUEL FEED	1	1						
22	1	129335-55700	SEPARATOR ASSY, WATER	1	1						
23	2	24311-240100	O-RING, 1AP10A	1	1						
24	2	104200-55321	VALVE, TAPER	1	1						
25	2	104200-55330	SPRING, VALVE	1	1						
26	2	104200-55341	HANDLE	1	1						
27	2	124064-55510	COVER	1	1						
28	2	102103-55520	O-RING	1	1						
29	2	110250-55610	RING, RETAINING	1	1						
30	2	121257-55720	SPRING	1	1						
31	2	121257-55731	FLOAT	1	1						
33	2	101720-55750	PLUG, 6	2	2						
34	2	104200-55750	SCREW, M4	1	1						
35	2	171081-55910	SCREEN	1	1						
36	2	23418-060000	GASKET, 6X1.0	2	2						

Remarks

*This item is applicable to [(A)(B)=EXXXXX-1] or previous machines. Refer to Fig.18.

Fig.17. (13A)FUEL LINE



(A)=3TNV76-SIK
(B)=3TNV76-QIK
(C)=

(D)=
(E)=
(F)=

No.	Lev.	Parts No.	Description	Q'ty						I	R
				(A)	(B)	(C)	(D)	(E)	(F)		
1	1	119740-55600	FILTER ASSY, FUEL	1	1						
2	2	121254-55510	COVER	1	1						
3	2	102103-55520	O-RING	1	1						
4	2	110250-55610	RING, RETAINING	1	1						
5	2	121250-55620	SPRING	1	1						
6	2	119810-55650	ELEMENT	1	1						
8	2	119810-55340	LEVER	1	1						
9	2	104200-55330	SPRING, VALVE	1	1						
10	2	24311-240100	O-RING, 1AP10A	1	1						
11	2	104200-55750	SCREW, M4	1	1						
12	1	119740-55660	BRACKET, FILTER	1	1						
13	1	26014-080702	BOLT, M8X 70	1	1						
14	1	26106-080142	BOLT, M8X 14 PLATED	2	2						
15	1	103854-39140	BOLT, PIPE JOINT	1	1						
16	1	101304-59020	JOINT, PIPE 12	1	1						
17	1	129210-59030	PIPE ASSY, FUEL	1	1						
18	2	124766-59050	CLIP, HOSE 12	2	2						
20	1	22190-120002	WASHER, SEAL 12	2	2						
21	1	119225-52102	PUMP ASSY, FUEL FEED	1	1						
22	1	129335-55750	SEPARATOR ASSY, WATER	1	1						
23	2	129053-55640	FLOAT	1	1						
24	2	129053-55650	SPRING, SCREEN	1	1						
25	2	119833-55660	RING, RETAINING	1	1						
26	2	129335-55740	CUP	1	1						
27	2	129335-55770	BODY ASSY	1	1						
28	3	129242-55750	VALVE, AIR VENT	2	2						
29	3	129242-55760	GASKET	2	2						
30	3	24311-000110	O-RING, 1AP11.0	1	1						
31	2	129335-55780	ELEMENT ASSY	1	1						
32	2	24311-000440	O-RING, 1AP44.0	1	1						

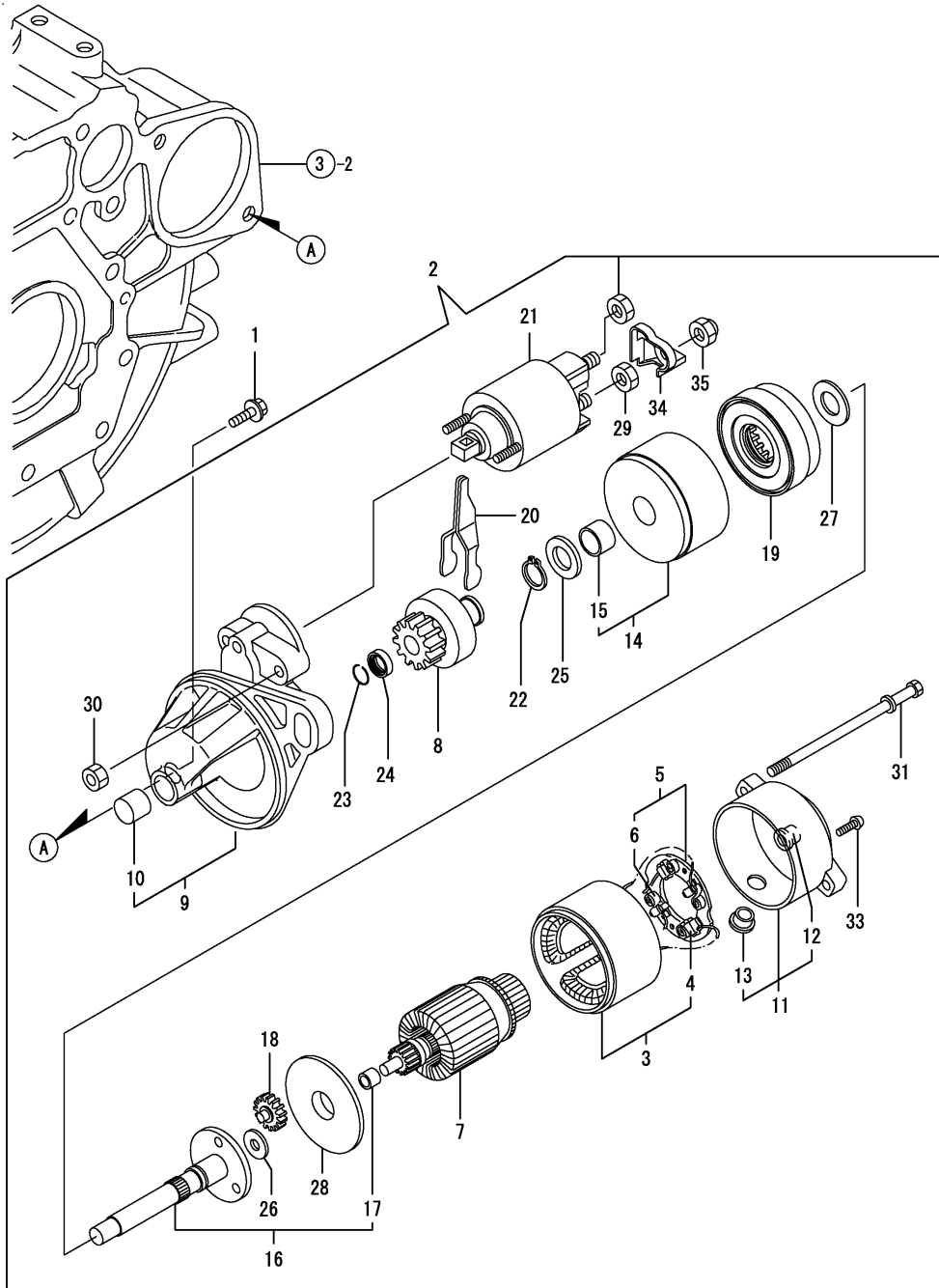
Remarks

*This item is applicable to [(A)(B)=EXXXXX] or following machines. Refer to Fig.13.

Fig.14. STARTING MOTOR

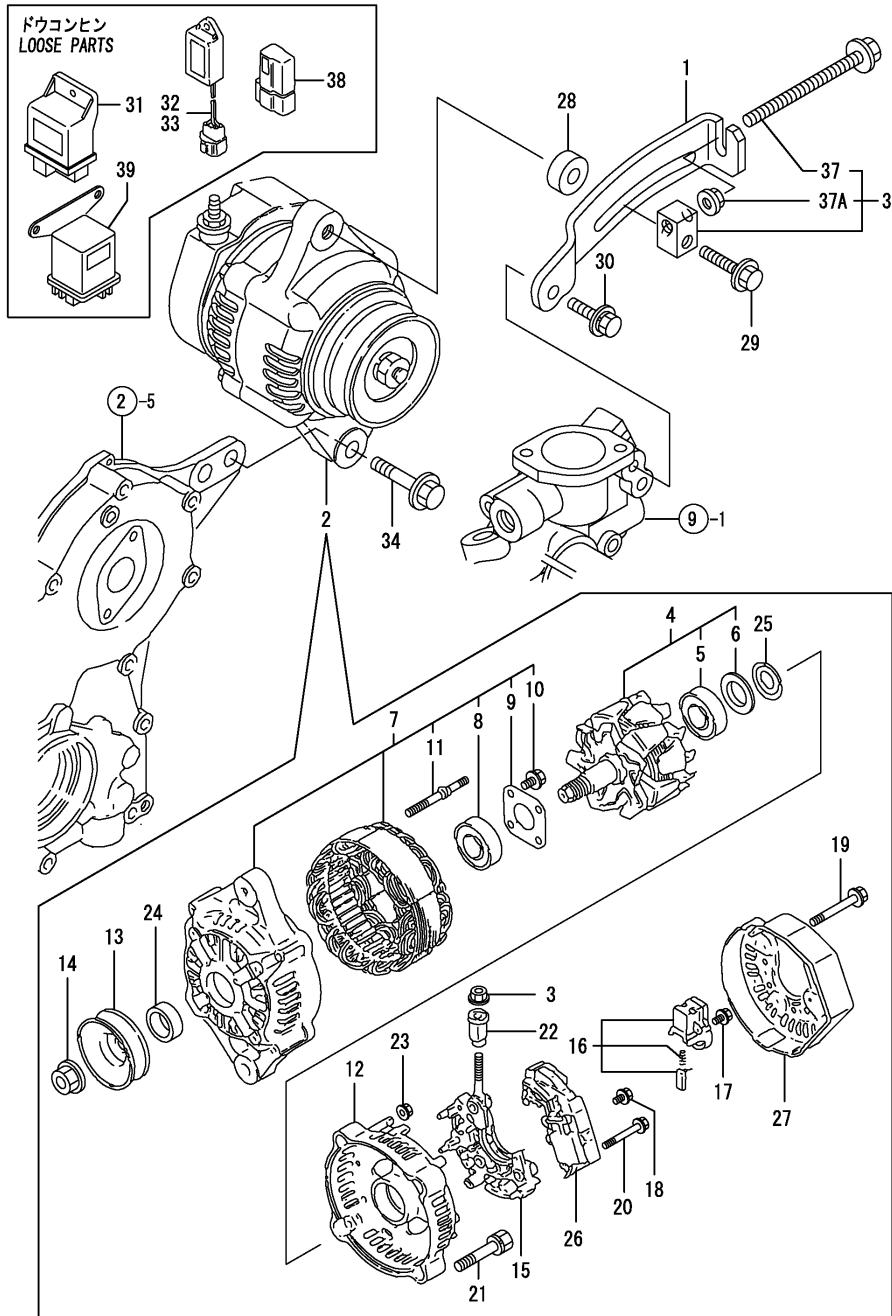
(A)=3TNV76-SIK
 (B)=3TNV76-QIK
 (C)=

(D)=
 (E)=
 (F)=



No.	Lev.	Parts No.	Description	Q'ty						I	R
				(A)	(B)	(C)	(D)	(E)	(F)		
1	1	26106-100252	BOLT, M10X 25 PLATED	2	2						
2	1	119717-77010	STARTER, P1.1	1	1						
3	2	X0281007750	YOKE ASSY	1	1						
4	3	X0280996180	STARTER KIT	2	2						
5	2	X0285105190	HOLDER ASSY	1	1						
6	3	X0285205030	SPRING	4	4						
7	2	X0282005991	ARMATURE ASSY	1	1						
8	2	X0283006960	CLUTCH ASSY	1	1						
9	2	X4284001590	HOUSING ASSY	1	1						
10	3	X9491050100	BEARING, NEEDLE	1	1						
11	2	X0285007030	FRAME ASSY	1	1						
12	3	X9491040990	BEARING	1	1						
13	3	X0280626010	COVER	1	1						
14	2	X0284105040	BEARING ASSY	1	1						
15	3	X9491034330	BEARING	1	1						
16	2	X0286105010	SHAFT ASSY	1	1						
17	3	X9491034320	BEARING	1	1						
18	2	X0286305010	GEAR	3	3						
19	2	X0286355010	GEAR	1	1						
20	2	X0287405140	LEVER	1	1						
21	2	X0534007800	SWITCH ASSY	1	1						
22	2	X9055715000	RING	1	1						
23	2	X9490721360	RING	1	1						
24	2	X0280210331	NUT	1	1						
25	2	X9490138110	WASHER	1	1						
26	2	X9490138090	WASHER	1	1						
27	2	X9490138100	WASHER	1	1						
28	2	X0284525010	PLATE	1	1						
29	2	X9490562360	NUT	1	1						
30	2	X9490560750	NUT	2	2						
31	2	X9490423420	BOLT, THROUGH	2	2						
33	2	X9490065670	SCREW, M4X6	2	2						
34	2	X0280335350	COVER, TERMINAL	1	1						
35	2	X1289510130	NUT	1	1						

Fig.15. GENERATOR



(A)=3TNV76-SIK
(B)=3TNV76-QIK
(C)=

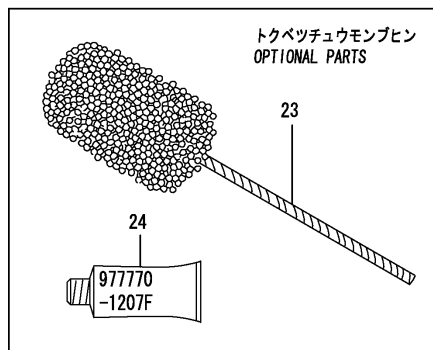
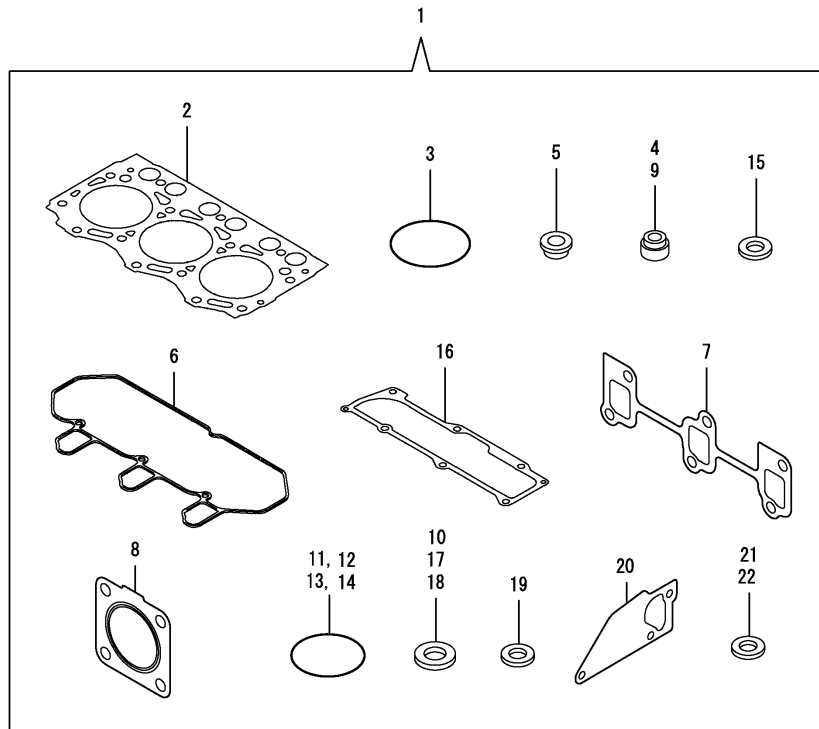
(D)=
(E)=
(F)=

No.	Lev.	Parts No.	Description	Qty						I	R
				(A)	(B)	(C)	(D)	(E)	(F)		
1	1	119740-77310	ADJUSTER	1	1						
2	1	129240-77200	ALTERNATOR	1	1						
3	2	129240-79310	NUT	1	1						
4	2	119620-77380	ROTOR ASSY	1	1						
5	3	126501-79240	BALL BEARING	1	1						
5-1	3	123501-79240	BEARING, BALL	1	1						N
		(A=E07926) (B=E07877)									
6	3	119620-79250	COVER	1	1						
7	2	119620-77421	FRAME ASSY, DRIVE	1	1						
8	3	119620-79200	BEARING, BALL	1	1						
9	3	119620-79210	PLATE, RETAINER	1	1						
10	3	119620-79220	SCREW	4	4						
11	3	119620-79230	STUD	2	2						
12	2	119620-77440	FRAME ASSY	1	1						
13	2	119620-77461	PULLEY	1	1						
14	2	119620-77471	NUT	1	1						
15	2	119620-79260	HOLDER	1	1						
16	2	129052-79270	HOLDER, BRUSH	1	1						
17	2	119620-79290	SCREW	6	6						
18	2	119620-79300	SCREW	1	1						
19	2	119620-79310	BOLT	3	3						
20	2	119620-79320	SCREW	2	2						
21	2	119620-79330	BOLT	2	2						
22	2	119620-79340	BUSH, INSULATION	1	1						
23	2	119620-79350	NUT	2	2						
24	2	119620-77490	COLLAR	1	1						
25	2	119620-79360	WASHER, THRUST	1	1						
26	2	129240-77710	REGULATOR ASSY	1	1						
27	2	129240-79300	COVER	1	1						
28	1	119940-77270	SPACER, GENERATOR	1	1						
29	1	26014-080502	BOLT, M8X 50	1	1						
29-1	1	26106-080552	BOLT, M8X 55 PLATED	1	1						N
		(A=E07926) (B=E07877)									
30	1	26106-080202	BOLT, M8X 20 PLATED	1	1						
31	1	119802-77200	RELAY, SAFETY	1	1						
32	1	129211-77920	TIMER	1	1						
33	1	129155-77925	TIMER	1	1						
34	1	26106-100502	BOLT, M10X 50 PLATED	1	1						
35	1	119624-77350	BLOCK, ADJUSTER	1	1						
35-1	1	119624-77351	BLOCK ASSY, ADJUSTER	1	1						N
		(A=E07926) (B=E07877)									
37	2	26106-081004	BOLT, M8X100 PLATED	1	1						
37A	2	26306-080002	NUT, M8	1	1						W
		(A=E21328) (B=E21049)									
38	1	119643-66900	DIODE	1	1						
39	1	119650-77910	RELAY ASSY, GLOW	1	1						

Fig.16. GASKET SET

(A)=3TNV76-SIK
 (B)=3TNV76-QIK
 (C)=

(D)=
 (E)=
 (F)=



No.	Lev.	Parts No.	Description	Q'ty						I	R
				(A)	(B)	(C)	(D)	(E)	(F)		
1	1	719717-92620	GASKET SET	1	1						1
2	2	119717-01330	GASKET, HEAD	1	1						
3	2	121850-51960	O-RING	1	1						
4	2	119717-11340	SEAL, VALVE STEM	3	3						
5	2	129901-11450	PROTECTOR, NOZZLE	3	3						
6	2	119718-11310	GASKET, BONNET	1	1						
7	2	119717-13110	GASKET	1	1						
8	2	119515-13200	GASKET, SILENCER	1	1						
9	2	119717-11350	SEAL, VALVE STEM	3	3						
10	2	22190-080002	WASHER, SEAL 6	4	4						
11	2	24311-000320	O-RING, 1AP32.0	2	2						
12	2	119717-32060	O-RING, P15.0	1	1						
13	2	119624-32040	O-RING, P12.0	1	1						
14	2	119717-32050	O-RING, P17.0	3	3						
15	2	119600-11460	GASKET, NOZZLE	6	6						
16	2	119717-11331	GASKET	1	1						
17	2	129150-49360	GASKET	1	1						
18	2	22190-120002	WASHER, SEAL 12	7	7						
19	2	129901-59560	GASKET	3	3						
20	2	119717-42020	GASKET, WATER PUMP	1	1						
21	2	23414-080000	GASKET, 8X1.0	1	1						
22	2	124465-44950	GASKET, 16	1	1						
23	1	129400-92420	HONE	1	1						1
24	1	977770-1207F	GASKET.LIQUID	1	1						1

Remarks
 (1) OPTIONAL PART.

Parts No. Index

Parts No.	Fig. No.	Ref. No.
101304-59020	13	16
	17	16
101720-55750	13	33
102103-55520	13	3
		28
	17	3
103854-39140	13	15
	17	15
104200-55321	13	24
104200-55330	13	9
		25
	17	9
104200-55341	13	26
104200-55750	13	11
		34
	17	11
105010-11490	4	5
105027-12570	5	15
105027-12580	5	16
105311-01090	1	6
105425-01690	3	9
110250-55610	13	4
		29
	17	4
118200-53010	12	2
118400-51370	10	56
119131-18320	5	6
119225-52102	13	21
	17	21
119233-12510	5	12
119233-12660	5	17
119233-77932	11	133
119260-07900	4	61
119266-49350	9	26 -1
119285-01990	1	9
119285-11990	4	15
119305-35151	8	3
119515-13200	5	3
	16	8
119515-59580	12	21
119515-59581	12	21 -1
119540-59570	12	29 -1
119600-11460	4	4
	16	15
119620-01750	3	4
119620-01800	2	6 A
119620-02020	1	10
119620-11280	4	30
119620-14200	6	1
119620-21500	7	39

Parts No.	Fig. No.	Ref. No.
119620-21941	7	14
119620-59700	12	32
119620-77380	15	4
119620-77421	15	7
119620-77440	15	12
119620-77461	15	13
119620-77471	15	14
119620-77490	15	24
119620-79200	15	8
119620-79210	15	9
119620-79220	15	10
119620-79230	15	11
119620-79250	15	6
119620-79260	15	15
119620-79290	15	17
119620-79300	15	18
119620-79310	15	19
119620-79320	15	20
119620-79330	15	21
119620-79340	15	22
119620-79350	15	23
119620-79360	15	25
119621-21680	7	13
119623-01250	1	7
119624-32040	2	19
	16	13
119624-77350	15	35
119624-77351	15	35 -1
119626-07900	4	61 -1
119643-66900	15	38
119650-77910	15	39
119655-12560	5	14
119660-01911	2	18
119660-61300	11	77
119660-61901	11	66
119717-01330	1	31
	16	2
119717-01501	2	1
119717-01521	2	5
119717-01570	2	3
119717-01590	2	4
119717-01600	3	2
119717-01601	3	2 -1
119717-01720	3	7
119717-01750	2	16
119717-01770	3	8
119717-02410	1	13
119717-02411	1	13 -1
119717-02930	1	27
119717-03031	4	40

Parts No.	Fig. No.	Ref. No.
119717-03070	4	41
		42
119717-11100	4	17
119717-11101	4	17 -1
119717-11110	4	18
119717-11131	4	19
119717-11190	4	21
119717-11200	4	25
119717-11240	4	26
119717-11260	4	29
119717-11320	4	51
119717-11331	4	52
	16	16
119717-11340	4	22
	16	4
119717-11350	4	23
	16	9
119717-11381	4	39
119717-11650	4	31
119717-11740	4	6
119717-11800	4	13
119717-13110	5	2
	16	7
119717-13600	5	4
119717-14400	6	2
119717-14580	6	3
119717-14581	6	3 -1
119717-21200	7	6
119717-21650	7	12
119717-21700	7	1
119717-22080	7	15
119717-22090	7	31
119717-22300	7	21
119717-22500	7	17
119717-22550	7	33
119717-23000	7	23
119717-23200	7	28
119717-23600	7	29
119717-23601	7	29 -1
119717-23610	7	37
119717-23611	7	37 -1
119717-23910	7	27
119717-25050	6	10
119717-25100	6	11
119717-25101	6	11 -1
119717-25930	6	16
119717-32050	2	20
	16	14
119717-32060	8	4
	16	12

Parts No.	Fig. No.	Ref. No.
119717-32080	2	8
119717-32100	2	7
119717-32110	2	12
119717-32120	2	13
119717-35080	8	5
119717-39210	8	11
119717-42002	9	1
119717-42020	9	13
	16	20
119717-42031	9	4
119717-42041	9	3
119717-42320	9	11
119717-49800	9	23
119717-51030	10	6
119717-51060	10	7
119717-51070	10	8
119717-51150	6	17
	10	14
119717-51170	10	15 -1
119717-51180	10	16
119717-51190	10	17
119717-51200	10	18
119717-51300	10	45
119717-51330	10	48
119717-51420	10	57
119717-51480	10	94
119717-51490	10	95
119717-51500	10	66
119717-51570	10	16 -1
119717-51710	10	77
119717-51711	10	77 -1
119717-51750	10	78
119717-51760	10	79
119717-51761	10	79 -1
119717-53000	12	1
119717-53001	12	1 -1
119717-53010	12	3
119717-59510	12	22
119717-59570	12	29
119717-59810	12	9
119717-59820	12	13
119717-59830	12	17
119717-61050	11	2
119717-61060	11	3
119717-61070	11	4
119717-61120	11	8
119717-61130	11	9
119717-61140	11	10
119717-61150	11	11
119717-61200	11	73

Parts No. Index

Parts No.	Fig. No.	Ref. No.
119717-61400	11	14
119717-61500	11	30
119717-77010	14	2
119717-77800	4	59
119717-77820	4	60
119718-11310	4	50
	16	6
119740-13100	5	1
119740-13500	5	9
119740-21590	7	8
119740-34800	8	1
119740-34801	8	1 -1
119740-42350	9	17
119740-51100	10	10
119740-55600	13	1
	17	1
119740-55660	13	12
	17	12
119740-61100	11	5
119740-61440	11	21
119740-61550	11	97
119740-77310	15	1
119802-03100	4	43
119802-03110	4	44
119802-03121	4	45
119802-03131	4	46
119802-03141	4	47
119802-13620	5	5
119802-32130	2	14
119802-77200	15	31
119808-12520	5	14 -1
119808-12540	5	13
119810-01200	1	30
119810-02940	1	32
119810-02941	1	32 -1
119810-55340	13	8
	17	8
119810-55650	13	6
	17	6
119813-59950	12	33
119833-55660	17	25
119865-21600	7	11
119940-13590	5	19
119940-77270	15	28
121120-01620	3	3
121250-55620	13	5
	17	5
121252-39450	8	10
121254-55510	13	2
	17	2

Parts No.	Fig. No.	Ref. No.
121256-44600	9	37
121257-55720	13	30
121257-55731	13	31
121450-42450	9	25
121450-44531	9	32
121470-44581	9	34
121520-34810	8	16
121850-51960	2	21
	16	3
122710-51090	10	9
123501-79240	15	5 -1
123900-13620	5	8
124060-01050	1	5
124064-55510	13	27
124066-59100	12	30
124085-02220	3	5
124160-01751	2	29
	4	38
124160-01910	1	8
124450-44550	9	36
124450-44560	9	33
124465-44950	9	27
	16	22
124550-51350	10	49
124766-59050	12	41
	13	18
	17	18
126501-79240	15	5
126650-12680	5	18
129001-32320	2	10
129001-32330	2	11
129005-59830	8	12
129030-44760	9	20
129051-12510	5	17 -1
129051-12540	5	15 -1
129052-61390	11	13
129052-79270	15	16
129053-55640	17	23
129053-55650	17	24
129100-01580	3	1
	7	2
129100-35140	8	2
129100-51560	10	71
129100-51570	10	72
129100-52200	10	100
129100-61650	11	60
129150-11230	4	32
129150-11750	4	34
129150-25301	6	15
129150-49360	9	29

Parts No.	Fig. No.	Ref. No.
129150-49360	16	17
129150-59120	12	4
129150-59131	12	7
129155-51020	10	5
129155-51140	10	13
129155-51280	10	43
		44
	11	6
129155-51400	10	58
129155-51450	10	61
129155-51521	10	67
129155-51530	10	68
129155-51540	10	69
129155-51550	10	70
129155-51580	10	74
129155-51591	10	75
129155-51600	10	23
129155-51701	10	76
129155-52051	10	99
129155-61341	11	78
129155-61450	11	22
129155-61460	11	79
129155-61480	11	24
129155-77925	15	33
129156-51910	10	81
129156-61460	11	23
129209-61370	11	12
129209-61930	11	131
129209-61970	11	132
129210-59030	13	17
	17	17
129210-59060	12	40
129211-77920	15	32
129240-12540	5	12 -1
129240-77200	15	2
129240-77710	15	26
129240-79300	15	27
129240-79310	15	3
129242-55750	17	28
129242-55760	17	29
129335-55700	13	22
129335-55740	17	26
129335-55750	17	22
129335-55770	17	27
129335-55780	17	31
129350-49530	9	22
129400-92420	16	23
129486-61540	11	50
129508-11180	4	20
129900-07900	4	1

Parts No.	Fig. No.	Ref. No.
129900-32130	2	9
129901-11450	4	3
	16	5
129901-53800	12	3 A
129901-59560	12	28
	16	19
129916-49740	9	12
158552-61700	11	61
158552-61710	11	65
158552-61900	11	82 -1
158600-51170	10	15
		15 -2
158600-51270	10	42
158600-51410	10	59
158600-51420	10	60
158600-51440	10	50
158600-51441	10	50 -1
158600-51442	10	50 -2
158600-51570	10	73
158600-51790	10	80
158601-61790	11	89
171001-42290	9	18
171051-59050	12	42
171056-49120	9	28
171056-49351	9	26
171064-44510	9	30
171081-55910	13	35
171340-44740	9	19
171353-61700	11	130
174307-51700	11	31
22117-100000	5	21
22190-080002	8	13
		15
	16	10
22190-100002	11	67
		88 A
22190-120002	11	80
	12	39
		43
	13	20
	16	18
	17	20
22190-160002	3	12
	10	82
22217-060000	10	83
22217-100000	5	22
22217-120000	6	18
	10	84
22242-000120	4	35
22252-000220	7	22

Parts No. Index

Parts No.	Fig. No.	Ref. No.
22272-000030	11	68
22351-050010	10	85
22351-060012	4	24
22372-040000	11	81
22512-040120	7	5
22857-500100	4	53
		54
22857-500160	4	55
23065-070225	9	35
23414-080000	9	14
	16	21
23414-120016	11	134
23418-060000	13	36
23857-030000	8	14
23876-005000	4	16
23876-030000	2	6 B
23887-100002	11	69
		88 B
24101-060034	10	86
24101-063034	10	87
24311-000110	17	30
24311-000320	2	30
	4	56
	16	11
24311-000440	17	32
24311-240100	13	10
		23
	17	10
24316-000150	10	88
24341-000070	11	70
24341-000280	11	82
26014-080502	15	29
26014-080702	13	13
	17	13
26022-050122	10	89
26022-060162	10	90
26106-050102	10	91
26106-060102	8	9
	11	71
		83
26106-060122	2	22
	6	9
26106-060142	11	84
26106-060162	2	23
26106-060202	4	57
	11	85
26106-060352	6	14
26106-060402	2	24
		25
26106-060452	11	86

Parts No.	Fig. No.	Ref. No.
26106-060502	9	21
26106-060602	2	26
26106-060652	2	27
26106-060752	4	58
26106-080122	3	13
	9	15
26106-080142	4	62
	13	14
	17	14
26106-080162	4	2
26106-080202	9	24
	15	30
26106-080302	3	14
26106-080402	4	37
26106-080452	3	15
26106-080502	3	16
	9	16
26106-080552	15	29 -1
26106-081004	15	37
26106-100182	5	10
26106-100252	14	1
26106-100502	15	34
26106-100652	5	23
26206-100252	3	6
		6 -1
26306-080002	2	28
	5	7
		11
	15	37 A
26366-080002	11	72
26577-060122	9	9
26706-100002	5	24
26716-060002	10	92
26716-120002	6	19
	10	93
26736-120002	11	87
26756-060002	11	88
26979-050162	4	36
27241-120000	1	14
27241-250000	9	10
719717-01500	2	4 A
719717-01560	1	1
719717-01561	1	1 -1
719717-02900	1	15
719717-02901	1	15 -1
719717-02910	1	35
719717-02911	1	35 -1
719717-92620	16	1
719740-51380	10	1
719740-51390	10	2

Parts No.	Fig. No.	Ref. No.
977770-1207F	2	31
	3	17
	4	63
	16	24
X0280210331	14	24
X0280335350	14	34
X0280626010	14	13
X0280996180	14	4
X0281007750	14	3
X0282005991	14	7
X0283006960	14	8
X0284105040	14	14
X0284525010	14	28
X0285007030	14	11
X0285105190	14	5
X0285205030	14	6
X0286105010	14	16
X0286305010	14	18
X0286355010	14	19
X0287405140	14	20
X0534007800	14	21
X1289510130	14	35
X4284001590	14	9
X9055715000	14	22
X9490065670	14	33
X9490138090	14	26
X9490138100	14	27
X9490138110	14	25
X9490423420	14	31
X9490560750	14	30
X9490562360	14	29
X9490721360	14	23
X9491034320	14	17
X9491034330	14	15
X9491040990	14	12
X9491050100	14	10

Parts No.	Fig. No.	Ref. No.
-----------	----------	----------