

OCD10-M71700EN

PREFACE

1. This parts catalog is the Second edition of 2TNE68-ETB for Takeuchi Mfg. Co., Ltd.
2. This parts catalog does not contain the technical data needed for maintenance service.
3. The illustrations used in this parts catalog have been simplified for clarity.

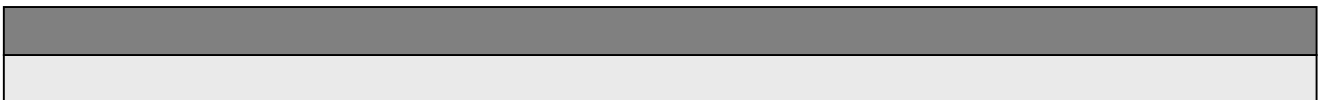
Pub. No.: 000Y00D7170

Published: May., 2000

4. Model name

Engine model	Vehicle		Vehicle made by
	Products	Model name	
2TNE68-ETB	COMPACT EXCAVATOR	TB007	Takeuchi Mfg. Co., Ltd.
	EXCAVATOR	A2	

5. The contents of this parts catalog are subject to change without prior notice.



Directions for the Parts Catalog.

1. This Parts Catalog shows both standard and optional parts.
2. Parts may change without prior notice.
3. The following is an example of the Parts Catalog format.

REF.	LEV.	PARTS NO.	DESCRIPTION	Q'TY						I	R
				(A)	(B)	(C)	(D)	(E)	(F)		
1	1	729595-51390	FUEL INJECTION PUMP	1	1	1	1	1			1
1-1	1	729595-51391	FUEL INJECTION PUMP	1	1	1	1	1		N	1
		(A=E00185) (B=E00200)									
3	2	26022-060162	SCREW M 6X 16	9	9	9	9	9			
3-1	2	26022-060162	SCREW M 6X 16	4	4	4	4	4		K	
		(A=E00156) (B=E00156) (C=E00156) (D=E00156) (E=E00156)									
4	2	129470-51040	CAMSHAFT	1	1	1	1	1			
5	2	122710-51050	BEARING, ROLLER	2	2	2	2	2			
6	2	129470-51060	RETAINER	1	1	1	1	1			

Remarks
(1) BOOST COMPEMSATOR TYPE. OPTIONAL PART, TO E00155,(4JH-DT, 4JH-DTZ

① Ref. No.

The Ref. No. listed may not be in accordance with the illustration Ref. No.

(Ex.) Illustration No.

List Ref No.

1

1

(Before change)

1-1

(After change)

For interchangeable symbols N, R and K, illustrations for new parts may be abbreviated.

② Lev. (Level)

Level indication

The numbers below indicate the level of relativity towards the main part.

1 ----- Main parts (Assembly parts)

2 ----- Sub component included in " 1 ".

3 ----- Sub component included in " 2 ".

Note) Parts that are not for sale are partially illustrated but not listed.

③ Interchangeability Symbol

When a part change takes place, one of the following interchangeability symbols is indicated beside the part.

Symbol	Interchangeability	Contents note
N	Old $\begin{matrix} \leftarrow \text{Yes} \\ \text{No} \rightarrow \end{matrix}$ New	New Part is interchangeable for Old Part but Old Part is not interchangeable for New Part.
Q	Old $\begin{matrix} \leftarrow \text{No} \\ \text{Yes} \rightarrow \end{matrix}$ New	New Part is not interchangeable for Old Part but Old Part is interchangeable for New Part.
R	Old $\begin{matrix} \leftarrow \text{Yes} \\ \text{Yes} \rightarrow \end{matrix}$ New	New/ Old Parts are both interchangeable.
S	Old $\begin{matrix} \leftarrow \text{No} \\ \text{No} \rightarrow \end{matrix}$ New	New/ Old Parts are both not interchangeable.
W		Part newly added.
Z		Part discontinued.
F		Not interchangeable by a single part but interchangeable together with related parts.
K		Changes only for used parts quantities.

④ Effective Machine No.

When a part changes, the effective Machine No. will be indicated in the (A)-(F) column.

Product Symbol	Product No.	Product Symbol	Product No.
C	Clutch No. Compressor No.	F	Machine No. (Agricultural Equip.)
D	Drive No.	M	Machine No.
E	Engine No.		

Note 1) A date may follow the symbol. (Ex.) 1996.01

Note 2) "XXXXX" and "ZZZZZ" are for parts that could not be predicted or for engine models that could not be identified.

Note 3) (A=E00185) is the E (Engine Serial Number) for the column (A) model (in this case 4JH-DT) after the parts design change.

⑤ Remarks

Figures or alphabets (symbols) are entered in the remarks column.

The comments (remarks) on parts that are indicated at the bottom of the illustration are the same symbols as those stated above.

Contents

Fig. No. Fig. Name

2TNE68-ETB

1. CYLINDER BLOCK
2. GEAR HOUSING
3. FLYWHEEL HOUSING & OIL SUMP
4. CYLINDER HEAD & BONNET
5. SUCTION MANIFOLD & AIR CLEANER
6. EXHAUST MANIFOLD & SILENCER
7. CAMSHAFT & DRIVING GEAR
8. CRANKSHAFT & PISTON
9. LUB.OIL SYSTEM
10. COOLING WATER SYSTEM
11. FUEL INJECTION PUMP
12. GOVERNOR
13. FUEL INJECTION VALVE
14. FUEL LINE
15. STARTING MOTOR
16. GENERATOR
17. GASKET SET

Fig. No. Fig. Name

Fig.1. CYLINDER BLOCK

(A)=2TNE68-ETB

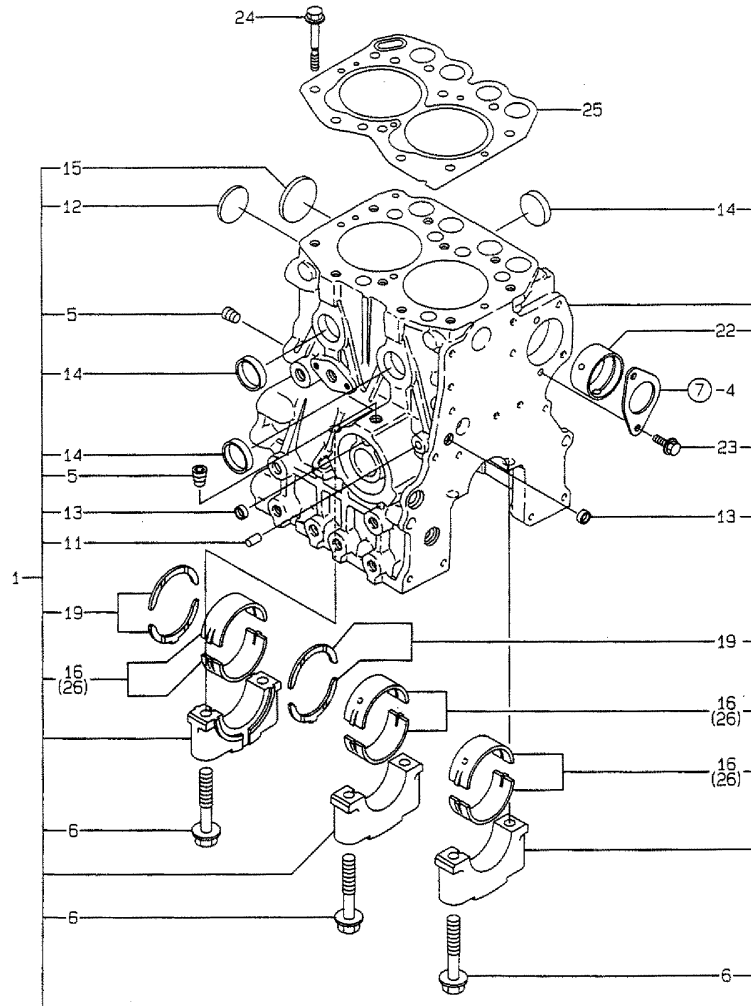
(B)=

(C)=

(D)=

(E)=

(F)=



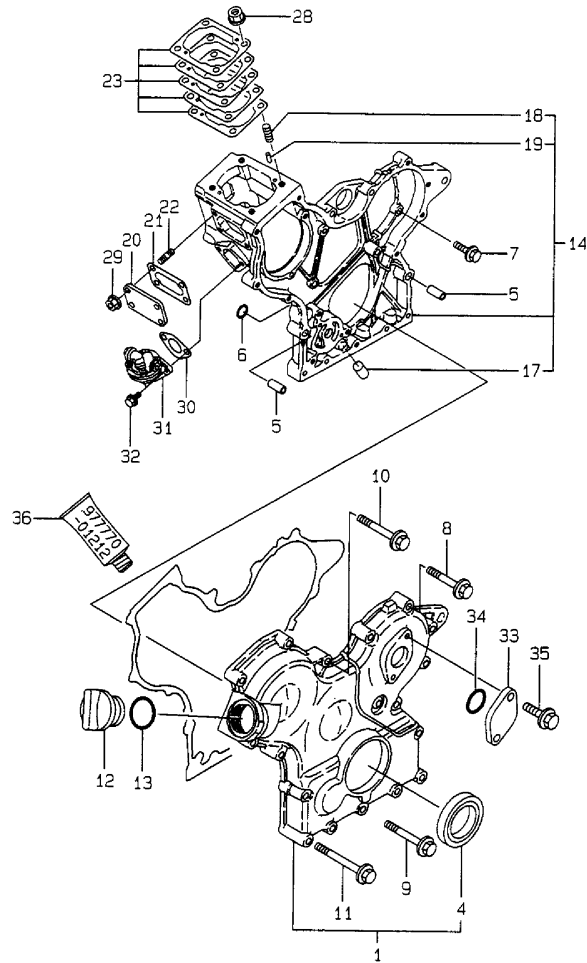
No.	Lev.	Parts No.	Description	Q'ty						I	R	
				(A)	(B)	(C)	(D)	(E)	(F)			
1	1	719325-01560	BLOCK ASSY, CYLINDER	1								
5	2	124060-01050	PLUG, PT1/8	2								
6	2	119260-02020	BOLT, METAL CAP	6								
11	2	27221-060100	PLUG, 6X10	1								
12	2	119265-01250	PLUG, 40	1								
13	2	27241-100000	PLUG, 10	2								
14	2	27241-250000	PLUG, 25	3								
15	2	27241-300000	PLUG 30	1								
16	2	119260-02800	BEARING, MAIN	3								
19	2	119260-02930	BEARING, THRUST	2								
22	2	119266-02410	BUSH	1								
23	2	26106-060122	BOLT, M6X 12 PLATED	2								
24	1	119266-01200	BOLT, HEAD	10								
25	1	119309-01330	GASKET, CYL. HEAD	1								
26	1	719260-02870	BEARING, 0.25 US	3								1

Remarks

(1) UNDER-SIZE(U.S=0.25)PART.

N:Old $\xrightarrow{\text{Yes}}$ New, Q:Old $\xrightarrow{\text{No}}$ New, R:Old $\xrightarrow{\text{Yes}}$ New, S:Old $\xrightarrow{\text{No}}$ New, W:Add, Z:Discontinued, F:Interchangeable by set, K:Q'ty Change

Fig.2. GEAR HOUSING



(A)=2TNE68-ETB

(B)=

(C)=

(D)=

(E)=

(F)=

No.	Lev.	Parts No.	Description	Q'ty						I	R
				(A)	(B)	(C)	(D)	(E)	(F)		
1	1	119260-01590	COVER ASSY,GEAR CASE	1							
4	2	119620-01800	SEAL, OIL	1							
5	1	119660-01911	PIPE, KNOCK	4							
6	1	119624-32040	O-RING, P12.0	2							
7	1	26106-060162	BOLT, M6X 16 PLATED	5							
8	1	26106-060302	BOLT, M6X 30 PLATED	5							
9	1	26106-060402	BOLT, M6X 40 PLATED	3							
10	1	26106-060502	BOLT, M6X 50 PLATED	4							
11	1	26106-060652	BOLT, M6X 65 PLATED	6							
12	1	124160-01751	COVER, FILLER	1							
13	1	24311-000320	O-RING, 1AP32.0	1							
14	1	119305-01490	CASE ASSY, GEAR	1							
17	2	119260-01510	PLUG	1							
18	2	121450-01560	STUD, M8X22	4							
19	2	22351-040010	PIN, SPRING 4.0X10	2							
20	1	119660-01551	COVER	1							
21	1	119660-01562	GASKET	1							
22	1	119660-01570	STUD, M6X12	4							
23	1	119305-01950	SHIM SET, ADJUSTING	1							
28	1	194990-22050	NUT, M8	4							
29	1	26366-060002	NUT, M6	4							
30	1	121520-01851	GASKET	1							
31	1	119600-52021	PUMP ASSY, FUEL FEED	1							
32	1	26106-060162	BOLT, M6X 16 PLATED	2							
33	1	121023-01550	COVER	1							
34	1	24341-000240	O-RING, 1AS24.0	1							
35	1	26106-060162	BOLT, M6X 16 PLATED	2							
36	1	977770-01212	GASKET, LIQUID	1							1

Remarks

(1) OPTIONAL PART.

N:Old $\begin{matrix} \leftarrow \text{Yes} \\ \text{No} \end{matrix}$ New, Q:Old $\begin{matrix} \leftarrow \text{No} \\ \text{Yes} \end{matrix}$ New, R:Old $\begin{matrix} \leftarrow \text{Yes} \\ \text{Yes} \end{matrix}$ New, S:Old $\begin{matrix} \leftarrow \text{No} \\ \text{No} \end{matrix}$ New, W:Add, Z:Discontinued, F:Interchangeable by set, K:Q'ty Change

Fig.3. FLYWHEEL HOUSING & OIL SUMP

(A)=2TNE68-ETB

(B)=

(C)=

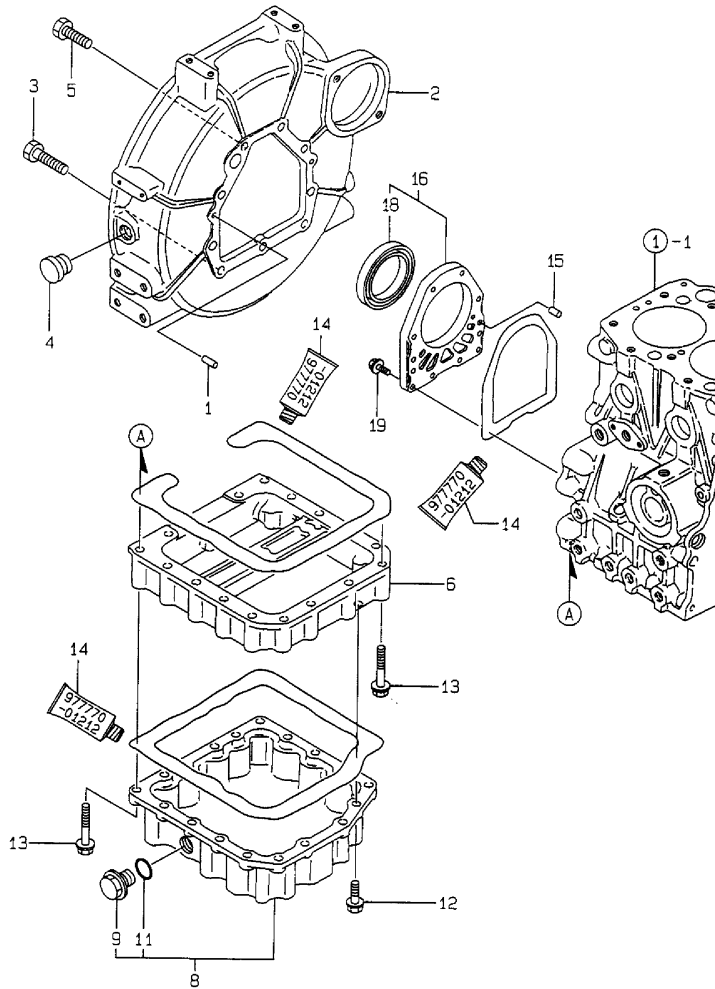
(D)=

(E)=

(F)=

Q'ty

No.	Lev.	Parts No.	Description	Q'ty						I	R
				(A)	(B)	(C)	(D)	(E)	(F)		
1	1	129100-01580	PIN, M8X16	2							
2	1	119260-01600	HOUSING, FLYWHEEL	1							
3	1	121120-01620	BOLT, M10X28	3							
4	1	119620-01750	CAP	1							
5	1	26206-100252	BOLT, M10X 25 PLATED	6							
6	1	119305-01760	SPACER, OIL SUMP	1							
8	1	119332-01771	SUMP ASSY, OIL	1							
9	2	121400-01640	PLUG, 16	1							
11	2	24311-000180	O-RING, 1AP18.0	1							
12	1	26106-060102	BOLT, M6X 10 PLATED	3							
13	1	26106-060452	BOLT, M6X 45 PLATED	16							
14	1	977770-01212	GASKET, LIQUID	1							1
15	1	119620-01620	PIN, M6X10	2							
16	1	119660-01640	CASE ASSY, OIL SEAL	1							
18	2	124085-02220	SEAL, OIL	1							
19	1	26106-060222	BOLT, M6X 22 PLATED	10							



Remarks
(1) OPTIONAL PART.

Fig.4. CYLINDER HEAD & BONNET

(A)=2TNE68-ETB

(B)=

(C)=

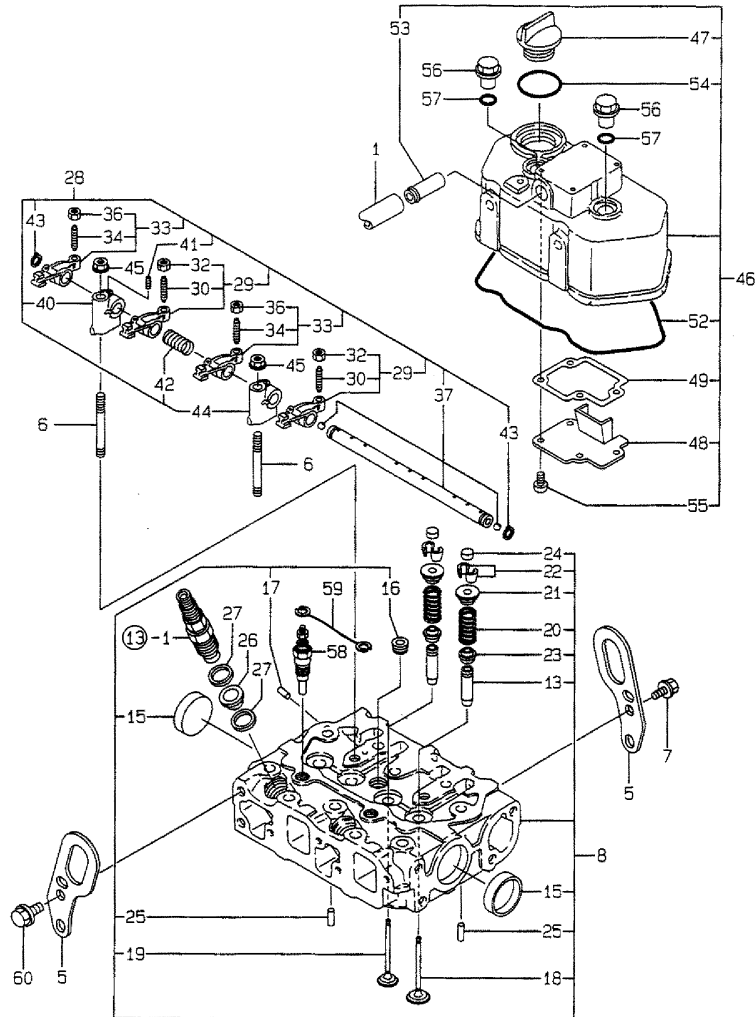
(D)=

(E)=

(F)=

Q'ty

I R



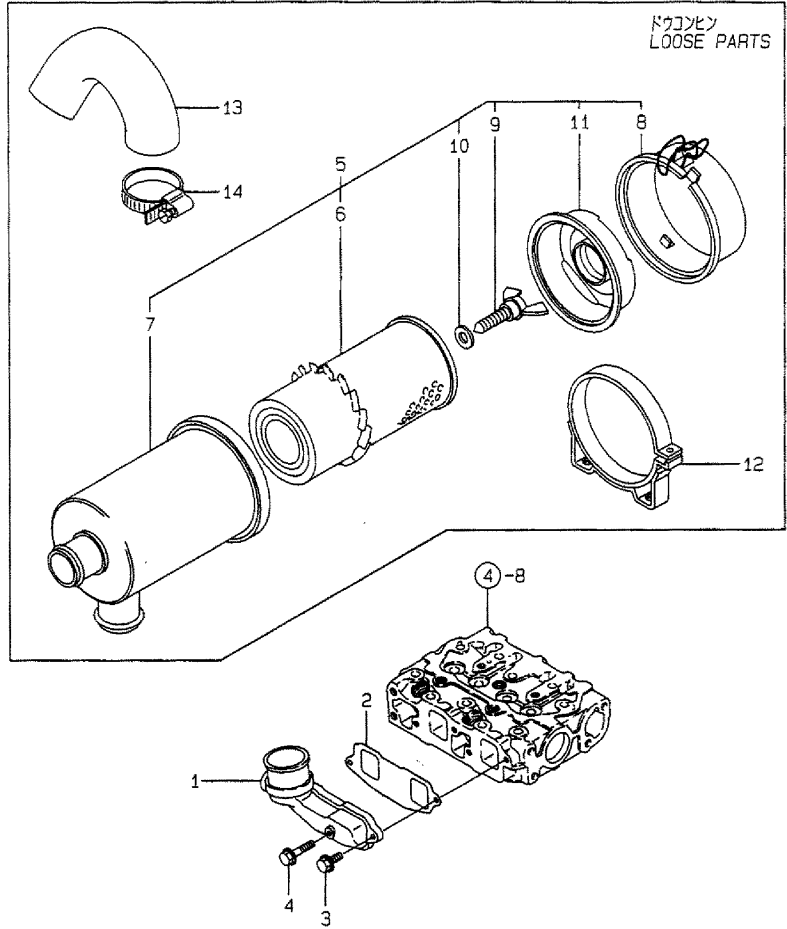
No.	Lev.	Parts No.	Description	(A)	(B)	(C)	(D)	(E)	(F)	I	R
1	1	23065-120500	PIPE, 12X 500	1							
5	1	119260-07900	LIFTER	2							
6	1	119620-11350	STUD	2							
7	1	26106-080142	BOLT, M8X 14 PLATED	1							
8	1	719325-11700	HEAD ASSY, CYLINDER	1							
13	2	119260-11800	GUIDE, VALVE	4							1
15	2	27241-350000	PLUG, 35	2							
16	2	23876-020000	PLUG, R02	1							
17	2	27221-050080	PLUG, 5X 8	1							
18	2	119260-11100	VALVE, INTAKE	2							
19	2	119260-11110	VALVE, EXHAUST	2							
20	2	114250-11120	SPRING, VALVE	4							
21	2	114250-11180	RETAINER, SPRING	4							
22	2	27310-055001	COTTER, 5.5	4							
23	2	119260-11340	SEAL, VALVE STEM	4							
24	2	119260-11370	CAP, VALVE	4							
25	2	22351-060012	PIN, SPRING 6.0X12	2							
26	1	119600-11450	PROTECTOR, NOZZLE	2							
27	1	119600-11460	GASKET, NOZZLE	4							
28	1	119305-11200	SUPPORT ASSY, ARM	1							
29	2	719260-11650	ARM ASSY, ROCKER	2							
30	3	105010-11230	SCREW, VALVE ADJUST	2							
32	3	26856-060002	NUT, M6	2							
33	2	719260-11660	ARM ASSY, ROCKER	2							
34	3	105010-11230	SCREW, VALVE ADJUST	2							
36	3	26856-060002	NUT, M6	2							
37	2	119305-11240	SHAFT ASSY, ROCKER	1							
40	2	119260-11260	SUPPORT, ROCKER ARM	1							
41	2	119260-11270	SCREW	1							
42	2	119260-11280	SPRING	1							
43	2	22242-000100	RING, 10	2							
44	2	119265-11260	SUPPORT, ROCKER ARM	1							
45	1	26366-080002	NUT, M8	2							
46	1	119305-11350	BONNET ASSY, HEAD	1							
47	2	124160-01751	COVER, FILLER	1							
48	2	119305-03020	PLATE, SHELTER	1							
49	2	119305-03031	GASKET	1							
52	2	119305-11310	GASKET, BONNET	1							
53	2	118400-03060	JOINT, BREATHER	1							
54	2	24311-000320	O-RING, 1AP32.0	1							
55	2	22857-500100	SCREW, 5X10	4							
56	1	124160-11360	KNOB	2							
57	1	24311-000120	O-RING, 1AP12.0	2							
58	1	129155-77801	PLUG, GLOW	2							
59	1	119305-77820	CONNECTOR, GLOW PLUG	1							
60	1	26106-080142	BOLT, M8X 14 PLATED	2							

Remarks

(1) REPAIR PART.

N:Old $\xrightarrow{\text{Yes}}$ New, Q:Old $\xrightarrow{\text{No}}$ New, R:Old $\xrightarrow{\text{Yes}}$ New, S:Old $\xrightarrow{\text{No}}$ New, W:Add, Z:Discontinued, F:Interchangeable by set, K:Q'ty Change

Fig.5. SUCTION MANIFOLD & AIR CLEANER

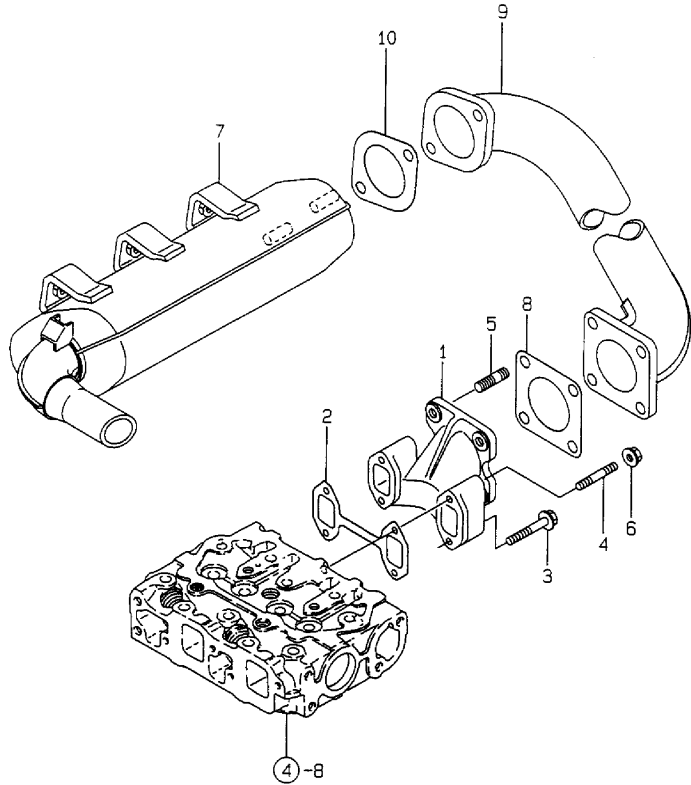


(A)=2TNE68-ETB
(B)=
(C)=

(D)=
(E)=
(F)=

No.	Lev.	Parts No.	Description	Q'ty						I	R
				(A)	(B)	(C)	(D)	(E)	(F)		
1	1	119305-12150	MANIFOLD, AIR INTAKE	1							
2	1	119326-12111	GASKET, MANIFOLD	1							
3	1	26106-060162	BOLT, M6X 16 PLATED	2							
4	1	26106-060282	BOLT, M6X 28 PLATED	1							
5	1	171033-12500	CLEANER ASSY, AIR	1							
6	2	171033-12510	ELEMENT	1							
7	2	171033-12540	CASE ASSY, CLEANER	1							
8	2	171033-12560	PAN ASSY, DUST	1							
9	2	124064-12680	BOLT	1							
10	2	124064-12690	WASHER	1							
11	2	121465-12700	RETAINER, ELEMENT	1							
12	1	171126-12580	BAND, AIR CLEANER	1							
13	1	119332-12210	PIPE, AIR INTAKE	1							
14	1	23000-060000	CLAMP, 60	3							

Fig.6. EXHAUST MANIFOLD & SILENCER

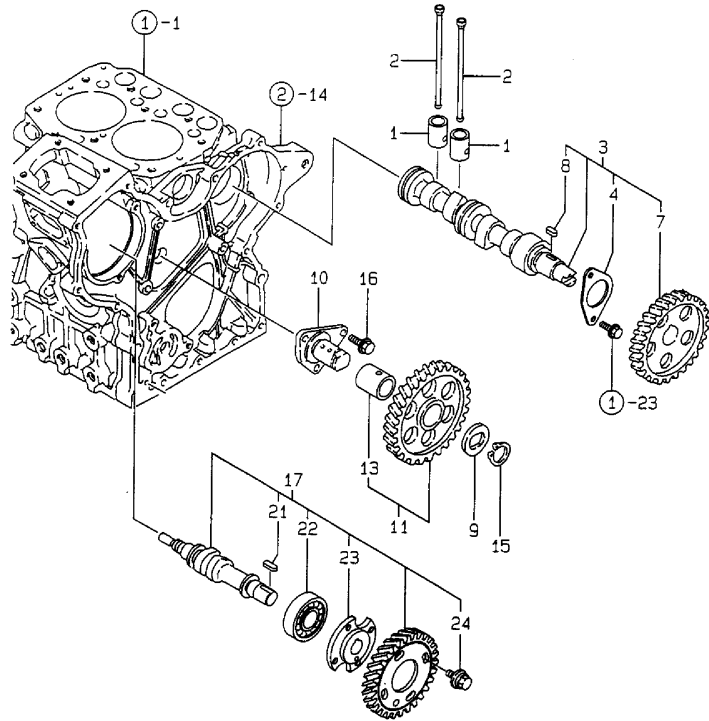


(A)=2TNE68-ETB
(B)=
(C)=

(D)=
(E)=
(F)=

No.	Lev.	Parts No.	Description	Q'ty						I	R
				(A)	(B)	(C)	(D)	(E)	(F)		
1	1	119305-13100	MANIFOLD, EXHAUST	1							
2	1	119305-13110	GASKET	1							
3	1	26106-060402	BOLT, M6X 40 PLATED	2							
4	1	26216-060402	STUD, M6X 40	2							
5	1	119131-18320	STUD, M8X22	4							
6	1	26366-060002	NUT, M6	2							
7	1	119332-13501	SILENCER	1							
8	1	124701-11911	GASKET, SILENCER	1							
9	1	119332-13551	PIPE	1							
10	1	129107-13550	GASKET	1							

Fig.7. CAMSHAFT & DRIVING GEAR



(A)=2TNE68-ETB

(B)=

(C)=

(D)=

(E)=

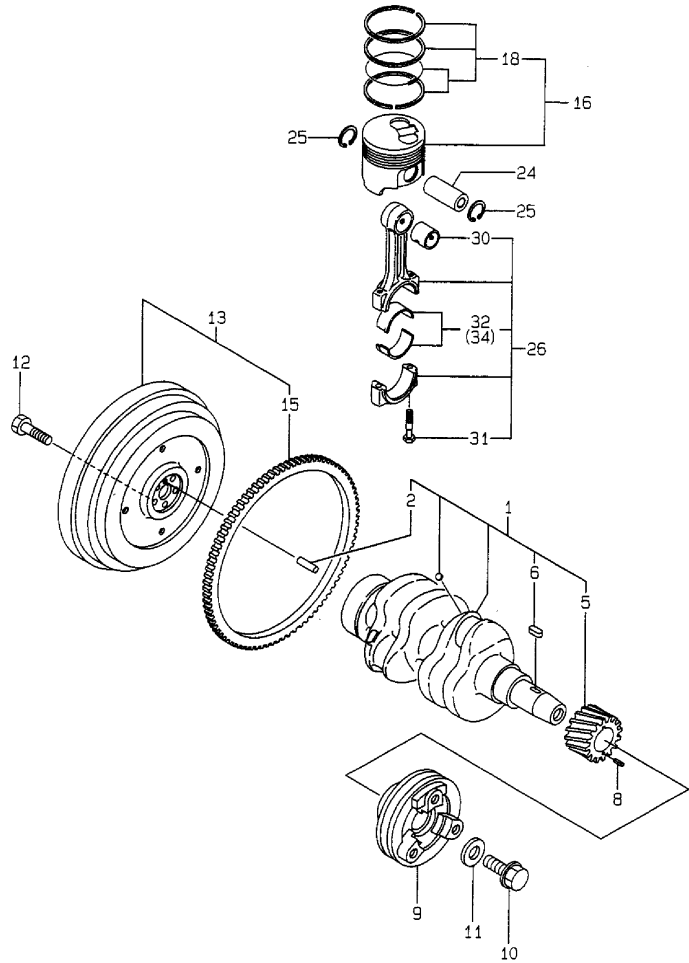
(F)=

No.	Lev.	Parts No.	Description	Q'ty						I	R
				(A)	(B)	(C)	(D)	(E)	(F)		
1	1	119260-14200	TAPPET	4							
2	1	119260-14400	ROD, PUSH	4							
3	1	119305-14580	CAMSHAFT ASSY	1							
4	2	119620-02450	BEARING, THRUST	1							
7	2	119260-14100	GEAR, CAMSHAFT	1							
8	2	22512-040120	KEY, 4X 12	1							
9	1	119660-25022	RETAINER	1							
10	1	119660-25052	SHAFT, IDLE	1							
11	1	119260-25100	GEAR ASSY, IDLE	1							
13	2	119620-25912	BUSH	1							1
15	1	22242-000200	RING, 20	1							
16	1	26106-060122	BOLT, M6X 12 PLATED	3							
17	1	119305-14210	CAM ASSY	1							
21	2	22512-040120	KEY, 4X 12	1							
22	2	24102-063034	BEARING, BALL 6303U	1							
23	2	119660-25920	FLANGE	1							
24	2	119660-25930	BOLT	4							

Remarks

(1) REPAIR PART.

Fig.8. CRANKSHAFT & PISTON



(A)=2TNE68-ETB

(B)=

(C)=

(D)=

(E)=

(F)=

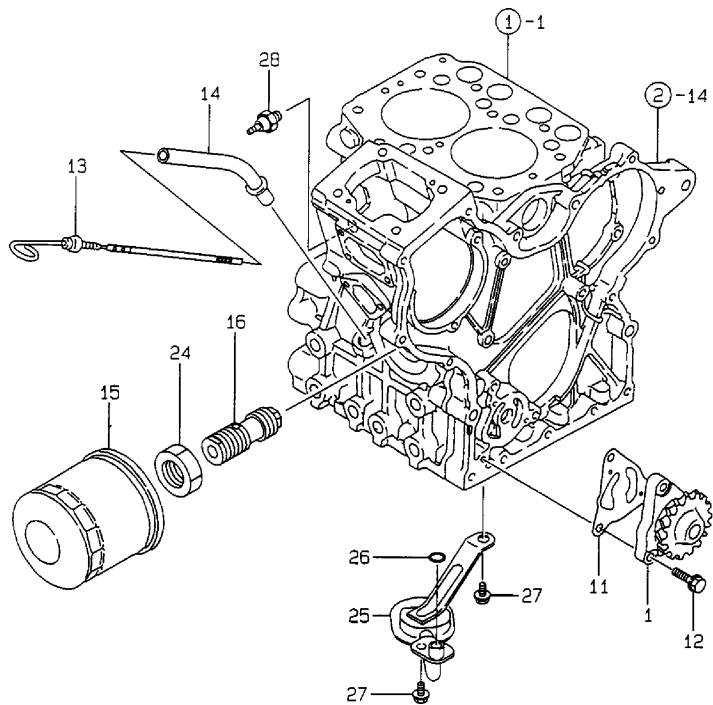
No.	Lev.	Parts No.	Description	Q'ty						I	R
				(A)	(B)	(C)	(D)	(E)	(F)		
1	1	119309-21700	CRANKSHAFT ASSY	1							
2	2	129100-01580	PIN, M8X16	1							
5	2	119260-21200	GEAR, CRANKSHAFT	1							
6	2	22512-040120	KEY, 4X 12	1							
8	1	22351-030012	PIN, SPRING 3.0X12	1							
9	1	119305-21650	V-PULLEY	1							
10	1	119621-21680	BOLT, FLANGE 12X1.25	1							
11	1	119620-21941	WASHER	1							
12	1	121111-21501	BOLT, FLYWHEEL	5							
13	1	119332-21590	FLYWHEEL ASSY	1							
15	2	124950-21600	GEAR, RING	1							
16	1	119265-22601	PISTON ASSY	2							
18	2	119265-22500	RING SET, PISTON	2							
24	1	119265-22300	PIN, PISTON	2							
25	1	22252-000200	RING, 20	4							
26	1	119265-23100	ROD ASSY, CONNECTING	2							
30	2	119260-23910	BEARING, PISTON PIN	2							1
31	2	119265-23200	BOLT, CONNECTING ROD	4							
32	2	719260-23600	BEARING, CRANK PIN	2							
34	1	719260-23610	BEARING ASSY, 0.25	2							2

Remarks

(1) REPAIR PART.

(2) UNDER-SIZE(U.S=0.25)PART.

Fig.9. LUB.OIL SYSTEM



(A)=2TNE68-ETB
(B)=
(C)=

(D)=
(E)=
(F)=

No.	Lev.	Parts No.	Description	Q'ty						I	R
				(A)	(B)	(C)	(D)	(E)	(F)		
1	1	119260-32000	PUMP ASSY, OIL	1							
11	1	119660-32020	GASKET, PUMP	1							
12	1	26450-060202	BOLT, M6X 20	3							
13	1	119332-34880	DIPSTICK, OIL	1							
14	1	119332-34890	GUIDE, DIPSTICK	1							
15	1	119305-35150	FILTER, OIL	1							
16	1	119225-35300	VALVE ASSY,OIL PRESS	1							
24	1	129150-35350	NUT	1							
25	1	119332-35080	PIPE ASSY, OIL INLET	1							
26	1	119209-35030	O-RING, P11	1							
27	1	26106-060122	BOLT, M6X 12 PLATED	2							
28	1	114250-39450	SWITCH, 0.5KG	1							

Fig.10. COOLING WATER SYSTEM

(A)=2TNE68-ETB

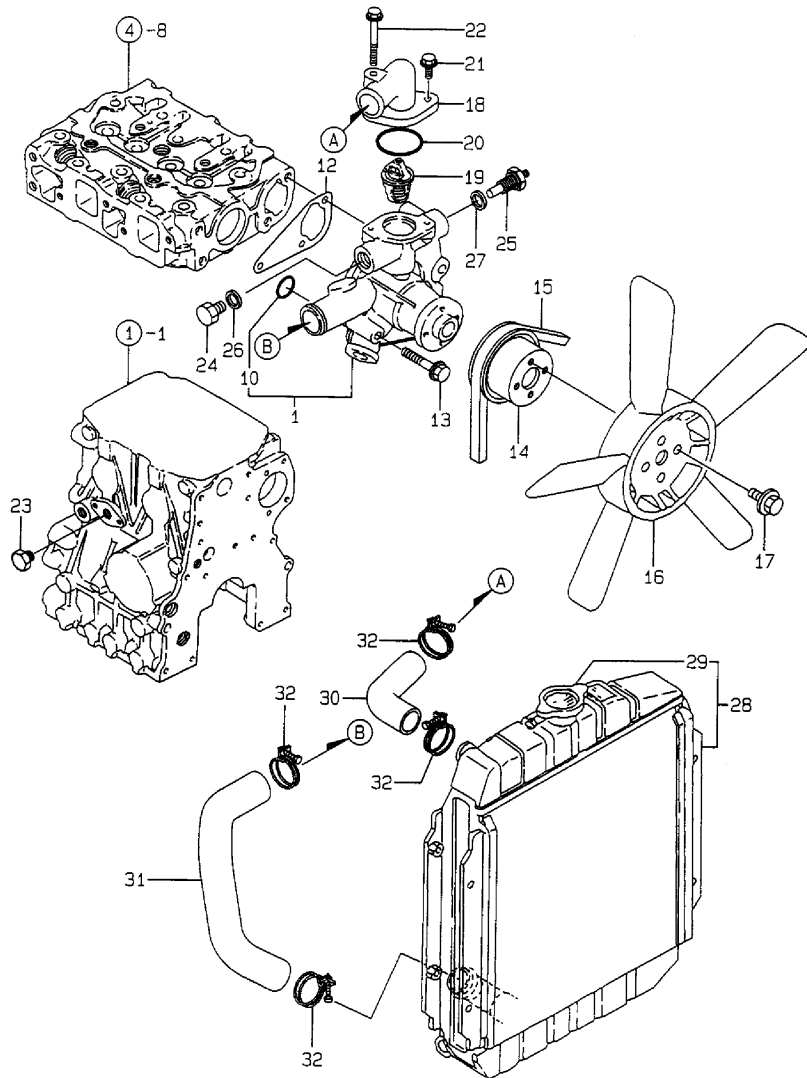
(B)=

(C)=

(D)=

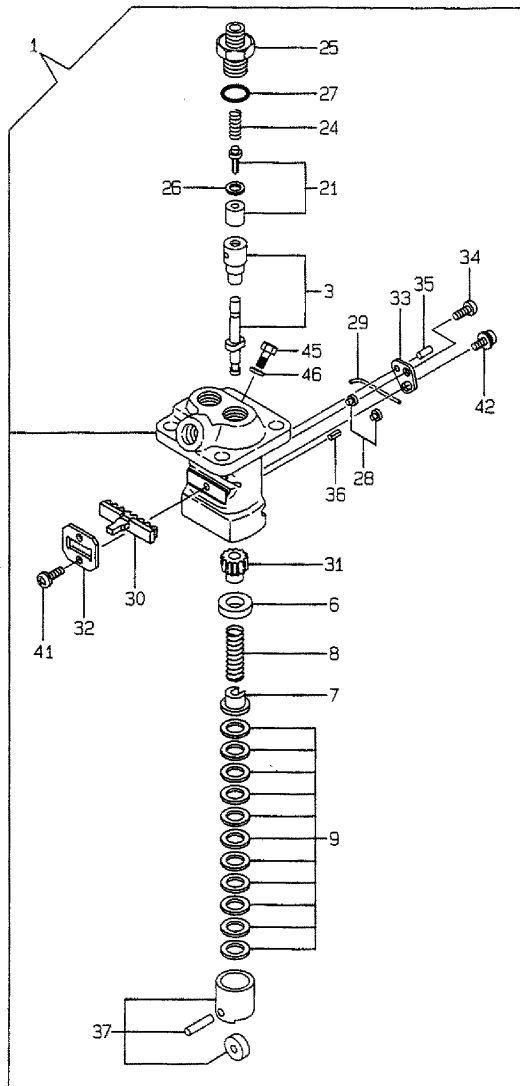
(E)=

(F)=



No.	Lev.	Parts No.	Description	Q'ty						I	R
				(A)	(B)	(C)	(D)	(E)	(F)		
1	1	119260-42002	PUMP ASSY, WATER	1							
10	2	119225-42320	O-RING	1							
12	1	119260-42021	GASKET, WATER PUMP	1							
13	1	26106-080452	BOLT, M8X 45 PLATED	3							
14	1	119620-42350	V-PULLEY	1							
15	1	104514-42780	V-BELT, HM33	1							
16	1	119332-44740	FAN, COOLING D260X5	1							
17	1	26014-060142	BOLT, M6X 14	4							
18	1	119256-49530	COVER, THERMOSTAT	1							
19	1	119260-49800	THERMOSTAT, 71	1							
20	1	119209-42140	O-RING, G 35	1							
21	1	26106-060162	BOLT, M6X 16 PLATED	1							
22	1	26106-060552	BOLT, M6X 55 PLATED	1							
23	1	171056-49120	PLUG, DRAIN	1							
24	1	121450-42450	PLUG, M16	1							
25	1	124250-49351	SENSOR	1							
26	1	124465-44950	GASKET, 16	1							
27	1	129150-49360	GASKET	1							
28	1	119332-44520	RADIATOR ASSY	1							
29	2	119259-44576	CAP, RADIATOR	1							
30	1	119230-49010	PIPE, WATER	1							
31	1	119332-49020	PIPE, WATER	1							
32	1	23010-038000	CLAMP, 38	4							

Fig.11. FUEL INJECTION PUMP

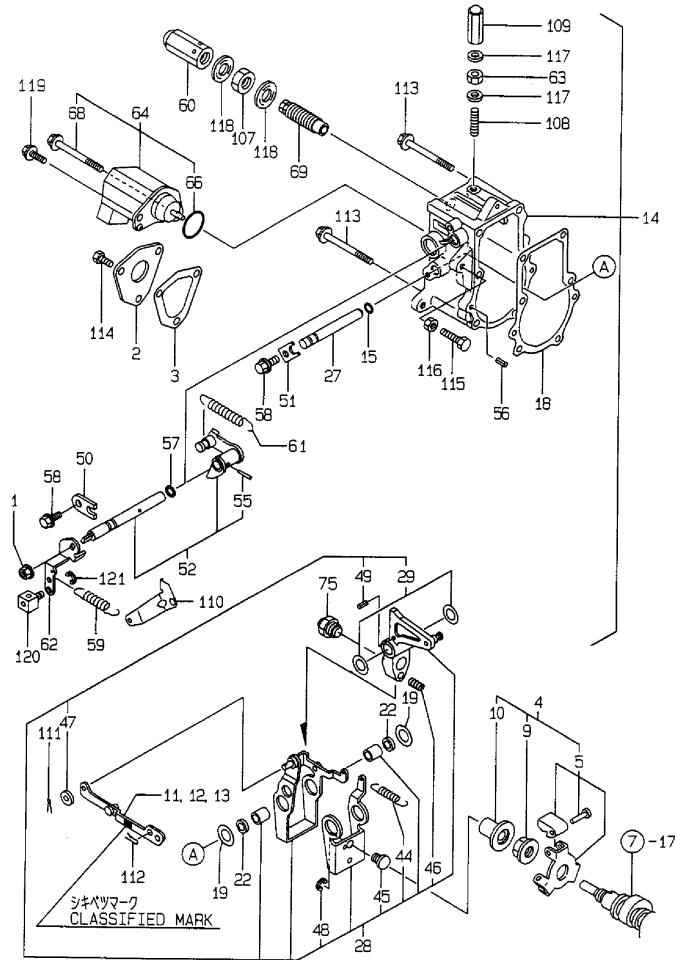


(A)=2TNE68-ETB
(B)=
(C)=

(D)=
(E)=
(F)=

No.	Lev.	Parts No.	Description	Q'ty						I	R
				(A)	(B)	(C)	(D)	(E)	(F)		
1	1	719309-51100	PUMP ASSY, INJECTION	1							
3	2	119225-51100	PLUNGER ASSY	2							
6	2	119620-51170	RETAINER, SPRING A	2							
7	2	119620-51180	RETAINER, SPRING B	2							
8	2	119620-51190	SPRING, PLUNGER	2							
9	2	119620-51250	SHIM SET	2							
21	2	119209-51300	VALVE ASSY, DELIVERY	2							
24	2	105546-51330	SPRING, DELIVERY	2							
25	2	119620-51340	HOLDER, DELIVERY	2							
26	2	119620-51350	GASKET	2							
27	2	119620-51370	O-RING	2							
28	2	119620-51450	PIECE	2							
29	2	174307-51460	PIN, LOCK	1							
30	2	119305-51500	RACK, CONTROL	1							
31	2	119620-51510	PINION	2							
32	2	119305-51530	RETAINER, RACK	1							
33	2	119620-51650	PLATE	1							
34	2	119620-51660	SCREW	1							
35	2	119620-51670	PIN	1							
36	2	119620-51680	PIN	1							
37	2	119620-51700	TAPPET ASSY	2							
41	2	26022-040082	SCREW, M4X 8	2							
42	2	26033-040102	SCREW, M4X10	1							
45	2	119266-51900	BOLT	1							
46	2	22190-080002	WASHER, SEAL 6	1							

Fig.12. GOVERNOR



Remarks

(1) SELECTIVE PARTS: CERTAIN THE CLASSIFICATION MARK, THEN PLACE YOUR ORDER.(REFER TO ILLUSTRATION).

(A)=2TNE68-ETB

(B)=

(C)=

(D)=

(E)=

(F)=

No.	Lev.	Parts No.	Description	Q'ty						I	R
				(A)	(B)	(C)	(D)	(E)	(F)		
1	1	194990-22050	NUT, M8	1							
2	1	119660-61060	COVER, GOVERNOR CASE	1							
3	1	119660-61071	GASKET	1							
4	1	119600-61300	DRIVE ASSY	1							
5	2	119600-61400	WEIGHT ASSY,GOVERNOR	1							
9	2	119660-61300	NUT	1							
10	2	119660-61341	SLEEVE	1							
11	1	119285-61120	LINK, NO MARK	1							1
12	1	119285-61130	LINK, MARK :2	1							1
13	1	119285-61140	LINK, MARK :3	1							1
14	1	119632-61200	CASE ASSY, GOVERNOR	1							
15	2	129155-51280	O-RING, S6	1							
18	2	119660-61052	GASKET	1							
19	2	119660-61460	SHIM SET	1							
22	2	129155-61480	SPACER ASSY	2							
27	2	119660-61590	SHAFT	1							
28	2	119232-61510	LEVER ASSY, GOVERNOR	1							
29	3	174307-51700	SHIM SET	2							
44	3	119232-61540	SPRING	1							
45	3	119600-61541	SHIFTER	1							
46	3	119660-61651	SPRING, STARTING	1							
47	3	22117-040000	WASHER, 4	1							
48	3	22272-000040	RING, E- 4	1							
49	3	22351-030014	PIN, SPRING 3.0X14	1							
50	2	119600-61900	RETAINER, SHAFT	1							
51	2	119660-61901	RETAINER, SHAFT	1							
52	2	119285-66080	SHAFT ASSY	1							
55	3	22322-030160	PIN, TAPER 3X16	1							
56	2	22351-040010	PIN, SPRING 4.0X10	2							
57	2	24341-000070	O-RING, 1AS7.0	1							
58	2	26106-060102	BOLT, M6X 10 PLATED	2							
59	1	119840-61870	SPRING	1							
60	1	129100-61930	NUT, CAP	1							
61	1	119305-66010	SPRING, REGULATOR	1							
62	1	119640-66051	HANDLE, REGULATOR	1							
63	1	124550-66370	NUT, M6	1							
64	1	119285-66500	STOPPER ASSY	1							
66	2	24341-000280	O-RING, 1AS28.0	1							
68	2	26106-060952	BOLT, M6X 95 PLATED	1							
69	1	119600-66530	LIMITER ASSY, FUEL	1							
75	1	119610-66700	ANGLEICH ASSY	1							
107	1	26776-120002	NUT, LOCK M12	1							
108	1	121575-66830	SCREW	1							
109	1	119600-66840	NUT, CAP	1							
110	1	119656-66910	HOOK	1							
111	1	22360-040000	PIN, SNAP 4	1							
112	1	22360-060000	PIN, SNAP 6	1							
113	1	26106-060702	BOLT, M6X 70 PLATED	5							
114	1	26116-050102	BOLT, M5X 10 PLATED	3							
115	1	26116-060304	BOLT, M6X 30 PLATED	1							
116	1	26756-060002	NUT, LOCK M6	1							

Fig.13. FUEL INJECTION VALVE

(A)=2TNE68-ETB

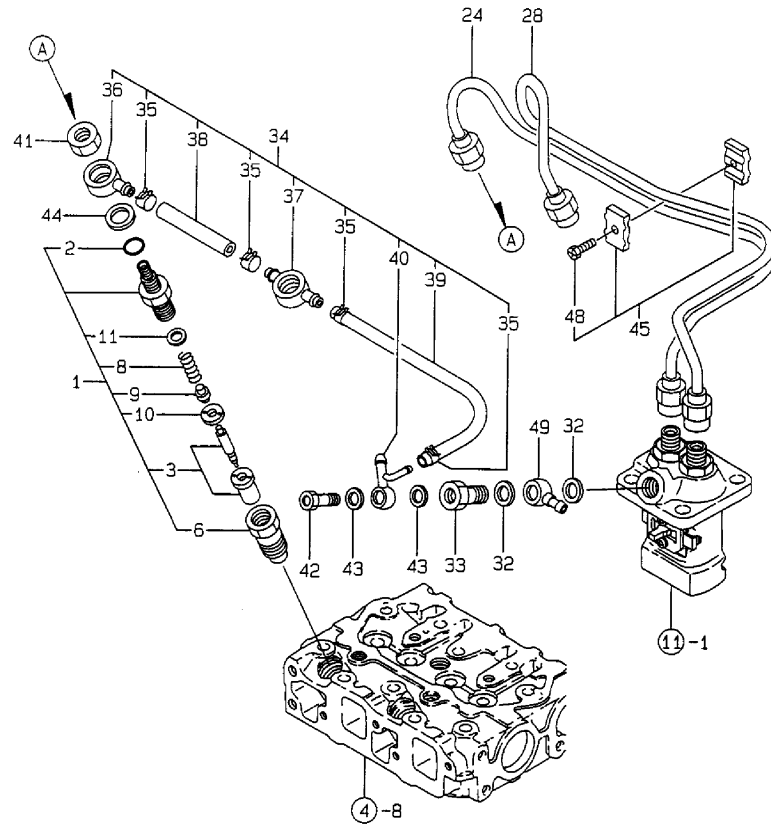
(B)=

(C)=

(D)=

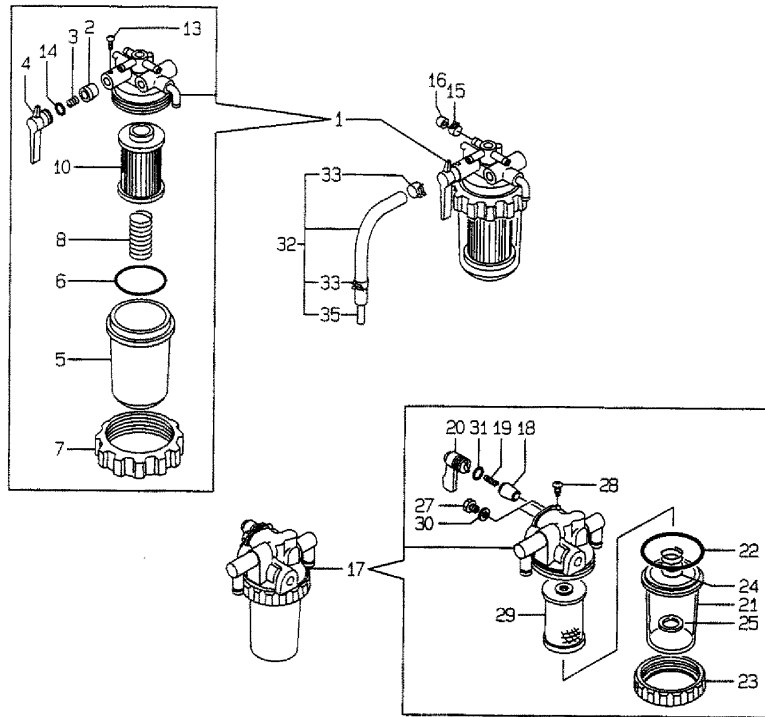
(E)=

(F)=



No.	Lev.	Parts No.	Description	Q'ty						I	R
				(A)	(B)	(C)	(D)	(E)	(F)		
1	1	719620-53100	VALVE ASSY,INJECTION	2							
2	2	129155-61830	O-RING, S10	2							
3	2	119620-53000	VALVE ASSY,INJECTION	2							
6	2	119620-53080	NUT, NOZZLE	2							
8	2	119620-53120	SPRING, NOZZLE	2							
9	2	114250-53130	SEAT, SPRING	2							
10	2	119620-53140	SPACER, VALVE STOP	2							
11	2	114250-53400	SHIM SET	2							
24	1	119309-59810	PIPE ASSY, INJECTION	1							
28	1	119309-59820	PIPE ASSY, INJECTION	1							
32	1	22190-120002	WASHER, SEAL 12	2							
33	1	119650-59200	BOLT, PIPE JOINT M12	1							
34	1	119332-59540	PIPE ASSY, RETURN	1							
35	2	124066-59100	CLIP, HOSE 8	4							
36	2	119260-59520	JOINT	1							
37	2	119260-59530	JOINT	1							
38	2	105025-59550	PIPE, FUEL RETURN	1							
39	2	119642-59550	PIPE, FUEL RETURN	1							
40	2	119642-59570	JOINT, OVER FLOW	1							
41	1	119620-59700	NUT, NOZZLE	2							
42	1	124550-59820	BOLT, PIPE JOINT M8	1							
43	1	22190-080002	WASHER, SEAL 6	2							
44	1	22190-140002	WASHER, SEAL 14	2							
45	1	119305-59120	RETAINER, PIPE	1							
48	2	129150-59131	BOLT, M4X14	1							
49	1	101304-59020	JOINT, PIPE 12	1							

Fig.14. FUEL LINE



(A)=2TNE68-ETB

(B)=

(C)=

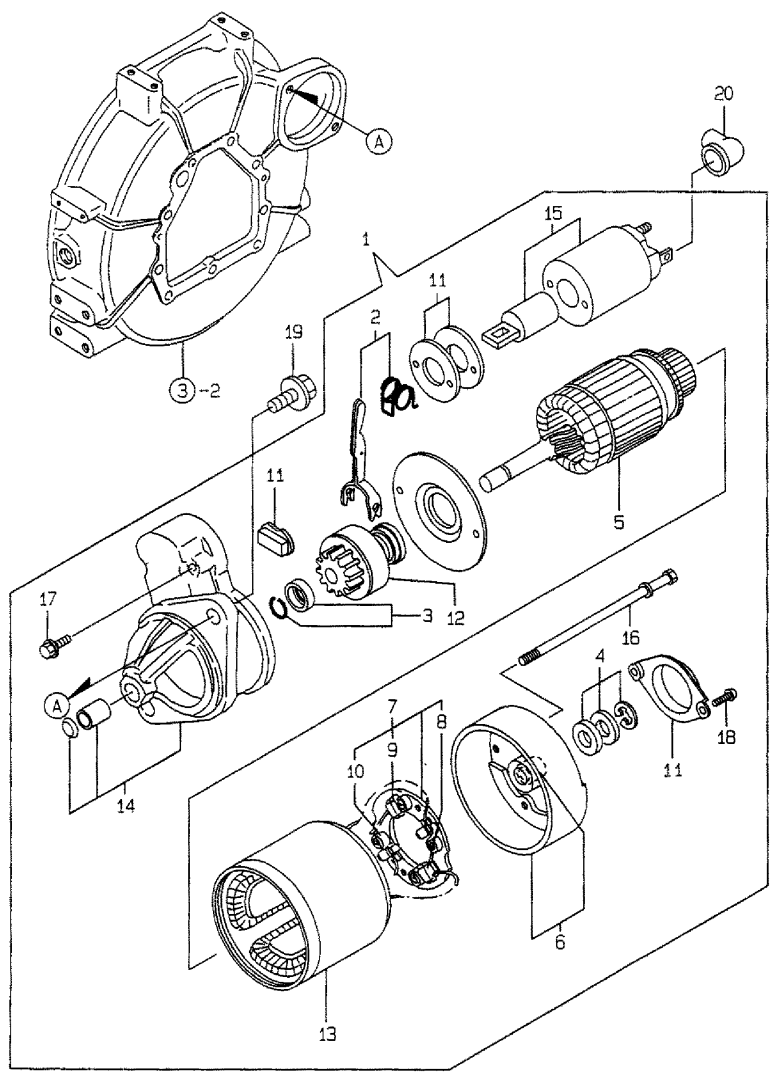
(D)=

(E)=

(F)=

No.	Lev.	Parts No.	Description	Q'ty						I	R
				(A)	(B)	(C)	(D)	(E)	(F)		
1	1	119632-55620	FILTER ASSY, FUEL	1							
2	2	104200-55321	VALVE, TAPER	1							
3	2	104200-55330	SPRING, VALVE	1							
4	2	119810-55340	LEVER	1							
5	2	121254-55510	COVER	1							
6	2	102103-55520	O-RING	1							
7	2	110250-55610	RING, RETAINING	1							
8	2	121250-55620	SPRING	1							
10	2	124550-55700	FILTER, FUEL L=90	1							
13	2	104200-55750	SCREW, M4	1							
14	2	24311-240100	O-RING, 1AP10A	1							
15	1	124066-59100	CLIP, HOSE 8	1							
16	1	129150-59580	CAP	1							
17	1	129335-55700	SEPARATOR ASSY,WATER	1							
18	2	104200-55321	VALVE, TAPER	1							
19	2	104200-55330	SPRING, VALVE	1							
20	2	104200-55341	HANDLE	1							
21	2	124064-55510	COVER	1							
22	2	102103-55520	O-RING	1							
23	2	110250-55610	RING, RETAINING	1							
24	2	121257-55720	SPRING	1							
25	2	121257-55731	FLOAT	1							
27	2	101720-55750	PLUG, 6	2							
28	2	104200-55750	SCREW, M4	1							
29	2	171081-55910	SCREEN	1							
30	2	23418-060000	GASKET, 6X1.0	2							
31	2	24311-240100	O-RING, 1AP10A	1							
32	1	119840-59601	BEND	1							
33	2	124766-59050	CLIP, HOSE 12	2							
35	2	119840-59621	JOINT	1							

Fig.15. STARTING MOTOR



(A)=2TNE68-ETB
(B)=
(C)=

(D)=
(E)=
(F)=

No.	Lev.	Parts No.	Description	Q'ty						I	R
				(A)	(B)	(C)	(D)	(E)	(F)		
1	1	119226-77010	STARTER,12V-0.8KW	1							
2	2	X2114560130	LEVER KIT, SHIFT	1							
3	2	X2114715500	STOPPER SET, PINION	1							
4	2	X211481000	WASHER KIT, THRUST	1							
5	2	114371-77110	ARMATURE	1							
6	2	114371-77140	COVER ASSY, REAR	1							
7	2	114371-77160	HOLDER ASSY, BRUSH	1							
8	3	114371-79040	BRUSH (-)	2							
9	3	114371-79050	BRUSH (+)	1							
10	3	114371-79060	SPRING, BRUSH	4							
11	2	114371-77170	COVER KIT, DUST	1							
12	2	119226-77650	CLUTCH ASSY	1							
13	2	124097-77710	YOKE ASSY	1							
14	2	124097-77760	CASE ASSY, GEAR	1							
15	2	124195-77760	MAGNETIC SWITCH ASSY	1							
16	2	124195-77770	THROUGH BOLT	2							
17	2	114371-79070	BOLT M 6X 37	2							
18	2	26022-040122	SCREW, M4X12	2							
19	1	26106-100252	BOLT, M10X 25 PLATED	2							
20	1	124160-77020	COVER, TERMINAL	1							

Fig.16. GENERATOR

(A)=2TNE68-ETB

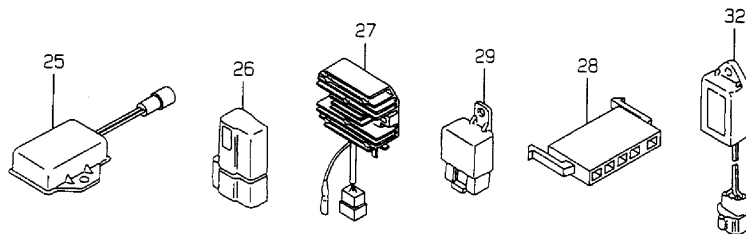
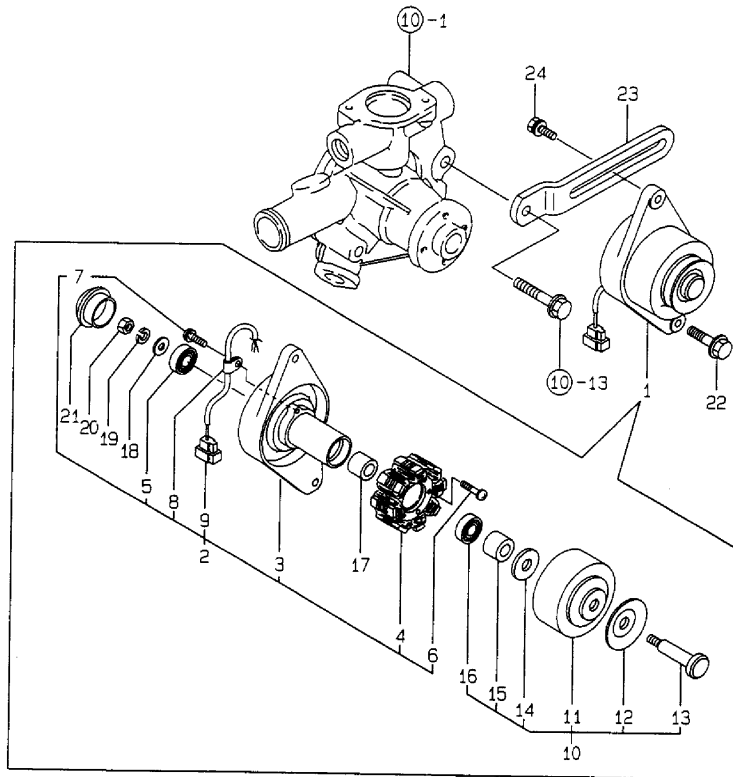
(B)=

(C)=

(D)=

(E)=

(F)=



No.	Lev.	Parts No.	Description	Q'ty						I	R
				(A)	(B)	(C)	(D)	(E)	(F)		
1	1	119663-77200	DYNAMO	1							
2	2	XM91967	PLATE ASSY	1							
3	3	XM91968	PLATE	1							
4	3	XM91969	STATOR	1							
5	3	XM27436	BALL BEARING	1							
6	3	26022-040252	SCREW, M4X25	2							
7	3	XYSPS4008	SCREW	1							
8	3	XM36410	CLAMP	1							
9	3	XM17878	COUPLER	1							
10	2	XM82099	FLYWHEEL ASSY	1							
11	3	XM82110	FLYWHEEL	1							
12	3	XM72174	PULLEY	1							
13	3	XM42927	SHAFT	1							
14	3	XM47549	WASHER	1							
15	3	XM72701	COLLAR	1							
16	3	XM27436	BALL BEARING	1							
17	2	106383-44720	SPACER	1							
18	2	106383-44730	WASHER	1							
19	2	22212-100000	SPRING WASHER 10	1							
20	2	26716-100002	NUT, M10	1							
21	2	105225-44790	CAP	1							
22	1	26106-100402	BOLT, M10X 40 PLATED	1							
23	1	121450-77330	ADJUSTER	1							
24	1	119810-77340	BOLT, ADJUSTER	1							
25	1	119332-77810	REGISTER	1							
26	1	119643-66900	DIODE	1							
27	1	119660-77711	LIMITER, CURRENT 15A	1							
28	1	171301-77720	COUPLER	1							
29	1	119650-77910	RELAY ASSY, GLOW	1							
32	1	129211-77920	TIMER	1							

Fig.17. GASKET SET

(A)=2TNE68-ETB

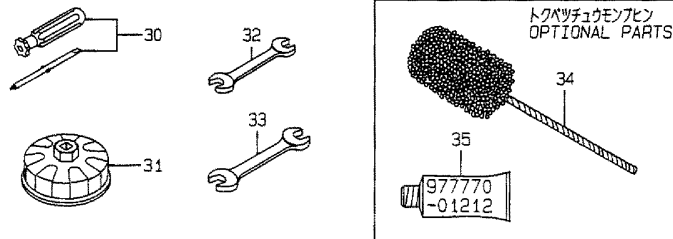
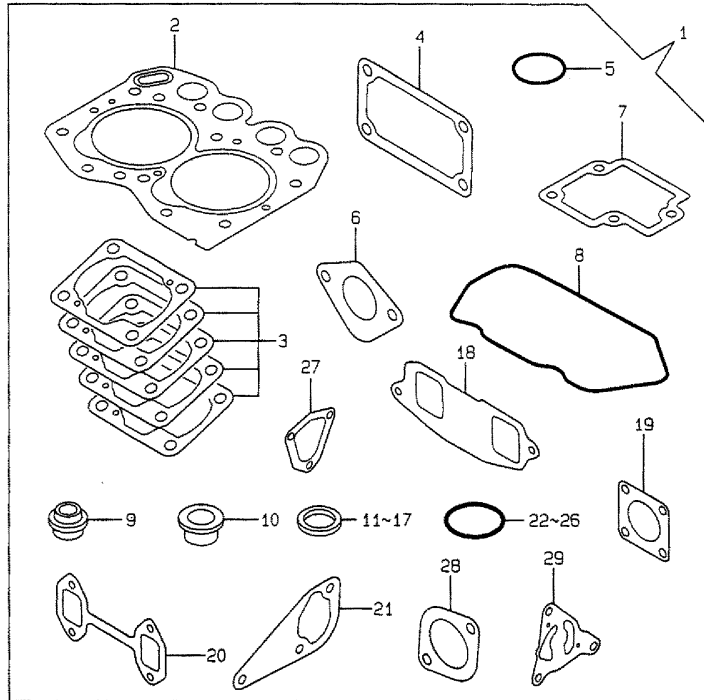
(B)=

(C)=

(D)=

(E)=

(F)=



No.	Lev.	Parts No.	Description	Q'ty						I	R
				(A)	(B)	(C)	(D)	(E)	(F)		
1	1	719325-92620	GASKET SET	1							1
2	2	119309-01330	GASKET, CYL. HEAD	1							
3	2	119305-01950	SHIM SET, ADJUSTING	1							
4	2	119660-01562	GASKET	1							
5	2	24311-000320	O-RING, 1AP32.0	2							
6	2	121520-01851	GASKET	1							
7	2	119305-03031	GASKET	1							
8	2	119305-11310	GASKET, BONNET	1							
9	2	119260-11340	SEAL, VALVE STEM	4							
10	2	119600-11450	PROTECTOR, NOZZLE	2							
11	2	119600-11460	GASKET, NOZZLE	4							
12	2	124465-44950	GASKET, 16	1							
13	2	22190-060003	SEAL WASHER 6	2							
14	2	22190-120002	WASHER, SEAL 12	4							
15	2	129150-49360	GASKET	1							
16	2	22190-080002	WASHER, SEAL 6	2							
17	2	22190-140002	WASHER, SEAL 14	2							
18	2	119326-12111	GASKET, MANIFOLD	1							
19	2	124701-11911	GASKET, SILENCER	1							
20	2	119305-13110	GASKET	1							
21	2	119260-42021	GASKET, WATER PUMP	1							
22	2	119209-42140	O-RING, G 35	1							
23	2	24311-000120	O-RING, 1AP12.0	2							
24	2	24341-000240	O-RING, 1AS24.0	1							
25	2	119209-35030	O-RING, P11	1							
26	2	119624-32040	O-RING, P12.0	2							
27	2	119660-61071	GASKET	1							
28	2	129107-13550	GASKET	1							
29	2	119660-32020	GASKET, PUMP	1							
30	1	104200-92350	DRIVER, SCREW	1							
31	1	119332-92751	WRENCH, FILTER 68	1							
32	1	28110-100120	SPANNER, 10X12	1							
33	1	28110-140170	SPANNER, 14X17	1							
34	1	129400-92400	FLEX HORN	1							1
35	1	977770-01212	GASKET, LIQUID	1							1

Remarks
(1) OPTIONAL PART.

Parts No. Index

Parts No.	Fig. No.	Ref. No.
101304-59020	13	49
101720-55750	14	27
102103-55520	14	6
		22
104200-55321	14	2
		18
104200-55330	14	3
		19
104200-55341	14	20
104200-55750	14	13
		28
104200-92350	17	30
104514-42780	10	15
105010-11230	4	30
		34
105025-59550	13	38
105225-44790	16	21
105546-51330	11	24
106383-44720	16	17
106383-44730	16	18
110250-55610	14	7
		23
114250-11120	4	20
114250-11180	4	21
114250-39450	9	28
114250-53130	13	9
114250-53400	13	11
114371-77110	15	5
114371-77140	15	6
114371-77160	15	7
114371-77170	15	11
114371-79040	15	8
114371-79050	15	9
114371-79060	15	10
114371-79070	15	17
118400-03060	4	53
119131-18320	6	5
119209-35030	9	26
	17	25
119209-42140	10	20
	17	22
119209-51300	11	21
119225-35300	9	16
119225-42320	10	10
119225-51100	11	3
119226-77010	15	1
119226-77650	15	12
119230-49010	10	30
119232-61510	12	28
119232-61540	12	44

Parts No.	Fig. No.	Ref. No.
119256-49530	10	18
119259-44576	10	29
119260-01510	2	17
119260-01590	2	1
119260-01600	3	2
119260-02020	1	6
119260-02800	1	16
119260-02930	1	19
119260-07900	4	5
119260-11100	4	18
119260-11110	4	19
119260-11260	4	40
119260-11270	4	41
119260-11280	4	42
119260-11340	4	23
	17	9
119260-11370	4	24
119260-11800	4	13
119260-14100	7	7
119260-14200	7	1
119260-14400	7	2
119260-21200	8	5
119260-23910	8	30
119260-25100	7	11
119260-32000	9	1
119260-42002	10	1
119260-42021	10	12
	17	21
119260-49800	10	19
119260-59520	13	36
119260-59530	13	37
119265-01250	1	12
119265-11260	4	44
119265-22300	8	24
119265-22500	8	18
119265-22601	8	16
119265-23100	8	26
119265-23200	8	31
119266-01200	1	24
119266-02410	1	22
119266-51900	11	45
119285-61120	12	11
119285-61130	12	12
119285-61140	12	13
119285-66080	12	52
119285-66500	12	64
119305-01490	2	14
119305-01760	3	6
119305-01950	2	23
	17	3

Parts No.	Fig. No.	Ref. No.
119305-03020	4	48
119305-03031	4	49
	17	7
119305-11200	4	28
119305-11240	4	37
119305-11310	4	52
	17	8
119305-11350	4	46
119305-12150	5	1
119305-13100	6	1
119305-13110	6	2
	17	20
119305-14210	7	17
119305-14580	7	3
119305-21650	8	9
119305-35150	9	15
119305-51500	11	30
119305-51530	11	32
119305-59120	13	45
119305-66010	12	61
119305-77820	4	59
119309-01330	1	25
	17	2
119309-21700	8	1
119309-59810	13	24
119309-59820	13	28
119326-12111	5	2
	17	18
119332-01771	3	8
119332-12210	5	13
119332-13501	6	7
119332-13551	6	9
119332-21590	8	13
119332-34880	9	13
119332-34890	9	14
119332-35080	9	25
119332-44520	10	28
119332-44740	10	16
119332-49020	10	31
119332-59540	13	34
119332-77810	16	25
119332-92751	17	31
119600-11450	4	26
	17	10
119600-11460	4	27
	17	11
119600-52021	2	31
119600-61300	12	4
119600-61400	12	5
119600-61541	12	45

Parts No.	Fig. No.	Ref. No.
119600-61900	12	50
119600-66530	12	69
119600-66840	12	109
119610-66700	12	75
119620-01620	3	15
119620-01750	3	4
119620-01800	2	4
119620-02450	7	4
119620-11350	4	6
119620-21941	8	11
119620-25912	7	13
119620-42350	10	14
119620-51170	11	6
119620-51180	11	7
119620-51190	11	8
119620-51250	11	9
119620-51340	11	25
119620-51350	11	26
119620-51370	11	27
119620-51450	11	28
119620-51510	11	31
119620-51650	11	33
119620-51660	11	34
119620-51670	11	35
119620-51680	11	36
119620-51700	11	37
119620-53000	13	3
119620-53080	13	6
119620-53120	13	8
119620-53140	13	10
119620-59700	13	41
119621-21680	8	10
119624-32040	2	6
	17	26
119632-55620	14	1
119632-61200	12	14
119640-66051	12	62
119642-59550	13	39
119642-59570	13	40
119643-66900	16	26
119650-59200	13	33
119650-77910	16	29
119656-66910	12	110
119660-01551	2	20
119660-01562	2	21
	17	4
119660-01570	2	22
119660-01640	3	16
119660-01911	2	5
119660-25022	7	9

Parts No. Index

Parts No.	Fig. No.	Ref. No.
119660-25052	7	10
119660-25920	7	23
119660-25930	7	24
119660-32020	9	11
	17	29
119660-61052	12	18
119660-61060	12	2
119660-61071	12	3
	17	27
119660-61300	12	9
119660-61341	12	10
119660-61460	12	19
119660-61590	12	27
119660-61651	12	46
119660-61901	12	51
119660-77711	16	27
119663-77200	16	1
119810-55340	14	4
119810-77340	16	24
119840-59601	14	32
119840-59621	14	35
119840-61870	12	59
121023-01550	2	33
121111-21501	8	12
121120-01620	3	3
121250-55620	14	8
121254-55510	14	5
121257-55720	14	24
121257-55731	14	25
121400-01640	3	9
121450-01560	2	18
121450-42450	10	24
121450-77330	16	23
121465-12700	5	11
121465-59950	12	119
121520-01851	2	30
	17	6
121575-66830	12	108
124060-01050	1	5
124064-12680	5	9
124064-12690	5	10
124064-55510	14	21
124066-59100	13	35
	14	15
124085-02220	3	18
124097-77710	15	13
124097-77760	15	14
124160-01751	2	12
	4	47
124160-11360	4	56

Parts No.	Fig. No.	Ref. No.
124160-77020	15	20
124195-77760	15	15
124195-77770	15	16
124250-49351	10	25
124465-44950	10	26
	17	12
124550-55700	14	10
124550-59820	13	42
124550-66370	12	63
124701-11911	6	8
	17	19
124756-67510	12	120
124766-59050	14	33
124950-21600	8	15
129100-01580	3	1
	8	2
129100-61930	12	60
129107-13550	6	10
	17	28
129150-35350	9	24
129150-49360	10	27
	17	15
129150-59131	13	48
129150-59580	14	16
129155-51280	12	15
129155-61480	12	22
129155-61830	13	2
129155-77801	4	58
129211-77920	16	32
129335-55700	14	17
129400-92400	17	34
171033-12500	5	5
171033-12510	5	6
171033-12540	5	7
171033-12560	5	8
171056-49120	10	23
171081-55910	14	29
171126-12580	5	12
171301-77720	16	28
174307-51460	11	29
174307-51700	12	29
194990-22050	2	28
	12	1
22117-040000	12	47
22190-060003	12	117
	17	13
22190-080002	11	46
	13	43
	17	16
22190-120002	12	118

Parts No.	Fig. No.	Ref. No.
22190-120002	13	32
	17	14
22190-140002	13	44
	17	17
22212-100000	16	19
22242-000100	4	43
22242-000200	7	15
22252-000200	8	25
22272-000040	12	48
22272-000070	12	121
22322-030160	12	55
22351-030012	8	8
22351-030014	12	49
22351-040010	2	19
	12	56
22351-060012	4	25
22360-040000	12	111
22360-060000	12	112
22512-040120	7	8
	8	6
	21	
22857-500100	4	55
23000-060000	5	14
23010-038000	10	32
23065-120500	4	1
23418-060000	14	30
23876-020000	4	16
24102-063034	7	22
24311-000120	4	57
	17	23
24311-000180	3	11
24311-000320	2	13
	4	54
	17	5
24311-240100	14	14
	31	
24341-000070	12	57
24341-000240	2	34
	17	24
24341-000280	12	66
26014-060142	10	17
26022-040082	11	41
26022-040122	15	18
26022-040252	16	6
26033-040102	11	42
26106-060102	3	12
	12	58
26106-060122	1	23
	7	16
	9	27

Parts No.	Fig. No.	Ref. No.
26106-060162	2	7
		32
		35
	5	3
	10	21
26106-060222	3	19
26106-060282	5	4
26106-060302	2	8
26106-060402	2	9
	6	3
26106-060452	3	13
26106-060502	2	10
26106-060552	10	22
26106-060652	2	11
26106-060702	12	113
26106-060952	12	68
26106-080142	4	7
		60
26106-080452	10	13
26106-100252	15	19
26106-100402	16	22
26116-050102	12	114
26116-060304	12	115
26206-100252	3	5
26216-060402	6	4
26366-060002	2	29
	6	6
26366-080002	4	45
26450-060202	9	12
26716-100002	16	20
26756-060002	12	116
26776-120002	12	107
26856-060002	4	32
		36
27221-050080	4	17
27221-060100	1	11
27241-100000	1	13
27241-250000	1	14
27241-300000	1	15
27241-350000	4	15
27310-055001	4	22
28110-100120	17	32
28110-140170	17	33
719260-02870	1	26
719260-11650	4	29
719260-11660	4	33
719260-23600	8	32
719260-23610	8	34
719309-51100	11	1
719325-01560	1	1

Parts No. Index

Parts No.	Fig. No.	Ref. No.
719325-11700	4	8
719325-92620	17	1
719620-53100	13	1
977770-01212	2	36
	3	14
	17	35
X2114560130	15	2
X2114715500	15	3
X2114811000	15	4
XM17878	16	9
XM27436	16	5
		16
XM36410	16	8
XM42927	16	13
XM47549	16	14
XM72174	16	12
XM72701	16	15
XM82099	16	10
XM82110	16	11
XM91967	16	2
XM91968	16	3
XM91969	16	4
XYS4008	16	7

Parts No.	Fig. No.	Ref. No.
-----------	----------	----------

Parts No.	Fig. No.	Ref. No.
-----------	----------	----------

Parts No.	Fig. No.	Ref. No.
-----------	----------	----------