

0CD10-M71100EN

# PREFACE

1.This parts catalog is the First edition of 3TNE84T – FL3 Diesel Engine for FURUKAWA KIKAI.

Pub. No.: 000Y00D7110

Published: Dec .,1999

2. Model name

Engine model	Vehicle		Vehicle Manufacturer
	Products	Model name	
3TNE84T – FL3	WHEEL LOADER	FL303-2	FURUKAWA KIKAI CO.,LTD.

## Directions for the Parts Catalog.

1. This Parts Catalog shows both standard and optional parts.
2. Parts may change without prior notice.
3. The following is an example of the Parts Catalog format.

REF.	LEV.	PARTS NO.	DESCRIPTION	Q'TY						I	R
				(A)	(B)	(C)	(D)	(E)	(F)		
1	1	729595-51390	FUEL INJECTION PUMP	1	1	1	1	1			1
1-1	1	729595-51391	FUEL INJECTION PUMP	1	1	1	1	1		N	1
		(A=E00185) (B=E00200)									
3	2	26022-060162	SCREW M 6X 16	9	9	9	9	9			
3-1	2	26022-060162	SCREW M 6X 16	4	4	4	4	4		K	
		(A=E00156) (B=E00156) (C=E00156) (D=E00156) (E=E00156)									
4	2	129470-51040	CAMSHAFT	1	1	1	1	1			
5	2	122710-51050	BEARING, ROLLER	2	2	2	2	2			
6	2	129470-51060	RETAINER	1	1	1	1	1			

Remarks
(1) BOOST COMPEMSATOR TYPE. OPTIONAL PART, TO E00155,(4JH-DT, 4JH-DTZ

### ① Ref. No.

The Ref. No. listed may not be in accordance with the illustration Ref. No.

(Ex.) Illustration No.

List Ref No.

1

1

(Before change)

1-1

(After change)

For interchangeable symbols N, R and K, illustrations for new parts may be abbreviated.

### ② Lev. (Level)

Level indication

The numbers below indicate the level of relativity towards the main part.

1 ----- Main parts (Assembly parts)

2 ----- Sub component included in " 1 ".

3 ----- Sub component included in " 2 ".

Note) Parts that are not for sale are partially illustrated but not listed.

### ③ Interchangeability Symbol

When a part change takes place, one of the following interchangeability symbols is indicated beside the part.

Symbol	Interchangeability	Contents note
N	Old $\begin{matrix} \leftarrow \text{Yes} \\ \text{No} \rightarrow \end{matrix}$ New	New Part is interchangeable for Old Part but Old Part is not interchangeable for New Part.
Q	Old $\begin{matrix} \leftarrow \text{No} \\ \text{Yes} \rightarrow \end{matrix}$ New	New Part is not interchangeable for Old Part but Old Part is interchangeable for New Part.
R	Old $\begin{matrix} \leftarrow \text{Yes} \\ \text{Yes} \rightarrow \end{matrix}$ New	New/ Old Parts are both interchangeable.
S	Old $\begin{matrix} \leftarrow \text{No} \\ \text{No} \rightarrow \end{matrix}$ New	New/ Old Parts are both not interchangeable.
W		Part newly added.
Z		Part discontinued.
F		Not interchangeable by a single part but interchangeable together with related parts.
K		Changes only for used parts quantities.

### ④ Effective Machine No.

When a part changes, the effective Machine No. will be indicated in the (A)-(F) column.

Product Symbol	Product No.	Product Symbol	Product No.
C	Clutch No. Compressor No.	F	Machine No. (Agricultural Equip.)
D	Drive No.	M	Machine No.
E	Engine No.		

Note 1) A date may follow the symbol. (Ex.) 1996.01

Note 2) "XXXXX" and "ZZZZZ" are for parts that could not be predicted or for engine models that could not be identified.

Note 3) (A=E00185) is the E (Engine Serial Number) for the column (A) model (in this case 4JH-DT) after the parts design change.

### ⑤ Remarks

Figures or alphabets (symbols) are entered in the remarks column.

The comments (remarks) on parts that are indicated at the bottom of the illustration are the same symbols as those stated above.

# Contents

Fig. No.    Fig. Name

3TNE84T-FL3

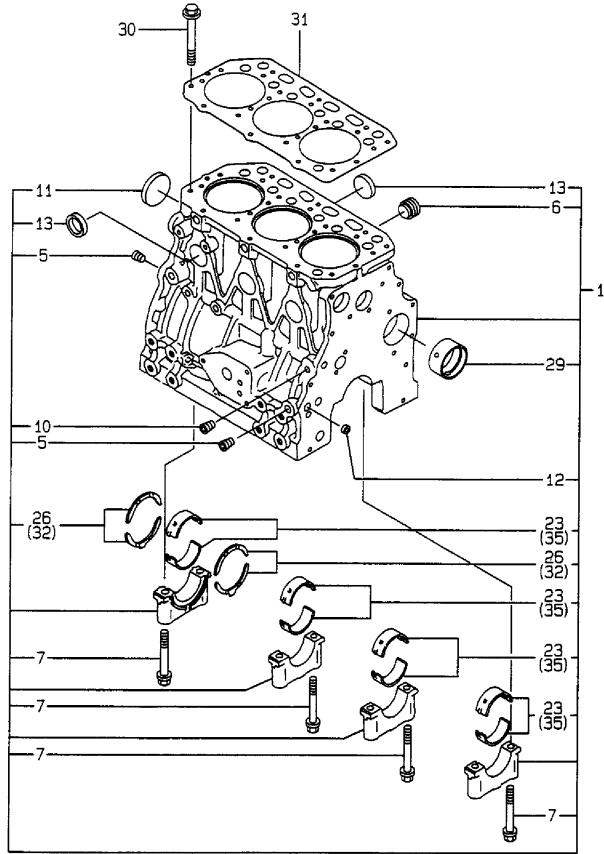
1. CYLINDER BLOCK
2. GEAR HOUSING
3. FLYWHEEL HOUSING & OIL SUMP
4. CYLINDER HEAD & BONNET
5. SUCTION MANIFOLD & AIR CLEANER
6. EXHAUST MANIFOLD & SILENCER
7. TURBIN
8. CAMSHAFT & DRIVING GEAR
9. CRANKSHAFT & PISTON
10. LUB.OIL SYSTEM
11. LUB.OIL LINE
12. COOLING WATER SYSTEM
13. FUEL INJECTION PUMP
14. GOVERNOR
15. FUEL INJECTION VALVE
16. FUEL LINE
17. STARTING MOTOR
18. GENERATOR
19. GASKET SET

Fig. No.    Fig. Name

# Fig.1. CYLINDER BLOCK

Y00D7110  
3TNE84T-FL3

1 シリンダブロック  
CYLINDER BLOCK



(A)=3TNE84T-FL3  
(B)=  
(C)=

(D)=  
(E)=  
(F)=

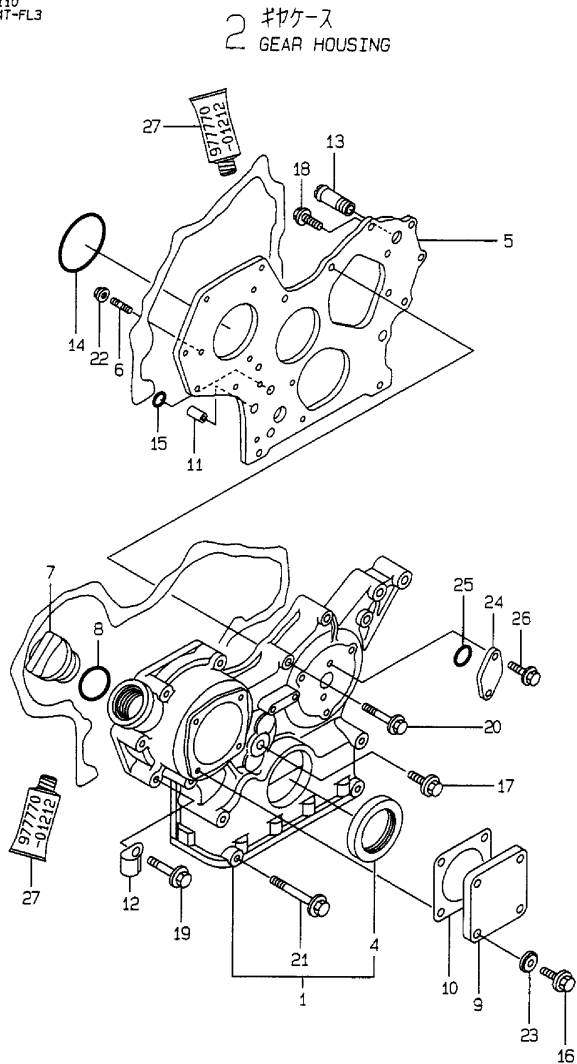
No.	Lev.	Parts No.	Description	Qty						I	R
				(A)	(B)	(C)	(D)	(E)	(F)		
1	1	729012-01560	BLOCK ASSY, CYLINDER	1							
5	2	124160-01910	PLUG, PT1/4	3							
6	2	171051-01921	PLUG, NPTF1	1							
7	2	129150-02020	BOLT, METAL CAP	8							
10	2	23876-010000	PLUG, R01	1							
11	2	129001-01250	PLUG, 50	1							
12	2	27241-120000	PLUG, 12	2							
13	2	27241-300000	PLUG 30	6							
23	2	129001-02930	BEARING, MAIN	4							3
26	2	129150-02930	BEARING, THRUST	2							
29	2	129795-02411	BUSH, CAMSHAFT	1							
30	1	129150-01200	BOLT, HEAD	14							
31	1	129002-01331	GASKET, HEAD	1							
32	1	129150-02940	BEARING, THRUST 0.25	2							1
35	1	129150-02870	BEARING, 0.25 US	4							2

Remarks

- (1) OVER-SIZE(O.S=0.25)PART.
- (2) UNDER-SIZE(U.S=0.25)PART.
- (3) REPAIR PART.

Fig.2. GEAR HOUSING

Y00D7110  
37NEB47-FL3



(A)=3TNE84T-FL3

(B)=

(C)=

(D)=

(E)=

(F)=

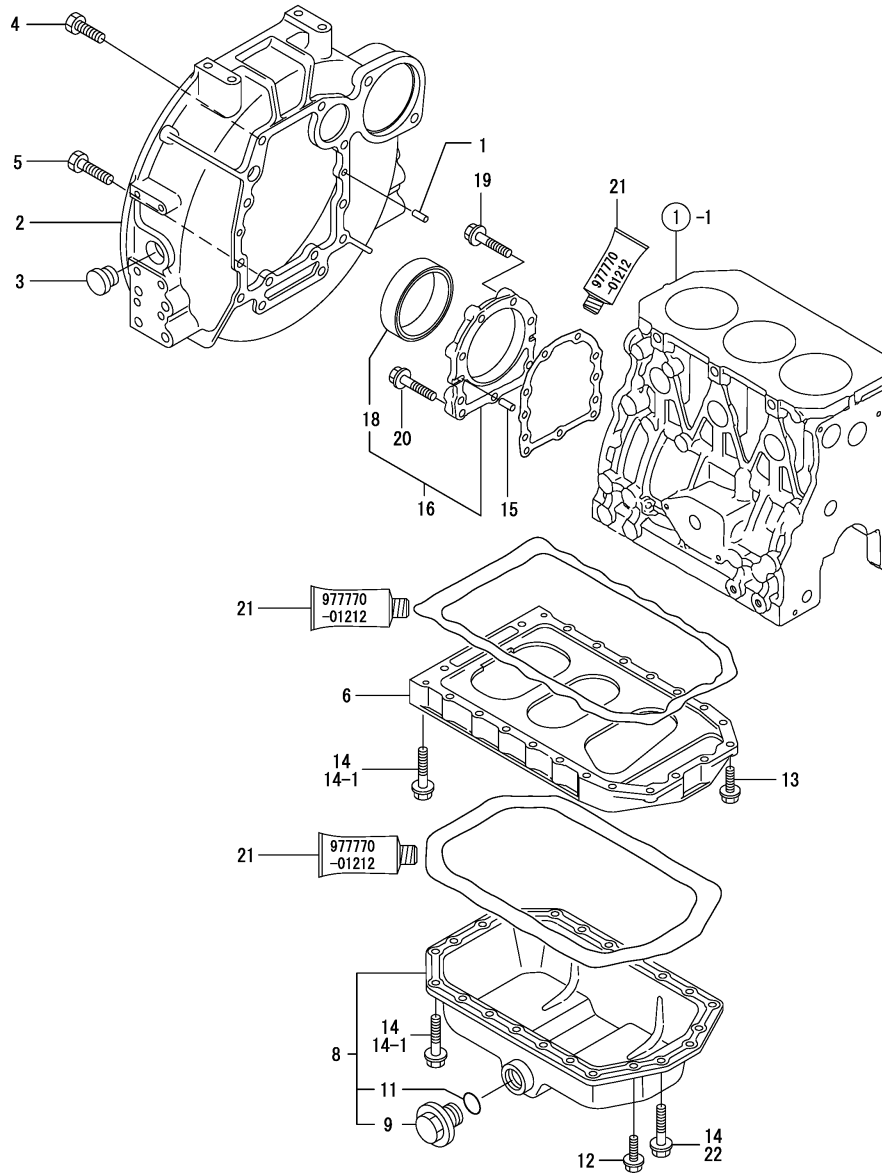
No.	Lev.	Parts No.	Description	Q'ty						I	R
				(A)	(B)	(C)	(D)	(E)	(F)		
1	1	129612-01590	CASE ASSY, GEAR	1							
4	2	129795-01800	SEAL, OIL	1							
5	1	129103-01530	FLANGE, GEAR CASE	1							
6	1	121450-01560	STUD, M8X22	3							
7	1	124160-01751	COVER, FILLER	1							
8	1	24311-000320	O-RING, 1AP32.0	1							
9	1	124240-01871	COVER	1							
10	1	124240-01883	GASKET	1							
11	1	129795-01950	PIPE, KNOCK L=18	2							
12	1	129150-03100	RETAINER, PIPE	1							
13	1	129122-44480	JOINT	1							
14	1	121850-51960	O-RING	1							
15	1	24311-000160	O-RING, 1AP16.0	2							
16	1	26106-080122	BOLT, M8X 12 PLATED	4							
17	1	26106-080162	BOLT, M8X 16 PLATED	1							
18	1	26106-080202	BOLT, M8X 20 PLATED	2							
19	1	26106-080452	BOLT, M8X 45 PLATED	6							
20	1	26106-080552	BOLT, M8X 55 PLATED	3							
21	1	129001-91840	BOLT, M8X85	4							
22	1	26366-080002	NUT, M8	3							
23	1	22190-080002	WASHER, SEAL 6	4							
24	1	121023-01550	COVER	1							
25	1	24341-000240	O-RING, 1AS24.0	1							
26	1	26106-060162	BOLT, M6X 16 PLATED	2							
27	1	977770-01212	GASKET, LIQUID	1							1

Remarks

(1) OPTIONAL PART.

N:Old  $\begin{matrix} \leftarrow \text{Yes} \\ \text{No} \end{matrix}$  New, Q:Old  $\begin{matrix} \leftarrow \text{No} \\ \text{Yes} \end{matrix}$  New, R:Old  $\begin{matrix} \leftarrow \text{Yes} \\ \text{Yes} \end{matrix}$  New, S:Old  $\begin{matrix} \leftarrow \text{No} \\ \text{No} \end{matrix}$  New, W:Add, Z:Discontinued, F:Interchangeable by set, K:Q'ty Change

Fig.3. FLYWHEEL HOUSING & OIL SUMP



(A)=3TNE84T-FL3

(B)=

(C)=

(D)=

(E)=

(F)=

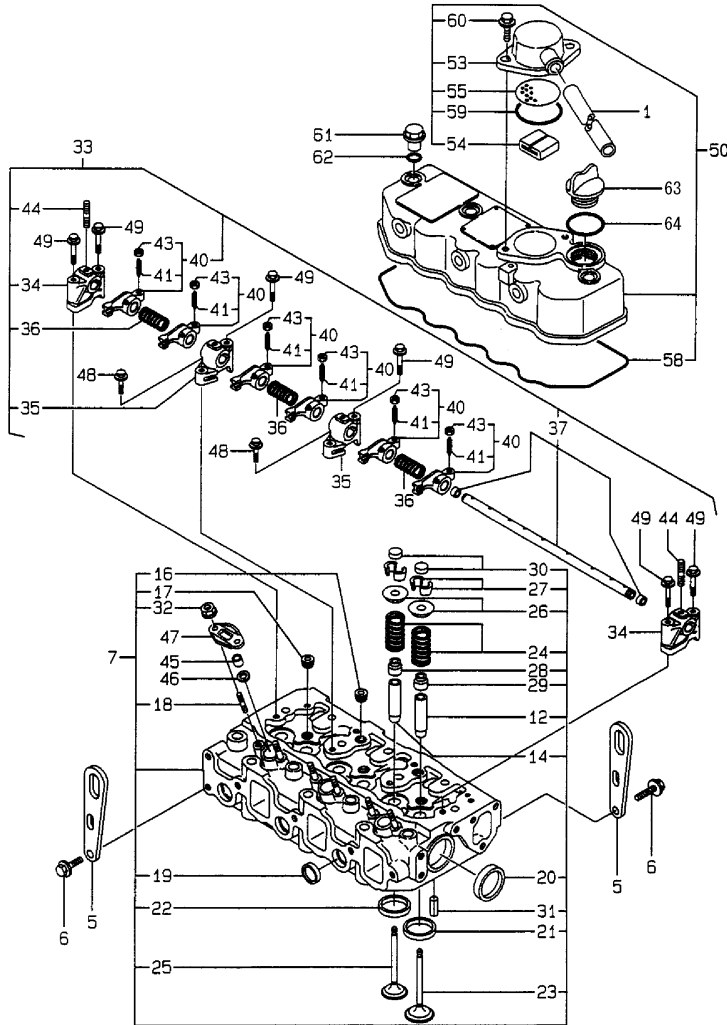
No.	Lev.	Parts No.	Description	Q'ty						I	R
				(A)	(B)	(C)	(D)	(E)	(F)		
1	1	129100-01580	PIN, M8X16	2							
2	1	171440-01600	HOUSING, FLYWHEEL	1							
3	1	119620-01750	CAP	1							
4	1	26206-100252	BOLT, M10X 25 PLATED	6							
5	1	26206-100302	BOLT, M10X 30 PLATED	4							
6	1	129100-01730	SPACER, OIL SUMP	1							
8	1	129175-01770	SUMP ASSY, OIL	1							
9	2	171301-01640	PLUG, 22	1							
11	2	24341-000250	O-RING, 1AS25.0	1							
12	1	26106-080162	BOLT, M8X 16 PLATED	4							
13	1	26106-080252	BOLT, M8X 25 PLATED	2							
14	1	26106-080452	BOLT, M8X 45 PLATED	20							
14-1	1	26106-080452	BOLT, M8X 45 PLATED	16							K
(A=FROM 1ST)											
15	1	129100-01580	PIN, M8X16	2							
16	1	129100-01640	CASE ASSY, OIL SEAL	1							
18	2	129795-01780	SEAL, OIL	1							
19	1	129486-01670	BOLT, M8X30	6							
20	1	26106-080352	BOLT, M8X 35 PLATED	3							
21	1	977770-01212	GASKET, LIQUID	1							1
22	1	26106-080502	BOLT, M8X 50 PLATED	4							W
(A=FROM 1ST)											

Remarks  
(1) OPTIONAL PART.

Fig.4. CYLINDER HEAD & BONNET

Y0007110  
3TNE84T-FL3

4 シリンダヘッド & ボンネット  
CYLINDER HEAD & BONNET



(A)=3TNE84T-FL3

(B)=

(C)=

(D)=

(E)=

(F)=

No.	Lev.	Parts No.	Description	Qty						I	R
				(A)	(B)	(C)	(D)	(E)	(F)		
1	1	171350-03090	PIPE , BREATHER 900	1							
5	1	124736-07900	LIFTER	2							
6	1	26106-080142	BOLT, M8X 14 PLATED	4							
7	1	729202-11710	HEAD ASSY, CYLINDER	1							
12	2	120130-11860	GUIDE, VALVE	3							1
14	2	129150-11810	GUIDE, VALVE	3							1
16	2	23876-020000	PLUG, R02	2							
17	2	23876-030000	PLUG, R03	3							
18	2	26216-060202	STUD, M6X 20	6							
19	2	27241-220000	PLUG, 22	3							
20	2	27241-400000	PLUG, 40	2							
21	2	129470-11080	SEAT, INTAKE VALVE	3							
22	2	129470-11090	SEAT, EXHAUST VALVE	3							
23	2	129100-11100	VALVE, INTAKE	3							
24	2	129795-11120	SPRING, VALVE	6							
25	2	129100-11130	VALVE, EXHAUST	3							
26	2	129795-11180	RETAINER, SPRING	6							
27	2	27310-080001	COTTER, 8	6							
28	2	121400-11340	SEAL, VALVE STEM	3							
29	2	124460-11340	SEAL, VALVE STEM	3							
30	2	129150-11370	CAP, VALVE	6							
31	2	22351-060012	PIN, SPRING 6.0X12	2							
32	2	26366-060002	NUT, M6	6							
33	1	129155-11241	SHAFT ASSY, ROCKER	1							
34	2	129155-11260	SUPPORT, ROCKER ARM	2							
35	2	129155-11270	SUPPORT, ROCKER ARM	2							
36	2	129150-11280	SPRING	3							
37	2	129150-11290	SHAFT, ROCKER ARM	1							
40	2	729402-11650	ARM ASSY, ROCKER	6							
41	3	129150-11230	SCREW, VALVE ADJUST	6							
43	3	129150-11750	NUT, M8	6							
44	2	26226-080182	STUD, M8X 18	3							
45	1	119625-11870	PROTECTOR, NOZZLE	3							
46	1	119625-11880	SEAT, NOZZLE	3							
47	1	119625-11900	RETAINER, NOZZLE	3							
48	1	26106-080252	BOLT, M8X 25 PLATED	2							
49	1	26106-080502	BOLT, M8X 50 PLATED	6							
50	1	729132-11521	BONNET ASSY, HEAD	1							
53	2	129150-03020	COVER, BREATHER	1							
54	2	129150-03070	BAFFLE, BREATHER	1							
55	2	129150-03080	PLATE, BAFFLE	1							
58	2	129150-11310	GASKET, BONNET	1							
59	2	24341-000500	O-RING, 1AS50.0	1							
60	2	26106-080162	BOLT, M8X 16 PLATED	2							
61	1	124160-11360	KNOB	3							
62	1	24311-000120	O-RING, 1AP12.0	3							
63	1	124160-01751	COVER, FILLER	1							
64	1	24311-000320	O-RING, 1AP32.0	1							

Remarks

(1) REPAIR PART.

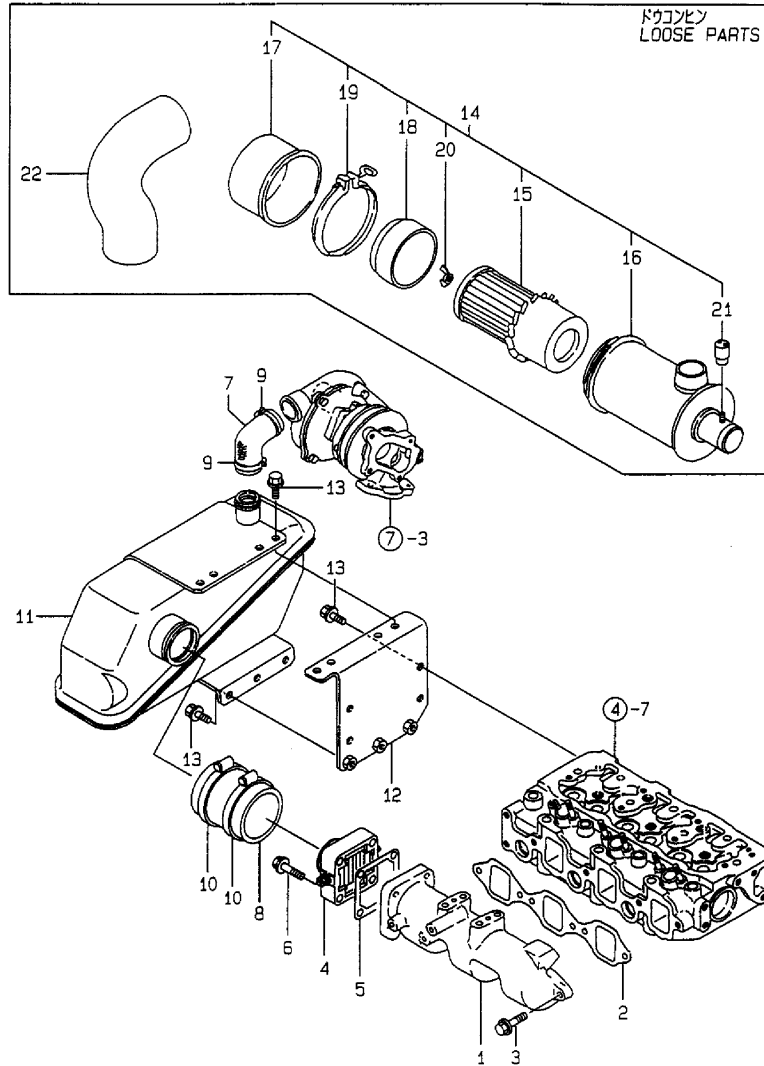
N:Old  $\xrightarrow{\text{Yes}}$  New, Q:Old  $\xrightarrow{\text{No}}$  New, R:Old  $\xrightarrow{\text{Yes}}$  New, S:Old  $\xrightarrow{\text{No}}$  New, W:Add, Z:Discontinued, F:Interchangeable by set, K:Qty Change



Fig.5. SUCTION MANIFOLD & AIR CLEANER

Y00D7110  
37NE84T-FL3

5 キュウキマニホールド & エアクリーナ  
SUCTION MANIFOLD & AIR CLEANER



(A)=3TNE84T-FL3

(B)=

(C)=

(D)=

(E)=

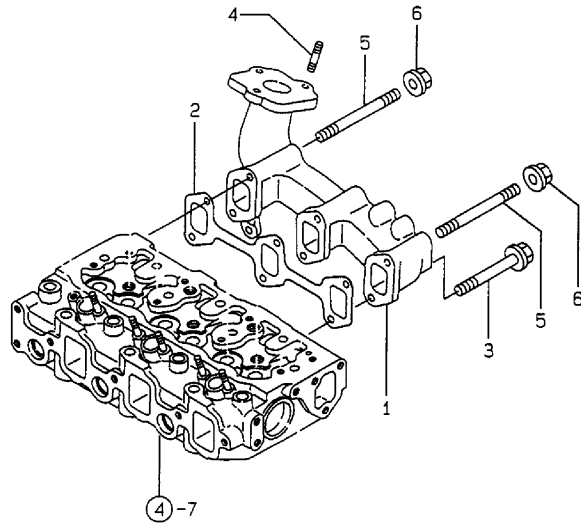
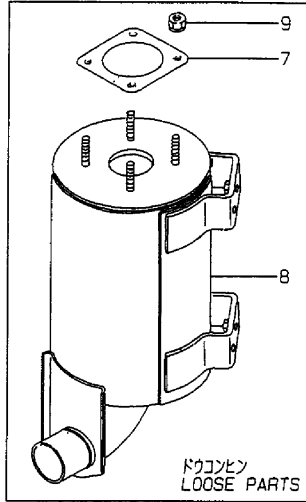
(F)=

No.	Lev.	Parts No.	Description	Qty						I	R
				(A)	(B)	(C)	(D)	(E)	(F)		
1	1	129122-12100	MANIFOLD, AIR INTAKE	1							
2	1	129150-12111	GASKET, MANIFOLD	1							
3	1	26106-080252	BOLT, M8X 25 PLATED	4							
4	1	129120-77501	HEATER	1							
5	1	129150-77511	GASKET	1							
6	1	26106-080352	BOLT, M8X 35 PLATED	4							
7	1	129139-12050	HOSE, WATER	1							
8	1	129122-12060	HOSE	1							
9	1	23000-041000	CLAMP, 41	2							
10	1	23000-060000	CLAMP, 60	2							
11	1	129139-12200	TANK, SURGE	1							
12	1	129122-12211	BRACKET	1							
13	1	26106-080162	BOLT, M8X 16 PLATED	11							
14	1	129135-12500	CLEANER ASSY, AIR	1							
15	2	121420-12511	ELEMENT	1							
16	2	129135-12520	BODY ASSY	1							
17	2	121420-12530	CAP, AIR CLEANER	1							
18	2	121420-12540	SCARF, BAFFLE	1							
19	2	121420-12550	CLAMP ASSY	1							
20	2	121420-12561	NUT, WING	1							
21	2	171061-12800	INDICATOR	1							
22	1	121505-12210	HOSE, AIR CLEANER	1							

# Fig.6. EXHAUST MANIFOLD & SILENCER

Y0007110  
3TNE84T-FL3

## 6 ハイキマニホールド & サイレンサ EXHAUST MANIFOLD & SILENCER



(A)=3TNE84T-FL3  
(B)=  
(C)=

(D)=  
(E)=  
(F)=

No.	Lev.	Parts No.	Description	Q'ty						I	R
				(A)	(B)	(C)	(D)	(E)	(F)		
1	1	129139-13100	MANIFOLD, EXHAUST	1							
2	1	129150-13110	GASKET	1							
3	1	26106-080802	BOLT, M8X 80 PLATED	4							
4	1	119131-18320	STUD, M8X22	3							
5	1	26216-080802	STUD, M8X 80	2							
6	1	26366-080002	NUT, M8	2							
7	1	129400-13201	GASKET, SILENCER	2							
8	1	129213-13510	SILENCER	1							
9	1	194990-22050	NUT, M8	8							

Fig.7. TURBIN

(A)=3TNE84T-FL3

(B)=

(C)=

(D)=

(E)=

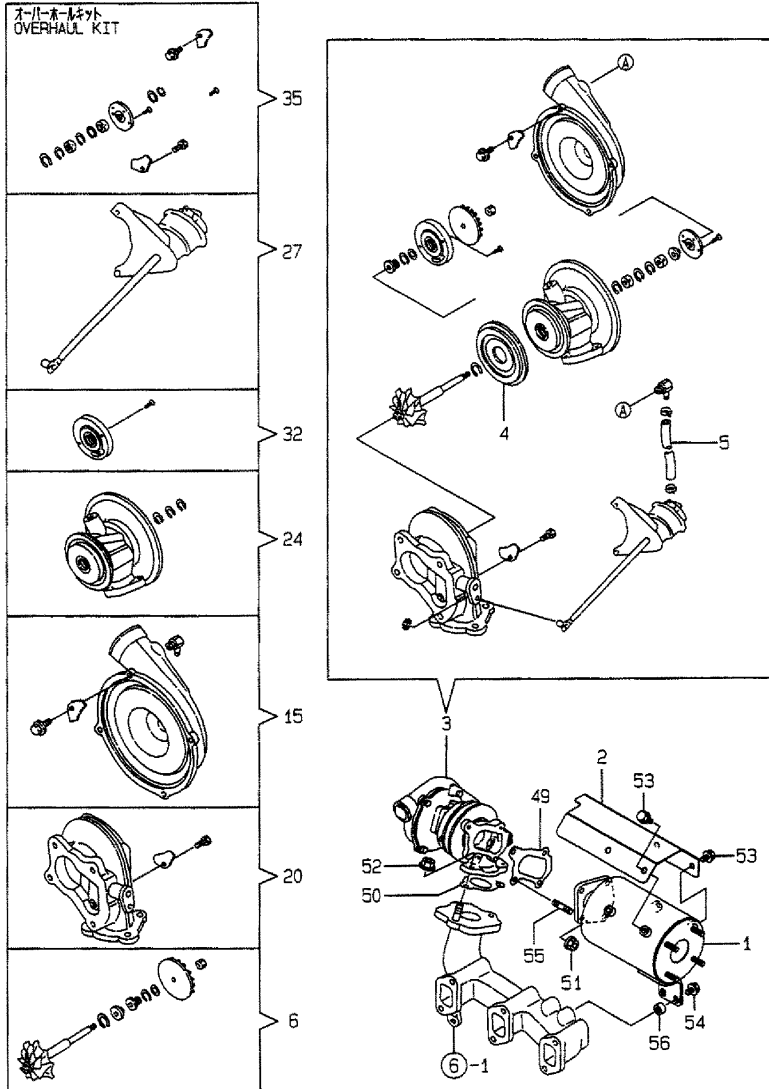
(F)=

Qty

No.	Lev.	Parts No.	Description	Qty						I	R
				(A)	(B)	(C)	(D)	(E)	(F)		
1	1	129012-13300	RESONATOR	1							
2	1	129012-13410	COVER, RESONATOR	1							
3	1	129137-18010	TURBINE, RHB31W/G	1							
4	2	129403-18720	PROTECTOR, HEAT	1							
5	2	129403-18750	HOSE	1							
6	2	129403-18770	ROTOR ASSY, TURBO	1							
15	2	129403-18780	HOUSING ASSY, BLOWER	1							
20	2	XNB139825	HOUSING ASSY, TURBO	1							
24	2	129403-18800	HOUSING ASSY, BEARING	1							
27	2	XNB139826	CONTROL ASSY	1							
32	2	XNB139815	SEAL PLATE ASSY	1							
35	2	XNB139827	OVERHAUL KIT	1							
49	1	129403-18091	GASKET	1							
50	1	129477-18101	GASKET	1							
51	1	194990-22050	NUT, M8	4							
52	1	194990-22050	NUT, M8	3							
53	1	26106-080102	BOLT, M8X 10 PLATED	4							
54	1	26014-080252	BOLT, M8X 25	2							
55	1	129418-18320	STUD, M8X20	4							
56	1	106500-44810	SPACER	2							

Y00D7110  
37NE84T-FL3

7 タービン  
TURBIN



# Fig.8. CAMSHAFT & DRIVING GEAR

(A)=3TNE84T-FL3

(B)=

(C)=

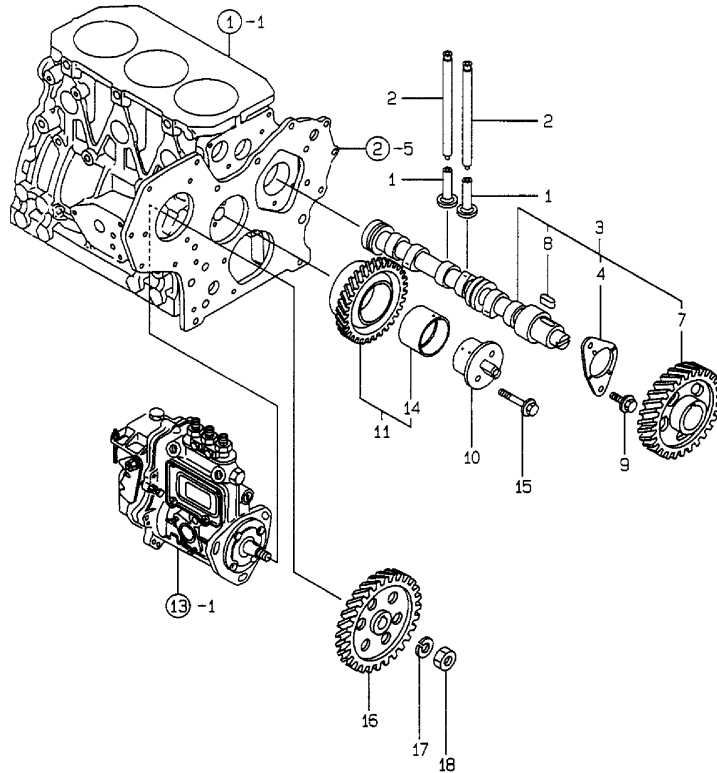
(D)=

(E)=

(F)=

Y0007110  
3TNE84T-FL3

カムシャフト & クドウギヤ  
CAMSHAFT & DRIVING GEAR



No.	Lev.	Parts No.	Description	Q'ty						I	R
				(A)	(B)	(C)	(D)	(E)	(F)		
1	1	129150-14200	TAPPET	6							
2	1	129150-14400	ROD, PUSH L=178	6							
3	1	129129-14580	CAMSHAFT ASSY	1							
4	2	129150-02450	BEARING, THRUST	1							
7	2	129150-14101	GEAR, CAMSHAFT	1							
8	2	22512-070140	KEY, 7X 14	1							
9	1	26106-080142	BOLT, M8X 14 PLATED	2							
10	1	129100-25061	SHAFT, IDLE	1							
11	1	129150-25101	GEAR ASSY, IDLE	1							
14	2	129150-25920	BUSH, IDLE GEAR	1							1
15	1	26106-080452	BOLT, M8X 45 PLATED	2							
16	1	129150-25900	GEAR, PUMP	1							
17	1	22217-120000	WASHER, SPRING 12	1							
18	1	26716-120002	NUT, M12	1							

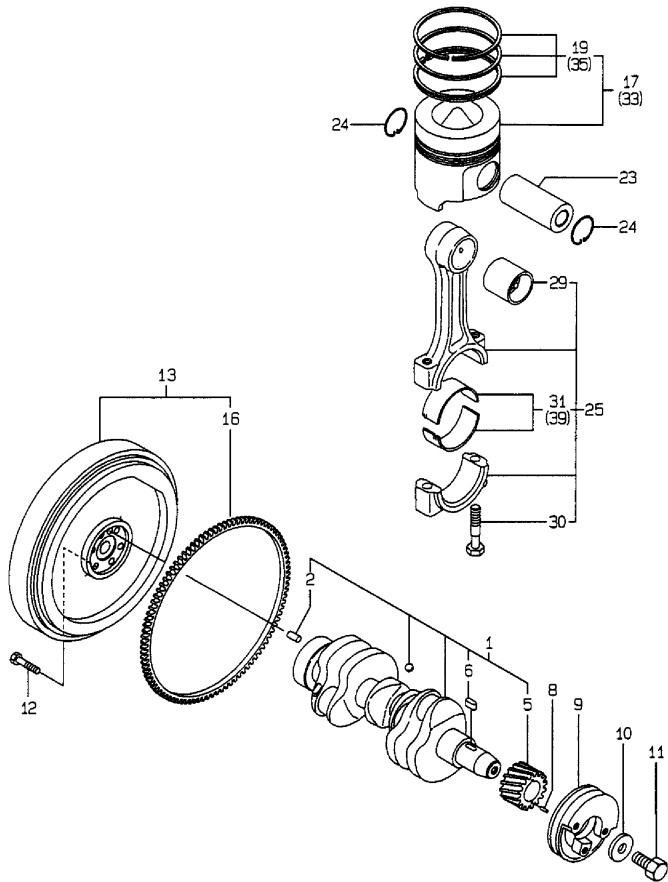
Remarks

(1) REPAIR PART.

# Fig.9. CRANKSHAFT & PISTON

Y0007110  
3TNE84T-FL3

9 クランクシャフト & ピストン  
CRANKSHAFT & PISTON



(A)=3TNE84T-FL3

(B)=

(C)=

(D)=

(E)=

(F)=

No.	Lev.	Parts No.	Description	Q'ty						I	R
				(A)	(B)	(C)	(D)	(E)	(F)		
1	1	129001-21000	CRANKSHAFT ASSY	1							
2	2	129100-01580	PIN, M8X16	1							
5	2	129150-21200	GEAR, CRANKSHAFT	1							
6	2	22512-070140	KEY, 7X 14	1							
8	1	22351-040010	PIN, SPRING 4.0X10	1							
9	1	171340-21650	V-PULLEY	1							
10	1	129795-21661	WASHER	1							
11	1	121850-21680	BOLT	1							
12	1	121111-21501	BOLT, FLYWHEEL	6							
13	1	171350-21590	FLYWHEEL ASSY	1							
16	2	124550-21600	GEAR, RING	1							
17	1	129002-22090	PISTON ASSY	3							
19	2	129002-22510	RING SET, PISTON	3							
23	1	129202-22300	PIN, PISTON D26 L70	3							
24	1	22252-000260	RING, 26	6							
25	1	729402-23100	ROD ASSY, CONNECTING	3							
29	2	129100-23910	BEARING, PISTON PIN	3							1
30	2	121550-23200	BOLT, CONNECTING ROD	6							
31	2	129150-23600	BEARING, CRANK PIN	3							
33	1	129002-22910	PISTON ASSY, 0.25 OS	3							2
35	2	129002-22960	RING SET, 0.25 OS	3							2
39	1	129150-23610	BEARING, 0.25 US	3							3

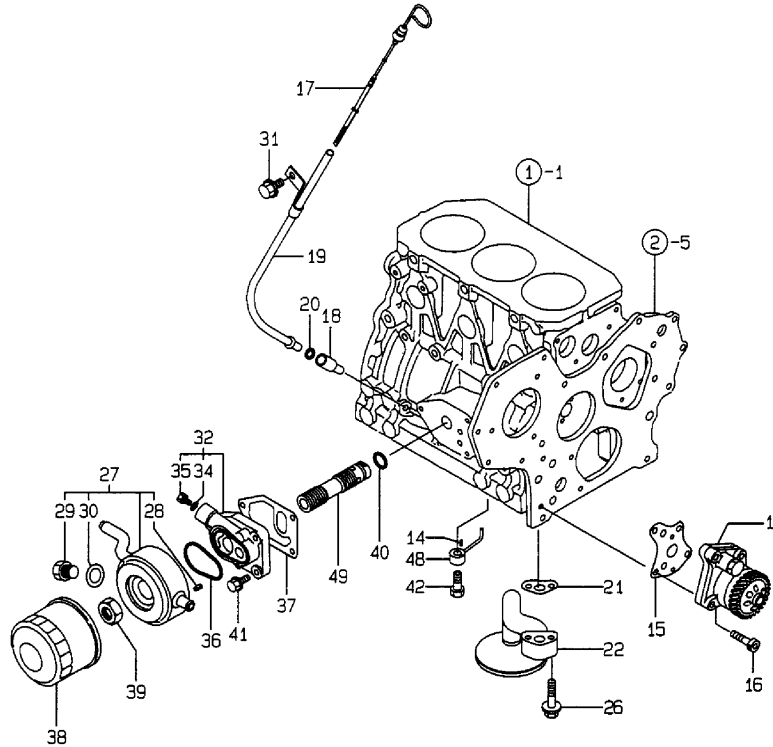
Remarks

- (1) REPAIR PART.
- (2) OVER-SIZE(O.S=0.25)PART.
- (3) UNDER-SIZE(U.S=0.25)PART.

Fig.10. LUB.OIL SYSTEM

Y00D7110  
3TNE84T-FL3

10 LOシステム  
LUB.OIL SYSTEM



(A)=3TNE84T-FL3

(B)=

(C)=

(D)=

(E)=

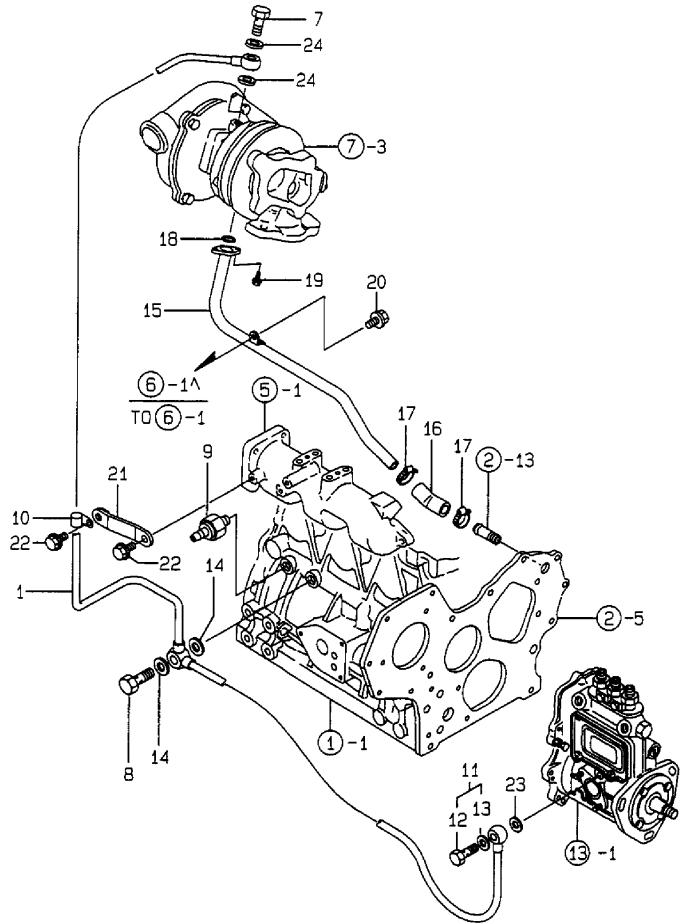
(F)=

No.	Lev.	Parts No.	Description	Q'ty						I	R
				(A)	(B)	(C)	(D)	(E)	(F)		
1	1	129418-32000	PUMP ASSY, OIL	1							
14	1	22351-030010	PIN, SPRING 3.0X10	3							
15	1	129150-32020	GASKET, PUMP	1							
16	1	26450-060252	BOLT, M6X 25	4							
17	1	129114-34820	DIPSTICK, OIL	1							
18	1	119260-34810	GUIDE, DIPSTICK	1							
19	1	129114-34810	GUIDE, DIPSTICK	1							
20	1	24311-240100	O-RING, 1AP10A	1							
21	1	129150-35041	GASKET	1							
22	1	129135-35090	PIPE ASSY, OIL INLET	1							
26	1	26106-080352	BOLT, M8X 35 PLATED	2							
27	1	129012-33000	COOLER ASSY, OIL	1							
28	2	129120-33040	PIN	2							
29	2	129120-33051	PLUG, DRAIN	1							
30	2	129120-33060	GASKET	1							
31	1	26106-080162	BOLT, M8X 16 PLATED	1							
32	1	129120-35001	BRACKET ASSY	1							
34	2	23414-100000	GASKET, 10X1.0	1							
35	2	23881-100002	PLUG, 10	1							
36	1	129120-35110	GASKET	1							
37	1	129120-35121	GASKET	1							
38	1	129150-35151	FILTER, D80XL80	1							
39	1	129150-35350	NUT	1							
40	1	24311-000160	O-RING, 1AP16.0	1							
41	1	26106-080252	BOLT, M8X 25 PLATED	3							
42	1	129792-39410	VALVE ASSY, CHECK	3							
48	1	129553-39650	NOZZLE	3							
49	1	129407-35300	BOLT, FILTER	1							

Fig.11. LUB.OIL LINE

Y00D7110  
3TNE84T-FL3

↑↑ LOパイ  
LUB.OIL LINE



(A)=3TNE84T-FL3

(B)=

(C)=

(D)=

(E)=

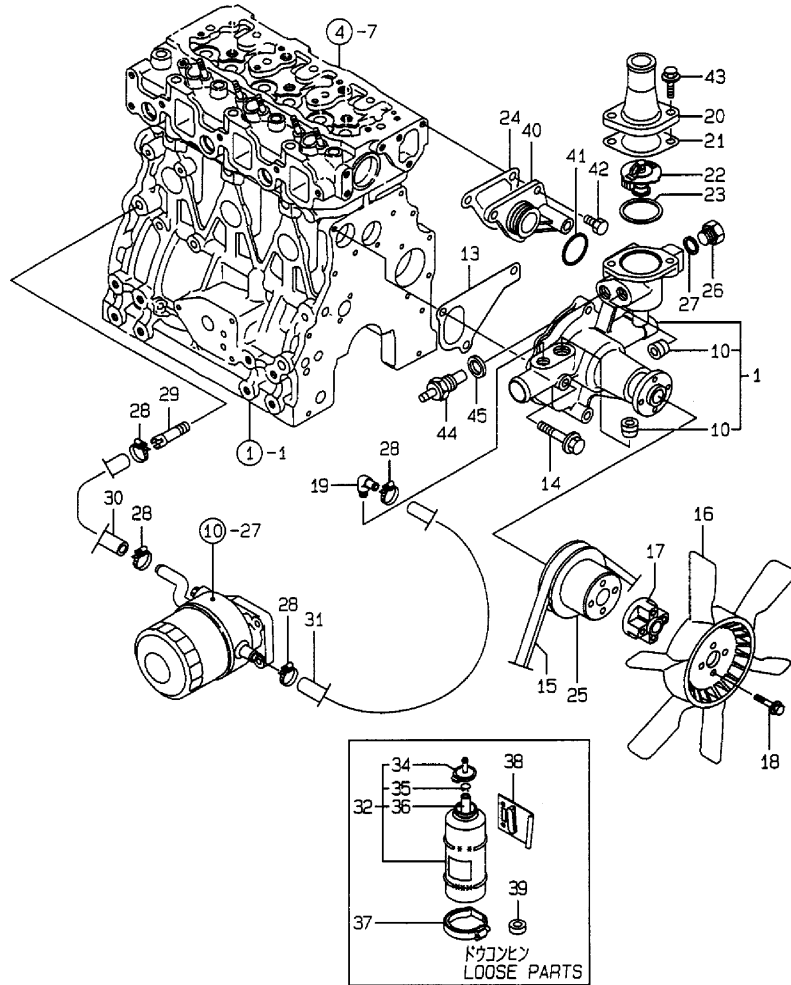
(F)=

No.	Lev.	Parts No.	Description	Q'ty						I	R
				(A)	(B)	(C)	(D)	(E)	(F)		
1	1	129139-39030	PIPE ASSY, OIL	1							
7	1	105010-39140	BOLT, PIPE JOINT	1							
8	1	124160-39140	BOLT, PIPE JOINT M10	1							
9	1	121252-39450	SWITCH, 0.5KG	1							
10	1	124223-39900	RETAINER	2							
11	1	124550-59830	BOLT ASSY, JOINT M8	1							
12	2	124550-59820	BOLT, PIPE JOINT M8	1							
13	2	22190-080002	WASHER, SEAL 6	1							
14	1	22190-100002	WASHER, SEAL 10	2							
15	1	129139-39601	PIPE, OIL	1							
16	1	129403-39610	JOINT, RUBBER	1							
17	1	23000-022000	CLAMP, 22	2							
18	1	24314-000160	O-RING, 4CP16.0	1							
19	1	26106-060162	BOLT, M6X 16 PLATED	2							
20	1	26106-080122	BOLT, M8X 12 PLATED	1							
21	1	129012-39910	SUPPORT	1							
22	1	26106-080162	BOLT, M8X 16 PLATED	2							
23	1	22190-080002	WASHER, SEAL 6	1							
24	1	23414-080000	GASKET, 8X1.0	2							

Fig.12. COOLING WATER SYSTEM

Y0007110  
3TNE84T-FL3

12 CWシステム  
COOLING WATER SYSTEM



(A)=3TNE84T-FL3

(B)=

(C)=

(D)=

(E)=

(F)=

No.	Lev.	Parts No.	Description	Q'ty						I	R
				(A)	(B)	(C)	(D)	(E)	(F)		
1	1	129001-42003	PUMP ASSY, WATER	1							
10	2	23876-030000	PLUG, R03	2							
13	1	129486-42021	GASKET, WATER PUMP	1							
14	1	26106-080602	BOLT, M8X 60 PLATED	3							
15	1	124722-42290	V-BELT, A40	1							
16	1	171440-44740	FAN, COOLING D350XQF	1							
17	1	171353-44760	SPACER, FAN	1							
18	1	26106-060352	BOLT, M6X 35 PLATED	4							
19	1	129103-49301	ELBOW, PT1/4	1							
20	1	129350-49530	COVER, THERMOSTAT	1							
21	1	129795-49551	GASKET	1							
22	1	129155-49800	THERMOSTAT, 71	1							
23	1	129150-49811	GASKET, THERMOSTAT	1							
24	1	129100-49840	GASKET	1							
25	1	129120-42350	V-PULLEY, 130	1							
26	1	121450-42450	PLUG, M16	1							
27	1	124465-44950	GASKET, 16	2							
28	1	23000-022000	CLAMP, 22	4							
29	1	129122-44480	JOINT	1							
30	1	129012-49030	HOSE, WATER	1							
31	1	129403-49050	PIPE, WATER	1							
32	1	124450-44510	TANK ASSY, SUB	1							
34	2	124450-44530	CAP	1							
35	2	124450-44560	RETAINER	1							
36	2	23061-070230	PIPE, 7X 230	1							
37	1	124450-44550	BAND	1							
38	1	121256-44600	BRACKET, SUB TANK	1							
39	1	129150-49360	GASKET	1							
40	1	129001-42040	JOINT	1							
41	1	129486-42140	O-RING, G30	1							
42	1	26106-080162	BOLT, M8X 16 PLATED	3							
43	1	26106-080222	BOLT, M8X 22 PLATED	2							
44	1	171056-49351	SENSOR	1							
45	1	129150-49360	GASKET	1							



# Fig.13. FUEL INJECTION PUMP

(A)=3TNE84T-FL3

(B)=

(C)=

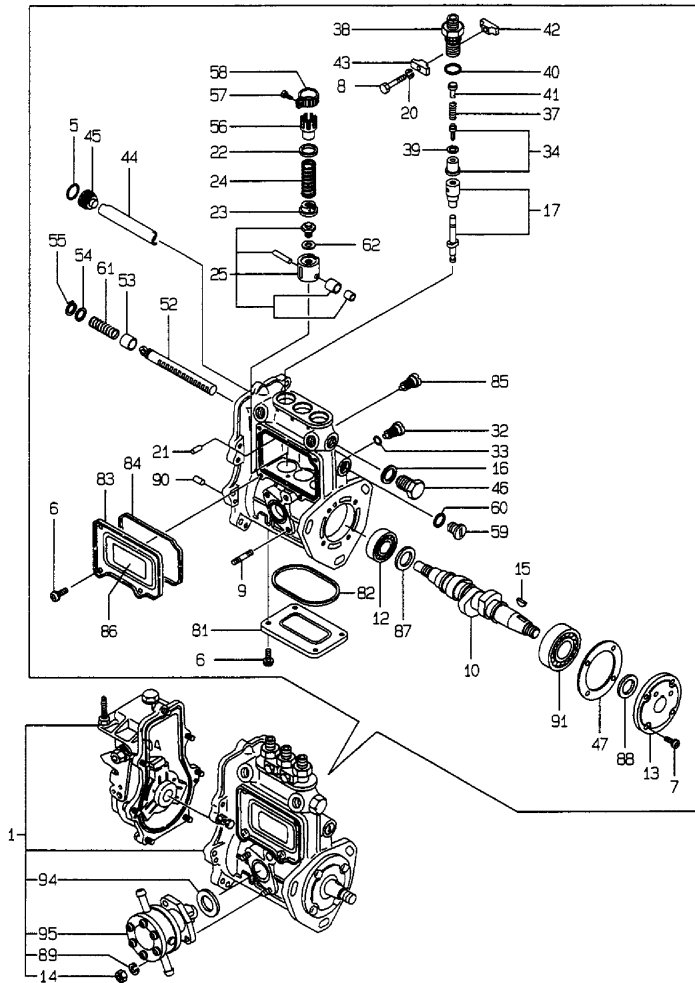
(D)=

(E)=

(F)=

Y0007110  
3TNE84T-FL3

## 13 F07インシャポン FUEL INJECTION PUMP



No.	Lev.	Parts No.	Description	Q'ty						I	R
				(A)	(B)	(C)	(D)	(E)	(F)		
1	1	729215-51371	PUMP ASSY, INJECTION	1							1
5	2	24341-000160	O-RING, 1AS16.0	1							
6	2	26022-050102	SCREW, M5X10	8							
7	2	26022-060162	SCREW, M6X16	4							
8	2	26116-050302	BOLT, M5X 30 PLATED	2							
9	2	129155-51020	STUD	2							
10	2	119810-51040	CAMSHAFT	1							
12	2	129155-51050	BEARING, 17BM001D	1							
13	2	129155-51060	SUPPORT, CAMSHAFT	1							
14	2	26716-060002	NUT, M6	2							
15	2	122710-51090	KEY	1							
16	2	22190-160002	WASHER, SEAL 16	1							
17	2	129470-51101	PLUNGER ASSY	3							
20	2	22217-050000	WASHER, SPRING 5	2							
21	2	129155-51140	PIN	3							
22	2	174307-51170	RETAINER, SPRING A	3							
23	2	129155-51180	RETAINER, SPRING	3							
24	2	124950-51190	SPRING, PLUNGER	3							
25	2	129155-51200	TAPPET ASSY	3							
32	2	129155-51270	STOPPER, TAPPET	3							
33	2	129155-51280	O-RING, S6	3							
34	2	129505-51300	VALVE ASSY, DELIVERY	3							
37	2	129155-51320	SPRING, DELIVERY	3							
38	2	129155-51340	RETAINER	3							
39	2	124550-51350	GASKET, DELIVERY	3							
40	2	124550-51370	O-RING	3							
41	2	129155-51370	STOPPER, VALVE	3							
42	2	129155-51380	STOPPER	2							
43	2	129155-51390	STOPPER	2							
44	2	129155-51400	DEFLECTOR	1							
45	2	129155-51410	BOLT	1							
46	2	129155-51420	PLUG, M16	1							
47	2	129155-51450	SHIM SET, ADJUSTING	1							
52	2	129155-51500	RACK, CONTROL	1							
53	2	129155-51521	BUSH, RACK	1							
54	2	129155-51530	SPACER	1							
55	2	129155-51540	CIRCLIP	1							
56	2	129155-51550	PINION, CONTROL	3							
57	2	122117-51560	SCREW	3							
58	2	174307-51560	PINION	3							
59	2	129155-51570	PLUG, M12	1							
60	2	129155-51580	O-RING	1							
61	2	129155-51591	SPRING, RACK	1							
62	2	129155-51600	SHIM SET, ADJUSTING	3							
81	2	129155-51700	COVER	1							
82	2	129155-51710	GASKET	1							
83	2	129155-51750	COVER	1							
84	2	129155-51760	GASKET	1							
85	2	129155-51790	STOOPER, RACK	1							
86	2	129156-51910	LABEL, CAUTION	1							
87	2	129155-51930	SPACER, T=3.25	1							

Remarks

(1) GOVERNOR(FIG.NO.14)IS INCORPORATED IN THIS FUEL INJECTION PUMP.(REF.NO.1).

N:Old  $\xrightarrow{\text{Yes}}$  New, Q:Old  $\xrightarrow{\text{No}}$  New, R:Old  $\xrightarrow{\text{Yes}}$  New, S:Old  $\xrightarrow{\text{No}}$  New, W:Add, Z:Discontinued, F:Interchangeable by set, K:Q'ty Change

++ CONTINUE ++

Copyright (C) YANMAR CO., LTD. All Rights Reserved.

# Fig.13. FUEL INJECTION PUMP

(A)=3TNE84T-FL3

(B)=

(C)=

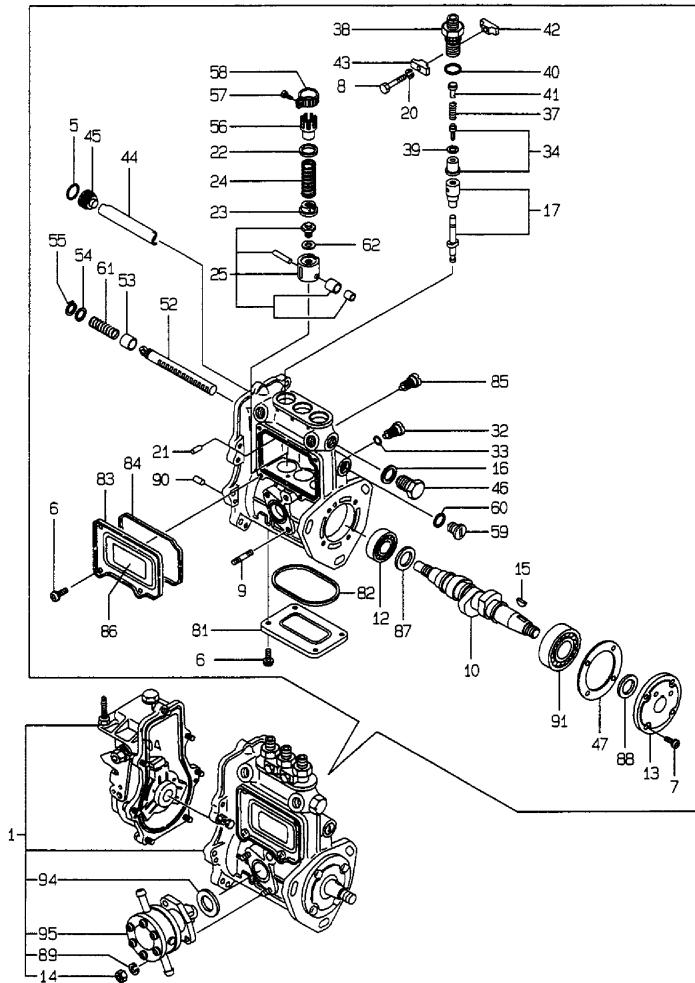
(D)=

(E)=

(F)=

Y0007110  
3TNE84T-FL3

## 13 F077ンシャポン FUEL INJECTION PUMP



No.	Lev.	Parts No.	Description	Q'ty						I	R
				(A)	(B)	(C)	(D)	(E)	(F)		
88	2	129155-51940	SPACER, T=1.5	1							
89	2	22217-060000	WASHER, SPRING 6	2							
90	2	22351-050010	PIN, SPRING 5.0X10	2							
91	2	24101-063034	BEARING, BALL 6303	1							
94	2	129155-52050	GASKET	1							
95	2	129100-52100	PUMP ASSY, FUEL FEED	1							

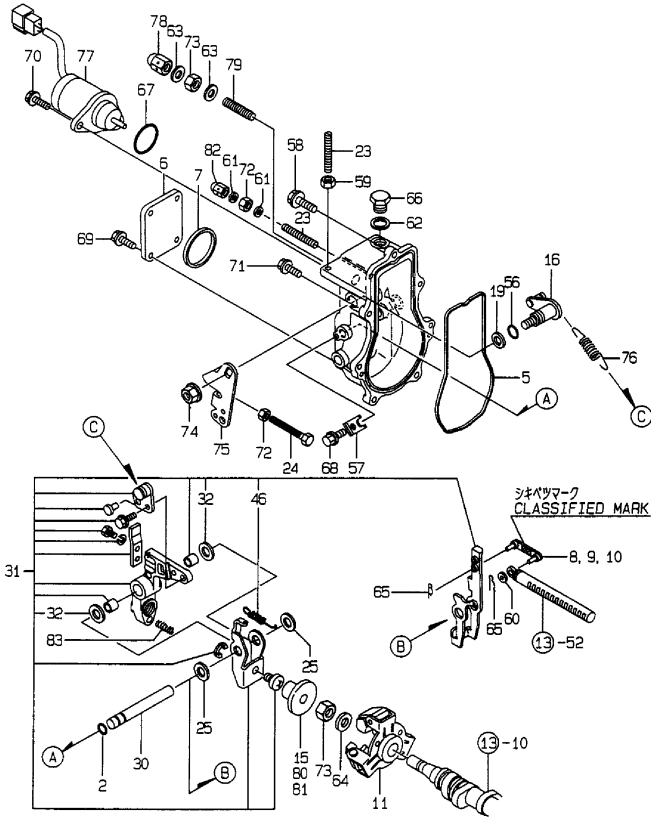
Remarks

(1) GOVERNOR(FIG.NO.14)IS INCORPORATED IN THIS FUEL INJECTION PUMP.(REF.NO.1).

Fig.14. GOVERNOR

Y0007110  
3TNE84T-FL3

14 ガバナー  
GOVERNOR



Remarks  
 (1) SELECTIVE PARTS: CERTAIN THE CLASSIFICATION MARK, THEN PLACE YOUR ORDER (REFER TO ILLUSTRATION)  
 (2) SELECTIVE PARTS.  
 \* THIS FIGURE (GOVERNOR ASSY) IS INCORPORATED IN THE FUEL INJECTION PUMP ASSY (FIG. 13).

(A)=3TNE84T-FL3

(B)=

(C)=

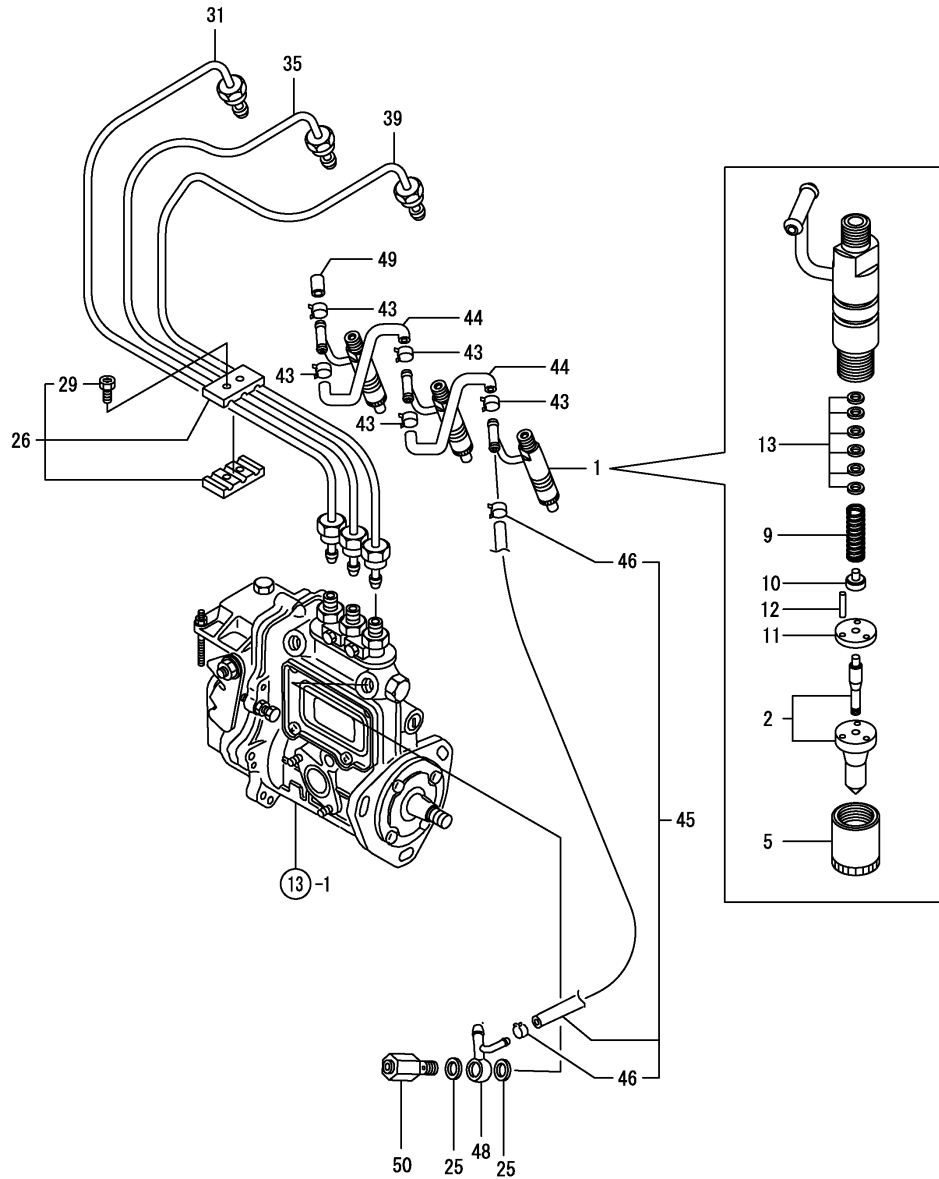
(D)=

(E)=

(F)=

No.	Lev.	Parts No.	Description	Q'ty						I	R
				(A)	(B)	(C)	(D)	(E)	(F)		
2	2	129155-51280	O-RING, S6	1							
5	2	129052-61050	GASKET	1							
6	2	129052-61060	COVER, GOVERNOR CASE	1							
7	2	129052-61070	GASKET	1							
8	2	129155-61120	LINK, L=30 MARK 0	1							1
9	2	129155-61130	LINK, L=31 MARK 1	1							1
10	2	129155-61140	LINK, L=30.5 MARK 05	1							1
11	2	129155-61201	WEIGHT ASSY, GOVERNOR	1							
15	2	129155-61341	SLEEVE	1							2
16	2	129100-61400	SHAFT ASSY	1							
19	2	129155-61430	SPACER	1							
23	2	129155-61450	BOLT, LIMITER	2							
24	2	129155-61460	BOLT, IDLE	1							
25	2	129155-61480	SPACER ASSY	2							
30	2	129052-61390	SHAFT	1							
31	2	129052-61500	LEVER ASSY, GOVERNOR	1							
32	3	174307-51700	SHIM SET	2							
46	3	129052-61540	SPRING, SET	1							
56	2	129155-61830	O-RING, S10	1							
57	2	119660-61901	RETAINER, SHAFT	1							
58	2	129155-61950	BOLT	1							
59	2	124550-66370	NUT, M6	1							
60	2	22117-04000	WASHER, 4	1							
61	2	22190-060003	SEAL WASER 6	2							
62	2	22190-100002	WASHER, SEAL 10	1							
63	2	22190-120002	WASHER, SEAL 12	2							
64	2	22287-120000	WASHER, 12	1							
65	2	22372-040000	PIN, SNAP 4	2							
66	2	23887-100002	PLUG, 10	1							
67	2	24341-000280	O-RING, 1AS28.0	1							
67-1	2	158552-61900	O-RING	1							N
		(A=EXXXXX)									
68	2	26106-060102	BOLT, M6X 10 PLATED	1							
69	2	26106-060102	BOLT, M6X 10 PLATED	4							
70	2	26106-060142	BOLT, M6X 14 PLATED	2							
71	2	26106-060202	BOLT, M6X 20 PLATED	6							
72	2	26756-060002	NUT, LOCK M6	2							
73	2	26776-120002	NUT, LOCK M12	2							
74	2	26366-080002	NUT, M8	1							
75	2	129100-61440	LEVER, CONTROL	1							
76	2	129489-61700	SPRING, GOVERNOR	1							
77	2	119233-77931	SOLENOID, STOP	1							
78	2	129100-61930	NUT, CAP	1							
79	2	129155-61470	BOLT, CONTROL	1							
80	2	129155-61350	SLEEVE, L=24.9	1							2
81	2	129155-61360	SLEEVE, L=25.2	1							2
82	2	119600-66840	NUT, CAP	1							
83	2	129100-61650	SPRING, CONTROLLER	1							

Fig.15. FUEL INJECTION VALVE



(A)=3TNE84T-FL3

(B)=

(C)=

(D)=

(E)=

(F)=

No.	Lev.	Parts No.	Description	Q'ty						I	R
				(A)	(B)	(C)	(D)	(E)	(F)		
1	1	729503-53200	VALVE ASSY,INJECTION	3							
2	2	129503-53050	VALVE ASSY,INJECTION	3							
5	2	114250-53080	NUT, NOZZLE D16.95	3							
9	2	114250-53120	SPRING, NOZZLE	3							
10	2	114250-53130	SEAT, SPRING	3							
11	2	114250-53140	PLATE	3							
12	2	114250-53210	PIN	6							
13	2	114250-53400	SHIM SET	3							
25	1	22190-120002	WASHER, SEAL 12	2							
26	1	129150-59120	RETAINER, PIPE	1							
29	2	129150-59131	BOLT, M4X14	2							
31	1	129211-59810	PIPE ASSY, INJECTION	1							
35	1	129211-59820	PIPE ASSY, INJECTION	1							
39	1	129211-59830	PIPE ASSY, INJECTION	1							
43	1	124066-59100	CLIP, HOSE 8	5							
44	1	121250-59550	PIPE, FUEL D8X120	2							
45	1	119840-59500	PIPE ASSY, RETURN	1							
46	2	124066-59100	CLIP, HOSE 8	2							
48	1	119840-59570	JOINT	1							
49	1	129150-59580	CAP	1							
50	1	129100-59951	VALVE ASSY, CHECK	1							

Fig.16. FUEL LINE

(A)=3TNE84T-FL3

(B)=

(C)=

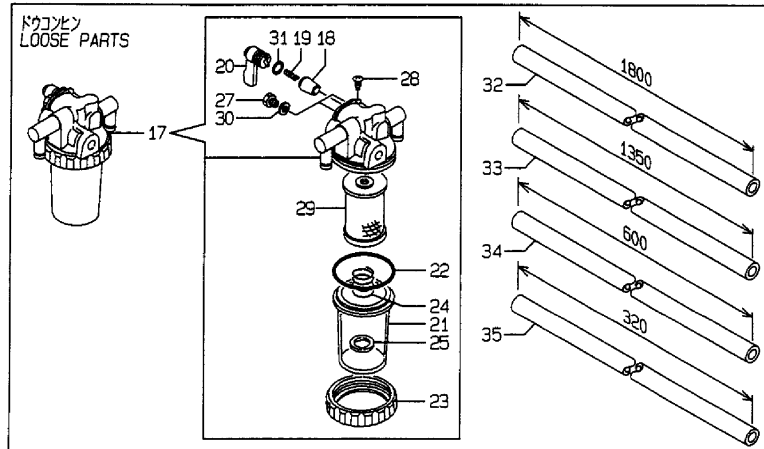
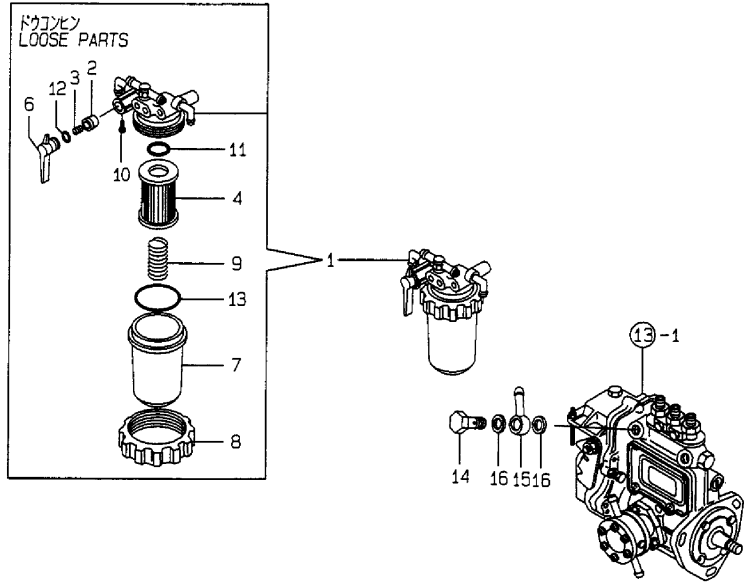
(D)=

(E)=

(F)=

Y00D7110  
3TNE84T-FL3

16 FUEL LINE

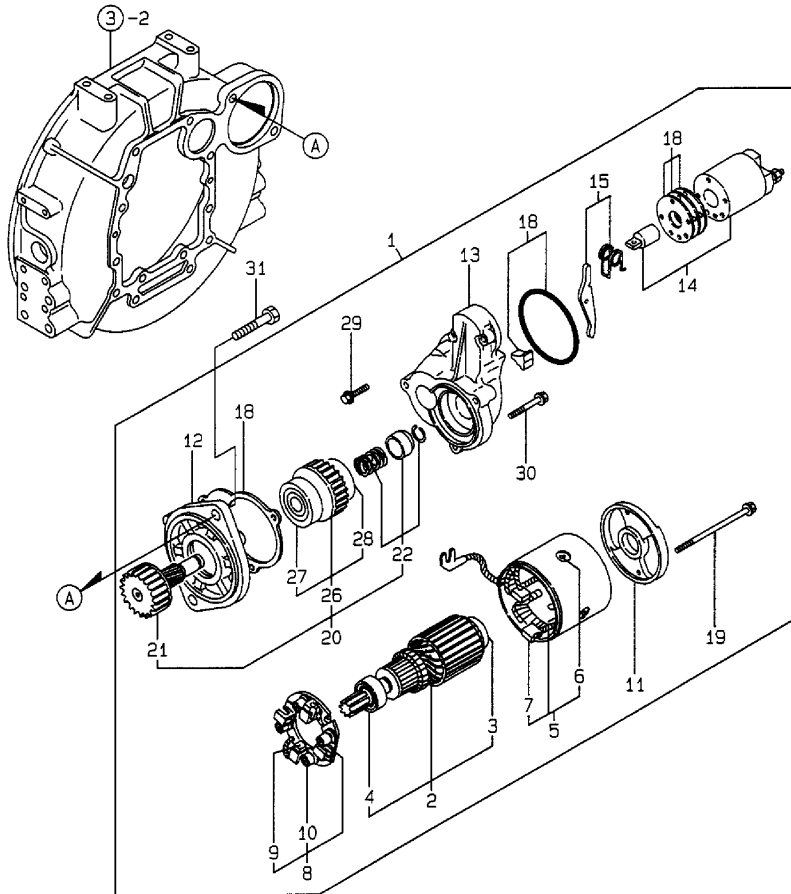


No.	Lev.	Parts No.	Description	Q'ty						I	R
				(A)	(B)	(C)	(D)	(E)	(F)		
1	1	129052-55620	FILTER ASSY, FUEL	1							
2	2	104200-55321	VALVE, TAPER	1							
3	2	104200-55330	SPRING, VALVE	1							
4	2	129100-55650	ELEMENT	1							
6	2	129100-55670	LEVER	1							
7	2	129100-55680	CUP, STRAINER	1							
8	2	129100-55690	RING, RETAINING	1							
9	2	129100-55700	SPRING	1							
10	2	104200-55750	SCREW, M4	1							
11	2	24311-000160	O-RING, 1AP16.0	1							
12	2	24311-240100	O-RING, 1AP10A	1							
13	2	24321-000650	O-RING, 1AG65.0	1							
14	1	103854-39140	BOLT, PIPE JOINT	1							
15	1	101304-59020	JOINT, PIPE 12	1							
16	1	22190-120002	WASHER, SEAL 12	2							
17	1	129335-55700	SEPARATOR ASSY, WATER	1							
18	2	104200-55321	VALVE, TAPER	1							
19	2	104200-55330	SPRING, VALVE	1							
20	2	104200-55341	HANDLE	1							
21	2	124064-55510	COVER	1							
22	2	102103-55520	O-RING	1							
23	2	110250-55610	RING, RETAINING	1							
24	2	121257-55720	SPRING	1							
25	2	121257-55731	FLOAT	1							
27	2	101720-55750	PLUG, 6	2							
28	2	104200-55750	SCREW, M4	1							
29	2	171081-55910	SCREEN	1							
30	2	23418-060000	GASKET, 6X1.0	2							
31	2	24311-240100	O-RING, 1AP10A	1							
32	1	121256-59072	PIPE, FUEL OIL	2							
33	1	121522-59080	PIPE, FUEL	1							
34	1	124323-59100	PIPE, FUEL D12X600	2							
35	1	121750-59110	PIPE, FUEL D12X320	2							

Fig.17. STARTING MOTOR

Y00D7110  
3TNE84T-FL3

17 スターティングモータ  
STARTING MOTOR



(A)=3TNE84T-FL3

(B)=

(C)=

(D)=

(E)=

(F)=

No.	Lev.	Parts No.	Description	Q'ty						I	R
				(A)	(B)	(C)	(D)	(E)	(F)		
1	1	129400-77012	STARTING MOTOR	1							
2	2	129486-77400	ARMATUER	1							
3	3	171008-77410	BEARING(1)	1							
4	3	171008-77420	BEARING(2)	1							
5	2	129400-77441	COIL ASSY, FIELD	1							
6	3	171008-77450	SCREW	4							
7	3	129486-77460	BRUSH	2							
8	2	129486-77470	HOLDER ASSY, BRUSH	1							
9	3	129486-77460	BRUSH	2							
10	3	129486-77490	SPRING,START BRUSH	4							
11	2	129900-77460	COVER, REAR	1							
12	2	171008-77510	HOUSING ASSY, GEAR	1							
13	2	129400-77520	HOUSING, CENTER	1							
14	2	129400-77531	SWITCH ASSY,MAGNETIC	1							
15	2	171008-77540	LEVER SET, SHIFT	1							
18	2	129400-77571	DUST COVER,(NON-ASB.	1							
19	2	129900-77640	BOLT, THROUGH	2							
20	2	171008-77650	PINION ASSY	1							
21	3	171008-77660	SHAFT, PINION	1							
22	3	171008-77670	STOPPER SET, PINION	1							
26	3	X2114555500	CLUTCH ASSY	1							
27	4	X2114955020	BALL BEARING	1							
28	4	X2240410100	BEARING, BALL	1							
29	2	26106-060322	BOLT, M6X 32 PLATED	2							
30	2	26106-060402	BOLT, M6X 40 PLATED	3							
31	1	26116-120252	BOLT, M12X 25 PLATED	2							

# Fig.18. GENERATOR

(A)=3TNE84T-FL3

(B)=

(C)=

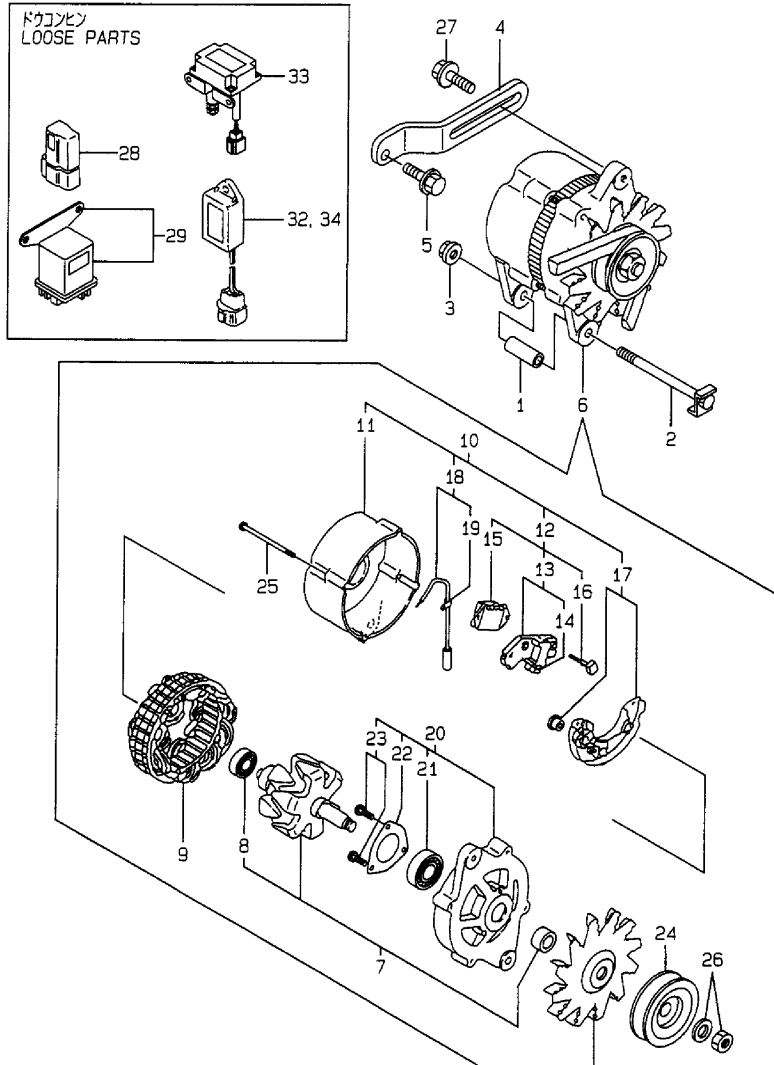
(D)=

(E)=

(F)=

Y0007110  
3TNE84T-FL3

## 18 ジェネレータ GENERATOR



No.	Lev.	Parts No.	Description	Q'ty						I	R
				(A)	(B)	(C)	(D)	(E)	(F)		
1	1	129002-77340	PIECE, DISTANCE	1							
2	1	129002-77280	BOLT ASSY	1							
2-1	1	129002-77281	BOLT, M10	1							N
(A)=*2009.04.)											
3	1	26366-100002	NUT, M10	1							
4	1	129495-77330	ADJUSTER, BELT	1							
5	1	26106-080502	BOLT, M8X 50 PLATED	1							
6	1	129900-77210	ALTERNATOR	1							
7	2	129900-77300	ROTOR ASSY	1							
8	3	119129-77320	BALL BEARING	1							
9	2	129900-77310	STATOR ASSY	1							
10	2	129900-77320	COVER ASSY	1							
11	3	119129-77341	COVER, REAR	1							
12	3	129900-77350	BRUSH REGURATOR ASSY	1							
13	4	129900-77360	BRUSH ASSY	1							
14	4	129900-77370	BRUSH ASSY	2							
15	4	124080-77390	REGULATOR ASSY	1							
16	4	124080-77520	BOLT M5	2							
17	3	129900-77410	DIODE ASSY	1							
18	3	119129-77250	WIRE, LEAD	1							
19	4	119129-77260	CLAMP	1							
20	2	119129-77840	COVER ASSY, FRONT	1							
21	3	119129-77850	BALL BEARING	1							
22	3	119129-77870	RETAINER, BEARING	1							
23	3	26116-050122	BOLT, M5X 12 PLATED	3							
24	2	129535-77880	PULLEY	1							
25	2	119129-77890	BOLT, THROUGH	4							
26	2	119129-77900	NUT ASSY, PULLEY	1							
27	1	119810-77340	BOLT, ADJUSTER	1							
28	1	119643-66900	DIODE	1							
29	1	119650-77910	RELAY ASSY, GLOW	1							
32	1	129211-77920	TIMER	1							
33	1	129136-77101	RELAY, SAFETY	1							
34	1	128300-77920	TIMER	1							

# Fig.19. GASKET SET

(A)=3TNE84T-FL3

(B)=

(C)=

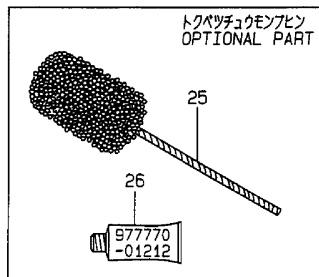
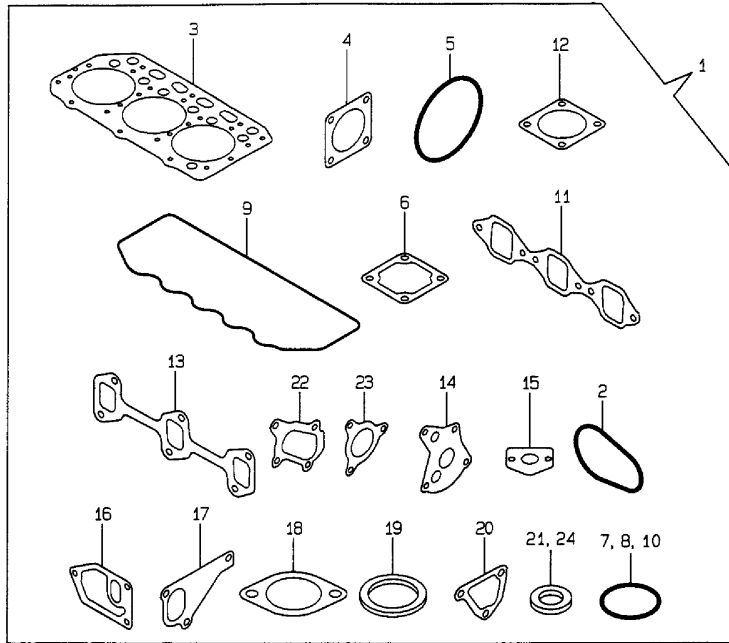
(D)=

(E)=

(F)=

Y0007110  
3TNE84T-FL3

19 バッキンセット  
GASKET SET



No.	Lev.	Parts No.	Description	Q'ty						I	R
				(A)	(B)	(C)	(D)	(E)	(F)		
1	1	729012-92600	GASKET SET	1							1
2	2	129120-35110	GASKET	1							
3	2	129002-01331	GASKET, HEAD	1							
4	2	124240-01883	GASKET	1							
5	2	121850-51960	O-RING	1							
6	2	129150-77511	GASKET	1							
7	2	24341-000500	O-RING, 1AS50.0	1							
8	2	24311-000320	O-RING, 1AP32.0	2							
9	2	129150-11310	GASKET, BONNET	1							
10	2	24311-000120	O-RING, 1AP12.0	3							
11	2	129150-12111	GASKET, MANIFOLD	1							
12	2	129400-13201	GASKET, SILENCER	2							
13	2	129150-13110	GASKET	1							
14	2	129150-32020	GASKET, PUMP	1							
15	2	129150-35041	GASKET	1							
16	2	129120-35121	GASKET	1							
17	2	129486-42021	GASKET, WATER PUMP	1							
18	2	129795-49551	GASKET	1							
19	2	129150-49811	GASKET, THERMOSTAT	1							
20	2	129100-49840	GASKET	1							
21	2	124465-44950	GASKET, 16	1							
22	2	129403-18091	GASKET	1							
23	2	129477-18101	GASKET	1							
24	2	129150-49360	GASKET	1							
25	1	129400-92420	FLEX HORN	1							1
26	1	977770-01212	GASKET, LIQUID	1							1

Remarks  
(1) OPTIONAL PART.



## Parts No. Index

Parts No.	Fig. No.	Ref. No.
101304-59020	16	15
101720-55750	16	27
102103-55520	16	22
103854-39140	16	14
104200-55321	16	2
		18
104200-55330	16	3
		19
104200-55341	16	20
104200-55750	16	10
		28
105010-39140	11	7
106500-44810	7	56
110250-55610	16	23
114250-53080	15	5
114250-53120	15	9
114250-53130	15	10
114250-53140	15	11
114250-53210	15	12
114250-53400	15	13
119129-77250	18	18
119129-77260	18	19
119129-77320	18	8
119129-77341	18	11
119129-77840	18	20
119129-77850	18	21
119129-77870	18	22
119129-77890	18	25
119129-77900	18	26
119131-18320	6	4
119233-77931	14	77
119260-34810	10	18
119600-66840	14	82
119620-01750	3	3
119625-11870	4	45
119625-11880	4	46
119625-11900	4	47
119643-66900	18	28
119650-77910	18	29
119660-61901	14	57
119810-51040	13	10
119810-77340	18	27
119840-59500	15	45
119840-59570	15	48
120130-11860	4	12
121023-01550	2	24
121111-21501	9	12
121250-59550	15	44
121252-39450	11	9
121256-44600	12	38

Parts No.	Fig. No.	Ref. No.
121256-59072	16	32
121257-55720	16	24
121257-55731	16	25
121400-11340	4	28
121420-12511	5	15
121420-12530	5	17
121420-12540	5	18
121420-12550	5	19
121420-12561	5	20
121450-01560	2	6
121450-42450	12	26
121505-12210	5	22
121522-59080	16	33
121550-23200	9	30
121750-59110	16	35
121850-21680	9	11
121850-51960	2	14
	19	5
122117-51560	13	57
122710-51090	13	15
124064-55510	16	21
124066-59100	15	43
		46
124080-77390	18	15
124080-77520	18	16
124160-01751	2	7
	4	63
124160-01910	1	5
124160-11360	4	61
124160-39140	11	8
124223-39900	11	10
124240-01871	2	9
124240-01883	2	10
	19	4
124323-59100	16	34
124450-44510	12	32
124450-44530	12	34
124450-44550	12	37
124450-44560	12	35
124460-11340	4	29
124465-44950	12	27
	19	21
124550-21600	9	16
124550-51350	13	39
124550-51370	13	40
124550-59820	11	12
124550-59830	11	11
124550-66370	14	59
124722-42290	12	15
124736-07900	4	5

Parts No.	Fig. No.	Ref. No.
124950-51190	13	24
128300-77920	18	34
129001-01250	1	11
129001-02930	1	23
129001-21000	9	1
129001-42003	12	1
129001-42040	12	40
129001-91840	2	21
129002-01331	1	31
	19	3
129002-22090	9	17
129002-22510	9	19
129002-22910	9	33
129002-22960	9	35
129002-77280	18	2
129002-77281	18	2 -1
129002-77340	18	1
129012-13300	7	1
129012-13410	7	2
129012-33000	10	27
129012-39910	11	21
129012-49030	12	30
129052-55620	16	1
129052-61050	14	5
129052-61060	14	6
129052-61070	14	7
129052-61390	14	30
129052-61500	14	31
129052-61540	14	46
129100-01580	3	1
		15
	9	2
129100-01640	3	16
129100-01730	3	6
129100-11100	4	23
129100-11130	4	25
129100-23910	9	29
129100-25061	8	10
129100-49840	12	24
	19	20
129100-52100	13	95
129100-55650	16	4
129100-55670	16	6
129100-55680	16	7
129100-55690	16	8
129100-55700	16	9
129100-59951	15	50
129100-61400	14	16
129100-61440	14	75
129100-61650	14	83

Parts No.	Fig. No.	Ref. No.
129100-61930	14	78
129103-01530	2	5
129103-49301	12	19
129114-34810	10	19
129114-34820	10	17
129120-33040	10	28
129120-33051	10	29
129120-33060	10	30
129120-35001	10	32
129120-35110	10	36
	19	2
129120-35121	10	37
	19	16
129120-42350	12	25
129120-77501	5	4
129122-12060	5	8
129122-12100	5	1
129122-12211	5	12
129122-44480	2	13
	12	29
129129-14580	8	3
129135-12500	5	14
129135-12520	5	16
129135-35090	10	22
129136-77101	18	33
129137-18010	7	3
129139-12050	5	7
129139-12200	5	11
129139-13100	6	1
129139-39030	11	1
129139-39601	11	15
129150-01200	1	30
129150-02020	1	7
129150-02450	8	4
129150-02870	1	35
129150-02930	1	26
129150-02940	1	32
129150-03020	4	53
129150-03070	4	54
129150-03080	4	55
129150-03100	2	12
129150-11230	4	41
129150-11280	4	36
129150-11290	4	37
129150-11310	4	58
	19	9
129150-11370	4	30
129150-11750	4	43
129150-11810	4	14
129150-12111	5	2

## Parts No. Index

Parts No.	Fig. No.	Ref. No.
129150-12111	19	11
129150-13110	6	2
	19	13
129150-14101	8	7
129150-14200	8	1
129150-14400	8	2
129150-21200	9	5
129150-23600	9	31
129150-23610	9	39
129150-25101	8	11
129150-25900	8	16
129150-25920	8	14
129150-32020	10	15
	19	14
129150-35041	10	21
	19	15
129150-35151	10	38
129150-35350	10	39
129150-49360	12	39
		45
	19	24
129150-49811	12	23
	19	19
129150-59120	15	26
129150-59131	15	29
129150-59580	15	49
129150-77511	5	5
	19	6
129155-11241	4	33
129155-11260	4	34
129155-11270	4	35
129155-49800	12	22
129155-51020	13	9
129155-51050	13	12
129155-51060	13	13
129155-51140	13	21
129155-51180	13	23
129155-51200	13	25
129155-51270	13	32
129155-51280	13	33
	14	2
129155-51320	13	37
129155-51340	13	38
129155-51370	13	41
129155-51380	13	42
129155-51390	13	43
129155-51400	13	44
129155-51410	13	45
129155-51420	13	46
129155-51450	13	47

Parts No.	Fig. No.	Ref. No.
129155-51500	13	52
129155-51521	13	53
129155-51530	13	54
129155-51540	13	55
129155-51550	13	56
129155-51570	13	59
129155-51580	13	60
129155-51591	13	61
129155-51600	13	62
129155-51700	13	81
129155-51710	13	82
129155-51750	13	83
129155-51760	13	84
129155-51790	13	85
129155-51930	13	87
129155-51940	13	88
129155-52050	13	94
129155-61120	14	8
129155-61130	14	9
129155-61140	14	10
129155-61201	14	11
129155-61341	14	15
129155-61350	14	80
129155-61360	14	81
129155-61430	14	19
129155-61450	14	23
129155-61460	14	24
129155-61470	14	79
129155-61480	14	25
129155-61830	14	56
129155-61950	14	58
129156-51910	13	86
129175-01770	3	8
129202-22300	9	23
129211-59810	15	31
129211-59820	15	35
129211-59830	15	39
129211-77920	18	32
129213-13510	6	8
129335-55700	16	17
129350-49530	12	20
129400-13201	6	7
	19	12
129400-77012	17	1
129400-77441	17	5
129400-77520	17	13
129400-77531	17	14
129400-77571	17	18
129400-92420	19	25
129403-18091	7	49

Parts No.	Fig. No.	Ref. No.
129403-18091	19	22
129403-18720	7	4
129403-18750	7	5
129403-18770	7	6
129403-18780	7	15
129403-18800	7	24
129403-39610	11	16
129403-49050	12	31
129407-35300	10	49
129418-18320	7	55
129418-32000	10	1
129470-11080	4	21
129470-11090	4	22
129470-51101	13	17
129477-18101	7	50
	19	23
129486-01670	3	19
129486-42021	12	13
	19	17
129486-42140	12	41
129486-77400	17	2
129486-77460	17	7
		9
129486-77470	17	8
129486-77490	17	10
129489-61700	14	76
129495-77330	18	4
129503-53050	15	2
129505-51300	13	34
129535-77880	18	24
129553-39650	10	48
129612-01590	2	1
129792-39410	10	42
129795-01780	3	18
129795-01800	2	4
129795-01950	2	11
129795-02411	1	29
129795-11120	4	24
129795-11180	4	26
129795-21661	9	10
129795-49551	12	21
	19	18
129900-77210	18	6
129900-77300	18	7
129900-77310	18	9
129900-77320	18	10
129900-77350	18	12
129900-77360	18	13
129900-77370	18	14
129900-77410	18	17

Parts No.	Fig. No.	Ref. No.
129900-77460	17	11
129900-77640	17	19
158552-61900	14	67 -1
171008-77410	17	3
171008-77420	17	4
171008-77450	17	6
171008-77510	17	12
171008-77540	17	15
171008-77650	17	20
171008-77660	17	21
171008-77670	17	22
171051-01921	1	6
171056-49351	12	44
171061-12800	5	21
171081-55910	16	29
171301-01640	3	9
171340-21650	9	9
171350-03090	4	1
171350-21590	9	13
171353-44760	12	17
171440-01600	3	2
171440-44740	12	16
174307-51170	13	22
174307-51560	13	58
174307-51700	14	32
194990-22050	6	9
	7	51
		52
22117-040000	14	60
22190-060003	14	61
22190-080002	2	23
	11	13
		23
22190-100002	11	14
	14	62
22190-120002	14	63
	15	25
	16	16
22190-160002	13	16
22217-050000	13	20
22217-060000	13	89
22217-120000	8	17
22252-000260	9	24
22287-120000	14	64
22351-030010	10	14
22351-040010	9	8
22351-050010	13	90
22351-060012	4	31
22372-040000	14	65
22512-070140	8	8

## Parts No. Index

Parts No.	Fig. No.	Ref. No.
22512-070140	9	6
23000-022000	11	17
	12	28
23000-041000	5	9
23000-060000	5	10
23061-070230	12	36
23414-080000	11	24
23414-100000	10	34
23418-060000	16	30
23876-010000	1	10
23876-020000	4	16
23876-030000	4	17
	12	10
23881-100002	10	35
23887-100002	14	66
24101-063034	13	91
24311-000120	4	62
	19	10
24311-000160	2	15
	10	40
	16	11
24311-000320	2	8
	4	64
	19	8
24311-240100	10	20
	16	12
		31
24314-000160	11	18
24321-000650	16	13
24341-000160	13	5
24341-000240	2	25
24341-000250	3	11
24341-000280	14	67
24341-000500	4	59
	19	7
26014-080252	7	54
26022-050102	13	6
26022-060162	13	7
26106-060102	14	68
		69
26106-060142	14	70
26106-060162	2	26
	11	19
26106-060202	14	71
26106-060322	17	29
26106-060352	12	18
26106-060402	17	30
26106-080102	7	53
26106-080122	2	16
	11	20

Parts No.	Fig. No.	Ref. No.
26106-080142	4	6
	8	9
26106-080162	2	17
	3	12
	4	60
	5	13
	10	31
	11	22
	12	42
26106-080202	2	18
26106-080222	12	43
26106-080252	3	13
	4	48
	5	3
	10	41
26106-080352	3	20
	5	6
	10	26
26106-080452	2	19
	3	14
		14 -1
	8	15
26106-080502	3	22
	4	49
	18	5
26106-080552	2	20
26106-080602	12	14
26106-080802	6	3
26116-050122	18	23
26116-050302	13	8
26116-120252	17	31
26206-100252	3	4
26206-100302	3	5
26216-060202	4	18
26216-080802	6	5
26226-080182	4	44
26366-060002	4	32
26366-080002	2	22
	6	6
	14	74
26366-100002	18	3
26450-060252	10	16
26716-060002	13	14
26716-120002	8	18
26756-060002	14	72
26776-120002	14	73
27241-120000	1	12
27241-220000	4	19
27241-300000	1	13
27241-400000	4	20

Parts No.	Fig. No.	Ref. No.
27310-080001	4	27
729012-01560	1	1
729012-92600	19	1
729132-11521	4	50
729202-11710	4	7
729215-51371	13	1
729402-11650	4	40
729402-23100	9	25
729503-53200	15	1
977770-01212	2	27
	3	21
	19	26
X2114555500	17	26
X2114955020	17	27
X2240410100	17	28
XNB139815	7	32
XNB139825	7	20
XNB139826	7	27
XNB139827	7	35

Parts No.	Fig. No.	Ref. No.
-----------	----------	----------