

0CD10-M70801EN

PREFACE

1. This parts catalog is the first edition of 3TNE74-NYB / 3TNE74-NYBB / 3TNE74-ENYBB
SHINKO ENGINEERING CO., LTD.

Pub. No.: 000Y00D7081

Published: Jan.,2001

2. Model name

Engine model	Equipped Operating Machine		Manufacturer
	Products	Model name	
3TNE74-NYB	EXCAVATOR	Z68 Z70	SHINKO ENGINEERING CO., LTD.
3TNE74-NYBB		Z69	
3TNE74-ENYBB		Z69 (EPA Spec.)	

Directions for the Parts Catalog.

1. This Parts Catalog shows both standard and optional parts.
2. Parts may change without prior notice.
3. The following is an example of the Parts Catalog format.

REF.	LEV.	PARTS NO.	DESCRIPTION	Q'TY						I	R
				(A)	(B)	(C)	(D)	(E)	(F)		
1	1	729595-51390	FUEL INJECTION PUMP	1	1	1	1	1			1
1-1	1	729595-51391	FUEL INJECTION PUMP	1	1	1	1	1		N	1
		(A=E00185) (B=E00200)									
3	2	26022-060162	SCREW M 6X 16	9	9	9	9	9			
3-1	2	26022-060162	SCREW M 6X 16	4	4	4	4	4		K	
		(A=E00156) (B=E00156) (C=E00156) (D=E00156) (E=E00156)									
4	2	129470-51040	CAMSHAFT	1	1	1	1	1			
5	2	122710-51050	BEARING, ROLLER	2	2	2	2	2			
6	2	129470-51060	RETAINER	1	1	1	1	1			

Remarks
(1) BOOST COMPEMSATOR TYPE. OPTIONAL PART, TO E00155,(4JH-DT, 4JH-DTZ

① Ref. No.

The Ref. No. listed may not be in accordance with the illustration Ref. No.

(Ex.) Illustration No.

List Ref No.

1

1

(Before change)

1-1

(After change)

For interchangeable symbols N, R and K, illustrations for new parts may be abbreviated.

② Lev. (Level)

Level indication

The numbers below indicate the level of relativity towards the main part.

1 ----- Main parts (Assembly parts)

2 ----- Sub component included in " 1 ".

3 ----- Sub component included in " 2 ".

Note) Parts that are not for sale are partially illustrated but not listed.

③ Interchangeability Symbol

When a part change takes place, one of the following interchangeability symbols is indicated beside the part.

Symbol	Interchangeability	Contents note
N	Old $\begin{matrix} \leftarrow \text{Yes} \\ \text{No} \rightarrow \end{matrix}$ New	New Part is interchangeable for Old Part but Old Part is not interchangeable for New Part.
Q	Old $\begin{matrix} \leftarrow \text{No} \\ \text{Yes} \rightarrow \end{matrix}$ New	New Part is not interchangeable for Old Part but Old Part is interchangeable for New Part.
R	Old $\begin{matrix} \leftarrow \text{Yes} \\ \text{Yes} \rightarrow \end{matrix}$ New	New/ Old Parts are both interchangeable.
S	Old $\begin{matrix} \leftarrow \text{No} \\ \text{No} \rightarrow \end{matrix}$ New	New/ Old Parts are both not interchangeable.
W		Part newly added.
Z		Part discontinued.
F		Not interchangeable by a single part but interchangeable together with related parts.
K		Changes only for used parts quantities.

④ Effective Machine No.

When a part changes, the effective Machine No. will be indicated in the (A)-(F) column.

Product Symbol	Product No.	Product Symbol	Product No.
C	Clutch No. Compressor No.	F	Machine No. (Agricultural Equip.)
D	Drive No.	M	Machine No.
E	Engine No.		

Note 1) A date may follow the symbol. (Ex.) 1996.01

Note 2) "XXXXX" and "ZZZZZ" are for parts that could not be predicted or for engine models that could not be identified.

Note 3) (A=E00185) is the E (Engine Serial Number) for the column (A) model (in this case 4JH-DT) after the parts design change.

⑤ Remarks

Figures or alphabets (symbols) are entered in the remarks column.

The comments (remarks) on parts that are indicated at the bottom of the illustration are the same symbols as those stated above.

Contents

OCD10-M70801

Fig. No. Fig. Name

3TNE74-(E)NYB(B)

1. CYLINDER BLOCK
2. GEAR HOUSING
3. FLYWHEEL HOUSING & OIL SUMP
4. CYLINDER HEAD & BONNET
5. SUCTION MANIFOLD
6. EXHAUST MANIFOLD
7. CAMSHAFT & DRIVING GEAR
8. CRANKSHAFT & PISTON
9. LUB.OIL SYSTEM
10. COOLING WATER SYSTEM
11. FUEL INJECTION PUMP
12. GOVERNOR
13. FUEL INJECTION VALVE
14. FUEL LINE
15. STARTING MOTOR
16. GENERATOR
17. GASKET SET

Fig. No. Fig. Name

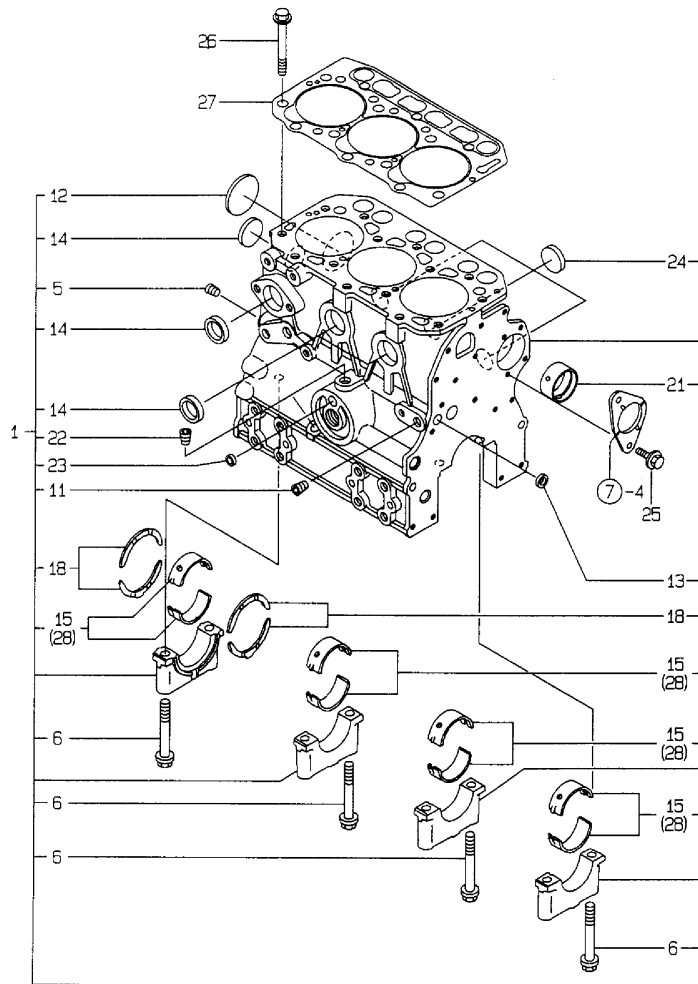
Fig.1. CYLINDER BLOCK

(A)=3TNE74-NYB
 (B)=3TNE74-NYBB
 (C)=3TNE74-ENYBB

(D)=
 (E)=
 (F)=

Y00D7081
 3TNE74-(E)NYB(B)

1 シリンダブロック
 1 CYLINDER BLOCK



No.	Lev.	Parts No.	Description	Qty						I	R	
				(A)	(B)	(C)	(D)	(E)	(F)			
1	1	719624-01561	BLOCK ASSY, CYLINDER	1	1	1						
5	2	119600-01050	PLUG, PT1/4	1	1	1						
6	2	119620-02020	BOLT, METAL CAP	8	8	8						
11	2	23876-010000	PLUG, R01	1	1	1						
12	2	119623-01250	PLUG, 45	1	1	1						
13	2	27241-120000	PLUG, 12	1	1	1						
14	2	27241-300000	PLUG 30	4	4	4						
15	2	719620-02800	BEARING, MAIN	4	4	4						
18	2	719620-02930	BEARING, THRUST	2	2	2						
21	2	119624-02410	BUSH	1	1	1						
22	2	119600-01050	PLUG, PT1/4	1	1	1						
23	2	27241-120000	PLUG, 12	1	1	1						
24	2	27241-250000	PLUG, 25	3	3	3						
25	1	26106-060122	BOLT, M6X 12 PLATED	2	2	2						
26	1	119620-01200	BOLT, HEAD	14	14	14						
27	1	119636-01330	GASKET, HEAD	1	1	1						
28	1	719620-02870	BEARING, 0.25 US	4	4	4						1

Remarks
 (1) UNDER-SIZE (U.S.=0.25) PART.

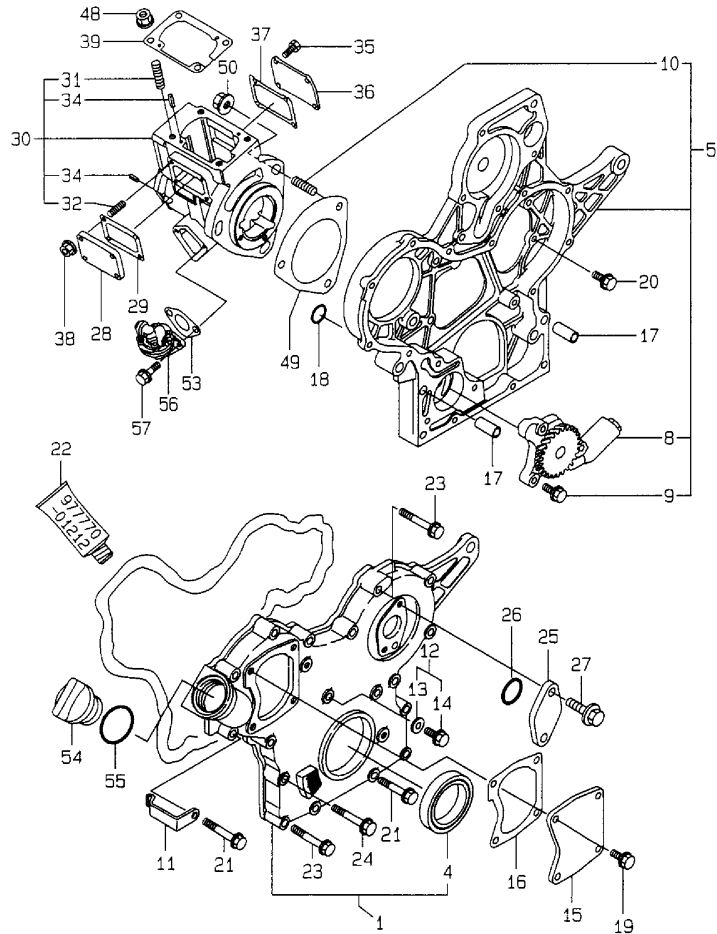
Fig.2. GEAR HOUSING

(A)=3TNE74-NYB
(B)=3TNE74-NYBB
(C)=3TNE74-ENYBB

(D)=
(E)=
(F)=

Y00D70B1
3TNE74-(E)NYB(B)

ギヤケース
GEAR HOUSING



No.	Lev.	Parts No.	Description	Qty						I	R
				(A)	(B)	(C)	(D)	(E)	(F)		
1	1	719624-01610	COVER ASSY,GEAR CASE	1	1	1					
4	2	119620-01800	SEAL, OIL	1	1	1					
5	1	119624-01591	CASE ASSY, GEAR	1	1	1					
8	2	119624-32000	PUMP ASSY, OIL	1	1	1					
9	2	26106-060252	BOLT, M6X 25 PLATED	3	3	3					
10	2	26216-080202	STUD, M8X 20	3	3	3					
11	1	119624-03100	RETAINER, PIPE	1	1	1					
12	1	119623-01550	BOLT, M6X20	1	1	1					
13	2	22190-060003	WASHER,SEAL 6	1	1	1					
14	2	26106-060202	BOLT, M6X 20 PLATED	1	1	1					
15	1	119636-01740	COVER	1	1	1					
16	1	119636-01750	GASKET	1	1	1					
17	1	119266-01910	PIPE, KNOCK	2	2	2					
18	1	119624-32040	O-RING, P12.0	2	2	2					
19	1	26106-060122	BOLT, M6X 12 PLATED	4	4	4					
20	1	26106-060162	BOLT, M6X 16 PLATED	5	5	5					
21	1	26106-060402	BOLT, M6X 40 PLATED	9	9	9					
22	1	977770-01212	GASKET, LIQUID	1	1	1					1
23	1	26106-060652	BOLT, M6X 65 PLATED	6	6	6					
24	1	26106-060702	BOLT, M6X 70 PLATED	2	2	2					
25	1	121023-01550	COVER	1	1	1					
26	1	24341-000240	O-RING, 1AS24.0	1	1	1					
27	1	26106-060162	BOLT, M6X 16 PLATED	2	2	2					
28	1	119660-01551	COVER	1	1	1					
29	1	119660-01562	GASKET	1	1	1					
30	1	119266-01840	COVER	1	1	1					
31	2	121450-01560	STUD, M8X22	4	4	4					
32	2	119660-01570	STUD, M6X12	4	4	4					
34	2	22351-040010	PIN, SPRING 4.0X10	4	4	4					
35	1	26116-050082	BOLT, M5X 8 PLATED	4	4	4					
36	1	119266-01880	COVER	1	1	1					
37	1	119266-01890	GASKET	1	1	1					
38	1	26366-060002	NUT, M6	4	4	4					
39	1	119623-01950	SHIM SET, ADJUSTING	1	1	1					
48	1	194990-22050	NUT, M8	4	4	4					
49	1	119266-01870	GASKET	1	1	1					
50	1	26366-080002	NUT, M8	3	3	3					
53	1	121520-01851	GASKET	1	1	1					
54	1	124160-01751	COVER, FILLER	1	1	1					
55	1	24311-000320	O-RING, 1AP32.0	1	1	1					
56	1	119600-52021	PUMP ASSY, FUEL FEED	1	1	1					
57	1	26106-060162	BOLT, M6X 16 PLATED	2	2	2					

Remarks

(1) OPTIONAL PART.

N:Old $\begin{matrix} \leftarrow \text{Yes} \\ \text{No} \end{matrix}$ New, Q:Old $\begin{matrix} \leftarrow \text{No} \\ \text{Yes} \end{matrix}$ New, R:Old $\begin{matrix} \leftarrow \text{Yes} \\ \text{Yes} \end{matrix}$ New, S:Old $\begin{matrix} \leftarrow \text{No} \\ \text{No} \end{matrix}$ New, W:Add, Z:Discontinued, F:Interchangeable by set, K:Qty Change

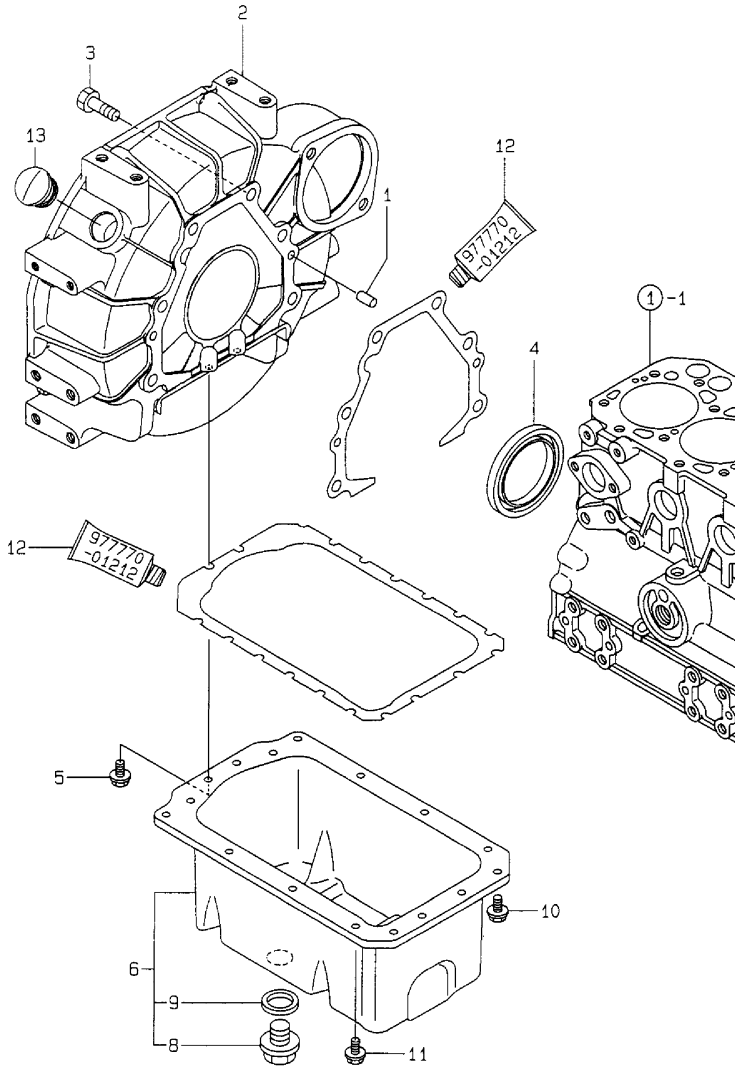
Fig.3. FLYWHEEL HOUSING & OIL SUMP

(A)=3TNE74-NYB
 (B)=3TNE74-NYBB
 (C)=3TNE74-ENYBB

(D)=
 (E)=
 (F)=

Y0007081
 3TNE74-(E)NYB(B)

3 フライホイールハウジング & オイルパン
 FLYWHEEL HOUSING & LUB.OIL SUMP



No.	Lev.	Parts No.	Description	Qty						I	R
				(A)	(B)	(C)	(D)	(E)	(F)		
1	1	129100-01580	PIN, M8X16	2	2	2					
2	1	119624-01600	HOUSING, FLYWHEEL	1	1	1					
3	1	26206-100252	BOLT, M10X 25 PLATED	6	6	6					
4	1	124085-02220	SEAL, OIL	1	1	1					
5	1	26106-060102	BOLT, M6X 10 PLATED	2	2	2					
6	1	119636-01780	SUMP ASSY, OIL	1	1	1					
8	2	119640-01640	PLUG, DRAIN M22	1	1	1					
9	2	22190-220002	WASHER, SEAL 22	1	1	1					
10	1	26106-060122	BOLT, M6X 12 PLATED	4	4	4					
11	1	26106-060102	BOLT, M6X 10 PLATED	10	10	10					
12	1	977770-01212	GASKET, LIQUID	1	1	1					1
13	1	119620-01750	CAP	1	1	1					W

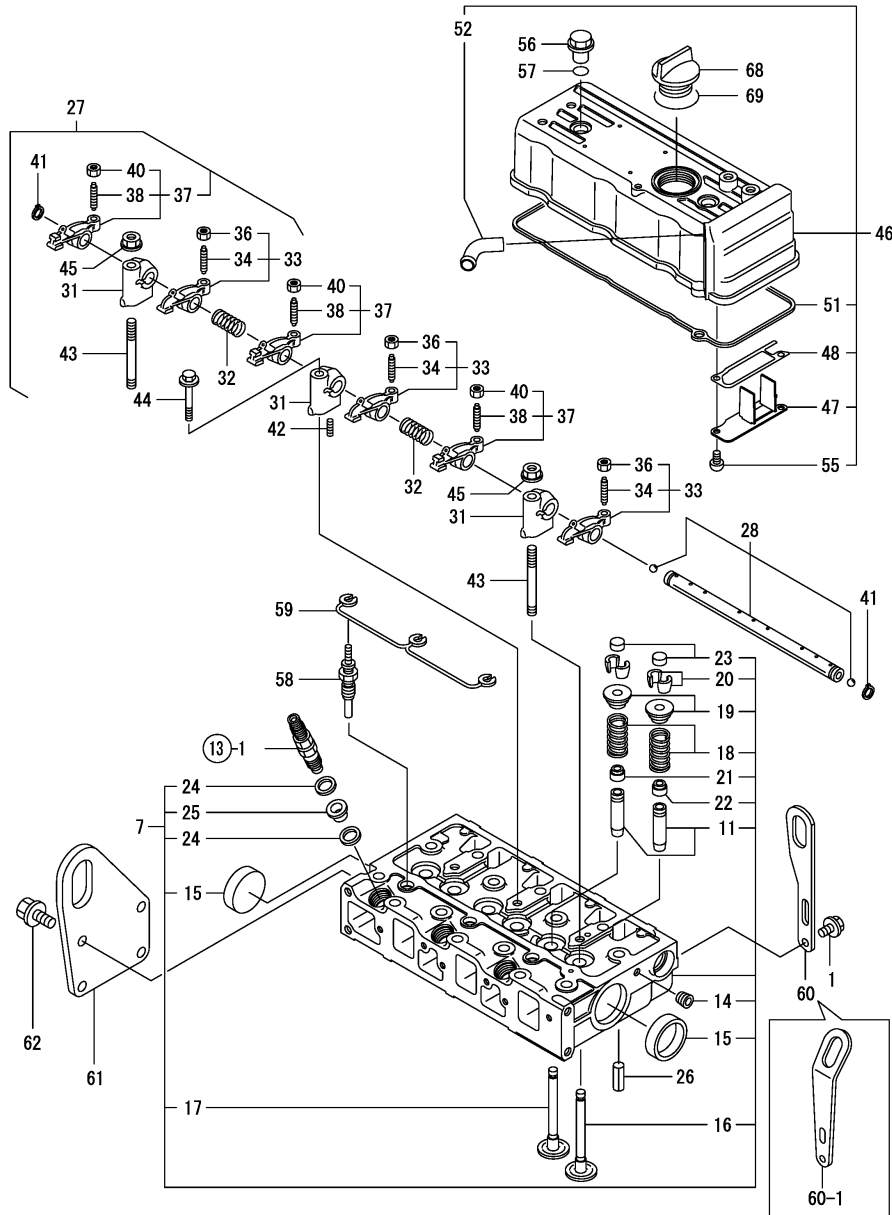
(A)=FROM 1ST (B)=FROM 1ST

Remarks
 (1) OPTIONAL PART.

Fig.4. CYLINDER HEAD & BONNET

(A)=3TNE74-NYB
(B)=3TNE74-NYBB
(C)=3TNE74-ENYBB

(D)=
(E)=
(F)=



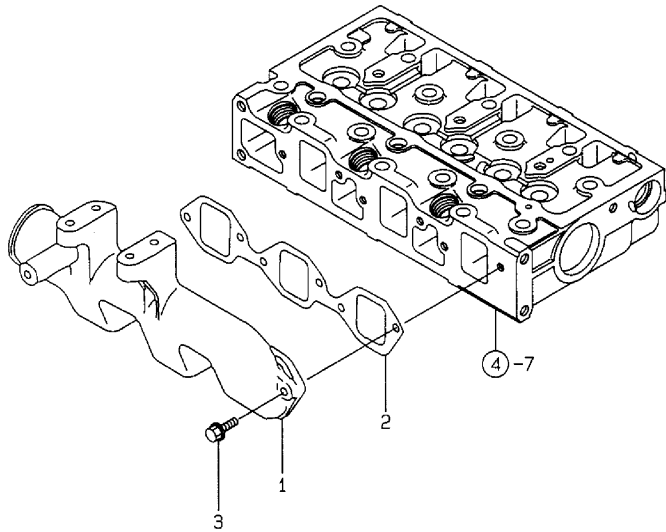
No.	Lev.	Parts No.	Description	Qty						I	R
				(A)	(B)	(C)	(D)	(E)	(F)		
1	1	26106-080142	BOLT, M8X 14 PLATED	2	2	2					
7	1	119624-11741	HEAD ASSY, CYLINDER	1	1	1					
11	2	119620-11801	GUIDE, VALVE	6	6	6					1
14	2	23876-005000	PLUG, R005	1	1	1					
15	2	27241-400000	PLUG, 40	2	2	2					
16	2	119623-11100	VALVE, INTAKE	3	3	3					
17	2	119620-11110	VALVE, EXHAUST	3	3	3					
18	2	119620-11120	SPRING, VALVE	6	6	6					
19	2	119620-11180	RETAINER, SPRING	6	6	6					
20	2	27310-070001	COTTER, 7	6	6	6					
21	2	124160-11340	SEAL, VALVE STEM	3	3	3					
22	2	124950-11340	SEAL, VALVE STEM	3	3	3					
23	2	104211-11370	CAP, VALVE	6	6	6					
24	2	119600-11460	GASKET, NOZZLE	6	6	6					
25	2	119600-11450	PROTECTOR, NOZZLE	3	3	3					
26	1	22351-060012	PIN, SPRING 6.0X12	2	2	2					
27	1	119624-11200	SUPPORT ASSY, ARM	1	1	1					
28	2	119620-11240	SHAFT ASSY, ROCKER	1	1	1					
31	2	124295-11260	SUPPORT, ROCKER ARM	3	3	3					
32	2	119620-11280	SPRING	2	2	2					
33	2	124295-11650	ARM, ROCKER	3	3	3					
34	3	105010-11230	SCREW, VALVE ADJUST	3	3	3					
36	3	26856-060002	NUT, M6	3	3	3					
37	2	124295-11660	ARM, ROCKER	3	3	3					
38	3	105010-11230	SCREW, VALVE ADJUST	3	3	3					
40	3	26856-060002	NUT, M6	3	3	3					
41	2	22242-000100	RING, 10	2	2	2					
42	2	26979-050162	SCREW, M5X16	1	1	1					
43	1	119620-11350	STUD	2	2	2					
44	1	26106-080502	BOLT, M8X 50 PLATED	1	1	1					
45	1	26366-080002	NUT, M8	2	2	2					
46	1	119624-11331	BONNET ASSY, HEAD	1	1	1					
47	2	119624-11600	PLATE, BAFFLE	1	1	1					
48	2	119624-11610	GASKET	1	1	1					
51	2	119624-11311	GASKET, BONNET	1	1	1					
52	2	119266-11390	JOINT	1	1	1					
55	2	22857-500100	SCREW, 5X10	2	2	2					
56	1	124160-11360	KNOB	2	2	2					
57	1	24311-000120	O-RING, 1AP12.0	2	2	2					
58	1	129155-77801	PLUG, GLOW	3	3	3					
59	1	119620-77820	CONNECTOR, GLOW PLUG	1	1	1					
60	1	124736-07900	LIFTER	1	1	1					
60-1	1	119266-07900	LIFTER	1	1	1					N
		(A=EXXXXX) (B=EXXXXX) (C=EXXXXX)									
61	1	119624-07900	LIFTER	1	1	1					
62	1	26106-060122	BOLT, M6X 12 PLATED	4	4	4					
68	1	124160-01751	COVER, FILLER	1	1	1					
69	1	24311-000320	O-RING, 1AP32.0	1	1	1					

Remarks
(1) REPAIR PART.

Fig.5. SUCTION MANIFOLD

Y0007081
3TNE74-(E)NYB(B)

5 キュウキマニホールド
SUC. MANIFOLD



(A)=3TNE74-NYB
(B)=3TNE74-NYBB
(C)=3TNE74-ENYBB

(D)=
(E)=
(F)=

No.	Lev.	Parts No.	Description	Q'ty						I	R
				(A)	(B)	(C)	(D)	(E)	(F)		
1	1	119645-12100	MANIFOLD, AIR INTAKE	1	1	1					
2	1	119620-12111	GASKET, MANIFOLD	1	1	1					
3	1	26106-060202	BOLT, M6X 20 PLATED	6	6	6					

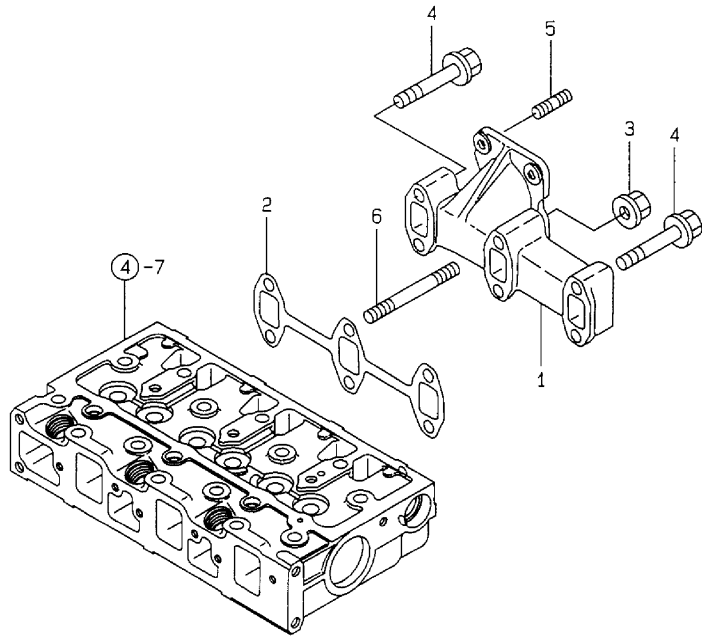
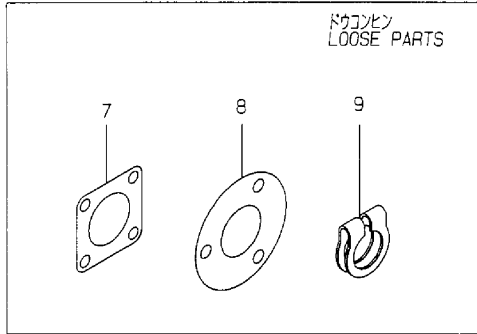
Fig.6. EXHAUST MANIFOLD

(A)=3TNE74-NYB
 (B)=3TNE74-NYBB
 (C)=3TNE74-ENYBB

(D)=
 (E)=
 (F)=

Y00D7081
 3TNE74-(E)NYB(B)

6 ハイキマニホールド
 EXH. MANIFOLD



No.	Lev.	Parts No.	Description	Qty						I	R
				(A)	(B)	(C)	(D)	(E)	(F)		
1	1	119600-13100	MANIFOLD, EXHAUST	1	1	1					
2	1	119620-13110	GASKET	1	1	1					
3	1	26366-080002	NUT, M8	2	2	2					
4	1	26106-080402	BOLT, M8X 40 PLATED	4	4	4					
5	1	119131-18320	STUD, M8X22	4	4	4					
6	1	26216-080552	STUD, M8X 55	2	2	2					
7	1	124701-11911	GASKET, SILENCER	1	1	1					
8	1	103954-13201	GASKET, SILENCER	1	1	1					
9	1	119831-13580	CLAMP	1	1	1					

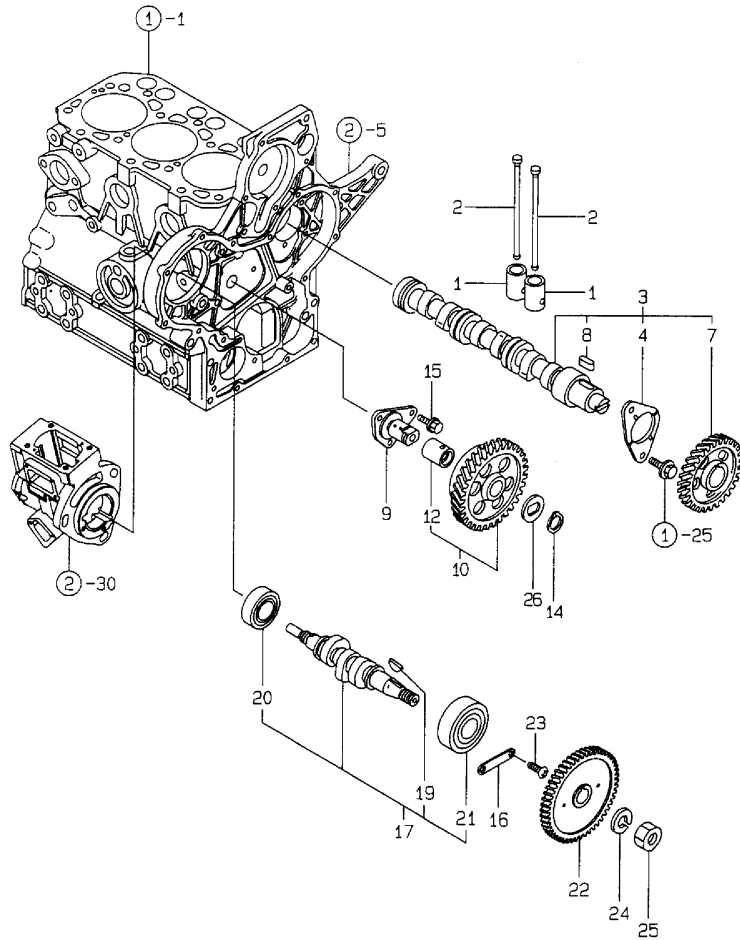
Fig.7. CAMSHAFT & DRIVING GEAR

(A)=3TNE74-NYB
 (B)=3TNE74-NYBB
 (C)=3TNE74-ENYBB

(D)=
 (E)=
 (F)=

Y00D7081
 3TNE74-(E)NYB(B)

7 カムシャフト & クドウギヤ
 CAMSHAFT & DRIVING GEAR



No.	Lev.	Parts No.	Description	Qty						I	R
				(A)	(B)	(C)	(D)	(E)	(F)		
1	1	119620-14200	TAPPET	6	6	6					
2	1	119620-14401	ROD, PUSH	6	6	6					
3	1	119629-14580	CAMSHAFT ASSY	1	1	1					
4	2	119620-02450	BEARING, THRUST	1	1	1					
7	2	119620-14100	GEAR, CAMSHAFT	1	1	1					
8	2	22512-040120	KEY, 4X 12	1	1	1					
9	1	119266-25050	SHAFT, IDLE GEAR	1	1	1					
10	1	119620-25102	GEAR ASSY, IDLE	1	1	1					
12	2	119620-25912	BUSH	1	1	1					1
14	1	22242-000200	RING, 20	1	1	1					
15	1	26106-060122	BOLT, M6X 12 PLATED	3	3	3					
16	1	119266-01900	RETAINER, BEARING	1	1	1					
17	1	119266-14200	CAM ASSY	1	1	1					
19	2	122710-51090	KEY	1	1	1					
20	2	24101-060034	BEARING, BALL 6003	1	1	1					
21	2	24102-063034	BEARING, BALL 6303U	1	1	1					
22	1	119624-25900	GEAR, PUMP	1	1	1					
23	1	26557-060102	SCREW, M6X10	2	2	2					
24	1	22217-120000	WASHER, SPRING 12	1	1	1					
25	1	26716-120002	NUT, M12	1	1	1					
26	1	119660-25022	RETAINER	1	1	1					

Remarks
 (1) REPAIR PART.

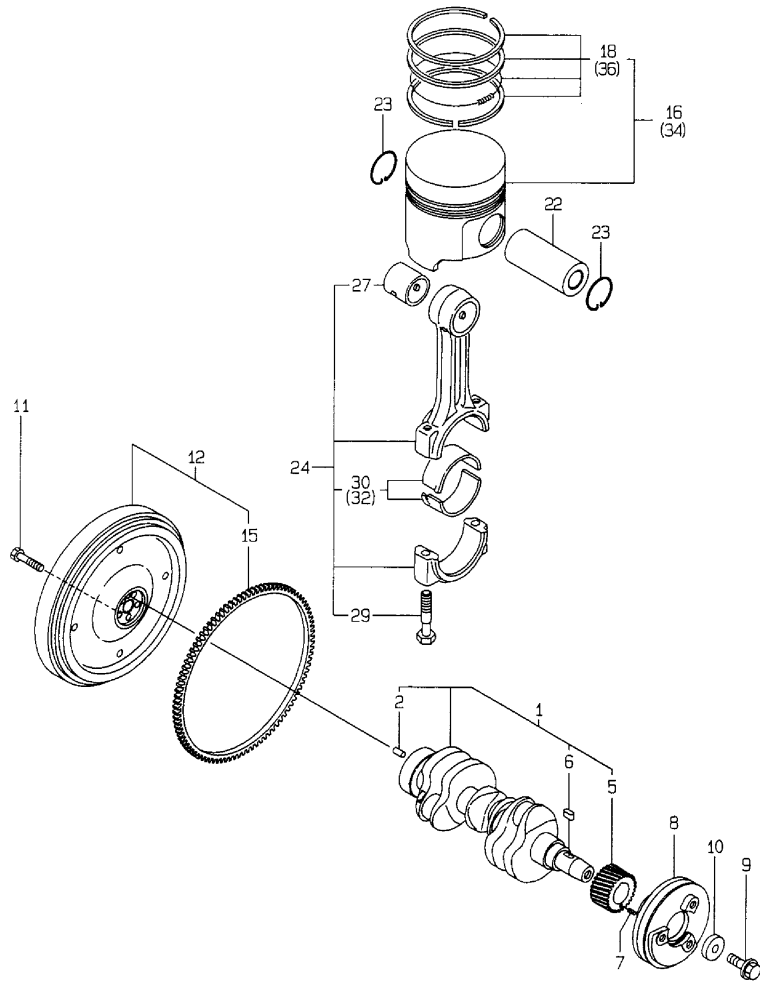
Fig.8. CRANKSHAFT & PISTON

(A)=3TNE74-NYB
(B)=3TNE74-NYBB
(C)=3TNE74-ENYBB

(D)=
(E)=
(F)=

Y00D70B1
3TNE74-(E)NYB(B)

クランクシャフト & ピストン
CRANKSHAFT & PISTON



No.	Lev.	Parts No.	Description	Q'ty						I	R
				(A)	(B)	(C)	(D)	(E)	(F)		
1	1	119624-21700	CRANKSHAFT ASSY	1	1	1					
2	2	129100-01580	PIN, M8X16	1	1	1					
5	2	119624-21200	GEAR, CRANKSHAFT	1	1	1					
6	2	22512-040120	KEY, 4X 12	1	1	1					
7	1	22351-030010	PIN, SPRING 3.0X10	1	1	1					
8	1	119266-21651	V-PULLEY	1	1	1					
9	1	119621-21680	BOLT, FLANGE 12X1.25	1	1	1					
10	1	119620-21941	WASHER	1	1	1					
11	1	121111-21501	BOLT, FLYWHEEL	5	5	5					
12	1	119624-21570	FLYWHEEL ASSY	1	1	1					
15	2	119865-21600	GEAR, RING	1	1	1					
16	1	119624-22082	PISTON ASSY	3	3	3					
18	2	119623-22500	RING SET, PISTON	3	3	3					
22	1	114350-22301	PIN, PISTON D=21	3	3						
22-1	1	114399-22300	PIN, PISTON D=21	3	3	3					R
		(A=EN05261) (B=EN05182)									
23	1	22252-000210	RING, 21	6	6	6					
24	1	719620-23100	ROD ASSY, CONNECTING	3	3	3					
27	2	119620-23910	BEARING, PISTON PIN	3	3	3					1
29	2	105225-23200	BOLT, CONNECTING ROD	6	6	6					
30	2	719620-23600	BEARING, CRANK PIN	3	3	3					
32	1	719620-23610	BEARING ASSY, 0.25	3	3	3					2
34	1	119624-22900	PISTON ASSY, 0.25 OS	3	3	3					3
36	2	119623-22950	RING SET, 0.25 OS	3	3	3					3

Remarks

- (1) REPAIR PART.
- (2) UNDER-SIZE(U.S=0.25)PART.
- (3) OVER-SIZE(O.S=0.25)PART.

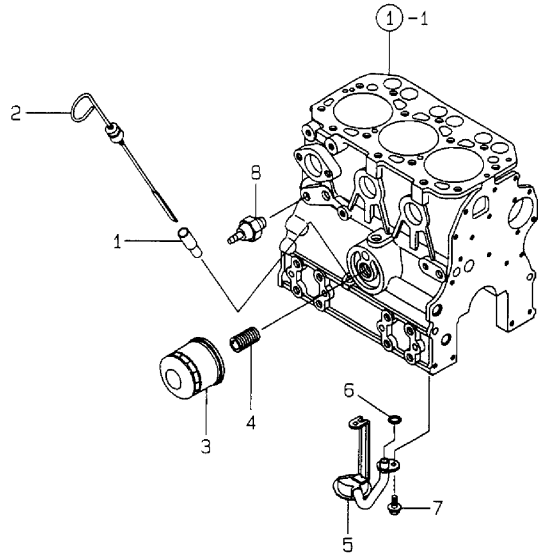
Fig.9. LUB.OIL SYSTEM

(A)=3TNE74-NYB
 (B)=3TNE74-NYBB
 (C)=3TNE74-ENYBB

(D)=
 (E)=
 (F)=

Y00D7081
 3TNE74-(E)NYB(B)

9 L.O.システム
 LUB.OIL SYSTEM



No.	Lev.	Parts No.	Description	Q'ty						I	R
				(A)	(B)	(C)	(D)	(E)	(F)		
1	1	121520-34810	GUIDE, DIPSTICK	1	1	1					
2	1	119624-34810	DIPSTICK, OIL	1	1	1					
3	1	119305-35150	FILTER, OIL	1	1	1					
4	1	129100-35140	STUD	1	1	1					
5	1	119620-35093	PIPE ASSY, OIL INLET	1	1	1					
6	1	119209-35030	O-RING, P11	1	1	1					
7	1	26106-060102	BOLT, M6X 10 PLATED	2	2	2					
8	1	114250-39450	SWITCH, 0.5KG	1	1	1					

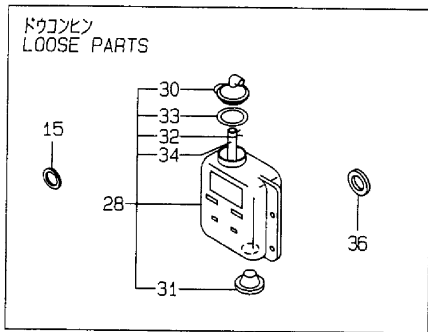
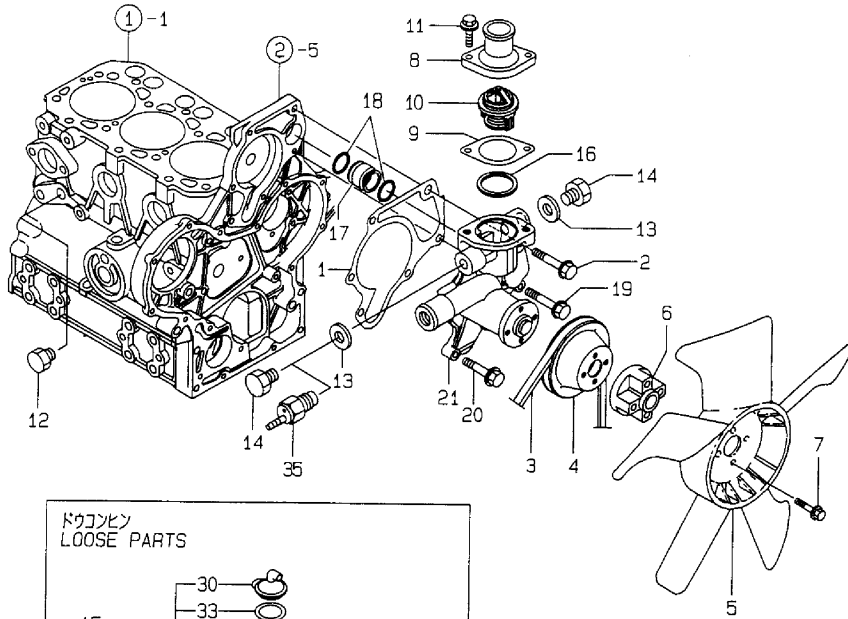
Fig.10. COOLING WATER SYSTEM

(A)=3TNE74-NYB
(B)=3TNE74-NYBB
(C)=3TNE74-ENYBB

(D)=
(E)=
(F)=

Y00D7081
3TNE74-(E)NYB(B)

10 C.W. システム
COOLING WATER SYSTEM



No.	Lev.	Parts No.	Description	Qty						I	R
				(A)	(B)	(C)	(D)	(E)	(F)		
1	1	119624-42021	GASKET, WATER PUMP	1	1	1					
2	1	26106-080452	BOLT, M8X 45 PLATED	1	1	1					
3	1	119656-42290	V-BELT, FM35.5	1	1	1					
4	1	119660-42350	V-PULLEY	1	1	1					
5	1	119265-44740	FAN, D=310X5F	1	1	1					
6	1	121267-44760	SPACER	1	1	1					
7	1	26106-060302	BOLT, M6X 30 PLATED	4	4	4					
8	1	129350-49530	COVER, THERMOSTAT	1	1	1					
9	1	129795-49551	GASKET	1	1	1					
10	1	129155-49800	THERMOSTAT, 71	1	1	1					
11	1	26106-080222	BOLT, M8X 22 PLATED	2	2	2					
12	1	171056-49120	PLUG, DRAIN	1	1	1					
13	1	124465-44950	GASKET, 16	2	2	2					
14	1	121450-42450	PLUG, M16	2	2						
14-1	1	121450-42450	PLUG, M16	1	1	1					K
		(A=EXXX) (B=EXXX)									
15	1	129150-49360	GASKET	1	1	1					
16	1	129150-49811	GASKET, THERMOSTAT	1	1	1					
17	1	119266-42052	JOINT	1	1	1					
18	1	119266-42140	O-RING, P22	2	2	2					
19	1	26106-060302	BOLT, M6X 30 PLATED	3	3	3					
20	1	26106-060552	BOLT, M6X 55 PLATED	2	2	2					
21	1	119624-42000	PUMP ASSY, WATER	1	1	1					
28	1	121468-44510	SUB-TANK ASSY	1	1	1					
30	2	121450-44531	CAP	1	1	1					
31	2	121468-44540	PLUG, SUB-TANK	1	1	1					
32	2	124450-44560	RETAINER	1	1	1					
33	2	121470-44581	GASKET	1	1	1					
34	2	23065-070130	PIPE, 7X 130	1	1	1					
35	1	121250-44901	SWITCH, 110	1	1	1					
36	1	124465-44950	GASKET, 16	1	1						Z
		(A=EXXX) (B=EXXX)									

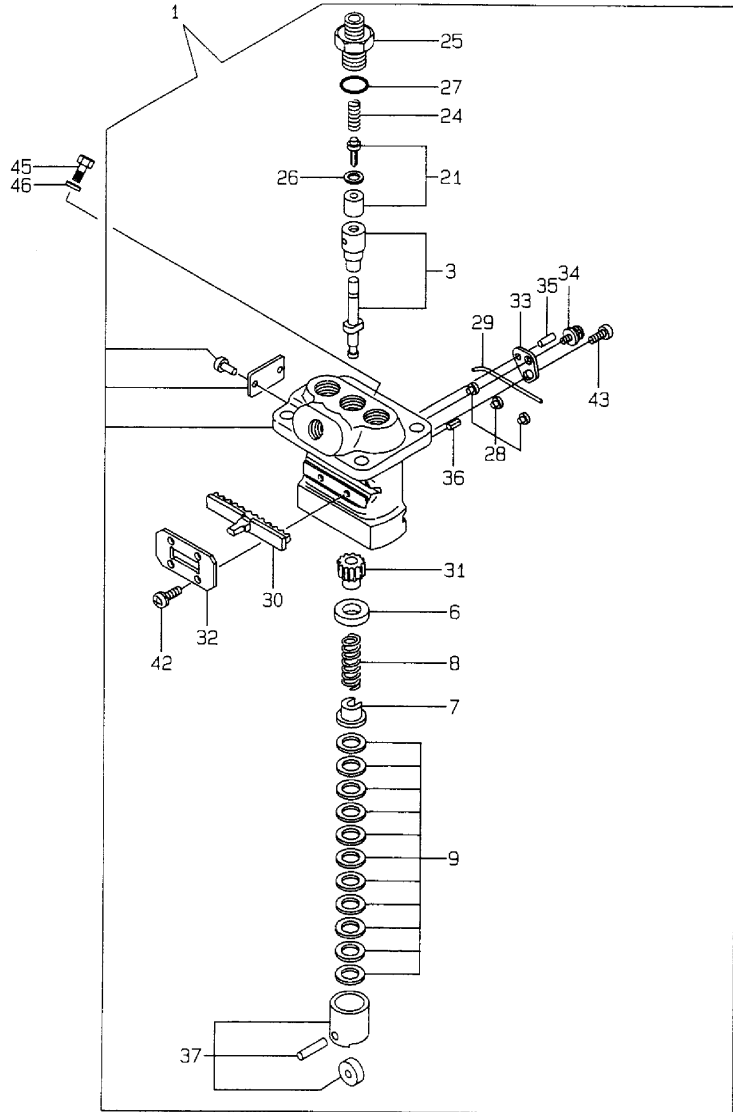
Fig.11. FUEL INJECTION PUMP

(A)=3TNE74-NYB
 (B)=3TNE74-NYBB
 (C)=3TNE74-ENYBB

(D)=
 (E)=
 (F)=

Y0007081
 3TNE74-(E)NYB(B)

1 1 F.O. フンシャポンプ
 1 1 FUEL INJECTION PUMP

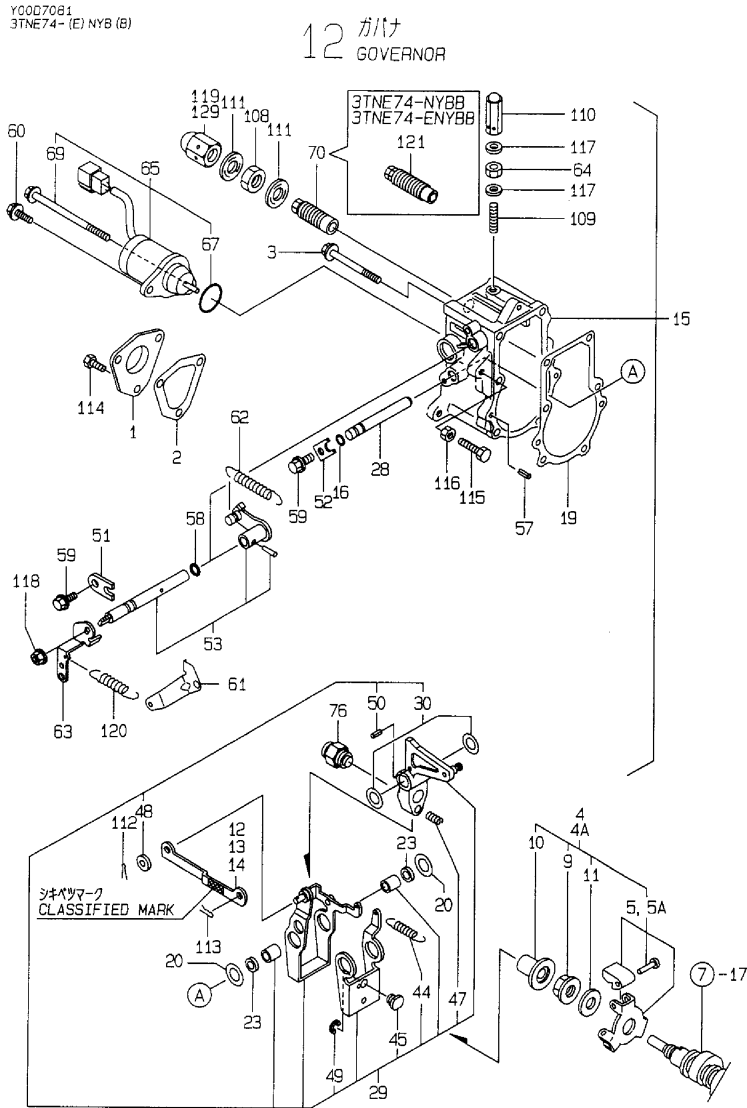


No.	Lev.	Parts No.	Description	Q'ty						I	R
				(A)	(B)	(C)	(D)	(E)	(F)		
1	1	719624-51100	PUMP ASSY, INJECTION	1	1	1					
3	2	119620-51101	PLUNGER ASSY	3	3	3					
6	2	119620-51170	RETAINER, SPRING A	3	3	3					
7	2	119620-51180	RETAINER, SPRING B	3	3	3					
8	2	119620-51190	SPRING, PLUNGER	3	3	3					
9	2	119620-51250	SHIM SET	3	3	3					
21	2	119620-51300	VALVE ASSY, DELIVERY	3	3	3					
24	2	105546-51330	SPRING, DELIVERY	3	3	3					
25	2	119620-51340	HOLDER, DELIVERY	3	3	3					
26	2	119620-51350	GASKET	3	3	3					
27	2	119620-51370	O-RING	3	3	3					
28	2	119620-51450	PIECE	3	3	3					
29	2	119620-51461	PIN	1	1	1					
30	2	119660-51500	RACK, CONTROL	1	1	1					
31	2	119620-51510	PINION	3	3	3					
32	2	119660-51530	RETAINER, RACK	1	1	1					
33	2	119620-51650	PLATE	2	2	2					
34	2	119620-51660	SCREW	2	2	2					
35	2	119620-51670	PIN	2	2	2					
36	2	119620-51680	PIN	1	1	1					
37	2	119620-51700	TAPPET ASSY	3	3	3					
42	2	26022-040082	SCREW, M4X 8	4	4	4					
43	2	26033-040102	SCREW, M4X10	2	2	2					
45	1	119266-51900	BOLT	1	1	1					
46	1	22190-080002	WASHER, SEAL 6	1	1	1					

Fig.12. GOVERNOR

(A)=3TNE74-NYB
(B)=3TNE74-NYBB
(C)=3TNE74-ENYBB

(D)=
(E)=
(F)=



No.	Lev.	Parts No.	Description	Qty						I	R
				(A)	(B)	(C)	(D)	(E)	(F)		
1	1	119660-61060	COVER, GOVERNOR CASE	1	1	1					
2	1	119660-61071	GASKET	1	1	1					
3	1	26106-060702	BOLT, M6X 70 PLATED	5	5	5					
4	1	119266-61100	DRIVE ASSY	1	1						
4A	1	119266-61300	DRIVE ASSY			1					
5	2	119600-61200	WEIGHT ASSY, GOVERNOR	1	1						
5A	2	119600-61400	WEIGHT ASSY, GOVERNOR			1					
9	2	119660-61300	NUT	1	1	1					
10	2	119660-61341	SLEEVE	1	1	1					
11	2	119266-61230	SPACER	1	1	1					
12	1	119660-61121	LINK, NO MARK	1	1	1					1
13	1	119660-61140	LINK, MARK :2	1	1	1					1
14	1	119660-61150	LINK, MARK :3	1	1	1					1
15	1	119632-61200	CASE ASSY, GOVERNOR	1	1	1					
16	2	129155-51280	O-RING, S6	1	1	1					
19	2	119660-61052	GASKET	1	1	1					
20	2	119660-61460	SHIM SET	1	1	1					
23	2	129155-61480	SPACER ASSY	2	2	2					
28	2	119660-61590	SHAFT	1	1	1					
29	2	119232-61510	LEVER ASSY, GOVERNOR	1	1	1					
30	3	174307-51700	SHIM SET	2	2	2					
44	3	119232-61540	SPRING	1	1	1					
45	3	119600-61541	SHIFTER	1	1	1					
47	3	119660-61651	SPRING, STARTING	1	1	1					
48	3	22117-040000	WASHER, 4	1	1	1					
49	3	22272-000040	RING, E- 4	1	1	1					
50	3	22351-030014	PIN, SPRING 3.0X14	1	1	1					
51	2	119600-61900	RETAINER, SHAFT	1	1	1					
52	2	119660-61901	RETAINER, SHAFT	1	1	1					
53	2	119285-66080	SHAFT ASSY	1	1	1					
57	2	22351-040010	PIN, SPRING 4.0X10	2	2	2					
58	2	24341-000070	O-RING, 1AS7.0	1	1	1					
59	2	26106-060102	BOLT, M6X 10 PLATED	2	2	2					
60	1	121465-59950	BOLT, M6X16	1	1	1					
61	1	119656-66910	HOOK	1	1	1					
62	1	119600-66020	SPRING, REGULATOR	1	1	1					
63	1	119640-66051	HANDLE, REGULATOR	1	1	1					
64	1	124550-66370	NUT, M6	1	1	1					
65	1	119233-66511	STOPPER ASSY	1	1	1					
67	2	24341-000280	O-RING, 1AS28.0	1	1	1					
69	2	26106-060952	BOLT, M6X 95 PLATED	1	1	1					
70	1	119600-66530	LIMITER ASSY, FUEL	1							
76	1	119610-66700	ANGLEICH ASSY	1	1	1					
108	1	26776-120002	NUT, LOCK M12	1	1	1					
109	1	121575-66830	SCREW	1	1	1					
110	1	119600-66840	NUT, CAP	1	1	1					
111	1	22190-120002	WASHER, SEAL 12	2	2	2					
112	1	22360-040000	PIN, SNAP 4	1	1	1					
113	1	22360-060000	PIN, SNAP 6	1	1	1					
114	1	26116-050102	BOLT, M5X 10 PLATED	3	3	3					
115	1	26116-060304	BOLT, M6X 30 PLATED	1	1	1					

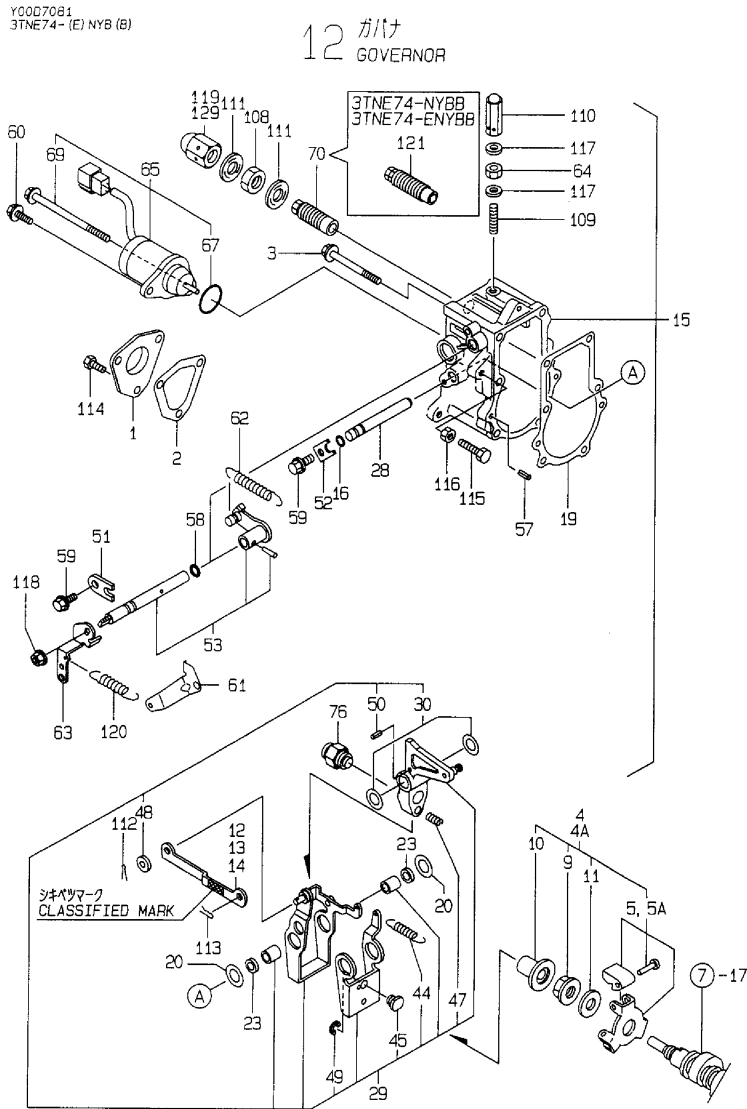
Remarks

(1) SELECTIVE PARTS: CERTAIN THE CLASSIFICATION MARK, THEN PLACE YOUR ORDER(REFER TO ILLUSTRATION)

Fig.12. GOVERNOR

(A)=3TNE74-NYB
 (B)=3TNE74-NYBB
 (C)=3TNE74-ENYBB

(D)=
 (E)=
 (F)=



No.	Lev.	Parts No.	Description	Q'ty						I	R
				(A)	(B)	(C)	(D)	(E)	(F)		
116	1	26756-060002	NUT, LOCK M6	1	1	1					
117	1	22190-060003	SEAL WASHER 6	2	2	2					
118	1	194990-22050	NUT, M8	1	1	1					
119	1	26687-120002	NUT, CAP M12	1	1	1					
120	1	119840-61870	SPRING	1	1	1					
121	1	119629-66510	LIMITER ASSY, FUEL			1	1				
129	1	129100-61930	NUT, CAP	1	1	1					W
		(A=E XXX) (B=E XXX)									

Remarks

(1) SELECTIVE PARTS: CERTAIN THE CLASSIFICATION MARK, THEN PLACE YOUR ORDER(REFER TO ILLUSTRATION)

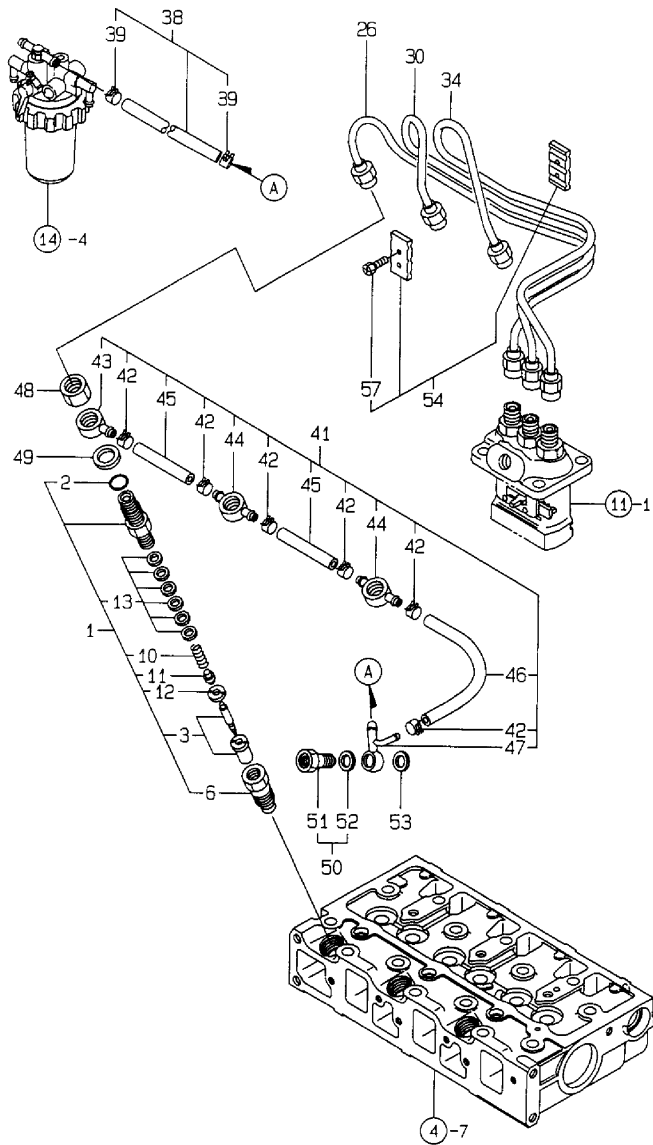
Fig.13. FUEL INJECTION VALVE

(A)=3TNE74-NYB
 (B)=3TNE74-NYBB
 (C)=3TNE74-ENYBB

(D)=
 (E)=
 (F)=

Y00D7081
 3TNE74-(E)NYB(B)

13 F.O. フンシャベン
 FUEL INJECTION VALVE



No.	Lev.	Parts No.	Description	Qty						I	R
				(A)	(B)	(C)	(D)	(E)	(F)		
1	1	719255-53100	VALVE ASSY,INJECTION	3	3	3					
2	2	129155-61830	O-RING, S10	3	3	3					
3	2	119620-53000	VALVE ASSY,INJECTION	3	3	3					
6	2	119620-53080	NUT, NOZZLE	3	3	3					
10	2	119620-53120	SPRING, NOZZLE	3	3	3					
11	2	114250-53130	SEAT, SPRING	3	3	3					
12	2	119620-53140	SPACER, VALVE STOP	3	3	3					
13	2	114250-53400	SHIM SET	3	3	3					
26	1	119624-59811	PIPE ASSY, INJECTION	1	1	1					
30	1	119624-59821	PIPE ASSY, INJECTION	1	1	1					
34	1	119624-59831	PIPE ASSY, INJECTION	1	1	1					
38	1	721250-59080	PIPE ASSY, FUEL	1	1	1					
39	2	124766-59050	CLIP, HOSE 12	2	2	2					
41	1	119642-59540	PIPE ASSY, RETURN	1	1	1					
42	2	124066-59100	CLIP, HOSE 8	6	6	6					
43	2	119260-59520	JOINT	1	1	1					
44	2	119260-59530	JOINT	2	2	2					
45	2	105025-59550	PIPE, FUEL RETURN	2	2	2					
46	2	119642-59550	PIPE, FUEL RETURN	1	1	1					
47	2	119642-59570	JOINT, OVER FLOW	1	1	1					
48	1	119620-59700	NUT, NOZZLE	3	3	3					
49	1	22190-140002	WASHER, SEAL 14	3	3	3					
50	1	124550-59830	BOLT ASSY, JOINT M8	1	1	1					
51	2	124550-59820	BOLT, PIPE JOINT M8	1	1	1					
52	2	22190-080002	WASHER, SEAL 6	1	1	1					
53	1	22190-080002	WASHER, SEAL 6	1	1	1					
54	1	129150-59120	RETAINER, PIPE	1	1	1					
57	2	129150-59131	BOLT, M4X14	2	2	2					

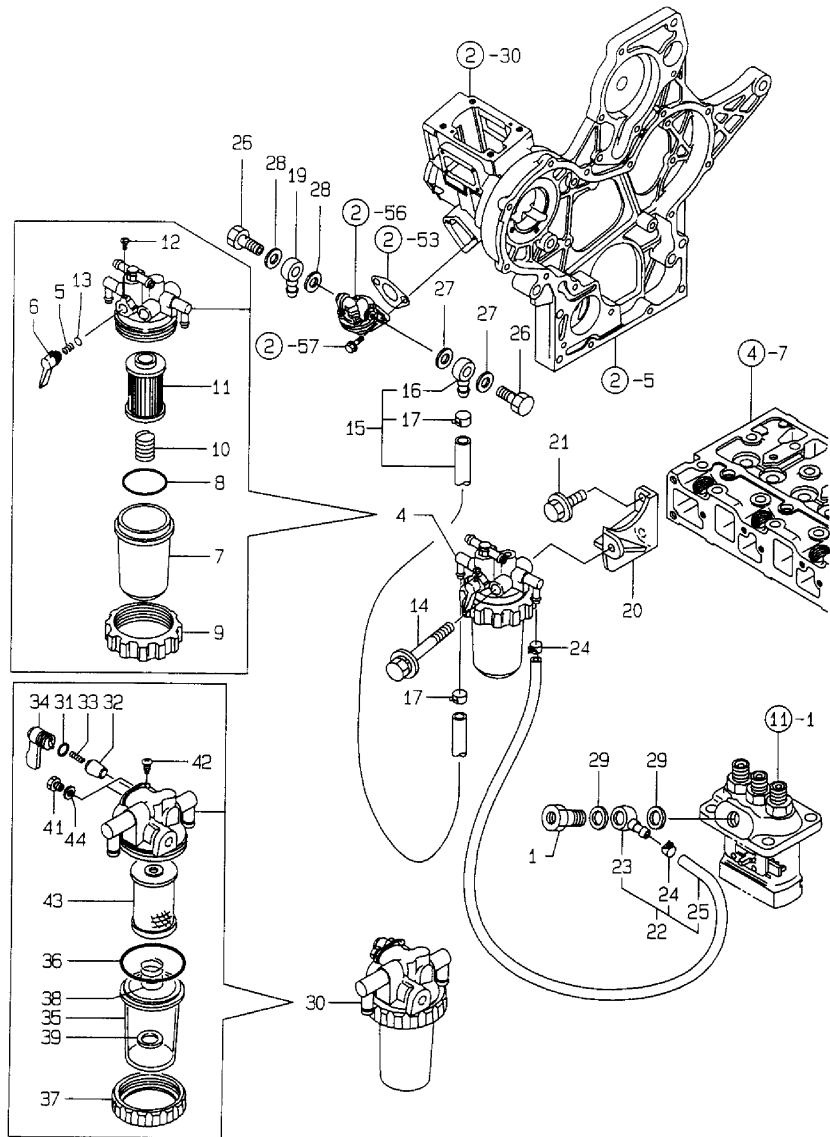
Fig.14. FUEL LINE

(A)=3TNE74-NYB
(B)=3TNE74-NYBB
(C)=3TNE74-ENYBB

(D)=
(E)=
(F)=

Y0007081
3TNE74-(E)NYB(B)

14 FUEL LINE



No.	Lev.	Parts No.	Description	Qty						I	R
				(A)	(B)	(C)	(D)	(E)	(F)		
1	1	119462-59190	BOLT ASSY, JOINT	1	1	1					
4	1	119255-55620	FILTER ASSY, FUEL	1	1	1					
5	2	104200-55330	SPRING, VALVE	1	1	1					
6	2	119810-55340	LEVER	1	1	1					
7	2	121254-55510	COVER	1	1	1					
8	2	102103-55520	O-RING	1	1	1					
9	2	110250-55610	RING, RETAINING	1	1	1					
10	2	121250-55620	SPRING	1	1	1					
11	2	124550-55700	FILTER, FUEL L=90	1	1	1					
12	2	104200-55750	SCREW, M4	1	1	1					
13	2	24311-240100	O-RING, 1AP10A	1	1	1					
14	1	26014-080702	BOLT, M8X 70	1	1	1					
15	1	119230-59020	PIPE ASSY, FUEL	1	1						
15-1	1	119624-59010	PIPE ASSY, FUEL	1	1	1					N
(A=EN04821) (B=EN04838)											
16	2	104264-59030	JOINT, PIPE 8	1	1	1					
17	2	124766-59050	CLIP, HOSE 12	2	2	2					
19	1	104264-59030	JOINT, PIPE 8	1	1	1					
20	1	119624-55910	BRACKET, FILTER	1	1	1					
21	1	26106-080182	BOLT, M8X 18 PLATED	2	2	2					
22	1	119325-59030	PIPE ASSY, FUEL	1	1	1					
23	2	101304-59020	JOINT, PIPE 12	1	1	1					
24	2	124766-59050	CLIP, HOSE 12	2	2	2					
25	2	119325-59080	PIPE, FUEL	1	1	1					
26	1	105582-59150	BOLT, PIPE JOINT	2	2	2					
27	1	22190-080002	WASHER, SEAL 6	2	2	2					
28	1	22190-080002	WASHER, SEAL 6	2	2	2					
29	1	22190-120002	WASHER, SEAL 12	2	2	2					
30	1	129335-55700	SEPARATOR ASSY, WATER	1	1	1					
31	2	24311-240100	O-RING, 1AP10A	1	1	1					
32	2	104200-55321	VALVE, TAPER	1	1	1					
33	2	104200-55330	SPRING, VALVE	1	1	1					
34	2	104200-55341	HANDLE	1	1	1					
35	2	124064-55510	COVER	1	1	1					
36	2	102103-55520	O-RING	1	1	1					
37	2	110250-55610	RING, RETAINING	1	1	1					
38	2	121257-55720	SPRING	1	1	1					

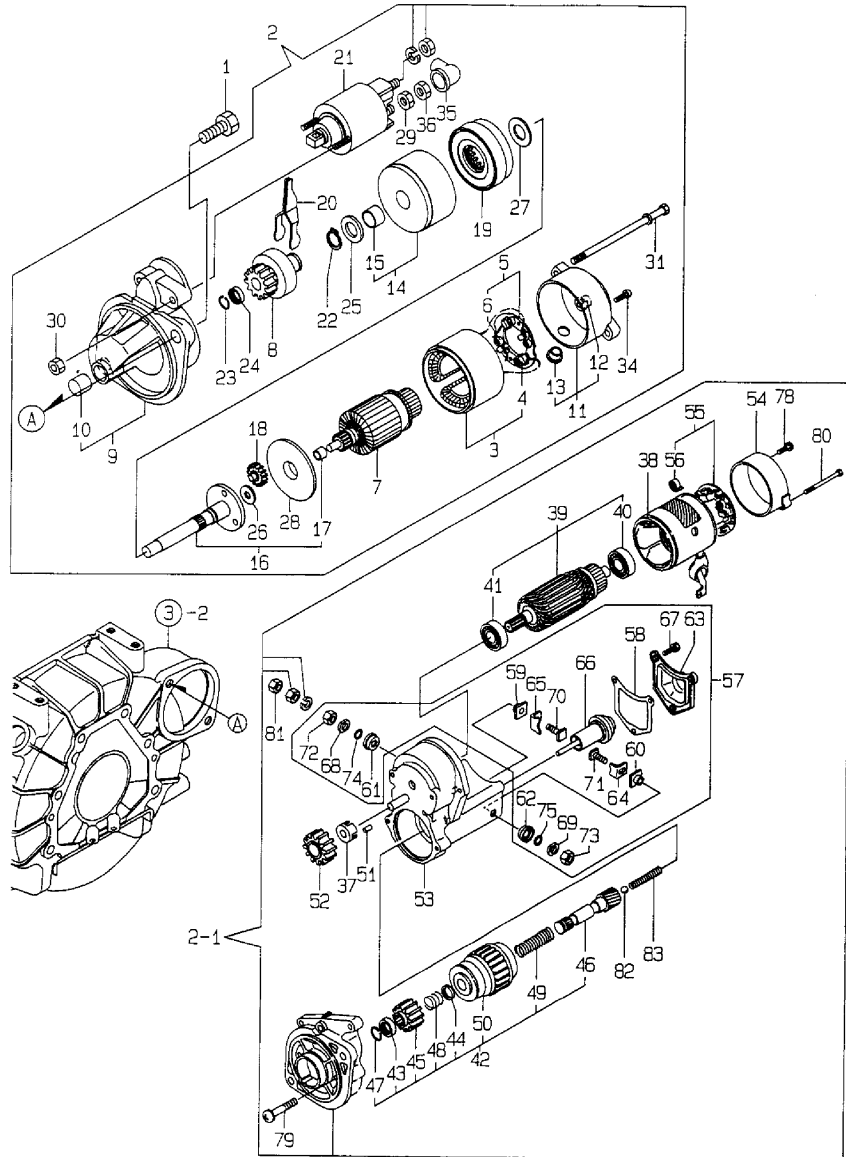
Fig.15. STARTING MOTOR

(A)=3TNE74-NYB
(B)=3TNE74-NYBB
(C)=3TNE74-ENYBB

(D)=
(E)=
(F)=

Y00D70B4
3TNE74-(E)NYB(B)

15 スターティングモーター
STARTING MOTOR



No.	Lev.	Parts No.	Description	Q'ty						I	R
				(A)	(B)	(C)	(D)	(E)	(F)		
1	1	26116-120252	BOLT, M12X 25 PLATED	2	2	2					
2	1	119255-77010	STARTER	1	1						
2-1	1	119620-77011	STARTER	1	1	1					N
3	2	X0281007680	YOKE ASSY	1	1						Z
4	3	X0280996180	STARTER KIT	2	2						Z
5	2	X0285105190	HOLDER ASSY	1	1						Z
6	3	X0285205030	SPRING	4	4						Z
7	2	X0282005871	ARMATURE ASSY	1	1						Z
8	2	X0283006960	CLUTCH ASSY	1	1						Z
9	2	X2284005750	HOUSING ASSY	1	1						Z
10	3	X9491050100	BEARING, NEEDLE	1	1						Z
11	2	X0285005770	FRAME ASSY	1	1						Z
12	3	X9491040990	BEARING	1	1						Z
13	3	X0280626010	COVER	1	1						Z
14	2	X0284105010	BEARING ASSY	1	1						Z
15	3	X9491034330	BEARING	1	1						Z
16	2	X0286105010	SHAFT ASSY	1	1						Z
17	3	X9491034320	BEARING	1	1						Z
18	2	X0286305010	GEAR	3	3						Z
19	2	X0286355010	GEAR	1	1						Z
20	2	X0287405140	LEVER	1	1						Z
21	2	X0534007800	SWITCH ASSY	1	1						Z
22	2	X9055715000	RING	1	1						Z
23	2	X9490721360	RING	1	1						Z
24	2	X0280210331	NUT	1	1						Z
25	2	X9490138110	WASHER	1	1						Z
26	2	X9490138090	WASHER	1	1						Z

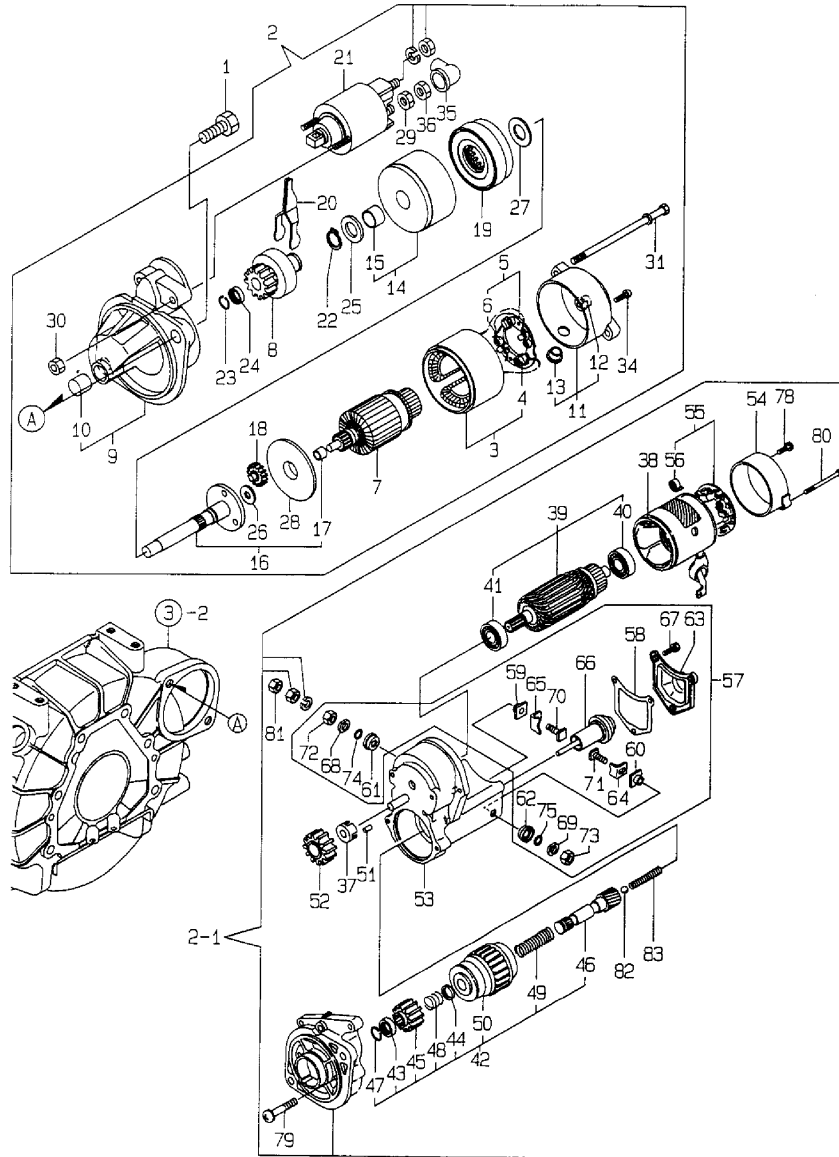
Fig.15. STARTING MOTOR

(A)=3TNE74-NYB
(B)=3TNE74-NYBB
(C)=3TNE74-ENYBB

(D)=
(E)=
(F)=

Y00D70B4
3TNE74-(E)NYB(B)

15 スターティングモーター
STARTING MOTOR



No.	Lev.	Parts No.	Description	Qty						I	R
				(A)	(B)	(C)	(D)	(E)	(F)		
27	2	(A=EN05462) (B=EN05459) X9490138100	WASHER	1	1						Z
		(A=EN05462) (B=EN05459)									
28	2	X0284525010	PLATE	1	1						Z
		(A=EN05462) (B=EN05459)									
29	2	X9490562360	NUT	1	1						Z
		(A=EN05462) (B=EN05459)									
30	2	X9490560750	NUT	2	2						Z
		(A=EN05462) (B=EN05459)									
31	2	X9490423520	BOLT, THROUGH	2	2						Z
		(A=EN05462) (B=EN05459)									
34	2	X9490065670	SCREW, M4X6	2	2						Z
		(A=EN05462) (B=EN05459)									
35	2	X0280335100	COVER, TERMINAL	1	1						Z
		(A=EN05462) (B=EN05459)									
36	2	X1289510130	NUT	1	1						Z
		(A=EN05462) (B=EN05459)									
37	2	X0280630011	RETAINER	1	1	1					W
		(A=EN05462) (B=EN05459)									
38	2	X0281003751	YOKE ASSY	1	1	1					W
		(A=EN05462) (B=EN05459)									
39	2	X0282001531	ARMATURE ASSY	1	1	1					W
		(A=EN05462) (B=EN05459)									
40	3	X9491001360	BEARING	1	1	1					W
		(A=EN05462) (B=EN05459)									
41	3	X9491001860	BALL BEARING	1	1	1					W
		(A=EN05462) (B=EN05459)									
42	2	X0283005050	CLUTCH, STARTER	1	1	1					W
		(A=EN05462) (B=EN05459)									
43	3	X0280210230	NUT	1	1	1					W
		(A=EN05462) (B=EN05459)									
44	3	X0283270140	RETAINER	1	1	1					W
		(A=EN05462) (B=EN05459)									
45	3	X0283715030	PINION, STARTER	1	1	1					W
		(A=EN05462) (B=EN05459)									
46	3	X0283810040	SHAFT	1	1	1					W
		(A=EN05462) (B=EN05459)									
47	3	X9490721080	RING	1	1	1					W
		(A=EN05462) (B=EN05459)									
48	3	X9491703371	SPRING, COIL	1	1	1					W
		(A=EN05462) (B=EN05459)									
49	3	X9491704260	SPRING	1	1	1					W
		(A=EN05462) (B=EN05459)									
50	3	121120-77930	CASE ASSY, STARTER	1	1	1					W
		(A=EN05462) (B=EN05459)									
51	2	X0283060061	ROLLER	5	5	5					W
		(A=EN05462) (B=EN05459)									
52	2	X0283711420	PINION	1	1	1					W
		(A=EN05462) (B=EN05459)									
53	2	X0284004910	HOUSING, STARTER	1	1	1					W
		(A=EN05462) (B=EN05459)									

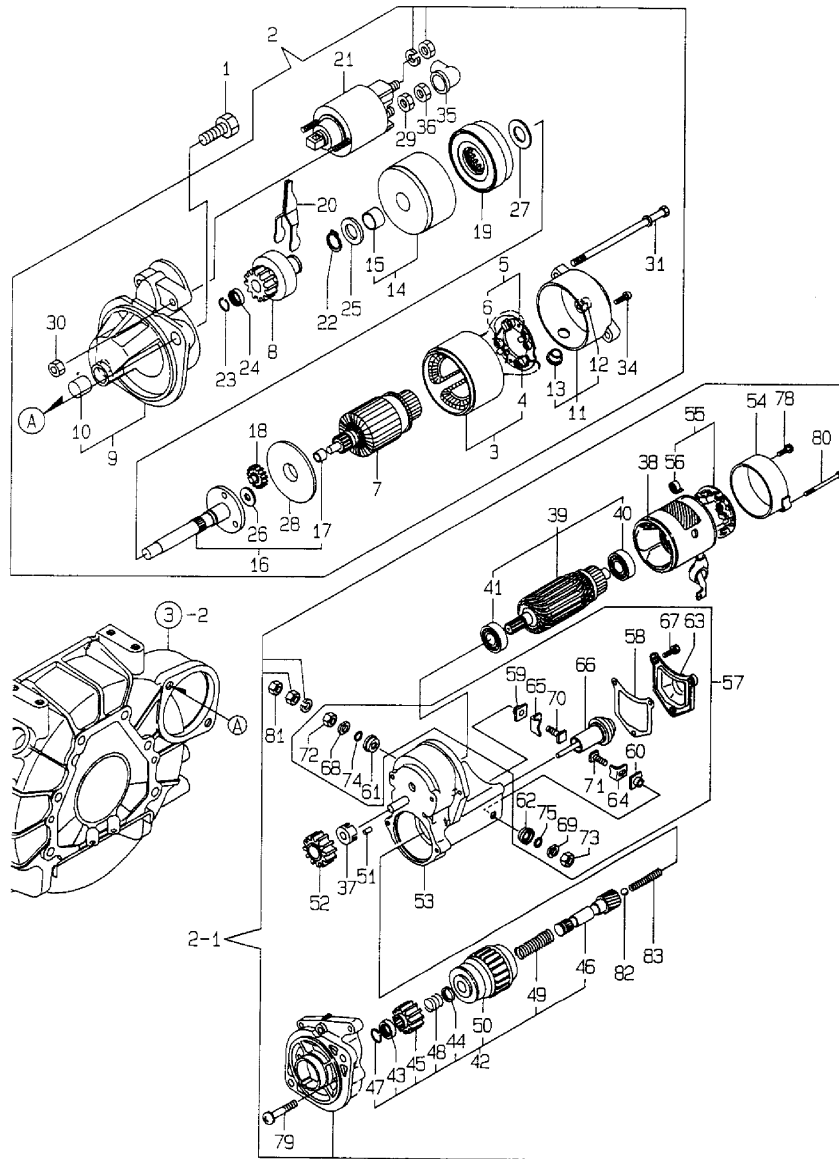
Fig.15. STARTING MOTOR

(A)=3TNE74-NYB
(B)=3TNE74-NYBB
(C)=3TNE74-ENYBB

(D)=
(E)=
(F)=

Y00D70B1
3TNE74-(E)NYB(B)

15 スターティングモーター
STARTING MOTOR



No.	Lev.	Parts No.	Description	Qty						I	R
				(A)	(B)	(C)	(D)	(E)	(F)		
54	2	X0285040631 (A=EN05462) (B=EN05459)	FRAME ASSY	1	1	1					W
55	2	X0285100460 (A=EN05462) (B=EN05459)	HOLDER ASSY, BRUSH	1	1	1					W
56	3	X9491730461 (A=EN05462) (B=EN05459)	SPRING	4	4	4					W
57	2	X0534006460 (A=EN05462) (B=EN05459)	SWITCH, MAGNETIC	1	1	1					W
58	3	X0534040320 (A=EN05462) (B=EN05459)	GASKET	1	1	1					W
59	3	X0534490120 (A=EN05462) (B=EN05459)	BUSH	1	1	1					W
60	3	X0534490120 (A=EN05462) (B=EN05459)	BUSH	1	1	1					W
61	3	X0534490230 (A=EN05462) (B=EN05459)	BUSH	1	1	1					W
62	3	X0534490230 (A=EN05462) (B=EN05459)	BUSH	1	1	1					W
63	3	X0535050620 (A=EN05462) (B=EN05459)	COVER	1	1	1					W
64	3	X0535130241 (A=EN05462) (B=EN05459)	PLATE (B)	1	1	1					W
65	3	X0535130320 (A=EN05462) (B=EN05459)	PLATE (A)	1	1	1					W
66	3	X0536600401 (A=EN05462) (B=EN05459)	PLUNGER	1	1	1					W
67	3	X9151005141 (A=EN05462) (B=EN05459)	BOLT W/WASHER	3	3	3					W
68	3	X9490170900 (A=EN05462) (B=EN05459)	WASHER	1	1	1					W
69	3	X9490170900 (A=EN05462) (B=EN05459)	WASHER	1	1	1					W
70	3	X9490441303 (A=EN05462) (B=EN05459)	BOLT	1	1	1					W
71	3	X9490441312 (A=EN05462) (B=EN05459)	BOLT	1	1	1					W
72	3	X9490502820 (A=EN05462) (B=EN05459)	NUT	1	1	1					W
73	3	X9490502820 (A=EN05462) (B=EN05459)	NUT	1	1	1					W
74	3	X9491402100 (A=EN05462) (B=EN05459)	O-RING	1	1	1					W
75	3	X9491402100 (A=EN05462) (B=EN05459)	O-RING	1	1	1					W
78	2	X9490071810 (A=EN05462) (B=EN05459)	SCREW W/WASHER	2	2	2					W
79	2	X9490071970 (A=EN05462) (B=EN05459)	SCREW W/WASHER	2	2	2					W
80	2	X9490471500 (A=EN05462) (B=EN05459)	BOLT W/WASHER	2	2	2					W
81	2	X9490561370 (A=EN05462) (B=EN05459)	NUT	1	1	1					W

N:Old $\begin{matrix} \text{Yes} \\ \text{No} \end{matrix}$ New, Q:Old $\begin{matrix} \text{No} \\ \text{Yes} \end{matrix}$ New, R:Old $\begin{matrix} \text{Yes} \\ \text{No} \end{matrix}$ New, S:Old $\begin{matrix} \text{No} \\ \text{Yes} \end{matrix}$ New, W:Add, Z:Discontinued, F:Interchangeable by set, K:Q'ty Change
 ++ CONTINUE ++
 Copyright (C) YANMAR CO., LTD. All Rights Reserved.

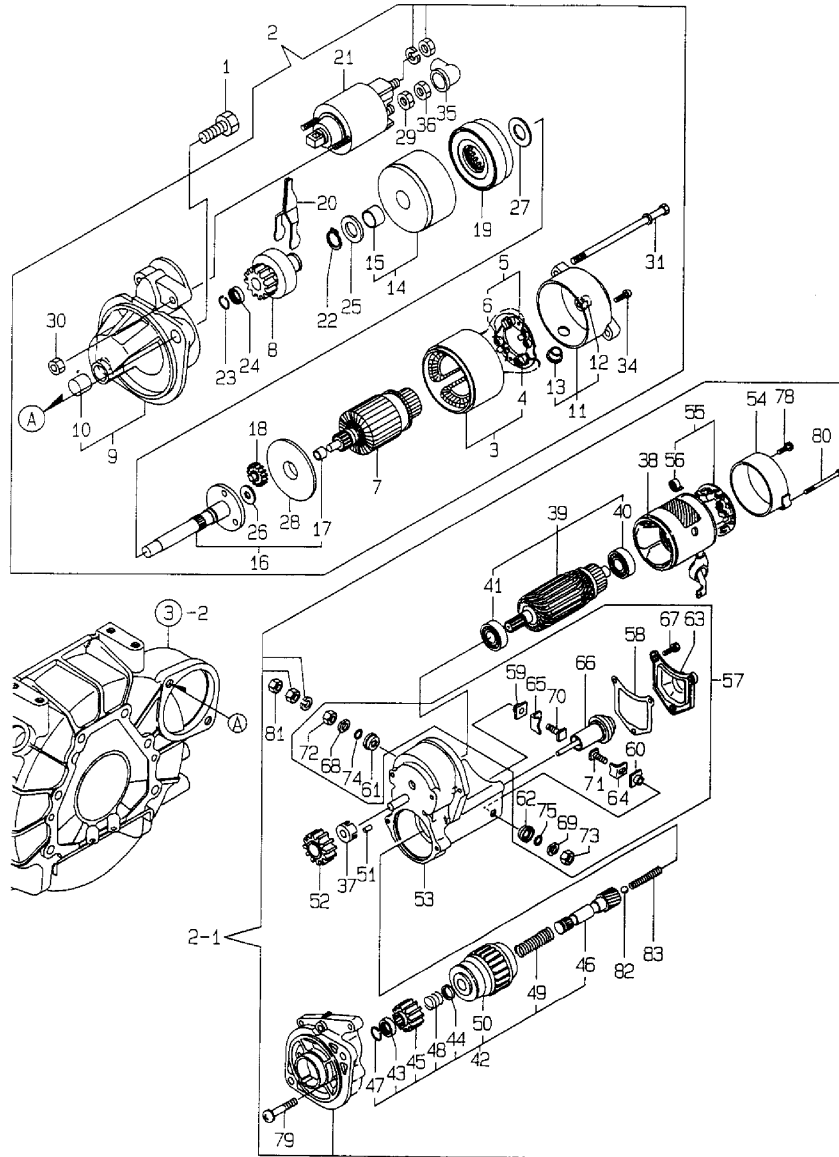
Fig.15. STARTING MOTOR

(A)=3TNE74-NYB
 (B)=3TNE74-NYBB
 (C)=3TNE74-ENYBB

(D)=
 (E)=
 (F)=

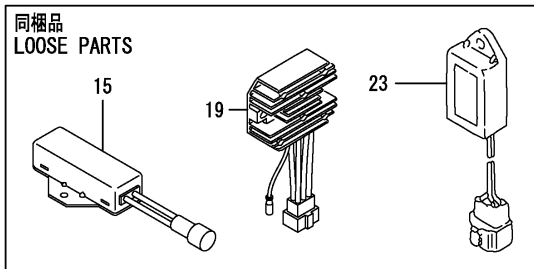
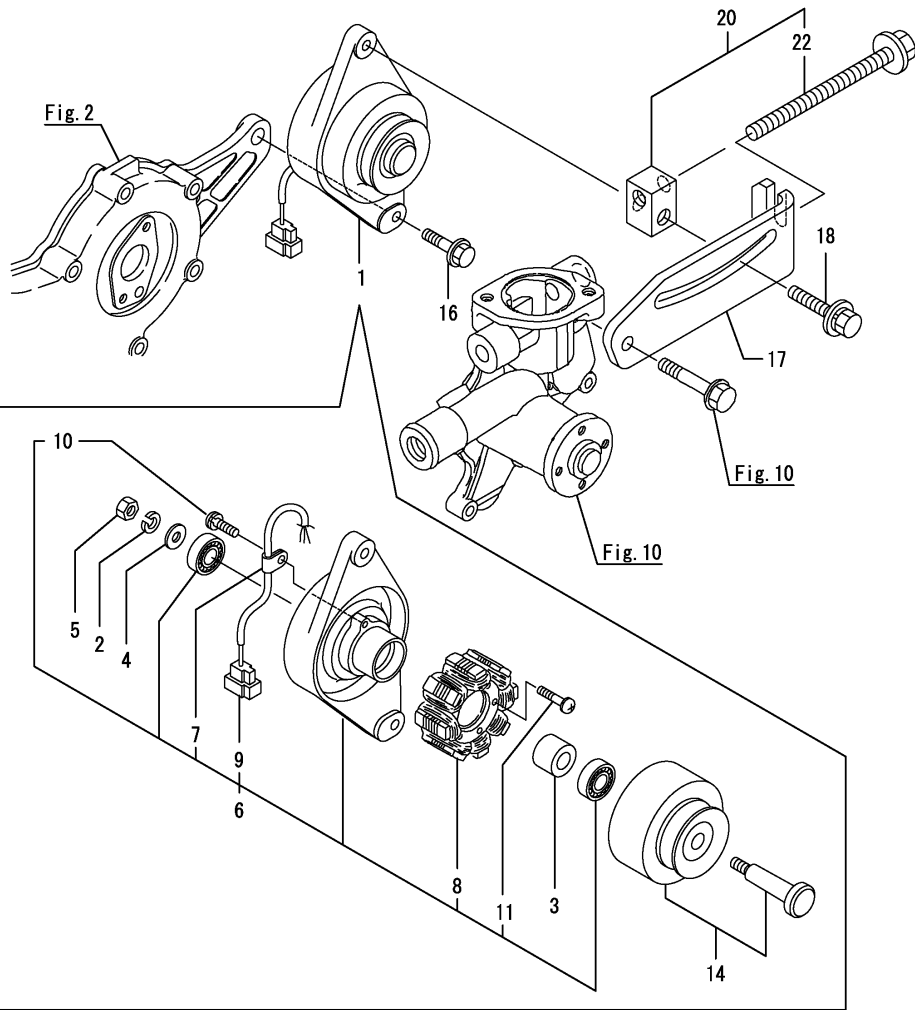
Y00D7081
 3TNE74-(E)NYB(B)

15 スターティングモーター
 STARTING MOTOR



No.	Lev.	Parts No.	Description	Qty						I	R	
				(A)	(B)	(C)	(D)	(E)	(F)			
		(A=EN05462) (B=EN05459)										
82	2	X9491200240	BALL	1	1	1						W
		(A=EN05462) (B=EN05459)										
83	2	X9491703380	SPRING	1	1	1						W
		(A=EN05462) (B=EN05459)										

Fig.16. GENERATOR



(A)=3TNE74-NYB
(B)=3TNE74-NYBB
(C)=3TNE74-ENYBB

(D)=
(E)=
(F)=

No.	Lev.	Parts No.	Description	Qty						I	R
				(A)	(B)	(C)	(D)	(E)	(F)		
1	1	129150-77202	GENERATOR	1	1	1					
1-1	1	129150-77203	DINAMO ASSY	1	1	1					N
		(A=EXXXXX) (B=EXXXXX) (C=EN19749)									
2	2	XM219230000	WASHER, SPRING	1	1	1					
3	2	XM329830000	COLLAR	1	1	1					
4	2	XM860250000	WASHER, 10	1	1	1					
5	2	XM863720000	NUT	1	1	1					
6	2	129150-77210	PLATE ASSY	1	1	1					
7	3	XM069000000	CLAMP	1	1	1					
8	3	XM081780000	STATOR	1	1	1					
9	3	XM178780000	COUPLER	1	1	1					
10	3	XYSPS400800	SCREW	1	1	1					
11	3	XYSPS402400	SCREW	2	2	2					
14	2	129150-77230	FLYWHEEL ASSY	1	1	1					
14-1	2	129150-77280	FLYWHEEL ASSY	1	1	1					N
		(A=EXXXXX) (B=EXXXXX) (C=EN19749)									
15	1	129155-77810	REGISTER	1	1	1					
16	1	26106-100402	BOLT, M10X 40 PLATED	1	1	1					
17	1	119624-77340	ADJUSTER	1	1	1					
18	1	26014-080452	BOLT, M8X 45	1	1	1					
19	1	119653-77710	CURRENT LIMITER	1	1	1					
20	1	119624-77350	BLOCK, ADJUSTER	1	1	1					
22	2	26106-081004	BOLT, M8X100 PLATED	1	1	1					
23	1	129211-77920	TIMER	1	1	1					

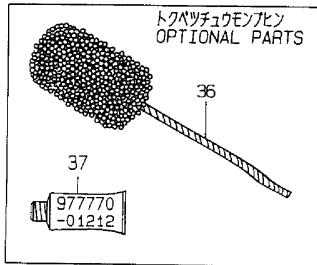
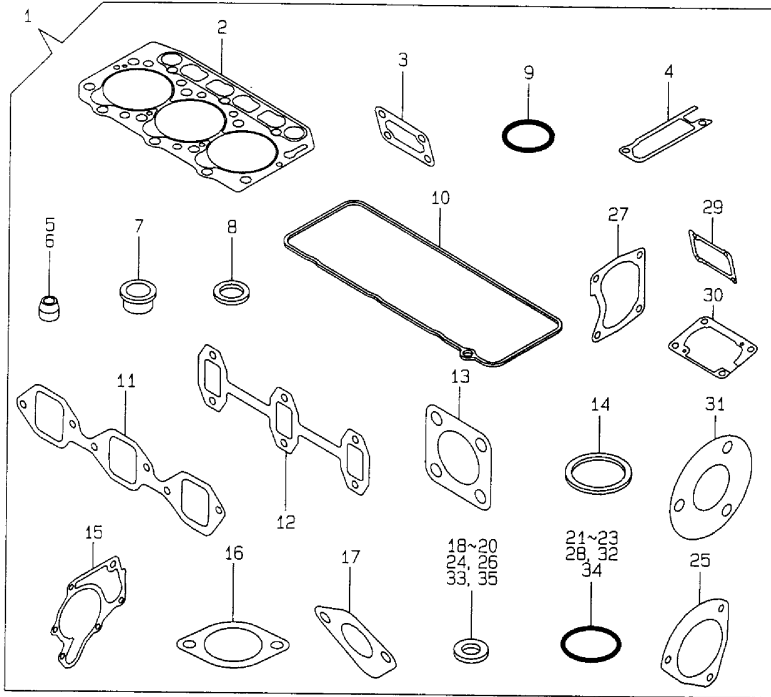
Fig.17. GASKET SET

(A)=3TNE74-NYB
(B)=3TNE74-NYBB
(C)=3TNE74-ENYBB

(D)=
(E)=
(F)=

Y0007081
3TNE74-(E)NYB(B)

17 パッキンセット
GASKET SET



No.	Lev.	Parts No.	Description	Q'ty						I	R
				(A)	(B)	(C)	(D)	(E)	(F)		
1	1	719636-92610	GASKET SET	1	1	1					1
2	2	119636-01330	GASKET, HEAD	1	1	1					
3	2	119660-01562	GASKET	1	1	1					
4	2	119624-11610	GASKET	1	1	1					
5	2	124950-11340	SEAL, VALVE STEM	3	3	3					
6	2	124160-11340	SEAL, VALVE STEM	3	3	3					
7	2	119600-11450	PROTECTOR, NOZZLE	3	3	3					
8	2	119600-11460	GASKET, NOZZLE	6	6	6					
9	2	24311-000320	O-RING, 1AP32.0	2	2	2					
10	2	119624-11311	GASKET, BONNET	1	1	1					
11	2	119620-12111	GASKET, MANIFOLD	1	1	1					
12	2	119620-13110	GASKET	1	1	1					
13	2	124701-11911	GASKET, SILENCER	1	1	1					
14	2	129150-49811	GASKET, THERMOSTAT	1	1	1					
15	2	119624-42021	GASKET, WATER PUMP	1	1	1					
16	2	129795-49551	GASKET	1	1	1					
17	2	121520-01851	GASKET	1	1	1					
18	2	124465-44950	GASKET, 16	2	2	2					
19	2	22190-120002	WASHER, SEAL 12	2	2	2					
20	2	23414-080012	GASKET, 8X1.0	2	2	2					
21	2	24311-000120	O-RING, 1AP12.0	2	2	2					
22	2	129155-61830	O-RING, S10	3	3	3					
23	2	24341-000240	O-RING, 1AS24.0	1	1	1					
24	2	22190-220002	WASHER, SEAL 22	1	1	1					
25	2	119266-01870	GASKET	1	1	1					
26	2	22190-060003	SEAL WASER 6	1	1	1					
27	2	119636-01750	GASKET	1	1	1					
28	2	119624-32040	O-RING, P12.0	2	2	2					
29	2	119266-01890	GASKET	1	1	1					
30	2	119623-01950	SHIM SET, ADJUSTING	1	1	1					
31	2	103954-13201	GASKET, SILENCER	1	1	1					
32	2	119209-35030	O-RING, P11	1	1	1					
33	2	129150-49360	GASKET	1	1	1					
34	2	119266-42140	O-RING, P22	2	2	2					
35	2	22190-080002	WASHER, SEAL 6	4	4	4					
36	1	129400-92410	FLEX HORN	1	1	1					1
37	1	977770-01212	GASKET, LIQUID	1	1	1					1

Remarks
(1) OPTIONAL PART.

Parts No. Index

Parts No.	Fig. No.	Ref. No.
101304-59020	14	23
102103-55520	14	8
		36
103954-13201	6	8
	17	31
104200-55321	14	32
104200-55330	14	5
		33
104200-55341	14	34
104200-55750	14	12
104211-11370	4	23
104264-59030	14	16
		19
105010-11230	4	34
		38
105025-59550	13	45
105225-23200	8	29
105546-51330	11	24
105582-59150	14	26
110250-55610	14	9
		37
114250-39450	9	8
114250-53130	13	11
114250-53400	13	13
114350-22301	8	22
114399-22300	8	22 -1
119131-18320	6	5
119209-35030	9	6
	17	32
119230-59020	14	15
119232-61510	12	29
119232-61540	12	44
119233-66511	12	65
119255-55620	14	4
119255-77010	15	2
119260-59520	13	43
119260-59530	13	44
119265-44740	10	5
119266-01840	2	30
119266-01870	2	49
	17	25
119266-01880	2	36
119266-01890	2	37
	17	29
119266-01900	7	16
119266-01910	2	17
119266-07900	4	60 -1
119266-11390	4	52
119266-14200	7	17
119266-21651	8	8

Parts No.	Fig. No.	Ref. No.
119266-25050	7	9
119266-42052	10	17
119266-42140	10	18
	17	34
119266-51900	11	45
119266-61100	12	4
119266-61230	12	11
119266-61300	12	4 A
119285-66080	12	53
119305-35150	9	3
119325-59030	14	22
119325-59080	14	25
119462-59190	14	1
119600-01050	1	5
		22
119600-11450	4	25
	17	7
119600-11460	4	24
	17	8
119600-13100	6	1
119600-52021	2	56
119600-61200	12	5
119600-61400	12	5 A
119600-61541	12	45
119600-61900	12	51
119600-66020	12	62
119600-66530	12	70
119600-66840	12	110
119610-66700	12	76
119620-01200	1	26
119620-01750	3	13
119620-01800	2	4
119620-02020	1	6
119620-02450	7	4
119620-11110	4	17
119620-11120	4	18
119620-11180	4	19
119620-11240	4	28
119620-11280	4	32
119620-11350	4	43
119620-11801	4	11
119620-12111	5	2
	17	11
119620-13110	6	2
	17	12
119620-14100	7	7
119620-14200	7	1
119620-14401	7	2
119620-21941	8	10
119620-23910	8	27

Parts No.	Fig. No.	Ref. No.
119620-25102	7	10
119620-25912	7	12
119620-35093	9	5
119620-51101	11	3
119620-51170	11	6
119620-51180	11	7
119620-51190	11	8
119620-51250	11	9
119620-51300	11	21
119620-51340	11	25
119620-51350	11	26
119620-51370	11	27
119620-51450	11	28
119620-51461	11	29
119620-51510	11	31
119620-51650	11	33
119620-51660	11	34
119620-51670	11	35
119620-51680	11	36
119620-51700	11	37
119620-53000	13	3
119620-53080	13	6
119620-53120	13	10
119620-53140	13	12
119620-59700	13	48
119620-77011	15	2 -1
119620-77820	4	59
119621-21680	8	9
119623-01250	1	12
119623-01550	2	12
119623-01950	2	39
	17	30
119623-11100	4	16
119623-22500	8	18
119623-22950	8	36
119624-01591	2	5
119624-01600	3	2
119624-02410	1	21
119624-03100	2	11
119624-07900	4	61
119624-11200	4	27
119624-11311	4	51
	17	10
119624-11331	4	46
119624-11600	4	47
119624-11610	4	48
	17	4
119624-11741	4	7
119624-21200	8	5
119624-21570	8	12

Parts No.	Fig. No.	Ref. No.
119624-21700	8	1
119624-22082	8	16
119624-22900	8	34
119624-25900	7	22
119624-32000	2	8
119624-32040	2	18
	17	28
119624-34810	9	2
119624-42000	10	21
119624-42021	10	1
	17	15
119624-55910	14	20
119624-59010	14	15 -1
119624-59811	13	26
119624-59821	13	30
119624-59831	13	34
119624-77340	16	17
119624-77350	16	20
119629-14580	7	3
119629-66510	12	121
119632-61200	12	15
119636-01330	1	27
	17	2
119636-01740	2	15
119636-01750	2	16
	17	27
119636-01780	3	6
119640-01640	3	8
119640-66051	12	63
119642-59540	13	41
119642-59550	13	46
119642-59570	13	47
119645-12100	5	1
119653-77710	16	19
119656-42290	10	3
119656-66910	12	61
119660-01551	2	28
119660-01562	2	29
	17	3
119660-01570	2	32
119660-25022	7	26
119660-42350	10	4
119660-51500	11	30
119660-51530	11	32
119660-61052	12	19
119660-61060	12	1
119660-61071	12	2
119660-61121	12	12
119660-61140	12	13
119660-61150	12	14

Parts No. Index

Parts No.	Fig. No.	Ref. No.
119660-61300	12	9
119660-61341	12	10
119660-61460	12	20
119660-61590	12	28
119660-61651	12	47
119660-61901	12	52
119810-55340	14	6
119831-13580	6	9
119840-61870	12	120
119865-21600	8	15
121023-01550	2	25
121111-21501	8	11
121120-77930	15	50
121250-44901	10	35
121250-55620	14	10
121254-55510	14	7
121257-55720	14	38
121267-44760	10	6
121450-01560	2	31
121450-42450	10	14
		14 -1
121450-44531	10	30
121465-59950	12	60
121468-44510	10	28
121468-44540	10	31
121470-44581	10	33
121520-01851	2	53
	17	17
121520-34810	9	1
121575-66830	12	109
122710-51090	7	19
124064-55510	14	35
124066-59100	13	42
124085-02220	3	4
124160-01751	2	54
	4	68
124160-11340	4	21
	17	6
124160-11360	4	56
124295-11260	4	31
124295-11650	4	33
124295-11660	4	37
124450-44560	10	32
124465-44950	10	13
		36
	17	18
124550-55700	14	11
124550-59820	13	51
124550-59830	13	50
124550-66370	12	64

Parts No.	Fig. No.	Ref. No.
124701-11911	6	7
	17	13
124736-07900	4	60
124766-59050	13	39
	14	17
		24
124950-11340	4	22
	17	5
129100-01580	3	1
	8	2
129100-35140	9	4
129100-61930	12	129
129150-49360	10	15
	17	33
129150-49811	10	16
	17	14
129150-59120	13	54
129150-59131	13	57
129150-77202	16	1
129150-77203	16	1 -1
129150-77210	16	6
129150-77230	16	14
129150-77280	16	14 -1
129155-49800	10	10
129155-51280	12	16
129155-61480	12	23
129155-61830	13	2
	17	22
129155-77801	4	58
129155-77810	16	15
129211-77920	16	23
129335-55700	14	30
129350-49530	10	8
129400-92410	17	36
129795-49551	10	9
	17	16
171056-49120	10	12
174307-51700	12	30
194990-22050	2	48
	12	118
22117-040000	12	48
22190-060003	2	13
	12	117
	17	26
22190-080002	11	46
	13	52
		53
	14	27
		28
	17	35

Parts No.	Fig. No.	Ref. No.
22190-120002	12	111
	14	29
	17	19
22190-140002	13	49
22190-220002	3	9
	17	24
22217-120000	7	24
22242-000100	4	41
22242-000200	7	14
22252-000210	8	23
22272-000040	12	49
22351-030010	8	7
22351-030014	12	50
22351-040010	2	34
	12	57
22351-060012	4	26
22360-040000	12	112
22360-060000	12	113
22512-040120	7	8
	8	6
22857-500100	4	55
23065-070130	10	34
23414-080012	17	20
23876-005000	4	14
23876-010000	1	11
24101-060034	7	20
24102-063034	7	21
24311-000120	4	57
	17	21
24311-000320	2	55
	4	69
	17	9
24311-240100	14	13
		31
24341-000070	12	58
24341-000240	2	26
	17	23
24341-000280	12	67
26014-080452	16	18
26014-080702	14	14
26022-040082	11	42
26033-040102	11	43
26106-060102	3	5
		11
	9	7
	12	59
26106-060122	1	25
	2	19
	3	10
	4	62

Parts No.	Fig. No.	Ref. No.
26106-060122	7	15
26106-060162	2	20
		27
		57
26106-060202	2	14
	5	3
26106-060252	2	9
26106-060302	10	7
		19
26106-060402	2	21
26106-060552	10	20
26106-060652	2	23
26106-060702	2	24
	12	3
26106-060952	12	69
26106-080142	4	1
26106-080182	14	21
26106-080222	10	11
26106-080402	6	4
26106-080452	10	2
26106-080502	4	44
26106-081004	16	22
26106-100402	16	16
26116-050082	2	35
26116-050102	12	114
26116-060304	12	115
26116-120252	15	1
26206-100252	3	3
26216-080202	2	10
26216-080552	6	6
26366-060002	2	38
26366-080002	2	50
	4	45
	6	3
26557-060102	7	23
26687-120002	12	119
26716-120002	7	25
26756-060002	12	116
26776-120002	12	108
26856-060002	4	36
		40
26979-050162	4	42
27241-120000	1	13
		23
27241-250000	1	24
27241-300000	1	14
27241-400000	4	15
27310-070001	4	20
719255-53100	13	1
719620-02800	1	15

Parts No. Index

Parts No.	Fig. No.	Ref. No.
719620-02870	1	28
719620-02930	1	18
719620-23100	8	24
719620-23600	8	30
719620-23610	8	32
719624-01561	1	1
719624-01610	2	1
719624-51100	11	1
719636-92610	17	1
721250-59080	13	38
977770-01212	2	22
	3	12
	17	37
X0280210230	15	43
X0280210331	15	24
X0280335100	15	35
X0280626010	15	13
X0280630011	15	37
X0280996180	15	4
X0281003751	15	38
X0281007680	15	3
X0282001531	15	39
X0282005871	15	7
X0283005050	15	42
X0283006960	15	8
X0283060061	15	51
X0283270140	15	44
X0283711420	15	52
X0283715030	15	45
X0283810040	15	46
X0284004910	15	53
X0284105010	15	14
X0284525010	15	28
X0285005770	15	11
X0285040631	15	54
X0285100460	15	55
X0285105190	15	5
X0285205030	15	6
X0286105010	15	16
X0286305010	15	18
X0286355010	15	19
X0287405140	15	20
X0534006460	15	57
X0534007800	15	21
X0534040320	15	58
X0534490120	15	59
		60
X0534490230	15	61
		62
X0535050620	15	63

Parts No.	Fig. No.	Ref. No.
X0535130241	15	64
X0535130320	15	65
X0536600401	15	66
X1289510130	15	36
X2284005750	15	9
X9055715000	15	22
X9151005141	15	67
X9490065670	15	34
X9490071810	15	78
X9490071970	15	79
X9490138090	15	26
X9490138100	15	27
X9490138110	15	25
X9490170900	15	68
		69
X9490423520	15	31
X9490441303	15	70
X9490441312	15	71
X9490471500	15	80
X9490502820	15	72
		73
X9490560750	15	30
X9490561370	15	81
X9490562360	15	29
X9490721080	15	47
X9490721360	15	23
X9491001360	15	40
X9491001860	15	41
X9491034320	15	17
X9491034330	15	15
X9491040990	15	12
X9491050100	15	10
X9491200240	15	82
X9491402100	15	74
		75
X9491703371	15	48
X9491703380	15	83
X9491704260	15	49
X9491730461	15	56
XM069000000	16	7
XM081780000	16	8
XM178780000	16	9
XM219230000	16	2
XM329830000	16	3
XM860250000	16	4
XM863720000	16	5
XYSPS400800	16	10
XYSPS402400	16	11

Parts No.	Fig. No.	Ref. No.
-----------	----------	----------

Parts No.	Fig. No.	Ref. No.
-----------	----------	----------