

0CD10-M67801EN

PREFACE

1. This parts catalog is the First edition of 3TNE84T – FT, 3TNE84T – FT Diesel Engine for FURUKAWA KIKAI.

Pub. No.: 000Y00D6781

Published: Oct.,2000

2. Model name

Engine model	Vehicle		Vehicle Manufacturer
	Products	Model name	
3TNE84T – FT	SHREDDER	FPC370R(C)	FURUKAWA KIKAI CO.,LTD.
3TNE84T – FT2		FPC400	

Directions for the Parts Catalog.

1. This Parts Catalog shows both standard and optional parts.
2. Parts may change without prior notice.
3. The following is an example of the Parts Catalog format.

REF.	LEV.	PARTS NO.	DESCRIPTION	Q'TY						I	R
				(A)	(B)	(C)	(D)	(E)	(F)		
1	1	729595-51390	FUEL INJECTION PUMP	1	1	1	1	1			1
1-1	1	729595-51391	FUEL INJECTION PUMP	1	1	1	1	1		N	1
		(A=E00185) (B=E00200)									
3	2	26022-060162	SCREW M 6X 16	9	9	9	9	9			
3-1	2	26022-060162	SCREW M 6X 16	4	4	4	4	4		K	
		(A=E00156) (B=E00156) (C=E00156) (D=E00156) (E=E00156)									
4	2	129470-51040	CAMSHAFT	1	1	1	1	1			
5	2	122710-51050	BEARING, ROLLER	2	2	2	2	2			
6	2	129470-51060	RETAINER	1	1	1	1	1			

Remarks
(1) BOOST COMPEMSATOR TYPE. OPTIONAL PART, TO E00155,(4JH-DT, 4JH-DTZ

① Ref. No.

The Ref. No. listed may not be in accordance with the illustration Ref. No.

(Ex.) Illustration No.

List Ref No.

1

1

(Before change)

1-1

(After change)

For interchangeable symbols N, R and K, illustrations for new parts may be abbreviated.

② Lev. (Level)

Level indication

The numbers below indicate the level of relativity towards the main part.

1 ----- Main parts (Assembly parts)

2 ----- Sub component included in " 1 ".

3 ----- Sub component included in " 2 ".

Note) Parts that are not for sale are partially illustrated but not listed.

③ Interchangeability Symbol

When a part change takes place, one of the following interchangeability symbols is indicated beside the part.

Symbol	Interchangeability	Contents note
N	Old $\begin{matrix} \leftarrow \text{Yes} \\ \text{No} \rightarrow \end{matrix}$ New	New Part is interchangeable for Old Part but Old Part is not interchangeable for New Part.
Q	Old $\begin{matrix} \leftarrow \text{No} \\ \text{Yes} \rightarrow \end{matrix}$ New	New Part is not interchangeable for Old Part but Old Part is interchangeable for New Part.
R	Old $\begin{matrix} \leftarrow \text{Yes} \\ \text{Yes} \rightarrow \end{matrix}$ New	New/ Old Parts are both interchangeable.
S	Old $\begin{matrix} \leftarrow \text{No} \\ \text{No} \rightarrow \end{matrix}$ New	New/ Old Parts are both not interchangeable.
W		Part newly added.
Z		Part discontinued.
F		Not interchangeable by a single part but interchangeable together with related parts.
K		Changes only for used parts quantities.

④ Effective Machine No.

When a part changes, the effective Machine No. will be indicated in the (A)-(F) column.

Product Symbol	Product No.	Product Symbol	Product No.
C	Clutch No. Compressor No.	F	Machine No. (Agricultural Equip.)
D	Drive No.	M	Machine No.
E	Engine No.		

Note 1) A date may follow the symbol. (Ex.) 1996.01

Note 2) "XXXXX" and "ZZZZZ" are for parts that could not be predicted or for engine models that could not be identified.

Note 3) (A=E00185) is the E (Engine Serial Number) for the column (A) model (in this case 4JH-DT) after the parts design change.

⑤ Remarks

Figures or alphabets (symbols) are entered in the remarks column.

The comments (remarks) on parts that are indicated at the bottom of the illustration are the same symbols as those stated above.

Contents

Fig. No. Fig. Name

3TNE-84T-FT(2)

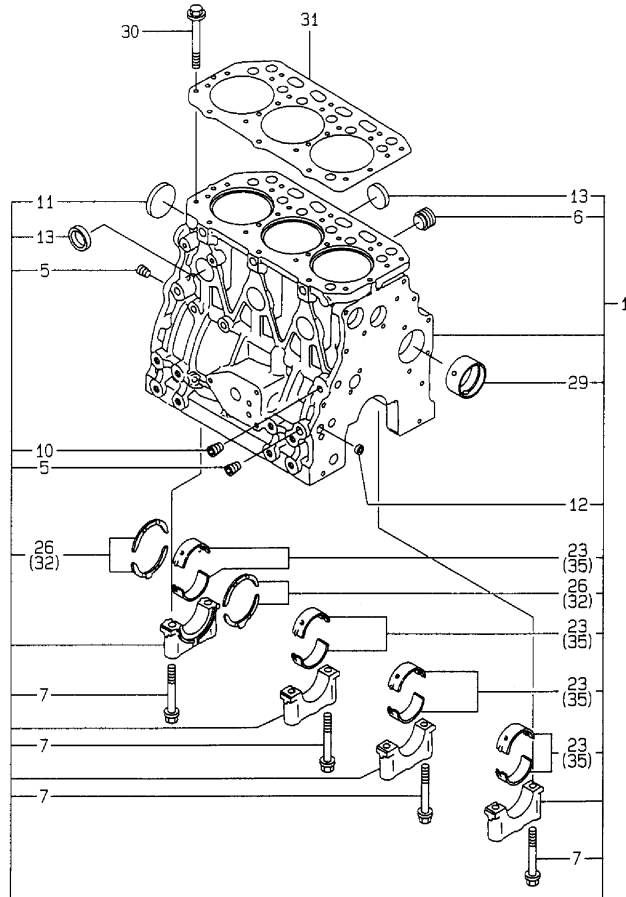
1. CYLINDER BLOCK
2. GEAR HOUSING
3. FLYWHEEL HOUSING & OIL SUMP
4. CYLINDER HEAD & BONNET
5. SUCTION MANIFOLD & AIR CLEANER
6. EXHAUST MANIFOLD & SILENCER
7. TURBINE
8. CAMSHAFT & DRIVING GEAR
9. CRANKSHAFT & PISTON
10. LUB.OIL SYSTEM
11. LUB.OIL LINE
12. COOLING WATER SYSTEM
13. FUEL INJECTION PUMP
14. GOVERNOR
15. FUEL INJECTION VALVE
16. FUEL LINE
17. STARTING MOTOR
18. GENERATOR
19. GASKET SET

Fig. No. Fig. Name

Fig.1. CYLINDER BLOCK

Y00D6781
3TNE84T-FT (2)

↑ シリンダブロック
↑ CYLINDER BLOCK



(A)=3TNE84T-FT
(B)=3TNE84T-FT2
(C)=

(D)=
(E)=
(F)=

No.	Lev.	Parts No.	Description	Q'ty						I	R
				(A)	(B)	(C)	(D)	(E)	(F)		
1	1	729012-01560	BLOCK ASSY, CYLINDER	1	1						
5	2	124160-01910	PLUG, PT1/4	3	3						
6	2	171051-01921	PLUG, NPTF1	1	1						
7	2	129150-02020	BOLT, METAL CAP	8	8						
10	2	23871-010000	PLUG, R01	1							
10-1	2	23876-010000	PLUG, R01	1	1						N
(A=EXXX)											
11	2	27231-500000	PLUG 50	1							
11-1	2	129001-01250	PLUG, 50	1	1						N
(A=EXXX)											
12	2	27241-120000	PLUG, 12	2	2						
13	2	27241-300000	PLUG 30	6	6						
23	2	129001-02930	BEARING, MAIN	4	4						3
26	2	129150-02930	BEARING, THRUST	2	2						
29	2	129795-02411	BUSH, CAMSHAFT	1	1						
30	1	129150-01200	BOLT, HEAD	14	14						
31	1	129002-01331	GASKET, HEAD	1	1						
32	1	129150-02940	BEARING, THRUST 0.25	1	1						1
35	1	129150-02870	BEARING, 0.25 US	4	4						2

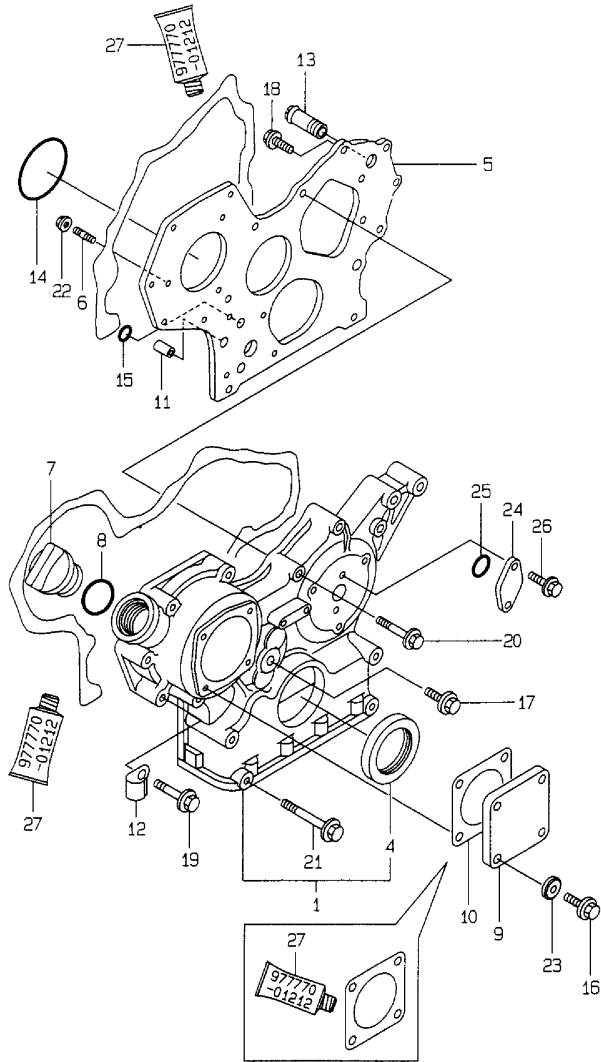
Remarks

- (1) OVER-SIZE(O.S=0.25)PART.
- (2) UNDER-SIZE(U.S=0.25)PART.
- (3) REPAIR PART.

Fig.2. GEAR HOUSING

Y00D6781
3TNE84T-FT (2)

2 ギヤケース
GEAR HOUSING



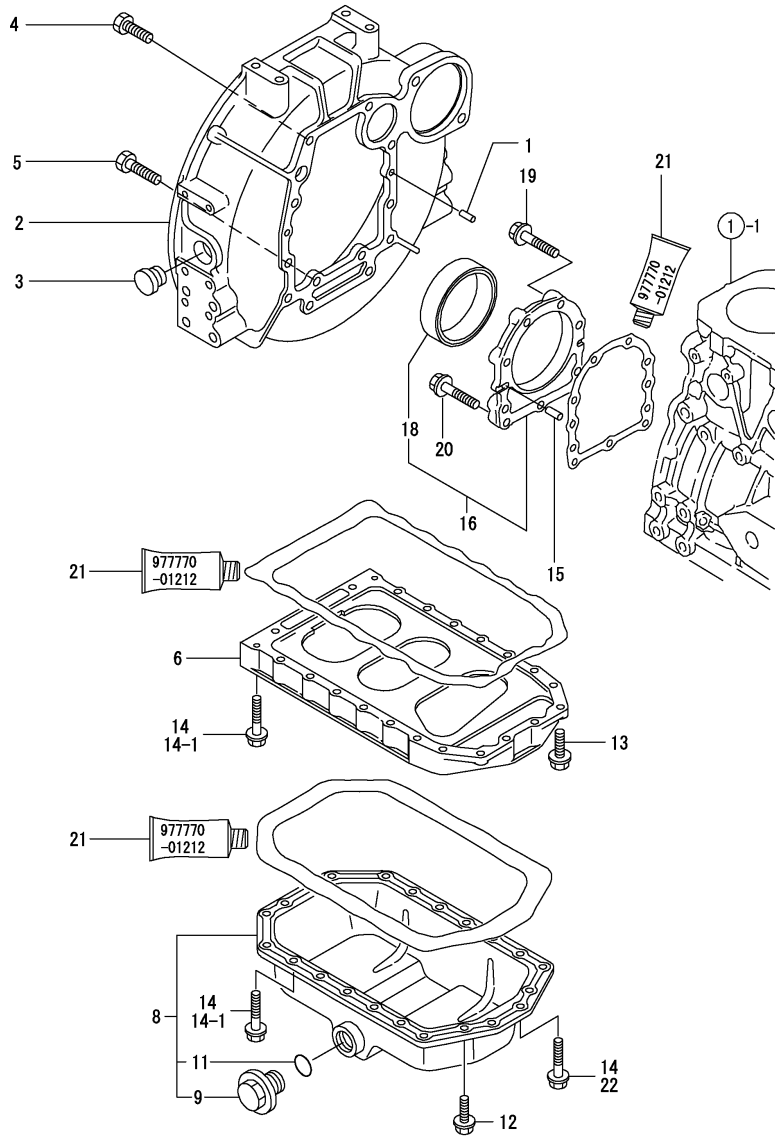
(A)=3TNE84T-FT
(B)=3TNE84T-FT2
(C)=

(D)=
(E)=
(F)=

No.	Lev.	Parts No.	Description	Q'ty						I	R
				(A)	(B)	(C)	(D)	(E)	(F)		
1	1	719810-01500	CASE ASSY, GEAR	1	1						
4	2	129795-01800	SEAL, OIL	1	1						
5	1	129103-01530	FLANGE, GEAR CASE	1	1						
6	1	121450-01560	STUD, M8X22	3	3						
7	1	124160-01751	COVER, FILLER	1	1						
8	1	24311-000320	O-RING, 1AP32.0	1	1						
9	1	124240-01871	COVER	1	1						
10	1	124240-01883	GASKET	1							Z
(A=E55405)											
11	1	129795-01950	PIPE, KNOCK L=18	2	2						
12	1	129150-03100	RETAINER, PIPE	1	1						
13	1	129122-44480	JOINT	1	1						
14	1	121850-51960	O-RING	1	1						
15	1	24311-000160	O-RING, 1AP16.0	2	2						
16	1	26106-080122	BOLT, M8X 12 PLATED	4	4						
17	1	26106-080162	BOLT, M8X 16 PLATED	1	1						
18	1	26106-080202	BOLT, M8X 20 PLATED	2	2						
19	1	26106-080452	BOLT, M8X 45 PLATED	6	6						
20	1	26106-080552	BOLT, M8X 55 PLATED	3	3						
21	1	129001-91840	BOLT, M8X85	4							
21-1	1	129001-91841	BOLT, M8X85	4	4						R
(A=E55405)											
22	1	26366-080002	NUT, M8	3	3						
23	1	22190-080002	WASHER, SEAL 6	4	4						
24	1	121023-01550	COVER	1	1						
25	1	24341-000240	O-RING, 1AS24.0	1	1						
26	1	26106-060162	BOLT, M6X 16 PLATED	2	2						
27	1	977770-01212	GASKET, LIQUID	1	1						1

Remarks
(1) OPTIONAL PART.

Fig.3. FLYWHEEL HOUSING & OIL SUMP



(A)=3TNE84T-FT
 (B)=3TNE84T-FT2
 (C)=

(D)=
 (E)=
 (F)=

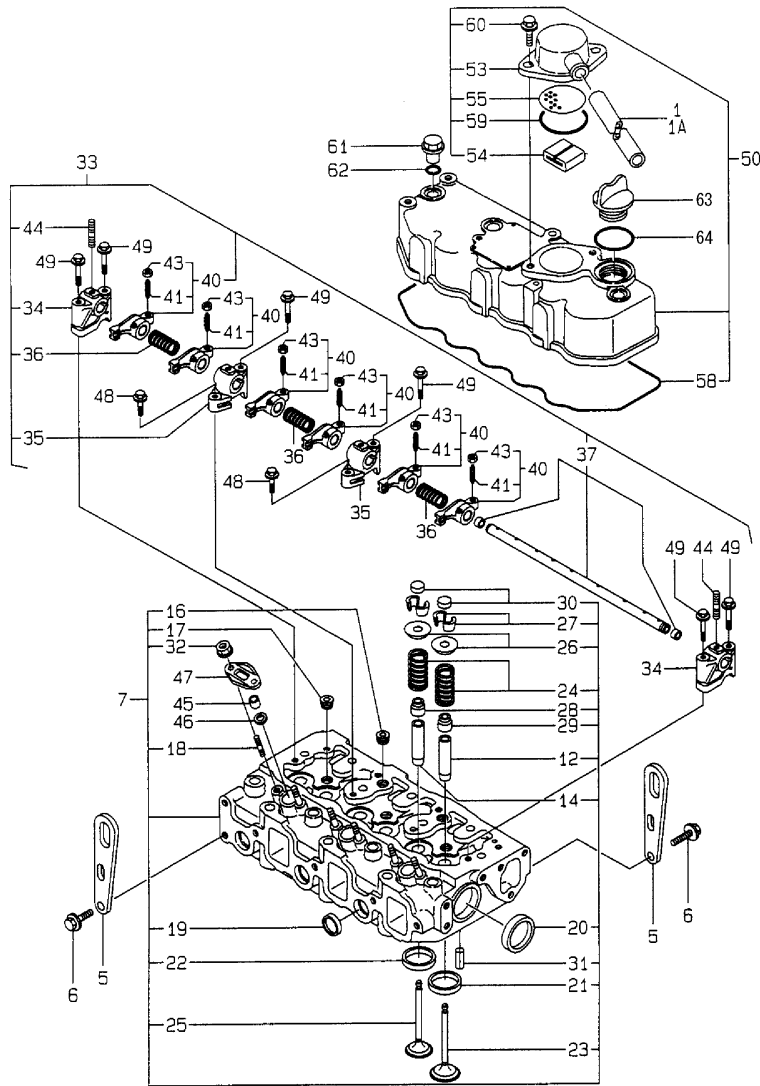
No.	Lev.	Parts No.	Description	Q'ty						I	R
				(A)	(B)	(C)	(D)	(E)	(F)		
1	1	129100-01580	PIN, M8X16	2	2						
2	1	171440-01600	HOUSING, FLYWHEEL	1	1						
3	1	119620-01750	CAP	1	1						
4	1	26206-100252	BOLT, M10X 25 PLATED	6	6						
5	1	26206-100302	BOLT, M10X 30 PLATED	4	4						
6	1	129100-01730	SPACER, OIL SUMP	1	1						
8	1	129175-01770	SUMP ASSY, OIL	1	1						
9	2	171301-01640	PLUG, 22	1	1						
11	2	24341-000250	O-RING, 1AS25.0	1	1						
12	1	26106-080162	BOLT, M8X 16 PLATED	4	4						
13	1	26106-080252	BOLT, M8X 25 PLATED	2	2						
14	1	26106-080452	BOLT, M8X 45 PLATED	20	20						
14-1	1	26106-080452	BOLT, M8X 45 PLATED	16	16						K
		(A=FROM 1ST) (B=FROM 1ST)									
15	1	129100-01580	PIN, M8X16	2	2						
16	1	129100-01640	CASE ASSY, OIL SEAL	1	1						
18	2	129795-01780	SEAL, OIL	1	1						
19	1	129486-01670	BOLT, M8X30	6	6						
20	1	26106-080352	BOLT, M8X 35 PLATED	3	3						
21	1	977770-01212	GASKET, LIQUID	1	1						1
22	1	26106-080502	BOLT, M8X 50 PLATED	4	4						W
		(A=FROM 1ST) (B=FROM 1ST)									

Remarks
 (1) OPTIONAL PART.

Fig.4. CYLINDER HEAD & BONNET

Y0005781
3TNE84T-FT (2)

4 シリンダヘッド & ボンネット
CYLINDER HEAD & BONNET



(A)=3TNE84T-FT
(B)=3TNE84T-FT2
(C)=

(D)=
(E)=
(F)=

No.	Lev.	Parts No.	Description	Qty						I	R
				(A)	(B)	(C)	(D)	(E)	(F)		
1	1	171350-03090	PIPE , BREATHER 900	1							
1A	1	129012-03090	PIPE , BREATHER		1						
5	1	124736-07900	LIFTER	2	2						
6	1	26106-080142	BOLT, M8X 14 PLATED	4	4						
7	1	729202-11710	HEAD ASSY, CYLINDER	1	1						
12	2	120130-11860	GUIDE, VALVE	3	3						1
14	2	129150-11810	GUIDE, VALVE	3	3						1
16	2	23871-020000	PLUG, R02	2							
16-1	2	23876-020000	PLUG, R02	2	2						N
(A=EXXX)											
17	2	23871-030000	PLUG, R03	3							
17-1	2	23876-030000	PLUG, R03	3	3						N
(A=EXXX)											
18	2	26216-060202	STUD, M6X 20	6	6						
19	2	27241-220000	PLUG, 22	3	3						
20	2	27241-400000	PLUG, 40	2	2						
21	2	129470-11080	SEAT, INTAKE VALVE	3	3						
22	2	129470-11090	SEAT, EXHAUST VALVE	3	3						
23	2	129100-11100	VALVE, INTAKE	3	3						
24	2	129795-11120	SPRING, VALVE	6	6						
25	2	129100-11130	VALVE, EXHAUST	3	3						
26	2	129795-11180	RETAINER, SPRING	6	6						
27	2	27310-080001	COTTER, 8	6	6						
28	2	121400-11340	SEAL, VALVE STEM	3	3						
29	2	124460-11340	SEAL, VALVE STEM	3	3						
30	2	129150-11370	CAP, VALVE	6	6						
31	2	22351-060012	PIN, SPRING 6.0X12	2	2						
32	2	26366-060002	NUT, M6	6	6						
33	1	129155-11241	SHAFT ASSY, ROCKER	1	1						
34	2	129155-11260	SUPPORT, ROCKER ARM	2	2						
35	2	129155-11270	SUPPORT, ROCKER ARM	2	2						
36	2	129150-11280	SPRING	3	3						
37	2	129150-11290	SHAFT, ROCKER ARM	1	1						
40	2	729402-11650	ARM ASSY, ROCKER	6	6						
41	3	129150-11230	SCREW, VALVE ADJUST	6	6						
43	3	129150-11750	NUT, M8	6	6						
44	2	26226-080182	STUD, M8X 18	3	3						
45	1	119625-11870	PROTECTOR, NOZZLE	3	3						
46	1	119625-11880	SEAT, NOZZLE	3	3						
47	1	119625-11900	RETAINER, NOZZLE	3	3						
48	1	26106-080252	BOLT, M8X 25 PLATED	2	2						
49	1	26106-080502	BOLT, M8X 50 PLATED	6	6						
50	1	129100-11350	BONNET ASSY, HEAD	1							
50-1	1	129100-11351	BONNET ASSY, HEAD	1							N
(A=E55405)											
50-2	1	729132-11521	BONNET ASSY, HEAD	1	1						R
(A=EXXX)											
53	2	129150-03020	COVER, BREATHER	1	1						
54	2	129150-03070	BAFFLE, BREATHER	1	1						
55	2	129150-03080	PLATE, BAFFLE	1	1						
58	2	129150-11310	GASKET, BONNET	1	1						

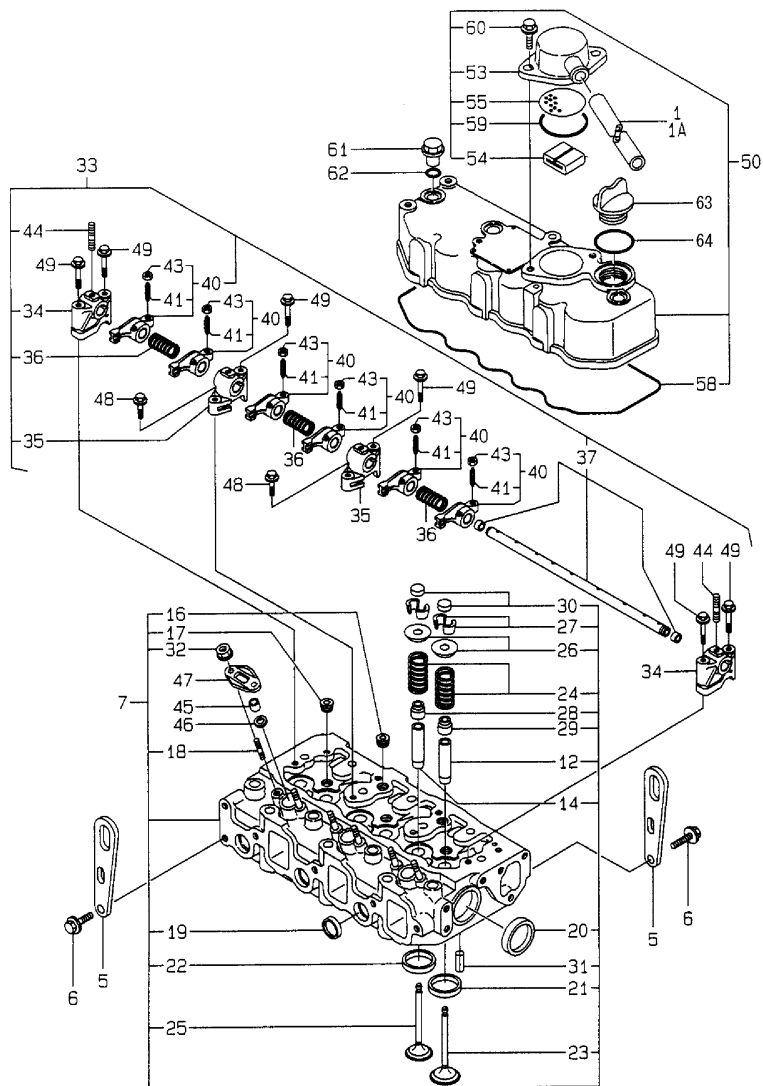
Remarks

(1) REPAIR PART.

Fig.4. CYLINDER HEAD & BONNET

Y0005781
3TNE84T-FT (2)

4 シリンダヘッド & ボンネット
CYLINDER HEAD & BONNET



(A)=3TNE84T-FT
(B)=3TNE84T-FT2
(C)=

(D)=
(E)=
(F)=

No.	Lev.	Parts No.	Description	Q'ty						I	R
				(A)	(B)	(C)	(D)	(E)	(F)		
59	2	24341-000500	O-RING, 1A50.0	1	1						
60	2	26106-080162	BOLT, M8X 16 PLATED	2	2						
61	1	124160-11360	KNOB	3	3						
62	1	24311-000120	O-RING, 1AP12.0	3	3						
63	1	124160-01751	COVER, FILLER	1	1						
64	1	24311-000320	O-RING, 1AP32.0	1	1						

Remarks
(1) REPAIR PART.

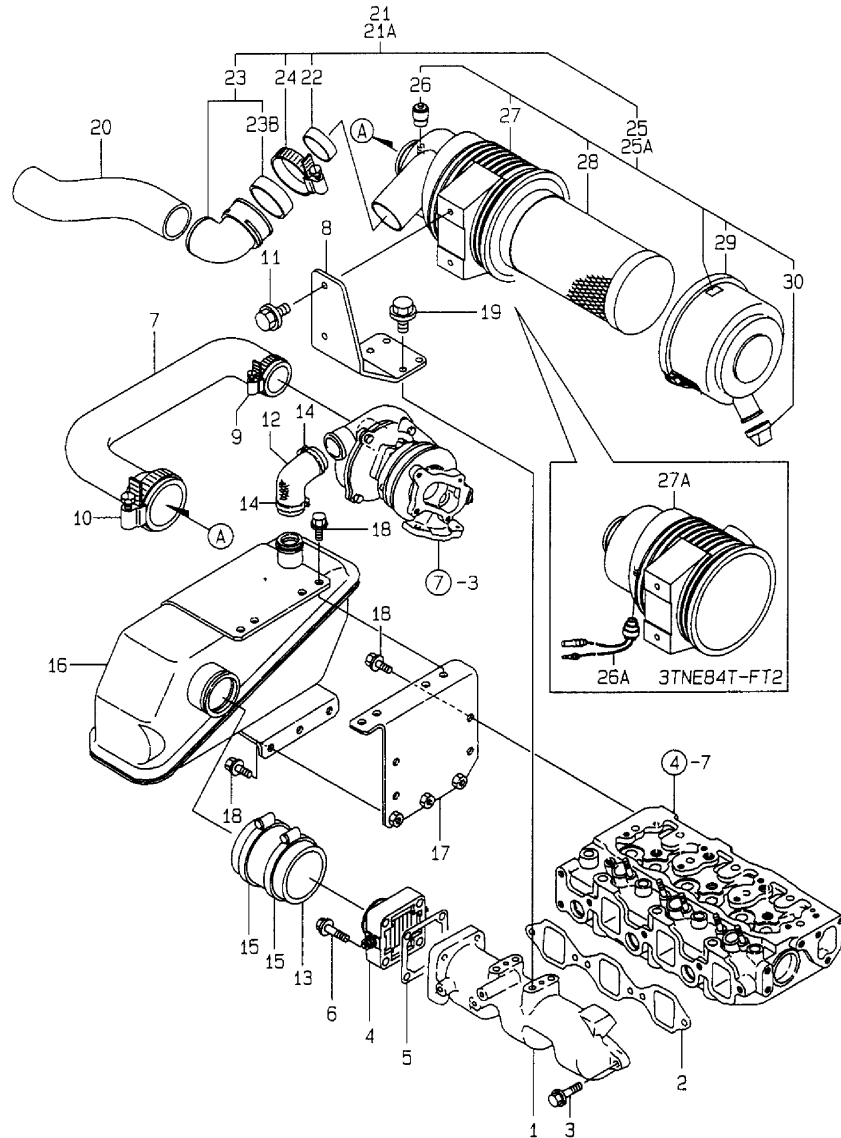
Fig.5. SUCTION MANIFOLD & AIR CLEANER

(A)=3TNE84T-FT
 (B)=3TNE84T-FT2
 (C)=

(D)=
 (E)=
 (F)=

Y00D6791
 3TNE84T-FT (2)

5 キュウキマニホールド & エアクリーナ
 SUCTION MANIFOLD & AIR CLEANER



No.	Lev.	Parts No.	Description	Q'ty						I	R
				(A)	(B)	(C)	(D)	(E)	(F)		
1	1	129122-12100	MANIFOLD, AIR INTAKE	1	1						
2	1	129150-12111	GASKET, MANIFOLD	1	1						
3	1	26106-080252	BOLT, M8X 25 PLATED	4	4						
4	1	129120-77501	HEATER	1	1						
5	1	129150-77511	GASKET	1	1						
6	1	26106-080352	BOLT, M8X 35 PLATED	4	4						
7	1	129139-12070	PIPE, AIR INTAKE	1							
7-1	1	129488-12050	PIPE, AIR INTAKE	1	1						N
(A=E55405)											
8	1	119910-12560	BRACKET, AIR CLEANER	1	1						
9	1	23000-048000	CLAMP, 48	1	1						
10	1	23000-060000	CLAMP, 60	1	1						
11	1	26013-080222	BOLT, M8X 22	2	2						
12	1	129139-12050	HOSE, WATER	1	1						
13	1	129122-12060	HOSE	1	1						
14	1	23000-041000	CLAMP, 41	2	2						
15	1	23000-060000	CLAMP, 60	2	2						
16	1	129139-12200	TANK, SURGE	1	1						
17	1	129122-12211	BRACKET	1	1						
18	1	26106-080162	BOLT, M8X 16 PLATED	11	11						
19	1	26013-080222	BOLT, M8X 22	4	4						
20	1	129132-12240	PIPE, AIR INTAKE	1	1						
21	1	129213-12500	CLEANER ASSY, AIR	1							
21A	1	129012-12540	CLEANER ASSY, AIR		1						
22	2	129259-12570	RING	1	1						
23	2	129612-12560	ELBOW	1	1						
23B	3	129612-12590	GASKET	1	1						W
(A=FROM 1ST)											
24	2	23000-060000	CLAMP, 60	1	1						
25	2	129213-12520	CLEANER ASSY, AIR	1							
25A	2	129012-12550	CLEANER ASSY, AIR		1						
26	3	126650-12680	INDICATOR	1							
26A	3	119140-12680	INDICATOR		1						
27	3	129213-12510	BODY	1							
27A	3	129012-12560	BODY, AIR CLEANER		1						
28	3	119808-12520	ELEMENT	1	1						
29	3	119866-12541	COVER ASSY	1	1						
30	3	119808-12540	VALVE, UNLOADER	1	1						

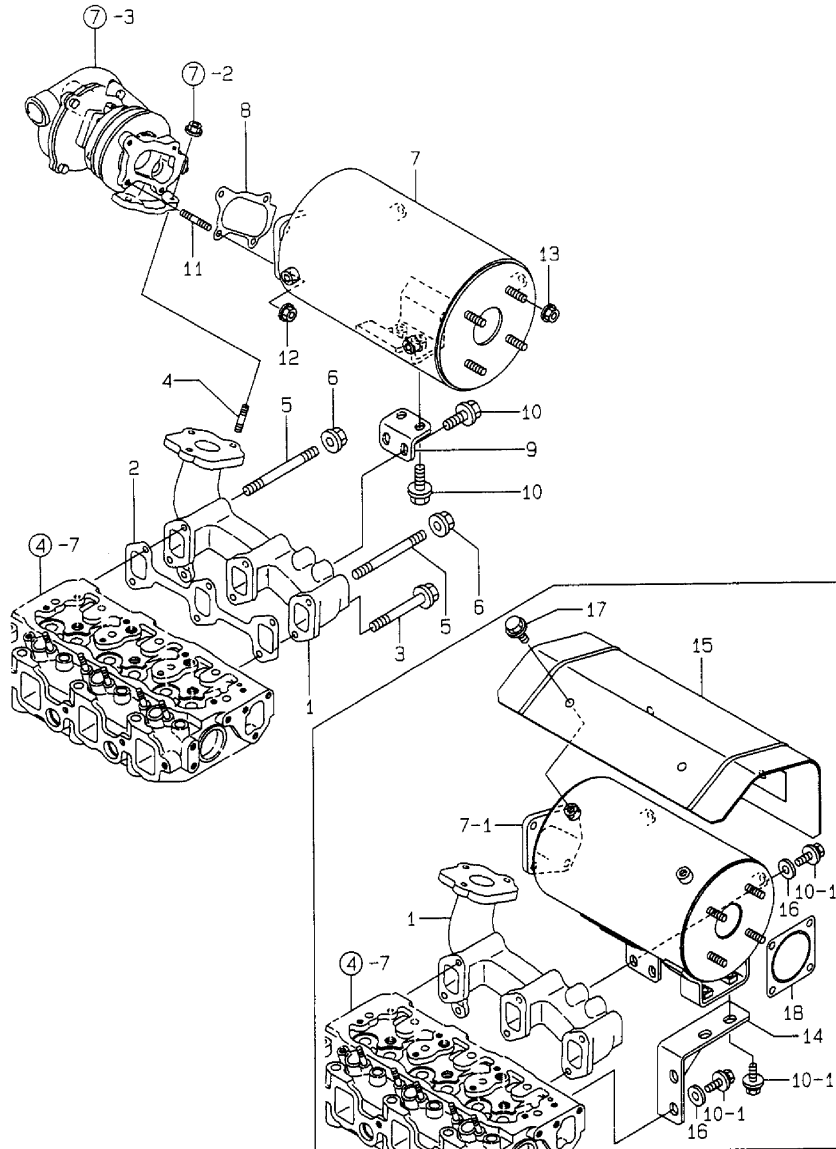
Fig.6. EXHAUST MANIFOLD & SILENCER

(A)=3TNE84T-FT
 (B)=3TNE84T-FT2
 (C)=

(D)=
 (E)=
 (F)=

Y0006781
 3TNE84T-FT (2)

6 ハイキマニホールド & サイレンサ
 EXHAUST MANIFOLD & SILENCER

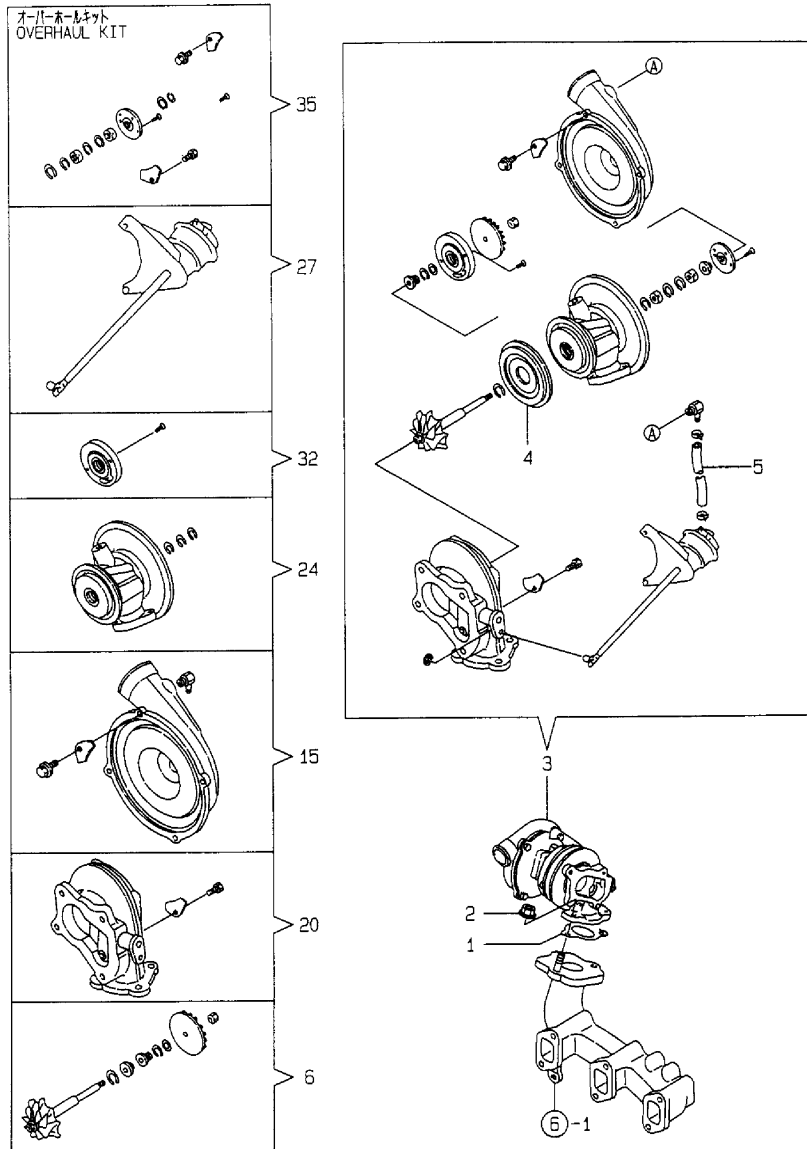


No.	Lev.	Parts No.	Description	Q'ty						I	R
				(A)	(B)	(C)	(D)	(E)	(F)		
1	1	129139-13100	MANIFOLD, EXHAUST	1	1						
2	1	129150-13110	GASKET	1	1						
3	1	26106-080802	BOLT, M8X 80 PLATED	4	4						
4	1	119131-18320	STUD, M8X22	3	3						
5	1	26216-080802	STUD, M8X 80	2	2						
6	1	26366-080002	NUT, M8	2	2						
7	1	129012-13520	SILENCER	1							
7-1	1	129012-13540	SILENCER	1	1						N
(A=FROM 1ST)											
8	1	129403-18091	GASKET	1	1						
9	1	129322-18150	BRACKET	1							Z
(A=FROM 1ST)											
10	1	26106-080142	BOLT, M8X 14 PLATED	4							
10-1	1	26014-080252	BOLT, M8X 25	6	6						N
(A=FROM 1ST)											
11	1	119131-18320	STUD, M8X22	4	4						
12	1	26366-080002	NUT, M8	4	4						
13	1	26366-080002	NUT, M8	4							
13-1	1	194990-22050	NUT, M8	4	4						N
(A=FROM 1ST)											
14	1	129012-13650	BRACKET, SILENCER	1	1						W
(A=FROM 1ST)											
15	1	129012-13612	COVER, SILENCER		1						
16	1	106500-44810	SPACER	4	4						W
(A=FROM 1ST)											
17	1	26106-080102	BOLT, M8X 10 PLATED		4						
18	1	129400-13201	GASKET, SILENCER	1	1						W
(A=FROM 1ST)											

Fig.7. TURBINE

Y0006781
3TNE84T-FT (2)

7 タービン
TURBIN



(A)=3TNE84T-FT
(B)=3TNE84T-FT2
(C)=

(D)=
(E)=
(F)=

No.	Lev.	Parts No.	Description	Q'ty						I	R
				(A)	(B)	(C)	(D)	(E)	(F)		
1	1	129477-18101	GASKET	1	1						
2	1	26366-080002	NUT, M8	3	3						
3	1	129137-18010	TURBINE, RHB31W/G	1	1						
4	2	129403-18720	PROTECTOR, HEAT	1	1						
5	2	129403-18750	HOSE	1	1						
6	2	129403-18770	ROTOR ASSY, TURBO	1	1						
15	2	129403-18780	HOUSING ASSY, BLOWER	1	1						
20	2	XNB139825	HOUSING ASSY, TURBO	1	1						
24	2	129403-18800	HOUSING ASSY, BEARING	1	1						
27	2	XNB139826	CONTROL ASSY	1	1						
32	2	XNB139815	SEAL PLATE ASSY	1	1						
35	2	XNB139827	OVERHAUL KIT	1	1						

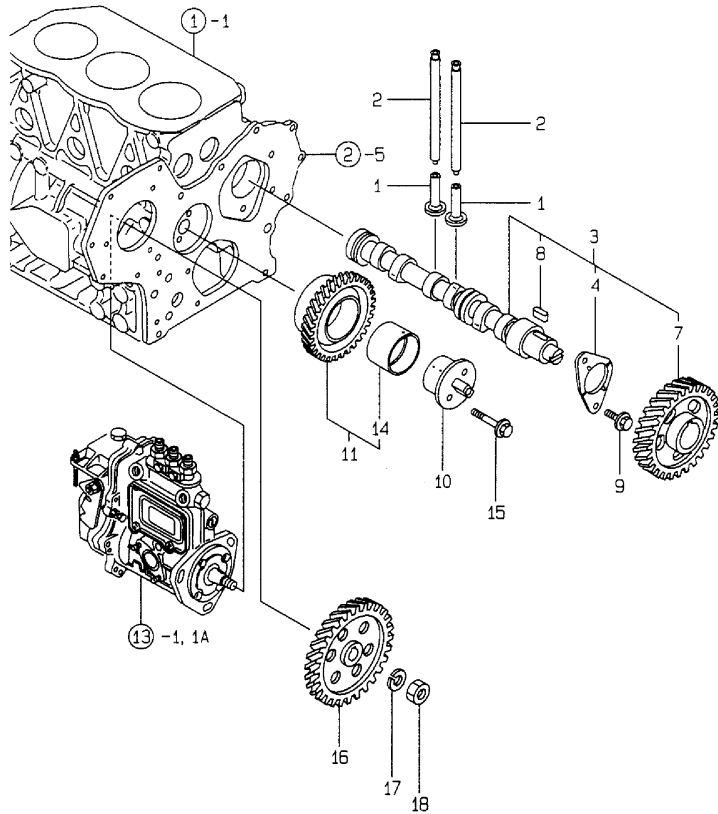
Fig.8. CAMSHAFT & DRIVING GEAR

(A)=3TNE84T-FT
 (B)=3TNE84T-FT2
 (C)=

(D)=
 (E)=
 (F)=

Y0006781
 3TNE84T-FT (2)

カムシャフト & フドウギヤ
 CAMSHAFT & DRIVING GEAR



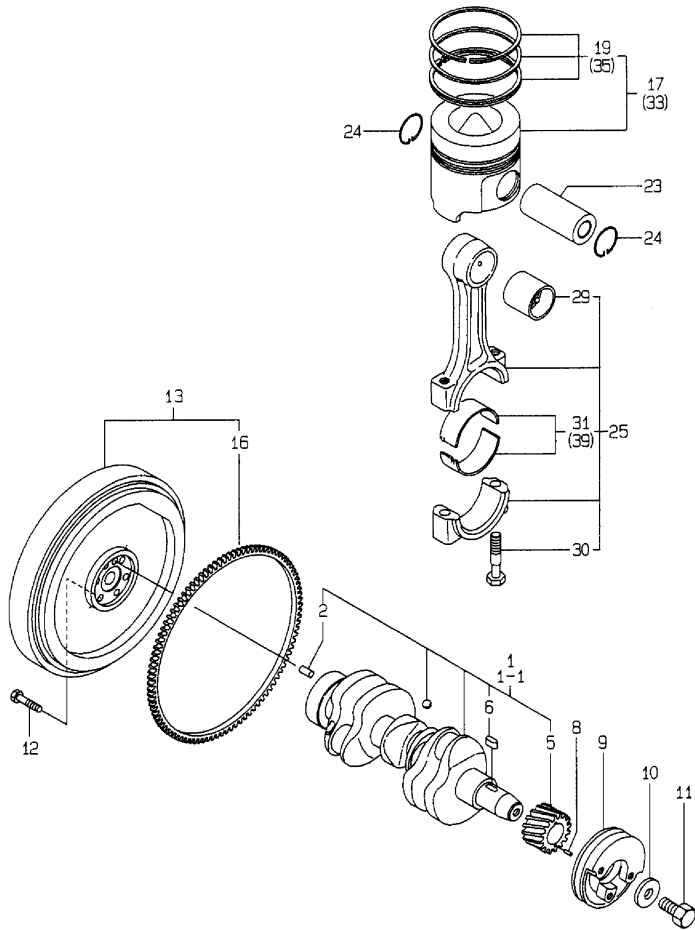
No.	Lev.	Parts No.	Description	Q'ty						I	R
				(A)	(B)	(C)	(D)	(E)	(F)		
1	1	129150-14200	TAPPET	6	6						
2	1	129150-14400	ROD, PUSH L=178	6	6						
3	1	129129-14580	CAMSHAFT ASSY	1	1						
4	2	129150-02450	BEARING, THRUST	1	1						
7	2	129150-14101	GEAR, CAMSHAFT	1	1						
8	2	22512-070140	KEY, 7X 14	1	1						
9	1	26106-080142	BOLT, M8X 14 PLATED	2	2						
10	1	129100-25061	SHAFT, IDLE	1	1						
11	1	129150-25101	GEAR ASSY, IDLE	1	1						
14	2	129150-25920	BUSH, IDLE GEAR	1	1						1
15	1	26106-080452	BOLT, M8X 45 PLATED	2	2						
16	1	129150-25900	GEAR, PUMP	1	1						
17	1	22217-120000	WASHER, SPRING 12	1	1						
18	1	26716-120002	NUT, M12	1	1						

Remarks
 (1) REPAIR PART.

Fig.9. CRANKSHAFT & PISTON

Y0005791
37NE84T-FT (2)

9 クランクシャフト & ピストン
CRANKSHAFT & PISTON



(A)=3TNE84T-FT
(B)=3TNE84T-FT2
(C)=

(D)=
(E)=
(F)=

No.	Lev.	Parts No.	Description	Q'ty						I	R
				(A)	(B)	(C)	(D)	(E)	(F)		
1	1	129001-21000	CRANKSHAFT ASSY	1							
1-1	1	129001-21100	CRANKSHAFT ASSY	1	1						S
(A=E55406)											
2	2	129100-01580	PIN, M8X16	1	1						
5	2	129150-21200	GEAR, CRANKSHAFT	1	1						
6	2	22512-070140	KEY, 7X 14	1	1						
8	1	22351-040010	PIN, SPRING 4.0X10	1	1						
9	1	171340-21650	V-PULLEY	1	1						
10	1	129795-21661	WASHER	1	1						
11	1	121850-21680	BOLT	1	1						
12	1	121111-21501	BOLT, FLYWHEEL	6	6						
13	1	171350-21590	FLYWHEEL ASSY	1	1						
16	2	124550-21600	GEAR, RING	1	1						
17	1	129002-22090	PISTON ASSY	3	3						
19	2	129002-22510	RING SET, PISTON	3	3						
23	1	129202-22300	PIN, PISTON D26 L70	3	3						
24	1	22252-000260	RING, 26	6	6						
25	1	729402-23100	ROD ASSY, CONNECTING	3	3						
29	2	129100-23910	BEARING, PISTON PIN	3	3						1
30	2	121550-23200	BOLT, CONNECTING ROD	6	6						
31	2	129150-23600	BEARING, CRANK PIN	3	3						
33	1	129002-22910	PISTON ASSY, 0.25 OS	3	3						2
35	2	129002-22960	RING SET, 0.25 OS	3	3						2
39	1	129150-23610	BEARING, 0.25 US	3	3						3

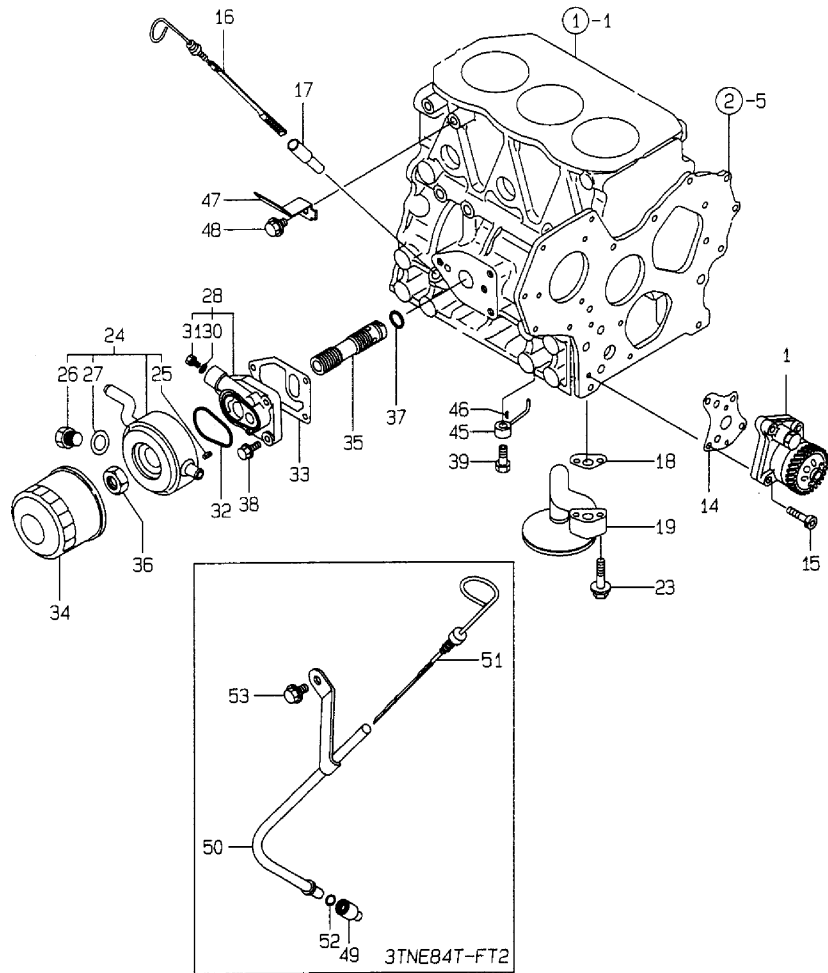
Remarks

- (1) REPAIR PART.
- (2) OVER-SIZE(O.S=0.25)PART.
- (3) UNDER-SIZE(U.S=0.25)PART.

Fig.10. LUB.OIL SYSTEM

Y00D6791
3TNE84T-FT (2)

10 10システム
LUB.OIL SYSTEM



(A)=3TNE84T-FT
(B)=3TNE84T-FT2
(C)=

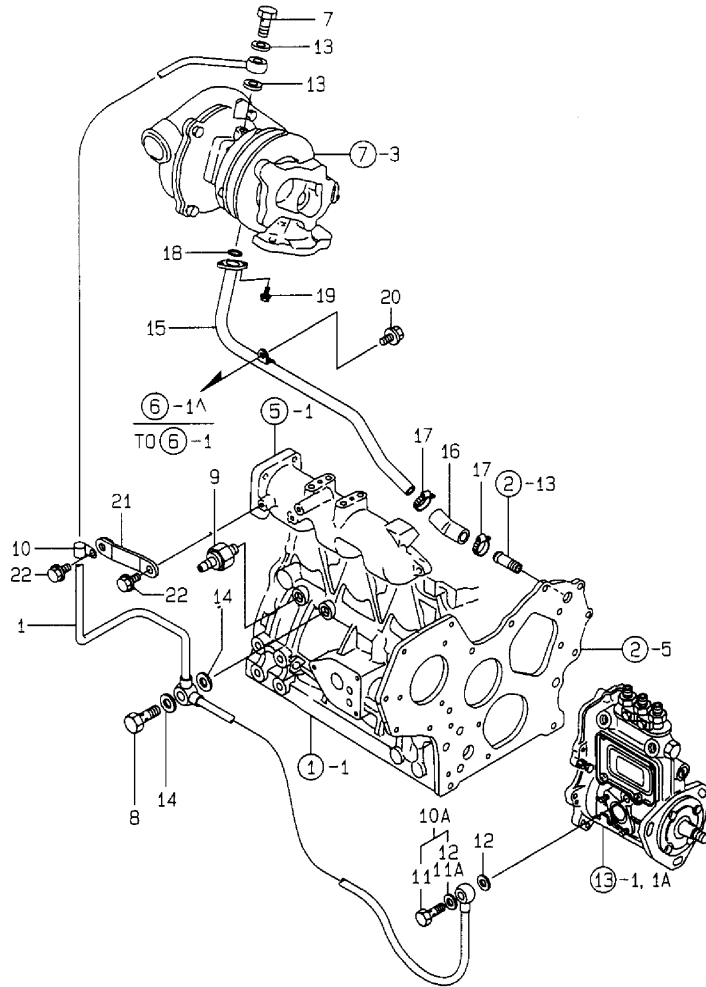
(D)=
(E)=
(F)=

No.	Lev.	Parts No.	Description	Q'ty						I	R
				(A)	(B)	(C)	(D)	(E)	(F)		
1	1	129418-32000	PUMP ASSY, OIL	1	1						
14	1	129150-32020	GASKET, PUMP	1	1						
15	1	26450-060252	BOLT, M6X 25	4	4						
16	1	171420-34800	DIPSTICK, OIL	1							
17	1	121520-34810	GUIDE, DIPSTICK	1							
18	1	129150-35041	GASKET	1	1						
19	1	129135-35090	PIPE ASSY, OIL INLET	1	1						
23	1	26106-080352	BOLT, M8X 35 PLATED	2	2						
24	1	129012-33000	COOLER ASSY, OIL	1	1						
25	2	129120-33040	PIN	2	2						
26	2	129120-33051	PLUG, DRAIN	1	1						
27	2	129120-33060	GASKET	1	1						
28	1	129120-35001	BRACKET ASSY	1	1						
30	2	23414-100000	GASKET, 10X1.0	1	1						
31	2	23881-100002	PLUG, 10	1	1						
32	1	129120-35110	GASKET	1	1						
33	1	129120-35121	GASKET	1	1						
34	1	129150-35151	FILTER, D80XL80	1	1						
35	1	129407-35300	BOLT, FILTER	1	1						
36	1	129150-35350	NUT	1	1						
37	1	24311-000160	O-RING, 1AP16.0	1	1						
38	1	26106-080252	BOLT, M8X 25 PLATED	3	3						
39	1	129792-39410	VALVE ASSY, CHECK	3	3						
45	1	129553-39650	NOZZLE	3	3						
46	1	22351-030010	PIN, SPRING 3.0X10	3	3						
47	1	129136-66852	SUPPORT	1	1						
48	1	26106-080122	BOLT, M8X 12 PLATED	1							Z
(A=FROM 1ST)											
49	1	119260-34810	GUIDE, DIPSTICK		1						
50	1	129012-34810	GUIDE, DIPSTICK		1						
51	1	129612-34850	DIPSTICK, OIL		1						
52	1	24311-240100	O-RING, 1AP10A		1						
53	1	26106-080162	BOLT, M8X 16 PLATED		1						

Fig.11. LUB.OIL LINE

Y00D6781
3TNE84T-FT (2)

11 LUB.OIL LINE



(A)=3TNE84T-FT
(B)=3TNE84T-FT2
(C)=

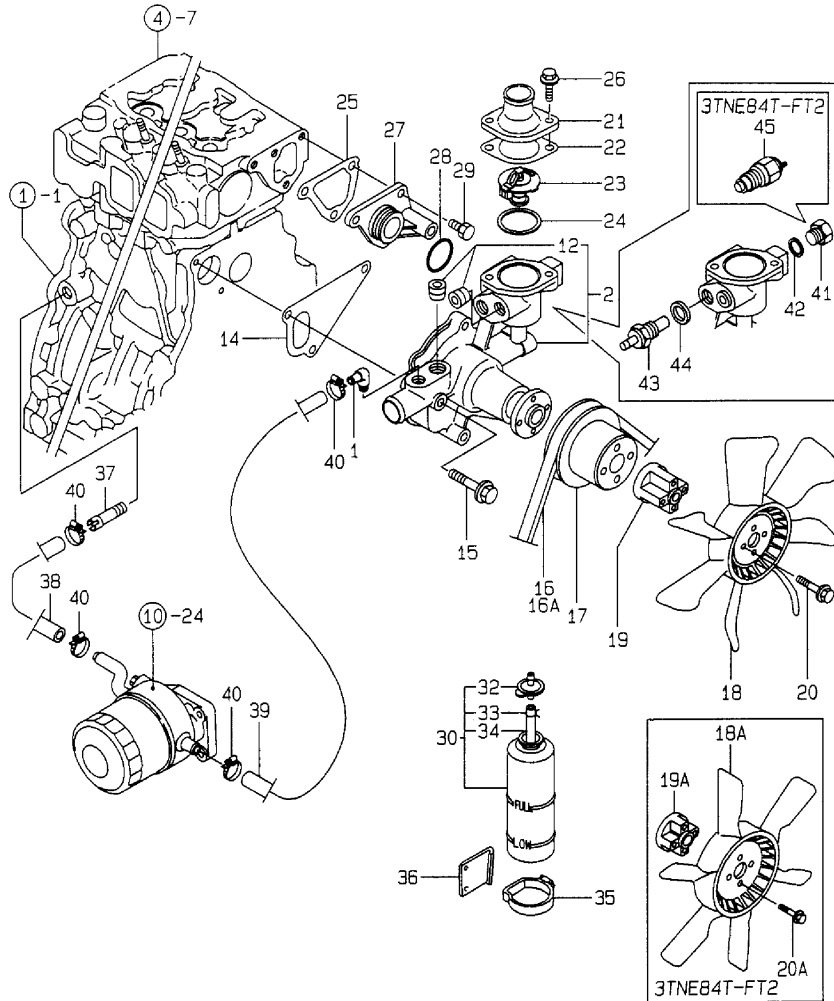
(D)=
(E)=
(F)=

No.	Lev.	Parts No.	Description	Qty						I	R
				(A)	(B)	(C)	(D)	(E)	(F)		
1	1	129139-39030	PIPE ASSY, OIL	1	1						
7	1	105010-39140	BOLT, PIPE JOINT	1	1						
8	1	124160-39140	BOLT, PIPE JOINT M10	1	1						
9	1	121252-39450	SWITCH, 0.5KG	1	1						
10	1	124223-39900	RETAINER	1	1						
10A	1	124550-59830	BOLT ASSY, JOINT M8	1	1						W
(A=E43432)											
11	2	124550-59820	BOLT, PIPE JOINT M8	1	1						
11A	2	22190-080002	WASHER, SEAL 6	1	1						W
(A=E43432)											
12	1	22190-080002	WASHER, SEAL 6	2							
12-1	1	22190-080002	WASHER, SEAL 6	1	1						K
(A=E43432)											
13	1	23414-080000	GASKET, 8X1.0	2	2						
14	1	23414-100000	GASKET, 10X1.0	2							
14-1	1	22190-100002	WASHER, SEAL 10	2	2						N
(A=E55405)											
15	1	129139-39601	PIPE, OIL	1	1						
16	1	129403-39610	JOINT, RUBBER	1	1						
17	1	23000-022000	CLAMP, 22	2	2						
18	1	24314-000160	O-RING, 4CP16.0	1	1						
19	1	26106-060162	BOLT, M6X 16 PLATED	2	2						
20	1	26106-080122	BOLT, M8X 12 PLATED	1	1						
21	1	129012-39910	SUPPORT	1	1						
22	1	26106-080162	BOLT, M8X 16 PLATED	2	2						

Fig.12. COOLING WATER SYSTEM

Y0006781
3TNE84T-FT (2)

12 CWシステム
COOLING WATER SYSTEM



(A)=3TNE84T-FT
(B)=3TNE84T-FT2
(C)=

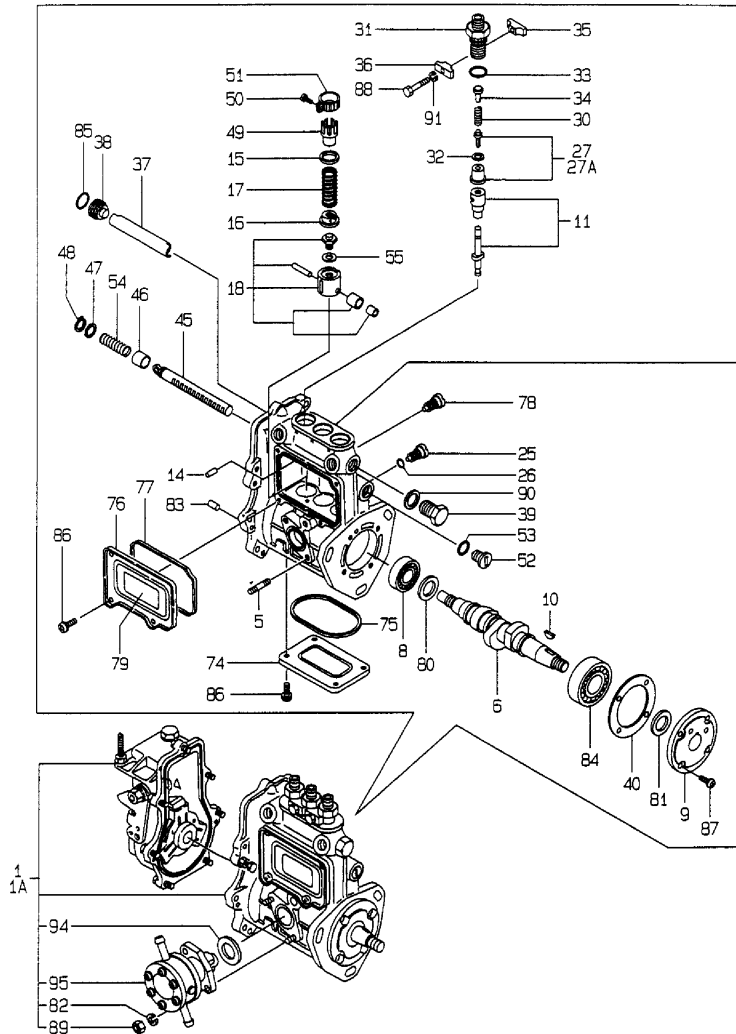
(D)=
(E)=
(F)=

No.	Lev.	Parts No.	Description	Q'ty						I	R
				(A)	(B)	(C)	(D)	(E)	(F)		
1	1	129103-49301	ELBOW, PT1/4	1	1						
2	1	129001-42002	PUMP ASSY, WATER	1							
2-1	1	129001-42003	PUMP ASSY, WATER	1	1						N
(A=E55405)											
12	2	23871-030000	PLUG, R03	2							
12-1	2	23876-030000	PLUG, R03	2	2						N
(A=E55405)											
14	1	129100-42020	GASKET, WATER PUMP	1							
14-1	1	129486-42021	GASKET, WATER PUMP	1	1						N
(A=E55405)											
15	1	26106-080602	BOLT, M8X 60 PLATED	3	3						
16	1	25132-003700	V-BELT, A37	1							
16A	1	25132-003800	V-BELT, A38		1						
17	1	129155-42350	V-PULLEY	1	1						
18	1	121267-44741	FAN, COOLING D=360	1							
18A	1	171440-44740	FAN, COOLING D350XQF		1						
19	1	119256-44760	SPACER, FAN	1							
19A	1	171353-44760	SPACER, FAN		1						
20	1	26106-060602	BOLT, M6X 60 PLATED	4							
20A	1	26106-060352	BOLT, M6X 35 PLATED		4						
21	1	129350-49530	COVER, THERMOSTAT	1	1						
22	1	129795-49551	GASKET	1	1						
23	1	129155-49800	THERMOSTAT, 71	1	1						
24	1	129150-49811	GASKET, THERMOSTAT	1	1						
25	1	129100-49840	GASKET	1							
25-1	1	124395-49840	GASKET	1	1						N
(A=E55405)											
26	1	26106-080222	BOLT, M8X 22 PLATED	2	2						
27	1	129001-42040	JOINT	1	1						
28	1	24321-000300	O-RING, 1AG30.0	1							
28-1	1	129486-42140	O-RING, G30	1	1						N
(A=E55405)											
29	1	26106-080162	BOLT, M8X 16 PLATED	3	3						
30	1	124450-44510	TANK ASSY, SUB	1	1						
32	2	124450-44530	CAP	1	1						
33	2	124450-44560	RETAINER	1	1						
34	2	23061-070230	PIPE, 7X 230	1	1						
35	1	124450-44550	BAND	1	1						
36	1	121256-44600	BRACKET, SUB TANK	1	1						
37	1	129122-44480	JOINT	1	1						
38	1	129012-49030	HOSE, WATER	1	1						
39	1	129403-49050	PIPE, WATER	1	1						
40	1	23000-022000	CLAMP, 22	4	4						
41	1	121450-42450	PLUG, M16	1							
42	1	124465-44950	GASKET, 16	1	1						
43	1	171056-49351	SENSOR	1	1						
44	1	129150-49360	GASKET	1	1						
45	1	121250-44901	SWITCH, 110	1							

Fig.13. FUEL INJECTION PUMP

Y00D6781
3TNE84T-FT (2)

13 FOフンシャポンプ
FUEL INJECTION PUMP



(A)=3TNE84T-FT
(B)=3TNE84T-FT2
(C)=

(D)=
(E)=
(F)=

No.	Lev.	Parts No.	Description	Q'ty						I	R
				(A)	(B)	(C)	(D)	(E)	(F)		
1	1	729215-51371	PUMP ASSY, INJECTION	1							1
1A	1	729012-51400	PUMP ASSY, INJECTION		1						1
5	2	129155-51020	STUD	2	2						
6	2	119810-51040	CAMSHAFT	1	1						
8	2	129155-51050	BEARING, 17BM001D	1	1						
9	2	129155-51060	SUPPORT, CAMSHAFT	1	1						
10	2	122710-51090	KEY	1	1						
11	2	129470-51101	PLUNGER ASSY	3	3						
14	2	129155-51140	PIN	3	3						
15	2	174307-51170	RETAINER, SPRING A	3	3						
16	2	129155-51180	RETAINER, SPRING	3	3						
17	2	124950-51190	SPRING, PLUNGER	3	3						
18	2	129155-51200	TAPPET ASSY	3	3						
25	2	129155-51270	STOPPER, TAPPET	3	3						
26	2	129155-51280	O-RING, S6	3	3						
27	2	129505-51300	VALVE ASSY, DELIVERY	3							
27A	2	105300-51300	VALVE ASSY, DELIVERY		3						
30	2	129155-51320	SPRING, DELIVERY	3	3						
31	2	129155-51340	RETAINER	3	3						
32	2	124550-51350	GASKET, DELIVERY	3	3						
33	2	124550-51370	O-RING	3	3						
34	2	129155-51370	STOPPER, VALVE	3	3						
35	2	129155-51380	STOPPER	2	2						
36	2	129155-51390	STOPPER	2	2						
37	2	129155-51400	DEFLECTOR	1	1						
38	2	129155-51410	BOLT	1	1						
39	2	129155-51420	PLUG, M16	1	1						
40	2	129155-51450	SHIM SET, ADJUSTING	1	1						
45	2	129155-51500	RACK, CONTROL	1	1						
46	2	129155-51521	BUSH, RACK	1	1						
47	2	129155-51530	SPACER	1	1						
48	2	129155-51540	CIRCLIP	1	1						
49	2	129155-51550	PINION, CONTROL	3	3						
50	2	122117-51560	SCREW	3	3						
51	2	174307-51560	PINION	3	3						
52	2	129155-51570	PLUG, M12	1	1						
53	2	129155-51580	O-RING	1	1						
54	2	129155-51591	SPRING, RACK	1	1						
55	2	129155-51600	SHIM SET, ADJUSTING	3	3						
74	2	129155-51700	COVER	1							
74-1	2	129155-51701	COVER	1	1						N
(A=E55405)											
75	2	129155-51710	GASKET	1							
75-1	2	129155-51711	GASKET	1	1						N
(A=E55406)											
76	2	129155-51750	COVER	1							
76-1	2	129155-51751	COVER	1	1						N
(A=E55405)											
77	2	129155-51760	GASKET	1	1						
78	2	129155-51790	STOOPER, RACK	1	1						
79	2	129156-51910	LABEL, CAUTION	1	1						

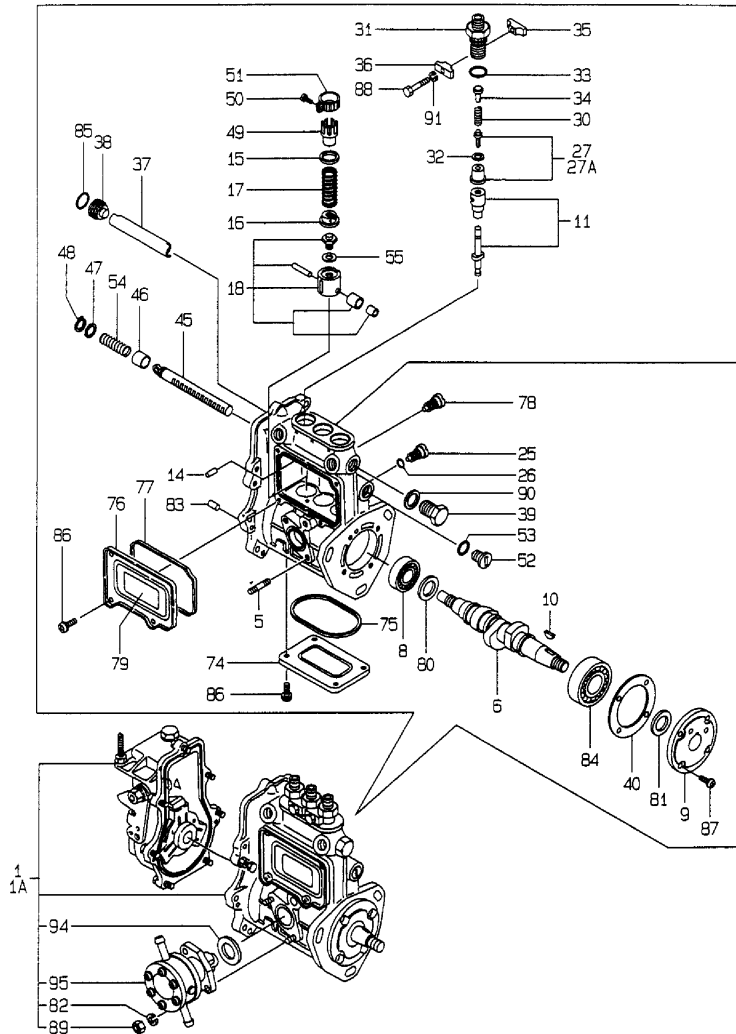
Remarks

(1) GOVERNOR(FIG.NO.14)IS INCORPORATED IN THIS FUEL INJECTION PUMP. (REF.NO.1,1A).

Fig.13. FUEL INJECTION PUMP

Y00D6781
3TNE84T-FT (2)

13 FOフンシャポンプ FUEL INJECTION PUMP



(A)=3TNE84T-FT
(B)=3TNE84T-FT2
(C)=

(D)=
(E)=
(F)=

No.	Lev.	Parts No.	Description	Q'ty						I	R
				(A)	(B)	(C)	(D)	(E)	(F)		
80	2	129155-51930	SPACER, T=3.25	1	1						
81	2	129155-51940	SPACER, T=1.5	1	1						
82	2	22217-060000	WASHER, SPRING 6	2	2						
83	2	22351-050010	PIN, SPRING 5.0X10	2	2						
84	2	24101-063034	BEARING, BALL 6303	1	1						
85	2	24341-000160	O-RING, 1AS16.0	1	1						
86	2	26022-050102	SCREW, M5X10	8							
86-1	2	26022-050122	SCREW, M5X12	8	8						N
(A=E55405)											
87	2	26022-060162	SCREW, M6X16	4	4						
88	2	26116-050302	BOLT, M5X 30 PLATED	2	2						
89	2	26716-060002	NUT, M6	2	2						
90	2	22190-160002	WASHER, SEAL 16	1	1						
91	2	22217-050000	WASHER, SPRING 5	2	2						
94	2	129155-52050	GASKET	1	1						
95	2	129100-52100	PUMP ASSY, FUEL FEED	1	1						

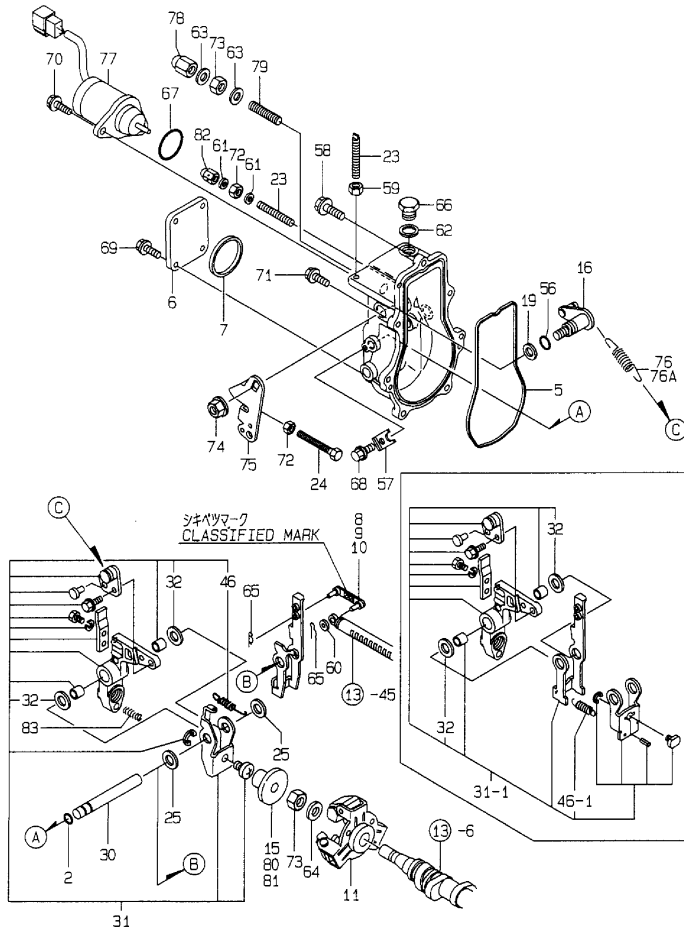
Remarks

(1) GOVERNOR(FIG.NO.14)IS INCORPORATED IN THIS FUEL INJECTION PUMP.
(REF.NO.1,1A).

Fig.14. GOVERNOR

Y0006781
3TNE84T-FT (2)

14 加付
GOVERNOR



Remarks

- (1) SELECTIVE PARTS: CERTAIN THE CLASSIFICATION MARK, THEN PLACE YOUR ORDER.(REFER TO ILLUSTRATION).
- (2) SELECTIVE PARTS.
- * THIS FIGURE(GOVERNOR ASSY)IS INCORPORATED IN THE FUEL INJECTION PUMP ASSY(FIG.13).

(A)=3TNE84T-FT
(B)=3TNE84T-FT2
(C)=

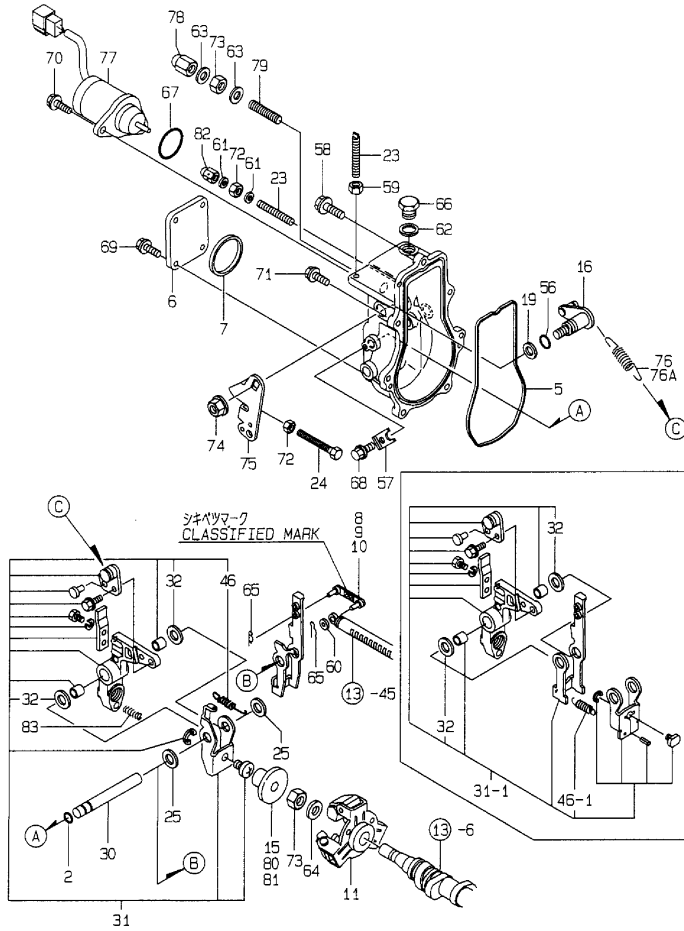
(D)=
(E)=
(F)=

No.	Lev.	Parts No.	Description	Q'ty						I	R
				(A)	(B)	(C)	(D)	(E)	(F)		
2	2	129155-51280	O-RING, S6	1	1						
5	2	129052-61050	GASKET	1	1						
6	2	129052-61060	COVER, GOVERNOR CASE	1	1						
7	2	129052-61070	GASKET	1	1						
8	2	129155-61120	LINK, L=30 MARK 0	1	1						1
9	2	129155-61130	LINK, L=31 MARK 1	1	1						1
10	2	129155-61140	LINK, L=30.5 MARK 05	1	1						1
11	2	129155-61201	WEIGHT ASSY,GOVERNOR	1							
11-1	2	129155-61202	WEIGHT ASSY,GOVERNOR	1	1						R
(A=E55405)											
15	2	129155-61341	SLEEVE	1	1						2
16	2	129100-61400	SHAFT ASSY	1	1						
19	2	129155-61430	SPACER	1	1						
23	2	129155-61450	BOLT, LIMITER	2	2						
24	2	129155-61460	BOLT, IDLE	1	1						
25	2	129155-61480	SPACER ASSY	2	2						
30	2	129052-61390	SHAFT	1	1						
31	2	129052-61500	LEVER ASSY, GOVERNOR	1							
31-1	2	119908-61501	LEVER ASSY, GOVERNOR	1	1						R
(A=E55406)											
32	3	174307-51700	SHIM SET	2	2						
46	3	129052-61540	SPRING, SET	1							
46-1	3	129486-61540	SPRING, SET	1	1						S
(A=E55406)											
56	2	129155-61830	O-RING, S10	1	1						
57	2	119660-61901	RETAINER, SHAFT	1	1						
58	2	129155-61950	BOLT	1	1						
59	2	124550-66370	NUT, M6	1	1						
60	2	22117-040000	WASHER, 4	1	1						
61	2	22190-060003	SEAL WASER 6	2	2						
62	2	22190-100002	WASHER, SEAL 10	1	1						
63	2	22190-120002	WASHER, SEAL 12	2	2						
64	2	22287-120000	WASHER, 12	1	1						
65	2	22372-040000	PIN, SNAP 4	2	2						
66	2	23887-100002	PLUG, 10	1	1						
67	2	24341-000280	O-RING, 1AS28.0	1	1						
67-1	2	158552-61900	O-RING	1	1						N
(A=EXXXXX) (B=EXXXXX)											
68	2	26106-060102	BOLT, M6X 10 PLATED	1	1						
69	2	26106-060102	BOLT, M6X 10 PLATED	4	4						
70	2	26106-060142	BOLT, M6X 14 PLATED	2	2						
71	2	26106-060202	BOLT, M6X 20 PLATED	6	6						
72	2	26756-060002	NUT, LOCK M6	2	2						
73	2	26776-120002	NUT, LOCK M12	2	2						
74	2	26366-080002	NUT, M8	1	1						
75	2	129100-61440	LEVER, CONTROL	1	1						
76	2	129489-61700	SPRING, GOVERNOR	1							
76A	2	171353-61710	SPRING, GOVERNOR		1						
77	2	119233-77931	SOLENOID, STOP	1	1						
78	2	26687-120002	NUT, CAP M12	1							
78-1	2	129100-61930	NUT, CAP	1	1						N

Fig.14. GOVERNOR

Y00D6781
3TNE84T-FT (2)

14 加付 GOVERNOR



Remarks

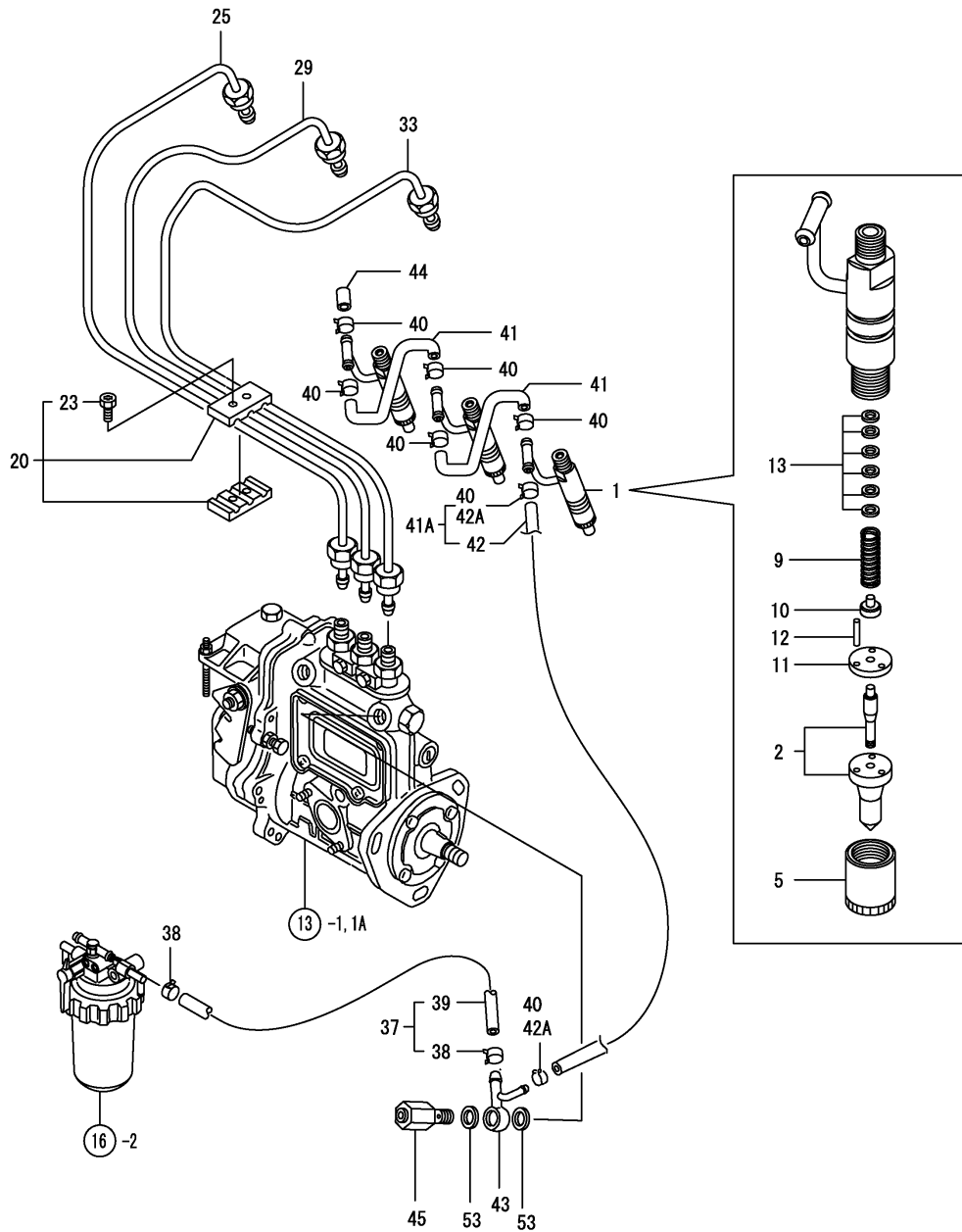
- (1) SELECTIVE PARTS: CERTAIN THE CLASSIFICATION MARK, THEN PLACE YOUR ORDER.(REFER TO ILLUSTRATION).
- (2) SELECTIVE PARTS.
* THIS FIGURE(GOVERNOR ASSY)IS INCORPORATED IN THE FUEL INJECTION PUMP ASSY(FIG.13).

(A)=3TNE84T-FT
(B)=3TNE84T-FT2
(C)=

(D)=
(E)=
(F)=

No.	Lev.	Parts No.	Description	Q'ty						I	R
				(A)	(B)	(C)	(D)	(E)	(F)		
(A=E XXX)											
79	2	129155-61470	BOLT, CONTROL	1	1						
80	2	129155-61350	SLEEVE, L=24.9	1	1					2	
81	2	129155-61360	SLEEVE, L=25.2	1	1					2	
82	2	119600-66840	NUT, CAP	1	1						
83	2	129100-61650	SPRING, CONTROLLER	1	1						

Fig.15. FUEL INJECTION VALVE



(A)=3TNE84T-FT
 (B)=3TNE84T-FT2
 (C)=

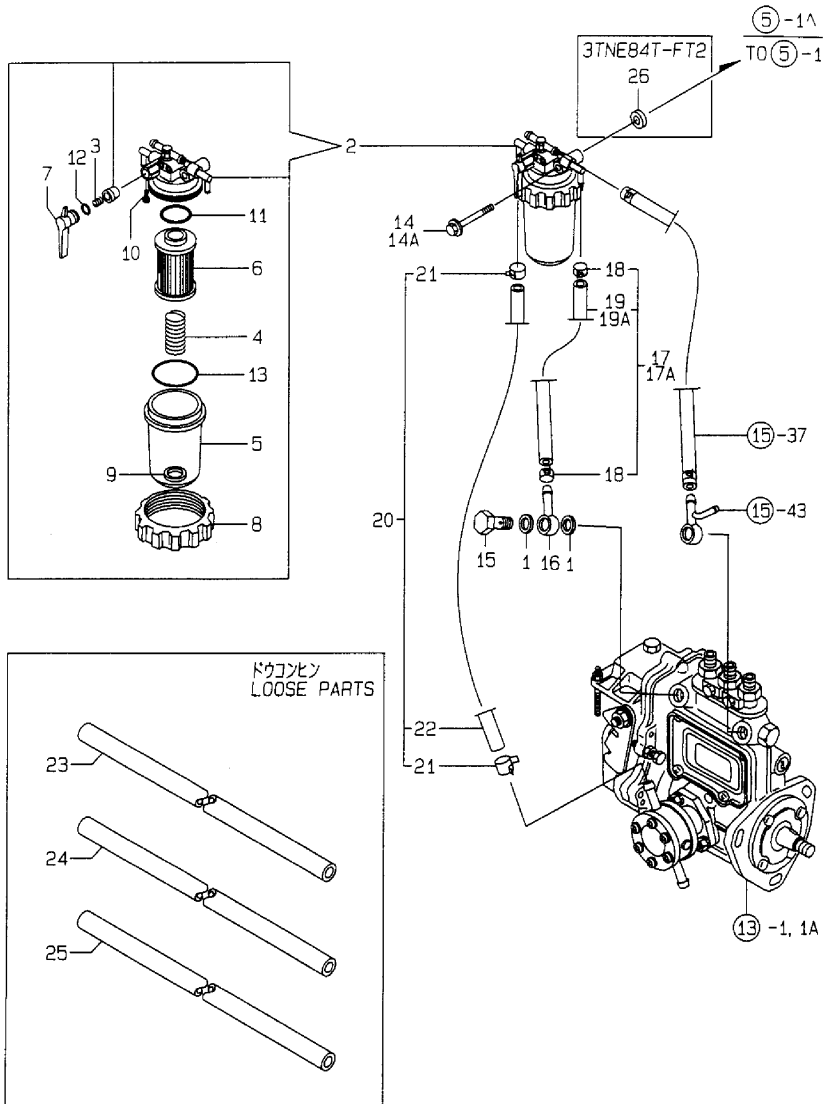
(D)=
 (E)=
 (F)=

No.	Lev.	Parts No.	Description	Q'ty						I	R
				(A)	(B)	(C)	(D)	(E)	(F)		
1	1	729503-53200	VALVE ASSY,INJECTION	3	3						
2	2	129503-53050	VALVE ASSY,INJECTION	3	3						
5	2	114250-53080	NUT, NOZZLE D16.95	3	3						
9	2	114250-53120	SPRING, NOZZLE	3	3						
10	2	114250-53130	SEAT, SPRING	3	3						
11	2	114250-53140	PLATE	3	3						
12	2	114250-53210	PIN	6	6						
13	2	114250-53400	SHIM SET	3	3						
20	1	129150-59120	RETAINER, PIPE	1	1						
23	2	129150-59131	BOLT, M4X14	2	2						
25	1	129211-59810	PIPE ASSY, INJECTION	1	1						
29	1	129211-59820	PIPE ASSY, INJECTION	1	1						
33	1	129211-59830	PIPE ASSY, INJECTION	1	1						
37	1	129210-59130	PIPE ASSY, FUEL	1	1						
38	2	124766-59050	CLIP, HOSE 12	2	2						
39	2	105025-59750	PIPE, FUEL	1	1						
40	1	124066-59100	CLIP, HOSE 8	7							
40-1	1	124066-59100	CLIP, HOSE 8	5	5						K
(A=E55405)											
41	1	121250-59550	PIPE, FUEL D8X120	2	2						
41A	1	119840-59500	PIPE ASSY, RETURN	1	1						W
(A=E55405)											
42	2	119840-59560	PIPE, FUEL RETURN	1	1						
42A	2	124066-59100	CLIP, HOSE 8	2	2						W
(A=E55405)											
43	1	119840-59570	JOINT	1	1						
44	1	129150-59580	CAP	1	1						
45	1	129100-59951	VALVE ASSY, CHECK	1	1						
53	1	23414-120000	GASKET, 12X1.0	2							
53-1	1	22190-120002	WASHER, SEAL 12	2	2						N
(A=E55405)											

Fig.16. FUEL LINE

Y0006781
3TNE84T-FT (2)

16 F0117
FUEL LINE



ドクコンピ
LOOSE PARTS

(A)=3TNE84T-FT
(B)=3TNE84T-FT2
(C)=

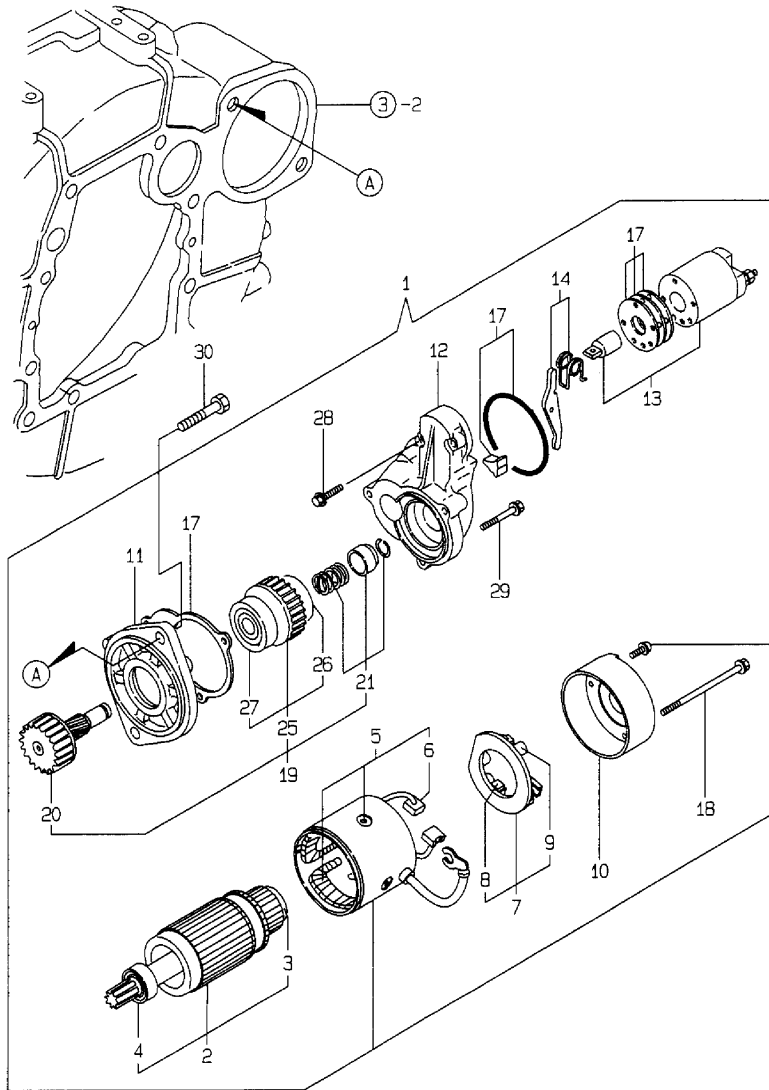
(D)=
(E)=
(F)=

No.	Lev.	Parts No.	Description	Qty						I	R
				(A)	(B)	(C)	(D)	(E)	(F)		
1	1	22190-120002	WASHER, SEAL 12	2	2						
2	1	129612-55620	FILTER ASSY, FUEL	1	1						
3	2	104200-55330	SPRING, VALVE	1	1						
4	2	105900-55330	SPRING	1	1						
5	2	129612-55510	CUP	1	1						
6	2	129100-55650	ELEMENT	1	1						
7	2	129100-55670	LEVER	1	1						
8	2	129100-55690	RING, RETAINING	1	1						
9	2	121257-55731	FLOAT	1	1						
10	2	104200-55750	SCREW, M4	1	1						
11	2	24311-000160	O-RING, 1AP16.0	1	1						
12	2	24311-240100	O-RING, 1AP10A	1	1						
13	2	24321-000650	O-RING, 1AG65.0	1	1						
14	1	26014-080702	BOLT, M8X 70	1							
14A	1	26014-080852	BOLT, M8X 85		1						
15	1	103854-39140	BOLT, PIPE JOINT	1	1						
16	1	101304-59020	JOINT, PIPE 12	1	1						
17	1	129210-59030	PIPE ASSY, FUEL	1							
17A	1	129210-59020	PIPE ASSY, FUEL		1						
18	2	124766-59050	CLIP, HOSE 12	2	2						
19	2	129150-59511	PIPE, FUEL	1							
19A	2	129115-59510	PIPE, FUEL		1						
20	1	129210-59130	PIPE ASSY, FUEL	1	1						
21	2	124766-59050	CLIP, HOSE 12	2	2						
22	2	105025-59750	PIPE, FUEL	1	1						
23	1	121256-59072	PIPE, FUEL OIL	3							
23-1	1	129150-49160	PIPE, WATER DRAIN	2	3						N
(A=E55405)											
24	1	105225-59511	PIPE, FUEL	1							
24-1	1	171058-59010	PIPE, FUEL	1							N
(A=E55405)											
25	1	121256-59572	PIPE, FUEL OIL	1							Z
(A=E55405)											
26	1	129411-55690	SPACER		1						

Fig.17. STARTING MOTOR

Y00D57B1
3TNE84T-FT (2)

17 スターティングモータ
STARTING MOTOR



(A)=3TNE84T-FT
(B)=3TNE84T-FT2
(C)=

(D)=
(E)=
(F)=

No.	Lev.	Parts No.	Description	Q'ty						I	R
				(A)	(B)	(C)	(D)	(E)	(F)		
1	1	129400-77012	STARTING MOTOR	1	1						
2	2	129486-77400	ARMATUER	1	1						
3	3	171008-77410	BEARING(1)	1	1						
4	3	171008-77420	BEARING(2)	1	1						
5	2	129400-77441	COIL ASSY, FIELD	1	1						
6	3	129486-77460	BRUSH	2	2						
7	2	129486-77470	HOLDER ASSY, BRUSH	1	1						
8	3	129486-77460	BRUSH	2	2						
9	3	129486-77490	SPRING,START BRUSH	4	4						
10	2	129900-77460	COVER, REAR	1	1						
11	2	171008-77510	HOUSING ASSY, GEAR	1	1						
12	2	129400-77520	HOUSING, CENTER	1	1						
13	2	129400-77531	SWITCH ASSY,MAGNETIC	1	1						
14	2	171008-77540	LEVER SET, SHIFT	1	1						
17	2	129400-77571	DUST COVER,(NON-ASB.	1	1						
18	2	129900-77640	BOLT, THROUGHT	2	2						
19	2	171008-77650	PINION ASSY	1	1						
20	3	171008-77660	SHAFT, PINION	1	1						
21	3	171008-77670	STOPPER SET, PINION	1	1						
25	3	X2114555500	CLUTCH ASSY	1	1						
26	4	X2114955020	BALL BEARING	1	1						
27	4	X2240410100	BEARING, BALL	1	1						
28	2	26106-060322	BOLT, M6X 32 PLATED	2	2						
29	2	26106-060402	BOLT, M6X 40 PLATED	3	3						
30	1	26116-120252	BOLT, M12X 25 PLATED	2	2						

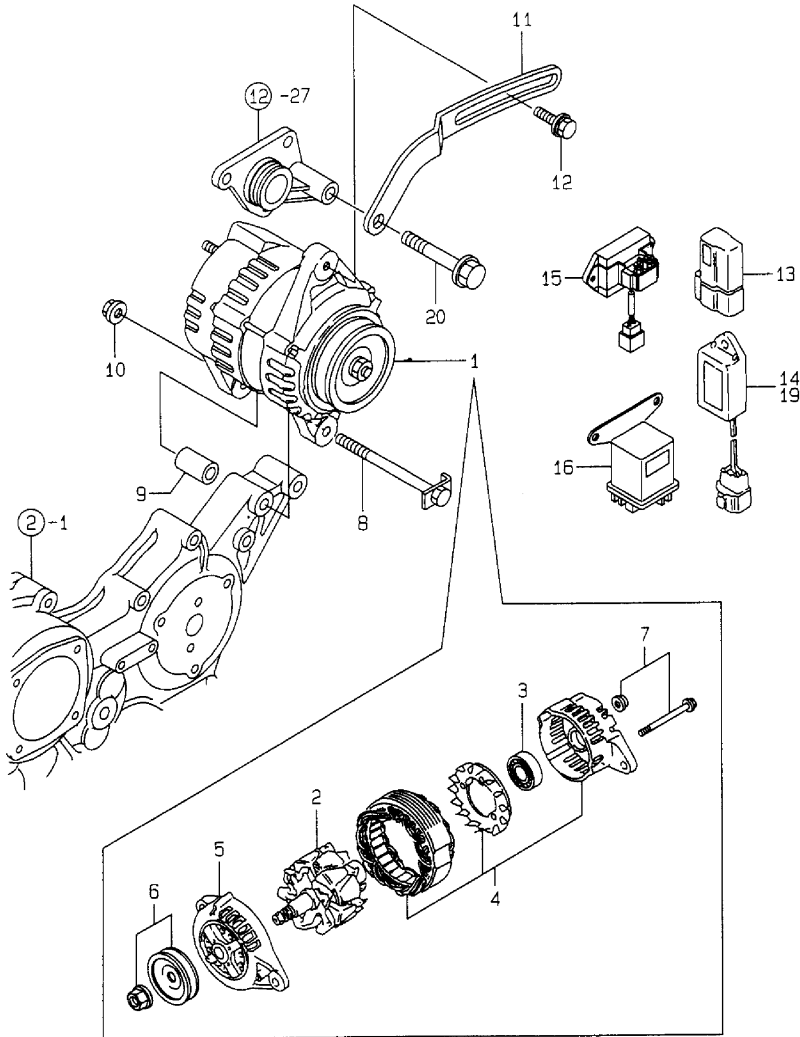
Fig.18. GENERATOR

(A)=3TNE84T-FT
 (B)=3TNE84T-FT2
 (C)=

(D)=
 (E)=
 (F)=

Y00D6781
 3TNE84T-FT (2)

18 ジェネレータ GENERATOR



No.	Lev.	Parts No.	Description	Qty						I	R
				(A)	(B)	(C)	(D)	(E)	(F)		
1	1	119836-77201	GENERATOR (AC)	1	1						
2	2	129612-77700	ROTOR ASSY	1	1						
3	2	129612-77710	BEARING, BALL	1	1						
4	2	119836-77920	BRACKET ASSY	1	1						
5	2	129612-77730	BRACKET ASSY, FILTER	1	1						
6	2	129612-77740	PULLEY	1	1						
7	2	129612-77750	SCREW KIT	1	1						
8	1	129136-77251	BOLT, M8X110	1	1						
9	1	119820-77340	PIECE, DISTANCE	1	1						
10	1	26366-080002	NUT, M8	1							
10-1	1	129612-77260	NUT, ALTERNATOR	1	1						R
			(A=E43432)								
11	1	129100-77330	ADJUSTER	1	1						
12	1	119810-77340	BOLT, ADJUSTER	1	1						
13	1	119643-66900	DIODE	1	1						
14	1	128300-77920	TIMER	1	1						
15	1	129136-77200	RELAY, SAFETY	1	1						
16	1	119650-77910	RELAY ASSY, GLOW	1	1						
19	1	119632-77920	TIMER	1							
19-1	1	129211-77920	TIMER	1	1						N
			(A=E55405)								
20	1	26106-080502	BOLT, M8X 50 PLATED	1	1						

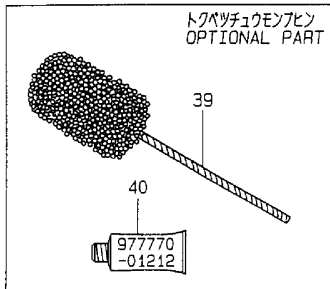
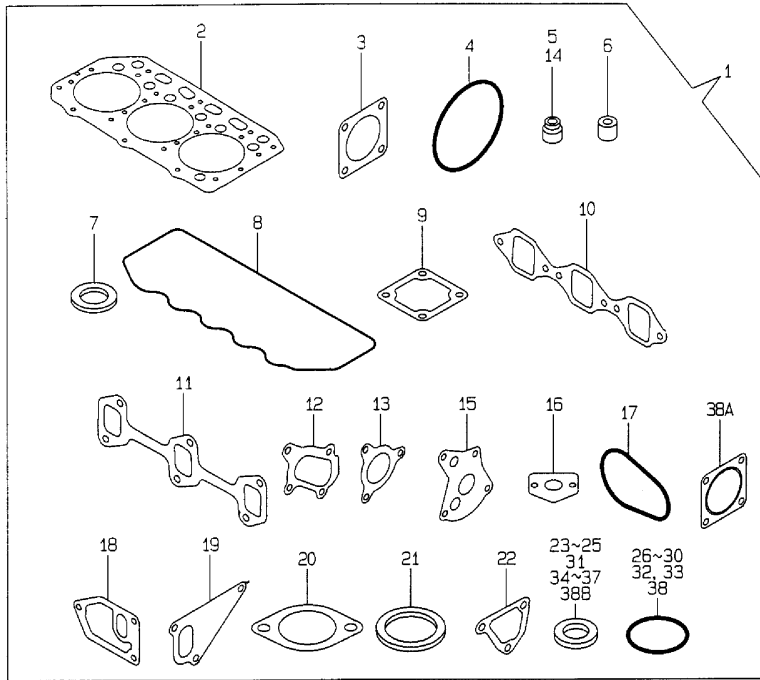
Fig.19. GASKET SET

(A)=3TNE84T-FT
(B)=3TNE84T-FT2
(C)=

(D)=
(E)=
(F)=

Y00D5781
3TNE84T-FT (2)

19 パッキンセット
GASKET SET



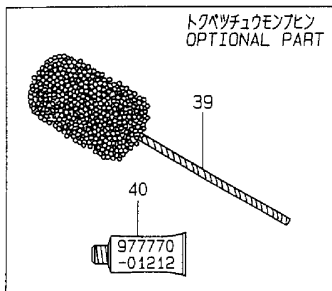
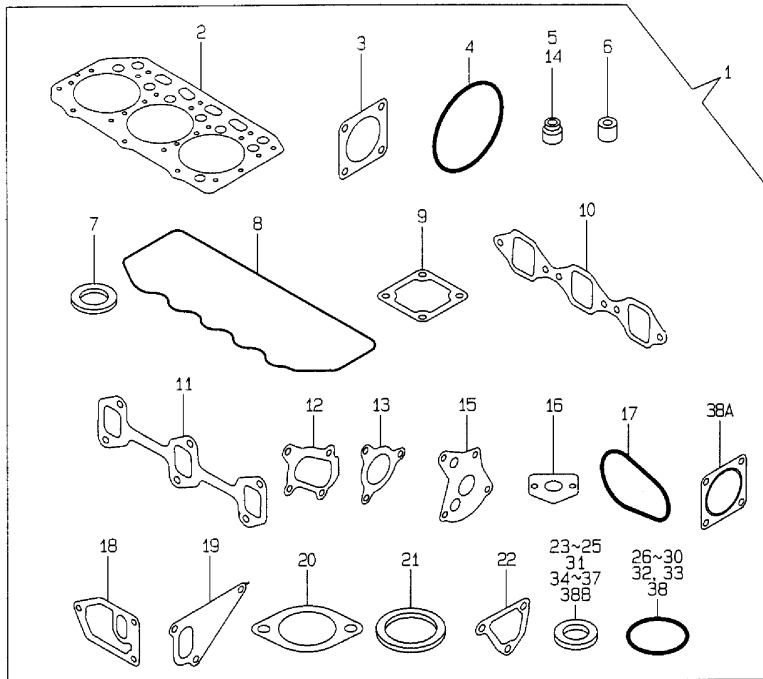
No.	Lev.	Parts No.	Description	Q'ty						I	R
				(A)	(B)	(C)	(D)	(E)	(F)		
1	1	729002-92660	GASKET SET	1							1
1-1	1	729002-92820	GASKET SET	1	1						N 1
(A=E55405)											
2	2	129002-01331	GASKET, HEAD	1	1						
3	2	124240-01883	GASKET	1							Z
(A=E55405)											
4	2	121850-51960	O-RING	1	1						
5	2	124460-11340	SEAL, VALVE STEM	3	3						
6	2	119625-11870	PROTECTOR, NOZZLE	3	3						
7	2	119625-11880	SEAT, NOZZLE	3	3						
8	2	129150-11310	GASKET, BONNET	1	1						
9	2	129150-77511	GASKET	1	1						
10	2	129150-12111	GASKET, MANIFOLD	1	1						
11	2	129150-13110	GASKET	1	1						
12	2	129403-18091	GASKET	1	1						
13	2	129477-18101	GASKET	1	1						
14	2	121400-11340	SEAL, VALVE STEM	3	3						
15	2	129150-32020	GASKET, PUMP	1	1						
16	2	129150-35041	GASKET	1	1						
17	2	129120-35110	GASKET	1	1						
18	2	129120-35121	GASKET	1	1						
19	2	129100-42020	GASKET, WATER PUMP	1							
19-1	2	129486-42021	GASKET, WATER PUMP	1	1						N
(A=E55405)											
20	2	129795-49551	GASKET	1	1						
21	2	129150-49811	GASKET, THERMOSTAT	1	1						
22	2	129100-49840	GASKET	1							
22-1	2	124395-49840	GASKET	1	1						N
(A=E55405)											
23	2	129155-52050	GASKET	1	1						
24	2	23414-080000	GASKET, 8X1.0	2	2						
25	2	23414-100000	GASKET, 10X1.0	3							
25-1	2	23414-100000	GASKET, 10X1.0	1	1						K
(A=E55405)											
26	2	24311-000120	O-RING, 1AP12.0	3	3						
27	2	24311-000160	O-RING, 1AP16.0	3	3						
28	2	24311-000320	O-RING, 1AP32.0	2	2						
29	2	24341-000240	O-RING, 1AS24.0	1	1						
30	2	24341-000500	O-RING, 1AS50.0	1	1						
31	2	22190-080002	WASHER, SEAL 6	6	6						
32	2	24341-000250	O-RING, 1AS25.0	1	1						
33	2	24321-000300	O-RING, 1AG30.0	1							
33-1	2	129486-42140	O-RING, G30	1	1						N
(A=E55405)											
34	2	124465-44950	GASKET, 16	1	1						
35	2	129150-49360	GASKET	1	1						
36	2	23414-120000	GASKET, 12X1.0	2							Z
(A=E55405)											
37	2	22190-120002	WASHER, SEAL 12	2							
37-1	2	22190-120002	WASHER, SEAL 12	4	4						K
(A=E55405)											

Remarks
(1) OPTIONAL PART.

Fig.19. GASKET SET

Y0005781
3TNE84T-FT (2)

19 パッキンセット GASKET SET



Remarks
(1) OPTIONAL PART.

(A)=3TNE84T-FT
(B)=3TNE84T-FT2
(C)=

(D)=
(E)=
(F)=

No.	Lev.	Parts No.	Description	Q'ty						I	R
				(A)	(B)	(C)	(D)	(E)	(F)		
38	2	24314-000160	O-RING, 4CP16.0	1	1						
38A	2	129400-13201	GASKET, SILENCER	1	1						W
(A=FROM 1ST)											
38B	2	22190-100002	WASHER, SEAL 10		2	2					W
(A=E55405)											
39	1	129400-92420	FLEX HORN	1	1						1
40	1	977770-01212	GASKET, LIQUID	1	1						1

Parts No. Index

Parts No.	Fig. No.	Ref. No.
101304-59020	16	16
103854-39140	16	15
104200-55330	16	3
104200-55750	16	10
105010-39140	11	7
105025-59750	15	39
	16	22
105225-59511	16	24
105300-51300	13	27 A
105900-55330	16	4
106500-44810	6	16
114250-53080	15	5
114250-53120	15	9
114250-53130	15	10
114250-53140	15	11
114250-53210	15	12
114250-53400	15	13
119131-18320	6	4
		11
119140-12680	5	26 A
119233-77931	14	77
119256-44760	12	19
119260-34810	10	49
119600-66840	14	82
119620-01750	3	3
119625-11870	4	45
	19	6
119625-11880	4	46
	19	7
119625-11900	4	47
119632-77920	18	19
119643-66900	18	13
119650-77910	18	16
119660-61901	14	57
119808-12520	5	28
119808-12540	5	30
119810-51040	13	6
119810-77340	18	12
119820-77340	18	9
119836-77201	18	1
119836-77920	18	4
119840-59500	15	41 A
119840-59560	15	42
119840-59570	15	43
119866-12541	5	29
119908-61501	14	31 -1
119910-12560	5	8
120130-11860	4	12
121023-01550	2	24
121111-21501	9	12

Parts No.	Fig. No.	Ref. No.
121250-44901	12	45
121250-59550	15	41
121252-39450	11	9
121256-44600	12	36
121256-59072	16	23
121256-59572	16	25
121257-55731	16	9
121267-44741	12	18
121400-11340	4	28
	19	14
121450-01560	2	6
121450-42450	12	41
121520-34810	10	17
121550-23200	9	30
121850-21680	9	11
121850-51960	2	14
	19	4
122117-51560	13	50
122710-51090	13	10
124066-59100	15	40
		40 -1
		42 A
124160-01751	2	7
	4	63
124160-01910	1	5
124160-11360	4	61
124160-39140	11	8
124223-39900	11	10
124240-01871	2	9
124240-01883	2	10
	19	3
124395-49840	12	25 -1
	19	22 -1
124450-44510	12	30
124450-44530	12	32
124450-44550	12	35
124450-44560	12	33
124460-11340	4	29
	19	5
124465-44950	12	42
	19	34
124550-21600	9	16
124550-51350	13	32
124550-51370	13	33
124550-59820	11	11
124550-59830	11	10 A
124550-66370	14	59
124736-07900	4	5
124766-59050	15	38
	16	18

Parts No.	Fig. No.	Ref. No.
124766-59050	16	21
124950-51190	13	17
126650-12680	5	26
128300-77920	18	14
129001-01250	1	11 -1
129001-02930	1	23
129001-21000	9	1
129001-21100	9	1 -1
129001-42002	12	2
129001-42003	12	2 -1
129001-42040	12	27
129001-91840	2	21
129001-91841	2	21 -1
129002-01331	1	31
	19	2
129002-22090	9	17
129002-22510	9	19
129002-22910	9	33
129002-22960	9	35
129012-03090	4	1 A
129012-12540	5	21 A
129012-12550	5	25 A
129012-12560	5	27 A
129012-13520	6	7
129012-13540	6	7 -1
129012-13612	6	15
129012-13650	6	14
129012-33000	10	24
129012-34810	10	50
129012-39910	11	21
129012-49030	12	38
129052-61050	14	5
129052-61060	14	6
129052-61070	14	7
129052-61390	14	30
129052-61500	14	31
129052-61540	14	46
129100-01580	3	1
		15
	9	2
129100-01640	3	16
129100-01730	3	6
129100-11100	4	23
129100-11130	4	25
129100-11350	4	50
129100-11351	4	50 -1
129100-23910	9	29
129100-25061	8	10
129100-42020	12	14
	19	19

Parts No.	Fig. No.	Ref. No.
129100-49840	12	25
	19	22
129100-52100	13	95
129100-55650	16	6
129100-55670	16	7
129100-55690	16	8
129100-59951	15	45
129100-61400	14	16
129100-61440	14	75
129100-61650	14	83
129100-61930	14	78 -1
129100-77330	18	11
129103-01530	2	5
129103-49301	12	1
129115-59510	16	19 A
129120-33040	10	25
129120-33051	10	26
129120-33060	10	27
129120-35001	10	28
129120-35110	10	32
	19	17
129120-35121	10	33
	19	18
129120-77501	5	4
129122-12060	5	13
129122-12100	5	1
129122-12211	5	17
129122-44480	2	13
	12	37
129129-14580	8	3
129132-12240	5	20
129135-35090	10	19
129136-66852	10	47
129136-77200	18	15
129136-77251	18	8
129137-18010	7	3
129139-12050	5	12
129139-12070	5	7
129139-12200	5	16
129139-13100	6	1
129139-39030	11	1
129139-39601	11	15
129150-01200	1	30
129150-02020	1	7
129150-02450	8	4
129150-02870	1	35
129150-02930	1	26
129150-02940	1	32
129150-03020	4	53
129150-03070	4	54

Parts No. Index

Parts No.	Fig. No.	Ref. No.
129150-03080	4	55
129150-03100	2	12
129150-11230	4	41
129150-11280	4	36
129150-11290	4	37
129150-11310	4	58
	19	8
129150-11370	4	30
129150-11750	4	43
129150-11810	4	14
129150-12111	5	2
	19	10
129150-13110	6	2
	19	11
129150-14101	8	7
129150-14200	8	1
129150-14400	8	2
129150-21200	9	5
129150-23600	9	31
129150-23610	9	39
129150-25101	8	11
129150-25900	8	16
129150-25920	8	14
129150-32020	10	14
	19	15
129150-35041	10	18
	19	16
129150-35151	10	34
129150-35350	10	36
129150-49160	16	23 -1
129150-49360	12	44
	19	35
129150-49811	12	24
	19	21
129150-59120	15	20
129150-59131	15	23
129150-59511	16	19
129150-59580	15	44
129150-77511	5	5
	19	9
129155-11241	4	33
129155-11260	4	34
129155-11270	4	35
129155-42350	12	17
129155-49800	12	23
129155-51020	13	5
129155-51050	13	8
129155-51060	13	9
129155-51140	13	14
129155-51180	13	16

Parts No.	Fig. No.	Ref. No.
129155-51200	13	18
129155-51270	13	25
129155-51280	13	26
	14	2
129155-51320	13	30
129155-51340	13	31
129155-51370	13	34
129155-51380	13	35
129155-51390	13	36
129155-51400	13	37
129155-51410	13	38
129155-51420	13	39
129155-51450	13	40
129155-51500	13	45
129155-51521	13	46
129155-51530	13	47
129155-51540	13	48
129155-51550	13	49
129155-51570	13	52
129155-51580	13	53
129155-51591	13	54
129155-51600	13	55
129155-51700	13	74
129155-51701	13	74 -1
129155-51710	13	75
129155-51711	13	75 -1
129155-51750	13	76
129155-51751	13	76 -1
129155-51760	13	77
129155-51790	13	78
129155-51930	13	80
129155-51940	13	81
129155-52050	13	94
	19	23
129155-61120	14	8
129155-61130	14	9
129155-61140	14	10
129155-61201	14	11
129155-61202	14	11 -1
129155-61341	14	15
129155-61350	14	80
129155-61360	14	81
129155-61430	14	19
129155-61450	14	23
129155-61460	14	24
129155-61470	14	79
129155-61480	14	25
129155-61830	14	56
129155-61950	14	58
129156-51910	13	79

Parts No.	Fig. No.	Ref. No.
129175-01770	3	8
129202-22300	9	23
129210-59020	16	17 A
129210-59030	16	17
129210-59130	15	37
	16	20
129211-59810	15	25
129211-59820	15	29
129211-59830	15	33
129211-77920	18	19 -1
129213-12500	5	21
129213-12510	5	27
129213-12520	5	25
129259-12570	5	22
129322-18150	6	9
129350-49530	12	21
129400-13201	6	18
	19	38 A
129400-77012	17	1
129400-77441	17	5
129400-77520	17	12
129400-77531	17	13
129400-77571	17	17
129400-92420	19	39
129403-18091	6	8
	19	12
129403-18720	7	4
129403-18750	7	5
129403-18770	7	6
129403-18780	7	15
129403-18800	7	24
129403-39610	11	16
129403-49050	12	39
129407-35300	10	35
129411-55690	16	26
129418-32000	10	1
129470-11080	4	21
129470-11090	4	22
129470-51101	13	11
129477-18101	7	1
	19	13
129486-01670	3	19
129486-42021	12	14 -1
	19	19 -1
129486-42140	12	28 -1
	19	33 -1
129486-61540	14	46 -1
129486-77400	17	2
129486-77460	17	6
		8

Parts No.	Fig. No.	Ref. No.
129486-77470	17	7
129486-77490	17	9
129488-12050	5	7 -1
129489-61700	14	76
129503-53050	15	2
129505-51300	13	27
129553-39650	10	45
129612-12560	5	23
129612-12590	5	23 B
129612-34850	10	51
129612-55510	16	5
129612-55620	16	2
129612-77260	18	10 -1
129612-77700	18	2
129612-77710	18	3
129612-77730	18	5
129612-77740	18	6
129612-77750	18	7
129792-39410	10	39
129795-01780	3	18
129795-01800	2	4
129795-01950	2	11
129795-02411	1	29
129795-11120	4	24
129795-11180	4	26
129795-21661	9	10
129795-49551	12	22
	19	20
129900-77460	17	10
129900-77640	17	18
158552-61900	14	67 -1
171008-77410	17	3
171008-77420	17	4
171008-77510	17	11
171008-77540	17	14
171008-77650	17	19
171008-77660	17	20
171008-77670	17	21
171051-01921	1	6
171056-49351	12	43
171058-59010	16	24 -1
171301-01640	3	9
171340-21650	9	9
171350-03090	4	1
171350-21590	9	13
171353-44760	12	19 A
171353-61710	14	76 A
171420-34800	10	16
171440-01600	3	2
171440-44740	12	18 A

Parts No. Index

Parts No.	Fig. No.	Ref. No.
174307-51170	13	15
174307-51560	13	51
174307-51700	14	32
194990-22050	6	13 -1
22117-040000	14	60
22190-060003	14	61
22190-080002	2	23
	11	11 A
		12
		12 -1
	19	31
22190-100002	11	14 -1
	14	62
	19	38 B
22190-120002	14	63
	15	53 -1
	16	1
	19	37
		37 -1
22190-160002	13	90
22217-050000	13	91
22217-060000	13	82
22217-120000	8	17
22252-000260	9	24
22287-120000	14	64
22351-030010	10	46
22351-040010	9	8
22351-050010	13	83
22351-060012	4	31
22372-040000	14	65
22512-070140	8	8
	9	6
23000-022000	11	17
	12	40
23000-041000	5	14
23000-048000	5	9
23000-060000	5	10
		15
		24
23061-070230	12	34
23414-080000	11	13
	19	24
23414-100000	10	30
	11	14
	19	25
		25 -1
23414-120000	15	53
	19	36
23871-010000	1	10
23871-020000	4	16

Parts No.	Fig. No.	Ref. No.
23871-030000	4	17
	12	12
23876-010000	1	10 -1
23876-020000	4	16 -1
23876-030000	4	17 -1
	12	12 -1
23881-100002	10	31
23887-100002	14	66
24101-063034	13	84
24311-000120	4	62
	19	26
24311-000160	2	15
	10	37
	16	11
	19	27
24311-000320	2	8
	4	64
	19	28
24311-240100	10	52
	16	12
24314-000160	11	18
	19	38
24321-000300	12	28
	19	33
24321-000650	16	13
24341-000160	13	85
24341-000240	2	25
	19	29
24341-000250	3	11
	19	32
24341-000280	14	67
24341-000500	4	59
	19	30
25132-003700	12	16
25132-003800	12	16 A
26013-080222	5	11
		19
26014-080252	6	10 -1
26014-080702	16	14
26014-080852	16	14 A
26022-050102	13	86
26022-050122	13	86 -1
26022-060162	13	87
26106-060102	14	68
		69
26106-060142	14	70
26106-060162	2	26
	11	19
26106-060202	14	71
26106-060322	17	28

Parts No.	Fig. No.	Ref. No.
26106-060352	12	20 A
26106-060402	17	29
26106-060602	12	20
26106-080102	6	17
26106-080122	2	16
	10	48
	11	20
26106-080142	4	6
	6	10
	8	9
26106-080162	2	17
	3	12
	4	60
	5	18
	10	53
	11	22
	12	29
26106-080202	2	18
26106-080222	12	26
26106-080252	3	13
	4	48
	5	3
	10	38
26106-080352	3	20
	5	6
	10	23
26106-080452	2	19
	3	14
		14 -1
	8	15
26106-080502	3	22
	4	49
	18	20
26106-080552	2	20
26106-080602	12	15
26106-080802	6	3
26116-050302	13	88
26116-120252	17	30
26206-100252	3	4
26206-100302	3	5
26216-060202	4	18
26216-080802	6	5
26226-080182	4	44
26366-060002	4	32
26366-080002	2	22
	6	6
		12
		13
	7	2
	14	74

Parts No.	Fig. No.	Ref. No.
26366-080002	18	10
26450-060252	10	15
26687-120002	14	78
26716-060002	13	89
26716-120002	8	18
26756-060002	14	72
26776-120002	14	73
27231-500000	1	11
27241-120000	1	12
27241-220000	4	19
27241-300000	1	13
27241-400000	4	20
27310-080001	4	27
719810-01500	2	1
729002-92660	19	1
729002-92820	19	1 -1
729012-01560	1	1
729012-51400	13	1 A
729132-11521	4	50 -2
729202-11710	4	7
729215-51371	13	1
729402-11650	4	40
729402-23100	9	25
729503-53200	15	1
977770-01212	2	27
	3	21
	19	40
X2114555500	17	25
X2114955020	17	26
X2240410100	17	27
XNB139815	7	32
XNB139825	7	20
XNB139826	7	27
XNB139827	7	35