

OCD10-M66701EN

# PREFACE

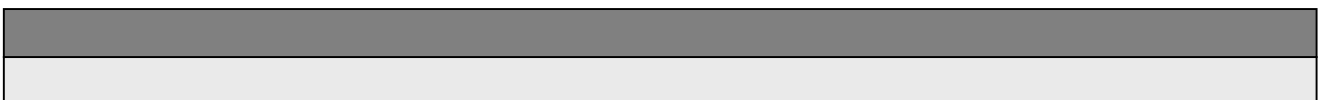
1. This Parts Catalog is the 1st edition of NFD10,13-MEP(A,AS) Diesel Engine for TERAL KYOKUTO.

Pub. No. : 000Y00D6671

Published : May,2000

2. Model name

Engine model	Vehicle		Vehicle made by
	Products	Model name	
NFD10,13-MEP(A,AS)	BLOWER	—	TERAL KYOKUTO



## How to read this Parts Catalog.

1. Parts mentioned in Parts Catalog may not necessarily be standard equipping parts
2. Parts change may be made without prior notice.
3. Form of this Parts Catalog.

REF.	LEV.	PARTS No.	DESCRIPTION	QTY						I	R
				(A)	(B)	(C)	(D)	(E)	(F)		
1		729595-51390	FUEL INJECTION PUMP		1	1	1	1			
1-1	1	729595-51391	FUEL INJECTION PUMP	1	1	1	1	1		N	1
3	2	26022-060162	SCREW M 6X16		9	9	9	9	9		
1 3-1	2	26022-060162	SCREW M 6X16		4	4	4	4	4		K
4	2	129470-51040	CAMSHFT		9	9	9	9	9		
5	2	122710-51050	BEARING. ROLLER		9	9	9	9	9		
6	2	129470-51060	RETAINER		9	9	9	9	9		

Remarks	(1) BOOST COMPENSATOR TYPE. OPTIONAL PART. TO E#00155 (4JH-DT, 4JH-DTZ)
---------	-------------------------------------------------------------------------

### ① Ref. No.

The Ref. No. in the list may not be in accordance with the Ref. No. on illustration.

(Ex.) illustration No. List head No.

1 1 (Before change) → 1-1 (After change)

When interchangeable symbol N, and k, illustrations for the new parts are sometimes omitted.

### ② Lev. (Level)

Indication and Meaning of Level

Level Hereunder is given the relation among the number of number (1,2,3) the level and the nominal parent-child relationship.

1 ---- Parent parts (Assembly parts)

2 ---- Child parts included in " 1 " (Semi-Assembly parts, component parts of Assembly parts.)

3 ---- Child parts included in " 2 ", Grand-child parts in terms of " 1 ".

(Component parts of Semi-Assembly parts.)

Note) A parts of non-sale parts are illustrated but not listed.




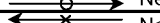
### ③ Change Mark

Change Mark " I " is given to the part for which a design change was made at this time.

The design change was not shown in the last published Parts Catalog.

### ④ Interchangeability Mark

In the case where a part change took place, one of the following interchangeability marks is indicated for that part

Symbol	Interchangeability	Contents note
N	Old ←  New	New Part is interchangeable for Old Part but not interchangeable conversely.
Q	Old ←  New	New Part is not interchangeable for Old Part but interchangeable conversely.
R	Old ←  New	New Part is interchangeable for Old Part and vice versa.
S	Old ←  New	New Part is not interchangeable for Old Part and vice versa.
W		Part newly added.
Z		Part discontinued.
F		Not interchangeable single part but interchangeable by set of the related parts.
K		Changed only in quantity used.

### ⑤ Effective Machine No.

When a part is changed, Effective Machine No. of a Model for which the part is applicable is indication

In each column of (A)-(F).

Product Symbol	Product No.	Product Symbol	Product No.
C	Clutch No, Compressor No,	M	Machine No,
D	Drive No,	T	Tractor No,
E	Engine No,	Note 1)※	Date

Note 1) Date may follow the symbol in some cases. (Ex.) ※1996.01

Note 2) As far as engine models shown by " XXX " are concerned, the modification of the parts could not be Predicted or the engine models themselves could not be identified.

Note 3) (A=E/#00185) means that the design change on the part has been effective for the model at the, column (A) (in the case, for 4JH-DT) on and from E/(Engine Serial Number) 00185

### ⑥ Remarks Mark

Figures or alphabets (Symbols) are entered in the remark column.

The comments (remarks) on the pertinent parts are indicated in the lower part of the list by the same symbols a those stated above.

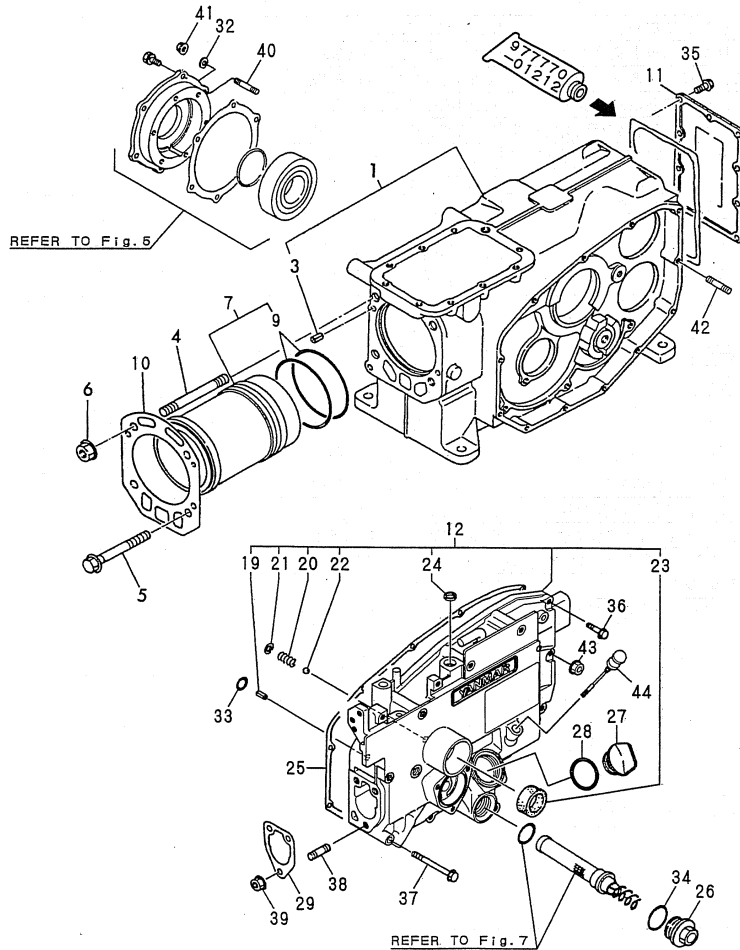
# Contents

Fig. No.	Fig. Name
NFD10,13-MEP(A,AS)	
1.	CYLINDER BLOCK
2.	CYLINDER HEAD & BONNET
3.	AIR CLEANER & MUFFLER
4.	CAMSHAFT & BALANCER
5.	CRANKSHAFT & FLYWHEEL
6.	PISTON & CONNECTING ROD
7.	LUB. OIL SYSTEM
8.	ENGINE LIFTER
9.	FAN
10.	FUEL INJECTION PUMP
11.	FUEL OIL COCK
12.	GOVERNOR & CONTROL DEVICE
13.	STARTING MOTOR
14.	ELECTRIC PART & OPTIONAL PART
15.	TOOL & LABEL
16.	GASKET SET
17.	CYLINDER BLOCK
18.	CYLINDER HEAD & BONNET
19.	AIR CLEANER & MUFFLER
20.	CAMSHAFT & BALANCER
21.	CRANKSHAFT & FLYWHEEL
22.	PISTON & CONNECTING ROD
23.	LUB. OIL SYSTEM
24.	RADIATOR & FUEL OIL TANK

Fig. No.	Fig. Name
25.	FAN
26.	FUEL INJECTION PUMP
27.	FUEL OIL PIPE
28.	GOVERNOR & CONTROL DEVICE
29.	STARTING MOTER
30.	ELECTRIC PART & OPTINAL PART
31.	TOOL & LABEL
32.	GASKET SET

Fig.1. CYLINDER BLOCK

Y00D6671



(A)=NFD10-MEP  
(B)=NFD10-MEPAS  
(C)=NFD10-MEPA

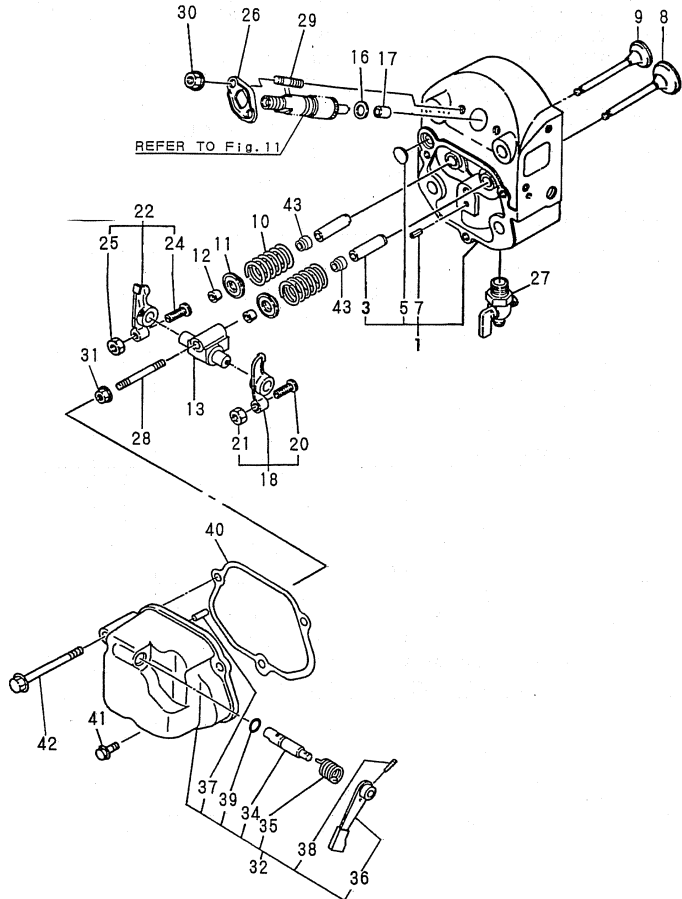
(D)=  
(E)=  
(F)=

No.	Lev.	Parts No.	Description	Qty						I	R
				(A)	(B)	(C)	(D)	(E)	(F)		
1	1	705400-01560	BLOCK ASSY, CYLINDER	1	1	1					
3	2	22351-060012	PIN, SPRING 6.0X12	2	2	2					
4	1	105230-01200	BOLT, HEAD	2	2	2					
5	1	121550-01200	BOLT, HEAD	2	2	2					
6	1	121450-01220	NUT, CYLINDER HEAD	2	2	2					
7	1	705400-01900	LINER ASSY, CYLINDER	1	1	1					
9	2	105300-01300	GASKET, LINER	2	2	2					A
10	1	105300-01331	GASKET, HEAD 156X126	1	1	1					A
10-1	1	105300-01332	GASKET, CYL. HEAD	1	1	1					N A
(A=E/#000367) (B=E/#048685)											
11	1	105300-01480	COVER	1	1	1					
12	1	705400-01500	CASE ASSY, GEAR	1	1	1					
19	2	22351-060012	PIN, SPRING 6.0X12	1	1	1					
20	2	105300-34040	SPRING	1	1	1					
21	2	22252-000100	RING, 10	1	1	1					
22	2	24190-120001	BALL, STEEL 3/8	1	1	1					
23	2	120270-61250	SEAL, OIL	1	1	1					
24	2	105378-01690	SEAL, OIL	1	1	1					
25	1	105300-01410	GASKET, GEAR CASE	1	1	1					A
26	1	105300-01690	PLUG	1	1	1					
27	1	10540H-01751	CAP, FEEDER	1	1	1					
28	1	24311-000320	O-RING, 1AP32.0	1	1	1					A
29	1	104271-01950	SHIM SET,0.2X3,0.3X2	1	1	1					
32	1	22217-080000	WASHER, SPRING 8	1	1	1					
33	1	24311-000060	O-RING, 1AP6.0	1	1	1					
34	1	24321-000250	O-RING, 1AG25.0	1	1	1					
35	1	26106-060162	BOLT, M6X 16 PLATED	10	10	10					
36	1	26106-060252	BOLT, M6X 25 PLATED	5	5	5					
37	1	26106-060652	BOLT, M6X 65 PLATED	6	6	6					
38	1	26216-080222	STUD, M8X 22	3	3	3					
39	1	26366-080002	NUT, M8	3	3	3					
40	1	26216-080222	STUD, M8X 22	1	1	1					
41	1	26716-080002	NUT, M8	1	1	1					
42	1	10530H-01800	BOLT	1	1	1					
43	1	26366-060002	NUT, M6	1	1	1					
44	1	10530H-34850	DIPSTICK, OIL	1	1	1					

Remarks  
(A)THESE PARTS ARE ALSO SOLD BY  
FIG.16.REF NO.1  
(GASKET SET.P/# 705300-92602).

Fig.2. CYLINDER HEAD & BONNET

Y00D6671



(A)=NFD10-MEP  
(B)=NFD10-MEPAS  
(C)=NFD10-MEPA

(D)=  
(E)=  
(F)=

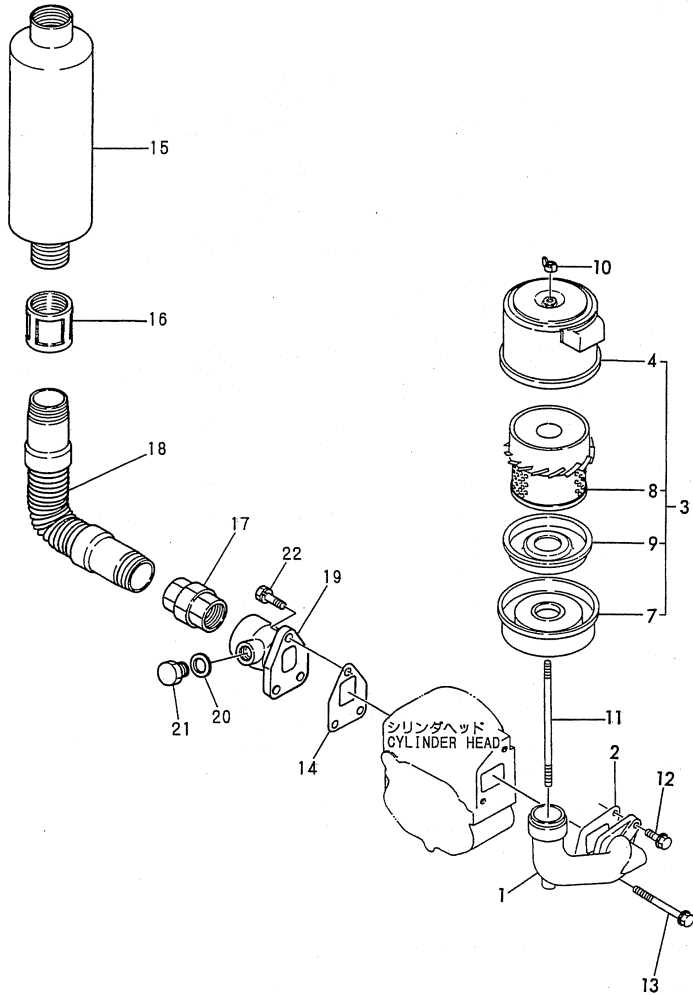
No.	Lev.	Parts No.	Description	Q'ty						I	R
				(A)	(B)	(C)	(D)	(E)	(F)		
1	1	705400-11701	HEAD ASSY, CYLINDER	1	1	1					
3	2	105400-11800	GUIDE, VALVE	2	2	2					
5	2	27231-150000	PLUG 15	1	1	1					
7	2	22351-060012	PIN, SPRING 6.0X12	1	1	1					
8	1	105300-11100	VALVE, INTAKE	1	1	1					
9	1	105300-11111	VALVE, EXHAUST	1	1	1					
10	1	105400-11121	SPRING, VALVE	2	2	2					
11	1	101158-11180	RETAINER, SPRING	2	2	2					
12	1	27310-070001	COTTER, 7	2	2	2					
13	1	10530H-11290	SUPPORT ASSY, ARM	1	1	1					
16	1	119625-11880	SEAT, NOZZLE	1	1	1					
17	1	119625-11871	PROTECTOR, NOZZLE	1	1	1					A
18	1	105300-11650	ARM, ROCKER	1	1	1					
20	2	101158-11230	SCREW, VALVE ADJUST	1	1	1					
21	2	26756-080002	NUT, LOCK M8	1	1	1					
22	1	105300-11660	ARM, ROCKER	1	1	1					
24	2	101158-11230	SCREW, VALVE ADJUST	1	1	1					
25	2	26756-080002	NUT, LOCK M8	1	1	1					
26	1	119625-11900	RETAINER, NOZZLE	1	1	1					
27	1	105010-11920	COCK, WATER	1	1	1					
28	1	26216-080452	STUD, M8X 45	1	1	1					
29	1	26216-060302	STUD, M6X 30	2	2	2					
30	1	26366-060002	NUT, M6	2	2	2					
31	1	26366-080002	NUT, M8	1	1	1					
32	1	705300-11520	BONNET ASSY, HEAD	1	1	1					
34	2	104200-03600	SHAFT, DECOMPRESSION	1	1	1					
35	2	104200-03641	SPRING, DECOMPRESSION	1	1	1					
36	2	104104-03750	LEVER, DECOMPRESSION	1	1	1					
37	2	22312-030180	PIN, PARALLEL M3X18	1	1	1					
38	2	22322-030180	PIN, TAPER 3X18	1	1	1					
39	2	24311-000070	O-RING, 1AP7.0	1	1	1					A
40	1	105300-11310	GASKET, BONNET	1	1	1					A
41	1	26106-060202	BOLT, M6X 20 PLATED	2	2	2					
42	1	26106-060602	BOLT, M6X 60 PLATED	1	1	1					
43	1	128170-11340	SEAL, VALVE STEM	2	2	2					

Remarks

(A)THESE PARTS ARE ALSO SOLD BY  
FIG.16.REF NO.1  
(GASKET SET.P/#705300-92602).

Fig.3. AIR CLEANER & MUFFLER

Y00D6671



(A)=NFD10-MEP  
(B)=NFD10-MEPAS  
(C)=NFD10-MEPA

(D)=  
(E)=  
(F)=

No.	Lev.	Parts No.	Description	Q'ty						I	R
				(A)	(B)	(C)	(D)	(E)	(F)		
1	1	105400-12020	PIPE, AIR INTAKE	1	1	1					
2	1	105400-12050	GASKET	1	1	1					
3	1	105300-12511	CLEANER, AIR	1	1	1					
4	2	105370-12531	COVER ASSY	1	1	1					
7	2	105370-12540	PAN ASSY, DUST	1	1	1					
8	2	105370-12570	ELEMENT	1	1	1					
9	2	105370-12670	BAFFLE	1	1	1					
10	1	101147-12550	NUT	1	1	1					
11	1	105300-12550	BOLT	1	1	1					
12	1	26106-080202	BOLT, M8X 20 PLATED	1	1	1					
13	1	26106-080602	BOLT, M8X 60 PLATED	1	1	1					
14	1	105300-13200	GASKET, SILENCER	1	1	1					A
15	1	43100-552880	SILENCER	1							
16	1	23131-120007	SOCKET, R1+1/4	1		1					
17	1	23152-120007	UNION, R1+1/4	1		1					
18	1	43720-500100	PIPE	1		1					
19	1	105478-13150TS	FLANGE, EXHAUST	1	1	1					
20	1	23414-170000	GASKET, 17X1.0	1	1	1					
21	1	23897-030002	PLUG G3/8,HEX.	1	1	1					
22	1	26013-080252	BOLT, M8X 25	3	3	3					

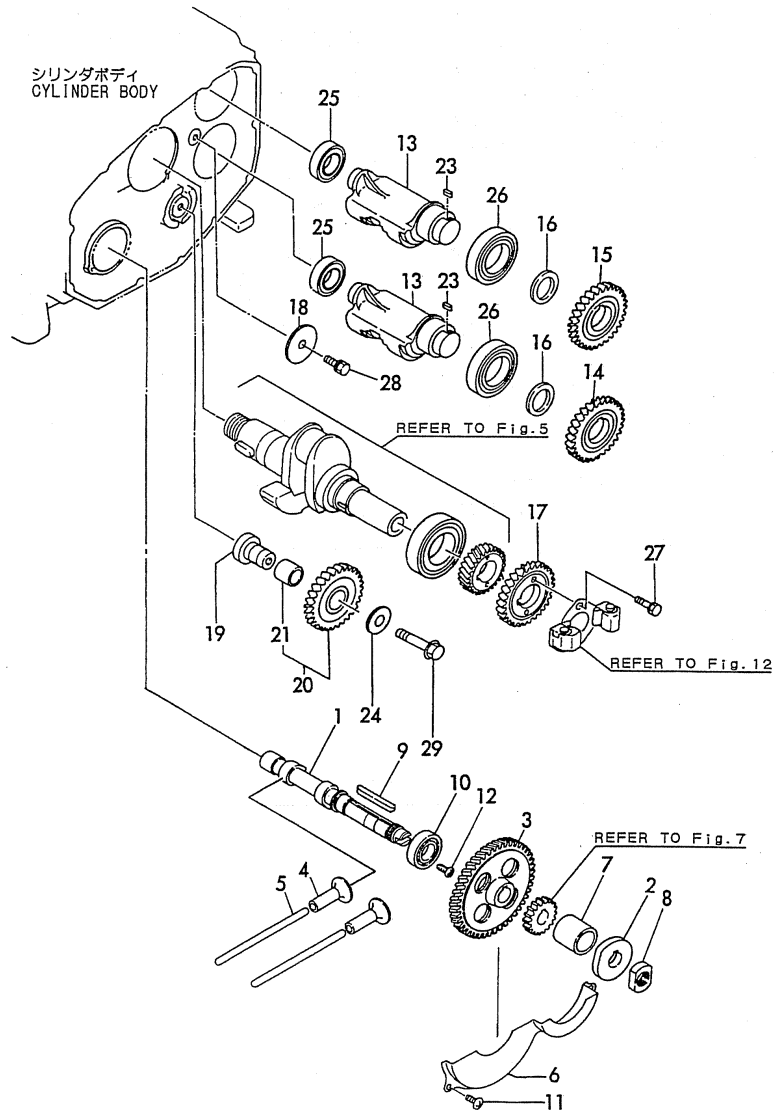
Remarks

(A)THESE PARTS ARE ALSO SOLD BY  
FIG.16.REF NO.1  
(GASKET SET.P/# 705300-92602).

Fig.4. CAMSHAFT & BALANCER

Y00D6671

(A)=NFD10-MEP (D)=  
 (B)=NFD10-MEPAS (E)=  
 (C)=NFD10-MEPA (F)=

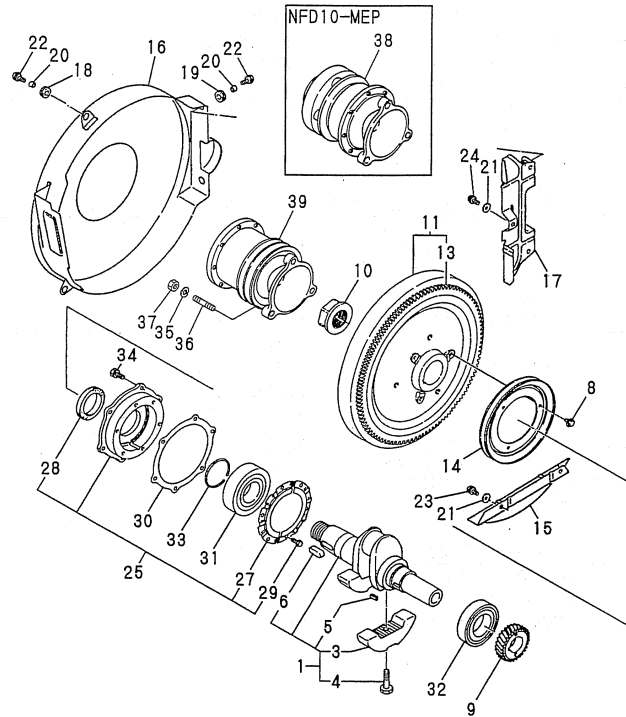


No.	Lev.	Parts No.	Description	Qty						I	R
				(A)	(B)	(C)	(D)	(E)	(F)		
1	1	105400-14015	CAMSHAFT	1	1	1					
2	1	105300-14090	CAM, FUEL	1	1	1					
3	1	10540H-14100	GEAR, CAMSHAFT	1	1	1					
4	1	105300-14200	TAPPET	2	2	2					
5	1	105300-14400	ROD, PUSH	2	2	2					
6	1	105300-14600	COVER	1	1	1					
7	1	105300-14700	SPACER	1	1	1					
8	1	104300-76460	NUT	1	1	1					
9	1	22512-070600	KEY, 7X 60	1	1	1					
10	1	24101-060064	BEARING, BALL 6006	1	1	1					
11	1	26022-060122	SCREW, M6X12	3	3	3					
12	1	26587-080122	SCREW, M8X12	1	1	1					
13	1	105300-28251	SHAFT, BALANCER	2	2	2					
14	1	10540G-28300	GEAR, BALANCER	1	1	1					
15	1	10540G-28310	GEAR, BALANCER	1	1	1					
16	1	105300-28380	SPACER	2	2	2					
17	1	10540H-28410	GEAR, BALANCER	1	1	1					
18	1	105300-28450	RETAINER	1	1	1					
19	1	105300-28700	SHAFT	1	1	1					
20	1	10530G-28750	GEAR ASSY	1	1	1					
21	2	105430-28720	BUSH, IDLE GEAR	1	1	1					
23	1	105215-76490	KEY	2	2	2					
24	1	123672-83880	RETAINER	1	1	1					
25	1	24101-060054	BEARING, BALL 6005	2	2	2					
26	1	24101-060084	BEARING, BALL 6008	2	2	2					
27	1	26013-060222	BOLT, M6X 22	2	2	2					
28	1	26106-080162	BOLT, M8X 16 PLATED	1	1	1					
29	1	26106-100552	BOLT, M10X 55 PLATED	1	1	1					



# Fig.5. CRANKSHAFT & FLYWHEEL

Y00D6671



(A)=NFD10-MEP  
(B)=NFD10-MEPAS  
(C)=NFD10-MEPA

(D)=  
(E)=  
(F)=

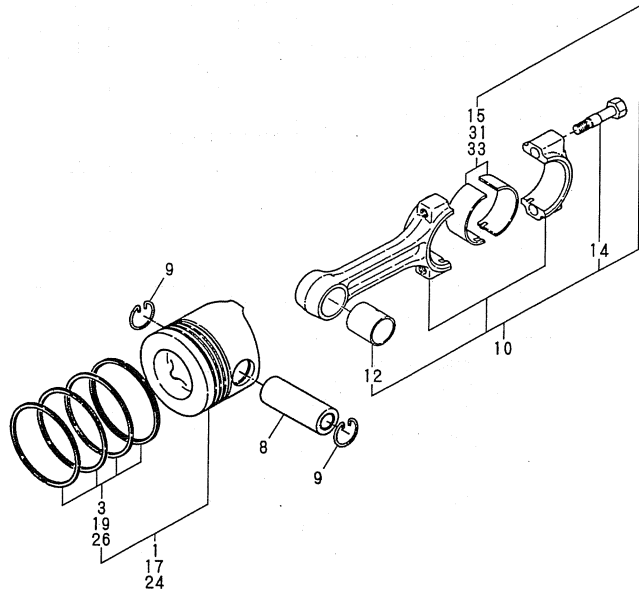
No.	Lev.	Parts No.	Description	Q'ty						I	R
				(A)	(B)	(C)	(D)	(E)	(F)		
1	1	705302-21700	CRANKSHAFT ASSY	1	1	1					
3	2	105300-21100	WEIGHT, BALANCE	2	2	2					
4	2	106100-21130	BOLT, BALANCE WEIGHT	2	2	2					
5	2	22512-050120	KEY, 5X 12	1	1	1					
6	2	22512-100260	KEY, 10X 26	1	1	1					
8	1	26106-060122	BOLT, M6X 12 PLATED	3	3	3					
9	1	10540H-21200	GEAR, CRANKSHAFT	1	1	1					
10	1	104200-21530	NUT, END	1	1	1					
11	1	105300-21591	FLYWHEEL ASSY	1	1	1					
13	2	105362-21600	GEAR, RING	1	1	1					
14	1	104104-21600	V-PULLEY	1	1	1					
15	1	105300-21320	COVER	1	1	1					
16	1	105478-21350	COVER, FLYWHEEL	1	1	1					
17	1	105300-21360	COVER	1	1	1					
18	1	105300-21381	ABSORBER	2	2	2					
19	1	105300-44451	ABSORBER	2	2	2					
20	1	105300-44460	COLLAR	4	4	4					
21	1	160120-76940	WASHER	5	5	5					
22	1	26106-060122	BOLT, M6X 12 PLATED	3	3	3					
23	1	26106-060122	BOLT, M6X 12 PLATED	2	2	2					
24	1	26106-060202	BOLT, M6X 20 PLATED	4	4	4					
25	1	705300-02500	HOUSING ASSY, METAL	1	1	1					
27	2	105230-02320	RETAINER, BEARING	2	2	2					
28	2	123325-02500	SEAL, OIL	1	1	1					
29	2	26116-060102	BOLT, M6X 10 PLATED	6	6	6					
30	1	105300-02020	GASKET	1	1	1					A
31	1	105400-02300	BEARING, 6309G3C3	1	1	1					
32	1	10540H-02310	BEARING, NF308-C3	1	1	1					
33	1	22242-000450	RING, 45	1	1	1					
34	1	26013-080202	BOLT, M8X 20	6	6	6					
35	1	22217-120000	WASHER, SPRING 12	3	3	3					W
		(A=FROM 1ST) (B=FROM 1ST)									
36	1	26216-120322	STUD, M12X 32	3	3	3					W
		(A=FROM 1ST) (B=FROM 1ST)									
37	1	26716-120002	NUT, M12	3	3	3					W
		(A=FROM 1ST) (B=FROM 1ST)									
38	1	105478-21970	CLUTCH	1							W
		(A=FROM 1ST)									
39	1	105478-21960	CLUTCH		1	1					W
		(B=FROM 1ST)									

Remarks

(A)THESE PARTS ARE ALSO SOLD BY  
FIG.16.REF NO.1  
(GASKET SET.P/# 705300-92602).

Fig.6. PISTON & CONNECTING ROD

Y00D6671



(A)=NFD10-MEP  
(B)=NFD10-MEPAS  
(C)=NFD10-MEPA

(D)=  
(E)=  
(F)=

No.	Lev.	Parts No.	Description	Q'ty						I	R
				(A)	(B)	(C)	(D)	(E)	(F)		
1	1	105400-22190	PISTON ASSY	1	1	1					
3	2	704500-22503	RING SET, PISTON	1	1	1					
8	1	105300-22300	PIN, PISTON	1	1	1					
9	1	105300-22400	CIRCLIP	2	2	2					
10	1	705300-23100	ROD ASSY, CONNECTING	1	1	1					
12	2	105300-23910	BEARING, PISTON PIN	1	1	1					
14	2	105300-23200	BOLT, CONNECTING ROD	2	2	2					
15	2	705300-23600	BEARING, CRANK PIN	1	1	1					
17	1	105400-22471	PISTON ASSY, 0.25 OS	1	1	1					1
19	2	105400-22510	RING SET, 0.25 OS	1	1	1					1
24	1	105400-22481	PISTON ASSY, 0.50 OS	1	1	1					2
26	2	105400-22520	RING SET, 0.50 OS	1	1	1					2
31	1	705300-23610	BEARING ASSY, 0.25	1	1	1					3
33	1	705300-23620	BEARING, 0.50 US	1	1	1					4

Remarks

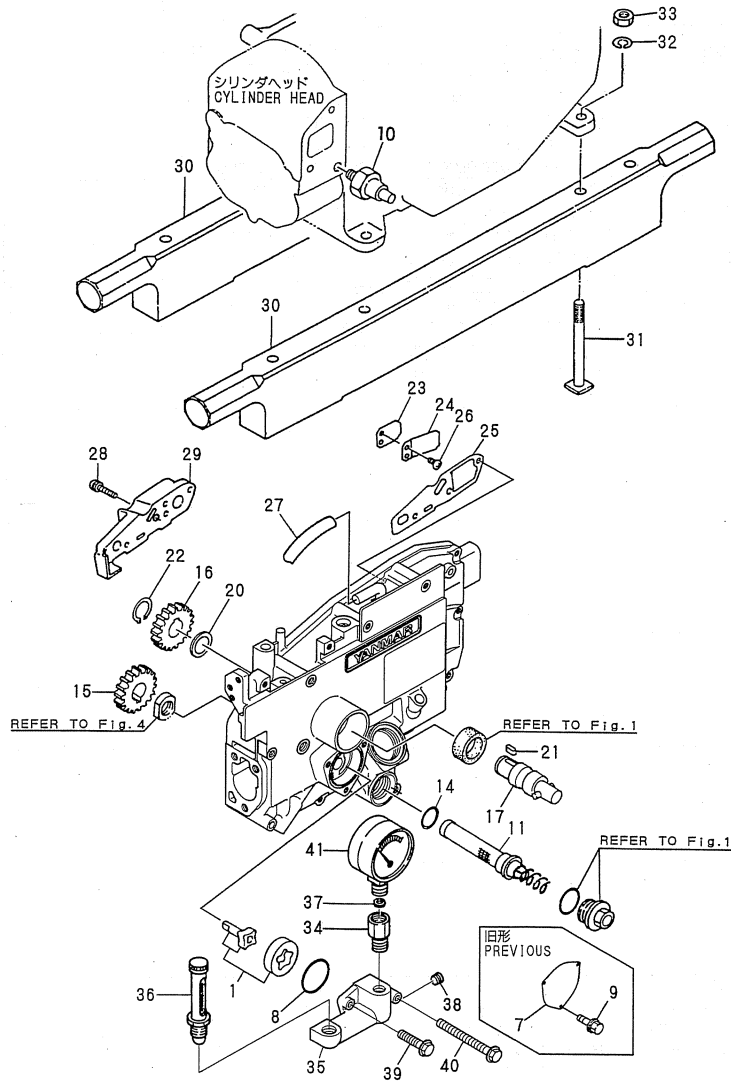
- (1) OVER-SIZED (O.S.=0.25) PART.
- (2) OVER-SIZED (O.S.=0.5) PART.
- (3) UNDER-SIZED (U.S.=0.25) PART.
- (4) UNDER-SIZED (U.S.=0.5) PART.

Fig.7. LUB. OIL SYSTEM

(A)=NFD10-MEP  
(B)=NFD10-MEPAS  
(C)=NFD10-MEPA

(D)=  
(E)=  
(F)=

Y0006671

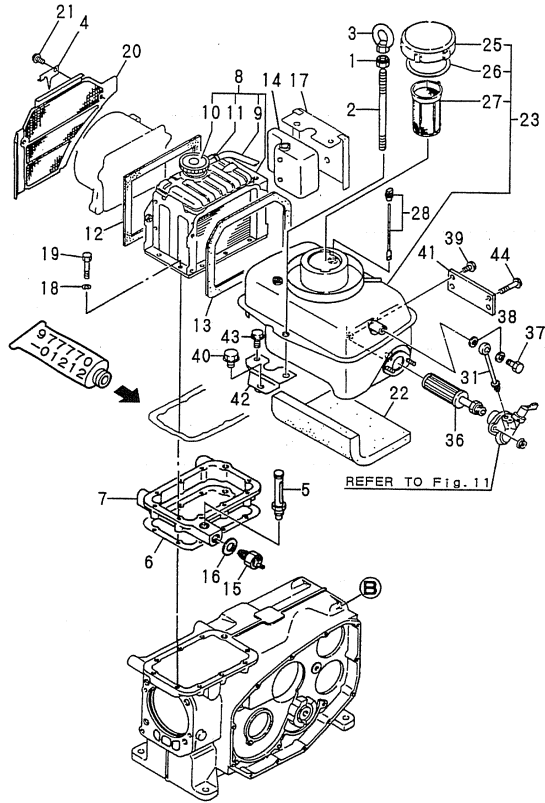


No.	Lev.	Parts No.	Description	Q'ty						I	R
				(A)	(B)	(C)	(D)	(E)	(F)		
1	1	705225-32500	ROTOR ASSY	1	1	1					
7	1	103854-32082	COVER	1	1						Z
		(A=EXXX) (B=EXXX)									
8	1	103854-32051	O-RING	1	1	1					A
9	1	26106-060122	BOLT, M6X 12 PLATED	3	3						Z
		(A=EXXX) (B=EXXX)									
10	1	181230-39450	SWITCH, OIL PRESSURE	1	1	1					
11	1	105306-35052	STRAINER ASSY, OIL	1	1	1					
14	1	24341-000200	O-RING, 1AS20.0	1	1	1					A
15	1	105300-76330	GEAR, STARTING	1	1	1					
16	1	105300-76330	GEAR, STARTING	1	1	1					
17	1	705100-76900	SHAFT ASSY, STARTING	1	1	1					
20	1	105300-76470	COLLAR	1	1	1					
21	1	105300-76490	KEY, 7X10	1	1	1					
22	1	22242-000200	RING, 20	1	1	1					
23	1	101158-03061	VALVE	1	1	1					
24	1	101158-03111	RETAINER	1	1	1					
25	1	105300-03130	GASKET	1	1	1					
26	1	105362-78960	SCREW, M4X8	2	2	2					
27	1	23064-090400	PIPE, 9X 400	1	1	1					
28	1	26106-060222	BOLT, M6X 22 PLATED	3	3	3					
29	1	105300-03082	COVER, BREATHER	1	1	1					
30	1	105300-08010	BED, WOODEN	2	2						
30-1	1	10540H-08010	ENGINE BED	2	2	2					R
		(A=E/#000381) (B=E/#050334)									
31	1	104300-08050	BOLT, FOUNDATION	4	4	4					
32	1	22217-120000	WASHER, SPRING 12	4	4	4					
33	1	26716-120002	NUT, M12	4	4	4					
34	1	171109-34030	JOINT	1	1	1					
35	1	105678-34050	BRACKET	1	1	1					
36	1	171101-34080	THERMOMETER	1	1	1					
37	1	23418-050000	GASKET, 5X1.0	1	1	1					
38	1	23871-010000	PLUG, R01	1	1						
38-1	1	23876-010000	PLUG, R01	1	1	1					N
		(A=E/#000377) (B=E/#049858)									
39	1	26106-060252	BOLT, M6X 25 PLATED	2	2	2					
40	1	26106-060552	BOLT, M6X 55 PLATED	1	1	1					
41	1	42130-502020	GAUGE	1	1						
41-1	1	28854-650000		1	1						S 1
		(A=E/#000379) (B=E/#050246)									
41-2	1	28856-650000	PRESSURE GAUGGES	1	1	1					S 1
		(A=E/#000382) (B=E/#050441)									

Remarks  
(A) THESE PARTS ARE ALSO SOLD BY FIG.16, REF NO.1 (GASKET SET.P/# 705300-92602).  
(1) S.I UNIT PART.

Fig.8. ENGINE LIFTER

Y00D6671



(A)=NFD10-MEP  
(B)=NFD10-MEPAS  
(C)=NFD10-MEPA

(D)=  
(E)=  
(F)=

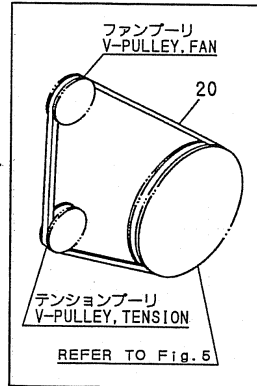
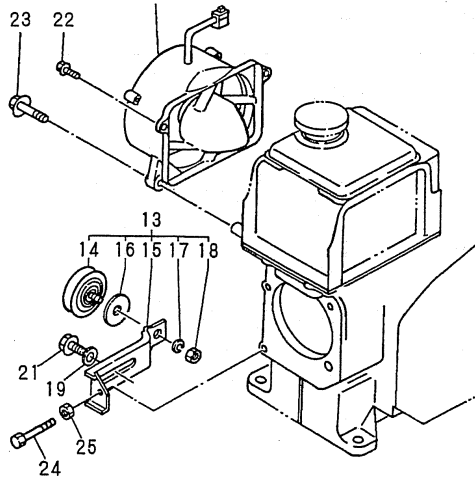
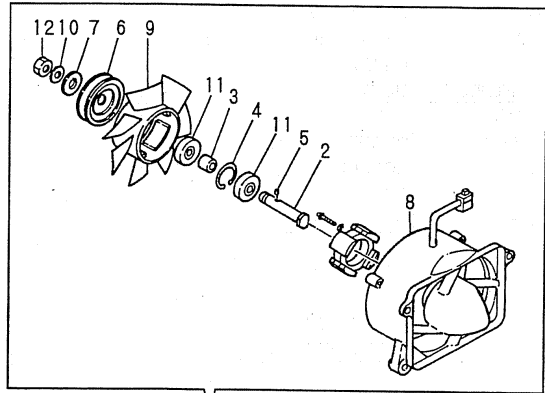
No.	Lev.	Parts No.	Description	Q'ty						I	R
				(A)	(B)	(C)	(D)	(E)	(F)		
1	1	104107-07900	NUT, M10	1	1	1					
2	1	105478-07940	BOLT, LIFTING	1	1	1					
3	1	26627-100002	NUT, EYE M10	1	1	1					
4	1	105478-07300	POINTER	1	1	1					
5	1	171101-34080	THERMOMETER	1	1	1					
6	1	105478-44050	GASKET	1	1	1					
7	1	105478-44300	BRACKET, RADIATOR	1	1	1					
8	1	105300-44502	RADIATOR ASSY	1	1	1					
9	2	105300-44570	PIPE, OVERFLOW 7X170	1	1	1					
10	2	105198-44590	CAP, RADIATOR	1	1	1					
11	2	121250-44590	CLAMP	1	1	1					
12	1	104607-44540	SPONGE	1	1	1					
13	1	106100-44560	SPONGE, 15X5X1000	1	1	1					
14	1	105300-44630	TANK, SUB	1	1	1					
15	1	121250-44901	SWITCH, 110	1	1	1					
16	1	124465-44950	GASKET, 16	1	1	1					
17	1	105297-44980	RETAINER	1	1	1					
18	1	22217-060000	WASHER, SPRING 6	9	9	9					
19	1	26116-060402	BOLT, M6X 40 PLATED	9	9	9					
20	1	105478-44330	SCREEN	1	1	1					
21	1	26106-060122	BOLT, M6X 12 PLATED	2	2	2					
22	1	171101-55010	INSULATOR	1	1	1					
23	1	771101-55700	TANK ASSY, FUEL	1	1	1					
25	2	105015-55040	CAP, FUEL TANK	1	1	1					
26	2	101504-55051	GASKET	1	1	1					A
27	2	101504-55101	STRAINER, FUEL	1	1	1					
28	1	104100-55170	DIPSTICK ASSY	1	1	1					
31	1	104100-55250	PIPE	1	1	1					
36	1	104300-55790	STRAINER, FUEL	1	1	1					
37	1	101147-59810	BOLT, PIPE JOINT M8	1	1	1					
38	1	23414-080000	GASKET, 8X1.0	2	2	2					
39	1	26106-080142	BOLT, M8X 14 PLATED	2	2	2					
40	1	26106-100162	BOLT, M10X 16 PLATED	1	1	1					
41	1	105478-55080	BRACKET	1	1	1					
42	1	105478-55090	BRACKET	1	1	1					
43	1	26106-080142	BOLT, M8X 14 PLATED	1	1	1					
44	1	26106-100222	BOLT, M10X 22 PLATED	2	2	2					

Remarks

(A)THESE PARTS ARE ALSO SOLD BY  
FIG.16.REF NO.1  
(GASKET SET.P/# 705300-92602).

Fig.9. FAN

Y00D6671



(A)=NFD10-MEP  
(B)=NFD10-MEPAS  
(C)=NFD10-MEPA

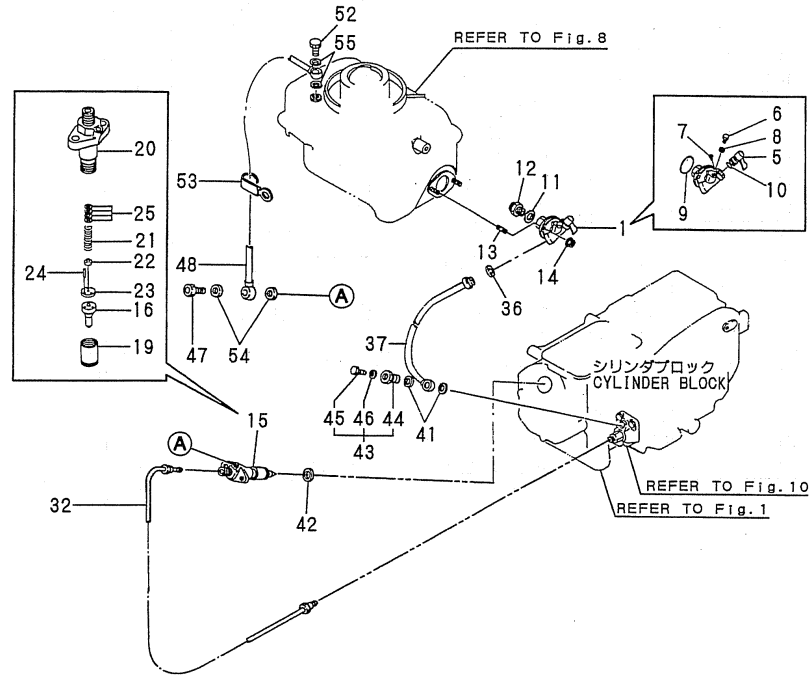
(D)=  
(E)=  
(F)=

No.	Lev.	Parts No.	Description	Q'ty						I	R
				(A)	(B)	(C)	(D)	(E)	(F)		
1	1	105300-44211	CASE ASSY, FAN	1	1	1					
2	2	105340-44710	SHAFT, FAN	1	1	1					
3	2	106383-44720	SPACER	1	1	1					
4	2	106383-44740	CIRCLIP	1	1	1					
5	2	105340-44750	PIN	1	1	1					
6	2	105100-44770	PULLEY, FAN	2	2	2					
7	2	105100-44780	WASHER, PULLEY	1	1	1					
8	2	105300-44800	COVER, FAN	1	1	1					
9	2	105300-44850	FAN, COOLING	1	1	1					
10	2	22217-120000	WASHER, SPRING 12	1	1	1					
11	2	24107-062013	BEARING, 6201ZZP6	2	2	2					
12	2	26777-120002	NUT, LOCK M12	1	1	1					
13	1	105300-44810	PULLEY ASSY, TENSION	1	1	1					
14	2	106100-44650	PULLEY, TENSION	1	1	1					
15	2	105300-44940	LEVER	1	1	1					
16	2	106100-44960	CAP	1	1	1					
17	2	22217-080000	WASHER, SPRING 8	1	1	1					
18	2	26716-080002	NUT, M8	1	1	1					
19	1	22137-080000	WASHER, 8	1	1	1					
20	1	25117-003851	V-BELT, M38.5H	1	1	1					
21	1	26013-080162	BOLT, M8X 16	1	1	1					
22	1	26106-060252	BOLT, M6X 25 PLATED	2	2	2					
23	1	26106-080302	BOLT, M8X 30 PLATED	2	2	2					
24	1	26116-060504	BOLT, M6X 50 PLATED	1	1	1					
25	1	26756-060002	NUT, LOCK M6	1	1	1					



# Fig.11. FUEL OIL COCK

Y00D6671



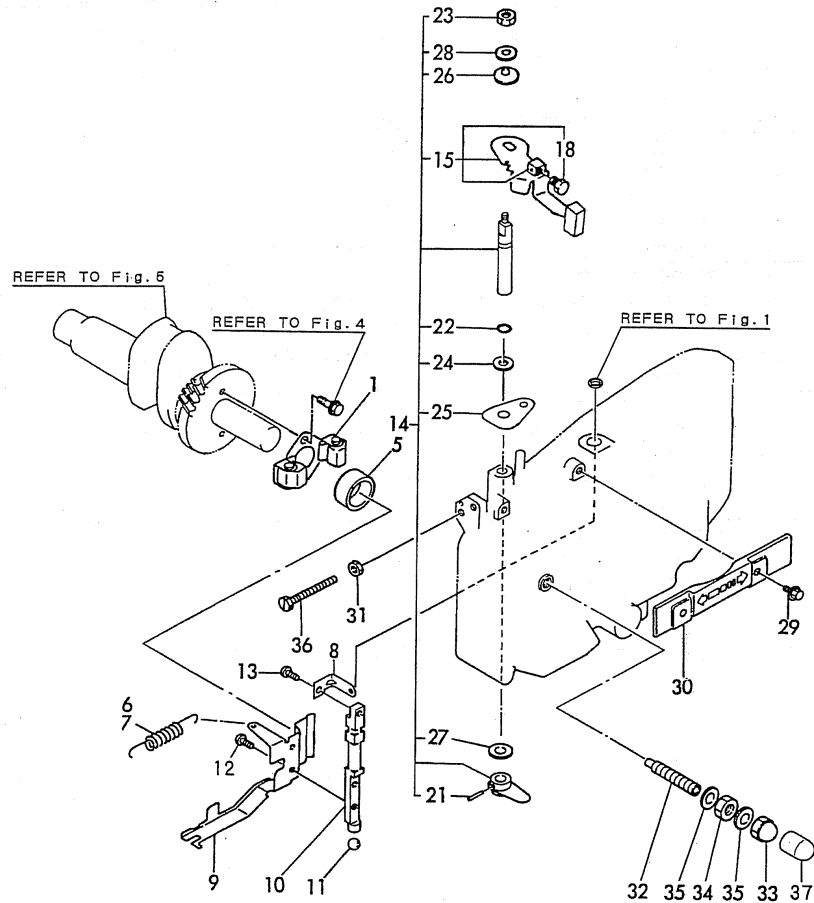
(A)=NFD10-MEP  
(B)=NFD10-MEPAS  
(C)=NFD10-MEPA

(D)=  
(E)=  
(F)=

No.	Lev.	Parts No.	Description	Qty						I	R
				(A)	(B)	(C)	(D)	(E)	(F)		
1	1	105476-55300	COCK ASSY, FUEL	1	1	1					
5	2	104211-55340	HANDLE	1	1	1					
6	2	101720-55750	PLUG, 6	1	1	1					
7	2	104200-55750	SCREW, M4	1	1	1					
8	2	22190-060002	WASHER, SEAL 6	1	1	1					
9	2	24311-000320	O-RING, 1AP32.0	1	1	1					
10	2	24311-240100	O-RING, 1AP10A	1	1	1					
11	1	23414-160000	GASKET, 16X1.0	1	1	1					
12	1	23831-100000	UNION, 10	1	1	1					
13	1	26216-060162	STUD, M6X 16	2	2	2					
14	1	26366-060002	NUT, M6	2	2	2					
15	1	705306-53100	VALVE ASSY, INJECTION	1	1	1					
16	2	129500-53050	VALVE ASSY, INJECTION	1	1	1					
19	2	114250-53080	NUT, NOZZLE D16.95	1	1	1					
20	2	105306-53100	HOLDER, NOZZLE	1	1	1					
21	2	114250-53120	SPRING, NOZZLE	1	1	1					
22	2	114250-53130	SEAT, SPRING	1	1	1					
23	2	114250-53140	PLATE	1	1	1					
24	2	114250-53210	PIN	2	2	2					
25	2	114250-53400	SHIM SET	1	1	1					
32	1	105300-59800	PIPE ASSY, INJECTION	1	1	1					
36	1	172200-01650	GASKET	1	1	1					
37	1	105478-59050	PIPE ASSY, FUEL	1	1	1					
41	1	104200-59170	GASKET, 12	2	2	2					
42	1	104884-59170	GASKET	1	1	1					
43	1	105891-59190	JOINT, PIPE	1	1	1					
44	2	105891-59200	BOLT, PIPE JOINT M12	1	1	1					
45	2	124060-59380	PLUG, 6	1	1	1					
46	2	22190-060002	WASHER, SEAL 6	1	1	1					
47	1	129491-59540	BOLT, PIPE JOINT M6	1	1	1					
48	1	105408-59570	PIPE ASSY, RETURN	1	1	1					
52	1	101147-59810	BOLT, PIPE JOINT M8	1	1	1					
53	1	160710-78710	CLAMP, CORD	1	1	1					
54	1	23414-060000	GASKET, 6X1.0	2	2	2					
55	1	23414-080012	GASKET, 8X1.0	2	2	2					

Fig.12. GOVERNOR & CONTROL DEVICE

Y00D6671



(A)=NFD10-MEP  
(B)=NFD10-MEPAS  
(C)=NFD10-MEPA

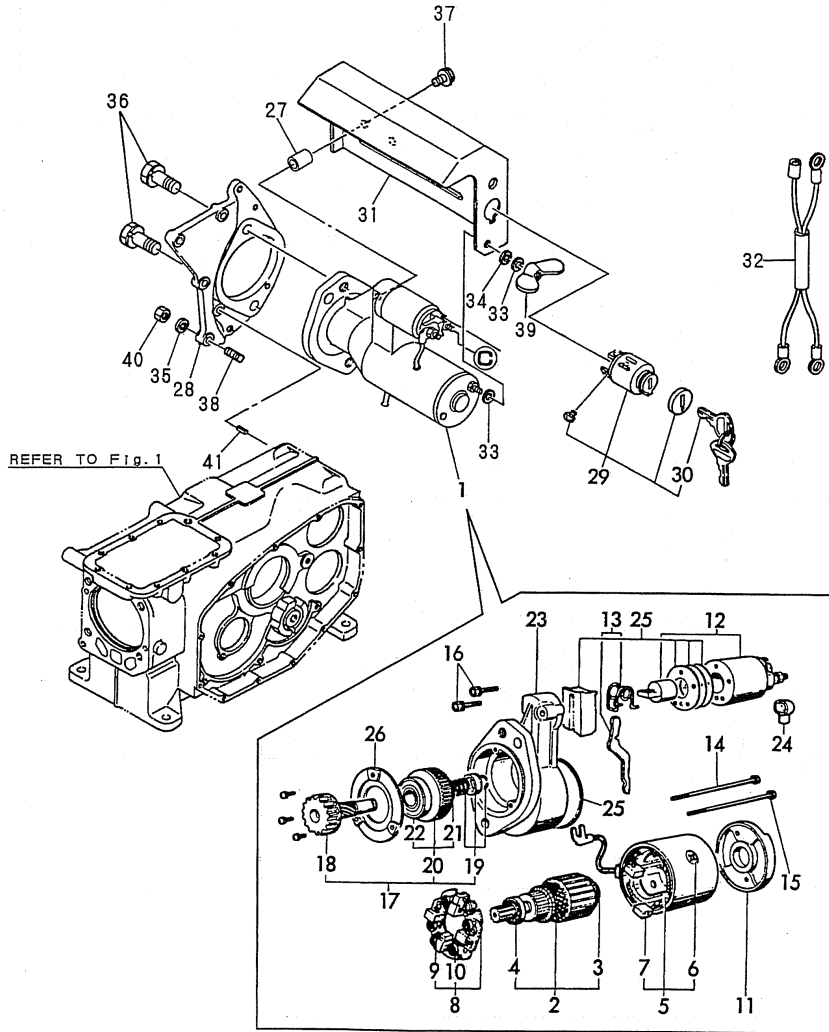
(D)=  
(E)=  
(F)=

No.	Lev.	Parts No.	Description	Q'ty						I	R
				(A)	(B)	(C)	(D)	(E)	(F)		
1	1	705300-61700	GOVERNOR ASSY	1	1	1					
5	1	105300-61600	SLEEVE, GOVERNOR	1	1	1					
6	1	105300-66010	SPRING, REGULATOR		1	1					
7	1	105300-66030	SPRING, REGULATOR	1							
8	1	105198-66160	LEVER, STOP	1	1	1					
9	1	105300-66300	LEVER, GOVERNOR	1	1	1					
10	1	105408-66400	SHAFT	1	1	1					
11	1	24190-120001	BALL, STEEL 3/8	1	1	1					
12	1	26022-050102	SCREW, M5X10	2	2	2					
13	1	26022-050102	SCREW, M5X10	1	1	1					
14	1	705300-61700	GOVERNOR ASSY	1	1	1					
15	2	105502-66041	HANDLE ASSY	1	1	1					
18	3	105225-66990	SCREW, M5X8.5	1	1	1					
21	2	22322-030200	PIN, TAPER 3X20	1	1	1					
22	2	24311-000070	O-RING, 1AP7.0	1	1	1					
23	2	26347-060002	NUT, M6	1	1	1					
24	2	105840-66831	PLATE, FRICTION	1	1	1					
25	2	105300-66850	RETAINER	1	1	1					
26	2	105840-66880	SPRING	1	1	1					
27	2	22117-100000	WASHER, 10	1	1	1					
28	2	22137-060000	WASHER, 6	1	1	1					
29	1	26106-060122	BOLT, M6X 12 PLATED	2	2	2					
30	1	105300-66110	COVER	1	1	1					
31	1	26756-060002	NUT, LOCK M6	1	1	1					
32	1	105090-66551	LIMITER ASSY, FUEL	1	1	1					
33	1	124060-66950	NUT, CAP M10	1	1	1					
34	1	26796-100002	NUT, LOCK M10	1	1	1					
35	1	22190-100002	WASHER, SEAL 10	2	2	2					
36	1	105300-66520	SCREW	1	1	1					
37	1	105300-66610	CAP	1	1	1					



Fig.13. STARTING MOTOR

Y00D6671



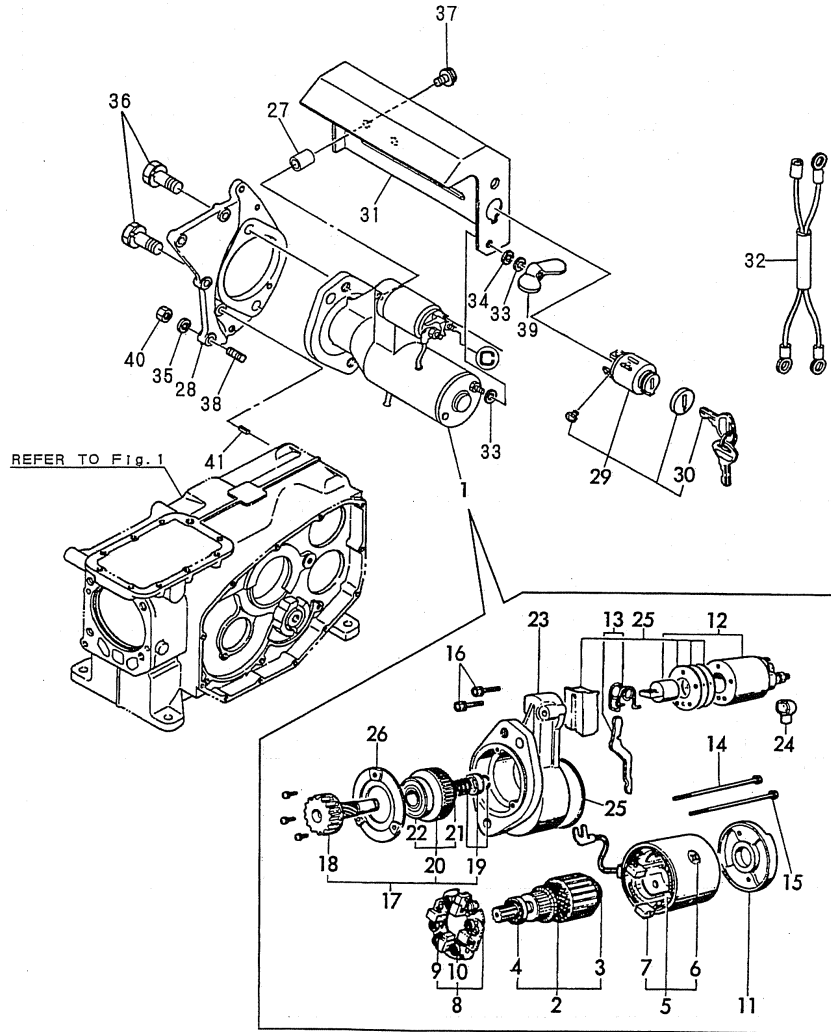
(A)=NFD10-MEP  
(B)=NFD10-MEPAS  
(C)=NFD10-MEPA

(D)=  
(E)=  
(F)=

No.	Lev.	Parts No.	Description	Qty						I	R
				(A)	(B)	(C)	(D)	(E)	(F)		
1	1	105100-77010	STARTER, S114-438B	1	1						
1-1	1	105100-77011	MOTOR,STARTER	1	1	1					N
		(A=E/#000370) (B=E/#048969)									
2	2	X211461005	ARMATURE	1	1	1					
3	3	X211415502	BEARING, BALL	1	1						
3-1	3	X2130350900	BALL BEARING	1	1	1					N
		(A=E/#000374) (B=E/#049574)									
4	3	X211425502	BEARING, BALL	1	1						
4-1	3	X211425511	BALL BEARING	1	1	1					N
		(A=E/#000374) (B=E/#049574)									
5	2	X211442003	COIL ASSY, FIELD	1	1	1					
6	3	X21143215	SCREW, CORE	1	1	1					
7	3	X211469002	BRUSH (+)	2	2	2					
8	2	X211479001	HOLDER ASSY, BRUSH	1	1	1					
9	3	X211459002	BRUSH (-)	2	2	2					
10	3	X21148314	SPRING, BRUSH	4	4	4					
11	2	X211483003	COVER	1	1	1					
12	2	171008-77530	SWITCH, MAGNETIC	1	1	1					
13	2	X211446012	LEVER, SHIFT	1	1	1					
14	2	X211468005	BOLT, THROUGH	1	1	1					
15	2	X21148856	BOLT, THROUGH	1	1	1					
16	2	X21145866	BOLT	2	2	2					
17	2	X211455011	PINION ASSY	1	1	1					
18	3	X211465011	SHAFT, PINION	1	1	1					
19	3	X211429006	STOPPER SET	1	1	1					
20	3	X211425506	CLUTCH ASSY	1	1						
20-1	3	X211455500	CLUTCH ASSY	1	1	1					N
		(A=E/#000370) (B=E/#048969)									
21	4	X211435502	BALL BEARING	1	1						
21-1	4	X211495502	BEARING, BALL	1	1	1					N
		(A=E/#000374) (B=E/#049574)									
22	4	X211455502	BALL BEARING	1	1	1					
23	2	X211466605	CASE ASSY, GEAR	1	1	1					
24	2	X21142742	COVER (A), RUBBER	1	1	1					
25	2	X211458012	COVER KIT	1	1	1					
26	2	X211428008	RETAINER, BEARING	1	1	1					
27	1	105578-77790	SPACER	2	2	2					
28	1	105300-77470	BRACKET	1	1	1					
29	1	106100-77620	SWITCH, KEY	1	1	1					
30	2	106100-77630	KEY, SWITCH	2	2	2					
31	1	105100-77780	COVER	1	1						
31-1	1	105100-77781	COVER	1	1	1					N
		(A=E/#000370) (B=E/#048969)									
32	1	105478-78550	HARNES, WIRE	1	1	1					
33	1	22117-050000	WASHER, 5	2	2	2					
34	1	22217-050000	WASHER, SPRING 5	1	1	1					
35	1	22217-060000	WASHER, SPRING 6	4	4	4					
36	1	26013-120302	BOLT, M12X 30	2	2	2					
37	1	26106-060102	BOLT, M6X 10 PLATED	2	2	2					
38	1	26216-060202	STUD, M6X 20	4	4	4					
39	1	26636-050002	NUT, WING M5	1	1	1					

# Fig.13. STARTING MOTOR

Y00D6671



(A)=NFD10-MEP  
(B)=NFD10-MEPAS  
(C)=NFD10-MEPA

(D)=  
(E)=  
(F)=

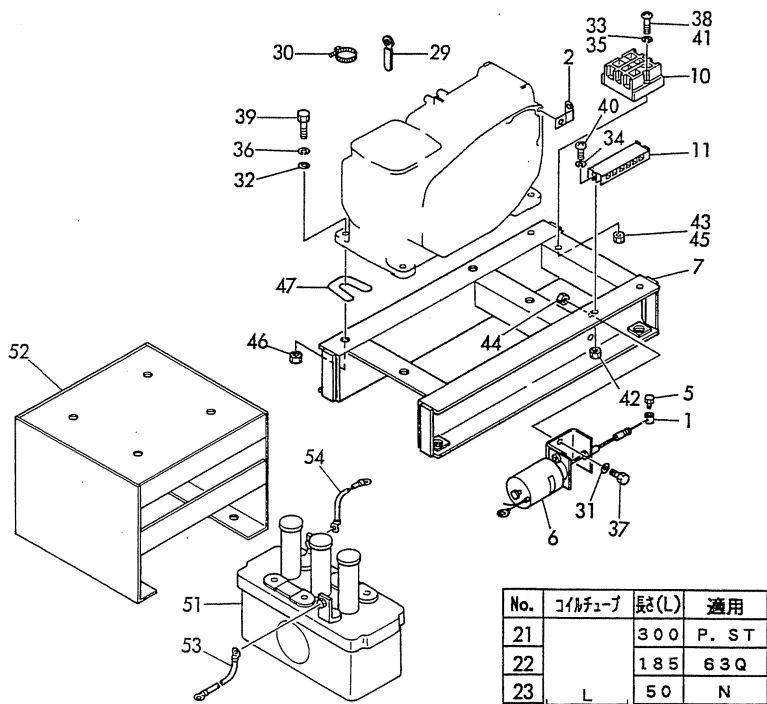
No.	Lev.	Parts No.	Description	Qty						I	R
				(A)	(B)	(C)	(D)	(E)	(F)		
40	1	26716-060002	NUT, M6	4	4	4					
41	1	22351-060012	PIN, SPRING 6.0X12	1	1	1					

Fig.14. ELECTRIC PART & OPTIONAL PART

Y00D6671

見出しNo. 12は、見出しNo. 13から28を含みます。  
12 inc. 13 ~ 28

No.	端子台	ワイヤーハーネス	No.	端子台	ワイヤーハーネス
13	P	セルモータ	17	63Q	油圧SW
14	N	ギヤケース	18	49W	水温センサー
15	ST	キーSW	19	J1	ファンケース
16	5	ソレノイド	20	J2	



No.	端子台	バッテリーコード
8	⊕ ガワ	シリンダ
9	⊖ ガワ	ボディ

No.	コイルタイプ	長さ(L)	適用
21		300	P. ST
22		185	63Q
23	L	50	N
24		180	J1. J2
25		30	J2
26		200	49W
27		260	5
28		80	ソレノイド

(A)=NFD10-MEP  
(B)=NFD10-MEPAS  
(C)=NFD10-MEPA

(D)=  
(E)=  
(F)=

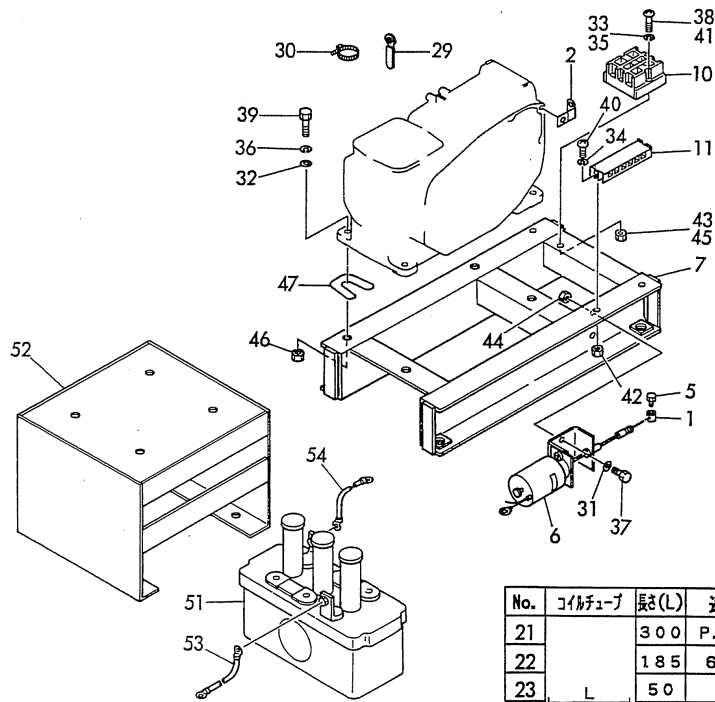
No.	Lev.	Parts No.	Description	Qty						I	R
				(A)	(B)	(C)	(D)	(E)	(F)		
1	1	106500-44870	STOPPER	1	1	1					
2	1	105478-66830	SUPPORT, WIRE	1	1	1					
5	1	26117-040068	BOLT M 4X 6 PLATED	2	2	2					
6	1	46116-504800	SOLENOID VALVE	1	1	1					
7	1	105478-08110	FOOT		1						
8	1	105198-77670	CORD, BATTERY		1						
9	1	105198-77680	CORD, BATTERY		1						
10	1	105198-77750	STAY		1						
11	1	105198-77760	TERMINAL BLOCK		1						
12	1	105478-77880	HARNESS ASSY, WIRE		1						
13	2	105198-77800	HARNESS, WIRE		1						
13-1	2	105478-77800	HARNESS, WIRE		1						R
(B=E/#049574)											
14	2	105198-77810	HARNESS, WIRE		1						
14-1	2	105478-77810	HARNESS, WIRE		1						R
(B=E/#049574)											
15	2	105198-77820	HARNESS, WIRE		1						
15-1	2	105478-77820	HARNESS, WIRE		1						R
(B=E/#049574)											
16	2	105198-77830	HARNESS, WIRE		1						
16-1	2	105478-77830	HARNESS, WIRE		1						R
(B=E/#049574)											
17	2	105198-77840	HARNESS, WIRE		1						
17-1	2	105478-77840	HARNESS, WIRE		1						R
(B=E/#049574)											
18	2	105198-77850	HARNESS, WIRE		1						
18-1	2	105478-77850	HARNESS, WIRE		1						R
(B=E/#049574)											
19	2	105198-77860	HARNESS, WIRE		1						
19-1	2	105478-77860	HARNESS, WIRE		1						R
(B=E/#049574)											
20	2	105198-77870	HARNESS, WIRE		1						
20-1	2	105478-77870	HARNESS, WIRE		1						R
(B=E/#049574)											
21	2	105198-77910	PIPE, COIL		1						
22	2	105198-77920	PIPE, COIL		1						
23	2	105198-77930	PIPE, COIL		1						
24	2	105198-77940	PIPE, COIL		1						
25	2	105198-77950	PIPE, COIL		1						
26	2	105198-77960	PIPE, COIL		1						
27	2	105198-77970	PIPE, COIL		1						
28	2	105198-77980	PIPE, COIL		1						
29	1	160710-78710	CLAMP, CORD		1						
30	1	160370-78950	BAND, L=98		2						
31	1	22117-080000	WASHER, 8		2						
32	1	22137-100000	WASHER, 10		4						
33	1	22151-080000	WASHER 8		2						
34	1	22217-040000	WASHER, SPRING 4		2						
35	1	22217-050000	WASHER, SPRING 5		2						
36	1	22217-100000	WASHER, SPRING 10		4						
37	1	26116-080202	BOLT, M8X 20 PLATED		2						

# Fig.14. ELECTRIC PART & OPTIONAL PART

Y00D6671

見出しNo. 12は、見出しNo. 13から28を含みます。  
12 inc. 13 ~ 28

No.	端子台	ワイヤーハーネス	No.	端子台	ワイヤーハーネス
13	P	セルモータ	17	63Q	油圧SW
14	N	ギヤケース	18	49W	水温センサー
15	ST	キー-SW	19	J1	ファンケース
16	5	ソレノイド	20	J2	



No.	端子台	バッテリーコード
8	⊕ ガワ	シリンダ
9	⊖ ガワ	ボディ

No.	コイルタイプ	長さ(L)	適用
21		300	P, ST
22		185	63Q
23	L	50	N
24		180	J1, J2
25		30	J2
26		200	49W
27		260	5
28		80	ソレノイド

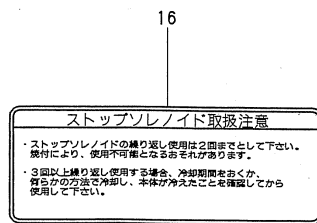
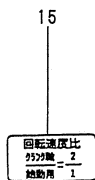
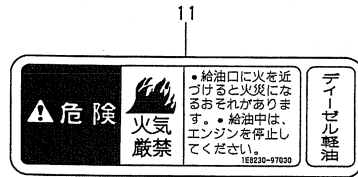
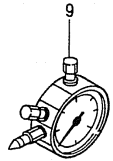
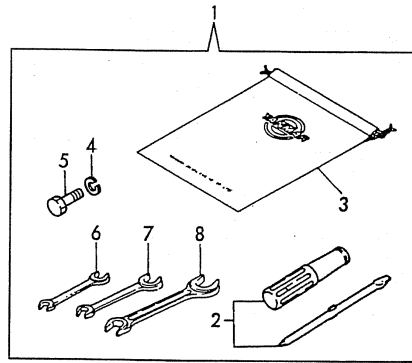
(A)=NFD10-MEP  
(B)=NFD10-MEPAS  
(C)=NFD10-MEPA

(D)=  
(E)=  
(F)=

No.	Lev.	Parts No.	Description	Q'ty						I	R
				(A)	(B)	(C)	(D)	(E)	(F)		
38	1	26116-080602	BOLT, M8X 60 PLATED		2						
39	1	26116-120402	BOLT, M12X 40 PLATED		4						
40	1	26557-040252	SCREW, M4X25		2						
41	1	26557-050402	SCREW, M5X40		2						
42	1	26756-040002	NUT, LOCK M4		2						
43	1	26756-050002	NUT, LOCK M5		2						
44	1	26756-080002	NUT, LOCK M8		2						
45	1	26756-080002	NUT, LOCK M8		2						
46	1	26756-100002	NUT, LOCK M10		4						
47	1	42215-002440	SHIM		1						
51	1	105198-77600	BATTERY, HS80-6E			1					
52	1	105198-7761012	BRACKET, BATTERY			1					
53	1	105198-77650	WIRE, LEAD			1					
54	1	105198-77660	WIRE, LEAD			1					

Fig.15. TOOL & LABEL

Y00D6671



(A)=NFD10-MEP  
(B)=NFD10-MEPAS  
(C)=NFD10-MEPA

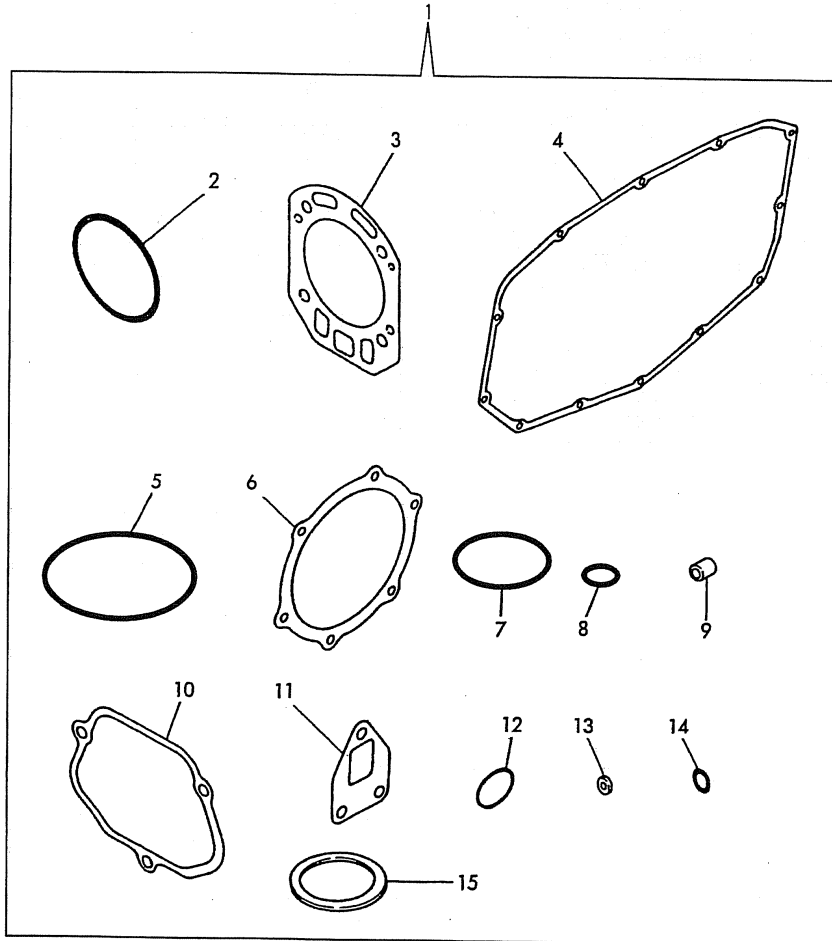
(D)=  
(E)=  
(F)=

No.	Lev.	Parts No.	Description	Qty						I	R
				(A)	(B)	(C)	(D)	(E)	(F)		
1	1	705300-92100	BOX ASSY, TOOL	1	1	1					
2	2	104200-92350	DRIVER, SCREW	1	1	1					
3	2	105300-92600	BAG, TOOL	1	1	1					
4	2	22217-120000	WASHER, SPRING 12	3	3	3					
5	2	26206-120352	BOLT, M12X 35 PLATED	3	3	3					
6	2	28110-100120	SPANNER, 10X12	1	1	1					
7	2	28110-140170	SPANNER, 14X17	1	1	1					
8	2	28110-190220	SPANNER, 19X22	1	1	1					
9	1	42111-000960	TACHOMETER H-TYPE	1	1						
9-1	1	42111-000961	TACHOMETER	1	1	1					S 1
		(A=E/#000379) (B=E/#050246)									
11	1	105250-07320	LABEL, NO FIRE	1	1	1					
12	1	105372-07150	LABEL, LUB. OIL	1	1	1					
13	1	105300-07400	LABEL, RADIATOR	1	1	1					
14	1	112100-55420	LABEL	1	1	1					
15	1	42221-500650	LABEL	1	1	1					
16	1	105808-07100	LABEL		1						W
		(B=E/#048058)									

Remarks  
(1)S.I UNIT PART.

# Fig.16. GASKET SET

Y00D6671



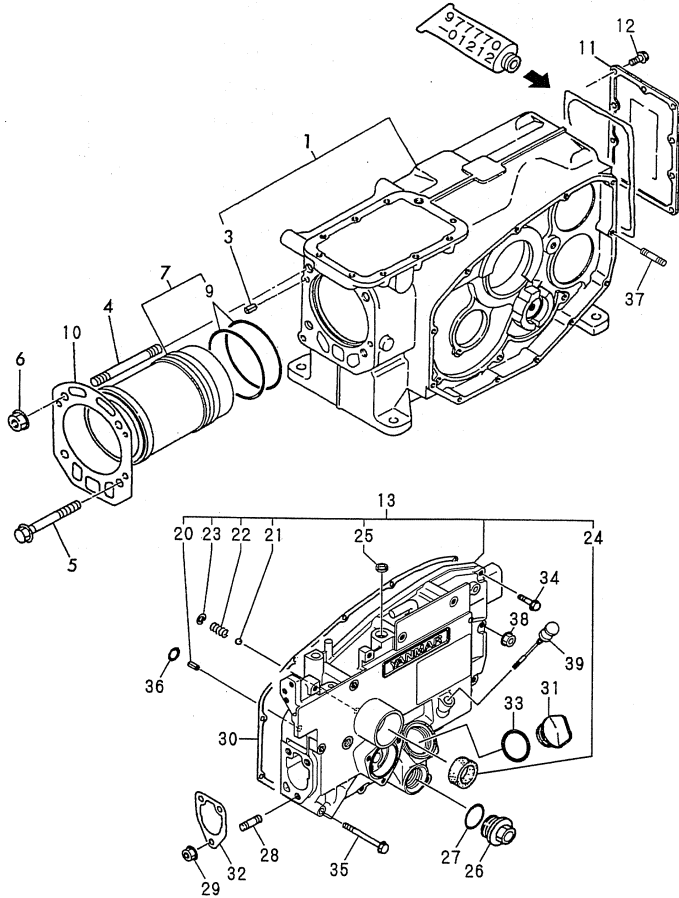
(A)=NFD10-MEP  
(B)=NFD10-MEPAS  
(C)=NFD10-MEPA

(D)=  
(E)=  
(F)=

No.	Lev.	Parts No.	Description	Q'ty						I	R
				(A)	(B)	(C)	(D)	(E)	(F)		
1	1	705300-92602	GASKET SET	1	1	1					
2	2	105300-01300	GASKET, LINER	2	2	2					
3	2	105300-01331	GASKET, HEAD 156X126	1	1						
3-1	2	105300-01332 (A=E/#000367) (B=E/#048685)	GASKET, CYL. HEAD	1	1	1					N
4	2	105300-01410	GASKET, GEAR CASE	1	1	1					
5	2	24311-000320	O-RING, 1AP32.0	1	1	1					
6	2	105300-02020	GASKET	1	1	1					
7	2	24341-000200	O-RING, 1AS20.0	1	1	1					
8	2	24311-000070	O-RING, 1AP7.0	1	1	1					
9	2	119625-11871	PROTECTOR, NOZZLE	1	1	1					
10	2	105300-11310	GASKET, BONNET	1	1	1					
11	2	105300-13200	GASKET, SILENCER	1	1	1					
12	2	103854-32051	O-RING	1	1	1					
13	2	124550-51350	GASKET, DELIVERY	1	1	1					
14	2	124550-51370	O-RING	1	1	1					
15	2	101504-55051	GASKET	1	1	1					

Fig.17. CYLINDER BLOCK

Y00D6671



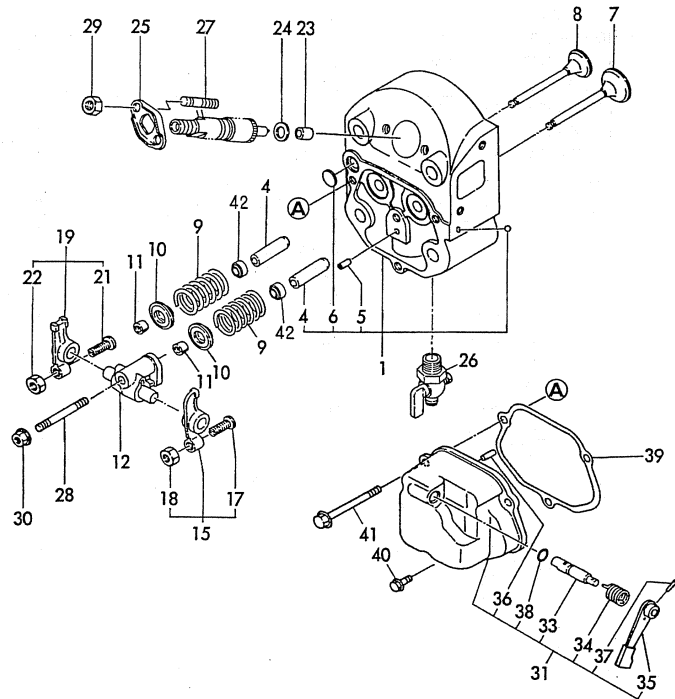
(A)= (D)=NFD13-MEP  
 (B)= (E)=NFD13-MEPAS  
 (C)= (F)=NFD13-MEPA

No.	Lev.	Parts No.	Description	Q'ty						I	R
				(A)	(B)	(C)	(D)	(E)	(F)		
1	1	705600-01560	BLOCK ASSY, CYLINDER				1	1	1		
3	2	22351-060012	PIN, SPRING 6.0X12				2	2	2		
4	1	105500-01200	BOLT, HEAD				2	2	2		
5	1	105500-01210	BOLT, HEAD				2	2	2		
6	1	105500-01220	NUT, CYLINDER HEAD				2	2	2		
7	1	705600-01900	LINER ASSY, CYLINDER				1	1	1		
9	2	105500-01300	GASKET, LINER				2	2	2		A
10	1	105500-01330	GASKET, HEAD				1	1	1		A
11	1	105500-01480	COVER				1	1	1		
12	1	26106-060162	BOLT, M6X 16 PLATED				10	10	10		
13	1	705600-01500	CASE ASSY, GEAR				1	1	1		
20	2	22351-060012	PIN, SPRING 6.0X12				1	1	1		
21	2	24190-120001	BALL, STEEL 3/8				1	1	1		
22	2	105300-34040	SPRING				1	1	1		
23	2	22252-000100	RING, 10				1	1	1		
24	2	120270-61250	SEAL, OIL				1	1	1		
25	2	105378-01690	SEAL, OIL				1	1	1		
26	1	105300-01690	PLUG				1	1	1		
27	1	24321-000250	O-RING, 1AG25.0				1	1	1		
28	1	26216-080222	STUD, M8X 22				3	3	3		
29	1	26366-080002	NUT, M8				3	3	3		
30	1	105500-01410	GASKET				1	1	1		A
31	1	10540H-01751	CAP, FEEDER				1	1	1		
32	1	104271-01950	SHIM SET,0.2X3,0.3X2				1	1	1		
33	1	24311-000320	O-RING, 1AP32.0				1	1	1		A
34	1	26106-060252	BOLT, M6X 25 PLATED				6	6	6		
35	1	26106-060652	BOLT, M6X 65 PLATED				6	6	6		
36	1	24311-000060	O-RING, 1AP6.0				1	1	1		
37	1	10530H-01800	BOLT				1	1	1		
38	1	26366-060002	NUT, M6				1	1	1		
39	1	10530H-34850	DIPSTICK, OIL				1	1	1		

Remarks  
 (A)THESE PARTS ARE ALSO SOLD BY  
 FIG.32.REF NO.1  
 (GASKET SET.P/# 705500-92601).

Fig.18. CYLINDER HEAD & BONNET

Y00D6671



(A)=  
(B)=  
(C)=

(D)=NFD13-MEP  
(E)=NFD13-MEPAS  
(F)=NFD13-MEPA

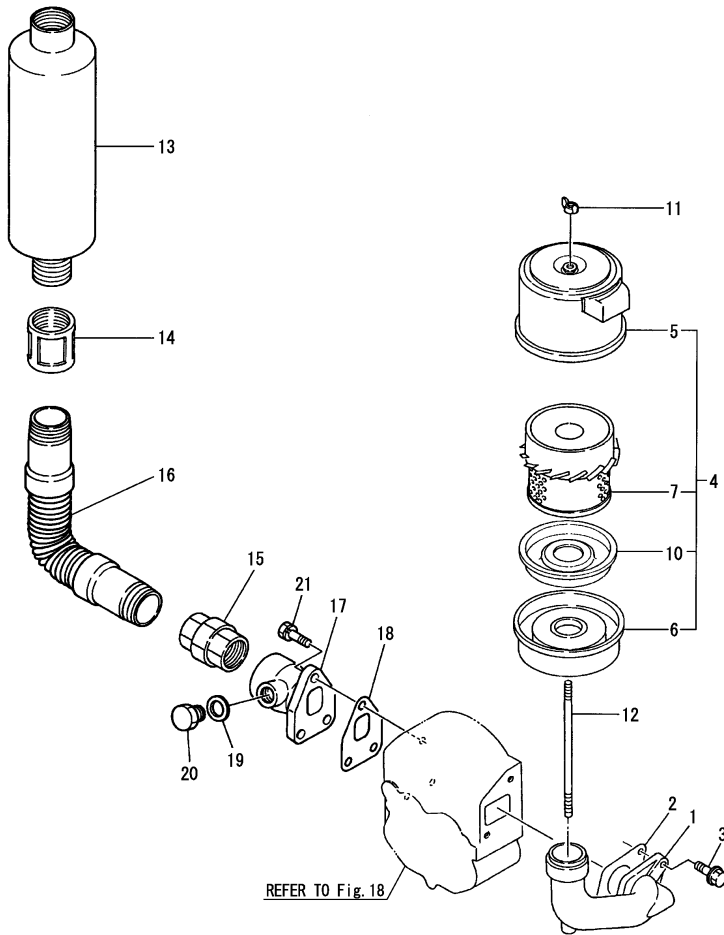
No.	Lev.	Parts No.	Description	Q'ty						I	R
				(A)	(B)	(C)	(D)	(E)	(F)		
1	1	705500-11702	HEAD ASSY, CYLINDER				1	1	1		
4	2	105600-11800	GUIDE, VALVE				2	2	2		
5	2	22351-060012	PIN, SPRING 6.0X12				1	1	1		
6	2	27231-150000	PLUG 15				1	1	1		
7	1	105500-11100	VALVE, INTAKE				1	1	1		
8	1	105500-11111	VALVE, EXHAUST				1	1	1		
9	1	104600-11120	SPRING, VALVE				2	2	2		
10	1	103338-11180	RETAINER, SPRING				2	2	2		
11	1	27310-080001	COTTER, 8				2	2	2		
12	1	10550H-11290	SUPPORT ASSY, ARM				1	1	1		
15	1	105500-11650	ARM, ROCKER				1	1	1		
17	2	101158-11230	SCREW, VALVE ADJUST				1	1	1		
18	2	26756-080002	NUT, LOCK M8				1	1	1		
19	1	105500-11660	ARM, ROCKER				1	1	1		
21	2	101158-11230	SCREW, VALVE ADJUST				1	1	1		
22	2	26756-080002	NUT, LOCK M8				1	1	1		
23	1	119625-11871	PROTECTOR, NOZZLE				1	1	1		A
24	1	119625-11880	SEAT, NOZZLE				1	1	1		
25	1	119625-11900	RETAINER, NOZZLE				1	1	1		
26	1	105010-11920	COCK, WATER				1	1	1		
27	1	26216-060252	STUD, M6X 25				2	2	2		
28	1	26216-080502	STUD, M8X 50				1	1	1		
29	1	26366-060002	NUT, M6				2	2	2		
30	1	26366-080002	NUT, M8				1	1	1		
31	1	705500-11520	BONNET ASSY, HEAD				1	1	1		
33	2	104200-03600	SHAFT, DECOMPRESSION				1	1	1		
34	2	104200-03641	SPRING, DECOMPRESSION				1	1	1		
35	2	104104-03750	LEVER, DECOMPRESSION				1	1	1		
36	2	22312-030180	PIN, PARALLEL M3X18				1	1	1		
37	2	22322-030180	PIN, TAPER 3X18				1	1	1		
38	2	24311-000070	O-RING, 1AP7.0				1	1	1		A
39	1	105500-11310	GASKET, BONNET				1	1	1		A
40	1	26106-060202	BOLT, M6X 20 PLATED				2	2	2		
41	1	26106-060702	BOLT, M6X 70 PLATED				1	1	1		
42	1	105500-11340	SEAL, VALVE STEM				2	2	2		

Remarks

(A)THESE PARTS ARE ALSO SOLD BY  
FIG.32.REF NO.1  
(GASKET SET.P/# 705500-92601).



Fig.19. AIR CLEANER & MUFFLER



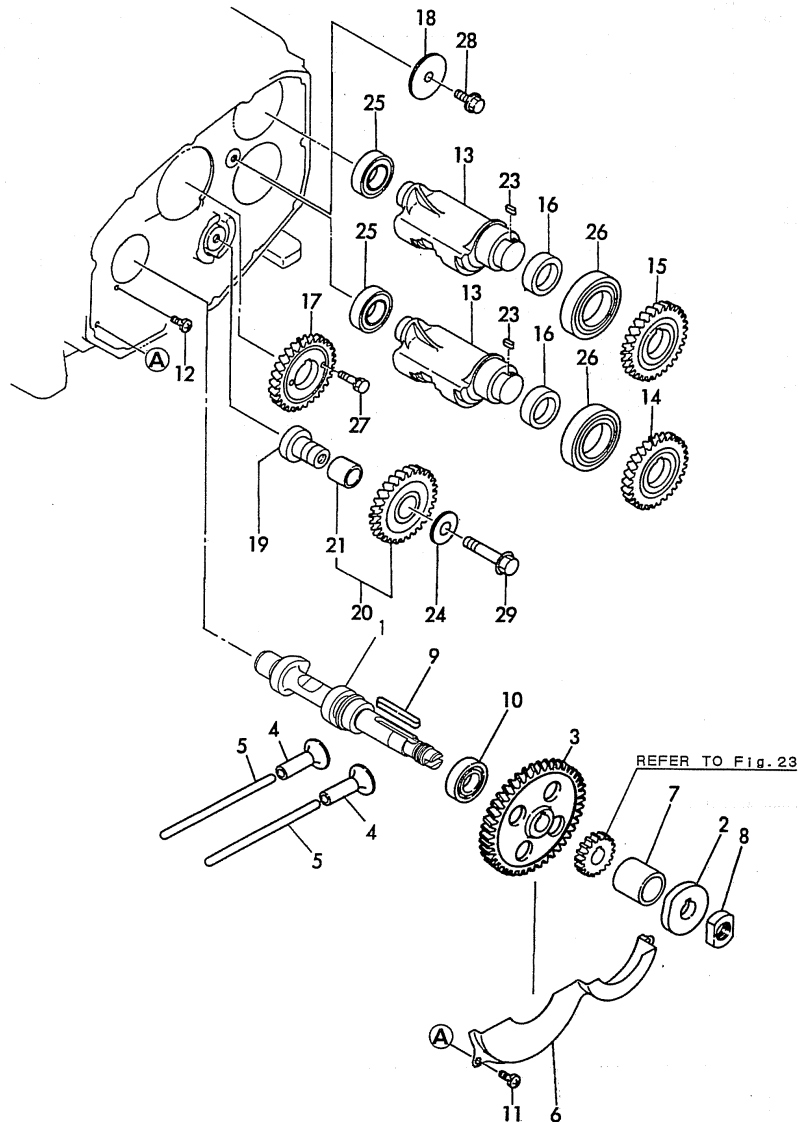
(A)=  
(B)=  
(C)=  
(D)=NFD13-MEP  
(E)=NFD13-MEPAS  
(F)=NFD13-MEPA

No.	Lev.	Parts No.	Description	Q'ty						I	R
				(A)	(B)	(C)	(D)	(E)	(F)		
1	1	105500-12020	PIPE, AIR INTAKE				1	1	1		
2	1	105500-12050	GASKET				1	1	1		
3	1	26106-080202	BOLT, M8X 20 PLATED				2	2	2		
4	1	105300-12511	CLEANER, AIR				1	1	1		
5	2	105370-12531	COVER ASSY				1	1	1		
6	2	105370-12540	PAN ASSY, DUST				1	1	1		
7	2	105370-12570	ELEMENT				1	1	1		
10	2	105370-12670	BAFFLE				1	1	1		
11	1	101147-12550	NUT				1	1	1		
12	1	105300-12550	BOLT				1	1	1		
13	1	43100-552890	SILENCER, BK-40				1				
14	1	23131-140007	SOCKET, R1+1/2				1		1		
15	1	23152-140007	UNION, R1+1/2				1		1		
16	1	43720-500110	PIPE, FLEXIBLE				1		1		
17	1	105678-13150	FLANGE, EXHAUST				1	1	1		
18	1	105500-13200	GASKET, SILENCER				1	1	1		A
19	1	23414-170000	GASKET, 17X1.0				1	1	1		
20	1	23897-030002	PLUG G3/8,HEX.				1	1	1		
21	1	26013-080252	BOLT, M8X 25				3	3	3		

Remarks  
(A)THESE PARTS ARE ALSO SOLD BY  
FIG.32.REF NO.1  
(GASKET SET.P/# 705500-92601).

# Fig.20. CAMSHAFT & BALANCER

Y00D6671



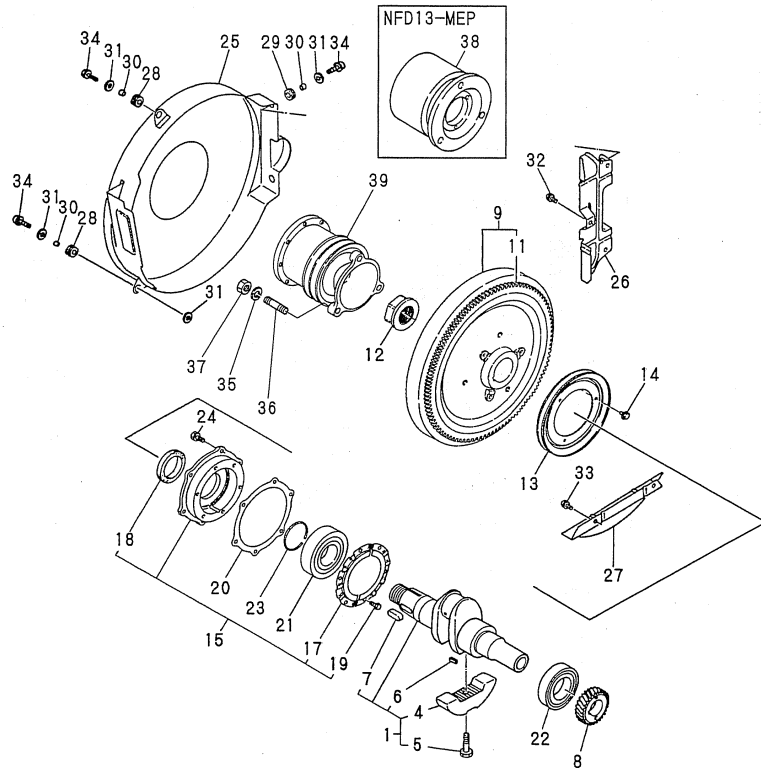
(A)=  
(B)=  
(C)=

(D)=NFD13-MEP  
(E)=NFD13-MEPAS  
(F)=NFD13-MEPA

No.	Lev.	Parts No.	Description	Q'ty						I	R
				(A)	(B)	(C)	(D)	(E)	(F)		
1	1	10557H-14010	CAMSHAFT				1	1	1		
2	1	105300-14090	CAM, FUEL				1	1	1		
3	1	10560H-14100	GEAR, CAMSHAFT				1	1	1		
4	1	105300-14200	TAPPET				2	2	2		
5	1	105500-14400	ROD, PUSH				2	2	2		
6	1	105500-14600	COVER				1	1	1		
7	1	105300-14700	SPACER				1	1	1		
8	1	104300-76460	NUT				1	1	1		
9	1	22512-070600	KEY, 7X 60				1	1	1		
10	1	24101-060064	BEARING, BALL 6006				1	1	1		
11	1	26022-060122	SCREW, M6X12				3	3	3		
12	1	26587-080122	SCREW, M8X12				1	1	1		
13	1	105500-28251	SHAFT, BALANCER				2	2	2		
14	1	10560G-28300	GEAR, BALANCER				1	1	1		
15	1	10560G-28310	GEAR, BALANCER				1	1	1		
16	1	105500-28380	SPACER				2	2	2		
17	1	10560H-28410	GEAR, BALANCER				1	1	1		
18	1	105300-28450	RETAINER				1	1	1		
19	1	105300-28700	SHAFT				1	1	1		
20	1	10550G-28750	GEAR ASSY				1	1	1		
21	2	105430-28720	BUSH, IDLE GEAR				1	1	1		
23	1	105215-76490	KEY				2	2	2		
24	1	123672-83880	RETAINER				1	1	1		
25	1	24101-060054	BEARING, BALL 6005				2	2	2		
26	1	24101-060094	BEARING, BALL 6009				2	2	2		
27	1	26013-060222	BOLT, M6X 22				2	2	2		
28	1	26106-080162	BOLT, M8X 16 PLATED				1	1	1		
29	1	26106-100552	BOLT, M10X 55 PLATED				1	1	1		

Fig.21. CRANKSHAFT & FLYWHEEL

Y00D6671



(A)= (D)=NFD13-MEP  
 (B)= (E)=NFD13-MEPAS  
 (C)= (F)=NFD13-MEPA

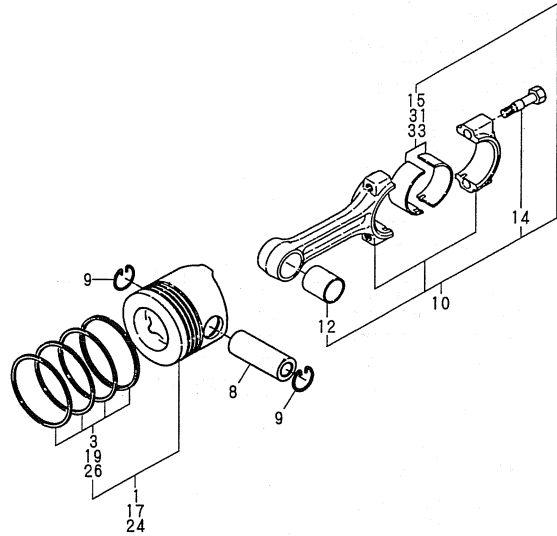
No.	Lev.	Parts No.	Description	Q'ty						I	R
				(A)	(B)	(C)	(D)	(E)	(F)		
1	1	705500-21701	CRANKSHAFT ASSY				1	1	1		
4	2	105500-21100	WEIGHT, BALANCE				2	2	2		
5	2	104271-21100	BOLT, BALANCE WEIGHT				2	2	2		
6	2	22512-050200	KEY, 5X 20				1	1	1		
7	2	22512-100300	KEY, 10X 30				1	1	1		
8	1	10560H-21200	GEAR, CRANKSHAFT				1	1	1		
9	1	105500-21591	FLYWHEEL ASSY				1	1	1		
11	2	105500-21600	GEAR, RING				1	1	1		
12	1	106330-21530	NUT, END				1	1	1		
13	1	105300-21600	V-PULLEY				1	1	1		
14	1	26106-060122	BOLT, M6X 12 PLATED				3	3	3		
15	1	705500-02500	HOUSING ASSY, METAL				1	1	1		
17	2	105430-02321	RETAINER, BEARING				2	2	2		
18	2	103288-02221	SEAL, OIL				1	1	1		
19	2	26116-060102	BOLT, M6X 10 PLATED				6	6	6		
20	1	105500-02020	GASKET				1	1	1		A
21	1	105600-02300	BEARING, 6310G3C3				1	1	1		
22	1	10560H-02310	BEARING, NF309-C3				1	1	1		
23	1	22242-000500	RING, 50				1	1	1		
24	1	26013-080202	BOLT, M8X 20				7	7	7		
25	1	105678-21350	COVER, FLYWHEEL				1	1	1		
26	1	105300-21360	COVER				1	1	1		
27	1	105300-21320	COVER				1	1	1		
28	1	105300-21381	ABSORBER				2	2	2		
29	1	105300-44451	ABSORBER				2	2	2		
30	1	105300-44460	COLLAR				4	4	4		
31	1	160120-76940	WASHER				5	5	5		
32	1	26106-060122	BOLT, M6X 12 PLATED				3	3	3		
33	1	26106-060122	BOLT, M6X 12 PLATED				2	2	2		
34	1	26106-060202	BOLT, M6X 20 PLATED				4	4	4		
35	1	22217-120000	WASHER, SPRING 12				3	3	3	W	
36	1	26216-120322	STUD, M12X 32	(D=FROM 1ST)	(E=FROM 1ST)		3	3	3	W	
37	1	26716-120002	NUT, M12	(D=FROM 1ST)	(E=FROM 1ST)		3	3	3	W	
38	1	105678-21970	CLUTCH				1				W
39	1	105478-21960	CLUTCH	(D=FROM 1ST)				1	1	W	
					(E=FROM 1ST)						

Remarks

(A)THESE PARTS ARE ALSO SOLD BY  
 FIG.32.REF NO.1  
 (GASKET SET.P/# 705500-92601).

Fig.22. PISTON & CONNECTING ROD

Y00D6671



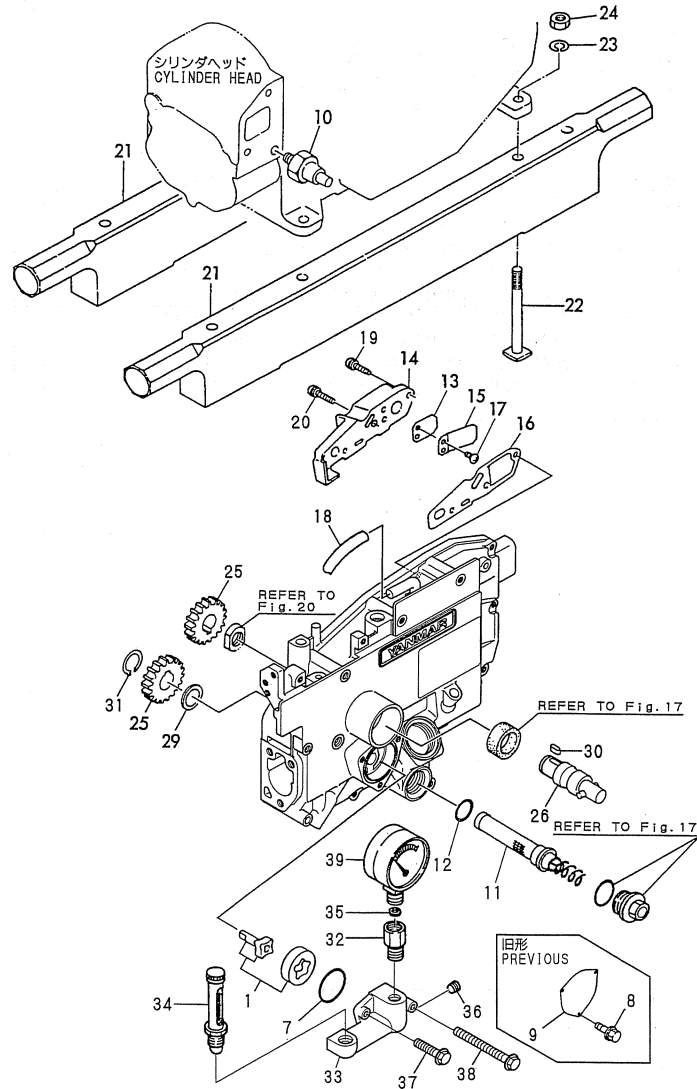
No.	Lev.	Parts No.	Description	Q'ty						I	R
				(A)	(B)	(C)	(D)	(E)	(F)		
1	1	105600-22090	PISTON ASSY, DI				1	1	1		
3	2	704600-22502	RING SET, PISTON				1	1	1		
8	1	105500-22300	PIN, PISTON				1	1	1		
9	1	105500-22400	CIRCLIP				2	2	2		
10	1	705500-23100	ROD ASSY, CONNECTING				1	1	1		
12	2	105500-23910	BEARING, PISTON PIN				1	1	1		
14	2	105500-23200	BOLT, CONNECTING ROD				2	2	2		
15	2	705500-23600	BEARING, CRANK PIN				1	1	1		
17	1	105600-22470	PISTON W/RING(OS0.25				1	1	1		
19	2	105600-22510	RING SET, 0.25 OS				1	1	1		1
24	1	105600-22480	PISTON W/RING(OS 0.5				1	1	1		2
26	2	105600-22520	RING SET, 0.50 OS				1	1	1		2
31	1	705500-23610	BEARING ASSY, 0.25				1	1	1		3
33	1	705500-23620	BEARING, 0.50 US				1	1	1		4

Remarks

- (1) OVER-SIZED(O.S=0.25)PART.
- (2) OVER-SIZED(O.S=0.5 )PART.
- (3) UNDER-SIZED(U.S=0.25)PART.
- (4) UNDER-SIZED(U.S=0.5 )PART.

Fig.23. LUB. OIL SYSTEM

Y0006671



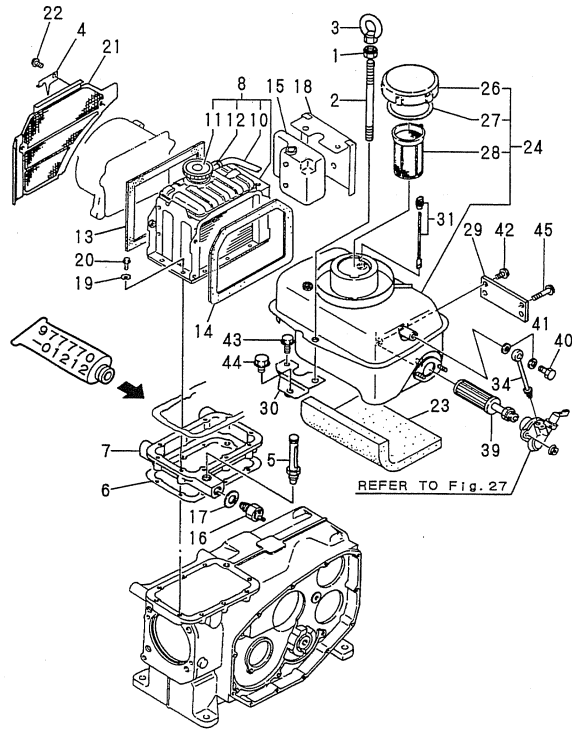
(A)=  
(B)=  
(C)=  
(D)=NFD13-MEP  
(E)=NFD13-MEPAS  
(F)=NFD13-MEPA

No.	Lev.	Parts No.	Description	Q'ty						I	R
				(A)	(B)	(C)	(D)	(E)	(F)		
1	1	705225-32500	ROTOR ASSY				1	1	1		
7	1	103854-32051	O-RING				1	1	1		A
8	1	26106-060122	BOLT, M6X 12 PLATED				3	3			Z
9	1	103854-32082	COVER	(D=E/XXX)	(E=E/XXX)		1	1			Z
10	1	181230-39450	SWITCH, OIL PRESSURE	(D=E/XXX)	(E=E/XXX)		1	1	1		
11	1	105306-35052	STRAINER ASSY, OIL				1	1	1		
12	1	24341-000200	O-RING, 1AS20.0				1	1	1		A
13	1	101158-03061	VALVE				1	1	1		
14	1	105500-03082	COVER, BREATHER				1	1	1		
15	1	101158-03111	RETAINER				1	1	1		
16	1	105300-03130	GASKET				1	1	1		
17	1	105362-78960	SCREW, M4X8				2	2	2		
18	1	23064-090400	PIPE, 9X 400				1	1	1		
19	1	26106-060222	BOLT, M6X 22 PLATED				2	2	2		
20	1	26106-060252	BOLT, M6X 25 PLATED				1	1	1		
21	1	105500-08010	BED, WOODEN				2	2			
21-1	1	10560H-08010	ENGINE BED	(D=E/#000519)	(E=E/#013029)		2	2	2		R
22	1	104300-08050	BOLT, FOUNDATION				4	4	4		
23	1	22217-120000	WASHER, SPRING 12				4	4	4		
24	1	26716-120002	NUT, M12				4	4	4		
25	1	105300-76330	GEAR, STARTING				2	2	2		
26	1	705100-76900	SHAFT ASSY, STARTING				1	1	1		
29	1	105300-76470	COLLAR				1	1	1		
30	1	105300-76490	KEY, 7X10				1	1	1		
31	1	22242-000200	RING, 20				1	1	1		
32	1	171109-34030	JOINT				1	1	1		
33	1	105678-34050	BRACKET				1	1	1		
34	1	171101-34080	THERMOMETER				1	1	1		
35	1	23418-050000	GASKET, 5X1.0				1	1	1		
36	1	23871-010000	PLUG, R01				1	1			
36-1	1	23876-010000	PLUG, R01	(D=E/#000518)	(E=E/#012765)		1	1	1		N
37	1	26106-060252	BOLT, M6X 25 PLATED				2	2	2		
38	1	26106-060552	BOLT, M6X 55 PLATED				1	1	1		
39	1	42130-502020	GAUGE				1	1	1		
39-1	1	28854-650000					1	1			S 1
39-2	1	28856-650000	PRESSURE GAUGGES	(D=E/#000519)	(E=E/#013029)		1	1	1		S 1
				(D=E/#000519)	(E=E/#013029)						

Remarks  
 (A) THESE PARTS ARE ALSO SOLD BY  
 FIG.32.REF NO.1  
 (GASKET SET.P/# 705500-92601).  
 (1)S.I UNIT PART.

Fig.24. RADIATOR & FUEL OIL TANK

Y00D6671



(A)= (D)=NFD13-MEP  
 (B)= (E)=NFD13-MEPAS  
 (C)= (F)=NFD13-MEPA

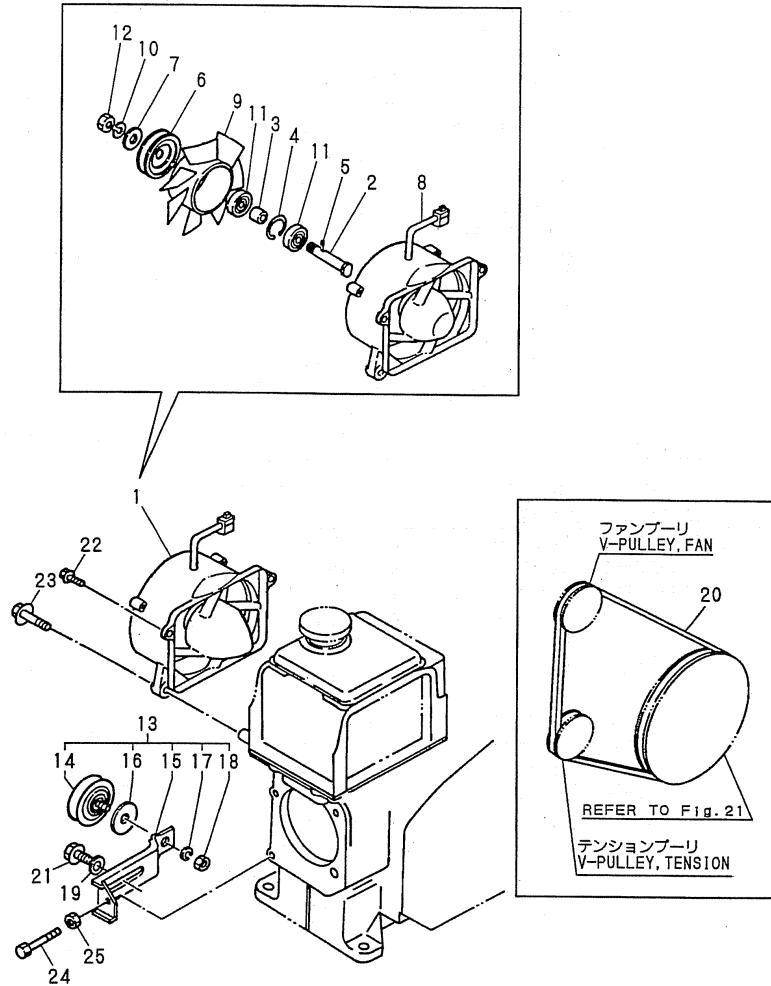
No.	Lev.	Parts No.	Description	Q'ty						I	R
				(A)	(B)	(C)	(D)	(E)	(F)		
1	1	104107-07900	NUT, M10				1	1	1		
2	1	105678-07940	BOLT, LIFTING				1	1	1		
3	1	26627-100002	NUT, EYE M10				1	1	1		
4	1	105678-07300	POINTER				1	1	1		
5	1	171101-34080	THERMOMETER				1	1	1		
6	1	105678-44050	GASKET				1	1	1		
7	1	105678-44300	BRACKET, RADIATOR				1	1	1		
8	1	105600-44520	RADIATOR ASSY				1	1	1		
10	2	105500-44570	PIPE, OVERFLOW 7X195				1	1	1		
11	2	105198-44590	CAP, RADIATOR				1	1	1		
12	2	121250-44590	CLAMP				1	1	1		
13	1	104607-44540	SPONGE				1	1	1		
14	1	106100-44560	SPONGE, 15X5X1000				1	1	1		
15	1	105300-44630	TANK, SUB				1	1	1		
16	1	121250-44901	SWITCH, 110				1	1	1		
17	1	124465-44950	GASKET, 16				1	1	1		
18	1	105678-44980	RETAINER				1	1	1		
19	1	22217-060000	WASHER, SPRING 6				9	9	9		
20	1	26116-060402	BOLT, M6X 40 PLATED				9	9	9		
21	1	105678-44330	SCREEN				1	1	1		
22	1	26106-060122	BOLT, M6X 12 PLATED				2	2	2		
23	1	171107-55010	INSULATOR				1	1	1		
24	1	771107-55700	TANK ASSY, FUEL				1	1	1		
26	2	105015-55040	CAP, FUEL TANK				1	1	1		
27	2	101504-55051	GASKET				1	1	1		A
28	2	101504-55101	STRAINER, FUEL				1	1	1		
29	1	105678-55080	BRACKET				1	1	1		
30	1	105678-55090	BRACKET				1	1	1		
31	1	104300-55170	DIPSTICK				1	1	1		
34	1	104300-55250	PIPE				1	1	1		
39	1	104300-55790	STRAINER, FUEL				1	1	1		
40	1	101147-59810	BOLT, PIPE JOINT M8				1	1	1		
41	1	23414-080000	GASKET, 8X1.0				2	2	2		
42	1	26106-080142	BOLT, M8X 14 PLATED				2	2	2		
43	1	26106-080142	BOLT, M8X 14 PLATED				1	1	1		
44	1	26106-100162	BOLT, M10X 16 PLATED				1	1	1		
45	1	26106-100222	BOLT, M10X 22 PLATED				2	2	2		

Remarks

(A)THESE PARTS ARE ALSO SOLD BY  
 FIG.32.REF NO.1  
 (GASKET SET.P/# 705500-92601).

Fig.25. FAN

Y00D6671



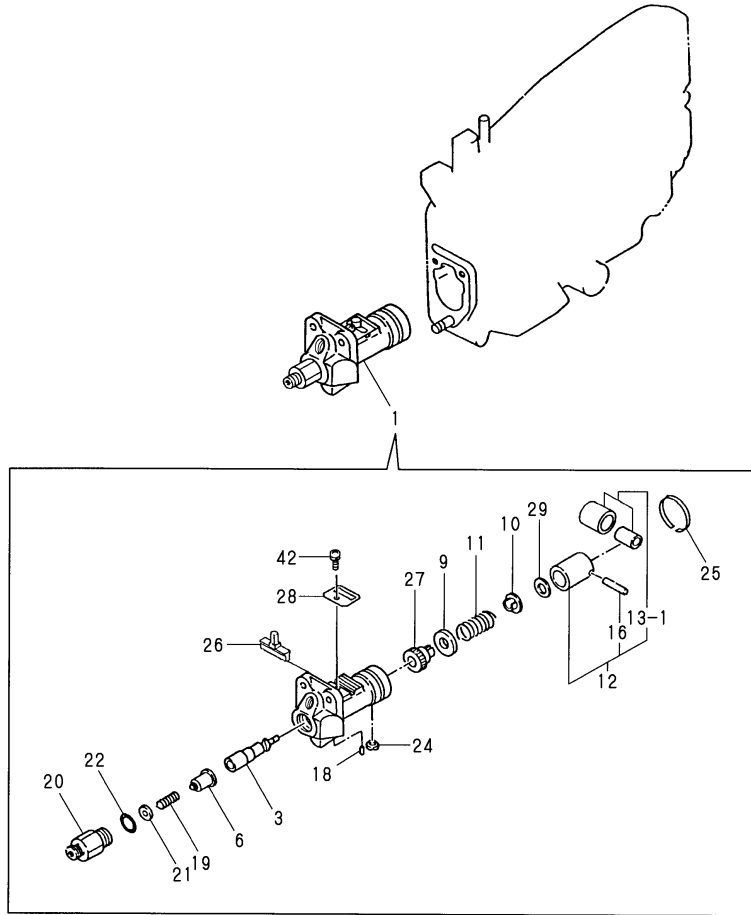
(A)=  
(B)=  
(C)=

(D)=NFD13-MEP  
(E)=NFD13-MEPAS  
(F)=NFD13-MEPA

No.	Lev.	Parts No.	Description	Q'ty						I	R
				(A)	(B)	(C)	(D)	(E)	(F)		
1	1	105500-44211	CASE ASSY, FAN				1	1	1		
2	2	105340-44710	SHAFT, FAN				1	1	1		
3	2	106383-44720	SPACER				1	1	1		
4	2	106383-44740	CIRCLIP				1	1	1		
5	2	105340-44750	PIN				1	1	1		
6	2	105100-44770	PULLEY, FAN				2	2	2		
7	2	105100-44780	WASHER, PULLEY				1	1	1		
8	2	105500-44800	COVER ASSY				1	1	1		
9	2	105500-44850	FAN, COOLING				1	1	1		
10	2	22217-120000	WASHER, SPRING 12				1	1	1		
11	2	24107-062013	BEARING, 6201ZZP6				2	2	2		
12	2	26777-120002	NUT, LOCK M12				1	1	1		
13	1	105500-44810	PULLEY ASSY, TENSION				1	1	1		
14	2	106100-44650	PULLEY, TENSION				1	1	1		
15	2	105500-44940	LEVER				1	1	1		
16	2	106100-44960	CAP				1	1	1		
17	2	22217-080000	WASHER, SPRING 8				1	1	1		
18	2	26716-080002	NUT, M8				1	1	1		
19	1	22137-080000	WASHER, 8				1	1	1		
20	1	25117-004001	V-BELT, M40H				1	1	1		
21	1	26013-080162	BOLT, M8X 16				1	1	1		
22	1	26106-060252	BOLT, M6X 25 PLATED				2	2	2		
23	1	26106-080302	BOLT, M8X 30 PLATED				2	2	2		
24	1	26116-060504	BOLT, M6X 50 PLATED				1	1	1		
25	1	26756-060002	NUT, LOCK M6				1	1	1		

Fig.26. FUEL INJECTION PUMP

P/C NEWS No:Y0006671-1  
PUBLISHED:2007/3



(A)= (D)=NFD13-MEP  
(B)= (E)=NFD13-MEPAS  
(C)= (F)=NFD13-MEPA

No.	Lev.	Parts No.	Description	Q'ty						I	R
				(A)	(B)	(C)	(D)	(E)	(F)		
1	1	705606-51103	PUMP ASSY, INJECTION				1	1	1		
3	2	105500-51600	PLUNGER ASSY				1	1	1		
6	2	105300-51300	VALVE ASSY, DELIVERY				1	1	1		
9	2	174307-51170	RETAINER, SPRING A				1	1	1		
10	2	174307-51181	RETAINER, SPRING B				1	1	1		
11	2	124950-51190	SPRING, PLUNGER				1	1	1		
12	2	724550-51520	GUIDE, PLUNGER				1	1	1		
13-1	3	711100-51540	ROLLER ASSY				1	1	1		
16	3	174100-54120	PIN				1	1	1		
18	2	103854-51251	PIN, PLUNGER				1	1	1		
19	2	124550-51320	SPRING, DELIVERY				1	1	1		
20	2	124550-51341	HOLDER, DELIVERY L43				1	1	1		
21	2	124550-51350	GASKET, DELIVERY				1	1	1	A	
22	2	124550-51370	O-RING				1	1	1		A
24	2	104271-51450	PIECE, GUIDE				1	1	1		
25	2	104271-51460	CIRCLIP				1	1	1		
26	2	105300-51500	RACK, CONTROL				1	1	1		
27	2	105300-51510	PINION				1	1	1		
28	2	105300-51550	RETAINER, RACK				1	1	1		
29	2	174307-51700	SHIM SET				1	1	1		
42	2	26022-050102	SCREW, M5X10				1	1	1		

---

---

---

---

---

---

---

---

---

---

---

---

---

---

---

---

---

---

---

---

---

---

---

---

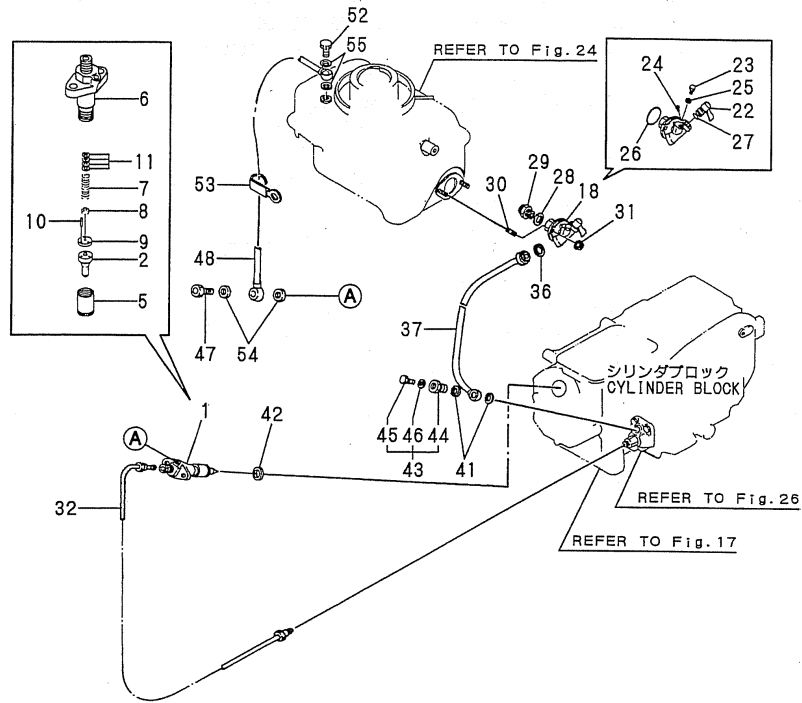
---

Remarks  
(A)THESE PARTS ARE ALSO SOLD BY  
FIG.32.REF NO.1  
(GASKET SET.P/# 705500-92601).



Fig.27. FUEL OIL PIPE

Y00D6671



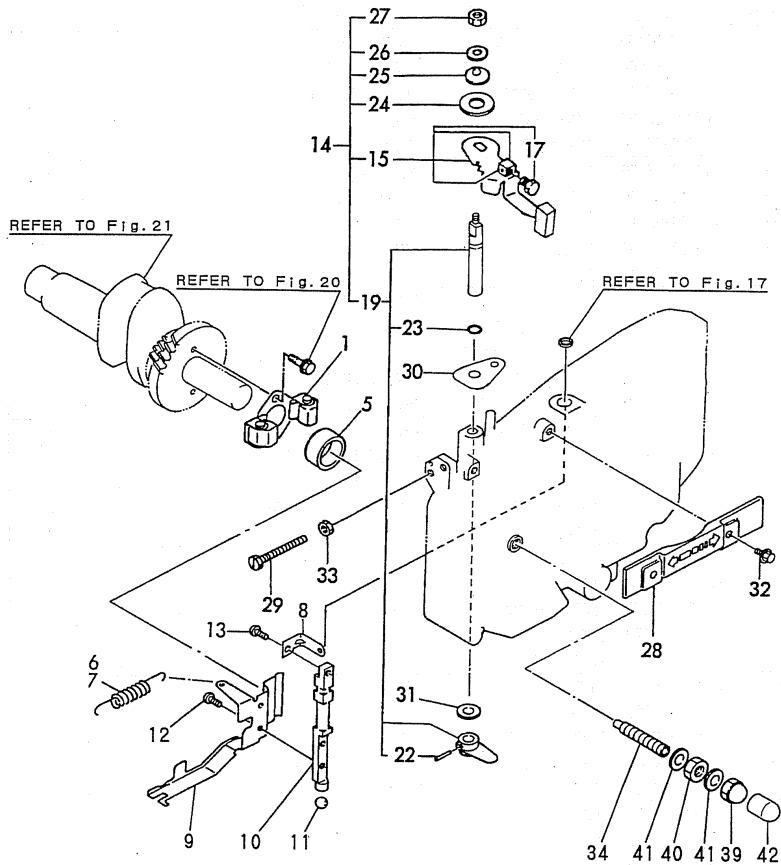
(A)=  
(B)=  
(C)=

(D)=NFD13-MEP  
(E)=NFD13-MEPAS  
(F)=NFD13-MEPA

No.	Lev.	Parts No.	Description	Q'ty						I	R
				(A)	(B)	(C)	(D)	(E)	(F)		
1	1	705506-53100	VALVE ASSY,INJECTION				1	1	1		
2	2	105500-53000	VALVE ASSY,INJECTION				1	1	1		
5	2	114250-53080	NUT, NOZZLE D16.95				1	1	1		
6	2	105306-53100	HOLDER, NOZZLE				1	1	1		
7	2	114250-53120	SPRING, NOZZLE				1	1	1		
8	2	114250-53130	SEAT, SPRING				1	1	1		
9	2	114250-53140	PLATE				1	1	1		
10	2	114250-53210	PIN				2	2	2		
11	2	114250-53400	SHIM SET				1	1	1		
18	1	105476-55300	COCK ASSY, FUEL				1	1	1		
22	2	104211-55340	HANDLE				1	1	1		
23	2	101720-55750	PLUG, 6				1	1	1		
24	2	104200-55750	SCREW, M4				1	1	1		
25	2	22190-060002	WASHER, SEAL 6				1	1	1		
26	2	24311-000320	O-RING, 1AP32.0				1	1	1		
27	2	24311-240100	O-RING, 1AP10A				1	1	1		
28	1	23414-160000	GASKET, 16X1.0				1	1	1		
29	1	23831-100000	UNION, 10				1	1	1		
30	1	26216-060162	STUD, M6X 16				2	2	2		
31	1	26366-060002	NUT, M6				2	2	2		
32	1	105500-59800	PIPE ASSY, INJECTION				1	1	1		
36	1	172200-01650	GASKET				1	1	1		
37	1	105678-59050	PIPE ASSY, FUEL				1	1	1		
41	1	104200-59170	GASKET, 12				2	2	2		
42	1	104884-59170	GASKET				1	1	1		
43	1	105891-59190	JOINT, PIPE				1	1	1		
44	2	105891-59200	BOLT, PIPE JOINT M12				1	1	1		
45	2	124060-59380	PLUG, 6				1	1	1		
46	2	22190-060002	WASHER, SEAL 6				1	1	1		
47	1	129491-59540	BOLT, PIPE JOINT M6				1	1	1		
48	1	105608-59570	PIPE ASSY, RETURN				1	1	1		
52	1	101147-59810	BOLT, PIPE JOINT M8				1	1	1		
53	1	160710-78710	CLAMP, CORD				1	1	1		
54	1	23414-060000	GASKET, 6X1.0				2	2	2		
55	1	23414-080012	GASKET, 8X1.0				2	2	2		

Fig.28. GOVERNOR & CONTROL DEVICE

Y00D6671



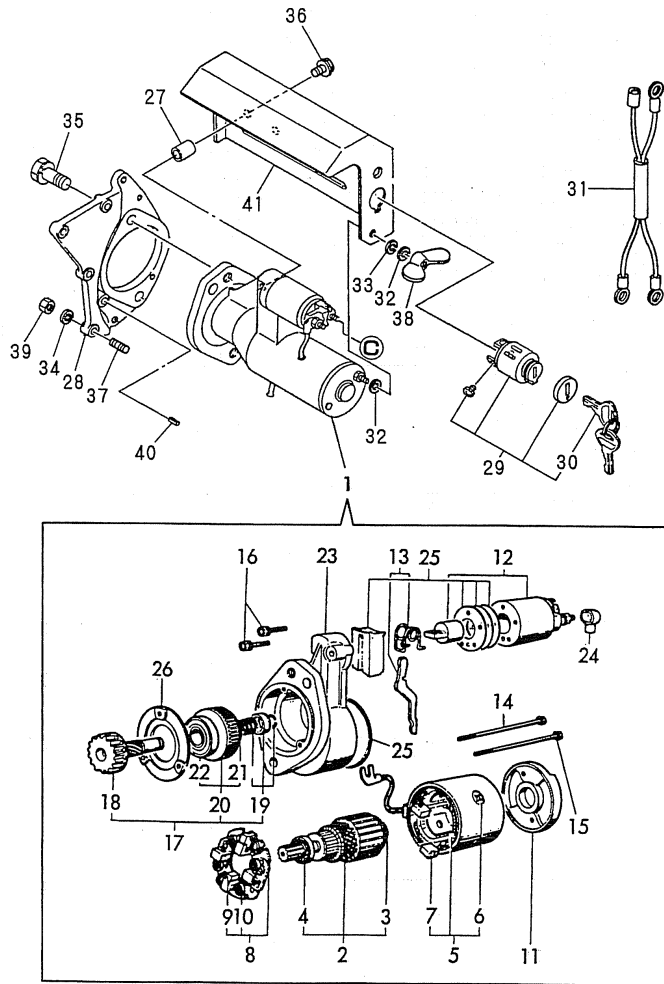
(A)=  
(B)=  
(C)=

(D)=NFD13-MEP  
(E)=NFD13-MEPAS  
(F)=NFD13-MEPA

No.	Lev.	Parts No.	Description	Q'ty						I	R
				(A)	(B)	(C)	(D)	(E)	(F)		
1	1	705300-61701	GOVERNOR ASSY				1	1	1		
5	1	105300-61600	SLEEVE, GOVERNOR				1	1	1		
6	1	105300-66010	SPRING, REGULATOR					1	1		
7	1	105300-66030	SPRING, REGULATOR				1				
8	1	105198-66160	LEVER, STOP				1	1	1		
9	1	105500-66300	LEVER, GOVERNOR				1	1	1		
10	1	105608-66400	SHAFT				1	1	1		
11	1	24190-120001	BALL, STEEL 3/8				1	1	1		
12	1	26022-050102	SCREW, M5X10				2	2	2		
13	1	26022-050102	SCREW, M5X10				1	1	1		
14	1	705192-66531	HANDLE ASSY				1	1	1		
15	2	105502-66041	HANDLE ASSY				1	1	1		
17	3	105225-66990	SCREW, M5X8.5				1	1	1		
19	2	705300-66700	LEVER ASSY,REGULATOR				1	1	1		
22	3	22322-030200	PIN, TAPER 3X20				1	1	1		
23	3	24311-000070	O-RING, 1AP7.0				1	1	1		
24	2	105840-66831	PLATE, FRICTION				1	1	1		
25	2	105840-66880	SPRING				1	1	1		
26	2	22137-060000	WASHER, 6				1	1	1		
27	2	26347-060002	NUT, M6				1	1	1		
28	1	105300-66110	COVER				1	1	1		
29	1	105300-66520	SCREW				1	1	1		
30	1	105300-66850	RETAINER				1	1	1		
31	1	22117-100000	WASHER, 10				1	1	1		
32	1	26106-060122	BOLT, M6X 12 PLATED				2	2	2		
33	1	26756-060002	NUT, LOCK M6				1	1	1		
34	1	105090-66551	LIMITER ASSY, FUEL				1	1	1		
39	1	124060-66950	NUT, CAP M10				1	1	1		
40	1	26796-100002	NUT, LOCK M10				1	1	1		
41	1	22190-100002	WASHER, SEAL 10				2	2	2		
42	1	105300-66610	CAP				1	1	1		

Fig.29. STARTING MOTER

Y00D6671

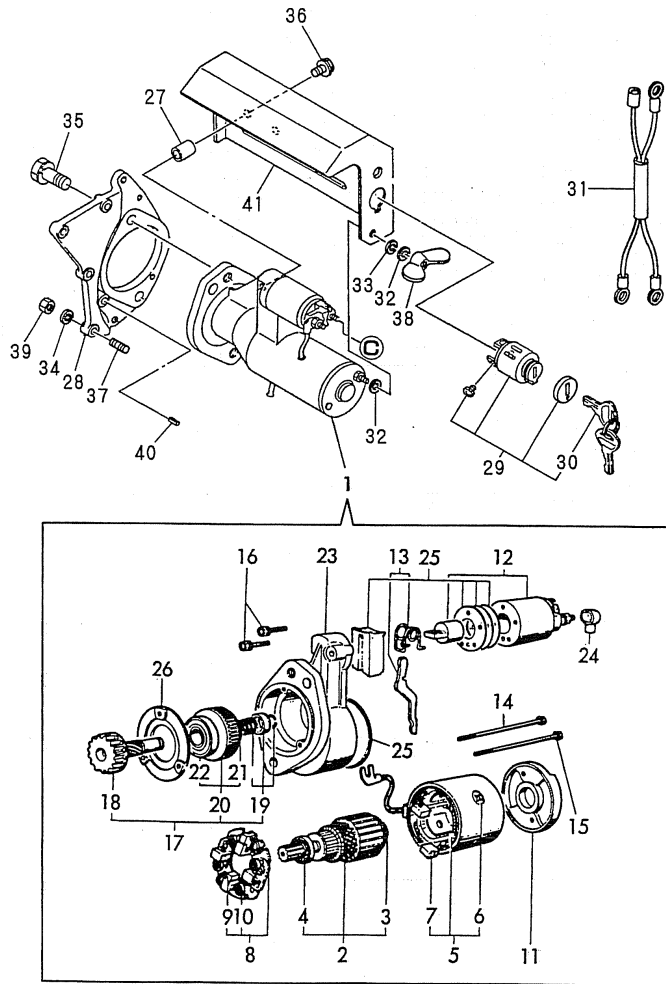


(A)= (D)=NFD13-MEP  
 (B)= (E)=NFD13-MEPAS  
 (C)= (F)=NFD13-MEPA

No.	Lev.	Parts No.	Description	Q'ty						I	R
				(A)	(B)	(C)	(D)	(E)	(F)		
1	1	105100-77010	STARTER, S114-438B				1	1			
1-1	1	105100-77011	MOTOR,STARTER				1	1	1	N	
			(D=E/#000498) (E=E/#012478)								
2	2	X211461005	ARMATURE				1	1	1		
3	3	X211415502	BEARING, BALL				1	1			
3-1	3	X2130350900	BALL BEARING				1	1	1	N	
			(D=E/#000504) (E=E/#012619)								
4	3	X211425502	BEARING, BALL				1	1			
4-1	3	X211425511	BALL BEARING				1	1	1	N	
			(D=E/#000504) (E=E/#012619)								
5	2	X211442003	COIL ASSY, FIELD				1	1	1		
6	3	X21143215	SCREW, CORE				1	1	1		
7	3	X211469002	BRUSH (+)				2	2	2		
8	2	X211479001	HOLDER ASSY, BRUSH				1	1	1		
9	3	X211459002	BRUSH (-)				2	2	2		
10	3	X21148314	SPRING, BRUSH				4	4	4		
11	2	X211483003	COVER				1	1	1		
12	2	171008-77530	SWITCH, MAGNETIC				1	1	1		
13	2	X211446012	LEVER, SHIFT				1	1	1		
14	2	X211468005	BOLT, THROUGH				1	1	1		
15	2	X21148856	BOLT, THROUGH				1	1	1		
16	2	X21145866	BOLT				2	2	2		
17	2	X211455011	PINION ASSY				1	1	1		
18	3	X211465011	SHAFT, PINION				1	1	1		
19	3	X211429006	STOPPER SET				1	1	1		
20	3	X211425506	CLUTCH ASSY				1	1			
20-1	3	X211455500	CLUTCH ASSY				1	1	1	N	
			(D=E/#000504) (E=E/#012619)								
21	4	X211435502	BALL BEARING				1	1			
21-1	4	X211495502	BEARING, BALL				1	1	1	N	
			(D=E/#000504) (E=E/#012619)								
22	4	X211455502	BALL BEARING				1	1	1		
23	2	X211466605	CASE ASSY, GEAR				1	1	1		
24	2	X21142742	COVER (A), RUBBER				1	1	1		
25	2	X211458012	COVER KIT				1	1	1		
26	2	X211428008	RETAINER, BEARING				1	1	1		
27	1	105578-77790	SPACER				2	2	2		
28	1	105500-77470	BRACKET				1	1	1		
29	1	106100-77620	SWITCH, KEY				1	1	1		
30	2	106100-77630	KEY, SWITCH				2	2	2		
31	1	105478-78550	HARNES, WIRE				1	1	1		
32	1	22117-050000	WASHER, 5				2	2	2		
33	1	22217-050000	WASHER, SPRING 5				1	1	1		
34	1	22217-060000	WASHER, SPRING 6				4	4	4		
35	1	26013-120302	BOLT, M12X 30				2	2	2		
36	1	26106-060102	BOLT, M6X 10 PLATED				2	2	2		
37	1	26216-060202	STUD, M6X 20				4	4	4		
38	1	26636-050002	NUT, WING M5				1	1	1		
39	1	26716-060002	NUT, M6				4	4	4		
40	1	22351-060012	PIN, SPRING 6.0X12				1	1	1		
41	1	105100-77780	COVER				1	1			

# Fig.29. STARTING MOTER

Y00D6671



(A)= (D)=NFD13-MEP  
 (B)= (E)=NFD13-MEPAS  
 (C)= (F)=NFD13-MEPA

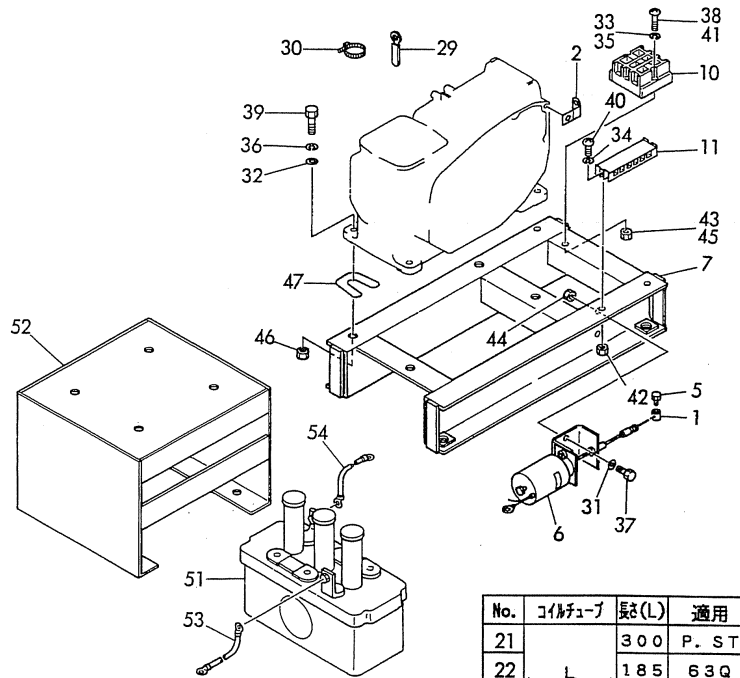
No.	Lev.	Parts No.	Description	Q'ty						I	R
				(A)	(B)	(C)	(D)	(E)	(F)		
41-1	1	105100-77781	COVER				1	1	1		N
			(D=E/#000498)				(E=E/#012478)				

Fig.30. ELECTRIC PART & OPTINAL PART

Y00D6671

見出しNo. 12は、見出しNo. 13から28を含みます。  
12 inc. 13 ~ 28

No.	端子台	ワイヤーハーネス	No.	端子台	ワイヤーハーネス
13	P	セルモータ	17	63Q	油圧SW
14	N	ギャケース	18	49W	水温センサー
15	ST	キーSW	19	J1	
16	5	ソレノイド	20	J2	ファンケース



No.	端子台	バッテリーコード
8	⊕ ガワ	シリンダ
9	⊖ ガワ	ボディ

No.	コイルタイプ	長さ(L)	適用
21		300	P. ST
22	L	185	63Q
23		50	N
24		180	J1, J2
25		30	J2
26		200	49W
27		260	5
28		80	ソレノイド

(A)= (D)=NFD13-MEP  
(B)= (E)=NFD13-MEPAS  
(C)= (F)=NFD13-MEPA

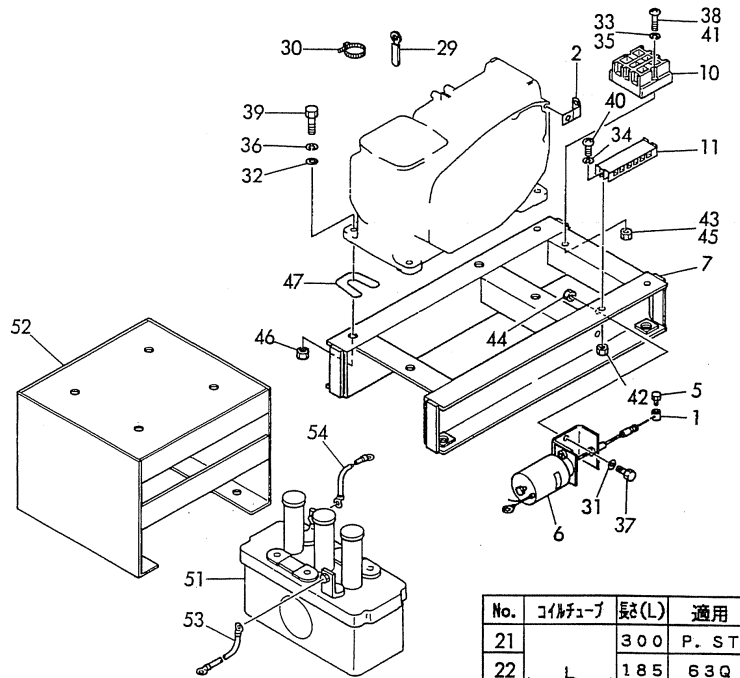
No.	Lev.	Parts No.	Description	Qty						I	R	
				(A)	(B)	(C)	(D)	(E)	(F)			
1	1	106500-44870	STOPPER				1	1	1			
2	1	105478-66830	SUPPORT, WIRE				1	1	1			
5	1	26117-040068	BOLT M 4X 6 PLATED				2	2	2			
6	1	46116-504800	SOLENOID VALVE				1	1	1			
7	1	105678-08110	FOOT						1			
8	1	105198-77670	CORD, BATTERY						1			
9	1	105198-77680	CORD, BATTERY						1			
10	1	105198-77750	STAY						1			
11	1	105198-77760	TERMINAL BLOCK						1			
12	1	105678-77880	HARNESS ASSY, WIRE						1			
13	2	105198-77800	HARNESS, WIRE						1			
13-1	2	105678-77800	HARNESS, WIRE						1		R	
				(E=E/#012619)								
14	2	105198-77810	HARNESS, WIRE						1			
14-1	2	105678-77810	HARNESS, WIRE						1		R	
				(E=E/#012619)								
15	2	105198-77820	HARNESS, WIRE						1			
15-1	2	105678-77820	HARNESS, WIRE						1		R	
				(E=E/#012619)								
16	2	105198-77830	HARNESS, WIRE						1			
16-1	2	105478-77830	HARNESS, WIRE						1		R	
				(E=E/#012619)								
17	2	105198-77840	HARNESS, WIRE						1			
17-1	2	105678-77840	HARNESS, WIRE						1		R	
				(E=E/#012619)								
18	2	105198-77850	HARNESS, WIRE						1			
18-1	2	105678-77850	HARNESS, WIRE						1		R	
				(E=E/#012619)								
19	2	105198-77860	HARNESS, WIRE						1			
19-1	2	105678-77860	HARNESS, WIRE						1		R	
				(E=E/#012619)								
20	2	105198-77870	HARNESS, WIRE						1			
20-1	2	105678-77870	HARNESS, WIRE						1		R	
				(E=E/#012619)								
21	2	105198-77910	PIPE, COIL						1			
22	2	105198-77920	PIPE, COIL						1			
23	2	105198-77930	PIPE, COIL						1			
24	2	105198-77940	PIPE, COIL						1			
25	2	105198-77950	PIPE, COIL						1			
26	2	105198-77960	PIPE, COIL						1			
27	2	105198-77970	PIPE, COIL						1			
28	2	105198-77980	PIPE, COIL						1			
29	1	160710-78710	CLAMP, CORD						1			
30	1	160370-78950	BAND, L=98						2			
31	1	22117-080000	WASHER, 8						2			
32	1	22137-100000	WASHER, 10						4			
33	1	22151-080000	WASHER 8						2			
34	1	22217-040000	WASHER, SPRING 4						2			
35	1	22217-050000	WASHER, SPRING 5						2			
36	1	22217-100000	WASHER, SPRING 10						4			
37	1	26116-080202	BOLT, M8X 20 PLATED						2			

# Fig.30. ELECTRIC PART & OPTINAL PART

Y00D6671

見出しNo. 12は、見出しNo. 13から28を含みます。  
12 inc. 13 ~ 28

No.	端子台	ワイヤーハーネス	No.	端子台	ワイヤーハーネス
13	P	セルモータ	17	63Q	油圧SW
14	N	ギヤケース	18	49W	水温センサー
15	ST	キーSW	19	J1	
16	5	ソレノイド	20	J2	ファンケース



No.	端子台	バッテリーコード
8	⊕ ガワ	シリンダ
9	⊖ ガワ	ボディ

No.	コイルタイプ	長さ(L)	適用
21		300	P. ST
22	L	185	63Q
23		50	N
24		180	J1. J2
25		30	J2
26		200	49W
27		260	5
28		80	ソレノイド

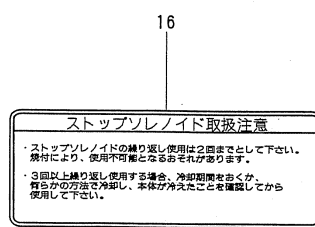
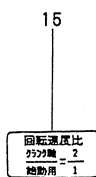
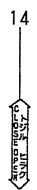
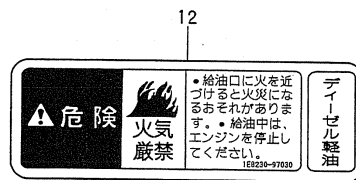
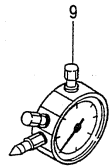
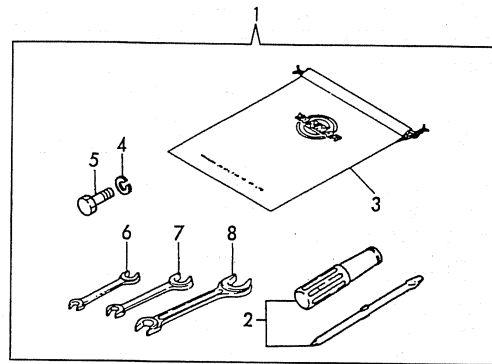
(A)=  
(B)=  
(C)=

(D)=NFD13-MEP  
(E)=NFD13-MEPAS  
(F)=NFD13-MEPA

No.	Lev.	Parts No.	Description	Q'ty						I	R
				(A)	(B)	(C)	(D)	(E)	(F)		
38	1	26116-080602	BOLT, M8X 60 PLATED						2		
39	1	26116-120402	BOLT, M12X 40 PLATED						4		
40	1	26557-040252	SCREW, M4X25						2		
41	1	26557-050402	SCREW, M5X40						2		
42	1	26756-040002	NUT, LOCK M4						2		
43	1	26756-050002	NUT, LOCK M5						2		
44	1	26756-080002	NUT, LOCK M8						2		
45	1	26756-080002	NUT, LOCK M8						2		
46	1	26756-100002	NUT, LOCK M10						4		
47	1	42215-002440	SHIM						1		
51	1	105198-77600	BATTERY, HS80-6E								1
52	1	105198-7761012	BRACKET, BATTERY								1
53	1	105198-77650	WIRE, LEAD								1
54	1	105198-77660	WIRE, LEAD								1

Fig.31. TOOL & LABEL

Y00D6671



(A)=  
(B)=  
(C)=

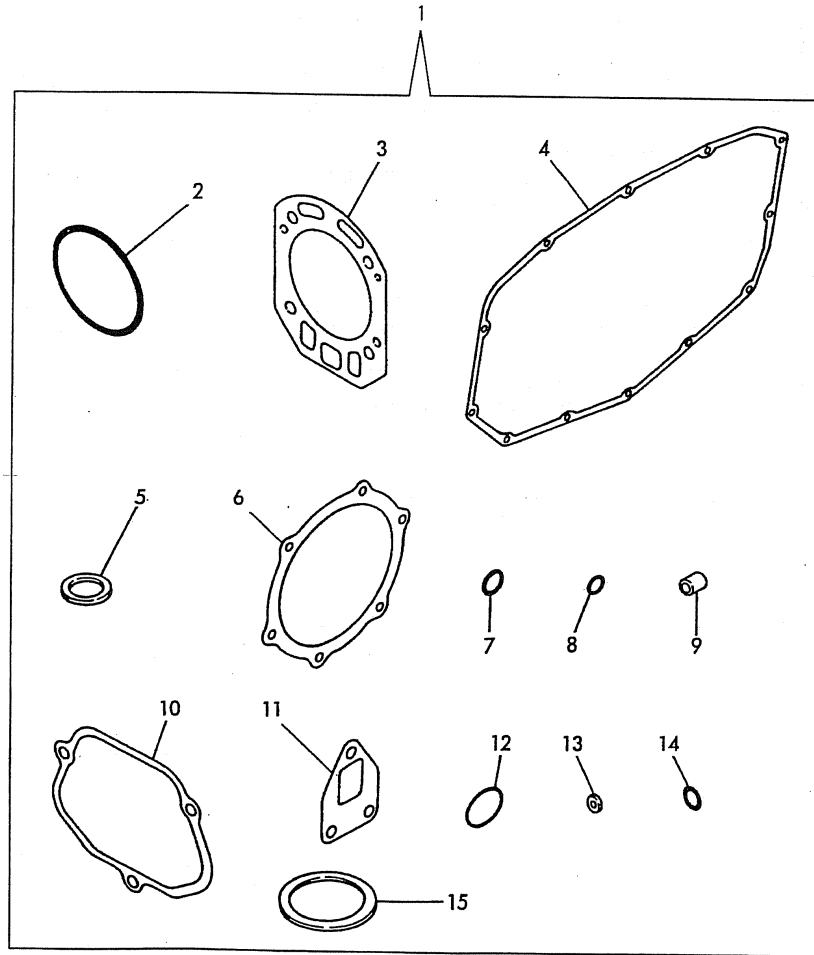
(D)=NFD13-MEP  
(E)=NFD13-MEPAS  
(F)=NFD13-MEPA

No.	Lev.	Parts No.	Description	Q'ty						I	R
				(A)	(B)	(C)	(D)	(E)	(F)		
1	1	705300-92100	BOX ASSY, TOOL				1	1	1		
2	2	104200-92350	DRIVER, SCREW				1	1	1		
3	2	105300-92600	BAG, TOOL				1	1	1		
4	2	22217-120000	WASHER, SPRING 12				3	3	3		
5	2	26206-120352	BOLT, M12X 35 PLATED				3	3	3		
6	2	28110-100120	SPANNER, 10X12				1	1	1		
7	2	28110-140170	SPANNER, 14X17				1	1	1		
8	2	28110-190220	SPANNER, 19X22				1	1	1		
9	1	42111-000960	TACHOMETER H-TYPE				1	1			
9-1	1	42111-000961	TACHOMETER				1	1	1	S	1
			(D=E/#000519)								
			(E=E/#013029)								
11	1	105372-07150	LABEL, LUB. OIL				1	1	1		
12	1	105250-07320	LABEL, NO FIRE				1	1	1		
13	1	105300-07400	LABEL, RADIATOR				1	1	1		
14	1	112100-55420	LABEL				1	1	1		
15	1	42221-500650	LABEL				1	1	1		
16	1	105808-07100	LABEL					1			W
			(E=E/#012175)								

Remarks  
(1)S.I UNIT PART.

# Fig.32. GASKET SET

Y00D6671



(A)=  
(B)=  
(C)=

(D)=NFD13-MEP  
(E)=NFD13-MEPAS  
(F)=NFD13-MEPA

No.	Lev.	Parts No.	Description	Q'ty						I	R
				(A)	(B)	(C)	(D)	(E)	(F)		
1	1	705500-92601	GASKET SET				1	1	1		
2	2	105500-01300	GASKET, LINER				2	2	2		
3	2	105500-01330	GASKET, HEAD				1	1	1		
4	2	105500-01410	GASKET				1	1	1		
5	2	24311-000320	O-RING, 1AP32.0				1	1	1		
6	2	105500-02020	GASKET				1	1	1		
7	2	24341-000200	O-RING, 1AS20.0				1	1	1		
8	2	24311-000070	O-RING, 1AP7.0				1	1	1		
9	2	119625-11871	PROTECTOR, NOZZLE				1	1	1		
10	2	105500-11310	GASKET, BONNET				1	1	1		
11	2	105500-13200	GASKET, SILENCER				1	1	1		
12	2	103854-32051	O-RING				1	1	1		
13	2	124550-51350	GASKET, DELIVERY				1	1	1		
14	2	124550-51370	O-RING				1	1	1		
15	2	101504-55051	GASKET				1	1	1		



## Parts No. Index

Parts No.	Fig. No.	Ref. No.
101147-12550	3	10
	19	11
101147-59810	8	37
	11	52
	24	40
	27	52
101158-03061	7	23
	23	13
101158-03111	7	24
	23	15
101158-11180	2	11
101158-11230	2	20
	24	17
	18	17
		21
101504-55051	8	26
	16	15
	24	27
	32	15
101504-55101	8	27
	24	28
101720-55750	11	6
	27	23
103288-02221	21	18
103338-11180	18	10
103854-32051	7	8
	16	12
	23	7
	32	12
103854-32082	7	7
	23	9
103854-51251	10	18
	26	18
104100-55170	8	28
104100-55250	8	31
104104-03750	2	36
	18	35
104104-21600	5	14
104107-07900	8	1
	24	1
104200-03600	2	34
	18	33
104200-03641	2	35
	18	34
104200-21530	5	10
104200-55750	11	7
	27	24
104200-59170	11	41
	27	41
104200-92350	15	2

Parts No.	Fig. No.	Ref. No.
104200-92350	31	2
104211-55340	11	5
	27	22
104271-01950	1	29
	17	32
104271-21100	21	5
104271-51450	10	24
	26	24
104271-51460	10	25
	26	25
104300-08050	7	31
	23	22
104300-55170	24	31
104300-55250	24	34
104300-55790	8	36
	24	39
104300-76460	4	8
	20	8
104600-11120	18	9
104607-44540	8	12
	24	13
104884-59170	11	42
	27	42
105010-11920	2	27
	18	26
105015-55040	8	25
	24	26
105090-66551	12	32
	28	34
105100-44770	9	6
	25	6
105100-44780	9	7
	25	7
105100-77010	13	1
	29	1
105100-77011	13	1 -1
	29	1 -1
105100-77780	13	31
	29	41
105100-77781	13	31 -1
	29	41 -1
105198-44590	8	10
	24	11
105198-66160	12	8
	28	8
105198-77600	14	51
	30	51
105198-7761012	14	52
	30	52
105198-77650	14	53

Parts No.	Fig. No.	Ref. No.
105198-77650	30	53
105198-77660	14	54
	30	54
105198-77670	14	8
	30	8
105198-77680	14	9
	30	9
105198-77750	14	10
	30	10
105198-77760	14	11
	30	11
105198-77800	14	13
	30	13
105198-77810	14	14
	30	14
105198-77820	14	15
	30	15
105198-77830	14	16
	30	16
105198-77840	14	17
	30	17
105198-77850	14	18
	30	18
105198-77860	14	19
	30	19
105198-77870	14	20
	30	20
105198-77910	14	21
	30	21
105198-77920	14	22
	30	22
105198-77930	14	23
	30	23
105198-77940	14	24
	30	24
105198-77950	14	25
	30	25
105198-77960	14	26
	30	26
105198-77970	14	27
	30	27
105198-77980	14	28
	30	28
105200-51100	10	3
105215-76490	4	23
	20	23
105225-66990	12	18
	28	17
105230-01200	1	4
105230-02320	5	27

Parts No.	Fig. No.	Ref. No.
105250-07320	15	11
	31	12
105297-44980	8	17
105300-01300	1	9
	16	2
105300-01331	1	10
	16	3
105300-01332	1	10 -1
	16	3 -1
105300-01410	1	25
	16	4
105300-01480	1	11
105300-01690	1	26
	17	26
105300-02020	5	30
	16	6
105300-03082	7	29
105300-03130	7	25
	23	16
105300-07400	15	13
	31	13
105300-08010	7	30
105300-11100	2	8
105300-11111	2	9
105300-11310	2	40
	16	10
105300-11650	2	18
105300-11660	2	22
105300-12511	3	3
	19	4
105300-12550	3	11
	19	12
105300-13200	3	14
	16	11
105300-14090	4	2
	20	2
105300-14200	4	4
	20	4
105300-14400	4	5
105300-14600	4	6
105300-14700	4	7
	20	7
105300-21100	5	3
105300-21320	5	15
	21	27
105300-21360	5	17
	21	26
105300-21381	5	18
	21	28
105300-21591	5	11

## Parts No. Index

Parts No.	Fig. No.	Ref. No.
105300-21600	21	13
105300-22300	6	8
105300-22400	6	9
105300-23200	6	14
105300-23910	6	12
105300-28251	4	13
105300-28380	4	16
105300-28450	4	18
	20	18
105300-28700	4	19
	20	19
105300-34040	1	20
	17	22
105300-44211	9	1
105300-44451	5	19
	21	29
105300-44460	5	20
	21	30
105300-44502	8	8
105300-44570	8	9
105300-44630	8	14
	24	15
105300-44800	9	8
105300-44810	9	13
105300-44850	9	9
105300-44940	9	15
105300-51300	26	6
105300-51500	10	26
	26	26
105300-51510	10	27
	26	27
105300-51550	10	28
	26	28
105300-59800	11	32
105300-61600	12	5
	28	5
105300-66010	12	6
	28	6
105300-66030	12	7
	28	7
105300-66110	12	30
	28	28
105300-66300	12	9
105300-66520	12	36
	28	29
105300-66610	12	37
	28	42
105300-66850	12	25
	28	30
105300-76330	7	15

Parts No.	Fig. No.	Ref. No.
105300-76330	7	16
	23	25
105300-76470	7	20
	23	29
105300-76490	7	21
	23	30
105300-77470	13	28
105300-92600	15	3
	31	3
105306-35052	7	11
	23	11
105306-53100	11	20
	27	6
10530G-28750	4	20
10530H-01800	1	42
	17	37
10530H-11290	2	13
10530H-34850	1	44
	17	39
105340-44710	9	2
	25	2
105340-44750	9	5
	25	5
105362-21600	5	13
105362-78960	7	26
	23	17
105370-12531	3	4
	19	5
105370-12540	3	7
	19	6
105370-12570	3	8
	19	7
105370-12670	3	9
	19	10
105372-07150	15	12
	31	11
105378-01690	1	24
	17	25
105400-02300	5	31
105400-11121	2	10
105400-11800	2	3
105400-12020	3	1
105400-12050	3	2
105400-14015	4	1
105400-22190	6	1
105400-22471	6	17
105400-22481	6	24
105400-22510	6	19
105400-22520	6	26
105408-59570	11	48

Parts No.	Fig. No.	Ref. No.
105408-66400	12	10
10540G-28300	4	14
10540G-28310	4	15
10540H-01751	1	27
	17	31
10540H-02310	5	32
10540H-08010	7	30 -1
10540H-14100	4	3
10540H-21200	5	9
10540H-28410	4	17
105430-02321	21	17
105430-28720	4	21
	20	21
105476-55300	11	1
	27	18
105478-07300	8	4
105478-07940	8	2
105478-08110	14	7
105478-13150TS	3	19
105478-21350	5	16
105478-21960	5	39
	21	39
105478-21970	5	38
105478-44050	8	6
105478-44300	8	7
105478-44330	8	20
105478-55080	8	41
105478-55090	8	42
105478-59050	11	37
105478-66830	14	2
	30	2
105478-77800	14	13 -1
105478-77810	14	14 -1
105478-77820	14	15 -1
105478-77830	14	16 -1
	30	16 -1
105478-77840	14	17 -1
105478-77850	14	18 -1
105478-77860	14	19 -1
105478-77870	14	20 -1
105478-77880	14	12
105478-78550	13	32
	29	31
105500-01200	17	4
105500-01210	17	5
105500-01220	17	6
105500-01300	17	9
	32	2
105500-01330	17	10
	32	3

Parts No.	Fig. No.	Ref. No.
105500-01410	17	30
	32	4
105500-01480	17	11
105500-02020	21	20
	32	6
105500-03082	23	14
105500-08010	23	21
105500-11100	18	7
105500-11111	18	8
105500-11310	18	39
	32	10
105500-11340	18	42
105500-11650	18	15
105500-11660	18	19
105500-12020	19	1
105500-12050	19	2
105500-13200	19	18
	32	11
105500-14400	20	5
105500-14600	20	6
105500-21100	21	4
105500-21591	21	9
105500-21600	21	11
105500-22300	22	8
105500-22400	22	9
105500-23200	22	14
105500-23910	22	12
105500-28251	20	13
105500-28380	20	16
105500-44211	25	1
105500-44570	24	10
105500-44800	25	8
105500-44810	25	13
105500-44850	25	9
105500-44940	25	15
105500-51600	26	3
105500-53000	27	2
105500-59800	27	32
105500-66300	28	9
105500-77470	29	28
105502-66041	12	15
	28	15
10550G-28750	20	20
10550H-11290	18	12
105578-77790	13	27
	29	27
10557H-14010	20	1
105600-02300	21	21
105600-11800	18	4
105600-22090	22	1

## Parts No. Index

Parts No.	Fig. No.	Ref. No.
105600-22470	22	17
105600-22480	22	24
105600-22510	22	19
105600-22520	22	26
105600-44520	24	8
105608-59570	27	48
105608-66400	28	10
10560G-28300	20	14
10560G-28310	20	15
10560H-02310	21	22
10560H-08010	23	21 -1
10560H-14100	20	3
10560H-21200	21	8
10560H-28410	20	17
105678-07300	24	4
105678-07940	24	2
105678-08110	30	7
105678-13150	19	17
105678-21350	21	25
105678-21970	21	38
105678-34050	7	35
	23	33
105678-44050	24	6
105678-44300	24	7
105678-44330	24	21
105678-44980	24	18
105678-55080	24	29
105678-55090	24	30
105678-59050	27	37
105678-77800	30	13 -1
105678-77810	30	14 -1
105678-77820	30	15 -1
105678-77840	30	17 -1
105678-77850	30	18 -1
105678-77860	30	19 -1
105678-77870	30	20 -1
105678-77880	30	12
105808-07100	15	16
	31	16
105840-66831	12	24
	28	24
105840-66880	12	26
	28	25
105891-59190	11	43
	27	43
105891-59200	11	44
	27	44
106100-21130	5	4
106100-44560	8	13
	24	14

Parts No.	Fig. No.	Ref. No.
106100-44650	9	14
	25	14
106100-44960	9	16
	25	16
106100-77620	13	29
	29	29
106100-77630	13	30
	29	30
106330-21530	21	12
106383-44720	9	3
	25	3
106383-44740	9	4
	25	4
106500-44870	14	1
	30	1
112100-55420	15	14
	31	14
114250-53080	11	19
	27	5
114250-53120	11	21
	27	7
114250-53130	11	22
	27	8
114250-53140	11	23
	27	9
114250-53210	11	24
	27	10
114250-53400	11	25
	27	11
119625-11871	2	17
	16	9
	18	23
	32	9
119625-11880	2	16
	18	24
119625-11900	2	26
	18	25
120270-61250	1	23
	17	24
121250-44590	8	11
	24	12
121250-44901	8	15
	24	16
121450-01220	1	6
121550-01200	1	5
123325-02500	5	28
123672-83880	4	24
	20	24
124060-59380	11	45
	27	45

Parts No.	Fig. No.	Ref. No.
124060-66950	12	33
	28	39
124465-44950	8	16
	24	17
124550-51320	10	19
	26	19
124550-51341	10	20
	26	20
124550-51350	10	21
	16	13
	26	21
	32	13
124550-51370	10	22
	16	14
	26	22
	32	14
124950-51190	10	11
	26	11
128170-11340	2	43
129491-59540	11	47
	27	47
129499-51300	10	6
129500-53050	11	16
160120-76940	5	21
	21	31
160370-78950	14	30
	30	30
160710-78710	11	53
	14	29
	27	53
	30	29
171008-77530	13	12
	29	12
171101-34080	7	36
	8	5
	23	34
	24	5
171101-55010	8	22
171107-55010	24	23
171109-34030	7	34
	23	32
172200-01650	11	36
	27	36
174100-54120	10	16
	26	16
174307-51170	10	9
	26	9
174307-51181	10	10
	26	10
174307-51700	10	29

Parts No.	Fig. No.	Ref. No.
174307-51700	26	29
181230-39450	7	10
	23	10
22117-050000	13	33
	29	32
22117-080000	14	31
	30	31
22117-100000	12	27
	28	31
22137-060000	12	28
	28	26
22137-080000	9	19
	25	19
22137-100000	14	32
	30	32
22151-080000	14	33
	30	33
22190-060002	11	8
	27	25
		46
		46
22190-100002	12	35
	28	41
22217-040000	14	34
	30	34
22217-050000	13	34
	14	35
	29	33
	30	35
22217-060000	8	18
	13	35
	24	19
	29	34
22217-080000	1	32
	9	17
	25	17
22217-100000	14	36
	30	36
22217-120000	5	35
	7	32
	9	10
	15	4
	21	35
	23	23
	25	10
	31	4
22242-000200	7	22
	23	31
22242-000450	5	33
22242-000500	21	23

## Parts No. Index

Parts No.	Fig. No.	Ref. No.
22252-000100	1	21
	17	23
22312-030180	2	37
	18	36
22322-030180	2	38
	18	37
22322-030200	12	21
	28	22
22351-060012	1	3
		19
	2	7
	13	41
	17	3
		20
	18	5
	29	40
22512-050120	5	5
22512-050200	21	6
22512-070600	4	9
	20	9
22512-100260	5	6
22512-100300	21	7
23064-090400	7	27
	23	18
23131-120007	3	16
23131-140007	19	14
23152-120007	3	17
23152-140007	19	15
23414-060000	11	54
	27	54
23414-080000	8	38
	24	41
23414-080012	11	55
	27	55
23414-160000	11	11
	27	28
23414-170000	3	20
	19	19
23418-050000	7	37
	23	35
23831-100000	11	12
	27	29
23871-010000	7	38
	23	36
23876-010000	7	38 -1
	23	36 -1
23897-030002	3	21
	19	20
24101-060054	4	25
	20	25

Parts No.	Fig. No.	Ref. No.
24101-060064	4	10
	20	10
24101-060084	4	26
24101-060094	20	26
24107-062013	9	11
	25	11
24190-120001	1	22
	12	11
	17	21
	28	11
24311-000060	1	33
	17	36
24311-000070	2	39
	12	22
	16	8
	18	38
	28	23
	32	8
24311-000320	1	28
	11	9
	16	5
	17	33
	27	26
	32	5
24311-240100	11	10
	27	27
24321-000250	1	34
	17	27
24341-000200	7	14
	16	7
	23	12
	32	7
25117-003851	9	20
25117-004001	25	20
26013-060222	4	27
	20	27
26013-080162	9	21
	25	21
26013-080202	5	34
	21	24
26013-080252	3	22
	19	21
26013-120302	13	36
	29	35
26022-050102	10	43
	12	12
		13
	26	42
	28	12
		13

Parts No.	Fig. No.	Ref. No.
26022-060122	4	11
	20	11
26106-060102	13	37
	29	36
26106-060122	5	8
		22
		23
	7	9
	8	21
	12	29
	21	14
		32
		33
	23	8
	24	22
	28	32
26106-060162	1	35
	17	12
26106-060202	2	41
	5	24
	18	40
	21	34
26106-060222	7	28
	23	19
26106-060252	1	36
	7	39
	9	22
	17	34
	23	20
		37
	25	22
26106-060552	7	40
	23	38
26106-060602	2	42
26106-060652	1	37
	17	35
26106-060702	18	41
26106-080142	8	39
		43
	24	42
		43
26106-080162	4	28
	20	28
26106-080202	3	12
	19	3
26106-080302	9	23
	25	23
26106-080602	3	13
26106-100162	8	40
	24	44

Parts No.	Fig. No.	Ref. No.
26106-100222	8	44
	24	45
26106-100552	4	29
	20	29
26116-060102	5	29
	21	19
26116-060402	8	19
	24	20
26116-060504	9	24
	25	24
26116-080202	14	37
	30	37
26116-080602	14	38
	30	38
26116-120402	14	39
	30	39
26117-040068	14	5
	30	5
26206-120352	15	5
	31	5
26216-060162	11	13
	27	30
26216-060202	13	38
	29	37
26216-060252	18	27
26216-060302	2	29
26216-080222	1	38
		40
	17	28
26216-080452	2	28
26216-080502	18	28
26216-120322	5	36
	21	36
26347-060002	12	23
	28	27
26366-060002	1	43
	2	30
	11	14
	17	38
	18	29
	27	31
26366-080002	1	39
	2	31
	17	29
	18	30
26557-040252	14	40
	30	40
26557-050402	14	41
	30	41
26587-080122	4	12

## Parts No. Index

Parts No.	Fig. No.	Ref. No.
26587-080122	20	12
26627-100002	8	3
	24	3
26636-050002	13	39
	29	38
26716-060002	13	40
	29	39
26716-080002	1	41
	9	18
	25	18
26716-120002	5	37
	7	33
	21	37
	23	24
26756-040002	14	42
	30	42
26756-050002	14	43
	30	43
26756-060002	9	25
	12	31
	25	25
	28	33
26756-080002	2	21
		25
	14	44
		45
	18	18
		22
	30	44
		45
26756-100002	14	46
	30	46
26777-120002	9	12
	25	12
26796-100002	12	34
	28	40
27231-150000	2	5
	18	6
27310-070001	2	12
27310-080001	18	11
28110-100120	15	6
	31	6
28110-140170	15	7
	31	7
28110-190220	15	8
	31	8
28854-650000	7	41 -1
	23	39 -1
28856-650000	7	41 -2
	23	39 -2

Parts No.	Fig. No.	Ref. No.
42111-000960	15	9
	31	9
42111-000961	15	9 -1
	31	9 -1
42130-502020	7	41
	23	39
42215-002440	14	47
	30	47
42221-500650	15	15
	31	15
43100-552880	3	15
43100-552890	19	13
43720-500100	3	18
43720-500110	19	16
46116-504800	14	6
	30	6
704500-22503	6	3
704600-22502	22	3
705100-76900	7	17
	23	26
705192-66531	28	14
705225-32500	7	1
	23	1
705300-02500	5	25
705300-11520	2	32
705300-23100	6	10
705300-23600	6	15
705300-23610	6	31
705300-23620	6	33
705300-61700	12	1
		14
705300-61701	28	1
705300-66700	28	19
705300-92100	15	1
	31	1
705300-92602	16	1
705302-21700	5	1
705306-53100	11	15
705400-01500	1	12
705400-01560	1	1
705400-01900	1	7
705400-11701	2	1
705406-51102	10	1
705500-02500	21	15
705500-11520	18	31
705500-11702	18	1
705500-21701	21	1
705500-23100	22	10
705500-23600	22	15
705500-23610	22	31

Parts No.	Fig. No.	Ref. No.
705500-23620	22	33
705500-92601	32	1
705506-53100	27	1
705600-01500	17	13
705600-01560	17	1
705600-01900	17	7
705606-51103	26	1
711100-51540	10	13
	26	13 -1
724550-51520	10	12
	26	12
771101-55700	8	23
771107-55700	24	24
X211415502	13	3
	29	3
X211425502	13	4
	29	4
X211425506	13	20
	29	20
X211425511	13	4 -1
	29	4 -1
X21142742	13	24
	29	24
X211428008	13	26
	29	26
X211429006	13	19
	29	19
X21143215	13	6
	29	6
X211435502	13	21
	29	21
X211442003	13	5
	29	5
X211446012	13	13
	29	13
X211455011	13	17
	29	17
X211455500	13	20 -1
	29	20 -1
X211455502	13	22
	29	22
X211458012	13	25
	29	25
X21145866	13	16
	29	16
X211459002	13	9
	29	9
X211461005	13	2
	29	2
X211465011	13	18

Parts No.	Fig. No.	Ref. No.
X211465011	29	18
X211466605	13	23
	29	23
X211468005	13	14
	29	14
X211469002	13	7
	29	7
X211479001	13	8
	29	8
X211483003	13	11
	29	11
X21148314	13	10
	29	10
X21148856	13	15
	29	15
X211495502	13	21 -1
	29	21 -1
X2130350900	13	3 -1
	29	3 -1