

OCD10-M65800EN

# PREFACE

1. This Parts Catalog is the 1st edition of NFD10,13-MEA(S) Diesel Engine for TERAL KYOKUTO.

Pub. No. : 000Y00D6580

Published : May,2000

2. Model name

Engine model	Vehicle		Vehicle made by
	Products	Model name	
NFD10,13-MEA(S)	BLOWER	—	TERAL KYOKUTO

## Directions for the Parts Catalog.

1. The parts stipulated in this Parts Catalog are not necessarily standard equipped parts.
2. Parts may change without prior notice.
3. The following is an example of the Parts Catalog format.

OCF10-G21601 29. FUEL INJECTION PUMP(W/BOOST)

REF.	LEV.	PARTS NO.	DESCRIPTION	Q'TY						I	R
				(A)	(B)	(C)	(D)	(E)	(F)		
1	1	729595-51390	FUEL INJECTION PUMP	1	1	1	1	1			1
1-1	1	729595-51391	FUEL INJECTION PUMP	1	1	1	1	1		N	1
		(A=E00185) (B=E00200)									
3	2	26022-060162	SCREW M 6X 16	9	9	9	9	9			
3-1	2	26022-060162	SCREW M 6X 16	4	4	4	4	4		K	
		(A=E00156) (B=E00156) (C=E00156) (D=E00156) (E=E00156)									
4	2	129470-51040	CAMSHAFT	1	1	1	1	1			
5	2	122710-51050	BEARING, ROLLER	2	2	2	2	2			
6	2	129470-51060	RETAINER	1	1	1	1	1			

Remarks

(1) BOOST COMPEMSATOR TYPE. OPTIONAL PART, TO E00155,(4JH-DT, 4JH-DTZ

### ① Ref. No.

The Ref. No. listed may not be in accordance with the illustration Ref. No.

(Ex.) Illustration No.

List Ref No.

1

1

(Before change) → 1-1 (After change)

For interchangeable symbols N, R and K, illustrations for new parts may be abbreviated.

### ② Lev. (Level)

Level indication

The numbers below indicate the level of relativity towards the main part.

1 ----- Main parts (Assembly parts)

2 ----- Sub component included in " 1 ".

3 ----- Sub component included in " 2 ".

Note) Parts that are not for sale are partially illustrated but not listed.

### ③ Interchangeability Mark

When a part change takes place, one of the following interchangeability symbols is indicated beside the part.

Symbol	Interchangeability	Contents note
N	Old $\begin{matrix} \leftarrow \text{Yes} \\ \text{No} \rightarrow \end{matrix}$ New	New Part is interchangeable for Old Part but Old Part is not interchangeable for New Part.
Q	Old $\begin{matrix} \leftarrow \text{No} \\ \text{Yes} \rightarrow \end{matrix}$ New	New Part is not interchangeable for Old Part but Old Part is interchangeable for New Part.
R	Old $\begin{matrix} \leftarrow \text{Yes} \\ \text{Yes} \rightarrow \end{matrix}$ New	New/ Old Parts are both interchangeable.
S	Old $\begin{matrix} \leftarrow \text{No} \\ \text{No} \rightarrow \end{matrix}$ New	New/ Old Parts are both not interchangeable.
W		Part newly added.
Z		Part discontinued.
F		Not interchangeable by a single part but interchangeable together with related parts.
K		Changes only for used parts quantities.

### ④ Effective Machine No.

When a part changes, the effective Machine No. will be indicated in the (A)-(F) column.

Product Symbol	Product No.	Product Symbol	Product No.
C	Clutch No. Compressor No.	F	Machine No. (Agricultural Equip.)
D	Drive No.	M	Machine No.
E	Engine No.		

Note 1) A date may follow the symbol. (Ex.) 1996.01

Note 2) "XXXXX" and "ZZZZZ" are for parts that could not be predicted or for engine models that could not be identified.

Note 3) (A=E00185) is the E (Engine Serial Number) for the column (A) model (in this case 4JH-DT) after the parts design change.

### ⑤ Remarks Mark

Figures or alphabets (symbols) are entered in the remarks column.

The comments (remarks) on parts that are indicated at the bottom of the illustration are the same symbols as those stated above.

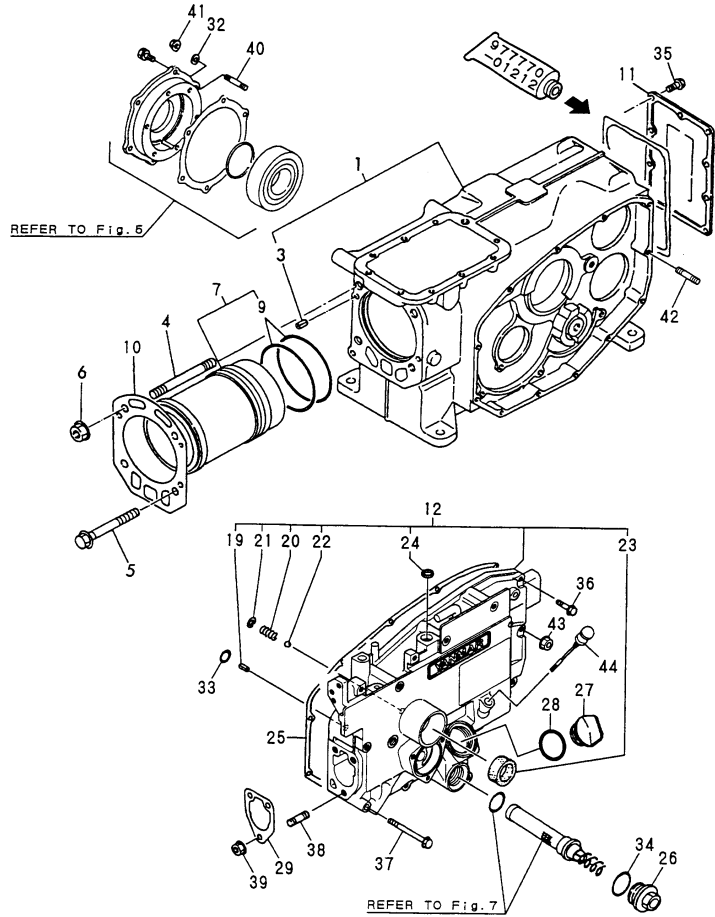
# Contents

Fig. No.	Fig. Name
NFD10,13-MEA(S)	
1.	CYLINDER BLOCK
2.	CYLINDER HEAD & BONNET
3.	AIR CLEANER & MUFFLER
4.	CAMSHAFT & BALANCER
5.	CRANKSHAFT & FLYWHEEL
6.	PISTON & CONNECTING ROD
7.	LUB.OIL SYSTEM
8.	RADIATOR & FUEL TANK
9.	FAN
10.	FUEL INJECTION PUMP
11.	FUEL OIL COCK
12.	GOVERNOR & CONTROL DEVICE
13.	STARTING MOTOR
14.	ELECTRIC PART & OPTIONAL PART
15.	TOOL & LABEL
16.	GASKET SET
17.	CYLINDER BLOCK
18.	CYLINDER HEAD & BONNET
19.	AIR CLEANER & MUFFLER
20.	CAMSHAFT & BALANCER
21.	CRANKSHAFT & FLYWHEEL
22.	PISTON & CONNECTING ROD
23.	LUB.OIL SYSTEM
24.	RADIATOR & FUEL OIL TANK

Fig. No.	Fig. Name
25.	FAN
26.	FUEL INJECTION PUMP
27.	FUEL OIL PIPE
28.	GOVERNOR & CONTROL DEVICE
29.	STARTING MOTER
30.	ELECTRIC PART & OPTINAL PART
31.	TOOL & LABEL
32.	GASKET SET

Fig.1. CYLINDER BLOCK

Y00D6580



(A)=NFD10-MEA  
(B)=NFD10-MEAS  
(C)=

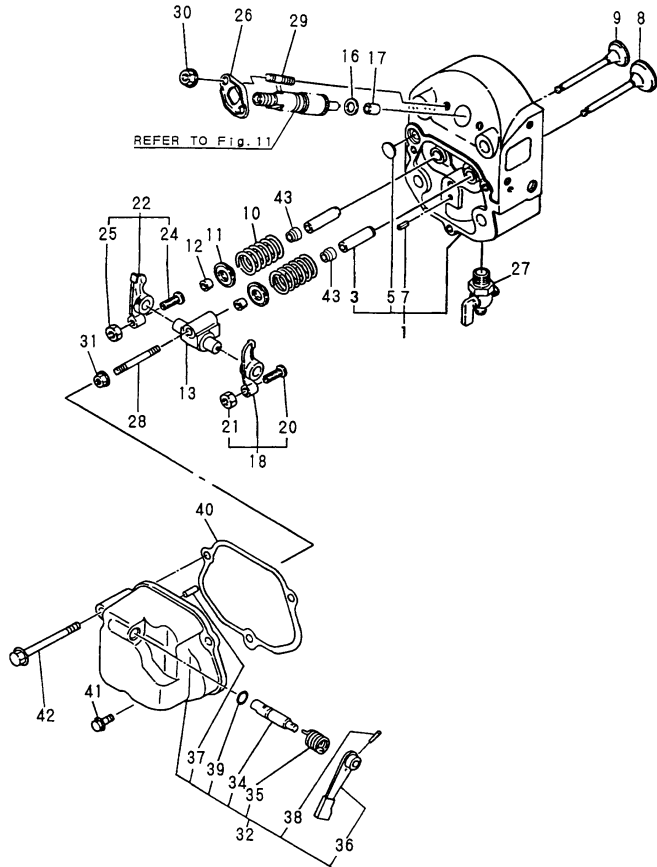
(D)=  
(E)=  
(F)=

No.	Lev.	Parts No.	Description	Q'ty						I	R
				(A)	(B)	(C)	(D)	(E)	(F)		
1	1	705400-01560	BLOCK ASSY, CYLINDER	1	1						
3	2	22351-060012	PIN, SPRING 6.0X12	2	2						
4	1	105230-01200	BOLT, HEAD	2	2						
5	1	121550-01200	BOLT, HEAD	2	2						
6	1	121450-01220	NUT, CYLINDER HEAD	2	2						
7	1	705400-01900	LINER ASSY, CYLINDER	1	1						
9	2	105300-01300	GASKET, LINER	2	2						A
10	1	105300-01332	GASKET, HEAD	1	1						A
11	1	105300-01480	COVER	1	1						
12	1	705400-01500	CASE ASSY, GEAR	1	1						
19	2	22351-060012	PIN, SPRING 6.0X12	1	1						
20	2	105300-34040	SPRING	1	1						
21	2	22252-000100	RING, 10	1	1						
22	2	24190-120001	BALL, STEEL 3/8	1	1						
23	2	120270-61250	SEAL, OIL	1	1						
24	2	105378-01690	SEAL, OIL	1	1						
25	1	105300-01410	GASKET, GEAR CASE	1	1						A
26	1	105300-01690	PLUG	1	1						
27	1	10540H-01751	CAP, FEEDER	1	1						
28	1	24311-000320	O-RING, 1AP32.0	1	1						A
29	1	104271-01950	SHIM SET,0.2X3,0.3X2	1	1						
32	1	22217-080000	WASHER, SPRING 8	1	1						
33	1	24311-000060	O-RING, 1AP6.0	1	1						
34	1	24321-000250	O-RING, 1AG25.0	1	1						
35	1	26106-060162	BOLT, M6X 16 PLATED	10	10						
36	1	26106-060252	BOLT, M6X 25 PLATED	5	5						
37	1	26106-060652	BOLT, M6X 65 PLATED	6	6						
38	1	26216-080222	STUD, M8X 22	3	3						
39	1	26366-080002	NUT, M8	3	3						
40	1	26216-080222	STUD, M8X 22	1	1						
41	1	26716-080002	NUT, M8	1	1						
42	1	10530H-01800	BOLT	1	1						
43	1	26366-060002	NUT, M6	1	1						
44	1	10530H-34850	DIPSTICK, OIL	1	1						

Remarks  
(A)THESE PARTS ARE ALSO SOLD BY  
FIG.16.REF NO.1  
(GASKET SET.P/# 705300-92602).

Fig.2. CYLINDER HEAD & BONNET

Y0006580



(A)=NFD10-MEA  
(B)=NFD10-MEAS  
(C)=

(D)=  
(E)=  
(F)=

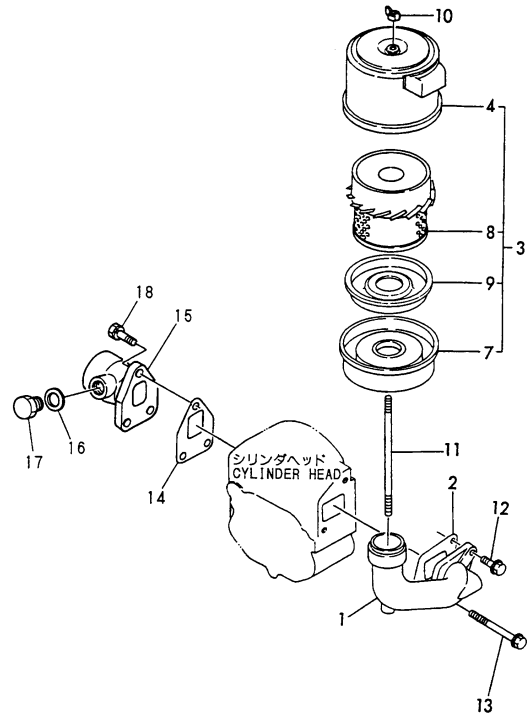
No.	Lev.	Parts No.	Description	Q'ty						I	R
				(A)	(B)	(C)	(D)	(E)	(F)		
1	1	705400-11701	HEAD ASSY, CYLINDER	1	1						
3	2	105400-11800	GUIDE, VALVE	2	2						
5	2	27231-150000	PLUG 15	1	1						
7	2	22351-060012	PIN, SPRING 6.0X12	1	1						
8	1	105300-11100	VALVE, INTAKE	1	1						
9	1	105300-11111	VALVE, EXHAUST	1	1						
10	1	105400-11121	SPRING, VALVE	2	2						
11	1	101158-11180	RETAINER, SPRING	2	2						
12	1	27310-070001	COTTER, 7	2	2						
13	1	10530H-11290	SUPPORT ASSY, ARM	1	1						
16	1	119625-11880	SEAT, NOZZLE	1	1						
17	1	119625-11871	PROTECTOR, NOZZLE	1	1						A
18	1	105300-11650	ARM, ROCKER	1	1						
20	2	101158-11230	SCREW, VALVE ADJUST	1	1						
21	2	26756-080002	NUT, LOCK M8	1	1						
22	1	105300-11660	ARM, ROCKER	1	1						
24	2	101158-11230	SCREW, VALVE ADJUST	1	1						
25	2	26756-080002	NUT, LOCK M8	1	1						
26	1	119625-11900	RETAINER, NOZZLE	1	1						
27	1	105010-11920	COCK, WATER	1	1						
28	1	26216-080452	STUD, M8X 45	1	1						
29	1	26216-060302	STUD, M6X 30	2	2						
30	1	26366-060002	NUT, M6	2	2						
31	1	26366-080002	NUT, M8	1	1						
32	1	705300-11520	BONNET ASSY, HEAD	1	1						
34	2	104200-03600	SHAFT, DECOMPRESSION	1	1						
35	2	104200-03641	SPRING, DECOMPRESSION	1	1						
36	2	104104-03750	LEVER, DECOMPRESSION	1	1						
37	2	22312-030180	PIN, PARALLEL M3X18	1	1						
38	2	22322-030180	PIN, TAPER 3X18	1	1						
39	2	24311-000070	O-RING, 1AP7.0	1	1						A
40	1	105300-11310	GASKET, BONNET	1	1						A
41	1	26106-060202	BOLT, M6X 20 PLATED	2	2						
42	1	26106-060602	BOLT, M6X 60 PLATED	1	1						
43	1	128170-11340	SEAL, VALVE STEM	2	2						

Remarks

(A)THESE PARTS ARE ALSO SOLD BY  
FIG.16.REF NO.1  
(GASKET SET.P/#705300-92602).

Fig.3. AIR CLEANER & MUFFLER

Y00D6580



(A)=NFD10-MEA  
(B)=NFD10-MEAS  
(C)=

(D)=  
(E)=  
(F)=

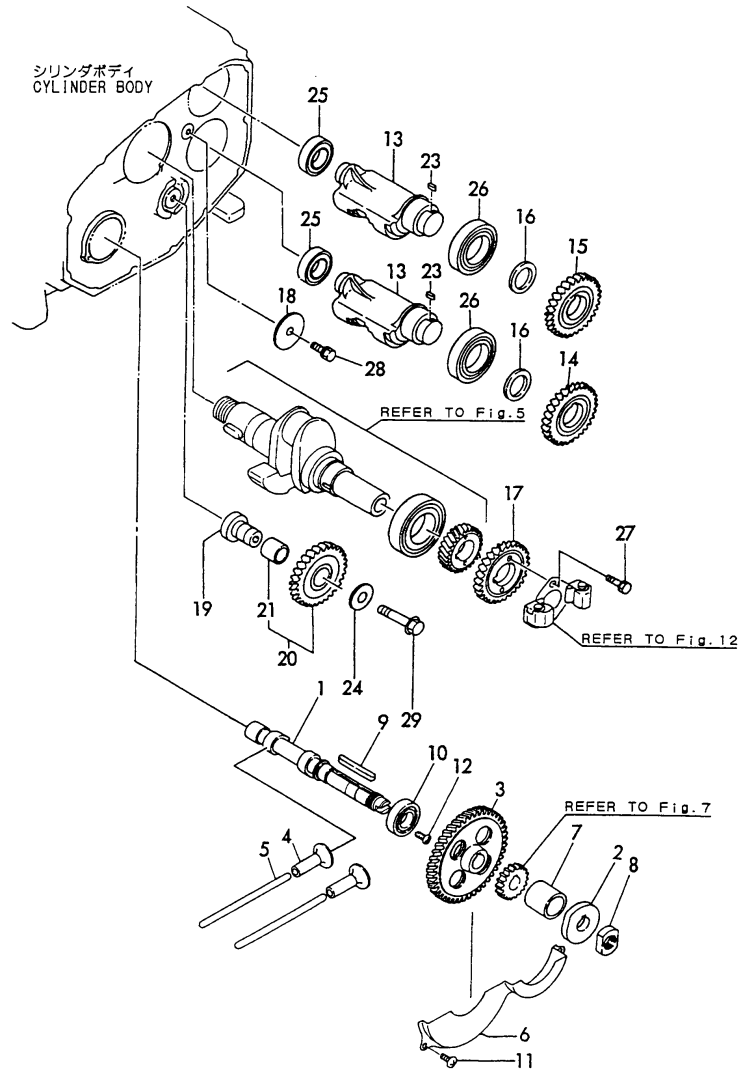
No.	Lev.	Parts No.	Description	Q'ty						I	R
				(A)	(B)	(C)	(D)	(E)	(F)		
1	1	105400-12020	PIPE, AIR INTAKE	1	1						
2	1	105400-12050	GASKET	1	1						
3	1	105300-12511	CLEANER, AIR	1	1						
4	2	105370-12531	COVER ASSY	1	1						
7	2	105370-12540	PAN ASSY, DUST	1	1						
8	2	105370-12570	ELEMENT	1	1						
9	2	105370-12670	BAFFLE	1	1						
10	1	101147-12550	NUT	1	1						
11	1	105300-12550	BOLT	1	1						
12	1	26106-080202	BOLT, M8X 20 PLATED	1	1						
13	1	26106-080602	BOLT, M8X 60 PLATED	1	1						
14	1	105300-13200	GASKET, SILENCER	1	1						
15	1	105478-13150	FLANGE, EXHAUST	1	1						A
16	1	23414-170000	GASKET, 17X1.0	1	1						
17	1	23897-030002	PLUG G3/8,HEX.	1	1						
18	1	26013-080252	BOLT, M8X 25	3	3						

Remarks

(A)THESE PARTS ARE ALSO SOLD BY  
FIG.16.REF NO.1  
(GASKET SET.P/# 705300-92602).

Fig.4. CAMSHAFT & BALANCER

Y0006580



(A)=NFD10-MEA  
(B)=NFD10-MEAS  
(C)=

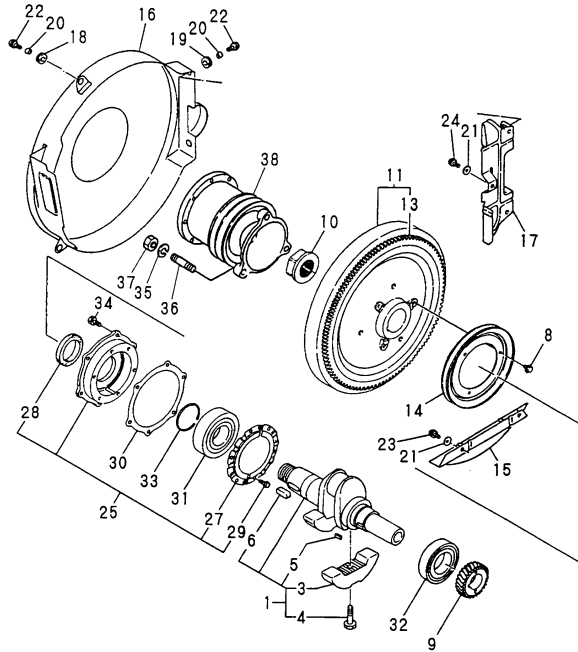
(D)=  
(E)=  
(F)=

No.	Lev.	Parts No.	Description	Q'ty						I	R
				(A)	(B)	(C)	(D)	(E)	(F)		
1	1	105400-14015	CAMSHAFT	1	1						
2	1	105300-14090	CAM, FUEL	1	1						
3	1	10540H-14100	GEAR, CAMSHAFT	1	1						
4	1	105300-14200	TAPPET	2	2						
5	1	105300-14400	ROD, PUSH	2	2						
6	1	105300-14600	COVER	1	1						
7	1	105300-14700	SPACER	1	1						
8	1	104300-76460	NUT	1	1						
9	1	22512-070600	KEY, 7X 60	1	1						
10	1	24101-060064	BEARING, BALL 6006	1	1						
11	1	26022-060122	SCREW, M6X12	3	3						
12	1	26587-080122	SCREW, M8X12	1	1						
13	1	105300-28251	SHAFT, BALANCER	2	2						
14	1	10540G-28300	GEAR, BALANCER	1	1						
15	1	10540G-28310	GEAR, BALANCER	1	1						
16	1	105300-28380	SPACER	2	2						
17	1	10540H-28410	GEAR, BALANCER	1	1						
18	1	105300-28450	RETAINER	1	1						
19	1	105300-28700	SHAFT	1	1						
20	1	10530G-28750	GEAR ASSY	1	1						
21	2	105430-28720	BUSH, IDLE GEAR	1	1						
23	1	105215-76490	KEY	2	2						
24	1	123672-83880	RETAINER	1	1						
25	1	24101-060054	BEARING, BALL 6005	2	2						
26	1	24101-060084	BEARING, BALL 6008	2	2						
27	1	26013-060222	BOLT, M6X 22	2	2						
28	1	26106-080162	BOLT, M8X 16 PLATED	1	1						
29	1	26106-100552	BOLT, M10X 55 PLATED	1	1						



Fig.5. CRANKSHAFT & FLYWHEEL

Y00D6580



(A)=NFD10-MEA  
(B)=NFD10-MEAS  
(C)=

(D)=  
(E)=  
(F)=

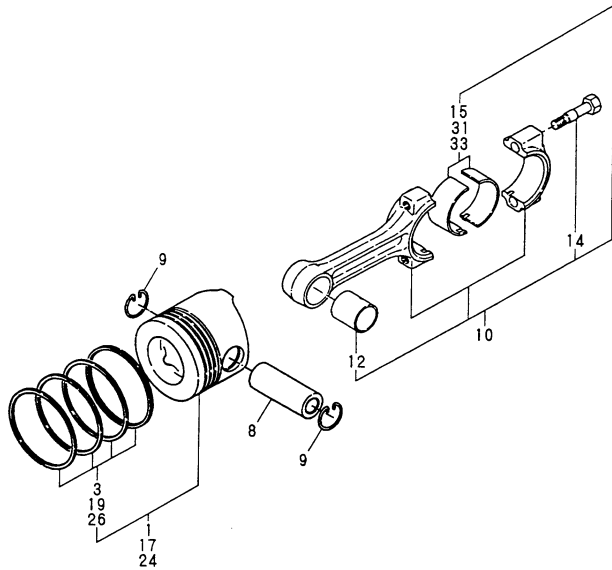
No.	Lev.	Parts No.	Description	Q'ty						I	R
				(A)	(B)	(C)	(D)	(E)	(F)		
1	1	705302-21700	CRANKSHAFT ASSY	1	1						
3	2	105300-21100	WEIGHT, BALANCE	2	2						
4	2	106100-21130	BOLT, BALANCE WEIGHT	2	2						
5	2	22512-050120	KEY, 5X 12	1	1						
6	2	22512-100260	KEY, 10X 26	1	1						
8	1	26106-060122	BOLT, M6X 12 PLATED	3	3						
9	1	10540H-21200	GEAR, CRANKSHAFT	1	1						
10	1	104200-21530	NUT, END	1	1						
11	1	105300-21591	FLYWHEEL ASSY	1	1						
13	2	105362-21600	GEAR, RING	1	1						
14	1	104104-21600	V-PULLEY	1	1						
15	1	105300-21320	COVER	1	1						
16	1	105300-21350	COVER, FLYWHEEL	1	1						
17	1	105300-21360	COVER	1	1						
18	1	105300-21381	ABSORBER	2	2						
19	1	105300-44451	ABSORBER	2	2						
20	1	105300-44460	COLLAR	4	4						
21	1	160120-76940	WASHER	5	5						
22	1	26106-060122	BOLT, M6X 12 PLATED	3	3						
23	1	26106-060122	BOLT, M6X 12 PLATED	2	2						
24	1	26106-060202	BOLT, M6X 20 PLATED	4	4						
25	1	705300-02500	HOUSING ASSY, METAL	1	1						
27	2	105230-02320	RETAINER, BEARING	2	2						
28	2	123325-02500	SEAL, OIL	1	1						
29	2	26116-060102	BOLT, M6X 10 PLATED	6	6						
30	1	105300-02020	GASKET	1	1						A
31	1	105400-02300	BEARING, 6309G3C3	1	1						
32	1	10540H-02310	BEARING, NF308-C3	1	1						
33	1	22242-000450	RING, 45	1	1						
34	1	26013-080202	BOLT, M8X 20	6	6						
35	1	22217-120000	WASHER, SPRING 12		3						
36	1	26216-120322	STUD, M12X 32		3						
37	1	26716-120002	NUT, M12		3						
38	1	105478-21960	CLUTCH		1						

Remarks

(A)THESE PARTS ARE ALSO SOLD BY  
FIG.16.REF NO.1  
(GASKET SET.P/# 705300-92602).

Fig.6. PISTON & CONNECTING ROD

Y00D5580



(A)=NFD10-MEA  
(B)=NFD10-MEAS  
(C)=

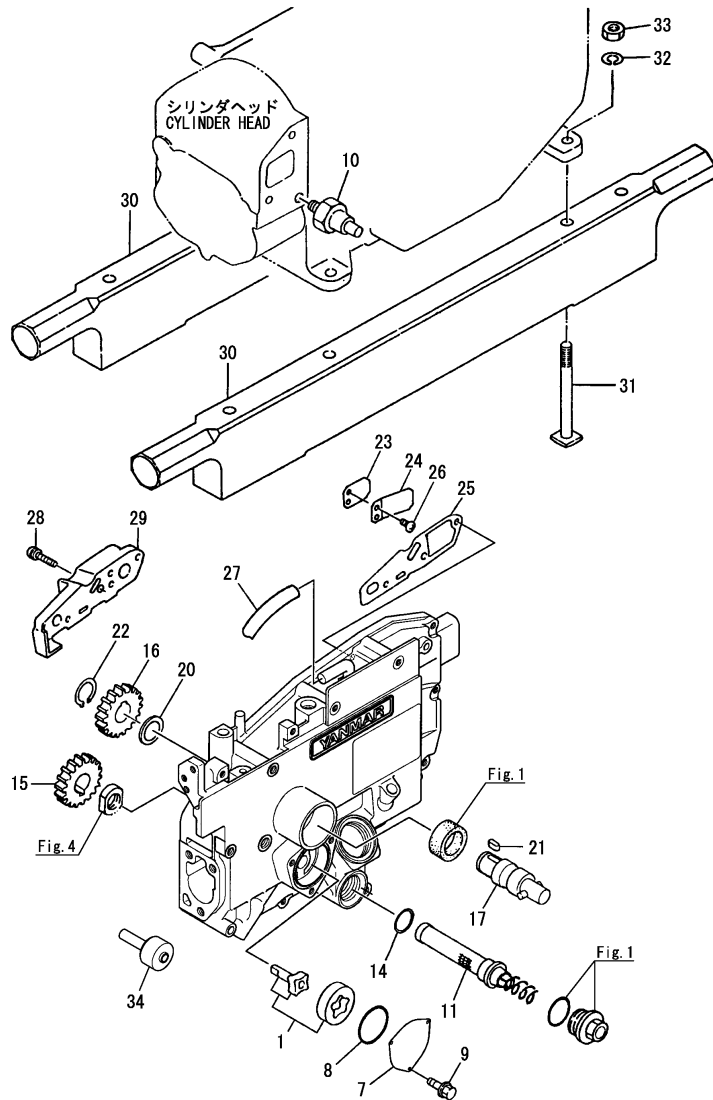
(D)=  
(E)=  
(F)=

No.	Lev.	Parts No.	Description	Q'ty						I	R
				(A)	(B)	(C)	(D)	(E)	(F)		
1	1	105400-22190	PISTON ASSY	1	1						
3	2	704500-22503	RING SET, PISTON	1	1						
8	1	105300-22300	PIN, PISTON	1	1						
9	1	105300-22400	CIRCLIP	2	2						
10	1	705300-23100	ROD ASSY, CONNECTING	1	1						
12	2	105300-23910	BEARING, PISTON PIN	1	1						
14	2	105300-23200	BOLT, CONNECTING ROD	2	2						
15	2	705300-23600	BEARING, CRANK PIN	1	1						
17	1	105400-22471	PISTON ASSY, 0.25 OS	1	1						1
19	2	105400-22510	RING SET, 0.25 OS	1	1						1
24	1	105400-22481	PISTON ASSY, 0.50 OS	1	1						2
26	2	105400-22520	RING SET, 0.50 OS	1	1						2
31	1	705300-23610	BEARING ASSY, 0.25	1	1						3
33	1	705300-23620	BEARING, 0.50 US	1	1						4

Remarks

- (1)OVER-SIZED(O.S=0.25)PART.
- (2)OVER-SIZED(O.S=0.5 )PART.
- (3)UNDER-SIZED(U.S=0.25)PART.
- (4)UNDER-SIZED(U.S=0.5 )PART.

Fig.7. LUB.OIL SYSTEM



(A)=NFD10-MEA  
(B)=NFD10-MEAS  
(C)=

(D)=  
(E)=  
(F)=

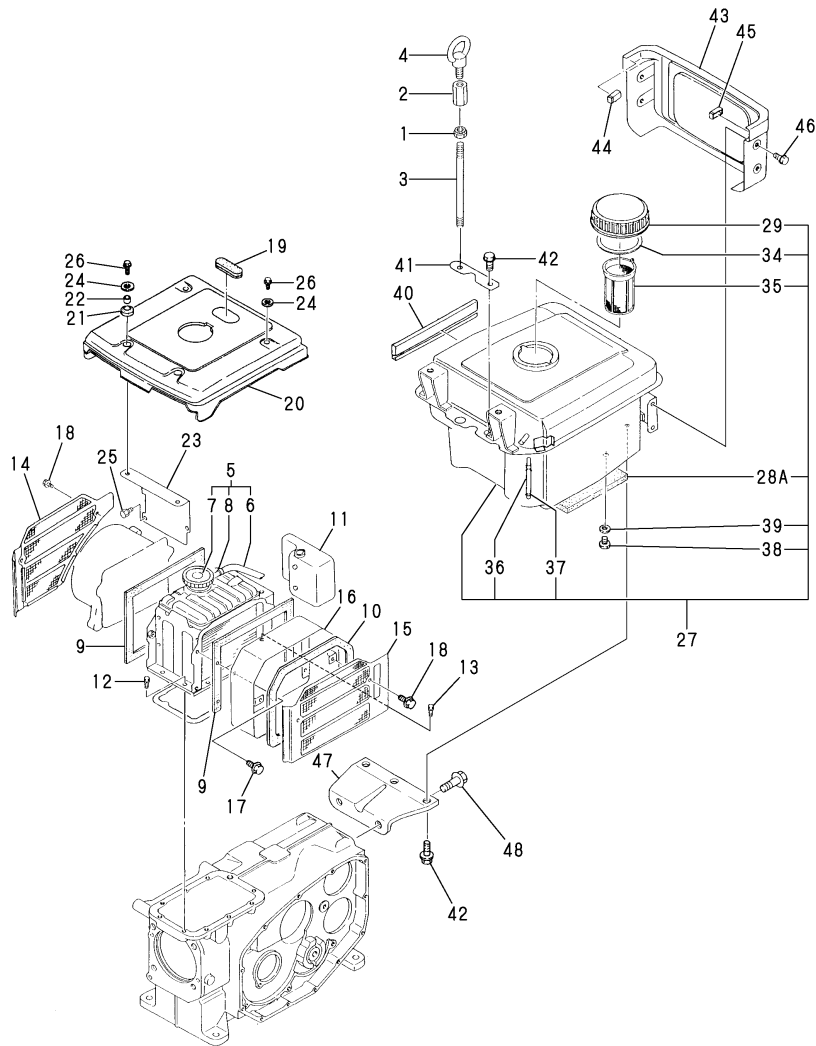
No.	Lev.	Parts No.	Description	Q'ty						I	R
				(A)	(B)	(C)	(D)	(E)	(F)		
1	1	705225-32500	ROTOR ASSY	1	1						
1-1	1	10537H-32500	PUMP, LUB.OIL CMP	1	1						N
		(A=EXXXXX) (B=EXXXXX)									
7	1	103854-32082	COVER	1	1						
8	1	103854-32051	O-RING	1	1						A
9	1	26106-060122	BOLT, M6X 12 PLATED	3	3						
10	1	105582-34100	SIGNAL	1	1						
11	1	105306-35052	STRAINER ASSY, OIL	1	1						
14	1	24341-000200	O-RING, 1AS20.0	1	1						A
15	1	105300-76330	GEAR, STARTING	1	1						
16	1	105300-76330	GEAR, STARTING	1	1						
17	1	705100-76900	SHAFT ASSY, STARTING	1	1						
20	1	105300-76470	COLLAR	1	1						
21	1	105300-76490	KEY, 7X10	1	1						
22	1	22242-000200	RING, 20	1	1						
23	1	101158-03061	VALVE	1	1						
24	1	101158-03111	RETAINER	1	1						
25	1	105300-03130	GASKET	1	1						
26	1	105362-78960	SCREW, M4X8	2	2						
27	1	23064-090400	PIPE, 9X 400	1	1						
28	1	26106-060222	BOLT, M6X 22 PLATED	3	3						
29	1	105300-03082	COVER, BREATHER	1	1						
30	1	10540H-08010	ENGINE BED	2	2						
31	1	104300-08050	BOLT, FOUNDATION	4	4						
32	1	22217-120000	WASHER, SPRING 12	4	4						
33	1	26716-120002	NUT, M12	4	4						
34	1	10530H-32200	PIECE	1	1						

Remarks

(A)These parts are also sold by Fig.16 No.1.  
(Gasket set P/# 705300-92602)

Fig.8. RADIATOR & FUEL TANK

P/C NEWS No:Y0006580-1  
PUBLISHED:2007/2



(A)=NFD10-MEA  
(B)=NFD10-MEAS  
(C)=

(D)=  
(E)=  
(F)=

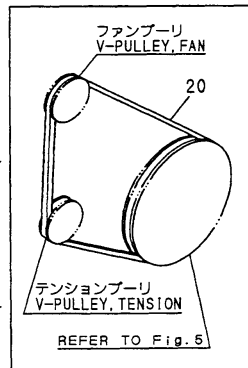
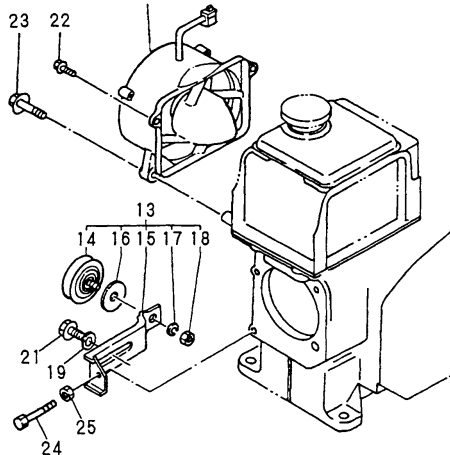
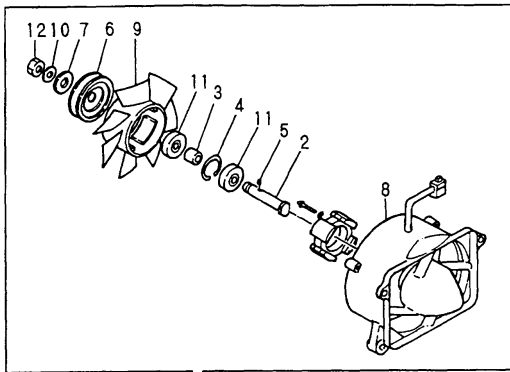
No.	Lev.	Parts No.	Description	Q'ty						I	R
				(A)	(B)	(C)	(D)	(E)	(F)		
1	1	104107-07900	NUT, M10	1	1						
2	1	105300-07910	NUT	1	1						
3	1	105300-07940	BOLT, LIFTING	1	1						
4	1	26617-100002	BOLT, EYE M10	1	1						
5	1	105300-44502	RADIATOR ASSY	1	1						
6	2	105300-44570	PIPE, OVERFLOW 7X170	1	1						
7	2	105198-44590	CAP, RADIATOR	1	1						
8	2	121250-44590	CLAMP	1	1						
9	1	104607-44540	SPONGE	2	2						
10	1	106100-44560	SPONGE, 15X5X1000	1	1						
11	1	105300-44630	TANK, SUB	1	1						
12	1	26013-060142	BOLT, M6X 14	8	8						
13	1	26013-060162	BOLT, M6X 16	1	1						
14	1	105300-44330	SCREEN	1	1						
15	1	105402-44340	SCREEN	1	1						
16	1	105300-44360	DUCT, SCREEN	1	1						
17	1	26013-060129	BOLT, M6X 12	4	4						
18	1	26106-060122	BOLT, M6X 12 PLATED	3	3						
19	1	105300-44220	COVER, RADIATOR	1	1						
20	1	105400-44250	COVER, RADIATOR	1	1						
21	1	105300-44451	ABSORBER	2	2						
22	1	105300-44460	COLLAR	2	2						
23	1	105300-44491	STAY	1	1						
24	1	160120-76940	WASHER	4	4						
25	1	26106-060122	BOLT, M6X 12 PLATED	2	2						
26	1	26106-060202	BOLT, M6X 20 PLATED	4	4						
27	1	705300-55703	TANK ASSY, FUEL	1	1						
28A	3	105990-55200	FELT, FUEL TANK	1	1						
29	2	101168-55040	CAP ASSY	1	1						
34	2	101504-55051	GASKET	1	1						A
35	2	101504-55101	STRAINER, FUEL	1	1						
36	2	104300-55160	GAUGE, LEVEL	1	1						
37	2	103854-55220	RETAINER	2	2						
38	2	105300-55080	PLUG, 8	1	1						
39	2	23414-080000	GASKET, 8X1.0	1	1						
40	1	105400-55231	MOULDING	2	2						
41	1	105198-55520	RETAINER	1	1						
42	1	26106-080222	BOLT, M8X 22 PLATED	4	4						
43	1	105300-55810	COVER, TANK	1	1						
44	1	105300-55840	PIECE	1	1						
45	1	105300-55850	PIECE	1	1						
46	1	26106-060122	BOLT, M6X 12 PLATED	4	4						
47	1	105306-55241	STAY, FUEL TANK	1	1						
48	1	26106-100202	BOLT, M10X 20 PLATED	2	2						

Remarks

(A)THESE PARTS ARE ALSO SOLD BY  
FIG.16.REF NO.1  
(GASKET SET.P/# 705300-92602).

Fig.9. FAN

Y00D6580



(A)=NFD10-MEA  
(B)=NFD10-MEAS  
(C)=

(D)=  
(E)=  
(F)=

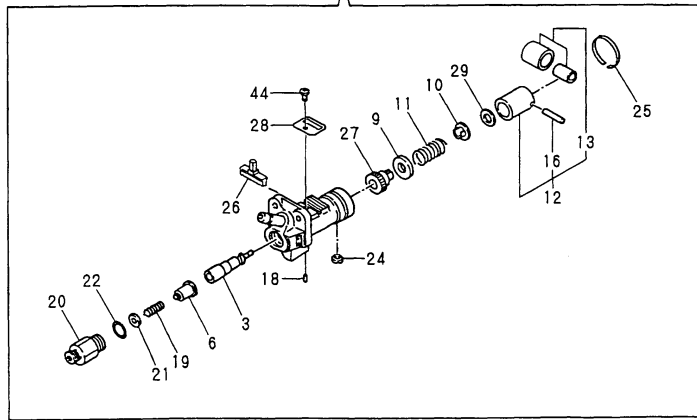
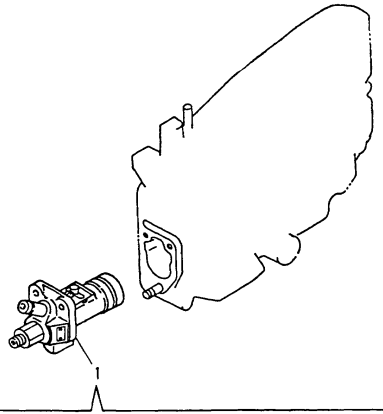
No.	Lev.	Parts No.	Description	Q'ty						I	R
				(A)	(B)	(C)	(D)	(E)	(F)		
1	1	105300-44212	CASE ASSY, FAN	1	1						
2	2	105340-44710	SHAFT, FAN	1	1						
3	2	106383-44720	SPACER	1	1						
4	2	106383-44740	CIRCLIP	1	1						
5	2	105340-44750	PIN	1	1						
6	2	105100-44770	PULLEY, FAN	2	2						
7	2	105100-44780	WASHER, PULLEY	1	1						
8	2	105400-44800	COVER ASSY	1	1						
9	2	105300-44850	FAN, COOLING	1	1						
10	2	22217-120000	WASHER, SPRING 12	1	1						
11	2	24107-062013	BEARING, 6201ZZP6	2	2						
12	2	26777-120002	NUT, LOCK M12	1	1						
13	1	105300-44810	PULLEY ASSY, TENSION	1	1						
14	2	106100-44650	PULLEY, TENSION	1	1						
15	2	105300-44940	LEVER	1	1						
16	2	106100-44960	CAP	1	1						
17	2	22217-080000	WASHER, SPRING 8	1	1						
18	2	26716-080002	NUT, M8	1	1						
19	1	22137-080000	WASHER, 8	1	1						
20	1	25117-003751	V-BELT, M37.5H	1	1						
21	1	26013-080162	BOLT, M8X 16	1	1						
22	1	26106-060252	BOLT, M6X 25 PLATED	2	2						
23	1	26106-080302	BOLT, M8X 30 PLATED	2	2						
24	1	26116-060504	BOLT, M6X 50 PLATED	1	1						
25	1	26756-060002	NUT, LOCK M6	1	1						

Fig.10. FUEL INJECTION PUMP

(A)=NFD10-MEA  
(B)=NFD10-MEAS  
(C)=

(D)=  
(E)=  
(F)=

Y0006580

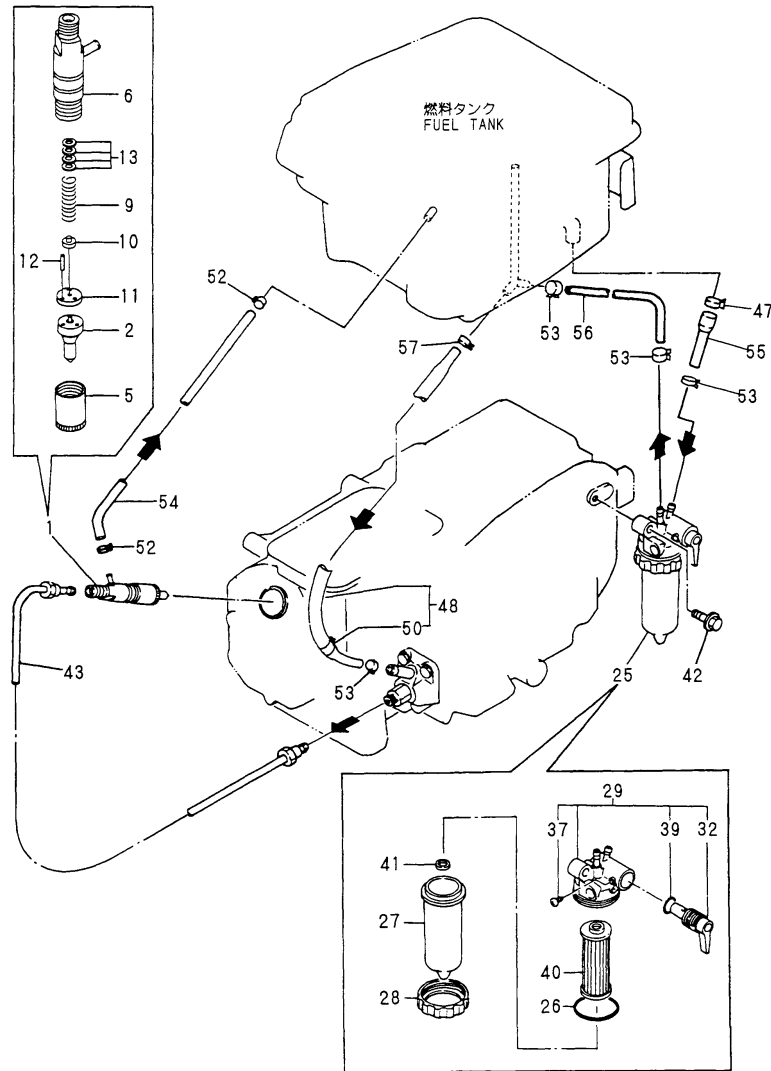


No.	Lev.	Parts No.	Description	Q'ty						I	R
				(A)	(B)	(C)	(D)	(E)	(F)		
1	1	705400-51102	PUMP ASSY, INJECTION	1	1						
3	2	105200-51100	PLUNGER ASSY	1	1						
6	2	129499-51300	VALVE ASSY, DELIVERY	1	1						
9	2	174307-51170	RETAINER, SPRING A	1	1						
10	2	174307-51181	RETAINER, SPRING B	1	1						
11	2	124950-51190	SPRING, PLUNGER	1	1						
12	2	724550-51520	GUIDE, PLUNGER	1	1						
13	3	711100-51540	ROLLER ASSY	1	1						
16	3	174100-54120	PIN	1	1						
18	2	103854-51251	PIN, PLUNGER	1	1						
19	2	124550-51320	SPRING, DELIVERY	1	1						
20	2	124550-51341	HOLDER, DELIVERY L43	1	1						
21	2	124550-51350	GASKET, DELIVERY	1	1						A
22	2	124550-51370	O-RING	1	1						A
24	2	104271-51450	PIECE, GUIDE	1	1						
25	2	104271-51460	CIRCLIP	1	1						
26	2	105300-51500	RACK, CONTROL	1	1						
27	2	105300-51510	PINION	1	1						
28	2	105300-51550	RETAINER, RACK	1	1						
29	2	174307-51700	SHIM SET	1	1						
44	2	26022-050102	SCREW, M5X10	1	1						

Remarks  
(A) THESE PARTS ARE ALSO SOLD BY  
FIG.16.REF NO.1  
(GASKET SET.P/# 705300-92602).

Fig.11. FUEL OIL COCK

Y0006580



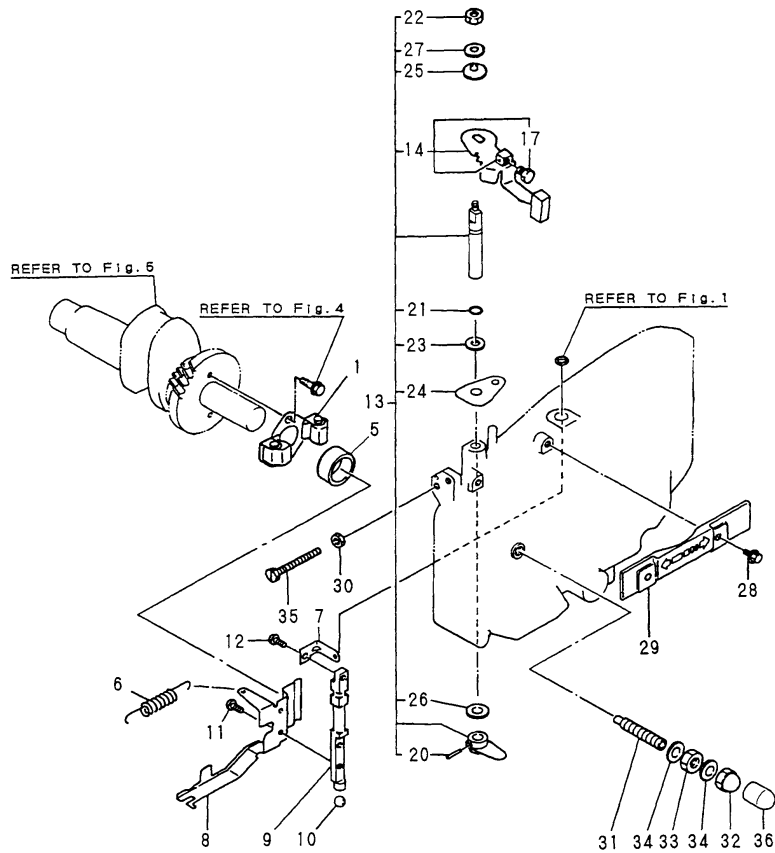
(A)=NFD10-MEA  
(B)=NFD10-MEAS  
(C)=

(D)=  
(E)=  
(F)=

No.	Lev.	Parts No.	Description	Q'ty						I	R
				(A)	(B)	(C)	(D)	(E)	(F)		
1	1	705500-53100	VALVE ASSY,INJECTION	1	1						
2	2	129500-53050	VALVE ASSY,INJECTION	1	1						
5	2	114250-53080	NUT, NOZZLE D16.95	1	1						
6	2	105300-53100	HOLDER ASSY, NOZZLE	1	1						
9	2	114250-53120	SPRING, NOZZLE	1	1						
10	2	114250-53130	SEAT, SPRING	1	1						
11	2	114250-53140	PLATE	1	1						
12	2	114250-53210	PIN	2	2						
13	2	114250-53400	SHIM SET	1	1						
25	1	105370-55650	STRAINER ASSY, FUEL	1	1						
26	2	105300-55520	O-RING	1	1						
27	2	105300-55530	CUP, STRAINER	1	1						
28	2	105300-55610	RING, RETAINING	1	1						
29	2	105300-55700	BODY ASSY, STRAINER	1	1						
32	3	105300-55340	LEVER	1	1						
37	3	104200-55750	SCREW, M4	1	1						
39	3	24311-000160	O-RING, 1AP16.0	1	1						
40	2	105370-55710	ELEMENT	1	1						
41	2	105300-55750	FLOAT	1	1						
42	1	26106-080302	BOLT, M8X 30 PLATED	1	1						
43	1	105300-59800	PIPE ASSY, INJECTION	1	1						
47	1	129301-03660	CLAMP 16	1	1						
48	1	105300-59020	PIPE ASSY, FUEL	1	1						
50	2	124766-59050	CLIP, HOSE 12	1	1						
52	1	124722-59050	CLIP, HOSE 9	2	2						
53	1	124766-59050	CLIP, HOSE 12	4	4						
54	1	105300-59100	PIPE, FUEL RETURN	1	1						
55	1	105300-59561	PIPE, FUEL	1	1						
56	1	105300-59570	PIPE, FUEL	1	1						
57	1	23080-013000	CLAMP, 13	1	1						

Fig.12. GOVERNOR & CONTROL DEVICE

Y00D6580



(A)=NFD10-MEA  
(B)=NFD10-MEAS  
(C)=

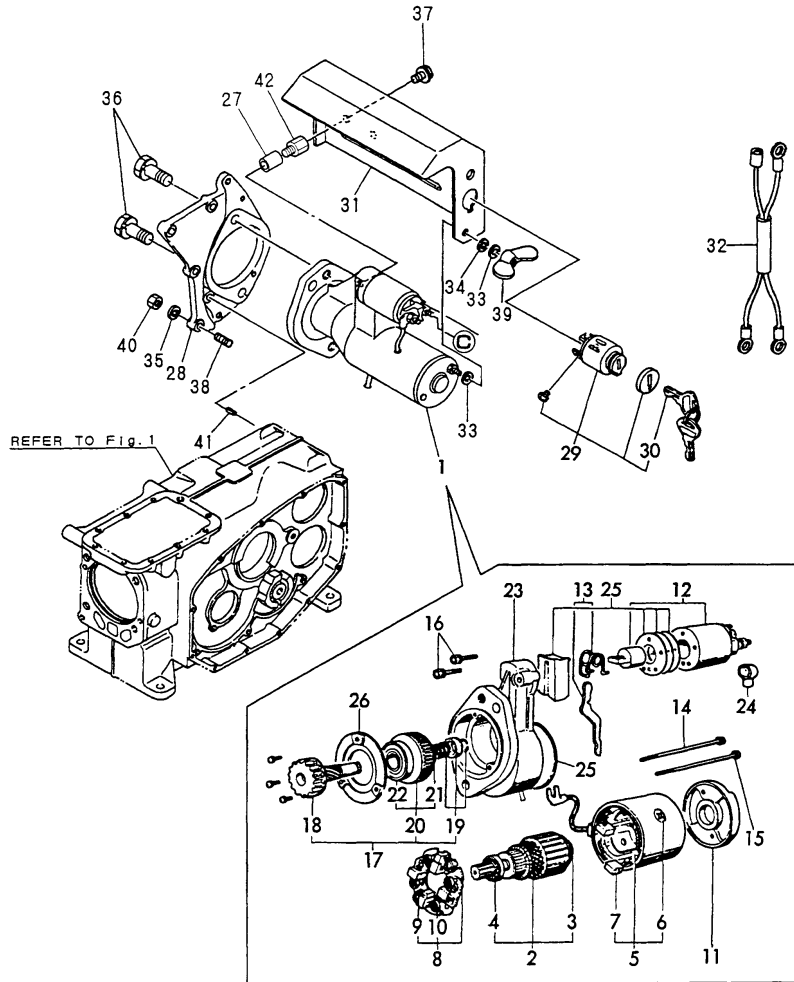
(D)=  
(E)=  
(F)=

No.	Lev.	Parts No.	Description	Q'ty						I	R
				(A)	(B)	(C)	(D)	(E)	(F)		
1	1	705300-61700	GOVERNOR ASSY	1	1						
5	1	105300-61600	SLEEVE, GOVERNOR	1	1						
6	1	105300-66010	SPRING, REGULATOR	1	1						
7	1	105198-66160	LEVER, STOP	1	1						
8	1	105300-66300	LEVER, GOVERNOR	1	1						
9	1	105408-66400	SHAFT	1	1						
10	1	24190-120001	BALL, STEEL 3/8	1	1						
11	1	26022-050102	SCREW, M5X10	2	2						
12	1	26022-050102	SCREW, M5X10	1	1						
13	1	705300-61700	GOVERNOR ASSY	1	1						
14	2	105502-66041	HANDLE ASSY	1	1						
17	3	105225-66990	SCREW, M5X8.5	1	1						
20	2	22322-030200	PIN, TAPER 3X20	1	1						
21	2	24311-000070	O-RING, 1AP7.0	1	1						
22	2	26347-060002	NUT, M6	1	1						
23	2	105840-66831	PLATE, FRICTION	1	1						
24	2	105300-66850	RETAINER	1	1						
25	2	105840-66880	SPRING	1	1						
26	2	22117-100000	WASHER, 10	1	1						
27	2	22137-060000	WASHER, 6	1	1						
28	1	26106-060122	BOLT, M6X 12 PLATED	2	2						
29	1	105300-66110	COVER	1	1						
30	1	26756-060002	NUT, LOCK M6	1	1						
31	1	105090-66551	LIMITER ASSY, FUEL	1	1						
32	1	124060-66950	NUT, CAP M10	1	1						
33	1	26796-100002	NUT, LOCK M10	1	1						
34	1	22190-100002	WASHER, SEAL 10	2	2						
35	1	105300-66520	SCREW	1	1						
36	1	105300-66610	CAP	1	1						



Fig.13. STARTING MOTOR

Y00D6580



(A)=NFD10-MEA  
(B)=NFD10-MEAS  
(C)=

(D)=  
(E)=  
(F)=

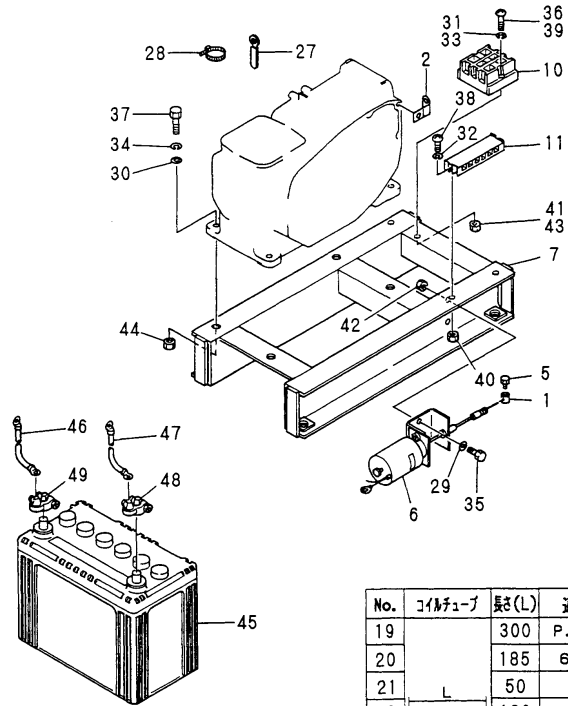
No.	Lev.	Parts No.	Description	Q'ty						I	R
				(A)	(B)	(C)	(D)	(E)	(F)		
1	1	105100-77011	MOTOR,STARTER	1	1						
2	2	X211461005	ARMATURE	1	1						
3	3	X2130350900	BALL BEARING	1	1						
4	3	X211425511	BALL BEARING	1	1						
5	2	X211442003	COIL ASSY, FIELD	1	1						
6	3	X21143215	SCREW, CORE	1	1						
7	3	X211469002	BRUSH (+)	2	2						
8	2	X211479001	HOLDER ASSY, BRUSH	1	1						
9	3	X211459002	BRUSH (-)	2	2						
10	3	X21148314	SPRING, BRUSH	4	4						
11	2	X211483003	COVER	1	1						
12	2	171008-77530	SWITCH, MAGNETIC	1	1						
13	2	X211446012	LEVER, SHIFT	1	1						
14	2	X211468005	BOLT, THROUGH	1	1						
15	2	X21148856	BOLT, THROUGH	1	1						
16	2	X21145866	BOLT	2	2						
17	2	X211455011	PINION ASSY	1	1						
18	3	X211465011	SHAFT, PINION	1	1						
19	3	X211429006	STOPPER SET	1	1						
20	3	X211455500	CLUTCH ASSY	1	1						
21	4	X211495502	BEARING, BALL	1	1						
22	4	X211455502	BALL BEARING	1	1						
23	2	X211466605	CASE ASSY, GEAR	1	1						
24	2	X21142742	COVER (A), RUBBER	1	1						
25	2	X211458012	COVER KIT	1	1						
26	2	X211428008	RETAINER, BEARING	1	1						
27	1	105578-77790	SPACER	2	2						
28	1	105300-77470	BRACKET	1	1						
29	1	106100-77620	SWITCH, KEY	1	1						
30	2	106100-77630	KEY, SWITCH	2	2						
31	1	105100-77781	COVER	1	1						
32	1	105478-78550	HARNES, WIRE	1	1						
33	1	22117-050000	WASHER, 5	2	2						
34	1	22217-050000	WASHER, SPRING 5	1	1						
35	1	22217-060000	WASHER, SPRING 6	4	4						
36	1	26013-120302	BOLT, M12X 30	2	2						
37	1	26106-060102	BOLT, M6X 10 PLATED	2	2						
38	1	26216-060202	STUD, M6X 20	4	4						
39	1	26636-050002	NUT, WING M5	1	1						
40	1	26716-060002	NUT, M6	4	4						
41	1	22351-060012	PIN, SPRING 6.0X12	1	1						
42	1	105212-01910	BOLT	2	2						

Fig.14. ELECTRIC PART & OPTIONAL PART

Y0006580

見出しNo. 12は、見出しNo. 13から26を含みます。  
12 inc. 13 ~ 26

No.	端子台	ワイヤーハーネス	No.	端子台	ワイヤーハーネス
13	P	セルモータ	17	J 1	ファンケース
14	N	ギャケース	18	J 2	
15	ST	キ-SW			
16	5	ソレノイド			



No.	端子台	バッテリーコード
8	⊕ ガワ	シリンドラ ボディー
9	⊖ ガワ	

No.	コイルタイプ	総(L)	適用
19		300	P. ST
20		185	63Q
21	L	50	N
22		180	J1, J2
23		30	J2
24		200	49W
25		260	5
26		80	ソレノイド

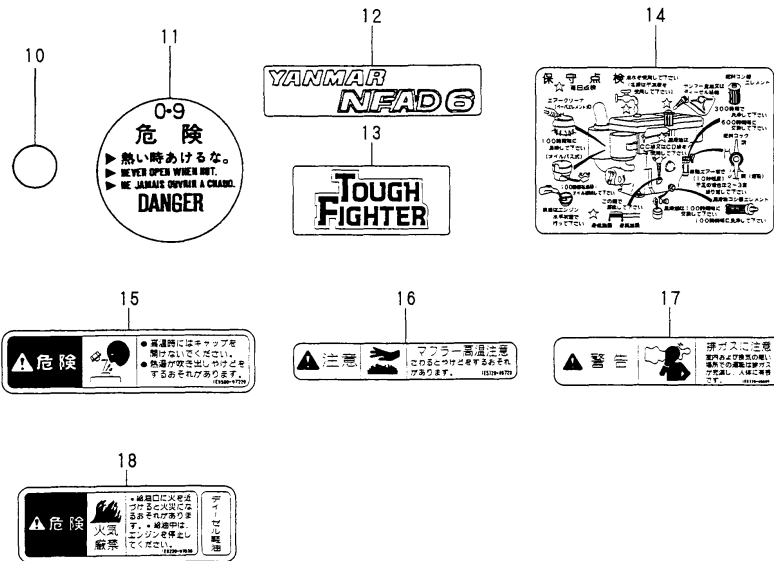
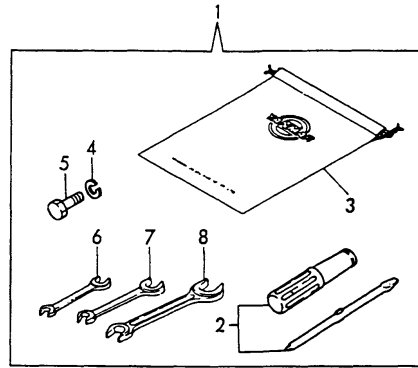
(A)=NFD10-MEA  
(B)=NFD10-MEAS  
(C)=

(D)=  
(E)=  
(F)=

No.	Lev.	Parts No.	Description	Q'ty						I	R
				(A)	(B)	(C)	(D)	(E)	(F)		
1	1	106500-44870	STOPPER	1	1						
2	1	105478-66830	SUPPORT, WIRE	1	1						
5	1	26117-040068	BOLT M 4X 6 PLATED	2	2						
6	1	46116-504800	SOLENOID VALVE	1	1						
7	1	105478-08110	FOOT		1						
8	1	105198-77670	CORD, BATTERY		1						
9	1	105198-77680	CORD, BATTERY		1						
10	1	105198-77750	STAY		1						
11	1	105198-77760	TERMINAL BLOCK		1						
12	1	105478-77890	HARNESS ASSY, WIRE		1						
13	2	105198-77800	HARNESS, WIRE		1						
14	2	105198-77810	HARNESS, WIRE		1						
15	2	105198-77820	HARNESS, WIRE		1						
16	2	105198-77830	HARNESS, WIRE		1						
17	2	105198-77860	HARNESS, WIRE		1						
18	2	105198-77870	HARNESS, WIRE		1						
19	2	105198-77910	PIPE, COIL		1						
20	2	105198-77920	PIPE, COIL		1						
21	2	105198-77930	PIPE, COIL		1						
22	2	105198-77940	PIPE, COIL		1						
23	2	105198-77950	PIPE, COIL		1						
24	2	105198-77960	PIPE, COIL		1						
25	2	105198-77970	PIPE, COIL		1						
26	2	105198-77900	PIPE, COIL		1						
27	1	160710-78710	CLAMP, CORD		1						
28	1	160370-78950	BAND, L=98		2						
29	1	22117-080000	WASHER, 8		2						
30	1	22137-100000	WASHER, 10		4						
31	1	22157-080000	WASHER, 8		2						
32	1	22217-040000	WASHER, SPRING 4		2						
33	1	22217-050000	WASHER, SPRING 5		2						
34	1	22217-100000	WASHER, SPRING 10		4						
35	1	26116-080202	BOLT, M8X 20 PLATED		2						
36	1	26116-080602	BOLT, M8X 60 PLATED		2						
37	1	26116-120402	BOLT, M12X 40 PLATED		4						
38	1	26557-040252	SCREW, M4X25		2						
39	1	26557-050402	SCREW, M5X40		2						
40	1	26756-040002	NUT, LOCK M4		2						
41	1	26756-050002	NUT, LOCK M5		2						
42	1	26756-080002	NUT, LOCK M8		2						
43	1	26756-080002	NUT, LOCK M8		2						
44	1	26756-100002	NUT, LOCK M10		4						
45	1	105198-77510	BATTERY, N70		1						
46	1	105198-77650	WIRE, LEAD		1						
47	1	105198-77660	WIRE, LEAD		1						
48	1	46150-500860	TERMINAL		1						
49	1	46150-500870	TERMINAL		1						

Fig.15. TOOL & LABEL

Y00D6580



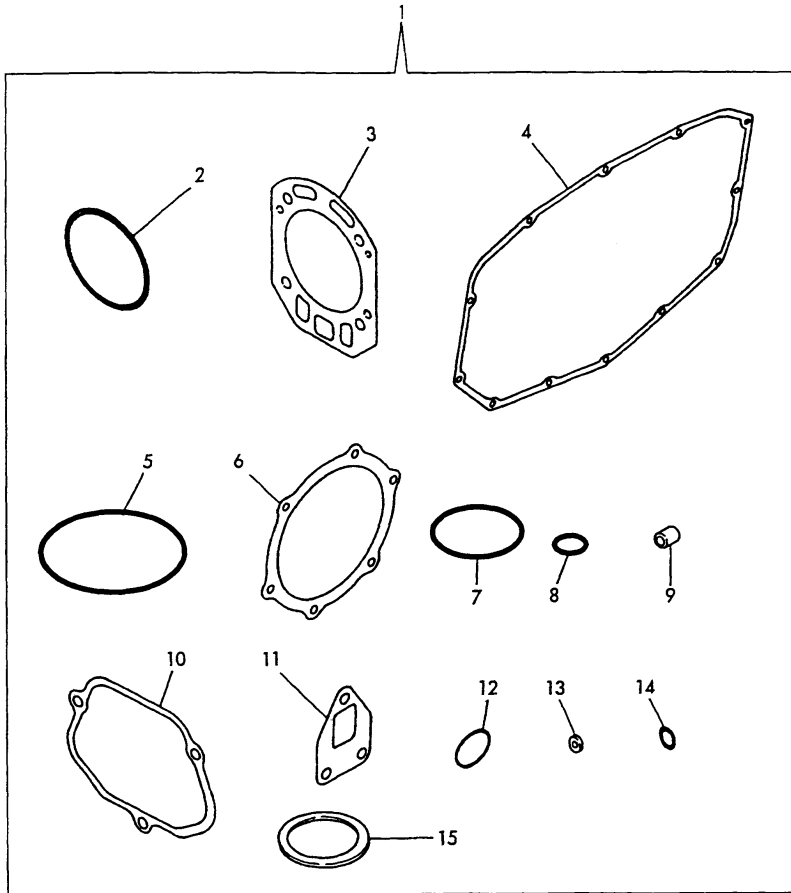
(A)=NFD10-MEA  
(B)=NFD10-MEAS  
(C)=

(D)=  
(E)=  
(F)=

No.	Lev.	Parts No.	Description	Qty						I	R
				(A)	(B)	(C)	(D)	(E)	(F)		
1	1	705300-92100	BOX ASSY, TOOL	1	1						
2	2	104200-92350	DRIVER, SCREW	1	1						
3	2	105300-92600	BAG, TOOL	1	1						
4	2	22217-120000	WASHER, SPRING 12	3	3						
5	2	26206-120352	BOLT, M12X 35 PLATED	3	3						
6	2	28110-100120	SPANNER, 10X12	1	1						
7	2	28110-140170	SPANNER, 14X17	1	1						
8	2	28110-190220	SPANNER, 19X22	1	1						
10	1	105372-07150	LABEL, LUB. OIL	1	1						
11	1	105300-07400	LABEL, RADIATOR	1	1						
12	1	105470-07061	LABEL	2	2						
13	1	105300-07070	LABEL	1	1						
14	1	105402-07100	LABEL	1	1						
15	1	105250-07310	LABEL, RADIATOR	1	1						
16	1	105250-07330	LABEL	1	1						
17	1	105250-07340	LABEL, EXH. GAS CAUTN	1	1						
18	1	105250-07320	LABEL, NO FIRE	1	1						

Fig.16. GASKET SET

Y00D6580



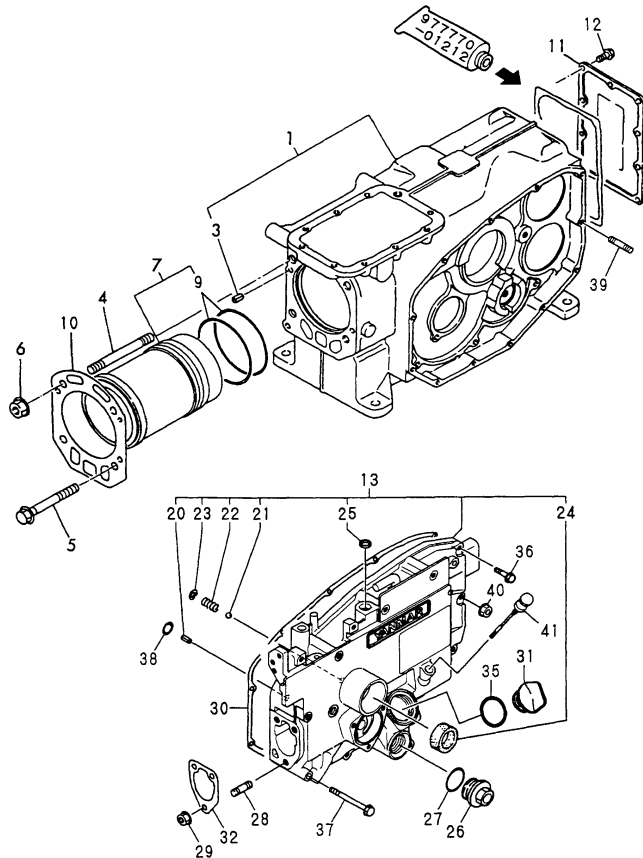
(A)=NFD10-MEA  
(B)=NFD10-MEAS  
(C)=

(D)=  
(E)=  
(F)=

No.	Lev.	Parts No.	Description	Q'ty						I	R
				(A)	(B)	(C)	(D)	(E)	(F)		
1	1	705300-92602	GASKET SET	1	1						
2	2	105300-01300	GASKET, LINER	2	2						
3	2	105300-01332	GASKET, HEAD	1	1						
4	2	105300-01410	GASKET, GEAR CASE	1	1						
5	2	24311-000320	O-RING, 1AP32.0	1	1						
6	2	105300-02020	GASKET	1	1						
7	2	24341-000200	O-RING, 1AS20.0	1	1						
8	2	24311-000070	O-RING, 1AP7.0	1	1						
9	2	119625-11871	PROTECTOR, NOZZLE	1	1						
10	2	105300-11310	GASKET, BONNET	1	1						
11	2	105300-13200	GASKET, SILENCER	1	1						
12	2	103854-32051	O-RING	1	1						
13	2	124550-51350	GASKET, DELIVERY	1	1						
14	2	124550-51370	O-RING	1	1						
15	2	101504-55051	GASKET	1	1						

Fig.17. CYLINDER BLOCK

Y00D6580



(A)=  
(B)=  
(C)=NFD13-MEA  
(D)=NFD13-MEAS  
(E)=  
(F)=

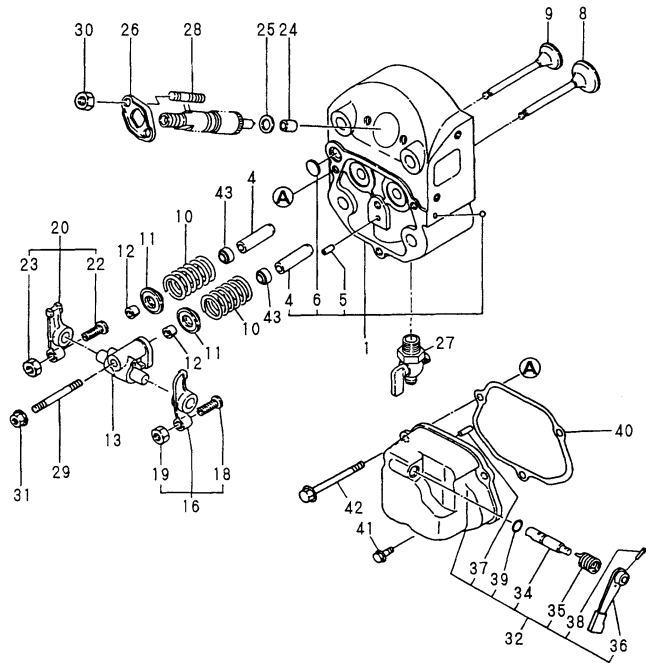
No.	Lev.	Parts No.	Description	Qty						I	R
				(A)	(B)	(C)	(D)	(E)	(F)		
1	1	705600-01560	BLOCK ASSY, CYLINDER			1	1				
3	2	22351-060012	PIN, SPRING 6.0X12			2	2				
4	1	105500-01200	BOLT, HEAD			2	2				
5	1	105500-01210	BOLT, HEAD			2	2				
6	1	105500-01220	NUT, CYLINDER HEAD			2	2				
7	1	705600-01900	LINER ASSY, CYLINDER			1	1				
9	2	105500-01300	GASKET, LINER			2	2				A
10	1	105500-01330	GASKET, HEAD			1	1				A
11	1	105500-01480	COVER			1	1				
12	1	26106-060162	BOLT, M6X 16 PLATED			10	10				
13	1	705600-01500	CASE ASSY, GEAR			1	1				
20	2	22351-060012	PIN, SPRING 6.0X12			1	1				
21	2	24190-120001	BALL, STEEL 3/8			1	1				
22	2	105300-34040	SPRING			1	1				
23	2	22252-000100	RING, 10			1	1				
24	2	120270-61250	SEAL, OIL			1	1				
25	2	105378-01690	SEAL, OIL			1	1				
26	1	105300-01690	PLUG			1	1				
27	1	24321-000250	O-RING, 1AG25.0			1	1				
28	1	26216-080222	STUD, M8X 22			3	3				
29	1	26366-080002	NUT, M8			3	3				
30	1	105500-01410	GASKET			1	1				A
31	1	10540H-01751	CAP, FEEDER			1	1				
32	1	104271-01950	SHIM SET,0.2X3,0.3X2			1	1				
35	1	24311-000320	O-RING, 1AP32.0			1	1				A
36	1	26106-060252	BOLT, M6X 25 PLATED			6	6				
37	1	26106-060652	BOLT, M6X 65 PLATED			6	6				
38	1	24311-000060	O-RING, 1AP6.0			1	1				
39	1	10530H-01800	BOLT			1	1				
40	1	26366-060002	NUT, M6			1	1				
41	1	10530H-34850	DIPSTICK, OIL			1	1				

Remarks

(A)THESE PARTS ARE ALSO SOLD BY  
FIG.32.REF NO.1  
(GASKET SET.P/# 705500-92601).

Fig.18. CYLINDER HEAD & BONNET

Y0006580



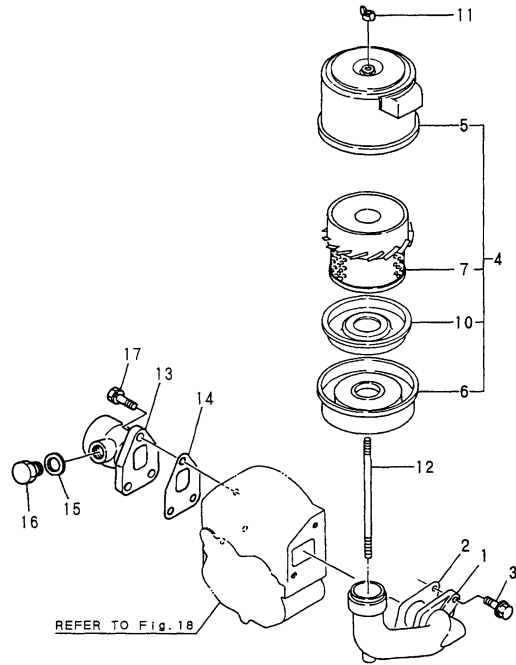
(A)=  
(B)=  
(C)=NFD13-MEA  
(D)=NFD13-MEAS  
(E)=  
(F)=

No.	Lev.	Parts No.	Description	Q'ty						I	R
				(A)	(B)	(C)	(D)	(E)	(F)		
1	1	705500-11702	HEAD ASSY, CYLINDER			1	1				
4	2	105600-11800	GUIDE, VALVE			2	2				
5	2	22351-060012	PIN, SPRING 6.0X12			1	1				
6	2	27231-150000	PLUG 15			1	1				
8	1	105500-11100	VALVE, INTAKE			1	1				
9	1	105500-11111	VALVE, EXHAUST			1	1				
10	1	104600-11120	SPRING, VALVE			2	2				
11	1	103338-11180	RETAINER, SPRING			2	2				
12	1	27310-080001	COTTER, 8			2	2				
13	1	10550H-11290	SUPPORT ASSY, ARM			1	1				
16	1	105500-11650	ARM, ROCKER			1	1				
18	2	101158-11230	SCREW, VALVE ADJUST			1	1				
19	2	26756-080002	NUT, LOCK M8			1	1				
20	1	105500-11660	ARM, ROCKER			1	1				
22	2	101158-11230	SCREW, VALVE ADJUST			1	1				
23	2	26756-080002	NUT, LOCK M8			1	1				
24	1	119625-11871	PROTECTOR, NOZZLE			1	1				A
25	1	119625-11880	SEAT, NOZZLE			1	1				
26	1	119625-11900	RETAINER, NOZZLE			1	1				
27	1	105010-11920	COCK, WATER			1	1				
28	1	26216-060252	STUD, M6X 25			2	2				
29	1	26216-080502	STUD, M8X 50			1	1				
30	1	26366-060002	NUT, M6			2	2				
31	1	26366-080002	NUT, M8			1	1				
32	1	705500-11520	BONNET ASSY, HEAD			1	1				
34	2	104200-03600	SHAFT, DECOMPRESSION			1	1				
35	2	104200-03641	SPRING, DECOMPRESSION			1	1				
36	2	104104-03750	LEVER, DECOMPRESSION			1	1				
37	2	22312-030180	PIN, PARALLEL M3X18			1	1				
38	2	22322-030180	PIN, TAPER 3X18			1	1				
39	2	24311-000070	O-RING, 1AP7.0			1	1				A
40	1	105500-11310	GASKET, BONNET			1	1				A
41	1	26106-060202	BOLT, M6X 20 PLATED			2	2				
42	1	26106-060702	BOLT, M6X 70 PLATED			1	1				
43	1	105500-11340	SEAL, VALVE STEM			2	2				

Remarks  
(A) THESE PARTS ARE ALSO SOLD BY  
FIG.32.REF NO.1  
(GASKET SET.P/# 705500-92601).

Fig.19. AIR CLEANER & MUFFLER

Y00D6580



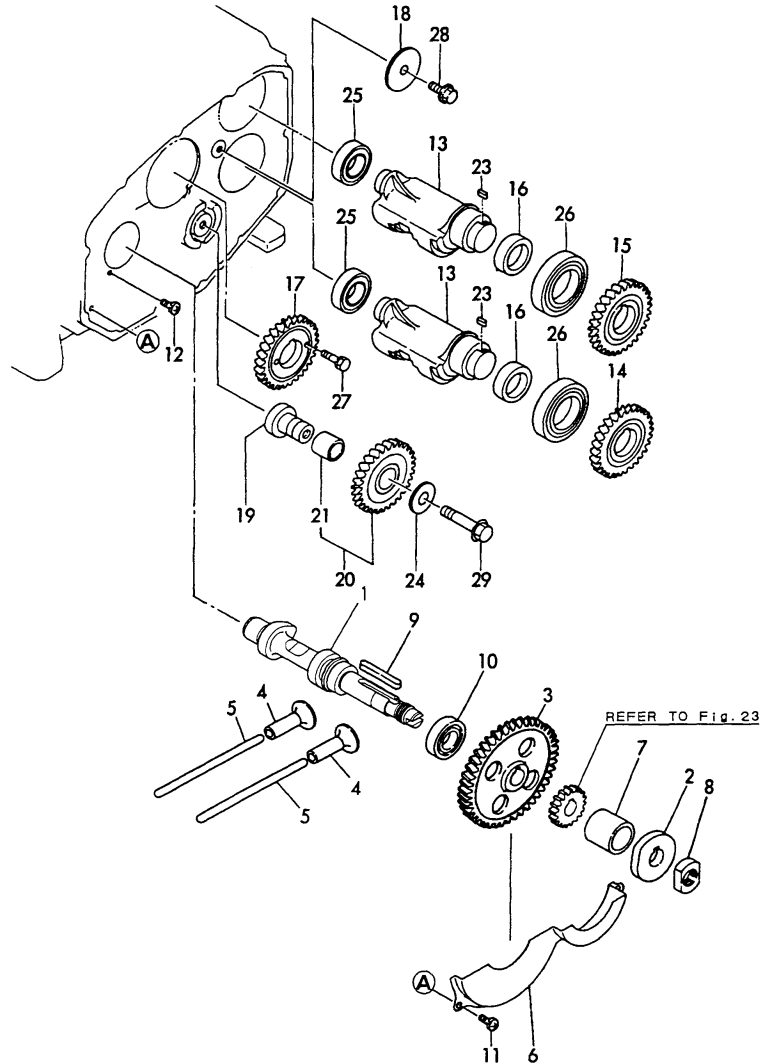
(A)= (D)=NFD13-MEAS  
 (B)= (E)=  
 (C)=NFD13-MEA (F)=

No.	Lev.	Parts No.	Description	Q'ty						I	R
				(A)	(B)	(C)	(D)	(E)	(F)		
1	1	105500-12020	PIPE, AIR INTAKE			1	1				
2	1	105500-12050	GASKET			1	1				
3	1	26106-080202	BOLT, M8X 20 PLATED			2	2				
4	1	105300-12511	CLEANER, AIR			1	1				
5	2	105370-12531	COVER ASSY			1	1				
6	2	105370-12540	PAN ASSY, DUST			1	1				
7	2	105370-12570	ELEMENT			1	1				
10	2	105370-12670	BAFFLE			1	1				
11	1	101147-12550	NUT			1	1				
12	1	105300-12550	BOLT			1	1				
13	1	105678-13150	FLANGE, EXHAUST			1	1				
14	1	105500-13200	GASKET, SILENCER			1	1				A
15	1	23414-170000	GASKET, 17X1.0			1	1				
16	1	23897-030002	PLUG G3/8,HEX.			1	1				
17	1	26013-080252	BOLT, M8X 25			3	3				

Remarks  
 (A)THESE PARTS ARE ALSO SOLD BY  
 FIG.32.REF NO.1  
 (GASKET SET.P/# 705500-92601).

Fig.20. CAMSHAFT & BALANCER

Y0006580



(A)=  
(B)=  
(C)=NFD13-MEA

(D)=NFD13-MEAS  
(E)=  
(F)=

No.	Lev.	Parts No.	Description	Q'ty						I	R
				(A)	(B)	(C)	(D)	(E)	(F)		
1	1	10557H-14010	CAMSHAFT			1	1				
2	1	105300-14090	CAM, FUEL			1	1				
3	1	10560H-14100	GEAR, CAMSHAFT			1	1				
4	1	105300-14200	TAPPET			2	2				
5	1	105500-14400	ROD, PUSH			2	2				
6	1	105500-14600	COVER			1	1				
7	1	105300-14700	SPACER			1	1				
8	1	104300-76460	NUT			1	1				
9	1	22512-070600	KEY, 7X 60			1	1				
10	1	24101-060064	BEARING, BALL 6006			1	1				
11	1	26022-060122	SCREW, M6X12			3	3				
12	1	26587-080122	SCREW, M8X12			1	1				
13	1	105500-28251	SHAFT, BALANCER			2	2				
14	1	10560G-28300	GEAR, BALANCER			1	1				
15	1	10560G-28310	GEAR, BALANCER			1	1				
16	1	105500-28380	SPACER			2	2				
17	1	10560H-28410	GEAR, BALANCER			1	1				
18	1	105300-28450	RETAINER			1	1				
19	1	105300-28700	SHAFT			1	1				
20	1	10550G-28750	GEAR ASSY			1	1				
21	2	105430-28720	BUSH, IDLE GEAR			1	1				
23	1	105215-76490	KEY			2	2				
24	1	123672-83880	RETAINER			1	1				
25	1	24101-060054	BEARING, BALL 6005			2	2				
26	1	24101-060094	BEARING, BALL 6009			2	2				
27	1	26013-060222	BOLT, M6X 22			2	2				
28	1	26106-080162	BOLT, M8X 16 PLATED			1	1				
29	1	26106-100552	BOLT, M10X 55 PLATED			1	1				

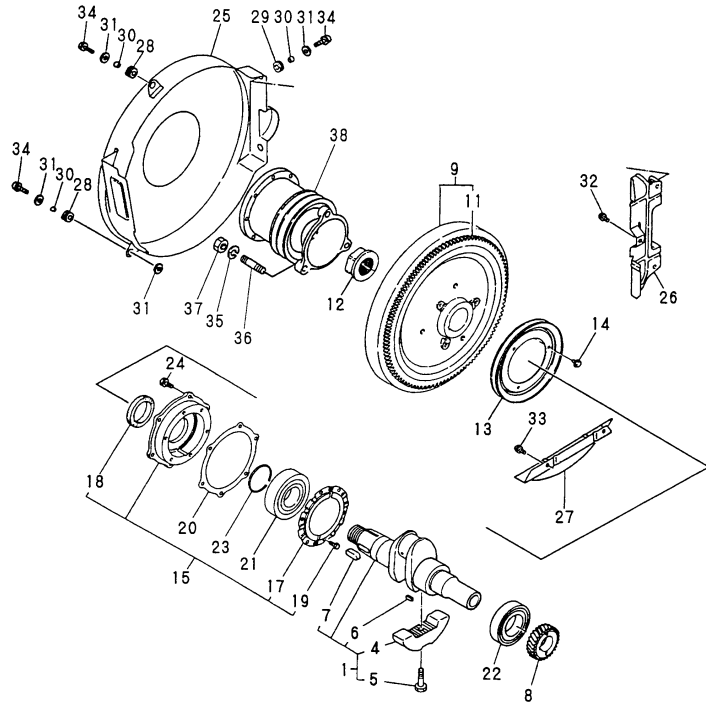


Fig.21. CRANKSHAFT & FLYWHEEL

(A)=  
(B)=  
(C)=NFD13-MEA

(D)=NFD13-MEAS  
(E)=  
(F)=

Y0006580



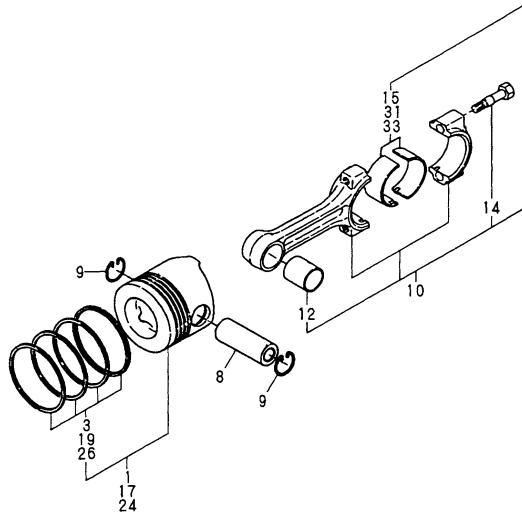
No.	Lev.	Parts No.	Description	Qty						I	R
				(A)	(B)	(C)	(D)	(E)	(F)		
1	1	705500-21701	CRANKSHAFT ASSY			1	1				
4	2	105500-21100	WEIGHT, BALANCE			2	2				
5	2	104271-21100	BOLT, BALANCE WEIGHT			2	2				
6	2	22512-050200	KEY, 5X 20			1	1				
7	2	22512-100300	KEY, 10X 30			1	1				
8	1	10560H-21200	GEAR, CRANKSHAFT			1	1				
9	1	105500-21591	FLYWHEEL ASSY			1	1				
11	2	105500-21600	GEAR, RING			1	1				
12	1	106330-21530	NUT, END			1	1				
13	1	105300-21600	V-PULLEY			1	1				
14	1	26106-060122	BOLT, M6X 12 PLATED			3	3				
15	1	705500-02500	HOUSING ASSY, METAL			1	1				
17	2	105430-02321	RETAINER, BEARING			2	2				
18	2	103288-02221	SEAL, OIL			1	1				
19	2	26116-060102	BOLT, M6X 10 PLATED			6	6				
20	1	105500-02020	GASKET			1	1				A
21	1	105600-02300	BEARING, 6310G3C3			1	1				
22	1	10560H-02310	BEARING, NF309-C3			1	1				
23	1	22242-000500	RING, 50			1	1				
24	1	26013-080202	BOLT, M8X 20			7	7				
25	1	105500-21350	COVER, FLYWHEEL			1	1				
26	1	105300-21360	COVER			1	1				
27	1	105300-21320	COVER			1	1				
28	1	105300-21381	ABSORBER			2	2				
29	1	105300-44451	ABSORBER			2	2				
30	1	105300-44460	COLLAR			4	4				
31	1	160120-76940	WASHER			5	5				
32	1	26106-060122	BOLT, M6X 12 PLATED			3	3				
33	1	26106-060122	BOLT, M6X 12 PLATED			2	2				
34	1	26106-060202	BOLT, M6X 20 PLATED			4	4				
35	1	22217-120000	WASHER, SPRING 12				3				
36	1	26216-120322	STUD, M12X 32				3				
37	1	26716-120002	NUT, M12				3				
38	1	105478-21960	CLUTCH				1				

Remarks

(A)THESE PARTS ARE ALSO SOLD BY  
FIG.32.REF NO.1  
(GASKET SET.P/# 705500-92601).

# Fig.22. PISTON & CONNECTING ROD

Y00D6580



(A)=  
(B)=  
(C)=NFD13-MEA

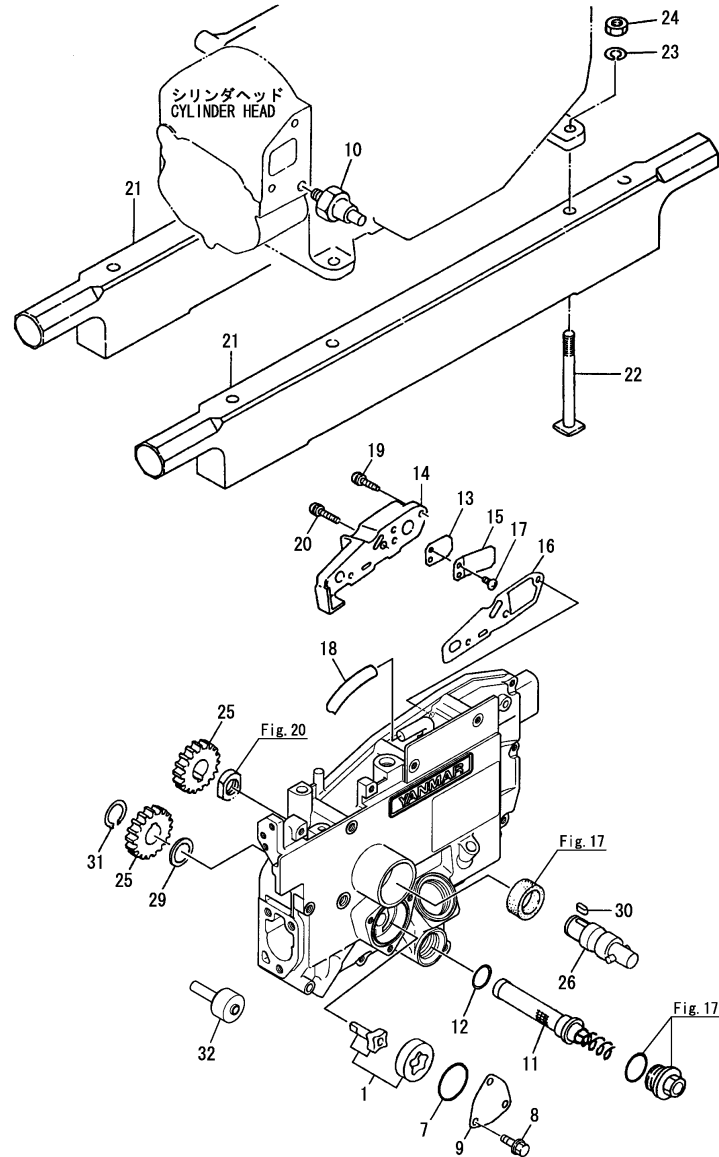
(D)=NFD13-MEAS  
(E)=  
(F)=

No.	Lev.	Parts No.	Description	Q'ty						I	R	
				(A)	(B)	(C)	(D)	(E)	(F)			
1	1	105600-22090	PISTON ASSY, DI			1	1					
3	2	704600-22502	RING SET, PISTON			1	1					
8	1	105500-22300	PIN, PISTON			1	1					
9	1	105500-22400	CIRCLIP			2	2					
10	1	705500-23100	ROD ASSY, CONNECTING			1	1					
12	2	105500-23910	BEARING, PISTON PIN			1	1					
14	2	105500-23200	BOLT, CONNECTING ROD			2	2					
15	2	705500-23600	BEARING, CRANK PIN			1	1					
17	1	105600-22470	PISTON W/RING(OS0.25			1	1					1
19	2	105600-22510	RING SET, 0.25 OS			1	1					1
24	1	105600-22480	PISTON W/RING(OS 0.5			1	1					2
26	2	105600-22520	RING SET, 0.50 OS			1	1					2
31	1	705500-23610	BEARING ASSY, 0.25			1	1					3
33	1	705500-23620	BEARING, 0.50 US			1	1					4

**Remarks**

- (1)OVER-SIZED(O.S=0.25)PART.
- (2)OVER-SIZED(O.S=0.5 )PART.
- (3)UNDER-SIZED(U.S=0.25)PART.
- (4)UNDER-SIZED(U.S=0.5 )PART.

Fig.23. LUB.OIL SYSTEM



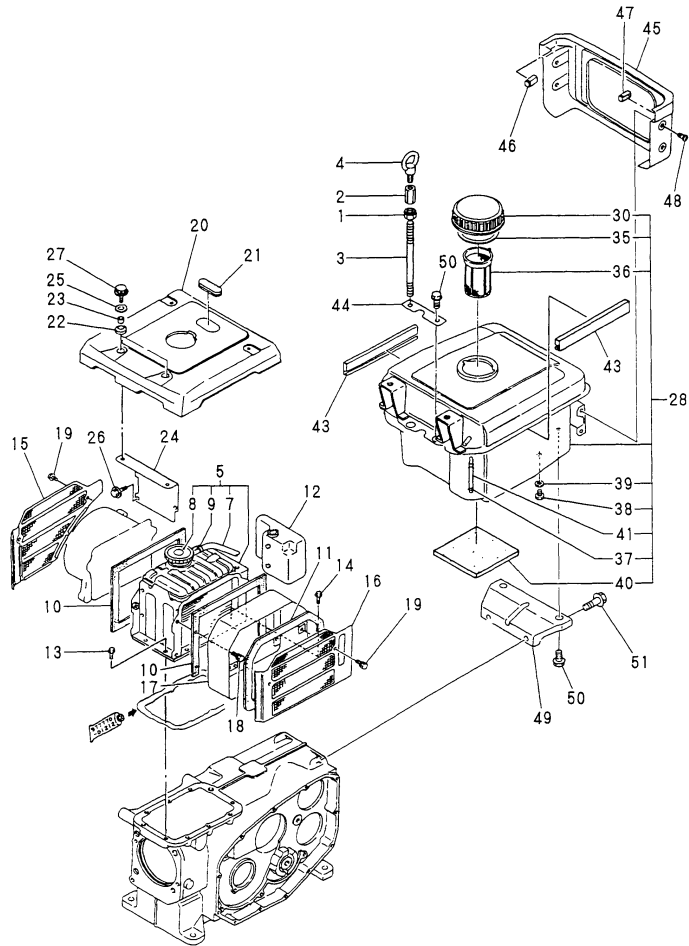
(A)= (D)=NFD13-MEAS  
 (B)= (E)=  
 (C)=NFD13-MEA (F)=

No.	Lev.	Parts No.	Description	Q'ty						I	R
				(A)	(B)	(C)	(D)	(E)	(F)		
1	1	705225-32500	ROTOR ASSY			1	1				
1-1	1	10537H-32500	PUMP, LUB.OIL CMP (C=EXXXXX) (D=EXXXXX)			1	1				N
7	1	103854-32051	O-RING			1	1				A
8	1	26106-060122	BOLT, M6X 12 PLATED			3	3				
9	1	103854-32082	COVER			1	1				
10	1	105582-34100	SIGNAL			1	1				
11	1	105306-35052	STRAINER ASSY, OIL			1	1				
12	1	24341-000200	O-RING, 1AS20.0			1	1				A
13	1	101158-03061	VALVE			1	1				
14	1	105500-03082	COVER, BREATHER			1	1				
15	1	101158-03111	RETAINER			1	1				
16	1	105300-03130	GASKET			1	1				
17	1	105362-78960	SCREW, M4X8			2	2				
18	1	23064-090400	PIPE, 9X 400			1	1				
19	1	26106-060222	BOLT, M6X 22 PLATED			2	2				
20	1	26106-060252	BOLT, M6X 25 PLATED			1	1				
21	1	10560H-08010	ENGINE BED			2	2				
22	1	104300-08050	BOLT, FOUNDATION			4	4				
23	1	22217-120000	WASHER, SPRING 12			4	4				
24	1	26716-120002	NUT, M12			4	4				
25	1	105300-76330	GEAR, STARTING			2	2				
26	1	705100-76900	SHAFT ASSY, STARTING			1	1				
29	1	105300-76470	COLLAR			1	1				
30	1	105300-76490	KEY, 7X10			1	1				
31	1	22242-000200	RING, 20			1	1				
32	1	10530H-32200	PIECE			1	1				

Remarks  
 (A)These parts are also sold by Fig.32 No.1.  
 (Gasket set P/# 705500-92601)

Fig.24. RADIATOR & FUEL OIL TANK

Y00D6580



(A)=  
(B)=  
(C)=NFD13-MEA

(D)=NFD13-MEAS  
(E)=  
(F)=

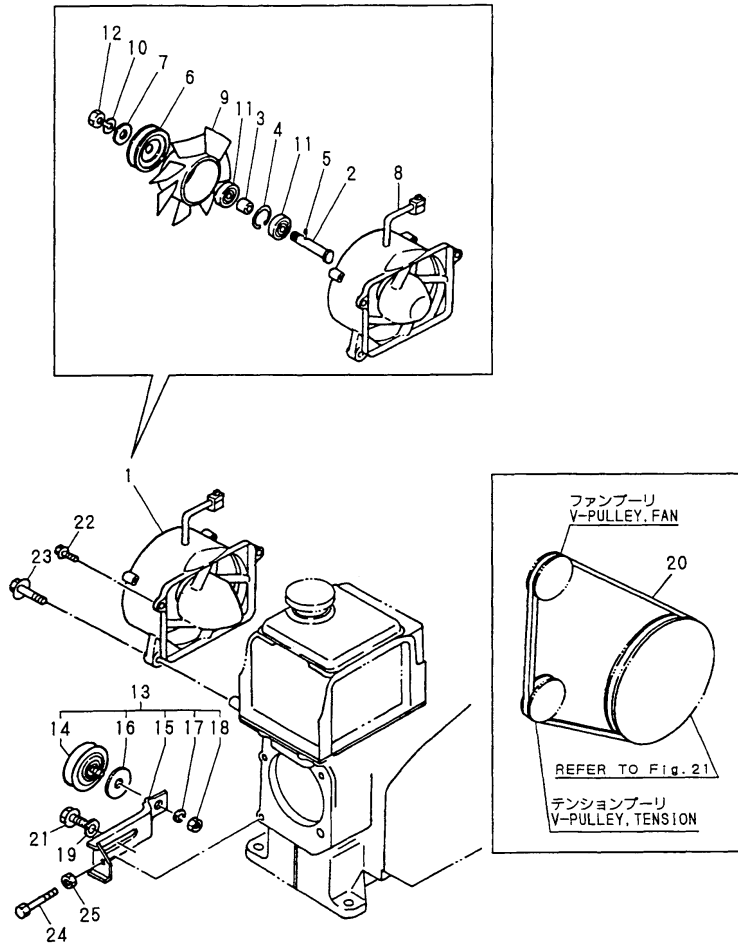
No.	Lev.	Parts No.	Description	Q'ty						I	R
				(A)	(B)	(C)	(D)	(E)	(F)		
1	1	104107-07900	NUT, M10			1	1				
2	1	105500-07920	NUT, M10			1	1				
3	1	105500-07950	BOLT, LIFTING M10			1	1				
4	1	26617-100002	BOLT, EYE M10			1	1				
5	1	105600-44520	RADIATOR ASSY			1	1				
7	2	105500-44570	PIPE, OVERFLOW 7X195			1	1				
8	2	105198-44590	CAP, RADIATOR			1	1				
9	2	121250-44590	CLAMP			1	1				
10	1	104607-44540	SPONGE			2	2				
11	1	106100-44560	SPONGE, 15X5X1000			1	1				
12	1	105300-44630	TANK, SUB			1	1				
13	1	26013-060142	BOLT, M6X 14			8	8				
14	1	26013-060162	BOLT, M6X 16			1	1				
15	1	105500-44330	SCREEN			1	1				
16	1	105600-44340	SCREEN			1	1				
17	1	105500-44360	DUCT, SCREEN			1	1				
18	1	26013-060129	BOLT, M6X 12			4	4				
19	1	26106-060122	BOLT, M6X 12 PLATED			3	3				
20	1	105300-44220	COVER, RADIATOR			1	1				
21	1	105600-44250	COVER, RADIATOR			1	1				
22	1	105300-44451	ABSORBER			2	2				
23	1	105300-44460	COLLAR			2	2				
24	1	105300-44491	STAY			1	1				
25	1	160120-76940	WASHER			4	4				
26	1	26106-060122	BOLT, M6X 12 PLATED			2	2				
27	1	26106-060202	BOLT, M6X 20 PLATED			4	4				
28	1	705500-55701	TANK ASSY, FUEL			1	1				
30	2	101168-55040	CAP ASSY			1	1				
35	2	101504-55051	GASKET			1	1				A
36	2	101504-55101	STRAINER, FUEL			1	1				
37	2	103854-55220	RETAINER			2	2				
38	2	105300-55080	PLUG, 8			1	1				
39	2	23414-080000	GASKET, 8X1.0			1	1				
40	2	105500-55200	FELT, FUEL TANK			1	1				
41	2	104300-55160	GAUGE, LEVEL			1	1				
43	1	105600-55231	MOULDING			2	2				
44	1	105198-55520	RETAINER			1	1				
45	1	105500-55810	COVER, TANK			1	1				
46	1	105300-55840	PIECE			1	1				
47	1	105300-55850	PIECE			1	1				
48	1	26106-060122	BOLT, M6X 12 PLATED			4	4				
49	1	105506-55241	STAY, FUEL TANK			1	1				
50	1	26106-080222	BOLT, M8X 22 PLATED			4	4				
51	1	26106-100202	BOLT, M10X 20 PLATED			2	2				

Remarks

(A)THESE PARTS ARE ALSO SOLD BY  
FIG.32.REF NO.1  
(GASKET SET.P/# 705500-92601).

Fig.25. FAN

Y00D6580



(A)=  
(B)=  
(C)=NFD13-MEA

(D)=NFD13-MEAS  
(E)=  
(F)=

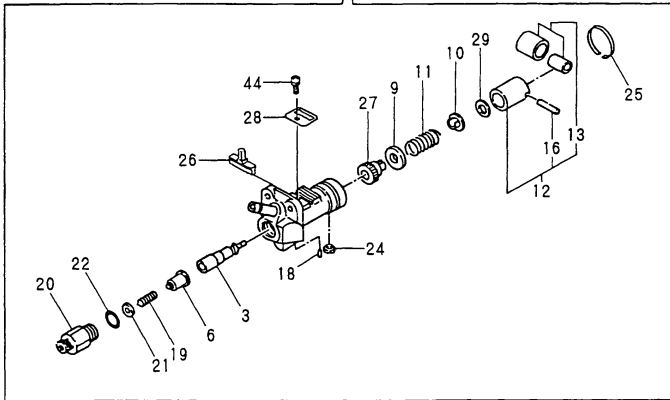
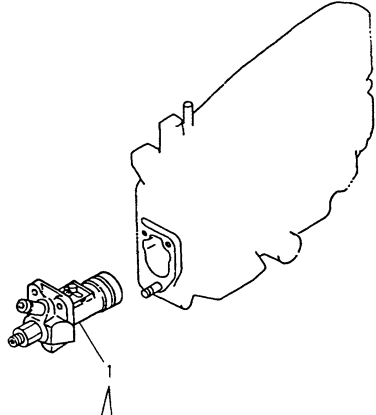
No.	Lev.	Parts No.	Description	Q'ty						I	R
				(A)	(B)	(C)	(D)	(E)	(F)		
1	1	105500-44211	CASE ASSY, FAN			1	1				
2	2	105340-44710	SHAFT, FAN			1	1				
3	2	106383-44720	SPACER			1	1				
4	2	106383-44740	CIRCLIP			1	1				
5	2	105340-44750	PIN			1	1				
6	2	105100-44770	PULLEY, FAN			2	2				
7	2	105100-44780	WASHER, PULLEY			1	1				
8	2	105500-44800	COVER ASSY			1	1				
9	2	105500-44850	FAN, COOLING			1	1				
10	2	22217-120000	WASHER, SPRING 12			1	1				
11	2	24107-062013	BEARING, 6201ZZP6			2	2				
12	2	26777-120002	NUT, LOCK M12			1	1				
13	1	105500-44810	PULLEY ASSY, TENSION			1	1				
14	2	106100-44650	PULLEY, TENSION			1	1				
15	2	105500-44940	LEVER			1	1				
16	2	106100-44960	CAP			1	1				
17	2	22217-080000	WASHER, SPRING 8			1	1				
18	2	26716-080002	NUT, M8			1	1				
19	1	22137-080000	WASHER, 8			1	1				
20	1	25117-003851	V-BELT, M38.5H			1	1				
21	1	26013-080162	BOLT, M8X 16			1	1				
22	1	26106-060252	BOLT, M6X 25 PLATED			2	2				
23	1	26106-080302	BOLT, M8X 30 PLATED			2	2				
24	1	26116-060504	BOLT, M6X 50 PLATED			1	1				
25	1	26756-060002	NUT, LOCK M6			1	1				

# Fig.26. FUEL INJECTION PUMP

(A)=  
(B)=  
(C)=NFD13-MEA

(D)=NFD13-MEAS  
(E)=  
(F)=

Y0006580

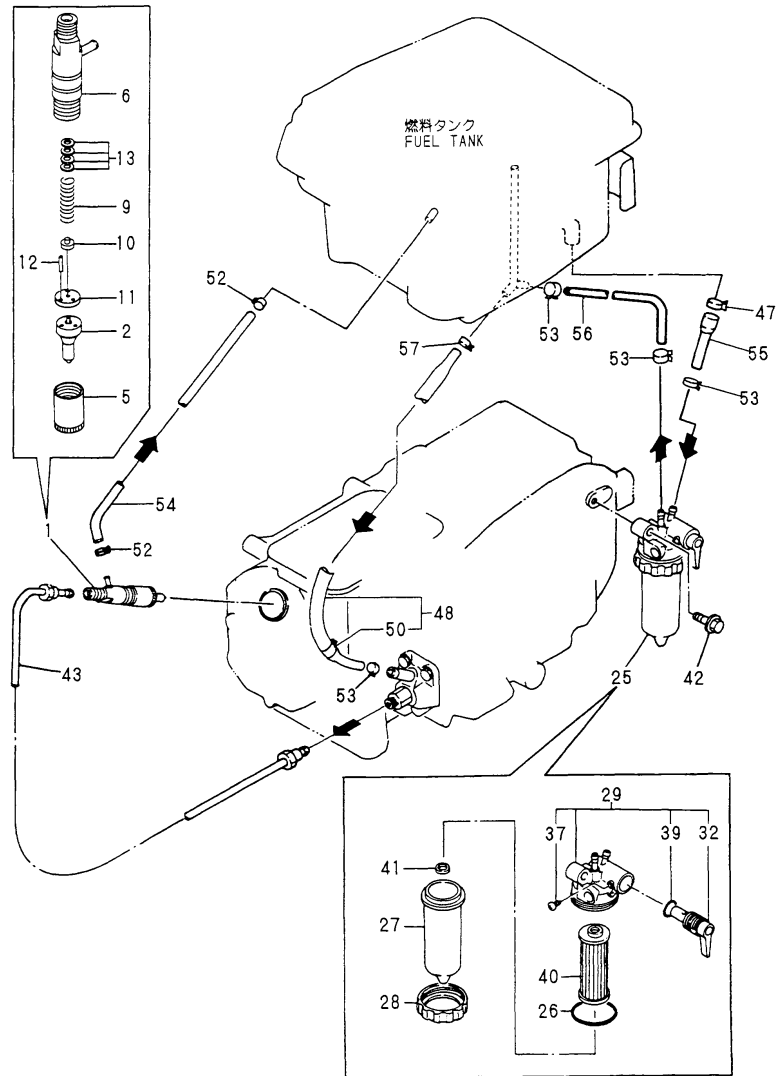


No.	Lev.	Parts No.	Description	Qty						I	R
				(A)	(B)	(C)	(D)	(E)	(F)		
1	1	705600-51103	PUMP ASSY, INJECTION			1	1				
3	2	105500-51600	PLUNGER ASSY			1	1				
6	2	105300-51300	VALVE ASSY, DELIVERY			1	1				
9	2	174307-51170	RETAINER, SPRING A			1	1				
10	2	174307-51181	RETAINER, SPRING B			1	1				
11	2	124950-51190	SPRING, PLUNGER			1	1				
12	2	724550-51520	GUIDE, PLUNGER			1	1				
13	3	724550-51520	GUIDE, PLUNGER			1	1				
16	3	174100-54120	PIN			1	1				
18	2	103854-51251	PIN, PLUNGER			1	1				
19	2	124550-51320	SPRING, DELIVERY			1	1				
20	2	124550-51341	HOLDER, DELIVERY L43			1	1				
21	2	124550-51350	GASKET, DELIVERY			1	1				A
22	2	124550-51370	O-RING			1	1				A
24	2	104271-51450	PIECE, GUIDE			1	1				
25	2	104271-51460	CIRCLIP			1	1				
26	2	105300-51500	RACK, CONTROL			1	1				
27	2	105300-51510	PINION			1	1				
28	2	105300-51550	RETAINER, RACK			1	1				
29	2	174307-51700	SHIM SET			1	1				
44	2	26022-050102	SCREW, M5X10			1	1				

Remarks  
(A)THESE PARTS ARE ALSO SOLD BY  
FIG.32.REF NO.1  
(GASKET SET.P/# 705500-92601).

Fig.27. FUEL OIL PIPE

Y00D6580



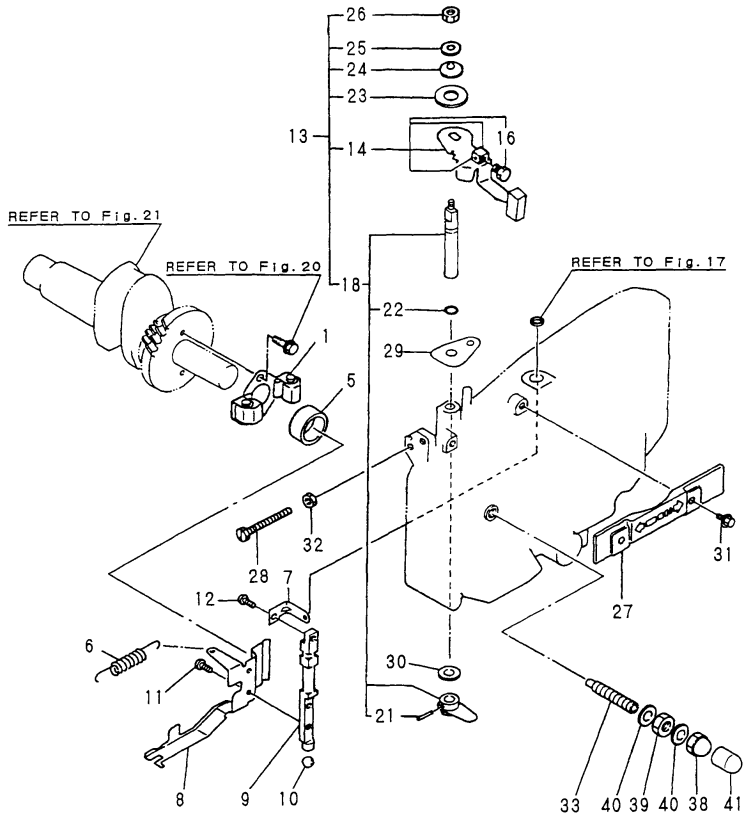
(A)=  
(B)=  
(C)=NFD13-MEA

(D)=NFD13-MEAS  
(E)=  
(F)=

No.	Lev.	Parts No.	Description	Q'ty						I	R
				(A)	(B)	(C)	(D)	(E)	(F)		
1	1	705500-53100	VALVE ASSY,INJECTION			1	1				
2	2	105500-53000	VALVE ASSY,INJECTION			1	1				
5	2	114250-53080	NUT, NOZZLE D16.95			1	1				
6	2	105300-53100	HOLDER ASSY, NOZZLE			1	1				
9	2	114250-53120	SPRING, NOZZLE			1	1				
10	2	114250-53130	SEAT, SPRING			1	1				
11	2	114250-53140	PLATE			1	1				
12	2	114250-53210	PIN			2	2				
13	2	114250-53400	SHIM SET			1	1				
25	1	105370-55650	STRAINER ASSY, FUEL			1	1				
26	2	105300-55520	O-RING			1	1				
27	2	105300-55530	CUP, STRAINER			1	1				
28	2	105300-55610	RING, RETAINING			1	1				
29	2	105300-55700	BODY ASSY, STRAINER			1	1				
32	3	105300-55340	LEVER			1	1				
37	3	104200-55750	SCREW, M4			1	1				
39	3	24311-000160	O-RING, 1AP16.0			1	1				
40	2	105370-55710	ELEMENT			1	1				
41	2	105300-55750	FLOAT			1	1				
42	1	26106-080302	BOLT, M8X 30 PLATED			1	1				
43	1	105500-59800	PIPE ASSY, INJECTION			1	1				
47	1	129301-03660	CLAMP 16			1	1				
48	1	105500-59020	PIPE ASSY, FUEL			1	1				
50	2	124766-59050	CLIP, HOSE 12			1	1				
52	1	124722-59050	CLIP, HOSE 9			2	2				
53	1	124766-59050	CLIP, HOSE 12			4	4				
54	1	105500-59100	PIPE, FUEL RETURN			1	1				
55	1	105500-59560	PIPE, FUEL			1	1				
56	1	105300-59570	PIPE, FUEL			1	1				
57	1	23080-013000	CLAMP, 13			1	1				

Fig.28. GOVERNOR & CONTROL DEVICE

Y0006580

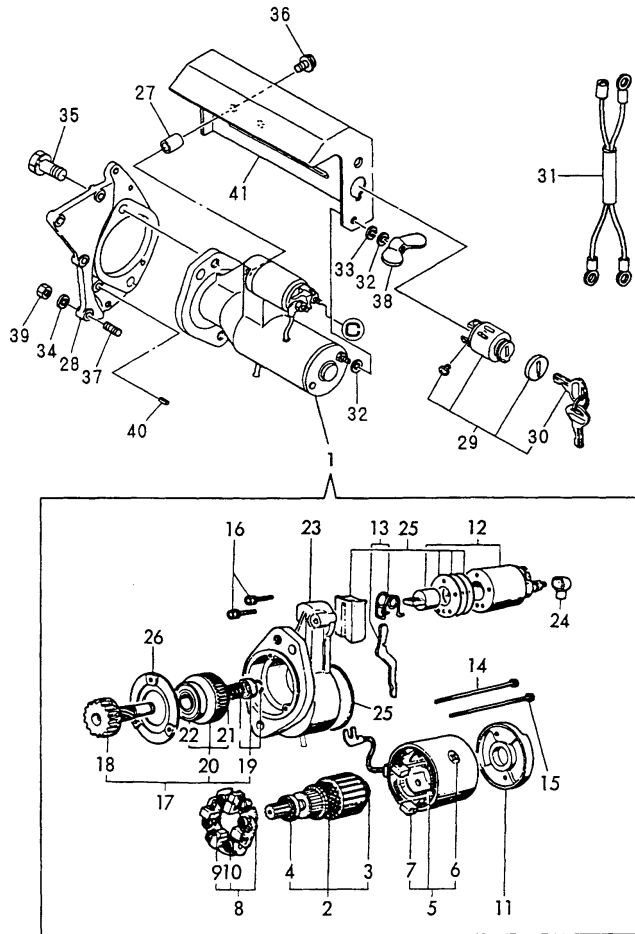


No.	Lev.	Parts No.	Description	Q'ty						I	R
				(A)	(B)	(C)	(D)	(E)	(F)		
1	1	705300-61701	GOVERNOR ASSY			1	1				
5	1	105300-61600	SLEEVE, GOVERNOR			1	1				
6	1	105300-66010	SPRING, REGULATOR			1	1				
7	1	105198-66160	LEVER, STOP			1	1				
8	1	105500-66300	LEVER, GOVERNOR			1	1				
9	1	105608-66400	SHAFT			1	1				
10	1	24190-120001	BALL, STEEL 3/8			1	1				
11	1	26022-050102	SCREW, M5X10			2	2				
12	1	26022-050102	SCREW, M5X10			1	1				
13	1	705192-66531	HANDLE ASSY			1	1				
14	2	105502-66041	HANDLE ASSY			1	1				
16	3	105225-66990	SCREW, M5X8.5			1	1				
18	2	705300-66700	LEVER ASSY,REGULATOR			1	1				
21	3	22322-030200	PIN, TAPER 3X20			1	1				
22	3	24311-000070	O-RING, 1AP7.0			1	1				
23	2	105840-66831	PLATE, FRICTION			1	1				
24	2	105840-66880	SPRING			1	1				
25	2	22137-060000	WASHER, 6			1	1				
26	2	26347-060002	NUT, M6			1	1				
27	1	105300-66110	COVER			1	1				
28	1	105300-66520	SCREW			1	1				
29	1	105300-66850	RETAINER			1	1				
30	1	22117-100000	WASHER, 10			1	1				
31	1	26106-060122	BOLT, M6X 12 PLATED			2	2				
32	1	26756-060002	NUT, LOCK M6			1	1				
33	1	105090-66551	LIMITER ASSY, FUEL			1	1				
38	1	124060-66950	NUT, CAP M10			1	1				
39	1	26796-100002	NUT, LOCK M10			1	1				
40	1	22190-100002	WASHER, SEAL 10			2	2				
41	1	105300-66610	CAP			1	1				



Fig.29. STARTING MOTER

Y0006580



(A)=  
(B)=  
(C)=NFD13-MEA  
(D)=NFD13-MEAS  
(E)=  
(F)=

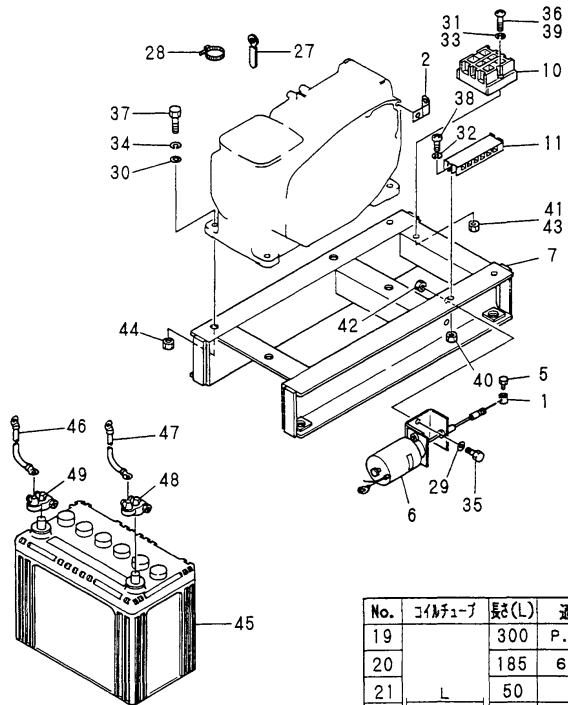
No.	Lev.	Parts No.	Description	Qty						I	R
				(A)	(B)	(C)	(D)	(E)	(F)		
1	1	105100-77011	MOTOR,STARTER			1	1				
2	2	X211461005	ARMATURE			1	1				
3	3	X2130350900	BALL BEARING			1	1				
4	3	X211425511	BALL BEARING			1	1				
5	2	X211442003	COIL ASSY, FIELD			1	1				
6	3	X21143215	SCREW, CORE			1	1				
7	3	X211469002	BRUSH (+)			2	2				
8	2	X211479001	HOLDER ASSY, BRUSH			1	1				
9	3	X211459002	BRUSH (-)			2	2				
10	3	X21148314	SPRING, BRUSH			4	4				
11	2	X211483003	COVER			1	1				
12	2	171008-77530	SWITCH, MAGNETIC			1	1				
13	2	X211446012	LEVER, SHIFT			1	1				
14	2	X211468005	BOLT, THROUGH			1	1				
15	2	X21148856	BOLT, THROUGH			1	1				
16	2	X21145866	BOLT			2	2				
17	2	X211455011	PINION ASSY			1	1				
18	3	X211465011	SHAFT, PINION			1	1				
19	3	X211429006	STOPPER SET			1	1				
20	3	X211455500	CLUTCH ASSY			1	1				
21	4	X211495502	BEARING, BALL			1	1				
22	4	X211455502	BALL BEARING			1	1				
23	2	X211466605	CASE ASSY, GEAR			1	1				
24	2	X21142742	COVER (A), RUBBER			1	1				
25	2	X211458012	COVER KIT			1	1				
26	2	X211428008	RETAINER, BEARING			1	1				
27	1	105578-77790	SPACER			2	2				
28	1	105500-77470	BRACKET			1	1				
29	1	106100-77620	SWITCH, KEY			1	1				
30	2	106100-77630	KEY, SWITCH			2	2				
31	1	105478-78550	HARNES, WIRE			1	1				
32	1	22117-050000	WASHER, 5			2	2				
33	1	22217-050000	WASHER, SPRING 5			1	1				
34	1	22217-060000	WASHER, SPRING 6			4	4				
35	1	26013-120302	BOLT, M12X 30			2	2				
36	1	26106-060102	BOLT, M6X 10 PLATED			2	2				
37	1	26216-060202	STUD, M6X 20			4	4				
38	1	26636-050002	NUT, WING M5			1	1				
39	1	26716-060002	NUT, M6			4	4				
40	1	22351-060012	PIN, SPRING 6.0X12			1	1				
41	1	105100-77781	COVER			1	1				

Fig.30. ELECTRIC PART & OPTINAL PART

Y0006580

見出しNo. 12は、見出しNo. 13から26を含みます。  
12 inc. 13 ~ 26

No.	端子台	ワイヤーハーネス	No.	端子台	ワイヤーハーネス
13	P	セルモータ	17	J 1	ファンケース
14	N	ギヤケース	18	J 2	
15	ST	キー-SW			
16	5	ソレノイド			



No.	端子台	バッテリーコード
8	⊕ ガワ	シリンダ
9	⊖ ガワ	ボディー

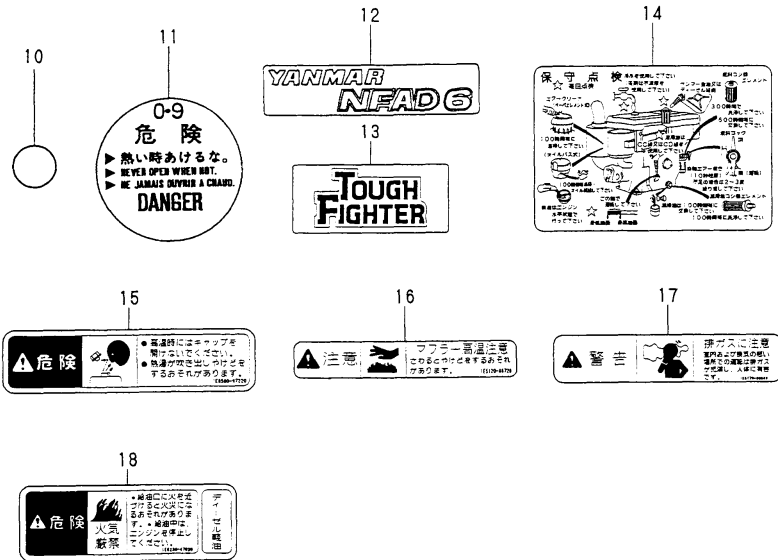
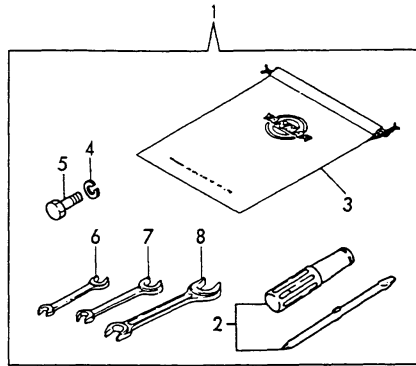
No.	コイルタイプ	長(L)	適用
19		300	P. ST
20		185	63Q
21	L	50	N
22		180	J 1, J 2
23		30	J 2
24		200	49W
25		260	5
26		80	ソレノイド

(A)= (D)=NFD13-MEAS  
(B)= (E)=  
(C)=NFD13-MEA (F)=

No.	Lev.	Parts No.	Description	Q'ty						I	R
				(A)	(B)	(C)	(D)	(E)	(F)		
1	1	106500-44870	STOPPER			1	1				
2	1	105478-66830	SUPPORT, WIRE			1	1				
5	1	26117-040068	BOLT M 4X 6 PLATED			2	2				
6	1	46116-504800	SOLENOID VALVE			1	1				
7	1	105678-08110	FOOT				1				
8	1	105198-77670	CORD, BATTERY				1				
9	1	105198-77680	CORD, BATTERY				1				
10	1	105198-77750	STAY				1				
11	1	105198-77760	TERMINAL BLOCK				1				
12	1	105678-77890	HARNESS ASSY, WIRE				1				
13	2	105198-77800	HARNESS, WIRE				1				
14	2	105198-77810	HARNESS, WIRE				1				
15	2	105198-77820	HARNESS, WIRE				1				
16	2	105198-77830	HARNESS, WIRE				1				
17	2	105198-77860	HARNESS, WIRE				1				
18	2	105198-77870	HARNESS, WIRE				1				
19	2	105198-77910	PIPE, COIL				1				
20	2	105198-77920	PIPE, COIL				1				
21	2	105198-77930	PIPE, COIL				1				
22	2	105198-77940	PIPE, COIL				1				
23	2	105198-77950	PIPE, COIL				1				
24	2	105198-77960	PIPE, COIL				1				
25	2	105198-77970	PIPE, COIL				1				
26	2	105198-77900	PIPE, COIL				1				
27	1	160710-78710	CLAMP, CORD				1				
28	1	160370-78950	BAND, L=98				2				
29	1	22117-080000	WASHER, 8				2				
30	1	22137-100000	WASHER, 10				4				
31	1	22157-080000	WASHER, 8				2				
32	1	22217-040000	WASHER, SPRING 4				2				
33	1	22217-050000	WASHER, SPRING 5				2				
34	1	22217-100000	WASHER, SPRING 10				4				
35	1	26116-080202	BOLT, M8X 20 PLATED				2				
36	1	26116-080602	BOLT, M8X 60 PLATED				2				
37	1	26116-120402	BOLT, M12X 40 PLATED				4				
38	1	26557-040252	SCREW, M4X25				2				
39	1	26557-050402	SCREW, M5X40				2				
40	1	26756-040002	NUT, LOCK M4				2				
41	1	26756-050002	NUT, LOCK M5				2				
42	1	26756-080002	NUT, LOCK M8				2				
43	1	26756-080002	NUT, LOCK M8				2				
44	1	26756-100002	NUT, LOCK M10				4				
45	1	105198-77510	BATTERY, N70				1				
46	1	105198-77650	WIRE, LEAD				1				
47	1	105198-77660	WIRE, LEAD				1				
48	1	46150-500860	TERMINAL				1				
49	1	46150-500870	TERMINAL				1				

Fig.31. TOOL & LABEL

Y00D6580



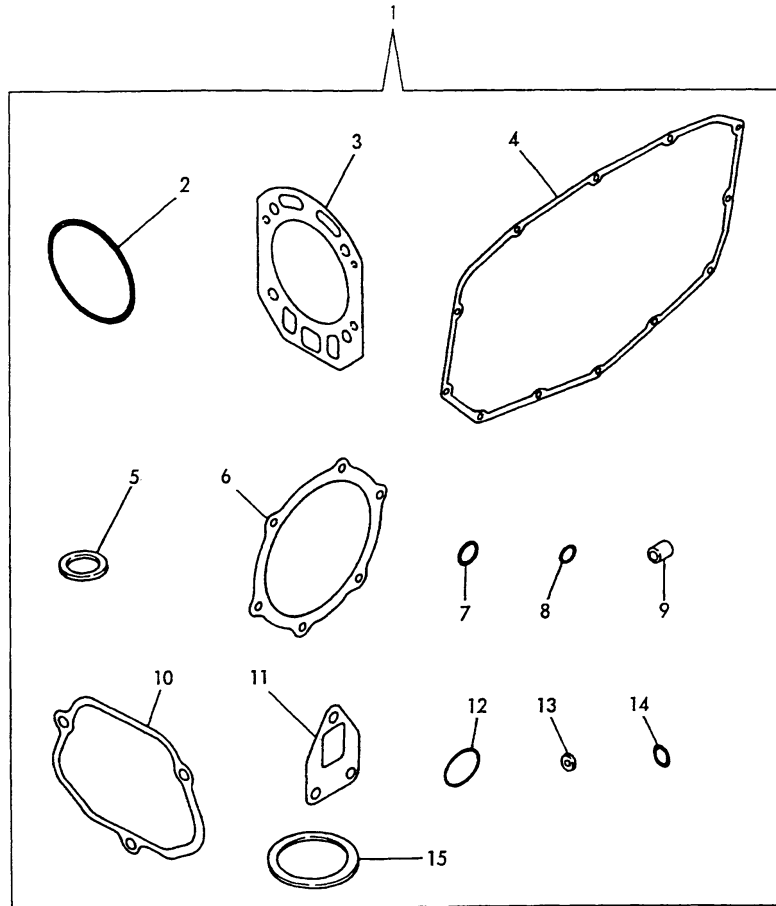
(A)=  
(B)=  
(C)=NFD13-MEA

(D)=NFD13-MEAS  
(E)=  
(F)=

No.	Lev.	Parts No.	Description	Q'ty						I	R
				(A)	(B)	(C)	(D)	(E)	(F)		
1	1	705300-92100	BOX ASSY, TOOL			1	1				
2	2	104200-92350	DRIVER, SCREW			1	1				
3	2	105300-92600	BAG, TOOL			1	1				
4	2	22217-120000	WASHER, SPRING 12			3	3				
5	2	26206-120352	BOLT, M12X 35 PLATED			3	3				
6	2	28110-100120	SPANNER, 10X12			1	1				
7	2	28110-140170	SPANNER, 14X17			1	1				
8	2	28110-190220	SPANNER, 19X22			1	1				
10	1	105372-07150	LABEL, LUB. OIL			1	1				
11	1	105300-07400	LABEL, RADIATOR			1	1				
12	1	105670-07061	LABEL			2	2				
13	1	105300-07070	LABEL			1	1				
14	1	105402-07100	LABEL			1	1				
15	1	105250-07310	LABEL, RADIATOR			1	1				
16	1	105250-07330	LABEL			1	1				
17	1	105250-07340	LABEL, EXH. GAS CAUTN			1	1				
18	1	105250-07320	LABEL, NO FIRE			1	1				

# Fig.32. GASKET SET

Y0006580



No.	Lev.	Parts No.	Description	Q'ty						I	R
				(A)	(B)	(C)	(D)	(E)	(F)		
1	1	705500-92601	GASKET SET			1	1				
2	2	105500-01300	GASKET, LINER			2	2				
3	2	105500-01330	GASKET, HEAD			1	1				
4	2	105500-01410	GASKET			1	1				
5	2	24311-000320	O-RING, 1AP32.0			1	1				
6	2	105500-02020	GASKET			1	1				
7	2	24341-000200	O-RING, 1AS20.0			1	1				
8	2	24311-000070	O-RING, 1AP7.0			1	1				
9	2	119625-11871	PROTECTOR, NOZZLE			1	1				
10	2	105500-11310	GASKET, BONNET			1	1				
11	2	105500-13200	GASKET, SILENCER			1	1				
12	2	103854-32051	O-RING			1	1				
13	2	124550-51350	GASKET, DELIVERY			1	1				
14	2	124550-51370	O-RING			1	1				
15	2	101504-55051	GASKET			1	1				

## Parts No. Index

Parts No.	Fig. No.	Ref. No.
101147-12550	3	10
	19	11
101158-03061	7	23
	23	13
101158-03111	7	24
	23	15
101158-11180	2	11
101158-11230	2	20
		24
	18	18
		22
101168-55040	8	29
	24	30
101504-55051	8	34
	16	15
	24	35
	32	15
101504-55101	8	35
	24	36
103288-02221	21	18
103338-11180	18	11
103854-32051	7	8
	16	12
	23	7
	32	12
103854-32082	7	7
	23	9
103854-51251	10	18
	26	18
103854-55220	8	37
	24	37
104104-03750	2	36
	18	36
104104-21600	5	14
104107-07900	8	1
	24	1
104200-03600	2	34
	18	34
104200-03641	2	35
	18	35
104200-21530	5	10
104200-55750	11	37
	27	37
104200-92350	15	2
	31	2
104271-01950	1	29
	17	32
104271-21100	21	5
104271-51450	10	24
	26	24

Parts No.	Fig. No.	Ref. No.
104271-51460	10	25
	26	25
104300-08050	7	31
	23	22
104300-55160	8	36
	24	41
104300-76460	4	8
	20	8
104600-11120	18	10
104607-44540	8	9
	24	10
105010-11920	2	27
	18	27
105090-66551	12	31
	28	33
105100-44770	9	6
	25	6
105100-44780	9	7
	25	7
105100-77011	13	1
	29	1
105100-77781	13	31
	29	41
105198-44590	8	7
	24	8
105198-55520	8	41
	24	44
105198-66160	12	7
	28	7
105198-77510	14	45
	30	45
105198-77650	14	46
	30	46
105198-77660	14	47
	30	47
105198-77670	14	8
	30	8
105198-77680	14	9
	30	9
105198-77750	14	10
	30	10
105198-77760	14	11
	30	11
105198-77800	14	13
	30	13
105198-77810	14	14
	30	14
105198-77820	14	15
	30	15
105198-77830	14	16

Parts No.	Fig. No.	Ref. No.
105198-77830	30	16
105198-77860	14	17
	30	17
105198-77870	14	18
	30	18
105198-77900	14	26
	30	26
105198-77910	14	19
	30	19
105198-77920	14	20
	30	20
105198-77930	14	21
	30	21
105198-77940	14	22
	30	22
105198-77950	14	23
	30	23
105198-77960	14	24
	30	24
105198-77970	14	25
	30	25
105200-51100	10	3
105212-01910	13	42
105215-76490	4	23
	20	23
105225-66990	12	17
	28	16
105230-01200	1	4
105230-02320	5	27
105250-07310	15	15
	31	15
105250-07320	15	18
	31	18
105250-07330	15	16
	31	16
105250-07340	15	17
	31	17
105300-01300	1	9
	16	2
105300-01332	1	10
	16	3
105300-01410	1	25
	16	4
105300-01480	1	11
105300-01690	1	26
	17	26
105300-02020	5	30
	16	6
105300-03082	7	29
105300-03130	7	25

Parts No.	Fig. No.	Ref. No.
105300-03130	23	16
105300-07070	15	13
	31	13
105300-07400	15	11
	31	11
105300-07910	8	2
105300-07940	8	3
105300-11100	2	8
105300-11111	2	9
105300-11310	2	40
	16	10
105300-11650	2	18
105300-11660	2	22
105300-12511	3	3
	19	4
105300-12550	3	11
	19	12
105300-13200	3	14
	16	11
105300-14090	4	2
	20	2
105300-14200	4	4
	20	4
105300-14400	4	5
105300-14600	4	6
105300-14700	4	7
	20	7
105300-21100	5	3
105300-21320	5	15
	21	27
105300-21350	5	16
105300-21360	5	17
	21	26
105300-21381	5	18
	21	28
105300-21591	5	11
105300-21600	21	13
105300-22300	6	8
105300-22400	6	9
105300-23200	6	14
105300-23910	6	12
105300-28251	4	13
105300-28380	4	16
105300-28450	4	18
	20	18
105300-28700	4	19
	20	19
105300-34040	1	20
	17	22
105300-44212	9	1

## Parts No. Index

Parts No.	Fig. No.	Ref. No.
105300-44220	8	19
	24	20
105300-44330	8	14
105300-44360	8	16
105300-44451	5	19
	8	21
	21	29
	24	22
105300-44460	5	20
	8	22
	21	30
	24	23
105300-44491	8	23
	24	24
105300-44502	8	5
105300-44570	8	6
105300-44630	8	11
	24	12
105300-44810	9	13
105300-44850	9	9
105300-44940	9	15
105300-51300	26	6
105300-51500	10	26
	26	26
105300-51510	10	27
	26	27
105300-51550	10	28
	26	28
105300-53100	11	6
	27	6
105300-55080	8	38
	24	38
105300-55340	11	32
	27	32
105300-55520	11	26
	27	26
105300-55530	11	27
	27	27
105300-55610	11	28
	27	28
105300-55700	11	29
	27	29
105300-55750	11	41
	27	41
105300-55810	8	43
105300-55840	8	44
	24	46
105300-55850	8	45
	24	47
105300-59020	11	48

Parts No.	Fig. No.	Ref. No.
105300-59100	11	54
105300-59561	11	55
105300-59570	11	56
	27	56
105300-59800	11	43
105300-61600	12	5
	28	5
105300-66010	12	6
	28	6
105300-66110	12	29
	28	27
105300-66300	12	8
105300-66520	12	35
	28	28
105300-66610	12	36
	28	41
105300-66850	12	24
	28	29
105300-76330	7	15
		16
	23	25
105300-76470	7	20
	23	29
105300-76490	7	21
	23	30
105300-77470	13	28
105300-92600	15	3
	31	3
105306-35052	7	11
	23	11
105306-55241	8	47
10530G-28750	4	20
10530H-01800	1	42
	17	39
10530H-11290	2	13
10530H-32200	7	34
	23	32
10530H-34850	1	44
	17	41
105340-44710	9	2
	25	2
105340-44750	9	5
	25	5
105362-21600	5	13
105362-78960	7	26
	23	17
105370-12531	3	4
	19	5
105370-12540	3	7
	19	6

Parts No.	Fig. No.	Ref. No.
105370-12570	3	8
	19	7
105370-12670	3	9
	19	10
105370-55650	11	25
	27	25
105370-55710	11	40
	27	40
105372-07150	15	10
	31	10
105378-01690	1	24
	17	25
10537H-32500	7	1 -1
	23	1 -1
105400-02300	5	31
105400-11121	2	10
105400-11800	2	3
105400-12020	3	1
105400-12050	3	2
105400-14015	4	1
105400-22190	6	1
105400-22471	6	17
105400-22481	6	24
105400-22510	6	19
105400-22520	6	26
105400-44250	8	20
105400-44800	9	8
105400-55231	8	40
105402-07100	15	14
	31	14
105402-44340	8	15
105408-66400	12	9
10540G-28300	4	14
10540G-28310	4	15
10540H-01751	1	27
	17	31
10540H-02310	5	32
10540H-08010	7	30
10540H-14100	4	3
10540H-21200	5	9
10540H-28410	4	17
105430-02321	21	17
105430-28720	4	21
	20	21
105470-07061	15	12
105478-08110	14	7
105478-13150	3	15
105478-21960	5	38
	21	38
105478-66830	14	2

Parts No.	Fig. No.	Ref. No.
105478-66830	30	2
105478-77890	14	12
105478-78550	13	32
	29	31
105500-01200	17	4
105500-01210	17	5
105500-01220	17	6
105500-01300	17	9
	32	2
105500-01330	17	10
	32	3
105500-01410	17	30
	32	4
105500-01480	17	11
105500-02020	21	20
	32	6
105500-03082	23	14
105500-07920	24	2
105500-07950	24	3
105500-11100	18	8
105500-11111	18	9
105500-11310	18	40
	32	10
105500-11340	18	43
105500-11650	18	16
105500-11660	18	20
105500-12020	19	1
105500-12050	19	2
105500-13200	19	14
	32	11
105500-14400	20	5
105500-14600	20	6
105500-21100	21	4
105500-21350	21	25
105500-21591	21	9
105500-21600	21	11
105500-22300	22	8
105500-22400	22	9
105500-23200	22	14
105500-23910	22	12
105500-28251	20	13
105500-28380	20	16
105500-44211	25	1
105500-44330	24	15
105500-44360	24	17
105500-44570	24	7
105500-44800	25	8
105500-44810	25	13
105500-44850	25	9
105500-44940	25	15

## Parts No. Index

Parts No.	Fig. No.	Ref. No.
105500-51600	26	3
105500-53000	27	2
105500-55200	24	40
105500-55810	24	45
105500-59020	27	48
105500-59100	27	54
105500-59560	27	55
105500-59800	27	43
105500-66300	28	8
105500-77470	29	28
105502-66041	12	14
	28	14
105506-55241	24	49
10550G-28750	20	20
10550H-11290	18	13
105578-77790	13	27
	29	27
10557H-14010	20	1
105582-34100	7	10
	23	10
105600-02300	21	21
105600-11800	18	4
105600-22090	22	1
105600-22470	22	17
105600-22480	22	24
105600-22510	22	19
105600-22520	22	26
105600-44250	24	21
105600-44340	24	16
105600-44520	24	5
105600-55231	24	43
105608-66400	28	9
10560G-28300	20	14
10560G-28310	20	15
10560H-02310	21	22
10560H-08010	23	21
10560H-14100	20	3
10560H-21200	21	8
10560H-28410	20	17
105670-07061	31	12
105678-08110	30	7
105678-13150	19	13
105678-77890	30	12
105840-66831	12	23
	28	23
105840-66880	12	25
	28	24
105990-55200	8	28 A
106100-21130	5	4
106100-44560	8	10

Parts No.	Fig. No.	Ref. No.
106100-44560	24	11
106100-44650	9	14
	25	14
106100-44960	9	16
	25	16
106100-77620	13	29
	29	29
106100-77630	13	30
	29	30
106330-21530	21	12
106383-44720	9	3
	25	3
106383-44740	9	4
	25	4
106500-44870	14	1
	30	1
114250-53080	11	5
	27	5
114250-53120	11	9
	27	9
114250-53130	11	10
	27	10
114250-53140	11	11
	27	11
114250-53210	11	12
	27	12
114250-53400	11	13
	27	13
119625-11871	2	17
	16	9
	18	24
	32	9
119625-11880	2	16
	18	25
119625-11900	2	26
	18	26
120270-61250	1	23
	17	24
121250-44590	8	8
	24	9
121450-01220	1	6
121550-01200	1	5
123325-02500	5	28
123672-83880	4	24
	20	24
124060-66950	12	32
	28	38
124550-51320	10	19
	26	19
124550-51341	10	20

Parts No.	Fig. No.	Ref. No.
124550-51341	26	20
124550-51350	10	21
	16	13
	26	21
	32	13
124550-51370	10	22
	16	14
	26	22
	32	14
124722-59050	11	52
	27	52
124766-59050	11	50
		53
	27	50
		53
124950-51190	10	11
	26	11
128170-11340	2	43
129301-03660	11	47
	27	47
129499-51300	10	6
129500-53050	11	2
160120-76940	5	21
	8	24
	21	31
	24	25
160370-78950	14	28
	30	28
160710-78710	14	27
	30	27
171008-77530	13	12
	29	12
174100-54120	10	16
	26	16
174307-51170	10	9
	26	9
174307-51181	10	10
	26	10
174307-51700	10	29
	26	29
22117-050000	13	33
	29	32
22117-080000	14	29
	30	29
22117-100000	12	26
	28	30
22137-060000	12	27
	28	25
22137-080000	9	19
	25	19

Parts No.	Fig. No.	Ref. No.
22137-100000	14	30
	30	30
22157-080000	14	31
	30	31
22190-100002	12	34
	28	40
22217-040000	14	32
	30	32
22217-050000	13	34
	14	33
	29	33
	30	33
22217-060000	13	35
	29	34
22217-080000	1	32
	9	17
	25	17
22217-100000	14	34
	30	34
22217-120000	5	35
	7	32
	9	10
	15	4
	21	35
	23	23
	25	10
	31	4
22242-000200	7	22
	23	31
22242-000450	5	33
22242-000500	21	23
22252-000100	1	21
	17	23
22312-030180	2	37
	18	37
22322-030180	2	38
	18	38
22322-030200	12	20
	28	21
22351-060012	1	3
		19
	2	7
	13	41
	17	3
		20
	18	5
	29	40
22512-050120	5	5
22512-050200	21	6
22512-070600	4	9

## Parts No. Index

Parts No.	Fig. No.	Ref. No.
22512-070600	20	9
22512-100260	5	6
22512-100300	21	7
23064-090400	7	27
	23	18
23080-013000	11	57
	27	57
23414-080000	8	39
	24	39
23414-170000	3	16
	19	15
23897-030002	3	17
	19	16
24101-060054	4	25
	20	25
24101-060064	4	10
	20	10
24101-060084	4	26
24101-060094	20	26
24107-062013	9	11
	25	11
24190-120001	1	22
	12	10
	17	21
	28	10
24311-000060	1	33
	17	38
24311-000070	2	39
	12	21
	16	8
	18	39
	28	22
	32	8
24311-000160	11	39
	27	39
24311-000320	1	28
	16	5
	17	35
	32	5
24321-000250	1	34
	17	27
24341-000200	7	14
	16	7
	23	12
	32	7
25117-003751	9	20
25117-003851	25	20
26013-060129	8	17
	24	18
26013-060142	8	12

Parts No.	Fig. No.	Ref. No.
26013-060142	24	13
26013-060162	8	13
	24	14
26013-060222	4	27
	20	27
26013-080162	9	21
	25	21
26013-080202	5	34
	21	24
26013-080252	3	18
	19	17
26013-120302	13	36
	29	35
26022-050102	10	44
	12	11
		12
	26	44
	28	11
		12
26022-060122	4	11
	20	11
26106-060102	13	37
	29	36
26106-060122	5	8
		22
		23
	7	9
	8	18
		25
		46
	12	28
	21	14
		32
		33
	23	8
	24	19
		26
		48
	28	31
26106-060162	1	35
	17	12
26106-060202	2	41
	5	24
	8	26
	18	41
	21	34
	24	27
26106-060222	7	28
	23	19
26106-060252	1	36

Parts No.	Fig. No.	Ref. No.
26106-060252	9	22
	17	36
	23	20
	25	22
26106-060602	2	42
26106-060652	1	37
	17	37
26106-060702	18	42
26106-080162	4	28
	20	28
26106-080202	3	12
	19	3
26106-080222	8	42
	24	50
26106-080302	9	23
	11	42
	25	23
	27	42
26106-080602	3	13
26106-100202	8	48
	24	51
26106-100552	4	29
	20	29
26116-060102	5	29
	21	19
26116-060504	9	24
	25	24
26116-080202	14	35
	30	35
26116-080602	14	36
	30	36
26116-120402	14	37
	30	37
26117-040068	14	5
	30	5
26206-120352	15	5
	31	5
26216-060202	13	38
	29	37
26216-060252	18	28
26216-060302	2	29
26216-080222	1	38
		40
	17	28
26216-080452	2	28
26216-080502	18	29
26216-120322	5	36
	21	36
26347-060002	12	22
	28	26

Parts No.	Fig. No.	Ref. No.
26366-060002	1	43
	2	30
	17	40
	18	30
26366-080002	1	39
	2	31
	17	29
	18	31
26557-040252	14	38
	30	38
26557-050402	14	39
	30	39
26587-080122	4	12
	20	12
26617-100002	8	4
	24	4
26636-050002	13	39
	29	38
26716-060002	13	40
	29	39
26716-080002	1	41
	9	18
	25	18
26716-120002	5	37
	7	33
	21	37
	23	24
26756-040002	14	40
	30	40
26756-050002	14	41
	30	41
26756-060002	9	25
	12	30
	25	25
	28	32
26756-080002	2	21
		25
	14	42
		43
	18	19
		23
	30	42
		43
26756-100002	14	44
	30	44
26777-120002	9	12
	25	12
26796-100002	12	33
	28	39
27231-150000	2	5



## Parts No. Index

Parts No.	Fig. No.	Ref. No.
27231-15000	18	6
27310-070001	2	12
27310-080001	18	12
28110-100120	15	6
	31	6
28110-140170	15	7
	31	7
28110-190220	15	8
	31	8
46116-504800	14	6
	30	6
46150-500860	14	48
	30	48
46150-500870	14	49
	30	49
704500-22503	6	3
704600-22502	22	3
705100-76900	7	17
	23	26
705192-66531	28	13
705225-32500	7	1
	23	1
705300-02500	5	25
705300-11520	2	32
705300-23100	6	10
705300-23600	6	15
705300-23610	6	31
705300-23620	6	33
705300-55703	8	27
705300-61700	12	1
		13
705300-61701	28	1
705300-66700	28	18
705300-92100	15	1
	31	1
705300-92602	16	1
705302-21700	5	1
705400-01500	1	12
705400-01560	1	1
705400-01900	1	7
705400-11701	2	1
705400-51102	10	1
705500-02500	21	15
705500-11520	18	32
705500-11702	18	1
705500-21701	21	1
705500-23100	22	10
705500-23600	22	15
705500-23610	22	31
705500-23620	22	33

Parts No.	Fig. No.	Ref. No.
705500-53100	11	1
	27	1
705500-55701	24	28
705500-92601	32	1
705600-01500	17	13
705600-01560	17	1
705600-01900	17	7
705600-51103	26	1
711100-51540	10	13
724550-51520	10	12
	26	12
		13
X211425511	13	4
	29	4
X21142742	13	24
	29	24
X211428008	13	26
	29	26
X211429006	13	19
	29	19
X21143215	13	6
	29	6
X211442003	13	5
	29	5
X211446012	13	13
	29	13
X211455011	13	17
	29	17
X211455500	13	20
	29	20
X211455502	13	22
	29	22
X211458012	13	25
	29	25
X21145866	13	16
	29	16
X211459002	13	9
	29	9
X211461005	13	2
	29	2
X211465011	13	18
	29	18
X211466605	13	23
	29	23
X211468005	13	14
	29	14
X211469002	13	7
	29	7
X211479001	13	8
	29	8

Parts No.	Fig. No.	Ref. No.
X211483003	13	11
	29	11
X21148314	13	10
	29	10
X21148856	13	15
	29	15
X211495502	13	21
	29	21
X2130350900	13	3
	29	3

Parts No.	Fig. No.	Ref. No.
-----------	----------	----------