

OCD10-M63400EN

PREFACE

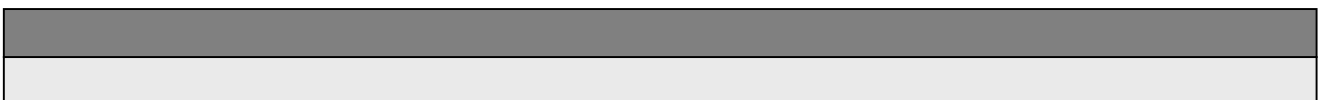
1. This Parts Catalog is the 1st edition of GA180/220/240SECMY1 Diesel Engine for MATSUYAMA.

Pub. No. : 000Y00D6340

Published : August, 1997

2. Model name

Engine model	Vehicle		Vehicle made by
	Products	Model name	
GA180/220/240SECMY1	—	—	MATSUYAMA



Directions for the Parts Catalog.

1. This Parts Catalog shows both standard and optional parts.
2. Parts may change without prior notice.
3. The following is an example of the Parts Catalog format.

REF.	LEV.	PARTS NO.	DESCRIPTION	Q'TY						I	R
				(A)	(B)	(C)	(D)	(E)	(F)		
1	1	729595-51390	FUEL INJECTION PUMP	1	1	1	1	1			1
1-1	1	729595-51391	FUEL INJECTION PUMP	1	1	1	1	1		N	1
		(A=E00185) (B=E00200)									
3	2	26022-060162	SCREW M 6X 16	9	9	9	9	9			
3-1	2	26022-060162	SCREW M 6X 16	4	4	4	4	4		K	
		(A=E00156) (B=E00156) (C=E00156) (D=E00156) (E=E00156)									
4	2	129470-51040	CAMSHAFT	1	1	1	1	1			
5	2	122710-51050	BEARING, ROLLER	2	2	2	2	2			
6	2	129470-51060	RETAINER	1	1	1	1	1			

Remarks
(1) BOOST COMPEMSATOR TYPE. OPTIONAL PART, TO E00155,(4JH-DT, 4JH-DTZ

① Ref. No.

The Ref. No. listed may not be in accordance with the illustration Ref. No.

(Ex.) Illustration No.

List Ref No.

1

1

(Before change)

1-1

(After change)

For interchangeable symbols N, R and K, illustrations for new parts may be abbreviated.

② Lev. (Level)

Level indication

The numbers below indicate the level of relativity towards the main part.

1 ----- Main parts (Assembly parts)

2 ----- Sub component included in " 1 ".

3 ----- Sub component included in " 2 ".

Note) Parts that are not for sale are partially illustrated but not listed.

③ Interchangeability Symbol

When a part change takes place, one of the following interchangeability symbols is indicated beside the part.

Symbol	Interchangeability	Contents note
N	Old $\begin{matrix} \leftarrow \text{Yes} \\ \text{No} \rightarrow \end{matrix}$ New	New Part is interchangeable for Old Part but Old Part is not interchangeable for New Part.
Q	Old $\begin{matrix} \leftarrow \text{No} \\ \text{Yes} \rightarrow \end{matrix}$ New	New Part is not interchangeable for Old Part but Old Part is interchangeable for New Part.
R	Old $\begin{matrix} \leftarrow \text{Yes} \\ \text{Yes} \rightarrow \end{matrix}$ New	New/ Old Parts are both interchangeable.
S	Old $\begin{matrix} \leftarrow \text{No} \\ \text{No} \rightarrow \end{matrix}$ New	New/ Old Parts are both not interchangeable.
W		Part newly added.
Z		Part discontinued.
F		Not interchangeable by a single part but interchangeable together with related parts.
K		Changes only for used parts quantities.

④ Effective Machine No.

When a part changes, the effective Machine No. will be indicated in the (A)-(F) column.

Product Symbol	Product No.	Product Symbol	Product No.
C	Clutch No. Compressor No.	F	Machine No. (Agricultural Equip.)
D	Drive No.	M	Machine No.
E	Engine No.		

Note 1) A date may follow the symbol. (Ex.) 1996.01

Note 2) "XXXXX" and "ZZZZZ" are for parts that could not be predicted or for engine models that could not be identified.

Note 3) (A=E00185) is the E (Engine Serial Number) for the column (A) model (in this case 4JH-DT) after the parts design change.

⑤ Remarks

Figures or alphabets (symbols) are entered in the remarks column.

The comments (remarks) on parts that are indicated at the bottom of the illustration are the same symbols as those stated above.

Contents

Fig. No. Fig. Name

ENGINE GA180SECMY

1. CYLINDER BLOCK
2. CYLINDER HEAD & BONNET
3. AIR CLEANER
4. CRANKSHAFT,PISTON & CAMSHAFT
5. FUEL TANK & FUEL PIPE
6. CARBURETOR
7. GOVERNOR & CONTROL DEVICE
8. FLY.MAGNETO & STARTING DEVICE
9. STARTING MOTOR
10. LABEL & TOOL

ENGINE GA220SECMY1

11. CYLINDER BLOCK
12. CYLINDER HEAD & BONNET
13. AIR CLEANER
14. CRANKSHAFT, PISTON & CAMSHAFT
15. FUEL TANK & FUEL PIPE
16. CARBURETOR
17. GOVERNOR & CONTROL DEVICE
18. MAGNETO & STARTING DEVICE
19. STARTING MOTOR
20. LABEL & TOOL

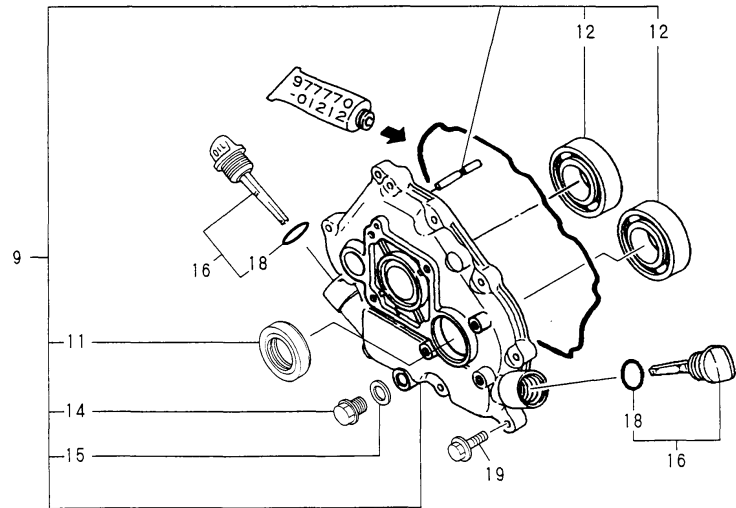
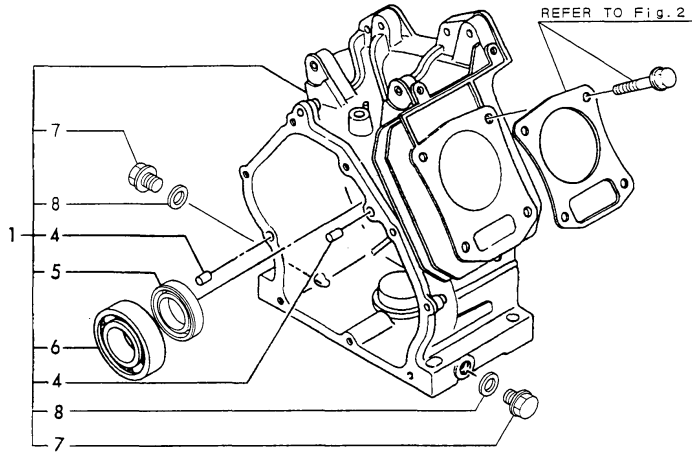
Fig. No. Fig. Name

ENGINE GA240SECMY

21. CYLINDER BLOCK
22. CYLINDER HEAD & BONNET
23. AIR CLEANER
24. CRANKSHAFT, PISTON & CAMSHAFT
25. FUEL TANK & FUEL PIPE
26. CARBURETOR
27. GOVERNOR & CONTROL DEVICE
28. FLY. MAGNETO & STARTING DEVICE
29. STARTING MOTOR
30. LABEL & TOOL

Fig.1. CYLINDER BLOCK

Y00D6340



(A)=GA180SECMY

(B)=

(C)=

(D)=

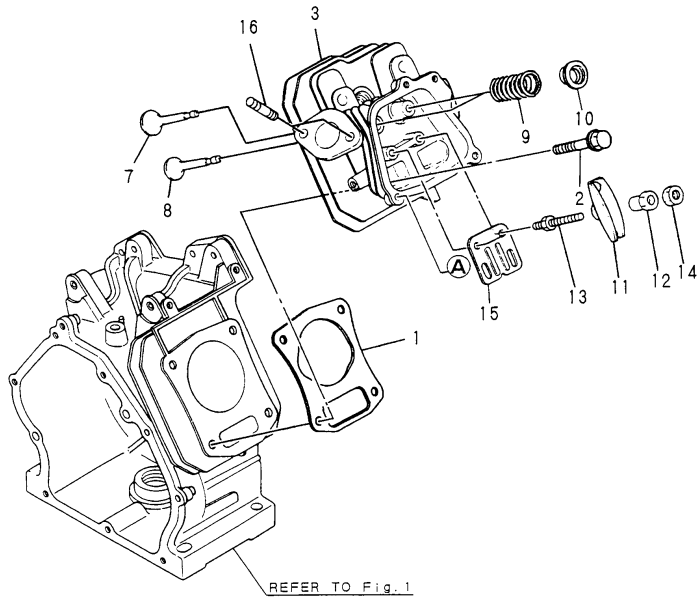
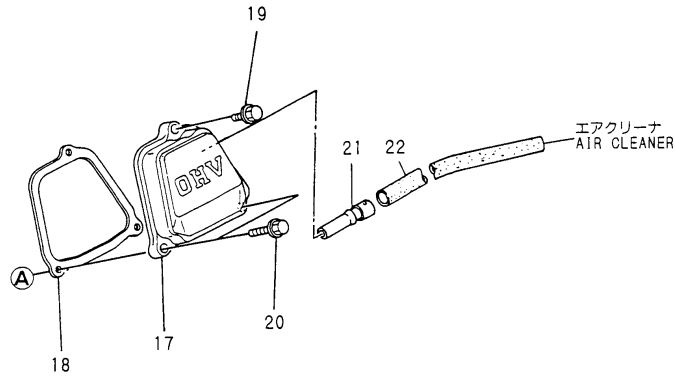
(E)=

(F)=

No.	Lev.	Parts No.	Description	Q'ty						I	R
				(A)	(B)	(C)	(D)	(E)	(F)		
1	1	783732-01560	BLOCK ASSY, CYLINDER	1							
4	2	114270-01600	PIN, M8X12	2							
5	2	160690-02220	SEAL, TC25416	1							
6	2	24101-062050	BEARING, BALL 6205C3	1							
7	2	160610-01690	PLUG, M12	2							
8	2	104200-59170	GASKET, 12	2							
9	1	760690-01501	COVER ASSY	1							
11	2	160690-02220	SEAL, TC25416	1							
12	2	24101-062050	BEARING, BALL 6205C3	2							
14	2	160610-01690	PLUG, M12	1							
15	2	104200-59170	GASKET, 12	1							
16	1	160710-01760	CAP ASSY, L82	2							
18	2	24311-000180	O-RING, 1AP18.0	2							
19	1	26476-060252	SCREW, TAPPING M6X25	8							

Fig.2. CYLINDER HEAD & BONNET

Y00D6340



(A)=GA180SECMY

(B)=

(C)=

(D)=

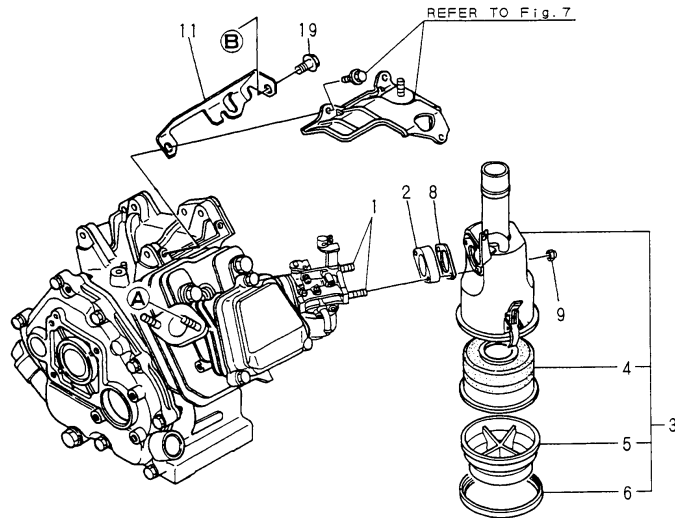
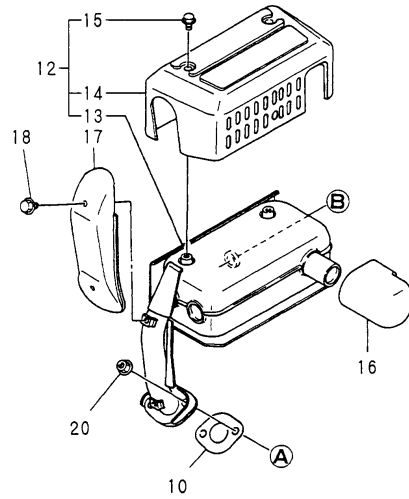
(E)=

(F)=

No.	Lev.	Parts No.	Description	Q'ty						I	R
				(A)	(B)	(C)	(D)	(E)	(F)		
1	1	160698-01330	GASKET, HEAD	1							
2	1	160610-04201	BOLT, FLANGE M8X53	4							
3	1	160690-11010	HEAD, CYLINDER	1							
7	1	160690-11100	VALVE, INTAKE	1							
8	1	160690-11110	VALVE, EXHAUST	1							
9	1	160690-11120	SPRING, VALVE	2							
10	1	160690-11180	RETAINER, SPRING	2							
11	1	160690-11200	ARM, ROCKER	2							
12	1	160690-11220	PIVOT, ROCKER ARM	2							
12-1	1	160690-11221	PIVOT, ROCKER ARM	2							N
		(A=EZZZZZ)									
13	1	160690-11271	BOLT	2							
14	1	160690-11280	NUT, M6X0.5	2							
15	1	160690-11290	PLATE, GUIDE	1							
16	1	26216-080182	STUD, M8X 18	2							
17	1	160690-11300	BONNET	1							
18	1	160690-11310	GASKET, BONNET	1							
19	1	26106-060202	BOLT, M6X 20 PLATED	1							
20	1	26106-060352	BOLT, M6X 35 PLATED	2							
21	1	160690-03050	BREATHER	1							
22	1	160820-03180	PIPE, BREATHER	1							

Fig.3. AIR CLEANER

Y00D6340



(A)=GA180SECMY

(B)=

(C)=

(D)=

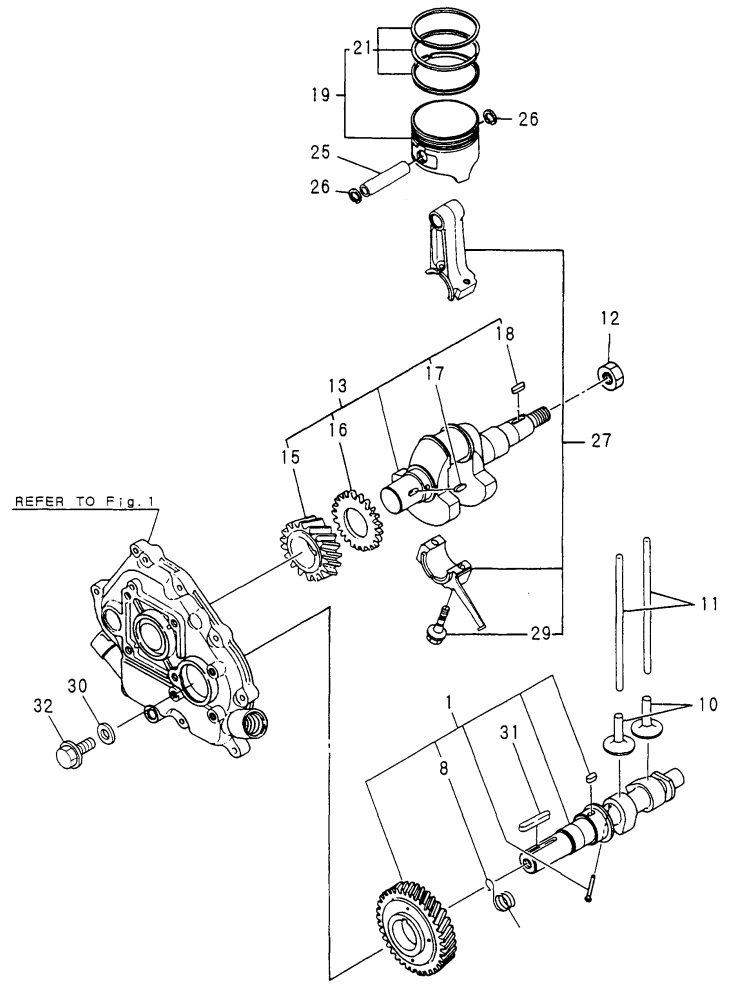
(E)=

(F)=

No.	Lev.	Parts No.	Description	Q'ty						I	R
				(A)	(B)	(C)	(D)	(E)	(F)		
1	1	160692-04310	BOLT, M6X143	2							
2	1	160690-12261	SPACER, AIR CLEANER	1							
3	1	160692-12550	CLEANER, AIR	1							
4	2	160692-12520	ELEMENT ASSY	1							
5	2	160692-12530	SUMP, OIL	1							
6	2	160692-12540	PIPE, REINFORCED	1							
8	1	160610-56150	GASKET, CARBURETOR	1							
9	1	26657-060002	NUT, CAP M6	2							
10	1	160690-13200	GASKET, MUFFLER	1							
11	1	160690-13550	BRACKET, MUFFLER	1							
12	1	160693-13600	MUFFLER ASSY	1							
13	2	160693-13510	MUFFLER	1							
14	2	160693-13540	COVER	1							
15	2	26106-060082	BOLT, M6X 8 PLATED	3							
16	1	160321-13770	PIPE	1							
17	1	160690-13900	COVER	1							
18	1	114252-13950	BOLT, M6X8	2							
19	1	26106-080142	BOLT, M8X 14 PLATED	1							
20	1	26366-080002	NUT, M8	2							

Fig.4. CRANKSHAFT,PISTON & CAMSHAFT

Y00D6340



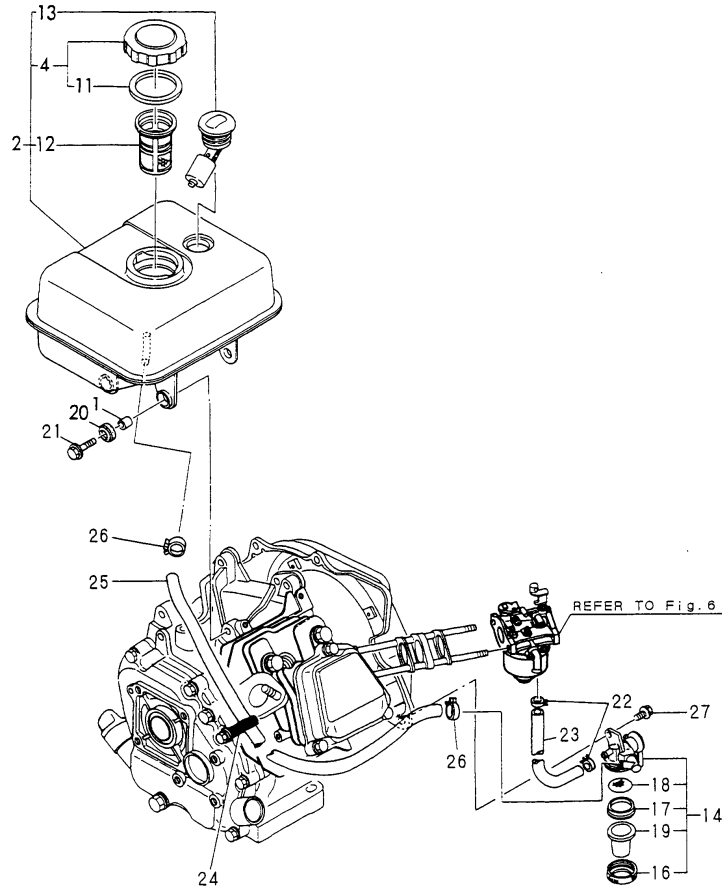
(A)=GA180SECMY
(B)=
(C)=

(D)=
(E)=
(F)=

No.	Lev.	Parts No.	Description	Q'ty						I	R
				(A)	(B)	(C)	(D)	(E)	(F)		
1	1	160690-14051	CAMSHAFT ASSY	1							
8	2	160690-14571	SPRING,DECOMPRESSION	1							
10	1	160490-14200	TAPPET	2							
11	1	114250-14400	ROD, PUSH	2							
12	1	160610-04910	NUT, FLYWHEEL M14	1							
13	1	760690-21701	CRANKSHAFT ASSY	1							
15	2	160690-21201	GEAR, CRANKSHAFT	1							
16	2	160590-21210	GEAR, IDLE	1							
17	2	22512-040120	KEY, 4X 12	1							
18	2	22512-040160	KEY, 4X 16	1							
19	1	160698-22010	PISTON ASSY	1							
21	2	760698-22501	RING SET, PISTON	1							
25	1	160690-22300	PIN, PISTON	1							
26	1	22252-000160	RING, 16	2							
27	1	760690-23700	ROD ASSY, CONNECTING	1							
29	2	26106-060302	BOLT, M6X 30 PLATED	2							
30	1	160310-14550	WASHER	1							
31	1	22512-050300	KEY, 5X 30	1							
32	1	26106-080202	BOLT, M8X 20 PLATED	1							

Fig.5. FUEL TANK & FUEL PIPE

Y00D6340



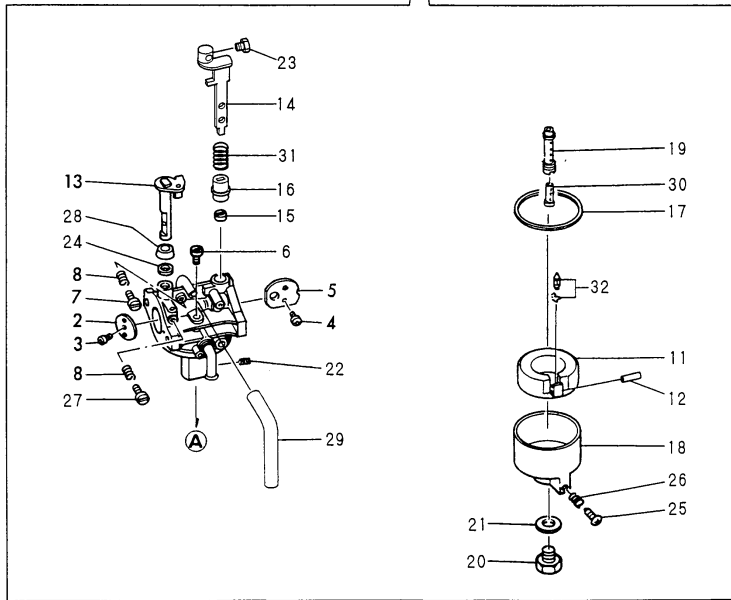
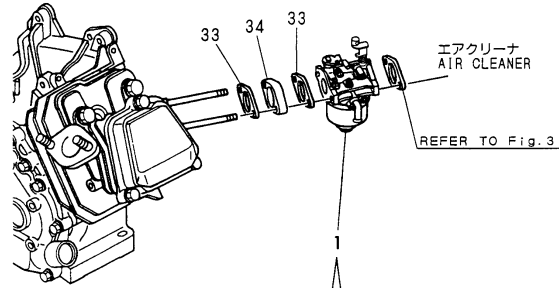
(A)=GA180SECMY
(B)=
(C)=

(D)=
(E)=
(F)=

No.	Lev.	Parts No.	Description	Q'ty						I	R
				(A)	(B)	(C)	(D)	(E)	(F)		
1	1	114250-45310	COLLAR	4							
2	1	760690-55702	TANK ASSY, FUEL	1							
4	2	160710-55061	CAP ASSY	1							
11	3	160393-55050	GASKET	1							
12	2	160610-55100	FILTER, FUEL	1							
13	2	160762-55150	GAUGE, FUEL	1							
14	1	160692-55300	COCK ASSY, FUEL	1							
16	2	160710-55360	RING	1							
17	2	160710-55370	GASKET	1							
18	2	160710-55382	FILTER	1							
19	2	160710-55390	CUP, FUEL COCK L37	1							
20	1	160690-55461	DAMPER, FUEL TANK	4							
21	1	114370-45350	BOLT	4							
22	1	106990-44660	CLIP, HOSE 12.5	2							
23	1	160820-59390	PIPE, D11.5/L159	1							
24	1	160710-78710	CLAMP, CORD	1							
25	1	160802-59370	PIPE, FUEL	1							
26	1	124060-77680	CLIP, HOSE 10	2							
27	1	26106-060102	BOLT, M6X 10 PLATED	1							

Fig.6. CARBURETOR

Y0006340



(A)=GA180SECMY

(B)=

(C)=

(D)=

(E)=

(F)=

No.	Lev.	Parts No.	Description	Q'ty						I	R
				(A)	(B)	(C)	(D)	(E)	(F)		
1	1	160698-56040	CARBURETOR ASSY	1							
2	2	160698-56520	VALVE, THROTTLE	1							
3	2	160810-56670	SCREW	1							
4	2	160903-56670	SCREW	2							
5	2	160698-56530	VALVE, CHOKE	1							
6	2	160492-56540	JET, PILOT	1							
7	2	160692-56710	SCREW	1							
8	2	181230-56380	SPRING	2							
11	2	160769-56620	FLOAT ASSY	1							
12	2	160610-56630	PIN, FLOAT	1							
13	2	160698-56550	SHAFT, THROTTLE	1							
14	2	160594-56650	LEVER, CHOKE	1							
15	2	160810-56580	RING, CHOKE SHAFT	1							
16	2	160594-56590	RING, CHOKE LEVER	1							
17	2	160610-56610	GASKET	1							
18	2	160769-56640	BODY, FLOAT CHAMBER	1							
19	2	160693-56570	NOZZLE, MAIN	1							
20	2	160769-56660	BOLT	1							
21	2	160610-56611	GASKET	1							
22	2	160698-56790	JET, ENRICHMENT	1							
23	2	26117-040088	BOLT M 4X 8 PLATED	1							
24	2	160640-56850	SEAL	1							
25	2	160610-56900	SCREW	1							
26	2	181230-56380	SPRING	1							
27	2	160667-56750	ADJUSTER	1							
28	2	160702-56720	RING	1							
29	2	160692-56770	HOSE	1							
30	2	160590-56800	NOZZLE, MAIN	1							
31	2	160594-56810	SPRING	1							
32	2	160692-56560	VALVE ASSY, NEEDLE	1							1
33	1	160610-56150	GASKET, CARBURETOR	2							
34	1	160690-56160	SPACER, CARBURETOR	1							

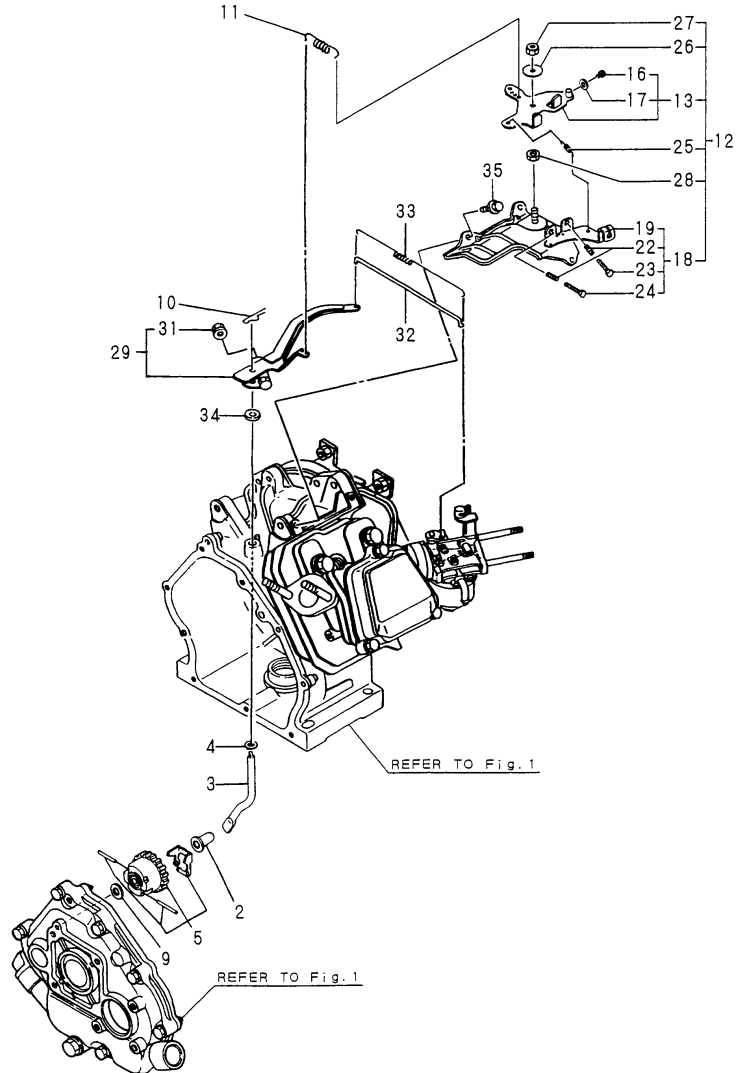
Remarks

(1)REPAIR PARTS.

N:Old $\xrightarrow{\text{Yes}}$ New, Q:Old $\xrightarrow{\text{No}}$ New, R:Old $\xrightarrow{\text{Yes}}$ New, S:Old $\xrightarrow{\text{No}}$ New, W:Add, Z:Discontinued, F:Interchangeable by set, K:Q'ty Change

Fig.7. GOVERNOR & CONTROL DEVICE

Y00D6340



(A)=GA180SECMY

(B)=

(C)=

(D)=

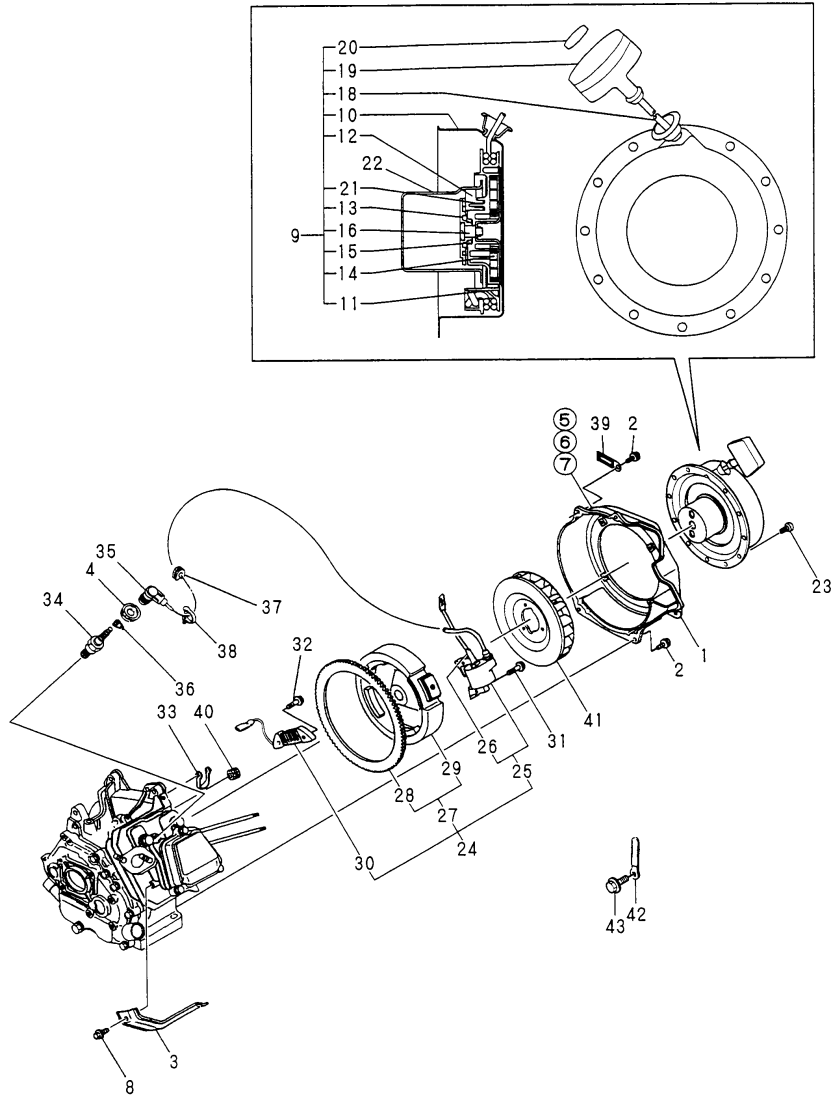
(E)=

(F)=

No.	Lev.	Parts No.	Description	Q'ty						I	R
				(A)	(B)	(C)	(D)	(E)	(F)		
2	1	160690-61301	SPINDLE	1							
3	1	160690-61311	SHAFT	1							
4	1	160690-61450	WASHER	1							
5	1	160690-61600	GEAR ASSY, GOVERNOR	1							
9	1	160120-76940	WASHER	1							
10	1	22372-080000	PIN, SNAP 8	1							
11	1	160690-66011	SPRING, GOVERNOR	1							
12	1	160692-66101	CONTROLLER ASSY	1							
13	2	160692-66051	LEVER ASSY, CONTROL	1							
16	3	26117-040088	BOLT M 4X 8 PLATED	1							
17	3	160690-66900	WASHER, 4	1							
18	2	160690-66111	BASE ASSY	1							
19	3	160690-66143	BASE ASSY	1							
22	3	160520-66291	SPRING	2							
23	3	26117-040257	BOLT, M4X 25 PLATED	1							
24	3	26117-040357	BOLT, M4X 35 PLATED	1							
25	2	160664-66220	SPRING, RETURN	1							
26	2	160670-66350	COLLAR	1							
27	2	26347-060002	NUT, M6	1							
28	2	26757-060002	NUT, LOCK M6	1							
29	1	160690-66180	LEVER ASSY, GOVERNOR	1							
31	2	26366-060002	NUT, M6	1							
32	1	160690-66200	LINK, THROTTLE	1							
33	1	160690-66210	SPRING, TENSION	1							
34	1	114770-61600	SEAL, OIL	1							
35	1	26476-060142	SCREW, TAPPING M6X14	3							

Fig.8. FLY.MAGNETO & STARTING DEVICE

Y00D6340



(A)=GA180SECMY

(B)=

(C)=

(D)=

(E)=

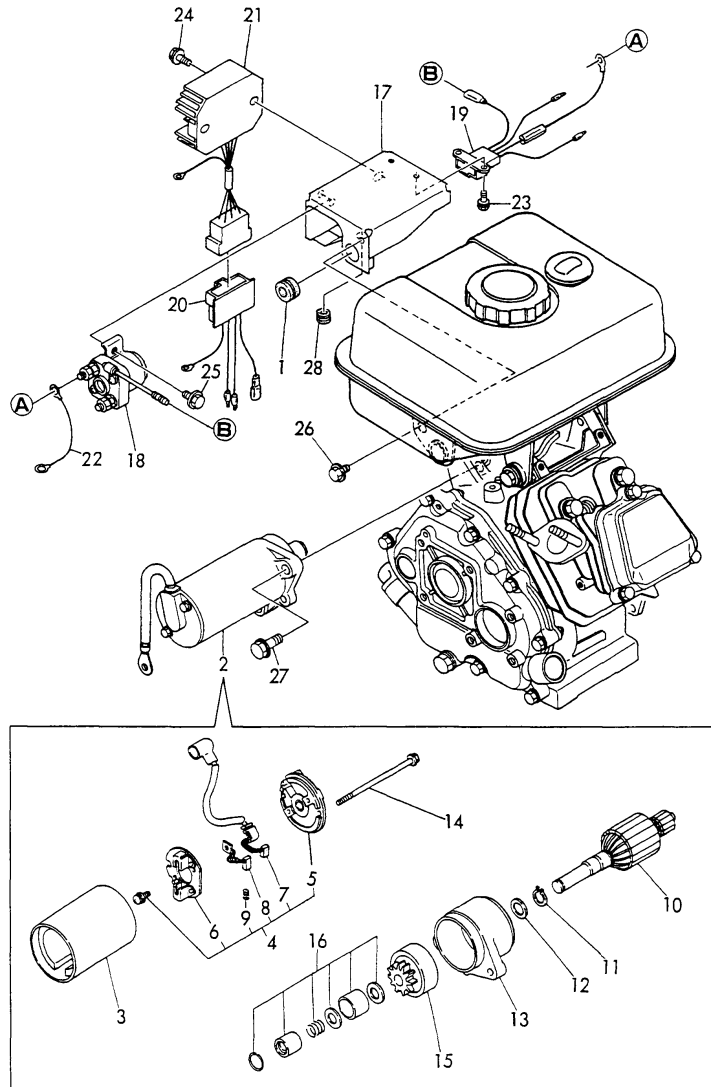
(F)=

No.	Lev.	Parts No.	Description	Q'ty						I	R
				(A)	(B)	(C)	(D)	(E)	(F)		
1	1	160692-45120	CASE, COOLING FAN	1							
2	1	26476-060142	SCREW, TAPPING M6X14	4							
3	1	160699-45200	COVER	1							
4	1	160797-45230	COVER	1							
5	1	160697-45900	SEAL, 0.2X50X400	1							
6	1	160897-45920	SPONGE	2							
7	1	160897-45930	SPONGE	2							
8	1	26476-060142	SCREW, TAPPING M6X14	1							
9	1	160690-76251	STARTER ASSY, RECOIL	1							
10	2	160690-76511	CASE ASSY, STARTER	1							
11	2	160690-76521	REEL	1							
12	2	160690-76801	RATCHET	1							
13	2	160690-76531	GUIDE, RATCHET	1							
14	2	160690-76540	SPRING, SPIRAL	1							
15	2	160690-76561	SPRING, FRICTION	1							
16	2	160698-76580	SCREW	1							
18	2	160690-76630	ROPE, STARTER	1							
19	2	160690-76620	KNOB, STARTER	1							
20	2	160690-76830	CAP, KNOB	1							
21	2	160690-76570	SPRING, RETURN	2							
22	1	160690-76591	PULLEY, STARTER	1							
23	1	26106-060082	BOLT, M6X 8 PLATED	4							
24	1	160698-78091	MAGNETIC ASSY	1							
25	2	160690-78532	COIL, IGNITION	1							
26	3	160690-78230	WIRE	1							
27	2	160698-78511	ROTOR ASSY	1							
28	3	160691-78170	GEAR, RING	1							
29	3	160698-78502	ROTOR	1							
30	2	160793-78631	COIL, CHARGE	1							
31	1	26476-060302	SCREW, TAPPING M6X30	2							
32	1	26476-060252	SCREW, TAPPING M6X25	4							
33	1	29610-000650	CLAMP, SPEED 065	1							
34	1	160793-78010	PLUG, SPARK	1							
35	1	160700-78040	CAP, PLUG	1							
36	1	160700-78050	TERMINAL, PLUG	1							
37	1	160700-78720	GROMMET	1							
38	1	29610-000950	CLAMP, SPEED 095	1							
39	1	29610-000650	CLAMP, SPEED 065	1							
40	1	160341-01950	PIPE	1							
41	1	160699-45010	CASE, COOLING FAN	1							
42	1	160710-78710	CLAMP, CORD	1							
43	1	26476-060142	SCREW, TAPPING M6X14	1							

注) 図番を○で囲んでいるものは、内側に付けるスポンジ又はグラスウールを示しています。
 NOTE) THE ENCIRCLED DRAWING NUMBERS INDICATES THE PARTS LINED WITH RUBBER SPONGE OR GLASS WOOL.

Fig.9. STARTING MOTOR

Y00D6340



(A)=GA180SECMY

(B)=

(C)=

(D)=

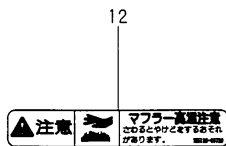
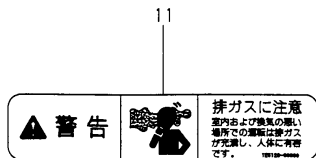
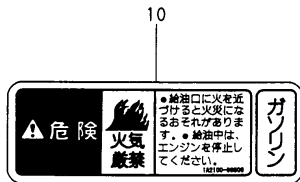
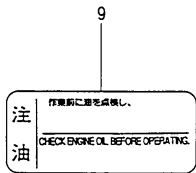
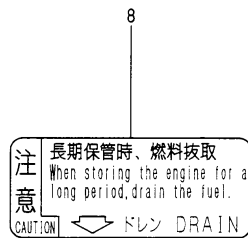
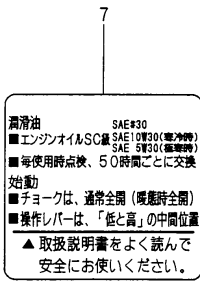
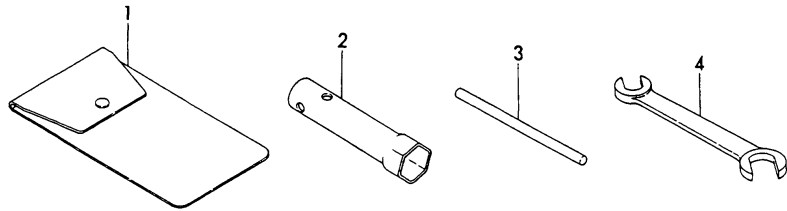
(E)=

(F)=

No.	Lev.	Parts No.	Description	Q'ty						I	R
				(A)	(B)	(C)	(D)	(E)	(F)		
1	1	160341-01950	PIPE	1							
2	1	160691-77020	MOTOR, STARTING	1							
3	2	X131009601X	YORK ASSY	1							
4	2	X133004703X	BRACKET ASSY, REAR	1							
5	3	X224023400X	BRACKET, REAR	1							
6	3	X133104900X	HOLDER ASSY, BLUSH	1							
7	3	X266008503X	BLUSH ASSY(+)	1							
8	3	X266008300X	BLUH ASSY(-)	1							
9	3	X520003100X	COIL, SPRING	2							
10	2	X132009202X	ARMATURE ASSY	1							
11	2	X8580151002	RING, RETAINING	1							
12	2	X503106201X	SHIM WASHER	1							
13	2	X224211001X	BRACKET, FRONT	1							
14	2	X8167050951	BOLT	1							
15	2	X136105701X	CLUTCH ASSY, PINION	1							
16	2	X366102100X	STOPPER, PINION	1							
17	1	160691-77310	BRACKET, ELECTRIC	1							
18	1	160725-77380	SWITCH, SOLENOID	1							
19	1	160691-77470	HARNESS, WIRE	1							
20	1	160691-77510	HARNESS, WIRE	1							
21	1	121520-77710	LIMITER, CURRENT	1							
22	1	160891-78200	WIRE, LEAD	1							
23	1	26023-040102	SCREW, M4X10	2							
24	1	26106-060102	BOLT, M6X 10 PLATED	2							
25	1	26106-060102	BOLT, M6X 10 PLATED	1							
26	1	26106-060122	BOLT, M6X 12 PLATED	1							
27	1	26106-080252	BOLT, M8X 25 PLATED	2							
28	1	29311-122000	GROMET, 12.0X2	1							

Fig.10. LABEL & TOOL

Y00D6340



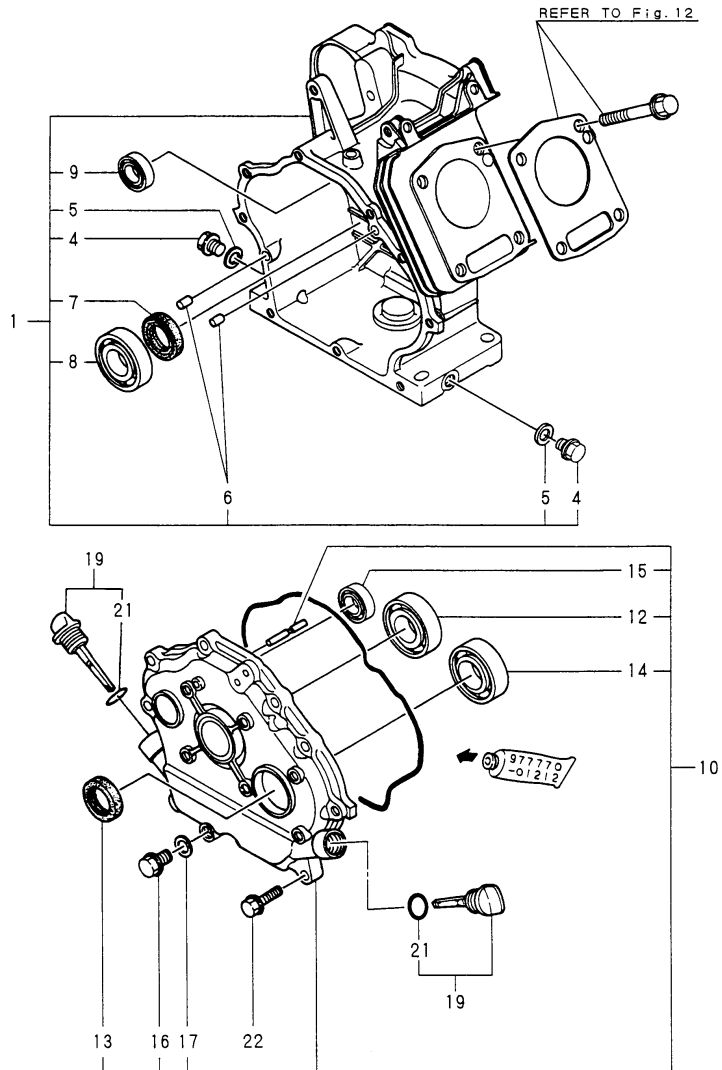
(A)=GA180SECMY
(B)=
(C)=

(D)=
(E)=
(F)=

No.	Lev.	Parts No.	Description	Qty						I	R
				(A)	(B)	(C)	(D)	(E)	(F)		
1	1	160110-92610	BAG, TOOL	1							
2	1	160120-92700	WRENCH, 21 L86	1							
3	1	160110-92710	HANDLE, WRENCH	1							
4	1	28110-100120	SPANNER, 10X12	1							
6	1	160698-07270	LABEL, FINGER START	1							
7	1	160692-07250	LABEL, CAUTION	1							
8	1	160520-07272	LABEL, DRAIN	1							
9	1	160692-07370	LABEL, AIR CLEANER	1							
10	1	160690-07320	LABEL, NO FIRE	1							
11	1	105250-07340	LABEL, EXH. GAS CAUTN	1							
12	1	105250-07330	LABEL	1							

Fig.11. CYLINDER BLOCK

Y00D6340

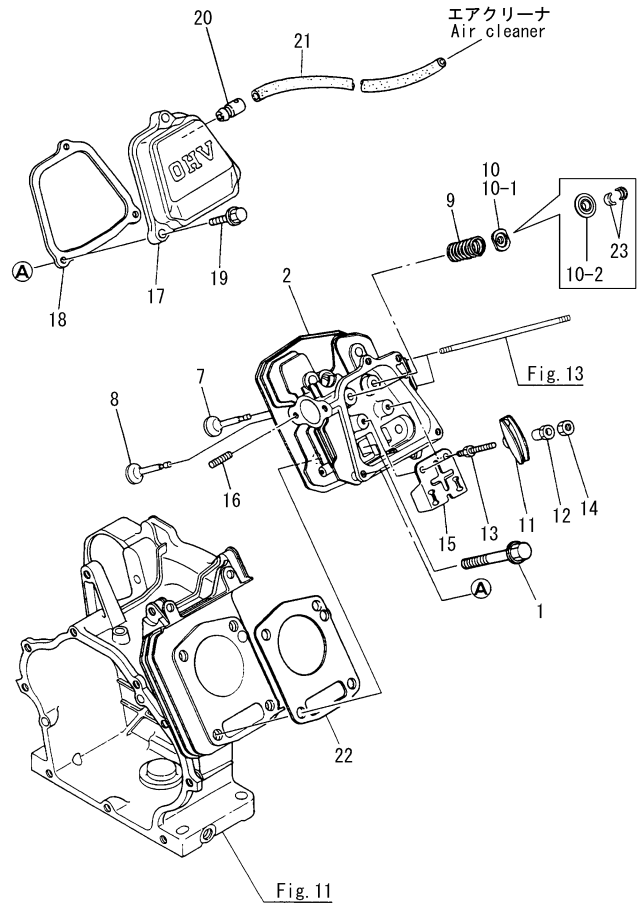


(A)=
(B)=GA220SECMY1
(C)=

(D)=
(E)=
(F)=

No.	Lev.	Parts No.	Description	Q'ty						I	R
				(A)	(B)	(C)	(D)	(E)	(F)		
1	1	760791-01561	BLOCK ASSY, CYLINDER		1						
4	2	160610-01690	PLUG, M12		2						
5	2	104200-59170	GASKET, 12		2						
6	2	114270-01600	PIN, M8X12		2						
7	2	160110-02220	SEAL, OIL		1						
8	2	24101-062060	BEARING, BALL 6206C3		1						
9	2	160903-28020	BEARING, 6202C3E		1						
10	1	760792-01500	COVER ASSY		1						
12	2	24101-062060	BEARING, BALL 6206C3		1						
13	2	160110-02220	SEAL, OIL		1						
14	2	24101-062060	BEARING, BALL 6206C3		1						
15	2	160903-28020	BEARING, 6202C3E		1						
16	2	160610-01690	PLUG, M12		1						
17	2	104200-59170	GASKET, 12		1						
19	1	160810-01740	CAP ASSY		2						
21	2	24311-000180	O-RING, 1AP18.0		2						
22	1	26106-080302	BOLT, M8X 30 PLATED		9						

Fig.12. CYLINDER HEAD & BONNET



(A)=
(B)=GA220SECMY1
(C)=

(D)=
(E)=
(F)=

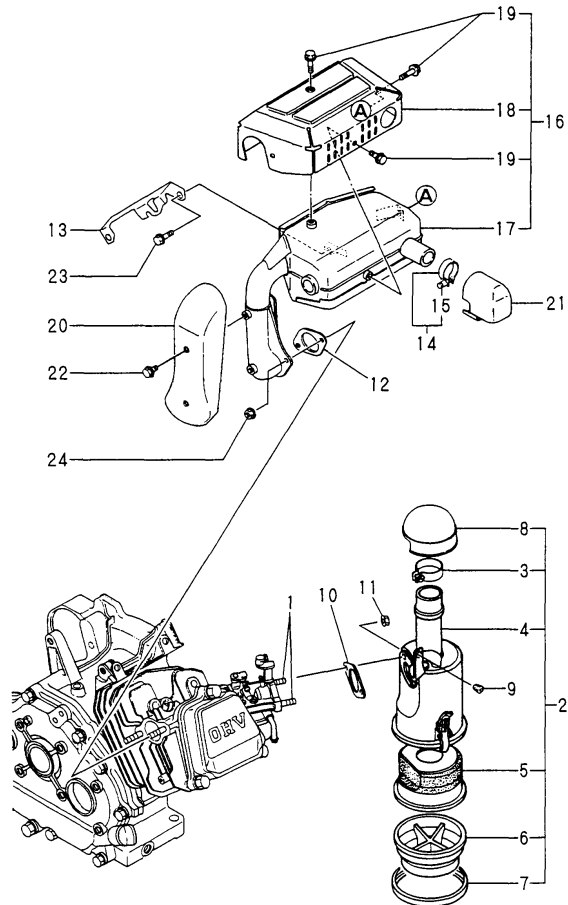
No.	Lev.	Parts No.	Description	Q'ty						I	R
				(A)	(B)	(C)	(D)	(E)	(F)		
1	1	160890-01210	BOLT, FLANGE M10X70		4						
2	1	160790-11011	HEAD ASSY, CYLINDER		1						
7	1	160790-11100	VALVE, INTAKE		1						
7-1	1	160790-11101	VALVE, INTAKE (B=EZZZZZ)		1					F	2
8	1	160790-11110	VALVE, EXHAUST		1						
8-1	1	160790-11110	VALVE, EXHAUST (B=EZZZZZ)		1					F	2
9	1	160890-11120	SPRING, VALVE		2						
10	1	160810-11180	RETAINER, SPRING		2						
10-1	1	160890-11180	RETAINER, SPRING (B=EZZZZZ)		2					F	1
10-2	1	160890-11190	RETAINER, SPRING (B=EZZZZZ)		2					F	2
11	1	160890-11200	ARM, ROCKER		2						
11-1	1	160890-11202	ARM, ROCKER (B=EZZZZZ)		2					F	1
12	1	160690-11220	PIVOT, ROCKER ARM		2						
12-1	1	160690-11221	PIVOT, ROCKER ARM (B=EZZZZZ)		2					F	1
13	1	160690-11271	BOLT		2						
13-1	1	160890-11270	BOLT (B=EZZZZZ)		2					F	1
14	1	160690-11280	NUT, M6X0.5		2						
15	1	160890-11290	PLATE, GUIDE		1						
16	1	26216-080182	STUD, M8X 18		2						
16-1	1	26226-080182	STUD, M8X 18 (B=EZZZZZ)		2						N
17	1	160890-11300	BONNET ASSY, HEAD		1						
18	1	160890-11310	GASKET, BONNET		1						
19	1	26106-060352	BOLT, M6X 35 PLATED		3						
20	1	160610-03050	BREATHER ASSY		1						
21	1	160710-03190	PIPE, BREATHER		1						
22	1	160790-01330	GASKET, HEAD		1						
23	1	720380-11570	COTTER (B=EZZZZZ)		2						W 2

Remarks

- (1) Ref.No.10-1,11-1,12-1 & 13-1 interchangeable by set.
- (2) Ref.No.7-1,8-1,10-2 & 23 interchangeable by set.

Fig.13. AIR CLEANER

Y0006340



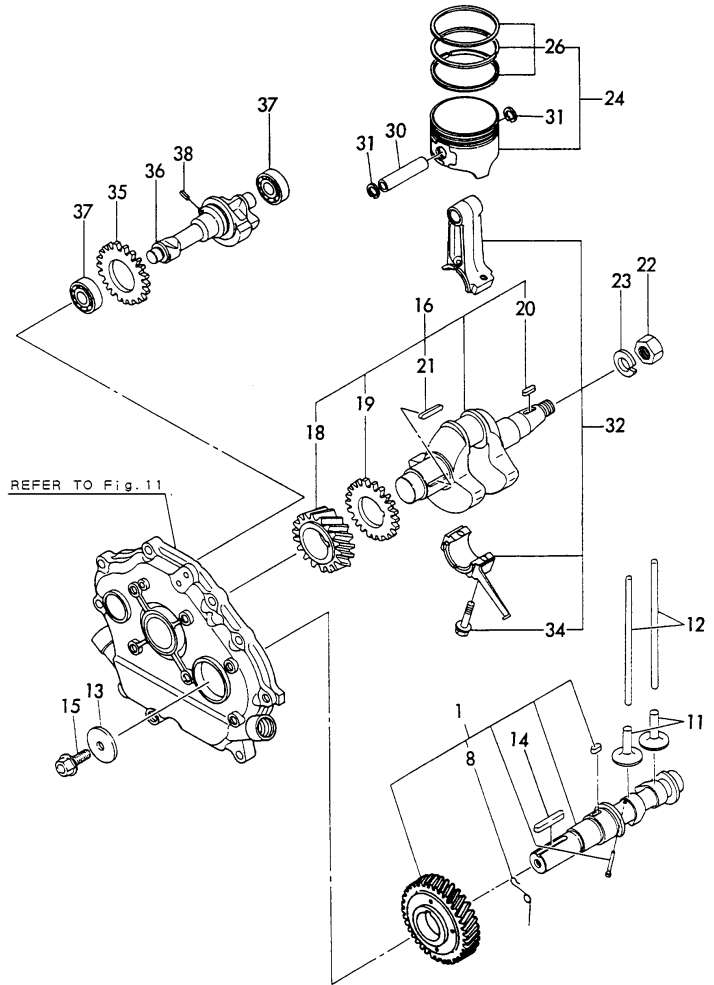
(A)=
(B)=GA220SECMY1
(C)=

(D)=
(E)=
(F)=

No.	Lev.	Parts No.	Description	Q'ty						I	R
				(A)	(B)	(C)	(D)	(E)	(F)		
1	1	160792-04310	BOLT, M6X159		2						
2	1	160793-12550	CLEANER ASSY, AIR		1						
3	2	160820-12300	BAND		1						
4	2	160793-12570	BODY, AIR CLEANER		1						
5	2	160792-12720	ELEMENT		1						
6	2	160820-12770	SUMP, OIL		1						
7	2	160792-12780	PIPE, REINFORCED		1						
8	2	160820-12790	CAP, AIR CLEANER		1						
9	1	160763-12600	GROMMET		1						
10	1	160810-56150	GASKET, CARBURETOR		1						
11	1	26366-060002	NUT, M6		2						
12	1	160890-13210	GASKET, MUFFLER		1						
13	1	160890-13570	BRACKET, MUFFLER		1						
14	1	160120-13580	CLAMP		1						
15	2	114252-13960	SCREW 6X 25		1						
16	1	160890-13610	MUFFLER ASSY		1						
17	2	160890-13540	MUFFLER		1						
18	2	160890-13560	COVER		1						
19	2	114252-13950	BOLT, M6X8		4						
20	1	160890-13660	COVER		1						
21	1	160797-13800	PIPE, TAIL		1						
22	1	114252-13950	BOLT, M6X8		2						
23	1	26106-080142	BOLT, M8X 14 PLATED		1						
24	1	26366-080002	NUT, M8		2						

Fig.14. CRANKSHAFT, PISTON & CAMSHAFT

Y00D6340



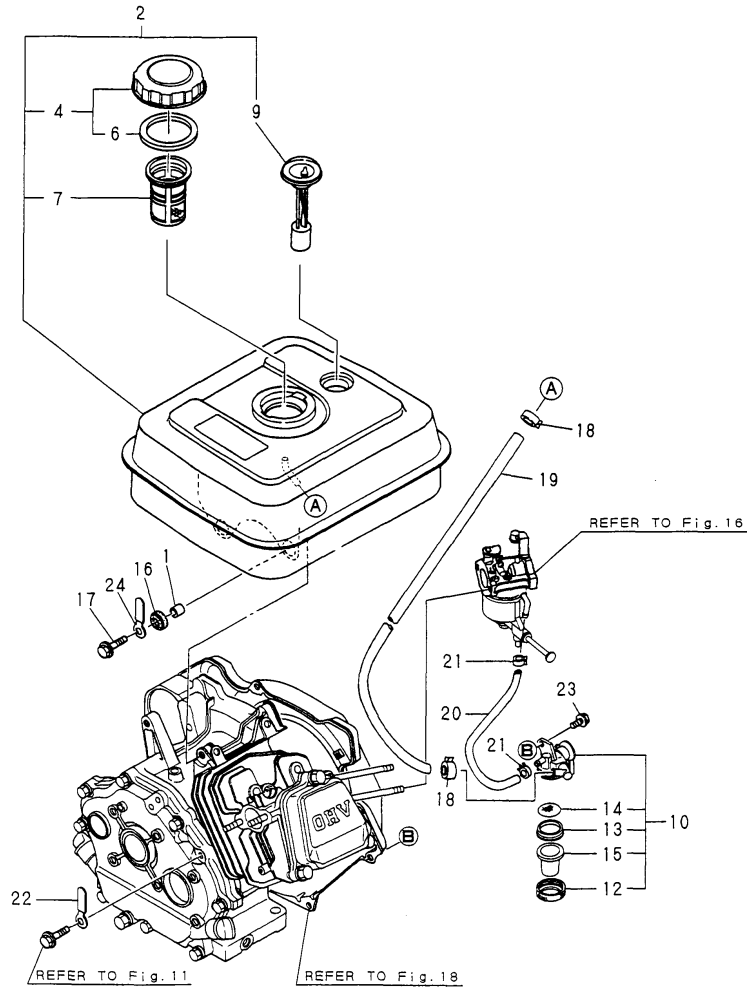
(A)=
(B)=GA220SECMY1
(C)=

(D)=
(E)=
(F)=

No.	Lev.	Parts No.	Description	Q'ty						I	R
				(A)	(B)	(C)	(D)	(E)	(F)		
1	1	160890-14051	CAMSHAFT ASSY		1						
8	2	160890-14560	SPRING,DECOMPRESSION		1						
10	1	160890-14200	TAPPET		2						
11	1	114250-14400	ROD, PUSH		2						
12	1	160310-14550	WASHER		1						
13	1	22512-070380	KEY, 7X 38		1						
14	1	26106-080202	BOLT, M8X 20 PLATED		1						
15	1	760790-21700	CRANKSHAFT ASSY		1						
17	2	160890-21200	GEAR, CRANKSHAFT		1						
18	2	160890-21220	GEAR, BALANCER		1						
19	2	22512-040160	KEY, 4X 16		1						
20	2	22512-040300	KEY, 4X 30		1						
21	1	26737-160002	NUT, M16		1						
22	1	22137-160000	WASHER, 16		1						
23	1	160790-22011	PISTON ASSY		1						
25	2	760790-22502	RING SET, PISTON		1						
29	1	160890-22300	PIN, PISTON		1						
30	1	22252-000190	RING, 19		2						
31	1	760790-23700	ROD ASSY, CONNECTING		1						
33	2	160810-23201	BOLT, CONNECTING ROD		2						
34	1	160890-21220	GEAR, BALANCER		1						
35	1	160790-28010	SHAFT, BALANCER		1						
36	1	160903-28020	BEARING, 6202C3E		2						
37	1	22351-040008	PIN, SPRING 4.0X 8		1						

Fig.15. FUEL TANK & FUEL PIPE

Y00D6340



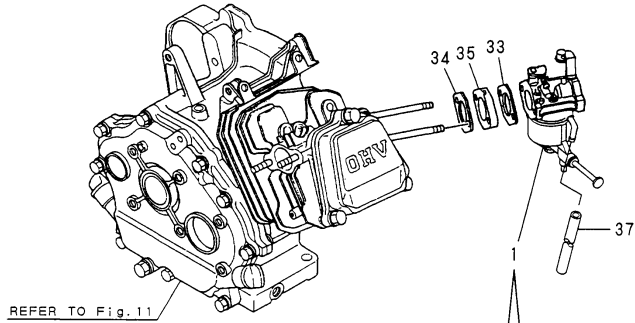
(A)=
(B)=GA220SECMY1
(C)=

(D)=
(E)=
(F)=

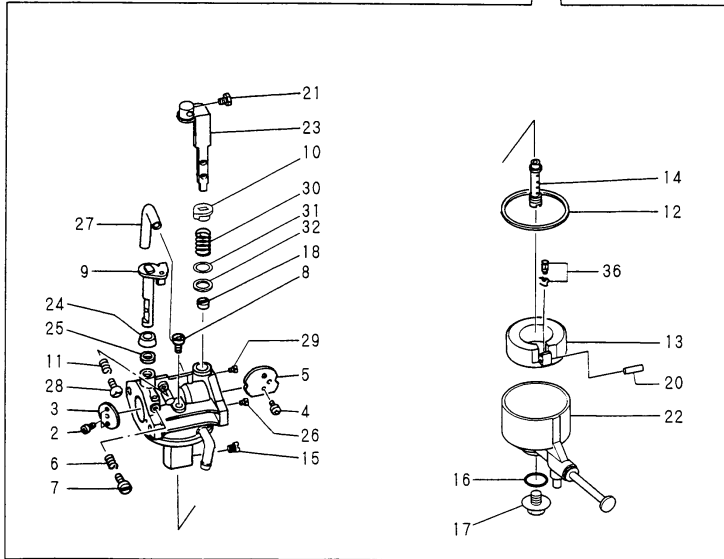
No.	Lev.	Parts No.	Description	Q'ty						I	R
				(A)	(B)	(C)	(D)	(E)	(F)		
1	1	114250-45310	COLLAR		4						
2	1	760890-55730	TANK ASSY, FUEL		1						
4	2	160710-55061	CAP ASSY		1						
6	3	160393-55050	GASKET		1						
7	2	160610-55100	FILTER, FUEL		1						
9	2	160762-55150	GAUGE, FUEL		1						
10	1	160692-55330	COCK ASSY, FUEL		1						
12	2	160710-55360	RING		1						
13	2	160710-55370	GASKET		1						
14	2	160710-55382	FILTER		1						
15	2	160903-55390	CUP, FUEL COCK L57		1						
16	1	160690-55461	DAMPER, FUEL TANK		4						
17	1	114370-45350	BOLT		4						
18	1	106990-44660	CLIP, HOSE 12.5		2						
19	1	160920-59350	PIPE, FUEL		1						
20	1	160792-59360	PIPE, FUEL		1						
21	1	124060-77680	CLIP, HOSE 10		2						
22	1	160820-78710	CLAMP, CORD		1						
23	1	26106-060102	BOLT, M6X 10 PLATED		1						
24	1	160710-78710	CLAMP, CORD		1						

Fig.16. CARBURETOR

Y00D6340



REFER TO Fig. 11



(A)=
(B)=GA220SECMY1
(C)=

(D)=
(E)=
(F)=

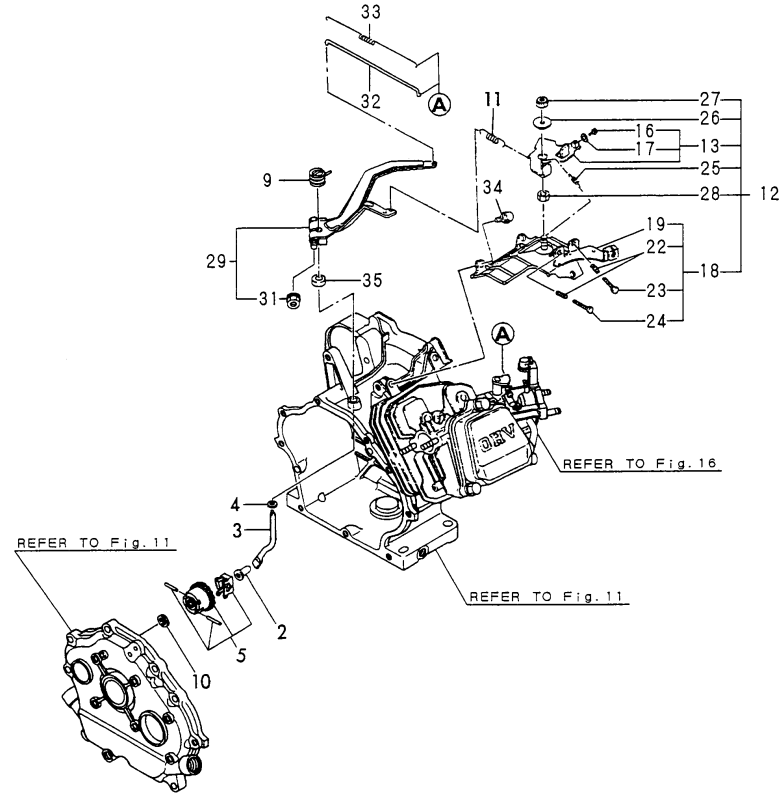
No.	Lev.	Parts No.	Description	Q'ty						I	R
				(A)	(B)	(C)	(D)	(E)	(F)		
1	1	160792-56031	CARBURETOR ASSY		1						
2	2	160120-56670	SCREW		2						
3	2	160880-56761	VALVE, THROTTLE		1						
4	2	160690-56570	SCREW		2						
5	2	160792-56520	VALVE, CHOKE		1						
6	2	181230-56380	SPRING		1						
7	2	160667-56750	ADJUSTER		1						
8	2	160460-56940	JET, PILOT		1						
9	2	160792-56530	SHAFT, THROTTLE		1						
10	2	160792-56680	RING		1						
11	2	181230-56380	SPRING		1						
12	2	160210-56610	WASHER		1						
13	2	160890-56620	FLOAT ASSY		1						
14	2	160792-56561	NOZZLE, MAIN		1						
15	2	160792-56571	JET, MAIN		1						
16	2	160893-56660	O-RING		1						
17	2	160891-56750	BOLT		1						
18	2	160810-56580	RING, CHOKE SHAFT		1						
20	2	160610-56630	PIN, FLOAT		1						
21	2	26117-040088	BOLT M 4X 8 PLATED		1						
22	2	160893-56430	BODY, FLOAT		1						
23	2	160790-56600	LEVER, CHOKE		1						
24	2	160702-56720	RING		1						
25	2	160640-56850	SEAL		1						
26	2	160792-56610	JET, PILOT		1						
27	2	160692-56770	HOSE		1						
28	2	160692-56710	SCREW		1						
29	2	160798-56630	JET		1						
30	2	160792-56690	SPRING		1						
31	2	160792-56700	SEAL		1						
32	2	160792-56710	CAP		1						
33	1	160790-56150	GASKET, CARBURETOR		1						
34	1	160810-56150	GASKET, CARBURETOR		1						
35	1	160790-56160	INSULATOR		1						
36	1	160792-56670	VALVE ASSY, NEEDLE		1						1
37	1	160730-56880	HOSE, D5/3		1						

Remarks

(1)REPAIR PARTS.

Fig.17. GOVERNOR & CONTROL DEVICE

Y00D6340



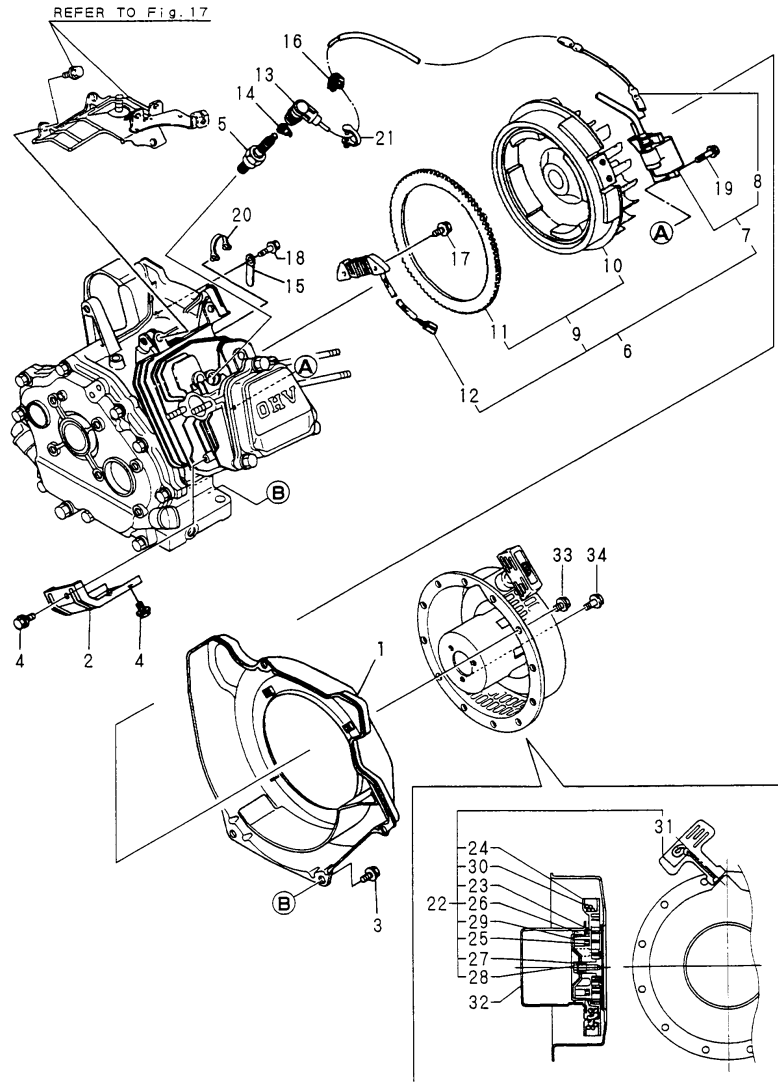
(A)=
(B)=GA220SECMY1
(C)=

(D)=
(E)=
(F)=

No.	Lev.	Parts No.	Description	Q'ty						I	R
				(A)	(B)	(C)	(D)	(E)	(F)		
2	1	160690-61301	SPINDLE		1						
3	1	160690-61311	SHAFT		1						
4	1	160690-61450	WASHER		1						
5	1	160690-61600	GEAR ASSY, GOVERNOR		1						
9	1	160890-66050	SPRING, RETURN		1						
10	1	160120-76940	WASHER		1						
11	1	160790-66010	SPRING, GOVERNOR		1						
12	1	160991-66111	CONTROLLER ASSY		1						
13	2	160692-66051	LEVER ASSY, CONTROL		1						
16	3	26117-040088	BOLT M 4X 8 PLATED		1						
17	3	160690-66900	WASHER, 4		1						
18	2	160890-66110	BASE ASSY		1						
19	3	160890-66142	BASE ASSY		1						
22	3	160520-66291	SPRING		2						
23	3	26117-040257	BOLT, M4X 25 PLATED		1						
24	3	26117-040257	BOLT, M4X 25 PLATED		1						
25	2	160664-66220	SPRING, RETURN		1						
26	2	160670-66350	COLLAR		1						
27	2	26347-060002	NUT, M6		1						
28	2	26757-060002	NUT, LOCK M6		1						
29	1	160890-66190	LEVER ASSY, GOVERNOR		1						
31	2	26366-060002	NUT, M6		1						
32	1	160690-66200	LINK, THROTTLE		1						
33	1	160690-66210	SPRING, TENSION		1						
34	1	26476-060142	SCREW, TAPPING M6X14		3						
35	1	114770-61600	SEAL, OIL		1						

Fig.18. MAGNETO & STARTING DEVICE

Y00D6340



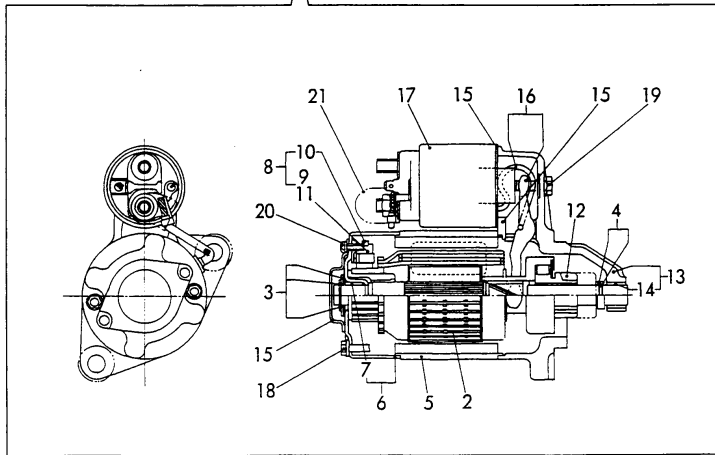
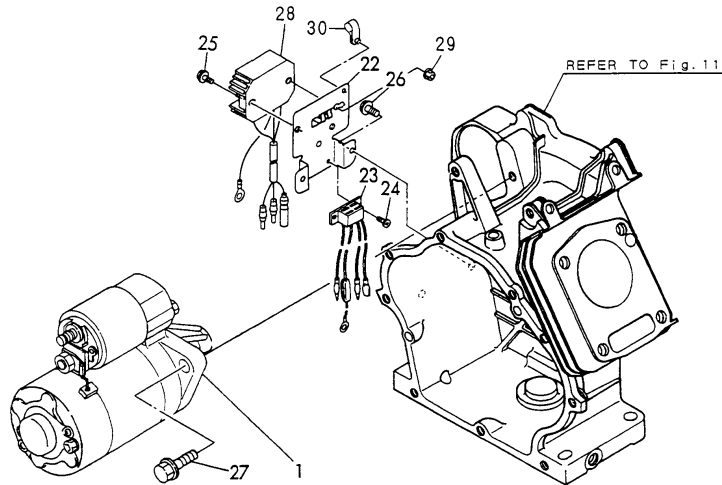
(A)=
(B)=GA220SECMY1
(C)=

(D)=
(E)=
(F)=

No.	Lev.	Parts No.	Description	Q'ty						I	R
				(A)	(B)	(C)	(D)	(E)	(F)		
1	1	160790-45130	CASE, COOLING FAN		1						
2	1	160890-45200	COVER, HEAD		1						
3	1	26476-060142	SCREW, TAPPING M6X14		4						
4	1	26476-060142	SCREW, TAPPING M6X14		2						
5	1	160690-78020	PLUG, SPARK		1						
6	1	160791-78062	MAGNETIC ASSY		1						
7	2	160791-78522	COIL, IGNITION		1						
7-1	2	160998-78400 (B="2010.01)	IGNITER		1						N
8	3	160690-78230	WIRE		1						
9	2	160791-78750	ROTOR ASSY		1						
10	3	160791-78510	ROTOR		1						
11	3	160891-78170	GEAR, RING		1						
12	2	160791-78650	COIL, CHARGE		1						
13	1	160700-78040	CAP, PLUG		1						
14	1	160700-78050	TERMINAL, PLUG		1						
15	1	160710-78710	CLAMP, CORD		2						
16	1	160700-78720	GROMMET		1						
17	1	26476-060252	SCREW, TAPPING M6X25		2						
18	1	26476-060142	SCREW, TAPPING M6X14		2						
19	1	26476-060252	SCREW, TAPPING M6X25		2						
20	1	29610-000650	CLAMP, SPEED 065		1						
21	1	29610-000950	CLAMP, SPEED 095		1						
22	1	160890-76250	STARTER ASSY, RECOIL		1						
23	2	160890-76510	SPRING, SPIRAL		1						
24	2	160890-76520	REEL		1						
25	2	160890-76530	SPRING, DOG		1						
26	2	160890-76540	DOG		1						
27	2	160890-76550	SPRING, BRAKE		1						
28	2	160641-76570	SCREW		1						
29	2	160890-76570	RETAINER		1						
30	3	160890-76580	ROPE, STARTER		1						
31	3	160260-76620	KNOB, STARTER		1						
32	1	160790-76590	PULLEY, STARTER		1						
33	1	26106-060082	BOLT, M6X 8 PLATED		4						
34	1	26106-060122	BOLT, M6X 12 PLATED		3						

Fig.19. STARTING MOTOR

Y00D6340



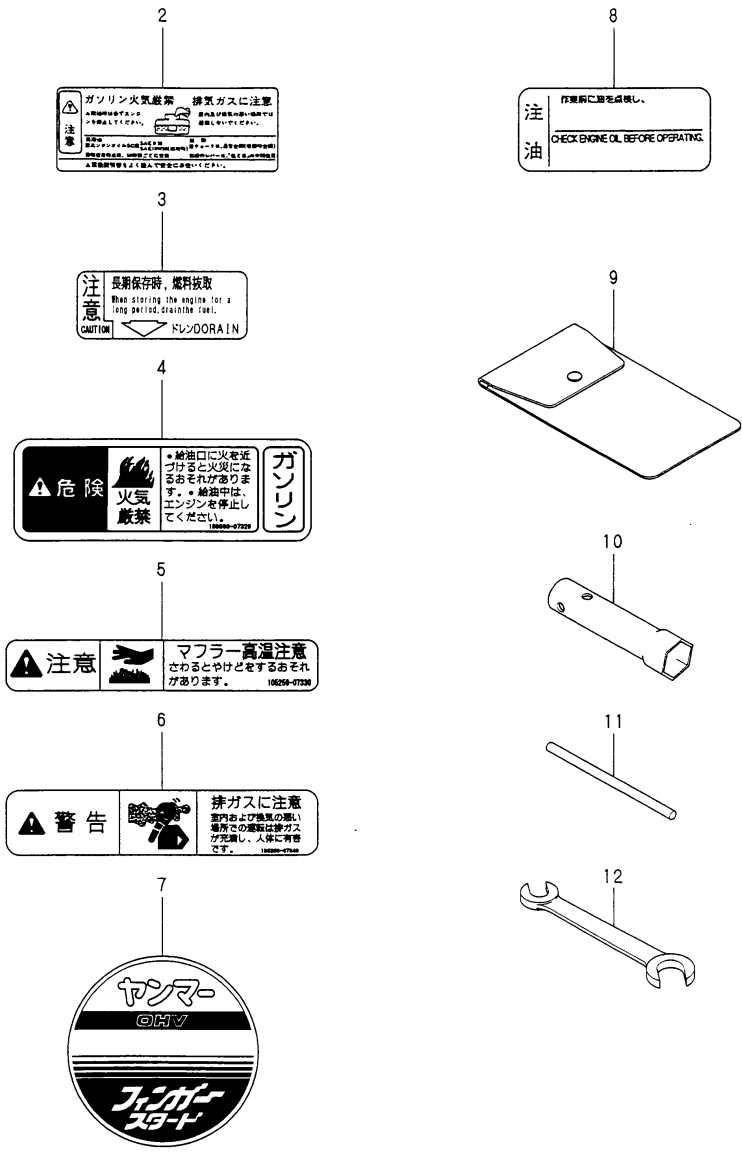
(A)=
(B)=GA220SECMY1
(C)=

(D)=
(E)=
(F)=

No.	Lev.	Parts No.	Description	Q'ty						I	R	
				(A)	(B)	(C)	(D)	(E)	(F)			
1	1	160891-77020	STARTER ASSY		1							
2	2	114371-77110	ARMATURE		1							
3	2	X21148110	WASHER SET, THRUST		1							
4	2	X21147155	STOPPER SET, PINION		1							
5	2	114371-77130	COIL ASSY, FIELD		1							
6	2	114371-77140	COVER ASSY, REAR		1							
7	3	X21145352	METAL		1							
8	2	114371-77160	HOLDER ASSY, BRUSH		1							
9	3	114371-79040	BRUSH		2							
10	3	114371-79060	SPRING		4							
11	3	114371-79050	BRUSH		1							
12	2	160891-77750	PINION ASSY		1							
13	2	160891-77760	HOUSING ASSY, GEARS		1							
14	3	X21145352	METAL		1							
15	2	114371-77170	COVER ASSY, DUST		1							
16	2	114371-77180	LEVER KIT, SHIFT		1							
17	2	124298-77020	SWITCH, MAGNETIC		1							
18	2	124195-77770	BOLT, THROUGH		2							
19	2	114371-79070	BOLT		2							
20	2	X21142835	SCREW SET		1							
21	2	X2114274200	COVER		1							
22	1	160891-77310	BRACKET, ELECTRIC		1							
23	1	160891-77490	HARNES, WIRE		1							
24	1	26023-040102	SCREW, M4X10		2							
25	1	26106-060202	BOLT, M6X 20 PLATED		2							
26	1	26106-080142	BOLT, M8X 14 PLATED		2							
27	1	26106-100302	BOLT, M10X 30 PLATED		2							
28	1	160715-77522	REGULATOR, RS2727		1							
29	1	26366-060002	NUT, M6		1							
30	1	29610-000650	CLAMP, SPEED 065		1							

Fig.20. LABEL & TOOL

Y00D6340

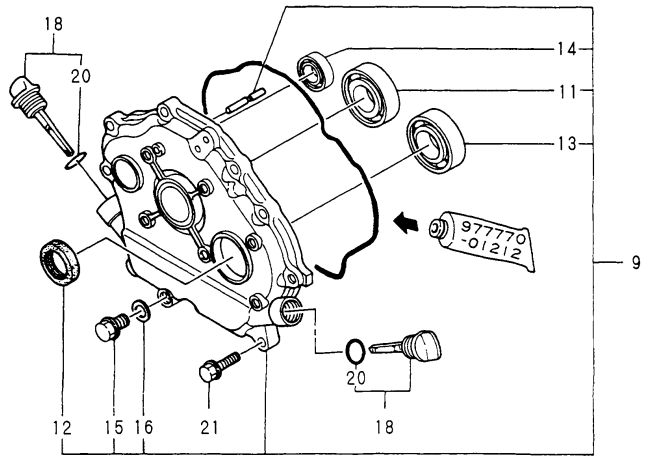
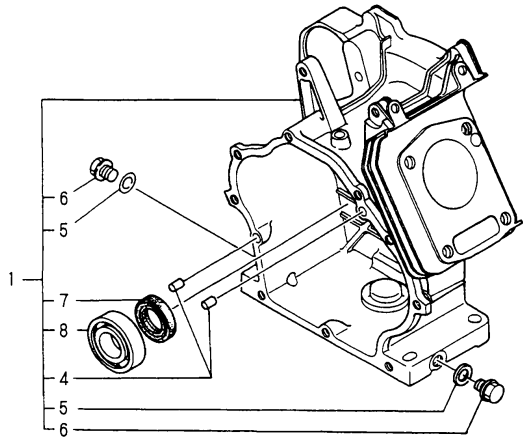


(A)= (D)=
 (B)=GA220SECMY1 (E)=
 (C)= (F)=

No.	Lev.	Parts No.	Description	Q'ty						I	R
				(A)	(B)	(C)	(D)	(E)	(F)		
2	1	160692-07250	LABEL, CAUTION		1						
3	1	160520-07272	LABEL, DRAIN		1						
4	1	160690-07320	LABEL,NO FIRE		1						
5	1	105250-07330	LABEL		1						
6	1	105250-07340	LABEL,EXH.GAS CAUTN		1						
7	1	160790-07200	LABEL, FINGER START		1						
8	1	160692-07370	LABEL, AIR CLEANER		1						
9	1	160110-92610	BAG, TOOL		1						
10	1	160120-92700	WRENCH, 21 L86		1						
11	1	160110-92710	HANDLE, WRENCH		1						
12	1	28110-100120	SPANNER, 10X12		1						

Fig.21. CYLINDER BLOCK

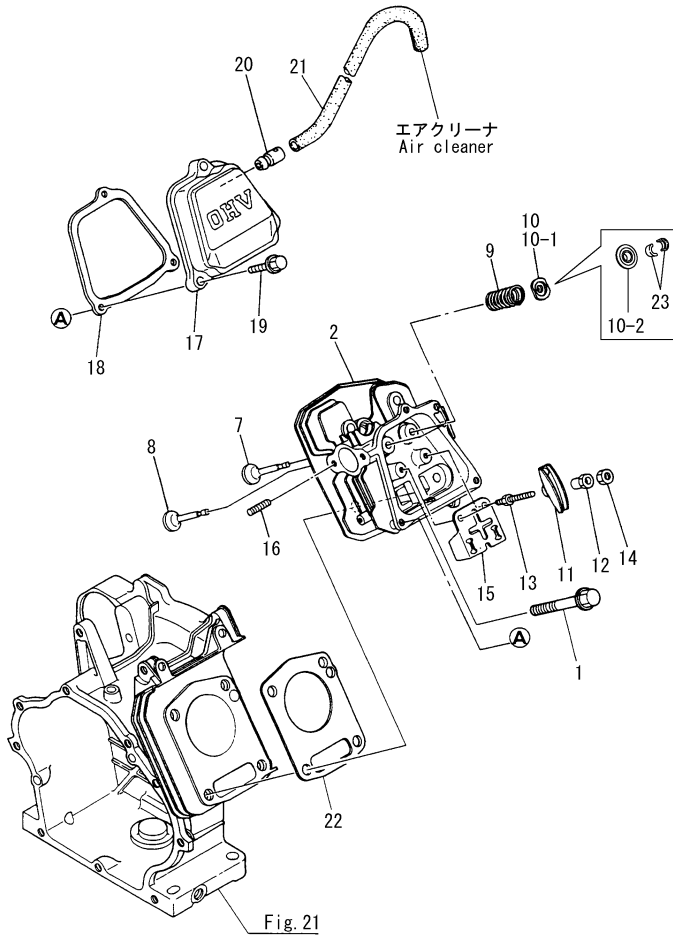
Y00D6340



(A)=
(B)=
(C)=GA240SECMY
(D)=
(E)=
(F)=

No.	Lev.	Parts No.	Description	Qty						I	R	
				(A)	(B)	(C)	(D)	(E)	(F)			
1	1	760798-01581	BLOCK ASSY, CYLINDER			1						
4	2	114270-01600	PIN, M8X12			2						
5	2	160610-01690	PLUG, M12			2						
6	2	104200-59170	GASKET, 12			2						
7	2	160110-02220	SEAL, OIL			1						
8	2	24101-062060	BEARING, BALL 6206C3			1						
9	1	760792-01500	COVER ASSY			1						
11	2	24101-062060	BEARING, BALL 6206C3			1						
12	2	160110-02220	SEAL, OIL			1						
13	2	24101-062060	BEARING, BALL 6206C3			1						
14	2	160903-28020	BEARING, 6202C3E			1						
15	2	160610-01690	PLUG, M12			1						
16	2	104200-59170	GASKET, 12			1						
18	1	160810-01740	CAP ASSY			2						
20	2	24311-000180	O-RING, 1AP18.0			2						
21	1	26106-080302	BOLT, M8X 30 PLATED			9						

Fig.22. CYLINDER HEAD & BONNET



(A)=
(B)=
(C)=GA240SECMY

(D)=
(E)=
(F)=

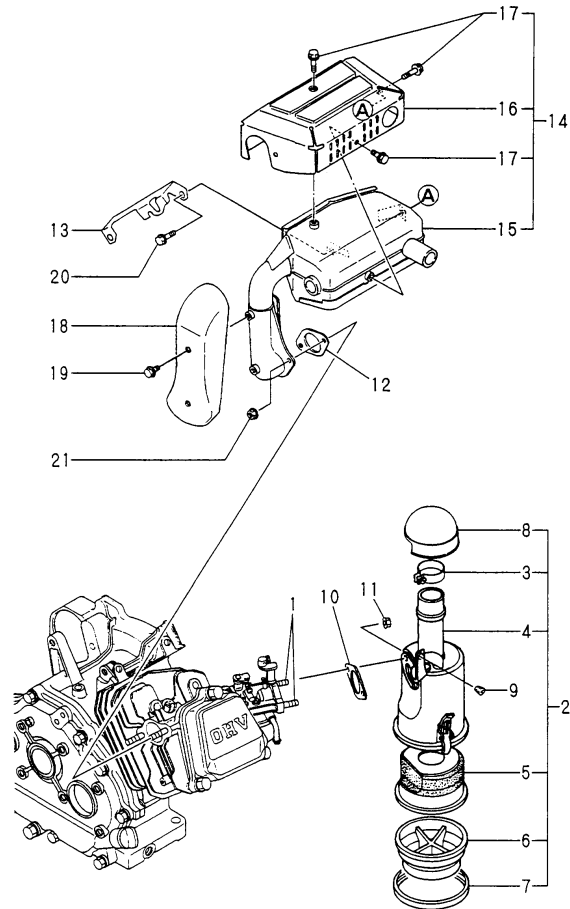
No.	Lev.	Parts No.	Description	Q'ty						I	R
				(A)	(B)	(C)	(D)	(E)	(F)		
1	1	160890-01210	BOLT, FLANGE M10X70			4					
2	1	160790-11011	HEAD ASSY, CYLINDER			1					
7	1	160790-11100	VALVE, INTAKE			1					
7-1	1	160790-11101	VALVE, INTAKE (C=EZZZZZ)			1				F	2
8	1	160790-11110	VALVE, EXHAUST			1					
8-1	1	160790-11111	VALVE, EXHAUST (C=EZZZZZ)			1				F	2
9	1	160890-11120	SPRING, VALVE			2					
10	1	160810-11180	RETAINER, SPRING			2					
10-1	1	160890-11180	RETAINER, SPRING (C=EZZZZZ)			2				F	1
10-2	1	160890-11190	RETAINER, SPRING (C=EZZZZZ)			2				F	2
11	1	160890-11200	ARM, ROCKER			2					
11-1	1	160890-11202	ARM, ROCKER (C=EZZZZZ)			2				F	1
12	1	160690-11220	PIVOT, ROCKER ARM			2					
12-1	1	160690-11221	PIVOT, ROCKER ARM (C=EZZZZZ)			2				F	1
13	1	160690-11271	BOLT			2					
13-1	1	160890-11270	BOLT (C=EZZZZZ)			2				F	1
14	1	160690-11280	NUT, M6X0.5			2					
15	1	160890-11290	PLATE, GUIDE			1					
16	1	26216-080182	STUD, M8X 18			2					
16-1	1	26226-080182	STUD, M8X 18 (C=EZZZZZ)			2					N
17	1	160890-11300	BONNET ASSY, HEAD			1					
18	1	160890-11310	GASKET, BONNET			1					
19	1	26106-060352	BOLT, M6X 35 PLATED			3					
20	1	160610-03050	BREATHER ASSY			1					
21	1	160710-03190	PIPE, BREATHER			1					
22	1	160890-01330	GASKET, HEAD			1					
23	1	720380-11570	COTTER (C=EZZZZZ)			2					W 2

Remarks

- (1) Ref.No.10-1,11-1,12-1 & 13-1 interchangeable by set.
- (2) Ref.No.7-1,8-1,10-2 & 23 interchangeable by set.

Fig.23. AIR CLEANER

Y00D6340



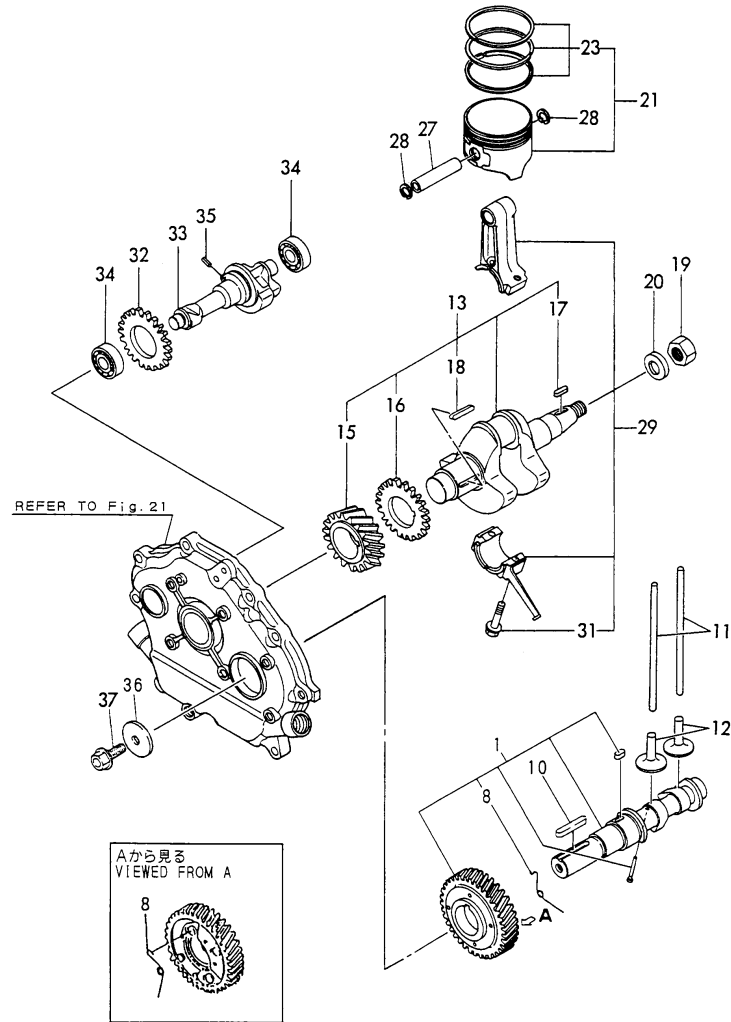
(A)=
(B)=
(C)=GA240SECMY

(D)=
(E)=
(F)=

No.	Lev.	Parts No.	Description	Qty						I	R	
				(A)	(B)	(C)	(D)	(E)	(F)			
1	1	160792-04310	BOLT, M6X159				2					
2	1	160793-12550	CLEANER ASSY, AIR				1					
3	2	160820-12300	BAND				1					
4	2	160793-12570	BODY, AIR CLEANER				1					
5	2	160792-12720	ELEMENT				1					
6	2	160820-12770	SUMP, OIL				1					
7	2	160792-12780	PIPE, REINFORCED				1					
8	2	160820-12790	CAP, AIR CLEANER				1					
9	1	160763-12600	GROMMET				1					
10	1	160810-56150	GASKET, CARBURETOR				1					
11	1	26366-060002	NUT, M6				2					
12	1	160890-13210	GASKET, MUFFLER				1					
13	1	160890-13570	BRACKET, MUFFLER				1					
14	1	160890-13610	MUFFLER ASSY				1					
15	2	160890-13540	MUFFLER				1					
16	2	160890-13560	COVER				1					
17	2	114252-13950	BOLT, M6X8				4					
18	1	160890-13660	COVER				1					
19	1	114252-13950	BOLT, M6X8				2					
20	1	26106-080142	BOLT, M8X 14 PLATED				1					
21	1	26366-080002	NUT, M8				2					

Fig.24. CRANKSHAFT, PISTON & CAMSHAFT

Y00D6340



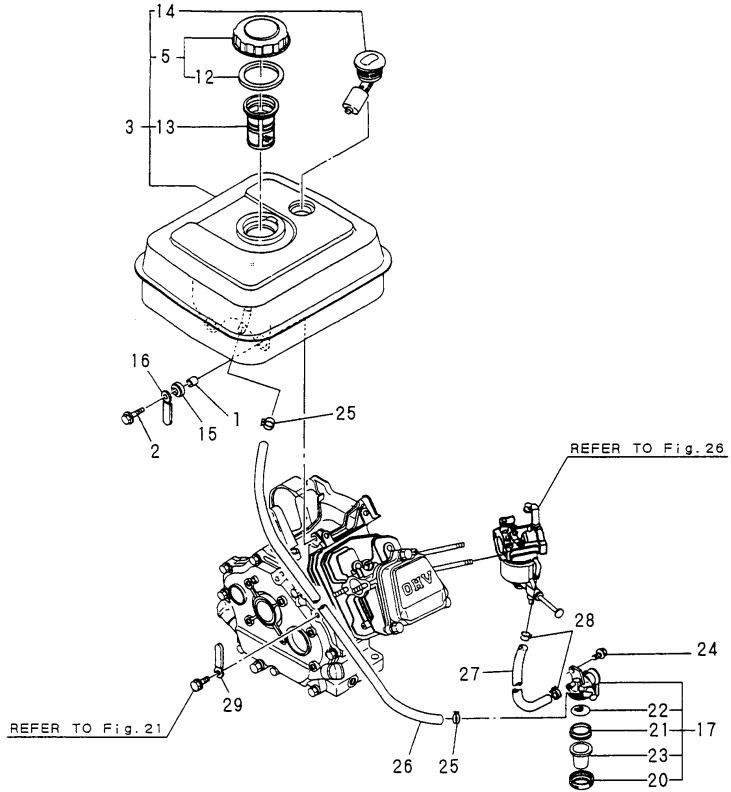
(A)=
(B)=
(C)=GA240SECMY

(D)=
(E)=
(F)=

No.	Lev.	Parts No.	Description	Qty						I	R
				(A)	(B)	(C)	(D)	(E)	(F)		
1	1	160890-14051	CAMSHAFT ASSY			1					
8	2	160890-14560	SPRING,DECOMPRESSION			1					
10	1	22512-070380	KEY, 7X 38			1					
11	1	114250-14400	ROD, PUSH			2					
12	1	160890-14200	TAPPET			2					
13	1	760790-21700	CRANKSHAFT ASSY			1					
15	2	160890-21200	GEAR, CRANKSHAFT			1					
16	2	160890-21220	GEAR, BALANCER			1					
17	2	22512-040160	KEY, 4X 16			1					
18	2	22512-040300	KEY, 4X 30			1					
19	1	26737-160002	NUT, M16			1					
20	1	22137-160000	WASHER, 16			1					
21	1	160798-22010	PISTON ASSY			1					
23	2	760798-22500	RING SET, PISTON			1					
27	1	160890-22300	PIN, PISTON			1					
28	1	22252-000190	RING, 19			2					
29	1	760790-23700	ROD ASSY, CONNECTING			1					
31	2	160810-23201	BOLT, CONNECTING ROD			2					
32	1	160890-21220	GEAR, BALANCER			1					
33	1	160790-28010	SHAFT, BALANCER			1					
34	1	160903-28020	BEARING, 6202C3E			2					
35	1	22351-040008	PIN, SPRING 4.0X 8			1					
36	1	160310-14550	WASHER			1					
37	1	26106-080202	BOLT, M8X 20 PLATED			1					

Fig.25. FUEL TANK & FUEL PIPE

Y0006340

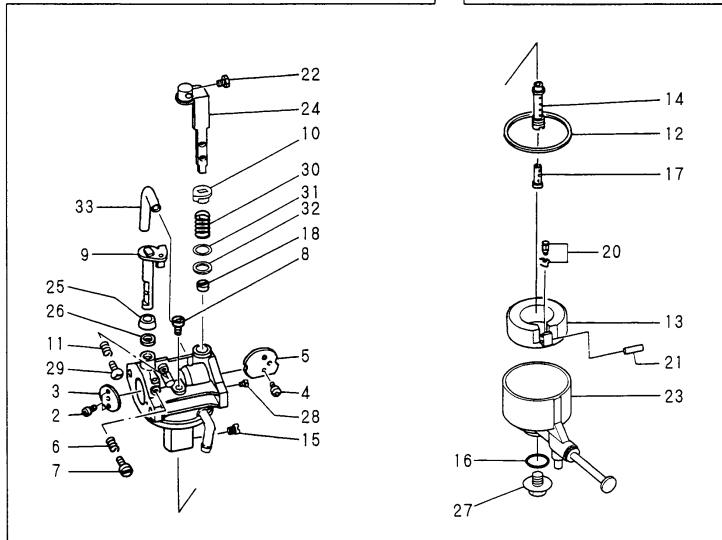
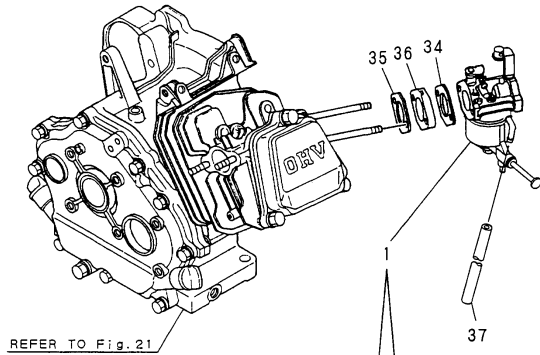


(A)=
(B)=
(C)=GA240SECMY
(D)=
(E)=
(F)=

No.	Lev.	Parts No.	Description	Qty						I	R
				(A)	(B)	(C)	(D)	(E)	(F)		
1	1	114250-45310	COLLAR			4					
2	1	114370-45350	BOLT			4					
3	1	760890-55730	TANK ASSY, FUEL			1					
5	2	160710-55061	CAP ASSY			1					
12	2	160393-55050	GASKET			1					
13	1	160610-55100	FILTER, FUEL			1					
14	1	160762-55150	GAUGE, FUEL			1					
15	1	160690-55461	DAMPER, FUEL TANK			4					
16	1	160710-78710	CLAMP, CORD			1					
17	1	160692-55330	COCK ASSY, FUEL			1					
20	2	160710-55360	RING			1					
21	2	160710-55370	GASKET			1					
22	2	160710-55382	FILTER			1					
23	2	160903-55390	CUP, FUEL COCK L57			1					
24	1	26106-060102	BOLT, M6X 10 PLATED			1					
25	1	106990-44660	CLIP, HOSE 12.5			2					
26	1	160920-59350	PIPE, FUEL			1					
27	1	160792-59360	PIPE, FUEL			1					
28	1	124060-77680	CLIP, HOSE 10			2					
29	1	160820-78710	CLAMP, CORD			1					

Fig.26. CARBURETOR

Y00D6340



(A)=
(B)=
(C)=GA240SECMY

(D)=
(E)=
(F)=

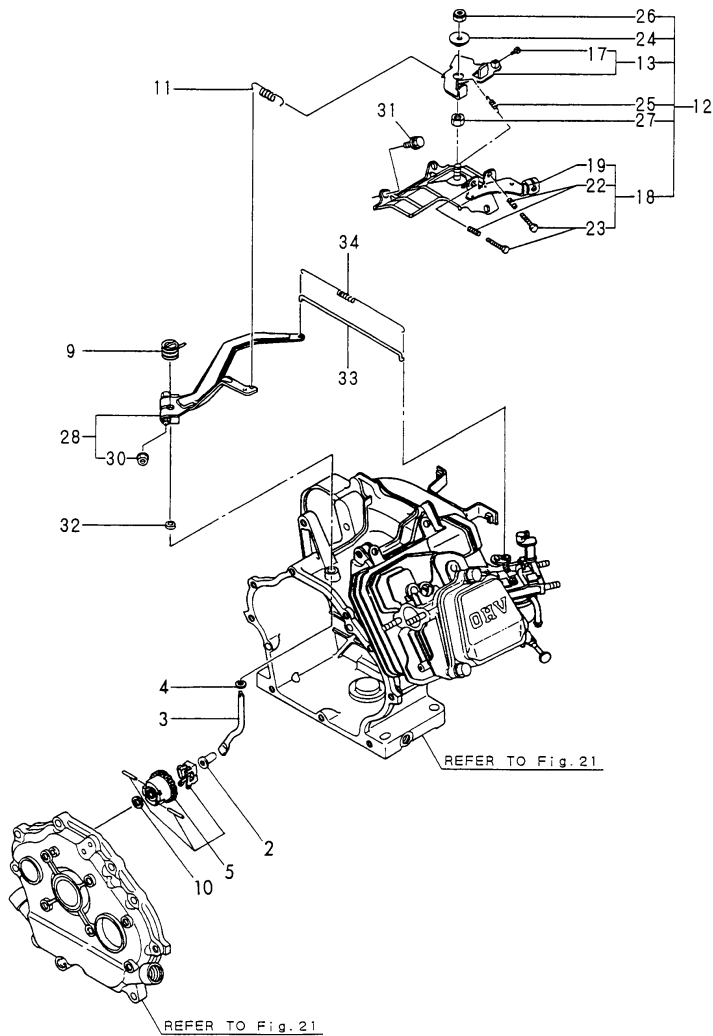
No.	Lev.	Parts No.	Description	Q'ty						I	R	
				(A)	(B)	(C)	(D)	(E)	(F)			
1	1	160798-56170	CARBURETOR ASSY				1					
2	2	160120-56670	SCREW				2					
3	2	160880-56761	VALVE, THROTTLE				1					
4	2	160690-56570	SCREW				2					
5	2	160792-56520	VALVE, CHOKE				1					
6	2	181230-56380	SPRING				1					
7	2	160667-56750	ADJUSTER				1					
8	2	160460-56940	JET, PILOT				1					
9	2	160792-56530	SHAFT, THROTTLE				1					
10	2	160792-56680	RING				1					
11	2	181230-56380	SPRING				1					
12	2	160210-56610	WASHER				1					
13	2	160890-56620	FLOAT ASSY				1					
14	2	160798-56700	NOZZLE, MAIN				1					
15	2	160798-56710	JET, ENRICHMENT				1					
16	2	160893-56660	O-RING				1					
17	2	160790-56571	NOZZLE				1					
18	2	160810-56580	RING, CHOKE SHAFT				1					
20	2	160792-56670	VALVE ASSY, NEEDLE				1					1
21	2	160610-56630	PIN, FLOAT				1					
22	2	160692-56500	BOLT				1					
23	2	160893-56430	BODY, FLOAT				1					
24	2	160790-56600	LEVER, CHOKE				1					
25	2	160702-56720	RING				1					
26	2	160640-56850	SEAL				1					
27	2	160891-56750	BOLT				1					
28	2	160792-56610	JET, PILOT				1					
29	2	160692-56710	SCREW				1					
30	2	160792-56690	SPRING				1					
31	2	160792-56700	SEAL				1					
32	2	160792-56710	CAP				1					
33	2	160692-56770	HOSE				1					
34	1	160790-56150	GASKET, CARBURETOR				1					
35	1	160810-56150	GASKET, CARBURETOR				1					
36	1	160790-56160	INSULATOR				1					
37	1	160730-56880	HOSE, D5/3				1					

Remarks

(1)REPAIR PARTS.

Fig.27. GOVERNOR & CONTROL DEVICE

Y00D6340



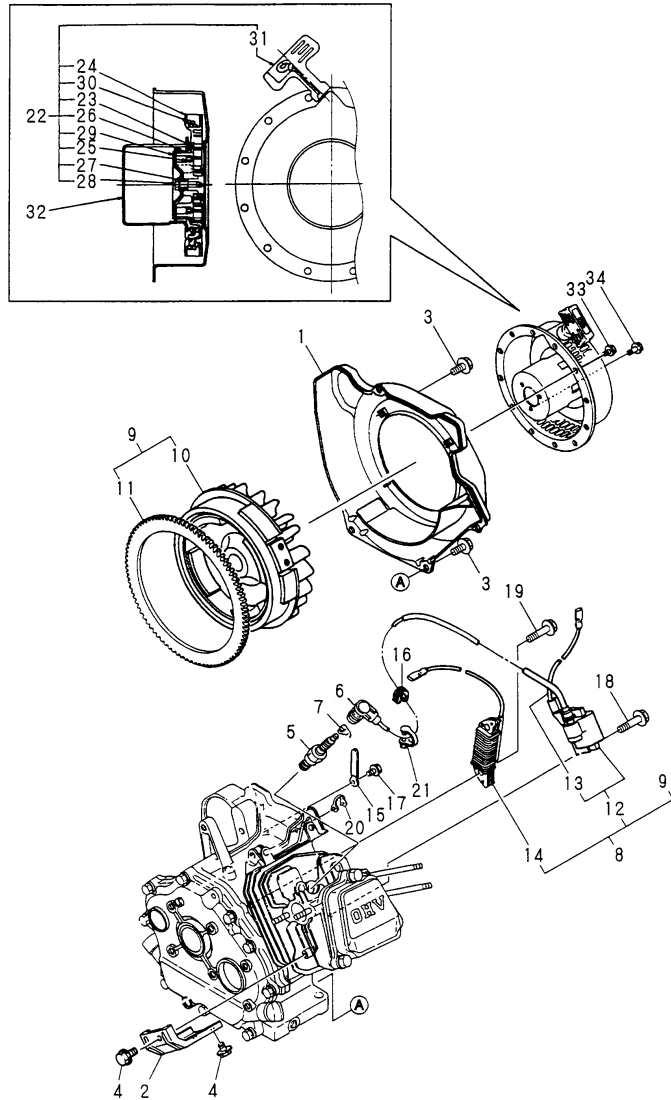
(A)=
(B)=
(C)=GA240SECMY

(D)=
(E)=
(F)=

No.	Lev.	Parts No.	Description	Qty						I	R
				(A)	(B)	(C)	(D)	(E)	(F)		
2	1	160690-61301	SPINDLE						1		
3	1	160690-61311	SHAFT						1		
4	1	160690-61450	WASHER						1		
5	1	160690-61600	GEAR ASSY, GOVERNOR						1		
9	1	160890-66050	SPRING, RETURN						1		
10	1	160120-76940	WASHER						1		
11	1	160790-66010	SPRING, GOVERNOR						1		
12	1	160991-66111	CONTROLLER ASSY						1		
13	2	160692-66051	LEVER ASSY, CONTROL						1		
17	3	26117-040088	BOLT M 4X 8 PLATED						1		
18	2	160890-66110	BASE ASSY						1		
19	3	160890-66142	BASE ASSY						1		
22	3	160520-66291	SPRING						2		
23	3	26117-040257	BOLT, M4X 25 PLATED						2		
24	2	160670-66350	COLLAR						1		
25	2	160664-66220	SPRING, RETURN						1		
26	2	26347-060002	NUT, M6						1		
27	2	26757-060002	NUT, LOCK M6						1		
28	1	160890-66190	LEVER ASSY, GOVERNOR						1		
30	2	26366-060002	NUT, M6						1		
31	1	26476-060142	SCREW, TAPPING M6X14						3		
32	1	114770-61600	SEAL, OIL						1		
33	1	160690-66200	LINK, THROTTLE						1		
34	1	160690-66210	SPRING, TENSION						1		

Fig.28. FLY. MAGNETO & STARTING DEVICE

Y0006340



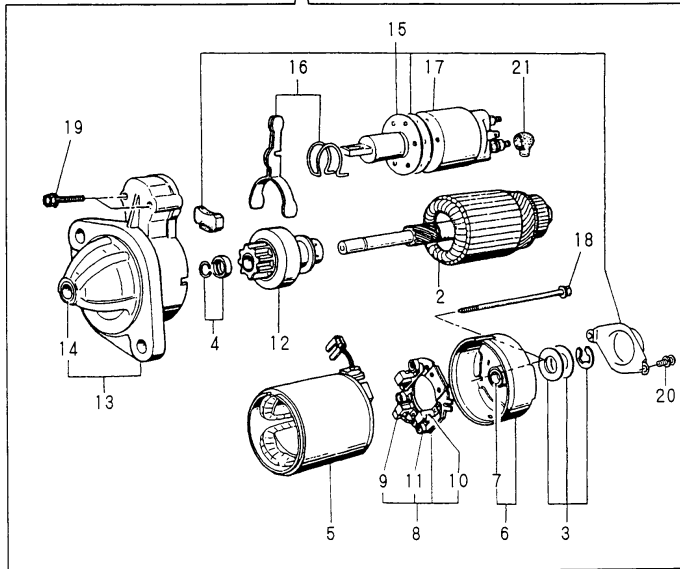
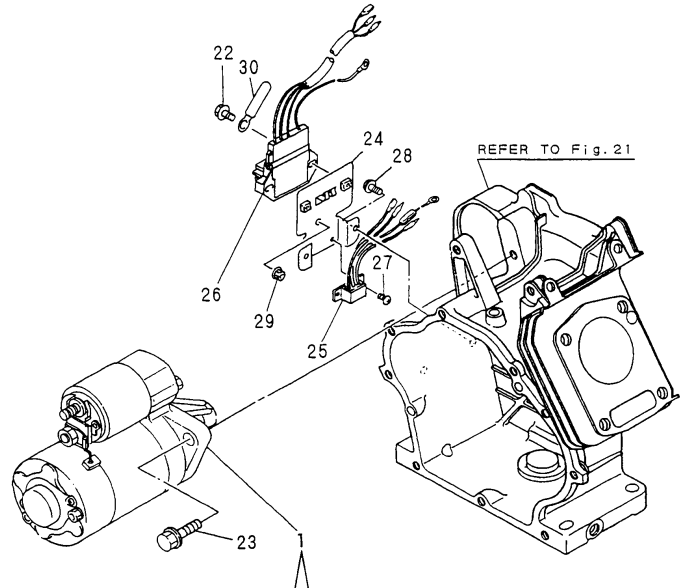
(A)=
(B)=
(C)=GA240SECMY

(D)=
(E)=
(F)=

No.	Lev.	Parts No.	Description	Qty						I	R
				(A)	(B)	(C)	(D)	(E)	(F)		
1	1	160790-45130	CASE, COOLING FAN			1					
2	1	160890-45200	COVER, HEAD			1					
3	1	26476-060142	SCREW, TAPPING M6X14			4					
4	1	26476-060142	SCREW, TAPPING M6X14			2					
5	1	160690-78020	PLUG, SPARK			1					
6	1	160700-78040	CAP, PLUG			1					
7	1	160700-78050	TERMINAL, PLUG			1					
8	1	160791-78062	MAGNETIC ASSY			1					
9	2	160791-78750	ROTOR ASSY			1					
10	3	160791-78510	ROTOR			1					
11	3	160891-78170	GEAR, RING			1					
12	2	160791-78522	COIL, IGNITION			1					
12-1	2	160998-78400	IGNITER			1					N
			(C="2010.01)								
13	3	160690-78230	WIRE			1					
14	2	160791-78650	COIL, CHARGE			1					
15	1	160710-78710	CLAMP, CORD			2					
16	1	160700-78720	GROMMET			1					
17	1	26476-060142	SCREW, TAPPING M6X14			2					
18	1	26476-060252	SCREW, TAPPING M6X25			2					
19	1	26476-060252	SCREW, TAPPING M6X25			2					
20	1	29610-000650	CLAMP, SPEED 065			1					
21	1	29610-000950	CLAMP, SPEED 095			1					
22	1	160890-76250	STARTER ASSY, RECOIL			1					
23	2	160890-76510	SPRING, SPIRAL			1					
24	2	160890-76520	REEL			1					
25	2	160890-76530	SPRING, DOG			1					
26	2	160890-76540	DOG			1					
27	2	160890-76550	SPRING, BRAKE			1					
28	2	160641-76570	SCREW			1					
29	2	160890-76570	RETAINER			1					
30	2	160890-76580	ROPE, STARTER			1					
31	2	160260-76620	KNOB, STARTER			1					
32	1	160790-76590	PULLEY, STARTER			1					
33	1	26106-060082	BOLT, M6X 8 PLATED			4					
34	1	26106-060122	BOLT, M6X 12 PLATED			3					

Fig.29. STARTING MOTOR

Y0006340



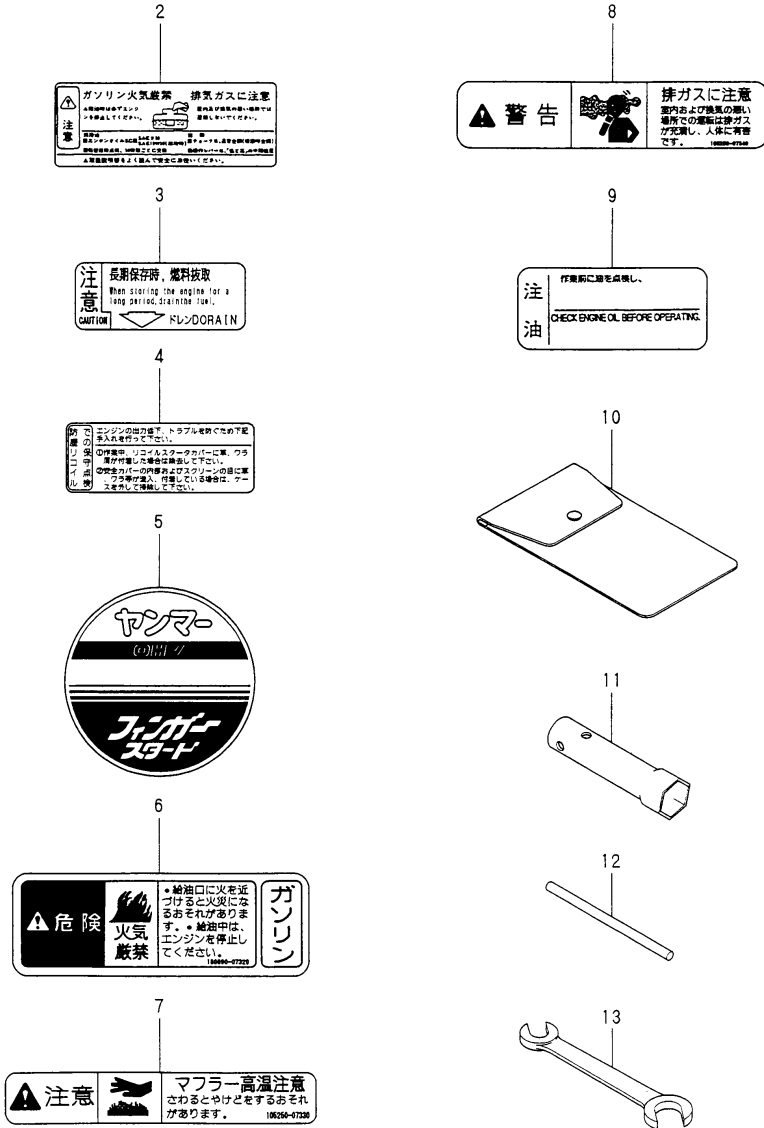
(A)=
(B)=
(C)=GA240SECMY

(D)=
(E)=
(F)=

No.	Lev.	Parts No.	Description	Qty						I	R
				(A)	(B)	(C)	(D)	(E)	(F)		
1	1	160891-77020	STARTER ASSY			1					
2	2	114371-77110	ARMATURE			1					
3	2	X21148110	WASHER SET, THRUST			1					
4	2	X21147155	STOPPER SET, PINION			1					
5	2	114371-77130	COIL ASSY, FIELD			1					
6	2	114371-77140	COVER ASSY, REAR			1					
7	3	X21145352	METAL			1					
8	2	114371-77160	HOLDER ASSY, BRUSH			1					
9	3	114371-79040	BRUSH			2					
10	3	114371-79050	BRUSH			1					
11	3	114371-79060	SPRING			4					
12	2	160891-77750	PINION ASSY			1					
13	2	160891-77760	HOUSING ASSY, GEARS			1					
14	3	X21145352	METAL			1					
15	2	114371-77170	COVER ASSY, DUST			1					
16	2	114371-77180	LEVER KIT, SHIFT			1					
17	2	124298-77020	SWITCH, MAGNETIC			1					
18	2	124195-77770	BOLT, THROUGH			2					
19	2	114371-79070	BOLT			2					
20	2	X21142835	SCREW SET			1					
21	2	X21142742	COVER (A), RUBBER			1					
22	1	26106-060202	BOLT, M6X 20 PLATED			2					
23	1	26106-100302	BOLT, M10X 30 PLATED			2					
24	1	160891-77310	BRACKET, ELECTRIC			1					
25	1	160891-77490	HARNES, WIRE			1					
26	1	160715-77522	REGULATOR, RS2727			1					
27	1	26023-040102	SCREW, M4X10			2					
28	1	26106-080142	BOLT, M8X 14 PLATED			2					
29	1	26366-060002	NUT, M6			1					
30	1	29610-000650	CLAMP, SPEED 065			1					

Fig.30. LABEL & TOOL

Y00D6340



(A)=
(B)=
(C)=GA240SECMY

(D)=
(E)=
(F)=

No.	Lev.	Parts No.	Description	Qty						I	R
				(A)	(B)	(C)	(D)	(E)	(F)		
2	1	160692-07250	LABEL, CAUTION			1					
3	1	160520-07272	LABEL, DRAIN			1					
4	1	160830-07300	LABEL			1					
5	1	160798-07310	LABEL, FINGER START			1					
6	1	160690-07320	LABEL, NO FIRE			1					
7	1	105250-07330	LABEL			1					
8	1	105250-07340	LABEL, EXH. GAS CAUTN			1					
9	1	160692-07370	LABEL, AIR CLEANER			1					
10	1	160110-92610	BAG, TOOL			1					
11	1	160120-92700	WRENCH, 21 L86			1					
12	1	160110-92710	HANDLE, WRENCH			1					
13	1	28110-100120	SPANNER, 10X12			1					

Parts No. Index

Parts No.	Fig. No.	Ref. No.
104200-59170	1	8
		15
	11	5
		17
105250-07330	21	6
		16
	10	12
105250-07340	20	5
	30	7
	10	11
106990-44660	20	6
	30	8
	5	22
	15	18
114250-14400	25	25
	4	11
	14	11
114250-45310	24	11
	5	1
	15	1
114252-13950	25	1
	3	18
	13	19
		22
114252-13960	23	17
		19
	13	15
114270-01600	1	4
	11	6
	21	4
114370-45350	5	21
	15	17
	25	2
114371-77110	19	2
	29	2
114371-77130	19	5
	29	5
114371-77140	19	6
	29	6
114371-77160	19	8
	29	8
114371-77170	19	15
	29	15
114371-77180	19	16
	29	16
114371-79040	19	9
	29	9
114371-79050	19	11
	29	10
114371-79060	19	10

Parts No.	Fig. No.	Ref. No.
114371-79060	29	11
	19	19
114371-79070	29	19
		34
	7	34
114770-61600	17	35
	27	32
	9	21
	5	26
121520-77710	15	21
	25	28
	19	18
124060-77680	29	18
	19	17
124195-77770	29	17
	11	7
		13
124298-77020	21	7
		12
160110-02220	10	1
	20	9
	30	10
160110-92610	10	3
	20	11
	30	12
160110-92710	10	3
	20	11
160120-13580	30	12
	13	14
160120-56670	16	2
	26	2
160120-76940	7	9
	17	10
160120-92700	27	10
	10	2
	20	10
160210-56610	30	11
	16	12
	26	12
160260-76620	18	31
	28	31
	4	30
160310-14550	14	12
	24	36
	3	16
160321-13770	8	40
	9	1
160341-01950	5	11
	15	6
160393-55050	25	12
	16	8
160460-56940	26	8
	4	10
160490-14200	4	10
	6	6
160492-56540	6	6

Parts No.	Fig. No.	Ref. No.
160520-07272	10	8
	20	3
	30	3
160520-66291	7	22
	17	22
	27	22
	4	16
160590-21210	6	30
	6	16
160590-56800	6	14
	6	31
160594-56590	1	7
		14
160594-56650	11	4
		16
160594-56810	21	5
		15
160610-01690	12	20
	22	20
160610-03050	2	2
	4	12
160610-04201	5	12
	15	7
160610-04910	25	13
	3	8
160610-05100	6	33
	6	17
160610-56150	6	21
	6	12
160610-56610	6	12
	16	20
	26	21
160610-56611	6	25
	6	24
160610-56630	6	24
	16	25
160610-56900	26	25
	6	26
160640-56850	26	26
	18	28
160641-76570	28	28
	7	25
160664-66220	17	25
	27	25
160667-56750	6	27
	16	7
160670-66350	26	7
	7	26
160670-66350	17	26
	27	24
160690-02220	1	5
		11
160690-03050	2	21
	10	10
160690-07320	10	10

Parts No.	Fig. No.	Ref. No.
160690-07320	20	4
	30	6
160690-11010	2	3
	2	7
160690-11100	2	8
	2	9
160690-11110	2	9
	2	10
160690-11120	2	11
	2	12
160690-11180	2	12
	12	12
160690-11200	22	12
	2	12
160690-11220	2	12
	2	12
160690-11221	2	12 -1
	12	12 -1
160690-11271	22	12 -1
	2	13
160690-11271	12	13
	22	13
160690-11280	2	14
	12	14
160690-11290	22	14
	2	15
160690-11300	2	17
	2	18
160690-11310	3	2
	3	10
160690-12261	3	11
	3	17
160690-13200	3	1
	3	8
160690-13550	4	1
	4	8
160690-13900	4	15
	4	25
160690-14051	4	20
	5	16
160690-14571	15	16
	25	15
160690-21201	6	34
	16	4
160690-22300	26	4
	7	2
160690-55461	17	2
	27	2
160690-61301	7	3
	17	3
160690-61311	27	3
	7	4
160690-61450	17	4
	27	4
160690-61600	7	5
	17	5
160690-61600	27	5
	7	11
160690-66011	7	11

Parts No. Index

Parts No.	Fig. No.	Ref. No.
160690-66111	7	18
160690-66143	7	19
160690-66180	7	29
160690-66200	7	32
	17	32
	27	33
160690-66210	7	33
	17	33
	27	34
160690-66900	7	17
	17	17
160690-76251	8	9
160690-76511	8	10
160690-76521	8	11
160690-76531	8	13
160690-76540	8	14
160690-76561	8	15
160690-76570	8	21
160690-76591	8	22
160690-76620	8	19
160690-76630	8	18
160690-76801	8	12
160690-76830	8	20
160690-78020	18	5
	28	5
160690-78230	8	26
	18	8
	28	13
160690-78532	8	25
160691-77020	9	2
160691-77310	9	17
160691-77470	9	19
160691-77510	9	20
160691-78170	8	28
160692-04310	3	1
160692-07250	10	7
	20	2
	30	2
160692-07370	10	9
	20	8
	30	9
160692-12520	3	4
160692-12530	3	5
160692-12540	3	6
160692-12550	3	3
160692-45120	8	1
160692-55300	5	14
160692-55330	15	10
	25	17
160692-56500	26	22

Parts No.	Fig. No.	Ref. No.
160692-56560	6	32
160692-56710	6	7
	16	28
	26	29
160692-56770	6	29
	16	27
	26	33
160692-66051	7	13
	17	13
	27	13
160692-66101	7	12
160693-13510	3	13
160693-13540	3	14
160693-13600	3	12
160693-56570	6	19
160697-45900	8	5
160698-01330	2	1
160698-07270	10	6
160698-22010	4	19
160698-56040	6	1
160698-56520	6	2
160698-56530	6	5
160698-56550	6	13
160698-56790	6	22
160698-76580	8	16
160698-78091	8	24
160698-78502	8	29
160698-78511	8	27
160699-45010	8	41
160699-45200	8	3
160700-78040	8	35
	18	13
	28	6
160700-78050	8	36
	18	14
	28	7
160700-78720	8	37
	18	16
	28	16
160702-56720	6	28
	16	24
	26	25
160710-01760	1	16
160710-03190	12	21
	22	21
160710-55061	5	4
	15	4
	25	5
160710-55360	5	16
	15	12

Parts No.	Fig. No.	Ref. No.
160710-55360	25	20
160710-55370	5	17
	15	13
	25	21
160710-55382	5	18
	15	14
	25	22
160710-55390	5	19
160710-78710	5	24
	8	42
	15	24
	18	15
	25	16
	28	15
160715-77522	19	28
	29	26
160725-77380	9	18
160730-56880	16	37
	26	37
160762-55150	5	13
	15	9
	25	14
160763-12600	13	9
	23	9
160769-56620	6	11
160769-56640	6	18
160769-56660	6	20
160790-01330	12	22
160790-07200	20	7
160790-11011	12	2
	22	2
160790-11100	12	7
	22	7
160790-11101	12	7 -1
	22	7 -1
160790-11110	12	8
	8	-1
	22	8
160790-11111	22	8 -1
160790-22011	14	23
160790-28010	14	35
	24	33
160790-45130	18	1
	28	1
160790-56150	16	33
	26	34
160790-56160	16	35
	26	36
160790-56571	26	17
160790-56600	16	23

Parts No.	Fig. No.	Ref. No.
160790-56600	26	24
160790-66010	17	11
	27	11
160790-76590	18	32
	28	32
160791-78062	18	6
	28	8
160791-78510	18	10
	28	10
160791-78522	18	7
	28	12
160791-78650	18	12
	28	14
160791-78750	18	9
	28	9
160792-04310	13	1
	23	1
160792-12720	13	5
	23	5
160792-12780	13	7
	23	7
160792-56031	16	1
160792-56520	16	5
	26	5
160792-56530	16	9
	26	9
160792-56561	16	14
160792-56571	16	15
160792-56610	16	26
	26	28
160792-56670	16	36
	26	20
160792-56680	16	10
	26	10
160792-56690	16	30
	26	30
160792-56700	16	31
	26	31
160792-56710	16	32
	26	32
160792-59360	15	20
	25	27
160793-12550	13	2
	23	2
160793-12570	13	4
	23	4
160793-78010	8	34
160793-78631	8	30
160797-13800	13	21
160797-45230	8	4

Parts No. Index

Parts No.	Fig. No.	Ref. No.
160798-07310	30	5
160798-22010	24	21
160798-56170	26	1
160798-56630	16	29
160798-56700	26	14
160798-56710	26	15
160802-59370	5	25
160810-01740	11	19
	21	18
160810-11180	12	10
	22	10
160810-23201	14	33
	24	31
160810-56150	13	10
	16	34
	23	10
	26	35
160810-56580	6	15
	16	18
	26	18
160810-56670	6	3
160820-03180	2	22
160820-12300	13	3
	23	3
160820-12770	13	6
	23	6
160820-12790	13	8
	23	8
160820-59390	5	23
160820-78710	15	22
	25	29
160830-07300	30	4
160880-56761	16	3
	26	3
160890-01210	12	1
	22	1
160890-01330	22	22
160890-11120	12	9
	22	9
160890-11180	12	10 -1
	22	10 -1
160890-11190	12	10 -2
	22	10 -2
160890-11200	12	11
	22	11
160890-11202	12	11 -1
	22	11 -1
160890-11270	12	13 -1
	22	13 -1
160890-11290	12	15

Parts No.	Fig. No.	Ref. No.
160890-11290	22	15
160890-11300	12	17
	22	17
160890-11310	12	18
	22	18
160890-13210	13	12
	23	12
160890-13540	13	17
	23	15
160890-13560	13	18
	23	16
160890-13570	13	13
	23	13
160890-13610	13	16
	23	14
160890-13660	13	20
	23	18
160890-14051	14	1
	24	1
160890-14200	14	10
	24	12
160890-14560	14	8
	24	8
160890-21200	14	17
	24	15
160890-21220	14	18
		34
	24	16
		32
160890-22300	14	29
	24	27
160890-45200	18	2
	28	2
160890-56620	16	13
	26	13
160890-66050	17	9
	27	9
160890-66110	17	18
	27	18
160890-66142	17	19
	27	19
160890-66190	17	29
	27	28
160890-76250	18	22
	28	22
160890-76510	18	23
	28	23
160890-76520	18	24
	28	24
160890-76530	18	25

Parts No.	Fig. No.	Ref. No.
160890-76530	28	25
160890-76540	18	26
	28	26
160890-76550	18	27
	28	27
160890-76570	18	29
	28	29
160890-76580	18	30
	28	30
160891-56750	16	17
	26	27
160891-77020	19	1
	29	1
160891-77310	19	22
	29	24
160891-77490	19	23
	29	25
160891-77750	19	12
	29	12
160891-77760	19	13
	29	13
160891-78170	18	11
	28	11
160891-78200	9	22
160893-56430	16	22
	26	23
160893-56660	16	16
	26	16
160897-45920	8	6
160897-45930	8	7
160903-28020	11	9
		15
		14
		36
		21
		14
		24
		34
160903-55390	15	15
	25	23
160903-56670	6	4
160920-59350	15	19
	25	26
160991-66111	17	12
	27	12
160998-78400	18	7 -1
	28	12 -1
181230-56380	6	8
		26
	16	6
		11
	26	6
		11
		6
		11

Parts No.	Fig. No.	Ref. No.
22137-160000	14	22
	24	20
22252-000160	4	26
22252-000190	14	30
	24	28
22351-040008	14	37
	24	35
22372-080000	7	10
22512-040120	4	17
22512-040160	4	18
	14	19
	24	17
22512-040300	14	20
	24	18
22512-050300	4	31
22512-070380	14	13
	24	10
24101-062050	1	6
		12
24101-062060	11	8
		12
		14
	21	8
		11
		13
24311-000180	1	18
	11	21
	21	20
26023-040102	9	23
	19	24
	29	27
26106-060082	3	15
	8	23
	18	33
	28	33
26106-060102	5	27
	9	24
		25
	15	23
	25	24
26106-060122	9	26
	18	34
	28	34
26106-060202	2	19
	19	25
	29	22
26106-060302	4	29
26106-060352	2	20
	12	19
	22	19

Parts No. Index

Parts No.	Fig. No.	Ref. No.
26106-080142	3	19
	13	23
	19	26
	23	20
	29	28
26106-080202	4	32
	14	14
	24	37
26106-080252	9	27
26106-080302	11	22
	21	21
26106-100302	19	27
	29	23
26117-040088	6	23
	7	16
	16	21
	17	16
	27	17
	7	23
26117-040257	17	23
		24
	27	23
26117-040357	7	24
26216-080182	2	16
	12	16
	22	16
26226-080182	12	16 -1
	22	16 -1
26347-060002	7	27
	17	27
	27	26
26366-060002	7	31
	13	11
	17	31
	19	29
	23	11
	27	30
	29	29
26366-080002	3	20
	13	24
	23	21
26476-060142	7	35
	8	2
		8
		43
	17	34
	18	3
		4
		18
		31

Parts No.	Fig. No.	Ref. No.
26476-060142	28	3
		4
		17
26476-060252	1	19
	8	32
	18	17
		19
	28	18
	19	
26476-060302	8	31
26657-060002	3	9
26737-160002	14	21
	24	19
26757-060002	7	28
	17	28
	27	27
	10	4
28110-100120	20	12
	30	13
29311-122000	9	28
29610-000650	8	33
		39
		20
29610-000950	18	20
	28	20
	29	30
	8	38
	18	21
	28	21
720380-11570	12	23
	22	23
760690-01501	1	9
760690-21701	4	13
760690-23700	4	27
760690-55702	5	2
760698-22501	4	21
760790-21700	14	15
	24	13
760790-22502	14	25
760790-23700	14	31
	24	29
760791-01561	11	1
760792-01500	11	10
	21	9
760798-01581	21	1
760798-22500	24	23
760890-55730	15	2
	25	3
783732-01560	1	1
X131009601X	9	3

Parts No.	Fig. No.	Ref. No.
X132009202X	9	10
X133004703X	9	4
X133104900X	9	6
X136105701X	9	15
X21142742	29	21
X2114274200	19	21
X21142835	19	20
	29	20
X21145352	19	7
		14
	29	7
		14
X21147155	19	4
	29	4
X21148110	19	3
	29	3
X224023400X	9	5
X224211001X	9	13
X266008300X	9	8
X266008503X	9	7
X366102100X	9	16
X503106201X	9	12
X520003100X	9	9
X8167050951	9	14
X8580151002	9	11

Parts No.	Fig. No.	Ref. No.
-----------	----------	----------