

OCD10-M59100EN

# PREFACE

1. This Parts Catalog is the 1st edition of 3TNE84-TBZ/TBY Diesel Engine for TAKEUCHI IND..

Pub. No. : 000Y00D5910  
Published : December, 1996

2. Model name

Engine model	Vehicle		Vehicle made by
	Products	Model name	
3TNE84-TBZ/TBY	EXCAVATOR	—	TAKEUCHI IND.

## Directions for the Parts Catalog.

1. This Parts Catalog shows both standard and optional parts.
2. Parts may change without prior notice.
3. The following is an example of the Parts Catalog format.

REF.	LEV.	PARTS NO.	DESCRIPTION	Q'TY						I	R
				(A)	(B)	(C)	(D)	(E)	(F)		
1	1	729595-51390	FUEL INJECTION PUMP	1	1	1	1	1			1
1-1	1	729595-51391	FUEL INJECTION PUMP	1	1	1	1	1		N	1
		(A=E00185) (B=E00200)									
3	2	26022-060162	SCREW M 6X 16	9	9	9	9	9			
3-1	2	26022-060162	SCREW M 6X 16	4	4	4	4	4		K	
		(A=E00156) (B=E00156) (C=E00156) (D=E00156) (E=E00156)									
4	2	129470-51040	CAMSHAFT	1	1	1	1	1			
5	2	122710-51050	BEARING, ROLLER	2	2	2	2	2			
6	2	129470-51060	RETAINER	1	1	1	1	1			

Remarks
(1) BOOST COMPEMSATOR TYPE. OPTIONAL PART, TO E00155,(4JH-DT, 4JH-DTZ

### ① Ref. No.

The Ref. No. listed may not be in accordance with the illustration Ref. No.

(Ex.) Illustration No.

List Ref No.

1

1

(Before change)

1-1

(After change)

For interchangeable symbols N, R and K, illustrations for new parts may be abbreviated.

### ② Lev. (Level)

Level indication

The numbers below indicate the level of relativity towards the main part.

1 ----- Main parts (Assembly parts)

2 ----- Sub component included in " 1 ".

3 ----- Sub component included in " 2 ".

Note) Parts that are not for sale are partially illustrated but not listed.

### ③ Interchangeability Symbol

When a part change takes place, one of the following interchangeability symbols is indicated beside the part.

Symbol	Interchangeability	Contents note
N	Old $\begin{matrix} \leftarrow \text{Yes} \\ \text{No} \rightarrow \end{matrix}$ New	New Part is interchangeable for Old Part but Old Part is not interchangeable for New Part.
Q	Old $\begin{matrix} \leftarrow \text{No} \\ \text{Yes} \rightarrow \end{matrix}$ New	New Part is not interchangeable for Old Part but Old Part is interchangeable for New Part.
R	Old $\begin{matrix} \leftarrow \text{Yes} \\ \text{Yes} \rightarrow \end{matrix}$ New	New/ Old Parts are both interchangeable.
S	Old $\begin{matrix} \leftarrow \text{No} \\ \text{No} \rightarrow \end{matrix}$ New	New/ Old Parts are both not interchangeable.
W		Part newly added.
Z		Part discontinued.
F		Not interchangeable by a single part but interchangeable together with related parts.
K		Changes only for used parts quantities.

### ④ Effective Machine No.

When a part changes, the effective Machine No. will be indicated in the (A)-(F) column.

Product Symbol	Product No.	Product Symbol	Product No.
C	Clutch No. Compressor No.	F	Machine No. (Agricultural Equip.)
D	Drive No.	M	Machine No.
E	Engine No.		

Note 1) A date may follow the symbol. (Ex.) 1996.01

Note 2) "XXXXX" and "ZZZZZ" are for parts that could not be predicted or for engine models that could not be identified.

Note 3) (A=E00185) is the E (Engine Serial Number) for the column (A) model (in this case 4JH-DT) after the parts design change.

### ⑤ Remarks

Figures or alphabets (symbols) are entered in the remarks column.

The comments (remarks) on parts that are indicated at the bottom of the illustration are the same symbols as those stated above.

# Contents

Fig. No.    Fig. Name

3TNE84-TBY, 3TNE84-TBZ

1. CYLINDER BLOCK
2. GEAR HOUSING
3. FLYWHEEL HOUSING & OIL SUMP
4. CYLINDER HEAD & BONNET
5. SUCTION MANIFOLD & AIR CLEANER
6. EXHAUST MANIFOLD & SILENCER
7. CAMSHAFT & DRIVING GEAR
8. CRANKSHAFT & PISTON
9. LUB. OIL SYSTEM
10. COOLING WATER SYSTEM
11. FUEL INJECTION PUMP
12. GOVERNOR
13. GOVERNOR
14. FUEL INJECTION VALVE
15. FUEL LINE
16. ENGINE STOP DEVICE
17. STARTING MOTOR
18. GENERATOR
19. GASKET SET

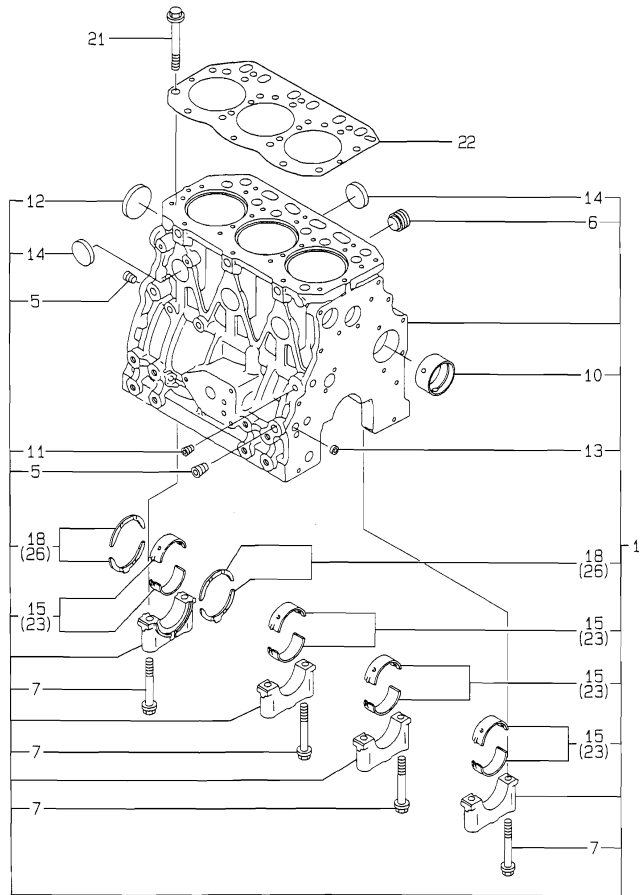
Fig. No.    Fig. Name

# Fig.1. CYLINDER BLOCK

(A)=3TNE84-TBZ  
 (B)=3TNE84-TBY  
 (C)=

(D)=  
 (E)=  
 (F)=

Y00D5910  
 3TNE84-TBZ/TBY



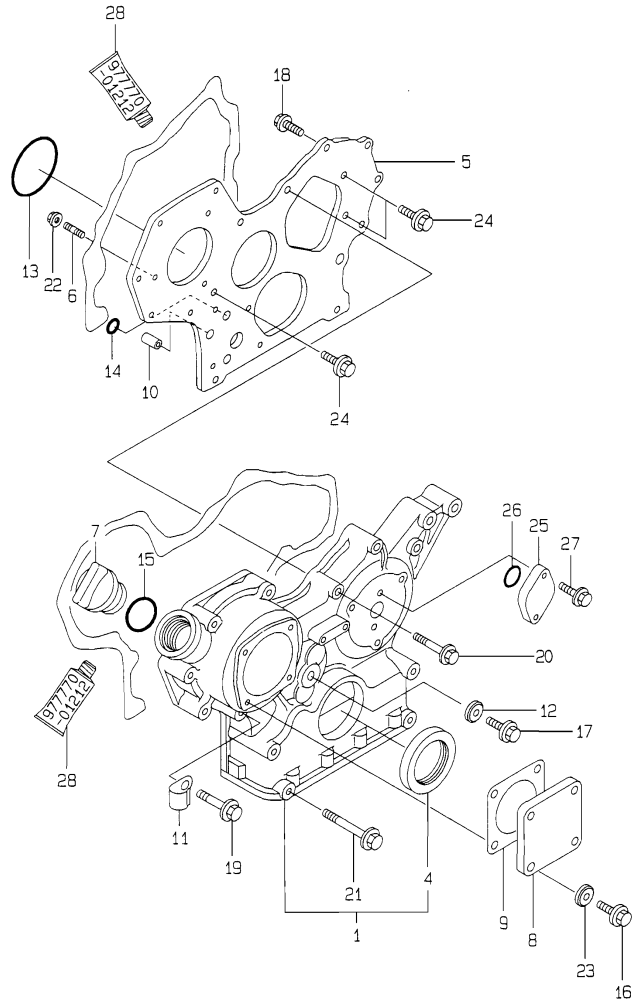
No.	Lev.	Parts No.	Description	Q'ty						I	R
				(A)	(B)	(C)	(D)	(E)	(F)		
1	1	729002-01560	BLOCK ASSY, CYLINDER	1	1						
5	2	124160-01910	PLUG, PT1/4	3	3						
6	2	171051-01921	PLUG, NPTF1	1	1						
7	2	129150-02020	BOLT, METAL CAP	8	8						
10	2	129795-02411	BUSH, CAMSHAFT	1	1						
11	2	23871-010000	PLUG, R01	1	1						
12	2	27231-500000	PLUG 50	1	1						
13	2	27241-120000	PLUG, 12	2	2						
14	2	27241-300000	PLUG 30	6	6						
15	2	129001-02800	BEARING, MAIN	4	4						
18	2	129150-02930	BEARING, THRUST	2	2						
21	1	129150-01200	BOLT, HEAD	14	14						
22	1	129002-01331	GASKET, HEAD	1	1						
23	1	129150-02870	BEARING, 0.25 US	4	4						1
26	1	129150-02940	BEARING, THRUST 0.25	2	2						2

Remarks

- (1) UNDER-SIZE(U.S=0.25)PART.
- (2) OVER-SIZE(O.S=0.25)PART.

# Fig.2. GEAR HOUSING

Y00D5910  
3TNE84-TBZ/TBY



(A)=3TNE84-TBZ  
(B)=3TNE84-TBY  
(C)=

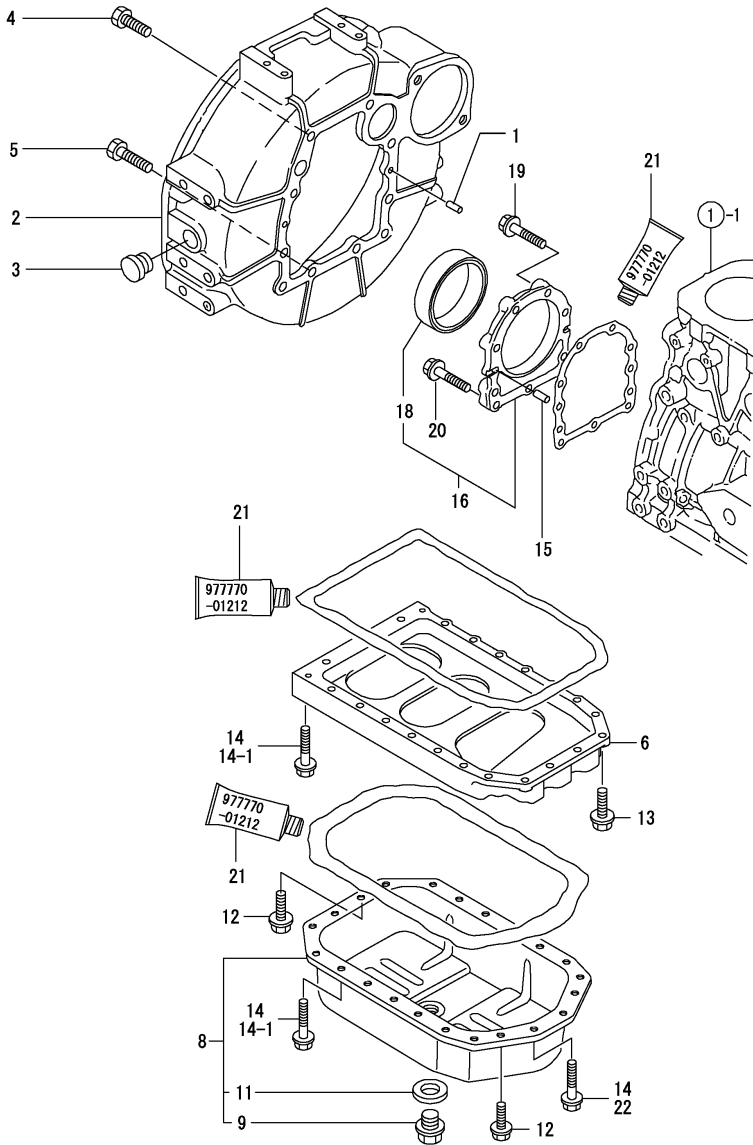
(D)=  
(E)=  
(F)=

No.	Lev.	Parts No.	Description	Q'ty						I	R
				(A)	(B)	(C)	(D)	(E)	(F)		
1	1	719810-01500	CASE ASSY, GEAR	1	1						
4	2	129795-01800	SEAL, OIL	1	1						
5	1	129400-01520	FLANGE, GEAR CASE	1	1						
6	1	121450-01560	STUD, M8X22	3	3						
7	1	124160-01751	COVER, FILLER	1	1						
8	1	124240-01871	COVER	1	1						
9	1	124240-01883	GASKET	1	1						
10	1	129795-01950	PIPE, KNOCK L=18	2	2						
11	1	129150-03100	RETAINER, PIPE	1	1						
12	1	22190-080002	WASHER, SEAL 6	1	1						
13	1	121850-51960	O-RING	1	1						
14	1	24311-000160	O-RING, 1AP16.0	2	2						
15	1	24311-000320	O-RING, 1AP32.0	1	1						
16	1	26106-080122	BOLT, M8X 12 PLATED	4	4						
17	1	26106-080162	BOLT, M8X 16 PLATED	1	1						
18	1	26106-080202	BOLT, M8X 20 PLATED	2	2						
19	1	26106-080452	BOLT, M8X 45 PLATED	6	6						
20	1	26106-080552	BOLT, M8X 55 PLATED	3	3						
21	1	26106-080852	BOLT, M8X 85 PLATED	4	4						
22	1	26366-080002	NUT, M8	3	3						
23	1	22190-080002	WASHER, SEAL 6	4	4						
24	1	26106-080162	BOLT, M8X 16 PLATED	3	3						
25	1	121023-01550	COVER	1	1						
26	1	24341-000240	O-RING, 1AS24.0	1	1						
27	1	26106-060122	BOLT, M6X 12 PLATED	2	2						
28	1	97770-01212	GASKET, LIQUID	1	1						1

Remarks

(1) OPTIONAL PART.

Fig.3. FLYWHEEL HOUSING & OIL SUMP



(A)=3TNE84-TBZ  
(B)=3TNE84-TBY  
(C)=

(D)=  
(E)=  
(F)=

No.	Lev.	Parts No.	Description	Q'ty						I	R
				(A)	(B)	(C)	(D)	(E)	(F)		
1	1	129100-01580	PIN, M8X16	2	2						
2	1	171301-01600	HOUSING, FLYWHEEL	1	1						
3	1	119620-01750	CAP	1	1						
4	1	26206-100252	BOLT, M10X 25 PLATED	6	6						
5	1	26206-100302	BOLT, M10X 30 PLATED	4	4						
6	1	129100-01730	SPACER, OIL SUMP	1	1						
8	1	729102-01540	SUMP ASSY, OIL	1	1						
9	2	119640-01640	PLUG, DRAIN M22	1	1						
11	2	22190-220002	WASHER, SEAL 22	1	1						
12	1	26106-080162	BOLT, M8X 16 PLATED	4	4						
13	1	26106-080252	BOLT, M8X 25 PLATED	2	2						
14	1	26106-080452	BOLT, M8X 45 PLATED	20	20						
14-1	1	26106-080452	BOLT, M8X 45 PLATED	16	16						K
(A=FROM 1ST) (B=FROM 1ST)											
15	1	129100-01580	PIN, M8X16	2	2						
16	1	129100-01640	CASE ASSY, OIL SEAL	1	1						
18	2	129795-01780	SEAL, OIL	1	1						
19	1	129486-01670	BOLT, M8X30	6	6						
20	1	26106-080352	BOLT, M8X 35 PLATED	3	3						
21	1	977770-01212	GASKET, LIQUID	1	1						1
22	1	26106-080502	BOLT, M8X 50 PLATED	4	4						W
(A=FROM 1ST) (B=FROM 1ST)											

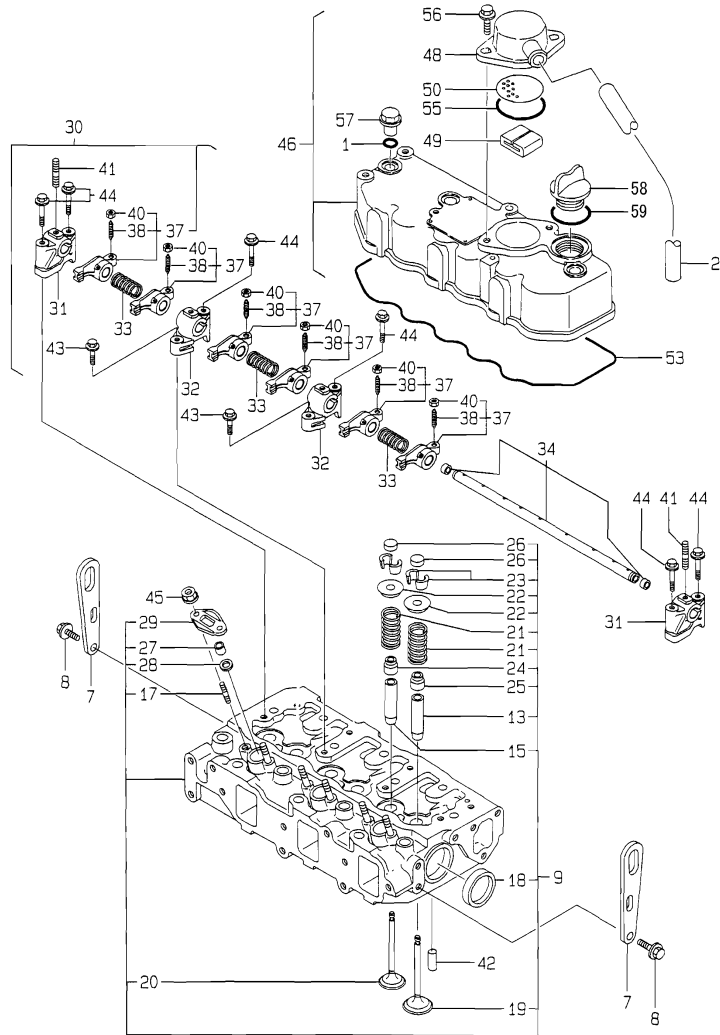
Remarks  
(1) OPTIONAL PART.

Fig.4. CYLINDER HEAD & BONNET

(A)=3TNE84-TBZ  
 (B)=3TNE84-TBY  
 (C)=

(D)=  
 (E)=  
 (F)=

Y00D5910  
 3TNE84-TBZ/TBY



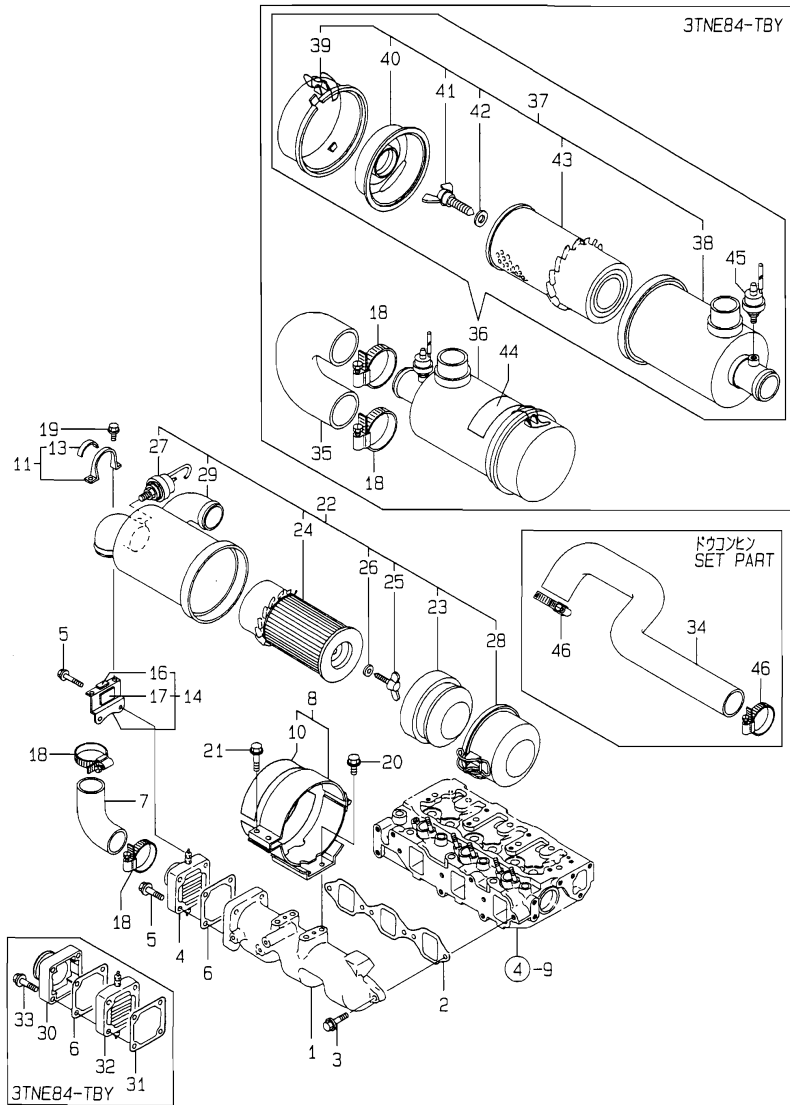
No.	Lev.	Parts No.	Description	Q'ty						I	R
				(A)	(B)	(C)	(D)	(E)	(F)		
1	1	24311-000120	O-RING, 1AP12.0	3	3						
2	1	23065-160800	PIPE, 16X 800	1	1						
7	1	124736-07900	LIFTER	2	2						
8	1	26106-080142	BOLT, M8X 14 PLATED	4	4						
9	1	129001-11700	HEAD ASSY, CYLINDER	1	1						
13	2	120130-11860	GUIDE, VALVE	3	3						1
15	2	129150-11810	GUIDE, VALVE	3	3						1
17	2	26216-060202	STUD, M6X 20	6	6						
18	2	27241-400000	PLUG, 40	2	2						
19	2	129100-11100	VALVE, INTAKE	3	3						
20	2	129100-11110	VALVE, EXHAUST	3	3						
21	2	129795-11120	SPRING, VALVE	6	6						
22	2	129795-11180	RETAINER, SPRING	6	6						
23	2	27310-080001	COTTER, 8	6	6						
24	2	121400-11340	SEAL, VALVE STEM	3	3						
25	2	124460-11340	SEAL, VALVE STEM	3	3						
26	2	129150-11370	CAP, VALVE	6	6						
27	2	119625-11871	PROTECTOR, NOZZLE	3	3						
28	2	119625-11880	SEAT, NOZZLE	3	3						
29	2	119625-11900	RETAINER, NOZZLE	3	3						
30A	1	129155-11241	SHAFT ASSY, ROCKER	1							
30B	1	129100-11240	SHAFT ASSY, ROCKER		1						
31	2	129155-11260	SUPPORT, ROCKER ARM	2	2						
32	2	129155-11270	SUPPORT, ROCKER ARM	2	2						
33	2	129150-11280	SPRING	3	3						
34	2	129150-11290	SHAFT, ROCKER ARM	1	1						
37A	2	729402-11650	ARM ASSY, ROCKER	6							
37B	2	129100-11650	ARM, ROCKER		6						
38	3	129150-11230	SCREW, VALVE ADJUST	6	6						
40	3	129150-11750	NUT, M8	6	6						
41	2	26226-080182	STUD, M8X 18	3	3						
42	1	22351-060012	PIN, SPRING 6.0X12	2	2						
43	1	26106-080252	BOLT, M8X 25 PLATED	2	2						
44	1	26106-080502	BOLT, M8X 50 PLATED	6	6						
45	1	26366-060002	NUT, M6	6	6						
46	1	129100-11350	BONNET ASSY, HEAD	1	1						
48	2	129150-03020	COVER, BREATHER	1	1						
49	2	129150-03070	BAFFLE, BREATHER	1	1						
50	2	129150-03080	PLATE, BAFFLE	1	1						
53	2	129150-11310	GASKET, BONNET	1	1						
55	2	24341-000500	O-RING, 1AS50.0	1	1						
56	2	26106-080162	BOLT, M8X 16 PLATED	2	2						
57	1	124160-11360	KNOB	3	3						
58	1	124160-01751	COVER, FILLER	1	1						
59	1	24311-000320	O-RING, 1AP32.0	1	1						

Remarks  
 (1) REPAIR PART.



Fig.5. SUCTION MANIFOLD & AIR CLEANER

Y00D5910  
3TNE84-TBZ/TBY



(A)=3TNE84-TBZ  
(B)=3TNE84-TBY  
(C)=

(D)=  
(E)=  
(F)=

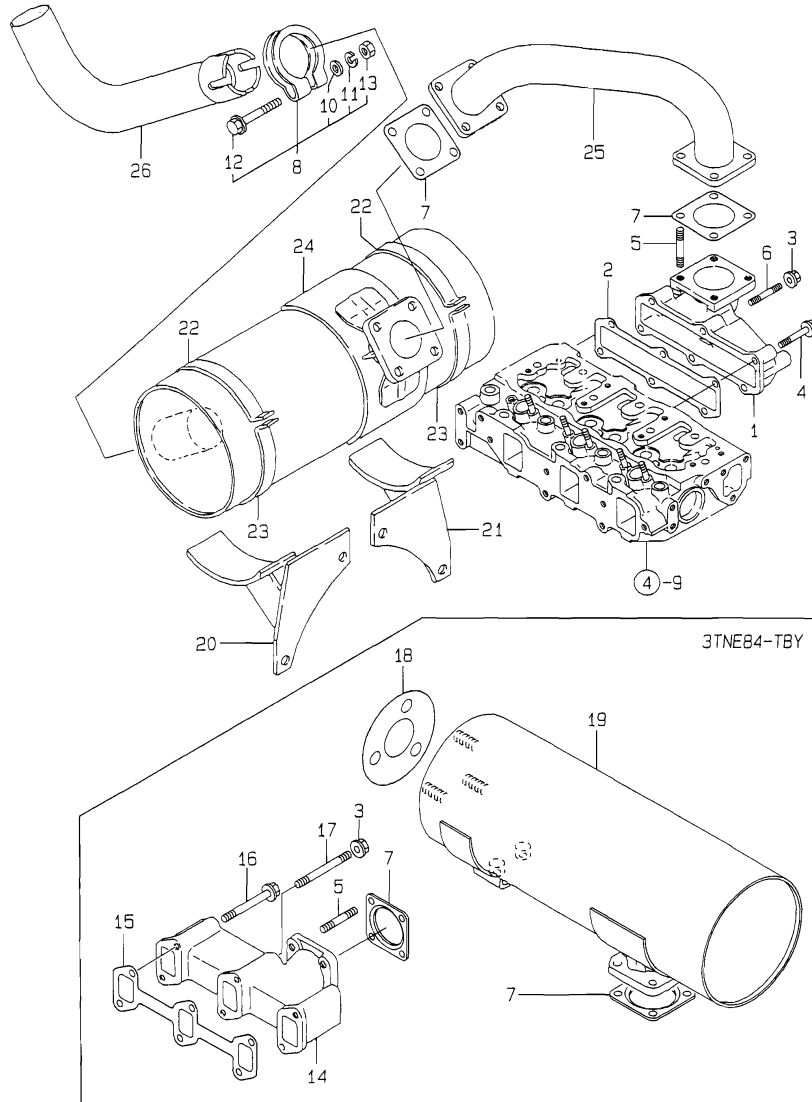
No.	Lev.	Parts No.	Description	Q'ty						I	R
				(A)	(B)	(C)	(D)	(E)	(F)		
1	1	129122-12100	MANIFOLD, AIR INTAKE	1	1						
2	1	129150-12111	GASKET, MANIFOLD	1	1						
3	1	26106-080252	BOLT, M8X 25 PLATED	4	4						
4	1	129120-77501	HEATER	1							
5	1	26106-080352	BOLT, M8X 35 PLATED	4							
6	1	129150-77511	GASKET	1	1						
7	1	119840-12210	PIPE, AIR INTAKE	1							
8	1	129132-12581	SUPPORT ASSY,CLEANER	1	1						
10	2	129132-12570	SEAT, RUBBER	2	2						
11	1	129132-12800	BAND, AIR CLEANER	1	1						
13	2	129132-12860	SEAT, RUBBER	1	1						
14	1	129132-12810	SUPPORT, AIR CLEANER	1	1						
16	2	129132-12890	SEAT, RUBBER	1	1						
17	2	129132-12900	DAMPER	1	1						
18	1	23000-060000	CLAMP, 60	2	2						
19	1	26106-060142	BOLT, M6X 14 PLATED	2	2						
20	1	26106-080142	BOLT, M8X 14 PLATED	4	4						
21	1	26106-080252	BOLT, M8X 25 PLATED	2	2						
22	1	129132-12520	CLEANER ASSY, AIR	1							
23	2	121120-12541	RETAINER, ELEMENT	1							
24	2	121120-18901	ELEMENT	1							
25	2	121120-12561	BOLT	1							
26	2	121120-12571	WASHER, SEAL	1							
27	2	129556-12570	INDICATOR	1							
28	2	121120-12531	PAN, DUST	1							
29	2	X762744064	CASE ASSY	1							
30	1	171463-12581	JOINT, MANIFOLD		1						
31	1	129100-77510	GASKET, AIR HEATER		1						
32	1	129100-77500	HEATER, AIR 12V		1						
33	1	26106-080552	BOLT, M8X 55 PLATED		4						
34	1	129132-12220	PIPE, AIR INTAKE		1						
35	1	119841-12210	PIPE, AIR INTAKE			1					
36	1	171064-12520	CLEANER ASSY, AIR			1					
37	2	129322-12510	CLEANER ASSY, AIR			1					
38	3	129322-12520	BODY, AIR CLEANER			1					
39	3	129322-12530	PAN ASSY, DUST			1					
40	3	121120-12540	RETAINER, ELEMENT			1					
41	3	121120-12560	BOLT			1					
42	3	22190-140003	WASHER, SEAL 14			1					
43	3	121120-12900	ELEMENT			1					
44	2	121258-12600	LABEL, AIR CLEANER			1					
45	2	121262-12800	INDICATOR			1					
46	1	23000-060000	CLAMP, 60		1	3					

Fig.6. EXHAUST MANIFOLD & SILENCER

(A)=3TNE84-TBZ  
 (B)=3TNE84-TBY  
 (C)=

(D)=  
 (E)=  
 (F)=

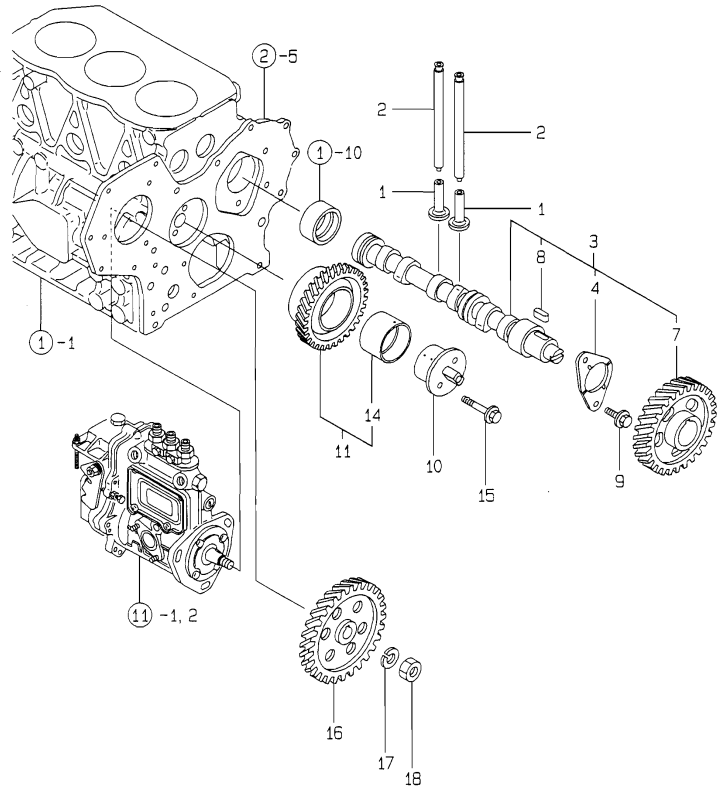
Y0005910  
 3TNE84-TBZ/TBY



No.	Lev.	Parts No.	Description	Qty						I	R
				(A)	(B)	(C)	(D)	(E)	(F)		
1	1	129001-13100	MANIFOLD, EXHAUST	1							
2	1	129001-13110	GASKET	1							
3	1	194990-22050	NUT, M8	2	2						
4	1	26106-080402	BOLT, M8X 40 PLATED	4							
5	1	26216-080222	STUD, M8X 22	4	4						
6	1	26216-080402	STUD, M8X 40	2							
7	1	124701-11911	GASKET, SILENCER	2	2						
8	1	121120-13590	CLAMP	1							
10	2	22137-100000	WASHER, 10	1							
11	2	22217-100000	WASHER, SPRING 10	1							
12	2	26106-100652	BOLT, M10X 65 PLATED	1							
13	2	26706-100002	NUT, M10	1							
14	1	129100-13110	MANIFOLD, EXHAUST		1						
15	1	129150-13110	GASKET		1						
16	1	26106-080802	BOLT, M8X 80 PLATED		4						
17	1	26216-080802	STUD, M8X 80		2						
18	1	103954-13201	GASKET, SILENCER		1						
19	1	129131-13510	SILENCER		1						
20	1	129130-13650	SUPPORT		1						
21	1	129130-13660	SUPPORT		1						
22	1	129111-13670	BAND, SILENCER		2						
23	1	129111-13680	BAND, SILENCER		2						
24	1	129132-13500	SILENCER		1						
25	1	129132-13160	PIPE		1						
26	1	129132-13170	PIPE		1						

# Fig.7. CAMSHAFT & DRIVING GEAR

Y0005910  
3TNE84-TBZ/TBY



(A)=3TNE84-TBZ  
(B)=3TNE84-TBY  
(C)=

(D)=  
(E)=  
(F)=

No.	Lev.	Parts No.	Description	Q'ty						I	R
				(A)	(B)	(C)	(D)	(E)	(F)		
1	1	129150-14200	TAPPET	6	6						
2	1	129150-14400	ROD, PUSH L=178	6	6						
3	1	129129-14580	CAMSHAFT ASSY	1	1						
4	2	129150-02450	BEARING, THRUST	1	1						
7	2	129150-14101	GEAR, CAMSHAFT	1	1						
8	2	22512-070140	KEY, 7X 14	1	1						
9	1	26106-080142	BOLT, M8X 14 PLATED	2	2						
10	1	129100-25061	SHAFT, IDLE	1	1						
11	1	129150-25101	GEAR ASSY, IDLE	1	1						
14	2	129150-25920	BUSH, IDLE GEAR	1	1						1
15	1	26106-080452	BOLT, M8X 45 PLATED	2	2						
16	1	129150-25900	GEAR, PUMP	1	1						
17	1	22217-120000	WASHER, SPRING 12	1	1						
18	1	26716-120002	NUT, M12	1	1						

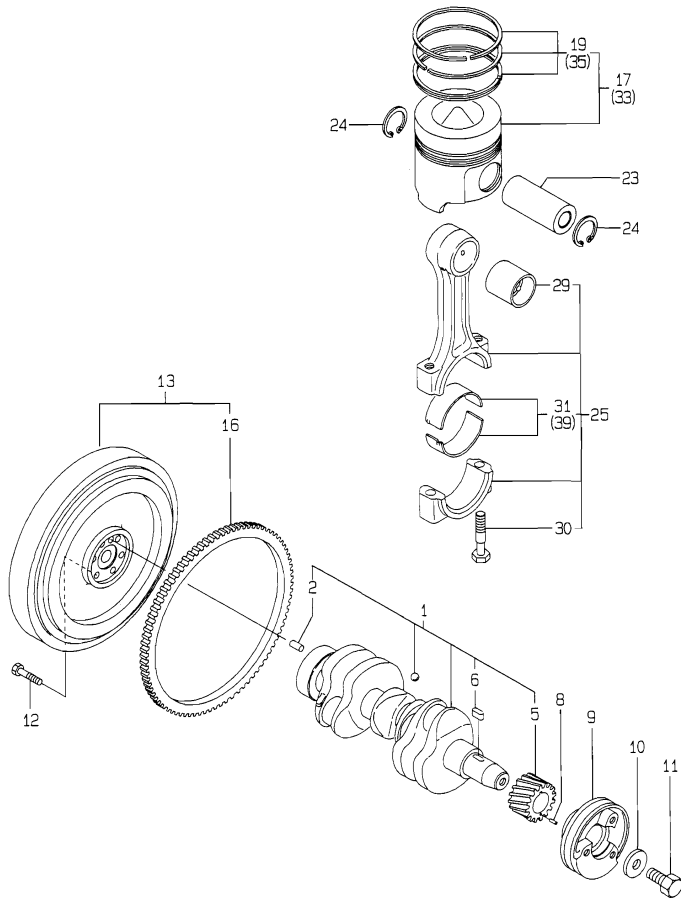
Remarks  
(1) REPAIR PART.

# Fig.8. CRANKSHAFT & PISTON

Y00D5910  
3TNE84-TBZ/TBY

(A)=3TNE84-TBZ  
(B)=3TNE84-TBY  
(C)=

(D)=  
(E)=  
(F)=



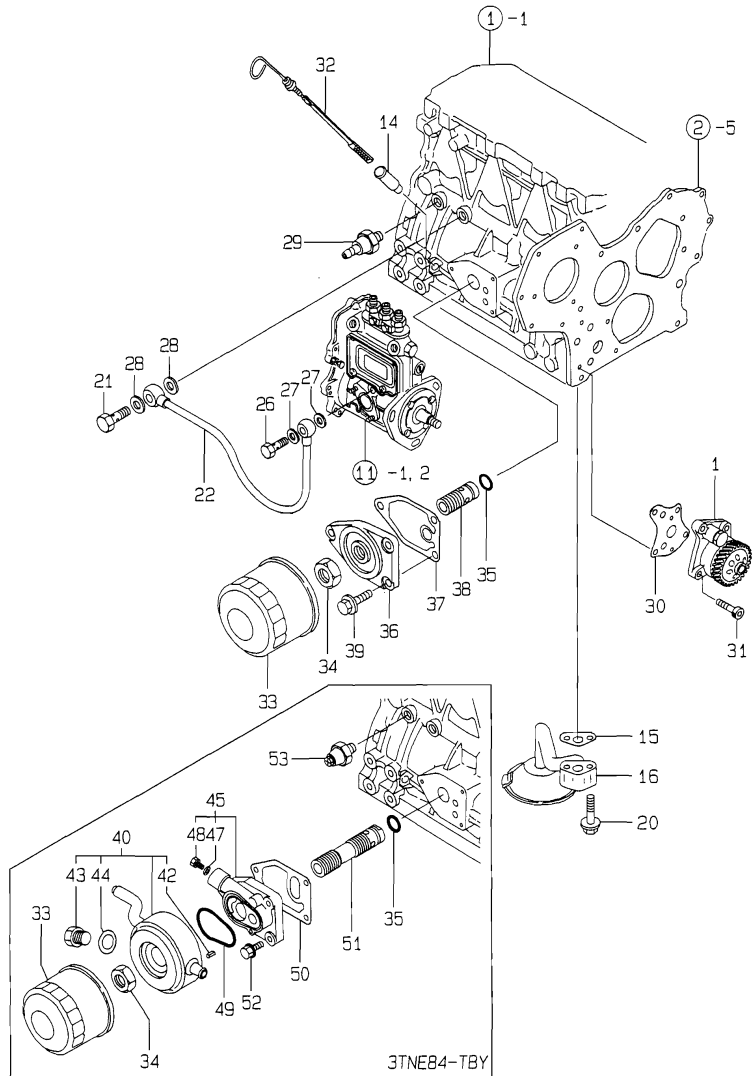
No.	Lev.	Parts No.	Description	Q'ty						I	R
				(A)	(B)	(C)	(D)	(E)	(F)		
1	1	129001-21000	CRANKSHAFT ASSY	1	1						
2	2	129100-01580	PIN, M8X16	1	1						
5	2	129150-21200	GEAR, CRANKSHAFT	1	1						
6	2	22512-070140	KEY, 7X 14	1	1						
8	1	22351-040010	PIN, SPRING 4.0X10	1	1						
9	1	171340-21650	V-PULLEY	1	1						
10	1	129795-21661	WASHER	1	1						
11	1	121850-21680	BOLT	1	1						
12	1	121111-21501	BOLT, FLYWHEEL	6	6						
13	1	129128-21590	FLYWHEEL ASSY	1	1						
16	2	119865-21600	GEAR, RING	1	1						
17	1	129002-22081	PISTON ASSY	3	3						
19	2	129002-22500	RING SET, PISTON	3	3						
23	1	129202-22300	PIN, PISTON D26 L70	3	3						
24	1	22252-000260	RING, 26	6	6						
25	1	729402-23100	ROD ASSY, CONNECTING	3	3						
29	2	129100-23910	BEARING, PISTON PIN	3	3						1
30	2	121550-23200	BOLT, CONNECTING ROD	6	6						
31	2	129150-23600	BEARING, CRANK PIN	3	3						
33	1	129002-22901	PISTON ASSY, 0.25 OS	3	3						2
35	2	129002-22950	RING SET, 0.25 OS	3	3						2
39	1	129150-23610	BEARING, 0.25 US	3	3						3

Remarks

- (1) REPAIR PART.
- (2) OVER-SIZE(O.S=0.25)PART.
- (3) UNDER-SIZE(U.S=0.25)PART.

# Fig.9. LUB. OIL SYSTEM

Y0005910  
3TNE84-TBZ/TBY



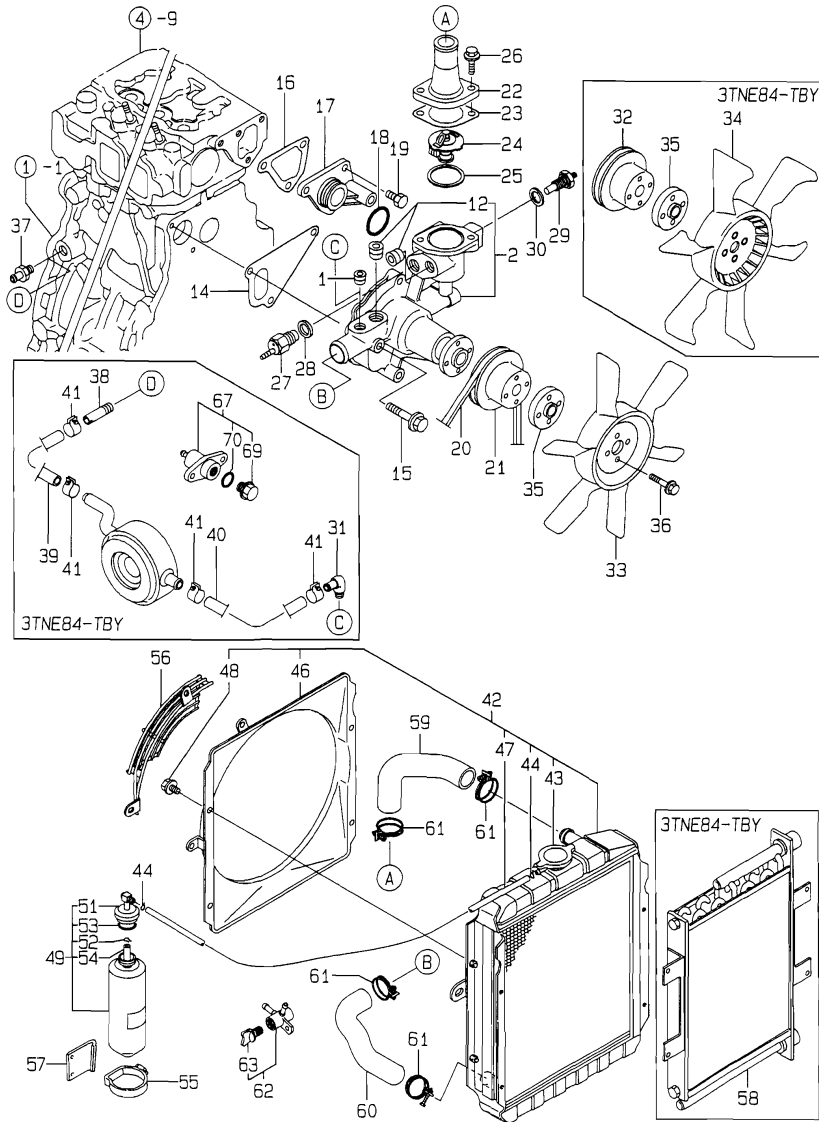
(A)=3TNE84-TBZ  
(B)=3TNE84-TBY  
(C)=

(D)=  
(E)=  
(F)=

No.	Lev.	Parts No.	Description	Q'ty						I	R
				(A)	(B)	(C)	(D)	(E)	(F)		
1	1	129001-32001	PUMP ASSY, OIL	1	1						
14	1	121520-34810	GUIDE, DIPSTICK	1	1						
15	1	129150-35041	GASKET	1	1						
16	1	129150-35091	PIPE ASSY, OIL INLET	1	1						
20	1	26106-080352	BOLT, M8X 35 PLATED	2	2						
21	1	124160-39140	BOLT, PIPE JOINT M10	1	1						
22	1	129150-39450	PIPE ASSY, OIL	1	1						
26	1	124550-59820	BOLT, PIPE JOINT M8	1	1						
27	1	23414-080000	GASKET, 8X1.0	2	2						
28	1	23414-100000	GASKET, 10X1.0	2	2						
29	1	124160-39450	SWITCH, 0.5KG	1							
30	1	129150-32020	GASKET, PUMP	1	1						
31	1	26450-060252	BOLT, M6X 25	4	4						
32A	1	171420-34800	DIPSTICK, OIL	1							
32B	1	129403-34800	DIPSTICK, OIL		1						
33	1	129150-35151	FILTER, D80XL80	1	1						
34	1	129150-35350	NUT	1	1						
35	1	24311-000160	O-RING, 1AP16.0	1	1						
36	1	129150-35101	BRACKET, STRAINER	1							
37	1	129150-35111	GASKET	1							
38	1	129001-35300	BOLT, FILTER	1							
39	1	26106-080202	BOLT, M8X 20 PLATED	3							
40	1	129012-33000	COOLER ASSY, OIL		1						
42	2	129120-33040	PIN		2						
43	2	129120-33051	PLUG, DRAIN		1						
44	2	129120-33060	GASKET		1						
45	1	129120-35001	BRACKET ASSY		1						
47	2	23414-100000	GASKET, 10X1.0		1						
48	2	23881-100002	PLUG, 10		1						
49	1	129120-35110	GASKET		1						
50	1	129120-35121	GASKET		1						
51	1	129407-35300	BOLT, FILTER		1						
52	1	26106-080252	BOLT, M8X 25 PLATED		3						
53	1	121252-39450	SWITCH, 0.5KG		1						

Fig.10. COOLING WATER SYSTEM

Y00D5910  
3TNE84-TBZ/TBY



(A)=3TNE84-TBZ  
(B)=3TNE84-TBY  
(C)=

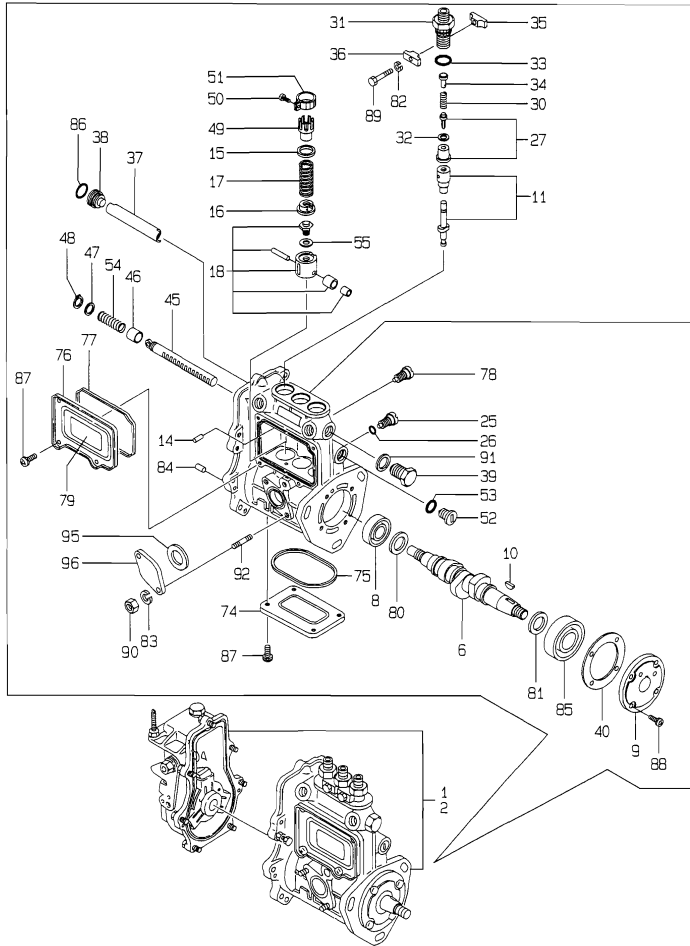
(D)=  
(E)=  
(F)=

No.	Lev.	Parts No.	Description	Q'ty						I	R
				(A)	(B)	(C)	(D)	(E)	(F)		
1	1	121850-11860	PLUG, PT1/4	1							
2	1	129001-42002	PUMP ASSY, WATER	1	1						
12	2	23871-030000	PLUG, R03	2	2						
14	1	129100-42020	GASKET, WATER PUMP	1	1						
15	1	26106-080602	BOLT, M8X 60 PLATED	3	3						
16	1	129100-49840	GASKET	1	1						
17	1	129001-42040	JOINT	1	1						
18	1	24321-000300	O-RING, 1AG30.0	1	1						
19	1	26106-080162	BOLT, M8X 16 PLATED	3	3						
20	1	25132-003800	V-BELT, A38	1	1						
21	1	129403-42380	V-PULLEY, D=110	1							
22	1	129350-49560	COVER, THERMOSTAT	1	1						
23	1	129795-49551	GASKET	1	1						
24	1	129155-49800	THERMOSTAT, 71	1	1						
25	1	129150-49811	GASKET, THERMOSTAT	1	1						
26	1	26106-080202	BOLT, M8X 20 PLATED	2	2						
27	1	121250-44901	SWITCH, 110	1	1						
28	1	124465-44950	GASKET, 16	1	1						
29	1	171056-49351	SENSOR	1	1						
30	1	129150-49360	GASKET	1	1						
31	1	129103-49301	ELBOW, PT1/4		1						
32	1	129155-42350	V-PULLEY		1						
33	1	121520-44740	FAN, COOLING D325	1							
34	1	129114-44740	FAN, COOLING D325XY		1						
35	1	124574-44761	SPACER, FAN	1	1						
36	1	26014-060302	BOLT, M6X 30	4	4						
37	1	121550-49111	JOINT, PT1/4	1							
38	1	129122-44480	JOINT		1						
39	1	129120-49030	HOSE		1						
40	1	129403-49050	PIPE, WATER		1						
41	1	23000-022000	CLAMP, 22		4						
42	1	129132-44500	RADIATOR	1	1						
43	2	123682-44210	CAP, RADIATOR	1	1						
44	2	121250-44590	CLAMP	2	2						
46	2	129132-44520	SHROUD	1	1						
47	2	129132-44530	HOSE, RUBBER	1	1						
48	2	26014-080162	BOLT, M8X 16	4	4						
49	1	171064-44510	TANK ASSY, SUB	1	1						
51	2	121450-44531	CAP	1	1						
52	2	124450-44560	RETAINER	1	1						
53	2	121470-44581	GASKET	1	1						
54	2	23065-070225	HOSE 7X 225	1	1						
55	1	124450-44550	BAND	1	1						
56	1	129132-44590	NET, WIRE	1	1						
57	1	121256-44600	BRACKET, SUB TANK	1	1						
58	1	129132-44901	COOLER ASSY, OIL		1						
59	1	119860-49010	PIPE, WATER	1	1						
60	1	119860-49020	PIPE, WATER	1	1						
61	1	23010-038000	CLAMP, 38	4	4						
62	1	129150-49100	COCK ASSY, 3-WAY	1							
63	2	129150-49080	COCK, DRAIN	1							



# Fig.11. FUEL INJECTION PUMP

Y00D5910  
3TNE84-TBZ/TBY



(A)=3TNE84-TBZ  
(B)=3TNE84-TBY  
(C)=

(D)=  
(E)=  
(F)=

No.	Lev.	Parts No.	Description	Q'ty						I	R
				(A)	(B)	(C)	(D)	(E)	(F)		
1	1	729213-51390	PUMP ASSY, INJECTION	1							1
2	1	729213-51380	PUMP ASSY, INJECTION		1						2
6	2	119810-51040	CAMSHAFT	1	1						
8	2	129155-51050	BEARING, 17BM001D	1	1						
9	2	129155-51060	SUPPORT, CAMSHAFT	1	1						
10	2	122710-51090	KEY	1	1						
11	2	129506-51100	PLUNGER ASSY	3	3						
14	2	129155-51140	PIN	3	3						
15	2	174307-51170	RETAINER, SPRING A	3	3						
16	2	129155-51180	RETAINER, SPRING	3	3						
17	2	124950-51190	SPRING, PLUNGER	3	3						
18	2	129155-51200	TAPPET ASSY	3	3						
25	2	129155-51270	STOPPER, TAPPET	3	3						
26	2	129155-51280	O-RING, S6	3	3						
27	2	129505-51300	VALVE ASSY, DELIVERY	3	3						
30	2	129155-51320	SPRING, DELIVERY	3	3						
31	2	129155-51340	RETAINER	3	3						
32	2	124550-51350	GASKET, DELIVERY	3	3						
33	2	124550-51370	O-RING	3	3						
34	2	129155-51370	STOPPER, VALVE	3	3						
35	2	129155-51380	STOPPER	2	2						
36	2	129155-51390	STOPPER	2	2						
37	2	129155-51400	DEFLECTOR	1	1						
38	2	129155-51410	BOLT	1	1						
39	2	129155-51420	PLUG, M16	1	1						
40	2	129155-51450	SHIM SET, ADJUSTING	1	1						
45	2	129155-51500	RACK, CONTROL	1	1						
46	2	129155-51521	BUSH, RACK	1	1						
47	2	129155-51530	SPACER	1	1						
48	2	129155-51540	CIRCLIP	1	1						
49	2	129155-51550	PINION, CONTROL	3	3						
50	2	122117-51560	SCREW	3	3						
51	2	174307-51560	PINION	3	3						
52	2	129155-51570	PLUG, M12	1	1						
53	2	129155-51580	O-RING	1	1						
54	2	129155-51591	SPRING, RACK	1	1						
55	2	129155-51600	SHIM SET, ADJUSTING	3	3						
74	2	129155-51700	COVER	1	1						
75	2	129155-51710	GASKET	1	1						
76	2	129155-51750	COVER	1	1						
77	2	129155-51760	GASKET	1	1						
78	2	129155-51790	STOOPER, RACK	1	1						
79	2	129156-51910	LABEL, CAUTION	1	1						
80	2	129155-51930	SPACER, T=3.25	1	1						
81	2	129155-51940	SPACER, T=1.5	1	1						
82	2	22217-050000	WASHER, SPRING 5	2	2						
83	2	22217-060000	WASHER, SPRING 6	2	2						
84	2	22351-050010	PIN, SPRING 5.0X10	2	2						
85	2	24101-063034	BEARING, BALL 6303	1	1						
86	2	24341-000160	O-RING, 1AS16.0	1	1						
87	2	26022-050102	SCREW, M5X10	8	8						

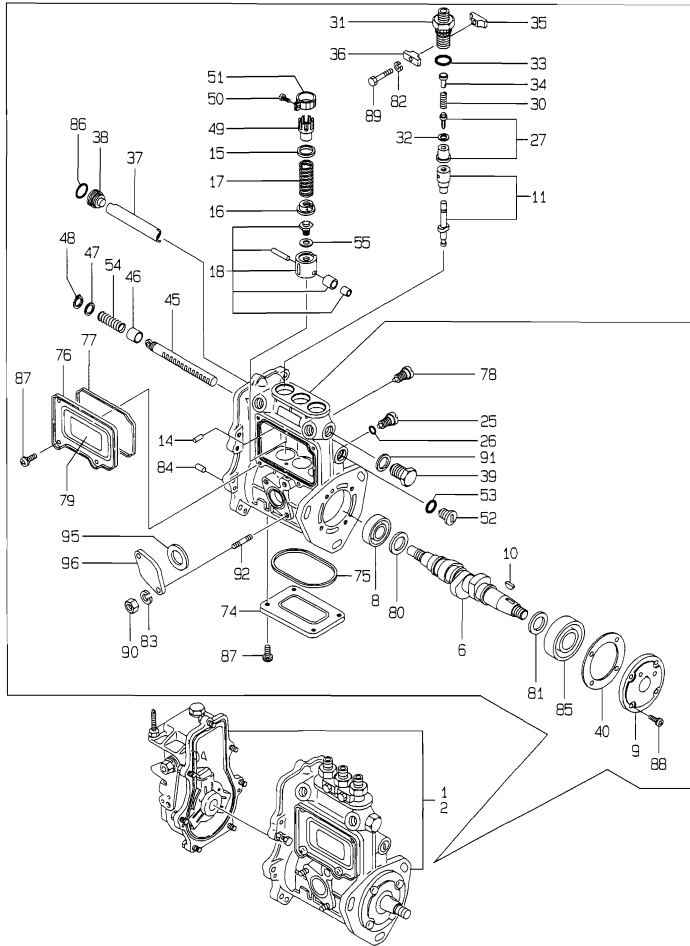
**Remarks**

- (1) GOVERNOR ASSY(FIG.12) IS INCORPORATED IN THIS FOP.CMP (REF.NO.1).
- (2) GOVERNOR ASSY(FIG.13) IS INCORPORATED IN THIS FOP.CMP (REF.NO.2).



# Fig.11. FUEL INJECTION PUMP

Y00D5910  
3TNE84-TBZ/TBY



(A)=3TNE84-TBZ  
(B)=3TNE84-TBY  
(C)=

(D)=  
(E)=  
(F)=

No.	Lev.	Parts No.	Description	Q'ty						I	R
				(A)	(B)	(C)	(D)	(E)	(F)		
88	2	26022-060162	SCREW, M6X16	4	4						
89	2	26116-050302	BOLT, M5X 30 PLATED	2	2						
90	2	26716-060002	NUT, M6	2	2						
91	2	22190-160002	WASHER, SEAL 16	1	1						
92	2	129155-51020	STUD	2	2						
95	2	129155-52050	GASKET	1	1						
96	2	129100-52200	COVER	1	1						

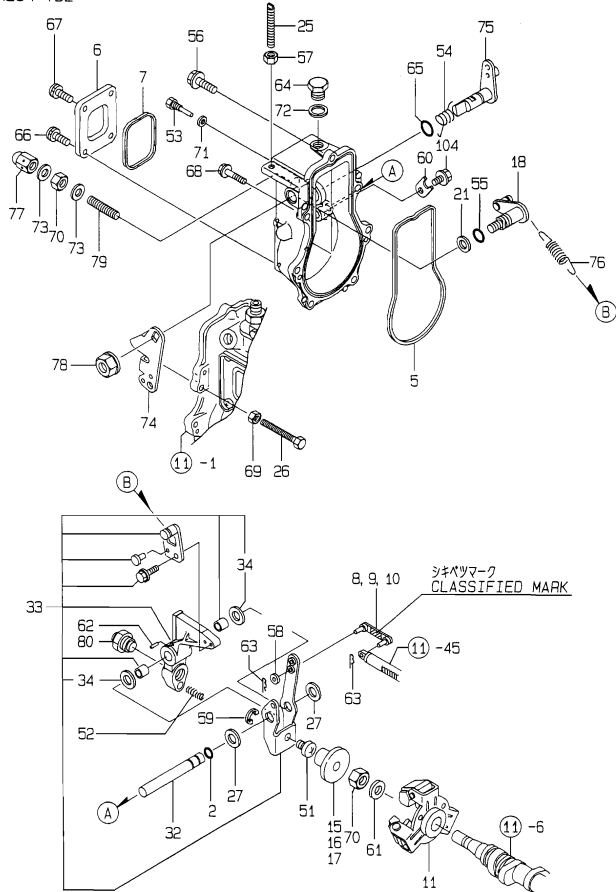
**Remarks**

- (1) GOVERNOR ASSY(FIG.12) IS INCORPORATED IN THIS FOP.CMP (REF.NO.1).
- (2) GOVERNOR ASSY(FIG.13) IS INCORPORATED IN THIS FOP.CMP (REF.NO.2).

Fig.12. GOVERNOR

Y0005910  
3TNE84-TBZ/TBY

3TNE84-TBZ



(A)=3TNE84-TBZ  
(B)=3TNE84-TBY  
(C)=

(D)=  
(E)=  
(F)=

No.	Lev.	Parts No.	Description	Q'ty						I	R
				(A)	(B)	(C)	(D)	(E)	(F)		
2	2	129155-51280	O-RING, S6	1							
5	2	129155-61050	GASKET	1							
6	2	129155-61060	COVER, GOVERNOR CASE	1							
7	2	129155-61070	GASKET	1							
8	2	129155-61120	LINK, L=30 MARK 0	1							1
9	2	129155-61130	LINK, L=31 MARK 1	1							1
10	2	129155-61140	LINK, L=30.5 MARK 05	1							1
11	2	129155-61201	WEIGHT ASSY,GOVERNOR	1							
15	2	129155-61341	SLEEVE	1							2
16	2	129155-61350	SLEEVE, L=24.9	1							2
17	2	129155-61360	SLEEVE, L=25.2	1							2
18	2	129100-61400	SHAFT ASSY	1							
21	2	129155-61430	SPACER	1							
25	2	129155-61450	BOLT, LIMITER	1							
26	2	129155-61460	BOLT, IDLE	1							
27	2	129155-61480	SPACER ASSY	2							
32	2	129155-61380	SHAFT	1							
33	2	129500-61501	LEVER ASSY, GOVERNOR	1							
34	3	174307-51700	SHIM SET	2							
51	2	129155-61540	SHIFTER	1							
52	2	129100-61650	SPRING, CONTROLLER	1							
53	2	129155-61810	PIN	1							
54	2	129100-61821	SPRING, RETURN	1							
55	2	129155-61830	O-RING, S10	1							
56	2	129155-61950	BOLT	1							
57	2	124550-66370	NUT, M6	1							
58	2	22117-040000	WASHER, 4	1							
59	2	22272-000040	RING, E- 4	1							
60	2	119660-61901	RETAINER, SHAFT	1							
61	2	22287-120000	WASHER, 12	1							
62	2	22351-030016	PIN, SPRING 3.0X16	1							
63	2	22372-040000	PIN, SNAP 4	2							
64	2	23887-100002	PLUG, 10	1							
65	2	24311-240100	O-RING, 1AP10A	1							
66	2	26022-050102	SCREW, M5X10	2							
67	2	26023-050102	SCREW, M5X10	2							
68	2	26106-060202	BOLT, M6X 20 PLATED	6							
69	2	26756-060002	NUT, LOCK M6	1							
70	2	26776-120002	NUT, LOCK M12	2							
71	2	22190-060002	WASHER, SEAL 6	2							
72	2	22190-100002	WASHER, SEAL 10	1							
73	2	22190-120002	WASHER, SEAL 12	2							
74	2	129100-61440	LEVER, CONTROL	1							
75	2	129255-61802	LEVER, STOP	1							
76	2	171353-61710	SPRING, GOVERNOR	1							
77	2	26687-120002	NUT, CAP M12	1							
78	2	26366-080002	NUT, M8	1							
79	2	129155-61470	BOLT, CONTROL	1							
80	2	171353-61550	ANGLEICH ASSY	1							
104	2	26106-060102	BOLT, M6X 10 PLATED	1							

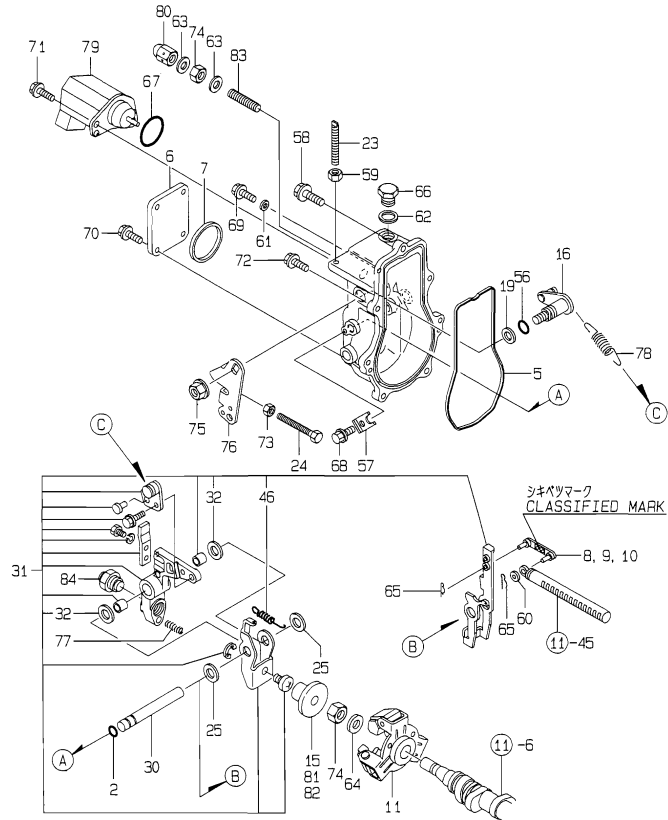
Remarks

(1) SELECTIVE PARTS;CERTAIN THE CLASSIFICATION MARK, THEN PLACE YOUR ORDER. (REF.TO.ILLUSTRATION).  
(2) SELECTIVE PART.  
\* THIS FIGURE(GOVERNOR ASSY)IS INCORPORATED IN THE FUEL INJECTION PUMP ASSY(FIG.11,REF.NO.1).

Fig.13. GOVERNOR

Y00D5910  
3TNE84-TBZ/TBY

3TNE84-TBY



(A)=3TNE84-TBZ  
(B)=3TNE84-TBY  
(C)=

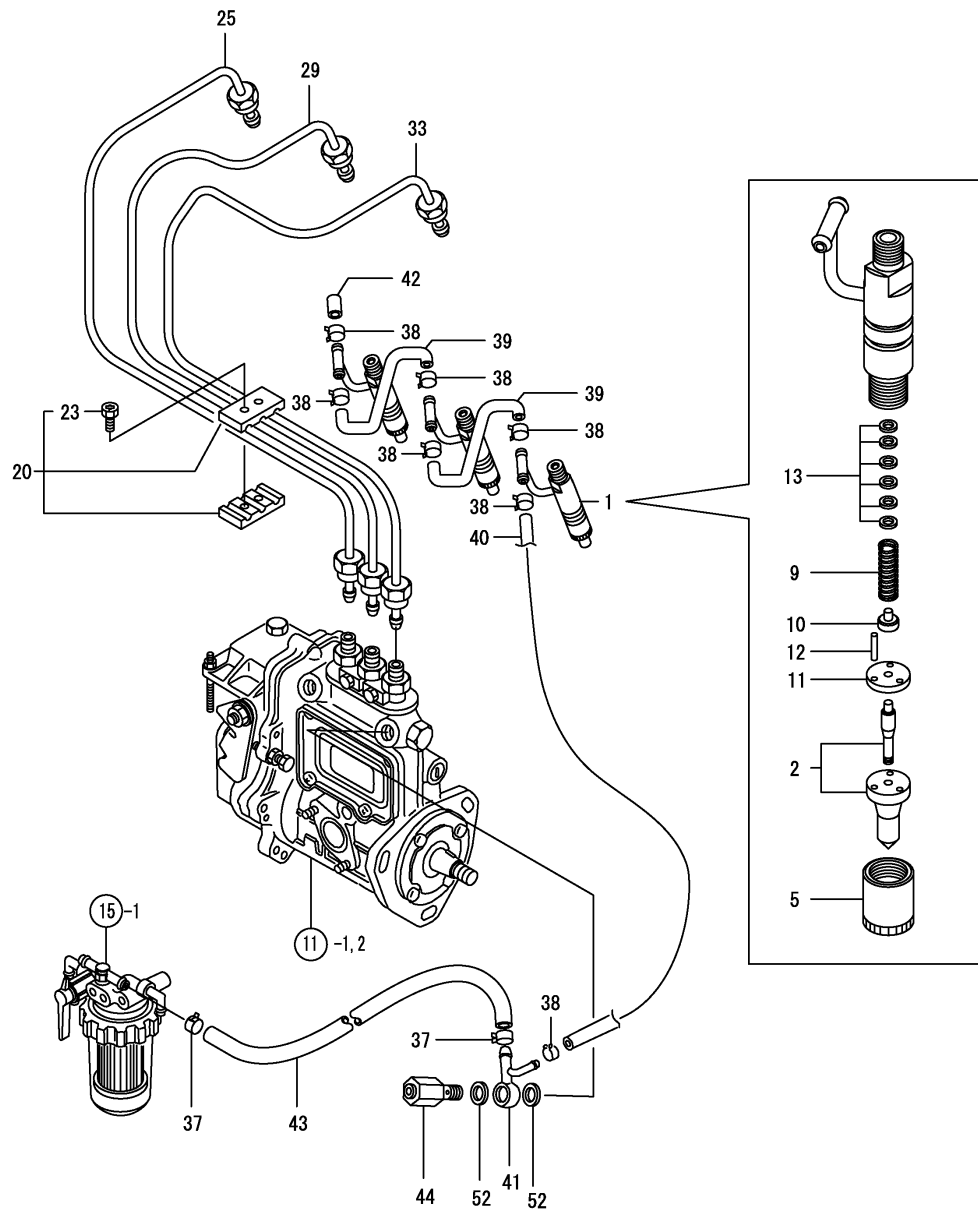
(D)=  
(E)=  
(F)=

No.	Lev.	Parts No.	Description	Q'ty						I	R
				(A)	(B)	(C)	(D)	(E)	(F)		
2	2	129155-51280	O-RING, S6		1						
5	2	129052-61050	GASKET		1						
6	2	129052-61060	COVER, GOVERNOR CASE		1						
7	2	129052-61070	GASKET		1						
8	2	129155-61120	LINK, L=30 MARK 0		1						1
9	2	129155-61130	LINK, L=31 MARK 1		1						1
10	2	129155-61140	LINK, L=30.5 MARK 05		1						1
11	2	129155-61201	WEIGHT ASSY,GOVERNOR		1						
15	2	129155-61341	SLEEVE		1						2
16	2	129100-61400	SHAFT ASSY		1						
19	2	129155-61430	SPACER		1						
23	2	129155-61450	BOLT, LIMITER		1						
24	2	129155-61460	BOLT, IDLE		1						
25	2	129155-61480	SPACER ASSY		2						
30	2	129052-61390	SHAFT		1						
31	2	129052-61500	LEVER ASSY, GOVERNOR		1						
32	3	174307-51700	SHIM SET		2						
46	3	129052-61540	SPRING, SET		1						
56	2	129155-61830	O-RING, S10		1						
57	2	119660-61901	RETAINER, SHAFT		1						
58	2	129155-61950	BOLT		1						
59	2	124550-66370	NUT, M6		1						
60	2	22117-04000	WASHER, 4		1						
61	2	22190-060002	WASHER, SEAL 6		1						
62	2	22190-100002	WASHER, SEAL 10		1						
63	2	22190-120002	WASHER, SEAL 12		2						
64	2	22287-120000	WASHER, 12		1						
65	2	22372-040000	PIN, SNAP 4		2						
66	2	23887-100002	PLUG, 10		1						
67	2	24341-000280	O-RING, 1AS28.0		1						
67-1	2	158552-61900	O-RING		1						N
		(B=EXXXXX)									
68	2	26106-060102	BOLT, M6X 10 PLATED		1						
69	2	26106-060102	BOLT, M6X 10 PLATED		1						
70	2	26106-060102	BOLT, M6X 10 PLATED		4						
71	2	26106-060142	BOLT, M6X 14 PLATED		2						
72	2	26106-060202	BOLT, M6X 20 PLATED		6						
73	2	26756-060002	NUT, LOCK M6		1						
74	2	26776-120002	NUT, LOCK M12		2						
75	2	26366-080002	NUT, M8		1						
76	2	129100-61440	LEVER, CONTROL		1						
77	2	129100-61650	SPRING, CONTROLLER		1						
78	2	129489-61700	SPRING, GOVERNOR		1						
79	2	119285-77951	SOLENOID		1						
80	2	26687-120002	NUT, CAP M12		1						
81	2	129155-61350	SLEEVE, L=24.9		1						2
82	2	129155-61360	SLEEVE, L=25.2		1						2
83	2	129155-61470	BOLT, CONTROL		1						
84	2	129132-61550	ANGLEICH ASSY		1						

Remarks

(1) SELECTIVE PARTS;CERTAIN THE CLASSIFICATION MARK, THEN PLACE YOUR ORDER.(REF.TO.ILLUSTRATION).  
(2) SELECTIVE PART.  
\* THIS FIGURE(GOVERNOR ASSY)IS INCORPORATED IN THE FUEL INJECTION PUMP ASSY(FIG.11,REF.NO.2).

Fig.14. FUEL INJECTION VALVE



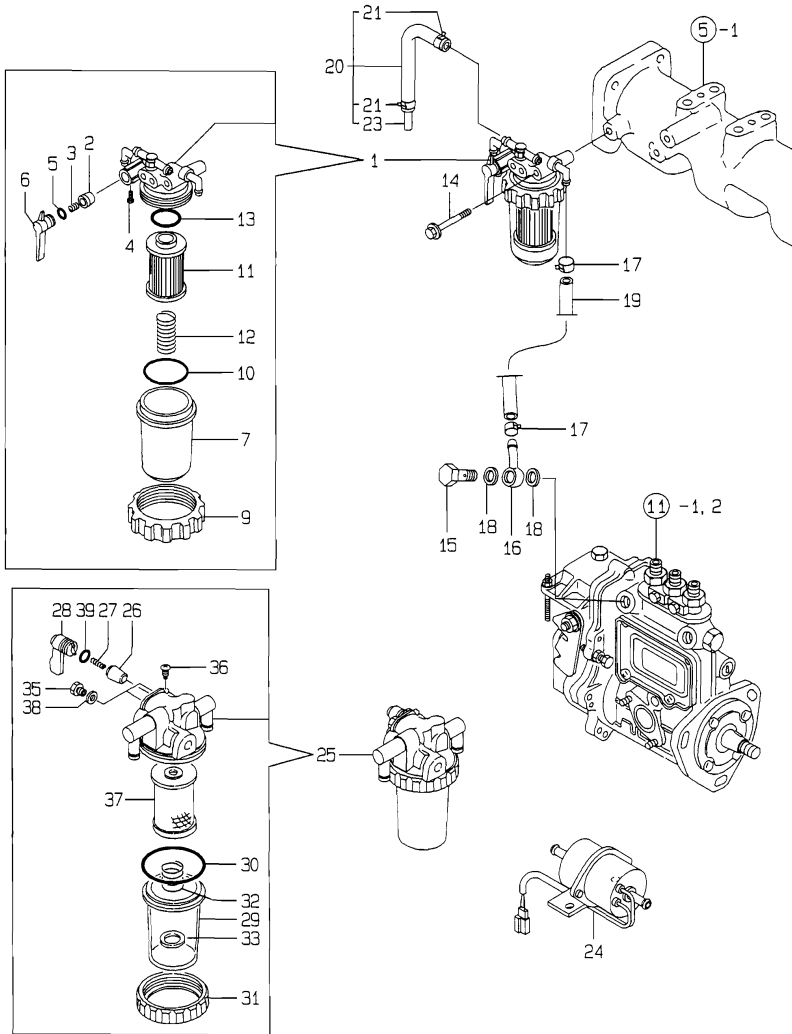
(A)=3TNE84-TBZ  
(B)=3TNE84-TBY  
(C)=

(D)=  
(E)=  
(F)=

No.	Lev.	Parts No.	Description	Q'ty						I	R
				(A)	(B)	(C)	(D)	(E)	(F)		
1A	1	729503-53100	VALVE ASSY,INJECTION	3							
1B	1	729102-53100	VALVE ASSY,INJECTION		3						
2A	2	129503-53000	VALVE ASSY,INJECTION	3							
2B	2	129102-53000	VALVE ASSY,INJECTION		3						
5	2	114250-53080	NUT, NOZZLE D16.95	3	3						
9	2	114250-53120	SPRING, NOZZLE	3	3						
10	2	114250-53130	SEAT, SPRING	3	3						
11	2	114250-53140	PLATE	3	3						
12	2	114250-53210	PIN	6	6						
13	2	114250-53400	SHIM SET	3	3						
20	1	129150-59120	RETAINER, PIPE	1	1						
23	2	129150-59131	BOLT, M4X14	2	2						
25	1	129100-59912	PIPE ASSY, INJECTION	1	1						
29	1	129100-59922	PIPE ASSY, INJECTION	1	1						
33	1	129100-59932	PIPE ASSY, INJECTION	1	1						
37	1	124766-59050	CLIP, HOSE 12	2	2						
38	1	124066-59100	CLIP, HOSE 8	7	7						
39	1	121250-59550	PIPE, FUEL D8X120	2	2						
40	1	119840-59560	PIPE, FUEL RETURN	1	1						
41	1	119840-59570	JOINT	1	1						
42	1	129150-59580	CAP	1	1						
43	1	129255-59580	PIPE, FUEL	1	1						
44	1	129100-59951	VALVE ASSY, CHECK	1	1						
52	1	23414-120000	GASKET, 12X1.0	2	2						

Fig.15. FUEL LINE

Y00D5910  
3TNE84-TBZ/TBY



(A)=3TNE84-TBZ  
(B)=3TNE84-TBY  
(C)=

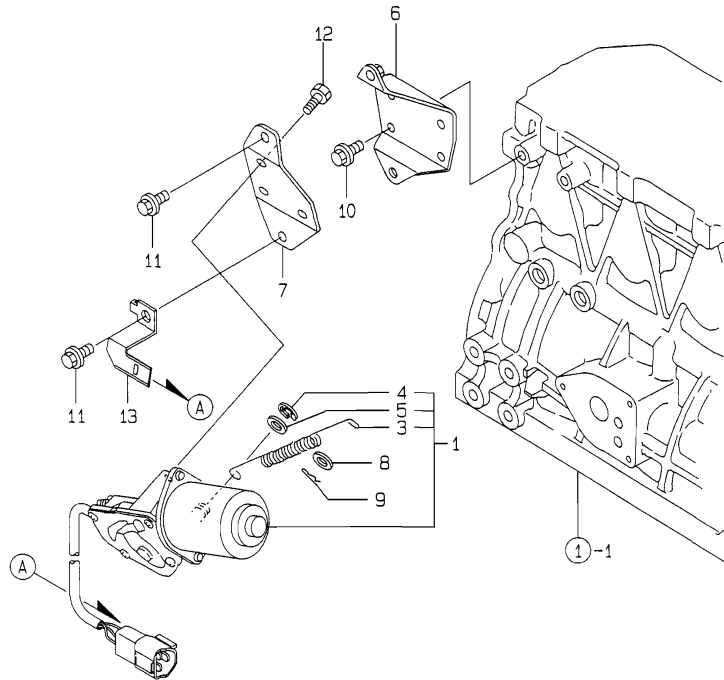
(D)=  
(E)=  
(F)=

No.	Lev.	Parts No.	Description	Q'ty						I	R
				(A)	(B)	(C)	(D)	(E)	(F)		
1	1	129052-55620	FILTER ASSY, FUEL	1	1						
2	2	104200-55321	VALVE, TAPER	1	1						
3	2	104200-55330	SPRING, VALVE	1	1						
4	2	104200-55750	SCREW, M4	1	1						
5	2	24311-240100	O-RING, 1AP10A	1	1						
6	2	129100-55670	LEVER	1	1						
7	2	129100-55680	CUP, STRAINER	1	1						
9	2	129100-55690	RING, RETAINING	1	1						
10	2	24321-000650	O-RING, 1AG65.0	1	1						
11	2	129100-55650	ELEMENT	1	1						
12	2	129100-55700	SPRING	1	1						
13	2	24311-000160	O-RING, 1AP16.0	1	1						
14	1	26014-080702	BOLT, M8X 70	1	1						
15	1	103854-39140	BOLT, PIPE JOINT	1	1						
16	1	101304-59020	JOINT, PIPE 12	1	1						
17	1	124766-59050	CLIP, HOSE 12	2	2						
18	1	22190-120002	WASHER, SEAL 12	2	2						
19	1	129555-59510	PIPE, D13/7.5X180	1	1						
20	1	119840-59601	BEND	1	1						
21	2	124766-59050	CLIP, HOSE 12	2	2						
23	2	119840-59621	JOINT	1	1						
24	1	129322-77401	PUMP ASSY, FUEL FEED	1	1						
25	1	129335-55700	SEPARATOR ASSY,WATER	1	1						
26	2	104200-55321	VALVE, TAPER	1	1						
27	2	104200-55330	SPRING, VALVE	1	1						
28	2	104200-55341	HANDLE	1	1						
29	2	124064-55510	COVER	1	1						
30	2	102103-55520	O-RING	1	1						
31	2	110250-55610	RING, RETAINING	1	1						
32	2	121257-55720	SPRING	1	1						
33	2	121257-55731	FLOAT	1	1						
35	2	101720-55750	PLUG, 6	2	2						
36	2	104200-55750	SCREW, M4	1	1						
37	2	171081-55910	SCREEN	1	1						
38	2	23418-060000	GASKET, 6X1.0	2	2						
39	2	24311-240100	O-RING, 1AP10A	1	1						

Fig.16. ENGINE STOP DEVICE

Y0005910  
3TNE84-TBZ/TBY

3TNE84-TBZ



(A)=3TNE84-TBZ  
(B)=3TNE84-TBY  
(C)=

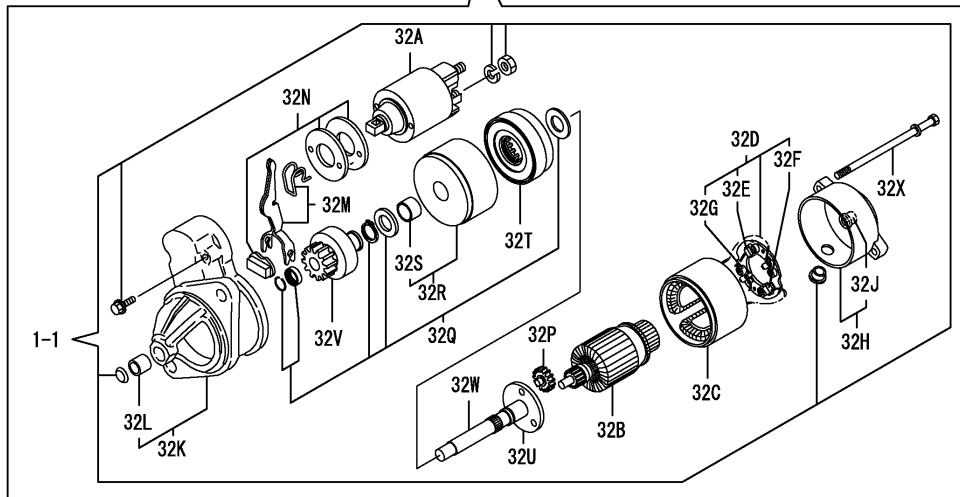
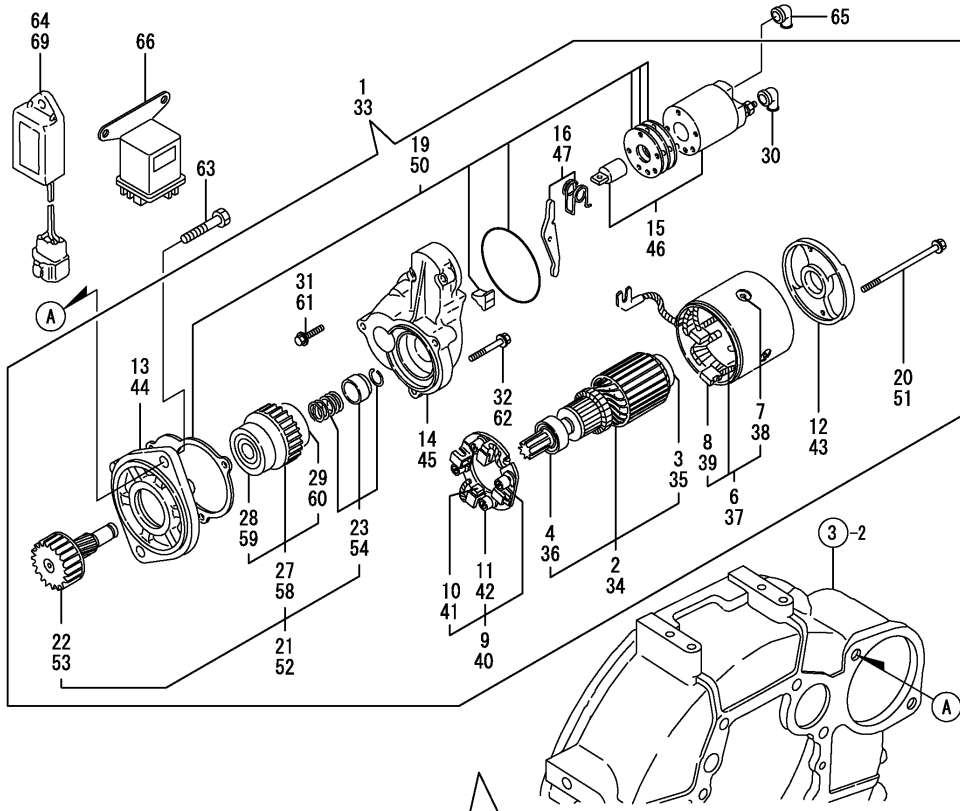
(D)=  
(E)=  
(F)=

No.	Lev.	Parts No.	Description	Q'ty						I	R
				(A)	(B)	(C)	(D)	(E)	(F)		
1	1	129136-66800	MOTOR ASSY, STOP	1							
3	2	129107-66830	SPRING, STOP MOTOR	1							
4	2	129566-66880	RING, SNAP	1							
5	2	129566-66890	WASHER	1							
6	1	129107-66810	BRACKET, STOP MOTOR	1							
7	1	129107-66820	BRACKET, STOP MOTOR	1							
8	1	22117-080000	WASHER, 8	1							
9	1	22360-080000	SNAP PIN 8	1							
10	1	26106-080122	BOLT, M8X 12 PLATED	2							
11	1	26106-080122	BOLT, M8X 12 PLATED	2							
12	1	26116-050102	BOLT, M5X 10 PLATED	3							
13	1	129136-66852	SUPPORT	1							

Fig.17. STARTING MOTOR

(A)=3TNE84-TBZ  
(B)=3TNE84-TBY  
(C)=

(D)=  
(E)=  
(F)=

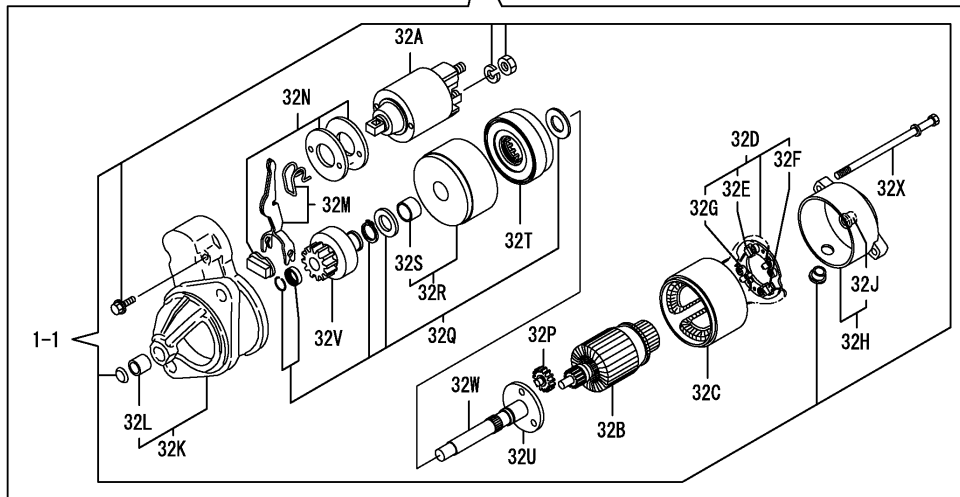
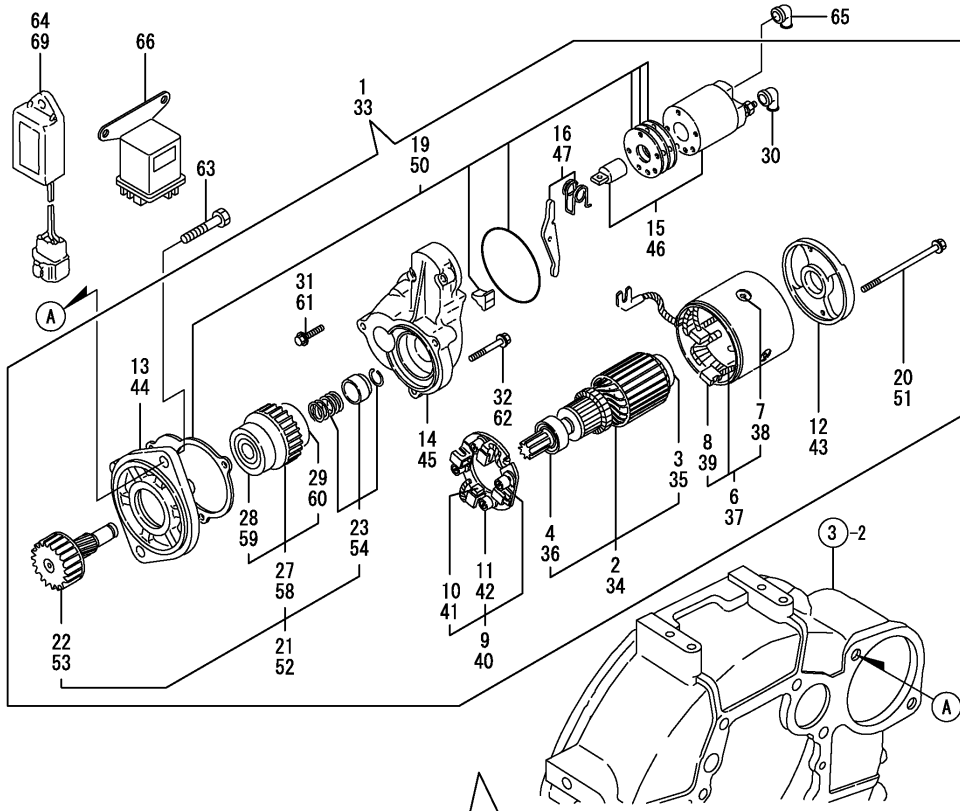


No.	Lev.	Parts No.	Description	Q'ty						I	R
				(A)	(B)	(C)	(D)	(E)	(F)		
1	1	171008-77010	STARTER, S114-483	1							
1-1	1	129698-77010	STARTER, 12V1.2KW	1							R
		(A=*2000.07.)									
2	2	171008-77400	ARMATURE ASSY	1							Z
		(A=*2000.07.)									
3	3	X2130350900	BALL BEARING	1							Z
		(A=*2000.07.)									
4	3	X2114255110	BEARING, BALL	1							Z
		(A=*2000.07.)									
6	2	171008-77440	COIL ASSY, FIELD	1							Z
		(A=*2000.07.)									
7	3	171008-77450	SCREW	4							Z
		(A=*2000.07.)									
8	3	171008-77460	BRUSH (+)	2							Z
		(A=*2000.07.)									
9	2	171008-77470	HOLDER ASSY, BRUSH	1							Z
		(A=*2000.07.)									
10	3	171008-77480	BRUSH (-)	2							Z
		(A=*2000.07.)									
11	3	171008-77490	SPRING, BRUSH	4							Z
		(A=*2000.07.)									
12	2	171008-77500	COVER, REAR	1							Z
		(A=*2000.07.)									
13	2	171008-77510	HOUSING ASSY, GEAR	1							Z
		(A=*2000.07.)									
14	2	171008-77520	HOUSING, CENTER	1							Z
		(A=*2000.07.)									
15	2	X2114T71010	SWITCH ASSY	1							Z
		(A=*2000.07.)									
16	2	171008-77540	LEVER SET, SHIFT	1							Z
		(A=*2000.07.)									
19	2	171008-77571	DUST COVER,(NON-ASB.	1							Z
		(A=*2000.07.)									
20	2	171008-77640	BOLT, THROUGH	2							Z
		(A=*2000.07.)									
21	2	171008-77650	PINION ASSY	1							Z
		(A=*2000.07.)									
22	3	171008-77660	SHAFT, PINION	1							Z
		(A=*2000.07.)									
23	3	171008-77670	STOPPER SET, PINION	1							Z
		(A=*2000.07.)									
27	3	X2114555500	CLUTCH ASSY	1							Z
		(A=*2000.07.)									
28	4	X2114955020	BALL BEARING	1							Z
		(A=*2000.07.)									
29	4	X2240410100	BEARING, BALL	1							Z
		(A=*2000.07.)									
30	2	171008-77750	COVER, M TERMINAL	1							Z
		(A=*2000.07.)									
31	2	26106-060322	BOLT, M6X 32 PLATED	2							Z
		(A=*2000.07.)									

Fig.17. STARTING MOTOR

(A)=3TNE84-TBZ  
(B)=3TNE84-TBY  
(C)=

(D)=  
(E)=  
(F)=



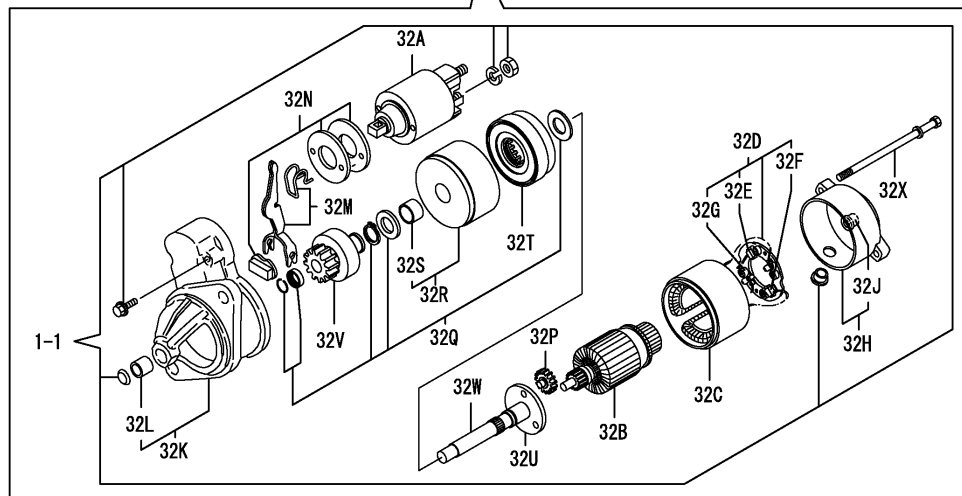
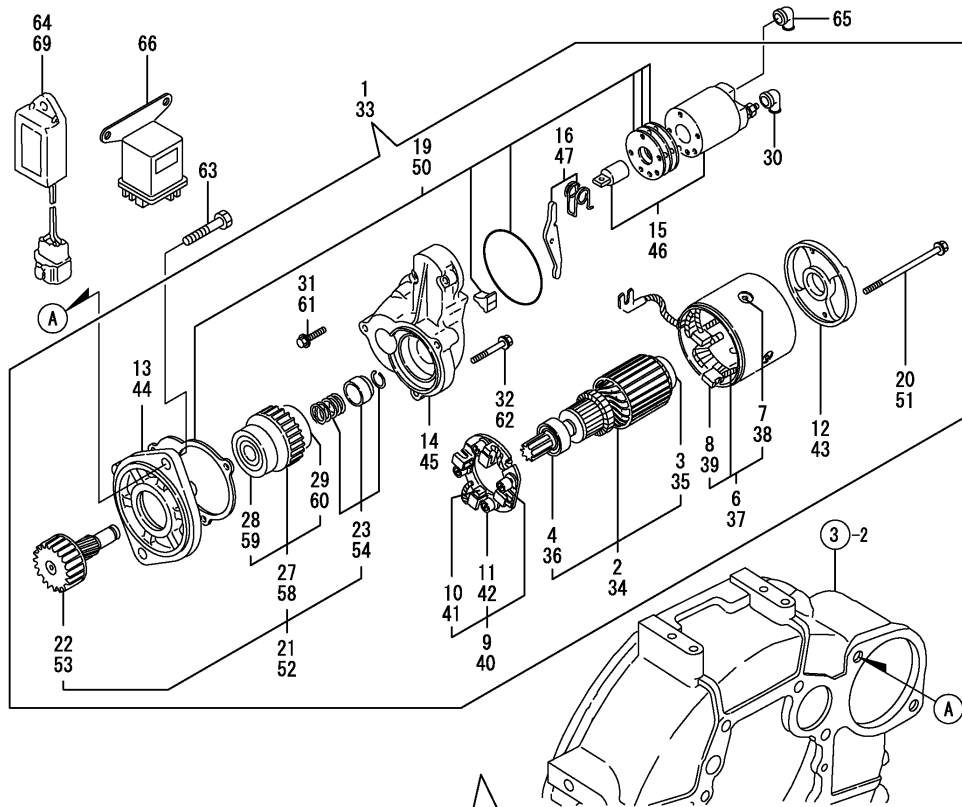
No.	Lev.	Parts No.	Description	Q'ty						I	R
				(A)	(B)	(C)	(D)	(E)	(F)		
32	2	26106-060402 (A=*2000.07.)	BOLT, M6X 40 PLATED	3							Z
32A	2	129698-77020 (A=*2000.07.)	MAGNETIC SWITCH ASSY	1							W
32B	2	129698-77100 (A=*2000.07.)	ARMATURE ASSY	1							W
32C	2	129698-77110 (A=*2000.07.)	COIL ASSY, FIELD	1							W
32D	2	129698-77120 (A=*2000.07.)	HOLDER ASSY, BRUSH	1							W
32E	3	129698-77140 (A=*2000.07.)	BRUSH(+) SET	1							W
32F	3	129698-77130 (A=*2000.07.)	BRUSH (-)	2							W
32G	3	129698-77150 (A=*2000.07.)	SPRING, BRUSH	4							W
32H	2	129698-77160 (A=*2000.07.)	COVER ASSY, REAR	1							W
32H-1	2	129698-77161 (A=EXXX)	COVER ASSY	1							R
32J	3	129698-77170 (A=*2000.07.)	BEARING	1							W
32K	2	129698-77260 (A=*2000.07.)	HOUSING ASSY, GEARS	1							W
32L	3	X2114535200 (A=*2000.07.)	METAL, STARTER	1							W
32M	2	129698-77270 (A=*2000.07.)	LEVER SET, SHIFT	1							W
32N	2	129698-77280 (A=*2000.07.)	COVER KIT	1							W
32P	2	129698-77240 (A=*2000.07.)	GEAR	3							W
32Q	2	129698-77250 (A=*2000.07.)	WASHER SET	1							W
32R	2	129698-77180 (A=*2000.07.)	BRACKET	1							W
32S	3	129698-77190 (A=*2000.07.)	BRACKET	1							W
32T	2	129698-77200 (A=*2000.07.)	GEAR, INTERNAL	1							W
32U	2	129698-77210 (A=*2000.07.)	BRACKET	1							W
32V	2	129698-77220 (A=*2000.07.)	PINION ASSY	1							W
32W	2	129698-77230 (A=*2000.07.)	SHAFT(PINION	1							W
32X	2	124195-77770 (A=*2000.07.)	THROUGH BOLT	2							W
33	1	129400-77011	STARTER, S13-94A	1							
34	2	129400-77400	ARMATURE ASSY	1							
35	3	X2130350900	BALL BEARING	1							



Fig.17. STARTING MOTOR

(A)=3TNE84-TBZ  
 (B)=3TNE84-TBY  
 (C)=

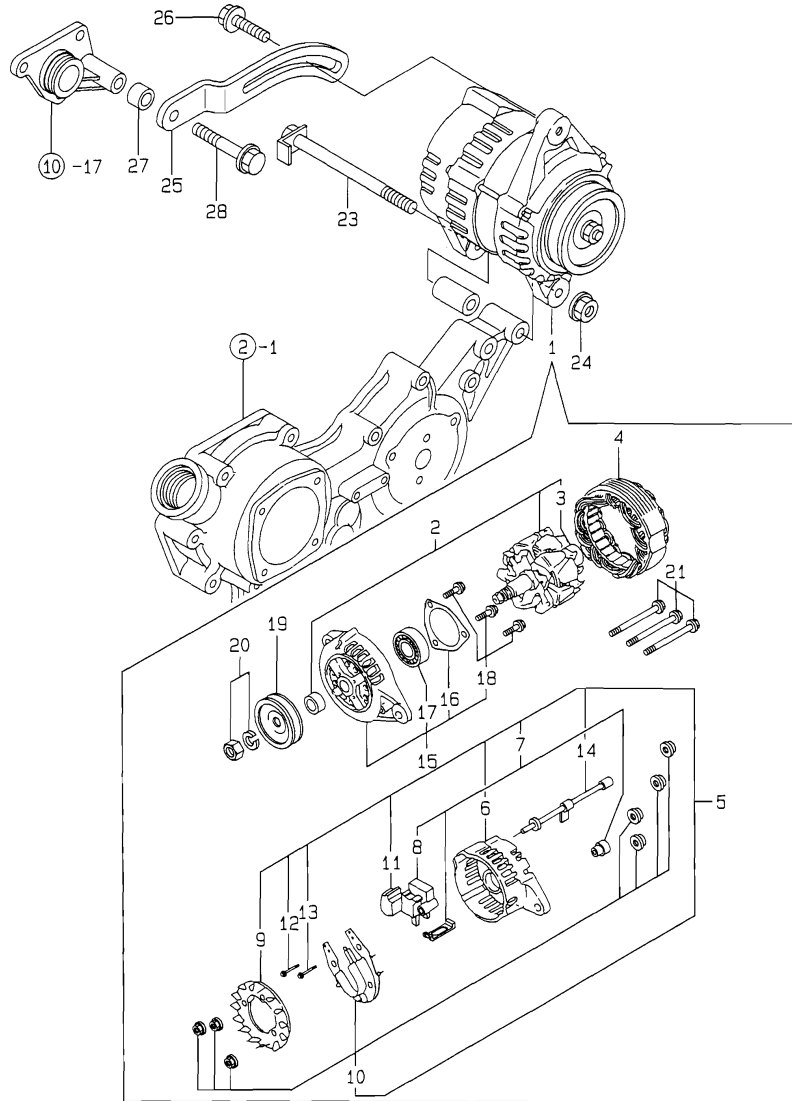
(D)=  
 (E)=  
 (F)=



No.	Lev.	Parts No.	Description	Q'ty						I	R
				(A)	(B)	(C)	(D)	(E)	(F)		
36	3	X2114255110	BEARING, BALL		1						
37	2	129400-77440	COIL ASSY, FIELD		1						
38	3	171008-77450	SCREW				4				
39	3	129400-77460	BRUSH (+)		2						
40	2	129400-77470	HOLDER ASSY, BRUSH		1						
41	3	129400-77480	BRUSH (-)		2						
42	3	129400-77490	SPRING, BRUSH		4						
43	2	129400-77510	COVER, REAR		1						
44	2	171008-77510	HOUSING ASSY, GEAR		1						
45	2	129400-77520	HOUSING, CENTER		1						
46	2	129400-77530	SWITCH ASSY, MAGNETIC		1						
47	2	171008-77540	LEVER SET, SHIFT		1						
50	2	129400-77570	COVER KIT, DUST		1						
51	2	129400-77640	BOLT, THROUGH		2						
52	2	171008-77650	PINION ASSY		1						
53	3	171008-77660	SHAFT, PINION		1						
54	3	171008-77670	STOPPER SET, PINION		1						
58	3	X2114555500	CLUTCH ASSY		1						
59	4	X2114955020	BALL BEARING		1						
60	4	X2240410100	BEARING, BALL		1						
61	2	26106-060322	BOLT, M6X 32 PLATED		2						
62	2	26106-060402	BOLT, M6X 40 PLATED		3						
63	1	26116-120252	BOLT, M12X 25 PLATED		2						
64	1	129136-77100	RELAY, SAFETY		1	1					
65	1	124550-77030	COVER, TERMINAL		1	1					
66	1	119650-77910	RELAY ASSY, GLOW		1						
69	1	119632-77920	TIMER		1						

# Fig.18. GENERATOR

Y0005910  
3TNE84-TBZ/TBY



(A)=3TNE84-TBZ  
(B)=3TNE84-TBY  
(C)=

(D)=  
(E)=  
(F)=

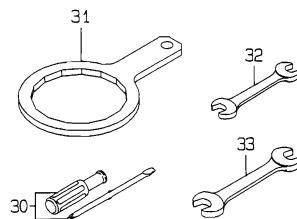
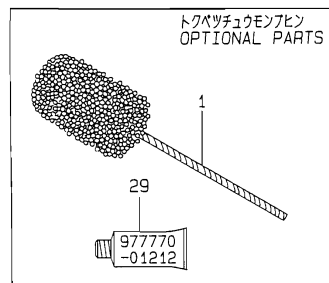
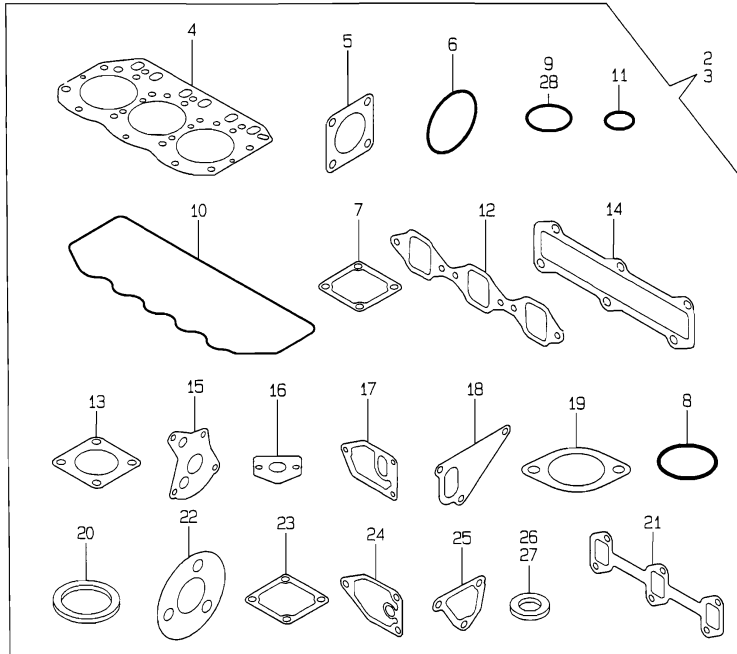
No.	Lev.	Parts No.	Description	Q'ty						I	R
				(A)	(B)	(C)	(D)	(E)	(F)		
1	1	119836-77200	GENERATOR	1	1						
2	2	119836-77700	ROTOR ASSY	1	1						
3	3	119836-77850	BALL BEARING	1	1						
4	2	119836-77710	STATOR ASSY	1	1						
5	2	119836-77721	COVER ASSY, REAR	1	1						
6	3	119836-77730	COVER, REAR	1	1						
7	3	119836-77741	BRUSH ASSY,REGULATOR	1	1						
8	4	119836-77750	BRUSH ASSY	1	1						
9	3	119836-77760	GUIDE, FAN SIDE	1	1						
10	3	119836-77770	DIODE ASSY	1	1						
11	3	119836-77780	CONDENSER	1	1						
12	3	119836-77871	BOLT (1)	1	1						
13	3	119836-77880	BOLT (2)	1	1						
14	3	119836-77890	WIRE ASSY, LEAD	1	1						
15	2	119836-77790	COVER ASSY, FRONT	1	1						
16	3	119836-77800	RETAINER, BEARING	1	1						
17	3	119836-77840	BALL BEARING	1	1						
18	3	119836-77860	SCREW KID	1	1						
19	2	119836-77810	PULLEY	1	1						
20	2	119836-77820	NUT ASSY, PULLEY	1	1						
21	2	119836-77830	BOLT, THROUGH	1	1						
22	1	119820-77340	PIECE, DISTANCE	1	1						
23	1	129136-77250	BOLT M 8X105	1	1						
24	1	26366-080002	NUT, M8	1	1						
25	1	129136-77350	ADJUSTER	1	1						
26	1	26014-060352	BOLT, M6X 35	1	1						
27	1	106500-44810	SPACER	1	1						
28	1	26106-080502	BOLT, M8X 50 PLATED	1	1						

Fig.19. GASKET SET

(A)=3TNE84-TBZ  
(B)=3TNE84-TBY  
(C)=

(D)=  
(E)=  
(F)=

Y00D5910  
3TNE84-TBZ/TBY



No.	Lev.	Parts No.	Description	Q'ty						I	R
				(A)	(B)	(C)	(D)	(E)	(F)		
1	1	129400-92420	FLEX HORN	1	1						1
2	1	729211-92610	GASKET SET	1							1
3	1	729211-92600	GASKET SET		1						1
4	2	129002-01331	GASKET, HEAD	1	1						
5	2	124240-01883	GASKET	1	1						
6	2	121850-51960	O-RING	1	1						
7	2	129150-77511	GASKET	1	1						
8	2	24341-000500	O-RING, 1AS50.0	1	1						
9	2	24311-000320	O-RING, 1AP32.0	2	2						
10	2	129150-11310	GASKET, BONNET	1	1						
11	2	24311-000120	O-RING, 1AP12.0	3	3						
12	2	129150-12111	GASKET, MANIFOLD	1	1						
13	2	124701-11911	GASKET, SILENCER	2	2						
14	2	129001-13110	GASKET	1							
15	2	129150-32020	GASKET, PUMP	1	1						
16	2	129150-35041	GASKET	1	1						
17	2	129120-35121	GASKET		1						
18	2	129100-42020	GASKET, WATER PUMP	1	1						
19	2	129795-49551	GASKET	1	1						
20	2	129150-49811	GASKET, THERMOSTAT	1	1						
21	2	129150-13110	GASKET		1						
22	2	103954-13201	GASKET, SILENCER		1						
23	2	129100-77510	GASKET, AIR HEATER		1						
24	2	129150-35111	GASKET	1							
25	2	129100-49840	GASKET	1	1						
26	2	124465-44950	GASKET, 16	1	1						
27	2	129150-49360	GASKET	1	1						
28	2	24341-000240	O-RING, 1AS24.0	1	1						
29	1	977770-01212	GASKET, LIQUID	1	1						1
30	1	104200-92350	DRIVER, SCREW	1	1						
31	1	119640-92750	WRENCH, FILTER 80	1	1						
32	1	28110-100120	SPANNER, 10X12	1	1						
33	1	28110-140170	SPANNER, 14X17	1	1						

Remarks  
(1) OPTIONAL PART.

## Parts No. Index

Parts No.	Fig. No.	Ref. No.
101304-59020	15	16
101720-55750	15	35
102103-55520	15	30
103854-39140	15	15
103954-13201	6	18
	19	22
104200-55321	15	2
		26
104200-55330	15	3
		27
104200-55341	15	28
104200-55750	15	4
		36
104200-92350	19	30
106500-44810	18	27
110250-55610	15	31
114250-53080	14	5
114250-53120	14	9
114250-53130	14	10
114250-53140	14	11
114250-53210	14	12
114250-53400	14	13
119285-77951	13	79
119620-01750	3	3
119625-11871	4	27
119625-11880	4	28
119625-11900	4	29
119632-77920	17	69
119640-01640	3	9
119640-92750	19	31
119650-77910	17	66
119660-61901	12	60
	13	57
119810-51040	11	6
119820-77340	18	22
119836-77200	18	1
119836-77700	18	2
119836-77710	18	4
119836-77721	18	5
119836-77730	18	6
119836-77741	18	7
119836-77750	18	8
119836-77760	18	9
119836-77770	18	10
119836-77780	18	11
119836-77790	18	15
119836-77800	18	16
119836-77810	18	19
119836-77820	18	20
119836-77830	18	21

Parts No.	Fig. No.	Ref. No.
119836-77840	18	17
119836-77850	18	3
119836-77860	18	18
119836-77871	18	12
119836-77880	18	13
119836-77890	18	14
119840-12210	5	7
119840-59560	14	40
119840-59570	14	41
119840-59601	15	20
119840-59621	15	23
119841-12210	5	35
119860-49010	10	59
119860-49020	10	60
119865-21600	8	16
120130-11860	4	13
121023-01550	2	25
121111-21501	8	12
121120-12531	5	28
121120-12540	5	40
121120-12541	5	23
121120-12560	5	41
121120-12561	5	25
121120-12571	5	26
121120-12900	5	43
121120-13590	6	8
121120-18901	5	24
121250-44590	10	44
121250-44901	10	27
121250-49121	10	69
121250-59550	14	39
121252-39450	9	53
121256-44600	10	57
121257-55720	15	32
121257-55731	15	33
121258-12600	5	44
121262-12800	5	45
121400-11340	4	24
121450-01560	2	6
121450-44531	10	51
121470-44581	10	53
121520-34810	9	14
121520-44740	10	33
121550-23200	8	30
121550-49111	10	37
121850-11860	10	1
121850-21680	8	11
121850-51960	2	13
	19	6
122117-51560	11	50

Parts No.	Fig. No.	Ref. No.
122710-51090	11	10
123682-44210	10	43
124064-55510	15	29
124066-59100	14	38
124160-01751	2	7
	4	58
124160-01910	1	5
124160-11360	4	57
124160-39140	9	21
124160-39450	9	29
124195-77770	17	32 X
124240-01871	2	8
124240-01883	2	9
	19	5
124450-44550	10	55
124450-44560	10	52
124460-11340	4	25
124465-44950	10	28
	19	26
124550-51350	11	32
124550-51370	11	33
124550-59820	9	26
124550-66370	12	57
	13	59
124550-77030	17	65
124574-44761	10	35
124701-11911	6	7
	19	13
124736-07900	4	7
124766-59050	14	37
	15	17
		21
124950-51190	11	17
129001-02800	1	15
129001-11700	4	9
129001-13100	6	1
129001-13110	6	2
	19	14
129001-21000	8	1
129001-32001	9	1
129001-35300	9	38
129001-42002	10	2
129001-42040	10	17
129002-01331	1	22
	19	4
129002-22081	8	17
129002-22500	8	19
129002-22901	8	33
129002-22950	8	35
129012-33000	9	40

Parts No.	Fig. No.	Ref. No.
129052-55620	15	1
129052-61050	13	5
129052-61060	13	6
129052-61070	13	7
129052-61390	13	30
129052-61500	13	31
129052-61540	13	46
129100-01580	3	1
		15
	8	2
129100-01640	3	16
129100-01730	3	6
129100-11100	4	19
129100-11110	4	20
129100-11240	4	30 B
129100-11350	4	46
129100-11650	4	37 B
129100-13110	6	14
129100-23910	8	29
129100-25061	7	10
129100-42020	10	14
	19	18
129100-49840	10	16
	19	25
129100-52200	11	96
129100-55650	15	11
129100-55670	15	6
129100-55680	15	7
129100-55690	15	9
129100-55700	15	12
129100-59912	14	25
129100-59922	14	29
129100-59932	14	33
129100-59951	14	44
129100-61400	12	18
	13	16
129100-61440	12	74
	13	76
129100-61650	12	52
	13	77
129100-61821	12	54
129100-77500	5	32
129100-77510	5	31
	19	23
129102-53000	14	2 B
129103-49301	10	31
129107-66810	16	6
129107-66820	16	7
129107-66830	16	3
129111-13670	6	22

## Parts No. Index

Parts No.	Fig. No.	Ref. No.
129111-13680	6	23
129114-44740	10	34
129120-33040	9	42
129120-33051	9	43
129120-33060	9	44
129120-35001	9	45
129120-35110	9	49
129120-35121	9	50
	19	17
129120-49030	10	39
129120-77501	5	4
129122-12100	5	1
129122-44480	10	38
129128-21590	8	13
129129-14580	7	3
129130-13650	6	20
129130-13660	6	21
129131-13510	6	19
129132-12220	5	34
129132-12520	5	22
129132-12570	5	10
129132-12581	5	8
129132-12800	5	11
129132-12810	5	14
129132-12860	5	13
129132-12890	5	16
129132-12900	5	17
129132-13160	6	25
129132-13170	6	26
129132-13500	6	24
129132-44500	10	42
129132-44520	10	46
129132-44530	10	47
129132-44590	10	56
129132-44901	10	58
129132-61550	13	84
129136-66800	16	1
129136-66852	16	13
129136-77100	17	64
129136-77250	18	23
129136-77350	18	25
129150-01200	1	21
129150-02020	1	7
129150-02450	7	4
129150-02870	1	23
129150-02930	1	18
129150-02940	1	26
129150-03020	4	48
129150-03070	4	49
129150-03080	4	50

Parts No.	Fig. No.	Ref. No.
129150-03100	2	11
129150-11230	4	38
129150-11280	4	33
129150-11290	4	34
129150-11310	4	53
	19	10
129150-11370	4	26
129150-11750	4	40
129150-11810	4	15
129150-12111	5	2
	19	12
129150-13110	6	15
	19	21
129150-14101	7	7
129150-14200	7	1
129150-14400	7	2
129150-21200	8	5
129150-23600	8	31
129150-23610	8	39
129150-25101	7	11
129150-25900	7	16
129150-25920	7	14
129150-32020	9	30
	19	15
129150-35041	9	15
	19	16
129150-35091	9	16
129150-35101	9	36
129150-35111	9	37
	19	24
129150-35151	9	33
129150-35350	9	34
129150-39450	9	22
129150-49080	10	63
129150-49100	10	62
129150-49360	10	30
	19	27
129150-49811	10	25
	19	20
129150-59120	14	20
129150-59131	14	23
129150-59580	14	42
129150-77511	5	6
	19	7
129155-11241	4	30 A
129155-11260	4	31
129155-11270	4	32
129155-42350	10	32
129155-49800	10	24
129155-51020	11	92

Parts No.	Fig. No.	Ref. No.
129155-51050	11	8
129155-51060	11	9
129155-51140	11	14
129155-51180	11	16
129155-51200	11	18
129155-51270	11	25
129155-51280	11	26
	12	2
	13	2
129155-51320	11	30
129155-51340	11	31
129155-51370	11	34
129155-51380	11	35
129155-51390	11	36
129155-51400	11	37
129155-51410	11	38
129155-51420	11	39
129155-51450	11	40
129155-51500	11	45
129155-51521	11	46
129155-51530	11	47
129155-51540	11	48
129155-51550	11	49
129155-51570	11	52
129155-51580	11	53
129155-51591	11	54
129155-51600	11	55
129155-51700	11	74
129155-51710	11	75
129155-51750	11	76
129155-51760	11	77
129155-51790	11	78
129155-51930	11	80
129155-51940	11	81
129155-52050	11	95
129155-61050	12	5
129155-61060	12	6
129155-61070	12	7
129155-61120	12	8
	13	8
129155-61130	12	9
	13	9
129155-61140	12	10
	13	10
129155-61201	12	11
	13	11
129155-61341	12	15
	13	15
129155-61350	12	16
	13	81

Parts No.	Fig. No.	Ref. No.
129155-61360	12	17
	13	82
129155-61380	12	32
129155-61430	12	21
	13	19
129155-61450	12	25
	13	23
129155-61460	12	26
	13	24
129155-61470	12	79
	13	83
129155-61480	12	27
	13	25
129155-61540	12	51
129155-61810	12	53
129155-61830	12	55
	13	56
129155-61950	12	56
	13	58
129156-51910	11	79
129202-22300	8	23
129255-59580	14	43
129255-61802	12	75
129322-12510	5	37
129322-12520	5	38
129322-12530	5	39
129322-77401	15	24
129335-55700	15	25
129350-49560	10	22
129400-01520	2	5
129400-77011	17	33
129400-77400	17	34
129400-77440	17	37
129400-77460	17	39
129400-77470	17	40
129400-77480	17	41
129400-77490	17	42
129400-77510	17	43
129400-77520	17	45
129400-77530	17	46
129400-77570	17	50
129400-77640	17	51
129400-92420	19	1
129403-34800	9	32 B
129403-42380	10	21
129403-49050	10	40
129407-35300	9	51
129486-01670	3	19
129489-61700	13	78
129500-61501	12	33

## Parts No. Index

Parts No.	Fig. No.	Ref. No.
129503-53000	14	2 A
129505-51300	11	27
129506-51100	11	11
129555-59510	15	19
129556-12570	5	27
129566-66880	16	4
129566-66890	16	5
129698-77010	17	1 -1
129698-77020	17	32 A
129698-77100	17	32 B
129698-77110	17	32 C
129698-77120	17	32 D
129698-77130	17	32 F
129698-77140	17	32 E
129698-77150	17	32 G
129698-77160	17	32 H
129698-77161	17	32 H-1
129698-77170	17	32 J
129698-77180	17	32 R
129698-77190	17	32 S
129698-77200	17	32 T
129698-77210	17	32 U
129698-77220	17	32 V
129698-77230	17	32 W
129698-77240	17	32 P
129698-77250	17	32 Q
129698-77260	17	32 K
129698-77270	17	32 M
129698-77280	17	32 N
129795-01780	3	18
129795-01800	2	4
129795-01950	2	10
129795-02411	1	10
129795-11120	4	21
129795-11180	4	22
129795-21661	8	10
129795-49551	10	23
	19	19
158552-61900	13	67 -1
171008-77010	17	1
171008-77400	17	2
171008-77440	17	6
171008-77450	17	7
		38
171008-77460	17	8
171008-77470	17	9
171008-77480	17	10
171008-77490	17	11
171008-77500	17	12
171008-77510	17	13

Parts No.	Fig. No.	Ref. No.
171008-77510	17	44
171008-77520	17	14
171008-77540	17	16
		47
171008-77571	17	19
171008-77640	17	20
171008-77650	17	21
		52
171008-77660	17	22
		53
171008-77670	17	23
		54
171008-77750	17	30
171051-01921	1	6
171056-49351	10	29
171064-12520	5	36
171064-44510	10	49
171081-55910	15	37
171301-01600	3	2
171340-21650	8	9
171353-61550	12	80
171353-61710	12	76
171420-34800	9	32 A
171463-12581	5	30
174307-51170	11	15
174307-51560	11	51
174307-51700	12	34
	13	32
194990-22050	6	3
22117-040000	12	58
	13	60
22117-080000	16	8
22137-100000	6	10
22190-060002	12	71
	13	61
22190-080002	2	12
		23
22190-100002	12	72
	13	62
22190-120002	12	73
	13	63
	15	18
22190-140003	5	42
22190-160002	11	91
22190-220002	3	11
22217-050000	11	82
22217-060000	11	83
22217-100000	6	11
22217-120000	7	17
22252-000260	8	24

Parts No.	Fig. No.	Ref. No.
22272-000040	12	59
22287-120000	12	61
	13	64
22351-030016	12	62
22351-040010	8	8
22351-050010	11	84
22351-060012	4	42
22360-080000	16	9
22372-040000	12	63
	13	65
22512-070140	7	8
	8	6
23000-022000	10	41
23000-060000	5	18
		46
23010-038000	10	61
23065-070225	10	54
23065-160800	4	2
23414-080000	9	27
23414-100000	9	28
		47
23414-120000	14	52
23418-060000	15	38
23871-010000	1	11
23871-030000	10	12
23881-100002	9	48
23887-100002	12	64
	13	66
24101-063034	11	85
24311-000120	4	1
	19	11
24311-000160	2	14
	9	35
	10	70
	15	13
24311-000320	2	15
	4	59
	19	9
24311-240100	12	65
	15	5
		39
24321-000300	10	18
24321-000650	15	10
24341-000160	11	86
24341-000240	2	26
	19	28
24341-000280	13	67
24341-000500	4	55
	19	8
25132-003800	10	20

Parts No.	Fig. No.	Ref. No.
26014-060302	10	36
26014-060352	18	26
26014-080162	10	48
26014-080702	15	14
26022-050102	11	87
	12	66
26022-060162	11	88
26023-050102	12	67
26106-060102	12	104
	13	68
		69
		70
26106-060122	2	27
26106-060142	5	19
	13	71
26106-060202	12	68
	13	72
26106-060322	17	31
		61
26106-060402	17	32
		62
26106-080122	2	16
	16	10
		11
26106-080142	4	8
	5	20
	7	9
26106-080162	2	17
		24
	3	12
	4	56
	10	19
26106-080202	2	18
	9	39
	10	26
26106-080252	3	13
	4	43
	5	3
		21
	9	52
26106-080352	3	20
	5	5
	9	20
26106-080402	6	4
26106-080452	2	19
	3	14
		14 -1
	7	15
26106-080502	3	22
	4	44

## Parts No. Index

Parts No.	Fig. No.	Ref. No.
26106-080502	18	28
26106-080552	2	20
	5	33
26106-080602	10	15
26106-080802	6	16
26106-080852	2	21
26106-100652	6	12
26116-050102	16	12
26116-050302	11	89
26116-120252	17	63
26206-100252	3	4
26206-100302	3	5
26216-060202	4	17
26216-080222	6	5
26216-080402	6	6
26216-080802	6	17
26226-080182	4	41
26366-060002	4	45
26366-080002	2	22
	12	78
	13	75
	18	24
26450-060252	9	31
26687-120002	12	77
	13	80
26706-100002	6	13
26716-060002	11	90
26716-120002	7	18
26756-060002	12	69
	13	73
26776-120002	12	70
	13	74
27231-500000	1	12
27241-120000	1	13
27241-300000	1	14
27241-400000	4	18
27310-080001	4	23
28110-100120	19	32
28110-140170	19	33
719810-01500	2	1
721521-49100	10	67
729002-01560	1	1
729102-01540	3	8
729102-53100	14	1 B
729211-92600	19	3
729211-92610	19	2
729213-51380	11	2
729213-51390	11	1
729402-11650	4	37 A
729402-23100	8	25

Parts No.	Fig. No.	Ref. No.
729503-53100	14	1 A
977770-01212	2	28
	3	21
	19	29
X2114255110	17	4
		36
X2114535200	17	32 L
X2114555500	17	27
		58
X2114955020	17	28
		59
X2114T71010	17	15
X2130350900	17	3
		35
X2240410100	17	29
		60
X762744064	5	29

Parts No.	Fig. No.	Ref. No.
-----------	----------	----------

Parts No.	Fig. No.	Ref. No.
-----------	----------	----------