

0CD10-M58900EN

Directions for the Parts Catalog.

1. This Parts Catalog shows both standard and optional parts.
2. Parts may change without prior notice.
3. The following is an example of the Parts Catalog format.

REF.	LEV.	PARTS NO.	DESCRIPTION	Q'TY						I	R
				(A)	(B)	(C)	(D)	(E)	(F)		
1	1	729595-51390	FUEL INJECTION PUMP	1	1	1	1	1			1
1-1	1	729595-51391	FUEL INJECTION PUMP	1	1	1	1	1		N	1
		(A=E00185) (B=E00200)									
3	2	26022-060162	SCREW M 6X 16	9	9	9	9	9			
3-1	2	26022-060162	SCREW M 6X 16	4	4	4	4	4		K	
		(A=E00156) (B=E00156) (C=E00156) (D=E00156) (E=E00156)									
4	2	129470-51040	CAMSHAFT	1	1	1	1	1			
5	2	122710-51050	BEARING, ROLLER	2	2	2	2	2			
6	2	129470-51060	RETAINER	1	1	1	1	1			

Remarks
(1) BOOST COMPEMSATOR TYPE. OPTIONAL PART, TO E00155,(4JH-DT, 4JH-DTZ

① Ref. No.

The Ref. No. listed may not be in accordance with the illustration Ref. No.

(Ex.) Illustration No.

List Ref No.

1

1

(Before change)

1-1

(After change)

For interchangeable symbols N, R and K, illustrations for new parts may be abbreviated.

② Lev. (Level)

Level indication

The numbers below indicate the level of relativity towards the main part.

1 ----- Main parts (Assembly parts)

2 ----- Sub component included in " 1 ".

3 ----- Sub component included in " 2 ".

Note) Parts that are not for sale are partially illustrated but not listed.

③ Interchangeability Symbol

When a part change takes place, one of the following interchangeability symbols is indicated beside the part.

Symbol	Interchangeability	Contents note
N	Old $\begin{matrix} \leftarrow \text{Yes} \\ \text{No} \rightarrow \end{matrix}$ New	New Part is interchangeable for Old Part but Old Part is not interchangeable for New Part.
Q	Old $\begin{matrix} \leftarrow \text{No} \\ \text{Yes} \rightarrow \end{matrix}$ New	New Part is not interchangeable for Old Part but Old Part is interchangeable for New Part.
R	Old $\begin{matrix} \leftarrow \text{Yes} \\ \text{Yes} \rightarrow \end{matrix}$ New	New/ Old Parts are both interchangeable.
S	Old $\begin{matrix} \leftarrow \text{No} \\ \text{No} \rightarrow \end{matrix}$ New	New/ Old Parts are both not interchangeable.
W		Part newly added.
Z		Part discontinued.
F		Not interchangeable by a single part but interchangeable together with related parts.
K		Changes only for used parts quantities.

④ Effective Machine No.

When a part changes, the effective Machine No. will be indicated in the (A)-(F) column.

Product Symbol	Product No.	Product Symbol	Product No.
C	Clutch No. Compressor No.	F	Machine No. (Agricultural Equip.)
D	Drive No.	M	Machine No.
E	Engine No.		

Note 1) A date may follow the symbol. (Ex.) 1996.01

Note 2) "XXXXX" and "ZZZZZ" are for parts that could not be predicted or for engine models that could not be identified.

Note 3) (A=E00185) is the E (Engine Serial Number) for the column (A) model (in this case 4JH-DT) after the parts design change.

⑤ Remarks

Figures or alphabets (symbols) are entered in the remarks column.

The comments (remarks) on parts that are indicated at the bottom of the illustration are the same symbols as those stated above.

Contents

Fig. No. Fig. Name

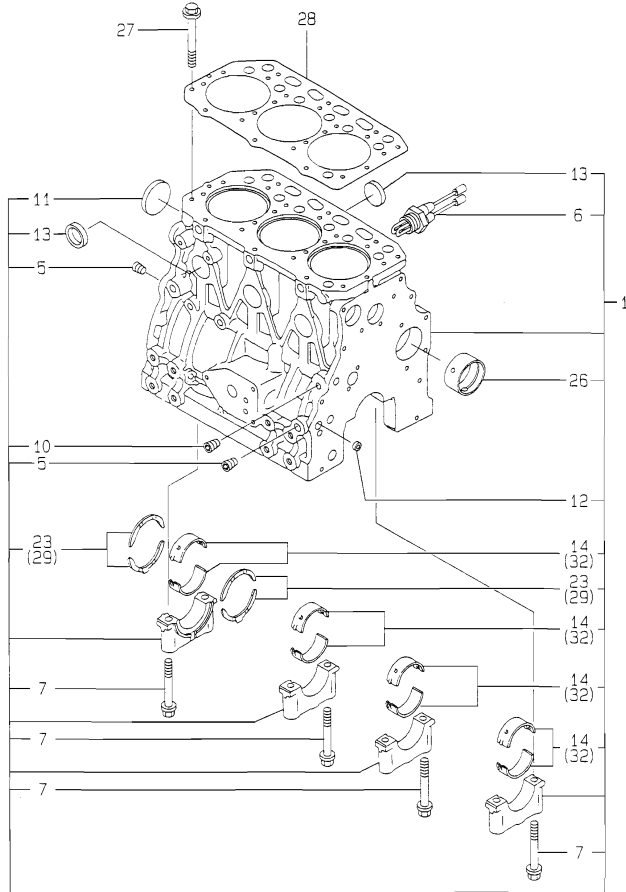
Fig. No. Fig. Name

3TNE84-GHN

1. CYLINDER BLOCK
2. GEAR HOUSING
3. FLYWHEEL HOUSING & OIL SUMP
4. CYLINDER HEAD & BONNET
5. SUCTION MANIFOLD
6. EXHAUST MANIFOLD
7. CAMSHAFT & DRIVING GEAR
8. CRANKSHAFT & PISTON
9. LUB. OIL SYSTEM
10. COOLING WATER SYSTEM
11. FUEL INJECTION PUMP
12. GOVERNOR
13. FEED PUMP
14. FUEL INJECTION VALVE
15. FUEL FILTER
16. ENGINE STOP DEVICE
17. STARTING MOTOR
18. TENSION PULLEY
19. ELECTRIC PARTS
20. GASKET SET

Fig.1. CYLINDER BLOCK

Y0005890
3TNE84-GHN



(A)=3TNE84-GHN

(B)=

(C)=

(D)=

(E)=

(F)=

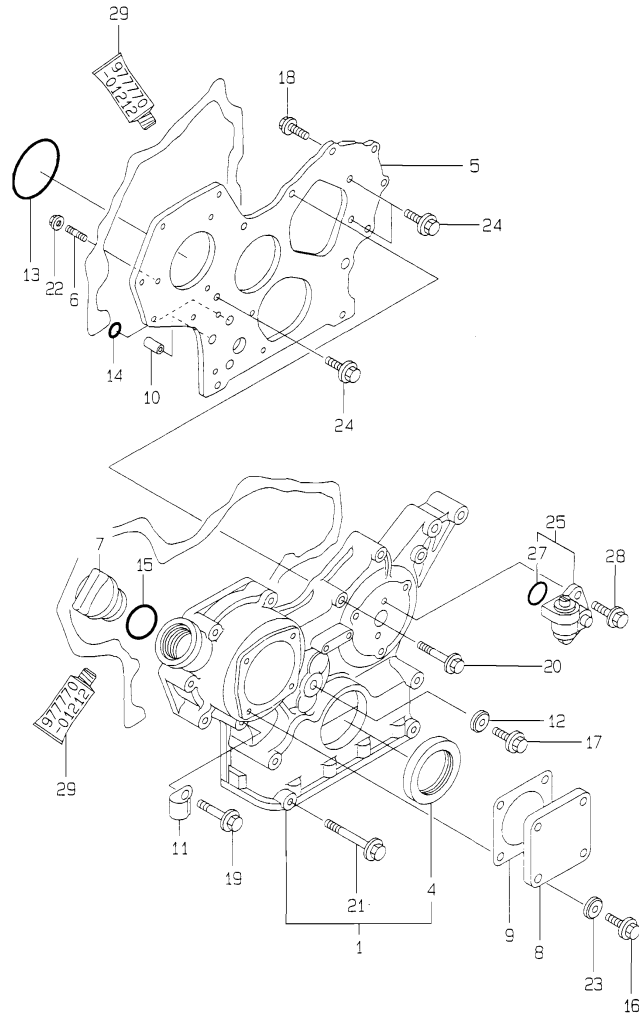
No.	Lev.	Parts No.	Description	Q'ty						I	R
				(A)	(B)	(C)	(D)	(E)	(F)		
1	1	729215-01560	BLOCK ASSY, CYLINDER	1							
5	2	124160-01910	PLUG, PT1/4	3							
6	2	46150-504600	HEATER	1							
6-1	2	124097-77900 (A=E66632)	HEATER, COOLING WATER	1							N
7	2	129150-02020	BOLT, METAL CAP	8							
10	2	23871-010000	PLUG, R01	1							
11	2	27231-500000	PLUG 50	1							
12	2	27241-120000	PLUG, 12	2							
13	2	27241-300000	PLUG 30	6							
14	2	129001-02800	BEARING, MAIN	4							
23	2	129150-02930	BEARING, THRUST	2							
26	2	129795-02411	BUSH, CAMSHAFT	1							
27	1	129150-01200	BOLT, HEAD	14							
28	1	129002-01331	GASKET, HEAD	1							
29	1	129150-02940	BEARING, THRUST 0.25	2							1
32	1	129150-02870	BEARING, 0.25 US	4							2

Remarks

- (1) OVER-SIZE(O.S=0.25)PART.
- (2) UNDER-SIZE(U.S=0.25)PART.

Fig.2. GEAR HOUSING

Y00D5890
3TNE84-GHN



(A)=3TNE84-GHN

(B)=

(C)=

(D)=

(E)=

(F)=

No.	Lev.	Parts No.	Description	Q'ty						I	R
				(A)	(B)	(C)	(D)	(E)	(F)		
1	1	719810-01500	CASE ASSY, GEAR	1							
4	2	129795-01800	SEAL, OIL	1							
5	1	129400-01520	FLANGE, GEAR CASE	1							
6	1	121450-01560	STUD, M8X22	3							
7	1	124160-01751	COVER, FILLER	1							
8	1	124240-01871	COVER	1							
9	1	124240-01883	GASKET	1							
10	1	129795-01950	PIPE, KNOCK L=18	2							
11	1	129150-03100	RETAINER, PIPE	1							
12	1	22190-080002	WASHER, SEAL 6	1							
13	1	121850-51960	O-RING	1							
14	1	24311-000160	O-RING, 1AP16.0	2							
15	1	24311-000320	O-RING, 1AP32.0	1							
16	1	26106-080122	BOLT, M8X 12 PLATED	4							
17	1	26106-080162	BOLT, M8X 16 PLATED	1							
18	1	26106-080202	BOLT, M8X 20 PLATED	2							
19	1	26106-080452	BOLT, M8X 45 PLATED	6							
20	1	26106-080552	BOLT, M8X 55 PLATED	3							
21	1	26106-080852	BOLT, M8X 85 PLATED	4							
22	1	26366-080002	NUT, M8	3							
23	1	22190-080002	WASHER, SEAL 6	4							
24	1	26106-080162	BOLT, M8X 16 PLATED	3							
25	1	129150-91400	GEAR	1							
27	2	24341-000240	O-RING, 1AS24.0	1							
28	1	26106-060162	BOLT, M6X 16 PLATED	2							
29	1	977770-01212	GASKET, LIQUID	1							1

Remarks

(1) OPTIONAL PART.

Fig.3. FLYWHEEL HOUSING & OIL SUMP

(A)=3TNE84-GHN

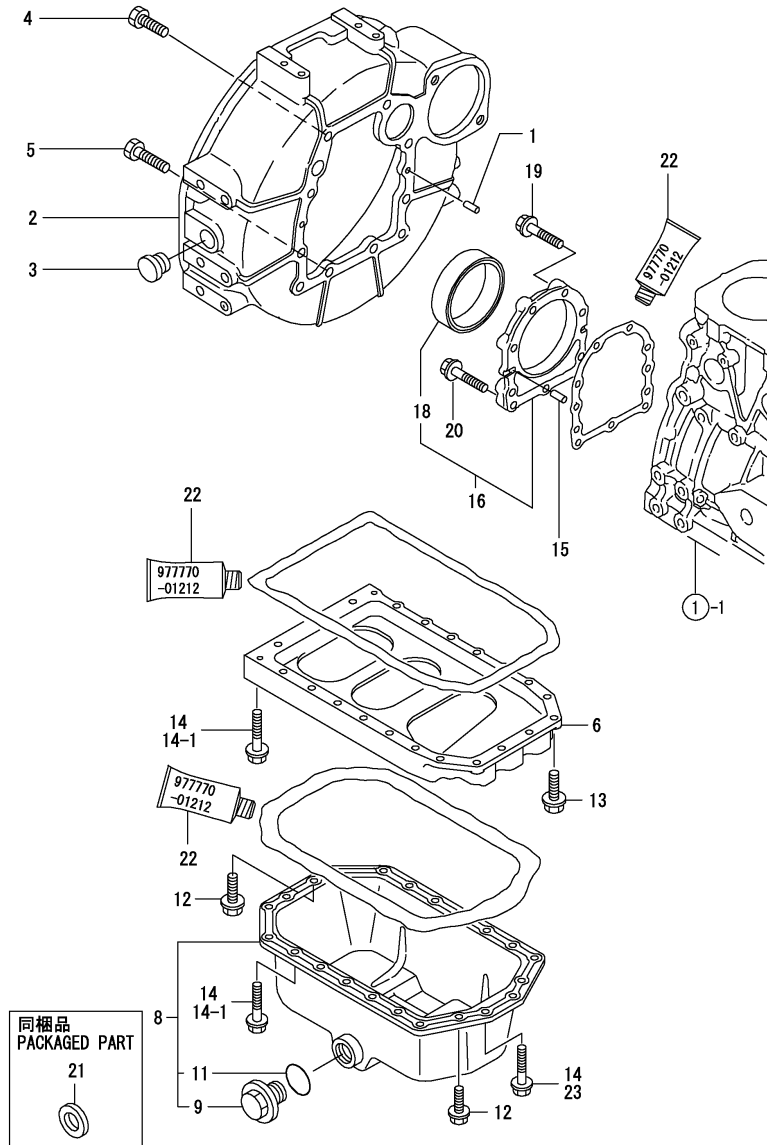
(B)=

(C)=

(D)=

(E)=

(F)=



No.	Lev.	Parts No.	Description	Q'ty						I	R
				(A)	(B)	(C)	(D)	(E)	(F)		
1	1	129100-01580	PIN, M8X16	2							
2	1	171301-01600	HOUSING, FLYWHEEL	1							
3	1	119620-01750	CAP	1							
4	1	26206-100252	BOLT, M10X 25 PLATED	6							
5	1	26206-100302	BOLT, M10X 30 PLATED	4							
6	1	129100-01730	SPACER, OIL SUMP	1							
8	1	129100-01760	SUMP ASSY, OIL	1							
9	2	171301-01640	PLUG, 22	1							
11	2	24341-000250	O-RING, 1AS25.0	1							
12	1	26106-080162	BOLT, M8X 16 PLATED	4							
13	1	26106-080252	BOLT, M8X 25 PLATED	2							
14	1	26106-080452	BOLT, M8X 45 PLATED	20							
14-1	1	26106-080452	BOLT, M8X 45 PLATED	16							K
(A=FROM 1ST)											
15	1	129100-01580	PIN, M8X16	2							
16	1	129100-01640	CASE ASSY, OIL SEAL	1							
18	2	129795-01780	SEAL, OIL	1							
19	1	129486-01670	BOLT, M8X30	6							
20	1	26106-080352	BOLT, M8X 35 PLATED	3							
21	1	23414-220000	GASKET, 22X1.0	1							
22	1	977770-01212	GASKET, LIQUID	1							
23	1	26106-080502	BOLT, M8X 50 PLATED	4							W
(A=FROM 1ST)											

Remarks
(1) OPTIONAL PART.

Fig.4. CYLINDER HEAD & BONNET

(A)=3TNE84-GHN

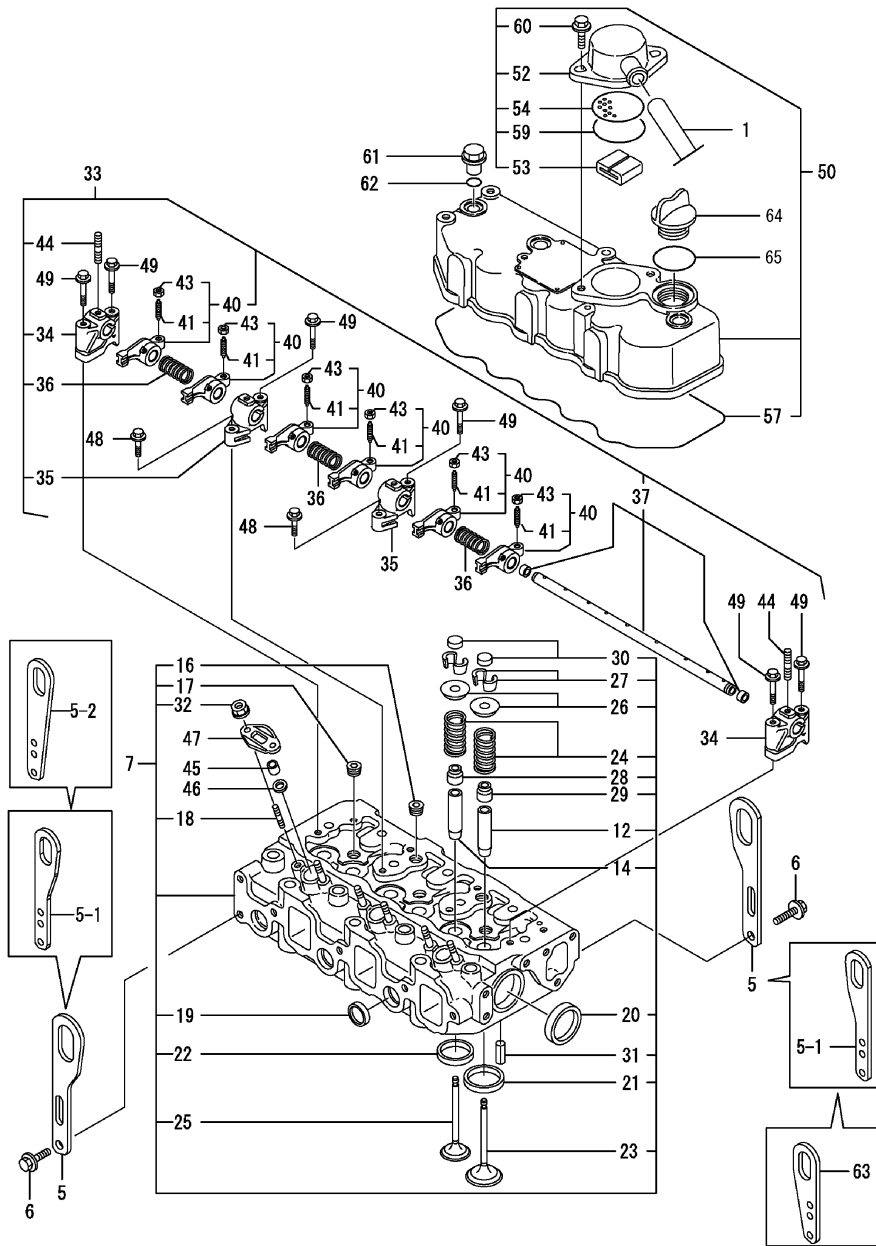
(B)=

(C)=

(D)=

(E)=

(F)=

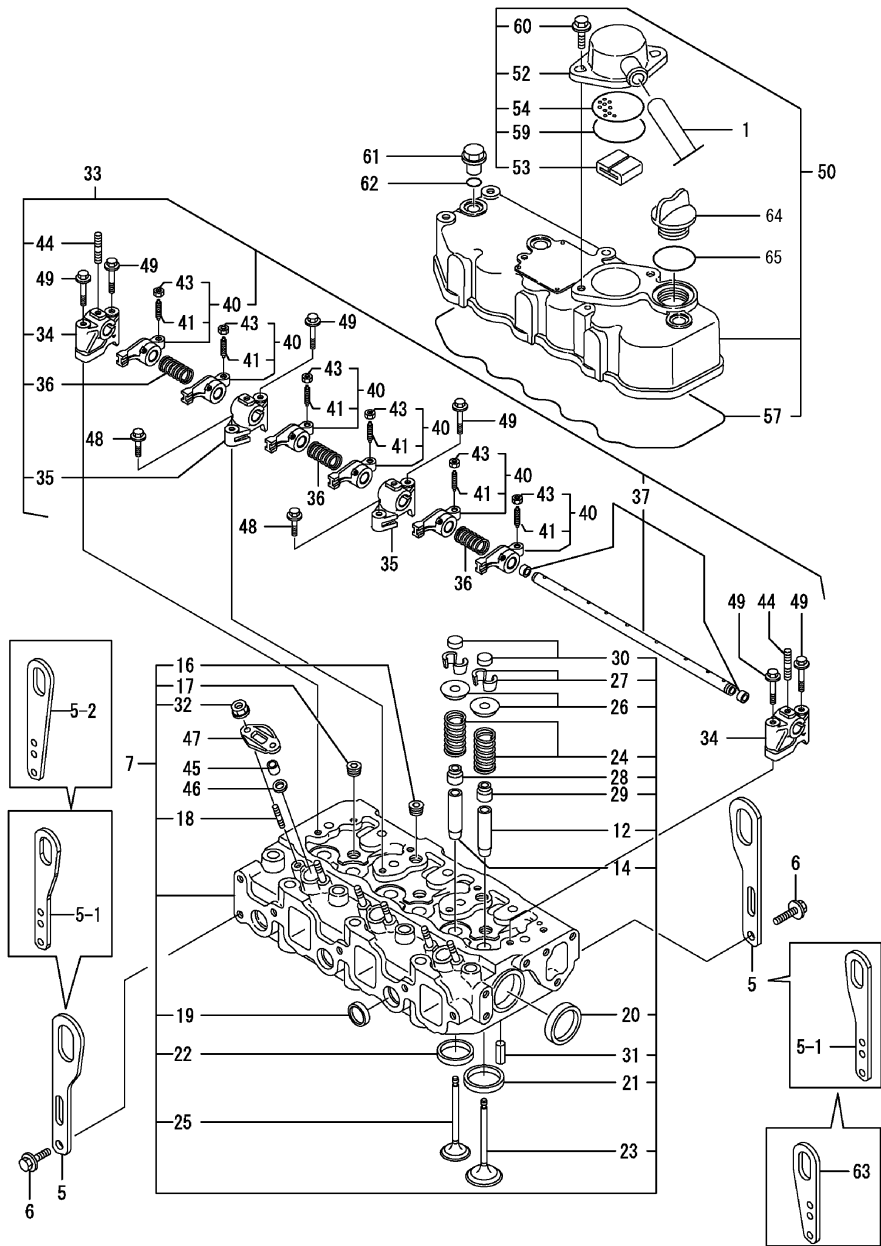


No.	Lev.	Parts No.	Description	Q'ty						I	R
				(A)	(B)	(C)	(D)	(E)	(F)		
1	1	129150-03090	HOSE, ID16X2T	1							
5	1	124736-07900	LIFTER	2							
5-1	1	129604-07900	LIFTER	2							N
(A=*2009.05)											
5-2	1	129900-07900	LIFTER	1							N
(A=*2009.08)											
6	1	26106-080142	BOLT, M8X 14 PLATED	4							
7	1	729202-11710	HEAD ASSY, CYLINDER	1							
12	2	120130-11860	GUIDE, VALVE	3							1
14	2	129150-11810	GUIDE, VALVE	3							1
16	2	23871-020000	PLUG, R02	2							
17	2	23871-030000	PLUG, R03	3							
18	2	26216-060202	STUD, M6X 20	6							
19	2	27241-220000	PLUG, 22	3							
20	2	27241-400000	PLUG, 40	2							
21	2	129470-11080	SEAT, INTAKE VALVE	3							
22	2	129470-11090	SEAT, EXHAUST VALVE	3							
23	2	129100-11100	VALVE, INTAKE	3							
24	2	129795-11120	SPRING, VALVE	6							
25	2	129100-11130	VALVE, EXHAUST	3							
26	2	129795-11180	RETAINER, SPRING	6							
27	2	27310-080000	COTTER 8	6							
28	2	121400-11340	SEAL, VALVE STEM	3							
29	2	124460-11340	SEAL, VALVE STEM	3							
30	2	129150-11370	CAP, VALVE	6							
31	2	22351-060012	PIN, SPRING 6.0X12	2							
32	2	26366-060002	NUT, M6	6							
33	1	129155-11241	SHAFT ASSY, ROCKER	1							
34	2	129155-11260	SUPPORT, ROCKER ARM	2							
35	2	129155-11270	SUPPORT, ROCKER ARM	2							
36	2	129150-11280	SPRING	3							
37	2	129150-11290	SHAFT, ROCKER ARM	1							
40	2	729402-11650	ARM ASSY, ROCKER	6							
41	3	129150-11230	SCREW, VALVE ADJUST	6							
43	3	129150-11750	NUT, M8	6							
44	2	26226-080182	STUD, M8X 18	3							
45	1	119625-11871	PROTECTOR, NOZZLE	3							
46	1	119625-11880	SEAT, NOZZLE	3							
47	1	119625-11900	RETAINER, NOZZLE	3							
48	1	26106-080252	BOLT, M8X 25 PLATED	2							
49	1	26106-080502	BOLT, M8X 50 PLATED	6							
50	1	129100-11350	BONNET ASSY, HEAD	1							
52	2	129150-03020	COVER, BREATHER	1							
53	2	129150-03070	BAFFLE, BREATHER	1							
54	2	129150-03080	PLATE, BAFFLE	1							
57	2	129150-11310	GASKET, BONNET	1							
59	2	24341-000500	O-RING, 1AS50.0	1							
60	2	26106-080162	BOLT, M8X 16 PLATED	2							
61	1	124160-11360	KNOB	3							
62	1	24311-000120	O-RING, 1AP12.0	3							
63	1	119226-07900	LIFTER	1							W

Remarks

(1) REPAIR PART.

Fig.4. CYLINDER HEAD & BONNET

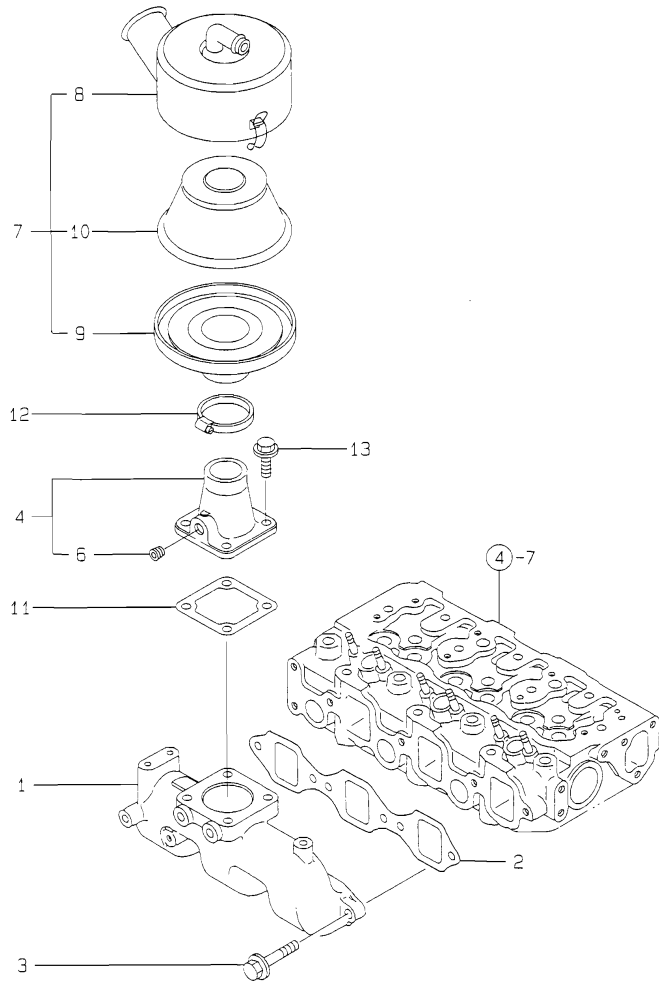


No.	Lev.	Parts No.	Description	Q'ty						I	R	
				(A)	(B)	(C)	(D)	(E)	(F)			
(A)=3TNE84-GHN												
(B)=												
(C)=												
(D)=												
(E)=												
(F)=												
(A)=*2009.08												
64	1	124160-01751	COVER, FILLER	1								
65	1	24311-000320	O-RING, 1AP32.0	1								

Remarks
(1) REPAIR PART.

Fig.5. SUCTION MANIFOLD

Y0005890
37NE84-GHN



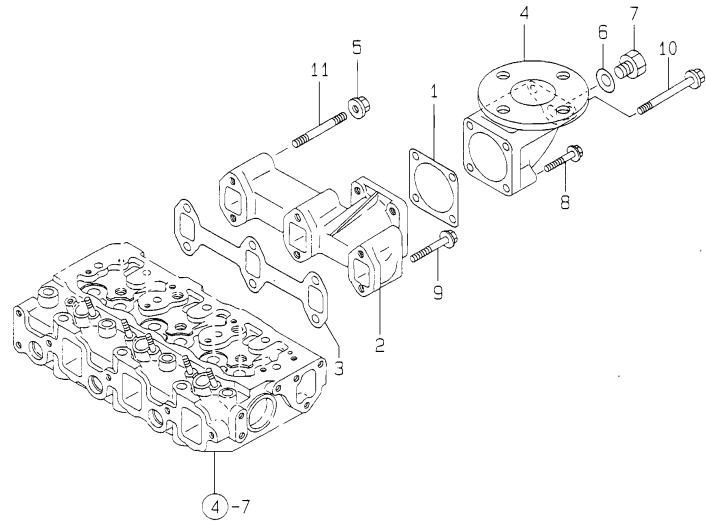
(A)=3TNE84-GHN
(B)=
(C)=

(D)=
(E)=
(F)=

No.	Lev.	Parts No.	Description	Q'ty						I	R
				(A)	(B)	(C)	(D)	(E)	(F)		
1	1	129150-12100	MANIFOLD, AIR INTAKE	1							
2	1	129150-12111	GASKET, MANIFOLD	1							
3	1	26106-080252	BOLT, M8X 25 PLATED	4							
4	1	129470-12210	JOINT ASSY	1							
6	2	23871-010000	PLUG, R01	1							
7	1	129795-12501	SILENCER ASSY	1							
8	2	129795-12520	PIPE, AIR INTAKE	1							
9	2	129795-12530	PLATE	1							
10	2	129795-12540	ELEMENT	1							
11	1	129150-77511	GASKET	1							
12	1	23000-060000	CLAMP, 60	1							
13	1	26106-080162	BOLT, M8X 16 PLATED	4							

Fig.6. EXHAUST MANIFOLD

Y0005890
3TNE84-GHN



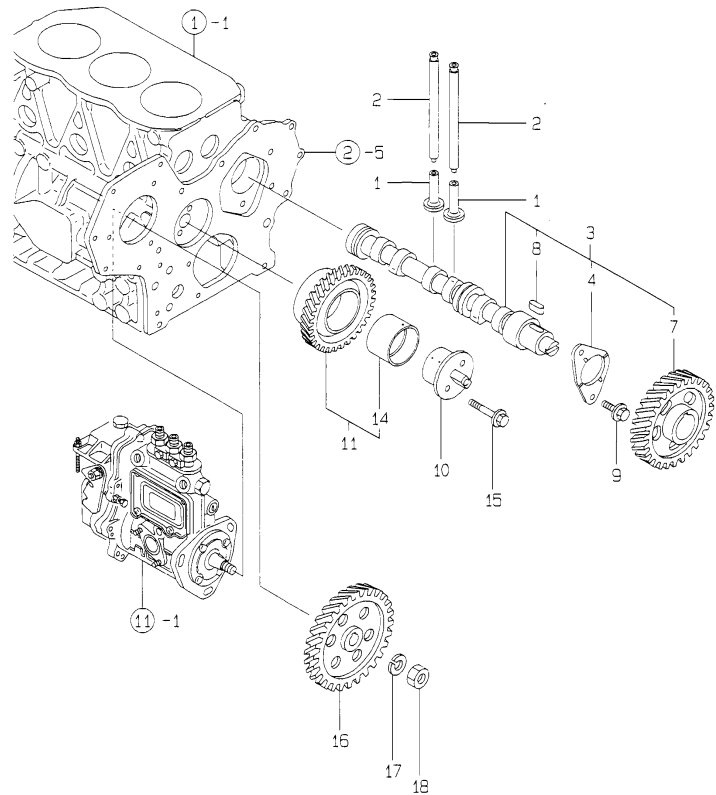
(A)=3TNE84-GHN
(B)=
(C)=

(D)=
(E)=
(F)=

No.	Lev.	Parts No.	Description	Q'ty						I	R
				(A)	(B)	(C)	(D)	(E)	(F)		
1	1	124450-11900	GASKET	1							
2	1	129100-13110	MANIFOLD, EXHAUST	1							
3	1	129150-13110	GASKET	1							
4	1	171083-13300	BEND, EXHAUST 50A	1							
5	1	194990-22050	NUT, M8	2							
6	1	23414-170000	GASKET, 17X1.0	1							
7	1	23894-030002	PLUG, G3/8	1							
8	1	26106-080452	BOLT, M8X 45 PLATED	2							
9	1	26106-080802	BOLT, M8X 80 PLATED	4							
10	1	26106-080952	BOLT, M8X 95 PLATED	2							
11	1	26216-080802	STUD, M8X 80	2							

Fig.7. CAMSHAFT & DRIVING GEAR

Y00D5890
3TNE84-GHN



(A)=3TNE84-GHN

(B)=

(C)=

(D)=

(E)=

(F)=

No.	Lev.	Parts No.	Description	Q'ty						I	R
				(A)	(B)	(C)	(D)	(E)	(F)		
1	1	129150-14200	TAPPET	6							
2	1	129150-14400	ROD, PUSH L=178	6							
3	1	129129-14580	CAMSHAFT ASSY	1							
4	2	129150-02450	BEARING, THRUST	1							
7	2	129150-14101	GEAR, CAMSHAFT	1							
8	2	22512-070140	KEY, 7X 14	1							
9	1	26106-080142	BOLT, M8X 14 PLATED	2							
10	1	129100-25061	SHAFT, IDLE	1							
11	1	129150-25101	GEAR ASSY, IDLE	1							
14	2	129150-25920	BUSH, IDLE GEAR	1							1
15	1	26106-080452	BOLT, M8X 45 PLATED	2							
16	1	129100-25900	GEAR, PUMP	1							
17	1	22217-120000	WASHER, SPRING 12	1							
18	1	26716-120002	NUT, M12	1							

Remarks

(1) REPAIR PART.

Fig.8. CRANKSHAFT & PISTON

(A)=3TNE84-GHN

(B)=

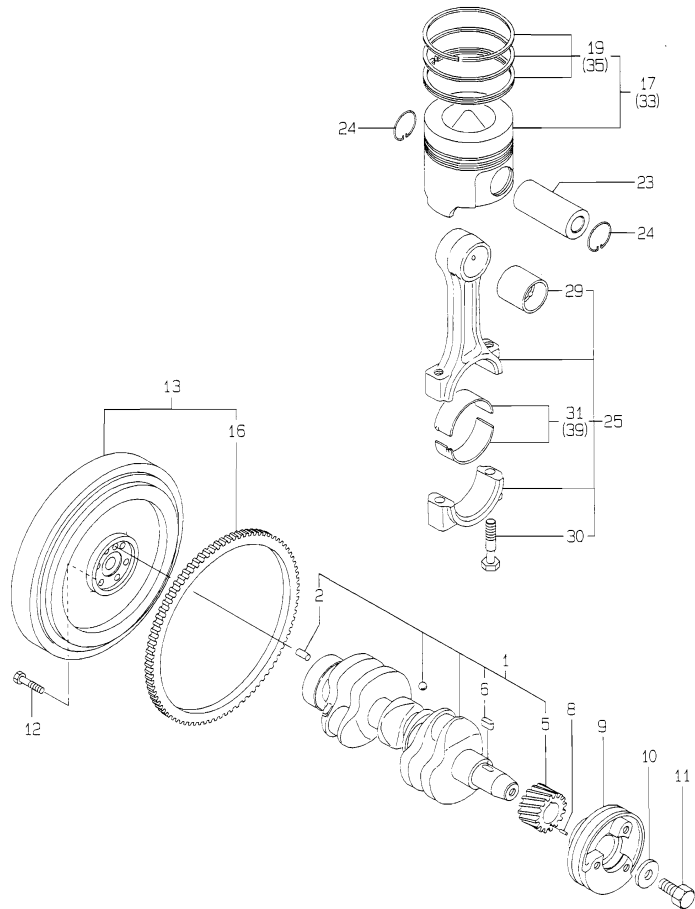
(C)=

(D)=

(E)=

(F)=

Y00D5890
3TNE84-GHN



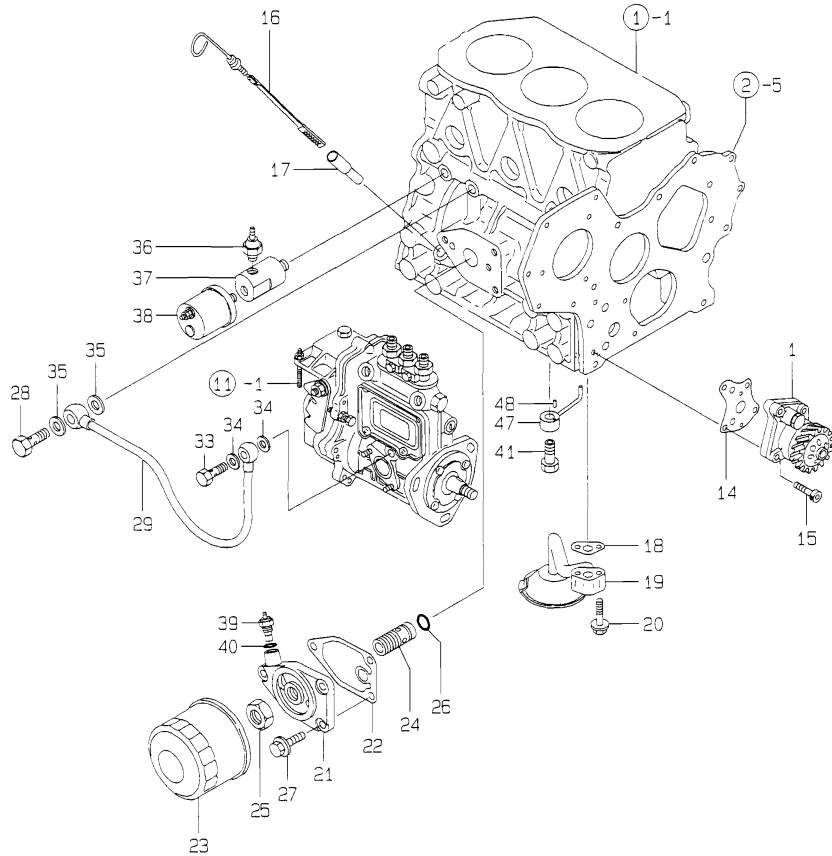
No.	Lev.	Parts No.	Description	Q'ty						I	R
				(A)	(B)	(C)	(D)	(E)	(F)		
1	1	129001-21000	CRANKSHAFT ASSY	1							
2	2	129100-01580	PIN, M8X16	1							
5	2	129150-21200	GEAR, CRANKSHAFT	1							
6	2	22512-070140	KEY, 7X 14	1							
8	1	22351-040010	PIN, SPRING 4.0X10	1							
9	1	171340-21650	V-PULLEY	1							
10	1	129795-21661	WASHER	1							
11	1	121850-21680	BOLT	1							
12	1	121111-21501	BOLT, FLYWHEEL	6							
13	1	171340-21580	FLYWHEEL ASSY	1							
16	2	119865-21600	GEAR, RING	1							
17	1	129002-22090	PISTON ASSY	3							
19	2	129002-22510	RING SET, PISTON	3							
23	1	129202-22300	PIN, PISTON D26 L70	3							
24	1	22252-000260	RING, 26	6							
25	1	729402-23100	ROD ASSY, CONNECTING	3							
29	2	129100-23910	BEARING, PISTON PIN	3							1
30	2	121550-23200	BOLT, CONNECTING ROD	6							
31	2	129150-23600	BEARING, CRANK PIN	3							
33	1	129002-22900	PISTON ASSY, 0.25 OS	3							2
35	2	129002-22950	RING SET, 0.25 OS	3							2
39	1	129150-23610	BEARING, 0.25 US	3							3

Remarks

- (1) REPAIR PART.
- (2) OVER-SIZE(O.S=0.25)PART.
- (3) UNDER-SIZE(U.S=0.25)PART.

Fig.9. LUB. OIL SYSTEM

Y0005890
3TNE84-GHN



(A)=3TNE84-GHN

(B)=

(C)=

(D)=

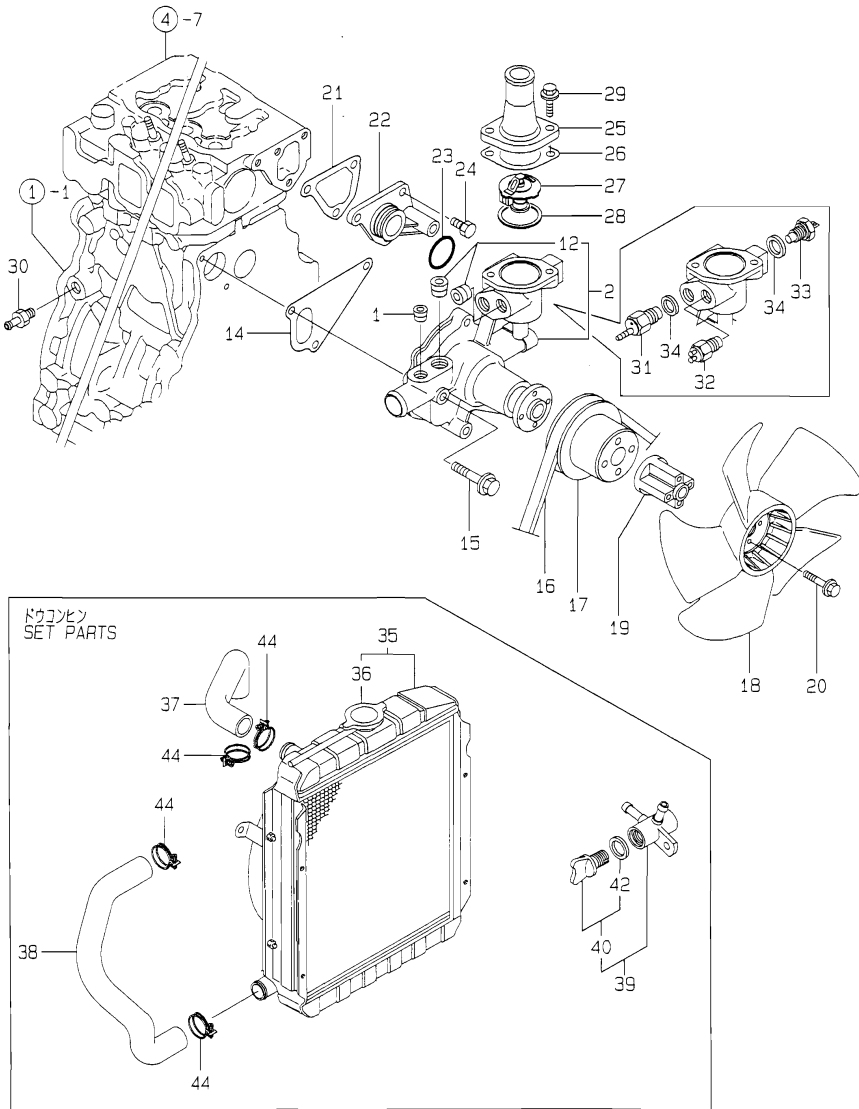
(E)=

(F)=

No.	Lev.	Parts No.	Description	Q'ty						I	R
				(A)	(B)	(C)	(D)	(E)	(F)		
1	1	129001-32001	PUMP ASSY, OIL	1							
14	1	129150-32020	GASKET, PUMP	1							
15	1	26450-060252	BOLT, M6X 25	4							
16	1	129136-34800	DIPSTICK, OIL	1							
17	1	121520-34810	GUIDE, DIPSTICK	1							
18	1	129150-35041	GASKET	1							
19	1	129100-35301	PIPE ASSY, OIL INLET	1							
20	1	26106-080352	BOLT, M8X 35 PLATED	2							
21	1	171375-35100	BRACKET, STRAINER	1							
22	1	129150-35111	GASKET	1							
23	1	129150-35151	FILTER, D80XL80	1							
24	1	129001-35300	BOLT, FILTER	1							
25	1	129150-35350	NUT	1							
26	1	24311-000160	O-RING, 1AP16.0	1							
27	1	26106-080202	BOLT, M8X 20 PLATED	3							
28	1	124160-39140	BOLT, PIPE JOINT M10	1							
29	1	129150-39450	PIPE ASSY, OIL	1							
33	1	124550-59820	BOLT, PIPE JOINT M8	1							
34	1	23414-080000	GASKET, 8X1.0	2							
35	1	23414-100000	GASKET, 10X1.0	2							
36	1	124160-39450	SWITCH, 0.5KG	1							
37	1	171375-39601	DAMPER, 1/8	1							
38	1	144626-91560	SENSOR	1							
39	1	124250-49351	SENSOR	1							
40	1	129150-49360	GASKET	1							
41	1	129792-39410	VALVE ASSY, CHECK	3							
47	1	129553-39650	NOZZLE	3							
48	1	22351-030010	PIN, SPRING 3.0X10	3							

Fig.10. COOLING WATER SYSTEM

Y00D5890
3TNE84-GHN



(A)=3TNE84-GHN

(B)=

(C)=

(D)=

(E)=

(F)=

No.	Lev.	Parts No.	Description	Q'ty						I	R
				(A)	(B)	(C)	(D)	(E)	(F)		
1	1	121850-11860	PLUG, PT1/4	1							
2	1	129001-42002	PUMP ASSY, WATER	1							
12	2	23871-030000	PLUG, R03	2							
14	1	129100-42020	GASKET, WATER PUMP	1							
15	1	26106-080602	BOLT, M8X 60 PLATED	3							
16	1	119831-42290	V-BELT, A37.5	1							
17	1	129155-42350	V-PULLEY	1							
18	1	119265-44740	FAN, D=310X5F	1							
19	1	119256-44760	SPACER, FAN	1							
20	1	26106-060602	BOLT, M6X 60 PLATED	4							
21	1	129100-49840	GASKET	1							
22	1	129001-42040	JOINT	1							
23	1	24321-000300	O-RING, 1AG30.0	1							
24	1	26106-080162	BOLT, M8X 16 PLATED	3							
25	1	129350-49560	COVER, THERMOSTAT	1							
26	1	129795-49551	GASKET	1							
27	1	129155-49800	THERMOSTAT, 71	1							
28	1	129150-49811	GASKET, THERMOSTAT	1							
29	1	26106-080202	BOLT, M8X 20 PLATED	2							
30	1	121550-49111	JOINT, PT1/4	1							
31	1	121250-44901	SWITCH, 110	1							
32	1	171375-44900	SWITCH, 15	1							
33	1	171375-44910	SENSOR	1							
34	1	124465-44950	GASKET, 16	2							
35	1	171340-44510	RADIATOR	1							
36	2	123682-44210	CAP, RADIATOR	1							
37	1	171301-49010	PIPE, WATER	1							
38	1	129211-49020	PIPE, WATER	1							
39	1	129150-49100	COCK ASSY, 3-WAY	1							
40	2	129150-49080	COCK, DRAIN	1							
42	3	119629-49080	GASKET	1							
44	1	23010-038000	CLAMP, 38	4							

Fig.11. FUEL INJECTION PUMP

(A)=3TNE84-GHN

(B)=

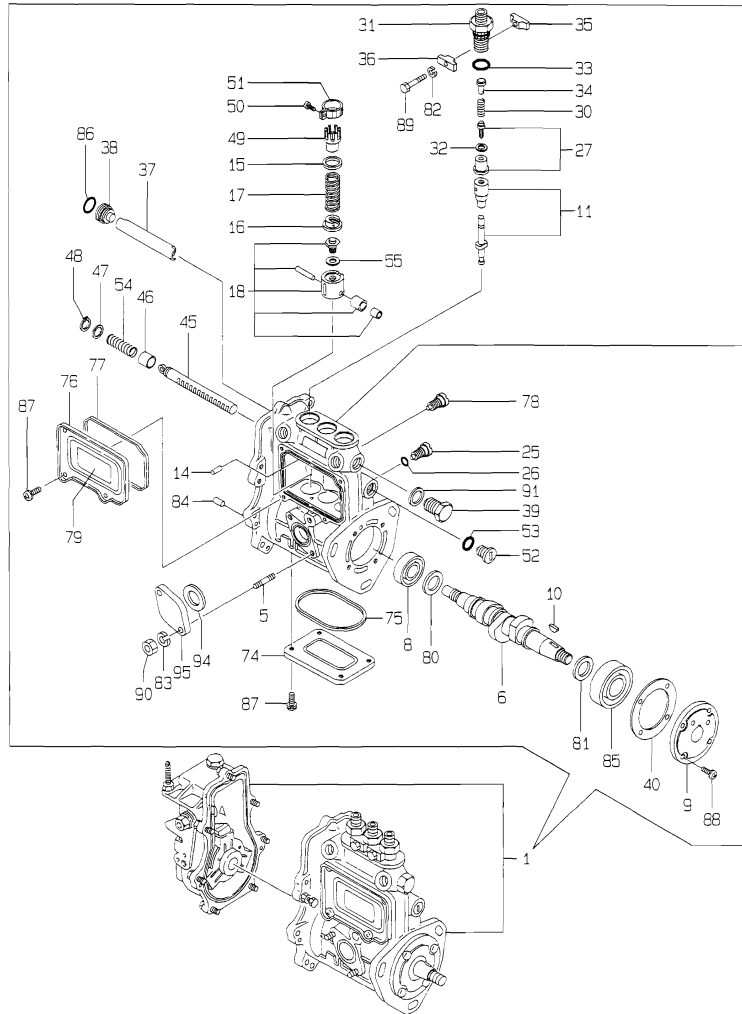
(C)=

(D)=

(E)=

(F)=

Y0005890
3TNE84-GHN



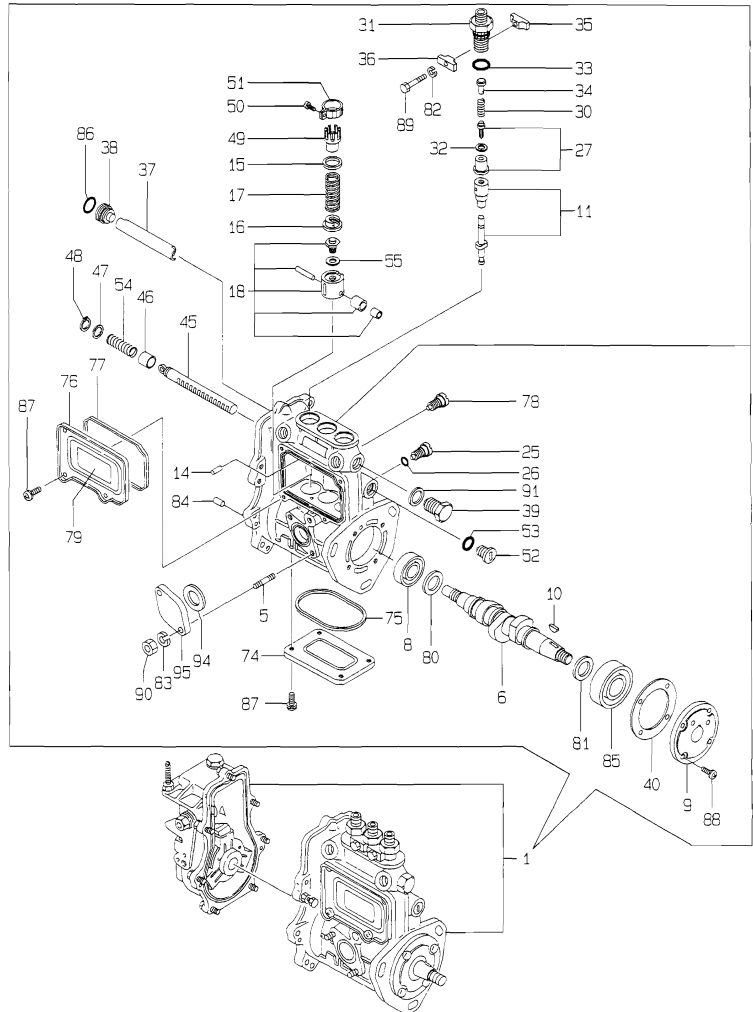
No.	Lev.	Parts No.	Description	Q'ty						I	R
				(A)	(B)	(C)	(D)	(E)	(F)		
1	1	729205-51400	PUMP ASSY, INJECTION	1							1
5	2	129155-51020	STUD	2							
6	2	119810-51040	CAMSHAFT	1							
8	2	129155-51050	BEARING, 17BM001D	1							
9	2	129155-51060	SUPPORT, CAMSHAFT	1							
10	2	122710-51090	KEY	1							
11	2	129412-51200	PLUNGER ASSY	3							
14	2	129155-51140	PIN	3							
15	2	174307-51170	RETAINER, SPRING A	3							
16	2	129155-51180	RETAINER, SPRING	3							
17	2	124950-51190	SPRING, PLUNGER	3							
18	2	129155-51200	TAPPET ASSY	3							
25	2	129155-51270	STOPPER, TAPPET	3							
26	2	129155-51280	O-RING, S6	3							
27	2	105300-51300	VALVE ASSY, DELIVERY	3							
30	2	129155-51320	SPRING, DELIVERY	3							
31	2	129155-51340	RETAINER	3							
32	2	124550-51350	GASKET, DELIVERY	3							
33	2	124550-51370	O-RING	3							
34	2	129155-51370	STOPPER, VALVE	3							
35	2	129155-51380	STOPPER	2							
36	2	129155-51390	STOPPER	2							
37	2	129155-51400	DEFLECTOR	1							
38	2	129155-51410	BOLT	1							
39	2	129155-51420	PLUG, M16	1							
40	2	129155-51450	SHIM SET, ADJUSTING	1							
45	2	129155-51500	RACK, CONTROL	1							
46	2	129155-51521	BUSH, RACK	1							
47	2	129155-51530	SPACER	1							
48	2	129155-51540	CIRCLIP	1							
49	2	129155-51550	PINION, CONTROL	3							
50	2	122117-51560	SCREW	3							
51	2	174307-51560	PINION	3							
52	2	129155-51570	PLUG, M12	1							
53	2	129155-51580	O-RING	1							
54	2	129155-51591	SPRING, RACK	1							
55	2	129155-51600	SHIM SET, ADJUSTING	3							
74	2	129155-51700	COVER	1							
75	2	129155-51710	GASKET	1							
76	2	129155-51750	COVER	1							
77	2	129155-51760	GASKET	1							
78	2	129155-51790	STOOPER, RACK	1							
79	2	129156-51910	LABEL, CAUTION	1							
80	2	129155-51930	SPACER, T=3.25	1							
81	2	129155-51940	SPACER, T=1.5	1							
82	2	22217-050000	WASHER, SPRING 5	2							
83	2	22217-060000	WASHER, SPRING 6	2							
84	2	22351-050010	PIN, SPRING 5.0X10	2							
85	2	24101-063034	BEARING, BALL 6303	1							
86	2	24341-000160	O-RING, 1AS16.0	1							
87	2	26022-050102	SCREW, M5X10	8							

Remarks

(1) GOVERNOR ASSY(FIG.12) IS INCORPORATED IN THIS FOP.CMP (REF.NO.1).

Fig.11. FUEL INJECTION PUMP

Y0005890
3TNE84-GHN



(A)=3TNE84-GHN
(B)=
(C)=

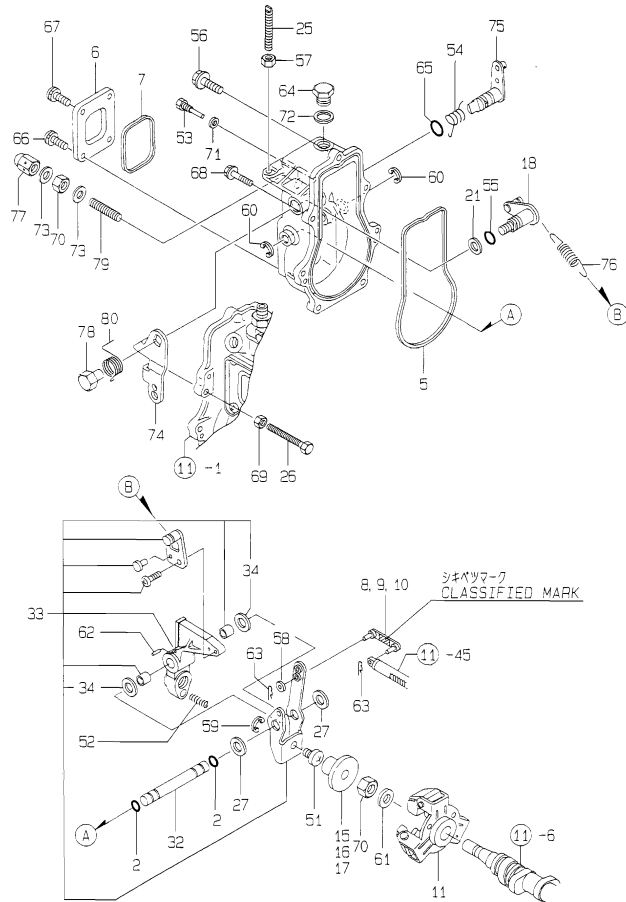
(D)=
(E)=
(F)=

No.	Lev.	Parts No.	Description	Q'ty						I	R
				(A)	(B)	(C)	(D)	(E)	(F)		
88	2	26022-060162	SCREW, M6X16	4							
89	2	26116-050302	BOLT, M5X 30 PLATED	2							
90	2	26716-060002	NUT, M6	2							
91	2	22190-160002	WASHER, SEAL 16	1							
94	2	129155-52050	GASKET	1							
95	2	129100-52200	COVER	1							

Remarks
(1) GOVERNOR ASSY(FIG.12) IS
INCORPORATED IN THIS FOP.CMP
(REF.NO.1).

Fig.12. GOVERNOR

Y00D5890
3TNE84-GHN



(A)=3TNE84-GHN

(B)=

(C)=

(D)=

(E)=

(F)=

No.	Lev.	Parts No.	Description	Q'ty						I	R
				(A)	(B)	(C)	(D)	(E)	(F)		
2	2	129155-51280	O-RING, S6	2							
5	2	129155-61050	GASKET	1							
6	2	129155-61060	COVER, GOVERNOR CASE	1							
7	2	129155-61070	GASKET	1							
8	2	129155-61120	LINK, L=30 MARK 0	1							1
9	2	129155-61130	LINK, L=31 MARK 1	1							1
10	2	129155-61140	LINK, L=30.5 MARK 05	1							1
11	2	129155-61201	WEIGHT ASSY,GOVERNOR	1							
15	2	129155-61341	SLEEVE	1							2
16	2	129155-61350	SLEEVE, L=24.9	1							2
17	2	129155-61360	SLEEVE, L=25.2	1							2
18	2	129100-61400	SHAFT ASSY	1							
21	2	129155-61430	SPACER	1							
25	2	129155-61450	BOLT, LIMITER	1							
26	2	129155-61460	BOLT, IDLE	1							
27	2	129155-61480	SPACER ASSY	2							
32	2	129155-61490	SHAFT	1							
33	2	129100-61501	LEVER ASSY, GOVERNOR	1							
34	3	174307-51700	SHIM SET	2							
51	2	129155-61540	SHIFTER	1							
52	2	129500-61650	SPRING, FUEL CONTROL	1							
53	2	129155-61810	PIN	1							
54	2	129100-61821	SPRING, RETURN	1							
55	2	129155-61830	O-RING, S10	1							
56	2	129155-61950	BOLT	1							
57	2	124550-66370	NUT, M6	1							
58	2	22117-040000	WASHER, 4	1							
59	2	22272-000040	RING, E- 4	1							
60	2	22272-000060	RING, E- 6	2							
61	2	22287-120000	WASHER, 12	1							
62	2	22351-030016	PIN, SPRING 3.0X16	1							
63	2	22372-040000	PIN, SNAP 4	2							
64	2	23887-100002	PLUG, 10	1							
65	2	24311-240100	O-RING, 1AP10A	1							
66	2	26022-050102	SCREW, M5X10	2							
67	2	26023-050102	SCREW, M5X10	2							
68	2	26106-060202	BOLT, M6X 20 PLATED	6							
69	2	26756-060002	NUT, LOCK M6	1							
70	2	26776-120002	NUT, LOCK M12	2							
71	2	22190-060002	WASHER, SEAL 6	1							
72	2	22190-100002	WASHER, SEAL 10	1							
73	2	22190-120002	WASHER, SEAL 12	2							
74	2	171488-61440	LEVER, CONTROL	1							
75	2	129155-61802	LEVER, STOP	1							
76	2	129500-61700	SPRING, GOVERNOR	1							
77	2	26687-120002	NUT, CAP M12	1							
78	2	129255-61410	NUT, LOCK	1							
79	2	129155-61470	BOLT, CONTROL	1							
80	2	129255-61420	SPRING, RETURN	1							

Remarks

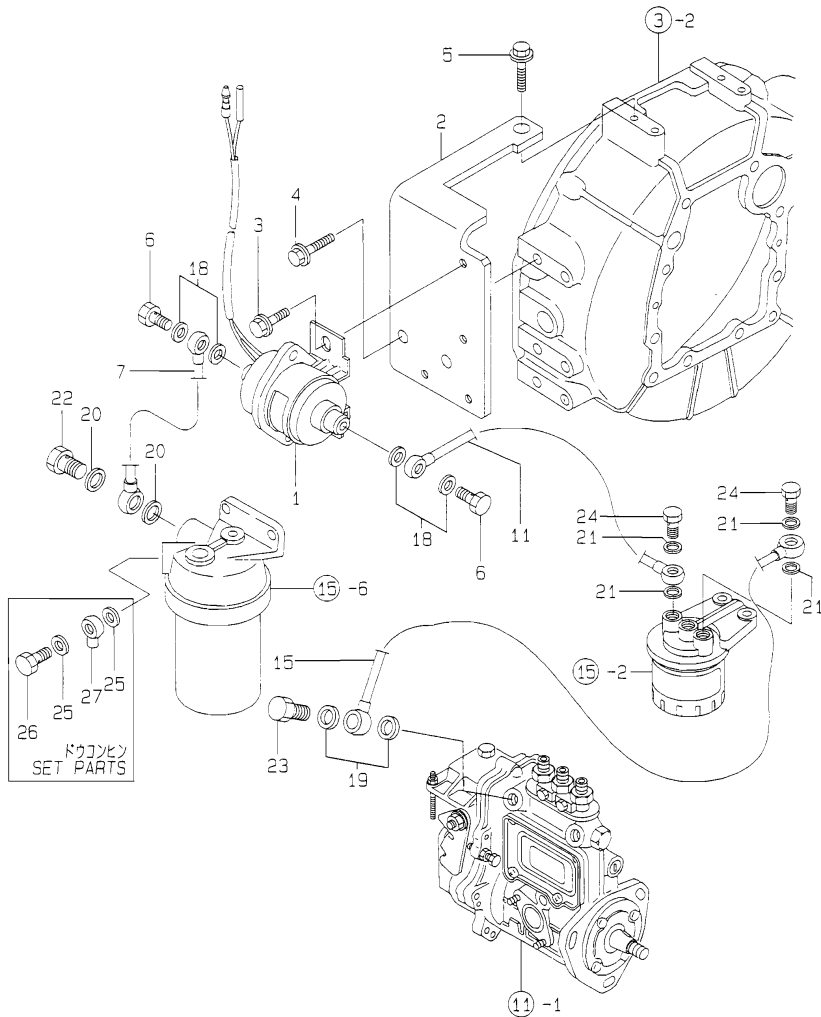
(1) SELECTIVE PARTS;CERTAIN THE CLASSIFICATION MARK, THEN PLACE YOUR ORDER. (REF.TO.ILLUSTRATION).

(2) SELECTIVE PART.

* THIS FIGURE(GOVERNOR ASSY)IS INCORPORATED IN THE FUEL INJECTION PUMP ASSY(FIG.11).

Fig.13. FEED PUMP

Y0005890
3TNE84-GHN



(A)=3TNE84-GHN

(B)=

(C)=

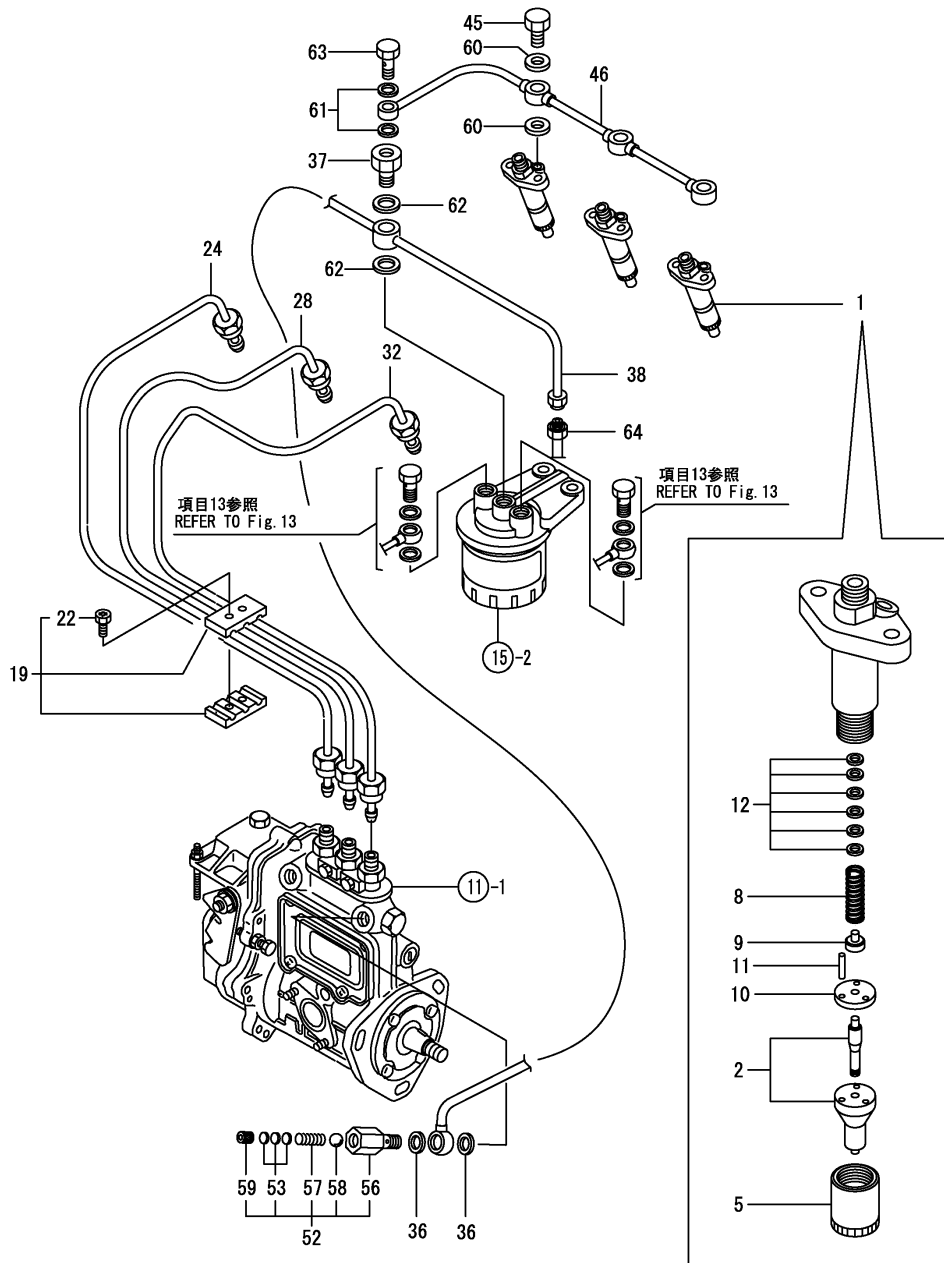
(D)=

(E)=

(F)=

No.	Lev.	Parts No.	Description	Q'ty						I	R
				(A)	(B)	(C)	(D)	(E)	(F)		
1	1	124790-52201	PUMP ASSY, FUEL FEED	1							
2	1	171375-52501	BRACKET, PUMP	1							
3	1	26106-060102	BOLT, M6X 10 PLATED	2							
4	1	26106-080162	BOLT, M8X 16 PLATED	2							
5	1	26106-100162	BOLT, M10X 16 PLATED	1							
6	1	105582-59150	BOLT, PIPE JOINT	2							
7	1	171375-59500	PIPE ASSY, FUEL	1							
11	1	171375-59511	PIPE ASSY, FUEL	1							
15	1	171375-59521	PIPE ASSY, FUEL	1							
18	1	23414-080012	GASKET, 8X1.0	4							
19	1	23414-120000	GASKET, 12X1.0	2							
20	1	23414-120000	GASKET, 12X1.0	2							
21	1	23414-120000	GASKET, 12X1.0	4							
22	1	23857-060000	BOLT, JOINT 6	1							
23	1	23857-060000	BOLT, JOINT 6	1							
24	1	23857-060000	BOLT, JOINT 6	2							
25	1	23414-120000	GASKET, 12X1.0	2							
26	1	23857-060000	BOLT, JOINT 6	1							
27	1	103854-39540	JOINT, PIPE	1							

Fig.14. FUEL INJECTION VALVE



(A)=3TNE84-GHN

(B)=

(C)=

(D)=

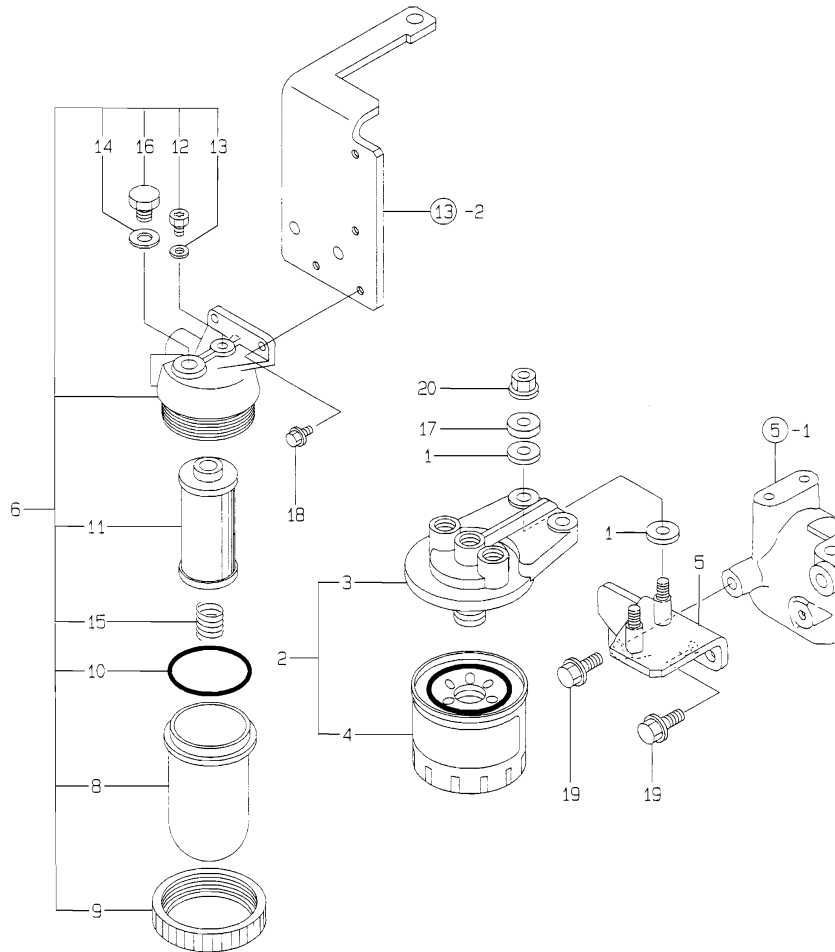
(E)=

(F)=

No.	Lev.	Parts No.	Description	Qty						I	R
				(A)	(B)	(C)	(D)	(E)	(F)		
1	1	729100-53300	VALVE ASSY,INJECTION	3							
2	2	129100-53000	VALVE ASSY,INJECTION	3							
5	2	114250-53080	NUT, NOZZLE D16.95	3							
8	2	114250-53120	SPRING, NOZZLE	3							
9	2	114250-53130	SEAT, SPRING	3							
10	2	114250-53140	PLATE	3							
11	2	114250-53210	PIN	6							
12	2	114250-53400	SHIM SET	3							
19	1	129150-59120	RETAINER, PIPE	1							
22	2	129150-59131	BOLT, M4X14	2							
24	1	129100-59811	PIPE ASSY, INJECTION	1							
28	1	129100-59821	PIPE ASSY, INJECTION	1							
32	1	129100-59831	PIPE ASSY, INJECTION	1							
36	1	104200-59170	GASKET, 12	2							
37	1	129495-59300	BOLT, PIPE JOINT	1							
38	1	171375-59530	PIPE ASSY, FUEL	1							
45	1	129491-59540	BOLT, PIPE JOINT M6	3							
46	1	171375-59551	PIPE ASSY, RETURN	1							
52	1	129100-59951	VALVE ASSY, CHECK	1							
53	2	129100-59850	SHIM SET	1							
56	2	129100-59961	BODY, VALVE	1							
57	2	129100-59970	SPRING	1							
58	2	24190-080001	BALL, STEEL 1/4	1							
59	2	27241-100000	PLUG, 10	1							
60	1	23414-060000	GASKET, 6X1.0	6							
61	1	23414-080012	GASKET, 8X1.0	2							
62	1	23414-140000	GASKET, 14X1.0	2							
63	1	23851-030000	JOINT BOLT 3	1							
64	1	43551-001451	UNION 8(M)	1							

Fig.15. FUEL FILTER

Y0005890
3TNE84-GHN



(A)=3TNE84-GHN

(B)=

(C)=

(D)=

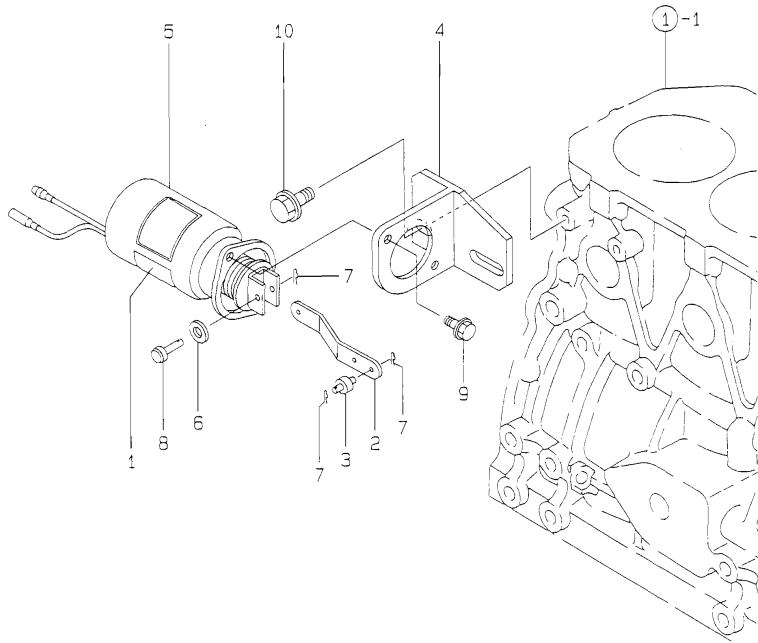
(E)=

(F)=

No.	Lev.	Parts No.	Description	Q'ty						I	R
				(A)	(B)	(C)	(D)	(E)	(F)		
1	1	160610-55460	INSULATOR	4							
2	1	129470-55601	FILTER ASSY, FUEL	1							
3	2	129470-55610	BODY, STRAINER	1							
4	2	129470-55701	STRAINER ASSY, FUEL	1							
5	1	171375-55612	BRACKET, STRAINER	1							
6	1	171081-55900	FILTER ASSY, PRE	1							
8	2	121370-55730	CUP, STRAINER	1							
9	2	110250-55610	RING, RETAINING	1							
10	2	103854-32050	O-RING	1							
11	2	171081-55910	SCREEN	1							
12	2	101720-55750	PLUG, 6	1							
13	2	23418-060000	GASKET, 6X1.0	1							
14	2	23414-080012	GASKET, 8X1.0	1							
15	2	121257-55720	SPRING	1							
16	2	101720-55750	PLUG, 6	1							
17	1	121236-77340	SPACER	2							
18	1	26106-060142	BOLT, M6X 14 PLATED	2							
19	1	26106-080162	BOLT, M8X 16 PLATED	2							
20	1	26366-080002	NUT, M8	2							

Fig.16. ENGINE STOP DEVICE

Y0005890
3TNE84-GHN

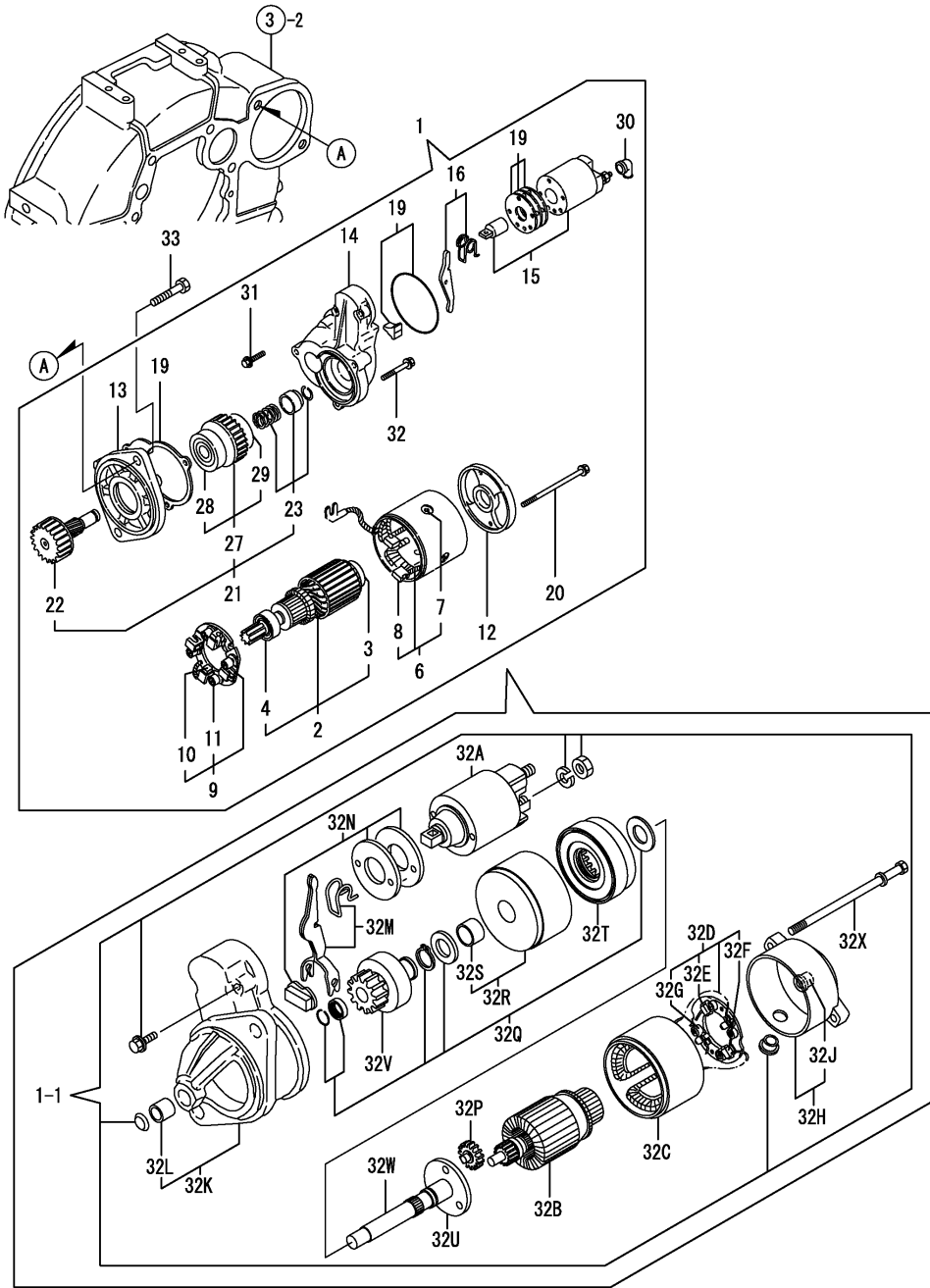


(A)=3TNE84-GHN
(B)=
(C)=

(D)=
(E)=
(F)=

No.	Lev.	Parts No.	Description	Q'ty						I	R
				(A)	(B)	(C)	(D)	(E)	(F)		
1	1	171010-65100	LABEL	1							
2	1	171335-65110	LINK, SOLENOID	1							
3	1	171335-65120	PIN	1							
4	1	171335-65130	BRACKET, SOLENOID	1							
5	1	171335-77951	SOLENOID, MAGNETIC	1							
6	1	22117-050000	WASHER, 5	1							
7	1	22360-050000	SNAP PIN 5	3							
8	1	22487-050160	PIN, H 5X 16	1							
9	1	26106-060122	BOLT, M6X 12 PLATED	2							
10	1	26106-080142	BOLT, M8X 14 PLATED	2							

Fig.17. STARTING MOTOR



(A)=3TNE84-GHN

(B)=

(C)=

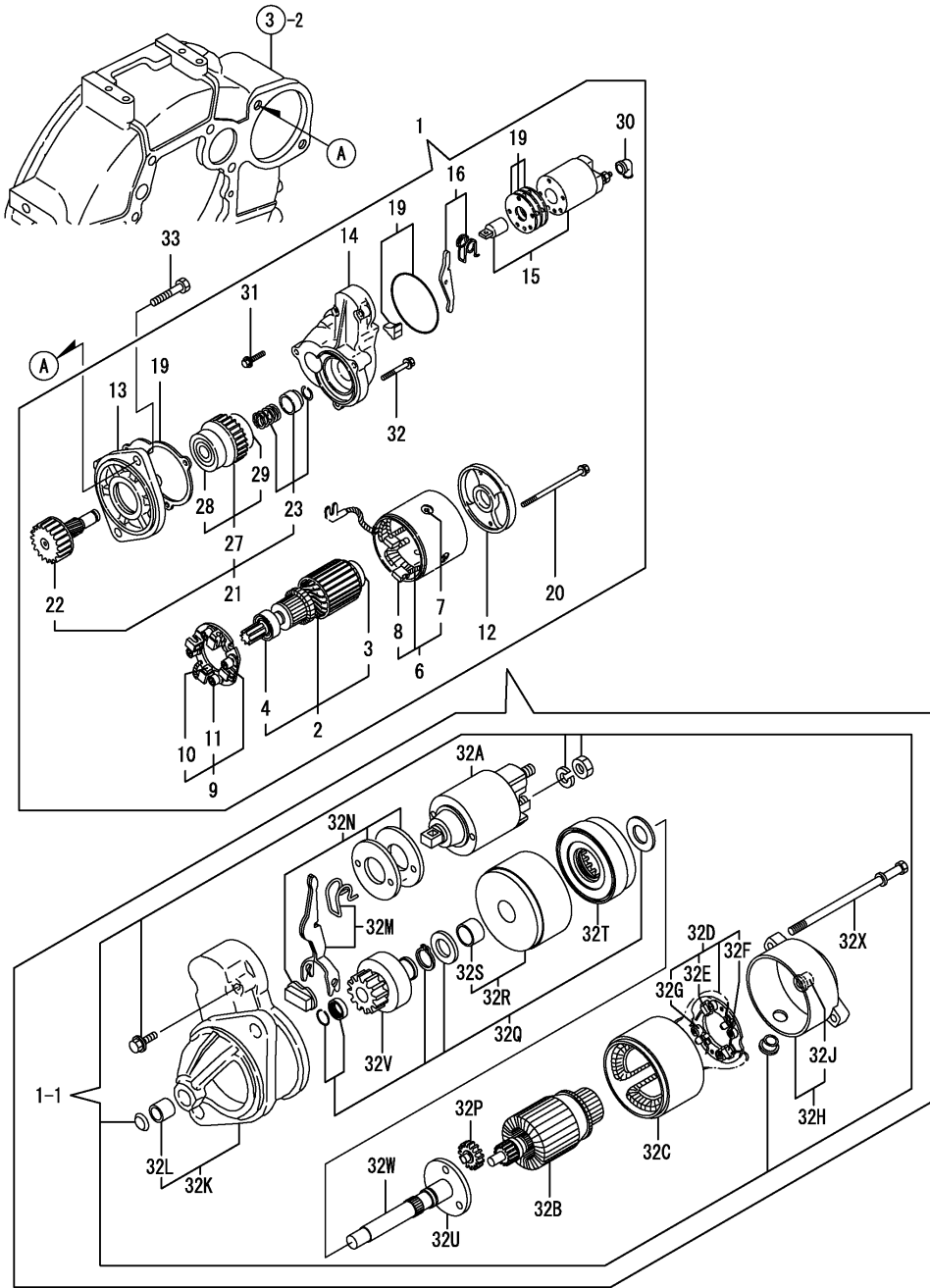
(D)=

(E)=

(F)=

No.	Lev.	Parts No.	Description	Q'ty						I	R
				(A)	(B)	(C)	(D)	(E)	(F)		
1	1	171008-77010	STARTER, S114-483	1							
1-1	1	129698-77010	STARTER, 12V1.2KW	1							R
		(A=E56841)									
2	2	171008-77400	ARMATURE ASSY	1							Z
		(A=E56841)									
3	3	171008-77410	BEARING(1)	1							Z
		(A=E56841)									
4	3	171008-77420	BEARING(2)	1							Z
		(A=E56841)									
6	2	171008-77440	COIL ASSY, FIELD	1							Z
		(A=E56841)									
7	3	171008-77450	SCREW	4							Z
		(A=E56841)									
8	3	171008-77460	BRUSH (+)	2							Z
		(A=E56841)									
9	2	171008-77470	HOLDER ASSY, BRUSH	1							Z
		(A=E56841)									
10	3	171008-77480	BRUSH (-)	2							Z
		(A=E56841)									
11	3	171008-77490	SPRING, BRUSH	4							Z
		(A=E56841)									
12	2	171008-77500	COVER, REAR	1							Z
		(A=E56841)									
13	2	171008-77510	HOUSING ASSY, GEAR	1							Z
		(A=E56841)									
14	2	171008-77520	HOUSING, CENTER	1							Z
		(A=E56841)									
15	2	171008-77530	SWITCH, MAGNETIC	1							Z
		(A=E56841)									
16	2	171008-77540	LEVER SET, SHIFT	1							Z
		(A=E56841)									
19	2	171008-77571	DUST COVER,(NON-ASB.	1							Z
		(A=E56841)									
20	2	171008-77640	BOLT, THROUGH	2							Z
		(A=E56841)									
21	2	171008-77650	PINION ASSY	1							Z
		(A=E56841)									
22	3	171008-77660	SHAFT, PINION	1							Z
		(A=E56841)									
23	3	171008-77670	STOPPER SET, PINION	1							Z
		(A=E56841)									
27	3	171008-77720	CLUTCH ASSY	1							Z
		(A=E56841)									
28	4	171008-77730	BALL BEARING (3)	1							Z
		(A=E56841)									
29	4	171008-77740	BALL BEARING (4)	1							Z
		(A=E56841)									
30	2	171008-77750	COVER, M TERMINAL	1							Z
		(A=E56841)									
31	2	26106-060322	BOLT, M6X 32 PLATED	2							Z
		(A=E56841)									

Fig.17. STARTING MOTOR



(A)=3TNE84-GHN

(B)=

(C)=

(D)=

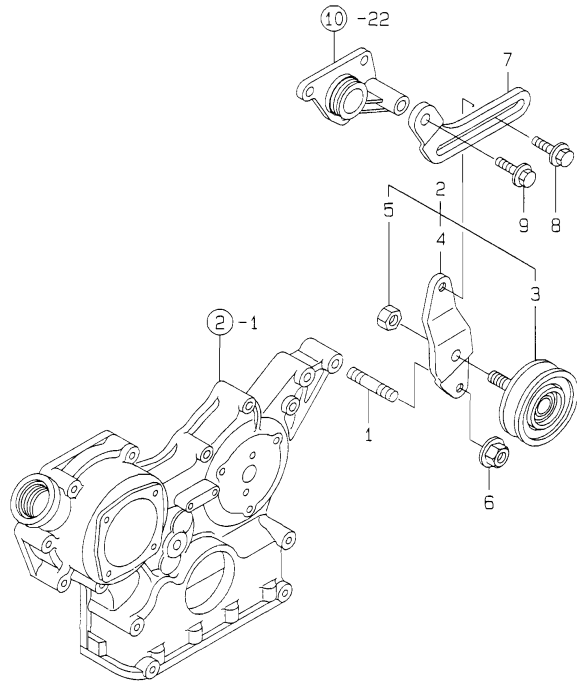
(E)=

(F)=

No.	Lev.	Parts No.	Description	Q'ty						I	R
				(A)	(B)	(C)	(D)	(E)	(F)		
32	2	26106-060402 (A=E56841)	BOLT, M6X 40 PLATED	3							Z
32A	2	129698-77020 (A=E56841)	MAGNETIC SWITCH ASSY	1							W
32B	2	129698-77100 (A=E56841)	ARMATURE ASSY	1							W
32C	2	129698-77110 (A=E56841)	COIL ASSY, FIELD	1							W
32D	2	129698-77120 (A=E56841)	HOLDER ASSY, BRUSH	1							W
32E	3	129698-77140 (A=E56841)	BRUSH(+) SET	1							W
32F	3	129698-77130 (A=E56841)	BRUSH (-)	2							W
32G	3	129698-77150 (A=E56841)	SPRING, BRUSH	4							W
32H	2	129698-77160 (A=E56841)	COVER ASSY, REAR	1							W
32H-1	2	129698-77161 (A=EXXX)	COVER ASSY	1							R
32J	3	129698-77170 (A=E56841)	BEARING	1							W
32K	2	129698-77260 (A=E56841)	HOUSING ASSY, GEARS	1							W
32L	3	X2114535200 (A=E56841)	METAL, STARTER	1							W
32M	2	129698-77270 (A=E56841)	LEVER SET, SHIFT	1							W
32N	2	129698-77280 (A=E56841)	COVER KIT	1							W
32P	2	129698-77240 (A=E56841)	GEAR	3							W
32Q	2	129698-77250 (A=E56841)	WASHER SET	1							W
32R	2	129698-77180 (A=E56841)	BRACKET	1							W
32S	3	129698-77190 (A=E56841)	BRACKET	1							W
32T	2	129698-77200 (A=E56841)	GEAR, INTERNAL	1							W
32U	2	129698-77210 (A=E56841)	BRACKET	1							W
32V	2	129698-77220 (A=E56841)	PINION ASSY	1							W
32W	2	129698-77230 (A=E56841)	SHAFT(PINION	1							W
32X	2	124195-77770 (A=E56841)	THROUGH BOLT	2							W
33	1	26116-120252	BOLT, M12X 25 PLATED	2							

Fig.18. TENSION PULLEY

Y0005890
3TNEB4-GHN



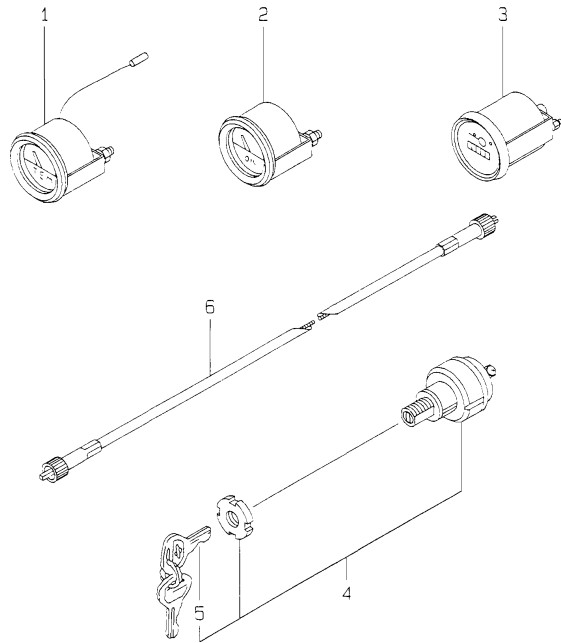
(A)=3TNE84-GHN
(B)=
(C)=

(D)=
(E)=
(F)=

No.	Lev.	Parts No.	Description	Q'ty						I	R
				(A)	(B)	(C)	(D)	(E)	(F)		
1	1	121450-01570	STUD	1							
2	1	171375-44300	PULLEY ASSY, TENSION	1							
3	2	171011-44301	PULLEY, TENSION	1							
4	2	171375-44320	BRACKET, PULLEY	1							
5	2	26706-100002	NUT, M10	1							
6	1	26366-100002	NUT, M10	1							
7	1	129400-77330	ADJUSTER	1							
8	1	26014-080252	BOLT, M8X 25	1							
9	1	26106-080502	BOLT, M8X 50 PLATED	1							

Fig.19. ELECTRIC PARTS

Y0005890
3TNE84-GHN



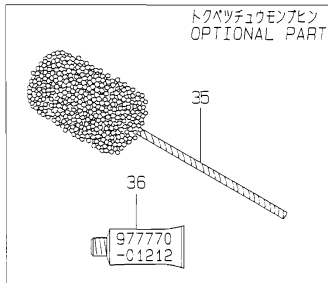
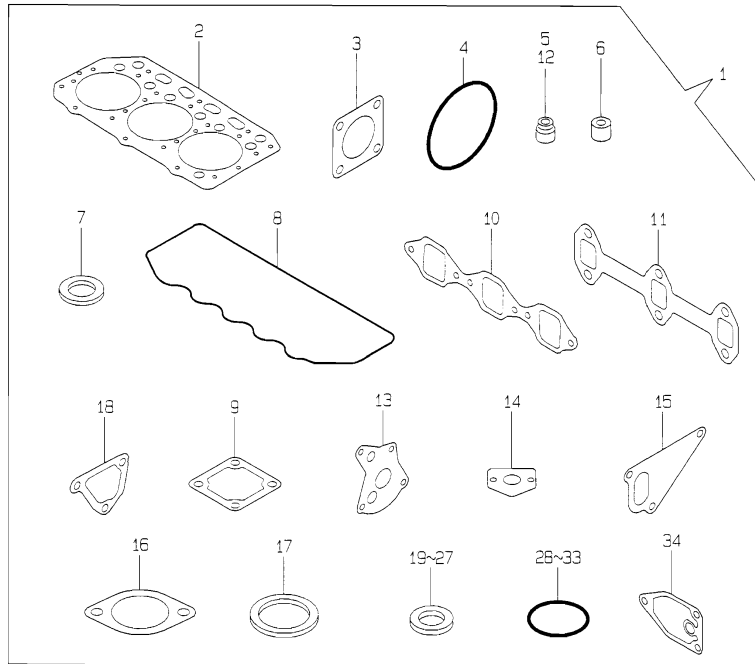
(A)=3TNE84-GHN
(B)=
(C)=

(D)=
(E)=
(F)=

No.	Lev.	Parts No.	Description	Q'ty						I	R
				(A)	(B)	(C)	(D)	(E)	(F)		
1	1	171010-77850	THERMOSTAT	2							
2	1	171090-91010	GAUGE	1							
3	1	171014-91101	TACHOMETER	1							
4	1	121400-91251	SWITCH, STARTER	1							
5	2	121400-91271	KEY, SWITCH	1							
6	1	121400-91140	SHAFT	1							

Fig.20. GASKET SET

Y00D5890
37NE84-GHN



(A)=3TNE84-GHN
(B)=
(C)=

(D)=
(E)=
(F)=

No.	Lev.	Parts No.	Description	Q'ty						I	R
				(A)	(B)	(C)	(D)	(E)	(F)		
1	1	729002-92680	GASKET SET	1							1
2	2	129002-01331	GASKET, HEAD	1							
3	2	124240-01883	GASKET	1							
4	2	121850-51960	O-RING	1							
5	2	124460-11340	SEAL, VALVE STEM	3							
6	2	119625-11871	PROTECTOR, NOZZLE	3							
7	2	119625-11880	SEAT, NOZZLE	3							
8	2	129150-11310	GASKET, BONNET	1							
9	2	129150-77511	GASKET	1							
10	2	129150-12111	GASKET, MANIFOLD	1							
11	2	129150-13110	GASKET	1							
12	2	121400-11340	SEAL, VALVE STEM	3							
13	2	129150-32020	GASKET, PUMP	1							
14	2	129150-35041	GASKET	1							
15	2	129100-42020	GASKET, WATER PUMP	1							
16	2	129795-49551	GASKET	1							
17	2	129150-49811	GASKET, THERMOSTAT	1							
18	2	129100-49840	GASKET	1							
19	2	22190-080002	WASHER, SEAL 6	5							
20	2	23414-080012	GASKET, 8X1.0	6							
21	2	23414-060000	GASKET, 6X1.0	6							
22	2	23414-140000	GASKET, 14X1.0	2							
23	2	23414-080000	GASKET, 8X1.0	2							
24	2	23414-100000	GASKET, 10X1.0	2							
25	2	23414-120000	GASKET, 12X1.0	10							
26	2	124465-44950	GASKET, 16	2							
27	2	129150-49360	GASKET	1							
28	2	24311-000120	O-RING, 1AP12.0	3							
29	2	24311-000160	O-RING, 1AP16.0	3							
30	2	24311-000320	O-RING, 1AP32.0	2							
31	2	24341-000240	O-RING, 1AS24.0	1							
32	2	24341-000500	O-RING, 1AS50.0	1							
33	2	24321-000300	O-RING, 1AG30.0	1							
34	2	129150-35111	GASKET	1							
35	1	129400-92420	FLEX HORN	1							1
36	1	977770-01212	GASKET, LIQUID	1							1

Remarks

(1) OPTIONAL PART.

Parts No. Index

Parts No.	Fig. No.	Ref. No.
101720-55750	15	12
		16
103854-32050	15	10
103854-39540	13	27
104200-59170	14	36
105300-51300	11	27
105582-59150	13	6
110250-55610	15	9
114250-53080	14	5
114250-53120	14	8
114250-53130	14	9
114250-53140	14	10
114250-53210	14	11
114250-53400	14	12
119226-07900	4	63
119256-44760	10	19
119265-44740	10	18
119620-01750	3	3
119625-11871	4	45
	20	6
119625-11880	4	46
	20	7
119625-11900	4	47
119629-49080	10	42
119810-51040	11	6
119831-42290	10	16
119865-21600	8	16
120130-11860	4	12
121111-21501	8	12
121236-77340	15	17
121250-44901	10	31
121257-55720	15	15
121370-55730	15	8
121400-11340	4	28
	20	12
121400-91140	19	6
121400-91251	19	4
121400-91271	19	5
121450-01560	2	6
121450-01570	18	1
121520-34810	9	17
121550-23200	8	30
121550-49111	10	30
121850-11860	10	1
121850-21680	8	11
121850-51960	2	13
	20	4
122117-51560	11	50
122710-51090	11	10
123682-44210	10	36

Parts No.	Fig. No.	Ref. No.
124097-77900	1	6 -1
124160-01751	2	7
	4	64
124160-01910	1	5
124160-11360	4	61
124160-39140	9	28
124160-39450	9	36
124195-77770	17	32 X
124240-01871	2	8
124240-01883	2	9
	20	3
124250-49351	9	39
124450-11900	6	1
124460-11340	4	29
	20	5
124465-44950	10	34
	20	26
124550-51350	11	32
124550-51370	11	33
124550-59820	9	33
124550-66370	12	57
124736-07900	4	5
124790-52201	13	1
124950-51190	11	17
129001-02800	1	14
129001-21000	8	1
129001-32001	9	1
129001-35300	9	24
129001-42002	10	2
129001-42040	10	22
129002-01331	1	28
	20	2
129002-22090	8	17
129002-22510	8	19
129002-22900	8	33
129002-22950	8	35
129100-01580	3	1
		15
	8	2
129100-01640	3	16
129100-01730	3	6
129100-01760	3	8
129100-11100	4	23
129100-11130	4	25
129100-11350	4	50
129100-13110	6	2
129100-23910	8	29
129100-25061	7	10
129100-25900	7	16
129100-35301	9	19

Parts No.	Fig. No.	Ref. No.
129100-42020	10	14
	20	15
129100-49840	10	21
	20	18
129100-52200	11	95
129100-53000	14	2
129100-59811	14	24
129100-59821	14	28
129100-59831	14	32
129100-59850	14	53
129100-59951	14	52
129100-59961	14	56
129100-59970	14	57
129100-61400	12	18
129100-61501	12	33
129100-61821	12	54
129129-14580	7	3
129136-34800	9	16
129150-01200	1	27
129150-02020	1	7
129150-02450	7	4
129150-02870	1	32
129150-02930	1	23
129150-02940	1	29
129150-03020	4	52
129150-03070	4	53
129150-03080	4	54
129150-03090	4	1
129150-03100	2	11
129150-11230	4	41
129150-11280	4	36
129150-11290	4	37
129150-11310	4	57
	20	8
129150-11370	4	30
129150-11750	4	43
129150-11810	4	14
129150-12100	5	1
129150-12111	5	2
	20	10
129150-13110	6	3
	20	11
129150-14101	7	7
129150-14200	7	1
129150-14400	7	2
129150-21200	8	5
129150-23600	8	31
129150-23610	8	39
129150-25101	7	11
129150-25920	7	14

Parts No.	Fig. No.	Ref. No.
129150-32020	9	14
	20	13
129150-35041	9	18
	20	14
129150-35111	9	22
	20	34
129150-35151	9	23
129150-35350	9	25
129150-39450	9	29
129150-49080	10	40
129150-49100	10	39
129150-49360	9	40
	20	27
129150-49811	10	28
	20	17
129150-59120	14	19
129150-59131	14	22
129150-77511	5	11
	20	9
129150-91400	2	25
129155-11241	4	33
129155-11260	4	34
129155-11270	4	35
129155-42350	10	17
129155-49800	10	27
129155-51020	11	5
129155-51050	11	8
129155-51060	11	9
129155-51140	11	14
129155-51180	11	16
129155-51200	11	18
129155-51270	11	25
129155-51280	11	26
	12	2
129155-51320	11	30
129155-51340	11	31
129155-51370	11	34
129155-51380	11	35
129155-51390	11	36
129155-51400	11	37
129155-51410	11	38
129155-51420	11	39
129155-51450	11	40
129155-51500	11	45
129155-51521	11	46
129155-51530	11	47
129155-51540	11	48
129155-51550	11	49
129155-51570	11	52
129155-51580	11	53

Parts No. Index

Parts No.	Fig. No.	Ref. No.
129155-51591	11	54
129155-51600	11	55
129155-51700	11	74
129155-51710	11	75
129155-51750	11	76
129155-51760	11	77
129155-51790	11	78
129155-51930	11	80
129155-51940	11	81
129155-52050	11	94
129155-61050	12	5
129155-61060	12	6
129155-61070	12	7
129155-61120	12	8
129155-61130	12	9
129155-61140	12	10
129155-61201	12	11
129155-61341	12	15
129155-61350	12	16
129155-61360	12	17
129155-61430	12	21
129155-61450	12	25
129155-61460	12	26
129155-61470	12	79
129155-61480	12	27
129155-61490	12	32
129155-61540	12	51
129155-61802	12	75
129155-61810	12	53
129155-61830	12	55
129155-61950	12	56
129156-51910	11	79
129202-22300	8	23
129211-49020	10	38
129255-61410	12	78
129255-61420	12	80
129350-49560	10	25
129400-01520	2	5
129400-77330	18	7
129400-92420	20	35
129412-51200	11	11
129470-11080	4	21
129470-11090	4	22
129470-12210	5	4
129470-55601	15	2
129470-55610	15	3
129470-55701	15	4
129486-01670	3	19
129491-59540	14	45
129495-59300	14	37

Parts No.	Fig. No.	Ref. No.
129500-61650	12	52
129500-61700	12	76
129553-39650	9	47
129604-07900	4	5 -1
129698-77010	17	1 -1
129698-77020	17	32 A
129698-77100	17	32 B
129698-77110	17	32 C
129698-77120	17	32 D
129698-77130	17	32 F
129698-77140	17	32 E
129698-77150	17	32 G
129698-77160	17	32 H
129698-77161	17	32 H-1
129698-77170	17	32 J
129698-77180	17	32 R
129698-77190	17	32 S
129698-77200	17	32 T
129698-77210	17	32 U
129698-77220	17	32 V
129698-77230	17	32 W
129698-77240	17	32 P
129698-77250	17	32 Q
129698-77260	17	32 K
129698-77270	17	32 M
129698-77280	17	32 N
129792-39410	9	41
129795-01780	3	18
129795-01800	2	4
129795-01950	2	10
129795-02411	1	26
129795-11120	4	24
129795-11180	4	26
129795-12501	5	7
129795-12520	5	8
129795-12530	5	9
129795-12540	5	10
129795-21661	8	10
129795-49551	10	26
	20	16
129900-07900	4	5 -2
144626-91560	9	38
160610-55460	15	1
171008-77010	17	1
171008-77400	17	2
171008-77410	17	3
171008-77420	17	4
171008-77440	17	6
171008-77450	17	7
171008-77460	17	8

Parts No.	Fig. No.	Ref. No.
171008-77470	17	9
171008-77480	17	10
171008-77490	17	11
171008-77500	17	12
171008-77510	17	13
171008-77520	17	14
171008-77530	17	15
171008-77540	17	16
171008-77571	17	19
171008-77640	17	20
171008-77650	17	21
171008-77660	17	22
171008-77670	17	23
171008-77720	17	27
171008-77730	17	28
171008-77740	17	29
171008-77750	17	30
171010-65100	16	1
171010-77850	19	1
171011-44301	18	3
171014-91101	19	3
171081-55900	15	6
171081-55910	15	11
171083-13300	6	4
171090-91010	19	2
171301-01600	3	2
171301-01640	3	9
171301-49010	10	37
171335-65110	16	2
171335-65120	16	3
171335-65130	16	4
171335-77951	16	5
171340-21580	8	13
171340-21650	8	9
171340-44510	10	35
171375-35100	9	21
171375-39601	9	37
171375-44300	18	2
171375-44320	18	4
171375-44900	10	32
171375-44910	10	33
171375-52501	13	2
171375-55612	15	5
171375-59500	13	7
171375-59511	13	11
171375-59521	13	15
171375-59530	14	38
171375-59551	14	46
171488-61440	12	74
174307-51170	11	15

Parts No.	Fig. No.	Ref. No.
174307-51560	11	51
174307-51700	12	34
194990-22050	6	5
22117-040000	12	58
22117-050000	16	6
22190-060002	12	71
22190-080002	2	12
		23
	20	19
22190-100002	12	72
22190-120002	12	73
22190-160002	11	91
22217-050000	11	82
22217-060000	11	83
22217-120000	7	17
22252-000260	8	24
22272-000040	12	59
22272-000060	12	60
22287-120000	12	61
22351-030010	9	48
22351-030016	12	62
22351-040010	8	8
22351-050010	11	84
22351-060012	4	31
22360-050000	16	7
22372-040000	12	63
22487-050160	16	8
22512-070140	7	8
	8	6
23000-060000	5	12
23010-038000	10	44
23414-060000	14	60
	20	21
23414-080000	9	34
	20	23
23414-080012	13	18
	14	61
	15	14
	20	20
23414-100000	9	35
	20	24
23414-120000	13	19
		20
		21
		25
	20	25
23414-140000	14	62
	20	22
23414-170000	6	6
23414-220000	3	21

Parts No. Index

Parts No.	Fig. No.	Ref. No.
23418-060000	15	13
23851-030000	14	63
23857-060000	13	22
		23
		24
		26
23871-010000	1	10
	5	6
23871-020000	4	16
23871-030000	4	17
	10	12
23887-100002	12	64
23894-030002	6	7
24101-063034	11	85
24190-080001	14	58
24311-000120	4	62
	20	28
24311-000160	2	14
	9	26
	20	29
24311-000320	2	15
	4	65
	20	30
24311-240100	12	65
24321-000300	10	23
	20	33
24341-000160	11	86
24341-000240	2	27
	20	31
24341-000250	3	11
24341-000500	4	59
	20	32
26014-080252	18	8
26022-050102	11	87
	12	66
26022-060162	11	88
26023-050102	12	67
26106-060102	13	3
26106-060122	16	9
26106-060142	15	18
26106-060162	2	28
26106-060202	12	68
26106-060322	17	31
26106-060402	17	32
26106-060602	10	20
26106-080122	2	16
26106-080142	4	6
	7	9
	16	10
26106-080162	2	17

Parts No.	Fig. No.	Ref. No.
26106-080162	2	24
	3	12
	4	60
	5	13
	10	24
	13	4
	15	19
26106-080202	2	18
	9	27
	10	29
26106-080252	3	13
	4	48
	5	3
26106-080352	3	20
	9	20
26106-080452	2	19
	3	14
	14	-1
	6	8
	7	15
26106-080502	3	23
	4	49
	18	9
26106-080552	2	20
26106-080602	10	15
26106-080802	6	9
26106-080852	2	21
26106-080952	6	10
26106-100162	13	5
26116-050302	11	89
26116-120252	17	33
26206-100252	3	4
26206-100302	3	5
26216-060202	4	18
26216-080802	6	11
26226-080182	4	44
26366-060002	4	32
26366-080002	2	22
	15	20
26366-100002	18	6
26450-060252	9	15
26687-120002	12	77
26706-100002	18	5
26716-060002	11	90
26716-120002	7	18
26756-060002	12	69
26776-120002	12	70
27231-500000	1	11
27241-100000	14	59
27241-120000	1	12

Parts No.	Fig. No.	Ref. No.
27241-220000	4	19
27241-300000	1	13
27241-400000	4	20
27310-080000	4	27
43551-001451	14	64
46150-504600	1	6
719810-01500	2	1
729002-92680	20	1
729100-53300	14	1
729202-11710	4	7
729205-51400	11	1
729215-01560	1	1
729402-11650	4	40
729402-23100	8	25
977770-01212	2	29
	3	22
	20	36
X2114535200	17	32 L

Parts No.	Fig. No.	Ref. No.
-----------	----------	----------