

0CD10-M58800EN

Directions for the Parts Catalog.

1. This Parts Catalog shows both standard and optional parts.
2. Parts may change without prior notice.
3. The following is an example of the Parts Catalog format.

REF.	LEV.	PARTS NO.	DESCRIPTION	Q'TY						I	R
				(A)	(B)	(C)	(D)	(E)	(F)		
1	1	729595-51390	FUEL INJECTION PUMP	1	1	1	1	1			1
1-1	1	729595-51391	FUEL INJECTION PUMP	1	1	1	1	1		N	1
		(A=E00185) (B=E00200)									
3	2	26022-060162	SCREW M 6X 16	9	9	9	9	9			
3-1	2	26022-060162	SCREW M 6X 16	4	4	4	4	4		K	
		(A=E00156) (B=E00156) (C=E00156) (D=E00156) (E=E00156)									
4	2	129470-51040	CAMSHAFT	1	1	1	1	1			
5	2	122710-51050	BEARING, ROLLER	2	2	2	2	2			
6	2	129470-51060	RETAINER	1	1	1	1	1			

Remarks
(1) BOOST COMPEMSATOR TYPE. OPTIONAL PART, TO E00155,(4JH-DT, 4JH-DTZ

① Ref. No.

The Ref. No. listed may not be in accordance with the illustration Ref. No.

(Ex.) Illustration No.

List Ref No.

1

1

(Before change)

1-1

(After change)

For interchangeable symbols N, R and K, illustrations for new parts may be abbreviated.

② Lev. (Level)

Level indication

The numbers below indicate the level of relativity towards the main part.

1 ----- Main parts (Assembly parts)

2 ----- Sub component included in " 1 ".

3 ----- Sub component included in " 2 ".

Note) Parts that are not for sale are partially illustrated but not listed.

③ Interchangeability Symbol

When a part change takes place, one of the following interchangeability symbols is indicated beside the part.

Symbol	Interchangeability	Contents note
N	Old $\begin{matrix} \leftarrow \text{Yes} \\ \text{No} \rightarrow \end{matrix}$ New	New Part is interchangeable for Old Part but Old Part is not interchangeable for New Part.
Q	Old $\begin{matrix} \leftarrow \text{No} \\ \text{Yes} \rightarrow \end{matrix}$ New	New Part is not interchangeable for Old Part but Old Part is interchangeable for New Part.
R	Old $\begin{matrix} \leftarrow \text{Yes} \\ \text{Yes} \rightarrow \end{matrix}$ New	New/ Old Parts are both interchangeable.
S	Old $\begin{matrix} \leftarrow \text{No} \\ \text{No} \rightarrow \end{matrix}$ New	New/ Old Parts are both not interchangeable.
W		Part newly added.
Z		Part discontinued.
F		Not interchangeable by a single part but interchangeable together with related parts.
K		Changes only for used parts quantities.

④ Effective Machine No.

When a part changes, the effective Machine No. will be indicated in the (A)-(F) column.

Product Symbol	Product No.	Product Symbol	Product No.
C	Clutch No. Compressor No.	F	Machine No. (Agricultural Equip.)
D	Drive No.	M	Machine No.
E	Engine No.		

Note 1) A date may follow the symbol. (Ex.) 1996.01

Note 2) "XXXXX" and "ZZZZZ" are for parts that could not be predicted or for engine models that could not be identified.

Note 3) (A=E00185) is the E (Engine Serial Number) for the column (A) model (in this case 4JH-DT) after the parts design change.

⑤ Remarks

Figures or alphabets (symbols) are entered in the remarks column.

The comments (remarks) on parts that are indicated at the bottom of the illustration are the same symbols as those stated above.

Contents

Fig. No. Fig. Name

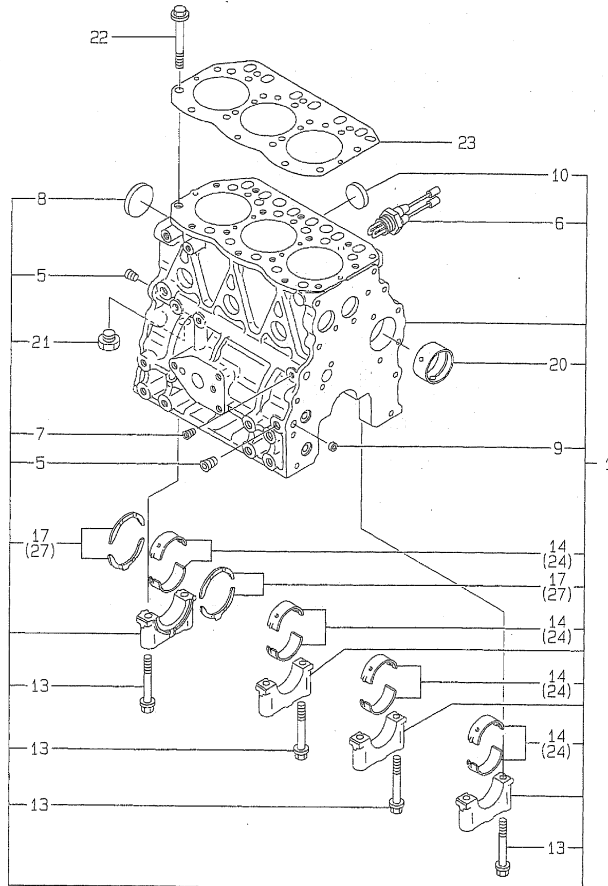
Fig. No. Fig. Name

3TNE78A-GHN

1. CYLINDER BLOCK
2. GEAR HOUSING
3. FLYWHEEL HOUSING & OIL SUMP
4. CYLINDER HEAD & BONNET
5. SUCTION MANIFOLD
6. EXHAUST MANIFOLD
7. CAMSHAFT & DRIVING GEAR
8. CRANKSHAFT & PISTON
9. LUB.OIL SYSTEM
10. COOLING WATER SYSTEM
11. FUEL INJECTION PUMP
12. GOVERNOR
13. FEED PUMP
14. FUEL INJECTION VALVE
15. FUEL FILTER
16. ENGINE STOP DEVICE
17. STARTING MOTOR
18. TENSION PULLEY
19. ELECTRIC PARTS
20. GASKET SET

Fig.1. CYLINDER BLOCK

Y00D5880
3TNE78A-GHN



(A)=3TNE78A-GHN

(B)=

(C)=

(D)=

(E)=

(F)=

No.	Lev.	Parts No.	Description	Q'ty						I	R
				(A)	(B)	(C)	(D)	(E)	(F)		
1	1	719915-01560	BLOCK ASSY, CYLINDER	1							
5	2	124160-01910	PLUG, PT1/4	2							
6	2	46150-504600	HEATER	1							
6-1	2	124097-77900 (A=E52037)	HEATER, COOLING WATER	1							N
7	2	23871-010000	PLUG, R01	1							
8	2	27231-500000	PLUG 50	1							
9	2	27241-120000	PLUG, 12	2							
10	2	27241-300000	PLUG 30	6							
13	2	119620-02020	BOLT, METAL CAP	8							
14	2	119810-02800	BEARING, MAIN	4							
17	2	119810-02930	BEARING, THRUST	1							
20	2	129795-02411	BUSH, CAMSHAFT	1							
21	2	23887-120002	PLUG, 12	1							
22	1	119810-01200	BOLT, HEAD	14							
23	1	119818-01330	GASKET, HEAD	1							
24	1	119810-02870	BEARING, 0.25 US	4							1
27	1	119810-02940	BEARING, THRUST 0.25	2							2

Remarks

- (1) UNDER-SIZE(U.S=0.25)PART.
- (2) OVER-SIZE(O.S=0.25)PART.

Fig.2. GEAR HOUSING

(A)=3TNE78A-GHN

(B)=

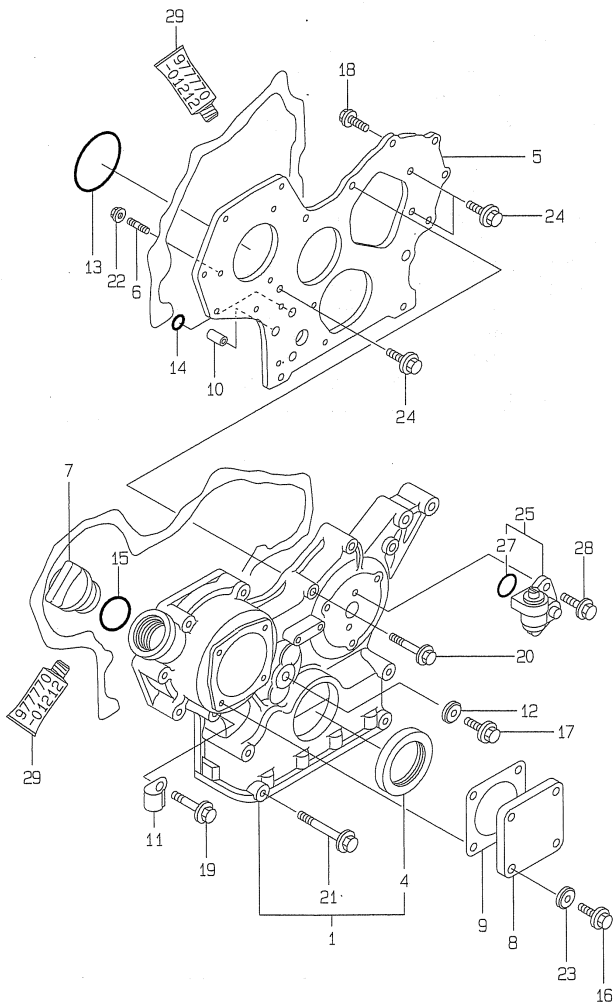
(C)=

(D)=

(E)=

(F)=

Y00D5880
3TNE78A-GHN



No.	Lev.	Parts No.	Description	Q'ty						I	R
				(A)	(B)	(C)	(D)	(E)	(F)		
1	1	719810-01500	CASE ASSY, GEAR	1							
4	2	129795-01800	SEAL, OIL	1							
5	1	129400-01520	FLANGE, GEAR CASE	1							
6	1	121450-01560	STUD, M8X22	3							
7	1	124160-01751	COVER, FILLER	1							
8	1	124240-01871	COVER	1							
9	1	124240-01883	GASKET	1							
10	1	129795-01950	PIPE, KNOCK L=18	2							
11	1	129150-03100	RETAINER, PIPE	1							
12	1	22190-080002	WASHER, SEAL 6	1							
13	1	121850-51960	O-RING	1							
14	1	24311-000160	O-RING, 1AP16.0	2							
15	1	24311-000320	O-RING, 1AP32.0	1							
16	1	26106-080122	BOLT, M8X 12 PLATED	4							
17	1	26106-080162	BOLT, M8X 16 PLATED	1							
18	1	26106-080202	BOLT, M8X 20 PLATED	2							
19	1	26106-080452	BOLT, M8X 45 PLATED	6							
20	1	26106-080552	BOLT, M8X 55 PLATED	3							
21	1	26106-080852	BOLT, M8X 85 PLATED	4							
22	1	26366-080002	NUT, M8	3							
23	1	22190-080002	WASHER, SEAL 6	4							
24	1	26106-080162	BOLT, M8X 16 PLATED	3							
25	1	129150-91400	GEAR	1							
27	2	24341-000240	O-RING, 1AS24.0	1							
28	1	26106-060162	BOLT, M6X 16 PLATED	2							
29	1	977770-01212	GASKET, LIQUID	1							1

Remarks
(1) OPTIONAL PART.

Fig.3. FLYWHEEL HOUSING & OIL SUMP

(A)=3TNE78A-GHN

(B)=

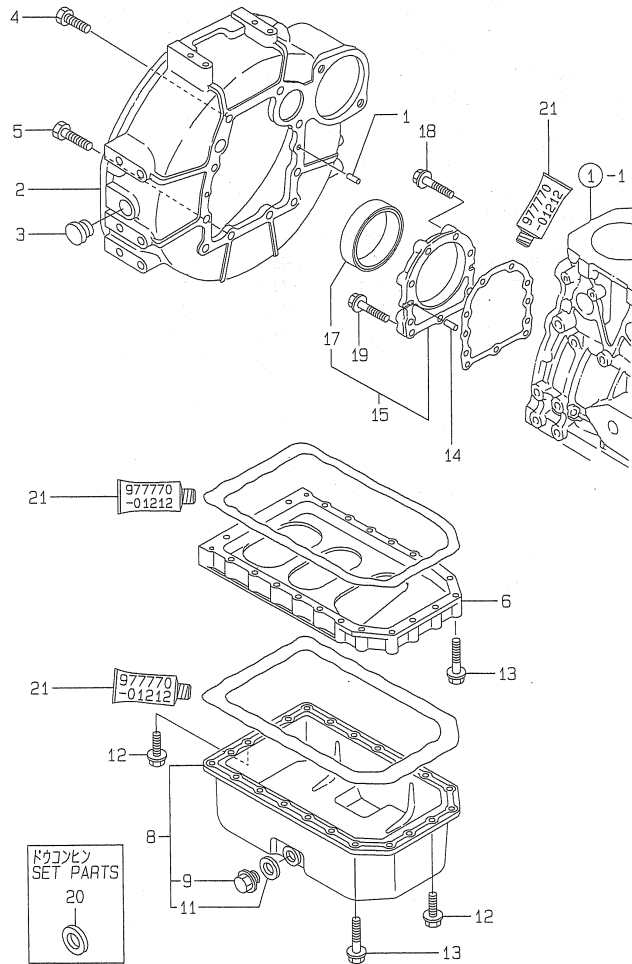
(C)=

(D)=

(E)=

(F)=

Y00D5880
3TNE78A-GHN



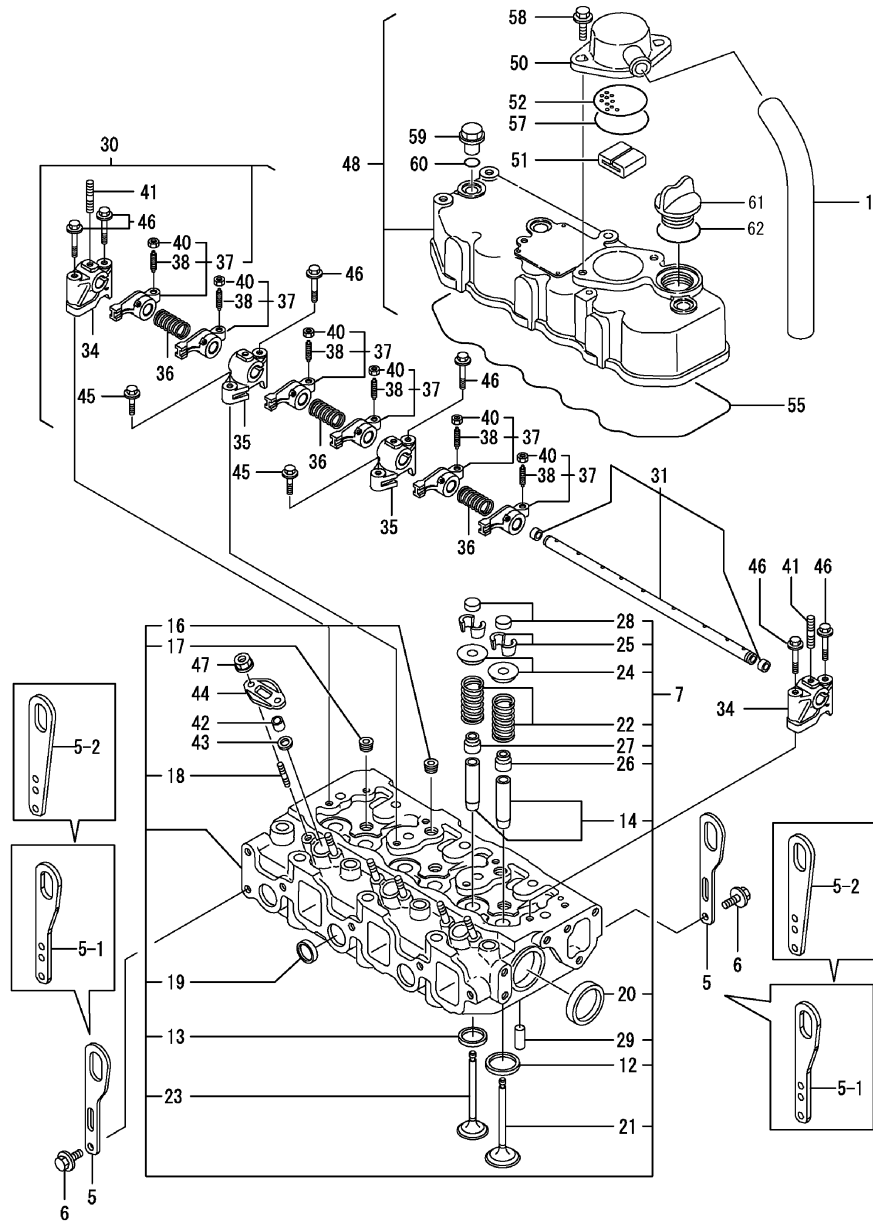
No.	Lev.	Parts No.	Description	Q'ty						I	R
				(A)	(B)	(C)	(D)	(E)	(F)		
1	1	129100-01580	PIN, M8X16	2							
2	1	171301-01600	HOUSING, FLYWHEEL	1							
3	1	119620-01750	CAP	1							
4	1	26206-100252	BOLT, M10X 25 PLATED	6							
5	1	26206-100302	BOLT, M10X 30 PLATED	4							
6	1	119810-01730	SPACER, OIL SUMP	1							
8	1	119810-01770	SUMP ASSY, OIL	1							
9	2	119640-01640	PLUG, DRAIN M22	1							
11	2	22190-220002	WASHER, SEAL 22	1							
12	1	26106-080162	BOLT, M8X 16 PLATED	6							
13	1	26106-080452	BOLT, M8X 45 PLATED	22							
14	1	129100-01580	PIN, M8X16	2							
15	1	719810-01650	CASE ASSY, OIL SEAL	1							
17	2	119810-01780	SEAL, 769310	1							
18	1	129486-01670	BOLT, M8X30	6							
19	1	26106-080352	BOLT, M8X 35 PLATED	3							
20	1	23414-220000	GASKET, 22X1.0	1							
21	1	977770-01212	GASKET, LIQUID	1							1

Remarks

(1) OPTIONAL PART.

N:Old $\xrightarrow{\text{Yes}}$ New, Q:Old $\xrightarrow{\text{No}}$ New, R:Old $\xrightarrow{\text{Yes}}$ New, S:Old $\xrightarrow{\text{No}}$ New, W:Add, Z:Discontinued, F:Interchangeable by set, K:Q'ty Change

Fig.4. CYLINDER HEAD & BONNET



(A)=3TNE78A-GHN

(B)=

(C)=

(D)=

(E)=

(F)=

No.	Lev.	Parts No.	Description	Q'ty						I	R
				(A)	(B)	(C)	(D)	(E)	(F)		
1	1	129150-03090	HOSE, ID16X2T	1							
5	1	124736-07900	LIFTER	2							
5-1	1	129604-07900	LIFTER	2							N
(A=*2009.05)											
5-2	1	129900-07900	LIFTER	2							N
(A=*2009.08)											
6	1	26106-080142	BOLT, M8X 14 PLATED	4							
7	1	719818-11700	HEAD ASSY, CYLINDER	1							
12	2	119810-11080	SEAT, INTAKE VALVE	3							
13	2	119810-11090	SEAT, EXHAUST VALVE	3							
14	2	124060-11800	GUIDE, VALVE	6							1
16	2	121850-11860	PLUG, PT1/4	2							
17	2	23871-030000	PLUG, R03	3							
18	2	26216-060302	STUD, M6X 30	6							
19	2	27241-220000	PLUG, 22	3							
20	2	27241-400000	PLUG, 40	2							
21	2	119810-11100	VALVE, INTAKE	3							
22	2	119810-11120	SPRING, VALVE	6							
23	2	119810-11130	VALVE, EXHAUST	3							
24	2	104211-11180	RETAINER, SPRING	6							
25	2	27310-070001	COTTER, 7	6							
26	2	124160-11340	SEAL, VALVE STEM	3							
27	2	124950-11340	SEAL, VALVE STEM	3							
28	2	104211-11370	CAP, VALVE	6							
29	2	22351-060012	PIN, SPRING 6.0X12	2							
30	1	119865-11200	SUPPORT ASSY, ARM	1							
31	2	119810-11240	SHAFT ASSY, ROCKER	1							
34	2	129155-11260	SUPPORT, ROCKER ARM	2							
35	2	129155-11270	SUPPORT, ROCKER ARM	2							
36	2	129150-11280	SPRING	3							
37	2	719810-11650	ARM ASSY, ROCKER	6							
38	3	129150-11230	SCREW, VALVE ADJUST	6							
40	3	129150-11750	NUT, M8	6							
41	2	26226-080182	STUD, M8X 18	3							
42	1	119625-11871	PROTECTOR, NOZZLE	3							
43	1	119625-11880	SEAT, NOZZLE	3							
44	1	119625-11900	RETAINER, NOZZLE	3							
45	1	26106-080252	BOLT, M8X 25 PLATED	2							
46	1	26106-080502	BOLT, M8X 50 PLATED	6							
47	1	26366-060002	NUT, M6	6							
48	1	719810-11520	BONNET ASSY, HEAD	1							
50	2	129150-03020	COVER, BREATHER	1							
51	2	129150-03070	BAFFLE, BREATHER	1							
52	2	129150-03080	PLATE, BAFFLE	1							
55	2	119865-11310	GASKET, BONNET	1							
57	2	24341-000500	O-RING, 1AS50.0	1							
58	2	26106-080162	BOLT, M8X 16 PLATED	2							
59	1	124160-11360	KNOB	3							
60	1	24311-000120	O-RING, 1AP12.0	3							
61	1	124160-01751	COVER, FILLER	1							
62	1	24311-000320	O-RING, 1AP32.0	1							

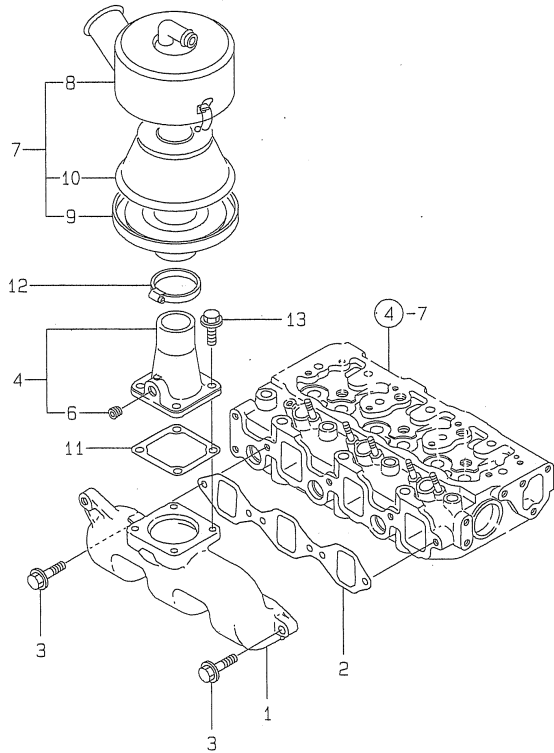
Remarks

(1) REPAIR PART.

N:Old $\xrightarrow{\text{Yes}}$ New, Q:Old $\xrightarrow{\text{No}}$ New, R:Old $\xrightarrow{\text{Yes}}$ New, S:Old $\xrightarrow{\text{No}}$ New, W:Add, Z:Discontinued, F:Interchangeable by set, K:Q'ty Change

Fig.5. SUCTION MANIFOLD

Y0005880
3TNE78A-GHN



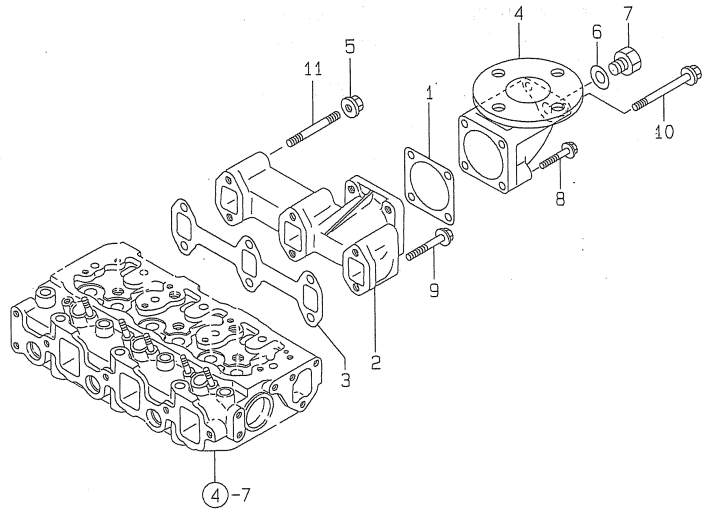
(A)=3TNE78A-GHN
(B)=
(C)=

(D)=
(E)=
(F)=

No.	Lev.	Parts No.	Description	Q'ty						I	R
				(A)	(B)	(C)	(D)	(E)	(F)		
1	1	119810-12100	MANIFOLD, AIR INTAKE	1							
2	1	119810-12111	GASKET, MANIFOLD	1							
3	1	26106-080252	BOLT, M8X 25 PLATED	4							
4	1	129470-12210	JOINT ASSY	1							
6	2	23871-010000	PLUG, R01	1							
7	1	129795-12501	SILENCER ASSY	1							
8	2	129795-12520	PIPE, AIR INTAKE	1							
9	2	129795-12530	PLATE	1							
10	2	129795-12540	ELEMENT	1							
11	1	129150-77511	GASKET	1							
12	1	23000-060000	CLAMP, 60	1							
13	1	26106-080162	BOLT, M8X 16 PLATED	4							

Fig.6. EXHAUST MANIFOLD

Y0005880
3TNE78A-GHN



(A)=3TNE78A-GHN
(B)=
(C)=

(D)=
(E)=
(F)=

No.	Lev.	Parts No.	Description	Q'ty						I	R
				(A)	(B)	(C)	(D)	(E)	(F)		
1	1	124450-11900	GASKET	1							
2	1	119810-13100	MANIFOLD, EXHAUST	1							
3	1	119810-13110	GASKET	1							
4	1	171083-13300	BEND, EXHAUST 50A	1							
5	1	194990-22050	NUT, M8	2							
6	1	23414-170000	GASKET, 17X1.0	1							
7	1	23894-030002	PLUG, G3/8	1							
8	1	26106-080452	BOLT, M8X 45 PLATED	2							
9	1	26106-080602	BOLT, M8X 60 PLATED	4							
10	1	26106-080952	BOLT, M8X 95 PLATED	2							
11	1	26216-080602	STUD, M8X 60	2							

Fig.7. CAMSHAFT & DRIVING GEAR

(A)=3TNE78A-GHN

(B)=

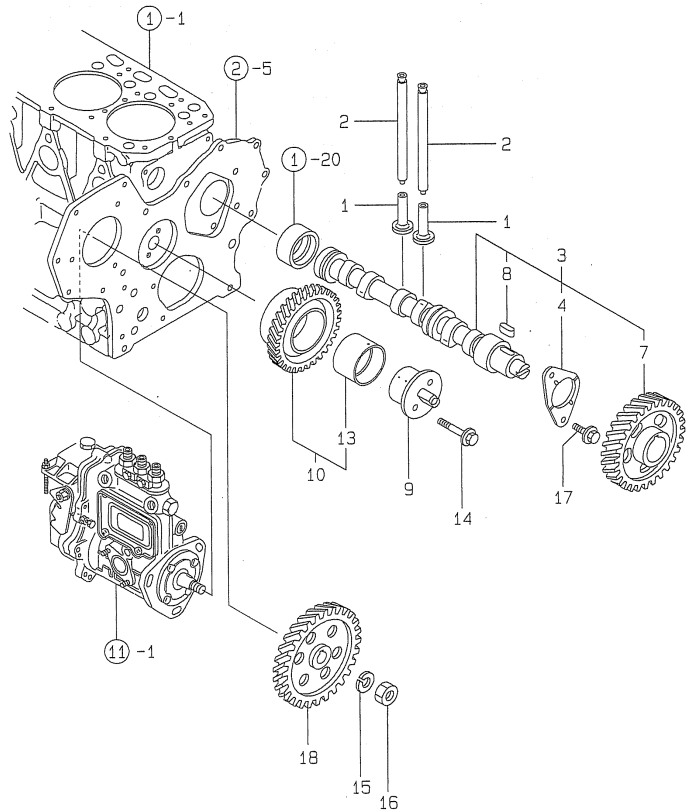
(C)=

(D)=

(E)=

(F)=

Y00D5880
3TNE78A-GHN



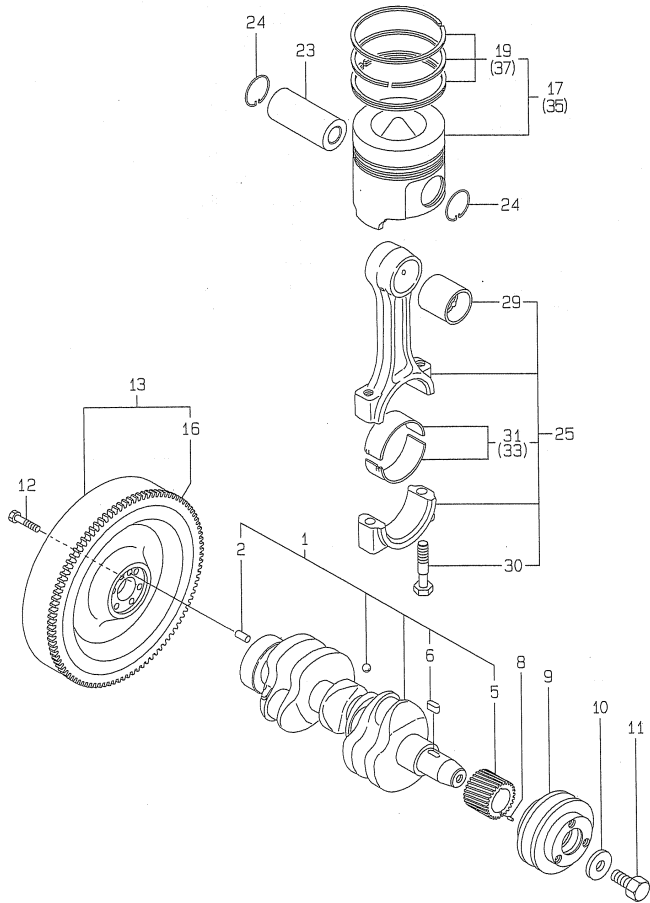
No.	Lev.	Parts No.	Description	Q'ty						I	R
				(A)	(B)	(C)	(D)	(E)	(F)		
1	1	129150-14200	TAPPET	6							
2	1	119810-14400	ROD, PUSH	6							
3	1	119810-14580	CAMSHAFT ASSY	1							
4	2	129150-02450	BEARING, THRUST	1							
7	2	129150-14101	GEAR, CAMSHAFT	1							
8	2	22512-070140	KEY, 7X 14	1							
9	1	129100-25061	SHAFT, IDLE	1							
10	1	129150-25101	GEAR ASSY, IDLE	1							
13	2	129150-25920	BUSH, IDLE GEAR	1							1
14	1	26106-080452	BOLT, M8X 45 PLATED	2							
15	1	22217-120000	WASHER, SPRING 12	1							
16	1	26716-120002	NUT, M12	1							
17	1	26106-080142	BOLT, M8X 14 PLATED	2							
18	1	129100-25900	GEAR, PUMP	1							

Remarks

(1) REPAIR PART.

Fig.8. CRANKSHAFT & PISTON

Y00D5880
3TNE78A-GHN



(A)=3TNE78A-GHN

(B)=

(C)=

(D)=

(E)=

(F)=

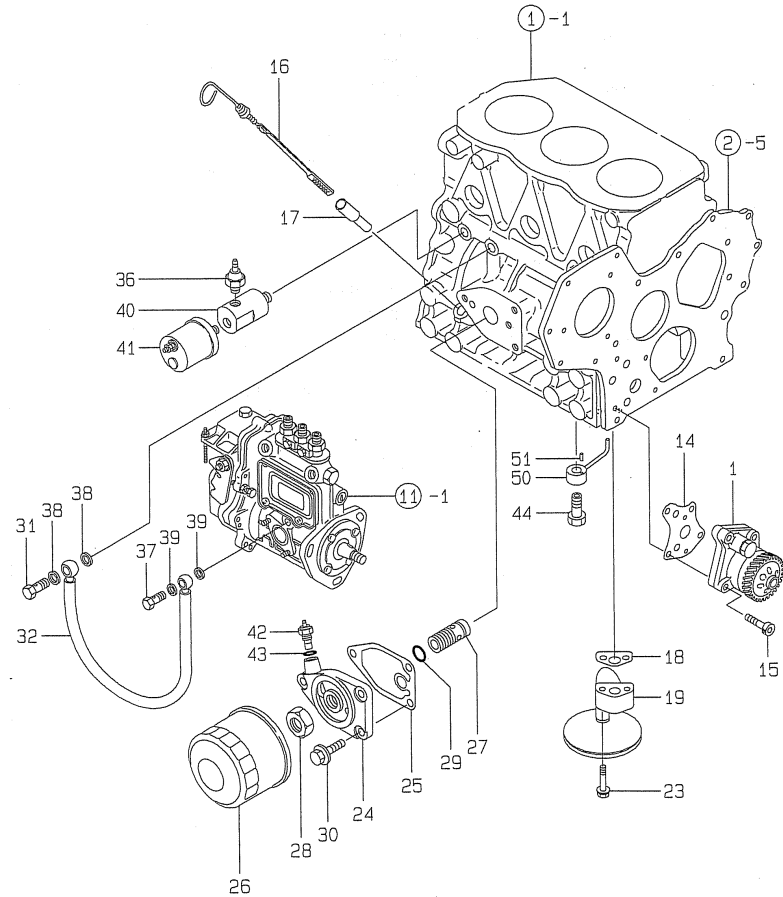
No.	Lev.	Parts No.	Description	Q'ty						I	R
				(A)	(B)	(C)	(D)	(E)	(F)		
1	1	119813-21000	CRANKSHAFT ASSY	1							
2	2	129100-01580	PIN, M8X16	1							
5	2	129150-21200	GEAR, CRANKSHAFT	1							
6	2	22512-070140	KEY, 7X 14	1							
8	1	22351-040010	PIN, SPRING 4.0X10	1							
9	1	171301-21650	V-PULLEY	1							
10	1	129795-21661	WASHER	1							
11	1	121850-21680	BOLT	1							
12	1	121111-21501	BOLT, FLYWHEEL	6							
13	1	171301-21580	FLYWHEEL ASSY	1							
16	2	119865-21600	GEAR, RING	1							
17	1	119818-22090	PISTON ASSY	3							
19	2	119818-22510	RING SET, PISTON	3							
23	1	119813-22300	PIN, PISTON	3							
24	1	129792-22400	CIRCLIP, 23	6							
25	1	719810-23100	ROD ASSY, CONNECTING	3							
29	2	119810-23910	BEARING, PISTON PIN	3							1
30	2	119810-23200	BOLT, CONNECTING ROD	6							
31	2	119810-23600	BEARING, CRANK PIN	3							
33	1	119810-23610	BEARING, 0.25 US	3							2
35	1	119818-22900	PISTON ASSY, 0.25 OS	3							3
37	2	119818-22950	RING SET, 0.25 OS	3							3

Remarks

- (1) REPAIR PART.
- (2) UNDER-SIZE(U.S=0.25)PART.
- (3) OVER-SIZE(O.S=0.25)PART.

Fig.9. LUB.OIL SYSTEM

Y00D5880
3TNE78A-GHN



(A)=3TNE78A-GHN

(B)=

(C)=

(D)=

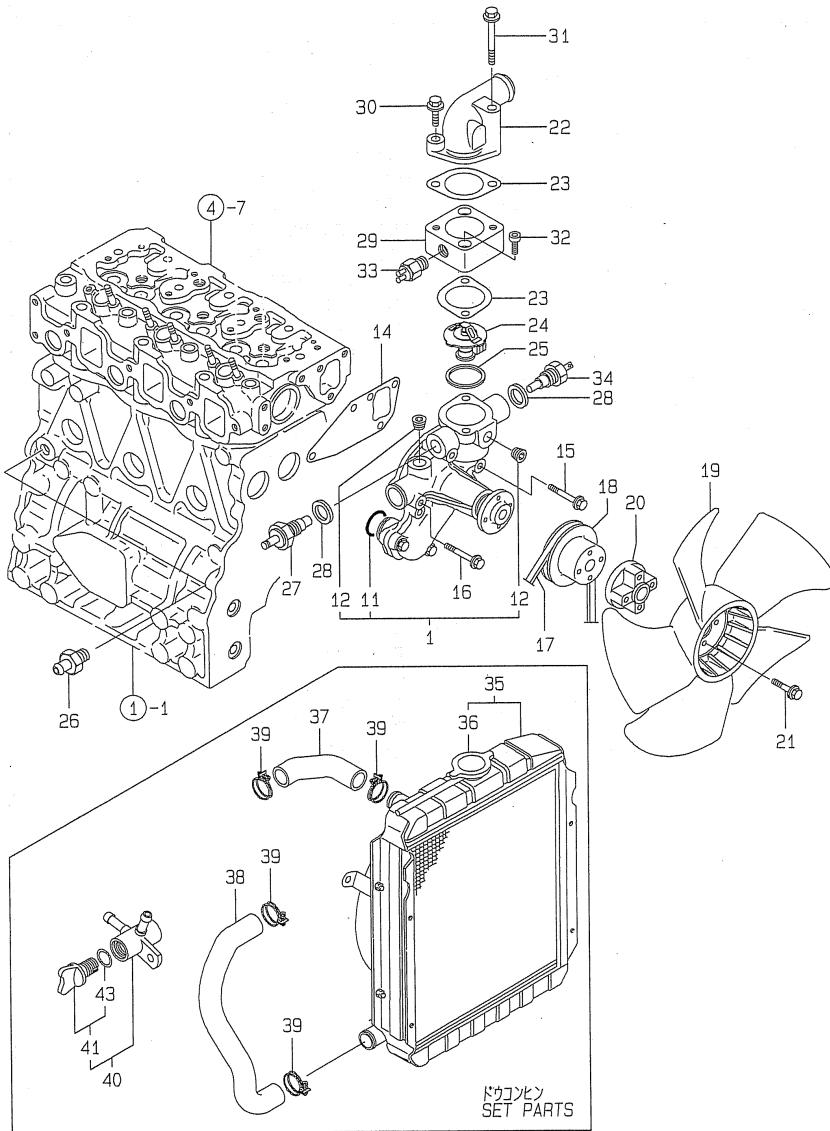
(E)=

(F)=

No.	Lev.	Parts No.	Description	Q'ty						I	R
				(A)	(B)	(C)	(D)	(E)	(F)		
1	1	129001-32001	PUMP ASSY, OIL	1							
14	1	129150-32020	GASKET, PUMP	1							
15	1	26450-060252	BOLT, M6X 25	4							
16	1	119932-34800	DIPSTICK, OIL	1							
17	1	121520-34810	GUIDE, DIPSTICK	1							
18	1	129150-35041	GASKET	1							
19	1	119810-35300	PIPE ASSY, OIL INLET	1							
23	1	26106-080352	BOLT, M8X 35 PLATED	2							
24	1	171375-35100	BRACKET, STRAINER	1							
25	1	129150-35111	GASKET	1							
26	1	129150-35151	FILTER, D80XL80	1							
27	1	129001-35300	BOLT, FILTER	1							
28	1	129150-35350	NUT	1							
29	1	24311-000160	O-RING, 1AP16.0	1							
30	1	26106-080202	BOLT, M8X 20 PLATED	3							
31	1	124160-39140	BOLT, PIPE JOINT M10	1							
32	1	119810-39200	PIPE ASSY, OIL	1							
36	1	124160-39450	SWITCH, 0.5KG	1							
37	1	124550-59820	BOLT, PIPE JOINT M8	1							
38	1	23414-100000	GASKET, 10X1.0	2							
39	1	22190-080002	WASHER, SEAL 6	2							
40	1	171375-39601	DAMPER, 1/8	1							
41	1	144626-91560	SENSOR	1							
42	1	124250-49351	SENSOR	1							
43	1	129150-49360	GASKET	1							
44	1	129792-39410	VALVE ASSY, CHECK	3							
50	1	119810-39650	NOZZLE	3							
51	1	22351-030010	PIN, SPRING 3.0X10	3							

Fig.10. COOLING WATER SYSTEM

Y00D5880
3TNE78A-GHN



(A)=3TNE78A-GHN

(B)=

(C)=

(D)=

(E)=

(F)=

No.	Lev.	Parts No.	Description	Q'ty						I	R
				(A)	(B)	(C)	(D)	(E)	(F)		
1	1	119810-42001	PUMP ASSY, WATER	1							
11	2	129150-42320	O-RING	1							
12	2	23871-030000	PLUG, R03	2							
14	1	129150-42020	GASKET, WATER PUMP	1							
15	1	26106-080352	BOLT, M8X 35 PLATED	1							
16	1	26106-080552	BOLT, M8X 55 PLATED	3							
17	1	25132-003900	V-BELT, A39	1							
18	1	129403-42380	V-PULLEY, D=110	1							
19	1	119265-44740	FAN, D=310X5F	1							
20	1	171353-44760	SPACER, FAN	1							
21	1	26106-060352	BOLT, M6X 35 PLATED	4							
22	1	124101-49530	COVER, THERMOSTAT	1							
23	1	129795-49551	GASKET	2							
24	1	129155-49800	THERMOSTAT, 71	1							
25	1	129150-49811	GASKET, THERMOSTAT	1							
26	1	121550-49111	JOINT, PT1/4	1							
27	1	121250-44901	SWITCH, 110	1							
28	1	124465-44950	GASKET, 16	2							
29	1	171335-49590	SPACER	1							
30	1	26106-080302	BOLT, M8X 30 PLATED	1							
31	1	26106-080602	BOLT, M8X 60 PLATED	1							
32	1	26450-080302	BOLT, M8X 30	2							
33	1	171375-44900	SWITCH, 15	1							
34	1	171375-44910	SENSOR	1							
35	1	171340-44510	RADIATOR	1							
36	2	123682-44210	CAP, RADIATOR	1							
37	1	171335-49010	PIPE, WATER	1							
38	1	171301-49020	PIPE, WATER	1							
39	1	23010-038000	CLAMP, 38	4							
40	1	129150-49100	COCK ASSY, 3-WAY	1							
41	2	129150-49080	COCK, DRAIN	1							
43	3	119629-49080	GASKET	1							

Fig.11. FUEL INJECTION PUMP

(A)=3TNE78A-GHN

(B)=

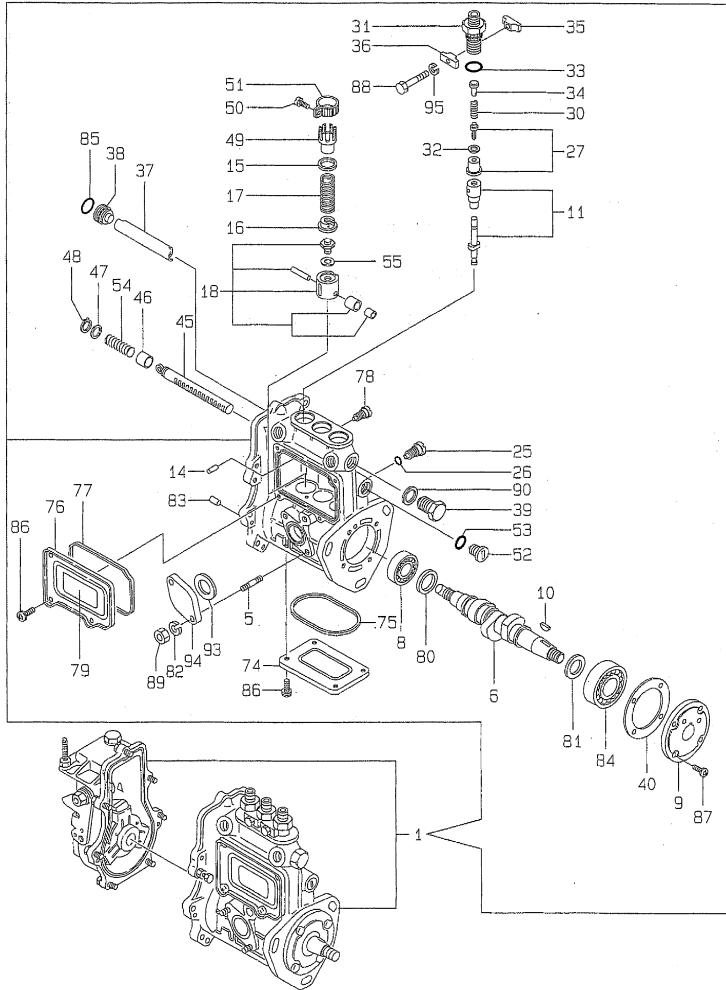
(C)=

(D)=

(E)=

(F)=

Y00D5880
3TNE78A-GHN



No.	Lev.	Parts No.	Description	Q'ty						I	R
				(A)	(B)	(C)	(D)	(E)	(F)		
1	1	719915-51400	PUMP ASSY, INJECTION	1							1
5	2	129155-51020	STUD	2							
6	2	119810-51040	CAMSHAFT	1							
8	2	129155-51050	BEARING, 17BM001D	1							
9	2	129155-51060	SUPPORT, CAMSHAFT	1							
10	2	122710-51090	KEY	1							
11	2	129411-51200	PLUNGER ASSY	3							
14	2	129155-51140	PIN	3							
15	2	174307-51170	RETAINER, SPRING A	3							
16	2	129155-51180	RETAINER, SPRING	3							
17	2	124950-51190	SPRING, PLUNGER	3							
18	2	129155-51200	TAPPET ASSY	3							
25	2	129155-51270	STOPPER, TAPPET	3							
26	2	129155-51280	O-RING, S6	3							
27	2	128170-51300	VALVE ASSY, DELIVERY	3							
30	2	129155-51320	SPRING, DELIVERY	3							
31	2	129155-51340	RETAINER	3							
32	2	124550-51350	GASKET, DELIVERY	3							
33	2	124550-51370	O-RING	3							
34	2	129155-51370	STOPPER, VALVE	3							
35	2	129155-51380	STOPPER	2							
36	2	129155-51390	STOPPER	2							
37	2	129155-51400	DEFLECTOR	1							
38	2	129155-51410	BOLT	1							
39	2	129155-51420	PLUG, M16	1							
40	2	129155-51450	SHIM SET, ADJUSTING	1							
45	2	129155-51500	RACK, CONTROL	1							
46	2	129155-51521	BUSH, RACK	1							
47	2	129155-51530	SPACER	1							
48	2	129155-51540	CIRCLIP	1							
49	2	129155-51550	PINION, CONTROL	3							
50	2	122117-51560	SCREW	3							
51	2	174307-51560	PINION	3							
52	2	129155-51570	PLUG, M12	1							
53	2	129155-51580	O-RING	1							
54	2	129155-51591	SPRING, RACK	1							
55	2	129155-51600	SHIM SET, ADJUSTING	3							
74	2	129155-51700	COVER	1							
75	2	129155-51710	GASKET	1							
76	2	129155-51750	COVER	1							
77	2	129155-51760	GASKET	1							
78	2	129155-51790	STOOPER, RACK	1							
79	2	129156-51910	LABEL, CAUTION	1							
80	2	129155-51930	SPACER, T=3.25	1							
81	2	129155-51940	SPACER, T=1.5	1							
82	2	22217-060000	WASHER, SPRING 6	2							
83	2	22351-050010	PIN, SPRING 5.0X10	2							
84	2	24101-063034	BEARING, BALL 6303	1							
85	2	24341-000160	O-RING, 1AS16.0	1							
86	2	26022-050102	SCREW, M5X10	8							
87	2	26022-060162	SCREW, M6X16	4							

Remarks

(1)GOVERNOR(FIG.12)IS INCORPORATED
IN THIS FUEL INJECTION PUMP.
(REF.NO.1).

Fig.11. FUEL INJECTION PUMP

(A)=3TNE78A-GHN

(B)=

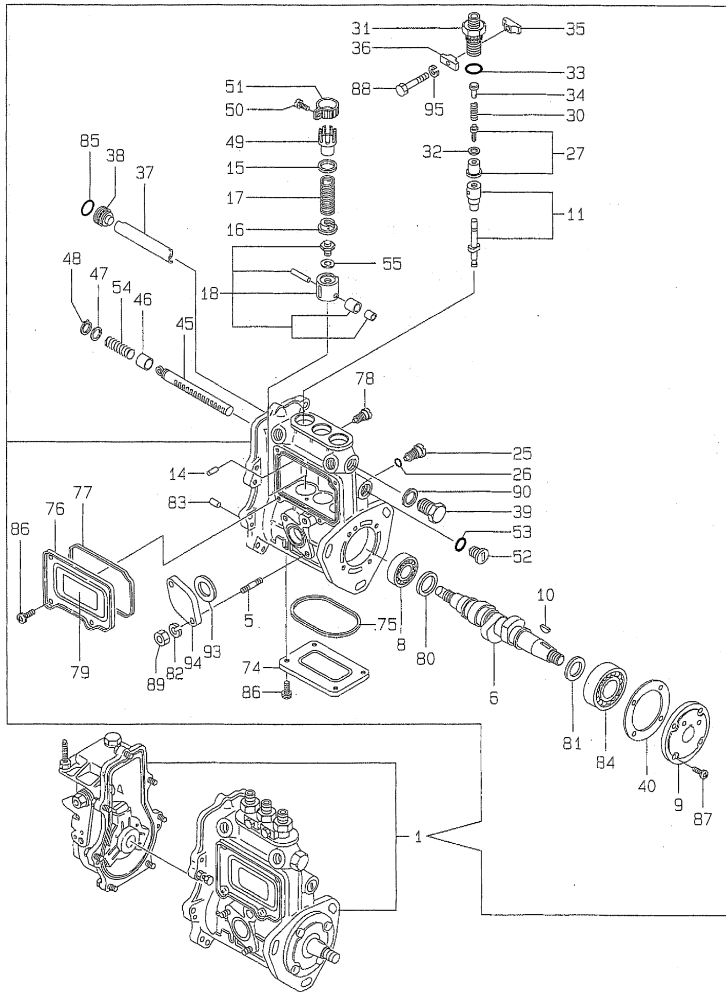
(C)=

(D)=

(E)=

(F)=

Y00D5880
3TNE78A-GHN



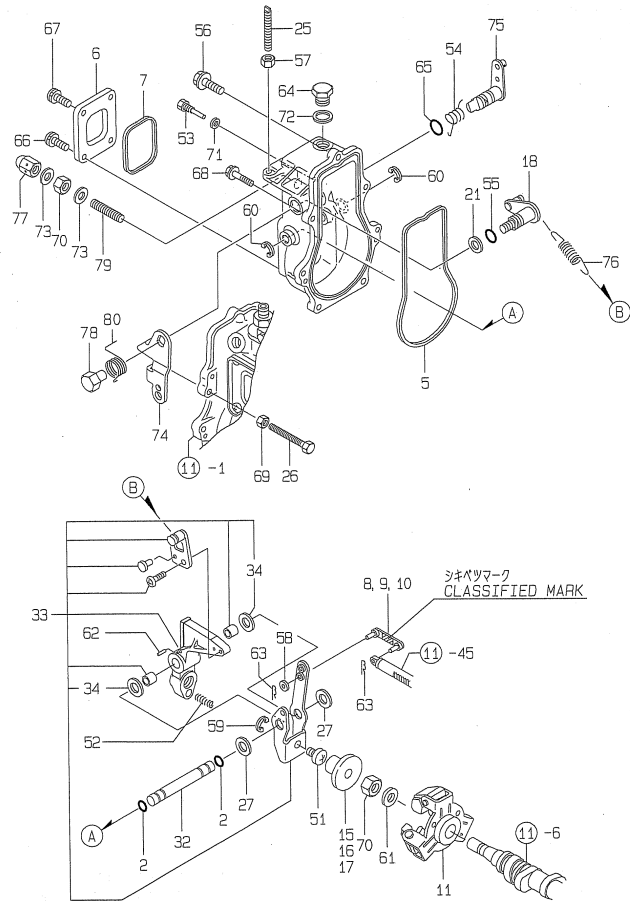
No.	Lev.	Parts No.	Description	Q'ty						I	R
				(A)	(B)	(C)	(D)	(E)	(F)		
88	2	26116-050302	BOLT, M5X 30 PLATED	2							
89	2	26716-060002	NUT, M6	2							
90	2	22190-160002	WASHER, SEAL 16	1							
93	2	129155-52050	GASKET	1							
94	2	129100-52200	COVER	1							
95	2	22217-050000	WASHER, SPRING 5	2							

Remarks

(1)GOVERNOR(FIG.12)IS INCORPORATED
IN THIS FUEL INJECTION PUMP.
(REF.NO.1).

Fig.12. GOVERNOR

Y00D5880
3TNE78A-GHN



(A)=3TNE78A-GHN

(B)=

(C)=

(D)=

(E)=

(F)=

No.	Lev.	Parts No.	Description	Q'ty						I	R
				(A)	(B)	(C)	(D)	(E)	(F)		
2	2	129155-51280	O-RING, S6	2							
5	2	129155-61050	GASKET	1							
6	2	129155-61060	COVER, GOVERNOR CASE	1							
7	2	129155-61070	GASKET	1							
8	2	129155-61120	LINK, L=30 MARK 0	1							1
9	2	129155-61130	LINK, L=31 MARK 1	1							1
10	2	129155-61140	LINK, L=30.5 MARK 05	1							1
11	2	129155-61201	WEIGHT ASSY,GOVERNOR	1							
15	2	129155-61341	SLEEVE	1							2
16	2	129155-61350	SLEEVE, L=24.9	1							2
17	2	129155-61360	SLEEVE, L=25.2	1							2
18	2	129100-61400	SHAFT ASSY	1							
21	2	129155-61430	SPACER	1							
25	2	129155-61450	BOLT, LIMITER	1							
26	2	129155-61460	BOLT, IDLE	1							
27	2	129155-61480	SPACER ASSY	2							
32	2	129155-61490	SHAFT	1							
33	2	129100-61501	LEVER ASSY, GOVERNOR	1							
34	3	174307-51700	SHIM SET	2							
51	2	129155-61540	SHIFTER	1							
52	2	129500-61650	SPRING, FUEL CONTROL	1							
53	2	129155-61810	PIN	1							
54	2	129100-61821	SPRING, RETURN	1							
55	2	129155-61830	O-RING, S10	1							
56	2	129155-61950	BOLT	1							
57	2	124550-66370	NUT, M6	1							
58	2	22117-040000	WASHER, 4	1							
59	2	22272-000040	RING, E- 4	1							
60	2	22272-000060	RING, E- 6	2							
61	2	22287-120000	WASHER, 12	1							
62	2	22351-030016	PIN, SPRING 3.0X16	1							
63	2	22372-040000	PIN, SNAP 4	2							
64	2	23887-100002	PLUG, 10	1							
65	2	24311-240100	O-RING, 1AP10A	1							
66	2	26022-050102	SCREW, M5X10	2							
67	2	26023-050102	SCREW, M5X10	2							
68	2	26106-060202	BOLT, M6X 20 PLATED	6							
69	2	26756-060002	NUT, LOCK M6	1							
70	2	26776-120002	NUT, LOCK M12	2							
71	2	22190-060002	WASHER, SEAL 6	1							
72	2	22190-100002	WASHER, SEAL 10	1							
73	2	22190-120002	WASHER, SEAL 12	2							
74	2	171488-61440	LEVER, CONTROL	1							
75	2	129155-61802	LEVER, STOP	1							
76	2	129500-61700	SPRING, GOVERNOR	1							
77	2	26687-120002	NUT, CAP M12	1							
78	2	129255-61410	NUT, LOCK	1							
79	2	129155-61470	BOLT, CONTROL	1							
80	2	129255-61420	SPRING, RETURN	1							

Remarks

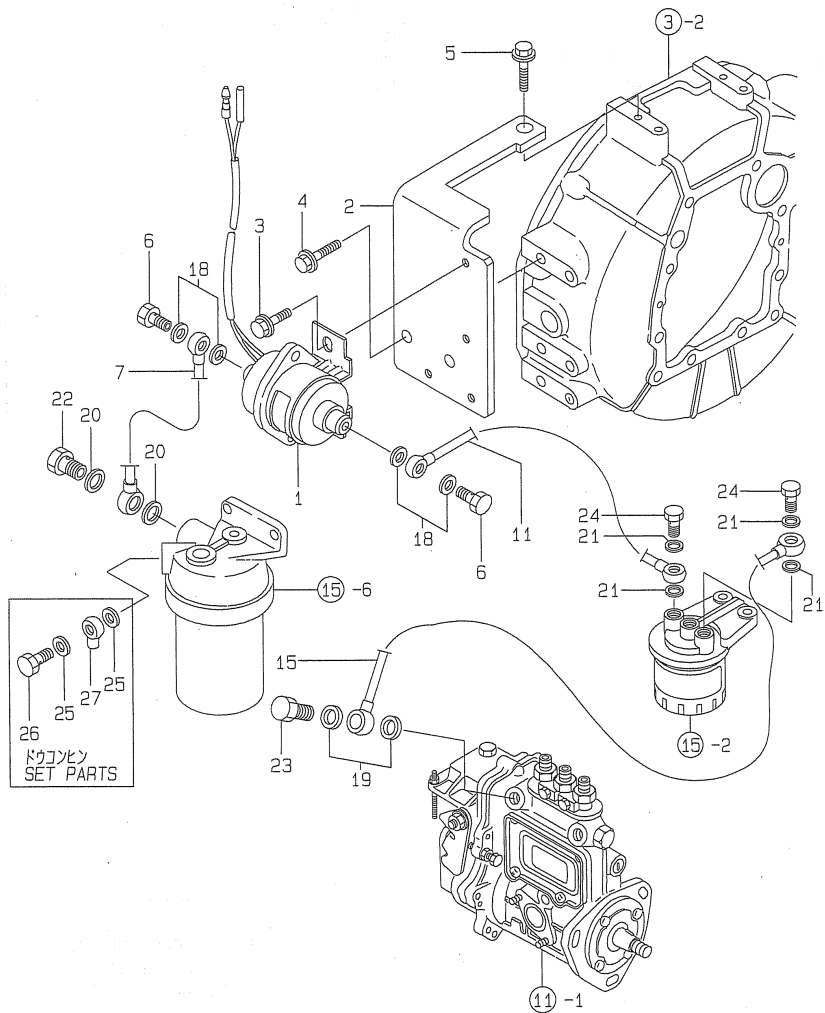
(1) SELECTIVE PARTS;CERTAIN THE CLASSIFICATION MARK, THEN PLACE YOUR ORDER. (REF.TO.ILLUSTRATION).

(2) SELECTIVE PART.

* THIS FIGURE(GOVERNOR ASSY)IS INCORPORATED IN THE FUEL INJECTION PUMP ASSY(FIG.11).

Fig.13. FEED PUMP

Y00D5880
3TNE78A-GHN

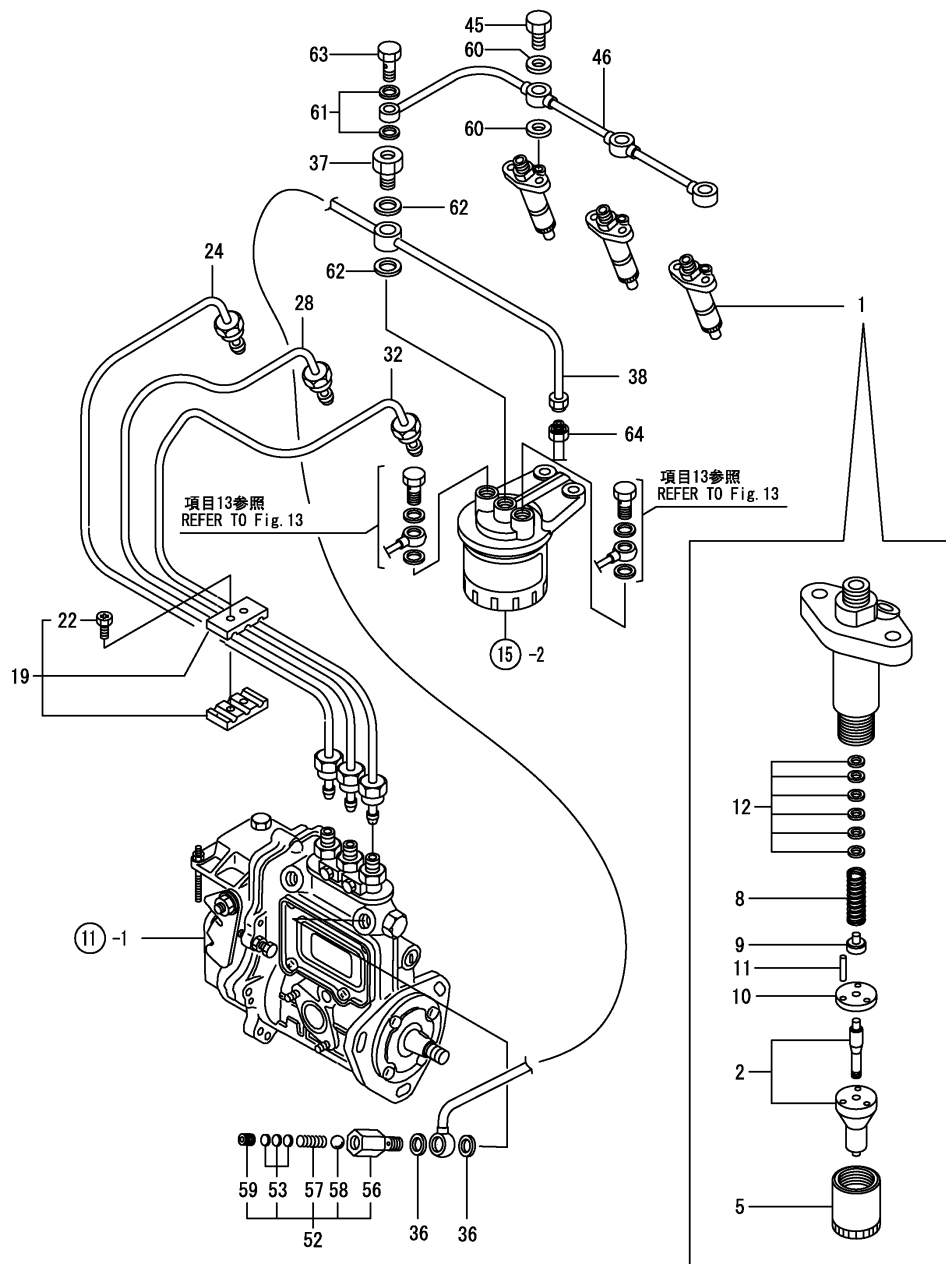


(A)=3TNE78A-GHN
(B)=
(C)=

(D)=
(E)=
(F)=

No.	Lev.	Parts No.	Description	Q'ty						I	R
				(A)	(B)	(C)	(D)	(E)	(F)		
1	1	124790-52201	PUMP ASSY, FUEL FEED	1							
2	1	171375-52501	BRACKET, PUMP	1							
3	1	26106-060102	BOLT, M6X 10 PLATED	2							
4	1	26106-080162	BOLT, M8X 16 PLATED	2							
5	1	26106-100162	BOLT, M10X 16 PLATED	1							
6	1	105582-59150	BOLT, PIPE JOINT	2							
7	1	171375-59500	PIPE ASSY, FUEL	1							
11	1	171335-59511	PIPE ASSY, FUEL	1							
15	1	171335-59521	PIPE ASSY, FUEL	1							
18	1	23414-080012	GASKET, 8X1.0	4							
19	1	23414-120000	GASKET, 12X1.0	2							
20	1	23414-120000	GASKET, 12X1.0	2							
21	1	23414-120000	GASKET, 12X1.0	4							
22	1	23857-060000	BOLT, JOINT 6	1							
23	1	23857-060000	BOLT, JOINT 6	1							
24	1	23857-060000	BOLT, JOINT 6	2							
25	1	23414-120000	GASKET, 12X1.0	2							
26	1	23857-060000	BOLT, JOINT 6	1							
27	1	103854-39540	JOINT, PIPE	1							

Fig.14. FUEL INJECTION VALVE



(A)=3TNE78A-GHN

(B)=

(C)=

(D)=

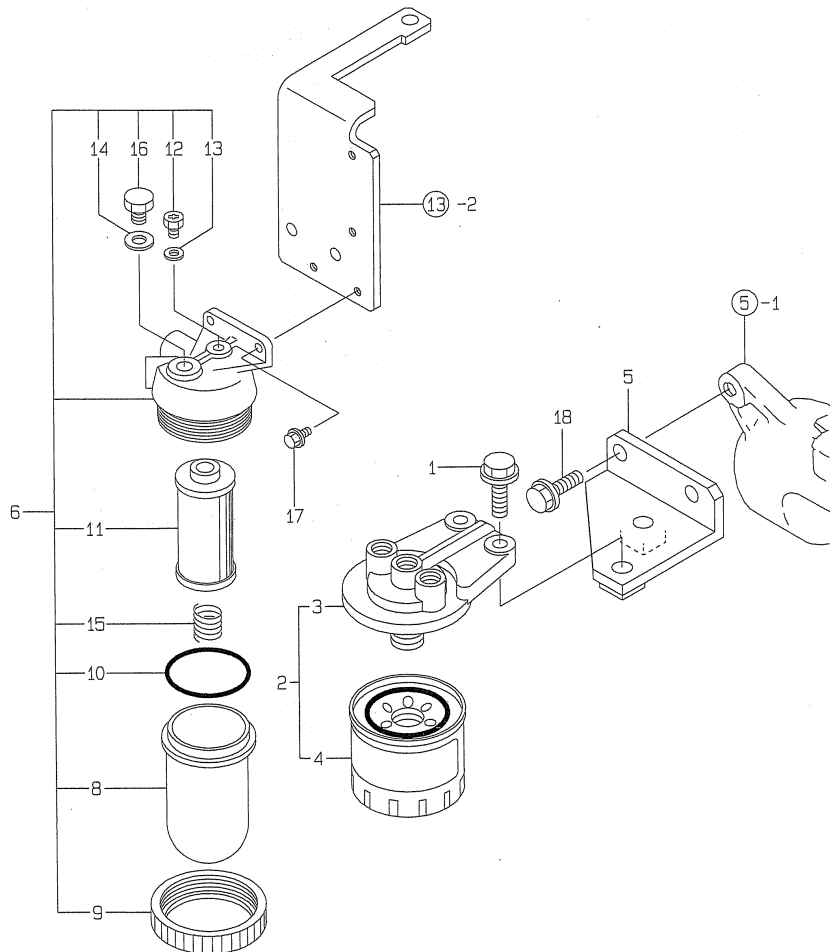
(E)=

(F)=

No.	Lev.	Parts No.	Description	Q'ty						I	R
				(A)	(B)	(C)	(D)	(E)	(F)		
1	1	729500-53300	VALVE ASSY,INJECTION	3							
2	2	129500-53000	VALVE ASSY,INJECTION	3							
5	2	114250-53080	NUT, NOZZLE D16.95	3							
8	2	114250-53120	SPRING, NOZZLE	3							
9	2	114250-53130	SEAT, SPRING	3							
10	2	114250-53140	PLATE	3							
11	2	114250-53210	PIN	6							
12	2	114250-53400	SHIM SET	3							
19	1	129150-59120	RETAINER, PIPE	1							
22	2	129150-59131	BOLT, M4X14	2							
24	1	119811-59810	PIPE ASSY, INJECTION	1							
28	1	119811-59820	PIPE ASSY, INJECTION	1							
32	1	119811-59830	PIPE ASSY, INJECTION	1							
36	1	104200-59170	GASKET, 12	2							
37	1	129495-59300	BOLT, PIPE JOINT	1							
38	1	171335-59530	PIPE ASSY, FUEL	1							
45	1	129491-59540	BOLT, PIPE JOINT M6	3							
46	1	171335-59551	PIPE ASSY, RETURN	1							
52	1	129100-59951	VALVE ASSY, CHECK	1							
53	2	129100-59850	SHIM SET	1							
56	2	129100-59961	BODY, VALVE	1							
57	2	129100-59970	SPRING	1							
58	2	24190-080001	BALL, STEEL 1/4	1							
59	2	27241-100000	PLUG, 10	1							
60	1	23414-060000	GASKET, 6X1.0	6							
61	1	23414-080012	GASKET, 8X1.0	2							
62	1	23414-140000	GASKET, 14X1.0	2							
63	1	23851-030000	JOINT BOLT 3	1							
64	1	43551-001451	UNION 8(M)	1							

Fig.15. FUEL FILTER

Y00D5880
3TNE78A-GHN



(A)=3TNE78A-GHN

(B)=

(C)=

(D)=

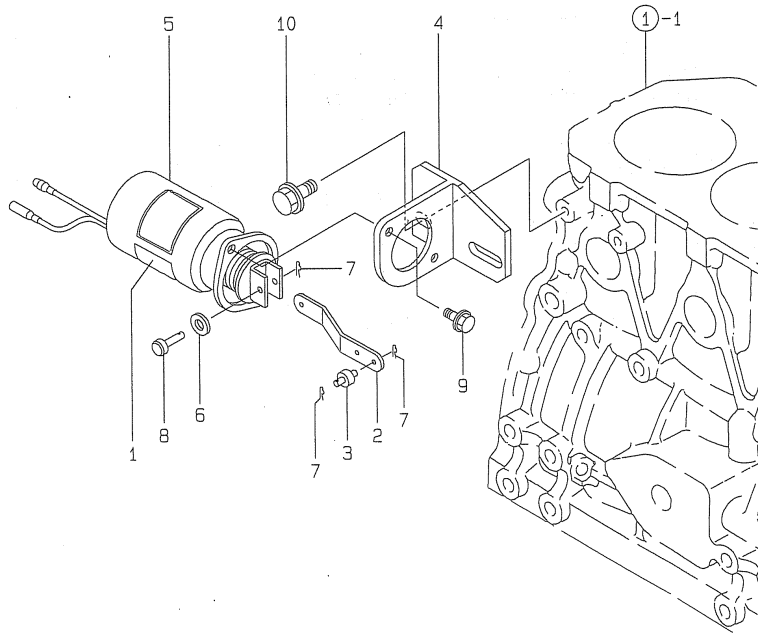
(E)=

(F)=

No.	Lev.	Parts No.	Description	Q'ty						I	R
				(A)	(B)	(C)	(D)	(E)	(F)		
1	1	26106-100302	BOLT, M10X 30 PLATED	2							
2	1	129470-55601	FILTER ASSY, FUEL	1							
3	2	129470-55610	BODY, STRAINER	1							
4	2	129470-55701	STRAINER ASSY, FUEL	1							
5	1	171335-55611	BRACKET, STRAINER	1							
6	1	171081-55900	FILTER ASSY, PRE	1							
8	2	121370-55730	CUP, STRAINER	1							
9	2	110250-55610	RING, RETAINING	1							
10	2	103854-32050	O-RING	1							
11	2	171081-55910	SCREEN	1							
12	2	101720-55750	PLUG, 6	1							
13	2	23418-060000	GASKET, 6X1.0	1							
14	2	23414-080012	GASKET, 8X1.0	1							
15	2	121257-55720	SPRING	1							
16	2	101720-55750	PLUG, 6	1							
17	1	26106-060142	BOLT, M6X 14 PLATED	2							
18	1	26106-080162	BOLT, M8X 16 PLATED	2							

Fig.16. ENGINE STOP DEVICE

Y00D5B80
3TNE78A-GHN



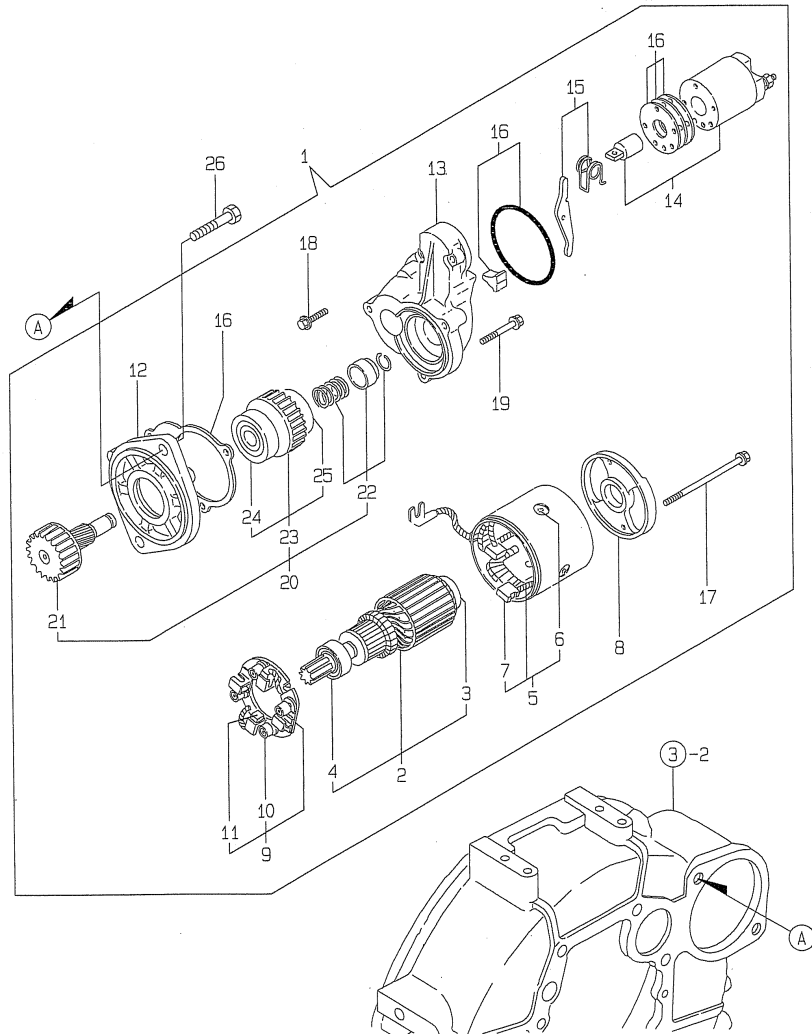
(A)=3TNE78A-GHN
(B)=
(C)=

(D)=
(E)=
(F)=

No.	Lev.	Parts No.	Description	Q'ty						I	R
				(A)	(B)	(C)	(D)	(E)	(F)		
1	1	171010-65100	LABEL	1							
2	1	171335-65110	LINK, SOLENOID	1							
3	1	171335-65120	PIN	1							
4	1	171335-65130	BRACKET, SOLENOID	1							
5	1	171335-77951	SOLENOID, MAGNETIC	1							
6	1	22117-050000	WASHER, 5	1							
7	1	22360-050000	SNAP PIN 5	3							
8	1	22487-050160	PIN, H 5X 16	1							
9	1	26106-060122	BOLT, M6X 12 PLATED	2							
10	1	26106-080142	BOLT, M8X 14 PLATED	2							

Fig.17. STARTING MOTOR

Y00D5880
3TNE78A-GHN



(A)=3TNE78A-GHN

(B)=

(C)=

(D)=

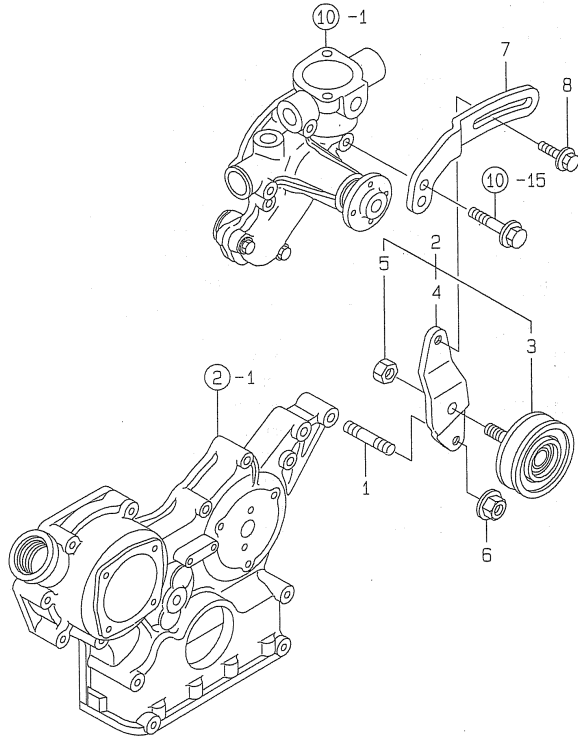
(E)=

(F)=

No.	Lev.	Parts No.	Description	Q'ty						I	R
				(A)	(B)	(C)	(D)	(E)	(F)		
1	1	124976-77011	STARTER, S114-349A	1							
2	2	X211451007	ARMATURE ASSY	1							
3	3	X211415502	BEARING, BALL	1							
4	3	X211425502	BEARING, BALL	1							
5	2	X211472106	COIL ASSY, FIELD	1							
6	3	X21143215	SCREW, CORE	4							
7	3	X211469002	BRUSH (+)	2							
8	2	X211483003	COVER	1							
9	2	X211429007	HOLDER ASSY, BRUSH	1							
10	3	X21148314	SPRING, BRUSH	4							
11	3	X211459002	BRUSH (-)	2							
12	2	X211476504	HOUSING ASSY, GEAR	1							
13	2	X211414501	HOUSING, CENTER	1							
14	2	171008-55730	SWITCH ASSY	1							
15	2	X21146012	LEVER, SHIFT	1							
16	2	171008-77571	DUST COVER,(NON-ASB.	1							
17	2	X211468005	BOLT, THROUGH	2							
18	2	X21145866	BOLT	2							
19	2	X21142867	BOLT	3							
20	2	X211415505	CLUTCH ASSY	1							
21	3	X211495009	SHAFT	1							
22	3	X211429006	STOPPER SET	1							
23	3	X211425505	CLUTCH ASSY	1							
24	4	X211435502	BALL BEARING	1							
25	4	X211445502	BALL BEARING	1							
26	1	26116-120252	BOLT, M12X 25 PLATED	2							

Fig.18. TENSION PULLEY

Y0005880
3TNE78A-GHN



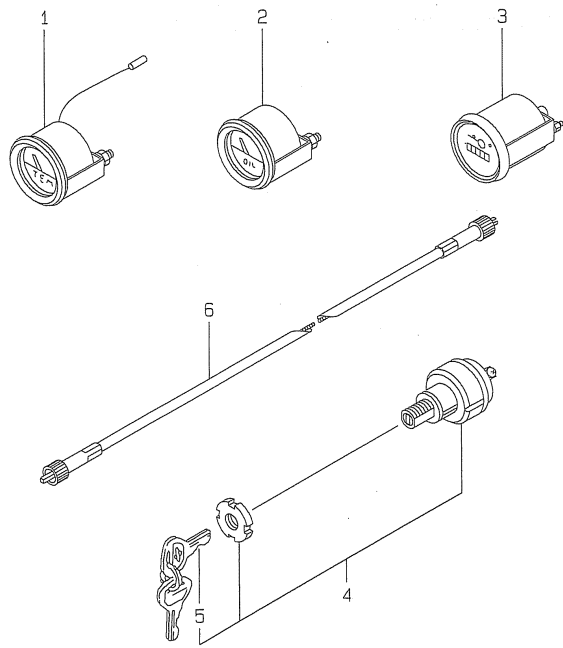
(A)=3TNE78A-GHN
(B)=
(C)=

(D)=
(E)=
(F)=

No.	Lev.	Parts No.	Description	Q'ty						I	R
				(A)	(B)	(C)	(D)	(E)	(F)		
1	1	121450-01570	STUD	1							
2	1	171375-44300	PULLEY ASSY, TENSION	1							
3	2	171011-44301	PULLEY, TENSION	1							
4	2	171375-44320	BRACKET, PULLEY	1							
5	2	26706-100002	NUT, M10	1							
6	1	26366-100002	NUT, M10	1							
7	1	119810-77330	ADJUSTER	1							
8	1	26014-080252	BOLT, M8X 25	1							

Fig.19. ELECTRIC PARTS

Y00D5880
3TNE78A-GHN



(A)=3TNE78A-GHN
(B)=
(C)=

(D)=
(E)=
(F)=

No.	Lev.	Parts No.	Description	Q'ty						I	R
				(A)	(B)	(C)	(D)	(E)	(F)		
1	1	171010-77850	THERMOSTAT	2							
2	1	171090-91010	GAUGE	1							
3	1	171014-91101	TACHOMETER	1							
4	1	121400-91251	SWITCH, STARTER	1							
5	2	121400-91271	KEY, SWITCH	1							
6	1	121400-91140	SHAFT	1							

Fig.20. GASKET SET

(A)=3TNE78A-GHN

(B)=

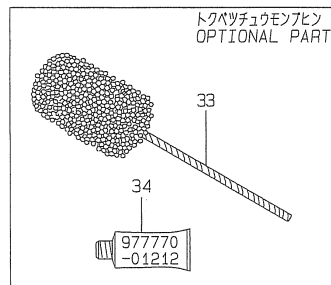
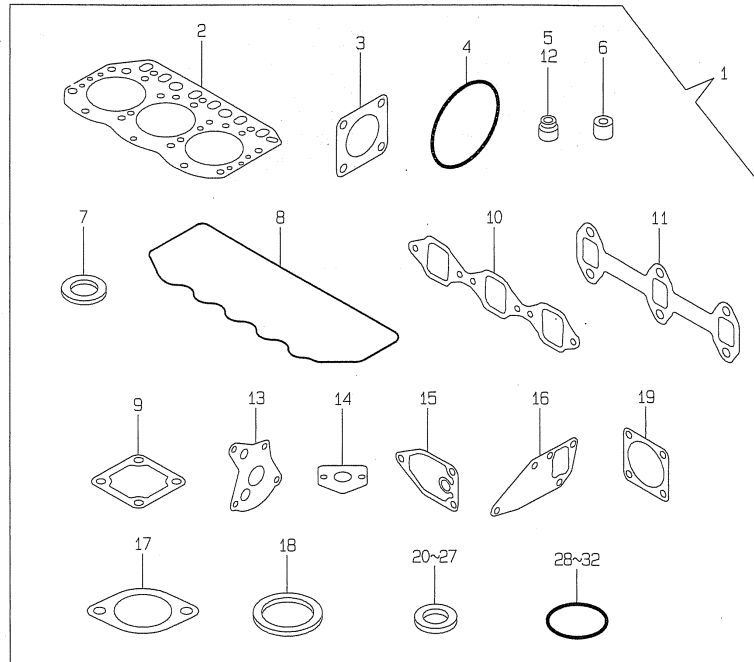
(C)=

(D)=

(E)=

(F)=

Y00D5880
3TNE78A-GHN



No.	Lev.	Parts No.	Description	Q'ty						I	R
				(A)	(B)	(C)	(D)	(E)	(F)		
1	1	719818-92620	GASKET SET	1							1
2	2	119818-01330	GASKET, HEAD	1							
3	2	124240-01883	GASKET	1							
4	2	121850-51960	O-RING	1							
5	2	124160-11340	SEAL, VALVE STEM	3							
6	2	119625-11871	PROTECTOR, NOZZLE	3							
7	2	119625-11880	SEAT, NOZZLE	3							
8	2	119865-11310	GASKET, BONNET	1							
9	2	129150-77511	GASKET	1							
10	2	119810-12111	GASKET, MANIFOLD	1							
11	2	119810-13110	GASKET	1							
12	2	124950-11340	SEAL, VALVE STEM	3							
13	2	129150-32020	GASKET, PUMP	1							
14	2	129150-35041	GASKET	1							
15	2	129150-35111	GASKET	1							
16	2	129150-42020	GASKET, WATER PUMP	1							
17	2	129795-49551	GASKET	2							
18	2	129150-49811	GASKET, THERMOSTAT	1							
19	2	124450-11900	GASKET	1							
20	2	104200-59170	GASKET, 12	2							
21	2	22190-080002	WASHER, SEAL 6	5							
22	2	129150-49360	GASKET	1							
23	2	23414-120000	GASKET, 12X1.0	10							
24	2	23414-080012	GASKET, 8X1.0	6							
25	2	23414-060000	GASKET, 6X1.0	6							
26	2	23414-140000	GASKET, 14X1.0	2							
27	2	124465-44950	GASKET, 16	2							
28	2	24311-000120	O-RING, 1AP12.0	3							
29	2	24311-000160	O-RING, 1AP16.0	2							
30	2	24311-000320	O-RING, 1AP32.0	2							
31	2	24341-000240	O-RING, 1AS24.0	1							
32	2	24341-000500	O-RING, 1AS50.0	1							
33	1	129400-92420	FLEX HORN	1							1
34	1	977770-01212	GASKET, LIQUID	1							1

Remarks

(1) OPTIONAL PART.

Parts No. Index

Parts No.	Fig. No.	Ref. No.
101720-55750	15	12
		16
103854-32050	15	10
103854-39540	13	27
104200-59170	14	36
	20	20
104211-11180	4	24
104211-11370	4	28
105582-59150	13	6
110250-55610	15	9
114250-53080	14	5
114250-53120	14	8
114250-53130	14	9
114250-53140	14	10
114250-53210	14	11
114250-53400	14	12
119265-44740	10	19
119620-01750	3	3
119620-02020	1	13
119625-11871	4	42
	20	6
119625-11880	4	43
	20	7
119625-11900	4	44
119629-49080	10	43
119640-01640	3	9
119810-01200	1	22
119810-01730	3	6
119810-01770	3	8
119810-01780	3	17
119810-02800	1	14
119810-02870	1	24
119810-02930	1	17
119810-02940	1	27
119810-11080	4	12
119810-11090	4	13
119810-11100	4	21
119810-11120	4	22
119810-11130	4	23
119810-11240	4	31
119810-12100	5	1
119810-12111	5	2
	20	10
119810-13100	6	2
119810-13110	6	3
	20	11
119810-14400	7	2
119810-14580	7	3
119810-23200	8	30
119810-23600	8	31

Parts No.	Fig. No.	Ref. No.
119810-23610	8	33
119810-23910	8	29
119810-35300	9	19
119810-39200	9	32
119810-39650	9	50
119810-42001	10	1
119810-51040	11	6
119810-77330	18	7
119811-59810	14	24
119811-59820	14	28
119811-59830	14	32
119813-21000	8	1
119813-22300	8	23
119818-01330	1	23
	20	2
119818-22090	8	17
119818-22510	8	19
119818-22900	8	35
119818-22950	8	37
119865-11200	4	30
119865-11310	4	55
	20	8
119865-21600	8	16
119932-34800	9	16
121111-21501	8	12
121250-44901	10	27
121257-55720	15	15
121370-55730	15	8
121400-91140	19	6
121400-91251	19	4
121400-91271	19	5
121450-01560	2	6
121450-01570	18	1
121520-34810	9	17
121550-49111	10	26
121850-11860	4	16
121850-21680	8	11
121850-51960	2	13
	20	4
122117-51560	11	50
122710-51090	11	10
123682-44210	10	36
124060-11800	4	14
124097-77900	1	6 -1
124101-49530	10	22
124160-01751	2	7
	4	61
124160-01910	1	5
124160-11340	4	26
	20	5

Parts No.	Fig. No.	Ref. No.
124160-11360	4	59
124160-39140	9	31
124160-39450	9	36
124240-01871	2	8
124240-01883	2	9
	20	3
124250-49351	9	42
124450-11900	6	1
	20	19
124465-44950	10	28
	20	27
124550-51350	11	32
124550-51370	11	33
124550-59820	9	37
124550-66370	12	57
124736-07900	4	5
124790-52201	13	1
124950-11340	4	27
	20	12
124950-51190	11	17
124976-77011	17	1
128170-51300	11	27
129001-32001	9	1
129001-35300	9	27
129100-01580	3	1
		14
	8	2
129100-25061	7	9
129100-25900	7	18
129100-52200	11	94
129100-59850	14	53
129100-59951	14	52
129100-59961	14	56
129100-59970	14	57
129100-61400	12	18
129100-61501	12	33
129100-61821	12	54
129150-02450	7	4
129150-03020	4	50
129150-03070	4	51
129150-03080	4	52
129150-03090	4	1
129150-03100	2	11
129150-11230	4	38
129150-11280	4	36
129150-11750	4	40
129150-14101	7	7
129150-14200	7	1
129150-21200	8	5
129150-25101	7	10

Parts No.	Fig. No.	Ref. No.
129150-25920	7	13
129150-32020	9	14
	20	13
129150-35041	9	18
	20	14
129150-35111	9	25
	20	15
129150-35151	9	26
129150-35350	9	28
129150-42020	10	14
	20	16
129150-42320	10	11
129150-49080	10	41
129150-49100	10	40
129150-49360	9	43
	20	22
129150-49811	10	25
	20	18
129150-59120	14	19
129150-59131	14	22
129150-77511	5	11
	20	9
129150-91400	2	25
129155-11260	4	34
129155-11270	4	35
129155-49800	10	24
129155-51020	11	5
129155-51050	11	8
129155-51060	11	9
129155-51140	11	14
129155-51180	11	16
129155-51200	11	18
129155-51270	11	25
129155-51280	11	26
	12	2
129155-51320	11	30
129155-51340	11	31
129155-51370	11	34
129155-51380	11	35
129155-51390	11	36
129155-51400	11	37
129155-51410	11	38
129155-51420	11	39
129155-51450	11	40
129155-51500	11	45
129155-51521	11	46
129155-51530	11	47
129155-51540	11	48
129155-51550	11	49
129155-51570	11	52

Parts No. Index

Parts No.	Fig. No.	Ref. No.
129155-51580	11	53
129155-51591	11	54
129155-51600	11	55
129155-51700	11	74
129155-51710	11	75
129155-51750	11	76
129155-51760	11	77
129155-51790	11	78
129155-51930	11	80
129155-51940	11	81
129155-52050	11	93
129155-61050	12	5
129155-61060	12	6
129155-61070	12	7
129155-61120	12	8
129155-61130	12	9
129155-61140	12	10
129155-61201	12	11
129155-61341	12	15
129155-61350	12	16
129155-61360	12	17
129155-61430	12	21
129155-61450	12	25
129155-61460	12	26
129155-61470	12	79
129155-61480	12	27
129155-61490	12	32
129155-61540	12	51
129155-61802	12	75
129155-61810	12	53
129155-61830	12	55
129155-61950	12	56
129156-51910	11	79
129255-61410	12	78
129255-61420	12	80
129400-01520	2	5
129400-92420	20	33
129403-42380	10	18
129411-51200	11	11
129470-12210	5	4
129470-55601	15	2
129470-55610	15	3
129470-55701	15	4
129486-01670	3	18
129491-59540	14	45
129495-59300	14	37
129500-53000	14	2
129500-61650	12	52
129500-61700	12	76
129604-07900	4	5 -1

Parts No.	Fig. No.	Ref. No.
129792-22400	8	24
129792-39410	9	44
129795-01800	2	4
129795-01950	2	10
129795-02411	1	20
129795-12501	5	7
129795-12520	5	8
129795-12530	5	9
129795-12540	5	10
129795-21661	8	10
129795-49551	10	23
	20	17
129900-07900	4	5 -2
144626-91560	9	41
171008-55730	17	14
171008-77571	17	16
171010-65100	16	1
171010-77850	19	1
171011-44301	18	3
171014-91101	19	3
171081-55900	15	6
171081-55910	15	11
171083-13300	6	4
171090-91010	19	2
171301-01600	3	2
171301-21580	8	13
171301-21650	8	9
171301-49020	10	38
171335-49010	10	37
171335-49590	10	29
171335-55611	15	5
171335-59511	13	11
171335-59521	13	15
171335-59530	14	38
171335-59551	14	46
171335-65110	16	2
171335-65120	16	3
171335-65130	16	4
171335-77951	16	5
171340-44510	10	35
171353-44760	10	20
171375-35100	9	24
171375-39601	9	40
171375-44300	18	2
171375-44320	18	4
171375-44900	10	33
171375-44910	10	34
171375-52501	13	2
171375-59500	13	7
171488-61440	12	74

Parts No.	Fig. No.	Ref. No.
174307-51170	11	15
174307-51560	11	51
174307-51700	12	34
194990-22050	6	5
22117-040000	12	58
22117-050000	16	6
22190-060002	12	71
22190-080002	2	12
		23
	9	39
	20	21
22190-100002	12	72
22190-120002	12	73
22190-160002	11	90
22190-220002	3	11
22217-050000	11	95
22217-060000	11	82
22217-120000	7	15
22272-000040	12	59
22272-000060	12	60
22287-120000	12	61
22351-030010	9	51
22351-030016	12	62
22351-040010	8	8
22351-050010	11	83
22351-060012	4	29
22360-050000	16	7
22372-040000	12	63
22487-050160	16	8
22512-070140	7	8
	8	6
23000-060000	5	12
23010-038000	10	39
23414-060000	14	60
	20	25
23414-080012	13	18
	14	61
	15	14
	20	24
23414-100000	9	38
23414-120000	13	19
	20	20
		21
		25
	20	23
23414-140000	14	62
	20	26
23414-170000	6	6
23414-220000	3	20
23418-060000	15	13

Parts No.	Fig. No.	Ref. No.
23851-030000	14	63
23857-060000	13	22
		23
		24
		26
23871-010000	1	7
	5	6
23871-030000	4	17
	10	12
23887-100002	12	64
23887-120002	1	21
23894-030002	6	7
24101-063034	11	84
24190-080001	14	58
24311-000120	4	60
	20	28
24311-000160	2	14
	9	29
	20	29
24311-000320	2	15
	4	62
	20	30
24311-240100	12	65
24341-000160	11	85
24341-000240	2	27
	20	31
24341-000500	4	57
	20	32
25132-003900	10	17
26014-080252	18	8
26022-050102	11	86
	12	66
26022-060162	11	87
26023-050102	12	67
26106-060102	13	3
26106-060122	16	9
26106-060142	15	17
26106-060162	2	28
26106-060202	12	68
26106-060352	10	21
26106-080122	2	16
26106-080142	4	6
	7	17
	16	10
26106-080162	2	17
		24
	3	12
	4	58
	5	13
	13	4

Parts No. Index

Parts No.	Fig. No.	Ref. No.
26106-080162	15	18
26106-080202	2	18
	9	30
26106-080252	4	45
	5	3
26106-080302	10	30
26106-080352	3	19
	9	23
	10	15
26106-080452	2	19
	3	13
	6	8
	7	14
26106-080502	4	46
26106-080552	2	20
	10	16
26106-080602	6	9
	10	31
26106-080852	2	21
26106-080952	6	10
26106-100162	13	5
26106-100302	15	1
26116-050302	11	88
26116-120252	17	26
26206-100252	3	4
26206-100302	3	5
26216-060302	4	18
26216-080602	6	11
26226-080182	4	41
26366-060002	4	47
26366-080002	2	22
26366-100002	18	6
26450-060252	9	15
26450-080302	10	32
26687-120002	12	77
26706-100002	18	5
26716-060002	11	89
26716-120002	7	16
26756-060002	12	69
26776-120002	12	70
27231-500000	1	8
27241-100000	14	59
27241-120000	1	9
27241-220000	4	19
27241-300000	1	10
27241-400000	4	20
27310-070001	4	25
43551-001451	14	64
46150-504600	1	6
719810-01500	2	1

Parts No.	Fig. No.	Ref. No.
719810-01650	3	15
719810-11520	4	48
719810-11650	4	37
719810-23100	8	25
719818-11700	4	7
719818-92620	20	1
719915-01560	1	1
719915-51400	11	1
729500-53300	14	1
977770-01212	2	29
	3	21
	20	34
X211414501	17	13
X211415502	17	3
X211415505	17	20
X211425502	17	4
X211425505	17	23
X21142867	17	19
X211429006	17	22
X211429007	17	9
X21143215	17	6
X211435502	17	24
X211445502	17	25
X211451007	17	2
X21145866	17	18
X211459002	17	11
X21146012	17	15
X211468005	17	17
X211469002	17	7
X211472106	17	5
X211476504	17	12
X211483003	17	8
X21148314	17	10
X211495009	17	21

Parts No.	Fig. No.	Ref. No.
-----------	----------	----------

Parts No.	Fig. No.	Ref. No.
-----------	----------	----------