

OCD10-M58500EN

PREFACE

1. This Parts Catalog is the 1st edition of NFAD8-(E)KMK Diesel Engine for MIKASA SANGYO.

Pub. No. : 000Y00D5850

Published : June, 1996

2. Model name

Engine model	Vehicle		Vehicle made by
	Products	Model name	
NFAD8-(E)KMK	VIBRATION ROLLER	—	MIKASA SANGYO

Directions for the Parts Catalog.

1. This Parts Catalog shows both standard and optional parts.
2. Parts may change without prior notice.
3. The following is an example of the Parts Catalog format.

REF.	LEV.	PARTS NO.	DESCRIPTION	Q'TY						I	R
				(A)	(B)	(C)	(D)	(E)	(F)		
1	1	729595-51390	FUEL INJECTION PUMP	1	1	1	1	1			1
1-1	1	729595-51391	FUEL INJECTION PUMP	1	1	1	1	1		N	1
		(A=E00185) (B=E00200)									
3	2	26022-060162	SCREW M 6X 16	9	9	9	9	9			
3-1	2	26022-060162	SCREW M 6X 16	4	4	4	4	4		K	
		(A=E00156) (B=E00156) (C=E00156) (D=E00156) (E=E00156)									
4	2	129470-51040	CAMSHAFT	1	1	1	1	1			
5	2	122710-51050	BEARING, ROLLER	2	2	2	2	2			
6	2	129470-51060	RETAINER	1	1	1	1	1			

Remarks
(1) BOOST COMPEMSATOR TYPE. OPTIONAL PART, TO E00155,(4JH-DT, 4JH-DTZ

① Ref. No.

The Ref. No. listed may not be in accordance with the illustration Ref. No.

(Ex.) Illustration No.

List Ref No.

1

1

(Before change)

1-1

(After change)

For interchangeable symbols N, R and K, illustrations for new parts may be abbreviated.

② Lev. (Level)

Level indication

The numbers below indicate the level of relativity towards the main part.

1 ----- Main parts (Assembly parts)

2 ----- Sub component included in " 1 ".

3 ----- Sub component included in " 2 ".

Note) Parts that are not for sale are partially illustrated but not listed.

③ Interchangeability Symbol

When a part change takes place, one of the following interchangeability symbols is indicated beside the part.

Symbol	Interchangeability	Contents note
N	Old $\begin{matrix} \leftarrow \text{Yes} \\ \text{No} \rightarrow \end{matrix}$ New	New Part is interchangeable for Old Part but Old Part is not interchangeable for New Part.
Q	Old $\begin{matrix} \leftarrow \text{No} \\ \text{Yes} \rightarrow \end{matrix}$ New	New Part is not interchangeable for Old Part but Old Part is interchangeable for New Part.
R	Old $\begin{matrix} \leftarrow \text{Yes} \\ \text{Yes} \rightarrow \end{matrix}$ New	New/ Old Parts are both interchangeable.
S	Old $\begin{matrix} \leftarrow \text{No} \\ \text{No} \rightarrow \end{matrix}$ New	New/ Old Parts are both not interchangeable.
W		Part newly added.
Z		Part discontinued.
F		Not interchangeable by a single part but interchangeable together with related parts.
K		Changes only for used parts quantities.

④ Effective Machine No.

When a part changes, the effective Machine No. will be indicated in the (A)-(F) column.

Product Symbol	Product No.	Product Symbol	Product No.
C	Clutch No. Compressor No.	F	Machine No. (Agricultural Equip.)
D	Drive No.	M	Machine No.
E	Engine No.		

Note 1) A date may follow the symbol. (Ex.) 1996.01

Note 2) "XXXXX" and "ZZZZZ" are for parts that could not be predicted or for engine models that could not be identified.

Note 3) (A=E00185) is the E (Engine Serial Number) for the column (A) model (in this case 4JH-DT) after the parts design change.

⑤ Remarks

Figures or alphabets (symbols) are entered in the remarks column.

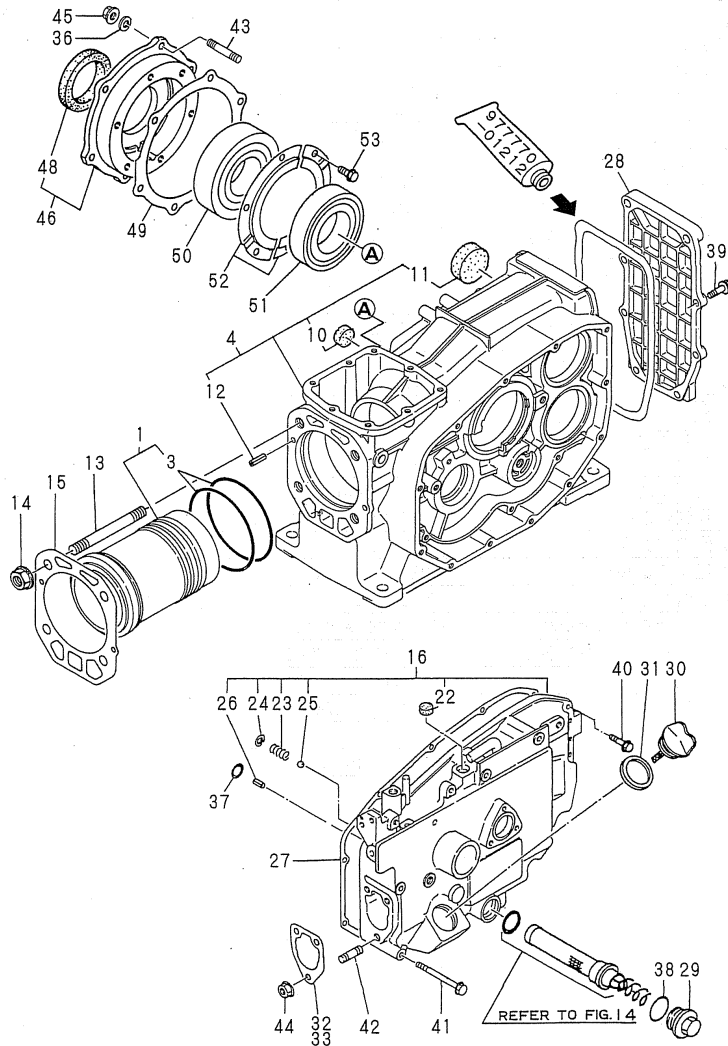
The comments (remarks) on parts that are indicated at the bottom of the illustration are the same symbols as those stated above.

Contents

Fig. No.	Fig. Name
NFAD8-(E)KMK	
1.	CYLINDER BLOCK
2.	BREATHER
3.	LABEL
4.	ENGINE LIFTER
5.	STARTING HANDLE BRACKET
6.	CYLINDER HEAD
7.	BONNET
8.	AIR CLEANER & MUFFLER
9.	CAMSHAFT
10.	CRANKSHAFT
11.	FLYWHEEL COVER
12.	PISTON & CONNECTING ROD
13.	BALANCER
14.	LUB.OIL SYSTEM
15.	RADIATOR
16.	FAN
17.	FUEL INJECTION PUMP
18.	FUEL INJECTION VALVE
19.	FUEL TANK
20.	FUEL STRAINER
21.	FUEL PIPE
22.	GOVERNOR & GOVERNOR LEVER
23.	REGULATOR HANDLE
24.	STARTING DENICE

Fig. No.	Fig. Name
25.	ELECTRIC STARTING DEVICE
26.	TOOL
27.	TOOL(OPTIONAL PART

Fig.1. CYLINDER BLOCK

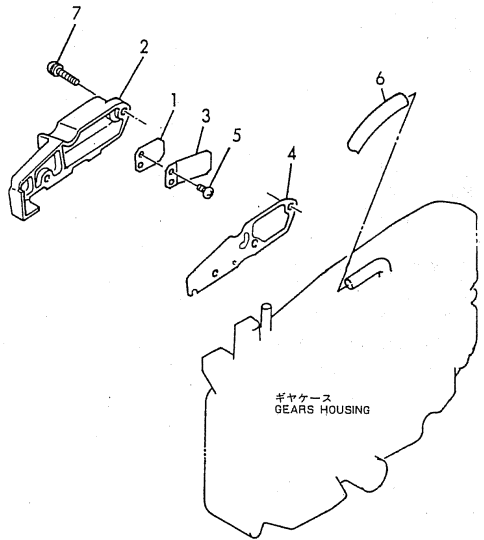


(A)=NFAD8-KMK
(B)=NFAD8-EKMK
(C)=

(D)=
(E)=
(F)=

No.	Lev.	Parts No.	Description	Q'ty						I	R
				(A)	(B)	(C)	(D)	(E)	(F)		
1	1	705200-01900	LINER ASSY, CYLINDER	1	1						
3	2	105100-01300	O-RING	2	2						
4	1	705190-01560	BLOCK ASSY, CYLINDER	1	1						
10	3	105190-01670	PLUG, 22	1	1						
11	3	105190-01680	SEAL, 42	2	2						
12	2	22351-060012	PIN, SPRING 6.0X12	2	2						
13	1	105215-01200	BOLT, HEAD M12	4	4						
14	1	121450-01220	NUT, CYLINDER HEAD	4	4						
15	1	105100-01331	GASKET, HEAD	1	1						
16	1	705100-01501	CASE ASSY, GEAR	1	1						
22	2	105100-01660	PLUG, 14	1	1						
23	2	105300-34040	SPRING	1	1						
24	2	22252-000100	RING, 10	1	1						
25	2	24190-120001	BALL, STEEL 3/8	1	1						
26	2	22351-060012	PIN, SPRING 6.0X12	1	1						
27	1	105100-01410	GASKET, GEAR CASE	1	1						
28	1	105190-01480	COVER	1	1						
29	1	105300-01690	PLUG	1	1						
30	1	105190-01750	CAP, FILLER	1	1						
31	1	101104-01760	GASKET, CAP	1	1						
32	1	105300-01920	SHIM, T=0.1	1	1						
33	1	104271-01950	SHIM SET, 0.2X3, 0.3X2	1	1						
36	1	22217-080000	WASHER, SPRING 8	6	6						
37	1	24311-000060	O-RING, 1AP6.0	1	1						
38	1	24321-000250	O-RING, 1AG25.0	1	1						
39	1	26106-060202	BOLT, M6X 20 PLATED	6	6						
40	1	26106-060302	BOLT, M6X 30 PLATED	7	7						
41	1	26106-060702	BOLT, M6X 70 PLATED	5	5						
42	1	26216-080222	STUD, M8X 22	3	3						
43	1	26226-080222	STUD, M8X 22	6	6						
44	1	26366-080002	NUT, M8	3	3						
45	1	26716-080002	NUT, M8	6	6						
46	1	705100-02500	HOUSING ASSY, METAL	1	1						
48	2	123325-02500	SEAL, OIL	1	1						
49	1	105100-02021	GASKET	1	1						
50	1	105100-02300	BEARING, 6308-SH2-C3	1	1						
51	1	105100-02310	BEARING, 6208-SH2-C3	1	1						
52	1	106100-02331	RETAINER, BEARING	2	2						
53	1	26116-050082	BOLT, M5X 8 PLATED	6	6						

Fig.2. BREATHER



(A)=NFAD8-KMK
 (B)=NFAD8-EKMK
 (C)=

(D)=
 (E)=
 (F)=

No.	Lev.	Parts No.	Description	Q'ty						I	R
				(A)	(B)	(C)	(D)	(E)	(F)		
1	1	101158-03061	VALVE	1	1						
2	1	105100-03081	COVER, BREATHER	1	1						
3	1	101158-03111	RETAINER	1	1						
4	1	105100-03131	GASKET	1	1						
5	1	105362-78960	SCREW, M4X8	2	2						
6	1	23064-090400	PIPE, 9X 400	1	1						
7	1	26023-060252	SCREW, M6X25	3	3						

Fig.3. LABEL

(A)=NFAD8-KMK
(B)=NFAD8-EKMK
(C)=

(D)=
(E)=
(F)=

No.	Lev.	Parts No.	Description	Q'ty						I	R
				(A)	(B)	(C)	(D)	(E)	(F)		
1	1	105190-07100	LABEL	1	1						
3	1	105250-07310	LABEL, RADIATOR	1	1						
4	1	105250-07320	LABEL,NO FIRE	1	1						
5	1	105250-07330	LABEL	1	1						
6	1	105250-07340	LABEL,EXH.GAS CAUTN	1	1						
7	1	105250-07070	LABEL	2	2						
8	1	105300-07070	LABEL	1	1						
9	1	105372-07150	LABEL, LUB. OIL	1	1						

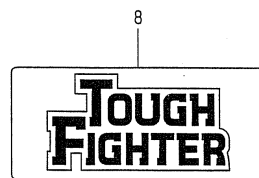
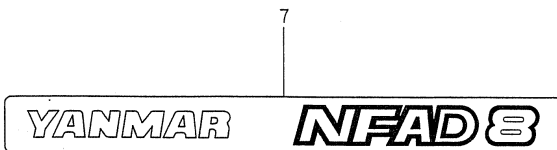
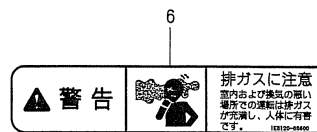
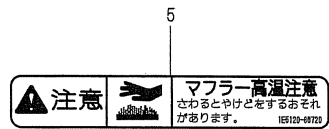
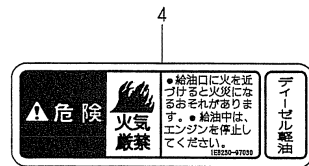
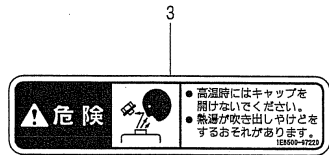
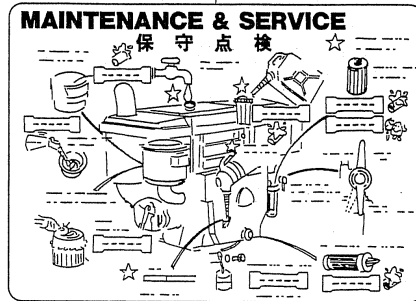
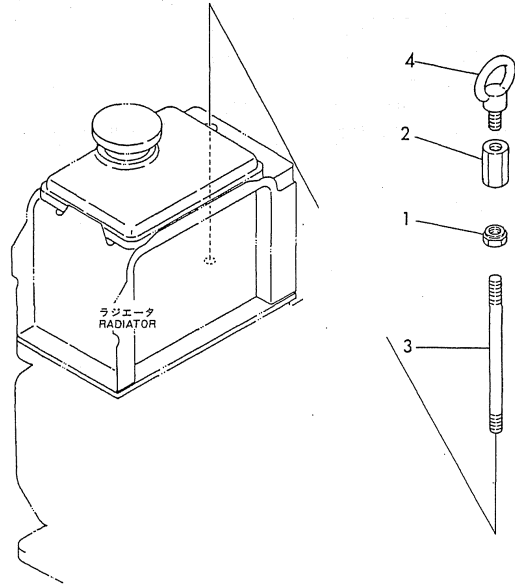


Fig.4. ENGINE LIFTER

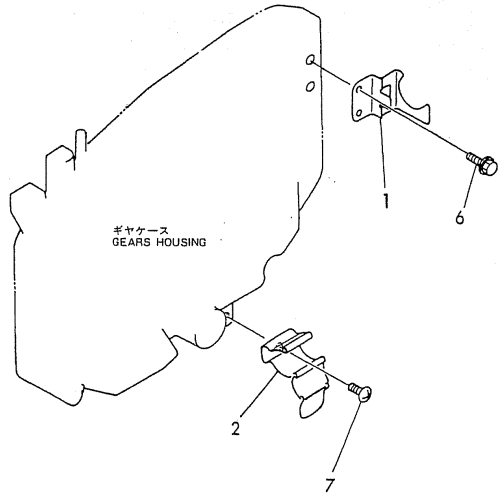


(A)=NFAD8-KMK
 (B)=NFAD8-EKMK
 (C)=

(D)=
 (E)=
 (F)=

No.	Lev.	Parts No.	Description	Q'ty						I	R
				(A)	(B)	(C)	(D)	(E)	(F)		
1	1	104107-07900	NUT, M10	1	1						
2	1	105300-07910	NUT	1	1						
3	1	105140-07940	BOLT, LIFTING	1	1						
4	1	26617-100002	BOLT, EYE M10	1	1						

Fig.5. STARTING HANDLE BRACKET



(A)=NFAD8-KMK
(B)=NFAD8-EKMK
(C)=

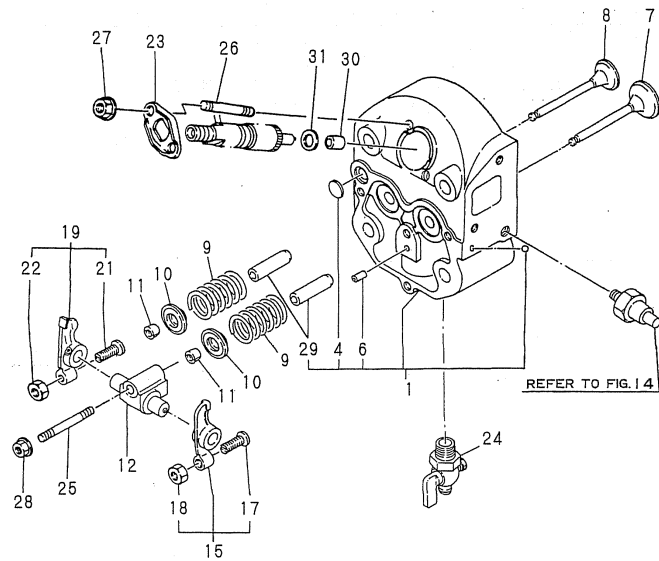
(D)=
(E)=
(F)=

No.	Lev.	Parts No.	Description	Q'ty						I	R
				(A)	(B)	(C)	(D)	(E)	(F)		
1	1	105298-08100	BRACKET, HANDLE	1	1						
2	1	105300-08510	BRACKET ASSY	1	1						
6	1	26106-060122	BOLT, M6X 12 PLATED	2	2						
7	1	26557-060082	SCREW, M6X 8	1	1						

Fig.6. CYLINDER HEAD

(A)=NFAD8-KMK
(B)=NFAD8-EKMK
(C)=

(D)=
(E)=
(F)=

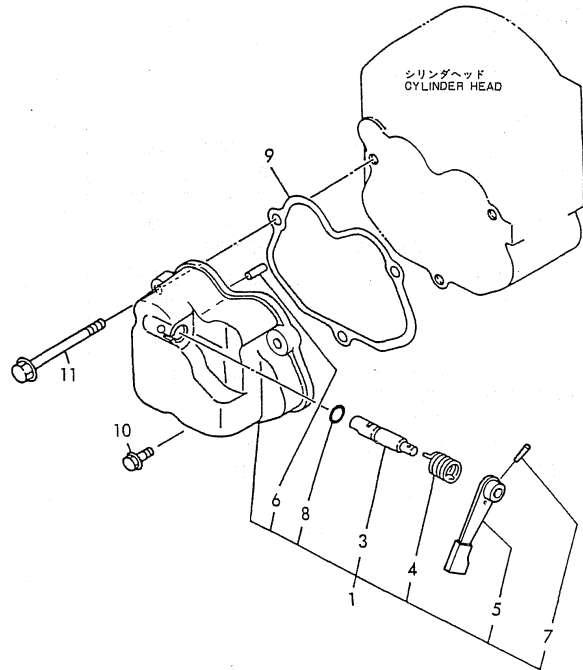


No.	Lev.	Parts No.	Description	Q'ty						I	R
				(A)	(B)	(C)	(D)	(E)	(F)		
1	1	705100-11700	HEAD ASSY, CYLINDER	1	1						
4	2	27231-150000	PLUG 15	1	1						
6	2	105300-11330	PIN	1	1						
7	1	105100-11100	VALVE, INTAKE	1	1						
8	1	105100-11111	VALVE, EXHAUST	1	1						
9	1	105400-11121	SPRING, VALVE	2	2						
10	1	101158-11180	RETAINER, SPRING	2	2						
11	1	27310-070001	COTTER, 7	2	2						
12	1	105300-11290	SUPPORT ASSY, ARM	1	1						
15	1	105100-11650	ARM, ROCKER	1	1						
17	2	101158-11230	SCREW, VALVE ADJUST	1	1						
18	2	26756-080002	NUT, LOCK M8	1	1						
19	1	105100-11660	ARM, ROCKER	1	1						
21	2	101158-11230	SCREW, VALVE ADJUST	1	1						
22	2	26756-080002	NUT, LOCK M8	1	1						
23	1	105300-11900	RETAINER	1	1						
24	1	105010-11920	COCK, WATER	1	1						
25	1	26216-080452	STUD, M8X 45	1	1						
26	1	26216-060402	STUD, M6X 40	2	2						
27	1	26366-060002	NUT, M6	2	2						
28	1	26366-080002	NUT, M8	1	1						
29	1	105300-11801	GUIDE, VALVE	2	2						1
30	1	119625-11871	PROTECTOR, NOZZLE	1	1						
31	1	119625-11880	SEAT, NOZZLE	1	1						

Remarks

(1)REPAIR PART.

Fig.7. BONNET

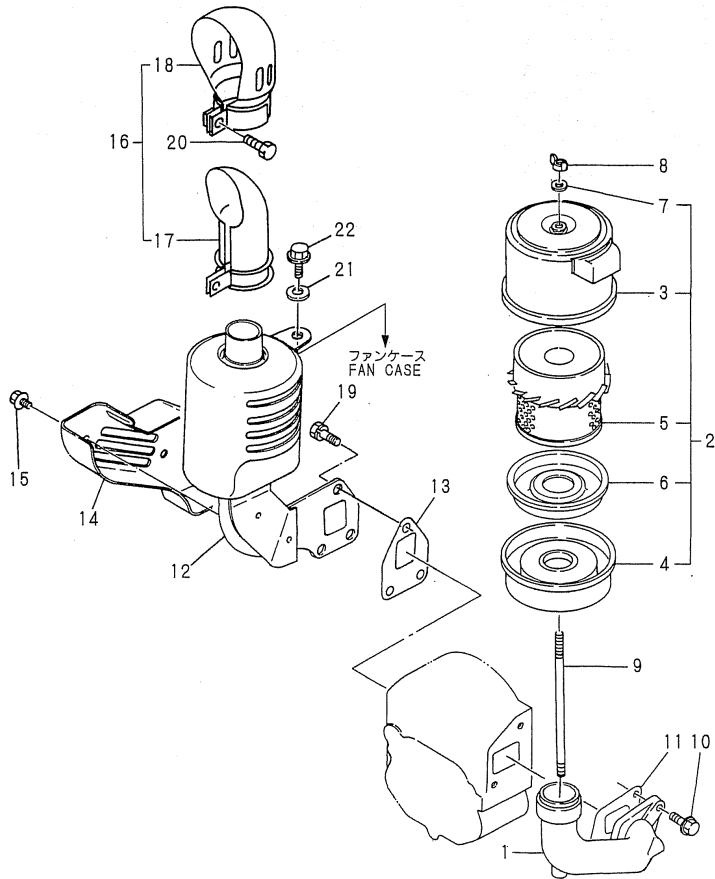


(A)=NFAD8-KMK
(B)=NFAD8-EKMK
(C)=

(D)=
(E)=
(F)=

No.	Lev.	Parts No.	Description	Q'ty						I	R
				(A)	(B)	(C)	(D)	(E)	(F)		
1	1	705100-11520	BONNET ASSY, HEAD	1	1						
3	2	104200-03600	SHAFT, DECOMPRESSION	1	1						
4	2	104200-03641	SPRING, DECOMPRESSION	1	1						
5	2	104104-03750	LEVER, DECOMPRESSION	1	1						
6	2	22312-030180	PIN, PARALLEL M3X18	1	1						
7	2	22322-030180	PIN, TAPER 3X18	1	1						
8	2	24311-000070	O-RING, 1AP7.0	1	1						
9	1	105100-11310	GASKET, BONNET	1	1						
10	1	26106-060202	BOLT, M6X 20 PLATED	2	2						
11	1	26106-060602	BOLT, M6X 60 PLATED	1	1						

Fig.8. AIR CLEANER & MUFFLER



(A)=NFAD8-KMK
(B)=NFAD8-EKMK
(C)=

(D)=
(E)=
(F)=

No.	Lev.	Parts No.	Description	Q'ty						I	R
				(A)	(B)	(C)	(D)	(E)	(F)		
1	1	105100-12020	PIPE, AIR INTAKE	1	1						
2	1	105190-12510	CLEANER, AIR	1	1						
3	2	105190-12530	COVER	1	1						
4	2	105190-12540	PAN, DUST	1	1						
5	2	104300-12960	ELEMENT	1	1						
6	2	105190-12560	BAFFLE ASSY	1	1						
7	2	105300-12560	WASHER, SEAL	1	1						
8	1	101147-12550	NUT	1	1						
9	1	105100-12550	BOLT	1	1						
10	1	26106-080202	BOLT, M8X 20 PLATED	2	2						
11	1	105190-12050	GASKET	1	1						
12	1	105198-13530	SILENCER ASSY	1	1						
13	1	105300-13201	GASKET, SILENCER	1	1						
14	1	105190-13550	COVER	1	1						
15	1	160260-01580	BOLT, FLANGE M6X6	2	2						
16	1	105198-13610	EXTENSION ASSY	1	1						
17	2	106530-13570	PIPE	1	1						
18	2	106530-13590	COVER	1	1						
19	1	26013-080189	BOLT, M8X 18	3	3						
20	1	26554-060162	SCREW, M6X16	1	1						
21	1	160120-76940	WASHER	1	1						
22	1	26106-060202	BOLT, M6X 20 PLATED	1	1						

Fig.9. CAMSHAFT

(A)=NFAD8-KMK
 (B)=NFAD8-EKMK
 (C)=

(D)=
 (E)=
 (F)=

No.	Lev.	Parts No.	Description	Q'ty						I	R
				(A)	(B)	(C)	(D)	(E)	(F)		
1	1	105170-14010	CAMSHAFT	1	1						
2	1	105100-14091	CAM, FUEL	1	1						
3	1	105100-14100	GEAR, CAMSHAFT	1	1						
4	1	105300-14200	TAPPET	2	2						
5	1	105100-14400	ROD, PUSH	2	2						
6	1	105190-14421	RETAINER, BEARING	1	1						
7	1	105100-14600	COVER	1	1						
8	1	105300-14700	SPACER	1	1						
9	1	104300-76460	NUT	1	1						
10	1	22512-070550	KEY, 7X 55	1	1						
11	1	24101-060064	BEARING, BALL 6006	1	1						
12	1	26022-060122	SCREW, M6X12	3	3						
13	1	26022-060122	SCREW, M6X12	1	1						

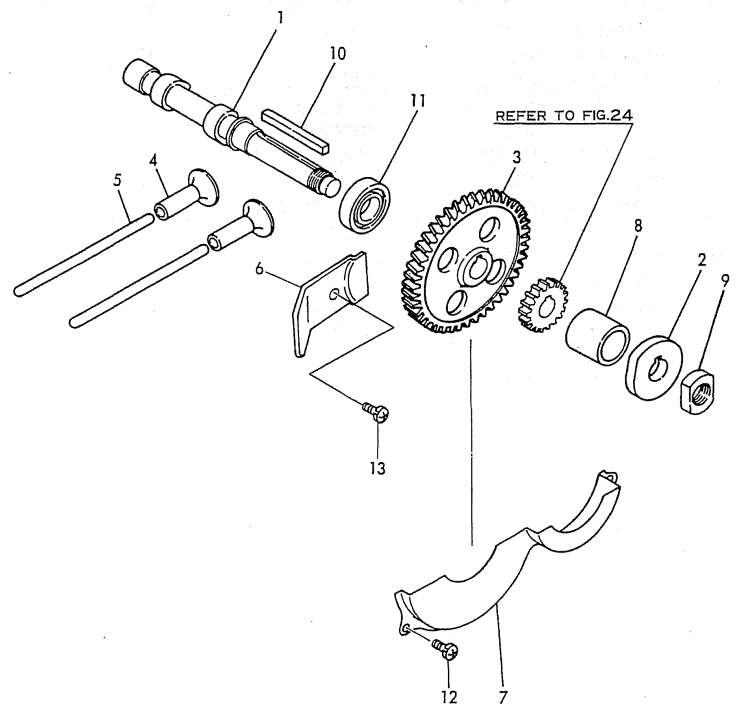
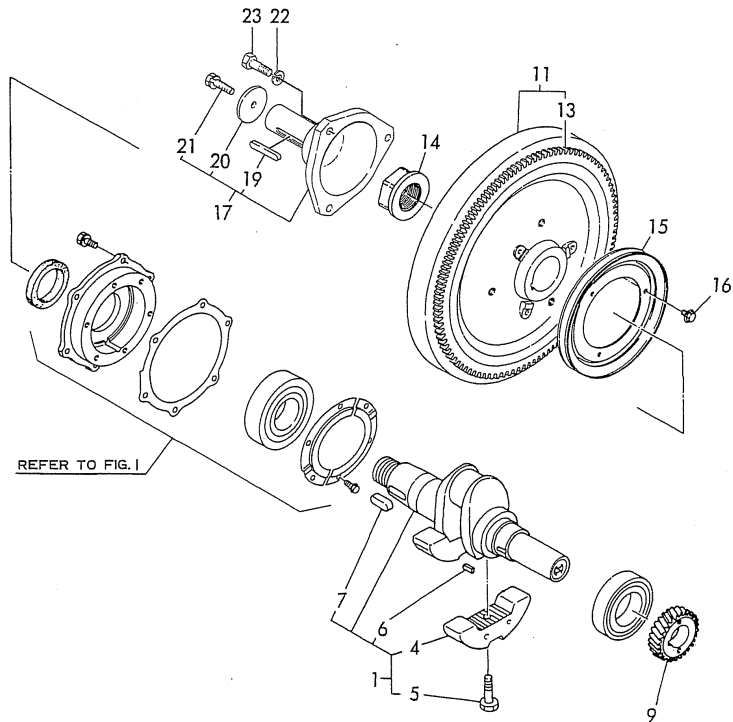
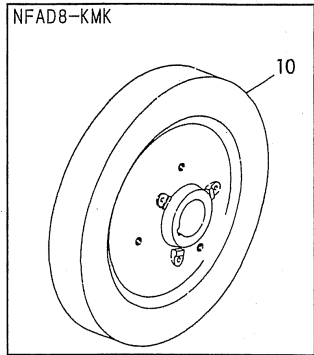


Fig.10. CRANKSHAFT



(A)=NFAD8-KMK
(B)=NFAD8-EKMK
(C)=

(D)=
(E)=
(F)=

No.	Lev.	Parts No.	Description	Q'ty						I	R
				(A)	(B)	(C)	(D)	(E)	(F)		
1	1	705190-21700	CRANKSHAFT ASSY	1	1						
4	2	105190-21100	WEIGHT, BALANCE	2	2						
5	2	106100-21130	BOLT, BALANCE WEIGHT	2	2						
6	2	22512-050120	KEY, 5X 12	1	1						
7	2	22512-100260	KEY, 10X 26	1	1						
9	1	105100-21200	GEAR, CRANKSHAFT	1	1						
10	1	105100-21400	FLYWHEEL	1							
11	1	105100-21590	FLYWHEEL ASSY		1						
13	2	105100-21600	GEAR, RING		1						
14	1	104200-21530	NUT, END	1	1						
15	1	104104-21600	V-PULLEY	1	1						
16	1	26106-060122	BOLT, M6X 12 PLATED	3	3						
17	1	705098-21500	SHAFT ASSY, STUB	1	1						
19	2	22512-070500	KEY, 7X 50	1	1						
20	2	173400-21940	WASHER	1	1						
21	2	26106-100202	BOLT, M10X 20 PLATED	1	1						
22	1	22217-120000	WASHER, SPRING 12	3	3						
23	1	26116-120352	BOLT, M12X 35 PLATED	3	3						

Fig.11. FLYWHEEL COVER

(A)=NFAD8-KMK
 (B)=NFAD8-EKMK
 (C)=

(D)=
 (E)=
 (F)=

No.	Lev.	Parts No.	Description	Q'ty						I	R
				(A)	(B)	(C)	(D)	(E)	(F)		
1	1	105190-21300	COVER, FLYWHEEL	1							
2	1	105190-21350	COVER, FLYWHEEL		1						
3	1	105190-21310	COVER	1							
4	1	105190-21360	COVER		1						
5	1	105190-21320	COVER	1	1						
6	1	105300-21381	ABSORBER	2	2						
7	1	105300-44451	ABSORBER	2	2						
8	1	105300-44460	COLLAR	4	4						
9	1	160120-76940	WASHER	5	5						
10	1	26013-060142	BOLT, M6X 14	2	2						
11	1	26013-060142	BOLT, M6X 14	3	2						
12	1	26106-060202	BOLT, M6X 20 PLATED	3	3						
13	1	26557-060082	SCREW, M6X 8	1	1						
14	1	105190-21910	WASHER	1	1						
15	1	105190-21900	TAPE	1	1						

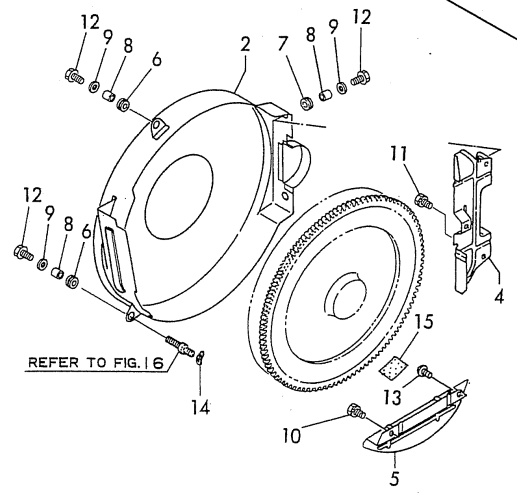
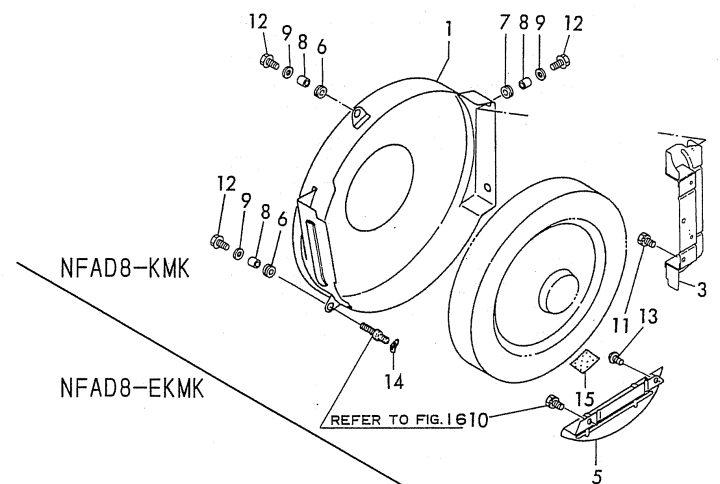
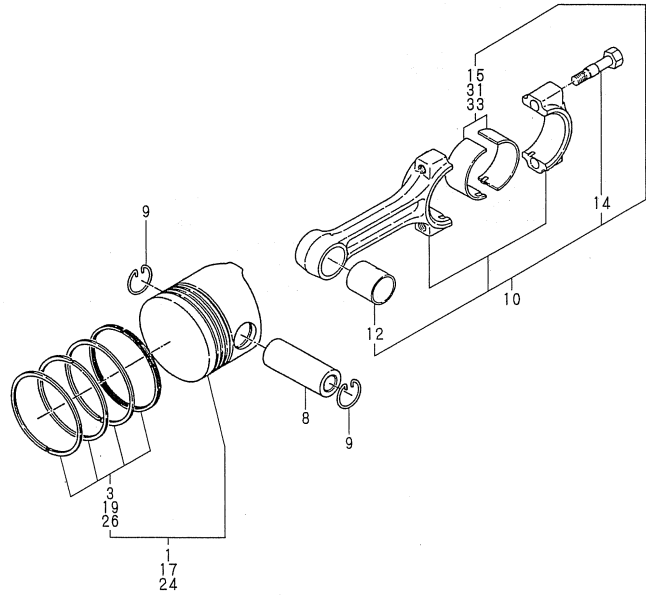


Fig.12. PISTON & CONNECTING ROD



(A)=NFAD8-KMK
(B)=NFAD8-EKMK
(C)=

(D)=
(E)=
(F)=

No.	Lev.	Parts No.	Description	Q'ty						I	R
				(A)	(B)	(C)	(D)	(E)	(F)		
1	1	105250-22090	PISTON ASSY	1	1						
3	2	705270-22501	RING SET, PISTON	1	1						
8	1	119810-22300	PIN, PISTON	1	1						
9	1	105100-22400	CIRCLIP	2	2						
10	1	705100-23100	ROD ASSY, CONNECTING	1	1						
12	2	105100-23910	BEARING, PISTON PIN	1	1						5
14	2	105300-23200	BOLT, CONNECTING ROD	2	2						
15	2	705100-23600	BEARING, CRANK PIN	1	1						
17	1	105200-22471	PISTON ASSY, 0.25 OS	1	1						1
19	2	105200-22510	RING SET, 0.25 OS	1	1						1
24	1	105200-22481	PISTON ASSY, 0.50 OS	1	1						2
26	2	105200-22520	RING SET, 0.50 OS	1	1						2
31	1	705100-23610	BEARING ASSY, 0.25	1	1						3
33	1	705100-23620	BEARING, 0.50 US	1	1						4

Remarks

- (1) OVER-SIZED(O.S=0.25)PART.
- (2) OVER-SIZED(O.S=0.50)PART.
- (3) UNDER-SIZED(U.S=0.25)PART.
- (4) UNDER-SIZED(U.S=0.50)PART.
- (5) REPAIR PARTS.

Fig.13. BALANCER

(A)=NFAD8-KMK
 (B)=NFAD8-EKMK
 (C)=

(D)=
 (E)=
 (F)=

No.	Lev.	Parts No.	Description	Q'ty						I	R
				(A)	(B)	(C)	(D)	(E)	(F)		
1	1	105190-28250	SHAFT, BALANCER	2	2						
2	1	105190-28300	GEAR, BALANCER	1	1						
3	1	105190-28310	GEAR, BALANCER	1	1						
4	1	105190-28380	SPACER	2	2						
5	1	105190-28410	GEAR, BALANCER	1	1						
6	1	105300-28450	RETAINER	1	1						
7	1	105300-28700	SHAFT	1	1						
8	1	105190-28710	GEAR ASSY, IDLE	1	1						
9	2	105430-28720	BUSH, IDLE GEAR	1	1						
11	1	105215-76490	KEY	2	2						
12	1	123672-83880	RETAINER	1	1						
13	1	24101-060044	BEARING, BALL 6004	2	2						
14	1	24121-060074	BEARING, BALL 6007NR	2	2						
15	1	26013-080202	BOLT, M8X 20	1	1						
16	1	26106-100552	BOLT, M10X 55 PLATED	1	1						

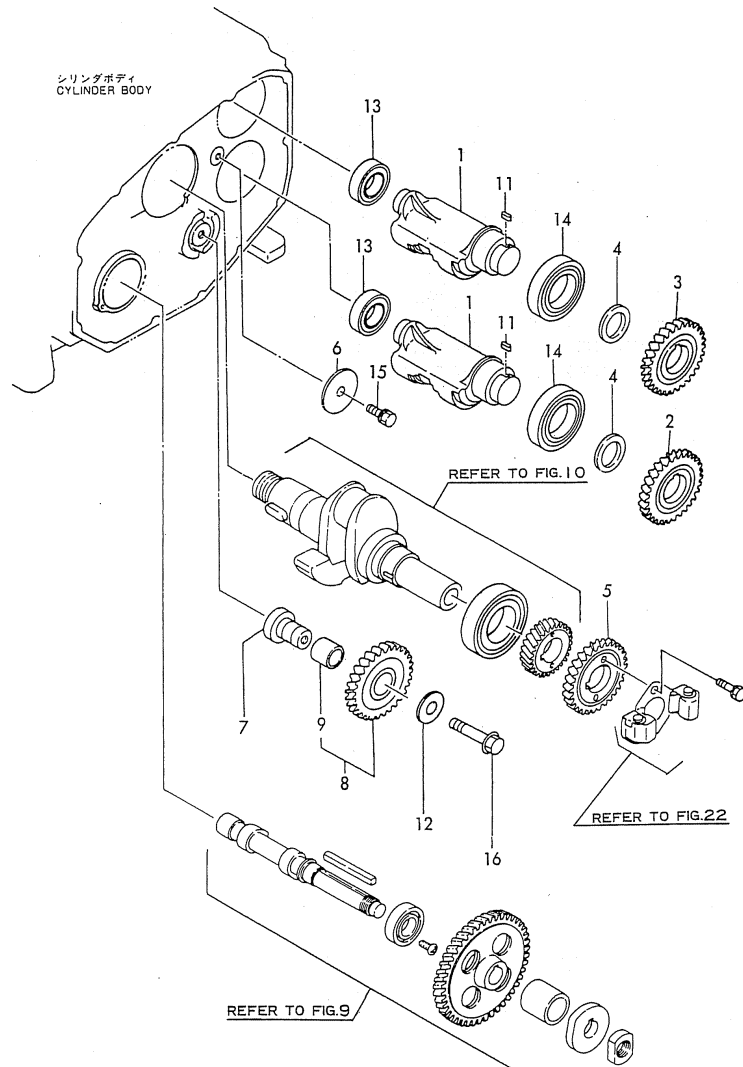


Fig.14. LUB.OIL SYSTEM

(A)=NFAD8-KMK
(B)=NFAD8-EKMK
(C)=

(D)=
(E)=
(F)=

No.	Lev.	Parts No.	Description	Q'ty						I	R
				(A)	(B)	(C)	(D)	(E)	(F)		
1	1	705300-32500	ROTOR ASSY	1	1						
1-1	1	105300-32500	PUMP, LUB.OIL CMP	1	1						N
		(A=EXXXXX) (B=EXXXXX)									
7	1	103338-32070	COVER	1	1						
8	1	103338-32570	O-RING	1	1						
9	1	26106-060122	BOLT, M6X 12 PLATED	3	3						
10A	1	105140-34100	INDICATOR	1							
10B	1	124060-39451	SWITCH, 0.2KG		1						
11	1	105190-35050	STRAINER ASSY, OIL	1	1						
14	1	24341-000200	O-RING, 1AS20.0	1	1						

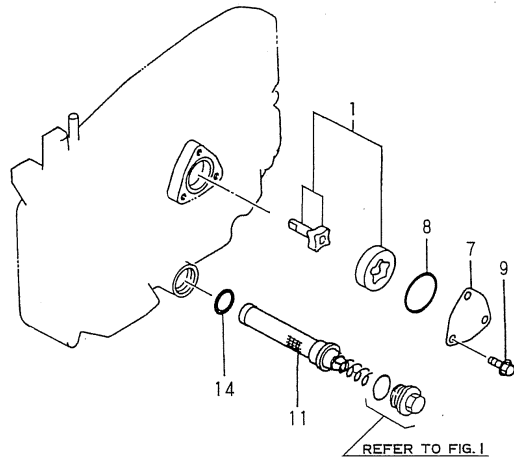
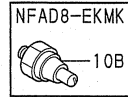
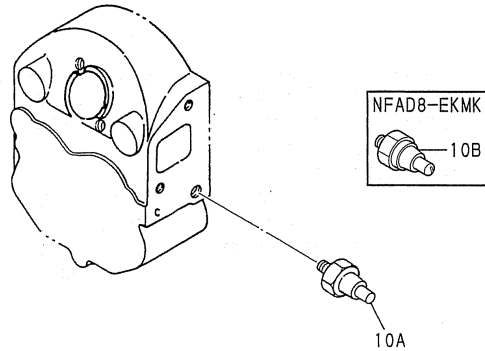
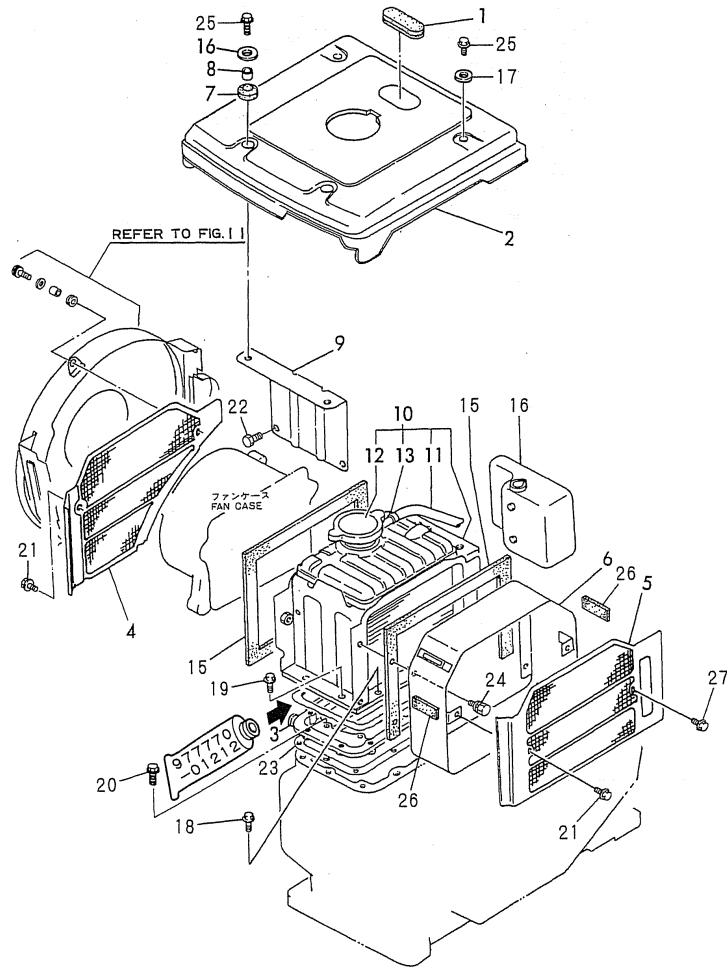
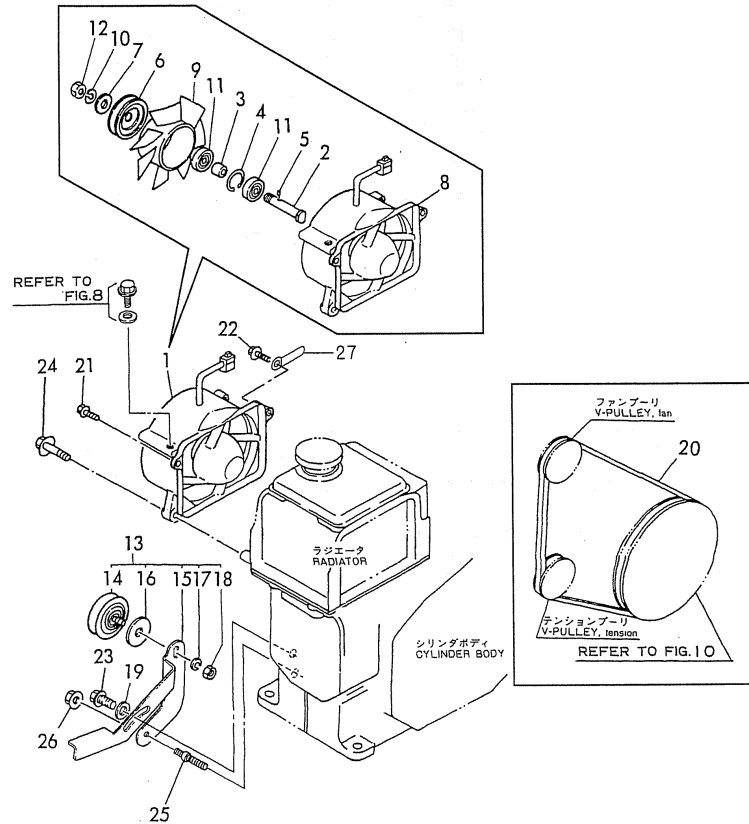


Fig.15. RADIATOR



No.	Lev.	Parts No.	Description	Q'ty						I	R
				(A)	(B)	(C)	(D)	(E)	(F)		
1	1	105300-44220	COVER, RADIATOR	1	1						
2	1	105198-44250	COVER, RADIATOR	1	1						
3	1	105190-44300	BRACKET, RADIATOR	1	1						
4	1	105100-44330	SCREEN	1	1						
5	1	105292-44340	SCREEN	1	1						
6	1	105100-44360	DUCT, SCREEN	1	1						
7	1	105300-44451	ABSORBER	2	2						
8	1	105300-44460	COLLAR	2	2						
9	1	105100-44490	STAY	1	1						
10	1	105198-44500	RADIATOR ASSY	1	1						
11	2	105340-44570	PIPE, 7X170	1	1						
12	2	105198-44590	CAP, RADIATOR	1	1						
13	2	121250-44590	CLAMP	1	1						
15	1	104607-44540	SPONGE	2	2						
16	1	105100-44630	TANK, SUB	1	1						
17	1	160120-76940	WASHER	4	4						
18	1	26013-060202	BOLT, M6X 20	1	1						
19	1	26013-060162	BOLT, M6X 16	8	8						
20	1	26106-060202	BOLT, M6X 20 PLATED	8	8						
21	1	26106-060122	BOLT, M6X 12 PLATED	3	3						
22	1	26106-060122	BOLT, M6X 12 PLATED	2	2						
23	1	105190-44050	GASKET	1	1						
24	1	26013-060129	BOLT, M6X 12	4	4						
25	1	26106-060202	BOLT, M6X 20 PLATED	4	4						
26	1	106100-44560	SPONGE, 15X5X1000	2	2						

Fig.16. FAN



(A)=NFAD8-KMK
(B)=NFAD8-EKMK
(C)=

(D)=
(E)=
(F)=

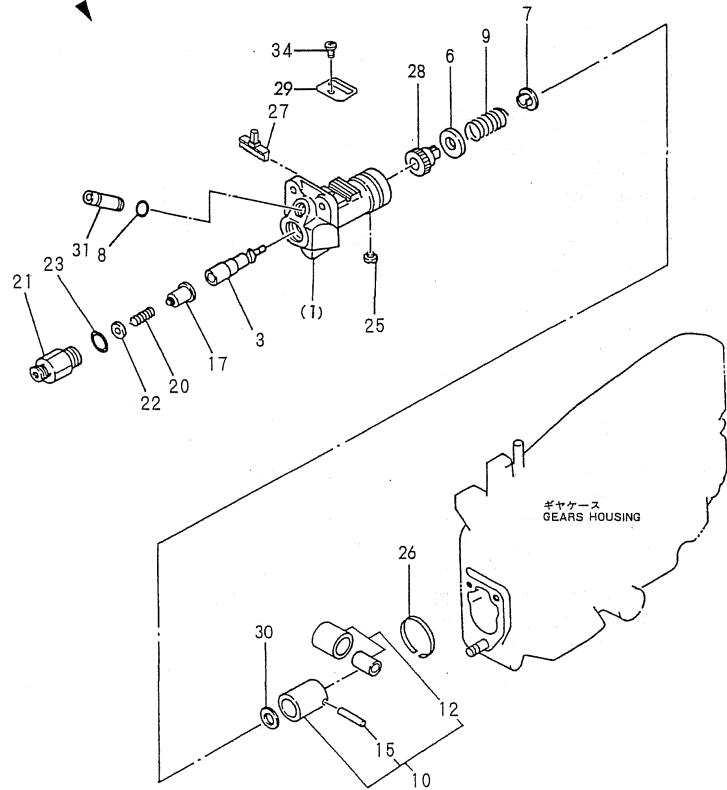
No.	Lev.	Parts No.	Description	Q'ty						I	R
				(A)	(B)	(C)	(D)	(E)	(F)		
1A	1	105172-44201	CASE ASSY, FAN	1							
1B	1	105292-44200	CASE ASSY, FAN		1						
2	2	105340-44710	SHAFT, FAN	1	1						
3	2	106383-44720	SPACER	1	1						
4	2	106383-44740	CIRCLIP	1	1						
5	2	105340-44750	PIN	1	1						
6	2	105100-44770	PULLEY, FAN	2	2						
7	2	105100-44780	WASHER, PULLEY	1	1						
8A	2	105172-44680	COVER ASSY	1							
8B	2	105292-44680	COVER ASSY		1						
9A	2	105172-44700	FAN, COOLING	1							
9B	2	105100-44850	FAN, COOLING		1						
10	2	22217-120000	WASHER, SPRING 12	1	1						
11	2	24107-062013	BEARING, 6201ZZP6	2	2						
12	2	26777-120002	NUT, LOCK M12	1	1						
13	1	105100-44810	PULLEY ASSY, TENSION	1	1						
14	2	106100-44650	PULLEY, TENSION	1	1						
15	2	105100-44940	LEVER, PULLEY	1	1						
16	2	106100-44960	CAP	1	1						
17	2	22217-080000	WASHER, SPRING 8	1	1						
18	2	26716-080002	NUT, M8	1	1						
19	1	22137-080000	WASHER, 8	1	1						
20	1	25117-003451	V-BELT, M34.5H	1	1						
21	1	26106-060252	BOLT, M6X 25 PLATED	1	1						
22	1	26106-060302	BOLT, M6X 30 PLATED	1	1						
23	1	26106-080202	BOLT, M8X 20 PLATED	1	1						
24	1	26106-080352	BOLT, M8X 35 PLATED	2	2						
25	1	105100-44930	BOLT	1	1						
26	1	26366-060002	NUT, M6	1	1						
27	1	105430-67110	CLAMP, CORD	1							

Fig.17. FUEL INJECTION PUMP

(A)=NFAD8-KMK
(B)=NFAD8-EKMK
(C)=

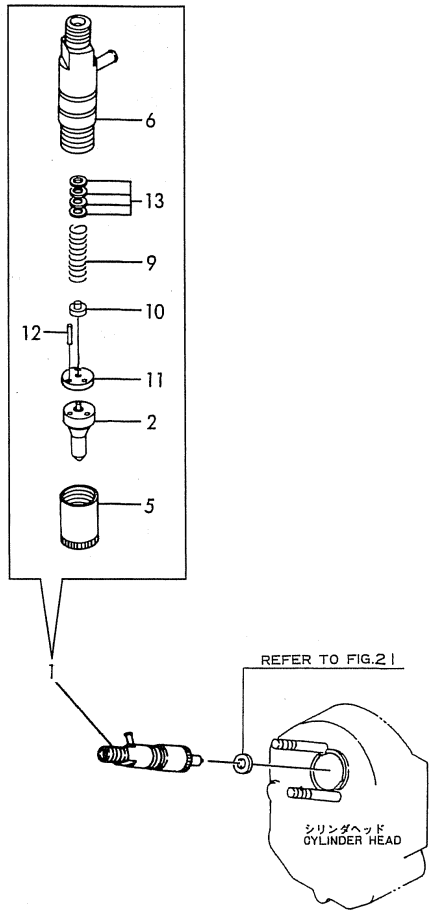
(D)=
(E)=
(F)=

見出しNo. 1は、見出しNo. (1) から34を含みます。
1 inc. (1)~34



No.	Lev.	Parts No.	Description	Q'ty						I	R
				(A)	(B)	(C)	(D)	(E)	(F)		
1	1	705200-51111	PUMP ASSY, INJECTION	1	1						
3	2	105200-51100	PLUNGER ASSY	1	1						
6	2	174307-51170	RETAINER, SPRING A	1	1						
7	2	174307-51181	RETAINER, SPRING B	1	1						
8	2	114250-51190	O-RING, S27	1	1						
9	2	124950-51190	SPRING, PLUNGER	1	1						
10	2	724550-51520	GUIDE, PLUNGER	1	1						
12	3	711100-51540	ROLLER ASSY	1	1						
15	3	174100-54120	PIN	1	1						
17	2	128170-51300	VALVE ASSY, DELIVERY	1	1						
20	2	124550-51320	SPRING, DELIVERY	1	1						
21	2	124550-51341	HOLDER, DELIVERY L43	1	1						
22	2	124550-51350	GASKET, DELIVERY	1	1						
23	2	124550-51370	O-RING	1	1						
25	2	104271-51450	PIECE, GUIDE	1	1						
26	2	104271-51460	CIRCLIP	1	1						
27	2	105300-51500	RACK, CONTROL	1	1						
28	2	105300-51510	PINION	1	1						
29	2	105300-51550	RETAINER, RACK	1	1						
30	2	174307-51700	SHIM SET	1	1						
31	2	105300-51800	JOINT	1	1						
34	2	26022-050102	SCREW, M5X10	1	1						

Fig.18. FUEL INJECTION VALVE

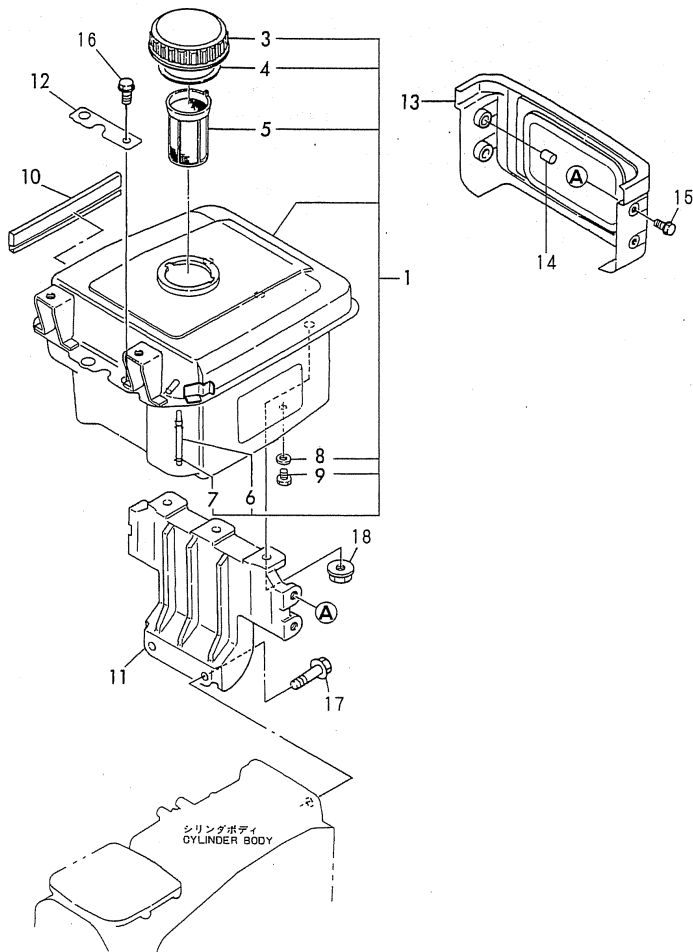


(A)=NFAD8-KMK
(B)=NFAD8-EKMK
(C)=

(D)=
(E)=
(F)=

No.	Lev.	Parts No.	Description	Q'ty						I	R
				(A)	(B)	(C)	(D)	(E)	(F)		
1	1	705100-53100	VALVE ASSY,INJECTION	1	1						
2	2	119800-53000	VALVE ASSY,INJECTION	1	1						
5	2	114250-53080	NUT, NOZZLE D16.95	1	1						
6	2	105300-53100	HOLDER ASSY, NOZZLE	1	1						
9	2	114250-53120	SPRING, NOZZLE	1	1						
10	2	114250-53130	SEAT, SPRING	1	1						
11	2	114250-53140	PLATE	1	1						
12	2	114250-53210	PIN	2	2						
13	2	114250-53400	SHIM SET	1	1						

Fig.19. FUEL TANK



(A)=NFAD8-KMK
(B)=NFAD8-EKMK
(C)=

(D)=
(E)=
(F)=

No.	Lev.	Parts No.	Description	Q'ty						I	R
				(A)	(B)	(C)	(D)	(E)	(F)		
1	1	705198-55710	TANK ASSY, FUEL	1	1						
3	2	101168-55040	CAP ASSY	1	1						
4	2	101504-55051	GASKET	1	1						
5	2	101504-55101	STRAINER, FUEL	1	1						
6	2	104300-55160	GAUGE, LEVEL	1	1						
7	2	103854-55220	RETAINER	2	2						
8	2	23414-080000	GASKET, 8X1.0	1	1						
9	2	105300-55080	PLUG, 8	1	1						
10	1	105100-55230	MOULDING	2	2						
11	1	105198-55240	STAY, FUEL TANK	1	1						
12	1	105198-55520	RETAINER	1	1						
13	1	105198-55810	COVER, TANK	1	1						
14	1	105100-55820	BUSH	4	4						
15	1	26106-060122	BOLT, M6X 12 PLATED	4	4						
16	1	26106-080222	BOLT, M8X 22 PLATED	1	1						
17	1	26106-080452	BOLT, M8X 45 PLATED	2	2						
18	1	26366-080002	NUT, M8	3	3						

Fig.20. FUEL STRAINER

(A)=NFAD8-KMK
 (B)=NFAD8-EKMK
 (C)=

(D)=
 (E)=
 (F)=

No.	Lev.	Parts No.	Description	Q'ty						I	R
				(A)	(B)	(C)	(D)	(E)	(F)		
1	1	105198-55600	STRAINER ASSY, FUEL	1	1						
2	2	105198-55510	CUP, STRAINER	1	1						
3	2	105300-55520	O-RING	1	1						
4	2	105300-55610	RING, RETAINING	1	1						
5	2	105300-55700	BODY ASSY, STRAINER	1	1						
8	3	105300-55340	LEVER	1	1						
13	3	104200-55750	SCREW, M4	1	1						
15	3	24311-000160	O-RING, 1AP16.0	1	1						
16	2	105370-55710	ELEMENT	1	1						
17	2	105300-55750	FLOAT	1	1						
18	1	26106-080302	BOLT, M8X 30 PLATED	1	1						

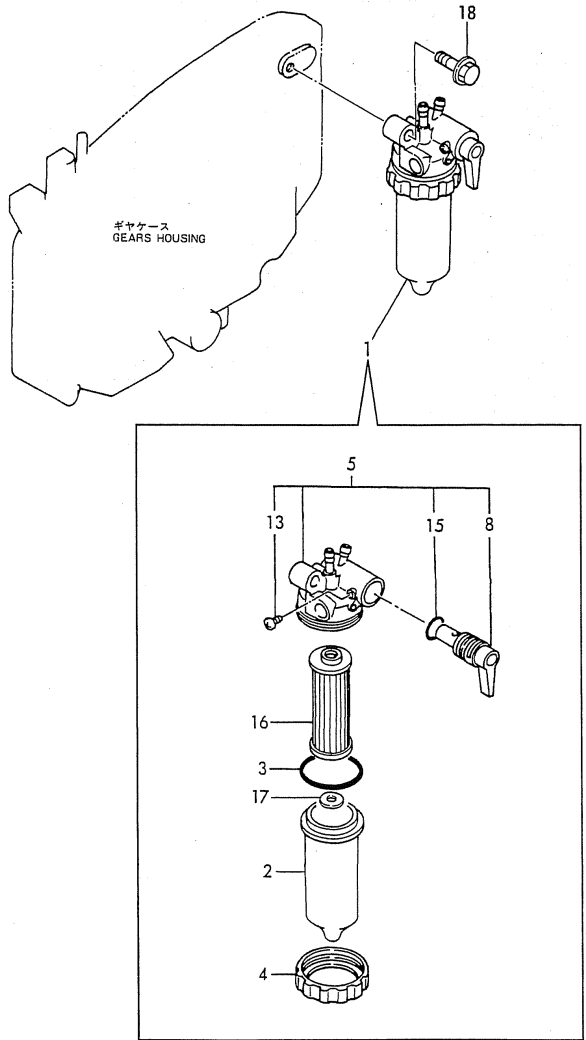


Fig.21. FUEL PIPE

(A)=NFAD8-KMK
(B)=NFAD8-EKMK
(C)=

(D)=
(E)=
(F)=

No.	Lev.	Parts No.	Description	Qty						I	R
				(A)	(B)	(C)	(D)	(E)	(F)		
1	1	105100-59800	PIPE ASSY, INJECTION	1	1						
5	1	129301-03660	CLAMP 16	1	1						
6	1	105100-59010	PIPE ASSY, FUEL	1	1						
8	2	124766-59050	CLIP, HOSE 12	1	1						
10	1	124722-59050	CLIP, HOSE 9	2	2						
11	1	124766-59050	CLIP, HOSE 12	4	4						
12	1	105300-59100	PIPE, FUEL RETURN	1	1						
13	1	104884-59170	GASKET	1	1						
14	1	105190-59520	PIPE, FUEL	1	1						
15	1	105300-59570	PIPE, FUEL	1	1						
16	1	23080-013000	CLAMP, 13	1	1						

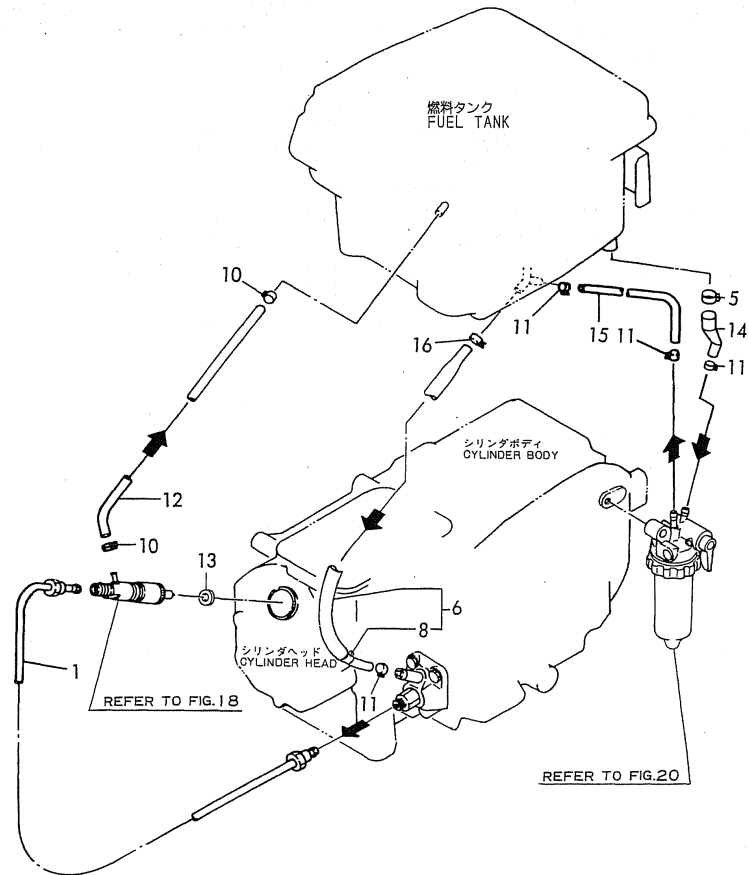


Fig.22. GOVERNOR & GOVERNOR LEVER

(A)=NFAD8-KMK
 (B)=NFAD8-EKMK
 (C)=

(D)=
 (E)=
 (F)=

No.	Lev.	Parts No.	Description	Q'ty						I	R
				(A)	(B)	(C)	(D)	(E)	(F)		
1	1	705300-61702	GOVERNOR ASSY	1	1						
5	1	105300-61600	SLEEVE, GOVERNOR	1	1						
6	1	26013-060222	BOLT, M6X 22	2	2						
7	1	105300-66011	SPRING, REGULATOR	1	1						
8	1	105100-66300	LEVER, GOVERNOR	1	1						
9	1	105100-66400	SHAFT	1	1						
10	1	24190-120001	BALL, STEEL 3/8	1	1						
11	1	26022-050102	SCREW, M5X10	2	2						

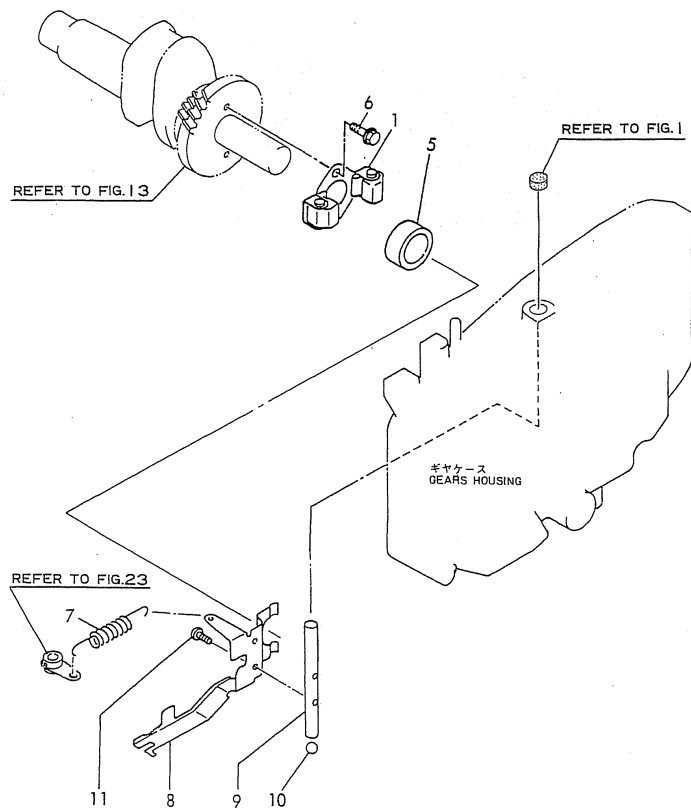
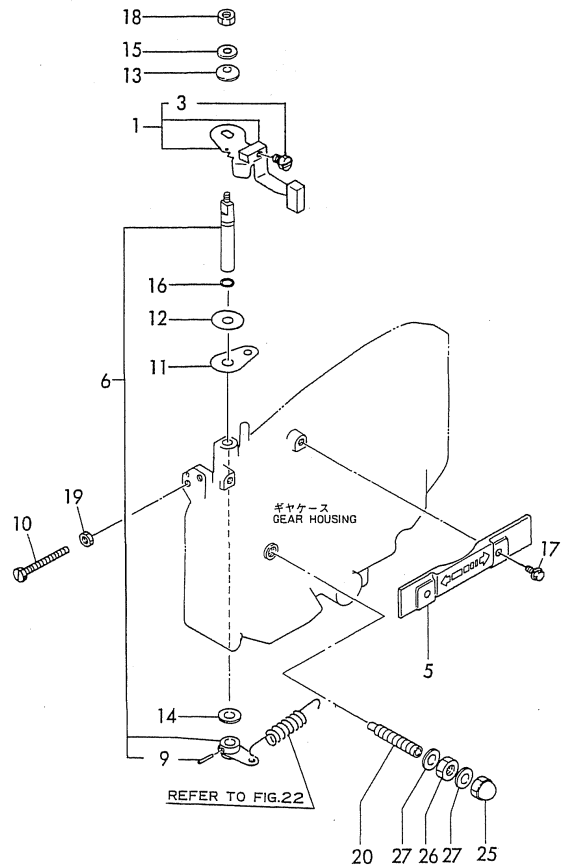


Fig.23. REGULATOR HANDLE



(A)=NFAD8-KMK
(B)=NFAD8-EKMK
(C)=

(D)=
(E)=
(F)=

No.	Lev.	Parts No.	Description	Q'ty						I	R
				(A)	(B)	(C)	(D)	(E)	(F)		
1	1	105502-66041	HANDLE ASSY	1	1						
3	2	105225-66990	SCREW, M5X8.5	1	1						
5	1	105300-66110	COVER	1	1						
6	1	705100-66700	LEVER ASSY,REGULATOR	1	1						
9	2	22322-030200	PIN, TAPER 3X20	1	1						
10	1	105300-66520	SCREW	1	1						
11	1	105300-66850	RETAINER	1	1						
12	1	105840-66831	PLATE, FRICTION	1	1						
13	1	105840-66880	SPRING	1	1						
14	1	22117-100000	WASHER, 10	1	1						
15	1	22137-060000	WASHER, 6	1	1						
16	1	24311-000070	O-RING, 1AP7.0	1	1						
17	1	26106-060122	BOLT, M6X 12 PLATED	2	2						
18	1	26347-060002	NUT, M6	1	1						
19	1	26756-060002	NUT, LOCK M6	1	1						
20	1	105090-66551	LIMITER ASSY, FUEL	1	1						
25	1	124060-66950	NUT, CAP M10	1	1						
26	1	26796-100002	NUT, LOCK M10	1	1						
27	1	22190-100002	WASHER, SEAL 10	2	2						

Fig.24. STARTING DENICE

(A)=NFAD8-KMK
 (B)=NFAD8-EKMK
 (C)=
 (D)=
 (E)=
 (F)=

No.	Lev.	Parts No.	Description	Q'ty						I	R
				(A)	(B)	(C)	(D)	(E)	(F)		
1	1	105300-76330	GEAR, STARTING	1	1						
2	1	105300-76330	GEAR, STARTING	1	1						
3	1	705100-76900	SHAFT ASSY, STARTING	1	1						
6	1	105300-76470	COLLAR	1	1						
7	1	105300-76490	KEY, 7X10	1	1						
8	1	120270-61250	SEAL, OIL	1	1						
9	1	105100-76790	HANDLE ASSY	1	1						
12	1	22242-000200	RING, 20	1	1						

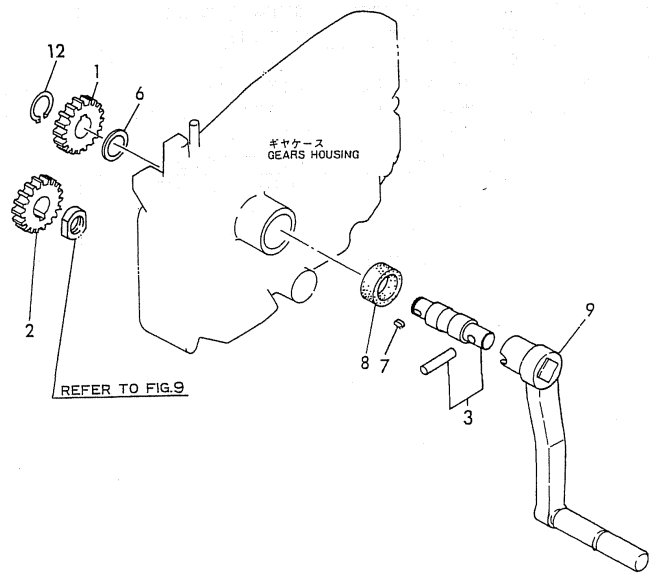
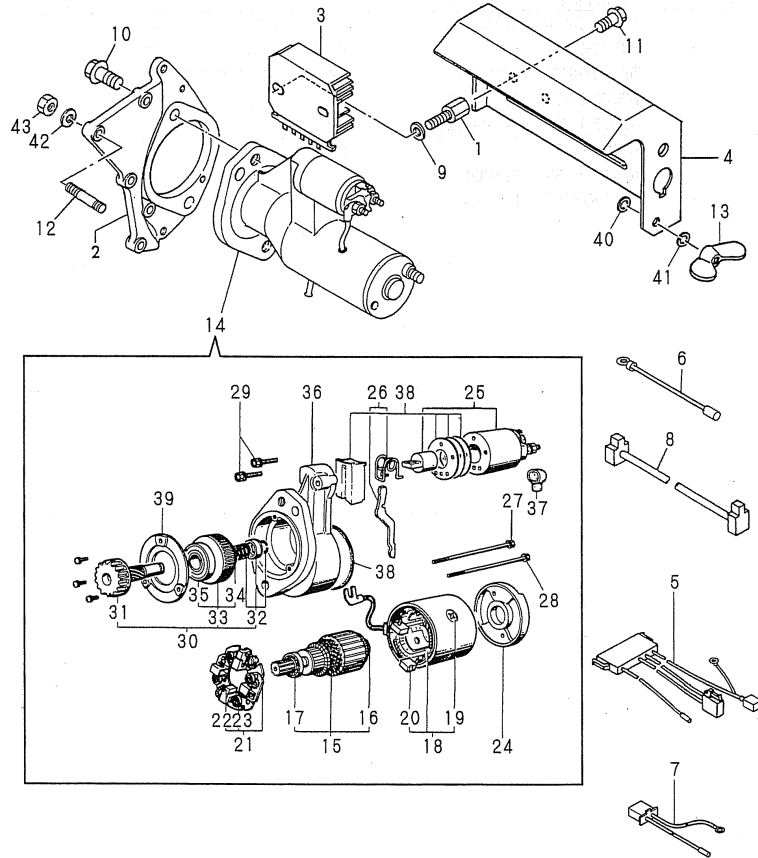


Fig.25. ELECTRIC STARTING DEVICE

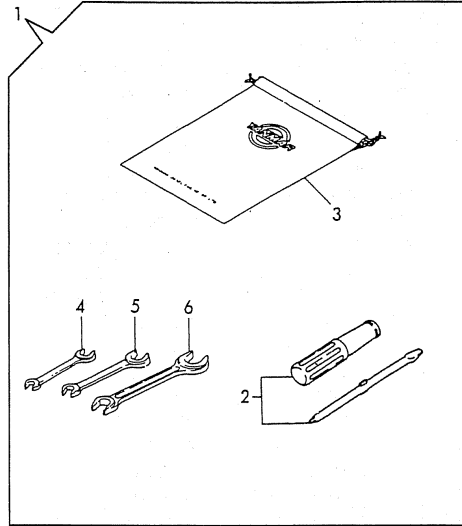
(A)=NFAD8-KMK
(B)=NFAD8-EKMK
(C)=

(D)=
(E)=
(F)=



No.	Lev.	Parts No.	Description	Q'ty						I	R
				(A)	(B)	(C)	(D)	(E)	(F)		
1	1	105212-01910	BOLT		2						
2	1	105100-77470	BRACKET		1						
3	1	119660-77710	LIMITER, CURRENT 15A		1						
4	1	105100-77780	COVER		1						
5	1	105198-78552	HARNESS, WIRE		1						
6	1	105198-78560	HARNESS, WIRE		1						
7	1	105198-78570	HARNESS, WIRE		1						
8	1	105300-78570	HARNESS, WIRE		1						
9	1	22117-060000	WASHER, 6		2						
10	1	26013-120302	BOLT, M12X 30		2						
11	1	26106-060102	BOLT, M6X 10 PLATED		2						
12	1	26226-060222	STUD, M6X 22		4						
13	1	26636-050002	NUT, WING M5		1						
14	1	105100-77010	STARTER, S114-438B		1						
15	2	X211461005	ARMATURE		1						
16	3	X211415502	BEARING, BALL		1						
17	3	X211425502	BEARING, BALL		1						
18	2	X211442003	COIL ASSY, FIELD		1						
19	3	X21143215	SCREW, CORE		1						
20	3	X211469002	BRUSH (+)		2						
21	2	X211479001	HOLDER ASSY, BRUSH		1						
22	3	X211459002	BRUSH (-)		2						
23	3	X21148314	SPRING, BRUSH		4						
24	2	X211483003	COVER		1						
25	2	X211447007	SWITCH, MAGNETIC		1						
26	2	X211446012	LEVER, SHIFT		1						
27	2	X211468005	BOLT, THROUGH		1						
28	2	X21148856	BOLT, THROUGH		1						
29	2	X21145866	BOLT		2						
30	2	X211455011	PINION ASSY		1						
31	3	X211465011	SHAFT, PINION		1						
32	3	X211429006	STOPPER SET		1						
33	3	X211425506	CLUTCH ASSY		1						
34	4	X211435502	BALL BEARING		1						
35	4	X211455502	BALL BEARING		1						
36	2	X211466605	CASE ASSY, GEAR		1						
37	2	X21142742	COVER (A), RUBBER		1						
38	2	X211458012	COVER KIT		1						
39	2	X211428008	RETAINER, BEARING		1						
40	1	22117-050000	WASHER, 5		2						
41	1	22217-050000	WASHER, SPRING 5		1						
42	1	22212-060000	WASHER 6		4						
43	1	26716-060002	NUT, M6		4						

Fig.26. TOOL

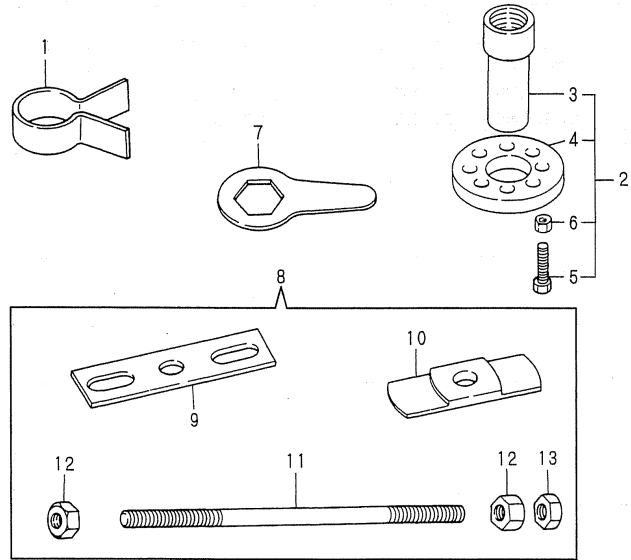


(A)=NFAD8-KMK
(B)=NFAD8-EKMK
(C)=

(D)=
(E)=
(F)=

No.	Lev.	Parts No.	Description	Q'ty						I	R
				(A)	(B)	(C)	(D)	(E)	(F)		
1	1	705300-92100	BOX ASSY, TOOL	1	1						
2	2	104200-92350	DRIVER, SCREW	1	1						
3	2	105300-92600	BAG, TOOL	1	1						
4	2	28110-100120	SPANNER, 10X12	1	1						
5	2	28110-140170	SPANNER, 14X17	1	1						
6	2	28110-190220	SPANNER, 19X22	1	1						

Fig.27. TOOL(OPTIONAL PART)



(A)=NFAD8-KMK
(B)=NFAD8-EKMK
(C)=

(D)=
(E)=
(F)=

No.	Lev.	Parts No.	Description	Q'ty						I	R
				(A)	(B)	(C)	(D)	(E)	(F)		
1	1	102700-92140	TOOL, PISTON&RING	1	1						
2	1	704200-92700	TOOL ASSY, FLYWHEEL	1	1						
3	2	104200-92110	RETAINER, A	1	1						
4	2	104200-92120	RETAINER, B	1	1						
5	2	104200-92130	TOOL	2	2						
6	2	26717-120002	NUT, M12	2	2						
7	1	104200-92100	WRENCH	1	1						
8	1	705200-92210	TOOL ASSY, LINER	1	1						
9	2	172200-92020	TOOL, LINER REMOVER	1	1						
10	2	105200-92010	TOOL, LINER REMOVER	1	1						
11	2	103338-92030	BOLT, LINER REMOVER	1	1						
12	2	26716-160002	NUT, M16	2	2						
13	2	26757-160002	NUT, LOCK M16	1	1						

Parts No. Index

Parts No.	Fig. No.	Ref. No.
101104-01760	1	31
101147-12550	8	8
101158-03061	2	1
101158-03111	2	3
101158-11180	6	10
101158-11230	6	17
		21
101168-55040	19	3
101504-55051	19	4
101504-55101	19	5
102700-92140	27	1
103338-32070	14	7
103338-32570	14	8
103338-92030	27	11
103854-55220	19	7
104104-03750	7	5
104104-21600	10	15
104107-07900	4	1
104200-03600	7	3
104200-03641	7	4
104200-21530	10	14
104200-55750	20	13
104200-92100	27	7
104200-92110	27	3
104200-92120	27	4
104200-92130	27	5
104200-92350	26	2
104271-01950	1	33
104271-51450	17	25
104271-51460	17	26
104300-12960	8	5
104300-55160	19	6
104300-76460	9	9
104607-44540	15	15
104884-59170	21	13
105010-11920	6	24
105090-66551	23	20
105100-01300	1	3
105100-01331	1	15
105100-01410	1	27
105100-01660	1	22
105100-02021	1	49
105100-02300	1	50
105100-02310	1	51
105100-03081	2	2
105100-03131	2	4
105100-11100	6	7
105100-11111	6	8
105100-11310	7	9
105100-11650	6	15

Parts No.	Fig. No.	Ref. No.
105100-11660	6	19
105100-12020	8	1
105100-12550	8	9
105100-14091	9	2
105100-14100	9	3
105100-14400	9	5
105100-14600	9	7
105100-21200	10	9
105100-21400	10	10
105100-21590	10	11
105100-21600	10	13
105100-22400	12	9
105100-23910	12	12
105100-44330	15	4
105100-44360	15	6
105100-44490	15	9
105100-44630	15	16
105100-44770	16	6
105100-44780	16	7
105100-44810	16	13
105100-44850	16	9 B
105100-44930	16	25
105100-44940	16	15
105100-55230	19	10
105100-55820	19	14
105100-59010	21	6
105100-59800	21	1
105100-66300	22	8
105100-66400	22	9
105100-76790	24	9
105100-77010	25	14
105100-77470	25	2
105100-77780	25	4
105140-07940	4	3
105140-34100	14	10 A
105170-14010	9	1
105172-44201	16	1 A
105172-44680	16	8 A
105172-44700	16	9 A
105190-01480	1	28
105190-01670	1	10
105190-01680	1	11
105190-01750	1	30
105190-07100	3	1
105190-12050	8	11
105190-12510	8	2
105190-12530	8	3
105190-12540	8	4
105190-12560	8	6
105190-13550	8	14

Parts No.	Fig. No.	Ref. No.
105190-14421	9	6
105190-21100	10	4
105190-21300	11	1
105190-21310	11	3
105190-21320	11	5
105190-21350	11	2
105190-21360	11	4
105190-21900	11	15
105190-21910	11	14
105190-28250	13	1
105190-28300	13	2
105190-28310	13	3
105190-28380	13	4
105190-28410	13	5
105190-28710	13	8
105190-35050	14	11
105190-44050	15	23
105190-44300	15	3
105190-59520	21	14
105198-13530	8	12
105198-13610	8	16
105198-44250	15	2
105198-44500	15	10
105198-44590	15	12
105198-55240	19	11
105198-55510	20	2
105198-55520	19	12
105198-55600	20	1
105198-55810	19	13
105198-78552	25	5
105198-78560	25	6
105198-78570	25	7
105200-22471	12	17
105200-22481	12	24
105200-22510	12	19
105200-22520	12	26
105200-51100	17	3
105200-92010	27	10
105212-01910	25	1
105215-01200	1	13
105215-76490	13	11
105225-66990	23	3
105250-07070	3	7
105250-07310	3	3
105250-07320	3	4
105250-07330	3	5
105250-07340	3	6
105250-22090	12	1
105292-44200	16	1 B
105292-44340	15	5

Parts No.	Fig. No.	Ref. No.
105292-44680	16	8 B
105298-08100	5	1
105300-01690	1	29
105300-01920	1	32
105300-07070	3	8
105300-07910	4	2
105300-08510	5	2
105300-11290	6	12
105300-11330	6	6
105300-11801	6	29
105300-11900	6	23
105300-12560	8	7
105300-13201	8	13
105300-14200	9	4
105300-14700	9	8
105300-21381	11	6
105300-23200	12	14
105300-28450	13	6
105300-28700	13	7
105300-32500	14	1 -1
105300-34040	1	23
105300-44220	15	1
105300-44451	11	7
	15	7
105300-44460	11	8
	15	8
105300-51500	17	27
105300-51510	17	28
105300-51550	17	29
105300-51800	17	31
105300-53100	18	6
105300-55080	19	9
105300-55340	20	8
105300-55520	20	3
105300-55610	20	4
105300-55700	20	5
105300-55750	20	17
105300-59100	21	12
105300-59570	21	15
105300-61600	22	5
105300-66011	22	7
105300-66110	23	5
105300-66520	23	10
105300-66850	23	11
105300-76330	24	1
	24	2
105300-76470	24	6
105300-76490	24	7
105300-78570	25	8
105300-92600	26	3

Parts No. Index

Parts No.	Fig. No.	Ref. No.
105340-44570	15	11
105340-44710	16	2
105340-44750	16	5
105362-78960	2	5
105370-55710	20	16
105372-07150	3	9
105400-11121	6	9
105430-28720	13	9
105430-67110	16	27
105502-66041	23	1
105840-66831	23	12
105840-66880	23	13
106100-02331	1	52
106100-21130	10	5
106100-44560	15	26
106100-44650	16	14
106100-44960	16	16
106383-44720	16	3
106383-44740	16	4
106530-13570	8	17
106530-13590	8	18
114250-51190	17	8
114250-53080	18	5
114250-53120	18	9
114250-53130	18	10
114250-53140	18	11
114250-53210	18	12
114250-53400	18	13
119625-11871	6	30
119625-11880	6	31
119660-77710	25	3
119800-53000	18	2
119810-22300	12	8
120270-61250	24	8
121250-44590	15	13
121450-01220	1	14
123325-02500	1	48
123672-83880	13	12
124060-39451	14	10 B
124060-66950	23	25
124550-51320	17	20
124550-51341	17	21
124550-51350	17	22
124550-51370	17	23
124722-59050	21	10
124766-59050	21	8
		11
124950-51190	17	9
128170-51300	17	17
129301-03660	21	5

Parts No.	Fig. No.	Ref. No.
160120-76940	8	21
	11	9
	15	17
160260-01580	8	15
172200-92020	27	9
173400-21940	10	20
174100-54120	17	15
174307-51170	17	6
174307-51181	17	7
174307-51700	17	30
22117-050000	25	40
22117-060000	25	9
22117-100000	23	14
22137-060000	23	15
22137-080000	16	19
22190-100002	23	27
22212-060000	25	42
22217-050000	25	41
22217-080000	1	36
	16	17
22217-120000	10	22
	16	10
22242-000200	24	12
22252-000100	1	24
22312-030180	7	6
22322-030180	7	7
22322-030200	23	9
22351-060012	1	12
		26
22512-050120	10	6
22512-070500	10	19
22512-070550	9	10
22512-100260	10	7
23064-090400	2	6
23080-013000	21	16
23414-080000	19	8
24101-060044	13	13
24101-060064	9	11
24107-062013	16	11
24121-060074	13	14
24190-120001	1	25
	22	10
24311-000060	1	37
24311-000070	7	8
	23	16
24311-000160	20	15
24321-000250	1	38
24341-000200	14	14
25117-003451	16	20
26013-060129	15	24

Parts No.	Fig. No.	Ref. No.
26013-060142	11	10
		11
26013-060162	15	19
26013-060202	15	18
26013-060222	22	6
26013-080189	8	19
26013-080202	13	15
26013-120302	25	10
26022-050102	17	34
	22	11
26022-060122	9	12
		13
26023-060252	2	7
26106-060102	25	11
26106-060122	5	6
	10	16
	14	9
	15	21
		22
	19	15
	23	17
26106-060202	1	39
	7	10
	8	22
	11	12
	15	20
		25
26106-060252	16	21
26106-060302	1	40
	16	22
26106-060602	7	11
26106-060702	1	41
26106-080202	8	10
	16	23
26106-080222	19	16
26106-080302	20	18
26106-080352	16	24
26106-080452	19	17
26106-100202	10	21
26106-100552	13	16
26116-050082	1	53
26116-120352	10	23
26216-060402	6	26
26216-080222	1	42
26216-080452	6	25
26226-060222	25	12
26226-080222	1	43
26347-060002	23	18
26366-060002	6	27
	16	26

Parts No.	Fig. No.	Ref. No.
26366-080002	1	44
	6	28
	19	18
26554-060162	8	20
26557-060082	5	7
	11	13
26617-100002	4	4
26636-050002	25	13
26716-060002	25	43
26716-080002	1	45
	16	18
26716-160002	27	12
26717-120002	27	6
26756-060002	23	19
26756-080002	6	18
		22
26757-160002	27	13
26777-120002	16	12
26796-100002	23	26
27231-150000	6	4
27310-070001	6	11
28110-100120	26	4
28110-140170	26	5
28110-190220	26	6
704200-92700	27	2
705098-21500	10	17
705100-01501	1	16
705100-02500	1	46
705100-11520	7	1
705100-11700	6	1
705100-23100	12	10
705100-23600	12	15
705100-23610	12	31
705100-23620	12	33
705100-53100	18	1
705100-66700	23	6
705100-76900	24	3
705190-01560	1	4
705190-21700	10	1
705198-55710	19	1
705200-01900	1	1
705200-51111	17	1
705200-92210	27	8
705270-22501	12	3
705300-32500	14	1
705300-61702	22	1
705300-92100	26	1
711100-51540	17	12
724550-51520	17	10
X211415502	25	16

Parts No. Index

Parts No.	Fig. No.	Ref. No.
X211425502	25	17
X211425506	25	33
X21142742	25	37
X211428008	25	39
X211429006	25	32
X21143215	25	19
X211435502	25	34
X211442003	25	18
X211446012	25	26
X211447007	25	25
X211455011	25	30
X211455502	25	35
X211458012	25	38
X21145866	25	29
X211459002	25	22
X211461005	25	15
X211465011	25	31
X211466605	25	36
X211468005	25	27
X211469002	25	20
X211479001	25	21
X211483003	25	24
X21148314	25	23
X21148856	25	28

Parts No.	Fig. No.	Ref. No.
-----------	----------	----------

Parts No.	Fig. No.	Ref. No.
-----------	----------	----------

Parts No.	Fig. No.	Ref. No.
-----------	----------	----------