

0CD10-M58401EN

PREFACE

1. This Parts Catalog is the 1st edition of GA180RD(E)GS Diesel Engine for SHIN-DAIWA.

Pub. No. : 000Y00D5841

Published : January, 1997

2. Model name

Engine model	Vehicle		Vehicle made by
	Products	Model name	
GA180RD(E)GS	GENERATOR	—	SHIN-DAIWA

Directions for the Parts Catalog.

1. This Parts Catalog shows both standard and optional parts.
2. Parts may change without prior notice.
3. The following is an example of the Parts Catalog format.

REF.	LEV.	PARTS NO.	DESCRIPTION	Q'TY						I	R
				(A)	(B)	(C)	(D)	(E)	(F)		
1	1	729595-51390	FUEL INJECTION PUMP	1	1	1	1	1			1
1-1	1	729595-51391	FUEL INJECTION PUMP	1	1	1	1	1		N	1
		(A=E00185) (B=E00200)									
3	2	26022-060162	SCREW M 6X 16	9	9	9	9	9			
3-1	2	26022-060162	SCREW M 6X 16	4	4	4	4	4		K	
		(A=E00156) (B=E00156) (C=E00156) (D=E00156) (E=E00156)									
4	2	129470-51040	CAMSHAFT	1	1	1	1	1			
5	2	122710-51050	BEARING, ROLLER	2	2	2	2	2			
6	2	129470-51060	RETAINER	1	1	1	1	1			

Remarks
(1) BOOST COMPEMSATOR TYPE. OPTIONAL PART, TO E00155,(4JH-DT, 4JH-DTZ

① Ref. No.

The Ref. No. listed may not be in accordance with the illustration Ref. No.

(Ex.) Illustration No.

List Ref No.

1

1

(Before change) → 1-1 (After change)

For interchangeable symbols N, R and K, illustrations for new parts may be abbreviated.

② Lev. (Level)

Level indication

The numbers below indicate the level of relativity towards the main part.

1 ----- Main parts (Assembly parts)

2 ----- Sub component included in " 1 ".

3 ----- Sub component included in " 2 ".

Note) Parts that are not for sale are partially illustrated but not listed.

③ Interchangeability Symbol

When a part change takes place, one of the following interchangeability symbols is indicated beside the part.

Symbol	Interchangeability	Contents note
N	Old $\begin{matrix} \leftarrow \text{Yes} \\ \text{No} \rightarrow \end{matrix}$ New	New Part is interchangeable for Old Part but Old Part is not interchangeable for New Part.
Q	Old $\begin{matrix} \leftarrow \text{No} \\ \text{Yes} \rightarrow \end{matrix}$ New	New Part is not interchangeable for Old Part but Old Part is interchangeable for New Part.
R	Old $\begin{matrix} \leftarrow \text{Yes} \\ \text{Yes} \rightarrow \end{matrix}$ New	New/ Old Parts are both interchangeable.
S	Old $\begin{matrix} \leftarrow \text{No} \\ \text{No} \rightarrow \end{matrix}$ New	New/ Old Parts are both not interchangeable.
W		Part newly added.
Z		Part discontinued.
F		Not interchangeable by a single part but interchangeable together with related parts.
K		Changes only for used parts quantities.

④ Effective Machine No.

When a part changes, the effective Machine No. will be indicated in the (A)-(F) column.

Product Symbol	Product No.	Product Symbol	Product No.
C	Clutch No. Compressor No.	F	Machine No. (Agricultural Equip.)
D	Drive No.	M	Machine No.
E	Engine No.		

Note 1) A date may follow the symbol. (Ex.) 1996.01

Note 2) "XXXXX" and "ZZZZZ" are for parts that could not be predicted or for engine models that could not be identified.

Note 3) (A=E00185) is the E (Engine Serial Number) for the column (A) model (in this case 4JH-DT) after the parts design change.

⑤ Remarks

Figures or alphabets (symbols) are entered in the remarks column.

The comments (remarks) on parts that are indicated at the bottom of the illustration are the same symbols as those stated above.

Contents

Fig. No. Fig. Name

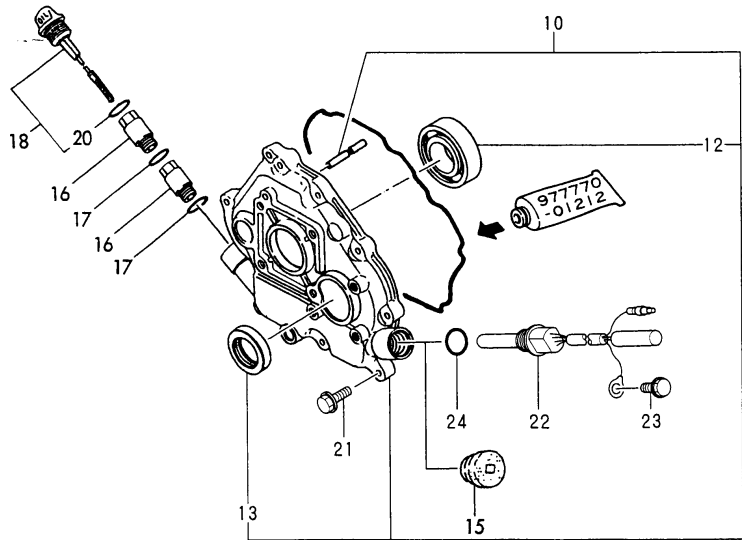
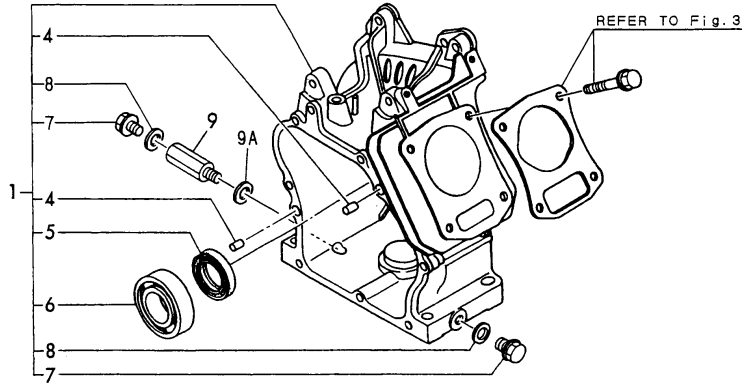
ENGINE GA160RDGS

1. CYLINDER BLOCK
2. CYLINDER BLOCK
3. CYLINDER HEAD & BONNET
4. AIR CLEANER & MUFFLER
5. CRANKSHAFT,PISTON & CAMSHAFT
6. FUEL TANK & FUEL PIPE
7. CARBURETOR
8. CARBURETOR
9. GOVERNOR & CONTROL DEVICE
10. FLY.MAGNETO & STARTING DEVICE
11. STARTING MOTOR
12. LABEL & TOOL

Fig. No. Fig. Name

Fig.1. CYLINDER BLOCK

Y00D5841



(A)=GA160RDGS
(B)=GA180RDGS
(C)=GA180RDEGS

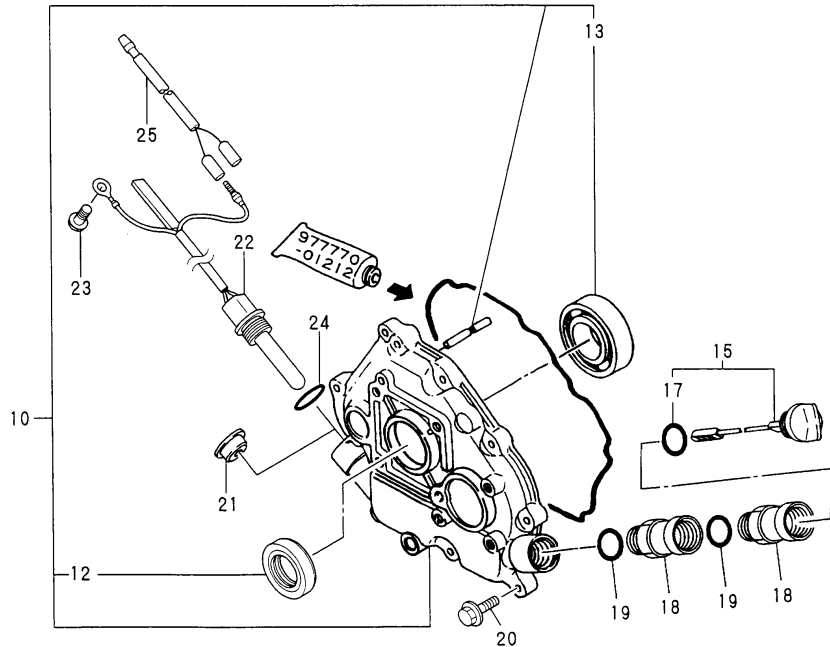
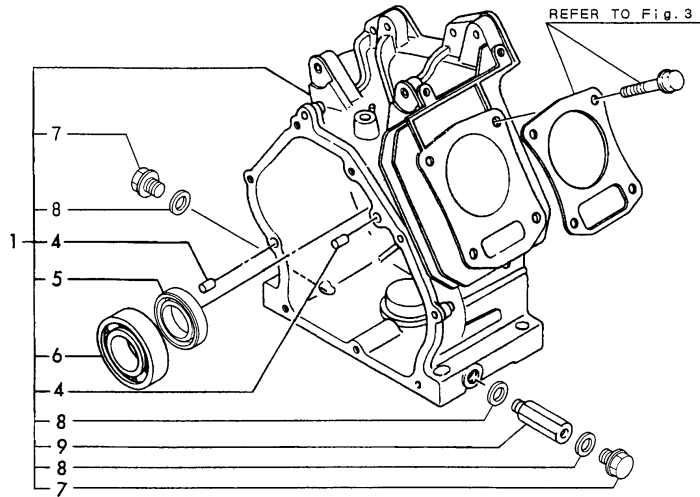
(D)=
(E)=
(F)=

No.	Lev.	Parts No.	Description	Q'ty						I	R
				(A)	(B)	(C)	(D)	(E)	(F)		
1	1	760690-01561	BLOCK ASSY, CYLINDER	1							
4	2	114270-01600	PIN, M8X12	2							
5	2	160690-02220	SEAL, TC25416	1							
6	2	24101-062050	BEARING, BALL 6205C3	1							
7	2	160610-01690	PLUG, M12	2							
8	2	104200-59170	GASKET, 12	2							
9	1	160802-01700	JOINT, DRAIN	1							
9A	1	104200-59170	GASKET, 12	1							W
(A=E/#M5522)											
10	1	760694-01501	COVER ASSY	1							
12	2	24101-062050	BEARING, BALL 6205C3	1							
13	2	160690-02220	SEAL, TC25416	1							
15	1	160110-01870	PLUG, RUBBER	1							
16	1	160797-01851	JOINT	2							
17	1	24311-000180	O-RING, 1AP18.0	2							
18	1	160591-01760	CAP ASSY	1							
20	2	24311-000180	O-RING, 1AP18.0	1							
21	1	26476-060252	SCREW, TAPPING M6X25	8							
22	1	160697-77750	SENSOR	1							
23	1	26476-060142	SCREW, TAPPING M6X14	1							
24	1	24311-000180	O-RING, 1AP18.0	1							W

(A=FROM 1ST)

Fig.2. CYLINDER BLOCK

Y00D5841



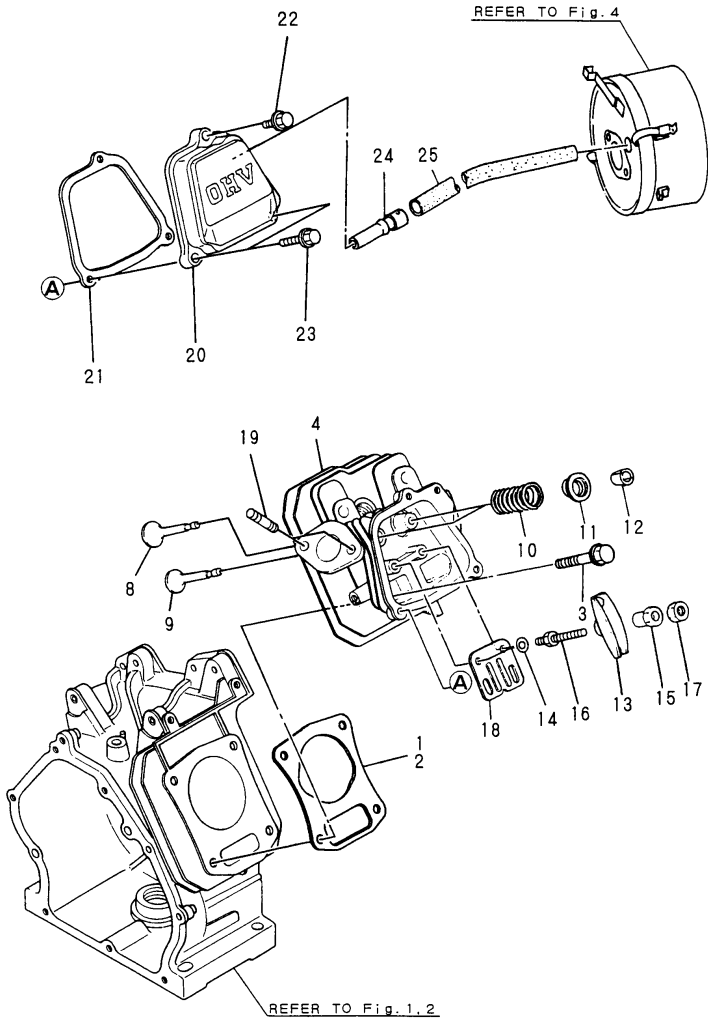
(A)=GA160RDGS
(B)=GA180RDGS
(C)=GA180RDEGS

(D)=
(E)=
(F)=

No.	Lev.	Parts No.	Description	Qty						I	R
				(A)	(B)	(C)	(D)	(E)	(F)		
1	1	760698-01561	BLOCK ASSY, CYLINDER		1						
1A	1	783732-01560	BLOCK ASSY, CYLINDER			1					
4	2	114270-01600	PIN, M8X12			2	2				
5	2	160690-02220	SEAL, TC25416		1	1					
6	2	24101-062050	BEARING, BALL 6205C3		1	1					
7	2	160610-01690	PLUG, M12		2	2					
8	2	104200-59170	GASKET, 12		3	3					
9	2	160802-01700	JOINT, DRAIN		1	1					
10	1	760694-01501	COVER ASSY		1	1					
12	2	160690-02220	SEAL, TC25416		1	1					
13	2	24101-062050	BEARING, BALL 6205C3		1	1					
15	1	160591-01760	CAP ASSY		1	1					
17	2	24311-000180	O-RING, 1AP18.0		1	1					
18	1	160797-01851	JOINT		2	2					
19	1	24311-000180	O-RING, 1AP18.0		2	2					
20	1	26476-060252	SCREW, TAPPING M6X25		8	8					
21	1	160110-01870	PLUG, RUBBER		1	1					
22	1	160697-77750	SENSOR		1	1					
23	1	26476-060142	SCREW, TAPPING M6X14		1	1					
24	1	24311-000180	O-RING, 1AP18.0		1	1					
25	1	160671-78200	WIRE, LEAD			1					

Fig.3. CYLINDER HEAD & BONNET

Y00D5841



(A)=GA160RDGS
(B)=GA180RDGS
(C)=GA180RDEGS

(D)=
(E)=
(F)=

No.	Lev.	Parts No.	Description	Qty						I	R
				(A)	(B)	(C)	(D)	(E)	(F)		
1	1	160690-01330	GASKET, HEAD	1							
2	1	160698-01330	GASKET, HEAD		1	1					
3	1	160610-04201	BOLT, FLANGE M8X53	4	4	4					
4	1	160690-11010	HEAD, CYLINDER	1	1	1					
8	1	160690-11130	VALVE, INTAKE	1	1	1					
9	1	160690-11140	VALVE, EXHAUST	1	1	1					
10	1	160690-11150	SPRING, VALVE	2	2	2					
11	1	101158-11180	RETAINER, SPRING	2	2	2					
12	1	27310-060001	COTTER, 6	2	2	2					
13	1	160690-11200	ARM, ROCKER	2	2	2					
14	1	22137-060000	WASHER, 6	2	2	2					
15	1	160690-11220	PIVOT, ROCKER ARM	2	2	2					
15-1	1	160690-11221	PIVOT, ROCKER ARM	2	2	2					N
		(A=EZZZZZ) (B=EZZZZZ) (C=EZZZZZ)									
16	1	160690-11271	BOLT	2	2	2					
17	1	160690-11280	NUT, M6X0.5	2	2	2					
18	1	160690-11290	PLATE, GUIDE	1	1	1					
19	1	160690-11050	BOLT, 2D M8X18	2							
19-1	1	26216-080182	STUD, M8X 18	2	2	2					N
		(A=E/#M9719)									
20	1	160690-11300	BONNET	1	1	1					
21	1	160690-11310	GASKET, BONNET	1	1	1					
22	1	26106-060202	BOLT, M6X 20 PLATED	1	1	1					
23	1	26106-060352	BOLT, M6X 35 PLATED	2	2	2					
24	1	160690-03050	BREATHER	1	1	1					
25	1	160810-03180	PIPE, BREATHER	1	1	1					

Fig.4. AIR CLEANER & MUFFLER

Y0005841

(A)=GA160RDGS
(B)=GA180RDGS
(C)=GA180RDEGS

(D)=
(E)=
(F)=

No.	Lev.	Parts No.	Description	Qty						I	R
				(A)	(B)	(C)	(D)	(E)	(F)		
1	1	160697-12551	CLEANER ASSY, AIR	1	1	1					
2	2	160697-12610	BODY, AIR CLEANER	1	1	1					
3	2	160697-12620	PLATE	1	1	1					
4	2	160697-12560	ELEMENT	1	1	1					
5	2	160697-12570	HOLDER, ELEMENT	1	1	1					
6	1	129470-49040	PIPE, WATER	1	1	1					
7	1	160802-78270	CLAMP, CORD	1	1	1					
8	1	23000-035000	CLAMP, 35	1	1	1					
9	1	160610-56150	GASKET, CARBURETOR	1	1	1					
10	1	160610-04570	BOLT, M6X70	2	2	2					
11	1	26366-060002	NUT, M6	2	2	2					
12	1	160690-13200	GASKET, MUFFLER	1	1	1					
13	1	160697-13520	MUFFLER ASSY	1	1	1					
14	1	26366-080002	NUT, M8	2	2	2					

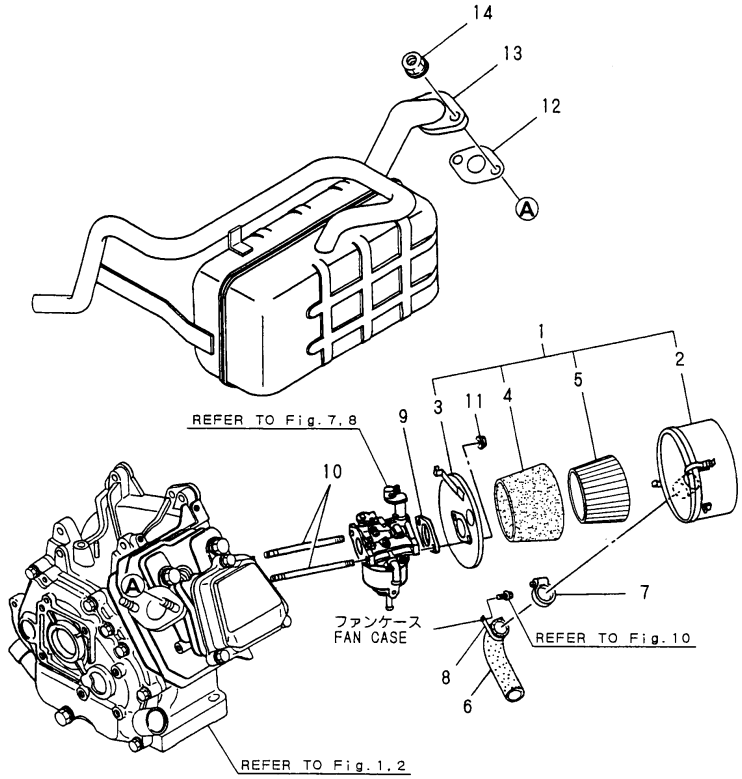
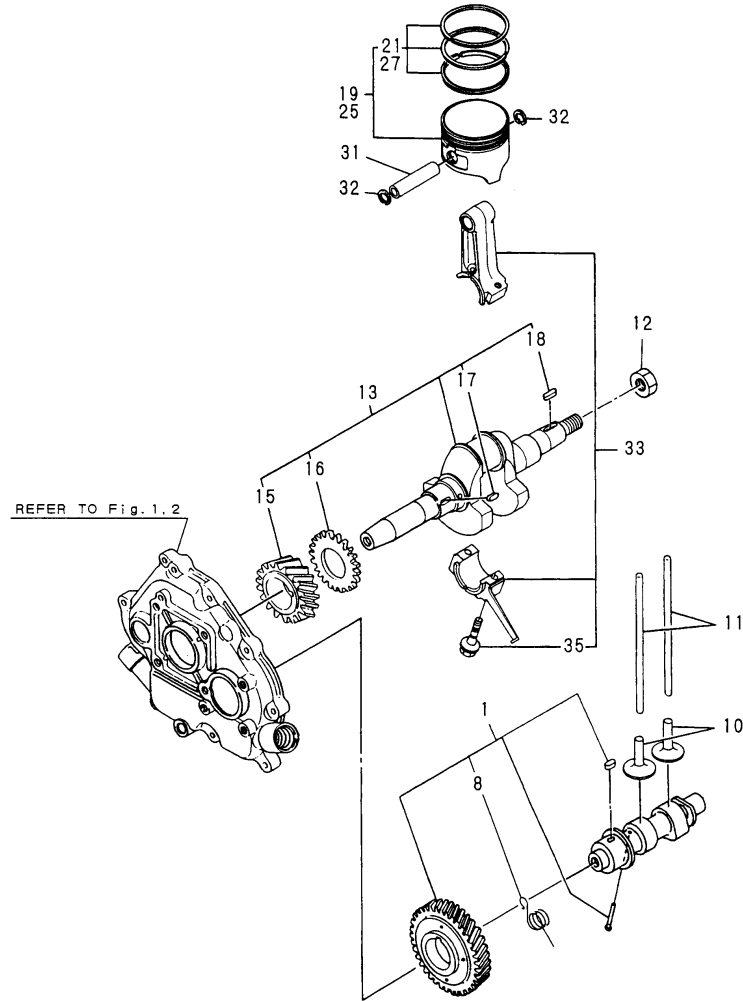


Fig.5. CRANKSHAFT,PISTON & CAMSHAFT

Y0005841



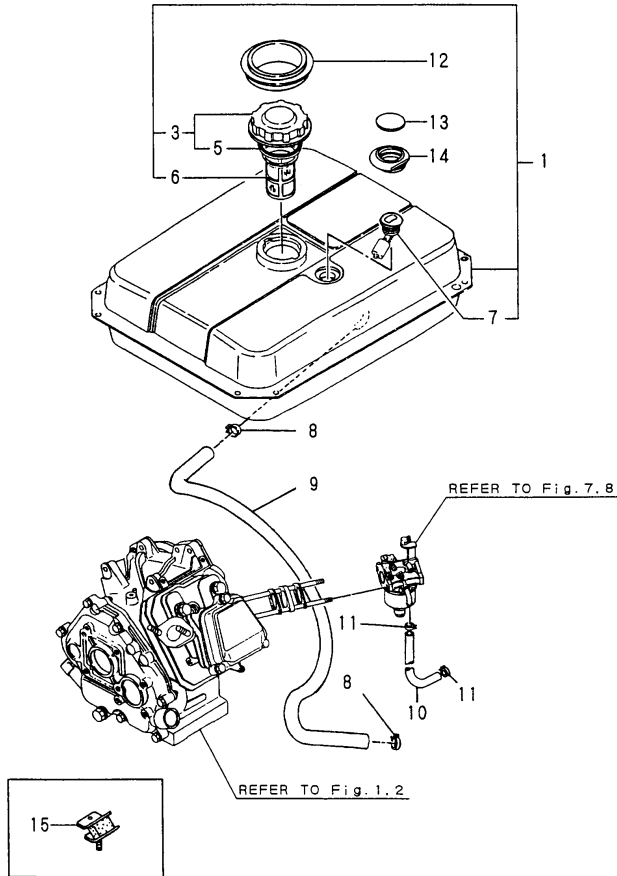
(A)=GA160RDGS
(B)=GA180RDGS
(C)=GA180RDEGS

(D)=
(E)=
(F)=

No.	Lev.	Parts No.	Description	Qty						I	R
				(A)	(B)	(C)	(D)	(E)	(F)		
1	1	160697-14050	CAMSHAFT ASSY	1	1	1					
8	2	160690-14570	SPRING,DECOMPRESSION	1	1						
8-1	2	160690-14571	SPRING,DECOMPRESSION	1	1	1					R
				(A)=E/#N6850	(B)=E/#52986						
10	1	160490-14200	TAPPET	2	2	2					
11	1	114250-14400	ROD, PUSH	2	2	2					
12	1	160610-04910	NUT, FLYWHEEL M14	1	1	1					
13	1	760694-21700	CRANKSHAFT ASSY	1	1	1					
15	2	160690-21201	GEAR, CRANKSHAFT	1	1	1					
16	2	160590-21210	GEAR, IDLE	1	1	1					
17	2	22512-040120	KEY, 4X 12	1	1	1					
18	2	22512-040160	KEY, 4X 16	1	1	1					
19	1	160690-22011	PISTON ASSY	1							
21	2	760690-22501	RING SET, PISTON	1							
25	1	160698-22010	PISTON ASSY		1	1					
27	2	760698-22501	RING SET, PISTON		1	1					
31	1	160690-22300	PIN, PISTON	1	1	1					
32	1	22252-000160	RING, 16	2	2	2					
33	1	760690-23700	ROD ASSY, CONNECTING	1	1	1					
35	2	26106-060302	BOLT, M6X 30 PLATED	2	2	2					

Fig.6. FUEL TANK & FUEL PIPE

Y00D5841



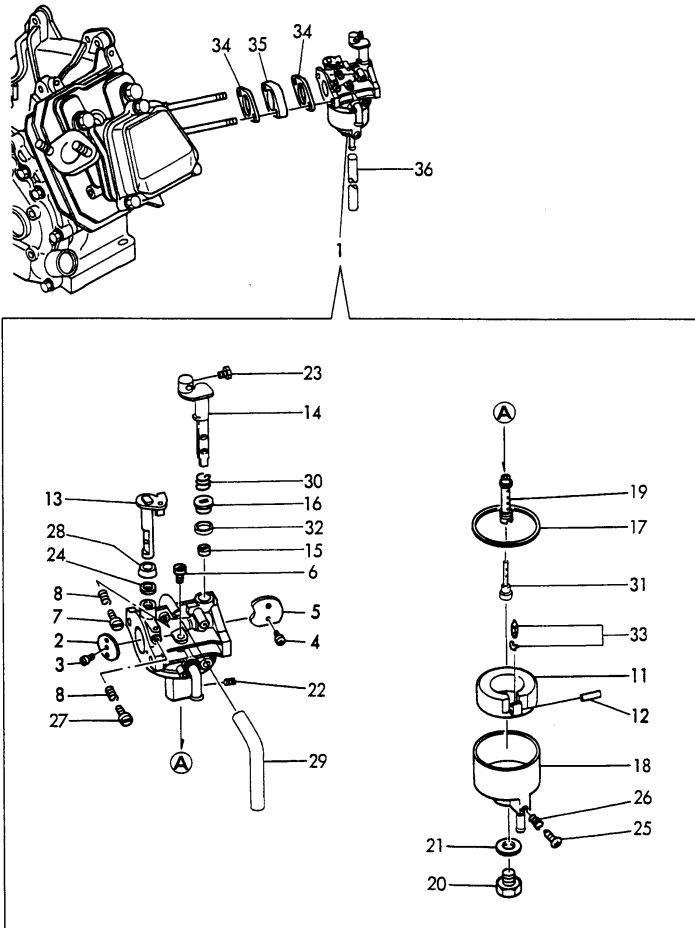
(A)=GA160RDGS
(B)=GA180RDGS
(C)=GA180RDEGS

(D)=
(E)=
(F)=

No.	Lev.	Parts No.	Description	Qty						I	R
				(A)	(B)	(C)	(D)	(E)	(F)		
1	1	783432-55700	TANK ASSY, FUEL	1	1	1					
3	2	183131-55060	CAP ASSY	1	1	1					
5	3	183131-55050	GASKET	1	1	1					
6	2	160610-55100	FILTER, FUEL	1	1	1					
7	2	183621-55150	GAUGE	1	1	1					
8	1	106990-44660	CLIP, HOSE 12.5	2	2	2					
9	1	160591-59360	PIPE, FUEL A-310	1	1	1					
10	1	160580-59360	PIPE, FUEL	1	1	1					
11	1	124060-77680	CLIP, HOSE 10	2	2	2					
12	1	183366-55210	GROMMET	1	1	1					
13	1	183131-08910	WINDOW	1	1	1					
14	1	183131-08920	GROMMET	1	1	1					
15	1	183730-08210	DAMPER	4	4	4					

Fig.7. CARBURETOR

Y0005841



(A)=GA160RDGS
(B)=GA180RDGS
(C)=GA180RDEGS

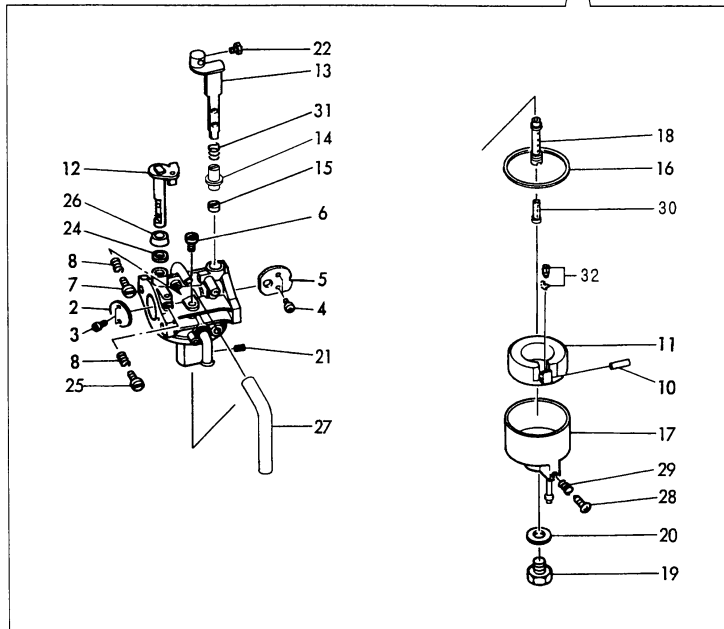
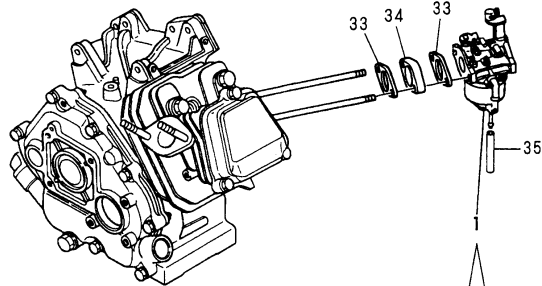
(D)=
(E)=
(F)=

No.	Lev.	Parts No.	Description	Q'ty						I	R
				(A)	(B)	(C)	(D)	(E)	(F)		
1	1	160697-56021	CARBURETOR ASSY	1							
1-1	1	160697-56030	CARBURETOR ASSY	1							N
(A=E/#M5522)											
2	2	160592-56540	VALVE, THROTTLE	1							
3	2	160690-56560	SCREW	1							
4	2	160690-56570	SCREW	2							
5	2	160691-56680	VALVE, CHOKE	1							
6	2	160410-56941	JET, PILOT	1							
7	2	160692-56710	SCREW	1							
8	2	181230-56380	SPRING	2							
10	2	160692-56750	CLIP	1							
11	2	160697-56620	FLOAT ASSY	1							
12	2	160610-56630	PIN, FLOAT	1							
13	2	160692-56640	SHAFT, THROTTLE	1							
14	2	160691-56700	LEVER, CHOKE	1							
15	2	160810-56580	RING, CHOKE SHAFT	1							
16	2	160594-56590	RING, CHOKE LEVER	1							
17	2	160610-56610	GASKET	1							
18	2	160730-56640	BODY, FLOAT CHAMBER	1							
19	2	160690-56570	SCREW	1							
19-1	2	160693-56570	NOZZLE, MAIN	1							S
(A=E/#M5522)											
20	2	160610-56660	BOLT	1							
21	2	160610-56611	GASKET	1							
21-1	2	160810-56550	WASHER	1							S
(A=E/#M5522)											
22	2	160697-56801	JET, MAIN	1							
23	2	26117-040088	BOLT M 4X 8 PLATED	1							
24	2	160640-56850	SEAL	1							
25	2	160610-56900	SCREW	1							
26	2	181230-56380	SPRING	1							
27	2	160667-56750	ADJUSTER	1							
28	2	160702-56720	RING	1							
29	2	160692-56770	HOSE	1							
30	2	160691-56720	SPRING	1							
31	2	160590-56800	NOZZLE, MAIN	1							
32	2	160692-56800	RUBBER, SEAL	1							
33	2	160692-56560	VALVE ASSY, NEEDLE	1							1
34	1	160610-56150	GASKET, CARBURETOR	2							
35	1	160690-56160	SPACER, CARBURETOR	1							
36	1	160730-56880	HOSE, D5/3	1							

Remarks
(1) ONLY FOR REPAIR.

Fig.8. CARBURETOR

Y00D5841



(A)=GA160RDGS
(B)=GA180RDGS
(C)=GA180RDEGS

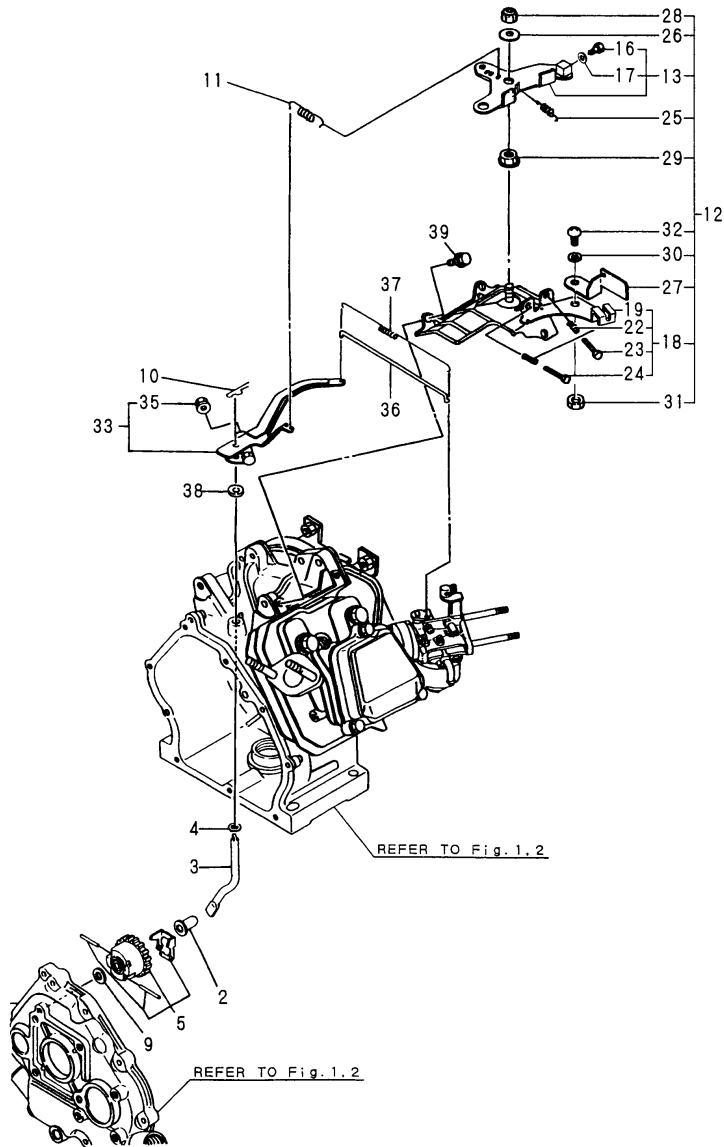
(D)=
(E)=
(F)=

No.	Lev.	Parts No.	Description	Qty						I	R	
				(A)	(B)	(C)	(D)	(E)	(F)			
1	1	160698-56091	CARBURETOR ASSY		1	1						
2	2	160698-56820	VALVE, THROTTLE		1	1						
3	2	160810-56670	SCREW		2	2						
4	2	160903-56670	SCREW		2	2						
5	2	160691-56680	VALVE, CHOKE		1	1						
6	2	160708-56740	JET, PILOT		1	1						
7	2	160692-56710	SCREW		1	1						
8	2	181230-56380	SPRING		2	2						
10	2	160610-56630	PIN, FLOAT		1	1						
11	2	160697-56650	LEVER, CHOKE		1	1						M
11-1	2	160769-56620	FLOAT ASSY		1	1						
12	2	160698-56550	SHAFT, THROTTLE		1	1						
13	2	160691-56700	LEVER, CHOKE		1	1						
14	2	160594-56590	RING, CHOKE LEVER		1	1						
15	2	160810-56580	RING, CHOKE SHAFT		1	1						
16	2	160610-56611	GASKET		1	1						
17	2	160730-56641	BODY, FLOAT CHAMBER		1	1						
18	2	160693-56570	NOZZLE, MAIN		1	1						
19	2	160610-56660	BOLT		1	1						
20	2	160610-56611	GASKET		1	1						
21	2	160698-56811	JET, MAIN		1	1						
22	2	26117-040088	BOLT M 4X 8 PLATED		1	1						
23	2	160692-56750	CLIP		1	1						
24	2	160640-56850	SEAL		1	1						
25	2	160667-56750	ADJUSTER		1	1						
26	2	160702-56720	RING		1	1						
27	2	160692-56770	HOSE		1	1						
28	2	160610-56900	SCREW		1	1						
29	2	181230-56380	SPRING		1	1						
30	2	160590-56800	NOZZLE, MAIN		1	1						
31	2	160691-56720	SPRING		1	1						
32	2	160692-56560	VALVE ASSY, NEEDLE		1	1						1
33	1	160610-56150	GASKET, CARBURETOR		2	2						
34	1	160690-56160	SPACER, CARBURETOR		1	1						
35	1	160730-56880	HOSE, D5/3		1	1						

Remarks
(1)REPAIR PARTS.
(M)MISPRINT

Fig.9. GOVERNOR & CONTROL DEVICE

Y00D5841



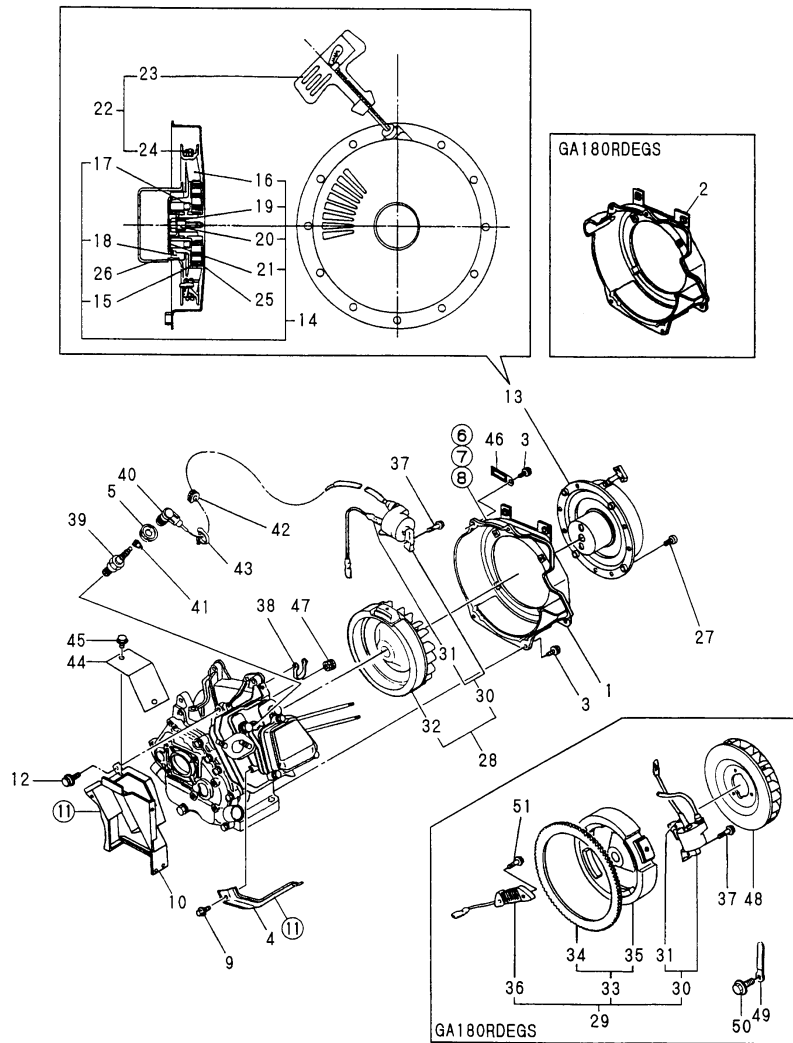
(A)=GA160RDGS
(B)=GA180RDGS
(C)=GA180RDEGS

(D)=
(E)=
(F)=

No.	Lev.	Parts No.	Description	Qty						I	R
				(A)	(B)	(C)	(D)	(E)	(F)		
2	1	160690-61301	SPINDLE	1	1	1					
3	1	160690-61311	SHAFT	1	1	1					
4	1	160690-61450	WASHER	1	1	1					
5	1	160690-61600	GEAR ASSY, GOVERNOR	1	1	1					
9	1	160120-76940	WASHER	1	1	1					
10	1	22372-080000	PIN, SNAP 8	1	1	1					
11	1	160697-66010	SPRING, GOVERNOR	1	1	1					
12	1	160697-66100	CONTROLLER ASSY	1	1	1					
13	2	160692-66051	LEVER ASSY, CONTROL	1	1	1					
16	3	26117-040088	BOLT M 4X 8 PLATED	1	1	1					
17	3	160690-66900	WASHER, 4	1	1	1					
18	2	160697-66110	BASE ASSY	1	1	1					
19	3	160697-66121	BASE ASSY	1	1	1					
22	3	160520-66291	SPRING	2	2	2					
23	3	26117-040257	BOLT, M4X 25 PLATED	1	1	1					
24	3	26117-040357	BOLT, M4X 35 PLATED	1	1	1					
25	2	160797-66320	SPRING, CONTROL	1	1	1					
26	2	160670-66350	COLLAR	1	1	1					
27	2	160797-66310	LEVER, CONTROL	1	1	1					
28	2	26347-060002	NUT, M6	1	1	1					
29	2	26366-060002	NUT, M6	1	1	1					
30	2	22137-040000	WASHER, 4	1	1	1					
31	2	26347-040002	NUT, M4	1	1	1					
32	2	26557-040102	SCREW, M4X10	1	1	1					
33	1	160690-66180	LEVER ASSY, GOVERNOR	1	1	1					
35	2	26366-060002	NUT, M6	1	1	1					
36	1	160690-66200	LINK, THROTTLE	1	1	1					
37	1	160690-66210	SPRING, TENSION	1	1	1					
38	1	114770-61600	SEAL, OIL	1	1	1					
39	1	26476-060142	SCREW, TAPPING M6X14	3	3	3					

Fig.10. FLY.MAGNETO & STARTING DEVICE

Y0005841



注) 図番を○で囲んでいるものは、内側に付けるスポンジ又はグラスウールを示しています。
NOTE) THE ENCIRCLED DRAWING NUMBERS INDICATES THE PARTS LINED WITH RUBBER SPONGE OR GLASS WOOL.

(A)=GA160RDGS
(B)=GA180RDGS
(C)=GA180RDEGS

(D)=
(E)=
(F)=

No.	Lev.	Parts No.	Description	Q'ty						I	R
				(A)	(B)	(C)	(D)	(E)	(F)		
1	1	160697-45150ED	CASE, COOLING FAN	1	1						
2	1	160697-45140	CASE, COOLING FAN					1			
3	1	26476-060142	SCREW, TAPPING M6X14	4	4			4			
4	1	160690-45200	COVER	1	1			1			
5	1	160797-45230	COVER	1	1			1			
6	1	160697-45900	SEAL, 0.2X50X400	1	1			1			
7	1	160897-45920	SPONGE	2	2			2			
8	1	160897-45930	SPONGE	2	2			2			
9	1	26476-060142	SCREW, TAPPING M6X14	1	1			1			
10	1	183732-45050	DUCT, COOLING	1	1						Z
		(A=E/#N6850) (B=E/#52987)									
11	1	160897-45910	SPONGE	1	1						Z
		(A=E/#N6850) (B=E/#52987)									
12	1	26476-060142	SCREW, TAPPING M6X14	2	2						Z
		(A=E/#N6850) (B=E/#52987)									
13	1	160697-76051	STARTER ASSY, RECOIL	1	1			1			
14	2	160697-76251	STARTER ASSY, RECOIL	1	1			1			
15	3	160697-76510	SPRING	1	1			1			
16	3	160697-76520	REEL	1	1			1			
17	3	160641-76530	SPRING, DOG	2	2			2			
18	3	160890-76540	DOG	2	2			2			
19	3	160697-76550	SPRING, BRAKE	1	1			1			
20	3	160641-76570	SCREW	1	1			1			
21	3	160697-76570	RETAINER	1	1			1			
22	2	160697-76620	HANDLE ASSY	1	1			1			
23	3	160900-76620	HANDLE	1	1			1			
24	3	160697-76580	ROPE, STARTER	1	1			1			
25	3	160697-76630	CASE, SPRING	1	1			1			M
25-1	2	160697-76630	CASE, SPRING	1	1			1			
26	2	160697-76591	PULLEY, STARTER	1	1			1			
27	1	26022-060162	SCREW, M6X16	4	4			4			
28	1	160690-78082	MAGNETIC ASSY	1	1						
29	1	160697-78060	MAGNETIC ASSY					1			
30	2	160690-78532	COIL, IGNITION	1	1			1			
31	3	160690-78230	WIRE	1	1			1			
32	2	160690-78541	ROTOR	1	1						
33	2	160697-78550	ROTOR ASSY					1			
36	2	160797-78530	COIL, CHARGE					1			
37	1	26476-060302	SCREW, TAPPING M6X30	2	2			2			
38	1	29610-000650	CLAMP, SPEED 065	1	1			1			
39	1	160793-78010	PLUG, SPARK	1	1			1			
40	1	160700-78040	CAP, PLUG	1	1			1			
41	1	160700-78050	TERMINAL, PLUG	1	1			1			
42	1	160700-78720	GROMMET	1	1			1			
43	1	29610-000950	CLAMP, SPEED 095	1	1			1			
44	1	183732-45540	COVER	1	1						Z
		(A=E/#N6850) (B=E/#52987)									
45	1	26106-060102	BOLT, M6X 10 PLATED	2	2						Z
		(A=E/#N6850) (B=E/#52987)									
46	1	160260-78700	CLAMP	1	1			1			
47	1	160341-01950	PIPE					1			

Remarks
(M) MISPRINT

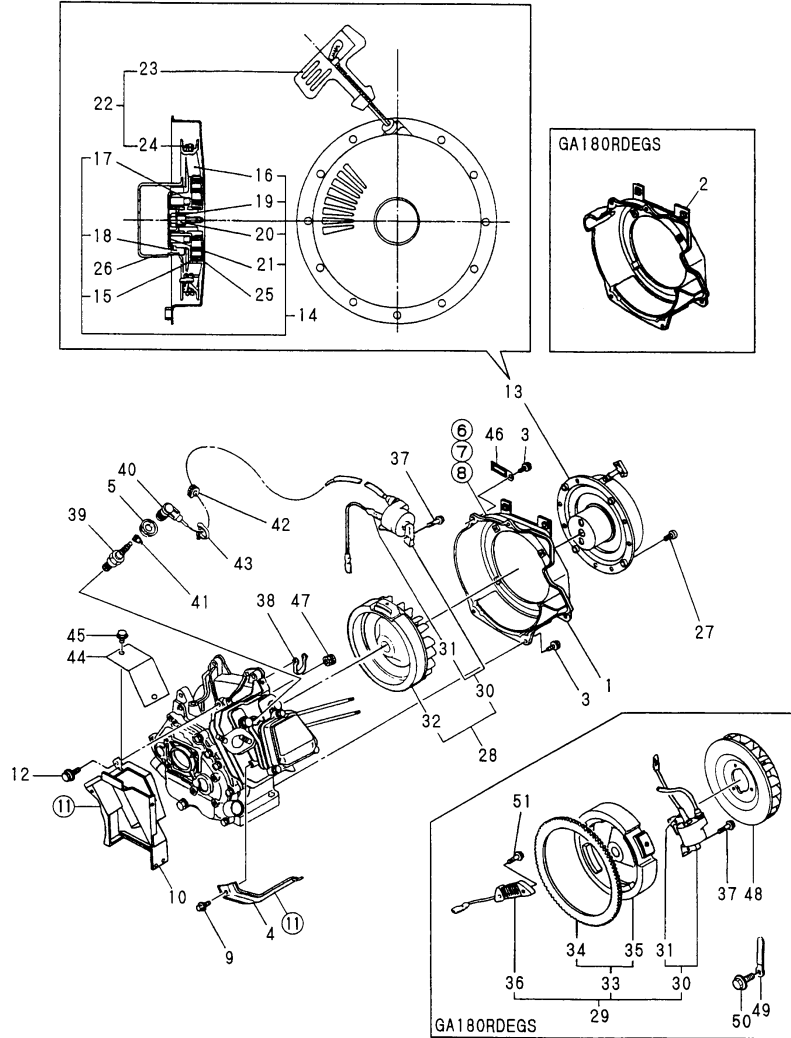
Fig.10. FLY.MAGNETO & STARTING DEVICE

Y0005841

(A)=GA160RDGS
(B)=GA180RDGS
(C)=GA180RDEGS

(D)=
(E)=
(F)=

No.	Lev.	Parts No.	Description	Qty						I	R
				(A)	(B)	(C)	(D)	(E)	(F)		
48	1	160699-45010	CASE, COOLING FAN			1					
49	1	160710-78710	CLAMP, CORD			1					
50	1	26476-060142	SCREW, TAPPING M6X14			1					
51	1	26476-060252	SCREW, TAPPING M6X25			2					

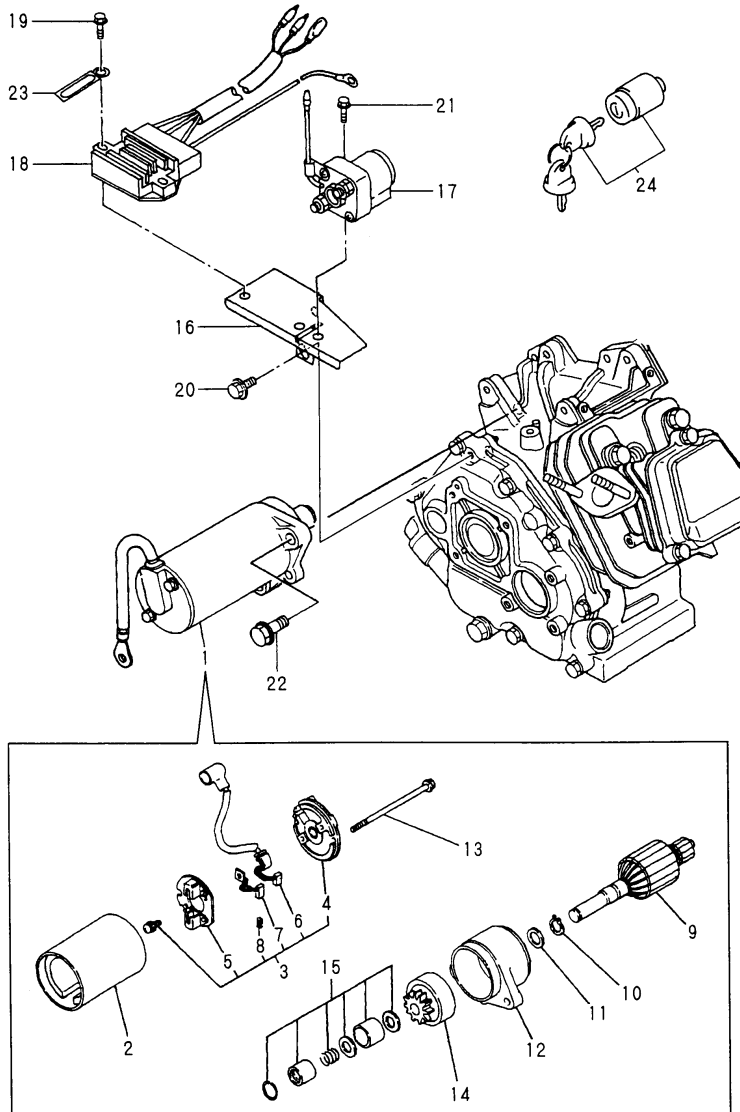


注) 図番を○で囲んでいるものは、内側に付けるスポンジ又はグラスウールを示しています。
NOTE) THE ENCIRCLED DRAWING NUMBERS INDICATES THE PARTS LINED WITH RUBBER SPONGE OR GLASS WOOL.

Remarks
(M) MISPRINT

Fig.11. STARTING MOTOR

Y00D5841



(A)=GA160RDGS
(B)=GA180RDGS
(C)=GA180RDEGS

(D)=
(E)=
(F)=

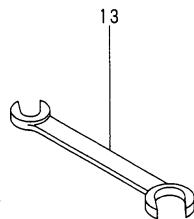
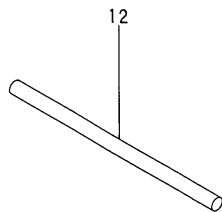
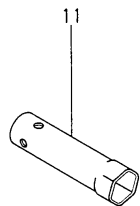
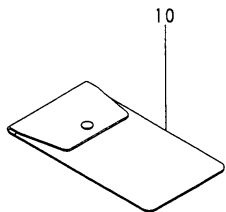
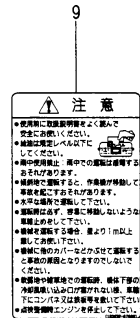
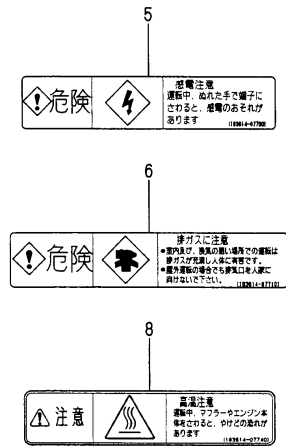
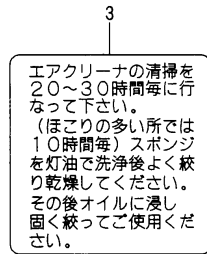
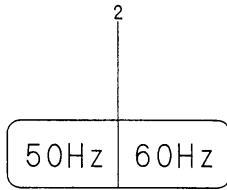
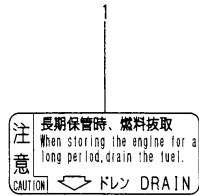
No.	Lev.	Parts No.	Description	Qty						I	R
				(A)	(B)	(C)	(D)	(E)	(F)		
1	1	160691-77020	MOTOR, STARTING			1					
2	2	X131009601X	YORK ASSY			1					
3	2	X133004703X	BRACKET ASSY, REAR			1					
4	3	X224023400X	BRACKET, REAR			1					
5	3	X133104900X	HOLDER ASSY, BLUSH			1					
6	3	X266008503X	BLUSH ASSY(+)			1					
7	3	X266008300X	BLUH ASSY(-)			1					
8	3	X520003100X	COIL, SPRING			2					
9	2	X132009202X	ARMATURE ASSY			1					
10	2	X8580151002	RING, RETAINING			1					
11	2	X503106201X	SHIM WASHER			1					
12	2	X224211001X	BRACKET, FRONT			1					
13	2	X8167050951	BOLT			1					
14	2	X136105701X	CLUTCH ASSY, PINION			1					
15	2	X366102100X	STOPPER, PINION			1					
16	1	183732-78030	BRACKET			1					
17	1	160725-77380	SWITCH, SOLENOID			1					
18	1	160715-77521	REGULATOR			1					
19	1	26106-060202	BOLT, M6X 20 PLATED			2					
20	1	26476-060142	SCREW, TAPPING M6X14			2					
21	1	26106-060122	BOLT, M6X 12 PLATED			1					
22	1	26106-080252	BOLT, M8X 25 PLATED			2					
23	1	160260-78700	CLAMP			1					
24	1	160797-77350	SWITCH ASSY			1					

Fig.12. LABEL & TOOL

Y00D5841

(A)=GA160RDGS
(B)=GA180RDGS
(C)=GA180RDEGS

(D)=
(E)=
(F)=



No.	Lev.	Parts No.	Description	Q'ty						I	R
				(A)	(B)	(C)	(D)	(E)	(F)		
1	1	160520-07272	LABEL, DRAIN	1	1	1					
2	1	183130-07220	LABEL, 50/60HZ	1	1	1					
3	1	160520-07370	LABEL, CLEANER	1	1	1					
5	1	183614-07700 (A=EXXX)	LABEL, CAUTION	1							Z
6	1	183614-07710 (A=EXXX)	LABEL, EXH. GAS CAUTN	1							Z
7	1	183614-07720 (A=EXXX)	LABEL, NO FIRE	1							Z
8	1	183614-07740 (A=EXXX)	LABEL, CAUTION	1							Z
9	1	183632-07600 (A=EXXX)	LABEL, CAUTION	1							Z
10	1	160110-92610	BAG, TOOL	1	1	1					
11	1	160120-92700	WRENCH, 21 L86	1	1	1					
12	1	160110-92710	HANDLE, WRENCH	1	1	1					
13	1	28110-100120	SPANNER, 10X12	1	1	1					

Parts No. Index

Parts No.	Fig. No.	Ref. No.
101158-11180	3	11
104200-59170	1	8
		9 A
	2	8
106990-44660	6	8
114250-14400	5	11
114270-01600	1	4
	2	4
114770-61600	9	38
124060-77680	6	11
129470-49040	4	6
160110-01870	1	15
	2	21
160110-92610	12	10
160110-92710	12	12
160120-76940	9	9
160120-92700	12	11
160260-78700	10	46
	11	23
160341-01950	10	47
160410-56941	7	6
160490-14200	5	10
160520-07272	12	1
160520-07370	12	3
160520-66291	9	22
160580-59360	6	10
160590-21210	5	16
160590-56800	7	31
	8	30
160591-01760	1	18
	2	15
160591-59360	6	9
160592-56540	7	2
160594-56590	7	16
	8	14
160610-01690	1	7
	2	7
160610-04201	3	3
160610-04570	4	10
160610-04910	5	12
160610-55100	6	6
160610-56150	4	9
	7	34
	8	33
160610-56610	7	17
160610-56611	7	21
	8	16
		20
160610-56630	7	12
	8	10

Parts No.	Fig. No.	Ref. No.
160610-56660	7	20
	8	19
160610-56900	7	25
	8	28
160640-56850	7	24
	8	24
160641-76530	10	17
160641-76570	10	20
160667-56750	7	27
	8	25
160670-66350	9	26
160671-78200	2	25
160690-01330	3	1
160690-02220	1	5
		13
	2	5
		12
160690-03050	3	24
160690-11010	3	4
160690-11050	3	19
160690-11130	3	8
160690-11140	3	9
160690-11150	3	10
160690-11200	3	13
160690-11220	3	15
160690-11221	3	15 -1
160690-11271	3	16
160690-11280	3	17
160690-11290	3	18
160690-11300	3	20
160690-11310	3	21
160690-13200	4	12
160690-14570	5	8
160690-14571	5	8 -1
160690-21201	5	15
160690-22011	5	19
160690-22300	5	31
160690-45200	10	4
160690-56160	7	35
	8	34
160690-56560	7	3
160690-56570	7	4
		19
160690-61301	9	2
160690-61311	9	3
160690-61450	9	4
160690-61600	9	5
160690-66180	9	33
160690-66200	9	36
160690-66210	9	37

Parts No.	Fig. No.	Ref. No.
160690-66900	9	17
160690-78082	10	28
160690-78230	10	31
160690-78532	10	30
160690-78541	10	32
160691-56680	7	5
	8	5
160691-56700	7	14
	8	13
160691-56720	7	30
	8	31
160691-77020	11	1
160692-56560	7	33
	8	32
160692-56640	7	13
160692-56710	7	7
	8	7
160692-56750	7	10
	8	23
160692-56770	7	29
	8	27
160692-56800	7	32
160692-66051	9	13
160693-56570	7	19 -1
	8	18
160697-12551	4	1
160697-12560	4	4
160697-12570	4	5
160697-12610	4	2
160697-12620	4	3
160697-13520	4	13
160697-14050	5	1
160697-45140	10	2
160697-45150ED	10	1
160697-45900	10	6
160697-56021	7	1
160697-56030	7	1 -1
160697-56620	7	11
160697-56650	8	11
160697-56801	7	22
160697-66010	9	11
160697-66100	9	12
160697-66110	9	18
160697-66121	9	19
160697-76051	10	13
160697-76251	10	14
160697-76510	10	15
160697-76520	10	16
160697-76550	10	19
160697-76570	10	21

Parts No.	Fig. No.	Ref. No.
160697-76580	10	24
160697-76591	10	26
160697-76620	10	22
160697-76630	10	25
		25 -1
160697-77750	1	22
	2	22
160697-78060	10	29
160697-78550	10	33
160698-01330	3	2
160698-22010	5	25
160698-56091	8	1
160698-56550	8	12
160698-56811	8	21
160698-56820	8	2
160699-45010	10	48
160700-78040	10	40
160700-78050	10	41
160700-78720	10	42
160702-56720	7	28
	8	26
160708-56740	8	6
160710-78710	10	49
160715-77521	11	18
160725-77380	11	17
160730-56640	7	18
160730-56641	8	17
160730-56880	7	36
	8	35
160769-56620	8	11 -1
160793-78010	10	39
160797-01851	1	16
	2	18
160797-45230	10	5
160797-66310	9	27
160797-66320	9	25
160797-77350	11	24
160797-78530	10	36
160802-01700	1	9
	2	9
160802-78270	4	7
160810-03180	3	25
160810-56550	7	21 -1
160810-56580	7	15
	8	15
160810-56670	8	3
160890-76540	10	18
160897-45910	10	11
160897-45920	10	7
160897-45930	10	8

Parts No. Index

Parts No.	Fig. No.	Ref. No.
160900-76620	10	23
160903-56670	8	4
181230-56380	7	8
		26
	8	8
		29
183130-07220	12	2
183131-08910	6	13
183131-08920	6	14
183131-55050	6	5
183131-55060	6	3
183366-55210	6	12
183614-07700	12	5
183614-07710	12	6
183614-07720	12	7
183614-07740	12	8
183621-55150	6	7
183632-07600	12	9
183730-08210	6	15
183732-45050	10	10
183732-45540	10	44
183732-78030	11	16
22137-040000	9	30
22137-060000	3	14
22252-000160	5	32
22372-080000	9	10
22512-040120	5	17
22512-040160	5	18
23000-035000	4	8
24101-062050	1	6
		12
	2	6
		13
24311-000180	1	17
		20
		24
	2	17
		19
		24
26022-060162	10	27
26106-060102	10	45
26106-060122	11	21
26106-060202	3	22
	11	19
26106-060302	5	35
26106-060352	3	23
26106-080252	11	22
26117-040088	7	23
	8	22
	9	16

Parts No.	Fig. No.	Ref. No.
26117-040257	9	23
26117-040357	9	24
26216-080182	3	19 -1
26347-040002	9	31
26347-060002	9	28
26366-060002	4	11
	9	29
		35
26366-080002	4	14
26476-060142	1	23
	2	23
	9	39
	10	3
		9
		12
		50
	11	20
26476-060252	1	21
	2	20
	10	51
26476-060302	10	37
26557-040102	9	32
27310-060001	3	12
28110-100120	12	13
29610-000650	10	38
29610-000950	10	43
760690-01561	1	1
760690-22501	5	21
760690-23700	5	33
760694-01501	1	10
	2	10
760694-21700	5	13
760698-01561	2	1
760698-22501	5	27
783432-55700	6	1
783732-01560	2	1 A
X131009601X	11	2
X132009202X	11	9
X133004703X	11	3
X133104900X	11	5
X136105701X	11	14
X224023400X	11	4
X224211001X	11	12
X266008300X	11	7
X266008503X	11	6
X366102100X	11	15
X503106201X	11	11
X520003100X	11	8
X8167050951	11	13
X8580151002	11	10

Parts No.	Fig. No.	Ref. No.
-----------	----------	----------

Parts No.	Fig. No.	Ref. No.
-----------	----------	----------