

0CD10-M58301EN

# P R E F A C E

1. This parts catalog is the 2nd edition GA300SECMS1 for MAEDA.

Pub.No. : 0CD10-G58301

Published : September, 2012

2. Model name

Engine model	Vehicle	Vehicle made by
GA300SECMS1	MINI CRAWLER CRANE	MAEDA

## Directions for the Parts Catalog.

1. This Parts Catalog shows both standard and optional parts.
2. Parts may change without prior notice.
3. The following is an example of the Parts Catalog format.

REF.	LEV.	PARTS NO.	DESCRIPTION	Q'TY						I	R
				(A)	(B)	(C)	(D)	(E)	(F)		
1	1	729595-51390	FUEL INJECTION PUMP	1	1	1	1	1			1
1-1	1	729595-51391	FUEL INJECTION PUMP	1	1	1	1	1		N	1
		(A=E00185) (B=E00200)									
3	2	26022-060162	SCREW M 6X 16	9	9	9	9	9			
3-1	2	26022-060162	SCREW M 6X 16	4	4	4	4	4		K	
		(A=E00156) (B=E00156) (C=E00156) (D=E00156) (E=E00156)									
4	2	129470-51040	CAMSHAFT	1	1	1	1	1			
5	2	122710-51050	BEARING, ROLLER	2	2	2	2	2			
6	2	129470-51060	RETAINER	1	1	1	1	1			

Remarks
(1) BOOST COMPEMSATOR TYPE. OPTIONAL PART, TO E00155,(4JH-DT, 4JH-DTZ

### ① Ref. No.

The Ref. No. listed may not be in accordance with the illustration Ref. No.

(Ex.) Illustration No.

List Ref No.

1

1

(Before change)

1-1

(After change)

For interchangeable symbols N, R and K, illustrations for new parts may be abbreviated.

### ② Lev. (Level)

Level indication

The numbers below indicate the level of relativity towards the main part.

1 ----- Main parts (Assembly parts)

2 ----- Sub component included in " 1 ".

3 ----- Sub component included in " 2 ".

Note) Parts that are not for sale are partially illustrated but not listed.

### ③ Interchangeability Symbol

When a part change takes place, one of the following interchangeability symbols is indicated beside the part.

Symbol	Interchangeability	Contents note
N	Old $\begin{matrix} \leftarrow \text{Yes} \\ \text{No} \rightarrow \end{matrix}$ New	New Part is interchangeable for Old Part but Old Part is not interchangeable for New Part.
Q	Old $\begin{matrix} \leftarrow \text{No} \\ \text{Yes} \rightarrow \end{matrix}$ New	New Part is not interchangeable for Old Part but Old Part is interchangeable for New Part.
R	Old $\begin{matrix} \leftarrow \text{Yes} \\ \text{Yes} \rightarrow \end{matrix}$ New	New/ Old Parts are both interchangeable.
S	Old $\begin{matrix} \leftarrow \text{No} \\ \text{No} \rightarrow \end{matrix}$ New	New/ Old Parts are both not interchangeable.
W		Part newly added.
Z		Part discontinued.
F		Not interchangeable by a single part but interchangeable together with related parts.
K		Changes only for used parts quantities.

### ④ Effective Machine No.

When a part changes, the effective Machine No. will be indicated in the (A)-(F) column.

Product Symbol	Product No.	Product Symbol	Product No.
C	Clutch No. Compressor No.	F	Machine No. (Agricultural Equip.)
D	Drive No.	M	Machine No.
E	Engine No.		

Note 1) A date may follow the symbol. (Ex.) 1996.01

Note 2) "XXXXX" and "ZZZZZ" are for parts that could not be predicted or for engine models that could not be identified.

Note 3) (A=E00185) is the E (Engine Serial Number) for the column (A) model (in this case 4JH-DT) after the parts design change.

### ⑤ Remarks

Figures or alphabets (symbols) are entered in the remarks column.

The comments (remarks) on parts that are indicated at the bottom of the illustration are the same symbols as those stated above.

# Contents

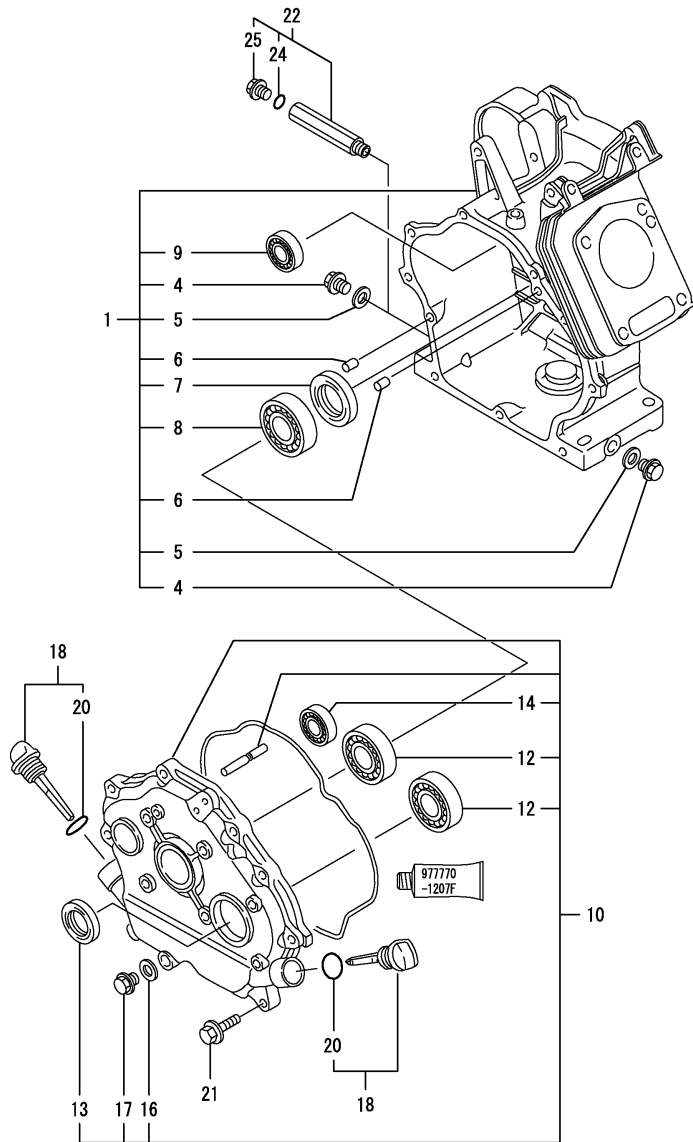
Fig. No.    Fig. Name

Fig. No.    Fig. Name

## ENGINE SECTION

1. CYLINDER BLOCK
2. CYLINDER HEAD & BONNET
3. AIR CLEANER & MUFFLER
4. CRANKSHAFT, PISTON & CAMSHAFT
5. FUEL TANK & FUEL PIPE
6. CARBURETOR
7. GOVERNOR & CONTROL DEVICE
8. FLY.MAGNETO & STARTING DEVICE
9. STARTING MOTOR
10. LABEL & TOOL

Fig.1. CYLINDER BLOCK



(A)=GA300SECMS1

(B)=

(C)=

(D)=

(E)=

(F)=

No.	Lev.	Parts No.	Description	Q'ty						I	R
				(A)	(B)	(C)	(D)	(E)	(F)		
1	1	760991-01560	BLOCK ASSY, CYLINDER	1							
4	2	160610-01690	PLUG, M12	2							
5	2	104200-59170	GASKET, 12	2							
6	2	114270-01600	PIN, M8X12	2							
7	2	160110-02220	SEAL, OIL	1							
8	2	24101-062060	BEARING, BALL 6206C3	1							
8-1	2	129900-26250	BEARING, BALL 6206C3	1							N
		(A=EXXXXX)									
9	2	160903-28020	BEARING, 6202C3E	1							
10	1	760792-01400	COVER ASSY	1							M
10-1	1	760792-01501	COVER ASSY	1							
		(A=EXXXXX)									
10-2	1	760792-01502	COVER ASSY	1							R
		(A=EXXXXX)									
12	2	24101-062060	BEARING, BALL 6206C3	2							
12-1	2	129900-26250	BEARING, BALL 6206C3	2							N
		(A=EXXXXX)									
13	2	160110-02220	SEAL, OIL	1							
14	2	160903-28020	BEARING, 6202C3E	1							
16	2	104200-59170	GASKET, 12	1							
17	2	160610-01690	PLUG, M12	1							
18	1	160810-01740	CAP ASSY	2							
20	2	24311-000180	O-RING, 1AP18.0	2							
21	1	26106-080302	BOLT, M8X 30 PLATED	9							
22	1	160598-01710	JOINT ASSY	1							W 1
		(A=FROM 1ST)									
24	2	24311-000100	O-RING, 1AP10.0	1							W 1
		(A=FROM 1ST)									
25	2	26106-100162	BOLT, M10X 16 PLATED	1							W 1
		(A=FROM 1ST)									

Remarks

(1) Loosed parts.

(M) Misprint.

Fig.2. CYLINDER HEAD & BONNET

(A)=GA300SECMS1

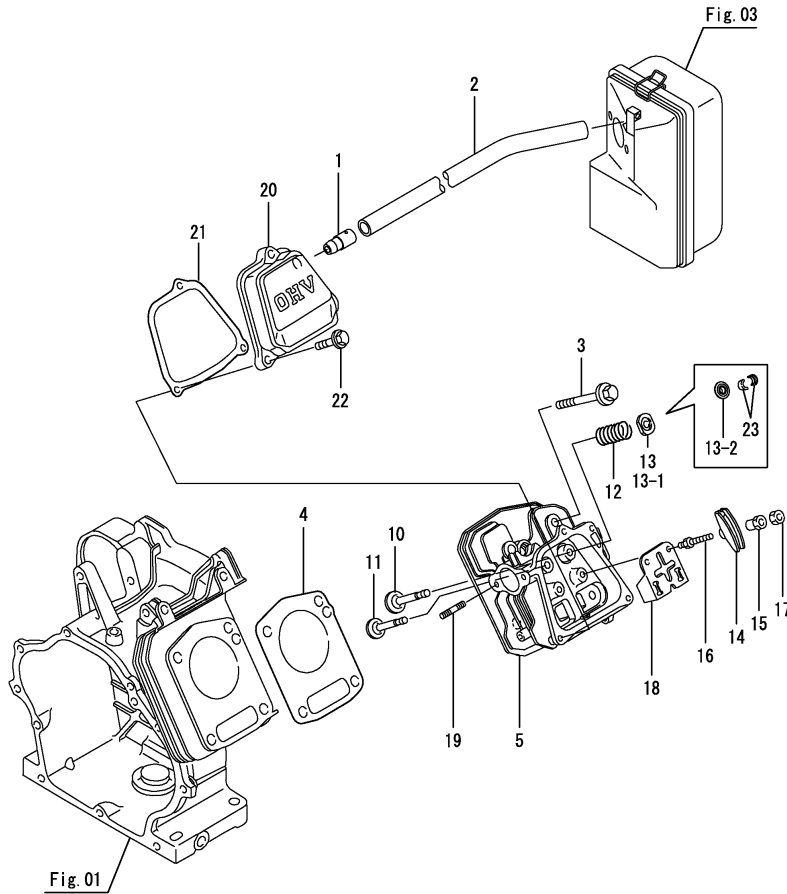
(B)=

(C)=

(D)=

(E)=

(F)=



No.	Lev.	Parts No.	Description	Q'ty						I	R
				(A)	(B)	(C)	(D)	(E)	(F)		
1	1	160610-03050	BREATHER ASSY	1							
2	1	160820-03180	PIPE , BREATHER	1							
3	1	160890-01210	BOLT, FLANGE M10X70	4							
4	1	160990-01330	GASKET, HEAD	1							
4-1	1	160990-01331	GASKET, HEAD	1							R
(A=EXXXXX)											
5	1	160890-11011	HEAD ASSY, CYLINDER	1							
5-1	1	160890-11012	HEAD ASSY, CYLINDER	1							N
(A=E14032)											
10	1	160890-11100	VALVE, INTAKE	1							
10-1	1	160890-11101	VALVE, INTAKE	1							F 2
(A=EZZZZZ)											
11	1	160890-11110	VALVE, EXHAUST	1							
11-1	1	160890-11111	VALVE, EXHAUST	1							F 2
(A=EZZZZZ)											
12	1	160890-11120	SPRING, VALVE	2							
13	1	160810-11180	RETAINER, SPRING	2							
13-1	1	160890-11180	RETAINER, SPRING	2							F 1
(A=EZZZZZ)											
13-2	1	160890-11190	RETAINER, SPRING	2							F 2
(A=EZZZZZ)											
14	1	160890-11200	ARM, ROCKER	2							
14-1	1	160890-11202	ARM, ROCKER	2							F 1
(A=EZZZZZ)											
15	1	160690-11220	PIVOT, ROCKER ARM	2							
15-1	1	160690-11221	PIVOT, ROCKER ARM	2							F 1
(A=EZZZZZ)											
15-2	1	160690-11222	PIVOT, ROCKER ARM	2							R
(A=EXXXXX)											
16	1	160690-11271	BOLT	2							
16-1	1	160890-11270	BOLT	2							F 1
(A=EZZZZZ)											
17	1	160690-11280	NUT, M6X0.5	2							
18	1	160890-11290	PLATE, GUIDE	1							
19	1	26216-080182	STUD, M8X 18	2							
19-1	1	26226-080182	STUD, M8X 18	2							N
(A=EZZZZZ)											
19-2	1	160890-04330	STUD, 2D8X18	2							R
(A=EXXXXX)											
20	1	160890-11300	BONNET ASSY, HEAD	1							
21	1	160890-11310	GASKET, BONNET	1							
21-1	1	160890-11311	GASKET	1							R
(A=EXXXXX)											
22	1	26106-060352	BOLT, M6X 35 PLATED	3							
23	1	720380-11570	COTTER	2							W 2
(A=EZZZZZ)											

Remarks

(1) Ref.No.13-1,14-1,15-1 & 16-1 interchangeable by set.

(2) Ref.No.10-1,11-1,13-2 & 23 interchangeable by set.

Fig.3. AIR CLEANER & MUFFLER

(A)=GA300SECMS1

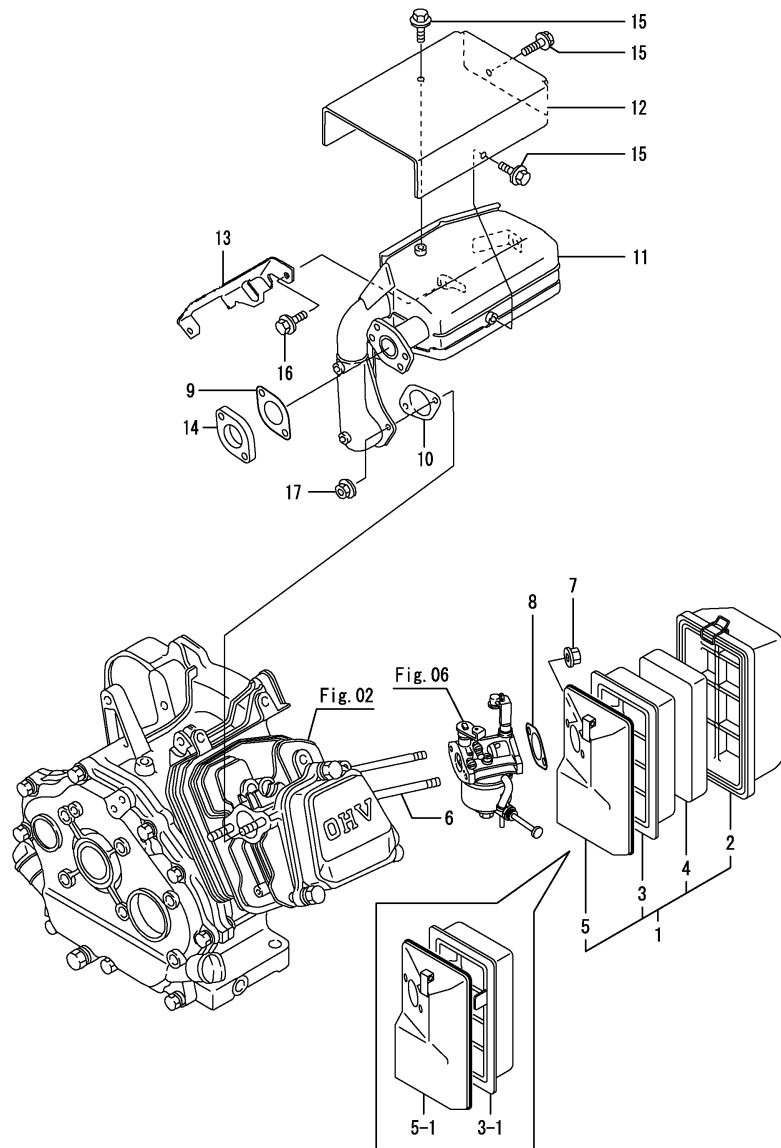
(B)=

(C)=

(D)=

(E)=

(F)=

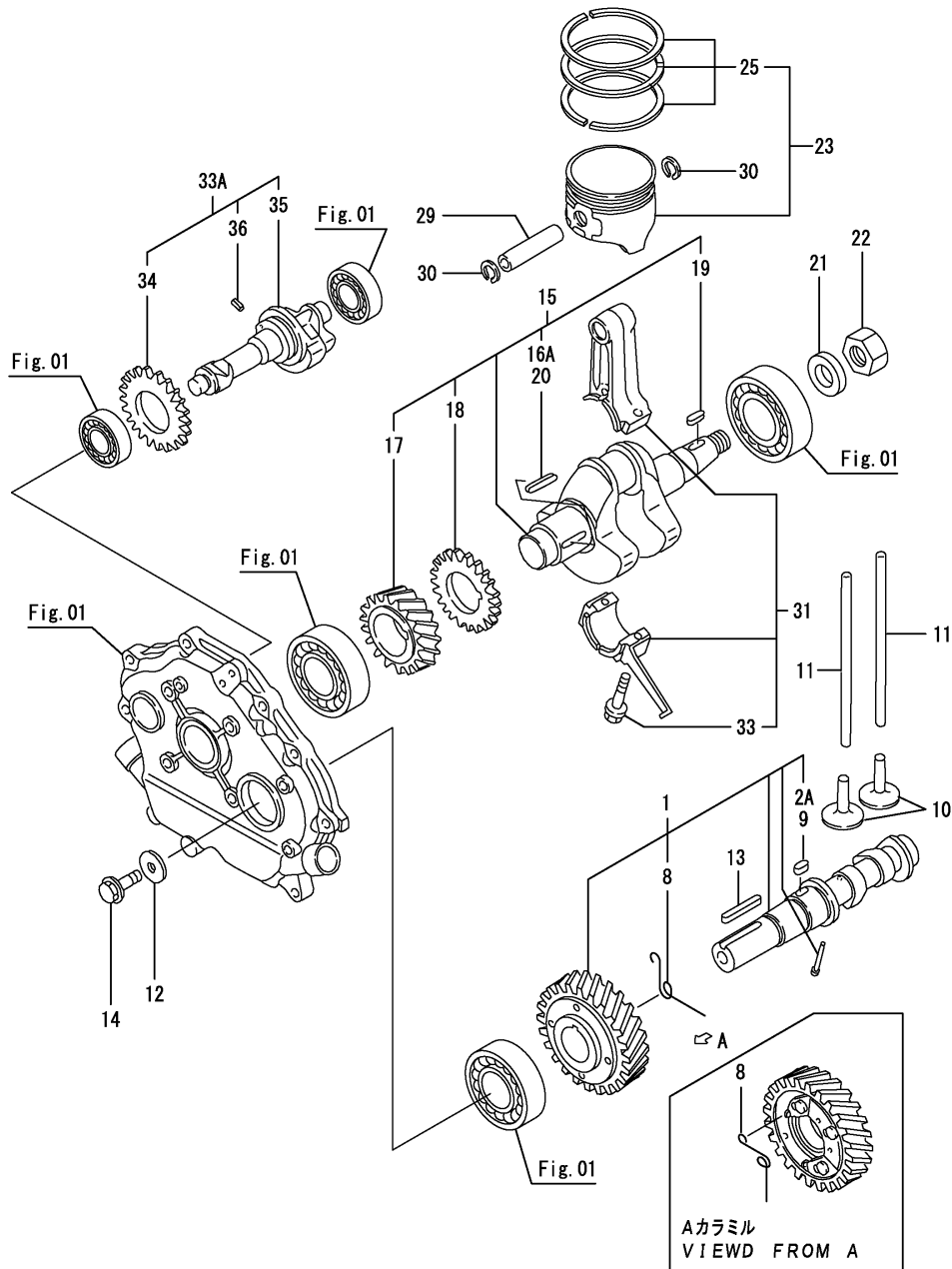


No.	Lev.	Parts No.	Description	Q'ty						I	R
				(A)	(B)	(C)	(D)	(E)	(F)		
1	1	160890-12500	CLEANER ASSY, AIR	1							
1-1	1	160890-12501	CLEANER ASSY, AIR	1							N
(A=E13240)											
2	2	160790-12510	COVER, AIR CREAMER	1							
3	2	160790-12530	HOLDER, ELEMENT	1							
3-1	2	160790-12531	HOLDER, ELEMENT	1							F 1
(A=E13240)											
4	2	160790-12540	ELEMENT	1							
5	2	160890-12520	CASE, AIR CLEANER	1							
5-1	2	160890-12521	CASE, AIR CLEANER	1							F 1
(A=E13240)											
6	1	26226-080802	STUD, M8X 80	2							
6-1	1	160890-04320	STUD, M8X 85	2							R
(A=E13240)											
6-2	1	160998-04340	STUD, 2D 8X 85	2							N
(A=E13240)											
7	1	26366-080002	NUT, M8	2							
7-1	1	160998-04330	NUT, M8	2							N
(A=E13240)											
8	1	160910-56150	GASKET, CARBURETOR	1							
8-1	1	160910-56151	GASKET, CARBURETOR	1							R
(A=E13240)											
9	1	114250-13201	GASKET, MUFFLER	1							
10	1	160890-13210	GASKET, MUFFLER	1							
10-1	1	160890-13211	GASKET, MUFFLER	1							N
(A=E13240)											
11	1	160891-13500	MUFFLER	1							
11-1	1	160891-13502	MUFFLER	1							N
(A=E13240)											
12	1	160890-13520	COVER	1							
13	1	160890-13570	BRACKET, MUFFLER	1							
14	1	114252-13900	FLANGE	1							
15	1	26106-060082	BOLT, M6X 8 PLATED	4							
16	1	26106-080142	BOLT, M8X 14 PLATED	1							
17	1	26366-080002	NUT, M8	2							

Remarks

(1) Ref.No.3-1 & 5-1 interchangeable by set.

Fig.4. CRANKSHAFT, PISTON & CAMSHAFT



(A)=GA300SECMS1

(B)=

(C)=

(D)=

(E)=

(F)=

No.	Lev.	Parts No.	Description	Q'ty						I	R
				(A)	(B)	(C)	(D)	(E)	(F)		
1	1	160890-14051	CAMSHAFT ASSY	1							
1-1	1	160890-14052	CAMSHAFT ASSY	1							N
(A=EXXXXX)											
2A	2	22512-050160	KEY, 5X 16	1							W
(A=EXXXXX)											
8	2	160890-14560	SPRING, DECOMPRESSION	1							
9	1	22512-050160	KEY, 5X 16	1							Z
(A=EXXXXX)											
10	1	160890-14200	TAPPET	2							
11	1	160890-14400	ROD, PUSH	2							
12	1	160310-14550	WASHER	1							
13	1	22512-070380	KEY, 7X 38	1							
14	1	26106-080202	BOLT, M8X 20 PLATED	1							
15	1	760890-21700	CRANKSHAFT ASSY	1							
16A	2	22512-040300	KEY, 4X 30	1							W
(A=EXXXXX)											
17	2	160890-21200	GEAR, CRANKSHAFT	1							
18	2	160890-21220	GEAR, BALANCER	1							
19	2	22512-040160	KEY, 4X 16	1							
20	2	22512-040300	KEY, 4X 30	1							Z
(A=EXXXXX)											
21	1	22137-160000	WASHER, 16	1							
22	1	26737-160002	NUT, M16	1							
23	1	160990-22011	PISTON ASSY	1							
25	2	760990-22502	RING SET, PISTON	1							
29	1	160890-22300	PIN, PISTON	1							
30	1	22252-000190	RING, 19	2							
31	1	760890-23700	ROD ASSY, CONNECTING	1							
33	2	160810-23201	BOLT, CONNECTING ROD	2							
33A	1	160890-28100	SHAFT ASSY, BALANCER	1							W
(A=E13240)											
34	1	160890-21220	GEAR, BALANCER	1							
35	1	160890-28010	SHAFT, BALANCER	1							
36	1	22351-040008	PIN, SPRING 4.0X 8	1							



Fig.5. FUEL TANK & FUEL PIPE

(A)=GA300SECMS1

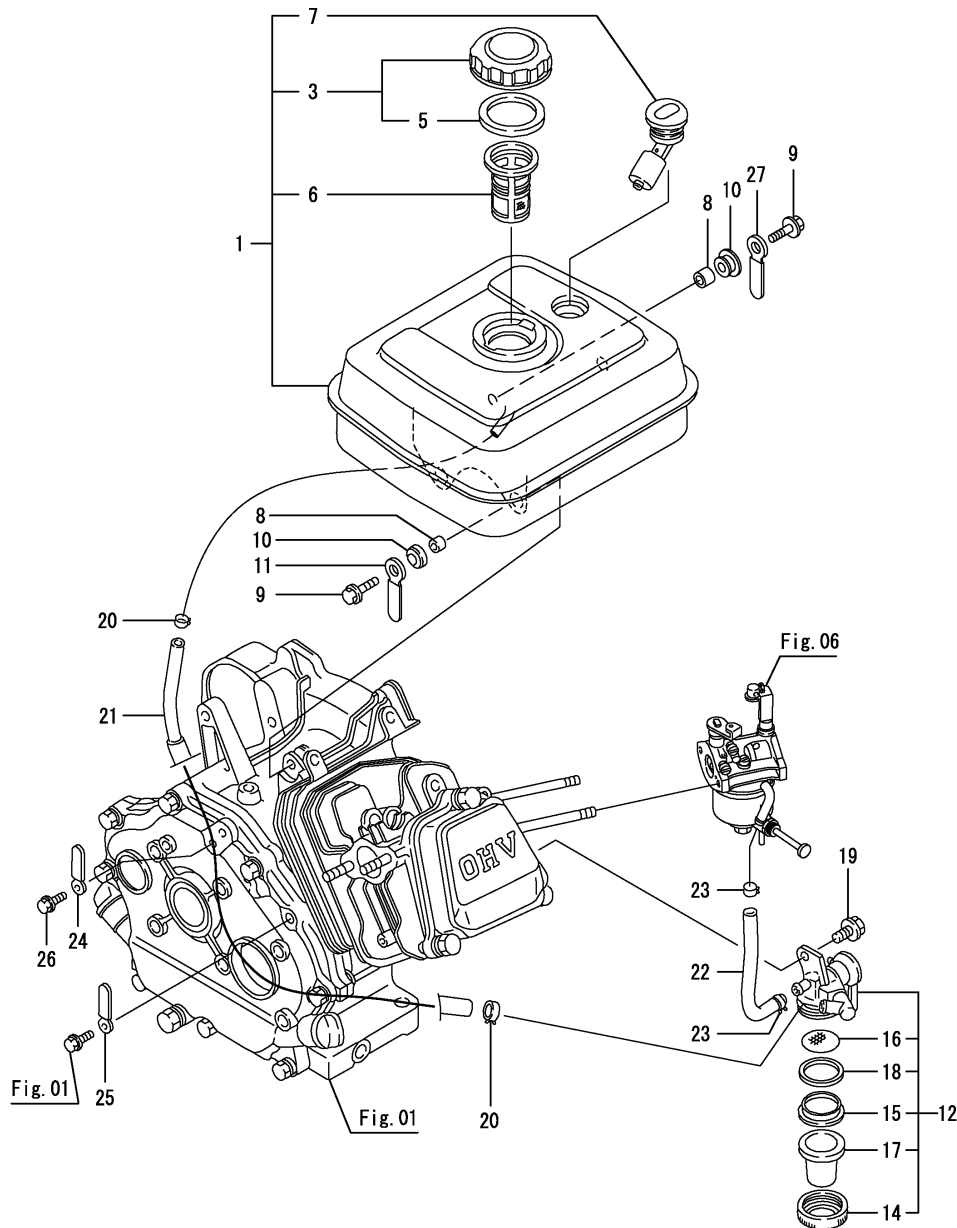
(B)=

(C)=

(D)=

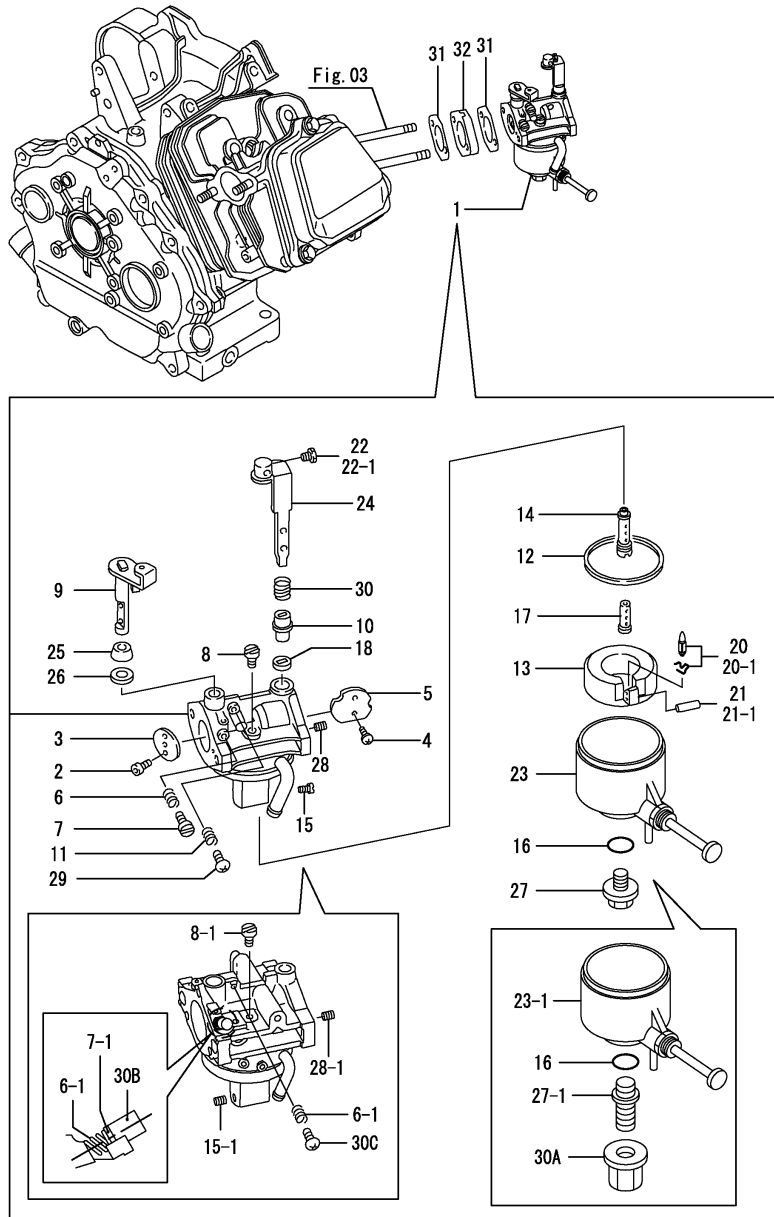
(E)=

(F)=



No.	Lev.	Parts No.	Description	Q'ty						I	R
				(A)	(B)	(C)	(D)	(E)	(F)		
1	1	760890-55730	TANK ASSY, FUEL	1							
3	2	160710-55061	CAP ASSY	1							
5	3	160393-55050	GASKET	1							
6	2	160610-55100	FILTER, FUEL	1							
7	2	160762-55150	GAUGE, FUEL	1							
7-1	2	160708-55150	GAUGE, FUEL	1							N
(A=E13240)											
8	1	114250-45310	COLLAR	4							
9	1	114370-45350	BOLT	4							
9-1	1	160690-55140	BOLT	4							N
(A=EXXXXX)											
10	1	160690-55461	DAMPER, FUEL TANK	4							
10-1	1	160690-55462	DAMPER, FUEL TANK	4							N
(A=EXXXXX)											
11	1	160710-78710	CLAMP, CORD	1							
12	1	160692-55300	COCK ASSY, FUEL	1							
12-1	1	160692-55301	COCK ASSY, FUEL	1							N
(A=E24770)											
14	2	160710-55360	RING	1							
14-1	2	160810-55570	RING	1							N
(A=E24770)											
15	2	160710-55370	GASKET	1							
15-1	2	160810-55560	GASKET	1							N
(A=E24770)											
16	2	160710-55381	FILTER, FUEL	1							
16-1	2	160810-55550	FILTER, FUEL	1							N
(A=E24770)											
17	2	160710-55390	CUP, FUEL COCK L37	1							
17-1	2	160810-55540	CUP, FUEL COCK L37	1							N
(A=E24770)											
18	2	160692-55421	PLATE	1							
19	1	26106-060102	BOLT, M6X 10 PLATED	1							
20	1	106990-44660	CLIP, HOSE 12.5	2							
20-1	1	119520-03990	CLIP, HOSE 10.5	2							R
(A=EXXXXX)											
21	1	160920-59350	PIPE, FUEL	1							
21-1	1	160920-59351	HOSE, FUEL A-510	1							N
(A=EXXXXX)											
22	1	160769-59370	PIPE, FUEL L=203	1							
22-1	1	160769-59371	PIPE, FUEL L=203	1							N
(A=EXXXXX)											
23	1	124060-77680	CLIP, HOSE 10	2							
23-1	1	114270-59010	CLIP, HOSE 12	2							N
(A=EXXXXX)											
24	1	160260-78700	CLAMP	1							
25	1	160820-78710	CLAMP, CORD	1							
26	1	26106-060082	BOLT, M6X 8 PLATED	1							
27	1	160802-78270	CLAMP, CORD	1							W
(A=EXXXXX)											

Fig.6. CARBURETOR



(A)=GA300SECMS1

(B)=

(C)=

(D)=

(E)=

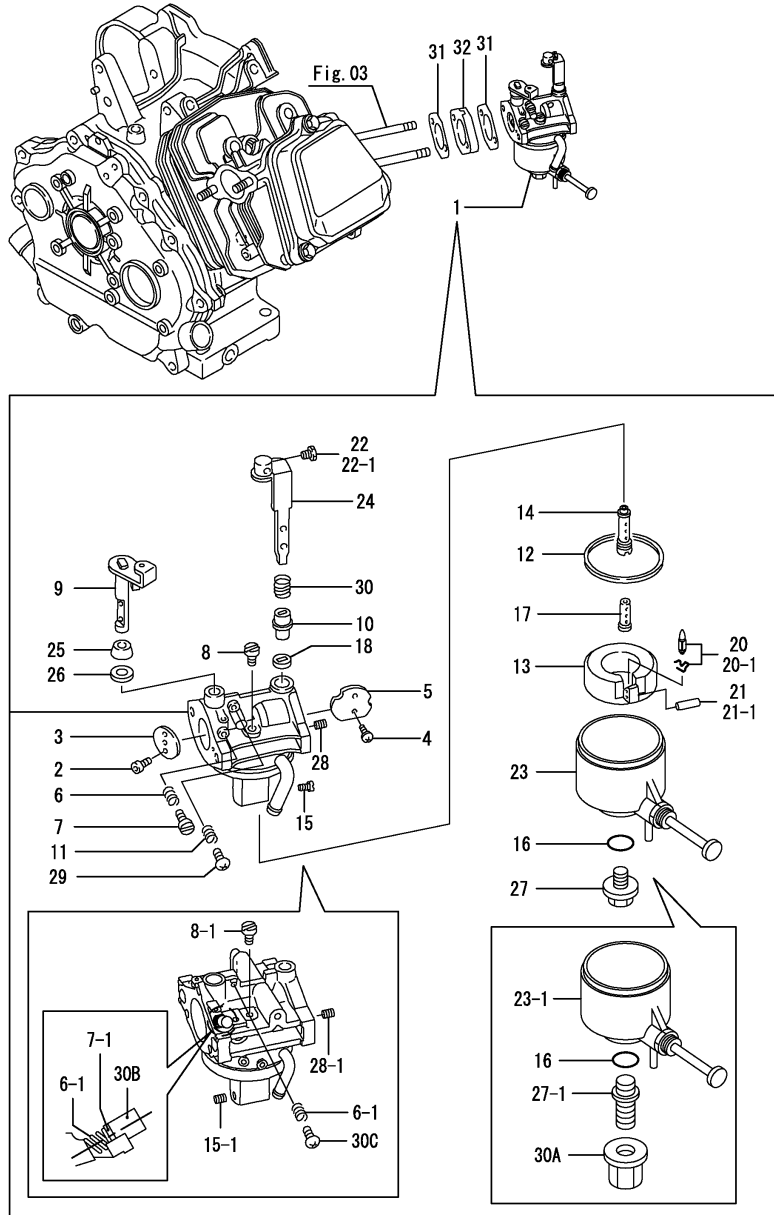
(F)=

No.	Lev.	Parts No.	Description	Q'ty						I	R
				(A)	(B)	(C)	(D)	(E)	(F)		
1	1	160891-56041	CARBURETOR ASSY	1							
1-1	1	160891-57010	CARBURETOR ASSY	1							N
(A=EXXXXX)											
2	2	160690-56560	SCREW	2							
3	2	160992-56520	VALVE, THROTTLE	1							
4	2	160690-56570	SCREW	2							
5	2	160992-56530	VALVE, CHOKE	1							
6	2	181230-56380	SPRING	1							
6-1	2	181230-56380	SPRING	2							K
(A=EXXXXX)											
7	2	160667-56750	ADJUSTER	1							
7-1	2	160890-57610	ADJUSTER	1							S
(A=EXXXXX)											
8	2	160330-56740	JET, PILOT	1							
8-1	2	160593-57750	JET, PILOT	1							S
(A=EXXXXX)											
9	2	160992-56550	SHAFT, THROTTLE	1							
10	2	160890-56700	RING, CHOKE LEVER	1							
11	2	181230-56380	SPRING	1							
12	2	160210-56610	WASHER	1							
13	2	160890-56620	FLOAT ASSY	1							
14	2	160998-56550	NOZZLE, MAIN	1							
15	2	160792-56571	JET, MAIN	1							
15-1	2	160890-57600	JET, MAIN	1							S
(A=EXXXXX)											
16	2	160893-56660	O-RING	1							
17	2	160790-56571	NOZZLE	1							
18	2	160810-56580	RING, CHOKE SHAFT	1							
20	2	160792-56670	VALVE ASSY, NEEDLE	1							1
20-1	2	160890-56790	VALVE, INJECTION	1							S 1
(A=EXXXXX)											
21	2	160610-56630	PIN, FLOAT	1							
21-1	2	160690-56630	PIN, FLOAT	1							S
(A=EXXXXX)											
22	2	26117-040088	BOLT M 4X 8 PLATED	1							
22-1	2	160692-56500	BOLT	1							S
(A=EXXXXX)											
23	2	160893-56430	BODY, FLOAT	1							
23-1	2	160798-57760	BODY, FLOAT	1							S
(A=EXXXXX)											
24	2	160891-56520	LEVER, CHOKE	1							
25	2	160702-56720	RING	1							
26	2	160640-56850	SEAL	1							
27	2	160891-56750	BOLT	1							
27-1	2	160790-57700	STUD	1							S
(A=EXXXXX)											
28	2	160790-56610	BOLT	1							
28-1	2	160890-56610	JET, PILOT	1							S
(A=EXXXXX)											
29	2	160692-56710	SCREW	1							
30	2	160891-56540	SPRING, CHOKE	1							

Remarks

(1) Spare parts.

# Fig.6. CARBURETOR



(A)=GA300SECMS1

(B)=

(C)=

(D)=

(E)=

(F)=

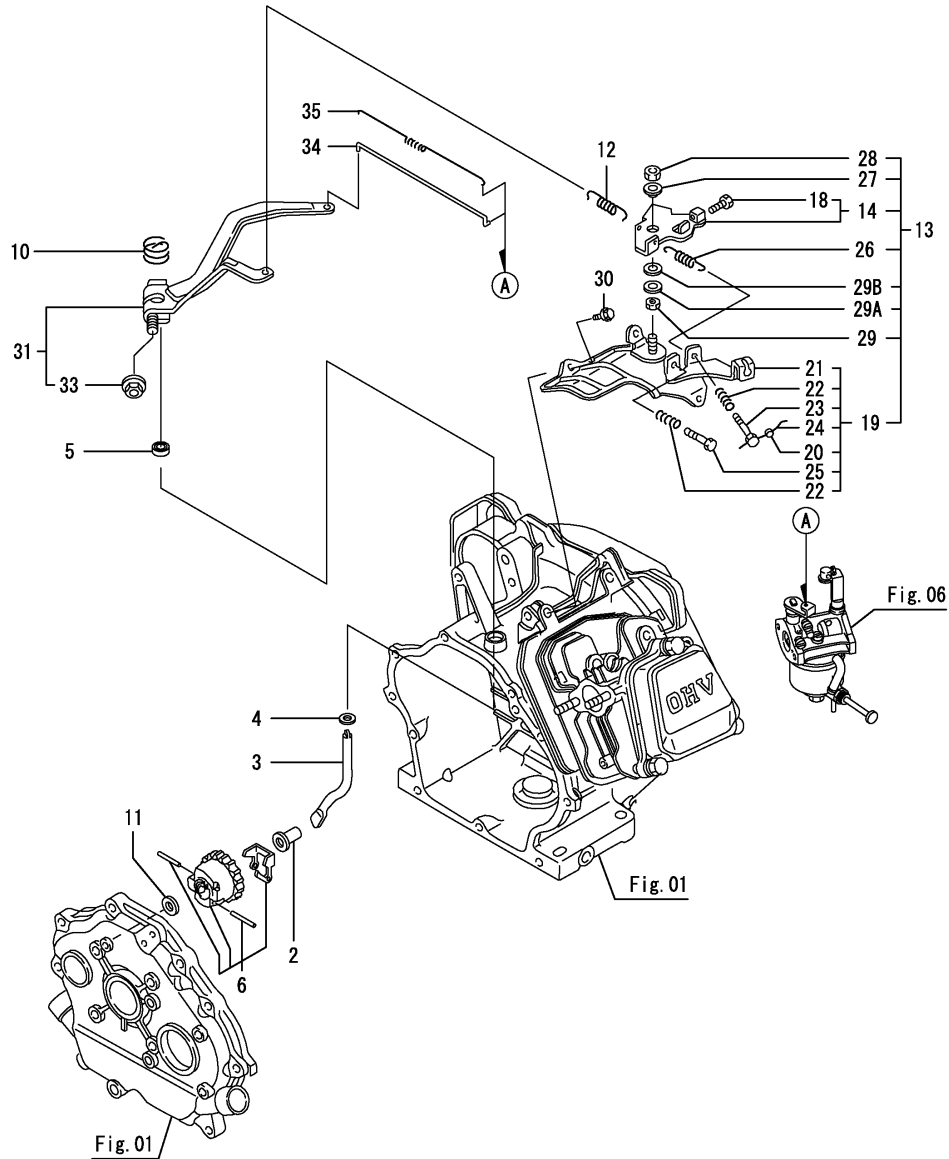
No.	Lev.	Parts No.	Description	Q'ty						I	R
				(A)	(B)	(C)	(D)	(E)	(F)		
30A	2	160692-56400 (A=EXXXXX)	NUT	1							W
30B	2	160691-56800 (A=EXXXXX)	CAP	1							W
30C	2	160610-56900 (A=EXXXXX)	SCREW	1							W
31	1	160910-56150	GASKET, CARBURETOR	2							
31-1	1	160910-56151 (A=EXXXXX)	GASKET, CARBURETOR	2							N
32	1	160890-56160	INSULATOR	1							

Remarks

(1) Spare parts.

N:Old  $\xrightarrow{\text{Yes}}$  New, Q:Old  $\xrightarrow{\text{No}}$  New, R:Old  $\xrightarrow{\text{Yes}}$  New, S:Old  $\xrightarrow{\text{No}}$  New, W:Add, Z:Discontinued, F:Interchangeable by set, K:Q'ty Change

Fig.7. GOVERNOR & CONTROLL DEVICE



(A)=GA300SECMS1

(B)=

(C)=

(D)=

(E)=

(F)=

No.	Lev.	Parts No.	Description	Q'ty						I	R
				(A)	(B)	(C)	(D)	(E)	(F)		
2	1	160690-61301	SPINDLE	1							
3	1	160690-61311	SHAFT	1							
4	1	160690-61450	WASHER	1							
5	1	114770-61600	SEAL, OIL	1							
6	1	160690-61600	GEAR ASSY, GOVERNOR	1							
10	1	160890-66050	SPRING, RETURN	1							
11	1	160120-76940	WASHER	1							
12	1	160890-66010	SPRING, GOVERNOR	1							
13	1	160792-66110	CONTROLLER ASSY	1							
14	2	160692-66051	LEVER ASSY, CONTROL	1							
18	3	26117-040088	BOLT M 4X 8 PLATED	1							
19	2	160792-66120	BASE ASSY	1							
20	3	135210-61090	LEAD	1							
20-1	3	114780-61090	TIN	1							N
(A=E14871)											
21	3	160890-66142	BASE ASSY	1							
22	3	160520-66291	SPRING	2							
23	3	160910-66440	BOLT, ADJUSTER	1							
24	3	22451-060000	WIRE, 0.6	1							
24-1	3	22451-060000	WIRE, 0.6	10							K
(A=EXXXXX)											
25	3	26117-040257	BOLT, M4X 25 PLATED	1							
26	2	160664-66220	SPRING, RETURN	1							
27	2	160670-66350	COLLAR	1							
28	2	26347-060002	NUT, M6	1							
29	2	26757-060002	NUT, LOCK M6	1							
29A	1	160120-76940	WASHER	1							W
(A=E24766)											
29B	1	22137-060000	WASHER, 6	1							W
(A=E24766)											
30	1	26476-060142	SCREW, TAPPING M6X14	3							
31	1	160890-66190	LEVER ASSY, GOVERNOR	1							
33	2	26366-060002	NUT, M6	1							
34	1	160690-66200	LINK, THROTTLE	1							
35	1	160690-66210	SPRING, TENSION	1							

Fig.8. FLY.MAGNETO & STRTING DEVICE

(A)=GA300SECMS1

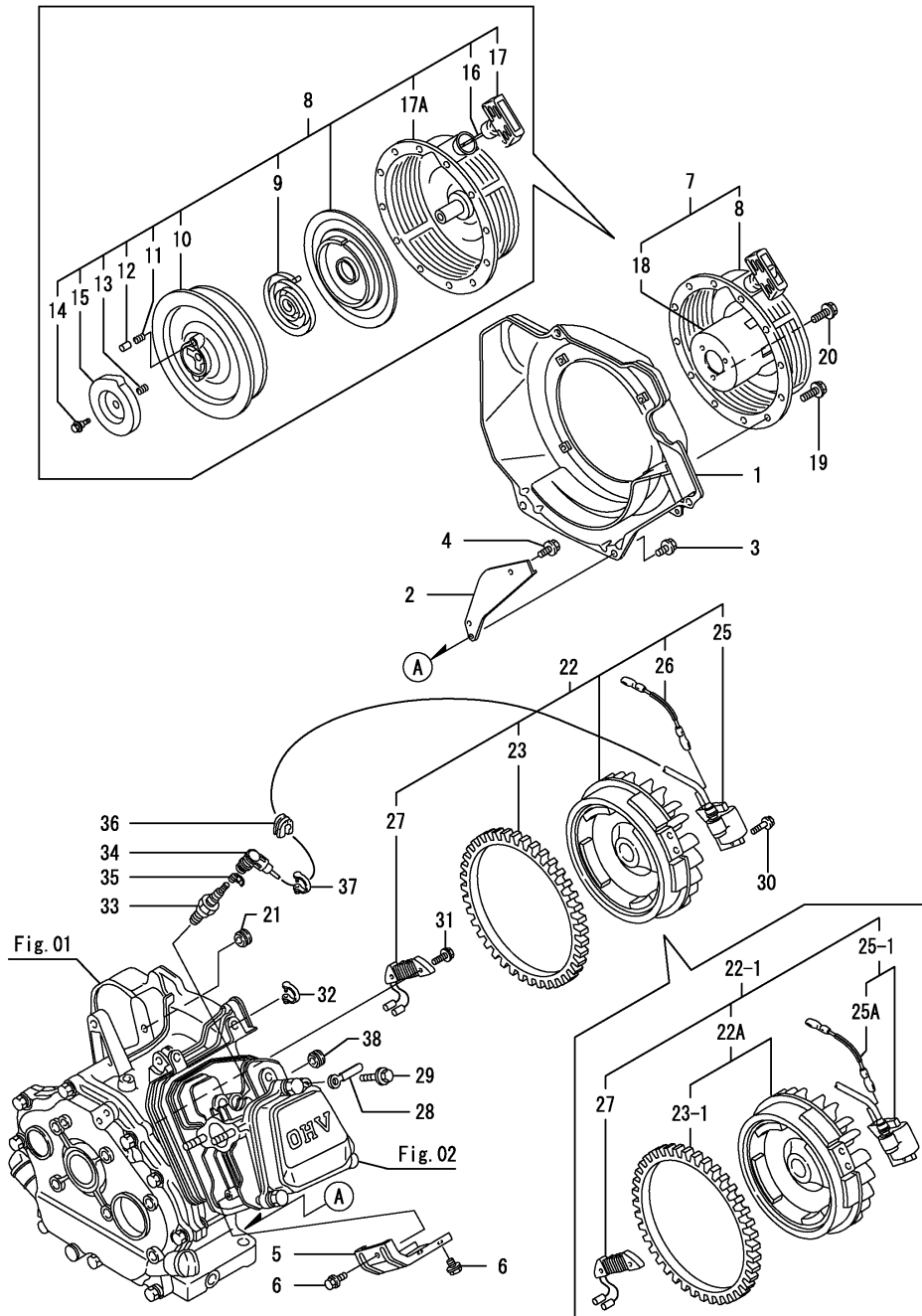
(B)=

(C)=

(D)=

(E)=

(F)=



No.	Lev.	Parts No.	Description	Q'ty						I	R
				(A)	(B)	(C)	(D)	(E)	(F)		
1	1	160992-45110-1	CASE, COOLING FAN	1							
1-1	1	160992-45111-1	CASE, COOLING FAN	1							R
(A=EXXXXX)											
2	1	160890-45210	COVER	1							Z
3	1	26476-060142	SCREW, TAPPING M6X14	4							
4	1	26476-060142	SCREW, TAPPING M6X14	1							Z
5	1	160890-45200	COVER, HEAD	1							
6	1	26476-060142	SCREW, TAPPING M6X14	2							
7	1	160890-76050	STARTER ASSY, RECOIL	1							
8	2	160890-76250	STARTER ASSY, RECOIL	1							
9	3	160890-76510	SPRING, SPIRAL	1							
10	3	160890-76520	REEL	1							
11	3	160890-76530	SPRING, DOG	1							
11-1	3	160890-76530	SPRING, DOG	2							K
(A=EXXXXX)											
12	3	160890-76540	DOG	1							
12-1	3	160890-76540	DOG	2							K
(A=EXXXXX)											
13	3	160890-76550	SPRING, BRAKE	1							
14	3	160641-76570	SCREW	1							
15	3	160890-76570	RETAINER	1							
16	3	160890-76580	ROPE, STARTER	1							
17	3	160260-76620	KNOB, STARTER	1							
17A	3	160890-76600	CASE ASSY	1							W
(A=EXXXXX)											
18	2	160890-76590	PULLEY, STARTER	1							
19	1	26106-060082	BOLT, M6X 8 PLATED	4							
20	1	26106-060122	BOLT, M6X 12 PLATED	3							
21	1	160341-01950	PIPE	1							Z
(A=EXXXXX)											
22	1	160998-78060	MAGNETIC ASSY	1							
22-1	1	160998-78061	MAGNETIC ASSY	1							R
(A=EXXXXX)											
22A	2	160998-78761	ROTOR ASSY	1							W
(A=EXXXXX)											
23	3	160791-78150	GEAR, RING	1							
23-1	3	160891-78171	GEAR, RING	1							N
(A=EXXXXX)											
25	2	160791-78522	COIL, IGNITION	1							
25-1	2	160998-78400	IGNITER	1							N
(A=EXXXXX)											
25A	3	160690-78230	WIRE	1							W
(A=EXXXXX)											
26	2	160690-78230	WIRE	1							Z
(A=EXXXXX)											
27	2	160791-78650	COIL, CHARGE	1							
28	1	160710-78710	CLAMP, CORD	1							
29	1	26476-060142	SCREW, TAPPING M6X14	1							Z
(A=EXXXXX)											
30	1	26476-060252	SCREW, TAPPING M6X25	2							
30-1	1	160690-04350	BOLT, M6X30	2							R

Fig.8. FLY.MAGNETO & STRTING DEVICE

(A)=GA300SECMS1

(B)=

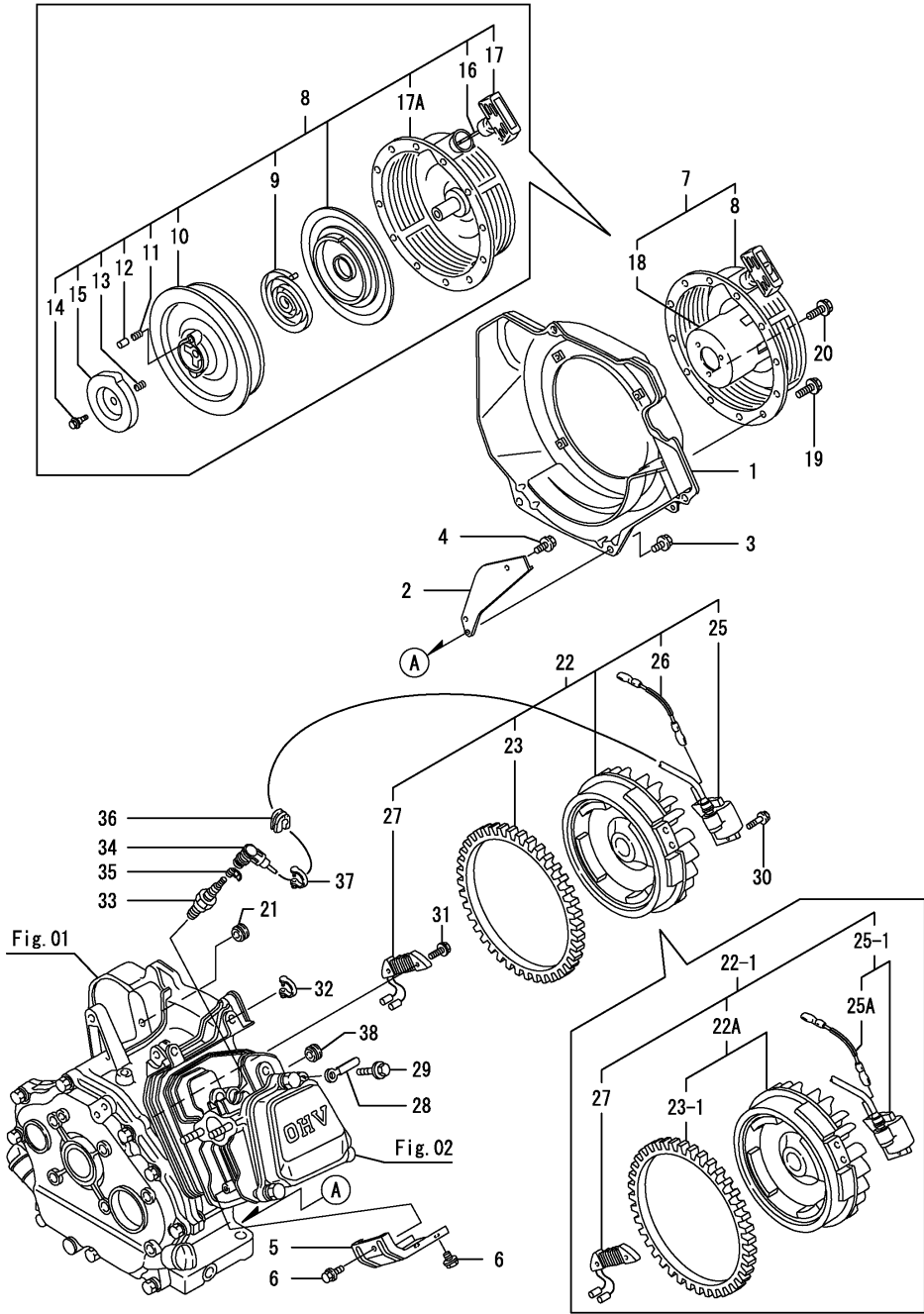
(C)=

(D)=

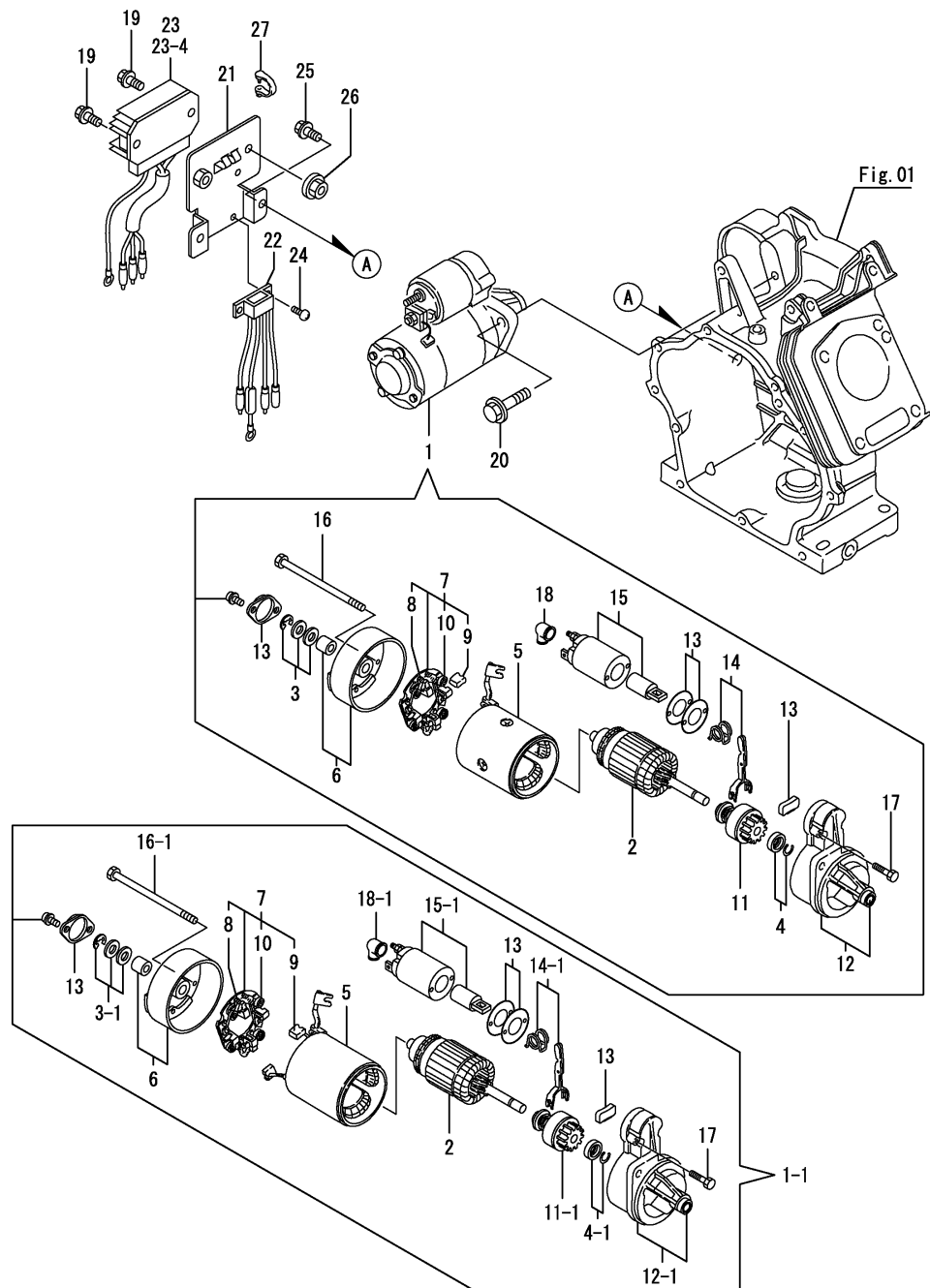
(E)=

(F)=

No.	Lev.	Parts No.	Description	Qty						I	R
				(A)	(B)	(C)	(D)	(E)	(F)		
(A=E14769)											
31	1	26476-060252	SCREW, TAPPING M6X25	2							
32	1	29610-000650	CLAMP, SPEED 065	1							
33	1	160793-78010	PLUG, SPARK	1							
34	1	160700-78040	CAP, PLUG	1							
34-1	1	160700-78041	CAP, PLUG	1							N
(A=E14769)											
35	1	160700-78050	TERMINAL, PLUG	1							
36	1	160700-78720	GROMMET	1							
37	1	29610-000950	CLAMP, SPEED 095	1							Z
(A=E14769)											
38	1	160763-12600	GROMMET	1							W
(A=E14769)											



# Fig.9. STARTING MOTOR



(A)=GA300SECMS1

(B)=

(C)=

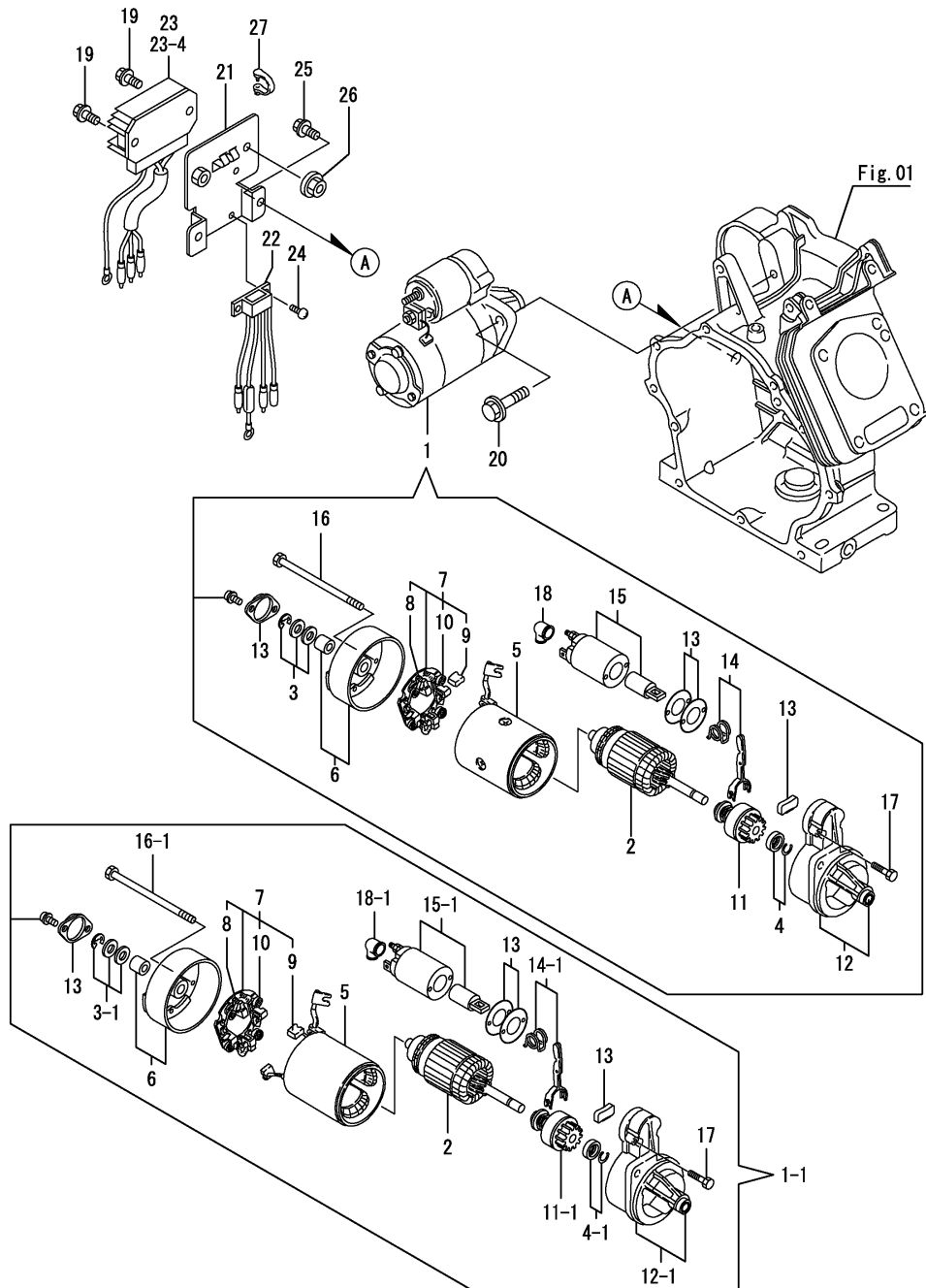
(D)=

(E)=

(F)=

No.	Lev.	Parts No.	Description	Qty						I	R
				(A)	(B)	(C)	(D)	(E)	(F)		
1	1	114351-77011	STARTER	1							
1-1	1	160891-77020	STARTER ASSY	1							S
(A=EXXXXX)											
2	2	114371-77110	ARMATURE	1							
3	2	X21148110	WASHER SET, THRUST	1							
3-1	2	X2114811000	WASHER SET, THRUST	1							S
(A=EXXXXX)											
4	2	X21147155	STOPPER SET, PINION	1							
4-1	2	X2114715500	STOPPER SET, PINION	1							S
(A=EXXXXX)											
5	2	114371-77130	COIL ASSY, FIELD	1							
6	2	114371-77140	COVER ASSY, REAR	1							
7	2	114371-77160	HOLDER ASSY, BRUSH	1							
8	3	114371-79040	BRUSH	2							
9	3	114371-79050	BRUSH	1							
10	3	114371-79060	SPRING	4							
11	2	X211445504	PINION ASSY	1							
11-1	2	160891-77750	PINION ASSY	1							S
(A=EXXXXX)											
12	2	114371-77150	CASE ASSY,GEAR	1							
12-1	2	160891-77760	CASE ASSY,GEAR	1							S
(A=EXXXXX)											
13	2	114371-77170	COVER ASSY, DUST	1							
14	2	X211456013	LEVER KIT, SHIFT	1							
14-1	2	114371-77180	LEVER KIT, SHIFT	1							S
(A=EXXXXX)											
15	2	X211427501	SWITCH, MAGNETIC	1							
15-1	2	124298-77020	SWITCH, MAGNETIC	1							S
(A=EXXXXX)											
16	2	X211468005	BOLT, THROUGH	2							
16-1	2	124195-77770	BOLT	2							S
(A=EXXXXX)											
17	2	114371-79070	BOLT	2							
18	2	X21142742	COVER (A), RUBBER	1							
18-1	2	X2114274200	COVER (A), RUBBER	1							S
(A=EXXXXX)											
19	1	26106-060202	BOLT, M6X 20 PLATED	2							
20	1	26106-100302	BOLT, M10X 30 PLATED	2							
21	1	160891-77310	BRACKET, ELECTRIC	1							
22	1	160891-77490	HARNESS, WIRE	1							
23	1	160715-77520	REGULATOR	1							
23-1	1	160715-77521	REGULATOR	1							N
23-2	1	160715-77522	REGULATOR, RS2727	1							N
(A=EXXXXX)											
23-3	1	160715-77522	REGULATOR, RS2727	1							Z
(A=EXXXXX)											
23-4	1	183232-77521	REGULATOR, RS2728	1							W
(A=EXXXXX)											
23-5	1	160998-77530	REGULATOR ASSY	1							N
(A=*2009.12)											
24	1	26023-040102	SCREW, M4X10	2							

# Fig.9. STARTING MOTOR



(A)=GA300SECMS1

(B)=

(C)=

(D)=

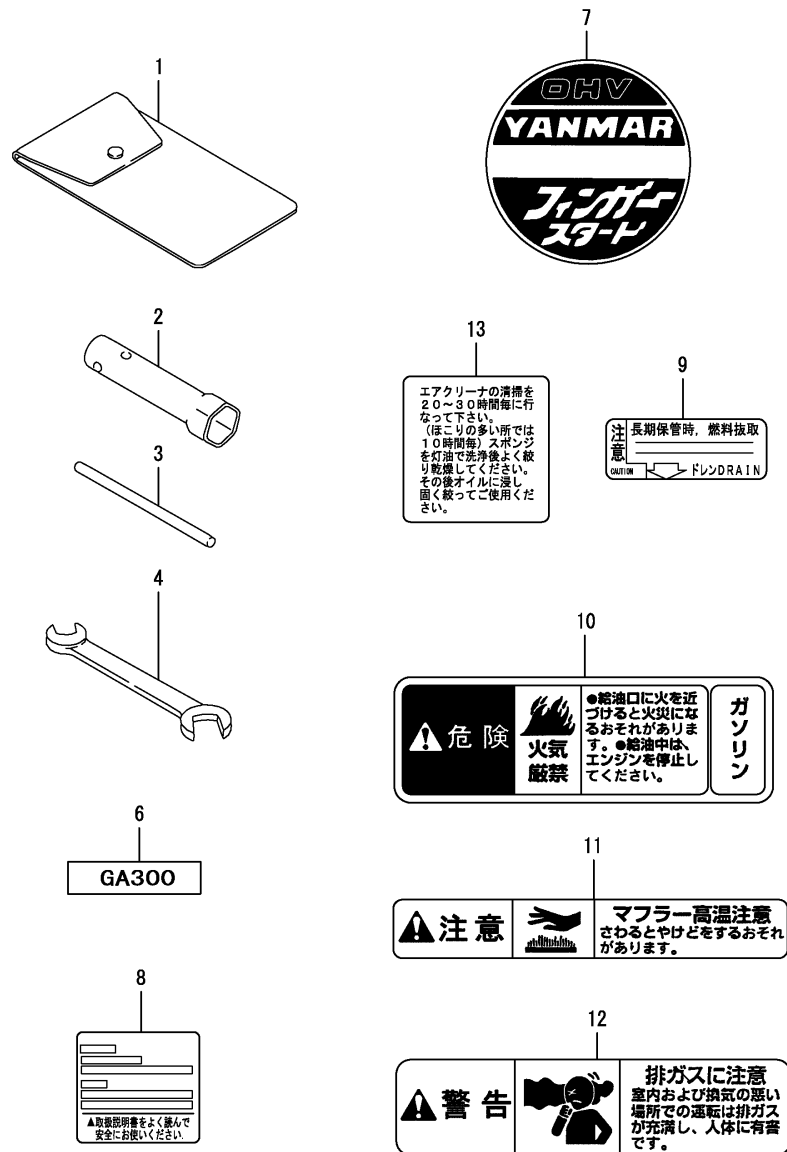
(E)=

(F)=

No.	Lev.	Parts No.	Description	Q'ty						I	R
				(A)	(B)	(C)	(D)	(E)	(F)		
25	1	26106-080142	BOLT, M8X 14 PLATED	2							
26	1	26366-060002	NUT, M6	1							
27	1	29610-000650	CLAMP, SPEED 065	1							



Fig.10. LABEL & TOOL



(A)=GA300SECMS1

(B)=

(C)=

(D)=

(E)=

(F)=

No.	Lev.	Parts No.	Description	Qty						I	R	
				(A)	(B)	(C)	(D)	(E)	(F)			
1	1	160110-92610	BAG, TOOL	1								
2	1	160120-92700	WRENCH, 21 L86	1								
3	1	160110-92710	HANDLE, WRENCH	1								
4	1	28110-100120	SPANNER, 10X12	1								
6	1	160990-07040	LABEL, MODEL	1								Z
(A=EXXXXX)												
7	1	160690-07100	LABEL, OHV MARK	1								
7-1	1	160990-07140	LABEL, OHV MARK	1								N
(A=EXXXXX)												
8	1	160692-07250	LABEL, CAUTION	1								
8-1	1	160692-07251	LABEL, CAUTION	1								R
(A=EXXXXX)												
9	1	160520-07272	LABEL, DRAIN	1								
9-1	1	160690-07260	LABEL, DRAIN	1								R
(A=EXXXXX)												
10	1	160690-07320	LABEL,NO FIRE	1								
11	1	105250-07330	LABEL	1								
12	1	105250-07340	LABEL,EXH.GAS CAUTN	1								
13	1	160520-07370	LABEL, CLEANER	1								

## Parts No. Index

Parts No.	Fig. No.	Ref. No.
104200-59170	1	5
		16
105250-07330	10	11
105250-07340	10	12
106990-44660	5	20
114250-13201	3	9
114250-45310	5	8
114252-13900	3	14
114270-01600	1	6
114270-59010	5	23 -1
114351-77011	9	1
114370-45350	5	9
114371-77110	9	2
114371-77130	9	5
114371-77140	9	6
114371-77150	9	12
114371-77160	9	7
114371-77170	9	13
114371-77180	9	14 -1
114371-79040	9	8
114371-79050	9	9
114371-79060	9	10
114371-79070	9	17
114770-61600	7	5
114780-61090	7	20 -1
119520-03990	5	20 -1
124060-77680	5	23
124195-77770	9	16 -1
124298-77020	9	15 -1
129900-26250	1	8 -1
		12 -1
135210-61090	7	20
160110-02220	1	7
		13
160110-92610	10	1
160110-92710	10	3
160120-76940	7	11
		29 A
160120-92700	10	2
160210-56610	6	12
160260-76620	8	17
160260-78700	5	24
160310-14550	4	12
160330-56740	6	8
160341-01950	8	21
160393-55050	5	5
160520-07272	10	9
160520-07370	10	13
160520-66291	7	22
160593-57750	6	8 -1

Parts No.	Fig. No.	Ref. No.
160598-01710	1	22
160610-01690	1	4
		17
160610-03050	2	1
160610-55100	5	6
160610-56630	6	21
160610-56900	6	30 C
160640-56850	6	26
160641-76570	8	14
160664-66220	7	26
160667-56750	6	7
160670-66350	7	27
160690-04350	8	30 -1
160690-07100	10	7
160690-07260	10	9 -1
160690-07320	10	10
160690-11220	2	15
160690-11221	2	15 -1
160690-11222	2	15 -2
160690-11271	2	16
160690-11280	2	17
160690-55140	5	9 -1
160690-55461	5	10
160690-55462	5	10 -1
160690-56560	6	2
160690-56570	6	4
160690-56630	6	21 -1
160690-61301	7	2
160690-61311	7	3
160690-61450	7	4
160690-61600	7	6
160690-66200	7	34
160690-66210	7	35
160690-78230	8	25 A
		26
160691-56800	6	30 B
160692-07250	10	8
160692-07251	10	8 -1
160692-55300	5	12
160692-55301	5	12 -1
160692-55421	5	18
160692-56400	6	30 A
160692-56500	6	22 -1
160692-56710	6	29
160692-66051	7	14
160700-78040	8	34
160700-78041	8	34 -1
160700-78050	8	35
160700-78720	8	36
160702-56720	6	25

Parts No.	Fig. No.	Ref. No.
160708-55150	5	7 -1
160710-55061	5	3
160710-55360	5	14
160710-55370	5	15
160710-55381	5	16
160710-55390	5	17
160710-78710	5	11
	8	28
160715-77520	9	23
160715-77521	9	23 -1
160715-77522	9	23 -2
		23 -3
160762-55150	5	7
160763-12600	8	38
160769-59370	5	22
160769-59371	5	22 -1
160790-12510	3	2
160790-12530	3	3
160790-12531	3	3 -1
160790-12540	3	4
160790-56571	6	17
160790-56610	6	28
160790-57700	6	27 -1
160791-78150	8	23
160791-78522	8	25
160791-78650	8	27
160792-56571	6	15
160792-56670	6	20
160792-66110	7	13
160792-66120	7	19
160793-78010	8	33
160798-57760	6	23 -1
160802-78270	5	27
160810-01740	1	18
160810-11180	2	13
160810-23201	4	33
160810-55540	5	17 -1
160810-55550	5	16 -1
160810-55560	5	15 -1
160810-55570	5	14 -1
160810-56580	6	18
160820-03180	2	2
160820-78710	5	25
160890-01210	2	3
160890-04320	3	6 -1
160890-04330	2	19 -2
160890-11011	2	5
160890-11012	2	5 -1
160890-11100	2	10
160890-11101	2	10 -1

Parts No.	Fig. No.	Ref. No.
160890-11110	2	11
160890-11111	2	11 -1
160890-11120	2	12
160890-11180	2	13 -1
160890-11190	2	13 -2
160890-11200	2	14
160890-11202	2	14 -1
160890-11270	2	16 -1
160890-11290	2	18
160890-11300	2	20
160890-11310	2	21
160890-11311	2	21 -1
160890-12500	3	1
160890-12501	3	1 -1
160890-12520	3	5
160890-12521	3	5 -1
160890-13210	3	10
160890-13211	3	10 -1
160890-13520	3	12
160890-13570	3	13
160890-14051	4	1
160890-14052	4	1 -1
160890-14200	4	10
160890-14400	4	11
160890-14560	4	8
160890-21200	4	17
160890-21220	4	18
		34
160890-22300	4	29
160890-28010	4	35
160890-28100	4	33 A
160890-45200	8	5
160890-45210	8	2
160890-56160	6	32
160890-56610	6	28 -1
160890-56620	6	13
160890-56700	6	10
160890-56790	6	20 -1
160890-57600	6	15 -1
160890-57610	6	7 -1
160890-66010	7	12
160890-66050	7	10
160890-66142	7	21
160890-66190	7	31
160890-76050	8	7
160890-76250	8	8
160890-76510	8	9
160890-76520	8	10
160890-76530	8	11
		11 -1

## Parts No. Index

Parts No.	Fig. No.	Ref. No.
160890-76540	8	12
		12 -1
160890-76550	8	13
160890-76570	8	15
160890-76580	8	16
160890-76590	8	18
160890-76600	8	17 A
160891-13500	3	11
160891-13502	3	11 -1
160891-56041	6	1
160891-56520	6	24
160891-56540	6	30
160891-56750	6	27
160891-57010	6	1 -1
160891-77020	9	1 -1
160891-77310	9	21
160891-77490	9	22
160891-77750	9	11 -1
160891-77760	9	12 -1
160891-78171	8	23 -1
160893-56430	6	23
160893-56660	6	16
160903-28020	1	9
		14
160910-56150	3	8
	6	31
160910-56151	3	8 -1
	6	31 -1
160910-66440	7	23
160920-59350	5	21
160920-59351	5	21 -1
160990-01330	2	4
160990-01331	2	4 -1
160990-07040	10	6
160990-07140	10	7 -1
160990-22011	4	23
160992-45110-1	8	1
160992-45111-1	8	1 -1
160992-56520	6	3
160992-56530	6	5
160992-56550	6	9
160998-04330	3	7 -1
160998-04340	3	6 -2
160998-56550	6	14
160998-77530	9	23 -5
160998-78060	8	22
160998-78061	8	22 -1
160998-78400	8	25 -1
160998-78761	8	22 A
181230-56380	6	6

Parts No.	Fig. No.	Ref. No.
181230-56380	6	6 -1
		11
183232-77521	9	23 -4
22137-060000	7	29 B
22137-160000	4	21
22252-000190	4	30
22351-040008	4	36
22451-060000	7	24
		24 -1
22512-040160	4	19
22512-040300	4	16 A
		20
22512-050160	4	2 A
		9
22512-070380	4	13
24101-062060	1	8
		12
24311-000100	1	24
24311-000180	1	20
26023-040102	9	24
26106-060082	3	15
		5
		26
		8
		19
26106-060102	5	19
26106-060122	8	20
26106-060202	9	19
26106-060352	2	22
26106-080142	3	16
		9
		25
26106-080202	4	14
26106-080302	1	21
26106-100162	1	25
26106-100302	9	20
26117-040088	6	22
		7
		18
26117-040257	7	25
26216-080182	2	19
26226-080182	2	19 -1
26226-080802	3	6
26347-060002	7	28
26366-060002	7	33
		9
		26
26366-080002	3	7
		17
26476-060142	7	30
	8	3
		4
		6
		29
26476-060252	8	30

Parts No.	Fig. No.	Ref. No.
26476-060252	8	31
26737-160002	4	22
26757-060002	7	29
28110-100120	10	4
29610-000650	8	32
	9	27
29610-000950	8	37
720380-11570	2	23
760792-01400	1	10
760792-01501	1	10 -1
760792-01502	1	10 -2
760890-21700	4	15
760890-23700	4	31
760890-55730	5	1
760990-22502	4	25
760991-01560	1	1
X21142742	9	18
X2114274200	9	18 -1
X211427501	9	15
X211445504	9	11
X211456013	9	14
X211468005	9	16
X21147155	9	4
X2114715500	9	4 -1
X21148110	9	3
X2114811000	9	3 -1

Parts No.	Fig. No.	Ref. No.
-----------	----------	----------