

0CD10-M54501EN

P R E F A C E

1. This parts catalog is the last edition of 3TNE82A-DGD for DENYO CO.,LTD.

Pub.No. : 0CD10-G54501
Published : August, 2009

2. Model name

Engine model	Vehicle	Vehicle made by
3TNE82A-DGD	GENERATOR	DENYO CO.,LTD

Directions for the Parts Catalog.

1. This Parts Catalog shows both standard and optional parts.
2. Parts may change without prior notice.
3. The following is an example of the Parts Catalog format.

REF.	LEV.	PARTS NO.	DESCRIPTION	Q'TY						I	R
				(A)	(B)	(C)	(D)	(E)	(F)		
1	1	729595-51390	FUEL INJECTION PUMP	1	1	1	1	1			1
1-1	1	729595-51391	FUEL INJECTION PUMP	1	1	1	1	1		N	1
		(A=E00185) (B=E00200)									
3	2	26022-060162	SCREW M 6X 16	9	9	9	9	9			
3-1	2	26022-060162	SCREW M 6X 16	4	4	4	4	4		K	
		(A=E00156) (B=E00156) (C=E00156) (D=E00156) (E=E00156)									
4	2	129470-51040	CAMSHAFT	1	1	1	1	1			
5	2	122710-51050	BEARING, ROLLER	2	2	2	2	2			
6	2	129470-51060	RETAINER	1	1	1	1	1			

Remarks
(1) BOOST COMPEMSATOR TYPE. OPTIONAL PART, TO E00155,(4JH-DT, 4JH-DTZ

① Ref. No.

The Ref. No. listed may not be in accordance with the illustration Ref. No.

(Ex.) Illustration No.

List Ref No.

1

1

(Before change)

1-1

(After change)

For interchangeable symbols N, R and K, illustrations for new parts may be abbreviated.

② Lev. (Level)

Level indication

The numbers below indicate the level of relativity towards the main part.

1 ----- Main parts (Assembly parts)

2 ----- Sub component included in " 1 ".

3 ----- Sub component included in " 2 ".

Note) Parts that are not for sale are partially illustrated but not listed.

③ Interchangeability Symbol

When a part change takes place, one of the following interchangeability symbols is indicated beside the part.

Symbol	Interchangeability	Contents note
N	Old $\begin{matrix} \leftarrow \text{Yes} \\ \text{No} \rightarrow \end{matrix}$ New	New Part is interchangeable for Old Part but Old Part is not interchangeable for New Part.
Q	Old $\begin{matrix} \leftarrow \text{No} \\ \text{Yes} \rightarrow \end{matrix}$ New	New Part is not interchangeable for Old Part but Old Part is interchangeable for New Part.
R	Old $\begin{matrix} \leftarrow \text{Yes} \\ \text{Yes} \rightarrow \end{matrix}$ New	New/ Old Parts are both interchangeable.
S	Old $\begin{matrix} \leftarrow \text{No} \\ \text{No} \rightarrow \end{matrix}$ New	New/ Old Parts are both not interchangeable.
W		Part newly added.
Z		Part discontinued.
F		Not interchangeable by a single part but interchangeable together with related parts.
K		Changes only for used parts quantities.

④ Effective Machine No.

When a part changes, the effective Machine No. will be indicated in the (A)-(F) column.

Product Symbol	Product No.	Product Symbol	Product No.
C	Clutch No. Compressor No.	F	Machine No. (Agricultural Equip.)
D	Drive No.	M	Machine No.
E	Engine No.		

Note 1) A date may follow the symbol. (Ex.) 1996.01

Note 2) "XXXXX" and "ZZZZZ" are for parts that could not be predicted or for engine models that could not be identified.

Note 3) (A=E00185) is the E (Engine Serial Number) for the column (A) model (in this case 4JH-DT) after the parts design change.

⑤ Remarks

Figures or alphabets (symbols) are entered in the remarks column.

The comments (remarks) on parts that are indicated at the bottom of the illustration are the same symbols as those stated above.

Contents

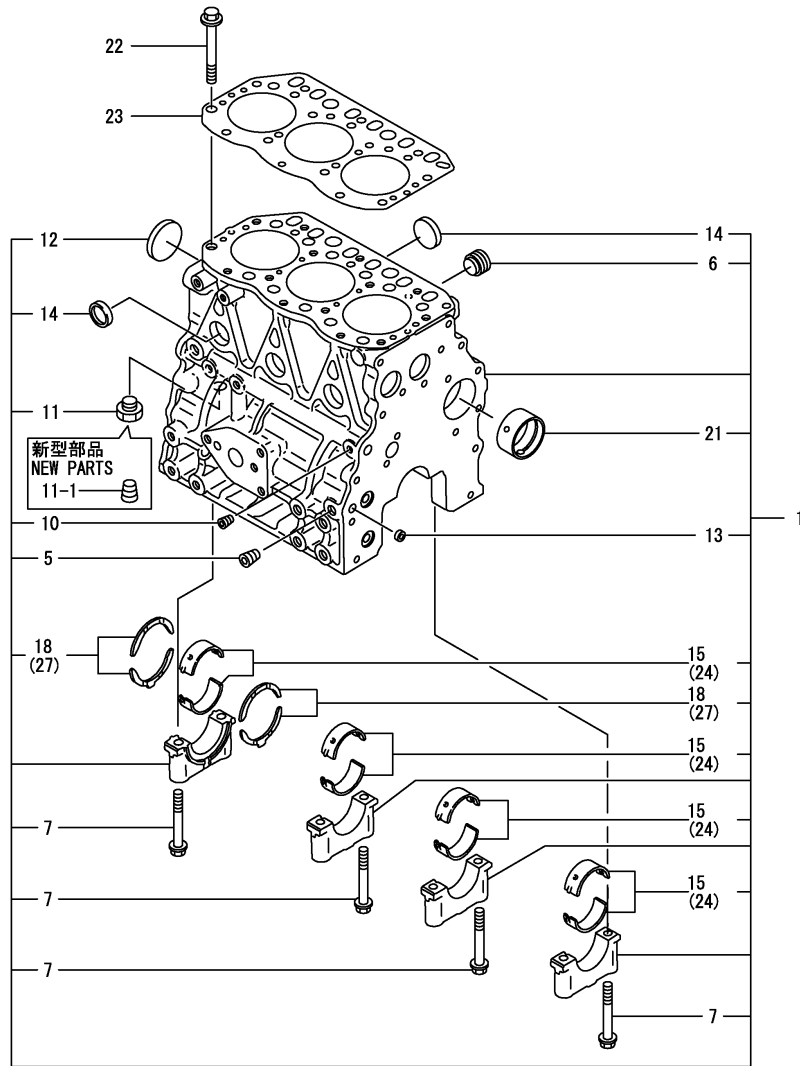
Fig. No. Fig. Name

3TNE82A-DGD

1. CYLINDER BLOCK
2. GEAR HOUSING
3. FLYWHEEL HOUSING & OIL SUMP
4. CYLINDER HEAD & BONNET
5. SUCTION MANIFOLD & AIR CLEANER
6. EXHAUST MANIFOLD
7. CAMSHAFT & DRIVING GEAR
8. CRANKSHAFT & PISTON
9. LUB.OIL SYSTEM
10. COOLING WATER SYSTEM
11. FUEL INJECTION PUMP
12. GOVERNOR
13. FUEL INJECTION VALVE
14. FUEL FILTER
15. STARTING MOTOR
16. GENERATOR
17. PULSER
18. GASKET SET

Fig. No. Fig. Name

Fig.1. CYLINDER BLOCK

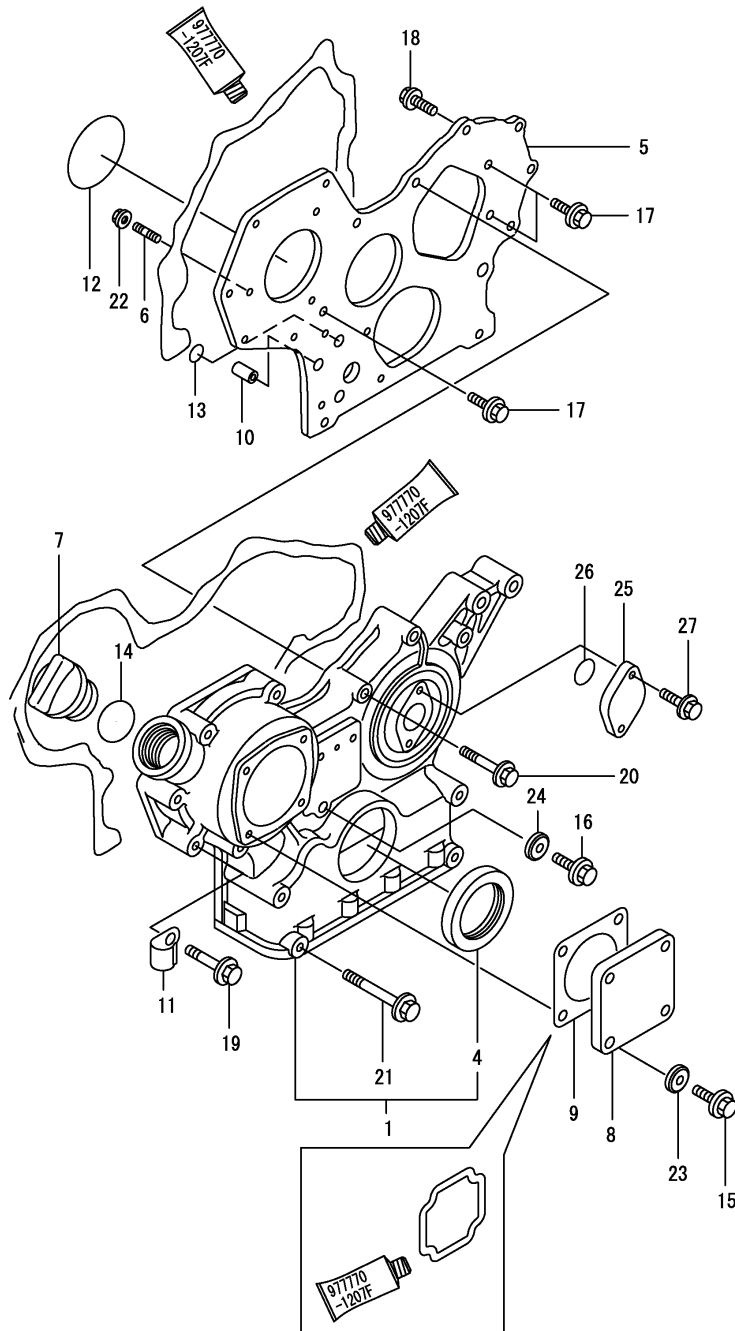


No.	Lev.	Parts No.	Description	Q'ty						I	R
				(A)	(B)	(C)	(D)	(E)	(F)		
1	1	719813-01560	BLOCK ASSY, CYLINDER	1							
5	2	124160-01910	PLUG, PT1/4	2							
6	2	171051-01921	PLUG, NPTF1	1							
7	2	119620-02020	BOLT, METAL CAP	8							
10	2	23871-010000	PLUG, R01	1							
10-1	2	23876-010000	PLUG, R01	1							N
(A=*1999.07)											
11	2	23887-120002	PLUG, 12	1							
11-1	2	124160-01910	PLUG, PT1/4	1							S
(A=*2008.08)											
12	2	27231-500000	PLUG 50	1							
12-1	2	129001-01250	PLUG, 50	1							N
(A=*1999.12)											
13	2	27241-120000	PLUG, 12	2							
14	2	27241-300000	PLUG 30	6							
15	2	119810-02800	BEARING, MAIN	4							
15-1	2	719810-02981	BEARING, MAIN	4							N 3
(A=*2006.05)											
18	2	119810-02930	BEARING, THRUST	1							
18-1	2	119810-02931	BEARING, THRUST	1							N 3
(A=*2006.05)											
21	2	129795-02411	BUSH, CAMSHAFT	1							
21-1	2	129795-02412	BUSH, CAMSHAFT	1							N
(A=*2006.05)											
22	1	119810-01200	BOLT, HEAD	14							
23	1	119812-01330	GASKET, HEAD	1							
24	1	119810-02870	BEARING, 0.25 US	4							1
24-1	1	119810-02871	BEARING, 0.25 US	4							N 1
(A=*2006.05)											
27	1	119810-02940	BEARING, THRUST 0.25	2							2
27-1	1	119810-02941	BEARING, THRUST 0.25	2							N 2
(A=*2006.05)											

Remarks

- (1) UNDER-SIZE(U.S=0.25)PART.
- (2) OVER-SIZE(O.S=0.25)PART.
- (3) REPAIR PART.

Fig.2. GEAR HOUSING



(A)=3TNE82A-DGD

(B)=

(C)=

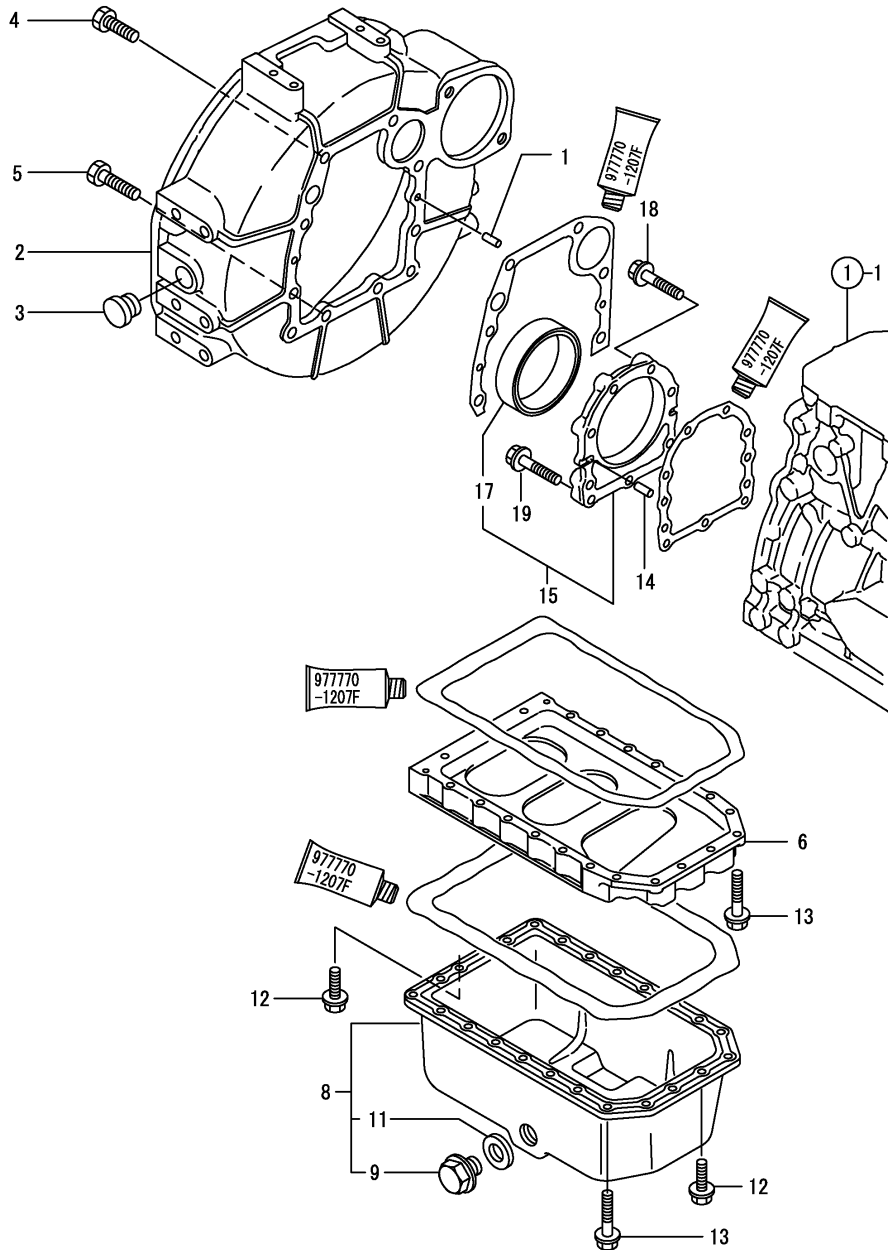
(D)=

(E)=

(F)=

No.	Lev.	Parts No.	Description	Q'ty						I	R
				(A)	(B)	(C)	(D)	(E)	(F)		
1	1	719810-01500	CASE ASSY, GEAR	1							
4	2	129795-01800	SEAL, OIL	1							
5	1	129400-01520	FLANGE, GEAR CASE	1							
6	1	121450-01560	STUD, M8X22	3							
7	1	124160-01751	COVER, FILLER	1							
8	1	124240-01871	COVER	1							
9	1	124240-01883	GASKET	1							Z
10	1	129795-01950	PIPE, KNOCK L=18	2							
11	1	129150-03100	RETAINER, PIPE	1							
12	1	121850-51960	O-RING	1							
13	1	24311-000160	O-RING, 1AP16.0	2							
13-1	1	119609-32040	O-RING, P16	2							R
(A=*2001.10)											
14	1	24311-000320	O-RING, 1AP32.0	1							
15	1	26106-080122	BOLT, M8X 12 PLATED	4							
16	1	26106-080162	BOLT, M8X 16 PLATED	1							
17	1	26106-080162	BOLT, M8X 16 PLATED	3							
18	1	26106-080202	BOLT, M8X 20 PLATED	2							
19	1	26106-080452	BOLT, M8X 45 PLATED	6							
20	1	26106-080552	BOLT, M8X 55 PLATED	3							
21	1	26106-080852	BOLT, M8X 85 PLATED	4							
22	1	26366-080002	NUT, M8	3							
22-1	1	26306-080002	NUT, M8	3							N
(A=*2001.05)											
23	1	22190-080002	WASHER, SEAL 6	4							
24	1	22190-080002	WASHER, SEAL 6	1							
25	1	121023-01550	COVER	1							
25-1	1	121023-01551	COVER	1							R
(A=*2005.10)											
26	1	24341-000240	O-RING, 1AS24.0	1							
27	1	26106-060122	BOLT, M6X 12 PLATED	2							
27-1	1	26106-060162	BOLT, M6X 16 PLATED	2							N

Fig.3. FLYWHEEL HOUSING & OIL SUMP



(A)=3TNE82A-DGD

(B)=

(C)=

(D)=

(E)=

(F)=

No.	Lev.	Parts No.	Description	Qty						I	R
				(A)	(B)	(C)	(D)	(E)	(F)		
1	1	129100-01580	PIN, M8X16	2							
2	1	171301-01600	HOUSING, FLYWHEEL	1							
2-1	1	129612-01600	HOUSING, FLYWHEEL	1							N
(A=*1996.06)											
3	1	119620-01750	CAP	1							
4	1	26206-100252	BOLT, M10X 25 PLATED	6							
5	1	26206-100302	BOLT, M10X 30 PLATED	4							
6	1	119810-01730	SPACER, OIL SUMP	1							
8	1	119810-01770	SUMP ASSY, OIL	1							
9	2	119640-01640	PLUG, DRAIN M22	1							
11	2	22190-220002	WASHER, SEAL 22	1							
12	1	26106-080162	BOLT, M8X 16 PLATED	6							
13	1	26106-080452	BOLT, M8X 45 PLATED	22							
14	1	129100-01580	PIN, M8X16	2							
15	1	719810-01650	CASE ASSY, OIL SEAL	1							
17	2	119810-01780	SEAL, 769310	1							
18	1	26106-080302	BOLT, M8X 30 PLATED	6							
18-1	1	129486-01670	BOLT, M8X30	6							R
(A=*1996.06)											
19	1	26106-080352	BOLT, M8X 35 PLATED	3							

Fig.4. CYLINDER HEAD & BONNET

(A)=3TNE82A-DGD

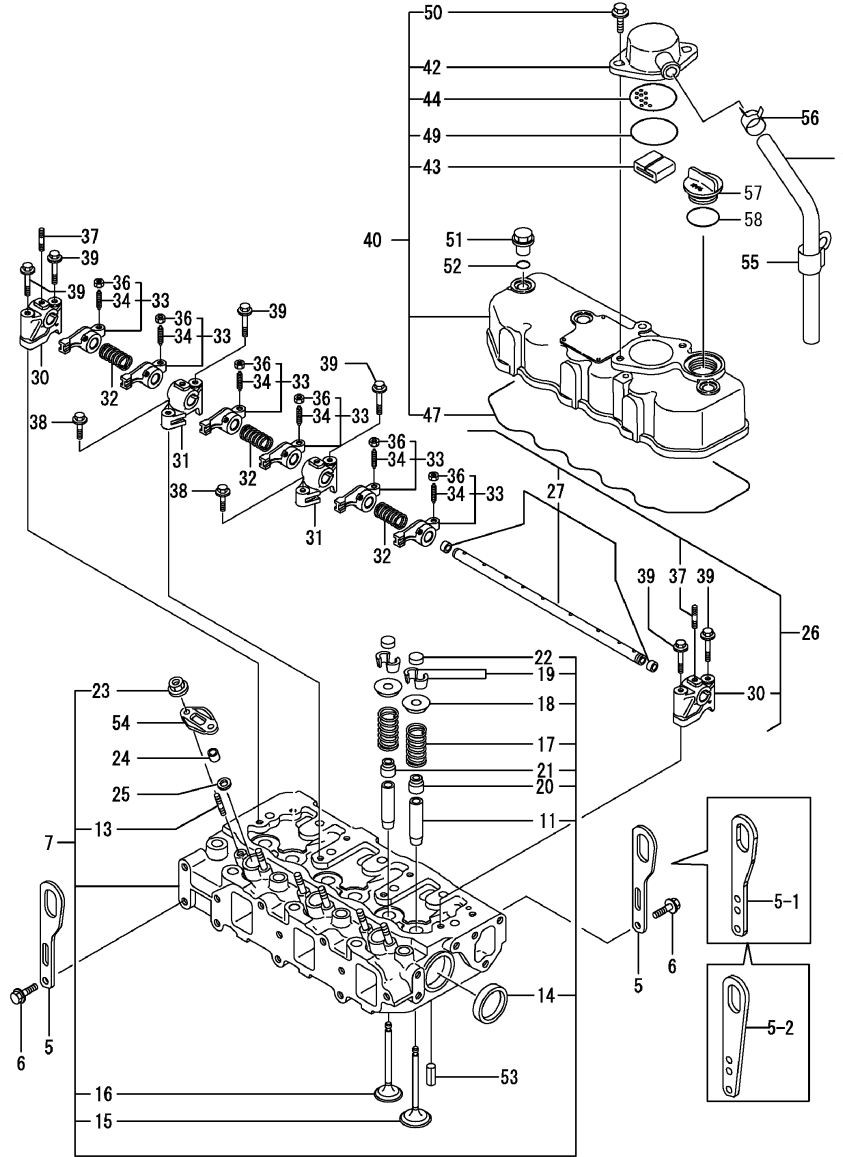
(B)=

(C)=

(D)=

(E)=

(F)=



No.	Lev.	Parts No.	Description	Q'ty						I	R
				(A)	(B)	(C)	(D)	(E)	(F)		
1	1	119847-03100	PIPE , BREATHER	1							
5	1	124736-07900	LIFTER	2							
5-1	1	129604-07900	LIFTER	2							N
(A=*2009.05)											
5-2	1	129900-07900	LIFTER	2							N
(A=*2009.08)											
6	1	26106-080142	BOLT, M8X 14 PLATED	4							
7	1	719812-11700	HEAD ASSY, CYLINDER	1							
11	2	124060-11800	GUIDE, VALVE	6							1
13	2	26216-060302	STUD, M6X 30	6							
14	2	27241-400000	PLUG, 40	2							
15	2	119810-11100	VALVE, INTAKE	3							
16	2	119810-11110	VALVE, EXHAUST	3							
17	2	119810-11120	SPRING, VALVE	6							
18	2	104211-11180	RETAINER, SPRING	6							
19	2	27310-070001	COTTER, 7	6							
20	2	124160-11340	SEAL, VALVE STEM	3							
21	2	124950-11340	SEAL, VALVE STEM	3							
22	2	104211-11370	CAP, VALVE	6							
23	2	26366-060002	NUT, M6	6							
24	1	119625-11871	PROTECTOR, NOZZLE	3							
24-1	1	119625-11870	PROTECTOR, NOZZLE	3							N
(A=*2002.09)											
25	1	119625-11880	SEAT, NOZZLE	3							
26	1	119865-11210	SUPPORT ASSY	1							
27	2	119810-11240	SHAFT ASSY, ROCKER	1							
30	2	129155-11260	SUPPORT, ROCKER ARM	2							
31	2	129155-11270	SUPPORT, ROCKER ARM	2							
32	2	129150-11280	SPRING	3							
33	2	719810-11660	ARM ASSY, ROCKER	6							
34	3	129150-11230	SCREW, VALVE ADJUST	6							
36	3	129150-11750	NUT, M8	6							
37	2	26226-080182	STUD, M8X 18	3							
37-1	2	119802-11280	STUD	3							R
(A=*2002.01)											
38	1	26106-080252	BOLT, M8X 25 PLATED	2							
39	1	26106-080502	BOLT, M8X 50 PLATED	6							
40	1	719810-11520	BONNET ASSY, HEAD	1							
40-1	1	719810-11521	BONNET ASSY, HEAD	1							N
(A=*1999.11)											
42	2	129150-03020	COVER, BREATHER	1							
43	2	129150-03070	BAFFLE, BREATHER	1							
44	2	129150-03080	PLATE, BAFFLE	1							
47	2	119865-11310	GASKET, BONNET	1							
49	2	24341-000500	O-RING, 1AS50.0	1							
50	2	26106-080162	BOLT, M8X 16 PLATED	2							
51	1	124160-11360	KNOB	3							
52	1	24311-000120	O-RING, 1AP12.0	3							
53	1	22351-060012	PIN, SPRING 6.0X12	2							
54	1	119625-11900	RETAINER, NOZZLE	3							
55	1	129150-03100	RETAINER, PIPE	1							

Remarks

(1) REPAIR PART.

Fig.4. CYLINDER HEAD & BONNET

(A)=3TNE82A-DGD

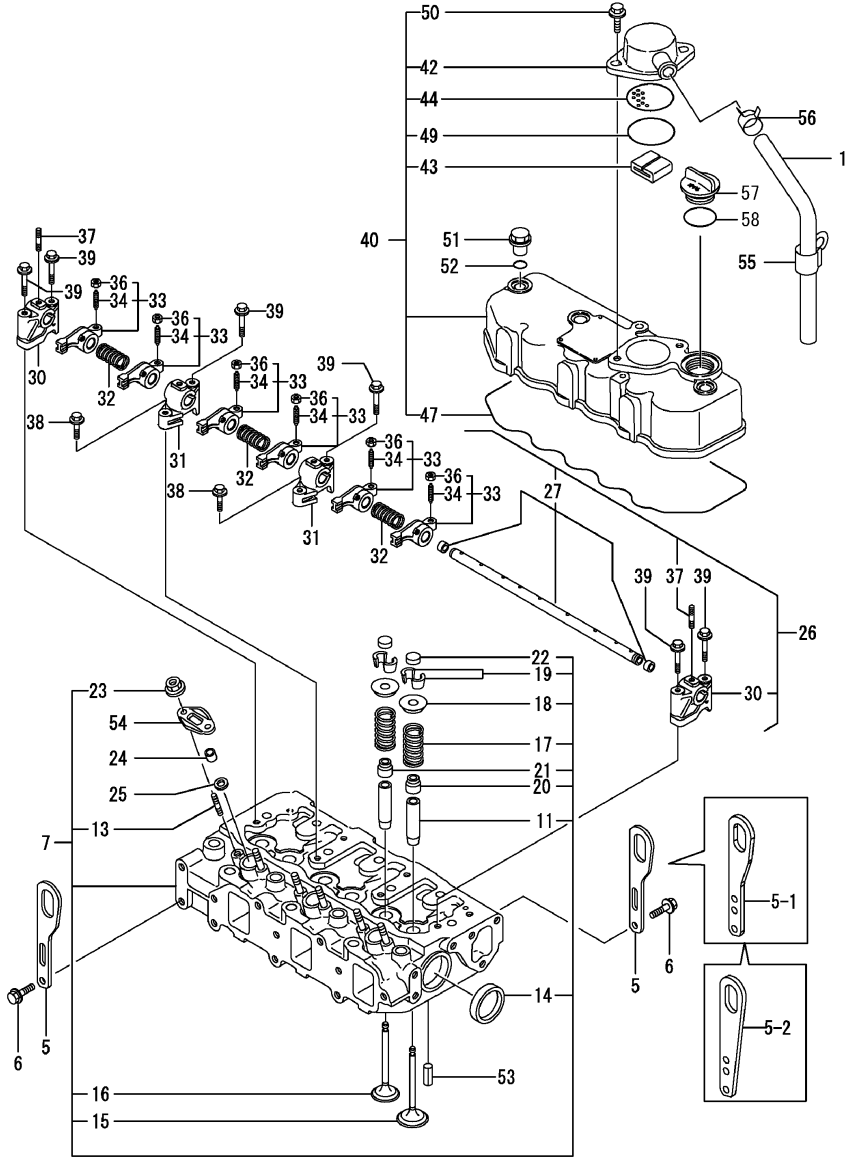
(B)=

(C)=

(D)=

(E)=

(F)=



No.	Lev.	Parts No.	Description	Q'ty						I	R
				(A)	(B)	(C)	(D)	(E)	(F)		
56	1	129410-03990	CLIP	2							
57	1	124160-01751	COVER, FILLER	1							
58	1	24311-000320	O-RING, 1AP32.0	1							

Remarks
(1) REPAIR PART.

Fig.5. SUCTION MANIFOLD & AIR CLEANER

(A)=3TNE82A-DGD

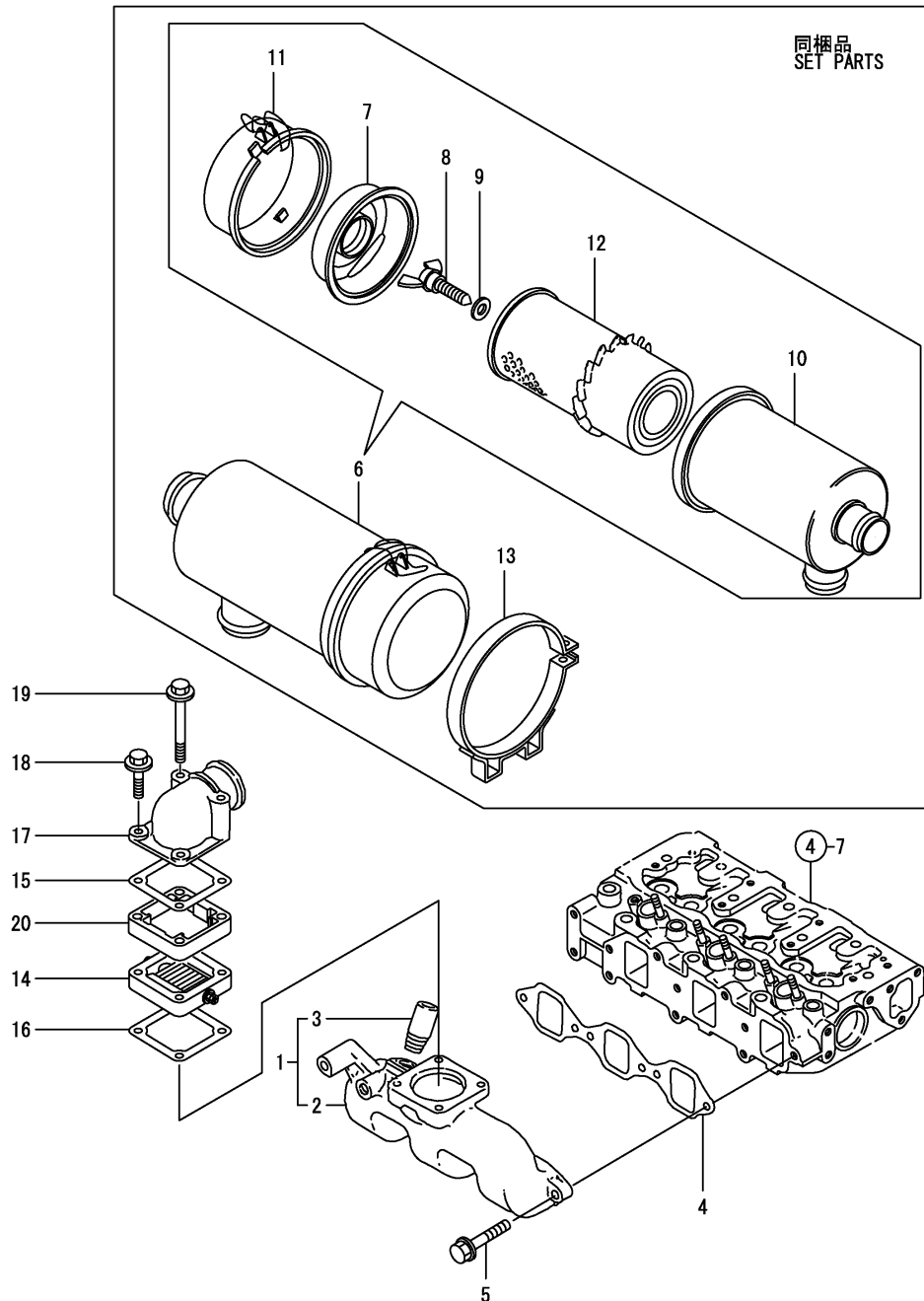
(B)=

(C)=

(D)=

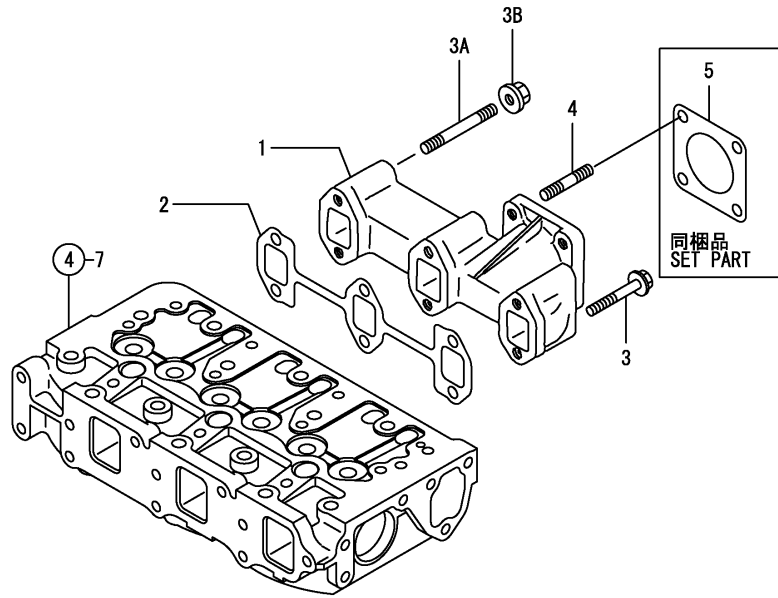
(E)=

(F)=



No.	Lev.	Parts No.	Description	Q'ty						I	R
				(A)	(B)	(C)	(D)	(E)	(F)		
1	1	119847-12100	MANIFOLD ASSY,INTAKE	1							
1-1	1	119847-12101	MANIFOLD ASSY,INTAKE	1							R
		(A=*2002.09)									
1-2	1	119847-12102	MANIFOLD ASSY,INTAKE	1							N
		(A=*2007.08)									
2	2	119847-12110	MANIFOLD, AIR INTAKE	1							
2-1	2	119847-12111	MANIFOLD, AIR INTAKE	1							R
		(A=*2002.09)									
2-2	2	119847-12112	MANIFOLD, AIR INTAKE	1							N
		(A=*2007.08)									
3	2	104407-44480	JOINT	1							
4	1	119810-12111	GASKET, MANIFOLD	1							
4-1	1	119810-12112	GASKET, MANIFOLD	1							R
		(A=*2003.01)									
5	1	26106-080252	BOLT, M8X 25 PLATED	4							
6	1	129350-12500	CLEANER ASSY, AIR	1							
6-1	1	129350-12501	CLEANER ASSY, AIR	1							R
		(A=*2009.07)									
7	2	121120-12541	RETAINER, ELEMENT	1							
8	2	121120-12561	BOLT	1							
9	2	121120-12571	WASHER, SEAL	1							
10	2	129350-12650	CASE ASSY, CLEANER	1							
11	2	129350-12660	PAN ASSY, DUST	1							
12	2	129350-12900	ELEMENT	1							
13	1	171002-12560	BAND, AIR CLEANER	1							
14	1	129100-77500	HEATER, AIR 12V	1							
14-1	1	129100-77501	HEATER	1							N
		(A=*1995.10)									
15	1	129100-77510	GASKET	1							
16	1	129150-77511	GASKET	1							
17	1	171340-77520	BEND	1							
18	1	26106-080402	BOLT, M8X 40 PLATED	2							
18-1	1	26106-080602	BOLT, M8X 60 PLATED	2							N
		(A=*1995.10)									
19	1	26106-080802	BOLT, M8X 80 PLATED	2							
19-1	1	26106-081002	BOLT, M8X100 PLATED	2							N
		(A=*1995.10)									
20	1	129170-12580	SPACER	1							W
		(A=*1995.10)									

Fig.6. EXHAUST MANIFOLD



(A)=3TNE82A-DGD
(B)=
(C)=

(D)=
(E)=
(F)=

No.	Lev.	Parts No.	Description	Q'ty						I	R
				(A)	(B)	(C)	(D)	(E)	(F)		
1	1	119810-13100	MANIFOLD, EXHAUST	1							
2	1	119810-13110	GASKET	1							
3	1	26106-080602	BOLT, M8X 60 PLATED	6							
3-1	1	119802-13640 (A=*2002.08)	BOLT, M8X60 10.9T	4							N
3A	1	119802-13740 (A=*2002.08)	STUD, M8X60	2							W
3B	1	26306-080002 (A=*2001.05)	NUT, M8	2							W
4	1	26216-080222	STUD, M8X 22	4							
4-1	1	119131-18320 (A=*1998.11)	STUD, M8X22	4							N
5	1	124701-11911	GASKET, SILENCER	1							
5-1	1	121000-13201 (A=*2009.07)	GASKET, SILENCER	1							N

Fig.7. CAMSHAFT & DRIVING GEAR

(A)=3TNE82A-DGD

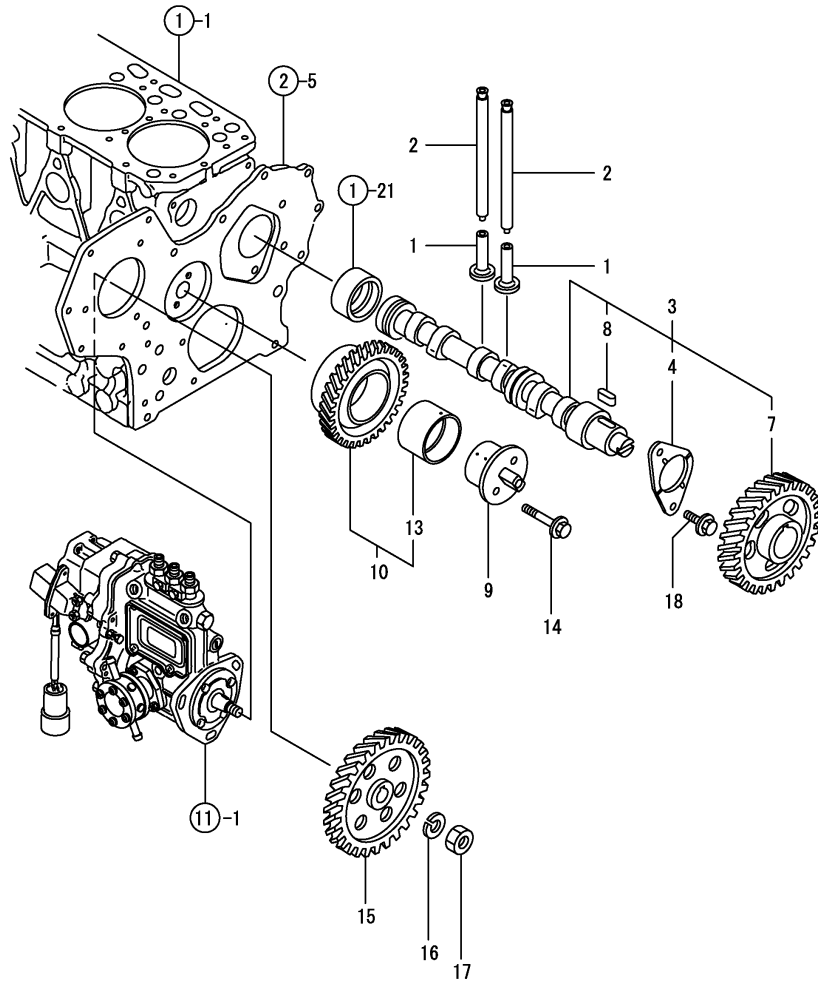
(B)=

(C)=

(D)=

(E)=

(F)=

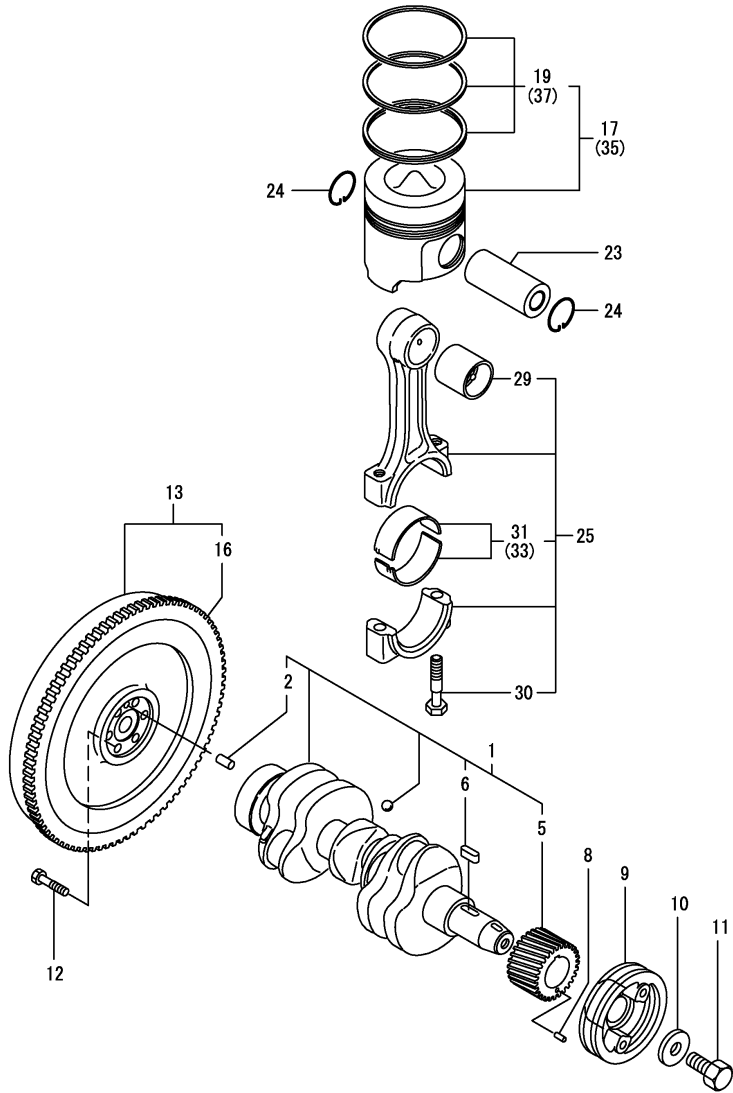


No.	Lev.	Parts No.	Description	Q'ty						I	R
				(A)	(B)	(C)	(D)	(E)	(F)		
1	1	129150-14200	TAPPET	6							
2	1	119810-14400	ROD, PUSH	6							
3	1	119810-14580	CAMSHAFT ASSY	1							
4	2	129150-02450	BEARING, THRUST	1							
7	2	129150-14101	GEAR, CAMSHAFT	1							
8	2	22512-070140	KEY, 7X 14	1							
9	1	129100-25061	SHAFT, IDLE	1							
10	1	129150-25101	GEAR ASSY, IDLE	1							
13	2	129150-25920	BUSH, IDLE GEAR	1							1
14	1	26106-080452	BOLT, M8X 45 PLATED	2							
15	1	129150-25900	GEAR, PUMP	1							
16	1	22217-120000	WASHER, SPRING 12	1							
17	1	26716-120002	NUT, M12	1							
18	1	26106-080162	BOLT, M8X 16 PLATED	2							
18-1	1	26106-080142	BOLT, M8X 14 PLATED	2							N

(A)**1995.06

Remarks
 (1) REPAIR PART.

Fig.8. CRANKSHAFT & PISTON



(A)=3TNE82A-DGD

(B)=

(C)=

(D)=

(E)=

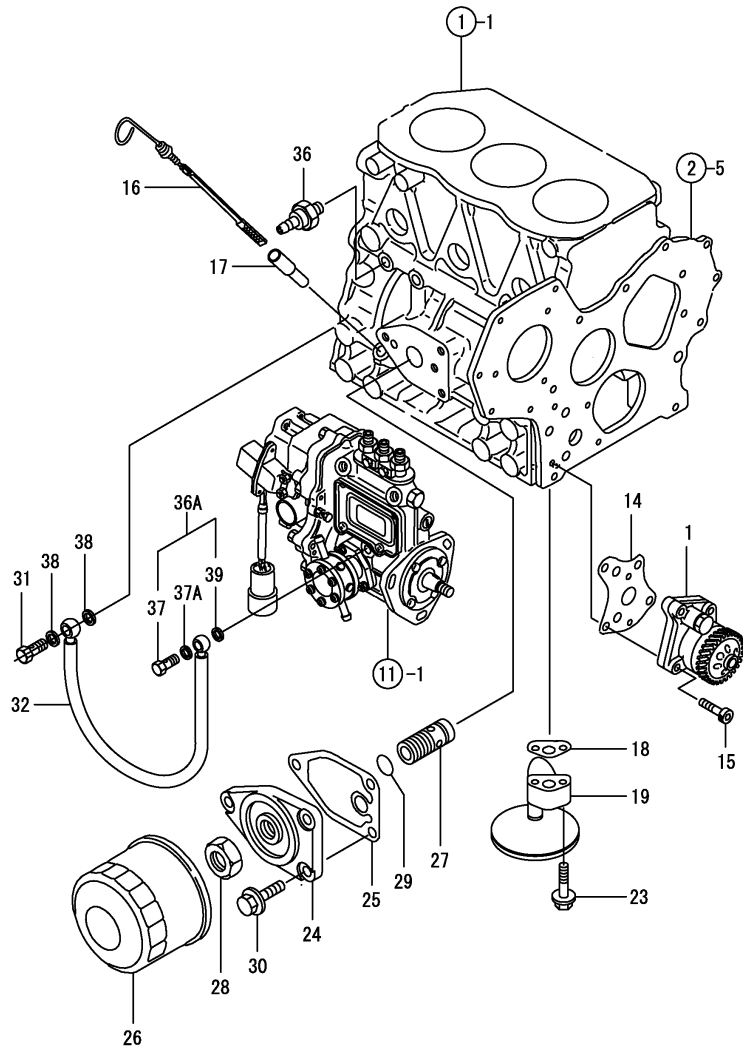
(F)=

No.	Lev.	Parts No.	Description	Q'ty						I	R
				(A)	(B)	(C)	(D)	(E)	(F)		
1	1	119813-21000	CRANKSHAFT ASSY	1							
2	2	129100-01580	PIN, M8X16	1							
5	2	129150-21200	GEAR, CRANKSHAFT	1							
6	2	22512-070140	KEY, 7X 14	1							
8	1	22351-040010	PIN, SPRING 4.0X10	1							
9	1	129550-21650	V-PULLEY	1							
10	1	129795-21661	WASHER	1							
11	1	121850-21680	BOLT	1							
12	1	124160-21501	BOLT, FLYWHEEL	6							
(A=*1999.12)											
13	1	129217-21590	FLYWHEEL ASSY	1							
16	2	119865-21600	GEAR, RING	1							
17	1	119813-22080	PISTON ASSY	3							
19	2	119813-22500	RING SET, PISTON	3							
23	1	119813-22300	PIN, PISTON	3							
24	1	129792-22400	CIRCLIP, 23	6							
25	1	719810-23100	ROD ASSY, CONNECTING	3							
29	2	119810-23910	BEARING, PISTON PIN	3							1
30	2	119810-23200	BOLT, CONNECTING ROD	6							
31	2	119810-23600	BEARING, CRANK PIN	3							
31-1	2	119810-23601	BEARING, CRANK PIN	3							N
32-1	3	119810-23301	BEARING, CRANK PIN	6							N
33	1	119810-23610	BEARING, 0.25 US	3							2
33-1	1	119810-23611	BEARING, 0.25 US	3							N 2
35	1	119813-22900	PISTON ASSY, 0.25 OS	3							3
37	2	129003-22950	RING SET, 0.25 OS	3							3

Remarks

- (1) REPAIR PART.
- (2) UNDER-SIZE(U.S=0.25)PART.
- (3) OVER-SIZE(O.S=0.25)PART.

Fig.9. LUB.OIL SYSTEM



(A)=3TNE82A-DGD

(B)=

(C)=

(D)=

(E)=

(F)=

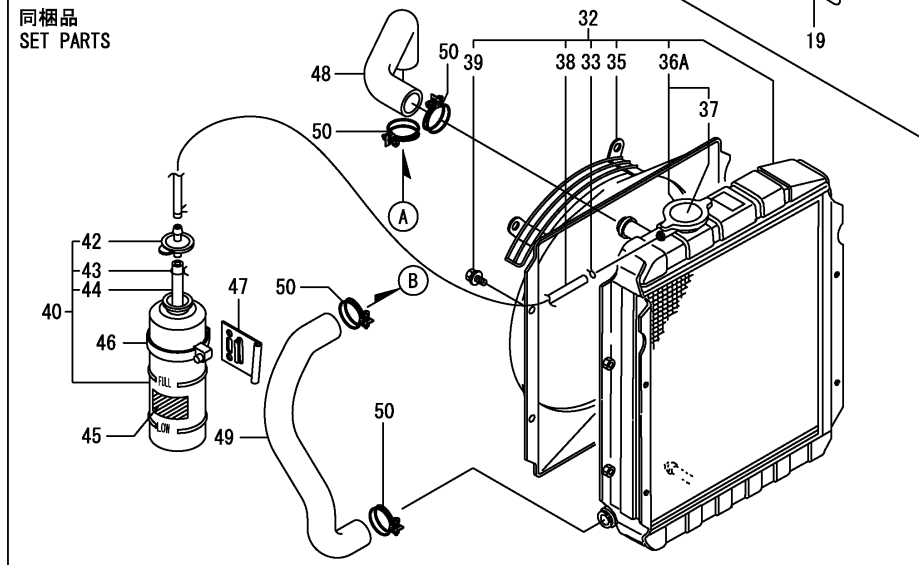
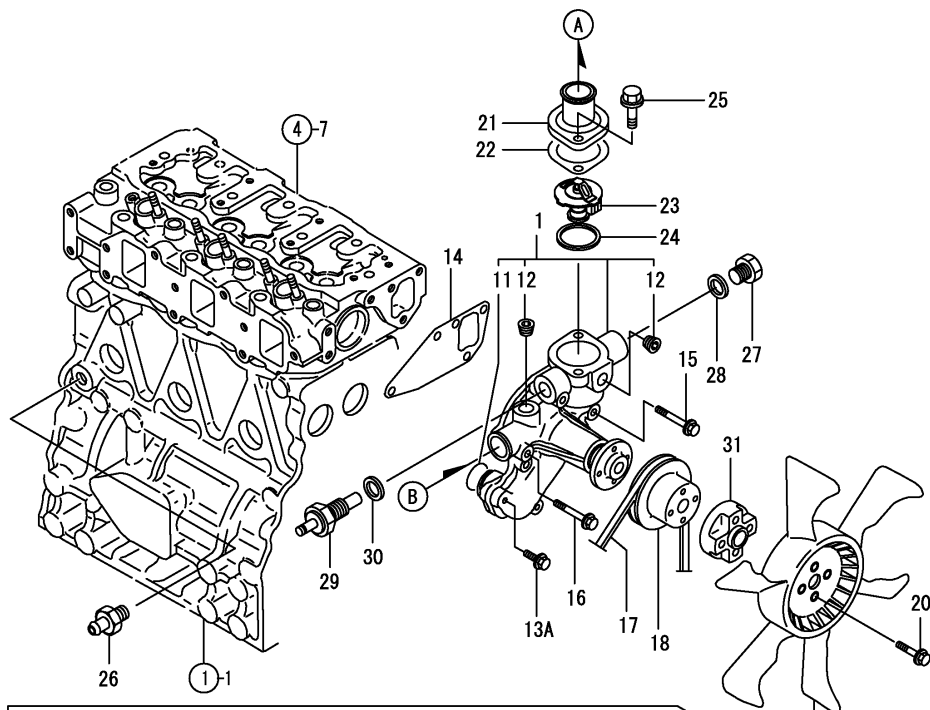
No.	Lev.	Parts No.	Description	Q'ty						I	R
				(A)	(B)	(C)	(D)	(E)	(F)		
1	1	129001-32001	PUMP ASSY, OIL	1							
5-1	2	129001-32151	ROTOR ASSY	1							R
		(A=*1994.09)									
5-2	2	129001-32152	ROTOR ASSY	1							N
		(A=*2002.09)									
14	1	129150-32020	GASKET, PUMP	1							
15	1	26450-060252	BOLT, M6X 25	4							
16	1	119836-34800	DIPSTICK, OIL	1							
16-1	1	119932-34800	DIPSTICK, OIL	1							R
17	1	121520-34810	GUIDE, DIPSTICK	1							
18	1	129150-35041	GASKET	1							
18-1	1	129150-35042	GASKET	1							N
		(A=*2004.05)									
19	1	119810-35300	PIPE ASSY, OIL INLET	1							
23	1	26106-080352	BOLT, M8X 35 PLATED	2							
24	1	129150-35101	BRACKET, STRAINER	1							
25	1	129150-35111	GASKET	1							
26	1	129150-35151	FILTER, D80XL80	1							
26-1	1	129150-35153	FILTER	1							R 1
		(A=*2006.05)									
27	1	129001-35300	BOLT, FILTER	1							
28	1	129150-35350	NUT	1							
29	1	24311-000160	O-RING, 1AP16.0	1							
30	1	26106-080202	BOLT, M8X 20 PLATED	3							
31	1	124160-39140	BOLT, PIPE JOINT M10	1							
32	1	119810-39200	PIPE ASSY, OIL	1							
36	1	124160-39450	SWITCH, 0.5KG	1							
36-1	1	114250-39450	SWITCH, 0.5KG	1							N
		(A=*2006.02)									
36A	1	124550-59830	BOLT ASSY, JOINT M8	1							W
		(A=*1999.02)									
37	2	124550-59820	BOLT, PIPE JOINT M8	1							
37A	2	22190-080002	WASHER, SEAL 6	1							W
		(A=*1999.12)									
38	1	23414-100000	GASKET, 10X1.0	2							
39	1	22190-080002	WASHER, SEAL 6	1							
39-1	1	22190-100002	WASHER, SEAL 10	2							N
		(A=*1999.12)									

Remarks

(1) REPAIR PART.

N:Old $\xrightarrow{\text{Yes}}$ New, Q:Old $\xrightarrow{\text{No}}$ New, R:Old $\xrightarrow{\text{Yes}}$ New, S:Old $\xrightarrow{\text{No}}$ New, W:Add, Z:Discontinued, F:Interchangeable by set, K:Q'ty Change

Fig.10. COOLING WATER SYSTEM



(A)=3TNE82A-DGD

(B)=

(C)=

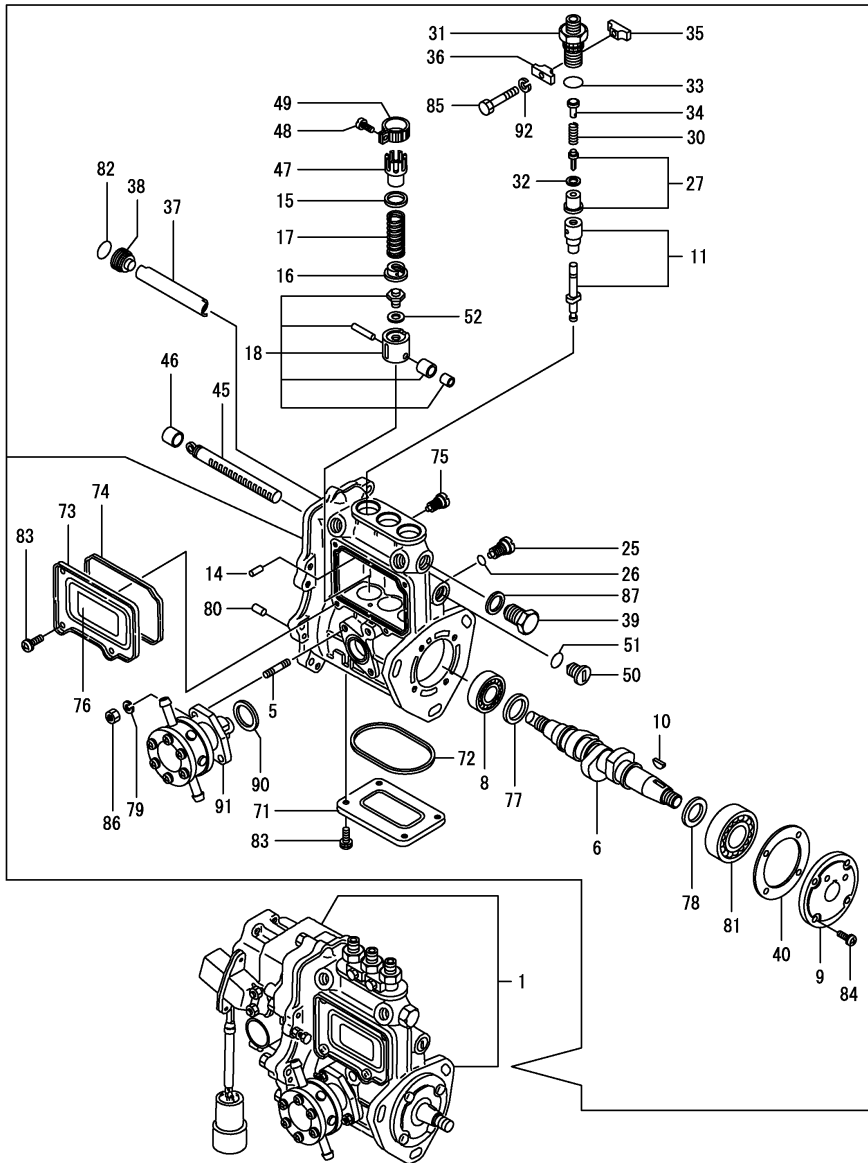
(D)=

(E)=

(F)=

No.	Lev.	Parts No.	Description	Q'ty						I	R
				(A)	(B)	(C)	(D)	(E)	(F)		
1	1	119810-42001	PUMP ASSY, WATER	1							
1-1	1	119810-42002	PUMP ASSY, WATER	1							N
11	2	129150-42320	O-RING	1							
12	2	23871-030000	PLUG, R03	2							
12-1	2	23876-030000	PLUG, R03	2							N
		(A=*1999.07)									
13A	2	26106-060202	BOLT, M6X 20 PLATED	2							W
		(A=*2005.04)									
14	1	129150-42020	GASKET, WATER PUMP	1							
14-1	1	129486-42050	GASKET, WATER PUMP	1							N
		(A=*2000.01)									
15	1	26106-080352	BOLT, M8X 35 PLATED	1							
16	1	26106-080552	BOLT, M8X 55 PLATED	3							
17	1	25132-003800	V-BELT, A38	1							
18	1	129155-42350	V-PULLEY	1							
19	1	171340-44740	FAN, COOLING D335XNF	1							
20	1	26106-060352	BOLT, M6X 35 PLATED	4							
21	1	129350-49530	COVER, THERMOSTAT	1							
22	1	129795-49551	GASKET	1							
23	1	129155-49800	THERMOSTAT, 71	1							
23-1	1	129155-49801	THERMOSTAT, 71	1							N
		(A=*2003.03)									
24	1	129150-49811	GASKET, THERMOSTAT	1							
25	1	26106-080202	BOLT, M8X 20 PLATED	2							
25-1	1	26106-080222	BOLT, M8X 22 PLATED	2							N
26	1	121550-49111	JOINT, PT1/4	1							
27	1	121450-42450	PLUG, M16	1							
28	1	124465-44950	GASKET, 16	1							
29	1	121250-44901	SWITCH, 110	1							
30	1	124465-44950	GASKET, 16	1							
31	1	171353-44760	SPACER, FAN	1							
32	1	119631-44502	RADIATOR	1							
33	2	121250-44590	CLAMP	2							
35	2	119631-44610	SHROUD	1							
36A	2	121120-44590	CAP ASSY	1							W
		(A=*2009.05)									
37	3	119631-44800	LABEL, RADIATOR	1							
38	2	124738-49150	PIPE, DRAIN L=300	1							
39	2	26014-080162	BOLT, M8X 16	4							
40	1	124450-44510	TANK ASSY, SUB	1							
42	2	124450-44530	CAP	1							
43	2	124450-44560	RETAINER	1							
44	2	23061-070230	PIPE, 7X 230	1							
45	1	121470-44540	LABEL, SUB-TANK	1							
46	1	124450-44550	BAND	1							
47	1	121256-44600	BRACKET, SUB TANK	1							
48	1	171301-49010	PIPE, WATER	1							
49	1	171301-49020	PIPE, WATER	1							
50	1	23010-038000	CLAMP, 38	4							

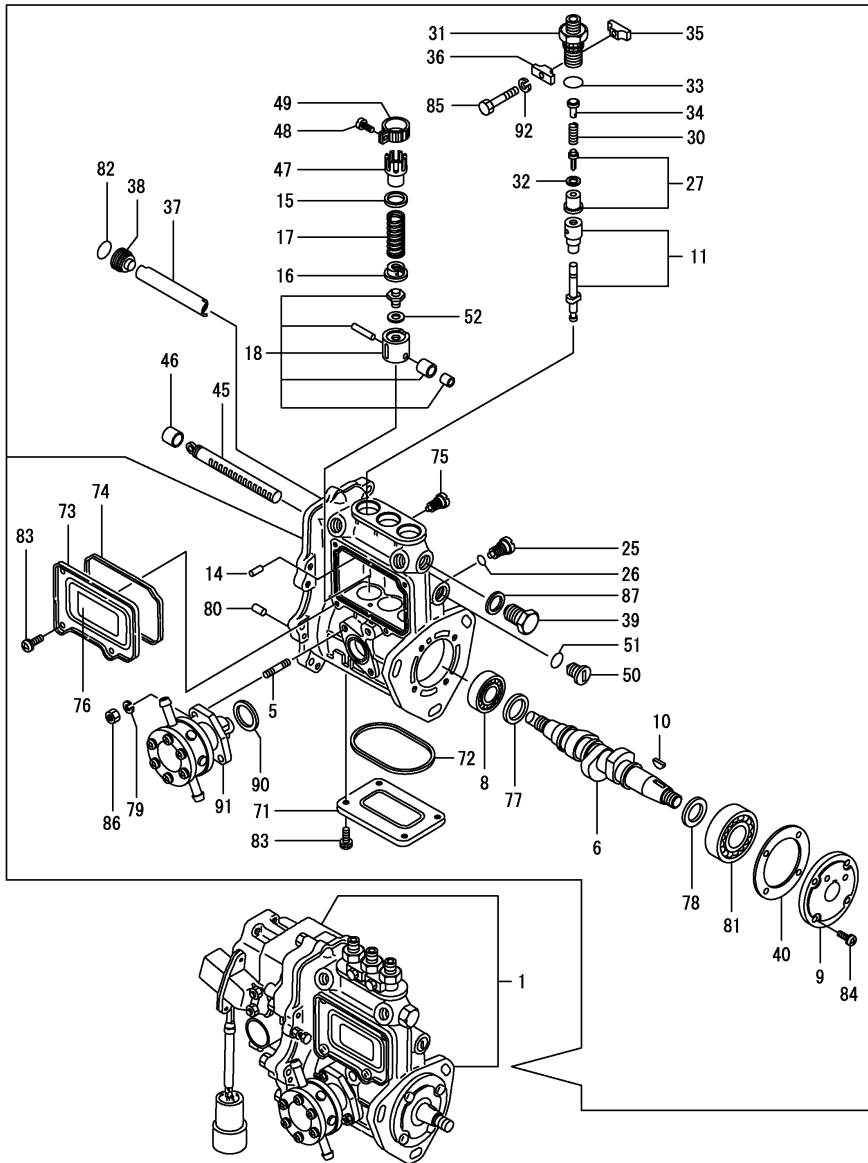
Fig.11. FUEL INJECTION PUMP



No.	Lev.	Parts No.	Description	Q'ty						I	R
				(A)	(B)	(C)	(D)	(E)	(F)		
1	1	729217-51200	PUMP ASSY, INJECTION	1							1
5	2	129155-51020	STUD	2							
6	2	119810-51040	CAMSHAFT	1							
8	2	129155-51050	BEARING, 17BM001D	1							
8-1	2	129155-51051	BEARING	1							N
(A=*EXXXXX)											
9	2	129155-51060	SUPPORT, CAMSHAFT	1							
10	2	122710-51090	KEY	1							
11	2	129108-51100	PLUNGER ASSY	3							
11-1	2	129217-51100	PLUNGER ASSY	3							N
(A=*2007.09)											
13-1	3	129217-51130	PLUNGER	3							N
14	2	129155-51140	PIN	3							
15	2	174307-51170	RETAINER, SPRING A	3							
15-1	2	158600-51170	RETAINER, SPRING	3							R
(A=*2009.03)											
16	2	129155-51180	RETAINER, SPRING	3							
17	2	124950-51190	SPRING, PLUNGER	3							
18	2	129155-51200	TAPPET ASSY	3							
25	2	129155-51270	STOPPER, TAPPET	3							
26	2	129155-51280	O-RING, S6	3							
27	2	128170-51300	VALVE ASSY, DELIVERY	3							
30	2	129155-51320	SPRING, DELIVERY	3							
31	2	129155-51340	RETAINER	3							
32	2	124550-51350	GASKET, DELIVERY	3							
33	2	124550-51370	O-RING	3							
33-1	2	24316-000150	O-RING, 4DP15.0	3							N
(A=*2006.04)											
34	2	129155-51370	STOPPER, VALVE	3							
35	2	129155-51380	STOPPER	2							
36	2	129155-51390	STOPPER	2							
37	2	129155-51400	DEFLECTOR	1							
38	2	129155-51410	BOLT	1							
38-1	2	158600-51410	PLUG, DEFLECTOR	1							R
(A=*2006.12)											
39	2	129155-51420	PLUG, M16	1							
39-1	2	158600-51420	PLUG, DEFLECTOR	1							R
(A=*2006.12)											
40	2	129155-51450	SHIM SET, ADJUSTING	1							
45	2	129155-51500	RACK, CONTROL	1							
45-1	2	119717-51500	RACK, CONTROL	1							R
(A=*2005.07)											
46	2	129155-51521	BUSH, RACK	1							
47	2	129155-51550	PINION, CONTROL	3							
48	2	122117-51560	SCREW	3							
48-1	2	129100-51570	SCREW	3							N
(A=*2001.02)											
49	2	174307-51560	PINION	3							
49-1	2	129100-51560	PINION	3							N
(A=*2001.02)											
50	2	129155-51570	PLUG, M12	1							

Remarks
 (1) GOVERNOR(FIG.12) IS INCORPORATED
 IN THIS FUEL INJECTION PUMP ASSY
 (REF.NO.1).

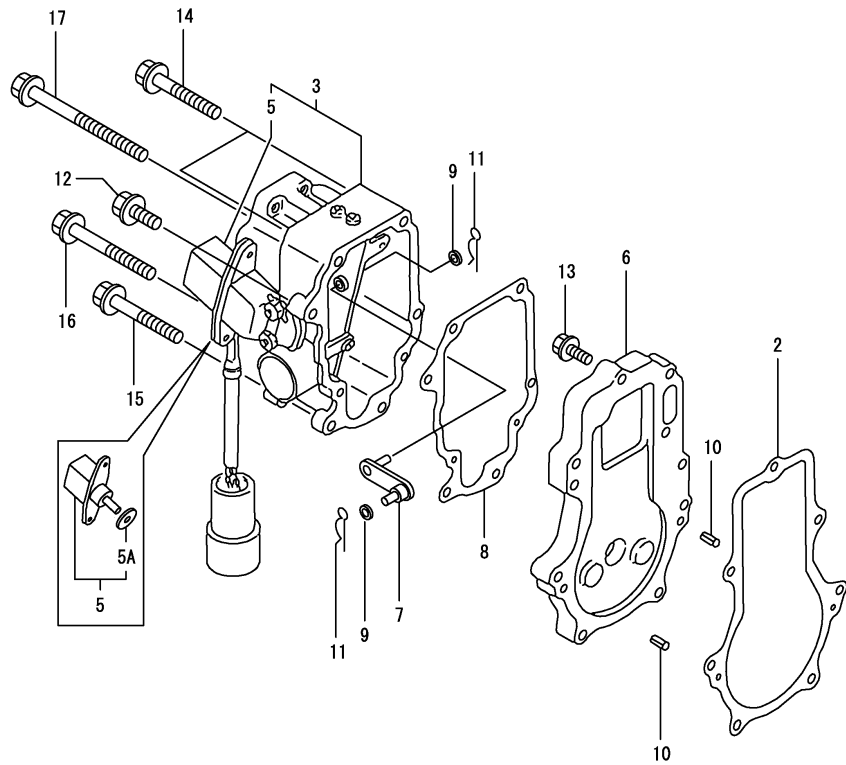
Fig.11. FUEL INJECTION PUMP



No.	Lev.	Parts No.	Description	Q'ty						I	R
				(A)	(B)	(C)	(D)	(E)	(F)		
51	2	129155-51580	O-RING	1							
52	2	129155-51600	SHIM SET, ADJUSTING	3							
71	2	129155-51700	COVER	1							
71-1	2	129155-51701 (A=EXXXXX)	COVER	1							N
72	2	129155-51710	GASKET	1							
72-1	2	129155-51711 (A=*2000.09)	GASKET	1							N
73	2	129155-51750	COVER	1							
73-1	2	129155-51751 (A=EXXXXX)	COVER	1							N
74	2	129155-51760	GASKET	1							
74-1	2	129155-51761	GASKET	1							N
75	2	129155-51790	STOOPER, RACK	1							
76	2	129156-51910	LABEL, CAUTION	1							
77	2	129155-51930	SPACER, T=3.25	1							
78	2	129155-51940	SPACER, T=1.5	1							
79	2	22217-060000	WASHER, SPRING 6	2							
80	2	22351-050010	PIN, SPRING 5.0X10	2							
81	2	24101-063034	BEARING, BALL 6303	1							
82	2	24341-000160	O-RING, 1AS16.0	1							
82-1	2	119717-51420 (A=*2006.04)	O-RING	1							N
83	2	26022-050102	SCREW, M5X10	8							
83-1	2	26022-050122 (A=EXXXXX)	SCREW, M5X12	8							N
84	2	26022-060162	SCREW, M6X16	4							
85	2	26116-050302	BOLT, M5X 30 PLATED	2							
86	2	26716-060002	NUT, M6	2							
87	2	22190-160002	WASHER, SEAL 16	1							
90	2	129155-52050	GASKET	1							
90-1	2	129155-52051	GASKET	1							N
91	2	129100-52100	PUMP ASSY, FUEL FEED	1							
91-1	2	129100-52101 (A=*2004.08)	PUMP ASSY, FUEL FEED	1							N
92	2	22217-050000	WASHER, SPRING 5	2							

Remarks
 (1) GOVERNOR(FIG.12) IS INCORPORATED
 IN THIS FUEL INJECTION PUMP ASSY
 (REF.NO.1).

Fig.12. GOVERNOR



(A)=3TNE82A-DGD

(B)=

(C)=

(D)=

(E)=

(F)=

No.	Lev.	Parts No.	Description	Q'ty						I	R
				(A)	(B)	(C)	(D)	(E)	(F)		
2	1	129116-61051	GASKET	1							
3	1	119649-61100	ACTUATOR	1							
3-1	1	129611-61100	ACTUATOR	1							N
5	2	119649-61090	SENSOR	1							
5-1	2	119649-61091	SENSOR	1							N
(A=*1996.10)											
5A	3	129611-61180	GASKET	1							W
6	1	129116-61110	SPACER	1							
7	1	129116-61120	LINK	1							
7-1	1	129116-61121	LINK	1							N
(A=*1997.05)											
8	1	119649-61151	GASKET	1							
9	1	22117-040000	WASHER, 4	2							
10	1	22351-040010	PIN, SPRING 4.0X10	2							
11	1	22360-050000	SNAP PIN 5	2							
12	1	26106-060202	BOLT, M6X 20 PLATED	1							
13	1	26106-060222	BOLT, M6X 22 PLATED	7							
14	1	26106-060452	BOLT, M6X 45 PLATED	2							
15	1	26106-060602	BOLT, M6X 60 PLATED	1							
16	1	26106-060702	BOLT, M6X 70 PLATED	1							
17	1	26106-060852	BOLT, M6X 85 PLATED	1							

Remarks

* THIS FIGURE(GOVERNOR ASSY)IS INCORPORATED IN THE FUEL INJECTION PUMP ASSY(FIG.11).

Fig.13. FUEL INJECTION VALVE

(A)=3TNE82A-DGD

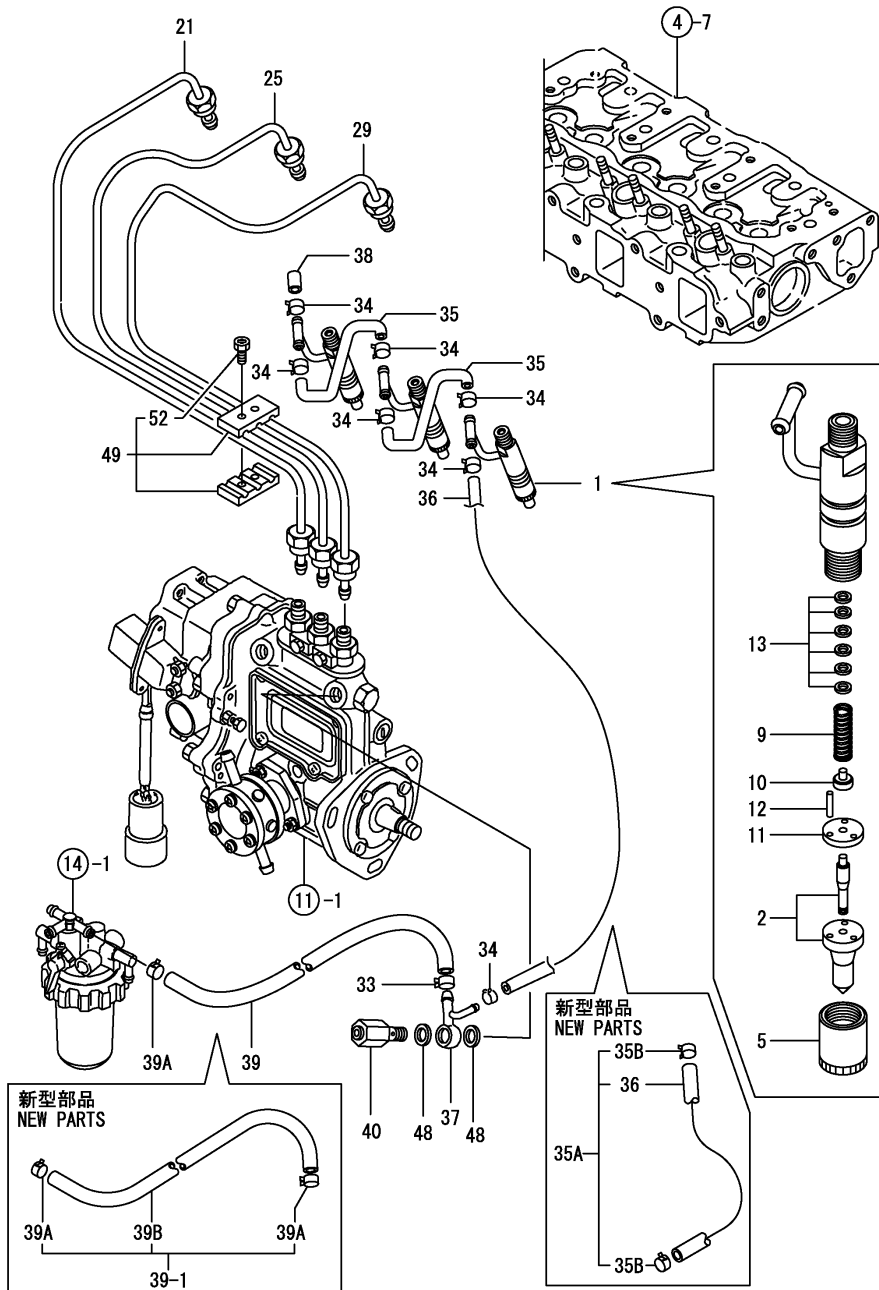
(B)=

(C)=

(D)=

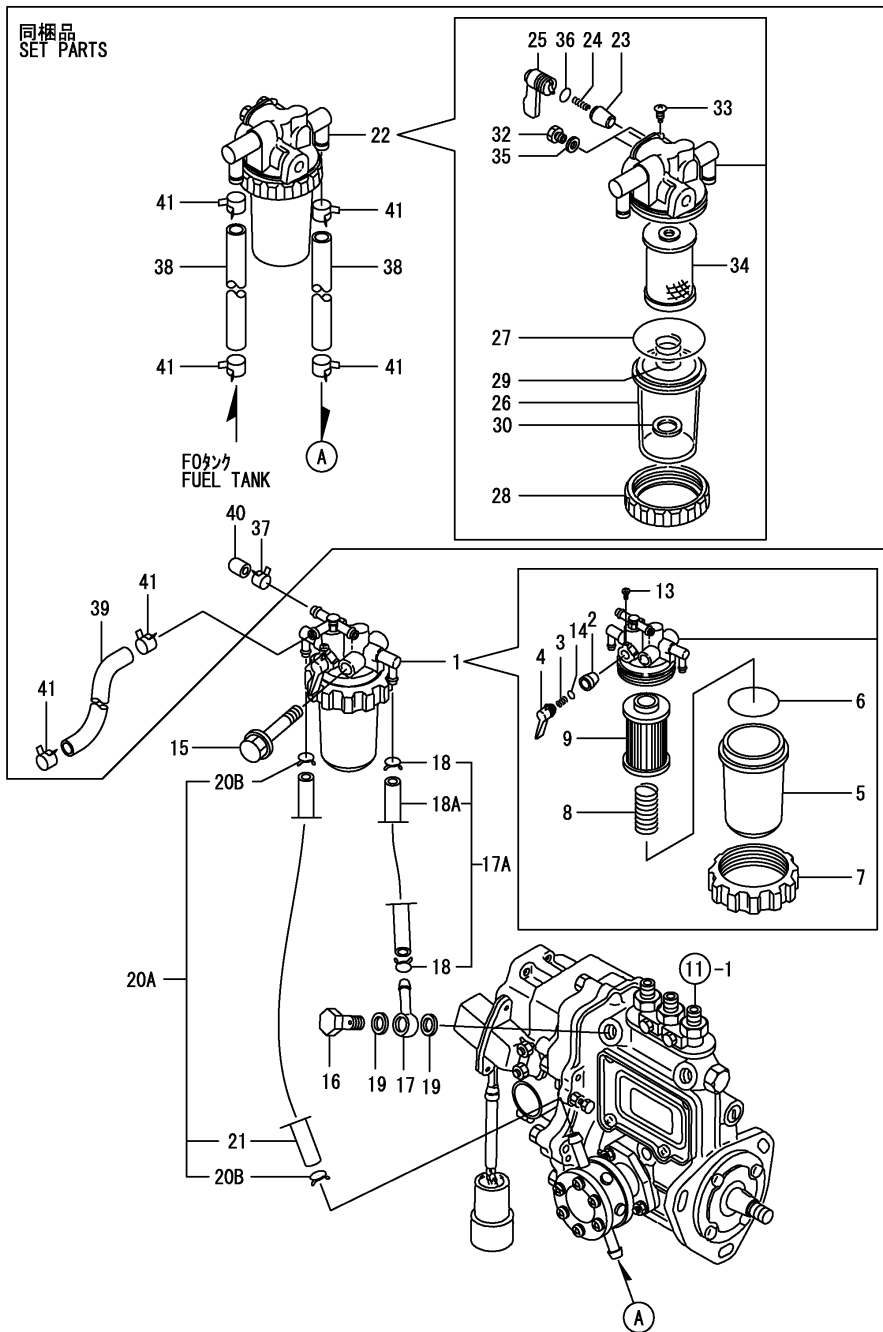
(E)=

(F)=



No.	Lev.	Parts No.	Description	Qty						I	R
				(A)	(B)	(C)	(D)	(E)	(F)		
1	1	719800-53100	VALVE ASSY,INJECTION	3							
2	2	119800-53000	VALVE ASSY,INJECTION	3							
5	2	114250-53080	NUT, NOZZLE D16.95	3							
9	2	114250-53120	SPRING, NOZZLE	3							
10	2	114250-53130	SEAT, SPRING	3							
11	2	114250-53140	PLATE	3							
12	2	114250-53210	PIN	6							
13	2	114250-53400	SHIM SET	3							
13-1	2	119803-53400	SHIM SET	3							N
(A=*2007.10)											
21	1	119810-59810	PIPE ASSY, INJECTION	1							
25	1	119810-59820	PIPE ASSY, INJECTION	1							
29	1	119810-59830	PIPE ASSY, INJECTION	1							
33	1	124766-59050	CLIP, HOSE 12	2							Z
34	1	124066-59100	CLIP, HOSE 8	7							
35	1	121250-59550	PIPE, FUEL D8X120	2							
35A	1	119840-59500	PIPE ASSY, RETURN	1							W
(A=*2000.01)											
35B	2	124066-59100	CLIP, HOSE 8	2							W
36	2	119840-59560	PIPE, FUEL RETURN	1							
37	1	119840-59570	JOINT	1							
38	1	129150-59580	CAP	1							
39	1	129255-59580	PIPE, FUEL	1							
39-1	1	129210-59130	PIPE ASSY, FUEL	1							N
(A=*1998.08)											
39A	2	124766-59050	CLIP, HOSE 12	2							W
(A=*1998.08)											
39B	2	105025-59750	PIPE, FUEL	1							W
(A=*1998.08)											
40	1	129100-59951	VALVE ASSY, CHECK	1							
40-1	1	119813-59950	VALVE ASSY, CHECK	1							N
(A=*2003.12)											
48	1	23414-120000	GASKET, 12X1.0	2							
48-1	1	22190-120002	WASHER, SEAL 12	2							N
(A=*1999.07)											
49	1	129150-59120	RETAINER, PIPE	1							
52	2	129150-59131	BOLT, M4X14	2							

Fig.14. FUEL FILTER



(A)=3TNE82A-DGD

(B)=

(C)=

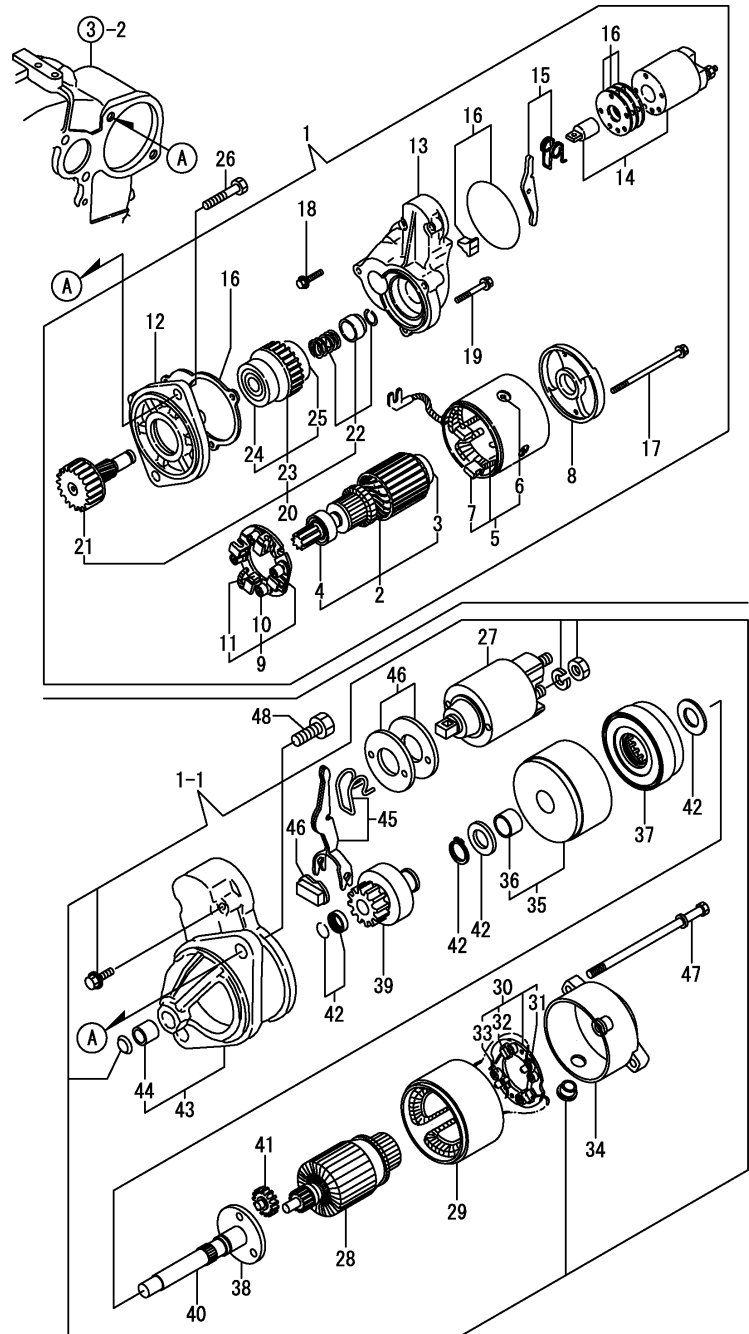
(D)=

(E)=

(F)=

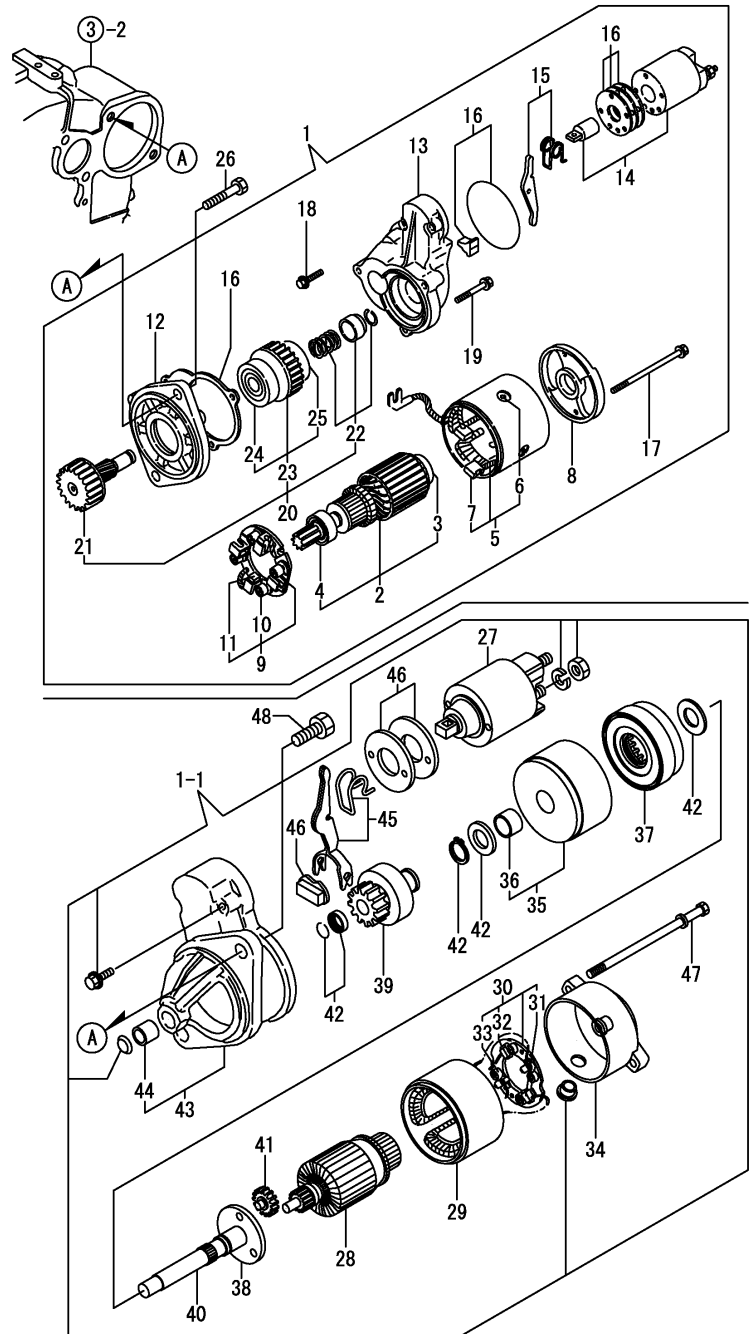
No.	Lev.	Parts No.	Description	Q'ty						I	R
				(A)	(B)	(C)	(D)	(E)	(F)		
1	1	119810-55621	FILTER ASSY, FUEL	1							
2	2	104200-55321	VALVE, TAPER	1							
3	2	104200-55330	SPRING, VALVE	1							
4	2	119810-55340	LEVER	1							
5	2	121254-55510	COVER	1							
6	2	102103-55520	O-RING	1							
7	2	110250-55610	RING, RETAINING	1							
8	2	121250-55620	SPRING	1							
9	2	119810-55650	ELEMENT	1							
13	2	104200-55750	SCREW, M4	1							
14	2	24311-240100	O-RING, 1AP10A	1							
15	1	26014-080702	BOLT, M8X 70	1							
16	1	103854-39140	BOLT, PIPE JOINT	1							
17	1	101304-59020	JOINT, PIPE 12	1							
17A	1	129210-59040	PIPE ASSY, FUEL	1							W
(A=*1998.08)											
18	2	124766-59050	CLIP, HOSE 12	2							K
18A	2	129555-59510	PIPE, D13/7.5X180	1							W
19	1	104200-59170	GASKET, 12	2							
19-1	1	22190-120002	WASHER, SEAL 12	2							N
(A=*1996.04)											
20	2	129555-59510	PIPE, D13/7.5X180	1							Z
20A	1	129210-59130	PIPE ASSY, FUEL	1							W
(A=*1998.08)											
20B	2	124766-59050	CLIP, HOSE 12	2							W
(A=*1998.08)											
21	2	129255-59580	PIPE, FUEL	1							
21-1	2	105025-59750	PIPE, FUEL	1							R
(A=*1998.08)											
22	1	129335-55700	SEPARATOR ASSY,WATER	1							
23	2	104200-55321	VALVE, TAPER	1							
24	2	104200-55330	SPRING, VALVE	1							
25	2	104200-55341	HANDLE	1							
26	2	124064-55510	COVER	1							
27	2	102103-55520	O-RING	1							
28	2	110250-55610	RING, RETAINING	1							
29	2	121257-55720	SPRING	1							
30	2	121257-55731	FLOAT	1							
32	2	101720-55750	PLUG, 6	2							
33	2	104200-55750	SCREW, M4	1							
34	2	171081-55910	SCREEN	1							
35	2	23418-060000	GASKET, 6X1.0	2							
36	2	24311-240100	O-RING, 1AP10A	1							
37	1	124766-59050	CLIP, HOSE 12	1							
38	1	124070-59130	PIPE, FUEL 2M	2							
39	1	105582-59540	PIPE, FUEL L=300	1							
40	1	129461-59580	CAP, FUEL OIL	1							
41	1	124060-77680	CLIP, HOSE 10	6							

Fig.15. STARTING MOTOR



No.	Lev.	Parts No.	Description	Qty						I	R
				(A)	(B)	(C)	(D)	(E)	(F)		
1	1	124976-77011	STARTER, S114-349A	1							
1-1	1	129698-77010	STARTER, 12V1.2KW	1							N
(A=EXXXXX)											
2	2	X211451007	ARMATURE ASSY	1							Z
3	3	X211415502	BEARING, BALL	1							Z
4	3	X211425502	BEARING, BALL	1							Z
5	2	X211472106	COIL ASSY, FIELD	1							Z
6	3	X21143215	SCREW, CORE	4							Z
7	3	X211469002	BRUSH (+)	2							Z
8	2	X211483003	COVER	1							Z
9	2	X211429007	HOLDER ASSY, BRUSH	1							Z
10	3	X21148314	SPRING, BRUSH	4							Z
11	3	X211459002	BRUSH (-)	2							Z
12	2	X211476504	HOUSING ASSY, GEAR	1							Z
13	2	X211414501	HOUSING, CENTER	1							Z
14	2	171008-55730	SWITCH ASSY	1							Z
15	2	X21146012	LEVER, SHIFT	1							Z
16	2	171008-77571	COVER KIT, DUST	1							Z
17	2	X211468005	BOLT, THROUGH	2							Z
18	2	X21145866	BOLT	2							Z
19	2	X21142867	BOLT	3							Z
20	2	X211415505	CLUTCH ASSY	1							Z
21	3	X211495009	SHAFT	1							Z
22	3	X211429006	STOPPER SET	1							Z
23	3	X211425505	CLUTCH ASSY	1							Z
24	4	X211435502	BALL BEARING	1							Z
25	4	X211445502	BALL BEARING	1							Z
26	1	26116-120252	BOLT, M12X 25 PLATED	2							Z
27	2	129698-77020	SWITCH ASSY	1							W
(A=*1998.12)											
28	2	129698-77100	ARMATURE ASSY	1							W
(A=*1997.10)											
29	2	129698-77110	YOKE ASSY	1							W
(A=*1997.10)											
30	2	129698-77120	HOLDER ASSY, BRUSH	1							W
(A=*1997.10)											
31	3	129698-77130	BRUSH	2							W
(A=EXXXXX)											
32	3	129698-77140	BRUSH SET	1							W
(A=EXXXXX)											
33	3	129698-77150	SPRING, BRUSH	4							W
(A=EXXXXX)											
34	2	129698-77161	COVER ASSY	1							W
(A=*2000.10)											
35	2	129698-77180	BRACKET	1							W
(A=*1997.10)											
36	3	129698-77190	BRACKET	1							W
37	2	129698-77200	GEAR, INTERNAL	1							W
(A=*1997.10)											
38	2	129698-77210	BRACKET	1							W
(A=*1997.10)											

Fig.15. STARTING MOTOR

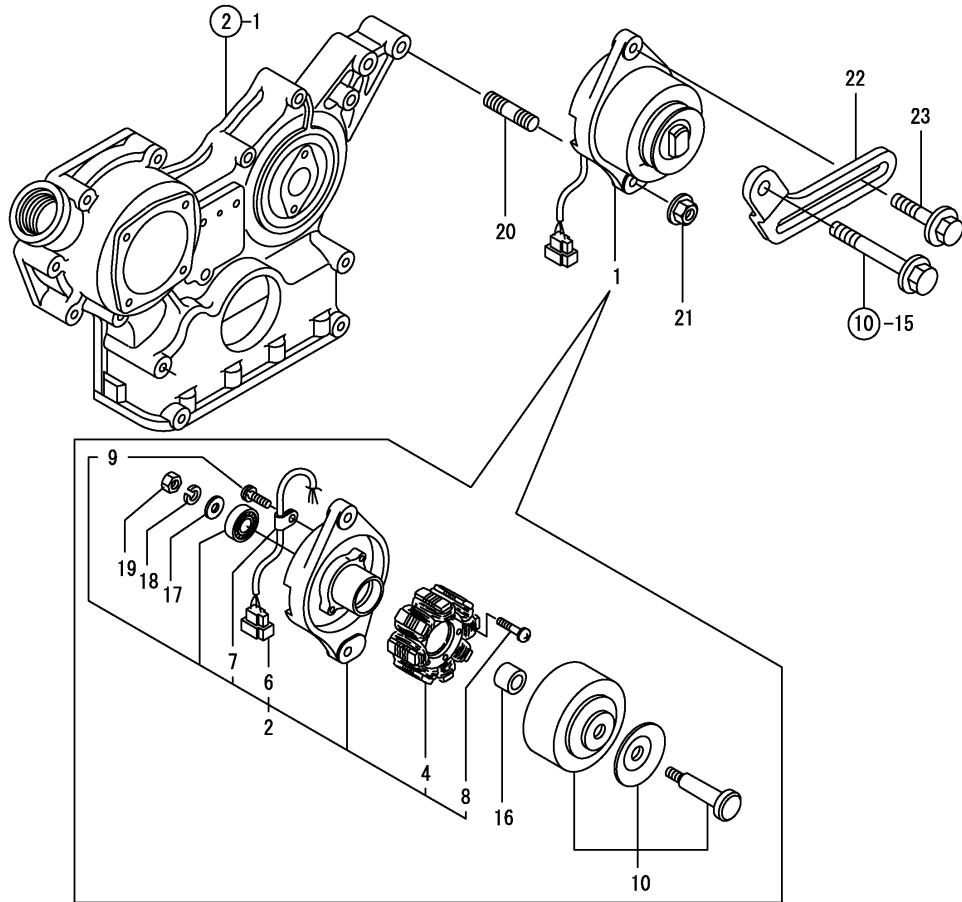


(A)=3TNE82A-DGD
(B)=
(C)=

(D)=
(E)=
(F)=

No.	Lev.	Parts No.	Description	Q'ty						I	R
				(A)	(B)	(C)	(D)	(E)	(F)		
39	2	129698-77220	PINION ASSY	1							W
		(A=*1997.10)									
40	2	129698-77230	SHAFT	1							W
		(A=*1997.10)									
41	2	129698-77240	GEAR	3							W
		(A=*1997.10)									
42	2	129698-77250	WASHER SET	1							W
		(A=*1997.10)									
43	2	129698-77260	CASE ASSY	1							W
		(A=*1997.10)									
44	3	X2114535200	METAL, STARTER	1							W
		(A=EXXXXX)									
45	2	129698-77270	LEVER SET, SHIFT	1							W
		(A=*1997.10)									
46	2	129698-77280	COVER KIT	1							W
		(A=*1997.10)									
47	2	124195-77770	BOLT, THROUGH	2							W
		(A=*1997.10)									
48	1	26116-120252	BOLT, M12X 25 PLATED	2							W

Fig.16. GENERATOR



(A)=3TNE82A-DGD

(B)=

(C)=

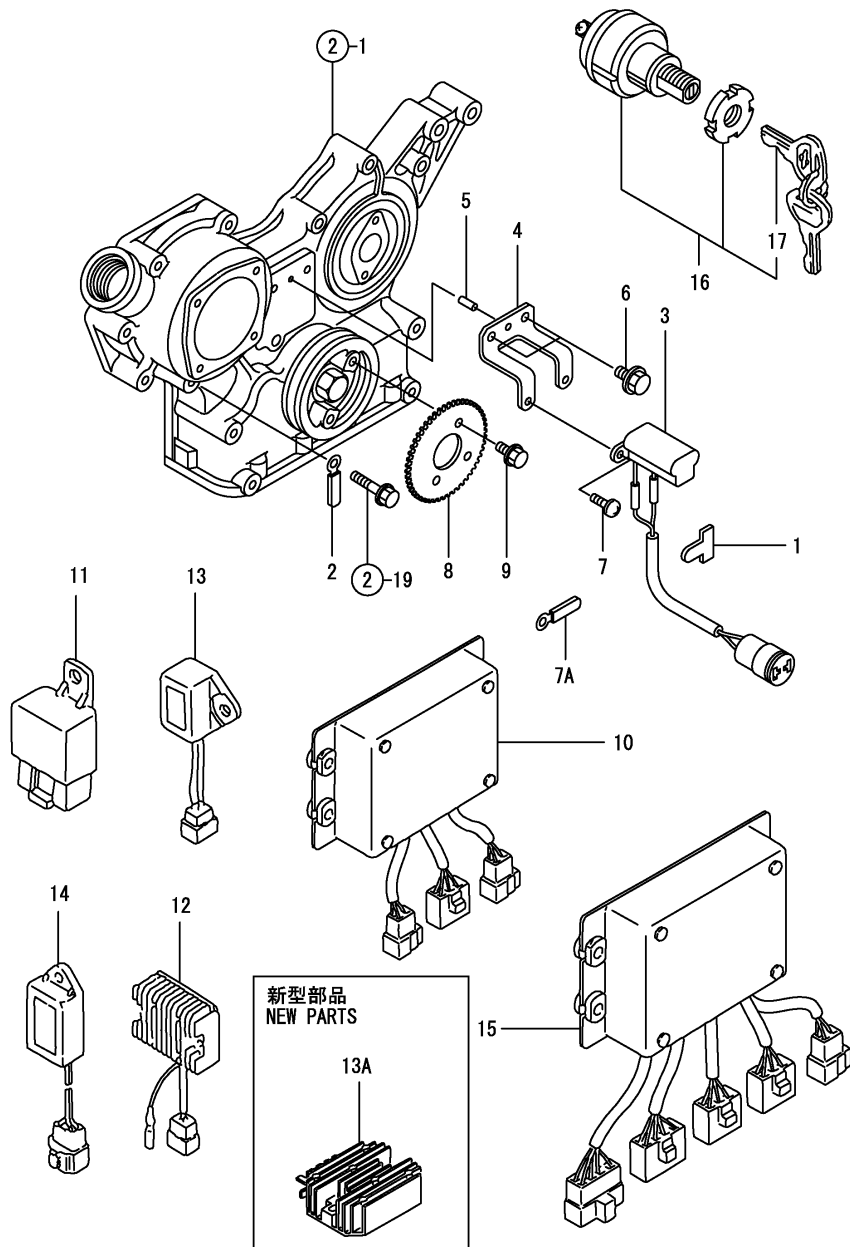
(D)=

(E)=

(F)=

No.	Lev.	Parts No.	Description	Q'ty						I	R
				(A)	(B)	(C)	(D)	(E)	(F)		
1	1	171301-77201	DYNAMO ASSY, 15A	1							
2	2	XM08137	PLATE ASSY	1							
4	3	XM08180	STATOR SET	1							
6	3	XM17878	COUPLER	1							
7	3	XM36410	CLAMP	1							
8	3	26022-040252	SCREW, M4X25	2							
9	3	XYSPS4008	SCREW	1							
10	2	XM82184	FLYWHEEL ASSY	1							
16	2	106383-44720	SPACER	1							
17	2	106383-44730	WASHER	1							
18	2	22212-100000	SPRING WASHER 10	1							
19	2	26716-100002	NUT, M10	1							
20	1	121450-01570	STUD	1							
20-1	1	129795-01900	STUD	1							N
(A=*1995.11)											
21	1	26366-100002	NUT, M10	1							
21-1	1	26306-100002	NUT, M10	1							N
(A=*2001.05)											
22	1	129400-77330	ADJUSTER	1							
23	1	26014-080252	BOLT, M8X 25	1							
23-1	1	119810-77340	BOLT, ADJUSTER	1							N
(A=*1998.02)											

Fig.17. PULSER



(A)=3TNE82A-DGD

(B)=

(C)=

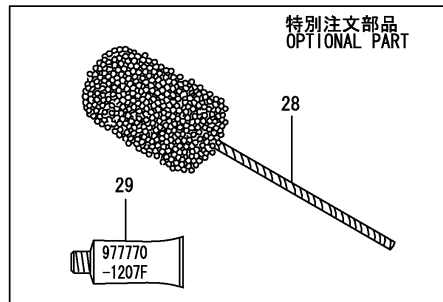
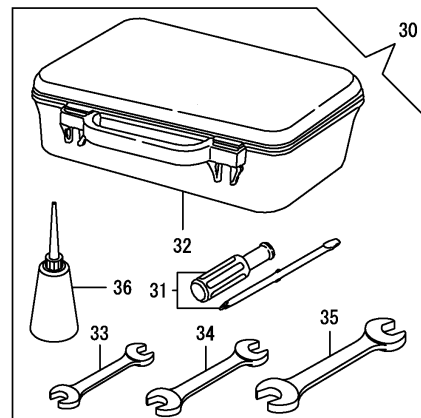
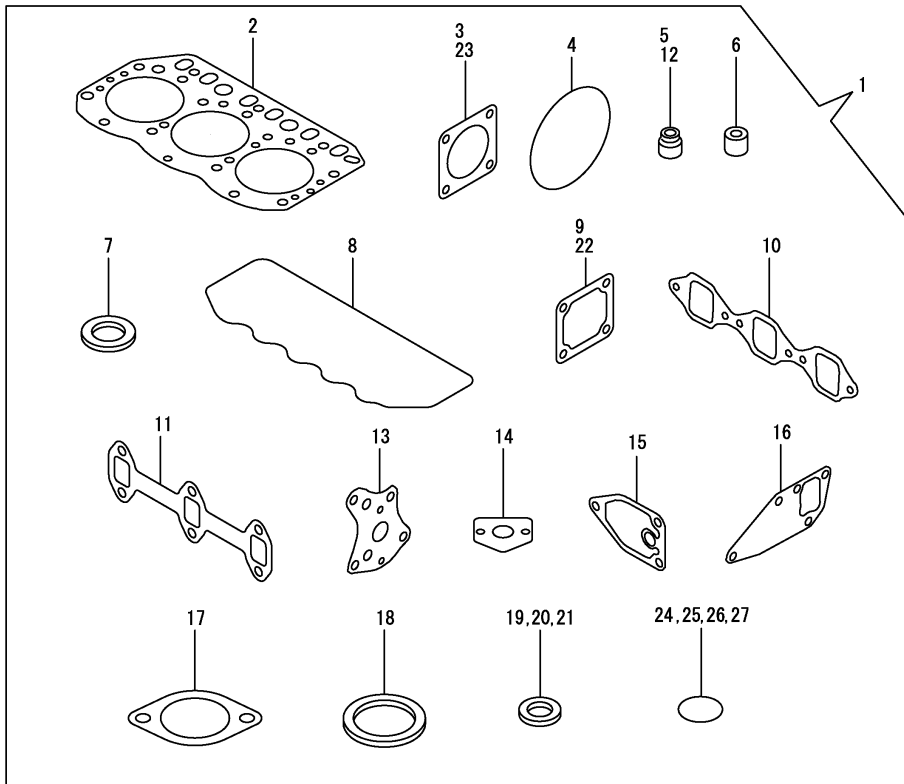
(D)=

(E)=

(F)=

No.	Lev.	Parts No.	Description	Q'ty						I	R
				(A)	(B)	(C)	(D)	(E)	(F)		
1	1	172010-08160	STICKER, WIRE	1							
2	1	194180-51640	CLAMP, HARNESS	1							
3	1	119649-78500	PULSAR	1							
4	1	129116-78510	BRACKET, PULSAR	1							
5	1	22351-040010	PIN, SPRING 4.0X10	1							
6	1	26116-060122	BOLT, M6X 12 PLATED	2							
7	1	26557-040082	SCREW, M4X 8	2							
7A	1	194440-51620	CLAMP	1							W
8	1	119649-78650	GEAR, PULSAR	1							
9	1	26106-100142	BOLT, M10X 14 PLATED	2							
10	1	129217-78800	CONTROLLER, MAIN 4P	1							
11	1	119247-77100	RELAY, SAFETY	1							
12	1	129132-77700	LIMITER, RS5136	1							Z
13	1	121522-77721	INDICATOR	1							Z
13A	1	119233-77712	LIMITER, CURRENT 15A	1							W
			(A=*2009.07)								
14	1	128300-77920	TIMER	1							
15	1	119140-78811	CONTROLLER, SUB	1							
16	1	121400-91251	SWITCH, STARTER	2							
17	2	121400-91271	KEY, SWITCH	2							

Fig.18. GASKET SET



(A)=3TNE82A-DGD

(B)=

(C)=

(D)=

(E)=

(F)=

No.	Lev.	Parts No.	Description	Q'ty						I	R
				(A)	(B)	(C)	(D)	(E)	(F)		
1	1	719813-92640	GASKET SET	1							1
2	2	119812-01330	GASKET, HEAD	1							
3	2	124240-01883	GASKET	1							
4	2	121850-51960	O-RING	1							
5	2	124160-11340	SEAL, VALVE STEM	3							
6	2	119625-11871	PROTECTOR, NOZZLE	3							
7	2	119625-11880	SEAT, NOZZLE	3							
8	2	119865-11310	GASKET, BONNET	1							
9	2	129150-77511	GASKET	1							
10	2	119810-12111	GASKET, MANIFOLD	1							
11	2	119810-13110	GASKET	1							
12	2	124950-11340	SEAL, VALVE STEM	3							
13	2	129150-32020	GASKET, PUMP	1							
14	2	129150-35041	GASKET	1							
15	2	129150-35111	GASKET	1							
16	2	129150-42020	GASKET, WATER PUMP	1							
17	2	129795-49551	GASKET	1							
18	2	129150-49811	GASKET, THERMOSTAT	1							
19	2	124465-44950	GASKET, 16	2							
20	2	104200-59170	GASKET, 12	2							
21	2	23414-120000	GASKET, 12X1.0	2							
22	2	129100-77510	GASKET	1							
23	2	124701-11911	GASKET, SILENCER	1							
24	2	24311-000120	O-RING, 1AP12.0	3							
25	2	24311-000160	O-RING, 1AP16.0	2							
26	2	24311-000320	O-RING, 1AP32.0	1							
27	2	24341-000240	O-RING, 1AS24.0	1							
28	1	129400-92420	HONE	1							1
29	1	977770-01212	GASKET, LIQUID	1							1
30	1	171001-93100	BOX, TOOL	1							
31	2	104200-92350	DRIVER, SCREW	1							
32	2	104200-92600	BOX, TOOL	1							
33	2	28110-100120	SPANNER, 10X12	1							
34	2	28110-140170	SPANNER, 14X17	1							
35	2	28110-190220	SPANNER, 19X22	1							
36	2	28210-000140	OILER	1							

Remarks

(1) OPTIONAL PART.

Parts No. Index

Parts No.	Fig. No.	Ref. No.
101304-59020	14	17
101720-55750	14	32
102103-55520	14	6
		27
103854-39140	14	16
104200-55321	14	2
		23
104200-55330	14	3
		24
104200-55341	14	25
104200-55750	14	13
		33
104200-59170	14	19
	18	20
104200-92350	18	31
104200-92600	18	32
104211-11180	4	18
104211-11370	4	22
104407-44480	5	3
105025-59750	13	39 B
	14	21 -1
105582-59540	14	39
106383-44720	16	16
106383-44730	16	17
110250-55610	14	7
		28
114250-39450	9	36 -1
114250-53080	13	5
114250-53120	13	9
114250-53130	13	10
114250-53140	13	11
114250-53210	13	12
114250-53400	13	13
119131-18320	6	4 -1
119140-78811	17	15
119233-77712	17	13 A
119247-77100	17	11
119609-32040	2	13 -1
119620-01750	3	3
119620-02020	1	7
119625-11870	4	24 -1
119625-11871	4	24
	18	6
119625-11880	4	25
	18	7
119625-11900	4	54
119631-44502	10	32
119631-44610	10	35
119631-44800	10	37
119640-01640	3	9

Parts No.	Fig. No.	Ref. No.
119649-61090	12	5
119649-61091	12	5 -1
119649-61100	12	3
119649-61151	12	8
119649-78500	17	3
119649-78650	17	8
119717-51420	11	82 -1
119717-51500	11	45 -1
119800-53000	13	2
119802-11280	4	37 -1
119802-13640	6	3 -1
119802-13740	6	3 A
119803-53400	13	13 -1
119810-01200	1	22
119810-01730	3	6
119810-01770	3	8
119810-01780	3	17
119810-02800	1	15
119810-02870	1	24
119810-02871	1	24 -1
119810-02930	1	18
119810-02931	1	18 -1
119810-02940	1	27
119810-02941	1	27 -1
119810-11100	4	15
119810-11110	4	16
119810-11120	4	17
119810-11240	4	27
119810-12111	5	4
	18	10
119810-12112	5	4 -1
119810-13100	6	1
119810-13110	6	2
	18	11
119810-14400	7	2
119810-14580	7	3
119810-23200	8	30
119810-23301	8	32 -1
119810-23600	8	31
119810-23601	8	31 -1
119810-23610	8	33
119810-23611	8	33 -1
119810-23910	8	29
119810-35300	9	19
119810-39200	9	32
119810-42001	10	1
119810-42002	10	1 -1
119810-51040	11	6
119810-55340	14	4
119810-55621	14	1

Parts No.	Fig. No.	Ref. No.
119810-55650	14	9
119810-59810	13	21
119810-59820	13	25
119810-59830	13	29
119810-77340	16	23 -1
119812-01330	1	23
	18	2
119813-21000	8	1
119813-22080	8	17
119813-22300	8	23
119813-22500	8	19
119813-22900	8	35
119813-59950	13	40 -1
119836-34800	9	16
119840-59500	13	35 A
119840-59560	13	36
119840-59570	13	37
119847-03100	4	1
119847-12100	5	1
119847-12101	5	1 -1
119847-12102	5	1 -2
119847-12110	5	2
119847-12111	5	2 -1
119847-12112	5	2 -2
119865-11210	4	26
119865-11310	4	47
	18	8
119865-21600	8	16
119932-34800	9	16 -1
121000-13201	6	5 -1
121023-01550	2	25
121023-01551	2	25 -1
121120-12541	5	7
121120-12561	5	8
121120-12571	5	9
121120-44590	10	36 A
121250-44590	10	33
121250-44901	10	29
121250-55620	14	8
121250-59550	13	35
121254-55510	14	5
121256-44600	10	47
121257-55720	14	29
121257-55731	14	30
121400-91251	17	16
121400-91271	17	17
121450-01560	2	6
121450-01570	16	20
121450-42450	10	27
121470-44540	10	45

Parts No.	Fig. No.	Ref. No.
121520-34810	9	17
121522-77721	17	13
121550-49111	10	26
121850-21680	8	11
121850-51960	2	12
	18	4
122117-51560	11	48
122710-51090	11	10
124060-11800	4	11
124060-77680	14	41
124064-55510	14	26
124066-59100	13	34
		35 B
124070-59130	14	38
124160-01751	2	7
	4	57
124160-01910	1	5
		11 -1
124160-11340	4	20
	18	5
124160-11360	4	51
124160-21501	8	12
124160-39140	9	31
124160-39450	9	36
124195-77770	15	47
124240-01871	2	8
124240-01883	2	9
	18	3
124450-44510	10	40
124450-44530	10	42
124450-44550	10	46
124450-44560	10	43
124465-44950	10	28
		30
	18	19
124550-51350	11	32
124550-51370	11	33
124550-59820	9	37
124550-59830	9	36 A
124701-11911	6	5
	18	23
124736-07900	4	5
124738-49150	10	38
124766-59050	13	33
		39 A
	14	18
		20 B
		37
124950-11340	4	21
	18	12

Parts No. Index

Parts No.	Fig. No.	Ref. No.
124950-51190	11	17
124976-77011	15	1
128170-51300	11	27
128300-77920	17	14
129001-01250	1	12 -1
129001-32001	9	1
129001-32151	9	5 -1
129001-32152	9	5 -2
129001-35300	9	27
129003-22950	8	37
129100-01580	3	1
		14
	8	2
129100-25061	7	9
129100-51560	11	49 -1
129100-51570	11	48 -1
129100-52100	11	91
129100-52101	11	91 -1
129100-59951	13	40
129100-77500	5	14
129100-77501	5	14 -1
129100-77510	5	15
	18	22
129108-51100	11	11
129116-61051	12	2
129116-61110	12	6
129116-61120	12	7
129116-61121	12	7 -1
129116-78510	17	4
129132-77700	17	12
129150-02450	7	4
129150-03020	4	42
129150-03070	4	43
129150-03080	4	44
129150-03100	2	11
	4	55
129150-11230	4	34
129150-11280	4	32
129150-11750	4	36
129150-14101	7	7
129150-14200	7	1
129150-21200	8	5
129150-25101	7	10
129150-25900	7	15
129150-25920	7	13
129150-32020	9	14
	18	13
129150-35041	9	18
	18	14
129150-35042	9	18 -1

Parts No.	Fig. No.	Ref. No.
129150-35101	9	24
129150-35111	9	25
	18	15
129150-35151	9	26
129150-35153	9	26 -1
129150-35350	9	28
129150-42020	10	14
	18	16
129150-42320	10	11
129150-49811	10	24
	18	18
129150-59120	13	49
129150-59131	13	52
129150-59580	13	38
129150-77511	5	16
	18	9
129155-11260	4	30
129155-11270	4	31
129155-42350	10	18
129155-49800	10	23
129155-49801	10	23 -1
129155-51020	11	5
129155-51050	11	8
129155-51051	11	8 -1
129155-51060	11	9
129155-51140	11	14
129155-51180	11	16
129155-51200	11	18
129155-51270	11	25
129155-51280	11	26
129155-51320	11	30
129155-51340	11	31
129155-51370	11	34
129155-51380	11	35
129155-51390	11	36
129155-51400	11	37
129155-51410	11	38
129155-51420	11	39
129155-51450	11	40
129155-51500	11	45
129155-51521	11	46
129155-51550	11	47
129155-51570	11	50
129155-51580	11	51
129155-51600	11	52
129155-51700	11	71
129155-51701	11	71 -1
129155-51710	11	72
129155-51711	11	72 -1
129155-51750	11	73

Parts No.	Fig. No.	Ref. No.
129155-51751	11	73 -1
129155-51760	11	74
129155-51761	11	74 -1
129155-51790	11	75
129155-51930	11	77
129155-51940	11	78
129155-52050	11	90
129155-52051	11	90 -1
129156-51910	11	76
129170-12580	5	20
129210-59040	14	17 A
129210-59130	13	39 -1
	14	20 A
129217-21590	8	13
129217-51100	11	11 -1
129217-51130	11	13 -1
129217-78800	17	10
129255-59580	13	39
	14	21
129335-55700	14	22
129350-12500	5	6
129350-12501	5	6 -1
129350-12650	5	10
129350-12660	5	11
129350-12900	5	12
129350-49530	10	21
129400-01520	2	5
129400-77330	16	22
129400-92420	18	28
129410-03990	4	56
129461-59580	14	40
129486-01670	3	18 -1
129486-42050	10	14 -1
129550-21650	8	9
129555-59510	14	18 A
		20
129604-07900	4	5 -1
129611-61100	12	3 -1
129611-61180	12	5 A
129612-01600	3	2 -1
129698-77010	15	1 -1
129698-77020	15	27
129698-77100	15	28
129698-77110	15	29
129698-77120	15	30
129698-77130	15	31
129698-77140	15	32
129698-77150	15	33
129698-77161	15	34
129698-77180	15	35

Parts No.	Fig. No.	Ref. No.
129698-77190	15	36
129698-77200	15	37
129698-77210	15	38
129698-77220	15	39
129698-77230	15	40
129698-77240	15	41
129698-77250	15	42
129698-77260	15	43
129698-77270	15	45
129698-77280	15	46
129792-22400	8	24
129795-01800	2	4
129795-01900	16	20 -1
129795-01950	2	10
129795-02411	1	21
129795-02412	1	21 -1
129795-21661	8	10
129795-49551	10	22
	18	17
129900-07900	4	5 -2
158600-51170	11	15 -1
158600-51410	11	38 -1
158600-51420	11	39 -1
171001-93100	18	30
171002-12560	5	13
171008-55730	15	14
171008-77571	15	16
171051-01921	1	6
171081-55910	14	34
171301-01600	3	2
171301-49010	10	48
171301-49020	10	49
171301-77201	16	1
171340-44740	10	19
171340-77520	5	17
171353-44760	10	31
172010-08160	17	1
174307-51170	11	15
174307-51560	11	49
194180-51640	17	2
194440-51620	17	7 A
22117-040000	12	9
22190-080002	2	23
		24
	9	37 A
		39
22190-100002	9	39 -1
22190-120002	13	48 -1
	14	19 -1
22190-160002	11	87

Parts No. Index

Parts No.	Fig. No.	Ref. No.
22190-220002	3	11
22212-100000	16	18
22217-050000	11	92
22217-060000	11	79
22217-120000	7	16
22351-040010	8	8
	12	10
	17	5
22351-050010	11	80
22351-060012	4	53
22360-050000	12	11
22512-070140	7	8
	8	6
23010-038000	10	50
23061-070230	10	44
23414-100000	9	38
23414-120000	13	48
	18	21
23418-060000	14	35
23871-010000	1	10
23871-030000	10	12
23876-010000	1	10 -1
23876-030000	10	12 -1
23887-120002	1	11
24101-063034	11	81
24311-000120	4	52
	18	24
24311-000160	2	13
	9	29
	18	25
24311-000320	2	14
	4	58
	18	26
24311-240100	14	14
		36
24316-000150	11	33 -1
24341-000160	11	82
24341-000240	2	26
	18	27
24341-000500	4	49
25132-003800	10	17
26014-080162	10	39
26014-080252	16	23
26014-080702	14	15
26022-040252	16	8
26022-050102	11	83
26022-050122	11	83 -1
26022-060162	11	84
26106-060122	2	27
26106-060162	2	27 -1

Parts No.	Fig. No.	Ref. No.
26106-060202	10	13 A
	12	12
26106-060222	12	13
26106-060352	10	20
26106-060452	12	14
26106-060602	12	15
26106-060702	12	16
26106-060852	12	17
26106-080122	2	15
26106-080142	4	6
	7	18 -1
26106-080162	2	16
		17
	3	12
	4	50
	7	18
26106-080202	2	18
	9	30
	10	25
26106-080222	10	25 -1
26106-080252	4	38
	5	5
26106-080302	3	18
26106-080352	3	19
	9	23
	10	15
26106-080402	5	18
26106-080452	2	19
	3	13
	7	14
26106-080502	4	39
26106-080552	2	20
	10	16
26106-080602	5	18 -1
	6	3
26106-080802	5	19
26106-080852	2	21
26106-081002	5	19 -1
26106-100142	17	9
26116-050302	11	85
26116-060122	17	6
26116-120252	15	26
		48
26206-100252	3	4
26206-100302	3	5
26216-060302	4	13
26216-080222	6	4
26226-080182	4	37
26306-080002	2	22 -1
	6	3 B

Parts No.	Fig. No.	Ref. No.
26306-100002	16	21 -1
26366-060002	4	23
26366-080002	2	22
26366-100002	16	21
26450-060252	9	15
26557-040082	17	7
26716-060002	11	86
26716-100002	16	19
26716-120002	7	17
27231-500000	1	12
27241-120000	1	13
27241-300000	1	14
27241-400000	4	14
27310-070001	4	19
28110-100120	18	33
28110-140170	18	34
28110-190220	18	35
28210-000140	18	36
719800-53100	13	1
719810-01500	2	1
719810-01650	3	15
719810-02981	1	15 -1
719810-11520	4	40
719810-11521	4	40 -1
719810-11660	4	33
719810-23100	8	25
719812-11700	4	7
719813-01560	1	1
719813-92640	18	1
729217-51200	11	1
977770-01212	18	29
X211414501	15	13
X211415502	15	3
X211415505	15	20
X211425502	15	4
X211425505	15	23
X21142867	15	19
X211429006	15	22
X211429007	15	9
X21143215	15	6
X211435502	15	24
X211445502	15	25
X211451007	15	2
X2114535200	15	44
X21145866	15	18
X211459002	15	11
X21146012	15	15
X211468005	15	17
X211469002	15	7
X211472106	15	5

Parts No.	Fig. No.	Ref. No.
X211476504	15	12
X211483003	15	8
X21148314	15	10
X211495009	15	21
XM08137	16	2
XM08180	16	4
XM17878	16	6
XM36410	16	7
XM82184	16	10
XYSPS4008	16	9