

0CD10-M51701EN

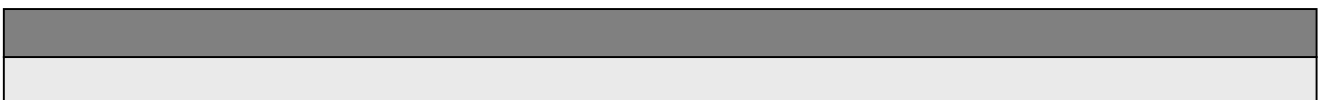
PREFACE

1. This Parts Catalog is the 1st edition of NFAD6-KB,EKB Diesel Engine for BOMAG JAPAN.

Pub. No. : 000Y00D5171
Published : December,1996

2. Model name

Engine model	Vehicle		Vehicle made by
	Products	Model name	
NFAD6-KB,EKB	VIBRATION ROLLER	—	BOMAG JAPAN



Directions for the Parts Catalog.

1. This Parts Catalog shows both standard and optional parts.
2. Parts may change without prior notice.
3. The following is an example of the Parts Catalog format.

REF.	LEV.	PARTS NO.	DESCRIPTION	Q'TY						I	R
				(A)	(B)	(C)	(D)	(E)	(F)		
1	1	729595-51390	FUEL INJECTION PUMP	1	1	1	1	1			1
1-1	1	729595-51391	FUEL INJECTION PUMP	1	1	1	1	1		N	1
		(A=E00185) (B=E00200)									
3	2	26022-060162	SCREW M 6X 16	9	9	9	9	9			
3-1	2	26022-060162	SCREW M 6X 16	4	4	4	4	4		K	
		(A=E00156) (B=E00156) (C=E00156) (D=E00156) (E=E00156)									
4	2	129470-51040	CAMSHAFT	1	1	1	1	1			
5	2	122710-51050	BEARING, ROLLER	2	2	2	2	2			
6	2	129470-51060	RETAINER	1	1	1	1	1			

Remarks
(1) BOOST COMPEMSATOR TYPE. OPTIONAL PART, TO E00155,(4JH-DT, 4JH-DTZ

① Ref. No.

The Ref. No. listed may not be in accordance with the illustration Ref. No.

(Ex.) Illustration No.

List Ref No.

1

1

(Before change)

1-1

(After change)

For interchangeable symbols N, R and K, illustrations for new parts may be abbreviated.

② Lev. (Level)

Level indication

The numbers below indicate the level of relativity towards the main part.

1 ----- Main parts (Assembly parts)

2 ----- Sub component included in " 1 ".

3 ----- Sub component included in " 2 ".

Note) Parts that are not for sale are partially illustrated but not listed.

③ Interchangeability Symbol

When a part change takes place, one of the following interchangeability symbols is indicated beside the part.

Symbol	Interchangeability	Contents note
N	Old $\begin{matrix} \leftarrow \text{Yes} \\ \text{No} \rightarrow \end{matrix}$ New	New Part is interchangeable for Old Part but Old Part is not interchangeable for New Part.
Q	Old $\begin{matrix} \leftarrow \text{No} \\ \text{Yes} \rightarrow \end{matrix}$ New	New Part is not interchangeable for Old Part but Old Part is interchangeable for New Part.
R	Old $\begin{matrix} \leftarrow \text{Yes} \\ \text{Yes} \rightarrow \end{matrix}$ New	New/ Old Parts are both interchangeable.
S	Old $\begin{matrix} \leftarrow \text{No} \\ \text{No} \rightarrow \end{matrix}$ New	New/ Old Parts are both not interchangeable.
W		Part newly added.
Z		Part discontinued.
F		Not interchangeable by a single part but interchangeable together with related parts.
K		Changes only for used parts quantities.

④ Effective Machine No.

When a part changes, the effective Machine No. will be indicated in the (A)-(F) column.

Product Symbol	Product No.	Product Symbol	Product No.
C	Clutch No. Compressor No.	F	Machine No. (Agricultural Equip.)
D	Drive No.	M	Machine No.
E	Engine No.		

Note 1) A date may follow the symbol. (Ex.) 1996.01

Note 2) "XXXXX" and "ZZZZZ" are for parts that could not be predicted or for engine models that could not be identified.

Note 3) (A=E00185) is the E (Engine Serial Number) for the column (A) model (in this case 4JH-DT) after the parts design change.

⑤ Remarks

Figures or alphabets (symbols) are entered in the remarks column.

The comments (remarks) on parts that are indicated at the bottom of the illustration are the same symbols as those stated above.

Contents

Fig. No. Fig. Name

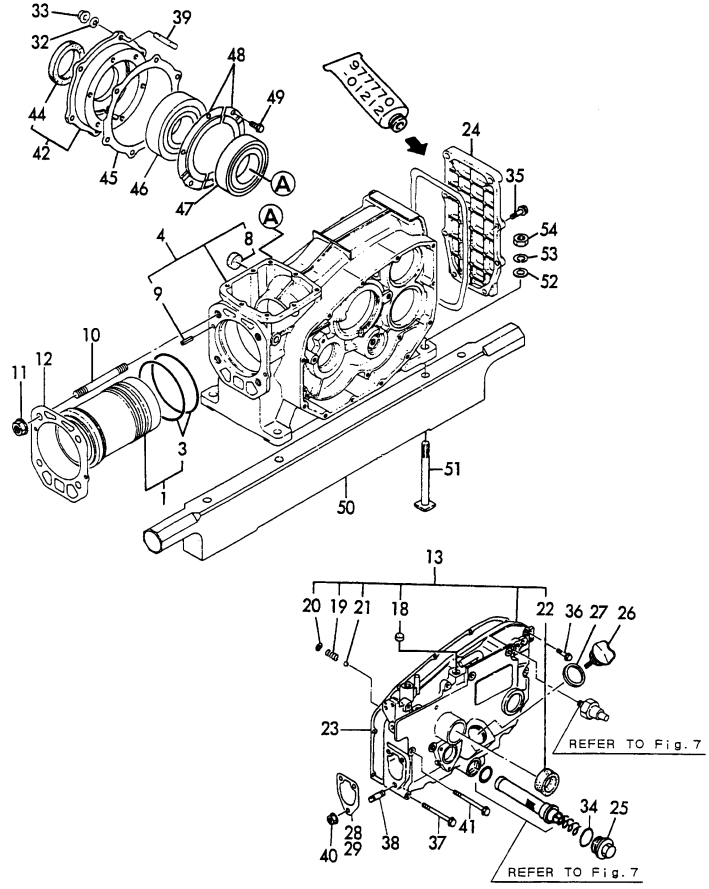
NFAD6-KB,EKB

1. CYLINDER BLOCK
2. CYLINDER HEAD & BONNET
3. AIR CLEANER & MUFFLER
4. CAMSHAFT
5. CRANKSHAFT & FLYWHEEL
6. PISTON & CONNECTING ROD
7. LUB.OIL SYSTEM & BREATHER
8. RADIATOR & FAN
9. FUEL INJECTION PUMP
10. FUEL OIL SYSTEM
11. FUEL TANK
12. HAND STARTING DEVICE
13. GOVERNOR & CONTROL DEVICE
14. STARTING MOTOR
15. TOOL & LABEL

Fig. No. Fig. Name

Fig.1. CYLINDER BLOCK

Y00D5171



(A)=NFAD6-KB
(B)=NFAD6-EKB
(C)=

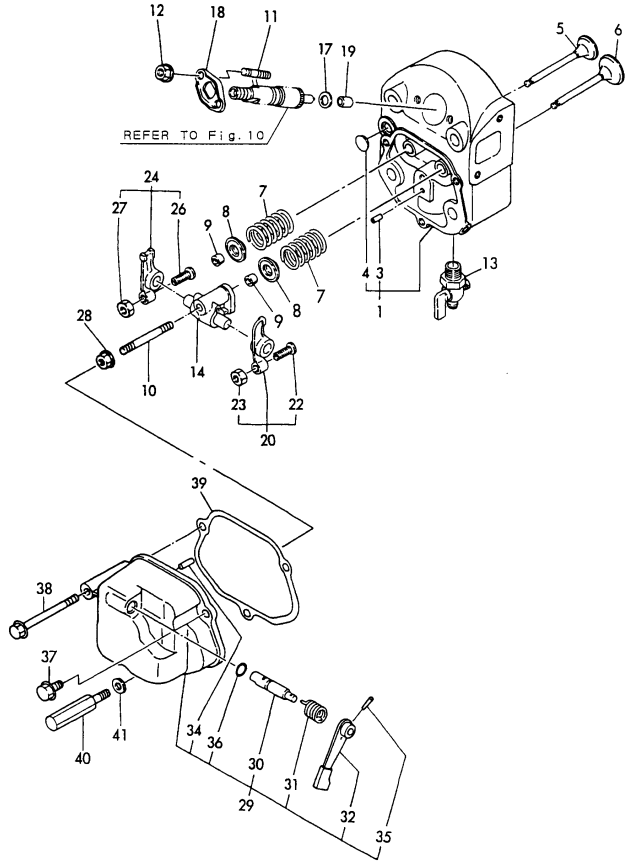
(D)=
(E)=
(F)=

No.	Lev.	Parts No.	Description	Q'ty						I	R
				(A)	(B)	(C)	(D)	(E)	(F)		
1	1	705090-01900	LINER ASSY, CYLINDER	1	1						
3	2	105090-01300	O-RING	2	2						A
4	1	705090-01560	BLOCK ASSY, CYLINDER	1	1						
8	3	105215-01670	SEAL, 20	1	1						
9	2	22351-060012	PIN, SPRING 6.0X12	2	2						
10	1	105215-01200	BOLT, HEAD M12	4	4						
11	1	121450-01220	NUT, CYLINDER HEAD	4	4						
12	1	105090-01330	GASKET, HEAD	1							
12-1	1	105090-01331	GASKET, CYL. HEAD	1	1						N A
(A=E034676)											
13	1	705090-01501	CASE ASSY, GEAR	1	1						
18	2	105100-01660	PLUG, 14	1	1						
19	2	105300-34040	SPRING	1	1						
20	2	22252-000100	RING, 10	1	1						
21	2	24190-120001	BALL, STEEL 3/8	1	1						
22	2	105140-76500	SEAL, TCX25X35X6	1							
22-1	2	120270-61250	SEAL, OIL	1	1						N
(A=E038174)											
23	1	105090-01410	GASKET, GEAR CASE	1	1						A
24	1	105090-01480	COVER	1	1						
25	1	105300-01690	PLUG	1	1						
26	1	105090-01750	CAP	1	1						
27	1	101104-01760	GASKET, CAP	1	1						A
28	1	105300-01920	SHIM, T=0.1	1	1						
29	1	104271-01950	SHIM SET,0.2X3,0.3X2	1	1						
32	1	22217-080000	WASHER, SPRING 8	6	6						
33	1	26716-080002	NUT, M8	6	6						
34	1	24321-000250	O-RING, 1AG25.0	1	1						
35	1	26106-060202	BOLT, M6X 20 PLATED	6	6						
36	1	26106-060302	BOLT, M6X 30 PLATED	6	6						
37	1	26106-060552	BOLT, M6X 55 PLATED	1	1						
38	1	26216-080222	STUD, M8X 22	3	3						
39	1	26226-080222	STUD, M8X 22	6	6						
40	1	26366-080002	NUT, M8	3	3						
41	1	26106-060652	BOLT, M6X 65 PLATED	4	4						
42	1	705090-02500	HOUSING ASSY, METAL	1	1						
44	2	111130-02160	SEAL, TC35508	1	1						
45	1	105090-02020	GASKET	1							
45-1	1	105090-02021	GASKET	1	1						N A
(A=E034676)											
46	1	105100-02300	BEARING, 6308-SH2-C3	1	1						
47	1	105100-02310	BEARING, 6208-SH2-C3	1	1						
48	1	106100-02331	RETAINER, BEARING	2	2						
49	1	26116-050082	BOLT, M5X 8 PLATED	6	6						
50	1	105090-08010	BED, WOODEN	2	2						
51	1	101137-08050	BOLT, FOUNDATION	4	4						
52	1	22117-100000	WASHER, 10	4	4						
53	1	22217-100000	WASHER, SPRING 10	4	4						
54	1	26706-100002	NUT, M10	4	4						

Remarks
 (A) THESE PART ARE ALSO SOLD BY
 FIG 15.REF NO.17.
 (GASKET SET.P/# 705090-92600).

Fig.2. CYLINDER HEAD & BONNET

Y00D5171



(A)=NFAD6-KB
(B)=NFAD6-EKB
(C)=

(D)=
(E)=
(F)=

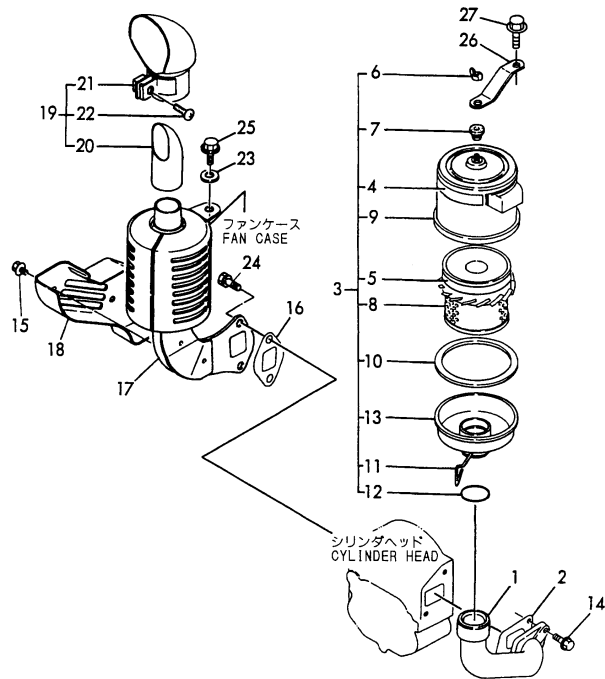
No.	Lev.	Parts No.	Description	Q'ty						I	R
				(A)	(B)	(C)	(D)	(E)	(F)		
1	1	705090-11700	HEAD ASSY, CYLINDER	1	1						
3	2	105300-11330	PIN	1	1						
4	2	27231-150000	PLUG 15	1	1						
5	1	105090-11100	VALVE, INTAKE	1	1						
6	1	105090-11111	VALVE, EXHAUST	1	1						
7	1	105400-11121	SPRING, VALVE	2	2						
8	1	101158-11180	RETAINER, SPRING	2	2						
9	1	27310-070001	COTTER, 7	2	2						
10	1	26216-080452	STUD, M8X 45	1	1						
11	1	26216-060402	STUD, M6X 40	2	2						
12	1	26366-060002	NUT, M6	2	2						
13	1	105010-11920	COCK, WATER	1	1						
14	1	105090-11290	SUPPORT ASSY, ARM	1	1						
17	1	119625-11880	SEAT, NOZZLE	1	1						
18	1	105300-11900	RETAINER	1	1						
19	1	119625-11871	PROTECTOR, NOZZLE	1	1						A
20	1	105090-11650	ARM, ROCKER	1	1						
22	2	101158-11230	SCREW, VALVE ADJUST	1	1						
23	2	26756-080002	NUT, LOCK M8	1	1						
24	1	105090-11660	ARM, ROCKER	1	1						
26	2	101158-11230	SCREW, VALVE ADJUST	1	1						
27	2	26756-080002	NUT, LOCK M8	1	1						
28	1	26366-080002	NUT, M8	1	1						
29	1	705090-11520	BONNET ASSY, HEAD	1	1						
30	2	104200-03600	SHAFT, DECOMPRESSION	1	1						
31	2	104200-03641	SPRING, DECOMPRESSION	1	1						
32	2	104104-03750	LEVER, DECOMPRESSION	1	1						
34	2	22312-030180	PIN, PARALLEL M3X18	1	1						
35	2	22322-030180	PIN, TAPER 3X18	1	1						
36	2	24311-000070	O-RING, 1AP7.0	1	1						A
37	1	26106-060202	BOLT, M6X 20 PLATED	1	1						
38	1	26106-060602	BOLT, M6X 60 PLATED	1	1						
39	1	105090-11310	GASKET, BONNET	1	1						A
40	1	105090-11820	BOLT	1	1						
41	1	22117-060000	WASHER, 6	1	1						

Remarks

(A) THESE PART ARE ALSO SOLD BY
FIG 15.REF NO.17.
(GASKET SET.P/# 705090-92600).

Fig.3. AIR CLEANER & MUFFLER

Y0005171



(A)=NFAD6-KB
(B)=NFAD6-EKB
(C)=

(D)=
(E)=
(F)=

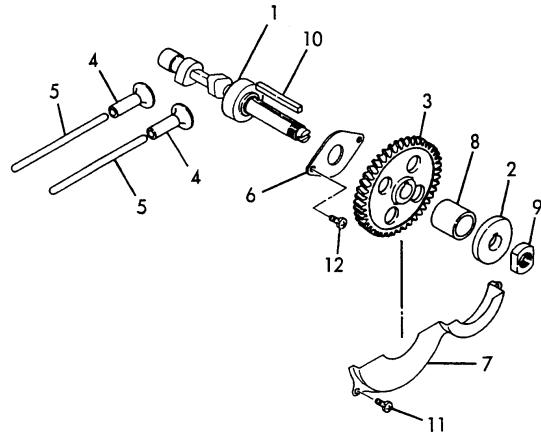
No.	Lev.	Parts No.	Description	Q'ty						I	R
				(A)	(B)	(C)	(D)	(E)	(F)		
1	1	105098-12020	PIPE, AIR INTAKE	1	1						
2	1	105190-12050	GASKET	1	1						
3	1	105098-12510	CLEANER, AIR	1	1						
4	2	105098-12530	LABEL, CAUTION	1	1						
5	2	105098-12540	LABEL, CAUTION	1	1						
6	2	105098-12550	NUT, WING	1	1						
7	2	105098-12560	GROMMET	1	1						
8	2	105098-12960	ELEMENT	1	1						
9	2	105098-12520	CASE ASSY	1	1						
10	2	105098-12580	GASKET	1	1						
11	2	105098-12590	BOLT	1	1						
12	2	105098-12600	O-RING	1	1						
13	2	105098-12610	BODY, AIR CLEANER	1	1						
14	1	26106-080202	BOLT, M8X 20 PLATED	2	2						
15	1	160260-01580	BOLT, FLANGE M6X6	2	2						
16	1	105010-13201	GASKET	1	1						A
17	1	105098-13510	SILENCER ASSY	1	1						
18	1	105090-13550	COVER	1	1						
19	1	105098-13610	EXTENSION ASSY	1	1						
20	2	105098-13570	PIPE	1	1						
21	2	106148-13590	COVER	1	1						
22	2	26554-060162	SCREW, M6X16	1	1						
23	1	160120-76940	WASHER	1	1						
24	1	26013-080189	BOLT, M8X 18	2	2						
25	1	26106-060202	BOLT, M6X 20 PLATED	1	1						
26	1	105098-12570	SUPPORT	1	1						
27	1	26106-060122	BOLT, M6X 12 PLATED	1	1						

Remarks

(A) THESE PART ARE ALSO SOLD BY
FIG 15.REF NO.17.
(GASKET SET.P/# 705090-92600).

Fig.4. CAMSHAFT

Y00D5171



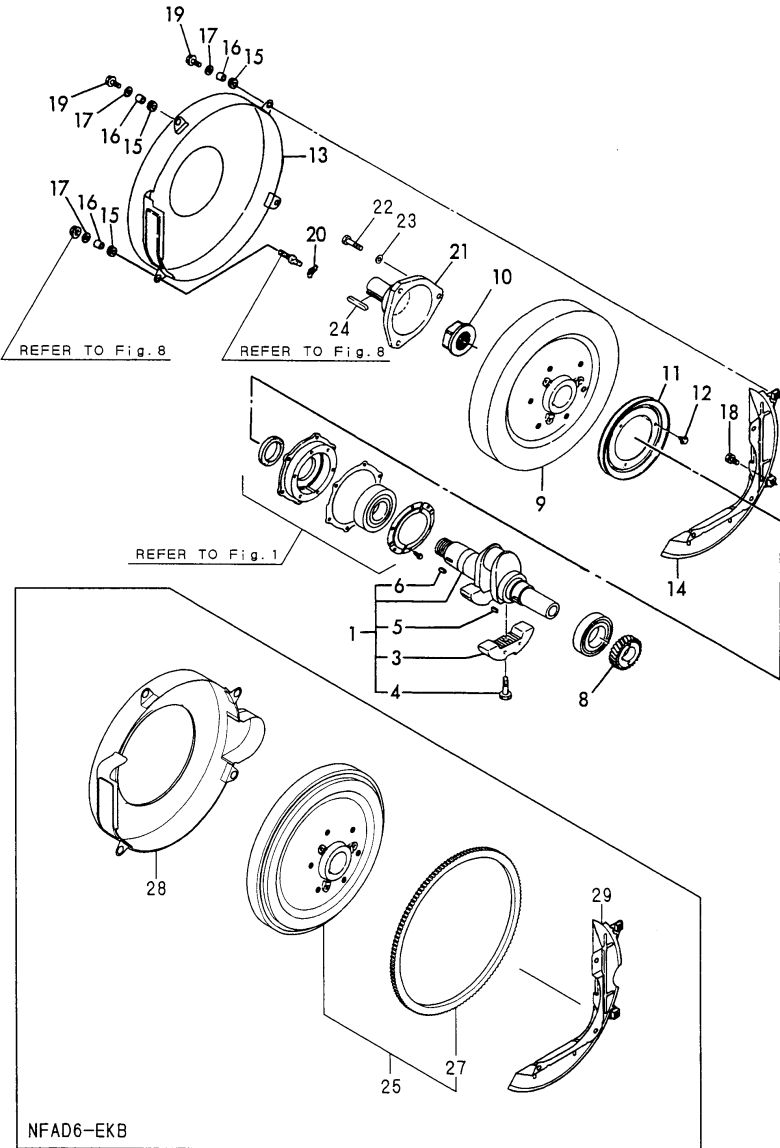
(A)=NFAD6-KB
(B)=NFAD6-EKB
(C)=

(D)=
(E)=
(F)=

No.	Lev.	Parts No.	Description	Q'ty						I	R
				(A)	(B)	(C)	(D)	(E)	(F)		
1	1	105090-14010	CAMSHAFT	1	1						
2	1	105090-14091	CAM, FUEL	1	1						
3	1	105090-14100	GEAR, CAMSHAFT	1	1						
4	1	105300-14200	TAPPET	2	2						
5	1	105090-14400	ROD, PUSH	2	2						
6	1	105090-14420	RETAINER, BEARING	1	1						
7	1	105090-14600	COVER	1	1						
8	1	105700-14700	SPACER	1	1						
9	1	104300-76460	NUT	1	1						
10	1	22512-070500	KEY, 7X 50	1	1						
11	1	26022-060122	SCREW, M6X12	2	2						
12	1	26557-060142	SCREW M 6X 14	2	2						

Fig.5. CRANKSHAFT & FLYWHEEL

Y00D5171



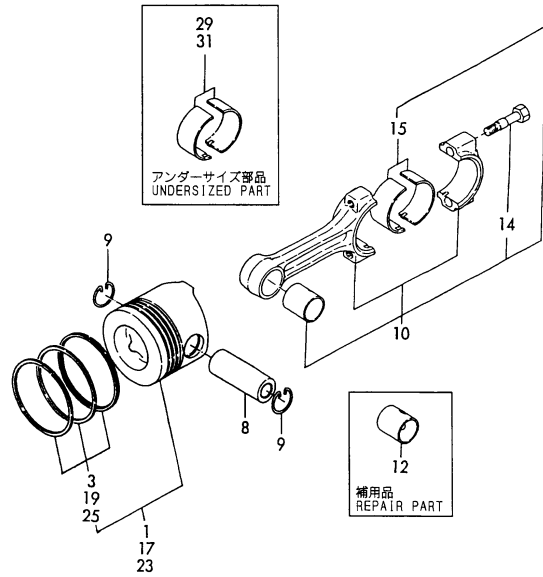
(A)=NFAD6-KB
(B)=NFAD6-EKB
(C)=

(D)=
(E)=
(F)=

No.	Lev.	Parts No.	Description	Q'ty						I	R
				(A)	(B)	(C)	(D)	(E)	(F)		
1	1	705090-21700	CRANKSHAFT ASSY	1	1						
3	2	105090-21100	WEIGHT, BALANCE	2	2						
4	2	105090-21130	BOLT, BALANCE WEIGHT	2	2						
5	2	22512-050140	KEY, 5X 14	1	1						
6	2	22512-050140	KEY, 5X 14	1	1						
8	1	105090-21200	GEAR, CRANKSHAFT	1	1						
9	1	105090-21401	FLYWHEEL	1							
10	1	105010-21530	NUT, END	1	1						
11	1	104407-21600	V-PULLEY	1	1						
12	1	26106-060122	BOLT, M6X 12 PLATED	3	3						
13	1	105090-21300	COVER, FLYWHEEL	1							
14	1	105090-21310	SUPPORT	1							
15	1	105300-21381	ABSORBER	4	4						
16	1	105300-44460	COLLAR	4	4						
17	1	160120-76940	WASHER	4	4						
18	1	26013-060142	BOLT, M6X 14	3	3						
19	1	26106-060202	BOLT, M6X 20 PLATED	3	3						
20	1	105190-21910	WASHER	1	1						
21	1	105098-21900	SHAFT, STUB	1	1						
22	1	26116-120352	BOLT, M12X 35 PLATED	3	3						
23	1	22217-120000	WASHER, SPRING 12	3	3						
24	1	22512-070500	KEY, 7X 50	1	1						
25	1	105090-21591	FLYWHEEL ASSY	1							
27	2	104511-21600	GEAR, RING	1							
28	1	105090-21350	COVER, FLYWHEEL	1							
29	1	105090-21361	SUPPORT	1							

Fig.6. PISTON & CONNECTING ROD

Y0005171



(A)=NFAD6-KB
(B)=NFAD6-EKB
(C)=

(D)=
(E)=
(F)=

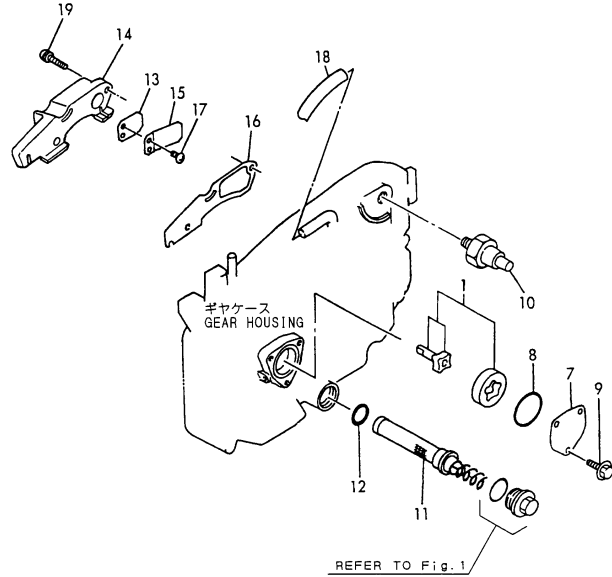
No.	Lev.	Parts No.	Description	Q'ty						I	R
				(A)	(B)	(C)	(D)	(E)	(F)		
1	1	105090-22190	PISTON ASSY	1	1						
3	2	705090-22501	RING SET, PISTON	1	1						
8	1	124950-22300	PIN, PISTON	1	1						
9	1	105090-22400	CIRCLIP	2	2						
10	1	705090-23100	ROD ASSY, CONNECTING	1	1						
12	2	105090-23910	BEARING, PISTON PIN	1	1						1
14	2	105225-23200	BOLT, CONNECTING ROD	2	2						
15	2	705090-23600	BEARING, CRANK PIN	1	1						
17	1	105090-22470	PISTON ASSY, 0.25 OS	1	1						2
19	2	105090-22510	RING SET, 0.25 OS	1	1						2
23	1	105090-22480	PISTON ASSY, 0.50 OS	1	1						3
25	2	105090-22520	RING SET, 0.50 OS	1	1						3
29	1	705090-23610	BEARING ASSY, 0.25	1	1						4
31	1	705090-23620	BEARING, 0.50 US	1	1						5

Remarks

- (1) REPAIR PART.
- (2) OVER-SIZED(O.S=0.25)PART.
- (3) OVER-SIZED(O.S=0.5)PART.
- (4) UNDER-SIZED(U.S=0.25)PART.
- (5) UNDER-SIZED(U.S=0.5)PART.

Fig.7. LUB.OIL SYSTEM & BREATHER

Y00D5171



REFER TO Fig.1

(A)=NFAD6-KB
(B)=NFAD6-EKB
(C)=

(D)=
(E)=
(F)=

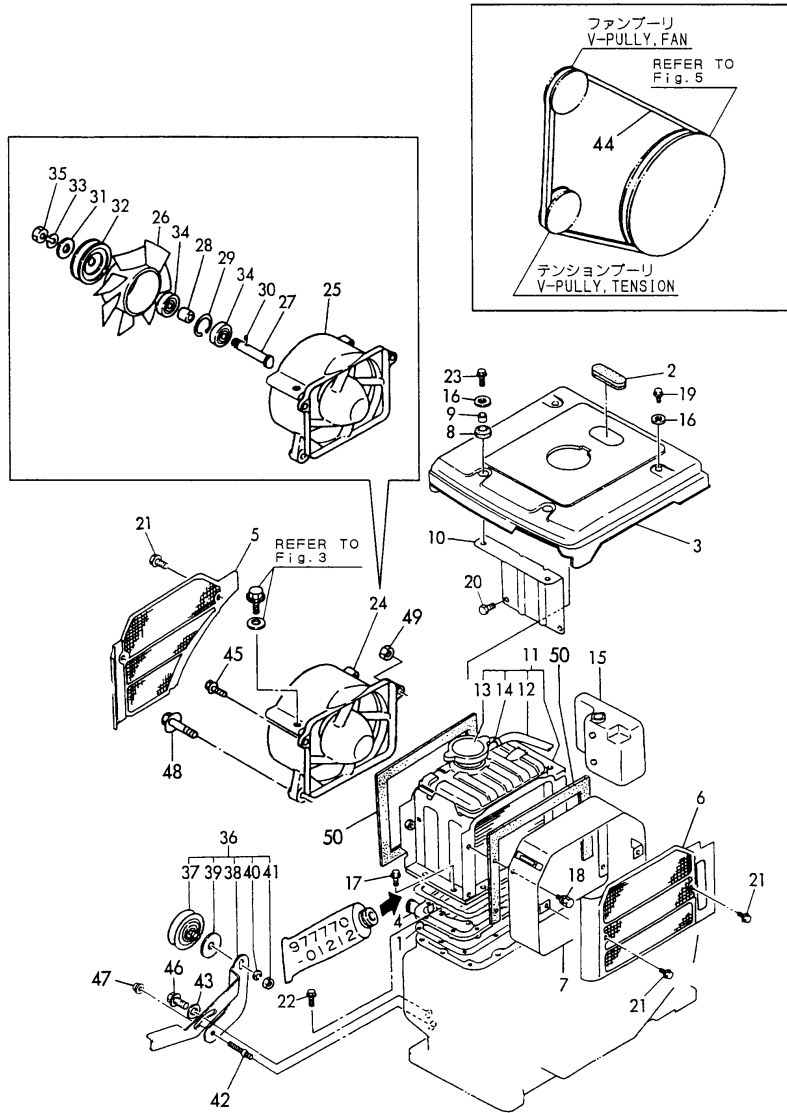
No.	Lev.	Parts No.	Description	Q'ty						I	R
				(A)	(B)	(C)	(D)	(E)	(F)		
1	1	104300-32150	ROTOR ASSY, INNER	1	1						
7	1	103338-32070	COVER	1	1						
8	1	103338-32570	O-RING	1	1						A
9	1	26106-060122	BOLT, M6X 12 PLATED	3	3						
10A	1	105140-34100	INDICATOR	1							
10B	1	124060-39451	SWITCH, 0.2KG		1						
11	1	105190-35050	STRAINER ASSY, OIL	1	1						
12	1	24341-000200	O-RING, 1AS20.0	1	1						A
13	1	101158-03061	VALVE	1	1						
14	1	105090-03081	COVER, BREATHER	1	1						
15	1	101158-03111	RETAINER	1	1						
16	1	105090-03131	GASKET	1	1						
17	1	105362-78960	SCREW, M4X8	2	2						
18A	1	23064-090220	PIPE, 9X 220		1						
18B	1	23064-090370	PIPE, 9X 370			1					
19A	1	26023-060252	SCREW, M6X25	2							
19B	1	26106-060222	BOLT, M6X 22 PLATED		2						

Remarks

(A) THESE PART ARE ALSO SOLD BY
FIG 15.REF NO.17.
(GASKET SET.P/# 705090-92600).

Fig.8. RADIATOR & FAN

Y0005171



(A)=NFAD6-KB
(B)=NFAD6-EKB
(C)=

(D)=
(E)=
(F)=

No.	Lev.	Parts No.	Description	Q'ty						I	R
				(A)	(B)	(C)	(D)	(E)	(F)		
1	1	105090-44050	GASKET	1	1						
2	1	105300-44220	COVER, RADIATOR	1	1						
3	1	105090-44251	COVER, RADIATOR	1	1						
4	1	105090-44300	BRACKET, RADIATOR	1	1						
5	1	105090-44330	SCREEN	1	1						
6	1	105090-44350	SCREEN	1	1						
7	1	105090-44360	DUCT, SCREEN	1	1						
8	1	105300-44451	ABSORBER	2	2						
9	1	105300-44460	COLLAR	2	2						
10	1	105090-44490	STAY	1	1						
11	1	105098-44500	RADIATOR ASSY	1	1						
12	2	105340-44570	PIPE, 7X170	1	1						
13	2	105198-44590	CAP, RADIATOR	1	1						
14	2	121250-44590	CLAMP	1	1						
15	1	105100-44630	TANK, SUB	1	1						
16	1	160120-76940	WASHER	4	4						
17	1	26013-060162	BOLT, M6X 16	9	9						
18	1	26013-060129	BOLT, M6X 12	4	4						
19	1	26106-060102	BOLT, M6X 10 PLATED	2	2						
20	1	26106-060122	BOLT, M6X 12 PLATED	2	2						
21	1	26106-060122	BOLT, M6X 12 PLATED	3	3						
22	1	26106-060202	BOLT, M6X 20 PLATED	8	8						
23	1	26106-060202	BOLT, M6X 20 PLATED	2	2						
24A	1	105090-44201	CASE ASSY, FAN	1							
24B	1	105090-44211	CASE ASSY, FAN		1						
25	2	105090-44680	COVER, FAN	1	1						
26A	2	105090-44700	FAN, COOLING	1							
26B	2	105090-44850	FAN, COOLING		1						
27	2	105340-44710	SHAFT, FAN	1	1						
28	2	106383-44720	SPACER	1	1						
29	2	106383-44740	CIRCLIP	1	1						
30	2	105340-44750	PIN	1	1						
31	2	105100-44780	WASHER, PULLEY	1	1						
32	2	105100-44770	PULLEY, FAN	2	2						
33	2	22217-120000	WASHER, SPRING 12	1	1						
34	2	24107-062013	BEARING, 6201ZZP6	2	2						
35	2	26777-120002	NUT, LOCK M12	1	1						
36	1	105090-44810	PULLEY ASSY, TENSION	1	1						
37	2	106100-44650	PULLEY, TENSION	1	1						
38	2	105090-44940	LEVER, PULLEY	1	1						
39	2	106100-44960	CAP	1	1						
40	2	22217-080000	WASHER, SPRING 8	1	1						
41	2	26716-080002	NUT, M8	1	1						
42	1	105100-44930	BOLT	1	1						
43	1	22137-080000	WASHER, 8	1	1						
44	1	25117-003301	V-BELT, M33H	1	1						
45	1	26106-060252	BOLT, M6X 25 PLATED	2	2						
46	1	26106-080162	BOLT, M8X 16 PLATED	1	1						
47	1	26366-060002	NUT, M6	1	1						
48	1	26106-080352	BOLT, M8X 35 PLATED	2	2						
49	1	26366-060002	NUT, M6	1	1						

Fig.8. RADIATOR & FAN

Y0005171

(A)=NFAD6-KB
(B)=NFAD6-EKB
(C)=

(D)=
(E)=
(F)=

No.	Lev.	Parts No.	Description	Qty						I	R
				(A)	(B)	(C)	(D)	(E)	(F)		
50	1	106100-44560	SPONGE, 15X5X1000	2	2						

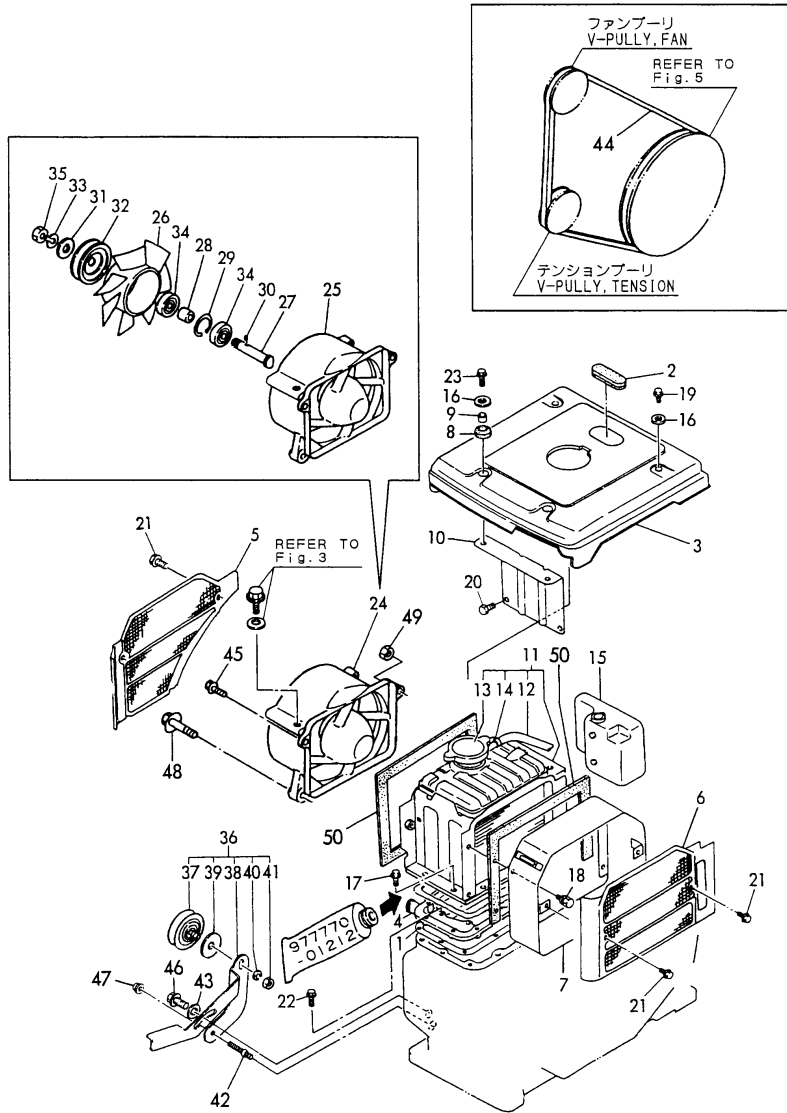
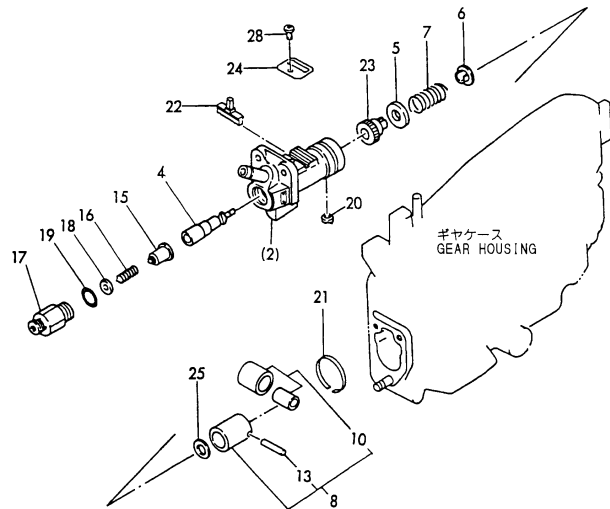


Fig.9. FUEL INJECTION PUMP

Y0005171

見出しNo. 1は、見出しNo. (2) から28を含みます。
↑inc. (2) ~ 28



(A)=NFAD6-KB
(B)=NFAD6-EKB
(C)=

(D)=
(E)=
(F)=

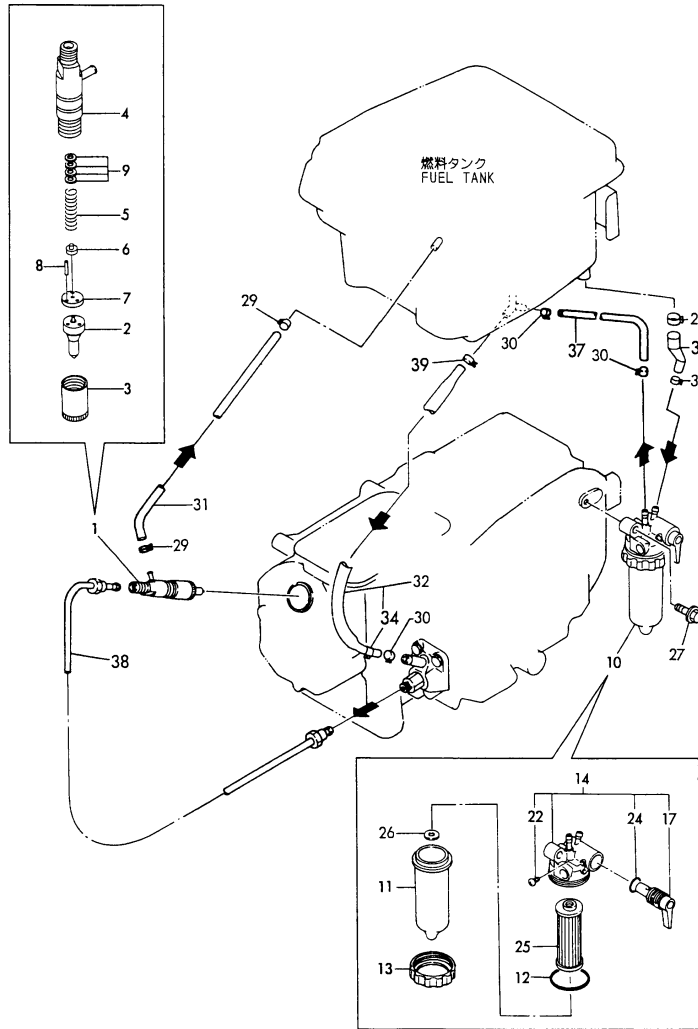
No.	Lev.	Parts No.	Description	Q'ty						I	R
				(A)	(B)	(C)	(D)	(E)	(F)		
1	1	705090-51102	PUMP ASSY, INJECTION	1	1						
4	2	105200-51100	PLUNGER ASSY	1	1						
5	2	174307-51170	RETAINER, SPRING A	1	1						
6	2	174307-51181	RETAINER, SPRING B	1	1						
7	2	124950-51190	SPRING, PLUNGER	1	1						
8	2	724550-51520	GUIDE, PLUNGER	1	1						
10	3	711100-51540	ROLLER ASSY	1	1						
13	3	174100-54120	PIN	1	1						
15	2	129100-51300	VALVE ASSY, DELIVERY	1	1						
16	2	124550-51320	SPRING, DELIVERY	1	1						
17	2	124550-51341	HOLDER, DELIVERY L43	1	1						
18	2	124550-51350	GASKET, DELIVERY	1	1						A
19	2	124550-51370	O-RING	1	1						A
20	2	104271-51450	PIECE, GUIDE	1	1						
21	2	104271-51460	CIRCLIP	1	1						
22	2	105300-51500	RACK, CONTROL	1	1						
23	2	105300-51510	PINION	1	1						
24	2	105300-51550	RETAINER, RACK	1	1						
25	2	174307-51700	SHIM SET	1	1						
28	2	26022-050102	SCREW, M5X10	1	1						

Remarks

(A) THESE PART ARE ALSO SOLD BY
FIG 15.REF NO.17.
(GASKET SET.P/# 705090-92600).

Fig.10. FUEL OIL SYSTEM

Y0005171



(A)=NFAD6-KB
(B)=NFAD6-EKB
(C)=

(D)=
(E)=
(F)=

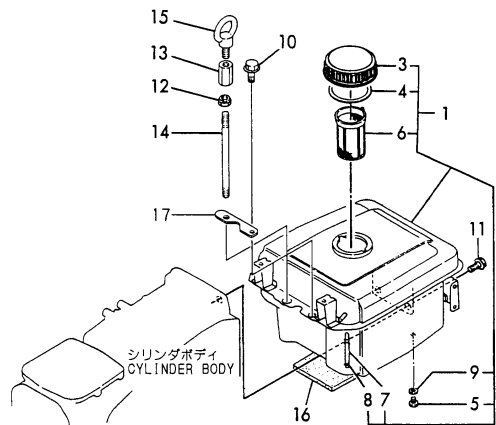
No.	Lev.	Parts No.	Description	Q'ty						I	R
				(A)	(B)	(C)	(D)	(E)	(F)		
1	1	705050-53100	VALVE ASSY,INJECTION	1	1						
2	2	105050-53000	VALVE ASSY,INJECTION	1	1						
3	2	114250-53080	NUT, NOZZLE D16.95	1	1						
4	2	105300-53100	HOLDER ASSY, NOZZLE	1	1						
5	2	114250-53120	SPRING, NOZZLE	1	1						
6	2	114250-53130	SEAT, SPRING	1	1						
7	2	114250-53140	PLATE	1	1						
8	2	114250-53210	PIN	2	2						
9	2	114250-53400	SHIM SET	1	1						
10	1	105198-55600	STRAINER ASSY, FUEL	1	1						
11	2	105198-55510	CUP, STRAINER	1	1						
12	2	105300-55520	O-RING	1	1						A
13	2	105300-55610	RING, RETAINING	1	1						
14	2	105300-55700	BODY ASSY, STRAINER	1	1						
17	3	105300-55340	LEVER	1	1						
22	3	104200-55750	SCREW, M4	1	1						
24	3	24311-000160	O-RING, 1AP16.0	1	1						
25	2	105370-55710	ELEMENT	1	1						
26	2	105300-55750	FLOAT	1	1						
27	1	26106-080302	BOLT, M8X 30 PLATED	1	1						
28	1	129301-03660	CLAMP 16	1	1						
29	1	124722-59050	CLIP, HOSE 9	2	2						
30	1	124766-59050	CLIP, HOSE 12	4	4						
31	1	105300-59100	PIPE, FUEL RETURN	1	1						
32	1	105090-59020	PIPE ASSY, FUEL	1	1						
34	2	124766-59050	CLIP, HOSE 12	1	1						
36	1	105192-59560	PIPE, FUEL	1							
36-1	1	105192-59562	PIPE, FUEL	1	1						N
		(A=E038174)									
37	1	105192-59570	PIPE, FUEL	1	1						
38	1	105090-59800	PIPE ASSY, INJECTION	1	1						
39	1	23080-013000	CLAMP, 13	1	1						

Remarks

(A) THESE PART ARE ALSO SOLD BY
FIG 15.REF NO.17.
(GASKET SET.P/# 705090-92600).

Fig.11. FUEL TANK

Y00D5171



(A)=NFAD6-KB
(B)=NFAD6-EKB
(C)=

(D)=
(E)=
(F)=

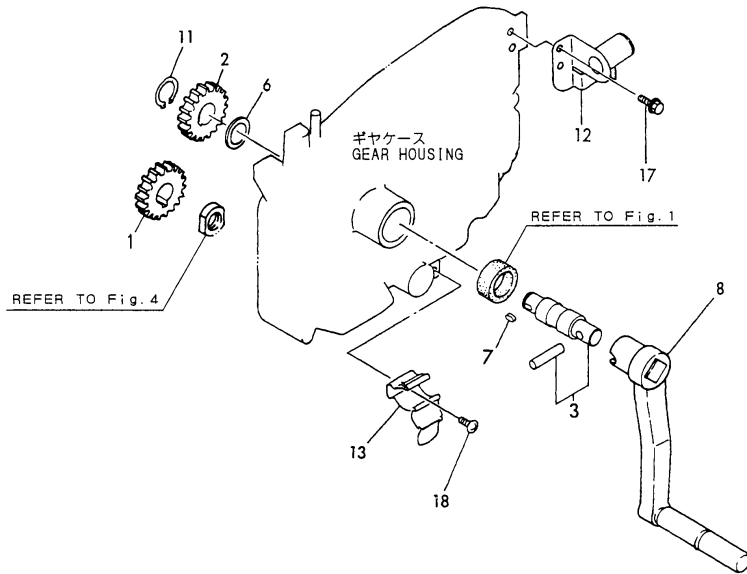
No.	Lev.	Parts No.	Description	Q'ty						I	R
				(A)	(B)	(C)	(D)	(E)	(F)		
1	1	705090-55700	TANK ASSY, FUEL	1	1						
3	2	101168-55040	CAP ASSY	1	1						
4	2	101504-55051	GASKET	1	1						A
5	2	105300-55080	PLUG, 8	1	1						
6	2	101504-55101	STRAINER, FUEL	1	1						
7	2	104200-55160	GAUGE, LEVEL	1	1						
8	2	103854-55220	RETAINER	2	2						
9	2	23414-080000	GASKET, 8X1.0	1	1						
10	1	26106-080222	BOLT, M8X 22 PLATED	1	1						
11	1	26106-080322	BOLT, M8X 32 PLATED	2	2						
12	1	104107-07900	NUT, M10	1	1						
13	1	105500-07920	NUT, M10	1	1						
14	1	105090-07940	BOLT, LIFTING	1	1						
15	1	26617-100002	BOLT, EYE M10	1	1						
16	1	104807-55220	FELT, FUEL TANK	1	1						
17	1	105198-55520	RETAINER	1	1						

Remarks

(A) THESE PART ARE ALSO SOLD BY
FIG 15.REF NO.17.
(GASKET SET.P/# 705090-92600).

Fig.12. HAND STARTING DEVICE

Y00D5171



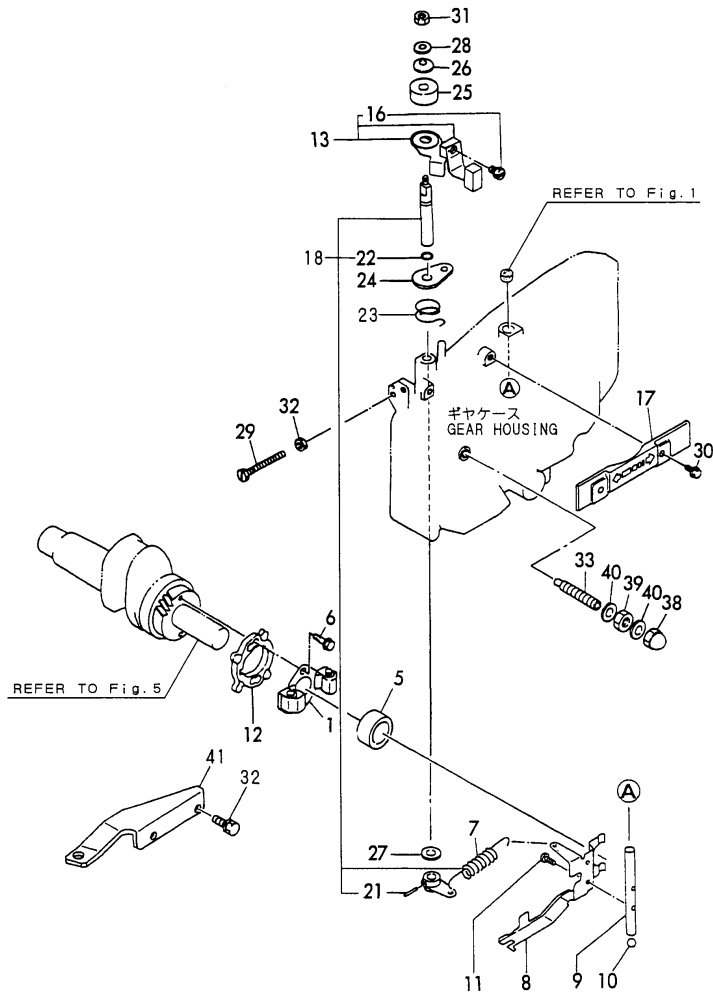
(A)=NFAD6-KB
(B)=NFAD6-EKB
(C)=

(D)=
(E)=
(F)=

No.	Lev.	Parts No.	Description	Qty						I	R
				(A)	(B)	(C)	(D)	(E)	(F)		
1	1	105300-76330	GEAR, STARTING	1	1						
2	1	105090-76340	GEAR, STARTING	1	1						
3	1	705100-76900	SHAFT ASSY, STARTING	1	1						
6	1	105300-76470	COLLAR	1	1						
7	1	105300-76490	KEY, 7X10	1	1						
8	1	105090-76790	HANDLE ASSY	1	1						
11	1	22242-000200	RING, 20	1	1						
12	1	105298-08100	BRACKET, HANDLE	1	1						
13	1	105300-08510	BRACKET ASSY	1	1						
17	1	26106-060122	BOLT, M6X 12 PLATED	2	2						
18	1	26557-060082	SCREW, M6X 8	1	1						

Fig.13. GOVERNOR & CONTROL DEVICE

Y0005171



(A)=NFAD6-KB
(B)=NFAD6-EKB
(C)=

(D)=
(E)=
(F)=

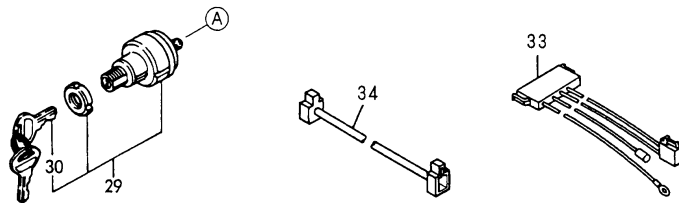
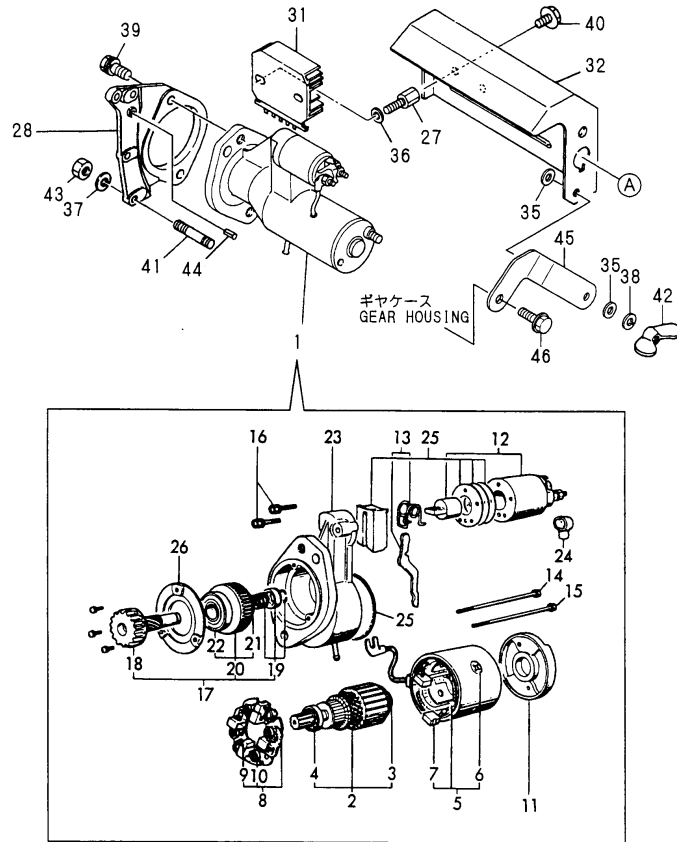
No.	Lev.	Parts No.	Description	Q'ty						I	R
				(A)	(B)	(C)	(D)	(E)	(F)		
1	1	705090-61700	GOVERNOR ASSY	1	1						
5	1	105300-61600	SLEEVE, GOVERNOR	1	1						
6	1	174100-61600	BOLT	2	2						
7	1	105300-66010	SPRING, REGULATOR	1	1						
8	1	105090-66300	LEVER, GOVERNOR	1	1						
9	1	105100-66400	SHAFT	1	1						
10	1	24190-120001	BALL, STEEL 3/8	1	1						
11	1	26022-050102	SCREW, M5X10	2	2						
12	1	105090-61810	PIECE, DISTANCE	1	1						
13	1	105502-66041	HANDLE ASSY	1	1						
16	2	105225-66990	SCREW, M5X8.5	1	1						
17	1	105300-66110	COVER	1	1						
18	1	705100-66700	LEVER ASSY,REGULATOR	1	1						
21	2	22322-030200	PIN, TAPER 3X20	1	1						
22	2	24311-000070	O-RING, 1AP7.0	1	1						
23	1	105502-67301	SPRING, RETURN	1	1						
24	1	105300-66850	RETAINER	1	1						
25	1	105840-66831	PLATE, FRICTION	1	1						
26	1	105840-66880	SPRING	1	1						
27	1	22117-100000	WASHER, 10	1	1						
28	1	22137-060000	WASHER, 6	1	1						
29	1	105300-66520	SCREW	1	1						
30	1	26106-060122	BOLT, M6X 12 PLATED	2	2						
31	1	26347-060002	NUT, M6	1	1						
32	1	26013-060202	BOLT, M6X 20	2	2						
33	1	105090-66551	LIMITER ASSY, FUEL	1	1						
38	1	124060-66950	NUT, CAP M10	1	1						
39	1	26796-100002	NUT, LOCK M10	1	1						
40	1	22190-100002	WASHER, SEAL 10	2	2						
41	1	105098-67010	BRACKET	1	1						

Fig.14. STARTING MOTOR

Y00D5171

(A)=NFAD6-KB
(B)=NFAD6-EKB
(C)=

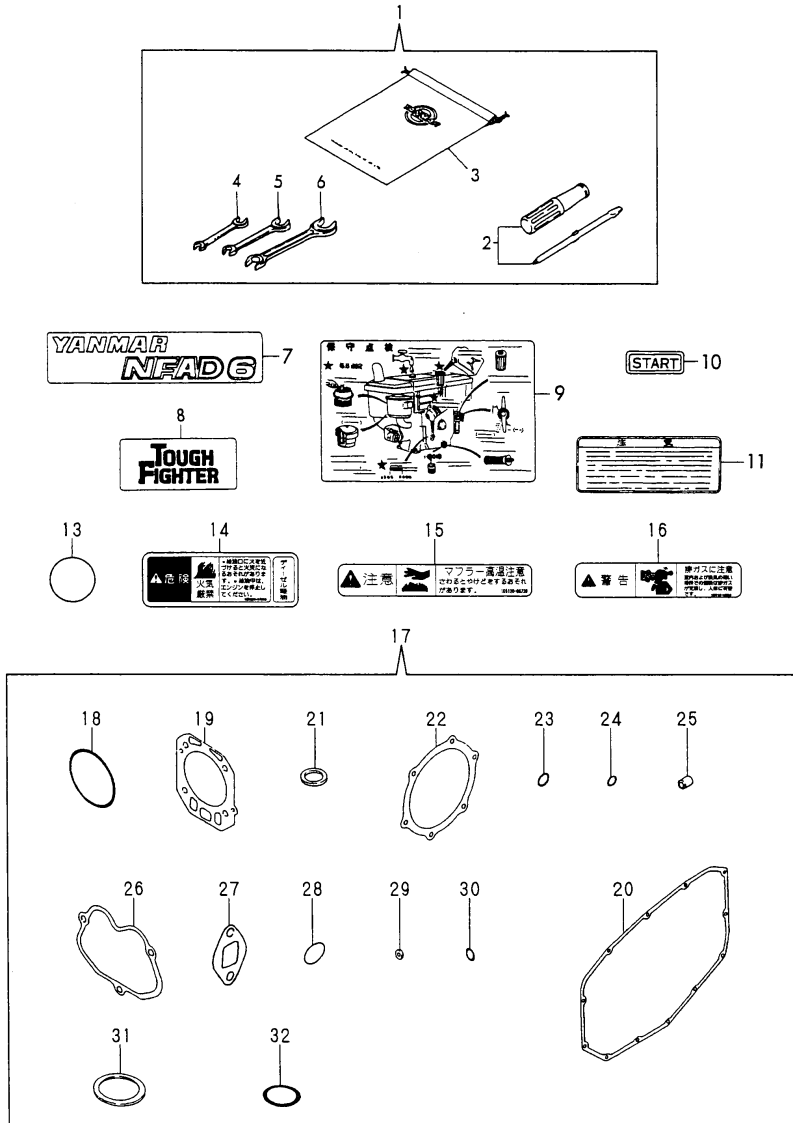
(D)=
(E)=
(F)=



No.	Lev.	Parts No.	Description	Q'ty						I	R
				(A)	(B)	(C)	(D)	(E)	(F)		
1	1	105100-77010	STARTER, S114-438B		1						
2	2	X211461005	ARMATURE		1						
3	3	X211415502	BEARING, BALL		1						
4	3	X211425502	BEARING, BALL		1						
5	2	X211442003	COIL ASSY, FIELD		1						
6	3	X21143215	SCREW, CORE		1						
7	3	X211469002	BRUSH (+)		2						
8	2	X211479001	HOLDER ASSY, BRUSH		1						
9	3	X211459002	BRUSH (-)		2						
10	3	X21148314	SPRING, BRUSH		4						
11	2	X211483003	COVER		1						
12	2	171008-77530	SWITCH, MAGNETIC		1						
13	2	X211446012	LEVER, SHIFT		1						
14	2	X211468005	BOLT, THROUGH		1						
15	2	X21148856	BOLT, THROUGH		1						
16	2	X21145866	BOLT		2						
17	2	X211455011	PINION ASSY		1						
18	3	X211465011	SHAFT, PINION		1						
19	3	X211429006	STOPPER SET		1						
20	3	X211425506	CLUTCH ASSY		1						
21	4	X211435502	BALL BEARING		1						
22	4	X211455502	BALL BEARING		1						
23	2	X211466605	CASE ASSY, GEAR		1						
24	2	X21142742	COVER (A), RUBBER		1						
25	2	X211458012	COVER KIT		1						
26	2	X211428008	RETAINER, BEARING		1						
27	1	105212-01910	BOLT		2						
28	1	105090-77471	BRACKET		1						
29	1	106100-77620	SWITCH, KEY		1						
30	2	106100-77630	KEY, SWITCH		1						
31	1	119660-77710	LIMITER, CURRENT 15A		1						
32	1	105100-77780	COVER		1						
33	1	105098-78540	HARNESS, WIRE		1						
34	1	105300-78570	HARNESS, WIRE		1						
35	1	22117-050000	WASHER, 5		2						
36	1	22117-060000	WASHER, 6		2						
37	1	22212-060000	SPRING WASHER 6		4						
38	1	22217-050000	WASHER, SPRING 5		1						
39	1	26013-120302	BOLT, M12X 30		2						
40	1	26106-060102	BOLT, M6X 10 PLATED		2						
41	1	26226-060222	STUD, M6X 22		4						
42	1	26636-050002	NUT, WING M5		1						
43	1	26716-060002	NUT, M6		4						
44	1	22351-060012	PIN, SPRING 6.0X12		1						
45	1	105090-77820	RETAINER		1						
46	1	26106-060182	BOLT, M6X 18 PLATED		1						

Fig.15. TOOL & LABEL

Y0005171



(A)=NFAD6-KB
(B)=NFAD6-EKB
(C)=

(D)=
(E)=
(F)=

No.	Lev.	Parts No.	Description	Q'ty						I	R
				(A)	(B)	(C)	(D)	(E)	(F)		
1	1	705300-92100	BOX ASSY, TOOL	1	1						
2	2	104200-92350	DRIVER, SCREW	1	1						
3	2	105300-92600	BAG, TOOL	1	1						
4	2	28110-100120	SPANNER, 10X12	1	1						
5	2	28110-140170	SPANNER, 14X17	1	1						
6	2	28110-190220	SPANNER, 19X22	1	1						
7	1	105098-07060	LABEL	2	2						
8	1	105300-07070	LABEL	1	1						
9	1	105190-07100	LABEL	1	1						
10	1	105090-07160	LABEL, START	1	1						
11	1	105370-07450	LABEL, RADIATOR CAP	1							
11-1	1	105250-07310	LABEL, RADIATOR	1	1						N
(A=E034676)											
13	1	105372-07150	LABEL, LUB. OIL	1	1						
14	1	105250-07320	LABEL, NO FIRE	1	1						W
(A=E034676)											
15	1	105250-07330	LABEL	1	1						W
(A=E034676)											
16	1	105250-07340	LABEL, EXH. GAS CAUT'N	1	1						W
(A=E034676)											
17	1	705090-92600	GASKET SET	1	1						
18	2	105090-01300	O-RING	2	2						
19	2	105090-01330	GASKET, HEAD	1							
19-1	2	105090-01331	GASKET, CYL. HEAD	1	1						N
(A=E034676)											
20	2	105090-01410	GASKET, GEAR CASE	1	1						
21	2	101104-01760	GASKET, CAP	1	1						
22	2	105090-02020	GASKET	1							
22-1	2	105090-02021	GASKET	1	1						N
(A=E034676)											
23	2	24341-000200	O-RING, 1AS20.0	1	1						
24	2	24311-000070	O-RING, 1AP7.0	1	1						
25	2	119625-11871	PROTECTOR, NOZZLE	1	1						
26	2	105090-11310	GASKET, BONNET	1	1						
27	2	105010-13201	GASKET	1	1						
28	2	103338-32570	O-RING	1	1						
29	2	124550-51350	GASKET, DELIVERY	1	1						
30	2	124550-51370	O-RING	1	1						
31	2	101504-55051	GASKET	1	1						
32	2	105300-55520	O-RING	1	1						

Parts No. Index

Parts No.	Fig. No.	Ref. No.
101104-01760	1	27
	15	21
101137-08050	1	51
101158-03061	7	13
101158-03111	7	15
101158-11180	2	8
101158-11230	2	22
		26
101168-55040	11	3
101504-55051	11	4
	15	31
101504-55101	11	6
103338-32070	7	7
103338-32570	7	8
	15	28
103854-55220	11	8
104104-03750	2	32
104107-07900	11	12
104200-03600	2	30
104200-03641	2	31
104200-55160	11	7
104200-55750	10	22
104200-92350	15	2
104271-01950	1	29
104271-51450	9	20
104271-51460	9	21
104300-32150	7	1
104300-76460	4	9
104407-21600	5	11
104511-21600	5	27
104807-55220	11	16
105010-11920	2	13
105010-13201	3	16
	15	27
105010-21530	5	10
105050-53000	10	2
105090-01300	1	3
	15	18
105090-01330	1	12
	15	19
105090-01331	1	12 -1
	15	19 -1
105090-01410	1	23
	15	20
105090-01480	1	24
105090-01750	1	26
105090-02020	1	45
	15	22
105090-02021	1	45 -1
	15	22 -1

Parts No.	Fig. No.	Ref. No.
105090-03081	7	14
105090-03131	7	16
105090-07160	15	10
105090-07940	11	14
105090-08010	1	50
105090-11100	2	5
105090-11111	2	6
105090-11290	2	14
105090-11310	2	39
	15	26
105090-11650	2	20
105090-11660	2	24
105090-11820	2	40
105090-13550	3	18
105090-14010	4	1
105090-14091	4	2
105090-14100	4	3
105090-14400	4	5
105090-14420	4	6
105090-14600	4	7
105090-21100	5	3
105090-21130	5	4
105090-21200	5	8
105090-21300	5	13
105090-21310	5	14
105090-21350	5	28
105090-21361	5	29
105090-21401	5	9
105090-21591	5	25
105090-22190	6	1
105090-22400	6	9
105090-22470	6	17
105090-22480	6	23
105090-22510	6	19
105090-22520	6	25
105090-23910	6	12
105090-44050	8	1
105090-44201	8	24 A
105090-44211	8	24 B
105090-44251	8	3
105090-44300	8	4
105090-44330	8	5
105090-44350	8	6
105090-44360	8	7
105090-44490	8	10
105090-44680	8	25
105090-44700	8	26 A
105090-44810	8	36
105090-44850	8	26 B
105090-44940	8	38

Parts No.	Fig. No.	Ref. No.
105090-59020	10	32
105090-59800	10	38
105090-61810	13	12
105090-66300	13	8
105090-66551	13	33
105090-76340	12	2
105090-76790	12	8
105090-77471	14	28
105090-77820	14	45
105098-07060	15	7
105098-12020	3	1
105098-12510	3	3
105098-12520	3	9
105098-12530	3	4
105098-12540	3	5
105098-12550	3	6
105098-12560	3	7
105098-12570	3	26
105098-12580	3	10
105098-12590	3	11
105098-12600	3	12
105098-12610	3	13
105098-12960	3	8
105098-13510	3	17
105098-13570	3	20
105098-13610	3	19
105098-21900	5	21
105098-44500	8	11
105098-67010	13	41
105098-78540	14	33
105100-01660	1	18
105100-02300	1	46
105100-02310	1	47
105100-44630	8	15
105100-44770	8	32
105100-44780	8	31
105100-44930	8	42
105100-66400	13	9
105100-77010	14	1
105100-77780	14	32
105140-34100	7	10 A
105140-76500	1	22
105190-07100	15	9
105190-12050	3	2
105190-21910	5	20
105190-35050	7	11
105192-59560	10	36
105192-59562	10	36 -1
105192-59570	10	37
105198-44590	8	13

Parts No.	Fig. No.	Ref. No.
105198-55510	10	11
105198-55520	11	17
105198-55600	10	10
105200-51100	9	4
105212-01910	14	27
105215-01200	1	10
105215-01670	1	8
105225-23200	6	14
105225-66990	13	16
105250-07310	15	11 -1
105250-07320	15	14
105250-07330	15	15
105250-07340	15	16
105298-08100	12	12
105300-01690	1	25
105300-01920	1	28
105300-07070	15	8
105300-08510	12	13
105300-11330	2	3
105300-11900	2	18
105300-14200	4	4
105300-21381	5	15
105300-34040	1	19
105300-44220	8	2
105300-44451	8	8
105300-44460	5	16
	8	9
105300-51500	9	22
105300-51510	9	23
105300-51550	9	24
105300-53100	10	4
105300-55080	11	5
105300-55340	10	17
105300-55520	10	12
	15	32
105300-55610	10	13
105300-55700	10	14
105300-55750	10	26
105300-59100	10	31
105300-61600	13	5
105300-66010	13	7
105300-66110	13	17
105300-66520	13	29
105300-66850	13	24
105300-76330	12	1
105300-76470	12	6
105300-76490	12	7
105300-78570	14	34
105300-92600	15	3
105340-44570	8	12

Parts No. Index

Parts No.	Fig. No.	Ref. No.
105340-44710	8	27
105340-44750	8	30
105362-78960	7	17
105370-07450	15	11
105370-55710	10	25
105372-07150	15	13
105400-11121	2	7
105500-07920	11	13
105502-66041	13	13
105502-67301	13	23
105700-14700	4	8
105840-66831	13	25
105840-66880	13	26
106100-02331	1	48
106100-44560	8	50
106100-44650	8	37
106100-44960	8	39
106100-77620	14	29
106100-77630	14	30
106148-13590	3	21
106383-44720	8	28
106383-44740	8	29
111130-02160	1	44
114250-53080	10	3
114250-53120	10	5
114250-53130	10	6
114250-53140	10	7
114250-53210	10	8
114250-53400	10	9
119625-11871	2	19
	15	25
119625-11880	2	17
119660-77710	14	31
120270-61250	1	22 -1
121250-44590	8	14
121450-01220	1	11
124060-39451	7	10 B
124060-66950	13	38
124550-51320	9	16
124550-51341	9	17
124550-51350	9	18
	15	29
124550-51370	9	19
	15	30
124722-59050	10	29
124766-59050	10	30
		34
124950-22300	6	8
124950-51190	9	7
129100-51300	9	15

Parts No.	Fig. No.	Ref. No.
129301-03660	10	28
160120-76940	3	23
	5	17
	8	16
160260-01580	3	15
171008-77530	14	12
174100-54120	9	13
174100-61600	13	6
174307-51170	9	5
174307-51181	9	6
174307-51700	9	25
22117-050000	14	35
22117-060000	2	41
	14	36
22117-100000	1	52
	13	27
22137-060000	13	28
22137-080000	8	43
22190-100002	13	40
22212-060000	14	37
22217-050000	14	38
22217-080000	1	32
	8	40
22217-100000	1	53
22217-120000	5	23
	8	33
22242-000200	12	11
22252-000100	1	20
22312-030180	2	34
22322-030180	2	35
22322-030200	13	21
22351-060012	1	9
	14	44
22512-050140	5	5
		6
22512-070500	4	10
	5	24
23064-090220	7	18 A
23064-090370	7	18 B
23080-013000	10	39
23414-080000	11	9
24107-062013	8	34
24190-120001	1	21
	13	10
24311-000070	2	36
	13	22
	15	24
24311-000160	10	24
24321-000250	1	34
24341-000200	7	12

Parts No.	Fig. No.	Ref. No.
24341-000200	15	23
25117-003301	8	44
26013-060129	8	18
26013-060142	5	18
26013-060162	8	17
26013-060202	13	32
26013-080189	3	24
26013-120302	14	39
26022-050102	9	28
	13	11
26022-060122	4	11
26023-060252	7	19 A
26106-060102	8	19
	14	40
26106-060122	3	27
	5	12
	7	9
	8	20
		21
	12	17
	13	30
26106-060182	14	46
26106-060202	1	35
	2	37
	3	25
	5	19
	8	22
		23
26106-060222	7	19 B
26106-060252	8	45
26106-060302	1	36
26106-060552	1	37
26106-060602	2	38
26106-060652	1	41
26106-080162	8	46
26106-080202	3	14
26106-080222	11	10
26106-080302	10	27
26106-080322	11	11
26106-080352	8	48
26116-050082	1	49
26116-120352	5	22
26216-060402	2	11
26216-080222	1	38
26216-080452	2	10
26226-060222	14	41
26226-080222	1	39
26347-060002	13	31
26366-060002	2	12
	8	47

Parts No.	Fig. No.	Ref. No.
26366-060002	8	49
26366-080002	1	40
	2	28
26554-060162	3	22
26557-060082	12	18
26557-060142	4	12
26617-100002	11	15
26636-050002	14	42
26706-100002	1	54
26716-060002	14	43
26716-080002	1	33
	8	41
26756-080002	2	23
		27
26777-120002	8	35
26796-100002	13	39
27231-150000	2	4
27310-070001	2	9
28110-100120	15	4
28110-140170	15	5
28110-190220	15	6
705050-53100	10	1
705090-01501	1	13
705090-01560	1	4
705090-01900	1	1
705090-02500	1	42
705090-11520	2	29
705090-11700	2	1
705090-21700	5	1
705090-22501	6	3
705090-23100	6	10
705090-23600	6	15
705090-23610	6	29
705090-23620	6	31
705090-51102	9	1
705090-55700	11	1
705090-61700	13	1
705090-92600	15	17
705100-66700	13	18
705100-76900	12	3
705300-92100	15	1
711100-51540	9	10
724550-51520	9	8
X211415502	14	3
X211425502	14	4
X211425506	14	20
X21142742	14	24
X211428008	14	26
X211429006	14	19
X21143215	14	6

Parts No. Index

Parts No.	Fig. No.	Ref. No.
X211435502	14	21
X211442003	14	5
X211446012	14	13
X211455011	14	17
X211455502	14	22
X211458012	14	25
X21145866	14	16
X211459002	14	9
X211461005	14	2
X211465011	14	18
X211466605	14	23
X211468005	14	14
X211469002	14	7
X211479001	14	8
X211483003	14	11
X21148314	14	10
X21148856	14	15

Parts No.	Fig. No.	Ref. No.
-----------	----------	----------

Parts No.	Fig. No.	Ref. No.
-----------	----------	----------

Parts No.	Fig. No.	Ref. No.
-----------	----------	----------