

OCD10-M48400EN

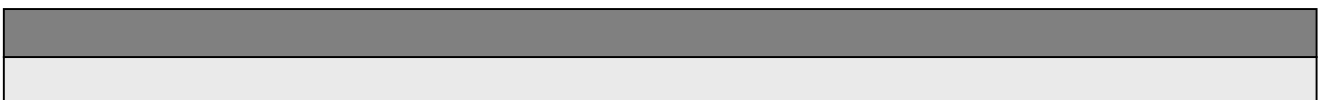
# PREFACE

1. This Parts Catalog is the 1st edition of 4TN84TL-RHG Diesel Engine for HOKUETSU.

Pub. No. : 000Y00D4840  
Published : December, 1993

2. Model name

Engine model	Vehicle		Vehicle made by
	Products	Model name	
4TN84TL-RHG	GENERATOR	—	HOKUETSU



## Directions for the Parts Catalog.

1. The parts stipulated in this Parts Catalog are not necessarily standard equipped parts.
2. Parts may change without prior notice.
3. The following is an example of the Parts Catalog format.

REF.	LEV.	PARTS NO.	DESCRIPTION	Q'TY						I	R
				(A)	(B)	(C)	(D)	(E)	(F)		
1	1	729595-51390	FUEL INJECTION PUMP	1	1	1	1	1			1
1-1	1	729595-51391	FUEL INJECTION PUMP	1	1	1	1	1		N	1
		(A=E00185) (B=E00200)									
3	2	26022-060162	SCREW M 6X 16	9	9	9	9	9			
3-1	2	26022-060162	SCREW M 6X 16	4	4	4	4	4		K	
		(A=E00156) (B=E00156) (C=E00156) (D=E00156) (E=E00156)									
4	2	129470-51040	CAMSHAFT	1	1	1	1	1			
5	2	122710-51050	BEARING, ROLLER	2	2	2	2	2			
6	2	129470-51060	RETAINER	1	1	1	1	1			

Remarks
(1) BOOST COMPEMSATOR TYPE. OPTIONAL PART, TO E00155,(4JH-DT, 4JH-DTZ

### ① Ref. No.

The Ref. No. listed may not be in accordance with the illustration Ref. No.

(Ex.) Illustration No.

List Ref No.

1

1

(Before change)

1-1

(After change)

For interchangeable symbols N, R and K, illustrations for new parts may be abbreviated.

### ② Lev. (Level)

Level indication

The numbers below indicate the level of relativity towards the main part.

1 ----- Main parts (Assembly parts)

2 ----- Sub component included in " 1 ".

3 ----- Sub component included in " 2 ".

Note) Parts that are not for sale are partially illustrated but not listed.

### ③ Interchangeability Mark

When a part change takes place, one of the following interchangeability symbols is indicated beside the part.

Symbol	Interchangeability	Contents note
N	Old $\begin{matrix} \leftarrow \text{Yes} \\ \text{No} \rightarrow \end{matrix}$ New	New Part is interchangeable for Old Part but Old Part is not interchangeable for New Part.
Q	Old $\begin{matrix} \leftarrow \text{No} \\ \text{Yes} \rightarrow \end{matrix}$ New	New Part is not interchangeable for Old Part but Old Part is interchangeable for New Part.
R	Old $\begin{matrix} \leftarrow \text{Yes} \\ \text{Yes} \rightarrow \end{matrix}$ New	New/ Old Parts are both interchangeable.
S	Old $\begin{matrix} \leftarrow \text{No} \\ \text{No} \rightarrow \end{matrix}$ New	New/ Old Parts are both not interchangeable.
W		Part newly added.
Z		Part discontinued.
F		Not interchangeable by a single part but interchangeable together with related parts.
K		Changes only for used parts quantities.

### ④ Effective Machine No.

When a part changes, the effective Machine No. will be indicated in the (A)-(F) column.

Product Symbol	Product No.	Product Symbol	Product No.
C	Clutch No. Compressor No.	F	Machine No. (Agricultural Equip.)
D	Drive No.	M	Machine No.
E	Engine No.		

Note 1) A date may follow the symbol. (Ex.) 1996.01

Note 2) "XXXXX" and "ZZZZZ" are for parts that could not be predicted or for engine models that could not be identified.

Note 3) (A=E00185) is the E (Engine Serial Number) for the column (A) model (in this case 4JH-DT) after the parts design change.

### ⑤ Remarks Mark

Figures or alphabets (symbols) are entered in the remarks column.

The comments (remarks) on parts that are indicated at the bottom of the illustration are the same symbols as those stated above.

# Contents

OCD10-M48400

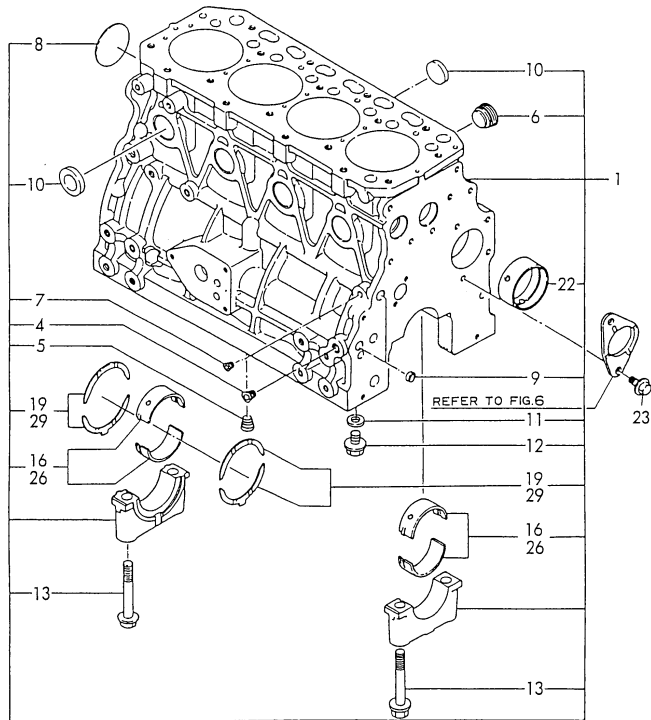
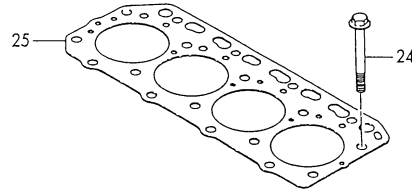
Fig. No.	Fig. Name	Fig. No.	Fig. Name
<b>ENGINE 4TN84TL-RHG</b>			
1.	CYLINDER BLOCK		
2.	GEAR HOUSING		
3.	FLYWHEEL HOUSING & OIL SUMP		
4.	CYLINDER HEAD & BONNET		
5.	SUC. & EXH. MANIFOLD		
6.	CAMSHAFT & DRIVING GEAR		
7.	TARBO-CHARGER		
8.	CRANKSHAFT & PISTON		
9.	LUB. OIL SYSTEM		
10.	LUB. OIL LINE		
11.	COOLING WATER SYSTEM		
12.	FUEL INJECTION PUMP		
13.	FUEL INJECTION VALVE		
14.	FUEL OIL LINE		
15.	GOVERNOR		
16.	ENGINE STOP DEVICE		
17.	STARTING MOTOR		
18.	GENERATOR		
19.	GASKET SET & TOOL(OPTIONAL)		

Fig.1. CYLINDER BLOCK

(A)=4TN84TL-RHG  
(B)=  
(C)=

(D)=  
(E)=  
(F)=

SPEC. CODE  
D29405-01110  
D29100-01820  
D29550-02101  
D29129-02200



No.	Lev.	Parts No.	Description	Q'ty						I	R
				(A)	(B)	(C)	(D)	(E)	(F)		
1	1	729405-01560	BLOCK ASSY, CYLINDER	1							
4	2	124160-01910	PLUG, PT1/4	2							
5	2	124160-01910	PLUG, PT1/4	1							
6	2	171051-01921	PLUG, NPTF1	1							
7	2	23871-010000	PLUG, R01	1							
8	2	27231-500000	PLUG 50	1							
9	2	27241-120000	PLUG, 12	2							
10	2	27241-300000	PLUG 30	8							
11	2	23414-080000	GASKET, 8X1.0	4							
12	2	26106-080122	BOLT, M8X 12 PLATED	4							
13	2	129150-02020	BOLT, METAL CAP	10							
16	2	129150-02800	BEARING, MAIN	5							
19	2	129150-02930	BEARING, THRUST	2							
22	2	129795-02411	BUSH, CAMSHAFT	1							
23	1	26106-080162	BOLT, M8X 16 PLATED	2							
24	1	129150-01200	BOLT, HEAD	18							
25	1	129405-01331	GASKET, HEAD	1							A
26	1	129150-02870	BEARING, 0.25 US	5							1
29	1	129150-02940	BEARING, THRUST 0.25	1							2

Remarks

(1) UNDER-SIZE(U.S.=0.25)PART.

(2) OVER-SIZE(O.S.=0.25)PART.

(A) THIS PART IS ALSO SOLD BY GASKET

SET(FIG 19.REF NO.1,P/# 729412

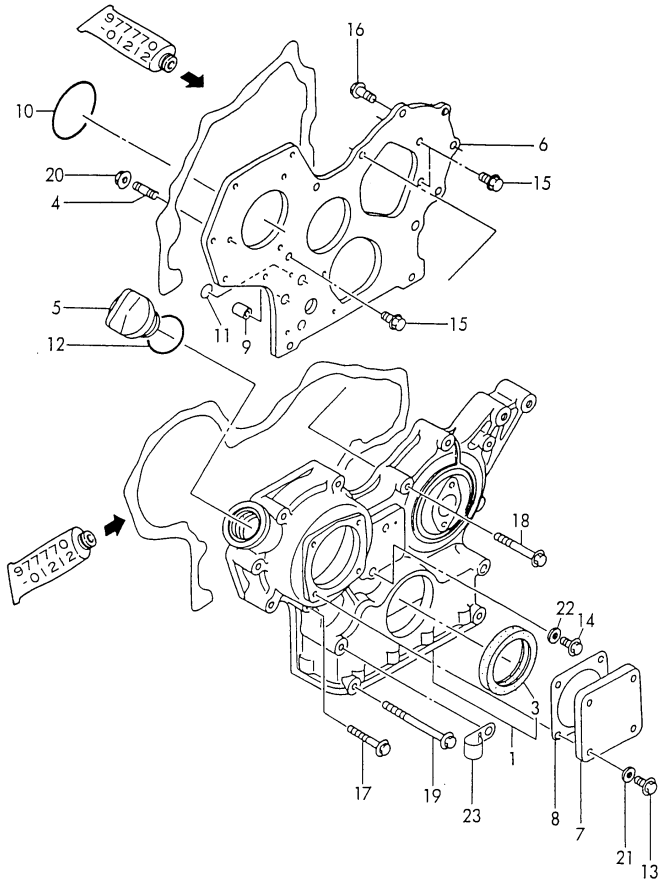
-92630).

Fig.2. GEAR HOUSING

(A)=4TN84TL-RHG  
(B)=  
(C)=

(D)=  
(E)=  
(F)=

SPEC. CODE  
D29400-01220



No.	Lev.	Parts No.	Description	Q'ty						I	R
				(A)	(B)	(C)	(D)	(E)	(F)		
1	1	719810-01500	CASE ASSY, GEAR	1							
3	2	129795-01800	SEAL, OIL	1							
4	1	121450-01560	STUD, M8X22	3							
5	1	124160-01751	COVER, FILLER	1							
6	1	129400-01520	FLANGE, GEAR CASE	1							
7	1	124240-01871	COVER	1							
8	1	124240-01883	GASKET	1							A
9	1	129795-01950	PIPE, KNOCK L=18	2							
10	1	121850-51960	O-RING	1							A
11	1	24311-000160	O-RING, 1AP16.0	2							A
12	1	24311-000320	O-RING, 1AP32.0	1							A
13	1	26106-080122	BOLT, M8X 12 PLATED	4							
14	1	26106-080162	BOLT, M8X 16 PLATED	1							
15	1	26106-080162	BOLT, M8X 16 PLATED	3							
16	1	26106-080202	BOLT, M8X 20 PLATED	2							
17	1	26106-080452	BOLT, M8X 45 PLATED	6							
18	1	26106-080552	BOLT, M8X 55 PLATED	3							
19	1	26106-080852	BOLT, M8X 85 PLATED	4							
20	1	26366-080002	NUT, M8	3							
21	1	22190-080002	WASHER, SEAL 6	4							
22	1	22190-080002	WASHER, SEAL 6	1							
23	1	129150-03100	RETAINER, PIPE	1							

Remarks

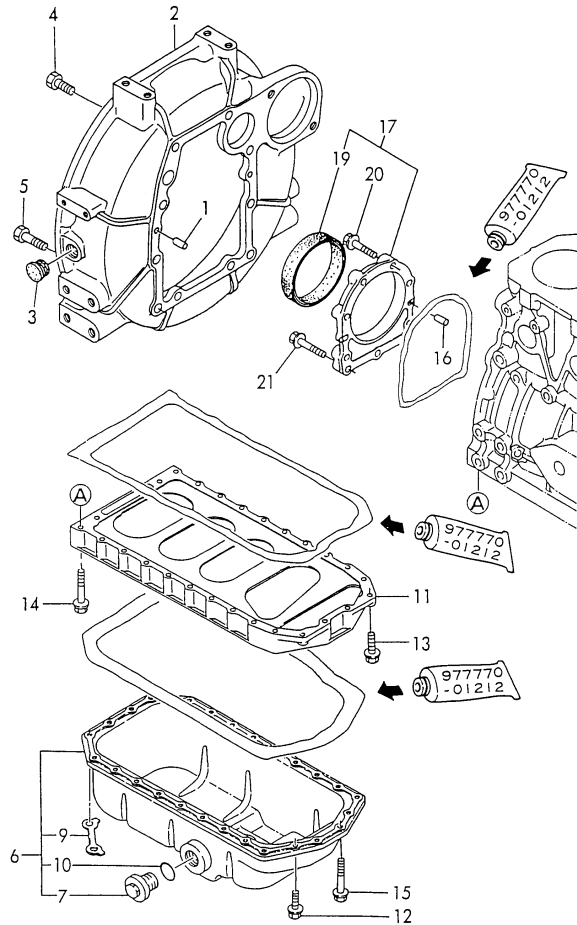
(A) THIS PART IS ALSO SOLD BY GASKET SET (FIG 19. REF NO.1, P/# 729412 -92630).

Fig.3. FLYWHEEL HOUSING & OIL SUMP

(A)=4TN84TL-RHG  
(B)=  
(C)=

(D)=  
(E)=  
(F)=

SPEC. CODE  
D29100-01310  
D29400-01410  
D29100-01510



No.	Lev.	Parts No.	Description	Q'ty						I	R
				(A)	(B)	(C)	(D)	(E)	(F)		
1	1	129100-01580	PIN, M8X16	2							
2	1	171301-01600	HOUSING, FLYWHEEL	1							
3	1	119620-01750	CAP	1							
4	1	26206-100252	BOLT, M10X 25 PLATED	6							
5	1	26206-100302	BOLT, M10X 30 PLATED	4							
6	1	129400-01770	SUMP ASSY, OIL	1							
7	2	171301-01640	PLUG, 22	1							
9	2	129100-01790	RETAINER	2							
10	2	24341-000240	O-RING, 1AS24.0	1							
11	1	129400-01730	SPACER, OIL SUMP	1							
12	1	26106-080162	BOLT, M8X 16 PLATED	4							
13	1	26106-080252	BOLT, M8X 25 PLATED	2							
14	1	26106-080452	BOLT, M8X 45 PLATED	20							
15	1	26106-080502	BOLT, M8X 50 PLATED	4							
16	1	129100-01580	PIN, M8X16	2							
17	1	129100-01640	CASE ASSY, OIL SEAL	1							
19	2	129795-01780	SEAL, OIL	1							
20	1	26106-080302	BOLT, M8X 30 PLATED	6							
21	1	26106-080352	BOLT, M8X 35 PLATED	3							

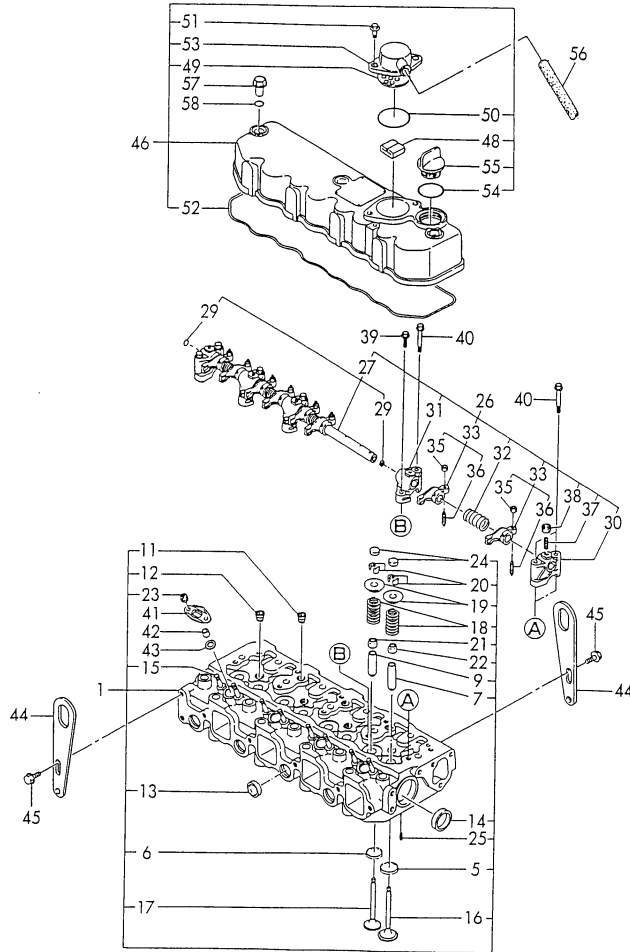
Remarks  
(A) THIS PART IS ALSO SOLD BY GASKET SET (FIG 19.REF NO.1,P/# 729412 -92630).

Fig.4. CYLINDER HEAD & BONNET

(A)=4TN84TL-RHG  
(B)=  
(C)=

(D)=  
(E)=  
(F)=

SPEC. CODE  
U71350-03120  
D21000-07300  
D29406-11120  
D29400-11220



No.	Lev.	Parts No.	Description	Q'ty						I	R
				(A)	(B)	(C)	(D)	(E)	(F)		
1	1	729406-11700	HEAD ASSY, CYLINDER	1							
5	2	129470-11080	SEAT, INTAKE VALVE	4							
6	2	129470-11090	SEAT, EXHAUST VALVE	4							
7	2	120130-11860	GUIDE, VALVE	4							
9	2	129150-11810	GUIDE, VALVE	4							
11	2	121850-11860	PLUG, PT1/4	3							
12	2	23871-030000	PLUG, R03	4							
13	2	27241-220000	PLUG, 22	4							
14	2	27241-400000	PLUG, 40	2							
15	2	26216-060202	STUD, M6X 20	8							
16	2	129100-11100	VALVE, INTAKE	4							
17	2	129100-11130	VALVE, EXHAUST	4							
18	2	129795-11120	SPRING, VALVE	8							
19	2	129795-11180	RETAINER, SPRING	8							
20	2	103338-11190	COTTER	8							
21	2	121400-11340	SEAL, VALVE STEM	4							A
22	2	124460-11340	SEAL, VALVE STEM	4							A
23	2	26366-060002	NUT, M6	8							
24	2	129150-11370	CAP, VALVE	8							
25	2	22351-060012	PIN, SPRING 6.0X12	2							
26	1	129500-11240	SHAFT ASSY, ROCKER	1							
27	2	129550-11290	SHAFT, ROCKER ARM	1							
29	3	27241-100000	PLUG, 10	2							
30	2	129155-11260	SUPPORT, ROCKER ARM	2							
31	2	129155-11270	SUPPORT, ROCKER ARM	3							
32	2	129150-11280	SPRING	4							
33	2	129100-11650	ARM, ROCKER	8							
35	3	129150-11750	NUT, M8	8							
36	3	129150-11230	SCREW, VALVE ADJUST	8							
37	2	26226-080182	STUD, M8X 18	3							
38	2	26756-080002	NUT, LOCK M8	3							
39	1	26106-080252	BOLT, M8X 25 PLATED	3							
40	1	26106-080502	BOLT, M8X 50 PLATED	7							
41	1	119625-11900	RETAINER, NOZZLE	4							
42	1	119625-11870	PROTECTOR, NOZZLE	4							A
43	1	119625-11880	SEAT, NOZZLE	4							A
44	1	124736-07900	LIFTER	2							
45	1	26106-080142	BOLT, M8X 14 PLATED	4							
46	1	129400-11350	BONNET ASSY, HEAD	1							
48	2	129150-03070	BAFFLE, BREATHER	1							
49	2	129150-03080	PLATE, BAFFLE	1							
50	2	24341-000500	O-RING, 1AS50.0	1							A
51	2	26106-080162	BOLT, M8X 16 PLATED	2							
52	2	129550-11310	GASKET, BONNET	1							A
53	2	129150-03020	COVER, BREATHER	1							
54	2	24311-000320	O-RING, 1AP32.0	1							
55	2	124160-01751	COVER, FILLER	1							
56	1	171350-03090	PIPE, BREATHER 900	1							
57	1	124160-11360	KNOB	3							
58	1	24311-000120	O-RING, 1AP12.0	3							A

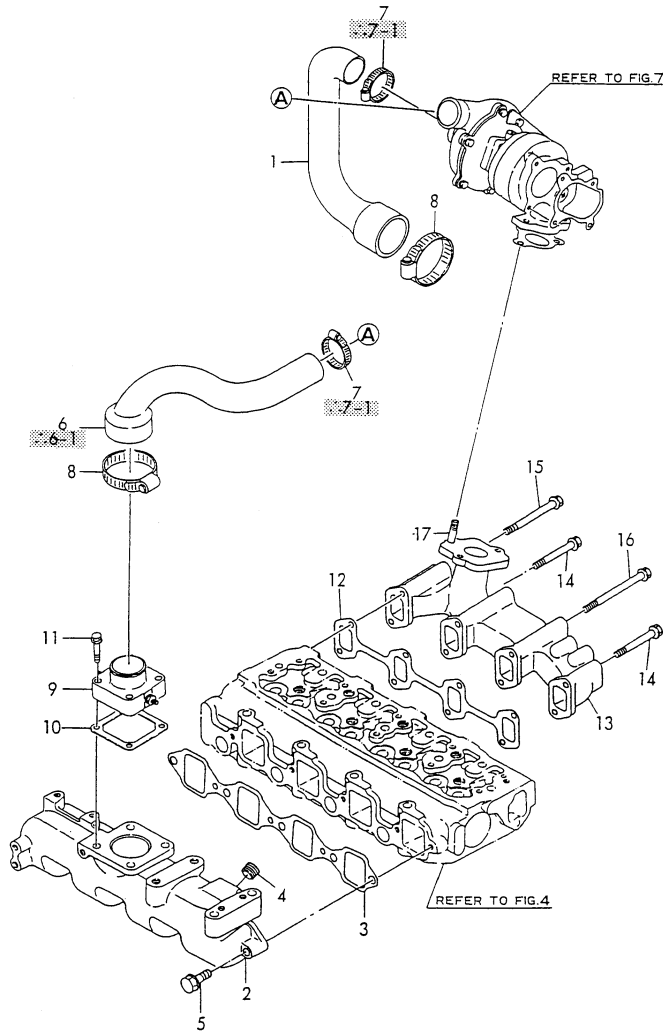
Remarks  
(1) REPAIR PART.  
(A) THIS PART IS ALSO SOLD BY GASKET SET (FIG 19. REF NO.1, P/# 729412 -92630).



Fig.5. SUC. & EXH. MANIFOLD

発行No. 0037003449-1  
 発修年月 : 1994. 8  
 REVISED : Aug., 1994

SPEC. CODE  
 D29400-12100  
 D29403-13130TK  
 D29100-77501  
 D29410-12310



(A)=4TN84TL-RHG  
 (B)=  
 (C)=

(D)=  
 (E)=  
 (F)=

No.	Lev.	Parts No.	Description	Q'ty						I	R
				(A)	(B)	(C)	(D)	(E)	(F)		
1	1	129488-12050	PIPE, AIR INTAKE	1							
2	1	129400-12100	MANIFOLD, AIR INTAKE	1							
3	1	129550-12111	GASKET, MANIFOLD	1							A
4	1	23871-030000	PLUG, R03	1							
5	1	26106-080352	BOLT, M8X 35 PLATED	5							
6	1	129488-12060	PIPE, AIR INTAKE	1							M
6-1	1	129403-12080	PIPE, AIR INTAKE	1							
(A=FROM 1ST)											
7	1	23000-050000	CLAMP 50	2							M
7-1	1	23000-054000	CLAMP, 54	2							
(A=FROM 1ST)											
8	1	23000-070000	CLAMP, 70	2							
9	1	129120-77501	HEATER	1							
10	1	129150-77511	GASKET	1							A
11	1	26106-080352	BOLT, M8X 35 PLATED	4							
12	1	129550-13110	GASKET	1							A
13	1	129403-13130	MANIFOLD, EXHAUST	1							
14	1	26106-080652	BOLT, M8X 65 PLATED	3							
15	1	26106-080852	BOLT, M8X 85 PLATED	1							
16	1	26106-081002	BOLT, M8X100 PLATED	4							
17	1	26216-080222	STUD, M8X 22	3							

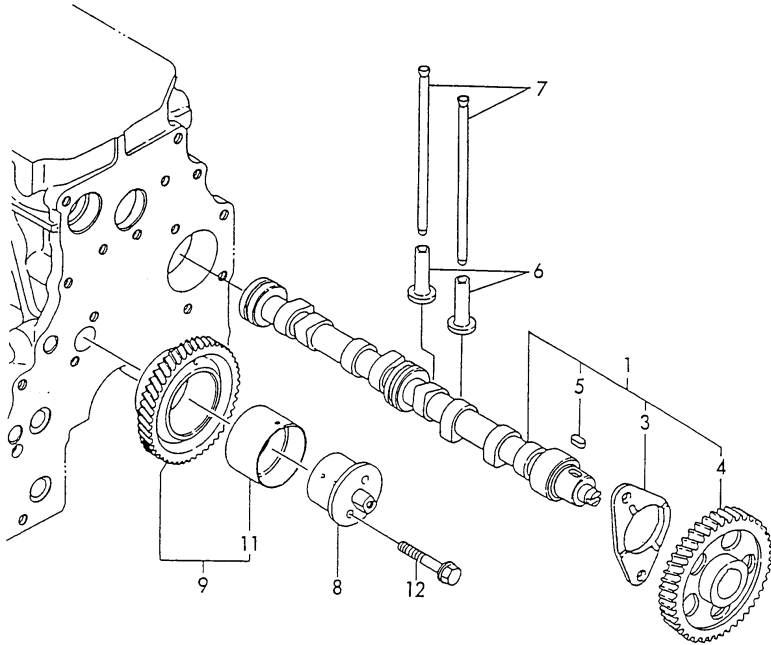
Remarks  
 (A) THIS PART IS ALSO SOLD BY GASKET SET (FIG 19. REF NO.1, P/# 729412 -92630).  
 (M) MISPRINT

Fig.6. CAMSHAFT & DRIVING GEAR

(A)=4TN84TL-RHG  
(B)=  
(C)=

(D)=  
(E)=  
(F)=

SPEC. CODE  
D29400-14110  
D29100-25101



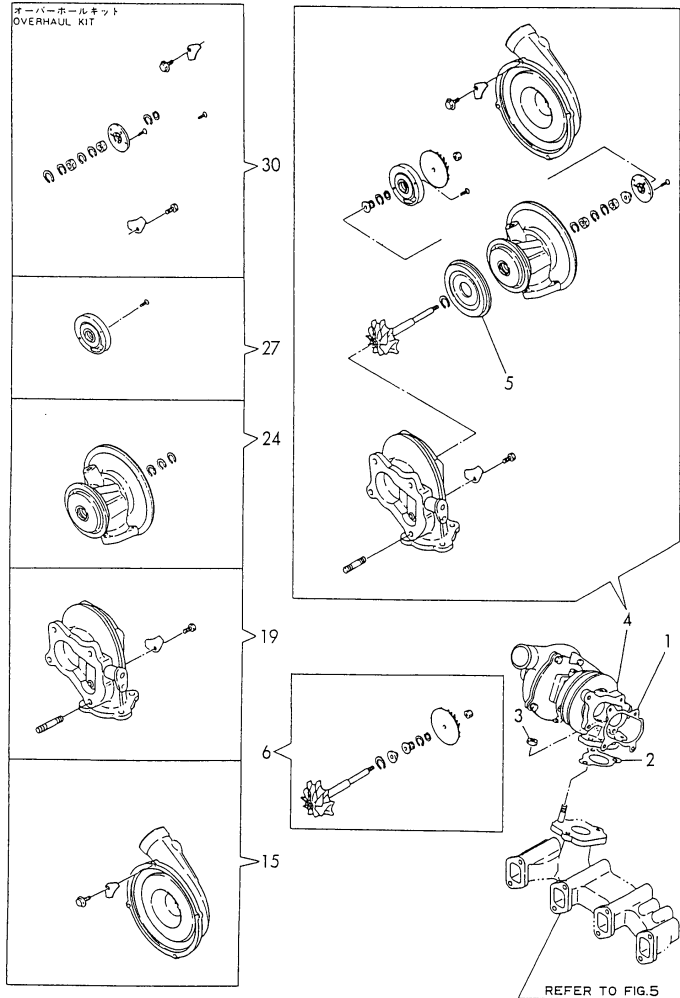
No.	Lev.	Parts No.	Description	Q'ty						I	R
				(A)	(B)	(C)	(D)	(E)	(F)		
1	1	729402-14580	CAMSHAFT ASSY	1							
3	2	129150-02450	BEARING, THRUST	1							
4	2	129150-14101	GEAR, CAMSHAFT	1							
5	2	22512-070140	KEY, 7X 14	1							
6	1	129150-14200	TAPPET	8							
7	1	129150-14400	ROD, PUSH L=178	8							
8	1	129100-25061	SHAFT, IDLE	1							
9	1	129150-25101	GEAR ASSY, IDLE	1							
11	2	129150-25061	BUSH, IDLE GEAR	1							
12	1	26106-080452	BOLT, M8X 45 PLATED	2							

Fig.7. TARBO-CHARGER

(A)=4TN84TL-RHG  
(B)=  
(C)=

(D)=  
(E)=  
(F)=

SPEC. CODE  
D29412-18120



No.	Lev.	Parts No.	Description	Q'ty						I	R
				(A)	(B)	(C)	(D)	(E)	(F)		
1	1	129403-18091	GASKET	1							A
2	1	129477-18101	GASKET	1							A
3	1	194990-22050	NUT, M8	3							
4	1	129406-18010	TURBINE, RHB31	1							
5	2	129403-18720	PROTECTOR, HEAT	1							
6	2	129406-18770	ROTOR ASSY, TURBO	1							
15	2	129406-18780	HOUSING ASSY, BLOWER	1							
19	2	129406-18790	HOUSING ASSY, TURBO	1							
24	2	129403-18800	HOUSING ASSY,BEARING	1							
27	2	129406-18820	PLATE ASSY, SEAL	1							
30	2	129406-18830	OVERHALL KIT	1							

Remarks

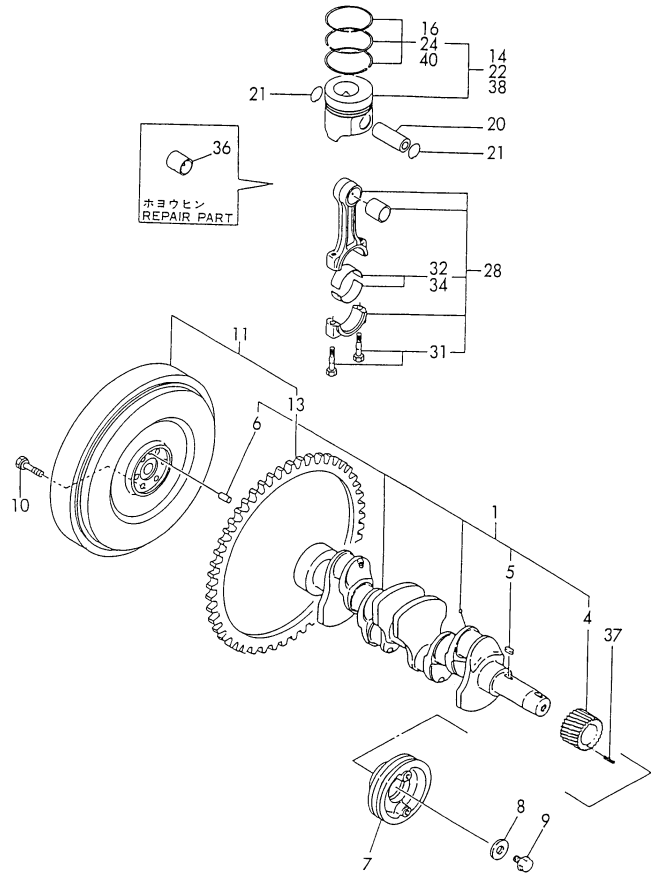
(A) THIS PART IS ALSO SOLD BY GASKET SET (FIG 19. REF NO.1, P/# 729412 -92630).

Fig.8. CRANKSHAFT & PISTON

(A)=4TN84TL-RHG  
(B)=  
(C)=

(D)=  
(E)=  
(F)=

SPEC. CODE  
D29406-21100  
D29400-21210  
D29400-21300  
D29105-22100  
D29150-23100



No.	Lev.	Parts No.	Description	Q'ty						I	R
				(A)	(B)	(C)	(D)	(E)	(F)		
1	1	729406-21700	CRANKSHAFT ASSY	1							
4	2	129150-21200	GEAR, CRANKSHAFT	1							
5	2	22512-070140	KEY, 7X 14	1							
6	2	129100-01580	PIN, M8X16	1							
7	1	129550-21650	V-PULLEY	1							
8	1	129795-21661	WASHER	1							
9	1	121850-21680	BOLT	1							
10	1	121111-21501	BOLT, FLYWHEEL	6							
11	1	171420-21580	FLYWHEEL ASSY	1							
13	2	119865-21600	GEAR, RING	1							
14	1	129105-22090	PISTON ASSY	4							
16	2	729105-22500	RING SET, PISTON	4							
20	1	129150-22300	PIN, PISTON D26 L66	4							
21	1	121100-22400	CIRCLIP	8							
22	1	729105-22910	PISTON ASSY, 0.25 OS	4							1
24	2	729105-22951	RING SET, 0.25 OS	4							1
28	1	729402-23100	ROD ASSY, CONNECTING	4							
31	2	121550-23200	BOLT, CONNECTING ROD	8							
32	2	129150-23600	BEARING, CRANK PIN	4							
34	1	129150-23610	BEARING, 0.25 US	4							2
36	1	129100-23910	BEARING, PISTON PIN	4							3
37	1	22351-040010	PIN, SPRING 4.0X10	1							
38	1	129105-22920	PISTON ASSY, 0.50 OS	4							4
40	2	129105-22970	RING SET, 0.50 OS	4							4

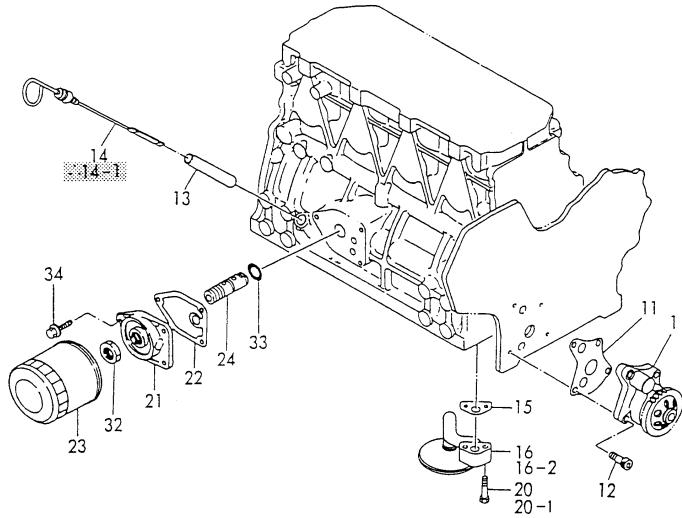
Remarks

- (1) OVER-SIZE(O.S.=0.25)PART.
- (2) UNDER-SIZE(U.S.=0.25)PART.
- (3) REPAIR PART.
- (4) OVER-SIZE(O.S=0.5)PART.

Fig.9. LUB. OIL SYSTEM

発行No. 03973004840-1  
更新年月: 1994. 1  
REVISED: Aug., 1994

SPEC. CODE  
029150-32100  
029436-35100  
029100-35201  
029136-34800



印が今回変更(追記)した箇所です。  
MARKED PART HAS BEEN CHANGED (ADDED).

(A)=4TN84TL-RHG  
(B)=  
(C)=

(D)=  
(E)=  
(F)=

No.	Lev.	Parts No.	Description	Q'ty						I	R
				(A)	(B)	(C)	(D)	(E)	(F)		
1	1	129150-32000	PUMP ASSY, OIL	1							
11	1	129150-32020	GASKET, PUMP	1							A
12	1	26450-060252	BOLT, M6X 25	4							
13	1	121520-34810	GUIDE, DIPSTICK	1							
14	1	171420-34820	DIPSTICK, OIL	1							
14-1	1	129136-34800	DIPSTICK, OIL	1							N
(A=E02563)											
15	1	129150-35041	GASKET	1							A
15-1	1	129150-35042	GASKET	1							N
(A=EZZZZZ)											
16	1	129436-35090	PIPE ASSY, OIL INLET	1							
16-1	1	129436-35091	PIPE ASSY, OIL INLET	1							N
(A=EZZZZZ)											
16-2	1	129436-35070	PIPE ASSY, LUB. OIL	1							S
(A=EZZZZZ)											
20	1	26106-080352	BOLT, M8X 35 PLATED	2							
20-1	1	26106-080552	BOLT, M8X 55 PLATED	2							S
(A=EZZZZZ)											
21	1	129150-35101	BRACKET, STRAINER	1							
22	1	129150-35111	GASKET	1							A
23	1	129150-35151	FILTER, D80XL80	1							
24	1	119865-35300	VALVE ASSY, CONTROL	1							
32	1	129150-35350	NUT	1							
33	1	24311-000160	O-RING, 1AP16.0	1							
34	1	26106-080202	BOLT, M8X 20 PLATED	3							

Remarks

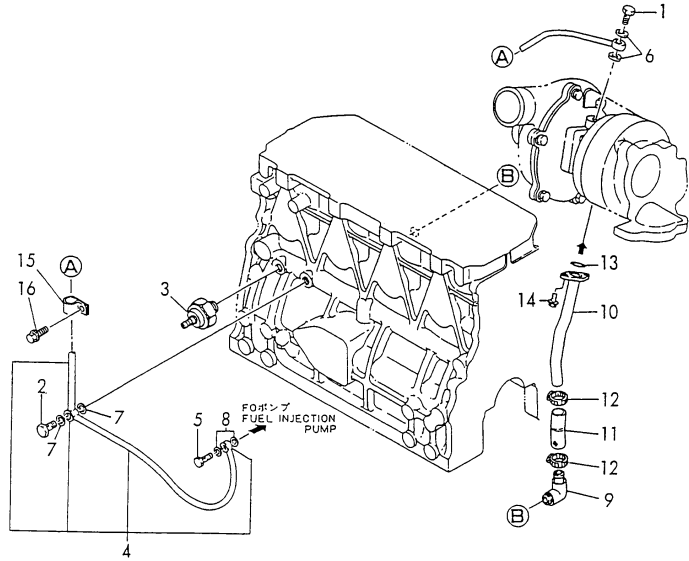
(A) THIS PART IS ALSO SOLD BY GASKET SET (FIG 19. REF NO.1, P/# 729412 -92630).

Fig.10. LUB. OIL LINE

(A)=4TN84TL-RHG  
(B)=  
(C)=

(D)=  
(E)=  
(F)=

SPEC. CODE  
D19600-39100  
D29403-39130  
D29403-39200



No.	Lev.	Parts No.	Description	Q'ty						I	R
				(A)	(B)	(C)	(D)	(E)	(F)		
1	1	105010-39140	BOLT, PIPE JOINT	1							
2	1	124160-39140	BOLT, PIPE JOINT M10	1							
3	1	124160-39450	SWITCH, 0.5KG	1							
4	1	129403-39450	PIPE ASSY, OIL	1							
5	1	124550-59820	BOLT, PIPE JOINT M8	1							
6	1	23414-080000	GASKET, 8X1.0	2							
7	1	23414-100000	GASKET, 10X1.0	2							A
8	1	22190-080002	WASHER, SEAL 6	2							A
9	1	128270-13620	JOINT, PIPE PT3/8	1							
10	1	129403-39600	PIPE, OIL	1							
11	1	129403-39610	JOINT, RUBBER	1							
12	1	23000-022000	CLAMP, 22	2							
13	1	24314-000160	O-RING, 4CP16.0	1							
14	1	26106-060162	BOLT, M6X 16 PLATED	2							
15	1	124223-39900	RETAINER	1							
16	1	26106-080102	BOLT, M8X 10 PLATED	1							

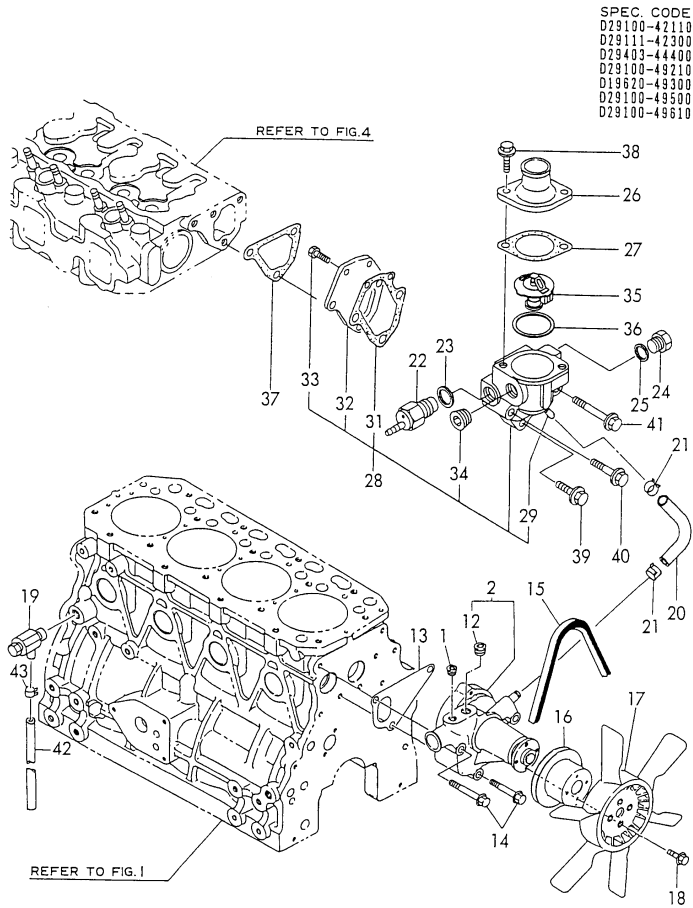
Remarks

(A) THIS PART IS ALSO SOLD BY GASKET SET (FIG 19. REF NO.1, P/# 729412 -92630).

Fig.11. COOLING WATER SYSTEM

(A)=4TN84TL-RHG  
(B)=  
(C)=

(D)=  
(E)=  
(F)=



No.	Lev.	Parts No.	Description	Q'ty						I	R
				(A)	(B)	(C)	(D)	(E)	(F)		
1	1	121850-11860	PLUG, PT1/4	1							
2	1	129100-42002	PUMP ASSY, WATER	1							
12	2	23871-030000	PLUG, R03	1							
13	1	129100-42020	GASKET, WATER PUMP	1							A
14	1	26106-080602	BOLT, M8X 60 PLATED	3							
15	1	124732-42290	V-BELT, AX37	1							
16	1	129155-42350	V-PULLEY	1							
17	1	129403-44740	FAN, COOLING 370	1							
18	1	26106-060162	BOLT, M6X 16 PLATED	4							
19	1	119620-49290	COCK ASSY, 1/4	1							
20	1	129100-49050	PIPE, WATER	1							
21	1	23000-016000	CLAMP, 16	2							
22	1	121250-44901	SWITCH, 110	1							
23	1	124465-44950	GASKET, 16	1							A
24	1	121450-42450	PLUG, M16	1							
25	1	124465-44950	GASKET, 16	1							A
26	1	129350-49530	COVER, THERMOSTAT	1							
27	1	129795-49551	GASKET	1							A
28	1	129100-49800	CASE ASSY, THERMOSTAT	1							
29	2	124770-11770	JOINT, PIPE PT1/8	1							
31	2	129100-49820	GASKET	1							
32	2	129100-49830	COVER, THERMOSTAT	1							
33	2	26116-060162	BOLT, M6X 16 PLATED	2							
34	2	23871-030000	PLUG, R03	1							
35	1	129155-49800	THERMOSTAT, 71	1							
36	1	129150-49811	GASKET, THERMOSTAT	1							A
37	1	129100-49840	GASKET	1							A
38	1	26106-080202	BOLT, M8X 20 PLATED	2							
39	1	26106-080252	BOLT, M8X 25 PLATED	1							
40	1	26106-080502	BOLT, M8X 50 PLATED	1							
41	1	26106-080602	BOLT, M8X 60 PLATED	1							
42	1	124766-49160	PIPE, WATER DRAIN	1							
43	1	124766-59050	CLIP, HOSE 12	1							

Remarks

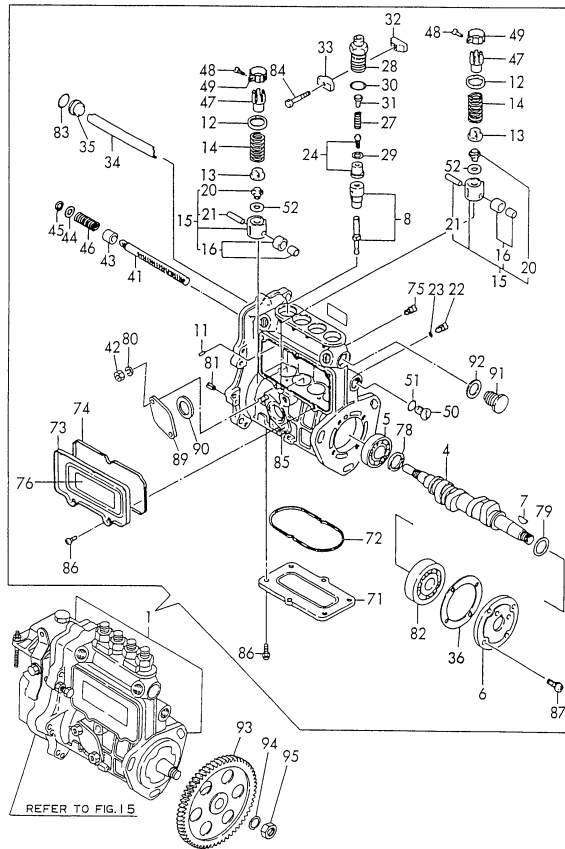
(A) THIS PART IS ALSO SOLD BY GASKET SET (FIG 19. REF NO.1, P/# 729412 -92630).

Fig.12. FUEL INJECTION PUMP

(A)=4TN84TL-RHG  
(B)=  
(C)=

(D)=  
(E)=  
(F)=

SPEC. CODE  
D79150-29200  
729413-51320



No.	Lev.	Parts No.	Description	Q'ty						I	R
				(A)	(B)	(C)	(D)	(E)	(F)		
1	1	729413-51230	PUMP ASSY, INJECTION	1							1
1-1	1	729413-51320	PUMP ASSY, INJECTION	1							2
4	2	129470-51040	CAMSHAFT	1							
5	2	129155-51050	BEARING, 17BM001D	1							
6	2	129155-51060	SUPPORT, CAMSHAFT	1							
7	2	122710-51090	KEY	1							
8	2	129470-51101	PLUNGER ASSY	4							
11	2	129155-51140	PIN	4							
12	2	174307-51170	RETAINER, SPRING A	4							
13	2	129155-51180	RETAINER, SPRING	4							
14	2	124950-51190	SPRING, PLUNGER	4							
15	2	129155-51200	TAPPET ASSY	4							
16	3	711100-51540	ROLLER ASSY	4							
20	3	129155-51250	BOLT, ADJUSTING	4							
21	3	174100-54120	PIN	4							
22	2	129155-51270	STOPPER, TAPPET	4							
23	2	129155-51280	O-RING, S6	4							
24	2	129100-51300	VALVE ASSY, DELIVERY	4							
27	2	129155-51320	SPRING, DELIVERY	4							
28	2	129155-51340	RETAINER	4							
29	2	124550-51350	GASKET, DELIVERY	4							
30	2	124550-51370	O-RING	4							
31	2	129155-51370	STOPPER, VALVE	4							
32	2	129155-51380	STOPPER	2							
33	2	129155-51390	STOPPER	2							
34	2	129555-51400	DEFLECTOR	1							
35	2	129155-51410	BOLT	1							
36	2	129155-51450	SHIM SET, ADJUSTING	1							
41	2	129555-51500	RACK, CONTROL	1							
42	2	26716-060002	NUT, M6	2							
43	2	129155-51521	BUSH, RACK	1							
44	2	129155-51530	SPACER	1							
45	2	129155-51540	CIRCLIP	1							
46	2	129155-51591	SPRING, RACK	1							
47	2	129155-51550	PINION, CONTROL	4							
48	2	122117-51560	SCREW	4							
49	2	174307-51560	PINION	4							
50	2	129155-51570	PLUG, M12	1							
51	2	129155-51580	O-RING	1							
52	2	129155-51600	SHIM SET, ADJUSTING	4							
71	2	129555-51700	COVER	1							
72	2	129555-51710	GASKET	1							
73	2	129555-51750	COVER	1							
74	2	129555-51760	GASKET	1							
75	2	129155-51790	STOPPER, RACK	1							
76	2	129156-51910	LABEL, CAUTION	1							
78	2	129155-51930	SPACER, T=3.25	1							
79	2	129155-51940	SPACER, T=1.5	1							
80	2	22217-060000	WASHER, SPRING 6	2							
81	2	22351-050010	PIN, SPRING 5.0X10	2							
82	2	24101-063034	BEARING, BALL 6303	1							

Remarks

- (1) GOVERNOR ASSY(FIG NO.37)IS INCORPORATED IN THIS FUEL INJECTION PUMP ASSY(REF NO.1). MIS PRINT
- (2) GOVERNOR ASSY(FIG NO.15)IS INCORPORATED IN THIS FUEL INJECTION PUMP ASSY(REF NO.1-1)
- (A) THIS PART IS ALSO SOLD BY GASKET SET(FIG 19.REF NO.1,P/# 729412 -92630).

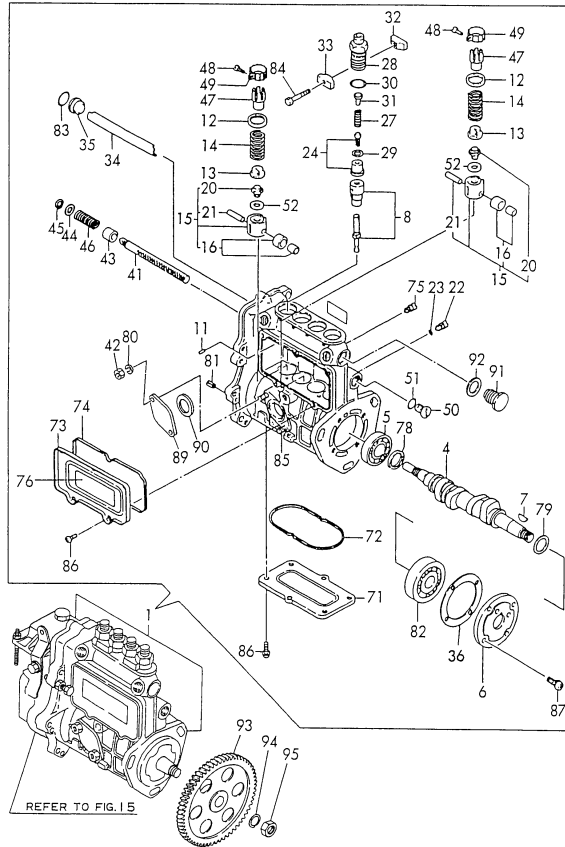


Fig.12. FUEL INJECTION PUMP

(A)=4TN84TL-RHG  
(B)=  
(C)=

(D)=  
(E)=  
(F)=

SPEC. CODE  
D79150-29200  
729413-51320



No.	Lev.	Parts No.	Description	Q'ty						I	R
				(A)	(B)	(C)	(D)	(E)	(F)		
83	2	24341-000160	O-RING, 1AS16.0	1							
84	2	26116-050302	BOLT, M5X 30 PLATED	2							
85	2	129155-51020	STUD	2							
86	2	26022-050102	SCREW, M5X10	11							
87	2	26022-060162	SCREW, M6X16	4							
89	2	129100-52200	COVER	1							
90	2	129155-52050	GASKET	1							A
91	2	129155-51420	PLUG, M16	1							
92	2	22190-160002	WASHER, SEAL 16	1							
93	1	129150-25900	GEAR, PUMP	1							
94	1	22217-120000	WASHER, SPRING 12	1							
95	1	26716-120002	NUT, M12	1							

Remarks

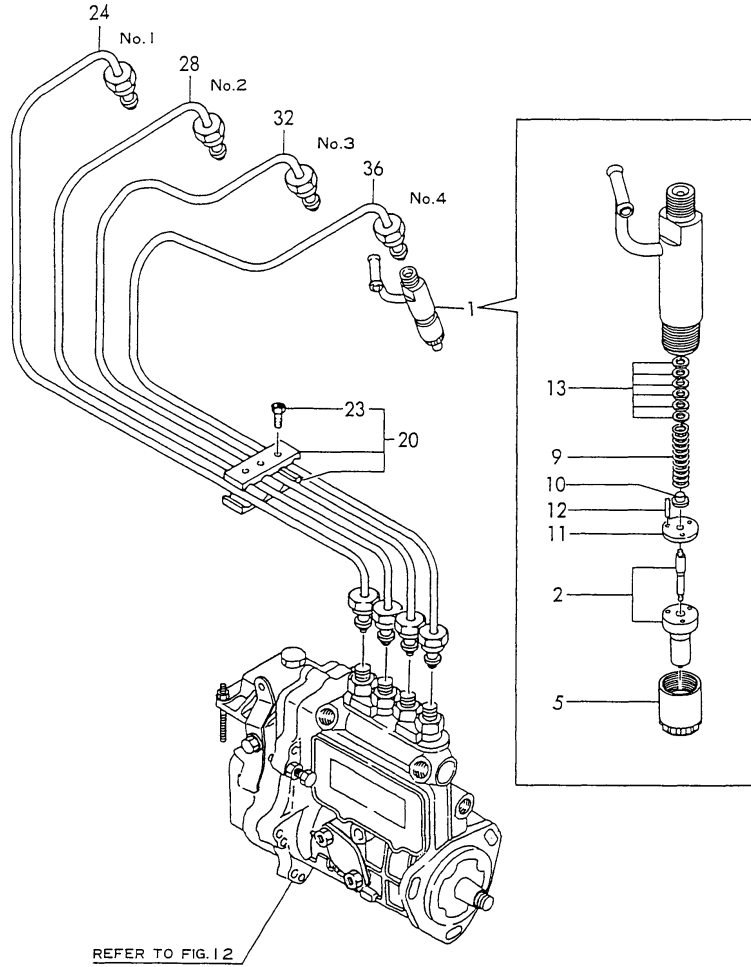
- (1) GOVERNOR ASSY(FIG NO.37)IS INCORPORATED IN THIS FUEL INJECTION PUMP ASSY(REF NO.1). MIS PRINT
- (2) GOVERNOR ASSY(FIG NO.15)IS INCORPORATED IN THIS FUEL INJECTION PUMP ASSY(REF NO.1-1)
- (A) THIS PART IS ALSO SOLD BY GASKET SET(FIG 19.REF NO.1,P/# 729412 -92630).

Fig.13. FUEL INJECTION VALVE

(A)=4TN84TL-RHG  
(B)=  
(C)=

(D)=  
(E)=  
(F)=

SPEC. CODE  
D29503-53100  
D29400-59110



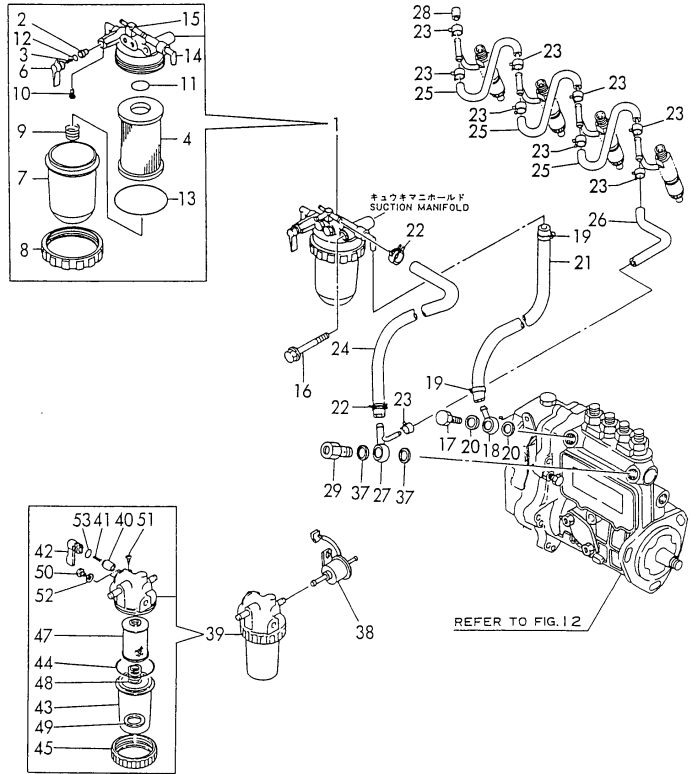
No.	Lev.	Parts No.	Description	Q'ty						I	R
				(A)	(B)	(C)	(D)	(E)	(F)		
1	1	729503-53100	VALVE ASSY,INJECTION	4							
2	2	129503-53000	VALVE ASSY,INJECTION	4							
5	2	114250-53080	NUT, NOZZLE D16.95	4							
9	2	114250-53120	SPRING, NOZZLE	4							
10	2	114250-53130	SEAT, SPRING	4							
11	2	114250-53140	PLATE	4							
12	2	114250-53210	PIN	8							
13	2	114250-53400	SHIM SET	4							
20	1	129550-59120	RETAINER, PIPE	1							
23	2	129150-59130	BOLT, M4X12	2							
24	1	129400-59910	PIPE ASSY, INJECTION	1							
28	1	129400-59920	PIPE ASSY, INJECTION	1							
32	1	129400-59930	PIPE ASSY, INJECTION	1							
36	1	129400-59940	PIPE ASSY, INJECTION	1							

Fig.14. FUEL OIL LINE

(A)=4TN84TL-RHG  
(B)=  
(C)=

(D)=  
(E)=  
(F)=

SPEC. CODE  
D29052-55100  
D29412-59000  
D29100-59302  
D29412-93180

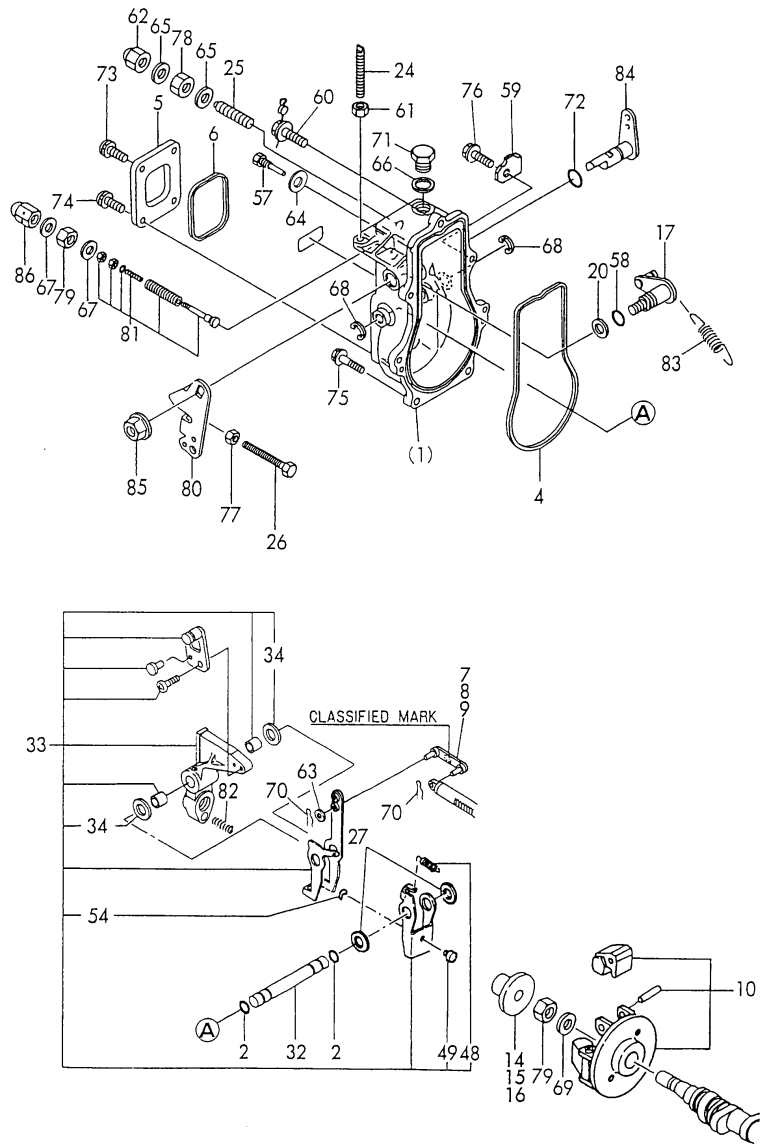


No.	Lev.	Parts No.	Description	Q'ty						I	R
				(A)	(B)	(C)	(D)	(E)	(F)		
1	1	129052-55620	FILTER ASSY, FUEL	1							
2	2	104200-55321	VALVE, TAPER	1							
3	2	104200-55330	SPRING, VALVE	1							
4	2	129100-55650	ELEMENT	1							
6	2	129100-55670	LEVER	1							
7	2	129100-55680	CUP, STRAINER	1							
8	2	129100-55690	RING, RETAINING	1							
9	2	129100-55700	SPRING	1							
10	2	104200-55750	SCREW, M4	1							
11	2	24311-000160	O-RING, 1AP16.0	1							
12	2	24311-240100	O-RING, 1AP10A	1							
13	2	24321-000650	O-RING, 1AG65.0	1							
16	1	26014-080702	BOLT, M8X 70	1							
17	1	103854-39140	BOLT, PIPE JOINT	1							
18	1	101304-59020	JOINT, PIPE 12	1							
19	1	124766-59050	CLIP, HOSE 12	2							
20	1	104200-59170	GASKET, 12	2							A
21	1	129555-59510	PIPE, D13/7.5X180	1							
22	1	124766-59050	CLIP, HOSE 12	2							
23	1	124066-59100	CLIP, HOSE 8	9							
24	1	105025-59750	PIPE, FUEL	1							
25	1	121250-59550	PIPE, FUEL D8X120	3							
26	1	119840-59560	PIPE, FUEL RETURN	1							
27	1	119840-59570	JOINT	1							
28	1	129150-59580	CAP	1							
29	1	129100-59951	VALVE ASSY, CHECK	1							
37	1	23414-120000	GASKET, 12X1.0	2							A
38	1	119225-52102	PUMP ASSY, FUEL FEED	1							
39	1	129335-55700	SEPARATOR ASSY, WATER	1							
40	2	104200-55321	VALVE, TAPER	1							
41	2	104200-55330	SPRING, VALVE	1							
42	2	104200-55341	HANDLE	1							
43	2	124064-55510	COVER	1							
44	2	102103-55520	O-RING	1							
45	2	110250-55610	RING, RETAINING	1							
47	2	171081-55910	SCREEN	1							
48	2	121257-55720	SPRING	1							
49	2	121257-55731	FLOAT	1							
50	2	101720-55750	PLUG, 6	2							
51	2	104200-55750	SCREW, M4	1							
52	2	23418-060000	GASKET, 6X1.0	2							
53	2	24311-240100	O-RING, 1AP10A	1							

Remarks

(A) THIS PART IS ALSO SOLD BY GASKET SET (FIG 19. REF NO.1, P/# 729412 -92630).

Fig.15. GOVERNOR



SPEC. CODE  
729413-51320

(A)=4TN84TL-RHG  
(B)=  
(C)=

(D)=  
(E)=  
(F)=

No.	Lev.	Parts No.	Description	Q'ty						I	R
				(A)	(B)	(C)	(D)	(E)	(F)		
2	2	129155-51280	O-RING, S6	2							
4	2	129155-61050	GASKET	1							
5	2	129155-61060	COVER, GOVERNOR CASE	1							
6	2	129155-61070	GASKET	1							
7	2	129155-61120	LINK, L=30 MARK 0	1							1
8	2	129155-61130	LINK, L=31 MARK 1	1							1
9	2	129155-61140	LINK, L=30.5 MARK 05	1							1
10	2	171488-61200	WEIGHT ASSY, GOVERNOR	1							
14	2	129155-61341	SLEEVE	1							2
15	2	129155-61350	SLEEVE, L=24.9	1							2
16	2	129155-61360	SLEEVE, L=25.2	1							2
17	2	129100-61400	SHAFT ASSY	1							
20	2	129155-61430	SPACER	1							
24	2	129155-61450	BOLT, LIMITER	1							
25	2	129155-61450	BOLT, LIMITER	1							
26	2	129155-61460	BOLT, IDLE	1							
27	2	129155-61480	SPACER ASSY	2							
32	2	129155-61490	SHAFT	1							
33	2	129116-61500	LEVER ASSY, GOVERNOR	1							
34	3	174307-51700	SHIM SET	2							
48	3	119843-61540	SPRING, SET	1							
49	3	129155-61540	SHIFTER	1							
54	3	22272-000040	RING, E- 4	1							
57	2	129155-61810	PIN	1							
58	2	129155-61830	O-RING, S10	1							
59	2	129116-61890	SUPPORT	1							
60	2	129155-61950	BOLT	1							
61	2	124550-66370	NUT, M6	1							
62	2	119600-66840	NUT, CAP	1							
63	2	22117-040000	WASHER, 4	1							
64	2	22190-060002	WASHER, SEAL 6	1							
65	2	22190-060002	WASHER, SEAL 6	2							
66	2	22190-100002	WASHER, SEAL 10	1							
67	2	22190-120002	WASHER, SEAL 12	2							
68	2	22272-000060	RING, E- 6	2							
69	2	22287-120000	WASHER, 12	1							
70	2	22372-040000	PIN, SNAP 4	2							
71	2	23887-100002	PLUG, 10	1							
72	2	24311-240100	O-RING, 1AP10A	1							
73	2	26022-050102	SCREW, M5X10	2							
74	2	26023-050102	SCREW, M5X10	2							
75	2	26106-060202	BOLT, M6X 20 PLATED	6							
76	2	26106-060252	BOLT, M6X 25 PLATED	1							
77	2	26756-060002	NUT, LOCK M6	1							
78	2	26756-060002	NUT, LOCK M6	1							
79	2	26776-120002	NUT, LOCK M12	2							
80	1	171488-61440	LEVER, CONTROL	1							
81	1	129155-61470	BOLT, CONTROL	1							
82	1	129100-61650	SPRING, CONTROLLER	1							
83	1	129477-61720	SPRING, GOVERNOR	1							
84	1	129111-61802	LEVER ASSY, STOP	1							

Fig.15. GOVERNOR

(A)=4TN84TL-RHG  
(B)=  
(C)=

(D)=  
(E)=  
(F)=

SPEC. CODE  
729413-51320

No.	Lev.	Parts No.	Description	Q'ty						I	R
				(A)	(B)	(C)	(D)	(E)	(F)		
85	1	26366-080002	NUT, M8	1							
86	1	26687-120002	NUT, CAP M12	1							

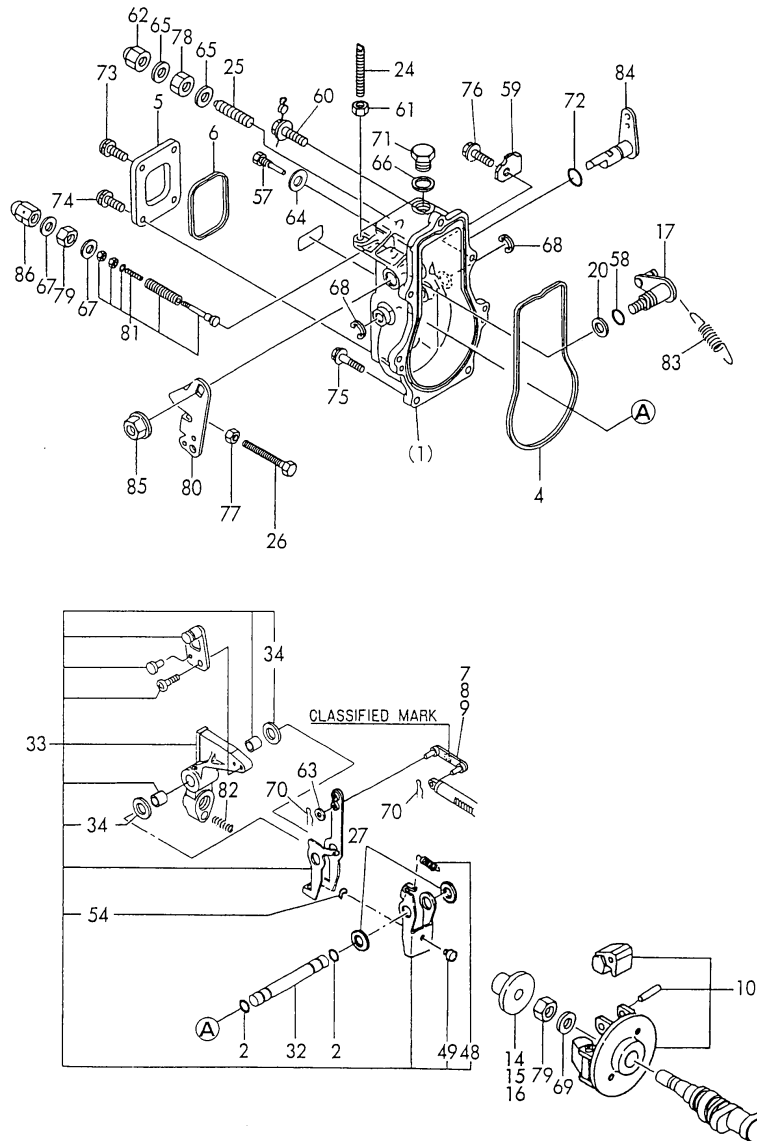
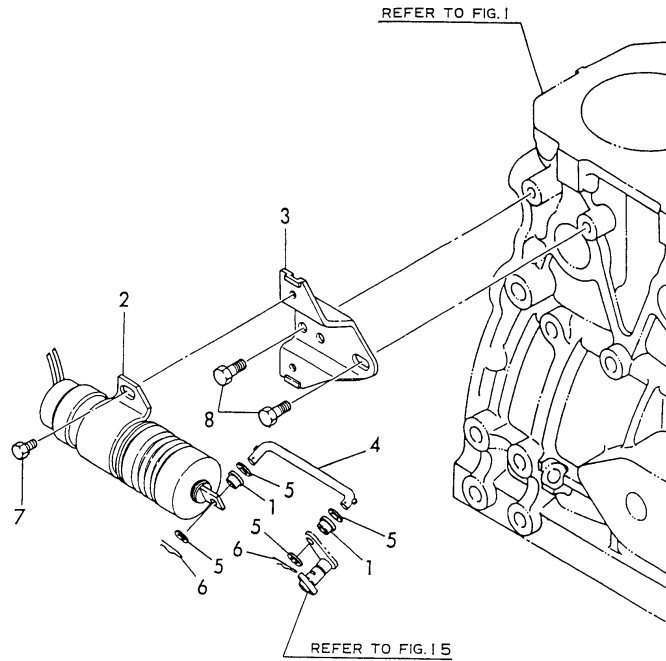


Fig.16. ENGINE STOP DEVICE

(A)=4TN84TL-RHG  
(B)=  
(C)=

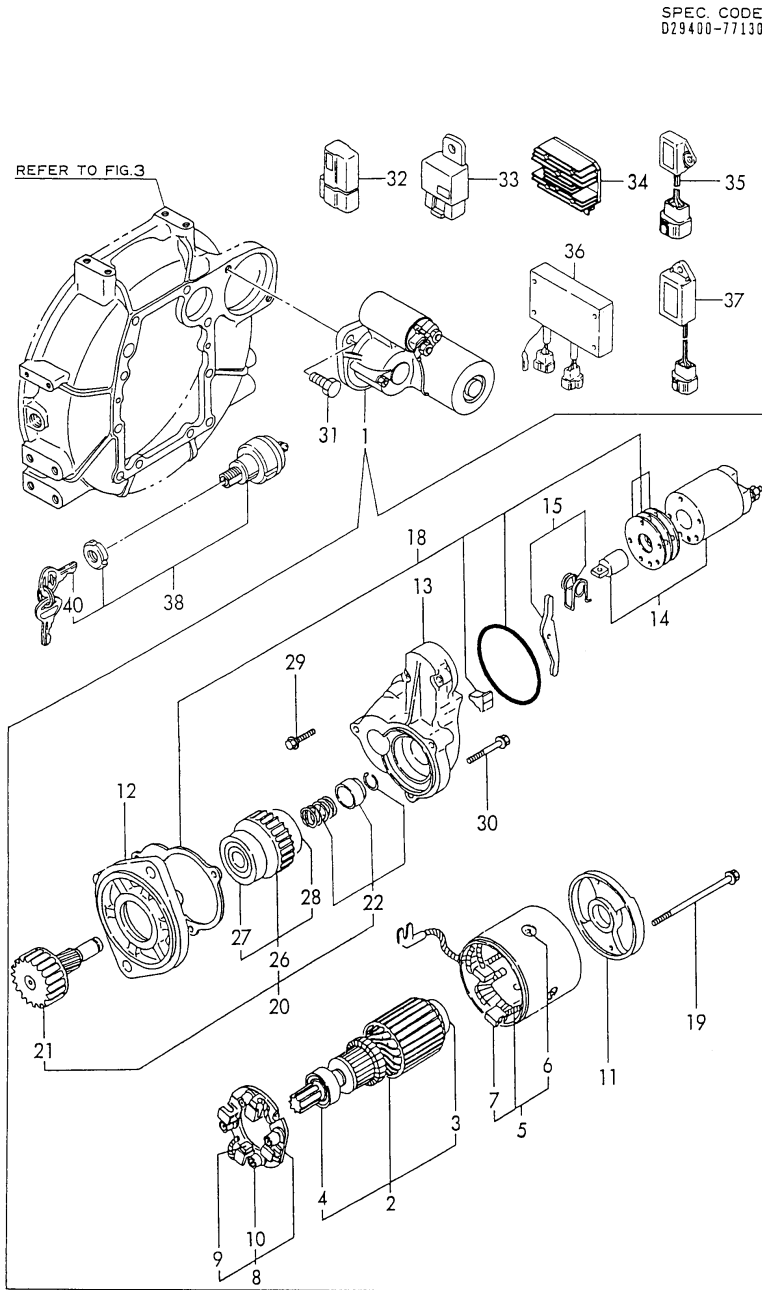
(D)=  
(E)=  
(F)=

SPEC. CODE  
D29555-66511



No.	Lev.	Parts No.	Description	Q'ty						I	R
				(A)	(B)	(C)	(D)	(E)	(F)		
1	1	119245-66400	BUSH	2							
2	1	129155-66800	SOLENOID	1							
3	1	129155-66811	BRACKET, SOLENOID	1							
4	1	129555-66822	LINK	1							
5	1	22137-040000	WASHER, 4	4							
6	1	22360-040000	PIN, SNAP 4	2							
7	1	26106-060102	BOLT, M6X 10 PLATED	2							
8	1	26106-080122	BOLT, M8X 12 PLATED	2							

Fig.17. STARTING MOTOR



(A)=4TN84TL-RHG  
(B)=  
(C)=

(D)=  
(E)=  
(F)=

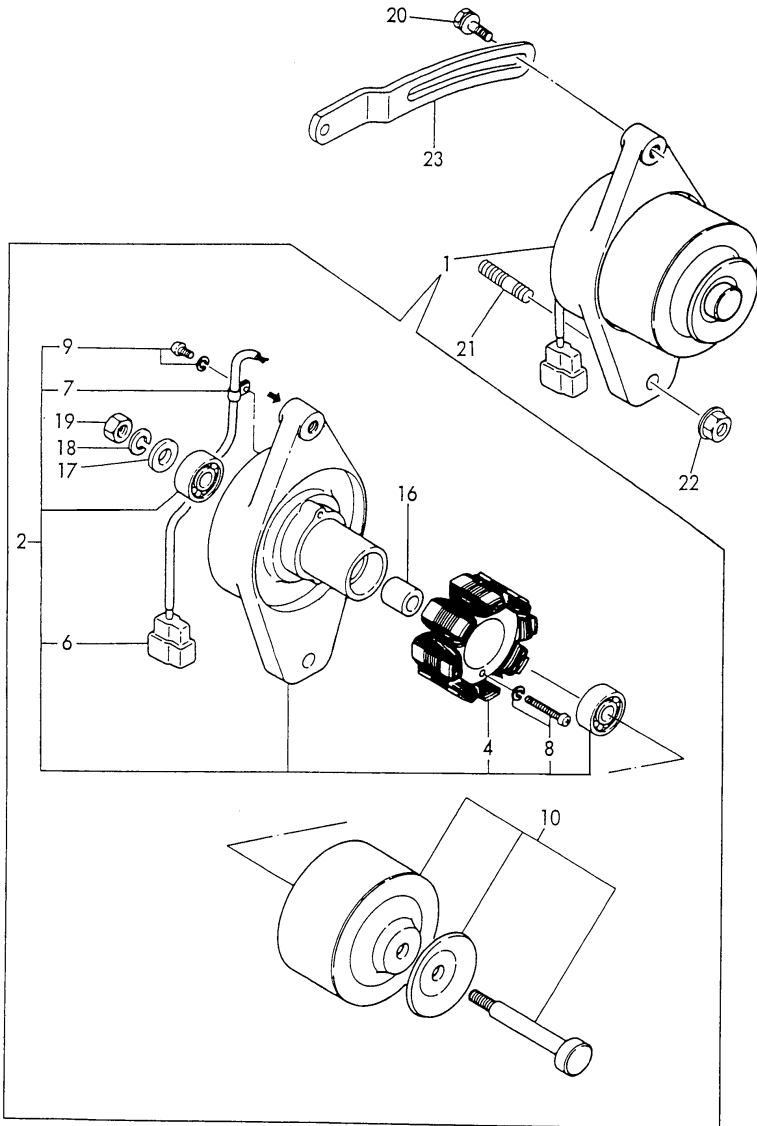
No.	Lev.	Parts No.	Description	Q'ty						I	R
				(A)	(B)	(C)	(D)	(E)	(F)		
1	1	129400-77011	STARTER, S13-94A	1							
2	2	129400-77400	ARMATURE ASSY	1							
3	3	171008-77410	BEARING(1)	1							
4	3	171008-77420	BEARING(2)	1							
5	2	129400-77440	COIL ASSY, FIELD	1							
6	3	171008-77450	SCREW	4							
7	3	129400-77460	BRUSH (+)	2							
8	2	129400-77470	HOLDER ASSY, BRUSH	1							
9	3	129400-77480	BRUSH (-)	2							
10	3	129400-77490	SPRING, BRUSH	4							
11	2	129400-77510	COVER, REAR	1							
12	2	171008-77510	HOUSING ASSY, GEAR	1							
13	2	129400-77520	HOUSING, CENTER	1							
14	2	129400-77530	SWITCH ASSY, MAGNETIC	1							
15	2	171008-77540	LEVER SET, SHIFT	1							
18	2	129400-77570	COVER KIT, DUST	1							
19	2	129400-77640	BOLT, THROUGH	2							
20	2	171008-77650	PINION ASSY	1							
21	3	171008-77660	SHAFT, PINION	1							
22	3	171008-77670	STOPPER SET, PINION	1							
26	3	171008-77720	CLUTCH ASSY	1							
27	4	171008-77730	BALL BEARING (3)	1							
28	4	171008-77740	BALL BEARING (4)	1							
29	2	26106-060322	BOLT, M6X 32 PLATED	2							
30	2	26106-060402	BOLT, M6X 40 PLATED	3							
31	1	26116-120252	BOLT, M12X 25 PLATED	2							
32	1	119643-66900	DIODE	1							
33	1	119247-77100	RELAY, SAFETY	3							
34	1	119640-77711	LIMITER, CURRENT	1							
35	1	121522-77721	INDICATOR	1							
36	1	171440-77801	RELAY, EMERGENCY	1							
37	1	128300-77920	TIMER	1							
38	1	129115-91250	SWITCH ASSY	1							
40	2	129115-91270	KEY ASSY	1							

Fig.18. GENERATOR

(A)=4TN84TL-RHG  
(B)=  
(C)=

(D)=  
(E)=  
(F)=

SPEC. CODE  
029100-77230  
029410-77300



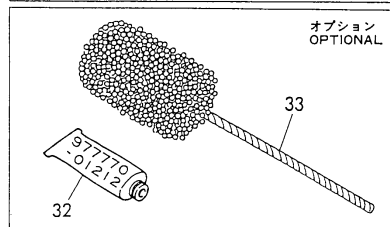
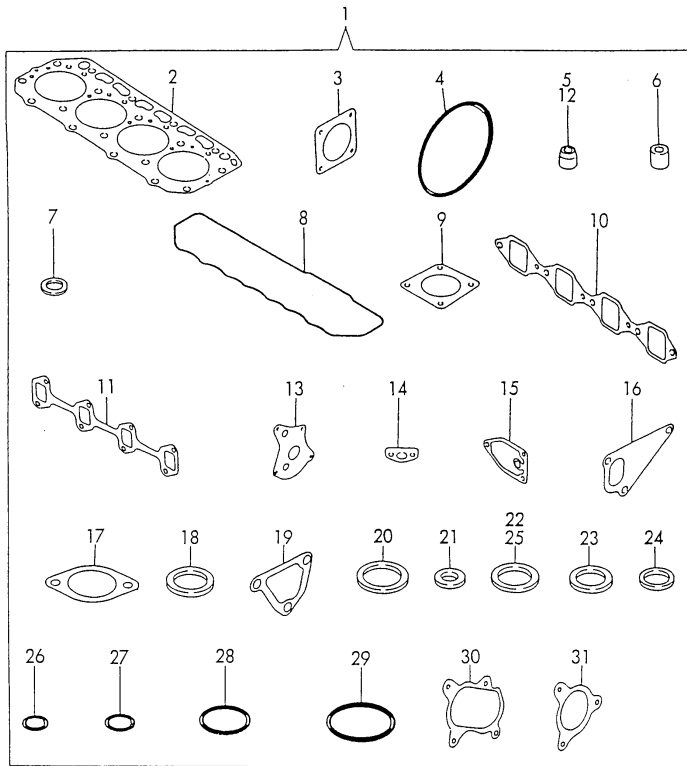
No.	Lev.	Parts No.	Description	Q'ty						I	R
				(A)	(B)	(C)	(D)	(E)	(F)		
1	1	129150-77202	GENERATOR	1							
2	2	129150-77210	PLATE ASSY	1							
4	3	XM081780000	STATOR	1							
6	3	XM178780000	COUPLER	1							
7	3	XM069000000	CLAMP	1							
8	3	XYSPS402400	SCREW	2							
9	3	XYSPS400800	SCREW	1							
10	2	129150-77230	FLYWHEEL ASSY	1							
16	2	XM329830000	COLLAR	1							
17	2	XM860250000	WASHER, 10	1							
18	2	XM219230000	WASHER, SPRING	1							
19	2	XM863720000	NUT	1							
20	1	26014-080252	BOLT, M8X 25	1							
21	1	121450-01570	BOLT, STUD	1							
22	1	26366-100002	NUT, M10	1							
23	1	129410-77330	ADJUSTER, BELT	1							



Fig.19. GASKET SET & TOOL(OPTIONAL)

(A)=4TN84TL-RHG  
(B)=  
(C)=

(D)=  
(E)=  
(F)=



No.	Lev.	Parts No.	Description	Q'ty						I	R
				(A)	(B)	(C)	(D)	(E)	(F)		
1	1	729412-92630	GASKET SET	1							1
2	2	129405-01331	GASKET, HEAD	1							
3	2	124240-01883	GASKET	1							
4	2	121850-51960	O-RING	1							
5	2	124460-11340	SEAL, VALVE STEM	4							
6	2	119625-11870	PROTECTOR, NOZZLE	4							
7	2	119625-11880	SEAT, NOZZLE	4							
8	2	129550-11310	GASKET, BONNET	1							
9	2	129150-77511	GASKET	1							
10	2	129550-12111	GASKET, MANIFOLD	1							
11	2	129550-13110	GASKET	1							
12	2	121400-11340	SEAL, VALVE STEM	4							
13	2	129150-32020	GASKET, PUMP	1							
14	2	129150-35041	GASKET	1							
15	2	129150-35111	GASKET	1							
16	2	129100-42020	GASKET, WATER PUMP	1							
17	2	129795-49551	GASKET	1							
18	2	129150-49811	GASKET, THERMOSTAT	1							
19	2	129100-49840	GASKET	1							
20	2	124465-44950	GASKET, 16	2							
21	2	129155-52050	GASKET	1							
22	2	104200-59170	GASKET, 12	2							
23	2	22190-080002	WASHER, SEAL 6	2							
24	2	23414-100000	GASKET, 10X1.0	2							
25	2	23414-120000	GASKET, 12X1.0	2							
26	2	24311-000120	O-RING, 1AP12.0	3							
27	2	24311-000160	O-RING, 1AP16.0	2							
28	2	24311-000320	O-RING, 1AP32.0	1							
29	2	24341-000500	O-RING, 1AS50.0	1							
30	2	129403-18091	GASKET	1							
31	2	129477-18101	GASKET	1							
32	1	977770-01212	GASKET, LIQUID	1							1
33	1	129400-92420	FLEX HORN	1							1

Remarks  
(1) OPTIONAL PART.

## Parts No. Index

Parts No.	Fig. No.	Ref. No.
101304-59020	14	18
101720-55750	14	50
102103-55520	14	44
103338-11190	4	20
103854-39140	14	17
104200-55321	14	2
		40
104200-55330	14	3
		41
104200-55341	14	42
104200-55750	14	10
		51
104200-59170	14	20
	19	22
105010-39140	10	1
105025-59750	14	24
110250-55610	14	45
114250-53080	13	5
114250-53120	13	9
114250-53130	13	10
114250-53140	13	11
114250-53210	13	12
114250-53400	13	13
119225-52102	14	38
119245-66400	16	1
119247-77100	17	33
119600-66840	15	62
119620-01750	3	3
119620-49290	11	19
119625-11870	4	42
	19	6
119625-11880	4	43
	19	7
119625-11900	4	41
119640-77711	17	34
119643-66900	17	32
119840-59560	14	26
119840-59570	14	27
119843-61540	15	48
119865-21600	8	13
119865-35300	9	24
120130-11860	4	7
121100-22400	8	21
121111-21501	8	10
121250-44901	11	22
121250-59550	14	25
121257-55720	14	48
121257-55731	14	49
121400-11340	4	21
	19	12

Parts No.	Fig. No.	Ref. No.
121450-01560	2	4
121450-01570	18	21
121450-42450	11	24
121520-34810	9	13
121522-77721	17	35
121550-23200	8	31
121850-11860	4	11
	11	1
121850-21680	8	9
121850-51960	2	10
	19	4
122117-51560	12	48
122710-51090	12	7
124064-55510	14	43
124066-59100	14	23
124160-01751	2	5
	4	55
124160-01910	1	4
		5
124160-11360	4	57
124160-39140	10	2
124160-39450	10	3
124223-39900	10	15
124240-01871	2	7
124240-01883	2	8
	19	3
124460-11340	4	22
	19	5
124465-44950	11	23
		25
	19	20
124550-51350	12	29
124550-51370	12	30
124550-59820	10	5
124550-66370	15	61
124732-42290	11	15
124736-07900	4	44
124766-49160	11	42
124766-59050	11	43
	14	19
		22
124770-11770	11	29
124950-51190	12	14
128270-13620	10	9
128300-77920	17	37
129052-55620	14	1
129100-01580	3	1
		16
	8	6
129100-01640	3	17

Parts No.	Fig. No.	Ref. No.
129100-01790	3	9
129100-11100	4	16
129100-11130	4	17
129100-11650	4	33
129100-23910	8	36
129100-25061	6	8
129100-42002	11	2
129100-42020	11	13
	19	16
129100-49050	11	20
129100-49800	11	28
129100-49820	11	31
129100-49830	11	32
129100-49840	11	37
	19	19
129100-51300	12	24
129100-52200	12	89
129100-55650	14	4
129100-55670	14	6
129100-55680	14	7
129100-55690	14	8
129100-55700	14	9
129100-59951	14	29
129100-61400	15	17
129100-61650	15	82
129105-22090	8	14
129105-22920	8	38
129105-22970	8	40
129111-61802	15	84
129115-91250	17	38
129115-91270	17	40
129116-61500	15	33
129116-61890	15	59
129120-77501	5	9
129136-34800	9	14
129150-01200	1	24
129150-02020	1	13
129150-02450	6	3
129150-02800	1	16
129150-02870	1	26
129150-02930	1	19
129150-02940	1	29
129150-03020	4	53
129150-03070	4	48
129150-03080	4	49
129150-03100	2	23
129150-11230	4	36
129150-11280	4	32
129150-11370	4	24
129150-11750	4	35

Parts No.	Fig. No.	Ref. No.
129150-11810	4	9
129150-14101	6	4
129150-14200	6	6
129150-14400	6	7
129150-21200	8	4
129150-22300	8	20
129150-23600	8	32
129150-23610	8	34
129150-25061	6	11
129150-25101	6	9
129150-25900	12	93
129150-32000	9	1
129150-32020	9	11
	19	13
129150-35041	9	15
	19	14
129150-35042	9	15
129150-35101	9	21
129150-35111	9	22
	19	15
129150-35151	9	23
129150-35350	9	32
129150-49811	11	36
	19	18
129150-59130	13	23
129150-59580	14	28
129150-77202	18	1
129150-77210	18	2
129150-77230	18	10
129150-77511	5	10
	19	9
129155-11260	4	30
129155-11270	4	31
129155-42350	11	16
129155-49800	11	35
129155-51020	12	85
129155-51050	12	5
129155-51060	12	6
129155-51140	12	11
129155-51180	12	13
129155-51200	12	15
129155-51250	12	20
129155-51270	12	22
129155-51280	12	23
	15	2
129155-51320	12	27
129155-51340	12	28
129155-51370	12	31
129155-51380	12	32
129155-51390	12	33

## Parts No. Index

Parts No.	Fig. No.	Ref. No.
129155-51410	12	35
129155-51420	12	91
129155-51450	12	36
129155-51521	12	43
129155-51530	12	44
129155-51540	12	45
129155-51550	12	47
129155-51570	12	50
129155-51580	12	51
129155-51591	12	46
129155-51600	12	52
129155-51790	12	75
129155-51930	12	78
129155-51940	12	79
129155-52050	12	90
	19	21
129155-61050	15	4
129155-61060	15	5
129155-61070	15	6
129155-61120	15	7
129155-61130	15	8
129155-61140	15	9
129155-61341	15	14
129155-61350	15	15
129155-61360	15	16
129155-61430	15	20
129155-61450	15	24
		25
129155-61460	15	26
129155-61470	15	81
129155-61480	15	27
129155-61490	15	32
129155-61540	15	49
129155-61810	15	57
129155-61830	15	58
129155-61950	15	60
129155-66800	16	2
129155-66811	16	3
129156-51910	12	76
129335-55700	14	39
129350-49530	11	26
129400-01520	2	6
129400-01730	3	11
129400-01770	3	6
129400-11350	4	46
129400-12100	5	2
129400-59910	13	24
129400-59920	13	28
129400-59930	13	32
129400-59940	13	36

Parts No.	Fig. No.	Ref. No.
129400-77011	17	1
129400-77400	17	2
129400-77440	17	5
129400-77460	17	7
129400-77470	17	8
129400-77480	17	9
129400-77490	17	10
129400-77510	17	11
129400-77520	17	13
129400-77530	17	14
129400-77570	17	18
129400-77640	17	19
129400-92420	19	33
129403-12080	5	6 -1
129403-13130	5	13
129403-18091	7	1
	19	30
129403-18720	7	5
129403-18800	7	24
129403-39450	10	4
129403-39600	10	10
129403-39610	10	11
129403-44740	11	17
129405-01331	1	25
	19	2
129406-18010	7	4
129406-18770	7	6
129406-18780	7	15
129406-18790	7	19
129406-18820	7	27
129406-18830	7	30
129410-77330	18	23
129436-35070	9	16 -2
129436-35090	9	16
129436-35091	9	16 -1
129470-11080	4	5
129470-11090	4	6
129470-51040	12	4
129470-51101	12	8
129477-18101	7	2
	19	31
129477-61720	15	83
129488-12050	5	1
129488-12060	5	6
129500-11240	4	26
129503-53000	13	2
129550-11290	4	27
129550-11310	4	52
	19	8
129550-12111	5	3

Parts No.	Fig. No.	Ref. No.
129550-12111	19	10
129550-13110	5	12
	19	11
129550-21650	8	7
129550-59120	13	20
129555-51400	12	34
129555-51500	12	41
129555-51700	12	71
129555-51710	12	72
129555-51750	12	73
129555-51760	12	74
129555-59510	14	21
129555-66822	16	4
129795-01780	3	19
129795-01800	2	3
129795-01950	2	9
129795-02411	1	22
129795-11120	4	18
129795-11180	4	19
129795-21661	8	8
129795-49551	11	27
	19	17
171008-77410	17	3
171008-77420	17	4
171008-77450	17	6
171008-77510	17	12
171008-77540	17	15
171008-77650	17	20
171008-77660	17	21
171008-77670	17	22
171008-77720	17	26
171008-77730	17	27
171008-77740	17	28
171051-01921	1	6
171081-55910	14	47
171301-01600	3	2
171301-01640	3	7
171350-03090	4	56
171420-21580	8	11
171420-34820	9	14
171440-77801	17	36
171488-61200	15	10
171488-61440	15	80
174100-54120	12	21
174307-51170	12	12
174307-51560	12	49
174307-51700	15	34
194990-22050	7	3
22117-040000	15	63
22137-040000	16	5

Parts No.	Fig. No.	Ref. No.
22190-060002	15	64
		65
22190-080002	2	21
		22
	10	8
	19	23
22190-100002	15	66
22190-120002	15	67
22190-160002	12	92
22217-060000	12	80
22217-120000	12	94
22272-000040	15	54
22272-000060	15	68
22287-120000	15	69
22351-040010	8	37
22351-050010	12	81
22351-060012	4	25
22360-040000	16	6
22372-040000	15	70
22512-070140	6	5
	8	5
23000-016000	11	21
23000-022000	10	12
23000-050000	5	7
23000-054000	5	7 -1
23000-070000	5	8
23414-080000	1	11
	10	6
23414-100000	10	7
	19	24
23414-120000	14	37
	19	25
23418-060000	14	52
23871-010000	1	7
23871-030000	4	12
	5	4
	11	12
		34
23887-100002	15	71
24101-063034	12	82
24311-000120	4	58
	19	26
24311-000160	2	11
	9	33
	14	11
	19	27
24311-000320	2	12
	4	54
	19	28
24311-240100	14	12

## Parts No. Index

Parts No.	Fig. No.	Ref. No.
24311-240100	14	53
	15	72
24314-000160	10	13
24321-000650	14	13
24341-000160	12	83
24341-000240	3	10
24341-000500	4	50
	19	29
26014-080252	18	20
26014-080702	14	16
26022-050102	12	86
	15	73
26022-060162	12	87
26023-050102	15	74
26106-060102	16	7
26106-060162	10	14
	11	18
26106-060202	15	75
26106-060252	15	76
26106-060322	17	29
26106-060402	17	30
26106-080102	10	16
26106-080122	1	12
	2	13
	16	8
26106-080142	4	45
26106-080162	1	23
	2	14
		15
	3	12
	4	51
26106-080202	2	16
	9	34
	11	38
26106-080252	3	13
	4	39
	11	39
26106-080302	3	20
26106-080352	3	21
	5	5
		11
	9	20
26106-080452	2	17
	3	14
	6	12
26106-080502	3	15
	4	40
	11	40
26106-080552	2	18
	9	20 -1

Parts No.	Fig. No.	Ref. No.
26106-080602	11	14
		41
26106-080652	5	14
26106-080852	2	19
	5	15
26106-081002	5	16
26116-050302	12	84
26116-060162	11	33
26116-120252	17	31
26206-100252	3	4
26206-100302	3	5
26216-060202	4	15
26216-080222	5	17
26226-080182	4	37
26366-060002	4	23
26366-080002	2	20
	15	85
26366-100002	18	22
26450-060252	9	12
26687-120002	15	86
26716-060002	12	42
26716-120002	12	95
26756-060002	15	77
		78
26756-080002	4	38
26776-120002	15	79
27231-500000	1	8
27241-100000	4	29
27241-120000	1	9
27241-220000	4	13
27241-300000	1	10
27241-400000	4	14
711100-51540	12	16
719810-01500	2	1
729105-22500	8	16
729105-22910	8	22
729105-22951	8	24
729402-14580	6	1
729402-23100	8	28
729405-01560	1	1
729406-11700	4	1
729406-21700	8	1
729412-92630	19	1
729413-51230	12	1
729413-51320	12	1 -1
729503-53100	13	1
977770-01212	19	32
XM069000000	18	7
XM081780000	18	4
XM178780000	18	6

Parts No.	Fig. No.	Ref. No.
XM219230000	18	18
XM329830000	18	16
XM860250000	18	17
XM863720000	18	19
XYSPS400800	18	9
XYSPS402400	18	8

Parts No.	Fig. No.	Ref. No.
-----------	----------	----------