

0CD10-M48203EN

Introduction

1. This parts catalog for SAKAI HEAVY INDUSTRIES, Ltd. NFAD6, 8-(E) SA is published as a revised edition of the Diesel engine.

	Parts catalog No.	Date of issue	Remarks
First edition	000Y00D4820		No need
1st revised edition	000Y00D4821	Apr. , 1995	No need
2nd revised edition	000Y00D4822	Dec. , 1999	No need
3rd revised edition	000Y00D4823	Oct. , 2006	

2. This parts catalog does not contain the technical data needed for maintenance service.

3. The illustrations used in this parts catalog have been simplified for clarity.

4. Specification

Model name	Column	Model of SAKAI HEAVY INDUSTRIES, Ltd name
NFAD6-ESA	A	HV301CY
NFAD6-SA	B	HV50Y, HV60Y
NFAD8-ESA	C	HV501CY
NFAD8-SA	D	HV70Y, HV80Y

5. The contents of this parts catalog are subject to change without notice.

6. Be sure to use only Yanmar genuine part for repairs. If imitation parts are used, it may cause engine defects.

Directions for the Parts Catalog.

- The parts stipulated in this Parts Catalog are not necessarily standard equipped parts.
- Parts may change without prior notice.
- The following is an example of the Parts Catalog format.

REF.	LEV.	PARTS NO.	DESCRIPTION	Q'TY						I	R
				(A)	(B)	(C)	(D)	(E)	(F)		
1	1	729595-51390	FUEL INJECTION PUMP	1	1	1	1	1			1
1-1	1	729595-51391	FUEL INJECTION PUMP	1	1	1	1	1		N	1
		(A=E00185) (B=E00200)									
3	2	26022-060162	SCREW M 6X 16	9	9	9	9	9			
3-1	2	26022-060162	SCREW M 6X 16	4	4	4	4	4		K	
		(A=E00156) (B=E00156) (C=E00156) (D=E00156) (E=E00156)									
4	2	129470-51040	CAMSHAFT	1	1	1	1	1			
5	2	122710-51050	BEARING, ROLLER	2	2	2	2	2			
6	2	129470-51060	RETAINER	1	1	1	1	1			

Remarks
(1) BOOST COMPEMSATOR TYPE. OPTIONAL PART, TO E00155,(4JH-DT, 4JH-DTZ

① Ref. No.

The Ref. No. listed may not be in accordance with the illustration Ref. No.

(Ex.) Illustration No.

List Ref No.

1

1

(Before change)

1-1

(After change)

For interchangeable symbols N, R and K, illustrations for new parts may be abbreviated.

② Lev. (Level)

Level indication

The numbers below indicate the level of relativity towards the main part.

1 ----- Main parts (Assembly parts)

2 ----- Sub component included in " 1 ".

3 ----- Sub component included in " 2 ".

Note) Parts that are not for sale are partially illustrated but not listed.

③ Interchangeability Mark

When a part change takes place, one of the following interchangeability symbols is indicated beside the part.

Symbol	Interchangeability	Contents note
N	Old $\begin{matrix} \leftarrow \text{Yes} \\ \text{No} \rightarrow \end{matrix}$ New	New Part is interchangeable for Old Part but Old Part is not interchangeable for New Part.
Q	Old $\begin{matrix} \leftarrow \text{No} \\ \text{Yes} \rightarrow \end{matrix}$ New	New Part is not interchangeable for Old Part but Old Part is interchangeable for New Part.
R	Old $\begin{matrix} \leftarrow \text{Yes} \\ \text{Yes} \rightarrow \end{matrix}$ New	New/ Old Parts are both interchangeable.
S	Old $\begin{matrix} \leftarrow \text{No} \\ \text{No} \rightarrow \end{matrix}$ New	New/ Old Parts are both not interchangeable.
W		Part newly added.
Z		Part discontinued.
F		Not interchangeable by a single part but interchangeable together with related parts.
K		Changes only for used parts quantities.

④ Effective Machine No.

When a part changes, the effective Machine No. will be indicated in the (A)-(F) column.

Product Symbol	Product No.	Product Symbol	Product No.
C	Clutch No. Compressor No.	F	Machine No. (Agricultural Equip.)
D	Drive No.	M	Machine No.
E	Engine No.		

Note 1) A date may follow the symbol. (Ex.) 1996.01

Note 2) "XXXXX" and "ZZZZZ" are for parts that could not be predicted or for engine models that could not be identified.

Note 3) (A=E00185) is the E (Engine Serial Number) for the column (A) model (in this case 4JH-DT) after the parts design change.

⑤ Remarks Mark

Figures or alphabets (symbols) are entered in the remarks column.

The comments (remarks) on parts that are indicated at the bottom of the illustration are the same symbols as those stated above.

Contents

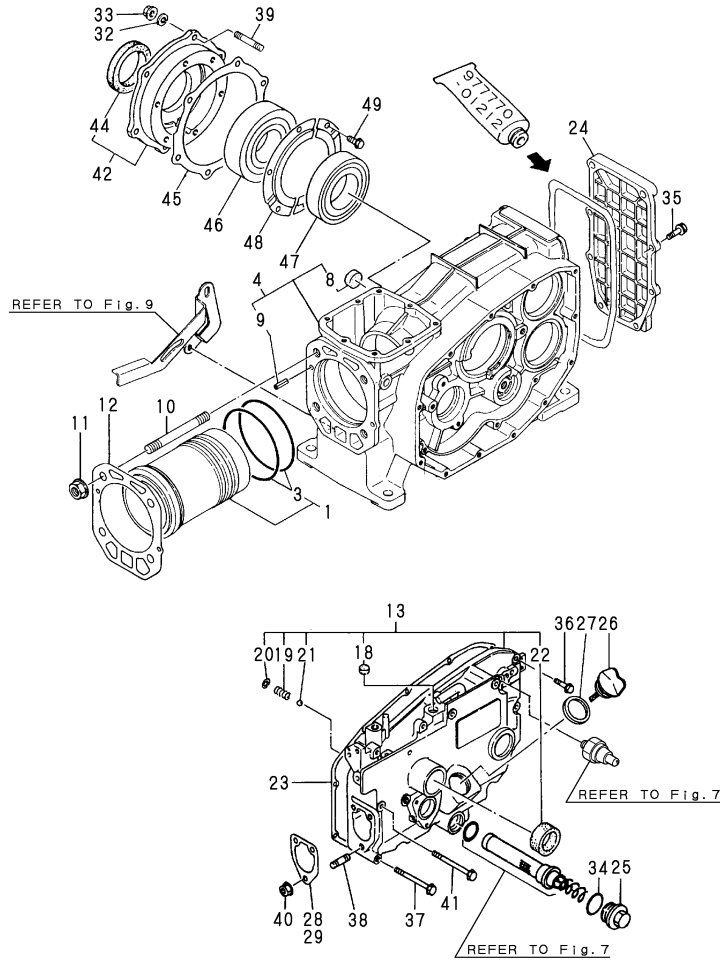
Fig. No.	Fig. Name
NFAD6,8-(E)SA	
1.	CYLINDER BLOCK
2.	CYLINDER HEAD & BONNET
3.	AIR CLEANER & MUFFLER
4.	CAMSHAFT
5.	CRANKSHAFT & FLYWHEEL
6.	PISTON & CONNECTING ROD
7.	LUB.OIL SYSTEM & STARTING DEVICE
8.	RADIATOR & FUEL TANK
9.	FAN
10.	FUEL INJECTION PUMP
11.	FUEL INJECTION SYSTEM
12.	GOVERNOR & CONTROL DEVICE
13.	STARTING MOTOR
14.	TOOL & LABEL
15.	GASKET SET(OPTIONAL)
16.	CYLINDER BLOCK
17.	CYLINDER HEAD & BONNET
18.	AIR CLEANER & MUFFLER
19.	CAMSHAFT
20.	CRANKSHAFT & FLYWHEEL
21.	PISTON & CONNECTING ROD
22.	BALANCER
23.	LUB.OIL SYSTEM & BREATHER
24.	RADIATOR & FAN

Fig. No.	Fig. Name
25.	FUEL INJECTION PUMP
26.	FUEL TANK
27.	FUEL INJECTION SYSTEM
28.	GOVERNOR & CONTROL DEVICE
29.	REGULATOR HANDLE
30.	STARTING DEVICE
31.	STARTING MOTOR
32.	TOOL & LABEL
33.	GASKET SET(OPTIONAL)

Fig.1. CYLINDER BLOCK

(A)=NFAD6-ESA
(B)=NFAD6-SA
(C)=

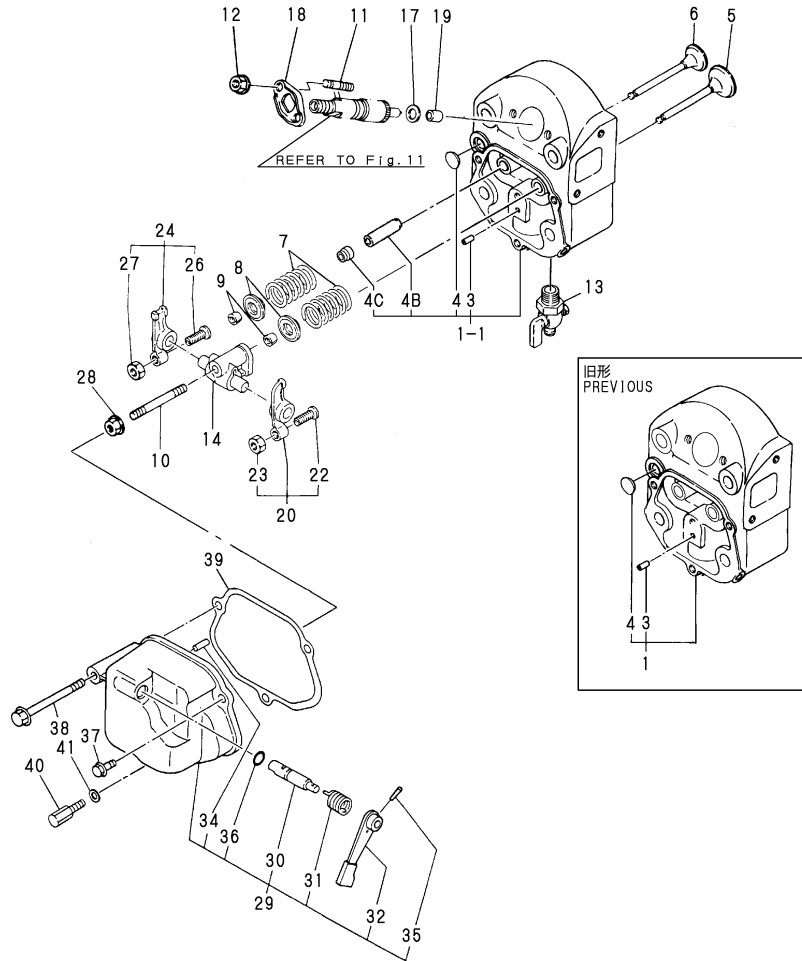
(D)=
(E)=
(F)=



No.	Lev.	Parts No.	Description	Q'ty						I	R
				(A)	(B)	(C)	(D)	(E)	(F)		
1	1	705090-01900	LINER ASSY, CYLINDER	1	1						
3	2	105090-01300	O-RING	2	2						A
4	1	705090-01560	BLOCK ASSY, CYLINDER	1	1						
8	2	105215-01670	SEAL, 20	1	1						
9	2	22351-060012	PIN, SPRING 6.0X12	2	2						
10	1	105215-01200	BOLT, HEAD M12	4	4						
11	1	121450-01220	NUT, CYLINDER HEAD	4	4						
12	1	105090-01330	GASKET, HEAD	1	1						
12-1	1	105090-01331	GASKET, HEAD	1	1						N A
(A=E/#034638) (B=E/#034638)											
13	1	705090-01501	CASE ASSY, GEAR	1	1						
18	2	105100-01660	PLUG, 14	1	1						
19	2	105300-34040	SPRING	1	1						
20	2	22252-000100	RING, 10	1	1						
21	2	24190-120001	BALL, STEEL 3/8	1	1						
22	2	105140-76500	SEAL, TCX25X35X6	1	1						
22-1	2	120270-61250	SEAL, OIL	1	1						R
(A=E/#038214) (B=E/#038214)											
23	1	105090-01410	GASKET, GEAR CASE	1	1						A
24	1	105090-01480	COVER	1	1						
25	1	105300-01690	PLUG	1	1						
26	1	105090-01750	CAP	1	1						
27	1	101104-01760	GASKET, CAP	1	1						A
28	1	105300-01920	SHIM, T=0.1	1	1						1
29	1	104271-01950	SHIM SET,0.2X3,0.3X2	1	1						
29-1	1	105090-01960	SHIM SET, ADJUSTING	1	1						N
(A=E/#076869) (B=*2006.01)											
32	1	22217-080000	WASHER, SPRING 8	6	6						
33	1	26716-080002	NUT, M8	6	6						
34	1	24321-000250	O-RING, 1AG25.0	1	1						
35	1	26106-060202	BOLT, M6X 20 PLATED	6	6						
36	1	26106-060302	BOLT, M6X 30 PLATED	6	6						
37	1	26106-060552	BOLT, M6X 55 PLATED	1	1						
38	1	26216-080222	STUD, M8X 22	3	3						
39	1	26226-080222	STUD, M8X 22	6	6						
40	1	26366-080002	NUT, M8	3	3						
40-1	1	26306-080002	NUT, M8	3	3						N
(A=E/#057565) (B=*2001.06)											
41	1	26106-060652	BOLT, M6X 65 PLATED	4	4						
42	1	705090-02500	HOUSING ASSY, METAL	1	1						
44	2	111130-02160	SEAL, TC35508	1	1						
45	1	105090-02020	GASKET	1	1						
45-1	1	105090-02021	GASKET	1	1						N A
(A=E/#034638) (B=E/#034638)											
46	1	105100-02300	BEARING, 6308-SH2-C3	1	1						
47	1	105100-02310	BEARING, 6208-SH2-C3	1	1						
48	1	106100-02331	RETAINER, BEARING	2	2						
49	1	26116-050082	BOLT, M5X 8 PLATED	6	6						

Remarks
 (A) THESE PART ARE ALSO SOLD BY FIG.15 NO.1-1 (GASKET SET.P/# 705092-92601).
 (1) REPAIR PART.

Fig.2. CYLINDER HEAD & BONNET



(A)=NFAD6-ESA
(B)=NFAD6-SA
(C)=

(D)=
(E)=
(F)=

No.	Lev.	Parts No.	Description	Q'ty						I	R
				(A)	(B)	(C)	(D)	(E)	(F)		
1	1	705090-11700	HEAD ASSY, CYLINDER	1	1						
1-1	1	705090-11701	HEAD ASSY, CYLINDER	1	1						N
		(A=E/#075003) (B=*2005.06)									
3	2	105300-11330	PIN	1	1						
4	2	27231-150000	PLUG 15	1	1						
4B	2	105090-11800	GUIDE, VALVE	1	1						W 2
		(A=E/#075003) (B=*2005.06)									
4C	2	128170-11340	SEAL, VALVE STEM	1	1						W
		(A=E/#075003) (B=*2005.06)									
5	1	105090-11100	VALVE, INTAKE	1	1						
6	1	105090-11111	VALVE, EXHAUST	1	1						
7	1	105400-11121	SPRING, VALVE	2	2						
8	1	101158-11180	RETAINER, SPRING	2	2						
9	1	27310-070001	COTTER, 7	2	2						
10	1	26216-080452	STUD, M8X 45	1	1						
11	1	26216-060402	STUD, M6X 40	2	2						
11-1	1	26216-060352	STUD, M6X 35	2	2						S 1
		(A=E/#043519) (B=E/#043519)									
12	1	26366-060002	NUT, M6	2	2						
13	1	105010-11920	COCK, WATER	1	1						
14	1	105090-11290	SUPPORT ASSY, ARM	1	1						
17	1	119625-11880	SEAT, NOZZLE	1	1						
18	1	105300-11900	RETAINER	1	1						
18-1	1	119625-11900	RETAINER, NOZZLE	1	1						S 1
		(A=E/#043519) (B=E/#043519)									
19	1	119625-11870	PROTECTOR, NOZZLE	1	1						
19-1	1	119625-11871	PROTECTOR, NOZZLE	1	1						R A
		(A=E/#030666) (B=E/#030666)									
20	1	105090-11650	ARM, ROCKER	1	1						
22	2	101158-11230	SCREW, VALVE ADJUST	1	1						
23	2	26756-080002	NUT, LOCK M8	1	1						
24	1	105090-11660	ARM, ROCKER	1	1						
26	2	101158-11230	SCREW, VALVE ADJUST	1	1						
27	2	26756-080002	NUT, LOCK M8	1	1						
28	1	26366-080002	NUT, M8	1	1						
28-1	1	26306-080002	NUT, M8	1	1						N
		(A=E/#057565) (B=*2001.06)									
29	1	705090-11520	BONNET ASSY, HEAD	1	1						
30	2	104200-03600	SHAFT, DECOMPRESSION	1	1						
31	2	104200-03641	SPRING, DECOMPRESSION	1	1						
32	2	104104-03750	LEVER, DECOMPRESSION	1	1						
34	2	22312-030180	PIN, PARALLEL M3X18	1	1						
35	2	22322-030180	PIN, TAPER 3X18	1	1						
36	2	24311-000070	O-RING, 1AP7.0	1	1						A
37	1	26106-060202	BOLT, M6X 20 PLATED	1	1						
38	1	26106-060602	BOLT, M6X 60 PLATED	1	1						
39	1	105090-11310	GASKET, BONNET	1	1						A
40	1	105090-11820	BOLT	1	1						
41	1	22117-060000	WASHER, 6	1	1						

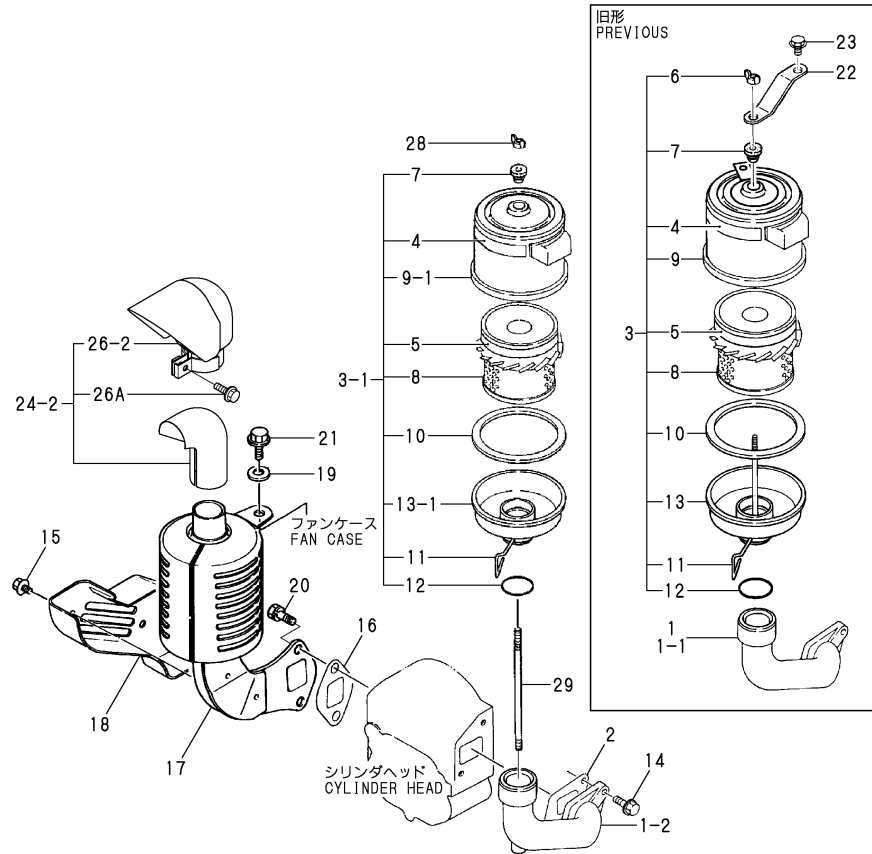
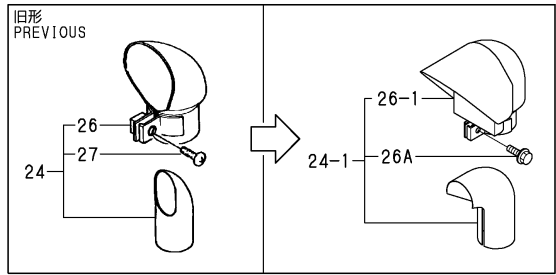
Remarks

(A) THESE PARTS ARE ALSO SOLD BY FIG.15 NO.1-1

(GASKET SET.P/# 705092-92601).

(1) INTERCHANGEABLE BY SIMULTANEOUS REPLACEMENT WITH NO.11-1 AND 18-1.

Fig.3. AIR CLEANER & MUFFLER



Remarks
 (A) THESE PART ARE ALSO SOLD BY
 FIG.15 NO.1-1
 (GASKET SET.P/# 705092-92601).

(A)=NFAD6-ESA
 (B)=NFAD6-SA
 (C)=

(D)=
 (E)=
 (F)=

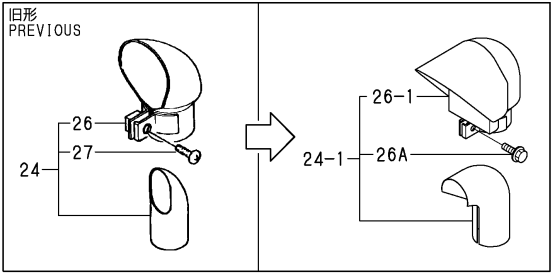
No.	Lev.	Parts No.	Description	Q'ty						I	R
				(A)	(B)	(C)	(D)	(E)	(F)		
1	1	105098-12020	PIPE, AIR INTAKE	1	1						
1-1	1	105098-12021	PIPE, AIR INTAKE	1	1						N
		(A=E/#046887) (B=E/#046887)									
1-2	1	105098-12022	PIPE, AIR INTAKE	1	1						N
		(A=E/#047120) (B=E/#047120)									
2	1	105190-12050	GASKET	1	1						
3	1	105098-12510	CLEANER, AIR	1	1						
3-1	1	105098-12511	CLEANER, AIR	1	1						S
		(A=E/#047120) (B=E/#047120)									
4	2	105098-12530	LABEL, CAUTION	1	1						
5	2	105098-12540	LABEL, CAUTION	1	1						
6	2	105098-12550	NUT, WING	1	1						Z
		(A=E/#047120) (B=E/#047120)									
7	2	105098-12560	GROMMET	1	1						
8	2	105098-12960	ELEMENT	1	1						
9	2	105098-12520	CASE ASSY	1	1						
9-1	2	105098-12521	CASE ASSY	1	1						S
		(A=E/#047120) (B=E/#047120)									
10	2	105098-12580	GASKET	1	1						
11	2	105098-12590	BOLT	1	1						
12	2	105098-12600	O-RING	1	1						
13	2	105098-12610	BODY, AIR CLEANER	1	1						
13-1	2	105098-12611	BODY ASSY	1	1						S
		(A=E/#047120) (B=E/#047120)									
14	1	26106-080202	BOLT, M8X 20 PLATED	2	2						
15	1	160260-01580	BOLT, FLANGE M6X6	2	2						
16	1	105010-13200	GASKET	1	1						
16-1	1	105010-13201	GASKET, AIR INTAKE	1	1						N A
		(A=E/#034638) (B=E/#034638)									
17	1	105098-13510	SILENCER ASSY	1	1						
17-1	1	105098-13511	SILENCER ASSY	1	1						N
		(A=E/XXX) (B=E/XXX)									
18	1	105090-13550	COVER	1	1						
19	1	160120-76940	WASHER	1	1						
20	1	26013-080189	BOLT, M8X 18	2	2						
21	1	26106-060202	BOLT, M6X 20 PLATED	1	1						
22	1	105098-12570	SUPPORT	1	1						Z
		(A=E/#047120) (B=E/#047120)									
23	1	26106-060122	BOLT, M6X 12 PLATED	1	1						Z
		(A=E/#047120) (B=E/#047120)									
24	1	105098-13610	EXTENSION ASSY	1	1						
24-1	1	105098-13622	EXTENSION ASSY	1	1						N
		(A=E/#045909) (B=E/#045909)									
24-2	1	105098-13623	EXTENSION ASSY	1	1						N
		(A=E/#051620) (B=E/#051620)									
26	2	106148-13590	COVER	1	1						
26-1	2	105098-13591	COVER	1	1						N
		(A=E/#045909) (B=E/#045909)									
26-2	2	105098-13592	COVER	1	1						N
		(A=E/#051620) (B=E/#051620)									
26A	3	105098-13990	BOLT	1	1						W

Fig.3. AIR CLEANER & MUFFLER

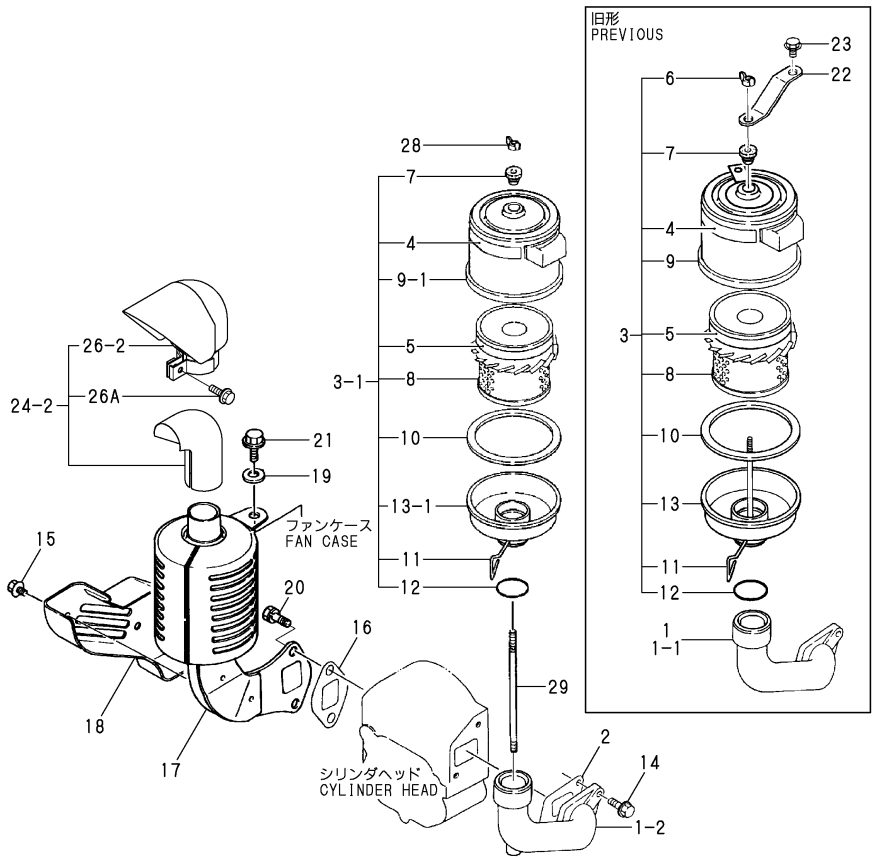
(A)=NFAD6-ESA
(B)=NFAD6-SA
(C)=

(D)=
(E)=
(F)=

No.	Lev.	Parts No.	Description	Qty						I	R
				(A)	(B)	(C)	(D)	(E)	(F)		

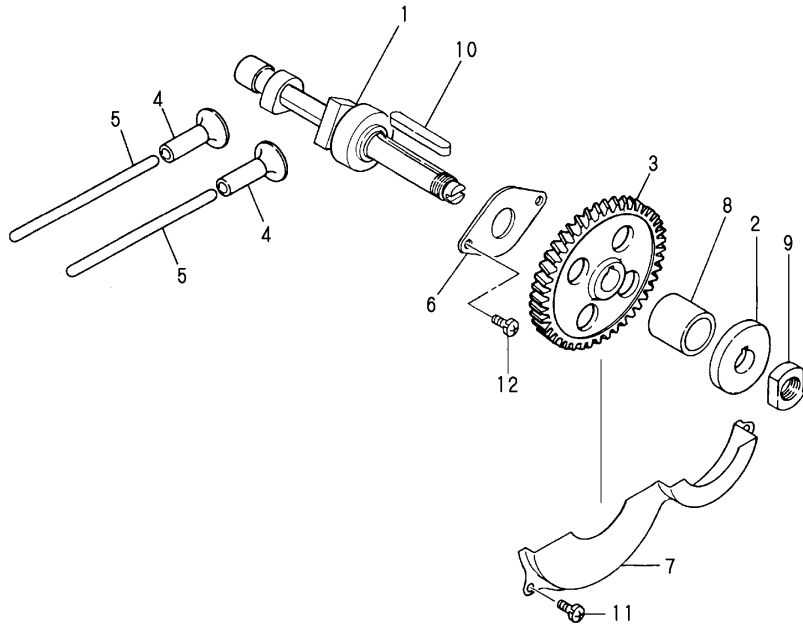


27	2	26554-060162	SCREW, M6X16	1	1						Z
28	1	101147-12550	NUT	1	1						W
28-1	1	105092-12550	NUT	1	1						N
29	1	105098-12650	BOLT	1	1						W



Remarks
(A) THESE PART ARE ALSO SOLD BY
FIG.15 NO.1-1
(GASKET SET.P/# 705092-92601).

Fig.4. CAMSHAFT

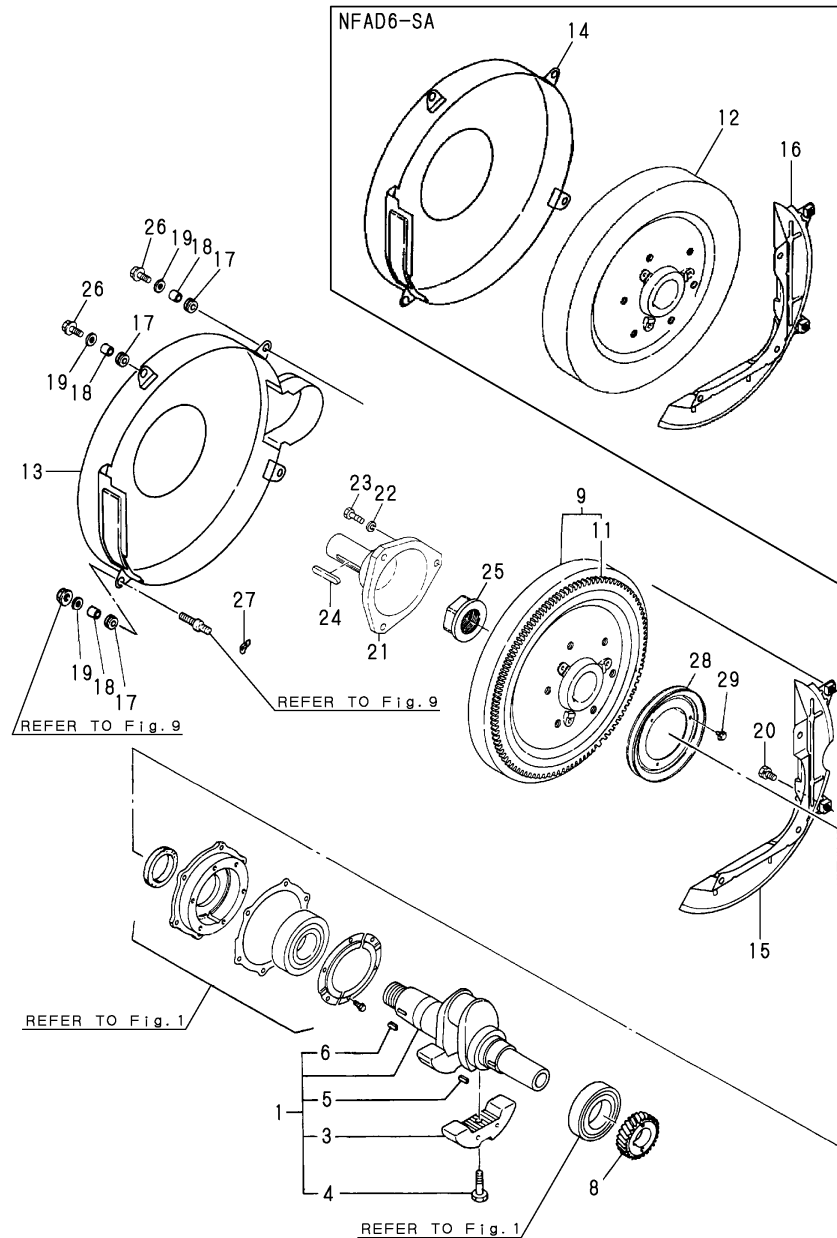


(A)=NFAD6-ESA
(B)=NFAD6-SA
(C)=

(D)=
(E)=
(F)=

No.	Lev.	Parts No.	Description	Q'ty						I	R
				(A)	(B)	(C)	(D)	(E)	(F)		
1	1	105090-14010	CAMSHAFT	1	1						
2	1	105090-14091	CAM, FUEL	1	1						
3	1	105090-14100	GEAR, CAMSHAFT	1	1						
4	1	105300-14200	TAPPET	2	2						
5	1	105090-14400	ROD, PUSH	2	2						
6	1	105090-14420	RETAINER, BEARING	1	1						
7	1	105090-14600	COVER	1	1						
8	1	105700-14700	SPACER	1	1						
9	1	104300-76460	NUT	1	1						
10	1	22512-070500	KEY, 7X 50	1	1						
11	1	26022-060122	SCREW, M6X12	2	2						
12	1	26557-060142	SCREW M 6X 14	2	2						

Fig.5. CRANKSHAFT & FLYWHEEL

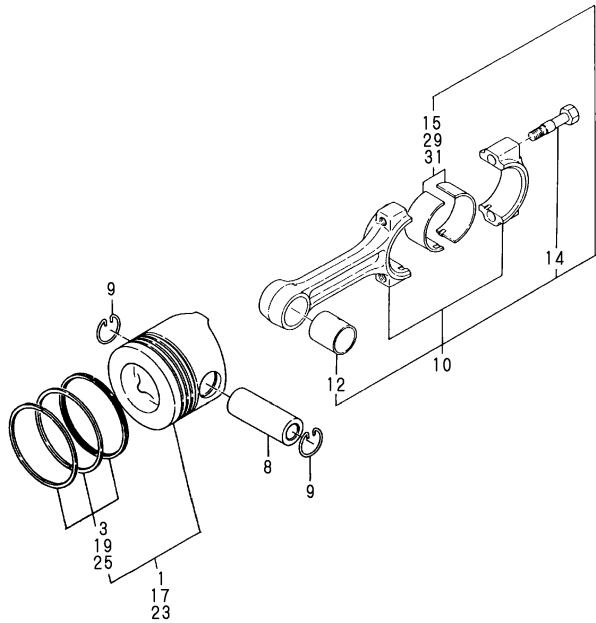


(A)=NFAD6-ESA
(B)=NFAD6-SA
(C)=

(D)=
(E)=
(F)=

No.	Lev.	Parts No.	Description	Q'ty						I	R
				(A)	(B)	(C)	(D)	(E)	(F)		
1	1	705090-21700	CRANKSHAFT ASSY	1	1						
3	2	105090-21100	WEIGHT, BALANCE	2	2						
4	2	105090-21130	BOLT, BALANCE WEIGHT	2	2						
5	2	22512-050140	KEY, 5X 14	1	1						
6	2	22512-050140	KEY, 5X 14	1	1						
8	1	105090-21200	GEAR, CRANKSHAFT	1	1						
9	1	105090-21591	FLYWHEEL ASSY	1							
11	2	104511-21600	GEAR, RING	1							
12	1	105090-21401	FLYWHEEL		1						
13	1	105090-21350	COVER, FLYWHEEL	1							
14	1	105090-21300	COVER, FLYWHEEL		1						
15	1	105090-21361	SUPPORT	1							
16	1	105090-21310	SUPPORT		1						
17	1	105300-21381	ABSORBER	4	4						
18	1	105300-44460	COLLAR	4	4						
19	1	160120-76940	WASHER	4	4						
20	1	26013-060142	BOLT, M6X 14	3	3						
21	1	105098-21900	SHAFT, STUB	1	1						
22	1	22217-120000	WASHER, SPRING 12	3	3						
23	1	26116-120352	BOLT, M12X 35 PLATED	3	3						
24	1	22512-070500	KEY, 7X 50	1	1						
25	1	105010-21530	NUT, END	1	1						
26	1	26106-060202	BOLT, M6X 20 PLATED	3	3						
27	1	105190-21910	WASHER	1	1						
28	1	104407-21600	V-PULLEY	1	1						W
		(A=EXXX) (B=EXXX)									
29	1	26106-060122	BOLT, M6X 12 PLATED	3	3						W
		(A=EXXX) (B=EXXX)									

Fig.6. PISTON & CONNECTING ROD



(A)=NFAD6-ESA
(B)=NFAD6-SA
(C)=

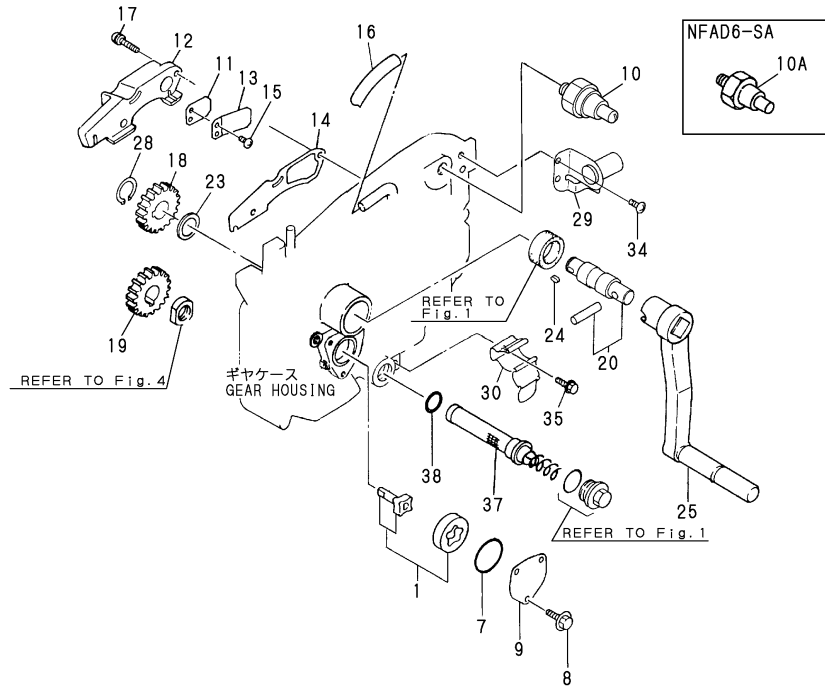
(D)=
(E)=
(F)=

No.	Lev.	Parts No.	Description	Q'ty						I	R
				(A)	(B)	(C)	(D)	(E)	(F)		
1	1	105090-22190	PISTON ASSY	1	1						
3	2	705090-22501	RING SET, PISTON	1	1						
8	1	124950-22300	PIN, PISTON	1	1						
9	1	105090-22400	CIRCLIP	2	2						
10	1	705090-23100	ROD ASSY, CONNECTING	1	1						
12	2	105090-23910	BEARING, PISTON PIN	1	1						5
14	2	105225-23200	BOLT, CONNECTING ROD	2	2						
15	2	705090-23600	BEARING, CRANK PIN	1	1						
17	1	105090-22470	PISTON ASSY, 0.25 OS	1	1						1
19	2	105090-22510	RING SET, 0.25 OS	1	1						1
23	1	105090-22480	PISTON ASSY, 0.50 OS	1	1						2
25	2	105090-22520	RING SET, 0.50 OS	1	1						2
29	1	705090-23610	BEARING ASSY, 0.25	1	1						3
31	1	705090-23620	BEARING, 0.50 US	1	1						4

Remarks

- (1) OVER SIZED(O.S.=0.25)PART.
- (2) OVER SIZED(O.S.=0.50)PART.
- (3) UNDER SIZED(U.S.=0.25)PART.
- (4) UNDER SIZED(U.S.=0.50)PART.
- (5) REPAIR PART.

Fig.7. LUB.OIL SYSTEM & STARTING DEVICE



(A)=NFAD6-ESA
(B)=NFAD6-SA
(C)=

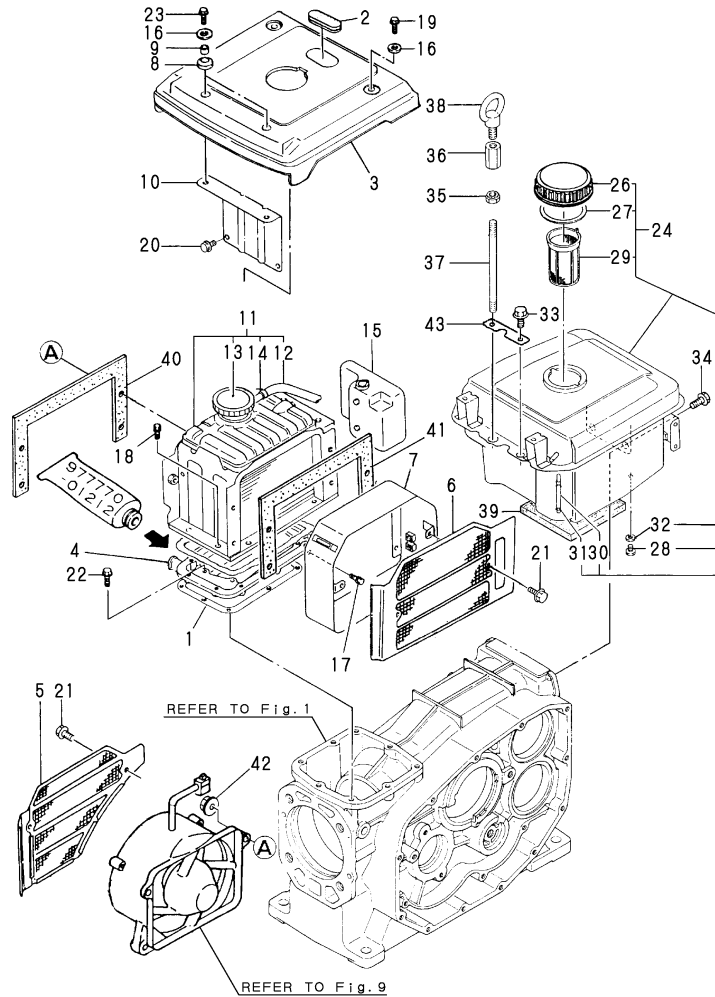
(D)=
(E)=
(F)=

No.	Lev.	Parts No.	Description	Q'ty						I	R
				(A)	(B)	(C)	(D)	(E)	(F)		
1	1	104300-32150	ROTOR ASSY, INNER	1	1						
7	1	103338-32570	O-RING	1	1						A
8	1	26106-060122	BOLT, M6X 12 PLATED	3	3						
9	1	103338-32070	COVER	1	1						
10	1	124060-39451	SWITCH, 0.2KG	1							
10-1	1	124060-39452	SWITCH, 0.2KG	1							N
10A	1	105140-34100 (A=E/#052298) (B=E/XXX)	INDICATOR		1						W
11	1	101158-03061	VALVE	1	1						
12	1	105090-03081	COVER, BREATHER	1	1						
13	1	101158-03111	RETAINER	1	1						
14	1	105090-03131	GASKET	1	1						
15	1	105362-78960	SCREW, M4X8	2	2						
16	1	23064-090220	PIPE, 9X 220		1						
16A	1	23064-090370	PIPE, 9X 370	1							
16A-1	1	23064-090220	PIPE, 9X 220	1							N
17	1	26023-060252	SCREW, M6X25	2	2						
17-1	1	26106-060222	BOLT, M6X 22 PLATED	2	2						R
17-2	1	26023-060252	SCREW, M6X25	2	2						N
18	1	105300-76330	GEAR, STARTING	1	1						
19	1	105090-76340	GEAR, STARTING	1	1						
20	1	705100-76900	SHAFT ASSY, STARTING	1	1						
23	1	105300-76470	COLLAR	1	1						
24	1	105300-76490	KEY, 7X10	1	1						
25	1	105090-76790	HANDLE ASSY	1	1						
28	1	22242-000200	RING, 20	1	1						
29	1	105298-08100	BRACKET, HANDLE	1	1						
30	1	105300-08510	BRACKET ASSY	1	1						
34	1	26106-060122	BOLT, M6X 12 PLATED	2	2						
35	1	26557-060082	SCREW, M6X 8	1	1						
37	1	105190-35050	STRAINER ASSY, OIL	1	1						
38	1	24341-000200	O-RING, 1AS20.0	1	1						A

Remarks

(A) THESE PART ARE ALSO SOLD BY
FIG.15 NO.1-1
(GASKET SET.P/# 705092-92601).

Fig.8. RADIATOR & FUEL TANK



(A)=NFAD6-ESA
(B)=NFAD6-SA
(C)=

(D)=
(E)=
(F)=

No.	Lev.	Parts No.	Description	Q'ty						I	R
				(A)	(B)	(C)	(D)	(E)	(F)		
1	1	105090-44050	GASKET	1	1						
2	1	105300-44220	COVER, RADIATOR	1	1						
3	1	105090-44251	COVER, RADIATOR	1	1						
4	1	105090-44300	BRACKET, RADIATOR	1	1						
5	1	105090-44330	SCREEN	1	1						
6	1	105090-44350	SCREEN	1	1						
7	1	105090-44360	DUCT, SCREEN	1	1						
8	1	105300-44451	ABSORBER	2	2						
9	1	105300-44460	COLLAR	2	2						
10	1	105090-44490	STAY	1	1						
11	1	105098-44500	RADIATOR ASSY	1	1						
12	2	105340-44570	PIPE, 7X170	1	1						
13	2	105198-44590	CAP, RADIATOR	1	1						
14	2	121250-44590	CLAMP	1	1						
15	1	105100-44630	TANK, SUB	1	1						
16	1	160120-76940	WASHER	4	4						
17	1	26013-060129	BOLT, M6X 12	4	4						
18	1	26013-060162	BOLT, M6X 16	9	9						
18-1	1	26013-060162	BOLT, M6X 16	7	7						K
		(A=E/XXX) (B=E/XXX)									
19	1	26106-060102	BOLT, M6X 10 PLATED	2	2						
20	1	26106-060122	BOLT, M6X 12 PLATED	2	2						
21	1	26106-060122	BOLT, M6X 12 PLATED	3	3						
22	1	26106-060202	BOLT, M6X 20 PLATED	8	8						
23	1	26106-060202	BOLT, M6X 20 PLATED	2	2						
24	1	705090-55700	TANK ASSY, FUEL	1	1						
26	2	101168-55040	CAP ASSY	1	1						
27	2	101504-55051	GASKET	1	1						A
28	2	105300-55080	PLUG, 8	1	1						
29	2	101504-55101	STRAINER, FUEL	1	1						
30	2	104200-55160	GAUGE, LEVEL	1	1						
31	2	103854-55220	RETAINER	2	2						
32	2	23414-080000	GASKET, 8X1.0	1	1						
33	1	26106-080142	BOLT, M8X 14 PLATED		1						
33-1	1	26106-080222	BOLT, M8X 22 PLATED	1	1						N
		(B=E/#038214)									
34	1	26106-080322	BOLT, M8X 32 PLATED	2	2						
35	1	104107-07900	NUT, M10	1	1						
36	1	105500-07920	NUT, M10	1	1						
37	1	105090-07940	BOLT, LIFTING	1	1						
38	1	26617-100002	BOLT, EYE M10	1	1						
39	1	104807-55220	FELT, FUEL TANK	1	1						
40	1	106100-44560	SPONGE, 15X5X1000	1	1						
41	1	106100-44560	SPONGE, 15X5X1000	1	1						
42	1	26366-060002	NUT, M6	1	1						
43	1	105198-55520	RETAINER	1	1						W
		(B=E/#038214)									

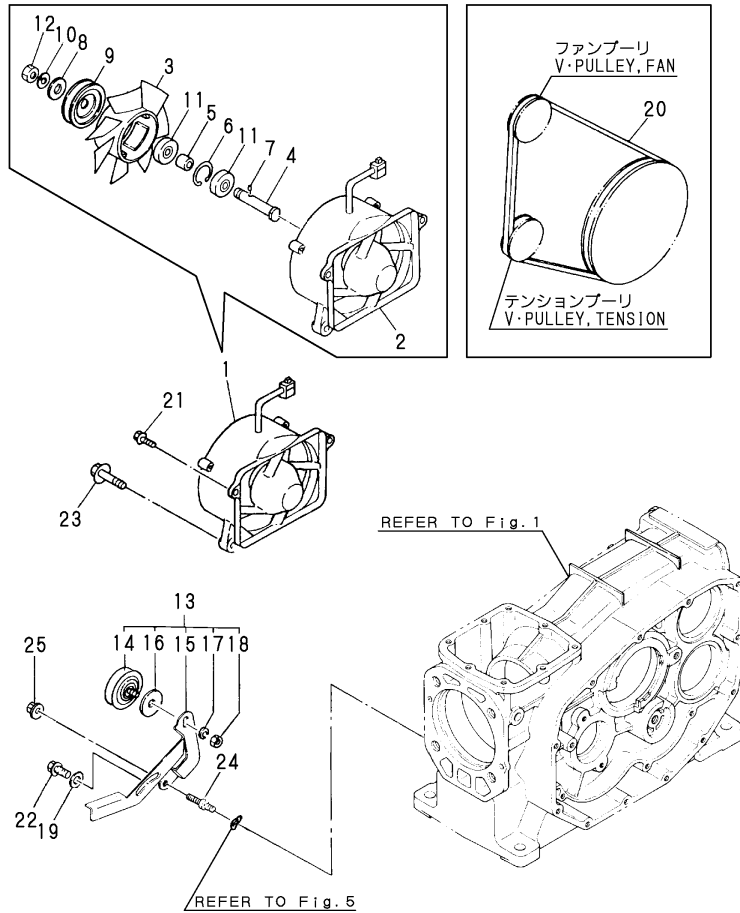
Remarks

(A) THESE PART ARE ALSO SOLD BY FIG.15 NO.1-1 (GASKET SET.P/# 705092-92601).

Fig.9. FAN

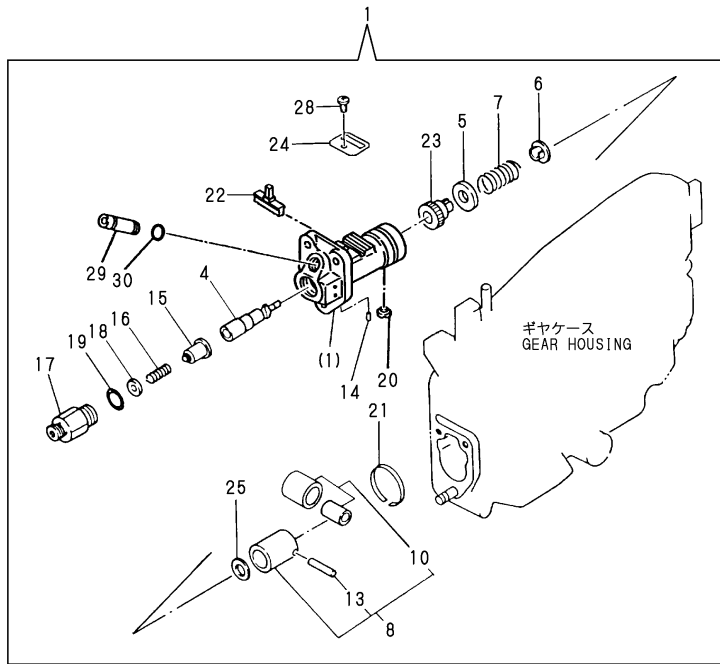
(A)=NFAD6-ESA
(B)=NFAD6-SA
(C)=

(D)=
(E)=
(F)=



No.	Lev.	Parts No.	Description	Q'ty						I	R
				(A)	(B)	(C)	(D)	(E)	(F)		
1	1	105090-44211	CASE ASSY, FAN	1							
1A	1	105092-44201	CASE ASSY, FAN		1						
2	2	105090-44800	CASE, COOLING FAN	1							
2A	2	105092-44680	COVER, FAN		1						
3	2	105090-44850	FAN, COOLING	1							
3A	2	105092-44700	FAN, COOLING		1						
4	2	105340-44710	SHAFT, FAN	1	1						
5	2	106383-44720	SPACER	1	1						
6	2	106383-44740	CIRCLIP	1	1						
7	2	105340-44750	PIN	1	1						
8	2	105100-44780	WASHER, PULLEY	1	1						
9	2	105100-44770	PULLEY, FAN	2	2						
10	2	22217-120000	WASHER, SPRING 12	1	1						
11	2	24107-062013	BEARING, 6201ZZP6	2	2						
12	2	26777-120002	NUT, LOCK M12	1	1						
13	1	105090-44810	PULLEY ASSY, TENSION	1	1						
14	2	106100-44650	PULLEY, TENSION	1	1						
15	2	105090-44940	LEVER, PULLEY	1	1						
16	2	106100-44960	CAP	1	1						
17	2	22217-080000	WASHER, SPRING 8	1	1						
18	2	26716-080002	NUT, M8	1	1						
19	1	22137-080000	WASHER, 8	1	1						
20	1	25117-003301	V-BELT, M33H	1	1						
21	1	26106-060252	BOLT, M6X 25 PLATED	2	2						
22	1	26106-080162	BOLT, M8X 16 PLATED	1	1						
23	1	26106-080352	BOLT, M8X 35 PLATED	2	2						
24	1	105100-44930	BOLT	1	1						
25	1	26366-060002	NUT, M6	1	1						

Fig.10. FUEL INJECTION PUMP



(A)=NFAD6-ESA
(B)=NFAD6-SA
(C)=

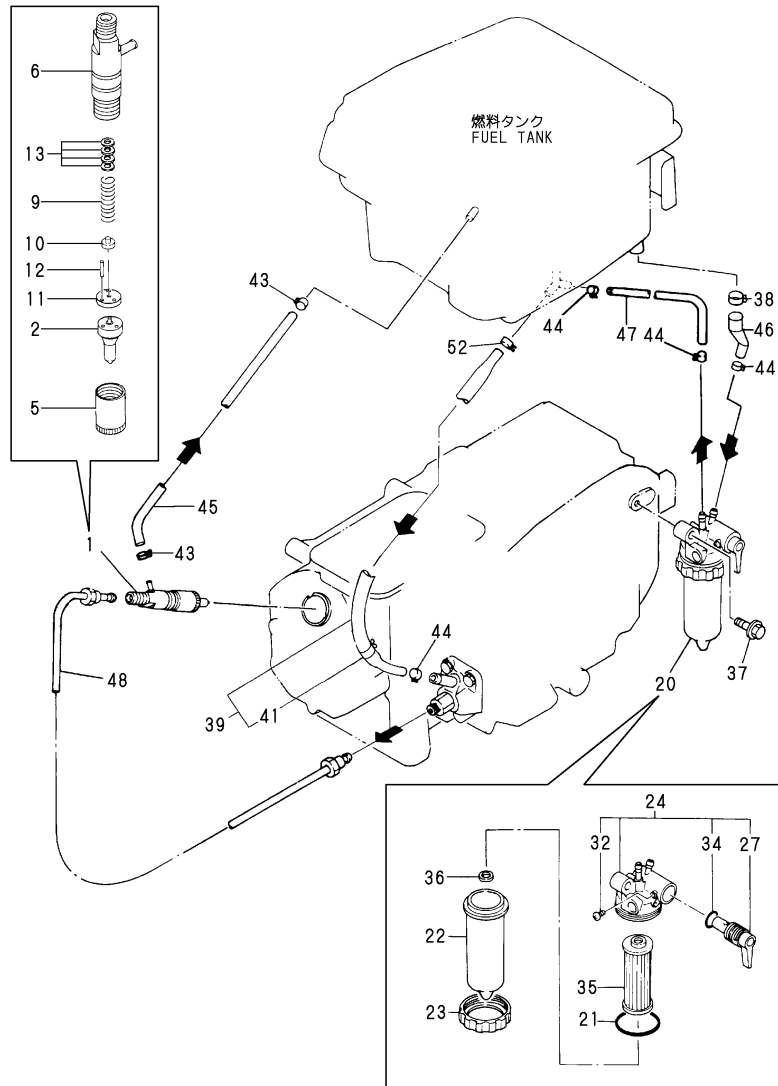
(D)=
(E)=
(F)=

No.	Lev.	Parts No.	Description	Q'ty						I	R
				(A)	(B)	(C)	(D)	(E)	(F)		
1	1	705090-51102	PUMP ASSY, INJECTION	1	1						
4	2	105200-51100	PLUNGER ASSY	1	1						
5	2	174307-51170	RETAINER, SPRING A	1	1						
6	2	174307-51181	RETAINER, SPRING B	1	1						
7	2	124950-51190	SPRING, PLUNGER	1	1						
8	2	724550-51520	GUIDE, PLUNGER	1	1						
10	3	711100-51540	ROLLER ASSY	1	1						
13	3	174100-54120	PIN	1	1						
14	2	103854-51251	PIN, PLUNGER	1	1						
15	2	129100-51300	VALVE ASSY, DELIVERY	1	1						
16	2	124550-51320	SPRING, DELIVERY	1	1						
17	2	124550-51341	HOLDER, DELIVERY L43	1	1						
18	2	124550-51350	GASKET, DELIVERY	1	1						A
19	2	124550-51370	O-RING	1	1						A
20	2	104271-51450	PIECE, GUIDE	1	1						
21	2	104271-51460	CIRCLIP	1	1						
22	2	105300-51500	RACK, CONTROL	1	1						
23	2	105300-51510	PINION	1	1						
24	2	105300-51550	RETAINER, RACK	1	1						
25	2	174307-51700	SHIM SET	1	1						
28	2	26022-050102	SCREW, M5X10	1	1						
29	2	105300-51800	JOINT	1	1						
30	2	114250-51190	O-RING, S27	1	1						

Remarks

(A) THESE PART ARE ALSO SOLD BY
FIG.15 NO.1-1
(GASKET SET.P/# 705092-92601).

Fig.11. FUEL INJECTION SYSTEM



(A)=NFAD6-ESA
(B)=NFAD6-SA
(C)=

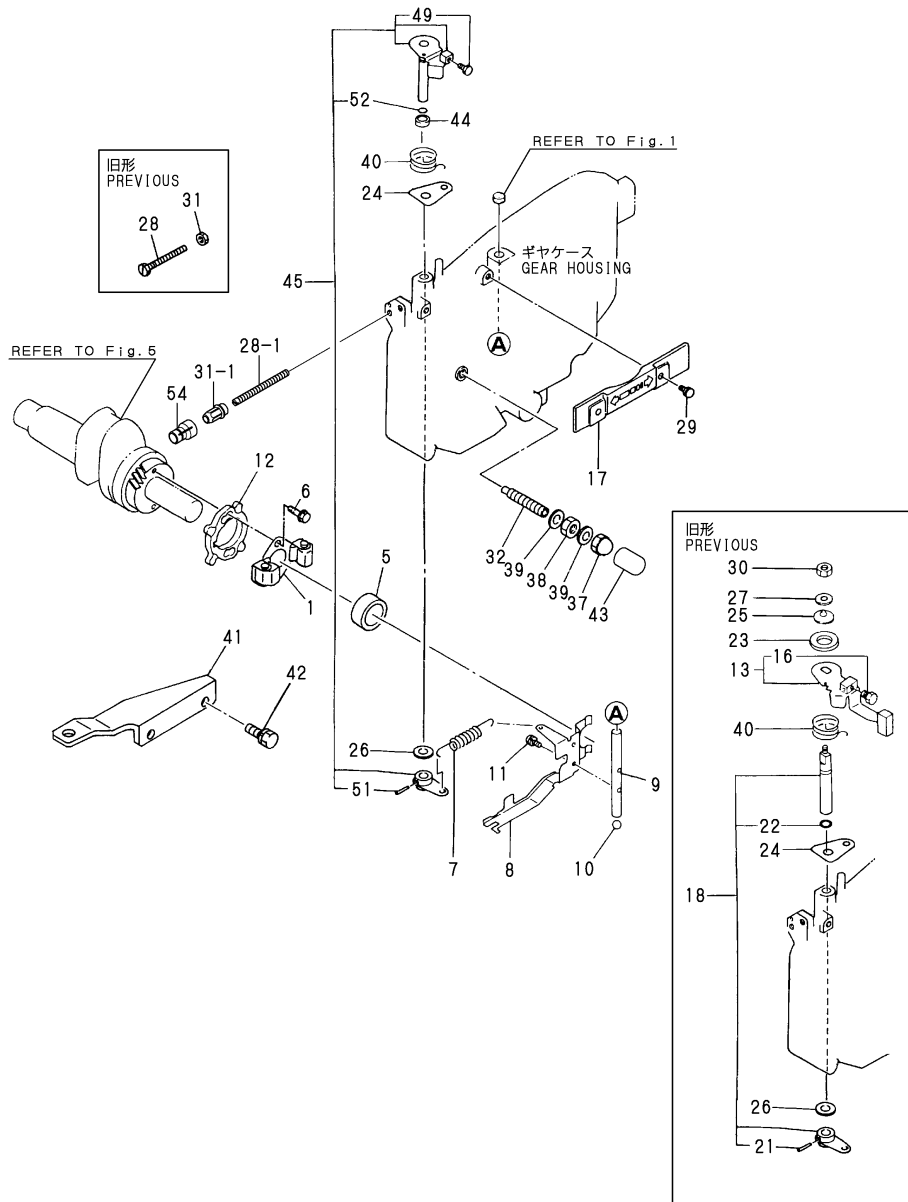
(D)=
(E)=
(F)=

No.	Lev.	Parts No.	Description	Q'ty						I	R
				(A)	(B)	(C)	(D)	(E)	(F)		
1	1	705050-53100	VALVE ASSY,INJECTION	1	1						
2	2	105050-53000	VALVE ASSY,INJECTION	1	1						
5	2	114250-53080	NUT, NOZZLE D16.95	1	1						
6	2	105300-53100	HOLDER ASSY, NOZZLE	1	1						
9	2	114250-53120	SPRING, NOZZLE	1	1						
10	2	114250-53130	SEAT, SPRING	1	1						
11	2	114250-53140	PLATE	1	1						
12	2	114250-53210	PIN	2	2						
13	2	114250-53400	SHIM SET	1	1						
20	1	105198-55600	STRAINER ASSY, FUEL	1	1						
21	2	105300-55520	O-RING	1	1						A
22	2	105198-55510	CUP, STRAINER	1	1						
23	2	105300-55610	RING, RETAINING	1	1						
24	2	105300-55700	BODY ASSY, STRAINER	1	1						
27	3	105300-55340	LEVER	1	1						
32	3	104200-55750	SCREW, M4	1	1						
34	3	24311-000160	O-RING, 1AP16.0	1	1						
35	2	105370-55710	ELEMENT	1	1						
36	2	105300-55750	FLOAT	1	1						
37	1	26106-080302	BOLT, M8X 30 PLATED	1	1						
38	1	129301-03660	CLAMP 16	1	1						
39	1	105090-59020	PIPE ASSY, FUEL	1	1						
41	2	124766-59050	CLIP, HOSE 12	1	1						
43	1	124722-59050	CLIP, HOSE 9	2	2						
44	1	124766-59050	CLIP, HOSE 12	4	4						
45	1	105300-59100	PIPE, FUEL RETURN	1	1						
46	1	105192-59560	PIPE, FUEL	1	1						
46-1	1	105192-59562	PIPE, FUEL	1	1						N
		(A=E/#036549) (B=E/#036549)									
47	1	105192-59570	PIPE, FUEL	1	1						
48	1	105090-59800	PIPE ASSY, INJECTION	1	1						
52	1	23080-013000	CLAMP, 13	1	1						

Remarks

(A)THESE PART ARE ALSO SOLD BY
FIG.15 NO.1-1
(GASKET SET.P/# 705092-92601).

Fig.12. GOVERNOR & CONTROL DEVICE



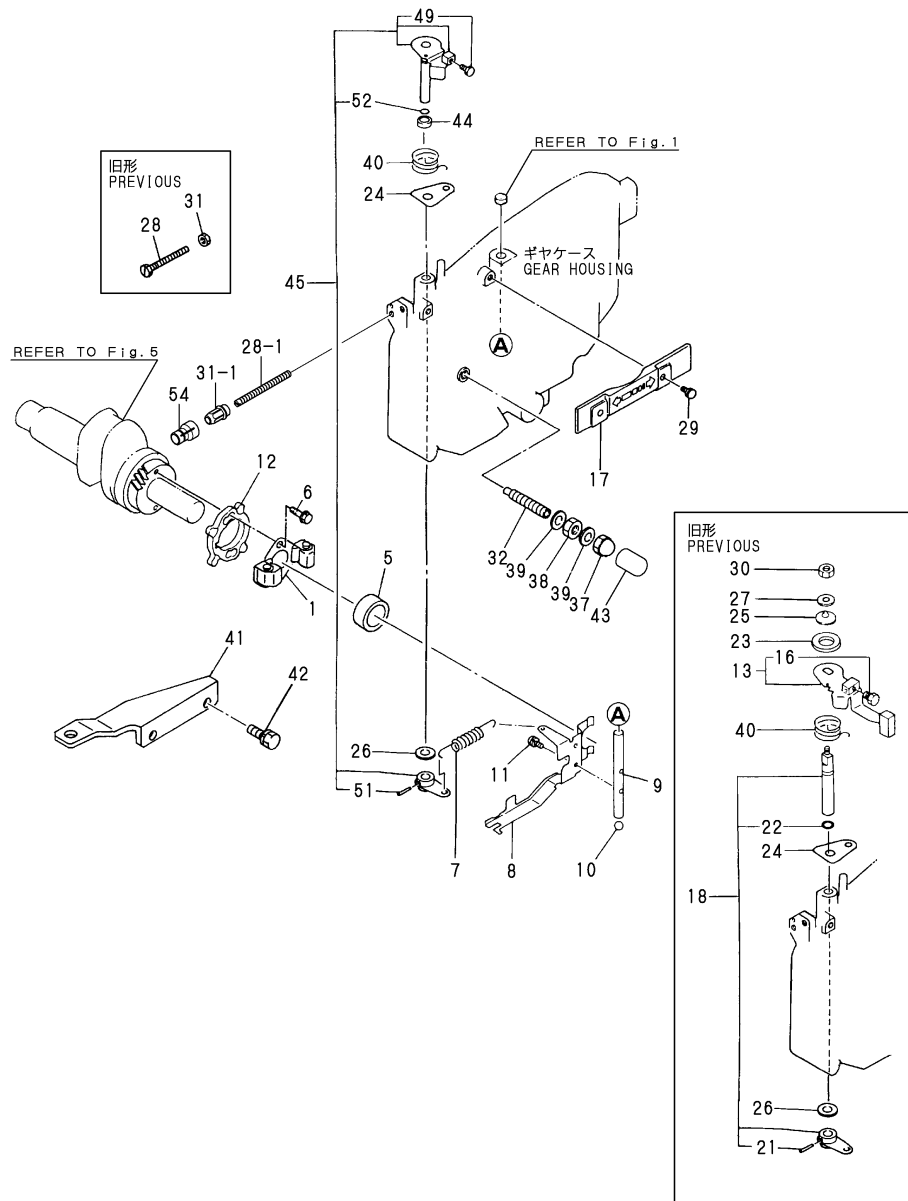
(A)=NFAD6-ESA
(B)=NFAD6-SA
(C)=

(D)=
(E)=
(F)=

No.	Lev.	Parts No.	Description	Q'ty						I	R
				(A)	(B)	(C)	(D)	(E)	(F)		
1	1	705090-61700	GOVERNOR ASSY	1	1						
5	1	105300-61600	SLEEVE, GOVERNOR	1	1						
6	1	174100-61600	BOLT	2	2						
7	1	105300-66010	SPRING, REGULATOR	1	1						
7-1	1	105300-66011	SPRING, REGULATOR	1	1						R
		(A=EXXX) (B=EXXX)									
8	1	105090-66300	LEVER, GOVERNOR	1	1						
9	1	105100-66400	SHAFT	1	1						
10	1	24190-120001	BALL, STEEL 3/8	1	1						
11	1	26022-050102	SCREW, M5X10	2	2						
12	1	105090-61810	PIECE, DISTANCE	1	1						
13	1	105502-66041	HANDLE ASSY	1	1						Z
		(A=EXXX) (B=EXXX)									
16	2	105225-66990	SCREW, M5X8.5	1	1						Z
		(A=EXXX) (B=EXXX)									
17	1	105300-66110	COVER	1	1						
18	1	705100-66700	LEVER ASSY,REGULATOR	1	1						Z
		(A=EXXX) (B=EXXX)									
21	2	22322-030200	PIN, TAPER 3X20	1	1						Z
		(A=EXXX) (B=EXXX)									
22	2	24311-000070	O-RING, 1AP7.0	1	1						Z
		(A=EXXX) (B=EXXX)									
23	1	105840-66831	PLATE, FRICTION	1	1						Z
		(A=EXXX) (B=EXXX)									
24	1	105300-66850	RETAINER	1	1						
25	1	105840-66880	SPRING	1	1						Z
		(A=EXXX) (B=EXXX)									
26	1	22117-100000	WASHER, 10	1	1						
27	1	22137-060000	WASHER, 6	1	1						Z
		(A=EXXX) (B=EXXX)									
28	1	105300-66520	SCREW	1	1						
28-1	1	105090-66830	SCREW	1	1						S 1
		(A=E/#076869) (B=*2006.01)									
29	1	26106-060122	BOLT, M6X 12 PLATED	2	2						
30	1	26347-060002	NUT, M6	1	1						Z
		(A=EXXX) (B=EXXX)									
31	1	26756-060002	NUT, LOCK M6	1	1						
31-1	1	129209-61370	NUT, M6	1	1						S 1
		(A=E/#076869) (B=*2006.01)									
32	1	105090-66551	LIMITER ASSY, FUEL	1	1						
32-1	1	105090-66540	LIMITER ASSY, FUEL	1	1						N
		(A=E/#048715) (B=E/#048715)									
37	1	124060-66950	NUT, CAP M10	1	1						
38	1	26796-100002	NUT, LOCK M10	1	1						
39	1	22190-100002	WASHER, SEAL 10	2	2						
40	1	105502-67301	SPRING, RETURN	1	1						
41	1	105098-67010	BRACKET	1	1						
42	1	26013-060202	BOLT, M6X 20	2	2						
42-1	1	26013-060202	BOLT, M6X 20	1	1						K
		(A=EXXX) (B=EXXX)									
43	1	105300-66610	CAP	1	1						W

Remarks
(1)INTERCHANGEABLE BY SIMULTANEOUS
REPLACEMENT WITH NO.28-1,31-1,AND
54.

Fig.12. GOVERNOR & CONTROL DEVICE



(A)=NFAD6-ESA
(B)=NFAD6-SA
(C)=

(D)=
(E)=
(F)=

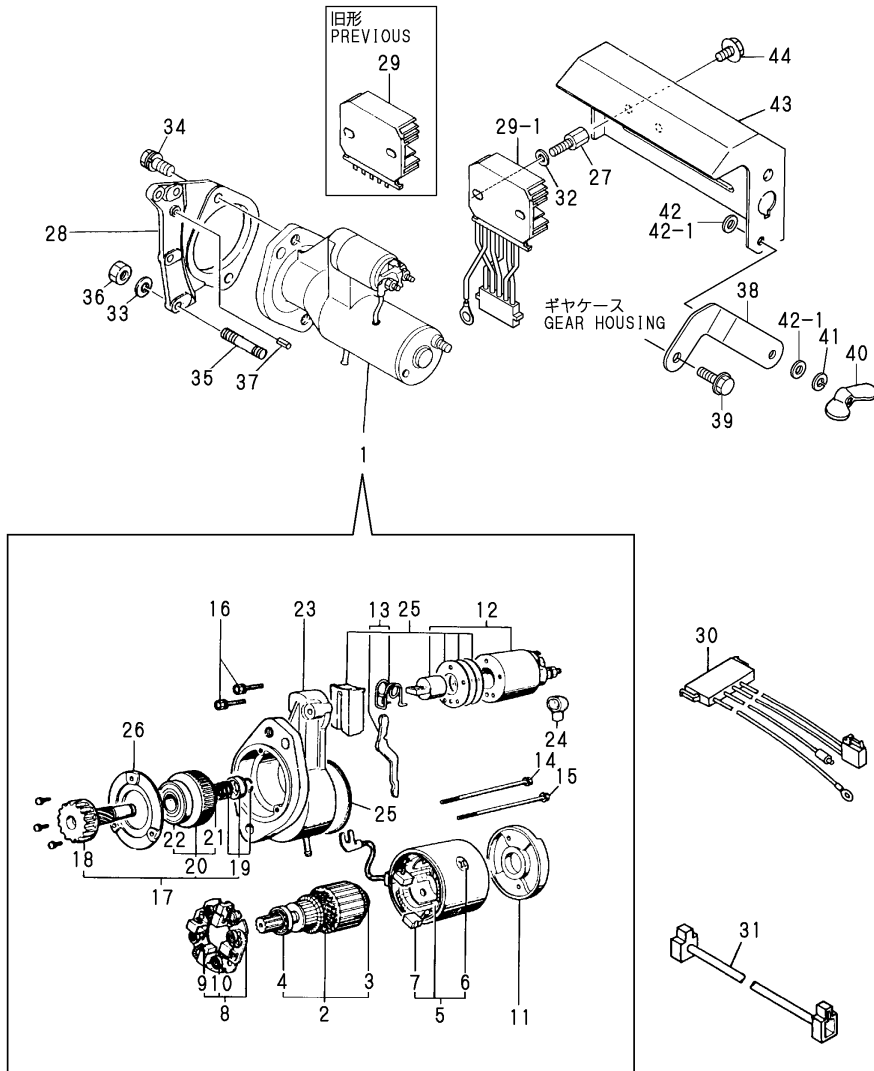
No.	Lev.	Parts No.	Description	Qty						I	R
				(A)	(B)	(C)	(D)	(E)	(F)		
44	1	121575-21850	WASHER	1	1						W
45	1	705192-66700	SHAFT ASSY	1	1						W
49	3	105225-66990	SCREW, M5X8.5	1	1						W
51	2	22322-030200	PIN, TAPER 3X20	1	1						W
52	2	24311-000070	O-RING, 1AP7.0	1	1						W
54	1	119285-66650	CAP, HIGH-IDLE	1	1						W 1
		(A=E/#074549) (B=*2005.04)									

Remarks
(1)INTERCHANGEABLE BY SIMULTANEOUS
REPLACEMENT WITH NO.28-1,31-1,AND
54.

Fig.13. STARTING MOTOR

(A)=NFAD6-ESA
(B)=NFAD6-SA
(C)=

(D)=
(E)=
(F)=

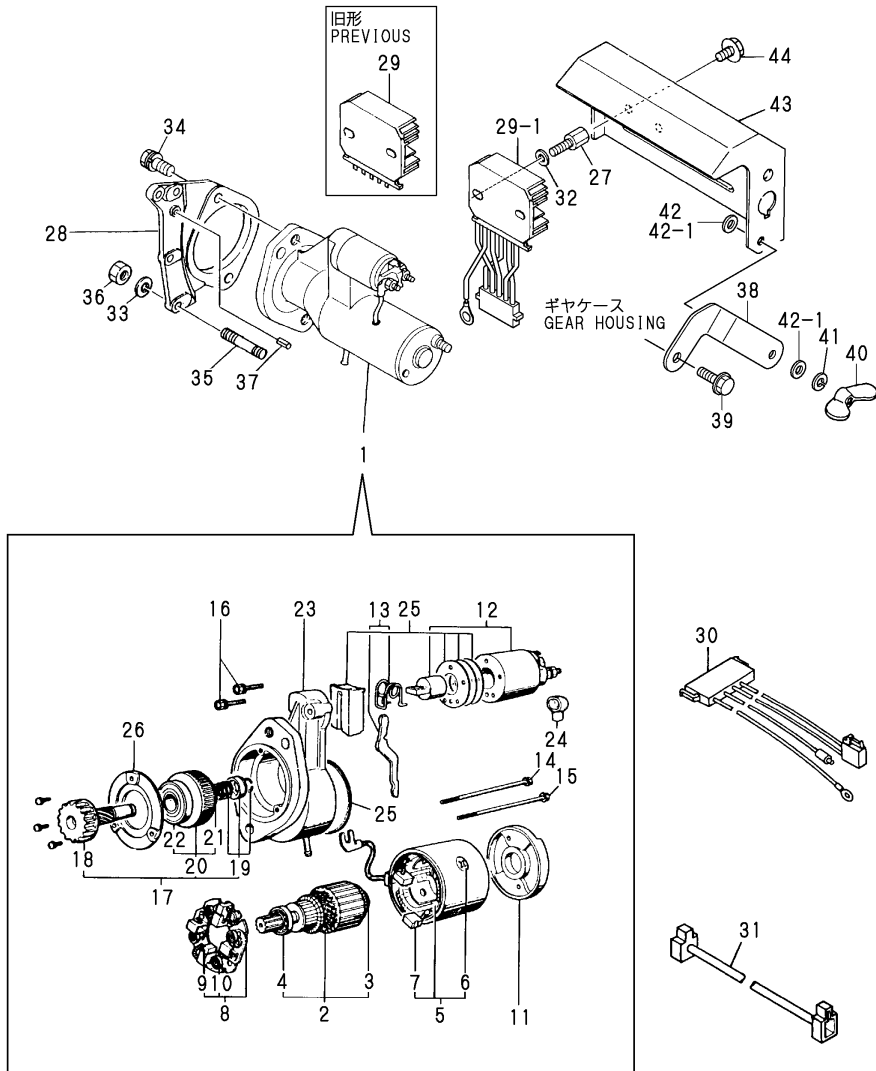


No.	Lev.	Parts No.	Description	Q'ty						I	R
				(A)	(B)	(C)	(D)	(E)	(F)		
1	1	105100-77010	STARTER, S114-438B	1							
1-1	1	105100-77011	MOTOR,STARTER	1							N
(A=E/#048715)											
2	2	X211461005	ARMATURE	1							
3	3	X211415502	BEARING, BALL	1							
3-2	3	X2130350900	BALL BEARING	1							R
(A=E/#048715)											
4	3	X211425502	BEARING, BALL	1							
4-2	3	X211425511	BALL BEARING	1							R
(A=E/#048715)											
5	2	X211442003	COIL ASSY, FIELD	1							
6	3	X21143215	SCREW, CORE	1							
7	3	X211469002	BRUSH (+)	2							
8	2	X211479001	HOLDER ASSY, BRUSH	1							
9	3	X211459002	BRUSH (-)	2							
10	3	X21148314	SPRING, BRUSH	4							
11	2	X211483003	COVER	1							
12	2	171008-77530	SWITCH, MAGNETIC	1							
13	2	X211446012	LEVER, SHIFT	1							
14	2	X211468005	BOLT, THROUGH	1							
15	2	X21148856	BOLT, THROUGH	1							
16	2	X21145866	BOLT	2							
17	2	X211455011	PINION ASSY	1							
18	3	X211465011	SHAFT, PINION	1							
19	3	X211429006	STOPPER SET	1							
20	3	X211425506	CLUTCH ASSY	1							
20-2	3	X2114555500	CLUTCH ASSY	1							R
(A=E/#048715)											
21	4	X211435502	BALL BEARING	1							
21-2	4	X211495502	BEARING, BALL	1							R
(A=E/#048715)											
22	4	X211455502	BALL BEARING	1							
23	2	X211466605	CASE ASSY, GEAR	1							
24	2	X21142742	COVER (A), RUBBER	1							
25	2	X211458012	COVER KIT	1							
26	2	X211428008	RETAINER, BEARING	1							
27	1	105212-01910	BOLT	2							
28	1	105090-77471	BRACKET	1							
29	1	119660-77710	LIMITER, CURRENT 15A	1							
29-1	1	119660-77711	LIMITER, CURRENT 15A	1							N
(A=*2000.07)											
30	1	105098-78540	HARNESS, WIRE	1							
31	1	105300-78570	HARNESS, WIRE	1							
32	1	22117-060000	WASHER, 6	2							
33	1	22212-060000	WASHER 6	4							
34	1	26013-120302	BOLT, M12X 30	2							
35	1	26226-060222	STUD, M6X 22	4							
36	1	26716-060002	NUT, M6	4							
37	1	22351-060012	PIN, SPRING 6.0X12	1							
38	1	105090-77820	RETAINER	1							W
(A=E/#38582)											

Fig.13. STARTING MOTOR

(A)=NFAD6-ESA
(B)=NFAD6-SA
(C)=

(D)=
(E)=
(F)=

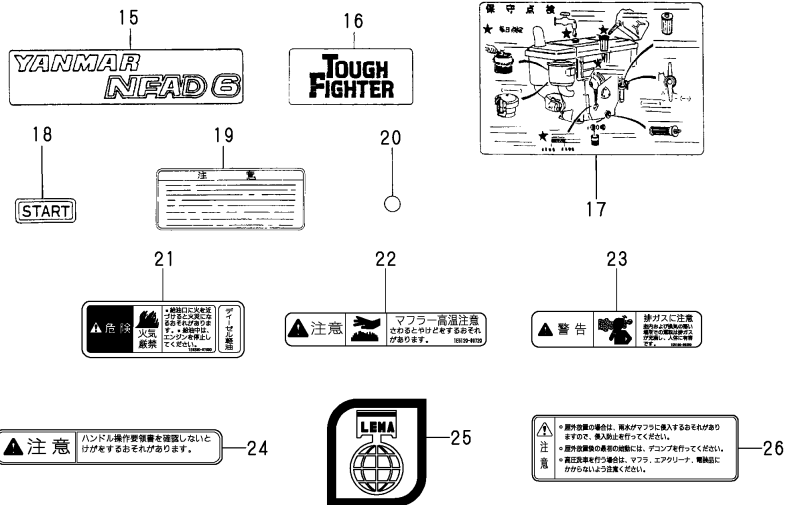
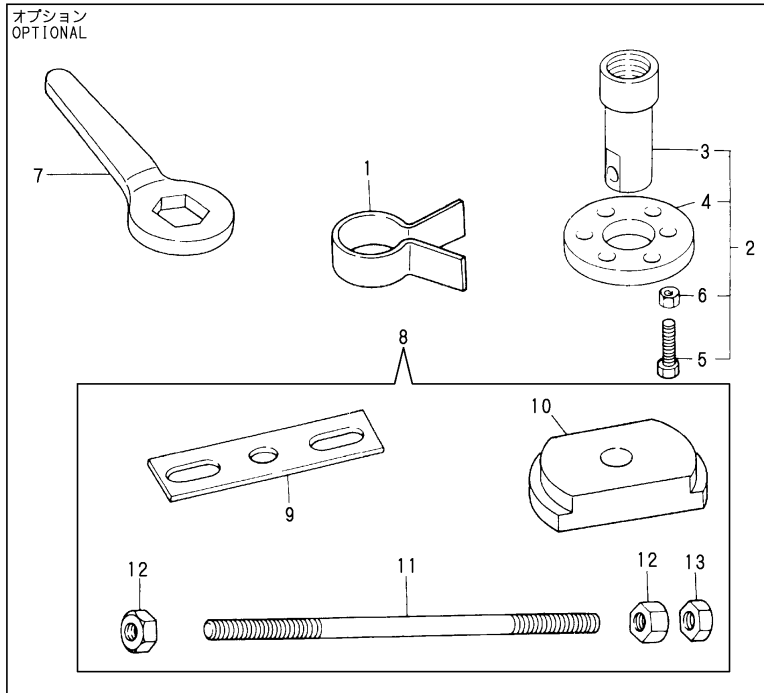


No.	Lev.	Parts No.	Description	Q'ty						I	R
				(A)	(B)	(C)	(D)	(E)	(F)		
39	1	26106-060182 (A=E/#38582)	BOLT, M6X 18 PLATED	1							W
40	1	26636-050002 (A=E/#38582)	NUT, WING M5	1							W
41	1	22217-050000 (A=E/#38582)	WASHER, SPRING 5	1							W
42	1	22117-050000 (A=E/#38582)	WASHER, 5	1							W
42-1	1	22117-050000 (A=E/XXXX)	WASHER, 5	2							K
43	1	105100-77781 (A=E/XXXX)	COVER	1							W
44	1	26106-060102 (A=E/XXXX)	BOLT, M6X 10 PLATED	2							W

Fig.14. TOOL & LABEL

(A)=NFAD6-ESA
(B)=NFAD6-SA
(C)=

(D)=
(E)=
(F)=



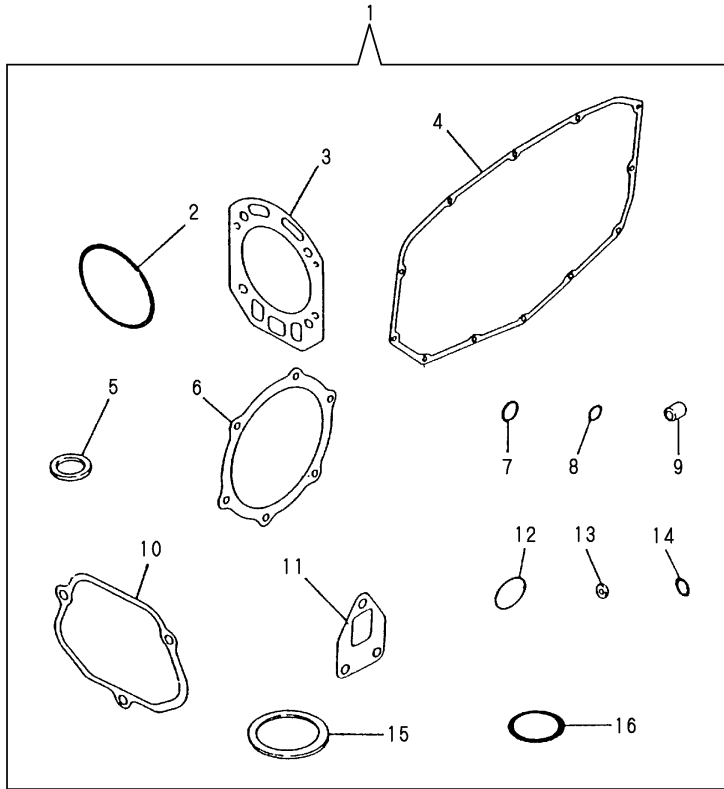
No.	Lev.	Parts No.	Description	Q'ty						I	R
				(A)	(B)	(C)	(D)	(E)	(F)		
1	1	101300-92140	TOOL, PISTON&RING	1	1						1
2	1	105090-92190	TOOL, WHEEL REMOVER	1	1						1
3	2	105090-92110	RETAINER, A	1	1						1
4	2	104200-92120	RETAINER, B	1	1						1
5	2	104200-92130	TOOL	2	2						1
6	2	26717-120002	NUT, M12	2	2						1
7	1	105010-92100	WRENCH	1	1						1
8	1	105090-92090	TOOL ASSY, LINER	1	1						1
9	2	172200-92020	TOOL, LINER REMOVER	1	1						1
10	2	105090-92010	TOOL, LINER REMOVER	1	1						1
11	2	103338-92030	BOLT, LINER REMOVER	1	1						1
12	2	26716-160002	NUT, M16	2	2						1
13	2	26757-160002	NUT, LOCK M16	1	1						1
15	1	105098-07060	LABEL	2	2						
16	1	105300-07070	LABEL	1	1						
17	1	105190-07100	LABEL	1	1						
18	1	105090-07160	LABEL, START	1	1						
19	1	105370-07450	LABEL, RADIATOR CAP	1	1						
19-1	1	105250-07310	LABEL, RADIATOR	1	1						N
		(A=E/#034638) (B=E/#034638)									
20	1	105372-07150	LABEL, LUB. OIL	1	1						
21	1	105250-07320	LABEL, NO FIRE	1	1						W
		(A=E/#034638) (B=E/#034638)									
22	1	105250-07330	LABEL	1	1						W
		(A=E/#034638) (B=E/#034638)									
23	1	105250-07340	LABEL, EXH. GAS CAUTN	1	1						W
		(A=E/#034638) (B=E/#034638)									
24	1	105100-07300	LABEL, CAUTION	1	1						W
		(A=*2003.06) (B=*2003.06)									
25	1	161690-07300	LABEL	1	1						W
		(A=E/#076869) (B=*2006.01)									
26	1	105098-07900	LABEL	1	1						W
		(A=E/#077035) (B=*2006.02)									

Remarks
(1)OPTIONAL

Fig.15. GASKET SET(OPTIONAL)

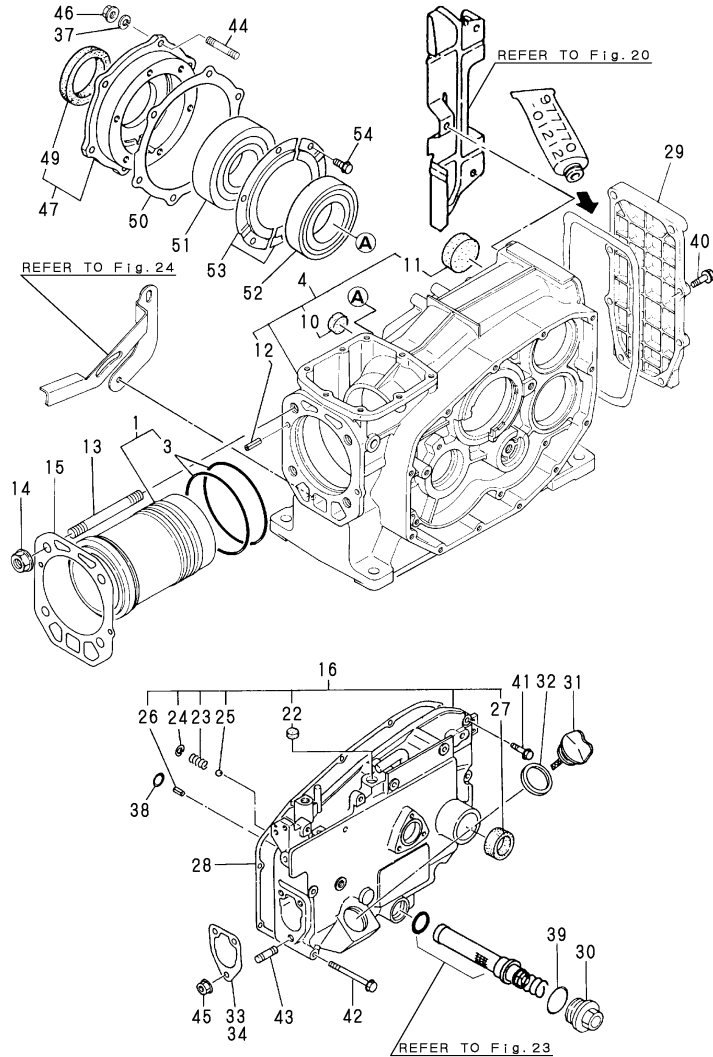
(A)=NFAD6-ESA
(B)=NFAD6-SA
(C)=

(D)=
(E)=
(F)=



No.	Lev.	Parts No.	Description	Q'ty						I	R
				(A)	(B)	(C)	(D)	(E)	(F)		
1	1	705092-92600	GASKET SET	1	1						
1-1	1	705092-92601	GASKET SET	1	1						N
		(A=E/#034638) (B=E/#034638)									
2	2	105090-01300	O-RING	2	2						
3	2	105090-01330	GASKET, HEAD	1	1						
3-1	2	105090-01331	GASKET, HEAD	1	1						N
		(A=E/#034638) (B=E/#034638)									
4	2	105090-01410	GASKET, GEAR CASE	1	1						
5	2	101104-01760	GASKET, CAP	1	1						
6	2	105090-02020	GASKET	1	1						
6-1	2	105090-02021	GASKET	1	1						N
		(A=E/#034638) (B=E/#034638)									
7	2	24341-000200	O-RING, 1AS20.0	1	1						
8	2	24311-000070	O-RING, 1AP7.0	1	1						
9	2	119625-11870	PROTECTOR, NOZZLE	1	1						
9-1	2	119625-11871	PROTECTOR, NOZZLE	1	1						R
		(A=E/#030666) (B=E/#030666)									
10	2	105090-11310	GASKET, BONNET	1	1						
11	2	105010-13200	GASKET	1	1						
11-1	2	105010-13201	GASKET, AIR INTAKE	1	1						N
		(A=E/#034638) (B=E/#034638)									
12	2	103338-32570	O-RING	1	1						
13	2	124550-51350	GASKET, DELIVERY	1	1						
14	2	124550-51370	O-RING	1	1						
15	2	101504-55051	GASKET	1	1						
16	2	105300-55520	O-RING	1	1						

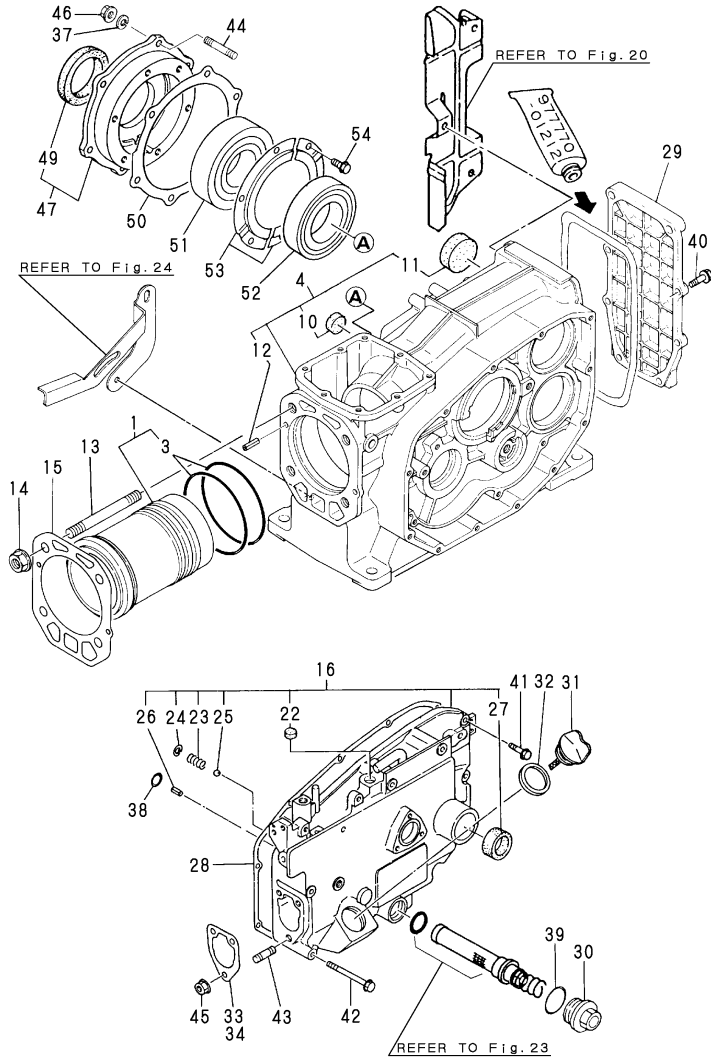
Fig.16. CYLINDER BLOCK



No.	Lev.	Parts No.	Description	Q'ty						I	R	
				(A)	(B)	(C)	(D)	(E)	(F)			
1	1	705200-01900	LINER ASSY, CYLINDER			1	1					
3	2	105100-01300	O-RING			2	2					A
4	1	705190-01560	BLOCK ASSY, CYLINDER			1	1					
10	3	105190-01670	PLUG, 22			1	1					
10-1	3	105190-01671	SEAL, 22			1	1					N
			(C=E/#070513) (D=*2000.10)									
11	3	105190-01680	SEAL, 42			2	2					
12	2	22351-060012	PIN, SPRING 6.0X12			2	2					
13	1	105215-01200	BOLT, HEAD M12			4	4					
14	1	121450-01220	NUT, CYLINDER HEAD			4	4					
15	1	105100-01330	GASKET, HEAD 147X118			1	1					
15-1	1	105100-01331	GASKET, HEAD			1	1					N A
			(C=E/#064318) (D=E/#064318)									
16	1	705100-01501	CASE ASSY, GEAR			1	1					
22	2	105100-01660	PLUG, 14			1	1					
23	2	105300-34040	SPRING			1	1					
24	2	22252-000100	RING, 10			1	1					
25	2	24190-120001	BALL, STEEL 3/8			1	1					
26	2	22351-060012	PIN, SPRING 6.0X12			1	1					
27	2	105140-76500	SEAL, TCX25X35X6			1	1					
27-1	2	120270-61250	SEAL, OIL			1	1					R
			(C=E/#060408) (D=E/#060408)									
28	1	105100-01410	GASKET, GEAR CASE			1	1					A
29	1	105190-01480	COVER			1	1					
30	1	105300-01690	PLUG			1	1					
31	1	105190-01750	CAP, FILLER			1	1					
32	1	101104-01760	GASKET, CAP			1	1					A
33	1	105300-01920	SHIM, T=0.1			1	1					1
34	1	104271-01950	SHIM SET, 0.2X3, 0.3X2			1	1					
34-1	1	105090-01960	SHIM SET, ADJUSTING			1	1					N
			(C=E/#082033) (D=E/#082026)									
37	1	22217-080000	WASHER, SPRING 8			6	6					
38	1	24311-000060	O-RING, 1AP6.0			1	1					
39	1	24321-000250	O-RING, 1AG25.0			1	1					
40	1	26106-060202	BOLT, M6X 20 PLATED			6	6					
41	1	26106-060302	BOLT, M6X 30 PLATED			7	7					
42	1	26106-060702	BOLT, M6X 70 PLATED			5	5					
43	1	26216-080222	STUD, M8X 22			3	3					
44	1	26226-080222	STUD, M8X 22			6	6					
45	1	26366-080002	NUT, M8			3	3					
45-1	1	26306-080002	NUT, M8			3	3					N
			(C=E/#071390) (D=*2001.06)									
46	1	26716-080002	NUT, M8			6	6					
47	1	705100-02500	HOUSING ASSY, METAL			1	1					
49	2	123325-02500	SEAL, OIL			1	1					
50	1	105100-02020	GASKET			1	1					
50-1	1	105100-02021	GASKET			1	1					N A
			(C=E/#064318) (D=E/#064318)									
51	1	105100-02300	BEARING, 6308-SH2-C3			1	1					
52	1	105100-02310	BEARING, 6208-SH2-C3			1	1					
53	1	106100-02331	RETAINER, BEARING			2	2					

Remarks
 (A) THESE PART ARE ALSO SOLD BY FIG.33 NO.1-1 (GASKET SET.P/# 705100-92601).
 (1) REPAIR PART.

Fig.16. CYLINDER BLOCK

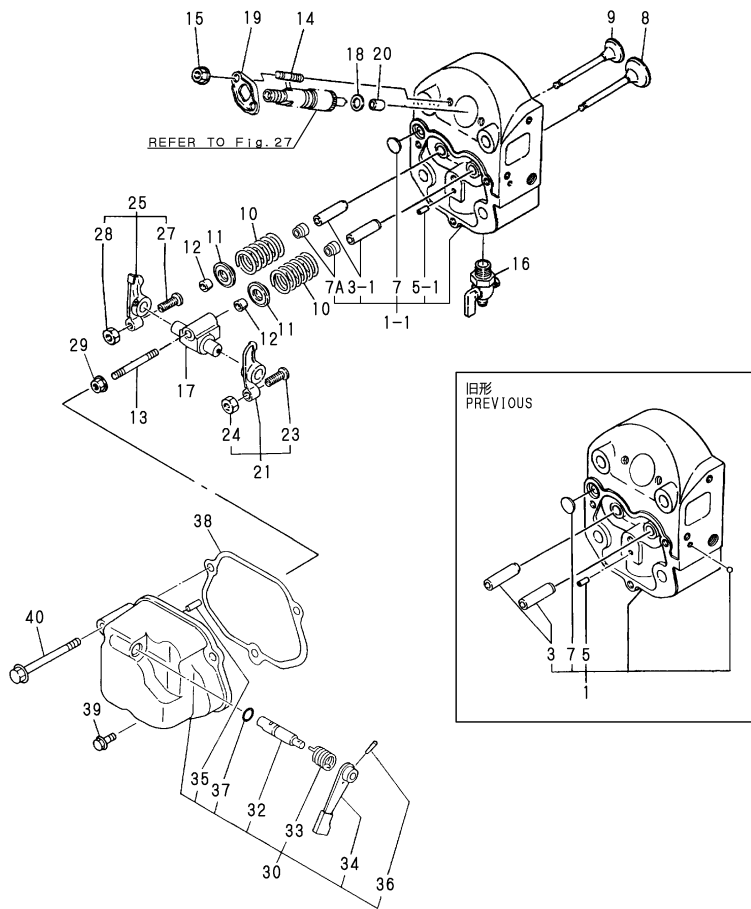


(A)= (D)=NFAD8-SA
 (B)= (E)=
 (C)=NFAD8-ESA (F)=

No.	Lev.	Parts No.	Description	Q'ty						I	R
				(A)	(B)	(C)	(D)	(E)	(F)		
54	1	26116-050082	BOLT, M5X 8 PLATED			6	6				

Remarks
 (A) THESE PART ARE ALSO SOLD BY
 FIG.33 NO.1-1
 (GASKET SET.P/# 705100-92601).
 (1) REPAIR PART.

Fig.17. CYLINDER HEAD & BONNET

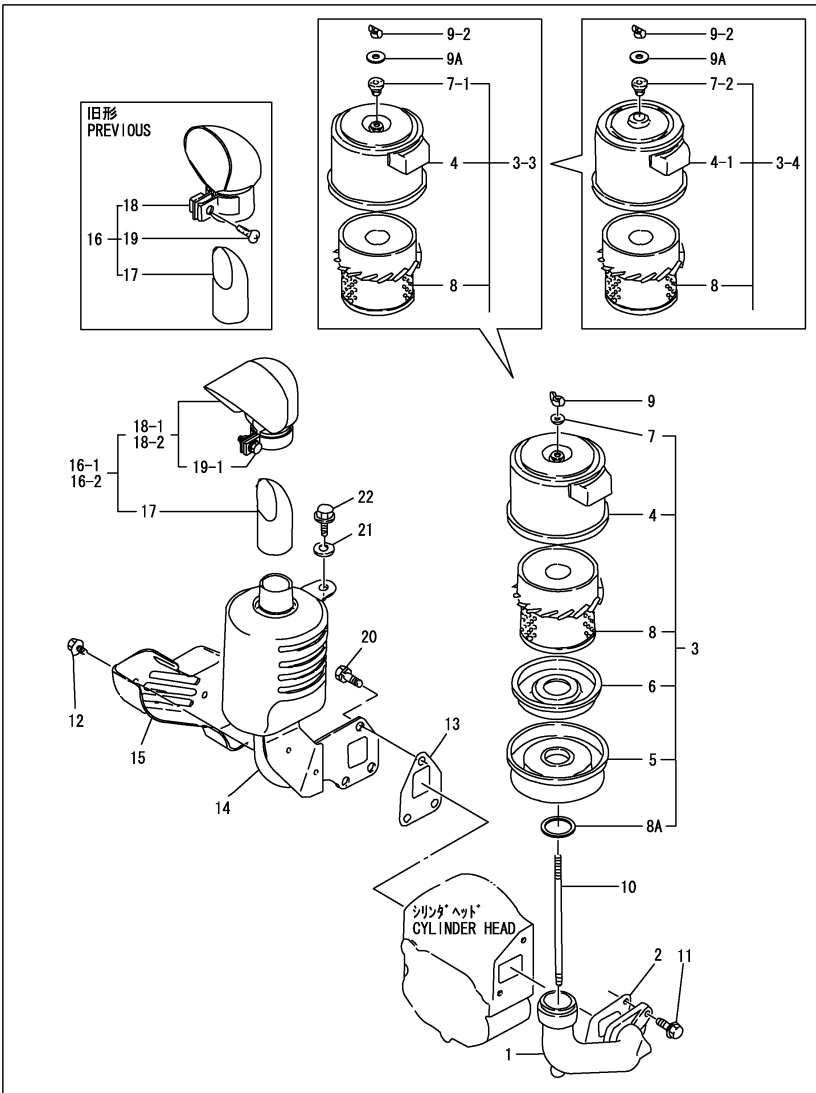


(A)= (D)=NFAD8-SA
 (B)= (E)=
 (C)=NFAD8-ESA (F)=

No.	Lev.	Parts No.	Description	Q'ty						I	R
				(A)	(B)	(C)	(D)	(E)	(F)		
1	1	705100-11700	HEAD ASSY, CYLINDER			1	1				
1-1	1	705100-11701	HEAD ASSY, CYLINDER (C=*2004.10) (D=*2004.10)			1	1			F	1
3	2	105300-11801	GUIDE, VALVE			2	2				
3-1	2	105400-11800	GUIDE, VALVE (C=*2004.10) (D=*2004.10)			2	2				S
5	2	105300-11330	PIN			1	1				
5-1	2	22351-060012	PIN, SPRING 6.0X12 (C=*2004.10) (D=*2004.10)			1	1				S
7	2	27231-150000	PLUG 15			1	1				
7A	2	128170-11340	SEAL, VALVE STEM (C=*2004.10) (D=*2004.10)			2	2				W
8	1	105100-11100	VALVE, INTAKE			1	1				
9	1	105100-11111	VALVE, EXHAUST			1	1				
10	1	105400-11121	SPRING, VALVE			2	2				
11	1	101158-11180	RETAINER, SPRING			2	2				
12	1	27310-070001	COTTER, 7			2	2				
13	1	26216-080452	STUD, M8X 45			1	1				
14	1	26216-060402	STUD, M6X 40			2	2				
14-1	1	26216-060352	STUD, M6X 35 (C=E/#064300) (D=E/#064300)			2	2			S	2
15	1	26366-060002	NUT, M6			2	2				
16	1	105010-11920	COCK, WATER			1	1				
17	1	105300-11290	SUPPORT ASSY, ARM			1	1				
17-1	1	10530H-11290	SUPPORT ASSY, ARM (C=*2004.10) (D=*2004.10)			1	1				S
18	1	119625-11880	SEAT, NOZZLE			1	1				
19	1	105300-11900	RETAINER			1	1				
19-1	1	119625-11900	RETAINER, NOZZLE (C=E/#064300) (D=E/#064300)			1	1			S	2
20	1	119625-11870	PROTECTOR, NOZZLE			1	1				
20-1	1	119625-11871	PROTECTOR, NOZZLE (C=E/#052567) (D=E/#052567)			1	1			R	A
21	1	105100-11650	ARM, ROCKER			1	1				
23	2	101158-11230	SCREW, VALVE ADJUST			1	1				
24	2	26756-080002	NUT, LOCK M8			1	1				
25	1	105100-11660	ARM, ROCKER			1	1				
27	2	101158-11230	SCREW, VALVE ADJUST			1	1				
28	2	26756-080002	NUT, LOCK M8			1	1				
29	1	26366-080002	NUT, M8			1	1				
29-1	1	26306-080002	NUT, M8 (C=E/#071390) (D=*2001.06)			1	1				N
30	1	705100-11520	BONNET ASSY, HEAD			1	1				
32	2	104200-03600	SHAFT, DECOMPRESSION			1	1				
33	2	104200-03641	SPRING, DECOMPRESSION			1	1				
34	2	104104-03750	LEVER, DECOMPRESSION			1	1				
35	2	22312-030180	PIN, PARALLEL M3X18			1	1				
36	2	22322-030180	PIN, TAPER 3X18			1	1				
37	2	24311-000070	O-RING, 1AP7.0			1	1				A
38	1	105100-11310	GASKET, BONNET			1	1				A
39	1	26106-060202	BOLT, M6X 20 PLATED			2	2				

Remarks
 (A) THESE PART ARE ALSO SOLD BY FIG.33 NO.1-1 (GASKET SET.P/# 705100-92601).
 (1) INTERCHANGEABLE BY SIMULTANEOUS REPLACEMENT WITH NO.17-1.
 (2) INTERCHANGEABLE BY SIMULTANEOUS REPLACEMENT WITH NO.14-1 AND 19-1.

Fig.18. AIR CLEANER & MUFFLER

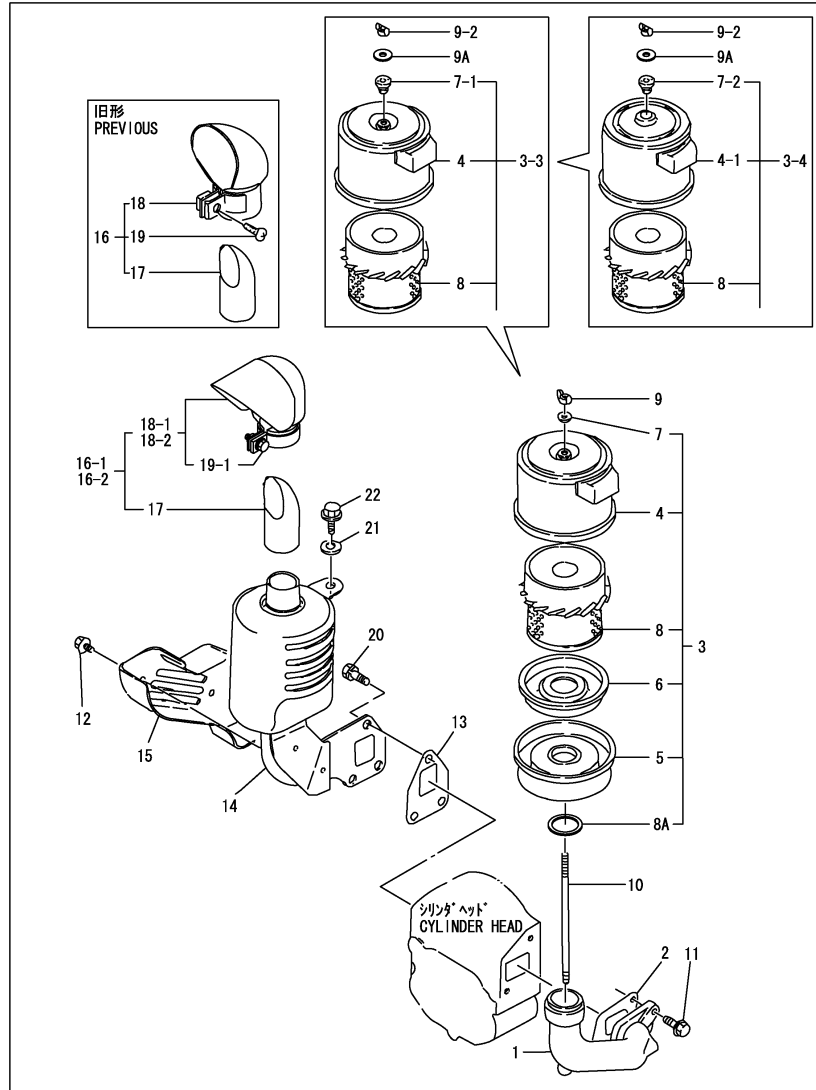


No.	Lev.	Parts No.	Description	Q'ty						I	R
				(A)	(B)	(C)	(D)	(E)	(F)		
1	1	105100-12020	PIPE, AIR INTAKE			1	1				
2	1	105190-12050	GASKET			1	1				
3	1	105190-12510	CLEANER, AIR			1	1				
3-1	1	105190-12511	CLEANER, AIR (C=*2002.01) (D=E/#072009)			1	1				N
3-2	1	105190-12512	CLEANER, AIR (C=*2002.04) (D=*2002.04)			1	1				R
3-3	1	105190-12513	CLEANER, AIR (C=EZZZZZ) (D=EZZZZZ)			1	1				S 1
3-4	1	105190-12514	CLEANER, AIR (C=EZZZZZ) (D=EZZZZZ)			1	1				S 2
4	2	105190-12530	COVER			1	1				
4-1	2	105190-12531	COVER ASSY, CLEANER (C=EZZZZZ) (D=EZZZZZ)			1	1				S
5	2	105190-12540	PAN, DUST			1	1				
6	2	105190-12560	BAFFLE ASSY			1	1				
7	2	105300-12560	WASHER, SEAL			1	1				
7-1	2	105098-12560	GROMMET (C=EZZZZZ) (D=EZZZZZ)			1	1				R
7-2	2	105190-12570	ELEMENT (C=EZZZZZ) (D=EZZZZZ)			1	1				R
8	2	104300-12960	ELEMENT			1	1				
8A	2	105190-12590	GASKET, AIR CLEANER (C=*2002.01) (D=E/#072009)			1	1				W
9	1	101147-12550	NUT			1	1				
9-1	1	105092-12550	NUT (C=*2002.04) (D=*2002.04)			1	1				R
9-2	1	114250-12550	NUT, WING M6 (C=EZZZZZ) (D=EZZZZZ)			1	1				R 1
9A	1	22190-060002	WASHER, SEAL 6 (C=EZZZZZ) (D=EZZZZZ)			1	1				W 1
10	1	105100-12550	BOLT			1	1				
10-1	1	10520H-12550	BOLT (C=EZZZZZ) (D=EZZZZZ)			1	1				S 2
11	1	26106-080202	BOLT, M8X 20 PLATED			2	2				
12	1	160260-01580	BOLT, FLANGE M6X6			2	2				
13	1	105300-13200	GASKET, SILENCER			1	1				
13-1	1	105300-13201	GASKET, SILENCER (C=EXXX) (D=EXXX)			1	1				N A
14	1	105198-13530	SILENCER ASSY			1	1				
15	1	105190-13550	COVER			1	1				
16	1	105198-13610	EXTENSION ASSY			1	1				
16-1	1	105198-13620	EXTENSION ASSY (C=*1997.12) (D=*1997.12)			1	1				R
16-2	1	105198-13621	EXTENSION ASSY (C=EXXX) (D=EXXX)			1	1				N
17	2	106530-13570	PIPE			1	1				
18	2	106530-13590	COVER			1	1				
18-1	2	105198-13590	COVER (C=*1997.12) (D=*1997.12)			1	1				R
18-2	2	105198-13591	COVER			1	1				N

Remarks
 (A) These part are also sold by Fig.33 Ref.No.1-1 (GASKET SET.P/# 705100-92601).
 (1) Interchangeable by simultaneous replacement with No.3-3, No.9-2 and No.9A.
 (2) Interchangeable by simultaneous replacement with No.3-4, No.10-1.

Fig.18. AIR CLEANER & MUFFLER

(A)= (D)=NFAD8-SA
 (B)= (E)=
 (C)=NFAD8-ESA (F)=

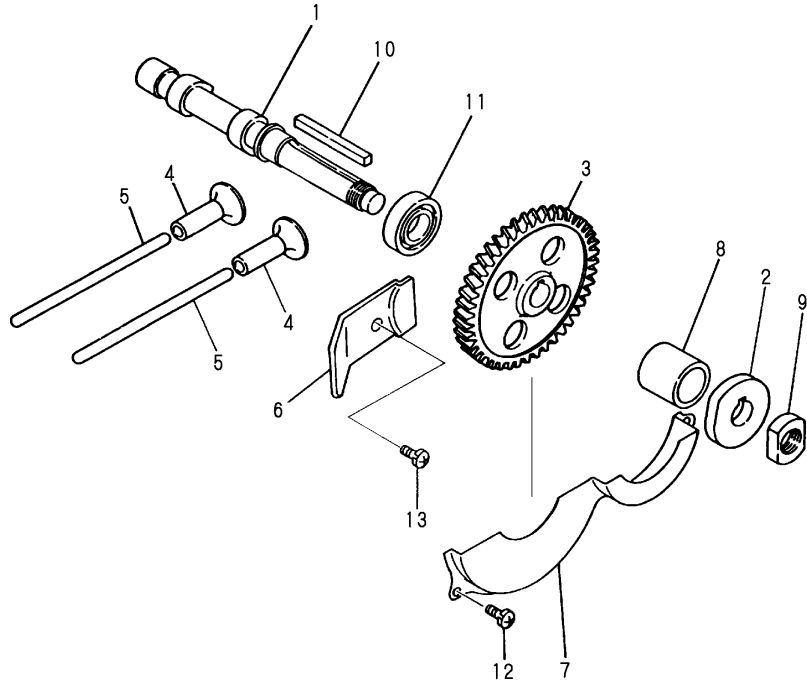


No.	Lev.	Parts No.	Description	Q'ty						I	R	
				(A)	(B)	(C)	(D)	(E)	(F)			
			(C=E)XXX (D=E)XXX									
19	2	26554-060182	SCREW, M6X18			1	1					
19-1	3	105098-13990	BOLT			1	1				R	
			(C=*1997.12) (D=*1997.12)									
20	1	26013-080189	BOLT, M8X 18			3	3					
21	1	160120-76940	WASHER			1	1					
22	1	26106-060202	BOLT, M6X 20 PLATED			1	1					

Remarks

- (A) These parts are also sold by Fig.33 Ref.No.1-1 (GASKET SET.P/# 705100-92601).
- (1) Interchangeable by simultaneous replacement with No.3-3, No.9-2 and No.9A.
- (2) Interchangeable by simultaneous replacement with No.3-4, No.10-1.

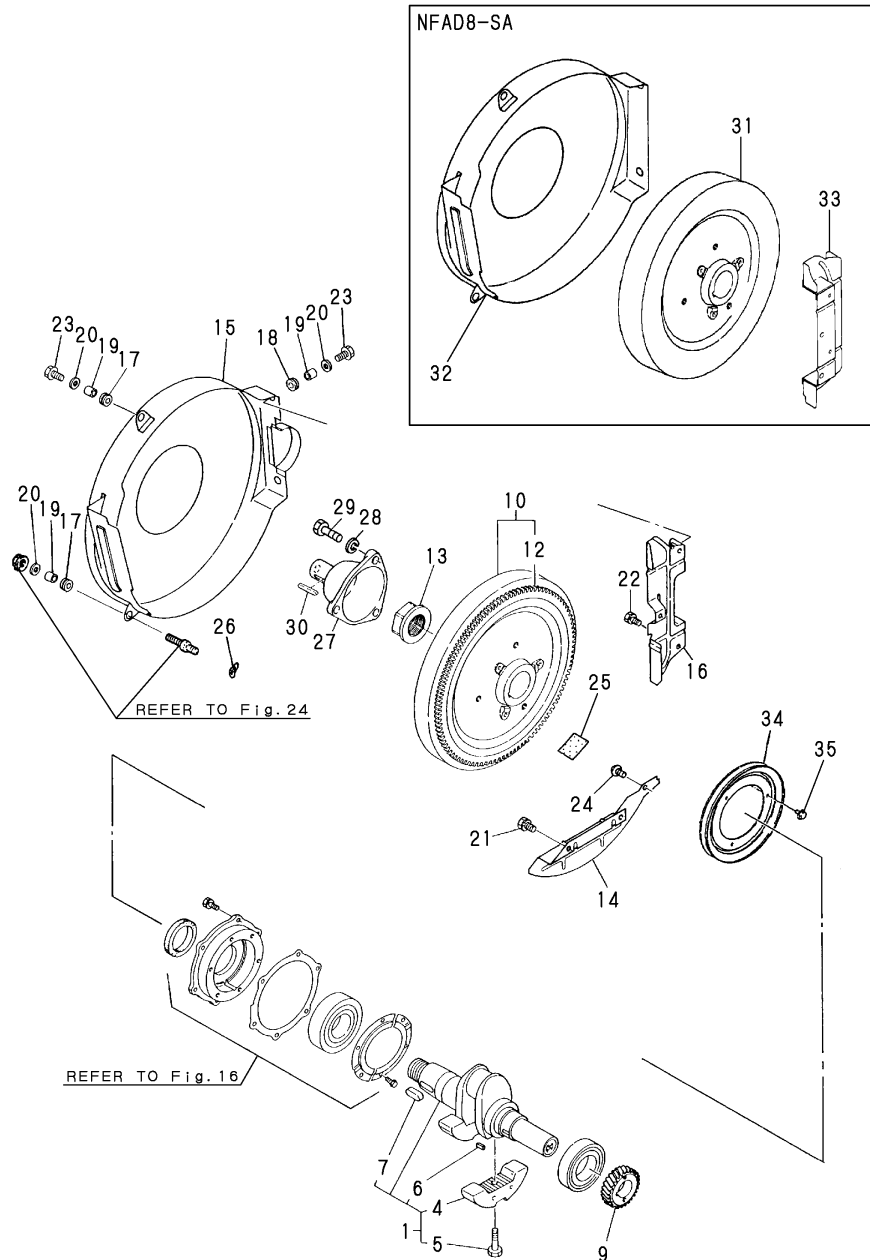
Fig.19. CAMSHAFT



(A)=
(B)=
(C)=NFAD8-ESA
(D)=NFAD8-SA
(E)=
(F)=

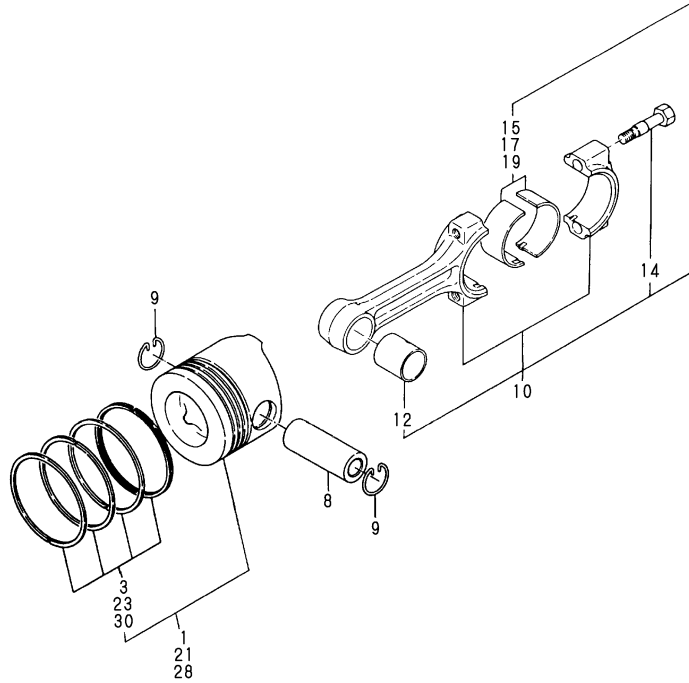
No.	Lev.	Parts No.	Description	Q'ty						I	R
				(A)	(B)	(C)	(D)	(E)	(F)		
1	1	105170-14010	CAMSHAFT			1	1				
2	1	105100-14091	CAM, FUEL			1	1				
3	1	105100-14100	GEAR, CAMSHAFT			1	1				
4	1	105300-14200	TAPPET			2	2				
5	1	105100-14400	ROD, PUSH			2	2				
6	1	105190-14421	RETAINER, BEARING			1	1				
7	1	105100-14600	COVER			1	1				
8	1	105300-14700	SPACER			1	1				
9	1	104300-76460	NUT			1	1				
10	1	22512-070550	KEY, 7X 55			1	1				
11	1	24101-060064	BEARING, BALL 6006			1	1				
12	1	26022-060122	SCREW, M6X12			3	3				
13	1	26022-060122	SCREW, M6X12			1	1				

Fig.20. CRANKSHAFT & FLYWHEEL



No.	Lev.	Parts No.	Description	Qty						I	R
				(A)	(B)	(C)	(D)	(E)	(F)		
1	1	705190-21700	CRANKSHAFT ASSY			1	1				
4	2	105190-21100	WEIGHT, BALANCE			2	2				
5	2	106100-21130	BOLT, BALANCE WEIGHT			2	2				
6	2	22512-050120	KEY, 5X 12			1	1				
7	2	22512-100260	KEY, 10X 26			1	1				
9	1	105100-21200	GEAR, CRANKSHAFT			1	1				
10	1	105100-21590	FLYWHEEL ASSY			1					
12	2	105100-21600	GEAR, RING			1					
13	1	104200-21530	NUT, END			1	1				
13-1	1	10530H-21530	NUT, END			1	1				N
			(C=*2004.07) (D=*2004.07)								
14	1	105190-21320	COVER			1	1				
15	1	105190-21350	COVER, FLYWHEEL			1					
16	1	105190-21360	COVER			1					
17	1	105300-21381	ABSORBER			2	2				
18	1	105300-44451	ABSORBER			2	2				
19	1	105300-44460	COLLAR			4	4				
20	1	160120-76940	WASHER			5	5				
21	1	26013-060142	BOLT, M6X 14			2	2				
22	1	26013-060142	BOLT, M6X 14			2	3				
23	1	26106-060202	BOLT, M6X 20 PLATED			3	3				
24	1	26557-060082	SCREW, M6X 8			1	1				
25	1	105190-21900	TAPE			1	1				
26	1	105190-21910	WASHER			1	1				
27	1	105198-21900	SHAFT, STUB			1	1				
28	1	22217-120000	WASHER, SPRING 12			3	3				
29	1	26116-120352	BOLT, M12X 35 PLATED			3	3				
30	1	22512-070500	KEY, 7X 50			1	1				
31	1	105100-21400	FLYWHEEL				1				
32	1	105190-21300	COVER, FLYWHEEL				1				
33	1	105190-21310	COVER				1				
34	1	104104-21600	V-PULLEY			1	1				W
			(C=EXXX) (D=EXXX)								
35	1	26106-060122	BOLT, M6X 12 PLATED			3	3				W
			(C=EXXX) (D=EXXX)								

Fig.21. PISTON & CONNECTING ROD

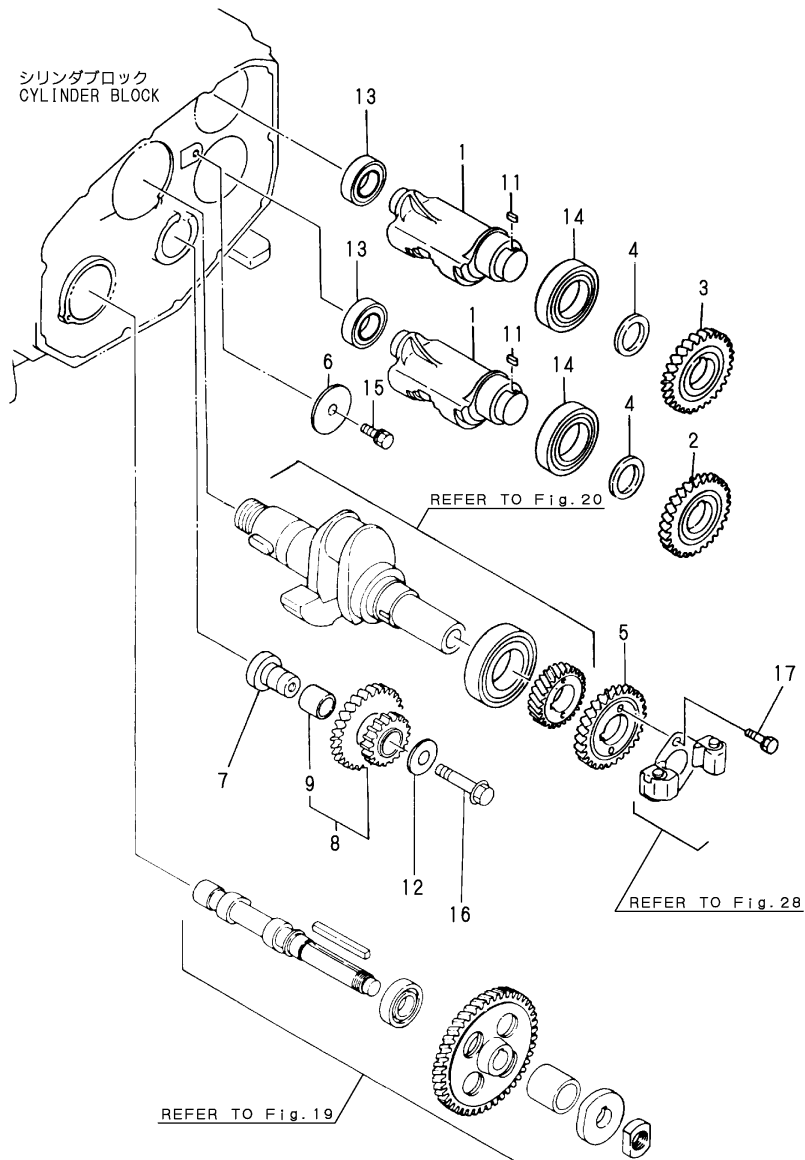


No.	Lev.	Parts No.	Description	Q'ty						I	R
				(A)	(B)	(C)	(D)	(E)	(F)		
1	1	105250-22090	PISTON ASSY			1	1				
1-1	1	105250-22091	PISTON ASSY (C=E/#082033) (D=E/#082026)			1	1				N
3	2	705270-22501	RING SET, PISTON			1	1				
3-1	2	705270-22502	RING SET, PISTON (C=*2004.05) (D=E/#080554)			1	1				N
3-2	2	105200-22500	RING SET, PISTON (C=E/#082033) (D=E/#082026)			1	1				N
8	1	119810-22300	PIN, PISTON			1	1				
9	1	105100-22400	CIRCLIP			2	2				
10	1	705100-23100	ROD ASSY, CONNECTING			1	1				
12	2	105100-23910	BEARING, PISTON PIN			1	1				5
14	2	105300-23200	BOLT, CONNECTING ROD			2	2				
15	2	705100-23600	BEARING, CRANK PIN			1	1				
17	1	705100-23610	BEARING ASSY, 0.25			1	1				1
19	1	705100-23620	BEARING, 0.50 US			1	1				2
21	1	105200-22471	PISTON ASSY, 0.25 OS			1	1				3
21-1	1	105200-22472	PISTON ASSY, 0.25 OS (C=E/#082033) (D=E/#082026)			1	1				N 3
23	2	105200-22510	RING SET, 0.25 OS			1	1				3
23-1	2	105200-22511	RING SET, 0.25 OS (C=E/#082033) (D=E/#082026)			1	1				N 3
28	1	105200-22481	PISTON ASSY, 0.50 OS			1	1				4
28-1	1	105200-22482	PISTON ASSY, 0.50 OS (C=E/#082033) (D=E/#082026)			1	1				N 4
30	2	105200-22520	RING SET, 0.50 OS			1	1				4
30-1	2	105200-22521	RING SET, 0.50 OS (C=E/#082033) (D=E/#082026)			1	1				N 4

Remarks

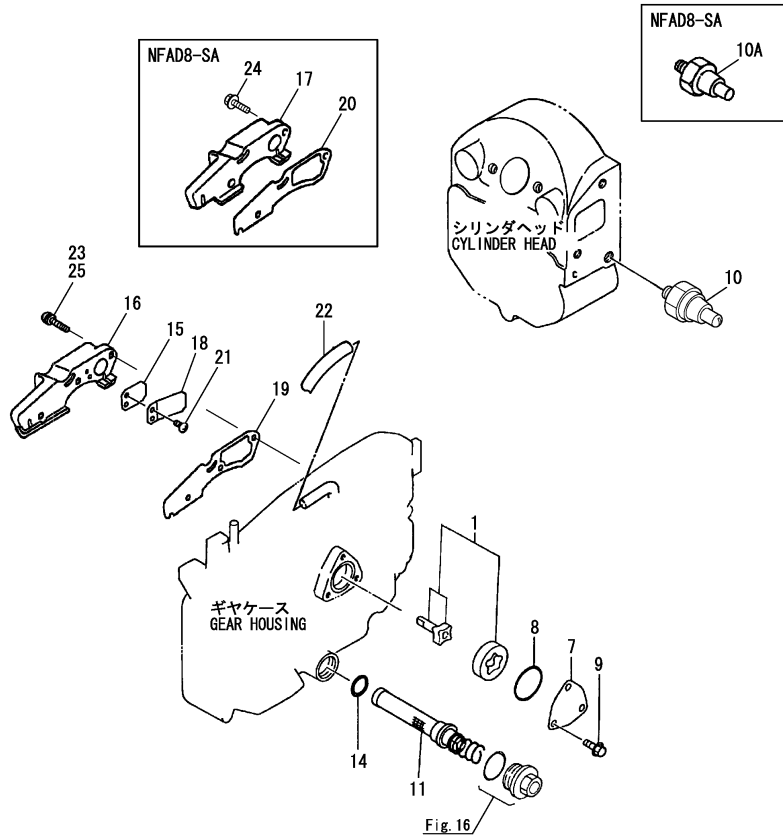
- (1) UNDER SIZED (U.S.=0.25) PART.
- (2) UNDER SIZED (U.S.=0.50) PART.
- (3) OVER SIZED (O.S.=0.25) PART.
- (4) OVER SIZED (O.S.=0.50) PART.
- (5) REPAIR PART.

Fig.22. BALANCER



No.	Lev.	Parts No.	Description	Qty						I	R
				(A)	(B)	(C)	(D)	(E)	(F)		
1	1	105190-28250	SHAFT, BALANCER			2	2				
2	1	105190-28300	GEAR, BALANCER			1	1				
3	1	105190-28310	GEAR, BALANCER			1	1				
4	1	105190-28380	SPACER			2	2				
5	1	105190-28410	GEAR, BALANCER			1	1				
6	1	105300-28450	RETAINER			1	1				
7	1	105300-28700	SHAFT			1	1				
8	1	105190-28710	GEAR ASSY, IDLE			1	1				
9	2	105430-28720	BUSH, IDLE GEAR			1	1				
11	1	105215-76490	KEY			2	2				
12	1	123672-83880	RETAINER			1	1				
13	1	24101-060044	BEARING, BALL 6004			2	2				
14	1	24121-060074	BEARING, BALL 6007NR			2	2				
15	1	26013-080202	BOLT, M8X 20			1	1				
16	1	26106-100502	BOLT, M10X 50 PLATED			1	1				
16-1	1	26106-100552	BOLT, M10X 55 PLATED (C=E/#058423) (D=E/#058423)			1	1				R
17	1	26013-060222	BOLT, M6X 22			2	2				

Fig.23. LUB.OIL SYSTEM & BREATHER

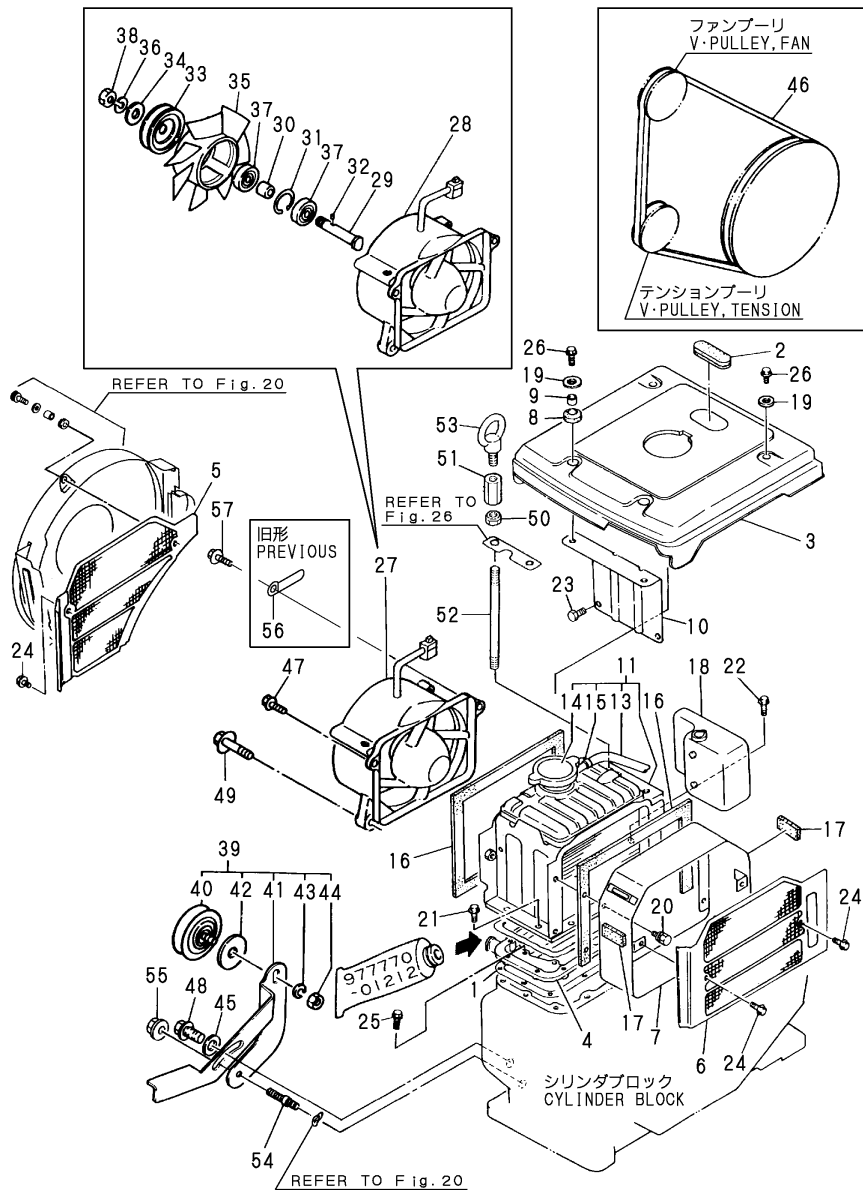


No.	Lev.	Parts No.	Description	Q'ty						I	R
				(A)	(B)	(C)	(D)	(E)	(F)		
1	1	705300-32500	ROTOR ASSY			1	1				
1-1	1	105300-32500	PUMP, LUB.OIL CMP (C=EXXXXX) (D=EXXXXX)			1	1				N
7	1	103338-32070	COVER			1	1				
8	1	103338-32570	O-RING			1	1				A
9	1	26106-060122	BOLT, M6X 12 PLATED			3	3				
10	1	124060-39451	SWITCH, 0.2KG			1					
10-1	1	124060-39452	SWITCH, 0.2KG (C=*2000.01)			1					N
10A	1	105140-34100	INDICATOR (D=EXXXXX)					1			W
11	1	105190-35050	STRAINER ASSY, OIL			1	1				
14	1	24341-000200	O-RING, 1AS20.0			1	1				A
15	1	101158-03061	VALVE			1	1				
16	1	105100-03081	COVER, BREATHER (D=EXXXXX)			1	1				W
17	1	105090-03081	COVER, BREATHER (D=EXXXXX)					1			Z
18	1	101158-03111	RETAINER			1	1				
19	1	105100-03131	GASKET (D=EXXXXX)			1	1				W
20	1	105090-03131	GASKET (D=EXXXXX)					1			Z
21	1	105362-78960	SCREW, M4X8			2	2				
22	1	49934-000105	PIPE, VINYL 9X12			1	1				
22-1	1	23064-090400	PIPE, 9X 400 (C=EXXXXX) (D=EXXXXX)			1	1				N
23	1	26023-060252	SCREW, M6X25			3					
23-1	1	26106-060222	BOLT, M6X 22 PLATED (C=E059699)			3					R
23-2	1	26023-060252	SCREW, M6X25 (C=EXXXXX)			3					N
24	1	26106-060222	BOLT, M6X 22 PLATED (D=EXXXXX)					2			Z
25	1	26023-060252	SCREW, M6X25 (D=EXXXXX)					3			W

Remarks

(A)These parts are also sold by Fig.33 No.1-1.
(Gasket set P/# 705100-92601)

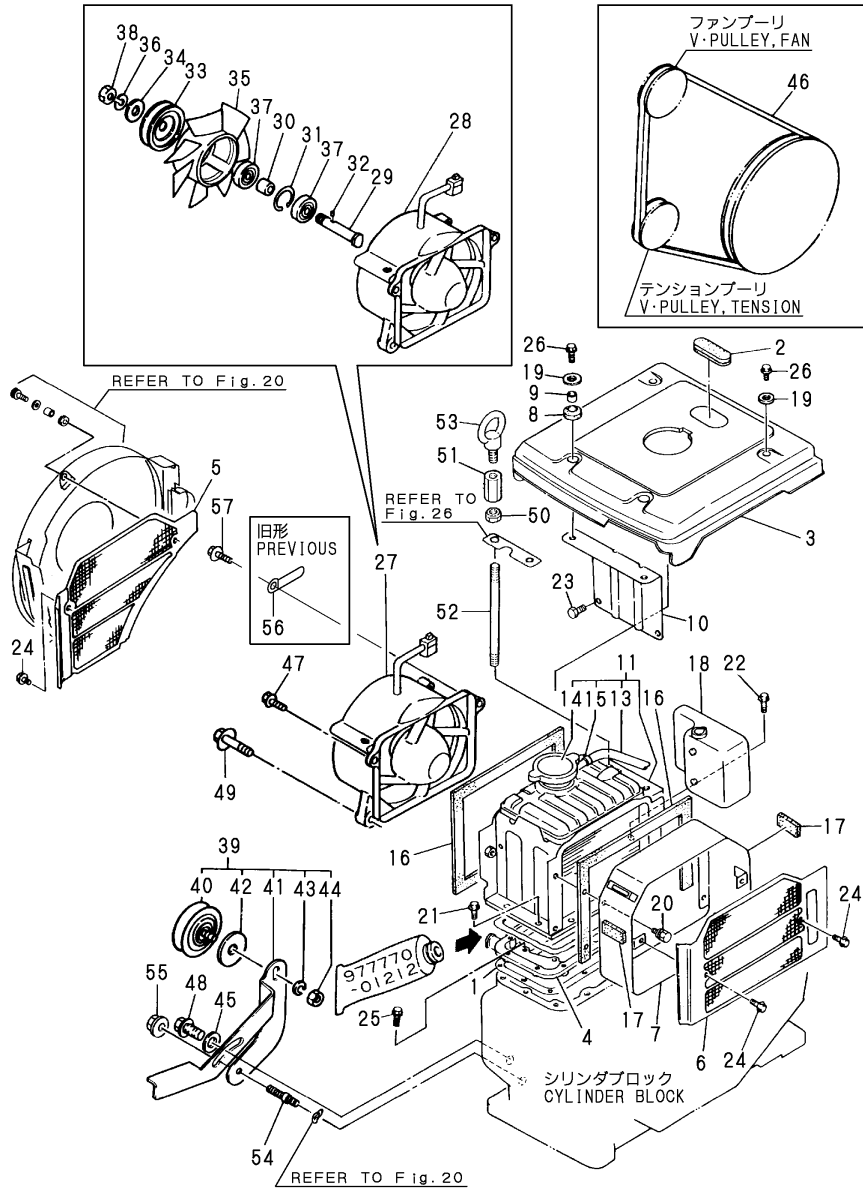
Fig.24. RADIATOR & FAN



(A)= (D)=NFAD8-SA
 (B)= (E)=
 (C)=NFAD8-ESA (F)=

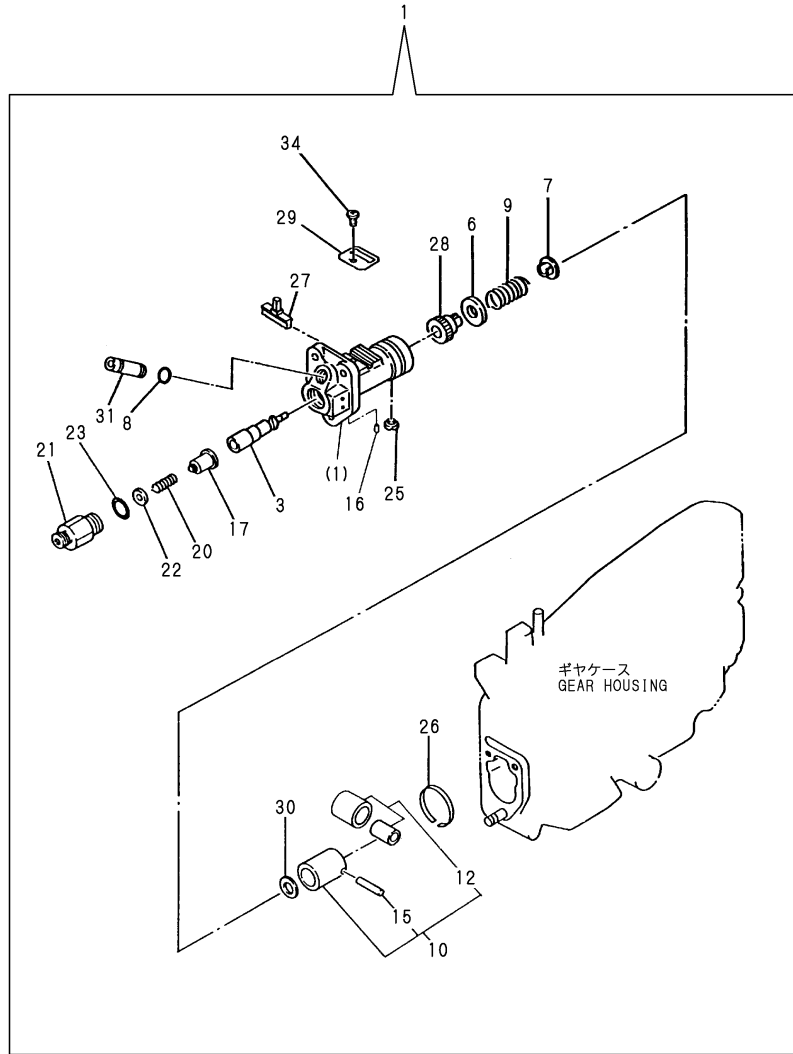
No.	Lev.	Parts No.	Description	Q'ty						I	R
				(A)	(B)	(C)	(D)	(E)	(F)		
1	1	105190-44050	GASKET			1	1				
2	1	105300-44220	COVER, RADIATOR			1	1				
3	1	105198-44250	COVER, RADIATOR			1	1				
4	1	105190-44300	BRACKET, RADIATOR			1	1				
5	1	105100-44330	SCREEN			1	1				
6	1	105292-44340	SCREEN			1	1				
7	1	105100-44360	DUCT, SCREEN			1	1				
8	1	105300-44451	ABSORBER			2	2				
9	1	105300-44460	COLLAR			2	2				
10	1	105100-44490	STAY			1	1				
11	1	105198-44500	RADIATOR ASSY			1	1				
13	2	105340-44570	PIPE, 7X170			1	1				
14	2	105198-44590	CAP, RADIATOR			1	1				
15	2	121250-44590	CLAMP			1	1				
16	1	104607-44540	SPONGE			2	2				
17	1	106100-44560	SPONGE, 15X5X1000			2	2				
18	1	105100-44630	TANK, SUB			1	1				
19	1	160120-76940	WASHER			4	4				
20	1	26013-060129	BOLT, M6X 12			4	4				
21	1	26013-060162	BOLT, M6X 16			8	8				
21-1	1	26013-060162	BOLT, M6X 16			6	6				K
			(C=E/XXX) (D=E/XXX)								
22	1	26013-060202	BOLT, M6X 20			1	1				
23	1	26106-060122	BOLT, M6X 12 PLATED			2	2				
24	1	26106-060122	BOLT, M6X 12 PLATED			3	3				
25	1	26106-060202	BOLT, M6X 20 PLATED			8	8				
25-1	1	26106-060182	BOLT, M6X 18 PLATED			8	8				N
			(C=E/#068752) (D=E/#068752)								
26	1	26106-060202	BOLT, M6X 20 PLATED			4	4				
27	1	105292-44200	CASE ASSY, FAN			1					
27A	1	105172-44201	CASE ASSY, FAN				1				
28	2	105292-44680	COVER ASSY			1					
28A	2	105172-44680	COVER ASSY				1				
29	2	105340-44710	SHAFT, FAN			1	1				
30	2	106383-44720	SPACER			1	1				
31	2	106383-44740	CIRCLIP			1	1				
32	2	105340-44750	PIN			1	1				
33	2	105100-44770	PULLEY, FAN			2	2				
34	2	105100-44780	WASHER, PULLEY			1	1				
35	2	105292-44850	FAN, COOLING			1					
35A	2	105172-44700	FAN, COOLING				1				
36	2	22217-120000	WASHER, SPRING 12			1	1				
37	2	24107-062013	BEARING, 6201ZZP6			2	2				
38	2	26777-120002	NUT, LOCK M12			1	1				
39	1	105100-44810	PULLEY ASSY, TENSION			1	1				
40	2	106100-44650	PULLEY, TENSION			1	1				
41	2	105100-44940	LEVER, PULLEY			1	1				
42	2	106100-44960	CAP			1	1				
43	2	22217-080000	WASHER, SPRING 8			1	1				
44	2	26716-080002	NUT, M8			1	1				
45	1	22137-080000	WASHER, 8			1	1				

Fig.24. RADIATOR & FAN



No.	Lev.	Parts No.	Description	Q'ty						I	R
				(A)	(B)	(C)	(D)	(E)	(F)		
46	1	25117-003451	V-BELT, M34.5H			1	1				
47	1	26106-060252	BOLT, M6X 25 PLATED			1	1				
48	1	26106-080202	BOLT, M8X 20 PLATED			1	1				
49	1	26106-080352	BOLT, M8X 35 PLATED			2	2				
49-1	1	26106-080302	BOLT, M8X 30 PLATED				2				N
(D=EXXX)											
50	1	104107-07900	NUT, M10			1	1				
51	1	105300-07910	NUT			1	1				
52	1	105140-07940	BOLT, LIFTING			1	1				
53	1	26617-100002	BOLT, EYE M10			1	1				
54	1	105100-44930	BOLT			1	1				
55	1	26366-060002	NUT, M6			1	1				
56	1	105430-67110	CLAMP, CORD				1				Z
(D=EXXX)											
57	1	26106-060302	BOLT, M6X 30 PLATED			1	1				

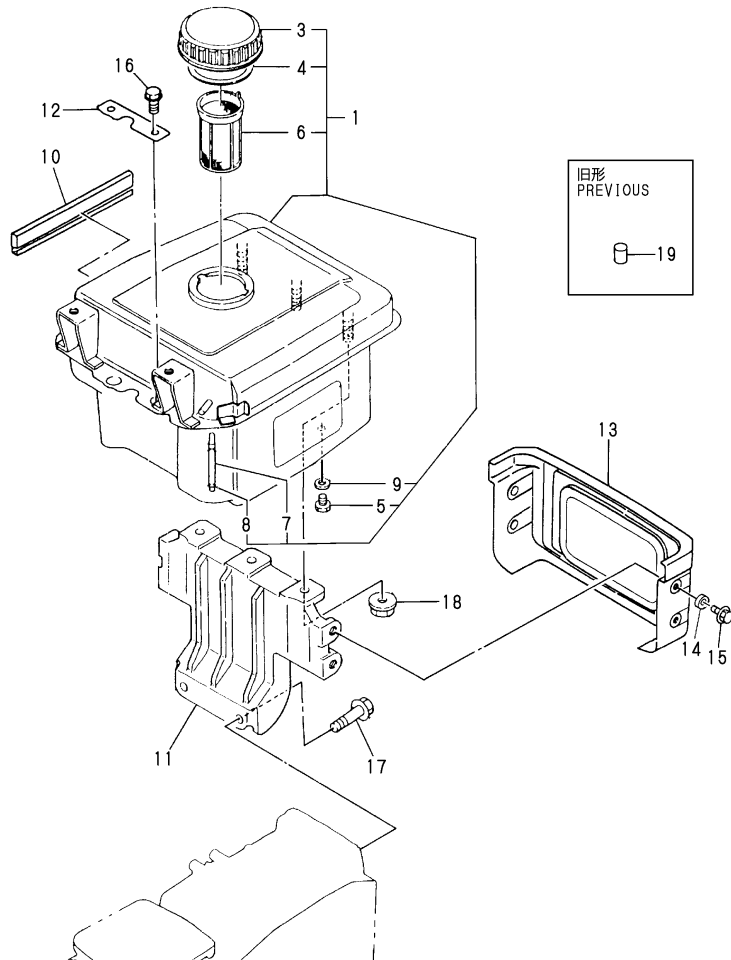
Fig.25. FUEL INJECTION PUMP



No.	Lev.	Parts No.	Description	Q'ty						I	R
				(A)	(B)	(C)	(D)	(E)	(F)		
1	1	705200-51111	PUMP ASSY, INJECTION			1	1				
3	2	105200-51100	PLUNGER ASSY			1	1				
6	2	174307-51170	RETAINER, SPRING A			1	1				
7	2	174307-51181	RETAINER, SPRING B			1	1				
8	2	114250-51190	O-RING, S27			1	1				
9	2	124950-51190	SPRING, PLUNGER			1	1				
10	2	724550-51520	GUIDE, PLUNGER			1	1				
12	3	711100-51540	ROLLER ASSY			1	1				
15	3	174100-54120	PIN			1	1				
16	2	103854-51251	PIN, PLUNGER			1	1				
17	2	128170-51300	VALVE ASSY, DELIVERY			1	1				
20	2	124550-51320	SPRING, DELIVERY			1	1				
21	2	124550-51341	HOLDER, DELIVERY L43			1	1				
22	2	124550-51350	GASKET, DELIVERY			1	1				A
23	2	124550-51370	O-RING			1	1				A
25	2	104271-51450	PIECE, GUIDE			1	1				
26	2	104271-51460	CIRCLIP			1	1				
27	2	105300-51500	RACK, CONTROL			1	1				
28	2	105300-51510	PINION			1	1				
29	2	105300-51550	RETAINER, RACK			1	1				
30	2	174307-51700	SHIM SET			1	1				
31	2	105300-51800	JOINT			1	1				
34	2	26022-050102	SCREW, M5X10			1	1				

Remarks
 (A) THESE PART ARE ALSO SOLD BY
 FIG.33 NO.1-1
 (GASKET SET.P/# 705100-92601).

Fig.26. FUEL TANK

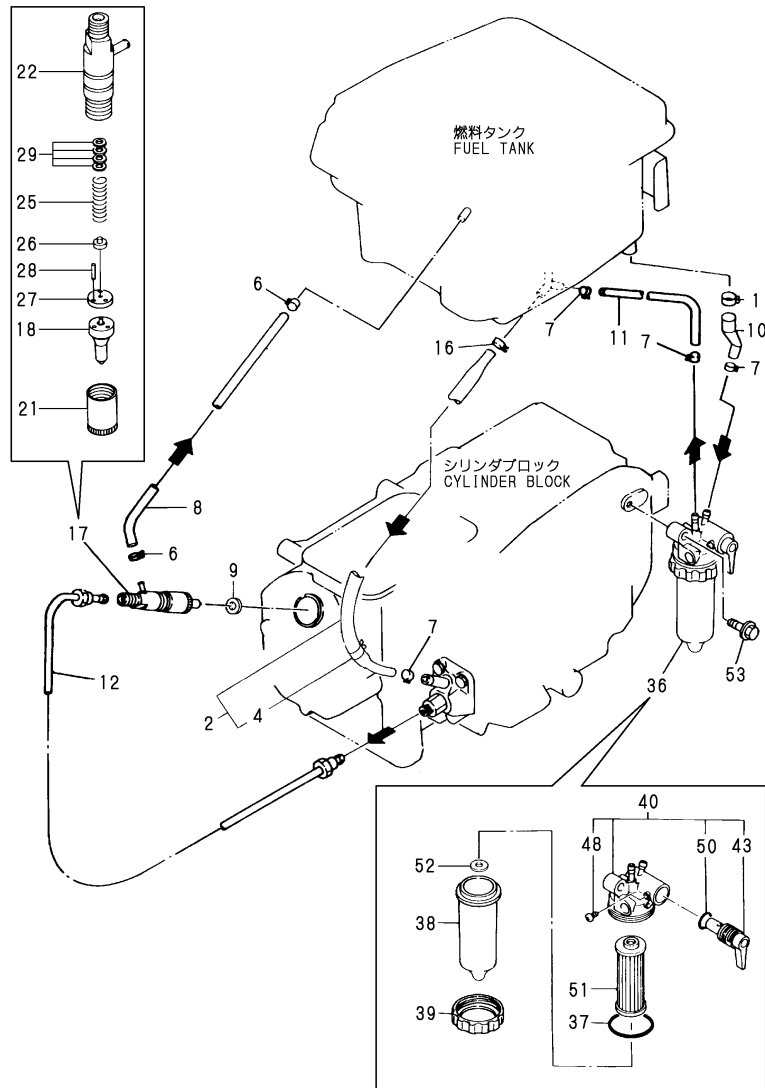


(A)= (D)=NFAD8-SA
 (B)= (E)=
 (C)=NFAD8-ESA (F)=

No.	Lev.	Parts No.	Description	Q'ty						I	R
				(A)	(B)	(C)	(D)	(E)	(F)		
1	1	705198-55750	TANK ASSY, FUEL			1	1				
3	2	101168-55040	CAP ASSY			1	1				
4	2	101504-55051	GASKET			1	1				A
5	2	105300-55080	PLUG, 8			1	1				
6	2	101504-55101	STRAINER, FUEL			1	1				
7	2	104300-55160	GAUGE, LEVEL			1	1				
8	2	103854-55220	RETAINER			2	2				
9	2	23414-080000	GASKET, 8X1.0			1	1				
10	1	105100-55230	MOULDING			2	2				
11	1	105198-55240	STAY, FUEL TANK			1	1				
12	1	105198-55520	RETAINER			1	1				
13	1	105100-55810	COVER, TANK			1	1				
14	1	105100-55820	BUSH			4	4				
15	1	26106-060122	BOLT, M6X 12 PLATED			4	4				
16	1	26106-080222	BOLT, M8X 22 PLATED			1	1				
17	1	26106-080452	BOLT, M8X 45 PLATED			2	2				
18	1	26366-080002	NUT, M8			3	3				
18-1	1	26306-080002	NUT, M8			3	3				N
19	1	49934-000014	PIPE, 5X7 (C=E/#071390) (D=*2001.06) (C=E) (D=E)			7	7				Z

Remarks
 (A) THESE PART ARE ALSO SOLD BY
 FIG.33 NO.1-1
 (GASKET SET.P/# 705100-92601).

Fig.27. FUEL INJECTION SYSTEM



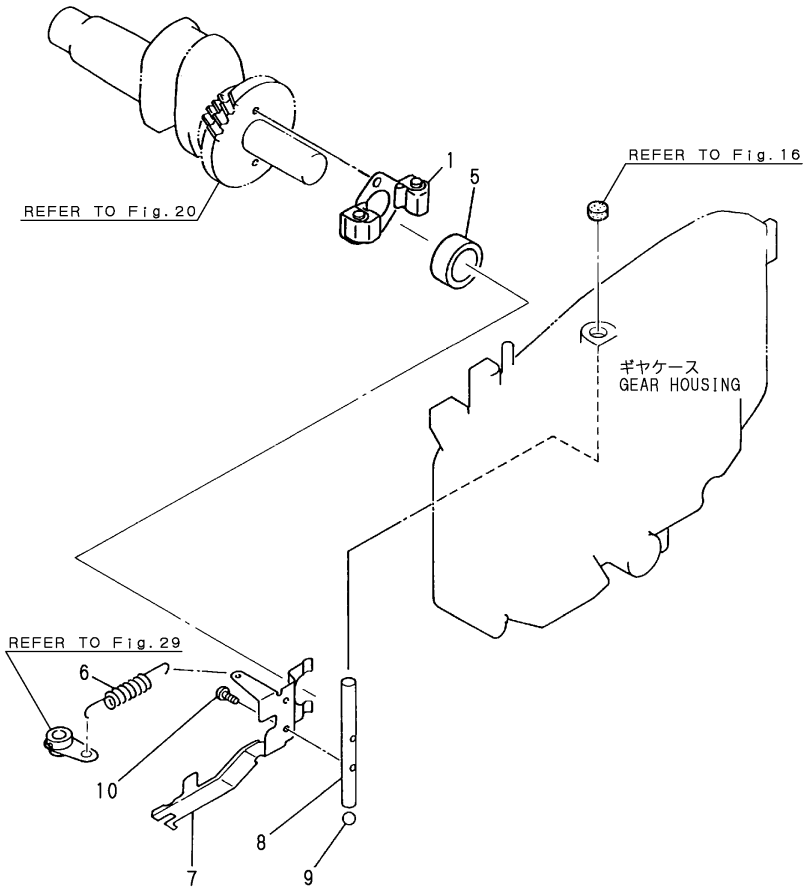
(A)= (D)=NFAD8-SA
 (B)= (E)=
 (C)=NFAD8-ESA (F)=

No.	Lev.	Parts No.	Description	Q'ty						I	R
				(A)	(B)	(C)	(D)	(E)	(F)		
1	1	129301-03660	CLAMP 16			1	1				
2	1	105100-59010	PIPE ASSY, FUEL			1	1				
4	2	124766-59050	CLIP, HOSE 12			1	1				
6	1	124722-59050	CLIP, HOSE 9			2	2				
7	1	124766-59050	CLIP, HOSE 12			4	4				
8	1	105300-59100	PIPE, FUEL RETURN			1	1				
9	1	104884-59170	GASKET			1	1				
10	1	105190-59520	PIPE, FUEL			1	1				
11	1	105300-59570	PIPE, FUEL			1	1				
12	1	105100-59800	PIPE ASSY, INJECTION			1	1				
16	1	23080-013000	CLAMP, 13			1	1				
17	1	705100-53100	VALVE ASSY, INJECTION			1	1				
18	2	119800-53000	VALVE ASSY, INJECTION			1	1				
21	2	114250-53080	NUT, NOZZLE D16.95			1	1				
22	2	105300-53100	HOLDER ASSY, NOZZLE			1	1				
25	2	114250-53120	SPRING, NOZZLE			1	1				
26	2	114250-53130	SEAT, SPRING			1	1				
27	2	114250-53140	PLATE			1	1				
28	2	114250-53210	PIN			2	2				
29	2	114250-53400	SHIM SET			1	1				
36	1	105198-55600	STRAINER ASSY, FUEL			1	1				
37	2	105300-55520	O-RING			1	1				A
38	2	105198-55510	CUP, STRAINER			1	1				
39	2	105300-55610	RING, RETAINING			1	1				
40	2	105300-55700	BODY ASSY, STRAINER			1	1				
43	3	105300-55340	LEVER			1	1				
48	3	104200-55750	SCREW, M4			1	1				
50	3	24311-000160	O-RING, 1AP16.0			1	1				
51	2	105370-55710	ELEMENT			1	1				
52	2	105300-55750	FLOAT			1	1				
53	1	26106-080302	BOLT, M8X 30 PLATED			1	1				

Remarks
 (A) THESE PART ARE ALSO SOLD BY
 FIG.33 NO.1-1
 (GASKET SET.P/# 705100-92601).

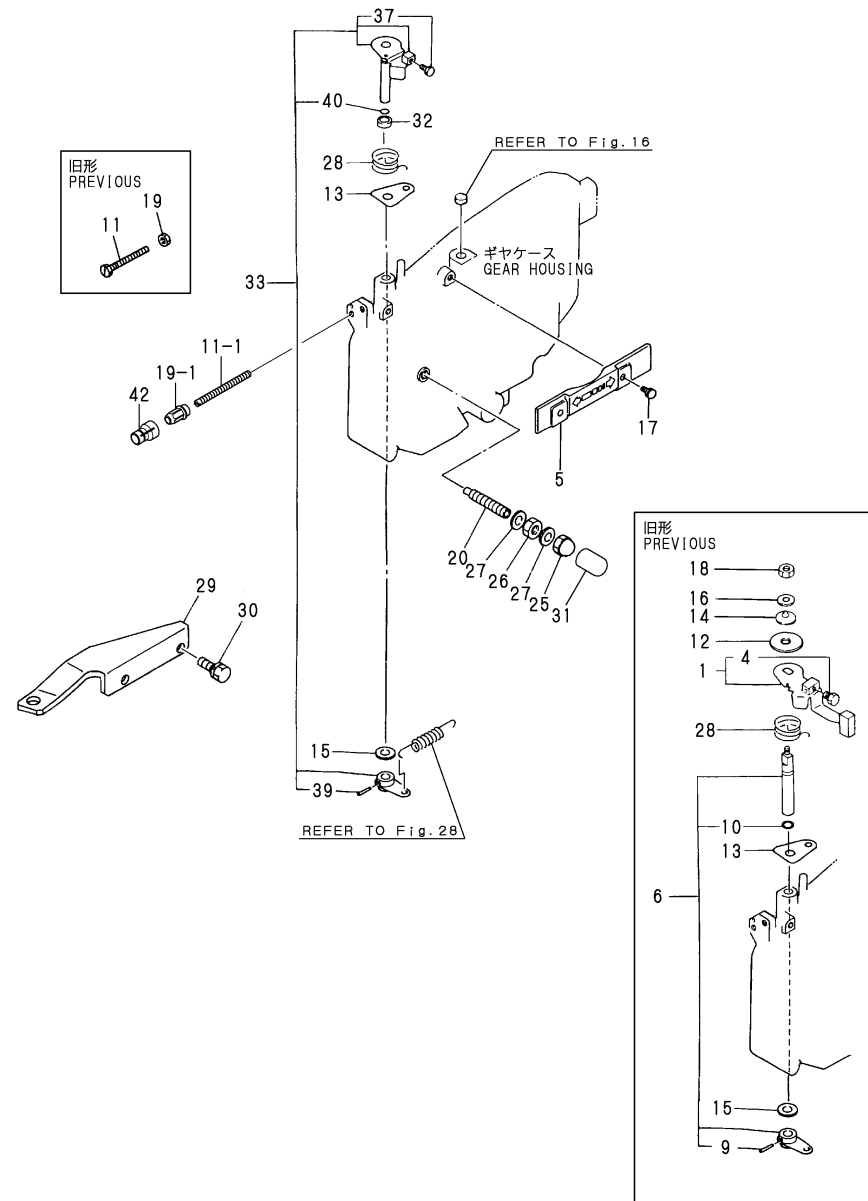
Fig.28. GOVERNOR & CONTROL DEVICE

(A)= (D)=NFAD8-SA
 (B)= (E)=
 (C)=NFAD8-ESA (F)=



No.	Lev.	Parts No.	Description	Q'ty						I	R
				(A)	(B)	(C)	(D)	(E)	(F)		
1	1	705300-61701	GOVERNOR ASSY			1	1				
5	1	105300-61600	SLEEVE, GOVERNOR			1	1				
6	1	105300-66011	SPRING, REGULATOR			1	1				
7	1	105100-66300	LEVER, GOVERNOR			1	1				
8	1	105100-66400	SHAFT			1	1				
9	1	24190-120001	BALL, STEEL 3/8			1	1				
10	1	26022-050102	SCREW, M5X10			2	2				

Fig.29. REGULATOR HANDLE



(A)= (D)=NFAD8-SA
 (B)= (E)=
 (C)=NFAD8-ESA (F)=

No.	Lev.	Parts No.	Description	Q'ty						I	R
				(A)	(B)	(C)	(D)	(E)	(F)		
1	1	105502-66041	HANDLE ASSY (C=E/XXX) (D=E/XXX)	1	1						Z
4	2	105225-66990	SCREW, M5X8.5 (C=E/XXX) (D=E/XXX)	1	1						Z
5	1	105300-66110	COVER	1	1						
6	1	705100-66700	LEVER ASSY,REGULATOR (C=E/XXX) (D=E/XXX)	1	1						Z
9	2	22322-030200	PIN, TAPER 3X20 (C=E/XXX) (D=E/XXX)	1	1						Z
10	2	24311-000070	O-RING, 1AP7.0 (C=E/XXX) (D=E/XXX)	1	1						Z
11	1	105300-66520	SCREW	1	1						
11-1	1	105090-66830	SCREW (C=E/#082033) (D=E/#082026)	1	1						S 1
12	1	105840-66831	PLATE, FRICTION (C=E/XXX) (D=E/XXX)	1	1						Z
13	1	105300-66850	RETAINER	1	1						
14	1	105840-66880	SPRING	1	1						Z
15	1	22117-100000	WASHER, 10	1	1						
16	1	22137-060000	WASHER, 6 (C=E/XXX) (D=E/XXX)	1	1						Z
17	1	26106-060122	BOLT, M6X 12 PLATED	2	2						
18	1	26347-060002	NUT, M6 (C=E/XXX) (D=E/XXX)	1	1						Z
19	1	26756-060002	NUT, LOCK M6	1	1						
19-1	1	129209-61370	NUT, M6 (C=E/#082033) (D=E/#082026)	1	1						S 1
20	1	105090-66551	LIMITER ASSY, FUEL	1	1						
25	1	124060-66950	NUT, CAP M10	1	1						
26	1	26796-100002	NUT, LOCK M10	1	1						
27	1	22190-100002	WASHER, SEAL 10	2	2						
28	1	105502-67301	SPRING, RETURN	1	1						
29	1	105298-67010	BRACKET	1	1						
30	1	26013-060202	BOLT, M6X 20	2	2						
31	1	105300-66610	CAP (C=E/XXX) (D=E/XXX)	1	1						W
32	1	121575-21850	WASHER (C=E/XXX) (D=E/XXX)	1	1						W
33	1	705192-66700	SHAFT ASSY (C=E/XXX) (D=E/XXX)	1	1						W
37	3	105225-66990	SCREW, M5X8.5 (C=E/XXX) (D=E/XXX)	1	1						W
39	2	22322-030200	PIN, TAPER 3X20 (C=E/XXX) (D=E/XXX)	1	1						W
40	2	24311-000070	O-RING, 1AP7.0 (C=E/XXX) (D=E/XXX)	1	1						W
42	1	119285-66650	CAP, HIGH-IDLE (C=*2005.04) (D=E/#081232)	1	1						W 1

Remarks
 (1)INTERCHANGEABLE BY SIMULTANEOUS
 REPLACEMENT WITH NO.11-1,19-1,AND
 42.

Fig.30. STARTING DEVICE

(A)=
(B)=
(C)=NFAD8-ESA
(D)=NFAD8-SA
(E)=
(F)=

No.	Lev.	Parts No.	Description	Q'ty						I	R
				(A)	(B)	(C)	(D)	(E)	(F)		
1	1	105300-76330	GEAR, STARTING			1	1				
2	1	105300-76330	GEAR, STARTING			1	1				
3	1	705100-76900	SHAFT ASSY, STARTING			1	1				
6	1	105300-76470	COLLAR			1	1				
7	1	105300-76490	KEY, 7X10			1	1				
8	1	26557-060082	SCREW, M6X 8			1	1				
9	1	105100-76790	HANDLE ASSY			1	1				
12	1	22242-000200	RING, 20			1	1				
13	1	105298-08100	BRACKET, HANDLE			1	1				
14	1	105300-08510	BRACKET ASSY			1	1				
18	1	26106-060122	BOLT, M6X 12 PLATED			2	2				

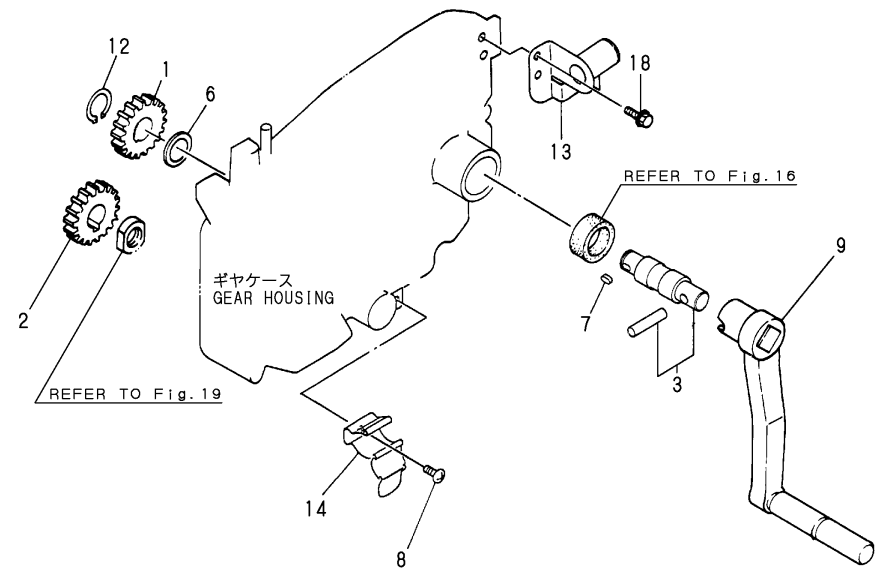
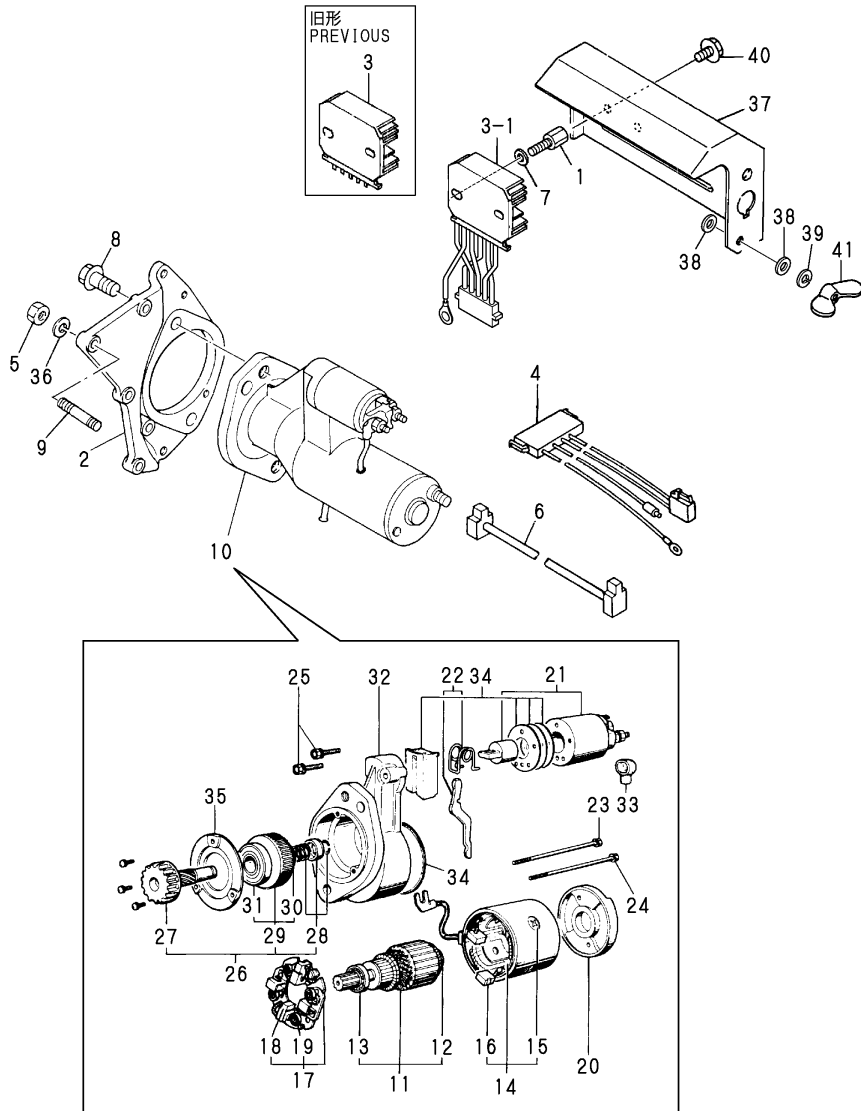


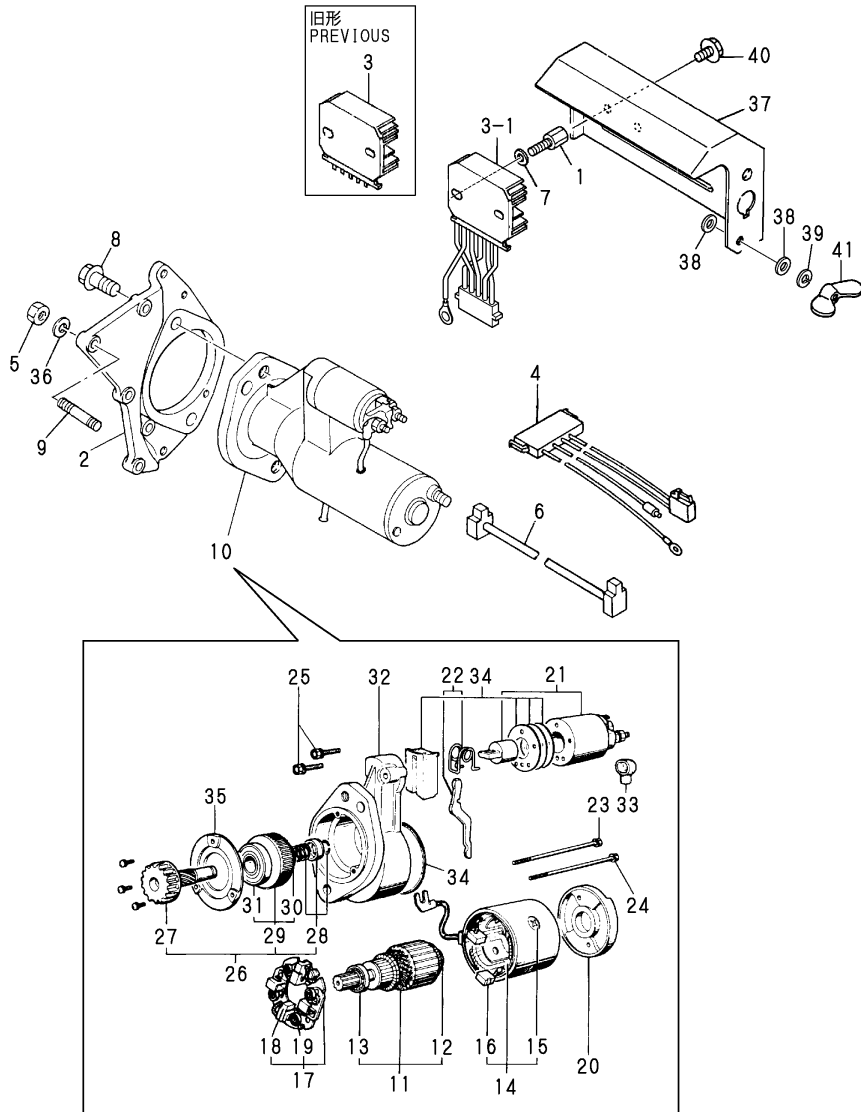
Fig.31. STARTING MOTOR



(A)=
(B)=
(C)=NFAD8-ESA
(D)=NFAD8-SA
(E)=
(F)=

No.	Lev.	Parts No.	Description	Qty						I	R
				(A)	(B)	(C)	(D)	(E)	(F)		
1	1	105212-01910	BOLT			2					
2	1	105100-77470	BRACKET			1					
3	1	119660-77710	LIMITER, CURRENT 15A			1					
3-1	1	119660-77711	LIMITER, CURRENT 15A (C=*2000.07)			1					N
4	1	105098-78540	HARNES, WIRE			1					
5	1	26716-060002	NUT, M6			4					
6	1	105300-78570	HARNES, WIRE			1					
7	1	22117-060000	WASHER, 6			2					
8	1	26013-120302	BOLT, M12X 30			2					
9	1	26226-060222	STUD, M6X 22			4					
10	1	105100-77010	STARTER, S114-438B			1					
10-1	1	105100-77011	MOTOR,STARTER (C=E/#067358)			1					N
11	2	X211461005	ARMATURE			1					
12	3	X211415502	BEARING, BALL			1					
12-2	3	X2130350900	BALL BEARING (C=E/#067358)			1					R
13	3	X211425502	BEARING, BALL			1					
13-2	3	X211425511	BALL BEARING (C=E/#067358)			1					R
14	2	X211442003	COIL ASSY, FIELD			1					
15	3	X21143215	SCREW, CORE			1					
16	3	X211469002	BRUSH (+)			2					
17	2	X211479001	HOLDER ASSY, BRUSH			1					
18	3	X211459002	BRUSH (-)			2					
19	3	X21148314	SPRING, BRUSH			4					
20	2	X211483003	COVER			1					
21	2	171008-77530	SWITCH, MAGNETIC			1					
22	2	X211446012	LEVER, SHIFT			1					
23	2	X211468005	BOLT, THROUGH			1					
24	2	X21148856	BOLT, THROUGH			1					
25	2	X21145866	BOLT			2					
26	2	X211455011	PINION ASSY			1					
27	3	X211465011	SHAFT, PINION			1					
28	3	X211429006	STOPPER SET			1					
29	3	X211425506	CLUTCH ASSY			1					
29-2	3	X2114555500	CLUTCH ASSY (C=E/#067358)			1					R
30	4	X211435502	BALL BEARING			1					
30-2	4	X211495502	BEARING, BALL (C=E/#067358)			1					R
31	4	X211455502	BALL BEARING			1					
32	2	X211466605	CASE ASSY, GEAR			1					
33	2	X21142742	COVER (A), RUBBER			1					
34	2	X211458012	COVER KIT			1					
35	2	X211428008	RETAINER, BEARING			1					
36	1	22212-060000	WASHER 6			4					
37	1	105100-77781	COVER (C=EXXX)			1					W
38	1	22117-050000	WASHER, 5			2					W

Fig.31. STARTING MOTOR

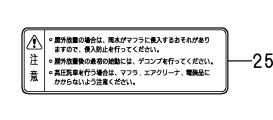
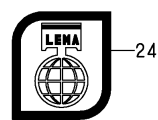
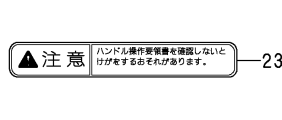
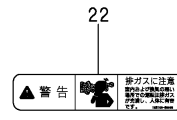
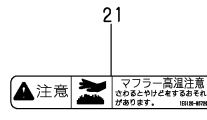
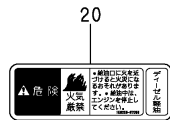
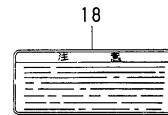
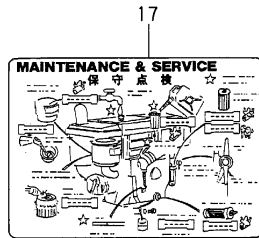
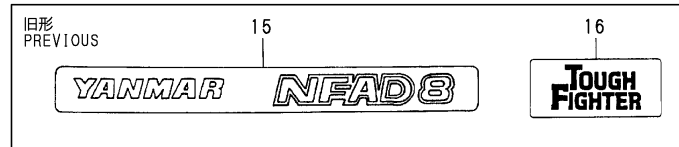
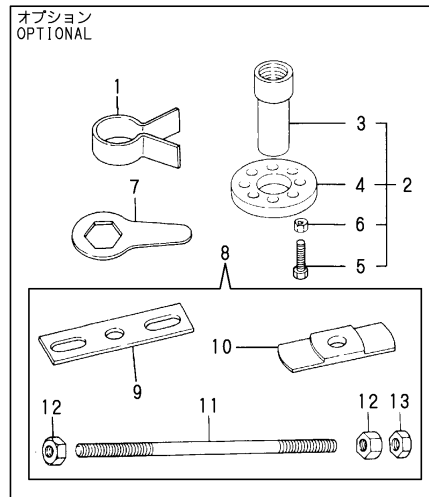


No.	Lev.	Parts No.	Description	Q'ty						I	R
				(A)	(B)	(C)	(D)	(E)	(F)		
39	1	22217-050000	WASHER, SPRING 5 (C=EXXX)			1					W
40	1	26106-060102	BOLT, M6X 10 PLATED (C=EXXX)			2					W
41	1	26636-050002	NUT, WING M5 (C=EXXX)			1					W

Fig.32. TOOL & LABEL

(A)=
(B)=
(C)=NFAD8-ESA

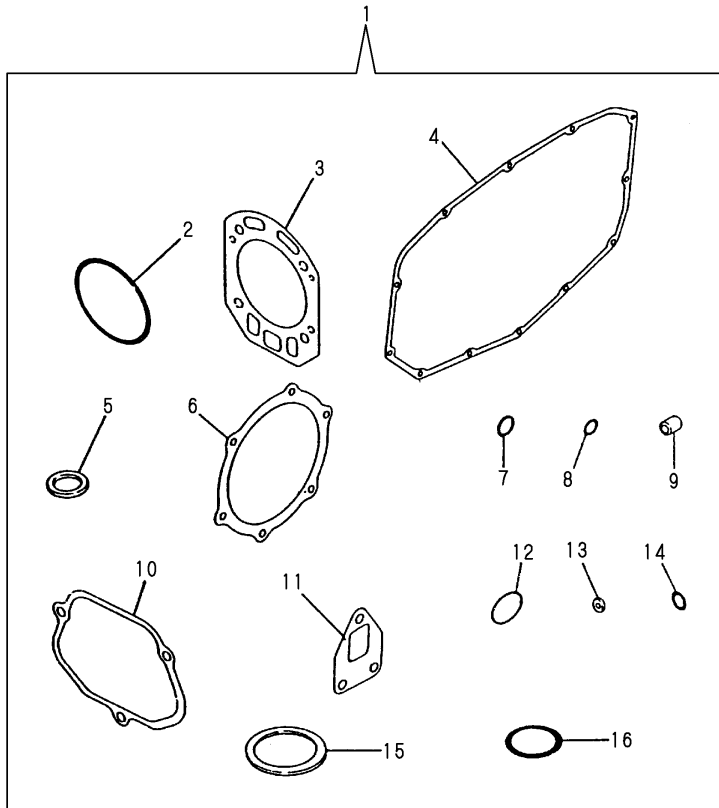
(D)=NFAD8-SA
(E)=
(F)=



No.	Lev.	Parts No.	Description	Qty						I	R	
				(A)	(B)	(C)	(D)	(E)	(F)			
1	1	102700-92140	TOOL, PISTON&RING			1	1					1
2	1	704200-92700	TOOL ASSY, FLYWHEEL			1	1					1
3	2	104200-92110	RETAINER, A			1	1					1
4	2	104200-92120	RETAINER, B			1	1					1
5	2	104200-92130	TOOL			2	2					1
6	2	26716-120002	NUT, M12			2	2					1
7	1	104200-92100	WRENCH			1	1					1
8	1	705200-92210	TOOL ASSY, LINER			1	1					1
9	2	172200-92020	TOOL, LINER REMOVER			1	1					1
10	2	105200-92010	TOOL, LINER REMOVER			1	1					1
11	2	103338-92030	BOLT, LINER REMOVER			1	1					1
12	2	26716-160002	NUT, M16			2	2					1
13	2	26757-160002	NUT, LOCK M16			1	1					1
15	1	105250-07070	LABEL (C=E/XXX) (D=E/XXX)			2	2					Z
16	1	105300-07070	LABEL (C=E/XXX) (D=E/XXX)			1	1					Z
17	1	105190-07100	LABEL			1	1					
18	1	105370-07450	LABEL, RADIATOR CAP			1	1					
18-1	1	105250-07310	LABEL, RADIATOR (C=E/#057757) (D=E/#057757)			1	1					N
19	1	105372-07150	LABEL, LUB. OIL			1	1					
20	1	105250-07320	LABEL, NO FIRE (C=E/#057757) (D=E/#057757)			1	1					W
21	1	105250-07330	LABEL (C=E/#057757) (D=E/#057757)			1	1					W
22	1	105250-07340	LABEL, EXH. GAS CAUTN (C=E/#057757) (D=E/#057757)			1	1					W
23	1	105100-07300	LABEL, CAUTION (C=E/#082068) (D=*2006.02)			1	1					W
24	1	161690-07300	LABEL (C=E/#082033) (D=E/#082026)			1	1					W
25	1	105098-07900	LABEL (C=E/#082068) (D=*2006.02)			1	1					W

Remarks
(1)OPTIONAL

Fig.33. GASKET SET(OPTIONAL)



No.	Lev.	Parts No.	Description	Q'ty						I	R
				(A)	(B)	(C)	(D)	(E)	(F)		
1	1	705100-92600	GASKET SET			1	1				
1-1	1	705100-92601	GASKET SET (C=E/#064318) (D=E/#064318)			1	1				N
2	2	105100-01300	O-RING			2	2				
3	2	105100-01330	GASKET, HEAD 147X118			1	1				
3-1	2	105100-01331	GASKET, HEAD (C=E/#064318) (D=E/#064318)			1	1				N
4	2	105100-01410	GASKET, GEAR CASE			1	1				
5	2	101104-01760	GASKET, CAP			1	1				
6	2	105100-02020	GASKET			1	1				
6-1	2	105100-02021	GASKET (C=E/#064318) (D=E/#064318)			1	1				N
7	2	24341-000200	O-RING, 1AS20.0			1	1				
8	2	24311-000070	O-RING, 1AP7.0			1	1				
9	2	119625-11870	PROTECTOR, NOZZLE			1	1				
9-1	2	119625-11871	PROTECTOR, NOZZLE (C=E/#052567) (D=E/#052567)			1	1				R
10	2	105100-11310	GASKET, BONNET			1	1				
11	2	105300-13200	GASKET, SILENCER			1	1				
12	2	103338-32570	O-RING			1	1				
13	2	124550-51350	GASKET, DELIVERY			1	1				
14	2	124550-51370	O-RING			1	1				
15	2	101504-55051	GASKET			1	1				
16	2	105300-55520	O-RING			1	1				

Parts No. Index

Parts No.	Fig. No.	Ref. No.
101104-01760	1	27
	15	5
	16	32
	33	5
101147-12550	3	28
	18	9
101158-03061	7	11
	23	15
101158-03111	7	13
	23	18
101158-11180	2	8
	17	11
101158-11230	2	22
		26
	17	23
		27
101168-55040	8	26
	26	3
101300-92140	14	1
101504-55051	8	27
	15	15
	26	4
	33	15
101504-55101	8	29
	26	6
102700-92140	32	1
103338-32070	7	9
	23	7
103338-32570	7	7
	15	12
	23	8
	33	12
103338-92030	14	11
	32	11
103854-51251	10	14
	25	16
103854-55220	8	31
	26	8
104104-03750	2	32
	17	34
104104-21600	20	34
104107-07900	8	35
	24	50
104200-03600	2	30
	17	32
104200-03641	2	31
	17	33
104200-21530	20	13
104200-55160	8	30
104200-55750	11	32

Parts No.	Fig. No.	Ref. No.
104200-55750	27	48
104200-92100	32	7
104200-92110	32	3
104200-92120	14	4
	32	4
104200-92130	14	5
	32	5
104271-01950	1	29
	16	34
104271-51450	10	20
	25	25
104271-51460	10	21
	25	26
104300-12960	18	8
104300-32150	7	1
104300-55160	26	7
104300-76460	4	9
	19	9
104407-21600	5	28
104511-21600	5	11
104607-44540	24	16
104807-55220	8	39
104884-59170	27	9
105010-11920	2	13
	17	16
105010-13200	3	16
	15	11
105010-13201	3	16 -1
	15	11 -1
105010-21530	5	25
105010-92100	14	7
105050-53000	11	2
105090-01300	1	3
	15	2
105090-01330	1	12
	15	3
105090-01331	1	12 -1
	15	3 -1
105090-01410	1	23
	15	4
105090-01480	1	24
105090-01750	1	26
105090-01960	1	29 -1
	16	34 -1
105090-02020	1	45
	15	6
105090-02021	1	45 -1
	15	6 -1
105090-03081	7	12
	23	17

Parts No.	Fig. No.	Ref. No.
105090-03131	7	14
	23	20
105090-07160	14	18
105090-07940	8	37
105090-11100	2	5
105090-11111	2	6
105090-11290	2	14
105090-11310	2	39
	15	10
105090-11650	2	20
105090-11660	2	24
105090-11800	2	4 B
105090-11820	2	40
105090-13550	3	18
105090-14010	4	1
105090-14091	4	2
105090-14100	4	3
105090-14400	4	5
105090-14420	4	6
105090-14600	4	7
105090-21100	5	3
105090-21130	5	4
105090-21200	5	8
105090-21300	5	14
105090-21310	5	16
105090-21350	5	13
105090-21361	5	15
105090-21401	5	12
105090-21591	5	9
105090-22190	6	1
105090-22400	6	9
105090-22470	6	17
105090-22480	6	23
105090-22510	6	19
105090-22520	6	25
105090-23910	6	12
105090-44050	8	1
105090-44211	9	1
105090-44251	8	3
105090-44300	8	4
105090-44330	8	5
105090-44350	8	6
105090-44360	8	7
105090-44490	8	10
105090-44800	9	2
105090-44810	9	13
105090-44850	9	3
105090-44940	9	15
105090-59020	11	39
105090-59800	11	48

Parts No.	Fig. No.	Ref. No.
105090-61810	12	12
105090-66300	12	8
105090-66540	12	32 -1
105090-66551	12	32
	29	20
105090-66830	12	28 -1
	29	11 -1
105090-76340	7	19
105090-76790	7	25
105090-77471	13	28
105090-77820	13	38
105090-92010	14	10
105090-92090	14	8
105090-92110	14	3
105090-92190	14	2
105092-12550	3	28 -1
	18	9 -1
105092-44201	9	1 A
105092-44680	9	2 A
105092-44700	9	3 A
105098-07060	14	15
105098-07900	14	26
	32	25
105098-12020	3	1
105098-12021	3	1 -1
105098-12022	3	1 -2
105098-12510	3	3
105098-12511	3	3 -1
105098-12520	3	9
105098-12521	3	9 -1
105098-12530	3	4
105098-12540	3	5
105098-12550	3	6
105098-12560	3	7
	18	7 -1
105098-12570	3	22
105098-12580	3	10
105098-12590	3	11
105098-12600	3	12
105098-12610	3	13
105098-12611	3	13 -1
105098-12650	3	29
105098-12960	3	8
105098-13510	3	17
105098-13511	3	17 -1
105098-13591	3	26 -1
105098-13592	3	26 -2
105098-13610	3	24
105098-13622	3	24 -1
105098-13623	3	24 -2

Parts No. Index

Parts No.	Fig. No.	Ref. No.
105098-13990	3	26 A
	18	19 -1
105098-21900	5	21
105098-44500	8	11
105098-67010	12	41
105098-78540	13	30
	31	4
105100-01300	16	3
	33	2
105100-01330	16	15
	33	3
105100-01331	16	15 -1
	33	3 -1
105100-01410	16	28
	33	4
105100-01660	1	18
	16	22
105100-02020	16	50
	33	6
105100-02021	16	50 -1
	33	6 -1
105100-02300	1	46
	16	51
105100-02310	1	47
	16	52
105100-03081	23	16
105100-03131	23	19
105100-07300	14	24
	32	23
105100-11100	17	8
105100-11111	17	9
105100-11310	17	38
	33	10
105100-11650	17	21
105100-11660	17	25
105100-12020	18	1
105100-12550	18	10
105100-14091	19	2
105100-14100	19	3
105100-14400	19	5
105100-14600	19	7
105100-21200	20	9
105100-21400	20	31
105100-21590	20	10
105100-21600	20	12
105100-22400	21	9
105100-23910	21	12
105100-44330	24	5
105100-44360	24	7
105100-44490	24	10

Parts No.	Fig. No.	Ref. No.
105100-44630	8	15
	24	18
105100-44770	9	9
	24	33
105100-44780	9	8
	24	34
105100-44810	24	39
105100-44930	9	24
	24	54
105100-44940	24	41
105100-55230	26	10
105100-55810	26	13
105100-55820	26	14
105100-59010	27	2
105100-59800	27	12
105100-66300	28	7
105100-66400	12	9
	28	8
105100-76790	30	9
105100-77010	13	1
	31	10
105100-77011	13	1 -1
	31	10 -1
105100-77470	31	2
105100-77781	13	43
	31	37
105140-07940	24	52
105140-34100	7	10 A
	23	10 A
105140-76500	1	22
	16	27
105170-14010	19	1
105172-44201	24	27 A
105172-44680	24	28 A
105172-44700	24	35 A
105190-01480	16	29
105190-01670	16	10
105190-01671	16	10 -1
105190-01680	16	11
105190-01750	16	31
105190-07100	14	17
	32	17
105190-12050	3	2
	18	2
105190-12510	18	3
105190-12511	18	3 -1
105190-12512	18	3 -2
105190-12513	18	3 -3
105190-12514	18	3 -4
105190-12530	18	4

Parts No.	Fig. No.	Ref. No.
105190-12531	18	4 -1
105190-12540	18	5
105190-12560	18	6
105190-12570	18	7 -2
105190-12590	18	8 A
105190-13550	18	15
105190-14421	19	6
105190-21100	20	4
105190-21300	20	32
105190-21310	20	33
105190-21320	20	14
105190-21350	20	15
105190-21360	20	16
105190-21900	20	25
105190-21910	5	27
	20	26
105190-28250	22	1
105190-28300	22	2
105190-28310	22	3
105190-28380	22	4
105190-28410	22	5
105190-28710	22	8
105190-35050	7	37
	23	11
105190-44050	24	1
105190-44300	24	4
105190-59520	27	10
105192-59560	11	46
105192-59562	11	46 -1
105192-59570	11	47
105198-13530	18	14
105198-13590	18	18 -1
105198-13591	18	18 -2
105198-13610	18	16
105198-13620	18	16 -1
105198-13621	18	16 -2
105198-21900	20	27
105198-44250	24	3
105198-44500	24	11
105198-44590	8	13
	24	14
105198-55240	26	11
105198-55510	11	22
	27	38
105198-55520	8	43
	26	12
105198-55600	11	20
	27	36
105200-22471	21	21
105200-22472	21	21 -1

Parts No.	Fig. No.	Ref. No.
105200-22481	21	28
105200-22482	21	28 -1
105200-22500	21	3 -2
105200-22510	21	23
105200-22511	21	23 -1
105200-22520	21	30
105200-22521	21	30 -1
105200-51100	10	4
	25	3
105200-92010	32	10
10520H-12550	18	10 -1
105212-01910	13	27
	31	1
105215-01200	1	10
	16	13
105215-01670	1	8
105215-76490	22	11
105225-23200	6	14
105225-66990	12	16
		49
	29	4
		37
105250-07070	32	15
105250-07310	14	19 -1
	32	18 -1
105250-07320	14	21
	32	20
105250-07330	14	22
	32	21
105250-07340	14	23
	32	22
105250-22090	21	1
105250-22091	21	1 -1
105292-44200	24	27
105292-44340	24	6
105292-44680	24	28
105292-44850	24	35
105298-08100	7	29
	30	13
105298-67010	29	29
105300-01690	1	25
	16	30
105300-01920	1	28
	16	33
105300-07070	14	16
	32	16
105300-07910	24	51
105300-08510	7	30
	30	14
105300-11290	17	17

Parts No. Index

Parts No.	Fig. No.	Ref. No.
105300-11330	2	3
	17	5
105300-11801	17	3
105300-11900	2	18
	17	19
105300-12560	18	7
105300-13200	18	13
	33	11
105300-13201	18	13 -1
105300-14200	4	4
	19	4
105300-14700	19	8
105300-21381	5	17
	20	17
105300-23200	21	14
105300-28450	22	6
105300-28700	22	7
105300-32500	23	1 -1
105300-34040	1	19
	16	23
105300-44220	8	2
	24	2
105300-44451	8	8
	20	18
	24	8
105300-44460	5	18
	8	9
	20	19
	24	9
105300-51500	10	22
	25	27
105300-51510	10	23
	25	28
105300-51550	10	24
	25	29
105300-51800	10	29
	25	31
105300-53100	11	6
	27	22
105300-55080	8	28
	26	5
105300-55340	11	27
	27	43
105300-55520	11	21
	15	16
	27	37
	33	16
105300-55610	11	23
	27	39
105300-55700	11	24

Parts No.	Fig. No.	Ref. No.
105300-55700	27	40
105300-55750	11	36
	27	52
105300-59100	11	45
	27	8
105300-59570	27	11
105300-61600	12	5
	28	5
105300-66010	12	7
105300-66011	12	7 -1
	28	6
105300-66110	12	17
	29	5
105300-66520	12	28
	29	11
105300-66610	12	43
	29	31
105300-66850	12	24
	29	13
105300-76330	7	18
	30	1
		2
105300-76470	7	23
	30	6
105300-76490	7	24
	30	7
105300-78570	13	31
	31	6
10530H-11290	17	17 -1
10530H-21530	20	13 -1
105340-44570	8	12
	24	13
105340-44710	9	4
	24	29
105340-44750	9	7
	24	32
105362-78960	7	15
	23	21
105370-07450	14	19
	32	18
105370-55710	11	35
	27	51
105372-07150	14	20
	32	19
105400-11121	2	7
	17	10
105400-11800	17	3 -1
105430-28720	22	9
105430-67110	24	56
105500-07920	8	36

Parts No.	Fig. No.	Ref. No.
105502-66041	12	13
	29	1
105502-67301	12	40
	29	28
105700-14700	4	8
105840-66831	12	23
	29	12
105840-66880	12	25
	29	14
106100-02331	1	48
	16	53
106100-21130	20	5
106100-44560	8	40
		41
	24	17
106100-44650	9	14
	24	40
106100-44960	9	16
	24	42
106148-13590	3	26
106383-44720	9	5
	24	30
106383-44740	9	6
	24	31
106530-13570	18	17
106530-13590	18	18
111130-02160	1	44
114250-12550	18	9 -2
114250-51190	10	30
	25	8
114250-53080	11	5
	27	21
114250-53120	11	9
	27	25
114250-53130	11	10
	27	26
114250-53140	11	11
	27	27
114250-53210	11	12
	27	28
114250-53400	11	13
	27	29
119285-66650	12	54
	29	42
119625-11870	2	19
	15	9
	17	20
	33	9
119625-11871	2	19 -1
	15	9 -1

Parts No.	Fig. No.	Ref. No.
119625-11871	17	20 -1
	33	9 -1
119625-11880	2	17
	17	18
119625-11900	2	18 -1
	17	19 -1
119660-77710	13	29
	31	3
119660-77711	13	29 -1
	31	3 -1
119800-53000	27	18
119810-22300	21	8
120270-61250	1	22 -1
	16	27 -1
121250-44590	8	14
	24	15
121450-01220	1	11
	16	14
121575-21850	12	44
	29	32
123325-02500	16	49
123672-83880	22	12
124060-39451	7	10
	23	10
124060-39452	7	10 -1
	23	10 -1
124060-66950	12	37
	29	25
124550-51320	10	16
	25	20
124550-51341	10	17
	25	21
124550-51350	10	18
	15	13
	25	22
	33	13
124550-51370	10	19
	15	14
	25	23
	33	14
124722-59050	11	43
	27	6
124766-59050	11	41
		44
	27	4
		7
124950-22300	6	8
124950-51190	10	7
	25	9
128170-11340	2	4 C

Parts No. Index

Parts No.	Fig. No.	Ref. No.
128170-11340	17	7 A
128170-51300	25	17
129100-51300	10	15
129209-61370	12	31 -1
	29	19 -1
129301-03660	11	38
	27	1
160120-76940	3	19
	5	19
	8	16
	18	21
	20	20
	24	19
160260-01580	3	15
	18	12
161690-07300	14	25
	32	24
171008-77530	13	12
	31	21
172200-92020	14	9
	32	9
174100-54120	10	13
	25	15
174100-61600	12	6
174307-51170	10	5
	25	6
174307-51181	10	6
	25	7
174307-51700	10	25
	25	30
22117-050000	13	42
		42 -1
	31	38
22117-060000	2	41
	13	32
	31	7
22117-100000	12	26
	29	15
22137-060000	12	27
	29	16
22137-080000	9	19
	24	45
22190-060002	18	9 A
22190-100002	12	39
	29	27
22212-060000	13	33
	31	36
22217-050000	13	41
	31	39
22217-080000	1	32

Parts No.	Fig. No.	Ref. No.
22217-080000	9	17
	16	37
	24	43
22217-120000	5	22
	9	10
	20	28
	24	36
22242-000200	7	28
	30	12
22252-000100	1	20
	16	24
22312-030180	2	34
	17	35
22322-030180	2	35
	17	36
22322-030200	12	21
		51
	29	9
		39
22351-060012	1	9
	13	37
	16	12
		26
	17	5 -1
22512-050120	20	6
22512-050140	5	5
		6
22512-070500	4	10
	5	24
	20	30
22512-070550	19	10
22512-100260	20	7
23064-090220	7	16
		16 A-1
23064-090370	7	16 A
23064-090400	23	22 -1
23080-013000	11	52
	27	16
23414-080000	8	32
	26	9
24101-060044	22	13
24101-060064	19	11
24107-062013	9	11
	24	37
24121-060074	22	14
24190-120001	1	21
	12	10
	16	25
	28	9
24311-000060	16	38

Parts No.	Fig. No.	Ref. No.
24311-000070	2	36
	12	22
		52
	15	8
	17	37
	29	10
		40
	33	8
24311-000160	11	34
	27	50
24321-000250	1	34
	16	39
24341-000200	7	38
	15	7
	23	14
	33	7
25117-003301	9	20
25117-003451	24	46
26013-060129	8	17
	24	20
26013-060142	5	20
	20	21
		22
26013-060162	8	18
		18 -1
	24	21
		21 -1
26013-060202	12	42
		42 -1
	24	22
	29	30
26013-060222	22	17
26013-080189	3	20
	18	20
26013-080202	22	15
26013-120302	13	34
	31	8
26022-050102	10	28
	12	11
	25	34
	28	10
26022-060122	4	11
	19	12
		13
26023-060252	7	17
		17 -2
	23	23
		23 -2
		25
26106-060102	8	19

Parts No.	Fig. No.	Ref. No.
26106-060102	13	44
	31	40
26106-060122	3	23
	5	29
	7	8
		34
	8	20
		21
	12	29
	20	35
	23	9
	24	23
		24
	26	15
	29	17
	30	18
26106-060182	13	39
	24	25 -1
26106-060202	1	35
	2	37
	3	21
	5	26
	8	22
		23
	16	40
	17	39
	18	22
	20	23
	24	25
		26
26106-060222	7	17 -1
	23	23 -1
		24
26106-060252	9	21
	24	47
26106-060302	1	36
	16	41
	24	57
26106-060552	1	37
26106-060602	2	38
	17	40
26106-060652	1	41
26106-060702	16	42
26106-080142	8	33
26106-080162	9	22
26106-080202	3	14
	18	11
	24	48
26106-080222	8	33 -1
	26	16

Parts No. Index

Parts No.	Fig. No.	Ref. No.
26106-080302	11	37
	24	49 -1
	27	53
26106-080322	8	34
26106-080352	9	23
	24	49
26106-080452	26	17
26106-100502	22	16
26106-100552	22	16 -1
26116-050082	1	49
	16	54
26116-120352	5	23
	20	29
26216-060352	2	11 -1
	17	14 -1
26216-060402	2	11
	17	14
26216-080222	1	38
	16	43
26216-080452	2	10
	17	13
26226-060222	13	35
	31	9
26226-080222	1	39
	16	44
26306-080002	1	40 -1
	2	28 -1
	16	45 -1
	17	29 -1
	26	18 -1
26347-060002	12	30
	29	18
26366-060002	2	12
	8	42
	9	25
	17	15
	24	55
26366-080002	1	40
	2	28
	16	45
	17	29
	26	18
26554-060162	3	27
26554-060182	18	19
26557-060082	7	35
	20	24
	30	8
26557-060142	4	12
26617-100002	8	38
	24	53

Parts No.	Fig. No.	Ref. No.
26636-050002	13	40
	31	41
26716-060002	13	36
	31	5
26716-080002	1	33
	9	18
	16	46
	24	44
26716-120002	32	6
26716-160002	14	12
	32	12
26717-120002	14	6
26756-060002	12	31
	29	19
26756-080002	2	23
		27
	17	24
		28
26757-160002	14	13
	32	13
26777-120002	9	12
	24	38
26796-100002	12	38
	29	26
27231-150000	2	4
	17	7
27310-070001	2	9
	17	12
49934-000014	26	19
49934-000105	23	22
704200-92700	32	2
705050-53100	11	1
705090-01501	1	13
705090-01560	1	4
705090-01900	1	1
705090-02500	1	42
705090-11520	2	29
705090-11700	2	1
705090-11701	2	1 -1
705090-21700	5	1
705090-22501	6	3
705090-23100	6	10
705090-23600	6	15
705090-23610	6	29
705090-23620	6	31
705090-51102	10	1
705090-55700	8	24
705090-61700	12	1
705092-92600	15	1
705092-92601	15	1 -1

Parts No.	Fig. No.	Ref. No.
705100-01501	16	16
705100-02500	16	47
705100-11520	17	30
705100-11700	17	1
705100-11701	17	1 -1
705100-23100	21	10
705100-23600	21	15
705100-23610	21	17
705100-23620	21	19
705100-53100	27	17
705100-66700	12	18
	29	6
705100-76900	7	20
	30	3
705100-92600	33	1
705100-92601	33	1 -1
705190-01560	16	4
705190-21700	20	1
705192-66700	12	45
	29	33
705198-55750	26	1
705200-01900	16	1
705200-51111	25	1
705200-92210	32	8
705270-22501	21	3
705270-22502	21	3 -1
705300-32500	23	1
705300-61701	28	1
711100-51540	10	10
	25	12
724550-51520	10	8
	25	10
X211415502	13	3
	31	12
X211425502	13	4
	31	13
X211425506	13	20
	31	29
X211425511	13	4 -2
	31	13 -2
X21142742	13	24
	31	33
X211428008	13	26
	31	35
X211429006	13	19
	31	28
X21143215	13	6
	31	15
X211435502	13	21
	31	30

Parts No.	Fig. No.	Ref. No.
X211442003	13	5
	31	14
X211446012	13	13
	31	22
X211455011	13	17
	31	26
X211455502	13	22
	31	31
X2114555500	13	20 -2
	31	29 -2
X211458012	13	25
	31	34
X21145866	13	16
	31	25
X211459002	13	9
	31	18
X211461005	13	2
	31	11
X211465011	13	18
	31	27
X211466605	13	23
	31	32
X211468005	13	14
	31	23
X211469002	13	7
	31	16
X211479001	13	8
	31	17
X211483003	13	11
	31	20
X21148314	13	10
	31	19
X21148856	13	15
	31	24
X211495502	13	21 -2
	31	30 -2
X2130350900	13	3 -2
	31	12 -2