

0CD10-M47100EN

PREFACE

1. This Parts Catalog is the 1st edition of NFD9-L(E)IK3 Diesel Engine for ISEKI NOHKI.

Pub. No. : 000Y00D4710

Published : April, 1993

2. Model name

Engine model	Vehicle		Vehicle made by
	Products	Model name	
NFD9-L(E)IK3	—	—	ISEKI NOHKI

Directions for the Parts Catalog.

1. This Parts Catalog shows both standard and optional parts.
2. Parts may change without prior notice.
3. The following is an example of the Parts Catalog format.

REF.	LEV.	PARTS NO.	DESCRIPTION	Q'TY						I	R
				(A)	(B)	(C)	(D)	(E)	(F)		
1	1	729595-51390	FUEL INJECTION PUMP	1	1	1	1	1			1
1-1	1	729595-51391	FUEL INJECTION PUMP	1	1	1	1	1		N	1
		(A=E00185) (B=E00200)									
3	2	26022-060162	SCREW M 6X 16	9	9	9	9	9			
3-1	2	26022-060162	SCREW M 6X 16	4	4	4	4	4		K	
		(A=E00156) (B=E00156) (C=E00156) (D=E00156) (E=E00156)									
4	2	129470-51040	CAMSHAFT	1	1	1	1	1			
5	2	122710-51050	BEARING, ROLLER	2	2	2	2	2			
6	2	129470-51060	RETAINER	1	1	1	1	1			

Remarks
(1) BOOST COMPEMSATOR TYPE. OPTIONAL PART, TO E00155,(4JH-DT, 4JH-DTZ

① Ref. No.

The Ref. No. listed may not be in accordance with the illustration Ref. No.

(Ex.) Illustration No.

List Ref No.

1

1

(Before change)

1-1

(After change)

For interchangeable symbols N, R and K, illustrations for new parts may be abbreviated.

② Lev. (Level)

Level indication

The numbers below indicate the level of relativity towards the main part.

1 ----- Main parts (Assembly parts)

2 ----- Sub component included in " 1 ".

3 ----- Sub component included in " 2 ".

Note) Parts that are not for sale are partially illustrated but not listed.

③ Interchangeability Symbol

When a part change takes place, one of the following interchangeability symbols is indicated beside the part.

Symbol	Interchangeability	Contents note
N	Old $\begin{matrix} \leftarrow \text{Yes} \\ \text{No} \rightarrow \end{matrix}$ New	New Part is interchangeable for Old Part but Old Part is not interchangeable for New Part.
Q	Old $\begin{matrix} \leftarrow \text{No} \\ \text{Yes} \rightarrow \end{matrix}$ New	New Part is not interchangeable for Old Part but Old Part is interchangeable for New Part.
R	Old $\begin{matrix} \leftarrow \text{Yes} \\ \text{Yes} \rightarrow \end{matrix}$ New	New/ Old Parts are both interchangeable.
S	Old $\begin{matrix} \leftarrow \text{No} \\ \text{No} \rightarrow \end{matrix}$ New	New/ Old Parts are both not interchangeable.
W		Part newly added.
Z		Part discontinued.
F		Not interchangeable by a single part but interchangeable together with related parts.
K		Changes only for used parts quantities.

④ Effective Machine No.

When a part changes, the effective Machine No. will be indicated in the (A)-(F) column.

Product Symbol	Product No.	Product Symbol	Product No.
C	Clutch No. Compressor No.	F	Machine No. (Agricultural Equip.)
D	Drive No.	M	Machine No.
E	Engine No.		

Note 1) A date may follow the symbol. (Ex.) 1996.01

Note 2) "XXXXX" and "ZZZZZ" are for parts that could not be predicted or for engine models that could not be identified.

Note 3) (A=E00185) is the E (Engine Serial Number) for the column (A) model (in this case 4JH-DT) after the parts design change.

⑤ Remarks

Figures or alphabets (symbols) are entered in the remarks column.

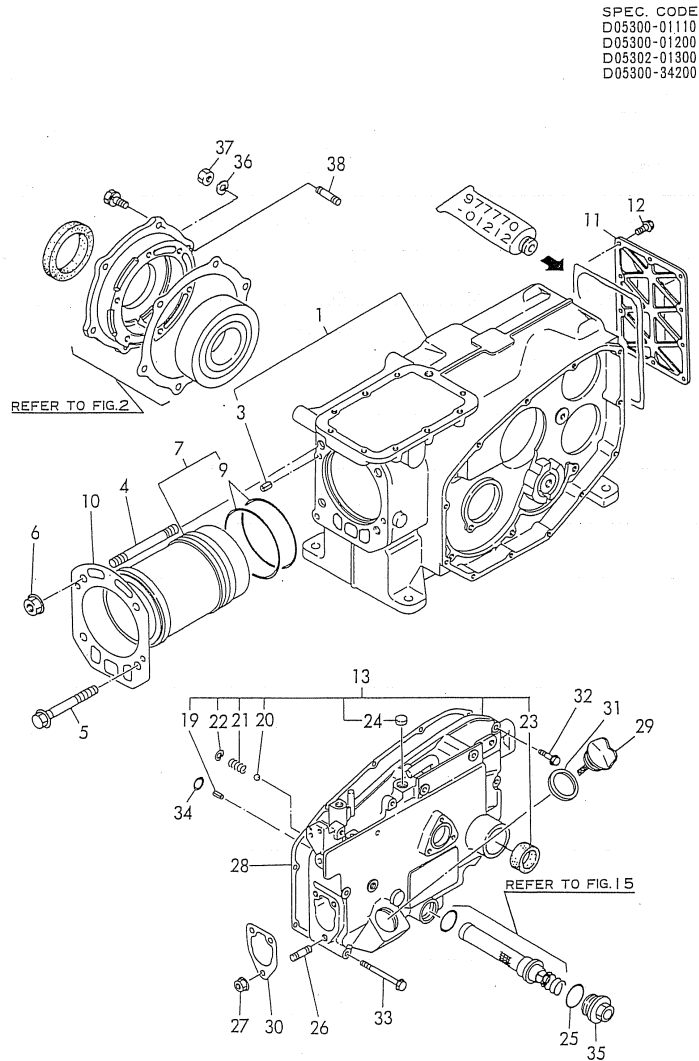
The comments (remarks) on parts that are indicated at the bottom of the illustration are the same symbols as those stated above.

Contents

Fig. No.	Fig. Name
ENGINE NFD9-L(E)IK3	
1.	CYLINDER BLOCK
2.	MAIN BEARING
3.	BREATHER & LABEL
4.	ENGINE LIFTER
5.	STARTING HANDLE BRACKET
6.	CYLINDER HEAD
7.	BONNET
8.	AIR CLEANER
9.	SILENCER
10.	CAMSHAFT
11.	CRANKSHAFT & FLYWHEEL
12.	FLYWHEEL COVER
13.	PISTON & CONNECTING ROD
14.	BALANCER
15.	LUB. OIL SYSTEM
16.	RADIATOR
17.	FAN
18.	FUEL INJECTION PUMP
19.	FUEL INJECTION VALVE
20.	FUEL TANK
21.	FUEL STRAINER
22.	FUEL LINE
23.	GOVERNOR & CONTROL DEVICE
24.	REGULATOR HANDLE

Fig. No.	Fig. Name
25.	STARTING DEVICE
26.	STARTING MOTER
27.	LIGHTING DEVICE
28.	TOOL & GASKET SET(OPTIONAL)
29.	TOOL(OPTIONAL)
30.	SAFETY LABEL

Fig.1. CYLINDER BLOCK



SPEC. CODE
 D05300-01110
 D05300-01200
 D05302-01300
 D05300-34200

(A)=NFD9-LIK3
 (B)=NFD9-LEIK3
 (C)=

(D)=
 (E)=
 (F)=

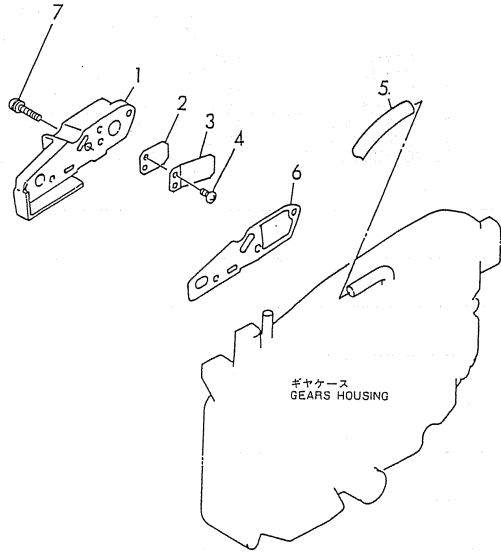
No.	Lev.	Parts No.	Description	Q'ty						I	R
				(A)	(B)	(C)	(D)	(E)	(F)		
1	1	705300-01561	BLOCK ASSY, CYLINDER	1	1						
3	2	22351-060012	PIN, SPRING 6.0X12	2	2						
4	1	105230-01200	BOLT, HEAD	2	2						
5	1	121550-01200	BOLT, HEAD	2	2						
6	1	121450-01220	NUT, CYLINDER HEAD	2	2						
7	1	705300-01900	LINER ASSY, CYLINDER	1	1						
9	2	105300-01300	GASKET, LINER	2	2						A
10	1	105300-01331	GASKET, HEAD 156X126	1	1						A
11	1	105300-01480	COVER	1	1						
12	1	26106-060162	BOLT, M6X 16 PLATED	10	10						
13	1	705302-01502	CASE ASSY, GEAR	1	1						
19	2	22351-060012	PIN, SPRING 6.0X12	1	1						
20	2	24190-120001	BALL, STEEL 3/8	1	1						
21	2	105300-34040	SPRING	1	1						
22	2	22252-000100	RING, 10	1	1						
23	2	105140-76500	SEAL, TCX25X35X6	1	1						
24	2	105100-01660	PLUG, 14	1	1						
25	1	24321-000250	O-RING, 1AG25.0	1	1						
26	1	26216-080222	STUD, M8X 22	3	3						
27	1	26366-080002	NUT, M8	3	3						
28	1	105300-01410	GASKET, GEAR CASE	1	1						A
29	1	105302-01750	CAP, FILLER	1	1						
30	1	104271-01950	SHIM SET,0.2X3,0.3X2	1	1						
31	1	101104-01760	GASKET, CAP	1	1						A
32	1	26106-060252	BOLT, M6X 25 PLATED	7	7						
33	1	26106-060652	BOLT, M6X 65 PLATED	5	5						
34	1	24311-000060	O-RING, 1AP6.0	1	1						
35	1	105300-01690	PLUG	1	1						
36	1	22217-080000	WASHER, SPRING 8	1	1						
37	1	26716-080002	NUT, M8	1	1						
38	1	26216-080222	STUD, M8X 22	1	1						

Remarks

(A) THESE PARTS ARE SOLD BY
 FIG28.REF NO.9

Fig.3. BREATHER & LABEL

SPEC. CODE
005300-03101
005308-07110



(A)=NFD9-LIK3
(B)=NFD9-LEIK3
(C)=

(D)=
(E)=
(F)=

No.	Lev.	Parts No.	Description	Q'ty						I	R
				(A)	(B)	(C)	(D)	(E)	(F)		
1	1	105300-03082	COVER, BREATHER	1	1						
2	1	101158-03061	VALVE	1	1						
3	1	101158-03111	RETAINER	1	1						
4	1	105362-78960	SCREW, M4X8	2	2						
5	1	23064-090400	PIPE, 9X 400	1	1						
6	1	105300-03130	GASKET	1	1						
7	1	26023-060252	SCREW, M6X25	3	3						
9	1	105308-07060	LABEL	1	1						
10	1	105402-07100	LABEL	1	1						
12	1	105370-07450	LABEL, RADIATOR CAP	1	1						

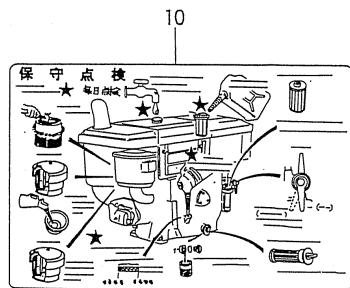
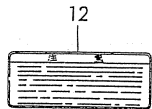
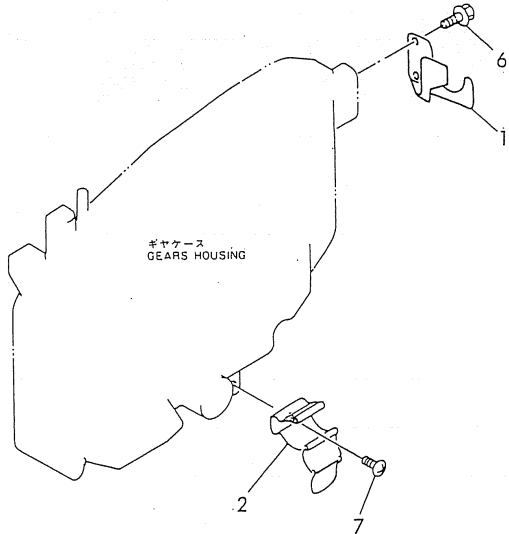


Fig.5. STARTING HANDLE BRACKET

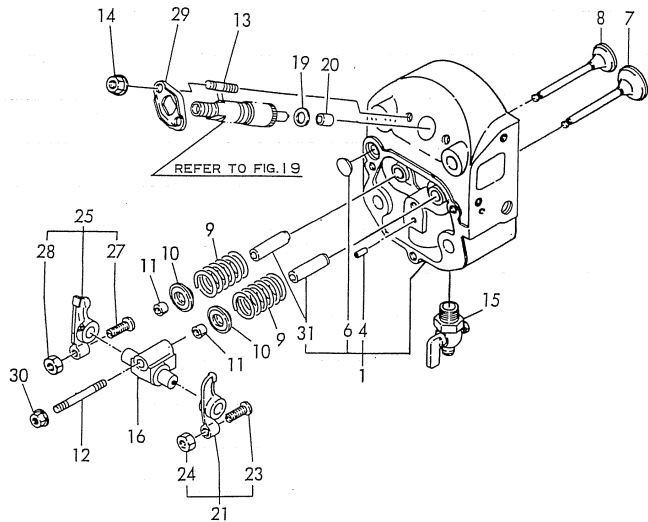
SPEC. CODE
D05302-08211



No.	Lev.	Parts No.	Description	Q'ty						I	R
				(A)	(B)	(C)	(D)	(E)	(F)		
1	1	105302-08101	BRACKET, HANDLE	1	1						
2	1	105300-08510	BRACKET ASSY	1	1						
6	1	26106-060122	BOLT, M6X 12 PLATED	2	2						
7	1	26557-060082	SCREW, M6X 8	1	1						

Fig.6. CYLINDER HEAD

SPEC. CODE
 DD5400-11110
 DD5300-11120



(A)=NFD9-LIK3
 (B)=NFD9-LEIK3
 (C)=

(D)=
 (E)=
 (F)=

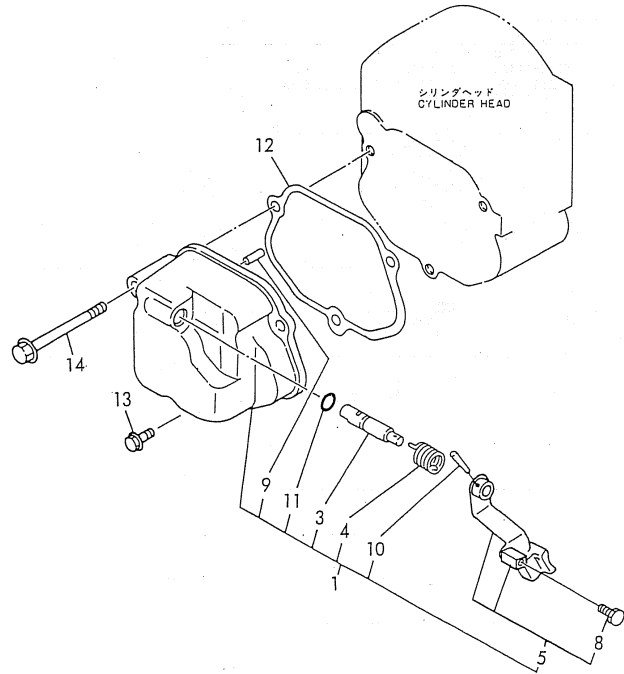
No.	Lev.	Parts No.	Description	Q'ty						I	R
				(A)	(B)	(C)	(D)	(E)	(F)		
1	1	705400-11700	HEAD ASSY, CYLINDER	1	1						
4	2	105300-11330	PIN	1	1						
6	2	27231-150000	PLUG 15	1	1						
7	1	105300-11100	VALVE, INTAKE	1	1						
8	1	105300-11111	VALVE, EXHAUST	1	1						
9	1	105400-11121	SPRING, VALVE	2	2						
10	1	101158-11180	RETAINER, SPRING	2	2						
11	1	101158-11190	COTTER	4	4						
11-1	1	27310-070001	COTTER, 7	2	2						N
		(A=EXXXXX)	(B=EXXXXX)								
12	1	26216-080452	STUD, M8X 45	1	1						
13	1	26216-060352	STUD, M6X 35	2	2						
14	1	26366-060002	NUT, M6	2	2						
15	1	105010-11920	COCK, WATER	1	1						
16	1	105300-11290	SUPPORT ASSY, ARM	1	1						
19	1	119625-11880	SEAT, NOZZLE	1	1						
20	1	119625-11870	PROTECTOR, NOZZLE	1	1						A
21	1	105300-11650	ARM, ROCKER	1	1						
23	2	101158-11230	SCREW, VALVE ADJUST	1	1						
24	2	26756-080002	NUT, LOCK M8	1	1						
25	1	105300-11660	ARM, ROCKER	1	1						
27	2	101158-11230	SCREW, VALVE ADJUST	1	1						
28	2	26756-080002	NUT, LOCK M8	1	1						
29	1	105300-11900	RETAINER	1	1						
30	1	26366-080002	NUT, M8	1	1						
31	1	105090-23910	BEARING, PISTON PIN	1	1						1

Remarks

(A) THESE PARTS ARE SOLD BY
 FIG28.REF NO.9
 (1) REPAIR PART

Fig.7. BONNET

SPEC. CODE
D05302-03200
D05300-11210



(A)=NFD9-LIK3
(B)=NFD9-LEIK3
(C)=

(D)=
(E)=
(F)=

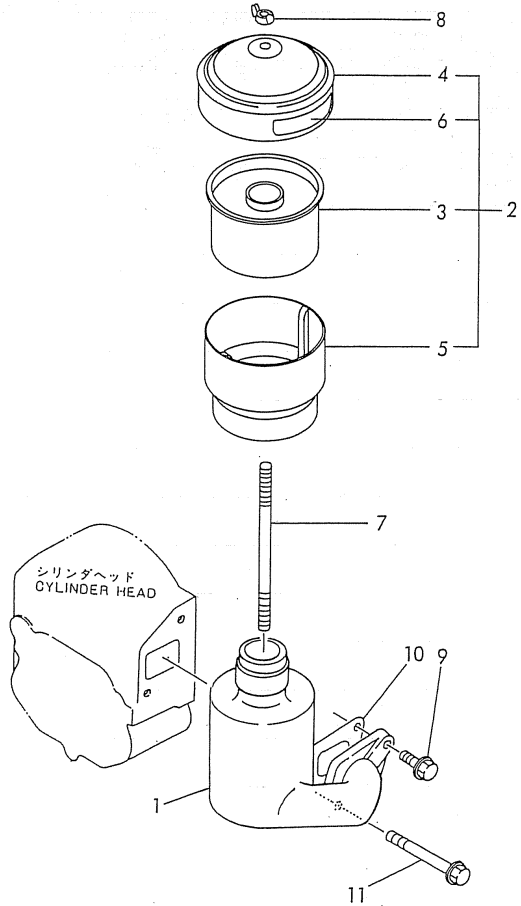
No.	Lev.	Parts No.	Description	Q'ty						I	R
				(A)	(B)	(C)	(D)	(E)	(F)		
1	1	705302-11520	BONNET ASSY, HEAD	1	1						
3	2	104200-03600	SHAFT, DECOMPRESSION	1	1						
4	2	104200-03641	SPRING, DECOMPRESSION	1	1						
5	2	105302-03740	LEVER ASSY	1	1						
8	3	105225-66990	SCREW, M5X8.5	1	1						
9	2	22312-030180	PIN, PARALLEL M3X18	1	1						
10	2	22322-030180	PIN, TAPER 3X18	1	1						
11	2	24311-000070	O-RING, 1AP7.0	1	1						A
12	1	105300-11310	GASKET, BONNET	1	1						A
13	1	26106-060202	BOLT, M6X 20 PLATED	2	2						
14	1	26106-060602	BOLT, M6X 60 PLATED	1	1						

Remarks

(A) THESE PARTS ARE SOLD BY
FIG28.REF NO.9

Fig.8. AIR CLEANER

SPEC. CODE
 D05402-1211025
 D05402-12210



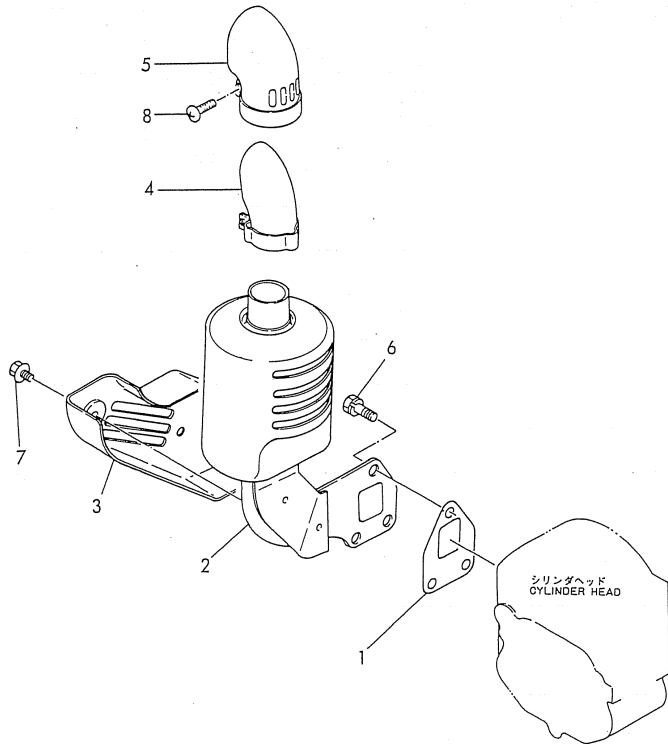
(A)=NFD9-LIK3
 (B)=NFD9-LEIK3
 (C)=

(D)=
 (E)=
 (F)=

No.	Lev.	Parts No.	Description	Q'ty						I	R
				(A)	(B)	(C)	(D)	(E)	(F)		
1	1	105402-12020	PIPE, AIR INTAKE	1	1						
2	1	105402-12510	CLEANER, AIR	1	1						
3	2	104504-12540	ELMENT, AIR CLEANER	1	1						
4	2	105402-12530	CASE, AIR CLEANER	1	1						
5	2	104504-12590	SUMP, OIL	1	1						
6	2	105092-07311	LABEL	1	1						
7	1	105402-12550	BOLT	1	1						
8	1	105092-12550	NUT	1	1						
9	1	26106-080202	BOLT, M8X 20 PLATED	1	1						
10	1	105400-12050	GASKET	1	1						
11	1	26106-080602	BOLT, M8X 60 PLATED	1	1						

Fig.9. SILENCER

SPEC. CODE
D05300-13110



(A)=NFD9-LIK3
(B)=NFD9-LEIK3
(C)=

(D)=
(E)=
(F)=

No.	Lev.	Parts No.	Description	Q'ty						I	R
				(A)	(B)	(C)	(D)	(E)	(F)		
1	1	105300-13200	GASKET, SILENCER	1	1						A
2	1	105300-13522	SILENCER ASSY	1	1						
3	1	105300-13550	COVER	1	1						
4	1	105370-13570	PIPE	1	1						
5	1	105212-13590	COVER	1	1						
6	1	26013-080189	BOLT, M8X 18	3	3						
7	1	160260-01580	BOLT, FLANGE M6X6	2	2						
8	1	26554-060162	SCREW, M6X16	1	1						

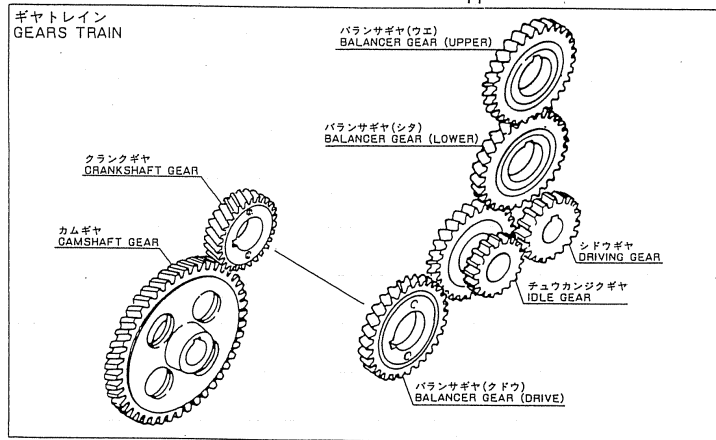
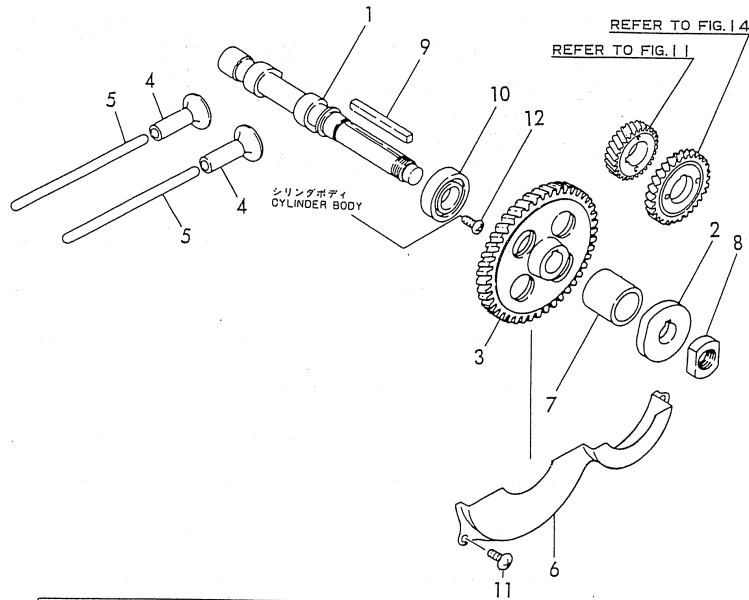
Remarks
(A) THESE PARTS ARE SOLD BY
FIG28.REF NO.9

Fig.10. CAMSHAFT

(A)=NFD9-LIK3
 (B)=NFD9-LEIK3
 (C)=

(D)=
 (E)=
 (F)=

SPEC. CODE
 D05400-14110
 D05300-14120
 D05302-14130



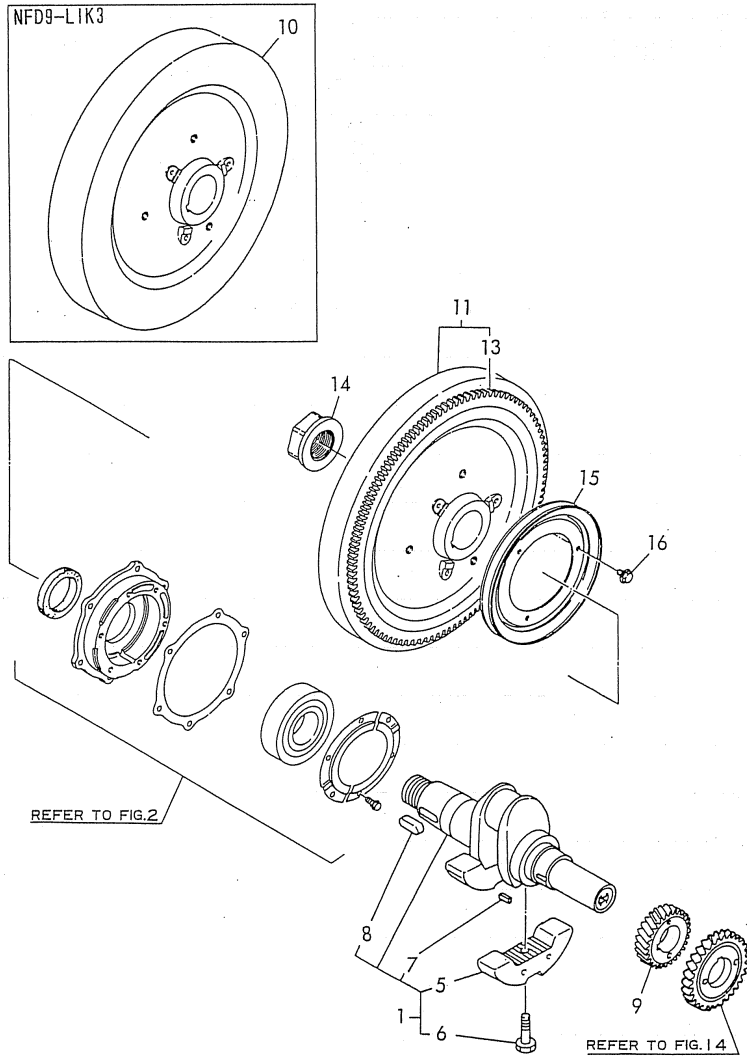
No.	Lev.	Parts No.	Description	Qty						I	R
				(A)	(B)	(C)	(D)	(E)	(F)		
1	1	105400-14010	CAMSHAFT	1	1						
2	1	105300-14090	CAM, FUEL	1	1						
3	1	105300-14100	GEAR, CAMSHAFT	1	1						
4	1	105300-14200	TAPPET	2	2						
5	1	105300-14400	ROD, PUSH	2	2						
6	1	105300-14600	COVER	1	1						
7	1	105302-14700	SPACER	1	1						
8	1	104300-76460	NUT	1	1						
9	1	22512-070600	KEY, 7X 60	1	1						
10	1	24101-060064	BEARING, BALL 6006	1	1						
11	1	26022-060122	SCREW, M6X12	3	3						
12	1	26587-080122	SCREW, M8X12	1	1						

Fig.11. CRANKSHAFT & FLYWHEEL

SPEC. CODE
 D05300-21110
 D05300-21200
 D05302-21200
 D05100-21500

(A)=NFD9-LIK3
 (B)=NFD9-LEIK3
 (C)=

(D)=
 (E)=
 (F)=



No.	Lev.	Parts No.	Description	Q'ty						I	R
				(A)	(B)	(C)	(D)	(E)	(F)		
1	1	705300-21700	CRANKSHAFT ASSY	1	1						
5	2	105300-21100	WEIGHT, BALANCE	2	2						
6	2	106100-21130	BOLT, BALANCE WEIGHT	2	2						
7	2	22512-050120	KEY, 5X 12	1	1						
8	2	22512-100260	KEY, 10X 26	1	1						
9	1	105300-21200	GEAR, CRANKSHAFT	1	1						
10	1	105300-21401	FLYWHEEL		1						
11	1	105300-21591	FLYWHEEL ASSY		1						
13	2	105362-21600	GEAR, RING		1						
14	1	104200-21530	NUT, END	1	1						
15	1	104104-21600	V-PULLEY	1	1						
16	1	26106-060122	BOLT, M6X 12 PLATED	3	3						

Fig.12. FLYWHEEL COVER

SPEC. CODE
D05378-2145025
D05378-2140025

(A)=NFD9-LIK3
(B)=NFD9-LEIK3
(C)=

(D)=
(E)=
(F)=

No.	Lev.	Parts No.	Description	Q'ty						I	R
				(A)	(B)	(C)	(D)	(E)	(F)		
1	1	105378-21300	COVER, FLYWHEEL	1							
2	1	105378-21350	COVER, FLYWHEEL		1						
3	1	105300-21310	COVER	1							
4	1	105300-21360	COVER		1						
5	1	105302-21320	COVER	1	1						
6	1	105300-21381	ABSORBER	2	2						
7	1	105300-44451	ABSORBER	2	2						
8	1	105300-44460	COLLAR	4	4						
9	1	160120-76940	WASHER	5	5						
10	1	26033-060142	SCREW M 6X 14	5	5						
11	1	26033-060202	SCREW M 6X 20	4	4						

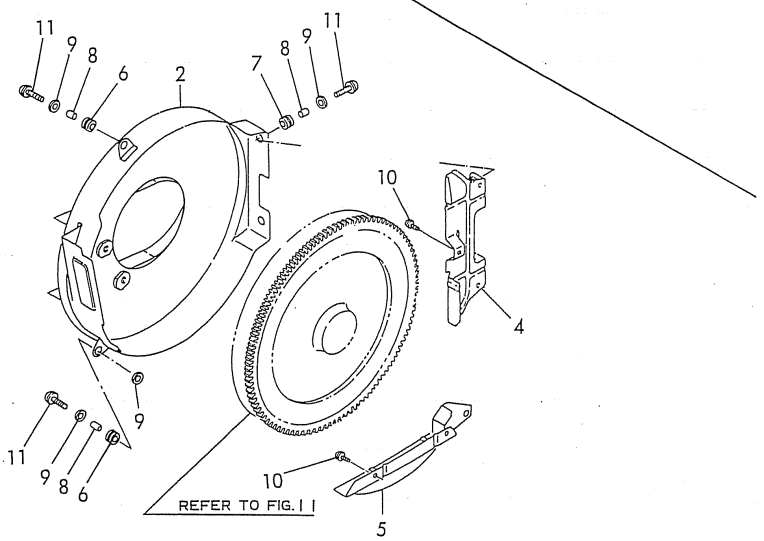
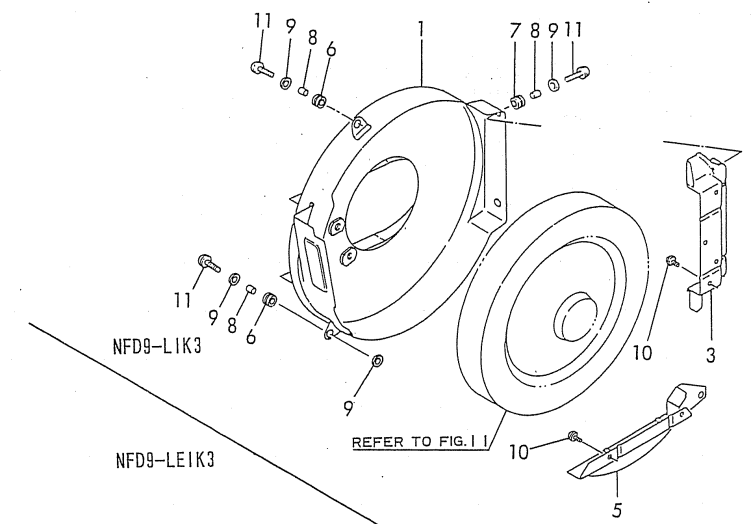
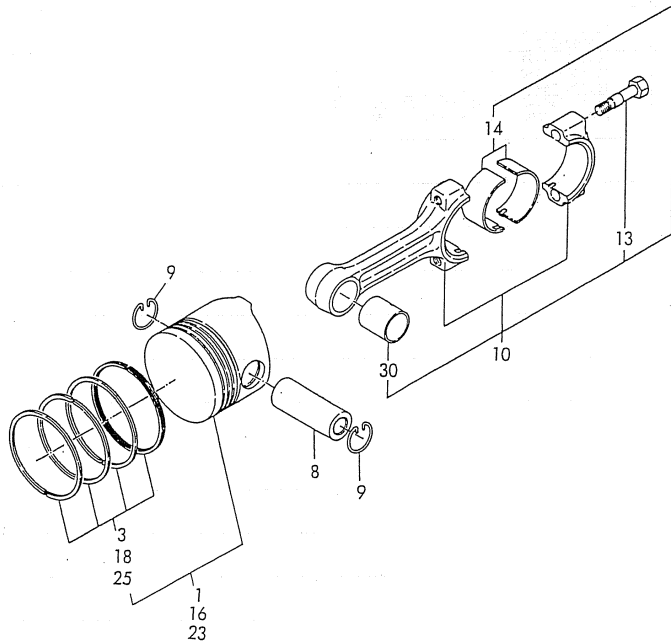


Fig.13. PISTON & CONNECTING ROD

SPEC. CODE
D05300-22110
D05300-23100



(A)=NFD9-LIK3
(B)=NFD9-LEIK3
(C)=

(D)=
(E)=
(F)=

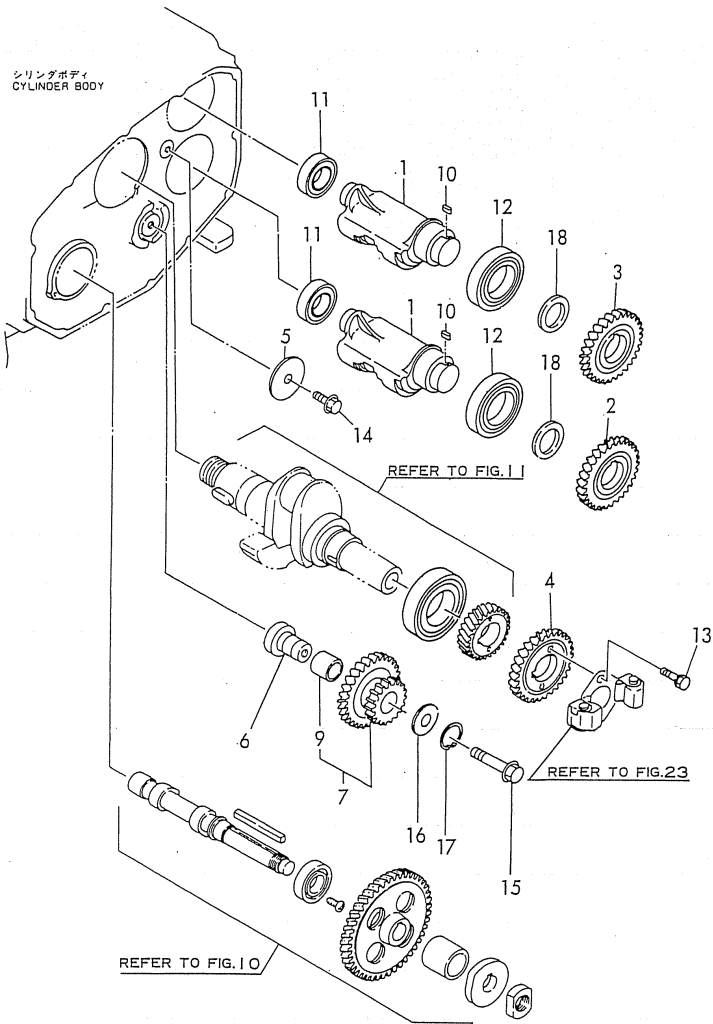
No.	Lev.	Parts No.	Description	Q'ty						I	R
				(A)	(B)	(C)	(D)	(E)	(F)		
1	1	105300-22190	PISTON ASSY	1	1						
3	2	704300-22503	RING SET	1	1						
8	1	105300-22300	PIN, PISTON	1	1						
9	1	105300-22400	CIRCLIP	2	2						
10	1	705300-23100	ROD ASSY, CONNECTING	1	1						
13	2	105300-23200	BOLT, CONNECTING ROD	2	2						
14	2	705300-23600	BEARING, CRANK PIN	1	1						
16	1	105300-22471	PISTON ASSY, 0.25 OS	1	1						2
18	2	105300-22510	RING SET, 0.25 OS	1	1						2
23	1	105300-22481	PISTON ASSY, 0.50 OS	1	1						3
25	2	105300-22520	RING SET, 0.50 OS	1	1						3
30	1	105300-23910	BEARING, PISTON PIN	1	1						1

Remarks

- (1) REPAIR PART.
- (2) OVER-SIZED(O.S=0.25)PART.
- (3) OVER-SIZED(O.S=0.50)PART.

Fig.14. BALANCER

SPEC. CODE
D05300-28110
D05302-28120

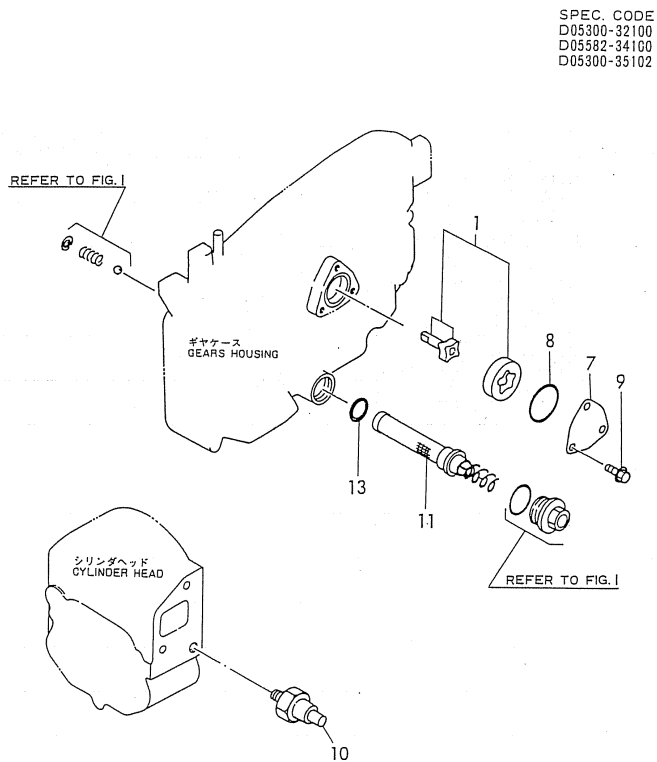


(A)=NFD9-LIK3
(B)=NFD9-LEIK3
(C)=

(D)=
(E)=
(F)=

No.	Lev.	Parts No.	Description	Q'ty						I	R
				(A)	(B)	(C)	(D)	(E)	(F)		
1	1	105300-28251	SHAFT, BALANCER	2	2						
2	1	105300-28300	GEAR, BALANCER	1	1						
3	1	105300-28310	GEAR, BALANCER	1	1						
4	1	105300-28410	GEAR, BALANCER	1	1						
5	1	105300-28450	RETAINER	1	1						
6	1	105302-28701	SHAFT, IDLE GEAR	1	1						
7	1	105302-28710	GEAR ASSY	1	1						
9	2	105302-28720	BUSH	1	1						
10	1	105215-76490	KEY	2	2						
11	1	24101-060054	BEARING, BALL 6005	2	2						
12	1	24101-060084	BEARING, BALL 6008	2	2						
13	1	26013-060222	BOLT, M6X 22	2	2						
14	1	26106-080162	BOLT, M8X 16 PLATED	1	1						
15	1	26106-100652	BOLT, M10X 65 PLATED	1	1						
16	1	105362-28750	SPACER	1	1						
17	1	22242-000210	RING, 21	1	1						
18	1	105300-28380	SPACER	2	2						

Fig.15. LUB. OIL SYSTEM



SPEC. CODE
 D05300-32100
 D05582-34100
 D05300-35102

(A)=NFD9-LIK3
 (B)=NFD9-LEIK3
 (C)=

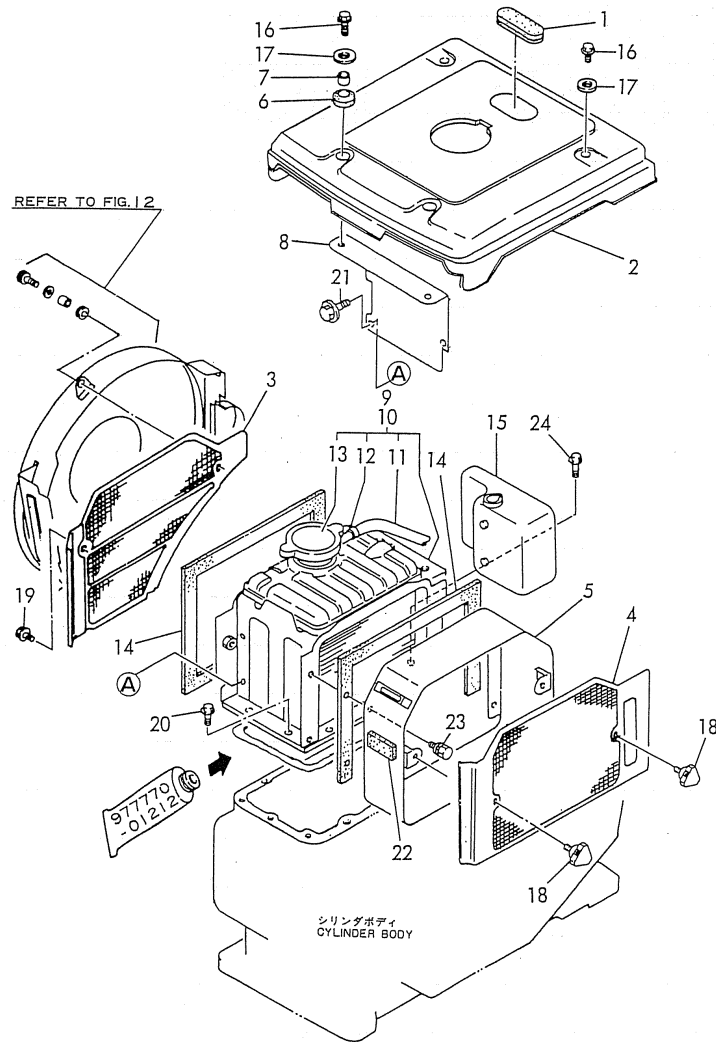
(D)=
 (E)=
 (F)=

No.	Lev.	Parts No.	Description	Q'ty						I	R
				(A)	(B)	(C)	(D)	(E)	(F)		
1	1	705300-32500	ROTOR ASSY	1	1						
7	1	103338-32070	COVER	1	1						
8	1	103338-32570	O-RING	1	1						A
9	1	26106-060122	BOLT, M6X 12 PLATED	3	3						
10	1	105582-34100	SIGNAL	1							
11	1	105300-35052	STRAINER ASSY, OIL	1	1						
13	1	24341-000200	O-RING, 1AS20.0	1	1						A

Remarks
 (A) THESE PARTS ARE SOLD BY
 FIG28.REF NO.9

Fig.16. RADIATOR

SPEC. CODE
 D05400-44110
 D05402-44110
 D05402-44220KB
 D05402-44300KB



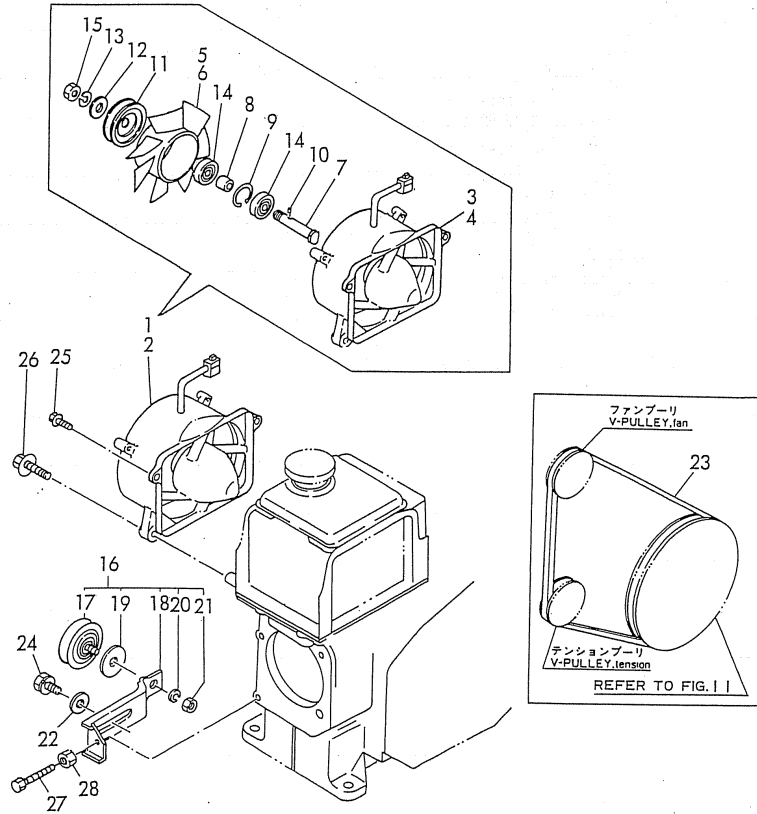
(A)=NFD9-LIK3
 (B)=NFD9-LEIK3
 (C)=

(D)=
 (E)=
 (F)=

No.	Lev.	Parts No.	Description	Q'ty						I	R
				(A)	(B)	(C)	(D)	(E)	(F)		
1	1	105300-44220	COVER, RADIATOR	1	1						
2	1	105400-44250	COVER, RADIATOR	1	1						
3	1	105300-44330	SCREEN	1	1						
4	1	105402-44340	SCREEN	1	1						
5	1	105402-44360	DUCT, SCREEN	1	1						
6	1	105300-44451	ABSORBER	2	2						
7	1	105300-44460	COLLAR	2	2						
8	1	105300-44491	STAY	1	1						
9	1	105300-44502	RADIATOR ASSY	1							
10	1	105300-44512	RADIATOR ASSY		1						
11	2	105300-44570	PIPE, OVERFLOW 7X170	1	1						
12	2	121250-44590	CLAMP	1	1						
13	2	105198-44590	CAP, RADIATOR	1	1						
14	1	104607-44540	SPONGE	2	2						
15	1	105300-44630	TANK, SUB	1	1						
16	1	26106-060202	BOLT, M6X 20 PLATED	4	4						
17	1	160120-76940	WASHER	4	4						
18	1	160725-78350	KNOB	2	2						
19	1	26106-060122	BOLT, M6X 12 PLATED	1	1						
20	1	26013-060142	BOLT, M6X 14	8	8						
21	1	26106-060122	BOLT, M6X 12 PLATED	2	2						
22	1	106100-44560	SPONGE, 15X5X1000	1	1						
23	1	26013-060129	BOLT, M6X 12	4	4						
24	1	26013-060162	BOLT, M6X 16	1	1						

Fig.17. FAN

SPEC. CODE
 D05400-44420
 D05300-44420
 D05300-44510



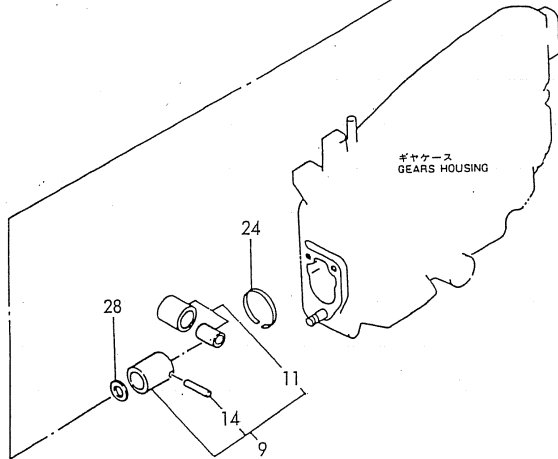
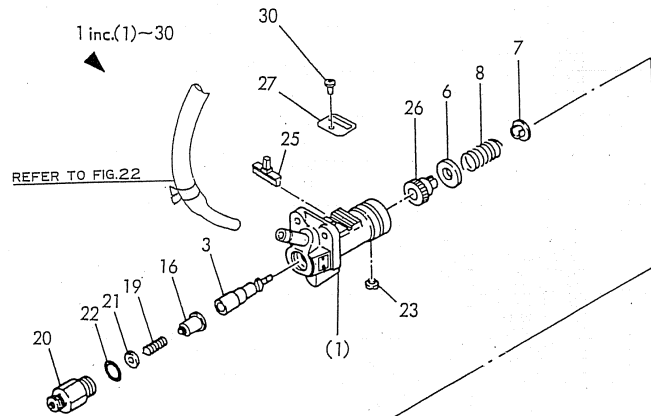
(A)=NFD9-LIK3
 (B)=NFD9-LEIK3
 (C)=

(D)=
 (E)=
 (F)=

No.	Lev.	Parts No.	Description	Q'ty						I	R
				(A)	(B)	(C)	(D)	(E)	(F)		
1	1	105302-44201	CASE ASSY, FAN	1							
2	1	105300-44212	CASE ASSY, FAN		1						
3	2	105302-44680	COVER ASSY	1							
4	2	105400-44800	COVER ASSY		1						
5	2	105302-44700	FAN, COOLING	1							
6	2	105300-44850	FAN, COOLING		1						
7	2	105340-44710	SHAFT, FAN	1	1						
8	2	106383-44720	SPACER	1	1						
9	2	106383-44740	CIRCLIP	1	1						
10	2	105340-44750	PIN	1	1						
11	2	105100-44770	PULLEY, FAN	2	2						
12	2	105100-44780	WASHER, PULLEY	1	1						
13	2	22217-120000	WASHER, SPRING 12	1	1						
14	2	24107-062013	BEARING, 6201ZZP6	2	2						
15	2	26777-120002	NUT, LOCK M12	1	1						
16	1	105300-44810	PULLEY ASSY, TENSION	1	1						
17	2	106100-44650	PULLEY, TENSION	1	1						
18	2	105300-44940	LEVER	1	1						
19	2	106100-44960	CAP	1	1						
20	2	22217-080000	WASHER, SPRING 8	1	1						
21	2	26716-080002	NUT, M8	1	1						
22	1	22137-080000	WASHER, 8	1	1						
23	1	25117-003751	V-BELT, M37.5H	1	1						
24	1	26013-080162	BOLT, M8X 16	1	1						
25	1	26106-060252	BOLT, M6X 25 PLATED	2	2						
26	1	26106-080302	BOLT, M8X 30 PLATED	2	2						
27	1	26116-060504	BOLT, M6X 50 PLATED	1	1						
28	1	26756-060002	NUT, LOCK M6	1	1						

Fig.18. FUEL INJECTION PUMP

SPEC. CODE
D05300-51102



(A)=NFD9-LIK3
(B)=NFD9-LEIK3
(C)=

(D)=
(E)=
(F)=

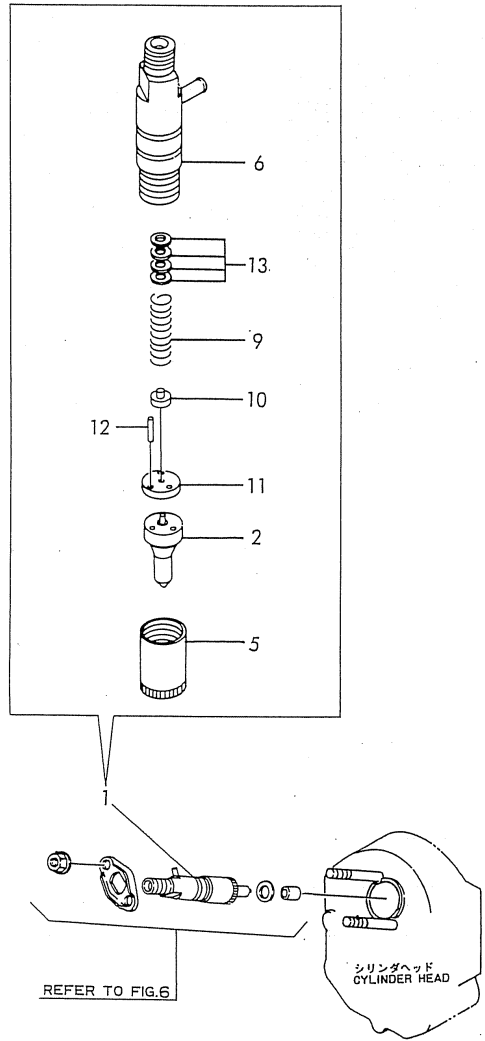
No.	Lev.	Parts No.	Description	Q'ty						I	R
				(A)	(B)	(C)	(D)	(E)	(F)		
1	1	705370-51100	PUMP ASSY, INJECTION	1	1						
3	2	105200-51100	PLUNGER ASSY	1	1						
6	2	174307-51170	RETAINER, SPRING A	1	1						
7	2	174307-51181	RETAINER, SPRING B	1	1						
8	2	124950-51190	SPRING, PLUNGER	1	1						
9	2	724550-51520	GUIDE, PLUNGER	1	1						
11	3	711100-51540	ROLLER ASSY	1	1						
14	3	174100-54120	PIN	1	1						
16	2	129499-51300	VALVE ASSY, DELIVERY	1	1						
19	2	124550-51320	SPRING, DELIVERY	1	1						
20	2	124550-51341	HOLDER, DELIVERY L43	1	1						
21	2	124550-51350	GASKET, DELIVERY	1	1						A
22	2	124550-51370	O-RING	1	1						A
23	2	104271-51450	PIECE, GUIDE	1	1						
24	2	104271-51460	CIRCLIP	1	1						
25	2	105300-51500	RACK, CONTROL	1	1						
26	2	105300-51510	PINION	1	1						
27	2	105300-51550	RETAINER, RACK	1	1						
28	2	174307-51700	SHIM SET	1	1						
30	2	26022-050102	SCREW, M5X10	1	1						

Remarks

(A) THESE PARTS ARE SOLD BY
FIG28.REF NO.9

Fig.19. FUEL INJECTION VALVE

SPEC. CODE
D05300-53100



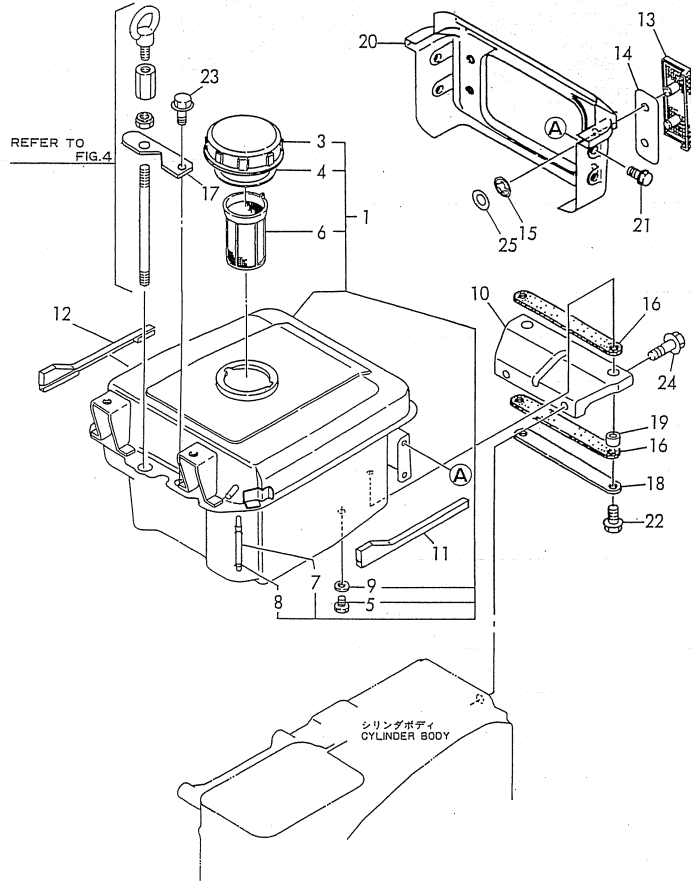
(A)=NFD9-LIK3
(B)=NFD9-LEIK3
(C)=

(D)=
(E)=
(F)=

No.	Lev.	Parts No.	Description	Q'ty						I	R
				(A)	(B)	(C)	(D)	(E)	(F)		
1	1	705300-53100	VALVE ASSY,INJECTION	1	1						
2	2	129500-53050	VALVE ASSY,INJECTION	1	1						
5	2	114250-53080	NUT, NOZZLE D16.95	1	1						
6	2	105300-53100	HOLDER ASSY, NOZZLE	1	1						
9	2	114250-53120	SPRING, NOZZLE	1	1						
10	2	114250-53130	SEAT, SPRING	1	1						
11	2	114250-53140	PLATE	1	1						
12	2	114250-53210	PIN	1	1						
13	2	114250-53400	SHIM SET	1	1						

Fig.20. FUEL TANK

SPEC. CODE
 D05402-55110KB
 D05402-55310KB
 D05372-55410KB
 D05302-55510



(A)=NFD9-LIK3
 (B)=NFD9-LEIK3
 (C)=

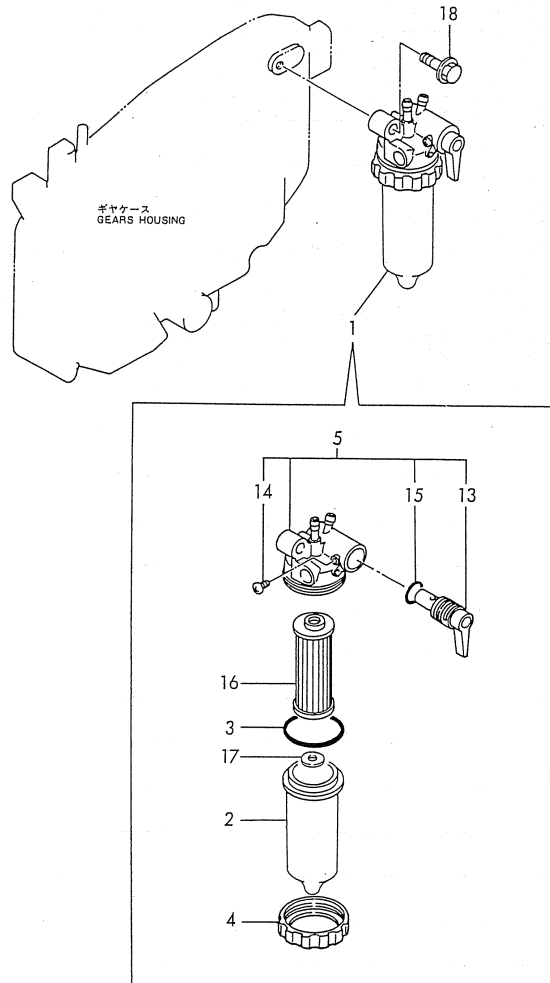
(D)=
 (E)=
 (F)=

No.	Lev.	Parts No.	Description	Q'ty						I	R
				(A)	(B)	(C)	(D)	(E)	(F)		
1	1	705402-55700	TANK ASSY, FUEL	1	1						
3	2	105302-55040	CAP, FUEL TANK	1	1						
4	2	101504-55051	GASKET	1	1						A
5	2	105300-55080	PLUG, 8	1	1						
6	2	105372-55100	STRAINER, FUEL	1	1						
7	2	104300-55160	GAUGE, LEVEL	1	1						
8	2	103854-55220	RETAINER	2	2						
9	2	23414-080000	GASKET, 8X1.0	1	1						
10	1	105300-55240	STAY, FUEL TANK	1	1						
11	1	105308-55250	MOULDING	1	1						
12	1	105308-55260	MOULDING	1	1						
13	1	105292-55450	PLATE	2	2						
14	1	105292-55460	PLATE	2	2						
15	1	105292-55471	NUT, M5	4	4						
16	1	105400-55520	ABSORBER	2	2						
17	1	105198-55520	RETAINER	1	1						
18	1	105500-55530	RETAINER	1	1						
19	1	105100-55540	COLLAR	2	2						
20	1	105308-55810	COVER, LIGHT	1	1						
21	1	26106-060122	BOLT, M6X 12 PLATED	4	4						
22	1	26106-080222	BOLT, M8X 22 PLATED	2	2						
23	1	26106-080222	BOLT, M8X 22 PLATED	1	1						
24	1	26106-100162	BOLT, M10X 16 PLATED	2	2						
25	1	120270-09310	GASKET	4	4						

Remarks
 (A) THESE PARTS ARE SOLD BY
 FIG28.REF NO.9

Fig.21. FUEL STRAINER

SPEC. CODE
D05300-55200



(A)=NFD9-LIK3
(B)=NFD9-LEIK3
(C)=

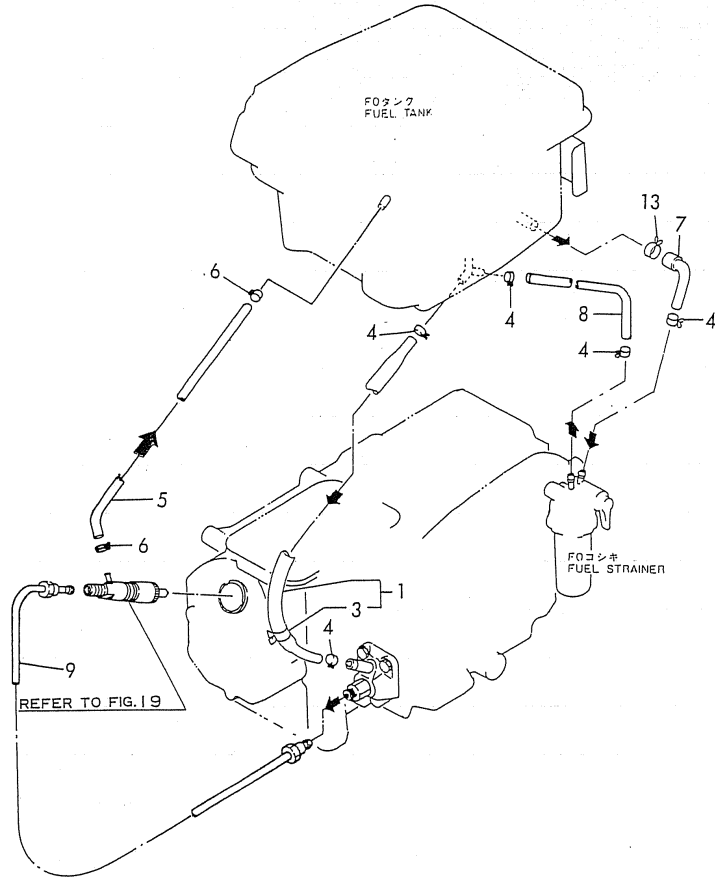
(D)=
(E)=
(F)=

No.	Lev.	Parts No.	Description	Q'ty						I	R
				(A)	(B)	(C)	(D)	(E)	(F)		
1	1	105370-55650	STRAINER ASSY, FUEL	1	1						
2	2	105300-55530	CUP, STRAINER	1	1						
3	2	105300-55520	O-RING	1	1						A
4	2	105300-55610	RING, RETAINING	1	1						
5	2	105300-55700	BODY ASSY, STRAINER	1	1						
13	3	105300-55340	LEVER	1	1						
14	3	104200-55750	SCREW, M4	1	1						
15	3	24311-000160	O-RING, 1AP16.0	1	1						
16	2	105370-55710	ELEMENT	1	1						
17	2	105300-55750	FLOAT	1	1						
18	1	26106-080302	BOLT, M8X 30 PLATED	1	1						

Remarks
(A) THESE PARTS ARE SOLD BY FIG 28.
REF NO.9.

Fig.22. FUEL LINE

SPEC. CODE
D05300-59110
D05300-59220



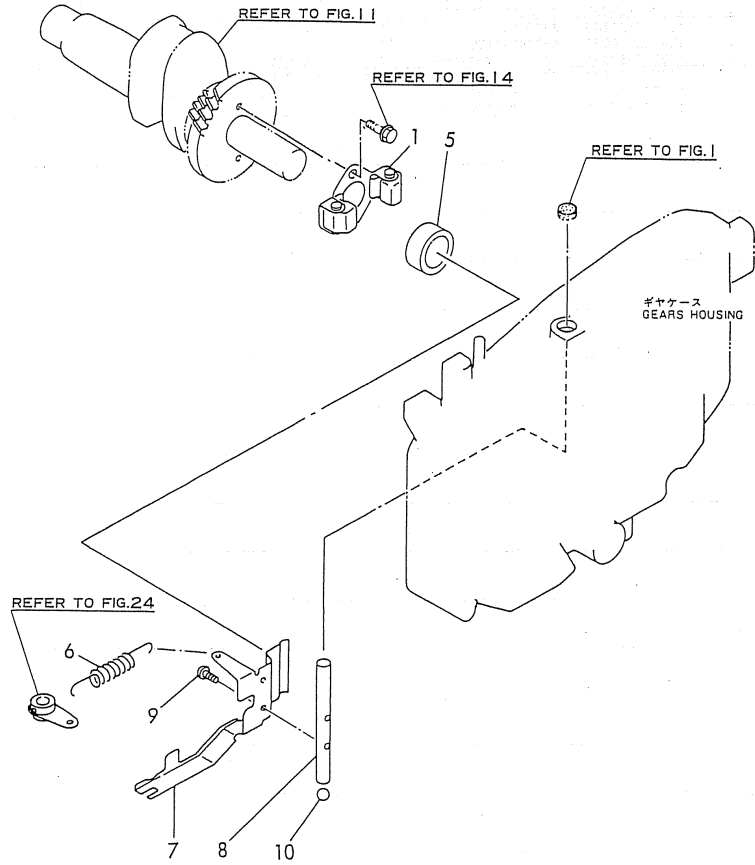
(A)=NFD9-LIK3
(B)=NFD9-LEIK3
(C)=

(D)=
(E)=
(F)=

No.	Lev.	Parts No.	Description	Qty						I	R
				(A)	(B)	(C)	(D)	(E)	(F)		
1	1	105300-59020	PIPE ASSY, FUEL	1	1						
3	2	124766-59050	CLIP, HOSE 12	1	1						
4	1	124766-59050	CLIP, HOSE 12	5	5						
5	1	105300-59100	PIPE, FUEL RETURN	1	1						
6	1	124722-59050	CLIP, HOSE 9	2	2						
7	1	105300-59561	PIPE, FUEL	1	1						
8	1	105300-59570	PIPE, FUEL	1	1						
9	1	105300-59800	PIPE ASSY, INJECTION	1	1						
13	1	129301-03660	CLAMP 16	1	1						

Fig.23. GOVERNOR & CONTROL DEVICE

SPEC. CODE
 D05300-61100
 D05300-66101



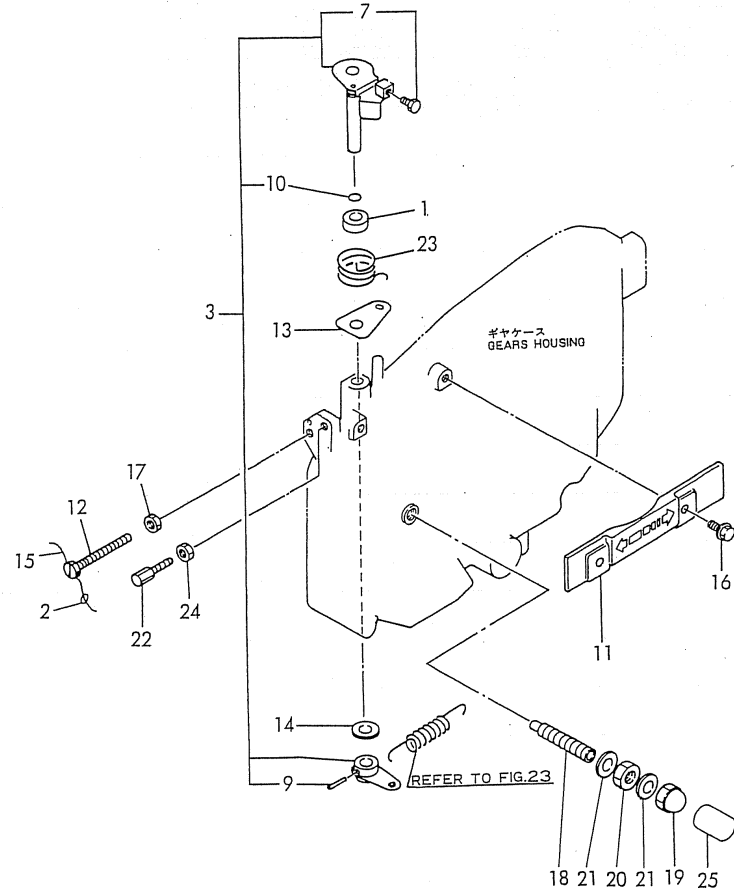
(A)=NFD9-LIK3
 (B)=NFD9-LEIK3
 (C)=

(D)=
 (E)=
 (F)=

No.	Lev.	Parts No.	Description	Q'ty						I	R
				(A)	(B)	(C)	(D)	(E)	(F)		
1	1	705300-61702	GOVERNOR ASSY	1	1						
5	1	105300-61600	SLEEVE, GOVERNOR	1	1						
6	1	105300-66011	SPRING, REGULATOR	1	1						
7	1	105300-66300	LEVER, GOVERNOR	1	1						
8	1	105300-66400	SHAFT	1	1						
9	1	26022-050102	SCREW, M5X10	2	2						
10	1	24190-120001	BALL, STEEL 3/8	1	1						

Fig.24. REGULATOR HANDLE

SPEC. CODE
 D05302-66210
 D05507-66300
 D05302-66220
 D05300-66310
 D05302-67101



(A)=NFD9-LIK3
 (B)=NFD9-LEIK3
 (C)=

(D)=
 (E)=
 (F)=

No.	Lev.	Parts No.	Description	Q'ty						I	R
				(A)	(B)	(C)	(D)	(E)	(F)		
1	1	121575-21850	WASHER	1	1						
2	1	135210-61090	LEAD	1	1						
3	1	705302-66530	HANDLE ASSY	1	1						
7	3	105225-66990	SCREW, M5X8.5	1	1						
9	2	22322-030200	PIN, TAPER 3X20	1	1						
10	2	24311-000070	O-RING, 1AP7.0	1	1						
11	1	105300-66110	COVER	1	1						
12	1	105300-66520	SCREW	1	1						
13	1	105300-66850	RETAINER	1	1						
14	1	22117-100000	WASHER, 10	1	1						
15	1	22451-060080	WIRE, 0.6X80	1	1						
16	1	26106-060122	BOLT, M6X 12 PLATED	2	2						
17	1	26756-060002	NUT, LOCK M6	1	1						
18	1	105507-66551	LIMITER ASSY, FUEL	1	1						
19	1	124060-66950	NUT, CAP M10	1	1						
20	1	26796-100002	NUT, LOCK M10	1	1						
21	1	43400-500430	SEAL WASHER 10S	2	2						
22	1	102100-67080	BOLT, ADJUSTING	1	1						
23	1	105502-67301	SPRING, RETURN	1	1						
24	1	26756-060002	NUT, LOCK M6	1	1						
25	1	105300-66610	CAP	1	1						

Fig.25. STARTING DEVICE

SPEC. CODE
 D05302-76110
 D05302-7622012

(A)=NFD9-LIK3
 (B)=NFD9-LEIK3
 (C)=

(D)=
 (E)=
 (F)=

No.	Lev.	Parts No.	Description	Q'ty						I	R
				(A)	(B)	(C)	(D)	(E)	(F)		
1	1	105302-76330	GEAR, STARTING	1	1						
2	1	705302-76900	SHAFT ASSY, STARTING	1	1						
5	1	105300-76470	COLLAR	1	1						
6	1	105300-76490	KEY, 7X10	1	1						
8	1	105302-76790	HANDLE ASSY	1	1						
9	1	22242-000200	RING, 20	1	1						

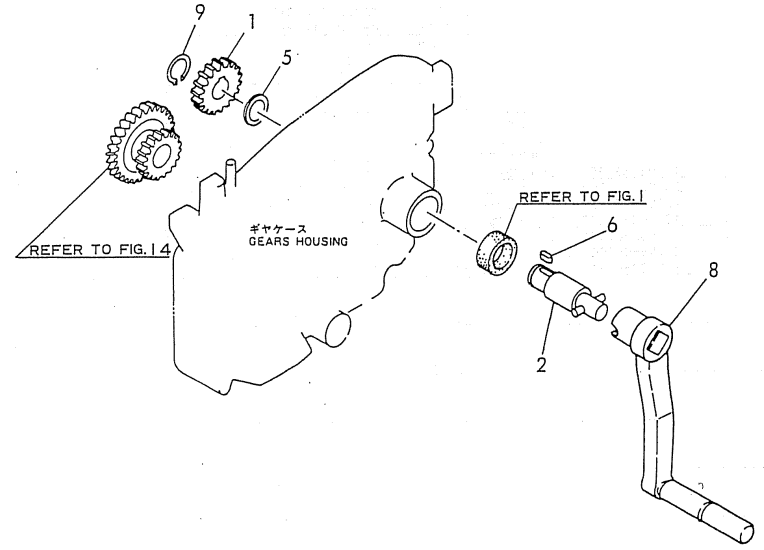
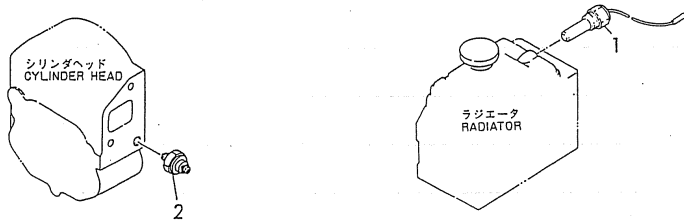
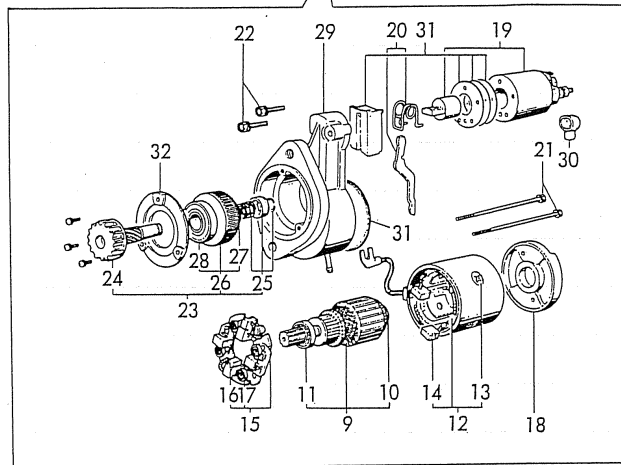
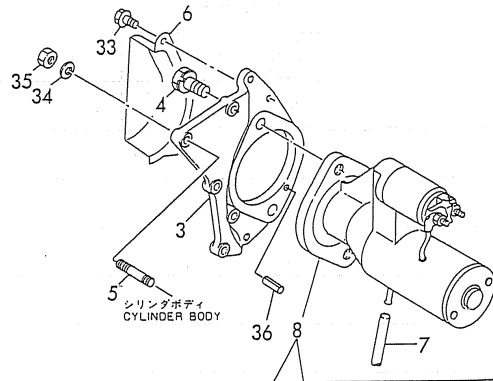


Fig.26. STARTING MOTER

SPEC. CODE
D05378-7711025
D05050-78200



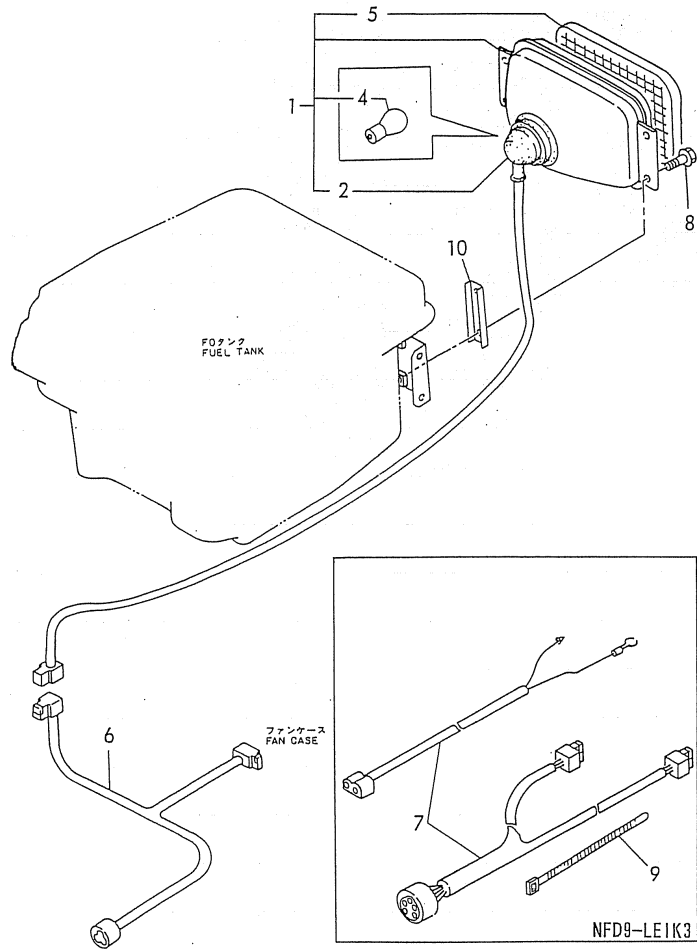
(A)=NFD9-LIK3
(B)=NFD9-LEIK3
(C)=

(D)=
(E)=
(F)=

No.	Lev.	Parts No.	Description	Q'ty						I	R
				(A)	(B)	(C)	(D)	(E)	(F)		
1	1	105300-44900	SWITCH		1						
2	1	124060-39451	SWITCH, 0.2KG		1						
3	1	105300-77470	BRACKET		1						
4	1	26013-120302	BOLT, M12X 30		2						
5	1	26216-060202	STUD, M6X 20		4						
6	1	105372-77480	COVER		1						
7	1	105840-59100	PIPE		1						
8	1	105300-77010	STARTER, S114-438		1						
9	2	X211461005	ARMATURE		1						
10	3	X211415502	BEARING, BALL		1						
11	3	X211425502	BEARING, BALL		1						
12	2	X211442003	COIL ASSY, FIELD		1						
13	3	X21143215	SCREW, CORE		4						
14	3	X211469002	BRUSH (+)		2						
15	2	X211449007	HOLDER ASSY, BRUSH		1						
16	3	X211459002	BRUSH (-)		2						
17	3	X21148314	SPRING, BRUSH		4						
18	2	X211483003	COVER		1						
19	2	171008-77530	SWITCH, MAGNETIC		1						
20	2	X211446012	LEVER, SHIFT		1						
21	2	X211468005	BOLT, THROUGH		2						
22	2	X21145866	BOLT		2						
23	2	X211455011	PINION ASSY		1						
24	3	X211465011	SHAFT, PINION		1						
25	3	X211429006	STOPPER SET		1						
26	3	X211425506	CLUTCH ASSY		1						
27	4	X211435502	BALL BEARING		1						
28	4	X211455502	BALL BEARING		1						
29	2	X211456605	CASE ASSY, GEAR		1						
30	2	X21142742	COVER (A), RUBBER		1						
31	2	X211458012	COVER KIT		1						
32	2	X211428008	RETAINER, BEARING		1						
33	1	26106-060102	BOLT, M6X 10 PLATED		2						
34	1	22217-060000	WASHER, SPRING 6		4						
35	1	26716-060002	NUT, M6		4						
36	1	22351-060012	PIN, SPRING 6.0X12		1						

Fig.27. LIGHTING DEVICE

SPEC. CODE
 DD5402-78110
 DD5192-78330
 DD5292-78330



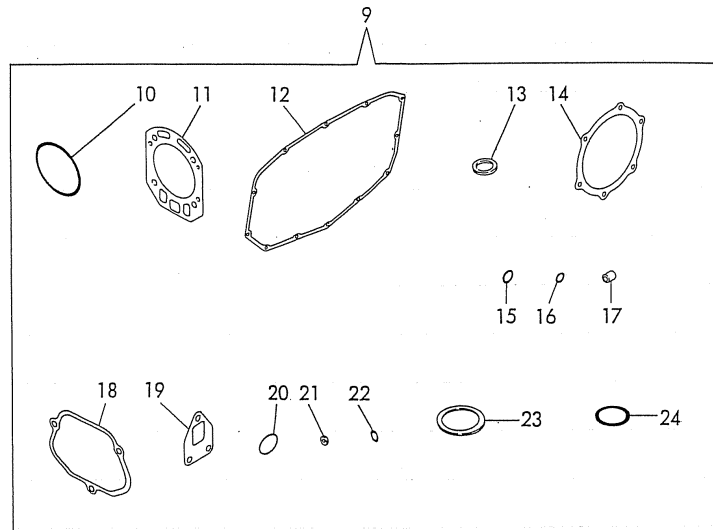
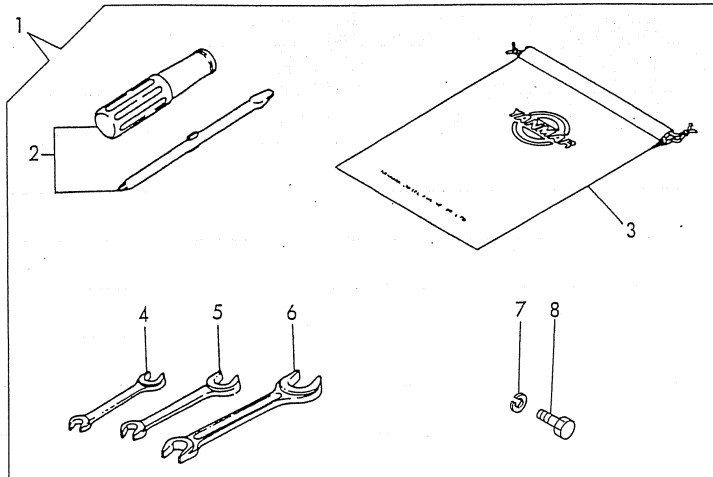
(A)=NFD9-LIK3
 (B)=NFD9-LEIK3
 (C)=

(D)=
 (E)=
 (F)=

No.	Lev.	Parts No.	Description	Q'ty						I	R
				(A)	(B)	(C)	(D)	(E)	(F)		
1	1	105372-78020	LAMP ASSY, HEAD	1	1						
2	2	105372-78040	SOCKET	1	1						
4	2	105372-78250	BULB, A12V-45/45W	1	1						
5	2	105372-78260	LENS	1	1						
6	1	105192-78530	HARNESS, WIRE	1							
7	1	105192-78540	HARNESS, WIRE			1					
8	1	26106-060202	BOLT, M6X 20 PLATED	4	4						
9	1	160370-78950	BAND, L=98			1					
10	1	105402-55420	SPACER	2	2						

Fig.28. TOOL & GASKET SET(OPTIONAL)

SPEC. CODE
D05300-92100



(A)=NFD9-LIK3
(B)=NFD9-LEIK3
(C)=

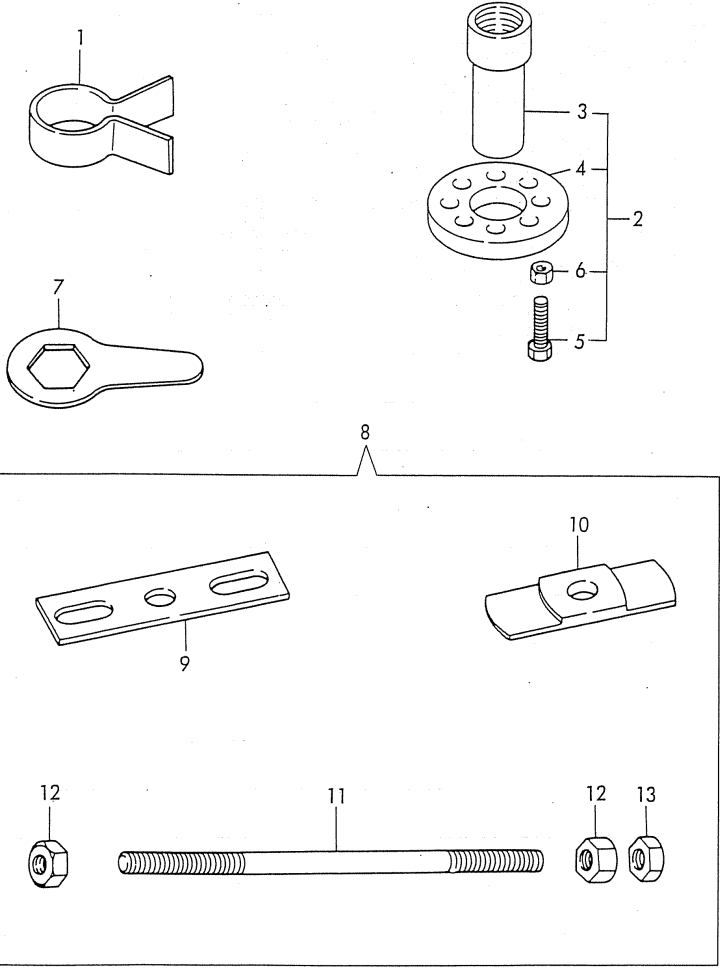
(D)=
(E)=
(F)=

No.	Lev.	Parts No.	Description	Q'ty						I	R
				(A)	(B)	(C)	(D)	(E)	(F)		
1	1	705300-92100	BOX ASSY, TOOL	1	1						
2	2	104200-92350	DRIVER, SCREW	1	1						
3	2	105300-92600	BAG, TOOL	1	1						
4	2	28110-100120	SPANNER, 10X12	1	1						
5	2	28110-140170	SPANNER, 14X17	1	1						
6	2	28110-190220	SPANNER, 19X22	1	1						
7	2	22217-120000	WASHER, SPRING 12	3	3						
8	2	26206-120352	BOLT, M12X 35 PLATED	3	3						
9	1	705300-92601	GASKET SET	1	1						
10	2	105300-01300	GASKET, LINER	2	2						
11	2	105300-01331	GASKET, HEAD 156X126	1	1						
12	2	105300-01410	GASKET, GEAR CASE	1	1						
13	2	101104-01760	GASKET, CAP	1	1						
14	2	105300-02020	GASKET	1	1						
15	2	24341-000200	O-RING, 1AS20.0	1	1						
16	2	24311-000070	O-RING, 1AP7.0	1	1						
17	2	119625-11870	PROTECTOR, NOZZLE	1	1						
18	2	105300-11310	GASKET, BONNET	1	1						
19	2	105300-13200	GASKET, SILENCER	1	1						
20	2	103338-32570	O-RING	1	1						
21	2	124550-51350	GASKET, DELIVERY	1	1						
22	2	124550-51370	O-RING	1	1						
23	2	101504-55051	GASKET	1	1						
24	2	105300-55520	O-RING	1	1						

Fig.29. TOOL(OPTIONAL)

(A)=NFD9-LIK3
(B)=NFD9-LEIK3
(C)=

(D)=
(E)=
(F)=



No.	Lev.	Parts No.	Description	Q'ty						I	R
				(A)	(B)	(C)	(D)	(E)	(F)		
1	1	102700-92140	TOOL, PISTON&RING	1	1						
2	1	704200-92700	TOOL ASSY, FLYWHEEL	1	1						
3	2	104200-92110	RETAINER, A	1	1						
4	2	104200-92120	RETAINER, B	1	1						
5	2	104200-92130	TOOL	2	2						
6	2	26716-120002	NUT, M12	2	2						
7	1	104200-92100	WRENCH	1	1						
8	1	772300-92210	TOOL ASSY, LINER	1	1						
9	2	172200-92020	TOOL, LINER REMOVER	1	1						
10	2	172300-92010	TOOL, LINER REMOVER	1	1						
11	2	103338-92030	BOLT, LINER REMOVER	1	1						
12	2	26716-160002	NUT, M16	2	2						
13	2	26757-160002	NUT, LOCK M16	1	1						

Fig.30. SAFETY LABEL

(A)=NFD9-LIK3
 (B)=NFD9-LEIK3
 (C)=
 (D)=
 (E)=
 (F)=

No.	Lev.	Parts No.	Description	Q'ty						I	R
				(A)	(B)	(C)	(D)	(E)	(F)		
1	1	1E8500-97220	LABEL, RADIATOR	1	1						
2	1	1E5120-86720	LABEL, CAUTION	1	1						
3	1	1E5120-86600		1	1						
4	1	1E8230-97030	LABEL, DANGER B	1	1						

Parts No. Index

Parts No.	Fig. No.	Ref. No.
101104-01760	1	31
	28	13
101158-03061	3	2
101158-03111	3	3
101158-11180	6	10
101158-11190	6	11
101158-11230	6	23
		27
101504-55051	20	4
	28	23
102100-67080	24	22
102700-92140	29	1
103338-32070	15	7
103338-32570	15	8
	28	20
103338-92030	29	11
103854-55220	20	8
104104-21600	11	15
104107-07900	4	1
104200-03600	7	3
104200-03641	7	4
104200-21530	11	14
104200-55750	21	14
104200-92100	29	7
104200-92110	29	3
104200-92120	29	4
104200-92130	29	5
104200-92350	28	2
104271-01950	1	30
104271-51450	18	23
104271-51460	18	24
104300-55160	20	7
104300-76460	10	8
104504-12540	8	3
104504-12590	8	5
104607-44540	16	14
105010-11920	6	15
105090-23910	6	31
105092-07311	8	6
105092-12550	8	8
105100-01660	1	24
105100-44770	17	11
105100-44780	17	12
105100-55540	20	19
105140-76500	1	23
105192-78530	27	6
105192-78540	27	7
105198-44590	16	13
105198-55520	20	17
105200-51100	18	3

Parts No.	Fig. No.	Ref. No.
105212-13590	9	5
105215-76490	14	10
105225-66990	7	8
	24	7
105230-01200	1	4
105230-02320	2	3
105292-55450	20	13
105292-55460	20	14
105292-55471	20	15
105300-01300	1	9
	28	10
105300-01331	1	10
	28	11
105300-01410	1	28
	28	12
105300-01480	1	11
105300-01690	1	35
105300-02020	2	6
	28	14
105300-03082	3	1
105300-03130	3	6
105300-07910	4	2
105300-07940	4	3
105300-08510	5	2
105300-11100	6	7
105300-11111	6	8
105300-11290	6	16
105300-11310	7	12
	28	18
105300-11330	6	4
105300-11650	6	21
105300-11660	6	25
105300-11900	6	29
105300-13200	9	1
	28	19
105300-13522	9	2
105300-13550	9	3
105300-14090	10	2
105300-14100	10	3
105300-14200	10	4
105300-14400	10	5
105300-14600	10	6
105300-21100	11	5
105300-21200	11	9
105300-21310	12	3
105300-21360	12	4
105300-21381	12	6
105300-21401	11	10
105300-21591	11	11
105300-22190	13	1

Parts No.	Fig. No.	Ref. No.
105300-22300	13	8
105300-22400	13	9
105300-22471	13	16
105300-22481	13	23
105300-22510	13	18
105300-22520	13	25
105300-23200	13	13
105300-23910	13	30
105300-28251	14	1
105300-28300	14	2
105300-28310	14	3
105300-28380	14	18
105300-28410	14	4
105300-28450	14	5
105300-34040	1	21
105300-35052	15	11
105300-44212	17	2
105300-44220	16	1
105300-44330	16	3
105300-44451	12	7
	16	6
105300-44460	12	8
	16	7
105300-44491	16	8
105300-44502	16	9
105300-44512	16	10
105300-44570	16	11
105300-44630	16	15
105300-44810	17	16
105300-44850	17	6
105300-44900	26	1
105300-44940	17	18
105300-51500	18	25
105300-51510	18	26
105300-51550	18	27
105300-53100	19	6
105300-55080	20	5
105300-55240	20	10
105300-55340	21	13
105300-55520	21	3
	28	24
105300-55530	21	2
105300-55610	21	4
105300-55700	21	5
105300-55750	21	17
105300-59020	22	1
105300-59100	22	5
105300-59561	22	7
105300-59570	22	8
105300-59800	22	9

Parts No.	Fig. No.	Ref. No.
105300-61600	23	5
105300-66011	23	6
105300-66110	24	11
105300-66300	23	7
105300-66400	23	8
105300-66520	24	12
105300-66610	24	25
105300-66850	24	13
105300-76470	25	5
105300-76490	25	6
105300-77010	26	8
105300-77470	26	3
105300-92600	28	3
105302-01750	1	29
105302-03740	7	5
105302-08101	5	1
105302-14700	10	7
105302-21320	12	5
105302-28701	14	6
105302-28710	14	7
105302-28720	14	9
105302-44201	17	1
105302-44680	17	3
105302-44700	17	5
105302-55040	20	3
105302-76330	25	1
105302-76790	25	8
105308-07060	3	9
105308-55250	20	11
105308-55260	20	12
105308-55810	20	20
105340-44710	17	7
105340-44750	17	10
105362-21600	11	13
105362-28750	14	16
105362-78960	3	4
105370-07450	3	12
105370-13570	9	4
105370-55650	21	1
105370-55710	21	16
105372-55100	20	6
105372-77480	26	6
105372-78020	27	1
105372-78040	27	2
105372-78250	27	4
105372-78260	27	5
105378-21300	12	1
105378-21350	12	2
105400-11121	6	9
105400-12050	8	10

Parts No. Index

Parts No.	Fig. No.	Ref. No.
105400-14010	10	1
105400-44250	16	2
105400-44800	17	4
105400-55520	20	16
105402-07100	3	10
105402-12020	8	1
105402-12510	8	2
105402-12530	8	4
105402-12550	8	7
105402-44340	16	4
105402-44360	16	5
105402-55420	27	10
105500-55530	20	18
105502-67301	24	23
105507-66551	24	18
105582-34100	15	10
105840-59100	26	7
106100-21130	11	6
106100-44560	16	22
106100-44650	17	17
106100-44960	17	19
106200-02300	2	7
106200-02310	2	8
106383-44720	17	8
106383-44740	17	9
114250-53080	19	5
114250-53120	19	9
114250-53130	19	10
114250-53140	19	11
114250-53210	19	12
114250-53400	19	13
119625-11870	6	20
	28	17
119625-11880	6	19
120270-09310	20	25
121250-44590	16	12
121450-01220	1	6
121550-01200	1	5
121575-21850	24	1
123325-02500	2	4
124060-39451	26	2
124060-66950	24	19
124550-51320	18	19
124550-51341	18	20
124550-51350	18	21
	28	21
124550-51370	18	22
	28	22
124722-59050	22	6
124766-59050	22	3

Parts No.	Fig. No.	Ref. No.
124766-59050	22	4
124950-51190	18	8
129301-03660	22	13
129499-51300	18	16
129500-53050	19	2
135210-61090	24	2
160120-76940	12	9
	16	17
160260-01580	9	7
160370-78950	27	9
160725-78350	16	18
171008-77530	26	19
172200-92020	29	9
172300-92010	29	10
174100-54120	18	14
174307-51170	18	6
174307-51181	18	7
174307-51700	18	28
1E5120-86600	30	3
1E5120-86720	30	2
1E8230-97030	30	4
1E8500-97220	30	1
22117-100000	24	14
22137-080000	17	22
22217-060000	26	34
22217-080000	1	36
	17	20
22217-120000	17	13
	28	7
22242-000200	25	9
22242-000210	14	17
22242-000450	2	9
22252-000100	1	22
22312-030180	7	9
22322-030180	7	10
22322-030200	24	9
22351-060012	1	3
		19
	26	36
22451-060080	24	15
22512-050120	11	7
22512-070600	10	9
22512-100260	11	8
23064-090400	3	5
23414-080000	20	9
24101-060054	14	11
24101-060064	10	10
24101-060084	14	12
24107-062013	17	14
24190-120001	1	20

Parts No.	Fig. No.	Ref. No.
24190-120001	23	10
24311-000060	1	34
24311-000070	7	11
	24	10
	28	16
24311-000160	21	15
24321-000250	1	25
24341-000200	15	13
	28	15
25117-003751	17	23
26013-060129	16	23
26013-060142	16	20
26013-060162	16	24
26013-060222	14	13
26013-080162	17	24
26013-080189	9	6
26013-080202	2	10
26013-120302	26	4
26022-050102	18	30
	23	9
26022-060122	10	11
26023-060252	3	7
26033-060142	12	10
26033-060202	12	11
26106-060102	26	33
26106-060122	5	6
	11	16
	15	9
	16	19
		21
	20	21
	24	16
26106-060162	1	12
26106-060202	7	13
	16	16
	27	8
26106-060252	1	32
	17	25
26106-060602	7	14
26106-060652	1	33
26106-080162	14	14
26106-080202	8	9
26106-080222	20	22
		23
26106-080302	17	26
	21	18
26106-080602	8	11
26106-100162	20	24
26106-100652	14	15
26116-060102	2	5

Parts No.	Fig. No.	Ref. No.
26116-060504	17	27
26206-120352	28	8
26216-060202	26	5
26216-060352	6	13
26216-080222	1	26
		38
26216-080452	6	12
26366-060002	6	14
26366-080002	1	27
	6	30
26554-060162	9	8
26557-060082	5	7
26587-080122	10	12
26617-100002	4	4
26716-060002	26	35
26716-080002	1	37
	17	21
26716-120002	29	6
26716-160002	29	12
26756-060002	17	28
	24	17
		24
26756-080002	6	24
		28
26757-160002	29	13
26777-120002	17	15
26796-100002	24	20
27231-150000	6	6
27310-070001	6	11 -1
28110-100120	28	4
28110-140170	28	5
28110-190220	28	6
43400-500430	24	21
704200-92700	29	2
704300-22503	13	3
705300-01561	1	1
705300-01900	1	7
705300-02500	2	1
705300-21700	11	1
705300-23100	13	10
705300-23600	13	14
705300-32500	15	1
705300-53100	19	1
705300-61702	23	1
705300-92100	28	1
705300-92601	28	9
705302-01502	1	13
705302-11520	7	1
705302-66530	24	3
705302-76900	25	2

Parts No. Index

Parts No.	Fig. No.	Ref. No.
705370-51100	18	1
705400-11700	6	1
705402-55700	20	1
711100-51540	18	11
724550-51520	18	9
772300-92210	29	8
X211415502	26	10
X211425502	26	11
X211425506	26	26
X21142742	26	30
X211428008	26	32
X211429006	26	25
X21143215	26	13
X211435502	26	27
X211442003	26	12
X211446012	26	20
X211449007	26	15
X211455011	26	23
X211455502	26	28
X211456605	26	29
X211458012	26	31
X21145866	26	22
X211459002	26	16
X211461005	26	9
X211465011	26	24
X211468005	26	21
X211469002	26	14
X211483003	26	18
X21148314	26	17

Parts No.	Fig. No.	Ref. No.
-----------	----------	----------

Parts No.	Fig. No.	Ref. No.
-----------	----------	----------

Parts No.	Fig. No.	Ref. No.
-----------	----------	----------