

0CD10-M46501EN

# Introduction

1. This parts catalog for ISEKI Co., Ltd. NFAD8-LIK3, NFAD8-LEIK3 is published as a revised edition of diesel engine.

	Parts catalog No.	Date of issue	Remarks
First edition	OCD10-G46500	Feb., 1993	No Need
1st revised edition	OCD10-G46501	Aug., 2010	

2. This parts catalog does not contain the technical data needed for maintenance service.

3. The illustrations used in this parts catalog have been simplified for clarity.

4. The contents of this parts catalog are subject to change without notice.

5. Be sure to use only Yanmar genuine part for repairs. If imitation parts are used, it may cause engine defects.

## Directions for the Parts Catalog.

1. The parts stipulated in this Parts Catalog are not necessarily standard equipped parts.
2. Parts may change without prior notice.
3. The following is an example of the Parts Catalog format.

OCF10-G21601		29. FUEL INJECTION PUMP(W/BOOST)									
REF.	LEV.	PARTS NO.	DESCRIPTION	(A)	(B)	(C)	(D)	(E)	(F)	I	R
1	1	729595-51390	FUEL INJECTION PUMP	1	1	1	1	1			1
1-1	1	729595-51391	FUEL INJECTION PUMP	1	1	1	1	1		N	1
		(A=E00185)	(B=E00200)								
3	2	26022-060162	SCREW M 6X 16	9	9	9	9	9			
3-1	2	26022-060162	SCREW M 6X 16	4	4	4	4	4		K	
		(A=E00156)	(B=E00156)	(C=E00156)	(D=E00156)	(E=E00156)					
4	2	129470-51040	CAMSHAFT	1	1	1	1	1			
5	2	122710-51050	BEARING, ROLLER	2	2	2	2	2			
6	2	129470-51060	RETAINER	1	1	1	1	1			

Remarks	
(1)	BOOST COMPEMSATOR TYPE. OPTIONAL PART, TO E00155,(4JH-DT, 4JH-DTZ

### ① Ref. No.

The Ref. No. listed may not be in accordance with the illustration Ref. No.

(Ex.) Illustration No.

List Ref No.

1

1

(Before change)

1-1

(After change)

For interchangeable symbols N, R and K, illustrations for new parts may be abbreviated.

### ② Lev. (Level)

Level indication

The numbers below indicate the level of relativity towards the main part.

1 ----- Main parts (Assembly parts)

2 ----- Sub component included in " 1 ".

3 ----- Sub component included in " 2 ".

Note) Parts that are not for sale are partially illustrated but not listed.

### ③ Interchangeability Mark

When a part change takes place, one of the following interchangeability symbols is indicated beside the part.

Symbol	Interchangeability	Contents note
N	Old $\begin{matrix} \leftarrow \text{Yes} \\ \text{No} \rightarrow \end{matrix}$ New	New Part is interchangeable for Old Part but Old Part is not interchangeable for New Part.
Q	Old $\begin{matrix} \leftarrow \text{No} \\ \text{Yes} \rightarrow \end{matrix}$ New	New Part is not interchangeable for Old Part but Old Part is interchangeable for New Part.
R	Old $\begin{matrix} \leftarrow \text{Yes} \\ \text{Yes} \rightarrow \end{matrix}$ New	New/ Old Parts are both interchangeable.
S	Old $\begin{matrix} \leftarrow \text{No} \\ \text{No} \rightarrow \end{matrix}$ New	New/ Old Parts are both not interchangeable.
W		Part newly added.
Z		Part discontinued.
F		Not interchangeable by a single part but interchangeable together with related parts.
K		Changes only for used parts quantities.

### ④ Effective Machine No.

When a part changes, the effective Machine No. will be indicated in the (A)-(F) column.

Product Symbol	Product No.	Product Symbol	Product No.
C	Clutch No. Compressor No.	F	Machine No. (Agricultural Equip.)
D	Drive No.	M	Machine No.
E	Engine No.		

Note 1) A date may follow the symbol. (Ex.) 1996.01

Note 2) "XXXXX" and "ZZZZZ" are for parts that could not be predicted or for engine models that could not be identified.

Note 3) (A=E00185) is the E (Engine Serial Number) for the column (A) model (in this case 4JH-DT) after the parts design change.

### ⑤ Remarks Mark

Figures or alphabets (symbols) are entered in the remarks column.

The comments (remarks) on parts that are indicated at the bottom of the illustration are the same symbols as those stated above.

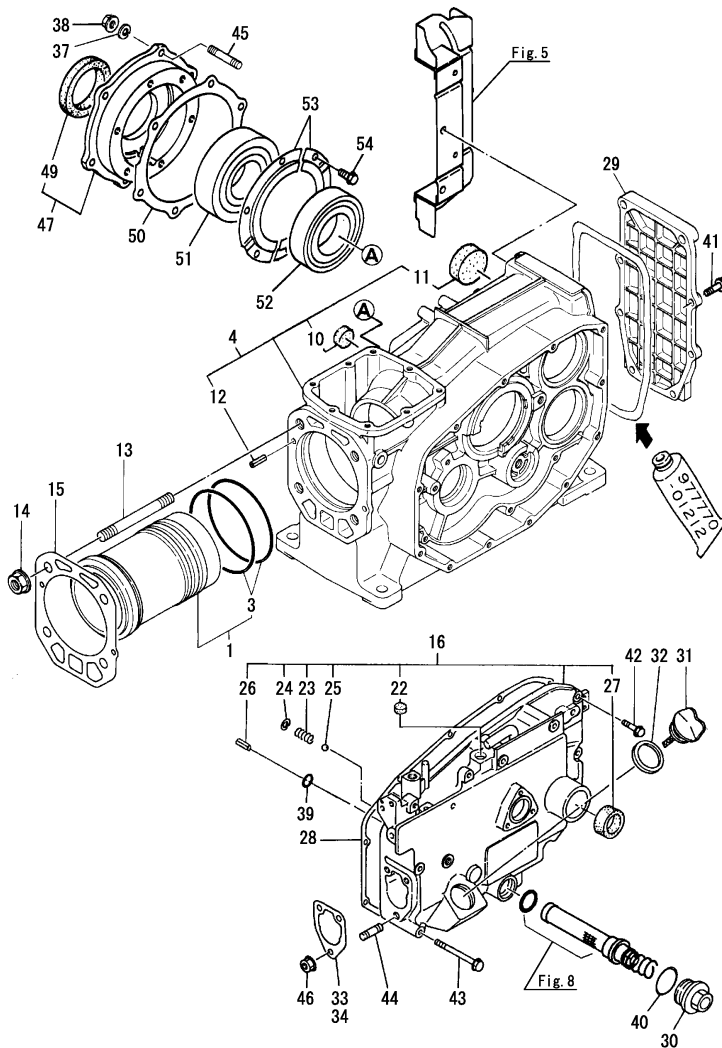
# Contents

Fig. No.	Fig. Name	Fig. No.	Fig. Name
ENGINE NFAD8-LIK3/-LEIK3			
1.	CYLINDER BLOCK		
2.	CYLINDER HEAD & BONNET		
3.	AIR CLEANER & MUFFLER		
4.	CAMSHAFT		
5.	CRANKSHAFT & FLYWHEEL		
6.	PISTON & CONNECTING ROD		
7.	BALANCER		
8.	LUB.OIL SYSTEM & BREATHER		
9.	RADIATOR & FAN		
10.	FUEL INJECTION PUMP		
11.	FUEL OIL SYSTEM		
12.	FUEL TANK		
13.	GOVERNOR & CONTROL DEVICE		
14.	REGULATOR HANDLE		
15.	HAND STARTING DEVICE		
16.	STARTING MOTOR		
17.	LIGHTING DEVICE		
18.	TOOL,LABEL & GASKET SET		
19.	TOOL(OPTIONAL)		
20.	SAFETY LABEL		

Fig.1. CYLINDER BLOCK

(A)=NFAD8-LIK3  
(B)=NFAD8-LEIK3  
(C)=

(D)=  
(E)=  
(F)=

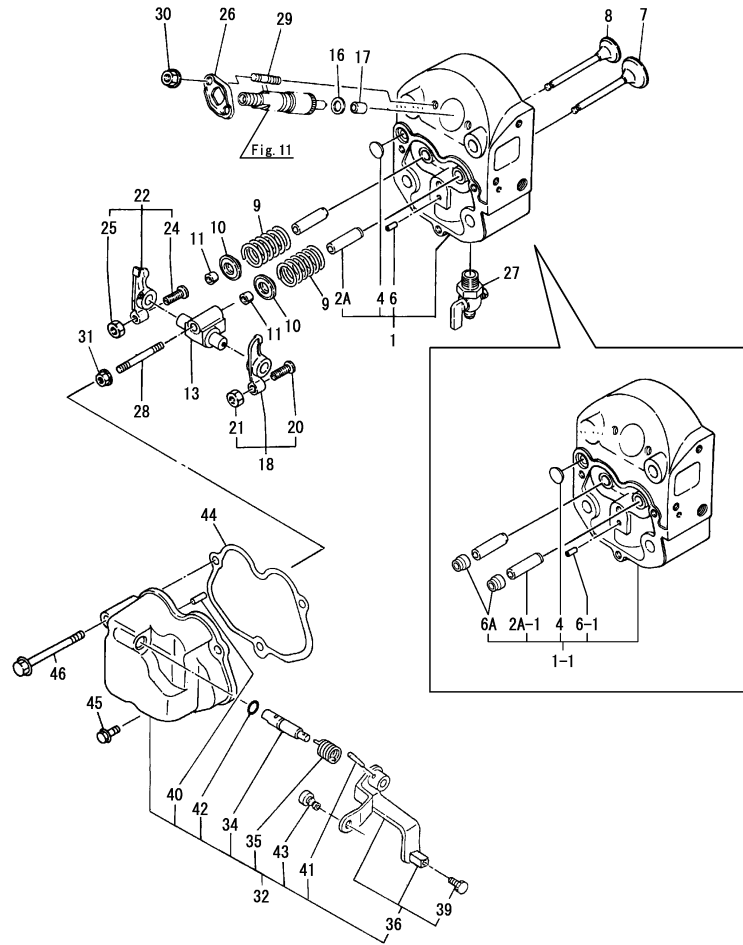


No.	Lev.	Parts No.	Description	Q'ty						I	R
				(A)	(B)	(C)	(D)	(E)	(F)		
1	1	705200-01900	LINER ASSY, CYLINDER	1	1						
3	2	105100-01300	O-RING	2	2						A
4	1	705190-01560	BLOCK ASSY, CYLINDER	1	1						
10	3	105190-01670	PLUG, 22	1	1						
10-1	3	105190-01671	SEAL, 22	1	1						N
		(A=E080028) (B=E080019)									
11	3	105190-01680	SEAL, 42	2	2						
12	2	22351-060012	PIN, SPRING 6.0X12	2	2						
13	1	105215-01200	BOLT, HEAD M12	4	4						
14	1	121450-01220	NUT, CYLINDER HEAD	4	4						
15	1	105100-01330	GASKET, HEAD 147X118	1	1						A
15-1	1	105100-01331	GASKET, HEAD	1	1						N A
		(A=E080028) (B=E080019)									
16	1	705192-01501	CASE ASSY, GEAR	1	1						
16-1	1	70519G-01500	HOUSING ASSY, GEARS	1	1						R
		(A=E080028) (B=E080019)									
22	2	105100-01660	PLUG, 14	1	1						
23	2	105300-34040	SPRING	1	1						
24	2	22252-000100	RING, 10	1	1						
25	2	24190-120001	BALL, STEEL 3/8	1	1						
26	2	22351-060012	PIN, SPRING 6.0X12	1	1						
27	2	105140-76500	SEAL, TCX25X35X6	1	1						
27-1	2	120270-61250	SEAL, OIL	1	1						R
		(A=E080028) (B=E080019)									
28	1	105100-01410	GASKET, GEAR CASE	1	1						A
29	1	105190-01480	COVER	1	1						
30	1	105300-01690	PLUG	1	1						
31	1	105302-01750	CAP, FILLER	1	1						
32	1	101104-01760	GASKET, CAP	1	1						A
33	1	105300-01920	SHIM, T=0.1	1	1						
34	1	104271-01950	SHIM SET,0.2X3,0.3X2	1	1						
34-1	1	105090-01960	SHIM SET, ADJUSTING	1	1						N
		(A=E080028) (B=E080019)									
37	1	22217-080000	WASHER, SPRING 8	6	6						
38	1	26716-080002	NUT, M8	6	6						
39	1	24311-000060	O-RING, 1AP6.0	1	1						
40	1	24321-000250	O-RING, 1AG25.0	1	1						
41	1	26106-060202	BOLT, M6X 20 PLATED	6	6						
42	1	26106-060302	BOLT, M6X 30 PLATED	7	7						
43	1	26106-060702	BOLT, M6X 70 PLATED	5	5						
44	1	26216-080222	STUD, M8X 22	3	3						
45	1	26226-080222	STUD, M8X 22	6	6						
46	1	26366-080002	NUT, M8	3	3						
46-1	1	26306-080002	NUT, M8	3	3						N
		(A=EZZZZZ) (B=EZZZZZ)									
47	1	705100-02500	HOUSING ASSY, METAL	1	1						
49	2	123325-02500	SEAL, OIL	1	1						
50	1	105100-02020	GASKET	1	1						A
50-1	1	105100-02021	GASKET	1	1						N A
		(A=E080028) (B=E080019)									
51	1	105100-02300	BEARING, 6308-SH2-C3	1	1						

Remarks  
(A)These parts are sold by  
Fig.18 No.14-1.



Fig.2. CYLINDER HEAD & BONNET



Remarks

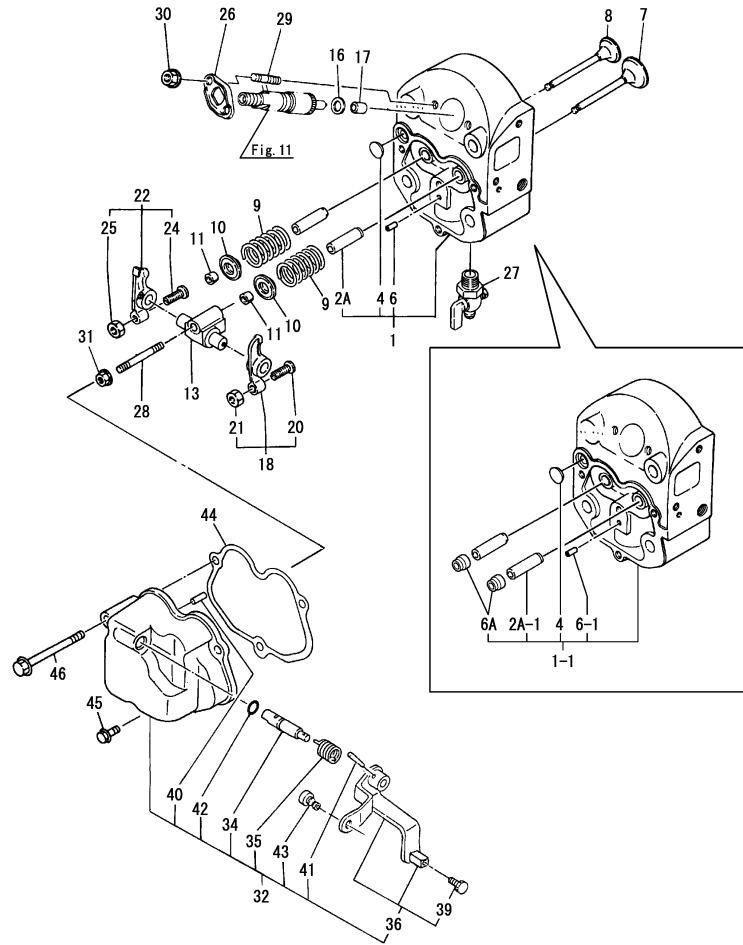
- (A) These parts are sold by Fig.18 No.14-1.
- (1) Repair parts.
- (2) Interchangeable by simultaneous replacement with No.13-1.
- (3) Interchangeable by simultaneous replacement with No.26-1 & 29-1.

(A)=NFAD8-LIK3  
(B)=NFAD8-LEIK3  
(C)=

(D)=  
(E)=  
(F)=

No.	Lev.	Parts No.	Description	Q'ty						I	R
				(A)	(B)	(C)	(D)	(E)	(F)		
1	1	705100-11700	HEAD ASSY, CYLINDER	1	1						
1-1	1	705100-11701	HEAD ASSY, CYLINDER	1	1						F 2
		(A=E080028) (B=E080019)									
2A	2	105300-11801	GUIDE, VALVE	2	2						1
2A-1	2	105400-11800	GUIDE, VALVE	2	2						S 1
		(A=E080028) (B=E080019)									
4	2	27231-150000	PLUG 15	1	1						
6	2	105300-11330	PIN	1	1						
6-1	2	22351-060012	PIN, SPRING 6.0X12	1	1						S
		(A=E080028) (B=E080019)									
6A	2	128170-11340	SEAL, VALVE STEM	2	2						W
		(A=E080028) (B=E080019)									
7	1	105100-11100	VALVE, INTAKE	1	1						
8	1	105100-11111	VALVE, EXHAUST	1	1						
9	1	105400-11121	SPRING, VALVE	2	2						
10	1	101158-11180	RETAINER, SPRING	2	2						
11	1	27310-070001	COTTER, 7	2	2						
13	1	105300-11290	SUPPORT ASSY, ARM	1	1						
13-1	1	10530H-11290	SUPPORT ASSY, ARM	1	1						S
		(A=E080028) (B=E080019)									
16	1	119625-11880	SEAT, NOZZLE	1	1						
17	1	119625-11870	PROTECTOR, NOZZLE	1	1						A
17-1	1	119625-11871	PROTECTOR, NOZZLE	1	1						R A
		(A=E080028) (B=E080019)									
18	1	105100-11650	ARM, ROCKER	1	1						
20	2	101158-11230	SCREW, VALVE ADJUST	1	1						
21	2	26756-080002	NUT, LOCK M8	1	1						
22	1	105100-11660	ARM, ROCKER	1	1						
24	2	101158-11230	SCREW, VALVE ADJUST	1	1						
25	2	26756-080002	NUT, LOCK M8	1	1						
26	1	105300-11900	RETAINER	1	1						
26-1	1	119625-11900	RETAINER, NOZZLE	1	1						S 3
		(A=E080028) (B=E080019)									
27	1	105010-11920	COCK, WATER	1	1						
28	1	26216-080452	STUD, M8X 45	1	1						
29	1	26216-060402	STUD, M6X 40	2	2						
29-1	1	26216-060352	STUD, M6X 35	2	2						S 3
		(A=E080028) (B=E080019)									
30	1	26366-060002	NUT, M6	2	2						
31	1	26366-080002	NUT, M8	1	1						
31-1	1	26306-080002	NUT, M8	1	1						N
		(A=EZZZZZ) (B=EZZZZZ)									
32	1	105190-11200	BONNET ASSY, HEAD	1	1						
32-1	1	105198-11200	BONNET ASSY, HEAD	1	1						N
		(A=EZZZZZ) (B=EZZZZZ)									
34	2	105092-03600	SHAFT, DECOMPRESSION	1	1						
35	2	104200-03641	SPRING, DECOMPRESSION	1	1						
36	2	105198-03740	LEVER ASSY	1	1						
39	3	105225-66990	SCREW, M5X8.5	1	1						
40	2	22312-030180	PIN, PARALLEL M3X18	1	1						
41	2	22322-030180	PIN, TAPER 3X18	1	1						

Fig.2. CYLINDER HEAD & BONNET



(A)=NFAD8-LIK3  
(B)=NFAD8-LEIK3  
(C)=

(D)=  
(E)=  
(F)=

No.	Lev.	Parts No.	Description	Qty						I	R	
				(A)	(B)	(C)	(D)	(E)	(F)			
42	2	24311-000070	O-RING, 1AP7.0	1	1							A
43	2	183250-03550	JOINT	1	1							
44	1	105100-11310	GASKET, BONNET	1	1							A
45	1	26106-060202	BOLT, M6X 20 PLATED	2	2							
46	1	26106-060602	BOLT, M6X 60 PLATED	1	1							

Remarks

(A) These parts are sold by Fig.18 No.14-1.

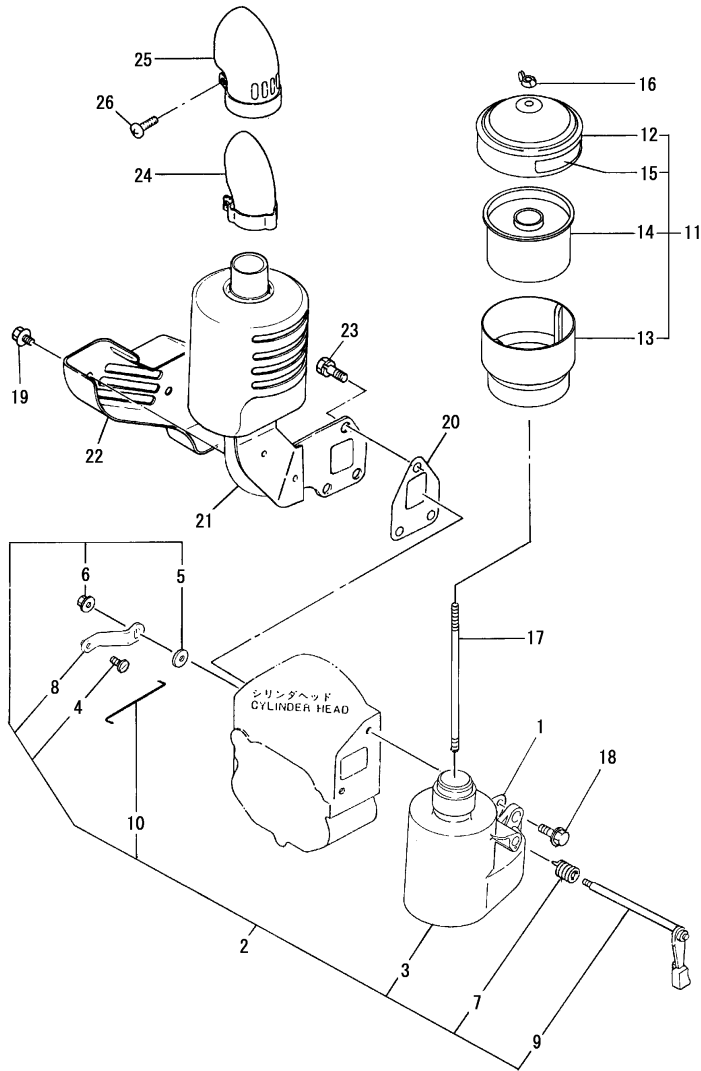
(1) Repair parts.

(2) Interchangeable by simultaneous replacement with No.13-1.

(3) Interchangeable by simultaneous replacement with No.26-1 & 29-1.



Fig.3. AIR CLEANER & MUFFLER



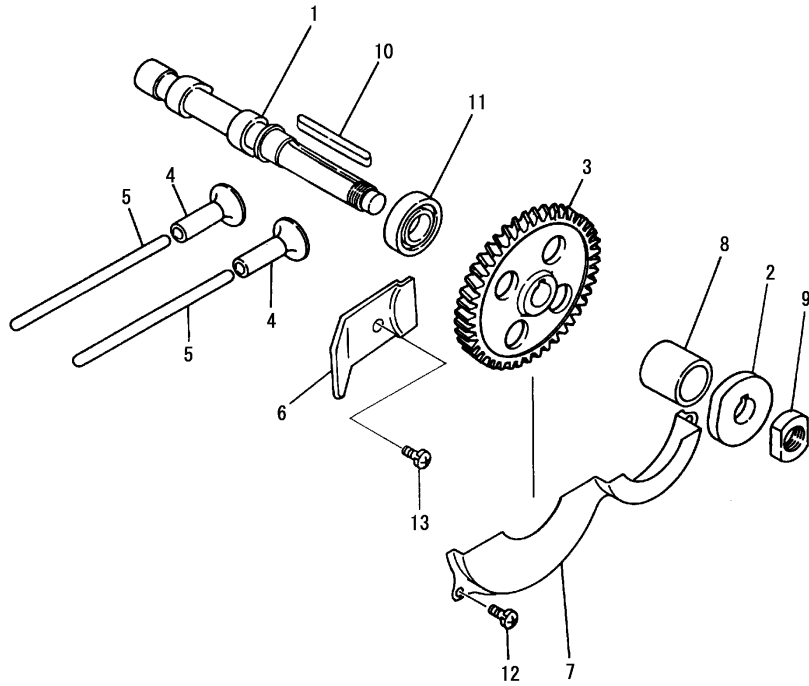
(A)=NFAD8-LIK3  
(B)=NFAD8-LEIK3  
(C)=

(D)=  
(E)=  
(F)=

No.	Lev.	Parts No.	Description	Q'ty						I	R
				(A)	(B)	(C)	(D)	(E)	(F)		
1	1	105190-12050	GASKET	1	1						
2	1	105198-12010	PIPE, AIR INTAKE	1	1						
3	2	105198-12020	PIPE, AIR INTAKE	1	1						
4	2	183250-03550	JOINT	1	1						
5	2	22137-100000	WASHER, 10	1	1						
6	2	26366-060002	NUT, M6	1	1						
7	2	104200-03641	SPRING, DECOMPRESSION	1	1						
8	2	105198-03770	LEVER, DECOMPRESSION	1	1						
9	2	105198-03780	SHAFT	1	1						
10	2	105150-03790	ROD	1	1						
11	1	105192-12510	CLEANER, AIR	1	1						
11-1	1	105192-12511	CLEANER, AIR	1	1						R
(A=E080028) (B=E080019)											
12	2	105192-12530	COVER ASSY	1	1						
13	2	104304-12590	SUMP, OIL	1	1						
14	2	104304-12540	ELEMENT	1	1						
15	2	105092-07311	LABEL	1	1						
16	1	105092-12550	NUT	1	1						
17	1	105092-12560	BOLT	1	1						
18	1	26106-080202	BOLT, M8X 20 PLATED	2	2						
19	1	160260-01580	BOLT, FLANGE M6X6	2	2						
20	1	105300-13200	GASKET, SILENCER	1	1						A
20-1	1	105300-13201	GASKET, SILENCER	1	1						N A
(A=E080028) (B=E080019)											
21	1	105190-13510	SILENCER ASSY	1	1						
22	1	105190-13550	COVER	1	1						
23	1	26013-080189	BOLT, M8X 18	3	3						
24	1	105370-13570	PIPE	1	1						
24-1	1	105370-13571	PIPE	1	1						N
(A=E080028) (B=E080019)											
25	1	105212-13590	COVER	1	1						
25-1	1	105212-13591	COVER	1	1						N
(A=E080028) (B=E080019)											
26	1	26554-060162	SCREW, M6X16	1	1						

Remarks  
(A)These parts are sold by  
Fig.18 No.14-1.

# Fig.4. CAMSHAFT



(A)=NFAD8-LIK3  
(B)=NFAD8-LEIK3  
(C)=

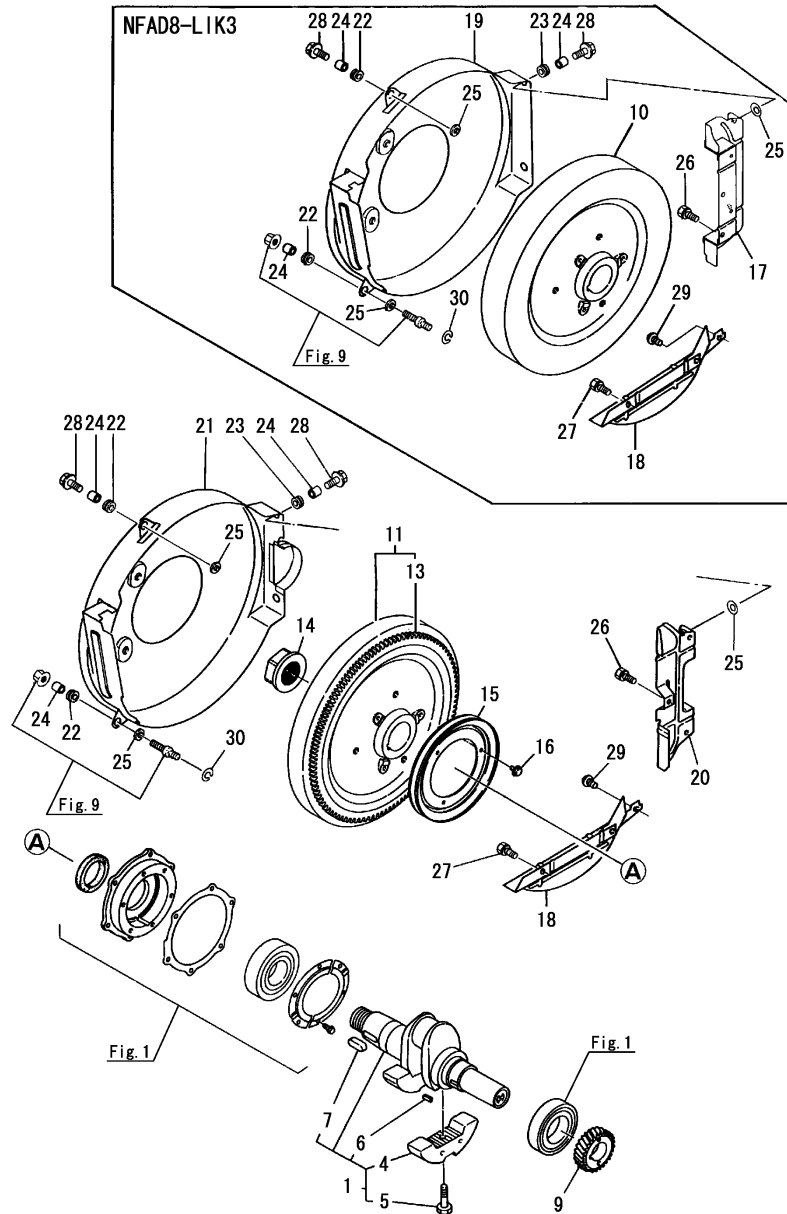
(D)=  
(E)=  
(F)=

No.	Lev.	Parts No.	Description	Q'ty						I	R
				(A)	(B)	(C)	(D)	(E)	(F)		
1	1	105170-14010	CAMSHAFT	1	1						
2	1	105100-14091	CAM, FUEL	1	1						
3	1	105100-14100	GEAR, CAMSHAFT	1	1						
3-1	1	10510G-14100 (A=E080028)	GEAR, CAMSHAFT (B=E080019)	1	1						S
3-2	1	10510G-14101	GEAR, CAMSHAFT	1	1						N
4	1	105300-14200	TAPPET	2	2						
5	1	105100-14400	ROD, PUSH	2	2						
6	1	105190-14421	RETAINER, BEARING	1	1						
7	1	105100-14600	COVER	1	1						
8	1	105302-14700	SPACER	1	1						
9	1	104300-76460	NUT	1	1						
10	1	22512-070550	KEY, 7X 55	1	1						
11	1	24101-060064	BEARING, BALL 6006	1	1						
12	1	26022-060122	SCREW, M6X12	3	3						
13	1	26022-060122	SCREW, M6X12	1	1						

Fig.5. CRANKSHAFT & FLYWHEEL

(A)=NFAD8-LIK3  
 (B)=NFAD8-LEIK3  
 (C)=

(D)=  
 (E)=  
 (F)=

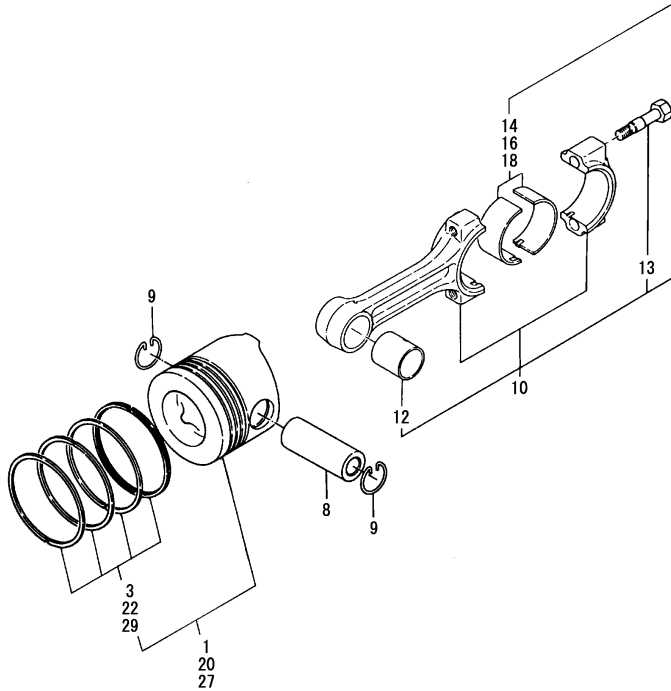


No.	Lev.	Parts No.	Description	Q'ty						I	R
				(A)	(B)	(C)	(D)	(E)	(F)		
1	1	705190-21700	CRANKSHAFT ASSY	1	1						
4	2	105190-21100	WEIGHT, BALANCE	2	2						
5	2	106100-21130	BOLT, BALANCE WEIGHT	2	2						
6	2	22512-050120	KEY, 5X 12	1	1						
7	2	22512-100260	KEY, 10X 26	1	1						
9	1	105100-21200	GEAR, CRANKSHAFT	1	1						
9-1	1	10510G-21200	GEAR, CRANKSHAFT	1	1						S
		(A=E080028) (B=E080019)									
9-2	1	10510G-21201	GEAR, CRANKSHAFT	1	1						N
		(A=EZZZZZ) (B=EZZZZZ)									
10	1	105100-21400	FLYWHEEL		1						
11	1	105100-21590	FLYWHEEL ASSY			1					
13	2	105100-21600	GEAR, RING			1					
14	1	104200-21530	NUT, END			1	1				
14-1	1	10530H-21530	NUT, END			1	1				N
		(A=E080028) (B=E080019)									
15	1	104104-21600	V-PULLEY			1	1				
16	1	26106-060122	BOLT, M6X 12 PLATED			3	3				
17	1	105190-21310	COVER			1					
18	1	105192-21320	COVER			1	1				
19	1	105198-21300	COVER, FLYWHEEL			1					
20	1	105190-21360	COVER				1				
21	1	105198-21360	COVER, FLYWHEEL				1				
22	1	105300-21381	ABSORBER			2	2				
23	1	105300-44451	ABSORBER			2	2				
24	1	105300-44460	COLLAR			4	4				
25	1	160120-76940	WASHER			5	5				
26	1	26013-060142	BOLT, M6X 14			3	2				
27	1	26013-060142	BOLT, M6X 14			2	2				
28	1	26106-060202	BOLT, M6X 20 PLATED			3	3				
29	1	26557-060082	SCREW, M6X 8			1	1				
30	1	105190-21910	WASHER			1	1				

Fig.6. PISTON & CONNECTING ROD

(A)=NFAD8-LIK3  
 (B)=NFAD8-LEIK3  
 (C)=

(D)=  
 (E)=  
 (F)=

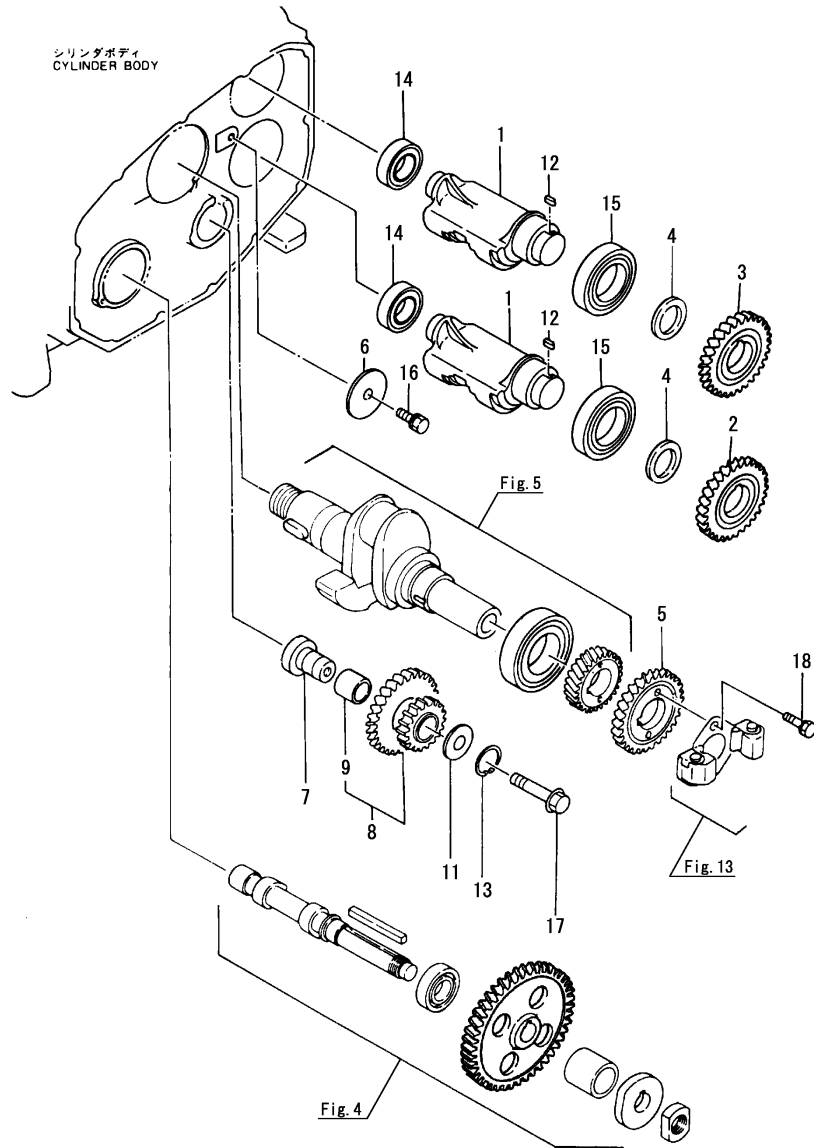


No.	Lev.	Parts No.	Description	Q'ty						I	R
				(A)	(B)	(C)	(D)	(E)	(F)		
1	1	105250-22090	PISTON ASSY	1	1						
1-1	1	105250-22091	PISTON ASSY	1	1						N
		(A=E080028) (B=E080019)									
3	2	705270-22501	RING SET, PISTON	1	1						
3-1	2	105200-22500	RING SET, PISTON	1	1						N
		(A=E080028) (B=E080019)									
8	1	119810-22300	PIN, PISTON	1	1						
9	1	105100-22400	CIRCLIP	2	2						
10	1	705100-23100	ROD ASSY, CONNECTING	1	1						
10-1	1	70510G-23100	ROD ASSY, CONNECTING	1	1						R
		(A=E080028) (B=E080019)									
12	2	105100-23910	BEARING, PISTON PIN	1	1						5
13	2	105300-23200	BOLT, CONNECTING ROD	2	2						
14	2	705100-23600	BEARING, CRANK PIN	1	1						
16	1	705100-23610	BEARING ASSY, 0.25	1	1						1
18	1	705100-23620	BEARING, 0.50 US	1	1						2
20	1	105200-22471	PISTON ASSY, 0.25 OS	1	1						3
20-1	1	105200-22472	PISTON ASSY, 0.25 OS	1	1						N 3
		(A=E080028) (B=E080019)									
22	2	105200-22510	RING SET, 0.25 OS	1	1						3
22-1	2	105200-22511	RING SET, 0.25 OS	1	1						N 3
		(A=E080028) (B=E080019)									
27	1	105200-22481	PISTON ASSY, 0.50 OS	1	1						4
27-1	1	105200-22482	PISTON ASSY, 0.50 OS	1	1						N 4
		(A=E080028) (B=E080019)									
29	2	105200-22520	RING SET, 0.50 OS	1	1						4
29-1	2	105200-22521	RING SET, 0.50 OS	1	1						N 4
		(A=E080028) (B=E080019)									

Remarks

- (1) Under sized (U.S.=0.25) parts.
- (2) Under sized (U.S.=0.50) parts.
- (3) Over sized (O.S.=0.25) parts.
- (4) Over sized (O.S.=0.50) parts.
- (5) Repair parts.

Fig.7. BALANCER



(A)=NFAD8-LIK3  
(B)=NFAD8-LEIK3  
(C)=

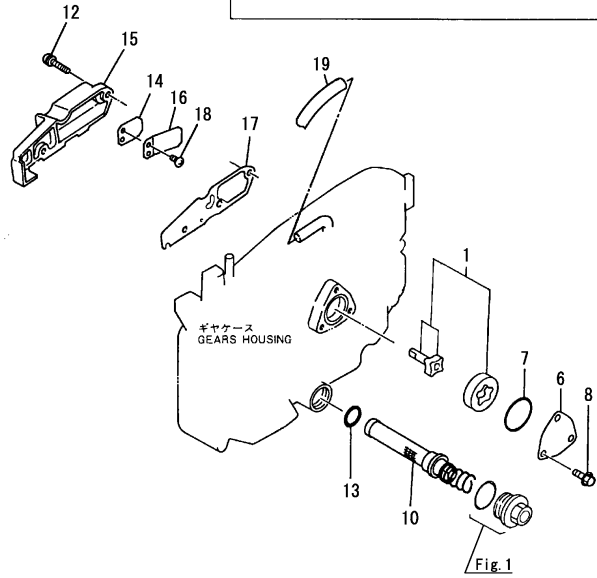
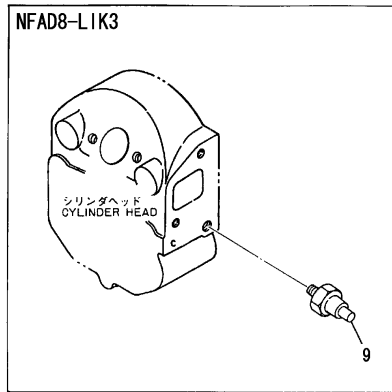
(D)=  
(E)=  
(F)=

No.	Lev.	Parts No.	Description	Q'ty						I	R
				(A)	(B)	(C)	(D)	(E)	(F)		
1	1	105190-28250	SHAFT, BALANCER	2	2						
2	1	105190-28300	GEAR, BALANCER	1	1						
2-1	1	10519G-28300	GEAR, BALANCER	1	1						S
2-2	1	10519G-28301	GEAR, BALANCER	1	1						N
3	1	105190-28310	GEAR, BALANCER	1	1						
3-1	1	10519G-28310	GEAR, BALANCER	1	1						S
3-2	1	10519G-28311	GEAR, BALANCER	1	1						N
4	1	105190-28380	SPACER	2	2						
5	1	105190-28410	GEAR, BALANCER	1	1						
5-1	1	10519G-28410	GEAR, BALANCER	1	1						S
5-2	1	10519G-28411	GEAR, BALANCER	1	1						N
6	1	105300-28450	RETAINER	1	1						
7	1	105302-28701	SHAFT, IDLE GEAR	1	1						
8	1	105192-28710	GEAR ASSY, IDLE	1	1						
8-1	1	10519G-28720	GEAR ASSY, IDLE	1	1						S
8-2	1	10519G-28721	GEAR ASSY, IDLE	1	1						N
9	2	105302-28720	BUSH	1	1						
11	1	105362-28750	SPACER	1	1						
12	1	105215-76490	KEY	2	2						
13	1	22242-000210	RING, 21	1	1						
14	1	24101-060044	BEARING, BALL 6004	2	2						
15	1	24121-060074	BEARING, BALL 6007NR	2	2						
16	1	26013-080202	BOLT, M8X 20	1	1						
17	1	26106-100652	BOLT, M10X 65 PLATED	1	1						
17-1	1	26106-100702	BOLT, M10X 70 PLATED	1	1						R
18	1	26013-060222	BOLT, M6X 22	2	2						

Fig.8. LUB.OIL SYSTEM & BREATHER

(A)=NFAD8-LIK3  
(B)=NFAD8-LEIK3  
(C)=

(D)=  
(E)=  
(F)=

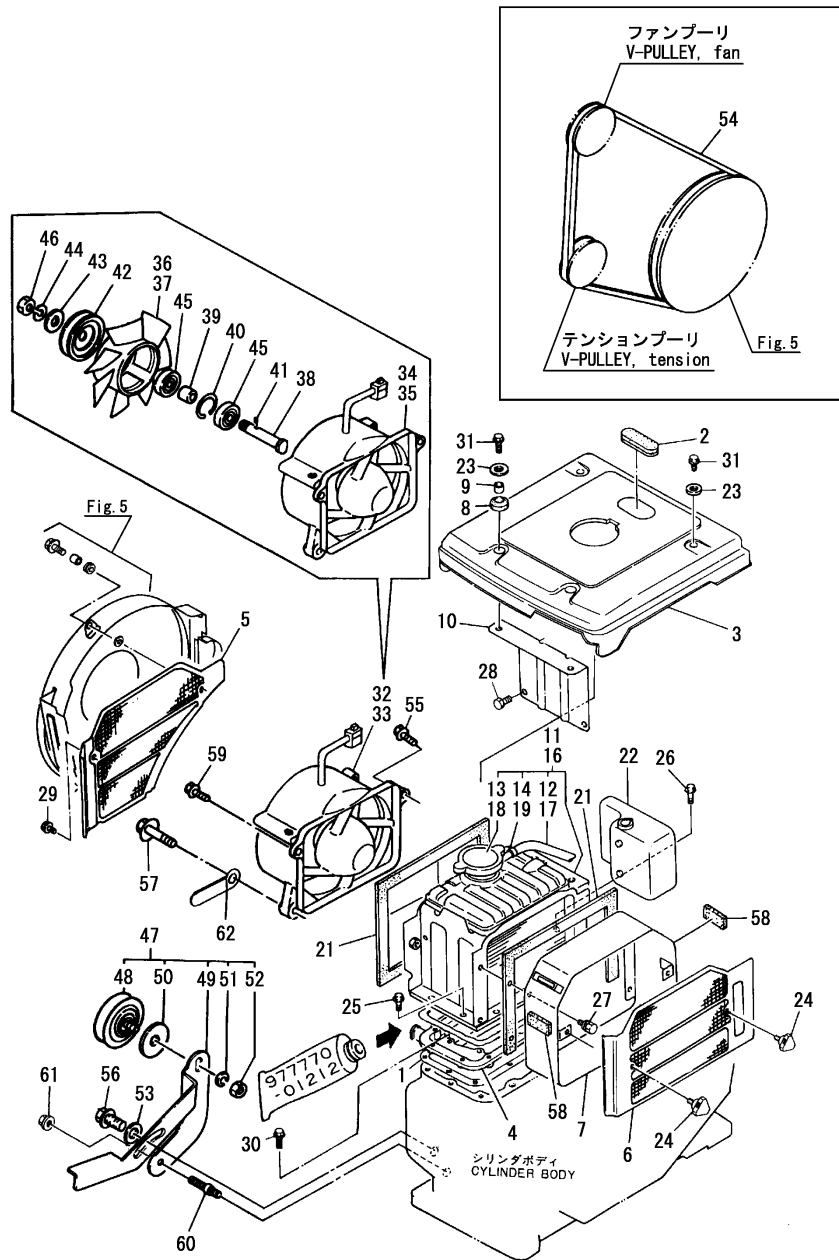


No.	Lev.	Parts No.	Description	Q'ty						I	R
				(A)	(B)	(C)	(D)	(E)	(F)		
1	1	705300-32500	ROTOR ASSY	1	1						
1-1	1	105300-32500	PUMP, LUB.OIL CMP	1	1						N
		(A=EXXXXX) (B=EXXXXX)									
6	1	103338-32070	COVER	1	1						A
7	1	103338-32570	O-RING	1	1						
8	1	26106-060122	BOLT, M6X 12 PLATED	3	3						
9	1	105140-34100	INDICATOR	1							
10	1	105190-35050	STRAINER ASSY, OIL	1	1						
12	1	26023-060252	SCREW, M6X25	3	3						
12-1	1	26106-060222	BOLT, M6X 22 PLATED	3	3						R
		(A=EZZZZZ) (B=EZZZZZ)									
13	1	24341-000200	O-RING, 1AS20.0	1	1						A
14	1	101158-03061	VALVE	1	1						
15	1	105100-03081	COVER, BREATHER	1	1						
16	1	101158-03111	RETAINER	1	1						
17	1	105100-03130	GASKET	1	1						
17-1	1	105100-03131	GASKET	1	1						N
		(A=E080028) (B=E080019)									
18	1	105362-78960	SCREW, M4X8	2	2						
19	1	23064-090400	PIPE, 9X 400	1	1						

Remarks

(A)These parts are also sold by Fig.18 No.14-1. (Gasket set P/# 705100-92610)

Fig.9. RADIATOR & FAN

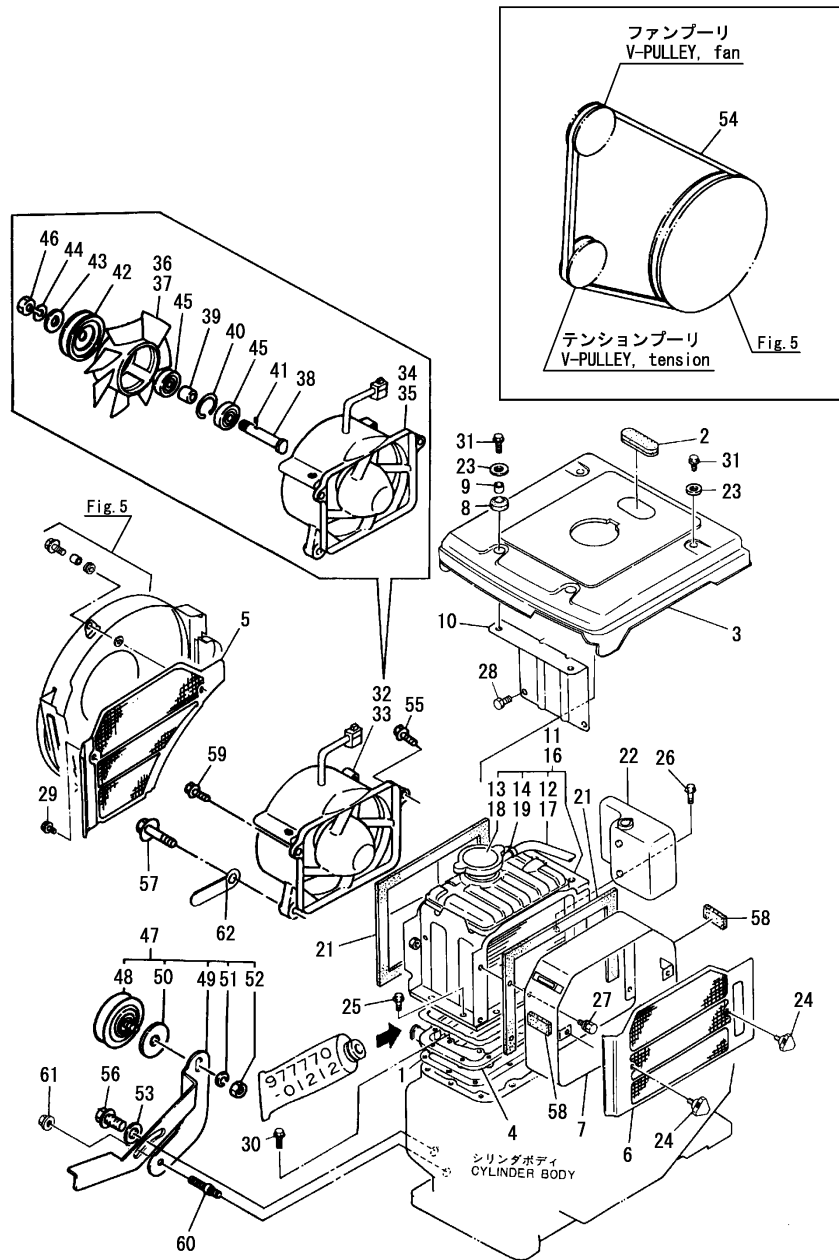


(A)=NFAD8-LIK3  
(B)=NFAD8-LEIK3  
(C)=

(D)=  
(E)=  
(F)=

No.	Lev.	Parts No.	Description	Q'ty						I	R
				(A)	(B)	(C)	(D)	(E)	(F)		
1	1	105190-44050	GASKET	1	1						
2	1	105300-44220	COVER, RADIATOR	1	1						
3	1	105198-44250-1	COVER, RADIATOR	1	1						
3-1	1	105198-44250-4 (A=E070136) (B=E070130)	COVER, RADIATOR	1	1						N
4	1	105190-44300	BRACKET, RADIATOR	1	1						
5	1	105100-44330-1	SCREEN	1	1						
5-1	1	105100-44330-2 (A=E070136) (B=E070130)	SCREEN	1	1						N
5-2	1	10510G-44330-1 (A=E080028) (B=E080019)	SCREEN,F.W.	1	1						R
6	1	105292-44340-1	SCREEN	1	1						
6-1	1	105292-44340-2 (A=E070136) (B=E070130)	SCREEN	1	1						N
6-2	1	10529G-44340-1 (A=E080028) (B=E080019)	SCREEN,O.F.W.	1	1						R
7	1	105292-44360	DUCT, SCREEN	1	1						
7-1	1	10529G-44360 (A=E080028) (B=E080019)	DUCT, SCREEN	1	1						R
8	1	105300-44451	ABSORBER	2	2						
9	1	105300-44460	COLLAR	2	2						
10	1	105100-44490	STAY	1	1						
11	1	105198-44500	RADIATOR ASSY	1							
12	2	105340-44570	PIPE, 7X170	1							
13	2	105198-44590	CAP, RADIATOR	1							
14	2	121250-44590	CLAMP	1							
16	1	105292-44500	RADIATOR ASSY		1						
17	2	105340-44570	PIPE, 7X170		1						
18	2	105198-44590	CAP, RADIATOR		1						
19	2	121250-44590	CLAMP		1						
21	1	104607-44540	SPONGE	2	2						
22	1	105100-44630	TANK, SUB	1	1						
23	1	160120-76940	WASHER	4	4						
24	1	160725-78350	KNOB	2	2						
25	1	26013-060162	BOLT, M6X 16	8	8						
26	1	26013-060202	BOLT, M6X 20	1	1						
27	1	26013-060129	BOLT, M6X 12	4	4						
28	1	26106-060122	BOLT, M6X 12 PLATED	2	2						
29	1	26106-060122	BOLT, M6X 12 PLATED	1	1						
30	1	26106-060202	BOLT, M6X 20 PLATED	8	8						
30-1	1	26106-060182 (A=EZZZZZ) (B=EZZZZZ)	BOLT, M6X 18 PLATED	8	8						N
31	1	26106-060202	BOLT, M6X 20 PLATED	4	4						
32	1	105172-44201	CASE ASSY, FAN	1							
33	1	105292-44200	CASE ASSY, FAN		1						
34	2	105172-44680	COVER ASSY	1							
35	2	105292-44680	COVER ASSY		1						
36	2	105172-44700	FAN, COOLING	1							
37	2	105100-44850	FAN, COOLING		1						
37-1	2	105292-44850 (B=E080019)	FAN, COOLING		1						R

Fig.9. RADIATOR & FAN



(A)=NFAD8-LIK3  
 (B)=NFAD8-LEIK3  
 (C)=

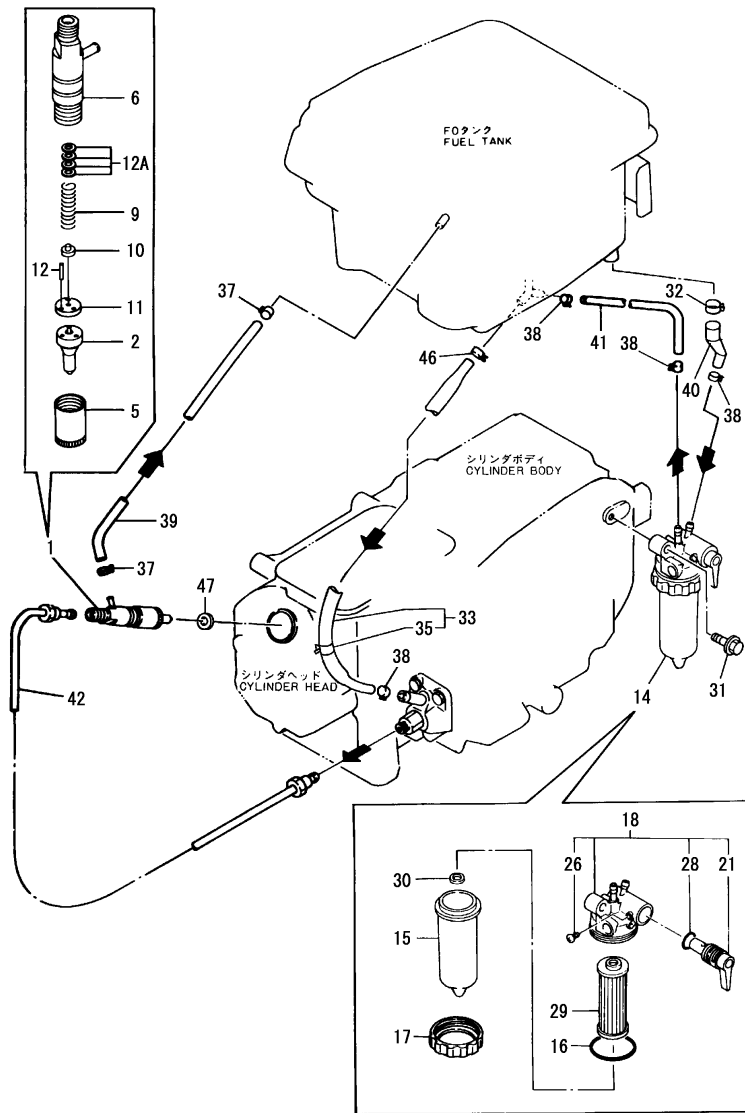
(D)=  
 (E)=  
 (F)=

No.	Lev.	Parts No.	Description	Q'ty						I	R
				(A)	(B)	(C)	(D)	(E)	(F)		
38	2	105340-44710	SHAFT, FAN	1	1						
39	2	106383-44720	SPACER	1	1						
40	2	106383-44740	CIRCLIP	1	1						
41	2	105340-44750	PIN	1	1						
42	2	105100-44770	PULLEY, FAN	2	2						
43	2	105100-44780	WASHER, PULLEY	1	1						
44	2	22217-120000	WASHER, SPRING 12	1	1						
45	2	24107-062013	BEARING, 6201ZZP6	2	2						
46	2	26777-120002	NUT, LOCK M12	1	1						
47	1	105100-44810	PULLEY ASSY, TENSION	1	1						
48	2	106100-44650	PULLEY, TENSION	1	1						
49	2	105100-44940	LEVER, PULLEY	1	1						
50	2	106100-44960	CAP	1	1						
51	2	22217-080000	WASHER, SPRING 8	1	1						
52	2	26716-080002	NUT, M8	1	1						
53	1	22137-080000	WASHER, 8	1	1						
54	1	25117-003451	V-BELT, M34.5H	1	1						
55	1	26106-060252	BOLT, M6X 25 PLATED	1	1						
56	1	26106-080202	BOLT, M8X 20 PLATED	1	1						
57	1	26106-080352	BOLT, M8X 35 PLATED	2	2						
58	1	106100-44560	SPONGE, 15X5X1000	2	2						
59	1	26106-060302	BOLT, M6X 30 PLATED	1	1						
60	1	105100-44930	BOLT	1	1						
61	1	26366-060002	NUT, M6	1	1						
62	1	105430-67110	CLAMP, CORD	1							





Fig.11. FUEL OIL SYSTEM



(A)=NFAD8-LIK3  
(B)=NFAD8-LEIK3  
(C)=

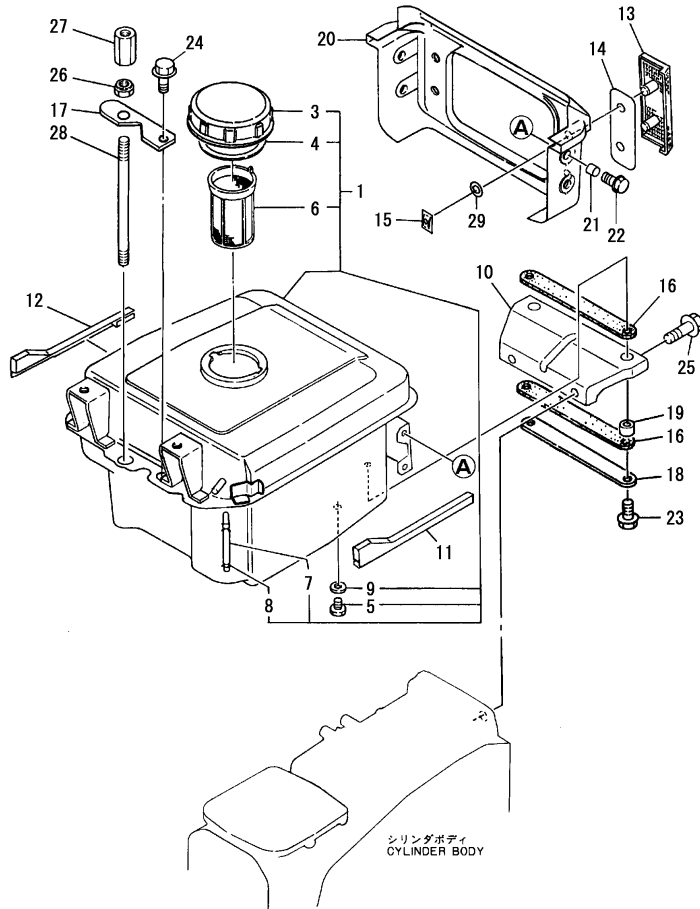
(D)=  
(E)=  
(F)=

No.	Lev.	Parts No.	Description	Qty						I	R
				(A)	(B)	(C)	(D)	(E)	(F)		
1	1	705100-53100	VALVE ASSY,INJECTION	1	1						
2	2	119800-53000	VALVE ASSY,INJECTION	1	1						
5	2	114250-53080	NUT, NOZZLE D16.95	1	1						
6	2	105300-53100	HOLDER ASSY, NOZZLE	1	1						
9	2	114250-53120	SPRING, NOZZLE	1	1						
10	2	114250-53130	SEAT, SPRING	1	1						
11	2	114250-53140	PLATE	1	1						
12	2	114250-53210	PIN	2	2						
12A	2	114250-53400	SHIM SET	1	1						
12A-1	2	119803-53400	SHIM SET	1	1						R
		(A=E085002) (B=E085011)									
14	1	105370-55650	STRAINER ASSY, FUEL	1	1						
14-1	1	105198-55600	STRAINER ASSY, FUEL	1	1						R
		(A=E085002) (B=E085011)									
15	2	105300-55530	CUP, STRAINER	1	1						
15-1	2	105198-55510	CUP, STRAINER	1	1						R
		(A=E085002) (B=E085011)									
16	2	105300-55520	O-RING	1	1						A
17	2	105300-55610	RING, RETAINING	1	1						
18	2	105300-55700	BODY ASSY, STRAINER	1	1						
21	3	105300-55340	LEVER	1	1						
26	3	104200-55750	SCREW, M4	1	1						
28	3	24311-000160	O-RING, 1AP16.0	1	1						
29	2	105370-55710	ELEMENT	1	1						
29-1	2	105370-55711	ELEMENT	1	1						R
		(A=E085002) (B=E085011)									
30	2	105300-55750	FLOAT	1	1						
31	1	26106-080302	BOLT, M8X 30 PLATED	1	1						
32	1	129301-03660	CLAMP 16	1	1						
33	1	105100-59010	PIPE ASSY, FUEL	1	1						
35	2	124766-59050	CLIP, HOSE 12	1	1						
37	1	124722-59050	CLIP, HOSE 9	2	2						
38	1	124766-59050	CLIP, HOSE 12	4	4						
39	1	105300-59100	PIPE, FUEL RETURN	1	1						
40	1	105192-59561	PIPE, FUEL	1	1						
41	1	105192-59570	PIPE, FUEL	1	1						
42	1	105100-59800	PIPE ASSY, INJECTION	1	1						
46	1	23080-013000	CLAMP, 13	1	1						
47	1	104884-59170	GASKET	1	1						

Remarks

(A)These parts are sold by  
Fig.18 No.14-1.

Fig.12. FUEL TANK



(A)=NFAD8-LIK3  
(B)=NFAD8-LEIK3  
(C)=

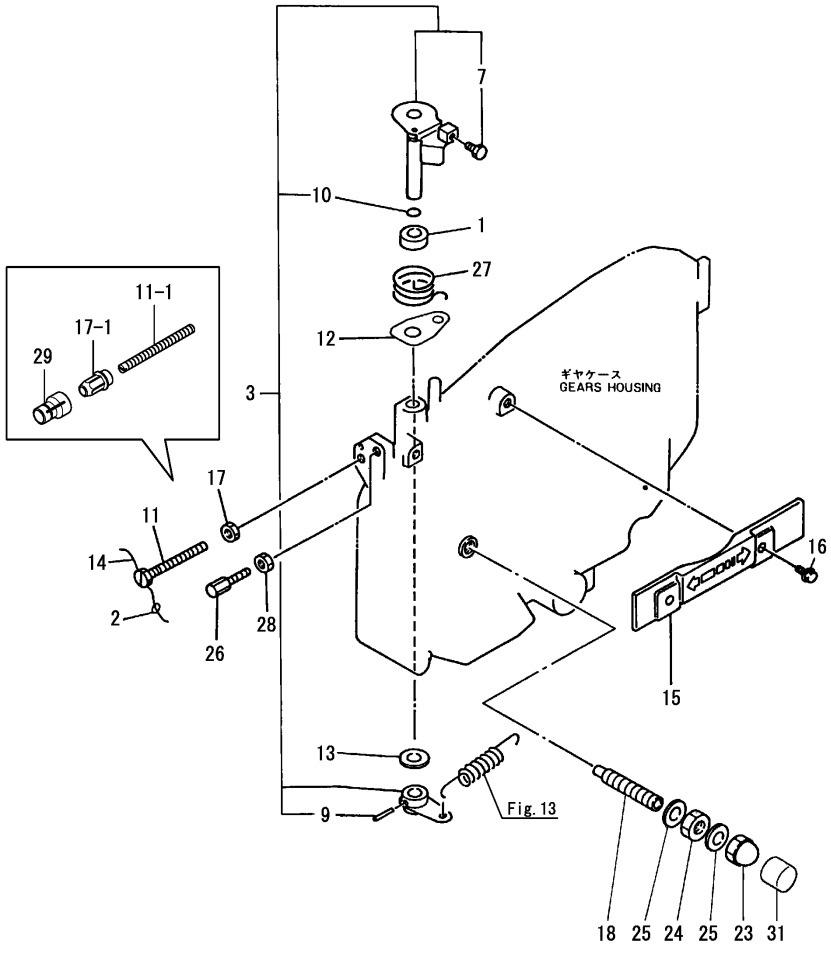
(D)=  
(E)=  
(F)=

No.	Lev.	Parts No.	Description	Q'ty						I	R
				(A)	(B)	(C)	(D)	(E)	(F)		
1	1	705292-55700-1	TANK ASSY, FUEL	1	1						
1-1	1	705292-55700-2	TANK ASSY, FUEL	1	1						N
		(A=E070136) (B=E070130)									
3	2	105302-55040	CAP, FUEL TANK	1	1						
4	2	101504-55051	GASKET	1	1						A
4-1	2	105302-55050	GASKET, CAP	1	1						R A
		(A=E080028) (B=E080019)									
5	2	105300-55080	PLUG, 8	1	1						
6	2	105372-55100	STRAINER, FUEL	1	1						
7	2	104300-55160	GAUGE, LEVEL	1	1						
8	2	103854-55220	RETAINER	2	2						
9	2	23414-080000	GASKET, 8X1.0	1	1						
10	1	105190-55240-1	STAY, FUEL TANK	1	1						
10-1	1	105190-55240-2	STAY, FUEL TANK	1	1						N
		(A=E070136) (B=E070130)									
11	1	105198-55250-1	MOULDING	1	1						
11-1	1	105198-55250-2	MOULDING	1	1						N
		(A=E070136) (B=E070130)									
12	1	105198-55260-1	MOULDING	1	1						
12-1	1	105198-55260-2	MOULDING	1	1						N
		(A=E070136) (B=E070130)									
13	1	105292-55450	PLATE	2	2						
14	1	105292-55460	PLATE	2	2						
15	1	105292-55471	NUT, M5	4	4						
16	1	105192-55520	ABSORBER	2	2						
17	1	105198-55520	RETAINER	1	1						
18	1	105192-55530	RETAINER	1	1						
19	1	105100-55540	COLLAR	2	2						
20	1	105298-55820-1	COVER, LIGHT	1	1						
20-1	1	105298-55820-2	COVER, LIGHT	1	1						N
		(A=E070136) (B=E070130)									
21	1	105100-55820	BUSH	4	4						
22	1	26106-060122	BOLT, M6X 12 PLATED	4	4						
23	1	26106-080222	BOLT, M8X 22 PLATED	2	2						
24	1	26106-080222	BOLT, M8X 22 PLATED	1	1						
25	1	26106-080322	BOLT, M8X 32 PLATED	2	2						
26	1	104107-07900	NUT, M10	1	1						
27	1	105300-07910	NUT	1	1						
28	1	105140-07940	BOLT, LIFTING	1	1						
29	1	120270-09310	GASKET	4	4						

Remarks  
(A)These parts are sold by  
Fig.18 No.14-1.



Fig.14. REGULATOR HANDLE

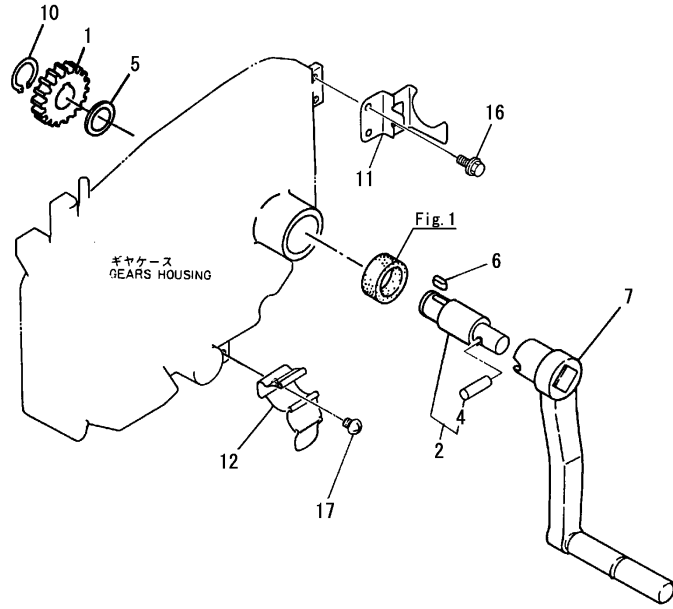


(A)=NFAD8-LIK3  
(B)=NFAD8-LEIK3  
(C)=

(D)=  
(E)=  
(F)=

No.	Lev.	Parts No.	Description	Q'ty						I	R
				(A)	(B)	(C)	(D)	(E)	(F)		
1	1	121575-21850	WASHER	1	1						
2	1	135210-61090	LEAD	1	1						
3	1	705192-66700	SHAFT ASSY	1	1						
7	3	105225-66990	SCREW, M5X8.5	1	1						
9	2	22322-030200	PIN, TAPER 3X20	1	1						
10	2	24311-000070	O-RING, 1AP7.0	1	1						
11	1	105300-66520	SCREW	1	1						
11-1	1	105090-66830	SCREW	1	1						N
		(A=E080028) (B=E080019)									
12	1	105300-66850	RETAINER	1	1						
13	1	22117-100000	WASHER, 10	1	1						
14	1	22451-060080	WIRE, 0.6X80	1	1						
15	1	105300-66110	COVER	1	1						
16	1	26106-060122	BOLT, M6X 12 PLATED	2	2						
17	1	26756-060002	NUT, LOCK M6	1	1						
17-1	1	129209-61370	NUT, M6	1	1						N
		(A=E080028) (B=E080019)									
18	1	105507-66551	LIMITER ASSY, FUEL	1	1						
23	1	124060-66950	NUT, CAP M10	1	1						
24	1	26796-100002	NUT, LOCK M10	1	1						
25	1	43400-500430	SEAL WASHER 10S	2	2						
25-1	1	22190-100002	WASHER, SEAL 10	2	2						N
		(A=EZZZZZ) (B=EZZZZZ)									
26	1	102100-67080	BOLT, ADJUSTING	1	1						
27	1	105502-67301	SPRING, RETURN	1	1						
28	1	26756-060002	NUT, LOCK M6	1	1						
29	1	119285-66610	CAP, HIGH-IDLE	1	1						W
		(A=E080028) (B=E080019)									
31	1	105300-66610	CAP	1	1						W
		(A=EZZZZZ) (B=EZZZZZ)									

Fig.15. HAND STARTING DEVICE

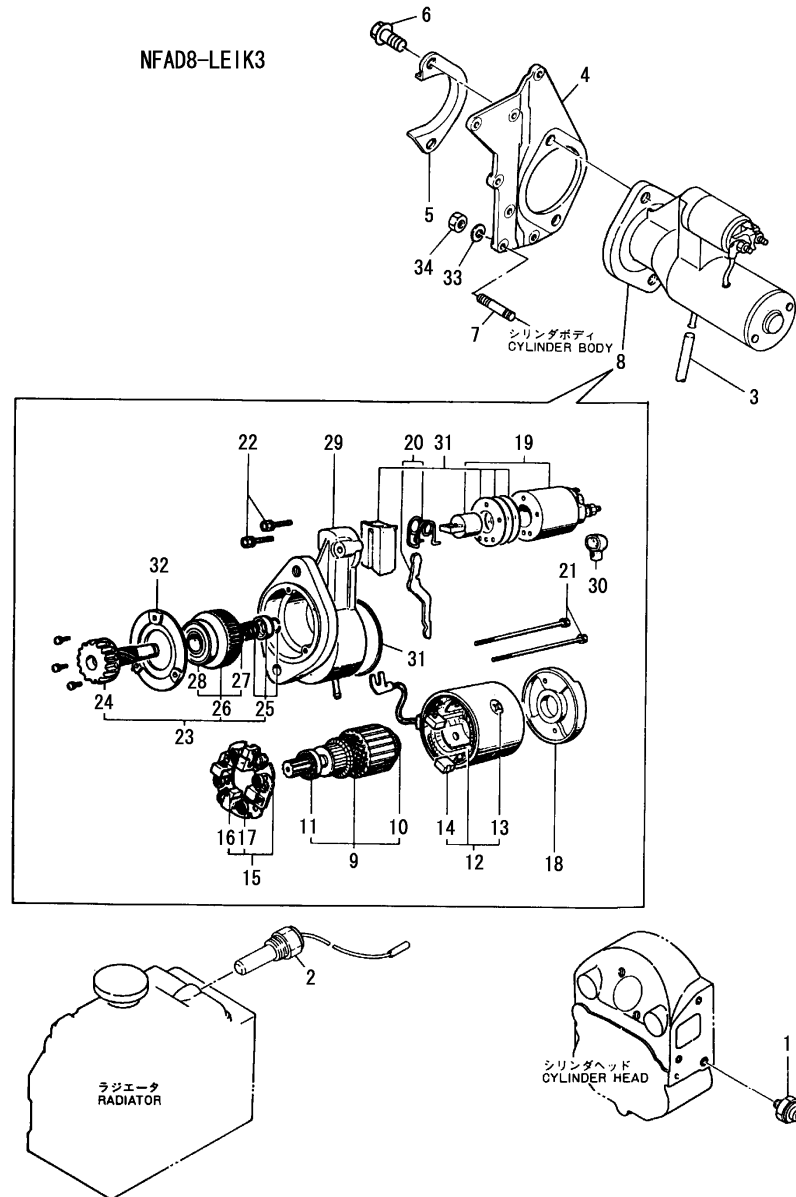


(A)=NFAD8-LIK3  
(B)=NFAD8-LEIK3  
(C)=

(D)=  
(E)=  
(F)=

No.	Lev.	Parts No.	Description	Q'ty						I	R
				(A)	(B)	(C)	(D)	(E)	(F)		
1	1	105192-76330	GEAR, STARTING	1	1						
1-1	1	10519G-76330	GEAR, STARTING	1	1						S
		(A=E080028) (B=E080019)									
1-2	1	10519G-76331	GEAR, STARTING	1	1						N
		(A=EZZZZZ) (B=EZZZZZ)									
2	1	705302-76900	SHAFT ASSY, STARTING	1	1						
4	2	104200-76480	PIN	1	1						
5	1	105300-76470	COLLAR	1	1						
6	1	105300-76490	KEY, 7X10	1	1						
7	1	106500-76790	HANDLE ASSY	1	1						
10	1	22242-000200	RING, 20	1	1						
11	1	105100-08100	BRACKET, HANDLE	1	1						
12	1	105300-08510	BRACKET ASSY	1	1						
16	1	26106-060122	BOLT, M6X 12 PLATED	2	2						
17	1	26557-060082	SCREW, M6X 8	1	1						

Fig.16. STARTING MOTOR



(A)=NFAD8-LIK3  
(B)=NFAD8-LEIK3  
(C)=

(D)=  
(E)=  
(F)=

No.	Lev.	Parts No.	Description	Q'ty						I	R
				(A)	(B)	(C)	(D)	(E)	(F)		
1	1	124060-39451	SWITCH, 0.2KG		1						
1-1	1	124060-39452 (B=E080019)	SWITCH, 0.2KG		1						N
2	1	105300-44900	SWITCH		1						
3	1	105840-59100	PIPE		1						
4	1	105100-77470	BRACKET		1						
5	1	105192-77480	COVER		1						
6	1	26013-120302	BOLT, M12X 30		2						
7	1	26226-060222	STUD, M6X 22		4						
8	1	105300-77010	STARTER, S114-438		1						
8-1	1	105300-77011 (B=EZZZZZ)	MOTOR, STARTING		1						N
9	2	X211461005	ARMATURE		1						
10	3	X211415502	BEARING, BALL		1						
10-1	3	X2130350900 (B=EZZZZZ)	BALL BEARING		1						R
11	3	X211425502	BEARING, BALL		1						
11-1	3	X211425511 (B=EZZZZZ)	BALL BEARING		1						R
12	2	X211442003	COIL ASSY, FIELD		1						
13	3	X21143215	SCREW, CORE		4						
14	3	X211469002	BRUSH (+)		2						
15	2	X211449007	HOLDER ASSY, BRUSH		1						
16	3	X211459002	BRUSH (-)		2						
17	3	X21148314	SPRING, BRUSH		4						
18	2	X211483003	COVER		1						
19	2	171008-77530	SWITCH, MAGNETIC		1						
19-1	2	X2114T71110 (B=EZZZZZ)	SWITCH, MAGNETIC		1						N
20	2	X211446012	LEVER, SHIFT		1						
21	2	X211468005	BOLT, THROUGH		2						
22	2	X21145866	BOLT		2						
23	2	X211455011	PINION ASSY		1						
24	3	X211465011	SHAFT, PINION		1						
25	3	X211429006	STOPPER SET		1						
26	3	X211425506	CLUTCH ASSY		1						
27	4	X211435502	BALL BEARING		1						
27-1	4	X211495502 (B=EZZZZZ)	BEARING, BALL		1						R
28	4	X211455502	BALL BEARING		1						
29	2	X211456605	CASE ASSY, GEAR		1						
30	2	X21142742	COVER (A), RUBBER		1						
31	2	X211458012	COVER KIT		1						
32	2	X211428008	RETAINER, BEARING		1						
33	1	22212-060000	WASHER 6		4						
34	1	26716-060002	NUT, M6		4						

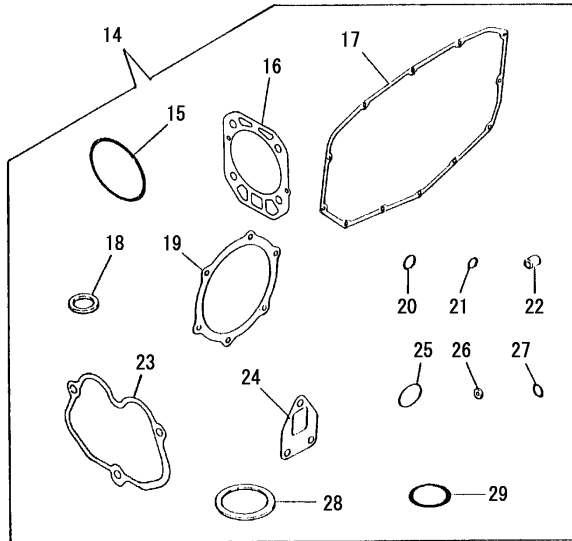
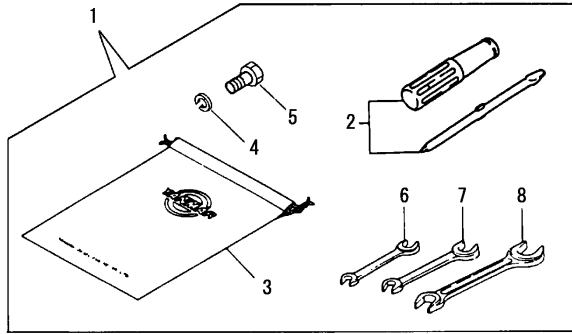
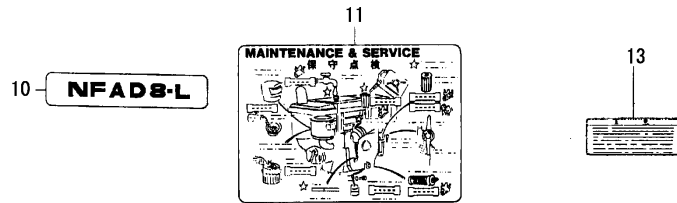




Fig.18. TOOL,LABEL & GASKET SET

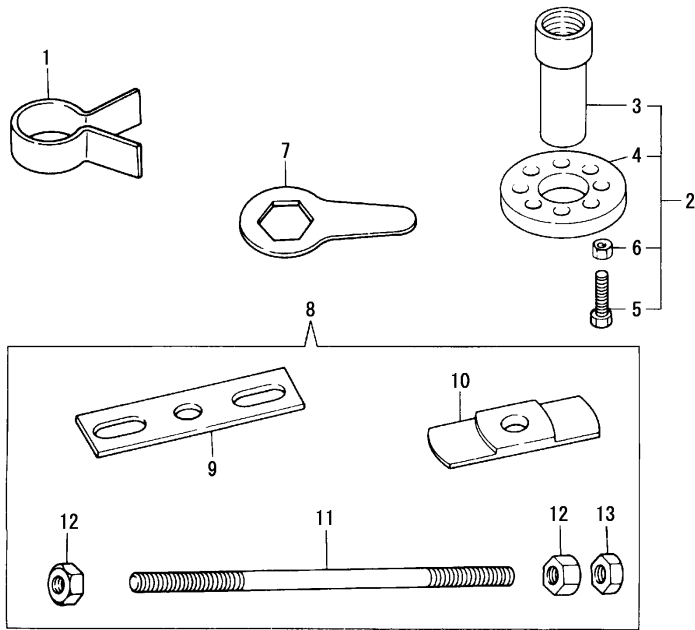
(A)=NFAD8-LIK3  
(B)=NFAD8-LEIK3  
(C)=

(D)=  
(E)=  
(F)=



No.	Lev.	Parts No.	Description	Q'ty						I	R
				(A)	(B)	(C)	(D)	(E)	(F)		
1	1	705300-92101	BOX ASSY, TOOL	1	1						
2	2	104200-92350	DRIVER, SCREW	1	1						
3	2	105300-92600	BAG, TOOL	1	1						
4	2	22217-120000	WASHER, SPRING 12	3	3						
5	2	26206-120352	BOLT, M12X 35 PLATED	3	3						
6	2	28110-100120	SPANNER, 10X12	1	1						
7	2	28110-140170	SPANNER, 14X17	1	1						
8	2	28110-190220	SPANNER, 19X22	1	1						
10	1	105298-07060	LABEL, MODEL NAME	1	1						
11	1	105190-07100	LABEL, CAUTION	1	1						
13	1	105370-07450	LABEL, RADIATOR CAP	1	1						Z
		(A=EZZZZZ) (B=EZZZZZ)									
14	1	705100-92600	GASKET SET	1	1						
14-1	1	705100-92610	GASKET SET	1	1						N
		(A=E080028) (B=E080019)									
15	2	105100-01300	O-RING	2	2						
16	2	105100-01330	GASKET, HEAD 147X118	1	1						
16-1	2	105100-01331	GASKET, HEAD	1	1						N
		(A=E080028) (B=E080019)									
17	2	105100-01410	GASKET, GEAR CASE	1	1						
18	2	101104-01760	GASKET, CAP	1	1						
19	2	105100-02020	GASKET	1	1						
19-1	2	105100-02021	GASKET	1	1						N
		(A=E080028) (B=E080019)									
20	2	24341-000200	O-RING, 1AS20.0	1	1						
21	2	24311-000070	O-RING, 1AP7.0	1	1						
22	2	119625-11870	PROTECTOR, NOZZLE	1	1						
22-1	2	119625-11871	PROTECTOR, NOZZLE	1	1						R
		(A=E080028) (B=E080019)									
23	2	105100-11310	GASKET, BONNET	1	1						
24	2	105300-13200	GASKET, SILENCER	1	1						
24-1	2	105300-13201	GASKET, SILENCER	1	1						N
		(A=E080028) (B=E080019)									
25	2	103338-32570	O-RING	1	1						
26	2	124550-51350	GASKET, DELIVERY	1	1						
27	2	124550-51370	O-RING	1	1						
28	2	101504-55051	GASKET	1	1						
28-1	2	105302-55050	GASKET, CAP	1	1						R
		(A=E080028) (B=E080019)									
29	2	105300-55520	O-RING	1	1						

Fig.19. TOOL(OPTIONAL)

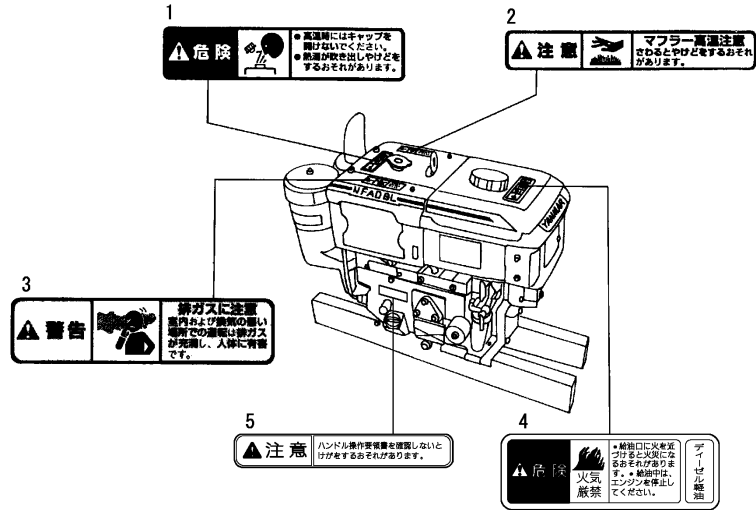


(A)=NFAD8-LIK3  
(B)=NFAD8-LEIK3  
(C)=

(D)=  
(E)=  
(F)=

No.	Lev.	Parts No.	Description	Q'ty						I	R
				(A)	(B)	(C)	(D)	(E)	(F)		
1	1	102700-92140	TOOL, PISTON&RING	1	1						
2	1	704200-92700	TOOL ASSY, FLYWHEEL	1	1						
3	2	104200-92110	RETAINER, A	1	1						
4	2	104200-92120	RETAINER, B	1	1						
5	2	104200-92130	TOOL	2	2						
6	2	26716-120002	NUT, M12	2	2						
7	1	104200-92100	WRENCH	1	1						
8	1	705200-92210	TOOL ASSY, LINER	1	1						
9	2	172200-92020	TOOL, LINER REMOVER	1	1						
10	2	105200-92010	TOOL, LINER REMOVER	1	1						
11	2	103338-92030	BOLT, LINER REMOVER	1	1						
12	2	26716-160002	NUT, M16	2	2						
13	2	26757-160002	NUT, LOCK M16	1	1						

Fig.20. SAFETY LABEL



警告表示(ラベル)の部品コード番号

No.	部品番号	警告表示内容
1	105250-07310	熱湯吹出し注意
2	105250-07330	マフラー高温注意
3	105250-07340	排気ガス注意
4	105250-07320	火気厳禁
5	105100-07300	ハンドル操作注意

安全銘板の貼付け位置は、取扱説明書をご参照下さい。

(A)=NFAD8-LIK3  
(B)=NFAD8-LEIK3  
(C)=

(D)=  
(E)=  
(F)=

No.	Lev.	Parts No.	Description	Q'ty						I	R
				(A)	(B)	(C)	(D)	(E)	(F)		
1	1	1E8500-97220	LABEL, RADIATOR	1	1						
1-1	1	105250-07310	LABEL, RADIATOR	1	1						R
		(A=E080028) (B=E080019)									
2	1	1E5120-86720	LABEL, CAUTION	1	1						
2-1	1	105250-07330	LABEL, CAUTION	1	1						R
		(A=E080028) (B=E080019)									
2-2	1	105250-07330	LABEL, CAUTION	1	1						Z
		(A=EZZZZZ) (B=EZZZZZ)									
3	1	1E5120-86600	WARNING, EXHAUST GAS	1	1						
3-1	1	105250-07340	LABEL, EXHAUST GAS	1	1						R
		(A=E080028) (B=E080019)									
3-2	1	105250-07340	LABEL, EXHAUST GAS	1	1						Z
		(A=EZZZZZ) (B=EZZZZZ)									
4	1	1E8230-97030	LABEL, DANGER B	1	1						
4-1	1	105250-07320	LABEL, NO FIRE	1	1						R
		(A=E080028) (B=E080019)									
5	1	105100-07300	LABEL, CAUTION	1	1						W
		(A=E080028) (B=E080019)									

## Parts No. Index

Parts No.	Fig. No.	Ref. No.
101104-01760	1	32
	18	18
101158-03061	8	14
101158-03111	8	16
101158-11180	2	10
101158-11230	2	20
		24
101504-55051	12	4
	18	28
102100-67080	14	26
102700-92140	19	1
103338-32070	8	6
103338-32570	8	7
	18	25
103338-92030	19	11
103854-55220	12	8
104104-21600	5	15
104107-07900	12	26
104200-03641	2	35
	3	7
104200-21530	5	14
104200-55750	11	26
104200-76480	15	4
104200-92100	19	7
104200-92110	19	3
104200-92120	19	4
104200-92130	19	5
104200-92350	18	2
104271-01950	1	34
104271-51450	10	25
104271-51460	10	26
104300-55160	12	7
104300-76460	4	9
104304-12540	3	14
104304-12590	3	13
104607-44540	9	21
104884-59170	11	47
105010-11920	2	27
105090-01960	1	34 -1
105090-66830	14	11 -1
105092-03600	2	34
105092-07311	3	15
105092-12550	3	16
105092-12560	3	17
105100-01300	1	3
	18	15
105100-01330	1	15
	18	16
105100-01331	1	15 -1
	18	16 -1

Parts No.	Fig. No.	Ref. No.
105100-01410	1	28
	18	17
105100-01660	1	22
105100-02020	1	50
	18	19
105100-02021	1	50 -1
	18	19 -1
105100-02300	1	51
105100-02310	1	52
105100-03081	8	15
105100-03130	8	17
105100-03131	8	17 -1
105100-07300	20	5
105100-08100	15	11
105100-11100	2	7
105100-11111	2	8
105100-11310	2	44
	18	23
105100-11650	2	18
105100-11660	2	22
105100-14091	4	2
105100-14100	4	3
105100-14400	4	5
105100-14600	4	7
105100-21200	5	9
105100-21400	5	10
105100-21590	5	11
105100-21600	5	13
105100-22400	6	9
105100-23910	6	12
105100-44330-1	9	5
105100-44330-2	9	5 -1
105100-44490	9	10
105100-44630	9	22
105100-44770	9	42
105100-44780	9	43
105100-44810	9	47
105100-44850	9	37
105100-44930	9	60
105100-44940	9	49
105100-55540	12	19
105100-55820	12	21
105100-59010	11	33
105100-59800	11	42
105100-66300	13	8
105100-66400	13	9
105100-77470	16	4
10510G-14100	4	3 -1
10510G-14101	4	3 -2
10510G-21200	5	9 -1

Parts No.	Fig. No.	Ref. No.
10510G-21201	5	9 -2
10510G-44330-1	9	5 -2
105140-07940	12	28
105140-34100	8	9
105140-76500	1	27
105150-03790	3	10
105170-14010	4	1
105172-44201	9	32
105172-44680	9	34
105172-44700	9	36
105190-01480	1	29
105190-01670	1	10
105190-01671	1	10 -1
105190-01680	1	11
105190-07100	18	11
105190-11200	2	32
105190-12050	3	1
105190-13510	3	21
105190-13550	3	22
105190-14421	4	6
105190-21100	5	4
105190-21310	5	17
105190-21360	5	20
105190-21910	5	30
105190-28250	7	1
105190-28300	7	2
105190-28310	7	3
105190-28380	7	4
105190-28410	7	5
105190-35050	8	10
105190-44050	9	1
105190-44300	9	4
105190-55240-1	12	10
105190-55240-2	12	10 -1
105192-12510	3	11
105192-12511	3	11 -1
105192-12530	3	12
105192-21320	5	18
105192-28710	7	8
105192-55520	12	16
105192-55530	12	18
105192-59561	11	40
105192-59570	11	41
105192-76330	15	1
105192-77480	16	5
105192-78020	17	1
105192-78040	17	2
105192-78250	17	4
105192-78260	17	6
105198-03740	2	36

Parts No.	Fig. No.	Ref. No.
105198-03770	3	8
105198-03780	3	9
105198-11200	2	32 -1
105198-12010	3	2
105198-12020	3	3
105198-21300	5	19
105198-21360	5	21
105198-44250-1	9	3
105198-44250-4	9	3 -1
105198-44500	9	11
105198-44590	9	13
		18
105198-55250-1	12	11
105198-55250-2	12	11 -1
105198-55260-1	12	12
105198-55260-2	12	12 -1
105198-55510	11	15 -1
105198-55520	12	17
105198-55600	11	14 -1
10519G-28300	7	2 -1
10519G-28301	7	2 -2
10519G-28310	7	3 -1
10519G-28311	7	3 -2
10519G-28410	7	5 -1
10519G-28411	7	5 -2
10519G-28720	7	8 -1
10519G-28721	7	8 -2
10519G-76330	15	1 -1
10519G-76331	15	1 -2
105200-22471	6	20
105200-22472	6	20 -1
105200-22481	6	27
105200-22482	6	27 -1
105200-22500	6	3 -1
105200-22510	6	22
105200-22511	6	22 -1
105200-22520	6	29
105200-22521	6	29 -1
105200-51100	10	3
105200-92010	19	10
105212-13590	3	25
105212-13591	3	25 -1
105215-01200	1	13
105215-76490	7	12
105225-66990	2	39
	14	7
105250-07310	20	1 -1
105250-07320	20	4 -1
105250-07330	20	2 -1
		2 -2

## Parts No. Index

Parts No.	Fig. No.	Ref. No.
105250-07340	20	3 -1 3 -2
105250-22090	6	1
105250-22091	6	1 -1
105292-44200	9	33
105292-44340-1	9	6
105292-44340-2	9	6 -1
105292-44360	9	7
105292-44500	9	16
105292-44680	9	35
105292-44850	9	37 -1
105292-55450	12	13
105292-55460	12	14
105292-55471	12	15
105298-07060	18	10
105298-55820-1	12	20
105298-55820-2	12	20 -1
105298-78530	17	7
105298-78540	17	8
10529G-44340-1	9	6 -2
10529G-44360	9	7 -1
105300-01690	1	30
105300-01920	1	33
105300-07910	12	27
105300-08510	15	12
105300-11290	2	13
105300-11330	2	6
105300-11801	2	2 A
105300-11900	2	26
105300-13200	3	20
	18	24
105300-13201	3	20 -1
	18	24 -1
105300-14200	4	4
105300-21381	5	22
105300-23200	6	13
105300-28450	7	6
105300-32500	8	1 -1
105300-34040	1	23
105300-44220	9	2
105300-44451	5	23
	9	8
105300-44460	5	24
	9	9
105300-44900	16	2
105300-51500	10	27
105300-51510	10	28
105300-51550	10	29
105300-51800	10	31
105300-53100	11	6

Parts No.	Fig. No.	Ref. No.
105300-55080	12	5
105300-55340	11	21
105300-55520	11	16
	18	29
105300-55530	11	15
105300-55610	11	17
105300-55700	11	18
105300-55750	11	30
105300-59100	11	39
105300-61600	13	5
105300-66010	13	7
105300-66110	14	15
105300-66520	14	11
105300-66610	14	31
105300-66850	14	12
105300-76470	15	5
105300-76490	15	6
105300-77010	16	8
105300-77011	16	8 -1
105300-92600	18	3
105302-01750	1	31
105302-14700	4	8
105302-28701	7	7
105302-28720	7	9
105302-55040	12	3
105302-55050	12	4 -1
	18	28 -1
10530H-11290	2	13 -1
10530H-21530	5	14 -1
105340-44570	9	12
	17	
105340-44710	9	38
105340-44750	9	41
105362-28750	7	11
105362-78960	8	18
105370-07450	18	13
105370-13570	3	24
105370-13571	3	24 -1
105370-55650	11	14
105370-55710	11	29
105370-55711	11	29 -1
105372-55100	12	6
105400-11121	2	9
105400-11800	2	2 A-1
105430-67110	9	62
105502-67301	14	27
105507-66551	14	18
105840-59100	16	3
106100-02331	1	53
106100-21130	5	5

Parts No.	Fig. No.	Ref. No.
106100-44560	9	58
106100-44650	9	48
106100-44960	9	50
106383-44720	9	39
106383-44740	9	40
106500-76790	15	7
114250-51190	10	8
114250-53080	11	5
114250-53120	11	9
114250-53130	11	10
114250-53140	11	11
114250-53210	11	12
114250-53400	11	12 A
119285-66610	14	29
119625-11870	2	17
	18	22
119625-11871	2	17 -1
	18	22 -1
119625-11880	2	16
119625-11900	2	26 -1
119800-53000	11	2
119803-53400	11	12 A-1
119810-22300	6	8
120270-09310	12	29
120270-61250	1	27 -1
121250-44590	9	14
	19	
121450-01220	1	14
121575-21850	14	1
123325-02500	1	49
124060-39451	16	1
124060-39452	16	1 -1
124060-66950	14	23
124550-51320	10	20
124550-51341	10	21
124550-51350	10	22
	18	26
124550-51370	10	23
	18	27
124722-59050	11	37
124766-59050	11	35
	38	
124950-51190	10	9
128170-11340	2	6 A
128170-51300	10	17
129209-61370	14	17 -1
129301-03660	11	32
135210-61090	14	2
158600-51170	10	6 -1
160120-76940	5	25

Parts No.	Fig. No.	Ref. No.
160120-76940	9	23
160260-01580	3	19
160370-78950	17	9
160725-78350	9	24
171008-77530	16	19
172200-92020	19	9
174100-54120	10	15
174307-51170	10	6
174307-51181	10	7
174307-51700	10	30
183250-03550	2	43
	3	4
1E5120-86600	20	3
1E5120-86720	20	2
1E8230-97030	20	4
1E8500-97220	20	1
22117-100000	14	13
22137-080000	9	53
22137-100000	3	5
22190-100002	14	25 -1
22212-060000	16	33
22217-080000	1	37
	9	51
22217-120000	9	44
	18	4
22242-000200	15	10
22242-000210	7	13
22252-000100	1	24
22312-030180	2	40
22322-030180	2	41
22322-030200	14	9
22351-060012	1	12
	26	
	2	6 -1
22451-060080	14	14
22512-050120	5	6
22512-070550	4	10
22512-100260	5	7
23064-090400	8	19
23080-013000	11	46
23414-080000	12	9
24101-060044	7	14
24101-060064	4	11
24107-062013	9	45
24121-060074	7	15
24190-120001	1	25
	13	10
24311-000060	1	39
24311-000070	2	42
	14	10

## Parts No. Index

Parts No.	Fig. No.	Ref. No.
24311-000070	18	21
24311-000160	11	28
24321-000250	1	40
24341-000200	8	13
	18	20
25117-003451	9	54
26013-060129	9	27
26013-060142	5	26
		27
26013-060162	9	25
26013-060202	9	26
26013-060222	7	18
26013-080189	3	23
26013-080202	7	16
26013-120302	16	6
26022-050102	10	34
	13	6
26022-060122	4	12
		13
26023-060252	8	12
26106-060122	5	16
	8	8
	9	28
		29
	12	22
	14	16
	15	16
26106-060182	9	30 -1
26106-060202	1	41
	2	45
	5	28
	9	30
		31
26106-060222	8	12 -1
26106-060252	9	55
26106-060302	1	42
	9	59
26106-060602	2	46
26106-060702	1	43
26106-080142	17	5
26106-080202	3	18
	9	56
26106-080222	12	23
		24
26106-080302	11	31
26106-080322	12	25
26106-080352	9	57
26106-100652	7	17
26106-100702	7	17 -1
26116-050082	1	54

Parts No.	Fig. No.	Ref. No.
26206-120352	18	5
26216-060352	2	29 -1
26216-060402	2	29
26216-080222	1	44
26216-080452	2	28
26226-060222	16	7
26226-080222	1	45
26306-080002	1	46 -1
	2	31 -1
26366-060002	2	30
	3	6
	9	61
26366-080002	1	46
	2	31
26554-060162	3	26
26557-060082	5	29
	15	17
26716-060002	16	34
26716-080002	1	38
	9	52
26716-120002	19	6
26716-160002	19	12
26756-060002	14	17
		28
26756-080002	2	21
		25
26757-160002	19	13
26777-120002	9	46
26796-100002	14	24
27231-150000	2	4
27310-070001	2	11
28110-100120	18	6
28110-140170	18	7
28110-190220	18	8
29621-100000	17	9 -1
43400-500430	14	25
704200-92700	19	2
705100-02500	1	47
705100-11700	2	1
705100-11701	2	1 -1
705100-23100	6	10
705100-23600	6	14
705100-23610	6	16
705100-23620	6	18
705100-53100	11	1
705100-92600	18	14
705100-92610	18	14 -1
70510G-23100	6	10 -1
705190-01560	1	4
705190-21700	5	1

Parts No.	Fig. No.	Ref. No.
705192-01501	1	16
705192-66700	14	3
70519G-01500	1	16 -1
705200-01900	1	1
705200-51111	10	1
705200-92210	19	8
705270-22501	6	3
705292-55700-1	12	1
705292-55700-2	12	1 -1
705300-32500	8	1
705300-61701	13	1
705300-92101	18	1
705302-76900	15	2
711100-51540	10	12
724550-51520	10	10
X211415502	16	10
X211425502	16	11
X211425506	16	26
X211425511	16	11 -1
X21142742	16	30
X211428008	16	32
X211429006	16	25
X21143215	16	13
X211435502	16	27
X211442003	16	12
X211446012	16	20
X211449007	16	15
X211455011	16	23
X211455502	16	28
X211456605	16	29
X211458012	16	31
X21145866	16	22
X211459002	16	16
X211461005	16	9
X211465011	16	24
X211468005	16	21
X211469002	16	14
X211483003	16	18
X21148314	16	17
X211495502	16	27 -1
X2114T71110	16	19 -1
X2130350900	16	10 -1

Parts No.	Fig. No.	Ref. No.
-----------	----------	----------